

*The Tennessee Spring Spectacular*



Tennessee Holstein Association

Saturday March 18, 2023

11AM



Tennessee Holstein Association

# TENNESSEE SPRING SPECTACULAR

**Saturday, March 18th: 11:00 AM (Central Time)**

**JAMES E. WARD AGRICULTURAL CENTER at the WILSON COUNTY FAIRGROUNDS**

**GPS Location: 945 E Baddour Parkway, Lebanon, TN**

**Directions:** From Nashville, travel East on I-40 to Exit 239. From Knoxville, travel West on I-40 to Exit 239

From the South, travel I-65 North to I-840, then onto I-40 East to Exit 239

**Catalog is online at [www.cowbuyer.com](http://www.cowbuyer.com)**



**LIVE INTERNET BIDDING: [WWW.COWBUYER.COM](http://WWW.COWBUYER.COM)**

## SALE PERSONNEL

**LYNN LEE**  
615-390-6312  
Auctioneer TN #2628

**TERRY SMITH**  
931-703-0015

**MATT MITCHELL**  
423-912-2493  
Fitting Coordinator

**JEREMY KINSLOW**  
270-646-0697

**JARED MAJOR**  
615-210-3207  
Sale Chairman

**NEAL SMITH**  
615-417-0759

**BENJAMIN NEWBERRY**  
478-737-6897  
Pedigrees

**MIKE HICKMAN**  
931-703-4302

**SETH MAJOR**  
615-478-8859

**DR. MITCHELL PARKS DVM**  
423-823-1364

**BRADLEY TAYLOR**  
662-720-3598

**CARL KENT**  
HOLSTEIN FIELD MAN  
802-380-0332

**TERMS OF SALE:** Cash or good check on sale day. We will gladly accept Absentee Bids via telephone or through a member of our sale team. **However, payment is expected by overnight mail.**  
Send payment to: Tennessee Holstein Association, 6851 Cainsville Road, Lebanon, TN 37090

### Attractions

#### GRAND OLE OPRY

2804 Opryland Dr., Nashville, TN 37214  
615-871-OPRY or [www.opry.com](http://www.opry.com)

#### SALE SPONSORED AND MANAGED BY

**TENNESSEE HOLSTEIN ASSOCIATION**  
6851 Cainsville Road, Lebanon, TN 37090

# Tennessee Spring Spectacular 2023



**KCKK BYWAY AMELIA-ET EX-90 EX-MS**  
DAM OF LOT 1



**MS APPLE ANARA-RED-ET VG-88-CAN**  
2ND DAM OF LOT 1



**KALEB, COLE & CARTER KRUSE**  
DYERSVILLE, IA 52040  
563-920-6084

## KCKK HANANS ADDIE-ET

840003250307718 99%RHA-I  
Born: June 15, 2022 • Herd No. 1558

### Siemers Exc Hanans 31753-ET

840003143986722 99%RHA-I  
PTA +266M +76F +36P 82R 12/22  
PTA +2.0PL 2.6SCS -2.3DPR 2.0%DCE  
PTA +3.75T +2.93UDC +2.39FLC 81R 12/22  
GTPI +2816G

### Kckk Byway Amelia-ET

840003149233444 Excellent-90 EEVEE  
2-02 2x 365d 32291 3.7 1183 3.3 1059  
3-08 2x 227d 25748 3.9 1009 3.2 834

### Oh-River Byway-ET

71310557 \*TR \*TP \*TY \*TV \*TL  
PTA +440M -30F -5P 99R 12/22  
PTA +2.33T +2.20UDC +.05FLC GTPI +1856G

### Ms Apple Anara-Red-ET

840003131999864 Very Good-88-CAN  
2-08 2x 365d 25097 5.3 1329 3.9 983

*Her Sons*

**Blondin Tower Red 196H056928**

**KCKK Appleway 551H03613**

**KCKK Amaretto 551H03726**

### APPLE-RED!

- 2013 HI Red Impact Cow of the Year
- Res Grand Champion, Grand Int'l R&W Show 2013
- Grand Champion, Grand Int'l R&W Show 2011
- All-American R&W Aged Cow 2011
- HI World Champion R&W Cow 2010
- Unanimous All-American Jr 2-Yr-Old 2006
- All-American R&W Jr 2-Yr-Old 2006
- HHM All-American Jr 3-Yr-Old 2007
- Nom All-American R&W 5-Yr-Old 2009
- Res Grand Champ, Royal Winter R&W 2009
- \$1,000,000 Sale Topper Global Glamour 2008

### 3rd-9th Dams

**KHW Regiment Apple-Red-ET EX-96 EEEEE 4E DOM**

9-01 2x 365d 36750 4.3 1582 3.3 1211

Life: 2898d 240640 4.7 11394 3.6 8559

**Kamps-Hollow Altitude-ET EX-95 2E DOM \*RC**

7-00 2x 365d 39690 4.7 1849 3.5 1385

Life: 1844d 144460 4.4 6295 3.7 5288

**Clover-Mist Alisha-ET EX-93 3E GMD DOM \*RC**

8-07 2x 365d 36920 4.2 1553 3.4 1258

Life: 2999d 226470 4.7 10659 3.6 8149

**Clover-Mist Augy Star-ET EX-94 4E DOM \*RC**

7-10 3x 365d 43140 5.0 2136 3.3 1421

Life: 2486d 206250 4.7 9793 3.5 7187

**D-R-A August EX-96 4E DOM**

8-05 2x 365d 27460 4.3 1187 3.2 871

Life: 3443d 190200 4.4 8281 3.3 4457

• Nominated All-American Aged Cow 1986

• All-Wisconsin Aged Cow 1987

**D-R-A Ideal Precious Leader EX-90 2E**

7-06 2x 358d 20090 3.9 787 3.4 675

**D-R-A Princess Lad Leader EX-90 3E**



# Tennessee Spring Spectacular 2023



**KHW REGIMENT APPLE-RED-ET EX-96 EEEEE 3E DOM**  
2ND DAM OF LOT 2



**MS APPLE ANDRINGA-RED-ET EX-94 EX-MS 2E**  
MATERNAL SISTER TO DAM OF LOT 2



**ELLA GILMORE**  
PO BOX 385  
BELL BUCKLE, TN 37020  
615-519-0197

## Lindenright Moovin-ET

12873743C 99%RHA-I \*RC \*TC \*TY \*TV \*TL  
PTA -596M -24F -11P 95R 12/22  
PTA -1.2PL 2.95SCS -3.4DPR 3.1%DCE  
PTA +3.39T +2.96UDC +1.71FLC 93R 12/22  
GTPI +1903G

## Apple-Pts Aleesa-Red-ET

840003147207058 99%RHA-I EX-91 EX-MS  
2-02 2x 365d 21720 4.1 891 3.3 714  
• Res Jr All-American R&W Summer Jr 2-Yr-Old 2020

## ROCKY-RUN MVN AURORA-RED-ET

840003144511058 99%RHA-I \*PO  
Born: December 2, 2020 • Herd No. 9954  
Due: September 2023

Maternal sisters to Aleesa

### MS Candy Apple-Red-ET EX-94 EEEEE 2E

- Unanimous All-American R&W 5-Yr-Old 2013
- 1st & Best Udder Int'l R&W Show 2013
- HM Grand Champion R&W Show WDE 2013
- 1st 5-Yr-Old Royal Winter Fair 2013
- 1st 4-Yr-Old R&W Show WDE 2012
- All-American R&W 4-Yr-Old 2012

### Ms Apple Andringa-Red-ET EX-94 EX-MS 2E

- All-American R&W Milking Yrlg 2017
- All-Canadian R&W Milking Yrlg 2017
- Res All-Canadian B&W Milking Yrlg 2017

### Riverdown Unstopabull-Red

11801450C 99%RHA-I \*TY \*TV \*TL  
PTA -429M -24F -24P 98R 12/22  
PTA +2.18T +2.20UDC +1.39FLC GTPI +1975G

### KHW Regiment Apple-Red-ET

135511521 Excellent-96 EEEEE 4E DOM \*CV  
9-01 2x 365d 36750 4.3 1582 3.3 1211  
4-01 2x 365d 35754 4.1 1682 3.5 1247  
7-00 2x 365d 33280 5.0 1653 3.4 1128  
5-03 2x 365d 30810 5.0 1527 3.7 1154  
2-02 2x 365d 28930 4.5 1297 3.4 979  
10-11 2x 305d 27390 4.4 1210 3.3 900  
Life: 2898d 240640 4.7 11394 3.6 8559

## APPLE-RED!

- 2013 HI Red Impact Cow of the Year
- Res Grand Champion, Grand Int'l R&W Show 2013
- Grand Champion, Grand Int'l R&W Show 2011
- All-American R&W Aged Cow 2011
- HI World Champion R&W Cow 2010
- Unanimous All-American Jr 2-Yr-Old 2006
- All-American R&W Jr 2-Yr-Old 2006
- HHM All-American Jr 3-Yr-Old 2007
- Nom All-American R&W 5-Yr-Old 2009
- Res Grand Champ, Royal Winter R&W 2009
- \$1,000,000 Sale Topper Global Glamour 2008

## 3rd-8th Dams

### Kamps-Hollow Altitude-ET EX-95 2E DOM \*RC

7-00 2x 365d 39690 4.7 1849 3.5 1385  
Life: 1844d 144460 4.4 6295 3.7 5288

### Clover-Mist Alisha-ET EX-93 3E GMD DOM \*RC

8-07 2x 365d 36920 4.2 1553 3.4 1258  
Life: 2999d 226470 4.7 10659 3.6 8149

### Clover-Mist Augy Star-ET EX-94 4E DOM \*RC

7-10 3x 365d 43140 5.0 2136 3.3 1421  
Life: 2486d 206250 4.7 9793 3.5 7187

### D-R-A August EX-96 4E DOM

8-05 2x 365d 27460 4.3 1187 3.2 871  
Life: 3443d 190200 4.4 8281 3.3 4457

- Nominated All-American Aged Cow 1986
- All-Wisconsin Aged Cow 1987

### D-R-A Ideal Precious Leader EX-90 2E

7-06 2x 358d 20090 3.9 787 3.4 675

### D-R-A Princess Lad Leader EX-90 3E

# Tennessee Spring Spectacular 2023



**FARNEAR TBR ARIA ADLER-ET EX-96**  
MATERNAL SISTER TO DAM OF LOT 3



**MS APPLES ARIA-ET EX-92 EX-MS 2E**  
2ND DAM OF LOT 3



**BRATCHER DAIRY**  
CRAB ORCHARD, KY 40419  
606-282-3675

### Farnear Altitude-Red-ET

840003128013348 99%RHA-I \*TC \*TY \*TV \*TL  
PTA +150M +10F +15P 98R 12/22  
PTA -.8PL 2.97SCS -2.6DPR 3.0%DCE  
PTA +3.16T +2.73UDC +1.50FLC 98R 12/22  
GTPI +2207G

### Golden-Oaks Autumn-Red

840003205609911 99%RHA-I GP-82 @ 2-03

### BRATCHER-VU ALT AXELLE-RED

840003257167629 99%RHA-I \*TC \*TL A1/A2  
Born: September 1, 2022 • Herd No. 1268

Maternal sisters to Autumn

#### Farnear TBR Aria Adler-ET EX-96

- Unanimous All-American Lft. Prod. Cow 2021
- 1st Lifetime Production Cow Int'l Show 2021
- Grand Champion IA State Show 2021
- Nom. All-American Lft. Production Cow 2020
- Grand Champion Midwest Fall National 2020
- Grand Champion Southern National 2020
- Grand Champion Iowa State Show 2020
- 5th Lft. Production Cow NA Open Show 2020
- Grand Champion Iowa State Fair 2019
- Res. Jr. All-Iowa 5 Year Old 2018
- 1st Jr. 2 Year Old Iowa State Fair 2015
- National Elite Performer

#### Ms Farnear Uno Amazing-ET EX-93 EEEEE \*RC

#### Riverdown Unstopabull-Red

11801450C 99%RHA-I \*TY \*TV \*TL  
PTA -429M -24F -24P 98R 12/22  
PTA +2.18T +2.20UDC +1.39FLC GTPI +1975G

#### Ms Apples Aria-ET

69822241 Excellent-92 EX-MS 2E \*RC \*TV  
2-01 3x 365d 24410 4.9 1200 3.9 944  
3-10 3x 312d 29830 4.8 1444 3.4 1019  
5-07 3x 365d 26000 4.7 1221 3.8 981  
• Jr Champ Iowa State Holstein Show 2011  
• 4th 4-Yr-Old Midwest Spring Nat'l 2015

### Apple!

- 2013 HI Red Impact Cow of the Year
- Unanimous All-American R&W 125,000lb 2013
- Res. Sr & Res Grand Champ WDE R&W Show 2013
- Grand Champion, WDE R&W Show 2011
- All-American R&W Aged Cow 2011
- HI World Champion R&W Cow 2010
- Nom All-American Jr 3-Yr-Old 2009
- 1,000,000 Sale Topper Global Glamour 2008
- Unanimous All-American Jr 2-Yr-Old 2006
- All-American R&W Jr. 2-Yr-Old 2006
- All-American B&W Jr 2-Yr-Old 2006

### 3rd-9th Dams

#### KHW Regiment Apple-Red-ET EX-96 4E DOM

9-01 2x 365d 36750 4.3 1582 3.3 1211  
Life: 2898d 240640 4.7 11394 3.6 8559

#### Kamps-Hollow Altitude-ET EX-95 2E DOM

7-00 2x 365d 39690 4.7 1849 3.5 1385  
Life: 1844d 144460 4.4 6295 3.7 5288

#### Clover-Mist Alisha-ET EX-93 3E GMD DOM \*RC

8-07 2x 365d 36920 4.2 1553 3.4 1258  
Life: 2999d 226470 4.7 10659 3.6 8149

#### Clover-Mist Augy Star-ET EX-94 4E DOM \*RC

7-10 3x 365d 43140 5.0 2136 3.3 1421  
Life: 2486d 206250 4.7 9793 3.5 7187

#### D-R-A August EX-96 4E DOM

8-05 2x 365d 27460 4.3 1187 3.2 871  
Life: 3443d 190200 4.4 8281 3.3 4457

- Nominated All-American Aged Cow 1986
- All-Wisconsin Aged Cow 1987

#### D-R-A Ideal Precious Leader EX-90 2E

7-06 2x 358d 20090 3.9 787 3.4 675

#### D-R-A Princess Lad Leader EX-90 3E

9-05 2x 305d 19160 4.2 809

# Tennessee Spring Spectacular 2023



LITTLEHOLME-BRT DAYZ-RED-ET EX-94 EEEEE 2E  
DAM OF LOTS 4 & 5



NEWBERRY & THOMAS  
5170 ROGERS ROAD  
LIZELLA, GA 31052  
912-781-6304

5

## HEIFER CALF

Registration Pending  
Born: December 1, 2022

## HEIFER CALF

Registration Pending  
Born: December 4, 2022

### Farnear Altitude-Red-ET

840003128013348 99%RHA-I \*TC \*TY \*TV \*TL  
PTA +150M +10F +15P 98R 12/22  
PTA -.8PL 2.97SCS -2.6DPR 3.0%DCE  
PTA +3.16T +2.73UDC +1.50FLC 98R 12/22  
GTPI +2207G

### Liddleholme-Brt Dayz-Red-ET

840003124690030 Excellent-94 EEEEE 2E  
6-00 2x 359d 22120 4.0 895 3.1 685  
7-03 2x 365d 21240 3.6 773 3.0 642  
4-09 2x 339d 16260 4.0 649 3.2 514  
2-03 2x 305d 15770 3.6 566 3.0 470  
3-10 2x 274d 14870 3.9 573 3.0 450  
Life: 1917d 100890 3.8 3868 3.1 3143

### Patience Sholine Contender-Red

7483577C Excellent-95-CAN  
PTA -2772M -68F -77P 99R 12/22  
PTA +1.21T +1.76UDC +.62FLC GTPI +1465M

### Liddleholme-RT Talent Dee

64516966 Excellent-92 EX-MS 2E  
7-05 2x 365d 28660 3.2 913 2.9 820  
3-08 2x 344d 27730 3.5 959 3.0 828  
6-01 2x 365d 27130 3.3 895 3.2 870  
5-00 2x 365d 25040 3.4 851 3.2 805  
2-02 2x 365d 20840 3.6 748 3.2 657  
Life: 1973d 137280 3.4 4662 3.0 4054

3rd Dam

### WVA-Greystone Morty Dana-ET VG-86 VG-MS

3-07 2x 305d 23590 3.4 797 3.1 721  
2-05 2x 347d 20230 3.7 757 3.1 628

4th Dam

### Regancrest Encore Day-ET EX-90 EX-MS

2-07 3x 365d 34490 3.5 1207 3.1 1080  
9-06 2x 365d 24730 3.6 890 3.3 819

5th Dam

### Snow-N Denises Dellia EX-95 EEEEE 2E GMD DOM

7-06 2x 365d 35610 4.0 1431 3.1 1103  
6-00 2x 365d 35230 4.0 1425 3.2 1116  
4-00 2x 365d 31590 3.6 1153 3.3 1028  
Life: 2558d 180240 3.9 7108 3.4 6065

- Res Gr Champ & Best Udder Spring Nat/WI 1993
- Gr Ch & Best Udder Spring Nat/WI 1991

6th Dam

### Snow-N Dorys Denise EX-90 2E GMD DOM

5-09 2x 365d 33350 3.8 1256 2.9 975



# Tennessee Spring Spectacular 2023



**MS-AOL CNTNDR REVIVE-RED-ET EX-94**  
MATERNAL SISTER TO 3RD DAM OF LOT 6



**OLT & GRIFFITHS**  
9140 MARSHALL RIDGE ROAD  
GREENSBURG, KY 42743  
270-405-1365

## Ri-Val-Re Rager-Red-ET

72353457 99%RHA-I EX-90 \*TP \*TC \*TY \* TL  
PTA +835M +47F +33P 99R 12/22  
PTA +4.9PL 2.84SCS -.5DPR 3.4%DCE  
PTA +1.60T +.78UDC +1.33FLC 99R 12/22  
GTPI +2568G

## Ms-Aol Cali Rippen-Red

840003140616921 Very Good-85 VG-MS  
2-02 2x 305d 18010 4.4 785 3.4 619

## MS-AOL RAGING-RED

840003233647003 99%RHA-I  
Born: March 1, 2021 • Herd No. 209

Due: May 20, 2023 to Mr Blondin Warrior-Red-ET

## Ek-Stj California-Red-ET

840003013232758 \*CD  
PTA +776M +11F +17P 99R 12/22  
PTA +1.56T +2.40UDC +.61FLC GTPI +2086G

## Ms-Aol Armainis Ribbon-Red

840003124588901

Maternal sister to Reanne

### Ms-Aol Cntndr Revive-Red-ET EX-94 EX-MS

- All-American R&W 5-Yr-Old 2019
- Sr/Grand Champ/1st 5-Yr-Old Iowa State B&W 2019
- 2nd 5-Yr-Old Grand Int'l R&W Show 2019
- Res All-American R&W Jr 3-Yr-Old 2017
- 1st Jr 3-Yr-Old/Int Champ NYSS R&W 2017
- 2nd Jr 3-Yr-Old Grand Int'l R&W 2017

Maternal sister to Recovery

### Parkvue Absolute Rap-Red-ET EX-93 EEEEE 2E

- Nom. All-American R&W 5-Yr-Old 2019
- 5th 5-Yr-Old North East Fall Nat'l 2019
- Sold for \$35,000 @ Liddleholm Sale 2019
- Nom. All-American R&W 3-Yr-Old 2017
- 2nd Sr 3-Yr-Old North East Fall Nat'l 2017

3rd-12th Dams

### Ms Aol Ducati Reanne-Red-ET EX-90

### Miss Roxys Recovery-Red EX-92 EEEEE 2E

6-02 2x 305d 31730 4.2 1331 2.8 897

3-06 2x 305d 23261 4.0 919 2.9 668

- HM All-American R&W Milking Yrlg 2012

### Galestone Ava Rae-Red-ET EX-91 VEVEE

3-09 2x 329d 24680 3.8 949 2.8 694

Life: 1454d 105870 3.6 3800 2.7 2881

### Scientific Rubirae Socks-ET EX-93 3E DOM \*RC

5-08 2x 365d 43050 4.2 1809 3.1 1331

Life: 2043d 154160 4.1 6388 3.1 4753

### Scientific Jubilant Rae-ET EX-90 DOM \*RC

5-11 2x 365d 38880 4.1 1608 3.6 1403

Life: 1394d 117590 4.0 4707 3.6 4242

### C Hanoverhill Tony Rae EX-96 3E GMD DOM 5\*

6-11 2x 365d 40220 4.1 1661 3.3 1331

Life: 2247d 166396 4.1 6904 3.4 5612

- Gr Champion Western National 1993

### C Hanoverhill TT Roxette-ET EX-94 2E GMD

10-0 3x 365d 35040 4.3 1519 3.0 1063

Life: 2104d 164789 4.1 6760 3.1 3587

### Mil-R-Mor Roxette EX-CAN 30\*

7-01 2x 365d 24531 4.7 1153

Life: 6 Lact 121418 4.7 5728

### C Glenridge Citation Roxy EX-97 4E GMD 6\*

10-1 2x 365d 25280 4.2 1061

Life: 3620d 209784 4.5 9471

'Queen of the Breed I & II'

### C Norton Court Model Vee EX-90 6\*

7-09 2x 357d 20362 3.9 793

Life: 4183d 218629 3.9 8581

- All-American Produce of Dam 1977, '78, '79

### Norton Court Reflection Vale VG-85-CAN 5\*

Life: 14 Lact 249583 3.7 9295

# Tennessee Spring Spectacular 2023



**MS GOLDWYN SATURDAY-ET VG-89-CAN EX-MS**  
MATERNAL SISTER TO DAM OF LOT 7



**HAPPYDANNY JAYZ SUNDAY-ET EX-95 EX-MS 2E**  
2ND DAM OF LOT 7



**JAXON WILLIAMS**  
WHITESBURG, TN 37891  
423-312-6531

## MS MAPLE-SLOPE JORDY JAYZ

145240105 99%RHA-I \*RC  
Born: March 3, 2021  
• Due by sale time

### Cycle Mcgucci Jordy-Red

840003131666411 99%RHA-I VG-87 \*CV \*TC \*TY \*TL  
PTA -1029M -23F -40P 99R 12/22  
PTA -3.0PL 2.98SCS -3.3DPR 3.5%DCE  
PTA +2.97T +2.22UDC +3.21FLC 99R 12/22  
GTPI +1687G

### Kimball-Way Blak Savannah-ET

840003204329056 99%RHA-I GP-80 @ 2-06

*Maternal sister to Savannah*

### Ms Goldwyn Saturday-ET VG-89-CAN EX-MS

- Res All-American Sr 3-Yr-Old 2018
- HM All-Can Sr 3-Yr-Old 2018
- 1st Sr 3-Yr-Old Int'l Holstein Show 2018
- 2nd Sr 3-Yr-Old Supreme Laitair 2018
- HM Int Champ/1st Sr 3-Yr-Old WDE 2018
- Res Int. Champ/1st Sr 2-Yr-Old WDE 2017
- All-American Sr 2-Yr-Old 2017
- Res. All-Can Sr 2-Yr-Old 2017

### Walnutlawn Blake-ET

11775997C 99%RHA-I \*TC \*TY \*TV \*TL  
PTA -486M -11F -3P 98R 12/22  
PTA +2.79T +1.66UDC +.65FLC GTPI +1763G

### Happydanny Jayz Sunday-ET

66724299 Excellent-95 EX-MS 2E  
3-08 2x 365d 40540 3.5 1401 3.2 1298  
2-07 2x 344d 32310 3.5 1120 3.1 997  
• HM Jr All-American 5-Yr-Old 2014  
• 2nd 5-Yr-Old Eastern Nat'l Show 2014  
• Res Grand Champ Premier Nat. Jr Show 2014  
• HM All-New York 4-Yr-Old 2013  
• 1st 4-Yr-Old/Res Sr Champ NY Champ Show 2013  
• 1st Sr 3-Yr-Old/Grand Champ Maxville Spring 2012

### 3rd-6th Dams

#### Blue-Gene Mr Sam Sandra EX-90 EX-MS

4-00 2x 305d 30760 3.3 1008 3.0 915  
2-07 2x 305d 20420 3.6 740 3.3 664

#### Blue-Gene Storm Suzane EX-90 EX-MS

3-05 2x 305d 31040 3.3 1030 3.3 828  
Life: 106860 3.7 3947 3.3 3568

#### Blue-Gene Black Jack Bulah VG-86 VG-MS

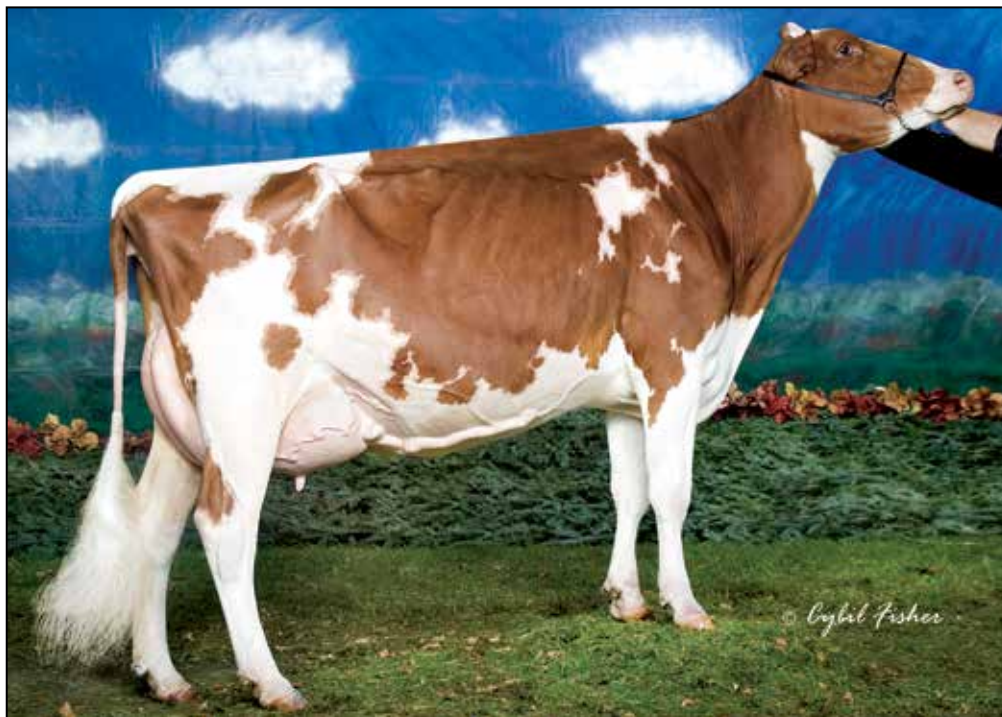
4-03 2x 305d 25470 3.4 877 3.1 779

#### C Brydale Rosemae EX-91 EX-MS

5-10 2x 270d 24200 4.6 1112 3.3 807



# Tennessee Spring Spectacular 2023



**YURSDEN KITE CARAMAC-RED EX-92 EX-MS**  
3RD DAM OF LOT 8 & 4TH DAM OF LOT 9



**COLE STRICKLAND**  
NASHVILLE, NC 27856  
252-908-2071

## **CEDAR-ISLE MJ ADDIE-ET**

840003229907233 Pending  
Born: December 1, 2020

## **9 HEIFER CALF**

Registration Pending  
Born: December 8, 2022  
Sire: **Ri-Val-Re Rager-Red-ET**  
Dam: **Cedar-Isle MJ Addie-ET**

### **Cycle Mcgucci Jordy-Red**

840003131666411 99%RHA-I VG-87 \*CV \*TC \*TY \*TL  
PTA -1029M -23F -40P 99R 12/22  
PTA -3.0PL 2.98SCS -3.3DPR 3.5%DCE  
PTA +2.97T +2.22UDC +3.21FLC 99R 12/22  
GTPI +1687G

### **Ms Goldwyn Ashley-ET**

840003011182935 Very Good-87 VG-MS  
4-06 3x 305d 27760 4.0 1120 3.5 967  
2-07 3x 305d 24000 3.7 891 3.2 759  
5-10 3x 187d 21470 3.7 798 2.8 594 RIP

### **Braedale Goldwyn**

10705608C Good Plus-84-CAN \*CD \*TY \*TV  
PTA -696M -6F -11P 99R 12/22  
PTA +1.06T +.62UDC +.78FLC GTPI +1873G

### **Greenlea Ad Add-Red-ET**

70257490 Very Good-88 VG-MS @ 3-11  
2-02 2x 305d 22590 3.8 866 3.2 729

*Maternal sisters to Add*

### **Greenlea Talent Cat-Red-ET EX-94 2E**

- All-American R&W 5-Yr-Old 2011
- Greenlea Redman Cara-Red-ET VG-88 EX-MS
- Reserve Grand Champion KS Spring Show 2008
- 1st Jr 2-Yr-Old KS Spring Show 2008
- Sale Topper of \$110,000 at KS Spring Sale 2008

### *3rd-11th Dams*

#### **Yursden Kite Caramac-Red EX-92 EEEEE**

4-02 2x 365d 31770 4.2 1325 3.3 1039  
2-01 2x 305d 21080 3.8 801 3.3 688

- International Red Cow of Year 2007
- Nom All-American R&W 5-Yr-Old Cow 2007
- All-American R&W 4-Yr-Old Cow 2006
- Nom All-American 4-Yr-Old Cow 2006
- All-American R&W Jr 2-Yr-Old Cow 2004
- Res All-American B&W Jr 2-Yr-Old 2004

#### **Yursden TT Candy-Red-ET-TW VG-87 VG-MS**

3-05 2x 305d 21120 4.3 902 3.4 715  
2-01 2x 305d 20750 4.2 864 3.1 649

#### **Cooklee Factor 1552-Red-ET GP-82 DC**

4-05 2x 305d 19590 3.3 648 2.9 571

#### **Cooklee Lester 1333-Red-ET VG-86 VG-MS**

4-06 3x 347d 37500 3.1 1144 2.9 1007  
Life: 1509d 134530 3.2 4302 3.1 4136

#### **Cooklee Willow 1159-Red-ET VG-85 VG-MS**

3-03 2x 365d 27760 4.1 1142 3.1 868

#### **Cooklee Enhancer 835-Red VG-85 EX-MS DOM**

2-02 3x 365d 33080 4.1 1354 3.1 1033

#### **Cooklee Valiant 612 VG-86 VVVV GMD DOM \*RC**

3-02 3x 365d 30420 3.7 1129 3.1 957

#### **Cooklee Pete 406 VG-85**

5-10 3x 353d 27090 3.6 964 2.8 771  
Life: 1758d 116800 3.5 4094

#### **Cooklee Cavalier Dori 278 VG-85 DOM**

7-09 3x 365d 35910 3.3 1175 2.7 965  
Life: 2114d 160550 3.1 4910 2.8 3928

# Tennessee Spring Spectacular 2023



**ENTOURAGE-LC PETRA SHOCK-ET EX-92 EEEEE 2E**  
DAM OF LOT 9

Maternal sisters to Petra Shock

**T-Triple-T Durham Poppi EX-95**

- Supreme Champ OH Spring Dairy Expo 2017
- Sr & Grand Champ Mid-East 5-Yr-Old 2015
- Nom All-American 5-Yr-Old 2015
- 1st 5-Yr-Old Mid-East Summer Nat'l 2015
- Sr & Grand Champ Mid-East Summer Nat'l 2015
- 5th 4-Yr-Old WDE 2014
- Futurity Champ/Int. Champ Mideast Sum Nat'l 2012
- 3rd Jr 2-Yr-Old Mid-East Summer Nat'l 2012
- 3rd Spring Yearling Mid-East Summer Nat'l 2011

Full sister to Petra Shock

**Entourage-LC Poppy Shock-ET EX-91**



**DR. RONNIE THOMAS**  
140 HOLLY POINTE  
WARNER ROBINS, GA 31088  
478-230-4108

## HEIFER CALF

Registration Pending  
Born: September 3, 2022

## Prize!

- All-American 4-Yr-Old 2012
- Nominated All-American 5-Yr-Old 2013
- 3rd 5-Yr-Old International Holstein Show 2013
- 1st 4-Yr-Old International Holstein Show 2012
- 1st Sr 2-Yr-Old, Mid-E Summer Nat'l 2010
- Unanimous All-American Winter Yrlg 2009
- 2009 People's Choice Winner
- All-Canadian Winter Yearling 2009
- Junior Champion International Show 2009
- Junior Champion Royal Winter Fair 2009
- 1st Winter Yrlg NY Int'l Spring Show 2009
- 1st Winter Yrlg Mid-E Summer Nat'l 2009

### Luck-E Undenied Admiral

840003141305497 99%RHA-I VG-85 \*TR \*TC \*TY \*TV TL  
PTA +567M +6F +0P 86R 12/22  
PTA +0.2PL 2.91SCS -3.4DPR 3.1%DCE  
PTA +3.58T +1.95UDC +.49FLC 81R 12/22  
GTPI +2073G

### Jon-Lu Solomon Prize-ET

144723553 99%RHA-I EX-91 EEEEE \*TR \*TC \*TL

### Walnutlawn Solomon-ET

11775998 99%RHA-I \*TR \*TP \*TY \*TV \*TL  
PTA -584M -15F -12P 99R 12/22  
PTA +2.63T +1.63UDC +.24FLC GTPI +1912G

### Entourage-Lc Petra Shock-ET

142755224 Excellent-92 EEEEE 2E  
4-04 2x 365d 34660 3.4 1184 3.2 1125  
2-08 2x 365d 32680 3.6 1188 3.4 1101  
7-01 2x 325d 29880 3.8 1146 3.2 958  
5-10 2x 365d 28890 3.8 1101 3.3 957  
Life: 1751d 148900 3.7 5555 3.3 4985

3rd-7th Dams

**T-Triple-T Gold Prize EX-94 EEEEE 2E**

Life: 1611d 116090 4.4 5063 3.2 3686

**T-Triple-T Dundee Paige EX-96 EEEEE 3E**

Life: 2129d 145510 4.5 6620 3.2 4701

- Nominated All-American 125,000lb Cow 2013
- 3rd 125,000lb International Holstein Show 2013
- Nom All-American Aged Cow 2011
- 4th Aged Cow, International Show 2011
- Grand Champ, Mid-E Summer Nat'l 2011

**T-Triple-T Linjet Phoebe-ET EX-91 EX-MS 2E**

Life: 1752d 132560 3.9 5193 2.9 3805

**Hesters Mark Prudence EX-95 4E GMD DOM**

Life: 3183d 301342 3.4 10318 3.1 9290

- 1st 125,000 Lb Cow, Mid-E Sprg Nat'l '96

**Chel-Brook Chairman Peach VG-87 EX-MS DOM**



# Tennessee Spring Spectacular 2023



**WINTERBAY GOLDWYN LOTTO EX-95 EEEEE**  
3RD DAM OF LOT 11



**OUR-FAVORITE LUSTRE-ET EX-91**  
MATERNAL SISTER TO LOT 11

## 3rd-13th Dams

### Winterbay Goldwyn Lotto EX-95 EEEEE

4-06 2x 365d 36620 4.1 1499 3.4 1249

Life: 1280d 106220 4.2 4511 3.4 3593

- All-American 4-Year-Old 2010
- All-Canadian 4-Year-Old 2010
- Grand Champion, Royal Winter Fair 2010

### Lexis Triumphant Lottery-TW-ET GP-84-2YR-CAN

2-04 2x 334d 25088 3.9 979 3.3 840

3-06 2x 283d 24105 3.7 888 3.2 783

### Idee Larissa EX-2E-CAN 12\*

6-05 2x 365d 34339 4.1 1393 3.3 1120

4-05 2x 365d 31449 4.2 1825 3.5 1539

- HM All-Atlantic Sr 3-Yr-Old Cow 2001
- 1st Sr 2-Year-Old, Atlantic Summer 2001

### C Ravenswell Lydia EX-92 EEEE DOM 19\*

5-01 2x 365d 24578 4.6 1125 3.2 779

### Spring Farm Miss Lynn-ET VG-CAN

2-11 2x 329d 22335 4.0 888 3.6 811

### Spring Farm Miss Connie VG-88 2\*

8-00 2x 305d 21420 3.9 840

Life: 5 Lact 108757 3.9 4273

### Spring Farm Miss Citation VG-87 3\*

6-04 2x 365d 27725 3.8 1054

Life: 11 Lacs 215519 3.7 7952

### Spring Farm Miss Pathfinder EX-CAN 8\*

10-6 2x 365d 26338 3.5 924

Life: 12 Lact 242021 3.6 8814

### Spring Farm Fond Pathfinder VG-CAN 5\*

6-05 2x 365d 21047 3.8 802

Life: 11 Lacs 202334 3.7 7582

### Evermot Pathfinder Ormsby VG-CAN 3\*

7-10 2x 365d 20567 3.6 745

Life: 10 Lacs 190482 3.6 6927

- HM All-Canadian 3-Yr-Old Cow 1948

### Evermot Pabst Ormsby VG-CAN 3\*

12-0 2x 365d 16246 3.9 635



**DR. RONNIE THOMAS**  
140 HOLLY POINTE  
WARNER ROBINS, GA 31088  
478-230-4108

## Farnear Delta-Lambda-ET

840003125993715 \*TR \*TP \*TC \*TY \*TV \*TL

PTA +1259M +45F +44P 99R 12/22

PTA +4.6PL 2.76SCS -.3DPR 2.3%DCE

PTA +2.71T +2.99UDC +.80FLC 99R 12/22

GTPI +2782G

## Lizettes Crush Lilly Pad-ET

840003144505853 99%RHA-I Very Good-88 VG-MS

1-09 2x 305d 21540 5.1 1105 3.3 701

- 3rd Milking Yrlg North-East Fall Nat'l 2019

## Maternal sisters to Lilly Pad

**Lizettes Ava Beaded Lace-ET EX-92 \*RC**

**Lizettes Windbrook Lily-ET EX-92**

**Our-Favorite Lustre-ET EX-91**

- 1st Jr 3-Yr-Old Mid-West Spring National 2021

- Res Int. Champ Mid-West Spring National 2021

**Lizettes Liza Manelli-ET EX-91**

## HEIFER CALF

Registration Pending

Born: December 2, 2023

## Maverick Crush

12042760 99%RHA-I \*TC \*TY \*TV \*TL

PTA -877M -50F -14P 99R 12/22

PTA +2.43T +1.56UDC +1.25FLC GTPI +2041G

## Lottos Atwood Lizette-ET

141750208 Excellent-94 EEEEE 3E \*TR

8-00 2x 365d 36560 4.6 1671 3.1 1133

4-02 2x 365d 34890 4.1 1422 3.2 1108

3-03 2x 306d 28800 4.2 1208 3.1 886

2-02 2x 336d 26380 4.3 1142 3.2 840

Life: 1485d 135630 4.4 5973 3.2 4318

- All-Canadian Sr 2-Yr-Old 2014

- Res All-American Sr 2-Yr-Old 2014

- 1st Sr 2-Yr-Old Royal 2014

- 2nd Sr 2-Yr-Old WDE 2014



# Tennessee Spring Spectacular 2023



**IDEE GOLDWYN LUCIA-ET EX-92-CAN**  
DAM OF LOT 12



**IDEE WINDBROOK LYNZI EX-95-CAN 2E**  
MATERNAL SISTER TO LOT 12

## LYNZI

- All-Canadian 5-Yr-Old 2019
- Supreme Champ Royal 2019
- 1st 5-Yr-Old Sr & Grand Champ Royal 2019
- HM Grand Quebec Spring 2019
- Res All-Am & All-Can 4-Yr-Old 2018
- Res All-American Jr 3-Yr-Old 2017
- All-Canadian Jr 3-Yr-Old 2017
- HM Grand Champ Royal 2017
- Int Champ Royal 2017
- Res All-Am & All-Can Jr 2-Yr-Old 2016
- Grand Champ Quebec Spring 2016
- Res All-American Spring Yrlg 2015
- HM All-Canadian Spring Yrlg 2015



**DR. RONNIE THOMAS**  
140 HOLLY POINTE  
WARNER ROBINS, GA 31088  
478-230-4108

## Blondin Luxor-Red

111239184C 99%RHA-I \*TY \*TV \*TL  
PTA -346M -27F -10P 82R 12/22  
PTA -1.9PL 3.11SCS -2.6DPR 3.2%DCE  
PTA +2.63T +1.99UDC +1.02FLC 80R 12/22  
GTPI +1794G

## Idee Goldwyn Lucia

9930655C Excellent-92-CAN 4\*  
3-05 2x 365d 34310 4.1 1422 3.2 1111  
6-10 2x 365d 31905 4.0 1420 3.0 1049  
5-02 2x 365d 28640 4.2 1199 3.0 860  
2-02 2x 359d 25882 4.5 1162 3.4 880  
Life: 1874d 145284 4.2 6147 3.0 4405  
• 2nd 4-Yr-Old/HM Grand Atlantic Summer 2013  
• 1st Sr 3-Yr-Old/Res Int Champ Atlantic 2013

## HEART&SOUL BL LUXOR LULU-ET

840003257831862 99%RHA-I \*RC  
Born: June 1, 2022 • Herd No. 363

Maternal sisters to Laurel

### Idee Windbrook Lynzi EX-95-CAN 95-MS 3E 2\*

- All-Canadian Lifetime Production Cow 2021
- All-Canadian 5-Yr-Old 2019
- Res AA/Res AC 4-Yr-Old 2018
- All-Canadian Jr 3-Yr-Old 2017

Daughter of Lynzi

### Idee Doorman Lysa EX-94 EEEEE MAX

- Res All-American & Res All-Can. Jr 3-Yr-Old 2019
- 2nd Jr 3-Yr-Old Int'l Holstein Show 2019

### Braedale Goldwyn

10705608C Good Plus-84-CAN \*CD \*TY \*TV  
PTA -696M -6F -11P 99R 12/22  
PTA +1.06T +.62UDC +.78FLC GTPI +1873G

### Idee Louis Luise-ET

8531257C Excellent-94-CAN 2E 19\*  
5-02 2x 365d 32656 3.9 1289 3.2 1044  
3-04 2x 365d 32564 4.0 1300 3.3 1068  
6-08 2x 365d 31109 4.1 1265 3.2 1003  
• 1st 5-Yr-Old Atlantic Summer Show 2007  
• 2nd 5-Yr-Old Atlantic Champ Show 2007  
• All-Atlantic 4-Yr-Old 2006  
• Nom. All-Canadian 4-Yr-Old 2006  
• Res. Grand Champ Atlantic Spring Show 2006  
• 1st 4-Yr-Old Atlantic Spring Show 2006  
• 1st 4-Yr-Old Atlantic Champ Show 2006  
• 2nd 4-Yr-Old Quebec Spring Show 2006  
• 3rd Jr. 2-Yr-Old Atlantic Champ 2004

## 3rd-11th Dams

### Idee Bellwood Ladonna VG-87-CAN 2\*

4-05 2x 319d 26140 4.1 1085 3.3 858

### C Ravenswell Lydia EX-92 EEEEE @ 3-09

5-01 2x 365d 24578 4.6 1125 3.2 779

3-05 2x 365d 17549 4.1 726 3.3 580

### Spring Farm Miss Lynn-ET VG-CAN

2-11 2x 329d 22335 4.0 888 3.6 811

### Spring Farm Miss Connie VG-88-CAN 2\*

8-00 2x 305d 21420 3.9 840

### Spring Farm Miss Citation VG-87-CAN 3\*

6-04 2x 365d 27725 3.8 1054

Life: 11 Lacs 215519 3.7 7952

### Spring Farm Miss Pathfinder EX-CAN 8\*

10-6 2x 365d 26338 3.5 924

Life: 12 Lacs 242021 3.6 8814

### Spring Farm Fond Pathfinder VG-CAN 5\*

4-03 2x 365d 22110 3.7 829

Life: 11 Lacs 202334 3.7 7582

### Evermot Pathfinder Ormsby VG-CAN 3\*

5-11 2x 365d 21524 4.1 884

Life: 10 Lacs 190482 3.6 6927

- HM All-Canadian 3-Yr-Old 1948

### Evermot Pabst Ormsby VG-CAN 3\*

12-0 2x 365d 16246 3.9 635

# Tennessee Spring Spectacular 2023



**ROCKY-TOP ASTRO LADY VOL-ET EX-93 EEEEE 3E**  
2ND DAM OF LOT 13



ELLA GILMORE  
PO BOX 385  
BELL BUCKLE, TN 37020  
615-519-0197

## Val-Bisson Doorman-ET

107281711 99%RHA-I Excellent-90 \*TR \*TP \*TY \*TV \*TL  
PTA -475M +13F +9P 99R 12/22  
PTA +0.3PL 2.67SCS -2.4DPR 2.6%DCE  
PTA +2.47T +1.60UDC +0.68FLC 99R 12/22  
GTPI +2142G

## Rocky-Top Goldwyn Velma-ET

840003136376603 Excellent-91  
4-06 2x 305d 29650 3.9 1142 3.1 920  
3-00 2x 305d 24750 3.8 947 3.2 790  
1-10 2x 249d 15410 3.3 505 3.1 479  
• 2nd Sr Milking Yrlg Mid-East Fall Nat'l 2018

## MS DOORMAN VIOLA

840003205781076 99%RHA-I Very Good-85 VG-MS  
Born: September 5, 2019 • Herd No. 87  
2-00 2x 365d 27360 4.2 1159 3.4 934  
• Sells Fresh

## Braedale Goldwyn

10705608C Good Plus-84-CAN \*CD \*TY \*TV  
PTA -696M -6F -11P 99R 12/22  
PTA +1.06T +.62UDC +.78FLC GTPI +1873G

## Rocky-Top Astro Lady Vol-ET

136623960 Excellent-93 EEEEE 3E  
6-11 2x 365d 31690 4.1 1299 3.2 1026  
4-10 2x 365d 29990 4.4 1333 3.3 997  
3-00 2x 365d 27230 3.4 936 3.1 844  
2-01 2x 318d 20340 4.2 854 3.3 674  
Life: 1754d 124580 4.1 5101 3.3 4069  
• Nom Jr All-American Jr 2-Yr-Old  
• Nom All-American Summer Yearling 2006  
• Un Jr All-American Summer Yearling 2006  
• 1st Summer Yrlg Mid-East Fall Nat'l 2006  
• 1st Summer Yrlg Mid-East Spring Nat'l 2006

## 3rd-7th Dams

### Legault Counselor Vickie EX-93 EEEEE 3E

9-09 2x 365d 30550 4.3 1316 3.3 996  
Life: 2407d 164080 4.2 6865 3.3 5335  
• Nom Jr All-American Winter Calf 2001  
• Jr Champion TN Holstein Show 2001

### Legault Stardust Marge EX-2E-CAN 2\*

4-05 2x 365d 27740 3.6 996 3.2 886  
Life: 5 Lact 143041 3.6 5104 3.2 4480  
• Nom All-Canadian Jr Yrlg Heifer 1996  
• Jr Champion Eastern Championship 1996  
• Res Grand Champion Pont Chateau 1997 & 2000

### Legault Raider Julie VG-88 EX-MS-CAN 3\*

3-09 2x 326d 27205 4.0 1091 3.3 893  
Life: 5 Lact 125356 4.1 5146 3.4 4228

### Legault Jubilee Danny EX 3E-CAN 6\*

8-03 2x 305d 30027 3.5 1065 2.8 849  
Life: 7 Lact 179419 3.5 6329 3.1 5476

### Cloverlea Enhancer Renee VG-88 VG-MS-CAN

4-01 2x 362d 27505 3.7 1016 3.2 869



Tennessee Spring Spectacular 2023



RAINYRIDGE TALENT BARBARA EX-95 EEEEE  
4TH DAM OF LOT 14



DR. RONNIE THOMAS  
140 HOLLY POINTE  
WARNER ROBINS, GA 31088  
478-230-4108

**Mr Blondin Warrior-Red-ET**

840003139655530 99%RHA-I \*TP \*TC \*TY \*TV \*TL  
PTA -802M -19F -16P 98R 12/22  
PTA -2.4PL 2.92SCS -3.0DPR 3.1%DCE  
PTA +3.20T +1.66UDC +1.64FLC 98R 12/22  
GTPI +1807G

**Liddleholme J Bright-Red-ET**

840003203988117 99%RHA-I Very Good-87 VG-MS

**HURCROFT WARRIOR BAILEY-RED**

840003210065094 99%RHA-I  
Born: March 11, 2021 • Herd No. 36  
• Sells Fresh

**Cycle McGucci Jordy-Red**

840003131666411 99%RHA-I VG-87 \*CV \*TC \*TY \*TL  
PTA -1029M -23F -40P 99R 12/22  
PTA +2.97T +2.22UDC +3.21FLC GTPI +1687G

**Rocklan Def Burgundy-Red-ET**

143684406 Very Good-87 VVVVV @ 2-10 \*TC \*TL  
3-01 2x 365d 39170 3.2 1241 2.9 1142

*3rd Dam*

**EK-STJ Brilliant-Red-ET** EX-94 EEEEE 2E  
6-11 2x 365d 52340 3.8 2001 2.8 1447  
Life: 1768d 170480 3.6 6164 2.9 4992

*4th Dam*

**Rainyridge Talent Barbara** EX-95 96-MS \*RC  
3-04 2x 365d 34465 3.6 1257 3.3 1133  
Life: 1266d 104815 3.9 4064 3.1 3259

*5th Dam*

**RF Outside Breeze-ET** EX-95 EEEEE 2E  
5-03 2x 365d 37607 4.3 1623 3.3 1237  
Life: 1896d 165379 4.6 7560 3.4 5659

• Grand Champion Southern Spring Show 2011

*6th Dam*

**Rayverley Briana Milan-ET** EX-2E-CAN 5\*  
6-03 2x 365d 27075 3.4 928 3.2 862

*7th Dam*

**Rainyridge Tony Beauty** EX-5E-CAN 9\*  
10-5 2x 365d 29081 3.5 1005 3.1 913  
Life: 8 Lact 199869 3.3 6592 3.2 6455

- All-Canadian Mature Cow 1992-93-95-99
- All-American Aged Cow 1992-95-99
- Supreme Champion WDE 1995 & 1999
- Res Grand Champion Royal Winter Fair 1999
- All-American People's Choice Winner 1999
- Holstein International Cow of Year 1999
- Res Grand Champion Royal Winter Fair 1995
- Grand Champion Royal Winter Fair 1993
- Nom All-Canadian Mature Cow 1991
- HM All-Canadian 4-Yr-Old 1989



# Tennessee Spring Spectacular 2023



**ROBJO DOORMAN EMBRACE EX-93 EEEEE**  
DAM OF LOT 15

15

**DR. RONNIE THOMAS**  
140 HOLLY POINTE  
WARNER ROBINS, GA 31088  
478-230-4108

## Lirr Drew Dempsey

61083609 Excellent-93 \*TR \*CD \*TP \*TY \*TV \*TL  
PTA -755M -4F -5P 99R 12/22  
PTA -2.1PL 2.74SCS -1.8DPR 2.6%DCE  
PTA +1.67T +1.08UDC +1.03FLC 99R 12/22  
GTPI +1916G

## Robjo Doorman Embrace

840003142292481 99%RHA-I Excellent-93 EEEVE  
4-05 2x 365d 33010 4.1 1357 3.6 1178  
3-05 2x 316d 27680 4.5 1235 3.4 947  
2-03 2x 338d 21650 5.1 1108 3.5 750  
• 4th 4-Yr-Old NE Fall Nat'l 2021  
• 4th 4-Yr-Old NE Spring Nat'l 2021  
• 1st Sr 2-Yr-Old NE Fall Nat'l 2019  
• 4th Winter Yrlg Int'l Holstein Show 2018

## MS DEMPSEYS EMBRACE

145500953 99%RHA-I  
Born: September 8, 2022

## Val-Bisson Doorman-ET

107281711 99%RHA-I Excellent-90 \*TR \*TP \*TY \*TV \*TL  
PTA -475M +13F +9P 99R 12/22  
PTA +2.47T +1.60UDC +0.68FLC GTPI +2142G

## Robjo Goldwyn Eve-ET

74023474 Excellent-90 EX-MS

### 3rd Dam

**Pineland Jasper Ecstatic VG-86 VG-MS**  
1-11 2x 294d 14570 4.3 624 3.1 445

### 4th Dam

**Wilson-Dale SS Echoe-ET EX-91 EX-MS 2E**  
6-07 2x 361d 27200 4.1 1123 3.0 812  
Life: 1784d 128620 3.9 4995 3.0 3889

### 5th Dam

**Budjon-JK Encore Energy-ET EX-90**  
4-01 2x 365d 28440 3.4 957 2.8 790  
2-04 2x 365d 25110 3.5 890 3.1 790

### 6th Dam

**Budjon-JK Integirt Elite-ET EX-91 EEEEE**  
2-02 2x 365d 33050 3.4 1135 3.0 1008  
4-00 2x 296d 29420 3.3 979 2.9 841

### 7th Dam

**Krull Broker Elegance EX-96 3E GMD DOM**  
Life: 2356d 183710 3.7 6878 3.4 6267  
• HM All-American Aged Cow 1999 & 2000

### 8th Dam

**Krull Starbuck Excellency EX-90 GMD DOM**  
3-03 2x 365d 27140 3.5 937 3.4 930

### 9th-11th Dams

**Krull TT Excellency EX-90 VEEE DOM**  
Life: 1733d 109780 3.7 4077 3.3 3605  
**Krull Boot Mark Excellency EX-92 2E GMD**  
6-06 2x 365d 27410 3.8 1040 3.1 868  
Life: 3026d 201440 3.5 7105  
**Krull Kingstead Excellency EX-92 4E GMD**  
Life: 3364d 179790 3.6 6436

# Tennessee Spring Spectacular 2023



**ELM-SPRING MORTY MITZI EX-94 EX-MS 3E**  
2ND DAM OF LOT 16



**ELM-SPRING INTEGRITY INEZ EX-94 4E EEEEE**  
3RD DAM OF LOT 16



**J.D. & REBECCA WICKER**  
5255 W 900 S  
MILROY, IN 46156  
765-561-6232

## Val-Bisson Doorman-ET

107281711 99%RHA-I Excellent-90 \*TR \*TP \*TY \*TV \*TL  
PTA -475M +13F +9P 99R 12/22  
PTA +0.3PL 2.67SCS -2.4DPR 2.6%DCE  
PTA +2.47T +1.60UDC +0.68FLC 99R 12/22  
GTPI +2142G

## Elm-Spring Wbk Innovator-ET

74134470 Excellent-92 EEEVE  
4-06 2x 332d 30520 3.0 901 2.6 785  
3-03 2x 305d 28800 2.9 835 2.5 719  
1-10 2x 305d 19480 3.3 645 2.8 538

## LIDDLEHOLME-JB IZZY-ET

840003206945239 99%RHA-I  
Born: December 2, 2020 • Herd No. 649  
• Sells Fresh

## Gillette Windbrook-ETS

7816429C Exclnt-97-CAN \*CD \*TY \*TV \*TL  
PTA -22M +17F +7P 99R 12/22  
PTA +1.62T +.77UDC +1.56FLC GTPI +1994G

## Elm-Spring Morty Mitzi

136983110 Excellent-94 EEVEE 3E  
8-00 2x 365d 38170 2.8 1076 2.8 1076  
4-06 2x 350d 34270 2.8 960 2.7 940  
3-04 2x 354d 32110 3.0 960 2.9 933  
5-07 2x 365d 28920 2.7 793 2.9 849  
2-02 2x 365d 26040 3.3 868 3.1 807  
Life: 2272d 183320 3.0 5445 2.9 5375  
• 1st Sr 3-Yr-Old/Int Champ Tri-County Jr Show 2009  
• 2nd Sr 3-Yr-Old/Res Int Champ Tri-County Show 2009

## 3rd-8th Dams

### Elm-Spring Integrity Inez EX-94 4E EEEEE

6-07 2x 365d 36030 3.5 1251 2.9 1033

Life: 211010 3.5 7313 2.9 6118

- HHM Jr All-American 5-Yr-Old 2008
- HHM All-NY 5-Yr-Old 2008
- Res. Jr All-NY 5-Yr-Old 2008
- 1st 5-Yr-Old Grand Nat'l Jr Show 2008

### Elm-Spring Astre Lucky-ET EX-92 3E

12-8 2x 365d 29310 3.0 865 2.9 836

Life: 250720 3.1 7786 2.8 7099

### Elm-Spring Enhancer Daisy EX-90 2E

4-11 2x 338d 28300 3.5 988 3.2 900

Life: 135780 3.4 4655 3.2 4294

### Yorkmont Cavalier Danta EX-92 4E EEEEE

10-4 2x 364d 25660 4.1 1056 3.6 933

Life: 203870 4.0 8108 3.6 7312

### Audets Arlinda Matt Danta EX-90 EEEE

Audets Ivan Dawn-OC VG-86 GMD

# Tennessee Spring Spectacular 2023



**ELM-MOUND DURHAM RAEANN-ET VG-86**  
FULL SISTER TO 3RD DAM OF LOT 17



**STELBRO RENITA RANGER-RED EX-94 EEEEE 3E**  
5TH DAM OF LOT 17



**MAGGIE & JAMES DUNIVAN**  
20 HONEY ROAD  
PETERSBURG, TN 37144  
931-933-0859

## Woodcrest King Doc

840003132417775 99%RHA-I EX-90 \*TR \*TP \*TC \*TY  
PTA +1581M +67F +53P 99R 12/22  
PTA +3.9PL 3.11SCS -1.4DPR 2.4%DCE  
PTA +3.19T +2.15UDC +1.95FLC 99R 12/22  
GTPI +2794G

## Dunvis Diamondback Rosie

71780172 99%RHA-I \*RC

## DUNVIS DOC RHONDA

840003208411524 99%RHA-I  
Born: March 6, 2022 • Herd No. 182

*Full sister to Rben*

**Elm-Mound Durham Raeann-ET VG-86**

*Maternal sister of Rben*

**Elm-Mound Sept Rylee-Red-ET VG-88**

*Maternal sister to Ravel*

**Carousel RM Rolanda-ET EX-94 EEEEE \*RC**

6-02 2x 365d 61510 3.7 2294 2.6 1587

## Mr D Apple Diamondback

3013721049 99%RHA-I EX-93 \*RC \*TP \*TC \*TV \*TL  
PTA -425M -24F -1P 99R 12/22  
PTA +2.50T +1.96UDC +1.38FLC GTPI +1866G

**Pop-A-Top Lad P Rose-Red-ET**

74562782

*3rd Dam*

**Elm-Mound Durham Rhen-ET EX-91 EX-MS \*RC**

8-02 2x 365d 35580 3.9 1374 3.4 1216

Life: 2139d 1 68720 3.9 6590 3.4 5740

*4th Dam*

**Stelbro Renita Ravel-ET VG-88 VVVVE \*RC**

4-04 2x 365d 27900 3.3 931 3.1 864

3-04 2x 284d 26709 3.3 886 3.1 829

*5th Dam*

**Stelbro Renita Ranger-Red EX-94 EEEEE 3E**

7-04 2x 365d 29760 3.9 1168 3.1 924

4-02 2x 305d 29259 3.9 1155 3.1 917

• *All-American R&W Aged Cow 2001*

• *Grand Champ Grand National 2001, 1998*

• *Unanimous All-American R&W 4-Yr Cow 1998*

• *All-American R&W Sr 2-Yr-Old Cow 1996*

*6th Dam*

**Stelbro Enhancer Ripple-Red EX-4E 7\***

9-05 2x 365d 31552 4.5 1413 3.2 1008

Life: 6 Lact 202164 4.5 9112 3.4 6867

*7th Dam*

**Stelbro Regal Rene EX-3E-CAN 3\***

8-09 2x 364d 21874 4.1 893 3.7 805

Life: 7 Lact 134725 3.9 5190 3.4 4619

*8th Dam*

**Stelbro Astra Starbrite VG-85-CAN**

6-06 2x 295d 18210 3.8 699 3.5 631

*9th Dam*

**Langstate Star VG-85-CAN**

4-03 2x 292d 17996 4.3 778



# Tennessee Spring Spectacular 2023



**STELBRO RENITA RANGER-RED EX-94 EEEEE 3E**  
6TH DAM OF LOT 18



**EVAN POWERS**  
1201 JASON PATRICK ROAD  
HOLLY SPRINGS, MS 38635  
662-292-4254

### Riverdown Unstopabull-Red

11801450C 99%RHA-I \*TY \*TV \*TL  
PTA -429M -24F -24P 98R 12/22  
PTA +1.1PL 2.94SCS +.9DPR 2.7%DCE  
PTA +2.18T +2.20UDC +1.39FLC 98R 12/22  
GTPI +1975G

### Pop-A-Top Aangel Willow-Red

840003148290457  
1-11 3x 305d 30200 4.2 1280 3.1 925

### MKP UNSTOPABUL-RED

145460358 99%RHA-I  
Born: March 3, 2022 • Herd No. 14

### Mr Eskdale Archagel-Red-ET

840003128590796 \*TP \*TC \*TY \*TV \*TL  
PTA -162M +17F -12P 97R 12/22  
PTA +1.00T +1.74UDC -.45FLC GTPI +1911G

### Pop-A-Top Carson 1303-Red

840003135717230 Very Good-85 VG-MS  
3-01 2x 305d 29410 2.9 840 2.9 850  
2-01 2x 304d 26190 3.3 854 2.8 745

### 3rd-10th Dams

**Pop-A-Top Advent Brook-ET VG-85 VG-MS \*RC**  
3-06 2x 365d 31150 3.6 1106 3.2 985  
2-01 2x 305d 20020 4.0 793 3.2 634  
**Elm-Mound Durham Rhen-ET EX-91 EX-MS \*RC**  
8-02 2x 365d 35580 3.9 1374 3.4 1216  
Life: 2139d 1 68720 3.9 6590 3.4 5740  
**Stelbro Renita Ravel-ET VG-88 VVVVE \*RC**  
4-04 2x 365d 27900 3.3 931 3.1 864  
3-04 2x 284d 26709 3.3 886 3.1 829  
**Stelbro Renita Ranger-Red EX-94 EEEEE 3E**  
7-04 2x 365d 29760 3.9 1168 3.1 924  
4-02 2x 305d 29259 3.9 1155 3.1 917  
• All-American R&W Aged Cow 2001  
• Grand Champ Grand National 2001, 1998  
• Unanimous All-American R&W 4-Yr Cow 1998  
• All-American R&W Sr 2-Yr-Old Cow 1996  
**Stelbro Enhancer Ripple-Red EX-4E 7\***  
9-05 2x 365d 31552 4.5 1413 3.2 1008  
Life: 6 Lact 202164 4.5 9112 3.4 6867  
**Stelbro Regal Rene EX-3E-CAN 3\***  
8-09 2x 364d 21874 4.1 893 3.7 805  
Life: 7 Lact 134725 3.9 5190 3.4 4619  
**Stelbro Astra Starbrite VG-85-CAN**  
6-06 2x 295d 18210 3.8 699 3.5 631  
**Langstate Star VG-85-CAN**  
4-03 2x 292d 17996 4.3 778

# Tennessee Spring Spectacular 2023



**ALL-GLO GOLD C KAPPUCINO-ET EX-91 EX-MS**  
FULL SISTER TO DAM OF LOT 19



**PENNWOOD DAMION KRAYOLA EX-90**  
2ND DAM OF LOT 19



**JUSTIN & ASHLEY KAUFMAN**  
1683 WILLS CHURCH ROAD  
BERLIN, PA 15530  
814-442-7796

## Walnutlawn Sidekick

12508113C 99%RHA-I \*TR \*TY \*TV \*TL  
PTA -1176M +7F -10P 98R 12/22  
PTA -.3PL 2.75SCS -.1DPR 2.1%DCE  
PTA +2.99T +2.41UDC +.97FLC 97R 12/22  
GTPI +2192G

## All-Glo Gld Chip Karamel-ET

840003126310779 Excellent-92 EEEEE 2E

*Full sister to Karmel*

## All-Glo Gold C Kappucino-ET EX-91 EX-MS

- 5th Sr 3-Yr-Old Eastern Fall Nat'l 2019
- 5th Sr 3-Yr-Old Mid-Eastern Fall Nat'l 2019
- 3rd Winter Yrlg Mid-East Fall Nat'l 2017
- 3rd Winter Yrlg Eastern Fall Nat'l 2017
- Res All-American Winter Calf 2016
- 2nd Winter Calf Int'l Holstein Show 2016
- 3rd Winter Calf Eastern Fall Nat'l 2016

## ALL-GLO SIDEKICK KAFE-ET

840003239759144 99%RHA-I  
Born: March 1, 2022 • Herd No. 436

## Mr Chassity Gold Chip-ET

140145553 Excellent-95 \*TR \*TP \*TY \*TV \*TL  
PTA -580M -22F -38P 99R 12/22  
PTA +1.51T +1.10UDC +1.04FLC GTPI +1751G

## Pennwood Damion Krayola

69495845 Excellent-90  
3-05 3x 272d 18590 3.0 554 3.2 590  
4-05 3x 301d 18060 3.3 605 3.3 603

*Maternal sister to Krayola*

## Pennwood Troy Kalahari EX-93 3E

### 3rd-15th Dams

#### **Pennwood Reece Kaleigh EX-90 VG-MS**

3-03 3x 301d 31678 2.6 822 2.7 849  
Life: 2425d 205490 3.1 6356 2.9 5863

#### **Pennwood Leader Kajun GP-82**

2-09 3x 292d 22230 3.8 842 3.0 661

#### **Pennwood Milan Kourtney GP-83**

3-02 3x 305d 22680 3.4 767 2.9 657

#### **Pennwood Raider Kody VG-88 VG-MS**

4-03 2x 365d 26990 3.1 826 2.8 765  
Life: 2531d 189670 2.9 5514 2.8 5280

#### **Pennwood Valet Kite G-78**

4-00 2x 349d 22130 3.3 720 3.3 733

#### **Pennwood Alex Kodak VG-88 VG-MS**

7-07 2x 364d 26200 3.3 855 3.0 785

Life: 2680d 180740 3.2 5806 3.0 5369

#### **Pennwood BF Kimberly VG-85 VG-MS**

4-05 2x 314d 20380 3.0 614 2.9 596

#### **Pennwood Magnet Kit VG-85 VG-MS GMD**

9-00 2x 305d 23040 4.2 979 3.1 716

#### **Pennwood Ultimate Kimbella VG-85**

3-07 2x 300d 20280 3.9 789

#### **Pennwood Major Kay VG-88 VG-MS**

Life: 3939d 198610 3.9 7766 2.9 3080

#### **Werstlerdale Imp Kastle EX-90 EX-MS 2E**

Life: 2546d 115890 3.9 4563

# Tennessee Spring Spectacular 2023



**PENWOOD TROY KALAHARI EX-93 3E**  
MATERNAL SISTER TO 2ND DAM OF LOT 20



**JUSTIN & ASHLEY KAUFMAN**  
1683 WILLS CHURCH ROAD  
BERLIN, PA 15530  
814-442-7796

### Regancrest-GV S Bradnick-ET

66625940 Excellent-96 \*TR \*TP \*TY \*TV \*TL  
PTA +505M -44F -3P 99R 12/22  
PTA +1.3PL 3.18SCS -2.9DPR 1.8%DCE  
PTA +1.68T +1.79UDC +1.67FLC 99R 12/22  
GTPI +1838G

### All-Glo Tatoo Kala

840003212608052 99%RHA-I VG-87 VVVVV @ 2-05

### ALL-GLO BRADNICK KIWI

840003244598052 99%RHA-I  
Born: July 21, 2022 • Herd No. 8362

### Duckett Crush Tatoo-ET

840003137052923 99%RHA-I \*TR \*TP \*TC \*TY \*TV \*TL  
PTA -552M -36F -3P 99R 12/22  
PTA +2.88T +2.24UDC +.71FLC GTPI +2013G

### All-Glo Reginald Kalara-ET

840003126310612 Very Good-87 VG-MS  
2-11 3x 299d 27790 3.3 915 2.9 801  
3-11 3x 305d 25440 3.6 909 3.2 804  
1-09 3x 305d 21430 3.7 788 3.1 660  
Life: 1296d 104550 3.5 3703 3.0 3142

*Full sisters to Kalara*

### All-Glo Reginald Kallie-ET EX-93 EX-MS 2E A2/A2

- 5th Sr 3-Yr-Old Eastern Fall Na'I 2018
- 5th Fall Calf Mid-East Fall Nat'l 2015

### All-Glo Reginald Kalilah-ET EX-90

*Maternal sister to Kalara*

### Pennwood Lrity Karibbean EX-90

### 3rd-14th Dams

#### Pennwood Troy Kalahari EX-93 3E

3-09 3x 336d 31678 2.8 907 2.9 915  
Life: 2364d 195310 3.0 5878 2.9 5747

#### Pennwood Reece Kaleigh EX-90 VG-MS

3-03 3x 301d 31678 2.6 822 2.7 849  
Life: 2425d 205490 3.1 6356 2.9 5863

#### Pennwood Leader Kajun GP-82

2-09 3x 292d 22230 3.8 842 3.0 661

#### Pennwood Milan Kourtney GP-83

3-02 3x 305d 22680 3.4 767 2.9 657

#### Pennwood Raider Kody VG-88 VG-MS

4-03 2x 365d 26990 3.1 826 2.8 765

Life: 2531d 189670 2.9 5514 2.8 5280

#### Pennwood Valet Kite G-78

4-00 2x 349d 22130 3.3 720 3.3 733

#### Pennwood Alex Kodak VG-88 VG-MS

7-07 2x 364d 26200 3.3 855 3.0 785

Life: 2680d 180740 3.2 5806 3.0 5369

#### Pennwood BF Kimberly VG-85 VG-MS

4-05 2x 314d 20380 3.0 614 2.9 596

#### Pennwood Magnet Kit VG-85 VG-MS GMD

9-00 2x 305d 23040 4.2 979 3.1 716

#### Pennwood Ultimate Kimbella VG-85

3-07 2x 300d 20280 3.9 789

#### Pennwood Major Kay VG-88 VG-MS

Life: 3939d 198610 3.9 7766 2.9 3080

#### Werstlerdale Imp Kastle EX-90 EX-MS 2E

Life: 2546d 115890 3.9 4563



# Tennessee Spring Spectacular 2023



**HARVUE ATWOOD EMILY ANN EX-94 EEEEE**  
3RD DAM OF LOT 21

## FIVE-#1 EMBRYOS



**R & A TOMPKINS & M&M BRANCH**  
69 BLACK CHERRY LANE  
ENNICE, NC 28623  
336-363-4639

### Jacobs Showtime-ET

111576086C 99%RHA-I \*RC \*TC \*TY \*TV \*TL  
PTA -83M +63F +28P 82R 12/22  
PTA -1.6PL 3.21SCS -3.1DOR 3.2%DCE  
PTA +2.75T +1.91UDC +1.79FLC 81R 12/22  
GTPI +2445G

### Havue Diamondback Egypt

840003140425337 99%RHA-I EX-90 EX-MS  
2-05 2x 183d 15660 3.4 530 3.0 473 INC

### Mr D Apple Diamondback

3013721049 99%RHA-I EX-93 \*RC \*TP \*TC \*TV \*TL  
PTA -425M -24F -1P 99R 12/22  
PTA +2.50T +1.96UDC +1.38FLC GTPI +1866G

### Havue Hextry Elyse-ET

840003124765309 Excellent-92 EEVEE  
3-05 2x 365d 35730 3.1 1106 3.2 1127  
4-08 2x 296d 26890 3.1 827 3.2 859  
2-05 2x 324d 24710 3.2 783 3.1 771

### 3rd-12th Dams

#### Harvue Atwood Emily Ann EX-94 EEEEE 2E

6-01 2x 365d 41650 3.0 1236 3.0 1268  
Life: 1722d 153990 3.3 5128 3.2 4918

#### Harvue Durham Eclipse-ET EX-93 95-MS 3E \*TV

6-00 2x 340d 34340 3.6 1248 3.3 1120  
Life: 2498d 191940 3.8 7270 3.4 6472

#### Harvue Juror Emily EX-94 EEEEE 2E DOM

4-08 2x 365d 37260 4.0 1473 3.3 1212  
Life: 1866d 144480 3.9 5699 3.3 4783

#### Harvue Raider Edty EX-90 EX-MS

3-02 2x 321d 22240 4.4 988 3.4 759  
4-02 2x 305d 20620 4.2 873 3.2 651

#### Harvue Algonquin Ella NC

Harvue Phil Evita VG-85  
3-02 2x 365d 25030 4.0 1000 3.2 813

#### Harvue Blizzard Evita GP-82 @ 2-04

2-00 2x 280d 16340 3.7 608 2.8 455

#### Harvue Bootmaker Evita EX-90 2E GMD DOM

5-11 2x 365d 31480 3.4 1064 2.8 873  
Life: 2739d 192520 3.7 7032 3.0 5254

#### Harvue Elevation Evita GP-80

3-06 2x 288d 19160 3.3 636

#### Harvue Astronaut Evita EX-91 EX-MS 2E

10-02 2x 365d 22580 3.2 712

# Tennessee Spring Spectacular 2023



WELSH-EDGE ROY HETTS EX-93 EEEEE 3E  
4TH DAM OF LOT 22



TYLER CARTER & DYLAN REED  
211 IL ROUTE 127  
GREENVILLE, IL 62246  
618-664-1825

## Sandy-Valley J Pharo-ET

3014562176 99%RHA-I VG-88 \*TR \*TP \*TC \*TY \*TV \*TL  
PTA +1018M +27F +35P 99R 12/22  
PTA +4.0PL 2.58SCS -1.0DPR 2.1%DCE  
PTA +2.38T +2.19UDC +.14FLC 99R 12/22  
GTPI +2515G

## Carters-Corner Doormn Reign

840003143327259 99%RHA-I Excellent-90  
2-00 2x 129d 6190 3.2 198 3.2 195  
• 2nd Fall Yrlg Mid-West Spring Nat'l 2019  
• 4th Milking Yrlg Mid-East Fall Nat'l 2019

## MS CARTERS-CORNER PHR REIGN

840003255208126 99%RHA-I  
Born: December 1, 2022 • Herd No. 1921

## Val-Bisson Doorman-ET

107281711 99%RHA-I Excellent-90 \*TR \*TP \*TY \*TV \*TL  
PTA -475M +13F +9P 99R 12/22  
PTA +2.47T +1.60UDC +0.68FLC GTPI +2142G

## Carters-Corner WH Reba-TW

840003130806980 Excellent-91 EX-MS  
• 3rd Fall Yrlg South Spring Nat'l 2017

Maternal sister to Realiy

**Welsh-Edge Fever Huggable** EX-92

• All-American 2013 & 2013

**Welsh-Edge Advent Hiccup** EX-90 EX-MS

Maternal sisters to Hetts

**Welsh-Edge Trbt Grandeur-ET** EX-93 3E

**Welsh-Edge Roy Heartache-ET** EX-92

**Welsh-Edge Hannah-ET** EX-91 EX-MS

Maternal sisters to Gingerheart

**Welsh-Edge Regency Girl** EX-91 3E

**Welsh-Edge Jolt Gingerbread** EX-91 2E

3rd-6th Dams

**Welsh-Edge Atwd Reality-ET** EX-90 EX-MS

4-03 2x 365d 30570 4.0 1233 3.2 983

3-00 2x 305d 24160 3.8 914 3.2 771

• Nom. Jr All-American Milking Yrlg 2014

**Welsh-Edge Roy Hetts** EX-93 EEEEE 3E

8-01 2x 305d 29660 3.6 1064 3.0 894

Life: 2535d 168580 3.8 6399 3.1 5155

**Welsh-Edge Gingerheart-ET** EX-92 EX-MS 4E DOM

9-03 2x 363d 30630 3.4 1030 3.0 926

Life: 3466d 235850 3.5 8227 3.2 7518

**Welsh-Edge Leadman Ginger** EX-90 EEEEEV 3E

4-04 2x 305d 33495 3.7 1224 3.0 1019

# Tennessee Spring Spectacular 2023



**OHIANA MOM HANDMAID-RED-ET EX-91 DOM**  
4TH DAM OF LOT 23



**J.D. & REBECCA WICKER**  
5255 W 900 S  
MILROY, IN 46156  
765-561-6232

## Progenesis Watson-ET

12857892 99%RHA-I \*RC \*TP \*TC \*TY \*TV \*TL  
PTA +1066M +64F +47P 94R 12/22  
PTA +2.7PL 3.04SCS -2.6DPR 2.2%DCE  
PTA +1.51T +1.72UDC +.26FLC 86R 12/22  
GTPI +2604G

## Ja-Bob C Heidimarie-Red-ET

840003128780951 99%RHA-I Very Good-85  
3-05 3x 297d 29090 3.5 1009 3.2 920  
4-04 3x 305d 28310 3.3 925 3.1 872  
1-11 3x 365d 28530 2.6 756 3.3 945

## JA-BOB WATSON HEIDIJO-RED

840003227954942 99%RHA-I \*CD \*TP \*TL  
Born: February 18, 2021 • Herd No. 348  
32K GTPI +2222G +362M +15F +26P 81R 12/22  
PTA +168NM +.00%F +.05%P  
PTA +.7PL 3.16SCS -1.5DPR 2.5%DCE  
PTA +1.55T +1.07UDC +.45FLC 79R 12/22  
PTA +58FE -1.1FI 2.9%SCE  
A2/A2 AA  
• Sells Fresh

## Kenmore Citation P-Red-ET

142158979 \*PO \*CD \*TY \*TV \*TL  
PTA -695M -2F -2P 95R 12/22  
PTA +98T +.29UDC +.02FLC GTPI +2001G

## Ja-Bob Elayo Heidijo-Red-ET

64527542 99%RHA-I VG-87 VG-MS  
4-05 3x 343d 34240 3.7 1252 3.1 1064  
5-07 3x 365d 33520 3.5 1158 3.1 1050  
2-10 3x 365d 30480 3.4 1039 3.2 981  
6-10 3x 287d 31430 3.2 1003 3.0 938  
7-10 3x 288d 28790 3.3 950 3.0 860  
8-11 3x 309d 27830 3.5 979 3.1 853  
9-11 3x 312d 23090 3.4 794 3.1 727  
1-10 3x 283d 21470 3.3 716 3.0 644  
Life: 2774d 241960 3.4 8284 3.1 7460

## 3rd-11th Dams

**Ja-Bob Cadon Heidi-Red-ET VG-85 VG-MS**  
2-03 3x 365d 27900 3.8 1054 3.0 839  
**Ohiana Mom Handmaid-Red-ET EX-91 DOM**  
3-05 3x 365d 34230 3.7 1272 3.3 1117  
2-03 2x 365d 26610 3.7 979 3.2 843  
**Ja-Bob Holly Jo-Red-ET EX-90 DOM**  
2-02 3x 365d 27010 5.2 1404 3.6 963  
**Ja-Bob Mark Heavenly Joy EX-92 2E 13\* DOM**  
7-03 2x 365d 33093 3.5 1155 3.2 1054  
Life: 4 Lact 120733 3.9 4766 3.3 3975  
**Sky-Hi Mars Helen-ET EX-92 4E GMD DOM**  
10-0 2x 365d 30181 3.9 1175 3.2 963  
Life: 7 Lact 235830 4.0 9407 3.4 7317  
**Sky-Hi Boots Honey VG-86 EX-MS GMD**  
9-10 2x 365d 22750 4.6 1050  
Life: 4327d 233390 4.5 10475  
**Sky-Hi Majority Honey EX-90 3E GMD**  
6-04 2x 365d 20311 4.2 849  
Life: 2429d 123200 4.2 5180  
**Terrace Heights Honey Sky Hi VG-86**  
6-10 2x 305d 16840 3.4 565  
Life: 3387d 165130 3.4 5566  
**Twin creek Burke Winnie VG-86**  
Life: 2747d 122905 3.8 4110



# Tennessee Spring Spectacular 2023



**HARDWOOD R BLISSFUL-ET EX-92 EX-MS 2E GMD**  
6TH DAM OF LOT 24



**LUKE & ABBY FAIRBANKS**  
8954 FOREST CHAPEL ROAD  
ANAMOSA, IA 52205  
319-480-2484

## Cherry-Lily Zip Luster-P-ET

840003138843085 99%RHA-I \*TR \*PC \*TC \*TY \*TV \*TL

PTA +1558M +76F +46 99R 12/22

PTA +2.2PL 2.74SCS -.3DPR 2.5%DCE

PTA +2.82T +2.28UDC +1.59FLC 98R 12/22

GTPI +2850G

## Hardwood Beemer Brizzo

840003135874456 Excellent-93 EEEEE

4-10 3x 365d 37400 3.6 1358 2.8 1061

3-10 2x 316d 22880 3.3 744 2.9 668

2-10 2x 346d 22730 3.5 785 2.8 646

1-11 2x 290d 15610 3.2 497 2.6 412

Life: 1363d 101240 3.4 3481 2.8 2874

## WAPSI-ANA LUSTER-P BUZZ-ET

840003253627253 99%RHA-I

Born: December 11, 2022 • Herd No. 1523

## Pol Butte Mc Beemer-ET

7525863C 99%RHA-I \*TP \*TC \*TY \*TV \*TL

PTA +3M -4F -5P 99R 12/22

PTA +2.32T +1.50UDC +.87FLC GTPI +1728G

## Hardwood F Brisco

72156611 Excellent-93 EEEEE 2E

4-11 2x 348d 29120 3.7 1071 3.0 872

7-01 2x 328d 28490 3.2 913 2.7 777

5-11 2x 365d 28450 3.6 1018 2.9 836

3-01 2x 289d 22230 3.5 780 2.8 632

2-00 2x 326d 21740 3.6 776 2.9 626

4-00 2x 286d 21530 3.5 753 2.9 621

Life: 1947d 151790 3.5 5321 2.9 4372

## 3rd-12th Dams

**Hardwood Fever Beretta** EX-90 EX-MS 2E

5-07 2x 365d 32000 3.4 1085 2.9 939

Life: 1788d 129200 3.7 4831 3.0 3867

**Hardwood Alexander Brasetta** EX-90 EX-MS 2E

4-11 2x 365d 31870 3.8 1207 2.7 849

Life: 1444d 105410 3.8 3955 2.8 2974

**Hardwood Durham Brassie-ET** VG-88

4-05 2x 365d 33190 3.3 1086 3.1 1026

3-03 2x 364d 29020 3.5 1006 3.2 918

**Hardwood R Blissful-ET** EX-92 EX-MS 2E GMD

3-04 2x 365d 35600 3.7 1305 3.1 1113

Life: 2193d 168290 3.8 6314 3.2 5419

**Hardwood Leadman Bliss** EX-92 3E GMD DOM

7-06 2x 365d 37150 4.2 1573 3.2 1172

Life: 2376d 172316 3.9 6796 3.3 5678

**Hardwood Mark Breanna** EX-92 2E GMD DOM

6-10 2x 365d 30650 4.2 1286 3.1 950

Life: 2518d 173670 4.2 7290 3.2 5596

**Hardwood Fantastic Brenda** VG-85 VG-MS

6-00 2x 365d 24930 4.3 1060 3.1 779

Life: 1817d 120600 4.1 5003 3.2 3827

**Hardwood Banner Bo** VG-86 EX-MS

3-01 2x 357d 27749 3.7 1021 3.2 878

**Hardwood Chairman Brook** EX-90 2E DOM

4-03 2x 365d 31360 3.3 1029 2.7 854

Life: 2215d 149620 3.6 5361 2.9 4339

**Hardwood Monitor Boots** VG-85

# Tennessee Spring Spectacular 2023



PLEASANT NOOK SID LULULEMON EX-94 EX-MS 2E  
2ND DAM OF LOT 25



MAGGIE & JAMES DUNIVAN  
20 HONEY ROAD  
PETERSBURG, TN 37144  
931-933-0859

## Woodcrest King Doc

840003132417775 99%RHA-I EX-90 \*TR \*TP \*TC \*TY  
PTA +1581M +67F +53P 99R 12/22  
PTA +3.9PL 3.11SCS -1.4DPR 2.4%DCE  
PTA +3.19T +2.15UDC +1.95FLC 99R 12/22  
GTPI +2794G

## Ms Lulus Doorman Linda-ET

840003215759714 99%RHA-I \*TR \*TC \*TL

Full sister to Linda

Ms Lulus Doorman Lisa-ET VG-85 @ 2-09

## DUNVIS DOC LAINEY

840003208411526 99%RHA-I  
Born: September 1, 2022 • Herd No. 184

## Val-Bisson Doorman-ET

107281711 99%RHA-I Excellent-90 \*TR \*TP \*TY \*TV \*TL  
PTA -475M +13F +9P 99R 12/22  
PTA +2.47T +1.60UDC +0.68FLC GTPI +2142G

## Pleasant Nook Sid Lululemon

11950675C Excellent-94 EX-MS 2E \*TR \*TC \*TL \*TD  
4-05 3x 365d 50660 3.1 1557 2.7 1376  
7-02 2x 305d 30940 4.3 1339 2.8 872  
1-09 2x 321d 28475 3.5 990 2.6 753  
2-11 2x 305d 33850 3.2 1076 2.7 909  
Life: 1836d 201095 3.3 6705 2.7 5493  
• 8th Milking Yrlg Int'l Holstein Show 2016

## 3rd-9th Dams

### Eby016 B G Easter Lilly-ET EX-95 3E

2-05 2x 313d 23669 3.9 930 2.8 663  
Life: 1952d 197897 4.2 8359 2.7 5341

- 3rd Mature Cow Ontario Summer Show 2015
- Grand Champ Perth Waterloo 2013
- Nom All-Ontario 5-Yr-Old 2013
- 2nd 4-Yr-Old Perth Waterloo 2012
- 1st Jr 3-Yr-Old Perth Waterloo 2011

### Brady View Integrity Lilly-ET EX-92 2E

6-06 2x 365d 34575 3.7 1270 2.5 864  
5-03 2x 322d 28499 3.8 1076 2.5 722

### Brady View Charles Tulip VG-86-CAN 5\*

4-11 2x 365d 20082 3.2 650 3.0 608  
2-08 2x 365d 19226 2.9 553 3.0 571

### Brady View Counselor Petunia VG-88-CAN

10-5 2x 365d 20606 3.5 721 2.8 608  
Life: 8 Lact 135219 3.7 5051 3.0 4094

### Locus Lane Daisy Starbuck VG-85

4-10 2x 365d 17899 4.0 714 3.3 597  
Life: 6 Lact 103215 3.7 3803 3.2 3320

### Locus Lane Priscella VG-86 3\*

3-07 2x 336d 24354 3.6 866 3.1 745  
Life: 10 Lact 181551 3.4 6105 3.1 5597

### Locus Lane Lisette Fury VG-85

9-02 2x 340d 21301 3.2 692 3.0 635  
Life: 8 Lact 126496 3.2 4092 2.0 2478

# Tennessee Spring Spectacular 2023



**EASTSIDE GOLDWYN MILLIE EX-94 EEEEE 2E**  
MATERNAL SISTER TO 2ND DAM OF LOT 26



**MACTALLA MARKER MOLLY EX-95 EEEEE 3E**  
3RD DAM OF LOT 26



**EVAN POWERS**  
1201 JASON PATRICK ROAD  
HOLLY SPRINGS, MS 38635  
662-292-4254

### Siemers Frazz Buzzard-ET

840003141495559 99%RhA-I \*TR \*TP \*TC \*TY \*TV \*TL  
PTA +1118M +81F +46P 99R 12/22  
PTA +4.2PL 2.85SCS -.8DPR 2.1%DCE  
PTA +.92T +1.68UDC -.52FLC 93R 12/22  
GTPI +2745G

### CT-Rocky-Top Tatoo Myrtle

840003200367170 99%RhA-I

### MKP BUZZARD MARCY-TW

145460367 99%RHA-I  
Born: August 11, 2022 • Herd No. 15

### Duckett Crush Tatoo-ET

840003137052923 99%RHA-I \*TR \*TP \*TC \*TY \*TV \*TL  
PTA -552M -36F -3P 99R 12/22  
PTA +2.88T +2.24UDC +.71FLC GTPI +2013G

### Rocky-Top Atwood Magic-ET

840003136376608

*Maternal sister to Magic*

### Eastside Goldwyn Millie EX-94 EEEEE 2E \*RC

3-04 2x 365d 34610 4.1 1426 3.3 1154  
Life: 2062d 157300 4.1 6490 3.3 5189  
• 3rd 5-Yr-Old Eastern Fall National 2013

### MOLLY!

- Jr All-American Aged Cow 2008
- Nominated All-American Aged Cow 2008
- Res Gr Champ International Jr. Show 2008
- Grand Champion TN Holstein Show 2008
- 5th Aged Cow International Show 2008
- All-Atlantic Mature Cow 2007
- Grand Champ Atlantic Summer Show 2007
- 2nd 4-Yr-Old Atlantic Champ 2005

*3rd Dam*

### Mactalla Marker Molly EX-95 EEEEE 3E \*RC

7-08 2x 365d 37790 3.9 1476 3.4 1273  
Life: 2617d 206211 3.9 8077 3.1 6387

*4th Dam*

### Mactalla Expert Molly VG-87-CAN

4-03 2x 355d 25035 3.6 910 3.0 750  
Life: 2338d 159387 3.6 5736 2.9 4627



# Tennessee Spring Spectacular 2023



**BEATYVIEW ADV RUTHE-RED-ET EX-93 EEEEE 2E**  
4TH DAM OF LOTS 27 & 28

Maternal sister to Ruthe

**Beatyview Aspen Riki-ET EX-92 EX-MS 2E**  
• 2nd 2-Yr-Old Mid-East Fall National 2012  
• 1st Sr 2-Yr-Old Jr Royal 2012



ELLA GILMORE  
PO BOX 385  
BELL BUCKLE, TN 37020  
615-519-0197

## Mr Affection Analyst-Red-ET

840003136496608 99%RHA-I \*TP \*TC \*TY \*TV \*TL  
PTA -53M -28F -23P 83R 12/22  
PTA -0.5PL 2.87SCS -1.5DPR 2.7%DCE  
PTA +2.71T +2.38UDC +1.66FLC 81R 12/22  
GTPI +1881G

## Mats-Uno App-Crisp Jewel

840003201200994 99%RHA-I

## MATS-UNO ANALYS AMBER-RED

840003226844450 99%RHA-I  
Born: June 3, 2021 • Herd No. 1999  
• Sells Fresh

## Siemers Oct Apple-Crisp-ET

840003134506808 99%RHA-I \*RC \*TP \*TC \*TY \*TV \*TL  
PTA +80M +4F -8P 99R 12/22  
PTA +1.88T +1.32UDC +1.23FLC GTPI +1957G

## Beatyview Diamondback Darla

840003124829874 99%RHA-NA Excellent-90 EX-MS  
2-06 2x 305d 26400 3.0 800 2.9 776  
3-09 2x 212d 23141 3.0 704 3.0 690  
5-00 2x 311d 19590 3.7 733 3.3 637

### 3rd-13th Dams

#### Beatyview Braxton Reese-ET VG-85 VG-MS

2-02 2x 365d 19400 3.8 738 3.2 617  
4-05 2x 207d 16410 3.7 602 3.1 501

#### Beatyview Adv Ruthe-Red-ET EX-93 EEEEE 2E

8-09 2x 365d 23220 3.6 845 3.1 711  
Life: 2239d 125840 3.9 4866 3.1 3869

• Nom Jr All-American R&W Jr 2-Yr-Old 2010

#### Rosedale R Rosario-ET EX-92 EX-MS 3E \*RC

5-00 2x 365d 30720 5.1 1560 3.2 973  
Life: 1773d 122820 4.1 5065 3.2 3870

• Two Nom All-American R&W daughters

#### Northrose Skychief Rosario-ET EX-92 EEEVE

4-04 2x 305d 31890 4.6 1467 3.2 1028

Maternal sister to Skychief Rosario

#### Lavender Ruby Redrose-ET EX-96 EEEEE 2E

• Supreme Champion, WDE 2005

#### Northrose-I Lavender-ET EX-90 \*RC 2\*

3-10 2x 365d 28734 3.6 1034 3.2 919

#### Rosedale Lea-Ann-ET EX-93 EEEEE 2E DOM \*RC

4-08 2x 365d 39370 3.4 1325 3.1 1202

Life: 1345d 120420 3.6 4315 3.2 3795

#### Stookey Elm Park Blackrose-ET EX-96 3E GMD

5-03 2x 365d 42230 4.6 1939 3.4 1432

Life: 1609d 149880 4.4 6621 3.3 4940

• Res All-American 5-Yr-Old Cow 1995

• All-American Jr 3-Yr-Old Cow 1993

• All-American Jr 2-Yr-Old Cow 1992

#### Nandette TT Speckle-Red EX-93 EEEE DOM

4-08 2x 365d 25290 4.7 1195

5-08 3x 365d 18600 4.4 812 3.5 645

• All-American R&W Aged Cow 1984

• All-American 2-Yr-Old Cow 1981

#### Nandette Riley Nana-Red VG-87

7-01 2x 365d 20070 3.4 677 3.1 621

#### Nandette Bootmaker Gale VG-89 VG-MS

Life: 2181d 129410 3.8 4916

# Tennessee Spring Spectacular 2023



**BEATYVIEW ASPEN RIKI-ET EX-92**  
MATERNAL SISTER TO 4TH DAM OF LOTS 27 & 28

Maternal sister to Rutbe

- Beatyview Aspen Riki-ET EX-92 EX-MS 2E**
- 2nd 2-Yr-Old Mid-East Fall National 2012
  - 1st Sr 2-Yr-Old Jr Royal 2012

### 3rd-13th Dams

**Beatyview Braxton Reese-ET VG-85 VG-MS**

2-02 2x 365d 19400 3.8 738 3.2 617

4-05 2x 207d 16410 3.7 602 3.1 501

**Beatyview Adv Ruthe-Red-ET EX-93 EEEEE 2E**

8-09 2x 365d 23220 3.6 845 3.1 711

Life: 2239d 125840 3.9 4866 3.1 3869

- Nom Jr All-American R&W Jr 2-Yr-Old 2010

**Rosedale R Rosario-ET EX-92 EX-MS 3E \*RC**

5-00 2x 365d 30720 5.1 1560 3.2 973

Life: 1773d 122820 4.1 5065 3.2 3870

- Two Nom All-American R&W daughters

**Northrose Skychief Rosario-ET EX-92 EEEVE**

4-04 2x 305d 31890 4.6 1467 3.2 1028

Maternal sister to Skychief Rosario

**Lavender Ruby Redrose-ET EX-96 EEEEE 2E**

- Supreme Champion, WDE 2005

**Northrose-I Lavender-ET EX-90 \*RC 2\***

3-10 2x 365d 28734 3.6 1034 3.2 919

**Rosedale Lea-Ann-ET EX-93 EEEEE 2E DOM \*RC**

4-08 2x 365d 39370 3.4 1325 3.1 1202

Life: 1345d 120420 3.6 4315 3.2 3795

**Stokey Elm Park Blackrose-ET EX-96 3E GMD**

5-03 2x 365d 42230 4.6 1939 3.4 1432

Life: 1609d 149880 4.4 6621 3.3 4940

- Res All-American 5-Yr-Old Cow 1995

- All-American Jr 3-Yr-Old Cow 1993

- All-American Jr 2-Yr-Old Cow 1992

**Nandette TT Speckle-Red EX-93 EEEE DOM**

4-08 2x 365d 25290 4.7 1195

5-08 3x 365d 18600 4.4 812 3.5 645

- All-American R&W Aged Cow 1984

- All-American 2-Yr-Old Cow 1981

**Nandette Riley Nana-Red VG-87**

7-01 2x 365d 20070 3.4 677 3.1 621

**Nandette Bootmaker Gale VG-89 VG-MS**

Life: 2181d 129410 3.8 4916



**KAYROUZ & DAVENPORT**  
3638 TRIMBLE ROAD  
ADAIRVILLE, KY 42202  
270-539-9072

### Golden-Oaks Master-ET

840003139216917 99%RHA-I \*TR \*TP \*TC \*TL

PTA -36M +10F -4P 92R 12/22

PTA -2.6PL 2.89SCS -3.6DPR 3.5%DCE

PTA +3.76T +3.01UDC +1.04FLC 89R 12/22

GTPI +2054G

### JG-Springs Jordy Diana

840003204544352 99%RHA-I GP-81 @ 2-03 \*RC

2-00 2x 305d 32092 3.4 1094 2.8 895"

### JEM-MAR-D MASTER PRINCES DI

840003245338561 99%RHA-I

Born: June 1, 2022 • Herd No. 953

### Cycle Mcgucci Jordy-Red

840003131666411 99%RHA-I VG-87 \*CV \*TC \*TY \*TL

PTA -1029M -23F -40P 99R 12/22

PTA +2.97T +2.22UDC +3.21FLC GTPI +1687G

### Beatyview Diamondback Darla

840003124829874 99%RHA-NA Excellent-90 EX-MS

2-06 2x 305d 26400 3.0 800 2.9 776

3-09 2x 212d 23141 3.0 704 3.0 690

5-00 2x 311d 19590 3.7 733 3.3 637

# Tennessee Spring Spectacular 2023



**REGANCREST CHANEL-ET EX-92 EX-MS**  
4TH DAM OF LOTS 29 & 30



**MIDAS-TOUCH DM CHINKS-ET EX-94 EEEEE**  
MATERNAL SISTER TO 3RD DAM OF LOTS 29 & 30

Maternal sister to Charisma (3rd Dam)

**Midas-Touch DM Chinks-ET EX-94 EEEEE**

- 1st 4-Yr-Old Tri-County NY Holstein Show 2021
- Res Int Champ Tri-County NY Holstein Show 2020
- 1st Sr 3-Yr-Old Tri-County NY Holstein Show 2020
- 1st Sr 2-Yr-Old PA Spring Show 2019
- HM Int Champ PA Spring Show 2019
- 2nd Sr 2-Yr-Old SE PA Champ Show 2019
- 1st Winter Yflg Tri-County NY Holstein Show 2018
- HM Jr Champ Tri-County NY Holstein Show 2018

**Midas-Touch Av Cling-ET 2E-93-CAN**

- Nom All-Canadian Milking Yearling 2018
- 1st Milking Yrlg Int'l Holstein Show 2018
- 1st Milking Yrlg Mid-East Summer Nat'l 2018

**Midas-Touch Solomon Cher-ET EX-91**

- Res All-American Spring Calf 2017
- 2nd Spring Calf Int'l Holstein Show 2017

**Crystal-Star Avlnch Cali-ET EX-90**

- Res All-American Fall Calf 2019
- 2nd Fall Calf Int'l Holstein Show 2019
- 1st Fall Calf/Jr Champ Eastern Nat'l Show 2019
- 2nd Fall Calf/Res Jr Champ MD Spring Show 2019

Maternal sister to Chanel (4th Dam)

**Regancrest S Chassity-ET EX-92 EEEVE GMD DOM**

- Global Cow of Year 2011
- Sold for \$150,000 as a package Int'l Intrigue 2009



ABBY FAIRBANKS  
20755 90TH STREET  
ANAMOSA, IA 52205  
319-480-2489

30

**WAPSI-ANA ST CALM-TW**

840003253627170 99%RHA-I  
Born: June 14, 2022 • Herd No. 1440

**WAPSI-ANA ST CRAZY-TW**

840003253627171 99%RHA-I  
Born: June 14, 2022 • Herd No. 1441

**Jacobs Showtime-ET**

111576086C 99%RHA-I \*RC \*TC \*TY \*TV \*TL  
PTA -83M +63F +28P 82R 12/22  
PTA -1.6PL 3.21SCS -3.1DOR 3.2%DCE  
PTA +2.75T +1.91UDC +1.79FLC 81R 12/22  
GTPI +2445G

**Le-O-La Doc Cal**

840003209275669 99%RHA-I VG-86 VG-MS @ 2-07

**Woodcrest King Doc**

840003132417775 99%RHA-I EX-90 \*TR \*TP \*TC \*TY  
PTA +1581M +67F +53P 99R 12/22  
PTA +3.19T +2.15UDC +1.95FLC GTPI +2794G

**Le-O-La Brokaw Callie-ET**

840003135507314 99%RHA-I

3rd-12th Dams

**Le-O-La Charisma-ET GP-84**

**Regancrest Chanel-ET EX-92 EX-MS**

4-11 3x 365d 30220 4.2 1261 3.3 1011  
3-04 3x 365d 24380 4.2 1019 3.7 894

**Regancrest Cinderella-ET EX-92 2E GMD DOM**

5-00 2x 365d 34220 4.1 1418 3.1 1074  
2-05 2x 365d 32300 4.4 1437 3.2 1029

- 1st Sr 3-Yr-Old Cow Midwest Sprg/Nat 2007
- 1st Sr 2-Yr-Old Cow Mideast Fall/Nat 2006

**Regancrest-PR Barbie-ET EX-92 GMD DOM**

2-06 2x 365d 31690 3.9 1237 3.3 1050

- HM All-American Jr 3-Yr-Old Cow 2004

**Regancrest Juror Brina-ET EX-92 EEEVE GMD**

4-04 2x 365d 40640 3.6 1478 3.0 1217

- Res Grand Champion, IA State Fair 2000
- Res Grand Champion, IA State Show 2002

**Regancrest Aerostar Bert-ET EX-90 GMD DOM**

5-05 2x 365d 37790 3.6 1357 3.2 1215  
Life: 4 Lact 109350 3.7 4030 3.3 3556

**Regancrest Mark Chairman Bea EX-91 2E GMD DOM**

7-09 2x 365d 33630 3.8 1278 3.1 1052  
Life: 2036d 140130 4.1 5711 3.3 4616

**Regancrest Board Chairman Bea EX-90 EX-MS**

5-09 2x 365d 26010 4.1 1059 3.4 884

**Regancrest Apache Standout Bea VG-86 EX-MS**

4-10 2x 320d 19070 4.0 766  
Life: 2432d 131940 3.6 4744



# Tennessee Spring Spectacular 2023



**CRAIGCREST RUBIES GOLD ROMA-ET EX-90 EX-MS**  
3RD DAM OF LOT 31

Full sisters to Roma

**Craigcrest Rubies Gold Rejoice EX-94**

- All-Canadian & All-American Sr 2-Yr-Old Cow 2011
- Res Int Champion International Show 2011
- 1st Sr 2-Yr-Old Cow International Show 2011
- 1st Sr 2-Yr-Old Cow Royal Winter Fair 2011
- HM Grand Champion Ontario Summer Show 2011
- All-American Winter Yrlg Heifer 2010
- Jr Champion International Show 2010
- All-Canadian Intermediate Yrlg Heifer 2010
- Res Jr Champion Royal Winter Fair 2010
- All-Canadian Intermediate Calf 2009
- All-American Winter Calf 2009

**Craigcrest Rubies Gold Ring-ET EX-93-CAN 92-MS 2E 3\***

- Res Grand Champion Dufferin & Wellington 2009
- 1st Sr 3-Yr-Old Cow Dufferin & Wellington 2009
- HM All-Ontario Sr 2-Yr-Old Cow 2008
- 1st Sr 2-Yr-Old Cow Dufferin & Wellington 2008

3rd-6th Dams

**Craigcrest Rubies Gold Roma-ET EX-90 EX-MS**

Born: June 2, 2011 • Herd No. 923  
4-01 2x 325d 28322 4.3 1222 3.5 1006  
3-01 2x 303d 23320 4.5 1054 3.6 830

**Montdale Dundee Rubie EX-93-CAN 92-MS 7\***

4-08 2x 329d 27692 4.1 1135 3.3 922  
2-05 2x 365d 27606 4.0 1102 3.4 950  
• Nom All-Canadian 4-H Sr Calf 2002  
• 1st Spring Yrlg Heifer Autumn Opportunity 2003  
• 1st Sr 2-Yr-Old Cow Ontario Spring Discovery

**K A S Carlton Ruby EX-91-CAN EX-MS 5E 9\***

6-03 2x 365d 30593 4.0 1232 3.1 941  
Life: 8 Lact 188075 3.7 6986 3.0 5700  
• Grand Champion Grenville Show 2000

**K A S Status Quo Closure EX-90-CAN 3\***

9-10 2x 309d 19178 3.8 721 2.9 558  
Life: 14 Lact 222638 4.2 9416 3.2 7015



**DR. RONNIE THOMAS**  
140 HOLLY POINTE  
WARNER ROBINS, GA 31088  
478-230-4108

**Carpsdale-J After Reginald**

8400032149889248 Very Good-85 VG-MS  
PTA -674M -27F -29P 39R 12/22  
PTA +.6PL 2.99SCS -1.3DPR 4.2%DCE  
PTA +1.52T +.69UDC +.38FLC 42R 12/22  
GTPI +1693

**Carpsdale-J Denver Rapunzal**

840003207665498 99%RHA-I  
2-02 2x 98d 6120 3.3 205 2.9 175 INC

**CARPSDALE-J REGGIE**

840003220930341 99%RHA-I  
Born: June 1, 2022 • Herd No. 38

**Brenland Denver**

12074893C 99%RHA-I \*TR \*TC \*TY \*TV \*TL  
PTA +466M +26F +7P 99R 12/22  
PTA +2.84T +1.66UDC +.73FLC GTPI +2140G

**St-Jacob Raspberry Crush**

840003138497937 99%RHA-I EX-92 EEEEE  
3-03 2x 365d 25000 4.0 1011 3.4 862  
4-05 2x 365d 24400 4.2 1018 3.5 858  
2-02 2x 331d 18570 4.0 750 3.6 660

# Tennessee Spring Spectacular 2023



**PLUSHANSKI AMEL PATTY-ET EX-93 3E GMD DOM**  
7TH DAM OF LOT 32



ELLA GILMORE  
PO BOX 385  
BELL BUCKLE, TN 37020  
615-519-0197

## Mr Blondin Warrior-Red-ET

840003139655530 99%RHA-I \*TP \*TC \*TY \*TV \*TL  
PTA -802M -19F -16P 98R 12/22  
PTA -2.4PL 2.92SCS -3.0DPR 3.1%DCE  
PTA +3.20T +1.66UDC +1.64FLC 98R 12/22  
GTPI +1807G

## Mats-Uno Apl Crisp Ruth-Red

840003201200958 99%RHA-I

## MATS-UNO WAR BABY RUTH-RED

840003226844418 99%RHA-I  
Born: March 2, 2021 • Herd No. 1960  
• Sells Fresh

## Siemers Oct Apple-Crisp-ET

840003134506808 99%RHA-I \*RC \*TP \*TC \*TY \*TV \*TL  
PTA +80M +4F -8P 99R 12/22  
PTA +1.88T +1.32UDC +1.23FLC GTPI +1957G

## Clemson Diamond 3797 Li-Red

840003136062195 99%RHA-I Excellent-91 EX-MS  
4-06 2x 276d 23080 3.2 738 3.2 743  
3-05 2x 261d 20770 4.0 829 3.3 686  
2-02 2x 305d 20580 4.1 841 3.4 692

### 3rd-10th Dams

**Ensenada Effect P Pages-Red GP-81 \*PO \*TL \*TD**  
2-02 2x 330d 18700 4.4 831 3.4 637

**Enenada Talent Page-Red EX-90 EX-MS**  
3-01 2x 365d 40850 3.1 1250 3.1 1256  
Life: 1935d 185340 3.5 6543 3.1 5700

**Ensenada Jordan Pretty-Red GP-82**  
3-00 2x 365d 29920 4.1 1241 3.3 975  
Life: 1715d 126220 4.3 5478 3.3 4119

**Ensenada Paradox Pizza-ET GP-82**  
2-11 2x 365d 35960 3.2 1135 3.0 1079  
1-10 2x 339d 29400 2.9 854 3.1 907

**Plushanski Amel Patty-ET EX-93 3E GMD DOM**  
8-11 2x 365d 49670 3.1 1555 2.6 1299  
Life: 256020 3.3 8356 2.9 7325

• World renowned dam of 'Planet'

**Dividing-Ridge Peg-ET VG-86 GMD DOM**  
2-00 2x 365d 34790 3.7 1296 3.1 1066  
Life: 166280 3.8 6381 3.0 5063

**Dividing-Ridge Elton Peggy EX-91 2E DOM**  
4-10 2x 365d 33070 3.5 1144 3.2 1065

**Dividing-Ridge Royalty Patty VG-88**  
9-07 2x 365d 29000 3.7 1071 2.9 846  
Life: 223200 3.5 7879 3.0 6630

# Tennessee Spring Spectacular 2023



**CARTERS-CORNER ATWOOD PRISS EX-92**  
MATERNAL SISTER TO 2ND DAM OF LOT 33



**CARTERS-CORNER FEVER PEN-ET EX-94 EEEEE 2E**  
2ND DAM OF LOT 33



TYLER CARTER  
211 IL ROUTE 127  
GREENVILLE, IL 62246  
618-664-1825

## CARTERS-CORNER D LAM PIXIE

840003255208115 99%RHA-I  
Born: September 8, 2022 • Herd No. 1910

*Maternal sister to Pen*

**Carters-Corner Atwood Priss EX-92**

• *Grand Champ Southern Spring Nat'l 2016*

### Farnear Delta-Lambda-ET

840003125993715 \*TR \*TP \*TC \*TY \*TV \*TL  
PTA +1259M +45F +44P 99R 12/22  
PTA +4.6PL 2.76SCS -.3DPR 2.3%DCE  
PTA +2.71T +2.99UDC +.80FLC 99R 12/22  
GTPI +2782G

### Carters-Corner Denver P-TW

840003220448021 99%RHA-I

### Brenland Denver

12074893C 99%RHA-I \*TR \*TC \*TY \*TV \*TL  
PTA +466M +26F +7P 99R 12/22  
PTA +2.84T +1.66UDC +.73FLC GTPI +2140G

### Carters-Corner Fever Pen-ET

71512651 Excellent-94 EEEEE 2E  
3-06 2x 365d 36940 4.7 1746 3.1 1151  
5-05 2x 305d 26800 4.4 1187 3.1 844  
2-04 2x 365d 26210 4.4 1142 3.0 774  
Life: 1592d 127560 4.5 5729 3.2 4101  
• *Grand Champion IL Championship 2017*

*3rd Dam*

### Mohrfield Supra Precious EX-94 EEEEE 3E

5-00 2x 365d 21070 4.7 982 3.4 720  
2-03 2x 365d 21070 4.7 982 3.4 720

• *1st 4-Yr-Old Mid-East Fall Nat'l 2011*  
• *2nd Fall Calf Mid-East Summer Nat'l 2007*

*4th Dam*

### Speedside Jed Pia NC

*5th Dam*

### Newhome Jethro Pinata EX-CAN 2E

7-00 2x 305d 22732 4.1 935 3.5 787  
Life: 5 Lact 102847 4.2 4325 3.6 3697

*6th Dam*

### Norhust Chris Pinata EX-CAN 3E 2\*

9-03 2x 365d 23435 3.6 847 3.5 818  
Life: 14 Lact 272048 3.5 9654 2.8 7749



# Tennessee Spring Spectacular 2023



RAE LYNN MCELROY  
MORRISON, TN 37357  
615-890-1026

## Woodcrest King Doc

840003132417775 99%RHA-I EX-90 \*TR \*TP \*TC \*TY  
PTA +1581M +67F +53P 99R 12/22  
PTA +3.9PL 3.11SCS -1.4DPR 2.4%DCE  
PTA +3.19T +2.15UDC +1.95FLC 99R 12/22  
GTPI +2794G

## Foxgap Corvette Musk

840003131138909 Good Plus-83 VG-MS

## CEDAR-ROCK DOC BELL

840003226844359 99%RHA-I  
Born: September 1, 2020 • Herd No. 1908  
• Sells Fresh

## Sonnek GC Corvette-ET

71391400 Excellent-92 \*TR \*TP \*TY \*TV \*TL  
PTA -109M +0F +1P 99R 12/22  
PTA +1.93T +.86UDC +1.29FLC GTPI +1923G

## Foxgap Free Mussy

62438473 Very Good-88 VG-MS  
2-02 2x 305d 19830 4.1 809 3.0 589  
3-03 2x 290d 18270 4.4 797 3.2 587  
4-02 2x 262d 17390 3.9 673 3.2 554

### 4th Dam

**Foxgap RM Musty VG-87 VG-MS**  
3-00 2x 305d 23470 3.2 756 3.0 701

## Pinehurst Fee Enterprise

130511179 Very Good-86

## Foxgap Milkstar Mustard

62438403 Very Good-86 VG-MS  
5-08 2x 305d 20440 4.2 864 3.3 669  
3-06 2x 305d 18330 4.1 759 3.2 595  
2-00 2x 305d 18290 3.8 702 3.2 588  
4-07 2x 304d 16520 4.4 733 3.2 533



SAM MCWILLIAMS  
288 SECHLER ROAD  
SOMERSET, PA 15501  
814-445-6231

## Kings-Ransom D Cadillac-ET

840003208782414 99%RHA-I \*TR \*TP \*TC \*TY \*TV \*TL  
PTA +978M +53F +31P 82R 12/22  
PTA +2.1PL 3.00SCS -.8DPR 2.1%DCE  
PTA +3.17T +2.60UDC +1.46FLC 81R 12/22  
GTPI +2633G

## McWilliams Artist Galant

840003202765568 99%RHA-I VG-87 VG-MS @ 3-05  
2-01 2x 215d 11310 3.6 405 3.2 360 INC

## MCWILLIAMS CADILLAC GIN

840003247317320 99%RHA-I  
Born: June 1, 2022 • Herd No. 5781

## Stone-Front Artist-ET

840003136876946 99%RHA-I \*TR \*TC \*TY \*TV \*TL  
PTA -653M -26F -12P 99R 12/22  
PTA +2.75T +1.58UDC +.73FLC GTPI +1957G

## McWilliams Damion Grace

840003133527719 Excellent-93 EEEEE 2E  
5-06 2x 333d 26290 2.8 734 3.2 833  
4-05 2x 343d 24360 3.5 855 3.1 763  
3-03 2x 334d 23780 3.6 859 3.3 777  
2-01 2x 363d 17780 3.6 636 3.2 568  
• Res Int Champ/2nd Sr 3-Yr-Old Western PA  
Champ Show 2019

### 3rd Dam

**Harvue Destry Ginnie EX-90**

### 4th Dam

**Harvue Aristotle Ginger GP-83 VG-MS @ 2-04**  
2-01 2x 273d 16030 3.2 511 2.9 460

### 5th Dam

**Harvue Elmo Georgette EX-91 EX-MS 2E**  
4-06 2x 365d 29820 3.7 1104 3.2 961  
Life: 1268d 101200 3.5 3516 3.3 3297

### 6th Dam

**Harvue Highlight Georgia GP-82 VG-MS**  
4-07 2x 365d 28030 4.1 1138 3.1 868

### 7th Dam

**Harvue Encore Gay EX-90**  
4-05 2x 365d 33520 3.9 1324 2.9 977  
Life: 1858d 151780 4.1 6172 3.0 4627

### 8th Dam

**Harvue Evan Gail GP-83**  
4-10 2x 309d 24550 4.0 985 3.1 753

### 9th Dam

**Harvue Phil Gloria VG-86 VG-MS**  
6-11 2x 305d 24680 4.5 1104 3.0 746  
Life: 2304d 160970 4.3 6964 3.1 4999

### 10th Dam

**Harvue Bova BJ Gloria EX-92 EEEEE 2E**  
6-07 2x 315d 25940 4.6 1202 2.8 733  
Life: 1914d 148630 4.3 6385 2.9 4303

# Tennessee Spring Spectacular 2023



**BARDHOLM TRINITY CHARLES EX-94 EEEEE**  
4TH DAM OF LOT 36



**BARDHOLM TRUST LEE EX-93 EEEEE**  
MATERNAL SISTER TO 4TH DAM OF LOT 36



**RYLEIGH RUMMAGE**  
2310 TINDELL LN  
COLUMBIA, TN 38401  
931-388-7914

## Mr D Apple Diamondback

3013721049 99%RHA-I EX-93 \*RC \*TP \*TC \*TV \*TL  
PTA -425M -24F -1P 99R 12/22  
PTA -.3PL 3.14SCS -3.0DPR 2.8%DCE  
PTA +2.50T +1.96UDC +1.38FLC 99R 12/22  
GTPI +1866G

## Rummage Atwood Trilogy

142777202 Very Good-86 VG-MS  
6-11 2x 365d 28120 4.4 1247 3.3 939  
5-07 2x 361d 24740 3.4 836 3.3 813  
2-08 2x 305d 19910 6.1 1224 3.3 650

## RUMMAGE DIAMONDBACK TRINTIY

14524675 99%RHA-I  
Born: December 9, 2020  
• Sells Fresh

## Maple-Downs-I G W Atwood-ET

8956379 Excellent-90 \*TR \*TP \*TY \*TV \*TL  
PTA -337M +11F -9P 99R 12/22  
PTA +2.92T +1.90UDC +2.07FLC GTPI +1907G

## Rummage Advent Tina

140568556 Very Good-87 VG-MS  
7-09 2x 365d 34826 4.1 1425 2.9 993  
6-10 2x 303d 29419 6.1 1795 2.7 792  
4-10 2x 347d 25947 5.1 1315 3.0 778  
5-10 2x 303d 24913 5.8 1452 3.2 791  
3-01 2x 277d 20761 4.1 849 2.9 602

Maternal sisters to Trinity Charles

**Bardholm Trust Lee EX-93 EEEEE \*TR**  
4-02 2x 365d 40590 5.3 2165 3.5 1418  
Life: 1261d 102090 4.9 5047 3.5 3543  
• 2nd 4-Year-Old, Eastern Fall Natl 2003  
• Grand Champion & BU, IL State Show 2004

**Luck-E Charles Trixy-ET EX-94**

3-02 2x 332d 24466 4.4 1073 3.8 936

**Luck-E Lee Tabitha-ET EX-92 \*RC**

3-10 2x 365d 30154 5.5 1651 3.7 1116

**Luck-E Leduc Trinity-ET EX-92**

3-05 2x 365d 37013 5.3 1975 3.5 1293

**Luck-E Lee Tracie-ET EX-91 2E**

3rd Dam

**Rummage Cousteau Trilogy VG-86 VG-MS**

8-01 2x 361d 33660 5.3 1792 3.0 1012

Life: 1886d 152190 5.1 7703 3.3 4966

4th Dam

**Bardholm Trinity Charles EX-94 EEEEE**

5-05 2x 365d 28669 3.8 1094 3.1 892

Life: 1912d 117377 3.5 4120 3.3 3820

5th Dam

**Bardholm Truly Buck EX-90 EVEVE \*RC**

10-10 2x 323d 25200 4.4 1121 3.3 831

Life: 2102d 122183 4.3 5223 3.4 4106

6th Dam

**Bardholm Trudy T T VG-85-CAN**

9-10 2x 319d 16953 3.5 595 2.8 477

Life: 2809d 123844 3.5 4394 3.2 4004

# Tennessee Spring Spectacular 2023



ERIN LEE SHANK  
HAGERSTOWN, MD 21740  
301-739-1960

## Avant-Garde-I Latenite-Red-ET

13507027 99%RHA-I \*PC \*TY \*TV \*TL  
PTA +1021M +26F +23P 82R 12/22  
PTA +.5PL 3.05SCS -.8DPR 2.9%DCE  
PTA +3.02T +1.95UDC +.97FLC 79R 12/22  
GTPI +2366G

## Palmyra Reeve P Latina-Red

840003201438789 99%RHA-I VG-85 VG-MS @ 2-06

## PALMYRA LATENITE LATINA-RED

840003207715341 99%RHA-I  
Born: June 2, 2022 • Herd No. 1579

## Mr Stone-Front Reeve-Red-ET

840003136877210 Very Good-86 \*\*TP \*TC \*TY \*TV  
PTA +544M +49F +34P 98R 12/22  
PTA +1.32T +1.02UDC -.05FLC GTPI +2594G

## Palmyra Polo Lanna-Red

84000346264460 99%RHA-I \*PO

### 3rd-13th Dams

**Palmyra Prince Letina-Red** GP-82

**Palmyra Jackson Letina** G-78\*RC  
2-01 2x 305d 18680 4.2 792 3.2 603

**MD-Carrollton Lou Letina-ET** VG-87 VG-MS

2-01 2x 365d 32000 3.4 1093 2.8 926  
Life: 1840d 138440 3.5 4876 3.0 4122

**Savage-Leigh Letty-ET** EX-90 EX-MS

2-02 2x 365d 31280 3.6 1124 2.9 907

**Savage-Leigh Aaron Linny-ET** VG-88 GMD DOM

2-00 2x 365d 39160 4.0 1552 3.1 1212

*Maternal sister to Linny*

**Savage-Leigh Licorice-ET** EX-92 EX-MS

**Savage-Leigh Bellwood Linda** EX-92 2E GMD DOM

2-10 2x 365d 40240 5.8 2349 3.4 1358

Life: 1312d 126760 5.2 6576 3.2 4076

• *Nom All-American Jr 3-Yr-Old Cow 1999*

**Savage-Leigh Star Linda-ET** VG-87 EX-MS GMD

2-02 2x 365d 30890 4.0 1236 3.1 952

**Savage-Leigh Glenview Linda** EX-90 GMD

6-08 2x 365d 41820 4.6 1936 3.0 1247

Life: 1892d 150300 4.4 6636 3.2 4813

**Savage-Leigh Lindas Chairman** GP-84

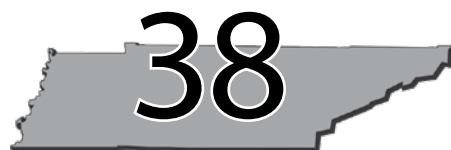
Life: 1972d 121550 3.9 4718 3.3 4013

**Savage-Leigh Creek Lydia** VG-88 VVVV

4-11 2x 344d 16390 4.2 685 3.1 511

**Savage-Leigh Kate Linda** VG-85

6-01 2x 305d 19940 4.0 793



EVAN POWERS  
1201 JASON PATRICK ROAD  
HOLLY SPRINGS, MS 38635  
662-292-4254

## Morningview Mgl Uptown-ET

69791511 Excellent-91 \*TR \*TP \*TY \*TV \*TL  
PTA +591M +16F +7P 99R 12/22  
PTA -.4PL 2.70SCS -.6DPR 2.9%DCE  
PTA +1.26T +1.35UDC +.44FLC 98R 12/22  
GTPI +2172G

## Hobby-Hollow Rager Madi-Red

840003149156114 99%RHA-I

## MKP UPTOWN RAGER ROXIE

145460376 99%RHA-I \*RC  
Born: September 26, 2022 • Herd No. 17

## Ri-Val-Re Rager-Red-ET

72353457 99%RHA-I EX-90 \*TP \*TC \*TY \* TL  
PTA +835M +47F +33P 99R 12/22  
PTA +1.60T +.78UDC +1.33FLC GTPI +2568G

## Trace-View Agent Mya-Red

840003141405661 Good-76  
4-02 2x 236d 9720 4.4 431 3.1 306

## Siemers Agent-Red-ET

840003123738666 \*TP \*TY \*TV \*TL  
**Trace-View Picolo Parka-Red**  
69477975 Good Plus-80  
5-02 2x 305d 28200 3.6 1023 3.0 851  
4-02 2x 296d 27930 3.5 973 3.0 838  
3-02 2x 305d 23860 4.0 944 3.1 729  
2-03 2x 299d 20130 3.8 763 3.0 596  
Life: 1559d 121640 3.7 4542 3.1 3798



# Tennessee Spring Spectacular 2023



## DUNVIS DIAMONDBACK PIPER

840003208411518 99%RHA-I  
Born: March 2, 2021 • Herd No. 176  
• Sells Fresh

MAGGIE & JAMES DUNIVAN  
20 HONEY ROAD  
PETERSBURG, TN 37144  
931-933-0859

## BLK-J-Ridge Dmback Devon

840003139717767 99%RHA-I  
PTA -4M -18F +5P 37R 12/22  
PTA -.3PL 3.13SCS -1.2DPR 2.8%DCE  
PTA +.89T +.59UDC +.23FLC 33R 12/22  
GTPI +1876

## Dunvis Sanchez Precious

71780137 99%RHA-NA

## Gen-Mark Stmatic Sanchez

134422312 Excellent-94 \*TR \*TP \*TY \*TV \*TL  
PTA +143M -37F -8P 99R 12/22  
PTA +1.15T +.12UDC +.79FLC GTPI +1563G

## Dunvis Pontiac Princess

140681794 99%RHA-NA \*RC

### 3rd Dam

**West-Hope Advent Peg-Red-ET NC**

### 4th Dam

**Molhil Peggy VG-87 EVVVV**

6-11 2x 305d 28380 4.2 1192 3.0 842

### 5th Dam

**Molhil Dazzle-Red-TW NC**

2-03 2x 272d 15490 3.8 591 3.4 526"

3-01 2x 238d 13720 4.1 562 3.5 476"

### 6th Dam

**Molhil Stone-Red NC**

4-00 2x 305d 21090 3.7 786 3.1 658

2-10 2x 305d 17160 3.4 587 3.4 577

### 7th Dam

**Molhil Connonade Vesta VG-85**

6-01 2x 285d 20850 3.6 747 3.3 697



## MCWILLIAMS CHEERFUL MAIZE

840003247317358 99%RHA-I \*RC  
Born: September 23, 2022 • Herd No. 5819

SAM MCWILLIAMS  
288 SECHLER ROAD  
SOMERSET, PA 15501  
814-445-6231

## Blondin Cheeful-Red

120345144C 99%RHA-I \*PC \*TC \*TY \*TV \*TL  
PTA +131M +27F +6P 81R 12/22  
PTA +.8PL 2.97SCS -1.3DPR 2.7%DCE  
PTA +1.96T +1.89UDC +.72FLC 79R 12/22  
GTPI +2258G

## Mcwilliams Bailey Macer

840003142774873 99%RHA-I VG-88 EX-MS @ 4-04  
3-11 2x 319d 25270 4.1 1036 3.0 747  
1-11 2x 275d 16550 3.7 612 3.0 499

## Mr Dg-Tm King Bailey-ET

73508043 99%RHA-I \*RC \*TY \*TV \*TL  
PTA +1248M +48F +25P 99R 12/22  
PTA +1.84T +1.01UDC +.70FLC GTPI +2361G

## Mcwilliams Paul Maze

840003009902837 Good Plus-83 VG-MS  
1-11 2x 297d 17760 3.5 618 3.1 547  
2-10 2x 248d 17730 3.3 588 3.1 551

# Tennessee Spring Spectacular 2023



## RED-OAK-DB HANGTIME 671

145040509

Born: March 19, 2020 • Herd No. 1044

• Sells Fresh

JOEL BERNARD  
7709 CLAY GREGORY ROAD  
ORLINDA, TN 37141  
615-654-3572

### Cookiecutter Hang-Time-ET

840003013614200 Excellent-90 \*TR \*TP \*TY \*TV \*TL

PTA +348M +46F +32P 99R 12/22

PTA -.3PL 3.08SCS -1.3DPR 2.5%DCE

PTA +1.24T +1.94UDC -.29FLC 99R 12/22

GTPI +2377G

### Red-Oak-DB Supershot 255

144410239

2-05 2x 267d 20370 3.6 741 3.2 642

### Cogent Supershot

755898903 \*TY \*TV \*TL

PTA +1603M +22F +48P 99R 12/22

PTA +.25T +.37UDC -.15FLC GTPI +2424G

### Red-Oak-DB Headliner Mil-TW

142790414 Good Plus-81

5-09 2x 365d 35630 4.0 1409 2.9 1025

7-04 2x 365d 32530 3.7 1209 2.9 958

4-08 2x 365d 29100 3.5 1022 2.9 853

3-08 2x 308d 23690 4.1 969 2.9 696

2-02 2x 365d 22770 3.8 867 3.1 717

### 3rd Dam

**Red-Oak-DB Armstead Buba** VG-87 VG-MS

3-02 2x 349d 25870 4.0 1022 3.0 779

4-04 2x 307d 22650 3.6 822 2.9 651

### 4th Dam

**Red-Oak-DB Jonah Buba** GP-81

5-02 2x 357d 22090 3.8 832 2.9 638

6-03 2x 310d 20840 3.5 728 2.8 592

### 5th Dam

**Red-Oak-DB Hersh Buba** EX-91 EX-MS 2E

6-03 2x 300d 29760 3.4 1014 2.9 864

Life: 2151d 181510 3.6 6521 3.0 5440



## RED-OAK-DB MONTROS 360

145040563

Born: April 12, 2020 • Herd No. 1050

• Sells Fresh

JOEL BERNARD  
7709 CLAY GREGORY ROAD  
ORLINDA, TN 37141  
615-654-3572

### Bacon-Hill Montross-ET

71703339 Excellent-92 \*TR \*TP \*TC \*TY \*TV \*TL

PTA +1963M +34F +53P 99R 12/22

PTA +1.1PL 3.25SCS -2.5DPR 2.2%DCE

PTA +.63T +1.47UDC -.24FLC 99R 12/22

GTPI +2352G

### Red-Oak-DB Dragonheart 1-TW

143330987

4-00 2x 328d 26550 3.4 914 3.0 789

3-01 2x 300d 18770 3.6 677 3.0 567

### Mr OCD Epic Dragonheart-ET

3009533223 Very Good-87 \*TR \*TP \*TC \*TY \*TV \*TL

PTA +1910M +33F +36P 99R 12/22

PTA +.97T +1.76UDC +.22FLC GTPI +2456G

### Red-Oak-DB Pontiac Jackie

138079673 Very Good-86

4-08 2x 365d 27150 3.7 1002 2.8 760

5-09 2x 342d 25210 3.7 945 2.8 703

6-10 2x 273d 24120 3.8 913 2.7 663

2-08 2x 330d 24010 3.3 802 2.8 667

3-08 2x 301d 22860 3.4 782 2.7 624

Life: 1666d 128280 3.6 4625 2.8 3559

### 3rd-10th Dams

**Red-Oak-DB O Man Jackie** EX-90

4-00 2x 365d 27010 4.7 1279 3.0 821

Life: 2247d 132630 4.6 6092 3.1 4123

**Red-Oak-DB Marshall Jackie** VG-88 VG-MS

5-05 2x 365d 31020 3.8 1174 2.9 890

Life: 2119d 156000 3.8 5937 2.9 4512

**Stuartvale Blackjack Anakin** VG-85 VG-MS

4-05 2x 312d 20270 4.6 928 3.3 672

3-06 2x 297d 19670 4.4 870 3.3 655

**Stuartvale Marquis Anna-ET** EX-90

7-04 2x 342d 21770 2.9 641 3.0 661

Life: 1939d 117080 3.6 4189 3.1 3584

**Stuartvale Warden C Annette** EX-92 EX-MS 2E

6-10 3x 365d 24290 3.7 905 3.4 816

Life: 2424d 134830 4.0 5326 3.3 4394

**Stuartvale Citation C Annette** VG-88 EX-MS

7-01 2x 320d 18680 3.5 649 3.3 622

Life: 2454d 137410 3.4 4679 3.2 1764

**Cash-Mar Lucky Annette** EX-90 2E

5-09 2x 299d 15370 3.5 540

**Strathaven Perseus Annette** EX-91 EX-MS 3E

# Tennessee Spring Spectacular 2023

# 43

DOUGLAS FAIRBANKS  
20755 90TH STREET  
ANAMOSA, IA 52205  
319-480-2484

## WAPSI-ANA JAGGER HARLOW

840003236017444 93%RHA-I  
Born: March 3, 2022 • Herd No. 1379

### Peak Jagger-ET

840003205436591 99%RHA-I \*TR \*TP \*TC \*TY \*TV \*TL  
PTA -17M +52F +24P 81R 12/22  
PTA +1.8PL 2.87SCS -.8DPR 1.9%DCE  
PTA +3.69T +2.94UDC +2.03FLC 81R 12/22  
GTPI +2670G

### Charcol Alexander 516

74157231 87%RHA-NA EX-92 EEEEE 2E  
4-09 3x 365d 43120 4.0 1737 2.9 1250  
2-10 3x 365d 40280 3.7 1487 3.1 1235  
6-01 3x 338d 38230 4.0 1529 2.9 1098  
1-10 3x 324d 29950 3.8 1150 3.0 909  
Life: 1723d 180060 3.9 7057 3.0 5375

### Golden-Oaks St Alexander-ET

61133837 Excellent-94 EEEE \*TR \*TY \*TV \*TL  
PTA -211M +32F -13P 99R 12/22  
PTA +.10T -.44UDC +.72FLC GTPI +1842G

### Charcol Grand 278

68981195 Good-78  
3-09 3x 365d 53990 3.2 1707 2.7 1459  
2-02 3x 365d 35350 3.2 1130 2.9 1019  
Life: 905d 106060 3.2 3373 2.8 2993

# 44

MARK & GARY HOBBY  
1711 MOORESVILLE ROAD  
CULLEOKA, TN 38451  
931-619-1025

## HOBBY-HOLLOW MAY JASMINE

840003214542376 \*RC  
Born: September 3, 2022 • Herd No. 1259

### S-S-I Snowman Mayflower-ET

840003008897582 Excellent-92 \*TR \*TP \*TY \*TV \*TL  
PTA +2077M +30F +62P 99R 12/22  
PTA +2.5PL 2.93SCS -.5DPR 3.0%DCE  
PTA -0.9T -.01UDC +.18FLC 98R 12/22  
GTPI +2464G

### Trace-View Carson Cassi-Red

144385328 Very Good-88 VG-MS  
2-11 2x 289d 21810 4.2 922 2.8 605  
3-10 2x 279d 19370 4.0 779 2.9 557  
2-00 2x 284d 18590 4.2 790 2.7 507

### MD-Valleyview Carson-Red-ET

6643056 Excellent-92 \*TP \*TY \*TV \*TY \*TL  
PTA +871M -15F +8P 99R 12/22  
PTA +.71T +.67UDC +.49FLC GTPI +1984G

### Trace-View Aladdin Take-Red

72591093 Very Good-85  
5-02 2x 284d 33970 4.4 1506 2.6 877  
2-01 2x 365d 32220 3.1 1008 3.1 984  
6-02 2x 305d 31250 3.9 1220 2.7 830  
4-03 2x 299d 30300 3.3 1006 2.8 842  
7-02 2x 275d 28250 3.5 990 2.6 741  
3-03 2x 321d 26020 4.0 1030 2.7 693  
Life: 1872d 183890 3.7 6841 2.7 5020

# 45

WESTON & MARKUS JONES  
LAFAYETTE, TN 37083  
615-666-3766

## MATS-UNO WAR 2095-RED

840003241543005 99%RHA-I  
Born: March 9, 2022 • Herd No. 2095

### Mr Blondin Warrior-Red-ET

840003139655530 99%RHA-I \*TP \*TC \*TY \*TV \*TL  
PTA -802M -19F -16P 98R 12/22  
PTA -2.4PL 2.92SCS -3.0DPR 3.1%DCE  
PTA +3.20T +1.66UDC +1.64FLC 98R 12/22  
GTPI +1807G

### Mats-Uno Acrisp Rosemary

840003216646933 99%RHA-I

### 2nd-12th Dams

#### Mats-Uno Diamondback Sage NC

#### Maple-Slope Barbwire Emily EX-90

#### Maple-Slope Gold Emblem-ET VG-86 VG-MS

#### Ms Maple-Slope Jasp Emily-ET VG-86 VG-MS

#### Ma-Tom-Ba Gibson Eclipse-ET EX-92 EEVVE

#### Budjon-JK Linjet Evalyn-ET EX-91

#### Krull Broker Elegance EX-96 3E GMD DOM

• HM All-American Aged Cow 1999 & 2000

• HM All-Canadian Mature Cow 1999

• 1st Produce International Show 2001-02-03-04

#### Krull Starbuck Excellency EX-90 GMD DOM

#### Krull TT Excellency EX-90 VEEE DOM

#### Krull Boot Mark Excellency EX-92 2E GMD

#### Krull Kingstead Excellency EX-92 4E GMD



# Tennessee Spring Spectacular 2023



**LOCUST-AYR MILLION ASTON-ET EX-92 EX-MS**  
MATERNAL SISTER TO 2ND DAM OF LOT 46



**MICHAEL & ANITA HAINES**  
TANEYTOWN, MD 21787  
410-346-7357

## LOCUST-AYR TATTOO ANGEL

840003235688240 99%RHA-I  
Born: September 5, 2022 • Herd No. 189

### Duckett Crush Tadoo-ET

840003137052923 99%RHA-I \*TR \*TP \*TC \*TY \*TV \*TL  
PTA -552M -36F -3P 99R 12/22  
PTA +1.6PL 2.73SCS -1.5DPR 1.8%DCE  
PTA +2.88T +2.24UDC +.71FLC 99R 12/22  
GTPI +2013G

### Locust-Ayr Doc Audrey

840003208253335 99%RHA-I GP-83 VG-MS @ 3-01

### Woodcrest King Doc

840003132417775 99%RHA-I EX-90 \*TR \*TP \*TC \*TY  
PTA +1581M +67F +53P 99R 12/22  
PTA +3.19T +2.15UDC +1.95FLC GTPI +2794G

### Locust-Ayr Lindell Alex

840003136218679 Very Good-85 VG-MS  
3-02 2x 365d 24410 3.5 866 3.1 750  
4-04 2x 240d 20020 2.9 575 2.9 588  
2-03 2x 291d 17840 3.0 544 3.1 547

Maternal sister to Alex

**Locust-Ayr Million Aston-ET EX-92 EX-MS**

### 3rd-6th Dams

#### Cranberry-Mdws A Aildre-ET EX-90

5-10 2x 329d 32300 2.7 856 3.1 996

Life: 117400 2.7 3152 3.2 3730

#### MD-Delight Storm Allison-ET EX-91 2E DOM

5-07 2x 365d 29830 4.1 1229 3.2 962

Life: 1734d 107250 3.9 4158 3.3 3532

#### Ms Kingstead Chief Adeen-ET EX-94 2E DOM

3-05 2x 310d 30180 4.0 1209 3.6 1077

Life: 1382d 100760 4.0 4010 3.6 3649

• Nom All-American Jr 3-Yr-Old Cow 2000

• Nom All-American 4-Yr-Old Cow 2001

• Member All-American Produce 2000

#### C Aitkenbrae Starbuck Ada EX-94 2E DOM

13-8 2x 365d 25150 3.0 764 3.4 843

Life: 6 Lact 137732 3.4 4749 3.4 4647

• Res All-Time All-American Sr 3-Yr-Old Cow

• All-American 3 Yr Old Cow 1990

• Grand Champion Eastern National 1990

# Tennessee Spring Spectacular 2023



**MAGGIE & JAMES DUNIVAN**  
20 HONEY ROAD  
PETERSBURG, TN 37144  
931-933-0859

## Appealing Planet Helix-ET

62669950 \*TR \*TY \*TV \*TL  
PTA +925M +2F +22P 99R 12/22  
PTA +2.1PL 2.99SCS -.7DPR 3.5%DCE  
PTA -.67T -.32UDC -.52FLC 92R 12/22  
GTPI +2051G

## Dunvis Mogul Lemondrop

71780166

## DUNVIS HELIX HALEY

840003208411519  
Born: March 3, 2021 • Herd No. 177  
• Sells Fresh

## Mountfield SSI Dcy Mogul-ET

840003006972816 Excellent-93 \*TR \*TP \*TC \*TY \*TV \*TL  
PTA +469M +42F +14P 99R 12/22  
PTA +1.29T +2.10UDC +1.07FLC GTPI +2288G

## Manila Lemon Maureen

70461221

### 3rd-17th Dams

#### MS Ma-Tom-Ba Gold Cindy-ET VG-86

4-06 2x 365d 35340 4.8 1695 3.0 1049

3-00 2x 365d 27530 4.7 1287 3.1 847

#### Morningview Chmp Circus-ET NC

#### Whittier-Farms Celebrate-ET VG-88 EX-MS

3-08 2x 365d 41240 4.0 1667 3.5 1442

1st Iowa Protein

2-02 2x 365d 34080 4.0 1347 3.7 1264

#### Whittier-Farms Emery Cin-ET VG-87 GMD DOM

4-06 2x 340d 36040 3.5 1273 3.5 1246

Life: 1480d 134380 3.7 4921 3.5 4654

#### Felder Den Barb Cindy-ET EX-91 3E GMD DOM

Life: 1926d 173370 4.1 7025 3.1 5407

#### Miss Den-Barb Global Cora EX-90 GMD

Life: 1106d 119520 4.4 5317 3.5 4183

#### Ruann Royalty Cora-ET EX-90 DOM

Life: 1184d 135930 3.7 5004 3.3 4481

#### Carnation S Pete Coralline-ET VG-86 GMD

Life: 1836d 124750 3.6 4503 3.0 2625

#### Diamond-S Eve Corry EX-90 2E GMD

Life: 1735d 129320 3.5 4571

#### Diamond-S Glamour Cass EX-93 3E GMD

#### Diamond S Bvar Cassie EX-90 GMD

#### Lavacres Polly Caroline EX-91

#### Lavacres Dusty Jo Carousel EX-91 3E

#### Lavacres Dusty Carla EX-90

#### Korndyke Christine VG-85



**JOEL BERNARD**  
7709 CLAY GREGORY ROAD  
ORLINDA, TN 37141  
615-654-3572

## Bacon-Hill Montross-ET

71703339 Excellent-92 \*TR \*TP \*TC \*TY \*TV \*TL  
PTA +1963M +34F +53P 99R 12/22  
PTA +1.1PL 3.25SCS -.25DPR 2.2%DCE  
PTA +.63T +1.47UDC -.24FLC 99R 12/22  
GTPI +2352G

## Red-Oak-DB Mayfield 322

144595958

## RED-OAK-DB MONTROS 750

145131883  
Born: September 20, 2020 • Herd No. 1088  
• Sells Fresh

## De-Su D Mayfield 893-ET

69473980 Excellent-90 \*TR \*TP \*TY \*TV \*TL  
PTA +663M +2F +4P 99R 12/22  
PTA +.84T +.65UDC -.28FLC GTPI +2026G

## Red-Oak-DB Payton 728

143151500 Good Plus-80  
3-04 2x 294d 22990 3.9 902 3.2 739  
2-03 2x 354d 20470 4.2 866 3.3 670

# Tennessee Spring Spectacular 2023



## DUNVIS DOC PRINGLE

840003208411525 99%RHA-I

Born: September 11, 2022 • Herd No. 183

MAGGIE & JAMES DUNIVAN  
20 HONEY ROAD  
PETERSBURG, TN 37144  
931-933-0859

### Woodcrest King Doc

840003132417775 99%RHA-I EX-90 \*TR \*TP \*TC \*TY

PTA +1581M +67F +53P 99R 12/22

PTA +3.9PL 3.11SCS -1.4DPR 2.4%DCE

PTA +3.19T +2.15UDC +1.95FLC 99R 12/22

GTPI +2794G

### Dunvis Alexander Pancake

71780161 99%RHA-NA

### Dunvis Alexander Ben

71780149

PTA -235M +4F -15P 29R 12/22

PTA -.24T -.84UDC +.37FLC PTPI +1683

### Trace-View Sirius Zuleima

72182318 99%RHA-NA



## DUNVIS DOC CATIE

840003208411523 99%RHA-I

Born: December 4, 2021 • Herd No. 181

MAGGIE & JAMES DUNIVAN  
20 HONEY ROAD  
PETERSBURG, TN 37144  
931-933-0859

### Woodcrest King Doc

840003132417775 99%RHA-I EX-90 \*TR \*TP \*TC \*TY

PTA +1581M +67F +53P 99R 12/22

PTA +3.9PL 3.11SCS -1.4DPR 2.4%DCE

PTA +3.19T +2.15UDC +1.95FLC 99R 12/22

GTPI +2794G

### Dunvis Scenario Cash

840003208411515 99%RHA-I

### Pop-A-Top Light My Fire 188

840003216646993 99%RHA-I

PTA +90M +13F +5P 39R 12/22

PTA +1.49T +1.55UDC +.80FLC PTPI +2143

### Dunvis Braxton Sweet

71780158



# Tennessee Spring Spectacular 2023



JO-CLAR ADVENT PANSY-RED-ET EX-90 EX-MS 3E  
3RD DAM OF LOT 51

## SIX EMBRYOS



ROSS RUSSELL  
RUSSELL SPRINGS, KY 42642  
270-566-2410

### Midas-Touch Ringtone-Red-ET

840003219884332  
PTA +858M +78F +38P 81R 12/22  
PTA +2.0PL 2.85SCS -2.0DPR 2.9%DCE  
PTA +1.82T +1.39UDC +.55FLC 99R 12/22  
GTPI +2630G

### Arethusa Pictur Perfect-Red

840003209028408

*Maternal sisters to Pansy (3rd Dam)*

**Jo-Clar Sept Storm Pearl-ET EX-92**

**Jo-Clar Sept Storm Polly-ET EX-92**

*Maternal sister to Poppy (4th Dam)*

**Any-Day Durham Pansey-ET EX-93 EX-MS \*CV**

4-08 2x 365d 38930 3.5 1368 3.1 1109

• Numerous sons in AI • Locator List Cow

### Luck-E Awesome-Red

72186769 \*CV \*TC \*TY \*TL

PTA -1694M -55F -52P 99R 12/22

PTA +2.01T +2.81UDC +.72FLC GTPI +1449G

### Arethusa Bostn Parsonia-Red

840003137802992 Excellent-93 EX-MS

2-07 2x 280d 18897 4.3 809 3.6 680

3-06 2x 268d 25327 3.8 964 3.5 875 RIP

### 3rd-10th Dams

**Jo-Clar Advent Pansy-Red-ET EX-90 EX-MS 3E**

6-11 2x 365d 39430 5.1 2012 3.0 1198

Life: 2212d 210930 4.1 8692 3.2 6746

**Any-Day Rubens Poppy-ET EX-90 2E GMD DOM**

4-02 2x 365d 40261 4.6 1869 3.5 1412"

Life: 1712d 140030 4.5 6238 3.6 4999

**Jo-Clar Jess Patsy EX-93 2E DOM**

3-06 2x 277d 25720 5.0 1277 3.5 910

Life: 1497d 107460 4.7 5093 3.6 3890

• Res Jr All-American Sr 3-Yr-Old Cow 1998

**Jo-Clar Lincoln Patches EX-90 EEEEEV**

7-08 2x 365d 32060 4.2 1361 3.5 1127

Life: 2224d 179640 4.2 7485 3.4 6141

**Jo-Clar Inspiration Penelope EX-90 2E**

5-09 2x 365d 27590 3.7 1026 3.4 937

Life: 1644d 123180 4.0 4902 3.4 4135

**Jo-Clar Mattador Pixie EX-90 GMD DOM**

6-11 2x 365d 36140 3.3 1191 2.8 1015

Life: 2872d 249150 3.2 8081 3.0 7575

**Jo-Clar Bell Patsy VG-86 EX-MS**

5-05 2x 316d 27670 3.9 1076 3.2 877

**Jo-Clar Marvex Pauline VG-87**

4-05 2x 301d 21690 4.1 889 3.3 720

# Tennessee Spring Spectacular 2023



**SCHULTE BROS COLTON CHEERIO-ET**  
FULL SISTER TO LOT 52



**SCHULTE BROS GENTRY CLARABELLE-ET**  
MATERNAL SISTER TO LOT 52



**SCHULTE BROS COLTON CECILIA-ET VG-88**  
FULL SISTER TO LOT 52



ZACH, BLAKE & MITCH SCHULTE  
2518 75TH STREET  
WATKINS, IA 52354

## Chilli Action Colton-ET

66738835  
USDA 12/22 99%R -1795M +.32% -25F +.12%P -43P  
AJCA 12/22 GPTAT 99%R +1.70 GJPI 99%R -64

## Svheaths Hgun Corolla-ET

840003133104346 Excellent-92%  
2-01 2x 274d 13980 4.6 646 3.7 511  
• 1st Sr 3-Yr-Old NY Spring Show 2019  
• 1st Sr 2-Yr-Old PA All-American 2018  
• Nom ABA All-American Winter Yrlg 2017  
• 1st Winter Yrlg & Res Jr Champ RAWF 2017

Maternal sister to Corolla

## SV Heaths Andreas Cameron EX-91%

• 1st Jr 3-Yr-Old/Res Grand Champ Western Nat'l 2018

Maternal sister to HGun Corolla

## SV Heaths Tequila Chloe-ET EX-91%

• Nom ABA All-American Milking Yrlg 2019  
• 3rd Milking Yrlg All-American Show 2019  
• 4th Sr 3-Yr-Old All-American Show 2021

## SCHULTE BROS COLTON CHALLENGER-ET

174867052  
Born: September 8, 2022 • Herd No. S857

Full sisters to Challenger

### Schulte Bros Colton Cheerio-ET

• Nominated All-American Fall Calf 2022 Open and Jr  
• Member of All American Jr Best 3

### Schulte Bros Colton Cecilia-ET VG-88

• HM Jr All-American Milking Yearling 2022

Maternal sister to Challenger

### Schulte Bros Gentry Clarabelle-ET

• AJCA Res All American winter yearling 2022  
• AJCA Jr All American winter yearling 2022  
• Member of All American Jr Best 3

## SV Jade Hired Gun-ET

115093063  
USDA 12/22 99%R -1952M +.24% -48F +.12%P -49F  
AJCA 12/22 GPTAT 99%R +0.20 GJPI 99%R -91

## Elliotts Faxon Comical-ET

118031675 Excellent-91%  
4-01 2x 305d 17880 4.8 855 3.6 644  
5-01 2x 305d 15050 4.5 682 3.8 569  
1-11 2x 305d 14890 4.7 698 3.5 523  
3-02 2x 280d 13450 4.7 633 3.8 506  
• 2nd 4-Yr-Old MD State Fair 2016  
• 4th 4-Yr-Old PA All-American 2016  
• 9th National Jersey Jug Futurity 2015  
• 3rd Jr 2-Yr-Old PA All-American 2014

3rd-10th Dams

### Arethusa Veronicas Comet-ET EX-95%

4-06 2x 305d 19970 6.5 1292 3.6 710

6-01 2x 305d 17290 6.3 1087 3.5 599

• ABA Res All-American Aged Cow 2012

• ABA Unanimous All-American 5-Yr-Old 2011

• All-Canadian 4-Yr-Old 2010

### Huronia Centurion Veronica 20J EX-97 5E

2-11 2x 365d 25815 4.9 1272 4.1 1054

4-09 2x 365d 24568 5.7 1399 4.0 977

• ABA All American Aged Cow 2008

• Grand Champion World Dairy Expo 2004-2006

• Res. Grand Champ World Dairy Expo 2002-2007

• National Grand Champ All American 2004

• Grand & Supr Champ PA All American 2005-2006

• Supreme Champion World Dairy Expo 2006

### Genesis Renaissance Vivianne VG-87 2\*

5-00 2x 305d 12108 4.2 514 3.8 461

### Genesis Juno Virginia 4E-91

Life: 107730 4.7 5062 3.9 4210

### Swissbell F Veronica SUP EX 1

Life: 3612d 133058 4.3 5760 4.0 5293

### Swissbell Ella Virginia SUP EX-90

Life: 5006d 149770 5.8 8670

• Dam of 4 EX Daughters

### Belmont Jester Virginia SUP EX

# Tennessee Spring Spectacular 2023



**RATLIFF PRICE ALICIA EX-95**  
2ND DAM OF LOT 53

## Price Alicia

- Nat'l Grand & Supreme Champion NAILE 2010
- All American 5-Yr-Old 2010
- 1st 5-Yr-Old, BU & BBO All Am Jersey Show 2010
- 1st 4-Yr-Old Grand & Sup Champ All-Am Show 2009
- Reserve Grand Champion WDE 2009
- All-American Sr. 3-Yr-Old 2008
- Int & Grand Champion All American 2008
- 1st Sr. 3-Yr-Old, BU, BB&O All American 2008
- Res. All-American Sr. 2-Yr-Old 2007
- Nom. All American Fall Yearling in Milk 2006

Maternal sisters to Alana

- Ratliff Sambo Aspen-ET EX-95**
- Ratliff Dually Atlee-ET EX-95**
- Ratliff Impression Annabella-ET EX-95**
- Ratliff Tequila Avelanche-ET EX-93**
- Ratliff Sambo Apache-ET EX-93**
- Ratliff Sambo Ann-ET EX-92**
- Ratliff Velocity Alpha-ET EX-92**
- Ratliff Impression Annie-ET EX-92**
- Ratliff Impression Arlene-ET EX-92**
- Ratliff Amadeo Acacia-ET EX-92**
- Ratliff Sambo Alison-ET EX-91**
- Ratliff Action Alana-ET EX-91**
- Ratliff Apple Jack Accent-ET EX-91**
- Ratliff Impression Arin-ET EX-90**
- Ratliff Tequila Miss Appeal-ET EX-90**
- Ratliff Impression Alaska-ET EX-90**
- Ratliff Tequila Aggie-ET EX-90**
- Ratliff Sambo Amber-ET EX-90**
- Ratliff Apple Jack Ansley-ET EX-90**
- Ratliff Apple Jack Amirah-ET EX-90**
- Ratliff Colton Avalon-ET EX-90**
- Ratliff Colton Atlee-ET EX-90**
- Ratliff Kwynn Ambrosia-ET EX-90**

Maternal Sister to Almond

**Ratliff Res Raizel-ET EX-93**

3rd Dam

**Bridon Ethan Almond EX-91%**

5-05 2x 305d 20260 5.3 1071 3.5 716

3-01 2x 289d 12380 5.3 653 3.8 468

4th Dam

**Rozview Dorie D Rachel EX-95**

4-07 2x 305d 19470 4.2 818 3.6 704

5th Dam

**Rozeview Master Robin VG-85**

8-00 2x 305d 14639 4.5 661 3.9 584

6th Dam

**Rozeview Jude Revin EX-90-CAN 2E**

7-09 2x 305d 16964 4.6 849 3.7 628



**RANDY KNAPP**  
22257 PILOT GROVE ROAD  
EPWORTH, IA 52045

## KNAPPS CHROME ALL THE RAGE-ET

174919076

Born: December 2, 2022 • Herd No. K593

### River Valley Cece Chrome-ET

840003012423929

USDA 12/22 99%R +501M +.03% +30F -.01%P +16P

AJCA 12/22 GPTAT 99%R +1.90 GJPI 99%R +74

### Ratliff Excitation Alana-ET

840003125089301 Excellent-90%

4-01 2x 350d 22828 5.1 1153 3.9 892

5-03 2x 305d 21160 4.8 1014 3.7 781

2-07 2x 362d 20149 6.0 1219 3.8 765

6-11 2x 232d 13290 5.2 694 4.0 526

**Ratliff Excitation Almira-ET EX-92**

**Ratliff Excitation Alanis-ET EX-91**

**Ratliff Excitation Alanis-ET EX-91**

**Ratliff Excitation Adrian-ET EX-90**

### Bridon Excitation

8572453

USDA 12/22 99%R -1802M +.13% -61F +.04%P -56P

AJCA 12/22 GPTAT 99%R +.30 GJPI 99%R -124

### Ratliff Price Alicia

114215765 Excellent-95%

3-05 2x 305d 20880 4.9 1014 3.6 760

4-07 2x 295d 17260 4.8 833 3.9 667

5-10 2x 256d 16930 4.7 797 3.7 626

1-11 2x 305d 13840 5.2 715 3.7 513

6-08 2x 237d 13440 5.9 788 4.4 596



# Tennessee Spring Spectacular 2023



**ARETHUSA VERONICAS COMET-ET EX-95**  
4TH DAM OF LOT 54

Maternal sisters to Tequila Chloe

**SV Heaths Hgun Corolla-ET EX-92**

- Nominated ABA All-American Winter Yrlg 2017
- 1st Winter Yrlg & Res Jr Champ RAWF 2017

**SV Heaths Andreas Cameron EX-91**

- 1st Jr 2-Yr-Old/Grand Champ All-Utah Show 2017

**SV Fizz Chorus-ET**

- HHM ABA All-American Fall Calf 2017
- 2nd Fall Calf World Dairy Expo 2017

**SV Fizz Constellation-ET**

- Nominated ABA All-American Fall Calf 2017
- 2nd Fall Calf PA All-American Show 2017
- 5th Fall Calf All-American Show 2017



**JAMES & SHARON KEILHOLTZ**  
10609 KEYSVILLE ROAD  
EMMITSBURG, MD 21727

**Milksource-FV Metallica**

840003205612556  
USDA 12/22 77%R -1325M +.26% -12F +.12%P -24P  
AJCA 12/22 GPTAT 79%R +1.00 GJPI 79%R -71

**Svheaths Kidrock Cadence**

17396594 Very Good-88%

**SV CACA**

174859123

Born: September 30, 2022 • Herd No. K12

Maternal sisters to Comical (3rd Dam)

**Elliotts Blackstone Charlotte EX-94**

- Res All-American 5-Yr-Old 2017
- Res Sr & Grand Champ WDE 2017
- HM Sr Grand Champ Royal 2017
- Res Jersey Jug Futurity Winner All-Am 2015
- Nom All-Canadian Sr 2-Yr-Old 2014

**Elliotts Corona Action EX-94**

- 3rd Sr 2-Yr-Old PA All-American 2013

**Elliotts Cosmo Action-ET EX-93%**

- All-American Sr 3-Yr-Old 2014
- 1st Sr 3-Yr-Old/ HM Int Champ WDE 2014
- 1st Sr 3-Yr-Old/Res Grand PA All-American 2014
- Nom ABA All-American Sr 2-Yr-Old 2013

**Arethusa Comets Capri EX-93**

**Elliotts Gold Confetti EX-92**

**Mr Kathies Kid Rock**

840003128791587  
USDA 12/22 89%R -1629M +.02% -74F +.01%P -58P  
AJCA 12/22 GPTAT 86%R +1.60 GJPI 86%R -154

**Svheaths Tequila Chloe-ET**

840003149434407 Excellent-93%  
3-09 2x 305d 26660 4.3 1148 3.4 915

3rd-11th Dams

**Elliotts Faxon Comical-ET EX-91%**

4-01 2x 305d 17880 4.8 855 3.6 644  
1-11 2x 305d 14890 4.7 698 3.5 523

- 2nd 4-Yr-Old MD State Fair 2016
- 4th 4-Yr-Old PA All-American Show 2016
- 9th National Jersey Jug Futurity 2015

**Arethusa Veronicas Comet-ET EX-95%**

4-06 2x 305d 19970 6.5 1292 3.6 710  
6-01 2x 305d 17290 6.3 1087 3.5 599

- Unanimous All-American 5-Yr-Old 2011
- Member of Unanimous All-Amer Produce of Dam
- Member of Unanimous All-Amer Best 3 Females
- Nom All-American Produce of Dam 2009

**Huronia Centurion Veronica 20J EX-97 5E**

2-11 2x 365d 25815 4.9 1272 4.1 1054  
4-09 2x 365d 24568 5.7 1399 4.0 977

- Dam of 27 EX & 15 VG Daughters
- ABA All American Aged Cow 2008
- Grand Champion World Dairy Expo 2004-2006
- Res. Grand Champ World Dairy Expo 2002-2007
- National Grand Champ All American 2004
- Grand & Supr Champ PA All American 2005-2006
- Supreme Champion World Dairy Expo 2006

**Genesis Renaissance Vivianne VG-87 2\***

5-00 2x 305d 12108 4.2 514 3.8 461

**Genesis Juno Virginia 4E-91**

Life: 107730 4.7 5062 3.9 4210

**Swissbell F Veronica SUP EX 1**

Life: 3612d 133058 4.3 5760 4.0 5293

**Swissbell Ella Virginia SUP EX-90**

**Swissbell Virginia SUP EX-90**

Life: 5006d 149770 5.8 8670

- Dam of 4 EX Daughters

**Belmont Jester Virginia SUP EX**

# Tennessee Spring Spectacular 2023



**SOUTH MOUNTAIN COLTON COUNTESS-ET**  
2ND DAM OF LOT 55

Maternal sisters to Cosmo Action

**Elliotts Blackstone Charlotte EX-94**

- Res All-American 5-Yr-Old 2017
- Res Sr & Grand Champ WDE 2017
- HM Sr Grand Champ Royal 2017
- Res Jersey Jug Futurity Winner All-Am 2015
- Nom All-Canadian Sr 2-Yr-Old 2014

**Elliotts Corona Action EX-94**

- 3rd Sr 2-Yr-Old PA All-American 2013

**Arethusa Comets Capri EX-93**

**Elliotts Gold Confetti EX-92**

**Elliotts Faxon Comical EX-91**

3rd Dam

**Elliotts Cosmo Action-ET EX-93%**

3-04 2x 305d 23470 5.4 1260 3.6 839

2-02 2x 305d 20100 4.7 951 3.4 676

- All-American Sr 3-Yr-Old 2014
- 1st Sr 3-Yr-Old/ HM Int Chmp WDE 2014
- 1st Sr 3-Yr-Old/Res Grand PA All-American 2014
- Nom ABA All-American Sr 2-Yr-Old 2013
- 3rd Sr 2-Yr-Old WDE 2013

**Arethusa Veronicas Comet-ET EX-95%**

4-06 2x 305d 19970 6.5 1292 3.6 710

6-01 2x 305d 17290 6.3 1087 3.5 599

- Unanimous All-American 5-Yr-Old 2011
- Member of Unanimous All-Amer Produce of Dam
- Member of Unanimous All-Amer Best 3 Females
- Nom All-American Produce of Dam 2009

**Huronion Centurion Veronica 20J EX-97 5E**

2-11 2x 365d 25815 4.9 1272 4.1 1054

4-09 2x 365d 24568 5.7 1399 4.0 977

- Dam of 27 EX & 15 VG Daughters
- ABA All American Aged Cow 2008
- Grand Champion World Dairy Expo 2004-2006
- Res. Grand Champ World Dairy Expo 2002-2007
- National Grand Champ All American 2004
- Grand & Supr Champ PA All American 2005-2006
- Supreme Champion World Dairy Expo 2006

**Genesis Renaissance Vivianne VG-87 2\***

5-00 2x 305d 12108 4.2 514 3.8 461

**Genesis Juno Virginia 4E-91**

Life: 107730 4.7 5062 3.9 4210

**Swissbell F Veronica SUP EX 1**

Life: 3612d 133058 4.3 5760 4.0 5293

**Swissbell Ella Virginia SUP EX-90**

**Swissbell Virginia SUP EX-90**

Life: 5006d 149770 5.8 8670

- Dam of 4 EX Daughters

**Belmont Jester Virginia SUP EX**

## BORDERVIEW CHOCOLATIER CIRCUS-ET

84000323222725

Born: September 2, 2022 • Herd No. 1174



**TIM & SHARYN ABBOTT**  
PO BOX 619  
ENOSBURG FALLS, VT 05450  
802-238-1142

**Avonlea Joel Chocolatier-ET**

10619755C

USDA 12/22 78%R -1263M +.07% -48F +.01%P -44P

AJCA 12/22 GPTAT 80%R +.80 GJPI 80%R -73

**Borderview Andreas Connie-ET**

840003220099820 Very Good-87%

Full sisters to Connie

**Borderview Andreas Cassi-ET VG-88%**

**Borderview Andreas Count-ET VG-86%**

**Sunset Canyon Andreas**

117597125

USDA 12/22 98%R -1971M +.09% -79F +.06%P -61P

AJCA 12/22 GPTAT 98%R +.90 GJPI 98%R -183

**South Mountain Colton Countess-ET**

840003134122933 Excellent-91%

2-00 2x 305d 22601 4.8 1075 3.8 860

3-02 2x 263d 19438 5.2 1010 4.4 857

4-00 2x 259d 18787 5.3 1003 4.4 818



# Tennessee Spring Spectacular 2023



**PLEASANT NOOK GUNS FOXY LADY EX-91**  
DAM OF LOT 56



**SCHULTE BROS FLASHY LADY EX-94**  
MATERNAL SISTER TO LOT 56



**ZACH, BLAKE & MITCH SCHULTE**  
2518 75TH STREET  
WATKINS, IA 52354

## Mr Kathies Kid Rock

8400032128791587

USDA 12/22 89%R -1629M +.02% -74F +.01%P -58P

AJCA 12/22 GPTAT 86%R +1.60 GJPI 86%R -154

## Pleasant Nook Guns Foxy Lady

11950665 Excellent-91%

2-10 2x 296d 18730 4.0 745 3.7 687

1-11 2x 305d 15060 4.4 659 3.6 549

• Res Inter Champ IA State Fair 2016

• Res All-American Summer Yrlg 2015

Maternal sister to Foxy Lady

**Pleasant Nook BC Fair Lady EX-92-CAN 2E**

## SCHULTE BROS KID ROCK FRISKY-ET

174836180

Born: June 10, 2022 • Herd No. S842

## SV Jade Hired Gun-ET

115093063

USDA 12/22 99%R -1952M +.24% -48F +.12%P -49P

AJCA 12/22 GPTAT 99%R +0.20 GJPI 99%R -91

## Pleasant Nook First Choice-ET

7724810 Excellent-91-5E-CAN

6-06 2x 207d 17531 4.7 827 3.7 648

4-06 2x 305d 17436 4.5 785 3.5 613

7-06 2x 299d 16894 4.7 802 3.7 635

• 3rd Sr 3-Yr-Old Brant-Norfolk Show 2011

• 3rd Sr 3-Yr-Old Brant-Norfolk Show 2010

Maternal sister to First Choice

## Pleasant Nook Comerica Future EX-93-3E-CAN

• Nom All-Canadian Sr 3-Yr-Old 2011

• Nom All-Canadian Sr 2-Yr-Old 2010

Maternal sisters to Frisky

## Schulte Bros Flashy Lady EX-94

• Res Sr/HM Grand IA State Fair 2022

## Schulte Bros Teq Fire EX-92-CAN

## Schulte Bros Fierce Lady-ET VG-89

• Nom ABA All-American Jr 2-Yr-Old 2022

• Int/Res Grand IA State Fair 2022

• 4th Jr 2-Yr-Old Int'l Show 2022

## Schulte Bros Flamoyant Lady-ET VG-87

## Schulte Bros Fine Lady-ET VG-87

## Schulte Bros Colton Flame-ET

• AJCA All-American Winter Yrlg 2020

• ABA All-American Winter Yrlg 2020

• 1st Winter Yrlg All-American Jersey Show 2020

• 1st Winter Yrlg/Jr Champ AA Jr Jersey 2020

• 2nd Winter Yrlg/Res Jr Champ Southern Nat'l 2020

## Schulte Bros Colton Fame-ET

• AJCA All-American Winter Yrlg 2020

• ABA All-American Winter Yrlg 2020

• Jr Champ All-American Jr Show 2020

## Schulte Bros Colton Fabulous-ET

• AJCA All-American Summer Yrlg 2021

## Schulte Bros Colton Fergalicious VG-86

• 1st Milking Yrlg IA State Fair 2022

• Grand Champ IA Jr State Fair 2022

• AJCA Jr All-American Fall Calf 2021

• Jr Champ All-American Jr Jersey Show 2021

• Res Supreme Jr Champ NAILLE 2021

## Schulte Bros Colton Frankie-ET

• AJCA Res All-American Spring Yrlg 2022

• AJCA Res Jr All-American Spring Yrlg 2022

• Res Jr Champ All-American Jr Show 2022

## 3rd-8th Dams

### Pleasant Nook Sambo Frolic EX-91-6E-CAN 5\*

11-5 2x 305d 21956 4.3 957 3.5 768

Life: 9 Lact 190766 5.1 9779 3.6 6845

• 1st 5-Yr-Old Golden Horsehoe 2006

### Pleasant Nook J Imp Flower EX-CAN

4-08 2x 305d 15650 5.0 789 4.0 628

3-08 2x 305d 14065 5.5 783 3.9 553

### Pleasant Nook D D Flower Pot EX-CAN

5-11 2x 305d 14718 5.7 847 3.8 569

### Pleasant Nook P S Flower EX-CAN 1\*

7-09 2x 305d 16378 5.1 847 3.9 650

Life: 123233 5.2 6226 4.0 3849

### Pleasant Nook B S Fannie EX-CAN SUP

8-07 2x 305d 17092 4.7 807 3.7 639

Life: 177459 5.0 8810 3.9 5631

### Pleasant Nook M Fancy EX-92-CAN 1\*

6-01 2x 305d 14647 5.5 813

### Pleasant Nook S F Fran EX-90-CAN SUP

8-01 2x 305d 12897 4.6 601



# Tennessee Spring Spectacular 2023



**LOCUST-AYR TEQUILA ROSE EX-95**  
MATERNAL SISTER TO 2ND DAM OF LOT 57



**MICHAEL HAINES**  
2810 BLACKS SCHOOL HOUSE ROAD  
TANEYTOWN, MD 21787

## Mr Kathies Kid Rock

840003128791587  
USDA 12/22 89%R -1629M +.02% -74F +.01%P -58P  
AJCA 12/22 GPTAT 86%R +1.60 GJPI 86%R -154

## Locust-Ayr Premier Ravish

119199480 Very Good-88%  
6-06 2x 305d 20070 5.5 1112 3.6 731  
5-05 2x 305d 19980 5.5 1106 3.8 755  
3-08 2x 305d 18700 5.1 904 3.6 644  
2-05 2x 305d 17620 4.8 838 3.6 635

## LOCUST-AYR KIDROCK ROCK-N-ROLL

840003243813388  
Born: September 2, 2022 • Herd No. 85

## Hawarden Impuls Premier

67107510  
USDA 12/22 99%R -1070M +.25% -2F +.14%P -11P  
AJCA 12/22 GPTAT 99%R +.40 GJPI 99%R +15

## Locust-Ayr Jurisdiction Rav

116109367 Very Good-86%  
4-06 2x 300d 16790 4.9 824 3.4 569  
6-07 2x 305d 15660 5.1 799 3.4 540  
2-06 2x 305d 14010 5.0 696 3.6 508  
3-06 2x 301d 12510 5.0 622 3.9 486  
5-07 2x 301d 12200 4.7 574 3.4 411

Maternal sister to Rav

## Locust-Ayr Tequila Rosie EX-95%

• 5th 5-Year-Old PA All-American 2018

Maternal Sisters to Rosetta (4th Dam)

**Lagerweys Brook Rosey-ET EX-91**

**Lagerweys Brook Rose-ET VG-87**

**Lagerweys Brook Rosette-ET VG-86**

3rd Dam

**Jades Rosette-ET VG-88**

4-02 2x 305d 20590 4.9 1016 3.7 753

5-05 2x 305d 19570 4.9 957 3.7 722

4th Dam

**Lagerweys Brook Rosetta-ET EX-94**

5-07 2x 365d 21039 4.7 994 3.5 737

5th Dam

**Lagerweys Beth Lad Rosey EX-90**

5-11 2x 305d 20750 4.8 990 4.0 839

Maternal Sisters to Beth Lad Rosey

**Lagerweys Berretta Rosalie EX-91**

**Lagerweys H Emblem Rosey VG-89**

6th Dam

**Lagerweys Hermitage Rosie-ET EX-91**

5-03 2x 305d 21740 5.1 1108 3.9 845

# Tennessee Spring Spectacular 2023



**HOMERIDGE HIRED GUN VIV 2 EX-92**  
DAM OF LOT 58



**TY & MAGGIE DUNVIVAN**  
20 HONEY ROAD  
PETERSBURG, TN 37144

## HEART&SOUL GENTRY VENICE

840003217182351  
Born: July 2, 2020 • Herd No. 384  
• Sells Fresh

### Rapid Bay Indiana Gentry-ET

105762718  
USDA 12/22 96%R -1756M .07% -72F +.07% -65P

### Homeridge Hired Gun Viv 2

108619916C Excellent-92%  
6-09 2x 229d 17960 6.1 1088 3.6 651  
4-03 2x 181d 12220 4.8 587 3.8 469  
3-05 2x 226d 12130 5.6 678 4.1 498

- ABA Jr All-American 4-Yr-Old 2018
- 1st 4-Yr-Old/HM Sr Champ Premier Nat'l Jr Show 2018
- 2nd 4-Yr-Old Mid-Atlantic Open Show 2018
- 2nd 4-Yr-Old WDE Jr Show 2018
- 2nd Sr 3-Yr-Old NYSS Open Show 2017
- Nom All-American Sr 2-Yr-Old 2016

### SV Jade Hired Gun-ET

115093063  
USDA 12/22 99%R -1952M +.24% -48F +.12%P -49P  
AJCA 12/22 GPTAT 99%R +0.20 GJPI 99%R -91

### Homeridge LB Viv

106378985 Very Good-85%  
2-00 3x 305d 4850 4.9 238 4.2 550

#### 3rd-12th Dams

#### Homeridge Kobalt Viv EX-90

Life: 8 Lact 93360 4.5 4182 4.0 3739

#### Homeridge Senior Viv GP-83

Life: 2 Lact 19456 4.2 820 3.8 736

#### Homeridge Elmo Viv EX-91

Life: 10 Lact 96586 4.4 4279 4.0 3827

#### Homeridge Bjs Viv GP-83

Life: 9 Lact 85101 4.7 4036 3.9 3344

#### Homeridge Bbs Viv NC

#### Gaymar J Viv EX-90

Life: 7 Lact 88343 4.5 3990 3.9 3474

#### Gaymar D Jude Victoria GP-83

Life: 4 Lact 45340 2.8 1287 3.7 1680

#### Gaymar Milestone Viv VG-88

Life: 6 Lact 61581 4.3 2628 3.8 2359

#### Regislawn Golden Vivacious EX

Life: 8 Lact 94280 4.9 4577 3.9 3638

#### Warwick Janice's Vonie EX-92

Life: 8 Lact 73326 5.7 4211 9.6 705

# Tennessee Spring Spectacular 2023



**ARETHUSA RESPONSE VIVID EX-96**  
FULL SISTER TO 3RD DAM OF LOT 59



**HURONIA CENTURION VERONICA 20J EX-97 4E**  
4TH DAM OF LOT 59



LANDON FAIRMAN  
DU BOIS, PA 15801

## Isau Lightning Ridge Ferdinand

778373

USDA 12/22 76%R -506M +.16% +9F +.05%P -9P

AJCA 12/22 GPTAT 79%R +.90 GJPI 79%R +6

## Vallorys Maui Verlene

840003220244965 Very Good-86%

1-09 2x 253d 9720 4.1 399 2.9 281

## VALLORYS FERDINAND VIOLET

840003220245006

Born: March 4, 2022 • Herd No. 330

*Full sisters to View*

### Arethusa Response Vivid EX-96

6-00 2x 305d 22670 6.5 1482 3.5 790

- *Sup Champion Royal 2014*
- *Grand Champ WDE & Royal 2012*

### Arethusa Response Vanity EX-93

5-10 2x 305d 22760 6.4 1465 3.3 751

### Ahlem Valentino Maui 21838

68951472

USDA 12/22 99%R -102M +-.17% +40F -.08%P -21P

AJCA 12/22 GPTAT 98%R +1.30 GJPI 98%R -33

### Sugar & Spice Fizz Vallory-ET

840003140043656 Excellent-92%

4-05 2x 299d 19350 4.8 930 3.3 644

3-03 2x 298d 14380 4.4 638 3.4 485

2-02 2x 286d 12340 5.6 692 3.8 473

*Maternal sisters to Vallory*

### Arethusa Tequila Vision EX-95

- *Res Grand Champ Southern Naional 2016*
- *4th Aged Cow WDE 2016*
- *Res All-American 4-Yr-Old 2014*

*3rd-11th Dams*

### Arethusa Response View-ET EX-92

6-04 2x 305d 20110 5.8 1163 3.7 749

4-03 2x 305d 18230 5.3 974 3.6 662

### Huronia Centurion Veronica 20J EX-97 4E

2-11 2x 365d 25815 5.1 1272 4.1 1054

4-09 2x 365d 24568 5.7 1399 4.0 977

- *Dam of 27 EX & 15 VG Daughters*
- *ABA All American Aged Cow 2008*
- *Grand Champion World Dairy Expo 2004-2006*
- *Res. Grand Champ World Dairy Expo 2002-2007*
- *National Grand Champ All American 2004*
- *Grand & Supr Champ PA All American 2005-2006*
- *Supreme Champion World Dairy Expo 2006*

### Genesis Renaissance Vivianne VG-87 2\*

5-00 2x 305d 12108 4.2 514 3.8 461

### Genesis Juno Virginia EX-91-4E

6-06 2x 305d 16539 4.7 772 3.8 628

Life: 7 Lacs 107730 4.7 5062 3.9 4210

### Swissbell F Veronica SUP EX 1

13-5 2x 305d 13854 4.5 619 3.9 536

Life: 2612d 133058 4.3 5760 4.0 5293

### Swissbell Ell Virginia SUP EX-90

5-03 2x 305d 11931 4.9 589

### Swissbell Virginia SUP EX-90

7-06 2x 305d 13263 5.9 787

Life: 5006d 149770 5.8 8670

*Dam of four EX daughters*

### Belmont Jester Virginia SUP EX

8-02 2x 305d 12059 5.6 679



# Tennessee Spring Spectacular 2023



GENE HENDERSON & COLE KRUSE  
808 W DELAWARE STREET  
MANCHESTER, IA 52057

## River Valley Victorious-ET

840003126479524

USDA 12/22 99%R -756M +.16% -3F +.11%P -6P

AJCA 12/22 GPTAT 99%R +1.80 GJPI 99%R -12

## Meadowridge Fizz Sparkle-ET

119978049 Very Good-88%

4-06 2x 365d 21109 4.8 1012 3.4 727

2-04 2x 365d 17060 5.0 859 3.5 595

## BAMBI-KCCK VICTORIOUS SHINE-ET

840003252228518

Born: September 19, 2022 • Herd No. 62



## MEADOWRIDGE FIZZ SPARKLE-ET VG-88 DAM OF LOT 60

- 2nd Jr Sr 2-Yr-Old WDE 2019
- 12th Open Show Sr 2-Yr-Old WDE Open 2019
- Grand Jr Show Iowa State Fair 2019
- Res Grand Open Show Iowa State Fair 2019
- 1st Winter Yearling Jr Show WDE 2018
- Jr Champion WDE Jr Show 2018
- 1st Winter Calf WDE Open 2018
- HM Jr Champ WDE 2018
- 4th Jr Show Louisville 2018
- 3rd Louisville Open 2018
- Jr Champ Iowa State Fair Open and Jr Show 2018
- Res Jr Champ WDE Jr Show 2017
- 4th Winter Calf WDE Open 2017
- 5th Jr Show Louisville 2017
- 12th Louisville Open 2017
- Jr Champ Iowa State Fair Open and Jr Show 2017

## J-Kay Tequilla Fizz

67060052

USDA 12/22 99%R -2044M +.16% -68F +.04%P -67P

AJCA 12/22 GPTAT 99%R +.80 GJPI 99%R -189

## Meadowridge Jacknife Summer

118164922



ANDREW CLOYD  
TELFORD, TN 37690

## Perkins Skyclass-ET

109516964

USDA 12/22 88%R +693M -.17% -3F -.08%P +7P

AJCA 12/22 GPTAT 85%R +1.30 GJPI 85%R +4

## Her-Man Victorious Wonder

840003213138682 Very Good-86

2-01 2x 263d 16270 4.4 724 3.2 514 1773

## HER-MAN SKYCLASS WONDER

840003247426669

Born: March 3, 2022 • Herd No. A785

## River Valley Victorious-ET

840003126479524

USDA 12/22 99%R -756M +.16% -3F +.11%P -6P

AJCA 12/22 GPTAT 99%R +1.80 GJPI 99%R -12

## Her-Man Hired Gun Wonder-ET

840003129809411 Excellent-90%

### 3rd-7th Dams

#### Her-Man Irwin A Wonder-ET EX-92

5-06 2x 305d 25440 4.4 1109 3.3 848

4-04 2x 305d 22350 4.4 982 3.4 749

#### Sar Chairman Allure EX-94

3-10 2x 365d 22853 4.9 1122 3.8 869

6-09 2x 305d 22560 5.1 1146 3.7 825

#### Sar Apollo Allure EX-91

5-04 2x 279d 21430 4.7 1013 3.9 718

6-03 2x 360d 20780 5.1 1058 3.9 814

#### Sar Flyer Addison VG-80

Sar Imperials Addie EX-90

4-09 2x 305d 17550 5.1 894 3.9 676



NEIRMANS

### **BROWN SWISS**

Born: September 4, 2022

Sire: **Hilltop Acres Doboy Dipndot**

Dam: **Nermans Famous Petunia**



NEIRMANS

### **BROWN SWISS**

Born: December 2, 2022

Sire: **Hilltop Acres Doboy Dipndot**

Dam: **Nermans Ramming**



HICKMAN VALLEY

### **HICKMAN VALLEY TB REECE**

Born: December 2, 2022

Sire: **Springhill Tabasco**

Dam: **Hickman Valley BP Raelynn**



HACKMAN

### **MILKING SHORTHORN HEIFER**

#### **BENTER TATUM TAYLOR**

840003208721352 Herd No. 68331804

Born: December 29, 2022

Sire: **Hard Core Snoopy Fireringer**

**68329384**

Dam: **Heavenly Tatum**

68325189



JSB ACRES

### **AYRSHIRE HEIFER**

Born: March 2023

Pedgree will be on update sheet

# Tennessee Spring Spectacular 2023



ALL-GLO REGINALD KALLIE-ET EX-93 EX-MS 2E  
DAM OF LOT 67



KAUFMAN & THOMPSON  
FRIEDENS, PA 15541  
814-443-9553

## Stantons Chief-ET

840003129015989 99%RHA-I \*TC \*TY \*TV \*TL  
PTA +782M +9F +20P 98R 12/22  
PTA +.5PL 2.73SCS -.3DPR 3.1%DCE  
PTA +2.24T +2.26UDC +.52FLC 97R 12/22  
GTPI +2299G

## All-Glo Reginald Kallie-ET

840003126310611 Excellent-93 EX-MS 2E A2/A2  
5-10 2x 305d 21910 3.6 794 3.1 686  
4-08 2x 305d 21690 3.5 756 3.0 649  
3-06 2x 305d 19620 3.7 734 2.9 572  
2-04 2x 305d 19310 3.4 658 3.0 581  
Life: 1587d 100860 3.6 3594 3.1 3097  
• 5th Sr 3-Yr-Old Eastern Fall Nat'l 2018  
• 5th Fall Calf Mid-East Fall Nat'l 2015

## AG-CD CHIEF KANGAROO-ET

840003263318484 99%RHA-I  
Born: September 2, 2022 • Herd No. 74

## Regancrest Reginald-ET

62496439 \*TY  
PTA -314M +5F -1P 99R 12/22  
PTA +1.80T +1.23UDC -.05FLC GTPI +1882G

## Pennwood Troy Kalahari

65445614 Excellent-93 3E  
3-09 3x 336d 31678 2.8 907 2.9 915  
6-05 3x 305d 30790 3.0 932 2.9 891  
2-10 3x 263d 24750 2.9 721 2.9 715  
10-1 3x 305d 22170 3.6 805 2.9 653  
1-11 3x 268d 22135 2.0 433 3.0 654  
4-10 3x 305d 25200 3.7 928 2.8 703  
Life: 2364d 195310 3.0 5878 2.9 5747

### 3rd-13th Dams

**Pennwood Reece Kaleigh** EX-90 VG-MS  
3-03 3x 301d 31678 2.6 822 2.7 849  
Life: 2425d 205490 3.1 6356 2.9 5863

**Pennwood Leader Kajun** GP-82  
2-09 3x 292d 22230 3.8 842 3.0 661

**Pennwood Milan Kourtney** GP-83  
3-02 3x 305d 22680 3.4 767 2.9 657

**Pennwood Raider Kody** VG-88 VG-MS  
4-03 2x 365d 26990 3.1 826 2.8 765  
Life: 2531d 189670 2.9 5514 2.8 5280

**Pennwood Valet Kite** G-78  
4-00 2x 349d 22130 3.3 720 3.3 733

**Pennwood Alex Kodak** VG-88 VG-MS  
7-07 2x 364d 26200 3.3 855 3.0 785  
Life: 2680d 180740 3.2 5806 3.0 5369

**Pennwood BF Kimberly** VG-85 VG-MS  
4-05 2x 314d 20380 3.0 614 2.9 596

**Pennwood Magnet Kit** VG-85 VG-MS GMD  
9-00 2x 305d 23040 4.2 979 3.1 716

**Pennwood Ultimate Kimbella** VG-85  
3-07 2x 300d 20280 3.9 789

**Pennwood Major Kay** VG-88 VG-MS  
Life: 3939d 198610 3.9 7766 2.9 3080

**Werstlerdale Imp Kastle** EX-90 EX-MS 2E  
Life: 2546d 115890 3.9 4563



# Tennessee Spring Spectacular 2023



MD-MAPLE-DELL J ASHLEY-ET EX-94 EEEEE 2E  
3RD DAM OF LOT 68



**MATTHEW MITCHELL**  
LA FOLLETTE, TN 37766  
865-300-4880

## Regancrest Elton Durham-ET

2250783 Excellent-90 \*TR \*CV \*TL  
PTA -1102M -73F -23P 99R 12/22  
PTA -2.4PL 3.05SCS +.4DPR 2.3%DCE  
PTA +.88T +.52UDC +1.06FLC 99R 12/22  
GTPI +1526G

## Ms Rocky-Top Rylcrush Cora

840003200367205 99%RHA-I

## ROCKY-TOP DURHAM CANDY

840003257831858 99%RHA-I  
Born: June 8, 2022 • Herd No. 359

## Eclipse Royalcrush-ET

2001234 99%RHA-I \*TC \*TY \*TV \*TL  
PTA -455M -5F +5P 92R 12/22  
PTA +3.22T +2.42UDC +1.31FLC GTPI +2176G

## Beatyview Solomon Cheri-ET

840003141305356 99%RHA-I VG-88 VG-MS @ 2-09  
2-10 2x 3s 255d 16230 5.8 941 3.3 538

### 3rd-7th Dams

#### **Md-Maple-Dell J Ashley-ET EX-94 EEEEE 3E**

4-04 2x 365d 34470 4.5 1557 2.9 999  
Life: 2155d 155600 4.2 6490 3.0 4685

- Grand Champion Tennessee State Show 2007 & 2009  
Maternal sister to Asbley

#### **MD-Maple-Dell Cous Amber-ET EX-93 EEVEE**

#### **Ms M-M-D Nobel Aruba EX-94 EEEEE 2E DOM**

3-05 2x 365d 34540 4.3 1480 3.1 1079  
Life: 1712d 130300 4.2 5482 3.2 4112

- Gr Champion Maryland Spring Show 2005

#### **Md-Delight Storm Adeline-ET VG-88 VVEVE DOM**

2-01 2x 365d 25340 4.6 1176 3.4 863

#### **Ms Kingstead Chief Adeen-ET EX-94 2E DOM**

3-05 2x 310d 30180 4.0 1209 3.6 1077  
Life: 1382d 100760 4.0 4010 3.6 3649

- Nom All-American Jr 3-Yr-Old Cow 2000
- Nom All-American 4-Yr-Old Cow 2001
- Member All-American Produce 2000

#### **C Aitkenbrae Starbuck Ada EX-94 2E DOM**

13-8 2x 365d 25150 3.0 764 3.4 843  
Life: 6 Lact 137732 3.4 4749 3.4 4647

- Res All-Time All-American Sr 3-Yr-Old Cow
- All-American 3 Yr Old Cow 1990
- Grand Champion Eastern National 1990
- All-American Produce of Dam 2000-2001

# Tennessee Spring Spectacular 2023



**LYLEHAVEN ATWOOD LYLly-ET EX-95 EEEEE 3E**  
MATERNAL SISTER TO DAM OF LOT 69



**DR. RONNIE THOMAS**  
140 HOLLY POINTE  
WARNER ROBINS, GA 31088  
478-230-4108

## DM-DON-SHER MOOVIN LYNDI

840003219617169 99%RHA-I  
Born: September 7, 2020 • Herd No. 280  
• Sells Fresh

### Lindenright Moovin-ET

12873743C 99%RHA-I \*RC \*TC \*TY \*TV \*TL  
PTA -596M -24F -11P 95R 12/22  
PTA -1.2PL 2.95SCS -3.4DPR 3.1%DCE  
PTA +3.39T +2.96UDC +1.71FLC 93R 12/22  
GTPI +1903G

### Lylehaven Lthy Lunet-ET

70908251 Excellent-93 EEEEE 3E  
5-10 2x 305d 23550 4.2 988 3.1 721  
3-04 2x 305d 23290 4.1 959 3.1 730  
4-05 2x 305d 23060 3.9 893 3.1 704  
8-09 2x 288d 23090 4.1 956 3.1 706  
7-10 2x 305d 22410 4.0 907 3.1 698  
2-02 2x 305d 18310 4.3 783 3.0 548

### Comestar Lauthority-ET

103455217 \*CD \*TY \*TL  
PTA -141M +0F -5P 99R 12/22  
PTA +1.81T +.57UDC +.59FLC GTPI +1885G

### Thiersant Lili Starbuck-ET

6332629C Excellent-94 5E 5\*  
9-11 2x 365d 30910 4.5 1385 3.1 965  
5-00 2x 358d 30190 4.6 1387 3.2 978  
9-11 2x 365d 30910 4.5 1385 3.3 1023  
8-00 2x 365d 29810 4.9 1453 3.4 1000  
6-01 2x 365d 28540 4.6 1313 3.3 944  
11-4 2x 365d 26320 4.8 1253 3.3 880  
Life: 3428d 238806 4.7 11291 3.2 7673

*Maternal sisters to Lunet*

### Lylehaven Atwood Lylly-ET EX-95 EEEEE 3E

5-11 2x 365d 41280 4.4 1831 3.2 1334  
Life: 2042d 181820 4.6 8420 3.4 6135

- 1st 5-Yr-Old/HM Sr Champ NY Spring Show 2015
- 4th Aged Cow NE Fall Nat'l 2016
- 2nd 150,000lb Cow NE Fall Nat'l 2018
- Topped Lylehaven Dispersal \$70,000

### Lylehaven Form Laura-ET 3E-94 GMD DOM 8\*

- HHM All-American 4-Yr-Old 2003
- Res. All-Canadian Jr 3-Yr-Old 2002

*3rd Dam*

### Ivyhall Astro Jet Ronie VG-86-6YR-CAN 1\*

5-04 2x 305d 18472 4.2 769 3.1 578



# HOLSTEIN ASSOCIATION TERMS AND CONDITIONS FOR PUBLIC SALES

EFFECTIVE MARCH 2, 1996 - Amended October 1, 1997, June 28, 2000, June 23, 2002, and March 26, 2010

**TERMS:** The terms of the sale are cash unless arrangements are made prior to the sale or are printed in the sale catalog. Only when the above conditions are met will the buyer be entitled to the warranties listed below. In no case will animals be released unless settlement is made with the clerk of the sale.

**RESPONSIBILITY:** The seller, buyer, and manager of this sale are obligated to comply with the provisions of these terms and conditions.

**EXPORT SALES:** Buyer assumes all responsibility for health tests required by the importing country.

**BIDS:** The highest bidder is the buyer. Bidding parties or their agents are responsible for all bids placed. Every animal or lot presented for bidding is pledged to absolute sale. In case of dispute, the animal or lot will again be put up for advance bids, and if there is no advance bid, the animal or lot will be sold to the person the auctioneer accepted the last bid from. In case two or more claim the bid, the auctioneer will indicate the party whose bid he recognized. Other claimants will be given an opportunity to increase the bid and bidding will be restricted to the two or more claimants.

**BY-BIDDING:** Bidding directly or indirectly by the sole owner of any animal or lot is prohibited unless the intention to bid is disclosed specific to each animal in the catalog and announced when the animal enters the ring. Bidding by any member of a partnership, syndicate, or other entity having an ownership interest in an animal or lot is permitted.

**TRANSFER OF OWNERSHIP:** For all Registered Holsteins<sup>SM</sup>, the transfer of ownership to the buyer will be recorded on the records of Holstein Association USA and a certificate of registration showing that transfer of ownership will be provided to the buyer free of charge. For embryos, the transfer of ownership to the buyer will be recorded on the records of Holstein Association USA free of charge to the buyer.

**RISK:** All animals located at sale site are at the purchaser's risk as soon as struck off, but will be cared for free of charge for a maximum of 24 hours following the end of the sale.

## WARRANTIES:

- 1) Each consignor warrants clear title to the animal or lot, and the right to sell same.
- 2) To the best of the seller's knowledge, each animal is sound and healthy in every respect and embryos have been recovered, processed, frozen, transferred and graded in keeping with IETS recommendations unless otherwise noted in the catalog or announced from the auction stand. Every precaution will be taken to represent the physical condition of each lot exactly as is known. Examination of all purchases should be made immediately after the purchase and before the close of the sale, and if found not to be as represented, complaint must be reported to the sale management before the close of the sale. In the event no complaint is filed, it is understood that the buyer assumes full ownership in the case of animals at sale site together with all risks, after which no representations of the seller can be challenged through the sale management. Heifers that never calved are in no way guaranteed as to the condition of their udders following calving.

### 3) Breeding Warranty

The seller guarantees all animals to be breeders, but not beyond the purchase price, with the following understanding:

- a. Males - Should any bull after reaching the age of fourteen months fail to prove a breeder after being used for two months on cows or heifers known to be breeders, the matter shall be reported in writing to the seller within three months of the sale date. The report must include the animal's examination record, a written statement of treatment, and a statement of the animals' inability to breed,

by a licensed veterinarian. The seller has the option to refund the purchase price or make other settlement that is satisfactory to the buyer. In either case the rights of ownership of the animal return to the seller. The seller makes no guarantees with respect to the ability to freeze semen.

- b. Females - All females are guaranteed to be breeders with the exception of:

1. Cows over 7 years of age when sold;
2. Cows and/or heifers carrying a pregnancy that is the result of an embryo transfer.

Report of a non-breeder must occur in writing within 3 months of the date of sale or before the animal reaches 21 months of age and must be submitted to the seller. The report must include the animal's examination record, a written statement of treatment, and a statement of the animals' inability to breed, by a licensed veterinarian. The seller has the option to refund the purchase price or make other settlement that is satisfactory to the buyer. In either case the rights of ownership of the animal return to the seller.

Females bred when sold and pronounced in calf are presumed to be pregnant but pregnancy is not guaranteed unless so announced. The seller makes no warranty that pregnant cows will deliver calves or that they will carry calves full term.

- c. If, after the sale, embryos or oocytes are recovered from a female or an attempt is made to superovulate her, this negates the breeding warranty unless there is a separate written agreement between buyer and seller.

**SHIPPING:** Assistance will be given in arranging shipping of the animals after the sale. All costs, risks and responsibility will be borne by the purchaser.

**PEDIGREE INFORMATION:** All production, classification, type and production summaries are current. Only information recorded on Holstein Association USA pedigrees is used. Any production or classification records supplied by the seller or consignor will be properly identified as provided by owner. Records in progress are identified as such.

**GENOMIC INFORMATION:** If genomic information on the animal or embryo is available, it must be dated and disclosed at or before the time of sale.

**EMBRYO TRANSFER:** All registered animals that have resulted from embryo transfer are identified with one of the following suffixes in the name: ET, ETS (from split embryo), or ETN (from nuclear transfer). If unregistered, the appropriate technology will be identified. Donor dams are identified.

**HEALTH WARRANTY:** The seller will provide an official health certificate to the buyer for each animal showing the results of all health tests made in preparation for this sale as required by the state where the cattle reside. Other health tests completed for this sale will be disclosed.

**ERRORS:** The material in this catalog has been carefully edited. If any errors or omissions are discovered, they will be announced. Such announcements take precedence over that printed in this catalog.

**ACCIDENT:** The sale management, the consignors, and the owner of the grounds will not be responsible in any case for the condition of the grounds or the behavior of the animals and disclaim any liability in the event of personal accident or property loss.

**LIMITATIONS OF WARRANTIES:** Warranties contained herein, unless terminated earlier, will cease upon the resale of an animal.





# Index

# TENNESSEE SPRING SPECTACULAR

ABBOTT, TIM & SHARYN, ENOSBURG FALLS, VT	LOT 55
BERNARD, JOEL, ORLINDA, TN	LOT 41, 42, 48
BRATCHER DAIRY, CRAB ORCHARD, KY	LOT 3
CARTER & REED, GREENVILLE, IL	LOT 22
CARTER, TYLER, GREENVILLE, IL	LOT 33
CLOYD, ANDREW, TELFORD, TN	LOT 61
DUNIVAN, MAGGIE & JAMES, PETERSBURG, TN	LOT 17, 25, 39, 47, 49, 50
DUNVIVAN, TY & MAGGIE, PETERSBURG, TN	LOT 58
FAIRBANKS, DOUGLAS, ANAMOSA, IA	LOT 43
FAIRBANKS, LUKE & ABBY, ANAMOSA, IA	LOT 24, 29, 30
FAIRMAN, LONDON, DU BOIS, PA	LOT 59
GILMORE, ELLA, BELL BUCKLE, TN	LOT 2, 13, 27, 32
HACKMAN	LOT 65
HAINES, MICHAEL & ANITA, TANEYTOWN, MD	LOT 46, 57
HERNDERSON & KRUSE, MANCHESTER, IA	LOT 60
HICKMAN VALLEY	LOT 64
HOBBY, MARK & GARY, CULLEOKA, TN	LOT 44
JONES, WESTON & MARKUS, LAFAYETTE, TN	LOT 45
JSB ACRES	LOT 66
KAUFMAN & THOMPSON, FRIEDENS, PA	LOT 67
KAUFMAN, JUSTIN & ASHLEY, BERLIN, PA	LOT 19, 20
KAYROUTZ & DAVENPORT, ADAIRVILLE, KY	LOT 28
KEILHOLTZ, JAMES & SHARON, EMMITSBURG, MD	LOT 54
KNAPP, RANDY, EPWORTH, IA	LOT 53
KRUSE, KALEB, COLE & CARTER, DYERSVILLE, IA	LOT 1
MCELROY, RAELYNN, MORRISON, TN	LOT 34
MCWILLIAMS, SAM, SOMERSET, PA	LOT 35, 40
MITCHELL, MATTHEW, LA FOLLETTE, TN	LOT 68
NEIRMAN	LOT 62, 63
NEWBERRY & THOMAS, LIZELLA, GA	LOT 4, 5
OLT & GRIFFITH, GREENSBURG, KY	LOT 6
POWERS, EVAN, HOLLY SPRINGS, MS	LOT 18, 26, 38
RUMMAGE, RYLEIGH, COLUMBIA, TN	LOT 36
RUSSELL, ROSS, RUSSELL SPRINGS, KY	LOT 51
SCHULTE, ZACH, BLAKE & MITCH, WATKINS, IA	LOT 52, 56
SHANK, ERIN, HAGERSTOWN, MD	LOT 37
STRICKLAND, NASHVILLE, NC	LOT 8, 9
THOMAS, RONNIE, WARNER ROBINS, GA	LOT 10, 11, 12, 14, 15, 31, 69
TOMPKINS & BRANCH, ENNICE, NC	LOT 21
WICKER, JD & REBECCA, MILROY, IN	LOT 16, 23
WILLIAMS, JAXON, WHITESBURG, TN	LOT 7

CATALOG DESIGN:

*De-Lite Graphics*

New Bloomfield, PA  
717-979-5272  
dlgraphics2013@gmail.com