

Crescentmead

Complete Dispersal



Crescentmead Farms



Saturday April 8, 2023 at Crescentmead



2017 Premier Exhibitor World Dairy Expo

2019 Premier Exhibitor World Dairy Expo



CRESCENTMEAD

Complete Dispersal

W2444 Evergreen Rd., Ixonia, WI 53036

Troy, Sarah, Grady & Lane Wendorf

Troy - 970-371-0540

Sarah - 920-342-3446

Saturday, April 8, 2023

** Pre-Sale Bloody Marys!*

12:00 Noon

** Heated Sale Arena!*

Sale Staff

Ryan Krohlow 920-639-5500
Tim Natzke 920-979-0611
Chad Ryan 920-960-1449
Lynn Harbaugh 920-420-1524
Kevin Jorgenson 920-210-3992
Ron Roskopf 414-587-4402
Eddie Bue 715-299-4651
Todd Wendorf 920-988-3323
Jim Jens 920-838-0315

Cattle Preparation

Joel Kietzman 608-289-0096
Brian Paulson 920-210-6111
Dawson Nickels 920-253-1521
Kylie Nickels 920-253-1520
Brian Mac McCullough 608-214-6475
Jon Powers 920-350-2985
Landon Wendorf

** Cattle must be removed from the barn by 11:00 AM, Monday, April 10th!*

** Announcements take precedence over printed material*

Sale Clerk

Joe DiGangi - 262-208-6020

HAMMERTIME
AUCTIONEERING HOLSTEINS

*Online
Bidding*



Aaron Ray Tompkins
336-363-4639
www.cowbuyer.com

Lunch Stand

Dodge County State Fair Kids

Hotel Accomodations

Hilton Garden Inn, Oconomowoc ... 262-200-2222
Staybridge Suites, Oconomowoc, WI ... 262-200-2900



MILKSOURCE DTY TAMMY-RED-ET EX-94 2E
Junior All-American R&W 4-Yr-Old Cow 2016
DAM OF LOT 1



CRESCENTMEAD TEMPRESS-RED

3203415518 Excellent-90 EX-M @ 3-00 TC TL TD
 Born: June 11, 2019
 GTPI +2023G +1.91T +1.73UDC +1.40FLC 12/22
 1-10 2x 302d 19158 4.2 804 3.2 616
 2-09 2x 324d 22581 4.5 1011 3.5 795 RIP
 Milking 50 lbs/day SCC 20

Bred: Sept. 17, 2022 to Eskdale Mr Aflame-Red-ET
 94H000914 GTPI +2293G +2.21T 12/22

Maternal sister:

Crescentmead-DF Tink-Red *PO EX-90
 • *Res. Jr All-American R&W Jr 2-Yr-Old 2017*

Scientific Destry-ET

138122625 Excellent-92 RC CD TY TV TL
 PTA -962M -35F -10P 99R 12/22
 PTA +1.28T +1.32UDC -.19FLC GTPI +1932G

Silvermine Adv Tally-Red-ET

138294193 Excellent-93 EX-MS 2E TL TD
 5-05 2x 365d 38700 4.2 1621 3.2 1254
 3-05 2x 365d 32920 4.3 1426 3.2 1042
 2-06 2x 308d 23680 4.1 978 3.2 762
 Life: 1266d 108890 4.3 4730 3.3 3564

TAMMY!

- *HHM All-American R&W 5-Yr-Old Cow 2017*
- *Junior All-American R&W 5-Yr-Old Cow 2017*
- *Res Gr Champ International R&W Jr Show 2017*
- *Junior All-American R&W 4-Yr-Old Cow 2016*
- *Grand Champion International R&W Jr Show 2016*
- *Nom All-American R&W Sr 3-Yr-Old Cow 2015*
- *Reserve All-Canadian R&W Junior Cow 2015*
- *Junior All-American R&W Sr 3-Yr-Old Cow 2015*
- *Int Champ International R&W Jr Show 2015*
- *Nom All-American R&W Sr 2-Yr-Old Cow 2014*

TALLY!

- *HHM All-American R&W 4-Yr-Old Cow 2011*
- *Nom All-American R&W Sr 3-Yr-Old Cow 2010*
- *Res Grand Champion Grand International 2010*
- *Int Champion Grand International 2010*
- *All-American R&W Sr 2-Yr-Old Cow 2009*
- *All-Canadian R&W Sr 2-Yr-Old Cow 2009*
- *Int Champion Royal R&W Winter Fair 2009*

Farnear Altitude-Red-ET

3128013348 TC TY TV TL TD
 PTA +150M +10F +15P 98R 12/22
 PTA -0.8PL 2.97SCS -2.6DPR 3.0%DCE
 PTA +3.16T +2.73UDC +1.50FLC 98R 12/22
 GTPI +2207G

Milksource Dty Tammy-Red-ET

70721248 Excellent-94 EEEEE 2E
 2-02 2x 365d 30980 4.7 1444 3.3 1036
 5-04 2x 338d 29750 5.3 1568 3.3 977
 3-06 2x 321d 29450 4.4 1302 3.2 935
 4-05 2x 284d 23220 5.0 1160 3.3 760
 6-05 2x 283d 20310 4.9 1002 3.4 687
 Life: 1728d 142030 4.8 6829 3.3 4657

3rd Dam

Spungold R-M Tammy-Red-ET EX-93 2E GMD

3-04 2x 365d 42690 3.4 1446 2.9 1235
 Life: 1262d 135110 3.3 4459 2.9 3951

4th Dam

Medovue Leader Lottie-Red VG-85 GMD

4-06 2x 365d 37670 3.9 1471 2.9 1106
 Life: 1355d 114310 3.8 4384 3.2 3626



SILVERMINE ADV TALLY-RED-ET EX-93 2E
Junior All-American R&W 5-Yr-Old Cow 2017
3RD DAM OF LOT 2



CRESCENTMEAD TRIFECTA-RED

3208382395
 Born: April 28, 2021

Carries embryo due: May 1, 2023
 Altitude-Red-ET X Milksource Abt Tessa-Red-ET EX-92
 • *Jr All-American R&W Sr 2-Yr-Old 2019*
 • *Nom All-American R&W 2-Yr-Old 2019*
Heifer Calf

Riverdown Unstopabull-Red

CAN 11801450 TY TV TL
 PTA -429M -24F -24P 99R 12/22
 PTA +2.18T +2.20UDC +1.39FLC GTPI +1975G

Milksource Byway Affection

3138524450 Excellent-94 EEEEE RC TL TD
 4-05 2x 266d 36050 4.5 1619 2.6 922
 2-11 2x 305d 27680 4.1 1128 2.9 805

Farnear Altitude-Red-ET

3128013348 TC TY TV TL TD
 PTA +150M +10F +15P 98R 12/22
 PTA +3.16T +2.73UDC +1.50FLC GTPI +2207G

Milksource Dty Tammy-Red-ET

70721248 Excellent-94 EEEEE 2E
 2-02 2x 365d 30980 4.7 1444 3.3 1036
 5-04 2x 338d 29750 5.3 1568 3.3 977
 3-06 2x 321d 29450 4.4 1302 3.2 935
 4-05 2x 284d 23220 5.0 1160 3.3 760

TAMMY!

- *HHM All-American R&W 5-Yr-Old Cow 2017*
- *Junior All-American R&W 5-Yr-Old Cow 2017*
- *Res Gr Champ International R&W Jr Show 2017*
- *Junior All-American R&W 4-Yr-Old Cow 2016*
- *Grand Champion International R&W Jr Show 2016*
- *Nom All-American R&W Sr 3-Yr-Old Cow 2015*
- *Reserve All-Canadian R&W Junior Cow 2015*
- *Junior All-American R&W Sr 3-Yr-Old Cow 2015*
- *Int Champ International R&W Jr Show 2015*
- *Nom All-American R&W Sr 2-Yr-Old Cow 2014*

TALLY!

- *HHM All-American R&W 4-Yr-Old Cow 2011*
- *Nom All-American R&W Sr 3-Yr-Old Cow 2010*

3rd Dam

Silvermine Adv Tally-Red-ET EX-93 EX-MS 2E
 5-05 2x 365d 38700 4.2 1621 3.2 1254
 Life: 1266d 108890 4.3 4730 3.3 3564

4th Dam

Spungold R-M Tammy-Red-ET EX-93 2E GMD
 3-04 2x 365d 42690 3.4 1446 2.9 1235
 Life: 1262d 135110 3.3 4459 2.9 3951

5th Dam

Medovue Leader Lottie-Red VG-85 GMD
 4-06 2x 365d 37670 3.9 1471 2.9 1106
 Life: 1355d 114310 3.8 4384 3.2 3626

Mr Affection Analyst-Red-ET

3136496608 TP TC TY TV TL TD
 PTA -53M -28F -23P 83R 12/22
 PTA -0.5PL 2.87SCS -1.5DPR 2.7%DCE
 PTA +2.71T +2.38UDC +1.66FLC 81R 12/22
 GTPI +1881G

Crescentmead Tempress-Red

3203415518 Excellent-90 EX-M @ 3-00 TC TL TD
 2-09 2x 324d 22581 4.5 1011 3.5 795 RIP
Sells as Lot 1



MILKSOURCE DTY TAMMY-RED-ET EX-94 2E
Junior All-American R&W 4-Yr-Old Cow 2016
2ND DAM OF LOT 3



CRESCENTMEAD TAIL SPIN-RED

3241471567
 Born: March 24, 2022

TAMMY!

- *HHM All-American R&W 5-Yr-Old Cow 2017*
- *Junior All-American R&W 5-Yr-Old Cow 2017*
- *Res Gr Champ International R&W Jr Show 2017*
- *Junior All-American R&W 4-Yr-Old Cow 2016*
- *Grand Champion International R&W Jr Show 2016*
- *Nom All-American R&W Sr 3-Yr-Old Cow 2015*
- *Reserve All-Canadian R&W Junior Cow 2015*
- *Junior All-American R&W Sr 3-Yr-Old Cow 2015*
- *Int Champ International R&W Jr Show 2015*
- *Nom All-American R&W Sr 2-Yr-Old Cow 2014*

TALLY!

- *HHM All-American R&W 4-Yr-Old Cow 2011*
- *Nom All-American R&W Sr 3-Yr-Old Cow 2010*

Cycle Jails Journey-Red-ET

3204381634 TP TC TY TV TL
 PTA -187M -26F -19P 81R 12/22
 PTA -1.0PL 2.94SCS -2.0DPR 3.1%DCE
 PTA +2.83T +2.20UDC +1.00FLC 8-OR 12/22
 GTPI +1834G

Crescentmead Temptress-Red

3203415518 Excellent-90 EX-M @ 3-00 TC TL TD
 2-09 2x 324d 22581 4.5 1011 3.5 795 RIP
Sells as Lot 1

Riverdown Unstopabull-Red

CAN 11801450 TY TV TL
 PTA -429M -24F -24P 99R 12/22
 PTA +2.18T +2.20UDC +1.39FLC GTPI +1975G

Cycle Callen Jazzy-ET

3128017746 RC TC TY TV TL

Farnear Altitude-Red-ET

3128013348 TC TY TV TL TD
 PTA +150M +10F +15P 98R 12/22
 PTA +3.16T +2.73UDC +1.50FLC GTPI +2207G

Milksource Dty Tammy-Red-ET

70721248 Excellent-94 EEEEE 2E
 2-02 2x 365d 30980 4.7 1444 3.3 1036
 5-04 2x 338d 29750 5.3 1568 3.3 977
 3-06 2x 321d 29450 4.4 1302 3.2 935
 4-05 2x 284d 23220 5.0 1160 3.3 760
 6-05 2x 283d 20310 4.9 1002 3.4 687
 Life: 1728d 142030 4.8 6829 3.3 4657

3rd Dam

Silvermine Adv Tally-Red-ET EX-93 EX-MS 2E

5-05 2x 365d 38700 4.2 1621 3.2 1254
 Life: 1266d 108890 4.3 4730 3.3 3564

4th Dam

Spungold R-M Tammy-Red-ET EX-93 2E GMD

3-04 2x 365d 42690 3.4 1446 2.9 1235
 Life: 1262d 135110 3.3 4459 2.9 3951

5th Dam

Medovue Leader Lottie-Red VG-85 GMD

4-06 2x 365d 37670 3.9 1471 2.9 1106
 Life: 1355d 114310 3.8 4384 3.2 3626



MILKSOURCE BST TERRY-RED-ET EX-94 2E

Reserve All-American R&W Fall Yearling in Milk 2014

MATERNAL SISTER TO DAM OF LOT 1 & 4



CRESCENTMEAD TADA-RED-ET

3203415551
Born: March 3, 2021

Sells fresh

TAMMY!

- HHM All-American R&W 5-Yr-Old Cow 2017
- Junior All-American R&W 5-Yr-Old Cow 2017
- Res Gr Champ International R&W Jr Show 2017
- Junior All-American R&W 4-Yr-Old Cow 2016
- Grand Champion International R&W Jr Show 2016
- Nom All-American R&W Sr 3-Yr-Old Cow 2015
- Reserve All-Canadian R&W Junior Cow 2015
- Junior All-American R&W Sr 3-Yr-Old Cow 2015
- Int Champ International R&W Jr Show 2015
- Nom All-American R&W Sr 2-Yr-Old Cow 2014

TALLY!

- HHM All-American R&W 4-Yr-Old Cow 2011
- Nom All-American R&W Sr 3-Yr-Old Cow 2010
- All-American R&W Sr 2-Yr-Old Cow 2009
- All-Canadian R&W Sr 2-Yr-Old Cow 2009

Mr Blondin Warrior-Red-ET

3139655530 TP TC TY TV TL TD
PTA -802M -19F -16P 98R 12/22
PTA -2.4PL 2.92SCS -3.00DPR 3.1%DCE
PTA +3.20T +1.66UDC +1.64FLC 98R 12/22
GTPI +1807G

Milksource Dty Tammy-Red-ET

70721248 Excellent-94 EEEEE 2E
2-02 2x 365d 30980 4.7 1444 3.3 1036
5-04 2x 338d 29750 5.3 1568 3.3 977
3-06 2x 321d 29450 4.4 1302 3.2 935
4-05 2x 284d 23220 5.0 1160 3.3 760
6-05 2x 283d 20310 4.9 1002 3.4 687
Life: 1728d 142030 4.8 6829 3.3 4657

Dymentholm Mr App Avalanche-TW

CAN 11957107 RC CV TL TY TD
PTA -260M -7F -8P 99R 12/22
PTA +3.72T +2.74UDC +2.07FLC GTPI +1960G

Triplecrown-JW Door Wisp-ET

3128860372 Very Good-85-CAN
3-03 2x 365d 35587 4.0 1424 3.3 1178

Scientific Destry-ET

138122625 Excellent-92 RC CD TY TV TL
PTA -962M -35F -10P 99R 12/22
PTA +1.28T +1.32UDC -.19FLC GTPI +1932G

Silvermine Adv Tally-Red-ET

138294193 Excellent-93 EX-MS 2E TL TD
5-05 2x 365d 38700 4.2 1621 3.2 1254
3-05 2x 365d 32920 4.3 1426 3.2 1042
2-06 2x 308d 23680 4.1 978 3.2 762
Life: 1266d 108890 4.3 4730 3.3 3564

3rd Dam

Spungold R-M Tammy-Red-ET EX-93 2E GMD

3-04 2x 365d 42690 3.4 1446 2.9 1235
Life: 1262d 135110 3.3 4459 2.9 3951

4th Dam

Medovue Leader Lottie-Red VG-85 GMD

4-06 2x 365d 37670 3.9 1471 2.9 1106
Life: 1355d 114310 3.8 4384 3.2 3626



MILKSOURCE TANTRUM-RED-ET EX-92
 Reserve All-American Sr 3-Yr-Old Cow 2022
 FULL SISTER TO LOT 5



MILKSOURCE UN TILLY-RED-ET

320838393 PO
 Born: March 1, 2021

Due: March 21, 2023 to Eskdale Mr Aflame-Red-ET
 94H000914 GTPI +2293G +2.21T 12/22

Full sister:

Milksource Tantrum-Red-ET EX-92

- Res All-American Sr 3-Yr-Old Cow 2022
- Res Int Champion International R&W Show 2022
- 1st Sr 3-Yr-Old International R&W Show 2022

Scientific Director-Red

138551069 Excellent-90 TV TL TD
 PTA -2052M -27F -40P 97R 12/22
 PTA +1.01T +.54UDC +.12FLC GTPI +1580G

Jen-D Devil Tiffany-Red-ET

62918023 Excellent-95 EEEEE 3E
 8-07 2x 365d 36170 4.3 1546 3.0 1082
 6-06 2x 365d 36140 4.1 1472 3.3 1196
 4-01 2x 365d 29830 4.3 1292 3.1 934
 5-04 2x 316d 27120 3.9 1048 3.1 846
 Life: 2282d 189780 4.2 8060 3.1 5867

TEQUILA!

- Res All-American R&W Aged Cow 2017
- HM Senior Champion International R&W 2017
- Res All-American R&W 5-Yr-Old Cow 2016
- Grand Champion Midwest Sprg/Nat Show 2016
- Unan All-American R&W 4-Yr-Old Cow 2015
- Grand Champion International R&W Show 2015
- Nom All-Canadian 4-Yr-Old Cow 2015
- Unan All-American R&W Sr 3-Yr-Old Cow 2014
- Nom All-American B&W Sr 3-Yr-Old Cow 2014
- Nom All-Canadian B&W Sr 3-Yr-Old Cow 2014
- Grand Champion International R&W Show 2014
- Res All-American R&W Sr 2-yr-Old Cow 2013
- Nom All-American R&W Fall Yearling, 2012

TIFFANY!

- Seven time R&W All-American Nominee!
- Nom All-American R&W 125,000LB Cow 2015
- Nom All-American R&W Aged Cow 2014
- Grand Champion Mid-West Sprg/Nat R&W 2014
- Nom All-American R&W 5-Yr-Old Cow 2012
- Grand Champion Mid-East Fall/Nat R&W 2012
- Grand Champion MN State Fair R&W Show 2012
- Grand Champion MN State R&W Show 2012
- Nom All-American 4-Yr-Old Cow 2011
- Supreme Champion MN State Fair 2011
- Nom All-American Sr 2-Yr-Old Cow 2009
- Int & HM Grand Champion MN State Show 2009
- HM All-American R&W Winter Yrlg Heifer 2008
- All-American R&W Winter Calf 2007

Riverdown Unstopabull-Red

CAN 11801450 TY TV TL
 PTA -429M -24F -24P 99R 12/22
 PTA +1.1PL 2.94SCS +0.9DPR 2.7%DCE
 PTA +2.18T +2.20UDC +1.39FLC 98R 12/22
 GTPI +1975G

Strans-Jen-D Tequila-Red-ET

141024338 Excellent-96 EEEEE 2E TL TD
 6-04 2x 365d 32840 4.3 1428 3.2 1054
 4-10 2x 293d 27840 4.4 1231 3.0 842
 2-05 2x 365d 24550 4.7 1145 3.4 831
 3-09 2x 306d 23990 4.4 1048 3.3 793
 Life: 1512d 118510 4.5 5327 3.2 3768



MILKSOURCE ABT TESSA-RED-ET EX-92
Jr All-American R&W Sr 2-Yr-Old Cow 2019
DAM OF LOTS 6, 7, 8 & 9



CRESCENTMEAD TONKA-RED-ET

Lot 7

CRESCENTMEAD TRIxie-ET

3241471586 • Born: September 1, 2022

Sire: Mr D Apple Diamondback

GTPi +1866G +2.50T +1.96UDC 12/22

Dam: Milksource Abt Tessa-Red

St Gen Doral-Red-ET

3146619138 TC TY TV TL TD

PTA +1192M +27F +40P 82R 12/22

PTA +2.3PL 2.89SCS -1.0DPR 2.7%DCE

PTA +2.99T +2.55UDC +1.05FLC 80R 12/22

GTPi +2536G

Milksource Abt Tessa-Red-ET

3132912479 Excellent-92 EEVEE TC TL TD

3-02 2x 365d 27520 4.6 1262 3.3 904

1-11 2x 365d 19860 4.6 910 3.5 687

5-03 2x 266d 20970 4.3 897 3.3 697

• *Jr All-American R&W Sr 2-Yr-Old 2019*

• *Nom All-American R&W Sr 2-Yr-Old 2019*

• *Res Grand Champion Midwest Nat/R&W 2019*

• *HM Int Champion WI Championship Show 2020*

3241471574

Born: December 2, 2021

• *2nd Winter Calf Wisconsin State R&W Fair 2022*

Farnear Altitude-Red-ET

3128013348 TC TY TV TL TD

PTA +150M +10F +15P 98R 12/22

PTA +3.16T +2.73UDC +1.50FLC GTPi +2207G

Danhof Alena-Red-ET

3141452964 Good Plus-83 VG-MS TP TC TL TD

3-00 2x 365d 35980 3.6 1299 3.1 1133

1-09 2x 365d 28130 3.4 946 3.1 862

Apples Absolute-Red-ET

139358472 Excellent-94 CV TC TL TY TD

PTA -1955M -12F -23P 99R 12/22

PTA +2.25T +2.46UDC +1.64FLC GTPi +1540G

Strans-Jen-D Tequila-Red-ET

141024338 Excellent-96 EEEEE 2E TL TD

6-04 2x 365d 32840 4.3 1428 3.2 1054

4-10 2x 293d 27840 4.4 1231 3.0 842

2-05 2x 365d 24550 4.7 1145 3.4 831

3-09 2x 306d 23990 4.4 1048 3.3 793

Life: 1512d 118510 4.5 5327 3.2 3768



TEQUILA!

- *Res All-American R&W Aged Cow 2017*
- *HM Senior Champion International R&W 2017*
- *Res All-American R&W 5-Yr-Old Cow 2016*
- *Grand Champion Midwest Sprg/Nat Show 2016*
- *Unan All-American R&W 4-Yr-Old Cow 2015*
- *Grand Champion International R&W Show 2015*
- *Nom All-Canadian 4-Yr-Old Cow 2015*
- *Unan All-American R&W Sr 3-Yr-Old Cow 2014*
- *Nom All-American B&W Sr 3-Yr-Old Cow 2014*
- *Nom All-Canadian B&W Sr 3-Yr-Old Cow 2014*
- *Grand Champion International R&W Show 2014*
- *Res All-American R&W Sr 2-yr-Old Cow 2013*
- *Nom All-American R&W Fall Yearling, 2012*

3rd Dam

Jen-D Devil Tiffany-Red-ET EX-95 EEEEE 3E

8-07 2x 365d 36170 4.3 1546 3.0 1082

Life: 2282d 189780 4.2 8060 3.1 5867



STRANS-JEN-D TEQUILA-RED-ET EX-96 2E

Unanimous All-American R&W 4-Yr-Old Cow 2015
2ND DAM OF LOTS 6, 7, 8 & 9



Lot 8 & 9

**CRESCENTMEAD TWILIGHT-RED-ET
 LOT 8**

**CRESCENTMEAD TRAVLER-RED-ET
 LOT 9**

3241471575 TC TL TD
 Born: March 4, 2022
 GTPI +1791G +2.34T +2.19UDC +1.95FLC 12/22
 Sire: *Unstopabull*

3241471573 TC TL TD
 Born: March 3, 2022
 GTPI +1726G +2.32T +1.63UDC +1.64FLC 12/22
 Sire: *Analyst*

Riverdown Unstopabull-Red - And -
 CAN 11801450 TY TV TL
 PTA -429M -24F -24P 99R 12/22
 PTA +2.18T +2.20UDC +1.39FLC GTPI +1975G

Milksource Abt Tessa-Red-ET
 3132912479 Excellent-92 EEVEE TC TL TD
 3-02 2x 365d 27520 4.6 1262 3.3 904
 1-11 2x 365d 19860 4.6 910 3.5 687
 5-03 2x 266d 20970 4.3 897 3.3 697
 • *Jr All-American R&W Sr 2-Yr-Old 2019*
 • *Nom All-American R&W Sr 2-Yr-Old 2019*
 • *Res Grand Champion Midwest Nat/R&W 2019*
 • *HM Int Champion WI Championship Show 2020*

Mr Affection Analyst-Red-ET
 3136496608 TP TC TY TV TL TD
 PTA -53M -28F -23P 83R 12/22
 PTA +2.71T +2.38UDC +1.66FLC GTPI +1881G

Apples Absolute-Red-ET
 139358472 Excellent-94 CV TC TL TY TD
 PTA -1955M -12F -23P 99R 12/22
 PTA +2.25T +2.46UDC +1.64FLC GTPI +1540G

Strans-Jen-D Tequila-Red-ET
 141024338 Excellent-96 EEEEE 2E TL TD
 6-04 2x 365d 32840 4.3 1428 3.2 1054
 4-10 2x 293d 27840 4.4 1231 3.0 842
 2-05 2x 365d 24550 4.7 1145 3.4 831
 3-09 2x 306d 23990 4.4 1048 3.3 793
 Life: 1512d 118510 4.5 5327 3.2 3768

- TEQUILA!**
- *Res All-American R&W Aged Cow 2017*
 - *HM Senior Champion International R&W 2017*
 - *Res All-American R&W 5-Yr-Old Cow 2016*
 - *Grand Champion Midwest Sprg/Nat Show 2016*
 - *Unan All-American R&W 4-Yr-Old Cow 2015*
 - *Grand Champion International R&W Show 2015*
 - *Nom All-Canadian 4-Yr-Old Cow 2015*
 - *Unan All-American R&W Sr 3-Yr-Old Cow 2014*
 - *Nom All-American B&W Sr 3-Yr-Old Cow 2014*
 - *Nom All-Canadian B&W Sr 3-Yr-Old Cow 2014*
 - *Grand Champion International R&W Show 2014*
 - *Res All-American R&W Sr 2-yr-Old Cow 2013*
 - *Nom All-American R&W Fall Yearling, 2012*

3rd Dam
Jen-D Devil Tiffany-Red-ET EX-95 EEEEE 3E
 8-07 2x 365d 36170 4.3 1546 3.0 1082
 Life: 2282d 189780 4.2 8060 3.1 5867



MS THUNDERSTORM ETERNITY-ET
Reserve All-American Winter Yearling 2022
FULL SISTER TO LOT 10



FLOYDHOLM MC EMOJI-ET EX-95



Lot **10**

MS THUNDERSTORM ELECTRA-ET

3203772801 TR TC TL TD
 Born: December 2, 2020
 GTPI +1988G +3.36T +2.02UDC +1.58FLC 12/22

Due: April 12, 2023 to Zbw-Retso-Pv Styleleader *RC
 551H004491 GTPI +2134G +3.75T +2.97UDC
 • Heifer calf

Full sister:

- Ms Thunderstorm Eternity-ET**
- *Res All-American Winter Yearling 2022*
- *Res Jr Champion International Show 2022*
- *Res Jr Champion Royal Winter Fair 2022*

Blondin Thunder Storm

CAN 110296922 VG-85-CAN
 PTA +115M -16F -8P 94R 12/22
 PTA -0.8PL 2.90SCS -2.7DPR 3.5%DCE
 PTA +3.55T +2.38UDC +1.20FLC 93R 12/22
 GTPI +1962G

Floydholm Mc Emoji-ET

3013223829 Excellent-95 EEEEE TR TC TL TD
 2-00 2x 365d 30960 3.8 1188 3.0 1024
 • *All-American Jr 3-Yr-Old Cow 2019*
 • *Int Champion International Holstein Show 2019*
 • *HM Int Champion Royal Winter Fair 2019*

De-Su Bkm McCutchen 1174-ET

69990138 Excellent-93 GM 8/15 TR TP TC TV TY TL
 PTA +234M +25F +11P 99R 12/22
 PTA +2.16T +1.40UDC +.94FLC GTPI +2204G

Budjon-JK Damion Eklipse-ET

142372537 Excellent-94 EEEEE 2E TL TD
 3-04 2x 365d 28067 3.7 1026 3.2 888
 2-03 2x 305d 20150 3.7 736 3.2 636
 • *Nom Junior All-American Sr 3-Yr-Old Cow 2016*

3rd thru 10th Dams

- Rolling-Spring G Escence-ET EX-95 EEEEE 2E**
 5-06 2x 365d 40500 4.1 1646 3.2 1307
 • *Nominated All-American Produce of Dam 2012*
 • *Nominated All-American 4-Yr-Old Cow 2010*
- Budjon-JK Dur Esquisite-ET EX-92 GMD DOM**
 3-07 2x 365d 40300 3.9 1555 3.2 1275
 • *Member Nom All-American Best Three 2007*
 • *Nom All-American Sr 2-Year-Old 2006*
- Budjon-JK Encore Electra-ET EX-95 2E GMD DOM**
 6-04 2x 365d 46830 4.0 1866 3.0 1382
 Life: 1806d 192280 3.6 6858 3.2 5097
 • *HM All-American 125,000 Lb Cow 2005*
 • *HM All-American Aged Cow 2004*
 • *Res All-American Sr 3-Year-Old Cow 2001*
- Krull Broker Elegance EX-96 3E GMD DOM**
 Life: 2356d 183710 3.7 6878 3.4 6267
 • *HM All-American Aged Cow 1999 & 2000*
 • *HM All-Canadian Mature Cow 1999*
- Krull Starbuck Excellency EX-90 GMD DOM**
 3-03 2x 365d 27140 3.5 937 3.4 930
- Krull TT Excellency EX-90 VEEE DOM**
 Life: 1733d 109780 3.7 4077 3.3 3605
- Krull Boot Mark Excellency EX-92 2E GMD**
 Life: 3026d 201440 3.5 7105 3.0 4634
- Krull Kingstead Excellency EX-92 4E GMD**
 Life: 3364d 179790 3.6 6436



MS ANGEL DAKARI-RED

Reserve Junior All-American R&W Milking Yearling 2022
SELLS AS LOT 11 & DAM OF LOT 12



Lot **11**

MS ANGEL DAKARI-RED

Lot **12**

MS J-GALA ANLST DANICA-RED

3241471582 • Born: July 19, 2022

Sire: Mr Affection Anaalyst-Red-ET

PTA +2.71T +2.38UDC +1.66FLC GTPI +1881G

Dam: Ms Angel Dakari-Red

Farnear Altitude-Red-ET

3128013348 TC TY TV TL TD

PTA +150M +10F +15P 98R 12/22

PTA -0.8PL 2.97SCS -2.6DPR 3.0%DCE

PTA +3.16T +2.73UDC +1.50FLC 98R 12/22

GTPI +2207G

Ms D Angel Devika-Red-ET

3142186076 Very Good-87 VVVVV TP TC TL TD

2-06 2x 303d 14830 4.8 708 3.7 552

3221166131

Born: September 1, 2020

1-10 2x 207d 15088 3.8 571 3.1 467 RIP

Milking 72 lbs/day SCC 24

Bred: Sept. 17, 2022 to Eskdale Mr Aflame-Red-ET

94H000914 GTPI +2293G +2.21T 12/22

Heifer Calf

- Res Jr All-American R&W Milking Yearling 2022
- 1st Milking Yearling WI Championship Show 2022
- 1st Milking Yearling WI Champion Jr Show 2022
- 2nd Milking Yearling Internat/ R&W Jr Show 2022

Lookout P Redburst-Red-ET

CAN 106030980 TY TV TL TD

PTA -176M -11F +3P 99R 12/22

PTA +1.36T +1.27UDC +.84FLC GTPI +2155G

Ms Apples Angel

139526936 Excellent-94 EEEEE 2E RC TV TL TD

6-00 2x 365d 44410 4.0 1771 3.3 1480

4-04 2x 365d 30230 4.0 1218 3.4 1036

9-00 2x 305d 29340 4.1 1192 3.3 976

2-00 2x 365d 22430 3.7 841 3.3 736

Life: 1501d 131230 4.0 5204 3.4 4407

APPLE!

- Res All-American R&W 125,000 Lb Cow 2014
- Unanimous All-American R&W 125,000 Lb 2013
- Res Grand Champion International R&W 2013
- Unanimous All-American R&W Aged Cow 2011
- Grand Champion International R&W Show 2011
- World Champion R&W Cow Holstein Int'l 2010
- Res Grand Champion R&W RAWF 2009
- Res All-Canadian R&W 5-Yr-Old Cow 2009
- Nom All-American 5-Yr-Old Cow 2009
- HHM All-American Jr 3-Yr-Old Cow 2007
- Unanimous All-American Jr 2-Yr-Old Cow 2006

3rd thru 9th Dams

KHW Regiment Apple-Red-ET EX-96 4E DOM

Life: 2898d 240640 4.7 11394 3.7 9013

Kamps-Hollow Altitude-ET EX-95 2E DOM RC CV

7-00 2x 365d 39690 4.7 1849 3.5 1385

Clover-Mist Alisha-ET EX-93 3E DOM

Life: 2999d 226470 4.7 10659 3.6 8149

Clover-Mist Augy Star-ET EX-94 4E DOM

Life: 2486d 206250 4.7 9793 3.5 7187

D-R-A August EX-96 4E DOM

Life: 3443d 190200 4.4 8281 3.5 4818

- Nominated All-American Aged Cow 1986

D-R-A Ideal Precious Leader EX-90 2E

Life: 2456d 133250 4.0 5308

D-R-A Princess Lad Leader EX-90 3E



NEHLS-VALLEY ARCH ANGEL EX-94
Nominated Junior All-American 5-Yr-Old Cow 2022
SELLS AS LOT 13 & DAM OF LOT 14



NEHLS-VALLEY ARCH ANGEL

Lot 14

MS J-GALA HELLS ANGEL

3241471584 • Born: June 20, 2022
Sire: Farnear Aria Addison Ewl-ET RC
 GTPI +1919G +2.37T 12/22
Dam: Nehls-Valley Arch Angel

Wa-Del Bryant-ET

142148310 TR TP TY TV TL
 PTA +1129M +42F +27P 99R 12/22
 PTA -1.7PL 3.02SCS -4.0DPR 2.6%DCE
 PTA +1.51T +1.59UDC +.59FLC 98R 12/22
 GTPI +2217G

Ms Ainsley Atense 24-ET

3012573476 Very Good-88 VEVVV
 7-08 2x 365d 37510 4.0 1512 3.1 1161
 6-05 2x 365d 30330 4.0 1212 3.1 946
 4-02 2x 359d 29730 3.9 1165 3.1 927
 5-04 2x 339d 29200 3.9 1146 3.1 899
 Life: 2212d 182030 3.9 7098 3.1 5696

3138480603 Excellent-94 EEEEE
 Born: September 30, 2016
 GTPI +2241G +1068M +2.25T 12/22
 3-05 2x 365d 43914 4.1 1807 2.7 1242
 2-10 2x 365d 41569 4.1 1705 2.9 1232
 1-11 2x 365d 33500 4.1 1376 3.1 1041
 4-08 2x 236d 25360 4.0 1021 2.8 722 RIP
 Milking 112 lbs/day SCC 10

Bred: Jan. 14, 2023 to Siemers Doc Hancock
 250H014579 GTPI +2698G +3.51T +3.37UDC

Dymentholm S Sympatico-ET

CAN 11004723 EX-90-CAN RC TP TY TV TL TD
 PTA +1136M +34F +21P 99R 12/22
 PTA +.74T +1.05UDC +.60FLC GTPI +2308G

Ms Apples Ainsley-ET

69822262 Excellent-90 VEEVE RC CV
 2-04 2x 277d 19050 4.5 855 3.2 605

ARCH ANGEL!

- *Nom Jr All-American 5-Yr-Old Cow 2022*
- *HM Sr Champion WI Championship Jr Show 2022*
- *Nom Jr All-American 4-Yr-Old Cow 2021*
- *Grand Champion WI Championship Jr Show 2021*

3rd Dam

KHW Regiment Apple-Red-ET EX-96 4E DOM CV

- 9-01 2x 365d 36750 4.3 1582 3.5 1280
 Life: 2898d 240640 4.7 11394 3.7 9013
- *Res All-American R&W 125,000 Lb Cow 2014*
 - *Unanimous All-American R&W 125,000 Lb 2013*
 - *Res Grand Champion International R&W 2013*
 - *Unanimous All-American R&W Aged Cow 2011*
 - *Grand Champion International R&W Show 2011*
 - *World Champion R&W Cow Holstein Int'l 2010*
 - *Res Grand Champion R&W RAWF 2009*
 - *Res All-Canadian R&W 5-Yr-Old Cow 2009*
 - *Nom All-American 5-Yr-Old Cow 2009*
 - *HHM All-American Jr 3-Yr-Old Cow 2007*
 - *Unanimous All-American Jr 2-Yr-Old Cow 2006*

4th Dam

Kamps-Hollow Altitude-ET EX-95 2E DOM RC CV

- 7-00 2x 365d 39690 4.7 1849 3.5 1385
 Life: 1844d 144460 4.4 6295 3.7 5288
- *All-American R&W Produce of Dam 2014*
- Next 5 Dams Excellent*



CRESCENTMEAD ALLEGRO-RED EX-90

Junior All-American R&W Summer Jr 2-Yr-Old Cow 2019

SELLS AS LOT 15



CRESCENTMEAD ALLEGRO-RED

3149946221 Excellent-90 VEEEE @ 3-03
 Born: June 1, 2017
 3-00 2x 317d 23948 4.3 1040 3.2 760
 2-00 2x 310d 19480 4.0 779 3.2 625
 4-00 2x 232d 18857 4.7 881 3.3 632
 5-02 2x 193d 15614 4.5 696 3.1 490 RIP
 Milking 72 lbs/day SCC 12

Bred: Oct. 22, 2022 to Farnear Altitude-Red-ET
 551H003617 GTPI +2207G +3.16T +2.73UDC
Heifer Calf

- *Jr All-American R&W Summer Jr 2-Yr-Old 2019*
- *Nom All-American R&W Summer Jr 2-Yr-Old 2019*
- *4th Summer Jr 2-Yr-Old Internat/ R&W 2019*

Tiger-Lily Ladd P-Red-ET
 69405975 Excellent-91 PC CD TY TV TL TD
 PTA -1367M -13F -12P 99R 12/22
 PTA +1.29T +.89UDC +.31FLC GTPI +2089G

Kamps-Hollow A-Noel-Red-ET
 137887583 Excellent-91 EEEVE 2E
 8-03 2x 365d 40620 3.8 1557 3.2 1311
 5-02 2x 365d 39760 4.2 1652 3.0 1183
 3-11 2x 365d 36580 3.5 1268 3.2 1186
 2-06 2x 365d 29800 3.4 1025 3.2 965
 Life: 2038d 189810 3.8 7155 3.2 6068

ACAPELA!

- *Nom All-American 5-Yr-Old Cow 2019*
- *HM Jr All-American R&W 5-Yr-Old Cow 2019*
- *All-American R&W Dam & Offspring 2019*
- *Res Jr. All-American R&W 4-Yr-Old Cow 2018*
- *Jr All-American R&W Sr 3-Yr-Old Cow 2017*
- *Nom Jr All-American R&W Sr. 2-Yr-Old Cow 2016*

Mr Apples Armani-ET

68571374 Excellent-90 RC CD TP TY TV TL TD
 PTA -1805M +16F -13P 99R 12/22
 PTA -1.7PL 2.84SCS +1.4DPR 2.3%DCE
 PTA +1.00T +1.53UDC +1.47FLC
 GTPI +2067G

Kamps-Hollow Acapela-Red-ET

3013109438 Excellent-93 EEEEE PC TL TD
 4-02 2x 365d 33545 3.9 1347 3.3 1138
 2-00 2x 365d 28399 3.7 1090 3.2 931
 3-04 2x 279d 23043 4.1 952 3.4 788
 5-04 2x 244d 23641 4.0 942 3.4 795

3rd Dam

Clover-Mist Alisha-ET EX-93 3E DOM
 8-07 2x 365d 36920 4.2 1553 3.4 1258
 Life: 2999d 226470 4.7 10659 3.6 8149

4th Dam

Clover-Mist Augy Star-ET EX-94 4E DOM
 7-10 2x 365d 43140 5.0 2136 3.3 1421
 Life: 2486d 206250 4.7 9793 3.5 7187

5th Dam

D-R-A August EX-96 4E DOM
 8-05 3x 365d 27460 4.3 1187 3.2 871
 Life: 3443d 190200 4.4 8281 3.5 4818
 • *Nominated All-American Aged Cow 1986*

6th Dam

D-R-A Ideal Precious Leader EX-90 2E
 Life: 2456d 133250 4.0 5308

7th Dam

D-R-A Princess Lad Leader EX-90 3E



KAMPS-HOLLOW ACAPELA-RED-ET EX-93

- Junior All-American R&W Sr 3-Yr-Old Cow 2017
- DAM OF LOT 15 & 16: 2ND DAM OF LOT 17



Lot 16

CRESCENTMEAD ALLEGRA-RED-ET

3241471585
Born: September 26, 2022

ACAPELA!

- Nom All-American 5-Yr-Old Cow 2019
- HM Jr All-American R&W 5-Yr-Old Cow 2019
- All-American R&W Dam & Offspring 2019
- Res Jr. All-American R&W 4-Yr-Old Cow 2018
- Jr All-American R&W Sr 3-Yr-Old Cow 2017
- Nom Jr All-American R&W Sr. 2-Yr-Old Cow 2016

Farnear Altitude-Red-ET

3128013348 TC TY TV TL TD
PTA +150M +10F +15P 98R 12/22
PTA -0.8PL 2.97SCS -2.6DPR 3.0%DCE
PTA +3.16T +2.73UDC +1.50FLC 98R 12/22
GTPI +2207G

Kamps-Hollow Acapela-Red-ET

3013109438 Excellent-93 EEEEE PC TL TD
4-02 2x 365d 33545 3.9 1347 3.3 1138
2-00 2x 365d 28399 3.7 1090 3.2 931
3-04 2x 279d 23043 4.1 952 3.4 788
5-04 2x 244d 23641 4.0 942 3.4 795

Mr LR EDG Arvis 18196-ET

3125201960 RC TY TV
PTA -485M +10F +4P 97R 12/22
PTA +1.94T +2.16UDC +1.19FLC GTPI +2176G

Farnear TBR Aria Adler-ET

72437575 Excellent-96 EEEEE 2E RC
Life: 1739d 180010 4.6 8318 3.3 5939
• Nom All-American Life Production Cow 2020

Tiger-Lily Ladd P-Red-ET

69405975 Excellent-91 PC CD TY TV TL TD
PTA -1367M -13F -12P 99R 12/22
PTA +1.29T +.89UDC +.31FLC GTPI +2089G

Kamps-Hollow A-Noel-Red-ET

137887583 Excellent-91 EEEEE 2E
8-03 2x 365d 40620 3.8 1557 3.2 1311
5-02 2x 365d 39760 4.2 1652 3.0 1183
3-11 2x 365d 36580 3.5 1268 3.2 1186
2-06 2x 365d 29800 3.4 1025 3.2 965
Life: 2038d 189810 3.8 7155 3.2 6068

3rd Dam

Clover-Mist Alisha-ET EX-93 3E DOM
8-07 2x 365d 36920 4.2 1553 3.4 1258
Life: 2999d 226470 4.7 10659 3.6 8149

4th Dam

Clover-Mist Augy Star-ET EX-94 4E DOM
7-10 2x 365d 43140 5.0 2136 3.3 1421
Life: 2486d 206250 4.7 9793 3.5 7187

5th Dam

D-R-A August EX-96 4E DOM
8-05 3x 365d 27460 4.3 1187 3.2 871
Life: 3443d 190200 4.4 8281 3.5 4818
• Nominated All-American Aged Cow 1986

6th Dam

D-R-A Ideal Precious Leader EX-90 2E
Life: 2456d 133250 4.0 5308

7th Dam

D-R-A Princess Lad Leader EX-90 3E



CRESCENTMEAD ALLEGRO-RED EX-90

Junior All-American R&W Summer Jr 2-Yr-Old Cow 2019
DAM OF LOT 17



CRESCENTMEAD ALTO-RED

3208382392

Born: June 2, 2021

Due: May 24, 2023 to Luck-E Aristocrat-Red
 94H000910 GTPI +1900G +2.54T 12/22
Heifer Calf

Riverdown Unstopabull-Red

CAN 11801450 TY TV TL
 PTA -429M -24F -24P 99R 12/22
 PTA +2.18T +2.20UDC +1.39FLC GTPI +1975G

Brookview Salt-N-Pepa-ET

143707297 Excellent-90 EX-MS RC TL TD
 4-07 2x 365d 39910 4.0 1587 3.5 1395
 2-06 2x 305d 21720 3.5 763 3.5 765

Mr Apples Armani-ET

68571374 Excellent-90 RC CD TP TY TV TL TD
 PTA -1805M +16F -13P 99R 12/22
 PTA +1.00T +1.53UDC +1.47FLC GTPI +2067G

Kamps-Hollow Acapela-Red-ET

3013109438 Excellent-93 EEEEE PCT TL TD
 4-02 2x 365d 33545 3.9 1347 3.3 1138
 2-00 2x 365d 28399 3.7 1090 3.2 931
 3-04 2x 279d 23043 4.1 952 3.4 788

ACAPELA!

- *Nom All-American 5-Yr-Old Cow 2019*
- *HM Jr All-American R&W 5-Yr-Old Cow 2019*
- *All-American R&W Dam & Offspring 2019*
- *Res Jr. All-American R&W 4-Yr-Old Cow 2018*
- *Jr All-American R&W Sr 3-Yr-Old Cow 2017*
- *Nom Jr All-American R&W Sr. 2-Yr-Old Cow 2016*

Brookview Redlight-Red

144557907 VG-87 TP TC TY TV TL TD
 PTA -660M -39F -19P 89R 12/22
 PTA +2.1PL 2.90SCS +2.1DPR 3.1%DCE
 PTA +2.54T +2.65UDC +1.13FLC 84R 12/22
 GTPI +2036G

Crescentmead Allegro-Red

3149946221 Excellent-90 VEEEE @ 3-03
 3-00 2x 317d 23948 4.3 1040 3.2 760
 2-00 2x 310d 19480 4.0 779 3.2 625
 4-00 2x 232d 18857 4.7 881 3.3 632
 • *Jr All-American R&W Summer Jr 2-Yr-Old 2019*
 • *Nom All-American R&W Summer Jr 2-Yr-Old 2019*
 • *1st Jr Summer Jr 2-Yr-Old Cow Internat/R&W 2019*
 • *4th Summer Jr 2-Yr-Old Internat/ R&W 2019*
Sells as Lot 15

3rd thru 8th Dams

Kamps-Hollow A-Noel-Red-ET EX-91 EEEVE 2E

8-03 2x 365d 40620 3.8 1557 3.2 1311
 Life: 2038d 189810 3.8 7155 3.2 6068

Clover-Mist Alisha-ET EX-93 3E DOM

8-07 2x 365d 36920 4.2 1553 3.4 1258
 Life: 2999d 226470 4.7 10659 3.6 8149

Clover-Mist Augy Star-ET EX-94 4E DOM

7-10 2x 365d 43140 5.0 2136 3.3 1421
 Life: 2486d 206250 4.7 9793 3.5 7187

D-R-A August EX-96 4E DOM

8-05 3x 365d 27460 4.3 1187 3.2 871
 Life: 3443d 190200 4.4 8281 3.5 4818

- *Nominated All-American Aged Cow 1986*

D-R-A Ideal Precious Leader EX-90 2E

Life: 2456d 133250 4.0 5308

D-R-A Princess Lad Leader EX-90 3E



MACLAND TS JULIET A-RED-ET EX-94 2E
Junior All-American R&W Sr 3-Yr-Old Cow 2019
SELLS AS LOT 18



MACLAND TS JULIET A-RED-ET

3012283141 Excellent-94 EEEEE 2E
 Born: September 15, 2015
 5-06 2x 365d 29003 4.2 1248 3.4 1039
 4-00 2x 365d 26994 4.4 1218 3.5 944
 2-11 2x 340d 21560 4.7 1022 3.7 796
 1-11 2x 292d 18450 4.6 847 3.5 641
 6-08 2x 263d 16267 4.7 759 3.3 532 RIP
 Milking 62 lbs/day SCC 43

Bred Nov. 21, 2022 to Mr Affection Analyst-Red-ET
 7H01502 Heifer Calf

JULIET A!

- *Supreme Champion WI Jr State Fair 2021*
- *Junior All-American R&W Sr 3-Yr-Old 2019*
- *1st Sr. 3 Year Old Internat/R&W Jr Show 2019*
- *Res. All-American R&W Milking Yearling 2017*
- *1st Milking Yearling Midwest Fall National 2017*

SEPT JULIET!

- *Res Grand Champion Southern Sprng/Nat 2009*
- *1st 4-Yr-Old Cow Southern Sprng/Nat 2009*
- *HM All-American Jr 3-Yr-Old Cow 2008*
- *1st Jr 3-Yr-Old Cow Eastern Fall/Nat 2008*
- *Supreme Champion Kingsmill Futurity 2008*
- *Nom All-American Jr 2-Yr-Old Cow 2007*

Mr Apples Armani-ET

68571374 Excellent-90 RC CD TP TY TV TL TD
 PTA -1805M +16F -13P 99R 12/22
 PTA -1.7PL 2.84SCS +1.4DPR 2.3%DCE
 PTA +1.00T +1.53UDC +1.47FLC
 GTPI +2067G

Macland Advent Juliet-Red

138189820 Excellent-90 EEVVE 2E
 5-08 2x 365d 29150 4.6 1340 3.3 959
 4-01 2x 365d 26700 4.5 1227 3.5 934
 3-01 2x 290d 24100 4.4 1051 3.3 789
 2-01 2x 327d 21250 4.6 973 3.3 709
 Life: 1450d 106960 4.6 4903 3.4 3647
 • *Nom All-American R&W Spring Calf 2007*
 • *HM All-American R&W Spring Yearling 2008*

KHW Kite Advent-Red-ET

133002953 Excellent-94 TV TL TD
 PTA -1657M -42F -44P 99R 12/22
 PTA +1.41T +.40UDC +.76FLC GTPI +1632G

Miss Macland Sept Juliet-ET

136281816 Excellent-92 EEEEE 2E RC TL TD
 1-11 2x 365d 27750 3.5 982 3.0 827
 5-05 2x 365d 24930 4.2 1045 2.8 689
 3-03 2x 305d 23270 3.9 908 2.7 590
 6-11 2x 365d 18870 3.9 831 2.8 593
 Life: 1676d 109040 3.9 4283 3.0 3257

3rd Dam

Sco-Lo Integrity Juliet EX-92 EEEVE

4-10 2x 365d 35716 3.7 1310 3.1 1091
 Life: 1165d 102980 3.6 3732 3.0 3088
 • *Nom All-American Jr 2-Yr-Old Cow 2000*

4th Dam

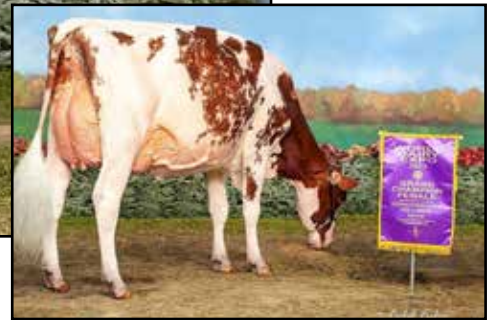
Sco-Lo Highlight Julia VG-85 GMD DOM

6-06 2x 305d 33460 3.8 1274 3.3 1101
 Life: 1899d 166108 3.7 6153 3.4 5634



SCENIC-EDGE JADENE-RED-ET

Champion Yearling Wisconsin Jr State Fair R&W 2022
SELLS AS LOT 19



SCENIC-EDGE JORDAN-RED EX-94



SCENIC-EDGE JADENE-RED-ET

3224973636
 Born: March 18, 2021

Bred: May 25, 2022 to St Gen Doral-Red-ET
 551H004184 GTPI +2536G +1192M +2.99T
Heifer Calf

- *Champion Yearling WI Jr State Fair R&W 2022*
- *5th Spring Yearling WI Championship Show 2022*
- *7th Spring Yearling International R&W Show 2022*

Maternal sister:

Scenic-Edge Jordan-Red EX-94

- *Unan All-American R&W Jr 3-Yr-Old 2021*
- *Supreme Champion WDE Junior Show 2021*
- *Grand Champion Internat/R&W Jr Show 2021*
- *Int Champion International R&W Show 2021*
- *1st Jr 3-Yr-Old International R&W Show 2021*

Mr Blondin Warrior-Red-ET

3139655530 TP TC TY TV TL TD
 PTA -802M -19F -16P 98R 12/22
 PTA -2.4PL 2.92SCS -3.00DPR 3.1%DCE
 PTA +3.20T +1.66UDC +1.64FLC 98R 12/22
 GTPI +1807G

Scenic-Edge Jasmine-Red

3134706668 Excellent-93 EEEEE 2E TC TL TD
 6-02 2x 365d 35520 4.3 1533 3.0 1077
 4-09 2x 365d 34020 4.3 1448 3.3 1133
 3-04 2x 365d 28400 4.2 1179 3.3 932
 2-02 2x 365d 27260 4.4 1189 3.4 920
 Life: 1631d 133480 4.3 5768 3.3 4367

St-Jacobs Destry Heztry-ET

70074442 EX-91 RC CD TY TV TL
 PTA -674M -20F -5P 99R 12/22
 PTA +1.12T +.41UDC +.66UDC GTPI +1899G

Scenic-Edge Jamboree-Red

68984864 Very Good-88 VG-MS @ 3-10
 3-07 2x 365d 26040 4.7 1225 3.6 942
 2-05 2x 306d 17190 5.0 865 3.7 641
 • *1st Summer Yearling NAILE R&W Show 2013*

3rd thru 8th Dams

Scenic-Edge Jellybean-Red EX-94 EEEEE 2E

3-09 2x 365d 36550 4.5 1652 3.2 1181

Life: 1358d 121110 4.6 5586 3.3 3992

- *Unan All-American R&W Fall Yearling 2009*
- *Jr Champion International R&W Show 2009*
- *Unan All-American R&W Fall Calf 2008*

Scenic-Edge SS Justine-ET EX-93 EEEEE 3E RC

3-02 2x 365d 39440 3.6 1410 2.8 1090

Life: 1767d 154830 3.5 5481 2.8 4364

Howard-Home Rmk Jena-Red-ET VG-86

2-03 3x 365d 27300 4.3 1172 3.1 837

Howard-Home Promotion Joy-Red EX-90 EVEE

4-08 2x 316d 25010 3.9 981 2.8 702

Howard-Home Caveman Joy-Red VG-87 VVVV

Life: 2783d 160620 3.9 6233 2.9 4636

Howard-Home Jetstar Jamie VG-85 VG-MS

3-08 2x 305d 21290 3.1 661 2.6 557



SCENIC-EDGE JUNEBUG-RED

Nominated All-American R&W Summer Yearling 2021

SELLS AS LOT 20



SCENIC-EDGE JUNEBUG-RED

3140296712

Born: June 11, 2020

2-00 2x 228d 13861 3.9 534 3.4 476 RIP

Milking 55 lbs/day SCC 43

Bred: Oct. 20, 2022 to BLondin Cheerful-Red

799H000035 GTPI +2258G +1.96T +1.89UDC

Heifer Calf

JUNEBUG!

- *Nom All-American R&W Summer Yearling 2021*
- *Nom Jr All-American R&W Summer Yearling 2021*
- *HM Jr Champion Midwest R&W Jr Show 2021*
- *4th Summer Yearling Midwest Nat/R&W Show 2021*
- *6th Summer Yearling International R&W Show 2021*

Mr Blondin Warrior-Red-ET

3139655530 TP TC TY TV TL TD

PTA -802M -19F -16P 98R 12/22

PTA -2.4PL 2.92SCS -3.00DPR 3.1%DCE

PTA +3.20T +1.66UDC +1.64FLC 98R 12/22

GTPI +1807G

Scenic-Edge Jitterbug-Red

71730718 Excellent-90 EEEVE 2E

7-04 2x 365d 36820 4.3 1600 3.1 1143

5-11 2x 365d 33230 4.3 1439 3.2 1061

4-02 2x 365d 29270 4.1 1209 3.4 991

3-01 2x 352d 27110 4.3 1175 3.3 888

2-02 2x 273d 19740 4.1 814 3.1 610

Life: 1855d 153260 4.3 6567 3.2 4953

Patience Shline Contender-Red

CAN 7483577 EX-95-CAN TV TL

PTA -2772M -68F -77P 99R 12/22

PTA +1.21T +1.767DC +.62FLC GTPI +1465M

Scenic-Edge Jellybean-Red

65210162 Excellent-94 EEEEE 2E

3-09 2x 365d 36550 4.5 1652 3.2 1181

5-03 2x 365d 36810 4.4 1617 3.2 1184

Life: 1358d 121110 4.6 5586 3.3 3992

• *Unan All-American R&W Fall Yearling 2009*

• *Jr Champion International R&W Show 2009*

• *Unan All-American R&W Fall Calf 2008*

3rd Dam

Scenic-Edge SS Justine-ET EX-93 EEEEE 3E RC

3-02 2x 365d 39440 3.6 1410 2.8 1090

Life: 1767d 154830 3.5 5481 2.8 4364

4th Dam

Howard-Home Rmk Jena-Red-ET VG-86

2-03 3x 365d 27300 4.3 1172 3.1 837

5th Dam

Howard-Home Promotion Joy-Red EX-90 EVEE

4-08 2x 316d 25010 3.9 981 2.8 702

6th Dam

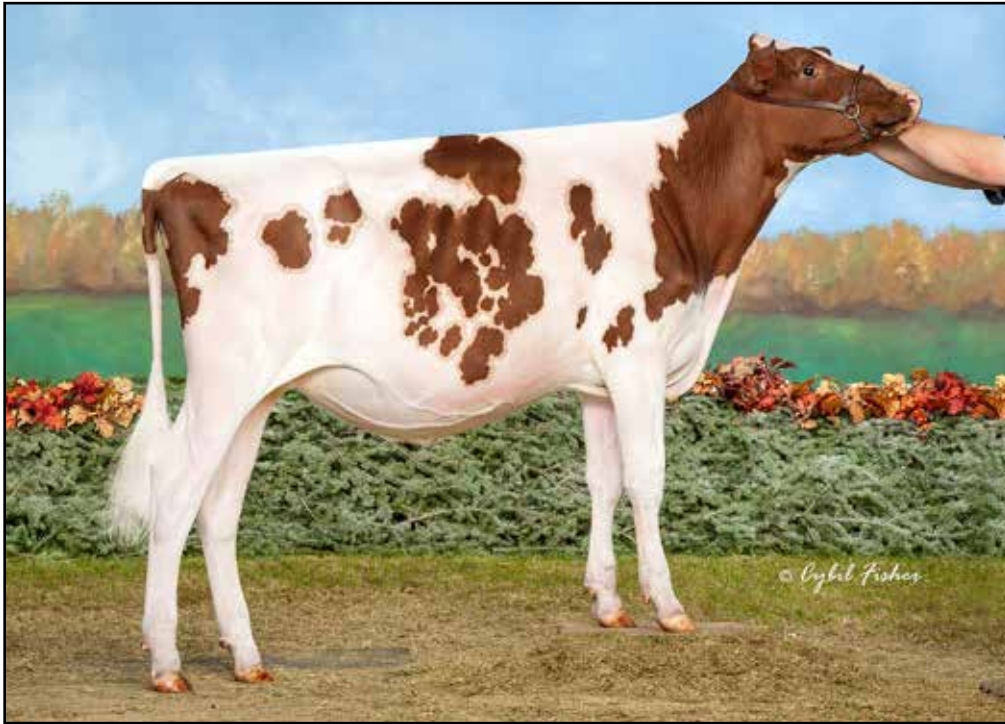
Howard-Home Caveman Joy-Red VG-87 VVVV

Life: 2783d 160620 3.9 6233 2.9 4636

7th Dam

Howard-Home Jetstar Jamie VG-85 VG-MS

3-08 2x 305d 21290 3.1 661 2.6 557



CRESCENTMEAD JUSTICE-RED

Junior All-American R&W Fall Calf 2021

SELLS AS LOT 21



CRESCENTMEAD JUSTICE-RED

3203415543 TC TL TD A2A2
 Born: September 26, 2020
 GTPI +1995G +3.47T +2.33UDC +1.80FLC
 1-11 2x 164d 10844 4.0 437 2.9 314 RIP
 Milking 56 lbs/day SCC 19

Implanted embryo Feb. 14, 2023:
 Moovin or Analyst x
 Milksource Abt Tessa-Red-ET EX-92

- *Jr All-American R&W Fall Calf 2021*
- *Res All-American R&W Fall Calf 2021*
- *2nd Fall Calf International R&W Show 2021*
- *1st Fall Yearling Midwest Sprg/Nat R&W 2022*

Luck-E Aristocrat-Red

3141305454 TC TY TV TL TD
 PTA -717M +13F -16P 97R 12/22
 PTA -3.9PL 2.99SCS -3.2DPR 2.1%DCE
 PTA +2.54T +1.53UDC +1.77FLC 96R 12/22
 GTPI +1900G

Go-Big Diamond Jus Cuz-Red

3138950216 Excellent-90 VEVEE @ 3-10
 3-03 2x 305d 28280 3.9 1110 3.2 910
 2-00 2x 365d 26070 3.9 1014 3.1 802
 • *Nom All-American Summer Jr 2-Yr-Old 2019*
 • *3rd Summer Jr 2-Yr-Old Internation/R&W 2019*

Mr D Apple Diamondback

840003013721049 Excellent-93 RC TP TC TY TV TL
 PTA -425M -24F -1P 99R 12/22
 PTA +2.50T +1.96UDC +1.38FLC GTPI +1866G

Milgene Just Be Cuz-Red-ET

3129016116 Excellent-94 EEEEE 2E CD TL TD
 6-06 2x 365d 34200 4.6 1571 3.2 1096
 5-06 2x 312d 31210 4.9 1521 3.2 1000
 4-06 2x 338d 29720 4.5 1348 3.2 953
 3-05 2x 329d 26100 4.6 1213 3.3 865
 2-02 2x 365d 24180 4.4 1063 3.3 793
 Life: 1771d 148610 4.6 6870 3.2 4822

3rd thru 13th Dams

Milgene Adv Jezabel-Red-ET EX-94 EEEEE 4E
 10-9 2x 365d 44860 4.7 2094 2.8 1255
 Life: 3076d 273140 4.2 11598 3.0 8201
 • *Unan Jr All-American R&W 4-Year-Old 2012*
Milgene S S Jez-Red 61711413 EX-90 VVVEE
 5-09 2x 365d 34290 3.9 1334 2.9 1006
Milgene Tribute Jessica-Red EX-91 EEEEE 3E CV
 Life: 2405d 182590 3.7 6813 3.3 5983
 • *Unan Jr All-American R&W 125,000 Lb Cow 2012*
Fitz-Sher-Hill Dur Jemini EX-93 3E DOM RC CV
 Life: 2306d 148660 3.7 5574 3.2 4742
Fitz-Sher-Hill Janella-ET EX-90 EEVVE 2E RC
 Life: 2493d 188990 3.6 6732 3.1 5932
Ja-Bob Jubilance-Red-ET VG-89 EEEVV
 Life: 2038d 125920 4.4 5532 3.4 4243
Sky-Hi Mars Helen-ET EX-92 4E GMD DOM
 Life: 7 Lact 235830 4.0 9407 3.4 7317
Sky-Hi Boots Honey VG-86 EX-MS GMD
 Life: 4327d 233390 4.5 10475
Sky-Hi Majority Honey EX-90 3E GMD
 6-04 2x 365d 20311 4.2 849
Terrace Heights Honey Sky Hi VG-86 VG-MS
 Life: 3387d 165130 3.4 5566
Twincreek Burke Winnie VG-86
 Life: 2747d 122905 3.8 4110



GO-BIG DIAMOND JUS CUZ-RED EX-90

Nominated All-American Summer Jr 2-Yr-Old Cow 2019
DAM OF LOTS 21, 22 & 22A



Lot 22

CRESCENTMEAD JUST JAZZY-RED

Lot 22A

MARCH CALF

Due: March 2, 2023

Sire: Farnear Altitude-Red-ET

GTPI +2207G +3.16T +2.73UDC +1.50FLC

Dam: Go-Big Diamond Jus Cuz-Red

Mr Affection Analyst-Red-ET

3136496608 TP TC TY TV TL TD

PTA -53M -28F -23P 83R 12/22

PTA -0.5PL 2.87SCS -1.5DPR 2.7%DCE

PTA +2.71T +2.38UDC +1.66FLC 81R 12/22

GTPI +1881G

Go-Big Diamond Jus Cuz-Red

3138950216 Excellent-90 VEVEE @ 3-10

3-03 2x 305d 28280 3.9 1110 3.2 910

2-00 2x 365d 26070 3.9 1014 3.1 802

• *Nom All-American Summer Jr 2-Yr-Old 2019*

• *3rd Summer Jr 2-Yr-Old Internation/R&W 2019*

3241471566 TC TL TD A2A2

Born: March 2, 2022

GTPI +2012G +3.37T +2.84UDC +2.08FLC A2A2

Riverdown Unstopabull-Red

CAN 11801450 TY TV TL

PTA -429M -24F -24P 99R 12/22

PTA +2.18T +2.20UDC +1.39FLC GTPI +1975G

Milksource Byway Affection

3138524450 Excellent-94 EEEEE RC TL TD

4-05 2x 266d 36050 4.5 1619 2.6 922

2-11 2x 305d 27680 4.1 1128 2.9 805

Mr D Apple Diamondback

840003013721049 Excellent-93 RC TP TC TY TV TL

PTA -425M -24F -1P 99R 12/22

PTA +2.50T +1.96UDC +1.38FLC GTPI +1866G

Milgene Just Be Cuz-Red-ET

3129016116 Excellent-94 EEEEE 2E CD TL TD

6-06 2x 365d 34200 4.6 1571 3.2 1096

5-06 2x 312d 31210 4.9 1521 3.2 1000

4-06 2x 338d 29720 4.5 1348 3.2 953

3-05 2x 329d 26100 4.6 1213 3.3 865

2-02 2x 365d 24180 4.4 1063 3.3 793

Life: 1771d 148610 4.6 6870 3.2 4822

3rd thru 13th Dams

Milgene Adv Jezabel-Red-ET EX-94 EEEEE 4E

10-9 2x 365d 44860 4.7 2094 2.8 1255

Life: 3076d 273140 4.2 11598 3.0 8201

• *Unan Jr All-American R&W 4-Year-Old 2012*

Milgene S S Jez-Red 61711413 EX-90 VVVEE

5-09 2x 365d 34290 3.9 1334 2.9 1006

Milgene Tribute Jessica-Red EX-91 EEEEE 3E CV

Life: 2405d 182590 3.7 6813 3.3 5983

• *Unan Jr All-American R&W 125,000 Lb Cow 2012*

Fitz-Sher-Hill Dur Jemini EX-93 3E DOM RC CV

Life: 2306d 148660 3.7 5574 3.2 4742

Fitz-Sher-Hill Janella-ET EX-90 EEVEE 2E RC

Life: 2493d 188990 3.6 6732 3.1 5932

Ja-Bob Jubilance-Red-ET VG-89 EEEVV

Life: 2038d 125920 4.4 5532 3.4 4243

Sky-Hi Mars Helen-ET EX-92 4E GMD DOM

Life: 7 Lact 235830 4.0 9407 3.4 7317

Sky-Hi Boots Honey VG-86 EX-MS GMD

Life: 4327d 233390 4.5 10475

Sky-Hi Majority Honey EX-90 3E GMD

6-04 2x 365d 20311 4.2 849

Terrace Heights Honey Sky Hi VG-86 VG-MS

Life: 3387d 165130 3.4 5566

Twincreek Burke Winnie VG-86

Life: 2747d 122905 3.8 4110



OCD AVA RHIANNA-RED-ET EX-92

Nominated Junior All-American R&W Sr 2-Yr-Old Cow 2021

SELLS AS LOT 23; DAM OF LOTS 24 & 25



Lot 23

OCD AVA RHIANNA-RED-ET

Lot 24

CRESCENTMEAD RADISH-RED

3241471576 • Born: April 4, 2022

Sire: Luck-E Aristorcat-Red

GTPi +1900G +2.54T 12/22

Dam: OCD Ava Rhianna-Red-ET

Dymenthalm Mr App Avalanche-TW

CAN 11957107 RC RV TY TL TD

PTA -260M -7F -8P 99R 12/22

PTA -2.1PL 2.94SCS -3.4DPR 3.1%DCE

PTA +3.72T +2.74UDC +2.07FLC

GTPi +1960G

Rosedale Lucky-Rose-Red

70890883 Excellent-94 EEEEE 2E TL TD

3-07 2x 365d 38090 4.5 1716 3.1 1175

4-11 2x 276d 29490 3.4 1014 2.9 859

Life: 2133d 155430 4.0 6245 3.2 4996

• 7X Nom All-American R&W

• Res All-American R&W Aged Cow 2018

3134445206 Excellent-92 VEVEE @ 3-06 TC TL TD

Born: December 1, 2018

GTPi +1863G +2.37T 12/22

2-03 2x 359d 27045 3.7 1002 3.3 900

3-04 2x 313d 26891 4.0 1065 3.4 910 RIP

Milking 52 lbs/day SCC 57

Bred: Feb. 24, 2023 to Mr D Apple Diamondback

7H01258 GTPi +1866G +2.50T +1.96UDC

• Nom Jr All-American R&W Sr 2-Yr-Old 2021

• Nom Jr All-American R&W Winter Calf 2019

Rainyridge Perseus

CAN 9808506 RC TY TV TL TD

PTA -1294M -3F -35P 98R 12/22

PTA +.82T +.30UDC -.67FLC GTPi +1495G

Rosedale Crown of Thorns-ET

140244421 Excellent-91 EEEEE 2E RC

5-05 2x 365d 32410 4.0 1293 3.3 1070

4-05 2x 334d 30310 3.7 1135 3.2 956

3-00 2x 365d 27240 3.8 1037 3.2 883

Life: 1514d 115080 3.9 4506 3.3 3745

Maternal sisters:

OCD Jordy Radiant-Red-ET

• IHM All-American R&W Spring Calf 2019

Oakfield Warr Levity-Red-ET

• Res All-American R&W Summer Yearling 2021

3rd thru 7th Dams

Lavender Ruby Redrose-Red EX-96 EEEEE 4E

7-04 2x 365d 52100 4.9 2576 3.2 1653

Life: 2671d 255980 4.3 10988 3.5 9047

• All-American R&W 125,000 Lb Cow 2007

• All-American R&W 5-Yr-Old Cow 2005

• Supreme Champion World Dairy Expo 2005

• Res All-American R&W 4-Yr-Old Cow 2004

Northrose-I Lavender-ET EX-90 RC 5*

3-10 2x 365d 28734 3.6 1034 3.4 974

Rosedale Lea-Ann-ET EX-93 2E GMD RC

4-08 3x 365d 39370 3.4 1325 3.1 1202

Life: 1345d 120420 3.6 4315 3.2 3795

Stokey Elm Park Blackrose-ET EX-96 3E GMD DOM

5-03 2x 365d 42230 4.6 1939 3.4 1432

• All-Time All-American Jr 2-Yr & Jr 3-Yr-Old Cow

Nandette TT Speckle-Red-ET EX-93 DOM

4-08 2x 365d 25290 4.7 1195

• All-American R&W 1981 & 1984



CRESCENTMEAD RHUBARB-RED

Reserve Junior All-American R&W Spring Calf 2021
SELLS AS LOT 25



ROSEDALE LUCKY-ROSE-RED EX-94 2E



CRESCENTMEAD RHUBARB-RED

3208382394
 Born: March 3, 2021

Due: May 8, 2023 to Beef Bull
 Heifer Calf

- Res Jr All-American R&W Spring Calf 2021
- Nom All-American R&W spring Calf 2021
- 4th Spring Calf International R&W 2021

Maternal sister to Rbiannas:

OCD Jordy Radiant-Red-ET

- HHM All-American R&W Spring Calf 2019

Oakfield Warr Levity-Red-ET

- Res All-American R&W Summer Yearling 2021

3rd thru 8th Dams

Rosedale Crown of Thorns-ET EX-91 2E RC

5-05 2x 365d 32410 4.0 1293 3.3 1070

Lavender Ruby Redrose-Red EX-96 EEEEE 4E

7-04 2x 365d 52100 4.9 2576 3.2 1653

Life: 2671d 255980 4.3 10988 3.5 9047

- All-American R&W 125,000 Lb Cow 2007
- All-American R&W 5-Yr-Old Cow 2005
- Supreme Champion World Dairy Expo 2005
- Res All-American R&W 4-Yr-Old Cow 2004

Northrose-I Lavender-ET EX-90 RC 5*

3-10 2x 365d 28734 3.6 1034 3.4 974

Rosedale Lea-Ann-ET EX-93 2E GMD RC

4-08 3x 365d 39370 3.4 1325 3.1 1202

Life: 1345d 120420 3.6 4315 3.2 3795

Stookey Elm Park Blackrose-ET EX-96 3E GMD DOM

5-03 2x 365d 42230 4.6 1939 3.4 1432

- All-Time All-American Jr 2-Yr & Jr 3-Yr-Old Cow

Nandette TT Speckle-Red-ET EX-93 DOM

4-08 2x 365d 25290 4.7 1195

- All-American R&W 1981 & 1984

Mr Affection Analyst-Red-ET

3136496608 TP TC TY TV TL TD

PTA -53M -28F -23P 83R 12/22

PTA -0.5PL 2.87SCS -1.5DPR 2.7%DCE

PTA +2.71T +2.38UDC +1.66FLC 81R 12/22

GTPI +1881G

OCD Ava Rhianna-Red-ET

3134445206 Excellent-92 VEVEE @ 3-06 TC TL TD

2-03 2x 359d 27045 3.7 1002 3.3 900

3-04 2x 313d 26891 4.0 1065 3.4 910 RIP

Sells as Lot 23

Dymentholm Mr App Avalanche-TW

CAN 11957107 RC RV TY TL TD

PTA -260M -7F -8P 99R 12/22

PTA +3.72T +2.74UDC +2.07FLC GTPI +1960G

Rosedale Lucky-Rose-Red

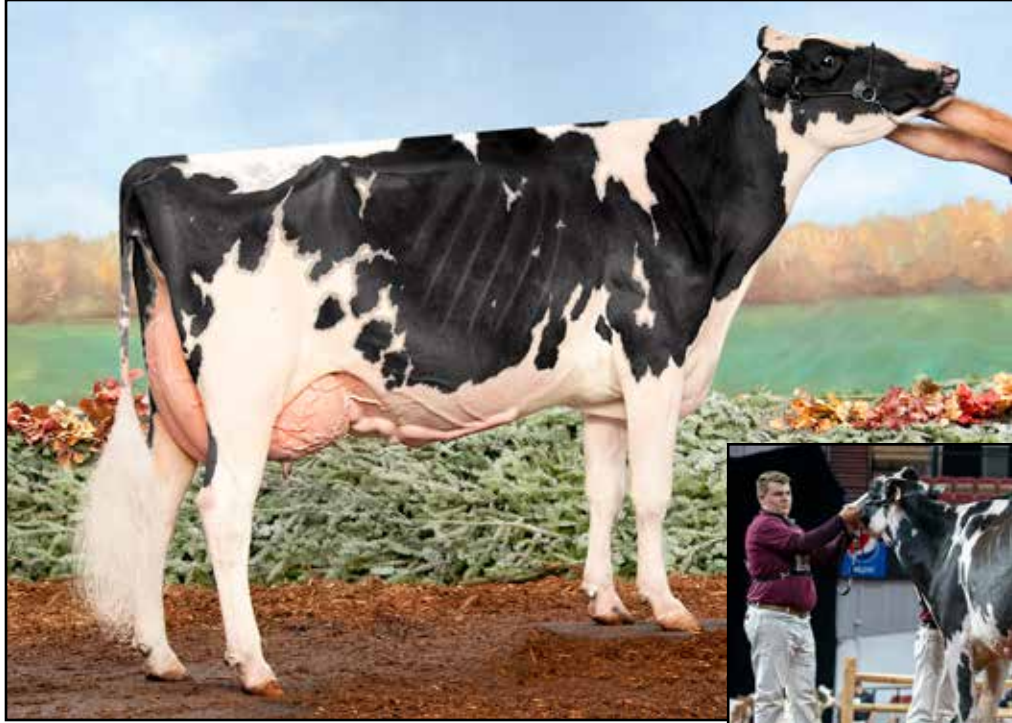
70890883 Excellent-94 EEEEE 2E TL TD

3-07 2x 365d 38090 4.5 1716 3.1 1175

4-11 2x 276d 29490 3.4 1014 2.9 859

Life: 2133d 155430 4.0 6245 3.2 4996

- 7X Nom All-American R&W
- Res All-American R&W Aged Cow 2018



BUTLerview GC AWESOME EX-94 2E
Junior All-American 5-Yr-Old Cow 2018
DAM OF LOT 26, 27 & 28



CRESCENTMEAD AMBITION

3203415535
 Born: May 1, 2020
 2-03 2x 173d 12235 4.6 557 3.3 401 RIP
 Milking 64 lbs/day SCC 21

Bred: Oct. 25, 2022 to Stone-Front Artist-ET
 94H018700 GPTA +1957G +2.75T 12/22
Twin Heifers

Willsbro Abbott-ET
 GBR 38830500583 TR TC TP TY TV TL A2A2
 PTA +1.79T +1.84UDC +.45FLC GTPI +2447G

Walnutlawn McCutchen Summer-ET
 CAN 11120480 Excellent-95 2E 9*
 1-10 2x 365d 27002 4.6 1237 3.3 888
 • *Nom All-American Senior 3-Year-Old Cow 2016*

Mr Chassity Gold Chip-ET
 140145553 Excellent-95 TR TP TY TV TL TD
 PTA +1.51T +1.10UDC +1.4FLC GTPI +1751G

Ms Atwood Adrenaline
 141790877 Excellent-94 EEEEE 2E TR TL TD
 5-00 2x 323d 30310 3.6 1079 3.2 962
 2-09 2x 305d 25300 4.2 1052 3.6 899
 • *HM All-American Milking Yearling 2013*
 • *HM All-Canadian Milking Yearling 2013*
 • *2nd Milking Yearling Royal Winter Fair 2013*
 • *3rd Milking Yearling International Show 2013*

AWESOME!

- *Jr All-American 5-Yr-Old Cow 2018*
- *1st & BU 5-Yr-Old International Jr Show 2018*
- *Grand Champion Wisconsin Jr State Fair 2018*
- *1st 5-Yr-Old Wisconsin Jr State Fair 2018*

Full sister to Adrenaline

JM Valley Atwood Agadou-ET VG-88

- *Reserve All-Canadian Junior Calf 2013*
- *1st Junior Calf, Royal Winter Fair 2013*

3rd Dam

Paninou Shottle Annabelle-ET VG-87 VG-MS

- 2-11 2x 365d 23358 4.8 1120 3.8 886
- 1-10 2x 311d 19800 4.9 974 3.7 740
- *HM All-American Milking Yearling 2010*
- *2nd Milking Yearling, International Show 2010*
- *1st Milking Yearling, Northeast Fall Nat'l 2010*

4th Dam

Begette Thunder Annabelle VG-85-CAN 1*

- 4-04 2x 365d 30814 3.8 1182 3.6 1107
- *1st Junior 3-Year-Old Amqui Expo 2006*
- *1st Junior 3-Year-Old Rimouski 2006*
- *1st Jr 3-Year-Old Confrontation de L'Est 2006*

5th Dam

Begette Storm Anna VG-85-CAN

- 5-09 2x 362d 22035 4.1 897 3.4 739

Walnutlawn Sidekick

CAN 12508113 TR TY TV TL TD A2A2
 PTA -1176M +7F -10P 98R 12/22
 PTA -0.3PL 2.75SCS -0.1DPR 2.1%DCE
 PTA +2.99T +2.41UDC +.967LC 97R 12/22
 GTPI +2192G

Butlerview GC Awesome

72127576 Excellent-94 EEEEE 2E
 4-06 2x 354d 34250 4.2 1446 3.0 1027
 6-08 2x 305d 30730 4.8 1485 2.8 867
 2-05 2x 365d 30520 3.8 1177 2.9 900
 3-07 2x 306d 29060 4.0 1171 2.9 842
 5-07 2x 348d 26980 4.4 1179 3.0 821
 Life: 2103d 181040 4.3 7777 2.9 5335



MS ATWOOD ADRENALINE EX-94 2E
HM All-American Milking Yearling 2013
2ND DAM OF LOTS 26, 27, & 28



Lot 27 & 28

CRESCENTMEAD ABRACADABRA-ET
LOT 27

CRESCENTMEAD DENVR ADIOS-ET
LOT 28

3203415547
 Born: August 2, 2020
 2-02 2x 109d 8731 4.5 389 3.1 271 RIP
 Milking 76 lbs/day SCC 20

 Bred: Feb. 21, 2023 to Woodcrest King Doc
 250H012961 GTPI +2794G +3.19T +2.15UDC

3203415548
 Born: December 1, 2020

 Due: May 4, 2023 to Mr D Apple Diamondback
 7H01258 GTPI +1866G +2.50T +1.96UDC
Heifer Calf

AWESOME!

- *Jr All-American 5-Yr-Old Cow 2018*
- *1st & BU 5-Yr-Old International Jr Show 2018*
- *Grand Champion Wisconsin Jr State Fair 2018*
- *1st 5-Yr-Old Wisconsin Jr State Fair 2018*

Brenland Denver

CAN 12074893 TR TC TY TV TL TD
 PTA +466M +26F +7P 99R 12/22
 -0.9PL 2.80SCS -3.1DPR 3.2%DCE
 PTA +2.84T +1.66UDC +.73FLC 98R 12/22
 GTPI +2140G

Butlerview GC Awesome

72127576 Excellent-94 EEEEE 2E
 4-06 2x 354d 34250 4.2 1446 3.0 1027
 6-08 2x 305d 30730 4.8 1485 2.8 867
 2-05 2x 365d 30520 3.8 1177 2.9 900
 3-07 2x 306d 29060 4.0 1171 2.9 842
 5-07 2x 348d 26980 4.4 1179 3.0 821
 Life: 2103d 181040 4.3 7777 2.9 5335

Mr Chassity Gold Chip-ET

140145553 Excellent-95 TR TP TY TV TL TD
 PTA -580M -22F -38P 99R 12/22
 PTA +1.51T +1.10UDC +1.4FLC GTPI +1751G

Ms Atwood Adrenaline

141790877 Excellent-94 EEEEE 2E TR TL TD
 5-00 2x 323d 30310 3.6 1079 3.2 962
 2-09 2x 305d 25300 4.2 1052 3.6 899
 • *HM All-American Milking Yearling 2013*
 • *HM All-Canadian Milking Yearling 2013*
 • *2nd Milking Yearling Royal Winter Fair 2013*
 • *3rd Milking Yearling International Show 2013*

3rd, 4th & 5th Dams

Paninou Shottle Annabelle-ET VG-87 VG-MS

2-11 2x 365d 23358 4.8 1120 3.8 886
 1-10 2x 311d 19800 4.9 974 3.7 740
 • *HM All-American Milking Yearling 2010*
 • *2nd Milking Yearling, International Show 2010*
 • *1st Milking Yearling, Northeast Fall Nat'l 2010*
Begette Thunder Annabelle VG-85-CAN 1*
 4-04 2x 365d 30814 3.8 1182 3.6 1107
 • *1st Junior 3-Year-Old Amqui Expo 2006*
 • *1st Junior 3-Year-Old Rimouski 2006*
 • *1st Jr 3-Year-Old Confrontation de L'Est 2006*
Begette Storm Anna VG-85-CAN
 5-09 2x 362d 22035 4.1 897 3.4 739



MS-AOL CNTNDR REVIVE-RED-ET EX-94
All-American R&W 5-Yr-Old Cow 2019
DAM OF LOT 29



Lot **29**

MS REVIVES RAINBOW-RED-ET

3149336498 Very Good-88 EVVVE @ 2-03
 Born: March 5, 2020
 GTPI +1627G +2.63T 12/22
 2-02 2x 267d 16175 4.0 654 3.2 514

Due: April 12, 2023 to Luck-E Aristocrat-Red
 94H000910 GTPI +1900G +2.54T 12/22
Heifer Calf

Dymenthalm Mr App Avalanche-TW

CAN 11957107 RC CV TL TY TD
 PTA -260M -7F -8P 99R 12/22
 PTA -2.1PL 2.94SCS -3.4DPR 3.1%DCE
 PTA +3.72T +2.74UDC +2.07FLC
 GTPI +1960G

Ms-AOL Cntndr Revive-Red-ET

3124588886 Excellent-94 EEVEE
 5-01 3x 362d 25750 4.8 1244 3.0 772
 2-11 3x 365d 24550 5.2 1269 3.2 759
 1-11 2x 296d 16740 4.2 704 3.1 519

• *All-American R&W 5-Yr-Old Cow 2019*
Maternal sister:

Ms-AOL Relive-Red-ET

• *Reserve All-American R&W Spring Calf 2020*

Patience Sholine Contender-Red

CAN 7483577 EX-95-CAN TV TL
 PTA -2772M -68F -77P 99R 12.V22
 PTA +1.21T +1.76UDC +.62FLC GTPI +1465M

Miss Roxys Recovery-Red

141367082 Excellent-92 EEEEE 2E
 6-02 2x 305d 31730 4.2 1331 3.0 957
 4-06 2x 305d 28650 4.2 1211 2.9 838
 7-08 2x 291d 24680 4.3 1072 3.1 755
 3-06 2x 305d 23260 4.0 919 2.9 669
 1-11 2x 305d 21850 4.0 878 3.1 673

• *HM All-American R&W Milking Yearling 2012*

3rd thru 10th Dams

Galestone Ava Rae-Red-ET EX-91 VEVEE
 3-09 2x 329d 24680 3.8 949 3.0 740
Scientific Rubirae Socks-ET EX-93 3E DOM *RC
 5-08 2x 365d 43050 4.2 1809 3.1 1331
 Life: 2043d 154160 4.1 6388 3.1 4753
Scientific Jubilant Rae-ET EX-90 DOM *RC
 5-11 2x 365d 38880 4.1 1608 3.6 1403
 Life: 1394d 117590 4.0 4707 3.6 4242
C Hanoverhill Tony Rae EX-96 3E GMD DOM 5*
 6-11 2x 365d 40220 4.1 1661 3.3 1331
 Life: 2247d 166396 4.1 6904 3.4 5612
 • *Gr Champion Western National 1993*
C Hanoverhill TT Roxette-ET EX-94 2E GMD
 10-0 3x 365d 35040 4.3 1519 3.0 1063
 Life: 2104d 164789 4.1 6760 3.1 3587
Mil-R-Mor Roxette-ET EX-90 GMD DOM
 Life: 1921d 121417 4.7 5725
C Glenridge Citation Roxy EX-97 EEEE 4E GMD 6*
 10-1 2x 365d 25280 4.2 1061
 Life: 3620d 209784 4.5 9471
 • *Two-Time Queen of the Breed*
C Norton Court Model Vee EX-90 6*
 Life: 4183d 218629 3.9 8581
 • *All-American Produce of Dam 1977, '78, '79*



MS-AOL CNTNDR ROOKIE-RED-ET EX-91
All-Minnesota Jr 3-Yr-Old Cow 2017
DAM OF LOT 30



MISS ROXY'S RECOVERY-RED EX-92 2E



Lot 30

CRESCENTMEAD ROCCO-RED

Lot 31

CRESCENTMEAD REGINA-RED

3241471587 • Born: August 2, 2022
Sire: Mr Affection Analyst-Red-ET
 PTA +2.71T +2.38UDC +1.66FLC GTPI +1881G
Dam: Crescentmead Rocco-Red

Luck-E Ammo Asteroid-Red-ET

3141305467 Excellent-92 TC TL TD
 PTA -856M +3F -18P 90R 12/22
 PTA -1.9PL 3.17SCS -1.2DPR 1.9%DCE
 PTA +2.28T +1.78UDC +2.13FLC 88R 12/22
 GTPI +1957G

Ms-AOL Cntndr Rookie-Red-ET

3124588885 Excellent-91 EX-MS @ 3-07
 2-00 2x 308d 18580 4.3 807 3.0 563
 • *All-Minnesota Jr 3-Yr-Old 2017*
 • *Intermediate Champion MN State Show 2017*
 • *All-Minnesota R&W Jr 3-Year-Old 2017*
 • *Intermediate Champion MN R&W Show 2017*
 • *Grand Champion MN State R&W Show 2017*
 • *Res Int Champ Midwest Spg/Nat R&W 2017*

3203415537
 Born: March 5, 2020
 2-04 2x 193d 12948 3.9 500 2.9 373 RIP
 Milking 67 lbs/day SCC 20

Bred: Jan. 16, 2023 to Trent-Way Rifle-Red-ET RC
 94H000923 GTPI +2724G +1930M +2.09T 12/22

Patience Sholine Contender-Red

CAN 7483577 EX-95-CAN TV TL
 PTA -2772M -68F -77P 99R 12.V22
 PTA +1.21T +1.76UDC +.62FLC GTPI +1465M

Miss Roxys Recovery-Red

141367082 Excellent-92 EEEEE 2E
 6-02 2x 305d 31730 4.2 1331 3.0 957
 4-06 2x 305d 28650 4.2 1211 2.9 838
 7-08 2x 291d 24680 4.3 1072 3.1 755
 3-06 2x 305d 23260 4.0 919 2.9 669
 1-11 2x 305d 21850 4.0 878 3.1 673
 • *HM All-American R&W Milking Yearling 2012*

3rd thru 10th Dams

Galestone Ava Rae-Red-ET EX-91 VEVEE
 3-09 2x 329d 24680 3.8 949 3.0 740
Scientific Rubirae Socks-ET EX-93 3E DOM *RC
 5-08 2x 365d 43050 4.2 1809 3.1 1331
 Life: 2043d 154160 4.1 6388 3.1 4753
Scientific Jubilant Rae-ET EX-90 DOM *RC
 5-11 2x 365d 38880 4.1 1608 3.6 1403
 Life: 1394d 117590 4.0 4707 3.6 4242
C Hanoverhill Tony Rae EX-96 3E GMD DOM 5*
 6-11 2x 365d 40220 4.1 1661 3.3 1331
 Life: 2247d 166396 4.1 6904 3.4 5612
 • *Gr Champion Western National 1993*
C Hanoverhill TT Roxette-ET EX-94 2E GMD
 10-0 3x 365d 35040 4.3 1519 3.0 1063
 Life: 2104d 164789 4.1 6760 3.1 3587
Mil-R-Mor Roxette-ET EX-90 GMD DOM
 Life: 1921d 121417 4.7 5725
C Glenridge Citation Roxy EX-97 EEEE 4E GMD 6*
 10-1 2x 365d 25280 4.2 1061
 Life: 3620d 209784 4.5 9471
 • *Two-Time Queen of the Breed*
C Norton Court Model Vee EX-90 6*
 Life: 4183d 218629 3.9 8581
 • *All-American Produce of Dam 1977, '78, '79*



MISS SIMPLY HOT-RED-ET EX-92 2E

Nominated Junior All-American R&W 2-Yr-Old Cow 2017

DAM OF LOT 32



STARMARK AD HOTSTUFF-RED-ET EX-94 2E



Lot **32**

CRESCENTMEAD SHENANIGAN-RED

3203415515 Very Good-86 VG-MS @ 2-05

Born: June 1, 2019

GTPI +2050G +2.63T +1.98UDC 12/22

2-00 2x 365d 24564 3.6 899 3.2 792

3-02 2x 173d 16605 4.2 691 3.1 509 RIP

Milking 93 lbs/day SCC 64

Bred: Feb. 14, 2023 to Golden-Oaks War Chant-ET RC

551H004494 GTPI +2128G +3.52T +2.35UDC

Farnear Altitude-Red-ET

3128013348 TC TY TV TL TD

PTA +150M +10F +15P 98R 12/22

PTA -0.8PL 2.97SCS -2.6DPR 3.0%DCE

PTA +3.16T +2.73UDC +1.50FLC 98R 12/22

GTPI +2207G

Miss Simply Hot-Red-ET

3012554396 Excellent-92 EEEVE 2E TL TD

5-05 2x 365d 37390 3.7 1385 2.8 1042

3-08 2x 365d 31150 3.8 1195 2.9 918

6-09 2x 305d 27170 3.9 1073 2.9 783

2-08 2x 308d 26710 4.0 1079 2.9 774

Life: 1833d 150955 3.8 5784 2.9 4406

• *Nom Jr All-American R&W 2-Yr-Old Cow 2017*

Dymenthalm S Sympatico-ET

CAN 11004723 EX-90-CAN RC TP TY TV TL TD

PTA +1136M +34F +21P 99R 12/22

PTA +.74T +1.05UDC +.60FLC GTPI +2308G

Starmark Ad Hotstuff-Red-ET

138253121 Excellent-94 EEEEE 2E

5-00 2x 365d 33690 5.6 1896 3.1 1051

3-04 2x 305d 22960 4.5 1040 3.2 731

Life: 1746d 125150 5.1 6366 3.5 4377

• *All-American R&W 5-Year-Old 2012*

3rd thru 10th Dams

Scientific SS Hottie-Red-ET EX-93 EEEEE 2E

4-09 2x 365d 33120 4.5 1475 3.5 1159

Life: 1349d 107760 4.5 4881 3.6 3864

• *Nom All-American R&W Junior 3-Year-Old 2008*

Scientific Raes Hope-Red-ET EX-92

4-03 2x 365d 36894 3.5 1302 3.0 1101

Scientific Jubilant Rae-ET EX-90 DOM *RC

5-11 2x 365d 38880 4.1 1608 3.6 1403

Life: 1394d 117590 4.0 4707 3.6 4242

C Hanoverhill Tony Rae EX-96 3E GMD DOM 5*

6-11 2x 365d 40220 4.1 1661 3.3 1331

Life: 2247d 166396 4.1 6904 3.4 5612

• *Gr Champion Western National 1993*

C Hanoverhill TT Roxette-ET EX-94 2E GMD

10-0 3x 365d 35040 4.3 1519 3.0 1063

Life: 2104d 164789 4.1 6760 3.1 3587

Mil-R-Mor Roxette EX-CAN 30*

7-01 2x 365d 24531 4.7 1153

Life: 6 Lact 121418 4.7 5728

C Glenridge Citation Roxy EX-97 4E GMD 6*

Life: 3620d 209784 4.5 9471

C Norton Court Model Vee EX-90 6*

Life: 4183d 218629 3.9 8581

• *All-American Produce of Dam 1977, '78, '79*



CRESCENTMEAD SWETIE PIE-RED EX-94

Unanimous All-American R&W 4-Yr-Old Cow 2016
DAM OF LOT 33



MS CM SWEETNESS-RED-ET

3203415510 Excellent-90 VEVEE @ 3-03
 Born: March 9, 2019
 2-00 2x 333d 21199 4.1 885 3.0 652
 3-01 2x 291d 23044 4.6 1049 3.0 701 RIP
 Milking 76 lbs/day SCC 38

Bred: Oct. 15, 2022 to Mr D Apple Diamondback
 7H01258 GTPI +1866G +2.50T +1.96UDC

SWETIE PIE!

- *Unanimous All-American R&W 4-Yr-Old Cow 2016*
- *1st & BU 4-Yr-Old Cow International R&W 2016*
- *2nd 4-Yr-Old Cow & BU Royal Winter R&W 2016*
- *All-Canadian Jr 3-Yr-Old Cow 2015*
- *HM Grand Champion Royal Winter R&W Show 2015*
- *Res All-American R&W Jr 3-Yr-Old Cow 2015*
- *HM Int Champion WI Championship R&W 2015*
- *Res All-American R&W Jr 2-Yr-Old Cow 2014*
- *Nom All-American Holstein Jr 2-Yr-Old Cow 2014*
- *Nom Jr All-American R&W Summer Yrlg Heifer 2013*

Cycle McGucci Jordy-Red

3131666411 Very Good-87 CV TC TY TL TD
 PTA -1029M -23F -40P 99R 12/22
 PTA -3.0PL 2.98SCS -3.3DPR 3.5%DCE
 PTA +2.97T +2.22UDC +3.21FLC
 GTPI +1687G

Crescentmead Swetie Pie-Red

170265214 Excellent-94 EEEEE TC TL TD
 3-10 2x 305d 26840 3.9 1039 3.0 804
 5-00 2x 365d 25450 4.4 1109 3.1 792
 6-08 2x 353d 24110 4.4 1070 2.9 706
 3-00 2x 293d 24840 3.7 924 3.0 742
 Life: 1609d 118460 4.1 4823 3.0 3563

Bossir Chris Reed-Red-ET

140783133 TY
 PTA -1174M -19F -32P 91R 12/22
 PTA +.77T +.59UDC +.48FLC GTPI +1791G

Westphalia SS Amaryllis-Red

69194356 Very Good-88 VEVEE @ 2-11 TL TD
 4-04 2x 365d 26380 3.9 1029 2.9 767
 2-02 2x 365d 26140 3.8 990 2.9 754

- *Unanimous All-American R&W Spring Calf 2010*
- *1st Spring Calf International R&W Show 2010*
- *2nd Jr 2-Yr-Old Wisconsin State Fair 2012*
- *Nom Jr All-American Jr 2-Yr-Old 2012*

3rd thru 7th Dams

Westphalia RM Amelia-Red VG-88 EX-MS

6-00 2x 337d 34860 3.0 1050 2.7 951
 Life: 1544d 137190 3.0 4125 2.8 3816

Westphalia Storm Amaze-ET VG-85 VG-MS

3-03 2x 317d 26680 3.9 1041 2.8 742

Gettinger Calypso Amist EX-93 EEEEE 3E

7-06 2x 365d 38250 3.8 1457 3.0 1140
 Life: 3159d 231494 3.9 8994 3.1 7114

Gettinger Adrian EX-92 EEEEE

6-04 2x 325d 20630 3.9 801 3.0 621
 Life: 2559d 129990 4.2 5425 3.1 4001

Gettinger Triple Threat Annete VG-87 VG-MS

8-09 2x 305d 20270 3.2 650 2.8 561
 Life: 2601d 139940 3.8 5338



CRESCENTMEAD SWETIE PIE-RED EX-94

Unanimous All-American R&W 4-Yr-Old Cow 2016
2ND DAM OF LOT 34



Lot **34**

CRESCENTMEAD STELLA-RED

3241471583
 Born: September 9, 2022

SWETIE PIE!

- *Unanimous All-American R&W 4-Yr-Old Cow 2016*
- *All-Canadian Jr 3-Yr-Old Cow 2015*
- *Res All-American R&W Jr 3-Yr-Old Cow 2015*
- *Res All-American R&W Jr 2-Yr-Old Cow 2014*
- *Nom All-American Holstein Jr 2-Yr-Old Cow 2014*
- *Nom Jr All-American R&W Summer Yrlg Heifer 2013*

Mr Affection Analyst-Red-ET

3136496608 TP TC TY TV TL TD
 PTA -53M -28F -23P 83R 12/22
 PTA -0.5PL 2.87SCS -1.5DPR 2.7%DCE
 PTA +2.71T +2.38UDC +1.66FLC 81R 12/22
 GTPI +1881G

Ms CM Scarlet-Red-ET

3203415541

Riverdown Unstopabull-Red

CAN 11801450 TY TV TL
 PTA -429M -24F -24P 99R 12/22
 PTA +2.18T +2.20UDC +1.39FLC GTPI +1975G

Milksource Byway Affection

3138524450 Excellent-94 EEEEE RC TL TD
 4-05 2x 305d 39960 4.3 1737 2.6 1033
 Life: 1326d 120500 3.9 4756 2.9 3504

Mr Blondin Warrior-Red-ET

3139655530 TP TC TY TV TL TD
 PTA -802M -19F -16P 98R 12/22
 PTA +3.20T +1.66UDC +1.64FLC GTPI +1807G

Crescentmead Swetie Pie-Red

170265214 Excellent-94 EEEEE TC TL TD
 3-10 2x 305d 26840 3.9 1039 3.0 804
 5-00 2x 365d 25450 4.4 1109 3.1 792
 6-08 2x 353d 24110 4.4 1070 2.9 706
 3-00 2x 293d 24840 3.7 924 3.0 742
 Life: 1609d 118460 4.1 4823 3.0 3563

3rd thru 8th Dams

Westphalia SS Amaryllis-Red VG-88 VEVVE

4-04 2x 365d 26380 3.9 1029 2.9 767
 • *Unanimous All-American R&W Spring Calf 2010*

Westphalia RM Amelia-Red VG-88 EX-MS

6-00 2x 337d 34860 3.0 1050 2.7 951
 Life: 1544d 137190 3.0 4125 2.8 3816

Westphalia Storm Amaze-ET VG-85 VG-MS

3-03 2x 317d 26680 3.9 1041 2.8 742

Gettinger Calypso Amist EX-93 EEEEE 3E

7-06 2x 365d 38250 3.8 1457 3.0 1140
 Life: 3159d 231494 3.9 8994 3.1 7114

Gettinger Adrian EX-92 EEEEE

6-04 2x 325d 20630 3.9 801 3.0 621
 Life: 2559d 129990 4.2 5425 3.1 4001

Gettinger Triple Threat Annete VG-87 VG-MS

8-09 2x 305d 20270 3.2 650 2.8 561
 Life: 2601d 139940 3.8 5338



CRESCENTMEAD ROKSTAR-RED-ET EX-90
HM Junior All-American R&W Jr 2-Yr-Old Cow 2019
DAM OF LOT 35



Lot 35

CRESCENTMEAD ROCKN IN-RED

Lot 36

CRESCENTMEAD READY 4 IT-RED

3208382397 • Born: June 18, 2021
 Bred: Jan. 12, 2023 to Mr Affection Analyst-Red-ET
 GTPI +1881G PTA +2.71T +2.38UDC +1.66FLC
Sire: Luck-E Aristocrat-Red
 GTPI +1900G +2.54T +1.53UDC +1.77FLC
Dam: Crescentmead Rockn In-Red

Mr D Apple Diamondback

840003013721049 Excellent-93 RC TP TC TY TV TL
 PTA -425M -24F -1P 99R 12/22
 PTA +2.50T +1.96UDC +1.38FLC
 GTPI +1866G

Crescentmead Rokstar-Red-ET

144200609 Excellent-90 EEVEE @ 4-01
 3-02 2x 305d 20280 4.5 921 3.1 620
 2-01 2x 290d 16760 4.1 695 3.3 546
 • *HM Jr All-American R&W Jr 2-Yr-Old 2019*

3203415514 Very Good-85 VG-MS @ 2-07

Born: April 28, 2019

2-01 2x 365d 19732 4.0 809 3.4 676

3-04 2x 164d 12911 4.6 591 3.3 423 RIP

Milking 68 lbs/day

Bred: Feb. 13, 2023 to Golden-Oaks War Chant-ET RC
 551H004494 GTPI +2128G +3.52T +2.35UDC

Westcoast Leverage-Red-ET

CAN 11956313 Very Good-85 CD
 PTA -1370M -23F -9P 98R 12/22
 PTA +2.49T +1.44UDC +1.70FLC GTPI +1751G

Westphalia SS Amaryllis-Red

69194356 Very Good-88 VEVVE @ 2-11 TL TD
 4-04 2x 365d 26380 3.9 1029 2.9 767
 2-02 2x 365d 26140 3.8 990 2.9 754
 • *Unanimous All-American R&W Spring Calf 2010*
 • *1st Spring Calf International R&W Show 2010*
 • *2nd Jr 2-Yr-Old Wisconsin State Fair 2012*
 • *Nom Jr All-American Jr 2-Yr-Old 2012*

3rd Dam

Westphalia RM Amelia-Red VG-88 EX-MS

6-00 2x 337d 34860 3.0 1050 2.7 951
 Life: 1544d 137190 3.0 4125 2.8 3816

4th Dam

Westphalia Storm Amaze-ET VG-85 VG-MS

3-03 2x 317d 26680 3.9 1041 2.8 742

5th Dam

Gettinger Calypso Amist EX-93 EEEEE 3E

7-06 2x 365d 38250 3.8 1457 3.0 1140
 Life: 3159d 231494 3.9 8994 3.1 7114

6th Dam

Gettinger Adrian EX-92 EEEEE

6-04 2x 325d 20630 3.9 801 3.0 621
 Life: 2559d 129990 4.2 5425 3.1 4001

7th Dam

Gettinger Triple Threat Annete VG-87 VG-MS

8-09 2x 305d 20270 3.2 650 2.8 561
 Life: 2601d 139940 3.8 5338

8th Dam

Gettinger Astro Artist VG-88 VVVE

Life: 2567d 128310 4.0 5160



WESTPHALIA SS AMARYLLIS-RED VG-88

Nominated Junior All-American Jr 2-Yr-Old Cow 2012
2ND DAM OF LOTS 35 & 37



Lot **37**

CRESCENTMEAD DBACK ALFY-RED

3241471593

Born: September 4, 2021

Bred: Nov. 18, 2022 to Luck-E Aristocrat-Red
 94H000910 GTPI +1900G +2.54T 12/22
Heifer Calf

Mr D Apple Diamondback

840003013721049 Excellent-93 RC TP TC TY TV TL
 PTA -425M -24F -1P 99R 12/22
 PTA -0.3PL 3.14SCS -3.0DPR 2.8%DCE
 PTA +2.50T +1.96UDC +1.38FLC
 GTPI +1866G

Crescentmead J Amaze-Red-ET

3149946224 Very Good-88 EEVVV @ 4-03
 3-05 2x 365d 30768 4.1 1260 3.1 941

Cycle McGucci Jordy-Red

3131666411 Very Good-87 CV TC TY TL TD
 PTA -1029M -23F -40P 99R 12/21
 PTA +2.97T +2.22UDC +3.21FLC GTPI +1687G

Westphalia SS Amaryllis-Red

69194356 Very Good-88 VEVVE @ 2-11 TL TD
 4-04 2x 365d 26380 3.9 1029 2.9 767
 2-02 2x 365d 26140 3.8 990 2.9 754

- *Unanimous All-American R&W Spring Calf 2010*
- *1st Spring Calf International R&W Show 2010*
- *2nd Jr 2-Yr-Old Wisconsin State Fair 2012*
- *Nom Jr All-American Jr 2-Yr-Old 2012*

3rd Dam

Westphalia RM Amelia-Red VG-88 EX-MS

6-00 2x 337d 34860 3.0 1050 2.7 951
 Life: 1544d 137190 3.0 4125 2.8 3816

4th Dam

Westphalia Storm Amaze-ET VG-85 VG-MS

3-03 2x 317d 26680 3.9 1041 2.8 742

5th Dam

Gettinger Calypso Amist EX-93 EEEEE 3E

7-06 2x 365d 38250 3.8 1457 3.0 1140
 Life: 3159d 231494 3.9 8994 3.1 7114

6th Dam

Gettinger Adrian EX-92 EEEEE

6-04 2x 325d 20630 3.9 801 3.0 621
 Life: 2559d 129990 4.2 5425 3.1 4001

7th Dam

Gettinger Triple Threat Annete VG-87 VG-MS

8-09 2x 305d 20270 3.2 650 2.8 561
 Life: 2601d 139940 3.8 5338

8th Dam

Gettinger Astro Artist VG-88 VVVE

Life: 2567d 128310 4.0 5160



BUDJON-VAIL HZ LACEY-RED-ET EX-94
All-American R&W Sr 3-Yr-Old Cow 2018
DAM OF LOTS 38, 39, 40, 41 & 42



Lot 38

MS LACYS LIMELIGHT-RED-ET

3241471569
 Born: March 1, 2022

Maternal sister:

Oakland-View Legacy-Red-ET EX-90
 2-02 2x 305d 20680 5.5 965 3.5 658
 • *Nom Jr All-American Sr 2-Yr-Old 2019*
 • *Grand Champion MD Jr R&W Show 2020*

LACEY!

- *Res Jr All-American Aged Cow 2021*
- *Nom All-American R&W 4-Yr-Old 2019*
- *All-American R&W Sr 3-Yr-Old 2018*
- *Jr All-American R&W Sr 2-Yr-Old 2017*
- *Reserve All-American R&W Sr 2-Yr-Old 2017*
- *1st Sr 2-Yr-Old, International R&W Show 2017*
- *All-American R&W Fall Yearling 2016*
- *1st Fall Yrlg International R&W Show 2016*
- *Junior Champion MD State Fair 2016*

Maternal sister to Lacey-Red

Crestomere RL Lovable-Red VG-87-CAN

- *Grand Champion AB Dairy Congress 2016*
- *1st Senior 3-Yr-Old & Res Int Champion Canadian National Convention R&W Show 2016*

Lindenright Moovin-ET

CAN 12873743 RC TC TY TV TL TD
 PTA -596M -24F -11F 95R 12/22
 PTA -1.2PL 2.95SCS -3.4DPR 3.1%DCE
 PTA +3.39T +2.96UDC +1.71FLC 93R 12/22
 GTPI +1903G

Budjon-Vail Hz Lacey-Red-ET

3126822831 Excellent-94 EEEEE 2E TL TD
 3-06 2x 345d 31780 4.0 1314 3.2 1043
 5-09 2x 365d 30001 4.3 1312 3.5 1051
 4-07 2x 365d 26874 4.1 1147 3.4 944
 2-05 2x 298d 22810 4.6 1060 3.3 747
 Life: 1691d 133190 4.3 5764 3.4 4532

Dymentholm Mr App Avalanche-TW

CAN 11957107 RC CV TL TY TD
 PTA +3.72T +2.74UDC +2.07FLC GTPI +1960G

Lindenright Bradnick Moovin On

CAN 11470454 VG-87 VVVV-CAN 27*
 4-06 2x 365d 43056 5.1 2207 3.2 1399
 2-00 2x 365d 30840 4.1 1556 3.3 1016

St-Jacob Destry Heztry-ET

70074442 Excellent-91 RC CD TY TV TL
 PTA +1.12T +.41UDC +.66DLC GTPI +1899G

Crestomere Absolutely Love-Red

CAN 9575714 Excellent-92 EEEEE @ 3-07
 3-03 2x 305d 23690 3.9 924 3.4 809
 2-02 2x 307d 18209 3.8 696 3.4 615

- *Reserve All-American R&W 4-Yr-Old 2014*
- *1st 4-Yr-Old Olds Show 2014*
- *1st Junior 3-Yr-Old AB Dairy Congress 2013*

3rd Dam

Crestomere Skychief Lori VG-86-2YR-CAN 6*

2-05 2x 365d 21391 3.7 789 3.1 614



BUDJON-VAIL HZ LACEY-RED-ET EX-94
All-American R&W Sr 3-Yr-Old Cow 2018
DAM OF LOTS 38, 39, 40, 41 & 42



Lot 39 & 40

CRESCENTMEAD LOUISE-RED-ET
LOT 39

CRESCENTMEAD LIBERTY-RED-ET
LOT 40

3203415549 • Born: March 1, 2021

3203415550 • Born: March 2, 2021

Due: April 11, 2023 to St Gen Doral-Red-ET
 551H004184 GTPI +2536G +1192M +2.99T
Heifer Calf

Due: March 1, 2023 to Luck-E Aristocrat-Red
 94H000910 GTPI +1900G +2.54T 12/22
Heifer Calf

Maternal sister:

Oakland-View Legacy-Red-ET EX-90
 2-02 2x 305d 20680 5.5 965 3.5 658
 • *Nom Jr All-American Sr 2-Yr-Old 2019*
 • *Grand Champion MD Jr R&W Show 2020*

LACEY!

- *Res Jr All-American Aged Cow 2021*
- *Nom All-American R&W 4-Yr-Old 2019*
- *All-American R&W Sr 3-Yr-Old 2018*
- *Jr All-American R&W Sr 2-Yr-Old 2017*
- *Reserve All-American R&W Sr 2-Yr-Old 2017*
- *1st Sr 2-Yr-Old, International R&W Show 2017*
- *All-American R&W Fall Yearling 2016*
- *1st Fall Yrlg International R&W Show 2016*
- *Junior Champion MD State Fair 2016*

Farnear Altitude-Red-ET

3128013348 TC TY TV TL TD
 PTA +150M +10F +15P 98R 12/22
 PTA -0.8PL 2.97SCS -2.6DPR 3.0%DCE
 PTA +3.16T +2.73UDC +1.50FLC 98R 12/22
 GTPI +2207G

Budjon-Vail HZ Lacey-Red-ET

3126822831 Excellent-94 EEEEE 2E TL TD
 3-06 2x 345d 31780 4.0 1314 3.2 1043
 5-09 2x 365d 30001 4.3 1312 3.5 1051
 4-07 2x 365d 26874 4.1 1147 3.4 944
 2-05 2x 298d 22810 4.6 1060 3.3 747
 Life: 1691d 133190 4.3 5764 3.4 4532

St-Jacob Destry Heztry-ET

70074442 Excellent-91 RC CD TY TV TL
 PTA -674M -20F -5P 99R 12/22
 PTA +1.12T +.41UDC +.66DLC GTPI +1899G

Crestomere Absolutely Love-Red

CAN 9575714 Excellent-92 EEEEE @ 3-07
 3-03 2x 305d 23690 3.9 924 3.4 809
 2-02 2x 307d 18209 3.8 696 3.4 615
 • *Reserve All-American R&W 4-Yr-Old 2014*
 • *1st 4-Yr-Old Olds Show 2014*
 • *1st Junior 3-Yr-Old AB Dairy Congress 2013*

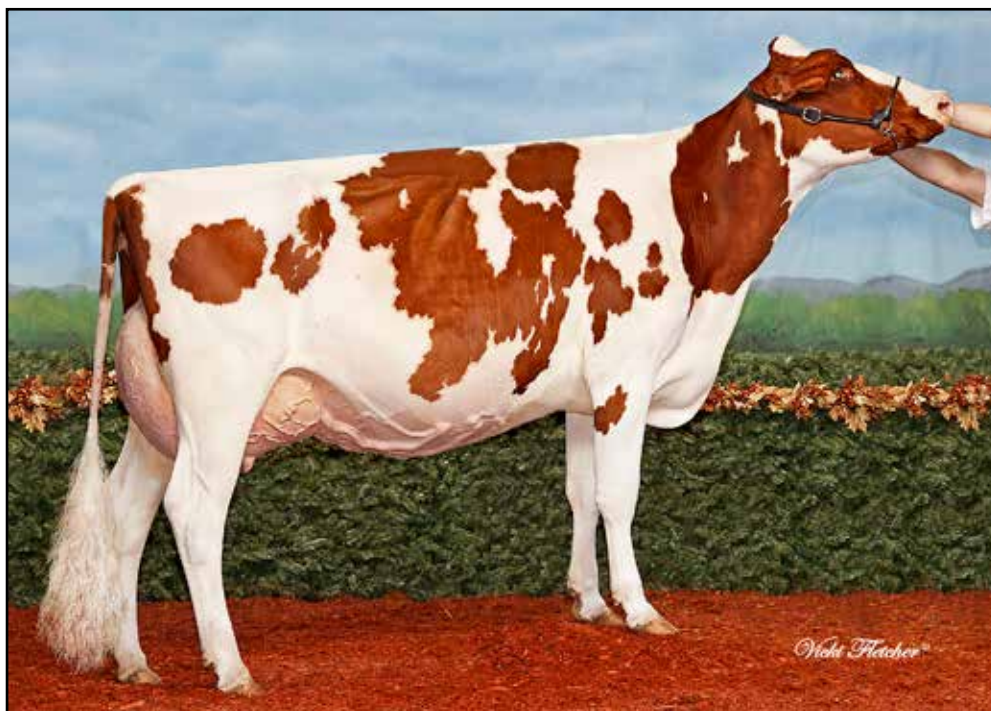
Maternal sister to Lacey-Red

Crestomere RL Lovable-Red VG-87-CAN

- *Grand Champion AB Dairy Congress 2016*
- *1st Senior 3-Yr-Old & Res Int Champion Canadian National Convention R&W Show 2016*

3rd Dam

Crestomere Skychief Lori VG-86-2YR-CAN 6*
 2-05 2x 365d 21391 3.7 789 3.1 614



CRESTOMERE ABSOLUTELY LOVE-RED EX-92
Reserve All-American R&W 4-Yr-Old Cow 2014
2ND DAM OF LOTS 38, 39, 40, 41 & 42



Lot 41 & 42

CRESCENTMEAD L PENNY-RED-ET
LOT 41

MS LACYS ALIBI-RED-ET
LOT 42

3241471572
 Born: March 3, 2022
 Sire: *Farnear Altitude-Red-ET*

3241471570
 Born: March 1, 2022
 Sire: *Mr Affection Analyst-Red-ET*

Maternal sister:

Oakland-View Legacy-Red-ET EX-90
 2-02 2x 305d 20680 5.5 965 3.5 658
 • *Nom Jr All-American Sr 2-Yr-Old 2019*
 • *Grand Champion MD Jr R&W Show 2020*

LACEY!

- *Res Jr All-American Aged Cow 2021*
- *Nom All-American R&W 4-Yr-Old 2019*
- *All-American R&W Sr 3-Yr-Old 2018*
- *Jr All-American R&W Sr 2-Yr-Old 2017*
- *Reserve All-American R&W Sr 2-Yr-Old 2017*
- *1st Sr 2-Yr-Old, International R&W Show 2017*
- *All-American R&W Fall Yearling 2016*
- *1st Fall Yrlg International R&W Show 2016*
- *Junior Champion MD State Fair 2016*

Farnear Altitude-Red-ET

3128013348 TC TY TV TL TD
 PTA +150M +10F +15P 98R 12/22
 PTA +3.16T +2.73UDC +1.50FLC GTPI +2207G

- AND -

Mr Affection Analyst-Red-ET

3136496608 TP TC TY TV TL TD
 PTA -53M -28F -23P 83R 12/22
 PTA +2.71T +2.38UDC +1.66FLC GTPI +1881G

Budjon-Vail Hz Lacey-Red-ET

3126822831 Excellent-94 EEEEE 2E TL TD
 3-06 2x 345d 31780 4.0 1314 3.2 1043
 5-09 2x 365d 30001 4.3 1312 3.5 1051
 4-07 2x 365d 26874 4.1 1147 3.4 944
 2-05 2x 298d 22810 4.6 1060 3.3 747
 Life: 1691d 133190 4.3 5764 3.4 4532

St-Jacob Destry Heztry-ET

70074442 Excellent-91 RC CD TY TV TL
 PTA -674M -20F -5P 99R 12/22
 PTA +1.12T +.41UDC +.66DLC GTPI +1899G

Crestomere Absolutely Love-Red

CAN 9575714 Excellent-92 EEEEE @ 3-07
 3-03 2x 305d 23690 3.9 924 3.4 809
 2-02 2x 307d 18209 3.8 696 3.4 615
 • *Reserve All-American R&W 4-Yr-Old 2014*
 • *1st 4-Yr-Old Olds Show 2014*
 • *1st Junior 3-Yr-Old AB Dairy Congress 2013*

Maternal sister to Lacey-Red

Crestomere RL Lovable-Red VG-87-CAN

- *Grand Champion AB Dairy Congress 2016*
- *1st Senior 3-Yr-Old & Res Int Champion Canadian National Convention R&W Show 2016*

3rd Dam

Crestomere Skychief Lori VG-86-2YR-CAN 6*
 2-05 2x 365d 21391 3.7 789 3.1 614



CRESCENTMEAD DUKN DONUT-RED EX-92

Nominated Junior All-American Jr 3-Yr-Old Cow 2019

SELLS AS LOT 43 & DAM OF LOTS 44, 45 & 47



Lot 43

CRESCENTMEAD DUKIN DONUT-RED

Lot 44

CRESCENTMEAD DAISY MAY-RED

3241471597 • Born: January 25, 2023

Sire: Mr Affection Analyst-Red-ET

PTA +2.71T +2.38UDC +1.66FLC GTPI +1881G

Dam: Crescentmead Dukn Donut-Red

143777139 Excellent-92 EEEEE @ 3-04

Born: March 11, 2016

5-05 2x 329d 24766 4.2 1035 3.3 822

3-11 2x 365d 24940 3.8 951 3.2 809

2-11 2x 290d 22060 3.8 846 3.2 706

1-11 2x 294d 19930 3.7 745 3.3 656

6-10 2x 17d 1294 3.4 44 3.3 43 RIP

Milking 94 lbs/day SCC 154

Fresh: January 25, 2023

DONUT!

• *Nom. Jr. All-American Jr 3-Yr-Old 2019*

• *Res Grand Champ Midwest/Spr R&W Jr Show 2018*

• *Nom All-American R&W Spring Yearling 2017*

• *Res Jr. All-American R&W Spring Yearling 2017*

• *Res Sup Junior Champion WI Jr State Fair 2017*

• *Supreme B&O Junior Champion WI Jr. St. Fr. 2017*

She-Ken BW Dunkin-Red-ET

72713010 TL TD

PTA -1368M -16F -22P 91R 12/22

PTA -1.4PL 3.21SCS -1.8DPR 3.7%DCE

PTA +2.21T +1.50UDC +1.23FLC 87R 12/22

GTPI +1742G

Vailwood Heztry Whitley-ET

3009999499 Very Good-87 VVVVV @ 3-09

3-04 2x 284d 19480 4.2 824 3.4 656

2-03 2x 335d 17210 4.0 691 3.3 572

St-Jacobs Destry Heztry-ET

70074442 EX-91 RC CD TY TV TL

PTA -674M -20F -5P 99R 12/22

PTA +1.12T +.41UDC +.66UDC GTPI +1899G

Budjon Durham Wedding-ET

136965257 Excellent-92 EEEEE @ 4-08

4-00 2x 365d 34920 3.8 1326 3.0 1048

2-09 2x 365d 32530 3.7 1214 3.0 964

• *Grand Champion Southern Parade of Stars 2010*

3rd thru 9th Dams

Budjon Stardust Windy-ET EX-90 EX-MS

3-07 2x 365d 35743 3.8 1369 3.0 1055

Mayerheim Winnie of Budjon EX-94 EEEEE 3E

12-1 2x 365d 31020 4.1 1284 3.2 982

Life: 2647d 187010 3.8 7038 2.9 5497

• *Nom Jr All-American 1995 & 1996*

Budjon Dairyman Willa VG-88 VVVE

3-11 2x 342d 16950 4.7 797 3.7 623

Green-Vale Wanda High VG-85 VG-MS

3-04 2x 365d 20190 3.5 713

Green-Vale Special Wanda Su EX-93 VEEE 2E

7-11 2x 365d 31830 3.4 1092 3.2 1012

Life: 2792d 196020 3.4 6695 3.0 2429

Green-Vale Skokie Wanita VG-87

Life: 2904d 157050 3.3 5229

Green-Vale A Wanda VG-85

Life: 3271d 207550 3.5 7195



CRESCENTMEAD DRAMAQUEEN

Unanimous Jr All-American Spring Calf 2018

MATERNAL SISTER TO LOT 45



Lot 45

CRESCENTMEAD DROP DEAD-RED

Lot 46

CRESCENTMEAD DIRTY HARY-RED

3241471577 • Born: March 24, 2022

Sire: Cycle Jails Journey-Red-ET

GTPI +1834G PTA +2.83T +2.20UDC +1.00FLC

Dam: Crescentmead Drop Dead-Red

Luck-E Awesome-Red

72186769 CV TC TY TL TD

PTA -1694M -55F -52P 99R 12/22

PTA -0.7PL 3.16SCS -2.3DPR 3.8%DCE

PTA +2.01T +2.81UDC +.72FLC

GTPI +1449G

Crescentmead Dukt Donut-Red

143777139 Excellent-92 EEEEE @ 3-04

5-05 2x 329d 24766 4.2 1035 3.3 822

3-11 2x 365d 24940 3.8 951 3.2 809

2-11 2x 290d 22060 3.8 846 3.2 706

1-11 2x 294d 19930 3.7 745 3.3 656

Sells as Lot 43

3203415532 Very Good-87 VVVV @ 2-03

Born: March 3, 2020

2-00 2x 257d 17062 3.9 659 3.2 548

Due: March 31, 2023 to Farnear Altitude-Red-ET

551H003617 GTPI +2207G +3.16T +2.73UDC

Heifer Calf

Maternal sister:

Crescentmead DramaQueen-Red VG-87

• *HM All-American R&W Spring Calf 2018*

• *Unan Jr. All-American R&W Spring Calf 2018*

• *HM Junior Champion WI St Fair R&W Sb. 2018*

She-Ken BW Dunkin-Red-ET

72713010 TL TD

PTA -1368M -16F -22P 91R 12/22

PTA +2.21T +1.50UDC +1.23FLC GTPI +1742G

Vailwood Heztry Whitley-ET

3009999499 Very Good-87 VVVV @ 3-09

3-04 2x 284d 19480 4.2 824 3.4 656

2-03 2x 335d 17210 4.0 691 3.3 572

DONUT!

• *Nom. Jr All-American Jr 3-Yr-Old 2019*

• *Nom All-American R&W Spring Yearling 2017*

• *Res Jr. All-American R&W Spring Yearling 2017*

• *Res Sup Junior Champion WI Jr State Fair 2017*

3rd thru 10th Dams

Budjon Durham Wedding-ET EX-92 EEEEE

4-00 2x 365d 34920 3.8 1326 3.0 1048

• *Grand Champion Southern Parade of Stars 2010*

Budjon Stardust Windy-ET EX-90 EX-MS

3-07 2x 365d 35743 3.8 1369 3.0 1055

Mayerheim Winnie of Budjon EX-94 EEEEE 3E

12-1 2x 365d 31020 4.1 1284 3.2 982

Life: 2647d 187010 3.8 7038 2.9 5497

• *Nom Jr All-American 1995 & 1996*

Budjon Dairyman Willa VG-88 VVVE

3-11 2x 342d 16950 4.7 797 3.7 623

Green-Vale Wanda High VG-85 VG-MS

3-04 2x 365d 20190 3.5 713

Green-Vale Special Wanda Su EX-93 VEEE 2E

7-11 2x 365d 31830 3.4 1092 3.2 1012

Life: 2792d 196020 3.4 6695 3.0 2429

Green-Vale Skokie Wanita VG-87

Life: 2904d 157050 3.3 5229

Green-Vale A Wanda VG-85

Life: 3271d 207550 3.5 7195



BUDJON DURHAM WEDDING-ET EX-92
3RD DAM OF LOTS 44, 45 & 47



CRESCENTMEAD POWDRDONUT-RED

3241471591

Born: September 21, 2021

Bred: Jan. 12, 2023 to Beef Bull

Maternal sister:

Crescentmead DramaQueen-Red VG-87

- HM All-American R&W Spring Calf 2018
- Unanimous Jr. All-American R&W Spr. Calf 201
- HM Junior Champion WI St. Fr. R&W Sh. 2018

Luck-E Aristocrat-Red

3141305454 TC TY TV TL TD

PTA -717M +13F -16P 97R 12/22

PTA -3.9PL 2.99SCS -3.2DPR 2.1%DCE

PTA +2.54T +1.53UDC +1.77FLC 96R 12/22

GTPI +1900G

Crescentmead Dukn Donut-Red

143777139 Excellent-92 EEEEE @ 3-04

5-05 2x 329d 24766 4.2 1035 3.3 822

3-11 2x 365d 24940 3.8 951 3.2 809

2-11 2x 290d 22060 3.8 846 3.2 706

1-11 2x 294d 19930 3.7 745 3.3 656

Sells as Lot 43

She-Ken BW Dunkin-Red-ET

72713010 TL TD

PTA -1368M -16F -22P 91R 12/22

PTA +2.21T +1.50UDC +1.23FLC GTPI +1742G

Vailwood Heztry Whitley-ET

3009999499 Very Good-87 VVVVV @ 3-09

3-04 2x 284d 19480 4.2 824 3.4 656

2-03 2x 335d 17210 4.0 691 3.3 572

DONUT!

- Nom. Jr. All-American Jr. 3 Year Old 2019
- Nom. All-American R&W Spring Yearling 2017
- Res. Jr. All-American R&W Spring Yearling 2017
- Res. Sup Junior Champion WI Jr State Fair 2017

3rd thru 9th Dams

Budjon Durham Wedding-ET EX-92 EEEEE

4-00 2x 365d 34920 3.8 1326 3.0 1048

- Grand Champion Southern Parade of Stars 2010

Budjon Stardust Windy-ET EX-90 EX-MS

3-07 2x 365d 35743 3.8 1369 3.0 1055

Mayerheim Winnie of Budjon EX-94 EEEEE 3E

12-1 2x 365d 31020 4.1 1284 3.2 982

Life: 2647d 187010 3.8 7038 2.9 5497

- Nom Jr All-American 1995 & 1996

Budjon Dairyman Willa VG-88 VVVE

3-11 2x 342d 16950 4.7 797 3.7 623

Green-Vale Wanda High VG-85 VG-MS

3-04 2x 365d 20190 3.5 713

Green-Vale Special Wanda Su EX-93 VEEE 2E

7-11 2x 365d 31830 3.4 1092 3.2 1012

Life: 2792d 196020 3.4 6695 3.0 2429

Green-Vale Skokie Wanita VG-87

Life: 2904d 157050 3.3 5229

Green-Vale A Wanda VG-85

Life: 3271d 207550 3.5 7195



BUDJON-VAIL DEIDRA-RED-ET EX-94

HHM All-American R&W Milking Yearling 2013
2ND DAM OF LOT 48



CRESCENTMEAD DEALBREAKR-RED

3203415521 Very Good-87 @ 2-09
 Born: September 2, 2019
 2-02 2x 365d 29128 3.9 1174 3.0 887

Sells fresh

Maternal sister to Diedra

Budjon-Nitzzy Destiny-Red-ET EX-94 EEEEE 2E
 3-02 2x 310d 32250 3.3 1070 3.2 1047
 • All-American R&W 4-Year-Old 2011
 • All-American R&W Junior 3-Year-Old 2010

3rd Dam

Budjon Redmarker Desire EX-96 3E GMD *RC
 5-03 2x 365d 47540 4.2 1998 2.9 1394
 Life: 2637d 255630 4.0 10213 3.0 7687
 • All-American 5-Year-Old 2005
 • Six-time All-American Nominee

4th Dam

Triple-A Danee EX-92 EEEEE 3E
 8-02 2x 312d 34210 4.1 1392 3.1 1052
 Life: 1957d 148520 4.1 6058 3.3 4963
 • All-American Produce of Dam 2007

5th Dam

Triple-A Linc Fancy EX-90 EEEEE 2E
 7-06 2x 365d 23120 4.4 1025 3.3 758
 Life: 2565d 155090 4.3 6698 3.4 5169

6th Dam

C Lessia Warden Pre Foxie EX-90 EEEV
 Life: 2251d 120216 4.0 4771 3.2 3902

7th Dam

Lessia Pre Foxie VG-85-2YR-CAN 1*
 Life: 10 Lact 194459 4.0 7738 3.2 5765

Cycle McGucci Jordy-Red

3131666411 Very Good-87 CV TC TY TL TD
 PTA -1029M -23F -40P 99R 12/22
 PTA -3.0PL 2.98SCS -3.3DPR 3.5%DCE
 PTA +2.97T +2.22UDC +3.21FLC
 GTPI +1687G

Lake-Breeze Delight-Red-ET

3012456982 Very Good-86 VG-MS @ 2-07
 3-03 2x 268d 17440 4.3 754 3.5 608
 2-03 2x 308d 17350 4.3 738 3.5 604
 • HM Jr All-American R&W Spring Yrlg 2016
 • Nom All-American R&W Spring Yrlg 2016

Scientific Destry-ET

138122625 Excellent-92 RC CD TY TV TL
 PTA -962M -35F -10P 99R 12/22
 PTA +1.28T +1.32UDC -.19FLC GTPI +1932G

Budjon-Vail Deidra-Red-ET

141591003 Excellent-94 EEEEE @ 4-07
 4-04 3x 365d 40270 3.1 1262 3.1 1236
 5-11 3x 305d 39740 3.5 1399 3.0 1182
 2-09 2x 365d 29030 3.5 1016 3.1 908
 Life: 1135d 118580 3.4 4009 3.1 3647
 • HHM All-American R&W Milking Yrlg 2013
 • All-American R&W Fall Calf 2012



FROZENES-LP CONTDR LARK-RED-ET EX-93 2E
Unanimous All-American R&W Sr 2-Yr-Old Cow 2015
DAM OF LOT 49



Lot **49**

MS CM LIMITLESS-RED

Lot **50**

CRESCENTMEAD ACRAT LUNA-RED

3241471595 • Born: September 11, 2021

Sire: Luck-E Aristocrat-Red

GTPI +1900G PTA +2.54T +1.53UDC +1.77FLC

Dam: Ms CM Limitless-Red

KHW Kite Advent-Red-ET

133002953 Excellent-94 TV TL TD

PTA -1657M -42F -44P 99R 12/22

PTA +0.0PL 3.16SCS +2.5DPR 4.4%DCE

PTA +1.41T +.40UDC +.76FLC

GTPI +1632G

Frozenes-LP Cntdr Lark-Red-ET

170272795 Excellent-93 EEEEE 2E

4-01 2x 365d 23620 4.7 1108 3.3 779

2-03 2x 365d 22360 4.4 992 3.3 743

5-04 2x 298d 19620 4.6 895 3.4 667

320315511

Born: April 7, 2019

GTPI +1516G +1.59T 12/22

2-05 2x 289d 14378 4.3 620 3.5 501

3-06 2x 108d 8908 4.3 382 3.3 294 RIP

Bred: Jan. 31, 2023 to Blondin Cheerful-Red

799H000035 GTPI +2258G +1.96T +1.89UDC

Maternal sister:

Ms Director Lottie-Red-ET

• *Res. Jr. All-American R&W Winter Hfr Calf 2017*

Patience Shline Contender-Red

CAN 7483577 EX-95-CAN TV TL

PTA -2772M -68F -77P 99R 12/22

PTA +1.21T +1.767DC +.62FLC GTPI +1465M

Ourway SS Larissa-Red-ET

136423971 Excellent-93 EEEEE 2E

5-09 2x 365d 29277 4.4 1361 3.1 950

4-05 2x 300d 28120 4.6 1281 3.4 963

2-00 2x 365d 22931 5.3 1247 3.0 726

3-04 2x 253d 22076 4.7 1030 3.1 684

7-10 2x 322d 22770 4.3 971 3.0 688

Life: 1782d 135630 4.8 6553 3.2 4404

LARK!

- *Unanimous All-American R&W Sr 2-Yr-Old 2015*
- *Res Int Champion International R&W Show 2015*
- *HM All-American R&W 5-Yr-Old 2018*
- *1st 5-Yr-Old WI Championship R&W Show 2018*

Maternal sister to Lark:

Frozenes-LP Apples Lass-Red VG-86

• *Nom. All-American R&W Winter Calf 2011*

LARISSA!

- *All-American R&W Spring Yearling 2006*
- *1st Spring Yrlg International R&W Show 2006*
- *HM All-American R&W Jr 2-Yr-Old 2007*
- *All-American R&W Jr 3-Yr-Old 2008*

3rd Dam

Tip-Er-Aire R Markr Lolipop RC EX-91 2E

4-11 2x 365d 30880 4.5 1400 2.9 910



VONS-HILLVIEW TALNT TIZ-RED EX-91 2E
3RD DAM OF LOT 51



Lot 51

AUTUMN-PINE ALT CASSY-RED

Registration Pending
Born: September 26, 2022

Farnear Altitude-Red-ET

3128013348 TC TY TV TL TD
PTA +150M +10F +15P 98R 12/22
PTA -0.8PL 2.97SCS -2.6DPR 3.0%DCE
PTA +3.16T +2.73UDC +1.50FLC 98R 12/22
GTPI +2207G

Autumn-Pine Calista-Red

3203415545
1-11 2x 61d 3699 3.9 144 2.8 105

Mr LR EDG Arvis 18196-ET

3125201960 RC TY TV
PTA -485M +10F +4P 97R 12/22
PTA +1.94T +2.16UDC +1.19FLC GTPI +2176G

Farnear TBR Aria Adler-ET

72437575 Excellent-96 EEEEE 2E RC
Life: 1739d 180010 4.6 8318 3.3 5939
• *Nom All-American Life Production Cow 2020*

Luck-E Aristocrat-Red

3141305454 TC TY TV TL TD
PTA -717M +13F -16P 97R 12/22
PTA +2.54T +1.53UDC +1.77FLC GTPI +1900G

Vons-Zast Def Caylin-Red-ET

144226971 Very Good-86 VG-MS
3-03 2x 340d 27010 3.2 865 3.0 808
4-06 2x 305d 24500 4.0 985 3.1 760
2-02 2x 362d 21710 3.6 776 3.3 711

3rd Dam

Vons-Zast Contende Cally-Red VG-89 EVVVE
6-11 3x 305d 23260 4.3 1003 3.3 773

4th Dam

Vons-Hillview Talnt Tiz-Red EX-91 EEEVE 2E
5-11 2x 365d 30760 3.8 1161 3.1 948
Life: 2028d 151810 3.8 5732 3.1 4665

Maternal sister:

Vons-Hillview Stormat Sandy EX-94 EEEEE
3-07 3x 338d 33770 3.7 1241 3.1 1062

• *HMM All-American Sr 3-Yr-Old Cow 2007*

5th Dam

Vons-Hillview Kite Kamalin VG-87 VVEVV
1-11 2x 331d 24200 4.2 1005 3.1 757

6th Dam

Ja-My Inspiration Ricki EX-91 EEVEE 2E
7-06 2x 365d 27480 4.1 1151 3.1 870
Life: 2001d 132720 4.3 5655 3.3 4333



NORTH LANES JETWAY CORINA 2E-E93
All-American BS Aged Cow 2008
4TH DAM OF LOT 52



HORSESHOE HILL NU CLAIRA

Lot 53

CRESCENTMEAD CLAUDIA

68225478 • Born: June 1, 2022

Sire: Old Mill Wde Supreme ET *TM

PTAT +.30T A2A2

Dam: Horseshoe Hill Nu Clairra

Cutting Edge Thunder*TM

68121893 *TM PT DT WT BH2T

PPR +10 95%R PTAT +0.1 97%R 12/22

PTA -510M -14F -13P -11NM\$ 98%R

PTA PL +1.7 SCS 2.84 DPR +0.7 SCE +3.0

Horseshoe Hill Nu Clarissa

68175734 V87 VVV+V 2/03

2-01 2x 80d 5090 4.0 204 3.0 154

68192053 EX91 EEEEE @ 3-08

Born: February 11, 2018 Tattoo 795

3-03 2x 287d 20549 4.8 983 3.6 738

2-03 2x 328d 19217 4.8 938 3.4 652

4-03 2x 255d 20533 5.1 1047 3.4 706 RIP

Milking 68 lbs/day SCC 63

Bred: Oct. 28, 2022 to HF Octagon ET

29BS03823 CDCB +899M BSBA +.50T A2A2 and

Old Mill Wde Supreme ET *TM

PTAT +.30T A2A2

• 3rd Jr Winter Yearling International BS Show 2019

Old Mill Tray Goliath ET*TM

68122621 *TM

PPR -11 87%R PTAT +0.5 92%R 12/22

PTA +101M +7F -3P -21NM\$ 94%R

Horseshoe Hill Nu Cassidy

68144301 VG86 VVVVV

3-08 2x 365d 25030 4.1 1037 3.5 876

5-00 2x 300d 23580 4.1 964 3.4 808

2-02 2x 365d 20790 4.4 921 3.5 732

5-09 2x 277d 16680 4.3 717 3.6 606

CORINA!

• *All-American Aged Cow 2008*

• *1st Aged Cow Central National Show 2008*

• *Res All-American Sr 3-Yr-Old Cow 2005*

• *1st Sr 3-Yr-Old Cow Southeast National 2005*

• *2nd Sr 3-Yr-Old Cow Central National Show 2005*

• *Res All-American Sr 2-Yr-Old Cow 2004*

• *Res Int Champion Central National Show 2004*

• *2nd Sr 2-Yr-Old Cow Central National Show 2004*

3rd Dam

B C K Agenda Cassy ET V86 VVV+V

3-08 2x 365d 23430 4.6 1078 3.8 901

4th Dam

North Lanes Jetway Corina 2E-E93 EEEEE

6-05 2x 359d 36700 4.9 1804 3.1 1148

5th Dam

North Lanes Peer Carnie ET 4E-E92

5-09 2x 365d 29650 4.8 1425 3.6 1063

Life: 4535d 250830 11767 9312

• *3rd Jr 3-Yr-Old Cow Southeastern National 2001*

6th Dam

North Lanes Simon Celia 2E-E90

3-05 2x 365d 21420 4.6 982 3.6 780

7th Dam

North Lanes Cissy 3E-E90

4-10 2x 365d 19380 4.5 875 3.9 761

Life: 3803d 190280 8151 7257



MILKSOURCE ABT TESSA-RED-ET EX-92
Junior All-American R&W Sr 2-Yr-Old Cow 2019
DAM OF EMBRYO LOTS 54



Lot **54**

EMBRYO PACKAGES

LOT 54A EMBRYO PACKAGE

Five #1 Sexed

**Mr D Apple Diamondback RC &
 Riverdown Unstopabull-Red**

LOT 54B EMBRYO PACKAGE

Three #1 Sexed

**Lindenright Moovin-ET &
 Mr Affection Analyst-Red-ET**

One #1 Sexed

St Gen Doral-Red-ET

Two #2 Sexed

Farnear Altitude-Red-ET

TEQUILA!

- Res All-American R&W Aged Cow 2017
- HM Senior Champion International R&W 2017
- Res All-American R&W 5-Yr-Old Cow 2016
- Grand Champion Midwest Sprg/Nat Show 2016
- Unan All-American R&W 4-Yr-Old Cow 2015
- Grand Champion International R&W Show 2015
- Nom All-Canadian 4-Yr-Old Cow 2015
- Unan All-American R&W Sr 3-Yr-Old Cow 2014
- Nom All-American B&W Sr 3-Yr-Old Cow 2014
- Nom All-Canadian B&W Sr 3-Yr-Old Cow 2014
- Grand Champion International R&W Show 2014
- Res All-American R&W Sr 2-yr-Old Cow 2013
- Nom All-American R&W Fall Yearling, 2012

3rd Dam

Jen-D Devil Tiffany-Red-ET EX-95 EEEEE 3E

8-07 2x 365d 36170 4.3 1546 3.0 1082

Life: 2282d 189780 4.2 8060 3.1 5867

Milksource Abt Tessa-Red-ET

3132912479 Excellent-92 EEVVEE TC TL TD

3-02 2x 365d 27520 4.6 1262 3.3 904

1-11 2x 365d 19860 4.6 910 3.5 687

5-03 2x 266d 20970 4.3 897 3.3 697

- Jr All-American R&W Sr 2-Yr-Old 2019
- Nom All-American R&W Sr 2-Yr-Old 2019
- Res Grand Champion Midwest Nat/R&W 2019
- HM Int Champion WI Championship Show 2020

Apples Absolute-Red-ET

139358472 Excellent-94 CV TC TL TY TD

PTA -1955M -12F -23P 99R 12/22

PTA +2.25T +2.46UDC +1.64FLC GTPI +1540G

Strans-Jen-D Tequila-Red-ET

141024338 Excellent-96 EEEEE 2E TL TD

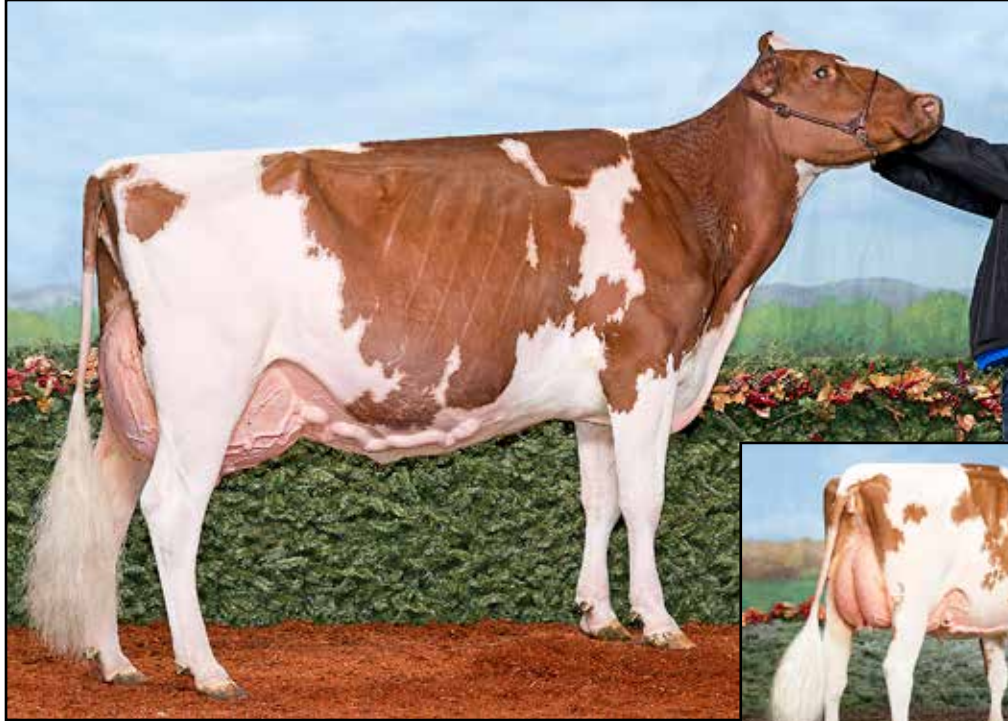
6-04 2x 365d 32840 4.3 1428 3.2 1054

4-10 2x 293d 27840 4.4 1231 3.0 842

2-05 2x 365d 24550 4.7 1145 3.4 831

3-09 2x 306d 23990 4.4 1048 3.3 793

Life: 1512d 118510 4.5 5327 3.2 3768



LEAWOOD SPICE GIRL-RED-ET EX-93
Reserve All-American R&W 4-Yr-Old Cow 2018
DAM OF LOTS 55



LEAWOOD SASSY GIRL-RED-ET EX-92



EMBRYO PACKAGES

LOT 55A EMBRYO PACKAGE

One #1 & One #2 embryos
Mr D Apple Diamondback RC

LOT 55B EMBRYO PACKAGE

Six #1 embryos
Farnear Altitude-Red-ET

LOT 55C EMBRYO PACKAGE

Five #1 & One #2
Farnear Altitude-Red-ET

SPICE GIRL!

- *Res All-American R&W 4-Yr-Old Cow 2018*
- *Grand Champion WI Sprg/Nat R&W Show, WI R&W Championship & WI State Fair R&W 2018*
- *HM Grand Champion Royal Winter Fair 2018*
- *1st 4-Yr-Old Royal Winter Fair 2018*
- *2nd 4-Yr-Old International R&W Show 2018*
- *Nom All-American Sr 3-Yr-Old 2017*
- *6th Sr 3-Yr-Old International R&W Show 2017*

Leewood Spice Girl-Red-ET

72084857 Excellent-93 EEEEE TL TD
 GTPI +1584G 12/22
 4-06 2x 365d 30350 4.3 1306 3.4 1030
 3-05 2x 318d 26360 3.9 1035 3.3 865
 2-01 2x 305d 19990 3.9 782 3.2 638

Maternal sister to Embryos:

Leewood Sassy Girl-Red EX-92

- *All-American R&W Jr 2-Yr-Old 2020*
- *1st Jr 2-Yr-Old North American R&W Show 2020*
- *2nd 4-Yr-Old Midwest Sprg/Nat R&W Show 2022*

Apples Absolute-Red-ET

139358472 Excellent-94 CV TC TL TY TD
 PTA -1955M -12F -23P 99R 12/22
 PTA +2.25T +2.46UDC +1.64FLC GTPI +1540G

Wide-Open Sportscenter-Red

140794766 Very Good-85 VG-MS @ 3-05

3rd Dam

Richesse Stream Rmarker-Red-ET EX-91 EEEEE 2E

7-09 2x 305d 28720 4.1 1180 3.0 851

- *Nom All-American R&W 4-Yr-Old 2006*

4th Dam

Richesse Stopoil Astre VG-87 VVVV-CAN

5-01 2x 365d 26325 3.0 800 3.2 842

5th Dam

Goloise Stora Jubilant VG-86 VG-MS-CAN 22*

8-00 2x 305d 28810 3.5 1014 3.4 985

6th Dam

Goloise Suby Starbuck VG-88 EX-MS-CAN 3*

5-01 2x 365d 25611 3.6 930 3.4 864

7th Dam

Bertelle Superbe Valiant-ET VG-85 VG-MS-CAN 1*

3-03 2x 355d 19921 4.1 818 3.6 712

8th Dam

Thayben Dinah Willow VG-86 VG-MS-CAN 4*

4-11 2x 305d 20366 3.6 732 3.3 677



BUDJON-VAIL HZ LACEY-RED-ET EX-94
All-American R&W Sr 3-Yr-Old Cow 2018
DAM OF LOT 56



EMBRYO PACKAGE

Five #1 Embryos

Maternal sisterto Embryos:

Oakland-View Legacy-Red-ET EX-90
 2-02 2x 305d 20680 5.5 965 3.5 658
 • *Nom Jr All-American Sr 2-Yr-Old 2019*
 • *Grand Champion MD Jr R&W Show 2020*

Dymentholm Mr App Avalanche-TW
 CAN 11957107 RC CV TL TY TD
 PTA +3.72T +2.74UDC +2.07FLC GTPI +1960G

Lindenright Bradnick Moovin On
 CAN 11470454 VG-87 VVVV-CAN 27*
 4-06 2x 365d 43056 5.1 2207 3.2 1399
 2-00 2x 365d 30840 4.1 1556 3.3 1016

St-Jacob Destry Heztry-ET
 70074442 Excellent-91 RC CD TY TV TL
 PTA +1.12T +.41UDC +.66DLC GTPI +1899G

Crestomere Absolutely Love-Red
 CAN 9575714 Excellent-92 EEEEE @ 3-07
 3-03 2x 305d 23690 3.9 924 3.4 809
 2-02 2x 307d 18209 3.8 696 3.4 615
 • *Reserve All-American R&W 4-Yr-Old 2014*
 • *1st 4-Yr-Old Olds Show 2014*
 • *1st Junior 3-Yr-Old AB Dairy Congress 2013*

LACEY!

- *Res Jr All-American Aged Cow 2021*
- *Nom All-American R&W 4-Yr-Old 2019*
- *All-American R&W Sr 3-Yr-Old 2018*
- *Jr All-American R&W Sr 2-Yr-Old 2017*
- *Reserve All-American R&W Sr 2-Yr-Old 2017*
- *1st Sr 2-Yr-Old, International R&W Show 2017*
- *All-American R&W Fall Yearling 2016*
- *1st Fall Yrlg International R&W Show 2016*
- *Junior Champion MD State Fair 2016*

Maternal sister to Lacey-Red

Crestomere RL Lovable-Red VG-87-CAN
 • *Grand Champion AB Dairy Congress 2016*
 • *1st Senior 3-Yr-Old & Res Int Champion Canadian National Convention R&W Show 2016*

Mr Affection Analyst-Red-ET
 3136496608 TP TC TY TV TL TD
 PTA -53M -28F -23P 83R 12/22
 PTA -0.5PL 2.87SCS -1.5DPR 2.7%DCE
 PTA +2.71T +2.38UDC +1.66FLC 81R 12/22
 GTPI +1881G

Budjon-Vail Hz Lacey-Red-ET
 3126822831 Excellent-94 EEEEE 2E TL TD
 3-06 2x 345d 31780 4.0 1314 3.2 1043
 5-09 2x 365d 30001 4.3 1312 3.5 1051
 4-07 2x 365d 26874 4.1 1147 3.4 944
 2-05 2x 298d 22810 4.6 1060 3.3 747
 Life: 1691d 133190 4.3 5764 3.4 4532

3rd Dam

Crestomere Skychief Lori VG-86-2YR-CAN 6*
 2-05 2x 365d 21391 3.7 789 3.1 614



ROLLING-SPRING G ESCENCE-ET EX-95 2E
Nominated All-American 4-Yr-Old Cow 2010
2ND DAM OF LOT 57



EMBRYO PACKAGE

Two #1 Embryos

Cycle McGucci Jordy-Red

3131666411 Very Good-87 CV TC TY TL TD
 PTA -1029M -23F -40P 99R 12/22
 PTA +2.97T +2.22UDC +3.21FLC
 GTPI +1687G

Budjon-JK Eva Longoria-ET

301325095 Excellent-90 VEVEE 2E RC
 GTPI +1792G +1.86T 12/22
 3-05 2x 365d 31470 4.8 1503 3.4 1085
 5-00 2x 305d 20640 4.6 951 3.1 640
 2-05 2x 294d 19670 4.7 924 3.6 704
 • 10th Generation Excellent

Maternal sisters to Eva Longoria

Budjon-JK Sid Elyssa-ET EX-92

- Junior All-American Sr 3-Yr-Old 2015
- Intermediate Champion NY Spring Show 2015

Budjon-JK Damion Eklipse-ET EX-92

- Nom Junior All-American Sr 3-Yr-Old 2016

Rolling-Spring Schz Ella-ET EX-92

- Nom All-American Junior 2-Yr-Old 2013
- Nom All-Canadian Junior 2-Yr-Old 2013

Budjon-JK Advn Awakening-ET VG-89

- Reserve All-American Spring Yearling 2013
- Reserve All-Canadian Junior Yearling 2013

Apples Absolute-Red-ET

139358472 Excellent-94 CV TC TL TY TD
 PTA -1955M -12F -23P 99R 12/22
 PTA +2.25T +2.46UDC +1.64FLC GTPI +1540G

Rolling-Spring G Escence-ET

62660946 Excellent-95 EEEEE 2E
 5-06 2x 365d 40500 4.1 1646 3.0 1231
 4-03 2x 365d 38160 4.1 1547 3.3 1249
 Life: 1565d 148800 4.2 6285 3.3 4950
 • Nom All-American Produce of Dam 2012
 • Nominated All-American 4-Yr-Old 2010
 • Member Nom AA Produce of Dam 2008

3rd thru 10th Dams

Budjon-JK Dur Esquisite-ET EX-92 GMD DOM

3-07 2x 365d 40300 3.9 1555 3.2 1275
 • Member Nom All-American Best Three 2007
 • Nom All-American Senior 2-Yr-Old 2006

Budjon-JK Encore Electra-ET EX-95 2E GMD DOM

6-04 2x 365d 46830 4.0 1866 3.0 1382
 Life: 1806d 192280 3.6 6858 3.2 5097
 • HM All-American 125,000 Lb Cow 2005
 • HM All-American Aged Cow 2004
 • Res All-American Sr 3-Yr-Old Cow 2001

Krull Broker Elegance EX-96 3E GMD DOM

Life: 2356d 183710 3.7 6878 3.4 6267
 • HM All-American Aged Cow 1999 & 2000
 • HM All-Canadian Mature Cow 1999

Krull Starbuck Excellency EX-90 GMD DOM

3-03 2x 365d 27140 3.5 937 3.4 930

Krull Starbuck Excellency EX-90 GMD DOM

3-03 2x 365d 27140 3.5 937 3.4 930

Krull TT Excellency EX-90 VEVEE DOM

Life: 1733d 109780 3.7 4077 3.3 3605

Krull Boot Mark Excellency EX-92 2E GMD

Life: 3026d 201440 3.5 7105 3.0 4634

Krull Kingstead Excellency EX-92 4E GMD

Life: 3364d 179790 3.6 6436



BUDJON-NITZY DESTINY-RED-ET EX-94 EEEEE 2E
All-American R&W 4-Year-Old 2011
4TH DAM OF LOT 58



COURTLANE DR CHERRY-RED

KYLIE NICKELS
 W7478 PROVIMI RD
 WATERTOWN, WI 53098
 920-253-1520

3212896041
 Born: April 2, 2022

Mr Stone-Front Reeve-Red-ET

3136877210 Very Good-86 TP TC TY TV TL TD
 PTA +544M +49F 34P 98R 12/22
 PTA +3.5PL 2.75SCS +1.2DPR 2.5%DCE
 PTA +1.32T +1.02UDC -.05FLC 97R 12/22
 GTPI +2594G

Mayerlane-TE Darkness-Red

3214443941 Very Good-86 VG-MS @ 2-08
 2-00 3x 358d 31640 3.5 1112 3.3 1052

Mr Salvatore RC-ET

3129037884 RC TP TC TY TV TL TD
 PTA +1608M +33F +31P 99R 12/22
 PTA +1.64T +1.30UDC +1.46FLC GTPI +2595G

Y-Whisper Silver Regal-ET

3130641761 Very Good-87 VVVV RC TL TD
 2-03 3x 365d 37990 3.3 1249 3.1 1162

Farnear Altitude-Red-ET

3128013348 TC TY TV TL TD
 PTA +150M +10F +15P 98R 12/22
 PTA +3.16T +2.73UDC +1.50FLC GTPI +2207G

Mayerlane-TE Darkana-Red-ET

313266636 Very Good085 VG-MS @ 3-11
 2-00 3x 358d 31640 3.5 1112 3.2 992
 3-03 2x 314d 26290 4.0 1046 3.4 894

3rd Dam

Milksource D Devils-Red-ET EX-90 EEEVE 2E
 4-00 3x 333d 32480 4.1 1343 3.9 1276

4th Dam

Budjon-Nitzy Destiny-Red-ET EX-94 EEEEE 2E
 3-02 2x 310d 32250 3.3 1070 3.2 1047

• *All-American R&W 4-Year-Old 2011*

5th Dam

Budjon Redmarker Desire EX-96 3E GMD *RC
 5-03 2x 365d 47540 4.2 1998 2.9 1394
 Life: 2637d 255630 4.0 10213 3.0 7687

• *All-American 5-Year-Old 2005*

• *Six-time All-American Nominee*

6th Dam

Triple-A Danee EX-92 EEEEE 3E
 8-02 2x 312d 34210 4.1 1392 3.1 1052
 Life: 1957d 148520 4.1 6058 3.3 4963

• *All-American Produce of Dam 2007*

7th Dam

Triple-A Linc Fancy EX-90 EEEVE 2E
 Life: 2565d 155090 4.3 6698 3.4 5169

8th Dam

C Lessia Warden Pre Foxie EX-90 EEEV
 Life: 2251d 120216 4.0 4771 3.2 3902

9th Dam

Lessia Pre Foxie VG-85-2YR-CAN 1*
 Life: 10 Lact 194459 4.0 7738 3.2 5765



GLORYLAND-JW LADY RAE RC EX-94 3E
4TH DAM OF LOT 59



DREAMFIX JELLY BEAN-RED

KYLIE NICKELS
W7478 PROVIMI RD
WATERTOWN, WI 53098
920-253-1520

3240650368
Born: April 7, 2022

Mr Affection Analyst-Red-ET

3136496608 TP TC TY TV TL TD
PTA -53M -28F -23P 83R 12/22
PTA -0.5PL 2.87SCS -1.5DPR 2.7%DCE
PTA +2.71T +2.38UDC +1.66FLC 81R 12/22
GTPI +1881G

Sellcrest W June Bug-Red

3206962562 Very Good-85 VG-MS @ 2-07

Riverdown Unstopabull-Red

CAN 11801450 TY TV TL
PTA -429M -24F -24P 99R 12/22
PTA +2.18T +2.20UDC +1.39FLC GTPI +1975G

Milksource Byway Affection

3138524450 Excellent-94 EEEEE RC TL TD
4-05 2x 305d 39960 4.3 1737 2.6 1033
Life: 1326d 120500 3.9 4756 2.9 3504

Mr Blondin Warrior-Red-ET

3139655530 TP TC TY TV TL TD
PTA -802M -19F -16P 98R 12/22
PTA +3.20T +1.66UDC +1.64FLC GTPI +1807G

Sellcrest J Lady Bug-Red

3143242413 Good Plus-83 @ 2-01
3-04 2x 349d 26280 3.9 1012 3.2 828
2-03 2x 365d 25990 3.7 962 3.0 791

3rd thru 13th Dams

Sellcrest Lady In-Red-ET EX-91

3-05 2x 365d 29630 4.1 1210 3.1 932

Gloryland-JW Lady Rae RC ex-94 3e

Life: 3333d 204400 3.8 7737 3.1 6427

Gloryland Lexie Rae-ET EX-96 4E

Life: 3919d 202630 3.7 7476 3.2 6424

Gloryland Lana Rae EX-94 EEEEE 2E

5-06 2x 365d 29011 4.0 1159 3.4 993

Scientific Liza Rae-ET EX-90 EEEEE

4-09 2x 365d 26710 2.9 786 3.3 878

C Hanoverhill Tony Rae EX-96 3E GMD DOM 5*

6-11 2x 365d 40220 4.1 1661 3.3 1331

• HM All-American Jr 2-Yr-Old Cow 1988

C Hanoverhill TT Roxette-ET EX-94 2E GMD

10-0 3x 365d 35040 4.3 1519 3.0 1063

Mil-R-Mor Roxette EX-CAN *30 STAR

7-01 2x 365d 24531 4.7 1153

C Glenridge Citation Roxy EX-97 4E GMD

Life: 3620d 209784 4.5 9471

'Queen of the Breed I & II'

C Norton Court Model Vee EX-90

Life: 4183d 218629 3.9 8581

• All-American Produce of Dam 1977, '78, '79

Norton Court Reflection Vale VG-85-CAN *5 STAR

Life: 14 Lact 249583 3.7 9295



HOLSTEIN ASSOCIATION TERMS AND CONDITIONS FOR PUBLIC SALES

EFFECTIVE MARCH 2, 1996 - Amended October 1, 1997, June 28, 2000, June 23, 2002, and March 26, 2010

TERMS: The terms of the sale are cash unless arrangements are made prior to the sale or are printed in the sale catalog. Only when the above conditions are met will the buyer be entitled to the warranties listed below. In no case will animals be released unless settlement is made with the clerk of the sale.

RESPONSIBILITY: The seller, buyer, and manager of this sale are obligated to comply with the provisions of these terms and conditions.

EXPORT SALES: Buyer assumes all responsibility for health tests required by the importing country.

BIDS: The highest bidder is the buyer. Bidding parties or their agents are responsible for all bids placed. Every animal or lot presented for bidding is pledged to absolute sale. In case of dispute, the animal or lot will again be put up for advance bids, and if there is no advance bid, the animal or lot will be sold to the person the auctioneer accepted the last bid from. In case two or more claim the bid, the auctioneer will indicate the party whose bid he recognized. Other claimants will be given an opportunity to increase the bid and bidding will be restricted to the two or more claimants.

BY-BIDDING: Bidding directly or indirectly by the sole owner of any animal or lot is prohibited unless the intention to bid is disclosed specific to each animal in the catalog and announced when the animal enters the ring. Bidding by any member of a partnership, syndicate, or other entity having an ownership interest in an animal or lot is permitted.

TRANSFER OF OWNERSHIP: For all Registered HolsteinsSM, the transfer of ownership to the buyer will be recorded on the records of Holstein Association USA and a certificate of registration showing that transfer of ownership will be provided to the buyer free of charge. For embryos, the transfer of ownership to the buyer will be recorded on the records of Holstein Association USA free of charge to the buyer.

RISK: All animals located at sale site are at the purchaser's risk as soon as struck off, but will be cared for free of charge for a maximum of 24 hours following the end of the sale.

WARRANTIES:

- 1) Each consignor warrants clear title to the animal or lot, and the right to sell same.
- 2) To the best of the seller's knowledge, each animal is sound and healthy in every respect and embryos have been recovered, processed, frozen, transferred and graded in keeping with IETS recommendations unless otherwise noted in the catalog or announced from the auction stand. Every precaution will be taken to represent the physical condition of each lot exactly as is known. Examination of all purchases should be made immediately after the purchase and before the close of the sale, and if found not to be as represented, complaint must be reported to the sale management before the close of the sale. In the event no complaint is filed, it is understood that the buyer assumes full ownership in the case of animals at sale site together with all risks, after which no representations of the seller can be challenged through the sale management. Heifers that never calved are in no way guaranteed as to the condition of their udders following calving.

3) Breeding Warranty

The seller guarantees all animals to be breeders, but not beyond the purchase price, with the following understanding:

- a. Males - Should any bull after reaching the age of fourteen months fail to prove a breeder after being used for two months on cows or heifers known to be breeders, the matter shall be reported in writing to the seller within three months of the sale date. The report must include the animal's examination record, a written statement of treatment, and a statement of the animals' inability to breed,

by a licensed veterinarian. The seller has the option to refund the purchase price or make other settlement that is satisfactory to the buyer. In either case the rights of ownership of the animal return to the seller. The seller makes no guarantees with respect to the ability to freeze semen.

- b. Females - All females are guaranteed to be breeders with the exception of:
 1. Cows over 7 years of age when sold;
 2. Cows and/or heifers carrying a pregnancy that is the result of an embryo transfer.

Report of a non-breeder must occur in writing within 3 months of the date of sale or before the animal reaches 21 months of age and must be submitted to the seller. The report must include the animal's examination record, a written statement of treatment, and a statement of the animals' inability to breed, by a licensed veterinarian. The seller has the option to refund the purchase price or make other settlement that is satisfactory to the buyer. In either case the rights of ownership of the animal return to the seller.

Females bred when sold and pronounced in calf are presumed to be pregnant but pregnancy is not guaranteed unless so announced. The seller makes no warranty that pregnant cows will deliver calves or that they will carry calves full term.

- c. If, after the sale, embryos or oocytes are recovered from a female or an attempt is made to superovulate her, this negates the breeding warranty unless there is a separate written agreement between buyer and seller.

SHIPPING: Assistance will be given in arranging shipping of the animals after the sale. All costs, risks and responsibility will be borne by the purchaser.

PEDIGREE INFORMATION: All production, classification, type and production summaries are current. Only information recorded on Holstein Association USA pedigrees is used. Any production or classification records supplied by the seller or consignor will be properly identified as provided by owner. Records in progress are identified as such.

GENOMIC INFORMATION: If genomic information on the animal or embryo is available, it must be dated and disclosed at or before the time of sale.

EMBRYO TRANSFER: All registered animals that have resulted from embryo transfer are identified with one of the following suffixes in the name: ET, ETS (from split embryo), or ETN (from nuclear transfer). If unregistered, the appropriate technology will be identified. Donor dams are identified.

HEALTH WARRANTY: The seller will provide an official health certificate to the buyer for each animal showing the results of all health tests made in preparation for this sale as required by the state where the cattle reside. Other health tests completed for this sale will be disclosed.

ERRORS: The material in this catalog has been carefully edited. If any errors or omissions are discovered, they will be announced. Such announcements take precedence over that printed in this catalog.

ACCIDENT: The sale management, the consignors, and the owner of the grounds will not be responsible in any case for the condition of the grounds or the behavior of the animals and disclaim any liability in the event of personal accident or property loss.

LIMITATIONS OF WARRANTIES: Warranties contained herein, unless terminated earlier, will cease upon the resale of an animal.

LIVE INTERNET BIDDING AT www.cowbuyer.com



- View/bid online in Real Time
- Registration is required. Please register at least one (1) hour prior to sale time at www.cowbuyer.com
- High Speed Internet is required. Slower speed will not permit you to bid and keep pace in real time.
- Terms: Purchasing online constitutes a legal contract and promise for payment of purchases. All purchases must be paid within five (5) days of sale date and prior to load out or delivery of cattle purchased.
- Cowbuyer.com is a service provider and is not responsible for the activity or inactivity of any technology, internet connection at the sale site or connection and technology of the bidders.
- No APP required on mobile devices.

For questions or information, contact:

Aaron Ray Tompkins – 336/363-4639, atompkin@vt.edu



AUTUMN-PINE ALT CASSY-RED	51	CRESCENTMEAD SHENANIGAN-RED	32
BUDJON-VAIL HZ KACEY-RED-ET (EMBRYOS)	56	CRESCENTMEAD STELLA-RED	34
BUDJON-JK EVA LONGORIA-ET (EMBRYOS)	57	CRESCENTMEAD TADA-RED-ET	4
COURTLANE DR CHERRY-RED	58	CRESCENTMEAD TAILSPIN-RED	3
CRESCENTMEAD ABRACADABRA-ET	27	CRESCENTMEAD TEMPTRESS-RED	1
CRESCENTMEAD ACRAT LUNA-RED	50	CRESCENTMEAD TONKA-RED-ET	6
CRESCENTMEAD ALLEGRA-RED-ET	16	CRESCENTMEAD TRAVLER-RED-ET	9
CRESCENTMEAD ALLEGRO-RED	15	CRESCENTMEAD TRIFECTA-RED	2
CRESCENTMEAD AMBITION	26	CRESCENTMEAD TRIXIE-ET	7
CRESCENTMEAD ALTO-RED	17	CRESCENTMEAD TWILIGHT-RED-ET	8
CRESCENTMEAD CLAUDIA	53	DREAMFIX JELLY BEAN-RED	59
CRESCENTMEAD DAISY MAY-RED	44	HORSESHOE HILL NU CLAIRA	52
CRESCENTMEAD DBACK ALFY-RED	37	LEAWOOD SPICE GIRL-RED-ET (EMBRYOS)	55
CRESCENTMEAD DEALBREAKER-RED	48	MACLAND JULIET A-RED-ET	18
CRESCENTMEAD DENVR ADIOS-ET	28	MILKSOURCE ABT TESSA-RED-ET (EMBRYOS)	54
CRESCENTMEAD DIRTY HARY-RED	46	MILKSOURCE UN TILLY-RED-ET	5
CRESCENTMEAD DROP DEAD-RED	45	MS ANGEL DAKARI-RED	11
CRESCENTMEAD DUKIN DONUT-RED	43	MS CM LIMITLESS-RED	49
CRESCENTMEAD JUSTICE-RED	21	MS CM SWEETNESS-RED-ET	33
CRESCENTMEAD JUST JAZZY-RED	22	MS J-GALA ANLST DANICA-RED	12
CRESCENTMEAD LIBERTY-RED-ET	40	MS J-GALA HELLS ANGEL	14
CRESCENTMEAD LOUISE-RED-ET	39	MS LACYS ALIBI-RED-ET	42
CRESCENTMEAD L PENNY-RED-ET	41	MS LACYS LIMELIGHT-RED-ET	38
CRESCENTMEAD POWERDONUT-RED	47	MS REVIVES RAINBOW-RED-ET	29
CRESCENTMEAD RADISH-RED	24	MS THUNDERSTORM ELECTRA-ET	10
CRESCENTMEAD READY 4 IT-RED	36	NEHLS-VALLEY ARCH ANGEL	13
CRESCENTMEAD REGINA-RED	31	OCD AVA RHIANNA-RED-ET	2
CRESCENTMEAD RHUBARB-RED	25	SCENIC-EDGE JADENE-RED-ET	19
CRESCENTMEAD ROCCO-RED	30	SCENIC-EDGE JUNEBUG-RED	20
CRESCENTMEAD ROCKN IN-RED	35		

