



THE  
RALLY  
@  
RICHMOND

MAY 16<sup>TH</sup>-18<sup>TH</sup> 2023



# THE RALLY @ RICHMOND

MAY 16<sup>TH</sup> - 18<sup>TH</sup> 2023

**Online Bidding will open on Tuesday, May 16th at 6:00 pm MDT  
Lots will start to close on Thursday, May 18th at 5:00 pm MDT**

## **Sale Staff**

Andrew King.....360-981-3801  
Zach Damrow.....920-344-2065  
Sarah Damrow.....920-296-2835

**The auction will utilize an auto-extend, soft closing.**

**With this feature, the bidding will close up to two (2) lots at the same time starting with Lot 1 and working through the catalog. Once two (2) minutes have lapsed without any bidding activity, the bidding on those items will be closed. Then the next set of lots will close in the same manner until they receive no additional bids, until all lots have closed.**

Buyers utilizing Cowbuyer may pay by credit card. Buyer's fees of 4% apply.

Please contact Aaron Ray Tompkins for full details.

Invoices will be emailed and/or mailed immediately.

**ALL purchases must be settled within 5 business days of the sale payable to Richmond B&W.**

Make checks payable & send to:

Richmond B&W  
PO Box 102  
Richmond, UT 84333

Embryos sold on a per embryo basis times the number of embryos offered in the package unless otherwise noted.

Shipping arrangements or pickup of the embryos, including all expenses, are the buyer's responsibility.

**No embryos will be released before payment is made.**

**ONLINE BIDDING AVAILABLE THROUGH:**



**Katie Shultz**

717-543-7883

**Registration and approval prior to sale time is required!**

# The Rally @ Richmond 2023



**AIJA KING-DOC WICHITA-ET VG-88-CAN**  
2ND DAM OF LOT 1



**MS AIJA MIRAND MYLAND-ET VG-86**  
**MATERNAL SISTER TO DAM OF LOT 1**  
*1st Senior 2-Year-Old, Utah State Fair 2022*

## Lot 1

**ESKDALE DAIRY**  
1100 CIRCLE DR  
ESKDALE, UT 84728  
435-209-0002

### Siemers Exc Hanans 31753-ET

840 3143986722 \*TY \*TV  
PTA +241M +77F +36P 82R 4/23  
PTA +2.2PL 2.83SCS -2.5DPR 2.0%DCE  
PTA +3.69T +2.90UDC +2.30FLC 81R 4/23  
GTPI +2804G

### Ms AIJA Axl Missouri-ET

840 3214540464 Very Good-86 VVVVV @ 2-04  
GTPI +2648 +200M +50F +30P 83R 4/23  
PTA +3.24T +3.05UDC +1.78FLC 83R 4/23  
2-03 2x 238d 17930 4.8 859 3.7 662 RIP  
• Ten maternal brothers in AI including Mooi P & Wolfgang

### IVF SESSION FROM:

#### ESKDALE HANANS SHOWME-ET

840 3248309892 99%RHA \*TR \*TC A2/A2 BB  
Born: March 27, 2022  
GTPI +2865 +422M +93F +40P 79R 4/23  
PTA +553NM +.27%F +.09%P  
PTA +1.3PL 2.84SCS -2.9DPR 2.4%DCE  
PTA +4.02T +3.35UDC +2.15FLC 78R 4/23

#### Sandy-Valley KR Excalibur

840 3140616380 \*TY \*TV  
PTA +418M +89F +38P 99R 4/23  
PTA +2.58T +1.60UDC +1.61FLC GTPI +2680G

#### Siemers Doc Hanan 28286-ET

840 3144882798 Excellent-92 EEEEE GMD  
3-05 2x 365d 40320 4.3 1725 3.5 1429  
2-04 2x 320d 26890 4.4 1171 3.7 988

#### Peak Axl-ET

840 3145230125 \*TY \*TV A2A2 BB  
PTA +477M +51F +30P 95R 4/23  
PTA +2.78T +2.35UDC +1.07FLC GTPI +2512G

#### AIJA King-Doc Wichita-ET

CAN 13053962 VG-88-3YR-CAN EX-90-MS  
GTPI +2619G +557M +22F +36P 86R 4/23  
PTA +3.17T +3.08UDC +1.74FLC 81R 4/23  
3-08 2x 365d 36532 4.1 1488 3.5 1290  
2-01 2x 347d 29740 4.1 1232 3.7 1098

*\* Buyer is purchasing rights to control the next IVF session(s). Buyer is guaranteed IVF sessions until a minimum of 8 #1 or #2 IVF embryos are produced. Embryo grades are determined at the time of transfer if fresh embryos or at time of freezing if freezing is requested by buyer. Buyer keeps all resulting embryos from these controlled IVF sessions. Buyer is responsible for all costs of the aspiration and mating sire decision.*

#### 3rd Dam

**Westcoast Comand Wisconsin 3788 VG-86-CAN**  
2-00 2x 300d 24996 4.3 1085 3.6 895

#### 4th Dam

**View-Home Drman Wisconsin-ET VG-88-CAN 7\***  
2-02 2x 365d 27070 4.3 1151 3.8 1014

#### 5th Dam

**Pine-Tree 2149Robst 4846-ET VG-86 DOM 2\***  
2-04 3x 365d 32000 4.8 1520 3.4 1096

#### 6th Dam

**Pine-Tree Zenith Sheen VG-87 VG-MS DOM**  
1-11 3x 305d 24500 3.9 959 3.2 786

#### 7th Dam

**Pine-Tree Martha Sheen-ET VG-85 VG-MS**  
1-11 3x 365d 31210 4.2 1305 3.1 968

#### 8th Dam

**Wesswood-HC Rudy Missy-ET EX-92 3E DOM**  
4-11 3x 365d 40880 4.1 1665 3.2 1308  
Life: 1262d 119610 4.1 4885 3.2 3804  
*Next four dams VG or EX!*

# The Rally @ Richmond 2023



**PALMYRA M-O-M MANHATTAN-ET VG-85**  
5TH DAM OF LOT 2

## Lot 2

ESKDALE DAIRY  
1100 CIRCLE DR  
ESKDALE, UT 84728  
435-209-0002

### Aprilday McDonald-Red-P-ET

840 3201598569 \*PC \*TC  
PTA +275M +50F +19P 82R 4/23  
PTA +4.6PL 2.55SCS +.4DPR 2.1%DCE  
PTA +2.36T +2.77UDC +1.54FLC 81R 4/23  
GTPI +2718G

### Aprilday Luster Muffin-ET

840 3207031363 VG-85-2YR-CAN \*RC \*PP  
GTPI +2686 +828M +39F +27P +1.57T 4/23  
2-02 2 365d 28417 4.2 1199 3.2 922

### IVF SESSION FROM:

#### VALIANT MCDONALD POPPY-ET

840 3248309895 99%RHA \*RC \*PP  
GTPI +2700G +863M +48F +31P 79R 4/23  
PTA +640NM +.05% +.01%P  
PTA +4.8PL 2.72SCS +.7DPR 1.9%DCE  
PTA +2.03T +1.79UDC +1.48FLC 77R 4/23

#### Trent-Way-JS Ronald-ET

840 3142352034 Very Good-85 \*RC \*TP \*TY \*TV  
PTA +651M +21F +29P 98R 4/23  
PTA +1.64T +1.95UDC +1.30FLC GTPI +2618G

#### Aprilday Pat Monique-Red-ET

840 3146077263 Excellent-90  
4-01 3x 365d 36700 4.8 1753 3.4 1248  
2-09 3x 365d 36080 4.6 1664 3.3 1202

#### Cherry-Lily Zip Luster-P-ET

840 3138843085 GM 12/22 \*PC \*TC \*TY \*TV  
PTA +1600M +82F +50P 99R 4/23  
PTA +2.83T +2.22UDC +1.70FLC GTPI +2913G

#### Aprilday P Margarita-Red-ET

840 3145202024 Good Plus-83 @ 4-04 \*PP  
2-03 3x 333d 27410 4.4 1195 3.2 871  
3-10 3x 312d 21700 3.7 812 3.6 777

#### 3rd Dam

#### Aprilday Jax Martini-Red-ET VG-87 VEVVW \*PC

3-00 3x 305d 28830 4.2 1223 3.3 953  
Life: 1511d 141900 4.0 5628 3.2 4491

#### 4th Dam

#### Ms Cash Coin Margie-ET VG-85 \*RC

#### 5th thru 12th Dams

#### Palmyra M-O-M Manhattan-ET VG-85 \*RC

2-04 2x 365d 32440 4.2 1377 3.5 1124

#### Debaugh Rdman Manhattan-ET EX-91 \*RC

3-03 2x 365d 32120 4.7 1511 3.2 1038

Life: 1619d 106830 4.5 4842 3.5 3732

#### Sutton Outside Mango VG-87 VG-MS DOM

2-11 2x 365d 32460 4.3 1385 3.0 978

#### Sutton Gilbert Marie EX-90 VEVVE 2E

5-06 3x 365d 41910 3.4 1411 2.8 1158

Life: 2382d 223540 3.6 8105 2.9 6308

#### Sutton Jolt Lil May-ET VG-87 EVEVV

6-05 2x 365d 30340 4.0 1205 3.0 907

Life: 1866d 141060 4.2 5947 3.1 4331

#### Windsor-Manor Del May-ET EX-90 EX-MS 3E

5-02 2x 365d 30520 4.1 1246 2.9 889

#### Windsor-Manor Mandy May EX-91 VEEEE 3E

3-01 2x 365d 26020 3.8 978 3.1 810

Life: 2544d 164670 3.7 6165 3.0 4917

#### Savage-Leigh Sweet Melissa VG-86

8-05 2x 338d 23990 3.4 810 2.8 669

Life: 2756d 183230 3.3 5964 2.9 5279

# The Rally @ Richmond 2023



**AOT JARED HASKEL-ET VG-85**  
2ND DAM OF LOT 3

## Lot 3

DAVID AZEVEDO

### Hilmar Ac Brass-ET

840 3212704067 \*TY \*TV  
PTA +1776M +100F +69P 82R 4/23  
PTA +5.1PL 2.97SCS +.3DPR 2.1%DCE  
PTA +.78T +.69UDC +.64FLC 80R 4/23  
GTPI +3013G

### AOT Fastball Hello-ET

840 3214487394 Good Plus-82 VG-MS @ 2-07  
GTPI +2934 +1305M +86F +49P 83R 4/23  
PTA +5.4PL 2.90SCS +1.1DPR  
PTA +1.77T +1.77UC +.80FLC 84R 4/23  
PTA +273FE +1.5FI 2.0%DCE

### IVF SESSION FROM:

#### MS CRANEHILL BRASS 19691-ET

840 3240584429 99%RHA  
GTPI +3027G +1608M +114F +65P 79R 4/23  
PTA +1070NM +.18% +.05%P  
PTA +5.0PL 2.91SCS -.5DPR 2.6%DCE  
PTA +1.27T +.87UDC +.87FLC 78R 4/23

#### Pine-Tree Acura-ET

840 3142332520 GM 12/22 \*TY \*TV  
PTA +2076M +107F +74P 99R 4/23  
PTA +.78T +.87UDC +.67FLC GTPI +3016G

#### Hilmar Montoya 15057-ET

840 3199635883 Good Plus-83  
2-02 2x 365d 28170 4.7 1312 3.4 960  
3-06 2x 317d 27980 4.7 1314 3.4 942

#### Bomaz Fastball-ET

840 3150307024 \*TY \*TV  
PTA +2002M +70F +49P 96R 4/23  
PTA +.97T +1.57UDC +.78FLC GTPI +2803G

#### AOT Jared Haskel-ET

840 3147987747 Very Good-85 VG-MS @ 2-05  
3-11 3x 305d 37310 3.7 1399 3.6 1325  
2-11 3x 301d 33760 4.0 1366 3.4 1151  
2-00 3x 278d 26070 4.0 1054 3.4 893

#### 3rd Dam

**Cookiecutter Dta Habitan-ET** EX-90 EVVVE DOM  
2-04 3x 365d 36280 4.7 1706 3.3 1214

#### 4th Dam

**Cookiecutter Day Haley-ET** VG-88 VEVVE  
2-00 3x 365d 35140 3.9 1379 3.4 1192

#### 5th Dam

**Cookiecutter MOM Halo-ET** VG-88 VVEEE DOM  
2-00 3x 365d 35280 5.2 1819 3.5 1237

#### 6th Dam

**Cookiecutter Gold Holler-ET** VG-88 DOM  
2-03 2x 365d 40730 3.5 1410 3.1 1249

#### 7th Dam

**Ms Kings-Ransom Champ Haley-ET** EX-90 GMD  
3-11 3x 365d 43690 3.7 1625 3.1 1357

#### 8th Dam

**Regancrest-JDV Hanna-ET** EX-90 EVVVE  
4-07 2x 365d 45110 4.3 1922 3.2 1449

#### 9th thru 12th Dams

**Long-Haven Rudolph Dee-ET** EX-90 2E GMD  
2-11 2x 365d 32720 4.8 1565 3.8 1252

Life: 2193d 166900 4.3 7099 3.5 5884

**Regancrest Elton Disrael-ET** VG-88 EX-MS DOM  
2-04 2x 365d 33617 4.5 1499 3.5 1169

**Snow-N Denises Dellia** EX-95 2E GMD DOM

6-00 2x 365d 35230 4.0 1425 3.0 1049

Life: 2558d 180240 3.9 7108 3.2 5723

**Snow-N Dorys Denise** EX-90 2E GMD DOM

Life: 1604d 114010 3.6 4153 3.2 3649

# The Rally @ Richmond 2023



**NO-FLA STOIC ANNE 40873-ET VG-86**  
4TH DAM OF LOT 4



**WINSTAR ELVER 8889-ET**  
SELLS AS LOT 4

## Lot 4

**WINSTAR GENETICS LLC**  
1470 N 750 E  
SHELLEY, ID 83274  
208-681-6747

### Winstar Elver-P-ET

840 3214292547 \*PC \*TC \*TY \*TV  
PTA +338M +103F +41P 81R 4/23  
PTA +6.6PL 2.74SCS +1.3DPR 3.1%DCE  
PTA +.97T +.74UDC +.84FLC 79R 4/23  
GTPI +2947G

### Winstar Mendel 7739-P-ET

840 3224449705 \*PC  
GTPI +2913 +626M +105F +51P 79R 4/23  
PTA +1001NM +.28%F +.11%P  
PTA +4.6PL 2.83SCS +.2DPR 1.9%DCE  
PTA +.62T +1.13UDC +.11FLC 78R 4/23  
PTA +273FE +0.6FI 2.3%SCE

### WINSTAR ELVER 8889-ET

840 3252784849 99%RHA  
Born: August 5, 2022  
GTPI +3042 +282M +120F +47P 78R 4/23  
PTA +1105NM +.39%F +.14%P  
PTA +6.5PL 2.77SCS +.5DPR 3.1%DCE  
PTA +.91T +1.04UDC +.92FLC 76R 4/23  
+275FE +0.9FI 2.2%SCE

### Winstar Edge-P-ET

840 3201862783 \*PC \*TC \*TY \*TV  
PTA +115M +78F +26P 90R 4/23  
PTA +.30T +.55UDC -.24FLC GTPI +2616G

### Winstar Medley 1767-ET

840 3200122048 Very Good-85

### Winstar Mendel-P-ET

840 3208037185 \*PC \*TC \*TY \*TV  
PTA +824M +135F +49P 85R 4/23  
PTA +.76T +1.10UDC -.22FLC GTPI +2949G

### Winstar Crimson 1936

840 3200122217  
GTPI +2772 +1261M +97F +55P 82R 4/23  
PTA +.32T +.66UDC -.47FLC 80R 4.23

#### 3rd Dam

#### Seagull-Bay Annabelle-ET GP-84

1-11 3x 333d 24770 4.6 1128 3.4 850

#### 4th Dam

#### No-Fla Stoic Anne 40873-ET VG-86 VG-MS

3-05 3x 365d 31800 4.0 1277 3.4 1095

#### 5th Dam

#### No-Fla Spersire 36193-ET GP-83 VG-MS

5-01 3x 305d 34840 3.9 1365 3.3 1154

Life: 1663d 165440 3.9 6415 3.3 5463

#### 6th Dam

#### No-Fla Massey 30194-ET VG-85

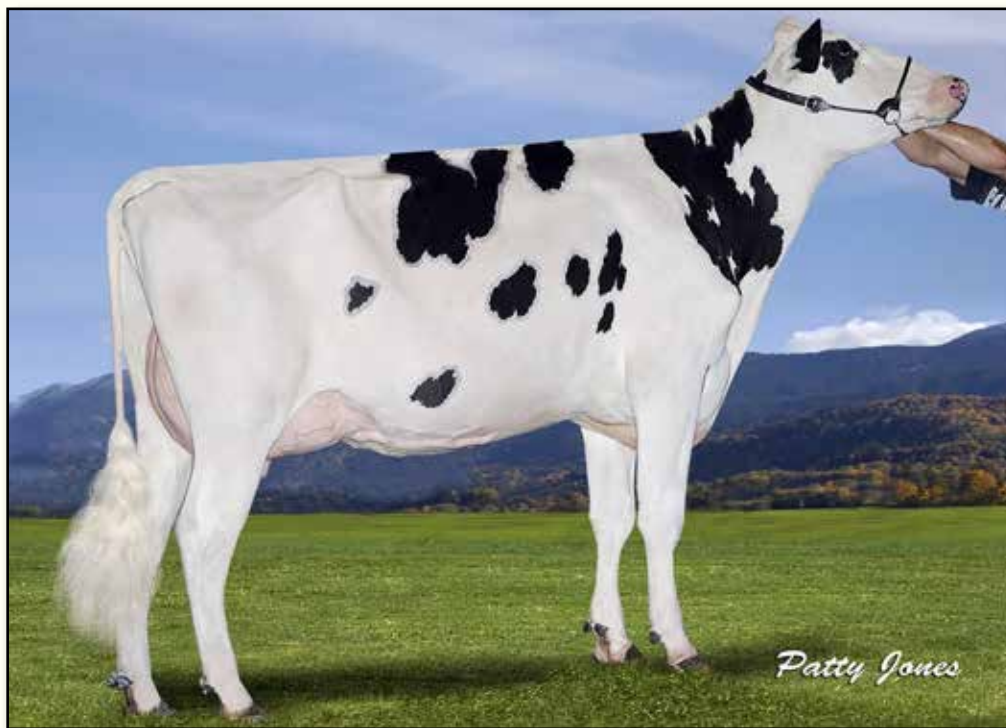
3-06 2x 305d 30810 3.6 1114 3.4 1043

#### 7th Dam

#### No-Fla Oman Liana 21974 VG-85 VG-MS

4-03 2x 305d 23300 4.7 1091 3.7 862

# The Rally @ Richmond 2023



**EDG CLAIRE CLING-ET VG-85-CAN**  
4TH DAM OF LOT 5

## Lot 5

**TERRA LINDA DAIRY & RASBERRY FUTURES**  
4433 AVE 232  
TULARE, CA 93274  
559-358-5345

### FEMALE

840 3266232124  
Born: April 28, 2023  
GTPI +2576 +475M +12F +24P 5/23  
PTA +3.71T +3.02UDC +1.46FLC 5/23  
PTA +1.7FI +5.1HCR

### Peak Hammer-ET

840 3212150483 \*TY \*TV  
PTA +1012M +15F +40P 81R 4/23  
PTA +1.3PL 2.80SCS -2.4DPR 2.2%DCE  
PTA +4.20T +2.97UDC +1.49FLC 80R 4/23  
GTPI +2517

### TerraLindaRF Cuddle-13024-ET

840 3228403372  
GTPI +2518 +379M +26F +11P 81R 4/23  
PTA +3.74T +2.94UDC +1.66FLC 81R 4/23

### Siemers Hanket-ET

840 3141495581  
PTA +36M -9F +17P 90R 4/23  
PTA +3.25T +274UDC +1.13FLC GTPI +2292

### Lorita Honeymoon

840 3136008676 Very Good-86 \*TY \*TV  
2-00 2x 365d 25240 3.6 910 3.5 891

### Siemers Doc Hancock

840 3144882821 \*TY \*TV A2A2  
PTA +1056M +49F +38P 99R 4/23  
PTA +3.59T +3.42UDC +2.32FLC GTPI +2722G

### TerraLindaRF Undn Cuddle-ET

840 3204988706 Excellent-90 EEVVE @ 3-07

### 3rd Dam

**Ms Cling Solomon Cuddle-ET GP-83 VG-MS**

### 4th Dam

**EDG Claire Cling-ET VG-85-CAN 8\***  
2-00 2x 365d 28929 4.7 1369 3.5 1003

### Dam of

**Maverick Crush @ St. Jacobs**

### 5th Dam

**Pine-Shelter Claire Wood-ET VG-87-CAN 4\***  
2-05 2x 365d 32390 4.2 1346 3.0 975

### 6th Dam

**Pine-Shelter Chelsy Sho-ET VG-86 DOM**  
2-00 2x 365d 32050 3.7 1175 3.2 1038

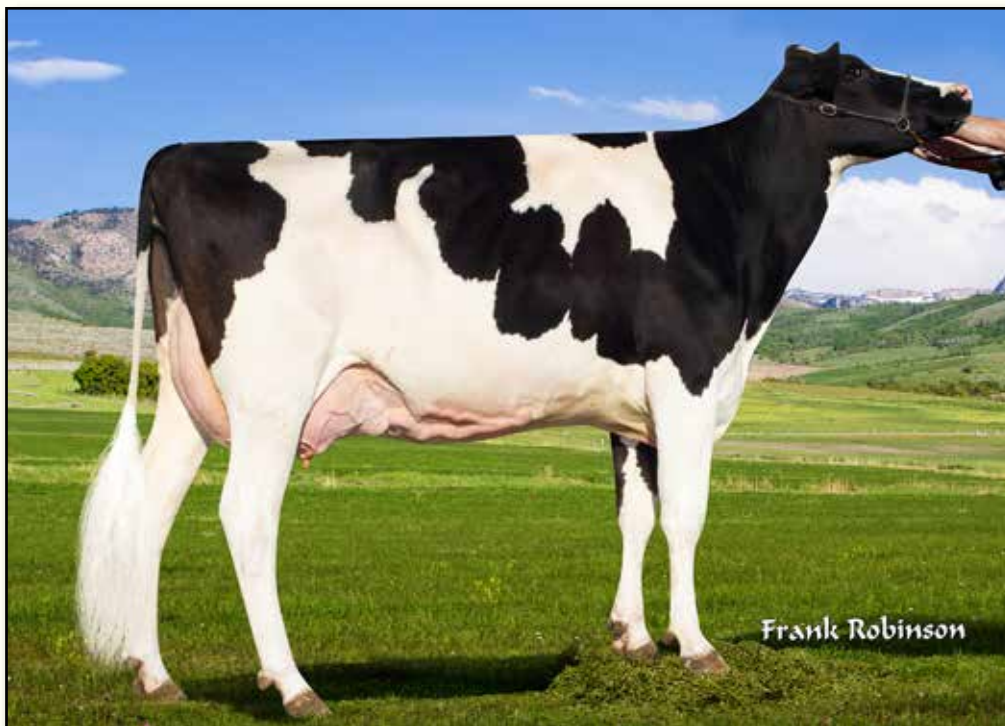
### 7th Dam

**Pine-Shelter Cheyenne EX-95 3E DOM**  
4-08 2x 365d 40820 3.4 1376 3.2 1314  
Life: 4 Lacs 151533 3.5 5341 3.2 4864

- All-American Senior 3-Year-Old 2003
- Grand Champion, World Dairy Expo 2013



# The Rally @ Richmond 2023



**ESKDALE SPLENDID ALMAH EX-90**  
2ND DAM OF LOT 6

## Lot 6

SNAKE RIVER DAIRIES

### Mr AIJA Mirand Mooi-ET

840 3204593849 \*RC \*PC \*TY \*TV  
PTA +994M +36F +30P 81R 4/23  
PTA +1.5PL 2.92SCS -1.6DPR 2.4%DCE  
PTA +3.42T +3.05UDC +1.06FLC 80R 4/23  
GTPI +2528

### Eskdale Luster Innocence-ET

840 3214540504 Very Good-88 EEVV @ 2-09 \*PC  
GTPI +2785 +1507M +67F +51P 81R 4/23  
PTA +3.12T +2.54UDC +1.31FLC 81R 4/23

Full brother to Innocence

**Eskdale Lustrous PP** +3.35T @ STgenetics

### ESKDALE MOOI 11398-ET

840 3266231534 99%RHA A2/A2 \*PP \*RC  
Born: January 3, 2023 Herd ID: 11398  
GTPI +2661 +1670M +69F +47P 79R 4/23  
PTA +3.05T +2.13UDC +1.07FLC 77R 4/23

### Coomboona Zipit Mirand-Imp-ET

AUS 1993596 \*PP  
PTA +776M +31F +13P 92R 4/23  
PTA +2.78T +2.46UDC +.38FLC GTPI +2386G

### AIJA King-Doc Wichita-ET

CAN 13053962 VG-88-3YR-CAN EX-90-MS  
3-08 2x 365d 36532 4.1 1488 3.5 1290  
2-01 2x 347d 29740 4.1 1232 3.7 1098

### Cherry-Lily Zip Luster-P-ET

840 3138843085 GM 12/22 \*PC \*TC \*TY \*TV  
PTA +1600M +82F +50P 99R 4/23  
PTA +2.83T +2.22UDC +1.70FLC GTPI +2913G

### Eskdale Splendid Almah

840 3139120139 Excellent-90 EEEVE @ 4-01  
GTPI +2514 +527M +62F +33P +3.64T 4/23  
2-00 2x 365d 28800 5.0 1436 3.9 1116  
3-10 2x 282d 28920 4.8 1469 3.5 1007 RIP

3rd Dam

### Eskdale McCutch Fraulein-ET EX-93 2E \*RC

5-05 2x 365d 36470 4.2 1546 3.5 1142  
Life: 1523d 135420 4.1 5552 3.6 4936

4th Dam

### Eskdale Destry Lady-ET EX-91 EEEVE \*RC

4-09 2x 365d 33830 3.7 1267 3.5 1195

5th Dam

### Eskdale Doozy-Red-ET EX-91 EEVEE 2E

5-02 2x 365d 35250 4.1 1451 3.7 1287  
Life: 1173d 102490 4.0 4092 3.6 3686

6th Dam

### Dyke Advent Lucy-Red-ET EX-93 EEEEE 2E

3-09 3x 334d 28530 3.7 1056 3.5 993

- Grand Champion, Idaho State Fair 2010
- Nom All-American R&W Sr 2-Year-Old 2008
- All-Utah Senior 2-Year-Old 2008

7th Dam

### Double-G Rubens Lindsay EX-94 EEEEE 4E \*RC

9-09 2x 365d 31240 4.5 1415 3.2 1013  
Life: 2405d 164151 4.3 7051 3.4 5596

8th Dam

### Crater Broker Lucky GP-83-CAN

3-11 2x 312d 20351 4.0 816 3.5 721

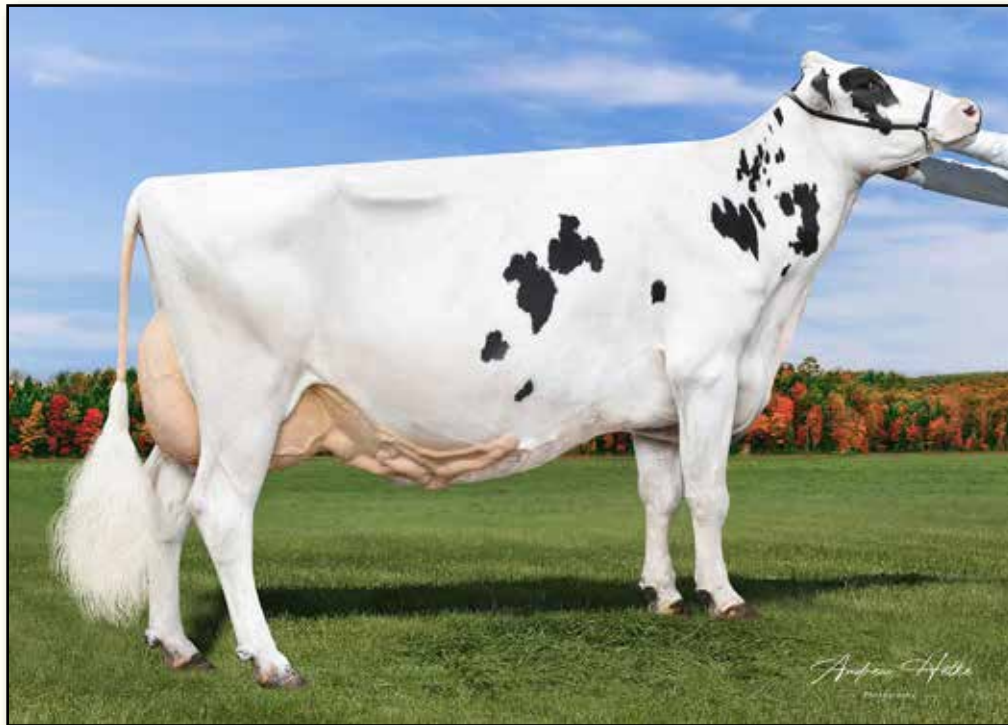
9th Dam

### Crater Lisette Astro VG-86-CAN

3-09 2x 365d 27456 4.2 1164 3.2 880

Next dam VG-86-CAN

# The Rally @ Richmond 2023



**MONUMENT DEFENDER JULIET-ET EX-93 2E**  
SELLS AS LOT 7

## Lot 7

DAVID AZEVEDO

### S-S-I Mogul Defender-ET

840003009554569 \*TR \*TP \*TY \*TV  
PTA -271M +5F +1P 99R 4/23  
PTA -2.9PL 3.03SCS -1.0DPR 2.0%DCE  
PTA +1.14T +1.59UDC +.79FLC 99R 4/23  
GTPI +1996G

### Monument Epic Julia-ET

72103055 Excellent-90 EEEV @ 6-04  
5-00 3x 365d 40730 3.9 1572 3.0 1225  
3-08 2x 365d 36960 4.1 1514 3.3 1228  
2-03 3x 365d 34230 4.0 1362 3.3 1114  
Life: 1446d 139610 4.0 5575 3.2 4467

### MONUMENT DEFENDER JULIET-ET

74320487 Excellent-93 EEEVE 2E  
13K GTPI +2239G +40M +30F +1P 84R 4/23  
PTA +1.99T +1.90UDC +.95FLC 84R 4/23  
4-09 3x 305d 32530 3.7 1197 3.4 1115  
5-09 3x 305d 31230 4.4 1361 3.5 1085  
3-01 3x 365d 28920 4.3 1256 3.4 989  
Life to date: 1928d 164970 4.2 6856 3.4 5575

### Mountfield SSI Dcy Mogul-ET

840 3006972816 Excellent-93 GM 8/15 \*TY \*TV  
PTA +460M +42F +14P 99R 4/22  
PTA +1.29T +2.09UDC +1.07FLC GTPI +2191G

### Regan-BB-ALH M Dannah-ET

66625308 Excellent-90  
2-00 3x 365d 31970 3.7 1178 3.3 1044  
3-05 3x 365d 29970 3.2 972 3.1 939

### Generations Epic-ET

CAN 11104016 Excellent-94 GM 12/14 \*TY \*TV  
PTA +763M +7F +19P 99R 4/23  
PTA +.92T +.38UDC +.75FLC GTPI +2170G

### Monument Colby Jade-ET

65765049 Excellent-92 EEVVE 2E  
6-10 3x 365d 44470 4.1 1818 3.3 1458  
4-05 3x 365d 40640 4.9 1975 3.2 1311  
2-02 3x 365d 41530 3.4 1397 3.2 1220  
Life: 2170d 212530 4.1 8783 3.3 7004

#### 3rd Dam

**River-Gorge Judy-ET EX-90 EX-MS DOM**  
2-01 3x 365d 36210 3.5 1272 3.3 1194  
Life: 1278d 123650 3.5 4328 3.1 3831

#### 4th Dam

**Deronda Durham Jessie VG-88 EX-MS DOM**  
2-03 2x 365d 31760 3.9 1236 3.3 1055

#### 5th Dam

**Wilcoxview Lee Jamie-ET EX-91 GMD DOM**  
5-05 2x 365d 52350 4.1 2168 3.9 2028

#### 6th Dam

**Wilcoxview Bellwood Jasmine VG-87 GMD DOM**  
1-11 2x 305d 23640 3.9 917 3.3 776

#### 7th Dam

**Wilcoxview Cinder Julie EX-91 EX-MS**  
3-05 2x 318d 25980 3.8 979 3.2 830

# The Rally @ Richmond 2023



**KHW REGIMENT APPLE-RED-ET EX-96 4E**  
**2ND DAM OF LOT 8**  
*All-American R&W 125,000 Lb Cow 2013*



**APPLE-PTS AUBRIA-RED-ET VG-87**  
**DAM OF LOT 8**  
*Junior All-American R&W Winter Yearling 2021*

## Lot 8

**RASBERRY FUTURES AND SNAKE RIVER DAIRY**  
 15188 S CAN ADA RD  
 MELBA, ID 83641

### FEMALE

Born: March, 2023

#### Mr Affection Analyst-Red-ET

840 3136496608 \*TY \*TV  
 PTA +48M -24F -20P 92R 4/23  
 PTA -.3PL 2.82SCS -1.5DPR 2.6%DCE  
 PTA +2.68T +2.19UDC +1.69FLC 85R 4/23  
 GTPI +1903G

#### Apple-Pts Aubria-Red-ET

840 3147207111 Very Good-87 VG-MS @ 3-02  
 2-01 3x 292d 17960 4.8 871 3.7 666

- Junior All-American R&W Winter Yearling 2021
- Junior Champion, CA Junior R&W State Show 2021
- Junior Champion, CA Junior B&W State Show 2021
- Res Junior Champion, CA R&W State Show 2021
- HM Junior Champion, CA B&W State Show 2021
- 1st Winter Calf, Western National R&W Show 2020

#### Riverdown Unstopabull-Red

CAN 11801450 \*TY \*TV  
 PTA -401M -23F -24P 99R 4/23  
 PTA +2.19T +2.15UDC +1.42FLC GTPI +1974G

#### Milksource Byway Affection

840 3138524450 Excellent-94 \*RC  
 4-05 2x 305d 39960 4.3 1737 2.8 1108  
 2-11 2x 305d 27680 4.1 1128 3.1 857

#### Mr Blondin Warrior-Red-ET

840 3139655530 99%RHA \*TY \*TV  
 PTA -843M -24F -18P 99R 4/23  
 PTA +2.90T +1.48UDC +1.28FLC GTPI +1748G

#### KHW Regiment Apple-Red-ET

135511521 Excellent-96 EEEEE 4E DOM 39\* \*CV  
 9-01 2x 365d 36750 4.3 1582 3.3 1211  
 4-01 2x 365d 35750 4.7 1682 3.7 1314  
 Life: 2898d 240640 4.7 11394 3.7 9013  
 • All-American R&W 125,000 Lb Cow 2013  
 • All-American R&W Aged Cow 2011  
 • Unanimous All-American Jr 2-Year-Old 2006

*Maternal sister to Aubria-Red*

#### Miss Apple Snapple-Red-ET EX-96 EEEEE 2E

4-02 2x 365d 38030 4.1 1547 3.7 1413  
 • All-American R&W 125,000 Lb Cow 2020  
 • Grand Champion, NA Open R&W Show 2020  
 • Reserve All-American 125,000 Lb Cow 2019  
 • All-American R&W 4-Year-Old 2017

*3rd Dam*

#### Kamps-Hollow Altitude-ET EX-95 2E DOM \*RC

7-00 2x 365d 39690 4.7 1849 3.5 1385  
 Life: 1844d 144460 4.4 6295 3.7 5288

*4th Dam*

#### Clover-Mist Alisha-ET EX-93 3E DOM

8-07 2x 365d 36920 4.2 1553 3.4 1258  
 Life: 2999d 226470 4.7 10659 3.6 8149

*5th Dam*

#### Clover-Mist Augy Star-ET EX-94 4E DOM

7-10 2x 365d 43140 5.0 2136 3.3 1421  
 Life: 2486d 206250 4.7 9793 3.5 7187

*6th thru 8th Dams*

#### D-R-A August EX-96 4E DOM

8-05 3x 365d 27460 4.3 1187 3.2 871  
 Life: 3443d 190200 4.4 8281 3.5 4818

- Nominated All-American Aged Cow 1986

#### D-R-A Ideal Precious Leader EX-90 2E

Life: 2456d 133250 4.0 5308

#### D-R-A Princess Lad Leader EX-90 3E

9-05 2x 305d 19160 4.2 809

# The Rally @ Richmond 2023



**SILDAHL-KH RISE-N-SHINE EX-92 2E**  
DAM OF LOT 9

## Lot 9

KARL & DONNA HALE  
32845 HWY 101 S  
CLOVERDALE, OR 97112  
503-812-2702

### Aprilday McDonald-Red-P-ET

840 3201598569 \*PC \*TC  
PTA +275M +50F +19P 82R 4/23  
PTA +4.6PL 2.55SCS +.4DPR 2.1%DCE  
PTA +2.36T +2.77UDC +1.54FLC 81R 4/23  
GTPI +2718G

### Sildahl-KH Rise-N-Shine

840 3143104615 Excellent-92 EEEEE 2E  
4-10 2x 365d 34870 3.3 1143 3.2 1123  
3-02 2x 365d 31350 3.2 991 3.2 997  
2-01 2x 365d 26950 3.5 945 3.3 883

## BUYER'S CHOICE OF TWO FEMALES

Due: October, 2023

### Trent-Way-JS Ronald-ET

840 3142352034 Very Good-85 \*RC \*TP \*TY \*TV  
PTA +651M +21F +29P 98R 4/23  
PTA +1.64T +1.95UDC +1.30FLC GTPI +2618G

### Aprilday Pat Monique-Red-ET

840 3146077263 Excellent-90  
4-01 3x 365d 36700 4.8 1753 3.4 1248  
2-09 3x 365d 36080 4.6 1664 3.3 1202

### Peak AltaMoreno-ET

840 3126779961 \*TY \*TV  
PTA +1445M +46F +50P 99R 4/23  
PTA +1.24T +1.40UDC +.27UDC GTPI +2428G

### Royleane-RH Tango Rass-ET

73635912 Excellent-92 EEEEE 2E  
4-06 2x 365d 29460 3.5 1044 3.2 947  
5-11 2x 365d 31230 3.1 983 3.3 1027  
3-06 2x 324d 25560 3.9 985 3.5 882

*3rd Dam*

**Golden-Rose Raspberry-ET** EX-91 EX-MS  
3-03 2x 267d 26230 4.3 1125 3.6 948

*4th Dam*

**Golden-Rose Atwood Ritzi** EX-93 2E GMD  
6-03 2x 305d 35670 4.1 1473 3.2 1125

*5th Dam*

**Oakfield Pronto Ritzi** EX-93 EEEEE  
3-01 2x 365d 36751 3.5 1285 3.1 1140

*6th Dam*

**Astrahoe Stormatic Radiant** EX-91 GMD  
5-02 3x 365d 49840 4.2 2087 2.7 1343  
Life: 1163d 130530 4.0 5182 3.0 3914

*7th Dam*

**Astrahoe LJ Rosa Rebel-ET** EX-92 EEV 2E  
7-05 2x 365d 48580 4.2 2021 3.0 1468  
Life: 1186d 110960 3.9 4326 3.2 3529

*8th thru 11th Dams*

**Pinehurst Royal Rose-ET** EX-91 EEEEE 2E  
3-10 3x 365d 41400 3.3 1358 3.0 1223  
Life: 1212d 115400 3.5 4073 3.1 3593

**Pinehurst Roulade** EX-92 EEEEE 2E  
5-00 3x 365d 35130 3.6 1271 3.2 1115  
Life: 1761d 142070 3.8 5395 3.3 4705

**Pinehurst Sweet Cleo** EX-90 EEVEV  
6-00 3x 365d 40380 4.4 1776 3.2 1305

**Pinehurst Sweet Freedom** EX-90 VEVE  
5-07 3x 330d 34520 4.3 1500 3.1 1084

*Next eight dams Excellent*

# The Rally @ Richmond 2023



**STRANS-JEN-D TEQUILA-RED-ET EX-96 2E**  
**DAM OF LOT 10**  
*All-American R&W 4-Year-Old 2015*



**MILKSOURCE TANTRUM-RED-ET EX-92**  
**MATERNAL SISTER TO LOT 10**  
*Reserve All-American R&W Senior 3-Year-Old 2022*

## Lot 10

### FIVE #1 EMBRYOS

SIEMERS HOLSTEIN FARMS INC.  
 14421 MINERAL SPRING RD  
 NEWTON, WI 53036  
 920-693-3671

#### Trent-Way-JS Rompen-Red-ET

840 3200914543 \*TY \*TV  
 PTA +1575M +45F +43P 82R 4/23  
 PTA +3.1PL 2.82SCS -1.8DPR 1.6%DCE  
 PTA +2.32T +2.36UDC +1.16FLC 81R 4/23  
 GTPI +2681G

#### Strans-Jen-D Tequila-Red-ET

141024338 Excellent-96 EEEEE 2E  
 6-04 2x 365d 32840 4.3 1428 3.4 1116  
 4-10 2x 293d 27840 4.4 1231 3.0 842  
 2-05 2x 365d 24550 4.7 1145 3.4 831  
 3-09 2x 306d 23990 4.4 1048 3.3 793  
 Life: 1512d 118510 4.5 5327 3.4 3991

#### Peak AltaAltuve-ET

840 3138499077 \*RC \*TV \*TV  
 PTA +1851M +80F +637P 97R 4/23  
 PTA +1.80T +.73UDC +.84FLC GTPI +2792G

#### Trent-Way-JS Redgirl-Red-ET

840 3142352061 Very Good-88  
 3-01 2x 365d 32130 4.1 1330 3.4 1087  
 2-00 2x 316d 23520 4.4 1043 3.3 784

#### Scientific Director-Red

138551069 Excellent-90 TV TL TD  
 PTA -2046M -27F -40P 97R 4/23  
 PTA +1.03T +.54UDC +.11FLC GTPI +1582G

#### Jen-D Devil Tiffany-Red-ET

62918023 Excellent-95 EEEEE 3E  
 8-07 2x 365d 36170 4.3 1546 3.0 1082  
 6-06 2x 365d 36140 4.1 1472 3.3 1196  
 Life: 2282d 189780 4.2 8060 3.1 5867

*Maternal sisters to embryos*

#### Milksource Tantrum-Red-ET EX-92 EEEEE

• *Reserve All-American R&W Sr 3-Year-Old 2022*

#### Milksource Torrent-Red-ET VG-87

• *HM All-American R&W Summer Jr 2-Yr-Old 2022*

#### Milksource Thunder-Red-ET VG-88

• *Supreme Champion Heifer, WDE 2019*

• *Junior Champion, International R&W Show 2019*

#### Milksource Taelyn-ET

• *Reserve Supreme Champion Heifer, WDE 2018*

• *Junior Champion, International Holstein Show 2018*

#### TEQUILA!

- *Res All-American R&W Aged Cow 2017*
- *Res All-American R&W 5-Year-Old 2016*
- *Unan All-American R&W 4-Year-Old 2015*
- *Grand Champion International R&W Show 2015*
- *Unan All-American R&W Sr 3-Year-Old 2014*
- *Nom All-American B&W Sr 3-Year-Old 2014*
- *Grand Champion International R&W Show 2014*
- *Res All-American R&W Sr 2-Year-Old 2013*

#### TIFFANY!

- *Seven time R&W All-American Nominee!*
- *Nom All-American R&W 125,000LB Cow 2015*
- *Nom All-American R&W Aged Cow 2014*
- *Nom All-American R&W 5-Year-Old 2012*
- *Nom All-American R&W 4-Year-Old 2011*
- *Nom All-American R&W Sr 2-Year-Old 2009*

# The Rally @ Richmond 2023



**SIEMERS AWESOME GREAT-RED EX-93 2E**  
**DAM OF LOT 11**

*Nominated All-American R&W Senior 3-Year-Old 2019*



**SIEMERS GREAT 31589-RED-ET EX-92**  
**MATERNAL SISTER TO LOT 11**

*Nomi All-American R&W Summer Junior 2-Year-Old 2021*

## Lot 11

**SIEMERS HOLSTEIN FARMS INC.**  
14421 MINERAL SPRING RD  
NEWTON, WI 53036  
920-693-3671

### TWO #1 EMBRYOS AND THREE #2 EMBRYOS

*Maternal sister to embryos:*

#### **Siemers Great 31589-Red-ET EX-92**

- *Nom All-American R&W Summer Jr 2-Yr-Old 2021*
- *5th Summer Jr 2-Yr-Old, International R&W 2021*

#### **Defnt Great!**

- *All-American R&W Winter Yearling 2015*
- *Un All-American R&W Winter Calf 2014*
- *Res All-American Winter Calf 2014*
- *Jr Champ International R&W Show 2014*
- *1st Winter Calf North-East Fall National 2014*

#### **Mr Blondin Warrior-Red-ET**

840 3139655530 99%RHA \*TY \*TV  
PTA -843M -24F -18P 99R 4/23  
PTA -2.9PL 2.94SCS -2.3DPR 3.1%DCE  
PTA +2.90T +1.48UDC +1.28FLC 98R 4/23  
GTPI +1748G

#### **Siemers Awesome Great-Red**

840 3132662762 Excellent-93 EEEEE 2E  
5-03 2x 365d 37630 2.5 955 3.1 1164  
3-02 2x 365d 38480 2.5 961 2.8 1082  
2-01 3x 338d 31780 3.0 949 3.0 947  
Life: 1344d 125660 2.8 3461 3.1 3940  
• *Nom All-American R&W Senior 3-Year-Old 2019*  
• *Un All-American R&W Senior 2-Year-Old 2018*  
• *1st Senior 2-Yr-Old International R&W Show 2018*

#### **Dymenthom Mr App Avalanche-TW**

CAN 11957107 \*RC \*CV \*TL \*TY \*TD  
PTA -301M -8F -8P 99R 4/23  
PTA +3.64T +2.70UDC +2.04FLC GTPI +1940G

#### **Triplecrown-JW Door Wisp-ET**

840 3128860372 VG-85-CAN  
3-03 2x 365d 35587 4.0 1424 3.5 1246  
2-01 2x 310d 17068 4.0 688 3.5 589

#### **Luck-E Awesome-Red**

72186769 \*CV \*TV \*TY \*TL \*TD  
PTA -1632M -53F -51P 99R 4/23  
PTA +2.02T +2.78UDC +.69FLC GTPI +1466G

#### **Siemers Defnt Great-Red-ET**

840 3013844312 Excellent-92 EEEEE TL TD  
3-01 2x 362d 41770 3.3 1360 3.2 1346  
2-00 2x 344d 27540 3.8 1053 3.1 856  
4-04 2x 218d 23190 2.9 680 3.2 741

#### *3rd thru 8th Dams*

#### **Benrise Royce Gretchen-Red EX-93 EEEEE**

2-01 2x 291d 18865 3.7 694 3.4 650  
• *HM All-American R&W Jr 3-Year-Old 2012*

#### **Deslacs September Great VG-85-CAN**

4-09 2x 365d 26301 4.1 1085 3.1 818

#### **Lesperron Red Man Great-Red EX-92-2E-CAN 2\***

5-01 2x 365d 31596 3.8 1199 3.2 1001

Life: 4 Lacs 121985 3.7 4559 3.5 4215

- *1st Junior 3-Yr-Old RAWF R&W Show 2008*

- *1st Junior 3-Yr-Old QC International R&W 2008*

#### **Granduc Grace Mason EX-CAN 7\***

3-11 2x 365d 53283 3.6 1925 3.2 1693

Life: 3 Lacs 161308 3.5 5580 3.2 5216

#### **Granduc Jewel Astre VG-85-CAN 13\***

4-00 2x 365d 46230 4.0 1850 3.3 1510

#### **Cloverlands Skylar Cherry-Red VG-87-CAN 12\***

4-09 2x 365d 51634 3.9 2000 3.1 1585

Life: 3 Lacs 135993 3.7 5011 3.1 4217

# The Rally @ Richmond 2023



**ROCKLAN-ZBW M PARIS-RED-ET EX-94**  
**DAM OF LOT 12**

*Nominated All-American R&W Senior 3-Year-Old 2020*



**MS-SRP ABSOLUTE PRO-RED-ET EX-93**  
**2ND DAM OF LOT 12**

*Unanimous All-American R&W 4-Year-Old 2014*

## Lot 12

### FIVE #1 EMBRYOS

**RED VIOLET GENETICS, ZIEMBA & HEINSOHN**  
 34695 KIRKLAND RD  
 KIRKLAND, IL 60146  
 815-979-5314

#### **Mr Blondin Warrior-Red-ET**

840 3139655530 99%RHA \*TY \*TV  
 PTA -843M -24F -18P 99R 4/23  
 PTA -2.9PL 2.94SCS -2.3DPR 3.1%DCE  
 PTA +2.90T +1.48UDC +1.28FLC 98R 4/23  
 GTPI +1748G

#### **Rocklan-ZBW M Paris-Red-ET**

840 3126362604 Excellent-94 EEEEE @ 5-00  
 4-03 2x 305d 29350 3.6 1043 3.3 976

- *Nom All-American R&W Senior 3-Year-Old 2020*
- *1st Sr 3-Year-Old, Northeast All-Breeds R&W 2020*
- *Nom All-American R&W Winter Yearling 2018*
- *All-American R&W Winter Calf 2017*

#### **Dymenthalm Mr App Avalanche-TW**

CAN 11957107 \*RC \*CV \*TL \*TY \*TD  
 PTA -301M -8F -8P 99R 4/23  
 PTA +3.64T +2.70UDC +2.04FLC GTPI +1940G

#### **Triplecrown-JW Door Wisp-ET**

840 3128860372 VG-85-CAN  
 3-03 2x 365d 35587 4.0 1424 3.5 1246  
 2-01 2x 310d 17068 4.0 688 3.5 589

#### **Air-Osa-Mle Malone-Red-ET**

71304165 Very Good-86 \*TY \*TV \*TL \*TD  
 PTA -710M -42F -8P 99R 4/22  
 PTA +1.16T +.30UDC +.60FLC GTPI +1610G

#### **Ms-SRP Absolute Pro-Red-ET**

69517435 Excellent-93 EEEEE @ 5-02  
 3-11 2x 365d 30030 4.4 1322 3.4 1035  
 2-03 2x 311d 16989 4.2 721 3.8 639

- *Unanimous All-American R&W 4-Year-Old 2014*
- *Reserve Grand Champion, RAWF R&W Show 2014*
- *Res Int Champion, RAWF R&W Show 2012*

#### *3rd Dam*

#### **Pineland Advent Paddie**

#### *4th Dam*

#### **Wilson-Dale Cousteau Pat-ET EX-92 EEEEE 2E**

6-10 2x 365d 34460 3.5 1203 3.2 1111  
 Life: 1910d 145630 3.6 5173 3.2 4677

#### *5th Dam*

#### **Wilsondale Storm Prism-ET EX-93 EEEEE 2E**

4-10 2x 365d 31680 3.5 1104 3.1 985

#### *6th Dam*

#### **L-Juniper Bstar Pretzel-ET EX-91 VEEEE 3E**

8-01 2x 365d 29530 3.3 961 3.3 930  
 Life: 2153d 124234 3.5 4371 3.5 4340

#### *7th Dam*

#### **Eric-Dew Conductor Peggy EX-94 4E GMD DOM**

9-03 2x 365d 37130 4.1 1517 3.2 1173  
 Life: 2543d 185600 4.1 7557 3.2 4204

#### *8th Dam*

#### **Eric-Dew Archie Bell EX-90 GMD DOM**

6-10 2x 352d 33310 3.5 1165  
 Life: 1599d 130800 3.5 4544

# The Rally @ Richmond 2023



**MS ROLL-N-VIEW ALTHEA-RED-ET EX-94 2E  
DAM OF LOT 13**

*Nominated All-American R&W Junior 2-Yr-Old Cow 2015*

## Lot 13

**SMITH, ZIEMBA & HEINSOHN**  
W7465 CTY RD Q  
WATERTOWN, WI 53098  
920-988-2443

### Hodglynn Maximum-Red

CAN 14156509  
PTA +55M +5F -5P 82R 4/23  
PTA +.7PL 2.89SCS -1.4DPR 3.0%DCE  
PTA +2.12T +1.94UDC +1.18FLC 80R 4/23  
GTPI +2081G

### Ms Roll-N-View Althea-Red-ET

72193370 Excellent-94 EEEEE 2E \*PC \*TV  
6-01 2x 365d 42180 4.7 1986 3.0 1272  
7-10 2x 365d 34040 4.4 1507 3.3 1140  
3-02 2x 351d 28580 4.0 1148 3.2 912  
Life: 2390d 191200 4.5 8511 3.4 6515

- *Nom All-American R&W Junior 2-Year-Old 2015*
- *1st Jr 2-Year-Old, Midwest R&W Fall/Nat 2015*
- *Dam of Ammo-P at St Jacobs*

## THREE #1 EMBRYOS

### Farnear Altitude-Red-ET

840 3128013348 \*TY \*TV  
PTA +283M +16F +18P 99R 4/23  
PTA +3.14T +2.65UDC +1.44FLC GTPI +2245G

### Blondin RD Unstopabull Maple-Red

CAN 13273809 Excellent-94  
1-09 2x 343d 26374 3.8 1010 2.9 763  
• *All-Canadian Senior 3-Year-Old 2022*

### Lirr Special EffectP-Red-ET

70504985 \*PO \*TY \*TV  
PTA -1184M +1F -19P 98R 4/23  
PTA -.36T +.77UDC +.17FLC GTPI +2026G

### Ms Apples Alexis

140532308 Very Good-87 VG-MS @ 2-11 \*RC  
2-03 2x 365d 31010 4.9 1518 3.5 1090

### Apple!

- *Res All-American R&W 125,000 Lb Cow 2014*
- *Unanimous All-American R&W 125,000 Lb 2013*
- *Res Grand Champion International R&W 2013*
- *Unanimous All-American R&W Aged Cow 2011*
- *Grand Champion International R&W Show 2011*
- *World Champion R&W Cow Holstein Int'l 2010*
- *Res Grand Champion R&W RAWF 2009*
- *Res All-Canadian R&W 5-Yr-Old Cow 2009*
- *Nom All-American 5-Yr-Old Cow 2009*
- *HHM All-American Jr 3-Yr-Old Cow 2007*
- *Unanimous All-American Jr 2-Yr-Old Cow 2006*

### 3rd thru 9th Dams

#### KHW Regiment Apple-Red-ET EX-96 4E DOM

Life: 2898d 240640 4.7 11394 3.7 9013

#### Kamps-Hollow Altitude-ET EX-95 2E DOM RC CV

7-00 2x 365d 39690 4.7 1849 3.5 1385

Life: 1844d 144460 4.4 6295 3.7 5288

#### Clover-Mist Alisha-ET EX-93 3E DOM

Life: 2999d 226470 4.7 10659 3.6 8149

#### Clover-Mist Augy Star-ET EX-94 4E DOM

Life: 2486d 206250 4.7 9793 3.5 7187

#### D-R-A August EX-96 4E DOM

Life: 3443d 190200 4.4 8281 3.5 4818

- *Nominated All-American Aged Cow 1986*

#### D-R-A Ideal Precious Leader EX-90 2E

Life: 2456d 133250 4.0 5308

#### D-R-A Princess Lad Leader EX-90 3E



# The Rally @ Richmond 2023



**MS RASBERRY TROPIC 1070-ET VG-87 EX-MS**  
DAM OF LOTS 14 & 15

## Lot 14

**FIVE #1 IVF EMBRYOS**

1070 SYNDICATE

### **Townlineacre Legendairy-ET**

840 3245704322 A2A2 \*TY \*TV  
PTA +702M +53F +32P 79R 4/23  
PTA +2.8PL 3.02SCS +.5DPR 2.2%DCE  
PTA +3.47T +2.67UDC +1.52FLC 79R 4/23  
GTPI +2721G

### **Ms Rasberry Tropic 1070-ET**

840 3210696248 Very Good-87 EX-MS @ 2-09  
GTPI +2670G +968M +50F +45P 83R 4/23  
PTA +3.45T +2.49UDC +1.29FLC 82R 4/23  
• Son at St Jacobs is +3.08T +1.7DPR GTPI +2858

## Lot 15

**FOUR #1 IVF EMBRYOS**

### **AOT Homecoming-ET**

840 3210341497 A2A2 BB \*TY  
PTA +772M +72F +39P 83R 4/23  
PTA +2.85T +2.61UDC +.36FLC GTPI +2820G

### **Townlineacre King Doc Lena**

840 3214266550 Excellent-92  
1-10 2x 308d 23380 3.9 901 3.1 727

### **Peak Tropic-ET**

840 3145229820 Very Good-85 \*TY \*TV  
PTA +453M +60F +36P 99R 4/23  
PTA +2.59T +2.00UDC +1.68FLC GTPI +2628G

### **GDR-Kings Doc 29358-ET**

840 3147036280  
GTPI +2480 +1096M +33F +41P 81R 4/23  
PTA +3.37T +2.11UDC +1.21FLC 81R 4/23  
• Reserve Junior Champion, OR State Show 2019  
• All-Oregon Spring Yearling 2019

*3rd Dam*

**GDR-Kings Montry 50468-ET** EX-90 EEEV  
3-08 2x 365d 28660 3.3 954 3.3 944

*4th Dam*

**Roylane-KH 5G Rece-ET** VG-87 VVVV  
2-04 2x 365d 24610 5.1 1267 3.9 953

*5th Dam*

**Golden-Rose Raspberry-ET** EX-91 EX-MS  
3-03 2x 267d 26230 4.3 1125 3.6 948

*6th Dam*

**Golden-Rose Atwood Ritzi** EX-93 2E GMD  
6-03 2x 305d 35670 4.1 1473 3.2 1125

*7th thru 11th Dams*

**Oakfield Pronto Ritzi** EX-93 EEEEE  
3-01 2x 365d 36751 3.5 1285 3.1 1140

**Astrahoe Stormatic Radiant** EX-91 GMD  
5-02 3x 365d 49840 4.2 2087 2.7 1343

Life: 1163d 130530 4.0 5182 3.0 3914

**Astrahoe LJ Rosa Rebel-ET** EX-92 EEEVV 2E  
7-05 2x 365d 48580 4.2 2021 3.0 1468

Life: 1186d 110960 3.9 4326 3.2 3529

**Pinehurst Royal Rose-ET** EX-91 EEEEE 2E  
3-10 3x 365d 41400 3.3 1358 3.0 1223

Life: 1212d 115400 3.5 4073 3.1 3593

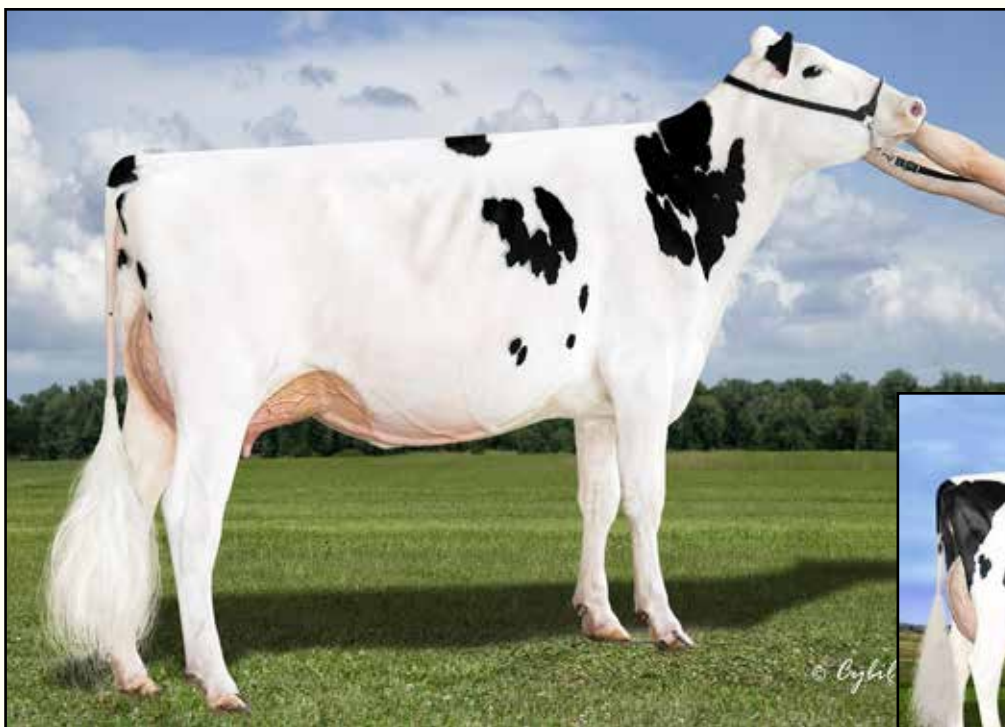
**Pinehurst Roulade** EX-92 EEEEE 2E

5-00 3x 365d 35130 3.6 1271 3.2 1115

Life: 1761d 142070 3.8 5395 3.3 4705

*Next ten dams Excellent!*

# The Rally @ Richmond 2023



**ROSEDALE PLAY HARD TO GET EX-93 2E**  
DAM OF LOT 16



**ROSEDALE ISNTSHELOVEABLE-ET EX-90-CAN**  
2ND DAM OF LOT 16

## Lot 16

### SIX #1 EMBRYOS

**DANIEL OLSON**  
6653 FREDRICKSON RD  
LENA, WI 54139  
920-676-2516

#### **Hodglynn Maximum-Red**

CAN 14156509  
PTA +55M +5F -5P 82R 4/23  
PTA +.7PL 2.89SCS -1.4DPR 3.0%DCE  
PTA +2.12T +1.94UDC +1.18FLC 80R 4/23  
GTPI +2081G

#### **Rosedale Play Hard To Get**

840 3013486862 Excellent-93 EEEEE 2E \*RC  
4-11 2x 365d 27770 4.8 1327 3.4 953  
3-01 2x 365d 26060 5.5 1422 3.7 953  
1-11 2x 365d 19460 4.8 925 3.7 724  
• 2nd Junior 3-Year-Old, Midwest Sprng Nat'l 2018

#### **Farnear Altitude-Red-ET**

840 3128013348 \*TY \*TV  
PTA +283M +16F +18P 99R 4/23  
PTA +3.14T +2.65UDC +1.44FLC GTPI +2245G

#### **Blondin RD Unstopabull Maple-Red**

CAN 13273809 Excellent-94  
1-09 2x 343d 26374 3.8 1010 2.9 763  
• All-Canadian Senior 3-Year-Old 2022

#### **Val-Bisson Doorman-ET**

CAN 107281711 EX-90-CAN ST'16 \*TV \*TY  
PTA -475M +13F +9P 99R 12/22  
PTA +2.47T +1.60UDC +.68FLC GTPI +2142G

#### **Rosedale IsntSheLoveable-ET**

71580666 EX-90-CAN  
3-11 2x 365d 42163 3.9 1627 3.3 1396  
2-03 2x 328d 28370 3.8 1077 3.3 929  
Life: 3 Lacs 161097 3.8 6197 3.5 5600

#### *3rd Dam*

#### **Rosedale Lexington-ET EX-95 EEEEE 2E**

4-11 2x 365d 42780 4.6 1973 3.0 1289  
• All-American 5-Year-Old 2013  
• Reserve All-American Junior 3-Year-Old 2011  
• Reserve All-American Junior 2-Year-Old 2010

#### *4th Dam*

#### **Rosedale Lexi-ET VG-89 EEEVE**

2-02 2x 365d 26800 5.1 1356 2.9 787  
• Res Int Champion, Midwest Spring Nat'l 2007  
• All-Wisconsin Junior 2-Year-Old 2006  
• HM All-American Spring Yearling 2005

#### *5th Dam*

#### **Rosedale Lea-Ann-ET EX-93 2E GMD \*RC**

4-08 2x 365d 39370 3.4 1325 3.1 1201  
• 1st Junior 3-Year-Old, Midwest Spring Nat'l 1998

#### *6th Dam*

#### **Stokey Elm Park Blackrose-ET EX-96 3E GMD**

5-03 2x 365d 42230 4.6 1939 3.4 1432  
Life: 1609d 149880 4.4 6621 3.3 4940

• All-American Junior 3 Year Old 1993  
• All-American Junior 2-Year-Old 1992

#### *7th Dam*

#### **Nandette TT Speckle-Red-ET EX-93 DOM**

4-08 2x 365d 25290 4.7 1195  
• All-American REW 1981 & 1984

# The Rally @ Richmond 2023



**LYLEHAVEN ATW LYLLY-ET EX-95 3E**  
**DAM OF LOT 17**

*1st Aged Cow, Northeast Fall National 2016*



**LYLEHAVEN FORM LAURA-ET EX-94 3E**  
**MATERNAL SISTER TO DAM OF LOT 17**

*HHM All-American 4-Year-Old 2003*

## Lot 17

**BROOKE CLARK**  
**PO BOX 34**  
**CORNISH, NH 03746**  
**603-469-3560**

### Hodglynx Maximum-Red

CAN 14156509  
 PTA +55M +5F -5P 82R 4/23  
 PTA +.7PL 2.89SCS -1.4DPR 3.0%DCE  
 PTA +2.12T +1.94UDC +1.18FLC 80R 4/23  
 GTPI +2081G

### Lylehaven Atwood Lylly-ET

68655585 Excellent-95 EEEEE 3E  
 5-11 2x 365d 41280 4.4 1831 3.4 1412  
 8-00 2x 365d 37190 4.5 1683 3.5 1291  
 4-04 2x 365d 32570 4.5 1461 3.6 1159  
 3-03 2x 358d 26020 4.9 1262 3.6 926  
 Life: 2042d 181820 4.6 8420 3.6 6477  
 • *1st Aged Cow, Northeast Fall National 2016*

### FIVE #1 EMBRYOS

• Embryos made with sexed semen

### Farnear Altitude-Red-ET

840 3128013348 \*TY \*TV  
 PTA +283M +16F +18P 99R 4/23  
 PTA +3.14T +2.65UDC +1.44FLC GTPI +2245G

### Blondin RD Unstopabull Maple-Red

CAN 13273809 Excellent-94  
 1-09 2x 343d 26374 3.8 1010 2.9 763  
 • *All-Canadian Senior 3-Year-Old 2022*

### Maple-Downs-I G W Atwood-ET

CAN 8956379 Excellent-90 \*TR \*TV \*TL \*TY \*TD  
 PTA -324M +11F -8P 99R 4/23  
 PTA +2.92T +1.90UDC +2.08FLC GTPI +1911G

### Thiersant Lili Starbuck-ET

CAN 6332629 Excellent-94 EEEVE 5E 6\*  
 9-00 2x 365d 30910 4.5 1385 3.3 1023  
 8-00 2x 365d 29810 4.9 1453 3.4 1000  
 5-00 2x 358d 30190 4.6 1387 3.2 979  
 Life: 8 Lacs 238804 4.7 11288 3.4 8124

*Maternal sisters to Atwood Lylly*

### Lylehaven Form Laura-ET EX-94 3E GMD DOM

8-08 2x 365d 39320 3.9 1529 3.1 1218  
 Life: 2267d 195690 4.0 7731 3.1 6015

- *HHM All-American 4-Year-Old 2003*
- *Reserve All-Canadian Junior 3-Year-Old 2002*

### Lylehaven Lthy Lunet-ET EX-93 EEEEE 3E

5-10 2x 305d 23550 4.2 988 3.2 765

### Lylehaven Lassie-ET EX-94 4E

### Lylehaven Damion Lynx-ET EX-94

### Lylehaven Leah-ET EX-91 2E 2\*

6-08 2x 365d 46480 3.8 1764 3.1 1429  
 Life: 3 Lacs 147651 3.9 5703 3.3 4808

### Hanoverhill Starbuck

CAN 352790 EX-CAN EXTRA'85 \*TV  
 PTA -2308M -61F -59P 99R 4/23  
 PTA -1.79T -3.20UDC -.22FLC GTPI +1062G

### Ivyhall Astro Jet Ronie

CAN 4623897 VG-86-CAN 1\*  
 5-04 2x 305d 18472 4.2 769 3.3 613  
 7-05 2x 305d 17447 4.3 756 3.2 562  
 10-7 2x 265d 17811 4.0 710 3.2 575

# The Rally @ Richmond 2023



**ROYLANE-RH TANGO RASS-ET EX-92 2E**  
DAM OF LOT 18



**GOLDEN-ROSE RASBERRY-ET EX-91**  
2ND DAM OF LOT 18

## Lot 18

**CRAIG HARRIS**  
300 N HIGHWAY 91  
RICHMOND, UT 84333  
435-258-4574

### FIVE #1 EMBRYOS

#### Farnear Delta-Lambda-ET

840 3125993715 GM 12/20 \*TY \*TV  
PTA +1238M +48F +46P 99R 4/23  
PTA +4.8PL 2.77SCS -.2DPR 2.3%DCE  
PTA +2.66T +2.87UDC +.83FLC 99R 4/23  
GTPI +2701G

#### Roylane-RH Tango Rass-ET

73635912 Excellent-92 EEEEE 2E  
4-06 2x 365d 29460 3.5 1044 3.2 947  
5-11 2x 365d 31230 3.1 983 3.3 1027  
3-06 2x 324d 25560 3.9 985 3.5 882  
2-05 2x 328d 22810 4.2 957 3.5 787  
Life: 1539d 116130 3.6 4192 3.3 3882

#### Mr Mogul Delta 1427-ET

72128216 GM 8/20 \*TY \*TV  
PTA +883M +56F +32P 99R 4/23  
PTA +1.13T +1.77UDC +.40FLC GTPI +2622G

#### EDG Lorette Uno 2198-ET

72437745 Excellent-91 2E  
4-02 2x 330d 31660 4.1 1289 3.6 1128  
Life: 1540d 131380 3.9 5183 3.6 4699

#### Mr Welcome Hill Tango-ET

70750485 \*TY \*TV A2A2  
PTA +1181M +32F +28P 99R 4/23  
PTA +.73T +.40UDC -.10FLC GTPI +2249G

#### Golden-Rose Raspberry-ET

71806484 Excellent-91 EX-MS @ 3-11  
3-03 2x 267d 26230 4.3 1125 3.6 948  
2-02 2x 365d 21710 4.8 1042 3.8 833

#### 3rd Dam

**Golden-Rose Atwood Ritzi EX-93 2E GMD**  
6-03 2x 305d 35670 4.1 1473 3.2 1125

#### 4th Dam

**Oakfield Pronto Ritzi EX-93 EEEEE**  
3-01 2x 365d 36751 3.5 1285 3.1 1140

#### 5th Dam

**Astrahoe Stormatic Radiant EX-91 GMD**  
5-02 3x 365d 49840 4.2 2087 2.7 1343  
Life: 1163d 130530 4.0 5182 3.0 3914

#### 6th Dam

**Astrahoe LJ Rosa Rebel-ET EX-92 EEEVV 2E**  
7-05 2x 365d 48580 4.2 2021 3.0 1468  
Life: 1186d 110960 3.9 4326 3.2 3529

#### 7th Dam

**Pinehurst Royal Rose-ET EX-91 EEEEE 2E**  
3-10 3x 365d 41400 3.3 1358 3.0 1223  
Life: 1212d 115400 3.5 4073 3.1 3593

#### 8th thru 11th Dams

**Pinehurst Roulade EX-92 EEEEE 2E**  
5-00 3x 365d 35130 3.6 1271 3.2 1115  
Life: 1761d 142070 3.8 5395 3.3 4705

**Pinehurst Sweet Cleo EX-90 EEEVV**  
6-00 3x 365d 40380 4.4 1776 3.2 1305

**Pinehurst Sweet Freedom EX-90 VEVE**  
5-07 3x 330d 34520 4.3 1500 3.1 1084

**Pinehurst Sweet Delite EX-91 3E GMD**  
Life: 2228d 151600 4.0 6116 3.2 4907

*Next seven dams Excellent*

# The Rally @ Richmond 2023



**PAULO-BRO-SP-FJ SHAR-RED-ET EX-92 2E**  
DAM OF LOT 19



**PAULO-BRO-SP SHAR-RED-ET EX-94**  
SAME FAMILY AS LOT 19

*HM All-American R&W 125,000 Lb Cow 2015*

## Lot 19

LANTZ ADAMS & MITCHELL WESER  
PO BOX 714  
LATON, CA 93242

### FIVE #1 EMBRYOS

#### Farnear Altitude-Red-ET

840 3128013348 \*TY \*TV  
PTA +283M +16F +18P 99R 4/23  
PTA -5PL 2.96SCS -2.6DPR 2.9%DCE  
PTA +3.14T +2.65UDC +1.44FLC 98R 4/23  
GTPI +2245G

#### Paulo-Bro-SP-FJ Shar-Red

143069627 Excellent-92 EEEEE 2E  
4-08 2x 347d 23770 4.3 1030 3.5 829  
2-08 2x 308d 22070 4.0 887 3.3 739  
5-09 2x 310d 21850 3.8 820 3.3 725  
3-09 2x 288d 20660 4.2 864 3.6 752  
Life: 1957d 123610 4.0 4940 3.4 4261

#### Dymenthalm Mr App Avalanche-TW

CAN 11957107 \*RC \*CV \*TL \*TY \*TD  
PTA -301M -8F -8P 99R 4/23  
PTA +3.64T +2.70UDC +2.04FLC GTPI +1940G

#### Triplecrown-JW Door Wisp-ET

840 3128860372 VG-85-CAN  
3-03 2x 365d 35587 4.0 1424 3.5 1246  
2-01 2x 310d 17068 4.0 688 3.5 589

#### Lookout P Redburst-Red-ET

CAN 106030980 \*TV \*TL \*TY \*TD  
PTA -162M -11F +3P 99R 4/23  
PTA +1.39T +1.27UDC +.88FLC GTPI +2156G

#### Paulo-Bro-SP Sharita-ET

140121434 Very Good-88 EX-MS @ 3-04  
3-00 2x 365d 28540 3.7 1042 3.2 923  
2-00 2x 324d 22520 3.8 858 3.2 724  
4-02 3x 303d 16220 4.0 650 3.4 549

*Same family as Paulo-Bro-SP-FJ Shar-Red*

#### Paulo-Bro-SP Shar-Red-ET EX-94 EEEEE

- *HM All-American R&W 125,000 Lb Cow 2015*
- *All-Wisconsin R&W Aged Cow 2015*
- *Reserve All-American R&W 5-Year-Old 2014*
- *Reserve All-Canadian R&W Junior Cow 2012*
- *Nom All-American R&W Jr 3-Year-Old 2012*

#### Paulo-Bro-SP Shari-Red-ET EX-94 EEEEE 3E

6-06 2x 342d 39010 3.4 1309 3.2 1230  
Life: 2423d 215690 3.7 7887 3.3 7043

- *Grand Champion, CA Spring R&W Show 2014*
- *Grand Champion, Western Nat'l R&W Show 2014*
- *1st 5-Year-Old, Western Spring National 2014*

*3rd thru 7th Dams*

#### Budjon Redmarker Shar-ET EX-94 EEEEE

4-03 2x 365d 30040 3.7 1118 3.2 958

- *Reserve All-Wisconsin 4-Year-Old 2007*
- *Member All-Wisconsin Produce of Dam 2007*

#### Budjon Encore Sharlene EX-93 EEEEE 2E

2-07 2x 365d 31420 3.5 1100 3.3 1051

#### Budjon Beautician Suzette EX-94 EEEEE 2E

7-05 2x 365d 23400 4.1 961 2.9 678

Life: 1900d 114930 4.1 4647 3.1 3586

#### Budjon Mark Sue EX-91 VEEE

6-04 2x 338d 21080 4.1 867 3.0 632

- *Res Junior All-Wisconsin 5-Year-Old 1992*

#### Budjon Chairman Susan VG-87 EX-MS DOM

6-11 2x 356d 26190 3.5 928 3.0 776

Life: 2059d 132950 3.6 4727 3.1 4059

# The Rally @ Richmond 2023



**MEAD-MANOR DEF ADELINE-RED EX-94 2E**  
**3RD DAM OF LOT 20**

*All-American R&W Junior 3-Year-Old 2019*

## Lot 20

**DANIEL OLSON**  
 6653 FREDRICKSON RD  
 LENA, WI 54139  
 920-676-2516

### FIVE #1 EMBRYOS

#### Golden-Oaks Tango-Red-ET

840 3209185764 A2A2 \*TY  
 PTA -425M +30F +0P 82R 4/23  
 PTA -.9PL 2.97SCS -2.6DPR 3.4%DCE  
 PTA +4.22T +3.06UDC +1.95FLC 80R 4/23  
 GTPI +2249G

#### Mead-Manor War Admiral-Red

145169417 Very Good-87 VVVVV @ 2-08  
 1-11 3x 133d 11360 3.1 356 3.1 357

#### Farnear Altitude-Red-ET

840 3128013348 \*TY \*TV  
 PTA +283M +16F +18P 99R 4/23  
 PTA +3.14T +2.65UDC +1.44FLC GTPI +2245G

#### Golden-Oaks Tease-Red-ET

840 3147994236 Very Good-86  
 2-03 3x 365d 27080 4.5 1206 3.4 920  
 3-07 3x 305d 26350 4.6 1205 3.4 907

#### Mr Blondin Warrior-Red-ET

840 3139655530 99%RHA \*TY \*TV  
 PTA -843M -24F -18P 99R 4/23  
 PTA +2.90T +1.48UDC +1.28FLC GTPI +1748G

#### Mead-Manor Sol Adoration

144778094 Excellent-91 EEVVE @ 3-03 \*RC  
 3-00 3x 318d 27500 4.0 1105 3.3 921  
 2-00 3x 282d 22750 4.2 959 3.4 779

#### ADELINE!

- Reserve All-American R&W 4-Year-Old 2020
- All-American R&W Junior 3-Year-Old 2019
- Junior All-American R&W Jr 3-Year-Old 2019
- Supreme Champion, WDE Junior Show 2019
- All-American R&W Junior 2-Year-Old 2018
- Junior All-American R&W Jr 2-Year-Old 2018

#### 3rd Dam

#### Mead-Manor Def Adeline-Red EX-94 EEEVE 2E

4-02 3x 305d 31520 4.0 1264 3.4 1069  
 Life: 1440d 129060 4.0 5206 3.4 4378

#### 4th Dam

#### Mead-Manor Abs Adele-ET VG-85 \*RC

2-03 3x 305d 22550 4.2 939 3.4 770

#### 5th Dam

#### BVK Atwood Abilene-ET EX-93 EEEEE 2E

5-10 3x 365d 39510 3.9 1537 3.0 1191  
 Life: 1265d 112400 3.9 4390 3.2 3582

#### 6th Dam

#### Ms Kingstead Chief Adeen-ET EX-94 2E DOM 11\*

3-05 2x 310d 30180 4.0 1209 3.6 1077

- Nom All-American Junior 3-Year-Old 2000
- Nom All-American 4-Year-Old 2001

#### 7th Dam

#### C Aitkenbrae Starbuck Ada EX-94 2E DOM 4\*

13-8 2x 365d 25150 3.0 764 3.4 843

Life: 6 Lact 137732 3.4 4749 3.4 4647

- All-American Produce of Dam 2000, 2001
- All-American 3-Year-Old 1990

# The Rally @ Richmond 2023



**DE LA PLAINE REMINGTON WING-ET EX-92 2E**  
DAM OF LOT 21



**OLD-N-LAZY GENTLE WIPEOUT EX-93 2E**  
MATERNAL SISTER TO LOT 21  
*All-American Junior 3-Year-Old 2019*

## Lot 21

ZACH & DANIELLE DAMROW  
8989 W POCATELLO CREEK RD  
POCATELLO, ID 83201  
920-344-2065

### FOUR #1 IVF EMBRYOS

By Mutually Agreeable Sire

#### Mutually Agreeable Sire

#### De La Plaine Remington Wing-ET

100618695 5-01 EX-92 2E  
4-11 3x 322d 28290 4.5 1274 3.3 934  
3-06 3x 318d 18950 4.9 931 3.6 674

• 2nd Junior 3-Year-Old, Southern National 2014

#### Mapleburn Remington-ET

CAN 10316238  
PTA -782M -47F -19P 92R 4/23  
PTA +.60T 88R 4/23

#### Forever Schoon Ping

CAN 9591001 EX-95 5E-CAN 5\*  
8-03 2x 365d 27007 4.6 1246 3.5 935  
Life: 2163d 140157 4.5 6345 3.6 5042

• All-Canadian 5-Year-Old 2013  
• All-American Senior 3-Year-Old 2011  
• Reserve All-American Senior 2-Year-Old 2010

*Maternal sisters to embryos*

#### Old-N-Lazy Gentle Wipeout EX-93 2E

3-04 2x 321d 26280 3.8 995 3.2 830

- HM All-American 5-Year-Old 2021
- Res All-American 4-Year-Old 2020
- All-American Junior 3-Year-Old 2019
- Res All-American Junior 2-Year-Old 2018
- Junior Champion WDE & Royal Winter Fair 2017

#### P&A Mack-El's Freebeer Welcome EX-92

- Nominated All-American Junior 3-Year-Old 2018
- Nominated All-American Junior 2-Year-Old 2017

#### Old-N-Lazy Gentleman Whammy VG-87

- Unanimous All-American Fall Yearling 2018
- Reserve All-American Fall Calf 2017

#### Ms B MY Fling

- Reserve All-American Fall Calf 2015

*3rd Dam*

#### Forever Schoon Pretty EX-93 2E-CAN 10\*

6-07 2x 365d 26026 4.6 1206 3.4 884

- Grand Champion, IDS 2008

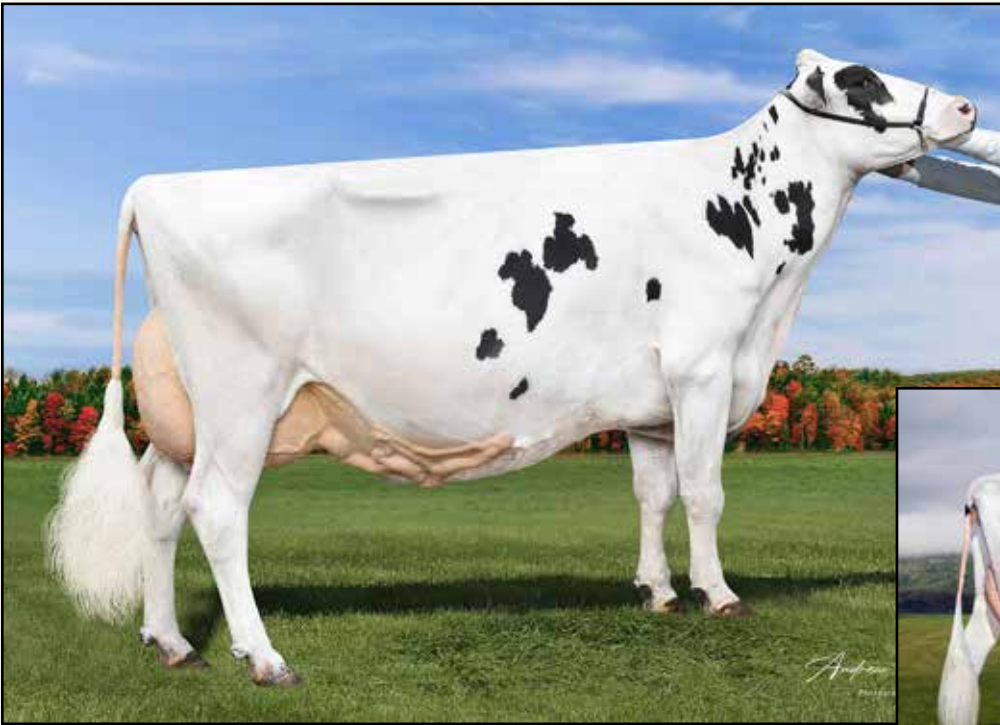
*4th Dam*

#### Forever Schoon BK Porsha-ET EX-90-CAN 7\*

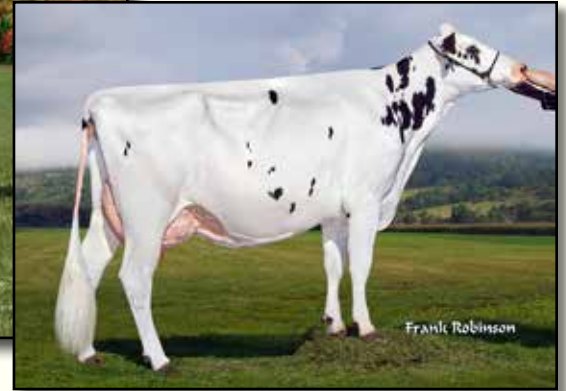
7-00 2x 305d 22932 5.3 1210 3.2 743

- Nom All-Canadian Intermediate Yearling 2002

# The Rally @ Richmond 2023



**MONUMENT DEFENDER JULIET-ET EX-93 2E**  
DAM OF LOTS 23 THRU 27



**MONUMENT EPIC JULIA-ET EX-90**  
2ND DAM OF LOTS 23 THRU 27

## Lot 23

### FIVE #1 EMBRYOS

Sire: Farnear Altitudo-Red-ET

## Lot 26

### FIVE #1 EMBRYOS

Sire: Townlineacre Legendairy-ET

DAVID AZEVEDO

#### Monument Defender Juliet-ET

74320487 Excellent-93 EEEEE 2E  
13K GTPI +2239G +40M +30F +1P 84R 4/23  
PTA +1.99T +1.90UDC +.95FLC 84R 4/23  
4-09 3x 305d 32530 3.7 1197 3.4 1115  
5-09 3x 305d 31230 4.4 1361 3.5 1085  
3-01 3x 365d 28920 4.3 1256 3.4 989  
Life to date: 1928d 164970 4.2 6856 3.4 5575

## Lot 24

### SIX #1 EMBRYOS

Sire: Bert-Mar B Atlantis-Red-ET

## Lot 27

### FIVE #1 EMBRYOS

Sire: Mr Blondin Warrior-Red-ET

#### S-S-I Mogul Defender-ET

840003009554569 \*TR \*TP \*TY \*TV  
PTA -271M +5F +1P 99R 4/23  
PTA +1.14T +1.59UDC +.79FLC GTPI +1996G

#### Monument Epic Julia-ET

72103055 Excellent-90 EEEEV @ 6-04  
5-00 3x 365d 40730 3.9 1572 3.0 1225  
3-08 2x 365d 36960 4.1 1514 3.3 1228  
2-03 3x 365d 34230 4.0 1362 3.3 1114  
Life: 1446d 139610 4.0 5575 3.2 4467

## Lot 25

### SIX #1 EMBRYOS

Sire: Bert-Mar B Atlantis-Red-ET

*3rd Dam*

#### Monument Colby Jade-ET EX-92 EEVVE 2E

6-10 3x 365d 44470 4.1 1818 3.3 1458  
Life: 2170d 212530 4.1 8783 3.3 7004

*4th Dam*

#### River-Gorge Judy-ET EX-90 EX-MS DOM

2-01 3x 365d 36210 3.5 1272 3.3 1194  
Life: 1278d 123650 3.5 4328 3.1 3831

*5th Dam*

#### Deronda Durham Jessie VG-88 EX-MS DOM

2-03 2x 365d 31760 3.9 1236 3.3 1055

*6th Dam*

#### Wilcoxview Lee Jamie-ET EX-91 GMD DOM

5-05 2x 365d 52350 4.1 2168 3.9 2028

*7th Dam*

#### Wilcoxview Bellwood Jasmine VG-87 GMD DOM

1-11 2x 305d 23640 3.9 917 3.3 776

*8th Dam*

#### Wilcoxview Cinder Julie EX-91 EX-MS

3-05 2x 318d 25980 3.8 979 3.2 830



# The Rally @ Richmond 2023



**BILLINGS IMPRESSION OF BOO BOO EX-92%**  
**DAM OF LOT 28**

*All-American Junior 2-Year-Old 2017*



**BILLINGS IMPRESSION BACKSTAGE-ET EX-93%**  
**FULL SISTER TO DAM OF LOT 28**

*All-American Junior 3-Year-Old 2018*

## Lot 28

**JOHNATHAN HEINSOHN**  
34695 KIRKLAND RD  
KIRKLAND, IL 60146  
815-979-5314

### FOUR #1 CHROME EMBRYOS TWO #1 ASKN EMBRYOS

#### River Valley Cece Choice

840 3133234718 JHIF JNSF 200JE10027  
CDCB 4/23 GPTA 98%R +11M +11F +1P  
AJCA 4/23 GPTAT 97%R +2.0 GJPI 94%R +26

#### Billings Impression of Booboo-ET

840 3129015884 4-04 EX-92%  
4-02 2x 305d 23380 4.9 1142 3.5 824  
3-00 2x 305d 22120 4.5 986 3.6 800  
1-11 2x 305d 16320 4.6 748 3.7 599  
• ABA All-American Junior 2-Year-Old 2017

#### Brookbora Valentino ASKN

AUS 666936  
CDCB 4/23 GPTA 68%R +518M +33F +26P  
AJCA 4/23 GPTAT 78%R +0.6 GJPI 66%R +136

#### Rock Ella Impression-ET

CAN 11227649 250JE3285  
CDCB 4/23 GPTA 98%R -1705M -74F -61P  
AJCA 4/23 GPTAT 98%R +0.6 GJPI 95%R -132

#### Billings LS Boo Boo

113916001 11-08 EX-93%  
5-10 2x 305d 19750 5.1 1009 3.6 716  
7-06 2x 305d 20100 4.8 957 3.6 725  
10-9 2x 305d 17090 5.0 848 3.8 649

*Maternal sisters to Impression of Booboo*

#### Billings Sultan Bryce EX-95%

8-02 2x 305d 19880 4.6 911 3.6 711

#### Billings Impression Backstage-ET EX-93%

4-09 3x 298d 20910 6.2 1287 3.6 763

• 1st 4-Year-Old, CA State Jersey Show 2019

• All-American Junior 3-Year-Old 2018

#### Billings Jade Bryant EX-92%

4-02 2x 305d 20260 5.3 1082 3.9 786

*3rd Dam*

#### Billings Berretta Breezy EX-92%

5-10 2x 305d 17180 5.4 935 3.9 671

*4th Dam*

#### Breezy Hill Lester Brew EX-91%

5-02 2x 305d 13750 5.3 723 4.1 569

*5th Dam*

#### Breezy Hill Royal Brandy VG-85%

*6th Dam*

#### Breezy Hill Royalist Bright {6} EX-90%

*7th Dam*

#### Breezy Hill Fascinator Brilliant {5} VG-88%

