



# BUYERS CHOICE OF LOT 1AG OR LOT 1BG

## Lot 1AG

FARIA BROTHERS DAIRIES  
5601 FM 281  
DUMAS, TX 79029-7023

### Forest Glen Jiggy Jalapeno-ET

67650510 JH1F JNSF A2A2 551JE1829  
CDCB 4/23 GPTA 78%R +1073M +56F +53P  
AJCA 4/23 GPTAT 80%R +0.8 GJPI 76%R +139

### FB Thrasher 692054-ET

840 3224804130 JH1F JNSF  
CDCB 4/23 PTA 81%R +1634M +65F +67P  
AJCA PTAT 79%R +1.1 GJUI 7.0 GJPI 77%R +170

### FB JALAPENO 822207-ET

840 3255808078 JH1F JNSF  
Born: July 9, 2022 AMID: 822207  
CDCB 4/23 PTA 74%R +1339M +65F +57P  
+878CM\$ +866NM\$ +7.1PL 2.87SCS  
AJCA PTAT 77%R +1.6 GJUI +14.6 GJPI 72%R +178

- +178 JPI
- +878 CM\$
- +14.6 JUI
- #3 CM\$ JALAPENO IN THE BREED

### JX Kash-In Got Jiggy {6}-ET

840 3138463636 JH1F JNSF A2A2 551JE1717  
CDCB 4/23 GPTA 99%R +1242M +79F +58P  
AJCA 4/23 GPTAT 99%R +0.6 GJPI 96%R +127

### Forest Glen Listowel Jules

67784110 VG-82%  
2-10 2x 299d 20290 4.1 831 3.4 697  
3-09 2x 305d 19200 4.4 841 3.7 704

### JX CDF JLS Pilgrim Thrasher {6}-ET

840 3006436075 JH1F JNSF A2A2 7E1758  
CDCB 4/23 GPTA 99%R +1999M +83F +77P  
AJCA 4/23 GPTAT 98%R +0.8 GJPI 94%R +198

### JX Faria Brothers Zinc 491630 {6}-ET

840 3205659870  
CDCB 4/23 PTA 83%R +622M +46F +36P  
AJCA PTAT 79%R +0.7 GJUI 8.5 GJPI 78%R +113

#### 3rd Dam

**JX Faria Brothers Calvin 306933 {5}** VG-87%  
3-10 2x 305d 20730 5.1 1048 3.9 799

#### 4th Dam

**JX Faria Brothers Hulk 229849 {4}** VG-85%  
4-09 2x 289d 25200 5.5 1382 3.9 986

#### 5th Dam

**JX Faria Brothers Valentino 203272 {3}** VG-86  
3-06 3x 305d 22660 5.0 1137 3.7 844

## Lot 1BG

FARIA BROTHERS DAIRIES  
5601 FM 281  
DUMAS, TX 79029-7023

### Sexing Jig Viktor-ET

840 3146621465 JH1F JNSF A2A2 551JE1862  
CDCB 4/23 GPTA 77%R +909M +77F +53P  
AJCA 4/23 GPTAT 80%R +1.2 GJPI 75%R +142

### FB Thrasher 674523 {5}-ET

840 3219853911 JH1F JNSF  
CDCB 4/23 PTA 79%R +2470M +70F +74P  
AJCA PTAT 79%R +0.7 GJUI 1.4 GJPI 75%R +189

### JX FB VIKTOR 840071 {6}-ET

840 3257922942 JH1F JNSF  
Born: October 16, 2022 AMID: 840071  
CDCB 4/23 PTA 73%R +1288M +68F +59P  
+813CM\$ +797NM\$ +5.9PL 2.78SCS  
AJCA PTAT 77%R +0.8 GJUI +6.0 GJPI 71%R +176

- +176 JPI
- +813 CM\$
- +1288 MILK
- #1 JPI VIKTOR IN THE BREED

### JX Kash-In Got Jiggy {6}-ET

840 3138463636 JH1F JNSF A2A2 551JE1717  
CDCB 4/23 GPTA 99%R +1242M +79F +58P  
AJCA 4/23 GPTAT 99%R +0.6 GJPI 96%R +176

### JX Sexing 82650 {6}-ET

840 3132356484 VG-80%  
1-09 3x 305d 15380 4.8 732 4.0 618

### JX CDF JLS Pilgrim Thrasher {6}-ET

840 3006436075 JH1F JNSF A2A2 7E1758  
CDCB 4/23 GPTA 99%R +1999M +83F +77P  
AJCA 4/23 GPTAT 98%R +0.8 GJPI 94%R +198

### JX Faria Brothers Fournette 416214 {4}-ET

840 3151361457  
CDCB 4/23 PTA 89%R +1769M +62F +56P  
AJCA PTAT 79%R +0.4 GJUI -0.6 GJPI 83%R +135

#### 3rd Dam

**JX Faria Brothers Harris Juventus {5}** VG-87%  
4-10 2x 305d 26180 4.8 1260 3.7 969



# Lot 2G

WICKSTROM JERSEY FARMS INC  
5638 COLUMBUS AVE  
HILMAR, CA 95324  
209-495-7398 BRENT WICKSTROM

## IVF SESSION FROM:

### JX DUPAT GOALS 25893 {6}-P

840 3252216315 JH1F JNSF  
Born: June 2, 2022  
CDCB 4/23 PTA 74%R +1188M +56F +46P  
+780CM\$ +770NM\$ +7.4PL +1.8DPR  
AJCA PTAT 77%R +1.2 GJUI +6.4 GJPI 71%R +173

- +173 JPI
- +1.8 DPR
- + #2 JPI GOALS-P IN THE BREED

*\* Buyer is purchasing rights to control the next IVF session(s). Buyer is guaranteed IVF sessions until a minimum of 8 #1 or #2 IVF embryos are produced. Embryo grades are determined at the time of transfer if fresh embryos or at time of freezing if freezing is requested by buyer. Buyer keeps all resulting embryos from these controlled IVF sessions. Buyer is responsible for all costs of the aspiration and mating sire decision.*

### JX Jer-Z-Boyz SSI Goals {5}-P-ET

173862773 JH1F JNSF A2A2 507JE1899  
CDCB 4/23 GPTA 78%R +856M +33F +31P  
AJCA 4/23 GPTAT 80%R +0.8 GJPI 75%R +129

### JX Avi-Lanche Viceroy Dashiell {6}-ET

840 313142772 JH1C JNSF A2A2 7JE1722  
CDCB 4/23 GPTA 99%R +561M +42F +34P  
AJCA 4/23 GPTAT 99%R +0.8 GJPI 97%R +90

### JX Jer-Z-Boyz Klay Mae 61978 {4}-PP-ET

173268832 VG-83%  
2-08 2x 302d 18700 4.8 893 3.9 723  
3-07 2x 305d 17800 4.9 874 4.1 736

### JX CDF JLS Pilgrim Thrasher {6}-ET

840 3006436075 JH1F JNSF A2A2 7E1758  
CDCB 4/23 GPTA 99%R +1999M +83F +77P  
AJCA 4/23 GPTAT 98%R +0.8 GJPI 94%R +198

### JX Dupat Got Maid 18992 {6}

840 3149435571 3-11 VG-83%  
3-06 3x 305d 26330 5.3 1395 3.8 1009  
2-06 3x 297d 20440 4.7 958 3.7 756

### Dupat Thrasher 22818-ET

840 3217050450 2-03 D-72%  
CDCB 4/23 PTA 81%R +1510M +58F +52P  
AJCA PTAT 82%R +0.9 GJUI 11.2 GJPI 77%R +162

3rd Dam

**Dupat Fearless 15945 VG-85%**  
1-10 2x 283d 15780 4.6 733 3.7 576

# Lot 3G

AHLEM FARMS PARTNERSHIP  
BILL & CAROLYN AHLEM &  
SABINO AHLEM HERRERA DVM  
24093 AMERICAN AVE  
HILMAR, CA 95324

## JX AHLEM BELMONT JUDY 64859 {5}-ET

840 3252836490 JH1F JNSF  
Born: August 6, 2022 Herd ID: 64859  
CDCB 4/23 PTA 75%R +1103M +81F +50P  
+781CM\$ +769NM\$ -1.6DPR 2.87SCS  
AJCA PTAT 78%R +1.6 GJUI 8.2 GJPI 72%R +165

- +165 JPI
- +781 CM\$
- #1 JPI BELMONT IN THE BREED

### JX Progenesis Belmont {5}-ET

840 3218042382 JH1F JNSF A2A2 200JE1299  
CDCB 4/23 GPTA 78%R +989M +78F +48P  
AJCA 4/23 GPTAT 80%R +0.7 GJPI 76%R +124

### JX Sunset Canyon Got Maid {5}-ET

119407594 JH1F JNSF 551JE1650  
CDCB 4/23 GPTA 99%R +1582M +72F +64P  
AJCA 4/23 GPTAT 99%R +0.5 GJPI 97%R +126

### JX Progenesis Cyrus Button {4}-ET

CAN 110872754 EX-91%

### JX Ahlem Kenton Judy 56211 {4}

840 3208829456 3-02 VG-87%  
CDCB 4/23 PTA 81%R +1010M +54F +34P  
AJCA PTAT 82%R +1.8 GJUI 15.1 GJPI 76%R +121  
1-11 2x 305d 19990 4.8 969 3.6 720

### JX Jer Bel Marlo Kenton {3}-ET

173124457 JH1F JNSF A2A2 7JE1723  
CDCB 4/23 GPTA 93%R +1598M +54F +43P  
AJCA 4/23 GPTAT 89%R +1.5 GJPI 88%R +121

### Ahlem Change Up Judy 52135

67952135 3-00 VG-86%  
3-07 3x 287d 21160 4.2 882 3.5 747  
2-08 3x 278d 17350 5.0 865 3.6 626  
1-09 2x 273d 14010 4.8 670 3.6 511

3rd Dam

**Ahlem Fastrack Judy 47934 VG-81%**  
5-07 3x 291d 21380 4.8 1054 3.8 823

4th Dam

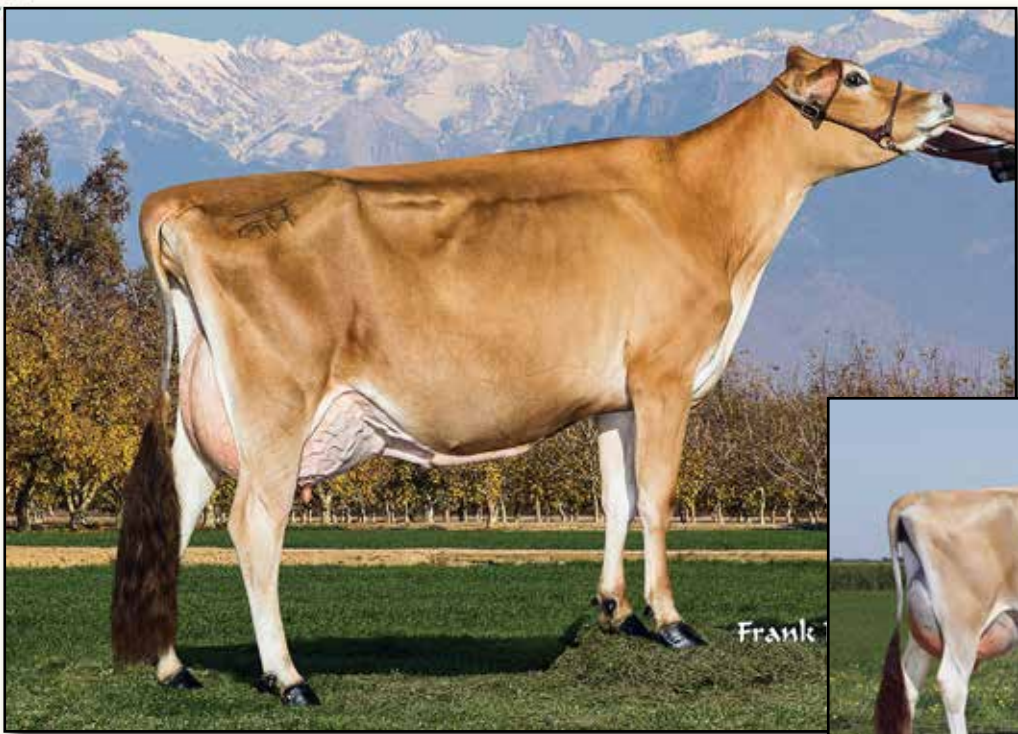
**Ahlem Vance Judy 43713 VG-82%**  
5-11 3x 305d 21520 4.6 985 3.7 804

5th Dam

**Ahlem Sentry Judy 39358 VG-82%**  
2-09 3x 305d 18940 4.2 790 3.7 704

6th Dam

**Ahlem Jacinto Judy 30735 VG-85%**  
4-11 3x 295d 24290 5.3 1278 3.9 949



**KASH-IN DIMENSION 39428-P-ET EX-90%**  
3RD DAM OF LOT 4G



**JARS OF CLAY VENERABLE 1771 2620-P EX-90%**  
4TH DAM OF LOT 4G

# Lot 4G

KASH-IN JERSEYS  
21744 ROAD 152  
TULARE, CA 93274  
559-804-6744 CASE

## IVF SESSION FROM:

### KASH-IN AEROSMITH 68614-ET

840 3251551745 JH1F JNSF  
Born: April 1, 2022  
CDCB 4/23 PTA 73%R +864M +60F +49P  
+735CM\$ +719NM\$ +6.3PL +0.9DPR  
AJCA PTAT 77%R +1.6 GJUI 9.9 GJPI 71%R +168

- +168 JPI
- +9.9 JUI
- +0.9 DPR
- +735 CM\$
- #1 JPI AEROSMITH IN THE BREED

### Vierra Aerosmith-ET

840 3209748365 JH1F JNSF A2A2 777JE1269  
CDCB 4/23 GPTA 76%R +749M +65F +45P  
AJCA 4/23 GPTAT 79%R +1.4 GJPI 73%R +102

### Kash-In Thrasher 63675-ET

840 3217561380 JH1F JNSF A2A2  
CDCB 4/23 PTA 81%R +1225M +55F +57P  
AJCA PTAT 81%R +1.0 GJUI 2.3 GJPI 78%R +172

### JX Progenesis VSOP {6}-ET

CAN 111129569 JH1F JNSF 200JE1198  
CDCB 4/23 GPTA 80%R +1206M +73F +50P  
AJCA 4/23 GPTAT 82%R +1.5 GJPI 77%R +93

### Cal-Mart Viceroy Macy 266

67796266 VG-85%  
3-06 3x 305d 20090 5.2 1051 3.9 788

### JX CDF JLS Pilgrim Thrasher {6}-ET

840 3006436075 JH1F JNSF A2A2 7E1758  
CDCB 4/23 GPTA 99%R +1999M +83F +77P  
AJCA 4/23 GPTAT 98%R +0.8 GJPI 94%R +198

### Kash-In Chrome 47024-ET

840 3131679220 3-03 VG-80%  
1-11 3x 301d 18050 5.9 1063 4.1 747  
2-10 3x 305d 18400 5.6 1026 4.3 800

*3rd Dam*  
**Kash-In Dimension 39428-P-ET EX-90%**  
3-09 3x 305d 21960 5.6 1239 4.1 900

*4th Dam*  
**Jars of Clay Venerable 1771 2620-P EX-90%**  
2-08 3x 305d 20050 5.0 1011 3.8 769

*5th Dam*  
**Jars of Clay Mercedes 1771-P EX-91%**  
7-07 3x 305d 24450 5.3 1291 3.7 908

*6th Dam*  
**Jars of Clay Choice J1039-P EX-92%**  
4-10 2x 305d 23500 4.5 1057 3.5 828



# Lot 5G

AHLEM FARMS PARTNERSHIP  
BILL & CAROLYN AHLEM &  
SABINO AHLEM HERRERA DVM  
24093 AMERICAN AVE  
HILMAR, CA 95324

### Dupat Thrasher Weld-ET

840 3206581219 JH1F JNSF A2A2 14JE1951  
CDCB 4/23 GPTA 78%R +1373M +60F +53P  
AJCA 4/23 GPTAT 80%R +0.9 GJPI 75%R +160

### JX Ahlem Thrasher Queen 59658 {5}

840 3220917016 2-00 D-79%  
CDCB 4/23 PTA 79%R +1056M +65F +51P  
AJCA PTAT 80%R +0.5 GJUI 3.7 GJPI 75%R +152

### JX AHLEM WELD QUEEN 64808 {6}

840 3252836439 JH1F JNSF  
Born: August 2, 2022 Herd ID: 64808  
CDCB 4/23 PTA 74%R +1505M +77F +62P  
+742CM\$ +730NM\$ -.6DPR 2.84SCS  
AJCA PTAT 77%R +0.6 GJUI 3.9 GJPI 71%R +168

- +168 JPI
- +1505M
- #2 WELD IN THE BREED!

### JX CDF JLS Pilgrim Thrasher {6}-ET

840 3006436075 JH1F JNSF A2A2 7E1758  
CDCB 4/23 GPTA 99%R +1999M +83F +77P  
AJCA 4/23 GPTAT 98%R +0.8 GJPI 94%R +198

### JX Dupat Got Maid 18992 {6}

840 3149435571 3-11 VG-83%  
3-06 3x 305d 26330 5.3 1395 3.8 1009  
2-06 3x 297d 20440 4.7 958 3.7 756

### JX CDF JLS Pilgrim Thrasher {6}-ET

840 3006436075 JH1F JNSF A2A2 7E1758  
CDCB 4/23 GPTA 99%R +1999M +83F +77P  
AJCA 4/23 GPTAT 98%R +0.8 GJPI 94%R +198

### JX Ahlem Reef Queen 54792 {4}

67954792 3-04 VG-81%  
2-10 3x 280d 20800 4.6 960 3.6 740  
1-09 2x 305d 17360 4.6 804 3.7 643

# Lot 6G

VIERRA DAIRY FARMS & SEMEX ALLIANCE  
HILMAR, CA  
209-678-4262 PETER CIPPONERI

### JX Sexing Gallantry {4}-ET

840 3203845448 JH1F JNSF A2A2 551JE1762  
CDCB 4/23 GPTA 94%R +1903M +88F +66P  
AJCA 4/23 GPTAT 81%R +1.3 GJPI 88%R +147

### JX Vierra Gypsy {4}-ET

840 3214926189 2-06 VG-85%  
CDCB 4/23 PTA 82%R +1065M +73F +53P  
AJCA PTAT 82%R +1.0 GJUI 0.5 GJPI 77%R +124  
2-00 3x 305d 21060 5.2 1094 3.9 813

### IVF SESSION FROM:

### JX VIERRA GABBY {5}-ET

840 3242639688 JH1F JNSF  
Born: October 17, 2021  
CDCB 4/23 PTA 75%R +1806M +90F +71P  
+753CM\$ +747NM\$ +2.8PL  
AJCA PTAT 75%R +1.5 GJUI 9.9 GJPI 71%R +160

- +1806M
- +161CFP
- TOP 20 FOR CFP IN THE BREED!

### Progenesis Completely-ET

CAN 109902120 JH1C JNSF 200JE1116  
CDCB 4/23 GPTA 99%R +1819M +67F +64P  
AJCA 4/23 GPTAT 99%R -0.1 GJPI 96%R +88

### JX Pine-Tree Avon Aleve {3}-ET

67671551 EX-90%  
4-06 3x 283d 22350 5.2 1167 3.8 843  
1-10 2x 305d 16570 5.0 823 3.7 620

### JX Progenesis Gifted {5}-ET

CAN 111180165 JH1F JNSF A2A2 777JE1201  
CDCB 4/23 GPTA 98%R +1170M +62F +58P  
AJCA 4/23 GPTAT 95%R +1.6 GJPI 92%R +124

### JX Faria Brothers Maldini The Grove {3}-ET

840 3149330168 2-01 VG-85%  
3-11 3x 305d 23950 5.2 1251 3.8 913  
3-00 3x 294d 21020 5.2 1101 3.7 780

3rd Dam

JX Faria Brothers Hulk Yaya Toure {2}-ET VG-88  
4-11 2x 305d 23760 6.0 1422 4.0 946

4th Dam

JX Faria Brothers Action Dean Smith {1} EX-92  
7-11 2x 305d 29240 4.5 1309 3.5 1032



**ROG-AL CHROME SHELBY EX-90%**  
**2ND DAM OF LOT 7G**

# Lot 7G

**MISTY MEADOW DAIRY**  
 2614 1ST ST  
 TILLAMOOK, OR 97141  
 614-679-5093 STEPHANIE MACK

**JX CDF JLS Pilgrim Thrasher {6}-ET**  
 840 3006436075 JH1F JNSF A2A2 7E1758  
 CDCB 4/23 GPTA 99%R +1999M +83F +77P  
 AJCA 4/23 GPTAT 98%R +0.8 GJPI 94%R +198

**Rog-Al Chrome Shelby**  
 173738153 3-02 EX-90%  
 CDCB 4/23 PTA 88%R +897M +50F +30P  
 AJCA PTAT 85%R +1.6 GJUI 10.8 GJPI 83%R +118  
 2-11 2x 305d 23020 5.5 1255 3.8 869  
 1-11 2x 304d 19300 5.1 977 3.8 736  
 4-01 2x 94d 7390 6.9 515 3.4 253 RIP

## IVF SESSION FROM:

### MM THRASHER SHELBY 13377-ET

840 3222005921 JH1F JNSF 1-11 VG-81%  
 Born: September 23, 2020  
 CDCB 4/23 PTA 80%R +1210M +56F +49P  
 +697CM\$ +686NM\$ +4.9PL +2.7DPR  
 AJCA PTAT 81%R +1.4 GJUI 6.4 GJPI 76%R +171  
 1-06 2x 262d 14960 5.4 806 4.0 595  
 2-05 2x 44d 3410 6.1 208 3.8 132 RIP

### Cal-Mart Medalist Pilgrim

118113935 JH1F JNSF A1A2 29JE3860  
 CDCB 4/23 GPTA 99%R +861M +17F +26P  
 AJCA 4/23 GPTAT 99%R +0.3 GJPI 99%R +88

### JX CDF Viceroy Soleil W334 {5}

840 3136717132 VG-84% JH1F JNSF  
 1-08 3x 305d 20960 4.2 875 3.2 678

### River Valley Cece Chrome-ET

840 3012423929 7JE5004  
 CDCB 4/23 GPTA 99%R +501M +30F +16P  
 AJCA 4/23 GPTAT 99%R +1.9 GJPI 99%R +75

### Rog-Al Pharoah Shine

172574183 3-09 VG-86%  
 3-05 2x 305d 19060 4.7 895 3.3 628  
 5-00 2x 287d 16020 5.3 843 3.5 568  
 2-00 2x 305d 13660 5.0 689 3.5 473

- #29 JPI COW
- +171 JPI
- +2.7DPR
- MILKING 84# 5.8% 3.6P ON LAST TEST
- 305D ME 22,480M 1,313F 865P
- AVERAGES 20 OOCYTES PER IVF SESSION  
 RESULTING IN AN AVERAGE OF 3 EMBRYOS PER SESSION

*\* Buyer is purchasing rights to control the next IVF session(s). Buyer is guaranteed IVF sessions until a minimum of 8 #1 or #2 IVF embryos are produced. Embryo grades are determined at the time of transfer if fresh embryos or at time of freezing if freezing is requested by buyer. Buyer keeps all resulting embryos from these controlled IVF sessions. Buyer is responsible for all costs of the aspiration and mating sire decision.*

*3rd Dam*

**Rog-Al Cyrus Salina EX-90%**  
 4-02 2x 305d 21170 5.4 1142 3.3 703

*4th Dam*

**Rog-Al latola Susan EX-90%**  
 4-03 2x 298d 19020 5.8 1110 3.6 692



# Lot 8G

VIERRA DAIRY FARMS & SEMEX ALLIANCE  
HILMAR, CA  
209-678-4262 PETER CIPPONERI

## JX VIERRA GOALS 35251 {6}-P

840 3250242771 JH1F JNSF  
Born: April 30, 2022 AMID: 35251  
CDCB 4/23 PTA 72%R +463M +31F +27P  
+5.7PL 2.83SCS +0.1DPR  
AJCA PTAT 75%R +1.8 GJUI 20.6 GJPI 69%R +128

• 20.6 GJUI - ELITE FOR JUI AND POLLED!

## JX Jer-Z-Boyz SSI Goals {5}-P-ET

173862773 JH1F JNSF A2A2 507JE1899  
CDCB 4/23 GPTA 78%R +856M +33F +31P  
AJCA 4/23 GPTAT 80%R +0.8 GJPI 75%R +129

## JX Ahlem Ruthless Princess 16822 {6}-P

75916822 3-06 VG-80%  
CDCB 4/23 PTA 83%R +310M +28F +25P  
AJCA PTAT 80%R +1.6 GJUI 17.8 GJPI 79%R +72  
3-00 3x 291d 18130 4.6 839 4.0 723  
2-00 3x 303d 16760 4.8 809 3.6 610

## JX Avi-Lanche Viceroy Dashiell {6}-ET

840 313142772 JH1C JNSF A2A2 7JE1722  
CDCB 4/23 GPTA 99%R +561M +42F +34P  
AJCA 4/23 GPTAT 99%R +0.8 GJPI 97%R +90

## JX Jer-Z-Boyz Klay Mae 61978 {4}-PP-ET

173268832 VG-83%  
2-08 2x 302d 18700 4.8 893 3.9 723  
3-07 2x 305d 17800 4.9 874 4.1 736

## JX River Valley Ruthless {5}-ET

840 3126479169 JH1F JNSF 200JE10002  
CDCB 4/23 GPTA 98%R +327M +23F +15P  
AJCA 4/23 GPTAT 96%R +1.5 GJPI 95%R +43

## JX Ahlem Steve Princess 13637 {6}

67913637 3-00 D-77%  
3-10 3x 301d 23270 4.5 1054 4.0 935  
2-09 3x 305d 18280 4.8 883 4.1 757  
1-09 2x 303d 14720 5.2 762 4.2 618

3rd Dam

## JX Ahlem Harris Princess 11166 {5} VG-80%

3-11 3x 305d 17370 5.2 897 4.3 746

# Lot 9G

HILMAR JERSEYS  
C/O MARK AHLEM  
23546 AMERICAN AVE  
HILMAR, CA

## IVF SESSION FROM:

## HILMAR TENPENNY 27912-ET

840 3221320616 JH1F JNSF  
Born: January 12, 2022  
CDCB 4/23 PTA 73%R +1134M +72F +54P  
+755CM\$ +745NM\$ +653FM\$ +698GM\$  
AJCA PTAT 75%R +0.6 GJUI 5.3 GJPI 70%R +161

- +161 GJPI
- +755 CMS
- #4 JPI TENPENNY IN THE BREED
- NO GOT MAID, CHIEF OR THRASHER

## Vierra Tenpenny-ET

840 3200644093 JH1F JNSF A2A2 777JE1222  
CDCB 4/23 GPTA 78%R +1757M +58F +57P  
AJCA 4/23 GPTAT 80%R +0.4 GJPI 76%R +126

## Hilmar Steve Ardis {6}

840 3132248152 3-09 VG-88%  
CDCB 4/23 PTA 83%R +393M +52F +38P  
AJCA PTAT 79%R +0.6 GJUI 6.0 GJPI 79%R +121  
3-03 3x 305d 22180 5.2 1146 3.9 872  
2-01 3x 196d 12640 5.1 639 3.8 477

## Progenesis Completely-ET

CAN 109902120 JH1C JNSF 200JE1116  
CDCB 4/23 GPTA 99%R +1819M +67F +64P  
AJCA 4/23 GPTAT 99%R -0.1 GJPI 96%R +88

## SHJ Listowel MacKenzie

67192955 VG-86%  
2-09 3x 296d 25610 4.3 1097 3.4 883  
4-10 3x 305d 24540 4.4 1092 3.6 893

## CDF Irwin Steve

840 3006436334 JH1C JNSF A2A2 11JE1259  
CDCB 4/23 GPTA 99%R +472M +87F +35P  
AJCA 4/23 GPTAT 99%R +0.8 GJPI 99%R +109

## Bamboo Chili 4188 {5}

840 3134128374 6-01 VG-83%  
2-09 2x 297d 15860 5.0 786 4.1 652  
4-08 2x 229d 14180 4.5 641 3.7 521  
1-10 2x 276d 11060 5.4 597 4.0 446

\* Buyer is purchasing rights to control the next IVF session(s). Buyer is guaranteed IVF sessions until a minimum of 8 #1 or #2 IVF embryos are produced. Embryo grades are determined at the time of transfer if fresh embryos or at time of freezing if freezing is requested by buyer. Buyer keeps all resulting embryos from these controlled IVF sessions. Buyer is responsible for all costs of the aspiration and mating sire decision.