



31st Annual Virginia Angus Association

GENETIC INVESTMENT FOR TOMORROW SALE

****NEW SALE DATE AND LOCATION****

Saturday, June 13, 2020 • 12:00 Noon
At Woodside South Farm
13789 North Valley Pike, New Market, VA



VIRGINIA ANGUS ASSOCIATION
644 GREENVILLE AVE #220 · STAUNTON, VA 24401
WWW.VAANGUS.ORG

On behalf of the Virginia Angus Association, I would like to personally invite you to the 2020 GIFT Sale on Saturday, June 13 at Noon. Due to COVID-19 restrictions, we decide to move the date and location of the sale, which is normally during Virginia Beef Expo. This change has not affected the quality of the offering at all, as our consignors offer some of the most premier genetics from high quality, forward-thinking programs. With the assistance of Tom Templeton, we have aspired to make the sale one of the most elite sales in the East!

This year's sale offering will certainly not disappoint! The cattle will offer you the opportunity to improve your program with industry-leading traits across all EPDs. Several cattle have had genomic testing completed, improving the accuracy of their EPDs. As you look through the catalog, you can see that phenotypically, the cattle are outstanding! I am impressed with the offering from our breeders and I know you will find that the cattle come from the heart of their program!

If you need assistance or have questions about the cattle, please do not hesitate to reach out to me, Tom Templeton or any of the other sale contacts listed in the catalog! If you are unable to attend the sale in-person, we will be offering two different options for purchasing cattle online. Please join us using Cowbuyer.com or LiveAuction.tv. If you prefer to be on the phone the day of the sale, we can also make arrangements for that to be possible.

We look forward to seeing you in New Market at the GIFT Sale!

Best Regards,

Paige Pratt, President
Virginia Angus Association



Accommodations for COVID-19

Virginia Angus Association and the consignors for this sale are making every effort to ensure that the buyers, consignors and management can participate in this sale in a safe manner. To ensure this, the following changes/adjustments will be made:

- Virginia Angus and Sales Management are following the recommendations put forth by Virginia Department of Agriculture and Consumer Services regarding hand sanitizing stations, spacing, and other accommodations to allow for appropriate distancing and sanitation. No food will be served.
- EPDs for all animals in the sale will be updated and available on a spreadsheet the week before the sale.
- Buyers are encouraged to come and view the cattle Friday and Saturday, while maintaining appropriate distance. Any buyer who does not wish to physically attend the sale can place a bid with Tom Templeton or any of the Sale Contacts(phone numbers on next page), or can participate online either through Cowbuyer.com (information for registering and connection for Cowbuyer is on page 4 of this catalog) or through LiveAuctions (information below).

LiveAuctions.TV

(817) 725-8595

- Go to www.LiveAuctions.tv
- Find your sale (listed in date order)
- Click "watch this event" which will take you to a log in page.
- If you have an account login, if not click "create new user"

For those phone and tablet users download the LiveAuctions.TV App



After logging in, you are able to view the sale. If planning to bid, register for a buyer number by clicking "register for a buyer number" in the top right-hand corner. Fill out the registration information, and click "register now". You will then be "pending approval". Once approved, a bidder status approval email will be received and the bidding number will appear in the top right of the sale page. We recommend registering for a buyer number at least 24 hours in advance of an auction. Sale day requests may still be accommodated.

Buyers :: post sale, contact the sale host or management team for payment & shipping

Proxy Bidding :: for those not able to watch in real-time, bids can be placed using the blue video tabs on the right of the log in screen.

Support :: for support during the sale broadcast, chat live with one of our representatives. Otherwise, our support team is available @ **800-431-4452**

31st ANNUAL VIRGINIA ANGUS

GENETIC INVESTMENT FOR TOMORROW SALE

Saturday, June 13, 2020

12:00 P.M.

Auctioneer

Thomas Carper.....540-336-2737

Sale Contacts

Chris Wojo.....540-292-0841

Scott Weller.....540-294-0555

Chuck Grove, AAA Board Member...816-390-6600

Reese Tuckwiller, AAA.....308-360-3048

Location

Woodside Farm South

13789 North Valley Pike, New Market, VA

Woodside Farm South is located on U.S. Route 11, 4 miles south of New Market (Exit 264 off I-81) or 4 miles north of Exit 257 on I-81.

Lodging

Please make your reservations directly.

Quality Inn, New Market.....540-740-3141

Days Inn, New Market.....540-740-4100

Holiday Inn Express Woodstock...540-459-5000

Hampton Inn, Woodstock.....540-459-7111

Comfort Inn, Woodstock.....800-992-2694

Health

Health papers will be available for immediate interstate shipping.

Inspection of Sale Cattle

Cattle will be available for inspection in the afternoon on June 12th and before the sale on June 13th.

Terms and Conditions

Cattle sell under the American Angus Association standard terms and conditions (see American Angus website for complete terms and conditions). Settlement is required immediately following the sale, prior to load out, unless arrangements are made before the sale with Tom Templeton or Scott Buchanan.

Trucking

Livestock haulers believed to be reliable will be present and available.

Insurance

Livestock mortality insurance will be available at the clerks desk.

Eartags

Eartags on the cattle will correspond to their lot numbers in the sale book.

Announcements

Announcements made from the auction block during the sale take precedence over printed materials in the sale book and on the update sheet.

American Angus Association re-calculates EPDs for all animals every Friday, which means the figures represented in this catalog may change for these animals in the future.

Catalog

Catalog designed by Black Locust Livestock.
540-333-1019



Sale Sponsored By:

Virginia Angus Association

Paige Pratt - President

Matthew Manbeck- President Elect

Dennis Pearson - Past President

Directors: Matthew Deacon, Robin Toms, John Alexander, Robert Durr, Larry Shaver, Jack Schutte, Paul Coleman Jr., Kenneth Payne, Buddy Shelton



SALE DAY PHONE:

TOM TEMPLETON (540)421-8341

6 Pastures Angus, LLC (703)868-1331.....	Lots 11&A, 12&A, 13&A, 42
Arehart Performance Genetics (540) 290-4251	Lot 61
Audley Farm (540) 460-6926.....	Lots 4, 43, 49
Brilee Farm LLC (540)383-9369.....	Lots 18&A, 19&A, 36, 37, 38
Buchanan Cattle Enterprises (703) 431-9316.....	Lots 57, 58, 62, 63
Edgewood Angus (757) 880-7274.....	Lots 24&A, 35
Friendship Farms (912) 663-8085	Lot 3
Groveland Farm (816) 390-6600.....	Lots 31, 32
High Ridge Farms (704)695-2390	Lots 50, 51, 52, 53, 54 55, 66, 67
Jerry Crenshaw (703)244-4767	Lots 30&A
Kipar Farms/Trinity Angus (570)499-2962.....	Lots 77A and 77B
Legacy Farm (434) 665-0800.....	Lots 21&A, 22&A, 23&A, 46
Little Windy Hill Farm (276) 620-427	Lot 10
Locust Hill Farm (703) 906-4667.....	Lots 44, 45, 73, 74
Lorson Angus Farms (540)290-4251.....	Lots 75, 76A, 76B
MC Livestock (540)292-0192	Lots 64
Meadow Brook Farm (540) 327-8378.....	Lots 8, 8A, 8B
Miky-Leto Farm (804)441-3758	Lots 29&A, 60
Miles Away Farm (919)603-4417	Lots 25&A, 26&A, 27&A, 28&A
Monomoy Farm (540) 222-5500.....	Lots 16&A, 17&A
Mountain View Farm (434)249-2605.....	Lot 59
Mystic Hill Farm (804) 332-3717.....	Lot 9
Raines Angus (540)392-3312	Lots 7, 7A
Reynolds Angus (302) 242-9645	Lot 68
RHR Cattle (540)406-1137	Lots 71, 72
Schutte Land and Livestock (540) 247-8583	Lot 39
Shelton Angus (434) 251-7149.....	Lots 20&A, 48
Silverado Cattle Company (540) 364-6186.....	Lots 40, 41
Soldiers Hill Angus Farm (540) 326-2222.....	Lots 5, 47
Straightstone Angus, LLC (434) 335-4169.....	Lots 6, 69, 70
Virginia Tech Beef Center (540) 231-6280	Lots 15&A
Walkers Branch Angus (336) 428-6974	Lots 56, 65, 78
Woodside Farms (540)290-4251	Lots 1, 2, 14&A, 33, 34

Bidding Available Online Through...



www.cowbuyer.com

***You MUST
register to bid
BEFORE the
sale starts!***



Choice of 2 G A R Early Bird N985 Heifer Calves

Calved: 2/12/2020 Cow: 19666405 Tattoo: 0C1

Calved: 2/13/2020 Cow: 19668864 Tattoo: 0C2

Consigned by: Woodside Farms

+*G A R Sure Fire
G A R Combustion
+*18943322 +*G A R Momentum 1724

#* Connealy In Sure 8524
+ Chair Rock 5050 G A R 8086
*G A R Momentum
+*G A R 28 Ambush M91
+*G A R Daylight
+*G A R Progress 830
#*Summitcrest Complete 1P55
+G A R Objective 277L

0C1 \$B
+234
0C1 \$C
+357
0C2 \$B
+230
0C2 \$C
+342

*G A R Early Bird
G A R Early Bird N985
+*18452266 +G A R Complete N281

	CED	BW	WW	YW	Milk	MARB	RE	FAT
0C1	+8	+3.0	+86	+160	+24	+1.35	+0.87	-0.008
0C2	+4	+3.9	+90	+158	+26	+1.27	+0.98	-0.026

•One of the super exciting investment opportunities to sale anywhere this Spring. This choice lot offers you the opportunity to select a direct daughter from one of true power cows of the breed and #1 \$BEEF dam. G A R Early Bird N985 is a direct daughter of the power cow, N281 and stems from the great 277L donor.

•This mating combines two special animals that excel for traits of economic importance and lasting value. These heifers will push the envelope in end product merit and will make a contribution wherever they go. Don't overlook this one.

•Selling choice of one of these two heifer calves



G A R Early Bird N985 - Selling Choice of 2 daughters and a pregnancy out of this #1 \$B cow.



G A R Complete N281 - Maternal Grandam of Lots 1 and 2



2 Early Bird N985 Heifer Pregnancy

Pregnancy Due 11/21/2020

Consigned by: Woodside Farms

*SydGen Exceed 3223
SydGen Enhance
18170041 SydGen Rita 2618

+*SydGen Googol
+*SydGen Rita 2618
#*SydGen Rita 2618

*G A R Early Bird
G A R Early Bird N985

+*18452266 +G A R Complete N281
+*18452266 +G A R Complete N281

\$B
+309
\$B
\$C
+348
Dam \$C
+369

	CED	BW	WW	YW	Milk	MARB	RE	FAT
Sy	+8	+3.0	+86	+160	+24	+1.35	+0.87	-0.008
D	+4	+3.9	+90	+158	+26	+1.27	+0.98	-0.026

•This pregnancy from the #1 \$BEEF dam of the breed combined with the super popular and multi trait, SydGen Enhance offers breed leading genetics. The sire of this mating has been dominating sales across the country and combined with the power of N985, this mating is cutting edge. The projections for this mating are outstanding have it ranking in the top 1% of the breed for multiple Epds, including top 1% for \$B and \$C. Study this heifer pregnancy as it has unlimited potential and tremendous value.



SydGen Enhance - Sire of Lot 2 Heifer Pregnancy

Breed Average EPDs											
CED	BW	WW	YW	Milk	MARB	RE	FAT	\$W	\$M	\$B	
+6	+1.2	+54	+96	+25	+0.50	+0.50	+0.012	+54	+52	+126	



Rita 5E32 Heifer Pregnancy

Pregnancy Due 8/16/2020

Consigned by: Friendship Farms

#*Connealy Cavalry 1149
WAR Cavalry B063 Z044
*17979842 War CC&7 Z044 X029

#*Connealy Consensus
+Brista of Conanga 927T
#*SydGen C C & 7
War Game Day X029 U239
#*A A R Ten X 7008 S A
+Sitz Henrietta Pride 643T
#Gardens Highmark
+*Rita 5F56 of 1198 FD

Sire \$B
+225
Dam \$B
+183
Sire \$C
+346
Dam \$C
+282

+*EXAR Resistol 3710B
FF Rita 5E32 of 9Q23 3710B
+*18323175 +*Rita 9Q23 of Rita 5F56 of GHM

	CED	BW	WW	YW	Milk	MARB	RE	FAT
S	+4	+3.5	+79	+150	+24	+0.98	+0.84	-0.001
D	+7	+1.1	+68	+135	+37	+0.85	+0.82	+0.041

- A unique opportunity to acquire genetics from one of the most highly proven cow families in the Angus breed.
- The donor dam by EXAR Resistol 371B is the featured Lot 3 in the upcoming Friendship Farms Production Sale in Canoochee, Ga. She carries 15 EPD's and Indexes in the top 10% of the breed.
- WAR Cavalry excels with great growth EPD's and carcass traits. An outcross on a lot of Angus genetics, he has picked up a lot of interest as he sired the high selling bull at the NWSS in Denver at \$85,000 and the high selling heifer in the Wilks Ranch Sale at \$90,000. Cavalry progeny have great phenotype, and semen is limited and selling for \$500/straw.



FF Rita 5E32 of 9Q23 3710B - Donor Dam of Lot 3 Pregnancy



WAR Cavalry B063 Z044
-Sire of Lot 3



Woodside Rita 6D68 of 9Q15- Donor Dam of the Lot 4 Heifer Pregnancy

VAR Power Play 7018
-Sire of Lot 4 Pregnancy



Choice of Rita 6D68 Heifer Calves

Born Late January and February

Consigned by: Audley Farm

#*Basin Payweight 1682
V A R Power Play 7018
+*18717048 +*Sandpoint Blackbird 8809

#*V A R Discovery 1682
Woodside Rita 6D68 of 9Q15 1682
+*18569184 +*Rita 9Q15 of 9Q15 1682

Sire \$B
+180
Sire \$C
+285
Dam \$C
+274

	YW	Milk	MARB	RE	FAT
S	+187	+155	+33	+0.91	+0.59
D	+74	+132	+13	+1.27	0.83

- An excellent opportunity to acquire a TOP shelf Pick of this exciting Flush by VAR Power Play 7018, out of the young donor by Discovery, out of the \$170,000 Rita 9Q15 [Flushmate to 9Q13 and 9Q20] serving as a foundation donor at Riverbend in Idaho.
- Rita 6D68 has been flushed 4 times to avg 8 transferable embryos. Her 1st natural calf will be a feature at the upcoming Riverbend Bull Sale. Calves are on the ground, born late Jan - Feb as the winning bidder can make their pick after the DNA test and weaning. Late summer.

OUT OF SALE

Breed Average EPDs

CED	BW	WW	YW	Milk	MARB	RE	FAT	\$W	\$M	\$B
+6	+1.2	+54	+96	+25	+0.50	+0.50	+0.012	+54	+52	+126



SHAF Lovely Rita Pro 17 - Donor Dam of Lot 5 Heifer Pregnancy



Jindra Acclaim - Sire of Lots 5 and 7



6

Choice of (2) 3N23 Blackcap D24 Heifer Calves

Born December 2019/January 2020

Consigned by: Straightstone Angus LLC

*Connealy Black Granite
QHF WWA Black Onyx 5Q11
+18463791 +*Wilks Blackcap 0D82

*V A R Discovery 2240
SSA 3N23 Blackcap D24
+18802451 +*Quaker Hill Blackcap 3N23

*Connealy Consensus 7229
#Eura Elga of Conanga 9109
#MCC Daybreak
+*QHF Blackcap 6E2 of 4V16 4355
#*A A R Ten X 7008 S A
+*Deer Valley Rita 0308
#*Connealy Confidence 0100
+*QHF Blackcap 6E2 of 4V16 4355

Sire \$B
+178
Dam \$B
+161
Sire \$C
+291
Dam \$C
+265

	CED	BW	WW	YW	Milk	MARB	RE	FAT
S	+13	-1.7	+77	+140	+40	+0.51	+0.88	-0.009
D	+16	-2.2	+63	+111	+26	+0.54	+0.89	-0.011

•Bob Durr of Straightstone has offered a pick of the Black Onyx ET heifers, out of one of his leading donors. Calves will be DNA tested and weaned before the selection.

•D24 is best known as the full sister to Quaker Hill Columbus, a member of the Semex Bull Stud in Wisconsin; who is a low birth wt, high growth, big scrotal EPD, in the top 10% for CW and \$B.

•D24 is a 2nd generation female from the 6E2 cow that has produced many AI stud bulls for Quaker Hill, Wild Wind Angus, Wilks, Friendship Farms, Straightstone and many others. D24 is a double digit CED, minus BW, and top 15% for WW and YW, top 20% for Scrotal, 1% CEM, 3% CW, 4% RE, 10% \$B.

•Black Onyx, the sire of the calves is featured at ST Genetics and is out of a full sister to ABS's highly proven Rampage; sired by Connealy Black Granite.

•Calves were born late December and January.



5

Lovely Rita Pro 17 Heifer Pregnancy

Pregnancy Due September 2020

Consigned by: Soldiers Hill Angus Farm

*Jindra 3rd Dimension
Jindra Acclaim
*17972810 +Jindra Blackbird Lassy 1111

#*G A R Prohet
SHAF Lovely Rita Pro 17
+*19132759 Monomoy Lovely Rita A20

#*Jindra Double Vision
Jindras Sapphire J 417
#*Connealy Impression
Jindras Enchantress J 102
#C R A Bextor 872 5205 608
+G A R Objective 1885
#Sitz Upward 307R
Monomoy Lovely Rita 083

Sire \$B
+222
Dam \$B
+133
Sire \$C
+325
Dam \$C
+252

	CED	BW	WW	YW	Milk	MARB	RE	FAT
S	+5	+0.9	+72	+145	+31	+0.63	+0.71	-0.039
D	+12	+2.4	+85	+144	+33	+1.18	+0.30	+0.036

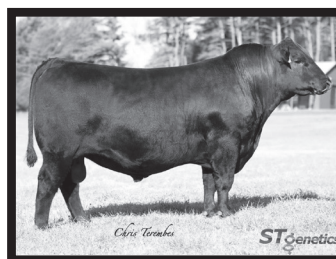
•Here is an exciting Genetic package! This donor was the top bred heifer from last year's GIFT Sale and went on to be flushed after calving as a 2 yr old. Rita Pro 17 is produced by a very reliable cow family that carries proven AI sires for many generations. Her full brother was the top performing and marbling bull at the 2018 Culpeper Bull Test Station in Va and now resides at Semex Bull Stud in Canada.

•A full sister nursing a fall calf sells in this sale, Lot 16 and this female excels in the top 10% of the breed in 9 EPD's /Indexes. Double digit CED, lots of growth, top 4% for milk, with a Marbling EPD in top 5%.

•The sire of the mating - Jindra Acclaim offers calving ease, abundant growth and carcass EPD's and above average foot score EPD's. He is in the top 1% of the breed for \$B and \$C.



Quaker Hill Blackcap 3N23 - Maternal Grandam of Lot 6 Heifer Calves



QHF WWA Black Onyx 5Q11 -Sire of Lot 6

Breed Average EPDs

CED	BW	WW	YW	Milk	MARB	RE	FAT	\$W	\$M	\$B
+6	+1.2	+54	+96	+25	+0.50	+0.50	+0.012	+54	+52	+126



Quaker Hill Blackcap 4EX1 -
Donor dam of Lots 7 and 7A



KB-Full Measure C40 -
Sire of Lot 7A Pregnancy



Raines Blackcap 1904

Calved: 12/12/2019 Cow: 19616456 Tattoo: 1904

Consigned by: Raines Angus

		\$W
*Jindra 3rd Dimension	#*Jindra Double Vision	+93
Jindra Acclaim	Jindras Sapphire J 417	\$M
*17972810 Jindra Blackbird Lassy 1111	#*Connealy Impression	+57
AGI GE-EPD #*EXAR Denver 2002B	Jindras Enchantress J 102	\$B
Quaker Hill Blackcap 4EX1	#*EXAR Upshot 0562B	+202
+*17795826 +*QHF Blackcap 6E2 of 4V16 4355	Exar Royal Lass 1067	\$C
	Ideal 4355 of 0T26 2440	+319
	*QHF Blackcap 4V16 of 1H8	

CED	BW	WW	YW	Milk	MARB	RE	FAT
+6	+1.5	+88	+152	+28	+0.83	+0.57	-0.046

• Here is a real exciting genetic package for the most discriminate Angus breeder. This cow family that starts with the 6E2 cow has been very productive.

• The donor dam Blackcap 4EX1 who is valued at \$50,000 is a sister to the famous ABS Global multi-trait leader, Rampage, in addition to many other bulls and females that have excelled in the most elite programs and major bull studs across the country. Blackcap 4EX1 records aWR 1@118 and a YR @115 with ultrasound ratios IMF 5 @117 and REA @99.

• Full and maternal sisters include a heifer pregnancy selling as the \$18,000 top pregnancy of the 2016 Banner Sale to Crazy K Ranch. Crazy K bought a maternal sister to this heifer pregnancy from Raines Angus in the Banner Sale in 2019. Crazy K also sold a maternal sib in their 2019 Sale for \$16,000. Other maternal sibs include Blackcap A032, A038, OD82, and 2nd generation females like 5K61, 5N56, 5Q6, 5EX9, 5B64 all at Wild Wind Angus in Virginia.

• The sire, Jindra Acclaim will increase growth, carcass quality and foot score EPD's. He was the #3 registration bull in the breed last year. Great mating!



7A Blackcap 4EX1 Heifer Pregnancy

Pregnancy Due Nov

Consigned by: Raines Angus

		Dam \$B
KB-Full Measure C40		+202
*18423726 KB-Full Measure C40		\$C
		+309
		\$C
		+319

	WW	YW	Milk	MARB	RE	FAT
S	+0.8	+78	+140	+33	+0.89	+0.57
D	+1.5	+87	+150	+28	+0.83	+0.57

• Full Measure -Featured Select Sires bull that will push genomic profiles to new levels. A double digit calving ease sire with early rapid growth, top 10% milk EPD and a \$C @325. Great mating with this Weigh Up K360 son.

Cool Pines
AHFF MB
Sophia - This
donor sells as
Lot 8



Cool Pines AHFF MB Sophia

Calved: 2/25/2015 Cow: 18141183 Tattoo: 2255

Consigned by: Meadow Brook Farm

		\$W
EXG RS First Rate S903 R3	#Exar Lutton 1831	+42
Dameron First Class	Rafter S Blackcap P909	\$M
*16175085 Dameron Northern Miss 3114	Dameron PVF Raptor 702	+47
AGI GE-EPD OSU Currency 8173	#+Dameron Miss 550	\$B
Lemenager CLA Travett 135	#Stevenson Moneymaker R185	+126
16961472 Patton Travett 558	OSU Empress 4123	\$C
	QLC LaGrand Forum	+210
	LaGrand Travett 226	

CED	BW	WW	YW	Milk	MARB	RE	FAT
+3	+2.9	+52	+83	+19	+0.16	+0.68	-0.003

• A direct daughter of the Triple Crown winner Dameron 1st Class, and a paternal sister to Colburn Primo, EXAR Classen, and others.

• On the maternal side OSU Currency was the lead bull in the Champion Pen of Bulls @ the NWSS, and the grandma Patton Travett 558 was the Grand Champion Bred / Owned heifer at a past NJAS.

• Sophia is in her prime. She is bred to ST Genetics page #1 Sire, Mugrave Exclusive with heifer semen. Due 9-13-2020.

• Sophia sells with 2 embryos [Grade 1] by Conley Express 7211.

Travett G1 -Lot 8A



Travett G2 -Lot 8B



Meadow Brook Travett G1

Calved: 9/3/2019 Cow: 19653265 Tattoo: G1



Meadow Brook Travett G2

Calved: 9/5/2019 Cow: 19653267 Tattoo: G2
Consigned by: Meadow Brook Farm

		G1 \$W	G2 \$W
#*PVF Insight 0129	#*SAV Brilliance 8077	+48	+39
Kramers Enforce 5006	+*PVF Missie 790	\$M	\$M
+*18338208 Kramers Evergreen Erica 1558	+*Rito 112 of 2536 Rito 616	+34	+41
AGI GE-EPD Cool Pines AHFF MB Sophia	KF Evergreen Erica 1466	\$B	\$B
+*18141183 Lemenager CLA Travett 135		+106	+132
		\$C	\$C
		+171	+212

	CED	BW	WW	YW	Milk	MARB	RE	FAT
G1	+8	+1.3	+49	+86	+24	+0.31	+0.64	+0.054
G2	-1	+3.6	+50	+81	+20	+0.34	+0.48	+0.015

• Quote from Dennis :Enforce is by Insight and out of powerful 2536 son Rito 112 daughter. This has been a rewarding mating with Sophia and we are excited to offer such strong potential to a new buyer. Both should be competitive in the show ring and will excel in production. Buy with confidence and have a great time owning one of the best fall calves to sell anywhere. Calves are halter broke.



9

Basin Joy 1036 Heifer Pregnancy

Pregnancy Due November 2020

Consigned by: Mystic Hill Farm

#+*Coleman Charlo 0256

S A V Raindance 6848

+*18578965 *S A V Blackcap May 4136

Basin Joy 1036

B P F Special Focus 504

Basin Joy 204R

Dam \$B
+145

Sire \$C
+222

Dam \$C
+253

	CED	BW	WW	YW	Milk	MARB	RE	FAT
S	+3	+1.4	+65	+125	+25	-0.01	+0.94	-0.009
D	+10	+1.8	+47	+80	+24	+0.42	+0.50	+0.052

• A big opportunity to acquire very up to date genetics from Mystic Hill Farm, out of a very superior cow – Basin Joy 1036 – a time tested family from Basin Angus Ranch.

• This pregnancy is out of the dam to Basin Rainmaker 4404 and sired by the very popular SAV Raindance 6848, it should catch the attention of seedstock producers of any level.

• Basin Joy 1036 and SAV Blackcap May 4136 have proven themselves time and time again through sons at major bull studs and daughters. Analyze the genomics and eye ball the cattle that make up this mating.



KLR Henrietta Pride 0293 - Donor Dam of Lot 10 Heifer Pregnancy



Sitz Henrietta Pride 643T
Maternal Grandam of Lot 10 Pregnancy



Baldridge Colonel C251
Sire of Lot 10 Pregnancy



Basin Joy 1036 - Donor dam of Lot 9 Heifer Pregnancy



SAV Raindance 6848-Sire
of Lot 9 Pregnancy



10

Henrietta Pride 0293 Heifer Pregnancy

Pregnancy Due 9/16/2020

Consigned by: Little Windy Hill Farms

+baldridge Xpand x743

Baldridge Colonel C251

+*18493773 *Baldridge Isabel Y69

#*S A V Bismarck 5682

KLR Henrietta Pride 0293

+*16834143 +Sitz Henrietta Pride 643T

#*Hoover Dam

Baldridge Queen S87

#*Styles Upgrade J59

+Baldridge Isabel T935

#+*G A R Grid Maker

S A V Abigale 0451

#*Connealy Onward

Sitz Henrietta Pride 81M

Sire \$B
+154

Dam \$B
+138

Sire \$C
+245

Dam \$C
+250

	CED	BW	WW	YW	Milk	MARB	RE	FAT
S	+3	+1.4	+62	+121	+18	+0.79	+0.95	-0.059
D	+10	+1.8	+60	+105	+24	+0.41	+0.79	+0.026

• Selling a confirmed heifer pregnancy out of a direct daughter of Sitz Henrietta Pride 643T, KLR Henrietta Pride 0293, who has produced several outstanding animals for the R Bar program.

• The granddam of this pregnancy, the \$390,000 Sitz Henrietta Pride 643T, is a full sister to Sitz Henrietta Pride 639T as well as Sitz Upward 307R. She anchors the donor programs at Pollard Farms, Express Ranches and Deer Valley Farm and has amassed over \$6 million in progeny sales to date, making her one of only two females to accomplish that feat in the history of the breed. She has produced 301 offspring and 581 embryos in her lifetime, and after the implementation of \$M has re-surfaced as one of the most current and relevant females in the Angus breed.

• The sire is the record setting \$580,000 bull Baldridge Colonel C251 offers a unique pedigree with plenty of power, muscle and a balanced EPD profile.

Breed Average EPDs

CED	BW	WW	YW	Milk	MARB	RE	FAT	\$W	\$M	\$B
+6	+1.2	+54	+96	+25	+0.50	+0.50	+0.012	+54	+52	+126



Ankony Miss Blackcap 7113 - This two year old sells as Lot 11



Ankony Miss Blackcap 7115 - This first calf heifer sells as Lot 12



11

Ankony Miss Blackcap 7113

Calved: 8/22/2017 Cow: 18878855 Tattoo: 7113

Consigned by: 6 Pastures Angus LLC

		\$W
#MCC Daybreak		
GAR Sunrise		+58
+*16933958 +*GAR Objective R227		\$M
AGI		+49
+*OCC Emblazon 854E		\$B
Riverbend Blackcap X237		+169
+*16622808 +*Riverbend Blackcap U493		\$C
+*Rita 2811 of 2536 BVND 878		+268

CED	BW	WW	YW	Milk	MARB	RE	FAT
+4	+4.7	+73	+132	+21	+0.71	+0.89	-0.028

- Blackcap 7113 is a powerful 1st calf heifer with a golden future in the ET program of any seedstock with the cow power behind her!
- The dam, Blackcap X237, a product of Riverbend Ranch and a past donor at Ankony in Georgia where she was a featured female in their very elite sale in 2018. A proven 3rd generation donor with a \$200,000 progeny sales record.
- 7113 combines growth, fleshing ability, and phenotype with a genomic profile that is solid from end to end. Her sire, GAR Sunrise, records several hundred carcass records and now proving himself thru daughter production - big middled, good - footed, and good udders.
- 7113 nurses an excellent heifer by EWA Peyton 642 as lot 11A. View the high level EPD profile this calf offers. Recently, a son of Peyton sold for \$75,000 at GAR in Kansas. Look at these PROVEN cow families.
- 7113 sells bred on 2/4/2020 to EWA Peyton 642.



12

Ankony Miss Blackcap 7115

Calved: 8/23/2017 Cow: 18878855 Tattoo: 7115

Consigned by: 6 Pastures Angus LLC

		\$W
#MCC Daybreak		
GAR Sunrise		+52
+*16933958 +*GAR Objective R227		\$M
AGI		+39
+*OCC Emblazon 854E		\$B
Riverbend Blackcap X237		+150
+*16622808 +*Riverbend Blackcap U493		\$C
+*Rita 2811 of 2536 BVND 878		+234

CED	BW	WW	YW	Milk	MARB	RE	FAT
+4	+4.7	+73	+132	+21	+0.71	+0.89	-0.028

- Here is the full sister and proof that there is consistency in a powerful cow family. She ranks in the breed's top two thirds for 10 traits and is an own daughter of the past Riverbend \ Ankony donor X237 who was a feature donor in their 2018 Sale in Clarksville, Georgia, selling for \$100,000.
- 7115 nurses a bull calf sired by Poss Maverick, at Universal Semen and the #1 \$B son of Basin Payweight 1682. Maverick is a high performance bull with a huge scrotal EPD, excellent marbling score with a \$C of +331. Great looking sire!
- 7115 sells rebred on 2/4/2020 to EWA Peyton 642.



12A

6P Maverick 90810

Calved: 8/17/2019 Bull: 19528909 Tattoo: 90810

Consigned by: 6 Pastures Angus LLC

		\$W
Poss Maverick		
+*18962396 Poss Pride 5163		+55
AGI		\$B
+*GAR Objective R227		+181
Ankony Miss Blackcap 7113		\$C
+*18878855 +*Riverbend Blackcap U493		+290

CED	BW	WW	YW	Milk	MARB	RE	FAT
+4	+4.7	+73	+132	+21	+0.71	+0.89	-0.028

- Heifer prospect with growth, marbling, big scrotal EPD, great heifer pregnancy EPD, and moderate BW.



11A

6P Blackcap 90809

Calved: 8/15/2019 Cow: 19528897 Tattoo: 90809

Consigned by: 6 Pastures Angus LLC

		\$W
+*Quaker Hill Manning 4EX9		+76
EWA Peyton 642		\$M
+*18675107 +*EWA 444 of 968 Progress		+63
AGI		\$B
+*GAR Sunrise		+202
Ankony Miss Blackcap 7113		\$C
+*18878855 +*Riverbend Blackcap X237		+325

CED	BW	WW	YW	Milk	MARB	RE	FAT
+18	-0.8	+75	+136	+24	+1.04	+0.85	-0.008

- Analyze this profile on the Peyton heifer calf. She scores in the top 15% for 17 traits and indexes. Here is one to pay attention to for your future in this cow business.

Breed Average EPDs

CED	BW	WW	YW	Milk	MARB	RE	FAT	\$W	\$M	\$B
+6	+1.2	+54	+96	+25	+0.50	+0.50	+0.012	+54	+52	+126



Ankory Miss Lucy 7094 -
Selling this first calf heifer as
Lot 13



6P Lucy 90811 - Lot
13A



Woodside Rita 5GN1 of A116 - This powerful cow sells
as Lot 14



Ankory Miss Lucy 7094

Calved: 8/9/2017 Cow: 18877975 Tattoo: 7094

Consigned by: 6 Pastures Angus LLC

								\$W
#*GAR Progress								+67
Rito 3S10 of 9Q15 Progress								\$M
+*17670691	+*Rita 9Q15 of Rita 5F56 GHM							+50
AGI								\$B
GE-EPD	#*SS Objective T510 0T26							+167
Riverbend Lucy U1187								\$C
+*16219499	Basin Lucy 3829							+267

CED	BW	WW	YW	Milk	MARB	RE	FAT
+10	+1.9	+58	+102	+31	+1.16	+0.53	+0.017

• Here is a daughter of one of the most prolific donors to ever work in the Ankory program, producing over \$1 million in progeny sales. The dam U1187 records a WR 2 @ 121 and a YR 1@ 139 with ultrasound ratios of 106 on 90 progeny and REA 90 @101 and 12 daughters combining a WR 20 @101 as of catalog time in 2018.

•7094 is a maternal sister to great cattle like Riverbend Brigham C662, Lucy C696, Lucy B1679, Lucy Z1182, Lucy Z1144 who sold to seedstock programs like Crazy K,Black Gold Genetics , Woodside, Ankory and many western ranches

•7094 is sired by one of the highest marbling bulls in the breed and one the best sons of the famous 9Q15 cow who is a leading donor at Riverbend in Idaho. Also see the great 3829 Lucy as the grandma.

•7094 is nursing a fine heifer calf as Lot 13A by Poss Maverick. She sells rebred on 12/18/19 to GAR Sunbeam, The Sexing Technologies GAR Sunrise son who displays 13 EPD's/indexes in the top 15% of the breed. Carrying a heifer calf.



6P Lucy 90811

Calved: 8/27/2019 Cow: 19528922 Tattoo: 90811

Consigned by: 6 Pastures Angus LLC

								\$W
#*Basin Payweight 1682								+84
Poss Maverick								\$M
+*18962396	Poss Pride 5163							+51
AGI								\$B
GE-EPD	+*Rito 3S10 of 9Q15 Progress							+216
Ankory Miss Lucy 7094								\$C
+*18877975	+*Riverbend Lucy U1187							+331

CED	BW	WW	YW	Milk	MARB	RE	FAT
+4	+1.2	+77	+137	+31	+1.44	+0.74	+0.019

• Look at the profile on this ready to wean heifer. Loads of growth, carcass and milk too with \$B and MARB EPD in the top 1%



Woodside Rita 5GN1 of A116

Calved: 2/20/2015 Cow: 18419780 Tattoo: 5GN1

Consigned by: Woodside Farms

								\$W
#*AAR Ten X 7008 SA								+83
VAR Discovery 2240								\$M
#*17262835	+*Deer Valley Rita 0308							+59
AGI								\$B
GE-EPD	#*Connealy Impression							+183
CoX 27R A116								\$C
+*17799894	+*SQ 27R of 3540 FD							+296

CED	BW	WW	YW	Milk	MARB	RE	FAT
+8	+1.2	+71	+130	+33	+0.86	+0.93	-0.026

• Power! This daughter of V A R Discovery is flawless in here makeup and she doesn't miss. 5GN1 is a powerhouse female that is hard to fault from any angle. This cow is well balanced in her EPD package, super correct in her pattern and visually stunning.

•She has been flushed one time averaging 24 quality embryos.

•She sells with a 12/1/19 heifer by G A R Method and sells rebred to G A R Home Town, the Lot 1 bull in the recent Gardiner Sale on 2/18/2020. Take this pair and multiply them.



Rita 9K9 of Rita 5GN1 Method

Calved: 12/01/2019 Cow: 19676090 Tattoo: 9K9

Consigned by: Woodside Farms

								\$W
*G A R Momentum								+76
G A R Method								\$M
*18025296	+*G A R Daybreak 1332							+52
#*V A R Discovery 2240								\$B
Woodside Rita 5GN1 of A116								+179
*18419780	+*CoX 27R A116							\$C
	+*SQ27R of 3540 FD							+284

CED	BW	WW	YW	Milk	MARB	RE	FAT
I+9	I+0.7	I+70	I+129	I+29	I+0.84	I+1.07	I-0.010

•This GAR Method daughter out of the powerful, productive female selling as Lot 14A is made a lot like her dam. If you're looking for performance in a great package, this pair is worth a second, and third, look.

Breed Average EPDs

CED	BW	WW	YW	Milk	MARB	RE	FAT	\$W	\$M	\$B
+6	+1.2	+54	+96	+25	+0.50	+0.50	+0.012	+54	+52	+126



VPI 5C12 Rita 7E36

Calved: 9/18/2017 Cow: 19043832 Tattoo: 7E36

Consigned by: Virginia Tech

#*S Chisum 6175	S Alliance 3313	\$W
S Whitlock 179	#S Gloria 464	+67
#*17007891 #S Pride Anna 709	#R&S Expedition 1404	\$M
AGI GE-EPD	#S Pride Anna 567	+48
+*VAR Index 3282	##GAR Ingenuity	\$B
VPI 2Z18 Rita 5C12 ET	+*Sandpoint Blackbird 8809	+131
+*18246269 Vpi 7T39 Rita 2Z18	##*GAR Prophet	\$C
	VPI Rita 317 7T39 ET	+218

CED	BW	WW	YW	Milk	MARB	RE	FAT
+10	+0.2	+64	+114	+24	+0.67	+0.66	+0.048

- Here is a tremendous opportunity to tap into the Virginia Tech Angus program with this complete two-year-old female.
- Rita 7E36 is backed by the \$10,000 HHF 704 Rita 317 donor that has made a major impact in the university herd. Her genomic EPD profile ranks her in the top 15% for CED, WW, YW, CEM, and \$W. Being sired by the Genex roster member, W Whitlock 179, this is a cowman's female with her powerful rib shape, soundness, and femininity.
- She is AI-bred to Spring Grove Expanse 7313 and due to calve on September 3, 2020. This first-calf female sells with a heifer calf at side born August 20, 2019 and sired by Poss Achievement.
- Certified and accredited herd.



VPI 7E36 Rita 9G13

Calved: 8/20/2019 Cow: 19646400 Tattoo: 9G13

Consigned by: Virginia Tech

Poss Lasting Impact 3118	Poss Easy Impact 0119	\$W
Poss Achievement	Poss Blackbird 005	+64
*18631344 *Poss Erica 327	##*KM Broken Bow 002	\$M
	Poss Erica 1203	+47
#*S Whitlock 179	#*S Chisum 6175	\$B
VPI 5C12 Rita 7E36	#S Pride Anna 709	+149
*19043832 +*VPI 2Z18 Rita 5C12 ET	+*VAR Index 3282	\$C
	Vpi 7T39 Rita 2Z18	+240

CED	BW	WW	YW	Milk	MARB	RE	FAT
I+14	I-1.1	I+66	I+120	I+19	I+.81	I+.59	I+.048

- This heifer calf out of the two year old selling as lot 15A and sired by Poss Achievement should make a great cow for her new owner.



VPI 7E36 Rita 9G13 - Lot 15A



Monomoy Rita D2

Calved: 8/23/2016 Cow: 18531244 Tattoo: D2

Consigned by: Monomoy Farm

#CRA Bextor 872 5205 608	#BAR Ext Traveler 205	\$W
GAR Prophet	Cra Lady Jaye 608 498 S Easy	+72
#*16295688 GAR Objective 1885	#*SS Objective T510 0T26	\$M
AGI GE-EPD	GAR 1407 New Design 2232	+65
#Sitz Upward 307R	##Connealy Onward	\$B
Monomoy Lovely Rita A20	Sitz Henrietta Pride 81M	+138
17558953 Monomoy Lovely Rita 083	#*Mytty In Focus	\$C
	GAR 1407 Exaltation	+244

CED	BW	WW	YW	Milk	MARB	RE	FAT
+15	+0.7	+59	+110	+30	+1.35	+0.48	+0.030

- Tom Templeton expects the very best for his sale. We let him choose from the only four females owned by Monomoy, from our most successful flush. Tom's choice was this 3 year old, whose qualifications include the following: Full sibling and flush mate to SHAF Oracle owned by Canadian Bull Stud Semex, full sibling and flush mate to the heifer that sold half interest for \$10,000 at our 2019 GIFT sale, full sibling and flush mate to 3 bulls that competed in the 2018 Culpeper Bull test and sold for an average of \$4,333.
- A 2 year old, she produced a calf with an outlier combination for calving ease (+15), yearling weight (+148), marbling(+1.16), and \$B(+200), matched by less than 20 animals, male or female in the Angus data base as of March 1, 2020. Sells rebred to Sydgen Enhance on 11/28/19. Safe in calf.



Monomoy Rita G12

Calved: 9/9/2019 Cow: 19515742 Tattoo: G12

Consigned by: Monomoy Farm

*Jindra 3rd Dimension	##Jindra Double Vision	\$W
Jindra Acclaim	Jindras Sapphire J 417	+80
*17972810 Jindra Blackbird Lassy 1111	##Connealy Impression	\$M
	Jindras Enchantress J 102	+54
#*GAR Prophet	#CRA Bextor 872 5205 608	\$B
Monomoy Rita D2	GAR Objective 1885	+186
+*18531244 Monomoy Lovely Rita A20	#Sitz Upward 307R	\$C
	Monomoy Lovely Rita 083	+295

CED	BW	WW	YW	Milk	MARB	RE	FAT
+10	+0.8	+73	+134	+29	+0.99	+0.68	-0.011

- This is a beautiful, athletic Jindra Acclaim heifer with exceptional calving ease, growth and marbling. There are good reasons why this Hoff influenced Jindra breeding works for this cow going back to an Exaltation daughter that we purchased in 2007. She was a double bred Scotch Cap 309 granddaughter. Proud to offer this one.



SHAF Lovely Rita Pro 17 - A full sister to this female sells as Lot 16



SHAF Oracle 437- Full Brother to Lot 16

Breed Average EPDs

CED	BW	WW	YW	Milk	MARB	RE	FAT	\$W	\$M	\$B
+6	+1.2	+54	+96	+25	+0.50	+0.50	+0.012	+54	+52	+126



Monomoy Blackbird Pro D9

Calved: 9/4/2016 Cow: 18535552 Tattoo: D9

Consigned by: Monomoy Farm

								\$W
JMB Traction 292	#*Sitz Top Game 561X	#*GDAR Game Day 449						+82
#*17262374	*JMB Emulota 013	#Sitz Pride 88T						\$M
		#*SAV 004 Predominant 4438						+44
		#BAR S Emulota 5426						\$B
		#*Rito 112 of 2536 Rito 616						+154
		LB 6807 Isabel 339						\$C
		#Bon View New Design 878						+244
		Whitestone Blackbird R017						

CED	BW	WW	YW	Milk	MARB	RE	FAT
+5	+2.1	+69	+119	+36	+0.51	+0.92	-0.025

- This is one of our top 3 year old cows. She produced a first calf with a low birth weight ratio of 93 with weaning and yearling ratios of 107 and 105. Her second calf is an outstanding Southern Charm heifer.
- Dam is a pathfinder and her grandam set the pace for this productive Blackbird family.
- Sells rebred to Sydgen Enhance on 11/30/2019. Safe in calf.



Monomoy Blackbird Ginny G2

Calved: 8/23/2019 Cow: 19498014 Tattoo: G2

Consigned by: Monomoy Farm

								\$W
BUBS Southern Charm AA31	*Silveiras Conversion 8064	#*BT Crossover 758N						+77
*17853196	*Hickory Hill Erica 009	EXG Saras Dream S609 R3						\$M
		#*Connealy Stimulus 8419						+59
		Hickory Hill Erica TA32						\$B
		#*Sitz Top Game 561X						+138
		*JMB Emulota 013						\$C
		#*GAR-EGL Protege						+238
		Monomoy Blackbird 815						

CED	BW	WW	YW	Milk	MARB	RE	FAT
+0	+3.3	+65	+107	+36	+0.87	+0.63	+0.050

- G2 has been an eye catching heifer from the start. Maternal quality runs deep in this pedigree. The sire of this heifer, Bubs Southern Charm, is quickly gaining recognition and heavy use for simultaneously improving fescue tolerance, carcass, and phenotype.



BoBo Rita 4568 [OSF]

Calved: 11/19/2014 Cow: 18049998 Tattoo: 4568

Consigned by: Brilee Farm

								\$W
GAR Prophet	#CRA Bextor 872 5205 608	#BAR Ext Traveler 205						+84
#*16295688	GAR Objective 1885	Cra Lady Jaye 608 498 S Easy						\$M
		#*SS Objective T510 0T26						+71
		GAR 1407 New Design 2232						\$B
		#*Mytty In Focus						+164
		#AAR Lady Kelton 5551						\$C
		#CRA Bextor 872 5205 608						+284
		GAR Ext 614						

CED	BW	WW	YW	Milk	MARB	RE	FAT
+10	+0.5	+71	+130	+29	+1.31	+0.39	+0.075

- A very productive Prophet daughter from Bob Bahr and produced by a highly predictable cow line – Back to the famous GAR Ext 614.
- Rita 4568 carries generations of proven AI sires with Ten X and Bextor at the forefront of the pedigree ; AND Prophet as the sire with enough carcass records and daughter data to make him highly predictable for quality premiums , good uddered daughters with high figures for \$W and \$M.
- 4568 is low birth wt, lots of growth, solid milk, top 1% for Marbling and solid \$ indexes as she nurses a heifer born 9-25-2019 by The Senior Herd Sire at Brilee Angus Ranch Rito 6R2 – Great Sire !
- 4568 sells bred to GAR Drive, calf sexed as a heifer.



Brilee Rita 9911 or 4568 6R2

Calved: 9/25/2019 Cow: 19546422 Tattoo: 9911

Consigned by: Brilee Farm

								\$W
Brilee Rito 6R2 of 0243 QHR	+*Quaker Hill Rampage 0A36	#MCC Daybreak						+82
+*18580160	Rita 0243 of Rita 7O68 5M2	+*QHF Blackcap 6E2 of 4V16 4355						\$M
		#*Rito Revenue 5M2 of 2536 Pre						+58
		Rita 7O68 of Rita 5FH8 Obj						\$B
		#CRA Bextor 872 5205 608						+180
		GAR Objective 1885						\$C
		#*AAR Ten X 7008 SA						+291
		Deer Valley Rita 9927						

CED	BW	WW	YW	Milk	MARB	RE	FAT
+11	+0.7	+74	+130	+30	I+1.19	I+.75	I+.030

- Notice her sire – A Rampage out of 0243 cow who is a full sister to 0242 – The dam of the top marbling bull of the breed at one time.



BUBS Southern Charm AA31 - Sire of Lot 17A



GAR Ext 614 - Lot 18 and 18A stem from this power foundation Angus female.

Breed Average EPDs

CED	BW	WW	YW	Milk	MARB	RE	FAT	\$W	\$M	\$B
+6	+1.2	+54	+96	+25	+0.50	+0.50	+0.012	+54	+52	+126



19

Brilee Rita 6TI9 TOD [DDC]

Calved: 3/4/2016 Cow: 18415546 Tattoo: 6TI9

Consigned by: Brilee Farm

								\$W
#+*Werner War Party 2417								+74
RB Tour Of Duty 177								\$M
#+*16984170 +*BA Lady 6807 305								+61
AGI GEEDP								\$B
#*AAR Ten X 7008 SA								+155
Brilee Rita B2I9 10X								\$C
*17773423 Rita 2I19 of 8HA7 9I9								+262

CED	BW	WW	YW	Milk	MARB	RE	FAT
+7	+2.0	+68	+119	+29	+0.83	+0.88	-0.019

• A young Tour of Duty daughter with 12 EPD's and indexes in the top 15% of the breed. She is out of a very strong producing Ten X cow with lots of power behind her with Rito 9I9 Total and Predestined. In top 5% for WW, YW ; 3% for REA, top 10% for CW,\$W,\$G, and \$B.

• 6TI9 nurses a heifer calf born 9-20-2019 by Rito 6R2.

• She sells rebred to EWA Peyton on 2-13-2020



20

WHS Composure Blackbird 2I19

Calved: 10/17/2016 Cow: 18831565

Consigned by: Shelton

#+GAR New Design 5050

								\$M
GAR Composure								+56
#+*16496980 *GAR Objective 2413								\$B
AGI GEEDP								+179
#*Robin								\$C
WHS								+288
#*WHS Limelight 64V								
#WHS 5050 Blackbird 76W								

CED	BW	WW	YW	Milk	MARB	RE	FAT
+7	+2.0	+68	+119	+39	+1.18	+0.76	-0.001

• Here is a top notch female from the heart of the Shelton Herd, a female that could be good enough to flush !

• As an individual she recorded growth ratios of 106/110 as a heifer, a solid 6 frame with IMF @ 117, RE @ 110 and genomic ranks of 7 for Marbling and 4 for Milk. Ranks in TOP 20% or better in 16 EPD's / Indexes. TOP 1% for Milk,\$W,\$G. TOP 2% for MB,\$B.

• 21E's 1st calf was a bull by GAR Sure Fire who achieved WW/YW ratios of 109/104, IMF @102 and sold for \$4,800 at auction.

• 21E is sired by a highly accurate female sire, a Proof Positive, Fertility Certified sire with a lot of daughter data, and produced by the well known cow, "2345".Sells with a solid heifer calf born 9-22-19 Lot 20A by DVF Growth Fund.

• Bred to GAR Quantum, The up and coming star at Select Sires. on 12/17/19. Foundation cow /calf pair.



20A

WHS G FUND Blackbird 17E

Calved: 9/22/2019 Cow: 196518

Consigned by: Shelton

#+*Basin Payweight 1682

								\$M
Deer Valley Growth Fund								+51
#+*18827828 +*Deer Valley								\$B
AGI GEEDP								+187
#*New Design 5050								\$C
WHS								+294
#*Connealy Confidence 0100								
WHS LL Blackbird 10Y								

CED	BW	WW	YW	Milk	MARB	RE	FAT
+6	+1.2	+79	+147	+33	+0.88	+0.61	+0.020

OUT OF SALE



19A

Brilee Rita 9907 of 6TI9 6R2 [DDP]

Calved: 9/20/2019 Cow: 19546421 Tattoo: 9907

Consigned by: Brilee Farm

								\$W
+*Quaker Hill Rampage 0A36								+77
Brilee Rito 6R2 of 0243 QHR								\$M
+*18580160 Rita 0243 of Rita 7O68 5M2								+53
#*RB Tour Of Duty 177								\$B
Brilee Rita 6TI9 TOD								+177
*18415546 *Brilee Rita B2I9 10X								\$C
#*AAR Ten X 7008 SA								+283
Rita 2I19 of 8HA7 9I9								

CED	BW	WW	YW	Milk	MARB	RE	FAT
+9	+2.0	+73	+126	+30	I+.95	I+1.00	I-.018

• Sells ready to wean. A well balanced heifer.



RB Tour of Duty 177

- His influence sells throughout the sale.



21

LPH Belle 755

Calved: 9/26/2017 Cow: 19097340 Tattoo: 755

Consigned by: Legacy Farm

								\$W
#*SAV Final Answer 0035								+52
SAV Pioneer 7301								\$M
#15688392 SAV Blackbird 5297								+42
#SAV 8180 Traveler 004								\$B
LPH Belle 953								+115
16604195 #+GAR Expectation 1970								\$C
GAR Precision 4396								+191

CED	BW	WW	YW	Milk	MARB	RE	FAT
I+2	+2.8	+59	+105	+24	+0.17	+0.62	+0.027

• Sired by SAV Pioneer 7301 whose legacy to the Angus Breed are his outstanding daughters. Dam is LPH Belle 953 who became one of our leading donor cows.

• Large framed young female with her first calf weighing 72 pounds at birth.

• Individual AHIR records include BW 78 lbs. ratio 96 WW ratio 111, YW ratio 108 EPD's Top 30% of Angus Breed: WW, YW,

• Breeding Information: Bred 12/7/2019 to MOGCK Entice Reg: AAA 18952921 due: September 15, 2020



21A

LPH Broken Bow 919

Calved: 9/2/2019 Bull: 19670675 Tattoo: 919

Consigned by: Legacy Farm

								\$W
#*Summitcrest Complete 1P55								+63
KM Broken Bow 002								\$M
#+*16764044 #Summitcrest Princess 0P12								N/A
#SAV Pioneer 7301								\$B
LPH Belle 755								+132
19097340 LPH Belle 953								\$C
#SAV Final Answer 0035								N/A

CED	BW	WW	YW	Milk	MARB	RE	FAT
N/A	I+.6	I+.61	I+.104	I+.26	I+.52	I+.67	I+.004

• This bull calf is sired by K M Broken Bow, a powerful Complete son known for his calving ease, moderate frame and heavy muscling.

Breed Average EPDs

CED	BW	WW	YW	Milk	MARB	RE	FAT	\$W	\$M	\$B
+6	+1.2	+54	+96	+25	+0.50	+0.50	+0.012	+54	+52	+126



Legacy Everelda 538

Calved: 9/14/2015 Cow: 18367687 Tattoo: 538

Consigned by: Legacy Farm

	\$W
Rito 707 of Ideal 3407 7075	+70
	\$M
SAV Resource 1441	
#+*17016597 *SAV Blackcap May 4136	+50
	\$B
#+Boyd New Day 8005	
Legacy Everelda 2481 138	+119
17150856 Three Trees Everelda 2481	\$C
Three Trees Everelda 9467	+204

CED	BW	WW	YW	Milk	MARB	RE	FAT
+7	+2.0	+63	+117	+29	+0.13	+0.88	+0.001

• Sired by the now deceased SAV Resource 1441 who was a leading herd sire in the Angus breed. Her dam is another one of our leading cow families the Evereldas.

• 538 is nursing her third calf. Her first two calves had average birth weight of 74 lbs. and an average weaning ratio 104. Her present calf weighed 76 pounds at birth.

• Individual AHIR records include BW 72, WW ratio 106, YW ratio 107. Individual EPDs rank her :top 15% for weaning, 10% for yearling, 25% for milk, 10% for CW, 4% RE, 10% \$W

• Bred 12/29/2019 to Basin Rainmaker 4404 Reg. AAA 17913751 due October 10,2020.



LPH Everelda 928

Calved: 9/7/2019 Cow: 19669923 Tattoo: 928

Consigned by: Legacy Farm

	\$W
#+*Coleman Charlo 0256	+68
	\$M
SAV Raindance 6848	
+*18578965 *SAV Blackcap May 4136	+56
	\$B
#+*SAV Resource 1441	
Legacy Everelda 538	+121
18367687 Legacy Everelda 2481 138	\$C
Three Trees Everelda 2481	+213

CED	BW	WW	YW	Milk	MARB	RE	FAT
I+6	I+1.8	I+64	I+121	I+27	I+.06	I+.92	I-.004

• Everelda 928 is sired by the breed changer SAV Raindance. This heifer is extra special. She is very quiet and a super looker.



Legacy Blackcap 636 [DDC]

Calved: 9/8/2016 Cow: 18690954 Tattoo: 636

Consigned by: Legacy Farm

	\$W
#B/R New Design 036	+41
	\$M
Bon View New Design 1407	
#12783540 Bon View Pride 664	+38
	\$B
#Sitz Traveler 8180	
Sherrod Blackcap 0062	+100
+*13704859 GAR Ext 2114	\$C
#GAR Scotch Cap 867	+168

CED	BW	WW	YW	Milk	MARB	RE	FAT
+1	+3.1	+46	+71	+25	+0.72	-0.18	+0.043

• Sired by a breed legend herd sire Bon View New Design 1407. Her dam was one of our leading Donor cows who at one time was number 3 cow for marbling in the Angus breed.

• 636 is nursing her second calf. Her first calf weighed 74 Lbs at birth and weaned with 108 weaning ratio. Her present calf weighed 56 lbs. at birth.

• Individual AHIR records include BW 70 lbs. WW ratio 90, YW ratio 94. Ultrasound scan 7.06 Pct IMF putting her in the top 20% of Breed for Marbling.

• Breeding information: Bred 12/12/2019 to Basin Rainmaker 4404, due September 22, 2020



LPH Blackcap 914 [DDP]

Calved: 9/1/2019 Cow: 19669888 Tattoo: 914

Consigned by: Legacy Farm

	\$W
#+*Basin Payweight 1682	+52
	\$M
Carter's Omaha	
*18245482 TC Marcia 0044	+42
	\$B
#Bon View New Design 1407	
Legacy Blackcap 636	+131
+*18690954 +*Sherrod Blackcap 0062	\$C
GAR Ext 2114	+212

CED	BW	WW	YW	Milk	MARB	RE	FAT
I+4	I+2.6	I+54	I+90	I+24	I+.67	I+.24	I+.017

• Sired by Carter's Omaha, this low birth weight heifer calf should be a good addition for her new owner.



LPH Everelda 928 - This September heifer sells as Lot 22A.



LPH Blackcap 914 - This heifer calf sells as lots 23A.

Breed Average EPDs

CED	BW	WW	YW	Milk	MARB	RE	FAT	\$W	\$M	\$B
+6	+1.2	+54	+96	+25	+0.50	+0.50	+0.012	+54	+52	+126



EWA 720 of 537 Bronc - This two year old female sells with her bull calf as Lot 24 and 24A



G A R Ashland - Selling several cows bred to this sire, and calves sired by this bull.



EWA 720 of 537 Bronc

Calved: 8/23/2017 Cow: 19054180 Tattoo: 720

Consigned by: Edgewood Angus, LLC

*EF Commando 1366	*#EF Complement 8088	\$W
Baldrige Bronc	Riverbend Young Lucy W1470	+102
+*18229425	*Baldridge Isabel Y69	\$M
AGI	*#Styles Upgrade J59	+78
GE-EPD	Baldrige Isabel T935	\$B
+*#GAR Prophet	#CRA Bextor 872 5205 608	+115
EWA 537 of 302 Prophet	GAR Objective 1885	\$C
*18332300	*EWA 302 of 115 Regis	+227
	*#Coleman Regis 904	
	+*Edgewood Shorita 115	

CED	BW	WW	YW	Milk	MARB	RE	FAT
+10	+0.1	+76	+124	+39	+0.68	+0.71	+0.027

- Sired by the outcross sire, Baldrige Bronc, 720 posted performance ratios of 106 for WW, 101 for YW, 101 for IMF, and 115 for REA in a contemporary group of 60 with an impressive REA measurement of 10.7.
- She sells A.I. bred on 3/1/20 to E W A Peyton 642 with her 12/4/19 born bull calf,
- E W A 9216 of 720 Citadel, Lot 24A at side.



Woodside Rita 779 of 4R5

Calved: 1/23/2017 Cow: 18740015 Tattoo: 779

Consigned by: Mile Away Farm

+*Rito 9Q20 of Rita 5F56 GHM	#Gardens Highmark	\$W
Woodside Rito 5Q5 of 789	+*Rita 5F56 of 1198 FD	+58
*18329136	#GAR New Design 5050	\$M
AGI	GAR Objective 1417	+45
GE-EPD	*#B/R New Day 454	\$B
+*#VAR Reserve 1111	+*Sandpoint Blackbird 8809	+189
Woodside Rita 4R5 of 5FH8	#CA Future Direction 5321	\$C
+*18128712	+*Rita 5FH8 of Rita 2V5 FD	+290
	+*Rita 2V5 of 2536 1407	

CED	BW	WW	YW	Milk	MARB	RE	FAT
+5	+1.3	+64	+114	+17	+0.9	+1.04	-0.063

- John Brewer owns this young cow and 3 other fall pairs. We welcome John to the GIFT Sale and thank him for raising good Angus seedstock.
- Rita 779 of 4R5 is just a 2 yr old with a host of proven bulls in her pedigree. She is a moderate birth, solid growth with carcass EPD's in the top 4% for REA and \$B @+189. Note her great-grandma, Rita 2V5, is one of the famous daughters of 2536.
- If you look into this pedigree, you will find many cows that have had an impact on the breed.
- Bred on 12-5-19 to GAR Ashland.



EWA 9216 of 720 Citadel

Calved: 12/4/2019 Bull: 19643661 Tattoo: 9216

Consigned by: Edgewood Angus, LLC

+*KCF Bennett Fortress	*#Connealy Consensus	\$W
EWA Citadel 713	*Thomas Patricia 9705	+101
+*18825683	*#Plattmire Weigh Up K360	\$M
AGI	+*Rita 9O67 of Rita 5M13 Obj	+69
GE-EPD	*EF Commando 1366	\$B
+*Baldrige Bronc	*Baldridge Isabel Y69	+174
EWA 720 of 537 Bronc	*#*GAR Prophet	\$C
*19054180	*EWA 302 of 115 Regis	+295

CED	BW	WW	YW	Milk	MARB	RE	FAT
+9	+0.5	+78	+134	+38	+1.07	+0.79	+0.018

- 9216 is an exciting calving-ease, growth, carcass, \$W and \$B young herd sire prospect sired by, E W A Citadel 713, a Fortress son of the \$100,000 record-selling female ever produced in the E W A program, 3128 who is the foundation member of the De-Su Angus herd.



MAF 119 of 779 X Absolute

Calved: 6/27/2019 Bull: 19663389 Tattoo: 119

Consigned by: Mile Away Farm

*#KCF Bennett Absolute	*#SAV Final Answer 0035	\$W
Springfield Absolute 6054	Thomas Miss Lucy 5152	+68
18746673	*#EXAR Denver 2002B	\$M
Springfield Rita 4034	Springfield Rita 2155	+75
	+*Rito 9Q20 of Rita 5F56 GHM	\$B
*Woodside Rito 5Q5 of 789	GAR 5050 New Design 789	+155
Woodside Rita 779 of 4R5	*#*VAR Reserve 1111	\$C
*18740015	+*Woodside Rita 4R5 of 5FH8	+276
	+*Rita 5FH8 of Rita 2V5 FD	

CED	BW	WW	YW	Milk	MARB	RE	FAT
I=8	I=9	I=66	I=116	I=23	I=0.76	I=1.04	I=.024

- This weanable bull calf at the side of the two year old selling as lot 25 stacks generation of proven genetics in his pedigree.

Breed Average EPDs

CED	BW	WW	YW	Milk	MARB	RE	FAT	\$W	\$M	\$B
+6	+1.2	+54	+96	+25	+0.50	+0.50	+0.012	+54	+52	+126



26

MAF GAR Sunrise 716

Calved: 8/17/2016 Cow: 18773403 Tattoo: 716

Consigned by: Mile Away Farm

#MCC Daybreak				#+Boyd New Day 8005				\$W
								+62
GAR Sunrise				#MCC Miss Focus 134				\$M
+*16933958				#*SS Objective T510 OT26				+47
AGI				GAR 1407 New Design 2983				\$B
GEED				#CA Future Direction 5321				+154
#*ALC Big Eye D09N				ALC Hazel L12L				\$C
MAF 712 of 102 x Big Eye				Rito 2V8 of 2536 1407				+247
17542260				FRTA Viking 42				

CED	BW	WW	YW	Milk	MARB	RE	FAT
+10	-0.3	+59	+103	+24	+0.66	+0.97	-0.032

- A 2nd calf cow sired by one of Select Sires premier female carcass sires with enough progeny with actual carcass records to be highly predictable.
- Sunrise 716 offers a double digit CED, low birth wt [top 15%] with WW | YW EPD's in the top 20% and RE @ 2% and \$B @ 10%. She is well balanced as she nurses an AI sired heifer calf by GAR Pro Active.
- Sells bred on 12-4-19 to GAR Ashland, the sire at GAR with 535 calving out of 1st calf heifers with low calving ease scores and positive growth ratios and 470 ultrasound scores at 104 ratio %IMF and 103 Ribeye ratio.



27

MAF 314 of 412 X GAR Propher

Calved: 8/13/2014 Cow: 18144753 Tattoo: 314

Consigned by: Mile Away Farm

#CRA Bextor 872 5205 608				#BAR Ext Traveler 205				\$W
								+63
GAR Prophet				Cra Lady Jaye 608 498 S Easy				\$M
#+*16295688				#*SS Objective T510 OT26				+54
				GAR 1407 New Design 2232				\$B
GAR 28 Ambush G720				#+B/R Ambush 28				+153
MAF 412 of 018 x GAR 720 28				GAR Objective N546				\$C
17540127				#+GAR New Design 5050				+252
				GAR Foresight 117U				

CED	BW	WW	YW	Milk	MARB	RE	FAT
+6	+2.1	+65	+120	+22	I+1.08	I+.55	I+.005

- This cow is nursing her 4th calf, this one by the Springfield sire and born on 9-30-19. A steady producing cow by Select Sires Prophet known for his daughters excelling for docility, CEM, femininity with solid udders.
- Cow sells bred on 11-14-19 to GAR Momentum



28

MAF 712 of 102 x Big Eye [DDF-M1F]

Calved: 8/15/2012 Cow: 17542260 Tattoo: 712

Consigned by: Mile Away Farm

#CA Future Direction 5321				#GAR Precision 1680				\$W
								+62
ALC Big Eye D09N				CA Miss Power Fix 308				\$M
#*14560689				SVF Bandolier				+46
ALC Hazel L12L				#Alc Hazel K14H				\$B
Rito 2V8 of 2536 1407				#Bon View New Design 1407				+144
FR Rita 2536-4144				GAR Precision 2536				\$C
16246994				#Bon View New Design 1407				+233
				Miss TA Viking FR				

CED	BW	WW	YW	Milk	MARB	RE	FAT
+11	+1.0	+57	+99	+28	+0.41	+0.97	-0.011

- This is the dam of the Sunrise cow in John's offering.
- A proven cow as you notice with more of the good traits in Angus cattle including LONGEVITY. She is a solid cow on paper and on foot.
- Nurses a 8-5-19 bull calf by GAR Proactive as Lot 28A.
- Sells bred on 11-13-19 to GAR Momentum.



26A

MAF 619 of 716 X 6054

Calved: 8/25/2019 Cow: 19661741 Tattoo: 619

Consigned by: Mile Away Farm

#*KCF Bennett Absolute				#*SAV Final Answer 0035				\$W
								+65
Springfield Absolute 6054				Thomas Miss Lucy 5152				\$M
18746673				#*EXAR Denver 2002B				+54
Springfield Rita 4034				Springfield Rita 2155				\$B
+*GAR Sunrise				#MCC Daybreak				+151
MAF GAR Sunrise 716				+*GAR Objective R227				\$C
18773403				#*ALC Big Eye D09N				+250
				FR Rita 2536-4144				

CED	BW	WW	YW	Milk	MARB	RE	FAT
I+11	I+.3	I+61	I+110	I+26	I+.63	I+1.01	I-.009

- This August born heifer calf is sired by GAR Proactive.



27A

MAF 1019 of 3 14 X 6054

Calved: 9/30/2019 Cow: 19658063 Tattoo: 1019

Consigned by: Mile Away Farm

#*KCF Bennett Absolute				#*SAV Final Answer 0035				\$W
								+64
Springfield Absolute 6054				Thomas Miss Lucy 5152				\$M
18746673				#*EXAR Denver 2002B				+48
Springfield Rita 4034				Springfield Rita 2155				\$B
+*GAR Prophet				#CRA Bextor 872 5205 608				N/A
MAF 314 of 412 X GAR Propher				GAR Objective 1885				\$C
18144753				GAR 28 Ambush G720				N/A
				GAR New Design 018				

CED	BW	WW	YW	Milk	MARB	RE	FAT
+10	+0.6	+64	+116	+24	N/A	N/A	N/A

- Heifer calf by Dr. Goodson's sire Springfield Absolute 6054.



28A

MAF 419 of GAR Proactive

Calved: 8/5/2019 Bull: 19661744 Tattoo: 419

Consigned by: Mile Away Farm

#*GAR Prophet				#CRA Bextor 872 5205 608				\$W
								+66
GAR Proactive				GAR Objective 1885				\$M
+*18333424				#MCC Daybreak				+60
*GAR Daybreak 1521				+*GAR 5050 New Design 1039				\$B
#*ALC Big Eye D09N				#CA Future Direction 5321				+159
MAF 712 of 102 x Big Eye				ALC Hazel L12L				\$C
17542260				Rito 2V8 of 2536 1407				+266
FR Rita 2536-4144				FRTA Viking 42				

CED	BW	WW	YW	Milk	MARB	RE	FAT
+12	+0.3	+65	+117	+25	I+.65	I+.92	I-.013

- Sired by G A R Proactive, this bull calf is out of the proven female selling as Lot 28.

Breed Average EPDs

CED	BW	WW	YW	Milk	MARB	RE	FAT	\$W	\$M	\$B
+6	+1.2	+54	+96	+25	+0.50	+0.50	+0.012	+54	+52	+126



31

Erica G 53E Niagara 43B

Calved: 9/16/2017 Cow: 19112396 Tattoo: 53E

Consigned by: Groveland Farm

#*Hoover Dam	#*SydGen CC&7	\$W
SS Niagara Z29	#Erica of Ellston C124	+82
*17287387 Jet SS X144	#*B/R New Day 454	\$M
AGI	JET SS T151	+42
GE-EPD	#Bon View New Design 208	\$B
Erica G 43B Total 62W	TC Erica Eileen 2047	+185
18112111 Erica Lass G 62W Bextor 45T	#CRA Bextor 872 5205 608	\$C
	Erica Lass G 45TSolution 61R	+282

CED	BW	WW	YW	Milk	MARB	RE	FAT
+11	-0.3	+70	+124	+33	+0.71	+1.45	-0.021

• What a beautiful 1st calf heifer from Groveland, typical of the quality females Chuck and his family raise. Here is a female with generations of proven sires and dams.

• 43B is +11 CED @15%, -4BW @15%, top 10% WW/YW, +33 Milk @5%, CW @10%, RE@1%, and \$B@3%. Pretty good EPD Profile with loads of phenotype.

• She nurses a bull calf, Lot 32A, born 1/29/2020 and sired by one of Select Sires new front runners GAR Quantum.

Sells bred on 5/14/2020 to Deer Valley Growth Fund.

• Lot 31A EPDs:

CED	BW	WW	YW	Milk	MARB	RE	FAT	\$W	\$M	\$B	\$C
+10	+3.1	+74	+133	+33	+0.75	+1.14	-0.014	+76	+42	+193	+292



33

Rita 8G10 of Rita 6N7 Drive

Calved: 12/12/2017 Cow: 19227299 Tattoo: 8G10

Consigned by: Woodside Farms

*GAR Momentum	#*GAR Progress	\$W
GAR Drive	GAR Big Eye 1770	+63
*18301470 *Maplecrest Blackcap 3007	#*Connealy In Sure 8524	\$M
AGI	Maplecrest Blackcap K9283	+32
GE-EPD	#*AAR Ten X 7008 SA	\$B
Ankony Miss Rita 6N7	+*Deer Valley Rita 0274	+185
+*18295991 +*Rita 9Q15 of Rita 5F56 GHM	#Gardens Highmark	\$C
	+*Rita 5F56 of 1I98 FD	+272

CED	BW	WW	YW	Milk	MARB	RE	FAT
+9	+0.4	+57	+104	+29	+0.91	+1.12	-0.029

• Rita 8G10 is a deep, stylish and thick made daughter of G A R Drive that stems from the \$140,000, Rita 9Q15 who now resides at Riverbend Ranch. This female excels for traits of economic importance, is loaded with end product merit and will be a solid cow for a longtime.

• 8G10 sells with a heifer calf, Lot 33A, born 3/20/2020 by Rito Highmark 7Q5 (Reg. 19698768). This female is flat good and will be a future donor.

• A.I. bred on 5/14/2020 to Rito 3S10 of 9Q15 Progress



Rita 8E20 of Rita 5F56 Stud - Lot 34



32

Erica Rose G 78E Niagara 54C

Calved: 10/4/2017 Cow: 19112382 Tattoo: 78E

Consigned by: Groveland Farm

#*Hoover Dam	#*SydGen CC&7	\$W
SS Niagara Z29	#Erica of Ellston C124	+88
*17287387 Jet SS X144	#*B/R New Day 454	\$M
AGI	JET SS T151	+47
GE-EPD	#*Deer Valley All In	\$B
Erica Rose G 54C All In 58Z	#*AAR Ten X 7008 SA	+159
18458321 Erica Rose G 58Z A71 78X	+*Deer Valley Rita 0274	\$C
	#Connealy Answer 71	+253

CED	BW	WW	YW	Milk	MARB	RE	FAT
+11	-0.1	+75	+143	+36	+0.57	+0.92	+0.006

• The daughters of Niagara make good looking, high production, big bodied cows. The top side of this pedigree provides verified quality assurance with Hoover Dam and New Day 454. Her ratios BW 96, Wn 112, YR 111.

• 54C nurses a heifer calf, Lot 33A, born 1/25/2020, BW of 70lbs and sired by DVF Growth Fund, the Payweight 1682 / Weigh Up blend and capped with the legendary "614" cow. This calf carries a powerful EPD profile.

• Sells rebred on 4/8/2020 to GAR Quantum

• Lot 32A EPDs:

CED	BW	WW	YW	Milk	MARB	RE	FAT	\$W	\$M	\$B	\$C
+8	+2.7	+89	+177	+37	+0.66	+0.76	+0.028	+92	+38	+182	+274



Rita 8G10 of Rita 6N7 Drive - Lot 33



34

Rita 8E20 of Rita 5F56 Stud

Calved: 12/15/2017 Cow: 19199539 Tattoo: 8E20

Consigned by: Woodside Farms

#*AAR Ten X 7008 SA	#*Mytty In Focus	\$W
EXAR Stud 4658B	#AAR Lady Kelton 5551	+59
+*17908266 +*BoBo Rita 1559	#*Summitcrest Complete 1P55	\$M
AGI	DRMCTR III Rita 6108	+65
GE-EPD	#GAR Precision 1680	\$B
Rita 5F56 of 1I98 FD	CA Miss Power Fix 308	+156
+*15142168 +*Rita 1I98 of 2536 Rito 616	#Rito 616 of 4B20 6807	\$C
	GAR Precision 2536	+267

CED	BW	WW	YW	Milk	MARB	RE	FAT
+15	-1.7	+51	+95	+27	+0.98	+0.59	+0.008

• Pay attention here. Rita 8E20 is a direct daughter of the \$5 million producer and cow that needs no introduction, Rita 5F56. This female is strong in her design, has a powerfully made hip, soft made, super sweet and attractive front end. Rita 8E20 could be one of the best daughters of Rita 5F56 ever produced.

• This female sells with a heifer calf, Lot 34A, born 2/28/2020 by G A R Inertia, special mating here. Calf Reg. # 19684532.

• A.I. bred on 5/14/2020 to G A R Set Apart

Breed Average EPDs

CED	BW	WW	YW	Milk	MARB	RE	FAT	\$W	\$M	\$B
+6	+1.2	+54	+96	+25	+0.50	+0.50	+0.012	+54	+52	+126



EWA 803 of 3128 Elation

Calved: 3/6/2018 Cow: 19307316 Tattoo: 803

Consigned by: Edgewood Angus, LLC

#*Basin Excitement	Basin Expedition R156	\$W
Hoover Elation M123	Basin Lady S532 AK	+70
*17603620 #*Pride of Ellston K68	#*SydGen CC&7	\$M
AGI GE-EPD #*Plattmire Weigh Up K360	#Pride of Ellston D58	+68
EWA 3128 of 9067 Weigh Up	#Sitz Upward 307R	\$B
+*17816357 +*Rita 9067 of Rita 5M13 Obj	#Barbara of Plattmire 337	+133
	#*SS Objective T510 0T26	\$C
	+*Rita 5M13 of 2V9 Predestined	+241

CED	BW	WW	YW	Milk	MARB	RE	FAT
+14	-1.9	+57	+111	+29	+0.62	+0.44	+0.036

•803 is a direct daughter of the \$100,000 record-selling female ever produced in the E W A program, 3128 who is the foundation member of the De-Su Angus herd, and she is sired by the outcross sire, Elation M123.

•Maternal siblings to this exciting young female include: Ascend 7306, the Number 3 proven \$B sire in the Executive Sires roster; the \$35,000 678 selected by Capitol Angus; and 6121, a highlight of the E W A Fall 2019 LiveOnline Sale selected by Jenkins Angus who went on to produce a natural daughter selling in the 2020 Bases Loaded Sale to Spruce Mountain Ranch for \$26,000 and a \$13,000 pregnancy selected by Riverbend Ranch.

•She sells open with her 2/4/20 born bull calf, Lot 35A (Reg. 19658081), by EWA Peyton 642 at side. Genomics results pending on calf and will be provided prior to sale day.



Brilee Rita 7P01 of 4X75 P - Lot 36



Brilee Rita 7I03 of 0243

Calved: 12/30/2017 Cow: 19405793 Tattoo: 7I03

Consigned by: Brilee Farm

#*GAR Ingenuity	#*GAR New Design 5050	\$W
VAR Index 3282	GAR Objective 1067	+65
+*17513381 +*Sandpoint Blackbird 8809	#*Connealy Onward	\$M
	Riverbend Blackbird 4301	+57
#*Rito Revenue 5M2 of 2536 Pre	#*GAR Predestined	\$B
Rita 0243 of Rita 7O68 5M2	GAR Precision 2536	+159
16874031 Rita 7O68 of Rita 5FH8 Obj	#*SS Objective T510 0T26	\$C
	+*Rita 5FH8 of Rita 2V5 FD	+263

CED	BW	WW	YW	Milk	MARB	RE	FAT
I+9	I+2.0	I+60	I+103	I+27	I+.91	I+.90	I-.001

•A direct daughter of one of the foundation cows at Brilee.

•A very moderate framed, well structured female by one of the higher quality sons of the 8809 cow at VAR. She shows a +27 Milk EPD, Marb @ 15%, RE @ 10% and \$B @ 10%. Notice the real cow makers in her pedigree.

•7I03 sells due to calve early March to Rito 6R2, The Rampage son at Brilee Angus Ranch.

Brilee Rita 7I03 of 0243 - Lot 37



EWA 803 of 3128 Elation - Lot 35



Brilee Rita 7P01 of 4X75 P

Calved: 12/28/2017 Cow: 19192233 Tattoo: 7P01

Consigned by: Brilee Farm

#*Basin Payweight 1682	#*Basin Payweight 006S	\$W
TEX Playbook 5437	21AR O Lass 7017	+81
+*18414912 +*Rita 1C43 of 9M26 Complete	#*Summitcrest Complete 1P55	\$M
AGI GE-EPD #*AAR Ten X 7008 SA	+*Rita 9M26 of Rita 5F56 Pred	+66
Woodside Brilee 4X75 of 0243	#*Mytty In Focus	\$B
+*18136340 Rita 0243 of Rita 7O68 5M2	#AAR Lady Kelton 5551	+155
	#*Rito Revenue 5M2 of 2536 Pre	\$C
	Rita 7O68 of Rita 5FH8 Obj	+267

CED	BW	WW	YW	Milk	MARB	RE	FAT
+14	+0.6	+66	+116	+31	+0.68	+0.42	+0.058

•A real deep bodied 1st calf heifer by Select Sires high customer satisfaction sire! The Brilee cowherd is loaded with predictable genetics with this family tracing to the 0243 cow.

•7P01 is a top10% CED, high growth cow WW /YW @15%,+31 Milk EPD @4%.

•7P01's dam by Ten X is a potential donor at Brilee Angus Ranch and the next cow sired by a real cow maker Rito 5M2. Sells with a bull calf (Reg. 19687318) born 1-30-2020 by Sydgen Enhance, ABS's high \$Beef bull. Very nice 2 yr old female.

Breed Average EPDs

CED	BW	WW	YW	Milk	MARB	RE	FAT	\$W	\$M	\$B
+6	+1.2	+54	+96	+25	+0.50	+0.50	+0.012	+54	+52	+126



38

Brilee Rita 8G04 of CX04 G

Calved: 5/1/2018 Cow: 19192226 Tattoo: 8G04

Consigned by: Brilee Farm

		\$W
#*Connealy Dublin 8223	Connealy Full Freight	+63
Connealy Guinness	Black Rina of Conanga 69	\$M
#*17031279 Panda of Conanga 3609	EGL Target 1148	+55
	Ponderra of Conanga 750	\$B
#*AAR Ten X 7008 SA	#*Mytty In Focus	
Brilee Rita CX04 7008	#AAR Lady Kelton 5551	+165
+*18139471 Rita 2119 of 8HA7 919	#*Rito 919 of Rita 5F56 616	\$C
	Rita 8HA7 of Rita 5M6 Total	+269

CED	BW	WW	YW	Milk	MARB	RE	FAT
I+8	I+.8	I+59	I+111	I+27	I+1.20	I+.40	I+.028

• She is a real example of the type that Guinness sires – deep bodied, easy doing with high marbling scores. This coming 2 yr old shows plenty of growth, above avg Milk and Marbling @ +1.41[4%] and \$B @ 10%.

• Sells due to calve on 4 -15-2020 to GAR Quantum, The Momentum son at Select Sires who is described by many to be one of the most impressive bulls to sell at GAR. He has close to 20 EPD's and indexes in the top 20% and better in the breed.



40

Silverado Miss Erica 8071

Calved: 3/1/2018 Cow: 19423042

Consigned by: Silverado Cattle

#*Plattmere Weigh Up K360

		\$W
Stevenson Turning Point		N/A
+*1843477 #*Stevenson Pride		\$B
		\$B
		N/A
		\$C
		N/A

CED	BW	WW	YW	Milk	MARB	RE	FAT
I+8	I+.8	I+55	I+92	I+21	N/A	N/A	N/A

• He is a well balanced 1st calf heifer from Rachel and Glenn Covington who always bring eye catching females with cutting edge genetics.

• Erica 8071 is sired by the Genex sire known for his overall capacity, muscle and stoutness of progeny despite his calving ease traits.

• This heifer has been bred for maternal performance, with the ability to produce show heifers for an interested Junior.

• She sells with a bull calf at side, Lot 40A, born 3/8/2020 sired by Spring Creek Acclaim 7049, the featured bull at the 2018 NWSS and selling to TC Ranch in Nebraska. He is an Acclaim son with top percentile rankings in nearly every trait.



Silverado Blossom 704E - Lot 41



39

SLL Rita E82

Calved: 9/16/2017 Cow: 19398683 Tattoo: E82

Consigned by: Schutte Land & Livestock

		\$W
#*Werner War Party 2417	#*Connealy Onward	+69
RB Tour Of Duty 177	BAAR USA Lady Jaye 489	\$M
#*16984170 +*BA Lady 6807 305	#Vermilion Dateline 7078	+36
	GD Lady Hi Flyer 302	\$B
	#*Connealy Onward	
	Sitz Henrietta Pride 81M	+156
	#*SS Objective T510 0T26	\$C
	EXG Limestone PrimeTime M097	+238

CED	BW	WW	YW	Milk	MARB	RE	FAT
-1	+3.2	+74	+127	+26	+0.58	+0.64	-0.048

• Here is a powerful, deep bodied, good milking, docile and super sound 1st calf heifer sired by a very moderate framed bull with a strong maternal line – Kesslers Bell cow family.

• E82's bottom side carries a host of proven cow makers – 307R, SS Objective with Whitestone Rita X130 as the grandma. Here is real cow power at it's best.

• E82 sells with a heifer calf, Lot 39A, born 3/11/2020 and sired by Sydgen Enhance, the #1 \$B bull in the breed. He is a high CED, moderate BW, big growth, big scrotal, high marbling sire.



Silverado Miss Erica 8071 - Lot 40



41

Silverado Blossom 704E

Calved: 9/9/2017 Cow: 19148770 Tattoo: 704E

Consigned by: Silverado Cattle Company

		\$W
OCC Legend 616L	#*OCC Emblazon 854E	+43
BC Lookout 7024	OCC Blackbird 632J	\$M
#*14791623 Gibbet Hill Mignonne E37	#Papa Equator 2928	+39
	Gibbet Hill Mignonne TR 29	\$B
	#BCC Bushwacker 41-93	+83
	GAR Precision 2168	\$C
	#*VDAR Lucys Boy	+147
	EF Blossom 699	

CED	BW	WW	YW	Milk	MARB	RE	FAT
I+8	I+.4	I+39	I+67	I+25	I+.35	I+.30	I+.005

• A daughter of the Grand Champion Cow/ Calf of a past Virginia Angus Breeders Show and sired by a Bill Conley bull that has been well proven thru progeny performance and show results.

• Rachel shared that if they were still showing cattle, this heifer would have been in the barn without question - and she'll produce calves that will be the same.

• Blossom 704E sells with a heifer calf at side, Lot 41A, born 3/4/2020, by Mogck Entice, who offers a pleasing phenotype in a mid 6 frame, and ranks in the top 1% of the breed for \$C which blends both maternal and terminal indexes.

• Rebreding information available on sale day.

Breed Average EPDs

CED	BW	WW	YW	Milk	MARB	RE	FAT	\$W	\$M	\$B
+6	+1.2	+54	+96	+25	+0.50	+0.50	+0.012	+54	+52	+126



Ankony Miss Primrose 6084

Calved: 10/27/2016 Cow: +*18675231 Tattoo: 6084

Consigned by: 6 Pastures Angus

#*A A R Ten X 7008 S A	#*Mytty In Focus	\$W
#*V A R Discovery 2240	#A A R Lady Kelton 5551	+59
#*17262835 +*Deer Valley Rita 0308	#Sitz Upward 307R	\$M
#AGI #Emulation 31	*G A R Objective 2345	+44
Ankony Miss Primrose 2424C	F C R Elation Lad 652	\$B
^16666487 Primrose N Bar 9962	Miss Emulous 243	+120
	Lad 118K of J R S	\$C
	#N Bar Primrose 5329	+200

CED	BW	WW	YW	Milk	MARB	RE	FAT
+3	+0.3	+55	+98	+23	+0.71	+0.28	+0.029

- Here is a special female from 6 Pastures.
- A maternal sister (genetically) to N Bar Emulation EXT, produced by the full (cloned) sister to Primrose 2424, one of the most influential matrons in this breed at one time.
- As of Sept 2018, EXT had over 4.8 million descendants as his DNA made up 7.2% of the registrations with AAA.
- 6084 Primrose has DONOR Potential without doubt. Sells with a high quality heifer calf born 2-21-2020 sired by GAR Drive, the ST Genetics high Marb/ RE Momentum son



Locust Hill Bonnie Maid F23

Calved: 2/23/2018 Cow: 19516733 Tattoo: F23

Consigned by: Locust Hill Farm

#*Connealy Consensus 7229	#*Connealy Consensus	\$W
Connealy Black Granite	Blue Lilly of Conanga 16	+54
#*17028963 #Eura Elga of Conanga 9109	#+SAV Bismarck 5682	\$M
	Eura Cal of Conanga 56B	+62
#KCF Bennett Coalition SCC	#Sitz Alliance 6595	\$B
Murcielago Miss M244 6272	#Pleasant Pill of Conanga	+134
15561388 KCF Miss Extra L208	Woodland Extra 526	\$C
	Da MS DHU Traveler 6807 143E	+236

CED	BW	WW	YW	Milk	MARB	RE	FAT
+5	+2.7	+55	+95	+26	I+.50	I+.32	I+.018

- Another 1st calf heifer for this Showcase Event, and 1 of 2 young females from Locust Hill. This young cow is typical of Black Granite progeny – very quiet, smooth made with solid udders. Bonnie Maid F23 has generations of proven sires and dams in her pedigree.
- Sells with a heifer calf at side, Lot 45A, born 2/24/2020 and sired by Select Sires popular Rampage son Connealy Legendary 644L, known for calving ease, excellent calf vigor early rapid performance and high fertility.
- Sells rebred to Connealy Legendary 644L on 5/13/2020.



LPH Everelda 798

Calved: 12/1/2017 Cow: 19072532 Tattoo: 798

Consigned by: Legacy Farm

#VDAR Really Windy 4097	#AAR Really Windy 1205	\$W
Ginger Hill Semper Fi 321	VDAR Blackbird 2031	+60
17694839 Ginger Hill Helen 172	Ginger Hill Duke 801	\$M
	#Ginger Hill Helen 771	+68
#*SAV Brilliance 8077	#+SAV Bismarck 5682	\$B
Legacy Everelda 155	SAV Blackcap May 5270	+97
#17150853 Legacy Everelda 2481 832	++*HSAF Bando 1961	\$C
	Three Trees Everelda 2481	+194

CED	BW	WW	YW	Milk	MARB	RE	FAT
+3	+2.5	+54	+87	+30	+0.15	+0.73	-0.017

- Sired by Ginger Hill Semper Fi 321 our senior herd sire. Dam is an Everelda our dominate cow family who is a pathfinder.
- An attractive young female with her first calf weighing 60 pounds at birth. Individual AHIR records include: BW 78 lbs. ratio 105 WW ratio 106, YW ratio 97. EPD's include top 15% milk, top 25% RE, 20% \$M and \$W 30%
- Her heifer calf, Lot 46A, born 1/1/2020, sired by Deer Valley Old Hickory a proven sire for low birth, high performing attractive progeny.
- Sells bred on 2/16/2020 to BUBS Souther Charm (Reg. 17853196)



Ankony Miss Primrose 6084 - Lot 42



Audley Juanty F026

Calved: 2/12/2018 Cow: 19321901 Tattoo: F026

Consigned by: Audley Farm

#+GAR Ingenuity	#+GAR New Design 5050	\$W
VAR Index 3282	GAR Objective 100	+50
+*17513381 +*Sandpoint Blackbird 8809	#*Connealy	\$M
#AGI #*VAR Discovery 2240	Rita	+130
Audley Miss Discovery C000		\$C
18319120 Audley Rita		+226

CED	BW	WW	YW	Milk	MARB	RE	FAT
+3	+0.25	+0.41	+0.9	-0.048			

- A state framed calving ease brood cow in the m... daughter of the 44 Farms and Select Sires herdsire VA...
- Sell... an exciting heifer calf at side, Lot 43A, by the widely popular ORigen sire Sydgen Enhance born 1/21/2020.



Locust Hill Blackbird F12 [OSF-O]

Calved: 2/18/2018 Cow: 19552339

Consigned by: Locust Hill

#Sitz Traveler 8180		\$W
SAV Final Answer 0035		+60
#*13592905 SAV Emulous		\$M
		N/A
		\$B
		N/A
		\$C
		N/A

CED	BW	WW	YW	Milk	MARB	RE	FAT
+3	+51	+87	+23	N/A	N/A	N/A	N/A

- Produced by a very reliable cow family from Don and Julianna Benner's Benfield Farm as we read this pedigree on yet another 1st calf heifer. The maternal strength in this female is very predictable with Duke Rito 112 and Final Answer who could be the best female sire that Schaff ever produced. Should be loads of milk and maternal instinct.
- Blackbird F12 is due to calve by mid March to 44Angus Valley 5406, senior herd sire at Locust Hill. Nice, deep bodied female offered by Mike and Rebecca.

Breed Average EPDs											
CED	BW	WW	YW	Milk	MARB	RE	FAT	\$W	\$M	\$B	
+6	+1.2	+54	+96	+25	+0.50	+0.50	+0.012	+54	+52	+126	



47

SHAF Miss Skymere 1238

Calved: 9/9/2018 Cow: 19383447 Tattoo: 1238

Consigned by: Soldiers Hill Angus Farm

KCF Bennett Fortress

+*17259012 *Thomas Patricia 9705



#*Connealy Impression

SHAF Miss Skymere 631

17246403 SHAF Miss Skymere 613

#KMK Alliance 6595 187

Blinda of Conanga 004

#*SS Objective T510 0T26

Thomas Patricia 71138

#Connealy Reflection

Pearl Pammy of Conanga 194

#Larks Canyon 74D4

SHAF Miss Skymere 321

\$W

+89

\$M

+53

\$B

+151

\$C

+249

CED	BW	WW	YW	Milk	MARB	RE	FAT
-5	+4.6	+89	+150	+29	+0.27	+0.86	-0.058

• This bred heifer out of Soldiers' Hill's donor SHAF Miss Skymere 631 and sired by KCF Bennett Fortress is a picture perfect heifer with a great future ahead of her.

• Her dam's first natural cal was the high sale index bull at the 2014 Virginia BCIA sale in Culpeper where he sold for \$12,000. She also produced a heifer pregnancy that sold for \$5,500 in the 2015 GIFT Sale.

• 1238 offers WW and \$W EPDs in the top 10% and YW and \$F in the top 15%

• Sells bred to GAR Sure Fire with a 9/11/2020 due date.



48

WHS Ashland Blackbird 39G

Calved: 9/18/2018 Cow: 19467075 Tattoo: 39G

Consigned by: Shelton Angus Farm

#*GAR Early Bird

+*GAR D

GAR Ashland

+*18217198 +*Chair Rock Ambush 10H



#*GAR New

WHS 5050 Blackbird

17262394

+*GAR New Blackbird Bushwacker 6P

\$B

+186

\$C

+291

CED	BW	WW	YW	Milk	MARB	RE	FAT
+134	+31	+0.95	+1.00	-0.008			

• V... a super set of bred heifers. This is one of the 1st Ashland bred heifers to sell at public auction, and a real chance to own a female that will prove in time her genetic worth. A double digit CED, top 3% / 4% WW / YW, Milk EPD @ +31, CW @ 5%, Marb @ 15%, RE @ 10% \$B @ 2% and \$C @ +291.

• Blackbird 39G records individual Ratios WW 119, YW 112 in a 6 frame package complemented by 11 Genomic Percent Ranks @ 20 and better. A beautiful female to look at and critique.

Sells bred on 12-6-19 to Tehama Tahoe, Select Sires top selling bull He ranks in top 15% or better for calving, docility, heifer pregnancy, marbling and REA. Here is foundation seedstock.



HRF Tough Love 804 - Flushmate sister to the bred heifer selling as Lot 50



49

Audley Blackcap F087

Calved: 8/4/2018 Cow: 19475958 Tattoo: 87

Consigned by: Audley Farm

#*GAR Ingenuity

#*GAR New

VAR Index 3282

+*17513381 +*Sandpoint Blackbird 8809

+*EXAR Rito

Audley Blackcap

+*18852910

+*18852910

+*18852910

+*18852910

\$B

+158

\$C

+245

CED	BW	WW	YW	Milk	MARB	RE	FAT
+119	+28	+0.62	+0.89	-0.001			

• This heifer is very pleasing to the eye and

genetic here is a real example of a well balanced Angus female.

• Sired by one of the premier sires from VAR in California and out of the famous herd bull producer 8809 cow. A double digit CED, with growth in the top 15%, Milk @ +28, with CEM @ 20%, RE @ 10% and \$B @ 15%.

• Maternally, F087 is supported by highly proven cow makers in Rito 9Q13 and AAR Ten X.

• Sells due to calve on 9-6-2020 to GAR Quantum, Select Sires GAR Momentum son and one of most heavily sampled bulls in the breed last year. Pay Attention.



50

HRF Madame Pride 803

Calved: 6/29/2018 Cow: 19380982 Tattoo: 803

Consigned by: High Ridge Farms

#*Jindra 3rd Dimension

#*Jindra Double Vision

Jindra Acclaim

+*17972810

Jindra Blackbird Lassy 1111

#*Connealy Impression

#*Jindra Enchantress J 102

#*SAV Final Answer 0035

SH Lady 7321 939

#*SAV 707 Rito 9969

#*SAV Madame Pride 5290

\$W

+57

\$M

+41

\$B

+162

\$C

+251

CED	BW	WW	YW	Milk	MARB	RE	FAT
+12	-1.8	+55	+111	+27	+0.47	+0.47	+0.001

• Mr. Bruce Cuddy is a 1st time consignor to the GIFT Sale as he offers a top shelf group of bred and open heifers. This one starts it off right!

• Pride 803 is sired by one of the more highly used sires in the breed, a bull who tops the charts with his EPD Profile. Her full sister sold in the HRF 2019 Fall Sale to Sloup in Neb for \$10,000. Her dam, by Whitestone Jubilee, has been a leading donor for HRF. A very high quality on paper and on foot - deep, thick, good structure.

• Sells bred to Chestnut Redemption 38 on 11/15/19, the lead bull in Chestnut Farms winning pen at the NWSS in Denver. Due late August.

Breed Average EPDs

CED	BW	WW	YW	Milk	MARB	RE	FAT	\$W	\$M	\$B
+6	+1.2	+54	+96	+25	+0.50	+0.50	+0.012	+54	+52	+126



HRF Emblynette 808 - Lot 51



HRF Emblynette 808

Calved: 7/14/2018 Cow: 19380984 Tattoo: 808

Consigned by: High Ridge Farms

#*KCF Bennett Absolute		#*SAV Final Answer 0035	\$W
RB Absolute Advantage		Thomas Miss Lucy 5152	+71
*18089331 +*RB Lady Party 167-305		#+*Werner War Party 2417	\$M
AGI		+*BA Lady 6807 305	+46
GE-EPD		#+SAV Bismarck 5682	\$B
#*SAV Brand Name 9115		#+SAV Blackcap May 5530	+147
SAV Emblynette 2190		#SAV Peacemaker 3179	\$C
17249252 SAV Emblynette 7361		SAV Emblynette 5559	+237

CED	BW	WW	YW	Milk	MARB	RE	FAT
+5	+3.2	+72	+126	+29	+0.13	+0.76	-0.007

• A product of embryo transfer, this heifer is out of HRF's high indexing donor, Emblynette 2190 and sired by the Riley Brothers Advantage bull that is produced by the same cow line as Tour of Duty. A real cow making tribe. A maternal sister sold in their 2018 sale for \$12,000.

• Emblynette 808 is a powerful growth female, in the top 10% for WW/YW and top 20% for milk. Well Balanced.

•Sells bred on 11-15-19 to Chestnut Redemption 38. Safe in calf.



HRF Emblynette 813 - Lot 52



HRF Emblynette 813

Calved: 7/24/2018 Cow: 19380986 Tattoo: 813

Consigned by: High Ridge Farms

#*KCF Bennett Absolute		#*SAV Final Answer 0035	\$W
RB Absolute Advantage		Thomas Miss Lucy 5152	+78
*18089331 +*RB Lady Party 167-305		#+*Werner War Party 2417	\$M
AGI		+*BA Lady 6807 305	+59
GE-EPD		#*Mytty In Focus	\$B
#*AAR Ten X 7008 SA		#AAR Lady Kelton 5551	+162
SAV Emblynette 4202		#*SAV Harvester 0338	\$C
*17824215 +*SAV Emblynette 2225		SAV Emblynette 3301	+269

CED	BW	WW	YW	Milk	MARB	RE	FAT
-1	+4.8	+80	+134	+30	+0.47	+0.90	+0.004

• In Mr. Cuddy's words - Here is a powerhouse heifer. A strong, growthy heifer with top #s for growth, milk, big RE and \$B @10%.

•Notice the proven, popular sires on the cow side - Ten X and Harvester, sires that have been known as real cow makers in this business.

•Sells bred on 11-17-19 to Chestnut Redemption 38. Safe in Calf.



HRF Emblynette 818

Calved: 7/30/2018 Cow: 19380989 Tattoo: 818

Consigned by: High Ridge Farms

#*Musgrave Big Sky		#+*Connealy Earnan 076E	\$W
Musgrave Sky High 1535		SAV Primrose 7861	+45
*18194415 Flag Queen W 00649		#+SAV 004 Density 4336	\$M
AGI		Plattmire Queen W 660	+55
GE-EPD		Rito 707 of Ideal 3407 7075	\$B
#+*SAV Resource 1441		*SAV Blackcap May 4136	+115
SAV Emblynette 3509		#+SAV Bismarck 5682	\$C
17579649 *SAV Emblynette 9044		#+SAV Emblynette 5573	+204

CED	BW	WW	YW	Milk	MARB	RE	FAT
+7	+1.7	+54	+100	+20	I+.33	I+.68	I+.046

•A top shelf bred heifer from this proven cow family at HRF, and sired by the leadoff bull at Musgraves Bull Sale. Sky High 1535 is now at Universal Semen Sales as a 6 frame bull and known to sire those stout, wide based cattle with lots of muscle and overall eye appeal.

•818 is a solid heifer, backed by SAV Resource and Bismarck, 2 of the more highly respected bulls in the SAV program. Good looking cattle.

•Sells bred on 11-15-19 to Chestnut Redemption 38. Safe in calf.



HRF Emblynette 818 - Lot 53

Breed Average EPDs

CED	BW	WW	YW	Milk	MARB	RE	FAT	\$W	\$M	\$B
+6	+1.2	+54	+96	+25	+0.50	+0.50	+0.012	+54	+52	+126



HRF Emblynette 820

Calved: 9/2/2018 Cow: 19380990 Tattoo: 820

Consigned by: High Ridge Farms

#Vin-Mar O'Reilly Factor	#*SAV Final Answer 0035	\$W
Bushs Easy Decision 98	#Vin-Mar Edella 2827	+80
*17649083 #Bushs Big Blackbird 7885	Bushs Big Time 452	\$M
AGI	#Bushs Dakota Blackbird 4763	+51
GE-EPD	#*GAR Grid Maker	\$B
#+SAV Bismarck 5682	SAV Abigale 0451	+148
SAV Emblynette 3541	#+SAF 598 Bando 5175	\$C
17579667 #*SAV Emblynette 1181	#*Sav Emblynette Diamond 6377	+243

CED	BW	WW	YW	Milk	MARB	RE	FAT
+3	+1.9	+77	+125	+27	+0.18	+0.72	+0.023

• A stout, attractive heifer by the Bushs Easy Decision 98, the lead bull in Bushs Champion Pen of Bulls at 2014 NWSS. Notice -His 1st 4 consecutive maternal dams are Pathfinder cows. Something that we do not talk about in today's cow business.

• 820 is another Emblynette female who shows top of the line sires like Bismarck and Bando 5175 who set the pace for those who used him. This female is attractive, docile with a solid balance of EPD's.

• Sells bred on 11-6-19 to Chestnut Redemption 38. Safe in calf.



HRF Emblynette 820 - Lot 54



HRF Emblynette 809 - Lot 55



HRF Blackcap 809

Calved: 7/18/2018 Cow: 19380985 Tattoo: 809

Consigned by: High Ridge Farms

#Vin-Mar O'Reilly Factor	#*SAV Final Answer 0035	\$W
Bushs Easy Decision 98	#Vin-Mar Edella 2827	+63
*17649083 #Bushs Big Blackbird 7885	Bushs Big Time 452	\$M
AGI	#Bushs Dakota Blackbird 4763	+55
GE-EPD	#*SAV Final Answer 0035	\$B
*Whitstone Jubilee B005	SH Lady 7321 939	+129
HRF Blackcap 501	Rito 8H60 of Rita 2A4 Total	\$C
18240778 NMA Blackcap X93	Daltons Blackcap 7226	+222

CED	BW	WW	YW	Milk	MARB	RE	FAT
+2	+2.3	+67	+112	+21	+0.55	+0.37	+0.007

• A real sharp, halter broke heifer with lots of femininity yet a lot of stoutness. Yes, the Easy Decision 98 cattle leave their mark of quality.

• Blackcap 809 posts a moderate BW and high growth and is produced by a Whitstone Jubilee B005 daughter with the old TC Total bull behind her. Total sired cattle with loads of muscle and good doing cattle.

• 809 will get your attention with her looks as she sells bred on 11-25-19 to Chestnut Redemption 38. Safe in calf.



Chestnut Redemption 38 - Service Sire of Lots 50-55



Chestnut Redemption 38

Calved: 1/3/2018 Cow: 19242590 Tattoo: 38

Consigned by:

*Varilek Product 2010 04	#*Connealy Final Product	\$W
3F Epic 4631	Varilek Pearl 0006 014	+75
17950219 Zebo Queen 1072	#*EF Complement 8088	\$M
AGI	EXG Blackcap 6247 PPC	+49
GE-EPD	#*KCF Bennett Absolute	\$B
*HAYNES Outright 452	HAYNES ND 454 Miss 179	+187
Chestnut Wetonka WJ 63	Chestnut Power One 19	\$C
18606251 Chestnut Wetonka AS 461	*Chestnut Wetonka WJ PF 242	+292

CED	BW	WW	YW	Milk	MARB	RE	FAT
+7	+1.5	+86	+161	+18	+0.43	+0.74	+0.019

Breed Average EPDs

CED	BW	WW	YW	Milk	MARB	RE	FAT	\$W	\$M	\$B
+6	+1.2	+54	+96	+25	+0.50	+0.50	+0.012	+54	+52	+126



WB Erica F048 - Lot 56



WB Erica F048

Calved: 9/10/2018 Cow: 19227450 Tattoo: F048

Consigned by: Walkers Branch Angus

#+*SAV Resource 1441	Rito 707 of Ideal 3407 7075	\$W
SAV Regard 4863	*SAV Blackcap May 4136	+65
+*17923520	#BCC Bushwacker 41-93	\$M
#+SAV Blackcap May 5530	SAV May 7238	+56
AGI GE-EPD	#+*GAR Grid Maker	\$B
#+SAV Bismarck 5682	SAV Abigale 0451	+132
SAV Erica 9448	#SAV 8180 Traveler 004	\$C
#+*16389610 SAV Erica 4419	SAV Erica 0178	+227

CED	BW	WW	YW	Milk	MARB	RE	FAT
-1	+4.8	+78	+130	+21	+0.20	+0.86	-0.009

- Here is a super nice female loaded with SAV influence and sired by a maternal brother to both SAV Priority 7283 and SAV Cutting Edge 4857.
- The dam, by the Pathfinder Sire, Bismarck 5682, is a superior producer at Schaff's with Pathfinder status through raw milk production.
- F048 is a high performance female WW/YW @ 3 and 4% with plenty of eye appeal.
- Sells bred on 11-22-19 to Musgrave Stunner, @ Genex as the top Capitalist 316 sons, ranking in the top tier for maternal traits, backed by a cow with tremendous and production. They will be attractive.



Buchanan's Elba 8558 [OHP]

Calved: 9/11/2018 Cow: 19651234 Tattoo: 8558

Consigned by: Buchanan Cattle Enterprises

#*CTS Remedy 1T01	#Connealy Thunder	\$W
Ellingson Homestead 6030	CTS 7V03 Bellemere Maid 9T02	+46
*18543019 EA Erica 1082	#LT Territory 5824 of EA	\$M
	SAV Alliance 2606	+58
#+*HSAF Bando 1961	#+SAF 598 Bando 5175	\$B
Tanner Elba X191	JKS Miss Cheyenne 196	+137
16074706 Whitestone Elba R226	Whitestone Survivor N088	\$C
	Three Trees Elba 0064	+236

CED	BW	WW	YW	Milk	MARB	RE	FAT
-2	+3.5	+57	+113	+25	I+.47	I+.48	I+.010

- If you want to buy genetics with longevity, eye appeal and proper feet and legs this one might be for you. The Elba cow family is that kind, her dam did everything right for 12 years in the BCE herd, producing many herd bulls, champions, and replacement females. A maternal brother to this female was the 2013 MAJAC Reserve Champion steer.
- Bred to one of the most popular sons of Confidence Plus, the future is bright for this Blueprint calf coming next fall.
- Due 9/11/2020 to Woodhill Blueprint



2013 MAJAC Reserve Grand Champion Steer - Maternal brother to Lot 57



AED Rita 310A - Dam of Lot 58



Beaver Creek Skyline D814 - Service Sire of Lot 58



Buchanan's Rita 8551

Calved: 9/4/2018 Cow: 19651224 Tattoo: 8551

Consigned by: Buchanan Cattle Enterprises

#*CTS Remedy 1T01	#Connealy Thunder	\$W
Ellingson Homestead 6030	CTS 7V03 Bellemere Maid 9T02	+72
*18543019 EA Erica 1082	#LT Territory 5824 of EA	\$M
AGI GE-EPD	SAV Alliance 2606	+66
#*Connealy Final Product	*Connealy Product 568	\$B
AED Rita 310A	#Ebonista of Conanga 471	+149
17792772 Sarratts Rita 9800	*BC Matrix 4132	\$C
	SAR Rita 6801	+259

CED	BW	WW	YW	Milk	MARB	RE	FAT
I+.5	I+.3	I+.68	I+.133	I+.28	I+.55	I+.52	I+.049

- A low birth weight high growth female that is the herd bull producing kind. Rita 8551 has 17 traits in the top 25 percent of the breed, and the growth and performance to go with those numbers. The best thing about this bred heifer might be the calf coming next fall, bred to Skyline the first calves hit the ground this spring, and are outstanding.
- Due 9/25/2020 to Beaver Creek Skyline D814 (Reg. 19276027)

Breed Average EPDs

CED	BW	WW	YW	Milk	MARB	RE	FAT	\$W	\$M	\$B
+6	+1.2	+54	+96	+25	+0.50	+0.50	+0.012	+54	+52	+126



59

MVF Enamel 8042

Calved: 9/10/2018 Cow: 19664147

Consigned by: Mountain View

#*SAV Brilliance 8077

PVF Insight 0129

#*16805884 +*PVF Missie 790

Buchanan

OUT OF SALE

17605884 +*SAV Brilliance 8077 +\$44
 +*SAV Brilliance 8077 \$B
 Buchanan's Enamel 8042 +\$133
 Connealy Power One \$C
 SandPoint Enamel 6123 +\$217

	YW	Milk	MARB	RE	FAT
17605884	I+58	I+97	I+25	I+.06	I+.87
17605884	I+.014				

- A great opportunity to own a direct daughter of Buchanan's Enamel T311 who was Supreme Champion of both the 2015 Beef Expo and the 2016 Virginia Breeder's Show. Sired by one of the most popular bulls ever for Genex, PVF Insight has produced thousands of champions and sale topper across the country. This sound structured, bold ribbed, square hipped powerful female will make ever good cowboy stop to take a look.
- Bred to calve 9/22/2020 to Stevenson Turning Point, the calving ease sire that produces big ribbed attractive progeny that work in both the real world as well as the show ring.



Buchanan's Enamel T311 - Dam of Lot 59



60

ML Gianna Page

Calved: 6/4/2018 Cow: 1913727

Consigned by: Mil

+*Quaker Hill Rampage 0A36

ML - Mick

18297010 LLF 679 Big Eye

OUT OF SALE

18297010 LLF 679 Big Eye \$M
 +\$52
 18297010 LLF 679 Big Eye \$B
 Objective 1885 +\$150
 #*WHS Limelight 64V \$C
 LLF 679 Big Eye 9106 +\$247

	WW	YW	Milk	MARB	RE	FAT
18297010	I+2.1	I+67	I+115	I+34	I+.69	I+.92
18297010	I-.034					

- A well balanced double bred female with proven sires on both sides of this pedigree. She carries a nice blend of EPD's with plenty of milk.
- The dam and grandma are both very deep bodied, thick, easy doing cows sired by highly predictable bulls.
- Sells bred David, the new Herd Sire at Miky - Leto Farm. David Y17 of Limelight is a son of Rito 9Q20 and out of a daughter of W H S Limelight 64V with ALC Big Eye on the maternal side. Due September 2020.



61

APG Rita 9B9 of 7M05 7008

Calved: 3/12/2019 Cow: 19656855 Tattoo: 9B9

Consigned by: Arehart Performance Genetics

+*GAR Sunrise

#MCC Daybreak

GAR Sunbeam

+*GAR Objective R227

+*18636166 *GAR Ingenuity 3132

+*GAR Ingenuity

AGI

*GAR Method

+*GAR 28 Ambush N340

LA Rita 7M05 of 4X2 Method

+*GAR Momentum

+*19110267 +*Woodside Rita 4X2 of 3070

+*GAR Daybreak 1332

#*AAR Ten X 7008 SA

GAR New Day 3070 +\$320

	CED	BW	WW	YW	Milk	MARB	RE	FAT
19110267	+13	+0.4	+77	+136	+28	+0.66	+1.32	-0.032

- This stout made daughter of G A R Sunbeam stems from the same cow family that produced the up and coming ABS sire, SS Identified 7551. This yearling heifer ranks as the #1 REA heifer sired by G A R Sunbeam and is the only non-parent female of the breed for her credentials of CED, BW, WW, REA and \$B, respectively.
- This donor prospect sells bred 4/11/20 to G A R Combustion and sells with 4 grade 1 embryos by the \$475,000 G A R Home Town. This heifer warrants a hard look.



2017 NJAS Reserve Champion Steer - The dam of Lot 62 is a flushmate to this very successful steer



62

Buchanan's Georgina 9592 [OHP]

Calved: 9/5/2019 Cow: 19654300 Tattoo: 9592

Consigned by: Buchanan Cattle Enterprises

*Musgrave Aviator

#*Koupals B&B Identity

4M Ace 709

MCATL Forever Lady 1429-138

*19014756 *KGM Enchantress 4054

#*SAV Bismarck 5682

Lazy JB Enchantress 275

+*PVF Surveillance 4129

#*BC Lookout 7024

Buchanan's Georgina V417

*PVF Ellen 9100

18573161 Buchanan's Georgina L151

Champion Hill Fullback 380

CQS Georgina 4005

	CED	BW	WW	YW	Milk	MARB	RE	FAT
18573161	+4	+2.6	+65	+109	+23	N/A	N/A	N/A

- Big time show heifer prospect here, this ACE September heifer calf has the balance, size, and look to succeed in the show ring and a proven championship pedigree. Her sire is one the most powerful and impressive looking bulls in the ABS Global Stud, and her dam is a flush mate sister to the 2017 NJAS Reserve Champion Steer, who was also Grand Champion at the 2017 VCCP, MAJAC and Atlantic Nationals. If you are looking for a quality heifer for the National Junior Show this summer here is one to take a look at.

Breed Average EPDs

	CED	BW	WW	YW	Milk	MARB	RE	FAT	\$W	\$M	\$B
Average	+6	+1.2	+54	+96	+25	+0.50	+0.50	+0.012	+54	+52	+126



AED Rita 310A - Donor Dam of Lot 63



Buchanan's Rita 9596

Calved: 9/8/2019 Cow: 19662209 Tattoo: 9596

Consigned by: Buchanan Cattle Enterprises

		\$W
#Sitz Traveler 8180	#GDAR Traveler 71	+69
SAV Final Answer 0035	Sitz Everelda Entense 1137	\$M
#*13592905 SAV Emulous 8145	#Bon View Bando 598	+67
	SAV Sky Emulous 2124	\$B
#*Connealy Final Product	*Connealy Product 568	+130
AED Rita 310A	#Ebonista of Conanga 471	\$C
17792772 Saratts Rita 9800	#*BC Matrix 4132	+236
	SAR Rita 6801	

CED	BW	WW	YW	Milk	MARB	RE	FAT
I+11	I-1.0	I+59	I+107	I+26	I+.53	I+.38	I+.055

• Straight from the Buchanan Cattle Enterprises embryo program, 9596 is a pounds heavy, easy fleshing, attractive donor prospect. A daughter of Final Answer, a bull that has done everything right for the last 20 years, producing offspring that are easy fleshing, fertile, eye appealing, and have structural integrity. Her donor dam is a solid as they come with an outstanding pedigree, balanced EPD's, fleshing ability, correct udder design, and great disposition are some of the reasons she is staying in the donor program. I guarantee in couple years the buyer of this female is going to think they got the buy of the sale.



MC Miss Wix 870 - Grandam of Lot 64



WB Blackcap May G062

Calved: 1/25/2019 Cow: 19375000 Tattoo: G062

Consigned by: Walkers Branch Angus

		\$W
#*GAR Grid Maker	#GDAR Traveler 044	+59
SAV Bismarck 5682	GAR Precision 2536	\$M
#*15109865 SAV Abigale 0451	#Schoenes Fix It 826	+63
AGI GE-EPD #SAV 8180 Traveler 004	SAV Abigale 6062	\$B
SAV Blackcap May 8962	#Sitz Traveler 8180	+79
+*16124526 #*SAV May 2397	Boyd Forever Lady 8003	\$C
	#*SAF 598 Bando 5175	+165
	SAV May 7238	

CED	BW	WW	YW	Milk	MARB	RE	FAT
+11	-0.4	+50	+83	+26	-0.13	+0.43	+0.048

• A full sister to the Ingram Angus Donor and former top indexing cow at SAV, Blackcap May 0024. The dam, 8962, is a full sister to Blackcap May 4136, who generated over 8.4 million dollars in progeny – Bulls like Raindance, Rainmaster, Governor, Renown, Resource, Rainfall and many others.

• This high quality heifer by the highly proven Bismarck 5682 can be a cornerstone for any purebred Angus breeder. She sells open and ready to breed of flush. We welcome the folks from Walkers Branch Angus to our GIFT Sale.



SAV Blackcap May 0024 - A full sister to this donor female sells as Lot 65

Breed Average EPDs

CED	BW	WW	YW	Milk	MARB	RE	FAT	\$W	\$M	\$B
+6	+1.2	+54	+96	+25	+0.50	+0.50	+0.012	+54	+52	+126



66

HRF Rita 904

Calved: 3/6/2019 Cow: 19602748 Tattoo: 904

Consigned by: High Ridge Farms

#*Sitz Dash 10277	#Sitz Upward 307R	\$W
Barstow Cash	Sitz Everelda Entense 2665	+53
#*17145326 Barstow Queen W16	#*SAV Final Answer 0035	\$M
	RCA Queen R42	+40
#*SydGen CC&7	#+SAF Connection	\$B
SSA Rita 014 of 1110 & CC&7	SydGen Forever Lady 4087	+150
*18121117 QV Rita 1110	#TC Total 410	\$C
	GAR Retail Product T485	+235

CED	BW	WW	YW	Milk	MARB	RE	FAT
I+8	I+1.1	I+58	I+113	I+24	I+.35	I+.88	I-.005

- Mr Bruce Cuddy, owner of High Ridge says: Here is a super docile show heifer for a young Junior. She has great style and balance. Sells halter broke and ready to go to the show.
- HRF Rita 904 is a sister to both Bankroll and Banker who reside at Select Sires, and are Double digit CED, adds plenty of growth and lots of eye appeal and stoutness to the table.



HRF Rita 904 - This heifer sells as Lot 66



67

HRF Raindrop 909

Calved: 8/30/2019 Cow: 19662735 Tattoo: 909

Consigned by: High Ridge Farms

#*Coleman Charlo 0256	#*OCC Paxton 730P	\$W
SAV Raindance 6848	Bohi Abigale 6014	+53
+*18578965 *SAV Blackcap May 4136	#SAV 8180 Traveler 004	\$M
	#+SAV May 2397	+57
#*SAV Iron Mountain 8066	#TC Gridiron 258	\$B
Springfield Jestress 1203	SAV Madame Pride 3249	+126
17190531 Bricton Jestress 7242	#Bon View New Design 878	\$C
	Bricton Jestress 2048	+220

CED	BW	WW	YW	Milk	MARB	RE	FAT
I+5	I+2.6	I+60	I+109	I+20	I+.39	I+.50	I+.023

- Another haltered heifer from HRF, sired by the Select Sires Raindance 6848 who makes them fancy and well balanced. Her dam is a past member of the HRF show string, produced by an old reliable cow family.
- Sells weaned, preconditioned, haltered, ready to hit the show road.



SAV Raindance 6848 - Sire of Lot 67



68

Reynolds Rita 902

Calved: 4/4/2019 Cow: 19415455 Tattoo: 902

Consigned by: Reynolds Angus

#*Plattmire Weigh Up K360	#Sitz Upward 307R	\$W
J&J Weigh Up 294	#Barbara of Plattmire 337	+79
18004546 J&J Miss Georgina 294	#TC Romeo 917	\$M
AGI	J&J Miss Georgina 927	+48
GEPPD+*Quaker Hill Rampage 0A36	#MCC Daybreak	\$B
Brilee Rita 7R10 of 4Y6	+*QHF Blackcap 6E2 of 4V16 4355	+180
19017445 +*Brilee Rita 4Y6 of 0242 W34	#*Baldridge Waylon W34	\$C
	Rita 0242 of Rita 7O68 5M2	+281

CED	BW	WW	YW	Milk	MARB	RE	FAT
+8	+1.4	+72	+133	+31	+0.71	+0.74	+0.005

- We are pleased to offer Reynolds Rita 902 as our inaugural consignment to the GIFT Sale. She is out of a 1st calf heifer by Rampage, recording BW/WW ratios of 101/103.
- Rita 902 has 10 traits in the top 10% of non-parent females and ranks in the top 4% for \$W, 3% for YW and \$B and 2% for \$F. She adds a beautiful phenotype with unique muscle shape and style and should be a great cow prospect with unlimited mating options.
- Heifer sells halter broke. Nice female!



Reynolds Rita 902 - Lot 68

Breed Average EPDs

CED	BW	WW	YW	Milk	MARB	RE	FAT	\$W	\$M	\$B
+6	+1.2	+54	+96	+25	+0.50	+0.50	+0.012	+54	+52	+126



Baldridge Colonel C251 - Sire of Lot 69



SSA Erica Dianna G09

Calved: 2/1/2019 Cow: 19416885 Tattoo: G09

Consigned by: Straightstone Angus LLC

Baldridge Colonel C251	#Hoover Dam	\$W
+*18493773 *Baldridge Isabel Y69	Baldridge Queen S87	+72
	#*Styles Upgrade J59	\$M
	Baldridge Isabel T935	+33
	#MCC Daybreak	\$B
SSA Erica Dianna D43	+*QHF Blackcap 6E2 of4V16 4355	+169
+*18649917 *Boyd Erica Dianna 9054	Boyd Next Day 6010	\$C
	Boyd Erica Dianna 606	+252

CED	BW	WW	YW	Milk	MARB	RE	FAT
+4	+2.4	+68	+132	+34	+0.55	+1.06	-0.051

- Straight from the replacement pen, this heifer is sired by Baldridge Colonel, the high accuracy sire at Universal Sires. Dianna G09's maternal grandam is also the dam of Select Sires stud Boyd Signature 1014, offering growth and muscling with top 15% WW, top 4% YW and RE.
- This heifer will suit with lots of growth and milk, well balance of EPD's and proven bulls throughout.
- Sells bred on 5/9/2020 to GAR Exceptional.



CSP Blackcap V035 - Maternal Grandam of Lot 70



RHR Georgina 0407 [OHP]

Calved: 4/7/2019 Cow: 19493194

Consigned by: RHR

EATHINGTON SUB-ZERO	#*Connealy Capitalist 028	\$M
+*17379591 KP Miss Pro		N/A
		\$B
		N/A
		\$C
		N/A

CED	BW	WW	YW	Milk	MARB	RE	FAT
N/A	N/A	N/A	N/A	N/A	N/A	N/A	N/A

- A great opportunity to buy this first daughter out of the past Glenwood Supreme Champion Female. This Sub Zero daughter is the right kind big bodied, easy fleshing that is correct in her design.



SSA Blackcap of Acclaim G06

Calved: 1/5/2019 Cow: 19418176 Tattoo: G06

Consigned by: Straightstone Angus LLC

Jindra Acclaim	#*Jindra Double Vision	\$W
*17972810 Jindra Blackbird Lassy 1111	Jindras Sapphire J 417	+61
	#*Connealy Impression	\$M
	Jindras Enchantress J 102	+53
	#MCC Daybreak	\$B
SSA Blackcap Rampage E06	+*QHF Blackcap 6E2 of4V16 4355	+177
+*18803167 +*CSP Blackcap V035	#*Riverbend Mile High 3718	\$C
	+*Three Trees Blackcap S1396	+283

CED	BW	WW	YW	Milk	MARB	RE	FAT
+1	+2.6	+67	+120	+24	+0.66	+0.75	-0.024

- A daughter of the multi trait sire who excels for heifer pregnancy, docility, CEM, with lots of milk, Jindra Acclaim, this heifer is in the top 4% for \$B, top 10% for YW and top 15% for WW.
- The Blackcap familt at Straightstone has produced good, solid, easy doing bulls with plenty of growth. G06's maternal grand dam is a massively made, high marbling daughter of Mile High - combined with the proven Rampage genetics this heifer is one to take a look at.
- Sells bred on 5/18/2020 to GAR Exceptional.



RHR Georgina 0407 - Lot 71

Breed Average EPDs

CED	BW	WW	YW	Milk	MARB	RE	FAT	\$W	\$M	\$B
+6	+1.2	+54	+96	+25	+0.50	+0.50	+0.012	+54	+52	+126

72

RHR Georgina 0324 [OHP]

Calved: 3/24/2019 Cow: 19493254

Consigned by: RHR

#*Connealy Capitalist 028

EATHINGTON SUB-ZERO

*17379591 KP Miss Proven

OUT OF SALE

503 N/A
8077 \$B
Missie 790 N/A
Dameron First Class \$C
CQS Georgina 4005 N/A

	N/A	YW	Milk	MARB	RE	FAT
	N/A	N/A	N/A	N/A	N/A	N/A

• Br similar to her sister Lot 71. Her grand-dam was a past Supreme Champion at the Virginia Beef Expo, Virginia Breeders Show, and Reserve Cow Calf at the Eastern Regionals. This attractive female has the pedigree, performance and look that showcases the RHR program. Can't go wrong with this one.



RHR Georgina 0324 - Lot 72

73

Locust Hill Rita G20

Calved: 3/10/2019 Cow: 19669762 Tattoo: G20

Consigned by: Locust Hill Farm

	\$W
#*Werner War Party 2417	+64
RB Tour Of Duty 177	\$M
#*16984170 +*BA Lady 6807 305	N/A
+*Boyd Resume 9008	\$B
Locust Hill Rita D018	N/A
18988118 Locust Hill Rita N66H	\$C
+*Connealy Onward	N/A
BAAR USA Lady Jaye 489	
#Vermilion Dateline 7078	
GD Lady Hi Flyer 302	
**SAV Final Answer 0035	
Boyd Forever Lady 5125	
*Will Role Model	
Whitstone Rita X253	

CED	BW	WW	YW	Milk	MARB	RE	FAT
I+7	I+1.4	I+58	I+103	I+32	N/A	N/A	N/A

• This Tour of Duty daughter has a lot of things to like. Extremely long fronted and soft middle, this is a heifer you notice out in the field. Study her pedigree - there is plenty of maternal performance there, and she offers a balanced EPD profile to go along with that.

• This heifer is halterbroke, and would make a good first project for someone starting out - she is a quiet as they come, and always the first one in the barn in the morning.

• Sells bred on 5/13/2020 to Connealy Legendary 644L.



Locust Hill Rita G20 - Lot 73

74

Locust Hill Blackcap G26 [DDP]

Calved: 3/19/2019 Cow: 19662201 Tattoo: G26

Consigned by: Locust Hill Farm

#*SAV Angus Valley 1867

#*SAV Iron Mountain 8066

44 Angus Valley 5406

#*SAV May 2397

*18250382 *BHR Jilt 0722 326

Ideal 5570 of 0452 0534

Ideal 0722 of 332 Jilt

+*Boyd Resume 9008

#*SAV Final Answer 0035

Locust Hill Blackcap D001

Boyd Forever Lady 5125

18527590 Locust Hill Blackcap L050C

Whitstone Predestined

Eastwood 141 Integrity 987

CED	BW	WW	YW	Milk	MARB	RE	FAT
N/A	N/A	N/A	N/A	N/A	N/A	N/A	N/A

• If you are looking for a powerful, productive heifer backed by generations of proven performance and maternal strength, you're going to want to take a look at this girl. Sired by Locust Hill Farm's senior Angus herd sire, an Angus Valley son, and out of a line of cows that just doesn't miss, this heifer will work in a lot of different programs. Big middle, square hipped and sounds on her feet and legs, this is one of those "no holes" kind of heifers.

• Sells bred on 5/13/2020 to Connealy Legendary 644L.

Breed Average EPDs

CED	BW	WW	YW	Milk	MARB	RE	FAT	\$W	\$M	\$B
+6	+1.2	+54	+96	+25	+0.50	+0.50	+0.012	+54	+52	+126



Rita 0243 of Rita 7068 5M2 - Donor Dam of Lot 75 Embryos



Rita 0243 Embryos

3 Grade 1 Embryos

Consigned by: Lorson Angus Farm

+*Quaker Hill Manning
E W A Peyton 642
*18675107 #+*E W A 444 of 968 Progress

+*EXAR Denver 2002B
+*Quaker Hill Blackcap 0A32
##+*G A R Progress
+Edgewood Lady 968

#+* Rita Revenue 5M2 of 2536 Pre
Rita 0243 of Rita 7068 5M2
16874031 +Rita 7068 of Rita 5FH8 Obj

#*G A R Predestined
G A R Precision 2536
#*S S Objective T510 0T26
+*Rita 5FH8 of Rita 2V5 FD

Sire \$B
+218
Dam \$B
+156
Sire \$C
+353
Dam \$C
+265

	CED	BW	WW	YW	Milk	MARB	RE	FAT
S	+13	+1.2	+92	+161	+30	+1.28	+0.76	+0.019
D	+8	+2.7	+63	+101	+31	+1.13	+0.67	+0.022

Selling 3 grade 1 embryos from one of the all-time great females bred at Wehrmann Angus. This mating is designed to produce cattle that excel for multiple traits. The donor female was the high selling heifer of the Wehrmann Angus dispersal. This is a neat mating and sexed heifer semen was used to create these elite embryos



GAR Daybreak 342 - Donor Dam of Lot 76 A&B Embryos



GAR Home Town - Sire of Lot 76B Embryos



GAR Quantum - Sire of Lot 76A Embryos



GAR Daybreak 342 Embryos

4 Grade 1 Embryos

Consigned by: Lorson Angus Farm

*G A R Momentum
G A R Quantum
+*18636059 +*G A R In Sure 1524

#MCC Daybreak
G A R Daybreak 342
+*17353668 +*G A R 5050 New Design 1039

##+*G A R Progress
+G A R Big Eye 1770
##*Connealy In Sure 8524
+G A R Complete 3011
##+Boyd New Day 8005
#MCC Miss Focus 134
##+G A R New Design 5050
*G A R Objective 2345

Sire \$B
+204
Dam \$B
+171
Sire \$C
+326
Dam \$C
+245

	CED	BW	WW	YW	Milk	MARB	RE	FAT
S	+11	+1.6	+72	+128	+38	+1.16	+1.25	-0.010
D	+15	-2.0	+62	+109	+33	+1.44	+0.62	-0.001

Selling 4 Grade 1 embryos from a donor dam that is leaving her mark on the industry. G A R Daybreak 342 is the dam of G A R Genuine who resides at Select Sires. The donor dam of these embryos is a flush sister to the \$80,000 WallStreet donor, G A R Daybreak 82 and to the Genex sire, G A R Scale House. These embryos cover all the bases for beef production.



GAR Daybreak 342 Embryos

4 Grade 1 Embryos

+*G A R Ashland
G A R Home Town
*19266718 +*Chair Rock Sure Fire 6095

G A R Daybreak 342
+*17353668

*G A R Early Bird
+*Chair Rock Ambush 1018
+*G A R Sure Fire
+*Chair Rock Progress 3005

Sire \$B
+245
Sire \$C
+378

	CED	BW	WW	YW	Milk	MARB	RE	FAT
S	+16	-0.7	+69	+130	+32	+1.83	+1.10	-0.025

Wow! What a mating here and a great opportunity to get in early on genetics from the recent lead off bull at Gardiners, G A R Home Town. These embryos are some of the best and most valuable genetics offered this Spring. This is special

Breed Average EPDs

CED	BW	WW	YW	Milk	MARB	RE	FAT	\$W	\$M	\$B
+6	+1.2	+54	+96	+25	+0.50	+0.50	+0.012	+54	+52	+126



Blackcap 7P17 Embryos

4 Embryos

Consigned by: Kipar Farms/Trinity Angus

*Silveiras Conversion 8064
Byergo Black Magic 3348
*17803074 *Byergo Elia Cupcake 5900

#+*Basin Payweight 1682
WWA SGR Blackcap 7P17
*18804162 +*Wild Wind Black Cap 5K61

#+*BT Crossover 758N
+EXG Saras Dream S609 R3
Byergo Picasso
+Byergo Miss Cupcake 3600
#+*Basin Payweight 006S
21AR O Lass 7017
*+*Connealy Black Granite
+*Wild Wind Blackcap Lady 2G73

Sire \$B
+235
Dam \$B
+179
Sire \$C
+346
Dam \$C
+306

	CED	BW	WW	YW	Milk	MARB	RE	FAT
S	-4	+6.1	+97	+181	+30	+0.94	+1.17	-0.018
D	+12	+0.6	+81	+142	+34	+0.66	+0.36	+0.041

•7P17 was the high selling open heifer in the 2018 GIFT Sale at \$7700.

•The maternal grandam of this pregnancy Black Cap 5K61 is a leading donor at Wild Wind Angus and Spring Grove Ranch, 1/2 interest in 5K61 sold for \$14,000 in a previous GIFT Sale.

•This mating to Byergo Black Magic 3348 combines performance and style.



Wild Wind Black Cap 5K61 - Maternal Grandam of Embryos selling as Lots 77A & B



Blackcap 7P17 Embryos

4 Embryos

*G A R Momentum
G A R Inertia
*18636043 +*G A R Prophet 2984

WWA SGR Blackcap 7P17
*18804162

#+*G A R Progress
+G A R Big Eye 1770
#+*G A R Prophet
*G A R Daybreak 1521

Sire \$B
+212
Sire \$C
+335

	CED	BW	WW	YW	Milk	MARB	RE	FAT
S	+6	+0.8	+80	+144	+35	+1.38	+0.91	+0.034

•Out 7P17 who sold for \$7700 as an open heifer in a previous GIFT Sale, these embryos sired by GAR Inertia should have plenty of performance and an impressive EPD profile.



GAR Inertia - Sire of Lot 77B Embryos



Byergo Black Magic 3348 - Sire of Lot 77A Embryos



Blackbird 7396 Embryos

4 Grade 1 Embryos

Consigned by: Walkers Branch Angus

*Connealy Confidence Plus
E&B Plus One
+*19196960 #+E&B Lady 1023 Precision 936

+*Baldridge Bronz
Vintage Blackbird 7396
+*18894830 +*Vintage Blackbird 4034

#*Connealy Confidence 0100
Elbanna of Conanga 1209
E&B 1680 Precision 1023
E&B Lady 878 New Design 441
*EF Commando 1366
*Baldridge Isabel Y69
#+*Rito 9M25 of Rita 5F56 Pred
+*Sandpoint Blackbird 8809

Sire \$B
+187
Dam \$B
+142
Sire \$C
+319
Dam \$C
+238

	CED	BW	WW	YW	Milk	MARB	RE	FAT
S	+9	+0.6	+66	+131	+25	+0.95	+0.92	+0.001
D	+9	-0.7	+65	+114	+23	+0.82	+0.48	+0.022

Offering four grade 1 conventional embryos out of Vintage Blackbird 7396. 7396's dam, Vintage Blackbird 4034, Lot 1B in the 2014 Vintage Angus Sale sold 1/2 interest for \$60,000 to Spring Grove Ranch. 4034 is a flush sister to VAR Commander 4152 that sold 1/2 interest for \$95,000 to Accelerated Genetics. 7396 stems from the Legendary Sandpoint Blackbird 8809 whose progeny sales have exceeded \$4 million in the last 5 years on over 40 head. The mating is to E&B Plus One who recently sold a 10% revenue-sharing semen interest for \$100,000. A full sister to Plus One was sold for \$200,000 at the 2019 Spruce Mountain sale. Embryos sell with a 50% guarantee if put in by a certified embryologist.



Vintage Blackbird 4034 - Maternal Grandam of Embryos selling as Lot 78

Breed Average EPDs

CED	BW	WW	YW	Milk	MARB	RE	FAT	\$W	\$M	\$B
+6	+1.2	+54	+96	+25	+0.50	+0.50	+0.012	+54	+52	+126



G A R Early Bird N985 - Selling the right to flush this #1 \$B cow to the bull of your choice.



Right to Flush GAR Early Bird N985

Calved: 5/9/2015 Cow: +*18452266 Tattoo: N985

Consigned by: Woodside Farms

*G A R Daylight	#MCC Daybreak	\$W
G A R Early Bird	+*G A R Objective R227	+82
*17354178	#*G A R Progress	\$M
+*G A R Progress 830	G A R III Rito 3346	+57
AGI	#C F Right Design 1802	\$B
GE-EPD	Summitcrest Elba 1M17	+245
#*Summitcrest Complete 1P55	#*S S Objective T510 0T26	\$C
G A R Complete N281	G A R Retail Product 2195	+377
+17184315		

CED	BW	WW	YW	Milk	MARB	RE	FAT
+10	+209	+88	+155	+26	+1.38	+0.73	-0.013

- Selling a flush to the bull of buyers choice from the #1 dam of the breed for \$Beef, who is the donor dam for Lot 1 heifer calves.
- The flush will be a minimum of 6 embryos and a cap of 10
- Guarantee of 3 pregnancies
- Buyer of flush is responsible for flush cost and supplies the semen
- N985 is fresh as of 5/10/20 and will be ready to work shortly. She flushes great



Quaker Hill Blackcap 4EX1 - Donor dam of Lot 80



Blackcap 4EX1 Heifer Pregnancy

Pregnancy Due November 15, 2020

Consigned by: Raines Angus

*Jindra 3rd Dimension	#*Jindra Double Vision	Sire \$B
Jindra Acclaim	Jindras Sapphire J 417	+209
*17972810	#*Connealy Impression	Dam \$B
Jindra Blackbird Lassy 1111	Jindras Enchantress J 102	+202
#*EXAR Denver 2002B	#*EXAR Upshot 0562B	Sire \$C
Quaker Hill Blackcap 4EX1	Exar Royal Lass 1067	+309
+*17795826	Ideal 4355 of 0T26 2440	Dam \$C
+*QHF Blackcap 6E2 of 4V16 4355	*QHF Blackcap 4V16 of 1H8	+319

	CED	BW	WW	YW	Milk	MARB	RE	FAT
S	+5	+1.0	+72	+142	+32	+0.72	+0.71	-0.036
D	+6	+1.5	+87	+150	+28	+0.83	+0.57	-0.047

- This heifer pregnancy is a full sister to the heifer calf selling as Lot 7.



WB Blackcap May G162

Calved: 2/1/2019 Cow: +*19375001 Tattoo: G162

Consigned by: Walkers Branch Angus

#*GAR Grid Maker	#GDAR Traveler 044	\$W
SAV Bismarck 5682	GAR Precision 2536	+61
#+15109865	#Schoenes Fix It 826	\$M
SAV Abigale 0451	SAV Abigale 6062	+57
AGI	#Sitz Traveler 8180	\$B
GE-EPD	Boyd Forever Lady 8003	+85
#SAV 8180 Traveler 004	#*SAF 598 Bando 5175	\$C
SAV Blackcap May 8962	SAV May 7238	+167
+*16124526		

CED	BW	WW	YW	Milk	MARB	RE	FAT
+6	+2.6	+61	+93	+22	-0.18	+0.59	+0.041

- A full sister to the Ingram Angus Donor and former top indexing cow at SAV, Blackcap May 0024. This heifer is also a full sister to Lot 65



81

Blackcap 1695 Heifer Pregnancy

Pregnancy Due January 1, 2021

Consigned by: Raines Angus

+baldridge Xpand x743

#*Hoover Dam

Baldridge Colonel C251

Baldridge Queen S87

+*18493773 *Baldridge Isabel Y69

#*Styles Upgrade J59

+Baldridge Isabel T935

#*AAR Ten X 7008 S A

#*Mytty In Focus

Quaker Hill Blackcap 1695

#AAR Lady Kelton 5551

*18408968 +*Quaker Hill Blackcap 0A38

#MCC Daybreak

+*QHF Blackcap 6E2 of 4V16 4355

Sire \$B

+155

Dam \$B

+182

Sire \$C

+245

Dam \$C

+302

	CED	BW	WW	YW	Milk	MARB	RE	FAT
S	+3	+1.4	+62	+123	+17	+0.79	+0.98	-0.060
D	+13	+0.4	+69	+122	+27	+1.12	+0.77	+0.020

• Selling a pregnancy out of Blackcap 1695 and sired by Baldridge Colonel C251.

• The maternal grandam of this pregnancy is valued at \$150,000 and is a full sister to the \$340,000 A032 at Spruce Mountain, High Roller, and the \$100,000 A035 at Riverbend Ranch.



Quaker Hill Blackcap 0A38 - Maternal Grandam of Lot 81



82

Ankony Miss Lucy 6131

Calved: 1/5/2017 Cow: +*18712097 Tattoo: 6131

Consigned by: 6 Pastures Angus

#*AAR Ten X 7008 SA

#*Mytty In Focus

VAR Discovery 2240

#AAR Lady Kelton 5551

#*17262835 +*Deer Valley Rita 0308

#Sitz Upward 307R



#*S S Objective T510 0T26

*GAR Objective 2345

Riverbend Lucy U1187

#SS Traveler 6807 T510

+*16219499 +Basin Lucy 3829

S S Miss Rita R011 7R8

#CA Future Direction 5321

Basin Lucy 178E

\$W

+72

\$M

+72

\$B

+167

\$C

+289

	CED	BW	WW	YW	Milk	MARB	RE	FAT
	+14	-0.9	+52	+102	+36	+1.26	+0.48	-0.011

• Due 6-5-2020 to EWA Peyton



Ankony Miss Lucy 6131 - Sells as Lot 82

UPDATED EPDS AND INFORMATION
ON LOTS WILL BE AVAILABLE
THE WEEK OF THE SALE ON THE
VIRGINIA ANGUS WEBSITE:
WWW.VAANGUS.ORG



Virginia Angus Association
644 Greenville Ave., #220
Staunton, VA 24401
www.vaangus.org

GENETIC INVESTMENT FOR TOMORROW SALE

****NEW SALE DATE AND LOCATION****

Saturday, June 13, 2020 • 12:00 Noon
At Woodside South Farm
13789 North Valley Pike, New Market, VA