



# Spring Fashions Sale



**Saturday, January 14th • 1:00pm**

At the Livestock Arena • Fresno State University • Near the Dairy Unit



# Spring Fashions Sale



Saturday, January 14th • 1:00pm

At the Livestock Arena • Fresno State University • Near the Dairy Unit

## OFFERING

70 head of Holstein, Jersey and Brown Swiss all aged

**4-H and FFA Judging Contest • 9:30am**

**Registration 10:00am Contest**

## Sale Staff

Chuck Cazzi ..... (209) 652-4479  
 Ryan Matheron ..... (209) 652-3511  
 Gressian Schmidt .... (608) 797-2855  
 Hank Van Exel ..... (209) 810-0880  
 Karen Martin ..... (209) 606-5066

Mike Deaver ..... (608) 207-0344  
 Frank Robinson ..... (209) 403-9516  
 Tim Natzke ..... (920) 979-0611  
 Gil Teixeira ..... (209) 985-2400

## Trucking Available

Motel University Inn ..... (559) 294-0224



**On January 14th pick your size, color  
and take your Spring Fashions home!**



Catalogs available on California Holsetin and Cowbuyer after January 1, 2023



**Bid online in real time at  
[www.cowbuyer.com](http://www.cowbuyer.com)**

**Bidders must be pre-registered and pre-approved**

### Contact:

**Aaron Ray Tompkins  
(336) 363-4639 • [atompkins@vt.edu](mailto:atompkins@vt.edu)**

**Assisted by**  
Fresno State Dairy Club  
Dr. Kyle Thompson  
(559) 213-8661

**Sale Manager**  
Ken Melvold  
Sales & Services  
(559) 906-1714 • Fax (559) 431-5954



# Spring Fashions Sale



**WALK-ERA DUNDEE ANNELISE**  
Dam of Lots 1, 1A, 1B, 1C

Consignor: NDIRA, INC. • PO BOX 221753 • CARMEL, CA 93922 • (831) 626-0451

**1 CAL-DENIER-I ANL SK 8901-ET**  
840003245571623 99%RHA-I  
Born: 6/1/2022 PTPI+1885  
PTA +2.34T +1.87UDC +.46FLC 47%R 8/22

**1B CAL-DENIER-I BM ELI 8928-ET**  
840003245571650 99%RHA-I  
Born: 6/15/2022 PTPI+1989  
PTA +203M -15F +10P 43%R 8/22  
PTA +2.71T +1.82UDC +.99FLC 43%R 8/22

**1A CAL-DENIER-I SK NEL 8908-ET**  
840003245571630 99%RHA-I  
Born: 6/1/2022 PTPI+1885  
PTA +2.34T +1.87UDC +.46FLC 47%R 8/22

**1C CAL-DENIER-I CH ANE 8909-ET**  
840003245571631 99%RHA-I  
Born: 6/1/2022 PTPI+1952  
PTA +1.98T +1.78UDC +.37FLC 47%R 8/22

Sire of lots 1 & 1A

**WALNUTLAWN SIDEKICK** 75K GTPI +2180G  
CAN 12508113 99%RHA-I TR TY TV TL TD  
PTA -1121M +9F -10P 98%R 8/22  
PTA -55NM +.19%F +.09%P 8%US  
PTA -.2PL 2.77SCS -.1DPR 2.1%DCE  
PTA +2.88T +2.42UDC +.64FLC 97%R 8/22  
PTA -32FE -0.2FI 2.0%SCE

Sire of lot 1B

**REGANCREST BOOM** AB P8 55K GTPI +2397G  
840003137164654 99%RHA-I TR TC TL TD  
PTA +878M +24F +32P 82%R 8/22  
PTA +117NM -.03%F +.02%P 100%US  
PTA +.1PL 3.14SCS -1.6DPR 2.6%DCE  
PTA +3.62T +2.33UDC +1.71FLC 81%R 8/22  
PTA +55FE -1.2FI 2.6%SCE

Sire of lot 1C

**STANTONS CHIEF-ET** A2/A2 75K GTPI +2314G  
840003129015989 99%RHA-I TC TY TV TL TD  
PTA +714M +10F +21P 98%R 8/22  
PTA +32NM -.06%F +.00%P 3%US  
PTA +.6PL 2.73SCS -.1DPR 3.1%DCE  
PTA +2.17T +2.24UDC +.46FLC 97%R 8/22  
PTA -9FE +0.0FI 3.2%DCE

Dam of lots 1, 1A, 1B, 1C

**WALK-ERA DUNDEE ANNELISE** AB 13K GTPI +1592G  
70000629 100%RHA-NA B/R TL TD  
5-00 95 EEEEE  
1-11 2 301 19490 3.4 672 3.0 587  
2-11 2 305 29790 3.3 978 3.0 889  
365 35350 3.3 1163 3.0 1064  
4-08 2 305 34430 3.2 1109 2.8 981  
365 41090 3.3 1355 2.9 1196  
LIFE 1283 117810 3.3 3924 3.0 3554  
\*3RD INTERNATIONAL JR 2Y COW 2014  
\*4TH INTERNATIONAL JR 3Y COW 2015

**REGANCREST DUNDEE-ET** HD GTPI +1361G

127640114 100%RHA-NA TY TV TL  
6-08 95 EEEV  
PTA -1082M -57F -32P 99%R 8/22  
PTA -684NM -.06%F +.01%P 41%US  
PTA -4.7PL 3.22SCS -.5DPR 3.8%DCE  
PTA +.56T +.66UDC -.17FLC 99%R 8/22

**WALK-ERA TALENT AUGUSTA-ET** AA 13K GTPI +1449G

66458015 100%RHA-NA TL TD  
6-02 91 EEEVEE 2E  
1-11 2 365 24490 4.0 978 3.2 783  
3-02 2 365 27300 3.9 1061 3.2 866  
4-04 2 306 26390 3.7 980 3.2 839  
5-04 2 365 32920 4.3 1403 3.2 1045  
LIFE 1522 117040 4.0 4668 3.2 3746

3rd through 8th Dams

**LIESSELS OUTSIDE ALLIE EX-91** EEEEE  
4-03 2 365 31650 4.7 1475 3.3 1045  
**WELK-SHADE ASTRO ARIELLE VG-88 EX-MS**  
3-02 2 365 21800 4.4 965 3.1 669  
**WELK-SHADE MILAN AMY EX-93 2E** EEEEE  
5-08 2 365 33440 3.6 1188 3.0 998  
**WELK-SHADE FLIP APEX EX-90**  
4-07 3 331 25740 4.0 1042 3.2 817  
**R-F-H SEZY AIRES VG-89 EX-MS**  
**IDEALS FLAME ALICE VG-85**



# Spring Fashions Sale



**DUBEAU DUNDEE HEZBOLLAH.JPG**  
Gr Dam of Lots 2 & 2A

## 2

### **CAL-DENIER-I SDEKCK 8862-ET**

840003245571584 99%RHA-I TR TP TC TL TD  
Born: 3/22/2022 A1/A2 AB 32K GTPI+ 2063G  
PTA +3.72T +2.53UDC +2.09FLC 81%R 8/22

Sire of lot 2

**WALNUTLAWN SIDEKICK** 75K GTPI +2180G  
CAN 12508113 99%RHA-I TR TY TV TL TD  
PTA -1121M +9F -10P 98%R 8/22  
PTA -55NM +.19%F +.09%P 8%US  
PTA -.2PL 2.77SCS -.1DPR 2.1%DCE  
PTA +2.88T +2.42UDC +.64FLC 97%R 8/22  
PTA -32FE -.02FI 2.0%SCE

**HEZ HEZBOLLAHS HONOUR-ET** BB 19K GTPI +1744G  
840003128968008 100%RHA-NA TR TC TL TD  
4-11 94 EEEEE  
PTA +2.77T +1.40UDC +2.30FLC 85%R 8/22  
2-01 2 317 22980 4.1 932 3.2 739  
3-01 2 335 31630 3.6 1149 3.1 989  
4-02 2 305 32460 3.2 1043 3.1 994

NDIRA, INC.  
PO BOX 221753  
CARMEL, CA 93922  
(831) 626-0451

## 2A

### **CAL-DENIER-I DC HON 8945-ET**

840003245571667 99%RHA-I  
Born: 6/29/2022 PTPI+ 2279  
PTA +573M +26F +21P 46%R 8/22  
PTA +3.04T +1.81UDC +2.17FLC 46%R 8/22

Sire of lot 2A

**WOODCREST KING DOC** A1/A2 BB 75K GTPI +2814G  
840003132417775 99%RHA-I TR TP TC TY TV  
3-04 90 EEEV  
PTA +1609M +69F +55P 99%R 8/22  
PTA +633NM +.02%F +.02%P 43%US  
PTA +3.8PL 3.09SCS -1.5DPR 2.5%DCE  
PTA +3.31T +2.21UDC +2.03FLC 99%R 8/22  
PTA +180FE -1.1FI 2.7%SCE

**MAPLE-DOWNS-I G W ATWOOD-ET** A1/A2 AB 50K GTPI +1908G+  
CAN 8956379 100%RHA-NA TR TP TY TV TL  
4-06 90 EE+V  
PTA -332M +11F -9P 99%R 8/22  
PTA -253NM +.09%F +.00%P 45%US  
PTA -2.5PL 3.12SCS -4.8DPR 4.4%DCE  
PTA +2.91T +1.91UDC +2.07FLC 99%R 8/22

**DUBEAH DUNDEE HEZBOLLAH** 50K GTPI +1747G  
CAN 104117050 100%RHA-NA  
4-05 92 EEEEE  
PTA +2.03T +.87UDC +1.22FLC 95%R 8/22  
2-03 2 365 27190 3.4 933 3.2 878  
4-03 2 365 42050 4.4 1859 3.1 1299

\*RESERVE ALL-AMERICAN 4Y COW 2011  
\*1ST INTERNATIONAL SR 2Y & INT SR CH 2009  
\*2ND INTERNATIONAL 4Y COW 2011  
\*1ST MID-W SPR NAT 4Y, SR & GR CH 2011

3rd Dam

**DUBEAU LYNE LA TRENT HUIT B EX-90-CAN 6\***  
5-05 2 365 28583 4.3 1230 3.4 983

4th Dam

**DUBEAU JY ANTOINETTE VG-87-4Y-CAN 2\***  
4-03 2 321 29111 3.9 1148 3.3 956



# Spring Fashions Sale



**MS APPLES ANGEL**  
Dan of Lots 3, 3A, 3B



**KHW REGIMENT APPLE-ET-RED**  
Gd Dam of Lots 3, 3A, 3B, 4

STEPHEN & PATRICK MADDOX & MICHAEL DEAVER  
7285 W DAVIS AVE • RIVERSALE, CA 93656  
(559) 977-1889

## 3

### SHERONA-HILL A-23893-RED-ET

840003248274563 99%RHA-I  
Born: 7/3/2022 55K GTPI+1767G  
PTA +2.52T +2.00UDC +1.44FLC 79%R 12/22

Sire for Lot 3

**AVANT-GARDE-I LATENITE-RED-ET** P7 60K GTPI +2366G  
CAN 13507027 99%RHA-I PC TY TV TL TD  
11-01 96 EEEE  
PTA -1264M -92F -27P 99%R 12/22  
PTA -735NM -16%F +05%P 41%US  
PTA -2.3PL 3.19SCS -8DPR 2.6%DCE  
PTA +1.45T +4.3UDC +1.74FLC 99%R 12/22

Sire for Lots 3A & 3B

**MR AFFECTION ANALYST-RED-ET** AA 75K GTPI +1881G  
840003136496608 99%RHA-I TP TC TY TV TL  
PTA -53M -28F -23P 83%R 12/22  
PTA -400NM -09%F -08%P 100%US  
PTA -.5PL 2.87SCS -1.5DPR 2.7%DCE  
PTA +2.71T -2.38UDC +1.66FLC 81%R 12/22  
PTA -129FE -1.2FI 3.3%SC

Dam for Lots 3, 3A & 3B

**MS APPLES ANGEL** 50K GTPI +1418G  
139526936 100%RHA-NA RC TV TL TD  
6-05 94 EEEEE 2E  
PTA +2.07T +1.76UDC +1.69FLC 90%R 12/22  
2-00 2 365 22430 3.7 841 3.3 736  
4-04 2 365 30230 4.0 1218 3.4 1036  
6-00 2 365 44410 4.0 1771 3.3 1480  
9-00 2 305 29340 4.1 1192 3.3 976  
LIFE 1501 131230 4.0 5204 3.4 4407

## 3A

### SHERONA-HILL ANGEL-23926-ET

840003248274596 96%RHA-I RC  
Born: 7/5/2022 55K GTPI+1767G  
PTA +2.16T +1.75UDC +1.50FLC 79%R 12/22

**ERBACRES DAMION** A2/A2 BB 50K GTPI +1375G  
130263722 100%RHA-NA TR TY TV TL TD  
11-01 96 EEEE  
PTA -1264M -92F -27P 99%R 12/22  
PTA -735NM -16%F +05%P 41%US  
PTA -2.3PL 3.19SCS -8DPR 2.6%DCE  
PTA +1.45T +4.3UDC +1.74FLC 99%R 12/22

**KHW REGIMENT APPLE-RED-ET** AA 12K GTPI +1905G  
135511521 100%RHA-NA CV TL TD  
13-07 96 EEEEE 4E DOM  
PTA +2.88T +2.25UDC +2.92FLC 97%R 12/22  
2-02 2 365 28930 4.5 1297 3.4 979  
4-01 2 365 35750 4.7 1682 3.5 1247  
5-03 2 365 30810 5.0 1527 3.7 1154  
7-00 2 365 33280 5.0 1654 3.4 1128  
9-01 2 365 36750 4.3 1582 3.3 1211  
10-11 2 365 31780 4.5 1440 3.3 1062  
LIFE 2898 240640 4.7 11394 3.6 8559

\*ALL-AMERICAN JR 2Y COW 2006  
\*H.M. ALL-AMERICAN JR 3Y COW 2007

## 3B

### SHERONA-HILL ANGEL-13666-ET

840003228404014 99%RHA-I RC  
Born: 6/20/2021 55K GTPI+1740G  
PTA +2.46T +1.94UDC +1.73FLC 79%R 12/22

BD 8/15/22 ATOMIC-RC SEXED 563H2356

Maternal Sisters to lots 3, 3A, 3B

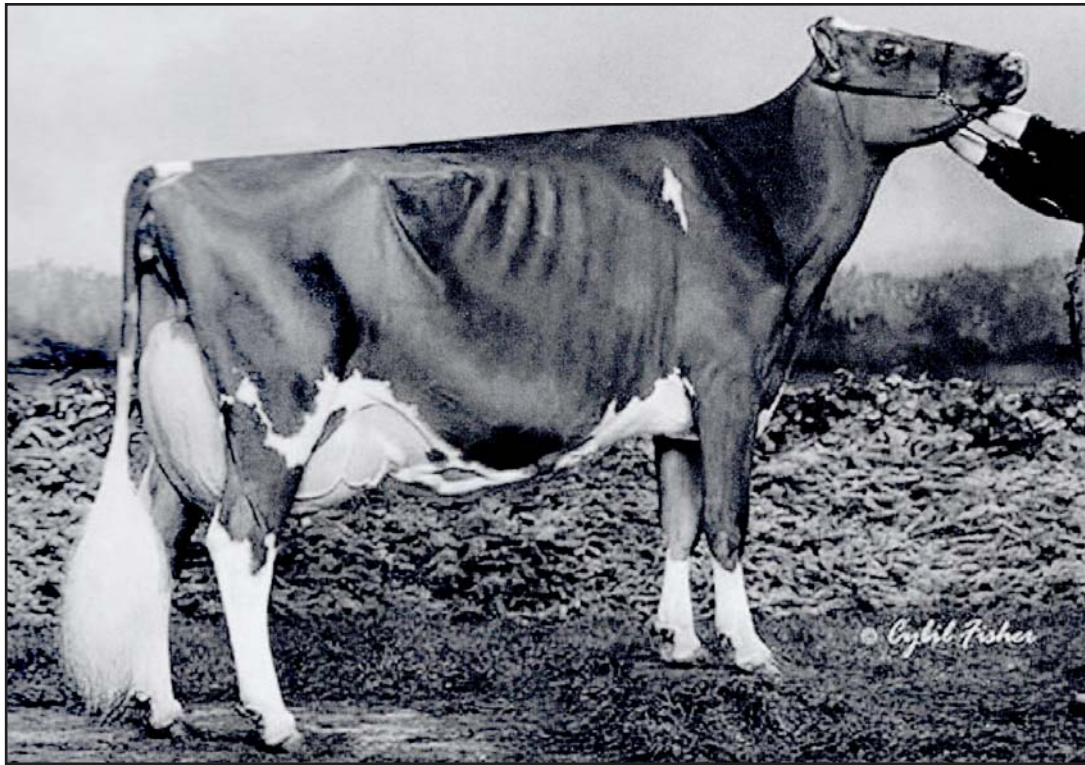
**MS ANGEL DELLUCCI** EX-92 EX-MS  
3-08 2 305 24778 4.2 1051 3.4 836  
**MS ANGEL ANA-ET \*RC** EX-92 EX-MS  
2-03 3 305 24580 4.9 1197 3.1 771  
**MS ANGEL ABRA-ET \*RC** EX-90 EX-MS  
2-03 3 365 25170 4.4 1106 3.6 901  
**MS D ANGEL DAELYN-ET** EX-92  
**MS D ANGEL DEZIRAE-ET** EX-91  
**MS D ANGEL DARNISHA-ET** EX-90 EX-MS  
**MS APPLE OF MY EYE-RED-ET** EX-90 EX-MS

3rd through 8th Dams

**KAMPS-HOLLOW ALTITUDE-ET \*RC** 2E-95  
2\* DOM  
7-00 2 365 39690 4.7 1849 3.5 1385  
**CLOVER-MIST ALISHA-ET \*RC** EX-93 3E  
DOM  
5-03 3 365 34670 4.8 1654 3.5 1220  
**CLOVER-MIST AUGY STAR-ET** EX-94 4E  
DOM  
7-10 2 365 43140 5.0 2136 3.1 1339  
**D-R-A AUGUST** EX-96 4E DOM  
8-05 3 365 27460 4.3 1187 3.2 871  
**D-R-A IDEAL PRECIOUS LEADER** EX-90 2E  
**D-R-A PRINCES LAD LEADER** EX-90 3E



# Spring Fashions Sale



**MS DELICIOUS APPLE-RED-ET EX-94 2E**  
*Dam of Lot 4*

# 4

**STEPHEN & PATRICK MADDOX  
& MICHAEL DEEVER**  
7285 W DAVIS AVE  
RIVERDALE, CA 93656  
(559) 977-1889

## **SHERONA-HILL A-13531-RED-ET**

840003228403879 99%RHA-I  
Born: 6/9/2021 55K GTPI+1838G  
PTA +2.88T +2.26UDC +1.80FLC 81%R 12/22  
BD 7/29/22 551H4610 ANTHITECT SEXED

**FARNEAR ALTITUDE-RED-ET** P6 75K GTPI +2207G  
840003128013348 99%RHA-I TC TY TV TL TD  
PTA +150M +10F +15P 98%R 12/22  
PTA -80NM +.02%F +.04%P 73%US  
PTA -.8PL 2.97SCS -2.6DPR 3.0%DCE  
PTA +3.16T +2.73UDC +1.50FLC 98%R 12/22  
PTA -2FE -2.7FI 4.7%SCE

**LADINO PARK TALENT-IMP-ET** 50K GTPI +1418G  
AUS 930377 100%RHA-NA RC TV TL  
PTA -1004M -.67F -24P 99%R 12/22  
PTA -463NM -.11%F +.03%P 13%US  
PTA -.6PL 3.34SCS -2.8DPR 4.5%DCE  
PTA +.44T +.69UDC -.08FLC 99%R 12/22

**MS DELICIOUS APPLE-RED-ET** AA 19K GTPI +1540G  
139236776 100%RHA-NA TC TV TL TD  
6-07 94 EEEEE 2E  
PTA +2.02T +2.20UDC +1.92FLC 89%R 12/22  
2-02 2 365 26460 3.9 1036 3.1 821  
4-03 2 305 32840 3.7 1229 3.0 998  
5-11 2 365 40660 3.9 1570 3.3 1331  
7-02 2 365 46510 4.0 1844 3.1 1424  
9-03 2 186 18160 4.1 736 3.1 562  
LIFE 1732 177970 3.9 6948 3.2 5632

**KHW REGIMENT APPLE-RED-ET** AA 12K GTPI +1905G  
135511521 100%RHA-NA CV TL TD  
13-07 96 EEEEE 4E DOM  
PTA +2.88T +2.25UDC +2.92FLC 97%R 12/22  
2-02 2 365 28930 4.5 1297 3.4 979  
4-01 2 365 35750 4.7 1682 3.5 1247  
5-03 2 365 30810 5.0 1527 3.7 1154  
7-00 2 365 33280 5.0 1654 3.4 1128  
9-01 2 365 36750 4.3 1582 3.3 1211  
10-11 2 365 31780 4.5 1440 3.3 1062  
LIFE 2898 240640 4.7 11394 3.6 8559  
\*ALL-AMERICAN JR 2Y COW 2006  
\*H.M. ALL-AMERICAN JR 3Y COW 2007

3rd through 8th Dams  
**KAMPS-HOLLOW ALTITUDE-ET \*RC 2E-95**  
2\* DOM  
7-00 2 365 39690 4.7 1849 3.5 1385  
**CLOVER-MIST ALISHA-ET \*RC EX-93 3E**  
DOM  
5-03 3 365 34670 4.8 1654 3.5 1220  
**CLOVER-MIST AUGY STAR-ET EX-94 4E**  
DOM  
7-10 2 365 43140 5.0 2136 3.1 1339  
**D-R-A AUGUST EX-96 4E DOM**  
8-05 3 365 27460 4.3 1187 3.2 871  
**D-R-A IDEAL PRECIOUS LEADER EX-90 2E**  
**D-R-A PRINCES LAD LEADER EX-90 3E**



# Spring Fashions Sale



**ROYLANE-KH TANGO BASE-ET**  
Dam of Embryos Selling of Lot 5

## 5

TONY CABRAL  
GALT, CA  
(209) 744-6932

### SELLING 5 NO 1 SEXED EMB

<b>FARNEAR DELTA LAMBDA-ET</b>										GTPI +2758	
3125993715	GM	TR	TP	TC	TY	TV	TL	TD			
PTA	+1123M		+47F		+43P				99%R	12/21	
PTA	+2.72T	+2.91UDC			+79FLC				99%R	12/21	
<b>ROYLANE-KH TANGO BASE-ET</b>										12K GTPI +2125G	
73635912	100%RHA-NA	TR	TL	TD							
6-05	92	EEEE	2E								
PTA	+51M		+13F		+4P				84%R	12/21	
PTA	+57NM		+04%F		+01%P						
PTA	-.2PL	2.98SCS			+5DPR				2.6%DCE		
PTA	+92T	+56UDC			+63FLC				84%R	12/21	
PTA	+19FE	+1.1FI			2.1%SCE						
2-05	2	328	22810	4.2	957	3.5			787		
3-04	2	324	25860	3.9	985	3.5			882		
4-06	2	365	29460	3.5	1044	3.2			947		
5-11	2	365	31230	3.1	983	3.3			1027		
LIFE		1407	109840	3.6	3994	3.3			3672		

<b>MR WELCOME HILL TANGO-ET</b>										50K GTPI +2257G	
70750485	100%RHA-NA	TV	TP	TC	TY	TV	TL				
PTA	+1205M		+33F		+29P				99%R	12/21	
PTA	+213NM		-.05%F		-.03%P				64%US		
PTA	-1.0PL	3.10SCS			+5DPR				3.2%DCE		
PTA	+72T	+39UDC			-.08FLC				99%R	12/21	
PTA	+98FE	+1.0FI			2.3%SCE						
<b>GOLDEN-ROSE RASBERRY-ET</b>										9K GTPI +1939G	
71806484	100%RHA-NA	TL	TD								
3-11	91	EE+VE									
PTA	+1.22T		+92UDC		+61FLC				91%R	12/21	
2-02	2	305	21710	4.8	1042	3.8			833		
		365	25290	4.8	1214	3.9			982		
3-03	2	267	26230	4.3	1125	3.6			948		

<b>3rd Dam</b>											
<b>GOLDEN-ROSE ATWOOD RITZI EX-93</b>											
EEEE 2E GMD											
LIFE	1708	167290	4.0	6670	3.3	5528					
<b>4th Dam</b>											
<b>OAKFIELD PRONTO RITZI EX-93 2E</b>											
3-01	2	305	31310	3.4	1058	3.1			959		
<b>5th Dam</b>											
<b>CASTLEHOLM DUND RHAPSODY-ET EX-90</b>											
EX-MS											
2-01	2	365	28850	3.0	859	2.8			803		
<b>6th Dam</b>											
<b>ASTRAHOE STORMATIC RADIANT EX-91 2E GMD</b>											
5-02	3	365	49847	4.2	2089	2.9			1437		
<b>7th Dam</b>											
<b>ASTRAHOE LJ ROSA REBEL-ET EX-92 2E</b>											
7-05	2	365	48580	4.2	2021	3.0			1468		
<b>8th Dam</b>											
<b>PINEHURST ROYAL ROSA-ET EX-91 2E</b>											
3-10	3	365	35130	3.6	1271	3.2			1115		
<b>9th Dam</b>											
<b>PINEHURST SWEET CLEO EX-90</b>											
6-00	3	365	40380	4.4	1776	3.2			1305		
<b>10th Dam</b>											
<b>PINEHURST SWEET FREEDOM EX-90 EX-MS</b>											
5-07	3	330	34520	4.3	1500	3.1			1084		
<b>11th Dam</b>											
<b>PINEHURST SWEET DELITE EX-91 3E GMD</b>											
8-10	3	365	28460	4.2	1194	3.2			917		
<b>12th Dam</b>											
<b>PINEHURST RAPTURE EX-96 4E GMD</b>											
8-02	3	365	30370	4.2	1290	3.1			945		
<b>NEXT 6 DAMS EX</b>											



# Spring Fashions Sale



**PAULO-BRO-SP SHARI-RED-ET EX-92**  
Dam of Lot 6

# 6

LANCE ADAMS  
LATON, CA  
(559) 862-8842

## MI-SHA W SHARI-23565-RED-ET 23565

840003248274235 99%RHA-I  
Born: 6/12/2022 PTPI+ 1684  
PTA +2.32T +.88UDC +.91FLC 45%R 8/22

**MR BLONDIN WARRIOR-RED-ET** A1/A2 BE 75K GTPI +1867G  
139538645 99%RHA-I TP TC TY TV TL TD  
PTA -684M -16F -13P 97%R 8/22  
PTA -428NM +.04%F +.03%P 90%US  
PTA -2.1PL 2.94SCS -2.5DPR 3.2%DCE  
PTA +3.22T +1.86UDC +1.67FLC 95%R 8/22  
PTA -99FE -2.7FI 4.6%SCE

**PAULO-BRO-SP SHARI-RED-ET** AB 13K GTPI +1500G  
139538645 100%RHA-NA TL TD  
11-02 94 EEEEE 3E  
PTA +1.41T -1.11UDC +.14FLC 83%R 8/22  
2-04 2 364 24020 4.1 985 3.1 749  
3-06 2 336 28760 3.9 1118 3.1 890  
4-07 2 308 27720 3.5 981 2.9 806  
5-05 2 316 33390 3.7 1227 3.3 1102  
6-06 2 342 39010 3.4 1309 3.0 1156  
7-09 2 365 29100 3.7 1086 3.3 947  
9-01 2 365 32140 3.5 1127 2.9 935  
LIFE 2423 215690 3.7 7887 3.1 6636

**KHW KITE ADVENT-RED-ETA1/A2 AA 50K GTPI +1630G**  
133002953 100%RHA-NA TV TL TD  
5-00 94 EEEE  
PTA -1662M -42F -44P 99%R 8/22  
PTA -457NM +.08%F +.03%P 78%US  
PTA -.1PL 3.16SCS +2.4DPR 4.4%DCE

**BUDJON REDMARKER SHAR-ET** IMP GTPI +1207G  
133780446 100%RHA-NA RC  
PTA +1.35T +.04UDC +.23FLC 79%R 8/22  
2-03 2 303 20530 3.7 761 2.8 570  
3-03 2 305 25370 3.6 903 2.8 723  
328 26580 3.6 956 2.9 765  
4-03 2 305 26450 3.7 984 3.0 782  
365 30040 3.7 1118 3.0 901

*3rd Dam*  
**BUDJON ENCORE SHARLENE EX-93**  
2-07 2 365 31420 3.5 1100 3.3 1051  
3-09 2 365 28480 4.1 1154 3.3 930  
5-11 2 319 30550 3.6 1113 2.8 846

*4th Dam*  
**BUDJON BEAUTICIAN SUZETTE EX-94**  
2-02 2 365 22490 3.7 838 2.8 636  
3-04 2 329 20730 4.1 858 3.0 631  
4-04 2 365 22870 4.0 918 3.1 700  
5-10 2 365 20700 4.3 885 3.0 630  
7-05 2 365 23400 4.1 961 2.9 678  
LIFE 1900 114930 4.1 4647 3.1 3586

*5th Dam*  
**BUDJON MARK SUE EX-91**  
2-02 2 309 13890 4.3 603 3.0 413  
3-01 2 365 19790 4.2 840 3.1 604  
4-03 2 315 16990 4.3 729 3.0 517  
5-04 2 346 21270 4.0 860 2.9 622  
6-04 2 338 21080 4.1 857 3.0 632  
\*RESERVE JUNIOR ALL-WISCONSIN 5-YEAR-OLD 1992

*6th Dam*  
**BUDJON CHAIRMAN SUSAN VG-87 DOM**  
2-07 2 365 21510 3.5 746 2.9 626  
3-08 2 349 18100 3.8 694 3.2 581  
4-09 2 365 25770 3.5 909 2.8 712  
5-10 2 345 24190 3.5 841 2.9 694  
6-11 2 356 26190 3.5 928 3.0 776  
8-00 2 260 16670 3.5 586 2.7 443  
LIFE 2059 132950 3.6 4727 3.1 4059





# Spring Fashions Sale



**CLAQUATO-RH EVE-ET**  
Dam of Lot 7 and Gd Dam of Lot 8

# 7

**STEPHEN & PATRICK MADDOX**  
7285 W DAVIS  
RIVERDALE, CA 93656  
(559) 977-1889

## **RUANN HAXL EVE-23511-ET 23511**

840003248274181 99%RHA-I  
Born: 6/8/2022 55K GTPI+2213G  
PTA +834M +21F +22P 79%R 12/22  
PTA +2.87T +1.54UDC +.59FLC 79%R 12/22

**PEAK HAXL-ET** BB P9 75K GTPI +2635G  
840003212150432 99%RHA-I TR TP TC TY TV  
PTA +1326M +37F +44P 81%R 12/22  
PTA +371NM -.05%F +.01%P 100%US  
PTA +2.2PL 2.95SCS -2.4DPR 2.3%DCE  
PTA +3.98T +2.73UDC +1.38FLC 80%R 12/22  
PTA +98FE -1.6FI 3.2%SCE

**CLAQUATO-RH EVE-ET** AB 19K GTPI +1696G  
71317483 100%RHA-NA TR TP TC TL TD  
6-10 94 EEEEE 2E  
PTA +1.33T +.19UDC +.20FLC 86%R 12/22  
2-05 2 365 25100 4.9 1221 3.2 795  
6-04 2 365 47620 3.7 1740 3.0 1406  
LIFE 1548 148580 4.4 6471 3.1 4626  
\*1ST MID-E FALL NAT 4Y, SR & RES GR CH 2017  
\*2ND WEST SPRG NATL 6Y+ COW 2019  
\*2ND MID-E SUMM NATL SR 2Y COW 2015  
\*2ND W FALL NATL WNTR HFR CALF 2013  
\*5TH E FALL NATL SR 2Y COW 2015

**MR CHASSITY GOLD CHIP-ET** A1/A2 AA 75K GTPI +1751G  
140145553 100%RHA-NA TR TP TY TV TL  
9-06 95 EEVE  
PTA -580M -22F -38P 99%R 12/22  
PTA -265NM +.00%F -.07%P 39%US  
PTA +.0PL 2.78SCS -1.6DPR 1.5%DCE  
PTA +1.51T +1.10UDC +1.04FLC 99%R 12/22

**SKAGVALE MIRACLE ELLEE** IMP GTPI +1382G  
135430628 100%RHA-NA  
4-04 91 EEEEV  
2-00 3 365 26550 3.6 965 3.3 875  
3-10 2 365 26660 3.8 1003 3.1 836

**3rd Dam**  
**SKAGVALE MILAN ELIE GAY-ET** EX-92-2E  
4-11 2 343 26060 3.6 941 3.1 814

**4th Dam**  
**SKAGVALE COUNTRY ELIE GAY** EX-95  
5-08 3 365 34240 3.7 1283 3.1 1077

**5th Dam**  
**SKAGVALE MAPLE GAY** EX-95-4E-GMD  
11-03 2 365 27320 3.9 1057 2.9 803

**6th Dam**  
**SKAGVALE GAY ROCKETTE** EX-93-4E-GMD  
5-04 2 365 25220 3.7 929

**7th Dam**  
**SKAGVALE DELIGHTFUL GAY** EX-90  
8-07 2 365 22710 3.9 880

**8th Dam**  
**SKAGVALE NETHERLAND GAY** EX-90  
8-07 2 365 22710 3.9 880

**9th Dam**  
**PUGET SOUND NETHERLAND GRACE** EX-93  
10-11 3 362 30150 2.7 800

**10th Dam**  
**TIETON MADCAP GALDYS** GP-82



# Spring Fashions Sale



**CLAQUATO-RH EVE-ET**  
Gd Dam of Lot 8

# 8

**GRAISSON & MANDY SCHMIDT  
& TYLER DICKER**  
PO BOX 245  
TOMALES, CA 94971  
(608) 488-7481

## MISS SIDEKICK GWENDOLYN-ET 3696

840003230505088 99%RHA-I  
Born: 3/4/2022 PTPI+ 2013  
PTA +2.38T +1.73UDC +.55FLC 45%R 8/22

**WALNUTLAWN SIDEKICK** 75K GTPI +2180G  
CAN 12508113 99%RHA-I TR TY TV TL TD  
PTA -1121M +9F -10P 98%R 8/22  
PTA -55NM +.19%F +.09%P 8%US  
PTA -.2PL 2.77SCS -1DPR 2.1%DCE  
PTA +2.88T +2.42UDC +.64FLC 97%R 8/22  
PTA -32FE -0.2FI 2.0%SCE

**RUANN DOORMAN GAY-91519-ET** BB 19K GTPI +1852G  
840003204210675 99%RHA-I TR TC TL TD  
2-03 88 VEVVV  
PTA +1.88T +1.03UDC +.45FLC 83%R 8/22  
2-01 3 305 28220 3.6 1007 3.2 912  
365 34320 3.5 1186 3.3 1125  
\*H.M. ALL-AMERICAN WNTR YR HFR 2020  
\*1ST WEST SPRG NATL WNTR YR HFR & JR CH 2020

**VAL-BISSON DOORMAN-ET** AB 75K GTPI +2155G  
CAN 107281711 99%RHA-I TR TP TY TV TL TD  
CAN 5Y EX 90  
PTA -475M +13F +10P 99%R 8/22  
PTA -54NM +.11%F +.09%P 17%US  
PTA +.4PL 2.66SCS -2.4DPR 2.6%DCE  
PTA +2.48T +1.61UDC +.71FLC 99%R 8/22

**CLAQUATO-RH EVE-ET** AB 19K GTPI +1670G  
71317483 100%RHA-NA TR TP TC TL TD  
6-10 94 EEEEE 2E  
PTA +1.33T +2.1UDC +.21FLC 86%R 8/22  
2-05 2 365 25100 4.9 1221 3.2 795  
6-04 2 365 47620 3.7 1740 3.0 1406  
LIFE 1548 148580 4.4 6471 3.1 4626  
\*1ST MID-E FALL NAT 4Y, SR & RES GR CH 2017  
\*2ND WEST SPRG NATL 6Y+ COW 2019  
\*2ND MID-E SUMM NATL SR 2Y COW 2015  
\*2ND W FALL NATL WNTR HFR CALF 2013  
\*5TH E FALL NATL SR 2Y COW 2015

<i>3rd Dam</i>							
<b>SHAGVALE MIRACLE ELLE EX-91 EEEEEV</b>							
2-00	365	26550	3.6	965	3.3	875	
3-10	365	26660	3.8	1003	3.1	836	
<i>4th Dam</i>							
<b>SHAGVALE MILAN ELIE GAY-ET EX-92, 2E EEEEE</b>							
3-03	365	24650	3.9	972	3.3	813	
4-11	343	26060	3.6	941	3.1	814	
<i>5th Dam</i>							
<b>SHAGVALE COUNTRY ELIE GAY EX-95 EEEEE</b>							
5-08	365	34240	3.7	1283	3.3	1142	
LIFE		117320	3.6	4281	3.4	3982	
<i>6th Dam</i>							
<b>SHAGVALE ELIE GAY-ET EX-93, 3E EEEE</b>							
6-00	365	30210	3.9	1171			
LIFE		164460	4.0	6659			
<i>7th Dam</i>							
<b>SHAGVALE GAY ROCKETTE *RC EX-93, 4E GMD</b>							
11-00	27320	3.9	1057				
LIFE		156120	3.8	5957			
<i>8th Dam</i>							
<b>SHAGVALE GAY ROCKETTE EX-95, 4E GMD</b>							
5-00	365	25220	3.7	929			
LIFE	218810	3.6	7975				
<i>9th Dam</i> <b>EX-90 LIFETIME 236850</b>							
<i>10th Dam</i> <b>EX-90, 3E LIFETIME 198101</b>							
<i>11th Dam</i> <b>EX-93 LIFETIME 217547</b>							



# Spring Fashions Sale



**MISS APPLE ARIA-RED-ET**  
*Gd Dam of Lots 9 & 10*

## 9

**KEN MELVOLD & JOANN E.S. EVANS**  
6178 N BLOSSER  
FRESNO, CA 93711  
(559) 431-5954

### MISS ARIANA-11508-RED-ET

840003338401856 99%RHA-I  
Born: 1/1/2021 55K GTPI+ 2031G  
PTA +2.82T -1.61UDC +2.07FLC 80%R 8/22

SELLS FRESH

**MR BLONDIN WARRIOR-RED-ET** A1/A2 BE 75K GTPI +1867G  
840003139655530 99%RHA-I TP TC TY TV TL TD  
PTA -684M -16F -13P 97%R 8/22  
PTA -428NM +.04%F +.03%P 90%US  
PTA -2.1PL 2.94SCS -2.5DPR 3.2%DCE  
PTA +3.22T +1.86UDC +1.67FLC 95%R 8/22  
PTA -99FE -2.7FI 4.6%SCE

**MISS CRUSH ARIANA-ET** A1/A1 AE 36K GTPI +2264G  
840003151980885 99%RHA-I RC CD TL TD  
4-01 85 VVVV+  
PTA +1.92T +1.19UDC +1.33FLC 84%R 8/22  
2-00 3 308 24270 4.4 1065 3.7 905  
3-00 3 310 25990 4.5 1181 3.7 974

**MAVRICK CRUSH** 75K GTPI +2049G  
CAN 12042760 99%RHA-I TC TY TV TL TD  
PTA -883M -49F -14P 99%R 8/22  
PTA -191NM -.06%F +.05%P 62%US  
PTA +3.0PL 2.37SCS +2.0DPR 2.6%DCE  
PTA +2.47T +1.58UDC +1.32FLC 99%R 8/22

**MISS APPLE ARIA-RED-ET** AA 49K GTPI +2253G  
72506370 100%RHA-NA TL TD  
6-06 95 EEEEE 2E  
PTA +2.29T +1.51UDC +1.14FLC 86%R 8/22  
3-08 2 327 31870 4.1 1321 3.5 1121  
4-09 2 365 37450 3.5 1293 3.5 1313  
6-00 2 365 41490 3.8 1562 3.4 1426  
LIFE 1106 114730 3.8 4375 3.5 4026  
\*R&W RESERVE ALL-AMERICAN 6Y & COW 2019  
\*1ST W FALL NATL 5Y COW 2018  
\*1ST WEST SPRG NATL 5Y COW 2018

**3rd Dam**  
**KHW REGIMENT APPLE-RED EX-96 EEEEE**  
4E DOM  
LIFE 2898 240640 4.7 11394 3.6 8559

**4th Dam**  
**KAMPS-HOLLOW ALTITUDE-ET EX-95**  
EEEEEE 2E DOM  
LIFE 1844 144460 4.4 6295 3.5 5015

**5th Dam**  
**CLOVER-MIST ALISHA-ET EX-93 3E DOM**  
LIFE 2999 226470 4.7 10659 3.6 8149

**6th Dam**  
**CLOVER-MIST AUGY STAR-ET EX-94 4E DOM**  
LIFE 2486 206250 4.7 9793 3.5 7187

**7th Dam**  
**D-R-A AUGUST EX-96 4E DOM**  
LIFE 3443 190200 4.4 8281 3.5 4818

**8th Dam**  
**D-R-A IDEAL PRECIOUS LEADER EX-90 2E**  
LIFE 2456 133250 4.0 5308

**9th Dam**  
**D-R-A PRINCESS LAD LEADER EX-90 3E**  
9-05 2 305 19160 4.2 809



# Spring Fashions Sale



**MISS APPLE ARIA-RED-ET**  
Gd Dam of Lots 10 & 9

# 10

**KEN MELVOLD & JOANN E.S. EVANS**  
6178 N BLOSSER  
FRESNO, CA 93711  
(559) 431-5654

## MS ANALYST ARIANA-10907

840003226825547 99%RHA-I RC  
Born: 9/13/2021 PTPI+ 2081  
PTA +2.37T +1.84UDC +1.57FLC 41%R 8/22

**MR AFFECTION ANALYST-RED-ET** AA 75K GTPI +1906G  
840003136496608 99%RHA-I TP TC TY TV TL TD  
PTA -20M -27F -23P 81%R 8/22  
PTA -386NM -09%F -08%P 100%US  
PTA -.4PL 2.87SCS -1.4DPR 2.6%DCE  
PTA +2.81T +2.49UDC +1.81FLC 81%R 8/22  
PTA -129FE -1.1FI 3.3%SCE

**MISS CRUSH ARIANA-ET** A1/A1 AE 36K GTPI +2264G  
840003151980885 99%RHA-I RC CD TL TD  
4-01 85 VVVV+  
PTA +1.92T +1.19UDC +1.33FLC 84%R 8/22  
2-00 3 308 24270 4.4 1065 3.7 905  
3-00 3 310 25990 4.5 1181 3.7 974

**MAVRICK CRUSH** 75K GTPI +2049G  
CAN 12042760 99%RHA-I TC TY TV TL TD  
PTA -883M -49F -14P 99%R 8/22  
PTA -191NM -06%F +05%P 62%US  
PTA +3.0PL 2.37SCS +2.0DPR 2.6%DCE  
PTA +2.47T +1.58UDC +1.32FLC 99%R 8/22

**MISS APPLE ARIA-RED-ET** AA 49K GTPI +2253G  
72506370 100%RHA-NA TL TD  
6-06 95 EEEEE 2E  
PTA +2.29T +1.51UDC +1.14FLC 86%R 8/22  
3-08 2 327 31870 4.1 1321 3.5 1121  
4-09 2 365 37450 3.5 1293 3.5 1313  
6-00 2 365 41490 3.8 1562 3.4 1426  
LIFE 1106 114730 3.8 4375 3.5 4026

**3rd Dam**  
**KHW REGIMENT APPLE-RED** EX-96 EEEEE  
4E DOM  
LIFE 2898 240640 4.7 11394 3.6 8559

**4th Dam**  
**KAMPS-HOLLOW ALTITUDE-ET** EX-95  
EEEE 2E DOM  
LIFE 1844 144460 4.4 6295 3.5 5015

**5th Dam**  
**CLOVER-MIST ALISHA-ET** EX-93 3E DOM  
LIFE 2999 226470 4.7 10659 3.6 8149

**6th Dam**  
**CLOVER-MIST AUGY STAR-ET** EX-94 4E DOM  
LIFE 2486 206250 4.7 9793 3.5 7187

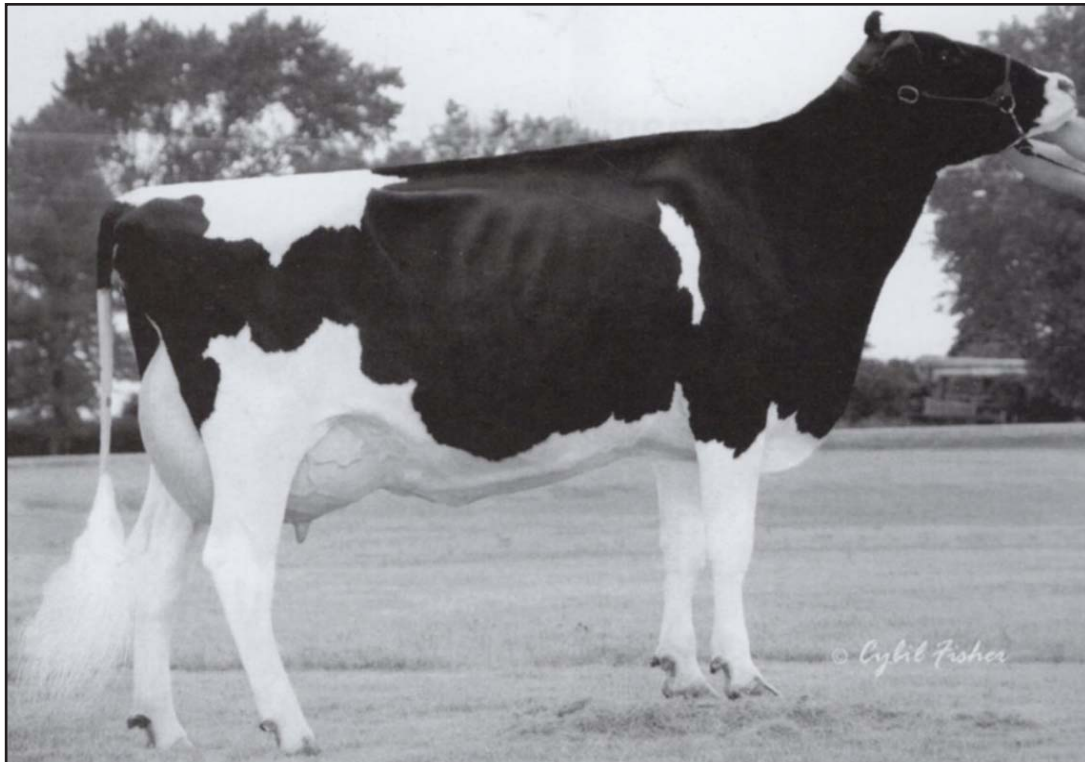
**7th Dam**  
**D-R-A AUGUST** EX-96 4E DOM  
LIFE 3443 190200 4.4 8281 3.5 4818

**8th Dam**  
**D-R-A IDEAL PRECIOUS LEADER** EX-90 2E  
LIFE 2456 133250 4.0 5308

**9th Dam**  
**D-R-A PRINCESS LAD LEADER** EX-90 3E  
9-05 2 305 19160 4.2 809



# Spring Fashions Sale



**SCIENTIFIC DEBUTANTE RAE-ET**  
4th Dam of Lot 11

# 11

**ELISE E REGUSCI**  
5425 STODDARD RD  
MODESTO, CA 95356  
(209) 604-2605

## TOP-DIMARK M DORIS-RED 133

145459042 99%RHA-I  
Born: 7/12/2022 PTPI+ 2192

<b>APRILDAY MCDONALD-P-RED-ET</b> A1/A2 AB P9 75K GTPI +2708G									
840003201598569	99%RHA-I	PC	TC	TY	TV	TL	TD		
PTA +187M	+50F	+18P	81%R	8/22					
PTA +580NM	+15%F	+04%P	100%US						
PTA +4.6PL	2.55SCS	+3DPR	2.1%DCE						
PTA +2.28T	+2.73USC	+1.63FLC	80%R	8/22					
PTA +102FE	+0.3FI	1.9%SCE							

<b>TOP-DI-MARK S DOLL-RED-ET</b> CTPI +1670									
142789153	100%RHA-NA	OI							
5-00	87	VEFEV							
2-01	2	224	12310	3.6	438	3.4	413		
3-02	2	236	12910	3.3	425	2.9	377		
4-05		305	23190	3.2	747	3.2	746		
5-11		305	29430	3.4	1010	3.3	975		
7-05		305	30780	3.2	994	3.2	995		

<b>ERBCREST SATCHEL P</b> 50K GTPI +1660G									
CAN 11103473	100%RHA-NA	RC	PO	TY					
PTA -579M	-36F	-11P	99%R	8/22					
PTA -311NM	-.05%F	+03%P	70%US						
PTA -.6PL	3.00SCS	-2.3DPR	3.3%DCE						
PTA +.56T	+65UDC	-.35FLC	97%R	8/22					

<b>SCIENTIFIC PICO DOLL-RED-ET</b> AB 49K GTPI +1750G									
70759781	100%RHA-NA	TL	TD						
2-00	85	+VVVV							
1-09	2	305	18170	3.7	678	3.2	576		
3-04	2	160	11040	3.4	379	2.8	313		
5-01	2	218	12940	3.6	467	2.7	354		

<b>3rd Dam</b>									
<b>SCIENTIFIC GOLD DOLL RAE-ET VG-87</b>									
VV+VV									
2-02	2	365	30180	4.4	1332	3.5	1064		
<b>4th Dam</b>									
<b>SCIENTIFIC DEBUTANTE RAE-ET EX-92</b>									
EEEE GMD DOM									
22-02	2	365	32930	4.4	1191	3.2	863		
<b>5th Dam</b>									
<b>SCIENTIFIC JUBILANT RAE-ET EX-90 DOM</b>									
LIFE 1394 117590 4.0 4707 3.6 4242									
<b>6th Dam</b>									
<b>HANOVERHILL TONY RAE 3E-96 EX-MS</b>									
GMD DOM 5*									
LIFE 166397 4.1 6903 3.4 5611									
<b>7th Dam</b>									
<b>HANOVERHILL TT ROXETTE-ET 2E-94 GMD</b>									
LIFE 164789 4.1 6759 3.1 4367									
<b>8th Dam</b>									
<b>MIL-R-MOR ROXETTE EX-90 GMD DOM 30*</b>									
LIFE 2150 121417 4.7 5725									
<b>9th Dam</b>									
<b>C GLENRIDGE CITATION ROXY 4E-97 GMD</b>									
5-06 2 365 21308 5.1 1086									
<b>10th Dam</b>									
<b>EX-90 GMD 6*</b>									
LIFE 218636 3.9 8583									
<b>11th Dam</b>									
<b>VG-85 5* BROOD COW</b>									



# Spring Fashions Sale



**RUANN DOORMAN JEAN 55162-ET**  
Full Sister to Dam of Lot 12

# 12

**KEN MELVOLD & JOANN E.S. EVANS**  
6178 N BLOSSER  
FRESNO, CA 93711  
(559) 431-5654

## MS SELECT JEAN-10599

840003226825239 99%RHA-I  
Born: 7/24/2021 PTPI+ 2040  
PTA +2.77T +1.52UDC +.59FLC 41%R 8/22

**AVANT-GARDE UNIX SELECT-ET** A1/A2 AE P7 75K GTPI +2299G  
840003149135073 99%RHA-I TR TP TC TY TV TL TD  
PTA -510M +29F -5P 82%R 8/22  
PTA +28NM +.18%F +.04%P 100%US  
PTA -.2PL 2.83SCS -.2DPR 2.1%DCE  
PTA +3.00T +2.46UDC +.56FLC 81%R 8/22  
PTA -10FE +0.0FI 2.0%SCE

**RUANN DOORMAN JEAN-93436ET** AA 19K GTPI +1786G  
840003204212592 99%RHA-I TR TC TL TD  
2-04 85 VV++V  
PTA +2.53T +.57UDC +.61FLC 84%R 8/22  
2-01 3 270 17050 4.4 746 3.3 567

**VAL-BISSON DOORMAN-ET** AB 75K GTPI +2155G  
CAN 107281711 99%RHA-I TR TP TY TV TL TD  
CAN 5Y EX 90  
PTA -475M +13F +10P 99%R 8/22  
PTA -54NM +.11%F +.09%P 17%US  
PTA +.4PL 2.66SCS -.24DPR 2.6%DCE  
PTA +2.48T +1.61UDC +.71FLC 99%R 8/22

**RUANN SIDNEY JEAN-85880-ET** AB 9K GTPI +1604G  
66610106 100%RHA-NA CV TY TL TD  
4-10 90 EEEVV  
2-00 3 313 20000 3.9 771 3.1 623  
3-04 3 327 31980 4.1 1312 3.2 1025  
4-08 3 365 39510 4.1 1617 3.5 1398

### 3rd through 9th Dams

**RUANN JORDAN JEAN-30162** EX-94 2E  
EEEE  
3-00 3 365 39600 3.6 1411 3.1 1223  
**RUANN DURHAM JEAN-10121-ET** VG-88  
3-08 3 289 25100 4.1 1020 3.0 757  
**RUANN EL TORO JILL-22697-ET** VG-88  
3-07 3 365 28130 4.5 1273 3.3 942  
**NUNESDALE-M VALIANT JEAN-ET** EX-90  
EX-MS  
3-07 3 338 24980 4.1 1027  
**NUNESDALE ELEVATION JENNY-TW** 2E-90  
GMD  
LIFE 1809 104300 4.1 4258  
**NUNESDALE ORIGINAL JEANNIE** EX-95 4E  
10-2 2 365 23980 4.5 1081  
**NUNESDALE NOBEL JEAN** VG-87



# Spring Fashions Sale



**GOLDEN-OAKS LOCKET LADY-ET**  
Gd Dam of Lot 13

# 13

**CAL DENIER HOLSETINS**  
10715 ARNO RD  
GALT, CA 95632  
(209) 745-4982

## CAL-DENIER DOC LENA 8935

840003245571657 99%RHA-I

Born: 6/16/2022 P6 PTPI+2398

PTA +402M +31F +16P 38%R 8/22

PTA +2.67T +1.88UDC +1.50FLC 36%R 8/22

**WOODCREST KING DOG** A1/A2 BB 75K GTPI +2814G  
840003132417775 99%RHA-I TR TP TC TY TV  
3-04 90 EEVE  
PTA +1609M +69F +55P 99%R 8/22  
PTA +633NM +.02%F +.02%P 43%US  
PTA +3.8PL 3.09SCS -1.5DPR 99%R 8/22  
PTA +3.31T +2.21UDC +2.03FLC 99%R 8/22  
PTA +180FE -1.1FI 2.7%SCE

**CRANEHILL CALLEN LENA-ET** PTPI+1976  
840003221021405 99%RHA-I  
4-06 90 EEVVE  
PTA +2.02T +1.55UDC +.97FLLC 45%R 8/22  
3-03 2 305 24330 3.5 863 3.2 777  
325 25410 3.6 905 3.2 810

**OCD 1STCLASS CALLEN-ET** A1/A2 BE 75K GTPI +2001G  
840003132672462 92%RHA-I TR TL TD  
2-05 86 VV++  
PTA -208M -1F -24P 99%R 8/22  
PTA -143NM +.03%F -.06%P 22%US  
PTA +.4PL 2.94SCS +.7DPR 2.2%DCE  
PTA +1.83T +1.51UDC +.76FLC 98%R 8/22

**GOLDEN-OAKS LOCKET LADY-ET** AB 12K GTPI +2036G  
840003132672462 92%RHA-I TR TL TD  
3-06 90 EEVVE  
3-00 291 26740 4.3 900 3.2 679  
Full Sister EX-95  
NOM ALL CAN & ALL AMERICAN JR 3YR OLD 2016

3rd through 12th Dam

**GLORYLAND-I GOLDWYN LOCKET-ET**  
EX-94 2E EEEEE  
LIFE 1485 137901 4.6 6400 3.4 4719  
**GLORYLAND LAKOTA RAE-ET** VG-88  
EX-MS DOM 2\*  
2-03 2 365 22850 3.8 857 3.3 751  
**GLORYLAND LANA RAE-ET** EX-94 2E 1\* DOM  
5-06 2 365 29011 4.0 1159 3.4 993  
**SCIENTIFIC LIZA RAE-ET** EX-90  
4-09 2 365 26710 2.9 768 3.1 827  
**HANOVERHILL TONY RAE** EX-96 3E GMD  
DOM 5\*  
6-11 2 365 40220 4.1 1661 3.3 1331  
**C HANOVERHILL TT ROXETTE-ET** 2E-94  
GMD DOM  
10-0 3 365 35040 4.3 1519 3.0 1063  
**MIL-R-MOR ROXETTE** EX-90 GMD DOM 30\*  
7-01 2 365 24530 4.7 1153  
**C GLENRIDGE CITATION ROXY** EX-97 4E  
GMD 6\*  
LIFE 3620 209784 4.5 9471  
**C NORTON COURT MODEL VEE** EX-90 6\*  
LIFE 4183 218629 3.9 8581  
**NORTON COURT REFLECTION VAL**  
VG-CAN 5\*  
LIFE 14 LACT 249583 3.7 9295



# Spring Fashions Sale



# 14

**RAY & DIANE SAGARIA**  
631 RAINSVILLE RD  
PETALUMA, CA 94952  
(707) 287-2320

## B-DIAMOND ARTIST KELSEY 839540

145222363 99%RHA-NA-I

Born: 6/30/2020 PTPI+ 1837

PTA +2.43T +1.67UDC +1.26FLC 34%R 8/22

2-02 74 6040 4.2 251 2.9 176 INC

305 ME 29980 1142 822

BD 12/8/2022 TO HARVEST 29H18043

\*DAU OF LOT 15\*

**STONE-FRONT ARTIST-ET** AA 75K GTPI +2000G  
840003136786946 99%RHA-I TR TC TY TV TL TD  
PTA -559M -23F -10P 98%R 8/22  
PTA -234NM -01F +.03%P 46%US  
PTA -1PL 2.62SCS -6DPR 2.7%DCE  
PTA +2.82T +1.57UDC +1.02FLC 98%R 8/22

**B-DIAMOND ABS KIMBERLY** PTPI+1686  
840003137819803 100%RHA-NA  
3-07 88 VEVVE  
PTA +2.03T +1.77UDC +1.49FLC 38%R 8/22  
2-00 2 305 21350 4.3 913 3.2 680

**APPLES ABSOLUT-RED-ET** 50K GTPI +1533G  
138358472 100%RHA-NA CV TC TY TL TD  
5-08 94 EEVE  
PTA -1969M -13F -24P 99%R 8/22  
PTA -662NM +.24%F +.14%P 51%US  
PTA -5.3PL 3.52SCS -5.0DPR 5.1%DCE  
PTA +2.25T +2.46UDC +1.64FLC 99%R 8/22

**B-DIAMOND ATWOOD KAYLEE** CTPI+1845  
142831104 100%RHA-NA  
5-04 91 EEEVE  
2-06 2 298 24950 3.6 886 2.9 736  
3-06 2 305 26360 3.7 975 3.0 789  
4-08 2 276 22220 3.9 877 3.0 667  
5-08 2 197 22150 3.3 732 2.7 594

3rd Dam							
EX-90							
4-04	305	27890	3.8	1054	3.1	871	

# 15

**RAY & DIANE SAGARIA**  
631 RAINSVILLE RD  
PETALUMA, CA 94952  
(707) 287-2320

## B-DIAMOND ABS KIMBERLY 21

840003137819803 100%RHA-NA RC

Born: 6/3/2018 PTPI+ 1688

PTA +2.03T +1.77UDC +1.48FLC 38%R 12/22

2-00 2 305 21350 4.3 913 3.2 680

3-02 2 305 28290 4.0 1134 3.4 960

6-03 59 1405 3.8 285 2.9 219 INC

DEC TEST 120#

305 ME 29500 1045 835

BD 12/28/2022 TO HARVEST 29H18043

**APPLES ABSOLUTE-RED-ET** 50K GTPI +1540G  
139358472 100%RHA-NA CV TC TY TL TD  
5-08 94 EEVE  
PTA -1955M -12F -23P 99%R 12/22  
PTA -652NM +.24%F +.14%P 51%US  
PTA -5.2PL 3.53SCS -5.1DPR 5.1%DCE  
PTA +2.25T +2.46UDC +1.64FLC 99%R 12/22  
PTA -83FE -6.2FI 4.5%SC

**B-DIAMOND ATWOOD KAYLEE** CTPI+1848  
142831104 100%RHA-NA  
5-04 91 EEEVE  
PTA +1.91T +1.04UDC +1.39FLC 53%R 12/22  
2-06 2 298 24950 3.6 886 2.9 736  
3-06 2 305 26360 3.7 975 3.0 789  
4-08 2 276 22220 3.9 877 3.0 667  
5-08 2 197 22150 3.3 732 2.7 594

**MAPLE-DOWNS-I G W ATWOOD-ET** A1/A2 AB 50K GTPI +1908G+  
CAN 8956379 100%RHA-NA TR TP TY TV TL TD  
4-06 90 EE+V  
PTA -337M +11F -9P 99%R 12/22  
PTA -254NM +.09%F +.01%P 45%US  
PTA -2.5PL 3.12SCS -4.8DPR 4.4%DCE  
PTA +2.92T +1.90UDC +2.07FLC 99%R 12/22

**JR-RAINS MR SAM KRISTI** CTPI+1693  
69287256 100%RHA-NA  
5-00 90 VEEVE  
2-02 2 2696 20380 3.7 761 3.0 617  
3-01 2 305 24630 3.9 962 3.3 810  
4-04 2 305 27870 3.8 1054 3.1 871

# 16

**CALIFORNIA STATE UNIV., FRESNO**  
C/O KYLE THOMPSON PHD  
2415 E SAN RAMON AVE  
FRESNO, CA 93740  
(559) 278-2873

## CSUF AMOUR MARTHA 220

840003251839291 87%RHA-I

Born: 6/14/2022 P6 PTPI+ 2415

PTA +439M +37F +19P 46%R 8/22

PTA +1.12T +.69UDC +.12FLC 45%R 8/22

**BOLDI V AMOUR-ET** BB 49K GTPI +2541G  
CAN 108798853 99%RHA-I TR TP TY TV TL TD  
CAN 03Y VG 86  
PTA +414M +52F +26P 99%R 8/22  
PTA +526NM +.13%F +.05%P 18%US  
PTA +4.0PL 2.65SCS +2.7DPR 1.7%DCE  
PTA +.51T +.14UDC -.11FLC 95%R 8/22  
PTA +103FE +2.2FI 1.8%SC

**CSUF KINGBOY MEGAN** 19K GTPI +2288G  
840003130518631 74%RHA-I  
4-04 88 VVV+V  
PTA +463M +21F +12P 83%R 8/22  
PTA +1.73T +1.23UDC +.35FLC 83%R 8/22  
2-02 2 288 21960 3.8 828 3.2 706  
3-01 2 297 22740 4.5 1029 3.2 723

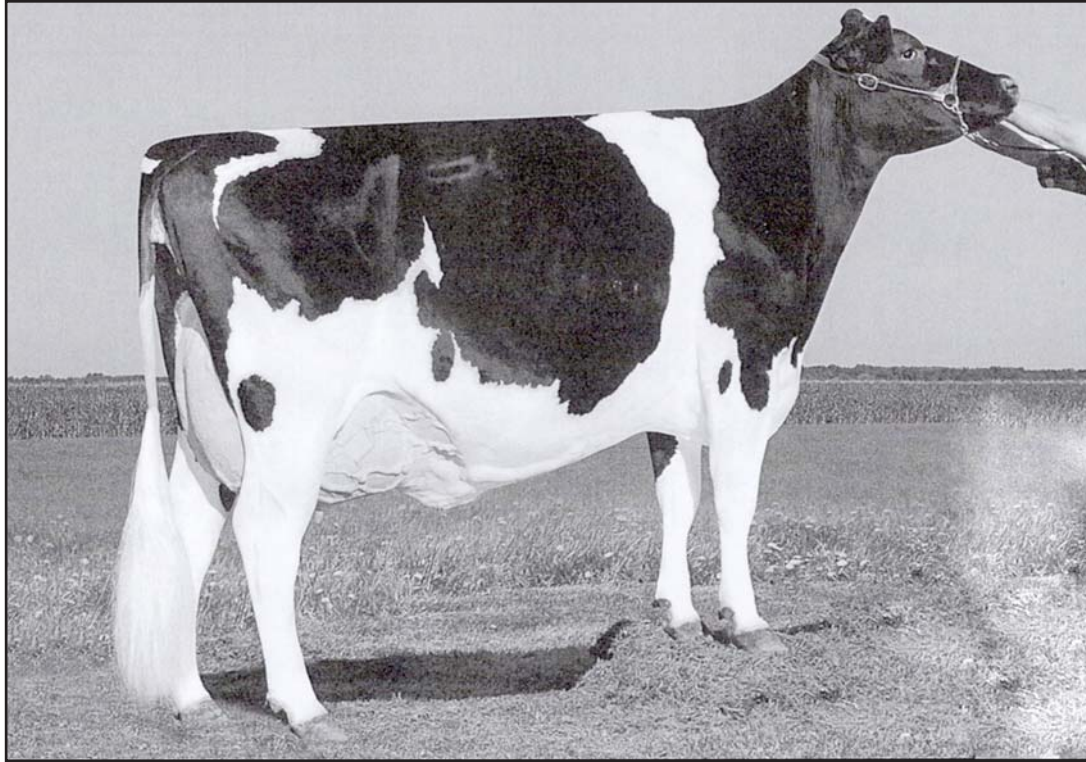
**MORNINGVIEW MCC KINGBOY-ET** A2/A2 AB 49K GTPI 2320G+  
72044077 99%RHA-I TR TP TC TY TV TL TD  
4-08 92 EEVE  
PTA +908M +22F +23P 99%R 8/22  
PTA +113NM -.04%F -.02%P 50%US  
PTA -.7PL 2.80SCS +.6DPR 2.1%DCE  
PTA +1.89T +1.54UDC +.29FLC 99%R 8/22

**CSUF MCCUTCHEN MEGAN** 19K GTPI +2019G  
840003130518521 49%RHA-I  
2-05 82 V+G++  
PTA +337M +18F -1P 83%R 8/22  
1-10 290 19820 3.8 758 3.0 601  
2-09 2 305 23430 4.2 993 3.0 708  
351 25590 4.2 1079 3.0 778





# Spring Fashions Sale



**DAR-LYNDA JASP MAI 36333-ET**  
Dam of Lot 17

# 17

## SELLING APP

Born: 9/4/2022

**ROYAL-CUT GENETICS**  
11380 AVENUE 22  
CHOWCHILLA, CA 93610  
(559) 978-6087

<b>FARNEAR ALTITUDE-RED-ET</b>	P6 75K GTPI +2207G
840003128013348	99%RHA-I TC TY TV TL TD
PTA +150M	+10F +15P 98%R 12/22
PTA -80NM	+02%F +04%P 73%US
PTA -.8PL	2.97SCS -2.6DPR 3.0%DCE
PTA +3.16T	+2.73UDC +1.50FLC 98%R 12/22
PTA -2FE	-2.7FI 4.7%SCE

<b>JO-COSTA MANHATTEN-RED 59472</b>	19K GTPI+2024G
840003130681684	100%RHA-NA
3-03 89	VEVEV
PTA +33NM	+21%F +08%P
PTA +1.49T	+1.07UDC -.26FLC 84%R 8/22
2-01 2	305 20590 4.5 933 3.4 703
	331 22530 4.5 1024 3.4 773
3-02 3	167 14140 4.1 577 3.3 466
4-04 2	135 13550 4.5 608 3.2 434

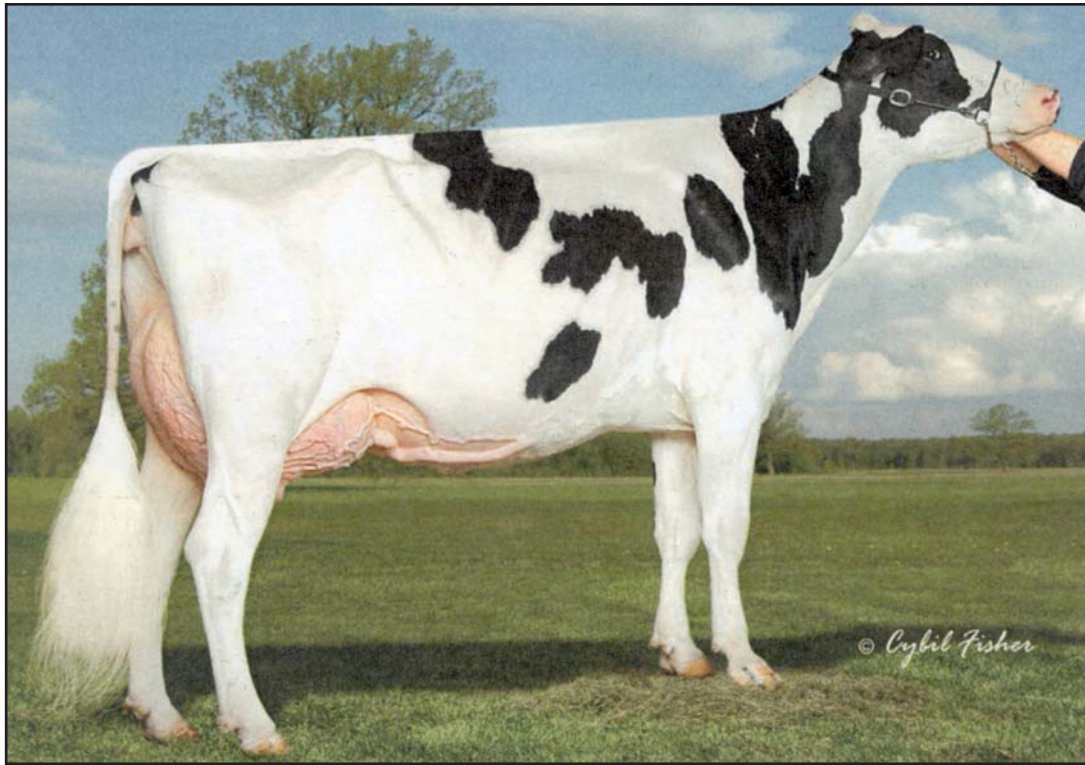
<b>BOSSIR SYMP ALACAZAM-RED</b>	A1/A2 BB 49K GTPI +2057G
72254590	100%RHA-NA TP TY TV TL TD
PTA -558M	+0F -5P 99%R 8/22
PTA +91NM	+08%F +04%P 58%US
PTA +1.8PL	2.90SCS -2DPR 2.4%DCE
PTA +1.37T	+1.05UDC +15FLC 95%R 8/22
PTA +4FE	-0.9FI 2.2%SCE

<b>DAR-LYNDA DESTRY 48193</b>	AA 9K GTPI +1770G
840003010398940	100%RHA-NA RC TL TD
3-06 85	VV+VV
2-03 2	305 21430 3.9 829 3.2 696
	306 21500 3.9 831 3.3 699
3-03 2	305 26660 3.7 982 3.0 800
	365 30460 3.7 1141 3.1 931

<i>3rd Dam</i>							
<b>DAR-LYNDA JASP MAI 36333-ET EX-91</b>							
EEEEV							
4-05 3	365	27030	3.8	1019	3.6	975	
<i>4th Dam</i>							
<b>MAPLELEY MORTY JENNA VG-85 VG-MS</b>							
3-06 3	252	20960	3.9	814	3.3	693	
<i>5th Dam</i>							
<b>MAPLELEY SPIRIT JENNIFER VG-88-CAN</b>							
3-07 2	307	17258	4.9	838	3.6	622	
<i>6th Dam</i>							
<b>CAMLERA JETHRO JANUARY EX-4E-CAN</b>							
8-01 2	365	19581	5.2	1021	3.6	697	
LIFE 7	LACS	129761	5.1	6605	3.7	4793	



# Spring Fashions Sale



**PETITCLERC GOLDCHIP SKYDOME-ET**  
Gd Dam of Lot 18

# 18

NDIRA, INC. FBO 9005532  
PO BOX 221753  
CARMEL, CA 93922  
(831) 626-0451

## CAL-DENIER-I DELTASKY 8946

840003245571668 99%RHA-I  
Born: 7/1/2022 PTPI+ 2246  
PTA +2.58T +1.98UDC +.90FLC 36%R 8/22

**FARNEAR DELTA-LAMBDA-ET** A1/A2 BB 75K GTPI +2818G  
840003125993715 100%RHA-NA TR TP TC TY  
PTA +1274M +47F +46P 99%R 8/22  
PTA +732NM -.01%F +.02%P 21%US  
PTA +5.5PL 2.76SCS -.5DPR 2.3%DCE  
PTA +2.89T +2.95UDC +.89FLC 99%R 8/22  
PTA +.165FE +.02FI 2.0%SCE

**CAL-DENIER-I DOOR SKYLA-ET** PTPI +1671  
840003145066408 99%RHA-I  
4-09 86 VEV+V  
2-04 365 16998 4.1 677  
3-07 304 25710 3.1 797  
FRESH IN JULY 126#  
305 ME 27590 3.1 856  
\*SKYLA HAS 2 EX FULL SISTERS

**VAL-BISSON DOORMAN-ET** AB 75K GTPI +2155G  
CAN 107281711 99%RHA-I TR TP TY TV TL  
CAN 5Y EX 90  
PTA -475M +13F +10P 99%R 8/22  
PTA -54NM +.11%F +.09%P 17%US  
PTA +.4PL 2.66SCS -.24DPR 2.6%DCE  
PTA +2.48T +1.61UDC +.71FLC 99%R 8/22

**PETITCLERC GOLDCHIP SKYDOME-ET** AA 12K GTPI +1470G  
CAN 107485150 100%RHA-NA TR TL TD  
4-00 92 EEVEE  
2-04 2 332 23490 3.5 813 3.1 717  
3-04 2 365 35490 3.4 1193 2.9 1044  
5-01 2 96 6210 3.8 236 2.4 152  
\*1ST MID-E FALL NAT JR 3Y COW 2015  
\*3RD MID-W SPR NAT JR 3Y COW 2015

3rd Dam  
**BLONDIN AFFIRMED SATINE** VG-89-4Y-CAN 3\*  
2-04 2 365 27824 3.6 996 3.2 899

4th Dam  
**BLONDIN LEDUC J SUPRA-ET** EX-90-CAN9\*  
2-02 2 356 27731 3.8 1056 3.3 910

5th Dam  
**BLONDIN JAMES SUPRA-ET** EX-90-CAN 9\*  
4-08 2 365 33691 4.8 1631 3.6 1206  
\*RES. ALL-CANADIAN 4 YEAR OLD 2004

6th Dam  
**BLONDIN SKYCHIEF SUPRA** EX-93-3E-CAN  
34\*  
9-04 2 365 42758 4.1 1733 3.1 1305  
LIFE 6LACT 263796 3.9 10207 3.4 8955  
\*CANADIAN COW OF THE YEAR 2009

7th Dam  
**BLONDIN STARBUCK SUPERLASS** VG-87-9Y-CAN 17\*  
11-9 2 365 36180 4.1 1479 3.1 1131  
LIFE 8LACT 250196 3.8 9486 3.2 7941

8th Dam  
**DIAMOND HILL WARDEN LASS** VG-87-9Y-CAN 17\*

9th Dam  
**DIAMOND HILL TEMPO MISTY** VG-85-3Y-CAN 2\*

10th Dam  
**DIAMOND HILL POPULAR B** VG-85-4Y-CAN

11th Dam  
**BROUGHT LEA POPULAR** EX-CAN 2\*



# Spring Fashions Sale



Frank Robinson

**R-JOHN DIAMONDBACK AMOUR-ET**  
Dam of Lot 19 Embryos

# 19

**5 NO 1 SEXED EMB. ALTITUDE**

LANCE ADAMS  
LATON, CA  
(559) 862-8842

<b>FARNEAR ALTITUDE-RED-ET</b>	P6 75K GTPI +2207G
840003128013348 99%RHA-I TC TY TV TL TD	
PTA +150M +10F +15P 98%R 12/22	
PTA -80NM +.02%F +.04%P 73%US	
PTA -.8PL 2.97SCS -2.6DPR 3.0%DCE	
PTA +3.16T +2.73UDC +1.50FLC 98%R 12/22	
PTA -2FE -2.7FI 4.7%SCE	
<b>R-JOHN DIAMONDBACK AMOUR-ET</b>	
144605374 VG-85	
1-11 305 19790 4.4 871 3.5 693	

<b>MR D APPLE DIAMONDBACK</b>	GTPI +1902
3013721049 EX-93	
PTA -412M -26F +0P +0PL	
PTA +3.09SCS -2.5DPR +2.7DCE	
PTAT +2.41UDC +1.84 99% 12/20	
<b>R-JOHN ATWOOD ASPIRE-ET</b>	
70785267 EX-93	
3-06 2 202 25940 3.5 919 3.5 903	
4-08 2 355 23040 4.2 970 3.5 803	

<i>3rd Dam</i>	<b>LA-FOSTER DUNDEE ADDIE-ET EX-91</b>
2-04 2 365 30920 5.2 1613 2.9 895	
4-03 2 305 27270 3.7 1000 3.0 825	
1ST 4 YR RES SIR RES GRAND WESTER SPR NAT'L	
JR SHOW 2011	
<i>4th Dam</i>	<b>DOUGAL LEA PATIENCE AMOUR EX-93 3E</b>
2-04 2 365 31680 4.8 1550 2.8 893	
<i>5th Dam</i>	<b>DOUGAL LEAH KAY PATIENCE VG-88 2*</b>
8-11 2 365 26488 4.4 1153 3.2 847	
<i>6th Dam</i>	<b>DOUGAL LEA DIXIE KAY-TW EX-90 EX-MS</b>
8-02 2 365 20140 3.9 788 3.8 757	
<i>7th Dam</i>	<b>DOUGAL LEA ASHLEY EMPRSS VG-88-CAN</b>
4-06 2 330 17017 3.8 650 3.1 529	
<i>8th Dam</i>	<b>DOUGAL LEA CHAR ASHLEY VG-85 1*</b>
6-08 2 365 17180 4.0 690 3.2 551	
<i>9th Dam</i>	<b>DOUGAL MIDNIGHT CHARLOTTE VG-87 EX-MS</b>
5-05 2 365 20262 3.5 712	
<i>10th Dam</i>	<b>DOUGAL LEA MIDNIGHT ROYAL</b>



# Spring Fashions Sale



**LUCK-E AWESOM AYTHYA**  
Dam of Lot 40

# 20

GARY W, LAURYN K  
& KINLEY M YOUNG  
267 HIGHWAY 603  
CHEHALIS, WA 98532  
(360) 740-5994

## CLAQUATO ADDISON ABSENTE-ET APPLIED

840003251670561

Born: 9/11/2022

**FARNEAR ARIA ADDISON**  
12/2022 CDCB SUMMARY MACE  
NM\$ -294  
MILK -571 98%R CHEESE MERIT \$ -286  
FAT -13 +0.03% FM\$ -292 GM\$ -360  
PROTEIN -21 -0.01% GESTATION LEN. +3 MSP +101  
TPI +1919

**LUCK-E AWESOME AYTHYA-ET** AA 12K GTPI +1782G  
73278410 100%RHA-NA RC  
PTA +1.64T +.95UDC +.80FLC 85%R 12/22  
\*2ND WA FUTURITY 2017  
\*2ND 150,000 COW EAST FALL NAT 2017  
\*NOM JR ALL AMERICAN AGED COW 2016

**LUCK-E AWESOME-RED** AE 75K GTPI +1449G  
72186769 100%RHA-NA CV TC TY TL TD  
PTA -1694M -55F -52P 99%R 12/22  
PTA -699NM +.04%F +.00%P 57%US  
PTA -.7PL 3.16SCS -2.3DPR 3.8%DCE  
PTA +2.01T +2.81UDC +.72FLC 99%R 12/22  
PTA -212FE -3.3FI 3.7%SCE

**LUCK-E GOLDWYN AALIYAH-ET** AA 19K GTPI +1879G  
64845000 100%RHA-NA TR TC TL TD  
10-01 94 EEEEE 3E  
2-07 2 365 28030 4.6 1294 3.4 959  
4-03 2 360 33440 3.9 1315 3.4 1129  
5-05 2 305 35590 4.7 1659 3.2 1129  
6-10 2 340 34520 3.9 1348 2.9 1001  
8-00 2 305 29030 4.4 1275 2.9 855  
9-07 2 301 29190 3.9 1130 3.0 867  
LIFE 2554 228890 4.3 9836 3.2 7308  
\*2ND E FALL NATL 150,000 POUND COW 2017  
\*4TH E FALL NATL 6Y+ COW 2016

3rd Dam  
**LUCK-E OUTSIDE ANXIOUS** EX-94 EEEEE 3E  
7-08 2 365 36660 4.8 1746 3.3 1211  
LIFE 2505 202480 4.5 9061 3.3 6612

4th Dam  
**LUCK-E BLACKICE ARTIC** EX-90

5th Dam  
**LUCK-E CHARLES ANGEL-ET** EX-93

6th Dam  
**HART-LYN STARBUCK ASHLEY** EX-94

7th Dam  
**KACHINA VALLIANT ACT** VG-86

8th Dam  
**DODEB MATT ACTRESS** EX-93

9th Dam  
**LAMKINLAND B MATT ACTRESS** VG-85



# Spring Fashions Sale



**BUTLERVIEW DOOR CAMILLA-ET**  
*Gr Dam of Lot 21*

# 21

## SELLING APP

Born: 6/1/2022

**CRANEHILL GENETICS**  
C/O RYAN MATHERON  
21859 CRANE AVE  
HILMAR, CA 95324  
(209) 652-3511

### PEAK HAXL-ET TC TP TR

NM\$ +371  
MILK +1326 81%R CHEESE MERIT \$ +374  
FAT +37 -0.05% FMS +349 GM\$ +277  
PROTEIN +44 +0.01% GESTATION LEN. +0 MSP  
CFP +81  
TPI +2635

### CAMILLAS LIL CLONE-ET A1/A2 BB 19K GTPI +2368G

840003150492687 99%RHA-I TR TC TL TD  
3-09 90 VEEVE  
PTA +2.72T +1.69UDC +1.48FLC 81%R 12/22  
2-06 283 22150 3.8 839 3.3 732

### WOODCREST KING DOC A1/A2 BB 75K GTPI +2794G

840003132417775 99%RHA-I TR TP TC TY TV TL TD  
3-04 90 EEEVE  
PTA +1581M +67F +53P 99%R 12/22  
PTA +631NM +0.02%F +0.01%P 40%US  
PTA +3.9PL 3.11SCS -1.4DPR 2.4%DCE  
PTA +3.19T +2.15UDC +1.95FLC 99%R 12/22  
PTA +175FE -1.1FI 2.7%SCE

### BUTLERVIEW DOOR CAMILLA-ET 49K GTPI +2079G

840003013177323 99%RHA-I  
3-08 92 EEEEE  
PTA +2.79T +2.00UDC +1.74FLC 87%R 12/22  
2-04 3 365 25370 3.6 920 3.2 817  
3-04 2 305 35950 3.7 1324 3.1 1129  
\*5TH INTERNATIONAL WNTR HFR CALF 2014  
\*1ST WEST SPRG NATL SR Y2, INT & R GR CH 2016  
\*1ST WEST SPRG WNTR YR HFR & JR CH 2015  
\*1ST MID-E FALL NAT SR 3Y COW 2017

3rd Dam

### SILVERMAPLE DAMION CAMOMILE EX-95

EEEE

3-03	2	365	32268	4.1	1327	3.4	1098
LIFE		1536	130677	4.2	5506	3.3	4309



# Spring Fashions Sale



**GEN-ACE MOGUL RHYLEA 7520-ET**  
*Gd Dam of Lot 22*

# 22

**SELLING APPLIED ET 54**  
Born: 6/24/2022

ANTONIO M. & MARY Y. CABRAL  
13390 MCFARLAND ST  
GALT, CA 95632  
(209) 614-5094

551H4184 DORAL

**GEN-ACE BAYONT RYLEA9628-ET** AA 12K GTPI +2351G  
840003133276738 100%RHA-NA TR TL TD  
6-02 88 VVVEV  
PTA +616M +46F +23P 84%R 8/22  
PTA +1.49T +1.44UDC +.72FLC 83%R 8/22  
2-00 3 289 23400 3.7 876 2.9 676  
3-00 3 323 31040 3.6 1110 3.0 942  
4-01 2 264 27590 4.0 1103 3.0 841  
5-00 3 365 38280 3.8 1471 3.3 1280  
LIFE 1348 126680 3.8 4855 3.2 4002

**PLAIN-KNOLL DONA BAYONET-ET A2/A2 AB 49K GTPI 2372G+**  
72190767 100%RHA-NA TR TP TC TY TV TL TD  
4-03 88 EVVV  
PTA +1117M +33F +36P 99%R 8/22  
PTA +365NM -.03%F +.00%P 65%US  
PTA +2.7PL 3.12SCS -.2DPR 3.1%DCE  
PTA +1.29T +.93UDC +.09FLC 99%R 8/22  
PTA +108FE -.01FI 2.5%SCE

**GEN-ACE MOGUL RHYLEA7520-ET** 9K GTPI +2339G  
72134342 100%RHA-NA  
5-01 90 EEVEV DOM  
1-10 3 365 26740 4.2 1119 3.1 819  
3-07 3 365 31760 4.2 1338 3.2 1021  
4-11 3 272 27530 4.0 1091 3.1 853

3rd Dam  
**EX-91**  
6-07 365 30850 4.1 1273 3.1 958  
4th through 9th Dams **EX**  
**FROM RAVEN FAMILY**



# Spring Fashions Sale



**PIERSTEIN GOLDWYN FRISOU**  
Gd Dam of Lot 23

# 23

NDRA, INC. FBO 9005532  
PO BOX 221753  
CARMEL, CA 93922  
(831) 626-0451

## CAL-DENIER-I CHIEF 8869

840003245571591 99%RHA-I  
Born: 3/30/2022 PTPI+ 1942  
PTA +2.11T +1.56UDC +.41FLC 45%R 8/22

**STANTONS CHIEF-ET** A2/A2 75K GTPI +2314G  
840003129015989 99%RHA-I TC TY TV TL TD  
PTA +714M +10F +21P 98%R 8/22  
PTA +32NM -.06%F +.00%P 3%US  
PTA +.6PL 2.73SCS -.1DPR 3.1%DCE  
PTA +2.17T +2.24UDC +.46FLC 97%R 8/22  
PTA -.9FE +.00FI 3.2%DCE

**WALNUTLAWN SOLOMON-ET** AA 49K GTPI +1919G  
CAN 11775998 99%RHA-I TR TP TY TV TL TD  
PTA -576M -.15F -.12P 99%R 8/22  
PTA -320NM +.03%F +.02%P 22%US  
PTA -1.8PL 2.89SCS -.1DPR 2.9%DCE  
PTA +2.61T +1.63UDC +.26FLC 99%R 8/22

**CAL-DENIER-I FRISO-75921-ET** AA 19K GTPI +1584G  
840003146410257 98%RHA-I TR TP TC TL TD  
3-05 88 EVVVV  
3-00 2 305 31680 3.3 1049 3.0 843  
365 36410 3.3 1209 3.0 1109

**PIERSTEIN GOLDWYN FRISOU** IMP GTPI +1415G  
CAN 104673332 96%RHA-NA  
6-11 94 EEEEE 2E  
2-01 2 291 20341 3.9 798 3.0 617  
3-02 2 365 35893 3.8 1371 3.1 1104  
4-07 2 305 34450 3.3 1136 2.7 926  
6-03 2 305 27010 4.7 1281 2.8 761  
LIFE 1567 144614 3.9 5674 2.9 4235

3rd Dam  
**DYKIE LHEROS FRITZ EX-90-2E-CAN**  
4-05 2 344 24746 3.4 853 3.1 766  
4th Dam  
**DYKIE BONANZA HOPPER**  
5th Dam  
**DYKIE STACEY VG-89-CAN**  
2-03 2 314 19905 4.4 875 3.1 611



# Spring Fashions Sale



*FROM THE SAME FAMILY  
as Lot 24*

# 24

**ELISE E REGUSCI**  
5425 STODDARD RD  
MODESTO, CA 95356  
(209) 604-2605

## **TOP-DIMARK WARRIOR LUNA-RED 130**

145458377 99%RHA-I

Born: 12/24/2021 PTPI+1683

PTA +2.44T +1.55UDC +1.55FLC 33%R 8/22

BD 12/21/2022 ROMPIN RED SEXED

<b>MR BLONDIN WARRIOR-RED-ET</b>	A1/A2	BE	75K	GTPI	+1867G		
840003139655530	99%RHA-I	TP	TC	TY	TV	TL	TD
PTA	-684M	-16F	-13P	97%R	8/22		
PTA	-428NM	+04%F	+03%P	90%US			
PTA	-2.1PL	2.94SCS	-2.5DPR	3.2%DCE			
PTA	+3.22T	+1.86UDC	+1.67FLC	95%R	8/22		
PTA	-99FE	-2.7FI	4.6%SCE				

**TOP-DIMARK JORDY LILY-RED** PTPI +1507  
144749432 100%RHA-I

<b>CYCLE MCGUCCI JORDY-RED</b>	75K	GTPI	+1693G				
840003131666411	99%RHA-I	CV	TC	TY	TL	TD	
6-09	87	+VVVV					
PTA	-1135M	-26F	-43P	99%R	8/22		
PTA	-547NM	+07%F	-03%P	49%US			
PTA	-2.5PL	2.95SCS	-2.8DPR	3.6%DCE			
PTA	+3.01T	+2.25UDC	+3.24FLC	99%R	8/22		

<b>LOOKOUT ELMBRIDGE LEVEL-RED-ET</b>	CTPI	+1409					
CAN 108250966	100%RHA-NA						
6-11	88	+EVVE					
2-01	2	238	1110	3.5	386	2.9	318
3-01	2	305	16720	3.0	506	2.7	456
4-04		305	18220	2.9	524	2.7	491
6-07		305	24570	2.9	703	2.7	658





# Spring Fashions Sale



*Sarah Darrow*

**OAKFIELD ARCHRIV LARSEN-ET**  
*Gr Dam of Lot 25*

# 25

**CHLOE & CHASE VANDER EYK**  
PO BOX 957  
TIPTON, CA 93272  
(559) 804-7500

## **EYKS CRUSHABULL LINDA 96**

840003206066917 99%RHA-I  
Born: 9/1/2022 PTPI+ 1972  
PTA +2.36T +1.97UDC +.90FLC 46%R 12/22

**OH-RIVER-SYC CRUSHABULL-ET** AB P6 40K GTPI +2189G  
840003135145001 99%RHA-I TR TP TC TY TV TL TD  
PTA +198M -19F +4P 98%R 12/22  
PTA -24NM -.09%F -.01%P 16%US  
PTA +.9PL 2.90SCS -1.0DPR 3.0%DCE  
PTA +3.51T +3.06UDC +1.53FLC 98%R 12/22  
PTA -20FE -.05FI 3.3%SCE

**EYKS KENOSHA LIBBY** A1/A2 AE 32K GTPI +1756G  
840003131151943 99%RHA-I TR TC TL TD  
4-04 87 VVVVV  
PTA +1.20T +.88UDC +.27FLC 84%R 12/22  
2-01 2 251 14310 3.8 550 3.1 443  
3-00 2 241 16760 4.0 665 3.2 537

**LARCREST KENOSHA 2515-ET** A1/A2 AA 75K GTPI +2106G  
74630765 99%RHA-I TR TP TC TY TV TL TD  
2-06 91 EEEEE  
PTA -408M -8F -3P 99%R 12/22  
PTA -134NM +.03%F +.04%P 70%US  
PTA -1.3PL 2.76SCS +.3DPR 3.8%DCE  
PTA +2.20T +1.90UDC +1.02FLC 98%R 12/22

**OAKFIELD ARCHRIV LARSEN-ET** CTPI +1625  
840003127422490 100%RHA-NA  
3-00 86 EV++V  
PTA +2.14T +1.38UDC +.58FLC 60%R 12/22  
2-09 2 305 22490 4.1 924 3.3 744  
365 26030 4.1 1078 3.3 870

**3rd Dam**  
**COWTOWN DURHAM LUELLE-ET EX-94**  
EEEEEE 2E  
6-07 3 365 34570 3.4 1182 3.2 1100  
LIFE 1572 119880 3.6 4320 3.3 3906

**4th Dam**  
**ELLEETA SKYBUCK LUCY EX-90 EEEV**  
6-11 2 365 30380 4.6 1397 3.1 940  
LIFE 1956 146090 4.8 7056 3.3 4753

\*ALL-AMERICAN 6Y+ COW 2007  
\*H.M. ALL-AMERICAN 5Y COW 2005  
\*1ST INTERNATIONAL 6Y+, SR & GR CH 2007  
\*1ST NORTH-E FALL NATL 125,000 LB COW 2010  
\*3RD NORTH-E FALL NATL YR 3Y COW 2003



# Spring Fashions Sale



**BUDJON JK ABSOLUT ELOISE-ET**  
Dam of Lot 26

# 26

**CAL DENIER HOLSETINS**  
10715 ARNO RD  
GALT, CA 95632  
(209) 745-4982

## CAL-DENIER USTP ELI 8904-ET

840003245571626 99%RHA-I RC  
Born: 6/1/2022 PTPI+ 1876  
PTA +2.29T +2.07UDC +1.46FLC 46%R 8/22

**RIVERDOWN UNSTOPABULL-RED** A1/A1 75K GTPI +1994G  
CAN 11801450 99%RHA-I TY TV TL  
PTA -379M -24F -25P 98%R 8/22  
PTA -220NM -.03%F -.05%P 49%US  
PTA +1.3PL 2.94SCS +.9DPR 2.7%DCE  
PTA +2.30T +2.37UDC +1.65FLC 98%R 8/22  
PTA -110FE +0.6FI 3.5%SCE

**BUDJON-JK ABSOLUT ELOISE-ET** AB 19K GTPI +1769G  
840003013177388 100%RHA-NA RC TC TL TD  
6-06 93 EEEEE 2E  
PTA +2.28T +1.77UDC +1.27FLC 84%R 8/22  
2-03 2 277 15660 4.3 668 3.6 562  
3-04 2 365 29760 4.3 1287 3.6 1078  
4-06 2 365 31400 4.4 1386 3.6 1133  
5-11 2 365 25920 4.6 1205 3.7 947  
LIFE 1466 106100 4.5 4727 3.7 3875

**APPLES ABSOLUTE-RED-ET** 50K GTPI +1533G  
139358472 100%RHA-NA CV TC TY TL TD  
5-08 94 EEVE  
PTA -1969M -13F -24P 99%R 8/22  
PTA -662NM +.24%F +.14%P 51%US  
PTA -5.3PL 3.52SCS -5.0DPR 5.1%DCE  
PTA +2.25T +2.46UDC +1.64FLC 99%R 8/22

**ROLLING-SPRING G ESCENCE-ET** 50K GTPI +1801G  
62660946 100%RHA-NA  
6-05 95 EEEEE 2E  
PTA +1.98T +.52UDC +1.28FLC 94%R 8/22  
2-07 2 365 36230 3.9 1413 3.2 1160  
4-03 2 365 38160 4.1 1547 3.1 1177  
5-06 2 365 40500 4.1 1646 3.0 1231  
LIFE 1565 148800 4.2 6285 3.3 4950  
\*4TH INTERNATIONAL 4Y COW 2010  
\*1ST MID-W SPR NAT 47, SR & GR CH 2010

**3rd Dam**  
**BUDJON-JK DUR ESQUISITE-ET** EX-92 GMD  
DOM  
3-07 2 365 40300 3.9 1555 3.2 1275

**4th Dam**  
**BUDJON-JK ENCORE ELECTRA-ET** 2E-95  
GMD DOM  
6-04 2 365 46830 4.0 1866 3.0 1382

**5th Dam**  
**KRULL BROKER ELEGANCE** EX-96 3E GMD  
DOM  
5-07 2 365 40950 3.7 1522 3.3 1350  
LIFE 2356 183710 3.7 6878 3.4 6267

**6th Dam**  
**KRULL STARBUCK EXCELLENCY** EX-90  
GMD DOM

**7th Dam**  
**KRULL TT EXCELLENCY** EX-90 EX-MS DOM

**8th Dam**  
**KRULL BOOT MARK EXCELLENCY** EX-92  
2E GMD

**9th Dam**  
**KRULL KINGSTEAD EXCELLENCY** EX-92 4E  
GMD



# Spring Fashions Sale



**SILVERMAPLE DAMION CAMOMILE**  
3rd Dam of Lot 27

# 27

## SELLING APP

Born: 6/1/2022

**CRANEHILL GENETICS**  
C/O RYAN MATHERON  
21859 CRANE AVE  
HILMAR, CA 95324  
(209) 652-3511

### PEAK HAXL-ET TC TP TR

NM\$ +371  
MILK +1326 81%R CHEESE MERIT \$ +374  
FAT +37 -0.05% FM\$ +349 GM\$ +277  
PROTEIN +44 +0.01% GESTATION LEN. +0 MSP  
CFP +81  
TPI +2635

### CAMILLAS LIL CLONE-ET A1/A2 BB 19K GTPI +2368G

840003150492687 99%RHA-I TR TC TL TD  
3-09 90 VEEVE  
PTA +2.72T +1.69UDC +1.48FLC 81%R 12/22  
2-06 283 22150 3.8 839 3.3 732

### WOODCREST KING DOC A1/A2 BB 75K GTPI +2794G

840003132417775 99%RHA-I TR TP TC TY TV TL TD  
3-04 90 EEVE  
PTA +1581M +67F +53P 99%R 12/22  
PTA +631NM +.02%F +.01%P 40%US  
PTA +3.9PL 3.11SCS -1.4DPR 2.4%DCE  
PTA +3.19T +2.15UDC +1.95FLC 99%R 12/22  
PTA +175FE -1.1FI 2.7%SCE

### BUTLERVIEW DOOR CAMILLA-ET 49K GTPI +2079G

840003013177323 99%RHA-I  
3-08 92 EEEEE  
PTA +2.79T +2.00UDC +1.74FLC 87%R 12/22  
2-04 3 365 25370 3.6 920 3.2 817  
3-04 2 305 35950 3.7 1324 3.1 1129  
\*5TH INTERNATIONAL WNTR HFR CALF 2014  
\*1ST WEST SPRG NATL SR Y2, INT & R GR CH 2016  
\*1ST WEST SPRG WNTR YR HFR & JR CH 2015  
\*1ST MID-E FALL NAT SR 3Y COW 2017

3rd Dam

### SILVERMAPLE DAMION CAMOMILE EX-95

EEEEEE  
3-03 2 365 32268 4.1 1327 3.4 1098  
LIFE 1536 130677 4.2 5506 3.3 4309



# Spring Fashions Sale



**PORPO GOLDWYN BARBY-ET**  
Dam of Lot 28

# 28

NDRA, INC. FBO 9005532  
PO BOX 221753  
CARMEL, CA 93922  
(831) 626-0451

## CAL-DENIER-I SDEKCK 8872-ET

840003245571594 99%RHA-I TR TP TC TL TD  
Born: 4/1/2022 A2/A2 AA 32K GTPI+1780G  
PTA +2.22T +1.37UDC +.98FLC 80%R 8/22

**WALNUTLAWN SIDEKICK** 75K GTPI +2180G  
CAN 12508113 99%RHA-I TR TY TV TL TD  
PTA -1121M +9F -10P 98%R 8/22  
PTA -55NM +.19%F +.09%P 8%US  
PTA -.2PL 2.77DCD -.1DPR 2.1%DCE  
PTA +2.88T +2.42UDC +.64FLC 97%R 8/22  
PTA -32FE -.02FI 2.0%SCE

**PORPO GOLDWYN BARBY-ET** AA 9K GTPI +1575G  
CAN 106016750 100%RHA-NA TL TD  
5-07 94 EEEEE  
PTA -1362M -52F -40P 86%R 8/22  
PTA -381NM +.00%F +.01%P  
PTA +.57T +.17UDC +.95FLC 83%R 8/22  
PTA -125FE -.01FI 3.1%SCE  
2-04 2 365 25804 4.2 1084 3.3 839  
3-08 2 365 33480 3.8 1264 3.4 1137  
5-00 2 365 35200 3.8 1349 3.1 1094  
6-05 2 320 27660 3.5 979 3.2 894  
7-05 2 365 36030 3.7 1339 3.2 1144  
LIFE 2027 174994 3.8 6626 3.3 5706

**BRAEDALE GOLDWYN** 50K GTPI +1873G  
CAN 10705608 100%RHA-NA CD TY TV TL  
CAN 8Y GP 84  
PTA -694M +6F -11P 99%R 8/22  
PTA -130NM +.08%F +.04%P 10%US  
PTA -1.4PL 2.82SCS -1.2DPR 2.5%DCE  
PTA +1.06T +.62UDC +.79FLC 99%R 8/22

**ROSIIERS BARKA TRIUMPHANT-ET** PTPI +1244M  
CAN 101324221 100%RHA-NA  
CAN EX 90  
2-05 2 365 27359 4.0 1104 3.0 825  
4-06 2 365 35211 3.8 1355 3.0 1059

*3rd Dam*  
**ROSIIERS BURDY VISION** VG-87 3Y-CAN 9\*  
6-07 2 365 26718 4.9 1310 3.4 910  
LIFE 6 LACT 141145 4.9 6938 3.4 4846

*4th Dam*  
**ROSIIERS BRANDA PRELUDE** VG-88-5Y-  
CAN 2\*  
10-1 2 365 24980 4.5 1133 3.3 825  
LIFE 8 LACT 174997 4.2 7399 3.3 5722

*5th Dam*  
**ROSIIERS BERNET PERSISTENT** EX-4E-CAN  
12\*  
7-08 2 305 26468 3.3 886 3.3 871  
LIFE 9 LACT 220367 3.4 7458 3.3 6239  
\*3RD MATURE COW DRUMMOND SHOW 1988



# Spring Fashions Sale



# 29

**CHLOE & CHASE VANDER EYK**  
PO BOX 957  
TIPTON, CA 93272  
(559) 804-7500

## EYKS DEVOUR HANNAH 90

840003206066911 99%RHA-I RC TC TL TD  
Born: 6/3/2022 A1/A1 AE 32K GTPI+ 2053G  
PTA +1035 -3F +13P 81%R 12/22  
PTA +1.40T +1.45UDC +.30FLC 80%R 12/22



**GEN-ACE JEDI HOLLY 1750**  
Gr Dam of Lot 29

**MR DANIELLE DEVOUR-ET** A1/A1 AE 75K GTPI +2119G  
72713024 99%RHA-I RC TP TY TV TL TD  
PTA +423M +4F +3P 98% 12/22  
PTA -22NM -.04%F -.04%P 23%US  
PTA +.2PL 3.08SCS -2.5DPR 2.8%DCE  
PTA +2.59T +3.22UDC +.85FLC 97%R 12/22  
PTA +7FE -2.7FI 3.4%SCE

**SIEMERS APPLES ARMY-ET** A1/A1 75K GTPI +1927G  
840003134506807 99%RHA-I RC TC TY TV TL TD  
PTA -149M -13F -12P 96%R 12/22  
PTA -234NM -.03%F -.03%P 7%US  
PTA -.7PL 3.08SCS -1.2DPR 2.9%DCE  
PTA +1.68T +1.88UDC +1.25FLC 94%R 12/22

**GEN-ACE JEDI HOLLY 1750** CTPI +1983  
840003145475465 99%RHA-I  
4-06 90 EEVVE  
PTA +777M -28F +20P 50%R 12/22  
1-09 2 275 17350 2.9 498 3.3 566  
2-09 2 295 24090 3.3 799 3.1 754  
3-11 2 244 18180 4.2 763 3.3 600

**EYKS ARMY HAILEIGH** BE 36K GTPI +1835G  
840003206066881 99%RHA-I RC TP TC TL TD  
2-03 85 V+VV+  
PTA +223M -35F -5P 53%R 12/22  
PTA +1.01T +1.03UDC +.45FLC 83%R 12/22  
1-10 192 10730 3.3 346 3.2 330 INC  
305 ME 23730

# 30

**RAGUSCI FARM**  
MODESTO, CA

## TOP-DIMARK MOOVIN DELTA-RED 150

145367196 99%RHA-I  
Born: 6/5/2021 PTPI+ 1934  
PTA +2.09T +1.56UDC +1.47FLC 35%R 12/21  
BD

**LINDENRIGHT MOOVIN-ET** P5 75K GTPI +2095G  
CAN 12873743 99%RHA-I RC TC TY TV TL TD  
PTA -306M -5F -4P 83%R 12/21  
PTA -236NM +.02%F +.02%P 100%US  
PTA -.6PL 2.99SCS -2.7DPR 3.0%DCE  
PTA +3.65T +3.01UDC +2.31FLC 81%R 12/21  
PTA -66FE -3.0FI 4.6%SCE

**MR ANSLY ADDICTION-P-RED-ET** 50K GTPI +2016G  
72128091 100%RHA-NA PC CD TY TV TL  
2-06 90 VEVE  
PTA -1859M -10F -18P 99%R 12/21  
PTA +33NM +.23%F +.15%P 45%US  
PTA +2.7PL 2.63SCS +1.7DPR 2.8%DCE  
PTA +.70T +1.11UDC -.20FLC 98%R 12/21

**TOP-DIMARK ADDICT DIVA-RED** CTPI +1777  
143672621 100%RHA-NA PO TL TD  
4-07 85 VVP+V

**TOP-DI-MARK S DOLL-RED-ET** CTPI +1689  
142789153 100%RHA-NA PO  
5-00 87 VEFEV  
2-01 2 224 12310 3.6 438 3.4 413  
3-02 2 226 12910 3.3 425 3.9 377  
4-05 305 23190 3.2 747 3.2 745  
5-11 305 29470 3.4 1010 3.3 975  
7-05 305 30780 3.2 994 3.2 995  
LIFE 1562 121800 3.4 4138 3.3 4003



# Spring Fashions Sale



**RUANN DOORMAN JEAN 55162-ET**  
Full Sister to Gr Dam of Lot 30

# 31

**CURTIS RYAN VANDEN BERGE**  
11701 OLD RIVER RD  
BAKERSFIELD, CA 93311  
(661) 340-6448

## VANDEN-BERGE JEAN 10096

840003252309052 99%RHA-I  
Born: 6/1/2022 P9 55K GTPI+ 2703G  
PTA +1367M +67F +52P 79%R 12/22  
PTA +556NM+.05%F +.03%P  
PTA +2.3PL 2.95SCS -2.0DPR 2.6%DCE  
PTA +2.65T +1.56UDC +1.31FLC 78%R 12/22

**S-S-I EISAKU PAYLOAD-ET** A1/A2 BE P9 75K GTPI +2931G  
840003211394853 99%RHA-I TR TP TC TY TV TL TD  
PTA +2002M +87F +72P 82%R 12/22  
PTA +952NM +.03%F +.03%P 100%US  
PTA +4.4PL 3.01SCS -1.1DPR 1.9%DCE  
PTA +1.59T +1.08UDC +1.16FLC 81%R 12/22  
PTA +272FE -0.6FI 2.3%SCE

**RUANN DOC JEAN-92817-ET** AB P8 19K GTPI +2391G  
840003204211973 99%RHA-I TR TC TL TD  
2-11 85 EEV++  
PTA +1048M +43F +40P 83%R 12/22  
PTA +189NM +.01%F +.03%P  
PTA +3.03T +1.13UDC +.93FLC 83%R 12/22  
2-01 3 290 233390 4.1 965 3.2 750

**WOODCREST KING DOC** A1/A2 BB 75K GTPI +2794G  
840003132417775 99%RHA-I TR TP TC TY TV TL TD  
3-04 90 EEVE  
PTA +1581M +67F +53P 99%R 12/22  
PTA +631NM +.02%F +.01%P 40%US  
PTA +3.9PL +2.15UDC +1.95FLC 99%R 12/22

**RUANN DOORMAN JEAN-54712-ET** AA 12K GTPI +1968G  
840003130274091 99%RHA-I TP  
4-02 92 EEVEE  
PTA +409M -1F +19P 85%R 12/22  
PTA +2.57T +.79UDC +.35FLC 84%R 12/22  
2-02 2 365 36290 3.6 1289 3.1 1136  
3-04 3 328 34520 3.6 1234 3.3 1127

3rd through 9th Dams

**RUANN JORDAN JEAN-30162** EX-94 2E  
EEEE \*TL \*TD  
3-00 3 365 39600 3.6 1411 3.1 1223  
LIFE 1633 153620 3.6 5534 3.1 4717

**RUANN DURHAM JEAN 10121-ET** VG-88  
3-08 3 289 25100 4.1 1020 3.0 757

**RUANN EL TORO JILL-22697-ET** VG-88  
3-07 3 365 28130 4.5 1273 3.3 942

**NUNESDALE-M VALIANT JEAN-ET** EX-90  
EX-MS  
3-07 3 338 24980 4.1 1027  
\*ALL-CALIFORNIA DRY 3 YEAR OLD 1985

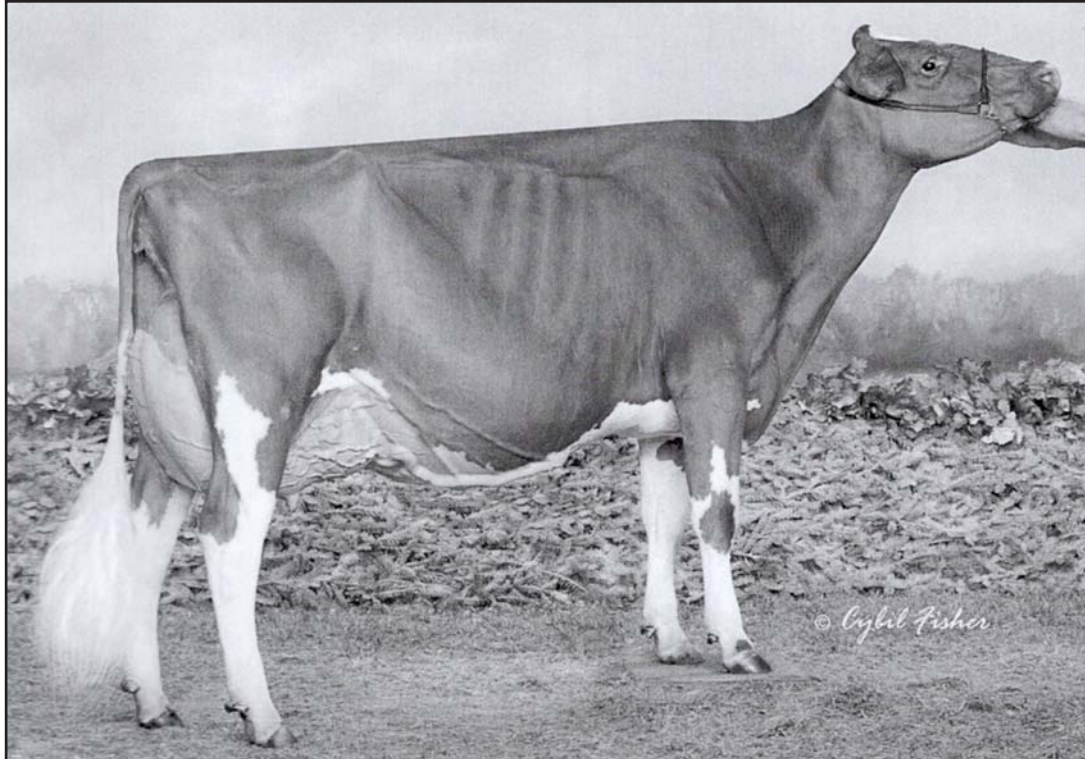
**NUNESDALE ELEVATION JENNY-TW** 2E-90  
GMD  
7-03 2 365 23910 4.2 1000  
LIFE 1809 104300 4.1 4258  
\*HM ALL-AMERICAN PRODUCE OF DAM 1984

**NUNESDALE ORIGINAL JEANNIE** EX-95 4E  
10-2 2 365 23980 4.2 1081  
\*HM ALL-AMERICAN AGED COW 1974  
\*HM ALL-AMERICAN 4 YEAR OLD 1972  
\*HM ALL-AMERICAN 3 YEAR OLD 1971

**NUNESDALE NOBLE JEAN** VG-87  
7-08 2 365 15900 4.3 679



# Spring Fashions Sale



**MEADOW GREEN ABSO FANNY-RED-ET**  
*Gd Dam of Lot 32*

# 32

**CHRISTIAN CUNNINGHAM**  
4338 LICHAU RD  
PENNGROVE, CA 94951  
(707) 974-8700

## **R-JOHN ALT FANNY-RED 1506**

840003234748849 99%RHA-I  
Born: 9/2/2020 PTPI+ 1972  
PTA +2.92T +2.46UDC +1.68FLC 37%R 12/22  
FRESH

**FARNEAR ALTITUDE-RED-ET** P6 75K GTPI +2207G  
840003128013348 99%RHA-I TC TY TV TL TD  
PTA +150M +10F +15P 98%R 12/22  
PTA -80NM +.02%F +.04%P 73%US  
PTA -.8PL 2.97SCS -2.6DPR 3.0%DCE  
PTA +3.16T +2.73UDC +1.50FLC 98%R 12/22  
PTA -2FE -2.7FI 4.7%SCE

**MS FANNYS FLAUNT IT-RED-ET** CTPI +1733  
840003136496609 99%RHA-I  
3-00 91 VEEEE  
PTA +2.68T +2.18UDC +1.86FLC 51%R 12/22  
2-10 3 305 23530 4.2 996 3.3 783

**DYMENTHOLM MR APP AVALANCHE-TW49K** GTPI +1960G  
CAN 11957107 99%RHA-I RC CV TY TL TD  
PTA -260M -7F -8P 99%R 12/22  
PTA -350NM +.01%F +.00%P 49%US  
PTA -2.1PL 2.94SCS -3.4DPR 3.1%DCE  
PTA +3.72T +2.74UDC +2.07FLC 99%R 12/22

**MEADOW GREEN ABSO FANNY-RED-ETIMP** GTPI +1521G  
CAN 10987488 100%RHA-NA TV  
11-08 96 EEEEE 3E  
2-03 2 306 17442 3.9 681 3.4 599  
3-03 2 365 24380 4.9 1183 3.4 840  
4-05 2 343 25660 4.7 1201 3.5 894  
5-05 2 333 27640 4.7 1296 3.6 1001  
6-05 2 305 28760 4.6 1328 3.6 1040

*3rd Dam*  
**MEADOW GREEN REDMAN FANCY-RED**  
EX-90-5E-CAN 2\*  
5-07 2 365 30974 4.8 1499 3.5 1078  
LIFE 7LACS 185147 4.1 7524 3.4 6290

*4th Dam*  
**DOUBLEAGLE MILES FAIRY-ET** VG-85-CAN  
2\*  
6-03 2 344 28851 4.0 1150 3.3 947  
LIFE 6LACS 155466 4.4 6878 3.3 5108

*5th Dam*  
**DOUBLEAGLE ROOSTER FAIRY**  
VG-85-CAN 1\*  
3-06 2 305 24782 3.7 928 3.0 743

*6th Dam*  
**DOUBLEAGLE CAVE FAIRY-RED** VG-86-CAN  
6-01 2 339 21107 4.6 961 3.5 765



# JERSEY



**DOUBLE G SHOWDOWN NALA**  
Dam of Lot 33



**DOUBLE G COLTON NATALIA**  
Gd Dam of Lot 33

## 33

**GABBIE GREGORIO**  
10950 E JAHANT RD  
ACAMPO, CA 95220

### **DOUBLE G OLIVER NICOLETTE-P**

JE840003247449461  
Born: 9/3/2021 Eartag: 120

BD 12/20/2022 TO APPLEJACK 11J968

#### **DUTCH HOLLOW OLIVER-P**

067184544  
CDCB GPTA S 12/1/22 12063DAUS 1532HRDS 10%RIP  
99%R 307M 0.01% 17F 20%ILE  
99%R -0.04% 2P 111CM\$ 115NM\$ 149FM\$ 43GM\$  
0.9PL 0.3LIV -2.2DPR -2.5CCR -1.5HCR 3.02SCS  
AJCA 12/1/22 4870DAUS  
GPTAT 99%R 1.3 GJUI 11.0 GJPI 99%R 11

#### **DOUBLE G SHOWDOWN NALA**

173848636  
2-06 88%

#### **RIVER VALLEY SPICE SHOWDOWN**

JE840003012423904  
CDCB GPTA S 12/1/22 627DAUS 290HRDS 5%RIP  
98%R -952M 0.14% -18F 4%ILES  
98%R 0.11% -12P -239CM\$ -244NM\$ -315FM\$ -222GM\$  
-2.1PL 0.5LIV 0.1DPR -0.5CCR 0.6HCR 3.20SCS  
0.0MFV 0.0DAB 0.4KET -0.2MAS 0.7MET 0.1RPL 0.46HTI  
AJCA 12/2/22  
GPTAT 97%R 0.1 GJUI -3.0 GJPI 95%R -49

#### **DOUBLE G COLTON NATALIA**

173209701  
4-07 90%

3rd Dam  
**FAMILY HILL TEQUILA NIGHT EX-93**  
4th Dam  
**FAMILY HILL MINISTER NERA EX-95**





# Spring Fashions Sale



**PAPPYS GOAL BANDIT**  
*Gd Dam of Lot 34*

# 34

**AIROSA JOEY & MELVOLD KEN**  
PO BOX 1087  
TIPTON, CA 93272

**JX AIR-OSA TI 31863 {3}**

JE840003233592971

Born: 12/1/2021 Eartag: 31863

**JX FARIA BROTHERS TI {2}**

JE840003124526322  
CDCB GPTA S 12/1/22 6890DAUS 116HRDS 10%RIP  
99%R 1300M -0.30% -4F 60%ILE  
99%R -0.08% 29P 282CM\$ 291NM\$ 342FM\$ 325GM\$  
2.9PL -3.0LIV 2.1DPR 2.8CCR 3.9HCR 3.15SCS  
0.1MFV 0.0DAB -0.2KET -1.2MAS -1.9MET -1.4RPL -2.87HTI  
AJCA 12/1/22 1073DAUS  
GPTAT 99%R 2.7 GJUI 25.4 GJPI 99%R 81M

**PAPPYS COLTON BELLE-ET**

JE840003139659150  
1-11 305 3 15740 4.1 640 3.2 505 78DCR 1720C  
4-02 292 3 21850 3.8 833 3.3 720 84DCR 2328C  
305 2X ME AVG 2L 17999M 720F 600P 1981C  
4-07 87%

**CHILLI ACTION COLTON-ET**

066738335  
CDCB GPTA S 12/1/22 5335DAUS 1356HRDS 12%RIP  
99%R -1795M 0.32% -25F 4%ILE  
99%R 0.12% -43P -274CM\$ -274NM\$ -316FM\$ 268CM\$  
-0.4PL 0.5LIV 0.1DPR 0.1CCR 0.3HCR 3.27SCS  
0.1MFV 0.1DAB -0.1KET 0.2MAS 0.6MET 0.2RPL 2.0HTI  
AJCA 12/1/22 3057DAUS  
GPTAT 99%R 1.7 GJUI 16.3 GJPI 99%R -64

**PAPPYS GOAL BANDIT**

063355909  
3-04 305 2 24390 4.7 1148 3.4 826 89DCR 2853C  
4-10 305 2 29620 4.9 1448 3.2 961 98DCR 3318C  
6-05 305 2 24310 5.0 1206 3.4 833 98DCR 2878C  
8-02 305 2 26980 4.5 1220 3.3 888 102DCR 3066C  
305 2S ME AVG 5L 25537M 872P 3011C  
8-10 95%

3rd Dam  
**EX-95**  
8-04 305 27700 5.5 1535 3.4 946  
4th Dam  
**EX-90**



# Spring Fashions Sale



**WEDGWOOD CONTROL BAMBI-ET**  
Dam of Lot 35

# 35

**HENRY P. VAN EXEL**  
2002 N THORNTON RD  
LODI, CA 95242  
(209) 334-3292

## EXELS BOOM BLYTHE 27899

99%RHA-I

Born: 9/28/2022 PTPI+ 2176

PTA +650M -1F +22P 34%R 12/22

PTA +2.92T +1.83UDC +1.60FLC 32%R 12/22

### REGANCREST BOOM

AB P8 GTPI +2392G

99%RHA-I  
PTA +872M +24F +31P 82%R 12/22  
PTA +120NM -0.03%F +.01%P 100%US  
PTA +.1PL 3.14SCS -1.5DPR 2.5%DCE  
PTA +3.57T +2.31UDC +1.66FLC 81%R 12/22  
PTA +55FE -1.2FI 2.7%SCE

### JK EDER-I CONTROL-ET

AB 50K GTPI +1979G

11278908C 100%RHA-NA  
CAN 05Y VG 88  
PTA +247M -24F +15P 97%R 12/22  
PTA -95NM -.12%F +.03%P 2%US  
PTA +.3PL 2.79SCS -2.3DPR 2.8%DCE  
PTA +1.24T +.52UDC +.27FLC 97%R 12/22

### WEDGWOOD CONTROL BAMBI-ET

CTPI +1965

12782017C 100%RHA-NA  
4-05 91 VEEEEE  
PTA +427M -25F +13P 54%R 12/22  
PTA +2.26T +1.34UDC +1.54FLC 48%R 12/22  
3-00 3 304 34650 3.5 1203 3.2 1103  
4-00 3 334 40040 3.3 1338 3.0 1210

### BUTE-BUTLER GOLD BRANDY-ET

50K GTPI +1736G

140145535 100%RHA-NA  
CAN EX-94 7Y  
PTA +1.74T +1.10UDC +.63FLC 84%R 12/22  
2-07 2 365 29573 4.0 1188 3.1 926  
4-10 2 365 37372 4.0 1510 3.0 1122  
7-04 3 365 34365 4.5 1532 3.0 1032  
LIFE 152307 4.3 6521 3.3 4974

Full Sister

### BUTZ-BUTLER GOLD BARBARA-ET

EX-95 EX-96-MS GMD  
6-02 2 365 43318 4.4 1890 2.8 1228

3rd through 9th Dams

### REGANCREST BRASILIA-ET 22-92 EX-MS

DOM

5-03 2 365 33481 3.9 1305 2.8 925

### REGANCREST-PR BARBIE-ET EX-92 EEEEE

GMD DOM 6\*

2-06 2 365 31690 3.9 1237 3.3 1050

\*HM ALL-AMERICAN JR. 3-YEAR-OLD 2004

### REGANCREST JUROR BRINA-ET EX-92

EEEEE GMD

4-04 2 365 40640 3.6 1478 3.0 1217

\*RES. GRAND CHAMPION IA STATE FAIR '00

### REGANCREST AEROSTAR BERT-ET EX-90

EEEEE GMD DOM

5-02 2 365 37790 3.6 1357 3.2 1215

### REGANCREST MARK CHAIRMAN BEA

2E-91 GMD DOM

7-09 2 365 33630 3.8 1276 3.1 1052

### REGANCREST BOARD CHAIRMAN BEA

EX-90 EX-MS

5-09 3 365 26010 4.1 1059 3.4 884

### REGANCREST APACHE STANDOUT BEA

VG-86 EX-MS



# Spring Fashions Sale



**SUNSET CANYON MBSB ANTHEM**  
5th Dam of Lot 36

## 36

**KINLEY YOUNG**  
282 HIGHWAY 603  
CHEHALIS, WA 98532

### **CLAQUATO JOYRIDE AUSTRALIA**

JE840003238750449  
Born: 9/2/2021 Eartag: 5949

#### **RIVER VALLEY JOYRIDE-ET**

JE840003126479085  
CDCB GPTA S 12/1/22 419DAUS 158HRDS 32%RIP  
94%R -904M 0.17% -10F 4%ILE  
94%R 0.10% -13P -157CM\$ -162NM\$ -224FM\$ -150GM\$  
-1.6PL -0.4LIV -0.4DPR -0.7CCR 1.2HCR 3.12SCS  
AJCA 12/1/22 324DAUS  
GPTAT 91%R 1.6 GJUI 13.8 GJPI 90%R -25

#### **CLAQUATO CASINO AMAZED**

JE840003206597493  
2-00 85%

#### **ELLIOTTS REGENCY CASINO-ET**

JE840003125141657  
CDCB GPTA S 12/1/22 5088DAUS 914HRDS 24%RIP  
99%R -308M 0.09% 3F 19%ILE  
99%R 0.12% 13P 118CM\$ 108NM\$ 8FM\$ 55CM\$  
2.2PL -0.2LIV -0.3DPR 0.1CCR 1.0HCR 3.12SCS  
0.0MFV 0.3DAB 0.1KET -2.2MAS 0.3MET 0.1RPL -2.18HTI  
AJCA 12/1/22 2778DAUS  
GPTAT 99%R 1.9 GJUI 17.1 GJPI 97%R 30

#### **SUNSET CANYON F POWER ANTHEM 464**

119410893  
3-07 90%

3rd Dam

**SUNSET CANYON HG FINAL ANTHEM EX-90**

4th Dam **EX-94**

5th Dam **EX-95**  
NAT JUG FUTUNITY WINNER

6th through 9th Dams

**ALL EX FROM THE ANTHEM FAMILY**



# Spring Fashions Sale



**RIVER VALLEY EXITATION FLAWLESS**  
*Gd Dam of Lot 37*

# 37

**KASH-IN JERSEYS**  
21744 ROAD 152  
TULARE, CA 93274

## **KASH-IN CHOCOLATIER 68309-ET**

JE840003251551440

Born: 3/8/2022 Eartag: 68309

AJCA 12/1/22 GPTAT 77%R 1.5 GJUI 14.6 GJPI 72%R -18

### **AVONLEA JOEL CHOCOLATIER-ET**

JECAN000012619755  
CDCB GPTA S 12/1/22  
78%R -1263M 0.07% -48F 4%ILE  
78%R 0.01% -44P -321CMS\$ -312NM\$ -275FM\$ -277GM\$  
0.4PL 2.1LIV 1.9DPR 1.8CCR 0.3HCR 3.28SCS  
0.0MFV 0.2DAB 0.5KET 1.1MAS 1.2MET 0.4RPL 4.12HTI  
AJCA 12/1/22 ODAUS  
GPTAT 80%R 0.8 GJUI 8.5 GJPI 75%R -73

### **KASH-IN CRAZE 57475-ET**

JE840003202629915  
1-10 305 3 14030 5.6 788 4.1 571 97DCR 1977C  
305 2X ME AVG 1L 18254M 740P 2563C  
3-05 87%

### **RIVER VALLEY CIRCUS CRAZE-ET**

75341001  
CDCB GPTA S 12/1/22 8579DAUS 609HRDS 18%RIP  
99%R 164M 0.07% 22F 63%ILE  
99%R -0.02% 2P 310CM\$ 311NM\$ 324FM\$ 247GM\$  
3.9PL 3.7LIV -0.1DPR 0.5CCR 0.2HCR 2.97SCS  
0.1MFV 0.1DAB -0.3KET -1.7MAS 0.6MET -0.1RPL -1.74HTI  
AJCA 12/1/22 3944DAUS  
GPTAT 99%R 2.0 GJUI 16.8 GJPI 99%R 60

### **RIVER VALLEY EXCITATION FLAWLESS-ET**

JE840003126479162  
1-09 305 3 15850 5.8 918 3.7 579 86DCR 2002C  
2-11 305 2 21890 5.9 1295 3.7 805 92DCR 2784C  
305 2X ME AVG 2L 21452M 787P 2722C  
5-07 93%

*3rd Dam*

**MI-SAN 2 VERBATIM EFFORTLESS EX-93**  
3-02 2 305 13900 5.2 718 3.8 522  
\*UNANIMOUS ALL-AMERICAN JR 3-YEAR-OLD 2013

*4th Dam*

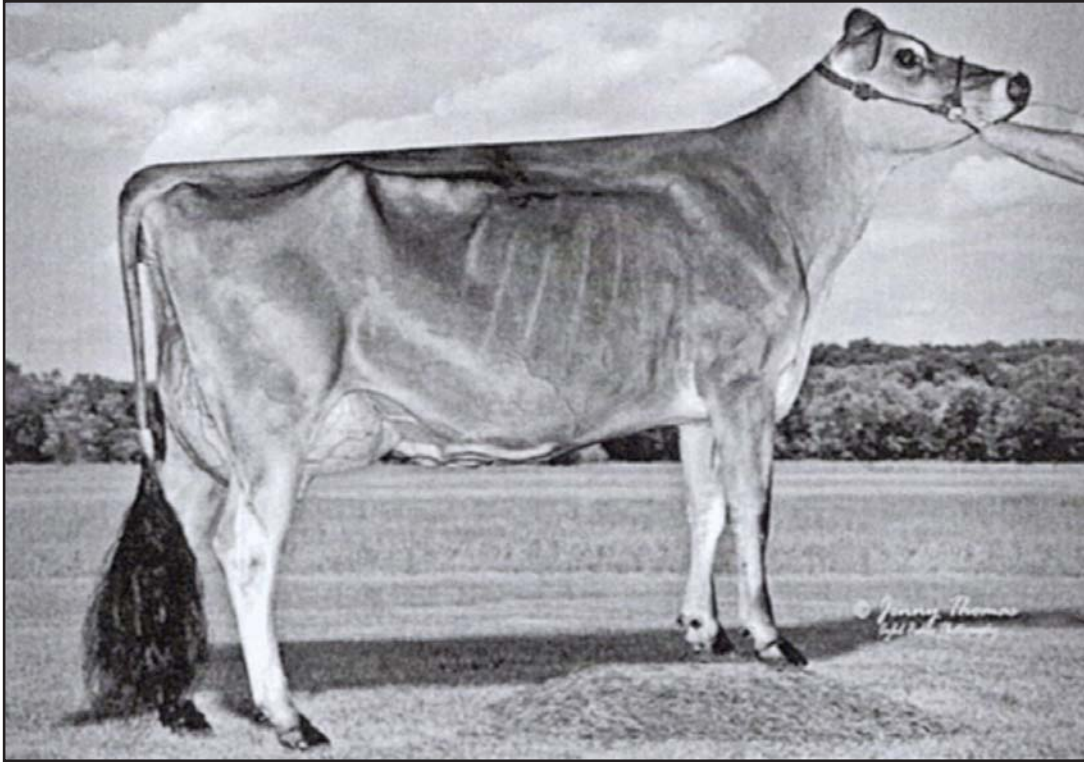
**PF TEQUILA MAKES IT EASY EX-93**  
4-01 3 291 12550 4.5 559 3.6 449  
\*INTERMEDIATE CHAMPION, IN STATE FAIR 2012

*5th Dam*

**AMLAIIRD COUNCILLER EMMY EX-95**  
6-10 2 305 18510 3.8 712 3.5 643  
\*RES GRAND CHAMPION, WI SPRING SHOW 2012  
\*GRAND CHAMPION, NY STATE FAIR 2008



# Spring Fashions Sale



**ENTOURAGE FIREMAN STACEY-ET**  
*dAM OF IOT 38*

# 38

**KASH-IN JERSEYS**  
21744 ROAD 152  
TULARE, CA 93274

## **SELLING APP**

*Born: 3/4/2022*

### **AVONLEA JOEL CHOCOLATIER-ET**

JECAN000012619755  
CDCB GPTA S 12/1/2022  
78%R -1263M 0.07% -48F 4%ILE  
78%R 0.01% -44P -321CMS\$ -312NM\$ -275FM\$ 277GM\$  
0.4PL 2.1LIV 1.9DPR 1.8CCR 0.3HCR 3.25SCS  
0.0MFV 0.2DAB 0.5KET 1.1MAS 1.2MET 0.4RPL 4.12HTI  
AJCA 12/1/22 ODAUS  
GPTAT 80%R 0.8 GJUI 8.5 GJPI 75%R -73

### **ENTOURAGE FIREMAN STACEY-ET**

JE840003140043559  
2-02 305 3 13510 5.1 692 3.7 504 90DCR 1743C  
4-01 305 3 18220 6.4 1158 3.9 711 97DCR 2461C  
305 MX ME AVG 2L 15237M 888F 597P 2065C  
4-04 90%

### **COLTON FLAME FIREMAN**

118155636  
CDCB GPTA S 12/1/22 257DAUS 127HRDS 14%RIP  
96%R -1916M 0.10% -74F 0%ILE  
96%R 0.08% -54P -712CMS\$ -709NM\$ -717FM\$ -714GM\$  
-2.3PL -0.2LIV 0.1DPR -0.3CCR 0.5HCR 3.25SCS  
0.1MFV 0.0DAB -0.4KET 0.2MAS 0.6MET 0.4RPL 1.31HTI  
AJCA 12/1/22 213DAUS  
GPTAT 95%R 1.2 GJUI 14.5 GJPI 92%R -150

### **ELLIOTTS VOLTAGE SIENNA-ET**

118128795  
2-06 73 2 3140 6.5 203 3.9 124 64DCR 429C  
3-09 305 3 14500 5.6 819 3.9 564 98DCR 1952C  
305 MX ME AVG 2L 13415M 824F 542P 1877C  
9-06 94%

*3rd Dam*

### **MILD VENDICATION SEASON-ET**

4-06 305 2 20610 6.2 1269 3.6 715 96DCR 2541C  
9-06 94%



# Spring Fashions Sale



**PATERNAL SISTER TO LOT 39**

## 39

**KYLE NATZKE  
N4543 COUNTY ROAD K  
FOND DU LAC, WI 54937**

### **CRESTBROOKE CHOCOLATIER 68869-ET**

JE840003251552000  
Born: 6/2/22 Eartag: 68869

#### **AVONLEA JOEL CHOCOLATIER-ET**

JECAN000012619755  
CDCB GPTA S 12/1/22  
78%R -1263M 0.17% -48F 4%ILE  
78%R 0.01% -44P -321CM\$ -312NM\$ -275FM\$ -277GM\$  
0.4PL 2.1LIV 1.9DPR 1.8CCR 0.3HCR 3.28SCS  
0.0MFV 0.2DAB 0.5KET 1.1MAS 1.2MET 0.4RPL 4.12HTI  
AJCA 12/1/22 0DAUS  
GPTAT 80%R 0.8 GJUI 8.5 GJPI 75%R -73

#### **BJ COLTON MONIQUE**

JE840003208254470  
1-09 164 3 10260 4.6 468 3.6 374 78DCR 1267C  
2-07 277 2 11810 4.3 503 3.9 457 96FVT 1441C  
305 2X ME AVG 2L 17657M 675P 2203C  
2-02 88%

#### **CHILLI ACTION COLTON-ET**

66738335  
CDCB GPTA S 12/1/225335DAUS 1356HRDS 12%RIP  
99%R -1795M 0.32% -25F 4%ILE  
99%R 0.12% -43P -274CM\$ -274NM\$ -316FM\$ -268GM\$  
-0.4PL 0.5LIV 0.1DPR 0.1CCR 0.3HCR 3.27SCS  
0.1MFV 0.1DAB -0.1KET 0.2MAS 0.6MET 0.2RPL 2.01HTI  
AJCA 12/1/22 3057DAUS  
GPTAT 99%R 1.7 GJUI 16.3 GJPI 99%R -64

#### **BJ TEQUILA HOPSY**

117883019  
5-05 305 2 20990 5.2 1090 3.7 778 102DCR 2691C  
6-05 305 2 21400 5.2 1112 4.0 847 102DCR 2932C  
8-00 305 2 22920 5.5 1258 3.8 877 101DCR 3035C  
9-05 305 2 28300 5.3 1491 3.8 1063 102DCR 2592C  
305 2X ME AVG 7L 19516M 1031F 749P 2592C  
6-10 95%



# BROWN SWISS

# 40

**EDWIN GENASCI  
LINCOLN, CA**

**LA RAINBOW BFLY DYNAMITE ETV**

840003129321096  
GENETIC CONDITIONS: \*TM PT DT WT BH2T  
NOT CLASSIFIED  
PPR: +11 96%R PTAT: +0.5 98%R (12/22)  
PTA: -638M -20F -2P +19NM\$ 99%R (MACE)  
PTA PL: +2.5 SCS: +2.67 DPR: -0.9 SCE: +2.2  
PTA LIV: +0.2  
2166 DAU. AV. 22924 4.2 974 3.4 788  
1045 CLASS. CAU. AV FS:84.1 UDC:1.22 FLC:0.43

**CAL-TICINO JAX BELL TWIN**

68196528  
03/03 +84  
01/09 336 3X 21390 3.6 768 3.2 689 DHIR  
02/11 318 3X 20820 3.8 793 3.3 693 DHIR  
04/01 130 3X 12150 4.6 559 3.1 380 DHIA

**CAL-TICONO DYNAMITE BETHANY**

68214341

Born: 11/28/2020

Tattoo: 4051

**WILL BE BD BEFORE SALE**

**TROUT RUN JAX ET PP \*TM**

68162289  
GENETIC CONDITIONS: PC DT MT WT BH2T  
NOT CLASSIFIED  
PPR: +2 82%R PTAT: -0.5 82%R (12/22)  
PTA: +642M +36F +12P +73NM\$ 90%R (MACE)  
PTA PL: -2.2 SCS: +3.07 DPR: -2.7 SCE: +1.6  
PTA LIV: -2.4  
127 DAU. AV. 25112 4.2 1049 3.3 831  
27 CLASS. DAU. AV. FS:83.2 UDC:-0.39 FLC:-0.87

**CAL-TICINO WARRANTY BETSY**

68155143  
03/02 V86  
01/09 325 3X 15410 4.0 623 3.1 484 DHIR  
02/11 299 3X 22110 3.9 861 3.3 729 DHIR  
03/11 292 3X 23790 3.8 914 3.3 795 DHIR

3rd Dam

**VG-85**

3-01 305 22130 3.8 834 3.1 691

# 41

**HUNTER & ASHELY GLASS  
TRAVIS KAMPER  
RIVERDALE, CA**

**LA RAINBOW BFLY SKYHIGH ET**

840003200520213  
GENETIC CONDITIONS: PT DT MT WT BH2T  
NOT CLASSIFIED  
PPR: +107 64%R PTAT: +0.5 69%R (12/22)  
PTA: +1128M +31F +35P +310NM\$ 67%R (GEN)  
PTA PL: +0.6 SCS: +2.79 DPR: -0.6 SCE: +2.9  
PTA LIV: -0.4  
0 DAU. AV.

**CAL-TICINO AROS OLIVIA**

68192893  
GENETIC CONDITIONS:  
03/07 V86  
3/02 305 2X 25220 4.3 1080 3.4 868 DHIR  
3/02 365 2X 29840 4.2 1241 3.5 1042 DHIR

**CAL-TICINO SKYHIGH OLIVE**

68223959

Born: 6/6/2021

Tattoo: 186

Not Classified

Parent Average PPR: +62 PTAT: +0.4

PA: +524m +19f +18p +229NM\$

Bd 7/16/2022 to 507BS914

**SUPERBROWN AROS**

195763  
GENETIC CONDITIONS: PT DT MT WT BH2T  
NOT CLASSIFIED  
PPR: -14 78%R PTAT: -1.5 77%R (12/22)  
PTA: -312M -2F -5P +145NM\$ 81%R (MACE)  
PTA PL: +0.8 SCS: +3.07 DPR: +1.4 SCE: +2.0  
PTA LIV: +1.8  
130 DAU. AV.  
93 CLASS. DAU. AV FS:85.3 UDC:-1.50 FLC:-1.70

**CAL TICINO BUSH OCEAN**

68155146  
GENETIC CONDITIONS  
07/01 \*2E-E90  
PPR: +37 43%R PTAT: +0.9 50%R  
PTA: +156M +18F +8P +167NM\$ 66%\$  
DEV: +192M +42F +16P (12/22)  
3/05 342 3X 23790 4.0 946 3.6 850 DHIR  
5/07 326 3X 26470 3.9 1045 3.3 868 DHIR  
\*Direct Maternal line to EX-93  
**LONG VIEW JELWAY OPRAH**  
\*GRAND CHE MADISON 2003

# 42

**HUNTER GLASS  
MODESTO, CA**

**LA RAINBOW SWEET SULTAN**

840003200520219  
GENETIC CONDITIONS: PT DT MT WT BH2T  
NOT CLASSIFIED  
PPR: +76 64%R PTAT: +1.1 67%R (8/22)  
PTA: +885M +20F +38P +212NM\$ 67%R (GEN)  
PTA PL: -0.7 SCS: +3.12 DPR: -2.2 SCE: +2.7  
PTA LIV: -1.8  
0 DAU. AV.

**CAL-TICINO BUSH BEAUTY**

68214047  
3-10 +83  
PPR: -9 41%R PTAT: +0.0 44%R  
PTA: -232M -6F -7P -18NM\$ 28%\$  
DEV: -4222M -135F -131P (08/22)  
3-06 229D 2X 12650 4.1 518 3.5 437 DHIA

**CAL-TICINO SULTAN BELINDA**

68221343

Born: 3/22/21

Tattoo: 4289

Not Classified

Parent Average PPR: +35 PTAT: +0.6

PA: +327m +7f +16p +97NM\$

BD 5/28/22 507BS914 SEXED

**JOBO VIGOR BUSH ET \*TM**

68129315  
GENETIC CONDITIONS: \*TM PT DT WT BH2T  
NOT CLASSIFIED  
PPR: +58 97%R PTAT: +0.5 98%R (8/22)  
PTA: +563M +15F +19P +272NM\$ 99%R (MACE)  
PTA PL: +1.0 SCS: +2.80 DPR: -2.1 SCE: +2.1  
PTA LIV: -0.4  
974 DAU. AV. 24461 4.0 987 3.3 810  
445 CLASS. DAU. AV. FS:84.2 UDC:1.30 FLC:0.76

**CAL-TICINO CARTER BELINDA**

68173458



# Spring Fashions Sale



# 43

**EDWIN GENASCI  
LINCOLN, CA**

**LA RAINBOW BFLY DYNAMITE ETV**

840003129321096  
GENETIC CONDITIONS: \*TM PT DT WT BH2T  
NOT CLASSIFIED  
PPR: +1 96%R PTAT: +0.4 98%R (08/22)  
PTA: -723M -21F -6P -20NM\$ 99%R (MACE)  
PTA PL: +2.2 SCS: +2.69 DPR: -0.8 SCE: +2.2  
PTA LIV: -0.4  
1917 DAU. AV. 22926 4.3 976 3.4 789  
941 CLASS. DAU. AV. FS:83.9 UDC:1.22 FLC:0.58

**CAL-TICINO DAVENPORT HOLLY**

68191408  
3-03 V87  
DEV: +335M +56F +28P (08/22)  
1-09 273D 3X 18940 4.2 793 3.4 639 DHIR  
2-09 269D 3X 23250 4.2 967 3.3 770 DHIA

**CAL-TICINO DYNAMITE HAZEL**

68214338  
Born: 3/3/21 Tattoo: 4259  
BD 11/2/22 507BS925 SEXED

**HILLTOP ACRES CT DAVENPORT ET**

68146682  
GENETIC CONDITIONS: PT DT MT WT BH2T  
NOT CLASSIFIED  
PPR: +32 92%R PTAT" +0.5 95%R (08/22)  
PTA: +140M +15F +4P +156NM\$ 96%R (MACE)  
PTA PL: +0.1 SCS: +3.03 DPR: -1.1 SCE: +1.8  
PTA LIV: +1.4  
287 DAU. AV. 24113 4.3 1030 3.4 808  
180 CLASS. DAU. AV FS:83.9 UDC:0.87 FLC:0.09

**CAL-TICINO WINNER HAILEY**

68168629  
2-04 305 3X 17900 4.6 822 3.5 625 DHIR  
2-04 329 3X 19070 4.6 884 3.5 671 DHIR  
3-06 225 3X 16840 4.1 684 3.3 552 DHIR  
\*6TH WINTER HFR CALF WESTERN NAT CA 2015

# 44

**HUNTER GLASS  
MODESTO, CA**

**O MALLEY**

4427424483  
GENETIC CONDITIONS: PT DT MT WT BH2T  
NOT CLASSIFIED  
PPT: +123 62%R PTAT: +0.4 64%R (12/22)  
PTA: +423M +26F +23P +315NM\$ 66%R (GEN)  
PTA PL: +2.5 SCS: +3.02 DPR: +1.8 SCE: +2.4  
PTA LIV: +1.2  
0 DAU. AV.

**CAL-TICINO BUSH ROSE**

68214339

**CAL-TICINO O MALLEY RUBY**

68223960  
Born: 7/7/2022 Tattoo: 135  
Not Classified  
Parent Average PPR: +66 PTAT: +0.4  
PA: +158m +8f +10p +177NM\$

**JOBO VIGOR BUSH ET \*TM**

68129315  
GENETIC CONDITIONS: \*TM PT DT WT BH2T  
NOT CLASSIFIED  
PPR: +60 97%R PTAT: +0.5 98%R (12/22)  
PTA: +574M +15F +19P +280NM\$ 99%R (12/22)  
PTA PL: +1.0 SCS: +2.79 DPR: -2.1 SCE: +2.1  
PTA LIV: -0.3  
978 DAU. AV. 24449 4.0 986 3.3 810  
451 CLASS. DAU. AV. FS:84.2 UDC:1.34 FLC:0.76

**CAL-TICINO DESTINATE ROSANDI**

68165706  
2/01 305 3X 14040 3.7 520 3.5 489 DHIR  
2/01 311 3X 14270 3.7 529 3.5 497 DHIR  
3/06 237 3X 14150 3.8 541 3.2 454 DHIR  
\*5TH WINTER HFR CALF WESTERN NAT CA 2015

# 45

**ELISE REGUSCI  
MODESTO, CA**

**O MALLEY**

4427424483  
GENETIC CONDITIONS: PT DT MT WT BH2T  
NOT CLASSIFIED  
PPR: +130 61%R PTAT: +0.5 63%R (8/02)  
PTA: +439M +28F +23P +339NM\$ 65%R (GEN)  
PTA PL: +2.7 SCS: +3.02 DPR: +2.1 SCE: +2.3  
PTA LIV: +1.5  
0 DAU. AV.

**TOPDIMARK DYNAMITE POLLY**

68214344  
GENETIC CONDITIONS:  
NOT CLASSIFIED  
PPR: +24 47%R 00%R  
PTA: -626M -13F -5P +113NM\$ 56%\$  
DEV: -5047M -143F -126P (8/02)

**TOPDIMARK O MALLEY PARIS OCS**

68222159  
Born: 2/28/2022 Tattoo: R343  
Not Classified  
Parent Average PPR: +77 PTAT: +0.3  
PA: -94m +8f +9p +226NM\$

**LA RAINBOW BFLY DYNAMITE ETV**

840003129321096  
GENETIC CONDITIONS: \*TM PT DT WT BH2T  
NOT CLASSIFIED  
PPR: +1 96%R PTAT: +0.4 98%R (8/02)  
PTA: -723M -21F -6P -20NM\$ 99%R (MACE)  
PTA LIV: -0.4  
1917 DAU. AV. 22926 4.3 976 3.4 789  
941 CLASS. DAU. AV. FS:83.9 UDC:1.22 FLC:0.58

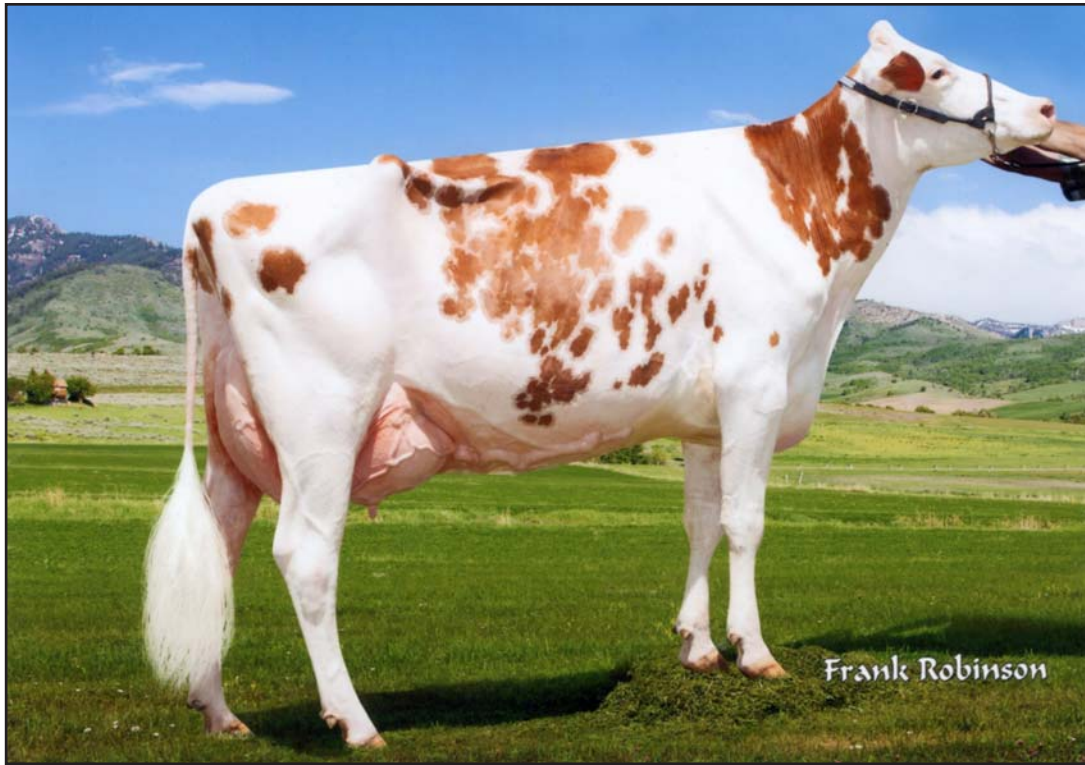
**TOPDIMARK GOLDWYN PAULA**

68196530  
GENETIC CONDITIONS:  
PPR: +78 44%R PTAT: -0.3 45%R  
PTA: +67M +8F +10P +350FM\$ 93%\$  
DEV: +14M +24F +24P (8/02)  
5/02 305 3X 29940 4.3 1286 3.2 947 DHIA  
5/02 365 3 33210 4.4 1455 3.2 1077 DHIA





# Spring Fashions Sale



**CAL-TICINO PAT MILLI-RED**  
Dam of Lot 46

# 46

**HUNTER R & ASHLEY R GLASS  
& CHARLIE A J**  
6555 BLUE GUM AVE  
MODESTO, CA  
(209) 380-2695

## CAL-TICINO RGR LEA 4202-RED

840003234357166 99%RHA-I  
Born: 2/8/2021 P5 PTPI+2298C  
PTA +1.26T +.66UDC +.85FLC 39%R 12/22  
BD 6/20/2022 TO APPLIEDAY MCDONALD-RED-ET

<b>RI-VAL-RE RAGER-RED-ET</b>	A2/A2 AB 60K	GTPI +2568G
72353457	99%RHA-I TP TC TY TV TL TD	
6-00	90 EEEV	
PTA	+835M +47F +33P	99%R 12/22
PTA	+573NM +.05%F +.02%P	54%US
PTA	+4.9PL 2.84SCS -.5DPR	3.4%DCE
PTA	+1.60T +.78UDC +1.33FLC	99%R 12/22
PTA	+125FE -.03FI 2.4%SCE	
<b>CAL-TICINO PAT MILLI-RED-ET</b>		PTPI +2021C
840003141254952	99%RHA-I	
5-01	92 EEEEE	
2-00	316 26550 3.8 1005	3.2 850
2-11	273 23370 3.8 887	3.2 743

<b>COYNE-FARMS SYMPATI PAT-RED</b>	A1/A2 AB 60K	GTPI +2552C
840003012178104	99%RHA-I TP TC TY TV TL TD	
PTA	+896M +40F +39P	99%R 12/22
PTA	+566NM +.02%F +.04%P	49%US
PTA	+2.7PL 2.92SCS +.0DPR	2.8%SCE
PTA	+86T +1.41UDC +.77FLC	98%R 12/22
<b>FROZENES BARWIRE MILLI-RED</b>	AA 12K	GTPI +1484G
141904960	100%RHA-NA TL TD	
7-02	91 EEEEE	
2-00	3 349 21340 3.9	832 3.0 631
4-08	3 297 28260 3.7	1033 3.0 840
5-08	3 314 28580 3.6	1027 2.8 807
6-08	3 365 33950 3.4	1163 2.9 993
LIFE	1630 127130 3.7	4653 3.0 3763

<b>3rd Dam</b>	<b>FROZENES JET MYLIE-RED</b>
<b>4th Dam</b>	<b>FROZENES SS MISTLETOE-RED-ET VG-88</b>
EE+VV	
6-00	255 31490 3.7 1173 3.0 933
<b>5th Dam</b>	<b>FROZENES RANGER MILLI-RED VG-88</b>
VVVEV	
4-09	342 24850 4.2 1036 3.4 834
LIFE	124980 4.2 5219 3.3 4077
<b>6th Dam</b>	<b>WEST PORT RUBENS MOLLI-RED-ET EX-90</b>
EVVVE	
4-04	365 33152 4.5 1483 3.5 1149
<b>7th Dam</b>	<b>EMLANE MILESTONE MOLLEY VG-87</b>
LIFE	183434 4.2 7672 3.4 6274
*ALL-AM R&W WINTER YRLING 1996	
<b>8th Dam</b>	<b>EMLANE STARBUCK T T MOLLY</b>
VE-85-CAN VG-MS	
LIFE	115905 4.1 4784 3.6 4123
<b>9th Dam</b>	<b>EMLANE T THREAT MARGE VD-85-CAN</b>
VG-MS	



# Spring Fashions Sale



# 47

**CHRISTIAN CUNNINGHAM**  
4338 LICHAU RD  
PENNGROVE, CA 94951  
(707) 974-8700

## R-JOHN BOOM KARISSA 1515

840003234748858 99%RHA-I  
Born: 4/8/2021 PTPI+ 2110  
PTA +2.74T +1.70UDC +1.26FLC 34%R 12/22  
BD DUE FEB

**REGANCREST BOOM** AB P8 55K GTPI +2392G  
840003137164654 99%RHA-I TR TC TL TD  
PTA +872M +24F +31P 82%R 12/22  
PTA +120NM -0.03%F +0.01%P 100%US  
PTA +1.1PL 3.14SCS -1.5DPR 81%R 12/22  
PTA +55FE -1.2FI 2.7%SCS

**MABERICK CRUSH** 75K GTPI +2041G  
CAN 12042760 99%RHA-I TC TY TV TL TD  
PTA -877M -50F -14P 99%R 12/22  
PTA -191NM -0.06%F +0.05%P 62%US  
PTA +3.0PL 2.37SCS +2.0DPR 2.6%DCE  
PTA +2.43T +1.56UDC +1.25FLC 99%R 12/22

**R-JOHN CRUSH KRYSTAL** CTPI +1833  
840003142774894 99%RHA-I  
2-04 87 VEVVV  
PTA +1.91T +1.08UDC +.85FLC 53%R 12/22

**R-JOHN DEFIANT KAYLYNN-ET** CTPI +1661  
840003134482796 100%RHA-NA  
5-05 90 EEEEE  
PTA +1.59T +.98UDC +.53FLC 59%R 12/22  
2-05 2 334 26140 3.4 884 3.0 773  
3-06 2 283 21530 3.7 805 3.1 676  
4-10 2 259 18290 3.8 704 3.2 588  
5-10 2 128 13330 4.7 630 3.2 420

# 48

**JOE AIROSA, H BINDER JR  
& K MELVOLD**  
C/O JOE AIROSA  
PO BOX 1087  
TIPTON, CA 93272 • (559) 967-5258

## AIR-OSA-BM MOOVIN 33066

840003249062461 99%RHA-I  
Born: 6/9/2022 PTPI+ 1805  
PTA +2.54T +2.30UDC +.82FLC 35%R 12/22

**LINDENRIGHT MOOVIN-ET** A1/A2 AE 75K GTPI +2+03G  
CAN 12873743 98%RHA-I RC TC TY TV TL TD  
PTA -596M -24F -11P 95%R 12/22  
PTA -396NM +0.00%F +0.03%P 100%US  
PTA -1.2PL 2.95SCS -3.4DPR 3.1%DCE  
PTA +3.39T +2.96UDC +1.71FLC 93%R 12/22  
PTA -109FE -3.8FI 4.4%SCS

**LUCK-E AWESOME-RED** AE 75K GTPI +1449G  
72186769 100%RHA-NA CV TC TY TL TD  
PTA -1694M -55F -52P 99%R 12/22  
PTA -699NM +.04%F +.00%P 57%US  
PTA -.7PL 3.16SCS -2.3DPR 3.8%DCE  
PTA +2.01T +2.81UDC +.72FLC 99%R 12/22

**AIR-OSA-BM AWESOME 28610** CTPI +1703  
840003217200115 100%RHA-NA RC  
2-03 82 V+GG+  
PTA +1.68T +1.63UDC -.07FLC 46%R 12/22

**AIR-OSA-BM OL LUCI 19833-ET** PTPI +1880  
840003125502073 100%RHA-NA RC  
3-07 86 VEV+V  
PTA +312M -24F +6P 58%R 12/22  
2-01 3 285 32500 3.4 1099 3.0 977  
3-01 3 359 37320 3.3 1245 3.1 1139  
4-03 3 305 34250 3.6 1220 3.1 1072  
LIFE 949 104070 3.4 3564 3.1 3188

# 49

**JOE AIROSA**  
PO BOX 1087  
TIPTON, CA 93272  
(559) 967-5258

## AIR-OSA HANCOCK 33661

840003249063056 92%RHA-I  
Born: 9/6/2022 P9 PTPI+ 2626  
PTA +776M +51F +31P 46%R 12/22  
PTA +2.90T +2.67UDC +1.59FLC 44%R 12/22

**SIEMERS DOC HANCOCK** A2/A2 AB P9 75K GTPI +2698G  
840003144882821 99%RHA-I TR TP TC TY TV TL TD  
PTA +980M +49F +34P 98%R 12/22  
PTA +489NM +.04%F +.01%P 93%US  
PTA +2.5PL 2.86SCS -1.6DPR 2.4%DCE  
PTA +3.51T +3.37UDC +2.19FLC 97%R 12/22  
PTA +141FE -1.1FI 2.2%SCS

**SIEMERS HUNK-ET** AA P9 75K GTPI +2694G  
840003141495349 99%RHA-I TR TP TC TY TV TL TD  
PTA -28M +81F +30P 98%R 12/22  
PTA +481NM +.29%F +.11%P 100%US  
PTA -1.1PL 2.92SCS -2.8DPR 1.6%DCE  
PTA +3.00T +2.54UDC +1.99FLC 95%R 12/22

**AIR-OSA HUNK 27099** AA P9 19K GTPI +2550G  
840003211748852 100%RHA-I TR TC TL TD  
3-00 88 +V++E  
PTA +572M +53F +27P 84%R 12/22  
PTA +2.28T +1.96UDC +.98FLC 79%R 12/22  
1-10 303 24450 4.0 973 3.3 802

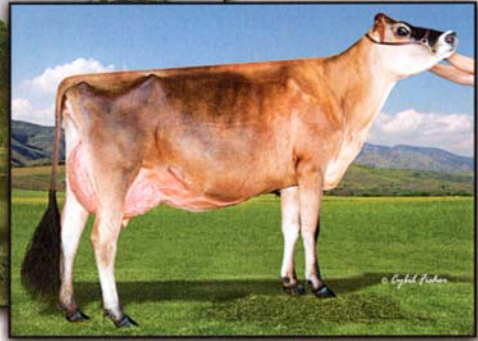
**AIR-OSA YODER 20829** PTPI +2200  
840003130085292 75%RHA-NA  
6-00 87 VVVVV  
PTA +2.8PL 3.02SCS +.3DPR 2.7%DCE  
1-10 3 305 27110 3.9 1049 3.2 857  
2-10 3 355 37680 3.9 1465 3.2 1192  
4-00 3 305 35780 4.1 1451 3.2 1139  
5-00 3 365 45820 3.7 1718 3.2 1472  
LIFE 1413 153030 3.9 5966 3.2 4904



# Spring Fashions Sale



**CROSSBROOK HG DIXIE-ET**  
*Gd Dam of Lot 50*



**DIXIES PREMIER DARLING-ET**  
*Dam of Lot 50*

# 50

**MISTY MEADOW DAIRY**  
2614 1ST ST  
TILLAMOOK, OR 97141

## **MM DOWNTOWN BROWN DARLING 19545-ET**

JE 840003250478303

Born: 6/1/2022 Eartag: 19545

### **RAPID BAY DOWNTOWN BROWN**

JECAN000120076424  
PA -1343M -30F -31P  
-381CM\$ -381NM\$ -419FM\$  
-2.5PL 1.6DPR 1.9CCR 0.4HCR 3.27SCS  
PATYPE 0.5 JPI 38%R -82

### **DIXIES PREMIER DARLING-ET**

067393271  
1-11 305 2 13580 6.2 843 3.9 536 91DCR 1855C  
3-01 46 2 2650 5.4 143 3.7 97 46DCR 335C  
305 2X ME AVG 2L 15376M 897F 597P 2065C  
4-07 92%

### **HAWARDEN IMPULS PREMIER**

067107510  
CDCB GPTA S 12/1/2022 7626DAUS 1266HRDS 4%RIP  
99%R -1070M 0.25% -2F 12%ILE  
99%R 0.14% -11P 70CM\$ 59NM\$ -36FM\$ 74GM\$  
2.3PL 2.5LIV 2.8DPR 1.2CCR -0.8HCR 3.08SCS  
0.1MFV 0.3DAP 0.8KET 1.0MAS 1.3MET 0.5RPL 5.87HTI  
AJCA 12/1/2022 4364DAUS  
GPTAT 99%R 0.4 GJUI -0.6 GJPI 99%R 15

### **CROSSBROOK HG DIXIE-ET**

067305133  
2-11 305 2 18280 6.0 1096 4.1 752 88DCR 2605C  
3-10 272 2 16940 6.4 1086 4.4 743 95DCR 2575C  
5-05 305 2 18800 5.4 1024 3.5 660 102DCR 2281C  
6-10 301 2 17540 6.0 1047 3.9 681 76DCR 2357C  
305 2X ME AVG 5L 18359M 1099F 708P 2450C  
5-08 94%

*3rd through 10th Dams*

**HURANIA CENTURION VERONICA EX-97**  
2-11 2 331 25623 4.9 1263 4.1 1047  
\*SUPREME CHAMPION, WORLD DAIRY EXPO 2006  
\*WINNER JERSEY JOURNAL GREAT COW CONTEST 2016  
\*CANADIAN JERSEY COW OF THE YEAR 2011

### **GENESIS RENAISSANCE VIVIANNE** VG-87-CAN

5-00 2 303 12018 4.2 514 3.8 461

**GENESIS JUNA VIRGINIA EX-91-4E-CAN**  
6-06 2 305 16539 4.7 772 3.8 628

**SWISSBELL F VERONICA EX-90-CAN**  
13-5 2 305 13854 4.5 619 3.9 536

**SWISSBELL EN VIRGINIA SUP-EX-I**  
5-03 2 305 11931 4.9 589

**SWISSBELL VIRGINIA SUP-EX-90-CAN**  
LIFE 5006 149770 5.8 8670

**BELMONT JESTER VIRGINIA SUP-EX**  
8-02 2 305 12059 5.6 679



# Spring Fashions Sale



# 51

**MISTY MEADOW DAIRY**  
2614 1ST ST  
TILLAMOOK, OR 97141

### MM VICTORIOUS FRANK-ET

JE840003201335580  
CDCB GPTA S 12/1/22  
78%R -1229M 0.18% -24F 4%ILE  
78%R 0.10% -25P -226CM\$ -232NM\$ -287FM\$ -289GM\$  
0.3PL -1.5LIV -1.8DPR -0.9CCR 0.5HCR 3.02SCS  
AJCA 12/1/22 1DAYS  
GPTAT 80%R 1.5 GJUI 18.7 GJPI 75%R -51

### SPATZ VELOCITY FASHION

JE840003128024641  
PPA -3103M -34F -95P / YD -3796M -67F -118P  
CDCB GPTA S 12/1/22 4RECS 80%R 2%ILE  
-2390M 0.31% -57F 0.08% -73P -603CM\$ -601NM\$ -591FM\$  
-0.9PL 1.6LIV 2.3DPR 2.4CCR -0.1HCR 3.10SCS -562GM\$  
0.0MFV -0.1DAB -0.2KET 1.8MAS 0.3MET 0.5RPL 2.85HTI  
AJCA 12/1/22 GPTAT 80%R 0.9 GJUI 14.2 GJPI 76%R -123  
2-09 301 15850 4.9 775 3.7 589  
3-09 305 16190 4.3 676 3.6 585  
5-00 91%

### MM FRANK FASHION 18712-ET

JE840003250240983

Born: 3/12/2022 Eartag: 18712

### ARETHUSA JAKE VELOCITY-ET

117243204  
CDCB GPTA S 12/1/22 525DAUS 264HRDS 8%RIP  
96%R -2306M 0.20% -74F 0%ILE  
96%R 0.00% -84P -788CM\$ -777NM\$ -702FM\$ -743GM\$  
-1.3PL 1.1LIV 2.3DPR 2.9CCR 0.6HCR 3.18SCS  
-0.1MFV -0.1DAB -0.2KET 0.0MAS 0.1MET 0.6RPL -1.30HTI  
AJCA 12/1/22 1DAUS  
GPTAT 80%R 1.5 GJUI 18.7 GJPI 75%R -51

### SPATZ PREMIER FAE

118934165  
PPA -5430M -120F -130P / YD -4180M -75F -88P  
CDCB PTA 12/1/22 3RECS 60%R 14%ILE  
-1914M 0.32% -30F 0.16% -39P -178CM\$ -188NM\$ -273FM\$  
-1.1PL 1.4LIV 2.0DPR 1.5CCR -0.6HCR 3.04SCS -160GM\$  
0.1MFV 0.0DAB 0.2KET 1.4MAS 1.0MET 0.4RPL 4.29HTI  
AJCA 12/1/22 PTAT 53%R 0.1 JUI 4.8 JPI 52%R -40  
2-04 305 2 12300 5.8 715 4.2 514 97DCR 1780C  
3-06 305 2 9800 6.4 625 4.5 440 100DCR 1525C  
4-07 305 2 13910 6.3 870 4.2 580 98DCR 2009C  
305 2X ME AVG 3L 13392M 803F 565P 1957C  
3-11 83%

3rd Dam **VG-87**

4th Dam **EX-93**

5th Dam **VG-87**

# 52

**CALIF STATE UNIVERSITY/FRESNO**  
DEPT/ANIMAL SCIENCE  
2415 E SAN RAMON AVE  
FRESNO, CA 93740

### JX CSUF TUCKER SALLE {5}

JE840003220647974

Born: 6/18/2022 Tattoo: 947

### ROWLEYS 1996 DANIEL TUCKER {6}-ET

JE840003201928443  
CDCB GPTA S 8/1/22  
77%R 942M 0.02% 51F 97%ILE  
77%R 0.04% 43P 677CM\$ 668NM\$ 598FM\$ 598GM\$  
5.3PL 2.0LIV -0.2DPR 0.3CCR 1.4HCR 2.96SCS  
0.0MFV 0.3DAB 0.2KET -1.6MAS 0.3MET 0.0RPL -1.07HTI  
AJCA 8/1/22 ODAUS  
GPTAT 79%R 1.2 GJUI 10.4 GJPI 73%R 141

### JX CSUF SANGITA 731 {4}

JE840003130518328  
PPA 413M 7F 23P / YD 312M 6F 20P  
3-06 298 2 18840 5.2 983 3.9 738102DCR 2555C  
305 2X ME AVG 1L 20302M 1046F 787P 2724C  
4-10 91%

### CDF SANGITA-ET

JE840003124584857  
CDCB GPTA S 8/1/22 515DAUS 94HRDS 2%RIP  
98%R 894M -0.15% 9F 28%ILE  
98%R 0.00% 32P 172CM\$ 167NM\$ 139FM\$ 7GM\$  
2.8PL 0.5LIV -3.3DPR -4.1CCR -4.3HCR 2.88SCS  
0.1MFV 0.3DAB 0.1KET 1.0MAS 0.3MET 0.0RPL 4.34HTI  
AJCA 8/1/22 224DAUS  
GPTAT 97%R 0.7 GJUI 4.3 GJPI 95%R 26

### JX CSUF BUMPS 900 {3}

JE840003130518385  
PPA 2084M 113F 59P / YD 814M 50F 21P  
161M 0.11% 31F 0.00% 5P 31CM\$ 28NMS 22FM\$  
3-09 305 2 19710 5.3 1037 3.7 726102DCR 2511C  
5-01 290 2 20260 4.9 984 3.6 725102DCR 2506C  
6-00 305 2 21320 5.1 1085 3.5 740102DCR 2557C  
7-01 305 2 18330 5.3 970 3.4 619101DCR 2138C  
305 2X ME AVG 5L 20786M 1042F 743P 2551C  
6-03 92%

# 53

**ELISE REGUSCI**  
MODESTO, CA

### TOPDIMARK JUKE FRIDA

68222166

Born: 1/20/2022 Tattoo: R341

Not Classified

Parent Average PPR: -13 PTAT: +0.5

PA: -54m +1f -6p -63NM\$

### TRIANGLE ACRES CARTER JUKE

840003139214232  
GENETIC CONDITIONS: PT DT MT WT BH2T  
NOT CLASSIFIED  
PPR: +26 78%R PTAT: +0.4 81%R (8/02)  
PTA: -106M +0F -6P +61NM\$ 86%R (GEN)  
PTA PL: +2.7 SCS: +2.64 DPR: -0.3 SCE: +2.5  
PTA LIV: +0.8  
46 DAU. AV. 22816 4.3 975 3.4 780  
22 CLASS. DAU. AV. FS:82.7 UDC:0.77 FLC:0.87

### TOPDIMARK BOSEPHUS FRISKY

68180903  
GENETIC CONDITIONS  
PPR: -52 44%R PTAT: +0.5 46%R  
PTA: -1M +1F -6P -186NM\$ 5%\$  
DEV: -158M -22F -19P (8/02)  
4/02 288D 2X 17370 3.7 649 3.2 562 DHIA

### JOBOWONDER BOSEPHUS ET \*TM

68129318  
GENETIC CONDITIONS: \*TM PT DT WT BH2C  
NOT CLASSIFIED  
PPR: -17 97%R PTAT: +0.8 98%R (8/02)  
PTA: +252M +37F +16P -56NM\$ 99%R (MACE)  
PTA PL: -3.8 SCS: +2.96 DPR: -5.7 SCE: +2.4  
PTA LIV: -7.0  
2860 DAU. AV. 24132 4.2 1017 3.3 803  
957 CLASS. DAU. AV. FS:84.7 UDC:0.68 FLC:0.31

### TOPDIMARK PARKER FRISKY ET

68116225  
GENETIC CONDITIONS  
PPR: -67 49%R PTAT: +0.2 52%R  
PTA: -247M -25F -24P -235NM\$ 2%\$  
DEV: -712M -66F -53P (8/02)  
09/03 227 2X 17500 3.7 647 3.3 569 DHIA  
LIFE 2017 119000M 3886F 3718P  
\*JR BEST 3 FMLS MEMBER ALL AMERICAN 2011  
\*FALL YRLG HFR NOM ALL AMERICAN 2011  
\*FALL HFR CALF NOM ALL AMERICAN 2010  
\*1ST GRAND CHAMPION WESTERN NAT CA 2016  
\*GRAND CHAMPION WESTERN NAT CA 2014



# Spring Fashions Sale



# 54

## SELLING APPLIED ET 53

Born: 12/18/2021

KRISTIN YOUNG  
13390 MCFARLAND ST  
GALT, CA 95632  
(209) 614-5094

**RI-VAL-RE RAGER-RED-ET** A2/A2 AB 60K GTPI +2568G  
72353457 99%RHA-I TP TC TY TV TL TD  
6-00 90 EEEV  
PTA +835M +47F +33P 99%R 12/22  
PTA +573NM +05%F +02%P 54%US  
PTA +4.9PL 2.84SCS -5DPR 3.4%DCE  
PTA +1.60T +.78UDC +1.33FLC 99%R 12/22  
PTA +125FE -0.3FI 2.4%SCE

**SCIENTIFIC B DEFIANT-ET** A1/A2 AE 50K GTPI +1661G  
141123484 100%RHA-NA TC TP TC TY TV TL TD  
4-08 87 EVV+  
PTA +60M -51F -14P 99%R 8/22  
PTA -473NM -19%F -06%P 69%US  
PTA -1.4PL 3.19SCS -2.8DPR 3.3%DCE  
PTA +2.67T +1.76UDC +.94FLC 99%R 8/22  
PTA -119FE -3.1FI 4.7%SCE

**CAL-CAB DEFIANT STELLA 1002** PTPI+1833  
70354985 96%RHA-NA RC  
1-11 83 +V+G+  
PTA +1.41T +.77UDC +.13FLC 46%R 8/22  
1-09 2 365 19850 4.0 800 3.5 688  
3-03 2 299 28060 3.8 1074 3.4 945

**FARIA FARMS ALCHEMY 8567-REDAA** 19K GTPI +1906G  
72110562 93%RHA-NA DC TL TD  
5-03 88 EVEVV  
2-02 2 331 20480 3.8 785 3.5 707  
3-03 2 340 27870 3.9 1079 3.3 933  
4-05 2 365 31620 3.7 1180 3.3 1058

# 55

## TOP-DIMARK ROMPEN LAURA-RED 134

145459109 99%RHA-I

Born: 6/12/2022 PTPI+ 2158

PTA +286M +3F +5P 8/2022

PTA +2.16T +1.96UDC +1.37FLC 29%R 8/2022

ELISE E REGUSCI  
5425 STODDARD RD  
MODESTO, CA 95356  
(209) 604-2605

**TRENT-WAY-JS ROMPEN-RED-ET** BB P9 75K GTPI +2705G  
840003200914543 99%RHA-I TP TC TY TV TL TD  
PTA +1562M +45F +43P 81%R 8/22  
PTA +603NM -05%F -02%P 100%US  
PTA +3.0PL 2.80SCS -1.5DPR 1.6%DCE  
PTA +2.36T +2.44UDC +1.22FLC 81%R 8/22  
PTA +148FE -0.5FI 1.7%SCE

**CYCLE MCGUCCI JORDY-RED** 75K GTPI +1693G  
840003131666411 99%RHA-I CV TC TY TL TD  
6-09 87 +VVVV  
PTA -1135M -26F -43P 99%R 8/22  
PTA -547NM +07%F -03%P 49%US  
PTA -2.5PL 2.95SCS -2.8DPR 3.6%DCE  
PTA +3.01T +2.25UDC +3.24FLC 99%R 8/22

**TOP-DIMARK JORDY LAILA-RED** PTPI+1611  
144688663 99%RHA-I

**TOP-DIMARK MALONE LEANN-RED** CTPI+1533  
61922355 100%RHA-NA  
3-09 83 +VVG  
2-03 3 320 23300 3.3 775 3.1 711  
3-04 3 365 35850 3.6 1282 3.1 1094

# 56

## TOP-DIMARK MOOVIN CHANEL 131

145458818 99%RHA-I

Born: 4/6/2021 PTPI+ 1899

PTA +2.06T +1.56UDC +1.27FLC 31%R 8/22

ELISE E REGUSCI  
5425 STODDARD RD  
MODESTO, CA 95356  
(209) 604-2605

BD 6/9/2022 ROMPER RED SEXED

**LINDENRIGHT MOOVIN-ET** A1/A2 AE 75K GTPI +1975G  
CAN 12873743 99%RHA-I RC TC TY TV TL TD  
PTA -503M -18F -10P 89%R 8/22  
PTA -335NM +00%F +02%P 100%US  
PTA -.9PL 3.04SCS -2.7DPR 3.2%DCE  
PTA +3.61T +2.90UDC +2.09FLC 84%R 8/22  
PTA -93FE -3.1FI 4.4%SCE

**GOLDEN-OAKS ST ALEXANDER-ET** A2/A2 AB HD GTPI +1838G  
61133837 100%RHA-NA TR TY TV TL TD  
8-02 94 EEEE  
PTA -213M +32F -13P 99%R 8/22  
PTA -33NM +14%F -02%P 49%US  
PTA -2.0PL 3.16SCS -3.4DPR 3.4%DCE  
PTA +.10T -.44UDC +.71FLC 99%P 8/22

**TOP-DIMARK A CHLOE** PTPI+1831  
144749384 100%RHA-NA  
1-11 2 204 14370 3.7 532 3.3 474  
3-00 2 305 19160 4.3 822 3.3 640  
305 19220 4.3 824 3.3 642

**TOP-DIMARK ARMANI CHERISH** CTPI+1775  
143442631 100%RHA-NA  
5-03 86 VVV+V  
2-02 2 272 11760 3.8 446 3.4 398  
3-03 2 154 9710 3.6 352 3.3 324  
4-02 2 204 13260 3.3 441 3.4 451  
5-02 305 18650 4.1 761 3.4 627  
6-02 305 23970 3.8 917 3.8 915



# Spring Fashions Sale



# 57

## HEIFER APP

840003251666143

Born: 3/22/2022

**GRAI-ROSE CATTLE CO,  
SILVER-ELITE, AND TYLER  
DICKERHOOF  
PO BOX 245  
TOMALES, CA 94971  
(608) 797-2855 (GRAISSON)**

**MR BLONDIN WARRIOR-RED-ET** A1/A2 BE 75K GTPI +1867G  
840003139655530 99%RHA-I TP TC TY TV TL TD  
PTA -684M -16F -13P 97%R 8/22  
PTA -428NM +.04%F +.03%P 90%US  
PTA -2.1PL 2.94SCS -2.5DPR 3.2%DCE  
PTA +3.22T +1.86UDC +1.67FLC 95%R 8/22  
PTA -99FE -2.7FI 4.6%SCE

**MS JAKE CHAMPION**  
840003212689490

**RUANN JAKE-75936-ET**  
840003146410272  
FULL BOTHER TO RUANN DOORMAN JEAN EX-95

**RJOHN PRESTIGE CHAMPION-ETAE** 19K GTPI +2098G  
840003138127409 99%RHA-I TR TC TL TD  
2-06 89 VEEVE  
PTA +3.25T +2.40UDC +1.05FLC 84%R 12/22  
2-02 3 365 30510 4.5 1371 3.5 985  
\*4TH INTERNATIONAL WNTR HFR CALF 2018  
\*2ND W FALL NATL WNTR YR HFR 2019  
\*5TH WEST SPRG NATL WNTR YR 2019

3rd Dam

**SILVERMAPLE WINDHAM CAMILLE-ET**  
EX-92 EEEEE  
\*RESERVE ALL-AMERICAN SR 2Y COW 2015  
\*2ND INTERNATIONAL SR 2Y COW 2015  
\*2ND WEST SPRG NATL WNTR YR HFR 2014

4th Dam

**SILVERMAPLE DAMION CAMOMILE EX-95**  
EEEEEE  
3-03 2 365 32268 4.1 1327 3.4 1098  
5-02 2 305 30450 4.1 1262 3.1 946

# 58

## CAL-DENIER-I GABI 8917

840003245571639 87%RHA-I

Born: 6/10/2022 PTPI+ 2107

PTA +612M +3F +16P 36%R 8/22

**NDIRA INC  
PO BOX 221753  
CARMEL, CA 93922  
(831) 626-0451**

**STANTONS CHIEF-ET** A2/A2 75K GTPI +2314G  
840003129015989 99%RHA-I TC TY TV TL TD  
PTA +714M +10F +21P 98%R 8/22  
PTA +32NM -.06%F +.00%P 3%US  
PTA +.6PL 2.73SCS -1DPR 3.1%DCE  
PTA +2.17T +2.24UDC +.46FLC 97%R 8/22  
PTA -9FE +0.0FI 3.2%SCE

**CAL-DENIER-I C GABI 8338** PTPI+1900  
840003217507490 75%RHA-NA  
PTA +509M -4F +10P 45%R 8/22  
\*DIED AT CALVING

**SONNEK GC CORVETTE-ET** A2/A2 AB 49K GTPI +1920G  
71391400 100%RHA-NA TR TP TY TV TL  
5-01 92 EEEE  
PTA -124M -1F +1P 99%R 8/22  
PTA -251NM +.01%F +.02%P 92%US  
PTA -3.1PL 2.90SCS -2.0DPR 2.0%DCE  
PTA +1.93T +.87UDC +1.29FLC 99%R 8/22

**CAL-DENIER-I MILTON GABI** AE 19K GTPI +1883G  
840003200120757 50%RHA-NA TR TP TC TL  
3-04 83 GVG++  
PTA +1142M -6F +19P 80%R 8/22

# 59

## GL-GR ALT DOWN-N-DIRTY-RED 3979

840003240551651 99%RHA-I

Born: 4/12/2022 PTPI+ 1953

PTA +2.67T +2.30UDC +1.30FLC 45%R 12/22

**G & M SCHMIDT  
& F & A GAMBONINI  
C/O GRAISSON SCHMIDT  
PO BOX 245 TOMALES, CA 94971  
(707) 484-2077**

**FARNEAR ALTITUDE-RED-ET** P6 75K GTPI +2207G  
840003128013348 99%RHA-I TC TY TV TL TD  
PTA +150M +10F +15P 98%R 12/22  
PTA -80NM +.02%F +.04%P 73%US  
PTA -.8PL 2.97SCS -2.6DPR 3.0%DCE  
PTA +3.16T +2.73UDC +1.50FLC 98%R 12/22  
PTA -2FE -2.7FI 4.7%SCE

**RUANN-GR DOWN-2PARTY-RED-ET** 55K GTPI +1705G  
840003212689941 99%RHA-I  
PTA -639M -39F -26P 82%R 12/22  
PTA -471NM -.05%F -.02%P  
PTA -1.4PL 3.13SCS -1.4DPR 3.1%DCE  
PTA +2.17T +1.86UDC +1.10FLC 81%R 12/12  
PTA -131FE -1.5FI 4.1%SCE

**RIVERDOWN UNSTOPABULL-RED** A1/A1 75K GTPI +1975G  
CAN 11801450 99%RHA-I TY TV TL  
PTA -429M -24F -24P 99%R 12/22  
PTA -227NM -.03%F -.04%P 48%US  
PTA +1.1PL 2.94SCS +.9DPR 2.7%DCE  
PTA +2.18T +2.20UDC +1.39FLC 98%R 12/22

**LAKE-BREEZE ACT DEE-RED-ET** AA 19K GTPI +1460G  
840003012456970 100%RHA-NA TC TL TD  
4-07 92 EEEEE  
PTA -662M -60F -29P 85%R 12/22  
PTA -726NM -.13%F -.03%P  
PTA -3.1PL 3.27SCS -1.9DPR 4.2%DCE  
PTA +2.04T +1.03UDC +1.36FLC 84%R 12/22  
2-00 3 365 27160 3.8 1022 2.8 766  
3-08 2 365 34270 3.3 1138 3.1 1065  
\*2ND WEST SPRG NATL SPR YR HFR 2015  
\*1ST SP YRLG WEST SP NAT 2015

3rd Dam

**BUDJON-VAIL DEIDRA-RED EX-94**

4th Dam

**BUDJON REDMARKER DESIRE EX-96**  
5X NOM ALL AM MILKING FARM

**NEXT 3 DAMS ALL EX**



# Spring Fashions Sale



## HAWARDEN JEDI ZINNIA Gd Dam of Lot 60

### KJME KIMBER 68534

JE840003251551665

Born: 3/22/2022 Eartag: 68534

# 60

**KJ JERSEYS & KEN MELVOLD  
& JOAN EVANS  
6179 N BLOSSER  
FRESNO, CA 93711**

#### KASH-IN KIMBER-ET

JE840003210812421  
CDCB GPTA S 8/1/22  
78%R 982M 0.02% 51F 82%ILE  
78%R 0.03% 43P 430CM\$ 420NM\$ 352FM\$ 328GM\$  
2.2PL -1.1LIV -2.4DPR -1.5CCR 0.8HCR 2.86SCS  
0.1MFV 0.0DAB -0.1KET -0.2MAS 0.4MET -0.1RPL 0.60HTI  
AJCA 8/1/22 ODAUS  
GPTAT 80%R 0.8 GJUI 8.6 GJPI 74%R 97

#### KJ FIZZ 59931-ET

JE840003125901432  
1-09 300 3 15750 5.2 817 3.7 589 96DCR 2037C  
305 2X ME AVG 1L 18534M 961F 702P 2429C  
2-09 83%

#### J-KAY TEQUILA FIZZ

067060052  
CDCB GPTA S 8/1/22 934DAUS 406HRDS 15%RIP  
98%R -2032M 0.15% -70F 0%ILE  
98%R 0.04% -67P -822CM\$ -814NM\$ -778FM\$ -880GM\$  
-2.1PL -2.8LIV -2.2DPR -1.8CCR -0.9HCR 3.24SCS  
0.1MFV -0.4DAB -0.3KET 1.2MAS 0.1MET 0.4RPL 1.18HTI  
AJCA 8/1/22 651DAUS  
GPTAT 98%R 0.8 GJUI 10.6 GJPI 95%R -190

#### HAWARDEN JEDI ZINNIA

067240835  
2-00 77 2 4050 3.5 143 3.3 133 77DCR 412C  
3-00 297 3 17350 4.7 813 3.8 660 94DCR 2217C  
3-11 298 3 22290 4.8 1063 3.7 821 95DCR 2839C  
4-11 305 3 23470 4.6 1080 3.5 831 98DCR 2873C  
305 2X ME AVG 4L 18979M 870F 700P 2357C  
3-01 90%

3rd Dam EX-91

4th Dam VG-87

5th Dam EX-90

6th Dam EX-91

# 61

## TOPDIMARK FERRIS WANDA

68219650

Born: 1/7/22 Tattoo: R340

**ELISABETH & ELISE REGUSCI  
MODESTO, CA**

#### TOPDIMARK BONANZA FERRIS

68178245  
GENETIC CONDITIONS:  
V88  
PARENT AVERAGE PPR: -83 PTAT: +0.1  
PA: -589M -27F -28P -326NM\$  
PTA: PL -0.2 SCS: +3.11 DPR: -0.2 SCE:  
PA: LIV +0.3

#### TOPDIMARK DARE WOW ETV

68196123  
03/09  
PTA: +84M +0F +2P -134NM\$ 10%\$ (GEN)  
DEV: +372M +6F +5P (08/22)  
2-02 127D 3X 7980 4.1 330 3.2 258 INC

#### HILLTOP ACRES B DAREDEVIL ET

840003012559129  
GENETIC CONDITIONS: PT DT MT WT BH2T  
NOT CLASSIFIED  
PPR: -47 94%R PTAT: +0.7 97%R (08/22)  
PTA: +243M -18F +4P -150NM\$ 98%R (MACE)  
PTA PL: -1.1 SCS: +3.25 DPR: -3.6 SCE: +2.6  
PTA LIV: -2.7  
894 DAU. AV. 24305 4.1 992 3.3 811  
577 CLASS. DAU. AV FS:84.3 UDC:1.41 FLC:-0.10

#### TOP ACRES C WIZZIE SHOW ET

68181947  
PTA: +655M +19F +15P -37NM\$ 24%\$ (GEN)  
DEV: +1894M +66F +53P (08/22)  
4-05 305 2X 26570 3.6 949 3.4 896 DHIA  
4-05 365 2X 30890 3.7 1149 3.4 1057 DHIA  
\*JR CHAMPION CA STATE FAIR 2018  
\*1ST WINTER YRLG HFR CA STATE FAIR 2018  
\*1ST WINTER HFR CALF MN STATE FAIR 2017



# Spring Fashions Sale



# 62

## CAL-DENIER SIDEKICK 8845

840003238070648 98%RHA-NA

Born: 3/2/2022 PTPI+ 2195

**CAL-DENIER HOLSTEINS**  
10715 ARNO RD  
GALT, CA 95632  
(209) 745-4982

**WALNUTLAWN SIDEKICK** 75K GTPI +2180G  
CAN 12508113 99%RHA-I TR TY TV TL TD  
PTA -1121M +9F -10P 98%R 8/22  
PTA -55NM +.19%F +.09%P 8%US  
PTA -.2PL 2.77DCD -.1DPR 2.1%DCE  
PTA +2.88T +2.42UDC +.64FLC 97%R 8/22  
PTA -32FE -0.2FI 2.0%SCE

**PROGENESIS BYTES-ET** AB 49K GTPI +2472G  
CAN 12108705 99%RHA-NA  
PTA +1875M +66F +66P 99%R 8/22  
PTA +325NM -.02%F +.03%P 24%US  
PTA -3.4PL 3.05SCS -2.5DPR 2.3%DCE  
PTA +1.68T +.64UDC -1.00FLC 97%R 8/22

**CAL-DENIER BYTES MIA 7652** PTPI +2197  
840003200120873 96%RHA-I  
PTA +807M +46F +31P 50%R 8/22  
2-04 2 319 23710 3.9 919 3.4 809  
3-04 2 104 10760 4.1 443 3.0 325

**CAL-DENIER POLICE MIA 6768** PTPI +1948  
840003139138513 92%RHA-NA  
2-01 80 V+FG+  
1-09 2 365 24470 4.4 1077 3.4 823  
2-11 2 277 20780 4.9 1009 3.3 689

# 63

## GABZ DOMINATE DAYTONA 8574

84000324507882 99%RHA-I

Born: 3/1/2022 PTPI+ 1552

PTA +1.49T +.55UDC +.35FLC 31%R 12/22

**GABBIE GREGORIO**  
10950 E JAHANT RD  
ACAMPO, CA 95220  
(209) 663-3976

**MR ERNEST DOMINATE-ETA1/A2 AE 19K GTPI +1495G**  
840003144536974 100%RHA-NA TR TC TL TD  
2-10 88 VVVE  
PTA -1000M -61F -41P 82%R 12/22  
PTA -583NM -.08%F -.04%P 100%US  
PTA -1.9PL 3.18SCS -.3DPR 2.3%DCE  
PTA +1.49T +.84UDC +.42FLC 80%R 12/22  
PTA -180FE -0.7FI 3.7%SCE

**CALORI-D CL SOLOMON POSCH** AA 12K GTPI +1818G  
144036484 99%RHA-I TR TC TY TV TL TD  
PTA -444M -24F -19P 91%R 12/22  
PTA -378NM -.03%F -.02%P 80%US  
PTA -1.4PL 2.97SCS -2.1DPR 2.6%DCE  
PTA +2.78T +2.16UDC +.81FLC 85%R 12/22

**GABZ CD DALLAS** PTPI +1620  
840003212826317 99%RHA-I  
2-10 83 VVV++  
PTA +1.49T +.26UDC +.28FLC 45%R 12/22  
\*IS NOT ON TEST

**GABZ BRAXTON DELILAH** CTPI +1532  
143933621 100%RHA-NA  
4-09 88 VEEVV  
2-02 3 364 33340 3.2 1079 2.8 947  
3-04 3 303 29920 3.2 960 2.9 865  
4-05 3 365 47020 4.4 2072 3.0 1425  
LIFE 1199 121820 3.7 4557 3.0 3634

# 64

## CAL-DENIER GOLD CHIP 8881

840003245571603 99%RHA-I

Born: 4/11/2022 PTPI+ 2100

**CAL-DENIER HOLSTEINS**  
10715 ARNO RD  
GALT, CA 95632  
(209) 745-4982

**MR CHASSITY GOLD CHIP-ET** A1/A2 AA 75K GTPI +1751G  
140145553 100%RHA-NA TR TP TY TV TL  
9-06 95 EEVE  
PTA -590M -22F -38P 99%R 8/22  
PTA -263NM +.00%F -.07%P 39%US  
PTA +.0PL 2.78SCS -1.6DPR 1.5%DCE  
PTA -102FE -2.2FI 1.6%SCE

**WOODCREST KING DOC** A1/A2 BB 75K GTPI +2814G  
840003132417775 99%RHA-I TR TP TC TY TV  
3-04 90 EEVE  
PTA +1609M +69F +55P 99%R 8/22  
PTA +633NM +.02%F +.02%P 43%US  
PTA +3.8PL 3.09SCS -1.5DPR 2.5%DCE  
PTA +3.31T +2.21UDC +2.03FLC 99%R 8/22

**CAL-DENIER DOC PRIM 8197** P8 PTPI +2453  
840003137484842 99%RHA-I  
PTA +1009M +42F +27P 46%R 8/22  
PTA +2.14T +1.40UDC +1.15FLC 38%R 8/22

**CAL-DENIER KINGPIN PRIM** CTPI +2150  
840003134498558 99%RHA-I  
5-02 85 EVGV+  
PTA +213M +25F +1P 56%R 8/22  
2-11 2 292 26030 3.6 947 3.0 776  
3-11 2 298 27960 4.2 1173 3.1 879  
4-10 2 288 28340 3.7 1041 3.1 875  
LIFE 1191 106200 3.7 3981 3.1 3278





# Spring Fashions Sale



# 65

**STEPHEN & PATRICK MADDOX**  
7285 W DAVIS AVE  
RIVERDALE, CA 93656  
(559) 977-1889

## RUANN ATOMIC AMA-22882-RED 22882

840003248273552 99%RHA-I  
Born: 4/13/2022 55K GTPI+ 2226G  
PTA +431M -5F +14P 79%R 12/22  
PTA +2.47T +1.81UDC +1.53FLC 79%R 12/22

**RUANN ATOMIC-2356** P9 55K GTPI +2704G  
840003212689887 99%RHA-I RC  
PTA +1172M +67F +56P 82%R 12/22  
PTA +572NM +.08%F +.07%P 100%US  
PTA +1.6PL 3.07SCS -2.5DPR 2.2%DCE  
PTA +2.75T +1.84UDC +2.00FLC 81%R 12/22  
PTA +194FE -2.5FI 2.6%SCE

**RUANN UNST AMA-3146-RED-ET** PTPI +1729  
840003212690677 99%RHA-I  
PTA +1.72T +.98UDC +.85FLC 46%R 12/22  
\*DIED AT CALVING  
\*MATERNAL SISTER BY WARRIOR VG-85  
\*ALL CA SP YRLG 2021

**RIVERDOWN UNSTOPABULL-RED** A1/A1 75K GTPI +1975G  
CAN 11801450 99%RHA-I TY TV TL  
PTA -429M -24F -24P 99%R 12/22  
PTA -227NM -.03%F -.04%P 48%US  
PTA +1.1PL 2.94SCS +.9DPR 2.7%DCE  
PTA +2.18T +2.20UDC +1.39FLC 98%R 12/22

**RUANN BARNIE AMA-20888-RED** AB 19K GTPI +1438G  
840003009754610 100%RHA-NA TL TD  
4-05 90 EEEEEV  
PTA +1.25T -.25UDC +.30FLC 87%R 12/22  
2-00 3 365 27340 3.4 942 3.1 847  
3-02 3 298 26730 3.4 903 3.1 826  
4-01 3 362 30370 3.6 1096 3.0 921  
5-03 3 365 34460 3.5 1219 3.0 1023  
LIFE 1413 120240 3.5 4209 3.0 3662

**3rd Dam**  
**RUANN PICOLO AMA-4810-ET** VG-85  
2-11 3 297 21560 3.8 810 3.0 643  
**4th Dam**  
**RUANN LASSITER AMA-51791-TW** EX-91  
2-01 3 28160 3.5 999 3.0 834  
**5th Dam**  
**RUANN S-LINER AMA-22015** EX-90  
2-11 3 300 30750 3.3 1000 2.9 878  
**6th Dam**  
**CLARKHOME RUANN AMA-1989**  
1-11 3 365 34180 3.9 1348 3.1 1058  
**7th Dam**  
**CLARKHOME ALEXA LBJ AMA-6690** NS  
3-02 3 305 34760 3.5 1204 3.1 1088  
**8th Dam**  
**CLARKHOME ALEXA WNB LBJ-6030** GP-83  
3-09 2 256 21900 4.1 887 3.5 761

# 66

**ELISE E REGUSCI**  
5425 STODDARD RD  
MODESTO, CA 95356  
(209) 604-2605

## TOP-DIMARK MOOVIN CARA-RED 132

145458368 99%RHA-I  
Born: 3/12/2021 PTPI+ 1871  
PTA +2.26T +1.89UDC +1.13FLC 36%R 8/22  
BD 6/2/2022 ROMPIN RED SEXED

**MR AFFECTION ANALYST-RED-ET** AA 75K GTPI +1906G  
840003136496608 99%RHA-I TP TC TY TV TL TD  
PTA -20M -27F -23P 81%R 8/22  
PTA -386NM -.09%F -.08%P 100%US  
PTA -.4PL 2.87SCS -1.4DPR 2.6%DCE  
PTA +2.81T +2.49UDC +1.81FLC 81%R 8/22  
PTA -129FE -1.1FI 3.3%SCE

**TOP-DIMARK ARMANI CHERISH** CTPI +1775  
143442631 100%RHA-NA  
5-03 86 VVV+V  
2-02 2 272 11760 3.8 446 3.4 398  
3-03 2 154 9710 3.6 352 3.3 324  
4-02 2 204 13260 3.3 441 3.4 451  
5-02 305 18650 4.1 761 3.4 627  
6-02 305 23970 3.8 917 3.8 915

**MR APPLES ARMANI-ET** A1/A2 AB 75K GTPI +2063G  
68571374 100%RHA-NA RC CD TP TY TV TL TD  
4-10 90 EEEV  
PTA -1819M +15F -13P 99%R 8/22  
PTA -36NM +.32%F +.17%P 51%US  
PTA -1.8PL 2.84SCS +1.4DPR 2.3%DCE  
PTA +.99T +1.53UDC +1.47FLC 99%R 8/22

**HILLPINE ASPEN COTTON** CTPI +1401  
65849836 100%RHA-NA  
4-02 90 EVEEV  
2-00 3 365 23010 3.7 845 3.0 697  
4-01 3 201 14680 3.9 566 3.3 480  
5-07 2 209 14380 3.8 542 3.0 428  
6-06 2 112 7320 3.5 253 2.9 209



# Spring Fashions Sale



**ARETHUSA RESPONSE VIVID**  
*Gd Dam of Lot 67*

# 67

**MISTY MEADOW DAIRY**  
2614 1ST ST  
TILLAMOOK, OR 97141

## **MM KID ROCK VAHLING 18624-ET**

JE840003250240895  
Born: 3/7/2022 Eartag: 18624

### **MR KATHIES KID ROCK**

JE840003128791587  
CDCB GPTA S 12/1/2022 49DAUS 29HRDS 69%RIP  
89%R -1629M 0.02% -74F 0%ILE  
89%R 0.01% -58P -688CM\$ -678NM\$ -627FM\$ -695GM\$  
-1.0PL -0.6LIV 0.5DPR 0.3CCR -0.9HCR 3.26SCS  
0.0MFV -0.5DAB -0.6KET 1.1MAS 0.1MET 0.3RPL -0.88HTI  
AJCA 12/1/2022 40DAUS  
GPTAT 86%R 1.6 GJUI 14.6 GJPI 83%R -154

### **ARETHUSA PREMIER VAHLING-ET**

JE840003143030468  
2-03 305 3 17830 5.0 894 3.8 675 55DCR 2335C  
3-05 305 2 16970 4.9 824 3.9 656 98DCR 2230C  
305 2X ME AVG 2L 18883M 934F 729P 2500C  
4-10 92%

### **HAWARDEN IMPULS PREMIER**

067107510  
CDCB GPTA S 12/1/2022 7626DAUS 1266HRDS 4%RIP  
99%R -1070M 0.25% -2F 12%ILE  
99%R 0.14% -11P 70CM\$ 59NM\$ -36FM\$ 74GM\$  
2.3PL 2.5LIV 2.8DPR 1.2CCR -0.8HCR 3.08SCS  
0.1MFV 0.3DAP 0.8KET 1.0MAS 1.3MET 0.5RPL 5.87HTI  
AJCA 12/1/2022 4364DAUS  
GPTAT 99%R 0.4 GJUI -0.6 GJPI 99%R 15

### **ARETHUSA RESPONSE VIVID-ET**

116023067  
4-01 305 2 20280 5.8 1175 3.6 729 97DCR 2520C  
6-00 305 2 22670 6.5 1482 3.5 790 97DCR 2730C  
7-04 305 2 21520 4.8 1023 3.7 788 98DCR 2725C  
9-04 305 2 20150 4.8 969 3.6 722 97DCR 2496C  
305 2X ME AVG 6L 20344M 1151F 727P 2513C  
10-04 96%

### *3rd through 10th Dams*

**HURANIA CENTURION VERONICA EX-97**  
2-11 2 331 25623 4.9 1263 4.1 1047  
\*SUPREME CHAMPION, WORLD DAIRY EXPO 2006  
\*WINNER JERSEY JOURNAL GREAT COW CONTEST 2016  
\*CANADIAN JERSEY COW OF THE YEAR 2011

### **GENESIS RENAISSANCE VIVIANNE**

VG-87-CAN  
5-00 2 303 12018 4.2 514 3.8 461

**GENESIS JUNA VIRGINIA EX-91-4E-CAN**  
6-06 2 305 16539 4.7 772 3.8 628

**SWISSBELL F VERONICA EX-90-CAN**  
13-5 2 305 13854 4.5 619 3.9 536

### **SWISSBELL EN VIRGINIA SUP-EX-I**

5-03 2 305 11931 4.9 589

### **SWISSBELL VIRGINIA SUP-EX-90-CAN**

LIFE 5006 149770 5.8 8670

### **BELMONT JESTER VIRGINIA SUP-EX**

8-02 2 305 12059 5.6 679



# Spring Fashions Sale



**ARETHUSA RESPONSE VIVID**  
*Gd Dam of Lot 68*

# 68

**MISTY MEADOW DAIRY**  
2614 1ST ST  
TILLAMOOK, OR 97141

## **MM BONTINO VAHLING 19609-ET**

JE840003250478367  
Born: 6/5/2022 Eartag: 19609

### **ISAU CAIRNBRAE BONTINO**

JEAUS000000691603  
CDCB PTA 12/1/2022 687DAUS 129HRDS  
64%R -769M 0.17% -2F 7%ILE  
57%R 0.10% -8P -67CM\$ -75NM\$ -145FM\$ -92GM\$  
-0.1PL 1.2LIV 0.1DPR -1.6CCR 1.8HCR 3.03SCS  
0.1MFV 0.2DAB 0.1KET 0.2MAS 0.6MET 0.4RPL 2.84HTI  
AJCA 12/1/2022 160DAUS  
GPTAT 53%R 0.4 JUI 1.8 JPI 59%R -11

### **ARETHUSA PREMIER VAHLING-ET**

JE840003143030468  
2-03 305 3 17830 5.0 894 3.8 675 55DCR 2335C  
3-05 305 2 16970 4.9 824 3.9 656 98DCR 2230C  
305 2X ME AVG 2L 18883M 934F 729P 2500C  
4-10 92%

### **HAWARDEN IMPULS PREMIER**

067107510  
CDCB GPTA S 12/1/2022 7626DAUS 1266HRDS 4%RIP  
99%R -1070M 0.25% -2F 12%ILE  
99%R 0.14% -11P 70CM\$ 59NM\$ -36FM\$ 74GM\$  
2.3PL 2.5LIV 2.8DPR 1.2CCR -0.8HCR 3.08SCS  
0.1MFV 0.3DAP 0.8KET 1.0MAS 1.3MET 0.5RPL 5.87HTI  
AJCA 12/1/2022 4364DAUS  
GPTAT 99%R 0.4 GJUI -0.6 GJPI 99%R 15

### **ARETHUSA RESPONSE VIVID-ET**

116023067  
4-01 305 2 20280 5.8 1175 3.6 729 97DCR 2520C  
6-00 305 2 22670 6.5 1482 3.5 790 97DCR 2730C  
7-04 305 2 21520 4.8 1023 3.7 788 98DCR 2725C  
9-04 305 2 20150 4.8 969 3.6 722 97DCR 2496C  
305 2X ME AVG 6L 20344M 1151F 727P 2513C  
10-04 96%

### *3rd through 10th Dams*

**ARETHUSA VERONICAS DASHER-ET EX-95**  
7-04 3 305 27720 5.9 1643 3.6 1007  
6-03 3 305 26730 5.9 1565 3.7 999  
\*NOM ABA ALL-AMERICAN AGED COW 2012

**HURANIA CENTURION VERONICA EX-97**  
2-11 2 331 25623 4.9 1263 4.1 1047  
\*SUPREME CHAMPION, WORLD DAIRY EXPO 2006  
\*WINNER JERSEY JOURNAL GREAT COW CONTEST 2016  
\*CANADIAN JERSEY COW OF THE YEAR 2011

**GENESIS RENAISSANCE VIVIANNE VG-87-CAN**  
5-00 2 303 12018 4.2 514 3.8 461

**GENESIS JUNA VIRGINIA EX-91-4E-CAN**  
6-06 2 305 16539 4.7 772 3.8 628

**SWISSBELL F VERONICA EX-90-CAN**  
13-5 2 305 13854 4.5 619 3.9 536

**SWISSBELL EN VIRGINIA SUP-EX-I**  
5-03 2 305 11931 4.9 589

**SWISSBELL VIRGINIA SUP-EX-90-CAN**  
LIFE 5006 149770 5.8 8670

**BELMONT JESTER VIRGINIA SUP-EX**  
8-02 2 305 12059 5.6 679



# Spring Fashions Sale



**SUNSET CANYON MBSB ANTHEM**  
*4th Dam of Lot 69*

# 69

**LAURYN YOUNG**  
282 HIGHWAY 603  
CHEHALIS, WA 98532

## **CLAQUATO FEEL THE MOTION**

JE840003251670516  
Born: 4/18/2022 Eartag: 6026

### **KCJF MOLLYS REN MOTION**

067054785  
CDCB GPTA S 12/1/22 73DAUS 36HRDS 1%RIP  
90%R -2054M 0.03% -93F 0%ILE  
91%R 0.03% -70P -919CM\$ -907NM\$ -854FM\$ -870GM\$  
-3.5PL -1.0LIV 1.0DPR 1.2CCR 0.8HCR 3.40SCS  
-0.1MFV -0.1DAB -1.0KET -0.4MAS 0.8MET 0.5RPL -2.8HTI  
AJCA 12/1/22 78DAUS  
PTAT 87%R 0.0 JULI -1.6 JPI 82%R -207

### **CLAQUATO CHROME FLARE**

JE840003214929036  
2-03 85%

### **RIVER VALLEY CECE CHROME-ET**

JE840003012423929  
CDCB GPTA S 12/1/22 19613DAUS 1804HRDS 26%RIP  
99%R 501M 0.03% 30F 61%ILE  
99%R -0.01% 16P 312CM\$ 308NM\$ 299FM\$ 292GM\$  
2.1PL -2.0LIV -0.4DPR 0.0CCR 0.7HCR 2.85SCS  
AJCA 12/1/22 9070DAUS  
GPTAT 99%R 1.9 GJUI 15.0 GJPI 99%R 74

### **CLAQUATO VIP FLAME-ET**

JE840003147825066  
3-06 88%

3rd Dam  
**EX-92**

4th through 8th Dams  
**ALL EX**



# Spring Fashions Sale



**SUNSET CANYON MBSB ANTHEM**  
*4th Dam of Lot 70*

# 70

**LAURYN & KINLEY YOUNG**  
282 HIGHWAY 603  
CHEHALIS, WA 98532

## **CLAQUATO FERDINAND NARWHAL**

JE840003251670496  
Born: 3/5/2022 Eartag: 6006

### **ISAU LIGHTNING RIDGE FERDINAND**

JEAUS000000778373  
CDCB GPTA S 12/1/22  
76%R -506M 0.16% 9F 9%ILE  
76%R 0.05% -9P 0CM\$ -2NM\$ -27FM\$ 33GM\$  
0.0PL -1.3LIV 1.2DPR 1.3CCR 0.4HCR 3.10SCS  
-0.1MFV -0.2DAB -0.1KET 1.6MAS -0.1MET 0.2RPL 0.85HTI  
AJCA 12/1/22 ODAUS  
GPTAT 79%R 0.9 GJUI 6.1 GJPI 74%R 6

### **CLAQUATO NORTHERN EDGE CASINO**

JE840003206597426  
3-06 88%

### **ELLIOTTS REGENCY CASINO-ET**

JE840003125141657  
CDCB GPTA S 12/1/22 5088DAUS 914HRDS 24%RIP  
99%R -308M 0.09% 3F 19%ILE  
99%R 0.12% 13P 118CM\$ 108NM\$ 8FM\$ 55GM\$  
2.2PL -0.2LIV -0.3DPR 0.1CCR 1.0HCR 3.12SCS  
0.0MFV 0.3DAB 0.1KET -2.2MAS 0.3MET 0.1RPL -2.18HTI  
AJCA 12/1/22 2778DAUS  
GPTAT 99%R 1.9 GJUI 17.1 GJPI 97%R 30

### **MISS NASTIAS NAOMI-ET**

074025577  
2-00 305 2 12710 5.1 648 3.8 477 89DCR 1650C  
305 2X ME AVG 1L 15456M 791F 591P 2045C  
5-08 90%

3rd Dam **EX-93**

4th Dam **EX-95**

5th Dam **EX-92**

6th Dam **EX-92**

7th Dam **EX-95**



# Spring Fashions Sale



**MARKWELL BSTAR E RAVEN**  
5th Dam of Lot 71

# 71

## SELLING APP

Born: 10/4/2022

**R-JOHN HOLSTEINS**  
4338 LICHAU RD  
PENNGORVE, CA 94951  
(707) 249-4749

<b>WALNUTLAWN SIDEKICK</b>	75K GTPI +2180G
CAN 12508113 99%RHA-I	TR TY TV TL TD
PTA -1121M +9F -10P	98%R 8/22
PTA -55NM +.19%F +.09%P	8%US
PTA -.2PL 2.77SCS -1DPR	2.1%DCE
PTA +2.88T +2.42UDC +.64FLC	97%R 8/22
PTA -32FE -0.2FI 2.0%SCE	

<b>DYMENTHOLM MR APP AVALANCH-TW</b>	49K GTPI +1960G
CAN 11957107 99%RHA-I	RC CV TY TL TD
PTA -260M -7F -8P	99%R 12/22
PTA -350NM +.01%F +.00%P	49%US
PTA -2.1PL 2.94SCS -3.4DPR	3.1%DCE
PTA +3.72T +2.74UDC +2.07FLC	99%R 12/22
PTA -62FE -4.1FI 5.0%SCE	

<b>PAPPYS AVALANCHE RIDDLE-ET</b>	A1/A1 AE 36K GTPI +1793G
840003201362852 99%RHA-I	RC TC TL TD
PTA +1.92T +1.04UDC +.78FLC	82%R 12/22
*1ST WEST SPRG NATL FALL HFR CALF 2021	
*2ND MID-W SPR NAT FALL YR HFR 2022	
*4TH MID-W FALL NATL FALL HFR CALF 2021	

<b>PAPPYS REDLINER ROSA</b>	AA 9K GTPI +1375G
65468230 100%RHA-NA	RC TL TD
5-09 90	EEEEVE
2-05 2	365 31110 3.0 923 3.0 944
3-09 2	365 30070 2.8 837 3.0 915
5-03 2	365 41450 2.6 1082 2.9 1215
LIFE	1619 138950 2.9 4054 3.0 4227

3rd Dam							
<b>MARKWELL DURHAM RAVEL-ET EX93</b>							
EEEEEE 3E							
4-07	2	365	38050	3.7	1422	3.0	1138
LIFE		1686	158750	3.6	5691	3.0	4778



# Spring Fashions Sale



# 72

**FINLEY ROSA**  
4901 WASHINGTON RD  
HILMAR, CA 95324

## BUDDVU VIP JOURNIE-ET

JE840003222022059  
Born: 9/1/2021 Eartag: 540

### RIVER VALLEY VEMIS VIP-ET

JE840003126479187  
CDCB GPTA S 12/1/22 701DAUS 256HRDS 16%RIP  
98%R -3191M 0.1% -75F 1%ILE  
98%R 0.08% -66P -595CM\$ -592NM\$ -587FM\$ -626CM\$  
0.6PL 2.2LIV 0.8DPR 0.7CCR -0.5HCR 3.12SCS  
0.1MFV -0.2DAS -0.5KET 0.5MAS 0.8MET 0.3RPL 0.8HTI  
AJCA 12/1/22 552DAUS  
GPTAT 97%R 1.5 GJUI 20.8 GJPI 94%R -131

### LADY LANE IMPRESSION JOSEPHINE

JE840003142995882  
3-08 91%  
\*RESERVE ALL AMERICAN 2020  
\*JC WESTERN CLASSIC 2020  
\*GRAND CHAMPION STAN CO FAIR 2021  
\*WESTERN DAIRY SHOWCASE GRAND CHAMP 2021  
\*INTERMEDIATE CHAMP WESTERN DAIRY SHOWCASE 2022

### ROCK ELLA IMPRESSION-ET

JECAN000011227649  
CDCB GPTA S 12/1/22 815DAUS 37HRDS 4%RIP  
98%R -1702M 0.04% -74F 3%ILE  
98%R 0.01% -61P -532CM\$ -524NM\$ -473FM\$ -528GM\$  
1.0PL 1.1LIV 1.6DPR 1.6CCR 1.6HCR 3.13SCS  
-0.0MFV -0.1DAB -0.6KET -0.4MAS -1.3MET 0.5RPL -5.14HTI  
AJCA 12/1/22 708DAUS  
GPTAT 98%R 0.6 GJUI 4.4 GJPI 95%R -130

### LADY LANE TEQUILA 30 ANN-ET

119223176  
1-08 305 3 9120 4.5 414 3.6 328 85DCR 1117C  
2-10 305 2 12710 5.0 652 3.4 436 92DCR 1506C  
4-04 305 2 14280 5.1 723 3.6 507 91DCR 1752C  
305 2X ME AVG 3L 13442M 649F 475P 1632C  
4-03 90%

# 73

**FINLEY ROSA**  
4901 WASHINGTON RD  
HILMAR, CA 95324

## YELLOW BRIAR GOOGLE THAT

JECAN000014207295  
Born: 12/18/2021 Eartag: 452

### RAPID BAY DOWNTOWN BROWN

JECAN000120076424  
PA -1343M -30F -31P  
-381CM\$ -381NM\$ -419FM\$  
-2.5PL 1.6DPR 1.9CCR 0.4HCR 3.27SCS  
PA TYPE 0.5 JPI 38%R -82

### WINTERPLACE SUEDE GUCCI

JECAN000012854280  
\*RES ALL CANADIAN SR CALF 2018

### COWBELL BLUE SUEDE SHOES

117925250  
CDCB GPTA S 12/1/22 42DAUS 18HRDS 2%RIP  
83%R -2040M 0.33% -35F 1%ILES  
83%R 0.10% -55P -618CM\$ -620NM\$ -644FM\$ -567GM\$  
-4.0PL -2.2LIV 0.3DPR 1.6CCR 1.3HCR 3.13SCS  
-0.1MFV -0.4DAB -0.8KET 0.6MAS 0.6MET 0.2RPL -2.44HTI  
AJCA 12/1/22 30DAUS  
PTAT 68%R 0.4 JUI 4.6 JPI 74%R -127

### LOOKOUT GLOW IN THE DARK-ET

JECAN000107764247  
CDCB PTA 12/1/22 38RCS 56%R 5%ILE  
-2567M 0.33% -62F 0.15% -67P -542CM\$ -545NM\$ -388FM\$  
0.3PL 2.5LIV 4.0DPR 4.4CCR -0.1HCR 3.13SCS -488GM\$  
-0.1MFV -0.5DAB 0.0KET 1.0MAS 0.6MET 0.5RPL -0.10HTI  
AJCA 12/1/22 PTAT 47%R -0.1 JUI 6.3 JPI 48%R -111  
3-05 88%  
\*2013 ALL CANADIAN SUMMER YRLG

# 74

**JENSON JAXON JACE BROOKLYN & BRODIE**  
2765 HIGHWAY 101 S  
CLOVERDALE, OR 97112

## SKANDIA CRAZE ANTHEM

JE840003143984415  
Born: 4/6/2022 Eartag: 1620



### SUNSET CANYON TOPECA ANTHEM

410-ET

3rd Dam of Lot 74

3rd Dam  
**SUNSET CANYON TOPECA ANTHEM 410-ET**  
EX-93  
3-11 305 17560 5.7 1002 3.7 648

4th Dam **EX-91**

**DIRECT MATERNAL LINE TO ANTHEM**  
EX-95

### RIVER VALLEY CIRCUS CRAZE-ET

075341001  
CDCB GPTA S 12/1/22 8579DAUS 609HRDS 18%RIP  
99%R 164M 0.07% 22F 63%ILE  
99%R -0.02% 2P 310CM\$ 311NM\$ 324FM\$ 247GM\$  
3.9PL 3.7LIV -0.1DPR 0.5CCR 0.2HCR 2.97SCS  
AJCA 12/1/22 3944DAUS  
GPTAT 99%R 2.0 GJUI 16.8 GJPI 99%R 60

### SKANDIA JOEL PT ANTHEM

JE840003143984372

### GUIMO JOEL-ET

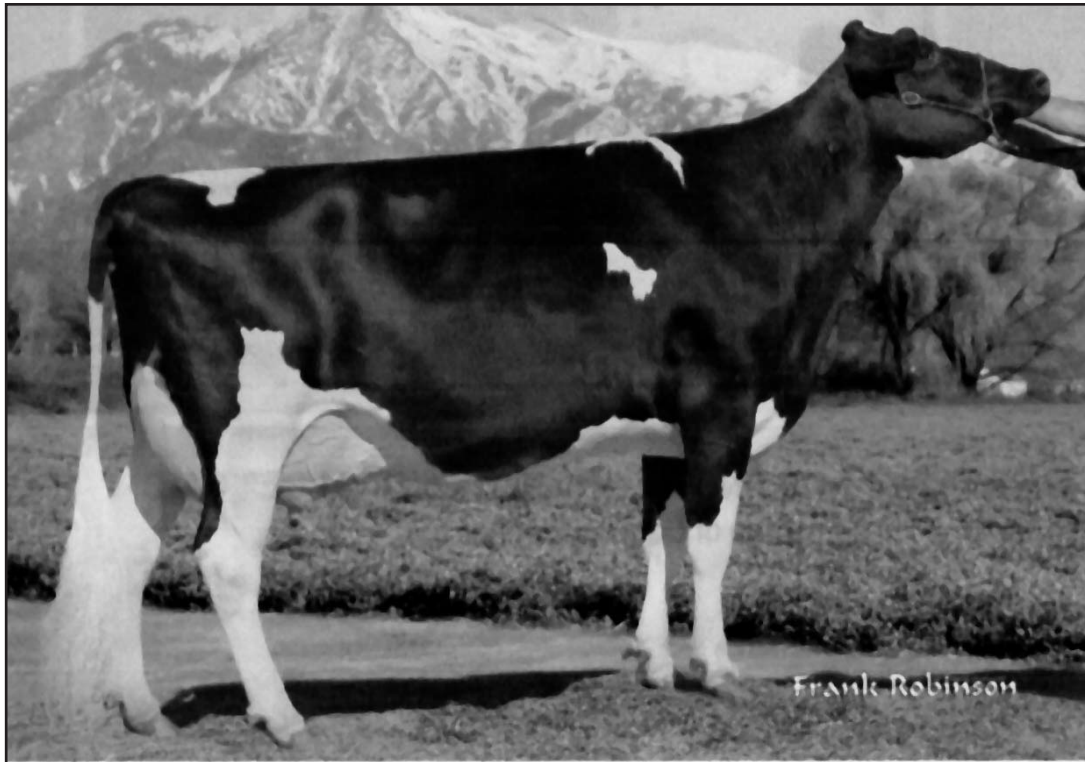
JECAN000106797223  
CDCB GPTA S 12/1/22 6151DAUS 1534HRDS 10%RIP  
99%R -1684M 0.13% -56F 3%ILE  
99%R 0.10% -42P -548CM\$ -547NM\$ -578FM\$ -556GM\$  
-1.9PL -0.7LIV -0.5DPR -0.4CCR 0.5HCR 3.28SCS  
0.1MFV 0.0DAB 0.5KET 0.8MAS 1.3MET 0.3RPL 3.66HTI  
AJCA 12/1/22 3393DAUS  
GPTAT 99%R 1.5 GJUI 16.5 GJPI 98%R -114

### SKANDIA TEQUILA T ANTHEM

119894518  
CDCB GPTA S 12/1/22 0RECS 78%R 5%ILE  
-1856M 0.34% -23F 0.12% -45P -450CM\$ -453NM\$ -497FM\$  
-0.9PL -3.9LIV -1.8DPR -3.0CCR -1.3HCR 3.17SCS -515GM\$  
AJCA 12/1/22 GPTAT 82%R 1.1 GJUI 10.0 GJPI 75%R -115  
2-09 85%



# Spring Fashions Sale



**MARKWELL DURHAM RAVEN-ET**  
Same Family as Lot 75

# 75

**R-JOHN HOLSTEINS**  
4338 LICHAU RD  
PENNGORVE, CA 94951  
(707) 249-4749

## **R-JOHN CRUSHABULL RAVEN 1528**

840003234748871 99%RHA-I  
Born: 9/1/2022 PTPI+ 1986  
PTA +2.72T +2.05UDC +1.16FLC 45%R 12/22

**OH-RIVER-SYC CRUSHABULL-ET** AB P6 40K GTPI +2189G  
840003135145001 99%RHA-I TR TP TC TY TV TL TD  
PTA +198M -19F +4P 98%R 12/22  
PTA -24NM -.09%F -.01%P 16%US  
PTA +.9PL 2.90SCS -1.0DPR 3.0%DCE  
PTA +3.51T +3.06UDC +1.53FLC 98%R 12/22  
PTA -20FE -.05FI 3.3%SCE

**PAPPYS AVALANCHE RIDDLE-ET** A1/A1 AE 36K GTPI +1793G  
840003201362852 99%RHA-I RC TC TL TD  
PTA +1.92T +1.04UDC +.78FLC 82%R 12/22  
\*1ST WEST SPRG NATL FALL HFR CALF 2021  
\*2ND MID-W SPR NAT FALL YR HFR 2022  
\*4TH MID-W FALL NATL FALL HFR CALF 2021

**DYMENTHOLM MR APP AVALANCHE-TW** 49K GTPI +1960G  
CAN 11957107 99%RHA-I RC CV TY TL TD  
PTA -260M -7F -8P 99%R 12/22  
PTA -350NM +.01%F +.00%P 49%US  
PTA -2.1PL 2.94SCS -3.4DPR 3.1%DCE  
PTA +3.72T +2.74UDC +2.07FLC 99%R 12/22

**PAPPYS REDLINER ROSA** AA 9K GTPI +1375G  
65468230 100%RHA-NA RC TL TD  
5-09 90 EEEVE  
2-05 2 365 31110 3.0 923 3.0 944  
3-09 2 365 30070 2.8 837 3.0 915  
5-03 2 365 41450 2.6 1082 2.9 1215  
LIFE 1619 138950 2.9 4054 3.0 4227  
\*4TH WEST SPRG NATL FALL YR HFR 2010  
\*5TH WEST SPRG NATL 5 Y COW 2014





# Spring Fashions Sale



# 76

**ASHLEY GLASS**  
1843 N HART RD  
MODESTO, CA 95358

**CAL-TICINIO CANDYMAN MARLEY**

174843737  
Born: 7/2/2021 Tattoo: A973  
Bd 8/31/22 50751662

**SOUTH MOUNTAIN CANDYMAN-ET**

JE840003141003008  
CDCB GPTA S 12/1/22  
78%R 410M -0.09% 0F 28%ILE  
78%R -0.01% 13P 161CM\$ 157NM\$ 150FM\$ 94GM\$  
1.9PL -1.0LIV -1.6DPR -2.1CCR -1.4HCR 2.86SCS  
0.0MFV 0.1DAB 0.1KET -0.2MAS 0.2MET -0.2RPL 0.18HTI  
AJCA 12/1/22 0DAUS  
GPTAT 80%R 1.7 GJUI 18.5 GJPI 76%R 35

**CAL-TICINIO ANDEAS MELODY**

174843728  
2-00 16740 815 570  
3-00 15080 594 463

**SUNSET CANYON ANDREAS**

117597125  
CDCB GPTA S 12/1/22 914DAUS 325HRDS 12%RIP  
98%R -1971M 0.09% -79F 0%ILE  
98%R 0.06% -61P -811CM\$ -807NM\$ -792FM\$ -808GM\$  
-3.5PL -2.2LIV -1.0DPR -0.9CCR -1.2HCR 3.17SCS  
0.0MFV -0.6DAB -0.5KET -2.1MAS -0.3MET 0.5RPL -6.80HTI  
AJCA 12/1/22 755DAUS  
GPTAT 98%R 0.9 GJUI 10.5 GJPI 95%R -183

**CAL-TICINIO BARNABAS MATTIE**

172964333

# 77

**GLASS HUNTER & ASHLEY**  
**& JONES CHARLIE & LUKAS**  
1843 N HART RD  
MODESTO, CA 95358

**CAL-TICINO TEXAS TREASURE**

17843719  
Born: 3/1/2022 Tattoo: A613

**HEARTLAND IRWIN TEXAS-ET**

67312531  
CDCB GPTA S 12/1/22 7507DAUS 73HRDS 9%RIP  
99%R 78M -0.13% -25F 22%ILE  
99%R 0.01% 4P 130CM\$ 130NM\$ 123FM\$ 67GM\$  
2.7PL -0.5LIV -1.6DPR -1.8CCR 2.2HCR 3.03SCS  
0.2MFV -0.4DAB 0.2KET 1.4MAS 1.6MET 0.7RPL 3.86HTI  
AJCA 12/1/22 2301DAUS  
GPTAT 99%R 1.9 GJUI 20.7 GJPI 99%R 21

**FIRE-LAKE ANDREAS TRIXIE**

JE840003135659912

**SUNSET CANYON ANDREAS**

117597125  
CDCB GPTA S 12/1/22 914DAUS 325HRDS 12%RIP  
98%R -1971M 0.09% -79F 0%ILE  
98%R 0.06% -61P -811CM\$ -807NM\$ -792FM\$ -808GM\$  
-3.5PL -2.2LIV -1.0DPR -0.9CCR -1.2HCR 3.17SCS  
0.0MFV -0.6DAB -0.5KET -2.1MAS -0.3MET 0.5RPL -6.80HTI  
AJCA 12/1/22 755DAUS  
GPTAT 98%R 0.9 GJUI 10.5 GJPI 95%R -183

**FIRE-LAKE ALEC AZALEA**

JE840003135659715  
1-09 305 2 8680 5.2 453 4.0 346 95DCR 1198C  
3-02 259 2 8870 5.6 496 4.0 357 93DCR 1236C  
4-01 264 2 12920 5.2 676 3.9 504 94DCR 1744C  
5-01 305 2 13790 5.7 780 3.8 526 70DCR 1768C  
305 2X ME AVG 4L 13158M 512P 1768C  
5-04 87



---

**Spring Fashions Sale**



*Notes*



*Notes*



---

# Spring Fashions Sale



## Notes



# INDEX

## Holstein

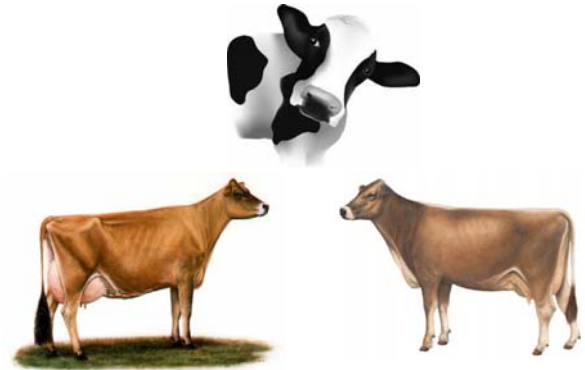
Adams, Lanee.....6, 19  
 Airosa, Joe .....49  
 Airosa, Bindea, Melvold .....48  
 Cabral, Tony .....5, 22, 54  
 Cal-Denier .....13, 26, 62, 64  
 Cranehill Genetics .....21, 27  
 Cunningham C.....32, 47, 71, 75  
 Garrison Mast & Oiekesahoaf .....8, 57, 59  
 Glass, Hunter.....46  
 Guegorla C. ....63  
 Maddox P&S.....7, 65  
 Maddox & Beaver .....3, 3A, 3B, 4  
 NDIRA .....1, 1A, 1B, 1C, 2, 2A, 18, 23, 28, 58  
 Melvold & Evans .....9, 1B, 12  
 Regusci, Elise .....11, 24, 30, 55, 56, 66  
 Royal Cut Genetics.....17  
 Sagaria R&D.....14, 15  
 Vanden Berge C. ....31  
 Vanden Eyk C&C.....25, 29  
 Van Exel .....35  
 Young, L, G & K.....20

## Jersey

Airosa & Melvold.....34  
 Calif. state Univ.....52  
 Glass, Hunter.....76, 77  
 Gregorio G. ....33  
 Jensen J&J .....74  
 Kash-In Jerseys .....37, 38  
 Melvold & Evans .....60  
 Misty Meadows.....50, 51, 67, 68  
 Natzke, Kyle.....39  
 Rosa Finley.....72, 73  
 Young K.....36, 69, 70

## Brown Swiss

Genasci, Ed .....40, 43  
 Glass, Hunter.....41, 42, 44  
 Regusci E. ....45, 53, 61





## HOLSTEIN ASSOCIATION TERMS AND CONDITIONS FOR PUBLIC SALES

EFFECTIVE MARCH 2, 1996 - Amended October 1, 1997, June 28, 2000, June 23, 2002, and March 26, 2010

**TERMS:** The terms of the sale are cash unless arrangements are made prior to the sale or are printed in the sale catalog. Only when the above conditions are met will the buyer be entitled to the warranties listed below. In no case will animals be released unless settlement is made with the clerk of the sale.

**RESPONSIBILITY:** The seller, buyer, and manager of this sale are obligated to comply with the provisions of these terms and conditions.

**EXPORT SALES:** Buyer assumes all responsibility for health tests required by the importing country.

**BIDS:** The highest bidder is the buyer. Bidding parties or their agents are responsible for all bids placed. Every animal or lot presented for bidding is pledged to absolute sale. In case of dispute, the animal or lot will again be put up for advance bids, and if there is no advance bid, the animal or lot will be sold to the person the auctioneer accepted the last bid from. In case two or more claim the bid, the auctioneer will indicate the party whose bid he recognized. Other claimants will be given an opportunity to increase the bid and bidding will be restricted to the two or more claimants.

**BY-BIDDING:** Bidding directly or indirectly by the sole owner of any animal or lot is prohibited unless the intention to bid is disclosed specific to each animal in the catalog and announced when the animal enters the ring. Bidding by any member of a partnership, syndicate, or other entity having an ownership interest in an animal or lot is permitted.

**TRANSFER OF OWNERSHIP:** For all Registered Holsteins<sup>SM</sup>, the transfer of ownership to the buyer will be recorded on the records of Holstein Association USA and a certificate of registration showing that transfer of ownership will be provided to the buyer free of charge. For embryos, the transfer of ownership to the buyer will be recorded on the records of Holstein Association USA free of charge to the buyer.

**RISK:** All animals located at sale site are at the purchaser's risk as soon as struck off, but will be cared for free of charge for a maximum of 24 hours following the end of the sale.

### WARRANTIES:

- 1) Each consignor warrants clear title to the animal or lot, and the right to sell same.
- 2) To the best of the seller's knowledge, each animal is sound and healthy in every respect and embryos have been recovered, processed, frozen, transferred and graded in keeping with IETS recommendations unless otherwise noted in the catalog or announced from the auction stand. Every precaution will be taken to represent the physical condition of each lot exactly as is known. Examination of all purchases should be made immediately after the purchase and before the close of the sale, and if found not to be as represented, complaint must be reported to the sale management before the close of the sale. In the event no complaint is filed, it is understood that the buyer assumes full ownership in the case of animals at sale site together with all risks, after which no representations of the seller can be challenged through the sale management. Heifers that never calved are in no way guaranteed as to the condition of their udders following calving.

### 3) Breeding Warranty

The seller guarantees all animals to be breeders, but not beyond the purchase price, with the following understanding:

- a. **Males** - Should any bull after reaching the age of fourteen months fail to prove a breeder after being used for two months on cows or heifers known to be breeders, the matter shall be reported in writing to the seller within three months of the sale date. The report must include the animal's examination record, a written statement of treatment, and a statement of the animals' inability to breed, by a licensed veterinarian. The seller has the option to refund the purchase price or make other settlement that is satisfactory to the buyer. In either case the rights of ownership of the animal return to the seller. The seller makes no guarantees with respect to the ability to freeze semen.

- b. **Females** - All females are guaranteed to be breeders with the exception of:

1. Cows over 7 years of age when sold;
2. Cows and/or heifers carrying a pregnancy that is the result of an embryo transfer.

Report of a non-breeder must occur in writing within 3 months of the date of sale or before the animal reaches 21 months of age and must be submitted to the seller. The report must include the animal's examination record, a written statement of treatment, and a statement of the animals' inability to breed, by a licensed veterinarian. The seller has the option to refund the purchase price or make other settlement that is satisfactory to the buyer. In either case the rights of ownership of the animal return to the seller.

Females bred when sold and pronounced in calf are presumed to be pregnant but pregnancy is not guaranteed unless so announced. The seller makes no warranty that pregnant cows will deliver calves of that they will carry calves full term.

- c. If, after the sale embryos or oocytes are recovered from a female or an attempt is made to superovulate her, this negates the breeding warranty unless there is a separate written agreement between buyer and seller.

**SHIPPING:** Assistance will be given in arranging shipping of the animals after the sale. All costs, risks and responsibility will be borne by the purchaser.

**PEDIGREE INFORMATION:** All production, classification, type and production summaries are current. Only information recorded on Holstein Association USA pedigrees is used. Any production or classification records supplied by the seller or consignor will be properly identified as provided by owner. Records in progress are identified as such.

**GENOMIC INFORMATION:** If genomic information on the animal or embryo is available, it must be dated and disclosed at or before the time of sale.

**EMBRYO TRANSFER:** All registered animals that have resulted from embryo transfer are identified with one of the following suffixes in the name: ET, ETS (from split embryo), or ETN (from nuclear transfer). If unregistered, the appropriate technology will be identified. Donor dams are identified.

**HEALTH WARRANTY:** The seller will provide an official health certificate to the buyer for each animal showing the results of all health tests made in preparation for this sale as required by the state where the cattle reside. Other health tests completed for this sale will be disclosed.

**ERRORS:** The material in this catalog has been carefully edited. If any errors or omissions are discovered, they will be announced. Such announcements take precedence over the matter of print in this catalog.

**ACCIDENT:** The sale management, the consignors, and the owner of the grounds will not be responsible in any case for the condition of the grounds or the behavior of the animals and disclaim any liability in the event of personal accident or property loss.

**LIMITATIONS OF WARRANTIES:** Warranties contained herein, unless terminated earlier, will cease upon the resale of an animal.

**KEN MELVOLD**  
Sales & Service  
6178 N. Blosser  
Fresno, CA 93711

**First Class**

*Catalog by  
Ken Melvold  
Sales & Service  
Fresno, CA*

*Please Bring  
This Catalog  
With You!*