

# **Future Opportunity Sale**



**January 30, 2023  
Richmond, MN**

**1:00 PM CST**



# Live Internet Bidding at

[www.cowbuyer.com](http://www.cowbuyer.com)



- View/Bid online in real time. Registration is required. Please register at least one hour prior to sale time at [www.cowbuyer.com](http://www.cowbuyer.com)
- High speed internet is required. Slower speed will not permit you to bid and keep pace in real time.
- Terms: Purchasing online constates a legal contract and promise for payment of purchase. All purchases must be paid within five days of sale date and prior to load out or delivery of cattle purchased.
- Cowbuyer.com is a service provider and is not responsible for the activity or inactivity of any technology, internet connection at the sale site or connection and technology of the bidder.
- No APP required on mobile devices.

Questions please contact Aaron Ray Tompkins 336-363-4639

# Future Opportunity Sale

Monday, January 30, 2023 @ 1:00 PM CST

View/ bid online in real time at [www.cowbuyer.com](http://www.cowbuyer.com)

\*Bidders must be pre-register & pre-approved. Contact Aaron Ray Tompkins if you need assistance at 336-363-4639

Feel Free to contact any member of the sale staff below to handle your bids or answer your questions!

## Sale Staff

Arnie Gruenes.....320-493-9703

Arnie Junior Gruenes....320-293-1514

Jamie Endvick.....608-566-9096

Terms of sale: We are not a bank & we do not finance cattle! Buyers will be invoiced immediately by email with overnight payments expected by money wires or good check sent by priority mail to Sale Clerk

## Sale Clerk

Kris Gruenes .....320-493-9704... [krisarn@meltel.net](mailto:krisarn@meltel.net)

We welcome participation from buyers who understand the proceeds need to be issued immediately! Buyers of live cattle should make immediate arrangements with sellers for transportation of purchases after payment has been made to sale managers. We encourage buyers to insure their purchases at least until they arrive at their new homes! Buyers are guaranteed their purchase will be healthy at time of pick up.

## Sale Catalog

Ashley Gruenes.....320-345-0126.....[lilyandmacy@gmail.com](mailto:lilyandmacy@gmail.com)

Twin Spruce Farm is excited to be giving the best opportunity for the future. As we have used these genetics and other cow families to make and grow our future herd early on. Our family would like to thank everyone for the support and hope these genetics will bring you great opportunities for in the future.

Sincerely,

Arnie & Kris Gruenes and Family

This sale will strictly be done on cowbuyer. All bidding will be placed and accepted through cowbuyer. This sale is going to be popcorn bidding. Where Every lot in up to 1-minute intervals after the last person bids will close. There will be two lots going the same time.

There is No actioner and No pedigree reader.





T-SPRUCE OVERDO 19388-ET

# Lot 1

# T-SPRUCE OVERDO 19388-ET

Arnie Gruenes  
Twin Spruce Farm  
17565 Co Rd 43  
Richmond, MN 56368  
Cows@meltel.net  
320-493-9703

Born 09/07/2022 Reg: 840003260816800

12/2022	CDCB SUMMARY GENOMICCOW			NMS +1113
Milk	+1128	79%R	Cheese Merit \$	+1131
Fat	+127	+0.29%	FMS +1005	GM\$ +1094
Protein	+55	+0.07%	Gestation Len.	MSP
CFP	+182		EFI %	gEFI 11.0% gIB 14.2%
SCS	2.72	%R	Mastitis +3.3	Fert. Index +1.3
PL	+5.2	%R	Livability +0.4	Heifer Liv. +1.4
DPR	+0.3	%R	HCR +2.5	CCR +2.1
RFI	-76			
Feed Saved	+100	43%R	0 Dtrs	0 Herds % US

### Sire: Ladys-Manor Overdo-ET

3214324420 12/22 PTA +3079 GTPI +598 M  
0.34% +119 F +0.10% +46 P +1081 NM\$ +5.1 PL  
+0.6 DPR 2.67 SCS +1.50 T +2.07 UDC +1.07 FLC  
HIGHJUMP x Granite x Millington

Beta: A2A2 Kappa: AB DWP\$: 1260

12/2022	GHA TYPE SUMMARY			TPI +3146				
PTAT +1.89	77%R	UDC+1.72	FLC+0.64	BSC +1.27	0 D / 0 H			
				-2	-1	0	1	2
Stature	+1.72	Tall						
Strength	+0.44	Strong						
Body Depth	+0.82	Deep						
Dairy Form	+2.62	Open Rib						
Rump Angle	+0.38	Sloped						
Thurl Width	+1.72	Wide						
Rear Legs-Side	+0.48	Sickle						
Rear Legs-Rear	+0.47	Straight						
Foot Angle	+0.54	Steep						
Feet & Legs Score	+1.13	High						
F. Udder Attachment	+1.74	Strong						
Rear Udder Height	+2.38	High						
Rear Udder Width	+2.86	Wide						
Udder Cleft	+1.36	Strong						
Udder Depth	+1.33	Shallow						
Front Teat Placement	+1.13	Close						
Rear Teat Placement	+1.28	Close						
Teat Length	-0.05	Short						

### Dam: T-SPRUCE LIONEL 13196-ET VG-83

Reg: 3205638661 12/22 PTA +3077 GTPI  
+1753 M +130 F +1119 NM\$  
+4.2 PL -0.8 DPR +0.93 T +0.71 UDC  
Sire Stack: Lionel x Samuri x Altaspring

**3<sup>rd</sup> Dam**  
T-Spruce Samuri 6347-ET  
**4<sup>th</sup> Dam**  
Mercedes Ts 9539-ET  
02-00 3x 354d 30670m 3.7 1149f 3.2 991p





T-SPRUCE OVERDO 19402-ET

# Lot 2

# T-SPRUCE OVERDO 19402-ET

Born 09/10/2022 Reg: 840003260816814

Arnie Gruenes  
Twin Spruce Farm  
17565 Co Rd 43  
Richmond, MN 56368  
Cows@meltel.net  
320-493-9703

12/2022	CDCB SUMMARY GENOMICCOW				NM\$ +1085
Milk	+953	79%R	Cheese Merit S		+1107
Fat	+101	+0.22%	FMS +932	GMS	+1069
Protein	+60	+0.10%	Gestation Len.	MSP	
CFP	+161		EFI %	gEFI 10.9%	gIB 12.4%
SCS	2.79	%R	Mastitis +1.5	Fert. Index	+1.3
PL	+5.3	%R	Livability +1.5	Heifer Liv.	+1.2
DPR	+0.4	%R	HCR +2.2	CCR	+2.0
RFI	-108				
Feed Saved	+221	43%R		0 Dtrs	0 Herds % US

Beta: A2A2 Kappa: BB DWP\$: 1180

12/2022	GHA TYPE SUMMARY				TPI +3081			
PTAT +1.38	77%R	UDC+2.04	FLC+1.08	BSC-0.12	0 D / 0 H			
				-2	-1	0	1	2
Stature	-0.16	Short						
Strength	-0.25	Frail						
Body Depth	-0.28	Shallow						
Dairy Form	+1.29	Open Rib						
Rump Angle	-0.06	High Pins						
Thurl Width	+0.60	Wide						
Rear Legs-Side	-0.62	Posty						
Rear Legs-Rear	+0.69	Straight						
Foot Angle	+0.65	Steep						
Feet & Legs Score	+1.08	High						
F. Udder Attachment	+1.70	Strong						
Rear Udder Height	+2.61	High						
Rear Udder Width	+2.92	Wide						
Udder Cleft	+1.03	Strong						
Udder Depth	+0.73	Shallow						
Front Teat Placement	+1.10	Close						
Rear Teat Placement	+1.32	Close						
Teat Length	-0.34	Short						

### Sire: Ladys-Manor Overdo-ET

3214324420 12/22 PTA +3079 GTPI +598 M  
0.34% +119 F +0.10% +46 P +1081 NM\$ +5.1 PL  
+0.6 DPR 2.67 SCS +1.50 T +2.07 UDC +1.07 FLC  
HIGHJUMP x Granite x Millington

### Dam: T-SPRUCE LIONEL 13196-ET VG-83

Reg: 3205638661 12/22 PTA +3077 GTPI  
+1753 M +130 F +1119 NM\$  
+4.2 PL -0.8 DPR +0.93 T +0.71 UDC  
Sire Stack: Lionel x Samuri x Altaspring

#### 2nd Dam

T-Spruce Samuri 6347-ET

#### 3rd Dam

Mercedes Ts 9539-ET

02-00 3x 354d 30670m 3.7 1149f 3.2 991p



T-SPRUCE BEETHOVEN 19393-ET

# Lot 3 T-SPRUCE BEETHOVEN 19393-ET

Arnie Gruenes  
Twin Spruce Farm  
17565 Co Rd 43  
Richmond, MN 56368  
Cows@meltel.net  
320-493-9703

Born 09/08/2022 Reg: 840003260816805

12/2022	CDCB SUMMARY GENOMICCOW			NMS +1166
Milk	+2040	78%R	Cheese Merit \$	+1180
Fat	+111	+0.11%	FMS +1069	GMS +1109
Protein	+81	+0.06%	Gestation Len.	MSP
CFP	+192		EFI % gEFI	11.1% gIB 17.4%
SCS	2.86	%R	Mastitis +0.0	Fert. Index -0.4
PL	+5.7	%R	Livability -0.1	Heifer Liv. +1.0
DPR	-1.2	%R	HCR +0.4	CCR +0.7
RFI	-73			
Feed Saved	+252	42%R	0 Dtrs 0 Herds	% US

**Sire: T-Spruce S-S-I Beethoven-ET**  
3223871576 12/22 PTA +2974 GTPI +1235 M  
0.19% +103 F +0.07% +59 P +1015 NM\$ +6.1 PL  
-0.3 DPR 2.69 SCS +0.98 T +1.39 UDC -0.13 FLC  
Taos x Legacy x Delta-Worth

Beta: A2A2 Kappa: AB DWP\$: 1212

12/2022	GHA TYPE SUMMARY			TPI +3070
PTAT +1.34	76%R	UDC+1.32	FLC-0.03	BSC +0.20 0 D / 0 H
				-2 -1 0 1 2
Stature	+0.53	Tall		
Strength	-0.42	Frail		
Body Depth	+0.10	Deep		
Dairy Form	+2.21	Open Rib		
Rump Angle	+0.04	Sloped		
Thurl Width	+0.22	Wide		
Rear Legs-Side	+0.85	Sickle		
Rear Legs-Rear	+0.01	Straight		
Foot Angle	-0.45	Low		
Feet & Legs Score	+0.17	High		
F. Udder Attachment	+0.87	Strong		
Rear Udder Height	+2.17	High		
Rear Udder Width	+2.22	Wide		
Udder Cleft	+1.10	Strong		
Udder Depth	+0.20	Shallow		
Front Teat Placement	+0.56	Close		
Rear Teat Placement	+1.15	Close		
Teat Length	+0.20	Long		

**Dam: T-SPRUCE MONSHINER 15704-ET**  
Reg: 3220247712 12/22 PTA +3133 GTPI  
+1766 M +121 F +1218 NM\$  
+5.8 PL -0.1 DPR +1.28 T +1.41 UDC  
Sire Stack: Moonshiner x Lionel x Samuri

**2nd Dam**  
T-Spruce Lionel 13196-ET  
**3rd Dam**  
T-Spruce Samuri 6347-ET  
**4th Dam**  
Mercedes Ts 9539-ET  
02-00 3x 354d 30670m 3.7 1149f 3.2 991p





T-SPRUCE OVERDO 19374-ET

# Lot 4

# T-SPRUCE OVERDO 19374-ET

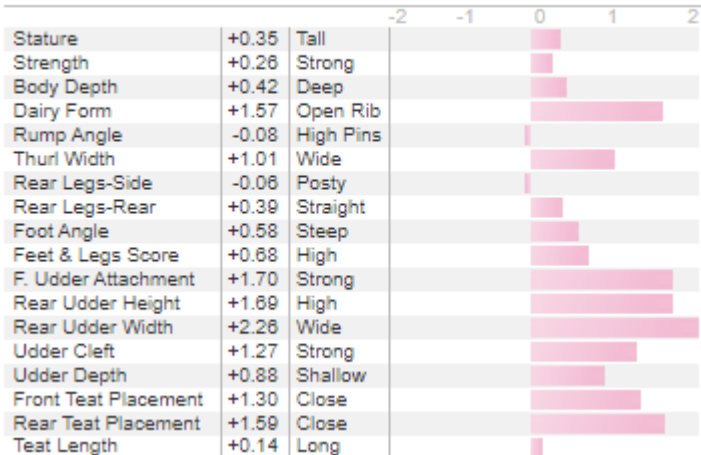
Arnie Gruenes  
Twin Spruce Farm  
17565 Co Rd 43  
Richmond, MN 56368  
Cows@meltel.net  
320-493-9703

Born 09/05/2022 Reg: 840003260816786

12/2022	CDCB SUMMARY GENOMICCOW				NM\$ +1062
Milk	+974	78%R	Cheese Merit \$		+1080
Fat	+121	+0.29%	FMS +947		GMS +1034
Protein	+52	+0.08%	Gestation Len.		MSP
CFP	+173		EFI %	gEFI 11.3%	gIB 11.5%
SCS	2.74	%R	Mastitis +2.8		Fert. Index +0.7
PL	+5.1	%R	Livability +0.9		Heifer Liv. +1.2
DPR	+0.2	%R	HCR +0.3		CCR +1.4
RFI	-45				
Feed Saved	+85	42%R			0 Dtrs 0 Herds % US

Beta: A2A2 Kappa: BB DWP\$: 1072

12/2022	GHA TYPE SUMMARY				TPI +3064
PTAT +1.43	76%R	UDC+1.61	FLC+0.58	BSC +0.40	0 D / 0 H



## Sire: Ladys-Manor Overdo-ET

3214324420 12/22 PTA +3079 GTPI +598 M  
0.34% +119 F +0.10% +46 P +1081 NM\$ +5.1 PL  
+0.6 DPR 2.67 SCS +1.50 T +2.07 UDC +1.07 FLC  
HIGHJUMP x Granite x Millington

## Dam: T-SPRUCE TAOS 16364-ET

Reg: 3235976371 12/22 PTA +3140 GTPI  
+1882 M +117 F +1141 NM\$  
+5.7 PL +0.7 DPR +1.45 T +0.87 UDC  
Sire Stack: Taos x Lionel x Samuri

### 2nd Dam

T-Spruce Lionel 13196-ET

### 3rd Dam

T-Spruce Samuri 6347-ET

### 4th Dam

Mercedes Ts 9539-ET

02-00 3x 354d 30670m 3.7 1149f 3.2 991p





T-SPRUCE MAGNUM 19455-ET

# Lot 5 T-SPRUCE MAGNUM 19455-ET

Arnie Gruenes  
Twin Spruce Farm  
17565 Co Rd 43  
Richmond, MN 56368  
Cows@meltel.net  
320-493-9703

Born 09/23/2022 Reg: 840003260816867

12/2022	CDCB SUMMARY GENOMICCOW				NM\$ +1044
Milk	+908	78%R	Cheese Merit \$		+1059
Fat	+111	+0.26%	FMS +945		GMS +1065
Protein	+47	+0.07%	Gestation Len.		MSP
CFP	+158		EFI %	gEFI 11.6%	gIB 12.9%
SCS	2.80	%R	Mastitis +1.0		Fert. Index +2.6
PL	+5.5	%R	Livability +0.9		Heifer Liv. +1.4
DPR	+2.2	%R	HCR +2.5		CCR +3.9
RFI	-25				
Feed Saved	+78	43%R		0 Dtrs 0 Herds	% US

Beta: A2A2 Kappa: AB DWP\$: 1121

12/2022	GHA TYPE SUMMARY				TPI +3063
PTAT +1.19	77%R	UDC+1.55	FLC+1.03	BSC +0.05	0 D / 0 H

			-2	-1	0	1	2
Stature	+0.36	Tall					
Strength	-0.22	Frail					
Body Depth	-0.31	Shallow					
Dairy Form	+0.43	Open Rib					
Rump Angle	-0.88	High Pins					
Thurl Width	-0.26	Narrow					
Rear Legs-Side	-0.93	Posty					
Rear Legs-Rear	+0.96	Straight					
Foot Angle	+1.06	Steep					
Feet & Legs Score	+1.08	High					
F. Udder Attachment	+1.53	Strong					
Rear Udder Height	+2.25	High					
Rear Udder Width	+1.90	Wide					
Udder Cleft	+0.33	Strong					
Udder Depth	+1.15	Shallow					
Front Teat Placement	+0.54	Close					
Rear Teat Placement	+0.56	Close					
Teat Length	+0.36	Long					

### Sire: Ocd Alphabet Magnum-ET

3216574976 12/22 PTA +2998 GTPI +1990 M  
0.10% +107 F +0.01% +64 P +1001 NM\$ +4.5 PL  
+0.3 DPR 2.96 SCS +1.27 T +1.55 UDC +0.28 FLC  
Alphabet x Jared x Burley

### Dam: T-SPRUCE CONWAY 15883-ET

Reg: 3220247891 12/22 PTA +3046 GTPI  
+736 M +134 F +1097 NM\$  
+4.4 PL +0.3 DPR +0.85 T +0.96 UDC  
Sire Stack: Conway x Lionel x Samuri

<b>2nd Dam</b>	T-Spruce Lionel 13196-ET
<b>3rd Dam</b>	T-Spruce Samuri 6347-ET
<b>4th Dam</b>	Mercedes Ts 9539-ET
	02-00 3x 354d 30670m 3.7 1149f 3.2 991p



T-SPRUCE GREYCUP 18177-ET

# Lot 6

# T-SPRUCE GREYCUP 18177-ET

## IVF Session

\*Buyer is purchasing rights to control the next IVF session(s) until a minimum of 8 #1 or #2 IVF embryos are produced. Embryo grades are determined at the time of transfer if fresh embryos or at time of freezing if freezing is requested by buyer. Buyer keeps all resulting embryos from these controlled IVF sessions. Buyer is responsible for all costs of the aspiration and mating sire decisions.

Born 03/01/2022 Reg: 840003243332431

## #2 TPI GreyCup Daughter

### Averages 20 oocytes per IVF session

Arnie Gruenes  
Twin Spruce Farm  
17565 Co Rd 43  
Richmond, MN 56368  
Cows@meltel.net  
320-493-9703

12/2022	CDCB SUMMARY GENOMICCOW				NMS +1150
Milk	+777	78%R	Cheese Merit \$		+1174
Fat	+117	+0.30%	FMS +987	GMS	+1123
Protein	+56	+0.11%	Gestation Len.	MSP	
CFP	+173		EFI %	gEFI 10.6%	gIB 15.8%
SCS	2.69	%R	Mastitis +2.1	Fert. Index	+2.1
PL	+6.5	%R	Livability +2.4	Heifer Liv.	+1.2
DPR	+1.0	%R	HCR +3.1	CCR	+3.2
RFI	-9				
Feed Saved	+94	41%R		0 Dtrs 0 Herds	% US

Beta: A1A2 Kappa: AB DWP\$: 1195

12/2022	GHA TYPE SUMMARY				TPI +3084
PTAT +0.54	78%R	UDC+1.09	FLC+0.00	BSC-0.25	0 D / 0 H

			-2	-1	0	1	2
Stature	-0.04	Short					
Strength	-0.40	Frail					
Body Depth	-0.56	Shallow					
Dairy Form	+0.28	Open Rib					
Rump Angle	+0.73	Sloped					
Thurl Width	-0.50	Narrow					
Rear Legs-Side	-0.71	Posty					
Rear Legs-Rear	-0.30	Hook In					
Foot Angle	+0.28	Steep					
Feet & Legs Score	+0.07	High					
F. Udder Attachment	+1.21	Strong					
Rear Udder Height	+1.24	High					
Rear Udder Width	+1.36	Wide					
Udder Cleft	+0.23	Strong					
Udder Depth	+0.69	Shallow					
Front Teat Placement	+0.85	Close					
Rear Teat Placement	+1.03	Close					
Teat Length	-0.75	Short					

### Sire: Winstar Greycup-ET

3212150603 12/22 PTA +2926 GTPI +932 M  
0.23% +103 F +0.08% +53 P +1088 NM\$ +6.6 PL  
+0.7 DPR 2.73 SCS +0.08 T +0.52 UDC -0.65 FLC  
Altazazzle x Crimson x Jedi

### Dam: T-SPRUCE RHETT 15027-ET

Reg: 3219884600 12/22 PTA +3032 GTPI  
+674 M +123 F +1084 NM\$  
+5.4 PL -0.4 DPR +0.92 T +1.34 UDC  
Sire Stack: Rhett x Lionel x Samuri

<b>3<sup>rd</sup> Dam</b>	T-Spruce Lionel 13196-ET
<b>4<sup>th</sup> Dam</b>	T-Spruce Samuri 6347-ET
<b>5<sup>th</sup> Dam</b>	Mercedes Ts 9539-ET
	02-00 3x 354d 30670m 3.7 1149f 3.2 991p





T-SPRUCE F BITE 19067-ET

# Lot 7

# T-SPRUCE F BITE 19067-ET

## IVF Session

\*Buyer is purchasing rights to control the next IVF session(s) until a minimum of 8 #1 or #2 IVF embryos are produced. Embryo grades are determined at the time of transfer if fresh embryos or at time of freezing if freezing is requested by buyer. Buyer keeps all resulting embryos from these controlled IVF sessions. Buyer is responsible for all costs of the aspiration and mating sire decisions.

Born 07/15/2022 Reg: 840003251844237

12/2022	CDCB SUMMARY GENOMICCOW				NMS +1318
Milk	+1584	78%R	Cheese Merit \$		+1336
Fat	+123	+0.21%	FMS +1189	GMS	+1306
Protein	+74	+0.08%	Gestation Len.	MSP	
CFP	+197		EFI %	gEFI 11.0%	gIB 36.3%
SCS	2.85	%R	Mastitis +0.9	Fert. Index	+1.5
PL	+6.2	%R	Livability +1.7	Heifer Liv.	+1.5
DPR	+0.2	%R	HCR +4.5	CCR	+2.7
RFI	-191				
Feed Saved	+427	43%R	0 Dtrs	0 Herds	% US

Beta: A2A2 Kappa: AB DWP\$: 1481

12/2022	GHA TYPE SUMMARY				TPI +3147
PTAT +0.34	77%R	UDC+1.03	FLC-0.09	BSC -1.18	0 D / 0 H
Stature	-1.31	Short			
Strength	-1.18	Frail			
Body Depth	-1.32	Shallow			
Dairy Form	+0.53	Open Rib			
Rump Angle	-0.66	High Pins			
Thurl Width	-0.29	Narrow			
Rear Legs-Side	+1.43	Sickle			
Rear Legs-Rear	-0.65	Hock In			
Foot Angle	-1.29	Low			
Feet & Legs Score	-0.15	Low			
F. Udder Attachment	+0.65	Strong			
Rear Udder Height	+1.57	High			
Rear Udder Width	+1.47	Wide			
Udder Cleft	-0.44	Weak			
Udder Depth	+0.08	Shallow			
Front Teat Placement	-0.24	Wide			
Rear Teat Placement	-0.28	Wide			
Teat Length	-1.38	Short			

## #2 Net Merit Frost Bite Daughter

Arnie Gruenes  
Twin Spruce Farm  
17565 Co Rd 43  
Richmond, MN 56368  
Cows@meltel.net  
320-493-9703

### Sire: T-Spruce G Frost Bite-ET

3220234128 12/22 PTA +3055 GTPI +1700 M  
0.14% +105 F +0.06% +70 P +1242 NM\$ +6.5 PL  
+0.5 DPR 2.78 SCS +0.07 T +0.80 UDC -0.20 FLC  
Granada x Lionel x Samuri

### Dam: T-SPRUCE LIONEL 13196-ET VG-83

Reg: 3205638661 12/22 PTA +3077 GTPI  
+1753 M +130 F +1119 NM\$  
+4.2 PL -0.8 DPR +0.93 T +0.71 UDC  
Sire Stack: Lionel x Samuri x Altaspring

#### 3<sup>rd</sup> Dam

T-Spruce Samuri 6347-ET

#### 4<sup>th</sup> Dam

Mercedes Ts 9539-ET

02-00 3x 354d 30670m 3.7 1149f 3.2 991p





T-SPRUCE MONSHINER 15704-ET

# Lot 8 T-SPRUCE MONSHINER 15704-ET

## IVF Session

\*Buyer is purchasing rights to control the next IVF session(s) until a minimum of 8 #1 or #2 IVF embryos are produced. Embryo grades are determined at the time of transfer if fresh embryos or at time of freezing if freezing is requested by buyer. Buyer keeps all resulting embryos from these controlled IVF sessions. Buyer is responsible for all costs of the aspiration and mating sire decisions.

**Averages 25 oocytes per IVF session**

Arnie Gruenes  
Twin Spruce Farm  
17565 Co Rd 43  
Richmond, MN 56368  
Cows@meltel.net  
320-493-9703

Born 12/20/2020 Reg: 840003220247712

12/2022	CDCB SUMMARY GENOMICCOW				NMS\$ +1218
Milk	+1766	79%R	Cheese Merit \$		+1233
Fat	+121	+0.18%	FMS +1117	GMS	+1194
Protein	+73	+0.06%	Gestation Len.	MSP	
CFP	+194		EFI %	gEFI 11.8%	gIB 20.4%
SCS	2.79	%R	Mastitis +1.1	Fert. Index	+0.9
PL	+5.8	%R	Livability +0.6	Heifer Liv.	+1.1
DPR	-0.1	%R	HCR +2.9	CCR	+2.3
RFI	-120				
Feed Saved	+273	45%R	0 Dtrs	0 Herds	% US

Beta: A1A2 Kappa: AB DWP\$: 1293

12/2022	GHA TYPE SUMMARY				TPI +3133
PTAT +1.28	78%R	UDC+1.41	FLC-0.15	BSC +0.07	0 D / 0 H

			-2	-1	0	1	2
Stature	+0.27	Tall					
Strength	-0.35	Frail					
Body Depth	+0.03	Deep					
Dairy Form	+1.81	Open Rib					
Rump Angle	-0.82	High Pins					
Thurl Width	+0.16	Wide					
Rear Legs-Side	+0.82	Sickle					
Rear Legs-Rear	-0.14	Hock In					
Foot Angle	-0.34	Low					
Feet & Legs Score	-0.02	Low					
F. Udder Attachment	+1.24	Strong					
Rear Udder Height	+2.03	High					
Rear Udder Width	+2.01	Wide					
Udder Cleft	+0.97	Strong					
Udder Depth	+0.69	Shallow					
Front Teat Placement	+0.77	Close					
Rear Teat Placement	+1.19	Close					
Teat Length	-1.20	Short					

## #1 TPI and Net Merit Moonshiner Daughter

### Sire: Fly-Higher Moonshiner-ET

3150997170 12/22 PTA +3003 GTPI +1818 M  
0.06% +88 F +0.03% +66 P +1050 NM\$ +4.9 PL  
+0.5 DPR 2.79 SCS +1.67 T +1.90 UDC -0.72 FLC  
Tahiti x Flagship x Delta

### Dam: T-SPRUCE LIONEL 13196-ET VG-83

Reg: 3205638661 12/22 PTA +3077 GTPI  
+1753 M +130 F +1119 NM\$  
+4.2 PL -0.8 DPR +0.93 T +0.71 UDC  
Sire Stack: Lionel x Samuri x Altaspring

**3<sup>rd</sup> Dam**  
T-Spruce Samuri 6347-ET  
**4<sup>th</sup> Dam**  
Mercedes Ts 9539-ET  
02-00 3x 354d 30670m 3.7 1149f 3.2 991p



T-SPRUCE CRUSHER 16744-ET

# Lot 9

# T-SPRUCE CRUSHER 16744-ET

## IVF Session

\*Buyer is purchasing rights to control the next IVF session(s) until a minimum of 8 #1 or #2 IVF embryos are produced. Embryo grades are determined at the time of transfer if fresh embryos or at time of freezing if freezing is requested by buyer. Buyer keeps all resulting embryos from these controlled IVF sessions. Buyer is responsible for all costs of the aspiration and mating sire decisions.

Born 06/22/2022 Reg: 840003235976751

### Averages 40 oocytes per IVF session

## #2 TPI and Net Merit Crusher Daughter

Arnie Gruenes  
Twin Spruce Farm  
17565 Co Rd 43  
Richmond, MN 56368  
Cows@meltel.net  
320-493-9703

12/2022	CDCB SUMMARY GENOMICCOW				NMS +1141
Milk	+1048	79%R	Cheese Merit \$		+1163
Fat	+140	+0.34%	FMS +959	GMS	+1071
Protein	+70	+0.13%	Gestation Len.	MSP	
CFP	+210		EFI %	gEFI 11.0%	gIB 20.2%
SCS	2.96	%R	Mastitis +0.8	Fert. Index	-0.5
PL	+4.5	%R	Livability +2.2	Heifer Liv.	+1.5
DPR	-1.7	%R	HCR +1.5	CCR -0.4	
RFI	-32				
Feed Saved	+63	44%R	0 Dtrs	0 Herds	% US

Beta: A2A2 Kappa: AB DWP\$: 1154

12/2022	GHA TYPE SUMMARY				TPI +3076
PTAT +1.20	78%R	UDC+0.56	FLC+0.42	BSC +0.54	0 D / 0 H

			-2	-1	0	1	2
Stature	+0.50	Tall					
Strength	+0.45	Strong					
Body Depth	+0.72	Deep					
Dairy Form	+1.75	Open Rib					
Rump Angle	+0.51	Sloped					
Thurl Width	+0.70	Wide					
Rear Legs-Side	+0.25	Sickle					
Rear Legs-Rear	+0.37	Straight					
Foot Angle	-0.54	Low					
Feet & Legs Score	+0.61	High					
F. Udder Attachment	+0.08	Strong					
Rear Udder Height	+1.67	High					
Rear Udder Width	+2.18	Wide					
Udder Cleft	-0.08	Weak					
Udder Depth	-0.85	Deep					
Front Teat Placement	-0.56	Wide					
Rear Teat Placement	-0.24	Wide					
Teat Length	+0.28	Long					

### Sire: Plain-Knoll Crusher-ET

3149934677 12/22 PTA +2966 GTPI +371 M  
0.38% +122 F +0.14% +50 P +991 NM\$ +4.7 PL  
-1.1 DPR 2.91 SCS +1.45 T +0.71 UDC +0.66 FLC  
Calvary x Legendary x Josuper

### Dam: T-SPRUCE LIONEL 13196-ET VG-83

Reg: 3205638661 12/22 PTA +3077 GTPI  
+1753 M +130 F +1119 NM\$  
+4.2 PL -0.8 DPR +0.93 T +0.71 UDC  
Sire Stack: Lionel x Samuri x Altaspring

### 3<sup>rd</sup> Dam

T-Spruce Samuri 6347-ET

### 4<sup>th</sup> Dam

Mercedes Ts 9539-ET

02-00 3x 354d 30670m 3.7 1149f 3.2 991p





T-SPRUCE EXTRA-P 16449-ET

# Lot 10

# T-SPRUCE EXTRA-P 16449-ET

## IVF Session

\*Buyer is purchasing rights to control the next IVF session(s) until a minimum of 8 #1 or #2 IVF embryos are produced. Embryo grades are determined at the time of transfer if fresh embryos or at time of freezing if freezing is requested by buyer. Buyer keeps all resulting embryos from these controlled IVF sessions. Buyer is responsible for all costs of the aspiration and mating sire decisions.

### Averages 18 oocytes per IVF session

Arnie Gruenes  
Twin Spruce Farm  
17565 Co Rd 43  
Richmond, MN 56368  
Cows@meltel.net  
320-493-9703

Born 04/26/2021 Reg: 840003235976456

12/2022	CDCB SUMMARY GENOMICCOW				NMS +1094
Milk	+1133	79%R	Cheese Merit S		+1114
Fat	+120	+0.26%	FMS +949	GMS	+1057
Protein	+64	+0.10%	Gestation Len.	MSP	
CFP	+184		EFI %	gEFI 10.7%	gIB 12.0%
SCS	2.85	%R	Mastitis +1.6	Fert. Index	+0.2
PL	+4.5	%R	Livability +1.6	Heifer Liv.	+1.1
DPR	-0.6	%R	HCR +0.5	CCR	+0.5
RFI	-46				
Feed Saved	+138	43%R	0 Dtrs	0 Herds	% US

Beta: A2A2 Kappa: BB DWP\$: 1180

12/2022	GHA TYPE SUMMARY					TPI +3068
PTAT +1.31	78%R	UDC+1.18	FLC+0.82	BSC +0.20	0 D / 0 H	

			-2	-1	0	1	2
Stature	+0.37	Tall					
Strength	-0.14	Frail					
Body Depth	+0.02	Deep					
Dairy Form	+1.42	Open Rib					
Rump Angle	-0.73	High Pins					
Thurl Width	+0.46	Wide					
Rear Legs-Side	+1.39	Sickle					
Rear Legs-Rear	+0.81	Straight					
Foot Angle	-0.26	Low					
Feet & Legs Score	+0.98	High					
F. Udder Attachment	+0.83	Strong					
Rear Udder Height	+1.64	High					
Rear Udder Width	+2.01	Wide					
Udder Cleft	+0.94	Strong					
Udder Depth	+0.42	Shallow					
Front Teat Placement	+0.41	Close					
Rear Teat Placement	+0.70	Close					
Teat Length	-0.29	Short					

## #1 TPI and Net Merit Extra Daughter

**Sire: Ttm Ss Renegade Extra-P-ET**

3203249995 12/22 PTA +2803 GTPI +1298 M  
0.12% +85 F +0.06% +57 P +821 NM\$ +2.7 PL  
-1.2 DPR 2.99 SCS +1.43 T +1.08 UDC +0.94 FLC  
Renegade x Charley x Josuper

**Dam: T-SPRUCE LIONEL 13196-ET VG-83**

Reg: 3205638661 12/22 PTA +3077 GTPI  
+1753 M +130 F +1119 NM\$  
+4.2 PL -0.8 DPR +0.93 T +0.71 UDC  
Sire Stack: Lionel x Samuri x Altaspring

**3<sup>rd</sup> Dam**

T-Spruce Samuri 6347-ET

**4<sup>th</sup> Dam**

Mercedes Ts 9539-ET

02-00 3x 354d 30670m 3.7 1149f 3.2 991p





T-SPRUCE MAHOMES 17505-ET

# Lot 11 T-SPRUCE MAHOMES 17505-ET

## IVF Session

\*Buyer is purchasing rights to control the next IVF session(s) until a minimum of 8 #1 or #2 IVF embryos are produced. Embryo grades are determined at the time of transfer if fresh embryos or at time of freezing if freezing is requested by buyer. Buyer keeps all resulting embryos from these controlled IVF sessions. Buyer is responsible for all costs of the aspiration and mating sire decisions.

Born 11/19/2021 Reg: 840003243331759

12/2022	CDCB SUMMARY GENOMICCOW				NMS +1115
Milk	+1462	78%R	Cheese Merit \$		+1130
Fat	+114	+0.20%	FMS +1018	GMS	+1083
Protein	+63	+0.06%	Gestation Len.	MSP	
CFP	+177		EFI %	gEFI 11.2%	gIB 14.8%
SCS	2.78	%R	Mastitis +1.9	Fert. Index	+1.4
PL	+5.6	%R	Livability +1.3	Heifer Liv.	+0.9
DPR	+0.1	%R	HCR +2.8	CCR	+2.4
RFI	-56				
Feed Saved	+122	42%R		0 Dtrs	0 Herds % US

Beta: A2A2 Kappa: AB DWP\$: 1303

12/2022	GHA TYPE SUMMARY				TPI +3065	
PTAT	+1.10	77%R	UDC+1.14	FLC-0.05	BSC +0.34	0 D / 0 H

			-2	-1	0	1	2
Stature	+0.38	Tall					
Strength	+0.09	Strong					
Body Depth	+0.24	Deep					
Dairy Form	+1.62	Open Rib					
Rump Angle	+0.95	Sloped					
Thurl Width	+0.89	Wide					
Rear Legs-Side	+0.42	Sickle					
Rear Legs-Rear	-0.34	Hock In					
Foot Angle	-0.42	Low					
Feet & Legs Score	+0.19	High					
F. Udder Attachment	+0.59	Strong					
Rear Udder Height	+1.92	High					
Rear Udder Width	+2.27	Wide					
Udder Cleft	+0.66	Strong					
Udder Depth	+0.01	Shallow					
Front Teat Placement	+0.53	Close					
Rear Teat Placement	+0.80	Close					
Teat Length	-0.47	Short					

Averages 20 oocytes per IVF session

## #3 TPI and #2 Net Merit Mahomes Daughter

### Sire: Progenesis Mahomes

13442781 12/22 PTA +2884 GTPI +1260 M  
0.08% +73 F +0.04% +51 P +917 NM\$ +5.4 PL  
+0.9 DPR 2.73 SCS +0.98 T +1.65 UDC +0.24 FLC  
Eldorado x Milktime x Modesty

### Dam: T-SPRUCE LIONEL 13196-ET VG-83

Reg: 3205638661 12/22 PTA +3077 GTPI  
+1753 M +130 F +1119 NM\$  
+4.2 PL -0.8 DPR +0.93 T +0.71 UDC  
Sire Stack: Lionel x Samuri x Altaspring

#### 3<sup>rd</sup> Dam

T-Spruce Samuri 6347-ET

#### 4<sup>th</sup> Dam

Mercedes Ts 9539-ET

02-00 3x 354d 30670m 3.7 1149f 3.2 991p

Arnie Gruenes  
Twin Spruce Farm  
17565 Co Rd 43  
Richmond, MN 56368  
Cows@meltel.net  
320-493-9703



T-SPRUCE GRAZIANO 17773-ET

# Lot 12 T-SPRUCE GRAZIANO 17773-ET

## IVF Session

\*Buyer is purchasing rights to control the next IVF session(s) until a minimum of 8 #1 or #2 IVF embryos are produced. Embryo grades are determined at the time of transfer if fresh embryos or at time of freezing if freezing is requested by buyer. Buyer keeps all resulting embryos from these controlled IVF sessions. Buyer is responsible for all costs of the aspiration and mating sire decisions.

### Averages 16 oocytes per IVF session

Arnie Gruenes  
Twin Spruce Farm  
17565 Co Rd 43  
Richmond, MN 56368  
Cows@meltel.net  
320-493-9703

Born 12/29/2021 Reg: 840003243332027

12/2022	CDCB SUMMARY GENOMICCOW			NMS +1144
Milk	+701	79%R	Cheese Merit S	+1168
Fat	+125	+0.34%	FMS +961	GMS +1123
Protein	+59	+0.13%	Gestation Len.	MSP
CFP	+184		EFI %	gEFI 11.0% gIB 17.1%
SCS	2.84	%R	Mastitis +1.3	Fert. Index +1.5
PL	+5.9	%R	Livability +1.7	Heifer Liv. +1.1
DPR	+0.7	%R	HCR +2.7	CCR +3.0
RFI	-75			
Feed Saved	+122	43%R	0 Dtrs	0 Herds % US

Beta: A2A2 Kappa: BB DWP\$: 1180

12/2022	GHA TYPE SUMMARY			TPI +3053
PTAT	+0.59	77%R	UDC+0.88	FLC-0.18
			BSC+0.07	0 D / 0 H

Stature	+0.31	Tall			
Strength	-0.05	Frail			
Body Depth	-0.32	Shallow			
Dairy Form	+0.59	Open Rib			
Rump Angle	+0.30	Sloped			
Thurl Width	-0.25	Narrow			
Rear Legs-Side	-0.76	Posty			
Rear Legs-Rear	-0.41	Hock In			
Foot Angle	+0.09	Steep			
Feet & Legs Score	+0.00	High			
F. Udder Attachment	+1.20	Strong			
Rear Udder Height	+1.32	High			
Rear Udder Width	+1.18	Wide			
Udder Cleft	-0.23	Weak			
Udder Depth	+0.95	Shallow			
Front Teat Placement	-0.32	Wide			
Rear Teat Placement	-0.42	Wide			
Teat Length	+0.63	Long			

### Sire: WINSTAR GRAZIANO-ET

3212150599 12/22 PTA +2945 GTPI +138 M  
0.40% +119 F +0.12% +39 P +1096 NM\$ +6.4 PL  
1.2 DPR 2.68 SCS +0.26 T 0.78 UDC -0.50 FLC  
Altazazzle x Crimson x Jedi

### Dam: T-SPRUCE LIONEL 13196-ET VG-83

Reg: 3205638661 12/22 PTA +3077 GTPI  
+1753 M +130 F +1119 NM\$  
+4.2 PL -0.8 DPR +0.93 T +0.71 UDC  
Sire Stack: Lionel x Samuri x Altaspring

#### 3<sup>rd</sup> Dam

T-Spruce Samuri 6347-ET

#### 4<sup>th</sup> Dam

Mercedes Ts 9539-ET

02-00 3x 354d 30670m 3.7 1149f 3.2 991p





T-SPRUCE LIONEL 13196-ET

# Lot 13

# T-SPRUCE LIONEL 13196-ET

## IVF Session

\*Buyer is purchasing rights to control the next IVF session(s) until a minimum of 8 #1 or #2 IVF embryos are produced. Embryo grades are determined at the time of transfer if fresh embryos or at time of freezing if freezing is requested by buyer. Buyer keeps all resulting embryos from these controlled IVF sessions. Buyer is responsible for all costs of the aspiration and mating sire decisions.

Born 04/10/2019 Reg: 840003205638661

**Averages 25 oocytes per IVF session**

**Dam of T-Spruce G Frost Bite-ET**

Arnie Gruenes  
Twin Spruce Farm  
17565 Co Rd 43  
Richmond, MN 56368  
Cows@meltel.net  
320-493-9703

12/2022	CDCB SUMMARY GENOMICCOW				NMS\$ +1119
Milk	+1753	83%R	Cheese Merit \$		+1133
Fat	+130	+0.21%	FMS +1011	GMS	+1088
Protein	+75	+0.07%	Gestation Len.	MSP	
CFP	+205		EFI %	gEFI 10.9%	gIB 14.8%
SCS	2.91	%R	Mastitis +0.2	Fert. Index	+0.7
PL	+4.2	%R	Livability +0.4	Heifer Liv.	+1.3
DPR	-0.8	%R	HCR +3.4	CCR	+2.0
RFI	-117				
Feed Saved	+42	48%R		0 Dtrs 0 Herds	% US

Beta: A2A2 Kappa: AB DWP\$: 1238

12/2022	GHA TYPE SUMMARY				TPI +3077			
PTAT +0.93	83%R	UDC+0.71	FLC+0.00	BSC +0.87	0 D / 0 H			
				-2	-1	0	1	2
Stature	+0.89	Tall						
Strength	+0.90	Strong						
Body Depth	+0.65	Deep						
Dairy Form	+1.26	Open Rib						
Rump Angle	-0.15	High Pins						
Thurl Width	+1.04	Wide						
Rear Legs-Side	+0.37	Sickle						
Rear Legs-Rear	-0.02	Hock In						
Foot Angle	-0.21	Low						
Feet & Legs Score	+0.29	High						
F. Udder Attachment	+0.46	Strong						
Rear Udder Height	+1.56	High						
Rear Udder Width	+2.11	Wide						
Udder Cleft	-0.08	Weak						
Udder Depth	-0.15	Deep						
Front Teat Placement	-0.19	Wide						
Rear Teat Placement	+0.10	Close						
Teat Length	-0.13	Short						

**Sire: Mr T-Spruce Frazz Lionel-ET**

3142490309 12/22 PTA +3132 GTPI +3565 M  
0.06% +155 F -0.04% +99 P +1257 NM\$ +3.4 PL  
-4.7 DPR 2.83 SCS +0.60 T +0.81 UDC -0.62 FLC  
Frazzled x Montross x Supersire

**Dam: T-SPRUCE SAMURI 6347-ET**

Reg: 3143484715 12/22 PTA +2660 GTPI  
+235 M +71 F +688 NM\$  
+3.0 PL +1.3 DPR +1.07 T +1.00 UDC  
Sire Stack: Samuri x Altaspring x Liquid Gold

### 3<sup>rd</sup> Dam

Mercedes Ts 9539-ET  
02-00 3x 354d 30670m 3.7 1149f 3.2 991p

### 4<sup>th</sup> Dam

T-Spruce Lgold 7871-ET





FB 667819 LIONEL 800494-ET

# Lot 14 FB 667819 LIONEL 800494-ET

FB Genetics  
fbgenetics@yahoo.com  
Dumas, TX

Heifer located at Blood Dairy in Iowa

Born 11/08/2022 Reg: 840003254652757

01/2023	CDCB SUMMARY GENOMIC COW				NMS +1209
Milk	+2423	81%R	Cheese Merit \$		+1213
Fat	+143	+0.16%	FMS +1200		GMS +1120
Protein	+73	-0.01%	Gestation Len. -1		MSP
CFP	+216		EFI %	gEFI 11.7%	gIB 20.1%
SCS	2.78	%R	Mastitis +1.2		Fert. Index -0.7
PL	+5.2	%R	Livability +1.6		Heifer Liv. +1.4
DPR	-2.3	%R	HCR +2.1		CCR +0.2
RFI	-74				
Feed Saved	+43	%R		0 Dtrs 0 Herds	% US

Beta: A2A2 Kappa: AA

01/2023	GHA TYPE SUMMARY				TPI +3171
PTAT +1.25	79%R	UDC+1.52	FLC+0.39	BSC+0.71	0 D / 0 H
Stature	+0.77	Tall			
Strength	+0.52	Strong			
Body Depth	+0.32	Deep			
Dairy Form	+1.32	Open Rib			
Rump Angle	+0.20	Sloped			
Thurl Width	+1.43	Wide			
Rear Legs-Side	-0.12	Posty			
Rear Legs-Rear	+0.49	Straight			
Foot Angle	+0.58	Steep			
Feet & Legs Score	+0.53	High			
F. Udder Attachment	+1.63	Strong			
Rear Udder Height	+2.29	High			
Rear Udder Width	+2.70	Wide			
Udder Cleft	+0.65	Strong			
Udder Depth	+0.53	Shallow			
Front Teat Placement	+0.94	Close			
Rear Teat Placement	+1.31	Close			
Teat Length	-1.35	Short			

## Sire: Mr T-Spruce Frazz Lionel-ET

3142490309 12/22 PTA +3132 GTPI +3565 M  
0.06% +155 F -0.04% +99 P +1257 NM\$ +3.4 PL  
-4.7 DPR 2.83 SCS +0.60 T +0.81 UDC -0.62 FLC  
Frazzled x Montross x Supersire

## Dam: FB 7683 ENTITY 667819-ET

Reg: 3216444105 12/22 PTA +2953 GTPI  
+897 M +123 F +975 NM\$  
+5.4 PL -0.3 DPR +1.03 T +0.97 UDC  
Sire Stack: Entity x Frazzled x Damaris

### 2nd Dam

Pine-TREE 6586 Fraz 7683-ET

### 3rd Dam

Green-Banks Damaris 6586-ET EX-90



FB 700227 LIONEL 800538-ET

# Lot 15

# FB 700227 LIONEL 800538-ET

Born 11/14/2022 Reg: 840003254652801

FB Genetics  
fbgenetics@yahoo.com

Dumas, TX

Heifer located at Blood Dairy in Iowa

01/2023	CDCB SUMMARY GENOMIC COW				NMS +1242
Milk	+2846	80%R	Cheese Merit \$		+1249
Fat	+142	+0.11%	FMS +1201	GMS	+1174
Protein	+93	+0.01%	Gestation Len. -3	MSP	
CFP	+235		EFI %	gEFI 11.8%	gIB 19.5%
SCS	2.83	%R	Mastitis -1.3	Fert. Index	-1.3
PL	+4.2	%R	Livability -1.0	Heifer Liv.	+1.4
DPR	-2.8	%R	HCR +2.8	CCR	-0.1
RFI	-52				
Feed Saved	+121	%R	0 Dtrs	0 Herds	% US

Beta: A2A2 Kappa: AB

01/2023	GHA TYPE SUMMARY				TPI +3144
PTAT +0.75	79%R	UDC+0.98	FLC-0.30	BSC +0.50	0 D / 0 H
Stature	+0.33	Tall			
Strength	+0.48	Strong			
Body Depth	+0.63	Deep			
Dairy Form	+2.42	Open Rib			
Rump Angle	-0.24	High Pins			
Thurl Width	+1.23	Wide			
Rear Legs-Side	+0.54	Sickle			
Rear Legs-Rear	-0.26	Hock In			
Foot Angle	-0.77	Low			
Feet & Legs Score	-0.14	Low			
F. Udder Attachment	+0.46	Strong			
Rear Udder Height	+1.79	High			
Rear Udder Width	+3.14	Wide			
Udder Cleft	+0.18	Strong			
Udder Depth	-1.03	Deep			
Front Teat Placement	+0.56	Close			
Rear Teat Placement	+0.59	Close			
Teat Length	-0.84	Short			

## Sire: Mr T-Spruce Frazz Lionel-ET

3142490309 12/22 PTA +3132 GTPI +3565 M  
0.06% +155 F -0.04% +99 P +1257 NM\$ +3.4 PL  
-4.7 DPR 2.83 SCS +0.60 T +0.81 UDC -0.62 FLC  
Frazzled x Montross x Supersire

## Dam: FB 604385 FORTNTE 700227-ET

Reg: 3225322765 12/22 PTA +2902 GTPI  
+1269 M +107 F +1006 NM\$  
+5.1 PL -1.0 DPR +0.68 T +1.04 UDC  
Sire Stack: Fortnite x Montreal x Achiever

### 2ndDam

Fb 22 Montreal 604385-ET

### 3rd Dam

Fb 4730 Achiever 22-ET VG-85

02-09 2x 305d 25340m 4.8 1228f 3.6 911p





# Lot 16 FB 603337 GAMEDAY 750574-ET

## IVF Session

\*Buyer is purchasing rights to control the next IVF session(s) until a minimum of 8 #1 or #2 IVF embryos are produced. Embryo grades are determined at the time of transfer if fresh embryos or at time of freezing if freezing is requested by buyer. Buyer keeps all resulting embryos from these controlled IVF sessions. Buyer is responsible for all costs of the aspiration and mating sire decisions.

FB Genetics  
fbgenetics@yahoo.com  
Dumas, TX  
Heifer Located at GenStart  
Through Transova IVF

Born 10/06/2021 Reg: 840003242770775

01/2023	CDCB SUMMARY GENOMICCOW				NM\$ +1237
Milk	+709	79%R	Cheese Merit \$		+1261
Fat	+119	+0.32%	FMS +1103	GMS	+1201
Protein	+47	+0.09%	Gestation Len. +0	MSP	+100
CFP	+166		EFI %	gEFI 12.2%	gIB 18.2%
SCS	2.55	%R	Mastitis +2.5	Fert. Index	+1.5
PL	+7.6	%R	Livability +4.4	Heifer Liv.	+1.2
DPR	+0.9	%R	HCR +3.8	CCR	+3.1
RFI	-203				
Feed Saved	+321	44%R		0 Dtrs	0 Herds % US

**Sire: Rmd-Dotterer Ssi Gameday-ET**  
3205704153 12/22 PTA +2986 GTPI +809 M  
0.27% +110 F +0.07% +45 P +1033 NM\$ +5.9 PL  
-0.3 DPR 2.61 SCS +1.57 T +1.44 UDC +0.32 FLC  
Big Al x Blowtorch x Yoder

Beta: A2A2 Kappa: AB

01/2023	GHA TYPE SUMMARY				TPI +3089
PTAT +0.63	78%R	UDC+0.90	FLC+0.40	BSC-0.33	0 D / 0 H
Stature	-0.25	Short			
Strength	-0.54	Frail			
Body Depth	-0.56	Shallow			
Dairy Form	+0.64	Open Rib			
Rump Angle	-0.14	High Pins			
Thurl Width	+0.11	Wide			
Rear Legs-Side	+0.88	Sickle			
Rear Legs-Rear	+0.17	Straight			
Foot Angle	+0.06	Steep			
Feet & Legs Score	+0.40	High			
F. Udder Attachment	+1.10	Strong			
Rear Udder Height	+1.00	High			
Rear Udder Width	+1.09	Wide			
Udder Cleft	-0.30	Weak			
Udder Depth	+0.74	Shallow			
Front Teat Placement	+0.28	Close			
Rear Teat Placement	+0.00	Close			
Teat Length	-0.46	Short			

**Dam: FB 164 ENTITY 603337-ET**  
Reg: 3208441190 12/22 PTA +2828 GTPI  
+863 M +96 F +870 NM\$  
+5.3 PL -0.1 DPR +0.43 T +0.90 UDC  
Sire Stack: Entity x Medley x Missouri

**3<sup>rd</sup> Dam**  
Fb 710 Medley 164-ET  
**4<sup>th</sup> Dam**  
Seagull-Bay Am Mizzou-ET



# Lot 17 SIEMERS UPSD ROZ 37917-ET

## IVF Session

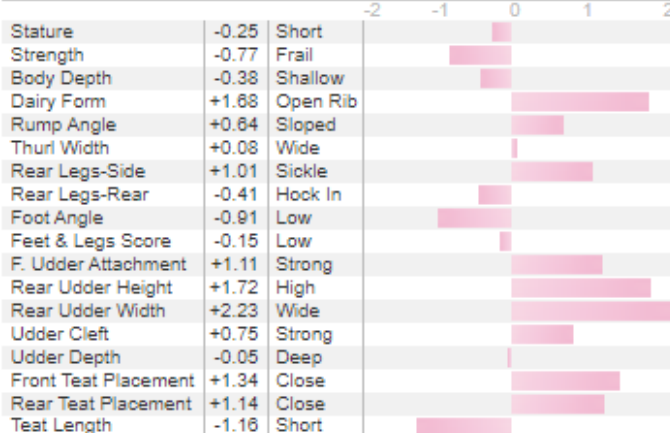
\*Buyer is purchasing rights to control the next IVF session(s) until a minimum of 8 #1 or #2 IVF embryos are produced. Embryo grades are determined at the time of transfer if fresh embryos or at time of freezing if freezing is requested by buyer. Buyer keeps all resulting embryos from these controlled IVF sessions. Buyer is responsible for all costs of the aspiration and mating sire decisions.

Born 05/03/2022 Reg: 840003245703774

12/2022	CDCB SUMMARY GENOMICCOW				NM\$ +1164
Milk	+1433	79%R	Cheese Merit \$		+1181
Fat	+106	+0.17%	FMS +1038	GMS	+1146
Protein	+69	+0.08%	Gestation Len.	MSP	
CFP	+175		EFI %	gEFI 10.7%	gIB 18.0%
SCS	2.85	%R	Mastitis +0.6	Fert. Index	+1.4
PL	+5.9	%R	Livability +1.4	Heifer Liv.	+0.9
DPR	+0.4	%R	HCR +2.6	CCR +2.8	
RFI	-44				
Feed Saved	+259	43%R	0 Dtrs	0 Herds	% US

Beta: A2A2 Kappa: BB DWP\$: 1306

12/2022	GHA TYPE SUMMARY				TPI +3067
PTAT +0.96	78%R	UDC+1.31	FLC-0.24	BSC-0.37	0 D / 0 H



Siemers Holsteins  
 14421 Mineral Springs Road  
 Newton, Wisconsin 53063  
 920-693-3600  
 siemers@excel.net

### Sire: Farnear Upside-ET

3147118750 12/22 PTA +3061 GTPI +2061 M  
 0.05% +94 F +0.01% +66 P +1146 NM\$ +6.4 PL  
 +1.3 DPR 2.83 SCS +0.97 T +1.48 UDC -0.01 FLC  
 Charl x Jedi x Robust

### Dam: SIEMERS LEGACY ROZ 34005-ET

Reg: 3218555368 12/22 PTA +2851 GTPI  
 +805 M +89 F +929 NM\$  
 +5.2 PL -1.7 DPR +1.13 T +1.43 UDC  
 Legacy x Milktime x Modesty

02-00 3x 365d 29410m 4.5 1315f 3.5 1027p

**3<sup>rd</sup> Dam**  
 Siemers Lmda Paris 27856-ET EX-91  
 03-05 2x 365d 38580m 4.1 1579f 3.5 1362p  
**4<sup>th</sup> Dam**  
 Siemers Denver Paris-ET EX-91



# Lot 18

# Siemens Chan Paris 37738-ET

## IVF Session

\*Buyer is purchasing rights to control the next IVF session(s) until a minimum of 8 #1 or #2 IVF embryos are produced. Embryo grades are determined at the time of transfer if fresh embryos or at time of freezing if freezing is requested by buyer. Buyer keeps all resulting embryos from these controlled IVF sessions. Buyer is responsible for all costs of the aspiration and mating sire decisions.

## #1 TPI Chandler Daughter

Born 04/13/2022 Reg: 840003245703595

12/2022	CDCB SUMMARY GENOMICCOW				NMS +1074
Milk	+1179	78%R	Cheese Merit \$		+1091
Fat	+109	+0.22%	FMS +954	GMS	+1033
Protein	+60	+0.08%	Gestation Len.	MSP	
CFP	+169		EFI %	gEFI 11.3%	gIB 14.2%
SCS	2.84	%R	Mastitis +1.2	Fert. Index	+1.4
PL	+6.1	%R	Livability +1.4	Heifer Liv.	+1.1
DPR	+0.4	%R	HCR +2.6	CCR	+1.8
RFI	-7				
Feed Saved	+60	43%R	0 Dtrs	0 Herds	% US

Beta: A2A2 Kappa: BB DWP\$: 1162

12/2022	GHA TYPE SUMMARY				TPI +3050
PTAT +1.18	76%R	UDC+1.44	FLC+0.42	BSC -0.08	0 D / 0 H

			-2	-1	0	1	2
Stature	-0.22	Short					
Strength	+0.02	Strong					
Body Depth	+0.11	Deep					
Dairy Form	+0.78	Open Rib					
Rump Angle	-1.14	High Pins					
Thurl Width	+0.27	Wide					
Rear Legs-Side	-0.36	Posty					
Rear Legs-Rear	+0.58	Straight					
Foot Angle	+0.57	Steep					
Feet & Legs Score	+0.27	High					
F. Udder Attachment	+1.22	Strong					
Rear Udder Height	+1.57	High					
Rear Udder Width	+1.98	Wide					
Udder Cleft	+1.27	Strong					
Udder Depth	+0.52	Shallow					
Front Teat Placement	+0.98	Close					
Rear Teat Placement	+1.47	Close					
Teat Length	-0.50	Short					

Siemers Holsteins

14421 Mineral Springs Road

Newton, Wisconsin 53063

920-693-3600

siemers@excel.net

### Sire: Denovo 16241 Chandler-ET

3204165479 12/22 PTA +2848 GTPI +426 M

0.32% +107 F +0.10% +41 P +927 NM\$ +5.4 PL

-0.3 DPR 2.81 SCS +0.54 T +0.71 UDC -0.29 FLC

Crimson x Achiever x Boastful

### Dam: SIEMERS MSHN PARIS 34474-ET

Reg: 3208359799 12/22 PTA +2991 GTPI

+1560 M +73 F +911 NM\$

+5.2 PL +0.2 DPR +2.55 T +1.41 UDC

Sire Stack: Moonshiner x Huey x Delta-Lambda

#### 3<sup>rd</sup> Dam

Siemers Huey Pari 31034-ET VG-85

02-00 3x 365d 29410m 4.5 1315f 3.5 1027p

#### 4<sup>th</sup> Dam

Siemers Lmda Paris 27856-ET EX-91

03-05 2x 365d 38580m 4.1 1579f 3.5 1362p



# Lot 19 SANDY-VALLEY SUGARPLUM-ET

## IVF Session

\*Buyer is purchasing rights to control the next IVF session(s) until a minimum of 8 #1 or #2 IVF embryos are produced. Embryo grades are determined at the time of transfer if fresh embryos or at time of freezing if freezing is requested by buyer. Buyer keeps all resulting embryos from these controlled IVF sessions. Buyer is responsible for all costs of the aspiration and mating sire decisions.

Siemers Holsteins  
 14421 Mineral Springs Road  
 Newton, Wisconsin 53063  
 920-693-3600  
 siemers@excel.net

Born 12/01/2020 Reg: 840003200569818

12/2022	CDCB SUMMARY GENOMICCOW				NMS +1001
Milk	+907	77%R	Cheese Merit S		+1020
Fat	+97	+0.21%	FMS +877		GMS +947
Protein	+52	+0.08%	Gestation Len.		MSP
CFP	+149		EFI %	gEFI 10.9%	gIB 14.1%
SCS	2.74	%R	Mastitis +3.1	Fert. Index	+1.1
PL	+6.2	%R	Livability +3.2	Heifer Liv.	+0.6
DPR	+0.4	%R	HCR +2.5	CCR	+1.5
RFI	-23				
Feed Saved	+16	42%R	0 Dtrs	0 Herds	% US

12/2022	GHA TYPE SUMMARY				TPI +3036
PTAT +1.74	76%R	UDC+1.60	FLC+1.26	BSC +0.51	0 D / 0 H

			-2	-1	0	1	2
Stature	+0.63	Tall					
Strength	+0.29	Strong					
Body Depth	+0.16	Deep					
Dairy Form	+1.04	Open Rib					
Rump Angle	-0.77	High Pins					
Thurl Width	+0.95	Wide					
Rear Legs-Side	-0.16	Posty					
Rear Legs-Rear	+1.57	Straight					
Foot Angle	+1.01	Steep					
Feet & Legs Score	+1.24	High					
F. Udder Attachment	+1.74	Strong					
Rear Udder Height	+2.08	High					
Rear Udder Width	+2.47	Wide					
Udder Cleft	+0.72	Strong					
Udder Depth	+0.86	Shallow					
Front Teat Placement	+0.57	Close					
Rear Teat Placement	+0.67	Close					
Teat Length	-0.10	Short					

### Sire: Siemers Rengd Perfect-ET

3200124761 12/22 PTA +3017 GTPI +1068 M  
 0.17% +91 F +0.08% +56 P +835 NM\$ +4.0 PL  
 +0.3 DPR 2.98 SCS +2.48 T +2.38 UDC +1.90 FLC  
 Renegade x Delta-Lambda x Denver

### Dam: SANDY-VALLEY SUGAR HIGH-ET GP-81

Reg: 3200569503 12/22 PTA +2789 GTPI  
 +856 M +70 F +890 NM\$  
 +6.8 PL -1.0 DPR +1.33 T +1.40 UDC  
 Sire Stack: Legacy x Rubicon x Morgan

**3<sup>rd</sup> Dam**  
 Sandy-Valley Eternity-ET EX-92  
**4<sup>th</sup> Dam**  
 Sandy-Valley Morgan Era-ET  
 02-02 2x 365d 34790m 4.2 1450f 3.4 1192p





# Lot 20 ERNEST-ANTHONY HAV 36275-ET

## IVF Session

\*Buyer is purchasing rights to control the next IVF session(s) until a minimum of 8 #1 or #2 IVF embryos are produced. Embryo grades are determined at the time of transfer if fresh embryos or at time of freezing if freezing is requested by buyer. Buyer keeps all resulting embryos from these controlled IVF sessions. Buyer is responsible for all costs of the aspiration and mating sire decisions.

Siemers Holsteins  
 14421 Mineral Springs Road  
 Newton, Wisconsin 53063  
 920-693-3600  
 siemers@excel.net

Born 10/02/2021 Reg: 840003243347219

12/2022	CDCB SUMMARY GENOMICCOW				NM\$ +806
Milk	+1629	79%R	Cheese Merit S		+813
Fat	+93	+0.10%	FMS +717	GMS	+712
Protein	+69	+0.06%	Gestation Len.	MSP	
CFP	+162		EFI %	gEFI 10.6%	gIB 11.1%
SCS	3.17	%R	Mastitis +0.2	Fert. Index	-1.0
PL	+4.0	%R	Livability +0.6	Heifer Liv.	+0.9
DPR	-1.9	%R	HCR +0.7	CCR	-0.6
RFI	+56				
Feed Saved	-280	43%R	0 Dtrs	0 Herds	% US

Beta: A2A2 Kappa: BB DWP\$: 749

12/2022	GHA TYPE SUMMARY				TPI +2981
PTAT +2.96	78%R	UDC+2.39	FLC+1.62	BSC +2.43	0 D / 0 H
Stature	+2.69	Tall			
Strength	+2.03	Strong			
Body Depth	+2.19	Deep			
Dairy Form	+2.54	Open Rib			
Rump Angle	-0.13	High Pins			
Thurl Width	+2.47	Wide			
Rear Legs-Side	-0.67	Posty			
Rear Legs-Rear	+2.42	Straight			
Foot Angle	+2.48	Steep			
Feet & Legs Score	+1.95	High			
F. Udder Attachment	+2.69	Strong			
Rear Udder Height	+3.71	High			
Rear Udder Width	+4.37	Wide			
Udder Cleft	+1.72	Strong			
Udder Depth	+1.37	Shallow			
Front Teat Placement	+0.87	Close			
Rear Teat Placement	+1.18	Close			
Teat Length	+0.19	Long			

### Sire: Siemers Rengd Parfect-ET

3200124761 12/22 PTA +3017 GTPI +1068 M  
 0.17% +91 F +0.08% +56 P +835 NM\$ +4.0 PL  
 +0.3 DPR 2.98 SCS +2.48 T +2.38 UDC +1.90 FLC  
 Renegade x Delta-Lambda x Denver

### Dam: S-S-I DOC HAVE NOT 8783-ET EX-92

Reg: 3143722146 12/22 PTA +2780 GTPI  
 +1287 M +51 F +636 NM\$  
 +4.5 PL -1.4 DPR +3.20 T +2.58 UDC  
 Sire Stack: Doc x Jedi x Massey  
 03-05 2x 305d 33380m 4.7 1571f 3.4 1131p

\*Full sister Doc 8784 EX-95

**3<sup>rd</sup> Dam**  
 Fly-Higher Jedi Havenot-ET VG-86  
**4<sup>th</sup> Dam**  
 Cookiecutter Masy Hashes-ET VG-85  
 02-01 3x 365d 31360m 3.8 1195f 3.2 1002p



Dam: SDG 2900 PURSUIT 6998-ET



SDG-PH 6998 PNDULUM 7857-ET

# Lot 21 SDG-PH 6998 PNDULUM 7857-ET

## IVF Session

\*Buyer is purchasing rights to control the next IVF session(s) until a minimum of 8 #1 or #2 IVF embryos are produced. Embryo grades are determined at the time of transfer if fresh embryos or at time of freezing if freezing is requested by buyer. Buyer keeps all resulting embryos from these controlled IVF sessions. Buyer is responsible for all costs of the aspiration and mating sire decisions.

Born 02/12/2022 Reg: 840003249791269

12/2022	CDCB SUMMARY GENOMICCOW				NMS +1195
Milk	+831	79%R	Cheese Merit \$		+1214
Fat	+105	+0.25%	FMS +1061	GMS	+1187
Protein	+52	+0.09%	Gestation Len.	MSP	
CFP	+157		EFI %	gEFI 11.4%	gIB 14.3%
SCS	2.77	%R	Mastitis +1.2	Fert. Index	+2.5
PL	+7.4	%R	Livability +4.3	Heifer Liv.	+0.7
DPR	+2.2	%R	HCR +3.2	CCR +3.4	
RFI	-148				
Feed Saved	+286	43%R	0 Dtrs	0 Herds	% US

Beta: A1A2 Kappa: BB DWPS: 1236

12/2022	GHA TYPE SUMMARY				TPI +3045
PTAT +0.28	77%R	UDC+0.96	FLC-0.06	BSC-0.50	0 D / 0 H
			-2	-1	0
Stature	-0.13	Short			
Strength	-0.80	Frail			
Body Depth	-1.05	Shallow			
Dairy Form	+0.17	Open Rib			
Rump Angle	+0.53	Sloped			
Thurl Width	-0.79	Narrow			
Rear Legs-Side	-0.51	Posty			
Rear Legs-Rear	-0.44	Hook In			
Foot Angle	+0.27	Steep			
Feet & Legs Score	+0.01	High			
F. Udder Attachment	+1.28	Strong			
Rear Udder Height	+0.75	High			
Rear Udder Width	+0.51	Wide			
Udder Cleft	+0.17	Strong			
Udder Depth	+1.24	Shallow			
Front Teat Placement	+0.79	Close			
Rear Teat Placement	+0.86	Close			
Teat Length	-0.14	Short			

## #2 NM Pendulum

### Sister to

## Sdg-Ph Delux Dominance-ET

## 3112 GTPI and 1227 NM

Jim Vierhout  
Nathan Johnson Co-owner  
510 Railroad St., Box 563  
Hull, IA 51239  
jimvierhout@gmail.com  
712-470-1202

### Sire: Peak Pendulum-ET

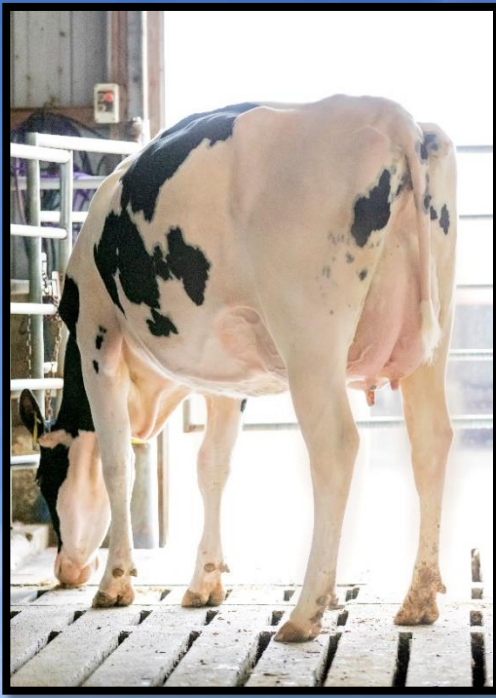
3213001120 12/22 PTA +2914 GTPI +923 M  
0.22% +99 F +0.07% +49 P +1052 NMS +6.0 PL  
+1.4 DPR 2.84 SCS +0.63 T +0.73 UDC -0.43 FLC  
Torro x Altaexplosion x Jedi

### Dam: SDG 2900 PURSUIT 6998-ET VG-85 VGMS

Reg: 3214860558 12/22 PTA +2965 GTPI  
+861 M +87 F +1075 NMS  
+6.6 PL +0.7 DPR +.85 T +1.52 UDC  
Sire Stack: Pursuit x Achiever x Jedi

3<sup>rd</sup> Dam  
Simple-Dreams 60371a2900-ET  
4<sup>th</sup> Dam  
Endco Jedi Balmorra-ET





Dam: SDG 2900 PURSUIT 6998-ET



SDG-PH 6998 PAYLOAD 7898-ET

# Lot 22 SDG-PH 6998 PAYLOAD 7898-ET

## IVF Session

\*Buyer is purchasing rights to control the next IVF session(s) until a minimum of 8 #1 or #2 IVF embryos are produced. Embryo grades are determined at the time of transfer if fresh embryos or at time of freezing if freezing is requested by buyer. Buyer keeps all resulting embryos from these controlled IVF sessions. Buyer is responsible for all costs of the aspiration and mating sire decisions.

Born 4/02/2022 Reg: 840003249791310

## #1 Net Merit Payload

Sister to

**Sdg-Ph Delux Dominance-ET**  
**3112 GTPI and 1227 NM**

Jim Vierhout  
Nathan Johnson Co-owner  
510 Railroad St., Box 563  
Hull, IA 51239  
jimvierhout@gmail.com  
712-470-1202

12/2022	CDCB SUMMARY GENOMICCOW			NMS +1159
Milk	+1832	79%R	Cheese Merit \$	+1172
Fat	+87	+0.06%	FMS +1083	GMS +1099
Protein	+70	+0.04%	Gestation Len.	MSP
CFP	+157		EFI %	gEFI 11.3% gIB 15.9%
SCS	2.80	%R	Mastitis +2.2	Fert. Index +1.1
PL	+7.4	%R	Livability +3.5	Heifer Liv. +1.5
DPR	+0.4	%R	HCR +2.1	CCR +1.8
RFI	-196			
Feed Saved	+265	44%R	0 Dtrs	0 Herds % US

Beta: A1A2 Kappa: BB DWP\$: 1129

12/2022	GHA TYPE SUMMARY				TPI +3061
PTAT +1.23	78%R	UDC+1.09	FLC+0.97	BSC +0.29	0 D / 0 H

			-2	-1	0	1	2
Stature	+0.25	Tall					
Strength	+0.10	Strong					
Body Depth	+0.16	Deep					
Dairy Form	+1.69	Open Rib					
Rump Angle	-0.12	High Pins					
Thurl Width	+1.13	Wide					
Rear Legs-Side	+0.24	Sickle					
Rear Legs-Rear	+1.01	Straight					
Foot Angle	+0.25	Steep					
Feet & Legs Score	+0.98	High					
F. Udder Attachment	+0.90	Strong					
Rear Udder Height	+1.23	High					
Rear Udder Width	+1.77	Wide					
Udder Cleft	+0.93	Strong					
Udder Depth	+0.42	Shallow					
Front Teat Placement	+0.90	Close					
Rear Teat Placement	+1.15	Close					
Teat Length	-0.27	Short					

### Sire: S-S-I Eisaku Payload-ET

3211394853 12/22 PTA +2931 GTPI +2002 M  
.03% +87 F +0.03% +72 P +952 NM\$ +4.4 PL  
-1.1 DPR 3.01 SCS +1.59 T +1.08 UDC +1.16 FLC  
Eisaku x Matters x Stoic

### Dam: SDG 2900 PURSUIT 6998-ET VG-85 VGMS

Reg: 3214860558 12/22 PTA +2965 GTPI  
+861 M +87 F +1075 NM\$  
+6.6 PL +0.7 DPR +.85 T +1.52 UDC  
Sire Stack: Pursuit x Achiever x Jedi

3<sup>rd</sup> Dam  
Simple-Dreams 60371a2900-ET  
4<sup>th</sup> Dam  
Endco Jedi Balmorra-ET



3<sup>rd</sup> Dam: Pine-TRee 7445 Skyw 8177-ET VG-85

# Lot 23 PINE-TREE 8676 HONE 9625-ET

## IVF Session

\*Buyer is purchasing rights to control the next IVF session(s) until a minimum of 8 #1 or #2 IVF embryos are produced. Embryo grades are determined at the time of transfer if fresh embryos or at time of freezing if freezing is requested by buyer. Buyer keeps all resulting embryos from these controlled IVF sessions. Buyer is responsible for all costs of the aspiration and mating sire decisions.

Pine-Tree Dairy  
8586 Benner Rd  
Marshallville, OH 44645  
Pinetreedairy@gmail.com  
Ethan – 330-466-8916

## Extreme Components

Born 07/09/2022 Reg: 840003254487682

12/2022	CDCB SUMMARY GENOMICCOW				NMS +1080
Milk	+232	79%R	Cheese Merit S		+1105
Fat	+146	+0.49%	FMS +873	GMS	+1049
Protein	+51	+0.16%	Gestation Len.	MSP	
CFP	+197		EFI %	gEFI 11.5%	gIB 16.6%
SCS	2.96	%R	Mastitis +1.2	Fert. Index	+0.1
PL	+4.2	%R	Livability +1.9	Heifer Liv.	+0.8
DPR	-0.2	%R	HCR -0.8	CCR	+0.7
RFI	-57				
Feed Saved	+14	43%R	0 Dtrs	0 Herds	% US

Beta: A2A2 Kappa: BB DWP\$:1210

12/2022	GHA TYPE SUMMARY				TPI +3043
PTAT +1.03	77%R	UDC+0.83	FLC+0.44	BSC +0.60	0 D / 0 H

			-2	-1	0	1	2
Stature	+0.57	Tall					
Strength	+0.41	Strong					
Body Depth	+0.53	Deep					
Dairy Form	+0.88	Open Rib					
Rump Angle	-0.68	High Pins					
Thurl Width	+1.31	Wide					
Rear Legs-Side	+0.54	Sickle					
Rear Legs-Rear	+0.10	Straight					
Foot Angle	+0.12	Steep					
Feet & Legs Score	+0.69	High					
F. Udder Attachment	+1.30	Strong					
Rear Udder Height	+0.98	High					
Rear Udder Width	+1.11	Wide					
Udder Cleft	+0.11	Strong					
Udder Depth	+1.00	Shallow					
Front Teat Placement	+0.01	Close					
Rear Teat Placement	-0.02	Wide					
Teat Length	+0.38	Long					

### Sire: Pine-TRee Honeycomb-ET

3150687471 12/22 PTA +2842 GTPI +775 M  
0.23% +96 F +0.07% +45 P +941 NM\$ +6.0 PL  
-0.6 DPR 2.77 SCS +0.55 T +0.76 UDC +0.43 FLC  
Altazarek x Prophecy x Delta

### Dam: PINE-TREE 8177 HERO 8676-ET GP-83

Reg: 3210258106 12/22 PTA +2859 GTPI  
+84 M +114 F +972 NM\$  
+4.2 PL +0.3 DPR +0.87 T +1.05 UDC  
Sire Stack: Heroic x Skywalker x Burley

**3<sup>rd</sup> Dam**  
Pine-TRee 7445 Skyw 8177-ET VG-85  
02-01 2x 365d 29000m 5.1 1474f 3.9 1117p  
**4<sup>th</sup> Dam**  
Pine-TRee 9839 Burl 7445-ET





MGD: Pine-Tree Era Achie 7593-ET

# Lot 24 PINE-TREE 9108 MAGN 9775-ET

Pine-Tree Dairy

8586 Benner Rd

Marshallville, OH 44645

Pinetreedairy@gmail.com

Ethan – 330-466-8916

Born 11/01/2022 Reg: 840003254487832

01/2023	CDCB SUMMARY GENOMICCOW				NMS +1148
Milk	+1473	78%R	Cheese Merit \$		+1163
Fat	+111	+0.18%	FMS +1056		GM\$
Protein	+62	+0.06%	Gestation Len.		MSP
CFP	+173		EFI %	gEFI 12.7%	gIB %
SCS	2.73	%R	Mastitis		Fert. Index
PL	+6.5	%R	Livability +2.4		Heifer Liv.
DPR	+0.9	%R	HCR +2.1		CCR +2.6
RFI					
Feed Saved		%R	0 Dtrs	0 Herds	% US

Beta: A2A2 Kappa: AA DWP\$: 1143

01/2023	GHA TYPE SUMMARY				TPI +3089
PTAT +0.91	77%R	UDC+1.24	FLC	BSC	0 D / 0 H
					-2 -1 0 1 2
Stature	+0.42	Tall			
Strength	-0.21	Frail			
Body Depth		Deep			
Dairy Form	+1.23	Open Rib			
Rump Angle	-0.27	High Pins			
Thurl Width	+0.64	Wide			
Rear Legs-Side		Sickle			
Rear Legs-Rear	-0.14	Hock In			
Foot Angle	+0.34	Steep			
Feet & Legs Score		High			
F. Udder Attachment	+1.07	Strong			
Rear Udder Height	+1.81	High			
Rear Udder Width	+1.62	Wide			
Udder Cleft	+0.61	Strong			
Udder Depth	+0.82	Shallow			
Front Teat Placement	+0.44	Close			
Rear Teat Placement		Close			
Teat Length	+0.15	Long			

## Sire: Ocd Alphabet Magnum-ET

3216574976 12/22 PTA +2998 GTPI +1990 M  
 0.10% +107 F +0.01% +64 P +1001 NM\$ +4.5 PL  
 +0.3 DPR 2.96 SCS +1.27 T +1.55 UDC +0.28 FLC  
 Alphabet x Jared x Burley

## Dam: PINE-TREE 7593 CAPT 9108-ET

Reg: 3240345309 12/22 PTA +2903 GTPI  
 +1293 M +106 F +1031 NM\$  
 +5.0 PL -1.1 DPR +0.58 T +0.51 UDC  
 Sire Stack: Captivating x Achiever x Morgan

### 2nd Dam

Pine-Tree Era Achie 7593-ET

### 3rd Dam

Sandy-Valley Morgan Era-ET

02-02 2x 365d 34790m 4.2 1450f 3.4 1192p



MGGD: S-S-I Moonry Myesha 9071-ET

# Lot 25 PINE-TREE 8721 DAZZ 9691-ET

## #1 Net Merit Zazzle

Born 08/24/2022 Reg: 840003254487748

Pine-Tree Dairy  
8586 Benner Rd  
Marshallville, OH 44645  
Pinetreedairy@gmail.com  
Ethan – 330-466-8916

12/2022	CDCB SUMMARY GENOMICCOW				NMS +1137
Milk	+1134	78%R	Cheese Merit \$		+1154
Fat	+111	+0.23%	FMS +1023		GMS +1082
Protein	+57	+0.07%	Gestation Len.		MSP
CFP	+168		EFI %	gEFI 11.7%	gIB 18.2%
SCS	2.79	%R	Mastitis +0.9	Fert. Index	+0.2
PL	+6.5	%R	Livability +3.1	Heifer Liv.	+1.0
DPR	-0.2	%R	HCR +1.0	CCR	+1.5
RFI	-174				
Feed Saved	+251	43%R	0 Dtrs	0 Herds	% US

Beta: A2A2 Kappa: BB DWP\$: 1129

### Sire: Winstar Zazzle 3171-ET

3214292636 12/22 PTA +2936 GTPI +792 M  
0.25% +102 F +0.07% +45 P +1026 NM\$ +5.9 PL  
-1.0 DPR 2.67 SCS +1.51 T +1.78 UDC -0.56 FLC  
Altazazzle x Hughes x Rubicon

12/2022	GHA TYPE SUMMARY				TPI +3035
PTAT +1.16	76%R	UDC+1.37	FLC+0.56	BSC -0.27	0 D / 0 H
Stature	-0.34	Short			
Strength	-0.21	Frail			
Body Depth	-0.29	Shallow			
Dairy Form	+0.52	Open Rib			
Rump Angle	+0.59	Sloped			
Thurl Width	-0.04	Narrow			
Rear Legs-Side	+0.61	Sickle			
Rear Legs-Rear	+0.34	Straight			
Foot Angle	-0.14	Low			
Feet & Legs Score	+0.54	High			
F. Udder Attachment	+1.40	Strong			
Rear Udder Height	+1.75	High			
Rear Udder Width	+1.58	Wide			
Udder Cleft	+0.27	Strong			
Udder Depth	+0.67	Shallow			
Front Teat Placement	+0.59	Close			
Rear Teat Placement	+0.54	Close			
Teat Length	-0.36	Short			

### Dam: PINE-TREE 7567 ACURA 8721 GP-81

Reg: 3208359799 12/22 PTA +3024 GTPI  
+1475 M +120 F +1035 NM\$  
+4.0 PL -1.0 DPR +1.49 T +1.41 UDC  
Sire Stack: Acura x Helix x Octoberfest

#### 2nd Dam

Pine-TTree 774 Helix 7567-ET GP-81  
02-11 2x 365d 31490m 4.6 1450f 3.3 1035p

#### 3rd Dam

Seagull-Bay My Octavia-ET VG-86  
03-02 3x 365d 43190m 3.4 1489f 3.0 1294p

#### 4th Dam

S-S-I Moonry Myesha 9071-ET VG-85  
02-01 2x 365d 33260m 4.0 1330f 3.3 1089p

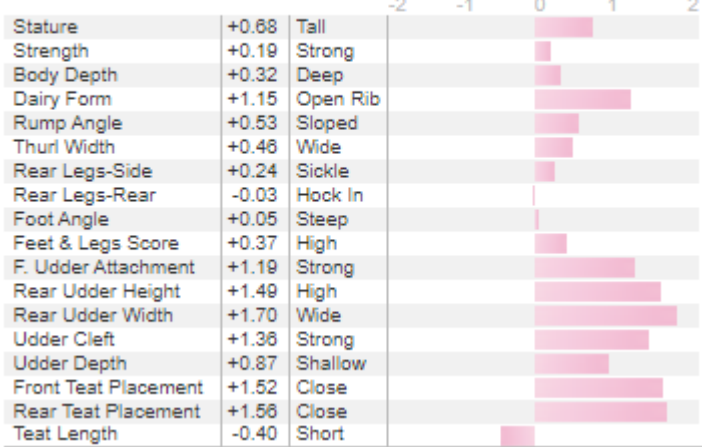


# Lot 26

# PINE-TREE HJS ZAPPY 1825-ET

12/2022	CDCB SUMMARY GENOMICCOW				NMS +1096
Milk	+1738	78%R	Cheese Merit \$		+1107
Fat	+105	+0.13%	FMS +1015	GMS	+1065
Protein	+69	+0.05%	Gestation Len.	MSP	
CFP	+174		EFI %	gEFI	12.0%
SCS	2.91	%R	Mastitis -0.3	Fert. Index	+0.6
PL	+5.4	%R	Livability +2.0	Heifer Liv.	+1.2
DPR	+0.2	%R	HCR +1.3	CCR	+1.5
RFI	-138				
Feed Saved	+160	43%R	0 Dtrs	0 Herds	% US

12/2022	GHA TYPE SUMMARY				TPI +3029
PTAT	+1.19	76%R	UDC+1.26	FLC+0.13	BSC +0.48
			0 D /	0 H	



## Choice A

Born 10/19/2022 Reg: 840003251629561

Beta: A1A2 Kappa: BB DWP\$: 1024

**Sire: Peak Zappy-ET**

3213001229 12/22 PTA +2993 GTPI +1643 M  
0.21% +126 F +0.05% +66 P +1136 NM\$ +5.0 PL  
-0.9 DPR 2.87 SCS +0.49 T +0.56 UDC -0.86 FLC  
Altazazzle x Altasohot x Samuri

**Dam: PINE-TREE 7567 ACURA 8721 GP-81**

Reg: 3208359799 12/22 PTA +3024 GTPI  
+1475 M +120 F +1035 NM\$  
+4.0 PL -1.0 DPR +1.49 T +1.41 UDC  
Sire Stack: Acura x Helix x Octoberfest

### 2ndDam

Pine-Tree 774 Helix 7567-ET GP-81  
02-11 2x 365d 31490m 4.6 1450f 3.3 1035p

### 3rd Dam

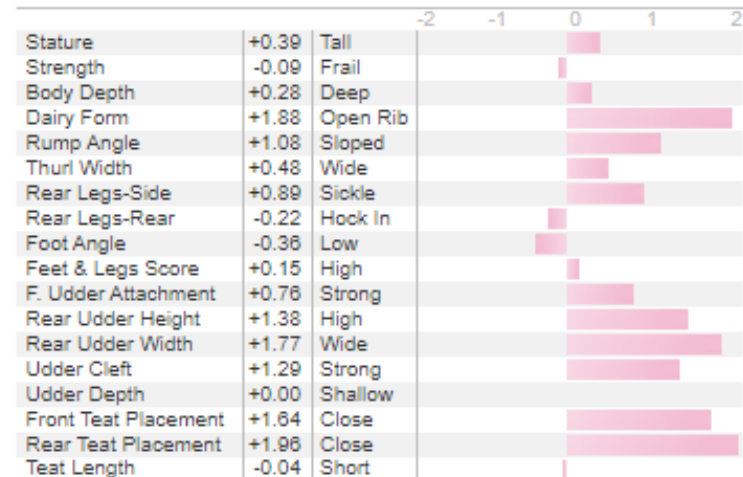
Seagull-Bay My Octavia-ET VG-86  
03-02 3x 365d 43190m 3.4 1489f 3.0 1294p

Pine-Tree Dairy  
8586 Benner Rd  
Marshallville, OH 44645  
Pinetreedairy@gmail.com  
Ethan - 330-466-8916

# PINE-TREE HJS ZAPPY 1827-ET

12/2022	CDCB SUMMARY GENOMICCOW				NMS +1117
Milk	+2691	78%R	Cheese Merit \$		+1115
Fat	+122	+0.06%	FMS +1102	GMS	+1056
Protein	+85	+0.00%	Gestation Len.	MSP	
CFP	+207		EFI %	gEFI	12.0%
SCS	3.17	%R	Mastitis -2.0	Fert. Index	-1.3
PL	+3.4	%R	Livability +0.5	Heifer Liv.	+0.7
DPR	-2.5	%R	HCR +1.0	CCR	-2.0
RFI	-122				
Feed Saved	+237	43%R	0 Dtrs	0 Herds	% US

12/2022	GHA TYPE SUMMARY				TPI +3015
PTAT	+1.03	76%R	UDC+1.05	FLC-0.06	BSC +0.26
			0 D /	0 H	



## Choice B

Born 10/23/2022 Reg: 840003251629563

Beta: A1A2 Kappa: AB DWP\$: 817

**Sire: Peak Zappy-ET**

3213001229 12/22 PTA +2993 GTPI +1643 M  
0.21% +126 F +0.05% +66 P +1136 NM\$ +5.0 PL  
-0.9 DPR 2.87 SCS +0.49 T +0.56 UDC -0.86 FLC  
Altazazzle x Altasohot x Samuri

**Dam: PINE-TREE 7567 ACURA 8721 GP-81**

Reg: 3208359799 12/22 PTA +3024 GTPI  
+1475 M +120 F +1035 NM\$  
+4.0 PL -1.0 DPR +1.49 T +1.41 UDC  
Sire Stack: Acura x Helix x Octoberfest

### 2nd Dam

Pine-Tree 774 Helix 7567-ET GP-81  
02-11 2x 365d 31490m 4.6 1450f 3.3 1035p

### 3rd Dam

Seagull-Bay My Octavia-ET VG-86  
03-02 3x 365d 43190m 3.4 1489f 3.0 1294p

Pine-Tree Dairy  
8586 Benner Rd  
Marshallville, OH 44645  
Pinetreedairy@gmail.com  
Ethan - 330-466-8916



# Lot 27 PINE-TREE 8721 EMPO 9664-ET

Pine-Tree Dairy  
8586 Benner Rd  
Marshallville, OH 44645  
Pinetreedairy@gmail.com  
Ethan – 330-466-8916

## #3 TPI Zazzle

Born 08/07/2022 Reg: 840003254487721

12/2022	CDCB SUMMARY GENOMICCOW				NM\$ +1060
Milk	+2216	79%R	Cheese Merit \$		+1070
Fat	+113	+0.09%	FMS +969		GMS +976
Protein	+86	+0.06%	Gestation Len.		MSP
CFP	+199		EFI %	gEFI 12.2%	gIB 19.5%
SCS	3.02	%R	Mastitis +1.0		Fert. Index -1.5
PL	+4.1	%R	Livability +1.0		Heifer Liv. +1.0
DPR	-2.4	%R	HCR +0.7		CCR -1.7
RFI	-78				
Feed Saved	+27	43%R		0 Dtrs 0 Herds	% US

Beta: A2A2 Kappa: BB DWP\$: 1065

12/2022	GHA TYPE SUMMARY				TPI +3058	
PTAT +1.89	77%R	UDC+1.26	FLC+0.39	BSC +1.20	0 D / 0 H	
		-2	-1	0	1	2
Stature	+1.34	Tall				
Strength	+0.96	Strong				
Body Depth	+1.25	Deep				
Dairy Form	+2.02	Open Rib				
Rump Angle	+0.77	Sloped				
Thurl Width	+1.05	Wide				
Rear Legs-Side	+0.62	Sickle				
Rear Legs-Rear	+0.61	Straight				
Foot Angle	+0.25	Steep				
Feet & Legs Score	+0.70	High				
F. Udder Attachment	+1.07	Strong				
Rear Udder Height	+2.25	High				
Rear Udder Width	+2.73	Wide				
Udder Cleft	+0.99	Strong				
Udder Depth	-0.02	Deep				
Front Teat Placement	+1.07	Close				
Rear Teat Placement	+1.03	Close				
Teat Length	-0.31	Short				

### Sire: Ttm Zazzle Empower-ET

3220448615 12/22 PTA +2924 GTPI +1404 M  
0.13% +91 F +0.04% +56 P +1000 NM\$ +5.6 PL  
-0.4 DPR 2.74 SCS +1.07 T +1.18 UDC +0.04 FLC  
Altazazzle x Riveting x Charley

### Dam: PINE-TREE 7567 ACURA 8721 GP-81

Reg: 3208359799 12/22 PTA +3024 GTPI  
+1475 M +120 F +1035 NM\$  
+4.0 PL -1.0 DPR +1.49 T +1.41 UDC  
Sire Stack: Acura x Helix x Octoberfest

#### 2nd Dam

Pine-TRee 774 Helix 7567-ET GP-81  
02-11 2x 365d 31490m 4.6 1450f 3.3 1035p

#### 3rd Dam

Seagull-Bay My Octavia-ET VG-86  
03-02 3x 365d 43190m 3.4 1489f 3.0 1294p

#### 4th Dam

S-S-I Moonry Myesha 9071-ET VG-85  
02-01 2x 365d 33260m 4.0 1330f 3.3 1089p





MGD: Pine-Tree Era Achie 7593-ET



T-SPRUCE F BITE 18758-ET

# Lot 28

# T-SPRUCE F BITE 18758-ET

Arnie Gruenes  
Twin Spruce Farm  
17565 Co Rd 43  
Richmond, MN 56368  
Cows@meltel.net  
320-493-9703

Born 06/02/2022 Reg: 840003251843928

12/2022	CDCB SUMMARY GENOMIC COW				NMS +1177
Milk	+1346	78%R	Cheese Merit \$		+1188
Fat	+123	+0.24%	FMS +1115	GMS	+1138
Protein	+52	+0.03%	Gestation Len.	MSP	
CFP	+175		EFI %	gEFI	11.5% gIB 13.0%
SCS	2.78	%R	Mastitis +0.9	Fert. Index	+0.2
PL	+5.9	%R	Livability +1.3	Heifer Liv.	+1.1
DPR	-0.7	%R	HCR +2.9	CCR	+1.1
RFI	-135				
Feed Saved	+399	42%R		0 Dtrs 0 Herds	% US

Beta: A1A2 Kappa: AE DWP\$: 1231

12/2022	GHA TYPE SUMMARY				TPI +3031
PTAT +0.63	77%R	UDC+1.34	FLC+0.62	BSC -1.28	0 D / 0 H
Stature	-1.54	Short			
Strength	-1.20	Frail			
Body Depth	-0.97	Shallow			
Dairy Form	+0.69	Open Rib			
Rump Angle	-0.82	High Pins			
Thurl Width	-0.67	Narrow			
Rear Legs-Side	+0.60	Sickle			
Rear Legs-Rear	-0.08	Hock In			
Foot Angle	-0.41	Low			
Feet & Legs Score	+0.41	High			
F. Udder Attachment	+0.88	Strong			
Rear Udder Height	+1.65	High			
Rear Udder Width	+1.37	Wide			
Udder Cleft	+0.27	Strong			
Udder Depth	+0.08	Shallow			
Front Teat Placement	+0.45	Close			
Rear Teat Placement	+0.28	Close			
Teat Length	+0.03	Long			

### Sire: T-Spruce G Frost Bite-ET

3220234128 12/22 PTA +3055 GTPI +1700 M  
0.14% +105 F +0.06% +70 P +1242 NM\$ +6.5 PL  
+0.5 DPR 2.78 SCS +0.07 T +0.80 UDC -0.20 FLC  
Granada x Lionel x Samuri

### Dam: PINE-TREE 7593 HERO 8588-ET

Reg: 3210258018 12/22 PTA +2825 GTPI  
+666 M +113 F +1002 NM\$  
+5.4 PL -1.2 DPR +0.33 T +0.85 UDC  
Sire Stack: Heroic x Achiever x Morgan

**2nd Dam**  
Pine-Tree Era Achie 7593-ET  
**3rd Dam**  
Sandy-Valley Morgan Era-ET  
02-02 2x 365d 34790m 4.2 1450f 3.4 1192p



MGD: Pine-Tree Era Achie 7593-ET



T-SPRUCE UPSIDE 18404-ET

# Lot 29

# T-SPRUCE UPSIDE 18404-ET

## IVF Session

\*Buyer is purchasing rights to control the next IVF session(s) until a minimum of 8 #1 or #2 IVF embryos are produced. Embryo grades are determined at the time of transfer if fresh embryos or at time of freezing if freezing is requested by buyer. Buyer keeps all resulting embryos from these controlled IVF sessions. Buyer is responsible for all costs of the aspiration and mating sire decisions.

### 17 oocytes on her last IVF session

Born 04/11/2022 Reg: 840003251843574

Arnie Gruenes  
Twin Spruce Farm  
17565 Co Rd 43  
Richmond, MN 56368  
Cows@meltel.net  
320-493-9703

12/2022	CDCB SUMMARY GENOMICCOW				NM\$ +1223
Milk	+1036	79%R	Cheese Merit S		+1243
Fat	+127	+0.30%	FMS +1090		GMS +1196
Protein	+58	+0.09%	Gestation Len.		MSP
CFP	+185		EFI %	gEFI 11.9%	gLB 19.2%
SCS	2.77	%R	Mastitis +1.9		Fert. Index +0.7
PL	+6.2	%R	Livability +3.8		Heifer Liv. +1.1
DPR	+0.4	%R	HCR +1.0		CCR +1.9
RFI	-82				
Feed Saved	+285	44%R			0 Dtrs 0 Herds % US

Beta: A2A2 Kappa: AB DWP\$: 1353

12/2022	GHA TYPE SUMMARY				TPI +3093
PTAT +0.66	78%R	UDC+1.23	FLC-0.06	BSC-0.75	0 D / 0 H

			-2	-1	0	1	2
Stature	-0.78	Short					
Strength	-0.99	Frail					
Body Depth	-0.78	Shallow					
Dairy Form	+0.83	Open Rib					
Rump Angle	+0.58	Sloped					
Thurl Width	+0.06	Wide					
Rear Legs-Side	+0.27	Sickle					
Rear Legs-Rear	-0.62	Hock In					
Foot Angle	-0.41	Low					
Feet & Legs Score	-0.09	Low					
F. Udder Attachment	+0.87	Strong					
Rear Udder Height	+1.40	High					
Rear Udder Width	+1.42	Wide					
Udder Cleft	+0.73	Strong					
Udder Depth	+0.19	Shallow					
Front Teat Placement	+0.91	Close					
Rear Teat Placement	+1.00	Close					
Teat Length	-0.18	Short					

### Sire: Farnear Upside-ET

3147118750 12/22 PTA +3061 GTPI +2061M  
0.05% +94 F 0.01% +66 P +1146 NM\$ +6.4 PL  
1.3 DPR 2.83 SCS +0.93 T +1.48 UDC -0.72 FLC  
Charl x Jedi x Robust

### Dam: PINE-TREE 7593 HERO 8588-ET

Reg: 3210258018 12/22 PTA +2825 GTPI  
+666 M +113 F +1002 NM\$  
+5.4 PL -1.2 DPR +0.33 T +0.85 UDC  
Sire Stack: Heroic x Achiever x Morgan

#### 3<sup>rd</sup> Dam

Pine-Tree Era Achie 7593-ET

#### 4<sup>th</sup> Dam

Sandy-Valley Morgan Era-ET

02-02 2x 365d 34790m 4.2 1450f 3.4 1192p





MGD: Pine-TRee Era Achie 7593-ET



Pine-Tree 8418 Gamed 767-ET

# Lot 30 PINE-TREE 8418 GAMED 767-ET

## IVF Session

\*Buyer is purchasing rights to control the next IVF session(s) until a minimum of 8 #1 or #2 IVF embryos are produced. Embryo grades are determined at the time of transfer if fresh embryos or at time of freezing if freezing is requested by buyer. Buyer keeps all resulting embryos from these controlled IVF sessions. Buyer is responsible for all costs of the aspiration and mating sire decisions.

**Averaging 22 oocytes**

Joe and Kenny Ramsier  
Ramsier's Willow Spring Farm  
2477 Eastern Rd  
Rittman, OH 44270  
ramsier.12@osu.edu  
234-956-4100

Born 3/01/2022 Reg: 840003247330105

12/2022	CDCB SUMMARY GENOMICCOW				NMS +1125
Milk	+893	79%R	Cheese Merit \$		+1148
Fat	+114	+0.28%	FMS +984		GMS +1066
Protein	+54	+0.09%	Gestation Len.		MSP
CFP	+168		EFI %	gEFI 11.7%	gIB 14.5%
SCS	2.59	%R	Mastitis +3.7		Fert. Index +0.6
PL	+6.5	%R	Livability +1.9		Heifer Liv. +0.9
DPR	-0.3	%R	HCR +3.0		CCR +1.7
RFI	-189				
Feed Saved	+160	44%R			0 Dtrs 0 Herds % US

Beta: A1A1 Kappa: AA DWP\$: 1058

12/2022	GHA TYPE SUMMARY				TPI +3102
PTAT +1.86	78%R	UDC+1.53	FLC+0.45	BSC +1.33	0 D / 0 H
					-2 -1 0 1 2
Stature	+1.80	Tall			
Strength	+0.86	Strong			
Body Depth	+0.86	Deep			
Dairy Form	+2.14	Open Rib			
Rump Angle	+1.14	Sloped			
Thurl Width	+1.37	Wide			
Rear Legs-Side	+0.43	Sickle			
Rear Legs-Rear	+0.59	Straight			
Foot Angle	+0.61	Steep			
Feet & Legs Score	+0.88	High			
F. Udder Attachment	+1.34	Strong			
Rear Udder Height	+2.48	High			
Rear Udder Width	+2.71	Wide			
Udder Cleft	+1.45	Strong			
Udder Depth	+0.93	Shallow			
Front Teat Placement	+1.60	Close			
Rear Teat Placement	+1.93	Close			
Teat Length	-0.45	Short			

**Sire: Rmd-Dotterer Ssi Gameday-ET**

3205704153 12/22 PTA +2986 GTPI +809M  
.27% +110 F 0.07% +45 P +1033 NM\$ +5.9 PL  
-0.3 DPR 2.61 SCS +1.57 T +1.44 UDC +0.32 FLC  
Big AI x Blowtorch

**Dam: PINE-TREE 7593 PURS 8418-ET**

Reg: 3150675490 12/22 PTA +2968 GTPI  
+1489 M +96 F +1110 NM\$  
+6.5 PL -0.8 DPR +0.72 T +0.69 UDC  
Sire: Pine-TRee-I Pursuit

**3<sup>rd</sup> Dam**

Pine-TRee Era Achie 7593-ET  
01-10 3x 365d 35130m 5.0 1758f 3.1 1084p

**4<sup>th</sup> Dam**

Sandy-Valley Morgan Era-ET  
02-02 2x 365d 34790m 4.2 1450f 3.4 1192p



MGD: Pine-TRee Era Achie 7593-ET



PINE-TREE 8418 RAYSH 714-ET

# Lot 31 PINE-TREE 8418 RAYSH 714-ET

## IVF Session

## #1 TPI and #2 Net Merit

## Rayshen Daughter

## Averages 20 oocytes per IVF session

\*Buyer is purchasing rights to control the next IVF session(s) until a minimum of 8 #1 or #2 IVF embryos are produced. Embryo grades are determined at the time of transfer if fresh embryos or at time of freezing if freezing is requested by buyer. Buyer keeps all resulting embryos from these controlled IVF sessions. Buyer is responsible for all costs of the aspiration and mating sire decisions.

Born 07/13/2021 Reg: 840003228682784

Arnie Gruenes  
Twin Spruce Farm  
17565 Co Rd 43  
Richmond, MN 56368  
Cows@meltel.net  
320-493-9703

12/2022	CDCB SUMMARY GENOMICCOW				NMS +1115
Milk	+1377	79%R	Cheese Merit S		+1137
Fat	+105	+0.18%	FMS +983	GMS	+1069
Protein	+67	+0.08%	Gestation Len.	MSP	
CFP	+172		EFI %	gEFI 11.2%	gIB 14.1%
SCS	2.64	%R	Mastitis +2.9	Fert. Index	+0.0
PL	+5.3	%R	Livability +1.1	Heifer Liv.	+0.7
DPR	-0.6	%R	HCR -0.6	CCR	+0.5
RFI	-101				
Feed Saved	+240	43%R	0 Dtrs	0 Herds	% US

12/2022	GHA TYPE SUMMARY				TPI +3049	
PTAT	+1.52	77%R	UDC+1.15	FLC+0.14	BSC +0.84	0 D / 0 H

	+1.36	Tall	-2	-1	0	1	2
Stature	+1.36	Tall					
Strength	-0.13	Frail					
Body Depth	+0.59	Deep					
Dairy Form	+2.90	Open Rib					
Rump Angle	-0.45	High Pins					
Thurl Width	+1.08	Wide					
Rear Legs-Side	+1.44	Sickle					
Rear Legs-Rear	+0.01	Straight					
Foot Angle	-0.18	Low					
Feet & Legs Score	+0.64	High					
F. Udder Attachment	+0.84	Strong					
Rear Udder Height	+1.70	High					
Rear Udder Width	+2.09	Wide					
Udder Cleft	+1.18	Strong					
Udder Depth	+0.67	Shallow					
Front Teat Placement	+1.26	Close					
Rear Teat Placement	+1.54	Close					
Teat Length	+0.01	Long					

### Sire: Peak Rayshen-ET

13353469 12/22 PTA +2893 GTPI +1626M  
0.16% +109 F 0.08% +74 P +997 NM\$ +3.6 PL  
-1.9 DPR 2.78 SCS +0.64 T +.54 UDC -0.63 FLC  
Guinness x Altatopshot x Delta

### Dam: PINE-TREE 7593 PURS 8418-ET

Reg: 3150675490 12/22 PTA +2968 GTPI  
+1489 M +96 F +1110 NM\$  
+6.5 PL -0.8 DPR +0.72 T +0.69 UDC  
Sire: Pine-TRee-I Pursuit

### 3<sup>rd</sup> Dam

Pine-TRee Era Achie 7593-ET  
01-10 3x 365d 35130m 5.0 1758f 3.1 1084p

### 4<sup>th</sup> Dam

Sandy-Valley Morgan Era-ET  
02-02 2x 365d 34790m 4.2 1450f 3.4 1192p





3<sup>rd</sup> Dam: Pine-TREE Era Achie 7593-ET



4<sup>th</sup> Dam: Sandy-Valley Morgan Era-ET

# Lot 32 WINSTAR PLINKO 2829-ET

**#3 Net Merit**  
**Altaplinko Daughter**

**Averaging 12 oocytes per session**

Winstar Genetics LLC  
2549 Lakeview Rd  
American Falls ID, 83211  
greg@seagullbaydairy.com  
208-339-0904

Born 02/07/2022 Reg: 840003241782817

01/2023	CDCB SUMMARY GENOMICCOW			NMS +1175
Milk	+1544	79%R	Cheese Merit \$	+1190
Fat	+97	+0.13%	FMS +1068	GMS +1125
Protein	+68	+0.07%	Gestation Len. -3	MSP +104
CFP	+165		EFI %	gEFI 11.9% gIB 13.8%
SCS	2.84	%R	Mastitis +1.4	Fert. Index +1.1
PL	+7.0	%R	Livability +3.6	Heifer Liv. +0.9
DPR	+0.3	%R	HCR +2.6	CCR +1.5
RFI	-74			
Feed Saved	+283	44%R	0 Dtrs	0 Herds % US

Beta: A1A2 Kappa: BB

01/2023	GHA TYPE SUMMARY			TPI +3046				
PTAT +0.73	78%R	UDC+1.12	FLC+0.45	BSC -0.59	0 D / 0 H			
				-2	-1	0	1	2
Stature	-0.54	Short						
Strength	-0.92	Frail						
Body Depth	-0.79	Shallow						
Dairy Form	+1.22	Open Rib						
Rump Angle	-0.56	High Pins						
Thurl Width	+0.26	Wide						
Rear Legs-Side	-0.27	Posty						
Rear Legs-Rear	+0.02	Straight						
Foot Angle	-0.27	Low						
Feet & Legs Score	+0.43	High						
F. Udder Attachment	+0.55	Strong						
Rear Udder Height	+1.20	High						
Rear Udder Width	+1.66	Wide						
Udder Cleft	+0.90	Strong						
Udder Depth	+0.27	Shallow						
Front Teat Placement	+0.43	Close						
Rear Teat Placement	+0.84	Close						
Teat Length	-0.20	Short						

**Sire: Peak Altaplinko-ET**

3200824505 12/22 PTA +2894 GTPI +1560 M  
0.14% +102 F +0.07% +70 P +1026 NM\$ +4.9 PL  
-0.6 DPR 2.78 SCS +0.04 T +0.20 UDC -0.51 FLC  
Marius x Altatopshot x Yoder

**Dam: PINE-TREE 7593 PURS 8416-ET VG-85**

Reg: 3150675488 12/22 PTA +2963 GTPI  
+1473 M +97 F +1125 NM\$  
+6.7 PL -1.3 DPR +0.99 T +0.74 UDC  
Sire Stack: Pursuit x Achiever x Morgan  
2-2 356 Days 31360 4.4 1417 3.2 1045

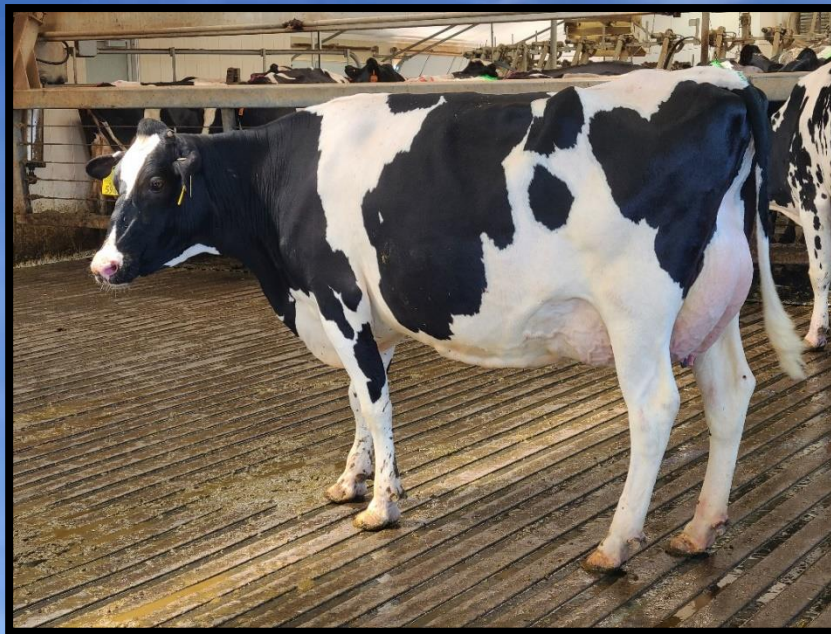
**2nd Dam**

Pine-Tree Era Achie 7593-ET

**3rd Dam**

Sandy-Valley Morgan Era-ET

02-02 2x 365d 34790m 4.2 1450f 3.4 1192p



Dam: WINSTAR BILLY 5947-ET

# Lot 33 WINSTAR MENDEL KLASSY-ET

## IVF Session

\*Buyer is purchasing rights to control the next IVF session(s) until a minimum of 8 #1 or #2 IVF embryos are produced. Embryo grades are determined at the time of transfer if fresh embryos or at time of freezing if freezing is requested by buyer. Buyer keeps all resulting embryos from these controlled IVF sessions. Buyer is responsible for all costs of the aspiration and mating sire decisions.

Pregnant

Last OPU 19 oocytes  
with 7 embryos

Winstar Genetics LLC  
2549 Lakeview Rd  
American Falls ID, 83211  
greg@seagullbaydairy.com  
208-339-0904

Born 01/31/2021 Reg: 840003224449694

Highest son is  
1319 NM and 3196 GTPI

12/2022	CDCB SUMMARY GENOMICCOW				NMS +1262
Milk	+1204	79%R	Cheese Merit \$		+1277
Fat	+165	+0.41%	FMS +1139		GMS +1186
Protein	+62	+0.08%	Gestation Len.		MSP
CFP	+227		EFI %	gEFI 10.9%	gIB 16.6%
SCS	2.96	%R	Mastitis +0.1		Fert. Index -2.2
PL	+3.9	%R	Livability +2.4		Heifer Liv. +0.7
DPR	-3.3	%R	HCR +0.5		CCR -2.1
RFI	-5				
Feed Saved	+317	44%R		0 Dtrs 0 Herds	% US

12/2022	GHA TYPE SUMMARY				TPI +3124
PTAT +1.01	78%R	UDC+1.39	FLC+0.09	BSC -0.52	0 D / 0 H

			-2	-1	0	1	2
Stature	-0.38	Short					
Strength	-1.22	Frail					
Body Depth	-0.46	Shallow					
Dairy Form	+2.40	Open Rib					
Rump Angle	-1.10	High Pins					
Thurl Width	+0.45	Wide					
Rear Legs-Side	+1.96	Sickle					
Rear Legs-Rear	-0.27	Hock In					
Foot Angle	-0.37	Low					
Feet & Legs Score	+0.20	High					
F. Udder Attachment	+0.88	Strong					
Rear Udder Height	+2.14	High					
Rear Udder Width	+2.26	Wide					
Udder Cleft	+0.78	Strong					
Udder Depth	-0.12	Deep					
Front Teat Placement	+1.58	Close					
Rear Teat Placement	+1.60	Close					
Teat Length	-1.42	Short					

### Sire: Winstar Mendel-P-ET

3208037185 12/22 PTA +2946 GTPI +805 M  
0.36% +134 F +0.08% +48 P +1036 NM\$ +3.4 PL  
-1.1 DPR 2.91 SCS +0.73 T +1.13 UDC -0.12 FLC  
Entity x Windfall x Powerball-P

### Dam: WINSTAR BILLY 5947-ET

Reg: 3206460994 12/22 PTA +2862 GTPI  
+770 M +122 F +1100 NM\$  
+4.4 PL -1.3 DPR -0.18 T +0.60 UDC  
Sire Stack: Billy x Modesty x Josuper  
1-11 291 Days 23860 6.0439 4.0 943

3<sup>rd</sup> Dam  
Seagull-Bay Modesty 1227  
4<sup>th</sup> Dam  
Seagull-Bay Josuper Kamy-ET





Endco Yoder L7933 9839-ET



T-SPRUCE UPSIDE 17580-ET

# Lot 34

# T-SPRUCE UPSIDE 17580-ET

## IVF Session

\*Buyer is purchasing rights to control the next IVF session(s) until a minimum of 8 #1 or #2 IVF embryos are produced. Embryo grades are determined at the time of transfer if fresh embryos or at time of freezing if freezing is requested by buyer. Buyer keeps all resulting embryos from these controlled IVF sessions. Buyer is responsible for all costs of the aspiration and mating sire decisions.

## #5 TPI Upside Daughter

## Averages 17 oocytes per IVF session

Born 12/04/2021 Reg: 840003243331834

12/2022	CDCB SUMMARY GENOMICCOW				NMS +1110
Milk	+2129	79%R	Cheese Merit \$		+1120
Fat	+120	+0.13%	FMS +1042		GMS +1071
Protein	+77	+0.04%	Gestation Len.		MSP
CFP	+197		EFI %	gEFI 10.8%	gIB 13.2%
SCS	2.82	%R	Mastitis +0.0		Fert. Index +0.5
PL	+4.7	%R	Livability +0.9		Heifer Liv. +1.0
DPR	-0.6	%R	HCR +2.4		CCR +1.7
RFI	+2				
Feed Saved	-6	43%R		0 Dtrs 0 Herds	% US

Beta: A2A2 Kappa: AB DWPS: 1273

12/2022	GHA TYPE SUMMARY				TPI +3157
PTAT +2.02	78%R	UDC+1.48	FLC+0.81	BSC +1.26	0 D / 0 H

			-2	-1	0	1	2
Stature	+1.48	Tall					
Strength	+0.81	Strong					
Body Depth	+1.32	Deep					
Dairy Form	+2.59	Open Rib					
Rump Angle	+0.15	Sloped					
Thurl Width	+1.28	Wide					
Rear Legs-Side	-0.39	Posty					
Rear Legs-Rear	+0.84	Straight					
Foot Angle	+0.39	Steep					
Feet & Legs Score	+0.92	High					
F. Udder Attachment	+1.04	Strong					
Rear Udder Height	+2.53	High					
Rear Udder Width	+3.41	Wide					
Udder Cleft	+1.57	Strong					
Udder Depth	-0.16	Deep					
Front Teat Placement	+1.17	Close					
Rear Teat Placement	+1.80	Close					
Teat Length	-0.27	Short					

### Sire: Farnear Upside-ET

3147118750 12/22 PTA +3061 GTPI +2061M  
 0.05% +94 F 0.01% +66 P +1146 NMS +6.4 PL  
 1.3 DPR 2.83 SCS +0.93 T +1.48 UDC -0.72 FLC  
 Charl x Jedi x Robust

### Dam: MERCEDES LIONEL LASS-ET

Reg: 3205638743 12/22 PTA +3055 GTPI  
 +2137 M +137 F +1096 NMS  
 +3.1 PL -3.7 DPR +1.62 T +1.54 UDC  
 Sire Stack: Lionel x Yoder x Liquid Gold

#### 3<sup>rd</sup> Dam

Endco Yoder L7933 9839-ET VG-86

#### 4<sup>th</sup> Dam

T-Spruce Lgold 7933-ET

02-05 2x 248d 20320m 4.4 904f 3.4 687p

Arnie Gruenes  
 Twin Spruce Farm  
 17565 Co Rd 43  
 Richmond, MN 56368  
 Cows@meltel.net  
 320-493-9703





Endco Yoder L7933 9839-ET



T-SPRUCE KASHTON 18217-ET

# Lot 35

# T-SPRUCE KASHTON 18217-ET

## IVF Session

\*Buyer is purchasing rights to control the next IVF session(s) until a minimum of 8 #1 or #2 IVF embryos are produced. Embryo grades are determined at the time of transfer if fresh embryos or at time of freezing if freezing is requested by buyer. Buyer keeps all resulting embryos from these controlled IVF sessions. Buyer is responsible for all costs of the aspiration and mating sire decisions.

Born 03/08/2022 Reg: 840003243332471

12/2022	CDCB SUMMARY GENOMICCOW				NMS +1113
Milk	+1171	78%R	Cheese Merit \$		+1130
Fat	+138	+0.32%	FMS +995	GMS	+1047
Protein	+59	+0.08%	Gestation Len.	MSP	
CFP	+197		EFI %	gEFI 11.5%	gIB 16.2%
SCS	2.80	%R	Mastitis +3.0	Fert. Index	-0.6
PL	+4.8	%R	Livability +0.0	Heifer Liv.	+1.0
DPR	-1.7	%R	HCR +1.6	CCR	-0.3
RFI	-30				
Feed Saved	+86	42%R		0 Dtrs	0 Herds % US

Beta: A2A2 Kappa: AB DWP\$: 1208

12/2022	GHA TYPE SUMMARY				TPI +3096
PTAT +1.35	78%R	UDC+1.55	FLC+0.67	BSC +0.24	0 D / 0 H

			-2	-1	0	1	2
Stature	+0.36	Tall					
Strength	+0.15	Strong					
Body Depth	+0.16	Deep					
Dairy Form	+1.20	Open Rib					
Rump Angle	+0.82	Sloped					
Thurl Width	-0.05	Narrow					
Rear Legs-Side	-0.77	Posty					
Rear Legs-Rear	+0.78	Straight					
Foot Angle	+0.70	Steep					
Feet & Legs Score	+0.70	High					
F. Udder Attachment	+1.58	Strong					
Rear Udder Height	+2.67	High					
Rear Udder Width	+2.55	Wide					
Udder Cleft	+0.25	Strong					
Udder Depth	+0.22	Shallow					
Front Teat Placement	+0.53	Close					
Rear Teat Placement	+0.55	Close					
Teat Length	-0.92	Short					

## #1 TPI Kashton Daughter

### Sire: Clear-Echo Max Kashton-ET

3149514248 12/22 PTA +2857 GTPI +868 M  
 0.23% +100 F +0.03% +37 P +996 NM\$ +6.5 PL  
 -1.0 DPR 2.63 SCS +0.26 T +1.75 UDC +0.06 FLC  
 Maximus x Frazzled x Silver

### Dam: T-SPRUCE CONWAY 15574-ET

Reg: 3220247582 12/22 PTA +3036 GTPI  
 +1314 M +123 F +1016 NM\$  
 +3.6 PL -1.8 DPR +1.71 T +1.47 UDC  
 Sire Stack: Conway x Lionel x Yoder

**3<sup>rd</sup> Dam**  
 Mercedes Lionel Lass-ET  
**4<sup>th</sup> Dam**  
 Endco Yoder L7933 9839-ET VG-86  
**5<sup>th</sup> Dam**  
 T-Spruce Lgold 7933-ET  
 02-05 2x 248d 20320m 4.4 904f 3.4 687p

Arnie Gruenes  
 Twin Spruce Farm  
 17565 Co Rd 43  
 Richmond, MN 56368  
 Cows@meltel.net  
 320-493-9703





Endco Yoder L7933 9839-ET



T-SPRUCE CONWAY 16723-ET

# Lot 36

# T-SPRUCE CONWAY 16723-ET

## IVF Session

\*Buyer is purchasing rights to control the next IVF session(s) until a minimum of 8 #1 or #2 IVF embryos are produced. Embryo grades are determined at the time of transfer if fresh embryos or at time of freezing if freezing is requested by buyer. Buyer keeps all resulting embryos from these controlled IVF sessions. Buyer is responsible for all costs of the aspiration and mating sire decisions.

Born 06/15/2022 Reg: 840003235976730

12/2022	CDCB SUMMARY GENOMICCOW				NMS +1146
Milk	+1801	79%R	Cheese Merit \$		+1159
Fat	+130	+0.20%	FMS +1025	GMS	+1095
Protein	+80	+0.08%	Gestation Len.	MSP	
CFP	+210		EFI %	gEFI 11.6%	gIB 14.6%
SCS	3.02	%R	Mastitis -1.2	Fert. Index	-1.1
PL	+3.9	%R	Livability +0.6	Heifer Liv.	+0.9
DPR	-2.2	%R	HCR +2.3	CCR	-0.2
RFI	-64				
Feed Saved	+221	43%R	0 Dtrs	0 Herds	% US

Beta: A2A2 Kappa: AB DWPS: 802

12/2022	GHA TYPE SUMMARY				TPI +3085
PTAT	+1.53	78%R	UDC+1.16	FLC+0.61	BSC +0.31
					0 D / 0 H

			-2	-1	0	1	2
Stature	+0.36	Tall					
Strength	-0.09	Frail					
Body Depth	+0.56	Deep					
Dairy Form	+2.81	Open Rib					
Rump Angle	-0.16	High Pins					
Thurl Width	+0.72	Wide					
Rear Legs-Side	+0.98	Sickle					
Rear Legs-Rear	+0.72	Straight					
Foot Angle	-0.31	Low					
Feet & Legs Score	+0.72	High					
F. Udder Attachment	+0.84	Strong					
Rear Udder Height	+2.07	High					
Rear Udder Width	+2.95	Wide					
Udder Cleft	+0.75	Strong					
Udder Depth	-0.80	Deep					
Front Teat Placement	+0.34	Close					
Rear Teat Placement	+0.51	Close					
Teat Length	+0.76	Long					

## #5 Net Merit

## Conway Daughter

### Sire: Sandy-Valley R Conway-ET

3148929379 12/22 PTA +2919 GTPI +505 M  
 0.29% +101 F +0.11% +48 P +867 NM\$ +3.7 PL  
 +0.6 DPR 2.89 SCS +1.54 T +1.49 UDC +0.94 FLC  
 Renegade x Granite x Draco

### Dam: MERCEDES LIONEL LASS-ET

Reg: 3205638743 12/22 PTA +3055 GTPI  
 +2137 M +137 F +1096 NM\$  
 +3.1 PL -3.7 DPR +1.62 T +1.54 UDC  
 Sire Stack: Lionel x Yoder x Liquid Gold

#### 3<sup>rd</sup> Dam

Endco Yoder L7933 9839-ET VG-86

#### 4<sup>th</sup> Dam

T-Spruce Lgold 7933-ET

02-05 2x 248d 20320m 4.4 904f 3.4 687p

Arnie Gruenes  
 Twin Spruce Farm  
 17565 Co Rd 43  
 Richmond, MN 56368  
 Cows@meltel.net  
 320-493-9703





Endco Yoder L7933 9839-ET



T-SPRUCE F BITE 18649-ET

# Lot 37 T-SPRUCE F BITE 18649-ET

## IVF Session

\*Buyer is purchasing rights to control the next IVF session(s) until a minimum of 8 #1 or #2 IVF embryos are produced. Embryo grades are determined at the time of transfer if fresh embryos or at time of freezing if freezing is requested by buyer. Buyer keeps all resulting embryos from these controlled IVF sessions. Buyer is responsible for all costs of the aspiration and mating sire decisions.

Born 005/18/2022 Reg: 840003251843819

Arnie Gruenes  
Twin Spruce Farm  
17565 Co Rd 43  
Richmond, MN 56368  
Cows@meltel.net  
320-493-9703

12/2022	CDCB SUMMARY GENOMICCOW				NMS +1147
Milk	+2116	78%R	Cheese Merit S		+1158
Fat	+110	+0.10%	FMS +1083		GMS +1111
Protein	+76	+0.03%	Gestation Len.		MSP
CFP	+186		EFI %	gEFI 10.4%	gIB 15.8%
SCS	2.81	%R	Mastitis +0.0	Fert. Index	+0.7
PL	+5.6	%R	Livability +1.2	Heifer Liv.	+1.4
DPR	-0.1	%R	HCR +1.9	CCR	+1.7
RFI	-62				
Feed Saved	+139	41%R		0 Dtrs 0 Herds	% US

Beta: A2A2 Kappa: AB DWP\$: 1165

12/2022	GHA TYPE SUMMARY				TPI +3081			
PTAT +1.05	78%R	UDC+1.27	FLC-0.01	BSC +0.15	0 D / 0 H			
				-2	-1	0	1	2
Stature	+0.40	Tail						
Strength	-0.26	Frail						
Body Depth	-0.30	Shallow						
Dairy Form	+1.04	Open Rib						
Rump Angle	-0.34	High Pins						
Thurl Width	+0.57	Wide						
Rear Legs-Side	+0.56	Sickle						
Rear Legs-Rear	-0.02	Hock In						
Foot Angle	-0.19	Low						
Feet & Legs Score	+0.14	High						
F. Udder Attachment	+1.30	Strong						
Rear Udder Height	+1.82	High						
Rear Udder Width	+1.96	Wide						
Udder Cleft	+0.28	Strong						
Udder Depth	+0.95	Shallow						
Front Teat Placement	-0.03	Wide						
Rear Teat Placement	-0.03	Wide						
Teat Length	-0.62	Short						

### Sire: T-Spruce G Frost Bite-ET

3220234128 12/22 PTA +3055 GTPI +1700 M  
0.14% +105 F +0.06% +70 P +1242 NM\$ +6.5 PL  
+0.5 DPR 2.78 SCS +0.07 T +0.80 UDC -0.20 FLC  
Granada x Lionel x Samuri

### Dam: T-SPRUCE TAOS 15384-ET

Reg: 3219884957 12/22 PTA +3104 GTPI  
+2515 M +101 F +1056 NM\$  
+5.6 PL -0.3 DPR +1.83 T +1.66 UDC  
Sire Stack: Taos x Lionel x Yoder

**3<sup>rd</sup> Dam**  
Mercedes Lionel Lass-ET  
**4<sup>th</sup> Dam**  
Endco Yoder L7933 9839-ET VG-86  
**5<sup>th</sup> Dam**  
T-Spruce Lgold 7933-ET  
02-05 2x 248d 20320m 4.4 904f 3.4 687p





Endco Yoder L7933 9839-ET



T-SPRUCE PAYLOAD 16903-ET

# Lot 38 T-SPRUCE PAYLOAD 16903-ET

## IVF Session

\*Buyer is purchasing rights to control the next IVF session(s) until a minimum of 8 #1 or #2 IVF embryos are produced. Embryo grades are determined at the time of transfer if fresh embryos or at time of freezing if freezing is requested by buyer. Buyer keeps all resulting embryos from these controlled IVF sessions. Buyer is responsible for all costs of the aspiration and mating sire decisions.

Born 07/29/2021 Reg: 840003235976910

12/2022	CDCB SUMMARY GENOMICCOW				NMS +1101
Milk	+1937	79%R	Cheese Merit \$		+1113
Fat	+132	+0.19%	FMS +1010	GMS	+1000
Protein	+77	+0.06%	Gestation Len.	MSP	
CFP	+209		EFI %	gEFI 11.6%	gIB 18.1%
SCS	2.92	%R	Mastitis -0.4	Fert. Index	-1.8
PL	+4.0	%R	Livability +1.7	Heifer Liv.	+1.7
DPR	-3.1	%R	HCR +0.4	CCR	-1.4
RFI	-100				
Feed Saved	+28	44%R	0 Dtrs	0 Herds	% US

Beta: A1A2 Kappa: AE DWP\$: 950

12/2022	GHA TYPE SUMMARY				TPI +3058	
PTAT	+1.50	78%R	UDC+0.88	FLC+0.67	BSC +0.76	0 D / 0 H

			-2	-1	0	1	2
Stature	+0.35	Tall					
Strength	+1.07	Strong					
Body Depth	+0.95	Deep					
Dairy Form	+1.59	Open Rib					
Rump Angle	-0.02	High Pins					
Thurl Width	+1.72	Wide					
Rear Legs-Side	-0.48	Posty					
Rear Legs-Rear	+0.95	Straight					
Foot Angle	+0.49	Steep					
Feet & Legs Score	+0.65	High					
F. Udder Attachment	+0.74	Strong					
Rear Udder Height	+1.33	High					
Rear Udder Width	+2.83	Wide					
Udder Cleft	+0.35	Strong					
Udder Depth	-0.88	Deep					
Front Teat Placement	+0.56	Close					
Rear Teat Placement	+0.88	Close					
Teat Length	+0.23	Long					

## #5 Net Merit Payload Daughter

### Sire: S-S-I Eisaku Payload-ET

3211394853 12/22 PTA +2931 GTPI +2002 M  
.03% +87 F +0.03% +72 P +952 NM\$ +4.4 PL  
-1.1 DPR 3.01 SCS +1.59 T +1.08 UDC +1.16 FLC  
Eisaku x Matters x Stoic

### Dam: MERCEDES LIONEL LASS-ET

Reg: 3205638743 12/22 PTA +3055 GTPI  
+2137 M +137 F +1096 NM\$  
+3.1 PL -3.7 DPR +1.62 T +1.54 UDC  
Sire Stack: Lionel x Yoder x Liquid Gold

#### 3<sup>rd</sup> Dam

Endco Yoder L7933 9839-ET VG-86

#### 4<sup>th</sup> Dam

T-Spruce Lgold 7933-ET

02-05 2x 248d 20320m 4.4 904f 3.4 687p

Arnie Gruenes  
Twin Spruce Farm  
17565 Co Rd 43  
Richmond, MN 56368  
Cows@meltel.net  
320-493-9703



Endco Yoder L7933 9839-ET



T-SPRUCE JALAPENO 18346-ET

# Lot 39

# T-SPRUCE JALAPENO 18346-ET

## IVF Session

\*Buyer is purchasing rights to control the next IVF session(s) until a minimum of 8 #1 or #2 IVF embryos are produced. Embryo grades are determined at the time of transfer if fresh embryos or at time of freezing if freezing is requested by buyer. Buyer keeps all resulting embryos from these controlled IVF sessions. Buyer is responsible for all costs of the aspiration and mating sire decisions.

### Averages 19 oocytes per IVF session

Arnie Gruenes  
Twin Spruce Farm  
17565 Co Rd 43  
Richmond, MN 56368  
Cows@meltel.net  
320-493-9703

Born 04/01/2022 Reg: 840003251843516

12/2022	CDCB SUMMARY GENOMIC COW				NMS +1173
Milk	+2214	78%R	Cheese Merit \$		+1183
Fat	+114	+0.10%	FMS +1108	GMS	+1092
Protein	+79	+0.03%	Gestation Len.	MSP	
CFP	+193		EFI %	gEFI 10.5%	gIB 14.4%
SCS	2.82	%R	Mastitis +0.5	Fert. Index	-1.7
PL	+5.0	%R	Livability +0.1	Heifer Liv.	+0.7
DPR	-2.9	%R	HCR +2.2	CCR	-1.3
RFI	-34				
Feed Saved	+367	41%R		0 Dtrs	0 Herds % US

Beta: A2A2 Kappa: AA DWP\$: 1240

12/2022	GHA TYPE SUMMARY				TPI +3057
PTAT +1.31	78%R	UDC+1.51	FLC+0.70	BSC -0.37	0 D / 0 H

	-0.15	Short	-2	-1	0	1	2
Stature	-0.15	Short					
Strength	-1.01	Frail					
Body Depth	-0.16	Shallow					
Dairy Form	+2.94	Open Rib					
Rump Angle	+0.36	Sloped					
Thurl Width	-0.23	Narrow					
Rear Legs-Side	+0.81	Sickle					
Rear Legs-Rear	+0.24	Straight					
Foot Angle	-0.45	Low					
Feet & Legs Score	+0.82	High					
F. Udder Attachment	+0.63	Strong					
Rear Udder Height	+2.65	High					
Rear Udder Width	+3.14	Wide					
Udder Cleft	+0.61	Strong					
Udder Depth	-0.61	Deep					
Front Teat Placement	+0.50	Close					
Rear Teat Placement	+0.61	Close					
Teat Length	-0.28	Short					

### Sire: Progenesis Jalapeno

13807753 12/22 PTA +2998 GTPI +1615 M  
0.17% +112 F 0.07% +70 P +1049 NM\$ +4.2 PL  
-0.5 DPR 2.77 SCS +1.07 T +1.04 UDC -0.38 FLC  
HIGHJUMP x Spectre x Josuper

### Dam: T-SPRUCE ZAREK 15464-ET

Reg: 3219885037 12/22 PTA +2994 GTPI  
+1969 M +101 F +1065 NM\$  
+5.4 PL -2.8 DPR +1.32 T +1.90 UDC  
Sire Stack: Altazarek x Lionel x Yoder

#### 3<sup>rd</sup> Dam

Mercedes Lionel Lass-ET

#### 4<sup>th</sup> Dam

Endco Yoder L7933 9839-ET VG-86

#### 5<sup>th</sup> Dam

T-Spruce Lgold 7933-ET

02-05 2x 248d 20320m 4.4 904f 3.4 687p





2<sup>nd</sup> Dam Endco Yoder L7933



T-SPRUCE UPSIDE 17557-ET

# Lot 40 T-SPRUCE UPSIDE 17557-ET

**Averages 28 oocytes per IVF session**

Born 12/01/2021 Reg: 840003243331811

Arnie Gruenes  
Twin Spruce Farm  
17565 Co Rd 43  
Richmond, MN 56368  
Cows@meltel.net  
320-493-9703

12/2022	CDCB SUMMARY GENOMICCOW				NM\$ +1049
Milk	+1529	79%R	Cheese Merit \$		+1062
Fat	+109	+0.17%	FMS +963	GMS	+1008
Protein	+63	+0.05%	Gestation Len.	MSP	
CFP	+172		EFI %	gEFI 10.5%	gIB 15.7%
SCS	2.81	%R	Mastitis +0.2	Fert. Index	+0.4
PL	+4.9	%R	Livability +2.2	Heifer Liv.	+1.1
DPR	-0.7	%R	HCR +3.4	CCR	+2.1
RFI	-23				
Feed Saved	+92	43%R	0 Dtrs	0 Herds	% US

Beta: A2A2 Kappa: AA DWP\$: 1208

12/2022	GHA TYPE SUMMARY				TPI +3050		
PTAT	+1.70	78%R	UDC+1.57	FLC+0.58	BSC +0.67 0 D / 0 H		
			-2	-1	0	1	2
Stature	+0.92	Tall					
Strength	+0.14	Strong					
Body Depth	+0.49	Deep					
Dairy Form	+2.08	Open Rib					
Rump Angle	+0.95	Sloped					
Thurl Width	+1.01	Wide					
Rear Legs-Side	+0.06	Sickle					
Rear Legs-Rear	+0.61	Straight					
Foot Angle	+0.13	Steep					
Feet & Legs Score	+0.81	High					
F. Udder Attachment	+1.44	Strong					
Rear Udder Height	+2.25	High					
Rear Udder Width	+2.87	Wide					
Udder Cleft	+1.32	Strong					
Udder Depth	+0.53	Shallow					
Front Teat Placement	+1.22	Close					
Rear Teat Placement	+1.49	Close					
Teat Length	-1.08	Short					

**Sire: Farnear Upside-ET**  
3147118750 12/22 PTA +3061 GTPI +2061M  
0.05% +94 F 0.01% +66 P +1146 NM\$ +6.4 PL  
1.3 DPR 2.83 SCS +0.93 T +1.48 UDC -0.72 FLC  
Charl x Jedi x Robust

**Dam: MERCEDES LIONEL LASS-ET**  
Reg: 3205638743 12/22 PTA +3055 GTPI  
+2137 M +137 F +1096 NM\$  
+3.1 PL -3.7 DPR +1.62 T +1.54 UDC  
Sire Stack: Lionel x Yoder x Liquid Gold

**2nd Dam**  
Endco Yoder L7933 9839-ET VG-86  
**3rd Dam**  
T-Spruce Lgold 7933-ET  
02-05 2x 248d 20320m 4.4 904f 3.4 687p



3<sup>rd</sup> Dam Endco Yoder L7933



T-SPRUCE F BITE 19575-ET

# Lot 41

# T-SPRUCE F BITE 19575-ET

Born 10/11/2022 Reg: 840003260816987

12/2022	CDCB SUMMARY GENOMICCOW				NMS +1116
Milk	+2008	78%R	Cheese Merit \$		+1128
Fat	+135	+0.19%	FMS +1017	GMS	+1040
Protein	+81	+0.06%	Gestation Len.	MSP	
CFP	+216		EFI %	gEFI 10.8%	gIB 17.8%
SCS	2.96	%R	Mastitis -0.1	Fert. Index	-1.9
PL	+2.8	%R	Livability +0.1	Heifer Liv.	+1.4
DPR	-3.6	%R	HCR +1.6	CCR	-2.0
RFI	-102				
Feed Saved	+179	41%R	0 Dtrs	0 Herds	% US

Beta: A2A2 Kappa: AB DWP\$: 1079

12/2022	GHA TYPE SUMMARY				TPI +3045
PTAT +0.91	76%R	UDC+1.08	FLC+0.45	BSC +0.09	0 D / 0 H
					-2 -1 0 1 2
Stature	+0.08	Tail			
Strength	-0.02	Frail			
Body Depth	-0.05	Shallow			
Dairy Form	+1.29	Open Rib			
Rump Angle	-0.51	High Pins			
Thurl Width	+0.58	Wide			
Rear Legs-Side	+0.35	Sickle			
Rear Legs-Rear	+0.34	Straight			
Foot Angle	+0.08	Steep			
Feet & Legs Score	+0.49	High			
F. Udder Attachment	+0.73	Strong			
Rear Udder Height	+1.95	High			
Rear Udder Width	+2.25	Wide			
Udder Cleft	-0.01	Weak			
Udder Depth	-0.18	Deep			
Front Teat Placement	-0.32	Wide			
Rear Teat Placement	-0.21	Wide			
Teat Length	-0.03	Short			

**Sire: T-Spruce G Frost Bite-ET**

3220234128 12/22 PTA +3055 GTPI +1700 M  
 0.14% +105 F +0.06% +70 P +1242 NM\$ +6.5 PL  
 +0.5 DPR 2.78 SCS +0.07 T +0.80 UDC -0.20 FLC  
 Granada x Lionel x Samuri

**Dam: T-SPRUCE CONWAY 15574-ET**

Reg: 3220247582 12/22 PTA +3036 GTPI  
 +1314 M +123 F +1016 NM\$  
 +3.6 PL -1.8 DPR +1.71 T +1.47 UDC  
 Sire Stack: Conway x Lionel x Yoder

**2nd Dam**  
 Mercedes Lionel Lass-ET  
**3rd Dam**  
 Endco Yoder L7933 9839-ET VG-86  
**4th Dam**  
 T-Spruce Lgold 7933-ET  
 02-05 2x 248d 20320m 4.4 904f 3.4 687p

Arnie Gruenes  
 Twin Spruce Farm  
 17565 Co Rd 43  
 Richmond, MN 56368  
 Cows@meltel.net  
 320-493-9703



# Lot 42 T-SPRUCE BEETHOVEN 19177-ET

## IVF Session

\*Buyer is purchasing rights to control the next IVF session(s) until a minimum of 8 #1 or #2 IVF embryos are produced. Embryo grades are determined at the time of transfer if fresh embryos or at time of freezing if freezing is requested by buyer. Buyer keeps all resulting embryos from these controlled IVF sessions. Buyer is responsible for all costs of the aspiration and mating sire decisions.

Born 07/29/2022 Reg: 840003251844347

12/2022	CDCB SUMMARY GENOMICCOW				NMS +1148
Milk	+897	78%R	Cheese Merit \$		+1178
Fat	+120	+0.30%	FMS +953	GMS	+1070
Protein	+66	+0.13%	Gestation Len.	MSP	
CFP	+186		EFI %	gEFI 11.1%	gIB 18.8%
SCS	2.60	%R	Mastitis +3.0	Fert. Index	-0.4
PL	+6.3	%R	Livability +1.6	Heifer Liv.	+1.3
DPR	-0.9	%R	HCR +0.0	CCR	+0.6
RFI	+91				
Feed Saved	+9	42%R		0 Dtrs 0 Herds	% US

Beta: A2A2 Kappa: BB DWP\$: 1385

12/2022	GHA TYPE SUMMARY				TPI +3129			
PTAT +1.31	77%R	UDC+1.85	FLC+0.31	BSC -0.12	0 D / 0 H			
				-2	-1	0	1	2
Stature	-0.31	Short						
Strength	-0.11	Frail						
Body Depth	-0.16	Shallow						
Dairy Form	+1.37	Open Rib						
Rump Angle	-0.81	High Pins						
Thurl Width	+0.89	Wide						
Rear Legs-Side	-0.25	Posty						
Rear Legs-Rear	+0.10	Straight						
Foot Angle	-0.06	Low						
Feet & Legs Score	+0.28	High						
F. Udder Attachment	+1.42	Strong						
Rear Udder Height	+2.27	High						
Rear Udder Width	+3.05	Wide						
Udder Cleft	+1.31	Strong						
Udder Depth	+0.19	Shallow						
Front Teat Placement	+1.07	Close						
Rear Teat Placement	+1.29	Close						
Teat Length	-0.47	Short						

## #2 TPI Beethoven Daughter

Arnie Gruenes  
Twin Spruce Farm  
17565 Co Rd 43  
Richmond, MN 56368  
Cows@meltel.net  
320-493-9703

### Sire: T-Spruce S-S-I Beethoven-ET

3223871576 12/22 PTA +2974 GTPI +1235 M  
0.19% +103 F +0.07% +59 P +1015 NM\$ +6.1 PL  
-0.3 DPR 2.69 SCS +0.98 T +1.39 UDC -0.13 FLC  
Taos x Legacy x Delta-Worth

### Dam: T-SPRUCE EINSTEIN 14632-ET

Reg: 3216672467 12/22 PTA +2936 GTPI  
+1101 M +90 F +944 NM\$  
+5.7 PL -0.6 DPR +1.14 T +2.03 UDC  
Sire Stack: Einstein x Nugent x Frazzle

#### 3<sup>rd</sup> Dam

T-Spruce Nugent 12660-ET

#### 4<sup>th</sup> Dam

T-Spruce Frazzled 10687-ET G-76

02-02 3x 305d 38840m 2.8 1103f 2.8 1091p



T-SPRUCE GRAZIANO 17774

# Lot 43

# T-SPRUCE GRAZIANO 17774

## IVF Session

\*Buyer is purchasing rights to control the next IVF session(s) until a minimum of 8 #1 or #2 IVF embryos are produced. Embryo grades are determined at the time of transfer if fresh embryos or at time of freezing if freezing is requested by buyer. Buyer keeps all resulting embryos from these controlled IVF sessions. Buyer is responsible for all costs of the aspiration and mating sire decisions.

### Averages 19 oocytes per IVF session

Arnie Gruenes  
Twin Spruce Farm  
17565 Co Rd 43  
Richmond, MN 56368  
Cows@meltel.net  
320-493-9703

Born 12/29/2022 Reg: 840003243332028

12/2022	CDCB SUMMARY GENOMICCOW				NMS +1110
Milk	+819	78%R	Cheese Merit \$		+1137
Fat	+104	+0.25%	FMS +938		GMS +1053
Protein	+59	+0.12%	Gestation Len.		MSP
CFP	+163		EFI %	gEFI 11.4%	glB 16.7%
SCS	2.64	%R	Mastitis +2.5		Fert. Index +0.6
PL	+7.0	%R	Livability +3.2		Heifer Liv. +1.3
DPR	+0.4	%R	HCR +0.6		CCR +2.3
RFI	-22				
Feed Saved	+76	42%R		0 Dtrs 0 Herds	% US

### Sire: WINSTAR GRAZIANO-ET

3212150599 12/22 PTA +2945 GTPI +138 M  
0.40% +119 F +0.12% +39 P +1096 NM\$ +6.4 PL  
1.2 DPR 2.68 SCS +0.26 T 0.78 UDC -0.50 FLC  
Altazazzle x Crimson x Jedi

Beta: A2A2 Kappa: BB DWP\$: 1256

12/2022	GHA TYPE SUMMARY				TPI +3027
PTAT +0.81	77%R	UDC+1.56	FLC-0.35	BSC -0.43	0 D / 0 H

### Dam: T-SPRUCE EINSTEIN 14632-ET

Reg: 3216672467 12/22 PTA +2936 GTPI  
+1101 M +90 F +944 NM\$  
+5.7 PL -0.6 DPR +1.14 T +2.03 UDC  
Sire Stack: Einstein x Nugent x Frazzled

		-2	-1	0	1	2
Stature	-0.57	Short				
Strength	-0.29	Frail				
Body Depth	-0.70	Shallow				
Dairy Form	+0.02	Open Rib				
Rump Angle	+0.27	Sloped				
Thurl Width	+0.30	Wide				
Rear Legs-Side	-0.98	Posty				
Rear Legs-Rear	-0.63	Hock In				
Foot Angle	-0.11	Low				
Feet & Legs Score	-0.38	Low				
F. Udder Attachment	+1.66	Strong				
Rear Udder Height	+1.47	High				
Rear Udder Width	+1.85	Wide				
Udder Cleft	+0.63	Strong				
Udder Depth	+0.91	Shallow				
Front Teat Placement	+0.59	Close				
Rear Teat Placement	+0.64	Close				
Teat Length	-0.19	Short				

**3<sup>rd</sup> Dam**  
T-Spruce Nugent 12660-ET  
**4<sup>th</sup> Dam**  
T-Spruce Frazzled 10687-ET G-76  
02-02 3x 305d 38840m 2.8 1103f 2.8 1091p



# Lot 44

# T-SPRUCE F BITE 18680-ET

## IVF Session

\*Buyer is purchasing rights to control the next IVF session(s) until a minimum of 8 #1 or #2 IVF embryos are produced. Embryo grades are determined at the time of transfer if fresh embryos or at time of freezing if freezing is requested by buyer. Buyer keeps all resulting embryos from these controlled IVF sessions. Buyer is responsible for all costs of the aspiration and mating sire decisions.

Born 05/24/2022 Reg: 840003251843850

12/2022	CDCB SUMMARY GENOMICCOW				NMS +1206
Milk	+1417	78%R	Cheese Merit \$		+1222
Fat	+121	+0.23%	FMS +1100	GMS	+1183
Protein	+64	+0.07%	Gestation Len.	MSP	
CFP	+185		EFI %	gEFI 10.5%	gIB 14.4%
SCS	2.82	%R	Mastitis +0.7	Fert. Index	+0.4
PL	+5.1	%R	Livability +1.0	Heifer Liv.	+0.9
DPR	-0.6	%R	HCR +1.6	CCR	+0.4
RFI	-230				
Feed Saved	+492	41%R		0 Dtrs	0 Herds % US

Beta: A2A2 Kappa: BB DWP\$: 1381

12/2022	GHA TYPE SUMMARY					TPI +3009
PTAT +0.27	76%R	UDC+0.67	FLC-0.09	BSC-0.98	0 D/ 0 H	

			-2	-1	0	1	2
Stature	-1.02	Short					
Strength	-1.31	Frail					
Body Depth	-1.07	Shallow					
Dairy Form	+1.05	Open Rib					
Rump Angle	-0.72	High Pins					
Thurl Width	+0.16	Wide					
Rear Legs-Side	+1.45	Sickle					
Rear Legs-Rear	-0.43	Hock In					
Foot Angle	-1.19	Low					
Feet & Legs Score	-0.13	Low					
F. Udder Attachment	+0.22	Strong					
Rear Udder Height	+0.93	High					
Rear Udder Width	+1.03	Wide					
Udder Cleft	+0.09	Strong					
Udder Depth	-0.30	Deep					
Front Teat Placement	+0.00	Close					
Rear Teat Placement	+0.16	Close					
Teat Length	+0.57	Long					

### Sire: T-Spruce G Frost Bite-ET

3220234128 12/22 PTA +3055 GTPI +1700 M  
0.14% +105 F +0.06% +70 P +1242 NM\$ +6.5 PL  
+0.5 DPR 2.78 SCS +0.07 T +0.80 UDC -0.20 FLC  
Granada x Lionel x Samuri

### Dam: T-SPRUCE CONWAY 15680-ET

Reg: 3220247688 12/22 PTA +2900 GTPI  
+753 M +103 F +970 NM\$  
+4.7 PL +0.3 DPR +0.98 T +1.09 UDC  
Sire Stack: Conway x Delta-Worth x Frazzled

#### 3<sup>rd</sup> Dam

T-Spruce Dworth 13452-ET G-77

#### 4<sup>th</sup> Dam

T-Spruce Frazzled 11721-ET

03-02 3x 283d 32230m 4.3 1388f 3.1 1002p

Arnie Gruenes  
Twin Spruce Farm  
17565 Co Rd 43  
Richmond, MN 56368  
Cows@meltel.net  
320-493-9703



T-SPRUCE UPSIDE 18116-ET

Lot 45

T-SPRUCE UPSIDE 18116-ET

## IVF Session

\*Buyer is purchasing rights to control the next IVF session(s) until a minimum of 8 #1 or #2 IVF embryos are produced. Embryo grades are determined at the time of transfer if fresh embryos or at time of freezing if freezing is requested by buyer. Buyer keeps all resulting embryos from these controlled IVF sessions. Buyer is responsible for all costs of the aspiration and mating sire decisions.

Born 02/19/2022 Reg: 840003243332370

12/2022	CDCB SUMMARY GENOMIC COW				NMS +1197
Milk	+1728	78%R	Cheese Merit S		+1206
Fat	+110	+0.15%	FMS +1156		GMS +1138
Protein	+59	+0.02%	Gestation Len.		MSP
CFP	+169		EFI %	gEFI	11.1% gIB 16.3%
SCS	2.75	%R	Mastitis +2.8	Fert. Index	+0.4
PL	+7.1	%R	Livability +3.4	Heifer Liv.	+1.3
DPR	-0.3	%R	HCR +2.1	CCR	+2.0
RFI	-96				
Feed Saved	+282	43%R			0 Dtrs 0 Herds % US

Beta: A2A2 Kappa: BB DWP\$: 1419

12/2022	GHA TYPE SUMMARY				TPI +3098
PTAT +1.41	77%R	UDC+1.75	FLC+0.33	BSC-0.30	0 D / 0 H

			-2	-1	0	1	2
Stature	-0.09	Short					
Strength	-0.70	Frail					
Body Depth	-0.48	Shallow					
Dairy Form	+1.38	Open Rib					
Rump Angle	+0.07	Sloped					
Thurl Width	-0.07	Narrow					
Rear Legs-Side	+0.19	Sickle					
Rear Legs-Rear	+0.05	Straight					
Foot Angle	-0.42	Low					
Feet & Legs Score	+0.41	High					
F. Udder Attachment	+1.63	Strong					
Rear Udder Height	+2.44	High					
Rear Udder Width	+2.34	Wide					
Udder Cleft	+0.64	Strong					
Udder Depth	+0.82	Shallow					
Front Teat Placement	+0.68	Close					
Rear Teat Placement	+0.82	Close					
Teat Length	-1.01	Short					

### Sire: Farnear Upside-ET

3147118750 12/22 PTA +3061 GTPI +2061M  
 0.05% +94 F 0.01% +66 P +1146 NM\$ +6.4 PL  
 1.3 DPR 2.83 SCS +0.93 T +1.48 UDC -0.72 FLC  
 Charl x Jedi x Robust

### Dam: T-SPRUCE GRNADA 15127-ET

Reg: 3219884700 12/22 PTA +2821 GTPI  
 +1925 M +97 F +1013 NM\$  
 +6.2 PL -2.4 DPR +0.51 T +0.94 UDC

Sire Stack: Granada x Legacy x Delta-Worth

#### 3<sup>rd</sup> Dam

Ms T-Spruce Legacy 13312-ET

#### 4<sup>th</sup> Dam

Ms T-Spruce Dworth 11342-ET

02-08 3x 365d 39880m 4.2 1662f 3.1 1252p

Arnie Gruenes  
 Twin Spruce Farm  
 17565 Co Rd 43  
 Richmond, MN 56368  
 Cows@meltel.net  
 320-493-9703





T-Spruce F Bite 1900-ET

# Lot 46

# T-SPRUCE F BITE 19000-ET

## IVF Session

\*Buyer is purchasing rights to control the next IVF session(s) until a minimum of 8 #1 or #2 IVF embryos are produced. Embryo grades are determined at the time of transfer if fresh embryos or at time of freezing if freezing is requested by buyer. Buyer keeps all resulting embryos from these controlled IVF sessions. Buyer is responsible for all costs of the aspiration and mating sire decisions.

Arnie Gruenes  
Twin Spruce Farm  
17565 Co Rd 43  
Richmond, MN 56368  
Cows@meltel.net  
320-493-9703

Born 07/06/2022 Reg: 840003251844170

12/2022	CDCB SUMMARY GENOMICCOW				NMS +1237
Milk	+1883	78%R	Cheese Merit \$		+1247
Fat	+117	+0.15%	FMS +1196		GMS +1194
Protein	+63	+0.02%	Gestation Len.		MSP
CFP	+180		EFI %	gEFI 11.3%	gIB 17.2%
SCS	2.69	%R	Mastitis +1.0	Fert. Index	+0.5
PL	+6.3	%R	Livability +1.9	Heifer Liv.	+1.5
DPR	-0.6	%R	HCR +3.7	CCR +1.7	
RFI	-122				
Feed Saved	+369	42%R		0 Dtrs 0 Herds	% US

Beta: A1A2 Kappa: BE DWP\$: 1218

12/2022	GHA TYPE SUMMARY				TPI +3075		
PTAT +0.66	78%R	UDC+1.31	FLC-0.28	BSC-0.95	0 D / 0 H		
			-2	-1	0	1	2
Stature	-1.07	Short					
Strength	-1.21	Frail					
Body Depth	-1.03	Shallow					
Dairy Form	+1.06	Open Rib					
Rump Angle	-1.14	High Pins					
Thurl Width	+0.40	Wide					
Rear Legs-Side	+1.14	Sickle					
Rear Legs-Rear	-0.60	Hock In					
Foot Angle	-1.01	Low					
Feet & Legs Score	-0.34	Low					
F. Udder Attachment	+1.12	Strong					
Rear Udder Height	+1.46	High					
Rear Udder Width	+1.33	Wide					
Udder Cleft	+0.43	Strong					
Udder Depth	+0.34	Shallow					
Front Teat Placement	+0.53	Close					
Rear Teat Placement	+0.76	Close					
Teat Length	-0.34	Short					

### Sire: T-Spruce G Frost Bite-ET

3220234128 12/22 PTA +3055 GTPI +1700 M  
0.14% +105 F +0.06% +70 P +1242 NM\$ +6.5 PL  
+0.5 DPR 2.78 SCS +0.07 T +0.80 UDC -0.20 FLC  
Granada x Lionel x Samuri

### Dam: T-SPRUCE FANECA 16019-ET

Reg: 3220248027 12/22 PTA +2916 GTPI  
+1270 M +104 F +960 NM\$  
+5.7 PL -0.1 DPR +1.38 T +1.72 UDC  
Sire Stack: Faneca x Legacy x Delta-Worth

#### 3<sup>rd</sup> Dam

Ms T-Spruce Legacy 13312-ET

#### 4<sup>th</sup> Dam

Ms T-Spruce Dworth 11342-ET

02-08 3x 365d 39880m 4.2 1662f 3.1 1252p



T-SPRUCE F BITE 18969-ET

# Lot 47

# T-SPRUCE F BITE 18969-ET

Arnie Gruenes  
Twin Spruce Farm  
17565 Co Rd 43  
Richmond, MN 56368  
Cows@meltel.net  
320-493-9703

Born 07/02/2022 Reg: 840003251844139

12/2022	CDCB SUMMARY GENOMICCOW				NM\$ +1206
Milk	+913	78%R	Cheese Merit \$		+1227
Fat	+93	+0.20%	FMS +1064	GMS	+1201
Protein	+56	+0.10%	Gestation Len.	MSP	
CFP	+149		EFI %	gEFI 11.1% gIB 19.1%	
SCS	2.74	%R	Mastitis +1.0	Fert. Index +2.6	
PL	+7.5	%R	Livability +3.7	Heifer Liv. +1.6	
DPR	+1.7	%R	HCR +4.7	CCR +4.3	
RFI	-124				
Feed Saved	+423	43%R	0 Dtrs	0 Herds	% US

Beta: A2A2 Kappa: BB DWP\$: 1236

12/2022	GHA TYPE SUMMARY				TPI +3022		
PTAT +0.18	77%R	UDC+1.17	FLC-0.23	BSC -1.81	0 D / 0 H		
			-2	-1	0	1	2
Stature	-2.02	Short					
Strength	-1.74	Frail					
Body Depth	-1.99	Shallow					
Dairy Form	-0.03	Tight					
Rump Angle	-0.85	High Pins					
Thurl Width	-0.64	Narrow					
Rear Legs-Side	+0.78	Sickle					
Rear Legs-Rear	-0.77	Hook In					
Foot Angle	-1.47	Low					
Feet & Legs Score	-0.51	Low					
F. Udder Attachment	+1.08	Strong					
Rear Udder Height	+1.24	High					
Rear Udder Width	+1.14	Wide					
Udder Cleft	-0.51	Weak					
Udder Depth	+0.23	Shallow					
Front Teat Placement	+0.00	Close					
Rear Teat Placement	-0.22	Wide					
Teat Length	-1.08	Short					

## Sire: T-Spruce G Frost Bite-ET

3220234128 12/22 PTA +3055 GTPI +1700 M  
0.14% +105 F +0.06% +70 P +1242 NM\$ +6.5 PL  
+0.5 DPR 2.78 SCS +0.07 T +0.80 UDC -0.20 FLC  
Granada x Lionel x Samuri

## Dam: MS T-SPRUCE LEGACY 13312-ET

Reg: 3205638777 12/22 PTA +2843 GTPI  
+774 M +91 F +1009 NM\$  
+7.2 PL -0.4 DPR +0.65 T +1.01 UDC  
Sire Stack: Legacy x Delta-Worth x Yoder

### 3<sup>rd</sup> Dam

Ms T-Spruce Dworth 11342-ET  
02-08 3x 365d 39880m 4.2 1662f 3.1 1252p

### 4<sup>th</sup> Dam

Jauquet Yoder POrsche-ET VG-86  
02-00 3x 305d 31840m 4.5 1444f 3.3 1054p





T-Spruce F Bite 18657-ET

Lot 48

T-SPRUCE F BITE 18657-ET

Averages 28 oocytes per IVF session

Born 05/19/2022 Reg: 840003251843827

Arnie Gruenes  
Twin Spruce Farm  
17565 Co Rd 43  
Richmond, MN 56368  
Cows@meltel.net  
320-493-9703

12/2022	CDCB SUMMARY GENOMICCOW				NMS +1179
Milk	+805	78%R	Cheese Merit \$		+1196
Fat	+120	+0.31%	FMS +1085	GMS	+1151
Protein	+42	+0.06%	Gestation Len.	MSP	
CFP	+162		EFI %	gEFI 11.2%	gIB 23.2%
SCS	2.65	%R	Mastitis +1.8	Fert. Index	+2.0
PL	+6.9	%R	Livability +3.5	Heifer Liv.	+1.3
DPR	+0.8	%R	HCR +4.9	CCR	+3.4
RFI	-130				
Feed Saved	+281	43%R		0 Dtrs 0 Herds	% US

Beta: A2A2 Kappa: AA DWP\$: 1194

12/2022	GHA TYPE SUMMARY				TPI +3028
PTAT +0.18	77%R	UDC+1.02	FLC-0.04	BSC -1.44	0 D / 0 H
Stature	-1.82	Short			
Strength	-1.01	Frail			
Body Depth	-1.59	Shallow			
Dairy Form	-0.71	Tight			
Rump Angle	-0.47	High Pins			
Thurl Width	-0.34	Narrow			
Rear Legs-Side	+0.32	Sickle			
Rear Legs-Rear	-0.49	Hock In			
Foot Angle	-0.94	Low			
Feet & Legs Score	-0.36	Low			
F. Udder Attachment	+1.03	Strong			
Rear Udder Height	+0.83	High			
Rear Udder Width	+0.86	Wide			
Udder Cleft	-0.15	Weak			
Udder Depth	+0.30	Shallow			
Front Teat Placement	+0.17	Close			
Rear Teat Placement	+0.10	Close			
Teat Length	-1.17	Short			

Sire: T-Spruce G Frost Bite-ET

3220234128 12/22 PTA +3055 GTPI +1700 M  
0.14% +105 F +0.06% +70 P +1242 NM\$ +6.5 PL  
+0.5 DPR 2.78 SCS +0.07 T +0.80 UDC -0.20 FLC  
Granada x Lionel x Samuri

Dam: MS T-SPRUCE LEGACY 13312-ET

Reg: 3205638777 12/22 PTA +2843 GTPI  
+774 M +91 F +1009 NM\$  
+7.2 PL -0.4 DPR +0.65 T +1.01 UDC  
Sire Stack: Legacy x Delta-Worth x Yoder

3<sup>rd</sup> Dam

Ms T-Spruce Dworath 11342-ET  
02-08 3x 365d 39880m 4.2 1662f 3.1 1252p

4<sup>th</sup> Dam

Jauquet Yoder POorsche-ET VG-86  
02-00 3x 305d 31840m 4.5 1444f 3.3 1054p



T-Spruce F Bite 18949-ET

# Lot 49

# T-SPRUCE F BITE 18949-ET

Arnie Gruenes  
Twin Spruce Farm  
17565 Co Rd 43  
Richmond, MN 56368  
Cows@meltel.net  
320-493-9703

Born 06/30/2022 Reg: 840003251844119

12/2022	CDCB SUMMARY GENOMICCOW				NMS +1102
Milk	+1110	78%R	Cheese Merit \$		+1116
Fat	+107	+0.22%	FMS +999	GMS	+1100
Protein	+54	+0.07%	Gestation Len.	MSP	
CFP	+161		EFI %	gEFI 11.6%	gIB 13.1%
SCS	2.83	%R	Mastitis +2.1	Fert. Index	+2.6
PL	+6.1	%R	Livability +2.5	Heifer Liv.	+1.5
DPR	+1.7	%R	HCR +4.2	CCR	+3.2
RFI	-36				
Feed Saved	+146	42%R	0 Dtrs	0 Herds	% US

Beta: A1A2 Kappa: BE DWP\$: 1078

12/2022	GHA TYPE SUMMARY				TPI +3086
PTAT +1.39	78%R	UDC+1.34	FLC+0.50	BSC -0.15	0 D / 0 H
					-2 -1 0 1 2
Stature	-0.11	Short			
Strength	-0.34	Frail			
Body Depth	-0.33	Shallow			
Dairy Form	+1.05	Open Rib			
Rump Angle	-0.02	High Pins			
Thurl Width	+0.36	Wide			
Rear Legs-Side	+1.04	Sickle			
Rear Legs-Rear	+0.40	Straight			
Foot Angle	-0.25	Low			
Feet & Legs Score	+0.53	High			
F. Udder Attachment	+1.54	Strong			
Rear Udder Height	+1.65	High			
Rear Udder Width	+1.52	Wide			
Udder Cleft	+0.28	Strong			
Udder Depth	+0.89	Shallow			
Front Teat Placement	+0.63	Close			
Rear Teat Placement	+0.45	Close			
Teat Length	-0.61	Short			

### Sire: T-Spruce G Frost Bite-ET

3220234128 12/22 PTA +3055 GTPI +1700 M  
0.14% +105 F +0.06% +70 P +1242 NM\$ +6.5 PL  
+0.5 DPR 2.78 SCS +0.07 T +0.80 UDC -0.20 FLC  
Granada x Lionel x Samuri

### Dam: T-SPRUCE FANCA 15805-ET

Reg: 3220247813 12/22 PTA +2917 GTPI  
+445 M +38 F +783 NM\$  
+3.2 PL -0.5 DPR +2.47 T +2.13 UDC  
Sire Stack: Faneca x Renegade x Yoder

#### 3<sup>rd</sup> Dam

Mercedes Renegade Zena-ET VG-85  
02-00 3x 290d 33790m 3.8 1270f 3.3 1125p

#### 4<sup>th</sup> Dam

Endco Yoder L7933 9839-ET VG-86  
05-05 3x 350d 34320m 4.5 1560f 3.7 1255p





T-Spruce F Bite 18891-ET

# Lot 50

# T-SPRUCE F BITE 18891-ET

Arnie Gruenes  
Twin Spruce Farm  
17565 Co Rd 43  
Richmond, MN 56368  
Cows@meltel.net  
320-493-9703

Born 06/22/2022 Reg: 840003251844061

12/2022	CDCB SUMMARY GENOMICCOW			NMS +1151
Milk	+1675	78%R	Cheese Merit S	+1169
Fat	+95	+0.10%	FMS +1059	GMS +1104
Protein	+67	+0.05%	Gestation Len.	MSP
CFP	+162		EFI %	gEFI 11.1% gIB 19.5%
SCS	2.57	%R	Mastitis +2.6	Fert. Index +1.6
PL	+7.3	%R	Livability +0.6	Heifer Liv. +1.1
DPR	+0.4	%R	HCR +3.9	CCR +2.8
RFI	-56			
Feed Saved	+180	42%R	0 Dtrs	0 Herds % US

Beta: A2A2 Kappa: AB DWP\$: 1247

12/2022	GHA TYPE SUMMARY			TPI +3060			
PTAT +0.80	76%R	UDC+1.46	FLC-0.33	BSC-0.34	0 D / 0 H		
			-2	-1	0	1	2
Stature	-0.31	Short					
Strength	-0.54	Frail					
Body Depth	-0.62	Shallow					
Dairy Form	+0.81	Open Rib					
Rump Angle	-0.23	High Pins					
Thurl Width	+0.41	Wide					
Rear Legs-Side	+0.56	Sickle					
Rear Legs-Rear	-0.85	Hock In					
Foot Angle	-0.43	Low					
Feet & Legs Score	-0.21	Low					
F. Udder Attachment	+1.51	Strong					
Rear Udder Height	+1.99	High					
Rear Udder Width	+1.89	Wide					
Udder Cleft	+0.14	Strong					
Udder Depth	+0.71	Shallow					
Front Teat Placement	+0.06	Close					
Rear Teat Placement	+0.27	Close					
Teat Length	-0.59	Short					

**Sire: T-Spruce G Frost Bite-ET**

3220234128 12/22 PTA +3055 GTPI +1700 M  
0.14% +105 F +0.06% +70 P +1242 NM\$ +6.5 PL  
+0.5 DPR 2.78 SCS +0.07 T +0.80 UDC -0.20 FLC  
Granada x Lionel x Samuri

**Dam: T-SPRUCE RHETT 14692-ET**

Reg: 3216672527 12/22 PTA +2844 GTPI  
+1234 M +73 F +853 NM\$  
+5.5 PL -1.0 DPR +1.29 T +1.91 UDC  
Sire Stack: Rhett x Nugent x Frazzled

**3<sup>rd</sup> Dam**  
T-Spruce Nugent 12728-ET  
**4<sup>th</sup> Dam**  
T-Spruce Frazzled 10914-ET G-78  
02-03 3x 293d 25960m 3.8 980f 3.2 842p



PINE-TREE 9614 UNICORN -ET

# Lot 51 PINE-TREE 9614 UNICORN -ET

## IVF Session

\*Buyer is purchasing rights to control the next IVF session(s) until a minimum of 8 #1 or #2 IVF embryos are produced. Embryo grades are determined at the time of transfer if fresh embryos or at time of freezing if freezing is requested by buyer. Buyer keeps all resulting embryos from these controlled IVF sessions. Buyer is responsible for all costs of the aspiration and mating sire decisions.

Born 06/30/2022 Reg: 840003254487671

12/2022	CDCB SUMMARY GENOMICCOW				NMS +1105
Milk	+1836	78%R	Cheese Merit \$		+1122
Fat	+111	+0.14%	FMS +967	GMS	+1058
Protein	+84	+0.09%	Gestation Len.	MSP	
CFP	+195		EFI %	gEFI 10.2%	gIB 10.4%
SCS	2.93	%R	Mastitis +0.7	Fert. Index	+0.0
PL	+4.7	%R	Livability +0.7	Heifer Liv.	+1.0
DPR	-0.9	%R	HCR +1.4	CCR	+0.7
RFI	-24				
Feed Saved	+105	41%R	0 Dtrs	0 Herds	% US

Beta: A2A2 Kappa: AB DWP\$: 1026

12/2022	GHA TYPE SUMMARY				TPI +3007
PTAT +0.60	78%R	UDC+0.06	FLC+0.31	BSC +0.02	0 D / 0 H

			-2	-1	0	1	2
Stature	-0.10	Short					
Strength	-0.07	Frail					
Body Depth	+0.08	Deep					
Dairy Form	+1.28	Open Rib					
Rump Angle	+0.15	Sloped					
Thurl Width	+0.79	Wide					
Rear Legs-Side	+1.02	Sickle					
Rear Legs-Rear	+0.16	Straight					
Foot Angle	-0.21	Low					
Feet & Legs Score	+0.37	High					
F. Udder Attachment	-0.41	Loose					
Rear Udder Height	+0.32	High					
Rear Udder Width	+1.14	Wide					
Udder Cleft	+0.27	Strong					
Udder Depth	-1.16	Deep					
Front Teat Placement	+0.48	Close					
Rear Teat Placement	+0.47	Close					
Teat Length	+0.49	Long					

### Alternative outcross pedigree

Altaparcheesi x Billy x Jalib x Altajonah x  
Balisto x Denim

#### Sire: Peak Altaparcheesi-ET

3212150617 12/22 PTA +2891 GTPI +1347 M  
0.15% +95 F +0.12% +76 P +970 NM\$ +4.4 PL  
-2.4 DPR 2.73 SCS +1.05 T +0.60 UDC -0.09 FLC  
Altaplanko x Altalawson x Frazzled

#### Dam: NO-FLA BLLY SHADOW 56012-ET

Reg: 3220168775 12/22 PTA +3010 GTPI  
+1998 M +111 F +1157 NM\$  
+5.0 PL -0.9 DPR -0.07 T +0.46 UDC  
Sire Stack: Billy x Jalib x Altajonah

#### 3<sup>rd</sup> Dam

50813  
02-00 3x 295d 26860m 4.0 1083f 3.3 887p

#### 4<sup>th</sup> Dam

No-Fla Jonah Karis 45512  
02-00 3x 305d 28190m 3.5 986f 3.2 910p

Fit Genetics  
fitdairygenetics@gmail.com  
859-699-2998



**Bulls**



MGD: Pine-TREE Era Achie 7593-ET

# Lot A T-Spruce Frost Bite 2547-ET

12/2022	CDCB SUMMARY GENOMIC				NMS +1211
Milk	+1585	78%R	Cheese Merit S		+1226
Fat	+110	+0.17%	FMS +1120	GMS	+1149
Protein	+65	+0.05%	Gestation Len. -1	MSP	
CFP	+175		EFI 10.3%	gEFI 11.5%	gIB 16.8%
SCS	2.72	74%R	Mastitis +2.7	Fert. Index	+0.2
PL	+6.6	73%R	Livability +2.8	Heifer Liv.	+0.9
DPR	-0.9	73%R	HCR +3.1	CCR	+1.0
RFI	-111				
Feed Saved	+358	42%R	0 Dtrs	0 Herds	100% US

12/2022	HA TYPE SUMMARY				TPI +3043
PTAT +0.43	77%R	UDC+1.27	FLC-0.18	BSC -1.63	0 D / 0 H

			-2	-1	0	1	2
Stature	-1.53	Short					
Strength	-1.23	Frail					
Body Depth	-1.10	Shallow					
Dairy Form	+0.55	Open Rib					
Rump Angle	-0.78	High Pins					
Thurl Width	-0.28	Narrow					
Rear Legs-Side	+0.20	Sickle					
Rear Legs-Rear	-0.93	Hock In					
Foot Angle	-0.67	Low					
Feet & Legs Score	-0.34	Low					
F. Udder Attachment	+1.02	Strong					
Rear Udder Height	+1.36	High					
Rear Udder Width	+1.09	Wide					
Udder Cleft	+0.13	Strong					
Udder Depth	+0.36	Shallow					
Front Teat Placement	+0.24	Close					
Rear Teat P. Rear	+0.29	Close					
Teat Length	-0.10	Short					

Born 06/24/2022 Reg: 840003247981989

Beta: A1A2 Kappa: BE DWP\$: 1262

Arnie Gruenes  
Twin Spruce Farm  
17565 Co Rd 43  
Richmond, MN 56368  
Cows@meltel.net  
320-493-9703

### Sire: T-Spruce G Frost Bite-ET

3220234128 12/22 PTA +3055 GTPI +1700 M  
0.14% +105 F +0.06% +70 P +1242 NM\$ +6.5 PL  
+0.5 DPR 2.78 SCS +0.07 T +0.80 UDC -0.20 FLC  
Granada x Lionel x Samuri

### Dam: PINE-TREE 7593 HERO 8588-ET

Reg: 3210258018 12/22 PTA +2825 GTPI  
+666 M +113 F +1002 NM\$  
+5.4 PL -1.2 DPR +0.33 T +0.85 UDC  
Sire Stack: Heroic x Achiever x Morgan

### Sale Terms

Twin Spruce Farm receives 30 units of conventional restriction-free semen from this bull, when he starts producing semen

### 2nd Dam

Pine-Tree Era Achie 7593-ET

### 3rd Dam

Sandy-Valley Morgan Era-ET

02-02 2x 365d 34790m 4.2 1450f 3.4 1192p



# Lot B

# T-Spruce Overdo 2686-ET

12/2022	CDCB SUMMARY GENOMIC			NMS +1138
Milk	+771	78%R	Cheese Merit \$	+1158
Fat	+118	+0.31%	FMS +1016	GMS +1088
Protein	+47	+0.08%	Gestation Len. -1	MSP
CFP	+165		EFI 10.0% gEFI 10.7% gIB 19.3%	
SCS	2.67	74%R	Mastitis +2.8	Fert. Index +0.7
PL	+7.0	73%R	Livability +2.8	Heifer Liv. +1.5
DPR	+0.3	73%R	HCR +2.7	CCR +1.8
RFI	+19			
Feed Saved	+160	42%R	0 Dtrs 0 Herds	100% US

12/2022	HA TYPE SUMMARY			TPI +3105
PTAT	+1.78	76%R	UDC+1.91 FLC+0.69 BSC-1.18 0 D / 0 H	

			-2	-1	0	1	2
Stature	+0.18	Tall					
Strength	-0.49	Frail					
Body Depth	-0.19	Shallow					
Dairy Form	+2.09	Open Rib					
Rump Angle	-0.40	High Pins					
Thurl Width	+0.78	Wide					
Rear Legs-Side	+0.85	Sickle					
Rear Legs-Rear	+0.33	Straight					
Foot Angle	+0.20	Steep					
Feet & Legs Score	+0.83	High					
F. Udder Attachment	+1.97	Strong					
Rear Udder Height	+2.21	High					
Rear Udder Width	+2.50	Wide					
Udder Cleft	+1.32	Strong					
Udder Depth	+1.23	Shallow					
Front Teat Placement	+1.18	Close					
Rear Teat P. Rear	+1.18	Close					
Teat Length	-1.00	Short					

Born 09/15/2022 Reg: 840003247982128

Beta: A2A2 Kappa: AB DWP\$: 1133

Arnie Gruenes  
Twin Spruce Farm  
17565 Co Rd 43  
Richmond, MN 56368  
Cows@meltel.net  
320-493-9703

### Sire: Ladys-Manor Overdo-ET

3214324420 12/22 PTA +3079 GTPI +598 M  
0.34% +119 F +0.10% +46 P +1081 NM\$ +5.1 PL  
+0.6 DPR 2.67 SCS +1.50 T +2.07 UDC +1.07 FLC  
HIGHJUMP x Granite x Millington

### Dam: T-SPRUCE LEGACY 16034-ET

Reg: 3220248042 12/22 PTA +2832 GTPI  
+820 M +91 F +898 NM\$  
+7.0 PL -1.5 DPR +1.40 T +1.47 UDC  
Sire Stack: Legacy x Moola x Helix

### Sale Terms

Twin Spruce Farm receives 30 units of conventional restriction-free semen from this bull, when he starts producing semen

### 2nd Dam

T-Spruce Moola 12707-ET

### 3rd Dam

Peak Josette Helix 80379-ET



# Lot C

# T-Spruce Beethoven 2647-ET

12/2022	CDCB SUMMARY GENOMIC			NMS +1132
Milk	+1304	78%R	Cheese Merit \$	+1150
Fat	+121	+0.24%	FMS +1005	GMS +1103
Protein	+65	+0.08%	Gestation Len. -1	MSP
CFP	+186		EFI 10.1% gEFI 10.4% gIB 15.4%	
SCS	2.80	73%R	Mastitis +1.1	Fert. Index +0.3
PL	+5.3	72%R	Livability +1.0	Heifer Liv. +1.1
DPR	-0.1	72%R	HCR +0.0	CCR +1.3
RFI	-12			
Feed Saved	+204	41%R	0 Dtrs 0 Herds	100% US

12/2022	HA TYPE SUMMARY			TPI +3046
PTAT +1.04	78%R	UDC+1.05	FLC-0.14	BSC -1.27 0 D / 0 H
				-2 -1 0 1 2
Stature	+0.47	Tall		
Strength	-0.59	Frail		
Body Depth	-0.17	Shallow		
Dairy Form	+2.12	Open Rib		
Rump Angle	+0.29	Sloped		
Thurl Width	+0.36	Wide		
Rear Legs-Side	+0.90	Sickle		
Rear Legs-Rear	-0.06	Hock In		
Foot Angle	-0.36	Low		
Feet & Legs Score	+0.03	High		
F. Udder Attachment	+0.65	Strong		
Rear Udder Height	+1.59	High		
Rear Udder Width	+2.04	Wide		
Udder Cleft	+0.99	Strong		
Udder Depth	+0.13	Shallow		
Front Teat Placement	+0.96	Close		
Rear Teat P. Rear	+1.21	Close		
Teat Length	-0.86	Short		

Born 08/18/2022 Reg: 840003247982089

Beta: A2A2 Kappa: AB DWP\$: 1157

Arnie Gruenes  
Twin Spruce Farm  
17565 Co Rd 43  
Richmond, MN 56368  
Cows@meltel.net  
320-493-9703

### Sire: T-Spruce S-S-I Beethoven-ET

3223871576 12/22 PTA +2974 GTPI +1235 M  
0.19% +103 F +0.07% +59 P +1015 NM\$ +6.1 PL  
-0.3 DPR 2.69 SCS +0.98 T +1.39 UDC -0.13 FLC  
Taos x Legacy x Delta-Worth

### Dam: T-SPRUCE MONSHINER 15704-ET

Reg: 3220247712 12/22 PTA +3133 GTPI  
+1766 M +121 F +1218 NM\$  
+5.8 PL -0.1 DPR +1.28 T +1.41 UDC  
Sire Stack: Moonshiner x Lionel x Samuri

### Sale Terms

Twin Spruce Farm receives 30 units of conventional restriction-free semen from this bull, when he starts producing semen

### 2nd Dam

T-Spruce Lionel 13196-ET

### 3rd Dam

T-Spruce Samuri 6347-ET

### 4th Dam

Mercedes Ts 9539-ET

02-00 3x 354d 30670m 3.7 1149f 3.2 991p





# Lot D

# T-Spruce Frost Bite 2613-ET

12/2022	CDCB SUMMARY GENOMIC				NM\$ +1183
Milk	+1778	78%R	Cheese Merit \$		+1193
Fat	+101	+0.11%	FM\$ +1141	GM\$	+1099
Protein	+60	+0.02%	Gestation Len. -1	MSP	
CFP	+161		EFI 10.0% gEFI 10.9% gIB 16.0%		
SCS	2.68	73%R	Mastitis +2.2	Fert. Index	-0.5
PL	+6.9	72%R	Livability +2.0	Heifer Liv.	+1.6
DPR	-1.7	72%R	HCR +2.3	CCR	+0.2
RFI	-109				
Feed Saved	+447	41%R	0 Dtrs 0 Herds	100% US	

12/2022	HA TYPE SUMMARY				TPI +3035
PTAT +1.14	76%R	UDC+2.16	FLC+0.31	BSC -2.23	0 D / 0 H
Stature	-1.67	Short			
Strength	-1.73	Frail			
Body Depth	-1.33	Shallow			
Dairy Form	+1.11	Open Rib			
Rump Angle	-1.34	High Pins			
Thurl Width	+0.16	Wide			
Rear Legs-Side	+2.21	Sickle			
Rear Legs-Rear	-0.22	Hock In			
Foot Angle	-1.10	Low			
Feet & Legs Score	+0.17	High			
F. Udder Attachment	+1.79	Strong			
Rear Udder Height	+2.41	High			
Rear Udder Width	+2.29	Wide			
Udder Cleft	+0.91	Strong			
Udder Depth	+0.78	Shallow			
Front Teat Placement	+1.18	Close			
Rear Teat P. Rear	+1.54	Close			
Teat Length	-1.13	Short			

Born 07/26/2022 Reg: 840003247982055

Beta: A2A2 Kappa: AB DWP\$: 1132

Arnie Gruenes  
Twin Spruce Farm  
17565 Co Rd 43  
Richmond, MN 56368  
Cows@meltel.net  
320-493-9703

### Sire: T-Spruce G Frost Bite-ET

3220234128 12/22 PTA +3055 GTPI +1700 M  
0.14% +105 F +0.06% +70 P +1242 NM\$ +6.5 PL  
+0.5 DPR 2.78 SCS +0.07 T +0.80 UDC -0.20 FLC  
Granada x Lionel x Samuri

### Dam: T-SPRUCE CONWAY 15623-ET

Reg: 3220247631 12/22 PTA +2890 GTPI  
+1075 M +88 F +1000 NM\$  
+6.5 PL -0.7 DPR +1.02 T +1.49 UDC  
Sire Stack: Conway x Delta-Worth x Frazzled

### Sale Terms

Twin Spruce Farm receives 30 units of conventional restriction-free semen from this bull, when he starts producing semen

#### 2nd Dam

T-Spruce Dworth 13452-ET G-77\

#### 3rd Dam

T-Spruce Frazzled 11721-ET

03-02 3x 283d 32230m 4.3 1388f 3.1 1002p

#### 4th Dam

Synergy Spring Dewdrop-ET



3<sup>rd</sup> Dam: Endco Yoder L7933 9839-ET

# Lot E T-Spruce Gg Miller 2724-ET

12/2022	CDCB SUMMARY GENOMIC				NMS +1114
Milk	+1257	78%R	Cheese Merit \$		+1131
Fat	+109	+0.21%	FMS +1004		GMS +1092
Protein	+60	+0.07%	Gestation Len. +0		MSP
CFP	+169		EFI 9.6% gEFI 9.9% gIB 15.4%		
SCS	2.80	73%R	Mastitis +1.0		Fert. Index +0.5
PL	+5.3	72%R	Livability +1.9		Heifer Liv. +1.3
DPR	-0.1	72%R	HCR +1.9		CCR +1.9
RFI	-115				
Feed Saved	+278	41%R	0 Dtrs 0 Herds		100% US

12/2022	HA TYPE SUMMARY				TPI +3068
PTAT	+1.47	76%R	UDC+1.92	FLC+0.47	BSC -1.08 0 D / 0 H
					-2 -1 0 1 2
Stature	+0.28	Tall			
Strength	-0.63	Frail			
Body Depth	-0.38	Shallow			
Dairy Form	+1.54	Open Rib			
Rump Angle	+0.14	Sloped			
Thurl Width	+0.36	Wide			
Rear Legs-Side	+0.42	Sickle			
Rear Legs-Rear	+0.46	Straight			
Foot Angle	+0.09	Steep			
Feet & Legs Score	+0.54	High			
F. Udder Attachment	+1.92	Strong			
Rear Udder Height	+2.34	High			
Rear Udder Width	+2.36	Wide			
Udder Cleft	+1.34	Strong			
Udder Depth	+1.29	Shallow			
Front Teat Placement	+1.15	Close			
Rear Teat P. Rear	+1.39	Close			
Teat Length	-0.75	Short			

**Sale Terms**  
Twin Spruce Farm receives 30 units of conventional restriction-free semen from this bull, when he starts producing semen

Born 10/11/2022 Reg: 840003254487671

Beta: A2A2 Kappa: AB DWP\$: 1006

## # 3 TPI and Net Merit Miller Son

**Sire: Lars-Acres George Miller-ET**

3219742983 12/22 PTA +2993 GTPI +347 M  
0.24% +81 F +0.13% +49 P +1021 NM\$ +7.7 PL  
+2.0 DPR 2.50 SCS +0.82 T +1.65 UDC +0.24 FLC  
Taos x Legacy x Jagger

**Dam: T-SPRUCE CONWAY 16106-ET**

Reg: 3220248114 12/22 PTA +3062 GTPI  
+1657 M +123 F +1081 NM\$  
+3.8 PL -2.1 DPR +1.81 T +2.16 UDC  
Sire Stack: Conway x Lionel x Yoder

**2nd Dam**  
Mercedes Lionel Lass-ET  
**3rd Dam**  
Endco Yoder L7933 9839-ET VG-86  
**4th Dam**  
T-Spruce Lgold 7933-ET  
02-05 2x 248d 20320m 4.4 904f 3.4 687p

Arnie Gruenes  
Twin Spruce Farm  
17565 Co Rd 43  
Richmond, MN 56368  
Cows@meltel.net  
320-493-9703



# Lot F

# T-Spruce Magnum 2718-ET

12/2022	CDCB SUMMARY GENOMIC				NM\$ +1078
Milk	+1393	78%R	Cheese Merit \$		+1091
Fat	+117	+0.22%	FMS +996	GMS	+1087
Protein	+58	+0.05%	Gestation Len. -2	MSP	
CFP	+175		EFI 10.0%	gEFI 11.2%	gIB 15.7%
SCS	2.81	74%R	Mastitis +0.7	Fert. Index	+2.1
PL	+5.3	73%R	Livability +0.3	Heifer Liv.	+1.4
DPR	+1.6	73%R	HCR +1.7	CCR	+3.0
RFI	-62				
Feed Saved	+77	42%R	0 Dtrs	0 Herds	100% US

12/2022	HA TYPE SUMMARY				TPI +3099
PTAT +1.44	77%R	UDC+1.59	FLC+0.45	BSC-0.10	0 D / 0 H

			-2	-1	0	1	2
Stature	+0.68	Tall					
Strength	+0.04	Strong					
Body Depth	+0.12	Deep					
Dairy Form	+0.73	Open Rib					
Rump Angle	-0.02	High Pins					
Thurl Width	+0.27	Wide					
Rear Legs-Side	+0.00	Sickle					
Rear Legs-Rear	+0.41	Straight					
Foot Angle	+0.65	Steep					
Feet & Legs Score	+0.59	High					
F. Udder Attachment	+1.78	Strong					
Rear Udder Height	+2.29	High					
Rear Udder Width	+1.93	Wide					
Udder Cleft	+0.24	Strong					
Udder Depth	+1.41	Shallow					
Front Teat Placement	+0.36	Close					
Rear Teat P. Rear	+0.35	Close					
Teat Length	+0.05	Long					

## Sale Terms

Twin Spruce Farm receives 30 units of conventional restriction-free semen from this bull, when he starts producing semen

Born 10/06/2022 Reg: 840003260814955

Beta: A2A2 Kappa: AB DWP\$: 1108

Twin Spruce Farm  
17565 Co Rd 43  
Richmond, MN 56368  
Cows@meltel.net  
320-493-9703

## Sire: Ocd Alphabet Magnum-ET

3216574976 12/22 PTA +2998 GTPI +1990 M  
0.10% +107 F +0.01% +64 P +1001 NM\$ +4.5 PL  
+0.3 DPR 2.96 SCS +1.27 T +1.55 UDC +0.28 FLC  
Alphabet x Jared x Burley

## Dam: T-SPRUCE CONWAY 15883-ET

Reg: 3220247891 12/22 PTA +3046 GTPI  
+736 M +134 F +1097 NM\$  
+4.4 PL +0.3 DPR +0.85 T +0.96 UDC  
Sire Stack: Conway x Lionel x Samuri

### 2nd Dam

T-Spruce Lionel 13196-ET

### 3rd Dam

T-Spruce Samuri 6347-ET

### 4th Dam

Mercedes Ts 9539-ET

02-00 3x 354d 30670m 3.7 1149f 3.2 991p







Sale lot type	DOB	Beta	Kapa	DWPS	REGNUM	Lot Number	ANIMALNAME	DREGNM	GENTPI	NM	MILK	FAT	PRO	CFP	CM
Sell	9.7.2022	A2A2	AB	1260	840003260816800	1	T-SPRUCE OVERDO 19388-ET	T-SPRUCE LIONEL 13196-ET	3146	1113	1128	127	55	182	1131
Sell	9.10.2022	A2A2	BB	1180	840003260816814	2	T-SPRUCE OVERDO 19402-ET	T-SPRUCE LIONEL 13196-ET	3081	1085	953	101	60	161	1107
Sell	9.8.2022	A2A2	AB	1212	840003260816805	3	T-SPRUCE BEETHOVEN 19393-ET	T-SPRUCE MONSHINER 15704-ET	3070	1166	2040	111	81	192	1180
Sell	9.5.2022	A2A2	BB	1072	840003260816786	4	T-SPRUCE OVERDO 19374-ET	T-SPRUCE TAOS 16364-ET	3064	1062	974	121	52	173	1080
Sell	9.23.2022	A2A2	AB	1121	840003260816867	5	T-SPRUCE MAGNUM 19455-ET	T-SPRUCE CONWAY 15883-ET	3063	1044	908	111	47	158	1059
IVF	3.1.2022	A1A2	AB	1195	840003243332431	6	T-SPRUCE GREYCUP 18177-ET	T-SPRUCE RHETT 15027-ET	3084	1150	777	117	56	173	1174
IVF	7.15.2022	A2A2	AB	1481	840003251844237	7	T-SPRUCE F BITE 19067-ET	T-SPRUCE LIONEL 13196-ET	3147	1318	1584	123	74	197	1336
IVF	12.20.2020	A1A2	AB	1293	840003220247712	8	T-SPRUCE MONSHINER 15704-ET	T-SPRUCE LIONEL 13196-ET	3133	1218	1766	121	73	194	1233
IVF	6.22.2021	A2A2	AB	1154	840003235976751	9	T-SPRUCE CRUSHER 16744-ET	T-SPRUCE LIONEL 13196-ET	3076	1141	1048	140	70	210	1163
IVF	4.26.2021	A2A2	BB	1180	840003235976456	10	T-SPRUCE EXTRA-P 16449-ET	T-SPRUCE LIONEL 13196-ET	3068	1094	1133	120	64	184	1114
IVF	11.19.2021	A2A2	AB	1303	840003243331759	11	T-SPRUCE MAHOMES 17505-ET	T-SPRUCE LIONEL 13196-ET	3065	1115	1462	114	63	177	1130
IVF	12.29.2021	A2A2	BB	1180	840003243332027	12	T-SPRUCE GRAZIANO 17773-ET	T-SPRUCE LIONEL 13196-ET	3053	1144	701	125	59	184	1168
IVF	4.10.2019	A2A2	AB	1238	840003205638661	13	T-SPRUCE LIONEL 13196-ET	T-SPRUCE SAMURI 6347-ET	3077	1119	1753	130	75	205	1133
Sell	11/8/2022	A2A2	AA	-	840003254652757	14	FB 667819 LIONEL 800494-ET	FB 7683 ENTITY 667819-ET	3171	1209	2423	143	73	216	1213
Sell	11/14/2022	A2A2	AB	-	840003254652801	15	FB 700227 LIONEL 800538-ET	FB 604385 FORTNTE 700227-ET	3144	1242	2846	142	93	235	1249
IVF	10/6/2021	A2A2	AB	-	840003242770775	16	FB 603337 GAMEDAY 750574-ET	FB 164 ENTITY 603337-ET	3089	1237	709	119	47	166	1261
IVF	5/3/2022	A2A2	BB	1306	840003245703774	17	SIEMERS UPSD ROZ 37917-ET	SIEMERS LEGACY ROZ 34005-ET	3067	1164	1433	106	69	175	1181
IVF	4/13/2022	A1A2	BB	1162	840003245703595	18	Siemens Chan Paris 37738-ET	SIEMERS MSHN PARIS 34474-ET	3050	1074	1179	109	60	169	1091
IVF	12/1/2020	-	-	-	840003200569818	19	SANDY-VALLEY SUGARPLUM-ET	SANDY-VALLEY SUGAR HIGH-ET	3036	1001	907	97	52	149	1020
IVF	10/2/2021	A2A2	BB	749	840003243347219	20	ERNEST-ANTHONY HAV 36275-ET	S-S-I DOC HAVE NOT 8783-ET	2981	806	1629	93	69	162	813
IVF	2/12/2022	A1A2	BB	1236	840003249791269	21	SDG-PH 6998 PNDULUM 7857-ET	SDG 2900 PURSUIT 6998-ET	3045	1195	831	105	52	157	1214
IVF	4/2/2022	A1A2	BB	1129	840003249791310	22	SDG-PH 6998 PAYLOAD 7898-ET	SDG 2900 PURSUIT 6998-ET	3061	1159	1832	87	70	157	1172
IVF	7/9/2022	A2A2	BB	1210	840003254487682	23	PINE-TREE 8676 HONE 9625-ET	PINE-TREE 8177 HERO 8676-ET	3043	1080	232	146	51	197	1105
Sell	11/1/0202	A2A2	AA	1143	840003254487832	24	PINE-TREE 9108 MAGN 9775-ET	PINE-TREE 7593 CAPT 9108-ET	3089	1148	1473	111	62	173	1163
Sell	8/24/2022	A2A2	BB	1096	840003254487748	25	Pine-Tree 8721 Dazzle 9691-ET	PINE-TREE 7567 ACURA 8721	3035	1137	1134	111	57	168	1154
Choice A	10/19/2022	A1A2	BB	1024	840003251629561	26	Pine-Tree Hjs Zappy 1825-ET	PINE-TREE 7567 ACURA 8721	3029	1096	1738	105	69	174	1107
Choice B	10/23/2022	A1A2	AB	817	840003251629563	26	Pine-Tree Hjs Zappy 1827-ET	PINE-TREE 7567 ACURA 8721	3015	1117	2691	122	85	207	1115

Sale lot type	DOB	Beta	Kapa	DWP\$	REGNUM	Lot Number	ANIMALNAME	DREGNM	GENTPI	NM	MILK	FAT	PRO	CFP	CM
Sell	10/6/2021	A2A2	BB	1065	840003254487721	27	Pine-Tree 8721 Empower 9664	PINE-TREE 7557 ACURA 8721	3058	1060	2216	113	86	199	1070
Sell	6.2.2022	A1A2	AE	1231	840003251843928	28	T-SPRUCE F BITE 18758-ET	PINE-TREE 7593 HERO 8588-ET	3031	1177	1346	123	52	175	1188
IVF	4.11.2022	A2A2	AB	1353	840003251843574	29	T-SPRUCE UPSIDE 18404-ET	PINE-TREE 7593 HERO 8588-ET	3093	1223	1036	127	58	185	1243
IVF	3.1.2022	A1A1	AA	1058	840003247330105	30	Pine-Tree 8418 Gamed 767-ET	PINE-TREE 7593 PURS 8418-ET	3102	1125	893	114	54	168	1148
IVF	7.13.2021	-	-	-	840003228682784	31	PINE-TREE 8418 RAYSH 714-ET	PINE-TREE 7593 PURS 8418-ET	3049	1115	1377	105	67	172	1137
Sell	2/7/2022	A1A2	BB	-	840003241782817	32	WINSTAR PLINKO 2829-ET	Pine-TREE 7593 PURS 8416-ET	3046	1175	1544	97	68	165	1190
IVF	1/31/2021	-	-	-	840003224449694	33	WINSTAR MENDEL KLASSY-ET	WINSTAR BILLY 5947-ET	3124	1262	1204	165	62	227	1277
IVF	12.4.2021	A2A2	AB	1273	840003243331834	34	T-SPRUCE UPSIDE 17580-ET	MERCEDES LIONEL LASS-ET	3157	1110	2129	120	77	197	1120
IVF	3.8.2022	A2A2	AB	1208	840003243332471	35	T-SPRUCE KASHTON 18217-ET	T-SPRUCE CONWAY 15574-ET	3096	1113	1171	138	59	197	1130
IVF	6.15.2021	A2A2	AB	802	840003235976730	36	T-SPRUCE CONWAY 16723-ET	MERCEDES LIONEL LASS-ET	3085	1146	1801	130	80	210	1159
IVF	5.18.2022	A2A2	AB	1165	840003251843819	37	T-SPRUCE F BITE 18649-ET	T-SPRUCE TAOS 15384-ET	3081	1147	2116	110	76	186	1158
IVF	7.29.2021	A1A2	AE	950	840003235976910	38	T-SPRUCE PAYLOAD 16903-ET	MERCEDES LIONEL LASS-ET	3058	1101	1937	132	77	209	1113
IVF	4.1.2022	A2A2	AA	1240	840003251843516	39	T-SPRUCE JALAPENO 18346-ET	T-SPRUCE ZAREK 15464-ET	3057	1173	2214	114	79	193	1183
Sell	12.1.2021	A2A2	AA	1208	840003243331811	40	T-SPRUCE UPSIDE 17557-ET	MERCEDES LIONEL LASS-ET	3050	1049	1529	109	63	172	1062
Sell	10.11.2022	A2A2	AB	1079	840003260816987	41	T-SPRUCE F BITE 19575-ET	T-SPRUCE CONWAY 15574-ET	3045	1116	2008	135	81	216	1128
Sell	7.29.2022	A2A2	BB	1385	840003251844347	42	T-SPRUCE BEETHOVEN 19177-ET	T-SPRUCE EINSTEIN 14632-ET	3129	1148	897	120	66	186	1178
IVF	12.29.2021	A2A2	BB	1256	840003243332028	43	T-SPRUCE GRAZIANO 17774	T-SPRUCE EINSTEIN 14632-ET	3027	1110	819	104	59	163	1137
IVF	5.24.2022	A2A2	BB	1381	840003251843850	44	T-SPRUCE F BITE 18680-ET	T-SPRUCE CONWAY 15680-ET	3009	1206	1417	121	64	185	1222
IVF	2.19.2022	A2A2	BB	1419	840003243332370	45	T-SPRUCE UPSIDE 18116-ET	T-SPRUCE GRNADA 15127-ET	3098	1197	1728	110	59	169	1206
IVF	7.6.2022	A1A2	BE	1218	840003251844170	46	T-SPRUCE F BITE 19000-ET	T-SPRUCE FANCA 16019-ET	3075	1237	1883	117	63	180	1247
Sell	7.2.2022	A2A2	BB	1236	840003251844139	47	T-SPRUCE F BITE 18969-ET	MS T-SPRUCE LEGACY 13312-ET	3022	1206	913	93	56	149	1227
Sell	5.19.2022	A2A2	AA	1194	840003251843827	48	T-SPRUCE F BITE 18657-ET	MS T-SPRUCE LEGACY 13312-ET	3028	1179	805	120	42	162	1196
Sell	6.30.2022	A1A2	BE	1078	840003251844119	49	T-SPRUCE F BITE 18949-ET	T-SPRUCE FANCA 15805-ET	3086	1102	1110	107	54	161	1116
Sell	6.22.2022	A2A2	AB	1247	840003251844061	50	T-SPRUCE F BITE 18891-ET	T-SPRUCE RHETT 14692-ET	3060	1151	1675	95	67	162	1169
IVF	6/30/2022	A2A2	AB	1026	840003254487671	51	PINE-TREE 9614 UNICORN -ET	NO-FLA BILLY SHADOW 56012-ET	3007	1105	1836	111	84	195	1122
Bull	6/24/2022	A1/A2	BE	1262	840003247981989	A	T-Spruce Frost Bite 2547-ET	PINE-TREE 7593 HERO 8588-ET	3,043	1,211	1,585	110	65	175	1226
Bull	9/15/2022	A2/A2	AB	1133	840003247982128	B	T-Spruce Overdo 2686-ET	T-SPRUCE LEGACY 16034-ET	3,105	1,138	771	118	47	165	1158
Bull	8/18/2022	A2/A2	AB	1157	840003247982089	C	T-Spruce Beethoven 2647-ET	T-SPRUCE MOONSHINER 15704-ET	3,046	1,133	1,304	121	65	186	1150
Bull	7/26/2022	A2/A2	AB	1132	840003247982055	D	T-Spruce Frost Bite 2613-ET	T-SPRUCE CONWAY 15623-ET	3,035	1,183	1,778	101	60	161	1193
Bull	10/11/2022	A2/A2	AB	1006	840003260814961	E	T-Spruce Gg Miller 2724-ET	T-SPRUCE CONWAY 16106-ET	3,068	1,114	1,257	109	60	169	1131
Bull	10/6/2022	A2/A2	AB	1108	840003260814955	F	T-Spruce Magnum 2718-ET	T-SPRUCE CONWAY 15883-ET	3,099	1,079	1,393	117	58	175	1091





# Sale Index

**Name**

**Lot**

Ramsier's Willow Spring Farm

30

Pine-Tree Dairy

23, 24, 25, 26, 27

Jim Vierhout & Nathan Johnson

21, 22

Fit Genetics

51

FB Genetics

14, 15, 16

Winstar

32, 33

Siemers Holsteins

17, 18, 19, 20

Twin Spruce Farm

1, 2, 3, 4, 5, 6, 7, 8, 9, 10, 11, 12, 13,  
28, 29, 31, 34, 35, 36, 37, 38, 39, 40,  
41, 42, 43, 44, 45, 46, 47, 48, 49, 50

A, B, C, D, E, F





# HOLSTEIN ASSOCIATION TERMS AND CONDITIONS FOR PUBLIC SALES

EFFECTIVE MARCH 2, 1996 - Amended October 1, 1997, June 28, 2000, June 23, 2002, March 26, 2010 and March 24, 2016

**TERMS:** The terms of the sale are cash unless arrangements are made prior to the sale or are printed in the sale catalog. Only when the above conditions are met will the buyer be entitled to the warranties listed below. In no case will animals be released unless settlement is made with the clerk of the sale.

**RESPONSIBILITY:** The seller, buyer, and manager of this sale are obligated to comply with the provisions of these terms and conditions.

**EXPORT SALES:** Buyer assumes all responsibility for health tests required by the importing country.

**BIDS:** The highest bidder is the buyer. Bidding parties or their agents are responsible for all bids placed. Every animal or lot presented for bidding is pledged to absolute sale. In case of dispute, the animal or lot will again be put up for advance bids, and if there is no advance bid, the animal or lot will be sold to the person the auctioneer accepted the last bid from. In case two or more claim the bid, the auctioneer will indicate the party whose bid he recognized. Other claimants will be given an opportunity to increase the bid and bidding will be restricted to the two or more claimants.

**BY-BIDDING:** Bidding directly or indirectly by the sole owner of any animal or lot is prohibited unless the intention to bid is disclosed specific to each animal in the catalog and announced when the animal enters the ring. Bidding by any member of a partnership, syndicate, or other entity having an ownership interest in an animal or lot is permitted.

**TRANSFER OF OWNERSHIP:** For all Registered Holsteins<sup>SM</sup>, the transfer of ownership to the buyer will be recorded on the records of Holstein Association USA and a certificate of registration showing that transfer of ownership will be provided to the buyer free of charge. For embryos, the transfer of ownership to the buyer will be recorded on the records of Holstein Association USA free of charge to the buyer.

**RISK:** All animals located at sale site are at the purchaser's risk as soon as struck off, but will be cared for free of charge for a maximum of 24 hours following the end of the sale.

## WARRANTIES:

- 1) Each consignor warrants clear title to the animal or lot, and the right to sell same.
- 2) To the best of the seller's knowledge, each animal is sound and healthy in every respect and embryos have been recovered, processed, frozen, transferred and graded in keeping with IETS recommendations unless otherwise noted in the catalog or announced from the auction stand. Every precaution will be taken to represent the physical condition of each lot exactly as is known. Examination of all purchases should be made immediately after the purchase and before the close of the sale, and if found not to be as represented, complaint must be reported to the sale management before the close of the sale. In the event no complaint is filed, it is understood that the buyer assumes full ownership in the case of animals at sale site together with all risks, after which no representations of the seller can be challenged through the sale management. Heifers that never calved are in no way guaranteed as to the condition of their udders following calving. The sex of an embryo or fetus is in no way guaranteed.

### 3) Breeding Warranty

The seller guarantees all animals to be breeders, but not beyond the purchase price, with the following understanding:

- a. Males - Should any bull after reaching the age of fourteen months fail to prove a breeder after being used for two months on cows or heifers known to be breeders, the matter shall be reported in writing to the seller within three months of the sale date. The report must include the animal's examination record, a written statement of treatment, and a statement of the animals' inability to breed,

by a licensed veterinarian. The seller has the option to refund the purchase price or make other settlement that is satisfactory to the buyer. In either case the rights of ownership of the animal return to the seller. The seller makes no guarantees with respect to the ability to freeze semen.

- b. Females - All females are guaranteed to be breeders with the exception of:
  1. Cows over 7 years of age when sold;
  2. Cows and/or heifers carrying a pregnancy that is the result of an embryo transfer.

Report of a non-breeder must occur in writing within 3 months of the date of sale or before the animal reaches 21 months of age and must be submitted to the seller. The report must include the animal's examination record, a written statement of treatment, and a statement of the animals' inability to breed, by a licensed veterinarian. The seller has the option to refund the purchase price or make other settlement that is satisfactory to the buyer. In either case the rights of ownership of the animal return to the seller.

Females bred when sold and pronounced in calf are presumed to be pregnant but pregnancy is not guaranteed unless so announced. The seller makes no warranty that pregnant cows will deliver calves or that they will carry calves full term.

- c. If, after the sale, embryos or oocytes are recovered from a female or an attempt is made to superovulate her, this negates the breeding warranty unless there is a separate written agreement between buyer and seller.

**SHIPPING:** Assistance will be given in arranging shipping of the animals after the sale. All costs, risks and responsibility will be borne by the purchaser.

**PEDIGREE INFORMATION:** All production, classification, type and production summaries are current. Only information recorded on Holstein Association USA pedigrees is used. Any production or classification records supplied by the seller or consignor will be properly identified as provided by owner. Records in progress are identified as such.

**GENOMIC INFORMATION:** If genomic information on the animal or embryo is available, it must be dated and disclosed at or before the time of sale.

**EMBRYO TRANSFER:** All registered animals that have resulted from embryo transfer are identified with one of the following suffixes in the name: ET, ETS (from split embryo), or ETN (from nuclear transfer). If unregistered, the appropriate technology will be identified. Donor dams are identified.

**HEALTH WARRANTY:** The seller will provide an official health certificate to the buyer for each animal showing the results of all health tests made in preparation for this sale as required by the state where the cattle reside. Other health tests completed for this sale will be disclosed.

**ERRORS:** The material in this catalog has been carefully edited. If any errors or omissions are discovered, they will be announced. Such announcements take precedence over that printed in this catalog.

**ACCIDENT:** The sale management, the consignors, and the owner of the grounds will not be responsible in any case for the condition of the grounds or the behavior of the animals and disclaim any liability in the event of personal accident or property loss.

**LIMITATIONS OF WARRANTIES:** Warranties contained herein, unless terminated earlier, will cease upon the resale of an animal.



Thank You

