



BOUCKVILLE, NY

Updates

Flysheet Lots 202-204

Embryos

Updates

- LOT 25 - BRED 8/6/19 TO APPLE CRISP
- LOT 33 - REBRED 4/28/20 SEXED TO
OUR-FAVORITE UNDENIED-ET 3125220760 TSTC
- LOT 36 - BRED 4/25/20 PEAKS TROPIC 3145229820 TSTC
- LOT 38 - OUT
- LOT 51 - BRED 4/26/20 TO
MR ATWOOD BROKAW-ET 140602463 TSTC
- LOT 56 - OUT
- LOT 83 - OUT
- LOT 88 - FRESH 4/26/20
- LOT 96 - OUT
- LOT 109 - FRESH 4/26/20
- LOT 109 ½ - HEIFER CALF BARN #82 BORN 4/26/20
SIRE: SIEMERS DOC HANCOCK

Updates

- LOT 119 - IS AN OPEN HEIFER
- LOT 133 - BRED 4/25/20 TO
SANDY-VALLEY J PHARO-ET 3014562176 TSTC
- LOT 134 - OUT
- LOT 138 - BRED 4/27/20 TO
MILKSOURCE CHEERS-ET 3132912604
- LOT 146 - FRESH 4/25/20
- LOT 146 ½ - HEIFER CALF BARN #81
SIRE: RICKLAND SHAN CARNEY-ET 71577469
- LOT 189 - BRED 4/27/20 TO
PLAIN-KNOLL KING ROYAL-ET 74564764 TSTC
- LOT 198 - FRESH 4/26/20
- LOT 198 ½ - HEIFER CALF -GRADE

Lot 202 - T-FARM CALLEN CARISSA - 99%

#865

840003144612231

BORN - 10/19/2017

• From VG-86 T-Farm Countess Family
(6th Gen EX, VG)

Milking 69 lbs ▪ Fresh 1/20/20
▪ Potential 4th Gen EX, VG
2-03 50 2288 3.9 89 2.9 66 Inc

3rd Dam: T-FARM DUPLEX CARLEY
VG-87

4th Dam: T-FARM TERRASON CAROL (GP-82)
• VG-88 Maternal Sister T-FARM IRON COLA
▪ 7th Gen EX, VG
4-01 344 19770 4.4 869 3.3 651
Life 1875 109600 4.4 4790 3.1 3414

5th Dam: T-FARM THAD COUNTESS
VG-86
▪ 6th Gen EX, VG

6th Dam: HIGH-HOPES-G HD COURTNEY
VG-85

OCD 1STCLASS CALLEN-ET

GTPI +2104G VG-86 VV++ 840003125170885
PTA +53M +18F -4P 96%R 12/2019
PTA +284NM +.06%F -.02%P 24%US
PTA +2.8PL 2.79SCS +1.0DPR 4.7%DCE
PTA +2.90T +3.07UDC +1.33FLC 92%R 12/2019

T-FARM ATMOST CARSEN

VG-88 4Y EV+EV 72817487
2-06 350 26820 3.4 906 3.2 854
3-07 365 29190 3.9 1130 3.4 991
• 3rd Gen EX, VG

7th Dam: HIGH-HOPES-G HHS CORA
VG-85

8th Dam: HIGH-HOPES-G FOND RITA
EX-90 DOM

9th Dam: HIGH-HOPES-G PERFORMER KATE
VG-85

10th Dam: HIGH-HOPES-G KENNEDY CORA
VG-85

ZAHBULLS ALTA1STCLASS-ET 71441918
GTPI +2171G
PTA +1.87T +3.44UDC -.25FLC 99%R 12/2019
EDG CLAIREWOOD MAY 2081-ET 72437628
EX-90 EEVEV
4-02 3 365 41980 3.3 1380 3.0 124

VELTHUIS SGC ATMOST-ET 11426869C
GTPI +1909G PTA +1344M +3F +36P 98%R 12/19

T-FARM DUSK CARISSA 70595283
VG-85 5Y VV+++
2-10 365 22920 4.0 928 3.3 748
4-03 365 30790 3.8 1173 3.1 963

Lot 203 - T-FARM ROBUST CARMEL

#125

DHI INDEX #196 840 3217449658

BORN - 03/12/2017

- Lot 72 Dam
- Lot 74 Maternal Sister

Milking 77 lbs ▪ Fresh 7/3/19
 2-03 251 18608 3.9 725 3.0 552 Inc
 ▪ T-Farm 10th Gen
 Bred 10/21/19 TO
 MR HOTSTUFFS HYPNOTIC-ET *RC
 840 3012554421

3rd Dam: T-FARM DECKER CHARM
 EX-90 6Y EEVVE

3-09 365 28160 4.2 1186 3.3 918
 5-02 365 27100 4.4 1203 3.1 843
 Life 1527 103860 4.3 4424 3.2 3322

- 6th Gen EX, VG
- T-Farm 7th Gen

4th Dam: T-FARM MICH CATNIP
 VG-87

- 6th Gen EX, VG

5th Dam: T-FARM LINJET CAT
 VG-85

6th Dam: T-FARM BLACKSTAR CO-STAR
 (VG-88)

- Mat Sis T-FARM ASTRO JET CLARINET (VG-87)

7th Dam: T-FARM KERRY CLAIRE
 EX-90

ROYLANE SOCRA ROBUST-ET

GTPI +2490G VG-88 VVVV GM 64966739
 PTA +505M +50F +27P 99%R 4/2020
 PTA +512NM +.11%F +.04%P 98%US
 PTA +4.0PL 3.04SCS +0.2DPR 5.8%DCE
 PTA -0.21T +0.28UDC +0.93FLC 99%R 4/2020

LOT 72 -**T-FARM GUTHRIE CHAZ**

G-77 4Y ++PGF 74066108
 2-02 359 20570 4.6 943 3.5 717
 3-04 302 18501 5.0 924 3.4 625
 4-04 301 17726 4.4 780 3.4 595 Inc

8th Dam: T-FARM KERRY CLAIRE
 EX-90

9th Dam: T-FARM COLONEL CLASSY
 G-77

10th Dam: LA-CROCE FARM TRIUNE CANDY (GP-82)

▪ Maternal Sister
 LA-CROCE FARM CAN CAN TRIUNE
 (VG-88) / Lots 28-69

11th Dam: WESTSIDE MAXIMUM CAN CAN
 VG-88

VELVET-VIEW-KJ SOCRATES 133126053
 GTPI +1830G EX-94 EEEE GM
 PTA +669M +35F +6P 99%R 12/2019
 SEAGULL-BAY OMAN MIRROR-ET
 VG-86 DOM
 3-00 365 36430 4.4 1606 3.4 1235

FUSTEAD GOLDWYN GUTHRIE-ET 137191143
 GTPI +1974G EX-94 EEEE
 PTA +1.73T +1.31UDC +0.79FLC 99%R 4/2020

T-FARM REGINALD CHIZZON

GP-81 3Y ++GG+ 71398714
 2-02 365 22060 99 4.1 895 3.2 711

Lot 204 - T-FARM INTGRL ROCKY

#115

DHI INDEX #197 840 3141663139

BORN - 05/05/2017

- From VG-86 T-Farm Roulette Family
- Lot 112 Dau

Milking 65 lbs ▪ Fresh 10/11/19
 2-05 151 9158 3.5 320 2.9 265 Inc
 Bred 1/14/20 TO SEXED
 PEAK TROPIC-ET
 840 3145229820

3rd Dam: T-FARM RUBENS REBECCA
 GP-82 2Y +V++G

- EX-90 Maternal Sister T-Farm Royalist Rockette
 [Lot 105 4th Dam]

BLONDIN INTEGRAL-ET *RC

GTPI +2205G 108109390C
 PTA -1029M +26F -21P 98%R 4/2020
 PTA +79NM +.24%F +.04%P 34%US
 PTA -.5PL 2.64SCS +.8DPR 11.8%DCE
 PTA +1.70T +2.20UDC +1.16FLC 98%R 4/2020

T-FARM TALENT ROXY

GP-84 4Y EV++ 71398727
 2-08 365 24050 4.0 972 3.2 780
 4-00 365 26640 4.0 1054 3.3 878
 5-03 273 20280 4.2 855 3.2 639

5th Dam: T-Farm Jolt Roulette
 VG-86

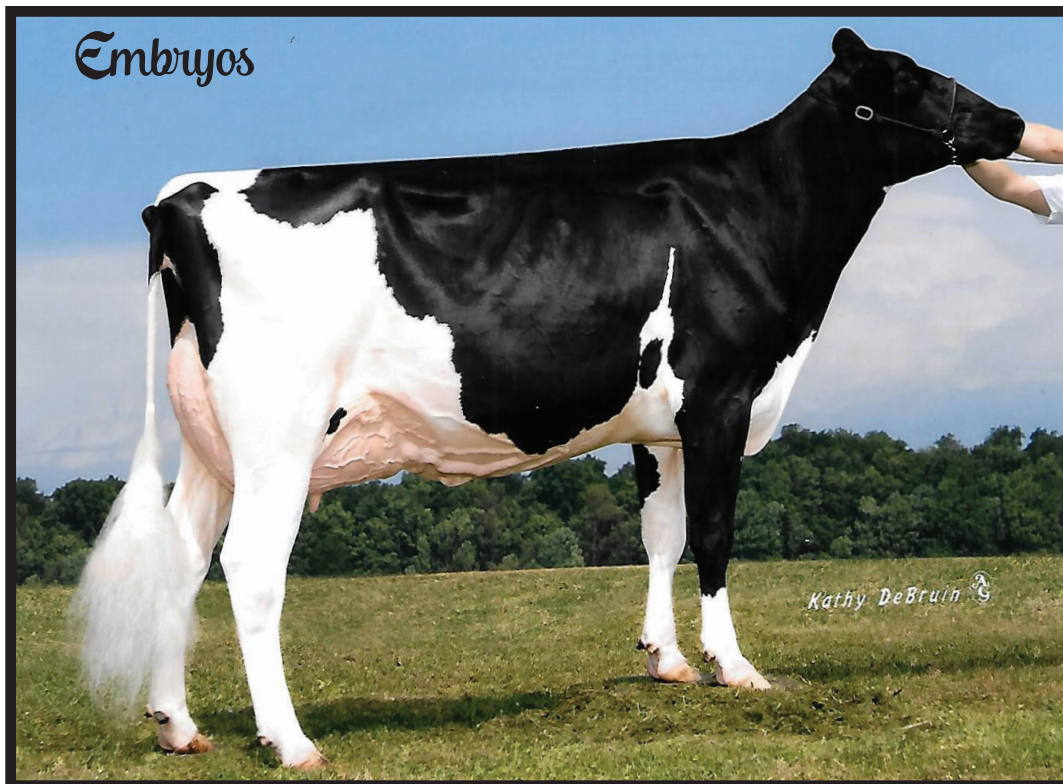
6th Dam: T-Farm Joel Rowell
 VG-87

DYMENTHOLM S SYMPATICO-ET *RC 11004723C
 GTPI +2279G
 PTA +1164M +43F +24P 99%R 4/2020
 VAL-BISSON SHOTTLE IMELDA-ET 106173432C
 EX-94 EEEEE
 4-02 365 40505 3.8 1550 3.4 1378

LADINO PARK TALENT-IMP-ET *RC 930377AUS
 GTPI +1369G
 PTA +1.12T +1.43UDC +.34FLC 99%R 12/2019

T-FARM SAHARA REBA

GP-82 4Y VVGG+ 141130394
 2-09 365 21280 4.4 927 3.4 731
 4-02 262 16090 4.3 695 3.2 516



Donor Dam Embryo [A] and [B]

T-FARM GOLDWYN CHRISTY
 2E-93 EEEVE
 6-09 365 26260 4.5 1177 3.3 871

- 5th Gen Excellent
- 14 Decedents Sell
- 9th Gen EX, VG
- 2 EX daus
- T-Farm 7 Gens
- 3 VG Daus

EMBRYOS [A] ▪ FIVE (5) #1

SIRE DE-SU BKM MCCUTCHEN 1174-ET

EMBRYOS [B] ▪ FOUR (4) #1

SIRE GEN-MARK STMATIC SANCHEZ

FROZEN BY
 DELAWARE VALLEY VET SERVICES

- Potential 10th Gen EX, VG
- Potential 6th Gen EX
- T-Farm 8th Gen

Maternal Sisters

- Lot 28 / EX-90 EEEVE
- T-FARM SANCHEZ CHRISSY
EX-91 EEEVE

3rd Dam: T-FARM STORM CHERISH
 ▪ 7th Gen EX, VG / EX-92

4th Dam: T-FARM JOLT CELEBRITY (EX-92)
 ▪ EX-92 dau Cherish [Lots 28-38]
 ▪ VG-87 dau Cheers [Lots 39-42]
 ▪ VG-86 dau Celebrate [Lots 43-44]
 ▪ VG-85 dau Celtic [Lots 45-58]

5th Dam: T-FARM NICK CELIA (EX-91)
 ▪ VG-86 Mat Sister T-Farm Wade Certes
 [Foundation Cow Lots 59-69]

6th Dam: T-FARM THOR CERTA (VG-85)

7th Dam: T-FARM SHEIK CERTAIN-ET (EX-90 DOM)

8th Dam: LA-CROCE FARM CAN CAN TRIUNE (VG-88)

9th Dam: WESTSIDE MAXIMUM CAN CAN (VG-88)

[A]

DE-SU BKM MCCUTCHEN 1174-ET

GTPI +2242G EX-93 EEEE GM 69990138
 PTA +782M +49F +30P 99%R 12/2019
 PTA +379NM +.07%F +.02%P 43%US FE +83
 PTA +1.1PL 2.83SCS -1.9DPR 4.1%DCE
 PTA +3.03T +2.42UDC +1.88FLC 99%R 12/2019

[B]

GEN-MARK STMATIC SANCHEZ

GTPI +1539G EX-94 EEEE 134422312
 PTA +72M -39F -9P 99%R 4/2020
 PTA -409NM -.15%F -.04%P 44%US
 PTA -3.2PL 3.28SCS -3.9DPR 7.8%DCE
 PTA +1.19T -.09UDC +.93FLC 99%R 4/2020

T-FARM GOLDWYN CHRISTY

2E-93 7Y EEEVE 138729194
 2-03 365 18520 4.3 790 3.4 621
 3-07 278 14350 4.2 603 3.1 438
 4-09 365 22160 4.3 957 3.3 726
 6-09 365 26260 4.5 1177 3.3 871
 8-03 288 25220 3.9 995 2.9 732
 Life 1916 115660 4.3 4916 3.2 3717
 ▪ 9th Gen EX, VG
 ▪ 5th Gen EX

DE-SU 521 BOOKEM-ET ▪ 99% 66636657
 GTPI +2244G EX-90 EEVV GM
 PTA +1295M +28F +47P 99%R 12/2019

SULLY SHOTTLE MAY-TW 138218285
 2E-91 9Y EEEVE DOM
 6-07 3 365 39960 3.9 1555 3.3 1302
 Life 1844 192480 3.6 6852 3.0 5844

COMESTAR STORMATIC-ET 6947936C GTPI +1462G
 CAN EX GM PTA -.08T -.97UDC +1.43FLC 99%R 4/20

GEN-MARK BW MAR WINNIE-ET 131652910
 2E-90 EEEVV GMD
 4-08 365 43690 3.6 1555 2.7 1172

BRAEDALE GOLDWYN 10705608C GTPI +1850G
 CAN GP-84 GM PTA +1.71T +1.46UDC +1.32FLC 99%R 12/19

T-FARM DURHAM CHELSEA 134171159
 EX-90 7Y VE++E
 2-04 290 12940 4.0 522 3.2 411
 3-04 338 19990 4.1 828 3.3 652
 4-05 299 19200 3.8 738 3.2 620
 5-06 325 20170 4.1 825 3.2 640
 6-07 365 25360 4.2 1061 3.1 796
 Life 1808 103990 4.1 4252 3.2 3346
 ▪ 8th Gen EX, VG
 ▪ 4th Gen EX