

GOLDEN FUTURE



EMBRYO SALE

Hosted by GMS

October 20 - 22, 2022 on [Cowbuyer.com](https://www.cowbuyer.com)

GOLDEN FUTURE EMBRYO SALE

hosted by Guernsey Marketing Service

October 20 - 22, 2022 on Cowbuyer.com

Bidding closes 8:00pm EST on October 22.

- All sales are final.
- Payment is due at the end of the sale.
- A 3% convenience fee will be charged for all credit card payments.
- Confirmation of payment will be sent to consignor and purchaser within one week of sale.
- No embryos will ship prior to a full payment being received.
- Buyer is responsible for the coordination, cost, and liability of shipment.
- All embryos are for domestic shipment only unless otherwise specified.
- Final bid must meet the seller's reserve price to be considered sold.

Sales Staff

Guernsey Marketing Service

Robin Alden 614.339.5390

ralden@usguernsey.com

Payment - Guernsey Marketing Service

Rita Rittgers 614.339.5396

accounting@usguernsey.com

Monday - Thursday, 9:00am - 2:00pm EST

Cowbuyer

Aaron Ray Tompkins 336.363.4639



**View and bid online at
www.cowbuyer.com**

Aaron Ray Tompkins 336.363.4639

Buyers must be pre-registered.

Auction opens at 12:00pm EST on Oct. 20
and closes on 8:00pm EST on Oct. 22.

Contact Robin Alden if you are unable
to monitor the auction during this time:

614.339.5390





Hi Guern View Diva Designer EX-94 2E
 4-07 305D 22,600M 4.5% 1,018F 3.4% 771P
 Unanimous All-American Jr. 3-Year-Old 2018
 Dam of Lot 1



Hi Guern View Dancers Diva-ET EX-96
 177,890M 4.6% 8,117F 3.6% 6,468P Lifetime
 Unanimous All-American Aged Cow 2018
 Granddam of Lot 1

LOT 1 4 #1 JAMES DEAN X DESIGNER IVF EMBRYOS

Breeder & Owner: DINDERMAN ALAINA, AMERY + AIDAN
ORANGEVILLE IL

815.297.4111 hiayrview@hotmail.com

PA: -198M +0.07% +4F +0.03% -1P +78CM\$ +75NM\$
 +1.3PTAT +1.5UDC +1.7FLC -0.4DPR +2.6PL +41CPI 2.96SCS

SPRINGHILL JAMES DEAN-ETV 840003151591428 551GU911 A2A2

08/22 USDA GPTA -189M +0.14% +16F +0.07% +6P
 -1.1DPR +2.0PL +144NM\$ 41NM%ile +153CM\$ 54% Rel
 2.84SCS -1.40HCR 28% Rel -2.20CCR 31% Rel
 0.90LIV 27% Rel -0.20GL 41% Rel -3.10EFC 29% Rel
 AGA 08/22 PTAT +1.2 +1.7UDC +1.7FLC 52%Rel PTI +59

HI GUERN VIEW DIVA DESIGNER USA000078005623 A2A2

08/22 USDA GPTA -207M +0.00% -9F -0.01% -8P
 +0.4DPR +3.1PL +5NM\$ 36NM%ile +2CM\$ 67% Rel
 3.07SCS-0.90HCR 35% Rel -1.00CCR 41% Rel
 1.10LIV 36% Rel -0.30GL 45% Rel 1.50EFC 37% Rel
 4 Rec YDev: -308M -3F -4P
 4 App 08/22 PTAT +1.3 +1.2UDR +1.6FLC 62%Rel CPI +22
 Appraisal: EX 94 @ 7-00 (EEEE) 2E
 2-00 305D 2X 14990M 4.7% 702F 3.1% 471P 93
 3-03 305D 2X 16620M 4.3% 708F 3.4% 572P 92
 4-07 305D 2X 22600M 4.5% 1018F 3.4% 771P 95
 5-10 365D 2X 22400M 4.3% 955F 3.5% 782P DHIA
Unanimous All-American & Jr. All-American Jr. 3-Year-Old 2018
Junior All-American & HM All-American Aged Cow 2021
Member, All-American Dam & Daughter 2018 & 2021
Grand Champion NJS-Madison 2018
Intermediate Champion NJS- & NGS-Madison 2018
Reserve Senior Champion NJS-Madison 2021
 Son at GGS: HI GUERN VIEW CHARMING DESIGN GPTI +35
 Son at Semex: HI GUERN VIEW CC DENZEL-ETV GPTI +69
 Dtrs: HI GUERN VIEW DESIGNER DECOR-ET 88 @ 4-08 (88/81)
 3-04 313D 2X 17310M 4.3% 747F 3.3% 566P DHIA
Nominated Junior All-American Fall Calf 2018
 HI GUERN VIEW LIFES A DANCE 88 @ 3-02 (87/88)
 2-03 365D 2X 17910M 4.4% 796F 3.3% 591P DHIA

- Four (4) #1 IVF embryos
- Sexed semen used for Females
- Resulting calves will be A2A2 by parentage
- Located at TransOva in Madison, Wisconsin
- Embryos must be in buyer's possession within 60 days of sale

MARODORE AARONS LEVI-ET USA000068025119 7GU438 A2A2

08/22 USDA GPTA -200M -0.03% -14F -0.04% -13P
 +1.0DPR +2.9PL -5NM\$ 29NM%ile -9CM\$ 97% Rel
 2.99SCS 0.50HCR 67% Rel -0.30CCR 88% Rel
 0.50LIV 67% Rel -0.60GL 99% Rel 4.30EFC 75% Rel
 AGA 08/22 PTAT +0.8 +0.5UDC +1.4FLC 97%Rel PTI +6

HI GUERN VIEW DANCING DIVA-ET USA000068047311 A2A2

Appraisal: EX 96 @ 10-01 (EEEE)
 1-11 353D 2X 19070M 4.8% 915F 3.5% 666P 95
 3-01 318D 2X 20010M 4.7% 933F 3.4% 688P 94
 4-00 305D 2X 19030M 4.6% 871F 3.7% 706P 95
 5-04 319D 2X 22670M 4.6% 1034F 3.5% 803P 94
 6-04 305D 2X 22100M 4.3% 957F 3.5% 781P 92
 7-07 305D 2X 25620M 3.9% 1001F 3.5% 897P 94
 8-09 365D 2X 29120M 4.4% 1282F 3.6% 1040P DHIA
 2765D 177890M 4.6% 8117F 3.6% 6468P LIFE
Unanimous All-American Aged Cow 2018
Member, Unanimous All-American Dam & Daughter 2018
Reserve All-American Four-Year-Old 2016
Honorable Mention All-American Five-Year-Old 2017
Nominated All-American Junior Three-Year-Old 2015
Grand Champion NGS-Louisville 2018
Reserve Grand Champion NGS-Madison 2018
1st Lifetime Production Cow NGS-Madison 2021
 Son at St Jacobs: HI GUERN VIEW LEVI DRONE GPTI +47
Premier Sire, NGS-Madison Heifer Show 2022
 Son at GGS: HI GUERN VIEW DIVAS JCPENNEY DJ GPTI +36
 Dtrs: HI GUERN VIEW LEVIS DENIM 90 @ 5-05 (89/88)
 4-09 365D 2X 23790M 4.9% 1158F 3.3% 787P DHIA
 HI GUERN VIEW DIVAS DESTINY 87 @ 3-02 (83/88)
 2-10 311D 2X 22040M 3.5% 775F 3.1% 692P 95

3D: ADAMS CREEK REGAL DANCER USA000068019811

Appraisal: 92 @ 3-07 (94/86)
 3-05 305D 2X 23750M 4.4% 1048F 3.3% 779P 50
All-American Four-Year-Old 2011



Valley Gem Luck Deidra EX-92
 2-11 282D 18,920M 4.8% 902F 3.0% 572P
 Unanimous All-American 4-Year-Old 2020
 Dam of Lot 2
 Granddam of Lot 3

LOT 2 3 #1 JAMES DEAN X DEIDRA IVF EMBRYOS

**Breeder & Owner: VALLEY GEM FARMS
 CUMBERLAND WI**

715.419.0745 vgguernseys@gmail.com

PA: +41M +0.05% +10F +0.01% +3P +94CM\$ +92NM\$
 +1.3PTAT +1.3UDC +2.0FLC -1.2DPR +2.3PL +48CPI 2.96SCS

SPRINGHILL JAMES DEAN-ETV 840003151591428 551GU911 A2A2

08/22 USDA GPTA -189M +0.14% +16F +0.07% +6P
 -1.1DPR +2.0PL +144NM\$ 41NM%ile +153CM\$ 54% Rel
 2.84SCS -1.40HCR 28% Rel -2.20CCR 31% Rel
 0.90LIV 27% Rel -0.20GL 41% Rel -3.10EFC 29% Rel
 AGA 08/22 PTAT +1.2 +1.7UDC +1.7FLC 52%Rel PTI +59

VALLEY GEM LUCK DEIDRA USA000097005385 A2A2

08/22 USDA GPTA +271M -0.05% +4F -0.05% +0P
 -1.3DPR +2.5PL +40NM\$ 45NM%ile +34CM\$ 65% Rel
 3.07SCS -2.20HCR 28% Rel -2.70CCR 33% Rel
 -0.60LIV 28% Rel -0.80GL 33% Rel -1.20EFC 29% Rel
 4 Rec YDev: +248M +4F -9P
 3 App 08/22 PTAT +1.3 +0.9UDR +2.2FLC 68%Rel CPI +35
 Appraisal: EX 92 @ 5-04 (EEEE)
 2-00 291D 2X 15570M 5.3% 827F 3.5% 540P 99
 2-11 282D 2X 18920M 4.8% 902F 3.0% 572P 96
 3-09 269D 2X 16050M 4.9% 784F 3.3% 531P 95
 5-00 305D 2X 23930M 5.0% 1205F 3.3% 796P 95

Unanimous All-American Four-Year-Old 2020

Reserve All-American Junior Three-Year-Old 2019

Nominated All-American Junior Two-Year-Old 2018

Nominated All-American Five-Year-Old 2021

Reserve Grand Champion NGS-Louisville 2020

Dtrs: VALLEY GEM HIT IT DEVORA 92 @ 4-02 (92/91)

3-02 305D 2X 21220M 5.1% 1092F 3.8% 805P 95

All-American Junior Two-Year-Old 2020

VALLEY GEM KJ MISS DRAMATIC 86 @ 3-03 (86/85)

VALLEY GEM APIE DADDYS GIRL-ETV

2nd Fall Calf NGS-Madison 2022

Reserve Junior Champion Guernsey Gold Showcase 2022

- Three (3) #1 IVF embryos
- Sexed semen used for Females
- Resulting calves will be A2A2 by parentage
- Embryos must be in buyer's possession within 60 days of sale

FLAMBEAU MANOR LOTS OF LUCK USA000078003964

VALLEY GEM GRUMPYS DEE USA000068042408

Appraisal: 80 @ 4-10 (78/74)
 2-02 305D 2X 16730M 6.7% 1118F 3.0% 496P DHIA
 3-04 305D 2X 20830M 5.1% 1053F 3.3% 681P 91
 4-07 305D 2X 20640M 4.5% 929F 3.0% 619P 99
 6-01 305D 2X 20390M 4.3% 876F 3.5% 713P 76
 1836D 101570M 5.1% 5183F 3.3% 3319P LIFE

3D: VALLEY GEM ALIANCES DEE DEE-ET USA000068007260

Appraisal: 75 @ 4-06 (74/76)
 3-02 341D 3X 23060M 4.0% 933F 2.8% 655P 102

4D: VALLEY GEM LORDS DINAH USA000003058679

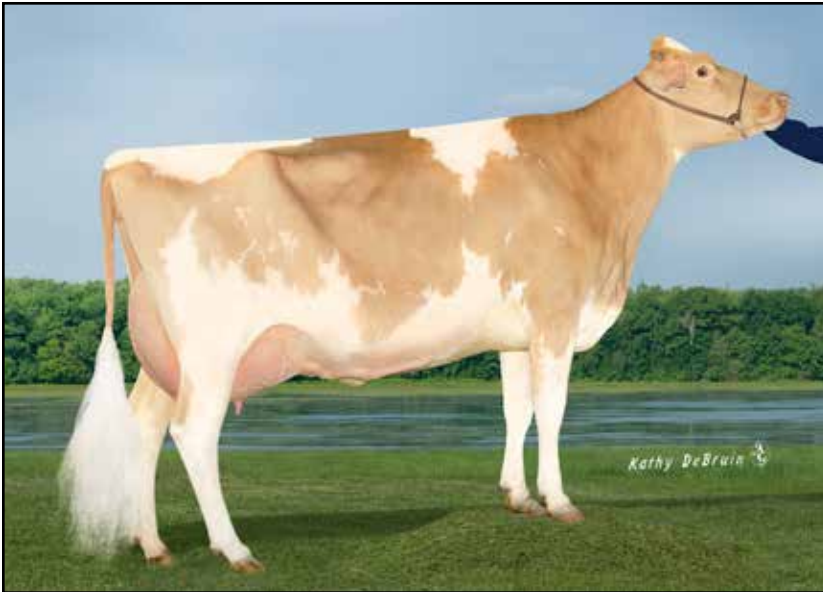
Appraisal: 88 @ 4-01 (88/85)
 3-10 365D 2X 20100M 5.9% 1184F 3.3% 660P 91

5D: VALLEY GEM HENRYS DEAR USA000003038744

Appraisal: 86 @ 3-09

6D: VALLEY GEM ELVIS DOZER USA000002994043

Appraisal: 85 @ 5-00



Valley Gem Hit It Devora EX-92
 All-American Jr. 2-Year-Old 2020
 Res. Grand Champion NJS-Madison 2022
 Dam of Lot 3
 Maternal Sister of Lot 2

LOT 3 3 #1 MISSILE X DEVORA EMBRYOS

**Breeder: VALLEY GEM FARMS
 CUMBERLAND WI**

**Owner: VALLEY GEM FARMS & ELMHURST
 CUMBERLAND WI**

715.419.0745 vgguernseys@gmail.com

PA: -476M +0.12% -3F +0.05% -7P -93CM\$ -93NM\$
 +1.2PTAT +1.4UDC +1.7FLC -0.4DPR +0.5PL +20CPI 3.17SCS

- Three (3) #1 IVF embryos
- Conventional semen used
- Resulting calves will be A2A2 by parentage
- Embryos located in Waynesville, OH
- Embryos must be in buyer's possession within 60 days of sale

VALLEY GEM MISSILE-ETV 840003208696258 200GU125 A2A2

08/22 USDA GPTA -1006M +0.20% -13F +0.08% -20P
 +0.0DPR +0.1PL -178NM\$ 11NM%ile -175CM\$ 54% Rel
 3.13SCS -1.90HCR 31% Rel -0.70CCR 40% Rel
 2.00LIV 35% Rel -0.40GL 40% Rel -3.90EFC 35% Rel
 AGA 08/22 PTAT +1.1 +1.9UDC +2.3FLC 54%Rel PTI +7

VALLEY GOLD KOJACKS HIT IT-ETV USA000097000381 138GU7034 A2A2

08/22 USDA GPTA +20M +0.02% +4F +0.05% +10P
 -0.4DPR -0.9PL -39NM\$ 23NM%ile -36CM\$ 72% Rel
 3.10SCS -1.10HCR 28% Rel -0.50CCR 40% Rel
 -2.10LIV 31% Rel 0.00GL 63% Rel -3.50EFC 34% Rel
 AGA 08/22 PTAT +0.8 +0.9UDC +0.1FLC 71%Rel PTI +19

VALLEY GEM HIT IT DEVORA USA000097007306 A2A2

08/22 USDA PTA +54M +0.03% +8F +0.02% +6P
 -0.8DPR +0.8PL -8NM\$ 33NM%ile -10CM\$ 42% Rel
 3.20SCS-1.60HCR 14% Rel -1.60CCR 18% Rel
 -1.40LIV 15% Rel -0.40GL 24% Rel -2.30EFC 16% Rel
 2 Rec YDev: +257M +35F +23P
 2 App 08/22 PTAT +1.3 +0.9UDR +1.1FLC 50%Rel CPI +32
 Appraisal: EX 92 @ 4-02 (EEEEEE)
 1-11 276D 2X 14400M 5.1% 729F 3.7% 529P 94
 3-02 305D 2X 21220M 5.1% 1092F 3.8% 805P 95
All-American Junior Two-Year-Old 2020
Member, All-American Dam & Daughter & Best 3 Females 2020
Reserve Intermediate Champion NGS-Louisville 2020
Reserve Grand Champion NJS-Madison 2022
Reserve Grand Champion Wisconsin State Show 2022

VALLEY GEM LUCK DEIDRA USA000097005385 A2A2

08/22 USDA GPTA +271M -0.05% +4F -0.05% +0P
 -1.3DPR +2.5PL +40NM\$ 45NM%ile +34CM\$ 65% Rel
 3.07SCS-2.20HCR 28% Rel -2.70CCR 33% Rel
 -0.60LIV 28% Rel -0.80GL 33% Rel -1.20EFC 29% Rel
 4 Rec YDev: +248M +4F -9P
 3 App 08/22 PTAT +1.3 +0.9UDR +2.2FLC 68%Rel CPI +35
 Appraisal: EX 92 @ 5-04 (EEEEEE)
 2-00 291D 2X 15570M 5.3% 827F 3.5% 540P 99
 2-11 282D 2X 18920M 4.8% 902F 3.0% 572P 96
 3-09 269D 2X 16050M 4.9% 784F 3.3% 531P 95
 5-00 305D 2X 23930M 5.0% 1205F 3.3% 796P 95
Unanimous All-American Four-Year-Old 2020
Reserve All-American Junior Three-Year-Old 2019
Nominated All-American Junior Two-Year-Old 2018
Nominated All-American Five-Year-Old 2021
Reserve Grand Champion NGS-Louisville 2020
 Dtrs: VALLEY GEM KJ MISS DRAMATIC 86 @ 3-03 (86/85)
 VALLEY GEM APIE DADDYS GIRL-ETV
2nd Fall Calf NGS-Madison 2022
Reserve Junior Champion Guernsey Gold Showcase 2022



Springhill Fame Calypso-ETV EX-93
 5-02 365D 28,010M 4.6% 1,296F 3.6% 1,005P
 Maternal Sister to Lot 4



Springhill Tiller Calico-ETV
 All-American Fall Calf 2021
 Maternal Sister to Lot 4

LOT 4 4 #1 JAVA-P X CONNY IVF EMBRYOS

**Breeder & Owner: SPRINGHILL
 BIG PRAIRIE OH**

330.473.9660 springhill.chris@gmail.com

PA: +310M -0.01% +14F +0.03% +16P +124CM\$ +120NM\$
 +1.0PTAT +0.5UDC +1.5FLC -1.5DPR +0.4PL +42CPI 2.98SCS

SPRINGHILL JAVA-ETV-P 840003151591431 200GU123 A2A2

08/22 USDA GPTA +206M +0.01% +12F +0.01% +9P
 -2.6DPR -0.3PL -14NM\$ 29NM%ile -11CM\$ 56% Rel
 2.95SCS -1.90HCR 28% Rel -4.00CCR 32% Rel
 -2.00LIV 28% Rel 0.00GL 41% Rel -2.60EFC 29% Rel
 AGA 08/22 PTAT +1.1 +1.1UDC +2.1FLC 55%Rel PTI +35

NELLS GLOW CHALLENGE CONNY USA000068028537

08/22 USDA GPTA +413M -0.02% +16F +0.05% +22P
 -0.4DPR +1.1PL +253NM\$ 88NM%ile +258CM\$ 72% Rel
 3.01SCS-2.10HCR 38% Rel -0.80CCR 46% Rel
 -0.60LIV 41% Rel -0.10GL 45% Rel -4.60EFC 40% Rel
 5 Rec YDev: +1194M +53F +55P
 3 App 08/22 PTAT +0.8 -0.1UDR +0.8FLC 74%Rel CPI +48
 Appraisal: 93 @ 7-11 (92/91)
 2-03 365D 2X 19560M 4.8% 930F 3.6% 695P 101
 3-05 305D 2X 21110M 4.5% 954F 3.4% 724P 102
 4-08 365D 2X 25430M 4.5% 1147F 3.4% 872P DHIA
 6-03 334D 2X 24810M 4.8% 1179F 3.6% 887P 102
 7-02 365D 2X 24990M 5.1% 1267F 4.0% 988P DHIA
 10-06 303D 2X 14320M 4.7% 677F 3.2% 463P 96
 2546D 156440M 4.9% 7597F 3.7% 5725P LIFE

Reserve Junior All-American Five-Year-Old 2013

Dtrs: NELLS GLOW CONNY OF SPRINGHILL 86 @ 3-09 (84/86)
 2-05 365D 2X 25170M 4.8% 1196F 3.5% 877P DHIA
 SPRINGHILL JUDGMENT CLEMENTINE 87 @ 4-00 (87/87)
 3-07 365D 2X 19400M 4.8% 922F 3.6% 694P DHIA
 SPRINGHILL KOJACK COLUMBIA-ETV 90 @ 5-09 (89/88)
 4-04 365D 2X 32380M 4.1% 1341F 3.4% 1116P DHIA
 SPRINGHILL FAME CALYPSO-ETV 93 @ 6-01 (93/94)
 5-02 365D 2X 28010M 4.6% 1296F 3.6% 1005P DHIA
 SPRINGHILL TILLER CALICO-ETV
 All-American Fall Calf 2021
 Junior Champion NGS-Harrisburg 2022

Nells Glow Challenge Conny EX-93
 156,440M 4.9% 7,597F 3.7% 5,725P
 Dam of Lot 4

- Four (4) #1 IVF embryos
- Reverse sorted semen used for females
- Embryos located at TransOva, MD
- Embryos must be in buyer's possession within 60 days of sale

IDLE GOLD E CHALLENGE-ET USA000000604268 1GU418 A2A2

08/22 USDA GPTA -547M +0.16% +2F +0.10% -2P
 +1.0DPR +1.0PL +136NM\$ 41NM%ile +147CM\$ 98% Rel
 2.87SCS -2.80HCR 81% Rel 1.20CCR 95% Rel
 -0.80LIV 86% Rel -0.20GL 99% Rel -6.70EFC 88% Rel
 AGA 08/22 PTAT -0.3 -0.4UDC +0.9FLC 98%Rel PTI +5

RIPLEY FARMS SP CONI SUE-ET USA000068008643

Appraisal: 82 @ 2-10 (82/85)
 2-04 365D 2X 25550M 4.3% 1086F 3.3% 851P DHIA
 3-10 307D 2X 19580M 4.4% 863F 3.6% 697P 101

3D: LOW BROOK GOLDFOOT CONNY USA000003067544

Appraisal: 90 @ 4-04 (86/90)
 2-00 365D 2X 29014M 4.1% 1193F 3.1% 903P 70
 1715D 123780M 4.7% 5824F 3.6% 4404P LIFE





Knapps Spider Bank On Me-ET EX-94
 111,140M 5.6% 6,190F 3.7% 4,058P Lifetime
 Three-Time Reserve All-American
 Dam of Lot 5



Knapps AP Bank Roll-ETV
 2nd Spring Yearling NGS-Madison 2022
 Full Sister to American Pie embryos

LOT 5 4 #1 AMERICAN PIE OR DRONE X BANK ON ME IVF EMBRYOS

Breeder & Owner: KNAPP LANDEN
EPWORTH IA
563.590.5369 austinknapp25@gmail.com

American Pie mating:

PA: +137M -0.06% -4F +0.01% +5P +50CM\$ +46NM\$
 +0.7PTAT +1.3UDC +1.5FLC -1.6DPR +2.1PL +24CPI 2.88SCS

INDIAN ACRES AMERICAN PIE USA000068016348 31GU618 A2A2

08/22 USDA GPTA +4M -0.17% -29F -0.03% -6P
 -1.8DPR +3.1PL -65NM\$ 17NM%ile -63CM\$ 98% Rel
 2.76SCS -3.60HCR 69% Rel -3.20CCR 90% Rel
 0.40LIV 72% Rel 0.90GL 97% Rel -6.30EFC 78% Rel
 AGA 08/22 PTAT +0.1 +0.4UDC +2.1FLC 97%Rel PTI -15

Drone mating:

PA: +374M -0.01% +17F -0.02% +10P +131CM\$ +133NM\$
 +1.3PTAT +1.5UDC +1.2FLC -0.8DPR +1.9PL +56CPI 3.08SCS

HI GUERN VIEW LEVI DRONE USA000097004646 94GU959 A2A2

08/22 USDA GPTA +478M -0.06% +12F -0.07% +4P
 -0.3DPR +2.6PL +109NM\$ 29NM%ile +100CM\$ 78% Rel
 3.16SCS +0.3SCR -1.30HCR 43% Rel -1.10CCR 42% Rel
 -0.60LIV 43% Rel -0.30GL 87% Rel 0.20EFC 38% Rel
 AGA 08/22 PTAT +1.3 +0.9UDC +1.5FLC 68%Rel PTI +47

KNAPPS SPIDER BANK ON ME-ET USA000097000091

08/22 USDA GPTA +270M +0.05% +22F +0.04% +16P
 -1.3DPR +1.1PL +157NM\$ 73NM%ile +162CM\$ 69% Rel
 2.99SCS -1.50HCR 34% Rel -1.60CCR 42% Rel
 -1.30LIV 36% Rel 0.70GL 43% Rel 3.30EFC 37% Rel
 4 Rec YDev: +650M +53F +35P
 2 App 08/22 PTAT +1.3 +2.1UDR +0.9FLC 69%Rel CPI +64
 Appraisal: EX 94 @ 6-01 (EEVEE)
 1-11 365D 2X 19560M 5.3% 1040F 3.6% 700P DHIA
 3-07 365D 2X 27770M 5.4% 1493F 3.4% 958P DHIA
 5-05 305D 2X 28590M 5.3% 1525F 3.4% 964P 96
 6-06 250D 2X 16960M 6.5% 1110F 4.0% 675P 94
 1811D 111140M 5.6% 6190F 3.7% 4058P LIFE

Reserve All-American 2017, 2019 & 2021

Nominated All-American & HM Jr. All-American 2016

Dtrs: KNAPPS COPPER BANK ON IT 90 @ 5-04 (91/86)

3-01 365D 2X 26170M 5.9% 1545F 3.5% 929P DHIA

Nominated All-American Jr. 2-Year-Old 2019

KNAPPS TG ROBBING THE BANK 85 @ 3-08 (84/84)

2-07 365D 2X 24620M 4.6% 1127F 3.4% 834P DHIA

Nominated All-American Winter Calf 2019

- Four (4) #1 IVF embryos
- Reverse sorted semen used for females
- Embryos located at TransOva, IA
- Embryos must be in buyer's possession within 60 days of sale



Knapps Acc Drone Blast-ET
 5th Spring Yearling
 NGS-Madison 2022
 Full Sister to Drone embryos

COULEE CREST LUXURY SPIDER-ET USA00000604229 1GU415

08/22 USDA GPTA +253M +0.09% +27F +0.09% +25P
 -3.1DPR -3.3PL -59NM\$ 23NM%ile -55CM\$ 97% Rel
 3.30SCS -0.80HCR 70% Rel -3.30CCR 91% Rel
 -3.50LIV 75% Rel -0.30GL 98% Rel 7.40EFC 79% Rel
 AGA 08/22 PTAT +0.4 +0.1UDC -1.5FLC 97%Rel PTI +13

KNAPPS MR AMERICA MISS BESTANY USA000068026893

Appraisal: 92 @ 6-07 (92/89)
 2-02 365D 2X 18700M 5.0% 938F 3.2% 604P DHIA
 3-10 365D 2X 23410M 5.5% 1297F 3.2% 748P DHIA
 5-10 365D 2X 24700M 5.8% 1438F 3.3% 817P DHIA
 2164D 120810M 5.8% 7034F 3.6% 4349P LIFE
 Junior All-American & Nom. All-American Sr. 2-Year-Old 2011

3D: KNAPPS ACE MISS BEST USA000068006305

Appraisal: 92 @ 5-08 (91/91)
 6-02 365D 2X 24730M 5.4% 1330F 3.2% 799P DHIA
 1837D 102260M 5.5% 5650F 3.4% 3430P LIFE
 Honorable Mention Jr. All-American Aged Cow 2011
 Dtr: KNAPPS REGIS BLESSING 92 @ 5-07 (92/88)
 5-02 365D 2X 24940M 3.8% 939F 3.2% 800P DHIA
 Reserve Jr. All-American Five-Year-Old 2015

4D: KNAPPS MISS BEST USA000003060918

Appraisal: 93 @ 5-04 (93/93) Gold Star Dam - 2002
 3-04 365D 2X 28510M 6.4% 1812F*3.4% 959P DHIA
 1679D 116150M 6.0% 6954F 3.5% 4025P LIFE
 Reserve All-American Sr. 3-Year-Old 2001
 Honorable Mention All-American 4-Year-Old 2002
 Total Performance Cow NGS-Madison 2002
 Dtr: KNAPPS ACE MISS BETSEY 90 @ 5-06 (88/88)
 5-03 365D 2X 24580M 5.7% 1399F 3.2% 788P DHIA



Coulee Crest Pilot Lava-ET EX-90
 4-01 365D 3X 27,730M 5.8% 1,618F 3.9% 1,071P
 #1(T) CPI Cow August 2022
 Nom. Jr. All-American Sr. 3-Year-Old 2019
 Dam of Lot 6
 Maternal Family of Lot 7

LOT 6 4 #1 JAVA-P X LAVA IVF EMBRYOS

**Breeder & Owner: COULEE CREST LLC
 CASHTON WI**

608.654.7555 couleecrest@hotmail.com

PA: +548M +0.03% +30F +0.03% +20P +152CM\$ +150NM\$
 +1.1PTAT +1.4UDC +1.9FLC -1.9DPR -0.2PL +78CPI 2.96SCS

SPRINGHILL JAVA-ETV-P 840003151591431 200GU123 A2A2

08/22 USDA GPTA +206M +0.01% +12F +0.01% +9P
 -2.6DPR -0.3PL -14NM\$ 29NM%ile -11CM\$ 56% Rel
 2.95SCS -1.90HCR 28% Rel -4.00CCR 32% Rel
 -2.00LIV 28% Rel 0.00GL 41% Rel -2.60EFC 29% Rel
 AGA 08/22 PTAT +1.1 +1.1UDC +2.1FLC 55%Rel PTI +35

COULEE CREST PILOT LAVA-ET USA000097000835

08/22 USDA GPTA +890M +0.04% +48F +0.00% +30P
 -1.2DPR +0.0PL +313NM\$ 94NM%ile +315CM\$ 66% Rel
 2.97SCS-0.20HCR 31% Rel -0.80CCR 37% Rel
 0.10LIV 30% Rel 1.10GL 42% Rel 2.90EFC 31% Rel
 3 Rec YDev: +1540M +134F +74P
 3 App 08/22 PTAT +1.1 +1.7UDR +1.7FLC 68%Rel CPI +121
 Appraisal: EX 90 @ 5-04 (EEVEV)

2-11 365D 3X 27590M 5.6% 1558F 3.6% 997P DHIA
 4-01 365D 3X 27730M 5.8% 1618F 3.9% 1071P DHIA
 5-04 365D 3X 32480M 5.6% 1812F 3.6% 1182P DHIA
 #1(T) CPI Cow August 2022

Dam of the top 2 CPI Heifers August 2022

Nominated Jr. All-American Senior Three-Year-Old 2019

Son at STGenetics: COULEE CREST LAVAS HURRICANE-ETV GPTI +84

Son at Semex: COULEE CREST TSUNAMI-ETV GPTI +71

- Four (4) #1 IVF embryos
- Sexed semen used for Females
- Resulting calves will be A2A2 by extended parentage
- Resulting calves would rank in top 100 CPI Heifers, August '22
- Located at TransOva in Madison, Wisconsin
- Embryos must be in buyer's possession within 60 days of sale

LINDRIAN GRUMPY PILOT-ET CAN000011632409 200GU307 A2A2

08/22 USDA GPTA -433M +0.11% -1F +0.06% -5P
 +0.4DPR +1.0PL +64NM\$ 29NM%ile +75CM\$ 88% Rel
 2.70SCS -0.60HCR 47% Rel 0.90CCR 65% Rel
 1.10LIV 43% Rel 2.60GL 91% Rel 0.60EFC 48% Rel
 AGA 08/22 PTAT +0.5 +1.5UDC +1.2FLC 83%Rel PTI +28

COULEE CREST LAREDO LALITA-ET USA000068039047 A2A2

08/22 USDA GPTA +868M +0.11% +60F -0.01% +27P
 -0.4DPR -0.9PL +347NM\$ 96NM%ile +347CM\$ 70% Rel
 3.04SCS 0.40HCR 35% Rel 0.20CCR 45% Rel
 0.00LIV 36% Rel -0.40GL 45% Rel 2.80EFC 37% Rel
 5 Rec YDev: +1597M +126F +59P
 3 App 08/22 PTAT +0.3 +0.5UDR -0.8FLC 70%Rel CPI +95

Appraisal: 84 @ 4-06 (82/84) Gold Star Dam - 2020

1-09 365D 3X 22370M 5.4% 1216F 3.7% 824P DHIA
 3-02 365D 3X 29720M 5.6% 1652F 3.7% 1094P DHIA
 4-05 333D 3X 23610M 5.4% 1275F 3.7% 867P 94
 5-06 358D 3X 26720M 5.5% 1458F 3.6% 975P 94
 6-07 365D 3X 30500M 5.9% 1786F 3.8% 1146P DHIA
 2150D 153860M 5.6% 8602F 3.7% 5756P LIFE

3D: FLAMBEAU MANOR DECISION LORI-ET USA000068012709 A2A2

Appraisal: 90 @ 8-02 (88/90) Gold Star Dam - 2013

3-09 365D 3X 44250M*5.9% 2600F*3.0% 1313P* 94
 2328D 184340M 5.4% 10017F 3.3% 6002P LIFE



Coulee Crest AP Lorilee EX-90

2-10 365D 3X 41,180M* 4.7% 1,945F* 3.5% 1,425P*
 Dam of Ernie, Logo & Latimer
 Maternal Sister to Dam of Lot 7



Coulee Crest Nick Lorilyn EX-91

3-05 365D 3X 42,440M* 5.3% 2,254F* 3.1% 1,298P*
 Dam of Legend & Lakoda
 Granddam of Lot 7

LOT 7 4 #1 JRUE X LULU IVF EMBRYOS

**Breeder & Owner: COULEE CREST LLC
 CASHTON WI**

608.654.7555 couleecrest@hotmail.com

PA: +852M -0.08% +25F -0.04% +20P +272CM\$ +270NM\$
 +0.7PTAT +0.7UDC +0.9FLC -0.3DPR +1.8PL +76CPI 2.96SCS

DAIRYMAN CRAIG JRUE 840003219111142 6GU125 A2A2

08/22 USDA GPTA +157M +0.06% +18F +0.03% +10P
 +2.1DPR +5.4PL +390NM\$ 99NM%ile +399CM\$ 48% Rel
 2.68SCS 0.40HCR 26% Rel 2.70CCR 29% Rel
 4.00LIV 25% Rel 0.20GL 31% Rel 0.00EFC 26% Rel
 AGA 08/22 PTAT +0.3 +0.8UDC -0.2FLC 47%Rel PTI +75

COULEE CREST COPPER LULU-ETV USA000097004428 A2A2

08/22 USDA GPTA +1547M -0.21% +32F -0.11% +30P
 -2.7DPR -1.8PL +150NM\$ 71NM%ile +144CM\$ 70% Rel
 2.82SCS 0.60HCR 41% Rel -2.80CCR 48% Rel
 -4.00LIV 39% Rel 0.70GL 49% Rel 5.30EFC 42% Rel
 3 Rec YDev: +3295M +88F +73P
 3 App 08/22 PTAT +1.1 +0.6UDR +2.0FLC 72%Rel CPI +76
 Appraisal: EX 90 @ 4-11 (EEVEV)
 1-04 305D 3X 14790M 4.4% 651F 3.2% 480P 93
 2-07 365D 3X 33130M 4.4% 1445F 3.2% 1071P DHIA
 4-00 305D 3X 34940M* 4.6% 1614F 3.2% 1126P* 93
 365D 3X 41350M* 4.9% 2011F* 3.3% 1354P* DHIA
 #83(T) CPI Cow August 2022

3D: FLAMBEAU MANOR DECISION LORI-ET USA000068012709 A2A2

Appraisal: 90 @ 8-02 (88/90) Gold Star Dam - 2013
 3-09 365D 3X 44250M* 5.9% 2600F* 3.0% 1313P* 94
 2328D 184340M 5.4% 10017F 3.3% 6002P LIFE

4D: FLAMBEAU MANOR ENHANCER LANA USA000003043629

Appraisal: 92 @ 7-11 (90/90) Gold Star Dam - 2001
 5-10 365D 2X 30271M 5.4% 1645F 3.2% 968P DHIA
 1980D 130421M 4.9% 6454F 3.3% 4293P LIFE

5D: FLAMBEAU MANOR VOL LAURA USA000003022186

Appraisal: 90 @ 4-07
 4-02 305D 2X 18260M 4.2% 765F 3.7% 680P DHIA

6D: FLAMBEAU MANOR LESLIE USA000002947026

Appraisal: 90 @ 3-08 Gold Star Dam - 1992
 3-05 308D 2X 17320M 4.3% 738F 3.8% 655P DHIA

7D: FLAMBEAU MANOR LAUREL USA000002861817

Appraisal: 80 @ 9-04 Gold Star Dam - 1992
 3193D 167770M 4.6% 7639F 3.7% 6168P LIFE

- Four (4) #1 IVF embryos
- Sexed semen used for Females
- Eligible for export to Canada & the EU
- Resulting calves will be A2A2 by parentage
- Resulting calves would rank in top 115 CPI Heifers, August '22
- Located at TransOva in Madison, Wisconsin
- Embryos must be in buyer's possession within 60 days of sale

JENS GOLD AARON COPPER-ET USA000068027038 14GU318 A2A2

08/22 USDA GPTA +231M +0.02% +15F -0.04% +0P
 -0.8DPR +1.4PL +198NM\$ 58NM%ile +198CM\$ 98% Rel
 2.83SCS 2.50HCR 72% Rel -0.40CCR 88% Rel
 -1.50LIV 66% Rel 0.70GL 99% Rel 5.70EFC 76% Rel
 AGA 08/22 PTAT +0.9 +1.4UDC +1.4FLC 97%Rel PTI +38

COULEE CREST NICK LORILYN USA000068023988 A1A2

Appraisal: 91 @ 5-00 (90/91)
 1-11 365D 3X 32060M* 5.1% 1624F* 3.2% 1010P* DHIA
 3-05 365D 3X 42440M* 5.3% 2254F* 3.1% 1298P* DHIA
 1168D 107900M 5.3% 5707F 3.3% 3533P LIFE
 Dam of Legend & Lakoda
 Dtrs: COULEE CREST AP LORIANNA-ET 88 @ 3-02 (87/90)
 COULEE CREST AP LORILANE-ET 90 @ 3-11 (90/86)
 COULEE CREST AP LEXI-ET 88 @ 2-09 (90/88)
 2-02 365D 2X 30470M 3.9% 1182F 3.1% 946P DHIA
 COULEE CREST TURLEY LYRIC-ET 85 @ 3-07 (77/85)
 3-02 365D 3X 32190M 3.2% 1016F 3.3% 1061P DHIA
 COULEE CREST AP LORILEE 90 @ 4-00 (91/90)
 2-10 365D 3X 41180M* 4.7% 1945F* 3.5% 1425P* DHIA
 COULEE CREST ADACKA LAINEY-ET 85 @ 4-00 (85/85)
 3-05 365D 3X 29590M 6.3% 1865F* 3.8% 1137P DHIA
 COULEE CREST AP LILAC-ET 87 @ 3-09 (86/87)
 2-02 365D 2X 23790M 4.8% 1136F 3.2% 766P DHIA
 COULEE CREST ALYMO LIV-ET 82 @ 4-01 (75/87)
 3-06 365D 2X 36540M* 5.2% 1898F 3.1% 1125P DHIA
 COULEE CREST AP LILITH 88 @ 3-04 (88/86)
 4-00 359D 2X 28040M 3.3% 912F 2.7% 762P 97
 COULEE CREST AP LEXUS-ET 89 @ 2-01 (91/87)
 1-10 365D 2X 25050M 4.7% 1173F 3.5% 869P DHIA
 COULEE CREST TOP NOTCH LEXANN-ETV 91 @ 5-11 (92/87)
 4-01 365D 2X 26720M 3.8% 1013F 3.3% 886P DHIA
 COULEE CREST PERFECTO LOVE-ETV 87 @ 4-02 (86/85)



Dairyman Profit 3825 Japan EX-90

2-10 365D 3X 22,170M 5.8% 1,295F 3.8% 840P

#1(T) CPI Cow August 2022

Dam of Lot 8

Maternal Sister to Dam of Lot 9

LOT 8 5 #2 TSUNAMI X JAPAN IVF EMBRYOS

**Breeder & Owner: HOARDS DAIRYMAN FARM
FORT ATKINSON WI**

920.728.4822 hdfarm@hoards.com

PA: +397M +0.05% +27F +0.03% +19P +398CM\$ +390NM\$
+0.9PTAT +1.3UDC +1.0FLC +0.7DPR +4.2PL +99CPI 2.80SCS

COULEE CREST TSUNAMI-ETV 840003214098840 200GU124 A2A2

08/22 USDA GPTA +420M +0.03% +25F +0.02% +18P
-0.8DPR +2.5PL +312NM\$ 82NM%ile +318CM\$ 50% Rel
2.90SCS -1.30HCR 28% Rel -1.60CCR 30% Rel
1.00LIV 27% Rel 0.90GL 31% Rel 1.20EFC 27% Rel
AGA 08/22 PTAT +0.8 +1.1UDC +0.5FLC 49%Rel PTI +71

DAIRYMAN PROFIT 3825 JAPAN 840003143321971 A2A2

08/22 USDA GPTA +373M +0.06% +28F +0.04% +19P
+2.1DPR +5.9PL +468NM\$ 98NM%ile +478CM\$ 65% Rel
2.70SCS 1.20HCR 28% Rel 3.00CCR 36% Rel
3.80LIV 27% Rel 0.00GL 42% Rel 0.20EFC 29% Rel
2 Rec YDev: +334M +53F +29P
4 App 08/22 PTAT +1.0 +1.4UDR +1.4FLC 70%Rel CPI +121
Appraisal: EX 90 @ 4-04 (EEVEV)

1-10 283D 3X 15320M 5.0% 771F 3.8% 582P 101
2-10 365D 3X 22170M 5.8% 1295F 3.8% 840P DHIA

#1(T) CPI Cow August 2022

Son at GGS: DAIRYMAN CRAIG JRUE GPTI +75

Dtrs: DAIRYMAN PHANTASTIC 4604 JANA 83 @ 2-05 (85/78)

#73(T) CPI Cow August 2022

DAIRYMAN THEO 5024 JARI-ETV

#9(T) CPI Heifer August 2022

- Five (5) #2 IVF embryos
- Reverse sorted semen used for Females
- Resulting calves will be A2A2 by parentage
- Resulting calves would rank in top 12 CPI Heifers, August '22
- Located at Sunshine Genetics, WI
- Embryos must be in buyer's possession within 60 days of sale

DAIRYMAN LOGO PROFIT 840003009973877 49GU229 A2A2

08/22 USDA GPTA +279M +0.00% +12F +0.00% +9P
+1.6DPR +3.0PL +245NM\$ 58NM%ile +250CM\$ 88% Rel
2.78SCS 0.30HCR 43% Rel 2.40CCR 58% Rel
2.70LIV 37% Rel 1.30GL 93% Rel -3.40EFC 44% Rel
AGA 08/22 PTAT +0.0 +0.7UDC +1.2FLC 83%Rel PTI +68

DAIRYMAN V I P 2512 JAZZER 840003124608098 A2A2

08/22 USDA GPTA +240M +0.16% +40F +0.09% +24P
+3.7DPR +6.0PL +592NM\$ 99NM%ile +608CM\$ 66% Rel
2.69SCS 1.90HCR 31% Rel 4.30CCR 38% Rel
4.30LIV 32% Rel -2.00GL 44% Rel 2.20EFC 32% Rel
5 Rec YDev: +723M +92F +59P

4 App 08/22 PTAT +0.1 +0.4UDR -0.8FLC 72%Rel CPI +118

Appraisal: + 81 @ 5-10 (V+VF+) Gold Star Dam - 2018

1-08 290D 3X 16890M 5.2% 877F 3.9% 667P 93

2-07 295D 3X 22770M 5.0% 1131F 3.8% 869P 94

3-07 365D 3X 28060M 5.4% 1523F 3.9% 1101P DHIA

5-02 318D 2X 18170M 5.7% 1032F 4.0% 718P DHIA

6-03 328D 3X 23470M 6.2% 1463F 3.8% 893P 104

1602D 109570M 5.5% 6041F 3.9% 4257P LIFE

Dtr: DAIRYMAN COPPER 3443 JIGGLES 90 @ 5-03 (91/90)

Gold Star Dam - 2022

3-09 332D 3X 19620M 5.9% 1148F 3.8% 736P 104

#6(T) CPI Cow August 2022

3D: DAIRYMAN ALSTAR JAZLYN USA000070781141

Appraisal: 85 @ 3-01 (85/85)

1-08 365D 3X 22260M 4.8% 1058F 3.6% 811P DHIA

Son: DAIRYMAN DAWSON JORDY-ET GPTI +38

4D: GR-DAIRYMAN BINGO JAZZ USA000064739061

Appraisal: 83 @ 3-04 (82/87)

2-00 315D 3X 19840M 5.2% 1036F 3.8% 759P 93

5D: PR-STOCKWELL FARM JANE USA000068004670

Appraisal: 84 @ 5-00 (80/88)

7-00 304D 3X 27760M 4.6% 1270F 3.5% 975P DHIA

LOT 9 5 #1 HURRICANE X JIGGLES IVF EMBRYOS

Breeder & Owner: HOARDS DAIRYMAN FARM
FORT ATKINSON WI

920.728.4822 hdfarm@hoards.com

PA: +177M +0.16% +36F +0.05% +16P +428CM\$ +419NM\$
+0.6PTAT +1.3UDC +0.9FLC +0.9DPR +3.4PL +97CPI 2.83SCS

COULLEE CREST LAVAS HURRICANE-ETV 840003214098780 551GU915A2A2

08/22 USDA GPTA +283M +0.12% +35F +0.06% +21P
-0.4DPR +1.5PL +338NM\$ 82NM%ile +346CM\$ 48% Rel
2.96SCS -0.60HCR 27% Rel -0.90CCR 29% Rel
1.00LIV 26% Rel 0.80GL 31% Rel 1.90EFC 27% Rel
AGA 08/22 PTAT +0.4 +1.0UDC +0.6FLC 48%Rel PTI +84

DAIRYMAN COPPER 3443 JIGGLES 840003134202043 A2A2

08/22 USDA GPTA +70M +0.19% +36F +0.04% +10P
+2.2DPR +5.2PL +499NM\$ 99NM%ile +509CM\$ 67% Rel
2.70SCS 2.30HCR 35% Rel 2.70CCR 43% Rel
1.80LIV 34% Rel -0.30GL 43% Rel 4.20EFC 36% Rel
3 Rec YDev: +167M +75F +19P
4 App 08/22 PTAT +0.8 +1.6UDR +1.2FLC 72%Rel CPI +110
Appraisal: EX 90 @ 5-03 (VEGEE) Gold Star Dam - 2022
2-01 365D 3X 18660M 6.1% 1134F 3.8% 707P DHIA
3-09 332D 3X 19620M 5.9% 1148F 3.8% 736P 104
#6(T) CPI Cow August 2022
Dtr: DAIRYMAN JAEGER 4332 JOELLE 80 @ 3-02 (83/77)
1-08 316D 3X 15940M 5.7% 913F 3.7% 595P DHIA
#89(T) CPI Cow August 2022

3D: DAIRYMAN ALSTAR JAZLYN USA000070781141

Appraisal: 85 @ 3-01 (85/85)
1-08 365D 3X 22260M 4.8% 1058F 3.6% 811P DHIA
Son: DAIRYMAN DAWSON JORDY-ET GPTI +38

4D: GR-DAIRYMAN BINGO JAZZ USA000064739061

Appraisal: 83 @ 3-04 (82/87)
2-00 315D 3X 19840M 5.2% 1036F 3.8% 759P 93

5D: PR-STOCKWELL FARM JANE USA000068004670

Appraisal: 84 @ 5-00 (80/88)
7-00 304D 3X 27760M 4.6% 1270F 3.5% 975P DHIA

- Five (5) #1 IVF embryos
- Sexed semen used for Females
- Resulting calves will be A2A2 by parentage
- Resulting calves would rank in top 20 CPI Heifers, August '22
- Located at Sunshine Genetics, WI
- Embryos must be in buyer's possession within 60 days of sale

JENS GOLD AARON COPPER-ET USA000068027038 14GU318 A2A2

08/22 USDA GPTA +231M +0.02% +15F -0.04% +0P
-0.8DPR +1.4PL +198NM\$ 58NM%ile +198CM\$ 98% Rel
2.83SCS 2.50HCR 72% Rel -0.40CCR 88% Rel
-1.50LIV 66% Rel 0.70GL 99% Rel 5.70EFC 76% Rel
AGA 08/22 PTAT +0.9 +1.4UDC +1.4FLC 97%Rel PTI +38

DAIRYMAN V I P 2512 JAZZER 840003124608098 A2A2

08/22 USDA GPTA +240M +0.16% +40F +0.09% +24P
+3.7DPR +6.0PL +592NM\$ 99NM%ile +608CM\$ 66% Rel
2.69SCS 1.90HCR 31% Rel 4.30CCR 38% Rel
4.30LIV 32% Rel -2.00GL 44% Rel 2.20EFC 32% Rel
5 Rec YDev: +723M +92F +59P
4 App 08/22 PTAT +0.1 +0.4UDR -0.8FLC 72%Rel CPI +118
Appraisal: +81 @ 5-10 (V+VF+) Gold Star Dam - 2018
1-08 290D 3X 16890M 5.2% 877F 3.9% 667P 93
2-07 295D 3X 22770M 5.0% 1131F 3.8% 869P 94
3-07 365D 3X 28060M 5.4% 1523F 3.9% 1101P DHIA
5-02 318D 2X 18170M 5.7% 1032F 4.0% 718P DHIA
6-03 328D 3X 23470M 6.2% 1463F 3.8% 893P 104
1602D 109570M 5.5% 6041F 3.9% 4257P LIFE
Dtr: DAIRYMAN PROFIT 3825 JAPAN 90 @ 4-04 (89/90)
2-10 365D 3X 22170M 5.8% 1295F 3.8% 840P DHIA
#1(T) CPI Cow August 2022



Thurston Farms Primetime Trixie EX-92
 2-09 305D 3X 21,122M 4.0% 835F 3.3% 700P
 Unanimous All-American Yearling in Milk 2019
 Maternal Sister to Lots 10 - 12



Knapps Regis Tambourine-ET EX-95
 6-10 365D 40,160M* 5.1% 2,055F* 3.3% 1,338P*
 Unanimous All-American Aged Cow 2015
 Full Sister to Dam of Lots 10 - 12

LOT 10 4 #1 MISSILE X TROTTER IVF EMBRYOS

Breeder & Owner: TAYLOR GLENN A & SHERYL
CASSVILLE NY
315.292.4230 twfarm.sheryl@gmail.com
 PA: +111M -0.05% -6F -0.04% -4P -28CM\$ -24NM\$
 +0.9PTAT +1.2UDC +0.8FLC -0.1DPR +1.1PL +12CPI 3.03SCS

- Four (4) #1 IVF embryos
- Sexed semen used for females
- Resulting calves will be A2A2 by parentage
- Embryos located at Vytelle, NY
- Embryos must be in buyer's possession within 60 days of sale

VALLEY GEM MISSILE-ETV 840003208696258 200GU125 A2A2
 08/22 USDA GPTA -1006M +0.20% -13F +0.08% -20P
 +0.0DPR +0.1PL -178NM\$ 11NM%ile -175CM\$ 54% Rel
 3.13SCS -1.90HCR 31% Rel -0.70CCR 40% Rel
 2.00LIV 35% Rel -0.40GL 40% Rel -3.90EFC 35% Rel
 AGA 08/22 PTAT +1.1 +1.9UDC +2.3FLC 54%Rel PTI +7

MARODORE ENHANCER REGIS-ET USA000000603223 14GU280
 08/22 USDA GPTA +675M -0.12% +9F -0.10% +4P
 -2.4DPR -3.6PL -197NM\$ 11NM%ile -209CM\$ 97% Rel
 3.09SCS -0.30HCR 62% Rel -2.90CCR 90% Rel
 -5.60LIV 78% Rel 1.30GL 96% Rel -1.10EFC 80% Rel
 AGA 08/22 PTAT -0.2 -0.4UDC -2.4FLC 97%Rel PTI -45

KNAPPS REGIS TROTTER-ETV USA000097000111 A2A2
 08/22 USDA GPTA +1227M -0.29% +2F -0.15% +13P
 -0.2DPR +2.1PL +131NM\$ 68NM%ile +119CM\$ 65% Rel
 2.92SCS-0.40HCR 30% Rel -0.80CCR 37% Rel
 -1.70LIV 33% Rel 0.60GL 37% Rel 1.10EFC 34% Rel
 4 Rec YDev: +2827M +19F +32P
 3 App 08/22 PTAT +0.6 +0.5UDR -0.7FLC 61%Rel CPI +17
 Appraisal: VG 88 @ 4-03 (VE+VV)
 4-10 365D 3X 28670M 3.9% 1129F 3.1% 875P DHIA
 Dtrs: THURSTON FARMS PRIMETIME TRIXIE 92 @ 3-07 (91/94)
 2-09 305D 3X 21122M 4.0% 835F 3.3% 700P DHIA
Unanimous All-American & Jr. All-American Yearling in Milk 2019
HM All-American & HM Jr. All-American Sr. 3-Year-Old 2021
HM All-American & HM Jr. All-American Sr. 2-Year-Old 2020
Grand Champion NJS-Madison 2019
Reserve Intermediate Champion NGS-Madison 2019
 HERITAGE BRK NOVAK TREASURE-ET 83 @ 2-09 (80/87)
 2-00 365D 3X 27620M 3.8% 1062F 2.9% 791P DHIA

KNAPPS ACE TAMERA USA000068006299
 Appraisal: 93 @ 9-07 (91/92)
 2-07 365D 2X 19960M 4.7% 935F 3.4% 670P DHIA
 3-08 365D 2X 24510M 4.3% 1044F 3.2% 786P DHIA
 5-06 365D 2X 24830M 4.6% 1146F 3.3% 809P DHIA
 9-07 365D 2X 32350M 4.2% 1351F 3.2% 1036P DHIA
 3038D 178720M 4.4% 7847F 3.4% 6004P LIFE
 Dtrs: KNAPPS REGIS TAMBOURINE-ET 95 @ 7-04 (95/94)
 6-10 365D 2X 40160M*5.1% 2055F*3.3% 1338P* DHIA
Unanimous All-American & Jr. All-American Aged Cow 2015
 KNAPPS REGIS TAMILLA-ET 90 @ 4-05 (90/90)
 3-01 365D 2X 27950M 4.4% 1238F 3.5% 968P DHIA
 KNAPPS REGIS TAMESTY-ET 90 @ 3-08 (91/87)
 3-00 365D 2X 29690M 4.9% 1459F 3.4% 997P DHIA
 KNAPPS HILLPOINT REGIS TWEETIE-ET 93 @ 4-06 (93/92)
 4-03 365D 2X 26280M 4.8% 1254F 3.3% 871P DHIA
 KNAPPS REGIS TAMMY-ET 87 @ 5-07 (86/85)
 4-08 365D 2X 23420M 4.2% 990F 3.4% 794P DHIA
 KNAPPS TOOLITE REGIS TRISTA-ET 94 @ 4-10 (95/94)
 5-02 365D 2X 29230M 4.6% 1359F 3.4% 989P DHIA
 KNAPPS REGIS TANBARK-ET 90 @ 3-07 (91/88)
 KNAPPS REGIS TABBY-ET 92 @ 6-03 (91/91)
 5-08 365D 2X 31280M 5.6% 1744F 3.3% 1038P DHIA
 KNAPPS REGIS TAMRICK-ET 89 @ 2-09 (92/90)
 KNAPPS REGIS TEMPERANCE-ETV 88 @ 4-07 (88/86)
 KNAPPS SPOLTMAN REGIS TAYLOR-ETV 86 @ 2-08 (86/84)
 KNAPPS REGIS TIME TO PARTY-ETV 86 @ 3-05 (88/82)
 KNAPPS REGIS TEXAS TORNADO-ETV 88 @ 3-05 (89/84)
 KNAPPS HP REGIS TISSUE-ETV 90 @ 3-11 (88/91)

3D: SUNRISE LUXURY TAMI USA000003068188
 Appraisal: 93 @ 5-04 (92/92)
 3-10 365D 2X 28480M 4.2% 1198F 3.2% 907P DHIA
 2395D 151070M 4.0% 6087F 3.2% 4888P LIFE
 Dtrs: KNAPPS DEEMAND TAMARO 92 @ 4-10 (90/90)
 4-05 365D 2X 22315M 4.4% 987F 3.4% 748P 99
 KNAPPS HILLPOINT PIE TEACUP-ET 94 @ 13-04 (95/94)
 11-06 365D 2X 39110M*5.1% 2003F*3.3% 1283P* DHIA



Knapps Ace Tamera EX-93

178,720M 4.4% 7,847F 3.4% 6,004P Lifetime
 24 Excellent Daughters
 Granddam of Lots 10 - 12



Knapps Toolite Regis Trista-ET EX-94

5-02 365D 29,230M 4.6% 1,359F 3.4% 989P
 Three-Time All-American Nominee
 Full Sister to Dam of Lots 10 - 12

LOT 11 4 #1 DRONE X TROTTER IVF EMBRYOS

**Breeder & Owner: TAYLOR GLENN A & SHERYL
 CASSVILLE NY**

315.292.4230 twfarm.sheryl@gmail.com

PA: +853M -0.18% +7F -0.11% +9P +110CM\$ +120NM\$
 +1.0PTAT +0.7UDC +0.4FLC -0.3DPR +2.4PL +32CPI 3.04SCS

HI GUERN VIEW LEVI DRONE USA000097004646 94GU959 A2A2

08/22 USDA GPTA +478M -0.06% +12F -0.07% +4P
 -0.3DPR +2.6PL +109NM\$ 29NM%ile +100CM\$ 78% Rel
 3.16SCS +0.3SCR -1.30HCR 43% Rel -1.10CCR 42% Rel
 -0.60LIV 43% Rel -0.30GL 87% Rel 0.20EFC 38% Rel
 AGA 08/22 PTAT +1.3 +0.9UDC +1.5FLC 68%Rel PTI +47

KNAPPS REGIS TROTTER-ETV USA000097000111 A2A2

Appraisal: VG 88 @ 4-03 (VE+VV)
 4-10 365D 3X 28670M 3.9% 1129F 3.1% 875P DHIA

- Four (4) #1 IVF embryos
- Sexed semen used for females
- Resulting calves will be A2A2 by parentage
- Embryos located at Vytelle, NY
- Embryos must be in buyer's possession within 60 days of sale

LOT 12 2 #1 JAMES DEAN X TROTTER IVF EMBRYOS

**Breeder & Owner: TAYLOR GLENN A & SHERYL
 CASSVILLE NY**

315.292.4230 twfarm.sheryl@gmail.com

PA: +519M -0.08% +9F -0.04% +10P +136CM\$ +138NM\$
 +0.9PTAT +1.1UDC +0.5FLC -0.7DPR +2.1PL +38CPI 2.88SCS

SPRINGHILL JAMES DEAN-ETV 840003151591428 551GU911 A2A2

08/22 USDA GPTA -189M +0.14% +16F +0.07% +6P
 -1.1DPR +2.0PL +144NM\$ 41NM%ile +153CM\$ 54% Rel
 2.84SCS -1.40HCR 28% Rel -2.20CCR 31% Rel
 0.90LIV 27% Rel -0.20GL 41% Rel -3.10EFC 29% Rel
 AGA 08/22 PTAT +1.2 +1.7UDC +1.7FLC 52%Rel PTI +59

KNAPPS REGIS TROTTER-ETV USA000097000111 A2A2

Appraisal: VG 88 @ 4-03 (VE+VV)
 4-10 365D 3X 28670M 3.9% 1129F 3.1% 875P DHIA

- Two (2) #1 IVF embryos
- Sexed semen used for females
- Resulting calves will be A2A2 by parentage
- Embryos located at Vytelle, NY
- Embryos must be in buyer's possession within 60 days of sale



Hartdale Best Man Crimson EX-93 2E
 4-08 323D 22,790M 3.5% 808F 3.0% 673P
 Reserve All-American 5-Year-Old 2021
 Dam of Lot 13

Hartdale Chief Cashmere EX-91
 2-01 310D 3X 23,050M 4.0% 927F 3.1% 714P
 Reserve All-American 2020 & 2021
 Maternal Sister to Lot 13

LOT 13 4 #2 JACK DANIELS-P X CRIMSON IVF EMBRYOS

Breeder & Owner: HARTMANN BRADEN & CONNOR
MULBERRY GROVE IL

618.407.4412 ehartmann@frontiernet.net
 PA: +529M -0.08% +9F -0.03% +12P +151CM\$ +151NM\$
 +1.3PTAT +1.5UDC +2.0FLC -0.1DPR +1.9PL +66CPI 2.89SCS

SPRINGHILL JACK DANIELS-ETV-P 840003151591419 54GU506 A2A2

PA: -1M +0.08% +13F +0.04% +6P +77CM\$ +71NM\$
 +1.3PTAT +1.4UDC +1.8FLC -1.1DPR +0.9PL +49PTI 2.85SCS

HARTDALE BEST MAN CRIMSON USA000097001340 A2A2

08/22 USDA GPTA +1059M -0.24% +4F -0.09% +18P
 +0.9DPR +2.9PL +230NM\$ 86NM%ile +224CM\$ 63% Rel
 2.92SCS-0.60HCR 25% Rel 0.70CCR 36% Rel
 0.50LIV 27% Rel 0.00GL 31% Rel -5.30EFC 27% Rel
 3 Rec YDev: +2098M -8F +26P
 2 App 08/22 PTAT +1.2 +1.6UDR +2.2FLC 64%Rel CPI +82
 Appraisal: EX 93 @ 6-02 (EEEE) 2E
 2-08 305D 2X 14380M 4.0% 573F 3.1% 440P 94
 4-08 323D 2X 22790M 3.5% 808F 3.0% 673P 94
 #60(T) CPI Cow August 2022

Reserve All-American & Nom. Jr. All-American 5-Year-Old 2021
Member, Reserve All-American Dam & Daughter, Best Three
Females & Exhibitor's Herd, 2022
Nominated Jr. All-American Jr. 3-Year-Old 2019
Reserve Grand Champion Illinois State Fair 2019
Junior Champion Illinois State Fair 2017
 Dtr: HARTDALE CHIEF CASHMERE 91 @ 3-06 (90/91)
 2-01 310D 3X 23050M 4.0% 927F 3.1% 714P 100
Reserve All-American & Res. Jr. All-American Winter Yearling 2020
Reserve All-American & Res. Jr. All-American Sr. 2-Year-Old 2021
1st Sr. 3-Year-Old NGS-Madison 2022

- Four (4) #2 IVF embryos
- Reverse sorted semen used for females
- Embryos located at TransOva, IA
- Resulting calves will be A2A2 by parentage
- Resulting calves will be potential 8th generation Excellents!
- Embryos must be in buyer's possession within 60 days of sale

FOUR WINDS BEST MAN USA000068041225

AGA 08/22 PTAT +1.2 +1.4UDC +1.2FLC 54%Rel

HARTDALE TOP NOTCH COCO USA000078002035

08/22 USDA GPTA +735M -0.16% +4F -0.08% +10P
 +0.9DPR +4.6PL +260NM\$ 89NM%ile +257CM\$ 67% Rel
 2.81SCS-0.40HCR 29% Rel 0.20CCR 43% Rel
 1.70LIV 32% Rel -0.10GL 41% Rel -2.40EFC 32% Rel
 4 Rec YDev: +2077M +26F +28P
 3 App 08/22 PTAT +0.8 +1.0UDR +1.6FLC 68%Rel CPI +66
 Appraisal: EX 91 @ 5-06 (EEEE) 2E

2-01 305D 2X 19010M 3.9% 750F 3.0% 563P 96
 3-06 277D 2X 19680M 4.1% 809F 3.1% 606P 96
 4-04 298D 2X 17840M 4.3% 764F 3.2% 569P 96
 5-03 339D 2X 20040M 3.7% 741F 3.1% 617P 97
Reserve Junior All-American Junior Three-Year-Old 2017
Reserve Junior All-American Four-Year-Old 2018
Reserve Junior All-American Five-Year-Old 2019
Nominated All-American 2017 & 2018
Total Performance Cow NJS-Madison 2019
Reserve Senior Champion NJS-Madison 2018 & 2019
Grand Champion IL State Fair Jr. Show 2016 & 2018
Reserve Junior Champion Illinois State Fair 2015

3D: HARTDALE ALSTAR CUTIE USA000068043444

Appraisal: EX 93 @ 10-04 (EEVEE) 2E
 7-07 305D 2X 25510M 4.2% 1080F 3.0% 766P 98
 2315D 158720M 4.2% 6735F 3.1% 4984P LIFE
 Dtrs: HARTDALE KRINGLE CLEMENTINE 91 @ 8-11 (91/90)
 HARTDALE MENTOR COCONUT 94 @ 6-09 (94/91)
 6-04 285D 3X 25480M 4.0% 1015F 3.0% 757P 100
Four-Time All-American Nominee

Backed by four more Excellent Dams - see Lot 14 for continuing pedigree!



Hartdale Kringle Clementine EX-91

5-10 305D 19,970M 4.7% 929F 3.5% 690P
Nom. Jr. All-American 4-Year-Old 2017
Full Sister to Dam of Lot 14

LOT 14 5 JAMES DEAN X CRESCENT IVF EMBRYOS

**Breeder & Owner: NC MTN CATTLE CO
ENNICE NC**

336.363.4639 atompkin@vt.edu

PA: -141M +0.11% +13F +0.01% -3P +125CM\$ +125NM\$
+0.4PTAT -0.2UDC -0.6FLC +0.5DPR +1.6PL +9CPI 3.04SCS

SPRINGHILL JAMES DEAN-ETV 840003151591428 551GU911 A2A2

08/22 USDA GPTA -189M +0.14% +16F +0.07% +6P
-1.1DPR +2.0PL +144NM\$ 41NM%ile +153CM\$ 54% Rel
2.84SCS -1.40HCR 28% Rel -2.20CCR 31% Rel
0.90LIV 27% Rel -0.20GL 41% Rel -3.10EFC 29% Rel
AGA 08/22 PTAT +1.2 +1.7UDC +1.7FLC 52%Rel PTI +59

HARTDALE KRINGLE CRESCENT USA000097002243

08/22 USDA PTA -150M +0.15% +20F +0.00% -5P
+0.3DPR +0.7PL +72NM\$ 53NM%ile +70CM\$ 47% Rel
3.10SCS-0.60HCR 20% Rel -0.80CCR 30% Rel
0.40LIV 22% Rel -0.50GL 34% Rel 2.20EFC 22% Rel
1 Rec YDev: +923M +73F +24P
3 App 08/22 PTAT -0.1 -1.2UDR -2.0FLC 37%Rel CPI -14
Appraisal: VG 85 @ 4-08 (VV+V+)
2-02 305D 2X 17140M 4.3% 739F 3.2% 552P 97
1st Summer Yearling Illinois State Fair Jr. Show 2017
2nd Summer Yearling Illinois State Fair 2017
Dtr: HARTDALE AXEL CAPPUCINO
Nominated Junior All-American Fall Calf 2019

3D: HARTDALE SHOWTIME CONFETTI USA000068025982

Appraisal: 91 @ 7-05 (90/88)
3-11 355D 2X 22930M 4.5% 1037F 3.2% 733P 98
1919D 115530M 4.6% 5342F 3.2% 3711P LIFE
Reserve All-American Winter Yearling 2010

4D: LEBANON VALLEY G CANDY USA000003046342

Appraisal: 92 @ 11-04 (91/90)
3-02 365D 2X 22067M 5.4% 1181F 3.3% 739P DHIA
2405D 115874M 5.1% 5911F 3.4% 3979P LIFE

5D: LEBANON VALLEY SUPREME KATIE USA000003023403

Appraisal: 93 @ 11-01 (93/90)
5-04 305D 3X 23700M 4.0% 943F 3.3% 782P DHIR
2509D 128950M 4.6% 5911F 3.3% 4266P LIFE

6D: LEBANON VALLEY SUPER KRUNCH USA000002986934

Appraisal: 91 @ 8-06
8-05 365D 3X 22540M 4.2% 944F 3.3% 754P DHIA
2279D 107080M 4.5% 4804F 3.4% 3589P LIFE



Hartdale Alstar Cutie EX-93 2E

158,720M 4.2% 6,735F 3.1% 4,984P Lifetime
Reserve Jr. All-American Jr. 3-Year-Old 2014
Granddam of Lot 14; 3rd Dam of Lot 13

- Five (5) total embryos: two (2) #1 quality & three (3) #2 quality
- Sexed semen used for females
- Embryos located at TransOva, MD
- Embryos must be in buyer's possession within 60 days of sale

CHUPPS HILLPOINT GDUST KRINGLE-ET USA000068019860 31GU622 A2A2

08/22 USDA GPTA -1037M +0.33% +7F +0.06% -24P
-2.6DPR -2.9PL -249NM\$ 11NM%ile -252CM\$ 92% Rel
3.34SCS -1.50HCR 44% Rel -3.30CCR 73% Rel
-2.90LIV 48% Rel -0.70GL 92% Rel 2.30EFC 53% Rel
AGA 08/22 PTAT +0.2 -0.5UDC -1.2FLC 91%Rel PTI -74

HARTDALE ALSTAR CUTIE USA000068043444

08/22 USDA GPTA +572M +0.00% +26F -0.05% +10P
+2.3DPR +4.3PL +352NM\$ 96NM%ile +351CM\$ 70% Rel
2.87SCS 0.20HCR 34% Rel 1.60CCR 45% Rel
3.80LIV 40% Rel -0.30GL 42% Rel 2.10EFC 37% Rel
5 Rec YDev: +1169M +78F +23P
5 App 08/22 PTAT +0.1 +0.1UDR +1.1FLC 64%Rel CPI +85
Appraisal: EX 93 @ 10-04 (EEVEE) 2E
2-00 335D 2X 20840M 4.2% 866F 3.1% 653P 94
3-00 288D 2X 23320M 4.2% 974F 3.1% 733P 97
4-00 305D 2X 24690M 3.8% 938F 3.0% 753P 97
5-03 305D 2X 22510M 4.4% 998F 3.0% 677P 97
6-06 348D 2X 24360M 4.4% 1078F 3.2% 783P 97
7-07 305D 2X 25510M 4.2% 1080F 3.0% 766P 98
2315D 158720M 4.2% 6735F 3.1% 4984P LIFE
Reserve Jr. All-American & Nom. All-American Jr. 3-Year-Old 2014
Grand Champion Illinois State Fair Junior Show 2015
Reserve Grand Champion IL State Fair Open & Jr. 2014
Dtrs: HARTDALE KRINGLE CLEMENTINE 91 @ 8-11 (91/90)
5-10 305D 2X 19970M 4.7% 929F 3.5% 690P 97
HARTDALE TOP NOTCH COCO 91 @ 5-06 (90/93)
5-03 339D 2X 20040M 3.7% 741F 3.1% 617P 97
Reserve Junior All-American 2017, 2018 & 2019
HARTDALE MENTOR COCONUT 94 @ 6-09 (94/91)
6-04 285D 3X 25480M 4.0% 1015F 3.0% 757P 100
Four-Time All-American Nominee



Knapps Best Buy Quarrel EX-90

104,260M 4.9% 5,095F 3.3% 3,490P Lifetime
Dam of Lot 15



Knapps Challenge Quarter-ET EX-90

3-10 341D 24,250M 4.8% 1,161F 3.1% 751P
Granddam of Lot 15

LOT 15 3 #1 DRONE X QUARREL IVF EMBRYOS

**Breeder & Owner: KNAPP LANDEN
EPWORTH IA
563.590.5369 austinknapp25@gmail.com**

PA: +2M -0.03% -4F -0.04% -7P +22CM\$ +25NM\$
+0.5PTAT +0.2UDC +0.3FLC +0.1DPR +1.9PL -5CPI 2.95SCS

- Three (3) #1 IVF embryos
- Reverse sorted semen used for females
- Embryos located at Knapps Genetics, IA
- Resulting calves are potential 8th generation Excellents!
- Embryos must be in buyer's possession within 60 days of sale

HI GUERN VIEW LEVI DRONE USA000097004646 94GU959 A2A2

08/22 USDA GPTA +478M -0.06% +12F -0.07% +4P
-0.3DPR +2.6PL +109NM\$ 29NM%ile +100CM\$ 78% Rel
3.16SCS +0.3SCR -1.30HCR 43% Rel -1.10CCR 42% Rel
-0.60LIV 43% Rel -0.30GL 87% Rel 0.20EFC 38% Rel
AGA 08/22 PTAT +1.3 +0.9UDC +1.5FLC 68%Rel PTI +47

KNAPPS REGIS BEST BUY USA000068047496 54GU466

08/22 USDA PTA -791M +0.04% -29F -0.02% -29P
+0.4DPR +0.8PL -243NM\$ 11NM%ile -241CM\$ 75% Rel
2.77SCS 0.00HCR 19% Rel -0.20CCR 40% Rel
-0.20LIV 30% Rel 0.50GL 68% Rel -0.50EFC 29% Rel
AGA 08/22 PTAT -0.2 +0.0UDC -1.0FLC 66%Rel PTI -74

KNAPPS BEST BUY QUARREL USA000078001456

08/22 USDA PTA -475M +0.01% -20F -0.01% -18P
+0.5DPR +1.1PL -60NM\$ 23NM%ile -57CM\$ 45% Rel
2.74SCS -1.00HCR 11% Rel 0.40CCR 21% Rel
0.00LIV 17% Rel 0.30GL 26% Rel -0.90EFC 16% Rel
5 Rec YDev: -892M -45F -36P
2 App 08/22 PTAT -0.3 -0.6UDR -1.0FLC 49%Rel CPI -59
Appraisal: EX 90 @ 7-07 (VVVEE)
2-01 365D 2X 19740M 4.6% 908F 3.2% 623P DHIA
4-00 365D 2X 19700M 4.9% 965F 3.4% 662P DHIA
5-02 365D 2X 19080M 5.4% 1021F 3.5% 668P DHIA
6-05 346D 2X 22180M 4.9% 1087F 3.2% 716P 95
7-07 350D 2X 20220M 4.6% 928F 3.4% 687P 98
1885D 104260M 4.9% 5095F 3.3% 3490P LIFE
DTR: KNAPPS DRONE QUEEN BEE-ETV
1st Spring Yearling Clemson Spring Show 2022
5th Spring Calf NGS-Harrisburg 2021

KNAPPS CHALLENGE QUARTER-ET USA000068041506

Appraisal: 90 @ 4-11 (90/90)
2-03 365D 2X 22150M 5.1% 1125F 3.2% 701P DHIA
3-10 341D 2X 24250M 4.8% 1161F 3.1% 751P 97
4-10 365D 2X 24230M 5.0% 1209F 3.6% 863P DHIA
Dtrs: KNAPPS JACKSON QUARRY 89 @ 2-08 (89/88)
2-06 365D 2X 23060M 5.7% 1305F 3.3% 755P DHIA
Reserve Junior All-American Spring Yearling 2013
KNAPPS TALENT QUALITY 86 @ 5-04 (86/85)
2-04 365D 2X 19080M 5.5% 1047F 3.6% 680P DHIA
Reserve Senior Champion NY Spring Carousel 2019
KNAPPS QUEEN OF DIAMONDS-ETV 88 @ 4-04 (87/87)
3-02 365D 2X 22870M 4.8% 1102F 3.3% 765P DHIA
KNAPPS ROL QUEEN OF HEARTS-ETV
Nominated All-American Winter Calf 2017

3D: KNAPPS SENTRY QUIN-ET USA000003071812

Appraisal: 90 @ 4-06 (87/90)
4-00 365D 2X 36360M*5.0% 1812F*3.1% 1135P DHIA
2857D 187850M 4.6% 8604F 3.2% 6042P LIFE

4D: KNAPPS PERFECTO QUEEN ANDORA-ET USA000003027749

Appraisal: 90 @ 4-10
3-05 365D 2X 25750M 4.4% 1138F 3.5% 893P DHIA

5D: PINEBREEZE TELESTAR ANDORA USA000002891647

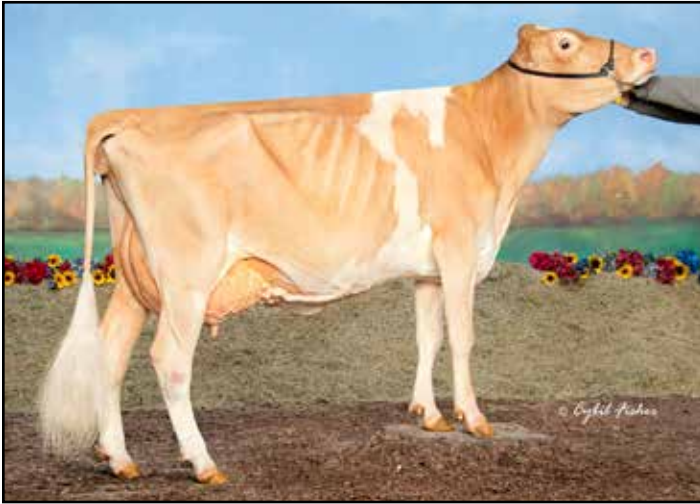
Appraisal: 95 @ 8-05
4-07 365D 2X 26680M*4.1% 1084F 3.3% 893P DHIA
2377D 156195M 4.5% 6976F 3.4% 5254P LIFE
Reserve All-American Three-Year-Old 1988

6D: MARFRED KH AGATHA USA000002853739

Appraisal: 91 @ 3-07
3-03 305D 2X 17850M 4.0% 721F 3.3% 582P DHIR

7D: MARFRED TN AGNES USA000002816831

Appraisal: 91 @ 3-06



Clover-Patch Boman Laura VG-87

4-05 348D 23,750M 4.3% 1,022F 3.5% 822P
 Nominated All-American Sr. 3-Year-Old 2020
 Dam of Lot 16

LOT 16 3 #1 DRONE X LAURA IVF EMBRYOS

**Breeder & Owner: RUMOVICZ WILLIAM
 N BERLIN NY**

607.316.6736 cloverpatchdairy@gmail.com

PA: -43M -0.05% -10F -0.01% -4P -47CM\$ -45NM\$
 +0.9PTAT +0.6UDC +1.2FLC -0.6DPR +2.1PL +6CPI 3.02SCS

HI GUERN VIEW LEVI DRONE USA000097004646 94GU959 A2A2

08/22 USDA GPTA +478M -0.06% +12F -0.07% +4P
 -0.3DPR +2.6PL +109NM\$ 29NM%ile +100CM\$ 78% Rel
 3.16SCS +0.3SCR -1.30HCR 43% Rel -1.10CCR 42% Rel
 -0.60LIV 43% Rel -0.30GL 87% Rel 0.20EFC 38% Rel
 AGA 08/22 PTAT +1.3 +0.9UDC +1.5FLC 68%Rel PTI +47

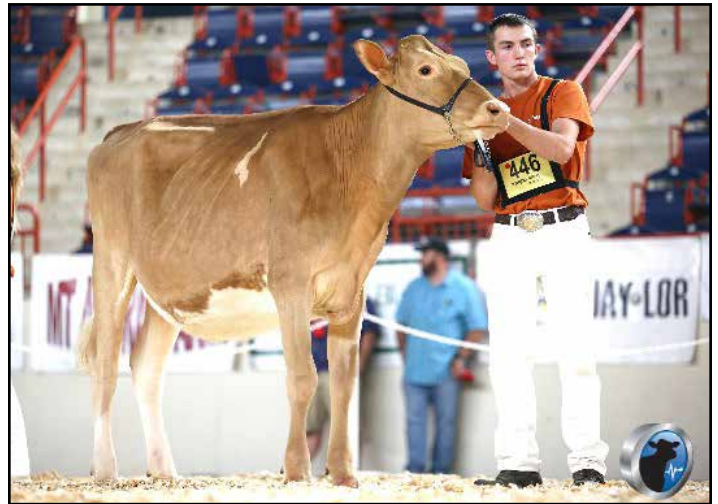
CLOVER-PATCH BOMAN LAURA 840003143280103

08/22 USDA PTA -563M -0.03% -31F +0.05% -11P
 -0.8DPR +1.6PL -199NM\$ 6NM%ile -193CM\$ 42% Rel
 2.88SCS -1.80HCR 15% Rel -1.80CCR 26% Rel
 0.40LIV 15% Rel -0.50GL 31% Rel -4.30EFC 17% Rel
 3 Rec YDev: -636M -49F -5P
 2 App 08/22 PTAT +0.5 +0.2UDR +0.8FLC 35%Rel CPI -34
 Appraisal: VG 87 @ 3-07 (VV+VV)
 4-05 348D 2X 23750M 4.3% 1022F 3.5% 822P 98
 Nom. All-American & Nom. Jr. All-American Sr. 3-Year-Old 2020
 Nominated Junior All-American Sr. 2-Year-Old 2019
 Grand Champion NY Spring Carousel Jr. Show 2019
 Reserve Intermediate Champion NY Spring Carousel 2019
 Junior Champion NY State Fair Jr. Show 2017
 Dtr: CLOVER-PATCH DRONE LEXIE
 1st Summer Yearling NJS-Harrisburg 2022
 2nd Summer Yearling NGS-Harrisburg 2022
 3rd Summer Yearling NJS-Madison 2022
 Junior Champion Guernsey Gold Showcase 2022
 Reserve Junior Champion NE Spring Junior Show 2022



Knapps Ace Tamera EX-93

178,720M 4.4% 7,847F 3.4% 6,004P Lifetime
 5th Dam of Lot 16; Granddam of Lots 10 - 12



Clover-Patch Drone Lexie

Junior Champion Guernsey Gold Showcase 2022
 1st Summer Yearling NJS-Harrisburg 2022
 Full Sister to Lot 16

- Three (3) #1 IVF embryos
- Reverse sorted semen used for females
- Embryos located at Vytelle Lab, NY
- Embryos must be in buyer's possession within 60 days of sale

FLAMBEAU MANOR BOMAN-ET USA000078000696 76GU900 A2A2

08/22 USDA GPTA -1145M +0.12% -33F +0.06% -29P
 -2.1DPR -0.7PL -436NM\$ 0NM%ile -433CM\$ 88% Rel
 2.99SCS -3.10HCR 42% Rel -3.90CCR 63% Rel
 0.70LIV 40% Rel -1.40GL 90% Rel -7.20EFC 48% Rel
 AGA 08/22 PTAT +0.3 +0.3UDC +1.3FLC 85%Rel PTI -68

LUCKYVALE NICO LUCY USA000078005359

Appraisal: +83 @ 3-09 (++)GV+
 1-11 346D 2X 13540M 4.0% 543F 3.3% 449P 97
 3-02 305D 2X 15130M 3.6% 551F 3.4% 514P 98
 4-05 334D 2X 17040M 4.1% 699F 3.4% 584P 98
 5-07 365D 2X 19700M 4.1% 809F 3.4% 661P DHIA
 1st Sr. Three-Year-Old NY State Fair 2018
 1st Aged Cow Guernsey Gold Showcase Jr. Show 2022
 2nd Aged Cow Guernsey Gold Showcase 2022

3D: LUCKYVALE JT LOVELY USA000068039261

Appraisal: 85 @ 3-08 (88/80)
 3-02 365D 2X 22070M 4.2% 935F 3.4% 743P DHIA

4D: KNAPPS YOGI LILA-ET USA000068041572

Appraisal: 86 @ 3-00 (88/83)

5D: KNAPPS ACE TAMERA USA000068006299

Appraisal: 93 @ 9-07 (91/92)
 9-07 365D 2X 32350M 4.2% 1351F 3.2% 1036P DHIA
 3038D 178720M 4.4% 7847F 3.4% 6004P LIFE
 24 Excellent Daughters!

6D: SUNRISE LUXURY TAMI USA000003068188

Appraisal: 93 @ 5-04 (92/92)
 3-10 365D 2X 28480M 4.2% 1198F 3.2% 907P DHIA
 2395D 151070M 4.0% 6087F 3.2% 4888P LIFE



Knapps Top Notch Harlow EX-92

2-08 365D 22,810M 4.9% 1,115F 3.3% 756P
All-American 2017 & 2019
Dam of Lot 17

Knapps Mentor Harley EX-94

3-06 365D 30,470M 5.2% 1,570F 3.4% 1,033P
Reserve All-American Jr. 2-Year-Old 2013
Granddam of Lot 17

LOT 17 3 #1 ALYMO OR MAS X HARLOW IVF EMBRYOS

**Breeder & Owner: KNAPP LANDEN
EPWORTH IA**

563.590.5369 austinknapp25@gmail.com

PA: -366M +0.07% -7F +0.02% -9P -59CM\$ -61NM\$
+1.0PTAT +1.3UDC +2.1FLC -0.7DPR +1.1PL +14CPI 2.96SCS

SNIDERS GARRETT ALYMO-ET USA000068018751 179GU8

08/22 USDA PTA -686M +0.22% +5F +0.08% -9P
+0.7DPR +0.6PL +20NM\$ 29NM%ile +27CM\$ 85% Rel
3.01SCS -0.50HCR 24% Rel 0.60CCR 56% Rel
0.70LIV 34% Rel 2.30GL 68% Rel -1.90EFC 36% Rel
AGA 08/22 PTAT +1.1 +1.5UDC +2.0FLC 83%Rel PTI +35

KNAPPS TOP NOTCH HARLOW USA000078001449

08/22 USDA PTA -45M -0.09% -18F -0.04% -9P
-2.0DPR +1.5PL -142NM\$ 11NM%ile -145CM\$ 49% Rel
2.90SCS-2.40HCR 15% Rel -3.20CCR 25% Rel
-0.80LIV 18% Rel 0.40GL 30% Rel -6.70EFC 18% Rel
3 Rec YDev: -351M -44F -27P
2 App 08/22 PTAT +0.9 +1.1UDR +2.2FLC 49%Rel CPI -7
Appraisal: 92 @ 4-04 (91/92)
2-08 365D 2X 22810M 4.9% 1115F 3.3% 756P DHIA
3-10 365D 2X 17790M 5.1% 902F 3.5% 614P DHIA
5-00 365D 2X 19770M 4.7% 939F 3.3% 662P DHIA
All-American Five-Year-Old 2019
All-American Sr. Three-Year-Old 2017
Junior All-American & HM All-American Sr. Two-Year-Old 2016
Reserve Junior All-American & Nom. All-American Fall Calf 2014
Nominated Junior All-American Fall Yearling 2015
Reserve Intermediate Champion NJS-Madison 2016
Grand Champion Midwest Spring Show 2019
Dtr: KNAPPS DRONE HOT TOPIC-ETV
1st Winter Calf Midwest Spring Show 2021
1st Winter Yearling Midwest Spring Show 2022
5th Winter Yearling NGS-Madison 2022

- Three (3) #1 IVF Embryos
- Reverse sorted semen used for females
- Two (2) Alymo embryos located at Knapps Genetics, IA
- If Alymo is chosen, embryos must be in buyer's possession within 60 days of sale. If a Mutually Agreeable Sire is chosen, embryos must be made within 60 days of sale and in buyer's possession within 90 days of sale.

KNAPPS APIE TOP NOTCH USA000068047498 54GU468

08/22 USDA PTA +401M -0.24% -24F -0.05% +4P
-2.1DPR +3.4PL +47NM\$ 29NM%ile +48CM\$ 86% Rel
2.76SCS -2.40HCR 27% Rel -3.80CCR 57% Rel
-0.80LIV 37% Rel 1.10GL 78% Rel -8.90EFC 37% Rel
AGA 08/22 PTAT +0.4 +1.0UDC +0.6FLC 85%Rel PTI -9

KNAPPS MENTOR HARLEY USA000068045551

Appraisal: 94 @ 6-05 (94/94)
2-01 365D 2X 17160M 5.8% 1001F 3.2% 544P DHIA
3-06 365D 2X 30470M 5.2% 1570F 3.4% 1033P DHIA
5-10 365D 2X 23830M 4.9% 1175F 3.4% 819P DHIA
Reserve All-American & Res. Jr. All-American Jr. 2-Year-Old 2013
Nominated All-American & Nom. Jr. All-American 4-Year-Old 2015
Member, All-American Best Three Females & Exhibitor's Herd 2015

3D: KNAPPS CHALLENGE HAYLEY USA000068020541

Appraisal: 84 @ 3-08 (82/87)
2-09 355D 2X 26160M 4.6% 1213F 3.3% 855P 98

4D: GREEN RIDGE REGIS HAYLO USA000003082860

Appraisal: 91 @ 4-10 (91/91)
4-01 365D 2X 29660M 3.7% 1105F 2.8% 842P DHIA
Junior All-American & Reserve All-American Jr. 3-Year-Old 2006
Reserve Junior All-American Five-Year-Old 2008
Grand Champion NJS-Madison 2006



Skoda Grove Drone Candy-ETV
 2nd Spring Calf NE Spring Jr. Show 2022
 #117(T) CPI Heifer August 2022
 #30(T) PTAT Heifer August 2022
 Full Sister to Lot 18

LOT 18 4 #1 DRONE OR MAS X MIRACLE IVF EMBRYOS

Breeder & Owner: SKODA RYAN & CRYSTIL LEE
CRARYVILLE NY

518.774.1085 skod14@yahoo.com

PA: +261M +0.02% +16F +0.00% +9P +133CM\$ +134NM\$
 +0.8PTAT +0.5UDC +0.8FLC -0.2DPR +1.7PL +44CPI 3.07SCS

HI GUERN VIEW LEVI DRONE USA000097004646 94GU959 A2A2

08/22 USDA GPTA +478M -0.06% +12F -0.07% +4P
 -0.3DPR +2.6PL +109NM\$ 29NM%ile +100CM\$ 78% Rel
 3.16SCS +0.3SCR -1.30HCR 43% Rel -1.10CCR 42% Rel
 -0.60LIV 43% Rel -0.30GL 87% Rel 0.20EFC 38% Rel
 AGA 08/22 PTAT +1.3 +0.9UDC +1.5FLC 68%Rel PTI +47

COYOTE RUN JACKSON MIRACLE USA000068047901 A1A2

08/22 USDA GPTA +44M +0.10% +19F +0.07% +14P
 +0.0DPR +0.8PL +158NM\$ 73NM%ile +166CM\$ 62% Rel
 2.97SCS 0.60HCR 26% Rel 0.90CCR 33% Rel
 -0.10LIV 31% Rel -0.20GL 30% Rel -1.10EFC 29% Rel
 4 Rec YDev: +601M +63F +48P
 2 App 08/22 PTAT +0.3 +0.1UDR +0.1FLC 57%Rel CPI +41
 Appraisal: EX 90 @ 8-01 (EEVVV)
 1-11 305D 2X 15830M 5.3% 843F 3.5% 548P 96
 3-01 305D 2X 20040M 5.3% 1069F 3.4% 687P 98
 5-01 305D 2X 23270M 5.1% 1182F 3.2% 745P 98
 6-09 305D 2X 26640M 4.8% 1275F 3.4% 910P 96
 1966D 126980M 5.2% 6558F 3.4% 4340P LIFE

Dtrs: SKODA GROVE COYOTES COOKIE 83 @ 2-05 (83/85)

3-01 305D 2X 19970M 4.8% 961F 3.7% 737P 98
 SKODA GROVE DRONE CRIMSON-ETV
 3rd Spring Calf/2nd Junior, New England Classic 2022
 SKODA GROVE DRONE CANDY-ETV
 2nd Spring Calf NE Spring Junior Show 2022
 SKODA GROVE SPARTACUS ALPINE-ETV
 Junior Champion Connecticut State Show 2022

- Four (4) #1 IVF Embryos
- Sexed semen used for females
- Eligible for export to Canada
- Located at TransOva Maryland
- If Drone is chosen, embryos must be in buyer's possession within 60 days of sale. If a Mutually Agreeable Sire is chosen, embryos must be made within 60 days of sale and in buyer's possession within 90 days of sale.

KNAPPS LES JACKSON USA000068045465

AGA 08/21 PTAT +0.6 +0.7UDC +0.7FLC 48%Rel

GR-KNAPPS REWARD MADISON USA000068016916

08/21 USDA PTA +94M -0.09% -12F +0.00% +4P
 -0.1DPR -4.2PL -220NM\$ 6NM%ile -221CM\$ 49% Rel
 3.11SCS 0.90HCR 15% Rel 1.10CCR 30% Rel
 -4.90LIV 21% Rel -0.80GL 32% Rel -1.50EFC 23% Rel
 3 Rec YDev: -425M -47F -4P
 2 App 08/21 PTAT -0.2 -0.3UDR -0.3FLC 48%Rel CPI -34
 Appraisal: 88 @ 3-08 (87/88)
 2-05 334D 2X 21130M 4.8% 1007F 3.4% 713P 97
 3-05 365D 2X 25020M 4.7% 1170F 3.4% 849P DHIA



Skoda Grove Spartacus Alpine-ETV
 Junior Champion Connecticut State Show 2022
 Maternal Sister to Lot 18



Springhill Blue Judith-ET EX-93

4-05 361D 2X 28170M 5.1% 1448F 3.3% 925P
Nominated All-American Jr. 3-Year-Old 2016

Dam of Lot 19; Maternal Sister to Granddam of Lot 20

LOT 19 3 #1 DRONE X JUDITH IVF EMBRYOS

Breeder & Owner: SPRINGHILL

BIG PRAIRIE OH

330.473.9660 springhill.chris@gmail.com

PA: +472M -0.04% +15F -0.07% +4P +46CM\$ +52NM\$
+1.2PTAT +1.0UDC +1.4FLC -1.0DPR +0.6PL +36CPI 3.05SCS

HI GUERN VIEW LEVI DRONE USA000097004646 94GU959 A2A2

08/22 USDA GPTA +478M -0.06% +12F -0.07% +4P
-0.3DPR +2.6PL +109NM\$ 29NM%ile +100CM\$ 78% Rel
3.16SCS +0.3SCR -1.30HCR 43% Rel -1.10CCR 42% Rel
-0.60LIV 43% Rel -0.30GL 87% Rel 0.20EFC 38% Rel
AGA 08/22 PTAT +1.3 +0.9UDC +1.5FLC 68%Rel PTI +47

SPRINGHILL BLUE JUDITH-ET USA000068032723

08/22 USDA GPTA +465M -0.02% +17F -0.06% +4P
-1.6DPR -1.5PL -5NM\$ 34NM%ile -9CM\$ 74% Rel
2.93SCS-3.10HCR 40% Rel -2.60CCR 50% Rel
-2.50LIV 42% Rel 0.80GL 51% Rel -5.30EFC 43% Rel
4 Rec YDev: +1620M +74F +30P
3 App 08/22 PTAT +1.1 +1.0UDR +1.2FLC 75%Rel CPI +21
Appraisal: 93 @ 4-06 (92/93)

1-11 318D 2X 19190M 4.8% 916F 3.3% 633P 95
2-11 365D 2X 28100M 4.4% 1230F 3.4% 969P DHIA
4-05 361D 2X 28170M 5.1% 1448F 3.3% 925P 96

Nominated All-American Junior Three-Year-Old 2016

Reserve Grand Champion Ohio State Fair 2016

Dtrs: SPRINGHILL YB JEWELRY-ETV 83 @ 3-05 (82/82)

Junior All-American Fall Yearling 2020

1st Senior Two-Year-Old Kentucky State Fair 2021

SPRINGHILL YOGIBEAR JAYCEE-ETV 84 @ 3-03 (83/79)

3D: DIX LEE JIFFY JIPSY USA000003066162

Appraisal: 90 @ 5-01 (88/90)

4-08 365D 2X 25080M 4.6% 1142F 3.4% 852P DHIA

4D: DIX LEE SMOKEY BEAR JIGGER USA000003036554

Appraisal: 84 @ 4-06

5D: DIX LEE BRETTS BIONIC JINGLE USA000003004382

Appraisal: 86 @ 5-06

6D: DIX LEE FAYETTE JINGO USA000002984299

Appraisal: 90 @ 3-11

4-02 305D 2X 21510M 4.6% 992F 3.6% 768P DHIR



Dix Lee Tiller Joke EX-93

5-06 365D 31,350M 4.9% 1,543F 3.3% 1,033P
All-American Jr. 2-Year-Old 2006

Granddam of Lot 19; 3rd Dam of Lot 20

- Three (3) #1 IVF embryos
- Reverse sorted semen used for females
- Embryos located at TransOva, MD
- Embryos must be in buyer's possession within 60 days of sale

JENS GOLD C BLUE SPRUCE-ET USA000068012543 1GU436 A1A2

08/22 USDA GPTA +166M +0.01% +9F +0.00% +6P
-1.5DPR -1.3PL -53NM\$ 23NM%ile -53CM\$ 97% Rel
3.02SCS -3.90HCR 70% Rel -2.30CCR 91% Rel
-3.30LIV 75% Rel 0.70GL 98% Rel -9.30EFC 78% Rel
AGA 08/22 PTAT +0.5 +0.4UDC +1.0FLC 97%Rel PTI +13

DIX LEE TILLER JOKE USA000068001932

Appraisal: 93 @ 5-08 (93/92)

2-00 365D 2X 24167M 4.8% 1158F 3.3% 794P 92
5-06 365D 2X 31350M 4.9% 1543F 3.3% 1033P DHIA

Dam of Jester, Judgment, Jackpot, Lone Star & Jaguar

All-American & Unan. Jr. All-American Jr. Two-Year-Old 2006

Reserve All-American 5-Year-Old 2009

Member, All-American Dam & Daughter 2009

Grand Champion NGS-Louisville 2009

Excellent Dtrs: DIX LEE MENTOR JAZZ-ET 92 @ 7-07 (90/91)

6-01 339D 2X 29160M 3.8% 1105F 3.6% 1038P 97

SPRINGHILL SILVER JESSICA-ET 90 @ 5-02 (88/91)

5-01 336D 2X 26080M 4.6% 1200F 3.3% 864P 102

SPRINGHILL JACQUELINE-ET 90 @ 3-05 (90/88)

3-03 365D 2X 22800M 4.8% 1084F 3.4% 770P DHIA

SPRINGHILL DOUBLE JAZMIN-ET 92 @ 5-03 (91/91)

5-00 365D 2X 28270M 7.3% 2060F*3.8% 1073P DHIA

SPRINGHILL MENTOR JAZZY-ET 95 @ 6-09 (94/96)

4-06 365D 2X 34720M 5.2% 1799F 3.6% 1260P* DHIA

SPRINGHILL BLUE JOVANNA-ET 90 @ 3-11 (90/90)

SPRINGHILL BLUE JULIET-ET 91 @ 7-02 (90/91)

6-04 358D 2X 26540M 4.1% 1082F 3.2% 850P 95

SPRINGHILL GRUMPY JUNO-ET 90 @ 6-09 (91/88)

7-00 365D 2X 31650M 4.0% 1267F 3.1% 987P DHIA

SPRINGHILL MENTOR JAMAICA-ET 93 @ 7-02 (92/92)

5-06 333D 2X 27670M 6.6% 1815F 3.2% 885P DHIA

SPRINGHILL MENTOR JINX-ET 91 @ 4-06 (91/91)

2-03 365D 2X 23230M 4.6% 1073F 3.5% 810P DHIA

SPRINGHILL MENTOR JUNIPER-ET 90 @ 4-01 (88/90)

1-11 365D 2X 22710M 5.2% 1186F 3.6% 809P DHIA

SPRINGHILL AMBITION JET-ET 90 @ 5-01 (90/88)

1-09 343D 2X 16110M 5.1% 829F 3.7% 593P 96

SPRINGHILL A PIE JINGO-ETV 90 @ 6-02 (88/88)

4-11 325D 2X 27300M 3.8% 1038F 3.2% 878P 95



Springhill Double Jazmin-ET EX-92

102,290M 6.2% 6,334F 3.8% 3,847P Lifetime
Two-Time HM Jr. All-American

Granddam of Lot 20; Mat. Sister to Dam of Lot 19

LOT 20 3 #2 TSUNAMI X JORDAN IVF EMBRYOS

Breeder & Owner: SPRINGHILL

BIG PRAIRIE OH

330.473.9660 springhill.chris@gmail.com

PA: +100M +0.08% +19F +0.04% +11P +223CM\$ +216NM\$
+0.8PTAT +1.0UDC +0.5FLC -0.6DPR +2.1PL +52CPI 2.92SCS

COULEE CREST TSUNAMI-ETV 840003214098840 200GU124 A2A2

08/22 USDA GPTA +420M +0.03% +25F +0.02% +18P
-0.8DPR +2.5PL +312NM\$ 82NM%ile +318CM\$ 50% Rel
2.90SCS -1.30HCR 28% Rel -1.60CCR 30% Rel
1.00LIV 27% Rel 0.90GL 31% Rel 1.20EFC 27% Rel
AGA 08/22 PTAT +0.8 +1.1UDC +0.5FLC 49%Rel PTI +71

SPRINGHILL MM JORDAN-ETV 840003132117652 A2A2

08/22 USDA GPTA -220M +0.13% +12F +0.06% +3P
-0.4DPR +1.6PL +120NM\$ 65NM%ile +127CM\$ 66% Rel
2.93SCS-0.60HCR 34% Rel -0.60CCR 43% Rel
1.80LIV 39% Rel 0.40GL 43% Rel -3.50EFC 39% Rel
3 Rec YDev: -3M +42F +32P
4 App 08/22 PTAT +0.7 +0.8UDR +0.5FLC 69%Rel CPI +33
Appraisal: EX 91 @ 4-08 (EEVEE)
2-01 339D 2X 17350M 4.3% 740F 3.4% 592P 95
3-01 348D 2X 16140M 4.7% 751F 3.7% 598P 96
4-03 365D 2X 26480M 4.8% 1270F 3.7% 986P DHIA

3D: DIX LEE TILLER JOKE USA000068001932

Appraisal: 93 @ 5-08 (93/92)
5-06 365D 2X 31350M 4.9% 1543F 3.3% 1033P DHIA
Dam of Jester, Judgment, Jackpot, Lone Star & Jaguar
All-American & Unan. Jr. All-American Jr. Two-Year-Old 2006
Reserve All-American 5-Year-Old 2009
Member, All-American Dam & Daughter 2009
Grand Champion NGS-Louisville 2009



Springhill Mentor Jazzy-ET EX-95

4-06 365D 34,720M 5.2% 1,799F 3.6% 1,260P
Four-Time All-American

Mat. Sister to Dam of Lot 19 & Granddam of Lot 20

- Three (3) #2 IVF embryos
- Reverse sorted semen used for Females
- Embryos located at TransOva, MD
- Resulting calves will be A2A2 by parentage
- Embryos must be in buyer's possession within 60 days of sale

FOUR WINDS MAGICMAN-ET USA000000602265 72GU120 A1A2

08/22 USDA GPTA -379M +0.03% -13F +0.02% -9P
-1.7DPR -1.4PL -252NM\$ 5NM%ile -249CM\$ 97% Rel
2.96SCS -0.90HCR 58% Rel -1.40CCR 90% Rel
2.50LIV 79% Rel -0.60GL 95% Rel -11.20EFC 80% Rel
AGA 08/22 PTAT -0.1 -0.8UDC -0.2FLC 98%Rel PTI -46

SPRINGHILL DOUBLE JAZMIN-ET USA000068031518

08/22 USDA GPTA +162M +0.19% +41F +0.01% +7P
-0.2DPR +1.3PL +310NM\$ 94NM%ile +314CM\$ 75% Rel
2.84SCS-1.50HCR 38% Rel -1.10CCR 47% Rel
0.50LIV 39% Rel 1.40GL 49% Rel 2.20EFC 40% Rel
4 Rec YDev: +665M +93F +24P
5 App 08/22 PTAT +1.0 +1.5UDR +2.1FLC 77%Rel CPI +87
Appraisal: 92 @ 5-03 (91/91)

1-08 349D 2X 19490M 5.4% 1047F 3.5% 685P 101
2-08 365D 2X 21090M 6.5% 1373F 3.5% 732P DHIA
3-11 361D 2X 26290M 5.1% 1329F 4.0% 1047P 96
5-00 365D 2X 28270M 7.3% 2060F*3.8% 1073P DHIA
1628D 102290M 6.2% 6334F 3.8% 3847P LIFE
HM Junior All-American Yearling in Milk 2013
HM Junior All-American Winter Calf 2012
Dtrs: SPRINGHILL LAREDO JOSLIN-ET 85 @ 6-11 (80/84)
3-01 365D 2X 26200M 5.3% 1395F 3.5% 917P DHIA
SPRINGHILL LAREDO JAZLYNN-ET 91 @ 6-00 (92/92)
Gold Star Dam - 2022
3-07 365D 2X 25770M 5.5% 1421F 3.6% 920P DHIA
SPRINGHILL GOTCHA JOLEE 88 @ 6-08 (90/78)
SPRINGHILL MM JOYRIDE-ETV 85 @ 2-04 (86/82)
2-02 365D 3X 11510M 5.2% 598F 3.6% 414P DHIA
SPRINGHILL LATIMER JUMANJI-ET 87 @ 4-08 (90/84)
3-06 305D 2X 15120M 5.8% 877F 4.0% 609P 96
SPRINGHILL RO LEVI JUMBO-ETV
1st Junior Two-Year-Old Minnesota State Fair 2022
SPRINGHILL RO LEVI JAMIE-ETV
1st Spring Yearling Ohio State Fair 2022



Jensgolden Fayette Orianna EX-92
 136,090M 4.6% 6,261F 3.7% 5,097P Lifetime
 Dam of Royal Oak and Option
 Gold Star Dam - 1991
 Maternal Family of Lot 21

LOT 21 5 #1 TSUNAMI OR CHECKMATE X ONALA IVF EMBRYOS

Breeder & Owner: HOARDS DAIRYMAN FARM
FORT ATKINSON WI
920.728.4822 hdfarm@hoards.com

Tsunami Mating:

PA: +395M +0.10% +35F +0.03% +19P +432CM\$ +423NM\$
 +0.7PTAT +1.1UDC +0.9FLC -0.1DPR +3.5PL +90CPI 2.80SCS

COULEE CREST TSUNAMI-ETV 840003214098840 200GU124 A2A2

08/22 USDA GPTA +420M +0.03% +25F +0.02% +18P
 -0.8DPR +2.5PL +312NM\$ 82NM%ile +318CM\$ 50% Rel
 2.90SCS -1.30HCR 28% Rel -1.60CCR 30% Rel
 1.00LIV 27% Rel 0.90GL 31% Rel 1.20EFC 27% Rel
 AGA 08/22 PTAT +0.8 +1.1UDC +0.5FLC 49%Rel PTI +71

Checkmate Mating:

PA: +349M +0.03% +22F +0.03% +16P +364CM\$ +357NM\$
 +0.5PTAT +1.0UDC +1.0FLC +0.8DPR +3.7PL +79CPI 2.78SCS

COULEE CREST RICHARD CHECKMATE 840003208361479 6GU116 A2A2

08/22 USDA GPTA +327M -0.10% -2F +0.01% +12P
 +0.9DPR +2.8PL +179NM\$ 52NM%ile +183CM\$ 54% Rel
 2.86SCS 0.10HCR 31% Rel 0.40CCR 34% Rel
 0.60LIV 29% Rel -0.80GL 42% Rel 5.30EFC 30% Rel
 AGA 08/22 PTAT +0.5 +0.8UDC +0.8FLC 52%Rel PTI +47

JENSGOLDEN CORDELL ONALA 840003128753804 A1A2

08/22 USDA GPTA +370M +0.16% +45F +0.04% +19P
 +0.6DPR +4.5PL +534NM\$ 99NM%ile +545CM\$ 68% Rel
 2.69SCS-0.30HCR 34% Rel 0.20CCR 40% Rel
 0.10LIV 35% Rel 0.60GL 43% Rel 1.20EFC 35% Rel
 5 Rec YDev: +1058M +108F +46P
 3 App 08/22 PTAT +0.5 +1.1UDR +1.2FLC 70%Rel CPI +107
 Appraisal: EX 90 @ 6-03 (EEVEV) Gold Star Dam - 2020
 1-11 305D 2X 12000M 5.6% 674F 3.7% 442P 95
 3-02 365D 2X 21863M 5.5% 1200F 3.7% 816P DHIA
 4-04 339D 2X 22540M 5.7% 1291F 3.7% 836P 96
 5-05 365D 3X 29840M 5.3% 1571F 3.6% 1080P DHIA
#8 CPI Cow August 2022
 Dam of two heifers in the top 12 CPI Heifers - August 2022

- Five (5) #1 IVF embryos
- Buyer's choice of sires - can select some of each or all of one
- Reverse sorted semen used for Females
- Tsunami mating - daughters would rank in the top 40 CPI Heifers, August 2022
- Checkmate mating - daughters would rank in the top 90 CPI Heifers, August 2022
- Located at Sunshine Genetics, WI
- Embryos must be in buyer's possession within 60 days of sale

RIPLEY FARMS AARON CORDELL USA000068027378 7GU440 A1A2

08/22 USDA GPTA +160M +0.08% +22F +0.01% +7P
 -1.2DPR +0.8PL +116NM\$ 35NM%ile +121CM\$ 96% Rel
 2.85SCS -0.60HCR 63% Rel -2.00CCR 84% Rel
 -1.70LIV 62% Rel 1.20GL 98% Rel -0.50EFC 68% Rel
 AGA 08/22 PTAT +0.3 +0.6UDC +0.5FLC 95%Rel PTI +32

JENSGOLDEN DOUBLE L ONALYN USA000068031379 A1A2

-08/22 USDA GPTA +295M +0.08% +27F +0.00% +9P
 +1.9DPR +6.7PL +543NM\$ 99NM%ile +551CM\$ 69% Rel
 2.64SCS-0.30HCR 32% Rel 2.20CCR 42% Rel
 3.10LIV 37% Rel -0.30GL 42% Rel 2.80EFC 33% Rel
 5 Rec YDev: +881M +69F +27P
 3 App 08/22 PTAT +0.1 +0.4UDR +0.6FLC 71%Rel CPI +82
 Appraisal: VG 88 @ 8-08 (VEVE+) Gold Star Dam - 2018
 2-00 288D 2X 13530M 4.7% 632F 3.3% 443P 91
 2-11 311D 2X 15540M 5.0% 778F 3.5% 550P 97
 3-10 337D 2X 21380M 4.6% 991F 3.3% 711P 97
 4-11 304D 2X 17930M 4.7% 845F 3.4% 604P 97
 5-11 308D 2X 19460M 4.9% 952F 3.5% 686P 96
 6-11 305D 2X 19570M 4.3% 849F 3.6% 701P 96
 8-01 305D 2X 20180M 4.6% 927F 3.4% 691P 96
 9-02 326D 2X 20250M 4.7% 947F 3.2% 657P 74
 10-03 257D 2X 14960M 4.1% 614F 3.2% 479P 93
 2887D 169930M 4.6% 7880F 3.4% 5797P LIFE
#60(T) CPI Cow August 2022
 Dam of three heifers in the top 200 CPI Heifers - August 2022



Maplehurst Les Marzipan EX-92
Two-Time Canadian Grand Champion
Granddam of Lot 22



Maplehurst Les Maya EX-91
HM All-American Sr. 3-Year-Old 2015
Full Sister to Granddam of Lot 22

LOT 22 RIGHTS TO IVF OF GLADHEART JD MAXINE-ET-P

Consignor: LEVESQUE ANDREW
RUPERT VT
407.907.9796 sapphiregenetics@yahoo.com

Selling price is per embryo. Buyer pays price of one embryo on sale day and will be invoiced when remaining embryos are made. Buyer is responsible for all costs of aspiration and mating sire decisions. Buyer has the option of up to three (3) IVF sessions. Total embryos is unlimited.

GLADHEART JD MAXINE-ET-P 840003227859536

Dam is naturally polled and A2A2 by parentage.

SPRINGHILL JACK DANIELS-ETV-P 840003151591419 54GU506 A2A2
PA: -1M +0.08% +13F +0.04% +6P +77CM\$ +71NM\$
+1.3PTAT +1.4UDC +1.8FLC -1.1DPR +0.9PL +49PTI 2.85SCS

MAPLEHURST LES MARZIPAN CAN000009594210 A2A2
Appraisal: EX 92 @ 7-10 (EEEE)
Grand Champion Canadian National Show 2015 & 2016
2nd Lifetime Production Cow NGS-Harrisburg 2018
Son at Masterpiece: GLADHEART MICHELANGELO-ET
Dtr: GLADHEART DRONE MEAGAN-ET
3rd Spring Calf NGS-Harrisburg 2022
5th Spring Calf NGS-Madison 2022

3D: MAPLEHURST TURLEYS MARISSA CAN000007433708
Appraisal: EX-90 @ 8-09 CAN
6-01 365D 2X 21233M 4.7% 992F 3.5% 743P
Dtr: MAPLEHURST LES MAYA 91 @ 6-07 (94/83)
3-06 304D 3X 19090M 4.8% 925F 3.3% 636P DHIA
Honorable Mention All-American Senior Three-Year-Old 2015

4D: COMFORT FARMS TRADITION MARY CAN000010034087
Appraisal: VG-85 @ 2-11 CAN

5D: COMFORT FARMS NORMA JEAN CAN10031892
Appraisal: GP-80 @ 2-05 CAN

6D: COMFORT FARMS NERNE CAN196975
Appraisal: VG-86 @ 2-08 CAN

7D: COMFORT FARMS NELDA CAN192364
Appraisal: GP-84 @ 2-10 CAN



Gladheart JD Maxine-ET-P
Junior Champion, Addison, Vermont County Fair &
Field Days 2022
Dam of Lot 22

SEMEN LOTS

S30 3 UNITS OF COULEE CREST NOVAK LAMBEAU-ET 840003128910115 7GU473 A2A2
NOVAK X COPPER X AMERICAN PIE +12 GPTI +0.6 PTAT
Consigned by Brian & Kristi Dinderman, Orangeville, IL 815.297.4111 Located in Orangeville, IL

S31 5 UNITS OF KNAPPS EALYS ACE TURBINE-ET 840003139726480 120GU3246 A2A2
ACE X AMERICAN PIE X LUXURY +24 GPTI +0.4 PTAT
Consigned by Dan & Sherry Ealy, Sharpsville, PA 724.456.8531 Located in the GMS tank, Columbus, OH

S32 2 UNITS OF INDIAN ACRES AMERICAN PIE USA000068016348 31GU618 A2A2
CHALLENGE X MAGICMAN X FAYETTE -15 GPTI +0.1 PTAT
Consigned by Randy Knapp, Epworth, IA 563.590.5369 Located in Epworth, IA

S33 2 UNITS OF DIX LEE TILLER KOJACK-ET USA000068015493 49GU120
TILLER X LOTTO X OPTION +36 PTI +1.7 PTAT
Consigned by Randy Knapp, Epworth, IA 563.590.5369 Located in Epworth, IA

S34 2 UNITS OF GOLDEN J RONALD GRUMPY USA000000604960 7GU405 A2A2
RONALD X ROYAL OAK X MAGIC +43 GPTI +0.1 PTAT
Consigned by Randy Knapp, Epworth, IA 563.590.5369 Located in Epworth, IA

S35 3 UNITS OF LANTZ FARM ENHANCER VILTER-ET USA000000603214 7GU358 A2A2
ENHANCER X SMOKEY X VICTORY -29 GPTI +0.3 PTAT
Consigned by Randy Knapp, Epworth, IA 563.590.5369 Located in Epworth, IA

S36 3 UNITS OF LAND OF LIVING P GARRETT-ET USA000000603126 72GU134 A2A2
PERFECTO X VAYETTE X SO HAPPY -31 PTI +0.1 PTAT
Consigned by Randy Knapp, Epworth, IA 563.590.5369 Located in Epworth, IA

S37 3 UNITS OF COULEE CREST LUXURY SPIDER-ET USA000000604229 1GU415
LUXURY X ENHANCER X MAGIC +13 GPTI +0.4 PTAT
Consigned by Randy Knapp, Epworth, IA 563.590.5369 Located in Epworth, IA

S38 10 UNITS OF SNIDERS OPTION AARON-ET USA000000604670 7GU395 A2A2
OPTION X ENHANCER X FRANK +44 GPTI +0.8 PTAT
Consigned by Levi Plocher, Salem, OH 330.446.0411 Located in Salem, OH

S39 10 UNITS OF SNIDERS OPTION AARON-ET USA000000604670 7GU395 A2A2
OPTION X ENHANCER X FRANK +44 GPTI +0.8 PTAT
Consigned by Levi Plocher, Salem, OH 330.446.0411 Located in Salem, OH

S40 10 UNITS OF TROTACRE LORAL TILLER-ET USA000000603341 7GU360 A2A2
LORAL X MAGIC X VICTORY -29 GPTI +0.9 PTAT
Consigned by Levi Plocher, Salem, OH 330.446.0411 Located in Salem, OH

S41 10 UNITS OF MARODORE ENHANCER REGIS-ET USA000000603223 14GU280
ENHANCER X PENDER X KING -45 GPTI -0.2 PTAT
Consigned by Levi Plocher, Salem, OH 330.446.0411 Located in Salem, OH

S42 10 UNITS OF FOUR WINDS MAGICMAN-ET USA000000602265 72GU120 A1A2
MAGIC X BIG TEX X PRINCE WALES -46 GPTI -0.1 PTAT
Consigned by Levi Plocher, Salem, OH 330.446.0411 Located in Salem, OH

S43 10 UNITS OF EDGEWATER MEADOWS YOGIBEAR-ET USA000000604917 7GU402 A2A2
TILLER X GOLIATH X PROTEIN KING +18 GPTI +1.2 PTAT
Consigned by Levi Plocher, Salem, OH 330.446.0411 Located in Salem, OH

S44 10 UNITS OF SPRINGHILL JACKPOT-ET USA000068030404 7GU437 A2A2
AARON X TILLER X JIFFY +12 GPTI +0.7 PTAT
Consigned by Levi Plocher, Salem, OH 330.446.0411 Located in Salem, OH

S45 10 UNITS OF MAR RAL TILLER MISSION USA000068005012 507GU423 A2A2 **SEXED!**
TILLER X ROYAL OAK X PRIME -86 GPTI +0.2 PTAT
Consigned by Levi Plocher, Salem, OH 330.446.0411 Located in Salem, OH

S46 10 UNITS OF MAR RAL TILLER MISSION USA000068005012 7GU423 A2A2
TILLER X ROYAL OAK X PRIME -86 GPTI +0.2 PTAT
Consigned by Levi Plocher, Salem, OH 330.446.0411 Located in Salem, OH

SEMEN LOTS

S47 5 UNITS OF HI GUERN VIEW LEVI DRONE USA000097004646 694GU959 A2A2 **SEXED!**
AARONS LEVI X YOGIBEAR X REGAL +47 GPTI +1.3 PTAT
Consigned by Lars Sivesind, Waukon, IA 563.794.0275 Located in the GMS tank, Columbus, OH

S48 5 UNITS OF HI GUERN VIEW LEVI DRONE USA000097004646 694GU959 A2A2 **SEXED!**
AARONS LEVI X YOGIBEAR X REGAL +47 GPTI +1.3 PTAT
Consigned by Lars Sivesind, Waukon, IA 563.794.0275 Located in the GMS tank, Columbus, OH

S49 3 UNITS OF HI GUERN VIEW LEVI DRONE USA000097004646 694GU959 A2A2 **SEXED!**
AARONS LEVI X YOGIBEAR X REGAL +47 GPTI +1.3 PTAT
Consigned by Springhill, Big Prairie, OH 330.473.9660 Located in the GMS tank, Columbus, OH

S50 10 UNITS OF SPRINGHILL J LONE STAR-ET USA000068030411 31GU624 A2A2
SPIDER X TILLER X JIFFY -14 GPTI +0.5 PTAT
Consigned by Springhill, Big Prairie, OH 330.473.9660 Located in the GMS tank, Columbus, OH

S51 9 UNITS OF SPRINGHILL J LONE STAR-ET USA000068030411 31GU624 A2A2
SPIDER X TILLER X JIFFY -14 GPTI +0.5 PTAT
Consigned by Springhill, Big Prairie, OH 330.473.9660 Located in the GMS tank, Columbus, OH

S52 3 UNITS OF WARWICK MANOR BO AXEL USA000097001046 A2A2
BO X GRUMPY X YOGIBEAR +33 PTI +0.9 PTAT
Consigned by Springhill, Big Prairie, OH 330.473.9660 Located in the GMS tank, Columbus, OH

S53 10 UNITS OF SPRINGHILL JETWAY-ET-P USA000068032772 54GU488 A2A2 POLLED
FUTURE-P X CHALLENGE X TILLER -90 GPTI -0.7 PTAT
Consigned by Idle Neer Sires, Letts, IA 319.572.7070 Located in the GMS tank, Columbus, OH

S54 10 UNITS OF SPRINGHILL JETWAY-ET-P USA000068032772 54GU488 A2A2 POLLED
FUTURE-P X CHALLENGE X TILLER -90 GPTI -0.7 PTAT
Consigned by Idle Neer Sires, Letts, IA 319.572.7070 Located in the GMS tank, Columbus, OH

S55 10 UNITS OF SPRINGHILL JETWAY-ET-P USA000068032772 54GU488 A2A2 POLLED
FUTURE-P X CHALLENGE X TILLER -90 GPTI -0.7 PTAT
Consigned by Idle Neer Sires, Letts, IA 319.572.7070 Located in the GMS tank, Columbus, OH

S56 6 UNITS OF SPRINGHILL JETWAY-ET-P USA000068032772 54GU488 A2A2 POLLED
FUTURE-P X CHALLENGE X TILLER -90 GPTI -0.7 PTAT
Consigned by Idle Neer Sires, Letts, IA 319.572.7070 Located in the GMS tank, Columbus, OH

S57 10 UNITS OF SPRINGHILL JAY Z-TW-P USA000068032770 54GU487 A2A2 POLLED
MIDAS-P X ROYAL OAK X TILLER -47 GPTI -0.5 PTAT
Consigned by Idle Neer Sires, Letts, IA 319.572.7070 Located in the GMS tank, Columbus, OH

S58 10 UNITS OF SPRINGHILL JAY Z-TW-P USA000068032770 54GU487 A2A2 POLLED
MIDAS-P X ROYAL OAK X TILLER -47 GPTI -0.5 PTAT
Consigned by Idle Neer Sires, Letts, IA 319.572.7070 Located in the GMS tank, Columbus, OH

S59 10 UNITS OF SPRINGHILL JAY Z-TW-P USA000068032770 54GU487 A2A2 POLLED
MIDAS-P X ROYAL OAK X TILLER -47 GPTI -0.5 PTAT
Consigned by Idle Neer Sires, Letts, IA 319.572.7070 Located in the GMS tank, Columbus, OH

S60 10 UNITS OF SPRINGHILL JAY Z-TW-P USA000068032770 54GU487 A2A2 POLLED
MIDAS-P X ROYAL OAK X TILLER -47 GPTI -0.5 PTAT
Consigned by Idle Neer Sires, Letts, IA 319.572.7070 Located in the GMS tank, Columbus, OH

S61 3 UNITS OF SPRINGHILL JAY Z-TW-P USA000068032770 54GU487 A2A2 POLLED
MIDAS-P X ROYAL OAK X TILLER -47 GPTI -0.5 PTAT
Consigned by Idle Neer Sires, Letts, IA 319.572.7070 Located in the GMS tank, Columbus, OH

S62 10 UNITS OF SPRINGHILL ALTITUDE-ET-P USA000068032787 54GU486 A2A2 POLLED
FUTURE-P X AARON X TILLER -7 GPTI +0.8 PTAT
Consigned by Idle Neer Sires, Letts, IA 319.572.7070 Located in the GMS tank, Columbus, OH

S63 20 UNITS OF WALNUT RIDGE KRINGLE CLASSIC-ET USA000068048802 54GU474 A1A2
KRINGLE X MAGIC X FRANK +6 PTI -0.4 PTAT
Consigned by Idle Neer Sires, Letts, IA 319.572.7070 Located in the GMS tank, Columbus, OH

S64 20 UNITS OF WALNUT RIDGE KRINGLE CLASSIC-ET USA000068048802 54GU474 A1A2
KRINGLE X MAGIC X FRANK +6 PTI -0.4 PTAT
Consigned by Idle Neer Sires, Letts, IA 319.572.7070 Located in the GMS tank, Columbus, OH

Registering Embryo Calves with the American Guernsey Association

New Guernsey Owners

- Visit www.usguernsey.com to learn about membership with the American Guernsey Association. Membership is not required to register calves, but will reduce your registration fees!
- Calf registration can be done online at www.usguernsey.com or using paper forms - contact the office if you desire paper forms.
- It is recommended to contact AGA prior to registration to obtain an owner number.

Requirements of registration

- All donor dams **MUST** be DNA tested. For embryos made after May 2017, donor dams must have been genomic tested. Be sure to ask the consignor about the dam's DNA status before submitting registrations.
- As with any calf registration, you must have the complete registration number and name of both the sire and dam of the calf.
- You must specify who the owner is of each calf registered.
- The AGA does not require any veterinary paperwork to be submitted before registration; although AGA reserves the right to request paperwork if deemed necessary.

Foreign Registration

Each country association has its own rules for embryo registration. Buyers should check with their respective association to see what paperwork and DNA requirements need met. Foreign buyers without a home association could be eligible for AGA registration. Contact the office directly to inquire. AGA will not register calves for buyers with a Guernsey registration association within their country.

