



SEMEN DISPERSAL

ONLINE AUCTION

Hi everyone, welcome to the Greiwe semen dispersal!

Over 850 units of semen from current type bulls plus lots of semen from legendary bulls from the past that have made a big impact in the breed and are no longer available. You won't want to miss this offering!!

For questions please contact: Deb Hoffman - 937-206-2486; Todd Woodruff - 937-605-0139; Or you are always welcome to call John or Donna.



**Wednesday, September 7 @ 6:00 PM
through 7:00 PM Friday, September 9**
Pre-Registration Required at least 1 hr prior to sale
www.cowbuyer.com

Aaron Tompkins: 336-363-4639 | atompkin@vt.edu

All semen will sell during the online acution through Cowbuyer.com. Selling price is per Straw of Semen - Buyer is responsible for all costs of shipping expenses. This auction will utilize an auto-extend, soft closing. With this feature, the bidding will close on 2 lots at the same time. Bidding will start to close from 7 pm to 7:02 if any lots receive a bid in the last minute of bidding they will extend bidding on that specific lot for an additional 2 minutes. Once 2 minutes have lapsed without any bidding activity, then that lot will close; All semen will be shipped at buyer's expense if not picked up day of the sale at the farm.

JERSEY BULL	NO.	UNITS		
ADVANCER SLEEPING MILESTONE	200JE2755	AMPULES	1	RIVER VALLEY JUDGES VERDICT..... 7JE5001..... 21
ARETHUSA VERBATUM RESPONSE	54JE583		14	RIVER VALLEY MARMIE MY-O-MY ET . 507JE5003..... 9
ARETHUSA VIRTUOSO-ET	91JE5555		11	RIVER VALLEY ROCK STAR 200J1009..... 4
BRIION REMAKE COMERICA-ET	200J131		1	RIVER VALLEY SPICE SHOWDOWN 507J5015...SEXED 12
BUDJON-VAIL JADE GRAYSON	76JE164		16	RIVER VALLEY VELOCITY 835 ET..... 91JE5558..... 27
DUSTIN	720JE690		5	RIVER VALLEY VENUS VIP-ET 777JE1003..... 20
ELLIOTTS RENAISSANCE DUKE	200JE119		47	ROCK ELLA BW VIVITAR-ET 179JE90..... 13
ENNISKILLEN RESPECT ET	138JE1403		7	STEINHAUERS IATOLA APPLEJACK 11JE968..... 2
DUAISEOIR EXAMPLE	REG.# 116432135		6	SV JADE HIRED GUN-ET 94JE3720..... 2
GLENHOME COUNCILOR	71JE158		1	TOWER VUE PRIME TEQUILIA ET..... 76J156..... 4
GUSTAR	2JE53		3	VALLEYSTREAM J I S JUNO 73JE33..... 8
HEATH BLACK STAR	120JE470		8	VIERRA MANILOW-ET 200JE1229..... 12
HEATH SILVER CHARM	120JE472		6	VINDICATION 94JE3437..... 32
HOLLYLANE LILIBETS LEGACY	200J314		2	AYRSHIRE BULLS
HOLLYLANE LILIBETS LEGACY	200JE314		9	NO.
HOMETOWN INCENTIVE	91J5503		5	UNITS
HURONIA CONNECTION NEVADA 27L	80JE4004		9	BLACKADDAR KELLOGG DUCE 293AY192..... 3
JANES PRIMETIME JUSTICE	36JE054		13	BONNIE BRAE JASPER 11A414...AMPULES..... 4
KCFJ RITZYS RAZOR	54JE623		3	BONNIE BRAE JASPER 11A414..... 5
KCFJ MOLLY REN MOTION	JE025		20	BONNIE BRAE JAYE 70AY9981..... 1
KCFJ ONE IN A MILLION	293JE085		18	BONNIE BRAE TUXEDO 78AY9953..... 6
KCFJ RITZ RESPOND	293JE403		2	DE LA PLAINE VICKING-ET..... 200AY778..... 20
KCFJ RITZS SAMBO RELENTLESS-ET	293JE152		4	DUO STAR GENTLEMAN-ET 200AY728..... 3
KCFJ SAMBOS TRUBADOR	29JE093		6	GLENGARRY LLOYD ROYAL..... 29A7607...AMPULES..... 9
KCFJ TREASURES THRILLER	100JE7327		4	LABRIE WILTON ET 200AY520..... 5
LORD SONTLEROY	138JE2277		16	LEE DIXIELAND MILK MAN..... 138A1284..... 4
MANDY PATRICK REX	158JE00009		26	MF HONEST PLEASURE 2A7..... 13
MEADOWLAWN JAYE IMPERIAL	73JE32		1	MILL VALLEY REBECCA PETE 158A2...HE 31
MILESTONE IMPERIAL	1J203		3	MILL VALLEY STARLET JESTER 158A6..... 208
PINE CREEK REN SHUR SHOT	179JE30		5	MILLVALLEY LILLY JEREMIAH..... 3094..... 9
RAPID BAY BLACKAPPLE	91JE5757		11	OAKRIDGE SUPER TIM 888..... 11
RAPID BAY GRAND PRIX ET	54JE00588		1	PALMYRA BENDIG BERKLEY 7AY93..... 11
RAPID BAY REQUEST ET	54JE578		2	ROYAL CROFT BRENDAN 73AY420..... 1
RAPID BAY RESURRECTION	70JE9953		16	RUISSEAU CLAIR TUXEDO-ET 200AY1052..... 9
REMAKE SON OF JEWEL	158JE62		3	YELLOW BRIAR PANDALARO 158AY12..... 22

029JE02755 SLEEPING MILESTONE

Reg: JEUSA000000609485

DOB: 11/28/1966
JH1F

Advancer Sleeping Milestone
x Milestone x



08/2022	CDCB SUMMARY GENOMIC			NM\$ -1129
Milk	-3675	99%R	Cheese Merit \$	-1129
Fat	-147	+0.18%	FM\$ -1101	GM\$ -844
Protein	-117	+0.10%	Gestation Len. -1	MSP +0
CFP	-264		EFI 2.1% gEFI 3.2%	
SCS	2.87	97%R	Mastitis +3.3	Fert. Index +8.9
PL	-3.5	99%R	Livability +1.0	Heifer Liv. +1.4
DPR	+9.6	99%R	HCR +2.3	CCR +12.8
RFI			11028m 4.7% 518f 3.7% 411p	
Feed Saved	%R		6160 Dtrs 1240 Herds	100% US

Sire: Advancer Sleeping Jester
Dam: Milestone Favor Milady
MGS: Marlu Milestone
MGD:

AJCA TYPE SUMMARY

JPI -203


PTAT -3.00	99%R	JUI-10.0	1575 D / 508 H	
Stature	-2.50	Short		
Strength	-0.90	Frail		
Dairy Form	-5.40	Tight		
Rump Angle	-3.00	High Pins		
Thurl Width	-0.80	Narrow		
Rear Legs-Side	-1.90	Posty		
Foot Angle	-0.10	Low		
F. Udder Attachment	-0.70	Loose		
Rear Udder Height	-3.30	Low		
Rear Udder Width	-3.50	Narrow		
Udder Cleft	-0.70	Weak		
Udder Depth	+1.10	Shallow		
Front Teat Placement	-2.40	Wide		
Rear Teat P. Side	+0.00	Close		
Teat Length	-1.00	Short		

1-S - 1 Ampule



Animal Details

Animal details provides Performance and Progeny information for an animal. To download the animal's Performance and Progeny information in PDF click Download.

 [Download](#)

Click on the sire, dam or progeny registration number to open the animal details in the current window.

DETAILS

MALE

ARETHUSA VERBATIM RESPONSE-ET

JEUSA000116023076 GT50K BBR 100

BORN 03/04/2008

TATTOO A07 / A07

DHI HERD # 43-66-0041

94JE3704

GFI 4.7%

PARENTAGE VERIFIED 05/20/2010

PARENTAGE

HOLLYLANE R RESPONSE-ET

SIRE [JEUSA000000660024](#) 158JE19

HURONIA CENTURION VERONICA 20J

DAM [JECAN000010206465](#) BBR 100 UZA / 20J

PERFORMANCE

CDCB GPTA

08/01/2022	1391DAUS	605HRDS	4%RIP			
99%R	-2096M	0.30%	-44F	2%ILE		
99%R	0.11%	-56P	-522CM\$	-525NM\$	-556FM\$	-453GM\$
-2.8PL	-2.4LIV	0.7DPR	3.2CCR	2.3HCR	3.03SCS	
-0.2MFV	-0.4DAB	-1.5KET	0.7MAS	0.9MET	0.2RPL	-4.04HTI

AJCA

2-5 - 14

Arethusa Virtuoso
Excitation x Centurion x Renaissance



08/2022 CDCB SUMMARY MACE				NM\$ -575
Milk	-2473	90%R	Cheese Merit \$	-578
Fat	-52	+0.36%	FM\$ -600	GM\$ -514
Protein	-66	+0.13%	Gestation Len. -2	MSP +0
CFP	-118		EFI 5.5%	gEFI %
SCS	3.39	84%R	Mastitis +1.4	Fert. Index +1.6
PL	-1.7	76%R	Livability -0.9	Heifer Liv. +0.6
DPR	+1.3	70%R	HCR +0.2	CCR +3.8
RFI			16094m 5.3%	858f 3.7% 599p
Feed Saved		%R	130 Dtrs	93 Herds 56% US

Sire: Bridon Excitation EX-90
Dam: Huronia Centurion Veronica 20J EX-97%
 2-11 331d 25623m 4.9 1263f 4.1 1047p
MGS: Sooner Centurion-ET
MGD: Genesis Renaissance Vivianne
MGGS: Hollylane Renaissance
MGGD: Genesis Juno Virginia

AJCA TYPE SUMMARY

JPI -131

PTAT +0.10 84%R JUI+7.0 101 D / 67 H			-2	-1	0	1	2
Stature	-0.80	Short					
Strength	-0.50	Frail					
Dairy Form	-0.70	Tight					
Rump Angle	-2.10	High Pins					
Thurl Width	+0.30	Wide					
Rear Legs-Side	-1.40	Posty					
Foot Angle	+1.70	Steep					
F. Udder Attachment	+2.30	Strong					
Rear Udder Height	-0.70	Low					
Rear Udder Width	-1.40	Narrow					
Udder Cleft	-1.10	Weak					
Udder Depth	+3.30	Shallow					
Front Teat Placement	-0.30	Wide					
Rear Teat P. Side	+0.10	Close					
Teat Length	-0.70	Short					



Dam: Huronia Centurion Veronica 20J

Bridon Remake Comerica-ET
Remake x Renaissance x



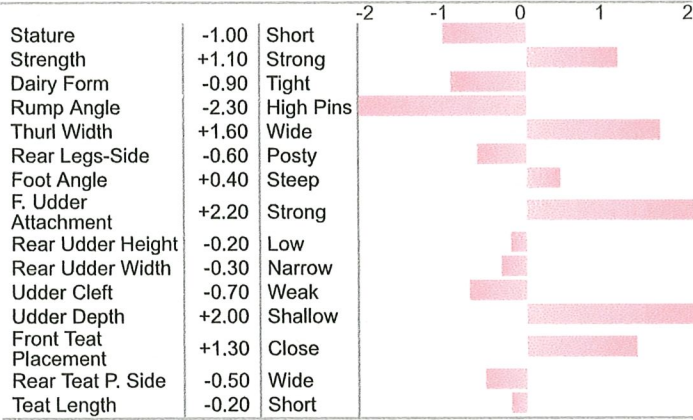
08/2022 CDCB SUMMARY MACE		NM\$ -732	
Milk	-2169 99%R	Cheese Merit \$	-733
Fat	-51 +0.28%	FM\$ -721	GM\$ -736
Protein	-67 +0.07%	Gestation Len. -1	MSP +0
CFP	-118	EFI 4.0% gEFI 4.2%	
SCS	3.04 99%R	Mastitis +2.4	Fert. Index -1.2
PL	-3.3 98%R	Livability -2.9	Heifer Liv. +1.5
DPR	-0.9 97%R	HCR -2.0	CCR -1.2
RFI		16523m 4.9% 817f 3.6% 597p	
Feed Saved	%R	5220 Dtrs 1684 Herds	43% US

Sire: Rock Ella Remake-ET
Dam: Jaspar Renaissance's Evening
MGS: Hollylane Renaissance
MGD: Elm Line Bruce'S Eva 7u

AJCA TYPE SUMMARY

JPI -168

PTAT +0.30 99%R JUI+5.5 2932 D / 988 H



W-3 - 1

Budjon-Vail Jade Grayson-ET
Jade x Master x



08/2022 CDCB SUMMARY				NM\$ -872	
Milk	-2274	88%R	Cheese Merit \$		-881
Fat	-82	+0.15%	FM\$ -827	GM\$	-804
Protein	-76	+0.04%	Gestation Len. +0	MSP	+0
CFP	-158		EFI 3.7%	gEFI %	
SCS	3.25	77%R	Mastitis +0.2	Fert. Index	+2.4
PL	-3.1	71%R	Livability +0.3	Heifer Liv.	+1.2
DPR	+2.6	63%R	HCR +0.4	CCR	+3.5
RFI			15586m 4.9%	762f 3.6%	566p
Feed Saved		%R	64 Dtrs	31 Herds	100% US

Sire: Giprat Belles Jade-ET EX-92
Dam: Llilyn Jude Griffen -ET EX-95%
 5-00 305d 2x 27980m 5.2 1456f 3.5 978p
MGS: Master C Tops
MGD: Llilyn Fred'S Gold 31b

AJCA TYPE SUMMARY			JPI -183	
PTAT +0.50	75%R	JUI+7.3	37 D /	26 H
Stature	+1.90	Tall		
Strength	+1.20	Strong		
Dairy Form	-1.10	Tight		
Rump Angle	-2.10	High Pins		
Thurl Width	+1.40	Wide		
Rear Legs-Side	-1.80	Posty		
Foot Angle	+1.80	Steep		
F. Udder Attachment	+2.50	Strong		
Rear Udder Height	-0.20	Low		
Rear Udder Width	-0.60	Narrow		
Udder Cleft	-0.20	Weak		
Udder Depth	+2.60	Shallow		
Front Teat Placement	+0.00	Close		
Rear Teat P. Side	+0.00	Close		
Teat Length	+0.20	Long		

5-5-16

Reports Complete



Animal Details

Animal details provides Performance and Progeny information for an animal. To download the animal's Performance and Progeny information in PDF click Download.

[Download](#) [Open In New Window](#)

Click on the sire, dam or progeny registration number to open the animal details in the current window.

DETAILS

MALE

RENAISSANCE DUSTIN

JEUSA000112803942

BORN 09/25/2000

TATTOO / B122

36JE62

EFI 2.2%

PARENTAGE VERIFIED 03/10/2005

PARENTAGE

HOLLYLANE RENAISSANCE

SIRE JECAN000000138720 70JE9984

ULTIMATES BRANDY

DAM JEUSA0000003602429 R520 /

PERFORMANCE

CDCB PTA

08/01/2022	128DAUS	71HRDS	9%RIP	
93%R	-2278M	0.03%	-104F	0%ILE
93%R	0.03%	-77P	-970CM\$	-962NM\$
-2.9PL	1.1LIV	1.8DPR	3.8CCR	1.2HCR
0.1MFV	-0.2DAB	-0.6KET	-0.9MAS	0.6MET

AJCA

8/1/2022	101DAUS			
-1.2	JUI -8.5	JPI 86%R	-206	
ST	SR	DF	RA	RW

6-5-5

Elliotts Renaissance Duke-ET
Renaissance x x Sparkler



08/2022	CDCB SUMMARY MACE			NM\$ -1125
Milk	-2972	98%R	Cheese Merit \$	-1128
Fat	-113	+0.17%	FM\$ -1117	GM\$ -1094
Protein	-90	+0.10%	Gestation Len. +0	MSP +0
CFP	-203		EFI 2.5%	gEFI 2.5%
SCS	3.12	97%R	Mastitis +0.8	Fert. Index +1.6
PL	-3.7	95%R	Livability +1.4	Heifer Liv. +1.1
DPR	+1.6	93%R	HCR +0.7	CCR +2.5
RFI			15084m 4.8%	717f 3.6% 546p
Feed Saved	%R		1039 Dtrs	483 Herds 58% US

Sire: Hollylane Renaissance
Dam: Ron-Net Maple Dorie Dee

MGS: JEUSA000000652949
MGD: Ron-Nets Dorie Of Sparkler

MGGS: Gil-Bar Unique Sparkler

AJCA TYPE SUMMARY

JPI -238

PTAT -1.00 97%R JUI-2.3 645 D / 306 H

			-2	-1	0	1	2
Stature	+2.00	Tall					
Strength	+0.90	Strong					
Dairy Form	-2.40	Tight					
Rump Angle	-3.00	High Pins					
Thurl Width	+1.80	Wide					
Rear Legs-Side	-1.30	Posty					
Foot Angle	+1.10	Steep					
F. Udder Attachment	+1.80	Strong					
Rear Udder Height	-2.40	Low					
Rear Udder Width	-2.00	Narrow					
Udder Cleft	-1.40	Weak					
Udder Depth	+2.80	Shallow					
Front Teat Placement	+0.60	Close					
Rear Teat P. Side	-0.90	Wide					
Teat Length	+0.90	Long					



Dam: Ron-Net Maple Dorie Dee

7-5-47

Enniskillen Respect-ET
Master x J.F.D Title x



08/2022	CDCB SUMMARY MACE			NM\$ -1033	
Latte	-2959	87%R	\$ Formaggio \$		-1042
Grasso	-85	+0.32%	FM\$ -995	GM\$	-923
Proteine	-95	+0.07%	Gestation Len +0	MSP	
CFP (lbs)	-180		EFI 1.8%	GFI %	
SCS	3.26	83%R	Mastitis +0.1	Fert. Index	+2.7
PL	-4.7	69%R	PTA Liv +0.4	Heifer Liv.	+0.9
DPR	+3.6	68%R	HCR +0.9	CCR	+1.3
RFI			14126m 4.9%	691f 3.6%	514p
Feed Saved		%R	117 Figlie	66 Allevamenti	36% US

Padre: Master C Tops
Madre: Enniskillen Surville Mamie
Nonno: J.F.D Title
Nonna: Starbelle B D M Mamie

0 TYPE SUMMARY

JPI

TIPO 0%R JUI 0 D / 0 H

		-2	-1	0	1	2
Statura	Alta					
Forza	Forte					
Caratteri Latte	Molto Ang					
Groppa Angolo	Ischi Bassi					
Groppa Larghezza	Larga					
Arti Post Di Lato	Falciati					
Altezza Tallone	Alto					
Attacco Anteriore	Forte					
Altezza Mammella	Alta					
Larghezza Mammella	Larga					
Legamento	Forte					
Profondità Mammella	Alta					
Posizione Capezzoli	Converg					
Rear Teat P. Side	Converg					
Lunghezza Capezzoli	Lunghi					

8-5-7

Reports Complete



Animal Details

Animal details provides Performance and Progeny information for an animal. To download the animal's Performance and Progeny information in PDF click Download.

[Download](#) [Open In New Window](#)

Click on the sire, dam or progeny registration number to open the animal details in the current window.

DETAILS

MALE

DUAISEOIR EXAMPLE

JEUSA000116432135

BORN 10/04/2007

TATTOO D1 / D1

EFI 2.2%

PARENTAGE

SHAMROCK DUAISEOIR-ET

SIRE JECAN000010029254 GTHD BBR 100 11JE840

RESPONSES CHERYL

DAM JEUSA000110822574 W133 / W133

PERFORMANCE

PA

-2473M	-94F	-76P		
-826CM\$	-824NM\$	-816FM\$		
-1.2PL		2.8DPR	3.6CCR	0.7HCR

PA

TYPE -0.6	JPI 38%R	-175		
ST	SR	DF	RA	RW
0.5	0.8	-2.1	H2.1	0.9
RH	RUW	UC	UD	TP
-1.3	-1.5	-0.1	S1.9	C0.0

9-5-6



071JE00158 COUNCILLER

Reg: JECAN000000139361

DOB: 09/03/1994
DMS: 345 aAa: 546312 JH1F

Glenholme Counciller
Jude x Justin x



08/2022 CDCB SUMMARY MACE				NM\$ -509	
Milk	-1831	99%R	Cheese Merit \$		-505
Fat	-56	+0.17%	FM\$ -525	GM\$	-532
Protein	-52	+0.08%	Gestation Len. -1	MSP	+0
CFP	-108		EFI 4.6%	gEFI 4.7%	
SCS	2.92	99%R	Mastitis +2.2	Fert. Index	+0.7
PL	+0.7	98%R	Livability +0.7	Heifer Liv.	+0.7
DPR	+1.4	97%R	HCR -1.4	CCR	+0.4
RFI			16497m 4.7%	782f 3.6%	594p
Feed Saved		%R	3015 Dtrs	1099 Herds	48% US

Sire: Curtsey Duncan Jude-ET
Dam: Glenholme Justin'S Cameo 6x
MGS: W.F. Generator Justin
MGD:

AJCA TYPE SUMMARY			JPI -118	
PTAT -0.60	99%R	JUI-3.7	1759 D /	619 H
Stature	+0.10	Tall	-2	2
Strength	+0.70	Strong		
Dairy Form	-1.10	Tight		
Rump Angle	-1.50	High Pins		
Thurl Width	+1.40	Wide		
Rear Legs-Side	-0.30	Posty		
Foot Angle	+0.30	Steep		
F. Udder Attachment	+0.90	Strong		
Rear Udder Height	-1.60	Low		
Rear Udder Width	-0.80	Narrow		
Udder Cleft	-0.90	Weak		
Udder Depth	+0.30	Shallow		
Front Teat Placement	+0.50	Close		
Rear Teat P. Side	-0.90	Wide		
Teat Length	-1.30	Short		

10-5-1

Reports Complete



Animal Details

Animal details provides Performance and Progeny information for an animal. To download the animal's Performance and Progeny information in PDF click Download.

[Download](#) [Open In New Window](#)

Click on the sire, dam or progeny registration number to open the animal details in the current window.

DETAILS

MALE

GUSTAR

JEUSA000000644521

BORN 07/12/1984

TATTOO / B68

2JE53

EFI 1.2%

PARENTAGE VERIFIED 11/04/1985

PARENTAGE

MILESTONE ADVANCER GUSTO

SIRE JEUSA000000628141

SLEEPER LAVENDER BORGS BARBY

DAM JEUSA000003174108 / B49

PERFORMANCE

CDCB PTA

08/01/2022	23DAUS	14HRDS	0%RIP	
76%R	-3840M	0.17%	-156F	0%ILE
78%R	0.10%	-124P	-1237CM\$	-1232NM\$
-3.1PL	1.4LIV	7.4DPR	6.3CCR	2.0HCR
0.1MFV	-0.5DAB	-0.5KET	0.9MAS	-0.1MET

AJCA

8/1/2022	5DAUS			
-3.7	JUI -3.2	JPI 66%R	-250	
ST	SR	DF	RA	RW

11-S-3

Reports Complete



Animal Details

Animal details provides Performance and Progeny information for an animal. To download the animal's Performance and Progeny information in PDF click Download.

[Download](#) [Open In New Window](#)

Click on the sire, dam or progeny registration number to open the animal details in the current window.

DETAILS

MALE

HEATHS BLACKSTAR-ET

JEUSA000110832496

BORN 06/26/1998

TATTOO / R165

120JE470

EFI 1.8%

PARENTAGE VERIFIED 10/17/2002

PARENTAGE

GIL-BAR UNIQUE SPARKLER

SIRE JEUSA000000637740 107JE840

GLENYLE S J HETTY

DAM JEUSA0000003518430 SPW / 3U

PERFORMANCE

CDCB PTA

08/01/2022	145DAUS	87HRDS	3%RIP	
94%R	-3054M	0.36%	-82F	0%ILE
94%R	0.15%	-84P	-935CM\$	-943NM\$
-4.3PL	-2.3LIV	1.9DPR	3.3CCR	-0.5HCR
0.1MFV	-0.5DAB	-0.9KET	0.7MAS	-0.1MET

AJCA

8/1/2022	115DAUS			
-1.3	JUI -7.6	JPI 87%R	-192	
ST	SR	DF	RA	RW

12-5-8



Reports Complete

Animal Details

Animal details provides Performance and Progeny information for an animal. To download the animal's Performance and Progeny information in PDF click Download.

[Download](#) [Open In New Window](#)

Click on the sire, dam or progeny registration number to open the animal details in the current window.

DETAILS

MALE

HEATHS SILVER CHARM-ET

JEUSA000110832517

BORN 09/25/1998

TATTOO / R175

120JE472

EFI 2.5%

PARENTAGE VERIFIED 08/06/2008

PARENTAGE

MEADOW LAWN J IMPERIAL 50R-ET

SIRE JECAN000000137656 GT50K BBR 100 73JE32

GLENYLE S J HETTY

DAM JEUSA0000003518430 SPW / 3U

PERFORMANCE

CDCB PTA

08/01/2022	53DAUS	24HRDS	0%RIP	
87%R	-2639M	0.42%	-50F	0%ILE
88%R	0.16%	-67P	-717CM\$	-729NM\$
-2.7PL	-0.9LIV	3.1DPR	4.1CCR	-1.0HCR
0.1MFV	-0.4DAB	-0.4KET	1.0MAS	0.2MET

AJCA

8/1/2022	34DAUS			
-2.3	JUI -9.2	JPI 78%R	-135	
ST	SR	DF	RA	RW

13-5 - 6

Hollylane Lilibet-~~S~~ Legacy
Perimeter x Renaissance x



08/2022 CDCB SUMMARY MACE				NM\$ -13	
Milch	-1157	99%R	Cheese Merit \$		-4
Fett	-22	+0.17%	FM\$ -71	GM\$	+62
Eiweiss	-23	+0.10%	Trächtigkeitsdauer -1	MSP	+0
CFP (lbs)	-45		EFI 6.8%	GFI 7.0%	
SCS	2.89	99%R	Mastitis +1.1	Fert. Index	+4.3
PL	+2.3	99%R	PTA Liv +3.7	Heifer Liv.	+0.7
DPR	+5.0	98%R	HCR +1.8	CCR	+4.1
RFI			19396m 4.8%	923f 3.7%	709p
Feed Saved	%R		7688 Tö.	1919 Herden	34% US

Vater: Rock Ella Perimeter-ET EX-90
Mutter: Willoa Lilibet Renaissance-ET

MV: Hollylane Renaissance
MM:

AJCA TYPE SUMMARY

JPI +14

TYP -0.40 98%R JUI-2.8 2921 D / 932 H

			-2	-1	0	1	2
Größe	-0.30	Klein					
Stärke	-0.10	Schwach					
Milchcharakter	-1.20	Rund/Derb					
Beckenneigung	+0.80	Abfallend					
Beckenbreite	+0.10	Breit					
Hinterbeinwinkelung	-1.10	Steil					
Klauenwinkel	+1.00	Hoch					
Vordereuteraufhängung	-0.20	Lose					
Hintereuterhöhe	-1.30	Tief					
Hintereuterbreite	-1.50	Schmal					
Zentralband	+0.60	Stark					
Euterboden	+1.50	Hoch					
Strichplatzierung Vorne	-0.30	Außen					
Rear Teat P. Side	-0.70	Außen					
Strichlänge	+0.20	Lang					

14-S-2

15-S-9



Hometown Incentive ET
Tequila x Connection x

08/2022 CDCB SUMMARY GENOMIC				NM\$ -552	
Milk	-1903	77%R	Cheese Merit \$		-556
Fat	-55	+0.19%	FM\$ -541	GM\$	-619
Protein	-58	+0.06%	Gestation Len. -1	MSP	+0
CFP	-113		EFI 4.5%	gEFI 4.7%	
SCS	3.19	75%R	Mastitis -0.8	Fert. Index	-0.5
PL	+0.6	72%R	Livability -0.9	Heifer Liv.	+1.0
DPR	-0.6	70%R	HCR +0.1	CCR	-0.8
RFI					
Feed Saved		%R	0 Dtrs	0 Herds	100% US

Sire: Tower Vue Prime Tequila-ET TL TD
Dam: Huronia Connectn Crystalyn 23I
MGS: Giprat Belle's Connection -ET VG-87
MGD:

AJCA TYPE SUMMARY			JPI -138				
PTAT +0.90 78%R JUI+13.1 0 D / 0 H			-2	-1	0	1	2
Stature	+1.50	Tall					
Strength	+0.70	Strong					
Dairy Form	-0.20	Tight					
Rump Angle	-1.00	High Pins					
Thurl Width	+1.00	Wide					
Rear Legs-Side	-1.20	Posty					
Foot Angle	+1.00	Steep					
F. Udder Attachment	+2.70	Strong					
Rear Udder Height	+0.40	High					
Rear Udder Width	+0.00	Wide					
Udder Cleft	+0.50	Strong					
Udder Depth	+3.50	Shallow					
Front Teat Placement	+1.10	Close					
Rear Teat P. Side	+0.80	Close					
Teat Length	+0.80	Long					

16-5-5

Huronion Connection Nevada 27I
 Connection x J Imperial x



08/2022 CDCB SUMMARY MACE				NM\$ -552	
Latte	-2836	96%R	\$ Formaggio \$		-543
Grasso	-55	+0.45%	FM\$ -630	GM\$	-478
Proteine	-68	+0.20%	Gestation Len +0	MSP	+0
CFP (lbs)	-123		EFI 5.5%	GFI %	
SCS	3.05	94%R	Mastitis +0.1	Fert. Index	+2.5
PL	-1.3	89%R	PTA Liv +0.6	Heifer Liv.	+0.6
DPR	+3.0	85%R	HCR +1.0	CCR	+2.3
RFI			15596m 5.2%	814f 3.8%	588p
Feed Saved		%R	443 Figlie	229 Allevamenti	55% US

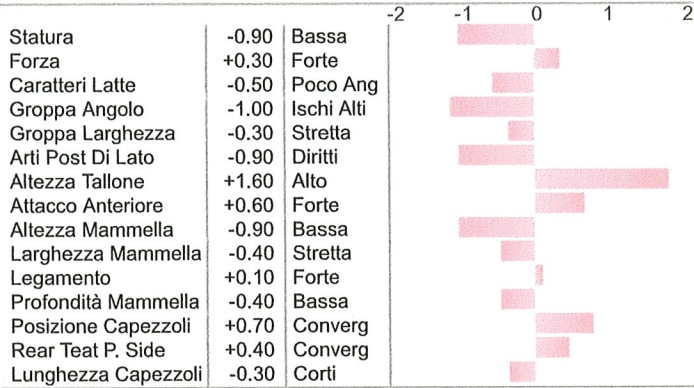
Padre: Giprat Belle's Connection -ET VG-87
Madre: Huronia Imperial Nan 13a

Nonno: Meadow Lawn J Imperial 50R-ET
Nonna:

AJCA TYPE SUMMARY

JPI -119

TIPO +0.00 93%R JUI-1.3 369 D / 173 H



17-3-9

Janes Primetime Justice-ET
Primetime x Renaissance x



08/2022 CDCB SUMMARY		NM\$ -974	
Milk	-2454 96%R	Cheese Merit \$	-976
Fat	-88 +0.16%	FM\$ -953	GM\$ -994
Protein	-78 +0.06%	Gestation Len. -1	MSP +0
CFP	-166	EFI 1.9%	gEFI %
SCS	3.00 94%R	Mastitis +0.5	Fert. Index -1.7
PL	-4.1 90%R	Livability -1.6	Heifer Liv. +0.7
DPR	-2.0 87%R	HCR -1.8	CCR -0.4
RFI		15733m 5.0%	782f 3.7% 578p
Feed Saved	%R	309 Dtrs	133 Herds 100% US

Sire: Gil-Bar Sparkler Primetime
Dam: Edgeview Renaissance Jane 57 EX-96%
 5-06 365d 24794m 4.9 1223f 3.7 924p
MGS: Hollylane Renaissance
MGD:

AJCA TYPE SUMMARY		JPI -218	
PTAT -0.20 95%R JUI-1.1 248 D / 119 H		-2	-1 0 1 2
Stature	+0.70 Tall		
Strength	+0.00 Strong		
Dairy Form	-0.60 Tight		
Rump Angle	-1.80 High Pins		
Thurl Width	+0.80 Wide		
Rear Legs-Side	-1.30 Posty		
Foot Angle	+0.30 Steep		
F. Udder Attachment	-0.60 Loose		
Rear Udder Height	-0.50 Low		
Rear Udder Width	-0.60 Narrow		
Udder Cleft	+0.80 Strong		
Udder Depth	+0.00 Shallow		
Front Teat Placement	-0.90 Wide		
Rear Teat P. Side	+0.90 Close		
Teat Length	+0.40 Long		

18-3 -13

Kcjf Ritzys Razor
x x Centurion



08/2022 CDCB SUMMARY GENOMIC				NM\$ -810	
Milk	-2224	88%R	Cheese Merit \$		-816
Fat	-92	+0.08%	FM\$ -801	GM\$	-720
Protein	-66	+0.08%	Gestation Len. +0	MSP	
CFP	-158		EFI 4.1%	gEFI 4.6%	
SCS	3.37	81%R	Mastitis +1.5	Fert. Index	+2.3
PL	-2.9	77%R	Livability -1.9	Heifer Liv.	+1.2
DPR	+2.7	71%R	HCR +0.1	CCR	+2.9
RFI			13468m 4.8%	648f 3.8%	515p
Feed Saved		%R	32 Dtrs	13 Herds	100% US

Sire: JEUSA000067054785
Dam: Kcjf TRacer Ritzzy
MGS: JEUSA000115392210
MGD: Kcjf Centurions Ritz
MGGS: Sooner Centurion-ET

08/2022 AJCA TYPE SUMMARY			JPI -172	
PTAT	-0.10	82%R JUI+4.2	0 D / 0 H	
Stature	+1.10	Tall		
Strength	-0.40	Frail		
Dairy Form	-0.60	Tight		
Rump Angle	-2.30	High Pins		
Thurl Width	+0.40	Wide		
Rear Legs-Side	-2.00	Posty		
Foot Angle	+1.00	Steep		
F. Udder Attachment	+1.30	Strong		
Rear Udder Height	+0.00	High		
Rear Udder Width	-0.50	Narrow		
Udder Cleft	-0.50	Weak		
Udder Depth	+1.50	Shallow		
Front Teat Placement	+0.10	Close		
Rear Teat P. Side		Close		
Teat Length	+0.00	Long		

195-3



Kcjf Mollys Ren Motion
Renaissance x Sambo x

2208 CAN - SIRE EVALUATIONS

LPI 827

Milk	-940	40% Rel	5% Rk	0 Dtrs	0 Herds
Fat	-63	-0.21%	0% Rk		
Protein	-41	-0.07%	4% Rk		
Production	154	Durability	456	Health & Fert.	217

2208 CONFORMATION - TYPE

Pro \$ -1523

0 Dtrs 0 Herds 35% Rel

				-10	-5	0	5	10
Conformation	+3	Rk						
Mammary System	+1	Rk						
Feet & Legs	+6	Rk						
Dairy Strength	+2	Rk						
Rump	+2	Rk						

2208 DESCRIPTIVE - TYPE

Mammary +1

				-10	-5	0	5	10
Udder Floor	+4	Rev. Tilt						
Udder Depth	+4	Shallow						
Udder Texture	+1	Soft						
Median Suspensory	+0	Strong						
Fore Attachment	+3	Strong						
Front Teat Placement	+3	Close						
Rear Attach. Height	-1	Low						
Rear Attach. Width	-4	Narrow						
Rear Teat Placement	+2	Close						
Teat Length	-2	Short						
Foot Angle	+6	Steep						
Heel Depth	+7	Deep						
Bone Quality	-1	Coarse						
Rear Legs Side View	-8	Straight						
Rear Legs Rear View	+8	Straight						
Front Leg View	+4	Straight						
Locomotion		Mobile						
Stature	+2	Tall						
Height at Front End	+6	High						
Chest Width	+2	Wide						
Body Depth	+2	Deep						
Angularity	-2	Non-Ang.						
Loin Strength	+4	Strong						
Rump Angle	-5	High Pins						
Pin Width	-1	Narrow						
Thurl Placement	+0	Ahead						

Sire: Hollylane Renaissance

Dam: Kcjf Sambo Molly

MGS: Lester Sambo

MGD:

2208 FUNCTIONAL - HEALTH

CA +103

				90	95	0	105	110
Herd Life	+103	Long						
Somatic Cell Score	+96	Undesirable						
Mastitis Resistance	+97	Susceptible						
Metabolic Disease	+101	Resistant						
Hoof Health		Susceptible						
Lact. Persistence	+96	Poor						
Daughter Fertility	+103	High						
Milking Speed	+99	Slow						
M. Temperament	+99	Nervous						
Calving Ability	+103	Easy						
Daughter Calving	+94	Difficult						
Body Condition	+104	High						

20-5 - 20

Kcjf One In A Million
INDIANA x Sambo x



08/2022 CDCB SUMMARY GENOMIC				NM\$ -714	
Milk	-1785	90%R	Cheese Merit \$		-721
Fat	-66	+0.10%	FM\$ -693	GM\$	-660
Protein	-56	+0.05%	Gestation Len. +1	MSP	
CFP	-122		EFI 4.1%	gEFI 4.5%	
SCS	3.29	84%R	Mastitis -0.7	Fert. Index	+1.0
PL	-3.2	80%R	Livability -3.6	Heifer Liv.	+1.2
DPR	+1.0	76%R	HCR +0.7	CCR	+1.3
RFI			18336m 5.0%	911f 3.7%	677p
Feed Saved		%R	47 Dtrs	15 Herds	100% US

Sire: Impressive Indiana-ET
Dam: Kcjf Sambo Molly
MGS: Lester Sambo
MGD:

08/2022 AJCA TYPE SUMMARY			JPI -159		
PTAT +0.30	86%R	JUI+2.2	0 D / 0 H		
Stature	+1.40	Tall			
Strength	+0.10	Strong			
Dairy Form	+0.30	Open Rib			
Rump Angle	-0.40	High Pins			
Thurl Width	+0.60	Wide			
Rear Legs-Side	-1.40	Posty			
Foot Angle	+0.70	Steep			
F. Udder Attachment	+0.30	Strong			
Rear Udder Height	-0.30	Low			
Rear Udder Width	-0.30	Narrow			
Udder Cleft	-0.20	Weak			
Udder Depth	+0.80	Shallow			
Front Teat Placement	+0.50	Close			
Rear Teat P. Side		Close			
Teat Length	-0.90	Short			

21-5-18



Reports Complete

Animal Details

Animal details provides Performance and Progeny information for an animal. To download the animal's Performance and Progeny information in PDF click Download.

[Download](#) [Open In New Window](#)

Click on the sire, dam or progeny registration number to open the animal details in the current window.

DETAILS

MALE

KCJF RITZS RESPOND-ET

JEUSA000118408574

BORN 02/26/2013

TATTOO C949 / C949

293JE403

EFI 3.9%

PARENTAGE

HOLLYLANE R RESPONSE-ET

SIRE JEUSA000000660024 158JE19

KCJF CENTURIONS RITZ

DAM JEUSA000115473403 C746 / C746

PERFORMANCE

PA

-1762M	-64F	-56P		
-665CM\$	-661NM\$	-641FM\$		
-2.8PL	-1.9LIV	2.6DPR	4.0CCR	1.8HCR

PA

TYPE 0.3	JPI 38%R	-130		
ST	SR	DF	RA	RW
1.6	0.1	-0.2	H2.3	1.1
RH	RUW	UC	UD	TP
0.4	-0.4	-0.1	S2.3	C0.5

225-2





Kcjf Ritzs Sambo Relentless-ET
Sambo x Centurion x

2208 CAN - SIRE EVALUATIONS				LPI 1053	
Milk	-410	71% Rel	14% Rk	0 Dtrs	0 Herds
Fat	-23	-0.02%	11% Rk		
Protein	-18	-0.01%	11% Rk		
Production	449	Durability	372	Health & Fert.	232

2208 CONFORMATION - TYPE			Pro \$ -819		
			0 Dtrs	0 Herds	63% Rel
Conformation	+2	Rk			
Mammary System	+2	Rk			
Feet & Legs	+2	Rk			
Dairy Strength	+0	Rk			
Rump	+0	Rk			

2208 DESCRIPTIVE - TYPE			Mammary +2				
			-10	-5	0	5	10
Udder Floor	+8	Rev. Tilt					
Udder Depth	+3	Shallow					
Udder Texture	-2	Fleshy					
Median Suspensory	-5	Weak					
Fore Attachment	+5	Strong					
Front Teat Placement	+4	Close					
Rear Attach. Height	+0	High					
Rear Attach. Width	+1	Wide					
Rear Teat Placement	-2	Wide					
Teat Length	+0	Long					
Foot Angle	+1	Steep					
Heel Depth	-1	Shallow					
Bone Quality	-2	Coarse					
Rear Legs Side View	-2	Straight					
Rear Legs Rear View	+4	Straight					
Front Leg View	+7	Straight					
Locomotion		Mobile					
Stature	+2	Tall					
Height at Front End	+6	High					
Chest Width	+1	Wide					
Body Depth	+3	Deep					
Angularity	-6	Non-Ang.					
Loin Strength	-2	Weak					
Rump Angle	-1	High Pins					
Pin Width	+1	Wide					
Thurl Placement	+0	Ahead					

Sire: Lester Sambo
Dam: Kcjf Centurions Ritz

MGS: Sooner Centurion-ET
MGD:

2208 FUNCTIONAL - HEALTH			CA +105				
			90	95	0	105	110
Herd Life	+98	Short					
Somatic Cell Score	+100	Desirable					
Mastitis Resistance	+99	Susceptible					
Metabolic Disease	+100	Resistant					
Hoof Health		Susceptible					
Lact. Persistence	+98	Poor					
Daughter Fertility	+102	High					
Milking Speed	+98	Slow					
M. Temperament	+94	Nervous					
Calving Ability	+105	Easy					
Daughter Calving	+98	Difficult					
Body Condition	+101	High					

23-3-4



Reports Complete

Animal Details

Animal details provides Performance and Progeny information for an animal. To download the animal's Performance and Progeny information in PDF click Download.

[Download](#) [Open In New Window](#)

Click on the sire, dam or progeny registration number to open the animal details in the current window.

DETAILS

MALE

KCJF SAMBOS TRUBADOR

JEUSA000067054786 GT8K BBR 100

BORN 06/14/2008

AMERICAN ID EARTAG / 786

TATTOO C786 /

293JE93

GFI 5.6%

PARENTAGE VERIFIED 12/16/2013

PARENTAGE

LESTER SAMBO

SIRE JEUSA000000658836 GT50K BBR 100 7JE356

KCJF REGENCY TREASURE

DAM JEUSA000112399816 BBR 100 C579 / C579

PERFORMANCE

CDCB GPTA

08/01/2022	26DAUS	10HRDS	4%RIP	
87%R	-2056M	0.20%	-62F	2%ILE
88%R	0.08%	-60P	-413CM\$	-411NM\$
0.6PL	0.3LIV	3.9DPR	5.4CCR	0.1HCR
-0.2MFV	-0.2DAB	-0.8KET	0.6MAS	0.5MET

AJCA

8/1/2022	9DAUS			
GPTAT 81%R	-0.1	G7UI 3.1	G7PI 82%R	-91

24-5-6

KCJF TREASURES THRILLER

100JE07327
JEUSA000117821631

KCJF TREASURES THRILLER JH1FJHPFJNSF

CONNECTION X REGENCY X RENAISSANCE

Last Update: 8/9/2022

Born On September 12, 2011

Beta-casein: Kappa-casein: EFl: 5.7% aAa:

Sire: GIPRAT BELLE'S CONNECTION-ET (/bull/70JE09957/)

Dam: KCJF REGENCY TREASURE

MGS: RENAISSANCE KIMS REGENCY (/bull/70JE09971/)

Daughter Average:

8,158 kgM 428 kgF 5.20%F 303 kgP 3.70%P



TRAITS

Trait	Value	Rel. %	Rel. %	Rel. %
Mastitis	0.9	59	0.9	59
Retained Placenta	0.4	32	0.7	59
Methis	0.6	36	3.7	76
Abomasum	-0.3	32	Life	80
Hypocalcaemia	-0.2	31	Productive	80
Fever	-0.2	31	Rel. %	80
Heifer Livability	1.00	31	Rel. %	80
Ketosis	-1.1	32	Rel. %	80
Rel. %	80	80	Rel. %	80

25-5-4

Stature		0.00
Strength		-0.30
Dairy Form		0.00
Rump Width		0.00
Rump Angle		0.00
Rear Leg (side view)		0.00
Foot Angle		0.00
Fore Udder		1.70
Rear Udder Height		0.50
Rear Udder Width		-0.10
Udder Cleft		0.00
Udder Depth		0.00
Front Teat Placement		0.40
Rear Teat (rear view)		-0.10
Rear Teat (side view)		0.00
Teat Length		0.00

Information for August 9, 2022, provided by the following:
 Production: CDCB; Type: CDCB/AJCA; Milking Speed: CDN Evaluation;

HIGH RANKING SONS

NAAB	Name	JPI	DWP	NM\$	PTA Milk (lbs)	P ^r Prote (lb)
JEUSA000118846651 (http://ct.wwsires.com/bull/JEUSA000118846651)	SUNSET CANYON 659	-29	N/A	-162	-1140	-

Lord Sontleroy

138 JE 2277

Mandys Patrick Rex



Patrick x Mercury LL x

NM\$ -683

08/2022 CDCB

Lait	-2233	94%R	Cheese Merit \$	-696
Gras	-101	+0.04%	FM\$ -575	GM\$ -494
Protéine	-90	-0.04%	D.Gestation +0	MSP +0
CGP (lbs)	-191		Cons.Future 2.6% Csg. future génom %	
CCS	3.02	89%R	Mammite +1.1	IF +7.4
VP	+0.8	82%R	PTA Liv +0.0	Génisse Liv. +0.4
Taux gestation filles	+8.2	73%R	Taux concept. génisse +2.6	Taux de conception +9.3
RFI			15434m 4.4% 684f 3.4% 529p	
Feed Saved		%R	137 Filles 36 Troup.	100% US

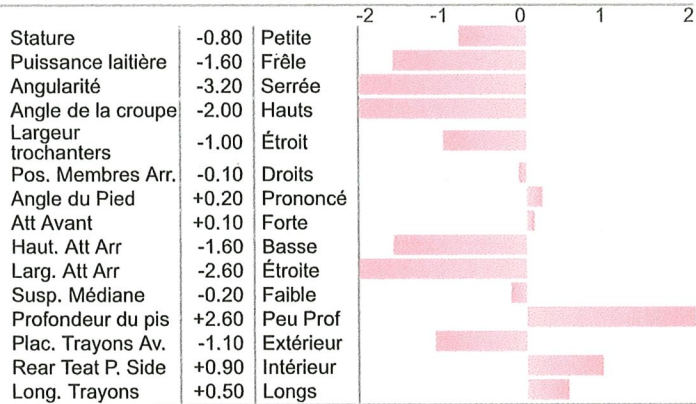
Père: Nabdon Master Patrick 7R
Mère: K.J.F. Amandas Mercury Mandy

GPM: Willrich Mercury LL
GMM:

AJCA CONFORMATION

JPI -130

TYPE -2.10 88%R JUI-0.4 77 D / 18 H



27-S-26

Meadow Lawn J Imperial 50r ET



x x

04/2022 CDCB SUMMARY MACE		NM\$ -626	
Milk	-2460 99%R	Cheese Merit \$	-618
Fat	-62 +0.30%	Fluid Merit \$ \$	-683
Protein	-62 +0.15%	Gestation Len. +1	GM\$ -637
CFP	-124	EFI 2.7% gEFI 4.4%	
SCS	2.94 99%R	Mastitis +1.2	Fert. Index +0.5
PL	-0.3 98%R	Livability +0.5	Heifer Liv. +0.8
DPR	+1.1 97%R	HCR -3.4	CCR +2.0
RFI		13883m 4.9% 681f 3.7% 512p	
Feed Saved	%R	9739 Dtrs 2440 Herds	16% US

Sire: JEUSA000000626550
Dam: Kingshurst Zinnias Bright

MGS: JECAN000000131188
MGD:

AJCA TYPE SUMMARY

JPI -142

PTAT -1.50 99%R JUI-8.3 4534 D / 1077 H

			-2	-1	0	1	2
Stature	-0.30	Short					
Strength	+0.80	Strong					
Dairy Form	-2.10	Tight					
Rump Angle	-0.20	High Pins					
Thurl Width	+0.60	Wide					
Rear Legs-Side	-1.10	Posty					
Foot Angle	-0.10	Low					
F. Udder Attachment	-1.00	Loose					
Rear Udder Height	-1.80	Low					
Rear Udder Width	-1.70	Narrow					
Udder Cleft	-0.50	Weak					
Udder Depth	+0.10	Shallow					
Front Teat Placement	-0.90	Wide					
Rear Teat P. Side	+0.10	Close					
Teat Length	+0.30	Long					

28-S-1

Reports Complete



Animal Details

Animal details provides Performance and Progeny information for an animal. To download the animal's Performance and Progeny information in PDF click Download.

[Download](#) [Open In New Window](#)

Click on the sire, dam or progeny registration number to open the animal details in the current window.

DETAILS

MALE

MILESTONES IMPERIAL

JEUSA000000629806

BORN 04/07/1977

TATTOO / S16

1JE203

EFI 2.7%

PARENTAGE VERIFIED 07/13/1978

PARENTAGE

ADVANCER SLEEPING MILESTONE

SIRE JEUSA000000609485 GT50K BBR 100 29JE2755

GENERATORS IMP

DAM JEUSA000002841298 X307 / X307

PERFORMANCE

CDCB PTA

08/01/2022	202DAUS	62HRDS	1%RIP	
96%R	-3382M	0.24%	-121F	0%ILE
96%R	0.17%	-94P	-931CM\$	-937NM\$
-3.1PL	-0.3LIV	7.5DPR	9.5CCR	2.4HCR
0.0MFV	-0.4DAB	-0.5KET	1.7MAS	0.4MET

AJCA

8/1/2022	93DAUS			
-2.2	JUI -5.2	JPI 89%R	-170	
ST	SR	DF	RA	RW

29-S-3

Pine Creek Ren Shur Shot
Renaissance x Master x



08/2022 CDCB SUMMARY				NM\$ -941	
Milk	-2350	80%R	Cheese Merit \$		-950
Fat	-108	+0.03%	FM\$ -877	GM\$	-811
Protein	-83	+0.02%	Gestation Len. -1	MSP	+0
CFP	-191		EFI 2.3%	gEFI %	
SCS	3.16	66%R	Mastitis -1.0	Fert. Index	+4.2
PL	-2.9	61%R	Livability -0.8	Heifer Liv.	+1.2
DPR	+4.4	51%R	HCR +2.7	CCR	+5.2
RFI			14612m 4.6%	665f 3.6%	520p
Feed Saved	%R		32 Dtrs	24 Herds	100% US

Sire: Hollylane Renaissance
Dam: JEUSA000003971813

MGS: Master C Tops
MGD:

AJCA TYPE SUMMARY			JPI -205				
PTAT -1.80	65%R	JUI-19.5	18 D / 13 H				
Stature	-1.20	Short	-2	-1	0	1	2
Strength	-0.30	Frail					
Dairy Form	-2.40	Tight					
Rump Angle	-1.70	High Pins					
Thurl Width	-0.20	Narrow					
Rear Legs-Side	-1.40	Posty					
Foot Angle	+0.00	Steep					
F. Udder Attachment	-1.60	Loose					
Rear Udder Height	-3.50	Low					
Rear Udder Width	-2.40	Narrow					
Udder Cleft	-1.20	Weak					
Udder Depth	-1.50	Deep					
Front Teat Placement	-1.40	Wide					
Rear Teat P. Side	-0.60	Wide					
Teat Length	+1.40	Long					

30-3-5

Rapid Bay BLack Apple
 Applejack x Getaway x



04/2022 CDCB SUMMARY				NM\$ -502	
Milk	-1419	86%R	Cheese Merit \$		-508
Fat	-40	+0.14%	Fluid Merit \$ \$		-463
Protein	-50	+0.01%	Gestation Len. +0	GM\$	-446
CFP	-90		EFI 6.5%	gEFI %	
SCS	3.13	72%R	Mastitis -1.6	Fert. Index	+2.0
PL	-1.5	59%R	Livability -2.3	Heifer Liv.	+0.7
DPR	+2.0	55%R	HCR +1.4	CCR	+2.6
RFI			19046m	4.7%	904f 3.5% 673p
Feed Saved	%R		67 Dtrs	29 Herds	100% US

Sire: Steinhauers latola Applejack
Dam: Rapid Bay Getaway Belle ET

MGS: Rapid Bay Getaway-ET
MGD: Giprat Belles Jonquil-ET

0 TYPE SUMMARY		JPI						
PTAT	0%R	JUI	0 D / 0 H	-2	-1	0	1	2
Stature								
Strength								
Dairy Form								
Rump Angle								
Thurl Width								
Rear Legs-Side								
Foot Angle								
F. Udder Attachment								
Rear Udder Height								
Rear Udder Width								
Udder Cleft								
Udder Depth								
Front Teat Placement								
Rear Teat P. Side								
Teat Length								

31-5-11

Rapid Bay Grand-Prix-ET
 Jade x Amedeo x



04/2022 CDCB SUMMARY MACE				NM\$ -534
Milk	-2347	95%R	Cheese Merit \$	-531
Fat	-55	+0.31%	Fluid Merit \$ \$	-546
Protein	-68	+0.10%	Gestation Len. +1	GM\$ -508
CFP	-123		EFI 4.4%	gEFI %
SCS	2.96	93%R	Mastitis +1.6	Fert. Index +2.1
PL	+0.0	89%R	Livability +1.2	Heifer Liv. +1.4
DPR	+2.8	85%R	HCR +0.4	CCR +1.2
RFI			16406m 5.0%	823f 3.7% 604p
Feed Saved	%R		549 Dtrs	284 Herds 39% US

Sire: Giprat Belles Jade-ET EX-92
Dam: Vandenberg Amadeo Gorgeous EX-97
 6-1 305d 22941m 5.5 1272f 4.1 941p
MGS: Piedmont Grove Amedeo
MGD:

AJCA TYPE SUMMARY			JPI -120
PTAT -0.10	92%R	JUI+1.5	294 D / 169 H
			-2 -1 0 1 2
Stature	-0.50	Short	
Strength	+0.80	Strong	
Dairy Form	-1.30	Tight	
Rump Angle	-3.30	High Pins	
Thurl Width	+1.30	Wide	
Rear Legs-Side	-0.10	Posty	
Foot Angle	+1.30	Steep	
F. Udder Attachment	+2.90	Strong	
Rear Udder Height	-0.90	Low	
Rear Udder Width	-1.20	Narrow	
Udder Cleft	-1.70	Weak	
Udder Depth	+1.00	Shallow	
Front Teat Placement	+0.10	Close	
Rear Teat P. Side	+0.00	Close	
Teat Length	+0.50	Long	

054JE00578 REQUEST

Reg: JECAN000101735552

DOB: 03/04/2003
aAa: 621453

Rapid Bay Request ET
Piedmont x Whistler x



04/2022 CDCB SUMMARY MACE		NM\$ -671	
Milk	-2180 90%R	Cheese Merit \$	-674
Fat	-77 +0.15%	Fluid Merit \$ \$	-672
Protein	-64 +0.08%	Gestation Len. -2	GM\$ -623
CFP	-141	EFI 1.9%	gEFI %
SCS	3.18 85%R	Mastitis +0.1	Fert. Index +2.2
PL	-0.7 76%R	Livability +0.5	Heifer Liv. +0.9
DPR	+2.9 72%R	HCR -0.9	CCR +2.8
RFI		16038m 4.9%	781f 3.7% 592p
Feed Saved	%R	160 Dtrs	96 Herds 34% US

Sire: Piedmont Nadine Furor EX-91
 Dam: Rapid Bay Whistler's Rumour EX-95-4E
 MGS: Bonnyburn Ali Whistler
 MGD:

AJCA TYPE SUMMARY

JPI -147

PTAT -0.60 85%R JUI-1.5 157 D / 88 H						
		-2	-1	0	1	2
Stature	+0.40 Tall					
Strength	+0.20 Strong					
Dairy Form	-0.90 Tight					
Rump Angle	-2.50 High Pins					
Thurl Width	+0.80 Wide					
Rear Legs-Side	-2.00 Posty					
Foot Angle	+0.40 Steep					
F. Udder Attachment	+1.20 Strong					
Rear Udder Height	-1.50 Low					
Rear Udder Width	-2.40 Narrow					
Udder Cleft	-1.10 Weak					
Udder Depth	+1.80 Shallow					
Front Teat Placement	-0.10 Wide					
Rear Teat P. Side	-0.50 Wide					
Teat Length	+0.20 Long					

33-5-2

070JE09953 RESSURECTION

Reg: JECAN000101735533

DOB: 09/04/2002
DMS: 22855 aAa: 22822

Rapid Bay Ressurrection-ET

Renaissance x Duncan x



04/2022 CDCB SUMMARY MACE		NM\$ -343	
Milk	-869 98%R	Cheese Merit \$	-345
Fat	-43 +0.00%	Fluid Merit \$ \$	-335
Protein	-27 +0.02%	Gestation Len. -2	GM\$ -333
CFP	-70	EFI 5.5%	gEFI %
SCS	3.10 97%R	Mastitis -0.7	Fert. Index +0.8
PL	-0.6 94%R	Livability -0.2	Heifer Liv. +1.1
DPR	+0.6 91%R	HCR +0.4	CCR +1.9
RFI		17708m 4.7%	826f 3.6% 637p
Feed Saved	%R	1568 Dtrs	599 Herds 26% US

Sire: Hollylane Renaissance
Dam: Duncan Belle EX-92%
 6-00 305d 2x 21029m 5.5 1162f 4.2 888p
MGS: Highland Magic Duncan
MGD: MMC Belle EX-90%
 9-00 2x 305d 17580m 5.4 941f 4.1 722p

AJCA TYPE SUMMARY

JPI -89

PTAT +0.30 96%R JUI-6.5 783 D / 340 H

			-2	-1	0	1	2
Stature	+0.70	Tall					
Strength	+1.00	Strong					
Dairy Form	+0.60	Open Rib					
Rump Angle	-1.10	High Pins					
Thurl Width	+1.10	Wide					
Rear Legs-Side	-0.50	Posty					
Foot Angle	+1.00	Steep					
F. Udder Attachment	+0.00	Strong					
Rear Udder Height	-1.00	Low					
Rear Udder Width	+0.30	Wide					
Udder Cleft	+0.50	Strong					
Udder Depth	-1.60	Deep					
Front Teat Placement	+2.10	Close					
Rear Teat P. Side	-0.30	Wide					
Teat Length	+1.50	Long					

345-16



Reports Complete

Animal Details

Animal details provides Performance and Progeny information for an animal. To download the animal's Performance and Progeny information in PDF click Download.

[Download](#) [Open In New Window](#)

Click on the sire, dam or progeny registration number to open the animal details in the current window.

DETAILS

MALE

REMAKE SON OF JEWEL

JEUSA000000665896

BORN 03/05/1996

TATTOO M992 /

158JE62

EFI 3.7%

PARENTAGE VERIFIED 03/01/2005

PARENTAGE

ROCK ELLA REMAKE-ET

SIRE JECAN000000139233 GTHD BBR 100 94JE3083

PH JEWEL

DAM JEUSA000003854000 M944 /

PERFORMANCE

CDCB PTA

08/01/2022	23DAUS	13HRDS	0%RIP	
78%R	-2686M	0.23%	-87F	0%ILE
80%R	0.08%	-84P	-802CM\$	-798NM\$
-2.0PL	-0.6LIV	3.9DPR	3.6CCR	0.2HCR
0.0MFV	-0.6DAB	-0.5KET	1.4MAS	0.4MET

AJCA

8/1/2022	13DAUS			
-1.4	JUI -1.1	JPI 69%R	-169	
ST	SR	DF	RA	RW

35-S-3

River Valley Judges Verdict-ET
Fire x latola x Duaiseoir



04/2022	CDCB 概要 多性状跨国评定			NM\$ -457
产奶量	-1416	95%R	奶酪利润 \$	-454
乳脂	-39	+0.15%	液奶利润 \$	-505
乳蛋白	-31	+0.11%	妊娠期 -2	GM\$ -477
CFP(磅)	-70		EFI 6.5% GFI 6.9%	
体细胞	3.17	92%R	乳房炎 +0.9	繁殖力 -0.7
生产寿命	-2.2	88%R	存活力 +1.2	青年牛存活 +1.0
女儿怀孕率	-0.7	84%R	HCR -0.3	CCR -0.9
剩余采食量			18293m 4.9%	891f 3.8% 686p
饲料节约	%R		190 女儿数	84 牛群数 77% US

AJCA 体型数据 JPI -99
体型外貌 +0.70 93%R 娟姗乳房指数+4.6 146 D / 63 H

			-2	-1	0	1	2
高度	+0.70	高					
力度	+1.30	强					
乳用特性	+0.00	开放					
尻角度	-1.60	高					
尻宽	+1.40	宽					
后肢侧视	-0.50	直					
蹄角度	+0.40	陡					
前乳房附着	+0.80	结实					
后乳房高度	+0.50	高					
后乳房宽度	+0.70	宽					
悬韧带	+0.60	结实					
乳深	+0.40	浅					
乳头位置	+1.10	紧密					
Rear Teat P. Side	+0.10	紧密					
乳头长度	-0.10	短					

父: Avonlea Cf Gt Balls of Fire-ET
母: Avonlea latola Victoria
外祖父: SC Gold Dust Paramount latola-ET
外祖母: Pullyn Duaiseoir Virginia -ET
外曾祖父: Shamrock Duaiseoir-ET EX-96
外曾祖母: Bridon Jade Virginia



River Valley Marmie My-O-My-E
Impuls x Minister x Fusion

08/2022 CDCB SUMMARY MACE				NM\$ -243	
Milk	-1170	94%R	Cheese Merit \$		-236
Fat	-32	+0.12%	FM\$ -311	GM\$	-197
Protein	-20	+0.11%	Gestation Len. +2	MSP	+0
CFP	-52		EFI 5.6%	gEFI 4.9%	
SCS	3.07	90%R	Mastitis +0.1	Fert. Index	+2.2
PL	+0.2	85%R	Livability +1.1	Heifer Liv.	-0.1
DPR	+2.9	81%R	HCR -1.1	CCR	+2.9
RFI			19022m 4.8%	915f 3.8%	714p
Feed Saved	%R		137 Dtrs	66 Herds	83% US

Sire: ISDK Q Impuls
 Dam: Pine Haven Ssm Marmie
 MGS: Select-Scott Minister-ET
 MGD: Pine Haven Mbe Kitty
 MGGS: Molly Brook Fusion ET EX-92

AJCA TYPE SUMMARY

JPI -39

PTAT -0.40 90%R JUI-0.6 77 D / 41 H			-2 -1 0 1 2	
Stature	+1.80	Tall		
Strength	+0.60	Strong		
Dairy Form	-0.60	Tight		
Rump Angle	+0.50	Sloped		
Thurl Width	+0.30	Wide		
Rear Legs-Side	-0.10	Posty		
Foot Angle	+0.40	Steep		
F. Udder Attachment	+0.60	Strong		
Rear Udder Height	+0.10	High		
Rear Udder Width	-1.60	Narrow		
Udder Cleft	-0.80	Weak		
Udder Depth	+1.40	Shallow		
Front Teat Placement	-2.20	Wide		
Rear Teat P. Side	+0.00	Close		
Teat Length	+1.90	Long		

37-3-9

River Valley Ricki Rockstar
Chrome x Guapo x Piedmont



04/2022 CDCB SUMMARY GENOMIC				NM\$ -463
Milk	-1788	96%R	Cheese Merit \$	-466
Fat	-51	+0.18%	Fluid Merit \$ \$	-453
Protein	-55	+0.05%	Gestation Len. +2	GM\$ -454
CFP	-106		EFI 6.4% gEFI 6.9%	
SCS	3.12	92%R	Mastitis +1.3	Fert. Index +1.4
PL	+0.3	85%R	Livability +1.0	Heifer Liv. +0.0
DPR	+1.5	84%R	HCR +0.2	CCR +2.3
RFI			17954m 5.0% 900f 3.7% 660p	
Feed Saved	%R		232 Dtrs 94 Herds	100% US

AJCA TYPE SUMMARY			JPI -102
PTAT +0.80	94%R	JUI+9.2	171 D / 83 H
Stature	+1.40	Tall	
Strength	-0.20	Frail	
Dairy Form	+0.10	Open Rib	
Rump Angle	-0.90	High Pins	
Thurl Width	+0.80	Wide	
Rear Legs-Side	-0.50	Posty	
Foot Angle	+0.60	Steep	
F. Udder Attachment	+2.20	Strong	
Rear Udder Height	+0.20	High	
Rear Udder Width	-0.70	Narrow	
Udder Cleft	+0.30	Strong	
Udder Depth	+2.80	Shallow	
Front Teat Placement	+0.50	Close	
Rear Teat P. Side	+0.60	Close	
Teat Length	+0.60	Long	

Sire: River Valley Cece Chrome-ET
 Dam: Cowbell Guapo Ricochet
 MGS: Yellow Briar Heaths Guapo
 MGD: Cowbell Furor Roxanne
 MGGS: Piedmont Nadine Furor EX-91

38-5-4

007JE05015 SHOWDOWN

Reg: JE840003012423904

DOB: 04/22/2013
aAa: 231 JH1F A1A2

River Valley Spice Showdown
Premier x Voltage x Deluxe



04/2022 CDCB SUMMARY MACE		NM\$ -249	
Milk	-967 98%R	Cheese Merit \$	-245
Fat	-18 +0.14%	Fluid Merit \$ \$	-318
Protein	-13 +0.11%	Gestation Len. +0	GM\$ -206
CFP	-31	EFI 6.3% gEFI 6.3%	
SCS	3.20 96%R	Mastitis -0.4	Fert. Index +0.5
PL	-2.3 93%R	Livability +0.1	Heifer Liv. +0.6
DPR	+0.7 90%R	HCR +0.6	CCR -0.1
RFI		18202m 4.9% 892f 3.7% 680p	
Feed Saved	%R	617 Dtrs 281 Herds	81% US

AJCA TYPE SUMMARY		JPI -47	
PTAT +0.10 97%R JUL-2.7 474 D / 244 H			
		-2	-1 0 1 2
Stature	+1.30 Tall		
Strength	-0.30 Frail		
Dairy Form	+0.80 Open Rib		
Rump Angle	-2.10 High Pins		
Thurl Width	+0.90 Wide		
Rear Legs-Side	-0.30 Posty		
Foot Angle	+0.80 Steep		
F. Udder Attachment	+0.10 Strong		
Rear Udder Height	-1.00 Low		
Rear Udder Width	-0.10 Narrow		
Udder Cleft	-0.30 Weak		
Udder Depth	+0.40 Shallow		
Front Teat Placement	+0.30 Close		
Rear Teat P. Side	-0.60 Wide		
Teat Length	+0.00 Long		

Sire: Hawarden Impuls Premier
Dam: South Mountain Voltage Spice-E

MGS: Elliotts Golden Voltage-ET
MGD: South Mountain Santana

MGGS: Elliotts Renaissance Deluxe
MGGD: Elliotts Premonition Sabrina

39-S-12

River Valley Velocity 835-ET

Velocity x Centurion x



04/2022 CDCB SUMMARY GENOMIC				NM\$ -611
Milk	-1430	77%R	Cheese Merit \$	-620
Fat	-70	+0.00%	Fluid Merit \$ \$	-534
Protein	-59	-0.03%	Gestation Len. +1	GM\$ -547
CFP	-129		EFI 5.0% gEFI 6.3%	
SCS	3.03	75%R	Mastitis +0.4	Fert. Index +2.5
PL	-1.2	72%R	Livability -0.1	Heifer Liv. +0.9
DPR	+2.7	69%R	HCR +0.1	CCR +4.2
RFI				
Feed Saved	%R		0 Dtrs 0 Herds	100% US

Sire: Arethusa Jade Velocity-ET
 Dam: Parkview Centurion Russia
 MGS: Sooner Centurion-ET
 MGD:

04/2022 AJCA TYPE SUMMARY JPI -130
 PTAT -0.30 78%R JUI-1.6 0 D / 0 H

			-2	-1	0	1	2
Stature	+0.70	Tall					
Strength	+0.30	Strong					
Dairy Form	-0.50	Tight					
Rump Angle	-0.60	High Pins					
Thurl Width	+0.50	Wide					
Rear Legs-Side	-0.50	Posty					
Foot Angle	+0.80	Steep					
F. Udder Attachment	+0.90	Strong					
Rear Udder Height	-0.70	Low					
Rear Udder Width	-0.10	Narrow					
Udder Cleft	-0.60	Weak					
Udder Depth	+0.30	Shallow					
Front Teat Placement	+0.40	Close					
Rear Teat P. Side		Close					
Teat Length	+1.20	Long					

40-S -27

River Valley Venus V I P-ET
Colton x Minister x Sparkler



04/2022 CDCB SUMMARY MACE		NM\$ -640	
Milk	-2287 98%R	Cheese Merit \$	-642
Fat	-73 +0.20%	Fluid Merit \$ \$	-643
Protein	-67 +0.09%	Gestation Len. -1	GM\$ -658
CFP	-140	EFI 5.2% gEFI 4.4%	
SCS	3.15 96%R	Mastitis +0.1	Fert. Index +0.4
PL	-0.5 89%R	Livability +1.6	Heifer Liv. +1.0
DPR	+0.7 88%R	HCR -0.9	CCR +0.5
RFI		17745m 4.9% 870f 3.7%	656p
Feed Saved	%R	585 Dtrs 216 Herds	81% US

AJCA TYPE SUMMARY		JPI -140	
PTAT +1.40	96%R	JUI+20.9	425 D / 208 H
			-2 -1 0 1 2
Stature	+2.30	Tall	
Strength	+0.20	Strong	
Dairy Form	+0.90	Open Rib	
Rump Angle	-2.00	High Pins	
Thurl Width	+1.40	Wide	
Rear Legs-Side	-0.30	Posty	
Foot Angle	+1.20	Steep	
F. Udder Attachment	+3.40	Strong	
Rear Udder Height	+2.00	High	
Rear Udder Width	-0.60	Narrow	
Udder Cleft	+1.00	Strong	
Udder Depth	+4.60	Shallow	
Front Teat Placement	-0.50	Wide	
Rear Teat P. Side	+1.00	Close	
Teat Length	+0.20	Long	

Sire: Chillii Action Colton-ET
Dam: Tj Classic Minister Venus
MGS: Select-Scott Minister-ET
MGD: Stephan Sparkler Vera
MGGS: Gil-Bar Unique Sparkler
MGGD: Piedmont Renaissance Vivian ET

415-20

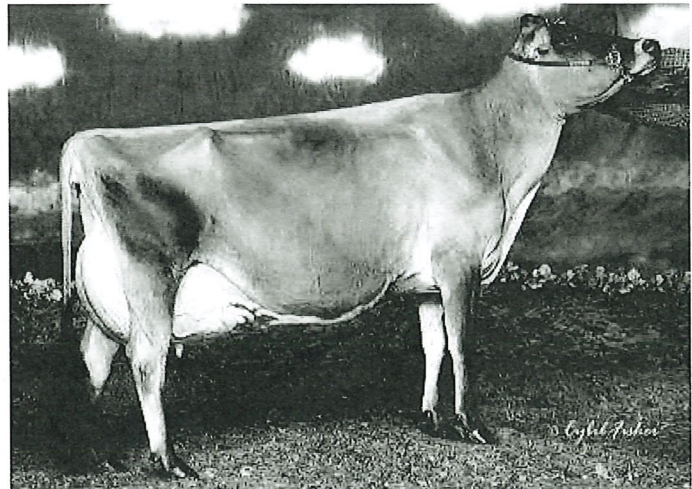
Rock Ella Bw Vivitar
 BYhom x Duaiseoir x Centurion



04/2022 CDCB SUMMARY MACE				NM\$ -699
Milk	-2478	84%R	Cheese Merit \$	-693
Fat	-89	+0.16%	Fluid Merit \$ \$	-750
Protein	-63	+0.15%	Gestation Len. -2	GM\$ -709
CFP	-152		EFI 4.4%	gEFI %
SCS	3.06	77%R	Mastitis -0.4	Fert. Index +0.7
PL	-0.7	63%R	Livability +2.6	Heifer Liv. +0.7
DPR	+1.0	62%R	HCR -0.7	CCR +0.9
RFI			14473m 4.9%	702f 3.8% 552p
Feed Saved	%R		97 Dtrs	59 Herds 23% US

AJCA TYPE SUMMARY		JPI -151				
PTAT +0.60 70%R JUI+16.0 83 D / 42 H		-2	-1	0	1	2
Stature	+3.00	Tall				
Strength	+0.50	Strong				
Dairy Form	-0.20	Tight				
Rump Angle	-1.50	High Pins				
Thurl Width	+1.30	Wide				
Rear Legs-Side	-0.80	Posty				
Foot Angle	+1.00	Steep				
F. Udder Attachment	+3.80	Strong				
Rear Udder Height	+0.80	High				
Rear Udder Width	-0.60	Narrow				
Udder Cleft	-0.80	Weak				
Udder Depth	+4.00	Shallow				
Front Teat Placement	+0.50	Close				
Rear Teat P. Side	+0.30	Close				
Teat Length	-0.70	Short				

Sire: Giprat Belles BYhom-ET
 Dam: Elliotts Sd Vanna-ET
 MGS: Shamrock Duaiseoir-ET EX-96
 MGD: Huronia Centurion Veronica 20J EX-97%
 2-11 331d 25623m 4.9 1263f 4.1 1047p
 MGGS: Sooner Centurion-ET
 MGGD: Genesis Renaissance Vivianne



MGD: Huronia Centurion Veronica 20J

Steinhauers latola Applejack
latola x Hallmark x



04/2022 CDCB SUMMARY MACE		NM\$ -348	
Milk	-960 99%R	Cheese Merit \$	-351
Fat	-25 +0.11%	Fluid Merit \$ \$	-369
Protein	-22 +0.07%	Gestation Len. -2	GM\$ -217
CFP	-47	EFI 8.2% gEFI 7.9%	
SCS	3.32 99%R	Mastitis -1.4	Fert. Index +2.3
PL	-3.3 99%R	Livability -5.8	Heifer Liv. +0.4
DPR	+2.4 98%R	HCR +1.2	CCR +3.1
RFI		20322m 4.9% 991f 3.7% 743p	
Feed Saved	%R	3947 Dtrs 602 Herds 90% US	

AJCA TYPE SUMMARY

JPI -68

PTAT +1.00 99%R JUI+8.1 2133 D / 404 H

			-2	-1	0	1	2
Stature	+1.20	Tall					
Strength	-0.90	Frail					
Dairy Form	+0.80	Open Rib					
Rump Angle	-1.40	High Pins					
Thurl Width	+0.30	Wide					
Rear Legs-Side	-0.40	Posty					
Foot Angle	+0.40	Steep					
F. Udder Attachment	+0.90	Strong					
Rear Udder Height	+1.50	High					
Rear Udder Width	+0.10	Wide					
Udder Cleft	-0.30	Weak					
Udder Depth	+1.60	Shallow					
Front Teat Placement	+0.40	Close					
Rear Teat P. Side	-0.30	Wide					
Teat Length	+0.10	Long					

Sire: SC Gold Dust Paramount latola-ET
Dam: Steinhauers H Mark Applepie EX-92%
 04-03 305d 2x 23540m 4.7 1117f 3.8 888p
MGS: Schultz Brook Hallmark
MGD: Steinhauers Ceasar Appleton EX-91%
 03-02 305d 3x 22030m 4.5 998f 3.3 725p
MGGS: Steinhauers Lester Ceasar

Sv Jade Hired Gun-ET
Jade x Primetime x



04/2022 CDCB SUMMARY MACE				NM\$ -464
Milk	-1962	99%R	Cheese Merit \$	-462
Fat	-48	+0.24%	Fluid Merit \$ \$	-501
Protein	-50	+0.11%	Gestation Len. +1	GM\$ -397
CFP	-98		EFI 3.8% gEFI 4.4%	
SCS	3.14	99%R	Mastitis +1.3	Fert. Index +3.4
PL	+0.0	98%R	Livability -1.0	Heifer Liv. +1.1
DPR	+3.7	98%R	HCR +0.7	CCR +4.8
RFI			17532m 5.0% 874f 3.7% 644p	
Feed Saved	%R		2871 Dtrs 890 Herds 84% US	

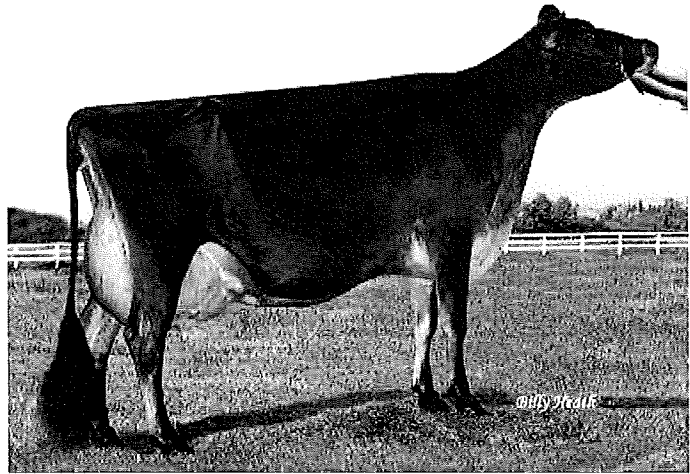
Sire: Giprat Belles Jade-ET EX-92
 Dam: Pleasant Valley Prime Heather
 MGS: Gil-Bar Sparkler Primetime
 MGD:

AJCA TYPE SUMMARY

JPI -92

PTAT +0.10 99%R JUI+4.4 1844 D / 588 H

			-2	-1	0	1	2
Stature	+0.50	Tall					
Strength	+0.80	Strong					
Dairy Form	-0.80	Tight					
Rump Angle	-2.70	High Pins					
Thurl Width	+1.60	Wide					
Rear Legs-Side	-0.60	Posty					
Foot Angle	+0.90	Steep					
F. Udder Attachment	+1.20	Strong					
Rear Udder Height	-0.50	Low					
Rear Udder Width	-0.50	Narrow					
Udder Cleft	-0.60	Weak					
Udder Depth	+1.50	Shallow					
Front Teat Placement	+0.80	Close					
Rear Teat P. Side	+0.60	Close					
Teat Length	-0.50	Short					



Dam: Pleasant Valley Prime Heather

44S-2

076JE00156 TEQUILA

Reg: JEUSA000114816452

DOB: 06/02/2005

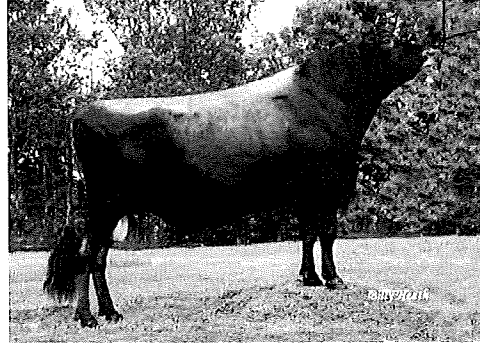
DMS: 234,123 aAa: 234165 JH1F BB A1A2



04/2022 CDCB SUMMARY MACE				NM\$ -859
Milk	-2141	99%R	Cheese Merit \$	-863
Fat	-56	+0.25%	Fluid Merit \$ \$	-875
Protein	-58	+0.11%	Gestation Len. -2	GM\$ -932
CFP	-114		EFI 3.7% gEFI 3.8%	
SCS	3.39	99%R	Mastitis -1.7	Fert. Index -3.3
PL	-4.0	99%R	Livability -5.2	Heifer Liv. +0.9
DPR	-3.4	98%R	HCR -1.6	CCR -4.6
RFI			16925m 5.0% 844f 3.7% 624p	
Feed Saved	%R		6134 Dtrs 1733 Herds 55% US	

Tower Vue Prime Tequila ET

Primetime x Sambo x Regal

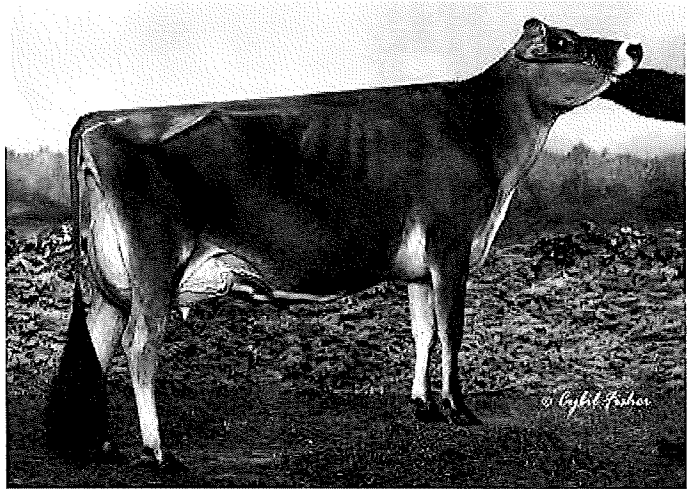


Sire: Gil-Bar Sparkler Primetime
Dam: Pleasant Nook Sambo Teal EX-94%
 5-00 305d 19040m 5.2 990f 3.5 662p
MGS: Lester Sambo
MGD: Pleasant Nook Regal Teal
MGGS: Hollylane R Regal-ET
MGGD: Pleasant Nook J Imp Toots

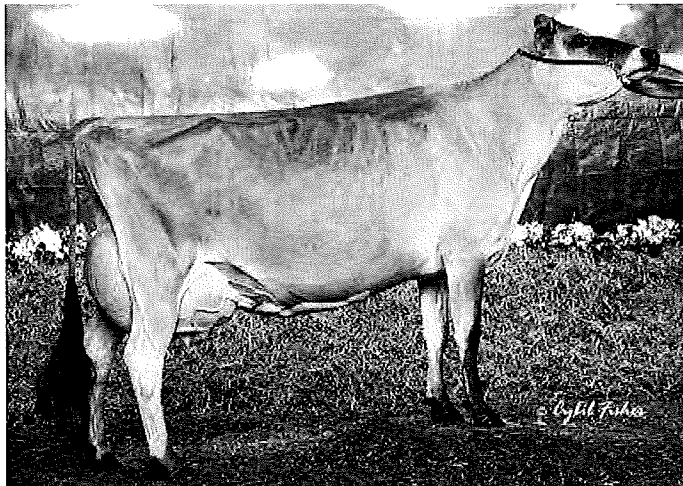
AJCA TYPE SUMMARY

JPI -205

PTAT +1.20 99%R JUI+13.0 3584 D / 1012 H		-2	-1	0	1	2
Stature	+3.70	Tall				
Strength	+0.90	Strong				
Dairy Form	+0.70	Open Rib				
Rump Angle	-1.00	High Pins				
Thurl Width	+1.50	Wide				
Rear Legs-Side	-1.30	Posty				
Foot Angle	+0.60	Steep				
F. Udder Attachment	+1.90	Strong				
Rear Udder Height	+1.10	High				
Rear Udder Width	+1.20	Wide				
Udder Cleft	+0.60	Strong				
Udder Depth	+3.40	Shallow				
Front Teat Placement	+1.00	Close				
Rear Teat P. Side	+1.10	Close				
Teat Length	+2.10	Long				



Daughter: Discoverys Tequila Jewelene



Dam: Pleasant Nook Sambo Teal



Daughter: Payneside Mac N Cheese

45-S-4

Valleystream J I S Juno 25r
x J.F.D Title x



04/2022 CDCB SUMMARY MACE		NM\$ -660	
Milk	-2293 99%R	Cheese Merit \$	-664
Fat	-96 +0.08%	Fluid Merit \$ \$	-648
Protein	-70 +0.07%	Gestation Len. +0	GM\$ -599
CFP	-166	EFI 2.3% gEFI 3.3%	
SCS	3.19 99%R	Mastitis +0.9	Fert. Index +4.3
PL	+1.3 98%R	Livability +1.6	Heifer Liv. +1.1
DPR	+4.4 97%R	HCR +0.7	CCR +7.3
RFI		14015m 4.7% 655f 3.6% 510p	
Feed Saved	%R	7090 Dtrs 1923 Herds	24% US

Sire: JEUSA000000626550
Dam: JEUSA000003434237

MGS: J.F.D Title
MGD:

AJCA TYPE SUMMARY

JPI -146

PTAT -1.90 99%R JUI-8.5 3612 D / 949 H

			-2	-1	0	1	2
Stature	-0.60	Short					
Strength	-0.20	Frail					
Dairy Form	-2.80	Tight					
Rump Angle	-2.40	High Pins					
Thurl Width	+0.20	Wide					
Rear Legs-Side	-1.10	Posty					
Foot Angle	+0.00	Steep					
F. Udder Attachment	+0.70	Strong					
Rear Udder Height	-2.40	Low					
Rear Udder Width	-2.50	Narrow					
Udder Cleft	-1.90	Weak					
Udder Depth	+1.00	Shallow					
Front Teat Placement	-2.10	Wide					
Rear Teat P. Side	+0.10	Close					
Teat Length	+1.30	Long					

46-S-8

Vierra Manilow-ET
Adreas x Premier x latola



CDCB SUMMARY GENOMIC			NM\$ -717	
Milk	-1728	77%R	Cheese Merit \$	-726
Fat	-64	+0.10%	Fluid Merit \$ \$	-677
Protein	-59	+0.02%	Gestation Len. +2	GM\$ -726
CFP	-123		EFI 5.4% gEFI 5.0%	
SCS	3.22	74%R	Mastitis -0.7	Fert. Index -1.2
PL	-3.5	71%R	Livability -1.1	Heifer Liv. +1.4
DPR	-1.3	67%R	HCR -0.3	CCR -2.0
RFI				
Feed Saved	%R		0 Dtrs 0 Herds	100% US

Sire: Sunset Canyon Adreas
Dam: MILKSOURCE PREMIER MYSTERY

MGS: Hawarden Impuls Premier
MGD: Musqie latola Martha ET

MGGS: SC Gold Dust Paramount latola-ET
MGGD: Avonlea Jed Maxie-ET

AJCA TYPE SUMMARY

JPI -166

PTAT +0.90 78%R JUI+10.3 0 D / 0 H

			-2	-1	0	1	2
Stature	+0.60	Tall					
Strength	+0.30	Strong					
Dairy Form	+0.20	Open Rib					
Rump Angle	-1.90	High Pins					
Thurl Width	+0.80	Wide					
Rear Legs-Side	-1.30	Posty					
Foot Angle	+1.70	Steep					
F. Udder Attachment	+2.40	Strong					
Rear Udder Height	+1.20	High					
Rear Udder Width	-0.50	Narrow					
Udder Cleft	+0.30	Strong					
Udder Depth	+2.70	Shallow					
Front Teat Placement	-0.90	Wide					
Rear Teat P. Side	+0.30	Close					
Teat Length	+1.70	Long					

47-5-12



VINDICATION | 94JE3437 | VINDICATION

Pedigree

- SIRE: BONNYBURN ALI WHISTLER
- DAM: HURONIA CENTURION VERONICA 20J
- MGS: SOONER CENTURION ET
- MGD: GENESIS RENAISSANCE VIVIANNE
- MGGS: HOLLYLANE RENAISSANCE

Real World Data

TransitionRight®
Bull Fertility Conv



Reg. Number 000113076851
 Reg. Name VINDICATION
 Registry Status
 Date of Birth 2002-08-30
 EFl 3.6%
 aAa 612
 DMS 246,234
 Kappa Casein
 Beta Casein A1/A1
 IB-M/USA 08/2022
 Controller ABS Global

Production

Dtrs: 1957 Herds: 870 NM\$: -375 TPI®:

Milk	-1989 Lbs	99% Rel
Pro	-63 Lbs	+0.05%
Fat	-77 Lbs	+0.10%
FS		
CM\$	-373	
GM\$	-259	
FM\$	-364	

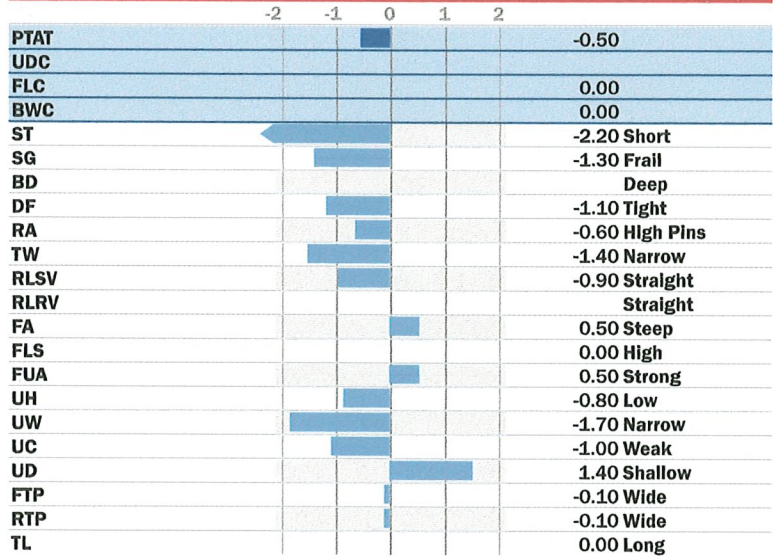
Health & Fertility

PL	+1.9	96% Rel
LIV	+0.5	88% Rel
DPR	+5.7	95% Rel
SCS	2.84	98% Rel
HCR	+2.7	80% Rel
CCR	+4.8	94% Rel
CDN MSP	101	
CDN MT	99	
AHI		

Recessives JH1F, JNSF

Conformation

Dtrs: 961 Herds: 451 PTAT Rel: 98%



48-S-32

Blackadder Kellogg Duce

293 AY 192



Bonnie Brae Jasper 2nd

x x

08/2022 CDCB SUMMARY				NM\$ -403	
Latte	-1878	94%R	\$ Formaggio \$		-395
Grasso	-60	+0.09%	FM\$ -459	GM\$	-196
Proteine	-45	+0.09%	Gestation Len +0	MSP	+0
CFP (lbs)	-105		EFI 1.8%	GFI %	
SCS	2.91	57%R	Mastitis	Fert. Index	
PL	-1.3	84%R	PTA Liv +2.3	Heifer Liv.	
DPR	+8.0	72%R	HCR +5.6	CCR +7.4	
RFI			13511m 3.9%	533f 3.3%	443p
Feed Saved		%R 214 Figlie	101 Allevamenti	100% US	

Padre: AYUSA000000135820
 Madre: Bonnie Brae Jessamine L
 Nonno: AYUSA000000122231
 Nonna: Barlows Jessamine D

ABA TYPE SUMMARY			PTI +253	
TIPO	-1.00	84%R UDC	47 D / 31 H	
Statura	-3.70	Bassa		
Forza	-0.20	Debole		
Profondità	-0.90	Poco Prof		
Caratteri Latte	-1.70	Poco Ang		
Groppa Angolo	+0.00	Ischi Bassi		
Groppa Larghezza	-0.40	Stretta		
Arti Post Di Lato	+0.40	Falciati		
Altezza Tallone	+0.00	Alto		
Attacco Anteriore	-1.50	Debole		
Altezza Mammella	-2.40	Bassa		
Larghezza Mammella	-2.00	Stretta		
Legamento	-3.90	Debole		
Profondità Mammella	-2.00	Bassa		
Posizione Capezzoli	-1.50	Divergenti		
Lunghezza Capezzoli	+0.60	Lunghi		

50-S-4 Ampules

Bonnie Brae Jasper 2nd



x x

08/2022 CDCB SUMMARY				NM\$ -403
Latte	-1878	94%R	\$ Formaggio \$	-395
Grasso	-60	+0.09%	FM\$ -459	GM\$ -196
Proteine	-45	+0.09%	Gestation Len +0	MSP +0
CFP (lbs)	-105		EFI 1.8%	GFI %
SCS	2.91	57%R	Mastitis	Fert. Index
PL	-1.3	84%R	PTA Liv +2.3	Heifer Liv.
DPR	+8.0	72%R	HCR +5.6	CCR +7.4
RFI			13511m 3.9%	533f 3.3% 443p
Feed Saved		%R 214 Figlie	101 Allevamenti	100% US

Padre: AYUSA000000135820
Madre: Bonnie Brae Jessamine L

Nonno: AYUSA000000122231
Nonna: Barlows Jessamine D

ABA TYPE SUMMARY			PTI +253
TIPO	-1.00	84%R UDC	47 D / 31 H

			-2	-1	0	1	2
Statura	-3.70	Bassa	[Bar chart showing deviation]				
Forza	-0.20	Debole	[Bar chart showing deviation]				
Profondità	-0.90	Poco Prof	[Bar chart showing deviation]				
Caratteri Latte	-1.70	Poco Ang	[Bar chart showing deviation]				
Groppa Angolo	+0.00	Ischi Bassi	[Bar chart showing deviation]				
Groppa Larghezza	-0.40	Stretta	[Bar chart showing deviation]				
Arti Post Di Lato	+0.40	Falciati	[Bar chart showing deviation]				
Altezza Tallone	+0.00	Alto	[Bar chart showing deviation]				
Attacco Anteriore	-1.50	Debole	[Bar chart showing deviation]				
Altezza Mammella	-2.40	Bassa	[Bar chart showing deviation]				
Larghezza Mammella	-2.00	Stretta	[Bar chart showing deviation]				
Legamento	-3.90	Debole	[Bar chart showing deviation]				
Profondità Mammella	-2.00	Bassa	[Bar chart showing deviation]				
Posizione Capezzoli	-1.50	Divergenti	[Bar chart showing deviation]				
Lunghezza Capezzoli	+0.60	Lunghi	[Bar chart showing deviation]				

51-S-5

Bonnie Brae Jaye
 Jade x Liberator x



04/2022 CDCB SUMMARY GENOMIC				NM\$ -487
Milk	-2155	94%R	Cheese Merit \$	-484
Fat	-55	+0.18%	Fluid Merit \$ \$	-510
Protein	-60	+0.05%	Gestation Len. +1	GM\$ -406
CFP	-115		EFI 4.3% gEFI 3.8%	
SCS	2.96	89%R	Mastitis	Fert. Index
PL	+0.5	85%R	Livability +0.7	Heifer Liv.
DPR	+4.8	79%R	HCR -0.7	CCR +3.7
RFI			15530m 4.0% 626f 3.2% 495p	
Feed Saved	%R		676 Dtrs 220 Herds	0% US

Sire: Ben Ferme Jade EX-91
 Dam: Sous L'Ombre Nadia
 MGS: Meredith Liberator
 MGD:

04/2022 ABA TYPE SUMMARY PTI +244
 PTAT -0.40 87%R UDC 0 D / 0 H

			-2	-1	0	1	2
Stature	+0.60	Tall					
Strength	+0.50	Strong					
Body Depth	+0.20	Deep					
Dairy Form	-0.30	Tight					
Rump Angle	-0.40	High Pins					
Thurl Width	+0.30	Wide					
Rear Legs-Side	+0.50	Sickle					
Foot Angle	-1.20	Low					
F. Udder Attachment	-0.90	Loose					
Rear Udder Height	-1.10	Low					
Rear Udder Width	-0.90	Narrow					
Udder Cleft	+0.50	Strong					
Udder Depth	+0.00	Shallow					
Front Teat Placement	-0.10	Wide					
Teat Length	+1.20	Long					

52-S-1

Bonnie Brae Tuxedo

Heligo x x



04/2022 CDCB SUMMARY GENOMIC		NM\$ -405	
Milk	-1225 90%R	Cheese Merit \$	-398
Fat	-33 +0.09%	Fluid Merit \$ \$	-454
Protein	-27 +0.07%	Gestation Len. +1	GM\$ -347
CFP	-60	EFI 5.4% gEFI 4.9%	
SCS	2.91 83%R	Mastitis	Fert. Index
PL	-2.9 77%R	Livability +0.1	Heifer Liv.
DPR	+1.7 75%R	HCR +0.5	CCR -1.1
RFI		18526m 3.9% 716f 3.2% 589p	
Feed Saved	%R	280 Dtrs 124 Herds	0% US

Sire: Bonnie Brae Heligo
 Dam: Des Prairies Toutou

MGS: AYCANA00000752965
 MGD: Des Prairies Toupie 2 VG-85
 8-02 305d 18054m 4.8 871f 3.4 617p

04/2022 ABA TYPE SUMMARY		PTI +311	
PTAT -0.50	86%R UDC	0 D / 0 H	
Stature	+0.30	Tall	
Strength	+0.40	Strong	
Body Depth	-0.50	Shallow	
Dairy Form	-1.30	Tight	
Rump Angle	+2.00	Sloped	
Thurl Width	+0.00	Wide	
Rear Legs-Side	+0.80	Sickle	
Foot Angle	-1.10	Low	
F. Udder Attachment	-1.10	Loose	
Rear Udder Height	-0.60	Low	
Rear Udder Width	-0.70	Narrow	
Udder Cleft	-0.30	Weak	
Udder Depth	-0.30	Deep	
Front Teat Placement	+0.10	Close	
Teat Length	-1.00	Short	

53 S-6

De La Plaine Vicking-ET
Burdette x Modem x Jerry

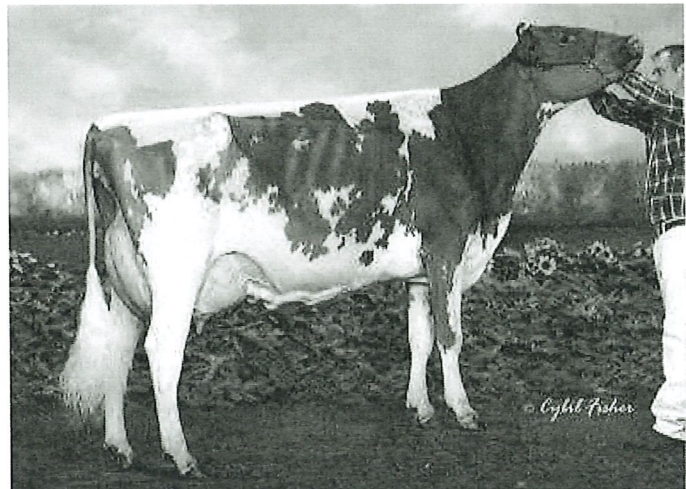


CDCB SUMMARY MACE				NM\$ +115
Milk	-1007	92%R	Cheese Merit \$	+137
Fat	+6	+0.25%	Fluid Merit \$ \$	+1
Protein	-9	+0.13%	Gestation Len. +1	GM\$ +110
CFP	-3		EFI 9.3% gEFI 8.7%	
SCS	2.54	89%R	Mastitis	Fert. Index
PL	+1.6	82%R	Livability +0.5	Heifer Liv.
DPR	+0.2	79%R	HCR +0.5	CCR +0.9
RFI			19957m 4.2% 830f 3.3% 656p	
Feed Saved		%R	422 Dtrs 200 Herds	26% US

ABA TYPE SUMMARY			PTI +419
PTAT +0.70	91%R	UDC	235 D / 110 H
Stature	-0.90	Short	
Strength	-0.40	Frail	
Body Depth	-0.30	Shallow	
Dairy Form	+0.00	Open Rib	
Rump Angle	+1.20	Sloped	
Thurl Width	-0.70	Narrow	
Rear Legs-Side	-1.40	Posty	
Foot Angle	+0.50	Steep	
F. Udder Attachment	+2.10	Strong	
Rear Udder Height	+1.70	High	
Rear Udder Width	+0.90	Wide	
Udder Cleft	+1.50	Strong	
Udder Depth	+1.00	Shallow	
Front Teat Placement	+0.50	Close	
Teat Length	+0.80	Long	

Sire: Palmyra Tri-Star Burdette
Dam: Forever Schoon Ping EX-94

MGS: Lagace Modem-ET EX-90
MGD: Forever Schoon Pretty EX-93
6-7 365d 25971m 4.6 1269f 3.4 882p
MGGS: Kildare Jerry-ET G-77
MGGD: Forever Schoon BK Porsha-ET EX-90
7-0 310d 23078m 5.3 1214f 3.2 750p



Dam: Forever Schoon Ping

54-S-20

200AY00728 GENTLEMAN

Reg: AYCANA000106306758
%R: %

DOB: 05/19/2010
A2A2

Duo Star Gentleman-ET

Reality x Calimero x



04/2022 CDCB SUMMARY MACE				NM\$ -373
Milk	-863	93%R	Cheese Merit \$	-378
Fat	-22	+0.07%	Fluid Merit \$ \$	-350
Protein	-30	-0.01%	Gestation Len. +2	GM\$ -347
CFP	-52		EFI 9.2% gEFI 8.4%	
SCS	3.12	90%R	Mastitis	Fert. Index
PL	-2.5	87%R	Livability -2.3	Heifer Liv.
DPR	+0.0	85%R	HCR -3.2	CCR -2.3
RFI			18995m 4.0% 768f 3.2% 602p	
Feed Saved		%R	942 Dtrs 406 Herds	15% US

Sire: Palmyra Tri-Star Reality EX-90
Dam: Duo Star Amour -ET

MGS: Margot Calimero VG-85
MGD: Lachute Road H S Salem-ET

ABA TYPE SUMMARY

PTI +348

PTAT +0.70 92%R UDC 347 D / 177 H

			-2	-1	0	1	2
Stature	+1.00	Tall					
Strength	+0.40	Strong					
Body Depth	+0.30	Deep					
Dairy Form	+0.40	Open Rib					
Rump Angle	-0.50	High Pins					
Thurl Width	+0.20	Wide					
Rear Legs-Side	-0.30	Posty					
Foot Angle	+0.50	Steep					
F. Udder Attachment	+1.70	Strong					
Rear Udder Height	+0.10	High					
Rear Udder Width	+0.10	Wide					
Udder Cleft	+1.60	Strong					
Udder Depth	+1.80	Shallow					
Front Teat Placement	+0.00	Close					
Teat Length	+1.60	Long					

55-S-3

Glengarry Lloyd Royal



x x

04/2022	PRUEBA			NM\$ -999
Leche	-2803	98%R	Mérito Queso \$	-1003
Grasa	-118	-0.03%	Mérito Fluído \$	-959
Proteína	-93	-0.02%	Gestation Len +0	GM\$ -742
CFP (lbs)	-211		EFI 1.5%	GFI %
Cél Som.	2.96	56%R	Mastitis	Fert. Index
Vida Prod.	-4.9	98%R	PTA Liv +1.8	Heifer Liv.
Preñez H.	+7.8	97%R	TCN +6.8	TCV +11.0
RFI			11905m 3.8%	451f 3.5% 415p
Feed Saved		%R	2364 Hijas 503	Hatos 100% US

Padre: AYUSA000000116364

Madre: AYCANA000000319689

Abuelo: AYCANA000000242816

Abuela:

ABA RESUMEN TIPO

PTI +130

TIPO -0.60 80%R Comp. Ubre 14 D / 10 H

			-2	-1	0	1	2
Estatura	-2.30	Baja					
Fortaleza	+0.20	Fuerte					
Prof. Corporal	-0.50	Poca Prof.					
Carac. Lechero	-2.10	Tosco					
Angulo Grupa	+2.50	Isq. Bajos					
Ancho Grupa	-0.80	Estrecha					
Patas Vta. Lateral	-0.40	Rectas					
Angulo Pezuña	+0.10	Alto					
Inserción Ubre Ant.	-0.40	Débil					
Altura Ubre Post.	-1.80	Baja					
Ancho Ubre Post.	-1.10	Estrecha					
Ligamento Central	-0.20	Débil					
Profundidad Ubre	+0.00	Poco Prof.					
Pezones Anteriores	+0.60	Cerrados					
Largo Pezones	+0.20	Largos					

56-3-9 Ampules

29AY7007 LLOYD ROYAL

GLENGARRY LLOYD ROYAL
 AYCAN50995
 Born: 04/15/1955
 Breeder:
 Beta-Casein: GFI: %
 Kappa-Casein: Beta-Lactoglobulin:
 Haplotypes

Sire:
 Dam:
 MGS: Cherry Bank Brown Bomber
 MGD:
 MGGs:
 MGGD:

Production

(PTA-Lbs) 4/2022 CDCB Sire Summary

Milk	-2,803	98% Rel	2,364 Dtrs 503 Herds
Protein	-93	-0.02 %	
Fat	-118	-0.03 %	
CFP	-211		
NM\$	-\$999	97% R	
CM\$	-\$1,003		
FM\$	-\$959		
GM\$	-\$742		

Type

(PTA) 4/2022 ABA Type Summary

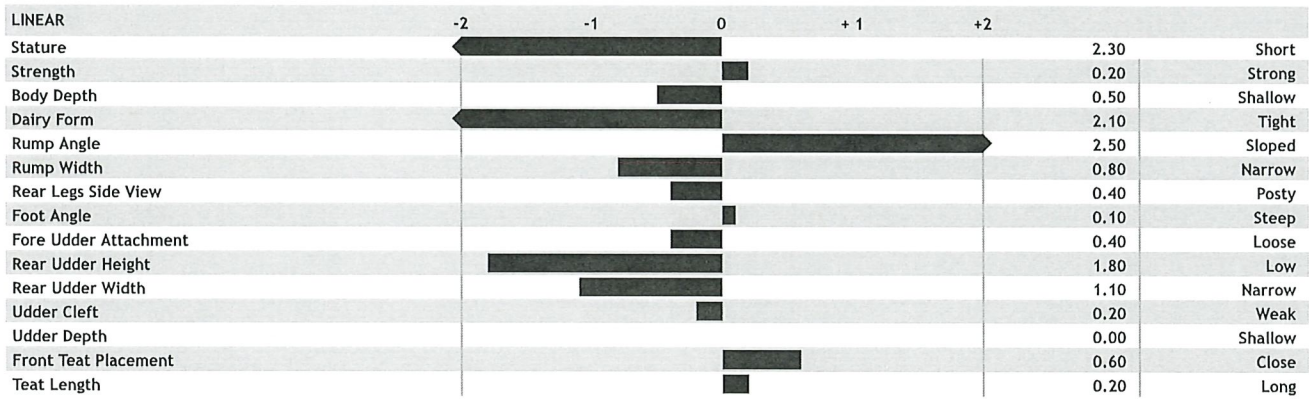
PTI	+130		
Type	-0.6	80% Rel 14 Dtrs 10 Herds	
MS	0		0%

Fitness

SCS	2.96	56% R	
PL	-4.9	98% R	
LIV	+1.8	86% R	
DPR	+7.8	97% R	
HCR	+6.8	15% R	0 Dtrs
CCR	+11.0	75% R	0 Dtrs

Other

CDN Evaluation





Labrie Wilton-ET
BBB Kellogg x Jeannot x

04/2022 CDCB SUMMARY MACE		NM\$ -272	
Milk	-494	97%R	Cheese Merit \$ -270
Fat	-28	-0.04%	Fluid Merit \$\$ -328
Protein	-1	+0.08%	Gestation Len. +1 GM\$ -300
CFP	-29		EFI 6.0% gEFI 4.6%
SCS	3.26	96%R	Mastitis Fert. Index
PL	-2.5	94%R	Livability -0.1 Heifer Liv.
DPR	-2.0	93%R	HCR -5.3 CCR -2.9
RFI			18438m 3.8% 707f 3.2% 596p
Feed Saved		%R	1478 Dtrs 510 Herds 24% US

Sire: Blackaddar B B Kellogg EX-90
Dam: Labrie Jeannot Wilma
MGS: AYUSA000000144825
MGD:

ABA TYPE SUMMARY

PTI +353

PTAT -0.10 95%R UDC 931 D / 344 H

			-2	-1	0	1	2
Stature	+1.60	Tall					
Strength	+0.00	Strong					
Body Depth	-1.10	Shallow					
Dairy Form	+0.20	Open Rib					
Rump Angle	+1.30	Sloped					
Thurl Width	+1.30	Wide					
Rear Legs-Side	-0.80	Posty					
Foot Angle	+0.40	Steep					
F. Udder Attachment	-0.30	Loose					
Rear Udder Height	+1.00	High					
Rear Udder Width	+1.10	Wide					
Udder Cleft	+0.40	Strong					
Udder Depth	-0.50	Deep					
Front Teat Placement	+1.10	Close					
Teat Length	-1.10	Short					

57-S-5

Lee Dixieland Milk Man

138 Ay 1284

58-5-4

MF Honest Pleasure

Mill Valley Rebecca Pete

Mill Valley Starlet Jester

61-S-208

Mill Valley Lilly Jeremiah

Oakridge Super Tim

63-S-11

Palmyra Bendig Berkely
Bendig x Reality x Ripken



04/2022 CDCB SUMMARY MACE		NM\$ -260	
Milk	-411 96%R	Cheese Merit \$	-267
Fat	-19 -0.01%	Fluid Merit \$ \$	-221
Protein	-20 -0.04%	Gestation Len. -2	GM\$ -230
CFP	-39	EFI 8.5% gEFI 7.6%	
SCS	3.10 94%R	Mastitis	Fert. Index
PL	-1.8 90%R	Livability -3.7	Heifer Liv.
DPR	-0.5 85%R	HCR +2.8	CCR +0.8
RFI		18926m 3.9% 747f 3.1% 590p	
Feed Saved	%R	569 Dtrs 293 Herds	51% US

ABA TYPE SUMMARY		PTI +352	
PTAT +0.30 95%R UDC 231 D / 109 H			
		-2	-1 0 1 2
Stature	-1.40 Short		
Strength	+0.20 Strong		
Body Depth	-0.10 Shallow		
Dairy Form	-0.30 Tight		
Rump Angle	-1.30 High Pins		
Thurl Width	-0.60 Narrow		
Rear Legs-Side	+0.80 Sickle		
Foot Angle	-0.20 Low		
F. Udder Attachment	+1.30 Strong		
Rear Udder Height	+1.50 High		
Rear Udder Width	+1.70 Wide		
Udder Cleft	+0.80 Strong		
Udder Depth	+0.80 Shallow		
Front Teat Placement	-1.60 Wide		
Teat Length	+4.60 Long		

Sire: Palmyra Jerry Bendig G-77
 Dam: AYUSA000065003767
 MGS: Palmyra Tri-Star Reality EX-90
 MGD: Palmyra Ripken J. Bonnie
 MGGS: Covey-Palmyra O. Ripken-ET

64-S-11

Royalcroft Brendan
Heligo x Herman x



04/2022 CDCB SUMMARY MACE				NM\$ -150
Milch	-712	97%R	Cheese Merit \$	-151
Fett	-27	+0.01%	Fluid Merit \$	-136
Eiweiss	-24	-0.01%	Trächtigkeitsdauer -1	GM\$ -181
CFP (lbs)	-51		EFI 5.2% GFI 5.1%	
SCS	3.03	96%R	Mastitis	Fert. Index
PL	+2.2	94%R	PTA Liv +2.2	Heifer Liv.
DPR	+1.0	92%R	HCR +0.5	CCR +1.2
RFI			18789m 3.8% 723f 3.1% 585p	
Feed Saved		%R	2337 Tö. 909 Herden	14% US

Vater: Bonnie Brae Heligo
Mutter: Royalcroft Brenda 3
MV: Blackaddar Herman
MM:

ABA TYPE SUMMARY			PTI +324
TYP -0.40 94%R Euter ZW 1312 D / 460 H			
			-2 -1 0 1 2
Größe	-1.90	Klein	
Stärke	+0.00	Stark	
Körpertiefe	-0.90	Wenig	
Milchcharakter	-1.50	Rund/Derb	
Beckenneigung	+0.80	Abfallend	
Beckenbreite	+0.20	Breit	
Hinterbeinwinkelung	-0.10	Steil	
Klauenwinkel	-0.90	Flach	
Vordereuteraufhängung	+0.70	Fest	
Hintereuterhöhe	-0.30	Tief	
Hintereuterbreite	+0.30	Breit	
Zentralband	+0.40	Stark	
Euterboden	+0.40	Hoch	
Strichplatzierung Vorne	+1.20	Innen	
Strichlänge	-1.40	Kurz	

65-S-1

Ruisseau Clair Tuxedo-ET



Volvo x Reality x Calimero

CDCB SUMMARY MACE				NM\$ +278
Milk	+874	86%R	Cheese Merit \$	+278
Fat	+21	-0.07%	Fluid Merit \$ \$	+291
Protein	+23	-0.02%	Gestation Len. -1	GM\$ +286
CFP	+44		EFI 9.8% gEFI 8.6%	
SCS	2.92	84%R	Mastitis	Fert. Index
PL	+1.4	68%R	Livability -1.8	Heifer Liv.
DPR	+0.2	74%R	HCR +1.0	CCR +0.7
RFI			21850m 4.0% 870f 3.2% 703p	
Feed Saved		%R	646 Dtrs 284 Herds	3% US

ABA TYPE SUMMARY

PTI +469

PTAT +0.20 80%R UDC 277 D / 127 H

			-2	-1	0	1	2
Stature	+2.30	Tall	[Bar chart showing Tall trait]				
Strength	-0.70	Frail	[Bar chart showing Frail trait]				
Body Depth	+0.00	Deep	[Bar chart showing Deep trait]				
Dairy Form	+1.30	Open Rib	[Bar chart showing Open Rib trait]				
Rump Angle	+0.00	Sloped	[Bar chart showing Sloped trait]				
Thurl Width	+0.00	Wide	[Bar chart showing Wide trait]				
Rear Legs-Side	-0.20	Posty	[Bar chart showing Posty trait]				
Foot Angle	+0.60	Steep	[Bar chart showing Steep trait]				
F. Udder Attachment	-1.90	Loose	[Bar chart showing Loose trait]				
Rear Udder Height	-0.90	Low	[Bar chart showing Low trait]				
Rear Udder Width	+0.00	Wide	[Bar chart showing Wide trait]				
Udder Cleft	+2.10	Strong	[Bar chart showing Strong trait]				
Udder Depth	+0.40	Shallow	[Bar chart showing Shallow trait]				
Front Teat Placement	-0.40	Wide	[Bar chart showing Wide trait]				
Teat Length	-2.00	Short	[Bar chart showing Short trait]				

Sire: Kamouraska Volvo -ET
Dam: AYCANA000107377079

MGS: Palmyra Tri-Star Reality EX-90
MGD: Duo Star Amour -ET

MGGs: Margot Calimero VG-85
MGGD: Lachute Road H S Salem-ET

66-S-9

Yellow Briar Pandaloro

158 AY 12

67-5-22