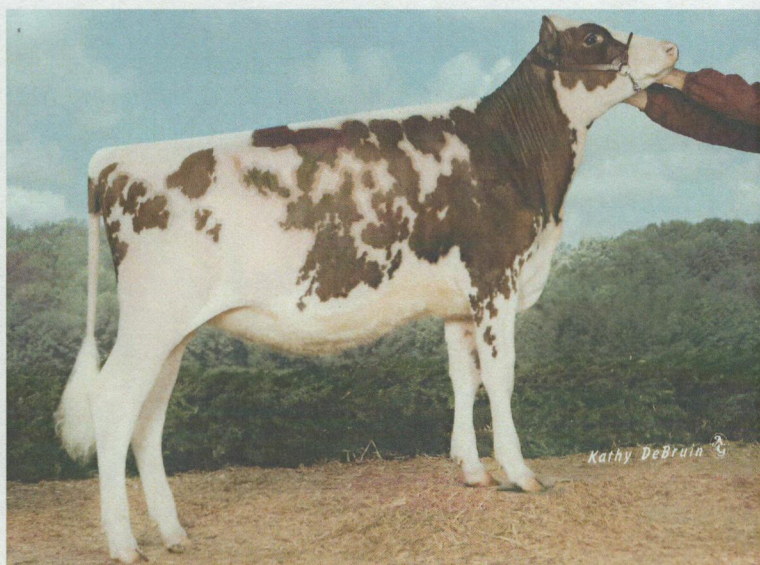
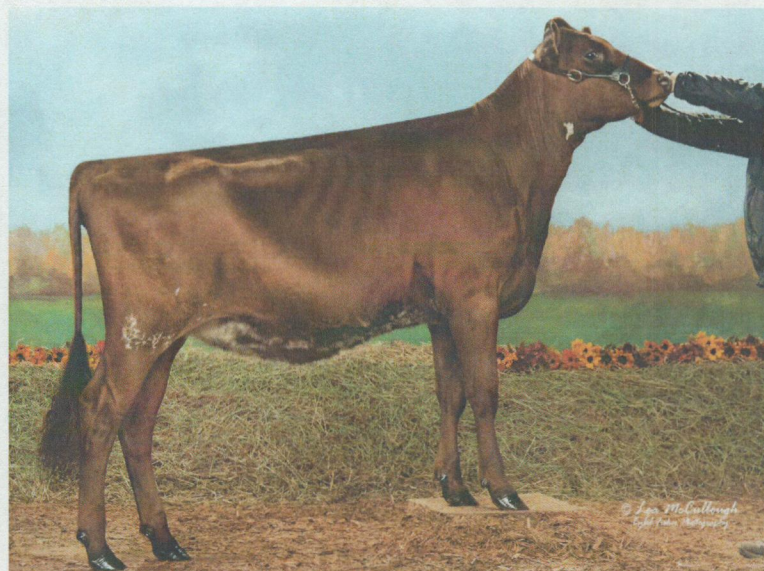


ALLEN FARMS DAIRY AUCTION JUNE 4TH, 2022

AYRSHIRE CATALOG



Allen Farms Dozer Peppermint
Dam of lots 91 & 222
Granddam to lot 247
Maternal sister to lot 134



Allen Farms TSB Sohpia
Dam of lot 223
Paternal sister to lot 116

ALLEN FARMS CAEX PALOOZA

91

Barn Name 91

Index No. 91

S: BRICKER-FARMS
 BURDETTE CAEX-ET
 D: ALLEN FARMS DOZER
 PEPPERMINT

Cow	Index No.	91	Breed	XX
	Barn Name	91		
	DHI ID	23ALF0091		
	Farm ID			
	Date of Birth	06/01/2015		
	PTA Milk	+0	PTA \$	+0
	PTA % Fat	+0	Rel.	
	PTA Fat	+0	Pctile(NM)	
	PTA Prot	+0		

Sire	DHI ID	PTA Milk	+0
		PTA % Fat	
	Name or number	PTA Fat	+0
		PTA Prot	+0
	Breed	PTA \$	+0
		Rel.	
		Pctile(NM)	
Dam	DHI ID	PTA Milk	+0
		PTA % Fat	
	Name or number	PTA Fat	+0
		PTA Prot	+0
	Breed	PTA \$	+0
		Rel.	
		Pctile(NM)	

Printed 5/13/2022 12:20:56 PM

Lactation Production Summary

Calving Date	Age at Calving Yr - Mo	Days Dry Before Calving	Rate	Days 3X	305 Day Lactation					Complete Lactation					Type of Record	
					Cond. Aff. Record	Milk	% Fat	Fat	% Prot	Prot	Days in Milk	Milk	Fat	Prot		Value Product
08/07/2017	2-2	0	B	0	15898	3.9	614	2.9	468	347	16923	662	504			DHI-AP
09/20/2018	3-3	62	E	0	12021	4.2	505	3.3	392	311	12202	513	398			DHI-AP
10/01/2019	4-4	65	E	0						297	16194	621	487			DHI-AP
09/30/2020	5-3	68	E	0						283	15195	645	463			DHI-AP
09/19/2021	6-3	71	E	0						229	14378	624	433			DHI-AP

Status Change	Last Test			Lifetime Production			Milk per Day Since 24 Mos of Age	Yield Deviation			Estimated Relative Producing Ability		
Calved	Milk	% Fat	% Prot	Milk	Fat	Protein		Milk	Fat	Protein	Milk	Fat	Protein
09/19/2021	36.3	3.8	3.3	74892	3065	2285	42	+0	+0	+0	-5730	-224	-174

Calf and Breeding Record

Calving Date	Body Wt (CWT)	Days Open	# Br	Successful Breeding Date	Sire		Calf		Persist. of Lact Curve	Avg. SCCS for Lact.	ME Lactation			Herdmate Deviation		
					Identity	Br	Sex Disp	Identity			Milk	Fat	Prot	Milk	Fat	Prot
08/07/2017	11	125					M7	LD-UN	112	1.1	20985	798	599	-2943	-87	-99
09/20/2018	12	89	3	12/10/2017	147AY8111		F	1837	98	3.4	13824	571	436	-7019	-295	-204
10/01/2019	13	75	1	12/18/2018	14AY120		M7	LD-UN	87	2.6	16733	636	499	-6602	-300	-218
09/30/2020	13	72	1	12/15/2019	7AY111		M7	LD-UN	102	2.6	16224	683	497	-8820	-322	-249
09/19/2021	13	137	1	12/11/2020	7AY119		F	9764	89	2.6	16703	717	510	-8995	-338	-276
			1	02/03/2022	9AY133	AY	Due	11/12/2022								

Dams Production Record

Test Day Data

Calving Date Mo-Day-Yr	Age at Calving	Days Dry	Rating	Days 3X	CAR	305 Day Lactation					Complete Lactation					Type of Record			
						Milk	% Fat	Fat	% Pro	Pro	DIM	Milk	% Fat	Fat	% Pro		Pro	Value Product	Inc Over Feed Cost
07-16-15	2-06		A			16,944	3.6	610	3.0	513	474	24,222	3.8	925	3.2	773			DHI-AP
01-08-17	3-11	68	C			18,221	3.4	619	2.9	521	314	18,521	3.4	633	2.9	533			DHI-AP
03-02-18	5-01	104	E			14,524	3.4	487	2.9	423	341	15,307	3.4	517	2.9	450			DHI-AP
05-15-19	6-04	98	E		4						169	10,391	3.4	355	2.7	279			DHI-AP

Status		This Test			Lifetime Production			Milk/Day Since 24 mo.	Yield Deviation			ERPA		
Change	Date	Milk	%Fat	%Pro	Milk	Fat	Pro		Milk	Fat	Pro	Milk	Fat	Pro
Repro	10-30-19				68,441	2430	2035	39.1	-595	-85	-45			

Barn Name						Index					
159						159					
Brd	Cntry	Identification			Birth Date	Inbrd	DCR Milk				
HO	USA	23ALF0159			05-01-16						
Predicted Transmitting Ability											
Milk	%Fat	Fat	%Pro	Pro	\$	%Rel	%Rank				

RECOVERY ELIGIBLE

S: Family AF-Ayr

DOUBLWHAMMY-ET

D:404

S: ALLEN FARMS SMARK
MR CLASSIC

D:215 Hol

/ Name	Inbrd
%Rel	%Rank
le / Index	Inbrd
%Rel	%Rank

Calving Date Mo-Day-Yr	Age at Calving	Days Dry	Rating	Days 3X	CAR	305 Day Lactation					Complete Lactation					Value Product	Inc Over Feed Cost	Type of Record	
						Milk	% Fat	Fat	% Pro	Pro	DIM	Milk	% Fat	Fat	% Pro				Pro
01-12-19	2-08		C			20,955	3.4	713	2.9	602	351	23,647	3.4	813	2.9	690			DHI-AP
03-08-20	3-10	70	C			23,834	3.6	856	2.8	671	339	25,651	3.6	930	2.8	730			DHI-AP
03-25-21	4-10	43	D			25,439	3.7	935	2.9	725	351	27,177	3.7	998	2.9	780	5012		DHI-AP

Status		This Test			Lifetime Production			Milk/Day Since 24 mo.	Yield Deviation			ERPA		
Change	Date	Milk	%Fat	%Pro	Milk	Fat	Pro		Milk	Fat	Pro	Milk	Fat	Pro
Turned Dry	03-11-22				76,475	2741	2200	54.2				+419	-51	-11

Calving Date Mo-Day-Yr	Body Wt 100 lb	Days Open	No. BR	Successful Breeding Date	Sire		Calf				Persist. Lact. Curve	Lact. Avg. SCC	ME Lactation		Herdmate Deviation	
					Identity	BR	Identity	Code	Milk	Pro Fat			Milk	Pro Fat		
01-12-19	12	131	1	04-06-18	PREDATOR 147AY08111	AY	1902		F	107		24,517	691	827	+731	+11
03-08-20	13	99	3	05-23-19	REAGAN 7AY00111	AY	SOLD-UNK 9741		M	104	21	25,264	699	899	+866	-77
03-25-21	13	243	2	06-15-20	REAGAN 7AY00111	AY	23WGN9741		F	110	45	25,439	726	935	+78	-16
			5 P	11-23-21	9AY133	HO	Due 08-30-22									-65
																-38
																-60

Lact Num.	Calving Date Mo-Yr	1st Test Day		2nd Test Day		3rd Test Day		4th Test Day		5th Test Day		6th Test Day		7th Test Day		8th Test Day		9th Test Day		10th Test Day		11th Test Day		12th Test Day	
		SCC Milk	%Pro %Fat	SCC Milk	%Pro %Fat	SCC Milk	%Pro %Fat	SCC Milk	%Pro %Fat	SCC Milk	%Pro %Fat	SCC Milk	%Pro %Fat	SCC Milk	%Pro %Fat	SCC Milk	%Pro %Fat	SCC Milk	%Pro %Fat	SCC Milk	%Pro %Fat	SCC Milk	%Pro %Fat	SCC Milk	%Pro %Fat
1	01-19	62	2.9	87	2.9	41	2.6	76	2.7	76	2.8	230	2.8	141	2.9	174	2.9	107	2.9	62	3.2	44	3.3		
		76	3.4	83	3.5	75	3.3	84	3.3	62	3.3	63	3.0	66	3.2	58	3.5	64	3.8	59	3.8	59	3.7		
2	03-20	31	3.1	35	2.5	13	2.6	13	2.6	13	2.7	13	2.8	17	3.0	13	2.9	23	3.0	27	3.1	54	3.4		
		68	4.3	92	2.9	109	3.6	85	3.0	91	3.9	80	3.0	65	4.2	70	3.3	57	4.2	73	3.9	39	4.3		
3	03-21	23	3.2	13	2.6	13	2.5	13	2.6	14	2.7	13	2.8	41	2.9	54	3.2	162	3.2	54	3.2	76	3.2	325	3.0
		82	3.6	96	2.4	115	3.2	99	3.6	105	4.6	66	2.2	59	4.3	70	3.8	86	5.1	60	3.8	44	3.2	28	4.0

ALLEN FARMS PBR DANDY

S PALMYRA BERKLEY REAGAN

D: ALLEN FARMS MADMAX DOODLE

311

Barn Name 311

Index No. 311

Cow	Index No.	311	Breed	AY
	Barn Name	311		
	DHI ID	23EVJ0763		
	Farm ID			
Date of Birth	12/17/2019			
PTA Milk	+126	PTA \$	+23	
PTA % Fat		Rel.		
PTA Fat	-2	Pctile(NM)		
PTA Prot	+2			
Sire	DHI ID	72394535	PTA Milk	-141
	Name or number	7AY111	PTA % Fat	+8
	Breed	AY	PTA Prot	-1
			PTA \$	-67
Dam	DHI ID	100659229	Rel.	20
	Name or number	DOODLE	Pctile(NM)	
	Breed	AY	PTA Milk	+283
			PTA % Fat	-11
		PTA Prot	+1	
		PTA \$	+111	
		Rel.		
		Pctile(NM)		

Lactation Production Summary

Calving Date	Age at Calving Yr - Mo	Days Dry Before Calving	Rate	Days 3X	305 Day Lactation					Complete Lactation					Type of Record		
					Cond. Aff. Record	Milk	% Fat	Fat	% Prot	Prot	Days in Milk	Milk	Fat	Prot		Value Product	Income Ovr Feed Cost
12/26/2021	2 - 0	0	D	0							131	7556	304	220			DHI-AP

Status Change	Last Test			Lifetime Production			Milk per Day Since 24 Mos of Age	Yield Deviation			Estimated Relative Producing Ability					
	Milk	% Fat	% Prot	Milk	Fat	Protein		Milk	Fat	Protein	Milk	Fat	Protein			
Calved																
12/26/2021	59.2	3.5	3.0	7556	304	220	54	+2211	+86	+55	-577	-32	-32			

Calf and Breeding Record

Calving Date	Body Wt (CWT)	Days Open	# Br	Successful Breeding Date	Sire		Calf		Persist. of Lact Curve	Avg. SCCS for Lact.	ME Lactation			Herdmate Deviation		
					Identity	Br	Sex Disp	Identity			Milk	Fat	Prot	Milk	Fat	Prot
12/26/2021	9	65					M7		98	1.1	18521	727	544	-1154	-63	-64
			1	03/01/2022	9AY133	AY	Due	12/08/2022								

DAMS PRODUCTION RECORD

Calving Date	Age at Calving Yr - Mo	Days Dry Before Calving	Rate	Days 3X	305 Day Lactation					Complete Lactation					Type of Record	
					Cond. Aff. Record	Milk	% Fat	Fat	% Prot	Prot	Days in Milk	Milk	Fat	Prot		Value Product
01/03/2015	2 - 3	0	C	0	14526	3.4	494	2.9	425	308	14623	498	429			DHI-AP
01/18/2016	3 - 3	72	D	0						275	14562	458	430			DHI-AP
12/16/2016	4 - 2	58	C	0	17857	3.2	567	3.0	543	363	20306	661	632			DHI-AP
02/21/2018	5 - 4	69	B	0	20397	3.5	707	2.8	577	587	31052	1118	923			DHI-AP
12/17/2019	7 - 2	77	B	0	25410	3.4	862	2.7	688	387	29667	1033	833			DHI-AP
03/20/2021	8 - 5	72	D	30	20177	3.1	623	2.9	589	355	22676	713	668			DHI-AP

Status Change	Last Test			Lifetime Production			Milk per Day Since 24 Mos of Age	Yield Deviation			Estimated Relative Producing Ability				
	Milk	% Fat	% Prot	Milk	Fat	Protein		Milk	Fat	Protein	Milk	Fat	Protein		
Left															
03/09/2022				132886	4481	3915	49	+790	-29	+8	+862	-73	-7		

ALLEN FARMS REAGAN PALAKIKA

222

Barn Name PALAKIK

Index No. 222

S: PALMYRA BERKELY REAGAN

D: ALLEN FARMS DOZER PEPPERMINT

Cow	Index No.	222	Breed	AY
	Barn Name	PALAKIK		
	DHI ID	840003211010892		
	Farm ID			
Date of Birth	03/02/2018			
PTA Milk	-465	PTA \$	-241	
PTA % Fat		Rel.		
PTA Fat	-28	Pctile(NM)		
PTA Prot	-18			
Sire	DHI ID	72394535	PTA Milk	-141
	Name or number	7AY111	PTA % Fat	+8
			PTA Prot	-1
			PTA \$	-67
Breed	AY	Rel.		
		Pctile(NM)	20	
Dam	DHI ID	100659274	PTA Milk	-358
	Name or number	PEPPRMN	PTA % Fat	-42
			PTA Prot	-24
			PTA \$	-277
Breed	AY	Rel.		
		Pctile(NM)		

Printed 5/13/2022 12:21:12 PM

Lactation Production Summary

Calving Date	Age at Calving Yr - Mo	Days Dry Before Calving	Rate	Days 3X	305 Day Lactation					Complete Lactation				Type of Record	
					Cond. Aff. Record	Milk	% Fat	Fat	% Prot	Prot	Days in Milk	Milk	Fat		Prot
06/19/2020	2 - 3	0	E	0	12637	3.9	494	3.1	394	335	13662	539	430		DHI-AP
07/24/2021	3 - 4	65	E	0						230	10210	440	327		DHI-AP

Status Change	Last Test			Lifetime Production			Milk per Day Since 24 Mos of Age	Yield Deviation			Estimated Relative Producing Ability				
	Milk	% Fat	% Prot	Milk	Fat	Protein		Milk	Fat	Protein	Milk	Fat	Protein		
Dry															
03/11/2022				23872	979	757	30	-2137	-100	-70	-3871	-156	-117		

Calf and Breeding Record

Calving Date	Body Wt (CWT)	Days Open	# B r	Successful Breeding Date	Sire		Calf		Persist. of Lact Curve	Avg. SCCS for Lact.	ME Lactation			Herdmate Deviation		
					Identity	B r	Sex Disp	Identity			Milk	Fat	Prot	Milk	Fat	Prot
06/19/2020	10	115	1	09/07/2019	14AY120		M7	LD-UN	103	1.6	15796	603	481	-4378	-210	-138
07/24/2021	11	127	1	10/12/2020	7AY108		M7		75	3.9	12556	541	397	-7384	-263	-217
			1	11/28/2021	7AY119	AY	Due	09/06/2022								

Dams Production Record

Calving Date Mo-Day-Yr	Age at Calving	Days Dry	Rating	Days 3X	CAR	305 Day Lactation					Complete Lactation					Type of Record		
						Milk	% Fat	Fat	% Pro	Pro	DIM	Milk	% Fat	Fat	% Pro		Pro	Value Product
07-16-15	2-06		A			16,944	3.6	610	3.0	513	474	24,222	3.8	925	3.2	773		DHI-AP
01-08-17	3-11	68	C			18,221	3.4	619	2.9	521	314	18,521	3.4	633	2.9	533		DHI-AP
03-02-18	5-01	104	E			14,524	3.4	487	2.9	423	341	15,307	3.4	517	2.9	450		DHI-AP
05-15-19	6-04	98	E		4						169	10,391	3.4	355	2.7	279		DHI-AP

Status		This Test			Lifetime Production			Milk/Day Since 24 mo.	Yield Deviation			ERPA		
Change	Date	Milk	%Fat	%Pro	Milk	Fat	Pro		Milk	Fat	Pro	Milk	Fat	Pro
Repro	10-30-19				68,441	2430	2035	39.1	-595	-85	-45			

ALLEN FARMS REAGAN SCHNAZZY

223

Barn Name SCHNAZZ Index No. 223

S: PALMYRA BERKELY REAGAN

D: ALLEN FARMS TSB SOPHIA

Cow	Index No.	223	Breed	AY
	Barn Name	SCHNAZZ		
	DHI ID	23ALF1810		
	Farm ID			
	Date of Birth	03/05/2018		
	PTA Milk	+79	PTA \$	+4
	PTA % Fat		Rel.	
	PTA Fat	+0		
	PTA Prot	+3	Pctile(NM)	

Sire	DHI ID	72394535	PTA Milk	-141
	Name or number	7AY111	PTA % Fat	+8
			PTA Fat	-1
			PTA Prot	-67
	Breed	AY	Rel.	
			Pctile(NM)	20

Dam	DHI ID	100680566	PTA Milk	+243
	Name or number	SOPHIA	PTA % Fat	-3
			PTA Fat	+3
			PTA Prot	+66
	Breed	AY	Rel.	
			Pctile(NM)	

Printed 5/13/2022 12:21:12 PM

Lactation Production Summary

Calving Date	Age at Calving Yr - Mo	Days Dry Before Calving	Rate	Days 3X	305 Day Lactation					Complete Lactation					Type of Record	
					Cond. Aff. Record	Milk	% Fat	Fat	% Prot	Prot	Days in Milk	Milk	Fat	Prot		Value Product
06/03/2020	2 - 2	0	B	0	15935	4.2	664	3.1	495	305	15935	664	495			DHI-AP
06/13/2021	3 - 3	70	B	0						280	17857	734	566			DHI-AP

Status Change	Last Test			Lifetime Production			Milk per Day Since 24 Mos of Age	Yield Deviation			Estimated Relative Producing Ability				
	Milk	% Fat	% Prot	Milk	Fat	Protein		Milk	Fat	Protein	Milk	Fat	Protein		
Dry															
03/20/2022				33792	1398	1061	43	+474	+10	+16	+892	+46	+33		

Calf and Breeding Record

Calving Date	Body Wt (CWT)	Days Open	# B r	Successful Breeding Date	Sire			Calf			Persist. of Lact Curve	Avg. SCCS for Lact.	ME Lactation			Herdmate Deviation		
					Identity	B r	Sex Disp	Identity					Milk	Fat	Prot	Milk	Fat	Prot
06/03/2020	10	88	1	08/17/2019	147AY8111		F	2029	112	2.0	20078	817	609	+195	+19	-1		
06/13/2021	11	70	1	08/30/2020	147AY8114		F	9746	123	2.9	22075	911	698	+2505	+120	+100		
			1	08/22/2021	14AY126	AY	Due	05/31/2022										

Dams Production Record

Calving Date	Age at Calving Yr - Mo	Days Dry Before Calving	Rate	Days 3X	305 Day Lactation					Complete Lactation					Type of Record	
					Cond. Aff. Record	Milk	% Fat	Fat	% Prot	Prot	Days in Milk	Milk	Fat	Prot		Value Product
01/11/2016	2 - 1	0	B	0	16106	3.9	627	3.1	503	341	17489	695	554			DHI-AP
02/15/2017	3 - 2	60	B	0	17364	4.0	686	3.1	537	322	17857	712	555			DHI-AP
03/05/2018	4 - 3	61	C	0	19124	3.3	633	2.9	551	365	21781	782	649			DHI-AP
10/04/2019	5 - 10	213	C	40	20717	4.0	836	3.0	627	375	21845	873	664			DHI-AP

Status Change	Last Test			Lifetime Production			Milk per Day Since 24 Mos of Age	Yield Deviation			Estimated Relative Producing Ability				
	Milk	% Fat	% Prot	Milk	Fat	Protein		Milk	Fat	Protein	Milk	Fat	Protein		
Left															
10/12/2020	13.6	2.8	3.3	78972	3062	2422	44	+781	+4	+11	+0	+0	+0		

ALLEN FARMS BERKELY PARIS

233

Barn Name 233

Index No. 233

S: PALMYRA BENDIG BERKELY

D: ALLEN FARMS DW PEANUT

Cow	Index No.	233	Breed	AY
	Barn Name	233		
	DHI ID	23WDX9965		
	Farm ID			
	Date of Birth	06/02/2018		
	PTA Milk	-264	PTA \$	-114
	PTA % Fat		Rel.	
	PTA Fat	-4	Pctile(NM)	
	PTA Prot	-2		

Sire	DHI ID	PTA Milk	+0
		PTA % Fat	
	Name or number	PTA Fat	+0
		PTA Prot	+0
		PTA \$	+0
	Breed	Rel.	
		Pctile(NM)	
Dam	DHI ID	PTA Milk	-326
		PTA % Fat	
	Name or number	PTA Fat	-4
		PTA Prot	+1
		PTA \$	-106
	Breed	Rel.	
	AY	Pctile(NM)	

Printed 5/13/2022 12:21:15 PM

Lactation Production Summary

Calving Date	Age at Calving Yr - Mo	Days Dry Before Calving	Rate	Days 3X	305 Day Lactation					Complete Lactation					Type of Record	
					Cond. Aff. Record	Milk	% Fat	Fat	% Prot	Prot	Days in Milk	Milk	Fat	Prot		Value Product
12/01/2020	2 - 5	0	B	0	0	18331	4.4	800	3.4	616	392	21868	985	758		DHI-AP
03/04/2022	3 - 9	66	C	0							63	6275	249	188		DHI-AP

Status Change	Last Test			Lifetime Production			Milk per Day Since 24 Mos of Age	Yield Deviation			Estimated Relative Producing Ability				
	Milk	% Fat	% Prot	Milk	Fat	Protein		Milk	Fat	Protein	Milk	Fat	Protein		
Calved															
03/04/2022	87.9	3.2	3.0	28143	1234	946	40	+587	+51	+52	+430	+35	+31		

Calf and Breeding Record

Calving Date	Body Wt (CWT)	Days Open	# B r	Successful Breeding Date	Sire		Calf		Persist. of Lact Curve	Avg SCCS for Lact.	ME Lactation			Herdmate Deviation		
					Identity	B r	Sex Disp	Identity			Milk	Fat	Prot	Milk	Fat	Prot
12/01/2020	11	176						KNOWN	115	1.7	20714	880	678	+459	+81	+62
03/04/2022	11	63	1	05/26/2021	14AY126		M7		0	0.1	20845	826	647	+831	+24	+31

DAMS PRODUCTION RECORD

Calving Date	Age at Calving Yr - Mo	Days Dry Before Calving	Rate	Days 3X	305 Day Lactation					Complete Lactation					Type of Record	
					Cond. Aff. Record	Milk	% Fat	Fat	% Prot	Prot	Days in Milk	Milk	Fat	Prot		Value Product
06/02/2018	2 - 2	0	B	0	0	14349	4.3	610	3.3	470	305	14349	610	470		DHI-AP
07/09/2019	3 - 3	97	D	0							267	13058	524	435		DHI-AP
06/27/2020	4 - 3	87	E	40							222	13338	524	423		DHI-AP

Status Change	Last Test			Lifetime Production			Milk per Day Since 24 Mos of Age	Yield Deviation			Estimated Relative Producing Ability				
	Milk	% Fat	% Prot	Milk	Fat	Protein		Milk	Fat	Protein	Milk	Fat	Protein		
Left															
02/03/2021	30.8	3.1	3.5	40745	1658	1328	39	-719	-8	+6	+0	+0	+0		

ALLEN FARMS PBR CHRISTIE

235

Barn Name 235

Index No. 235

S: PALMYRA BERKELY REAGAN-ET

D: ALLEN FARMS CLASSIC CHRISTIE

Cow	Index No.	235	Breed	AY	Sire	DHI ID	72394535	PTA Milk	-141
	Barn Name	235				Name or number	7AY111	PTA % Fat	+8
	DHI ID	23XXX0235				PTA Prot	-1	PTA \$	-67
	Farm ID					Rel.		Pctile(NM)	20
	Date of Birth	07/15/2018			Dam	DHI ID	23WCH8757	PTA Milk	+597
	PTA Milk	+0	PTA \$	+0		Name or number	CHRISTI	PTA % Fat	+13
	PTA % Fat	+0	Rel.			PTA Prot	+9	PTA \$	+146
	PTA Fat	+0	Pctile(NM)			Rel.		Pctile(NM)	

Printed 5/13/2022 12:21:16 PM

Lactation Production Summary

Calving Date	Age at Calving Yr - Mo	Days Dry Before Calving	Rate	Days 3X	305 Day Lactation					Complete Lactation					Type of Record	
					Cond. Aff. Record	Milk	% Fat	Fat	% Prot	Prot	Days in Milk	Milk	Fat	Prot		Value Product
02/01/2021	2 - 6	0	B	0	18952	4.2	791	2.8	538	454	25668	1160	777			DHI-AP

Status Change	Last Test			Lifetime Production			Milk per Day Since 24 Mos of Age	Yield Deviation			Estimated Relative Producing Ability					
	Milk	% Fat	% Prot	Milk	Fat	Protein		Milk	Fat	Protein	Milk	Fat	Protein			
Dry																
05/01/2022				25668	1160	777	39	+0	+0	+0	+616	+29	-13			

Calf and Breeding Record

Calving Date	Body Wt (CWT)	Days Open	# B r	Successful Breeding Date	Sire		Calf		Persist. of Lact Curve	Avg. SCCS for Lact.	ME Lactation			Herdmate Deviation		
					Identity	B r	Sex Disp	Identity			Milk	Fat	Prot	Milk	Fat	Prot
02/01/2021	9	244					M7		117	0.7	21795	886	603	+1231	+58	-25
			4	10/03/2021	9AY133	AY	Due	07/12/2022								

DAMS PRODUCTION RECORDS

Calving Date Mo-Day-Yr	Age at Calving	Days Dry	Rating	Days 3X	CAR	305 Day Lactation					Complete Lactation					Type of Record			
						Milk	% Fat	Fat	% Pro	Pro	DIM	Milk	% Fat	Fat	% Pro		Pro	Value Product	Inc Over Feed Cost
03-22-14	2-02		B			16,188	3.8	620	2.9	461	409	21,279	3.9	840	2.9	626			DHI-AP
07-24-15	3-06	80	A			20,337	3.7	753	2.9	589	313	20,794	3.7	768	2.9	603			DHI-AP
08-08-16	4-06	68	A								304	22,592	3.8	852	2.8	641			DHI-AP
08-11-17	5-06	64	A								278	20,749	3.8	779	2.9	611			DHI-AP
07-15-18	6-05	60	A			21,215	3.6	771	2.9	613	443	27,975	3.7	1023	2.9	820			DHI-AP
12-30-19	7-11	90			X						17	945	7.6	72	3.7	35			DHI-AP

Status		This Test			Lifetime Production			Milk/Day Since 24 mo.	Yield Deviation			ERPA		
Change	Date	Milk	%Fat	%Pro	Milk	Fat	Pro		Milk	Fat	Pro	Milk	Fat	Pro
Not Rprtd	01-15-20				114,334	4334	3336	52.2	+1925	+50	+35			

ALLEN FARMS SAMSON PRESTIGE

246

S: VISSERDALE SELWOOD P
SAMSON

D: ALLEN FARMS DW PANDA

Barn Name 246 Index No. 246

Cow	Index No.	246	Breed	AY	Sire	DHI ID	840003128940	PTA Milk	+427
	Barn Name	246				Name or number	7AY117	PTA % Fat	+5
	DHI ID	23XXX0246						PTA Prot	+16
	Farm ID					Breed	AY	PTA \$	+32
	Date of Birth	09/19/2018			Dam	DHI ID	23WDW9260	Rel.	
	PTA Milk	+0	PTA \$	+0		Name or number	PANDA	Pctile(NM)	50
	PTA % Fat		Rel.					PTA Milk	-493
	PTA Fat	+0	Pctile(NM)					PTA % Fat	-24
	PTA Prot	+0			Breed	AY	PTA Prot	-10	
							PTA \$	-203	
							Rel.		
							Pctile(NM)		

Printed 5/13/2022 12:21:19 PM

Lactation Production Summary

Calving Date	Age at Calving Yr - Mo	Days Dry Before Calving	Rate	Days 3X	305 Day Lactation					Complete Lactation					Type of Record	
					Cond. Aff. Record	Milk	% Fat	Fat	% Prot	Prot	Days in Milk	Milk	Fat	Prot		Value Product
11/06/2021	3 - 1	0	C	0						181	10963	486	353			DHI-AP

Status Change	Last Test			Lifetime Production			Milk per Day Since 24 Mos of Age	Yield Deviation			Estimated Relative Producing Ability				
	Milk	% Fat	% Prot	Milk	Fat	Protein		Milk	Fat	Protein	Milk	Fat	Protein		
Calved															
11/06/2021	64.9	4.9	3.1	10963	486	353	18	+0	+0	+0	-362	+23	-7		

Calf and Breeding Record

Calving Date	Body Wt (CWT)	Days Open	# B	Successful Breeding Date	Sire			Calf			Persist. of Lact Curve	Avg. SCCS for Lact.	ME Lactation			Herdmate Deviation		
					Identity	B r	Sex Disp	Identity						Milk	Fat	Prot	Milk	Fat
11/06/2021	10	142						M7			111	2.0	18513	822	585	-748	+47	-13
			3	03/28/2022	7AN556	AN	Due	01/04/2023										

Dams Production Record

Calving Date	Age at Calving Yr - Mo	Days Dry Before Calving	Rate	Days 3X	305 Day Lactation					Complete Lactation					Type of Record	
					Cond. Aff. Record	Milk	% Fat	Fat	% Prot	Prot	Days in Milk	Milk	Fat	Prot		Value Product
					0											
04/23/2017	1 - 10	0	C	0	14374	3.5	506	3.2	462	439	20385	748	669			DHI-AP
09/19/2018	3 - 3	75	D	0						297	15516	457	488			DHI-AP
09/10/2019	4 - 3	59	D	0						295	16256	539	539			DHI-AP
10/29/2020	5 - 4	120	E	40						201	13513	483	426			DHI-AP

Status Change	Last Test			Lifetime Production			Milk per Day Since 24 Mos of Age	Yield Deviation			Estimated Relative Producing Ability		
	Milk	% Fat	% Prot	Milk	Fat	Protein		Milk	Fat	Protein	Milk	Fat	Protein
Left													
05/17/2021	27.2	3.6	2.8	65670	2227	2122	45	-864	-65	-15	+0	+0	+0

247

ALLEN FARMS PREDATOR PISTOL

S: FOREVER SCHOOL PREDATOR

D: ALLEN FARMS CHEX PALOOZA

Barn Name PISTOL

Index No. 247

Cow	Index No.	247	Breed	AY
	Barn Name	PISTOL		
	DHI ID	23XXX0247		
	Farm ID			
	Date of Birth	09/20/2018		
	PTA Milk	+0	PTA \$	+0
	PTA % Fat		Rel.	
	PTA Fat	+0		
	PTA Prot	+0	Pctile(NM)	

Sire	DHI ID	124000011119	PTA Milk	+22
	Name or number	147AY8111	PTA % Fat	-1
	Breed	AY	PTA Prot	-3
			PTA \$	-128
			Rel.	
Dam	DHI ID	23ALF0091	PTA Milk	+0
	Name or number	91	PTA % Fat	+0
	Breed	XX	PTA Prot	+0
			PTA \$	+0
			Rel.	
		Pctile(NM)		

Lactation Production Summary

Calving Date	Age at Calving Yr - Mo	Days Dry Before Calving	Rate	Days 3X	305 Day Lactation					Complete Lactation					Type of Record	
					Cond. Aff. Record	Milk	% Fat	Fat	% Prot	Prot	Days in Milk	Milk	Fat	Prot		Value Product
06/26/2021	2 - 9	0	A	0	17702	5.0	892	3.3	579	314	18047	908	592			DHI-AP

Status Change	Last Test			Lifetime Production			Milk per Day Since 24 Mos of Age	Yield Deviation			Estimated Relative Producing Ability		
Calved	Milk	% Fat	% Prot	Milk	Fat	Protein		Milk	Fat	Protein	Milk	Fat	Protein
06/26/2021	36.3	4.2	3.8	18047	908	592	30	+0	+0	+0	+716	+131	+39

Calf and Breeding Record

Calving Date	Body Wt (CWT)	Days Open	# Br	Successful Breeding Date	Sire		Calf		Persist. of Lact Curve	Avg. SCCS for Lact.	ME Lactation			Herdmate Deviation		
					Identity	Br	Sex Disp	Identity			Milk	Fat	Prot	Milk	Fat	Prot
06/26/2021	10	262					M7		105	2.7	21065	1044	677	+1432	+262	+77
			4	03/15/2022	9AY133	AY	Due	12/22/2022								

DAMS PRODUCTION RECORD

Calving Date	Age at Calving Yr - Mo	Days Dry Before Calving	Rate	Days 3X	305 Day Lactation					Complete Lactation					Type of Record	
					Cond. Aff. Record	Milk	% Fat	Fat	% Prot	Prot	Days in Milk	Milk	Fat	Prot		Value Product
08/07/2017	2 - 2	0	B	0	15898	3.9	614	2.9	468	347	16923	662	504			DHI-AP
09/20/2018	3 - 3	62	E	0	12021	4.2	505	3.3	392	311	12202	513	398			DHI-AP
10/01/2019	4 - 4	65	E	0						297	16194	621	487			DHI-AP
09/30/2020	5 - 3	68	E	0						283	15195	645	463			DHI-AP
09/19/2021	6 - 3	71	E	0						229	14378	624	433			DHI-AP

Status Change	Last Test			Lifetime Production			Milk per Day Since 24 Mos of Age	Yield Deviation			Estimated Relative Producing Ability		
Calved	Milk	% Fat	% Prot	Milk	Fat	Protein		Milk	Fat	Protein	Milk	Fat	Protein
09/19/2021	36.3	3.8	3.3	71800	3065	2295	42	+0	+0	+0	5700	204	174

ALLEN FARMS PBR BELIEVE

256

Barn Name 256

Index No. 256

S PALMYRA BERKELY REAGAN

D HOMESTEAD ACRES TSB BABBY

Cow	Index No.	256	Breed	AY
	Barn Name	256		
	DHI ID	23EVJ0702		
	Farm ID			
Sire	DHI ID	72394535	PTA Milk	-141
	Name or number	7AY111	PTA % Fat	+8
			PTA Fat	-1
			PTA \$	-67
	Breed	AY	Rel.	20
Dam	DHI ID	23WDW9225	PTA Milk	+0
	Name or number	BABBY	PTA % Fat	+0
			PTA Fat	+0
			PTA \$	+0
	Breed	AY	Rel.	20

Printed 5/13/2022 12:21:22 PM

Lactation Production Summary

Calving Date	Age at Calving Yr - Mo	Days Dry Before Calving	Rate	Days 3X	305 Day Lactation					Complete Lactation					Type of Record
					Cond. Aff. Record	Milk	% Fat	Fat	% Prot	Prot	Days in Milk	Milk	Fat	Prot	
12/14/2020	1 - 11	0	C	0	16331	4.1	677	3.0	490	331	17660	739	536		DHI-AP
01/12/2022	3 - 0	63	A	0						114	10360	481	297		DHI-AP

Status Change	Last Test			Lifetime Production			Milk per Day Since 24 Mos of Age	Yield Deviation			Estimated Relative Producing Ability		
Calved	Milk	% Fat	% Prot	Milk	Fat	Protein		Milk	Fat	Protein	Milk	Fat	Protein
01/12/2022	91.7	2.4	2.8	28020	1220	833	56	+179	+5	-13	+1090	+46	+11

Calf and Breeding Record

Calving Date	Body Wt (CWT)	Days Open	# Br	Successful Breeding Date	Sire		Calf		Persist. of Lact Curve	Avg. SCCS for Lact.	ME Lactation			Herdmate Deviation		
					Identity	Br	Sex Disp	Identity			Milk	Fat	Prot	Milk	Fat	Prot
12/14/2020	10	112					MB	RN DE	102	0.8	19597	792	573	-733	-13	-50
01/12/2022	11	109	1	04/05/2021	7AY119		M7		88	0.1	24070	956	701	+4002	+151	+83
			1	05/01/2022	9AY129	AY	Due	02/07/2023								

DAMS PRODUCTION RECORD

Calving Date	Age at Calving Yr - Mo	Days Dry Before Calving	Rate	Days 3X	305 Day Lactation					Complete Lactation					Type of Record
					Cond. Aff. Record	Milk	% Fat	Fat	% Prot	Prot	Days in Milk	Milk	Fat	Prot	
10/07/2016	2 - 10	0	B	0						291	16506	630	491		DHI-AP
09/22/2017	3 - 9	59	B	0	18443	3.4	636	3.1	563	376	21874	755	677		DHI-AP
12/24/2018	5 - 0	82	B	0	20338	3.5	711	2.9	594	310	20526	715	599		DHI-AP
01/01/2020	6 - 0	63	C	40	21030	3.6	748	2.9	617	323	21777	773	640		DHI-AP

Status Change	Last Test			Lifetime Production			Milk per Day Since 24 Mos of Age	Yield Deviation			Estimated Relative Producing Ability		
Left	Milk	% Fat	% Prot	Milk	Fat	Protein		Milk	Fat	Protein	Milk	Fat	Protein
11/18/2020	43.1	3.3	3.2	80683	2873	2407	45	+577	-20	+0	+0	+0	+0

ALLEN FARMS MAGELLAN
DUCHESS

264

Barn Name DUTCHES

Index No. 264

S: DES COTEAUX MAGELLAN

D: ALLEN FARMS SMARK DAHLIA

Cow	Index No.	264	Breed	AY
	Barn Name	DUTCHES		
	DHI ID	100754401		
	Farm ID			
Date of Birth	03/02/2019			
PTA Milk	+227	PTA \$	+115	
PTA % Fat		Rel.		
PTA Fat	+16			
PTA Prot	+19	Pctile(NM)		

Sire	DHI ID	124000110237	PTA Milk	+1072
	Name or number	7AY121	PTA % Fat	+46
	Breed	AY	PTA Fat	+46
			PTA \$	+406
		Rel.		
		Pctile(NM)	80	
Dam	DHI ID	23EKA5420	PTA Milk	+239
	Name or number	DAHLIA	PTA % Fat	+6
	Breed	AY	PTA Fat	+9
			PTA \$	-8
		Rel.		
		Pctile(NM)		

Printed 5/13/2022 12:21:24 PM

Lactation Production Summary

Calving Date	Age at Calving Yr - Mo	Days Dry Before Calving	Rate	Days 3X	305 Day Lactation					Complete Lactation					Type of Record	
					Cond. Aff. Record	Milk	% Fat	Fat	% Prot	Prot	Days in Milk	Milk	Fat	Prot		Value Product
03/01/2021	1 - 11	0	C	0						264	14115	614	469			DHI-AP
01/06/2022	2 - 10	47	C	0						120	8135	322	278			DHI-AP

Status Change	Last Test			Lifetime Production			Milk per Day Since 24 Mos of Age	Yield Deviation			Estimated Relative Producing Ability					
	Milk	% Fat	% Prot	Milk	Fat	Protein		Milk	Fat	Protein	Milk	Fat	Protein			
Calved																
01/06/2022	66.9	3.6	3.3	22250	936	747	52	-3	+37	+45	-347	-1	+30			

Calf and Breeding Record

Calving Date	Body Wt (CWT)	Days Open	# Br	Successful Breeding Date	Sire		Calf		Persist. of Lact Curve	Avg. SCCS for Lact.	ME Lactation			Herdmate Deviation		
					Identity	Br	Sex Disp	Identity			Milk	Fat	Prot	Milk	Fat	Prot
03/01/2021	9	35	1	05/23/2020	147AY8111		F	2069	101	1.6	19608	860	648	-1341	+13	+12
01/06/2022	10	120	1	04/05/2021	14AY126		M7		103	1.1	19999	774	689	+280	-16	+73

DAMS PRODUCTION RECORD

Calving Date Mo-Day-Yr	Age at Calving	Days Dry	Rating	Days 3X	CAR	305 Day Lactation					Complete Lactation					Value Product	Inc Over Feed Cost	Type of Record	
						Milk	% Fat	Fat	% Pro	Pro	DIM	Milk	% Fat	Fat	% Pro				Pro
02-17-12	2-03		B			15,352	3.9	599	3.2	492	351	17,027	4.0	676	3.3	557			DHI-AP
04-24-13	3-05	81	A			19,616	3.5	690	3.2	617	343	21,103	3.6	755	3.2	673			DHI-AP
07-11-14	4-07	100	B			16,531	4.0	663	3.2	529	319	17,229	4.0	688	3.2	554			DHI-AP
07-26-15	5-08	61	A			19,617	3.6	700	3.0	597	311	19,823	3.6	706	3.0	604			DHI-AP
08-16-16	6-09	76	A			20,827	3.6	742	3.1	655	414	25,043	3.7	921	3.2	803			DHI-AP
02-06-18	8-02	125	C			19,472	3.4	659	2.9	555	325	20,073	3.5	693	2.9	590			DHI-AP
03-02-19	9-03	64	E	5							236	14,204	3.6	506	2.8	394			DHI-AP

Status		This Test			Lifetime Production			Milk/Day Since 24 mo.	Yield Deviation			ERPA		
Change	Date	Milk	%Fat	%Pro	Milk	Fat	Pro		Milk	Fat	Pro	Milk	Fat	Pro
Injy/Other	10-23-19				134,502	4945	4175	46.4	+855	+9	+27			

ALLEN FARMS PREDATOR
PEANUT BUTTER

277

Barn Name 277

Index No. 277

S: FOREVER SCHOON PREDATOR

D: ALLEN FARMS DW PEANUT

Cow	Index No.	277	Breed	
	Barn Name	277	AY	
	DHI ID	23XXX0277		
	Farm ID			
	Date of Birth	07/09/2019		
	PTA Milk	+0	PTA \$	+0
PTA % Fat		Rel.		
PTA Fat	+0			
PTA Prot	+0	Pctile(NM)		

Sire	DHI ID	124000011119	PTA Milk	+22
	Name or number	147AY8111	PTA % Fat	-1
	Breed	AY	PTA Fat	-3
			PTA \$	-128
			Rel.	
Dam	DHI ID	100719903	PTA Milk	-326
	Name or number	PEANUT	PTA % Fat	-4
	Breed	AY	PTA Prot	+1
			PTA \$	-106
			Rel.	
		Pctile(NM)		

Lactation Production Summary

Calving Date	Age at Calving Yr - Mo	Days Dry Before Calving	Rate	Days 3X	305 Day Lactation					Complete Lactation					Type of Record		
					Cond. Aff. Record	Milk	% Fat	Fat	% Prot	Prot	Days in Milk	Milk	Fat	Prot		Value Product	Income Ovr Feed Cost
09/10/2021	2 - 2	0	D	0							238	11502	506	383			DHI-AP

Status Change	Last Test			Lifetime Production			Milk per Day Since 24 Mos of Age	Yield Deviation			Estimated Relative Producing Ability		
	Milk	% Fat	% Prot	Milk	Fat	Protein		Milk	Fat	Protein	Milk	Fat	Protein
Calved 09/10/2021	47.8	4.5	3.5	11502	506	383	38	+0	+0	+0	-882	-29	-15

Calf and Breeding Record

Calving Date	Body Wt (CWT)	Days Open	# Br	Successful Breeding Date	Sire		Calf		Persist. of Lact Curve	Avg. SCCS for Lact.	ME Lactation			Herdmate Deviation		
					Identity	Br	Sex Disp	Identity			Milk	Fat	Prot	Milk	Fat	Prot
09/10/2021	9	69	1	12/06/2020	7AY119		F	9762	105	2.3	17505	746	568	-1764	-58	-29
			1	11/18/2021	9AY133	AY	Due	08/27/2022								

DAMS PRODUCTION RECORD

Calving Date	Age at Calving Yr - Mo	Days Dry Before Calving	Rate	Days 3X	305 Day Lactation					Complete Lactation					Type of Record	
					Cond. Aff. Record	Milk	% Fat	Fat	% Prot	Prot	Days in Milk	Milk	Fat	Prot		Value Product
				0												
06/02/2018	2 - 2	0	B	0	14349	4.3	610	3.3	470	305	14349	610	470			DHI-AP
07/09/2019	3 - 3	97	D	0						267	13058	524	435			DHI-AP
06/27/2020	4 - 3	87	E	40						222	13338	524	423			DHI-AP

Status Change	Last Test			Lifetime Production			Milk per Day Since 24 Mos of Age	Yield Deviation			Estimated Relative Producing Ability		
	Milk	% Fat	% Prot	Milk	Fat	Protein		Milk	Fat	Protein	Milk	Fat	Protein
Left 02/03/2021	30.8	3.1	3.5	40745	1658	1328	39	-719	-8	+6	+0	+0	+0

ALLEN FARMS KINGSIRE Demi

279

Barn Name 279

Index No. 279

S: BEAR Ayr Distinct
KINGSIRE

D: ALLEN FARMS TSB DELILAH

Cow	Index No.	279	Breed	AY	Sire	DHI ID	PTA Milk	-386
	Barn Name	279				840003132388	PTA % Fat	
	DHI ID	23XXX0279				Name or number	PTA Fat	-14
	Farm ID					7AY120	PTA Prot	+0
	Date of Birth	07/23/2019				PTA \$	-142	
	PTA Milk	+0	PTA \$	+0	Dam	DHI ID	PTA Milk	+0
	PTA % Fat		Rel.			23ALF0073	PTA % Fat	
	PTA Fat	+0				Name or number	PTA Fat	+0
	PTA Prot	+0	Pctile(NM)			DELILAH	PTA Prot	+0
						PTA \$	+0	
					Breed	Rel.		
					XX	Pctile(NM)		

Printed 5/13/2022 12:21:27 PM

Lactation Production Summary

Calving Date	Age at Calving Yr - Mo	Days Dry Before Calving	Rate	Days 3X	305 Day Lactation					Complete Lactation				Type of Record			
					Cond. Aff. Record	Milk	% Fat	Fat	% Prot	Prot	Days in Milk	Milk	Fat		Prot	Value Product	Income Ovr Feed Cost
01/04/2022	2 - 5	0	C	0							122	8343	311	247			DHI-AP

Status Change	Last Test			Lifetime Production			Milk per Day Since 24 Mos of Age	Yield Deviation			Estimated Relative Producing Ability						
	Milk	% Fat	% Prot	Milk	Fat	Protein		Milk	Fat	Protein	Milk	Fat	Protein				
Calved																	
01/04/2022	66.9	3.7	3.0	8343	311	247	29	+0	+0	+0	+463	-3	+3				

Calf and Breeding Record

Calving Date	Body Wt (CWT)	Days Open	# B r	Successful Breeding Date	Sire		Calf		Persist. of Lact Curve	Avg. SCCS for Lact.	ME Lactation			Herdmate Deviation		
					Identity	B r	Sex Disp	Identity			Milk	Fat	Prot	Milk	Fat	Prot
01/04/2022	9	76					M7		100	2.1	20637	786	616	+926	-6	+6
			1	03/21/2022	9AY133	AY	Due	12/28/2022								

DAMS PRODUCTION RECORD

Calving Date Mo-Day-Yr	Age at Calving	Days Dry	Rating	Days 3X	CAR	305 Day Lactation					Complete Lactation					Type of Record		
						Milk	% Fat	Fat	% Pro	Pro	DIM	Milk	% Fat	Fat	% Pro		Pro	Value Product
03-11-17	2-00		B			15,719	4.1	650	3.2	499	358	17,882	4.2	759	3.2	580		DHI-AP
05-10-18	3-02	67	D			13,857	4.0	551	3.2	440	328	14,892	4.0	600	3.2	481		DHI-AP
07-23-19	4-04	111	E		X						205	11,629	4.3	504	3.1	363		DHI-AP

Status		This Test			Lifetime Production			Milk/Day Since 24 mo.	Yield Deviation			ERPA		
Change	Date	Milk	%Fat	%Pro	Milk	Fat	Pro		Milk	Fat	Pro	Milk	Fat	Pro
Not Rprtd	02-12-20				44,403	1863	1424	41.3						

ALLEN FARMS PREDATOR DEE

288

Barn Name 288

Index No. 288

S: FOREVER SCHOOL PREDATOR

D: ALLEN FARMS BLUE SKY DEE

Cow	Index No.	288	Breed	AY
	Barn Name	288		
	DHI ID	23EVJ0738		
	Farm ID			
	Date of Birth	09/03/2019		
	PTA Milk	-189	PTA \$	-158
	PTA % Fat		Rel.	
	PTA Fat	-8	Pctile(NM)	
	PTA Prot	-5		

Sire	DHI ID	124000011119	PTA Milk	+22
			PTA % Fat	
	Name or number	147AY8111	PTA Fat	-1
			PTA Prot	-3
			PTA \$	-128
	Breed	AY	Rel.	
			Pctile(NM)	10
Dam	DHI ID	100564857	PTA Milk	-401
			PTA % Fat	
	Name or number	DEE	PTA Fat	-15
			PTA Prot	-8
			PTA \$	-185
	Breed	AY	Rel.	
			Pctile(NM)	

Printed 5/13/2022 12:53:32 PM

Lactation Production Summary

Calving Date	Age at Calving Yr - Mo	Days Dry Before Calving	Rating	Days 3X	305 Day Lactation					Complete Lactation					Type of Record		
					Cond. Aff. Record	Milk	% Fat	Fat	% Prot	Prot	Days in Milk	Milk	Fat	Prot		Value Product	Income Ovr Feed Cost
01/03/2022	2 - 4	0	C	0							123	7643	352	231			DHI-AP

Status Change	Last Test			Lifetime Production			Milk per Day Since 24 Mos of Age	Yield Deviation			Estimated Relative Producing Ability		
	Milk	% Fat	% Prot	Milk	Fat	Protein		Milk	Fat	Protein	Milk	Fat	Protein
01/03/2022	59.2	4.1	3.1	7643	352	231	31	+0	+0	+0	-418	+20	-18

Calf and Breeding Record

Calving Date	Body Wt (CWT)	Days Open	# Br	Successful Breeding Date	Sire		Calf		Persist. of Lact Curve	Avg. SCCS for Lact.	ME Lactation			Herdmate Deviation		
					Identity	Br	Sex Disp	Identity			Milk	Fat	Prot	Milk	Fat	Prot
01/03/2022	9	73					M7		100	0.3	18844	832	574	-836	+40	-35
			1	03/17/2022	9AY133	AY	Due	12/24/2022								

DAMS PRODUCTION RECORD

Calving Date	Age at Calving	Days Dry	Rating	Days 3X	CAR	305 Day Lactation					Complete Lactation					Type of Record		
						Milk	% Fat	Fat	% Pro	Pro	DIM	Milk	% Fat	Fat	% Pro		Pro	Value Product
10-05-10	2-00		B								280	13,332	4.3	578	3.5	466		DHI-AP
09-09-11	3-00	59	A			15,589	4.4	679	3.4	537	325	15,976	4.4	702	3.5	554		DHI-AP
10-19-12	4-01	81	B			16,355	4.7	764	3.4	560	308	16,413	4.7	767	3.4	562		DHI-AP
10-14-13	5-01	52	D			15,156	3.8	580	3.2	486	310	15,205	3.8	583	3.2	487		DHI-AP
12-25-14	6-03	127	B			18,252	3.7	676	3.0	551	341	18,799	3.7	700	3.0	573		DHI-AP
05-06-16	7-07	157	C			18,244	3.8	687	3.1	561	362	19,036	3.8	719	3.1	596		DHI-AP
07-25-17	8-10	83	E			12,434	3.8	469	3.5	435	346	13,208	3.7	495	3.5	459		DHI-AP
09-18-18	10-00	74	D								290	14,238	3.9	554	3.1	443		DHI-AP
Status		This Test		Lifetime Production			Milk/Day Since 24 mo.		Yield Deviation			ERPA						
Change	Date	Milk	% Fat	% Pro	Milk	Fat	Pro	Milk	Fat	Pro	Milk	Fat	Pro	Milk	Fat	Pro		
Died	09-04-19				126,207	5098	4140	38.4	-619	-24	-6							

ALLEN FARMS BERKELY PAISLEY

290

Barn Name 290

Index No. 290

S: PALMYRA BENDIG BERKELY

D: ALLEN FARMS DW PANDA

Cow	Index No.	290	Breed	AY
	Barn Name	290		
	DHI ID	23EVJ0740		
	Farm ID			
	Date of Birth	09/10/2019		
	PTA Milk	-380	PTA \$	-167
PTA % Fat		Rel.		
PTA Fat	-13	Pctile(NM)		
PTA Prot	-8			

Sire	DHI ID	69261805	PTA Milk	-411
	Name or number	7AY93	PTA % Fat	-19
	Breed	AY	PTA Fat	-20
Dam	DHI ID	23WDW9260	PTA Prot	-260
	Name or number	PANDA	Rel.	
	Breed	AY	Pctile(NM)	10
	DHI ID		PTA Milk	-493
	Name or number		PTA % Fat	-24
		PTA Fat	-10	
		PTA Prot	-203	
		Rel.		
		Pctile(NM)		

on Production Summary

Calving Date	Age at Calving Yr - Mo	Days Dry Before Calving	Lactation	Lactation					Complete Lactation					Type of Record			
				Cond. Aff. Record	Milk	% Fat	Fat	% Prot	Prot	Days in Milk	Milk	Fat	Prot		Value Product	Income Ovr Feed Cost	
12/01/2021	2 - 2	0	E	0							156	7544	354	256			DHI-AP

Status Change	Last Test			Lifetime Production			Milk per Day Since 24 Mos of Age	Yield Deviation			Estimated Relative Producing Ability						
	Milk	% Fat	% Prot	Milk	Fat	Protein		Milk	Fat	Protein	Milk	Fat	Protein				
Calved																	
12/01/2021	38.2	4.0	3.4	7544	354	256	32	+657	+82	+58	-2954	-93	-71				

Calf and Breeding Record

Calving Date	Body Wt (CWT)	Days Open	# B r	Successful Breeding Date	Sire		Calf		Persist. of Lact Curve	Avg. SCCS for Lact.	ME Lactation			Herdmate Deviation		
					Identity	B r	Sex Disp	Identity			Milk	Fat	Prot	Milk	Fat	Prot
12/01/2021	9	14					F	5	84	2.5	13821	608	468	-5908	-185	-142
			1	12/15/2021	94Y/33	BULL	AY	Due								

DAMS PRODUCTION RECORD

Calving Date	Age at Calving Yr - Mo	Days Dry Before Calving	Lactation	305 Day Lactation					Complete Lactation					Type of Record	
				Cond. Aff. Record	Milk	% Fat	Fat	% Prot	Prot	Days in Milk	Milk	Fat	Prot		Value Product
04/23/2017	1 - 10	0	C	0	14374	3.5	506	3.2	462	439	20385	748	669		DHI-AP
09/19/2018	3 - 3	75	D	0						297	15516	457	488		DHI-AP
09/10/2019	4 - 3	59	D	0						295	16256	539	539		DHI-AP
10/29/2020	5 - 4	120	E	40						201	13513	483	426		DHI-AP

Status Change	Last Test			Lifetime Production			Milk per Day Since 24 Mos of Age	Yield Deviation			Estimated Relative Producing Ability					
	Milk	% Fat	% Prot	Milk	Fat	Protein		Milk	Fat	Protein	Milk	Fat	Protein			
Left																
05/17/2021	27.2	3.6	2.8	65670	2227	2122	45	-864	-65	-15	+0	+0	+0			

CERTIFICATE OF REGISTRATION
Ayrshire Breeders' Association

98.84% AYRSHIRE

Registry No: 100761076 Sex: FEMALE Born: 17 APR 2020
Name: ALLEN FARMS PREDATOR SAVAGE
Tattoo (right): AN1H Tattoo (left): AN1H



Bred By: 886146
PETERS, NIKAYLA B.
C/O JENNI WOLFE
3480 MALLORY RD
COCHRANTON PA 16314

Bred By:

PALMYRA TRI-STAR 150440
PALMYRA TRI-STAR REALITY 100369452
GALNEY-EPC L.H. ROSY-ET 100110610
Sire: FOREVER SCHOON PREDATOR-ET 11119921
KILDARE JERRY-ET 10002432
FOREVER SCHOON PRETTY 7441960
FOREVER SCHOON BK PORSHA-ET 8237763

Original Owner: 886146
PETERS, NIKAYLA B.
C/O JENNI WOLFE
3480 MALLORY RD
COCHRANTON PA 16314

Original Owner:

PALMYRA TRI-STAR 150440
PALMYRA TRI-STAR BURDETTE-ET 100419568
PALMYRA RENO BETHANY-ET 100101191
Dam: ALLEN FARMS TSB SAVANNAH 100732683
ALLEN FARMS SMARK MR CLASSIC 100637063
ALLEN FARMS CLASSIC SASSY 100637456
ALLEN FARMS PATTON SATIN 100597431

Current Owner: 891682
WOLFE, BARRETT L
3840 MALLORY RD
COCHRANTON PA 16314

Current Owner:

OWNER

Validating Signature _____

This Certificate is issued, and remains at all time the property of the Ayrshire Breeders' Association, for the identification of the animal hereon described and registered in the Ayrshire Herdbook according to particulars provided by the breeder.

This Certificate is validated by the signature of the owner affixed hereto, who attests to the accuracy and completeness of breeding details and the identification of this animal as printed or depicted hereon.

This Certificate remains valid only while in the possession of the titleholder currently recorded in the Herdbook, and indicated above or on the reverse as owner or breeder. The reverse side must be endorsed and the Certificate returned to the ABA in the event of a change of ownership, or on the death or deregistration of this animal.

The Certificate identifies an Ayrshire animal registered in accordance with the ABA bylaws, and which not be portrayed as grade or unregistered until such time as this document is surrendered to the Ayrshire Breeders' Association, 1224 Alton Darby Creek Rd., Suite B, Columbus, OH 43228.

<<< PLEASE SIGN HERE

Certifying that the details on this document are correct and accurate to the best of your knowledge and belief

IDENTIFICATION BOX

In addition to an official tattoo or American ID, breeders may choose to affix an additional identification by photo or sketch to this space.

THIS DOCUMENT IS INVALID UNLESS THE SIGNATURE OF THE OWNER APPEARS HERE AND A TATTOO OR AMERICAN ID NUMBER APPEARS ABOVE.



CERTIFICATE OF REGISTRATION Ayrshire Breeders' Association

97.68% AYRSHIRE

Registry No: 100767317 Sex: FEMALE Born: 26 JUL 2020
Name: ALLEN FARMS KSIRE CHA CHA
Tattoo (right): ANZH Tattoo (left): ANZH

Bred By: 876002
ALLEN, KATIE S.
11561 ST. HWY. 285
CONNEAUT LAKE PA 16316

Original Owner: 876002
ALLEN, KATIE S.
11561 ST. HWY. 285
CONNEAUT LAKE PA 16316

Current Owner: 886146
PETERS, NIKAYLA B.
C/O JENNI WOLFE
3480 MALLORY RD
COCHRANTON PA 16314

MAPLEBURN REMINGTON -ET 10316238
FAMILY-AF -AYR DISTINCTION 100578700
FAMILY-AF -AYR CORNELIUS DAISY 1001366647
Sire: BEAR-AYR DISTINCT KINGSIRE 840003132388711
BLACKADDAR B B KELLOGG 777850
DALTONDALE BBK KUDDLER 100483655
DALTONDALE S. KENDRA 1017990

PALMYRA TRI-STAR 150440
PALMYRA TRI-STAR BURDETTE-ET 100419568
PALMYRA RENO BETHANY-ET 100101191
Dam: ALLEN FARMS TSB CHOO CHOO 100729209
VISSERDALE SWEDMARK-ET-S 100212415 (10316326)
ALLEN FARMS SWEDMARK CHERRY 100528460
ALLEN FARMS RECRUITER CHELSEY 100199268

OWNER

Validating Signature

This Certificate is issued, and remains at all time the property of the Ayrshire Breeders' Association, for the identification of the animal hereon described and registered in the Ayrshire Herdbook according to particulars provided by the breeder.

This Certificate is validated by the signature of the owner affixed hereto, who attests to the accuracy and completeness of breeding details and the identification of this animal as printed or depicted hereon.

This Certificate remains valid only while in the possession of the titleholder currently recorded in the Herdbook, and indicated above or on the reverse as owner or breeder. The reverse side must be endorsed and the Certificate returned to the ABA in the event of a change of ownership, or on the death or deregistration of this animal.

The Certificate identifies an Ayrshire animal registered in accordance with the ABA bylaws, and which not be portrayed as grade or unregistered until such time as this document is surrendered to the Ayrshire Breeders' Association, 1224 Alton Darby Creek Rd., Suite B, Columbus, OH 43228.

<<< PLEASE SIGN HERE

Certifying that the details on this document are correct and accurate to the best of your knowledge and belief

IDENTIFICATION BOX

In addition to an official tattoo or American ID, breeders may choose to affix an additional identification by photo or sketch to this space.

THIS DOCUMENT IS INVALID UNLESS THE SIGNATURE OF THE OWNER APPEARS HERE AND A TATTOO OR AMERICAN ID NUMBER APPEARS ABOVE.



CERTIFICATE OF REGISTRATION
Ayrshire Breeders' Association

PUREBRED AYRSHIRE

Registry No: 100767296 Sex: FEMALE Born: 24 SEP 2020
Name: ALLEN FARMS PBR PRISM
Tattoo (right): AN3H Tattoo (left): AN3H

Bred By: 886146
PETERS, NIKAYLA B.
C/O JENNI WOLFE
3480 MALLORY RD
COCHRANTON PA 16314

Original Owner: 886146
PETERS, NIKAYLA B.
C/O JENNI WOLFE
3480 MALLORY RD
COCHRANTON PA 16314

Current Owner: 890945
WOLFE, TATUM
3480 MALLORY RD
COCHRANTON PA 16314

Sire: PALMYRA BERKELY REAGAN-ET 840003123620602
PALMYRA POKER LH ROSY-ET 66596106
GALNEY-EPC L.H. ROSY-ET 100110610
PALMYRA JERRY BENDIG-ET 100323168
PALMYRA BENDIG BERKELY-ET 69261805
PALMYRA REALITY BONNIE-ET 65003767
DES CHAMOIS POKER-ET 8401621

Dam: ALLEN FARMS TSB PASSION 100680520
PALMYRA TRI-STAR 150440
PALMYRA TRI-STAR BURDETTE-ET 100419568
PALMYRA RENO BETHANY-ET 100101191
PALMYRA PARDNER BALTIMORE-ET 100279731
BREMEN BALTIMORE'S PRINCESSE 100566596
BREMEN CELESTE 100465514

OWNER

Validating Signature

This Certificate is issued, and remains at all time the property of the Ayrshire Breeders' Association, for the identification of the animal hereon described and registered in the Ayrshire Herdbook according to particulars provided by the breeder.

This Certificate is validated by the signature of the owner affixed hereto, who attests to the accuracy and completeness of breeding details and the identification of this animal as printed or depicted hereon.

This Certificate remains valid only while in the possession of the titleholder currently recorded in the Herdbook, and indicated above or on the reverse as owner or breeder. The reverse side must be endorsed and the Certificate returned to the ABA in the event of a change of ownership, or on the death or deregistration of this animal.

The Certificate identifies an Ayrshire animal registered in accordance with the ABA bylaws, and which not be portrayed as grade or unregistered until such time as this document is surrendered to the Ayrshire Breeders' Association, 1224 Alton Darby Creek Rd., Suite B, Columbus, OH 43228.

<<< PLEASE SIGN HERE

Certifying that the details on this document are correct and accurate to the best of your knowledge and belief

IDENTIFICATION BOX

In addition to an official tattoo or American ID, breeders may choose to affix an additional identification by photo or sketch to this space.

THIS DOCUMENT IS INVALID UNLESS THE SIGNATURE OF THE OWNER APPEARS HERE AND A TATTOO OR AMERICAN ID NUMBER APPEARS ABOVE.

RECOVERY ELIGIBLE

Barn Name 257

Index No. 257

S: FOREVER SCHOOL PREPATOR
 LOT
 D: 159
 S: FAMILY-AF AYR DOUBLWHAMMY-ET
 D: 404 S: ALLEN FARMS SMARK MR CLASSIK
 D: 215 HOL

Cow	Index No.	257	Breed	AY
	Barn Name	257		
	DHI ID	23EVJ0703		
	Farm ID			
Date of Birth	01/12/2019			
PTA Milk	+0	PTA \$	+0	
PTA % Fat		Rel.		
PTA Fat	+0	Pctile(NM)		
PTA Prot	+0			

Sire	DHI ID	124000011119	PTA Milk	+22
	Name or number	147AY8111	PTA % Fat	
	Breed	AY	PTA Fat	-1
			PTA Prot	-3
			PTA \$	-128
			Rel.	
			Pctile(NM)	10

Dam	DHI ID	159	PTA Milk	+0
	Name or number		PTA % Fat	
	Breed		PTA Fat	+0
			PTA Prot	+0
			PTA \$	+0
			Rel.	
			Pctile(NM)	

Printed 5/13/2022 12:21:22 PM

Lactation Production Summary

Calving Date	Age at Calving Yr - Mo	Days Dry Before Calving	r a t e	Days 3X	305 Day Lactation					Complete Lactation					Type of Record	
					Cond. Aff. Record	Milk	% Fat	Fat	% Prot	Prot	Days in Milk	Milk	Fat	Prot		Value Product
04/05/2021	2 - 2	0	B	0	18849	3.9	744	3.0	574	391	22479	932	700			DHI-AP

Status Change	Last Test			Lifetime Production			Milk per Day Since 24 Mos of Age	Yield Deviation			Estimated Relative Producing Ability				
	Milk	% Fat	% Prot	Milk	Fat	Protein		Milk	Fat	Protein	Milk	Fat	Protein		
Dry															
05/01/2022				22479	932	700	47	+0	+0	+0	+1569	+38	+38		

Calf and Breeding Record

Calving Date	Body Wt (CWT)	Days Open	# B r	Successful Breeding Date	Sire		Calf		Persist. of Lact Curve	Avg. SCCS for Lact.	ME Lactation			Herdmate Deviation		
					Identity	B r	Sex Disp	Identity			Milk	Fat	Prot	Milk	Fat	Prot
04/05/2021	9	205					F7		107	3.8	23373	900	695	+3137	+76	+75
			1	10/27/2021	9AY133	AY	Due	08/05/2022								

Dams Production Record

Calving Date	Age at Calving Yr - Mo	Days Dry Before Calving	r a t e	Days 3X	305 Day Lactation					Complete Lactation					Type of Record	
					Cond. Aff. Record	Milk	% Fat	Fat	% Prot	Prot	Days in Milk	Milk	Fat	Prot		Value Product
01/12/2019	2 - 8	0	C	0	20955	3.4	713	2.9	602	351	23647	813	690			DHI-AP
03/08/2020	3 - 10	70	C	0	23834	3.6	856	2.8	671	339	25651	930	730			DHI-AP
03/25/2021	4 - 10	43	D	0	25439	3.7	935	2.8	725	351	27177	998	780			DHI-AP

Status Change	Last Test			Lifetime Production			Milk per Day Since 24 Mos of Age	Yield Deviation			Estimated Relative Producing Ability				
	Milk	% Fat	% Prot	Milk	Fat	Protein		Milk	Fat	Protein	Milk	Fat	Protein		
Dry															
03/11/2022				76475	2741	2200	52	+0	+0	+0	+419	-51	-11		

365

Barn Name 233

Index No. 233

ALLEN FARMS DOZER PITA
 BD: 12-3-20
 S: Family-AF-Ayr Reno Dozer-ET
 Lot 233
 D: ALLEN FARMS BERKELY PARIS

Cow	Index No.	233	Breed	AY
	Barn Name	233		
	DHI ID	23WDX9965		
	Farm ID			
	Date of Birth	06/02/2018		
	PTA Milk	-264	PTA \$	-114
	PTA % Fat		Rel.	
	PTA Fat	-4	Pctile(NM)	
	PTA Prot	-2		

Sire	DHI ID		PTA Milk	+0
			PTA % Fat	
	Name or number		PTA Fat	+0
			PTA Prot	+0
			PTA \$	+0
	Breed		Rel.	
			Pctile(NM)	
Dam	DHI ID		PTA Milk	-326
		100719903	PTA % Fat	
	Name or number		PTA Fat	-4
		PEANUT	PTA Prot	+1
			PTA \$	-106
	Breed		Rel.	
	AY		Pctile(NM)	

Lactation Production Summary

Calving Date	Age at Calving Yr - Mo	Days Dry Before Calving	Rate	Days 3X	305 Day Lactation					Complete Lactation					Type of Record	
					Cond. Aff. Record	Milk	% Fat	Fat	% Prot	Prot	Days in Milk	Milk	Fat	Prot		Value Product
12/01/2020	2-5	0	B	0	0	18331	4.4	800	3.4	616	392	21868	985	758		DHI-AP
03/04/2022	3-9	66	C	0							63	6275	249	188		DHI-AP

Status Change	Last Test			Lifetime Production			Milk per Day Since 24 Mos of Age	Yield Deviation			Estimated Relative Producing Ability				
	Milk	% Fat	% Prot	Milk	Fat	Protein		Milk	Fat	Protein	Milk	Fat	Protein		
Calved															
03/04/2022	87.9	3.2	3.0	28143	1234	946	40	+587	+51	+52	+430	+35	+31		

Calf and Breeding Record

Calving Date	Body Wt (CWT)	Days Open	# Br	Successful Breeding Date	Sire		Calf		Persist. of Lact Curve	Avg. SCCS for Lact.	ME Lactation			Herdmate Deviation		
					Identity	Br	Sex Disp	Identity			Milk	Fat	Prot	Milk	Fat	Prot
12/01/2020	11	176						KNOWN	115	1.7	20714	880	678	+459	+81	+62
03/04/2022	11	63	1	05/26/2021	14AY126		M7		0	0.1	20845	826	647	+831	+24	+31

DAMS PRODUCTION RECORD

Calving Date	Age at Calving Yr - Mo	Days Dry Before Calving	Rate	Days 3X	305 Day Lactation					Complete Lactation					Type of Record	
					Cond. Aff. Record	Milk	% Fat	Fat	% Prot	Prot	Days in Milk	Milk	Fat	Prot		Value Product
06/02/2018	2-2	0	B	0	0	14349	4.3	610	3.3	470	305	14349	610	470		DHI-AP
07/08/2019	3-3	97	D	0							267	13058	524	435		DHI-AP
06/27/2020	4-3	87	E	40							222	13338	524	423		DHI-AP

Status Change	Last Test			Lifetime Production			Milk per Day Since 24 Mos of Age	Yield Deviation			Estimated Relative Producing Ability				
	Milk	% Fat	% Prot	Milk	Fat	Protein		Milk	Fat	Protein	Milk	Fat	Protein		
Left															
02/03/2021	30.8	3.1	3.5	40745	1658	1328	39	-719	-8	+6	+0	+0			

CERTIFICATE OF REGISTRATION
Ayrshire Breeders' Association

99.42% AYRSHIRE



Registry No: 100767308
Name: ALLEN FARMS DOZER PITA
Tattoo (right): AN4H
Sex: FEMALE Born: 03 DEC 2020
Tattoo (left): AN4H

Sire: FAMILY-AF-AYR RENO DOZER-ET 100427602
COVEY-FARMS A E REALITY 968249
DALTONDALE'S KELLIOGG 144860
FAMILY-AF-AYR DK DESITREE 1020932
NEW-DAWN-AYR J.P. DANA 986110
Bred By: 886146
PETERS, NIKAYIA B.
C/O JENNI WOLFE
3480 MALLORY RD
COCHRANTON PA 16314

Dam: ALLEN FARMS BERKELY PARIS 100745302
PALMYRA BENDIG BERKELY-ET 100323168
PALMYRA REALITY BONNIE-ET 65003767
PALMYRA JERRY BENDIG-ET 100323168
PALMYRA BENDIG BERKELY-ET 69261805
PALMYRA REALITY BONNIE-ET 65003767
Original Owner: 886146
PETERS, NIKAYIA B.
C/O JENNI WOLFE
3480 MALLORY RD
COCHRANTON PA 16314

Current Owner: 886146
PETERS, NIKAYIA B.
C/O JENNI WOLFE
3480 MALLORY RD
COCHRANTON PA 16314
ALLEN FARMS DW PEANUT 100719903
ALLEN FARMS TSB PASSION 100680520

OWNER

Validating Signature

This Certificate is issued, and remains at all time the property of the Ayrshire Breeders' Association, for the identification of the animal hereon described and registered in the Ayrshire Herdbook according to particulars provided by the breeder.

This Certificate is validated by the signature of the owner affixed hereto, who attests to the accuracy and completeness of breeding details and the identification of this animal as printed or depicted hereon.

This Certificate remains valid only while in the possession of the titleholder currently recorded in the Herdbook, and indicated above or on the reverse as owner or breeder. The reverse side must be endorsed and the Certificate returned to the ABA in the event of a change of ownership, or on the death or deregistration of this animal.

The Certificate identifies an Ayrshire animal registered in accordance with the ABA bylaws, and which not be portrayed as grade or unregistered until such time as this document is surrendered to the Ayrshire Breeders' Association, 1224 Alton Darby Creek Rd., Suite B, Columbus, OH 43228.

<<< PLEASE SIGN HERE

Certifying that the details on this document are correct and accurate to the best of your knowledge and belief

IDENTIFICATION BOX

In addition to an official tattoo or American ID, breeders may choose to affix an additional identification by photo or sketch to this space.

THIS DOCUMENT IS INVALID UNLESS THE SIGNATURE OF THE OWNER APPEARS HERE AND A TATTOO OR AMERICAN ID NUMBER APPEARS ABOVE.