

# COLLINS FARMS

*Producing Functional Cattle Since 1944*

**2022 BRED HEIFER OPEN HOUSE SALE**

**Saturday April 23 at the Farm, 12:30 Central**

*1100 County Road 481 Cusseta, AL 36852*



# COLLINS FARMS

1100 County Road 481 Cusseta, AL 36852 - Jim 478-957-6572- Jimmy 334-559-3227

## 2022 BRED HEIFERS, All Home Raised in our closed herd

These Home Raised Heifers were bred to easy calving Angus Bulls developed in our environment. We have been developing our heifers and marketing them for over 30 years.

**Herd Health:** Our cow herd and these heifers have been a part of a lifetime of Zoetis protocols, starting on the WeanVAC program and continuing by following the Heifer VAC specifications.

### **Genetic Herd History:**

Herd genetically evaluated using GeneMax Advantage DNA testing for the last eight years. Steers from Collins Farms have performed well in Corn Belt and Panhandle feedyards.

CONGRATULATIONS to Jay Collins Winning "Highest Value Pen" in 2019 AL Jr. Pasture to Rail.



This load of our steers were: 4% Prime-CAB, 33%CAB,3%Select. AVG 3.21YG & 858lb carcass wt  
*These heifers come from our calf crop that scored a 138 Beef score, 133 Feedlot and 130 Grid Score and qualified for Certified Angus Beef's Targeting the Brand seal as a part of the ANGUSLink program in 2021.*

**Pregnancy Guarantee:** Heifers are guaranteed to be pregnant as of day of sale. They have been confirmed pregnant by a qualified veterinarian. Purchasers will have 30 days from the date of sale to observe for signs of nonpregnancy and report any open females to Collins Farms. If a qualified veterinarian determines that a heifer that was sold as pregnant is in fact open, then the purchaser will be eligible for a 25 percent refund of the purchase price. Collins Farms reserves the right to retest any heifer in question for pregnancy.

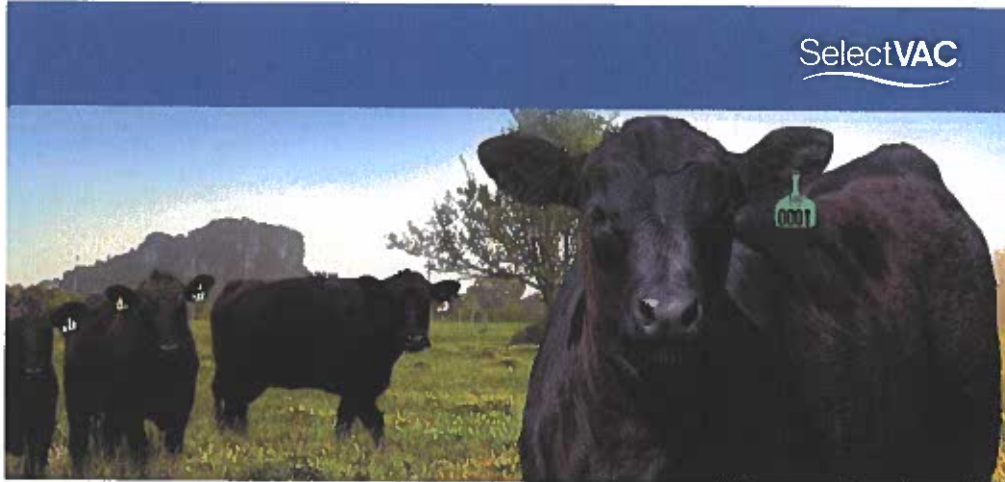
**AUCTION Terms:** Cattle will be available for viewing before the sale. At 12:30 the cattle will be auctioned in sale order. Each lot will be offered at base price (base price set by each group). If more than one person is interested in the lot the high bidder can make a choice from the lot or the entire lot. If high bidder selects a portion of the group, then the bidding will be opened back up for the remaining cattle in the lot. Auctioneer has the right to settle any dispute. There will be bidding in person, by conference line, online through CowBuyer.com and some producers have left orders and sale management will be bidding on their behalf.

**J. S. Collins AL Auctioneer License 501**

**Longevity:** As much as we enjoy developing heifers like these, we enjoy watching them develop into productive cows and many stay in the herd well into their 'teens.

# Save the date for upcoming Black and White Bull Sales: Arcadia Stockyards, Arcadia, FL 10/21/22, Montgomery Stockyards 12/2/2022, 2/25/2022

Thank You to our Meal Sponsor: Anna Grace Parnell with ZOETIS



## SelectVAC® CALVES QUALIFY FOR THE GO GREEN PROGRAM.

SelectVAC® is an industry leading preconditioning program, combining cattle vaccination and management services to prepare calves for weaning and shipping. It offers four different vaccination program options to meet the needs of different producers.

### Program benefits

Financial benefits from preconditioning in general	Financial benefits from using SelectVAC specifically	Healthier calves for buyers		
<p><b>\$35.00/HEAD*</b></p> <p>(\$6.20/cwt average premium<sup>1</sup>)</p> <p>At auction 1995-2012</p> <p>Calves preconditioned with a program like WeanVAC™ vs. nonpreconditioned calves</p>	<p><b>UP TO \$72.00/HEAD</b></p> <table border="0"> <tr> <td> <p>↑</p> <p>WeanVAC \$8.00/cwt premium<sup>2</sup></p> </td> <td> <p>↑</p> <p>PreVAC™ \$5.32/cwt premium<sup>2</sup></p> </td> </tr> </table> <p>At auction 2014-15</p> <p>Price advantage vs. similarly preconditioned cattle not enrolled in SelectVAC or other health programs</p>	<p>↑</p> <p>WeanVAC \$8.00/cwt premium<sup>2</sup></p>	<p>↑</p> <p>PreVAC™ \$5.32/cwt premium<sup>2</sup></p>	<p><b>4x</b> less likely to get sick<sup>3</sup></p> <p><b>4x</b> less likely to die<sup>4</sup></p> <p>Calves preconditioned with WeanVAC vs. unweaned calves of unknown vaccination history</p>
<p>↑</p> <p>WeanVAC \$8.00/cwt premium<sup>2</sup></p>	<p>↑</p> <p>PreVAC™ \$5.32/cwt premium<sup>2</sup></p>			

\*Based on a 566 lb average weight

See [www.SelectVAC.com](http://www.SelectVAC.com) for more details.

1. Inq ME. Effect of two field health programs on the sale price of beef calves marketed through a feedlot. *Journal of Animal Science* 2012; 115: 100-105. <http://dx.doi.org/10.2527/jas.111.3100>.  
2. The effects of age at weaning, management programs and preconditioning programs on the sale price of beef calves marketed through a feedlot. *Journal of Animal Science* 2014; 119: 100-105. <http://dx.doi.org/10.2527/jas.113.2290>.  
3. See also: D. G. Nisbet, et al. (2014) The effects of the feedlot health program on the performance, quality of carcasses and the value of unweaned beef calves with unknown vaccination history and of weaned beef calves with unknown vaccination history. *Journal of Animal Science* 2014; 119: 100-105. <http://dx.doi.org/10.2527/jas.113.2290>.

4. Inq ME. The effects of two field health programs on the sale price of beef calves marketed through a feedlot. *Journal of Animal Science* 2012; 115: 100-105. <http://dx.doi.org/10.2527/jas.111.3100>.  
© 2014 Zoetis Services LLC. All rights reserved. 131-07028



We are happy to partner with W.B. Fleming for custom mineral needs.



## W. B. FLEMING COMPANY

MANUFACTURER OF UNIVERSITY BRAND  
MINERALS & PREMIXES

### Richard Meadows

4905 County Rd. 33 North  
Columbia, AL 36319  
1-800-223-9341

Cell: 334-797-4870  
Home: 334-899-4870  
Fax: 334-899-7295

**YOU'VE DONE  
THE WORK.**  
Get paid for it.

You've invested in good genetics. You've kept all the records.

**Angus Link™** combines USDA Process Verified Programs with a Genetic Alert to ensure that gives buyers confidence in your calves. From age and source verification to cattle care and handling, you choose which programs make the most sense for you.

**Group Age & Source:** Verifies the group age and source of the cattle.

**Registered Genetic:** Angus calves are bred by state registered Angus bulls.

**Non-Hormone Treated Cattle:** Verifies cattle have never received hormones.

**Health:** No antibiotics, no hormones, no steroid injections ever.

**Cattle Care & Handling:** Documents proper treatment, demonstrates quality care.

**Call Management:** Documents preventive health program.

**Genetic Alert:** Provides the genetic merit of calves for health, performance and carcass merit.

Easy and affordable, our customer service representatives walk you through the program.

**ANGUS LINK**  
VALUE ADDED PROGRAMS  
CALL 1-800-223-9341  
and AngusLink.com for more information.

**GMX**  
GENEMAX Advantage

**MORE POUNDS.  
HIGHER QUALITY GRADE.  
BETTER FEMALES.  
GENEMAX ADVANTAGE.™**

zoetis

PEN #	Tag	Sire	Fetal Sex	Calving Window	Breed/Color	NOTES
		All Bred to Calving Ease Angus bulls(sons of Horizon, Sure Fire ans SAV Bruiser)				
		GROUP I Heifers Base Price \$1750				
1	0156	Ponca Creek PepperX Obj	B	Oct 10 - Oct 24	Angus/Black	
2	0133	Prophet X Spectrum/EXT	B	Oct 12 - Oct 26	Angus/Black	
2	0155	Prophet X Spectrum/EXT	B	Oct 12 - Oct 26	Angus/Black	
3	0221	Woodside Rito x Ten X/454	B/H	Oct 12 - Oct 26	Angus/Black	
3	0134	Prophet X Spectrum/EXT	H	Oct 17 - Oct 31	Angus/Black	
4	0206	Upshot x Matrix	B	Oct 12 - Oct 26	Angus/Black	
4	0103	GAR Sure Fire	H	Oct 15 - Oct 29	Angus/Black	
5	0213	Ponca Creek PepperX Obj	H	Oct 22 - Nov 5	Angus/Black	
5	0147	Prophet X Spectrum/EXT	B	Oct 22 - Nov 5	Angus/Black	
6	0223	Game On x Obj/112	B	Oct 20 - Nov 3	Angus/Black	
6	0135	Prophet X Spectrum/EXT	H	Oct 22 - Nov 5	Angus/Black	
7	0101	Capitalist x Mentor/InFocus	B	Oct 12 - Oct 26	7/8 AN (smokey)	
8	0151	Prophet X Spectrum/EXT	B	Oct 22 - Nov 5	Angus/Black	
8	0140	Prophet X Spectrum/EXT	N/A	Oct 27 - Nov 10	Angus/Black	
9	0202	Upshot x Matrix	B	Oct 22 - Nov 5	Angus/Black	
9	0209	Upshot x Matrix	B	Oct 22 - Nov 5	Angus/Black	
10	0153	SAV Brilliance x InFocus/Anchor	H	Oct 22 - Nov 5	Angus/Black	
10	0136	Prophet X Spectrum/EXT	B	Oct 27 - Nov 10	Angus/Black	

<b>1</b>	Tag: 0590 Tattoo: 0590	JSC Hickory's Jean 0590 Cow	*20329643 Birth Date: 11/12/20
----------	---------------------------	--------------------------------	-----------------------------------

#\*Plattmehere Weigh Up K360[AMF-CAF-XF] BW: 60  
 #+\*Deer Valley Old Hickory[AMF-CAF-XF] WW Adj: 623  
 +\*Deer Valley Rita 1126[DDF] WW Ratio: 100  
 YW Adj:  
 #+\*Connealy Courage 25L[AMF-CAF-XF] YW Ratio:  
 \*JSC Courageous Jean 114 537[OSF] YH Adj:  
 \*Hayfields Mentor Jean102-114[OSF]

CED	BW	WW	YW	CEM	Milk	\$EN	CW	Marb	RE	Fat	\$M	\$F	\$B
Acc	Acc	Acc	Acc	Acc	Acc	Acc	Acc	Acc	Acc	Acc	\$W	\$G	\$C
1+9	1+1.3	1+64	1+112	1+9	1+26	-11	1+36	1+54	1+48	1-009	+63	+83	+128
.05	.05	.05	.05	.05	.05		.05	.05	.05	.05	+71	+46	+229

Due AI 9/24 with Calf by Deer Valley Brigade 81247 AAA 19469706

<b>2</b>	Tag: 0575 Tattoo: 0575	JSC Bankrolls Ellie 0575 Cow Angus GS	*20325711 Birth Date: 11/25/20
----------	---------------------------	--	-----------------------------------

#\*Barstow Bankroll B73[AMF-CAF-XF] BW: 60  
 \*JSC Bankrolls Weigh Up 228 WW Adj: 685  
 PF AAS Miss Prudence 262 WW Ratio: 105  
 YW Adj:  
 BC Classic 385-7[CAF-DDF-XF] YW Ratio:  
 \*JSC Classic Ellie 1205 530[OSF] YH Adj:  
 \*Hayfields Scotsman 039 1205

CED	BW	WW	YW	CEM	Milk	\$EN	CW	Marb	RE	Fat	\$M	\$F	\$B
Acc	Acc	Acc	Acc	Acc	Acc	Acc	Acc	Acc	Acc	Acc	\$W	\$G	\$C
+11	+1.4	+60	+107	+8	+29	-14	+39	+59	+62	-.004	+64	+77	+126
.30	.51	.42	.32	.24	.26		.36	.31	.31	.27	+69	+49	+227

Due AI 9/24 with a Bull Calf by Deer Valley Brigade 81247 AAA 19469706

<b>3</b>	Tag: 0578 Tattoo: 0578	JSC Bankroll' Trac Lady 0578 Cow Angus GS	*20325704 Birth Date: 11/30/20
----------	---------------------------	--	-----------------------------------

#\*Barstow Bankroll B73[AMF-CAF-XF] BW: 60  
 \*JSC Bankrolls Weigh Up 228 WW Adj: 670  
 PF AAS Miss Prudence 262 WW Ratio: 102  
 YW Adj:  
 Deer Valley Traction 4383[OSF] YW Ratio:  
 JSC Traction's Lady 9349 671 YH Adj:  
 PCT Eitha 9349[DDF]

CED	BW	WW	YW	CEM	Milk	\$EN	CW	Marb	RE	Fat	\$M	\$F	\$B
Acc	Acc	Acc	Acc	Acc	Acc	Acc	Acc	Acc	Acc	Acc	\$W	\$G	\$C
+8	+2.0	+76	+145	+3	+27	-57	+69	+89	+82	-.046	+34	+124	+192
.30	.52	.43	.33	.24	.27		.37	.32	.32	.28	+70	+68	+283

Due AI 10/4 with a Heifer Calf by Deer Valley Brigade 81247 AAA 19469706

<b>4</b>	Tag: 0587 Tattoo: 0587	JSC Bronc's Mentor Jean 0587 Cow Angus GS	*20325695 Birth Date: 12/02/20
----------	---------------------------	--	-----------------------------------

#\*EF Commando 1366[AMF-CAF-XF] BW: 58  
 #+\*Baldrige Bronc[AMF-CAF-XF] WW Adj: 631  
 \*Baldrige Isabel Y69[DDF] WW Ratio: 96  
 YW Adj:  
 #\*Connealy Mentor 7374[AMF-CAF-XF] YW Ratio:  
 \*Hayfields Mentor Jean102-114[OSF] YH Adj:  
 Hayfields EXT Jean 927 102[OSF]

CED	BW	WW	YW	CEM	Milk	\$EN	CW	Marb	RE	Fat	\$M	\$F	\$B
Acc	Acc	Acc	Acc	Acc	Acc	Acc	Acc	Acc	Acc	Acc	\$W	\$G	\$C
+7	+3	+57	+100	+6	+30	-13	+38	-.04	+73	+015	+59	+80	+102
.35	.54	.46	.38	.32	.34		.42	.37	.37	.33	+68	+21	+191

Due AI 10/4 with a Bull Calf by Deer Valley Brigade 81247 AAA 19469706

<b>5</b>	Tag: 0572 Tattoo: 0572	JSC Annabellies Traction 0572 Cow Angus GS	*20325709 Birth Date: 12/08/20
----------	---------------------------	---	-----------------------------------

#\*JMB Traction 292[AMF-CAF-XF] BW: 58  
 Deer Valley Traction 4383[OSF] WW Adj: 656  
 Long Lucy 905 WW Ratio: 102  
 YW Adj:  
 \*Hayfields Mentor 704 1201 YW Ratio:  
 \*JSC MentorEXT Annabella 1994[OSF] YH Adj:  
 Hayfields EXT Jean 927 102[OSF]

CED	BW	WW	YW	CEM	Milk	\$EN	CW	Marb	RE	Fat	\$M	\$F	\$B
Acc	Acc	Acc	Acc	Acc	Acc	Acc	Acc	Acc	Acc	Acc	\$W	\$G	\$C
+5	+2	+40	+76	+6	+37	-11	+26	+26	+66	-.017	+58	+70	+106
.31	.52	.42	.33	.26	.28		.37	.32	.32	.28	+55	+36	+195

Due AI 9/29 with Calf by Deer Valley Brigade 81247 AAA 19469706

<b>6</b>	Tag: 0523 Tattoo: 0523	JSC Bankrolls EXT Lilly 0523 Cow Angus GS	*20325706 Birth Date: 11/08/20
----------	---------------------------	--	-----------------------------------

#\*Barstow Bankroll B73[AMF-CAF-XF] BW: 62  
 \*JSC Bankrolls Weigh Up 228 WW Adj: 593  
 PF AAS Miss Prudence 262 WW Ratio: 92  
 YW Adj:  
 Hayfields EXT 2-878 410 706 YW Ratio:  
 Hayfields EXT 706 310 1122 YH Adj:  
 Hayfields 9M9 EXT 919-310

CED	BW	WW	YW	CEM	Milk	\$EN	CW	Marb	RE	Fat	\$M	\$F	\$B
Acc	Acc	Acc	Acc	Acc	Acc	Acc	Acc	Acc	Acc	Acc	\$W	\$G	\$C
+9	+6	+56	+102	+12	+25	-5	+35	+81	+32	+015	+88	+83	+136
.30	.52	.42	.32	.24	.28		.37	.32	.32	.28	+62	+53	+264

Due AI 9/29 with a Heifer Calf by Deer Valley Brigade 81247 AAA 19469706

<b>7</b>	Tag: 0518 Tattoo: 0518	JSC Fortress Vision 0518 Cow Angus GS	*20327095 Birth Date: 10/16/20
----------	---------------------------	--	-----------------------------------

#+S A V Bismarck 5682[AMF-CAF-XF] BW: 70  
 \*FAF QP New Vision 1705 WW Adj: 630  
 FAF Queen Peggy 3J15 705K WW Ratio: 106  
 YW Adj:  
 #+\*K C F Bennett Fortress[AMF-CAF-XF] YW Ratio:  
 JSC Fortress Mentor 1119 632 YH Adj:  
 Hayfields Mentor616 836-1119[OSF]

CED	BW	WW	YW	CEM	Milk	\$EN	CW	Marb	RE	Fat	\$M	\$F	\$B
Acc	Acc	Acc	Acc	Acc	Acc	Acc	Acc	Acc	Acc	Acc	\$W	\$G	\$C
+12	-.7	+69	+124	+13	+24	-14	+38	+80	+12	+028	+58	+81	+130
.30	.50	.42	.32	.24	.27		.37	.31	.32	.27	+76	+49	+227

Due Oct 7-Oct 21 with a bull calf by JSC HF SureFire WeighUp 1921 AAA19617116

<b>8</b>	Tag: 0506 Tattoo: 0506	JSC Bronc's Queen Lucy 0506 Cow Angus GS	*20325698[DDF] Birth Date: 10/07/20
----------	---------------------------	---	--

#\*EF Commando 1366[AMF-CAF-XF] BW: 55  
 #+\*Baldrige Bronc[AMF-CAF-XF] WW Adj: 556  
 \*Baldrige Isabel Y69[DDF] WW Ratio: 93  
 YW Adj:  
 \*JSC ND 5050 807-1114[DDC] YW Ratio:  
 \*JSC 5050-1114 Lucy-420 1914[DDC] YH Adj:  
 Hill Top Lady Lucy Ext 420[DDF-OSF]

CED	BW	WW	YW	CEM	Milk	\$EN	CW	Marb	RE	Fat	\$M	\$F	\$B
Acc	Acc	Acc	Acc	Acc	Acc	Acc	Acc	Acc	Acc	Acc	\$W	\$G	\$C
+13	-1.5	+55	+103	+12	+33	-72	+38	+38	+60	+005	+64	+84	+123
.34	.52	.44	.36	.29	.32		.40	.35	.35	.31	+69	+39	+224

Due Oct 22-Nov 5 with a heifer calf by JSC HF SureFire WeighUp 1921 AAA19617116

<b>9</b>	Tag: 0521	JSC Unique Trac Jean 0521	20325699
	Tattoo: 0521	Cow Angus GS	Birth Date: 11/08/20

#\*Plattermere Weigh Up K360[AMF-CAF-XF] BW: 58  
 +\*Deer Valley Unique 5635[AMF-CAF-XF] WW Adj: 634  
 +\*Sitz Henrietta Pride 643T WW Ratio: 97  
 Deer Valley Traction 4383[OSF] YW Adj:  
 JSC Jean's Traction 1814 675 YW Ratio:  
 \*JSC Confident Jean-814 1814[OSF] YH Adj:

CED	BW	WW	YW	CEM	Milk	\$EN	CW	Marb	RE	Fat	\$M	\$F	\$B
Acc	Acc	Acc	Acc	Acc	Acc		Acc	Acc	Acc	Acc	\$W	\$G	\$C
+8	+6	+71	+130	+6	+28	-34	+40	+66	+52	+023	+46	+92	+131
.33	.51	.43	.35	.27	.29		.39	.34	.34	.30	+76	+49	+216

Due Oct 22-Nov 5 with a heifer calf by JSC HF SureFire WeighUp 1921  
 AAA19617116

<b>10</b>	Tag: 0511	JSC Fortress' Jean 0511	*20325696
	Tattoo: 0511	Cow Angus GS	Birth Date: 10/11/20

#\*Connealy Consensus[PDF] BW: 65  
 #\*\*K C F Bennett Fortress[AMF-CAF-XF] WW Adj: 584  
 \*Thomas Patricia 9705[PDF] WW Ratio: 98  
 YW Adj:  
 #\*Connealy Confidence 0100[CAF-DDF-XF] YW Ratio:  
 \*JSC Confident Jean-814 1814[OSF] YH Adj:  
 \*Hayfields 112 Bandit 403[OSF]

CED	BW	WW	YW	CEM	Milk	\$EN	CW	Marb	RE	Fat	\$M	\$F	\$B
Acc	Acc	Acc	Acc	Acc	Acc		Acc	Acc	Acc	Acc	\$W	\$G	\$C
+13	-7	+78	+132	+11	+19	-12	+30	+67	+58	-006	+79	+66	+119
.35	.52	.45	.37	.31	.33		.41	.37	.37	.33	+82	+52	+233

Due Oct 17-Oct 21 with a bull calf by JSC HF SureFire WeighUp 1921  
 AAA19617116

<b>11</b>	Tag: 0570	JSC Unique Trac Lady 0570	*20325700
	Tattoo: 0570	Cow Angus GS	Birth Date: 12/06/20

#\*Plattermere Weigh Up K360[AMF-CAF-XF] BW: 55  
 +\*Deer Valley Unique 5635[AMF-CAF-XF] WW Adj: 664  
 +\*Sitz Henrietta Pride 643T WW Ratio: 102  
 Deer Valley Traction 4383[OSF] YW Adj:  
 JSC Traction's Lady 113 674D YW Ratio:  
 \*Hayfields Mentor Band212-113 YH Adj:

CED	BW	WW	YW	CEM	Milk	\$EN	CW	Marb	RE	Fat	\$M	\$F	\$B
Acc	Acc	Acc	Acc	Acc	Acc		Acc	Acc	Acc	Acc	\$W	\$G	\$C
+0	+1.5	+66	+111	+1	+20	-36	+44	+70	+66	+018	+24	+88	+141
.35	.54	.46	.38	.30	.31		.41	.37	.37	.33	+59	+53	+207

Due 11/13-11/27 with a bull calf by JSC HF SureFire WeighUp 1921  
 AAA19617116

<b>12</b>	Tag: 0584	JSC Trac's Prophetess 0584	*20325707
	Tattoo: 0584	Cow Angus GS	Birth Date: 11/10/20

#\*JMB Traction 292[AMF-CAF-XF] BW: 50  
 Deer Valley Traction 4383[OSF] WW Adj: 629  
 Long Lucy 905 WW Ratio: 106  
 YW Adj:  
 #\*\*G A R Prophet[AMF-CAF-XF] YW Ratio:  
 \*JSC Prophet Eye 039 1864[OSF] YH Adj:  
 \*Hayfields Big Ey2878 704 039[OSF]

CED	BW	WW	YW	CEM	Milk	\$EN	CW	Marb	RE	Fat	\$M	\$F	\$B
Acc	Acc	Acc	Acc	Acc	Acc		Acc	Acc	Acc	Acc	\$W	\$G	\$C
+9	+1.5	+63	+112	+7	+27	-23	+40	+40	+32	+010	+58	+81	+117
.32	.52	.44	.34	.27	.29		.38	.33	.34	.30	+67	+36	+210

Due Nov 7-Nov 11 with a heifer calf by JSC HF SureFire WeighUp 1921  
 AAA19617116

<b>13</b>	Tag: 0512	JSC DarkFire Jean 0512	*20325701[OW]
	Tattoo: 0512	Cow Angus GS	Birth Date: 10/12/20

#\*\*G A R Sure Fire[AMF-CAF-XF] BW: 52  
 \*RES Dark Fire E612[AMF-CAF-XF] WW Adj: 566  
 \*RES Elela 193 587 466[OSF] WW Ratio: 95  
 YW Adj:  
 JSC Objective 909[NHF] YW Ratio:  
 \*JSC Retail Eye-112 012 1355[OSF] YH Adj:  
 Hayfields 616 Big Ey 836-012[OSF]

CED	BW	WW	YW	CEM	Milk	\$EN	CW	Marb	RE	Fat	\$M	\$F	\$B
Acc	Acc	Acc	Acc	Acc	Acc		Acc	Acc	Acc	Acc	\$W	\$G	\$C
+17	-1.9	+42	+69	+14	+41	+3	+15	+1.08	+44	+004	+72	+57	+125
.33	.52	.45	.36	.26	.28		.38	.33	.33	.30	+71	+68	+234

Due Oct 12-26 with a bull calf by JSC HF SureFire WeighUp 1921  
 AAA19617116

<b>14</b>	Tag: 0524	JSC Bankroll's Jeannie 0524	*20325708
	Tattoo: 0524	Cow Angus GS	Birth Date: 11/04/20

#\*Barstow Bankroll B73[AMF-CAF-XF] BW: 52  
 \*JSC Bankrolls Weigh Up 228 WW Adj: 581  
 PF AAS Miss Prudence 262 WW Ratio: 92  
 YW Adj:  
 #\*\*G A R Prophet[AMF-CAF-XF] YW Ratio:  
 \*JSC Prophet 112 Jean813 1904[OSF] YH Adj:  
 \*Hayfields 112 Sauga-413[OSF]

CED	BW	WW	YW	CEM	Milk	\$EN	CW	Marb	RE	Fat	\$M	\$F	\$B
Acc	Acc	Acc	Acc	Acc	Acc		Acc	Acc	Acc	Acc	\$W	\$G	\$C
+15	-1.6	+60	+103	+11	+25	-7	+31	+68	+41	+033	+91	+68	+115
.32	.53	.43	.35	.27	.29		.39	.34	.34	.30	+71	+48	+240

Due Nov7-21 with a bull calf by JSC HF SureFire WeighUp 1921  
 AAA19617116

<b>15</b>	Tag: 0559	JSC Reserved Niagara 0559	*20329933[OW]
	Tattoo: 0559	Cow	Birth Date: 12/21/20

AAF Reserve 4047[PDF] BW: 58  
 \*JSC Reserved Answer 503 782E WW Adj: 699  
 \*JSC Answer Obj-rtl 1362 503 WW Ratio: 100  
 YW Adj:  
 #\*S S Niagara Z29[AMF-CAF-XF] YW Ratio:  
 \*JSC Niagaras Lucy 523 875 YH Adj:  
 \*JSC Courageous Lucy 420 523[OSF]

CED	BW	WW	YW	CEM	Milk	\$EN	CW	Marb	RE	Fat	\$M	\$F	\$B
Acc	Acc	Acc	Acc	Acc	Acc		Acc	Acc	Acc	Acc	\$W	\$G	\$C
1+9	1+3	1+59	1+110	1+8	1+34	-15	1+42	1+69	1+50	1+051	+68	+85	+132
.05	.05	.05	.05	.05	.05		.05	.05	.05	.05	+74	+48	+239

Due Nov 19-12/3 with calf by JSC HF SureFire WeighUp 1921  
 AAA19617116

<b>16</b>	Tag: 0573	JSC Bankrolls Lucy 0573	*20325710[DDP]
	Tattoo: 0573	Cow Angus GS	Birth Date: 12/10/20

#\*Barstow Bankroll B73[AMF-CAF-XF] BW: 62  
 \*JSC Bankrolls Weigh Up 228 WW Adj: 685  
 PF AAS Miss Prudence 262 WW Ratio: 108  
 YW Adj:  
 #\*S A V Beacon 0008[PDF-OSF] YW Ratio:  
 JSC Lucy's Beacon 647D YH Adj:  
 \*JSC 5050-1114 Lucy-420 1914[DDC]

CED	BW	WW	YW	CEM	Milk	\$EN	CW	Marb	RE	Fat	\$M	\$F	\$B
Acc	Acc	Acc	Acc	Acc	Acc		Acc	Acc	Acc	Acc	\$W	\$G	\$C
+10	+7	+66	+114	+12	+16	-13	+46	+54	+84	-045	+70	+98	+151
.31	.52	.42	.34	.25	.28		.38	.33	.33	.29	+60	+53	+266

Due Oct 22-Nov 5 with a heifer calf by JSC HF SureFire WeighUp 1921  
 AAA19617116

<b>17</b>	<b>Tag:</b> 0598	<b>JSC Bankroll's Niagara 0598</b>	<b>20331000</b>
	<b>Tattoo:</b> 0598	<b>Cow</b>	<b>Birth Date: 02/02/21</b>

#\*Barstow Bankroll B73[AMF-CAF-XF] BW: 56  
 \*JSC Bankrolls Weigh Up 228 WW Adj: 712  
 PF AAS Miss Prudence 262 WW Ratio: 100  
 #\*S S Niagara Z29[AMF-CAF-XF] YW Adj:  
 JSC Niagara's Courage 791E YW Ratio:  
 \*JSC Courageous Jean 114 537(OSF) YH Adj:

CED	BW	WW	YW	CEM	Milk	\$EN	CW	Marb	RE	Fat	\$M	\$F	\$B
Acc	Acc	Acc	Acc	Acc	Acc		Acc	Acc	Acc	Acc	\$W	\$G	\$C
I+7	I+1.9	I+70	I+128	I+9	I+24								
.05	.05	.05	.05	.05	.05						+63		

Due Dec 23-Jan 5 with calf by JSC HF SureFire WeighUp 1921  
AAA19617116

<b>18</b>	<b>Tag:</b> 1921	<b>JSC HF SureFire WeighUp 1921</b>	<b>*19617118</b>
	<b>Tattoo:</b> 1921	<b>Bull HD50K</b>	<b>Birth Date: 10/29/19</b>

#\*Connealy In Sure 8524[AMF-CAF-XF] BW: 50  
 #+\*G A R Sure Fire[AMF-CAF-XF] WW Adj: 505  
 +Chair Rock 5050 G A R 8086[DDC] WW Ratio: 86  
 #\*Plattermere Weigh Up K360[AMF-CAF-XF] YW Adj:  
 \*Hayfields Weigh Up 010 1402 YW Ratio:  
 \*Hayfields Sav Focus 212 010 YH Adj:

CED	BW	WW	YW	CEM	Milk	\$EN	CW	Marb	RE	Fat	\$M	\$F	\$B
Acc	Acc	Acc	Acc	Acc	Acc		Acc	Acc	Acc	Acc	\$W	\$G	\$C
+13	-1.8	+48	+98	+12	+38	-15	+34	+90	+39	+029	+59	+83	+141
.35	.53	.46	.38	.32	.34		.42	.38	.38	.34	+67	+57	+242

NATURAL SERVICE SIRE



SimAngus		7 3/4 Siblings				
Lot 18		Fetal Sex	Pedigree	Base Price \$1750	Service by	
Reg #					Sons of Horizon and Sure Fire	
4037726	O225	B	Oct 7-Oct 21	1/4 Sim, 1/4 RA, 1/2 Angus	EPD's	
10/2/2020	Sire; WS Beef Maker son (SimAngus)	AngusDam: out of Connealy Mentor son			B/-1.0, W/63.8, Y/102.3, M/25.9	
Lot 19		Fetal Sex	Pedigree	Base Price \$1750	Service by	
Reg #					Sons of Horizon and Sure Fire	
4037795	O226	B	Oct 7-Oct 21	1/4 Sim, 1/4 RA, 1/2 Angus	EPD's	
10/5/2020	Sire; WS Beef Maker son (SimAngus)	AngusDam: out of Connealy Mentor son			B/-1.0, W/64, Y/102.3, M/25.9	
Lot 20		Fetal Sex	Pedigree	Base Price \$1750	Service by	
Reg #					Sons of Horizon and Sure Fire	
4038132	O227	H	Oct 7-Oct 21	1/4 Sim, 1/4 RA, 1/2 Angus	EPD's	
11/22/2020	Sire; WS Beef Maker son (SimAngus)	AngusDam: out of Connealy Mentor son			B/-1.1, W/63.3, Y/101.7, M/26.1	
Lot 21		Fetal Sex	Pedigree	Base Price \$1750	Service by	
Reg #					Sons of Horizon and Sure Fire	
4038133	O219	B	Oct 17-Oct 31	1/4 Sim, 1/4 RA, 1/2 Angus	EPD's	
10/18/2020	Sire; WS Beef Maker son (SimAngus)	AngusDam: out of Connealy Mentor son			B/-0.6, W/63.9, Y/102.6, M/25.9	
Lot 22		Fetal Sex	Pedigree	Base Price \$1750	Service by	
Reg #					Sons of Horizon and Sure Fire	
4038134	O229	H	Oct 17-Oct 31	1/4 Sim, 1/4 RA, 1/2 Angus	EPD's	
10/20/2020	Sire; WS Beef Maker son (SimAngus)	AngusDam: out of Connealy Mentor son			B/-0.5, W/61.7, Y/99.6, M/26.6	
Lot 23		Fetal Sex	Pedigree	Base Price \$1750	Service by	
Reg #					Sons of Horizon and Sure Fire	
4038134	O220	H	Nov 13-27	1/4 Sim, 1/4 RA, 1/2 Angus	EPD's	
11/20/2020	Sire; WS Beef Maker son (SimAngus)	AngusDam: out of Connealy Mentor son			B/0.3, W/68.8, Y/109.7, M/24.9	
Lot 24		Fetal Sex	Pedigree	Base Price \$1750	Service by	
Reg #					Sons of Horizon and Sure Fire	
4038136	O224	N/A	Nov 17-Dec 1	1/4 Sim, 1/4 RA, 1/2 Angus	EPD's	
11/25/2020	Sire; WS Beef Maker son (SimAngus)	AngusDam: out of Connealy Mentor son			B/-1.7, W/62.1, Y/99.7, M/27.1	



All Bred to Calving Ease Angus bulls(sons of Horizon, Sure Fire ans SAV Bruiser)							
GROUP III Heifers Base Price \$1500							
PEN #	Tag	Sire	Fetal Sex	Calving Window	Breed/Color	NOTES	
20	0241	Final Answer x Emblazon	B	Nov 1 - Nov 15	Angus/Black		
20	0173	Upshot X CC&7/Matrix	B	Nov 11 - Nov 25	Angus/Black		
21	0132	Prophet X Spectrum/EXT	H	Nov 9 - Nov 23	Angus/Black		
21	0157	Prophet X Spectrum/EXT	N/A	Nov 17 - Dec 1	Angus/Black		
22	0148	WHS Limelight X E161	N/A	Nov 17 - Dec 1	Angus/Black		
22	0242	Final Answer x Emblazon	N/A	Nov 21 - Dec 5	Angus/Black		
23	0110	WAR Party X EXT/616	N/A	Nov 19 - Dec 3	Angus/Black		
23	0301	Upshot X CC&7/Matrix	N/A	Nov 21 - Dec 5	Angus/Black		
24	0215	Upshot X CC&7/Matrix	N/A	Nov 25 - Dec 9	Angus/Black		
24	0130	Prophet X Spectrum/EXT	N/A	Nov 29 - Dec 13	Angus/Black		
25	0141	Prophet X Spectrum/EXT	N/A	Nov 26 - Dec 10	Angus/Black		
25	0240	Final Answer x Emblazon	N/A	Nov 27 - Dec 11	Angus/Black		
26	0137	Prophet X Spectrum/EXT	N/A	Nov 29 - Dec 13	Angus/Black		
26	0139	Prophet X Spectrum/EXT	N/A	Nov 29 - Dec 13	Angus/Black		
27	0197	Upshot x Matrix	N/A	Nov 29 - Dec 13	Angus/Black		

All Bred to Calving Ease Angus bulls(sons of Horizon, Sure Fire ans SAV Bruiser)						
GROUP IV Heifers Base Price \$1400						
PEN #	Tag	Sire	Fetal Sex	Calving Window	Breed/Color	NOTES
28	0171	Upshot X CC&7/Matrix	N/A	Dec 1 - Dec 15	Angus/Black	
28	0105	GAR Sure Fire	N/A	Dec 3 - Dec 17	Angus/Black	
29	0247	Capitalist x Mentor/InFocus	N/A	Dec 2 - Dec 16	Angus/Black	
29	0216	Upshot x Matrix	N/A	Dec 3 - Dec 17	Angus/Black	
30	0168	Absolute x Confidence/Regis	N/A	Dec 9 - Dec 23	Angus/Black	
30	0181	Upshot X CC&7/Matrix	N/A	Dec 9 - Dec 23	Angus/Black	
31	0146	Prophet X Spectrum/EXT	N/A	Dec 9 - Dec 23	Angus/Black	