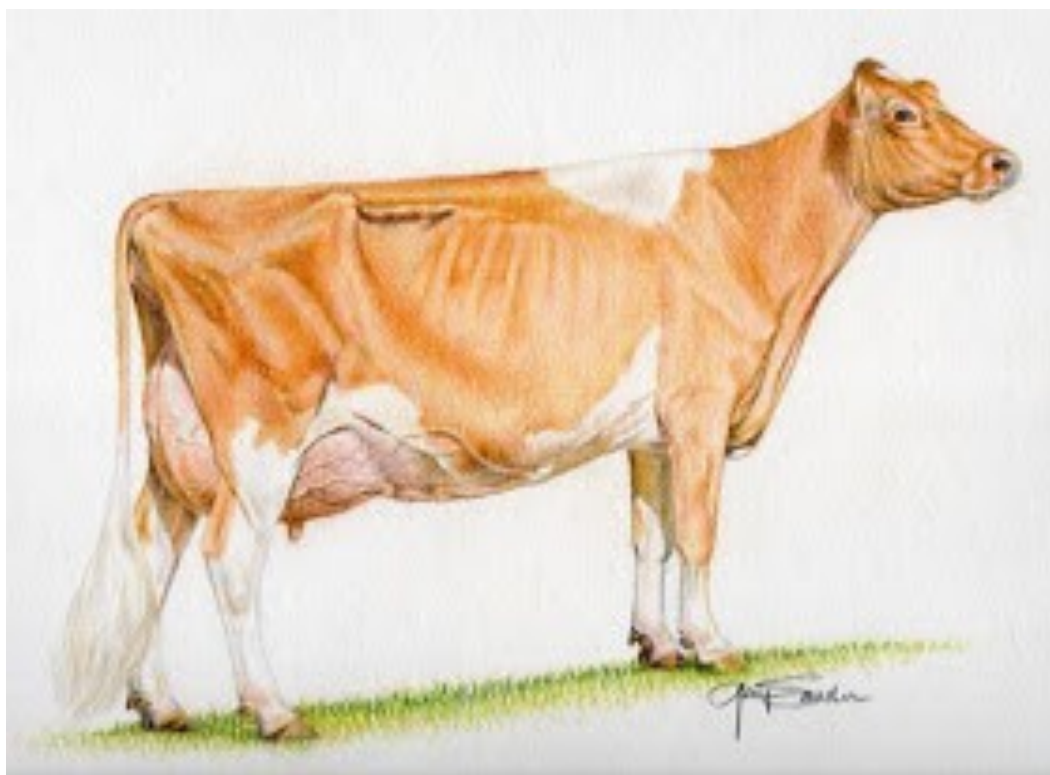


2022 NYS Guernsey Video Sale

Saturday April 30, 6 P.M.

Online with Cowbuyer.com



Live Bid off to follow the NYS Annual meeting and banquet

At the Adirondack Room

3357 US Rte 11, Malone, NY 12953

****Please Bring Catalog with you to Sale****

Sale Terms:

- Buyer is responsible for all trucking costs and arrangements in coordination with the Seller
- No Health requirements for animals to be sold, Buyer has the right to request shots and appropriate tests needed for interstate travel at the expense of the Seller.
- Animals will not be transferred or moved from seller's location until confirmation of payment is made.

Sale Contacts:

Eric Craig– 518-232-2770

Liz Couillard– 518-353-1386

David Coon– 845-518-0732

Wayne Foote– 518-744-7943

Seth Johnson– Pedigrees– 614-208-3529

Aaron Tompkins– Cowbuyer- 336-363-4639



Knapps Copper Bank On It-
Sister to Lot 1



Knapps Spider Bank On Me-
Dam to Lot 1

KNAPPS ACC BOM THREAT-ET

Lot 1



AMERICAN
GUERNSEY
ASSOCIATION

KNAPPS ACC BOM THREAT-ET
A1A2

USA000097012259

Current Date: 2-25-2022

Born: 03-03-2021 Tattoo LE 84 RE

Breeder: KNAPP LANDEN

EPWORTH

IA

Owner: CLARK BETH ANNE + REICHARD CHRIS

NEW PARIS

PA

DHI Herd # 00000000

12/21 USDA GPTA +169M -0.03% +3F +0.01% +7P
-0.6DPR +2.0PL +98NMS 62NM%ile +101CM\$ 49% Rel
2.93SCS-1.30HCR 27% Rel -1.20CCR 30% Rel
-1.00LIV 28% Rel 0.60GL 32% Rel 0.50EFC 29% Rel

0 Rec YDev: M F P
0 App 12/21 PTAT +1.3 +1.6UDR +0.4FLC 49%Rel CPI +32

ST SR BD DF RA TW RV RL FA
+2.7 +0.8 +0.9 +1.1 L0.3 +0.5 P0.6 S0.1
FU RH RW UC UD TP TL
+2.0 +2.7 +1.0 +0.1 S1.5 C1.5 -1.3

HI GUERN VIEW LEVI DRONE
A2A2

USA000097004646 94GU959

12/21 USDA GPTA +167M -0.07% -4F -0.03% +1P
-0.4DPR +2.8PL +51NMS 41NM%ile +47CM\$ 62% Rel
3.06SCS +0.4SCR -1.40HCR 38% Rel -1.20CCR 41% Rel
-0.50LIV 36% Rel -0.60GL 50% Rel 0.30EFC 38% Rel

AGA 12/21 PTAT +1.4 +1.1UDC +1.6FLC 58%Rel PTI +30

ST SR BD DF RA TW RV RL FA
+1.8 +1.2 +1.3 +1.4 H0.6 +1.1 S0.6 P1.0 S0.3
FU RH RW UC UD TP TL
+1.3 +1.6 +1.2 +0.4 S0.6 C1.3 -0.3

KNAPPS SPIDER BANK ON ME-ET

USA000097000091

DHI Herd # 42310529 Cow Control 000998
12/21 USDA GPTA +245M +0.04% +19F +0.03% +13P
-1.4DPR +1.0PL +127NMS 69NM%ile +131CM\$ 68% Rel
2.96SCS-1.30HCR 33% Rel -1.50CCR 41% Rel
-1.40LIV 35% Rel 0.80GL 43% Rel 3.00EFC 36% Rel

3 Rec YDev: +1006M +57F +36P
2 App 12/21 PTAT +1.4 +2.1UDR +0.8FLC 68%Rel CPI +55

ST SR BD DF RA TW RV RL FA
+5.5 +1.4 +1.5 +1.4 L1.6 +0.8 S0.4 P0.1 S0.2
FU RH RW UC UD TP TL
+2.6 +2.8 +1.0 -0.2 S2.7 C2.3 -1.9
Appraisal: EX 94 @ 6-01 (EEEEE)
1-11 365D 2X 19560M 5.3% 1040F 3.6% 700P DHIA
3-07 365D 2X 27770M 5.4% 1493F 3.4% 958P DHIA
5-05 305D 2X 28590M 5.3% 1525F 3.4% 964P 96
KNAPPS COPPER BANK ON IT 87 @ 4-01 (90/84)
3-01 365D 2X 26170M 5.9% 1545F 3.5% 929P DHIA

Three Time Reserve All-American!

MARODORE AARONS LEVI-ET
A2A2

USA000068025119 7GU438

12/21 USDA GPTA -161M -0.04% -14F -0.04% -13P
+0.8DPR +2.1PL -49NMS 29NM%ile -53CM\$ 97% Rel
3.00SCS 0.30HCR 65% Rel -0.50CCR 87% Rel
-0.70LIV 66% Rel -0.60GL 98% Rel 3.90EFC 74% Rel

AGA 12/21 PTAT +0.8 +0.4UDC +0.7FLC 96%Rel PTI -7

HI GUERN VIEW DANCING DIVA-ET
A2A2

USA000068047311

DHI Herd # 33860658 Cow Control 001134
12/21 USDA GPTA -200M +0.06% +2F +0.08% +7P
-0.4DPR +3.0PL +86NMS 59NM%ile +95CM\$ 70% Rel
2.93SCS-1.50HCR 34% Rel -0.70CCR 45% Rel
1.60LIV 40% Rel -0.40GL 42% Rel -1.90EFC 39% Rel

5 Rec YDev: +216M +30F +38P
5 App 12/21 PTAT +1.5 +1.9UDR +1.4FLC 64%Rel CPI +54
Appraisal: EX 96 @ 9-00 (EEEEEE)
8-09 365D 2X 29120M 4.4% 1282F 3.6% 1040P DHIA

COULEE CREST LUXURY SPIDER-ET
A2A2

USA00000604229 1GU415

12/21 USDA GPTA +253M +0.09% +27F +0.09% +25P
-3.3DPR -3.2PL -56NMS 29NM%ile -52CM\$ 97% Rel
3.28SCS -1.30HCR 70% Rel -3.20CCR 90% Rel
-3.60LIV 75% Rel -0.30GL 98% Rel 7.10EFC 79% Rel

AGA 12/21 PTAT +0.4 +0.0UDC -1.6FLC 97%Rel PTI +10

KNAPPS MR AMERICA MISS BESTANY
A2A2

USA000068026893

DHI Herd # 42310529 Cow Control 000560
12/21 USDA PTA -357M +0.05% -7F -0.02% -15P
+1.0DPR +1.1PL -21NMS 33NM%ile -15CM\$ 56% Rel
2.60SCS-0.30HCR 16% Rel 1.10CCR 28% Rel
0.40LIV 22% Rel 1.00GL 34% Rel 1.30EFC 22% Rel

3 Rec YDev: -1033M -29F -39P
2 App 12/21 PTAT +1.2 +1.4UDR +1.5FLC 57%Rel CPI +10
Appraisal: 92 @ 6-07 (92/89)

2-02 365D 2X 18700M 5.0% 938F 3.2% 604P DHIA
3-10 365D 2X 23410M 5.5% 1297F 3.2% 748P DHIA
5-10 365D 2X 24700M 5.8% 1438F 3.3% 817P DHIA
2164D 120810M 5.8% 7034F 3.6% 4349P LIFE

KNAPPS SPIDER BET ON ME-ET
3-09 364D 2X 16750M 6.5% 1083F 3.8% 642P 97

KNAPPS REGIS TROTTER-ETV

Dam to Lot 2

March 2, 2022 Calf X Primetime



AMERICAN
GUERNSEY
ASSOCIATION

KNAPPS REGIS TROTTER-ETV
A2A2

USA000097000111

Current Date: 4-8-2022

Consigned by: Glen & Sheryl Taylor,

Heritage Brook Guernseys

DHI Herd # 21290760 Cow Control 004124
04/22 USDA GPTA +1227M -0.28% +3F -0.15% +12P
-0.2DPR +2.1PL +131NM\$ 69NM\$ile +118CMS 65% Rel
2.93SCS-0.40HCR 30% Rel -0.80CCR 37% Rel
-1.70LIV 33% Rel 0.60GL 36% Rel 1.50EFC 34% Rel

4 Rec YDev: +3057M +37F +38P
3 App 04/22 PTAT +0.8 +0.5UDR -1.1FLC 60%Rel CPI +13

ST SR BD DF RA TW RV RL FA
+2.2 +0.0 +0.6 +0.8 L2.5 +0.6 H0.6 P0.7 L0.4

FU RH RW UC UD TP TL
+0.7 +0.9 +0.7 +0.1 S0.6 W0.1 +0.2

Appraisal: VG 88 @ 4-03 (VE+VV)

ST SR BD DF RA TW RV RL FA FU RH RW UC UD TP TL

38 35 25 42 26 25 24 24 25 35 35 35 32 35 28 28

4-10 305D 3X 25230M 3.9% 986F 3.0% 759P DHIA

365D 3X 28670M 3.9% 1129F 3.1% 875P DHIA

MARODORE ENHANCER REGIS-ETV USA000000603223 14GU280

04/22 USDA GPTA +677M -0.12% +9F -0.10% +4P
-2.4DPR -3.6PL -195NM\$ 11NM\$ile -206CMS 97% Rel
3.09SCS -0.30HCR 62% Rel -3.00CCR 90% Rel
-5.50LIV 78% Rel 1.30GL 96% Rel -0.90EFC 80% Rel

AGA 04/22 PTAT -0.2 -0.3UDC -2.7FLC 97%Rel PTI -47

ST SR BD DF RA TW RV RL FA

+1.6 +0.8 +1.3 +0.9 L2.0 +1.3 H1.1 P0.4 L1.0

FU RH RW UC UD TP TL

-0.1 +0.9 +0.7 -0.1 D0.8 W1.1 +0.8

KNAPPS ACE TAMERA USA000068006299

DHI Herd # 42310529 Cow Control 000094
04/22 USDA GPTA -639M -0.12% -50F +0.05% -13P
+1.8DPR +5.7PL +39NM\$ 46NM\$ile +52CMS 90% Rel
2.57SCS-0.70HCR 34% Rel -0.10CCR 62% Rel
3.00LIV 48% Rel 1.00GL 58% Rel -1.20EFC 48% Rel

3 Rec YDev: -1393M -106F -32P
3 App 04/22 PTAT +1.1 +1.3UDR +0.0FLC 90%Rel CPI -30

ST SR BD DF RA TW RV RL FA
+1.5 -1.2 -0.6 -0.6 H0.3 -0.6 S0.4 P0.2 L0.4

FU RH RW UC UD TP TL

+1.8 +0.5 -0.7 +1.0 S3.0 W0.6 +0.5

Appraisal: 93 @ 9-07 (91/92)

2-07 365D 2X 19960M 4.7% 935F 3.4% 670P DHIA

3-08 365D 2X 24510M 4.3% 1044F 3.2% 786P DHIA

5-06 365D 2X 24830M 4.6% 1146F 3.3% 809P DHIA

9-07 365D 2X 32350M 4.2% 1351F 3.2% 1036P DHIA

3038D 178720M 4.4% 7847F 3.4% 6004P LIFE

KNAPPS ADACKA TITAN-ET GPTI -26

KNAPPS RIPLEY REGIS TAMPA-ET GPTI -22

KNAPPS TOOLITE REGISA TAZ-ET GPTI -55

KNAPPS BMORAL PIES THOR-ETV GPTI -13

KNAPPS MONTE TARA 87 @ 4-01 (90/77)

2-02 365D 2X 24760M 4.7% 1160F 3.2% 785P DHIA

KNAPPS REGIS TAMBOURINE-ET 95 @ 7-04 (95/94)

6-10 365D 2X 40160M*5.1% 2055F*3.3% 1338P* DHIA

KNAPPS REGIS TAMILLA-ET 90 @ 4-05 (90/90)

3-01 365D 2X 27950M 4.4% 1238F 3.5% 968P DHIA

HERITAGE BROOK NOVAK TETON-ET GPTI +28
HERITAGE BROOK LB TAHOE GPTI +8
THURSTON FARMS PRIMETIME TRIxie 92 @ 3-07 (91/94)
2-09 305D 3X 21122M 4.0% 835F 3.3% 700P DHIA
HERITAGE BRK NOVAK TREASURE-ET 83 @ 2-09 (80/87)
2-00 365D 3X 27620M 3.8% 1062F 2.9% 791P DHIA

Full Sister to Thurston Farms

Primetime Trixie!

SHERMA VICTORY ELLAS ENHANCER USA000000600510 29GU918

04/22 USDA GPTA +417M -0.02% +15F -0.08% +0P
-1.3DPR -3.1PL -44NM\$ 23NM\$ile -54CMS 98% Rel
3.17SCS 1.00HCR 76% Rel -0.40CCR 93% Rel
-5.70LIV 89% Rel 1.80GL 93% Rel 1.70EFC 90% Rel

AGA 04/22 PTAT +0.0 +0.2UDC -1.3FLC 98%Rel PTI -22

MARODORE PENDERS RONETTE USA000003000058

DHI Herd # 31230061 Cow Control 000555
04/22 USDA PTA +606M -0.19% -7F -0.08% +6P
+0.1DPR -4.4PL -216NM\$ 5NM\$ile -227CMS 80% Rel
3.18SCS 2.30HCR 34% Rel 0.90CCR 69% Rel
-0.50LIV 61% Rel 0.00GL 65% Rel 0.90EFC 59% Rel

3 Rec YDev: +1796M -4F +24P
2 App 04/22 PTAT -0.5 -1.5UDR -1.4FLC 78%Rel CPI -37

Appraisal: 91 @ 3-08

3-10 305D 2X 22740M 3.9% 876F 3.3% 761P DHIA

KNAPPS PERFECTO ACE-ETV USA000000602569

04/22 USDA PTA -829M +0.05% -29F +0.05% -19P
+2.9DPR +4.1PL +41NM\$ 29NM\$ile +58CMS 92% Rel
2.39SCS -1.50HCR 31% Rel 1.70CCR 70% Rel
3.40LIV 58% Rel 2.60GL 69% Rel -7.10EFC 56% Rel

AGA 04/22 PTAT +0.5 +1.2UDC +1.3FLC 92%Rel PTI +3

SUNRISE LUXURY TAMI USA000003068188

DHI Herd # 42310529 Cow Control 000056
04/22 USDA PTA +81M -0.21% -33F -0.02% +0P
+1.5DPR -0.7PL -127NM\$ 14NM\$ile -129CMS 76% Rel
3.05SCS 0.80HCR 24% Rel 0.60CCR 50% Rel
-1.90LIV 39% Rel 0.10GL 37% Rel 3.50EFC 37% Rel

5 Rec YDev: +338M -61F +6P
4 App 04/22 PTAT +1.0 +0.3UDR -0.6FLC 77%Rel CPI -35

Appraisal: 93 @ 5-04 (92/92)

2-02 311D 2X 14630M 3.9% 571F 3.2% 474P 98

3-10 365D 2X 28480M 4.2% 1198F 3.2% 907P DHIA

5-00 307D 2X 25280M 3.8% 961F 3.1% 793P 93

5-11 365D 2X 26130M 3.8% 989F 3.2% 848P DHIA

7-00 365D 2X 24680M 4.0% 992F 3.2% 796P DHIA

2395D 151070M 4.0% 6087F 3.2% 4888P LIFE

KNAPPS MR AMERICA TORNADO PTI -9

KNAPPS DEEMAND TAMARO 92 @ 4-10 (90/90)

4-05 365D 2X 22315M 4.4% 987F 3.4% 748P 99

KNAPPS HILLPOINT C TIPSTER-ET 89 @ 2-09 (90/86)

2-02 365D 2X 16810M 4.3% 723F 3.2% 534P DHIA

KNAPPS HILLPOINT PIE TEACUP-ET 94 @12-02 (95/93)

11-06 365D 2X 39110M*5.1% 2003F*3.3% 1283P* DHIA



Heritage Brook Drone Trinket-ETV

Daughters of Trixie

Heritage Brook LB Trillium



Heritage Brook Lat Trinity-ETV

Daughters of Trixie

Heritage Brook AP Tinsel



Thurston Farms Primetime Trixie — EX 92

Full Sister to Lot 2



KNAPPS TIME TO TEASE-ETV

Lot 3- Embryos

3 #1 IVF Conventional X Drone



AMERICAN
GUERNSEY
ASSOCIATION

KNAPPS TIME TO TEASE-ETV
A2A2

840003137430747

Current Date: 2-28-2022

Born: 09-23-2019 Tattoo LE RE
Breeder: KNAPP AUSTIN & LANDEN
EPWORTH IA
Owner: FOOTE WAYNE & ELIZABETH
HARTFORD NY

PA: +62M -0.13% -20F -0.04% -5P -67CMS -67NMS
+0.5PTAT +0.5UDC -1.3FLC -0.2DPR +1.2PL -37CPI
2.83SCS

ST SR BD DF RA TW RV RL FA
+1.7 -0.1 +0.5 +0.3 L1.0 +0.6 H0.3 P0.3 L0.7
FU RH RW UC UD TP TL
+0.8 +0.8 +0.2 +0.5 S1.1 W0.8 +0.7

MARODORE ENHANCER REGIS-ET USA000000603223 14GU280

12/21 USDA GPTA +680M -0.12% +9F -0.10% +4P
-2.3DPR -3.6PL -194NMS 17NM%ile -205CMS 97% Rel
3.10SCS -0.50HCR 62% Rel -2.80CCR 90% Rel
-5.40LIV 78% Rel 1.30GL 96% Rel -0.50EFC 80% Rel

AGA 12/21 PTAT -0.2 -0.3UDC -2.7FLC 97%Rel PTI -46

ST SR BD DF RA TW RV RL FA
+1.6 +0.8 +1.3 +0.9 L2.0 +1.4 H1.1 P0.4 L1.0
FU RH RW UC UD TP TL
-0.2 +0.9 +0.7 +0.0 D0.8 W1.1 +0.8

KNAPPS ACE TAMERA

USA0000068006299

DHI Herd # 42310529 Cow Control 000094
12/21 USDA GPTA -557M -0.13% -48F +0.03% -13P
+1.9DPR +6.0PL +60NMS 53NM%ile +72CMS 89% Rel
2.56SCS -0.90HCR 34% Rel 0.30CCR 61% Rel
3.30LIV 48% Rel 1.10GL 58% Rel -0.80EFC 47% Rel

3 Rec YDev: -1301M -104F -31P
3 App 12/21 PTAT +1.2 +1.3UDR +0.1FLC 89%Rel CPI -25

ST SR BD DF RA TW RV RL FA
+1.7 -1.0 -0.3 -0.3 H0.1 -0.3 S0.5 P0.1 L0.4
FU RH RW UC UD TP TL
+1.7 +0.7 -0.4 +1.0 S2.9 W0.5 +0.5

Appraisal: 93 @ 9-07 (91/92)
2-07 365D 2X 19960M 4.7% 935F 3.4% 670P DHIA
3-08 365D 2X 24510M 4.3% 1044F 3.2% 786P DHIA
5-06 365D 2X 24830M 4.6% 1146F 3.3% 809P DHIA
9-07 365D 2X 32350M 4.2% 1351F 3.2% 1036P DHIA
3038D 178720M 4.4% 7847F 3.4% 6004P TTF

SHERMA VICTORY ELLAS ENHANCER USA000000600510 29GU918

12/21 USDA GPTA +394M -0.02% +15F -0.07% +0P
-1.2DPR -3.0PL -41NMS 29NM%ile -51CMS 98% Rel
3.17SCS 0.90HCR 75% Rel -0.30CCR 93% Rel
-5.80LIV 89% Rel 1.80GL 93% Rel 1.70EFC 90% Rel

AGA 12/21 PTAT +0.0 +0.2UDC -1.3FLC 98%Rel PTI -21

MARODORE PENDERS RONETTE USA000003000058

DHI Herd # 31230061 Cow Control 000555
12/21 USDA PTA +536M -0.17% -7F -0.07% +6P
+0.2DPR -4.3PL -215NMS 5NM%ile -224CMS 80% Rel
3.19SCS 2.30HCR 34% Rel 1.00CCR 69% Rel
-0.40LIV 60% Rel 0.00GL 65% Rel 0.90EFC 59% Rel

3 Rec YDev: +1677M -4F +26P
2 App 12/21 PTAT -0.5 -1.5UDR -1.4FLC 78%Rel CPI -36
Appraisal: 91 @ 3-08
3-10 305D 2X 22740M 3.9% 876F 3.3% 761P DHIA

KNAPPS PERFECTO ACE-ET USA000000602569

12/21 USDA PTA -875M +0.06% -30F +0.04% -22P
+3.0DPR +4.2PL +31NMS 41NM%ile +47CMS 92% Rel
2.38SCS -1.60HCR 31% Rel 1.90CCR 70% Rel
3.60LIV 58% Rel 2.70GL 69% Rel -6.80EFC 56% Rel

AGA 12/21 PTAT +0.5 +1.2UDC +1.3FLC 92%Rel PTI -1

SUNRISE LUXURY TAMI USA000003068188

DHI Herd # 42310529 Cow Control 000056
12/21 USDA PTA +128M -0.22% -33F -0.01% +2P
+1.6DPR -0.6PL -111NMS 17NM%ile -114CMS 76% Rel
3.05SCS 0.60HCR 24% Rel 0.70CCR 49% Rel
-1.80LIV 39% Rel 0.20GL 37% Rel 3.60EFC 37% Rel

5 Rec YDev: +417M -61F +9P
4 App 12/21 PTAT +1.1 +0.3UDR -0.6FLC 77%Rel CPI -31
Appraisal: 93 @ 5-04 (92/92)
2-02 311D 2X 14630M 3.9% 571F 3.2% 474P 98
3-10 365D 2X 28480M 4.2% 1198F 3.2% 907P DHIA
5-00 307D 2X 25280M 3.8% 961F 3.1% 793P 93
5-11 365D 2X 26130M 3.8% 989F 3.2% 848P DHIA
7-00 365D 2X 24680M 4.0% 992F 3.2% 796P DHIA
2395D 151070M 4.0% 6087F 3.2% 4888P LIFE



Knapps Regis Tamourine— EX 95

Full Sister to Dam of Lot 2 & Lot 3, Maternal Sister to Dam of Lot 4

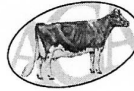


Knapps Regis Trista— EX94

Full Sister to
Dam of Lot 2 & 3
Maternal Sister to
Dam of Lot 4

PLEASANT KNOB NOVAK TABITHA

Lot 4



AMERICAN
GUERNSEY
ASSOCIATION

PLEASANT KNOB NOVAK TABITHA 840003214859771
A2A2

Current Date: 4-8-2022

Born: 12-20-2019 Tag # 32
Breeder: RYMPH ANDREW JADEN
GREENWICH NY
Owner: RYMPH ANDREW JADEN
GREENWICH NY

Due 7/18/22 to Latimer

DHI Herd # 00000000
04/22 USDA GPTA +381M -0.03% +13F +0.00% +12P
-2.0DPR +1.3PL +157NM\$ 74NM\$ile +158CM\$ 47% Rel
2.97SCS-2.30HCR 32% Rel -4.00CCR 34% Rel
-0.30LIV 29% Rel 2.30GL 36% Rel 4.10EFC 31% Rel

0 Rec YDev: M F P
0 App 04/22 PTAT +0.8 +0.7UDR +0.5FLC 48%Rel CPI +27

ST SR BD DF RA TW RV RL FA
+2.4 -0.2 +0.3 +1.9 L1.2 +0.1 P0.6 S0.2
FU RH RW UC UD TP TL
-0.5 +0.7 +1.1 +1.0 S0.1 C1.4 +1.6

LANG HAVEN GRUMPY NOVAK USA000068042542 7GU446
A2A2

04/22 USDA GPTA +816M -0.08% +23F -0.03% +22P
-3.1DPR +0.5PL +215NM\$ 58NM\$ile +212CM\$ 96% Rel
3.03SCS -3.80HCR 69% Rel -4.50CCR 84% Rel
0.60LIV 57% Rel 2.90GL 98% Rel 5.10EFC 67% Rel

AGA 04/22 PTAT +0.4 +0.4UDC +0.0FLC 96%Rel PTI +36

ST SR BD DF RA TW RV RL FA
+1.3 -0.4 -0.1 +1.6 L0.7 +0.3 0.0 P0.9 L0.2
FU RH RW UC UD TP TL
-0.8 +0.9 +1.0 +0.7 S0.2 C0.7 +1.2

KNAPPS PK AARON TAMERICA-ET USA000097002260
A2A2

DHI Herd # 21424506 Cow Control 000260
04/22 USDA PTA -237M +0.02% -8F +0.03% -3P
-0.8DPR +2.7PL +84NM\$ 57NM\$ile +92CM\$ 53% Rel
2.75SCS-0.20HCR 29% Rel -2.80CCR 40% Rel
0.00LIV 34% Rel 1.30GL 39% Rel 1.20EFC 34% Rel

1 Rec YDev: -327M -32F +26P

GOLDEN J RONALD GRUMPY USA000000604960 7GU405
A2A2

04/22 USDA GPTA -122M +0.09% +10F +0.05% +5P
+0.4DPR +3.8PL +317NM\$ 88NM\$ile +325CM\$ 98% Rel
2.87SCS -0.60HCR 77% Rel 1.00CCR 93% Rel
2.40LIV 80% Rel -1.10GL 99% Rel 3.40EFC 83% Rel

AGA 04/22 PTAT +0.1 +1.0UDC +0.9FLC 98%Rel PTI +50

LANG HAVEN NATURAL NOVELTY USA000068005592

DHI Herd # 35320145 Cow Control 000833
04/22 USDA PTA +798M -0.15% +9F +0.02% +30P
-1.2DPR -1.7PL +125NM\$ 68NM\$ile +127CM\$ 64% Rel
3.05SCS-1.80HCR 30% Rel -2.20CCR 48% Rel
1.40LIV 31% Rel 3.20GL 48% Rel 4.30EFC 35% Rel

4 Rec YDev: +1964M +39F +75P
3 App 04/22 PTAT -0.2 -0.8UDR -1.4FLC 65%Rel CPI +17
Appraisal: 90 @ 7-07 (89/87)
3-11 365D 2X 29560M 5.2% 1528F 3.6% 1069P DHIA

SNIDERS OPTION AARON-ET USA000000604670 7GU395
A2A2

04/22 USDA GPTA +150M +0.16% +35F -0.01% +4P
-3.5DPR -0.3PL +114NM\$ 29NM\$ile +115CM\$ 99% Rel
2.93SCS 0.30HCR 82% Rel -5.60CCR 96% Rel
-3.10LIV 87% Rel 1.50GL 99% Rel 3.50EFC 89% Rel

AGA 04/22 PTAT +0.8 +1.1UDC +0.9FLC 99%Rel PTI +34

KNAPPS ACE TAMERA USA000068006299

DHI Herd # 42310529 Cow Control 000094
04/22 USDA GPTA -639M -0.12% -50F +0.05% -13P
+1.8DPR +5.7PL +39NM\$ 46NM\$ile +52CM\$ 90% Rel
2.57SCS-0.70HCR 34% Rel -0.10CCR 62% Rel
3.00LIV 48% Rel 1.00GL 58% Rel -1.20EFC 48% Rel

3 Rec YDev: -1393M -106F -32P
3 App 04/22 PTAT +1.1 +1.3UDR +0.0FLC 90%Rel CPI -30
Appraisal: 93 @ 9-07 (91/92)

2-07 365D 2X 19960M 4.7% 935F 3.4% 670P DHIA
3-08 365D 2X 24510M 4.3% 1044F 3.2% 786P DHIA
5-06 365D 2X 24830M 4.6% 1146F 3.3% 809P DHIA
9-07 365D 2X 32350M 4.2% 1351F 3.2% 1036P DHIA
3038D 178720M 4.4% 7847F 3.4% 6004P LIFE

KNAPPS ADACKA TITAN-ET GPTI -26
KNAPPS RIPLEY REGIS TAMPA-ET GPTI -22
KNAPPS TOOLITE REGISA TAZ-ET GPTI -55
KNAPPS BMORAL PIES THOR-ETV GPTI -13
KNAPPS MONTE TARA 87 @ 4-01 (90/77)
2-02 365D 2X 24760M 4.7% 1160F 3.2% 785P DHIA
KNAPPS REGIS TAMBOURINE-ET 95 @ 7-04 (95/94)
6-10 365D 2X 40160M*5.1% 2055F*3.3% 1338P* DHIA
KNAPPS REGIS TAMILLA-ET 90 @ 4-05 (90/90)
3-01 365D 2X 27950M 4.4% 1238F 3.5% 968P DHIA
KNAPPS REGIS TAMESTY-ET 90 @ 3-08 (91/87)

Nells Glow Challenge Conny
EX93

Dam to Lots 5A & 5B



Maternal Sisters to Lots 5A & 5B

Springhill Fame Calypso-ETV EX93

Bottom Left:

Springhill Kojack Columbia-ETV EX 90

Bottom Right:

Springhill Tiller Calico-ET



SPRINGHILL LS CAPTAIN CRUNCH-ETV

Lot 5A- Choice



AMERICAN
GUERNSEY
ASSOCIATION

SPRINGHILL LS CAPTAIN CRUNCH-ETV840003231578527
A2A2

Born: 09-10-2021 Tattoo LE H12 RE

Breeder: SPRINGHILL

BIG PRAIRIE

OH

Owner: ZACHARY & SYLVIA JOHNSON

TUNBRIDGE

VT

PA: +301M -0.02% +12F +0.05% +18P +58CM\$ +54NM\$
+0.7PTAT -0.4UDC +1.0FLC -2.1DPR -1.1PL +19CPI
3.06SCS

ST	SR	BD	DF	RA	TW	RV	RL	FA
+2.0	-0.3	+0.7	+1.9	L2.2	+0.1	S0.7	P0.7	L0.2
FU	RH	RW	UC	UD	TP	TL		
-0.1	+1.8	+0.9	-1.2	D0.5	W1.3	+0.0		

SPRINGHILL J LONE STAR-ET USA000068030411 31GU624
A2A2

12/21 USDA GPTA +222M -0.02% +7F +0.03% +13P
-3.8DPR -3.0PL -137NM\$ 17NM\$ile -136CM\$ 94% Rel
3.09SCS -2.60HCR 53% Rel -4.70CCR 76% Rel
-3.60LIV 53% Rel 2.30GL 95% Rel 2.60EFC 60% Rel

AGA 12/21 PTAT +0.5 -0.6UDC +0.4FLC 93%Rel PTI -18

ST	SR	BD	DF	RA	TW	RV	RL	FA
+3.8	+0.9	+1.4	+2.0	L2.9	+1.5	S0.3	P0.8	L0.2
FU	RH	RW	UC	UD	TP	TL		
-0.5	+1.7	+0.9	-2.1	D0.8	W0.5	-0.2		

NELLS GLOW CHALLENGE CONNY USA000068028537

DHI Herd # 31380323 Cow Control 000217
12/21 USDA GPTA +380M -0.01% +16F +0.06% +23P
-0.4DPR +0.8PL +245NM\$ 88NM\$ile +251CM\$ 71% Rel
3.02SCS-2.20HCR 37% Rel -0.80CCR 45% Rel
-0.60LIV 41% Rel -0.10GL 44% Rel -4.90EFC 40% Rel

5 Rec YDev: +1076M +53F +57P
3 App 12/21 PTAT +0.8 -0.2UDR +1.5FLC 73%Rel CPI +54

ST	SR	BD	DF	RA	TW	RV	RL	FA
+0.2	-1.4	+0.0	+1.7	L1.5	-1.4	S1.1	P0.6	L0.1
FU	RH	RW	UC	UD	TP	TL		
+0.3	+1.9	+0.9	-0.3	D0.2	W2.0	+0.2		

Appraisal: 93 @ 7-11 (92/91)
2-03 365D 2X 19560M 4.8% 930F 3.6% 695P 101
3-05 305D 2X 21110M 4.5% 954F 3.4% 724P 102
4-08 365D 2X 25430M 4.5% 1147F 3.4% 872P DHIA
6-03 334D 2X 24810M 4.8% 1179F 3.6% 887P 102
7-02 365D 2X 24990M 5.1% 1267F 4.0% 988P DHIA
10-06 303D 2X 14320M 4.7% 677F 3.2% 463P 96
2546D 156440M 4.9% 7597F 3.7% 5725P LIFE
NELLS GLOW CONNY OF SPRINGHILL 86 @ 3-09 (84/86)
2-05 365D 2X 25170M 4.8% 1196F 3.5% 877P DHIA
SPRINGHILL JUDGMENT CLEMENTINE 87 @ 4-00 (87/87)
3-07 365D 2X 19400M 4.8% 922F 3.6% 694P DHIA
SPRINGHILL KOJACK COLUMBIA-ETV 90 @ 5-09 (89/88)
4-04 365D 2X 32380M 4.1% 1341F 3.4% 1116P DHIA
SPRINGHILL FAME CALYPSO-ETV 93 @ 6-01 (93/94)
5-02 365D 2X 28010M 4.6% 1296F 3.6% 1005P DHIA

COULEE CREST LUXURY SPIDER-ET USA000000604229 1GU415

12/21 USDA GPTA +253M +0.09% +27F +0.09% +25P
-3.3DPR -3.2PL -56NM\$ 29NM\$ile -52CM\$ 97% Rel
3.28SCS -1.30HCR 70% Rel -3.20CCR 90% Rel
-3.60LIV 75% Rel -0.30GL 98% Rel 7.10EFC 79% Rel

AGA 12/21 PTAT +0.4 +0.0UDC -1.6FLC 97%Rel PTI +10

DIX LEE TILLER JOKE USA000068001932

DHI Herd # 35650694 Cow Control 000314
12/21 USDA GPTA +278M +0.02% +16F -0.03% +3P
-1.3DPR +0.2PL +42NM\$ 48NM\$ile +41CM\$ 89% Rel
2.90SCS-2.40HCR 54% Rel -2.50CCR 75% Rel
-1.40LIV 57% Rel 0.90GL 76% Rel -0.40EFC 60% Rel

2 Rec YDev: +2297M +122F +62P
2 App 12/21 PTAT +1.2 +1.5UDR +1.7FLC 89%Rel CPI +37
Appraisal: 93 @ 5-08 (93/92)
5-06 365D 2X 31350M 4.9% 1543F 3.3% 1033P DHIA

IDLE GOLD E CHALLENGE-ET USA000000604268 1GU418
A2A2

12/21 USDA GPTA -538M +0.15% +1F +0.10% -1P
+1.0DPR +0.7PL +123NM\$ 41NM\$ile +134CM\$ 98% Rel
2.88SCS -3.00HCR 80% Rel 1.10CCR 94% Rel
-0.80LIV 85% Rel -0.20GL 99% Rel -7.40EFC 88% Rel

AGA 12/21 PTAT -0.3 -0.4UDC -0.3FLC 98%Rel PTI -7

RIPLEY FARMS SP CONI SUE-ET USA000068008643

DHI Herd # 93240010 Cow Control 000169
12/21 USDA PTA +853M -0.12% +17F -0.03% +23P
-1.5DPR -0.9PL +89NM\$ 60NM\$ile +85CM\$ 61% Rel
3.13SCS-0.10HCR 25% Rel -2.30CCR 42% Rel
-0.90LIV 28% Rel -0.60GL 40% Rel 0.30EFC 29% Rel

2 Rec YDev: +1621M +36F +48P
1 App 12/21 PTAT +0.7 -1.1UDR +0.1FLC 60%Rel CPI +22
Appraisal: 82 @ 2-10 (82/85)
2-04 365D 2X 25550M 4.3% 1086F 3.3% 851P DHIA
3-10 307D 2X 19580M 4.4% 863F 3.6% 697P 101
NELLS GLOW AARON CONNELL 82 @ 2-10 (82/86)
2-03 340D 2X 22980M 4.7% 1090F 3.3% 766P 56

SPRINGHILL LS CRYPTONITE-ETV

Lot 5B- Choice



AMERICAN
GUERNSEY
ASSOCIATION

SPRINGHILL LS CRYPTONITE-ETV 840003231578525
A2A2

Current Date: 2-25-2022

Born: 09-10-2021 Tattoo LE L13 RE
Breeder: SPRINGHILL
BIG PRAIRIE OH
Owner: ZACHARY & SYLVIA JOHNSON
TUNBRIDGE VT
PA: +301M -0.02% +12F +0.05% +18P +58CMS +54NMS
+0.7PTAT -0.4UDC +1.0FLC -2.1DPR -1.1PL +19CPI
3.06SCS

ST SR BD DF RA TW RV RL FA
+2.0 -0.3 +0.7 +1.9 L2.2 +0.1 S0.7 P0.7 L0.2
FU RH RW UC UD TP TL
-0.1 +1.8 +0.9 -1.2 D0.5 W1.3 +0.0

SPRINGHILL J LONE STAR-ET USA000068030411 31GU624
A2A2

12/21 USDA GPTA +222M -0.02% +7F +0.03% +13P
-3.8DPR -3.0PL -137NMS 17NM%ile -136CMS 94% Rel
3.09SCS -2.60HCR 53% Rel -4.70CCR 76% Rel
-3.60LIV 53% Rel 2.30GL 95% Rel 2.60EFC 60% Rel

AGA 12/21 PTAT +0.5 -0.6UDC +0.4FLC 93%Rel PTI -18

ST SR BD DF RA TW RV RL FA
+3.8 +0.9 +1.4 +2.0 L2.9 +1.5 S0.3 P0.8 L0.2
FU RH RW UC UD TP TL
-0.5 +1.7 +0.9 -2.1 D0.8 W0.5 -0.2

NELLS GLOW CHALLENGE CONNY USA000068028537

DHI Herd # 31380323 Cow Control 000217
12/21 USDA GPTA +380M -0.01% +16F +0.06% +23P
-0.4DPR +0.8PL +245NMS 88NM%ile +251CMS 71% Rel
3.02SCS -2.20HCR 37% Rel -0.80CCR 45% Rel
-0.60LIV 41% Rel -0.10GL 44% Rel -4.90EFC 40% Rel

5 Rec YDev: +1076M +53F +57P
3 App 12/21 PTAT +0.8 -0.2UDR +1.5FLC 73%Rel CPI +54

ST SR BD DF RA TW RV RL FA
+0.2 -1.4 +0.0 +1.7 L1.5 -1.4 S1.1 P0.6 L0.1
FU RH RW UC UD TP TL
+0.3 +1.9 +0.9 -0.3 D0.2 W2.0 +0.2

Appraisal: 93 @ 7-11 (92/91)
2-03 365D 2X 19560M 4.8% 930F 3.6% 695P 101
3-05 305D 2X 21110M 4.5% 954F 3.4% 724P 102
4-08 365D 2X 25430M 4.5% 1147F 3.4% 872P DHIA
6-03 334D 2X 24810M 4.8% 1179F 3.6% 887P 102
7-02 365D 2X 24990M 5.1% 1267F 4.0% 988P DHIA
10-06 303D 2X 14320M 4.7% 677F 3.2% 463P 96
2546D 156440M 4.9% 7597F 3.7% 5725P LIFE
NELLS GLOW CONNY OF SPRINGHILL 86 @ 3-09 (84/86)
2-05 365D 2X 25170M 4.8% 1196F 3.5% 877P DHIA
SPRINGHILL JUDGMENT CLEMENTINE 87 @ 4-00 (87/87)
3-07 365D 2X 19400M 4.8% 922F 3.6% 694P DHIA
SPRINGHILL KOJACK COLUMBIA-ETV 90 @ 5-09 (89/88)
4-04 365D 2X 32380M 4.1% 1341F 3.4% 1116P DHIA
SPRINGHILL FAME CALYPSO-ETV 93 @ 6-01 (93/94)
5-02 365D 2X 28010M 4.6% 1296F 3.6% 1005P DHIA

COULEE CREST LUXURY SPIDER-ET USA000000604229 1GU415

12/21 USDA GPTA +253M +0.09% +27F +0.09% +25P
-3.3DPR -3.2PL -56NMS 29NM%ile -52CMS 97% Rel
3.28SCS -1.30HCR 70% Rel -3.20CCR 90% Rel
-3.60LIV 75% Rel -0.30GL 98% Rel 7.10EFC 79% Rel

AGA 12/21 PTAT +0.4 +0.0UDC -1.6FLC 97%Rel PTI +10

DIX LEE TILLER JOKE USA000068001932

DHI Herd # 35650694 Cow Control 000314
12/21 USDA GPTA +278M +0.02% +16F -0.03% +3P
-1.3DPR +0.2PL +42NMS 48NM%ile +41CMS 89% Rel
2.90SCS -2.40HCR 54% Rel -2.50CCR 75% Rel
-1.40LIV 57% Rel 0.90GL 76% Rel -0.40EFC 60% Rel

2 Rec YDev: +2297M +122F +62P
2 App 12/21 PTAT +1.2 +1.5UDR +1.7FLC 89%Rel CPI +37
Appraisal: 93 @ 5-08 (93/92)
5-06 365D 2X 31350M 4.9% 1543F 3.3% 1033P DHIA

IDLE GOLD E CHALLENGE-ET USA000000604268 1GU418
A2A2

12/21 USDA GPTA -538M +0.15% +1F +0.10% -1P
+1.0DPR +0.7PL +123NMS 41NM%ile +134CMS 98% Rel
2.88SCS -3.00HCR 80% Rel 1.10CCR 94% Rel
-0.80LIV 85% Rel -0.20GL 99% Rel -7.40EFC 88% Rel

AGA 12/21 PTAT -0.3 -0.4UDC -0.3FLC 98%Rel PTI -7

RIPLEY FARMS SP CONI SUE-ET USA000068008643

DHI Herd # 93240010 Cow Control 000169
12/21 USDA PTA +853M -0.12% +17F -0.03% +23P
-1.5DPR -0.9PL +89NMS 60NM%ile +85CMS 61% Rel
3.13SCS -0.10HCR 25% Rel -2.30CCR 42% Rel
-0.90LIV 28% Rel -0.60GL 40% Rel 0.30EFC 29% Rel

2 Rec YDev: +1621M +36F +48P
1 App 12/21 PTAT +0.7 -1.1UDR +0.1FLC 60%Rel CPI +22
Appraisal: 82 @ 2-10 (82/85)
2-04 365D 2X 25550M 4.3% 1086F 3.3% 851P DHIA
3-10 307D 2X 19580M 4.4% 863F 3.6% 697P 101
NELLS GLOW AARON CONNELL 82 @ 2-10 (82/86)
2-03 340D 2X 22980M 4.7% 1090F 3.3% 766P 56



Knapps Regis Sissy EX 94– 2nd Dam to Lot 6

Knapps Pies Superior-ETV

Maternal Sister to

Dam of Lot 6



KNAPPS SHOUT OUT TO SAPPHIRE

Lot 6- Embryos

3 #1 Rev Sort IVF X MAS



AMERICAN
GUERNSEY
ASSOCIATION

KNAPPS SHOUT OUT TO SAPPHIRE 840003209028407

Born: 06-18-2020 Tattoo LE RE
Breeder: KNAPP AUSTIN & LANDEN
EPWORTH IA
Owner: LEVESQUE ANDREW
RUPERT VT

PA: +218M -0.07% -2F -0.02% +4P +6CM\$ +8NM\$
+1.1PTAT +0.8UDC +1.2FLC -1.2DPR +1.3PL +18CPI
3.05SCS

ST	SR	BD	DF	RA	TW	RV	RL	FA
+1.6	+0.7	+1.0	+1.0	L0.1	+0.8	S0.4	P0.9	S0.3
FU	RH	RW	UC	UD	TP	TL		
+1.4	+1.7	+0.6	-0.2	S1.0	C0.3	-0.3		

HI GUERN VIEW LEVI DRONE USA000097004646 94GU959
A2A2

12/21 USDA GPTA +167M -0.07% -4F -0.03% +1P
-0.4DPR +2.8PL +51NM\$ 41NM\$ile +47CM\$ 62% Rel
3.06SCS +0.4SCR -1.40HCR 38% Rel -1.20CCR 41% Rel
-0.50LIV 36% Rel -0.60GL 50% Rel 0.30EFC 38% Rel

AGA 12/21 PTAT +1.4 +1.1UDC +1.6FLC 58%Rel PTI +30

ST	SR	BD	DF	RA	TW	RV	RL	FA
+1.8	+1.2	+1.3	+1.4	H0.6	+1.1	S0.6	P1.0	S0.3
FU	RH	RW	UC	UD	TP	TL		
+1.3	+1.6	+1.2	+0.4	S0.6	C1.3	-0.3		

MARODORE AARONS LEVI-ET
A2A2

USA000068025119 7GU438

12/21 USDA GPTA -161M -0.04% -14F -0.04% -13P
+0.8DPR +2.1PL -49NM\$ 29NM\$ile -53CM\$ 97% Rel
3.00SCS 0.30HCR 65% Rel -0.50CCR 87% Rel
-0.70LIV 66% Rel -0.60GL 98% Rel 3.90EFC 74% Rel

AGA 12/21 PTAT +0.8 +0.4UDC +0.7FLC 96%Rel PTI -7

HI GUERN VIEW DANCING DIVA-ET USA000068047311
A2A2

DHI Herd # 33860658 Cow Control 001134
12/21 USDA GPTA -200M +0.06% +2F +0.08% +7P
-0.4DPR +3.0PL +86NM\$ 59NM\$ile +95CM\$ 70% Rel
2.93SCS -1.50HCR 34% Rel -0.70CCR 45% Rel
1.60LIV 40% Rel -0.40GL 42% Rel -1.90EFC 39% Rel

5 Rec YDev: +216M +30F +38P
5 App 12/21 PTAT +1.5 +1.9UDR +1.4FLC 64%Rel CPI +54
Appraisal: EX 96 @ 9-00 (EEEEEE)
8-09 365D 2X 29120M 4.4% 1282F 3.6% 1040P DHIA

INDIAN ACRES PIES-ET
A2A2

USA000068024088 94GU958

12/21 USDA GPTA +314M -0.10% -4F +0.03% +15P
-2.7DPR -0.7PL -58NM\$ 29NM\$ile -58CM\$ 92% Rel
3.13SCS -3.40HCR 50% Rel -3.60CCR 72% Rel
-1.10LIV 55% Rel -1.20GL 91% Rel -9.80EFC 59% Rel

AGA 12/21 PTAT +0.9 +0.6UDC +2.7FLC 87%Rel PTI +25

KNAPPS PIES SHIMMER-ETV USA000097005107

DHI Herd # 41230913 Cow Control 000152
12/21 USDA PTA +268M -0.07% +0F -0.01% +7P
-2.0DPR -0.3PL -35NM\$ 29NM\$ile -36CM\$ 47% Rel
3.04SCS -2.30HCR 20% Rel -2.80CCR 29% Rel
-1.70LIV 23% Rel 0.00GL 32% Rel -6.00EFC 24% Rel

2 Rec YDev: +2017M +5F +43P
1 App 12/21 PTAT +0.7 +0.5UDR +0.7FLC 47%Rel CPI +4

ST	SR	BD	DF	RA	TW	RV	RL	FA
+1.3	+0.1	+0.6	+0.6	L0.8	+0.5	S0.1	P0.7	S0.2
FU	RH	RW	UC	UD	TP	TL		
+1.5	+1.8	+0.0	-0.7	S1.3	W0.7	-0.2		

Appraisal: VG 87 @ 3-02 (VVV+E)
1-09 325D 3X 17250M 4.5% 770F 3.3% 565P 50

KNAPPS REGIS SISSY
A1A2

USA000068012759

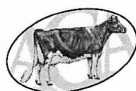
DHI Herd # 42310529 Cow Control 000200
12/21 USDA GPTA -303M +0.11% +5F +0.01% -9P
-1.4DPR +0.1PL -39NM\$ 28NM\$ile -37CM\$ 71% Rel
2.88SCS -1.20HCR 30% Rel -1.90CCR 44% Rel
-2.30LIV 38% Rel 1.20GL 39% Rel -2.10EFC 38% Rel

5 Rec YDev: -848M +11F -19P
3 App 12/21 PTAT +0.5 +0.8UDR -1.4FLC 74%Rel CPI -25
Appraisal: 94 @ 8-04 (94/92)

2-02 350D 2X	18010M	5.5%	990F	3.4%	612P	DHIA
3-02 365D 2X	24460M	5.3%	1304F	3.5%	868P	DHIA
4-05 365D 2X	29960M	5.4%	1630F	3.5%	1044P	DHIA
5-08 317D 2X	13090M	5.4%	713F	3.6%	474P	98
7-07 365D 2X	25380M	5.4%	1361F	3.4%	858P	DHIA
2886D	169790M	5.6%	9545F	3.7%	6237P	LIFE
KNAPPS REGAL SIZZLE			91 @ 5-05	(93/82)		
4-09 365D 2X	25200M	5.0%	1259F	3.2%	802P	DHIA
KNAPPS A PIE SUZUKI-ETV			88 @ 2-03	(90/88)		
1-11 365D 2X	13550M	5.3%	719F	3.4%	457P	DHIA
KNAPPS A PIE SASSY-ETV			88 @ 2-03	(87/85)		
2-11 365D 2X	18310M	5.1%	926F	3.4%	624P	DHIA
KNAPPS PIES SONIC-ETV						
2-05 365D 2X	22740M	4.5%	1012F	3.3%	755P	DHIA
KNAPPS PIES SUPERIOR-ETV						
2-03 365D 2X	25140M	5.0%	1254F	3.5%	881P	DHIA
KNAPPS CF PIES SATSUMA-ETV						
2-05 305D 2X	15410M	5.2%	808F	3.7%	567P	95
KNAPPS PIES SHOW ME OFF-ETV			85 @ 4-09	(85/82)		
2-09 365D 2X	20950M	5.3%	1101F	3.6%	758P	DHIA

ROCKY HILL TOBY HOT SAUCE

Lot 7



AMERICAN
GUERNSEY
ASSOCIATION

ROCKY HILL TOBY HOT SAUCE
A1A2

USA000097011486

Current Date: 4-8-2022

Born: 03-08-2021 Tattoo LE RE
Breeder: ROCKY HILL FARM
HUGHESVILLE PA
Owner: ROCKY HILL FARM
HUGHESVILLE PA

DHI Herd # 00000000

04/22 USDA GPTA -153M +0.05% +2F +0.04% +1P
+1.7DPR +3.2PL +262NMS 90NM%ile +269CMS 50% Rel
2.84SCS-1.00HCR 30% Rel 1.40CCR 35% Rel
1.60LIV 29% Rel 0.90GL 41% Rel 0.90EFC 30% Rel

0 Rec YDev: M F P
0 App 04/22 PTAT -0.2 +0.0UDR +0.5FLC 51%Rel CPI +28

ST SR BD DF RA TW RV RL FA
-3.9 -2.4 -2.4 -1.2 H1.3 -2.4 P0.9 S0.1
FU RH RW UC UD TP TL
+0.4 -0.3 -1.0 -0.7 S0.8 0.0 -1.9

RIPLEY FARMS PIE C TOBY
A2A2

USA000068047797 1GU446

04/22 USDA GPTA +259M +0.06% +23F +0.05% +17P
+0.5DPR +1.7PL +303NMS 76NM%ile +313CMS 92% Rel
2.77SCS -2.4SCR -1.20HCR 54% Rel -0.20CCR 68% Rel
-0.10LIV 47% Rel -0.10GL 95% Rel -0.40EFC 52% Rel

AGA 04/22 PTAT +0.1 -0.6UDC +1.5FLC 90%Rel PTI +59

ST SR BD DF RA TW RV RL FA
-1.2 -1.4 -1.5 +0.0 H2.0 -1.5 S1.0 P0.2 S0.1
FU RH RW UC UD TP TL
-0.3 -0.5 +0.0 -1.0 D0.3 W0.7 -0.4

ROCKY HILL PILOT HOLLISTER
A1A2

USA000097001296

DHI Herd # 23410420

Cow Control 000301

04/22 USDA PTA -714M +0.15% -8F +0.05% -15P
+0.7DPR +0.1PL -80NMS 21NM%ile -75CMS 43% Rel
2.92SCS-1.50HCR 15% Rel 0.50CCR 23% Rel
0.90LIV 15% Rel 2.00GL 31% Rel -1.00EFC 16% Rel

3 Rec YDev: -1336M -10F -28P
4 App 04/22 PTAT +0.4 +0.5UDR +0.9FLC 44%Rel CPI -7

ST SR BD DF RA TW RV RL FA
-0.7 +0.2 +0.5 -0.2 H0.4 +0.2 S0.1 P0.6 S0.4
FU RH RW UC UD TP TL
+0.6 +0.5 -0.3 +0.2 S1.0 C0.1 -0.8

Appraisal: VG 87 @ 5-00 (VE++V)

2-04 336D 2X 14270M 4.2% 599F 3.4% 483P 94
3-06 365D 2X 19120M 4.4% 841F 3.4% 642P DHIA
4-10 365D 2X 23230M 4.6% 1066F 3.3% 771P DHIA

INDIAN ACRES AMERICAN PIE
A2A2

USA000068016348 31GU618

04/22 USDA GPTA +2M -0.17% -29F -0.04% -7P
-1.6DPR +3.0PL -68NMS 11NM%ile -66CMS 98% Rel
2.75SCS -3.70HCR 68% Rel -2.90CCR 90% Rel
0.60LIV 71% Rel 0.80GL 97% Rel -6.30EFC 77% Rel

AGA 04/22 PTAT +0.2 +0.4UDC +2.3FLC 97%Rel PTI -13

RIPLEY FARMS ARON CONI TINA-ET USA000068022185

DHI Herd # 21050030 Cow Control 002681
04/22 USDA GPTA +992M -0.01% +44F -0.03% +28P
-0.8DPR -0.5PL +234NMS 86NM%ile +233CMS 75% Rel
2.97SCS 1.40HCR 35% Rel -2.10CCR 53% Rel
-1.20LIV 36% Rel -0.70GL 56% Rel 5.70EFC 40% Rel

3 Rec YDev: +2739M +140F +83P
4 App 04/22 PTAT +1.5 -0.1UDR +3.6FLC 78%Rel CPI +106
Appraisal: 90 @ 4-09 (91/90)
Gold Star Dam - 2018
4-03 365D 3X 36150M 4.0% 1459F 3.3% 1193P DHIA

LINDRIAN GRUMPY PILOT-ET
A2A2

CAN000011632409 200GU307

04/22 USDA GPTA -391M +0.10% +0F +0.05% -4P
+0.3DPR +0.4PL +52NMS 29NM%ile +63CMS 87% Rel
2.71SCS -0.70HCR 46% Rel 0.30CCR 64% Rel
1.30LIV 42% Rel 2.40GL 91% Rel 0.60EFC 46% Rel

AGA 04/22 PTAT +0.6 +1.5UDC +1.4FLC 82%Rel PTI +30

ROCKY HILL DYNAMIC HAVEN

USA000068045820

DHI Herd # 23410420 Cow Control 000018
04/22 USDA PTA -1208M +0.20% -23F +0.06% -31P
+1.0DPR -0.3PL -242NMS 3NM%ile -239CMS 49% Rel
3.01SCS-2.20HCR 15% Rel 0.60CCR 28% Rel
0.50LIV 18% Rel 1.50GL 30% Rel -2.70EFC 17% Rel

4 Rec YDev: -2562M -34F -63P
3 App 04/22 PTAT +0.7 +0.4UDR +0.7FLC 50%Rel CPI -47
Appraisal: 90 @ 5-10 (88/90)
2-03 303D 2X 13330M 4.5% 601F 3.4% 448P 94
3-03 365D 2X 18650M 4.7% 879F 3.5% 662P DHIA
4-07 301D 2X 20180M 4.5% 917F 3.4% 694P 97
5-07 362D 2X 17920M 4.5% 804F 3.6% 649P 98
ROCKY HILL PRADA HOLIDAY 94 @ 7-10 (93/97)
5-02 297D 2X 20570M 4.2% 855F 3.2% 657P 95



Rocky Hill Dynamic Haven EX 90– 2nd Dam to Lot 7

Rocky Hill Prada Holiday EX 94– Maternal sister to Dam of Lot 7



MILL BRIDGE JAVA P MERRY

Lot 8



AMERICAN
GUERNSEY
ASSOCIATION

MILL BRIDGE JAVA P MERRY

840003216573608

Current Date: 2-25-2022

Born: 12-17-2021 Tattoo LE RE

Breeder: FORMAN SARA

MERIDEN

NH

Owner: FORMAN SARA

MERIDEN

NH

PA: -358M +0.06% -7F +0.04% -6P -85CM\$ -89NM\$
+1.0PTAT +1.2UDC +1.4FLC -0.5DPR +0.5PL +10CPI
2.96SCS

ST SR BD DF RA TW RV RL FA
+2.5 +1.4 +1.4 +0.6 H0.3 +1.9 S0.5 S0.3 S0.6
FU RH RW UC UD TP TL
+1.5 +0.8 +0.8 +0.6 S1.4 C1.1 +0.7

SPRINGHILL JAVA-ETV-P 840003151591431 200GU123
A2A2

12/21 USDA GPTA +232M +0.02% +15F +0.01% +9P
-2.3DPR +0.3PL +36NM\$ 41NM\$ile +40CM\$ 54% Rel
2.87SCS -1.50HCR 28% Rel -3.40CCR 30% Rel
-1.30LIV 29% Rel 0.20GL 29% Rel -0.90EFC 29% Rel

AGA 12/21 PTAT +1.0 +1.1UDC +1.8FLC 52%Rel PTI +39

ST SR BD DF RA TW RV RL FA
+4.7 +1.6 +2.2 +2.1 L0.8 +2.2 S0.9 S0.2 S0.5
FU RH RW UC UD TP TL
+0.8 +1.1 +1.4 +1.0 S1.3 C0.6 +1.3

SPRINGHILL ALTITUDE MYA-ETV-P 840003151591396
A2A2

DHI Herd # 00000000
12/21 USDA GPTA -947M +0.09% -28F +0.06% -21P
+1.4DPR +0.7PL -213NM\$ 5NM\$ile -210CM\$ 47% Rel
3.05SCS-1.00HCR 26% Rel 0.60CCR 29% Rel
0.60LIV 27% Rel 0.80GL 28% Rel 0.50EFC 27% Rel

0 Rec YDev: M F P
0 App 12/21 PTAT +1.0 +1.2UDR +0.9FLC 47%Rel CPI -20

ST SR BD DF RA TW RV RL FA
+0.2 +1.1 +0.6 -1.0 H1.3 +1.5 S0.3 S0.7
FU RH RW UC UD TP TL
+2.1 +0.4 +0.1 +0.2 S1.5 C1.6 +0.1
Appraisal: VG 86 @ 3-04 (VVVVV)

IDLE GOLD A HERALD-P
A2A2

USA000097002947 54GU499

12/21 USDA GPTA -236M +0.11% +9F +0.07% +4P
-0.1DPR +1.2PL +94NM\$ 41NM\$ile +105CM\$ 64% Rel
2.78SCS 0.30HCR 28% Rel -1.00CCR 29% Rel
0.10LIV 30% Rel 0.10GL 27% Rel 0.50EFC 26% Rel

AGA 12/21 PTAT +0.6 +0.9UDC +1.4FLC 57%Rel PTI +40

SPRINGHILL MENTOR JAZZY-ET
A2A2

USA000068031553

DHI Herd # 31380323 Cow Control 000193
12/21 USDA GPTA +338M +0.06% +27F +0.00% +12P
-1.4DPR +1.3PL +154NM\$ 74NM\$ile +158CM\$ 75% Rel
2.86SCS-2.60HCR 37% Rel -2.80CCR 48% Rel
0.00LIV 40% Rel 0.00GL 49% Rel -3.90EFC 42% Rel

4 Rec YDev: +1228M +86F +42P
3 App 12/21 PTAT +2.0 +2.4UDR +2.3FLC 77%Rel CPI +85
Appraisal: EX 95 @ 6-09 (EEEE)
4-06 365D 2X 34720M 5.2% 1799F 3.6% 1260P* DHIA

SPRINGHILL ALTITUDE-ET-P
A2A2

USA000068032787 54GU486

12/21 USDA GPTA -695M +0.09% -16F +0.04% -16P
+1.7DPR -0.8PL -176NM\$ 17NM\$ile -169CM\$ 66% Rel
2.82SCS -0.30HCR 27% Rel 0.70CCR 33% Rel
0.80LIV 26% Rel 1.20GL 31% Rel 1.10EFC 29% Rel

AGA 12/21 PTAT +0.7 +1.3UDC +1.2FLC 65%Rel PTI -1

MAPLEHURST YB MERCY
A2A2

CAN000009594213

DHI Herd # 31380323 Cow Control 000268
12/21 USDA GPTA -952M +0.09% -29F +0.08% -19P
+0.0DPR -0.8PL -297NM\$ 1NM\$ile -295CM\$ 64% Rel
3.19SCS-2.40HCR 35% Rel -0.80CCR 43% Rel
-0.90LIV 38% Rel -0.40GL 42% Rel -0.60EFC 38% Rel

0 Rec YDev: M F P
3 App 12/21 PTAT +1.3 +0.8UDR +1.6FLC 69%Rel CPI -31
Appraisal: 92 @ 4-08 (92/93)

2-05 306D 2X 13074M 4.8% 630F 3.5% 464P DHIA
3-04 365D 2X 24772M 5.1% 1251F 3.6% 891P DHIA
4-07 365D 2X 29282M 5.4% 1590F 3.6% 1068P DHIA
SPRINGHILL MARTAVIOUS GPTI -12
SPRINGHILL MARKESE GPTI -40
SPRINGHILL COPPER MARIE-ETV 85 @ 3-07 (79/90)
2-06 278D 2X 13570M 3.7% 504F 3.5% 473P DHIA
SPRINGHILL COPPER MARIETTA-ETV 87 @ 2-10 (88/88)
2-04 273D 2X 13380M 5.0% 665F 3.2% 430P DHIA



Maplehurst YB Mercy EX 92– 2nd Dam to Lot 8

Springhill Copper Marietta-ETV VG 87– Maternal Sister to Dam of Lot 8



2022 NYS Guernsey Video Sale

ROCKY HILL INDIGO SASSAFRAS

Lot 9



AMERICAN
GUERNSEY
ASSOCIATION

ROCKY HILL INDIGO SASSAFRAS USA000097010759
A2A2

Born: 09-10-2020 Tattoo LE RE
Breeder: MCCARTY THOMAS & HOLLY
HUGHESVILLE PA
Owner: MCCARTY THOMAS & HOLLY
HUGHESVILLE PA
PA: -394M +0.17% +11F +0.04% -8P -24CMS -26NMS
+0.4PTAT +1.0UDC -0.3FLC -0.8DPR -0.3PL +1CPI
2.99SCS

ST SR BD DF RA TW RV RL FA
+0.6 +0.4 +0.5 +0.2 L0.5 +0.9 H0.2 P0.5 L0.2
FU RH RW UC UD TP TL
+0.9 +0.8 +0.8 +0.7 S0.5 C1.9 -0.2

EBY MANOR INDIGO CAN000012949167 200GU122
A2A2

12/21 USDA GPTA +199M +0.11% +28F -0.02% +3P
-2.5DPR -1.9PL -10NMS 35NM%ile -12CMS 56% Rel
3.04SCS -1.20HCR 32% Rel -3.30CCR 38% Rel
-3.00LIV 32% Rel 0.70GL 42% Rel -0.10EFC 34% Rel

AGA 12/21 PTAT +0.9 +1.6UDC +0.7FLC 51%Rel PTI +31

ST SR BD DF RA TW RV RL FA
+2.4 +0.9 +1.5 +1.6 L0.6 +1.8 S0.3 0.0 S0.2
FU RH RW UC UD TP TL
+1.6 +1.6 +1.8 +0.8 S0.7 C2.9 +0.3

ROCKY HILL CHARMING SPIRIT USA000097006908
A2A2

DHI Herd # 23410420 Cow Control 000086
12/21 USDA PTA -986M +0.23% -7F +0.09% -18P
+1.0DPR +1.3PL -42NMS 28NM%ile -35CMS 44% Rel
2.94SCS -0.20HCR 16% Rel 0.90CCR 22% Rel
1.10LIV 13% Rel 0.60GL 32% Rel 0.40EFC 15% Rel

2 Rec YDev: -1782M +28F -22P
2 App 12/21 PTAT -0.2 +0.4UDR -1.3FLC 44%Rel CPI -28

ST SR BD DF RA TW RV RL FA
-1.2 -0.2 -0.5 -1.2 L0.3 +0.0 H0.7 P0.9 L0.5
FU RH RW UC UD TP TL
+0.2 +0.0 -0.3 +0.6 S0.3 C0.9 -0.7
Appraisal: VG 86 @ 3-04 (+V+VV)
2-01 322D 2X 13900M 5.2% 728F 3.7% 508P DHIA

*Confirmed Pregnant to 2/4/22 breeding to
Springhill Java*

MARODORE T LES LIGHTNING-ET USA000068029818 7GU445
A2A2

12/21 USDA GPTA +174M +0.08% +23F +0.01% +7P
-2.4DPR -2.1PL -79NMS 23NM%ile -82CMS 92% Rel
3.21SCS -1.30HCR 50% Rel -3.10CCR 73% Rel
-2.70LIV 50% Rel -0.10GL 97% Rel -0.90EFC 56% Rel

AGA 12/21 PTAT +0.7 +0.8UDC +0.1FLC 89%Rel PTI +20

EBY MANOR D L INDY CAN000011553848

DHI Herd # 00000000
12/21 USDA PTA -154M +0.30% +46F +0.06% +6P
-1.0DPR +1.2PL +341NMS 95NM%ile +351CMS 58% Rel
2.81SCS -0.20HCR 22% Rel -0.90CCR 29% Rel
0.20LIV 23% Rel 1.10GL 34% Rel 3.60EFC 24% Rel

0 Rec YDev: M F P

WALNUT RIDGE PRINCE CHARMING USA000097001421 7GU472
A2A2

12/21 USDA GPTA -818M +0.16% -11F +0.06% -17P
+1.0DPR +2.2PL +12NMS 41NM%ile +21CMS 88% Rel
2.77SCS 0.40HCR 48% Rel 1.00CCR 55% Rel
2.70LIV 31% Rel 1.40GL 95% Rel 1.60EFC 41% Rel

AGA 12/21 PTAT +0.0 +0.4UDC -1.2FLC 87%Rel PTI -24

ROCKY HILL MISSION STATEMENT USA000078005486
A2A2

DHI Herd # 23410420 Cow Control 000486
12/21 USDA PTA -1140M +0.20% -20F +0.07% -26P
+1.0DPR +0.4PL -203NMS 6NM%ile -200CMS 49% Rel
3.10SCS -0.90HCR 16% Rel 0.10CCR 28% Rel
-0.50LIV 21% Rel -0.20GL 31% Rel -0.70EFC 21% Rel

5 Rec YDev: -2214M -31F -49P
3 App 12/21 PTAT -0.1 +0.2UDR -1.1FLC 45%Rel CPI -55
Appraisal: VG 88 @ 6-09 (VEVVV)



Rocky Hill Loral Skylite— 3rd Dam to Lot 9

Indian Acres N Cutie Pie— Full Sister to 3rd Dam of Lot 10



ROCKY HILL LONE STAR PATTY PIE

Dam to Lot 10
Green Slopes Tzar Pantene



AMERICAN
GUERNSEY
 ASSOCIATION

Born 3/18/2022

ROCKY HILL LONE STAR PATTY PIE USA000097010662
 A2A2

Current Date: 3-26-2022

Born: 04-12-2020 Tattoo LE RE

Consigned by: Green Slopes Farm

PA: -21M -0.01% -3F +0.02% +3P -137CM\$ -135NM\$
 +0.2PTAT -0.6UDC -0.3FLC -2.2DPR -1.3PL -28CPI
 3.18SCS

ST SR BD DF RA TW RV RL FA
 +1.1 +0.7 +0.5 +0.5 L1.0 +0.5 H0.2 P0.5 L0.2
 FU RH RW UC UD TP TL
 -0.6 +0.9 +0.6 -1.2 D1.1 W0.2 -0.6

SPRINGHILL J LONE STAR-ET USA000068030411 31GU624
 A2A2

12/21 USDA GPTA +222M -0.02% +7F +0.03% +13P
 -3.8DPR -3.0PL -137NM\$ 17NM\$ile -136CM\$ 94% Rel
 3.09SCS -2.60HCR 53% Rel -4.70CCR 76% Rel
 -3.60LIV 53% Rel 2.30GL 95% Rel 2.60EFC 60% Rel

AGA 12/21 PTAT +0.5 -0.6UDC +0.4FLC 93%Rel PTI -18

ST SR BD DF RA TW RV RL FA
 +3.8 +0.9 +1.4 +2.0 L2.9 +1.5 S0.3 P0.8 L0.2
 FU RH RW UC UD TP TL
 -0.5 +1.7 +0.9 -2.1 D0.8 W0.5 -0.2

ROCKY HILL LADY PRINCESS PIE-ET USA000097005153
 A2A2

DHI Herd # 23410420 Cow Control 001111
 12/21 USDA PTA -263M +0.00% -12F +0.01% -7P
 -0.5DPR +0.5PL -133NM\$ 13NM\$ile -138CM\$ 48% Rel
 3.27SCS -2.10HCR 19% Rel -1.90CCR 26% Rel
 -0.30LIV 17% Rel -0.30GL 34% Rel -5.60EFC 22% Rel

2 Rec YDev: -880M -27F -23P
 2 App 12/21 PTAT -0.1 -0.5UDR -0.9FLC 46%Rel CPI -34

ST SR BD DF RA TW RV RL FA
 -1.7 +0.4 -0.4 -1.0 H1.0 -0.6 H0.6 P0.1 L0.1
 FU RH RW UC UD TP TL
 -0.6 +0.1 +0.2 -0.2 D1.3 C0.1 -0.9
 Appraisal: + 84 @ 3-11 (+VG+)
 2-04 321D 2X 15600M 4.4% 686F 3.3% 514P 95

COULEE CREST LUXURY SPIDER-ET USA000000604229 1GU415

12/21 USDA GPTA +253M +0.09% +27F +0.09% +25P
 -3.3DPR -3.2PL -56NM\$ 29NM\$ile -52CM\$ 97% Rel
 3.28SCS -1.30HCR 70% Rel -3.20CCR 90% Rel
 -3.60LIV 75% Rel -0.30GL 98% Rel 7.10EFC 79% Rel

AGA 12/21 PTAT +0.4 +0.0UDC -1.6FLC 97%Rel PTI +10

DIX LEE TILLER JOKE USA000068001932

DHI Herd # 35650694 Cow Control 000314
 12/21 USDA GPTA +278M +0.02% +16F -0.03% +3P
 -1.3DPR +0.2PL +42NM\$ 48NM\$ile +41CM\$ 89% Rel
 2.90SCS -2.40HCR 54% Rel -2.50CCR 75% Rel
 -1.40LIV 57% Rel 0.90GL 76% Rel -0.40EFC 60% Rel

2 Rec YDev: +2297M +122F +62P
 2 App 12/21 PTAT +1.2 +1.5UDR +1.7FLC 89%Rel CPI +37
 Appraisal: 93 @ 5-08 (93/92)
 5-06 365D 2X 31350M 4.9% 1543F 3.3% 1033P DHIA

FLAMBEAU MANOR LADYS MAN USA000078006572 7GU468
 A2A2

12/21 USDA GPTA -378M -0.05% -26F -0.04% -20P
 -0.1DPR -0.4PL -291NM\$ 11NM\$ile -301CM\$ 94% Rel
 3.25SCS -0.2SCR -1.30HCR 51% Rel -1.90CCR 71% Rel
 -0.10LIV 43% Rel -1.60GL 97% Rel -4.40EFC 58% Rel

AGA 12/21 PTAT +0.3 +0.2UDC +0.0FLC 91%Rel PTI -49

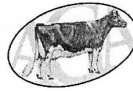
INDIAN ACRES BLUE PAZZAZ PIE USA000068048195
 A1A2

DHI Herd # 23410420 Cow Control 000022
 12/21 USDA PTA +94M -0.02% +1F +0.03% +9P
 -1.2DPR +0.0PL -32NM\$ 30NM\$ile -32CM\$ 51% Rel
 3.17SCS -3.00HCR 24% Rel -2.00CCR 33% Rel
 -0.40LIV 27% Rel 1.10GL 36% Rel -6.90EFC 28% Rel

4 Rec YDev: +84M +1F +17P
 3 App 12/21 PTAT +0.4 -0.1UDR -0.1FLC 47%Rel CPI +4
 Appraisal: EX 90 @ 7-02 (EE+EE)
 4-03 329D 2X 19490M 4.2% 816F 3.7% 713P 98
 6-01 365D 2X 19870M 4.2% 832F 3.3% 657P DHIA

SKODA GROVE DRONE CARLY-ETV

Lot 11



AMERICAN
GUERNSEY
ASSOCIATION

SKODA GROVE DRONE CARLY-ETV 840003215003791

Current Date: 2-25-2022

Born: 09-01-2021 Tag # 51
Breeder: SKODA RYAN & CRYSTIL LEE
CRARYVILLE NY
Owner: SKODA RYAN & CRYSTIL LEE
CRARYVILLE NY
PA: +129M +0.01% +7F +0.03% +9P +109CM\$ +107NM\$
+0.9PTAT +0.6UDC +0.9FLC -0.2DPR +1.8PL +38CPI
3.02SCS

ST SR BD DF RA TW RV RL FA
+1.8 +0.9 +1.1 +1.0 L0.5 +0.8 S0.3 P0.8 S0.2
FU RH RW UC UD TP TL
+0.6 +0.9 +0.7 +0.4 S0.4 C0.7 +0.1

HI GUERN VIEW LEVI DRONE USA000097004646 94GU959
A2A2

12/21 USDA GPTA +167M -0.07% -4F -0.03% +1P
-0.4DPR +2.8PL +51NM\$ 41NM\$ile +47CM\$ 62% Rel
3.06SCS +0.4SCR -1.40HCR 38% Rel -1.20CCR 41% Rel
-0.50LIV 36% Rel -0.60GL 50% Rel 0.30EFC 38% Rel

AGA 12/21 PTAT +1.4 +1.1UDC +1.6FLC 58%Rel PTI +30

ST SR BD DF RA TW RV RL FA
+1.8 +1.2 +1.3 +1.4 H0.6 +1.1 S0.6 Pl.0 S0.3
FU RH RW UC UD TP TL
+1.3 +1.6 +1.2 +0.4 S0.6 C1.3 -0.3

MARODORE AARONS LEVI-ET
A2A2

USA000068025119 7GU438

12/21 USDA GPTA -161M -0.04% -14F -0.04% -13P
+0.8DPR +2.1PL -49NM\$ 29NM\$ile -53CM\$ 97% Rel
3.00SCS 0.30HCR 65% Rel -0.50CCR 87% Rel
-0.70LIV 66% Rel -0.60GL 98% Rel 3.90EFC 74% Rel

AGA 12/21 PTAT +0.8 +0.4UDC +0.7FLC 96%Rel PTI -7

HI GUERN VIEW DANCING DIVA-ET USA000068047311
A2A2

DHI Herd # 33860658 Cow Control 001134
12/21 USDA GPTA -200M +0.06% +2F +0.08% +7P
-0.4DPR +3.0PL +86NM\$ 59NM\$ile +95CM\$ 70% Rel
2.93SCS-1.50HCR 34% Rel -0.70CCR 45% Rel
1.60LIV 40% Rel -0.40GL 42% Rel -1.90EFC 39% Rel

5 Rec YDev: +216M +30F +38P
5 App 12/21 PTAT +1.5 +1.9UDR +1.4FLC 64%Rel CPI +54
Appraisal: EX 96 @ 9-00 (EEEEEE)
8-09 365D 2X 29120M 4.4% 1282F 3.6% 1040P DHIA

KNAPPS LES JACKSON

USA000068045465

AGA 12/21 PTAT +0.6 +0.7UDC +0.9FLC 48%Rel

COYOTE RUN JACKSON MIRACLE USA000068047901
A1A2

DHI Herd # 21101003 Cow Control 000032
12/21 USDA GPTA +91M +0.08% +18F +0.08% +17P
+0.1DPR +0.7PL +163NM\$ 76NM\$ile +171CM\$ 61% Rel
2.98SCS 0.50HCR 26% Rel 0.80CCR 39% Rel
0.00LIV 30% Rel -0.30GL 30% Rel -1.60EFC 28% Rel

4 Rec YDev: +958M +65F +56P
2 App 12/21 PTAT +0.4 +0.1UDR +0.1FLC 55%Rel CPI +45

ST SR BD DF RA TW RV RL FA
+1.8 +0.5 +0.9 +0.5 L1.5 +0.4 H0.1 P0.6 0.0
FU RH RW UC UD TP TL
-0.2 +0.2 +0.1 +0.4 S0.1 0.0 +0.5

Appraisal: EX 90 @ 8-01 (EEVVVV)
1-11 305D 2X 15830M 5.3% 843F 3.5% 548P 96
3-01 305D 2X 20040M 5.3% 1069F 3.4% 687P 98
5-01 305D 2X 23270M 5.1% 1182F 3.2% 745P 98
6-09 305D 2X 26640M 4.8% 1275F 3.4% 910P 96
1966D 126980M 5.2% 6558F 3.4% 4340P LIFE
SKODA GROVE COYOTES COOKIE 83 @ 2-05 (83/85)
3-01 305D 2X 19970M 4.8% 961F 3.7% 737P 98

GR-KNAPPS REWARD MADISON USA000068016916

DHI Herd # 42310529 Cow Control 000507
12/21 USDA PTA +102M -0.09% -11F +0.00% +4P
+0.0DPR -4.1PL -209NM\$ 6NM\$ile -211CM\$ 49% Rel
3.10SCS 0.90HCR 15% Rel 1.30CCR 31% Rel
-4.70LIV 21% Rel -0.80GL 32% Rel -1.40EFC 23% Rel

3 Rec YDev: -404M -45F -3P
2 App 12/21 PTAT -0.2 -0.3UDR -0.3FLC 48%Rel CPI -32
Appraisal: 88 @ 3-08 (87/88)
2-05 334D 2X 21130M 4.8% 1007F 3.4% 713P 97
3-05 365D 2X 25020M 4.7% 1170F 3.4% 849P DHIA



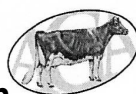
Tayl Wind Toro Ariella-ET—2nd Dam to Lot 12

Tayl Wind Toro Abigail-ET GP84— Full Sister to 2nd Dam of Lot 12



HERITAGE BROOK NOVAK EVE-ET

Dam to Lot 12



AMERICAN
GUERNSEY
ASSOCIATION

March 5, 2022 Calf X James Dean

HERITAGE BROOK NOVAK EVE-ET 840003143620922
A2A2

Current Date: 4-8-2022

Born: 12-24-2017 Tag # 22
Breeder: TAYLOR GLENN A & SHERYL
CASSVILLE NY
Owner: TAYLOR GLENN A & SHERYL
CASSVILLE NY
DHI Herd # 21290760 Cow Control 000022
04/22 USDA GPTA +689M -0.18% -1F -0.08% +9P
-1.9DPR +0.2PL +48NM\$ 48NM\$ile +40CM\$ 63% Rel
3.07SCS-1.50HCR 33% Rel -2.20CCR 39% Rel
-0.30LIV 31% Rel 1.70GL 41% Rel 3.30EFC 33% Rel

2 Rec YDev: +1069M -10F -2P
2 App 04/22 PTAT +0.2 +0.2UDR -0.7FLC 63%Rel CPI -8

ST SR BD DF RA TW RV RL FA
+0.2 -0.7 -0.9 +0.5 H0.2 -0.1 H0.5 P0.3 L0.1
FU RH RW UC UD TP TL
-0.7 +0.0 +0.4 -0.1 S0.1 C1.3 -0.8
Appraisal: + 82 @ 3-08 (VEVVF)
ST SR BD DF RA TW RV RL FA FU RH RW UC UD TP TL
42 35 35 42 32 32 20 32 25 9 35 32 25 15 32 25
2-02 305D 3X 22610M 3.8% 860F 3.1% 704P 103

LANG HAVEN GRUMPY NOVAK USA000068042542 7GU446
A2A2

04/22 USDA GPTA +816M -0.08% +23F -0.03% +22P
-3.1DPR +0.5PL +215NM\$ 58NM\$ile +212CM\$ 96% Rel
3.03SCS -3.80HCR 69% Rel -4.50CCR 84% Rel
0.60LIV 57% Rel 2.90GL 98% Rel 5.10EFC 67% Rel

AGA 04/22 PTAT +0.4 +0.4UDC +0.0FLC 96%Rel PTI +36

ST SR BD DF RA TW RV RL FA
+1.3 -0.4 -0.1 +1.6 L0.7 +0.3 0.0 P0.9 L0.2
FU RH RW UC UD TP TL
-0.8 +0.9 +1.0 +0.7 S0.2 C0.7 +1.2

TAYL WIND TORO ARIELLA-ET 840003126794977
A2A2

DHI Herd # 00000000
04/22 USDA GPTA +251M -0.07% -1F -0.05% -1P
-1.6DPR -1.6PL -96NM\$ 18NM\$ile -101CM\$ 54% Rel
2.99SCS 0.20HCR 29% Rel -1.00CCR 35% Rel
-1.50LIV 30% Rel 1.00GL 37% Rel 0.60EFC 32% Rel

0 Rec YDev: M F P

GOLDEN J RONALD GRUMPY
A2A2

USA000000604960 7GU405

04/22 USDA GPTA -122M +0.09% +10F +0.05% +5P
+0.4DPR +3.8PL +317NM\$ 88NM\$ile +325CM\$ 98% Rel
2.87SCS -0.60HCR 77% Rel 1.00CCR 93% Rel
2.40LIV 80% Rel -1.10GL 99% Rel 3.40EFC 83% Rel

AGA 04/22 PTAT +0.1 +1.0UDC +0.9FLC 98%Rel PTI +50

LANG HAVEN NATURAL NOVELTY

USA000068005592

DHI Herd # 35320145 Cow Control 000833
04/22 USDA PTA +798M -0.15% +9F +0.02% +30P
-1.2DPR -1.7PL +125NM\$ 68NM\$ile +127CM\$ 64% Rel
3.05SCS-1.80HCR 30% Rel -2.20CCR 48% Rel
1.40LIV 31% Rel 3.20GL 48% Rel 4.30EFC 35% Rel

4 Rec YDev: +1964M +39F +75P
3 App 04/22 PTAT -0.2 -0.8UDR -1.4FLC 65%Rel CPI +17
Appraisal: 90 @ 7-07 (89/87)
3-11 365D 2X 29560M 5.2% 1528F 3.6% 1069P DHIA

SPRING WALK SHERBERTS TORO-ET USA000068025916 1GU441
A2A2

04/22 USDA GPTA +218M +0.12% +31F +0.03% +13P
-2.9DPR -0.4PL +148NM\$ 47NM\$ile +153CM\$ 95% Rel
2.95SCS 0.90HCR 59% Rel -2.20CCR 82% Rel
-2.40LIV 60% Rel 1.50GL 98% Rel 0.70EFC 65% Rel

AGA 04/22 PTAT +0.5 +0.1UDC +1.3FLC 93%Rel PTI +36

CHUPPS FARM DYNASTY ARIEL

USA000068030640

DHI Herd # 21290760 Cow Control 000656
04/22 USDA PTA -407M -0.15% -45F -0.08% -28P
+1.6DPR -2.7PL -363NM\$ 0NM\$ile -372CM\$ 42% Rel
2.98SCS 2.30HCR 5% Rel 2.30CCR 10% Rel
1.90LIV 7% Rel -0.10GL 8% Rel 0.60EFC 8% Rel

1 Rec YDev: -1096M -167F -93P
1 App 04/22 PTAT -0.3 -0.3UDR -0.6FLC 41%Rel CPI -89
Appraisal: 86 @ 2-11 (86/85)
2-08 305D 2X 18980M 3.4% 646F 3.1% 580P 100
TAYL WIND TORO ABIGAIL-ET 84 @ 2-07 (85/84)

COLBYROCK DRONE SAVAGE

Lot 13



AMERICAN
GUERNSEY
ASSOCIATION

COLBYROCK DRONE SAVAGE

840003224973631

Current Date: 4-8-2022

Born: 03-22-2021 Tag # 48

Breeder: TRYON JOHN

COBLESKILL

NY

Owner: CRAIG ERIC & SKARKA PAUL

SCHUYLERVILLE

NY

PA: +70M +0.01% +5F +0.00% +2P +55CM\$ +56NM\$
+0.8PTAT +0.6UDC +1.2FLC -0.7DPR +1.5PL +25CPI
3.02SCS

ST SR BD DF RA TW RV RL FA
+1.0 +0.6 +0.7 +1.0 H1.4 +0.7 S0.5 P0.6 S0.2
FU RH RW UC UD TP TL
+0.6 +1.1 +0.9 +0.1 S0.3 C0.7 +0.4

HI GUERN VIEW LEVI DRONE USA000097004646 94GU959
A2A2

04/22 USDA GPTA +398M -0.04% +11F -0.01% +11P
-0.3DPR +3.0PL +157NM\$ 52NM\$ile +155CM\$ 70% Rel
3.07SCS +0.6SCR -0.90HCR 41% Rel -0.90CCR 42% Rel
-0.30LIV 41% Rel -0.10GL 79% Rel 0.10EFC 38% Rel

AGA 04/22 PTAT +1.2 +0.8UDC +1.9FLC 64%Rel PTI +61

ST SR BD DF RA TW RV RL FA
+1.7 +1.5 +1.7 +1.5 H0.7 +1.4 S0.9 P0.8 S0.3
FU RH RW UC UD TP TL
+0.9 +1.4 +1.4 +0.4 S0.1 C1.1 +0.4

POPPYDALE BEAU SABLE-ETV 840003143623289
A2A2

PA: -258M +0.06% -2F +0.01% -8P -45CM\$ -45NM\$
+0.4PTAT +0.3UDC +0.4FLC -1.1DPR -0.1PL -15CPI
2.97SCS

ST SR BD DF RA TW RV RL FA
+0.2 -0.4 -0.3 +0.5 H2.0 -0.1 S0.1 P0.3 S0.1
FU RH RW UC UD TP TL
+0.3 +0.8 +0.4 -0.2 S0.4 C0.2 +0.3
2-00 293D 2X 9260M 5.0% 460F 3.3% 309P DHIA

MARODORE AARONS LEVI-ET
A2A2

USA000068025119 7GU438

04/22 USDA GPTA -201M -0.03% -15F -0.02% -11P
+0.9DPR +2.6PL -18NM\$ 23NM\$ile -20CM\$ 97% Rel
2.98SCS 0.50HCR 66% Rel -0.20CCR 88% Rel
-0.10LIV 66% Rel -0.60GL 99% Rel 4.00EFC 75% Rel
AGA 04/22 PTAT +0.8 +0.5UDC +0.9FLC 97%Rel PTI +0

HI GUERN VIEW DANCING DIVA-ET USA000068047311
A2A2

DHI Herd # 33860658 Cow Control 001134
04/22 USDA GPTA -38M +0.06% +9F +0.07% +11P
-0.2DPR +2.7PL +121NM\$ 67NM\$ile +129CM\$ 71% Rel
2.94SCS -1.30HCR 34% Rel -0.30CCR 47% Rel
1.50LIV 40% Rel -0.20GL 53% Rel -2.30EFC 39% Rel

5 Rec YDev: +630M +52F +47P
5 App 04/22 PTAT +1.6 +1.8UDR +1.8FLC 66%Rel CPI +70
Appraisal: EX 96 @ 9-00 (EEEEEE)
8-09 365D 2X 29120M 4.4% 1282F 3.6% 1040P DHIA

COULEE CREST NOVAK LAMBEAU-ET 840003128910115 7GU473
A2A2

04/22 USDA GPTA -120M +0.11% +13F +0.01% -3P
-2.5DPR +1.2PL +74NM\$ 29NM\$ile +73CM\$ 92% Rel
3.04SCS -2.80HCR 60% Rel -3.80CCR 62% Rel
0.10LIV 34% Rel 2.20GL 97% Rel 2.80EFC 46% Rel

AGA 04/22 PTAT +0.6 +1.1UDC +1.9FLC 86%Rel PTI +24

CRAIG MOOR FAYETTE SELMA
A2A2

USA000068003686

DHI Herd # 21160789 Cow Control 000003
04/22 USDA GPTA -396M +0.01% -17F +0.00% -13P
+0.4DPR -1.4PL -164NM\$ 10NM\$ile -162CM\$ 72% Rel
2.90SCS -2.50HCR 32% Rel -0.80CCR 48% Rel
-0.40LIV 44% Rel 0.60GL 37% Rel -1.30EFC 42% Rel

0 Rec YDev: M F P
3 App 04/22 PTAT +0.2 -0.6UDR -1.1FLC 69%Rel CPI -55
Appraisal: 93 @ 5-10 (92/89)

4-03 325D 2X 17330M 4.2% 736F 3.2% 558P 98
5-04 298D 2X 14980M 4.2% 633F 3.2% 482P 97
6-03 339D 2X 16630M 4.1% 679F 3.4% 567P 97
7-06 305D 2X 17670M 4.5% 803F 3.2% 568P 97
POPPYDALE PHOENIX SHERLOCK GPTI -68
POPPYDALE LATIMER SMOKEY-ET GPTI -34
POPPYDALE ROYALTY ANNIE 84 @ 3-02 (84/85)
2-06 305D 2X 11100M 3.9% 437F 3.3% 366P 96
POPPYDALE AARON SAVANNAH-TW 90 @ 6-08 (90/92)
6-04 305D 2X 18860M 5.4% 1014F 3.6% 675P 98
POPPYDALE ACHIEVE SARA-ET 92 @ 6-06 (91/91)
2-01 305D 2X 15870M 4.3% 687F 3.2% 515P 97
POPPYDALE YOGI SUZANNAH-ET 90 @ 3-06 (90/90)
POPPYDALE YOGI SHEILA-ET 90 @ 3-07 (90/91)
2-11 303D 2X 15860M 4.5% 708F 3.3% 523P DHIA
POPPYDALE LATIMER SUGAR-ET 83 @ 4-10 (84/84)
3-11 312D 2X 18400M 4.5% 835F 3.6% 654P 98
POPPYDALE LATIMER SPICE-ET 88 @ 4-08 (88/84)
4-02 336D 2X 20950M 6.4% 1336F 4.3% 893P 97
POPPYDALE LATIMER SYRUP-ET 80 @ 2-02 (79/78)



2nd Dam to Lot 13

Craig Moor Fayette Selma– EX 93

Grand Champion All-American Junior Show– 2008

Honorable Mention All-American Junior Show– 2010

Grand Champion NYS Fair Junior Show– 2008, 2009, 2010

Nominated Jr All-American Sr. 3 Year Old & 5 year old

1311 Poppydale Beau SkyETV



Full Sister to Dam of Lot 13

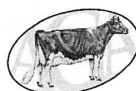
Poppydale Beau Sky-ETV

*1st place Fall Calf 2020 Cortland
Showcase*

Nominated All-American Fall Calf 2020

SMITHFIELD REPUTATION GLOW

Lot 14



AMERICAN
GUERNSEY
ASSOCIATION

SMITHFIELD REPUTATION GLOW 840003239855980

Current Date: 3-17-2022

Born: 01-11-2022 Tag # 6711
Breeder: COON BROTHERS FARM, LLC
AMENIA NY
Owner: COON BROTHERS FARM, LLC
AMENIA NY
PA: -173M +0.03% -4F +0.01% -5P +135CM\$ +133NMS
+0.0PTAT +0.5UDC +0.4FLC +1.4DPR +2.4PL +14CPI
2.91SCS

ST	SR	BD	DF	RA	TW	RV	RL	FA
-3.0	-1.5	-2.3	-1.7	H1.7	-1.8	S0.1	S0.2	S0.3
FU	RH	RW	UC	UD	TP	TL		
+0.8	-0.3	-1.4	+0.5	S0.7	C0.9	-0.6		

MISS ME REBAS REPUTATION-TW 840003150515719 6GU109
A2A2

12/21 USDA GPTA -212M +0.11% +9F +0.02% -4P
+1.0DPR +2.3PL +181NMS 64NM\$ile +184CM\$ 56% Rel
2.91SCS -0.1SCR 1.00HCR 36% Rel 1.60CCR 40% Rel
1.40LIV 35% Rel -0.50GL 41% Rel 2.30EFC 37% Rel

AGA 12/21 PTAT +0.2 +1.2UDC +0.4FLC 53%Rel PTI +33

ST	SR	BD	DF	RA	TW	RV	RL	FA
-1.4	-1.1	-2.2	-1.4	H0.8	-0.3	H0.2	S0.5	S0.6
FU	RH	RW	UC	UD	TP	TL		
+2.1	+0.8	-0.9	+0.6	S1.3	C1.7	-0.8		

JENS GOLD AARON COPPER-ET USA000068027038 14GU318
A2A2

12/21 USDA GPTA +158M +0.03% +12F -0.05% -3P
-0.6DPR +0.7PL +150NMS 52NM\$ile +149CM\$ 97% Rel
2.85SCS 2.20HCR 71% Rel -0.30CCR 87% Rel
-1.00LIV 63% Rel 0.70GL 99% Rel 5.40EFC 74% Rel

AGA 12/21 PTAT +0.9 +1.3UDC +0.8FLC 97%Rel PTI +25

KNAPPS LES REBA USA000068045555

DHI Herd # 35310588 Cow Control 000006
12/21 USDA GPTA -144M +0.13% +16F +0.07% +8P
-0.5DPR +1.9PL +138NMS 71NM\$ile +143CM\$ 66% Rel
3.10SCS-1.00HCR 31% Rel -0.20CCR 36% Rel
1.00LIV 33% Rel -0.40GL 36% Rel -2.10EFC 33% Rel

3 Rec YDev: -459M +26F +7P
3 App 12/21 PTAT +0.7 +1.2UDR +0.4FLC 60%Rel CPI +47
Appraisal: 93 @ 6-00 (94/90)

MARODORE AARONS LEVI-ET USA000068025119 7GU438
A2A2

12/21 USDA GPTA -161M -0.04% -14F -0.04% -13P
+0.8DPR +2.1PL -49NMS 29NM\$ile -53CM\$ 97% Rel
3.00SCS 0.30HCR 65% Rel -0.50CCR 87% Rel
-0.70LIV 66% Rel -0.60GL 98% Rel 3.90EFC 74% Rel

AGA 12/21 PTAT +0.8 +0.4UDC +0.7FLC 96%Rel PTI -7

SMITHFIELD LEVI SEPT SUNRISE 840003140900824

DHI Herd # 21130033 Cow Control 005972
12/21 USDA PTA -133M -0.06% -17F -0.01% -6P
+1.8DPR +2.5PL +85NMS 59NM\$ile +86CM\$ 49% Rel
2.90SCS-0.60HCR 19% Rel 1.40CCR 30% Rel
-0.30LIV 20% Rel 0.10GL 32% Rel 2.00EFC 23% Rel

2 Rec YDev: -466M -48F -13P
2 App 12/21 PTAT -0.2 -0.3UDR +0.3FLC 54%Rel CPI -7

ST	SR	BD	DF	RA	TW	RV	RL	FA
-4.5	-1.9	-2.4	-2.0	H2.5	-3.3	S0.3	P0.2	L0.1
FU	RH	RW	UC	UD	TP	TL		
-0.5	-1.3	-1.8	+0.4	S0.1	0.0	-0.4		

Appraisal: + 80 @ 3-08 (G+F++)
2-04 282D 2X 12500M 4.9% 607F 3.5% 435P 100
3-03 290D 2X 15910M 4.5% 720F 3.3% 532P 101

SMITHFIELD AGILITY SEPT SUNSET 840003131849924

DHI Herd # 21130033 Cow Control 005610
12/21 USDA PTA -41M -0.05% -11F +0.01% +0P
+1.5DPR +1.1PL +25NMS 44NM\$ile +30CM\$ 48% Rel
2.78SCS-1.60HCR 13% Rel 1.30CCR 21% Rel
0.20LIV 16% Rel 1.00GL 26% Rel -0.40EFC 16% Rel

2 Rec YDev: -233M -30F -6P
1 App 12/21 PTAT -1.1 -1.2UDR -0.6FLC 46%Rel CPI -17
Appraisal: 73 @ 2-02 (68/77)
1-11 294D 2X 13550M 4.7% 639F 3.4% 467P 100
2-11 305D 2X 11900M 4.9% 586F 3.3% 396P 102

GOLD TOP REPUTATION SEQUOIA

Lot 15



AMERICAN
GUERNSEY
ASSOCIATION

GOLD TOP REPUTATION SEQUOIA USA000097012443

Current Date: 4-12-2022

Born: 06-04-2021 Tattoo LE RE GT106
Breeder: PLOEHN JOHN & SALLY
HAMMOND NY
Owner: PLOEHN JOHN & SALLY
HAMMOND NY
PA: +50M +0.02% +6F -0.02% +1P +124CM\$ +123NM\$
+0.1PTAT +0.9UDC +0.0FLC +0.7DPR +1.6PL +25CPI
2.92SCS

ST	SR	BD	DF	RA	TW	RV	RL	FA
+0.1	-0.5	-1.1	-0.7	L0.1	+0.3	H0.1	S0.5	S0.2
FU	RH	RW	UC	UD	TP	TL		
+1.4	+0.6	-0.6	+0.3	S1.3	C0.8	-0.8		

MISS ME REBAS REPUTATION-TW 840003150515719 6GU109
A2A2

04/22 USDA GPTA -86M +0.06% +7F +0.00% -2P
+1.0DPR +2.7PL +195NM\$ 58NM\$ile +198CM\$ 54% Rel
2.90SCS +0.4SCR 1.20HCR 36% Rel 1.90CCR 40% Rel
1.10LIV 35% Rel -0.50GL 41% Rel 2.40EFC 37% Rel

AGA 04/22 PTAT +0.3 +1.3UDC +0.6FLC 53%Rel PTI +38

ST	SR	BD	DF	RA	TW	RV	RL	FA
-1.3	-1.1	-2.1	-1.3	H0.9	-0.3	H0.2	S0.5	S0.7
FU	RH	RW	UC	UD	TP	TL		
+2.2	+0.7	-1.0	+0.7	S1.5	C1.8	-0.7		

GOLD TOP JAGUAR VAIL USA000097004533

PA: +185M -0.02% +5F -0.03% +3P +50CM\$ +50NM\$
-0.1PTAT +0.4UDC -0.6FLC +0.4DPR +0.4PL +10CPI
2.94SCS

ST	SR	BD	DF	RA	TW	RV	RL	FA
+1.5	+0.1	-0.1	+0.0	L1.1	+0.8	S0.1	S0.5	L0.4
FU	RH	RW	UC	UD	TP	TL		
+0.5	+0.5	-0.2	-0.2	S1.0	W0.3	-0.9		

JENS GOLD AARON COPPER-ET USA000068027038 14GU318
A2A2

04/22 USDA GPTA +245M +0.03% +16F -0.05% +0P
-0.6DPR +1.4PL +205NM\$ 58NM\$ile +204CM\$ 97% Rel
2.84SCS 2.40HCR 72% Rel 0.10CCR 88% Rel
-1.60LIV 65% Rel 0.70GL 99% Rel 5.40EFC 75% Rel

AGA 04/22 PTAT +0.9 +1.4UDC +1.2FLC 97%Rel PTI +39

KNAPPS LES REBA USA000068045555

DHI Herd # 35310588 Cow Control 000006
04/22 USDA GPTA -77M +0.07% +8F +0.05% +6P
-0.5DPR +2.1PL +102NM\$ 62NM\$ile +105CM\$ 59% Rel
3.09SCS -0.80HCR 32% Rel -0.10CCR 36% Rel
1.00LIV 33% Rel -0.40GL 36% Rel -2.00EFC 33% Rel

0 Rec YDev: M F P
3 App 04/22 PTAT +0.7 +1.2UDR +0.7FLC 60%Rel CPI +40
Appraisal: 93 @ 6-00 (94/90)

SPRINGHILL JOKES JAGUAR-ET USA000068031529 7GU458
A2A2

04/22 USDA GPTA +66M -0.03% -3F -0.04% -4P
+0.3DPR +1.6PL +74NM\$ 29NM\$ile +76CM\$ 92% Rel
2.75SCS -1.40HCR 48% Rel -0.50CCR 70% Rel
1.90LIV 46% Rel 1.90GL 96% Rel 0.50EFC 52% Rel

AGA 04/22 PTAT +0.3 +1.0UDC +0.3FLC 91%Rel PTI +12

GOLD TOP GARY ASPEN USA000068039957

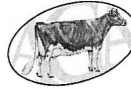
DHI Herd # 21391441 Cow Control 009957
04/22 USDA PTA +304M -0.01% +12F -0.01% +9P
+0.4DPR -0.9PL +26NM\$ 43NM\$ile +23CM\$ 46% Rel
3.12SCS -0.40HCR 20% Rel 0.20CCR 29% Rel
-0.70LIV 22% Rel -0.50GL 34% Rel 2.60EFC 24% Rel

3 Rec YDev: +934M +33F +28P
1 App 04/22 PTAT -0.4 -0.3UDR -1.5FLC 45%Rel CPI +4
Appraisal: 81 @ 2-08 (82/74)

2-02 300D 2X 13660M 4.1% 560F 3.2% 432P 92
3-02 289D 2X 13980M 4.6% 638F 3.2% 449P 91
4-02 305D 2X 15060M 4.4% 656F 3.3% 490P 90
GOLD TOP VINCENT CHEYANNE 86 @ 6-01 (83/86)

WALNUT RIDGE CAP TERRIFIC KENDLE

Lot 16



AMERICAN
GUERNSEY
ASSOCIATION

WALNUT RIDGE CAP TERRIFIC KENDLEUSA000097013043

Current Date: 2-25-2022

Born: 09-02-2021 Tattoo LE 379 RE 379
Breeder: WALNUT RIDGE FARM
MIDDLETOWN MD
Owner: WALNUT RIDGE FARM
MIDDLETOWN MD
PA: +55M +0.14% +27F +0.03% +6P +223CM\$ +221NM\$
+0.1PTAT -0.4UDC -0.2FLC +0.1DPR +2.2PL +38CPI
3.03SCS

ST SR BD DF RA TW RV RL FA
-0.6 -0.1 +0.2 -0.1 H1.1 -0.6 H0.1 P0.1 L0.1
FU RH RW UC UD TP TL
-0.3 +0.1 -0.5 +0.1 S0.1 W1.5 +0.2

WALNUT RIDGE CAPTAIN TERRIFIC-TWUSA000097008927
A2A2

12/21 USDA GPTA +4M -0.05% -8F -0.01% -2P
+0.5DPR +4.2PL +123NM\$ 41NM\$ile +122CM\$ 46% Rel
2.99SCS -0.60HCR 26% Rel 0.00CCR 30% Rel
2.90LIV 27% Rel -1.40GL 29% Rel -5.80EFC 27% Rel

AGA 12/21 PTAT +0.4 -0.2UDC -0.2FLC 44%Rel PTI +4

ST SR BD DF RA TW RV RL FA
-0.9 -0.1 -0.2 -0.6 H1.3 -0.7 S0.1 L0.1
FU RH RW UC UD TP TL
+0.1 +0.0 -0.5 +0.0 S0.1 W1.0 +0.6

GR-WALNUT RIDGE CEZAR KEENER USA000097010367
A2A2

DHI Herd # 51070832 Cow Control 000263
12/21 USDA PTA +106M +0.32% +61F +0.06% +14P
-0.4DPR +0.1PL +319NM\$ 94NM\$ile +324CM\$ 26% Rel
3.07SCS -0.50HCR 10% Rel -0.80CCR 13% Rel
0.40LIV 10% Rel -1.20GL 14% Rel -1.00EFC 10% Rel

1 Rec YDev: +1791M +412F +161P
Appraisal: + 81 @ 2-03 (++)G++

WALNUT RIDGE MENTOR LEO USA000097003237
A2A2

12/21 USDA GPTA -776M +0.13% -14F +0.07% -14P
+0.3DPR +3.8PL -5NM\$ 35NM\$ile +1CM\$ 62% Rel
2.95SCS -1.20HCR 32% Rel -0.80CCR 41% Rel
1.50LIV 35% Rel 0.40GL 40% Rel -1.90EFC 36% Rel

AGA 12/21 PTAT +0.6 +1.0UDC +0.3FLC 59%Rel PTI -5

WALNUT RIDGE CASANOVA CHARDONA USA000068048809
A2A2

DHI Herd # 51070024 Cow Control 016027
12/21 USDA PTA +686M -0.12% +9F -0.06% +11P
-1.1DPR +0.3PL +55NM\$ 51NM\$ile +47CM\$ 53% Rel
3.14SCS -1.40HCR 13% Rel -1.70CCR 27% Rel
1.00LIV 15% Rel -1.90GL 30% Rel -5.60EFC 14% Rel

2 Rec YDev: +1284M +30F +19P
1 App 12/21 PTAT +0.0 -0.8UDR -1.5FLC 50%Rel CPI -4
Appraisal: VG 87 @ 5-08 (VE++V)
4-04 365D 2X 29500M 5.9% 1733F 3.0% 888P 96

WALNUT RIDGE LK CEZAR USA000097005213
A2A2

12/21 USDA GPTA +61M +0.26% +49F +0.02% +5P
-0.8DPR +1.0PL +273NM\$ 64NM\$ile +273CM\$ 50% Rel
3.06SCS -1.00HCR 25% Rel -1.50CCR 30% Rel
0.00LIV 26% Rel -2.10GL 27% Rel -1.20EFC 27% Rel

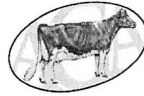
AGA 12/21 PTAT +0.6 +0.1UDC -0.4FLC 49%Rel PTI +51

PR-WALNUT RIDGE ERNIE KEEN USA000097010366

1 App 12/21 PTAT -1.1 -1.1UDR +0.0FLC 42%Rel
Appraisal: + 80 @ 3-00 (VV+VF)

GOLD TOP EXCALIBUR COWYN

Lot 17



AMERICAN
GUERNSEY
ASSOCIATION

GOLD TOP EXCALIBUR COWYN

USA000097013067

Current Date: 3-7-2022

Born: 12-28-2021 Tattoo LE RE GT112

Breeder: PLOEHN JOHN & SALLY

HAMMOND NY

Owner: PLOEHN JOHN & SALLY

HAMMOND NY

PA: +14M +0.02% +4F +0.02% +3P +91CM\$ +88NM\$
-0.1PTAT -0.3UDC +0.4FLC +0.6DPR +1.4PL +17CPI
2.94SCS

ST	SR	BD	DF	RA	TW	RV	RL	FA
-0.3	+0.2	+0.3	+0.4	L0.4	-0.1	H0.1	0.0	S0.3
FU	RH	RW	UC	UD	TP	TL		
-0.4	+0.2	+0.4	-0.2	D0.8	W0.2	+0.6		

BEECHGROVES EXCALIBUR
A2A2

GBR281005701400 522GU903

12/21 USDA GPTA +103M +0.10% +23F +0.04% +11P
-0.8DPR +0.5PL +112NM\$ 41NM\$ile +117CM\$ 50% Rel
2.99SCS -0.30HCR 32% Rel -2.20CCR 38% Rel
-1.00LIV 33% Rel -0.10GL 38% Rel 0.50EFC 34% Rel

AGA 12/21 PTAT +0.8 +0.0UDC +1.8FLC 48%Rel PTI +53

ST	SR	BD	DF	RA	TW	RV	RL	FA
+1.5	+1.4	+1.5	+1.8	H0.6	+1.3	S0.4	P0.4	S0.8
FU	RH	RW	UC	UD	TP	TL		
-0.4	+1.0	+1.5	+0.1	D1.1	C0.2	-0.4		

GOLD TOP NICO BREACON

USA000097006393

PA: -75M -0.07% -16F -0.01% -5P +65CM\$ +64NM\$
-1.0PTAT -0.6UDC -1.1FLC +2.0DPR +2.3PL -20CPI
2.88SCS

ST	SR	BD	DF	RA	TW	RV	RL	FA
-2.1	-1.0	-1.0	-1.0	L1.4	-1.5	H0.5	S0.4	L0.3
FU	RH	RW	UC	UD	TP	TL		
-0.3	-0.7	-0.8	-0.5	D0.5	W0.5	+1.5		

MARODORE AARONS LEVI-ET
A2A2

USA000068025119 7GU438

12/21 USDA GPTA -161M -0.04% -14F -0.04% -13P
+0.8DPR +2.1PL -49NM\$ 29NM\$ile -53CM\$ 97% Rel
3.00SCS 0.30HCR 65% Rel -0.50CCR 87% Rel
-0.70LIV 66% Rel -0.60GL 98% Rel 3.90EFC 74% Rel

AGA 12/21 PTAT +0.8 +0.4UDC +0.7FLC 96%Rel PTI -7

BEECHGROVES EVITA 5

GBR000000450942

LANG HAVEN PRADA NICO-ET
A2A2

USA000068045933 14GU323

12/21 USDA GPTA +174M -0.16% -21F -0.04% -2P
+1.4DPR +3.2PL +58NM\$ 41NM\$ile +57CM\$ 94% Rel
2.88SCS 0.70HCR 54% Rel 1.10CCR 79% Rel
1.20LIV 55% Rel 1.60GL 97% Rel -2.70EFC 60% Rel

AGA 12/21 PTAT -0.4 -0.4UDC +0.4FLC 93%Rel PTI -4

GOLD TOP V I P TWYNE

USA000068039959

DHI Herd # 21391441 Cow Control 009959
12/21 USDA PTA -323M +0.02% -11F +0.02% -7P
+2.5DPR +1.3PL +69NM\$ 55NM\$ile +73CM\$ 48% Rel
2.88SCS 1.00HCR 16% Rel 3.60CCR 25% Rel
1.20LIV 18% Rel -0.30GL 32% Rel 3.70EFC 19% Rel

3 Rec YDev: -859M -35F -15P
1 App 12/21 PTAT -1.5 -0.8UDR -2.6FLC 43%Rel CPI -35
Appraisal: 78 @ 2-07 (80/75)
2-05 323D 2X 13600M 4.2% 574F 3.3% 449P 93
3-05 280D 2X 11210M 4.4% 494F 3.3% 370P 92

SMITHFIELD JORDY HUGO

Lot 18- Bull



AMERICAN
GUERNSEY
ASSOCIATION

SMITHFIELD JORDY HUGO

840003220410929

Current Date: 3-17-2022

Born: 03-01-2021 Tag # 6551

Breeder: COON TERI

REINHOLDS

PA

Owner: COON TERI

REINHOLDS

PA

12/21 USDA GPTA +135M +0.22% +45F +0.05% +14P
+1.0DPR +3.9PL +508NMS 99NM%ile +518CMS 48% Rel
2.77SCS 0.00HCR 28% Rel 1.60CCR 31% Rel
2.00LIV 25% Rel -0.50GL 30% Rel -0.30EFC 27% Rel

AGA 12/21 PTAT -0.4 -0.5UDC -0.2FLC 47%Rel PTI +78

ST	SR	BD	DF	RA	TW	RV	RL	FA
-5.4	-2.1	-2.4	-1.8	H0.3	-2.1		P0.2	L0.2
FU	RH	RW	UC	UD	TP	TL		
+0.7	-0.4	-1.1	-0.9	D0.2	W0.9	-1.6		

DAIRYMAN DAWSON JORDY-ET 840003009973867 49GU144
A2A2

12/21 USDA GPTA -239M +0.18% +20F +0.07% +4P
+2.7DPR +3.9PL +405NMS 99NM%ile +420CMS 75% Rel
2.58SCS -0.20HCR 42% Rel 3.50CCR 45% Rel
3.60LIV 31% Rel -0.80GL 41% Rel -0.40EFC 36% Rel

AGA 12/21 PTAT -1.3 -0.9UDC -1.4FLC 74%Rel PTI +35

ST	SR	BD	DF	RA	TW	RV	RL	FA
-4.9	-2.2	-2.8	-2.1	H0.8	-3.0	H0.8	0.0	L0.3
FU	RH	RW	UC	UD	TP	TL		
+0.2	-1.3	-1.8	-1.0	D0.2	W1.3	-0.8		

SMITHFIELD KINGSTON HOLLY
A2A2

840003135668986

DHI Herd # 21130033 Cow Control 005820
12/21 USDA GPTA +329M +0.17% +45F +0.03% +16P
-0.2DPR +3.1PL +474NMS 99NM%ile +478CMS 64% Rel
2.99SCS-1.30HCR 29% Rel -0.50CCR 39% Rel
0.20LIV 29% Rel -0.40GL 40% Rel 0.80EFC 30% Rel

3 Rec YDev: +1408M +124F +54P
4 App 12/21 PTAT +0.4 +0.4UDR -0.3FLC 69%Rel CPI +76

ST	SR	BD	DF	RA	TW	RV	RL	FA
-5.5	-2.7	-2.7	-1.7	H1.1	-2.5	S0.4	P0.1	L0.6
FU	RH	RW	UC	UD	TP	TL		
+1.4	+0.7	-0.8	-0.3	S0.7	0.0	-1.9		

Appraisal: VG 88 @ 5-01 (+VVVEV)

Gold Star Dam - 2021

2-02	290D	2X	15570M	5.7%	886F	3.5%	547P	100
3-01	365D	2X	25740M	5.4%	1397F	3.5%	898P	DHIA
4-04	345D	2X	22940M	5.3%	1209F	3.4%	774P	102

DAIRYMAN DOUBLE DAWSON
A2A2

USA000068045873 200GU121

12/21 USDA GPTA -350M +0.14% +8F +0.03% -7P
+2.2DPR +3.6PL +320NMS 82NM%ile +330CMS 90% Rel
2.60SCS -1.30HCR 49% Rel 3.40CCR 67% Rel
1.50LIV 46% Rel 0.50GL 93% Rel -1.20EFC 49% Rel

AGA 12/21 PTAT -0.1 +0.6UDC +0.5FLC 88%Rel PTI +32

DAIRYMAN ALSTAR JAZLYN

USA000070781141

DHI Herd # 35280016 Cow Control 001631
12/21 USDA GPTA +553M +0.03% +30F +0.05% +28P
+2.2DPR +2.5PL +369NMS 96NM%ile +378CMS 65% Rel
2.90SCS 1.30HCR 38% Rel 3.20CCR 45% Rel
2.30LIV 38% Rel -1.70GL 43% Rel 1.50EFC 41% Rel

2 Rec YDev: +590M +45F +56P
2 App 12/21 PTAT +0.1 +0.0UDR +0.0FLC 67%Rel CPI +97
Appraisal: 85 @ 3-01 (85/85)
1-08 365D 3X 22260M 4.8% 1058F 3.6% 811P DHIA

MOZIERS SPIDER KINGSTON
A1A2

USA000068027067 31GU627

12/21 USDA GPTA +739M +0.06% +44F +0.03% +30P
-1.0DPR -0.7PL +298NMS 70NM%ile +298CMS 92% Rel
3.20SCS -0.90HCR 49% Rel -1.40CCR 73% Rel
-2.90LIV 50% Rel -0.20GL 94% Rel 5.00EFC 54% Rel

AGA 12/21 PTAT -0.4 -1.1UDC -0.4FLC 89%Rel PTI +56

SMITHFIELD MONARCH HOPE

USA000072881434

DHI Herd # 21130033 Cow Control 005289
12/21 USDA PTA -476M +0.17% +8F +0.02% -12P
+0.7DPR +1.8PL +120NMS 67NM%ile +125CMS 51% Rel
2.83SCS-1.40HCR 16% Rel 1.10CCR 27% Rel
0.70LIV 18% Rel -1.00GL 32% Rel -2.10EFC 19% Rel

5 Rec YDev: -1135M +13F -29P
4 App 12/21 PTAT -0.2 +1.0UDR -0.8FLC 59%Rel CPI +6
Appraisal: G 79 @ 7-00 (VVVFF)
2-01 296D 2X 12350M 5.3% 660F 3.5% 432P 100
3-00 337D 2X 15700M 6.0% 940F 3.7% 579P 102
4-02 289D 2X 14330M 6.0% 859F 3.4% 486P 101
5-01 305D 2X 15570M 6.2% 962F 3.6% 561P 102
6-06 339D 2X 13560M 5.7% 773F 3.6% 491P 102

Online Bidding:
View/Bid Online in real time at
www.cowbuyer.com



Registration is Required:

Please register at least one hour prior to sale at www.cowbuyer.com

High Speed Internet is Required:

Slower speed internet will not allow you to bid and keep pace in real time

Terms:

Purchasing online constitutes a legal contract and promise for payment of purchases. All purchases must be paid within ten days of sale date and prior to load out or delivery of cattle purchased.

Cowbuyer LLC is a service provider and is not responsible for the activity, or inactivity of any technology or internet connection at the sale site or connection and technology of the bidders.

For questions or information contact: Aaron Ray Tompkins 336-363-4639 or

atompkin@vt.edu