



**THE HIBSCHMAN FAMILY**

# *Spring Selections Sale*

**SATURDAY, APRIL 16, 2022 • 11:00 EDT**

**SYRACUSE, INDIANA**



# ONEEDA FARMS

## Spring Selections Sale

SATURDAY, APRIL 16, 2022 • 11:00 AM EDT • SYRACUSE, INDIANA

Sale TO BE HELD AT ONEEDA FARM  
GPS Address: 71957 CR 35, Syracuse, IN

### Sales Force

ROGER HIBSCHMAN, OWNER.....574-596-5823  
MERV LEFFLER, AUCTIONEER.....765-661-5903  
MIKE LORTIE, PEDIGREES.....260-367-1700  
DRU MERCER.....574-727-9192

PAT CONROY.....260-402-4494  
JIM PIPER.....903-919-2242  
PATTI DAVIS.....908-619-2057  
DARCIE HARTFORD.....508-277-0693



*Real-Time Bidding:*

[www.cowbuyer.com](http://www.cowbuyer.com)  
[atompkin@vt.edu](mailto:atompkin@vt.edu)

*Progressive Breeders  
Registry Award Winner  
for 28 years*



*BAA: 107.5%  
14 EX, 75 VG, 61 GP  
Top 25 for herd size in US*

**R-NEEDA**

Madison 574-457-6946  
Lauren 574-457-9185

**ONEEDA FARMS**

Roger Hibschan  
574-596-5823

**KNEE-HIGH**

Harland Gardner  
574-606-6224

# Spring Selections Sale



**R-NEEDA ABSOLUTE RAEGAN-RED EX-92 2E**  
**2ND DAM OF LOT 1**

*1st 4-Year-Old, Mid-East Fall R&W Junior Show 2019*

## Lot 1

**LAUREN HIBSCHMAN**  
 SYRACUSE, IN  
 574-457-6725

### Mr Stone-Front Reeve-Red-ET

840 3136877210 Very Good-86 \*TY \*TV  
 PTA +433M +54F +27P 88R 12/21  
 PTA +2.9PL 2.78SCS +1.5DPR 2.3%DCE  
 PTA +1.56T +1.22UDC +.65FLC 83R 12/21  
 GTPI +2616G

### R-Needa Defiant Rascal

840 3141486860 Very Good-88 EX-MS @ 3-07 \*RC  
 2-10 2x 305d 24130 4.1 1000 3.3 802  
 1-10 2x 299d 18580 3.9 727 3.2 599

### R-NEEDA REEVE RAZZLE

840 3227781656 \*RC  
 Born: December 1, 2020 HMID: 510  
 • WINTER YEARLING

Due: October 29, 2022 to  
 Mr Blondin Warrior-Red-ET #3139655530

### Mr Salvatore RC-ET

840 3129037884 \*RC \*TY \*TV  
 PTA +1529M +38F +30P 99R 12/21  
 PTA +1.72T +1.24UDC +1.41FLC GTPI +2591G

### Y-Whisper Silver Regal-ET

840 3130641761 Very Good-87 \*RC  
 2-03 3x 365d 37990 3.3 1249 3.1 1162

### Scientific B Defiant-ET

141123484 Very Good-87 \*RC \*TV \*TL \*TY \*TD  
 PTA +72M -52F -12P 99R 12/21  
 PTA +2.69T +1.73UDC +.97FLC GTPI +1664G

### R-Needa Absolute Raegan-Red

73126611 Excellent-92 EEEEE 2E  
 5-00 2x 365d 29320 4.6 1335 3.5 1029  
 4-00 2x 324d 25680 4.5 1168 3.5 904  
 3-00 2x 307d 25650 4.4 1135 3.5 885  
 Life: 1425d 111090 4.4 4903 3.4 3804

• 1st 4-Year-Old, Senior & HM Grand Champion,  
 Mid-East Fall Red & White Junior Show 2019

#### 3rd Dam

**Bossir Sterling Rana-ET GP-83 \*RC**  
 3-01 3x 299d 23330 3.8 879 3.1 732

#### 4th Dam

**Bossir Destry Ringer-ET VG-85 VG-MS \*RC**  
 2-01 3x 365d 23920 4.1 971 3.3 791

#### 5th Dam

**Buckhorn-Acres Rita-Red-ET EX-94 EEEEE 2E**  
 3-08 3x 365d 33000 4.0 1315 3.7 1216  
 Life: 1619d 127480 4.2 5335 3.5 2679

#### 6th Dam

**Buckhorn-Acres Rita-Red-ET EX-94 EEEEE 2E**  
 3-08 2x 365d 33000 4.0 1315 3.7 1216  
 Life: 1763d 127480 4.2 5335 3.5 2679

#### 7th thru 10th Dams

**Sellcrest T Roseanne-Red-ET EX-93 2E GMD DOM**  
 4-01 2x 365d 28920 4.9 1427 3.8 1112  
 Life: 1973d 115040 4.7 5401 3.8 4350

**Clover-Mist Regina-Red-ET EX-92 EEEEE 2E DOM**  
 6-01 2x 365d 32320 4.2 1359 3.6 1157  
 Life: 1598d 128340 4.6 5946 3.6 4599

**Augys Rose Regal-Red-ET EX-90 VVEE 2E**  
 4-07 2x 351d 23550 4.9 1157 3.4 791  
 Life: 1344d 102830 4.9 5022 3.3 3432

**D-R-A August EX-96 4E DOM**  
 8-05 3x 365d 27460 4.3 1187 3.2 871  
 Life: 3443d 190200 4.4 8281 3.5 4818

• Nominated All-American Aged Cow 1986  
 Next two dams Excellent!

# Spring Selections Sale

## Lot 2

### Mr Affection Analyst-Red-ET

840 3136496608 \*TY \*TV  
PTA -84M -28F -23P 81R 12/21  
PTA -.6PL 2.87SCS -1.4DPR 2.4%DCE  
PTA +2.80T +2.49UDC +1.90FLC 81R 12/21  
GTPI +1902G

### R-Needa Rager Raelynn-Red

840 3139113097 Good Plus-81 @ 2-08  
2-00 2x 365d 29640 4.0 1174 3.3 964

### R-NEEDA ANALYST RAELENE-RED

840 3227781666 99%RHA  
Born: January 7, 2021 HMID: 520  
• WINTER YEARLING

### Riverdown Unstopabull-Red

CAN 11801450 \*TY \*TV  
PTA -435M -26F -24P 95R 12/21  
PTA +2.80T +2.31UDC +1.90FLC GTPI +2007G

### Milksource Byway Affection

840 3138524450 Excellent-94 \*RC  
4-05 2x 266d 36050 4.5 1619 2.7 990  
2-11 2x 305d 27680 4.1 1128 3.1 857

### Ri-Val-Re Rager-Red-ET

72353457 Excellent-90 \*TY \*TV  
PTA +823M +48F +33P 99R 12/21  
PTA +1.50T +.62UDC +1.12FLC GTPI +2560G

### R-Needa Defiant Rana

840 3131912121 Very Good-87 VG-MS @ 4-01 \*RC  
3-04 2x 327d 32860 2.9 937 3.1 1014  
2-00 2x 365d 26860 3.2 860 3.3 884

#### 3rd Dam

**R-Needa Absolute Raegan-Red** EX-92 EEEEE 2E  
5-00 2x 365d 29320 4.6 1335 3.5 1029  
Life: 1425d 111090 4.4 4903 3.4 3804  
• 1st 4-Year-Old, Senior & HM Grand Champion,  
Mid-East Fall Red & White Junior Show 2019

#### 4th Dam

**Bossir Sterling Rana-ET** GP-83 \*RC  
3-01 3x 299d 23330 3.8 879 3.1 732

#### 4th Dam

**Bossir Destry Ringer-ET** VG-85 VG-MS \*RC  
2-01 3x 365d 23920 4.1 971 3.3 791

#### 5th Dam

**Buckhorn-Acres Rita-Red-ET** EX-94 EEEEE 2E  
3-08 3x 365d 33000 4.0 1315 3.7 1216  
Life: 1619d 127480 4.2 5335 3.5 2679

#### 6th Dam

**Buckhorn-Acres Rita-Red-ET** EX-94 EEEEE 2E  
3-08 2x 365d 33000 4.0 1315 3.7 1216  
Life: 1763d 127480 4.2 5335 3.5 2679

#### 7th & 8th Dams

**Sellcrest T Roseanne-Red-ET** EX-93 2E GMD DOM  
4-01 2x 365d 28920 4.9 1427 3.8 1112  
Life: 1973d 115040 4.7 5401 3.8 4350

**Clover-Mist Regina-Red-ET** EX-92 EEEEE 2E DOM  
6-01 2x 365d 32320 4.2 1359 3.6 1157  
Life: 1598d 128340 4.6 5946 3.6 4599

Next four dams Excellent!

## Lot 3

LAUREN HIBSCHMAN  
SYRACUSE, IN  
574-457-6725

### Ri-Val-Re Rager-Red-ET

72353457 \*TY \*TV  
PTA +823M +48F +33P 99R 12/21  
PTA +5.2PL 2.86SCS -.1DPR 3.6%DCE  
PTA +1.50T +.62UDC +1.12FLC 98R 12/21  
GTPI +2560G

### R-Needa Diamondback Rasco

840 3211747179  
1-10 2x 85d 5412 4.0 216 3.3 176 RIP

### R-NEEDA RAGER RILEY-RED

840 3240290933 99%RHA  
Born: October 18, 2021 HMID: 567  
• FALL CALF

### Pine-Tree Relief P 4954

69169920 \*RC \*PC \*TY \*TV  
PTA +109M +21F +5P 98R 12/21  
PTA -.27T -.81UDC +.29FLC GTPI +2174G

### Ri-Val-Re Obsrvr Salsa-ET

69928442 Very Good-88 DOM \*RC

### Mr D Apple Diamondback

840 3013721049 Excellent-93 \*RC \*TV \*TL \*TY  
PTA -400M -25F -1P 99R 12/21  
PTA +2.44T +1.95UDC +1.43FLC GTPI +1873G

### R-Needa Defiant Rascal

840 3141486860 Very Good-88 EX-MS @ 3-07  
2-10 2x 305d 24130 4.1 1000 3.3 802  
1-10 2x 299d 18580 3.9 727 3.2 599

#### 3rd Dam

**R-Needa Absolute Raegan-Red** EX-92 EEEEE 2E  
5-00 2x 365d 29320 4.6 1335 3.5 1029  
Life: 1425d 111090 4.4 4903 3.4 3804  
• 1st 4-Year-Old, Senior & HM Grand Champion,  
Mid-East Fall Red & White Junior Show 2019

#### 4th Dam

**Bossir Sterling Rana-ET** GP-83 \*RC  
3-01 3x 299d 23330 3.8 879 3.1 732

#### 4th Dam

**Bossir Destry Ringer-ET** VG-85 VG-MS \*RC  
2-01 3x 365d 23920 4.1 971 3.3 791

#### 5th Dam

**Buckhorn-Acres Rita-Red-ET** EX-94 EEEEE 2E  
3-08 3x 365d 33000 4.0 1315 3.7 1216  
Life: 1619d 127480 4.2 5335 3.5 2679

#### 6th Dam

**Buckhorn-Acres Rita-Red-ET** EX-94 EEEEE 2E  
3-08 2x 365d 33000 4.0 1315 3.7 1216  
Life: 1763d 127480 4.2 5335 3.5 2679

#### 7th & 8th Dams

**Sellcrest T Roseanne-Red-ET** EX-93 2E GMD DOM  
4-01 2x 365d 28920 4.9 1427 3.8 1112  
Life: 1973d 115040 4.7 5401 3.8 4350

**Clover-Mist Regina-Red-ET** EX-92 EEEEE 2E DOM  
6-01 2x 365d 32320 4.2 1359 3.6 1157  
Life: 1598d 128340 4.6 5946 3.6 4599

Next four dams Excellent!

# Spring Selections Sale

## Lot 4

MADISON HIBSCHMAN  
SYRACUSE, IN  
574-457-6725

### Ja-Bob Jordan-Red-ET

17378279 Excellent-90 \*TV \*TL  
PTA -1109M -2F -21P 99R 12/21  
PTA -2.5PL 3.38SCS -.5DPR 2.7%DCE  
PTA -1.02T -1.22UDC -1.25FLC 99R 12/21  
GTPI +1524G

### R-Needa Guthrie Starburst

73126600 Very Good-87 VG-MS @ 5-05  
5-10 2x 350d 30930 4.5 1395 3.5 1080  
4-08 2x 356d 29510 4.6 1352 3.6 1063  
3-05 2x 365d 29430 4.5 1327 3.5 1024  
2-02 3x 365d 24880 4.8 1195 3.3 820  
Life: 1591d 126000 4.6 5766 3.5 4351

### R-NEEDA JORDAN SNAPPLE

840 3227781687 \*RC  
Born: June 1, 2021 HMID: 541  
• SUMMER YEARLING

### Mercy Phideaux-ET

2135113 Very Good-88 \*RC  
PTA -1574M -23F -30P 99R 12/21  
PTA -1.70T -2.68UDC -1.90FLC GTPI+1405G

### Ohiana MOM Handmaid-Red-ET

15318707 Excellent-91 DOM  
3-05 3x 365d 34230 3.7 1272 3.3 1117  
2-03 2x 365d 26610 3.7 979 3.2 843

### Fustead Goldwyn Guthrie-ET

137191143 Excellent-94 \*TY \*TV  
PTA -448M -5F -4P 99R 12/21  
PTA +1.85T +1.66UDC +.81FLC GTPI +2007G

### R-Needa Arnee Sassy

71394987 Very Good-87 VG-MS @ 7-05  
3-03 3x 365d 28720 4.7 1360 3.4 978  
6-08 2x 365d 26360 5.1 1336 3.5 931  
5-06 2x 351d 26970 4.8 1303 3.5 939  
Life: 1886d 138390 4.7 6540 3.4 4651

#### 3rd Dam

**Green-Vale Gldwyn Selena-ET** VG-86 VG-MS  
4-03 3x 292d 26930 4.0 1068 3.2 873

#### 4th Dam

**Walnut-Vu Champion Selena** VG-85 VG-MS

#### 5th Dam

**Star-Summit RM Sophie-ET** EX-90 EVEVE 2E  
4-05 2x 305d 28170 4.2 1181 3.4 954  
Life: 1247d 105470 4.4 4664 3.3 3508

#### 6th Dam

**Star-Summit Lindy Sweet** EX-94 3E GMD DOM  
5-09 2x 365d 43850 3.6 1592 3.4 1500  
Life: 2500d 186680 4.2 7811 3.7 6845

#### 7th Dam

**Star-Summit Southwind Sugar** VG-88 DOM

#### 8th Dam

**LWS Patty Segis** EX-91 5E GMD DOM  
Life: 3410d 259910 3.6 9429 3.2 8292

#### 9th Dam

**LWS Patty D** EX-90 EEEE 2E  
Life: 1850d 121650 3.7 4560 3.3 3990

#### 10th Dam

**LWS Pat** VG-87 VVEV

## Lot 5

ONEEDA FARMS LLC  
SYRACUSE, IN  
574-596-5823

### Mr Affection Analyst-Red-ET

840 3136496608 \*TY \*TV  
PTA -84M -28F -23P 81R 12/21  
PTA -.6PL 2.87SCS -1.4DPR 2.4%DCE  
PTA +2.80T +2.49UDC +1.90FLC 81R 12/21  
GTPI +1902G

### Oneeda Alacazam Koko

840 3146496650 Very Good-85 VG-MS @ 3-10 \*RC  
2-03 2x 365d 23250 4.2 986 3.4 796  
3-09 2x 159d 10867 4.8 451 3.3 364 RIP

### ONEEDA ANALYST KOOZIE-RED

840 3233447780 99%RHA  
Born: August 12, 2021 HMID: 2072  
• SUMMER YEARLING

### Riverdown Unstopabull-Red

CAN 11801450 \*TY \*TV  
PTA -435M -26F -24P 95R 12/21  
PTA +2.80T +2.31UDC +1.90FLC GTPI +2007G

### Milksource Byway Affection

840 3138524450 Excellent-94 \*RC  
4-05 2x 266d 36050 4.5 1619 2.7 990  
2-11 2x 305d 27680 4.1 1128 3.1 857

### Bossir Symp Alacazam-Red

72254590 \*TY \*TV  
PTA -542M +0F -5P 99R 12/21  
PTA +1.38T +1.08UDC +.16FLC GTPI +2066G

### Oneeda Chris Kaleigh

72014916 Very Good-87 VEVV @ 4-09  
3-03 3x 365d 37410 3.5 1320 3.1 1167  
2-03 3x 271d 24270 3.6 869 3.0 721

#### 3rd Dam

**Oneeda Alexander Kathy** VG-88 VEVV  
3-00 3x 365d 29680 3.9 1146 3.2 949  
Life: 1663d 142220 3.8 5416 3.2 4486

#### 4th Dam

**Oneeda Lou Kelsey** VG-86 VG-MS  
1-11 3x 365d 35940 3.7 1328 3.3 1177  
Life: 1568d 160810 3.8 6036 3.2 5194

#### 4th Dam

**Oneeda Boss Iron Kimberly** EX-90 EEEEE  
4-04 3x 316d 40160 3.6 1455 3.3 1326  
Life: 1036d 111930 3.7 4156 3.2 3594

# Spring Selections Sale



**HENKESEEN AD RUMOR-RED-ET EX-93 3E**  
4TH DAM OF LOT 6



**HENKESEEN RIPPLE-RED-ET EX-92 2E**  
5TH DAM OF LOT 6

*Junior All-American R&W 4-Year-Old 2009*

## Lot 6

JOSEPH & HARLAND GARNDER JR.  
SYRACUSE, IN  
574-849-2515

### Mr Stone-Front Reeve-Red-ET

840 3136877210 Very Good-86 \*TY \*TV  
PTA +433M +54F +27P 88R 12/21  
PTA +2.9PL 2.78SCS +1.5DPR 2.3%DCE  
PTA +1.56T +1.22UDC +.65FLC 83R 12/21  
GTPI +2616G

### Knee-High Ad Gertie-Red-TW

840 3139113070 Good Plus-83 @ 3-02  
2-01 2x 293d 19630 4.2 828 3.5 678  
3-00 2x 194d 15004 3.9 592 3.3 495 RIP

### KNEE-HIGH REEVE GLAM-RED

840 3227781695  
Born: July 1, 2021 HMID: 549  
• SUMMER YEARLING

### Mr Salvatore RC-ET

840 3129037884 \*RC \*TY \*TV  
PTA +1529M +38F +30P 99R 12/21  
PTA +1.72T +1.24UDC +1.41FLC GTPI +2591G

### Y-Whisper Silver Regal-ET

840 3130641761 Very Good-87 \*RC  
2-03 3x 365d 37990 3.3 1249 3.1 1162

### Mr Ansly Addiction-P-Red-ET

72128091 Excellent-90 \*PC \*CD \*TY \*TV  
PTA -1859M -10F -18P 99R 12/21  
PTA +.70T +1.11UDC -.20FLC GTPI +2016G

### Bossir Alchemy Gabby

70725120 Excellent-90 EEVWV @ 8-08 \*RC  
3-06 3x 323d 32890 4.0 1314 3.3 1099  
7-08 2x 365d 30300 4.3 1307 3.5 1063  
6-06 2x 365d 29830 4.2 1260 3.6 1085  
Life: 2053d 171930 4.1 7132 3.4 5888

#### 3rd Dam

**Henkeesen Real Gossip-Red VG-85 VG-MS**  
2-02 3x 312d 26140 3.5 920 3.0 788

#### 4th Dam

**Henkeesen Ad Rumor-Red-ET EX-93 EEEEE 3E**  
6-02 2x 365d 28890 3.8 1104 3.4 968  
Life: 2174d 151940 3.8 5799 3.4 4501

#### 5th Dam

**Henkeesen Ripple-Red-ET EX-92 EEEVE 2E**  
2-04 2x 365d 29630 4.1 1222 3.5 1039  
Life: 1893d 157450 4.2 6585 3.4 5365  
• Junior All-American R&W 4-Year-Old 2009

#### 6th thru 10th Dams

**Henkeesen Rubens Robin-ET EX-91,2E EEEEE**  
4-08 2x 365d 35460 4.3 1511 3.4 1209  
Life: 1543d 102320 4.0 4142 3.4 3484

#### • HM Junior All-American Aged Cow 2005

**Henkeesen Mason Handi-ET EX-92,DOM**  
5-07 2x 365d 43561 4.0 1746 3.5 1512

**Henkeesen M Hillary-ET EX-94,3E GMD-DOM**  
4-09 2x 365d 41550 4.3 1777 3.4 1413  
Life: 2318d 202960 4.1 8255 3.6 7325

**Henkeesen Mark Marci EX-94 3E GMD DOM**  
5-00 2x 365d 33430 3.5 1168 3.2 1060  
Life: 2433d 171670 3.4 5888 3.1 5329

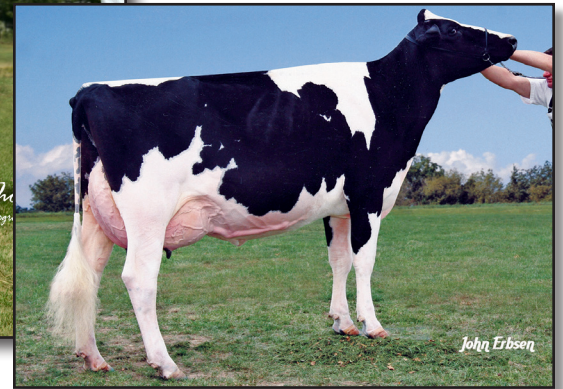
**Henkeesen Chairman Mandy VG-88 GMD DOM**  
3-03 2x 365d 33490 3.2 1066 2.9 960  
Life: 1882d 133690 3.3 4353 2.9 3891

# Spring Selections Sale



**ROSEDALE PUSSYCAT DOLL-ET EX-93**  
4TH DAM OF LOT 7

*1st Senior 2-Year-Old, Midwest Spring Nat'l 2010*



**VANDYK-K INTEG PARADISE 2-ETN EX-92**  
5TH DAM OF LOT 7

*All-American Senior 2-Year-Old 2005*

## Lot 7

**LAUREN & MADISON HIBSCHMAN**  
SYRACUSE, IN  
574-457-6725

### Oneeda Defiant Virginian

3139113075  
PTA -431M -46F -21P 39R 12/21  
PTA -1.0PL 3.13SCS -1.2DPR 3.6%DCE  
PTA +1.16T -.02UDC +.14FLC 40R 12/21  
PTPI +1565

### R-Needa Crush Icing

840 3139113092 Very Good-85 VG-MS @ 2-08  
2-00 2x 353d 24342 3.5 847 3.4 834

### R-NEEDA VIRGINIAN ICEE

840 3227781664 99%RHA  
Born: January 6, 2021 HMID: 518  
• WINTER YEARLING

### Scientific B Defiant-ET

141123484 Very Good-87 \*RC \*TV \*TL \*TY \*TD  
PTA +72M -52F -12P 99R 12/21  
PTA +2.69T +1.73UDC +.97FLC GTPI +1664G

### Oneeda Logan Iron Virginia

69375332 Excellent-91  
3-10 3x 304d 29860 3.5 1057 3.0 898  
Life: 2558d 196060 3.9 7581 3.1 6080

### Maverick Crush

CAN 12042760 \*TY \*TV \*TL \*TD  
PTA -893M -51F -15P 99R 12/21  
PTA +2.44T +1.53UDC +1.31FLC GTPI +2039G

### Beatyview Diamondback Ishea

840 3143055250 Good Plus-83 VG-MS @ 3-06  
2-00 2x 311d 21290 3.7 779 3.3 712

### 3rd Dam

**Beatyview Reginald Polly-ET VG-87 VG-MS**  
3-07 2x 365d 32570 4.9 1584 3.3 1064

### 4th Dam

**Rosedale Pussycat Doll-ET EX-93 EEEVE**  
3-03 2x 365d 28470 3.9 1246 3.2 1025  
Life: 1363d 104340 3.7 3869 3.2 3349

• *1st Senior 2-Year-Old, Midwest Spring Nat'l 2010*

### 5th Dam

**Vandyk-K Integ Paradise 2-ETN EX-92 EEEEE**  
2-04 2x 365d 36120 3.7 1354 3.4 1239

• *All-American Senior 2-Year-Old 2005*

• *HM All-American Winter Yearling 2004*

### 6th Dam

**Vandyk-K Broker Pansy-ET EX-90 DOM**  
5-06 3x 365d 41460 3.7 1535 3.2 1306

### 7th Dam

**Vandyk-K Mark Patty EX-94 EEEEE 2E**  
7-07 2x 365d 29080 3.4 1000 3.0 869

• *1st Junior 3-Year-Old, Western National 1992*

### 8th Dam

**Vandyk-K Melvin Pappy VG-88**  
4-03 2x 358d 24580 3.8 925 3.2 779

• *Nom Junior All-American Senior Yearling 1988*



# Spring Selections Sale

## Lot 8

MADISON HIBSCHMAN  
SYRACUSE, IN  
574-457-6725

### Ri-Val-Re Rager-Red-ET

72353457 \*TY \*TV  
PTA +823M +48F +33P 99R 12/21  
PTA +5.2PL 2.86SCS -.1DPR 3.6%DCE  
PTA +1.50T +.62UDC +1.12FLC 98R 12/21  
GTPI +2560G

### R-Needa Simplicity Tatum-Red

840 3205237477  
1-10 2x 98d 6762 3.2 219 2.7 181 RIP

### R-NEEDA RAGER TOPNOTCH-RED

840 3240290929 99%RHA  
Born: October 5, 2021 HMID: 563  
• FALL CALF

### Pine-Tree Relief P 4954

69169920 \*RC \*PC \*TY \*TV  
PTA +109M +21F +5P 98R 12/21  
PTA -.27T -.81UDC +.29FLC GTPI +2174G

### Ri-Val-Re Obsrvr Salsa-ET

69928442 Very Good-88 DOM \*RC

### Holyland Simplicity-P-RC-ET

840 3136246981 \*PC \*RC \*TY \*TV  
PTA +1075M +51F +34P 99R 12/21  
PTA +.81T +.66UDC +.27FLC 97R 12/21

### R-Needa Avalanche Twizzler

840 3131912124 Very Good-85 VG-MS @ 2-04  
1-11 2x 300d 23270 3.4 798 3.0 698

3rd Dam

### R-Needa Redburst Tina-Red EX-91 EEVVE 2E

6-06 2x 365d 31610 4.4 1401 3.7 1168  
Life: 1898d 156020 4.5 6962 3.6 5561

4th Dam

### R-Needa Advent Trina GP-82 \*RC

4-05 3x 365d 41300 3.9 1597 3.2 1302  
Life: 1248d 118870 3.9 4592 3.2 3787

## Lot 9

ONEEDA FARMS LLC  
SYRACUSE, IN  
574-596-5823

### Mr Stone-Front Reeve-Red-ET

840 3136877210 Very Good-86 \*TY \*TV  
PTA +433M +54F +27P 88R 12/21  
PTA +2.9PL 2.78SCS +1.5DPR 2.3%DCE  
PTA +1.56T +1.22UDC +.65FLC 83R 12/21  
GTPI +2616G

### Oneeda Fulton Valerie

840 3139051555 Very Good-85 @ 4-11  
3-02 2x 365d 33970 4.5 1533 3.0 1036  
2-01 2x 320d 25800 4.3 1121 3.0 772  
4-05 2x 295d 22222 4.4 1193 2.8 761 RIP

### ONEEDA REEVE VICTORIA

840 3233447765 \*RC  
Born: March 22, 2021 HMID: 2057  
• SPRING YEARLING

### Mr Salvatore RC-ET

840 3129037884 \*RC \*TY \*TV  
PTA +1529M +38F +30P 99R 12/21  
PTA +1.72T +1.24UDC +1.41FLC GTPI +2591G

### Y-Whisper Silver Regal-ET

840 3130641761 Very Good-87 \*RC  
2-03 3x 365d 37990 3.3 1249 3.1 1162

### Navs Shtl Fulton-ET

62821518 Excellent-91 \*TY \*TV  
PTA +93M +14F -9P 99R 12/21  
PTA +.66T -.17UDC +.42FLC GTPI +1735G

### Oneeda Wildman Vickie

72335400 Good Plus-82 @ 3-01  
2-01 3x 365d 28180 4.7 1329 3.3 935

3rd Dam

### Oneeda Spearmint Victory G-77

2-00 3x 316d 18890 4.9 928 3.1 591

4th Dam

### Oneeda Zenith Valerie EX-90 EEVEV

3-11 3x 331d 33020 4.8 1575 3.4 1137

# Spring Selections Sale



**ALWAYSAUTUMN SASH 1357-RED EX-90**  
**2ND DAM OF LOT 10**

*Nom Junior All-American R&W Senior 3-Year-Old 2019*

## Lot 10

**LAUREN & MADISON HIBSCHMAN**  
 SYRACUSE, IN  
 574-457-6725

### Mr Blondin Warrior-Red-ET

840 3139655530 99%RHA \*TY \*TV  
 PTA -141M +0F -1P 85R 12/21  
 PTA -1.8PL 2.86SCS -2.5DPR 3.3%DCE  
 PTA +3.52T +2.22UDC +1.55FLC 80R 12/21  
 GTPI +2057G

### R-Needa Crown Secret-Red

840 3205237472

### R-NEEDA WARRIOR SHIMMER-RED

840 3240290924 99%RHA  
 Born: September 20, 2021 HMID: 558  
 • FALL CALF

### Dymenthalm Mr App Avalanche-TW

CAN 11957107 \*RC \*CV \*TL \*TY \*TD  
 PTA -94M +1F -4P 99R 12/21  
 PTA +3.76T +2.85UDC +2.26FLC GTPI +2036G

### Triplecrown-JW Door Wisp-ET

840 3128860372 VG-85-CAN  
 3-03 2x 365d 35587 4.0 1424 3.5 1246  
 2-01 2x 310d 17068 4.0 688 3.5 589

### Sandy-Valley Crown P-Red-ET

71181706 \*PC \*TY \*TV  
 PTA -317M -4F +1P 98R 12/21  
 PTA +1.38T +.93UDC +.65FLC GTPI +2080G

### AlwaysAutumn Sash 1357-Red

74112180 Excellent-90 EVEVE @ 4-06  
 3-09 2x 365d 31670 4.2 1328 3.3 1035  
 2-09 2x 314d 25850 4.1 1060 3.4 870  
 1-09 2x 303d 23710 3.9 916 3.0 714  
 • *Nom Junior All-American R&W Sr 3-Year-Old 2019*  
 • *1st Senior 3-Year-Old & Int Champion, Mideast Fall R&W Junior Show 2019*

*3rd Dam*

### Hinz-Bos Rb Marlana-Red-ET

*4th Dam*

### Mer-Gold Advent Ms Meg-Red EX-92 EEVVE

6-02 2x 365d 36940 4.8 1788 3.3 1219

*5th Dam*

### Derrwyn Miss Special-Red-ET EX-94 4E DOM

5-02 2x 365d 43260 4.2 1834 3.0 1278

Life: 1865d 165170 4.0 6688 3.3 5452

• *All-American R&W 125,000 Lb Cow 2008*

• *All-American R&W 5-Year-Old 2006*

• *All-American Senior 3-Year-Old 2004*

*6th Dam*

### Derrwyn Factor Miata-Red EX-94 2E

6-11 2x 365d 36900 4.2 1560 2.8 1049

Life: 1959d 152150 4.2 6417 3.1 4703

• *HM All-American R&W Aged Cow 2003*

*7th Dam*

### Derrwyn TT Mystic VG-86 VG-MS

6-02 2x 365d 27200 3.9 1068 2.8 749

Life: 2119d 140260 4.0 5669 2.8 3905

*8th Dam*

### Derrwyn Gold Mistress EX-91 EEVE 2E

5-02 2x 365d 23540 3.4 793 2.9 683

*9th Dam*

### Derrwyn Magic Missy VG-88 VVVV

4-06 2x 305d 19680 3.3 644 2.8 558

*Next three dams Very Good & Excellent!*

# Spring Selections Sale



**MER-GOLD ADVENT MS MEG-RED EX-92**  
4TH DAM OF LOT 11



**DERRWYN MS SPECIAL-RED-ET EX-94 4E**  
5TH DAM OF LOT 11  
*All-American R&W 125,000 Lb Cow 2008*

## Lot 11

LAUREN & MADISON HIBSCHMAN  
SYRACUSE, IN  
574-457-6725

### Lortie-Lea A Crisp Guy-Red

145336596  
PTA -991M +7F -7P 35R 12/21  
PTA -2.2PL 3.17SCS -1.1DPR 3.4%DCE  
PTA +1.31T +.77UDC +.70FLC 36R 12/21  
PTPI +1900

### R-Needa Crush Star

840 3205237465  
2-00 2x 107d 6905 3.3 228 3.2 219 RIP

### R-NEEDA GUY STARLIGHT-RED

840 3240290926 99%RHA  
Born: September 26, 2021 HMID: 560  
• FALL CALF

### Glory-Road M Apple Crisp-ET

142205998 Excellent-90 \*RC \*TY \*TV  
PTA -310M +28F +8P 99R 12/21  
PTA +1.32T +.58UDC +.56FLC GTPI +2008G

### Ms Stranshome Guava-Red-ET

142908471 Excellent-91 2E  
5-08 2x 365d 29911 4.6 1379 3.6 1081  
Life: 1726d 127500 4.5 5497 4.2 4519

### Maverick Crush

CAN 12042760 \*TY \*TV \*TL \*TD  
PTA -893M -51F -15P 99R 12/21  
PTA +2.44T +1.53UDC +1.31FLC GTPI +2039G

### AlwaysAutumn Sash 1357-Red

74112180 Excellent-90 EVEVE @ 4-06  
3-09 2x 365d 31670 4.2 1328 3.3 1035  
2-09 2x 314d 25850 4.1 1060 3.4 870  
1-09 2x 303d 23710 3.9 916 3.0 714  
• Nom Junior All-American R&W Sr 3-Year-Old 2019  
• 1st Senior 3-Year-Old & Int Champion,  
Midwest Fall R&W Junior Show 2019

#### 3rd Dam

#### Hinz-Bos Rb Marlana-Red-ET

#### 4th Dam

#### Mer-Gold Advent Ms Meg-Red EX-92 EEVEE

6-02 2x 365d 36940 4.8 1788 3.3 1219

#### 5th Dam

#### Derrwyn Miss Special-Red-ET EX-94 4E DOM

5-02 2x 365d 43260 4.2 1834 3.0 1278

Life: 1865d 165170 4.0 6688 3.3 5452

• All-American R&W 125,000 Lb Cow 2008

• All-American R&W 5-Year-Old 2006

• All-American Senior 3-Year-Old 2004

#### 6th Dam

#### Derrwyn Factor Miata-Red EX-94 2E

6-11 2x 365d 36900 4.2 1560 2.8 1049

Life: 1959d 152150 4.2 6417 3.1 4703

• HM All-American R&W Aged Cow 2003

#### 7th Dam

#### Derrwyn TT Mystic VG-86 VG-MS

6-02 2x 365d 27200 3.9 1068 2.8 749

Life: 2119d 140260 4.0 5669 2.8 3905

#### 8th Dam

#### Derrwyn Gold Mistress EX-91 EEVEE 2E

5-02 2x 365d 23540 3.4 793 2.9 683

#### 9th Dam

#### Derrwyn Magic Missy VG-88 VVVV

4-06 2x 305d 19680 3.3 644 2.8 558

Next three dams Very Good & Excellent!

# Spring Selections Sale



**MS MA-TOM-BA DUNDEE ERIN-ET EX-93 2E**  
3RD DAM OF LOT 12; 4TH DAM OF LOT 13



**BUDJON-JK LINJET EILEEN EX-96 4E**  
5TH DAM OF LOT 12  
*All-American 5-Year-Old 2004*

## Lot 12

DOUGLAS LEMAN  
FRANCESVILLE, IN  
219-567-2660

### Bacon-Hill Rick-P-Red-ET

840 3199699371 \*PC \*TY \*TV  
PTA +729M +40F +36P 82R 12/21  
PTA +3.3PL 2.82SCS -1.3DPR 2.2%DCE  
PTA +1.48T +.98UDC +.90FLC 80R 12/21  
GTPI +2498G

### Ms Brady Peaches

840 3131912078 Excellent-91 EEEVE 2E  
5-07 2x 287d 25457 3.5 890 3.1 785 RIP

### SRDLLC RICK PENELOPE

840 3227781679 99%RHA \*RC  
Born: March 30, 2021 HMID: 533  
• *SPRING YEARLING*

### Holyland Simplicity-P-RC-ET

840 3136246981 \*PC \*RC \*TY \*TV  
PTA +1075M +51F +34P 99R 12/21  
PTA +.81T +.66UDC +.27FLC 97R 12/21

### Bacon-Hill Jax Roxa-Red

840 3134284837 Very Good-85  
3-01 3x 365d 36120 3.1 1131 2.9 1052  
2-03 3x 272d 26120 3.5 918 2.8 759

### Butz-Butler Atwood Brady-ET

140610404 Excellent-93 \*TY \*TV  
PTA -616M -47F -44P 99R 12/21  
PTA +2.18T +1.82UDC +.49FLC GTPI +1466G

### Ms Maple-Slope Atwd Ella-ET

66758645 Very Good-86 VG-MS @ 5-07  
6-07 3x 365d 29210 4.4 1280 3.3 977  
5-05 3x 365d 26200 4.4 1154 3.4 902  
4-02 3x 365d 23130 4.5 1032 3.6 839  
Life: 1776d 125420 4.1 5197 3.4 4314

#### 3rd Dam

**Ms Ma-Tom-Ba Dundee Erin-ET EX-93 EEEEE 2E**  
5-05 2x 305d 25280 3.0 766 3.4 864

#### 4th Dam

**Budjon-JK Nobel Elly Mae EX-91 VEEVE**  
2-00 2x 365 22300 3.8 849 3.4 765

#### 5th Dam

**Budjon-JK Linjet Eileen-ET EX-96 4E GMD DOM**

5-06 2x 365d 44703 3.7 1647 3.3 1467  
Life: 2106d 194050 3.6 6935 3.4 6518

• *Reserve All-American Aged Cow 2005*

• *All-American 5-Year-Old 2004*

#### 6th Dam

**Budjon-JK Encore Electra-ET EX-95 2E GMD 4\***

6-04 2x 365d 46830 4.0 1866 2.8 1294  
Life: 2123d 1192280 3.6 6858 3.0 5733

• *HM All-American 125,000 Lb Cow 2005*

• *HM All-American Aged Cow 2004*

• *Reserve All-American Senior 3-Year-Old 2001*

#### 7th Dam

**Krull Broker Elegance EX-96 3E GMD DOM 1\***

5-07 2x 365d 40950 3.7 1522 3.3 1350  
Life: 2356d 183710 3.7 6878 3.4 6267

• *HM All-American Aged Cow 1999*

• *HM All-Canadian Mature Cow 1999*

#### 8th Dam

**Krull Starbuck Excellency EX-90 GMD DOM**

3-03 2x 365d 27140 3.5 937 3.4 930

*Next three dams Excellent!*

# Spring Selections Sale

## Lot 13

DOUGLAS LEMAN & JOE HIBSCHMAN  
FRANCESVILLE, IN  
219-567-2660

### Mr Stone-Front Reeve-Red-ET

840 3136877210 Very Good-86 \*TY \*TV  
PTA +433M +54F +27P 88R 12/21  
PTA +2.9PL 2.78SCS +1.5DPR 2.3%DCE  
PTA +1.56T +1.22UDC +.65FLC 83R 12/21  
GTPI +2616G

### Ms Awesome Plum

840 3139113079 Very Good-85 VG-MS @ 2-11  
1-11 2x 318d 17590 3.5 608 3.0 525  
2-11 2x 123d 10704 3.6 384 2.8 300 RIP

### SRDLLC REEVE PARMA-RED

840 3240290921  
Born: September 10, 2021 HMID: 555  
• FALL CALF

### Mr Salvatore RC-ET

840 3129037884 \*RC \*TY \*TV  
PTA +1529M +38F +30P 99R 12/21  
PTA +1.72T +1.24UDC +1.41FLC GTPI +2591G

### Y-Whisper Silver Regal-ET

840 3130641761 Very Good-87 \*RC  
2-03 3x 365d 37990 3.3 1249 3.1 1162

### Luck-E Awesome-Red

72186769 \*CV \*TV \*TY \*TL \*TD  
PTA -1697M -59F -55P 99R 12/21  
PTA +2.03T +2.78UDC +.75FLC GTPI +1415G

### Ms Brady Peaches

840 3131912078 Excellent-91 EEEVE 2E  
5-07 2x 287d 25457 3.5 890 3.1 785 RIP

#### 3rd Dam

**Ms Maple-Slope Atwd Ella-ET** VG-86 VG-MS  
6-07 3x 365d 29210 4.4 1280 3.3 977  
Life: 1776d 125420 4.1 5197 3.4 4314

#### 4th Dam

**Ms Ma-Tom-Ba Dundee Erin-ET** EX-93 EEEEE 2E  
5-05 2x 305d 25280 3.0 766 3.4 864

#### 5th Dam

**Budjon-JK Nobel Elly Mae** EX-91 VEEVE  
2-00 2x 365 22300 3.8 849 3.4 765

#### 6th Dam

**Budjon-JK Linjet Eileen-ET** EX-96 4E GMD DOM  
5-06 2x 365d 44703 3.7 1647 3.3 1467

Life: 2106d 194050 3.6 6935 3.4 6518

• Reserve All-American Aged Cow 2005

• All-American 5-Year-Old 2004

#### 7th & 8th Dams

**Budjon-JK Encore Electra-ET** EX-95 2E GMD 4\*

6-04 2x 365d 46830 4.0 1866 2.8 1294

Life: 2123d 1192280 3.6 6858 3.0 5733

• HM All-American 125,000 Lb Cow 2005

• HM All-American Aged Cow 2004

• Reserve All-American Senior 3-Year-Old 2001

**Krull Broker Elegance** EX-96 3E GMD DOM 1\*

5-07 2x 365d 40950 3.7 1522 3.3 1350

Life: 2356d 183710 3.7 6878 3.4 6267

• HM All-American Aged Cow 1999

• HM All-Canadian Mature Cow 1999

Next four dams Excellent!

## Lot 14

ONEEDA FARMS LLC  
SYRACUSE, IN  
574-596-5823

### Oneeda Defiant Virginian

3139113075  
PTA -431M -46F -21P 39R 12/21  
PTA -1.0PL 3.13SCS -1.2DPR 3.6%DCE  
PTA +1.16T -.02UDC +.14FLC 40R 12/21  
PTPI +1565

### Oneeda Redman Kendra

840 3139113020 Very Good-86 VG-MS @ 3-01 \*RC

### ONEEDA VIRGINIAN KENYA-RED

840 3220114241  
Born: October 3, 2020 HMID: 2007  
• FALL YEARLING

### Scientific B Defiant-ET

141123484 Very Good-87 \*RC \*TV \*TL \*TY \*TD  
PTA +72M -52F -12P 99R 12/21  
PTA +2.69T +1.73UDC +.97FLC GTPI +1664G

### Oneeda Logan Iron Virginia

69375332 Excellent-91  
3-10 3x 304d 29860 3.5 1057 3.0 898  
Life: 2558d 196060 3.9 7581 3.1 6080

### Valleyriver Ruben Redman-Red

CAN 10646281 EX-CAN \*TY \*TV  
PTA -1518M -49F -32P 99R 12/21  
PTA -.05T +.66UDC -.77FLC GTPI +1528G

### Oneeda Gold Chip Kelly

72335422 Good Plus-83 @ 5-08  
3-10 2x 341d 28780 3.8 1107 2.9 849  
2-10 3x 331d 28600 3.7 1056 3.1 882  
1-10 3x 317d 26060 3.5 924 2.8 730  
Life: 1742d 147080 3.7 5406 3.0 4369

Due: October 29, 2022 to  
Creeknook Rager Drew-Red #145138518

#### 3rd Dam

**Oneeda Jabez Kendra** G-78  
3-02 3x 365d 32090 3.3 1047 2.9 938

#### 4th Dam

**Oneeda Brick Kiss-TW** VG-85 VG-MS  
4-03 3x 365d 36770 4.0 1467 3.3 1210

Life: 1919d 172990 4.0 6848 3.2 5586

#### 5th Dam

**Oneeda Hi Metro Kelly** VG-87 VG-MS  
2-04 3x 365d 33110 3.5 1170 3.1 1025

# Spring Selections Sale



ONEEDA BLITZ KIZZY KAY EX-90  
3RD DAM OF LOT 15

## Lot 15

JOSEPH GARDNER  
MILLERSBURG, IN  
574-849-2515

### Mr Morningview 5491-Red

72044118 Excellent-90  
PTA -1076M -34F -23P 90R 12/21  
PTA -1.1PL 3.06SCS +.9DPR 3.6%DCE  
PTA +.97T +.85UDC -.18FLC 84R 12/21  
GTPI +1701G

### Oneeda Fulton Karina

840 3146496639 Very Good-86 @ 3-11  
3-05 2x 319d 32330 4.2 1342 2.9 952  
2-03 2x 365d 29240 4.0 1161 3.1 895

### KNEE-HIGH MORNVIEW KAY

840 3240290955 \*RC  
Born: March 6, 2022 HMID: 589  
• SPRING CALF

### Hunsberger Alchemy-ET

69080973 \*RC \*TY \*TV  
PTA +29M -15F +10P 99R 12/21  
PTA +.39T +.37UDC -1.54FLC GTPI +2046G

### Ms Apples Angel

139526936 Excellent-94 2E \*RC  
6-00 2x 365d 44410 4.0 1771 3.3 1480  
Life: 1501d 131230 4.0 5204 3.4 4407

### Navs Shtl Fulton-ET

62821518 Excellent-91 \*TY \*TV  
PTA +93M +14F -9P 99R 12/21  
PTA +.66T -.17UDC +.42FLC GTPI +1735G

### Oneeda Gold Chip Kraft-ET

72886550 Good Plus-83 @ 3-11  
2-01 3x 365d 34020 3.6 1229 2.8 955  
3-05 2x 351d 31910 3.9 1248 3.0 956

#### 2nd Dam

**Oneeda Blitz Kizzy Kay** EX-90 EEEV GMD  
3-05 3x 365d 50930 3.3 1705 3.1 1582  
Life: 1177d 132170 3.5 4589 3.1 4132

#### 3rd Dam

**Oneeda Convincer Kizzy** EX-90 2E GMD  
3-04 3x 365d 45240 3.5 1561 2.9 1313  
Life: 2712d 275960 3.7 10095 2.9 8123

#### 4th Dam

**Oneeda Emperor Kitty-ET** VG-85 GMD DOM  
6-10 3x 365d 44620 3.6 1599 2.9 1294  
Life: 2292d 234710 3.7 8665 3.0 6997

#### 5th Dam

**Oneeda Bell Kay** EX-90 2E GMD DOM  
8-07 3x 348d 34160 3.5 1195 2.9 988  
Life: 2830d 244410 3.7 9113 3.0 7441

#### 6th Dam

**Oneeda Veeman Kate-Twin** VG-85  
5-00 2x 357d 28720 4.0 1159 3.3 934

#### 7th Dam

**Oneeda Triune Colette** VG-85 VG-MS  
Life: 2363d 133970 4.5 6094

#### 8th Dam

**Oneeda Pioneer Lucifer Connie** VG-89 VEEV  
Life: 3526d 157270 4.5 7130

# Spring Selections Sale

## Lot 16

JOSEPH GARDNER  
MILLERSBURG, IN  
574-849-2515

### Mr Blondin Warrior-Red-ET

840 3139655530 99%RHA \*TY \*TV  
PTA -141M +0F -1P 85R 12/21  
PTA -1.8PL 2.86SCS -2.5DPR 3.3%DCE  
PTA +3.52T +2.22UDC +1.55FLC 80R 12/21  
GTPI +2057G

### Knee-High Chris Lilac-Red

840 3141486844 Good Plus-83 @ 3-10

### KNEE-HIGH WARRIOR LYRIC-RED

840 3227781670 99%RHA  
Born: January 22, 2021 HMID: 524  
• WINTER YEARLING

### Dymenthalm Mr App Avalanche-TW

CAN 11957107 \*RC \*CV \*TL \*TY \*TD  
PTA -94M +1F -4P 99R 12/21  
PTA +3.76T +2.85UDC +2.26FLC GTPI +2036G

### Triplecrown-JW Door Wisp-ET

840 3128860372 VG-85-CAN  
3-03 2x 365d 35587 4.0 1424 3.5 1246  
2-01 2x 310d 17068 4.0 688 3.5 589

### MD-Valleyvue Gold Chris-ET

137302783 Excellent-92 \*RC \*TY \*TV  
PTA -31M -20F -12P 99R 12/21  
PTA +.34T -.56UDC +.82FLC GTPI +1826G

### Knee-High Defiant Lilbit-TW

840 3131912083 Good Plus-83 @ 4-08  
2-11 2x 365d 31250 4.0 1239 3.3 1035  
4-02 2x 291d 31870 3.9 1248 3.1 984  
1-11 2x 311d 24500 3.8 921 3.1 753

#### 3rd Dam

#### Knee-High Lawnboy Lily GP-80

3-01 3x 343d 31890 3.8 1202 3.1 1000  
Life: 1449d 126560 3.8 4796 3.3 4135

#### 4th Dam

#### Knee-High Rubens Libby EX-90 EEVVE 2E

6-04 3x 329d 38030 4.5 1704 3.4 1292  
Life: 1757d 173570 4.1 7110 3.3 5673

#### 5th Dam

#### Knee-High Chil Lori EX-90 EX-MS 2E

8-08 2x 365d 37820 4.2 1584 3.2 1192  
Life: 2492d 215000 4.0 8677 3.3 6799

## Lot 17

JOSEPH GARDNER  
MILLERSBURG, IN  
574-849-2515

### Ri-Val-Re Rager-Red-ET

72353457 \*TY \*TV  
PTA +823M +48F +33P 99R 12/21  
PTA +5.2PL 2.86SCS -.1DPR 3.6%DCE  
PTA +1.50T +.62UDC +1.12FLC 98R 12/21  
GTPI +2560G

### Knee-High Brokaw Lala

840 3205237480

### KNEE-HIGH RAGER LILY

840 3240290925 99%RHA \*RC  
Born: September 23, 2021 HMID: 559  
• FALL CALF

### Pine-Tree Relief P 4954

69169920 \*RC \*PC \*TY \*TV  
PTA +109M +21F +5P 98R 12/21  
PTA -.27T -.81UDC +.29FLC GTPI +2174G

### Ri-Val-Re Obsrvr Salsa-ET

69928442 Very Good-88 DOM \*RC

### Mr Atwood Brokaw-ET

140602463 Very Good-86 \*TY \*TV  
PTA -552M -2F -5P 99R 12/21  
PTA +2.61T +1.68UDC +.55FLC GTPI +1848G

### Knee-High Defiant Lilbit-TW

840 3131912083 Good Plus-83 @ 4-08  
2-11 2x 365d 31250 4.0 1239 3.3 1035  
4-02 2x 291d 31870 3.9 1248 3.1 984  
1-11 2x 311d 24500 3.8 921 3.1 753

#### 3rd Dam

#### Knee-High Lawnboy Lily GP-80

3-01 3x 343d 31890 3.8 1202 3.1 1000  
Life: 1449d 126560 3.8 4796 3.3 4135

#### 4th Dam

#### Knee-High Rubens Libby EX-90 EEVVE 2E

6-04 3x 329d 38030 4.5 1704 3.4 1292  
Life: 1757d 173570 4.1 7110 3.3 5673

#### 5th Dam

#### Knee-High Chil Lori EX-90 EX-MS 2E

8-08 2x 365d 37820 4.2 1584 3.2 1192  
Life: 2492d 215000 4.0 8677 3.3 6799

# Spring Selections Sale

## Lot 18

ONEEDA FARMS LLC  
SYRACUSE, IN  
574-596-5823

### ST Gen RR Applefree-Red-ET

840 3132353140 \*TY \*TV  
PTA +468M +59F +20P 82R 12/21  
PTA +2.2PL 2.82SCS -.1DPR 1.9%DCE  
PTA +1.83T +1.57UDC +.68FLC 80R 12/21  
GTPI +2547G

### Oneeda Malone Spandex

840 3139051565 Good Plus-80 @ 4-10 \*RC  
4-02 2x 338d 39028 2.8 1089 3.0 1156 RIP  
2-11 2x 365d 31920 2.8 902 3.0 946  
1-11 2x 301d 22500 2.8 630 2.9 658

### ONEEDA APPLEFREE SILK

840 3250084502 \*RC  
Born: January 16, 2022 HMID: 2112  
• WINTER CALF

### Vogue Revival-Red-ET

CAN 12111876 \*TY \*TV  
PTA -311M +68F +11P 96R 12/21  
PTA +.48T +.77UDC +.49FLC GTPI +2447G

### Lismore Delta Anna-ET

840 3126680429 Very Good-87 \*RC  
3-03 2x 365d 36400 3.7 1361 3.0 1107  
4-07 2x 365d 30160 4.1 1242 3.2 977

### Air-Osa-Mle Malone-Red-ET

71304165 Very Good-86 \*TY \*TV  
PTA -685M -42F -9P 99R 12/21  
PTA +1.16T +.29UDC +.58FLC GTPI +1602G

### Oneeda Cupid Sadie

72886535 Good Plus-80 @ 2-05 \*RC  
3-09 3x 305d 23450 3.7 877 3.1 732  
5-03 2x 305d 24620 3.3 810 3.2 784  
1-10 3x 298d 21060 3.6 754 3.0 638  
Life: 1632d 112820 3.5 3943 3.2 3624

3rd Dam

### Oneeda Contnd Safron-Red-TW

4th Dam

### Oneeda Talent Sadie-Red VG-86 VG-MS

3-10 3x 289d 30260 3.5 1071 3.1 942  
Life: 1188d 111840 3.3 3699 3.2 3563

5th Dam

### Oneeda Alf Saucey-Red EX-90 EVVVE

3-07 3x 365d 34540 3.6 1235 3.2 1102

6th Dam

### Lortie-Dale Int Sassy EX-90 EEEEE 2E \*RC

5-06 3x 365d 37580 4.0 1505 3.3 1237  
Life: 1790d 151210 3.8 5796 3.3 5040

## Lot 19

ONEEDA FARMS LLC  
SYRACUSE, IN  
574-596-5823

### Burket-Falls Done Right-Red

142812101 Excellent-92 \*PC  
PTA -1570M -35F -49P 91R 12/21  
PTA +1.3PL 2.91SCS +2.0DPR 3.9%DCE  
PTA -.26T -1.10UDC +.06FLC 84R 12/21  
GTPI +1566G

### Oneeda Diamondback Nike

840 3141486775 Very Good-85 VG-MS @ 4-06  
3-10 2x 312d 29080 4.1 1181 3.4 995  
2-10 2x 324d 29220 3.9 1153 3.3 964  
1-11 2x 303d 20870 4.3 890 3.4 719  
4-10 2x 11d 783 5.1 40 4.6 36 RIP

### ONEEDA DONE RIGHT NEXT-RED

840 3250084495 99%RHA  
Born: December 31, 2021 HMID: 2105  
• WINTER CALF

### Burket-Falls Dazzler-Red-ET

139229651 Very Good-88 \*PO  
PTA -1915M -16F -49P 86R 12/21  
PTA +.10T -.55UDC +1.00FLC TPI +1636

### Burket-Falls 1562-Red

138719478 Excellent-91 EEEEE 2E \*PO  
7-05 2x 365d 28150 4.2 1185 3.0 833  
Life: 2854d 206250 3.8 7850 2.9 6034

### Mr D Apple Diamondback

840 3013721049 Excellent-93 \*RC \*TV \*TL \*TY  
PTA -400M -25F -1P 99R 12/21  
PTA +2.44T +1.95UDC +1.43FLC GTPI +1873G

### Oneeda Fork Nicki

840 3126669751 Good-76 @ 2-06  
2-01 3x 286d 20700 3.6 753 3.0 613

3rd Dam

### Oneeda Buckeye Naomi VG-85

3-04 3x 355d 42700 3.1 1323 3.1 1306  
Life: 1473d 161960 3.1 5021 3.0 4928

4th Dam

### Oneeda Aspen Nina GP-82

5-05 3x 365d 41120 3.6 1488 3.2 1332  
Life: 1712d 177160 3.7 6629 3.3 5771

5th Dam

### Prairie-Dairy Nancy VG-85

5-02 3x 365d 40870 3.1 1272 2.9 1175



# Spring Selections Sale

## Lot 20

JOSHUA GARDNER  
MILLERSBURG, IN  
574-606-6224

### Mr Stone-Front Reeve-Red-ET

840 3136877210 Very Good-86 \*TY \*TV  
PTA +433M +54F +27P 88R 12/21  
PTA +2.9PL 2.78SCS +1.5DPR 2.3%DCE  
PTA +1.56T +1.22UDC +.65FLC 83R 12/21  
GTPI +2616G

### Knee-High Chris Grassy

840 3205237456 \*RC

### KNEE-HIGH REEVE GLITZ-RED

840 3227781691  
Born: June 17, 2021 HMID: 545  
• SUMMER YEARLING

### Mr Salvatore RC-ET

840 3129037884 \*RC \*TY \*TV  
PTA +1529M +38F +30P 99R 12/21  
PTA +1.72T +1.24UDC +1.41FLC GTPI +2591G

### Y-Whisper Silver Regal-ET

840 3130641761 Very Good-87 \*RC  
2-03 3x 365d 37990 3.3 1249 3.1 1162

### MD-Valleyvue Gold Chris-ET

137302783 Excellent-92 \*RC \*TY \*TV  
PTA -31M -20F -12P 99R 12/21  
PTA +.34T -.56UDC +.82FLC GTPI +1826G

### Knee-High Ric Gracious-Red

71395014 Excellent-90 EX-MS @ 4-09  
7-01 2x 365d 32300 4.5 1441 3.6 1168  
3-00 3x 336d 29970 4.6 1380 3.6 1083  
6-01 2x 314d 25410 4.4 1126 3.6 918  
Life: 1965d 166190 4.5 7453 3.6 5945

#### 3rd Dam

### Knee-High Raid Glinda-Red EX-90 EEEEV

8-09 2x 340d 30400 4.0 1226 3.4 1035  
Life: 3019d 244560 4.0 9866 3.4 8436

#### 4th Dam

### Knee-High Reddevil Jem-Red VG-85

6-03 3x 365d 40610 3.4 1384 3.1 1241  
Life: 2314d 221020 3.8 8467 3.1 6809

#### 5th Dam

### Knee-High Jordan Jamie GP-81 \*RC

3-07 2x 365d 35830 3.3 1189 3.0 0176

#### 6th Dam

### Knee-High Jubal Jolly VG-87

4-08 3x 365d 42710 3.3 1420 2.9 1251  
Life: 1643d 152590 3.5 5314 3.0 4507

## Lot 21

JOSHUA GARDNER  
MILLERSBURG, IN  
574-606-6224

### Mr Stone-Front Reeve-Red-ET

840 3136877210 Very Good-86 \*TY \*TV  
PTA +433M +54F +27P 88R 12/21  
PTA +2.9PL 2.78SCS +1.5DPR 2.3%DCE  
PTA +1.56T +1.22UDC +.65FLC 83R 12/21  
GTPI +2616G

### Knee-High Axel Gobble-Red

840 3205237470  
2-00 2x 97d 6741 3.8 255 3.1 207 RIP

### KNEE-HIGH REEVE GABBIE-RED

840 3240290930 99%RHA  
Born: October 6, 2021 HMID: 564  
• FALL CALF

### Mr Salvatore RC-ET

840 3129037884 \*RC \*TY \*TV  
PTA +1529M +38F +30P 99R 12/21  
PTA +1.72T +1.24UDC +1.41FLC GTPI +2591G

### Y-Whisper Silver Regal-ET

840 3130641761 Very Good-87 \*RC  
2-03 3x 365d 37990 3.3 1249 3.1 1162

### Kulp-Dale AG Dr Axel-Red-ET

840 3127359450 \*TY \*TV  
PTA +752M +31F +24P 98R 12/21  
PTA +1.48T +1.87UDC +.66FLC GTPI +2354G

### Knee-High Malone Gibby-Red

73126631 Very Good-85 VG-MS @ 3-09  
2-01 2x 347d 23070 4.1 867 3.3 705  
3-01 2x 295d 20010 4.4 881 3.7 739

#### 3rd Dam

### Knee-High Raid Glinda-Red EX-90 EEEEV

8-09 2x 340d 30400 4.0 1226 3.4 1035  
Life: 3019d 244560 4.0 9866 3.4 8436

#### 4th Dam

### Knee-High Reddevil Jem-Red VG-85

6-03 3x 365d 40610 3.4 1384 3.1 1241  
Life: 2314d 221020 3.8 8467 3.1 6809

#### 5th Dam

### Knee-High Jordan Jamie GP-81 \*RC

3-07 2x 365d 35830 3.3 1189 3.0 0176

#### 6th Dam

### Knee-High Jubal Jolly VG-87

4-08 3x 365d 42710 3.3 1420 2.9 1251  
Life: 1643d 152590 3.5 5314 3.0 4507

# Spring Selections Sale

## Lot 22

JOSHUA GARDNER  
MILLERSBURG, IN  
574-606-6224

### Mr D Apple Diamondback

840 3013721049 Excellent-93 \*RC \*TV \*TL \*TY  
PTA -400M -25F -1P 99R 12/21  
PTA -1PL 3.12SCS -3.0DPR 2.9%DCE  
PTA +2.44T +1.95UDC +1.43FLC 99R 12/21  
GTPI +1873G

### Knee-High Alacazam Glamour

840 3205237459 \*RC  
2-00 2x 165d 10002 3.4 341 3.3 326 RIP

### KNEE-HIGH DBACK GLITTER

840 3240290917 99%RHA  
Born: July 30, 2021 HMID: 551  
• SUMMER YEARLING

### Val-Bisson Doorman-ET

CAN 107281711 EX-90-CAN ST'16 \*TV \*TY  
PTA -446M +14F +9P 99R 12/21  
PTA +2.44T +1.58UDC +.67FLC GTPI +2164G

### Ms Delicious Apple-Red-ET

139236776 Excellent-94 2E  
7-02 2x 365d 46510 4.0 1844 3.3 1512  
• Reserve All-American R&W 125,000 Lb Cow 2015

### Bossir Symp Alacazam-Red

72254590 \*TY \*TV  
PTA -542M +0F -5P 99R 12/21  
PTA +1.38T +1.08UDC +.16FLC GTPI +2066G

### Knee-High Armani Galaxy

840 3131912105 Very Good-89 EEEV @ 4-06  
3-00 2x 336d 30390 3.1 927 3.0 925  
4-01 2x 242d 26150 3.2 826 2.9 755  
2-00 2x 305d 24160 3.1 758 3.1 737

#### 3rd Dam

**Knee-High Cupid Garland F-72 \*RC**  
3-00 2x 316d 20490 4.2 852 3.4 698

#### 4th Dam

**Knee-High Raid Glinda-Red EX-90 EEEV**  
8-09 2x 340d 30400 4.0 1226 3.4 1035  
Life: 3019d 244560 4.0 9866 3.4 8436

#### 5th Dam

**Knee-High Reddevil Jem-Red VG-85**  
6-03 3x 365d 40610 3.4 1384 3.1 1241  
Life: 2314d 221020 3.8 8467 3.1 6809

#### 6th Dam

**Knee-High Jordan Jamie GP-81 \*RC**  
3-07 2x 365d 35830 3.3 1189 3.0 0176

#### 7th Dam

**Knee-High Jubal Jolly VG-87**  
4-08 3x 365d 42710 3.3 1420 2.9 1251  
Life: 1643d 152590 3.5 5314 3.0 4507

## Lot 23

JANET GARDNER  
MILLERSBURG, IN  
574-606-6224

### ST Gen RR Applefree-Red-ET

840 3132353140 \*TY \*TV  
PTA +468M +59F +20P 82R 12/21  
PTA +2.2PL 2.82SCS -1DPR 1.9%DCE  
PTA +1.83T +1.57UDC +.68FLC 80R 12/21  
GTPI +2547G

### Knee-High Arvis Alexis-Red

840 3139113086 Very Good-86 VG-MS @ 2-08  
2-00 2x 365d 27440 3.8 1052 3.3 901

### KNEE-HIGH AF ALICE-RED-TW

840 3240290952  
Born: March 1, 2022 HMID: 586  
• SPRING CALF

### Vogue Revival-Red-ET

CAN 12111876 \*TY \*TV  
PTA -311M +68F +11P 96R 12/21  
PTA +.48T +.77UDC +.49FLC GTPI +2447G

### Lismore Delta Anna-ET

840 3126680429 Very Good-87 \*RC  
3-03 2x 365d 36400 3.7 1361 3.0 1107  
4-07 2x 365d 30160 4.1 1242 3.2 977

### Mr LR EDG Arvis 18196-ET

840 3125201960 \*RC \*TY \*TV  
PTA -535M +8F +1P 97R 12/21  
PTA +1.95T +2.09UDC +1.35FLC GTPI +2157G

### Knee-High Defend Annie-Red

71395015 Very Good-87 VG-MS @ 5-11

#### 3rd Dam

**Knee-High Aaron Alfa-Red VG-88 EEVW**  
4-08 3x 341d 37220 3.4 1268 3.1 1146  
Life: 2108d 185940 3.4 6312 3.2 5953

#### 4th Dam

**Knee-High Raid Glinda-Red EX-90 EEEV**  
8-09 2x 340d 30400 4.0 1226 3.4 1035  
Life: 3019d 244560 4.0 9866 3.4 8436

#### 5th Dam

**Knee-High Reddevil Jem-Red VG-85**  
6-03 3x 365d 40610 3.4 1384 3.1 1241  
Life: 2314d 221020 3.8 8467 3.1 6809

#### 6th Dam

**Knee-High Jordan Jamie GP-81 \*RC**  
3-07 2x 365d 35830 3.3 1189 3.0 0176

#### 7th Dam

**Knee-High Jubal Jolly VG-87**  
4-08 3x 365d 42710 3.3 1420 2.9 1251  
Life: 1643d 152590 3.5 5314 3.0 4507

# Spring Selections Sale

## Lot 24

ONEEDA FARMS LLC  
SYRACUSE, IN  
574-596-5823

### Holyland Simplicity-P-RC-ET

840 3136246981 \*PC \*RC \*TY \*TV  
PTA +1075M +51F +34P 99R 12/21  
PTA +3.1PL 2.97SCS -1.8DPR 1.5%DCE  
PTA +.81T +.66UDC +.27FLC 97R 12/21  
GTPI +2459G

### Oneeda Licorice Kepler

840 3131912065 Very Good-86 EVVV @ 5-01 \*RC  
4-07 2x 365d 27840 3.5 983 3.3 905  
3-05 2x 343d 27520 3.3 910 3.2 881  
1-10 2x 365d 21540 3.5 748 3.2 700  
5-09 2x 99d 10011 3.8 379 3.0 302 RIP

### ONEEDA SIMPLICITY KANSAS

840 3233447790 99%RHA  
Born: October 4, 2021 HMID: 2082  
• FALL CALF

### Bacon-Hill Pety Modesty

840 3013654627 Very Good-86 GM 8/18 \*TY \*TV  
PTA +234M +43F +17P 99R 12/21  
PTA -.07T +1.19UDC +.62FLC GTPI +2391G

### Ms Sunview Relief Sundew-ET

840 3012643765 Very Good-87 GMD  
2-01 4x 365d 35340 4.0 1405 3.2 1144  
Life: 1494d 118160 3.8 4511 3.1 3670

### Blk Forest RMH Licorice-Red-ET

CAN 11255412  
PTA -1081M -68F -31P 96R 12/21  
PTA +.16T +.21UDC -.23FLC GTPI +1301G

### Oneeda Seaver Kendall

70910607 Very Good-87 VG-MS @ 5-07  
6-01 2x 365d 36380 4.0 1446 3.3 1217  
3-11 3x 321d 32830 3.8 1240 3.1 1008  
5-00 3x 331d 31300 3.8 1194 3.0 952  
Life: 2126d 190380 3.8 7237 3.3 6280

3rd Dam

### Oneeda Blitz Karma VG-87 VG-MS

4-01 3x 320d 33050 3.7 1221 2.9 956  
Life: 1643d 157420 3.5 5562 2.8 4429

4th Dam

### Fuhrmann-Vu Gibson Katie VG-88 EVEVV

2-05 3x 365d 21210 4.3 922 3.3 703

## Lot 25

ONEEDA FARMS LLC  
SYRACUSE, IN  
574-596-5823

### Mr Affection Analyst-Red-ET

840 3136496608 \*TY \*TV  
PTA -84M -28F -23P 81R 12/21  
PTA -.6PL 2.87SCS -1.4DPR 2.4%DCE  
PTA +2.80T +2.49UDC +1.90FLC 81R 12/21  
GTPI +1902G

### Oneeda Chris Klynn

840 3146496654 Good Plus-81 @ 3-09  
2-11 2x 307d 27440 3.2 868 3.2 886  
1-11 2x 347d 24690 3.4 842 3.1 771

### ONEEDA ANALYST KELSEY-RED

840 3233447795 99%RHA  
Born: October 15, 2021 HMID: 2087  
• FALL CALF

### Riverdown Unstopabull-Red

CAN 11801450 \*TY \*TV  
PTA -435M -26F -24P 95R 12/21  
PTA +2.80T +2.31UDC +1.90FLC GTPI +2007G

### Milksource Byway Affection

840 3138524450 Excellent-94 \*RC  
4-05 2x 266d 36050 4.5 1619 2.7 990  
2-11 2x 305d 27680 4.1 1128 3.1 857

### MD-Valleyvue Gold Chris-ET

137302783 Excellent-92 \*RC \*TY \*TV  
PTA -31M -20F -12P 99R 12/21  
PTA +.34T -.56UDC +.82FLC GTPI +1826G

### Oneeda Licorice Kepler

840 3131912065 Very Good-86 EVVV @ 5-01 \*RC  
4-07 2x 365d 27840 3.5 983 3.3 905  
3-05 2x 343d 27520 3.3 910 3.2 881  
1-10 2x 365d 21540 3.5 748 3.2 700  
5-09 2x 99d 10011 3.8 379 3.0 302 RIP

3rd Dam

### Oneeda Seaver Kendall VG-87 VG-MS

6-01 2x 365d 36380 4.0 1446 3.3 1217  
Life: 2126d 190380 3.8 7237 3.3 6280

4th Dam

### Oneeda Blitz Karma VG-87 VG-MS

4-01 3x 320d 33050 3.7 1221 2.9 956  
Life: 1643d 157420 3.5 5562 2.8 4429

5th Dam

### Fuhrmann-Vu Gibson Katie VG-88 EVEVV

2-05 3x 365d 21210 4.3 922 3.3 703

# Spring Selections Sale

## Lot 26

ONEEDA FARMS LLC  
SYRACUSE, IN  
574-596-5823

### ST Gen RR Applefree-Red-ET

840 3132353140 \*TY \*TV  
PTA +468M +59F +20P 82R 12/21  
PTA +2.2PL 2.82SCS -.1DPR 1.9%DCE  
PTA +1.83T +1.57UDC +.68FLC 88R 12/21  
GTPI +2547G

### Oneeda Defiant Kaffeem

840 3139051570 Very Good-85 VG-MS @ 4-09  
3-01 2x 312d 25890 3.6 932 3.0 779  
2-01 2x 299d 23450 3.5 819 3.0 695  
5-01 2x 30d 2952 3.9 114 3.0 90 RIP

### ONEEDA APPLEFREE KAREFREE

840 3233447808 \*RC  
Born: December 12, 2021 HMID: 2100  
• WINTER CALF

### Vogue Revival-Red-ET

CAN 12111876 \*TY \*TV  
PTA -311M +68F +11P 96R 12/21  
PTA +.48T +.77UDC +.49FLC GTPI +2447G

### Lismore Delta Anna-ET

840 3126680429 Very Good-87 \*RC  
3-03 2x 365d 36400 3.7 1361 3.0 1107  
4-07 2x 365d 30160 4.1 1242 3.2 977

### Scientific B Defiant-ET

141123484 Very Good-87 \*RC \*TV \*TL \*TY \*TD  
PTA +72M -52F -12P 99R 12/21  
PTA +2.69T +1.73UDC +.97FLC GTPI +1664G

### Oneeda Ryker Kirsten

840 3126669752 Good Plus-82 @ 5-05  
3-11 2x 361d 29870 4.3 1272 3.4 1019  
2-11 2x 328d 24760 4.3 1055 3.4 845  
1-09 3x 365d 26210 3.7 975 3.2 835  
Life: 1291d 103610 4.1 4220 3.3 3412

#### 3rd Dam

**Oneeda Atwood Kiki** VG-88 EVVVV  
3-03 3x 362d 29100 4.8 1410 3.7 1086

#### 4th Dam

**Oneeda Million Kinzie** VG-87 VG-MS  
2-11 2x 284d 17520 4.3 756 3.6 637

#### 5th Dam

**Oneeda MrSam Kylie** EX-90 EVVEE  
6-02 3x 361d 36840 4.0 1462 3.2 1181  
Life: 1651d 161280 4.1 6645 3.2 5194

#### 6th Dam

**Oneeda Boss Iron Kimberly** EX-90 EEEEE  
4-04 3x 316d 40160 3.6 1455 3.3 1326  
Life: 1036d 111930 3.7 4156 3.2 3594

## Lot 27

ONEEDA FARMS LLC  
SYRACUSE, IN  
574-596-5823

### Mr Affection Analyst-Red-ET

840 3136496608 \*TY \*TV  
PTA -84M -28F -23P 81R 12/21  
PTA -.6PL 2.87SCS -1.4DPR 2.4%DCE  
PTA +2.80T +2.49UDC +1.90FLC 81R 12/21  
GTPI +1902G

### Oneeda Furious Karle

840 3211747234  
2-00 40d 2327 4.3 101 3.2 74 RIP

### ONEEDA ANALYSTE KAYLIE

840 3233447807 99%RHA \*RC  
Born: December 2, 2021 HMID: 2099  
• WINTER CALF

### Riverdown Unstopabull-Red

CAN 11801450 \*TY \*TV  
PTA -435M -26F -24P 95R 12/21  
PTA +2.80T +2.31UDC +1.90FLC GTPI +2007G

### Milksource Byway Affection

840 3138524450 Excellent-94 \*RC  
4-05 2x 266d 36050 4.5 1619 2.7 990  
2-11 2x 305d 27680 4.1 1128 3.1 857

### Lars-Acres Goldchip Furious

70053925 Excellent-92 \*TY \*TV  
PTA -195M -1F -15P 98R 12/21  
PTA +1.89T +2.19UDC +1.06FLC GTPI +2030G

### Oneeda Armani Kolby

840 3139051578 Good Plus-82 @ 3-07  
3-00 2x 314d 19810 5.1 1001 3.9 771  
2-00 2x 302d 16240 5.3 858 4.0 646

#### 3rd Dam

**Oneeda Brokaw Kelby** VG-88 VG-MS  
3-09 2x 365d 32020 3.9 1264 3.7 1180  
Life: 1388d 112080 4.1 4565 3.5 3960

#### 4th Dam

**Oneeda Daniel Kimber** G-79  
2-00 3x 292d 23280 4.1 952 3.2 745

#### 5th Dam

**Oneeda Lou Kelsey** VG-86 VG-MS  
1-11 3x 365d 35940 3.7 1328 3.3 1177  
Life: 1568d 160810 3.8 6036 3.2 5194

#### 6th Dam

**Oneeda Boss Iron Kimberly** EX-90 EEEEE  
4-04 3x 316d 40160 3.6 1455 3.3 1326  
Life: 1036d 111930 3.7 4156 3.2 3594

# Spring Selections Sale

## Lot 28

ONEEDA FARMS LLC  
SYRACUSE, IN  
574-596-5823

### ONEEDA REEVE RENAE

840 3233447782 \*RC  
Born: August 18, 2021 HMID: 2074  
• SUMMER YEARLING

#### Mr Stone-Front Reeve-Red-ET

840 3136877210 Very Good-86 \*TY \*TV  
PTA +433M +54F +27P 88R 12/21  
PTA +2.9PL 2.78SCS +1.5DPR 2.3%DCE  
PTA +1.56T +1.22UDC +.65FLC 83R 12/21  
GTPI +2616G

#### Oneeda Krusader Rebecca

70910623 Very Good-88 VEVV @ 5-05  
8-06 2x 325d 35100 3.5 1240 3.3 1141  
4-11 3x 357d 36710 3.4 1243 3.0 1118  
7-04 2x 365d 35520 3.7 1315 3.2 1122  
3-11 3x 324d 34840 3.6 1253 3.2 1119  
9-05 2x 146d 14732 3.3 489 3.2 477 RIP  
Life: 2361d 229520 3.6 8314 3.2 7260

#### Mr Salvatore RC-ET

840 3129037884 \*RC \*TY \*TV  
PTA +1529M +38F +30P 99R 12/21  
PTA +1.72T +1.24UDC +1.41FLC GTPI +2591G

#### Y-Whisper Silver Regal-ET

840 3130641761 Very Good-87 \*RC  
2-03 3x 365d 37990 3.3 1249 3.1 1162

#### O-Bee Krusader-ET

139986224 GP-82-CAN ST'14 \*TY \*TD  
PTA +124M -21F +8P 99R 12/21  
PTA +1.02T +.74UDC +.91FLC GTPI +1817G

#### Oneeda Keith Royal

139455731 Good Plus-82 @ 5-11  
4-06 3x 343d 31990 3.2 1028 2.9 929  
5-07 3x 365d 32050 2.8 909 2.8 913  
3-05 3x 365d 29850 3.3 989 2.9 870  
Life: 1658d 136740 3.2 4353 2.9 3959

## Lot 29

ONEEDA FARMS LLC  
SYRACUSE, IN  
574-596-5823

### ONEEDA ANALYSTE VIOLIN-RED

840 3233447778  
Born: July 27, 2021 HMID: 2070  
• SUMMER YEARLING

#### Mr Affection Analyst-Red-ET

840 3136496608 \*TY \*TV  
PTA -84M -28F -23P 81R 12/21  
PTA -.6PL 2.87SCS -1.4DPR 2.4%DCE  
PTA +2.80T +2.49UDC +1.90FLC 81R 12/21  
GTPI +1902G

#### Oneeda Saturn Venus

840 3204064064

#### Riverdown Unstopabull-Red

CAN 11801450 \*TY \*TV  
PTA -435M -26F -24P 95R 12/21  
PTA +2.80T +2.31UDC +1.90FLC GTPI +2007G

#### Milksource Byway Affection

840 3138524450 Excellent-94 \*RC  
4-05 2x 266d 36050 4.5 1619 2.7 990  
2-11 2x 305d 27680 4.1 1128 3.1 857

#### Darita Meridian Saturn-ET

70259179 Excellent-90 \*TY \*TV  
PTA +387M -6F -3P 98R 12/21  
PTA +2.39T +2.02UDC +1.48FLC GTPI +2175G

#### Oneeda Logan Iron Virginia

69375332 Excellent-91 EEVVEE 2E  
3-10 3x 304d 29860 3.5 1057 3.0 898  
5-09 3x 314d 27940 3.7 1036 3.1 866  
6-10 2x 360d 26730 3.8 1010 3.0 814  
Life: 2558d 196060 3.9 7581 3.1 6080

## Lot 30

MADISON HIBSCHMAN  
SYRACUSE, IN  
574-457-6725

### ONEEDA VIRGINIAN ECLIP-RED

840 3227781693  
Born: June 27, 2021 HMID: 547  
• SUMMER YEARLING

#### Oneeda Defiant Virginian

3139113075  
PTA -431M -46F -21P 39R 12/21  
PTA -1.0PL 3.13SCS -1.2DPR 3.6%DCE  
PTA +1.16T -.02UDC +.14FLC 40R 12/21  
PTPI +1565

#### R-Needa Crush Elsa

840 3139113095 Very Good-85 VG-MS @ 2-08 \*RC  
2-06 2x 198d 14387 3.9 561 3.1 442 RIP

3rd Dam

Oneeda Contender Exodus VG-85 \*RC

#### Maverick Crush

CAN 12042760 \*TY \*TV \*TL \*TD  
PTA -893M -51F -15P 99R 12/21  
PTA +2.44T +1.53UDC +1.31FLC GTPI +2039G

#### Oneeda Magenta Erin-Red

840 3126669745 Very Good-88 @ 6-01  
4-00 2x 365d 29320 4.3 1263 3.0 867  
5-07 2x 286d 26080 4.7 1221 2.9 750  
2-11 2x 324d 26060 4.1 1058 3.1 800  
Life: 1408d 114860 4.1 4718 2.9 3329

# Spring Selections Sale



**KNEE-HIGH CONTENT ANNA-RED VG-88**  
**3RD DAM OF LOTS 31 & 32**

*1st Senior 3-Year-Old, NY Spring R&W Show 2015*

## Lot 31

JOEY & JOSH GARDNER  
MILLERSBURG, IN  
574-642-4731

### **KNEE-HIGH AMRT ANNIE-RED-TW**

840 3227781677 99%RHA  
Born: March 26, 2021 HMID: 531  
• *SPRING YEARLING*

#### **KCKK Amaretto-Red-ET**

840 3141240934 \*TY \*TV  
PTA -774M -2F -16P 82R 12/21  
PTA -1.0PL 2.89SCS -1.2DPR 3.3%DCE  
PTA +2.80T +2.31UDC +2.52FLC 80R 12/21  
GTPI +2035G

#### **Knee-High Defiant Amber-Red**

840 3139113061 Very Good-85 @ 3-04  
2-11 2x 291d 28969 3.2 919 3.1 888 RIP  
1-11 2x 301d 21170 3.5 731 3.2 669

#### *3rd Dam*

#### **Knee-High Contend Anna-Red VG-88 VEVV**

4-11 2x 305d 18050 3.9 696 3.2 577  
• *1st Senior 3-Yr-Old, NY Spring R&W Show 2015*

#### **Scientific B Defiant-ET**

141123484 Very Good-87 \*RC \*TV \*TL \*TY \*TD  
PTA +72M -52F -12P 99R 12/21  
PTA +2.69T +1.73UDC +.97FLC GTPI +1664G

#### **Knee-High ColtP Annabel-Red**

73126592 Good Plus-83 @ 6-10  
6-03 2x 365d 33310 4.1 1361 3.4 1137  
4-01 2x 346d 28290 4.4 1250 3.5 999  
5-02 2x 338d 28400 4.3 1223 3.5 981  
Life: 1728d 142240 4.3 6111 3.4 4840

## Lot 32

JOEY & JOSH GARDNER  
MILLERSBURG, IN  
574-642-4731

### **KNEE-HIGH AMRET ANNA-RED-TW**

840 3227781676 99%RHA  
Born: March 26, 2021 HMID: 530  
• *SPRING YEARLING*

#### **KCKK Amaretto-Red-ET**

840 3141240934 \*TY \*TV  
PTA -774M -2F -16P 82R 12/21  
PTA -1.0PL 2.89SCS -1.2DPR 3.3%DCE  
PTA +2.80T +2.31UDC +2.52FLC 80R 12/21  
GTPI +2035G

#### **Knee-High Defiant Amber-Red**

840 3139113061 Very Good-85 @ 3-04  
2-11 2x 291d 28969 3.2 919 3.1 888 RIP  
1-11 2x 301d 21170 3.5 731 3.2 669

#### *3rd Dam*

#### **Knee-High Contend Anna-Red VG-88 VEVV**

4-11 2x 305d 18050 3.9 696 3.2 577  
• *1st Senior 3-Yr-Old, NY Spring R&W Show 2015*

#### **Scientific B Defiant-ET**

141123484 Very Good-87 \*RC \*TV \*TL \*TY \*TD  
PTA +72M -52F -12P 99R 12/21  
PTA +2.69T +1.73UDC +.97FLC GTPI +1664G

#### **Knee-High ColtP Annabel-Red**

73126592 Good Plus-83 @ 6-10  
6-03 2x 365d 33310 4.1 1361 3.4 1137  
4-01 2x 346d 28290 4.4 1250 3.5 999  
5-02 2x 338d 28400 4.3 1223 3.5 981  
Life: 1728d 142240 4.3 6111 3.4 4840

# Spring Selections Sale

## Lot 33

ROGER HIBSCHMAN  
SYRACUSE, IN  
574-596-5823

### R-NEEDA DIAMONDBACK TASE

840 3227781673 99%RHA  
Born: February 13, 2021 HMID: 527  
• WINTER YEARLING

### Mr D Apple Diamondback

840 3013721049 Excellent-93 \*RC \*TV \*TL \*TY  
PTA -400M -25F -1P 99R 12/21  
PTA -.1PL 3.12SCS -3.0DPR 2.9%DCE  
PTA +2.44T +1.95UDC +1.43FLC 99R 12/21  
GTPI +1873G

### R-Needa Acrobat Taffy

840 32040640322  
2-01 2x 171d 14690 3.7 546 3.1 452

### Val-Bisson Doorman-ET

CAN 107281711 EX-90-CAN ST'16 \*TV \*TY  
PTA -446M +14F +9P 99R 12/21  
PTA +2.44T +1.58UDC +.67FLC GTPI +2164G

### Ms Delicious Apple-Red-ET

139236776 Excellent-94 2E  
7-02 2x 365d 46510 4.0 1844 3.3 1512  
• Reserve All-American RE&W 125,000 Lb Cow 2015

### Mystique Acrobat-ET

CAN 107993373 VG-86-CAN ST'17 \*TY \*TV  
PTA +634M +18F +27P 93R 12/21  
PTA +1.94T +.67UDC -.23FLC GTPI +2056G

### R-Needa Gold Chip Tawna

73126616 Excellent-91 EEVEE @ 5-04  
3-10 2x 313d 23820 4.8 1146 3.1 729  
2-09 2x 334d 22520 4.7 1057 3.1 691  
4-11 2x 320d 21940 4.4 955 3.2 696

## Lot 34

ROGER HIBSCHMAN  
SYRACUSE, IN  
574-596-5823

### R-NEEDA WARRIOR TWIXX

840 3227781665 99%RHA \*RC  
Born: January 7, 2021 HMID: 519  
• WINTER YEARLING

Bred: February 28, 2022 to  
Mr Stone-Front Reeve-Red-ET #3136877210

### Mr Blondin Warrior-Red-ET

840 3139655530 99%RHA \*TY \*TV  
PTA -141M +0F -1P 85R 12/21  
PTA -1.8PL 2.86SCS -2.5DPR 3.3%DCE  
PTA +3.52T +2.22UDC +1.55FLC 80R 12/21  
GTPI +2057G

### R-Needa Chris Tickle

840 3139113098 Good Plus-83 @ 2-07  
2-00 2x 288d 22290 3.2 706 3.2 724  
2-11 2x 27d 2348 3.4 80 3.7 88 RIP

3rd Dam

R-Needa Gold Chip Tawna EX-91 EEVEE  
3-10 2x 313d 23820 4.8 1146 3.1 729

### MD-Valleyvue Gold Chris-ET

137302783 Excellent-92 \*RC \*TY \*TV  
PTA -31M -20F -12P 99R 12/21  
PTA +.34T -.56UDC +.82FLC GTPI +1826G

### R-Needa Diamondback Tess

840 3131912126 Excellent-90 EEVEE @ 4-00  
3-01 2x 319d 26980 4.4 1177 3.5 941  
1-11 2x 360d 22930 4.3 984 3.6 826

## Lot 35

KENDRA CONLEY  
SYRACUSE, IN  
574-526-0524

### R-NEEDA REX TAYLOR

840 3240290942 99%RHA \*RC  
Born: December 15, 2021 HMID: 576  
• WINTER CALF

### Ja-Bob Rex PP-Red-ET

73130038 Excellent-90 \*PP \*TC \*TV  
PTA -911M -45F -12P 97R 12/21  
PTA +1.9PL 2.95SCS -.3DPR 3.6%DCE  
PTA -.25T +.56UDC +.22FLC 93R 12/21  
GTPI +1758G

### R-Needa Chris Tickle

840 3139113098 Good Plus-83 @ 2-07  
2-00 2x 288d 22290 3.2 706 3.2 724  
2-11 2x 27d 2348 3.4 80 3.7 88 RIP

3rd Dam

R-Needa Gold Chip Tawna EX-91 EEVEE  
3-10 2x 313d 23820 4.8 1146 3.1 729

### MD-Valleyvue Gold Chris-ET

137302783 Excellent-92 \*RC \*TY \*TV  
PTA -31M -20F -12P 99R 12/21  
PTA +.34T -.56UDC +.82FLC GTPI +1826G

### R-Needa Diamondback Tess

840 3131912126 Excellent-90 EEVEE @ 4-00  
3-01 2x 319d 26980 4.4 1177 3.5 941  
1-11 2x 360d 22930 4.3 984 3.6 826

# Spring Selections Sale

## Lot 36

ONEEDA FARMS LLC  
SYRACUSE, IN  
574-596-5823

### ONEEDA NORWIN IGLOO

840 3250084497 98%RHA  
Born: January 4, 2022 HMID: 2107  
• WINTER CALF

#### RH Norwin

DEU 534650505 96%RHA \*RC  
PTA -674M -26F -17P 97R 12/21  
PTA -1.9PL 2.97SCS -.5DPR 2.8%DCE  
PTA -1.01T -1.57UDC -1.51FLC 94R 12/21  
GTPI +1525G

#### Ooneeda Atlantic Iggy

72014953 Very Good-87 VG-MS @ 7-06  
5-03 2x 365d 33360 3.6 1217 3.0 1003  
7-07 2x 365d 35840 3.1 1108 3.1 1102  
6-05 2x 365d 32150 3.6 1150 3.1 993  
4-01 3x 328d 30470 3.4 1050 2.9 892  
Life: 2193d 199870 3.4 6784 3.0 6016

#### Highland-H Stormin Norman

122217650 Excellent-94 \*TV \*TL  
PTA -1781M -51F -54P 99R 12/21  
PTA -.70T -1.38UDC -.30FLC GTPI +1202G

#### RH Meggilee

DEU 578236019 92%RHA EX-91-DEU  
6-05 2x 305d 26397 4.3 1135 3.3 871

#### Maple-Downs-I G W Atlantic-ET

CAN 8956383 Very Good-88 \*TY \*TV  
PTA +6M -35F -14P 99R 12/21  
PTA +1.09T +1.03UDC +.87FLC GTPI +1757G

#### Ooneeda Minister Irma

69890203

## Lot 37

ONEEDA FARMS LLC  
SYRACUSE, IN  
574-596-5823

### ONEEDA ARTISAN INDIA

840 3233447768 99%RHA \*RC  
Born: April 16, 2021 HMID: 2060  
• SPRING YEARLING

#### Luck-E Artisan-Red-ET

840 3141305472 \*TY \*TV  
PTA -53M +58F +12P 83R 12/21  
PTA +1.5PL 3.05SCS -.3DPR 2.2%DCE  
PTA -1.01T +1.17UD +.93FLC 81R 12/21  
GTPI +2410G

#### Ooneeda Alacazam Ice

840 3139113007 Good Plus-84 VG-MS @ 3-05 \*RC  
1-11 2x 360d 27380 3.6 984 3.1 856  
3-00 2x 270d 23430 3.8 889 3.1 738 RIP

#### Endo Apprentice-ET

74146951 \*RC \*PC \*TY \*TV  
PTA +292M -6F -3P 99R 12/21  
PTA +2.40T +2.03UDC +1.07FLC GTPI +1838G

#### Luck-E McGucci Afro-Red-ET

73278355 Excellent-94 EEEEE 2E  
4-07 2x 365d 36630 5.6 2055 3.7 1342  
Life: 1305d 105990 5.5 5852 3.7 3917

#### Bossir Symp Alacazam-Red

72254590 \*TY \*TV  
PTA -542M +0F -5P 99R 12/21  
PTA +1.38T +1.08UDC +.16FLC GTPI +2066G

#### Ooneeda Atlantic Iggy

72014953 Very Good-87 VG-MS @ 7-06  
5-03 2x 365d 33360 3.6 1217 3.0 1003  
7-07 2x 365d 35840 3.1 1108 3.1 1102  
6-05 2x 365d 32150 3.6 1150 3.1 993  
Life: 2193d 199870 3.4 6784 3.0 6016

## Lot 38

JOEY & JOSH GARDNER  
MILLERSBURG, IN  
574-642-4731

### KNEE-HIGH ARTISAN AMAZE-RED

840 3227781684 99%RHA  
Born: April 19, 2021 HMID: 538  
• SPRING YEARLING

#### Luck-E Artisan-Red-ET

840 3141305472 \*TY \*TV  
PTA -53M +58F +12P 83R 12/21  
PTA +1.5PL 3.05SCS -.3DPR 2.2%DCE  
PTA -1.01T +1.17UD +.93FLC 81R 12/21  
GTPI +2410G

#### Knee-High Addicted Amy-Red

840 3139113068 Very Good-85 VG-MS @ 3-02  
1-09 2x 318d 22350 4.1 920 3.3 737  
2-09 2x 264d 20609 4.6 943 3.6 733 RIP

#### Endo Apprentice-ET

74146951 \*RC \*PC \*TY \*TV  
PTA +292M -6F -3P 99R 12/21  
PTA +2.40T +2.03UDC +1.07FLC GTPI +1838G

#### Luck-E McGucci Afro-Red-ET

73278355 Excellent-94 EEEEE 2E  
4-07 2x 365d 36630 5.6 2055 3.7 1342  
Life: 1305d 105990 5.5 5852 3.7 3917

#### Mr Ansly Addiction-P-Red-ET

72128091 Excellent-90 \*PC \*CD \*TY \*TV  
PTA -1859M -10F -18P 99R 12/21  
PTA +.70T +1.11UDC -.20FLC GTPI +2016G

#### Knee-High Armani Amor-Red

73126597 Very Good-85 @ 5-06  
4-01 2x 336d 26270 5.4 1421 3.0 1021  
3-01 2x 313d 25550 4.9 1245 3.5 893  
5-01 2x 365d 24410 5.0 1212 3.8 920



# Spring Selections Sale

## Lot 39

ROGER HIBSCHMAN  
SYRACUSE, IN  
574-596-5823

### UNEEDA ARTISAN TA DA

840 3227781686 99%RHA \*RC  
Born: May 19, 2021 HMID: 240  
• SPRING YEARLING

#### Luck-E Artisan-Red-ET

840 3141305472 \*TY \*TV  
PTA -53M +58F +12P 83R 12/21  
PTA +1.5PL 3.05SCS -.3DPR 2.2%DCE  
PTA -1.01T +1.17UD +.93FLC 81R 12/21  
GTPI +2410G

#### R-Needa Armani Tana

840 3141486852 Good Plus-84 @ 2-06  
2-01 2x 365d 26560 4.2 1122 3.3 865

3rd Dam

**R-Needa Million Tweeter** VG-85 VG-MS  
4-00 3x 323d 31970 3.5 1104 2.8 902  
Life: 1150d 112240 3.4 3812 2.8 3140

4th Dam

**R-Needa Wildman Twilight** VG-85 VG-MS  
2-10 3x 365d 33040 3.5 1152 3.1 1014

#### Mr Apples Armani-ET

68571374 Excellent-90 \*RC \*CD \*TV \*TL \*TY \*TD  
PTA -1776M +14F -14P 99R 12/21  
PTA +.98T +1.53UDC +1.50FLC GTPI +2048

#### R-Needa Federal Twitter

71394999 Very Good-87 VG-MS @ 5-03  
4-00 3x 326d 30470 3.1 935 2.8 856  
3-00 3x 297d 30480 3.0 918 2.8 849  
2-00 3x 320d 28820 3.2 931 2.9 828  
Life: 1065d 103190 3.1 3228 2.8 2898

## Lot 40

ROGER HIBSCHMAN  
SYRACUSE, IN  
574-596-5823

### R-NEEDA REEVE TEAL-RED

840 3227781646  
Born: October 9, 2020 HMID: 500  
• FALL YEARLING

#### Mr Stone-Front Reeve-Red-ET

840 3136877210 Very Good-86 \*TY \*TV  
PTA +433M +54F +27P 88R 12/21  
PTA +2.9PL 2.78SCS +1.5DPR 2.3%DCE  
PTA +1.56T +1.22UDC +.65FLC 83R 12/21  
GTPI +2616G

#### R-Needa Leroy Taffy

840 3139113088 Good Plus-82 @ 2-08 \*RC  
1-10 2x 327d 22760 3.8 867 3.2 718  
2-10 2x 84d 6858 3.8 258 3.1 216 RIP

3rd Dam

**R-Needa Million Tweeter** VG-85 VG-MS  
4-00 3x 323d 31970 3.5 1104 2.8 902  
Life: 1150d 112240 3.4 3812 2.8 3140

4th Dam

**R-Needa Wildman Twilight** VG-85 VG-MS  
2-10 3x 365d 33040 3.5 1152 3.1 1014

#### Hy-Class Ladd P Leroy-Red

144450013  
PTA -1245M -34F -30P 37R 12/21  
PTA +1.06T +.63UDC +.60FLC PTPI +1825C

#### R-Needa Hypnotic Tiana

840 3131912120 Good Plus-83 @ 4-09  
3-00 2x 365d 35800 3.6 1272 3.1 1105  
2-00 2x 331d 24750 3.6 893 3.2 785

## Lot 41

ONEEDA FARMS LLC  
SYRACUSE, IN  
574-596-5823

### ONEEDA WARRIOR JACKO

840 3233447776 99%RHA \*RC  
Born: July 8, 2021 HMID: 2068  
• SUMMER YEARLING

#### Mr Blondin Warrior-Red-ET

840 3139655530 99%RHA \*TY \*TV  
PTA -141M +0F -1P 85R 12/21  
PTA -1.8PL 2.86SCS -2.5DPR 3.3%DCE  
PTA +3.52T +2.22UDC +1.55FLC 80R 12/21  
GTPI +2057G

#### Oneeda Chris Jordan

840 3139113006 Good Plus-84 @ 3-05  
1-11 2x 365d 25410 4.3 1103 3.2 823  
3-03 2x 187d 18349 3.8 698 3.0 544 RIP

3rd Dam

#### Oneeda Cupid Jet

4th Dam

**Oneeda Krusader Joan** VG-85  
3-10 3x 358d 30190 4.7 1428 3.6 1082

5th Dam

**Oneeda Maraconi Jodi** VG-85  
3-03 3x 358d 32190 4.2 1337 3.4 1082

#### MD-Valleyvue Gold Chris-ET

137302783 Excellent-92 \*RC \*TY \*TV  
PTA -31M -20F -12P 99R 12/21  
PTA +.34T -.56UDC +.82FLC GTPI +1826G

#### Oneeda Diamondback Joli

840 3135447460  
1-09 2x 189d 12540 4.5 565 3.2 407

# Spring Selections Sale

## Lot 42

ONEEDA FARMS LLC  
SYRACUSE, IN  
574-596-5823

### ONEEDA REEVE BOO

840 3233447764 \*RC  
Born: March 21, 2021 HMID: 2056  
• SPRING YEARLING

#### Mr Stone-Front Reeve-Red-ET

840 3136877210 Very Good-86 \*TY \*TV  
PTA +433M +54F +27P 88R 12/21  
PTA +2.9PL 2.78SCS +1.5DPR 2.3%DCE  
PTA +1.56T +1.22UDC +.65FLC 83R 12/21  
GTPI +2616G

#### Oneeda Arvis Brianna

840 3204064047 Very Good-85 VG-MS @ 2-03  
1-10 2x 296d 22593 3.9 887 3.1 693 RIP

3rd Dam

**Oneeda Freelance Briana** VG-87 EX-MS  
3-06 3x 365d 33690 4.0 1339 3.4 1154

#### Mr LR EDG Arvis 18196-ET

840 3125201960 \*RC \*TY \*TV  
PTA -535M +8F +1P 97R 12/21  
PTA +1.95T +2.09UDC +1.35FLC GTPI +2157G

#### Oneeda Guthrie Brenda

71394980 Very Good-86 VG-MS @ 5-05  
4-04 3x 365d 37030 2.8 1029 3.0 1120  
6-07 2x 336d 36280 2.8 1019 3.0 1100  
3-03 3x 325d 33280 2.9 965 3.0 1006  
Life: 1962d 195640 2.8 5535 3.1 6030

## Lot 43

ONEEDA FARMS LLC  
SYRACUSE, IN  
574-596-5823

### ONEEDA REEVE BOSTON-RED

840 3233447792 99%RHA  
Born: October 9, 2021 HMID: 2084  
• FALL CALF

#### Mr Stone-Front Reeve-Red-ET

840 3136877210 Very Good-86 \*TY \*TV  
PTA +433M +54F +27P 88R 12/21  
PTA +2.9PL 2.78SCS +1.5DPR 2.3%DCE  
PTA +1.56T +1.22UDC +.65FLC 83R 12/21  
GTPI +2616G

#### Oneeda Simplicity Beck

840 3211747238 \*RC  
1-10 2x 94d 7329 3.3 243 3.0 222 RIP

3rd Dam

**Oneeda Fantasy Balee** \*RC

4th Dam

**Oneeda Guthrie Brenda** VG-86 VG-MS  
4-04 3x 365d 37030 2.8 1029 3.0 1120  
Life: 1962d 195640 2.8 5535 3.1 6030

5th Dam

**Oneeda Freelance Briana** VG-87 EX-MS  
3-06 3x 365d 33690 4.0 1339 3.4 1154

#### Holyland Simplicity-P-RC-ET

840 3136246981 \*PC \*RC \*TY \*TV  
PTA +1075M +51F +34P 99R 12/21  
PTA +.81T +.66UDC +.27FLC 97R 12/21

#### Oneeda Defiant Beverly-Red

840 3146496665 Very Good-85 VG-MS @ 2-06  
1-11 2x 269d 18430 2.8 517 4.1 579

## Lot 44

ONEEDA FARMS LLC  
SYRACUSE, IN  
574-596-5823

### ONEEDA AMARETTO DORA

840 3233447763 99%RHA \*RC  
Born: March 20, 2021 HMID: 2055  
• SPRING YEARLING

#### KCKK Amaretto-Red-ET

840 3141240934 \*TY \*TV  
PTA -774M -2F -16P 82R 12/21  
PTA -1.0PL 2.89SCS -1.2DPR 3.3%DCE  
PTA +2.80T +2.31UDC +2.52FLC 80R 12/21  
GTPI +2035G

#### Oneeda Rager Dorri

840 3141486768 Very Good-86 VVVVV @ 4-07 \*RC  
3-00 2x 355d 31850 4.2 1323 3.2 1024  
4-01 2x 297d 30744 4.0 1240 3.1 952 RIP  
1-10 2x 365d 27780 4.0 1123 3.2 900

#### Cycle McGucci Jordy-Red

840 3131666411 \*CV \*TY  
PTA -1139M -29F -44P 99R 12/21  
PTA +2.96T +2.24UDC +3.15FLC GTPI +1691G

#### Ms Apple Anara-Red-ET

840 3131999864

#### Ri-Val-Re Rager-Red-ET

72353457 Excellent-90 \*TY \*TV  
PTA +823M +48F +33P 99R 12/21  
PTA +1.50T +.62UDC +1.12FLC GTPI +2560G

#### Oneeda Shamrock Dallas

840 3126669748 Good Plus-83 VG-MS @ 3-02  
2-01 3x 302d 21940 3.7 819 2.8 614  
3-00 2x 249d 21960 3.7 812 3.0 663

# Spring Selections Sale

## Lot 45

ONEEDA FARMS LLC  
SYRACUSE, IN  
574-596-5823

### ONEEDA RAGER PENNY

840 3233447793 99%RHA \*RC  
Born: October 10, 2021 HMID: 2085  
• FALL CALF

#### Ri-Val-Re Rager-Red-ET

72353457 \*TY \*TV  
PTA +823M +48F +33P 99R 12/21  
PTA +5.2PL 2.86SCS -.1DPR 3.6%DCE  
PTA +1.50T +.62UDC +1.12FLC 98R 12/21  
GTPI +2560G

#### Oneeda D Back Priscilla

840 3146496647 Very Good-88 EX-MS @ 3-04 \*RC  
3-01 2x 296d 27810 3.7 1030 3.4 944  
1-11 2x 356d 24940 4.0 993 3.4 845  
4-00 2x 93d 7771 4.1 316 3.2 247 RIP

#### 3rd Dam

##### Oneeda Leon Pepper-Red GP-84

4-01 3x 365d 35600 3.2 1128 3.1 1092  
Life: 1260d 126980 3.2 4053 3.1 3873

#### 4th Dam

##### Oneeda Persia Peggy-Red VG-86

5-05 3x 365d 39230 3.2 1268 2.9 1155  
Life: 1521d 149790 3.2 4853 3.1 4612

#### Mr D Apple Diamondback

840 3013721049 Excellent-93 \*RC \*TV \*TL \*TY  
PTA -400M -25F -1P 99R 12/21  
PTA +2.44T +1.95UDC +1.43FLC GTPI +1873G

#### Oneeda Alacazam Pretty-Red

840 3131912059 Good Plus-82 @ 4-06  
3-10 2x 365d 28570 3.9 1100 3.0 855  
2-09 2x 341d 22160 4.0 893 3.3 722  
1-09 2x 310d 23520 3.6 847 3.0 704

## Lot 46

ONEEDA FARMS LLC  
SYRACUSE, IN  
574-596-5823

### ONEEDA GUY PRECIOUS

840 3233447788 99%RHA \*RC  
Born: September 24, 2021 HMID: 2080  
• FALL CALF

#### Lortie-Lea A Crisp Guy-Red

145336596  
PTA -991M +7F -7P 35R 12/21  
PTA -2.2PL 3.17SCS -1.1DPR 3.4%DCE  
PTA +1.31T +.77UDC +.70FLC 36R 12/21  
PTPI +1900

#### Oneeda Axel Prissy

840 3204064067 \*RC

#### 2nd Dam

##### Oneeda D Back Priscilla VG-88 EX-MS \*RC

3-01 2x 296d 27810 3.7 1030 3.4 944

#### 3rd Dam

##### Oneeda Alacazam Pretty-Red GP-82

3-10 2x 365d 28570 3.9 1100 3.0 855

#### 4th Dam

##### Oneeda Leon Pepper-Red GP-84

4-01 3x 365d 35600 3.2 1128 3.1 1092  
Life: 1260d 126980 3.2 4053 3.1 3873

#### 5th Dam

##### Oneeda Persia Peggy-Red VG-86

5-05 3x 365d 39230 3.2 1268 2.9 1155  
Life: 1521d 149790 3.2 4853 3.1 4612

## Lot 47

ONEEDA FARMS LLC  
SYRACUSE, IN  
574-596-5823

### ONEEDA ANALYST HERSEY

840 3220114264 99%RHA \*RC  
Born: December 25, 2020 HMID: 2030  
• WINTER YEARLING

#### Mr Affection Analyst-Red-ET

840 3136496608 \*TY \*TV  
PTA -84M -28F -23P 81R 12/21  
PTA -.6PL 2.87SCS -1.4DPR 2.4%DCE  
PTA +2.80T +2.49UDC +1.90FLC 81R 12/21  
GTPI +1902G

#### Oneeda Jordy Harper

840 3139113041 Very Good-85 VG-MS @ 2-10 \*RC  
2-01 2x 334d 24900 4.0 1000 3.3 821

#### Riverdown Unstopabull-Red

CAN 11801450 \*TY \*TV  
PTA -435M -26F -24P 95R 12/21  
PTA +2.80T +2.31UDC +1.90FLC GTPI +2007G

#### Milksource Byway Affection

840 3138524450 Excellent-94 \*RC  
4-05 2x 266d 36050 4.5 1619 2.7 990  
2-11 2x 305d 27680 4.1 1128 3.1 857

#### Cycle McGucci Jordy-Red

840 3131666411 \*CV \*TY  
PTA -1139M -29F -44P 99R 12/21  
PTA +2.96T +2.24UDC +3.15FLC GTPI +1691G

#### Oneeda Fulton Hilary

71394966 Good Plus-84 @ 5-06  
6-02 2x 365d 29950 3.9 1162 3.3 975  
5-01 2x 323d 28340 3.8 1066 3.1 870  
3-10 3x 365d 29600 3.7 1093 3.1 908  
Life: 1899d 149630 3.8 5629 3.1 4642

Due: November 7, 2022 to  
Mr Stone-Front Reeve-Red-ET #3136877210

# Spring Selections Sale

## Lot 48

ONEEDA FARMS LLC  
SYRACUSE, IN  
574-596-5823

### ONEEDA TRIPLECROWN ALOHA

840 3220114262 99%RHA \*RC  
Born: December 9, 2020 HMID: 2028  
• WINTER YEARLING

Due: October 10, 2022 to  
Ri-Val-Re Rager-Red-ET #72353457

#### Kenmore Triple Crown-ET

840 3143029863 \*TY \*TV  
PTA +461M +48F +33P 86R 12/21  
PTA +3.5PL 2.66SCS -1.0DPR 3.0%DCE  
PTA +1.81T +1.29UDC +.92FLC 81R 12/21  
GTPI +2548G

#### Ooneeda Defiant Alyssa

840 3129356913 Excellent-91 EEVVE 2E  
4-03 2x 365d 33090 3.3 1082 3.1 1018  
5-07 2x 305d 30330 3.4 1044 3.0 916 RIP  
3-01 2x 365d 29200 3.6 1052 3.2 939  
2-00 3x 339d 24540 3.3 804 3.0 724  
Life: 1440d 120700 3.4 4116 3.1 3719

3rd Dam

**Ooneeda Blitz Angie** VG-88 VEVVV  
3-01 3x 320d 41640 3.6 1519 3.0 1248  
Life: 2028d 210420 3.5 7350 2.9 6161

#### Scientific B Defiant-ET

141123484 Very Good-87 \*RC \*TV \*TL \*TY \*TD  
PTA +72M -52F -12P 99R 12/21  
PTA +2.69T +1.73UDC +.97FLC GTPI +1664G

#### Ooneeda Sid Agnes

72335403 Good Plus-80 @ 4-03  
3-04 3x 312d 27650 3.6 990 2.8 777  
2-00 3x 365d 27030 3.5 944 2.8 765

## Lot 49

ONEEDA FARMS LLC  
SYRACUSE, IN  
574-596-5823

### ONEEDA REEVE ALPINE-RED

840 3233447766 99%RHA  
Born: March 28, 2021 HMID: 2058  
• SPRING YEARLING

#### Mr Stone-Front Reeve-Red-ET

840 3136877210 Very Good-86 \*TY \*TV  
PTA +433M +54F +27P 88R 12/21  
PTA +2.9PL 2.78SCS +1.5DPR 2.3%DCE  
PTA +1.56T +1.22UDC +.65FLC 83R 12/21  
GTPI +2616G

#### Ooneeda Jedex Anyway

840 3204064046 Good Plus-80 @ 2-03 \*RC  
1-10 2x 186d 15100 2.8 426 3.0 454

3rd thru 5th Dams

**Ooneeda Defiant Alyssa** EX-91 EEVVE 2E  
4-03 2x 365d 33090 3.3 1082 3.1 1018  
Life: 1440d 120700 3.4 4116 3.1 3719

#### Ooneeda Sid Agnes

GP-80  
3-04 3x 312d 27650 3.6 990 2.8 777

#### Ooneeda Blitz Angie

VG-88 VEVVV  
3-01 3x 320d 41640 3.6 1519 3.0 1248  
Life: 2028d 210420 3.5 7350 2.9 6161

#### Ooneeda Defiant Jedex-Red

840 3131912112  
PTA -649M -31F -17P 40R 12/21  
PTA +1.28T +.61UDC -.42FLC PTPI +1707

#### Ooneeda Rager Anyhow

840 3141486794 Good Plus-82 @ 3-08 \*RC  
2-10 2x 365d 33350 3.0 997 3.1 1031  
1-11 2x 302d 22150 2.9 650 3.1 686

## Lot 50

ONEEDA FARMS LLC  
SYRACUSE, IN  
574-596-5823

### ONEEDA RAGER OAKLYN-TW

840 3220114242 99%RHA \*RC  
Born: October 7, 2020 HMID: 2008  
• FALL YEARLING

Due: September 20, 2022 to  
Mr Blondin Warrior-Red-ET #3139655530

#### Ri-Val-Re Rager-Red-ET

72353457 \*TY \*TV  
PTA +823M +48F +33P 99R 12/21  
PTA +5.2PL 2.86SCS -1.1DPR 3.6%DCE  
PTA +1.50T +.62UDC +1.12FLC 98R 12/21  
GTPI +2560G

#### Ooneeda Chris Oriana

72014918 Very Good-87 VEVVV @ 7-08  
4-02 3x 365d 35880 4.0 1446 3.1 1116  
5-07 2x 363d 32860 4.0 1323 3.3 1069  
3-00 3x 365d 34130 4.1 1401 3.1 1072  
7-11 2x 350d 32190 3.8 1239 3.2 1018  
Life: 2290d 197990 4.0 7881 3.2 6298

#### Pine-Tree Relief P 4954

69169920 \*RC \*PC \*TY \*TV  
PTA +109M +21F +5P 98R 12/21  
PTA -.27T -.81UDC +.29FLC GTPI +2174G

#### Ri-Val-Re Obsrvr Salsa-ET

69928442 Very Good-88 DOM \*RC

#### MD-Valleyvue Gold Chris-ET

137302783 Excellent-92 \*RC \*TY \*TV  
PTA -31M -20F -12P 99R 12/21  
PTA +.34T -.56UDC +.82FLC GTPI +1826G

#### Ooneeda Minister Oksana

69890189

# Spring Selections Sale

## Lot 51

ONEEDA FARMS LLC  
SYRACUSE, IN  
574-596-5823

### ONEEDA AMARETTO JILL-RED

840 3220114255 99%RHA  
Born: November 11, 2020 HMID: 2021  
• FALL YEARLING

Due: October 11, 2022 to  
Holyland Simplicity-P-RC-ET #3136246981

### KCKK Amaretto-Red-ET

840 3141240934 \*TY \*TV  
PTA -774M -2F -16P 82R 12/21  
PTA -1.0PL 2.89SCS -1.2DPR 3.3%DCE  
PTA +2.80T +2.31UDC +2.52FLC 80R 12/21  
GTPI +2035G

### Oneeda Ric Jacoda

840 3146496659 Good Plus-80 @ 2-06 \*RC  
1-11 2x 323d 18210 3.9 705 3.5 634

3rd Dam

### Oneeda Bonair Jingle GP-83

3-03 3x 365d 41680 3.4 1416 2.9 1190

### Stantons AltaRic-Red-ET

CAN 9605778 SP'12 \*TY \*TV \*TL \*TD  
PTA -239M +17F +12P 98R 12/21  
PTA +.67T -43UDC +.21FLC GTPI +1909G

### Oneeda Dempsey Jiggle

71394945 Very Good-88 EEVEV @ 6-10  
2-11 3x 365d 37060 3.5 1309 3.0 1115  
4-03 3x 365d 38150 3.7 1407 2.9 1101  
5-05 2x 303d 32040 3.6 1150 2.9 926  
Life: 1976d 197480 3.6 7048 3.0 5875

## Lot 52

ONEEDA FARMS LLC  
SYRACUSE, IN  
574-596-5823

### ONEEDA REEVE GEORGIA

840 3233447789 \*RC  
Born: September 27, 2021 HMID: 2081  
• FALL CALF

### Mr Stone-Front Reeve-Red-ET

840 3136877210 Very Good-86 \*TY \*TV  
PTA +433M +54F +27P 88R 12/21  
PTA +2.9PL 2.78SCS +1.5DPR 2.3%DCE  
PTA +1.56T +1.22UDC +.65FLC 83R 12/21  
GTPI +2616G

### Oneeda Peck Giggie

840 3211747230

3rd Dam

### Oneeda Bonair Jingle GP-83

3-03 3x 365d 41680 3.4 1416 2.9 1190

### Ransom-Rail Sz Peck-ET

69379549 Very Good-86 \*TY \*TV  
PTA -377M -16F -5PP 98R 12/21  
PTA +1.11T +1.30UDC +1.34FLC GTPI +1997G

### Oneeda Dempsey Jiggle

71394945 Very Good-88 EEVEV @ 6-10  
2-11 3x 365d 37060 3.5 1309 3.0 1115  
4-03 3x 365d 38150 3.7 1407 2.9 1101  
5-05 2x 303d 32040 3.6 1150 2.9 926  
Life: 1976d 197480 3.6 7048 3.0 5875

## Lot 53

ONEEDA FARMS LLC  
SYRACUSE, IN  
574-596-5823

### ONEEDA ARTISAN RACER

840 3233447774 99%RHA \*RC  
Born: June 11, 2021 HMID: 2066  
• SUMMER YEARLING

### Luck-E Artisan-Red-ET

840 3141305472 \*TY \*TV  
PTA -53M +58F +12P 83R 12/21  
PTA +1.5PL 3.05SCS -.3DPR 2.2%DCE  
PTA -1.01T +1.17UD +.93FLC 81R 12/21  
GTPI +2410G

### Oneeda Redman Rizzo

840 3139113021 Good Plus-83 @ 3-01 \*RC  
2-10 2x 214d 15575 3.5 548 3.4 530 RIP

### Endo Apprentice-ET

74146951 \*RC \*PC \*TY \*TV  
PTA +292M -6F -3P 99R 12/21  
PTA +2.40T +2.03UDC +1.07FLC GTPI +1838G

### Luck-E McGucci Afro-Red-ET

73278355 Excellent-94 EEEEE 2E  
4-07 2x 365d 36630 5.6 2055 3.7 1342  
Life: 1305d 105990 5.5 5852 3.7 3917

### Valleyriver Ruben Redman-Red

CAN 10646281 EX-CAN \*TY \*TV  
PTA -1518M -49F -32P 99R 12/21  
PTA -.05T +.66UDC -.77FLC GTPI +1528G

### Oneeda McCutchen Richie

840 3129356902 Very Good-85 VG-MS @ 2-10  
2-02 2x 339d 21590 3.9 846 3.1 663

# Spring Selections Sale

## Lot 54

MADISON HIBSCHMAN  
SYRACUSE, IN  
574-457-6725

### R-NEEDA REX-PP TRENTON

840 3227781669 \*RC  
Born: January 14, 2021 HMID: 523  
• WINTER YEARLING

#### Ja-Bob Rex PP-Red-ET

73130038 Excellent-90 \*PP \*TC \*TV  
PTA -911M -45F -12P 97R 12/21  
PTA +1.9PL 2.95SCS -.3DPR 3.6%DCE  
PTA -.25T +.56UDC +.22FLC 93R 12/21  
GTPI +1758G

#### R-Needa Fulton Tabitha

840 3131912085 Very Good-86 @ 5-09  
3-10 2x 365d 38530 3.9 1494 2.9 1118  
5-02 2x 362d 34980 3.8 1337 2.9 1011  
2-09 2x 325d 28480 3.8 1068 3.0 848  
1-10 2x 284d 24200 3.7 891 2.8 679  
Life: 1335d 127310 3.8 4835 2.9 3694

#### Hahncrest Appl Jax-P-Red-ET

142397572 \*PO \*TY \*TV  
PTA -700M -36F -4P 94R 12/21  
PTA +.62T +1.03UDC +.68FLC GTPI +1944G

#### Golden-Oaks Dura Rae-P-Red

70560438 Very Good-88 \*PO  
3-07 3x 365d 34300 3.8 1319 3.2 1087  
2-04 3x 365d 27350 3.9 1053 3.4 923

#### Navs Shtl Fulton-ET

62821518 Excellent-91 \*TY \*TV  
PTA +93M +14F -9P 99R 12/21  
PTA +.66T -.17UDC +.42FLC GTPI +1735G

#### R-Needa Braxton Tonya

69375387 Good Plus-83 @ 4-05  
3-11 3x 354d 42100 3.5 1460 2.7 1123  
2-00 3x 365d 36860 3.3 1209 2.8 1033

## Lot 55

ONEEDA FARMS LLC  
SYRACUSE, IN  
574-596-5823

### ONEEDA VIRGINIAN BLAIR-RED

840 3220114246  
Born: October 25, 2020 HMID: 2012  
• FALL YEARLING

Due: October 3, 2022 to  
Holyland Simplicity-P-RC-ET #3136246981

#### Oneeda Defiant Virginian

3139113075  
PTA -431M -46F -21P 39R 12/21  
PTA -1.0PL 3.13SCS -1.2DPR 3.6%DCE  
PTA +1.16T -.02UDC +.14FLC 40R 12/21  
PTPI +1565

#### Oneeda Alacazam Bea

840 3139113022 Good Plus-81 @ 3-01 \*RC  
2-03 2x 362d 24330 4.4 1066 3.4 829  
3-04 2x 40d 2687 4.9 133 3.7 99 RIP

#### Scientific B Defiant-ET

141123484 Very Good-87 \*RC \*TY \*TV  
PTA +72M -52F -12P 99R 12/21  
PTA +2.69T +1.73UDC +.97FLC GTPI +1664G

#### Oneeda Logan Iron Virginia

69375332 Excellent-91  
3-10 3x 304d 29860 3.5 1057 3.0 898  
Life: 2558d 196060 3.9 7581 3.1 6080

#### Bossir Symp Alacazam-Red

72254590 \*TY \*TV  
PTA -542M +0F -5P 99R 12/21  
PTA +1.38T +1.08UDC +.16FLC GTPI +2066G

#### Oneeda Fulton Billie

72335398 Good Plus-84 @ 4-11  
3-01 3x 331d 27070 3.8 1040 3.2 864  
4-02 3x 365d 24380 4.4 1062 3.4 819  
2-01 3x 318d 22870 3.9 897 3.1 717

## Lot 56

ONEEDA FARMS LLC  
SYRACUSE, IN  
574-596-5823

### ONEEDA WARRIOR JELLO-RED

840 3233447786 99%RHA  
Born: September 23, 2021 HMID: 2078  
• FALL CALF

#### Mr Blondin Warrior-Red-ET

840 3139655530 99%RHA \*TY \*TV  
PTA -141M +0F -1P 85R 12/21  
PTA -1.8PL 2.86SCS -2.5DPR 3.3%DCE  
PTA +3.52T +2.22UDC +1.55FLC 80R 12/21  
GTPI +2057G

#### Oneeda Snazzy Janice

840 3211747231  
1-10 2x 110d 5793 3.9 225 3.1 179 RIP

3rd Dam

#### Oneeda Shamrock Jada VG-86 VG-MS

1-09 3x 304d 19820 4.0 789 3.2 639

#### Kenmore Snazzy-ET

141028408 \*RC \*TY \*TV  
PTA -263M -6F -11P 96R 12/21  
PTA +.73T -.04UDC +.98FLC GTPI +1868G

#### Oneeda Diamondback Joplin

840 3139051549 Good Plus-83 @ 2-07  
2-00 2x 355d 23000 3.8 872 3.3 749

# Spring Selections Sale

## Lot 57

ONEEDA FARMS LLC  
SYRACUSE, IN  
574-596-5823

### ONEEDA RAGER SONYA

840 3233447797 99%RHA \*RC  
Born: October 17, 2021 HMID: 2089  
• FALL CALF

### Ri-Val-Re Rager-Red-ET

72353457 \*TY \*TV  
PTA +823M +48F +33P 99R 12/21  
PTA +5.2PL 2.86SCS -.1DPR 3.6%DCE  
PTA +1.50T +.62UDC +1.12FLC 98R 12/21  
GTPI +2560G

### Oneeda Bankroll Sabella

840 3211747232  
1-10 2x 86d 4857 4.5 217 3.3 160 RIP

### Pine-Tree Relief P 4954

69169920 \*RC \*PC \*TY \*TV  
PTA +109M +21F +5P 98R 12/21  
PTA -.27T -.81UDC +.29FLC GTPI +2174G

### Ri-Val-Re Obsrvr Salsa-ET

69928442 Very Good-88 DOM \*RC

### Crasdale Bankroll-ET

72436689 \*TY \*TV \*TL \*TD  
PTA -178M +18F +11P 99R 12/21  
PTA +1.64T +1.81UDC +1.26FLC GTPI +2131G

### Oneeda Equation Satire

73502965 Very Good-86 @ 5-10  
5-03 2x 350d 27090 4.7 1264 3.3 903  
3-11 2x 365d 25000 4.7 1183 3.4 857  
2-11 2x 333d 24010 4.6 1097 3.4 805  
Life: 1433d 101590 4.6 4643 3.3 3384

## Lot 58

ONEEDA FARMS LLC  
SYRACUSE, IN  
574-596-5823

### ONEEDA GUY SASKIA

840 3233447800 99%RHA \*RC  
Born: October 19, 2021 HMID: 2092  
• FALL CALF

### Lortie-Lea A Crisp Guy-Red

145336596  
PTA -991M +7F -7P 35R 12/21  
PTA -2.2PL 3.17SCS -1.1DPR 3.4%DCE  
PTA +1.31T +.77UDC +.70FLC 36R 12/21  
PTPI +1900

### Oneeda Simplicity Sumo

840 3204064072  
2-00 2x 74d 5024 5.0 250 3.0 152 RIP

3rd Dam

### Oneeda Equation Satire VG-86

5-03 2x 350d 27090 4.7 1264 3.3 903  
Life: 1433d 101590 4.6 4643 3.3 3384

### Holyland Simplicity-P-RC-ET

840 3136246981 \*PC \*RC \*TY \*TV  
PTA +1075M +51F +34P 99R 12/21  
PTA +.81T +.66UDC +.27FLC GTPI +2459G

### Oneeda Redburst Sukup

840 3141486814 Very Good-88 VG-MS @ 4-01  
2-02 2x 365d 23380 4.7 1089 3.5 821

## Lot 59

JOSEPH GARDNER  
MILLERSBURG, IN  
574-849-2515

### KNEE-HIGH JORDAN DAYTON-RED

840 3240290932  
Born: October 12, 2021 HMID: 566  
• FALL CALF

### Ja-Bob Jordan-Red-ET

17378279 Excellent-90 \*TV \*TL  
PTA -1109M -2F -21P 99R 12/21  
PTA -2.5PL 3.38SCS -.5DPR 2.7%DCE  
PTA -1.02T -1.22UDC -1.25FLC 99R 12/21  
GTPI +1524G

### Knee-High Awesome Danelle

840 3131912095 Very Good-88 VG-MS @ 5-04 \*RC  
4-02 2x 365d 32130 3.6 1160 3.2 1014  
3-00 2x 365d 29350 3.9 1136 3.2 949  
2-00 2x 303d 17920 4.0 709 3.1 547  
5-05 2x 91d 7116 4.3 306 3.1 224 RIP

### Mercy Phideaux-ET

2135113 Very Good-88 \*RC  
PTA -1574M -23F -30P 99R 12/21  
PTA -1.70T -2.68UDC -1.90FLC GTPI +1405G

### Ohiana MOM Handmaid-Red-ET

15318707 Excellent-91 DOM  
3-05 3x 365d 34230 3.7 1272 3.3 1117  
2-03 2x 365d 26610 3.7 979 3.2 843

### Luck-E Awesome-Red

72186769 \*CV \*TV \*TY \*TL \*TD  
PTA -1697M -59F -55P 99R 12/21  
PTA +2.03T +2.78UDC +.75FLC GTPI +1415G

### Knee-High Atlantic Deidre

71395007 Good-78 @ 3-03  
3-01 3x 301d 35070 2.6 903 2.8 977  
4-01 3x 318d 34860 2.4 845 2.7 947  
2-01 3x 304d 27420 2.8 778 2.8 776

# Spring Selections Sale

## Lot 60

ONEEDA FARMS LLC  
SYRACUSE, IN  
574-596-5823

### ONEEDA RAGER LAINE-RED

840 3233447799 99%RHA  
Born: October 26, 2021 HMID: 2091  
• FALL CALF

#### Ri-Val-Re Rager-Red-ET

72353457 \*TY \*TV  
PTA +823M +48F +33P 99R 12/21  
PTA +5.2PL 2.86SCS -.1DPR 3.6%DCE  
PTA +1.50T +.62UDC +1.12FLC 98R 12/21  
GTPI +2560G

#### Oneeda Avalance Lupe

840 3139051573 Excellent-90 VG-MS @ 4-09  
3-10 2x 354d 34950 4.2 1460 3.4 1202  
2-10 2x 307d 27220 3.9 1064 3.2 883  
1-11 2x 298d 15910 4.5 723 3.4 544

#### Pine-Tree Relief P 4954

69169920 \*RC \*PC \*TY \*TV  
PTA +109M +21F +5P 98R 12/21  
PTA -.27T -.81UDC +.29FLC GTPI +2174G

#### Ri-Val-Re Obsrvr Salsa-ET

69928442 Very Good-88 DOM \*RC

#### Dymenthom Mr App Avalanche-TW

CAN 11957107 \*RC \*CV \*TL \*TY \*TD  
PTA -94M +1F -4P 99R 12/21  
PTA +3.76T +2.85UDC +2.26FLC GTPI +2036G

#### Oneeda Gold Chip Lonna

72886539 Good-79 @ 2-04

## Lot 61

ONEEDA FARMS LLC  
SYRACUSE, IN  
574-596-5823

### ONEEDA LUXOR LIGEL

840 3250084508 99%RHA \*RC  
Born: March 1, 2022 HMID: 2118  
• SPRING CALF

#### Blondin Luxor-Red

CAN 111239184 \*TY \*TV  
PTA -344M -29F -10P 82R 12/21  
PTA -1.7PL 3.10SCS -2.3DPR 3.1%DCE  
PTA +2.70T +2.04UDC +1.27FLC 80R 12/21  
GTPI +1819G

#### Oneeda Saturn Logan

840 3211747256

#### Riverdown Unstopabull-Red

CAN 11801450 \*TY \*TV  
PTA -435M -26F -24P 95R 12/21  
PTA +2.80T +2.31UDC +1.90FLC GTPI +2007G

#### Blondin Diamondback Luxury-Red

CAN 109951637 VG-85-CAN  
2-03 2x 333d 22663 4.3 972 3.4 777  
3-04 2x 247d 17798 4.3 772 3.7 659

#### Darita Meridian Saturn-ET

70259179 Excellent-90 \*TY \*TV  
PTA +387M -6F -3P 98R 12/21  
PTA +2.39T +2.02UDC +1.48FLC GTPI +2175G

#### Oneeda Bankroll Lesley

840 3131912064 Excellent-91 EEEEE @ 5-01  
4-02 2x 365d 35860 4.2 1491 3.1 1119  
3-00 2x 365d 28150 4.2 1185 3.5 978  
1-11 2x 320d 22430 4.3 962 3.3 743

## Lot 62

ONEEDA FARMS LLC  
SYRACUSE, IN  
574-596-5823

### ONEEDA GUY SPINNER-RED

840 3233447787  
Born: September 23, 2021 HMID: 2079  
• FALL CALF

#### Lortie-Lea A Crisp Guy-Red

145336596  
PTA -991M +7F -7P 35R 12/21  
PTA -2.2PL 3.17SCS -1.1DPR 3.4%DCE  
PTA +1.31T +.77UDC +.70FLC 36R 12/21  
PTPI +1900

#### Oneeda Alacazam Spiral

840 3204064055 \*RC  
2-02 2x 110d 6959 3.8 261 3.0 210 RIP

3rd Dam

#### Oneeda Socrates Sibyl VG-85 VG-MS

7-07 3x 339d 34540 3.7 1273 3.1 1084  
Life: 1963d 184940 3.7 6805 3.1 5739

#### Bossir Symp Alacazam-Red

72254590 \*TY \*TV  
PTA -542M +0F -5P 99R 12/21  
PTA +1.38T +1.08UDC +.16FLC GTPI +2066G

#### Oneeda Lavanguard Sylvia

73502953 Very Good-87 VEVVV @ 5-05  
2-09 3x 365d 33910 3.5 1185 2.9 998  
4-00 2x 320d 24800 3.7 919 3.1 774  
Life: 1381d 109600 3.6 3962 3.0 3324



# Spring Selections Sale

## Lot 63

ONEEDA FARMS LLC  
SYRACUSE, IN  
574-596-5823

### ONEEDA GUY JASMINE

840 3233447784 \*RC  
Born: September 5, 2021 HMID: 2076  
• FALL CALF

### Lortie-Lea A Crisp Guy-Red

145336596  
PTA -991M +7F -7P 35R 12/21  
PTA -2.2PL 3.17SCS -1.1DPR 3.4%DCE  
PTA +1.31T +.77UDC +.70FLC 36R 12/21  
PTPI +1900

### Ooneeda Gold Chip Jennette

840 3204064062  
2-00 2x 128d 8474 3.8 326 3.0 251 RIP

### Glory-Road M Apple Crisp-ET

142205998 Excellent-90 \*RC \*TY \*TV  
PTA -310M +28F +8P 99R 12/21  
PTA +1.32T +.58UDC +.56FLC GTPI +2008G

### Ms Stranshome Guava-Red-ET

142908471 Excellent-91 2E  
5-08 2x 365d 29911 4.6 1379 3.6 1081  
Life: 1726d 127500 4.5 5497 4.2 4519

### Mr Chassity Gold Chip-ET

140145553 Excellent-95 ST'14 \*TY \*TV  
PTA -577M -22F -37P 99R 12/21  
PTA +1.54T +1.11UDC +1.09FLC GTPI +1760G

### Ooneeda Cupid Jean

73502956 Very Good-85 @ 5-05  
5-01 2x 357d 29820 4.2 1249 3.4 1008  
3-11 2x 365d 26160 4.8 1245 3.4 899  
2-11 2x 312d 24290 4.1 991 3.2 779  
Life: 1339d 102320 4.3 4439 3.3 3353

## Lot 64

ONEEDA FARMS LLC  
SYRACUSE, IN  
574-596-5823

### ONEEDA WARRIOR JENNY-RED

840 3250084498 99%RHA  
Born: January 8, 2022 HMID: 2108  
• WINTER CALF

### Mr Blondin Warrior-Red-ET

840 3139655530 99%RHA \*TY \*TV  
PTA -141M +0F -1P 85R 12/21  
PTA -1.8PL 2.86SCS -2.5DPR 3.3%DCE  
PTA +3.52T +2.22UDC +1.55FLC 80R 12/21  
GTPI +2057G

### Ooneeda Rager Joli-Red

840 3211747251

### Dymenthholm Mr App Avalanche-TW

CAN 11957107 \*RC \*CV \*TL \*TY \*TD  
PTA -94M +1F -4P 99R 12/21  
PTA +3.76T +2.85UDC +2.26FLC GTPI +2036G

### Triplecrown-JW Door Wisp-ET

840 3128860372 VG-85-CAN  
3-03 2x 365d 35587 4.0 1424 3.5 1246  
2-01 2x 310d 17068 4.0 688 3.5 589

### Ri-Val-Re Rager-Red-ET

72353457 Excellent-90 \*TY \*TV  
PTA +823M +48F +33P 99R 12/21  
PTA +1.50T +.62UDC +1.12FLC GTPI +2560G

### Ooneeda Defiant Julie-Red

840 3135447448 Excellent-90 VEEVE @ 5-05  
3-10 2x 299d 24750 3.7 925 3.1 762  
2-10 2x 332d 24380 3.7 895 3.2 784  
1-10 2x 307d 19580 3.8 750 3.1 608

## Lot 65

ONEEDA FARMS LLC  
SYRACUSE, IN  
574-596-5823

### ONEEDA WARRIOR KARATE-RED

840 3250084499 99%RHA  
Born: January 10, 2022 HMID: 2109  
• WINTER CALF

### Mr Blondin Warrior-Red-ET

840 3139655530 99%RHA \*TY \*TV  
PTA -141M +0F -1P 85R 12/21  
PTA -1.8PL 2.86SCS -2.5DPR 3.3%DCE  
PTA +3.52T +2.22UDC +1.55FLC 80R 12/21  
GTPI +2057G

### Ooneeda Rager Kapper-Red

840 3211747240

### Dymenthholm Mr App Avalanche-TW

CAN 11957107 \*RC \*CV \*TL \*TY \*TD  
PTA -94M +1F -4P 99R 12/21  
PTA +3.76T +2.85UDC +2.26FLC GTPI +2036G

### Triplecrown-JW Door Wisp-ET

840 3128860372 VG-85-CAN  
3-03 2x 365d 35587 4.0 1424 3.5 1246  
2-01 2x 310d 17068 4.0 688 3.5 589

### Ri-Val-Re Rager-Red-ET

72353457 Excellent-90 \*TY \*TV  
PTA +823M +48F +33P 99R 12/21  
PTA +1.50T +.62UDC +1.12FLC GTPI +2560G

### Ooneeda Diamondback Kisst

840 3146496672 Excellent-90 VEEVE @ 3-07  
2-11 2x 305d 29910 4.5 1360 3.5 1047  
1-11 2x 334d 23900 4.4 1045 3.4 807

# Spring Selections Sale

## Lot 66

ONEEDA FARMS LLC  
SYRACUSE, IN  
574-596-5823

### ONEEDA APPLEFREE EVEREST

840 3250084493 99%RHA \*RC  
Born: December 24, 2021 HMID: 2103  
• WINTER CALF

#### ST Gen RR Applefree-Red-ET

840 3132353140 \*TY \*TV  
PTA +468M +59F +20P 82R 12/21  
PTA +2.2PL 2.82SCS -.1DPR 1.9%DCE  
PTA +1.83T +1.57UDC +.68FLC 80R 12/21  
GTPI +2547G

#### Oneeda Alacazam Eve-TW

840 3139113045 Good Plus-81 @ 2-09 \*RC  
2-01 2x 325d 25880 3.7 962 3.3 859  
3-01 2x 18d 1146 5.4 62 4.4 50 RIP

3rd Dam

#### Mad-About Hi Metro Elle VG-86

6-10 3x 305d 32700 4.3 1390 3.2 1061  
Life: 1375d 103720 4.1 4221 3.3 2387

#### Bossir Symp Alacazam-Red

72254590 \*TY \*TV  
PTA -542M +0F -5P 99R 12/21  
PTA +1.38T +1.08UDC +.16FLC GTPI +2066G

#### Oneeda Baltimore Elle

72886516 Very Good-87 @ 5-06  
5-01 2x 365d 35280 3.4 1182 3.2 1114  
6-04 2x 314d 32070 3.3 1043 3.0 962  
4-00 2x 314d 29790 3.5 1055 3.1 924  
Life: 1816d 173590 3.3 5800 3.0 5262

## Lot 67

ONEEDA FARMS LLC  
SYRACUSE, IN  
574-596-5823

### ONEEDA APPLEFREE WHISKY-RED

840 3250084491 99%RHA  
Born: December 17, 2021 HMID: 2101  
• WINTER CALF

#### ST Gen RR Applefree-Red-ET

840 3132353140 \*TY \*TV  
PTA +468M +59F +20P 82R 12/21  
PTA +2.2PL 2.82SCS -.1DPR 1.9%DCE  
PTA +1.83T +1.57UDC +.68FLC 80R 12/21  
GTPI +2547G

#### Oneeda Diamondback Waltz

840 3139113037 Good Plus-81 @ 2-10  
2-00 2x 359d 25410 3.9 986 3.4 853  
3-02 2x 25d 2029 4.5 92 3.7 76 RIP

3rd Dam

#### Oneeda Seaver Willa GP-83

5-00 3x 314d 32080 4.7 1494 3.3 1056  
Life: 1261d 102490 4.6 4753 3.4 3494

#### Oneeda Boss Iron Winnie EX-90 EX-MS 2E

4-09 3x 314d 36960 4.4 1631 3.2 1187  
Life: 1883d 170040 4.3 7290 3.2 5385

#### Mr D Apple Diamondback

840 3013721049 Excellent-93 \*RC \*TV \*TL \*TY  
PTA -400M -25F -1P 99R 12/21  
PTA +2.44T +1.95UDC +1.43FLC GTPI +1873G

#### Oneeda Californi Wicker

840 3139051576 Very Good-85 VG-MS @ 4-09 \*RC  
4-00 2x 340d 36130 4.4 1586 3.5 1257  
3-00 2x 328d 29150 4.3 1255 3.4 988  
1-10 2x 363d 25300 4.6 1165 3.5 892

## Lot 68

ONEEDA FARMS LLC  
SYRACUSE, IN  
574-596-5823

### ONEEDA REEVE SCOUT-RED

840 3233447805  
Born: December 1, 2021 HMID: 2097  
• WINTER CALF

#### Mr Stone-Front Reeve-Red-ET

840 3136877210 Very Good-86 \*TY \*TV  
PTA +433M +54F +27P 88R 12/21  
PTA +2.9PL 2.78SCS +1.5DPR 2.3%DCE  
PTA +1.56T +1.22UDC +.65FLC 83R 12/21  
GTPI +2616G

#### Oneeda Ready Sheila

840 3146496675 Good Plus-81 @ 3-06 \*RC  
2-09 2x 310d 27740 4.3 1187 3.5 964  
1-09 2x 317d 21720 4.0 864 3.4 740  
3-09 2x 41d 3783 4.1 154 3.3 123 RIP

3rd Dam

#### Oneeda Logan Iron Sandra VG-89 EEVVV

5-02 3x 330d 34190 4.5 1540 3.3 1120  
Life: 1571d 155290 4.5 7004 3.2 4947

#### Greenlea Ready-Red

69473802 Excellent-93  
PTA -805M -43F -35P 94R 12/21  
PTA +.57T +.31UDC +.08FLC TPI +1540

#### Oneeda Guthrie Shandi

72886525 Very Good-87 VG-MS @ 6-00  
3-00 3x 365d 37000 4.1 1503 3.1 1136  
4-02 2x 348d 31480 4.4 1391 3.4 1066  
5-04 2x 287d 29080 4.4 1292 3.2 929  
Life: 1314d 120520 4.3 5158 3.2 3873

# Spring Selections Sale

## Lot 69

ONEEDA FARMS LLC  
SYRACUSE, IN  
574-596-5823

### ONEEDA WARRIOR JADE

840 3250084492 99%RHA \*RC  
Born: December 19, 2021 HMID: 2102  
• WINTER CALF

#### Mr Blondin Warrior-Red-ET

840 3139655530 99%RHA \*TY \*TV  
PTA -141M +0F -1P 85R 12/21  
PTA -1.8PL 2.86SCS -2.5DPR 3.3%DCE  
PTA +3.52T +2.22UDC +1.55FLC 80R 12/21  
GTPI +2057G

#### Ooneeda Furious Janae

840 3211747247  
1-10 2x 23d 1600 4.6 73 3.0 48 RIP

Ooneeda Atlantic Jamie VG-85 VG-MS  
3-01 3x 299d 30680 3.1 959 2.8 860

#### Lars-Acres Goldchip Furious

70053925 Excellent-92 \*TY \*TV  
PTA -195M -1F -15P 98R 12/21  
PTA +1.89T +2.19UDC +1.06FLC GTPI +2030G

#### Ooneeda Shamrock June

840 3126669753  
4-00 2x 316d 27200 2.9 785 3.1 839  
3-00 2x 314d 26380 3.1 887 2.9 762  
5-00 2x 250d 25140 3.4 859 2.8 708  
Life: 1202d 101700 3.0 3083 2.9 2939

## Lot 70

ONEEDA FARMS LLC  
SYRACUSE, IN  
574-596-5823

### ONEEDA WARRIOR SPRING

840 3250084494 99%RHA \*RC  
Born: December 26, 2021 HMID: 2104  
• WINTER CALF

#### Mr Blondin Warrior-Red-ET

840 3139655530 99%RHA \*TY \*TV  
PTA -141M +0F -1P 85R 12/21  
PTA -1.8PL 2.86SCS -2.5DPR 3.3%DCE  
PTA +3.52T +2.22UDC +1.55FLC 80R 12/21  
GTPI +2057G

#### Ooneeda Armani Summer

840 3211747254

#### Dymenthalm Mr App Avalanche-TW

CAN 11957107 \*RC \*CV \*TL \*TY \*TD  
PTA -94M +1F -4P 99R 12/21  
PTA +3.76T +2.85UDC +2.26FLC GTPI +2036G

#### Triplecrown-JW Door Wisp-ET

840 3128860372 VG-85-CAN  
3-03 2x 365d 35587 4.0 1424 3.5 1246  
2-01 2x 310d 17068 4.0 688 3.5 589

#### Mr Apples Armani-ET

68571374 Excellent-90 \*RC \*CD \*TY \*TV  
PTA -1776M +14F -14P 99R 12/21  
PTA +.98T +1.53UDC +1.50FLC GTPI +2048

#### Ooneeda Defiant Silk

840 3146496676 Good Plus-83 @ 2-04  
2-00 2x 209d 15120 3.2 483 2.8 425  
Life: 1202d 101700 3.0 3083 2.9 2939

## Lot 71

PHILIP, MELISSA, PATRICK & ANDREW DOWTY  
GOSHEN, IN

### GOJ TRIXIE MEGAPOWER TRUDIE

840 3213862646 Tattoo: GOJ/D32  
Born: October 5, 2020  
• FALL YEARLING

#### River Valley PF Megapower-ET

840 3012423848 JH1C JNSF A2A2 7JE5011  
CDCB 12/21 GPTA 99%R +311M +50F +15P  
AJCA 12/21 GPTAT 98%R +1.0 GJPI 97%R +38

#### GOJ Treat Showdown Trixie

840 3142674428

3rd Dam

KKF Tasty Eclipse Tango-P VG-86%  
2-11 2x 297d 15340 4.9 753 3.6 558

4th Dam

KKF Tassel Seymour Tasty VG-84%  
3-10 2x 273d 17290 5.8 1002 3.6 624

#### River Valley Spice Showdown

840 3012423904 7JE5015  
CDCB 12/21 GPTA 98%R -959M -17F -12P  
AJCA 12/21 GPTAT 97%R +0.2 GJPI 94%R -42

#### KKF Tango Val Treati

119012899 3-06 EX-90%

# Spring Selections Sale

## Lot 72

MADISON & LAUREN HIBSCHMAN  
SYRACUSE, IN  
574-596-5823

### RNEEDA MEGAPOWER BECK

174021421 Tattoo: R463  
Born: March 23, 2020  
• JUNIOR TWO-YEAR-OLD

Fresh: March 8, 2022

#### River Valley PF Megapower-ET

840 3012423848 JH1C JNSF A2A2 7JE5011  
CDCB 12/21 GPTA 99%R +311M +50F +15P  
AJCA 12/21 GPTAT 98%R +1.0 GJPI 97%R +38

#### R-Needa Fizz Bella

173297618 2-01 VG-83%  
2-00 2x 288d 14540 4.4 634 3.5 509

3rd Dam

#### R-Needa Eclipses Lola-P EX-90%

4-04 2x 305d 18635 5.8 1084 4.0 739

#### J-Kay Tequila Fizz

67060052 7JE1486  
CDCB 12/21 GPTA 98%R -2061M -74F -66P  
AJCA 12/21 GPTAT 97%R +0.8 GJPI 94%R -194

#### R-Needa Lastshot Barbie

119283459 5-09 EX-91%  
3-07 2x 305d 17757 5.7 1018 3.6 644  
4-07 2x 305d 18250 5.0 918 3.8 698  
5-08 2x 305d 18330 4.9 897 3.7 673

## Lot 73

MADISON & LAUREN HIBSCHMAN  
SYRACUSE, IN  
574-596-5823

### RNEEDA CASINO BLACKJACK

174635985 Tattoo: R588  
Born: March 8, 2022  
• SPRING CALF

#### Elliotts Regency Casino-ET

840 3125141657 JH1F JNSF A2A2 14JE725  
CDCB 12/21 GPTA 99%R -434M -2F +9P  
AJCA 12/21 GPTAT 99%R +1.9 GJPI 97%R +19

#### RNeeda Megapower Beck

174021421

3rd Dam

#### R-Needa Lastshot Barbie EX-91%

3-07 2x 305d 17757 5.7 1018 3.6 644

4th Dam

#### R-Needa Eclipses Lola-P EX-90%

4-04 2x 305d 18635 5.8 1084 4.0 739

#### River Valley PF Megapower-ET

840 3012423848 JH1C JNSF A2A2 7JE5011  
CDCB 12/21 GPTA 99%R +311M +50F +15P  
AJCA 12/21 GPTAT 98%R +1.0 GJPI 97%R +38

#### R-Needa Fizz Bella

173297618 2-01 VG-83%  
2-00 2x 288d 14540 4.4 634 3.5 509

## Lot 74

MADISON & LAUREN HIBSCHMAN  
SYRACUSE, IN  
574-596-5823

### RNEEDA MEGAPOWER BELLA

174310158 Tattoo: R537  
Born: April 14, 2021  
• SPRING YEARLING

#### River Valley PF Megapower-ET

840 3012423848 JH1C JNSF A2A2 7JE5011  
CDCB 12/21 GPTA 99%R +311M +50F +15P  
AJCA 12/21 GPTAT 98%R +1.0 GJPI 97%R +38

#### R-Needa Fizz Brooke

173619432  
2-01 2 147d 6200 4.8 296 3.4 212

3rd Dam

#### R-Needa Eclipses Lola-P EX-90%

4-04 2x 305d 18635 5.8 1084 4.0 739

#### J-Kay Tequila Fizz

67060052 7JE1486  
CDCB 12/21 GPTA 98%R -2061M -74F -66P  
AJCA 12/21 GPTAT 97%R +0.8 GJPI 94%R -194

#### R-Needa Lastshot Barbie

119283459 5-09 EX-91%  
3-07 2x 305d 17757 5.7 1018 3.6 644  
4-07 2x 305d 18250 5.0 918 3.8 698  
5-08 2x 305d 18330 4.9 897 3.7 673

# Spring Selections Sale

## Lot 75

MADISON & LAUREN HIBSCHMAN  
SYRACUSE, IN  
574-596-5823

### RNEEDA FIZZ LAVENDAR

174021458 Tattoo: R473

Born: April 17, 2020

• JUNIOR TWO-YEAR-OLD

Due: April 5, 2022 to Elliotts Regency Casino-ET

14JE00725 (sexed)

### J-Kay Tequila Fizz

67060052 7JE1486

CDCB 12/21 GPTA 98%R -2061M -74F -66P

AJCA 12/21 GPTAT 97%R +0.8 GJPI 94%R -194

### R-Needa Showdown Lazer

119997109 4-05 VG-83%

3-09 2x 305d 17230 6.5 1127 4.4 757

2-09 2x 296d 15030 6.4 958 4.6 692

1-09 2x 303d 14103 6.2 877 4.2 593

### Tower Vue Prime Tequila-ET

114816452 76JE156

CDCB 12/21 GPTA 99%R -1979M -54F -55P

AJCA 12/21 GPTAT 99%R +1.2 GJPI 99%R -199

### Harmony Corners Fozzy-ET

67052052 EX-95%

8-04 2x 305d 18500 5.3 987 3.7 676

• All-American 5-Year-Old 2014

### River Valley Spice Showdown

840 3012423904 7JE5015

CDCB 12/21 GPTA 98%R -959M -17F -12P

AJCA 12/21 GPTAT 97%R +0.2 GJPI 94%R -42

### R-Needa Vincent Lauryn

118891512

4-03 2x 305d 17623 5.2 917 3.8 672

3-02 2x 305d 16266 5.2 839 3.9 632

2-02 2x 305d 14986 4.9 734 3.7 553

## Lot 76

PHILIP, MELISSA, PATRICK & ANDREW DOWTY  
GOSHEN, IN

### GOJ NATALIE FIZZ NICOLE

840 3213862645 Tattoo: GOJ/D31

Born: June 10, 2020

• SUMMER JUNIOR TWO-YEAR-OLD

• Entered in 2023 National Jersey Jug Futurity

• Entered in 2022 Indiana State Futurity

Due: June 4, 2022 to

GOJ Frivolous Chrome Fernando

(Chrome x Golden Gammon Frivolous EX-94%)

### J-Kay Tequila Fizz

67060052 7JE1486

CDCB 12/21 GPTA 98%R -2061M -74F -66P

AJCA 12/21 GPTAT 97%R +0.8 GJPI 94%R -194

### GOJ Naomi Andreas Natalie

840 3142674425 2-05 VG-85%

### Tower Vue Prime Tequila-ET

114816452 76JE156

CDCB 12/21 GPTA 99%R -1979M -54F -55P

AJCA 12/21 GPTAT 99%R +1.2 GJPI 99%R -199

### Harmony Corners Fozzy-ET

67052052 EX-95%

8-04 2x 305d 18500 5.3 987 3.7 676

• All-American 5-Year-Old 2014

### Sunset Canyon Andreas

117597125 94JE4036

CDCB 12/21 GPTA 98%R -1968M -78F -60P

AJCA 12/21 GPTAT 98%R +0.9 GJPI 94%R -181

### Gordons Showdown Naomi

840 3132393184

## Lot 77

PHILIP, MELISSA, PATRICK & ANDREW DOWTY  
GOSHEN, IN

### GOJ FRIVOLOUS CASINO BRITTANY-ET

840 3213862643 Tattoo: GOJ/D29

Born: March 31, 2020

• JUNIOR TWO-YEAR-OLD

• Entered in 2023 National Jersey Jug Futurity

• Entered in 2022 Indiana State Futurity

Due: August 17, 2022 to River Valley Victorious

7JE5032

### Elliotts Regency Casino-ET

840 3125141657 JH1F JNSF A2A2 14JE725

CDCB 12/21 GPTA 99%R -434M -2F +9P

AJCA 12/21 GPTAT 99%R +1.9 GJPI 97%R +19

### Golden Gammon Frivolous

CAN 11421582 8-11 EX-94%

3-00 2x 345d 18179 5.9 1065 4.0 734

7-04 2x 305d 18370 5.2 963 3.8 690

2-00 2x 312d 12639 5.6 710 3.8 478

• 2nd Aged Cow, All-American Junior Show 2018

### 3rd Dam

#### Swissbell Vindication Fanta EX-91-3E-CAN

5-01 2x 320d 15269 4.9 754 3.9 595

• Res Grand Champion, Grey-Bruce Show 2008

### 4th Dam

#### Silverdene Amadeo Freska VG-87-CAN 3\*

3-11 2x 319d 16061 5.6 902 3.4 538

### 4th Dam

#### Silverdene Select Flash VG-86 VG-MS

5-03 2x 336d 17161 4.7 814 3.5 593

### Rapid Bay Gammon-ET

CAN 105499917 JH1F JNSF 70JE9941

CDCB 12/21 GPTA 94%R -434M -2F +9P

AJCA 12/21 GPTAT 99%R +1.9 GJPI 97%R +19

### Golden Justice Frisky

CAN 11081896



# HOLSTEIN ASSOCIATION TERMS AND CONDITIONS FOR PUBLIC SALES

EFFECTIVE MARCH 2, 1996 - Amended October 1, 1997, June 28, 2000, June 23, 2002, and March 26, 2010

**TERMS:** The terms of the sale are cash unless arrangements are made prior to the sale or are printed in the sale catalog. Only when the above conditions are met will the buyer be entitled to the warranties listed below. In no case will animals be released unless settlement is made with the clerk of the sale.

**RESPONSIBILITY:** The seller, buyer, and manager of this sale are obligated to comply with the provisions of these terms and conditions.

**EXPORT SALES:** Buyer assumes all responsibility for health tests required by the importing country.

**BIDS:** The highest bidder is the buyer. Bidding parties or their agents are responsible for all bids placed. Every animal or lot presented for bidding is pledged to absolute sale. In case of dispute, the animal or lot will again be put up for advance bids, and if there is no advance bid, the animal or lot will be sold to the person the auctioneer accepted the last bid from. In case two or more claim the bid, the auctioneer will indicate the party whose bid he recognized. Other claimants will be given an opportunity to increase the bid and bidding will be restricted to the two or more claimants.

**BY-BIDDING:** Bidding directly or indirectly by the sole owner of any animal or lot is prohibited unless the intention to bid is disclosed specific to each animal in the catalog and announced when the animal enters the ring. Bidding by any member of a partnership, syndicate, or other entity having an ownership interest in an animal or lot is permitted.

**TRANSFER OF OWNERSHIP:** For all Registered Holsteins<sup>SM</sup>, the transfer of ownership to the buyer will be recorded on the records of Holstein Association USA and a certificate of registration showing that transfer of ownership will be provided to the buyer free of charge. For embryos, the transfer of ownership to the buyer will be recorded on the records of Holstein Association USA free of charge to the buyer.

**RISK:** All animals located at sale site are at the purchaser's risk as soon as struck off, but will be cared for free of charge for a maximum of 24 hours following the end of the sale.

## WARRANTIES:

- 1) Each consignor warrants clear title to the animal or lot, and the right to sell same.
- 2) To the best of the seller's knowledge, each animal is sound and healthy in every respect and embryos have been recovered, processed, frozen, transferred and graded in keeping with IETS recommendations unless otherwise noted in the catalog or announced from the auction stand. Every precaution will be taken to represent the physical condition of each lot exactly as is known. Examination of all purchases should be made immediately after the purchase and before the close of the sale, and if found not to be as represented, complaint must be reported to the sale management before the close of the sale. In the event no complaint is filed, it is understood that the buyer assumes full ownership in the case of animals at sale site together with all risks, after which no representations of the seller can be challenged through the sale management. Heifers that never calved are in no way guaranteed as to the condition of their udders following calving.

### 3) Breeding Warranty

The seller guarantees all animals to be breeders, but not beyond the purchase price, with the following understanding:

- a. Males - Should any bull after reaching the age of fourteen months fail to prove a breeder after being used for two months on cows or heifers known to be breeders, the matter shall be reported in writing to the seller within three months of the sale date. The report must include the animal's examination record, a written statement of treatment, and a statement of the animals' inability to breed,

by a licensed veterinarian. The seller has the option to refund the purchase price or make other settlement that is satisfactory to the buyer. In either case the rights of ownership of the animal return to the seller. The seller makes no guarantees with respect to the ability to freeze semen.

- b. Females - All females are guaranteed to be breeders with the exception of:
  1. Cows over 7 years of age when sold;
  2. Cows and/or heifers carrying a pregnancy that is the result of an embryo transfer.

Report of a non-breeder must occur in writing within 3 months of the date of sale or before the animal reaches 21 months of age and must be submitted to the seller. The report must include the animal's examination record, a written statement of treatment, and a statement of the animals' inability to breed, by a licensed veterinarian. The seller has the option to refund the purchase price or make other settlement that is satisfactory to the buyer. In either case the rights of ownership of the animal return to the seller.

Females bred when sold and pronounced in calf are presumed to be pregnant but pregnancy is not guaranteed unless so announced. The seller makes no warranty that pregnant cows will deliver calves or that they will carry calves full term.

- c. If, after the sale, embryos or oocytes are recovered from a female or an attempt is made to superovulate her, this negates the breeding warranty unless there is a separate written agreement between buyer and seller.

**SHIPPING:** Assistance will be given in arranging shipping of the animals after the sale. All costs, risks and responsibility will be borne by the purchaser.

**PEDIGREE INFORMATION:** All production, classification, type and production summaries are current. Only information recorded on Holstein Association USA pedigrees is used. Any production or classification records supplied by the seller or consignor will be properly identified as provided by owner. Records in progress are identified as such.

**GENOMIC INFORMATION:** If genomic information on the animal or embryo is available, it must be dated and disclosed at or before the time of sale.

**EMBRYO TRANSFER:** All registered animals that have resulted from embryo transfer are identified with one of the following suffixes in the name: ET, ETS (from split embryo), or ETN (from nuclear transfer). If unregistered, the appropriate technology will be identified. Donor dams are identified.

**HEALTH WARRANTY:** The seller will provide an official health certificate to the buyer for each animal showing the results of all health tests made in preparation for this sale as required by the state where the cattle reside. Other health tests completed for this sale will be disclosed.

**ERRORS:** The material in this catalog has been carefully edited. If any errors or omissions are discovered, they will be announced. Such announcements take precedence over that printed in this catalog.

**ACCIDENT:** The sale management, the consignors, and the owner of the grounds will not be responsible in any case for the condition of the grounds or the behavior of the animals and disclaim any liability in the event of personal accident or property loss.

**LIMITATIONS OF WARRANTIES:** Warranties contained herein, unless terminated earlier, will cease upon the resale of an animal.



Yoder Farm Service now offers a complete pellet formulated for growing dairy heifers being fed for exhibition.

- 40% protein, 0.5% fat and no more than 6% crude fiber
- Enhances hair growth
- Feed 5 lb per day to heifers ages 4 months+

## *Notes*

---

---

---

---

---

---

---

---

# Index

GOJ FRIVOLOUS CASINO BRITTANY-ET.....	77	ONEEDA REEVE ALPINE-RED.....	49
GOJ NATALIE FIZZ NICOLE.....	76	ONEEDA REEVE BOO.....	42
GOJ TRIXIE MEGAPOWER TRUDIE.....	71	ONEEDA REEVE BOSTON-RED.....	43
KNEE-HIGH AF ALICE-RED-TW.....	23	ONEEDA REEVE GEORGIA.....	52
KNEE-HIGH AMRET ANNA-RED-TW.....	32	ONEEDA REEVE RENAE.....	28
KNEE-HIGH AMRT ANNIE-RED-TW.....	31	ONEEDA REEVE SCOUT-RED.....	68
KNEE-HIGH ARTISAN AMAZE-RED.....	38	ONEEDA REEVE VICTORIA.....	9
KNEE-HIGH DBACK GLITTER.....	22	ONEEDA SIMPLICITY KANSAS.....	24
KNEE-HIGH JORDAN DAYTON-RED.....	59	ONEEDA TRIPLECROWN ALOHA.....	48
KNEE-HIGH MORNVIEW KAY.....	15	ONEEDA VIRGINIAN BLAIR-RED.....	55
KNEE-HIGH RAGER LILY.....	17	ONEEDA VIRGINIAN ECLIP-RED.....	30
KNEE-HIGH REEVE GABBIE-RED.....	21	ONEEDA VIRGINIAN KENYA-RED.....	14
KNEE-HIGH REEVE GLAM-RED.....	6	ONEEDA WARRIOR JACKO.....	41
KNEE-HIGH REEVE GLITZ-RED.....	20	ONEEDA WARRIOR JADE.....	69
KNEE-HIGH WARRIOR LYRIC-RED.....	16	ONEEDA WARRIOR JELLO-RED.....	56
ONEEDA AMARETTO DORA.....	44	ONEEDA WARRIOR JENNY-RED.....	64
ONEEDA AMARETTO JILL-RED.....	51	ONEEDA WARRIOR KARATE-RED.....	65
ONEEDA ANALYST HERSEY.....	47	ONEEDA WARRIOR SPRING.....	70
ONEEDA ANALYST KELSEY-RED.....	25	R-NEEDA ANALYST RAELENE-RED.....	2
ONEEDA ANALYST KOOZIE-RED.....	5	R-NEEDA CASINO BLACKJACK.....	73
ONEEDA ANALYSTE KAYLIE.....	27	R-NEEDA DIAMONDBACK TASE.....	33
ONEEDA ANALYSTE VIOLIN-RED.....	29	R-NEEDA FIZZ LAVENDAR.....	75
ONEEDA APPLEFREE EVEREST.....	66	R-NEEDA GUY STARLIGHT-RED.....	11
ONEEDA APPLEFREE KAREFREE.....	26	R-NEEDA JORDAN SNAPPLE.....	4
ONEEDA APPLEFREE SILK.....	18	R-NEEDA MEGAPOWER BECK.....	72
ONEEDA APPLEFREE WHISKY-RED.....	67	R-NEEDA MEGAPOWER BELLA.....	74
ONEEDA ARTISAN INDIA.....	37	R-NEEDA RAGER RILEY-RED.....	3
ONEEDA ARTISAN RACER.....	53	R-NEEDA RAGER TOPNOTCH-RED.....	8
ONEEDA DONE RIGHT NEXT-RED.....	19	R-NEEDA REEVE RAZZLE.....	1
ONEEDA GUY JASMINE.....	63	R-NEEDA REEVE TEAL-RED.....	40
ONEEDA GUY PRECIOUS.....	46	R-NEEDA REX TAYLOR.....	35
ONEEDA GUY SASKIA.....	58	R-NEEDA REX-PP TRENTON.....	54
ONEEDA GUY SPINNER-RED.....	62	R-NEEDA VIRGINIA ICEE.....	7
ONEEDA LUXOR LIGEL.....	61	R-NEEDA WARRIOR SHIMMER-RED.....	10
ONEEDA NORWIN IGLOO.....	36	R-NEEDA WARRIOR TWIXX.....	34
ONEEDA RAGER LAINE-RED.....	60	SRDLLC REEVE PARMA-RED.....	13
ONEEDA RAGER OAKLYN-TW.....	50	SRDLLC RICK PENELOPE.....	12
ONEEDA RAGER PENNY.....	45	UNEEDA ARTISAN TA DA.....	39
ONEEDA RAGER SONYA.....	57		



