



***Kentucky National Holstein Sale***

**Friday, April 8, 2022**

***Kentucky Fair & Expo Center • Louisville, KY***







# Kentucky National Holstein Show and Sale

**KENTUCKY FAIR AND EXPOSITION CENTER  
FRIDAY, APRIL 8, 2022 • LOUISVILLE, KENTUCKY**

---

**The Kentucky National Show • Friday, April 8, 2022 • 11:00 am (EDT)**  
Show held in Pavilion

**The Kentucky National Sale • Friday, April 8, 2022 • 1:00 pm (EDT)**  
Sale held in Newmarket Hall

---

## **SALE PERSONNEL**

<b>LYNN LEE</b> 615-390-6312	<b>JR. TURNER</b> 859-583-1695	<b>CHAD GRIFFITH</b> 513-543-2315
<b>JEREMY KINSLOW</b> 270-646-0697	<b>LISA GIBSON</b> 502-379-2757	<b>JEFF GIBSON</b> 502-379-2756

**BARN PHONE: 502-367-5086**

**ROBERT COLVIN • SALE CO-CHAIRMAN • 270-572-6046**

**KATIE DARNELL • SALE CO-CHAIRMAN • 270-579-3811**

**LIVE BIDDING AVAILABLE ON COWBUYER.COM**

*Absentee bids are welcome and will be executed free of charge for the buyer's benefit.*

**THANK YOU TO MCRAY FEED, LLC AND BURKMAN MILLS FOR DONATING THE FEED!**

## **Sale Sponsored by the Kentucky Department of Agriculture**

**Ryan Quarles**  
Commissioner

**Chris Caudill, Director**  
Division of Shows & Fairs

**Ethan Berry**  
Dairy Coordinator - Div. of Shows & Fairs

## **Sale Co-Sponsored by the Kentucky Holstein Cattle Club**

Greg Goode - President

Jane Ransdell - Treasurer  
Steven Olt  
Scott Yocum  
Larry Jagers

John C. Kalmey  
Jr. Turner  
Lisa Gibson  
Dustin Adkins  
Greg Goode

Glenn Sageser  
Allen Chiles  
James Davenport  
William Lutz

**SALE SPONSORED AND MANAGED BY:  
KENTUCKY HOLSTEIN CATTLE CLUB**

# A Message from Kentucky Agriculture Commissioner Ryan Quarles

Dear friends,

Welcome to the **60th Annual Kentucky National Dairy Show and Sale**. Every year, buyers and sellers come here to show, exchange, and promote leading cattle genetics in the country.

America's dairy industry has experienced a string of unusual years. Even prior to the pandemic, dairy producers were facing some hard times. The pandemic did a number on the supply and demand structure of our milk marketing system, which even into 2021 continued to hurt small dairy farmers across the commonwealth and around the nation.

Despite the issues, the dairy industry may be experiencing a bit of a bounce back. The domestic demand for dairy has been good, with an increase in per capita consumption of all products.

Export demand has also been strong for dairy categories, with skim and whey exports showing the most growth. While the value of the dollar has been strengthening, inflation is the big unknown. But dairy producers have always been a flexible group, able to adjust to market fluctuations.

With all the unknown this year has already shown us, it's good to be able to gather for the National Dairy Show and Sale. This event provides a unique opportunity to celebrate what is best about the dairy industry, made up of some of the hardest working people in agriculture.

Please know the Kentucky Department of Agriculture (KDA) is playing a central role in the execution of this event and we are here to help. Our Office of State Veterinarian, led by our state veterinarian Dr. Katie Flynn, is checking the health papers of every animal that enters the grounds and KDA's Office of Show and Fairs, led by Chris Caudill, helps conduct the shows and sales.

We encourage you, while in Louisville, to visit any of the dozens of restaurants that help make Louisville a well-known destination for local cuisine and bourbon tourism. Be on the lookout for the Kentucky Proud symbol on menus and products throughout the area to know that they are sourced from Kentucky farms and agribusinesses.

We expect another successful sale this year that will continue to solidify this Kentucky event as a leading showcase of prime dairy cattle. If we can do anything to make your attendance more comfortable or successful, please ask me or my staff. Again, welcome, and best wishes.

Sincerely,



Dr. Ryan F. Quarles  
Commissioner of Agriculture  
Commonwealth of Kentucky





## MAKE PLANS TO ATTEND THE 2022 KENTUCKY NATIONAL DAIRY SHOW & SALE

KENTUCKY FAIR & EXPOSITION CENTER, PAVILION—LOUISVILLE, KY—ALL TIMES ARE EDT.

### AYRSHIRE/MILKING SHORTHORN

FRIDAY, APRIL 8  
SHOW @ 1 PM  
SALE @ 3 PM  
SALE MANAGED BY:  
KY AYRSHIRE CATTLE CLUB  
AYRSHIRE CONTACT  
BILLY BRANSTETTER—270-528-6336  
MILKING SHORTHORN CONTACT  
RAY GRAVES—859-209-0695

**Online Bidding Available!!!**  
**Log on to [www.cowbuyer.com](http://www.cowbuyer.com)**  
**Time Change!!**

### BROWN SWISS

FRIDAY, APRIL 8  
SHOW @ 9 AM  
SALE @ 11 AM  
SALE MANAGED BY:  
KY BROWN SWISS BREEDERS' ASSOC.  
RICHARD SPARROW—502-370-6730

**Online Bidding Available!!!**  
**Log on to [www.cowbuyer.com](http://www.cowbuyer.com)**

### HOLSTEIN

FRIDAY, APRIL 8  
SHOW @ 11 AM  
SALE @ 1 PM  
SALE MANAGED BY:  
KY HOLSTEIN CATTLE CLUB  
ROBERT COLVIN—270-572-6046

**Online Bidding Available!!!**  
**Log on to [www.cowbuyer.com](http://www.cowbuyer.com)**

For more Info & Updates:  
[www.kyagr.com](http://www.kyagr.com)  
Facebook: Kentucky National Dairy Shows and Sales  
Ethan Berry —KY Dept. of Ag  
P- 502-782-4134 E- [ethan.berry@ky.gov](mailto:ethan.berry@ky.gov)



**KDDC**  
Kentucky Dairy  
Development Council



**LUCK-E DOC AWUKI-ET VG-88**  
**FULL SISTER TO DAM OF LOT 1**

*Reserve Junior All-American Junior 2-Year-Old 2021*



**LUCK-E MCGUCCI AFRO-RED-ET EX-94 2E**  
**2ND DAM OF LOT 1**

**1**

**MATT ENGEL**  
 15N638 WALKER RD  
 HAMPSHIRE, IL 60140  
 847-347-5561

**Lindenright Moovin-ET**

CAN 12873743 \*RC \*TY \*TV  
 PTA -306M -5F -4P 83R 12/21  
 PTA -.6PL 2.99SCS -2.7DPR 3.0%DCE  
 PTA +3.65T +3.01UDC +2.31FLC 81R 12/21  
 GTPI +2095G

**Luck-E Doc A-Mood-ET**

840 3150766269 Very Good-88 VEVV @ 2-06 \*RC  
 GTPI +2299 +4.19T +2.40UDC +2.12FLC 12/21

*Full sister to Doc A-Mood*

**Luck-E Doc Awuki-ET VG-88 VVVVE \*RC**

- Reserve Junior All-American Jr 2-Year-Old 2021
- 2nd Jr 2-Year-Old, International Jr Show 2021
- 1st Jr 2-Year-Old, Western Dairy Showcase 2021

**LUCK-E MOOVIN A-MOOSE-ET**

840 3239496541 99%RHA \*RC  
 Born: September 1, 2021  
 PTA +3.74T +2.52UDC +2.08FLC 12/21

**Dymenthalm Mr App Avalanche-TW**

CAN 11957107 \*RC \*CV \*TL \*TY \*TD  
 PTA -94M +1F -4P 99R 12/21  
 PTA +3.76T +2.85UDC +2.26FLC GTPI +2036G

**Lindenright Bradnick Moovin On**

CAN 11470454 VG-87-CAN 27\*  
 4-06 2x 365d 35875 5.3 1900 3.4 1217  
 2-00 2x 365d 30840 5.0 1556 3.3 1016

**Woodcrest King Doc**

840 3132417775 Excellent-90 GM 12/21 \*TY \*TV  
 PTA +1574M +69F +54P 99R 12/21  
 PTA +3.54T +2.36UDC +2.10FLC GTPI +2783G

**Luck-E McGucci Afro-Red-ET**

73278355 Excellent-94 EEEE 2E  
 4-07 2x 365d 36630 5.6 2055 3.7 1342  
 2-10 2x 365d 29200 6.0 1765 3.6 1061  
 Life: 1305d 105990 5.5 5852 3.7 3917

- Dam of Luck-E Aristocrat-Red at St. Jacobs

*3rd Dam*

**Luck-E Advent Asia-ET EX-94 EEEEE 3E \*RC**  
 6-02 2x 365d 40150 4.9 1984 3.3 1337  
 Life: 1282d 113730 5.1 5814 3.4 3860

- Dam of Luck-E Awesome-Red
- Dam of Luck-E America \*RC

*4th Dam*

**Luck-E Blitz Australia-ET VG-87 VG-MS GMD**  
 2-02 2x 365d 37990 4.0 1528 2.8 1060

*5th Dam*

**Luck-E Skychief Arizona-ET EX-90 GMD DOM**  
 5-01 2x 365d 56280 5.1 2872 3.3 1855  
 Life: 1301d 125490 5.2 6512 3.6 4464

*6th Dam*

**Hart-Lyn Starbuck Ashley EX-94 2E GMD DOM**  
 6-06 2x 365d 35720 4.2 1504 3.4 1200  
 Life: 1753d 124040 4.0 4994 3.4 4239

*7th Dam*

**Kachina Valiant Act-ET VG-86 VG-MS**  
 7-05 2x 365d 23450 4.4 1041 3.3 764  
 Life: 2103d 110050 4.6 5037 3.4 3742

*8th Dam*

**Dodeb Matt Actress EX-93 EEEE 3E**  
 3-00 3x 305d 27110 4.2 1131  
 Life: 2348d 141870 4.3 6058

*9th Dam*

**Lamkinland B Matt Actress VG-85 VG-MS**  
 5-04 3x 305d 20780 3.9 820



**STRANS-JEN-D TEQUILA-RED-ET EX-96 2E**  
**DAM OF LOT 2**  
*All-American R&W 4-Year-Old 2015*



**MILKSOURCE THUNDER-RED-ET**  
**MATERNAL SISTER TO LOT 2**  
*Supreme Champion Heifer, World Dairy Expo 2019*

# 2

**SIEMERS HOLSTEIN FARMS INC.**  
 14421 MINERAL SPRING RD  
 NEWTON, WI 53036  
 920-693-3600

**Mr Blondin Warrior-Red-ET**

840 3139655530 99%RHA \*TY\*TV  
 PTA -141M +0F -1P 85R 12/21  
 PTA -1.8PL 2.86SCS -2.5DPR 3.3%DCE  
 PTA +3.52T +2.22UDC +1.55FLC 80R 12/21  
 GTPI +2057G

**Strans-Jen-D Tequila-Red-ET**

141024338 Excellent-96 EEEEE 2E  
 6-04 2x 365d 32840 4.3 1428 3.4 1116  
 4-10 2x 293d 27840 4.4 1231 3.0 842  
 2-05 2x 365d 24550 4.7 1145 3.4 831  
 3-09 2x 306d 23990 4.4 1048 3.3 793  
 Life: 1512d 118510 4.5 5327 3.4 3991

**SIEMERS TQUILA 35602-RED-ET**

840 3229291267 99%RHA  
 Born: June 10, 2021

**Dymentholm Mr App Avalanche-TW**

CAN 11957107 \*RC\*CV\*TL\*TY\*TD  
 PTA -94M +1F -4P 99R 12/21  
 PTA +3.76T +2.85UDC +2.26FLC GTPI +2036G

**Triplecrown-JW Door Wisp-ET**

840 3128860372 VG-85-CAN  
 3-03 2x 365d 35587 4.0 1424 3.5 1246  
 2-01 2x 310d 17068 4.0 688 3.5 589

**Scientific Director-Red**

138551069 Excellent-90 TV TL TD  
 PTA -2021M -28F -41P 97R 12/21  
 PTA +.95T +.52UDC +.11FLC GTPI +1554G

**Jen-D Devil Tiffany-Red-ET**

62918023 Excellent-95 EEEEE 3E  
 8-07 2x 365d 36170 4.3 1546 3.0 1082  
 6-06 2x 365d 36140 4.1 1472 3.3 1196  
 4-01 2x 365d 29830 4.3 1292 3.1 934  
 5-04 2x 316d 27120 3.9 1048 3.1 846  
 Life: 2282d 189780 4.2 8060 3.1 5867

*Maternal sisters to 35602-Red*

**Milksource Thunder-Red-ET VG-88**

- *Supreme Champion Heifer, WDE 2019*
- *Junior Champion, International R&W Show 2019*

**Milksource Taelyn-ET**

- *Reserve Supreme Champion Heifer, WDE 2018*
- *Junior Champion, International Holstein Show 2018*

**TEQUILA!**

- *Res All-American R&W Aged Cow 2017*
- *HM Senior Champion, International R&W 2017*
- *Res All-American R&W 5-Year-Old 2016*
- *Unan All-American R&W 4-Year-Old 2015*
- *Grand Champion International R&W Show 2015*
- *Nominated All-Canadian 4-Year-Old 2015*
- *Unan All-American R&W Sr 3-Year-Old 2014*
- *Nom All-American B&W Sr 3-Year-Old 2014*
- *Nom All-Canadian B&W Sr 3-Year-Old 2014*
- *Grand Champion International R&W Show 2014*
- *Res All-American R&W Sr 2-Year-Old 2013*
- *Nom All-American R&W Fall Yearling, 2012*

**TIFFANY!**

- *Seven time R&W All-American Nominee!*
- *Nom All-American R&W 125,000LB Cow 2015*
- *Nom All-American R&W Aged Cow 2014*
- *Nom All-American R&W 5-Year-Old 2012*
- *Grand Champion Mid-East Fall/Nat R&W 2012*
- *Grand Champion MN State Fair R&W Show 2012*
- *Grand Champion MN State R&W Show 2012*
- *Nom All-American R&W 4-Year-Old 2011*
- *Supreme Champion MN State Fair 2011*
- *Nom All-American R&W Sr 2-Year-Old 2009*



**CRAIGCREST RUBIES RACHELE-ET EX-94**  
DAM OF LOT 3

*HM All-American Junior 3-Year-Old Cow 2016*



**CRAIGCREST RUBIES GOLD REJOICE-ET EX-94**  
FULL SISTER TO DAM OF LOT 3

*All-American Senior 2-Year-Old 2011*

# 3

**DOUGLAS FAIRBANKS**  
20755 90TH ST  
ANAMOSA, IA 52205  
319-480-2484

## Brenland Denver

CAN 12074893 \*TY \*TV  
PTA +359M +25F +8P 98R 12/21  
PTA --1.0PL 2.83SCS -2.8DPR 3.3%DCE  
PTA +2.90T +1.70UDC +.63FLC 98R 12/21  
GTPI +2152G

## Craigcrest Rubies Rachele-ET

CAN 11732999 Excellent-94 EEEEE @ 4-11  
3-10 2x 305d 24270 4.1 990 3.5 858  
2-11 3x 330d 24320 4.0 972 3.4 793  
2-01 3x 331d 20990 4.0 848 3.4 714

- *HM All-American Junior 3-Year-Old 2016*
- *2nd Junior 3-Year-Old, International Show 2016*
- *1st Junior 3-Year-Old, NY Spring Show 2016*
- *All-NY Junior 3-Year-Old 2016*

## WAPSI-ANA DENVER RACY-ET

840 3236017338 99%RHA  
Born: September 1, 2021

## Stantons High Octane-ET

CAN 11696704 EX-93-CAN ST'17 \*TY \*TV  
PTA +1018M +11F +14P 99R 12/21  
PTA +2.43T +2.18UDC +.57FLC GTPI +2153G

## Brenland Doorman Desirable-ET

CAN 9913324 EX-90-CAN 3\*  
5-06 2x 365d 35644 5.2 1856 3.2 1149  
2-01 2x 365d 28281 4.6 1307 3.3 926

## Braedale Goldwyn

CAN 10705608 GP-CAN GM 12/11 \*CD \*TV \*TL  
PTA -704M -7F -12P 99R 12/21  
PTA +1.05T +.62UDC +.79FLC GTPI +1860G

## Montdale Dundee Rubie-TW

CAN 8502119 EX-93-CAN 10\*  
4-08 2x 329d 27692 4.1 1135 3.3 922  
5-07 2x 365d 27064 3.9 1054 3.3 895

- *Nom All-Canadian 4-H Senior Calf 2002*
- *1st Senior Yearling, Autumn Opportunity 2003*
- *1st Sr 2-Year-Old, Dufferin-Wellington 2004*

*Full sisters to Rubies Rachele*

## Craigcrest Rubies Gold Rejoice EX-94 EEEEE

3-04 2x 335d 33342 4.3 1431 3.5 1151  
• *All-American Senior 2-Year-Old Cow 2011*  
• *All-Canadian Senior 2-Year-Old Cow 2011*  
• *All-American Winter Yearling Heifer 2010*  
• *All-Canadian Intermediate Yearling 2010*  
• *All-American Winter Calf 2009*  
• *All-Canadian Intermediate Calf 2009*

## Craigcrest Rubies Sapphire EX-94-5E-CAN 2\*

6-10 2x 365d 38259 3.6 1378 2.9 1118  
Life: 8 Lacs 224095 3.6 8080 3.0 6832

*3rd Dam*

## K A S Carlton Ruby EX-91-CAN 5E 10\*

6-03 2x 365d 30593 4.0 1232 3.1 941  
Life: 8 Lact 188074 3.7 6986 3.0 5701  
• *Grand Champion Grenville Show 2000*

*4th Dam*

## K A S Status Quo Closure EX-90-CAN 3\*

9-10 2x 309d 19178 3.8 721 2.9 558  
Life: 14 Lact 222638 4.2 9416 3.2 7015





**SAVAGE-LEIGH GOLD LONA-ET EX-92**  
2ND DAM OF LOT 4

*1st 4-Year-Old, Eastern Fall Nationals 2013*



**MS MCWILLIAMS DEMP LADY LUCK**  
MATERNAL SISTER TO LOT 4

*Nominated All-American Spring Calf 2019*

# 4

**SAM MCWILLIAMS**  
288 SECHLER RD  
SOMERSET, PA 15501  
814-445-6231

## Stantons Chief-ET

840 3129015989 \*TY\*TV A2/A2  
PTA +659M +8F +17P 96R 12/21  
PTA +.8PL 2.73SCS -.4DPR 3.1%DCE  
PTA +2.04T +2.29UDC +.44FLC 95R 12/21  
GTPI +2282G

## Savage-Leigh Drman Lucky-ET

840 3123796940 Excellent-91 EEEVE @ 4-00  
3-06 2x 349d 24530 4.5 1094 3.3 820  
• *1st Fall Calf & Jr Champ, NY Spring Jr Show 2016*

*Maternal sister to Drman Lucky*

## Savage-Leigh Alex Lacey-ET VG-87 VVVVV

- *All-American Winter Yearling 2014*
- *1st Winter Yearling, International Show 2014*
- *2nd Winter Yearling, Eastern National 2014*

## MCWILLIAMS CHIEF LUERLE-ET

840 3247317308 99%RHA  
Born: December 23, 2021

*Maternal sister to Chief Luerle*

## Ms McWilliams Demp Lady Luck

- *Nominated All-American Spring Calf 2019*
- *Nominated All-Canadian Spring Calf 2019*

## Stantons High Octane-ET

CAN 11696704 EX-93-CAN ST'17 \*TY\*TV  
PTA +1018M +11F +14P 99R 12/21  
PTA +2.43T +2.18UDC +.57FLC GTPI +2153G

## RockyMountain Uno Cheyenne-ET

CAN 11445880 VG-85-2YR-CAN 14\*  
3-09 2x 365d 33918 4.0 1371 3.4 1155  
2-02 2x 365d 32386 4.5 1462 3.4 1111

## Val-Bisson Doorman-ET

CAN 107281711 EX-90-CAN ST'16 \*TV\*TY  
PTA -446M +14F +9P 99R 12/21  
PTA +2.44T +1.58UDC +.67FLC GTPI +2164G

## Savage-Leigh Gold Lona-ET

840003004778739 Excellent-92 EEEVE @ 3-10  
5-03 2x 365d 38710 4.0 1540 3.3 1263  
3-06 2x 365d 34290 3.8 1304 3.1 1065  
• *1st 4-Year-Old & Res Sr Champ, Eastern Nat'l 2013*  
• *Intermediate Champ, Mid-W Fall Nat'l 2012*  
• *1st Senior 2-Year-Old, Eastern National 2011*

*3rd Dam*

**Savage-Leigh Licorice-ET EX-92 GMD DOM \*TV**  
4-02 2x 365d 51220 4.3 2179 3.1 1596  
Life: 1018d 113740 4.4 4968 3.2 3643  
• *HHM All-American 5-Year-Old 2006*

*4th Dam*

**Savage-Leigh Bellwood Linda EX-92 2E GMD**  
2-10 2x 365d 40240 5.8 2349 3.4 1358

*5th Dam*

**Savage-Leigh Star Linda-ET VG-87 EX-MS GMD**  
2-02 2x 365d 30890 4.0 1236 3.1 952

*6th Dam*

**Savage-Leigh Glenview Linda EX-90 GMD**  
6-08 2x 365d 41820 4.6 1936 3.0 1247  
Life: 1892d 150300 4.4 6636 3.2 4813

*7th Dam*

**Savage-Leigh Lindas Chairman GP-84**  
5-10 2x 365d 30620 3.8 1167 3.3 1013  
Life: 1972d 121550 3.9 4718 3.3 4013

*8th Dam*

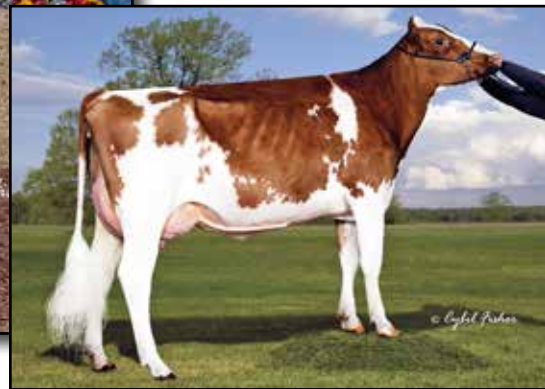
**Savage-Leigh Creek Lydia VG-88 VVVV**  
4-11 2x 344d 16390 4.2 685 3.1 511

*9th Dam*

**Savage-Leigh Kate Linda VG-85**  
6-01 2x 305d 19940 4.0 793



**LUCK-E AWESOME JOY-RED-ET EX-91**  
DAM OF LOT 5



**LUCK-E LADD JUBILEE-RED-ET EX-93 2E**  
2ND DAM OF LOT 5

**5**

**KEVIN & BARBARA ZIEMBA & JEFFERY PIRRUNG**  
6162 DUNBARTON RD  
DURHAMVILLE, NY 13054  
315-730-0201

**Avant-Garde-I Latenite-P-Red**

CAN 13507027 \*PC\*TY\*TV A2A2  
PTA +1033M +26F +25P 80R 12/21  
PTA +.1PL 3.02SCS -.9DPR 2.6%DCE  
PTA +3.16T +1.94UDC +1.06FLC 78R 12/21  
GTPI +2382G

**Luck-E Awesome Joy-Red-ET**

840 3139051661 Excellent-91 EEVVE @ 4-09  
3-05 2x 365d 32530 4.6 1510 3.4 1101  
2-00 3x 305d 24890 4.8 1202 3.1 771

**ZBW-JLP LTNITE JOKES-RED-ET**

840 3218602690 99%RHA \*PO  
Born: September 16, 2021  
PTA +3.32T +2.70UDC +1.41FLC 12/21

**Coomboona Zipit Mirand-PP**

AUS 1993596 \*RC\*PP \*TY\*TV A2/A2  
PTA +746M +26F +11P 90R 12/21  
PTA +2.77T +2.30UDC +.56FLC GTPI +2322G

**Liddleholme Lotto-ET**

840 3138274632 VG-85-3YR-CAN VG-86-MS \*RC  
3-01 2x 365d 31987 4.1 1303 3.4 1085  
4-06 2x 110d 11369 4.2 472 3.2 362 RIP

**Luck-E Awesome-Red**

72186769 \*CV\*TV\*TY\*TL\*TD  
PTA -1697M -59F -55P 99R 12/21  
PTA +2.03T +2.78UDC +.75FLC GTPI +1415G

**Luck-E Ladd Jubilee-Red-ET**

69873754 Excellent-93 EEEEE 2E  
6-08 2x 365d 44350 4.5 1990 3.1 1369  
5-01 2x 365d 32310 4.0 1301 3.2 1032  
2-10 2x 365d 30390 4.7 1437 3.5 1068  
Life: 2075d 178320 4.5 8061 3.3 5947

*3rd Dam*

**Double-D Mr Burns Jess-ET EX-94 EEEEE 2E \*RC**  
8-01 3x 339d 42360 4.7 1994 3.2 1370  
Life: 1784d 164880 3.9 6379 3.6 5972  
• *Nom Junior All-American 5-Year-Old 2005*

*4th Dam*

**Hy-Class Advnt Jessi-Red-ET EX-90 EX-MS**  
5-06 2x 305d 22290 4.1 923 3.2 717  
Life: 1607d 110310 4.1 4553 3.2 3541

*5th Dam*

**Hy-Class Rang Jathne-Red-TW EX-90 VEEVE**  
2-03 2x 365d 31190 3.6 1119 3.2 994

*6th Dam*

**Hy-Class Jacob Jackie-Red EX-91 EEVEE**  
4-10 2x 365d 27800 2.8 785 3.0 827

*7th Dam*

**Jandi-Mac June Logic-Red-ET EX-91 EVVEE 2E**  
3-05 2x 305d 32790 3.5 1158 3.2 1043

*8th Dam*

**Ja-Bob Harry Jerry-Red-ET EX-90 EEVEV 2E**  
6-00 2x 365d 30570 3.9 1183 3.4 1038  
Life: 2898d 191560 3.7 7044 3.3 6390

*9th Dam*

**Ja-Bob Harmony Joy-Red-ET EX-90 VEVE**  
6-08 2x 365d 32900 3.4 1105 3.0 1001

*9th Dam*

**Ja-Bob Mark Heavenly Joy EX-92 DOM \*RC**  
7-03 2x 365d 33090 3.5 1155 3.2 1054

*Next five dams VG & EX!*



**KHW REGIMENT APPLE 2-RED-ETN EX-93 2E**  
**DAM OF LOTS 6 & 7**

*Grand Champion, Mid-East Fall R&W Show 2013*



**MISS ALABAMA-RED-ET EX-92-CAN**  
**MATERNAL SISTER TO LOTS 6 & 7**

*Nominated All-West 4-Year-Old 2016*

# 6

## STAR-KY-BLUE ADALYN-RED-ET

840 3234513484 99%RHA  
 Born: June 2, 2021  
 Sire: Mr Blondin Warrior-Red-ET

### Mr Blondin Warrior-Red-ET

840 3139655530 99%RHA \*TY\*TV  
 PTA -141M +0F -1P 85R 12/21  
 PTA --1.8PL 2.86SCS -2.5DPR 3.3%DCE  
 PTA +3.52T +2.22UDC +1.55FLC 80R 12/21  
 GTPI +2057G

### KHW Regiment Apple 2-Red-ETN

139226818 Excellent-93 EEEEE 2E DOM \*CV  
 5-09 2x 365d 30050 4.5 1361 3.4 1016  
 3-06 2x 282d 23050 4.3 1000 3.4 781  
 2-04 2x 305d 20430 4.4 906 3.3 665  
 • Grand Champion, Mid-East Fall R&W Show 2013  
 • HM All-American R&W Winter Yearling 2009  
 • All-American R&W Winter Calf 2008  
 • 3x All-American R&W Nominee

# 7

## STAR-KY-BLUE ALANA-RED-ET

840 3234513489 99%RHA  
 Born: September 4, 2021  
 Sire: Farnear Altitude-Red-ET

### Farnear Altitude-Red-ET

840 3128013348 \*TY\*TV  
 PTA +194M +19F +16P 94R 12/21  
 PTA -2.3PL 3.01SCS -2.3DPR 3.2%DCE  
 PTA +2.92T +2.32UDC +1.63FLC 91R 12/21  
 GTPI +2207G

### Carrousel Regiment-Red-ET

128891296 VG-85-CAN \*TV\*TL  
 PTA -1308M -37F -30P 99R 12/21  
 PTA -.04T -.40UDC -.72FC GTPI +1344G

### Kamps-Hollow Altitude-ET

129136431 Excellent-95 EEEEE 2E DOM 2\* \*RC \*CV  
 7-00 2x 365d 39690 4.7 1849 3.5 1385  
 2-00 2x 365d 28830 3.8 1097 3.5 1013  
 4-03 2x 365d 30430 4.2 1267 3.1 956  
 Life: 1844d 144460 4.4 6295 3.7 5288

**ROBERT COLVIN**  
 100 COLVIN PL  
 CAMPBELLSVILLE, KY 42718  
 270-572-6046

*Maternal sister to Adalyn & Alan*  
**Miss Alabama-Red-ET EX-92-2E-CAN**  
 6-02 2x 365d 31744 4.1 1314 3.5 1107  
 • Nominated All-West 4-Year-Old 2016

#### 3rd Dam

**Clover-Mist Alisha-ET EX-93 3E DOM**  
 8-07 2x 365d 36920 4.2 1553 3.4 1258  
 Life: 2999d 226470 4.7 10659 3.6 8149

#### 4th Dam

**Clover-Mist Augy Star-ET EX-94 4E DOM**  
 7-10 2x 365d 43140 5.0 2136 3.3 1421  
 Life: 2486d 206250 4.7 9793 3.5 7187

#### 5th Dam

**D-R-A August EX-96 4E DOM**  
 8-05 3x 365d 27460 4.3 1187 3.2 871  
 Life: 3443d 190200 4.4 8281 3.5 4818  
 • Nominated All-American Aged Cow 1986

#### 6th Dam

**D-R-A Ideal Precious Leader EX-90 2E**  
 Life: 2456d 133250 4.0 5308

#### 7th Dam

**D-R-A Princess Lad Leader EX-90 3E**  
 9-05 2x 305d 19160 4.2 809



**OAKFIELD-BRO FONTAIN-RED EX-90 2E**  
MATERNAL SISTER TO DAM OF LOT 8



**PENN-GATE RMARKER FERGGY-ET EX-93 3E**  
2ND DAM OF LOT 8

8

STEVEN OLT  
9140 MARSHALL RIDGE RD  
GREENSBURG, KY 42743  
2709-405-1365

**ROCKY-RUN FERGGYLICIOUS-RED**

840 3241546931 99%RHA  
Born: June 9, 2021

*Maternal sisters to Ferggy-Red*

- Oakfield-Bro AT Finance-ET EX-92**
- Oakfield-Bro AS Fire-Red-ET EX-92**
- Oakfield-Bro Fountain-Red-ET EX-90 2E**
- Oakfield-Bro Gld Fantasy-ET EX-90**
- Oakfield-Bro Goldwyn 650-ET EX-90**

**Mr Blondin Warrior-Red-ET**

840 3139655530 99%RHA \*TY \*TV  
PTA -141M +0F -1P 85R 12/21  
PTA -1.8PL 2.86SCS -2.5DPR 3.3%DCE  
PTA +3.52T +2.22UDC +1.55FLC 80R 12/21  
GTPI +2057G

**Oakfield-Bro Ferggy-Red-ET**

840 3127421941 Very Good-88 VEEVV @ 6-04  
3-05 2x 305d 24240 4.0 970 3.3 798  
4-09 2x 365d 23160 4.2 978 3.3 771  
2-03 2x 305d 19520 4.2 821 3.3 652

**Dymentholm Mr App Avalanche-TW**

CAN 11957107 \*RC \*CV \*TL \*TY \*TD  
PTA -94M +1F -4P 99R 12/21  
PTA +3.76T +2.85UDC +2.26FLC GTPI +2036G

**Triplecrown-JW Door Wisp-ET**

840 3128860372 VG-85-CAN  
3-03 2x 365d 35587 4.0 1424 3.5 1246  
2-01 2x 310d 17068 4.0 688 3.5 589

**Apples Absolute-Red-ET**

139358472 Excellent-94 \*CV \*TL \*TY \*TD  
PTA -1888M -13F -24P 99R 12/21  
PTA +2.22T +2.43UDC +1.63FLC GTPI +1526G

**Penn-Gate RMarker Ferggy-ET**

136214034 Excellent-93 EEEEE 3E \*RC  
3-08 2x 365d 27080 3.7 1002 3.3 893  
5-11 2x 365d 26780 4.2 1133 3.4 901  
2-01 2x 321d 18050 3.6 653 3.4 610

*3rd Dam*

**Penn-Gate Skychief Finesse EX-95 3E DOM**

9-00 2x 365d 36760 3.8 1386 3.3 1227  
Life: 2245d 161510 4.5 7311 3.5 5590

• *Dam of 19 Excellent daughters*

*4th Dam*

**Penn-Gate Starbuck Finesse EX-95 3E GMD DOM**

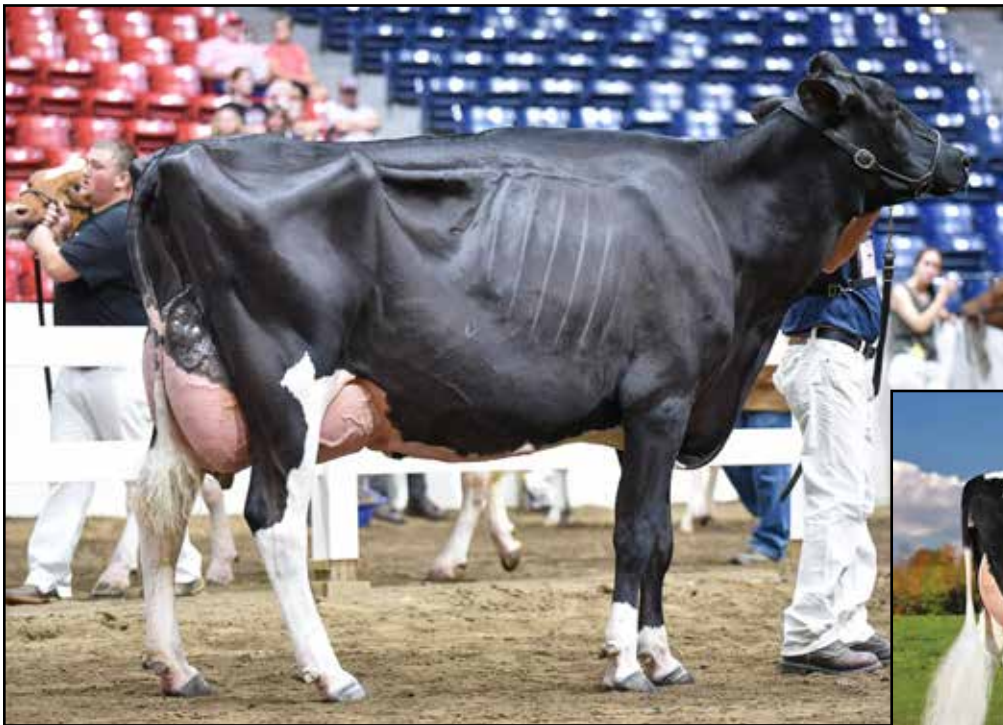
9-00 2x 365d 36760 3.8 1386 3.3 1227  
Life: 2220d 166730 3.7 6252 3.5 5902

• *1st Place Pennsylvania Futurity*

*5th Dam*

**Penn-Gate Elevation Flashie EX-94 5E GMD DOM**

7-01 2x 365d 32410 4.3 1382 3.2 1025  
Life: 3872d 260540 4.4 11435 3.3 7091



**EXPRESS-SMD DBACK VIVICA EX-90**  
2ND DAM OF LOT 9



**EXPRESS-SMD VICARIOUS VG-89**  
3RD DAM OF LOT 9

9

**EXPRESS HOLSTEINS & STAN-MAR-DALE HOLSTEINS**  
3516 FLATFOOT RD  
URBANA, OH 43078  
937-652-3840

**Express-SMD Masterpiece**

145173605 \*RC  
PTA -395M +1F -3P 34R 12/21  
PTA -.6PL 3.16SCS -1.5DPR 3.1%DCE  
PTA +1.80T +1.21UDC +.76FLC 30R 12/21  
PTPI +1960

**Express-SMD Immense Virgo**

144911806 Very Good-86 VG-MS @ 2-05

**EXPRESS-SMD MP VENMO**

145365792 99%RHA  
Born: December 1, 2021

**Bert-Mar Ammo Archer-ET**

840 3141033545 \*RC \*PO  
PTA -108M +11F -6P 86R 12/21  
PTA +2.20T +1.65UDC +.34FLC GTPI +1978G

**W-Brook Db Milly-Red**

144398654 Excellent-90  
2-07 2x 365d 24740 4.2 1048 3.4 841

**Our-Favorite Immense-ET**

840 3125220776 \*TY \*TV  
PTA -244M -5F -22P 84R 12/21  
PTA +3.05T +2.14UDC +1.55FLC GTPI +1903G

**Express-SMD Dback Vivica**

143913122 Excellent-90 EEVVE @ 5-02  
3-02 2x 365d 26870 3.9 1058 2.9 790  
4-08 2x 305d 27000 3.6 979 3.0 814  
1-11 2x 365d 20300 3.7 761 3.0 617  
• 4th Aged Cow, Mid-East Summer Nat'l 2021

*3rd Dam*

**Express-SMD Vicarious VG-89 VVEEV**

5-06 2x 365d 33120 4.2 1399 3.0 984  
Life: 1688d 126090 3.9 4910 3.0 3824

• 2nd Jr 2-Year-Old, Mid-East Fall Nat'l 2015

*4th Dam*

**Express-SMD Asteroid Vegas EX-90 EEVVV 2E**

5-00 2x 365d 24300 5.4 1306 3.5 839  
Life: 2627d 123940 5.2 6427 3.5 4390

• 2nd Jr 2-Year-Old, Mid-East Spring Nat'l 2012

*5th Dam*

**Stan-Mar-Dale Roy Vogue GP-84**

4-02 2x 365d 28770 4.2 1221 3.6 1042

*6th thru 9th Dams*

**Stan-Mar-Dale Veronique EX-91 EEEEE**

5-02 2x 365d 35560 4.1 1441 3.2 1147  
Life: 1706d 123400 4.0 4877 3.4 4254

• 1st Sr 2-Year-Old, Mid-East Spring Nat'l 2006

**Stan-Mar-Dale Gsm Verona-ET EX-93 EEEEE 3E**

4-08 2x 358d 36100 3.7 1327 3.2 1173  
Life: 1846d 131680 4.2 5522 3.5 4544

• 1st 4-Year-Old & Reserve Grand Champion,  
Mid-East Spring National 2003

**Stan-Mar-Dale Rotatbean Vicky EX-93 3E**

6-05 2x 365d 28400 4.5 1267 3.4 962  
Life: 1983d 132910 4.5 5937 3.4 4546

**Stan-Mar-Dale Chime Victoria EX-90 GMD DOM**

6-06 2x 365d 29800 4.6 1383 3.5 1036  
Life: 2193d 140500 4.6 6412 3.5 4866



**ROSEDALE RUMOR HASIT-RED-ET EX-94 2E**  
2ND DAM OF LOT 10

*HM All-American R&W Senior 3-Year-Old 2016*



**LAVENDER RUBY REDROSE-RED EX-96 4E**  
3RD DAM OF LOT 10

*Supreme Champion, WDE 2005*

# 10

**STARLIGHT GENETICS**  
**NICK RANDLE**  
5880 S STATE RD 267  
LEBANON, IN 46052  
317-354-6044

## SHG Avalanche Lotto-Red-ET

DNK 5176304789 \*CV \*TL  
-59M +3F +2P 82R 12/21  
PTA +.1PL 2.83SCS -1.5DPR 2.1%DCE  
PTA +2.80T +1.82UDC +1.79FLC 80R 12/21  
GTPI +2151G

## Seeking The Soul-Red

840 3130101478 Very Good-88 VVEV @ 3-08  
2-04 2x 215d 14640 3.9 574 3.1 459

## SOUL LOTTO SPADE-RED

840 3238193104 99%RHA  
Born: January 25, 2022

## Dymenthlm Mr App Avalanche-TW

CAN 11957107 \*RC \*CV \*TL \*TY \*TD  
PTA -94M +1F -4P 99R 12/21  
PTA +3.76T +2.85UDC +2.26FLC GTPI +2036G

## Blondin Doorman Lovergirl-ET

CAN 109045989 EX-90-CAN 1\* \*RC  
5-03 2x 323d 38475 4.1 1594 3.6 1376  
2-01 2x 365d 34024 4.2 1411 3.4 1164

## Luck-E Awesome-Red

72186769 \*CV \*TV \*TY \*TL \*TD  
PTA -1697M -59F -55P 99R 12/21  
PTA +2.03T +2.78UDC +.75FLC GTPI +1415G

## Rosedale Rumor Hasit-Red-ET

71580671 Excellent-94 EEEEE 2E  
5-07 2x 365d 46780 4.6 2165 3.4 1576  
4-06 2x 315d 32480 3.7 1198 3.8 1244  
Life: 1600d 162310 4.3 6939 3.6 5782  
• *HM All-American R&W Sr 3-Year-Old 2016*

### 3rd Dam

#### Lavender Ruby Redrose-Red EX-96 EEEEE 4E

7-04 2x 365d 52100 4.9 2576 3.4 1751  
Life: 2671d 255980 4.3 10988 3.5 9047  
• *All-American R&W 125,000 Lb Cow 2007*  
• *Grand Champ, International R&W Show 2007*  
• *Supreme Champion, World Dairy Expo 2005*  
• *All-American R&W 5-Year-Old 2005*

### 4th Dam

#### Northrose-I Lavender-ET EX-90 EVVEE \*RC 5\*

3-10 2x 365d 28734 3.6 1034 3.4 974

### 5th Dam

#### Rosedale Lea-Ann-ET EX-93 2E GMD \*RC

4-08 3x 365d 39370 3.4 1325 3.1 1202  
Life: 1345d 120420 3.6 4315 3.2 3795

### 6th Dam

#### Stokey Elm Park Blackrose-ET EX-96 3E GMD

5-03 2x 365d 42230 4.6 1939 3.4 1432

• *All-Time All-American Jr 2-Yr-Old Cow*

• *All-Time All-American Jr 3 Yr Old Cow*

### 7th thru 9th Dams

#### Nandette TT Speckle-Red-ET EX-93 DOM

4-08 2x 365d 25290 4.7 1195

• *All-American R&W 1981 & 1984*

#### Nandette Riley Nana-Red VG-87

7-01 2x 365d 20070 3.4 677 3.1 621

#### Nandette Bootmaker Gale VG-89 VG-MS

5-07 2x 305d 22300 4.0 896



**KNONDALE JASMINE EX-96-4E-CAN**  
2ND DAM OF LOT 11

*Reserve All-Canadian Longtime Production Cow 2017*



**KNONDALE MUDPIE-ET EX-94 2E**  
MATERNAL SISTER TO DAM OF LOT 11

*Reserve All-American Junior 3-Year-Old 2015*

# 11

**ARMCREST & KINGSWAY**  
549 CTY RD 21, RR #3  
MILLBROOK, ON L0A 1G0  
514-232-3909

## FIVE #1 EMBRYOS

### Farnear Delta-Lambda-ET

840 3125993715 GM 12/20 \*TY \*TV  
PTA +1123M +47F +43P 99R 12/21  
PTA +4.6PL 2.75SCS -.7DPR 2.4%DCE  
PTA +2.72T +2.91UDC +.79FLC 99R 12/21  
GTPI +2758G

### Kingsway Doorman Juanita

CAN 13279728 VG-85-2YR-CAN VVVV  
1-09 2x 302d 20673 6.1 1263 3.5 730 RIP

*Full sister to Doorman Juanita*

### Kingsway Doorman Jet EX-92-CAN

4-11 2x 365d 39255 5.8 2264 3.3 1307

### Mr Mogul Delta 1427-ET

72128216 GM 8/20 \*TY \*TV  
PTA +939M +58F +33P 99R 12/21  
PTA +1.18T +1.80UDC +.53FLC GTPI +2655G

### EDG Lorette Uno 2198-ET

72437745 Excellent-91 2E  
4-02 2x 330d 31660 4.1 1289 3.6 1128  
Life: 1540d 131380 3.9 5183 3.6 4699

### Val-Bisson Doorman-ET

CAN 107281711 EX-90-CAN ST'16 \*TV \*TY  
PTA -446M +14F +9P 99R 12/21  
PTA +2.44T +1.58UDC +.67FLC GTPI +2164G

### KNONDALE Jasmine

CAN 8994601 EX-96-4E-CAN 10\*  
8-02 2x 365d 33603 4.9 1645 3.4 1144  
6-07 2x 365d 30926 5.0 1559 3.6 1122  
Life: 6 Lacs 170596 4.5 7756 3.5 6056  
• Reserve All-Canadian Longtime Prod Cow 2017

*Maternal sisters to Doorman Juanita*

### KNONDALE Mudpie-ET EX-94 EEEVE 2E

4-08 2x 305d 30120 4.6 1377 3.5 1046  
• Nominated All-American Aged Cow 2018  
• Reserve All-American Junior 3-Year-Old 2015  
• HM All-Canadian Junior 3-Year-Old 2015

### Kingsway Windbrook Jazz EX-95-2E-CAN

**KNONDALE Muddy EX-94-4E-CAN 4\***

*3rd Dam*

### KNONDALE Elsy EX-92 2E 7\*

3-09 2x 365d 34350 3.3 1118 3.2 1111

*4th Dam*

### KNONDALE Anna VG-88-CAN 4\*

7-00 2x 365d 30864 4.3 1329 3.4 1054  
Life: 5 Lacs 160063 4.3 6892 3.6 5743

*5th Dam*

### KNONDALE Toodie GP-83-2YR-CAN 4\*

3-09 2x 339d 29310 3.8 1105 3.4 994  
Life: 8 Lacs 194510 3.7 7216 3.3 6490

*6th Dam*

### KNONDALE Perpetua VG-87-CAN 6\*

6-02 2x 365d 32079 3.9 1243 3.3 1045  
Life: 5 Lacs 136498 3.8 5243 3.8 4632

*7th Dam*

### KNONDALE Liz VG-88-CAN 5\*

7-10 2x 309d 25483 4.1 1036 3.1 780  
Life: 6 Lacs 126923 4.3 5463 3.5 4396



**BUCKMEADOW MISS MAGGIE EX-93**  
**MATERNAL SISTER TO DAM OF LOT 12**  
*Grand Champion, KY State Fair 2016*

# 12

**BUCKLEY, SPOONAMORE, GIBSON & ELMORE**  
1402 NINEVAH RD  
LAWRENCEBURG, KY 40342  
502-839-5797

## MS UNIX MICA

144862063 \*RC  
Born: June 5, 2019

Fresh: December, 2021

# 13

## FEMALE

Born: December, 2021  
Sire: Cycle McGucci Jordy-Red  
Dam: Ms Unix Mica

### Croteau Lesperron Unix-ET

CAN 107567492 EX-96-CAN ST'17 \*TY \*TV  
PTA +536M +24F +11P 99R 12/21  
PTA +.7PL 2.92SCS -.3DPR 2.2%DCE  
PTA +2.39T +2.40UDC +.15FLC 98R 12/21  
GTPI +2351G

### Buckmeadow Mickey-Red-ET

142986130 Very Good-88 EX-MS @ 3-03  
4-00 2x 365d 22634 4.1 933  
6-00 2x 365d 22093 4.0 893

*Maternal sister to Mickey-Red*

### Buckmeadow Miss Maggie EX-93

• *Grand Champion, KY State Fair 2016*

### Amighetti Numero Uno-ET

ITA 17990915143 EX-90-HUN ST'15  
PTA -829M +30F -13P 99R 12/21  
PTA +.98T +1.01UDC -.45FLC GTPI +2240G

### Regan-ALH Domain Daya-ET

66625459 EX-93-2E-CAN 15\*  
10-2 2x 365d 51621 4.3 2211 3.4 1766  
Life: 5 Lacs 243699 4.3 10377 3.6 8768

### Lookout P Redburst-Red-ET

CAN 106030980 \*TV \*TL \*TY \*TD  
PTA -191M -11F +2P 99R 12/21  
PTA +1.35T +1.26UDC +.90FLC GTPI +2150G

### Buckmeadow Advnt Mya-Red-ET

139712036 Very Good-85 @ 2-07

*3rd Dam*

**Mer-Gold Tint Maiden-Red-ET VG-87 EX-MS**  
2-03 3x 365d 27110 3.5 939 3.3 907

*4th Dam*

**Derrwyn Miss Special-Red-ET EX-94 4E DOM**  
5-02 2x 365d 43260 4.2 1834 3.0 1278  
Life: 1865d 165170 4.0 6688 3.3 5452

• *All-American R&W 125,000 Lb Cow 2008*

• *All-American R&W 5-Year-Old 2006*

*5th Dam*

**Derrwyn Factor Miata-Red EX-94 2E**  
6-11 2x 365d 36900 4.2 1560 2.8 1049  
Life: 1959d 152150 4.2 6417 3.1 4703

• *HM All-American R&W Aged Cow 2003*

*6th Dam*

**Derrwyn TT Mystic VG-86 VG-MS**  
6-02 2x 365d 27200 3.9 1068 2.8 749  
Life: 2119d 140260 4.0 5669 2.8 3905

*Next five dams VG & EX!*





**GAEMENCHET SID KATIA EX-94**  
**DAM OF LOT 14**

*All-Canadian Junior 3-Year-Old 2015*

# 14

**JOHNATHAN HEINSOHN**  
 34695 KIRKLAND RD  
 KIRKLAND, IL 60146  
 815-979-5314

## Walnutlawn Sidekick

CAN 12508113 VG-85-CAN \*TY \*TV A2/A2  
 PTA -1030M +13F -9P 96R 12/21  
 PTA +.1PL 2.72SCS -.5DPR 2.1%DCE  
 PTA +2.92T +2.48UDC +.96FLC 95R 12/21  
 GTPI +2227G

## Gaemenchet Sid Katia

CAN 107414160 Excellent-94 EEEVE @ 5-06  
 5-03 2x 334d 36320 3.9 1422 3.1 1126  
 3-02 2x 365d 34790 3.9 1362 3.0 1059

*Maternal sister to Sid Katia*

**Gaemenchet Shottle Katia** EX-91-3E-CAN  
 8-05 2x 365d 30970 4.8 1479 3.6 1118  
 Life: 7 Lacs 205140 4.5 9198 3.6 7321

## REDCARPET SIDEKICKKARATE-ET

840 3224513281 99%RHA  
 Born: December 5, 2021

## Willsbro Abbott

GBR 388380500583 \*TY \*TV A2/A2  
 PTA -298M +41F +8P 98R 12/21  
 PTA +177T +1.84UDC +.53FLC GTPI +2426G

## Walnutlawn McCutchen Summer-ET

CAN 11120480 Excellent-95 EEEEE 9\*  
 7-02 2x 365d 37010 4.7 1735 3.5 1285  
 • *Nom All-Canadian Mature Cow 2020*

## Pine-Tree Sid-ET

62175895 VG-86-CAN ST'10 \*TY \*TV  
 PTA -8719M -19F -23P 99R 12/21  
 PTA +1.54T +1.02UDC -.83FLC GTPI +1523G

## Gaemenchet Goldwyn Cinde-ET

CAN 105595759 VG-85 VG-MS-CAN 7\*  
 5-09 2x 365d 39707 3.7 1484 3.1 1217  
 9-09 2x 365d 38660 3.7 1442 3.2 1226  
 4-07 2x 346d 33108 4.1 1351 3.1 1037  
 Life: 4 Lacs 196697 4.0 7791 3.3 6435

## KATIA!

- *All-Canadian Junior 3-Year-Old Cow 2015*
- *HM Int Champion, Royal Winter Fair 2015*
- *Nom All-American Jr 3-Year-Old Cow 2015*
- *Nom All-American Jr 2-Year-Old Cow 2014*

*3rd Dam*

**Ferlou Dundee Cathy-ET** GP-81-CAN 3\*

*4th Dam*

**Lordcadie Aeroline Kate** EX-90 EVVEE-CAN

4-08 2X 365d 33673 3.7 1248 3.2 1089

*5th Dam*

**Julibel Dultan Limage** VG-86 VG-MS 16\*

Life: 13 Lact 228663 3.3 7441 3.0 6766

*6th Dam*

**Julibel Golden Boots Line** EX 2E-CAN 1\*

7-04 2x 334d 24068 3.8 904 3.3 805

Life: 7 Lact 146438 3.8 5516 3.1 4597

• *1st Mature Cow Sherbrooke 1990*

*7th Dam*

**Julibel Telmatt Laninon** VG-87 VVVE 4\*

Life: 8 Lact 146139 4.1 5990 3.0 4420

*8th Dam*

**Julibel Madison Lanie** VG-85 VG-MS 2\*

Life: 9 Lact 156584 3.8 5900

*9th Dam*

**Julibel Ace Lana** VG-85-CAN



**KULP-DALE ADV ROMONA-RED VG-88**  
2ND DAM OF LOT 15

**15**

**J. D. & REBECCA WICKER**  
5255 W 900 S  
MILROY, IN 46156  
765-561-6232

**Farnear Altitude-Red-ET**

840 3128013348 \*TY \*TV  
PTA +194M +19F +16P 94R 12/21  
PTA -2.3PL 3.01SCS -2.3DPR 3.2%DCE  
PTA +2.92T +2.32UDC +1.63FLC 91R 12/21  
GTPI +2207G

**Ms Koenen LaddP-5866-Red-ET**

70179960 Excellent-90 EEEVE 2E \*PO

**HILLTOP-RJ ALT RHEA-RED-ET**

840 3210371194 99%RHA \*TC \*TL \*TD  
Born: December 1, 2019  
PTA +2.56T +2.02UDC +1.19FLC 12/21

Fresh: March 1, 2022

**Mr LR EDG Arvis 18196-ET**

840 3125201960 \*RC \*TY \*TV  
PTA -535M +8F +1P 97R 12/21  
PTA +1.95T +2.09UDC +1.35FLC GTPI +2157G

**Farnear TBR Aria Adler-ET**

72437575 Excellent-96 2E  
5-11 2x 365d 38770 4.1 1608 3.4 1335  
• All-American Lifetime Production Cow 2021

**Tiger-Lily Ladd P-Red-ET**

69405976 Excellent-91 \*PC \*TV \*TL \*TY \*TD  
PTA -1342M -14F -13P 99R 12/21  
PTA +1.29T +.87UDC +.35FLC GTPI +2079G

**Kulp-Dale Adv Romona-Red-ET**

62887153 Very Good-88 VVVVE @ 3-06 \*PO  
2-02 2x 365d 24270 4.8 1154 3.8 911

*3rd Dam*

**Golden-Oaks Rmn Rae2-Red-ET VG-88 \*PO**  
4-08 2x 365d 28390 4.4 1255 3.6 1019

*4th Dam*

**Golden-Oaks Perk Rae-Red-ET EX-90 \*PO**  
1-11 3x 365d 31030 3.7 1161 3.4 1041

*5th Dam*

**Scientific Beauty Rae-ET EX-90 VEEVE \*RC**  
4-03 2x 365d 33710 4.7 1595 3.5 1179

*6th Dam*

**Scientific Jubilant Rae-ET EX-90 DOM \*RC**  
5-11 2x 365d 38880 4.1 1608 3.6 1403  
Life: 1394d 117590 4.0 4707 3.6 4242

*7th Dam*

**C Hanoverhill Tony Rae EX-96 3E GMD DOM 5\***  
6-11 2x 365d 40220 4.1 1661 3.3 1331  
Life: 2247d 166396 4.1 6904 3.4 5612

• Gr Champion Western National 1993

*8th thru 10th Dams*

**C Hanoverhill TT Roxette-ET EX-94 2E GMD**  
10-0 3x 365d 35040 4.3 1519 3.0 1063  
Life: 2104d 164789 4.1 6760 3.1 3587

**Mil-R-Mor Roxette EX-CAN 30\***

7-01 2x 365d 24531 4.7 1153  
Life: 6 Lact 121418 4.7 5728

**C Glenridge Citation Roxy EX-97 4E GMD 6\***

Life: 3620d 209784 4.5 9471

*Next two dams VG & EX!*



**SCIENTIFIC GRACE-RED-ET EX-91**  
2ND DAM OF LOT 16

*Nominated All-American R&W Aged Cow 2008*



**JERLAND ADVENT GRETA-RED-ET EX-90**  
MATERNAL SISTER TO DAM OF LOT 16

*Nom All-American R&W 5-Year-Old 2014*

# 16

**CHASE CALL**  
11050 HUNTINGTON RD  
SOUTH CHARLESTON, OH 45368  
937-462-7285

**ST Gen Arvis Echo-Red-ET**

840 3132348169 \*TY \*TV  
PTA -378M +16F +6P 91R 12/21  
PTA +.7PL 2.92SCS -.4DPR 2.8%DCE  
PTA +1.82T +1.82UDC +.87FLC 83R 12/21  
GTPI +2222G

**Jerland SH Gemstone-Red-ET**

142451540 Good Plus-83 @ 2-06  
4-03 2x 305d 24680 4.9 1197 3.2 779  
5-08 2x 395d 20860 4.2 882 2.7 561  
2-03 2x 321d 16690 4.7 791 3.3 556

*Maternal sister to SH Gemstone-Red*

**Jerland Advent Greta-Red-ET EX-90 EEVVE**

2-04 2x 305d 17340 4.8 836 3.5 609  
• *Nom All-American R&W 5-Year-Old 2014*

**CALL-DEL ECHO GRACE-RED**

144971787  
Born: January 2, 2020

**Mr LR EDG Arvis 18196-ET**

840 3125201960 \*RC \*TY \*TV  
PTA -535M +8F +1P 97R 12/21  
PTA +1.95T +2.09UDC +1.35FLC GTPI +2157G

**Triplecrown M Event 972-ET**

74186111 \*RC

**Patience Showline Contender-Red**

CAN 7483577 EX-95-CAN \*TV \*TL  
PTA -2622M -69F -74P 99R 12/21  
PTA +1.18T +2.59UDC +.59FLC GTPI +1518G

**Scientific Grace-Red-ET**

132856773 Excellent-91 EEEEE @ 5-05  
5-00 2x 365d 28530 4.4 1260 3.7 1058  
3-04 3x 365d 27990 3.7 1043 3.7 1028

- *Nom All-American R&W 2007 & 2008*
- *1st Aged Cow, Midwest Spring Show 2008*
- *1st 5-Year-Old, Midwest Spring Show 2007*

*3rd Dam*

**Scientific Raes Hope-Red EX-92 EEEEEV**

4-03 2x 365d 36894 3.5 1302 3.2 1409  
Life: 1386d 103070 3.5 3655 3.3 3409

*4th Dam*

**Scientific Jubilant Rae-ET EX-90 DOM \*RC**

5-11 2x 365d 38880 4.1 1608 3.6 1403  
Life: 1394d 117590 4.0 4707 3.6 4242

*5th Dam*

**C Hanoverhill Tony Rae EX-96 3E GMD DOM 5\***

6-11 2x 365d 40220 4.1 1661 3.3 1331  
Life: 2247d 166396 4.1 6904 3.4 5612

- *Gr Champion Western National 1993*

*6th Dam*

**C Hanoverhill TT Roxette-ET EX-94 2E GMD**

10-0 3x 365d 35040 4.3 1519 3.0 1063  
Life: 2104d 164789 4.1 6760 3.1 3587

*7th Dam*

**Mil-R-Mor Roxette EX-CAN 30\***

Life: 6 Lact 121418 4.7 5728

*8th, 9th & 10th Dams*

**C Glenridge Citation Roxy EX-97 4E GMD 6\***

Life: 3620d 209784 4.5 9471

**C Norton Court Model Vee EX-90 6\***

Life: 4183d 218629 3.9 8581

- *All-American Produce of Dam 1977, '78, '79*

**Norton Court Reflection Val VG-CAN 5\***

Life: 14 Lacs 249583 3.7 9295



**SPRINGWAY BEAUTYROSE-RED-ET EX-94 2E**  
**DAM OF LOT 17; 2ND DAM OF LOT 18**  
*Grand Champion, KY State Fair 2015*

# 17

**MATTHEW MITCHELL**  
 227 HOLSTEIN DR  
 LA FOLLETTE, TN 37766  
 865-300-4880

## Apples Absolute-Red-ET

139358472 Excellent-94 \*CV \*TL \*TY \*TD  
 PTA -1888M -13F -24P 99R 12/21  
 PTA -5.5PL 3.52SCS -5.1DPR 5.0%DCE  
 PTA +2.22T +2.43UDC +1.63FLC 99R 12/21  
 GTPI +1526G

## Springway Beautyrose-Red-ET

53573178 Excellent-94 EEEEE 2E  
 4-07 2x 365d 36290 4.1 1475 3.3 1210  
 3-06 2x 348d 30990 4.4 1361 3.4 1050  
 7-07 2x 365d 30530 3.8 1172 3.3 998  
 9-07 2x 365d 28120 4.1 1139 3.3 940  
 2-05 2x 343d 25380 4.5 1143 3.5 887  
 Life: 2255d 173950 4.1 7188 3.3 5822  
 • *Grand Champion, KY State Fair 2015*

## ROCKY-TOP ABSL BARB-RED-ET

840 3200367231  
 Born: June 4, 2019

### Ladino Park Talent-Imp-ET

AUS 930377 Excellent-90 ST'03 \*RC \*TV \*TL  
 PTA -960M -67F -24P 99R 12/21  
 PTA +.43T +.66UDC -.08FLC GTPI +1411G

### KHW Regiment Apple-Red-ET

135511521 Excellent-96 EEEEE 4E DOM \*CV  
 9-01 2x 365d 36750 4.3 1582 3.3 1211  
 Life: 2898d 240649 4.7 11394 3.7 9013

### KHW Kite Advent-Red-ET

133002953 Excellent-94 \*TV \*TL \*TD  
 PTA -1613M -42F -43P 99R 12/21  
 PTA +1.39T +.37UDC +.74FLC GTPI +1632G

### Early-Autumn Blackrose-ET

136860413 Very Good-87 VVVVV @ 2-05 \*RC  
 2-03 2x 365d 27410 4.5 1238 3.1 861

### 3rd Dam

**Scientific Beauty Rae-ET EX-90 VEEVE \*RC**  
 4-03 2x 365d 33710 4.7 1595 3.5 1179

### 4th Dam

**Scientific Jubilant Rae-ET EX-90 DOM \*RC**  
 5-11 2x 365d 38880 4.1 1608 3.6 1403  
 Life: 1394d 117590 4.0 4707 3.6 4242

### 5th Dam

**C Hanoverhill Tony Rae EX-96 3E GMD DOM 5\***  
 6-11 2x 365d 40220 4.1 1661 3.3 1331  
 Life: 2247d 166396 4.1 6904 3.4 5612  
 • *Grand Champion, Western National 1993*

### 6th Dam

**C Hanoverhill TT Roxette-ET EX-94 2E GMD**  
 10-0 3x 365d 35040 4.3 1519 3.0 1063  
 Life: 2104d 164789 4.1 6760 3.1 3587

### 7th Dam

**Mil-R-Mor Roxette EX-CAN 30\***  
 7-01 2x 365d 24531 4.7 1153  
 Life: 6 Lact 121418 4.7 5728

### 8th Dam

**C Glenridge Citation Roxy EX-97 4E GMD 6\***  
 Life: 3620d 209784 4.5 9471

### 9th Dam

**C Norton Court Model Vee EX-90 6\***  
 7-09 2x 357d 20362 3.9 793  
 Life: 4183d 218629 3.9 8581

18

MATTHEW MITCHELL  
227 HOLSTEIN DR  
LA FOLLETTE, TN 37766  
865-300-4880

**Apples Absolute-Red-ET**

139358472 Excellent-94 \*CV \*TL \*TY \*TD  
PTA -1888M -13F -24P 99R 12/21  
PTA -5.5PL 3.52SCS -5.1DPR 5.0%DCE  
PTA +2.22T +2.43UDC +1.63FLC 99R 12/21  
GTPI +1526G

**Springway Beautyrose-Red-ET**

53573178 Excellent-94 EEEEE 2E  
4-07 2x 365d 36290 4.1 1475 3.3 1210  
3-06 2x 348d 30990 4.4 1361 3.4 1050  
7-07 2x 365d 30530 3.8 1172 3.3 998  
9-07 2x 365d 28120 4.1 1139 3.3 940  
2-05 2x 343d 25380 4.5 1143 3.5 887  
Life: 2255d 173950 4.1 7188 3.3 5822  
• Grand Champion, KY State Fair 2015

**ROCKY-TOP ABS BETSY-RED-ET**

840 3200367157  
Born: June 18, 2019

**Ladino Park Talent-Imp-ET**

AUS 930377 Excellent-90 ST'03 \*RC \*TV \*TL  
PTA -960M -67F -24P 99R 12/21  
PTA +.43T +.66UDC -.08FLC GTPI +1411G

**KHW Regiment Apple-Red-ET**

135511521 Excellent-96 EEEEE 4E DOM \*CV  
9-01 2x 365d 36750 4.3 1582 3.3 1211  
Life: 2898d 240649 4.7 11394 3.7 9013

**KHW Kite Advent-Red-ET**

133002953 Excellent-94 \*TV \*TL \*TD  
PTA -1613M -42F -43P 99R 12/21  
PTA +1.39T +.37UDC +.74FLC GTPI +1632G

**Early-Autumn Blackrose-ET**

136860413 Very Good-87 VVVVV @ 2-05 \*RC  
2-03 2x 365d 27410 4.5 1238 3.1 861

*3rd Dam*

**Scientific Beauty Rae-ET** EX-90 VEEVE \*RC  
4-03 2x 365d 33710 4.7 1595 3.5 1179

*4th Dam*

**Scientific Jubilant Rae-ET** EX-90 DOM \*RC  
5-11 2x 365d 38880 4.1 1608 3.6 1403  
Life: 1394d 117590 4.0 4707 3.6 4242

*5th Dam*

**C Hanoverhill Tony Rae** EX-96 3E GMD DOM 5\*  
6-11 2x 365d 40220 4.1 1661 3.3 1331  
Life: 2247d 166396 4.1 6904 3.4 5612

• Grand Champion, Western National 1993

*6th Dam*

**C Hanoverhill TT Roxette-ET** EX-94 2E GMD  
10-0 3x 365d 35040 4.3 1519 3.0 1063  
Life: 2104d 164789 4.1 6760 3.1 3587

*7th Dam*

**Mil-R-Mor Roxette** EX-CAN 30\*

7-01 2x 365d 24531 4.7 1153  
Life: 6 Lact 121418 4.7 5728

*8th Dam*

**C Glenridge Citation Roxy** EX-97 4E GMD 6\*  
Life: 3620d 209784 4.5 9471

*9th Dam*

**C Norton Court Model Vee** EX-90 6\*

7-09 2x 357d 20362 3.9 793  
Life: 4183d 218629 3.9 8581

19

MATTHEW MITCHELL & MARY COBLE  
227 HOLSTEIN DR  
LA FOLLETTE, TN 37766  
865-300-4880

**Farnear Altitude-Red-ET**

840 3128013348 \*TY \*TV  
PTA +194M +19F +16P 94R 12/21  
PTA -2.3PL 3.01SCS -2.3DPR 3.2%DCE  
PTA +2.92T +2.32UDC +1.63FLC 91R 12/21  
GTPI +2207G

**Rocky-Top Abs Betsy-Red-ET**

840 3200367157

**WALDEN-POND ALTD BUTTER-RED**

840 3200367218  
Born: March 3, 2021

**Mr LR EDG Arvis 18196-ET**

840 3125201960 \*RC \*TY \*TV  
PTA -535M +8F +1P 97R 12/21  
PTA +1.95T +2.09UDC +1.35FLC GTPI +2157G

**Farnear TBR Aria Adler-ET**

72437575 Excellent-96 2E  
5-11 2x 365d 38770 4.1 1608 3.4 1335  
• All-American Lifetime Production Cow 2021

**Apples Absolute-Red-ET**

139358472 Excellent-94 \*CV \*TL \*TY \*TD  
PTA -1888M -13F -24P 99R 12/21  
PTA +2.22T +2.43UDC +1.63FLC GTPI +1526G

**Springway Beautyrose-Red-ET**

53573178 Excellent-94 EEEEE 2E  
4-07 2x 365d 36290 4.1 1475 3.3 1210  
3-06 2x 348d 30990 4.4 1361 3.4 1050  
7-07 2x 365d 30530 3.8 1172 3.3 998  
Life: 2255d 173950 4.1 7188 3.3 5822  
• Grand Champion, KY State Fair 2015

*3rd Dam*

**Early-Autumn Blackrose-ET** VG-87 VVVVV \*RC  
2-03 2x 365d 27410 4.5 1238 3.1 861

*4th Dam*

**Scientific Beauty Rae-ET** EX-90 VEEVE \*RC  
4-03 2x 365d 33710 4.7 1595 3.5 1179

*5th Dam*

**Scientific Jubilant Rae-ET** EX-90 DOM \*RC  
5-11 2x 365d 38880 4.1 1608 3.6 1403  
Life: 1394d 117590 4.0 4707 3.6 4242

*6th Dam*

**C Hanoverhill Tony Rae** EX-96 3E GMD DOM 5\*  
6-11 2x 365d 40220 4.1 1661 3.3 1331  
Life: 2247d 166396 4.1 6904 3.4 5612

• Grand Champion, Western National 1993

*7th Dam*

**C Hanoverhill TT Roxette-ET** EX-94 2E GMD  
10-0 3x 365d 35040 4.3 1519 3.0 1063  
Life: 2104d 164789 4.1 6760 3.1 3587

*8th Dam*

**Mil-R-Mor Roxette** EX-CAN 30\*

7-01 2x 365d 24531 4.7 1153  
Life: 6 Lact 121418 4.7 5728

*9th & 10th Dams*

**C Glenridge Citation Roxy** EX-97 4E GMD 6\*  
Life: 3620d 209784 4.5 9471

**C Norton Court Model Vee** EX-90 6\*

7-09 2x 357d 20362 3.9 793  
Life: 4183d 218629 3.9 8581

# 20

DALTON FREEMAN  
7220 STATE ROAD 106  
BREMEN, IN 46506  
574-546-3749

## ONEEDA WARRIOR DIZZY-RED

840 3220114282 99%RHA  
Born: February 18, 2021

### Mr Blondin Warrior-Red-ET

840 3139655530 99%RHA \*TY \*TV  
PTA -141M +0F -1P 85R 12/21  
PTA -1.8PL 2.86SCS -2.5DPR 3.3%DCE  
PTA +3.52T +2.22UDC +1.55FLC 80R 12/21  
GTPI +2057G

### Oneeda Armani Darva-TW

840 3146496662 Very Good-86 VVVV @ 3-08  
1-11 2x 365d 30010 3.0 908 2.9 874  
3-02 2x 315d 24470 2.8 674 2.9 717

### Dymentholm Mr App Avalanche-TW

CAN 11957107 \*RC \*CV \*TL \*TY \*TD  
PTA -94M +1F -4P 99R 12/21  
PTA +3.76T +2.85UDC +2.26FLC GTPI +2036G

### Triplecrown-JW Door Wisp-ET

840 3128860372 VG-85-CAN  
3-03 2x 365d 35587 4.0 1424 3.5 1246  
2-01 2x 310d 17068 4.0 688 3.5 589

### Mr Apples Armani-ET

68571374 Excellent-90 \*RC \*CD \*TV \*TL \*TY \*TD  
PTA -1776M +14F -14P 99R 12/21  
PTA +.98T +1.53UDC +1.50FLC GTPI +2048

### Oneeda Cupid Donna

72886542 Very Good-86 VG-MS @ 5-03 \*RC  
5-10 2x 365d 32860 3.5 1154 3.0 975  
7-01 2x 319d 32720 3.3 1083 2.9 952  
4-10 2x 308d 26240 3.7 959 3.1 812  
Life: 1981d 168100 3.4 5762 3.0 5013

# 21

LIZZY TURNER  
960 SHAKERTOWN RD  
HARRODSBURG, KY 40330  
859-748-5432

## CEDAR-CROWN JORDY ATLEE-RED

840 3244597227 99%RHA  
Born: September 9, 2021

### Cycle McGucci Jordy-Red

840 3131666411 \*CV \*TY  
PTA -1139M -29F -44P 99R 12/21  
PTA -2.5PL 2.98SCS -2.6DPR 3.4%DCE  
PTA +2.96T +2.24UDC +3.15FLC 98R 12/21  
GTPI +1691G

### OARDC G W Atwood 5512

840 3139152998 Excellent-91 EEEVE @ 4-00 \*RC  
3-09 2x 321d 25590 4.3 1099 3.4 875  
2-06 2x 314d 24270 4.0 961 3.1 764

### Mr Apples McGucci-ET

72353438 99%RHA \*RC \*TY \*TL \*TD  
PTA -1601M +10F -11P 96R 12/21  
PTA +2.65T +1.95UDC +2.89FLC GTPI +2072G

### Bryersquart GChip Jail-P-ET

71402418 Excellent-90 \*RC \*PO  
1-11 3x 341d 31581 3.9 1232 3.1 985

### Maple-Downs-I G W Atwood-ET

CAN 8956379 Excellent-90 \*TR \*TV \*TL \*TY \*TD  
PTA -344M +11F -9P 99R 12/21  
PTA +2.91T +1.91UDC +2.09FLC GTPI +1906G

### OARDC Croc 5012-Red

142054574 Excellent-91 EEEEE @ 6-07

# 22

CLYDE & CHARLENE MCWILLIAMS  
288 SECHLER RD  
SOMERSET, PA 15501  
814-442-4327

## MCWILLIAMS ADMIRAL TORI

840 3247317292 99%RHA  
Born: September 5, 2021

### Luck-E Undenied Admiral

840 3141305497 \*TY \*TV  
PTA +486M +7F -2P 82R 12/21  
PTA +.4PL 2.95SCS -2.8DPR 2.9%DCE  
PTA +3.61T +2.04UDC +.59FLC 80R 12/21  
GTPI +2102G

### McWilliams Sidekick Trick

840 3202765582 Very Good-86 VG-MS @ 2-07

3rd Dam

McWilliams Tucker Twinkle VG-85

### Walnutlawn Sidekick

CAN 12508113 VG-85-CAN \*TY \*TV A2/A2  
PTA -1030M +13F -9P 96R 12/21  
PTA +2.92T +2.48UDC +.96FLC GTPI +2227G

### McWilliams Air Tammy

840 3009902879 Very Good-87 VG-MS @ 4-04  
2-11 2x 365d 26130 3.6 949 2.9 747  
4-01 2x 221d 20940 3.8 801 2.8 580  
1-11 2x 280d 14670 3.8 564 2.9 432



**MS SOUTHERN-HILLS TREASURE VG-87**  
**SAME MATERNAL FAMILY AS LOT 23**

*Nom Junior All-American Milking Yearling 2021*

**23**

LARRY GRIFFITH  
 12146 DAIRY LN  
 BETHEL, OH 45106  
 513-543-5894

**SOUTHERN-HILLS 1CRUSH TRUTH**

840 3216576667 99%RHA  
 Born: March 2, 2020

Fresh: March, 2022

**23 1/2**

**FEMALE**

Born: March, 2022  
 Sire: Lindenright Moovin-ET

**Eclipse Firstcrush-ET**

AUS 2001237 \*TY \*TV  
 PTA -302M -31F -8P 81R 12/21  
 PTA +2.1PL 2.60SCS +1.0DPR 2.6%DCE  
 PTA +2.84T +2.34UDC +1.06FLC 79R 12/21  
 GTPI +2112G

**Southern-Hills DB Trilogy**

144370072 Very Good-85 VG-MS @ 3-11  
 3-05 2x 330d 24160 4.0 961 2.9 703  
 2-05 2x 271d 16980 4.7 796 3.2 540

*3rd Dam*

**Southern-Hills Atwd Tauren VG-87 VG-MS**  
 4-09 2x 335d 25370 4.0 1027 2.9 745

*4th Dam*

**Southern-Hills Dundee Tara VG-87 VG-MS**  
 3-01 3x 327d 26810 4.1 1087 2.9 790

**Mr D Apple Diamondback**

840 3013721049 Excellent-93 \*RC \*TV \*TL \*TY  
 PTA -400M -25F -1P 99R 12/21  
 PTA +2.44T +1.95UDC +1.43FLC GTPI +1873G

**Southern-Hills WF Trina**

142481596 Excellent-90 EX-MS @ 6-04  
 4-03 2x 308d 27320 4.4 1211 3.1 846  
 3-01 2x 357d 27070 4.4 1192 3.1 838  
 5-03 2x 365d 23690 4.4 1048 3.1 740  
 Life: 1450d 103710 4.4 4564 3.1 3228

**24**

MCKENZIE PEDIGO & MAKENSEY EDWARDS  
 10600 OLD BOWLING GREEN RD  
 SMITHS GROVE, KY 42171  
 270-646-0697

**KINSLAWS ANALYST BLK INK**

840 3221230705 99%RHA \*RC  
 Born: March 3, 2021

**Mr Affection Analyst-Red-ET**

840 3136496608 \*TY \*TV  
 PTA -84M -28F -23P 81R 12/21  
 PTA -.6PL 2.87SCS -1.4DPR 2.4%DCE  
 PTA +2.80T +2.49UDC +1.90FLC 81R 12/21  
 GTPI +1902G

**Ms Kinslows Tatoo 704**

840 3207906641 Very Good-87 VVVVV @ 2-01  
 1-09 3x 338d 22670 5.4 1223 3.1 710

**Riverdown Unstopabull-Red**

CAN 11801450 \*TY \*TV  
 PTA -435M -26F -24P 95R 12/21  
 PTA +2.80T +2.31UDC +1.90FLC GTPI +2007G

**Milksource Byway Affection**

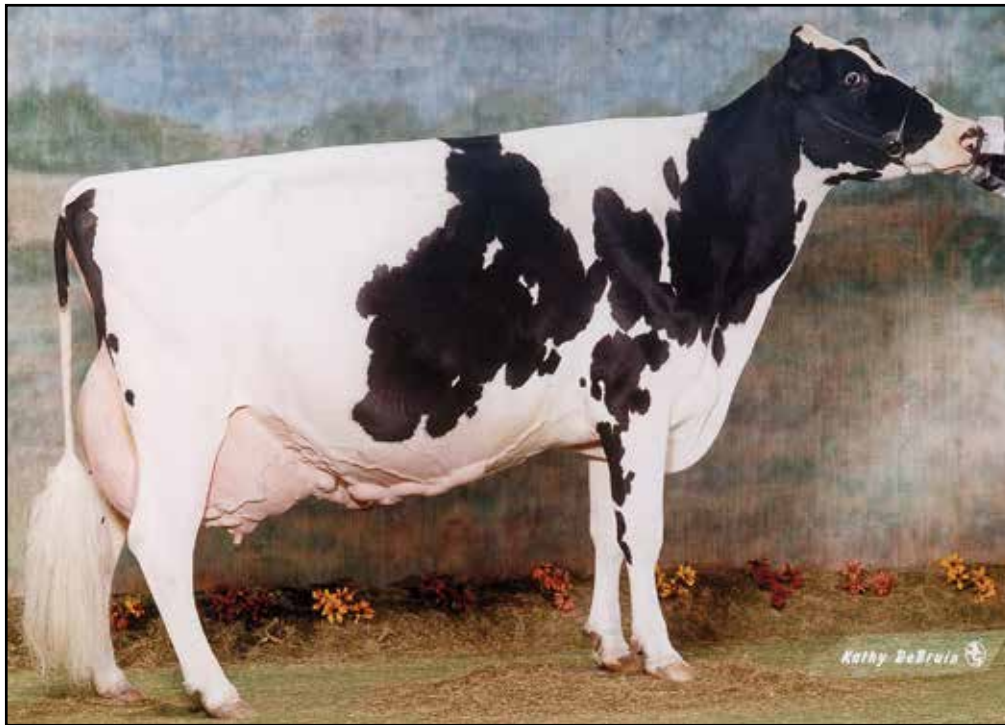
840 3138524450 Excellent-94 \*RC  
 4-05 2x 266d 36050 4.5 1619 2.7 990  
 2-11 2x 305d 27680 4.1 1128 3.1 857

**Duckett Crush Tatoo-ET**

840 3137052923 \*TY \*TV  
 PTA -621M -38F -3P 99R 12/21  
 PTA +2.95T +2.40UDC +.97FLC GTPI +2037G

**Bridges Adonis 624**

840 3148509420 Good Plus-80 @ 2-03 \*RC  
 1-11 3x 264d 14310 3.8 544 3.3 4779



**MAPLEDEUL MYSTIC JAZZY-ET EX-95 3E**  
**4TH DAM OF LOT 25**  
*Grand Champion, Mid-East Fall National 2002*

**25**

LIZZY TURNER  
 960 SHAKERTOWN RD  
 HARRODSBURG, KY 40330  
 859-748-5432

**Mr D Apple Diamondback**

840 3013721049 Excellent-93 \*RC \*TV \*TL \*TY  
 PTA -400M -25F -1P 99R 12/21  
 PTA -.1PL 3.12SCS -3.0DPR 2.9%DCE  
 PTA +2.44T +1.95UDC +1.43FLC 99R 12/21  
 GTPI +1873G

**Silk-Wood Nollie Mae-Red**

143249096 Very Good-88 EX-MS @ 4-03  
 3-09 3x 305d 28480 3.8 1084 3.1 875  
 2-04 3x 305d 27190 3.9 1057 3.0 829

**SILK-WOOD ALLURE**

840 3133503828 Very Good-86 VG-MS @ 4-03  
 Born: April 15, 2017  
 2-01 2x 305d 18090 4.0 730 3.2 585

**Val-Bisson Doorman-ET**

CAN 107281711 EX-90-CAN ST'16 \*TV \*TY  
 PTA -446M +14F +9P 99R 12/21  
 PTA +2.44T +1.58UDC +.67FLC GTPI +2164G

**Ms Delicious Apple-Red-ET**

139236776 Excellent-94 2E  
 7-02 2x 365d 46510 4.0 1844 3.3 1512  
 • Reserve All-American R&W 125,000 Lb Cow 2015

**Lookout P Redburst-Red-ET**

CAN 106030980 \*TV \*TL \*TY \*TD  
 PTA -191M -11F +2P 99R 12/21  
 PTA +1.35T +1.26UDC +.90FLC GTPI +2150G

**Silk-Wood Calamity Jane-Red**

140492329 Very Good-87 VG-MS @ 4-02  
 3-11 3x 316d 24530 3.1 763 3.3 809  
 2-10 2x 298d 15750 3.7 587 3.2 506

**26**

**CEDAR-CROWN FABAIN ALLEY**

840 3234513487 Born: June 3, 2021 \*RC  
 Sire: Rocky-Run Jacot Fabian-Red  
 Dam: Silk-Wood Allure VG-86 VG-MS

*3rd Dam*

**Ms Silkwood Dplex Jasmin-ET VG-87**  
 3-09 3x 365d 38590 4.5 1718 3.2 1220  
 Life: 2141d 185110 4.3 7946 3.3 6079

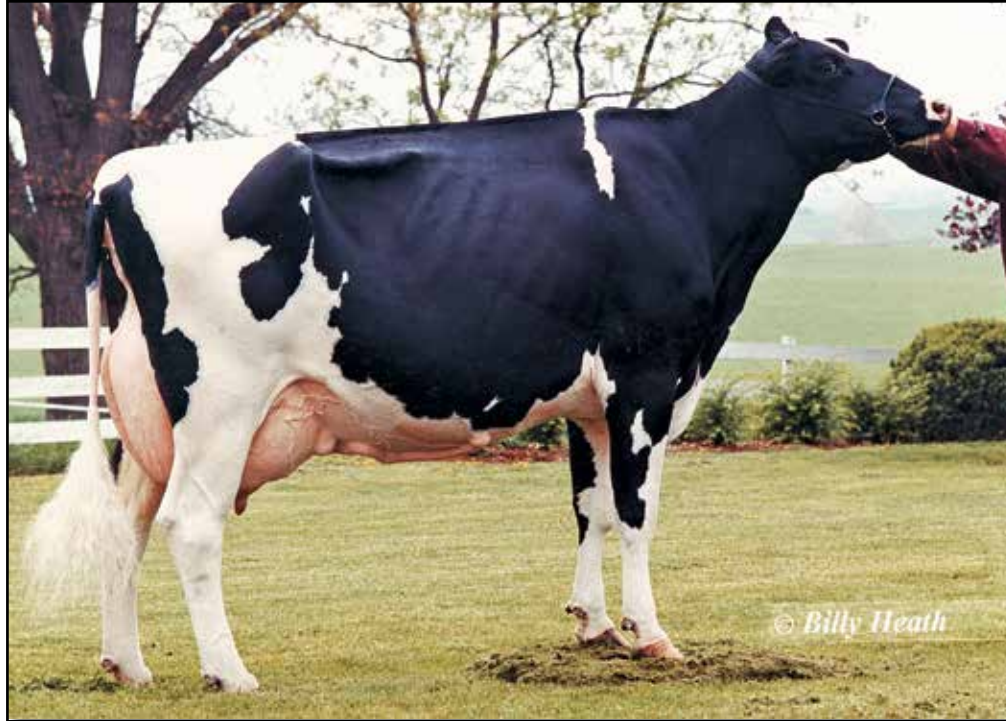
*4th Dam*

**Mapledeul Mystic Jazzy-ET EX-95 EEEEE 3E**  
 5-05 2x 365d 30820 4.3 1310 3.3 1016  
 • Grand Champion, Mid-E Fall Nat'l 2002  
 • Res Grand Champion, IN State Fair 1997  
 • Res Grand Champion, KY State Show 1997

*5th thru 8th Dams*

**Mapledeul Jethro Julieann EX-94 EEEEE 3E 2\***  
 10-4 2x 365d 30850 3.8 1181 3.3 1022  
 Life: 2887d 185846 4.1 7534 3.3 6220  
**Mapledeul Cas Jennifer VG-86 VG-MS-CAN**  
 5-01 2x 350d 23358 4.7 1102 3.5 825  
 Life: 9 Lact 185288 4.5 8430 3.5 6537  
*Next two dams Very Good!*





GLORYLAND LANA RAE EX-94 2E  
4TH DAM OF LOT 27

**27**

LIZZY TURNER  
960 SHAKERTOWN RD  
HARRODSBURG, KY 40330  
859-748-5432

**Raspberry Revere-Red-ET**

840 3204145346 99%RHA \*TY \*TV A1A2 BE  
PTA +943M +40F +34P 75R 12/21  
PTA +2.7PL 2.94SCS -.1DPR 5.3%DCE  
PTA +3.18T +2.92UDC +1.87FLC 72R 12/21  
GTPI +2332G

**Cedar-Crown Armani Lucy-ET**

144962839

**FEMALE**

Registration pending  
Born: September, 2021

**Riverdown Unstopabull-Red**

CAN 11801450 \*TY \*TV  
PTA -435M -26F -24P 95R 12/21  
PTA +2.80T +2.31UDC +1.90FLC GTPI +2007G

**GDR-Kings Bailey 50878-ET**

840 3140618338 Very Good-86 \*RC

**Mr Apples Armani-ET**

68571374 Excellent-90 \*RC \*CD \*TY \*TV  
PTA -1776M +14F -14P 99R 12/21  
PTA +.98T +1.53UDC +1.50FLC GTPI +2048G

**Long-Haven Advent Liza-ET**

139894480 Very Good-87 VEVVV @ 3-10 \*RC  
2-03 2x 365d 21290 2.6 556 2.9 625

*3rd Dam*

**Gloryland Lena Rae-ET** EX-91 EEEEE 3E  
6-07 2x 305d 31670 4.6 1468 3.4 1117

*4th Dam*

**Gloryland Lana Rae** EX-94 EEEEE 2E DOM 1\*  
5-06 2x 365d 29011 4.0 1159 3.4 993  
Life: 2113d 129620 3.7 4768 3.5 4587

• Five EX daughters from EX-92 to EX-95

*5th Dam*

**Scientific Liza Rae-ET** EX-90 EEEEE  
4-09 2x 365d 26710 2.9 786 3.3 878

*6th Dam*

**C Hanoverhill Tony Rae** EX-96 3E GMD DOM 5\*  
6-11 2x 365d 40220 4.1 1661 3.3 1331  
Life: 2247d 166396 4.1 6904 3.4 5612

*7th Dam*

**C Hanoverhill TT Roxette-ET** EX-94 2E GMD  
10-0 3x 365d 35040 4.3 1519 3.0 1063  
Life: 2104d 164789 4.1 6760 3.1 3587

*8th thru 10th Dams*

**Mil-R-Mor Roxette** EX-CAN 30\*  
7-01 2x 365d 24531 4.7 1153

Life: 6 Lacs 121418 4.7 5728

**C Glenridge Citation Roxy** EX-97 4E GMD 6\*

10-1 2x 365d 25280 4.2 1061

Life: 3620d 209784 4.5 9471

**C Norton Court Model Vee** EX-90 6\*

7-09 2x 357d 20362 3.9 793

Life: 4183d 218629 3.9 8581



**GREENLEA ADVENT LETA-RED EX-94**  
**MATERNAL SISTER TO 3RD DAM OF LOT 28**  
*Reserve All-American R&W 4-Year-Old 2011*

**28**

**STARLIGHT GENETICS**  
**NICK RANDLE**  
 5880 S STATE RD 267  
 LEBANON, PA 46052  
 317-354-6044

**Cycle McGucci Jordy-Red**

840 3131666411 \*CV \*TY  
 PTA -1139M -29F -44P 99R 12/21  
 PTA -2.5PL 2.98SCS -2.6DPR 3.4%DCE  
 PTA +2.96T +2.24UDC +3.15FLC 98R 12/21  
 GTPI +1691G

**Star-Gen Unstbul Legend-Red**

840 3151199891 Excellent-90 EEVVE @ 3-05

**STAR-GEN JORDY LEVEL UP-RED**

840 3238193102 99%RHA  
 Born: September 14, 2021

**Mr Apples McGucci-ET**

72353438 99%RHA \*RC \*TY \*TL \*TD  
 PTA -1601M +10F -11P 96R 12/21  
 PTA +2.65T +1.95UDC +2.89FLC GTPI +2072G

**Bryersquart GChip Jail-P-ET**

71402418 Excellent-90 \*RC \*PO  
 1-11 3x 341d 31581 3.9 1232 3.1 985

**Riverdown Unstopabull-Red**

CAN 11801450 \*TY \*TV  
 PTA -435M -26F -24P 95R 12/21  
 PTA +2.80T +2.31UDC +1.90FLC GTPI +2007G

**N-Randle Absolut Legacy-Red**

840 3013267147 Excellent-91 EEEVE @ 5-04

*3rd Dam*

**Greenlea Secure Lib-Red-ETS VG-87 VG-MS**  
 5-10 2x 305d 35180 3.6 1283 3.2 1109  
 Life: 1890d 160680 4.2 6811 3.2 5122

*Maternal sister to*

**Greenlea Advent Leta-Red EX-94 EEVVE**  
 • Reserve All-American R&W 4-Year-Old 2011  
 • Reserve All-American R&W Jr 2-Year-Old 2009

*4th Dam*

**Erbacres Rubens Libby-Red EX-94 EEEEE**  
 5-00 2x 365d 31990 3.5 1121 3.5 1111  
 • Res All-American R&W 5-Year-Old 2007  
 • Supreme Champion, MN State Fair 2007  
 • All-American R&W Junior 3-Year-Old 2005

*5th Dam*

**Erbacres R M Lucky Lady V VG-87 VG-MS \*RC**  
 5-03 2x 359d 31490 3.4 1069 3.1 963  
 Life: 1777d 137240 3.5 4761 3.1 4217

*6th Dam*

**Erbacres Encore Liberty**

*7th Dam*

**Erbacres Lavina EX-90 2E**  
 6-01 2x 365d 38680 3.7 1418 2.9 1136  
 Life: 1786d 142380 3.6 5114 3.0 4231Z

*8th Dam*

**Erbacres Tab Laughter EX-94 3E GMD**  
 10-2 2x 365d 36440 4.1 1478 3.1 1126  
 Life: 2686d 223610 4.0 8964 3.2 7170  
 • 1st 125,000 Lb Cow, Midwest Sprng Nat'l '97



**T-TRIPLE-T GOLD PRIZE EX-94 2E**  
**3RD DAM OF LOT 29**  
*All-American 4-Year-Old 2012*



**T-TRIPLE-T DUNDEE PAIGE EX-96 3E**  
**4TH DAM OF LOT 29**  
*HHM All-American 125,000 Lb Cow 2013*

# 29

**SAM MCWILLIAMS**  
 288 SECHLER RD  
 SOMERSET, PA 15501  
 814-445-6231

**Lindenright Moovin-ET**

CAN 12873743 \*RC \*TY \*TV  
 PTA -306M -5F -4P 83R 12/21  
 PTA -.6PL 2.99SCS -2.7DPR 3.0%DCE  
 PTA +3.65T +3.01UDC +2.31FLC 81R 12/21  
 GTPI +2095G

**Leaseway Altitude Phoebee**

840 3213249775 Good Plus-82 @ 2-03 \*RC

## LEASEWAY MOOVIN PEYTON

840 3247317304 99%RHA  
 Born: December 17, 2021

**Dymentholm Mr App Avalanche-TW**

CAN 11957107 \*RC \*CV \*TL \*TY \*TD  
 PTA -.94M +1F -4P 99R 12/21  
 PTA +3.76T +2.85UDC +2.26FLC GTPI +2036G

**Lindenright Bradnick Moovin On**

CAN 11470454 VG-87-CAN 27\*  
 4-06 2x 365d 35875 5.3 1900 3.4 1217  
 2-00 2x 365d 30840 5.0 1556 3.3 1016

**Farnear Altitude-Red-ET**

840 3128013348 \*TY \*TV  
 PTA +194M +19F +16P 94R 12/21  
 PTA +2.92T +2.32UDC +1.63FLC GTPI +2207G

**Entourage-LC Poppy Shock-ET**

142755215 Excellent-92 EEEEE 2E  
 6-01 2x 348d 25410 3.6 913 3.0 775  
 7-03 2x 309d 24630 3.5 863 3.0 750  
 4-09 2x 365d 20300 3.5 713 3.1 629  
 Life: 1908d 121410 3.7 4511 3.1 3742

*3rd Dam*

**T-Triple-T Gold Prize EX-94 EEEEE 2E**

4-01 2x 365d 30330 4.3 1311 3.2 976  
 • Nominated All-American 5-Year-Old 2013  
 • All-American 4-Year-Old 2012  
 • All-American Winter Yearling 2009  
 • All-Canadian Winter Yearling 2009  
 • Junior Champion, International Show 2009  
 • Junior Champion, Royal Winter Fair 2009

*4th Dam*

**T-Triple-T Dundee Paige EX-96 EEEEE 3E**

7-09 2x 365d 33420 4.6 1551 3.2 1080  
 Life: 2129d 145510 4.5 6620 3.4 4974  
 • HHM All-American 125,000 Lb Cow 2013  
 • Nom All-American Aged Cow 2011  
 • Grand Champion, Mid-East Summer Nat'l 2011

*5th Dam*

**T-Triple-T Linjet Phoebe EX-91 EX-MS 2E**

5-06 2x 305d 29200 3.9 1136 2.8 817  
 Life: 1752d 132560 3.9 5193 2.9 3805

*6th Dam*

**Hesters Mark Prudence EX-95 4E GMD DOM**

7-06 2x 365d 49771 3.8 1885 2.8 1396  
 Life: 3183d 301342 3.4 10318 3.1 9290  
 • 1st 125,000 Lb Cow, Mid-E Sprg National 1996

*7th Dam*

**Chel-Brook Chairman Peach VG-87 EX-MS DOM**

4-07 2x 305d 25790 3.4 874 2.9 744



**GREENLEA ADVENT LETA-RED EX-94**  
**5TH DAM OF LOT 30**  
*Reserve All-American R&W 4-Year-Old 2011*

# 30

STAN-MAR-DALE, EXPRESS & MIKE LANDERS  
5077 S KENNARD RD  
URBANA, OH 43078  
937-653-7096

### Express-SMD Masterpiece

145173605 \*RC  
PTA -395M +1F -3P 34R 12/21  
PTA -.6PL 3.16SCS -1.5DPR 3.1%DCE  
PTA +1.80T +1.21UDC +.76FLC 30R 12/21  
PTPI +1960

### Ms Express-SMD Fizzle

144860061 Good Plus-82 @ 2-02

### MS EXPRESS-SMD FLICKER

145275147 99%RHA  
Born: June 6, 2021

### Bert-Mar Ammo Archer-ET

840 3141033545 \*RC \*PO  
PTA -108M +11F -6P 86R 12/21  
PTA +2.20T +1.65UDC +.34FLC GTPI +1978G

### W-Brook Db Milly-Red

144398654 Excellent-90  
2-07 2x 365d 24740 4.2 1048 3.4 841

### Siemres Oct Apple-Crisp-ET

840 3134506808 \*RC \*TY \*TV  
PTA +147M +9F -5P 98R 12/21  
PTA +2.02T +1.50UDC +1.34FLC GTPI +2014G

### Ms Express-SMD Flirt

143822503 Very Good-86 VVVVV @ 3-09 \*RC  
3-04 2x 365d 20480 4.7 965 3.2 659  
1-11 2x 365d 18120 5.4 979 3.1 570

#### 3rd Dam

**Mt-Ararat Lauthority Fay-ET VG-85**  
2-04 2x 365d 21310 4.7 1006 3.0 637

#### 4th Dam

**Duckett-SA A Favor-ET EX-90 EEVVE**  
3-08 2x 305d 27710 3.9 1080 2.8 781

#### 5th Dam

**Harvue Roy Frosty EX-97 EEEEE 3E GMD**  
5-07 2x 365d 44710 5.0 2222 3.0 1332  
Life: 2285d 217250 4.8 10507 3.2 6856  
• *Supreme Champion WDE 2009 & 2010*  
• *All-American Aged Cow 2010*  
• *Unanimous All-American 5-Year-Old 2009*

#### 6th Dam

**Harvue Sam Heidi EX-93 EEEEE 3E DOM**  
5-07 2x 365d 34700 4.6 1586 3.2 1115  
Life: 2480d 183870 4.5 8335 3.4 6312

#### 7th Dam

**Harvue Skybuck Harmony VG-88 EEVVV**  
2-00 2x 263d 17520 4.4 775 3.4 600

#### 8th thru 10th Dams

**Harvue Melvin Hallie VG-86**  
4-08 2x 365d 33690 4.4 1490 3.2 1093  
**Harvue Bell Harrison VG-86 GMD DOM**  
10-4 2x 365d 38040 3.4 1301 3.0 1124  
Life: 3171d 264120 3.5 9273 3.1 8221  
**Harvue Libido Harrison VG-87**  
6-00 2x 365d 22360 3.8 843



**STARMARK AD HOTSTUFF-RED EX-94 2E**  
**3RD DAM OF LOT 31**  
*All-American R&W 5-Year-Old 2012*

**31**

**SAM MCWILLIAMS**  
 288 SECHLER RD  
 SOMERSET, PA 15501  
 814-445-6231

**Farnear Altitude-Red-ET**

840 3128013348 \*TY \*TV  
 PTA +194M +19F +16P 94R 12/21  
 PTA -2.3PL 3.01SCS -2.3DPR 3.2%DCE  
 PTA +2.92T +2.32UDC +1.63FLC 91R 12/21  
 GTPI +2207G

**Confidence Hotline Blng-Red**

840 3132554547 Good Plus-84 @ 2-08

**MCWILLIAMS ALT BLITZ-RED**

840 3227052318 99%RHA  
 Born: June 5, 2021 Herd ID: 5737

**Mr LR EDG Arvis 18196-ET**

840 3125201960 \*RC \*TY \*TV  
 PTA -535M +8F +1P 97R 12/21  
 PTA +1.95T +2.09UDC +1.35FLC GTPI +2157G

**Farnear TBR Aria Adler-ET**

72437575 Excellent-96 2E  
 5-11 2x 365d 38770 4.1 1608 3.4 1335  
 • All-American Lifetime Production Cow 2021

**Cycle McGucci Jordy-Red**

840 3131666411 \*CV \*TY  
 PTA -1139M -29F -44P 99R 12/21  
 PTA +2.96T +2.24UDC +3.15FLC GTPI +1691G

**Ms Awesomely Hot-Red-ET**

840 3136496567 Very Good-88 VVEVE @ 3-07  
 3-06 2x 198d 13040 5.0 649 3.2 421

*3rd Dam*

**Starmark Ad Hotstuff-Red-ET EX-94 EEEEE 2E**

5-00 2x 365d 33690 5.6 1896 3.1 1051  
 Life: 1746d 125150 5.1 6366 3.5 4377

- All-American R&W 5-Year-Old 2012
- 1st 5-Year-Old & Reserve Grand Champion, International R&W Show 2012
- Res All-American R&W Junior 3-Year-Old 2010

*4th Dam*

**Scientific SS Hottie-Red-ET EX-93 EEEEE 2E**

4-09 2x 365d 33120 4.5 1475 3.5 1159

- Nom All-American R&W Jr 3-Year-Old 2008

*5th Dam*

**Scientific Raes Hope-Red-ET EX-92**

4-03 2x 365d 36894 3.5 1302 3.0 1101

Life: 1386d 103070 3.5 3655 3.1 3215

*6th Dam*

**Scientific Jubilant Rae-ET EX-90 DOM \*RC**

5-11 2x 365d 38880 4.1 1608 3.6 1403

Life: 1394d 117590 4.0 4707 3.6 4242

*6th Dam*

**C Hanoverhill Tony Rae EX-96 3E GMD DOM 5\***

6-11 2x 365d 40220 4.1 1661 3.3 1331

Life: 2247d 166396 4.1 6904 3.4 5612

- Gr Champion Western National 1993

**C Hanoverhill TT Roxette-ET EX-94 2E GMD**

10-0 3x 365d 35040 4.3 1519 3.0 1063

Life: 2104d 164789 4.1 6760 3.1 3587

*Next three dams EX including EX-97 Roxy!*



**SILVERMINE ADV TALLY-RED-ET EX-93 2E**  
3RD DAM OF LOT 32

*HHM All-American R&W 4-Year-Old Cow 2011*



**MILKSOURCE DTY TAMMY-RED EX-93**  
4TH DAM OF LOT 32

*Reserve All-Canadian R&W Junior Cow 2015*

# 32

KADYN GIBSON  
4486 JACKSON RD  
EMINENCE, KY 40019  
502-379-2757

## MS KY-BLUE UNIX TARA

144862072  
Born: June 5, 2019

### Luck-E Awesome-Red

72186769 \*CV\*TV\*TY\*TL\*TD  
PTA -1697M -59F -55P 99R 12/21  
PTA -1.2PL 3.17SCS -2.2DPR 3.8%DCE  
PTA +2.03T +2.78UDC +.75FLC 99R 12/21  
GTPI +1415G

### Ms KY-Blue Unix Tara

144862072 \*RC

### Apples Absolute-Red-ET

139358472 Excellent-94 \*CV\*TL\*TY\*TD  
PTA -1888M -13F -24P 99R 12/21  
PTA +2.22T +2.43UDC +1.63FLC GTPI +1526G

### Luck-E Advent Asia-ET

63437444 Excellent-94 3E \*RC  
6-02 2x 365d 40150 4.9 1984 3.3 1337  
Life: 1282d 113730 5.1 5814 3.4 3860

### Croteau Lesperron Unix-ET

CAN 107567492 EX-96-CAN ST'17 \*TY\*TV  
PTA +536M +24F +11P 99R 12/21  
PTA +2.39T +2.40UDC +.15FLC GTPI +2351G

### Milksource At Target-Red-ET

840 3130676048 Very Good-88 VEEVV @ 3-07  
2-03 2x 353d 21480 2.9 629 3.0 652  
3-03 2x 365d 15210 2.8 426 3.3 505

*Maternal sisters to At Target-Red*

### Milksource Dty Tanya-Red EX-94 EEEEE 2E

3-03 2x 365d 32020 5.2 1672 3.6 1168

• *Nom All-American R&W 4-Year-Old 2016*

### Milksource Dty Tammy-Red EX-93 EEEEE

• *Reserve All-Canadian R&W Junior Cow 2015*

*3rd Dam*

### Silvermine Adv Tally-Red-ET EX-93 EX-MS 2E

5-05 2x 365d 38700 4.2 1621 3.2 1254

Life: 1266d 108890 4.3 4730 3.3 3564

• *HHM All-American R&W 4-Year-Old Cow 2011*

• *Nom All-American R&W Sr 3-Year-Old Cow 2010*

• *All-American R&W Sr 2-Year-Old Cow 2009*

• *All-Canadian R&W Junior Cow 2009*

*4th Dam*

### Spungold R-M Tammy-Red-ET EX-93 2E GMD

3-04 2x 365d 42690 3.4 1446 2.9 1235

Life: 1262d 135110 3.3 4459 2.9 3951

*Maternal sister to*

### Spungold Tahoe-Red EX-93 2E

3-03 2x 365d 34670 4.1 1420 3.2 1107

• *Grand Champion, Internat'l R&W Show 2002*

• *All-American R&W Senior 3-Year-Old 2002*

• *All-American R&W Senior 2-Year-Old 2001*

*5th Dam*

### Medovue Leader Lottie-Red VG-85 GMD

4-06 2x 365d 37670 3.9 1471 2.9 1106

Life: 1355d 114310 3.8 4384 3.2 3626



**BOSSIR SHAQ ROBIN-RED EX-90**  
3RD DAM OF LOT 33



**BUCKHORN-ACRES RITA-RED EX-94 2E**  
5TH DAM OF LOT 33

# 33

CHASE & COOPER CALL AND  
LYDIA & KORBIN KAVERMAN  
C/O ALFRED CALL  
11050 HUNTINGTON RD  
SOUTH CHARLESSTON, OH 45368  
937-462-7285

**StGen Nashville 85859-ET**  
840 3146618921 96%RHA  
PTA +1877M +74F +67P 80R 12/21  
PTA +5.4PL 2.79SCS -1.2DPR 1.7%DCE  
PTA +.65T +.82UDC +.35FLC 78R 12/21  
GTPI +2799G

**Dandy-Lea Awesome In-Red**  
143748465  
2-08 2x 305d 180990 5.0 899 3.0 534

## CALL-DEL NVILLE ROCKIN

145347549 98%RHA \*RC  
Born: December 3, 2021 Herd ID: 12121

**Mr Dynasty Nashville-ET**  
840 3132353072 \*TR \*TY \*TV  
PTA +1599M +79F +65P 95R 12/21  
PTA +.18T +.07UDC +.77FLC GTPI +2828G

**Hollerman Jedi 958Y-ET**  
840 3139800284 \*TR \*TP

**Luck-E Awesome-Red**  
72186769 \*CV \*TV \*TY \*TL \*TD  
PTA -1697M -59F -55P 99R 12/21  
PTA +2.03T +2.78UDC +.75FLC GTPI +1415G

**Bossir Magent Royale-Red-TW**  
142735707 Good Plus-82 @ 3-05

### 3rd Dam

**Bossir Shaq Robin-Red-ET EX-90 EEVEV**  
3-02 3x 343d 34610 4.7 1635 3.6 1247

### 4th Dam

**Square-Acres Rosane-Red-ET EX-93 EEEVE**  
4-00 3x 305d 29540 5.6 1667 3.8 1127

### 5th Dam

**Buckhorn-Acres Rita-Red-ET EX-94 EEEEE 2E**  
3-08 3x 365d 33000 4.0 1315 3.7 1216  
Life: 1619d 127480 4.2 5335 3.5 2679

### 6th Dam

**Buckhorn-Acres Rita-Red-ET EX-94 EEEEE 2E**  
3-08 2x 365d 33000 4.0 1315 3.7 1216  
Life: 1763d 127480 4.2 5335 3.5 2679

### 7th thru 10th Dams

**Sellcrest T Roseanne-Red-ET EX-93 2E GMD DOM**  
4-01 2x 365d 28920 4.9 1427 3.8 1112  
Life: 1973d 115040 4.7 5401 3.8 4350

**Clover-Mist Regina-Red-ET EX-92 EEEEE 2E DOM**  
6-01 2x 365d 32320 4.2 1359 3.6 1157  
Life: 1598d 128340 4.6 5946 3.6 4599

**Augys Rose Regal-Red-ET EX-90 VVEE 2E**  
4-07 2x 351d 23550 4.9 1157 3.4 791  
Life: 1344d 102830 4.9 5022 3.3 3432

**D-R-A August EX-96 4E DOM**  
8-05 3x 365d 27460 4.3 1187 3.2 871  
Life: 3443d 190200 4.4 8281 3.5 4818

• Nominated All-American Aged Cow 1986  
Next two dams Excellent!



**KY-BLUE GW DEBBIE-ET EX-94**  
**MATERNAL SISTER TO 2ND DAM OF LOT 34**  
*All-American Summer Yearling 2009*



**BVK OUTSIDE DIANA-ET EX-92 2E**  
**3RD DAM OF LOT 34**

# 34

ISABELLA HAYSE  
 2700 ANDERSON LN  
 SHELBYVILLE, KY 40065  
 502-671-9829

## KY-BLUE DIXIE DIESEL

840 3209716450 99%RHA \*RC  
 Born: December 6, 2019

Due: April 27, 2022 to  
 Mr Chassity Gold Chip-ET (sexed)

*Maternal sisters to Atwood Dime*

**KY-Blue GW Debbie-ET EX-94 EEEEE**  
 9-08 2x 305d 41173 4.8 1991 3.1 1271  
 • *All-American Summer Yearling 2009*

**KY-Blue GW Destiny-ET EX-91**  
 1-10 2x 365d 26720 3.5 947 3.0 789  
 • *Int Champion, Mid-East Fall National 2011*

## Cycle McGucci Jordy-Red

840 3131666411 \*CV \*TY  
 PTA -1139M -29F -44P 99R 12/21  
 PTA -2.5PL 2.98SCS -2.6DPR 3.4%DCE  
 PTA +2.96T +2.24UDC +3.15FLC 98R 12/21  
 GTPI +1691G

## KY-Blue Control Dia

144972779 Very Good-85 @ 3-03  
 3-04 2x 342d 20130 3.0 611 2.7 537  
 2-03 2x 365d 16520 3.8 620 3.0 500

## Mr Apples McGucci-ET

72353438 99%RHA \*RC \*TY \*TL \*TD  
 PTA -1601M +10F -11P 96R 12/21  
 PTA +2.65T +1.95UDC +2.89FLC GTPI +2072G  
**Bryersquart GChip Jail-P-ET**  
 71402418 Excellent-90 \*RC \*PO  
 1-11 3x 341d 31581 3.9 1232 3.1 985

## JK Eder-I Control-ET

CAN 11278908 VG-88-CAN ST'16 \*TY \*TV  
 PTA +208M -24F +15P 97R 12/21  
 PTA +1.20T +.53UDC +.27FLC GTPI +1980G

## KY-Blue Atwood Dime-ET

143868570 Excellent-91 EEVVE @ 4-05  
 3-06 2x 365d 26296 3.5 921 3.0 774  
 2-00 2x 365d 23924 3.6 857 2.8 675

*3rd Dam*

**BVK Outside Diana-ET EX-92 EEEEE 2E DOM**  
 5-01 2x 365d 31920 3.5 1129 3.2 1034  
 Life: 1544d 107400 3.5 3708 3.1 3348

*4th Dam*

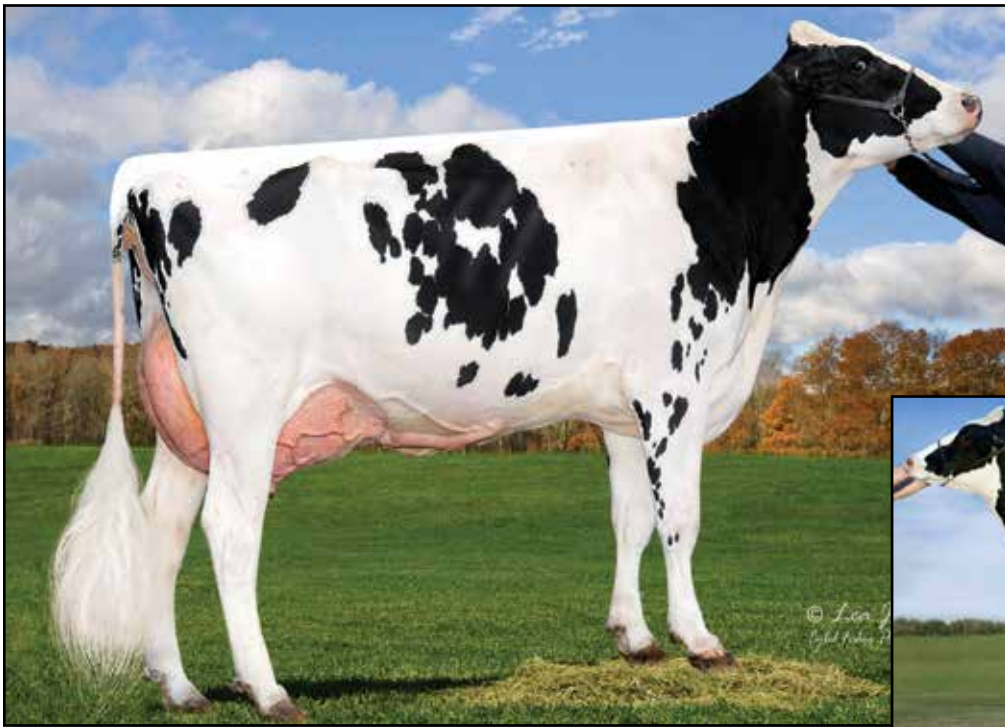
**Ms Kingstead Chief Adeen-ET EX-94 2E DOM 11\***  
 3-05 2x 310d 30180 4.0 1209 3.6 1077  
 Life: 1382d 100760 4.0 4010 3.6 3649

• *Nom All-American Junior 3-Year-Old 2000*  
 • *Nom All-American 4-Year-Old 2001*  
 • *Member All-American Produce '00 & '01*

*5th Dam*

**C Aitkenbrae Starbuck Ada EX-94 2E DOM 4\***  
 13-8 2x 365d 25150 3.0 764 3.4 843  
 Life: 6 Lact 137732 3.4 4749 3.4 4647  
 • *All-American Produce of Dam 2000, 2001*  
 • *All-American 3-Year-Old 1990*





**FARNEAR-TBR-BH VICKIE-ET EX-94 2E**  
3RD DAM OF LOT 35



**VISION-GEN SH SHO A12037-ET**  
4TH DAM OF LOT 35

**35**

**JOHNATHAN HEINSOHN**  
34695 KIRKLAND RD  
KIRKLAND, IL 60146  
815-979-5314

**Mr Blondin Warrior-Red-ET**

840 3139655530 99%RHA \*TY\*TV  
PTA -141M +0F -1P 85R 12/21  
PTA -1.8PL 2.86SCS -2.5DPR 3.3%DCE  
PTA +3.52T +2.22UDC +1.55FLC 80R 12/21  
GTPI +2057G

**Redcarpet Denver Dazzlyn-ET**

840 3205645890 Good Plus-82 @ 2-01

**REDCARPET WAR EAGLE**

840 3224513163 99%RHA \*RC  
Born: March 22, 2021

**Dymentholm Mr App Avalanche-TW**

CAN 11957107 \*RC \*CV \*TL \*TY \*TD  
PTA -94M +1F -4P 99R 12/21  
PTA +3.76T +2.85UDC +2.26FLC GTPI +2036G

**Triplecrown-JW Door Wisp-ET**

840 3128860372 VG-85-CAN  
3-03 2x 365d 35587 4.0 1424 3.5 1246  
2-01 2x 310d 17068 4.0 688 3.5 589

**Brenland Denver**

CAN 12074893 \*TY \*TV  
PTA +359M +25F +8P 98R 12/21  
PTA +2.90T +1.70UDC +.63FLC GTPI +2152G

**IHG Jetset Vickie 9045-ET**

840 3125944567 Good Plus-83 @ 4-05  
4-05 2x 359d 27970 4.0 1119 3.1 854  
3-05 2x 331d 26690 3.9 1052 3.1 816

*3rd Dam*

**Farnear-TBR-BH Vickie-ET EX-94 EEEEE 2E**

3-09 3x 365d 45680 3.6 1662 3.2 1443  
Life: 1949d 217120 3.4 7388 3.2 6964

*4th Dam*

**Vision-Gen Sh Sho A12037-ET VG-87 DOM 9\***

2-02 2x 327d 28300 3.7 1045 3.4 968

*5th Dam*

**KY-Blue GW Dana-ET EX-91 EX-MS**

2-05 2x 276d 17749 4.1 731 3.3 585

*6th Dam*

**BVK Outside Diana-ET EX-92 EEEVE 2E DOM**

5-01 2x 365d 31920 3.5 1129 3.2 1034  
Life: 1544d 107400 3.5 3708 3.1 3348

*7th Dam*

**Ms Kingstead Chief Adeen-ET EX-94 2E DOM 11\***

3-05 2x 310d 30180 4.0 1209 3.6 1077  
Life: 1382d 100760 4.0 4010 3.6 3649

- Nom All-American Junior 3-Year-Old 2000
- Nom All-American 4-Year-Old 2001
- Member All-American Produce '00 & '01

*8th Dam*

**C Aitkenbrae Starbuck Ada EX-94 2E DOM 4\***

13-8 2x 365d 25150 3.0 764 3.4 843  
Life: 6 Lact 137732 3.4 4749 3.4 4647

- All-American Produce of Dam 2000, 2001
- All-American 3-Year-Old 1990



**WEGNERLANN GABBY EX-94**  
3RD DAM OF LOT 36

*Nom Junior All-American Senior 2-Year-Old 2004*



**WEGNERLANN GABRIELLA-ET EX-93 2E**  
MATERNAL SISTER TO 2ND DAM OF LOT 36

*Nom Junior All-American Senior 2-Year-Old 2006*

# 36

**KATIE GIBSON**  
4486 JACKSON RD  
EMINENCE, KY 40019  
502-379-2757

## Brenland Denver

CAN 12074893 \*TY \*TV  
PTA +359M +25F +8P 98R 12/21  
PTA --1.0PL 2.83SCS -2.8DPR 3.3%DCE  
PTA +2.90T +1.70UDC +.63FLC 98R 12/21  
GTPI +2152G

## KY-Blue Gabby

144568624  
2-03 2x 252d 10310 3.6 373 3.2 330

## KY-BLUE DENVER GRACE

145220875 99%RHA  
Born: July 1, 2020

## Stantons High Octane-ET

CAN 11696704 EX-93-CAN ST'17 \*TY \*TV  
PTA +1018M +11F +14P 99R 12/21  
PTA +2.43T +2.18UDC +.57FLC GTPI +2153G

## Brenland Doorman Desirable-ET

CAN 9913324 EX-90-CAN 3\*  
5-06 2x 365d 35644 5.2 1856 3.2 1149  
2-01 2x 365d 28281 4.6 1307 3.3 926

## Taylor-Maid Skybuck Chubbs

143723037  
PTA -1073M -36F -32P 37R 12/21  
PTA +.24T -1.04UDC +.93FLC PTPI +1507

## KY-Blue Braxton Gabby

143468163 Excellent-90 EEEV @ 7-11  
7-09 2x 365d 24930 3.1 771 3.0 774  
3-08 2x 305d 20460 3.1 630 2.9 597  
2-09 2x 305d 17260 3.1 540 3.2 556

*Maternal sisters to Braxton Gabby*

## Wegnerlann Gabriella-ET EX-93 2E

4-05 2x 365d 30040 3.7 1101 3.2 964  
• *Nom Junior All-American Sr 2-Year-Old 2006*  
• *1st Sr 2-Year-Old, Western Fall Nat'l 2006*  
• *Nom Jr All-American Winter Yrlg 2005*  
• *1st Winter Yrlg, Western Fall Nat'l 2005*

## KY-Blue GW Gabriel-ET EX-92 EEVVE

3-02 2x 365d 28100 3.2 899 3.1 874

## Wegnerlann Gucci-ET EX-90 EEVVE

2-01 2x 316d 20430 3.3 679 3.3 667  
• *1st Spring Yearling & Junior Champion, Midwest Spring National Show 2006*  
• *1st Spring Yearling & Junior Champion, Mideast Spring National 2006*

## KY-Blue GW Gail-ET EX-90

3-09 2x 365d 24560 3.0 744 3.2 788

*3rd Dam*

## Wegnerlann Gabby EX-94 EEEVE

5-07 2x 365d 36210 3.6 1286 2.9 1065  
• *1st Sr 3-Year-Old, Midwest Spring National 2005*  
• *Nom Jr All-American Senior 2-Year-Old 2004*

*4th Dam*

## Wegnerlann Encore Gracie VG-86 VVVVV

1-10 3x 365d 24030 3.3 804 3.0 716



**SILVERMAPLE WINDHAM CAMILLE EX-92**  
**MATERNAL SISTER TO 2ND DAM OF LOT 37**  
*Supreme Champion, WDE Junior Show 2016*



**SILVERMAPLE DAMION CAMOMILE EX-95**  
**3RD DAM OF LOT 37**  
*All-American Junior 3-Year-Old 2011*

# 37

**BRATCHER DAIRY**  
 6580 KY HWY 643  
 CRAB ORCHARD, KY 40419  
 606-282-3675

**Maple-Downs-I G W Atwood-ET**

CAN 8956379 Excellent-90 \*TR \*TV \*TL \*TY \*TD  
 PTA -344M +11F -9P 99R 12/21  
 PTA -2.6PL 3.12SCS -4.8PL 4.4%DCE  
 PTA +2.91T +1.91UDC +2.09FLC 99R 12/21  
 GTPI +1906G

**MD-Maple-Lawn U Camaro-ET**

840 3205609903

**BULLDOG ATWOOD CHEVY**

840 3245564425 99%RHA  
 Born: December 4, 2021

**Braedale Goldwyn**

CAN 10705608 GP-CAN GM 12/11 \*CD \*TV \*TL  
 PTA -704M -7F -12P 99R 12/21  
 PTA +1.05T +.62UDC +.79FLC GTPI +1860G

**MD-Delight Durham Atlee-ET**

131704103 Excellent-92 EEEEE GMD DOM  
 3-11 2x 365d 38290 5.5 2091 3.1 1177  
 • All-American Senior 3-Year-Old 2005

**Croteau Lesperron Unix-ET**

CAN 107567492 EX-96-CAN ST'17 \*TY \*TV  
 PTA +536M +24F +11P 99R 12/21  
 PTA +2.39T +2.40UDC +.15FLC GTPI +2351G

**MD-Maple-Lawn Doorm Cris-ET**

840 3145376845

*Maternal sister to Doorm Cris*

**Butlerview Door Camilla-ET EX-92 EEEEE**

3-04 2x 305d 35950 3.7 1324 3.3 1197  
 • 1st Sr 3-Year-Old, Mid-East Fall National 2017  
 • Res Grand Champion, Western National 2016  
 • Junior Champion, Western National 2015  
 • Junior All-American Winter Calf 2014

*Maternal sister to Doorm Cris*

**Silvermaple Windham Camille EX-92 EEEEE**

• Junior All-American Senior 3-Year-Old 2016  
 • HM All-Canadian Senior 3-Year-Old 2016  
 • Supreme Champion, WDE Junior Show 2016

*3rd Dam*

**Silvermaple Damion Camomile EX-95 EEEEE**

3-03 2x 365d 32269 4.1 1327 3.6 1160  
 Life: 1536d 130677 4.2 4506 3.5 4555  
 • All-American Junior 3-Year-Old 2011  
 • All-Canadian Junior 3-Year-Old 2011  
 • Res Grand Champion International Show 2011  
 • All-American Junior 2-Year-Old 2010

*4th Dam*

**Stanhope Camila Goldwyn EX-90-CAN 1\***

4-01 2x 365d 30461 4.9 1486 3.3 1010  
 Life: 6 Lacs 136032 4.9 6617 3.4 4683

*4th Dam*

**Kendu Triumphant Charity EX-93 EEEE-CAN 3\***

3-04 2x 365d 28519 3.7 1065 3.1 888  
 • HM Grand Champion Vancouver Island 2006



**CEDAR-CROWN HYPNO TWIZZLER**  
SELLS AS LOT 38

# 38

**LONDON COLVIN & LIZZY TURNER**  
100 COLVIN PL  
CAMPBELLSVILLE, KY 42718  
859-748-5432

**Mr Hotstuffs Hypnotic-ET**

840 3012554421 \*RC \*TY \*TV  
PTA -218M +7F +4P 99R 12/21  
PTA -2.8PL 3.43SCS -2.2DPR 3.8%DCE  
PTA +1.80T +1.19UDC +1.34FLC 97R 12/21  
GTPI +1936G

**Ratliff App4 Twister-Red-ET**

840 3139815159 Very Good-88 VG-MS @ 4-03  
4-00 2x 319d 25440 3.5 889 3.2 811  
2-05 2x 364d 26790 3.1 822 3.1 820

**CEDAR-CROWN HYPNO TWIZZLER**

144778937 \*RC  
Born: March 2, 2019

**Gillette Windbrook-ETS**

CAN 7816429 EX-97-CAN EXTRA'10 \*TV \*TL \*TY  
PTA -48M +17F +6P 99R 12/21  
PTA +1.59T +.75UDC +1.56FLC GTPI +1983G

**Starmark Ad Hotstuff-Red-ET**

138253121 Excellent-94 EEEEE 2E  
5-00 2x 365d 33690 5.6 1896 3.1 1051  
• All-American R&W 5-Year-Old 2012

**Luck-E Adonis-Red-ET**

69989444 \*TY  
PTA +347M +19F -11P 99R 12/21  
PTA +1.07T +1.02UDC +.72FLC GTPI +1820G

**KHW Regiment Apple4-Red-ETN**

140100354 Excellent-90 EX-MS @ 5-03 \*CV  
4-06 2x 305d 18260 4.8 873 3.4 625

*Maternal sisters to Twister-Red*

**Ratliff App4 Whitney-Red-ET EX-94**

- 1st 4-Year-Old & Reserve Grand Champion, Southern National Holstein Show 2020
- Nom All-American R&W Milking Yearling 2017

**Ratliff App-4 Fiesta-Red-ET EX-92**

- Int Champion, Mid-East Fall R&W Show 2018
- Nom All-American R&W Milking Yearling 2017

*3rd Dam*

**Kamps-Hollow Altitude-ET EX-95 2E DOM 2\***

7-00 2x 365d 39690 4.7 1849 3.5 1385  
Life: 1844d 144460 4.4 6295 3.7 5288

*4th Dam*

**Clover-Mist Alisha-ET EX-93 3E DOM**

8-07 2x 365d 36920 4.2 1553 3.4 1258  
Life: 2999d 226470 4.7 10659 3.6 8149

*5th thru 8th Dams*

**Clover-Mist Augy Star-ET EX-94 4E DOM**

7-10 2x 365d 43140 5.0 2136 3.3 1421  
Life: 2486d 206250 4.7 9793 3.5 7187

**D-R-A August EX-96 4E DOM**

8-05 3x 365d 27460 4.3 1187 3.2 871  
Life: 3443d 190200 4.4 8281 3.5 4818

- Nominated All-American Aged Cow 1986

**D-R-A Ideal Precious Leader EX-90 2E**

Life: 2456d 133250 4.0 5308

**D-R-A Princess Lad Leader EX-90 3E**

9-05 2x 305d 19160 4.2 809



**RATLIFF APP4 WHITNEY-RED-ET EX-94**  
**MATERNAL SISTER TO 2ND DAM OF LOT 39**

*Reserve Grand Champion, Southern National Holstein Show 2020*



**RATLIFF APP-4 FIESTA-RED-ET EX-92**  
**MATERNAL SISTER TO 2ND DAM OF LOT 39**

*Intermediate Champion, Mid-East Fall R&W Show 2018*

# 39

**LANDON COLVIN & LIZZY TURNER**  
 100 COLVIN PL  
 CAMPBELLSVILLE, KY 42718  
 859-748-5432

## MS CEDAR CR ANALYS TINA-RED

840 3234513488 99%RHA  
 Born: September 2, 2021

### Mr Affection Analyst-Red-ET

840 3136496608 \*TY \*TV  
 PTA -84M -28F -23P 81R 12/21  
 PTA -.6PL 2.87SCS -1.4DPR 2.4%DCE  
 PTA +2.80T +2.49UDC +1.90FLC 81R 12/21  
 GTPI +1902G

### Cedar-Crown Hypno Twizzler

144778937 \*RC

### Riverdown Unstopabull-Red

CAN 11801450 \*TY \*TV  
 PTA -435M -26F -24P 95R 12/21  
 PTA +2.80T +2.31UDC +1.90FLC GTPI +2007G

### Milksource Byway Affection

840 3138524450 Excellent-94 \*RC  
 4-05 2x 266d 36050 4.5 1619 2.7 990  
 2-11 2x 305d 27680 4.1 1128 3.1 857

### Mr Hotstuffs Hypnotic-ET

840 3012554421 \*RC \*TY \*TV  
 PTA -218M +7F +4P 99R 12/21  
 PTA +1.80T +1.19UDC +1.34FLC GTPI +1936G

### Ratliff App4 Twister-Red-ET

840 3139815159 Very Good-88 VG-MS @ 4-03  
 4-00 2x 319d 25440 3.5 889 3.2 811  
 2-05 2x 364d 26790 3.1 822 3.1 820

#### 3rd Dam

**KHW Regiment Apple4-Red-ETN EX-90 EX-MS**  
 4-06 2x 305d 18260 4.8 873 3.4 625

#### 4th Dam

**Kamps-Hollow Altitude-ET EX-95 2E DOM 2\***  
 7-00 2x 365d 39690 4.7 1849 3.5 1385  
 Life: 1844d 144460 4.4 6295 3.7 5288

#### 5th Dam

**Clover-Mist Alisha-ET EX-93 3E DOM**  
 8-07 2x 365d 36920 4.2 1553 3.4 1258  
 Life: 2999d 226470 4.7 10659 3.6 8149

#### 6th Dam

**Clover-Mist Augy Star-ET EX-94 4E DOM**  
 7-10 2x 365d 43140 5.0 2136 3.3 1421  
 Life: 2486d 206250 4.7 9793 3.5 7187

#### 7th Dam

**D-R-A August EX-96 4E DOM**  
 8-05 3x 365d 27460 4.3 1187 3.2 871  
 Life: 3443d 190200 4.4 8281 3.5 4818

• Nominated All-American Aged Cow 1986

#### 8th Dam

**D-R-A Ideal Precious Leader EX-90 2E**  
 Life: 2456d 133250 4.0 5308

#### 9th Dam

**D-R-A Princess Lad Leader EX-90 3E**  
 9-05 2x 305d 19160 4.2 809



**MS ROXYS RECOVERY-RED EX-92 2E**  
**2ND DAM OF LOTS 40 & 41**

*HM All-American R&W Milking Yearling 2012*

# 40

**KADYN GIBSON, TRE WRIGHT & LUKUS SCHMITT**  
 4486 JACKSON RD  
 EMINENCE, KY 40019  
 502-379-2757

**Mr D Apple Diamondback**

840 3013721049 Excellent-93 \*RC \*TV \*TL \*TY  
 PTA -400M -25F -1P 99R 12/21  
 PTA -.1PL 3.12SCS -3.0DPR 2.9%DCE  
 PTA +2.44T +1.95UDC +1.43FLC 99R 12/21  
 GTPI +1873G

**Ms-AOL Jordy Rheta-Red-ET**

840 3203988032  
 1-09 ME Proj 23,785M 775F 642P

*Maternal sisters to Rheta-Red*

**Ms-AOL Db Raspberry-Red-ET EX-90-CAN**

• *All-American R&W Milking Yearling 2018*

**Ms-AOL Jordy Raeann-Red-ET**

• *Nominated All-American R&W Fall Calf 2020*

**Ms-AOL Relive-Red-ET**

• *Reserve All-American R&W Spring Calf 2020*

## FEMALE

Registration pending

Born: June, 2021

**Val-Bisson Doorman-ET**

CAN 107281711 EX-90-CAN ST'16 \*TV \*TY  
 PTA -446M +14F +9P 99R 12/21  
 PTA +2.44T +1.58UDC +.67FLC GTPI +2164G

**Ms Delicious Apple-Red-ET**

139236776 Excellent-94 2E  
 7-02 2x 365d 46510 4.0 1844 3.3 1512  
 • *Reserve All-American R&W 125,000 Lb Cow 2015*

**Cycle McGucci Jordy-Red**

840 3131666411 \*CV \*TY  
 PTA -1139M -29F -44P 99R 12/21  
 PTA +2.96T +2.24UDC +3.15FLC GTPI +1691G

**Miss Roxys Recovery-Red**

141367082 Excellent-92 EEEEE 2E  
 6-02 2x 305d 31730 4.2 1331 3.0 957  
 4-06 2x 305d 28650 4.2 1211 2.9 838  
 • *HM All-American R&W Milking Yearling 2012*

*3rd Dam*

**Galestone Ava Rae-Red-ET EX-91 VEVEE**

3-09 2x 329d 24680 3.8 949 3.0 740  
 Life: 1454d 105870 3.6 3800 2.9 3080

*4th Dam*

**Scientific Rubirae Socks-ET EX-93 3E DOM \*RC**

5-08 2x 365d 43050 4.2 1809 3.1 1331  
 Life: 2043d 154160 4.1 6388 3.1 4753

*5th Dam*

**Scientific Jubilant Rae-ET EX-90 DOM \*RC**

5-11 2x 365d 38880 4.1 1608 3.6 1403  
 Life: 1394d 117590 4.0 4707 3.6 4242

*6th Dam*

**C Hanoverhill Tony Rae EX-96 3E GMD DOM 5\***

6-11 2x 365d 40220 4.1 1661 3.3 1331  
 Life: 2247d 166396 4.1 6904 3.4 5612

• *Gr Champion Western National 1993*

*7th thru 10th Dams*

**C Hanoverhill TT Roxette-ET EX-94 2E GMD**

10-0 3x 365d 35040 4.3 1519 3.0 1063  
 Life: 2104d 164789 4.1 6760 3.1 3587

**Mil-R-Mor Roxette-ET EX-90 GMD DOM**

Life: 1921d 121417 4.7 5725

**C Glenridge Citation Roxy EX-97 EEEE 4E GMD 6\***

10-1 2x 365d 25280 4.2 1061  
 Life: 3620d 209784 4.5 9471

**C Norton Court Model Vee EX-90 6\***

Life: 4183d 218629 3.9 8581

• *All-American Produce of Dam 1977, '78, '79*



**MS-AOL DB RASPBERRY-RED-ET EX-90-CAN**  
**MATERNAL SISTER TO DAM OF LOTS 40 & 41**  
*All-American R&W Milking Yearling 2018*

**41**

**LANDON COLVIN & LIZZY TURNER**  
 100 COLVIN PL  
 CAMPBELLSVILLE, KY 42718  
 270-572-6046

**Mr Affection Analyst-Red-ET**

840 3136496608 \*TY \*TV  
 PTA -84M -28F -23P 81R 12/21  
 PTA -.6PL 2.87SCS -1.4DPR 2.4%DCE  
 PTA +2.80T +2.49UDC +1.90FLC 81R 12/21  
 GTPI +1902G

**Ms-AOL Diamond-Red-ET**

840 3140616941

*Maternal sisters to Rbeta-Red*

**MS-AOL Db Raspberry-Red-ET EX-90-CAN**

• *All-American R&W Milking Yearling 2018*

**MS-AOL Jordy Raeann-Red-ET**

• *Nominated All-American R&W Fall Calf 2020*

**MS-AOL Relive-Red-ET**

• *Reserve All-American R&W Spring Calf 2020*

**FEMALE**

Registration pending

Born: March, 2021

**Riverdown Unstopabull-Red**

CAN 11801450 \*TY \*TV  
 PTA -435M -26F -24P 95R 12/21  
 PTA +2.80T +2.31UDC +1.90FLC GTPI +2007G

**Milksource Byway Affection**

840 3138524450 Excellent-94 \*RC  
 4-05 2x 266d 36050 4.5 1619 2.7 990  
 2-11 2x 305d 27680 4.1 1128 3.1 857

**Mr D Apple Diamondback**

840 3013721049 Excellent-93 \*RC \*TV \*TL \*TY  
 PTA -400M -25F -1P 99R 12/21  
 PTA +2.44T +1.95UDC +1.43FLC GTPI +1873G

**Miss Roxys Recovery-Red**

141367082 Excellent-92 EEEEE 2E  
 6-02 2x 305d 31730 4.2 1331 3.0 957  
 4-06 2x 305d 28650 4.2 1211 2.9 838  
 • *HM All-American R&W Milking Yearling 2012*

*3rd Dam*

**Galestone Ava Rae-Red-ET EX-91 VEVEE**

3-09 2x 329d 24680 3.8 949 3.0 740  
 Life: 1454d 105870 3.6 3800 2.9 3080

*4th Dam*

**Scientific Rubirae Socks-ET EX-93 3E DOM \*RC**

5-08 2x 365d 43050 4.2 1809 3.1 1331  
 Life: 2043d 154160 4.1 6388 3.1 4753

*5th Dam*

**Scientific Jubilant Rae-ET EX-90 DOM \*RC**

5-11 2x 365d 38880 4.1 1608 3.6 1403  
 Life: 1394d 117590 4.0 4707 3.6 4242

*6th Dam*

**C Hanoverhill Tony Rae EX-96 3E GMD DOM 5\***

6-11 2x 365d 40220 4.1 1661 3.3 1331  
 Life: 2247d 166396 4.1 6904 3.4 5612

• *Gr Champion Western National 1993*

*7th thru 10th Dams*

**C Hanoverhill TT Roxette-ET EX-94 2E GMD**

10-0 3x 365d 35040 4.3 1519 3.0 1063  
 Life: 2104d 164789 4.1 6760 3.1 3587

**Mil-R-Mor Roxette-ET EX-90 GMD DOM**

Life: 1921d 121417 4.7 5725

**C Glenridge Citation Roxy EX-97 EEEE 4E GMD 6\***

10-1 2x 365d 25280 4.2 1061

Life: 3620d 209784 4.5 9471

**C Norton Court Model Vee EX-90 6\***

Life: 4183d 218629 3.9 8581

• *All-American Produce of Dam 1977, '78, '79*



**BENRISE DUPLEX ARIENNE EX-95 2E**  
**DAM OF LOT 42**

*1st Aged Cow, Mid-East Fall National Show 2017*

# 42

**MATTHEW MITCHELL**  
 227 HOLSTEIN DR  
 LA FOLLETTE, TN 37766  
 865-300-4880

## Mr D Apple Diamondback

840 3013721049 Excellent-93 \*RC \*TV \*TL \*TY  
 PTA -400M -25F -1P 99R 12/21  
 PTA -.1PL 3.12SCS -3.0DPR 2.9%DCE  
 PTA +2.44T +1.95UDC +1.43FLC 99R 12/21  
 GTPI +1873G

## Benrise Duplex Arienne

CAN 11070544 Excellent-95 EEEEE 2E  
 7-01 2x 365d 28630 5.1 1474 3.6 1038  
 3-11 2x 305d 20690 5.2 1068 3.5 715  
 2-01 2x 259d 13410 4.2 564 3.2 435

• *1st Aged Cow, Mid-East Fall National Show 2017*

## ROCKY-TOP D-BACK ADELE-ET

840 3200367163 Very Good-86 VG-MS @ 2-02  
 Born: September 9, 2018  
 1-11 2x 365d 26090 3.9 1029 3.2 845

## Val-Bisson Doorman-ET

CAN 107281711 EX-90-CAN ST'16 \*TV \*TY  
 PTA -446M +14F +9P 99R 12/21  
 PTA +2.44T +1.58UDC +.67FLC GTPI +2164G

## Ms Delicious Apple-Red-ET

139236776 Excellent-94 2E  
 7-02 2x 365d 46510 4.0 1844 3.3 1512  
 • *Reserve All-American R&W 125,000 Lb Cow 2015*

## Mesland Duplex-ET

ESP 9201683779 EX-91-ESP ST'09  
 PTA -687M -64F -14P 99R 12/21  
 PTA +1.03T -.17UDC +.71FLC GTPI +1410G

## Benrise September Ariel-ET

CAN 7827323 VG-86-CAN  
 3-05 2x 338d 19111 4.2 795 3.2 614  
 2-02 2x 333d 15066 4.1 623 3.1 462

*3rd Dam*

**Wellcrest Rudolph Akila VG-88-CAN 1\***  
 4-05 2x 316d 17531 4.3 754 3.4 600

*4th Dam*

**Ash Brook Autumn Jet EX-2E-CAN 3\***  
 6-01 2x 365d 30419 3.7 1138 3.3 999  
 Life: 5 Lacs 107126 3.9 4213 3.3 3578

• *1st Senior 3-Year-Old, Maxville Spring 2000*  
 • *Res Grand, Bassin De La Chaudiere 2000*

*5th Dam*

**Brians Banker Lassie VG-86-CAN**  
 8-10 2x 365d 18307 3.7 683 3.3 600  
 Life: 8 Lacs 117578 3.6 4277 3.2 3796

*6th Dam*

**Raivue Warden Lassie VG-85-CAN**  
 2-07 2x 365d 15269 3.6 545 3.4 522





# HOLSTEIN ASSOCIATION TERMS AND CONDITIONS FOR PUBLIC SALES

EFFECTIVE MARCH 2, 1996 - Amended October 1, 1997, June 28, 2000, June 23, 2002, and March 26, 2010

**TERMS:** The terms of the sale are cash unless arrangements are made prior to the sale or are printed in the sale catalog. Only when the above conditions are met will the buyer be entitled to the warranties listed below. In no case will animals be released unless settlement is made with the clerk of the sale.

**RESPONSIBILITY:** The seller, buyer, and manager of this sale are obligated to comply with the provisions of these terms and conditions.

**EXPORT SALES:** Buyer assumes all responsibility for health tests required by the importing country.

**BIDS:** The highest bidder is the buyer. Bidding parties or their agents are responsible for all bids placed. Every animal or lot presented for bidding is pledged to absolute sale. In case of dispute, the animal or lot will again be put up for advance bids, and if there is no advance bid, the animal or lot will be sold to the person the auctioneer accepted the last bid from. In case two or more claim the bid, the auctioneer will indicate the party whose bid he recognized. Other claimants will be given an opportunity to increase the bid and bidding will be restricted to the two or more claimants.

**BY-BIDDING:** Bidding directly or indirectly by the sole owner of any animal or lot is prohibited unless the intention to bid is disclosed specific to each animal in the catalog and announced when the animal enters the ring. Bidding by any member of a partnership, syndicate, or other entity having an ownership interest in an animal or lot is permitted.

**TRANSFER OF OWNERSHIP:** For all Registered Holsteins<sup>SM</sup>, the transfer of ownership to the buyer will be recorded on the records of Holstein Association USA and a certificate of registration showing that transfer of ownership will be provided to the buyer free of charge. For embryos, the transfer of ownership to the buyer will be recorded on the records of Holstein Association USA free of charge to the buyer.

**RISK:** All animals located at sale site are at the purchaser's risk as soon as struck off, but will be cared for free of charge for a maximum of 24 hours following the end of the sale.

## WARRANTIES:

- 1) Each consignor warrants clear title to the animal or lot, and the right to sell same.
- 2) To the best of the seller's knowledge, each animal is sound and healthy in every respect and embryos have been recovered, processed, frozen, transferred and graded in keeping with IETS recommendations unless otherwise noted in the catalog or announced from the auction stand. Every precaution will be taken to represent the physical condition of each lot exactly as is known. Examination of all purchases should be made immediately after the purchase and before the close of the sale, and if found not to be as represented, complaint must be reported to the sale management before the close of the sale. In the event no complaint is filed, it is understood that the buyer assumes full ownership in the case of animals at sale site together with all risks, after which no representations of the seller can be challenged through the sale management. Heifers that never calved are in no way guaranteed as to the condition of their udders following calving.
- 3) **Breeding Warranty**  
The seller guarantees all animals to be breeders, but not beyond the purchase price, with the following understanding:
  - a. Males - Should any bull after reaching the age of fourteen months fail to prove a breeder after being used for two months on cows or heifers known to be breeders, the matter shall be reported in writing to the seller within three months of the sale date. The report must include the animal's examination record, a written statement of treatment, and a statement of the animals' inability to breed,

by a licensed veterinarian. The seller has the option to refund the purchase price or make other settlement that is satisfactory to the buyer. In either case the rights of ownership of the animal return to the seller. The seller makes no guarantees with respect to the ability to freeze semen.

- b. Females - All females are guaranteed to be breeders with the exception of:
  1. Cows over 7 years of age when sold;
  2. Cows and/or heifers carrying a pregnancy that is the result of an embryo transfer.

Report of a non-breeder must occur in writing within 3 months of the date of sale or before the animal reaches 21 months of age and must be submitted to the seller. The report must include the animal's examination record, a written statement of treatment, and a statement of the animals' inability to breed, by a licensed veterinarian. The seller has the option to refund the purchase price or make other settlement that is satisfactory to the buyer. In either case the rights of ownership of the animal return to the seller.

Females bred when sold and pronounced in calf are presumed to be pregnant but pregnancy is not guaranteed unless so announced. The seller makes no warranty that pregnant cows will deliver calves or that they will carry calves full term.

- c. If, after the sale, embryos or oocytes are recovered from a female or an attempt is made to superovulate her, this negates the breeding warranty unless there is a separate written agreement between buyer and seller.

**SHIPPING:** Assistance will be given in arranging shipping of the animals after the sale. All costs, risks and responsibility will be borne by the purchaser.

**PEDIGREE INFORMATION:** All production, classification, type and production summaries are current. Only information recorded on Holstein Association USA pedigrees is used. Any production or classification records supplied by the seller or consignor will be properly identified as provided by owner. Records in progress are identified as such.

**GENOMIC INFORMATION:** If genomic information on the animal or embryo is available, it must be dated and disclosed at or before the time of sale.

**EMBRYO TRANSFER:** All registered animals that have resulted from embryo transfer are identified with one of the following suffixes in the name: ET, ETS (from split embryo), or ETN (from nuclear transfer). If unregistered, the appropriate technology will be identified. Donor dams are identified.

**HEALTH WARRANTY:** The seller will provide an official health certificate to the buyer for each animal showing the results of all health tests made in preparation for this sale as required by the state where the cattle reside. Other health tests completed for this sale will be disclosed.

**ERRORS:** The material in this catalog has been carefully edited. If any errors or omissions are discovered, they will be announced. Such announcements take precedence over that printed in this catalog.

**ACCIDENT:** The sale management, the consignors, and the owner of the grounds will not be responsible in any case for the condition of the grounds or the behavior of the animals and disclaim any liability in the event of personal accident or property loss.

**LIMITATIONS OF WARRANTIES:** Warranties contained herein, unless terminated earlier, will cease upon the resale of an animal.

## Index

ARMCREST & KINGSWAY.....	11	HAYSE, ISABELLA.....	34
BRATCHER DAIRY.....	37	HEINSOHN, JOHNATHAN.....	14, 35
BUCKLEY, SPOONAMORE, GIBSON & ELMORE.....	12, 13	MCWILLIAMS, CLYDE & CHARLENE.....	22
CALL, CHASE.....	16	MCWILLIAMS, SAM.....	4, 29, 31
CALL, CHASE & COOPER AND KAVERMAN, LYDIA & KORBIN.....	33	MITCHELL, MATT.....	17, 18, 42
COLVIN, LONDON AND TURNER, LIZZY.....	38, 39, 41	MITCHELL, MATT & COBLE, MARY.....	19
COLVIN, ROBERT.....	6, 7	OLT, STEVEN.....	8
ENGEL, MATT.....	1	PEDIGO, MCKENZIE & EDWARDS, MAKENSEY.....	24
EXPRESS HOLSTEINS & STAN-MAR-DALE HOLSTEINS.....	9	SIEMERS HOLSTEIN FARMS INC.....	2
FAIRBANKS, DOUGLAS.....	3	STAN-MAR-DALE, EXPRESS & LANDERS, MIKE.....	30
FREEMAN, DALTON.....	20	STARLIGHT GENETICS.....	10, 28
GIBSON, KADYN.....	32	TURNER, LIZZY.....	21, 25, 26, 27
GIBSON, KADYN, WRIGHT, TRE AND SCMITT, LUKUS.....	40	WICKER, JD & REBECCA.....	15
GIBSON, KATIE.....	36	ZIEMBA, KEVIN & BARBARA AND PIRRUNG, JEFFREY.....	5
GRIFFITH, LARRY.....	23, 23 1/2		

