A white cow with black spots is grazing in a green field at sunset. The cow is wearing a blue and green rope halter. The sky is a mix of orange, yellow, and blue.

Colors Of The Season

Spring Selections

11:00 AM CST THURSDAY, MARCH 3, 2022

W1461 WI-98, LOYAL, WI 54446

Colors of the Season

Thursday, March 3, 2022 11:00AM

Oberholtzer Dairy

W1461 WI-98, Loyal WI 54446

Sale Staff

Adam Hovland... (715) 316-2982	Chair
Bridget Achterberg... (715) 383-0086	Co-Chair
Brian Behnke... (608) 279-2016	Pedigrees
Mark Oberholtzer... (715) 773-2240	Auctioneer
Melissa Sprecher... (608) 417-9201	Fitting
Jasenko Gavranovic (507)776-6112	Fitting

Sale Day Contacts

Adam Hovland
(715) 316-2982

John Ivan
(715) 219-2781

John Obertholzer
(715) 216-1897

Leadspeople

Abigail Hovland
Rachel Pankratz
Emily Pankratz
Sydney Kauffman

Catalog Cover Photo

Ella Raatz, Colby WI.

Terms

Cash of Good Check sale day. Any special terms must be approved before the sale by Oberholtzer Dairy or sale management . See balance of limited terms in back of catalog. Cowbuyer.com online bidding must be approved by Aaron Ray Tomkins at 336-363-4839 or online at Cowbuyer.com prior to sale.

All cattle can be viewed Wednesday, March 2, 2022 between 1:00PM and 8:00PM
CST or on sale day!



Mark Oberholtzer: WI Auctioneer# 2882

Rockymountain Talent Licorice



Excellent-95 (5-year-old) **RC**

All-Canadian & Reserve All-American Sr 3 2010

All Canadian & All-American 4-Year-Old 2011

Reserve Senior Champion World Dairy Expo 2011

Grand Champion New York Spring Show 2011

Grand Champion Quebec Spring Show 2011

Consigned by Ferme Blondin Licorice sold for \$420,000 in the 2011 International
Intrigue Sale





MS Listerines Look At Me-ET EX95



FirstGlance Analyst Lovebug

145348595 9/21/2021 *RC

Riverdown Unstopabull-Red

11801450 99%RHA TY TV TL
PTA -435M -26F -24P 98%R 12/2021
PTA -219NM -.03%F -0.4%P 48%US
PTA +1.4PL 2.92SCS +.9DPR 2.5%DCE
PTA +2.33T +2.31UDC +1.90FLC 97%R 12/2021

Milksource Byway Affection

840003138524450 100RHA-I TY TV TL
5-04 94 EEEEE 07/26/2016
2-01 2 305 20670 91 4.1 841 3.2 659 91
2-11 2 305 27680 93 4.1 1128 2.9 805 93
4-05 2 266 36050 4.3 1619 2.6 922

MR Affection Analyst-Red-ET

840003136496608 99%RHA-I TP TC TY TV TL
PTA -94M -28F -23P 81%R 12/2021
PTA -399NM# -.09F -.07P 100%US
PTA -.6PL 2.87SCS -1.4DPR 2.4%DCE
PTA +2.80T +2.49UDC +1.90FLC 81%R 12/21
PTA -1.34FE -1.2FI 3.0%SCE

Oh-River-SYC Crushabull-ET

840003135145001 99%RHA-I TR TP TC TY TD
PTA +187M -12F +4P 95%R12/2021
PTA -9NM -.07%F -.01%P 23%US
PTA +.8PL 2.86SCS -1.0DPR 3.0DCE
PTA +3.45T +2.83UDC +1.47FLC 93%R12/2021

MS Listerines Look At Me-ET

143332804 100%RHA-NA TR TC TL TD
6-10 95 EEEEE 2E 3/07/2015
3-03 2x 257 22510 4.3 979 3.3 734
4-02 2x 305 29000 95 4.1 1187 3.1 911 95
312 29170 95 4.1 1197 3.2 917 95
5-02 2x 305 28900 95 4.2 1227 3.2 926 95
2x 309 29040 95 4.2 1234 3.2 931 95
Life 1269D 108020M 4.1 4436F 3.2 3439P

Consigned by:
Tom and Amy Shaefer
Galesville WI

MS Licorice Listerine EX-91 EXMS
Rockymountain Talent Licorice EX95
All-CAN Sr 3 & 4YO
All-AM 4YO, R. All-AM SR 3
Idee Rudolph Liberty VG89-CAN 3YR
(MAX)
2nd JR 3-YR-Cow Westemer Champ 04'
3rd JR 3-YR-Cow Saskatoon Expo 04'
7 Star Brood Production Award Winner
Idee Skychief Latoya VG-88-CAN 7yr 8*

Duckett Crushabull Lady-ET

840003209843168 99%RHA-I TR TC TL TD
PTA -537M -27F -21P 81%R 12/2021
PTA -171NM -.02%F -.02%P
PTA +.7PL 2.96SCE -1.0DPR 3.4%DCE
PTA +2.22T +1.49UDC +1.36FLC 80%R 12/21
PTA -63FE -1.3FI 2.7%SCE

CIE Double W EM

Favor



Cutting Edge Thundr

Fancy



AM Acres Kickstart My Heart-ET

68212356 9/2/2020
Due 10/15/2022 to Dynamite (Sexed)
Confirmed Pregnant 2/6/2022

Consigned by:
Megan Landkammer
Burtrum, MN

Hilltop Acres D Kickstart-ET

840003138790773
PPR +65 63%R PTAT +.8 67%R 12/20
PTA +210M +13F +12P +157NM\$ 66R
PTA +.9PL 2.3SCE +.5DPR

Schamaun BS Gordon Glenn

120023664460
PPR +27 93%R PTAT +2.0 93R 4/21
PTA -96m +9F +12P
PTA PL -2.4 +2.6CE +3.3DPR

Jo-Dee Nemo Risky

840003135087427 2E-94 E94MS
Life: 1968 143950m 5288F 4644P
Res. AA 2014 & HM AA 2012, 13, & 16
Member of AA Sr. Best 3 Females 13 & 14'

Cutting Edge Thunder*TM

68121893
PPR +2 94R PTAT +.1 96R 12/20
PTA -458m -11F -12P +32NM\$
PTA PL +1.9 SCS +2.79 DPR +.7 SCE 3.4%

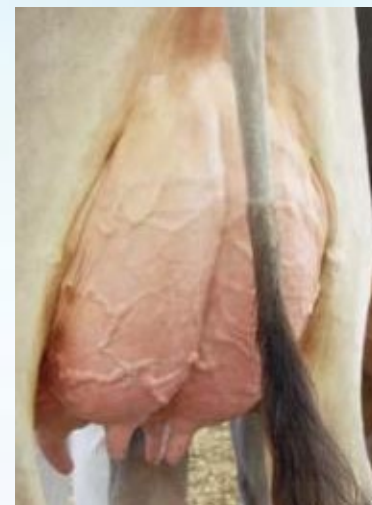
CIE Double W EM Favor

68126278 2E-EX95 EX94-MS
Life: 2332d 165520m 7306F 6059P
*4-YR Old All-American 2015
*5-YR Old HM All-American 2016
*Comp Merit Cow Nom. All-American 2019
*Aged Cow Nom All-American 2017
*Res. Grand Champion Eastern National 2015

3rd Dam
IE Double W Fawn
379326224 2E-E90 EX90-MS
Life: 1849d 117,000m 4347F 3620P

Cutting Edge Thundr Fancy-ETV

68197524 12/20/2018 VG85
5th Sr. 2 Year Old Midwest Quality
Colors Show 2021



Round-Hill Garbro Wanda, EX-91 92MS
Second Dam of Lot 3



B3 Encore-Gen Rasta Willow

Pending Born: 7/13/2021

Schamaun BS Gordon Glenn

120023664460
 PPR +27 93%R PTAT +2.0 93R 4/21
 PTA -96m +9F +12P
 PTA PL -2.4 +2.6CE +3.3DPR

Jo-Dee Nemo Risky

2E94 E94 MS
 Life: 1968d 143950M 5288F 4644P
 Reserve AA 2014: HM AA 12', 13' & 16';
 Member AA Best 3 Females 13' & 14'

Voelkers TD Carter

68119645 A1/A2
 PTR: +38 99R PTAT +7 998R 4/21
 PTA +1035M +26F +19P
 PTA PL -4 SCS +3.11 DPR -2.5 SCE +2.6

Top Acres Garbro Wanda ET

68130904 04/04 E91 E90 E91 E91 E88 E92 12/14
 4-00 365 2x 26521 4.3 1131 3.4 908
 5-00 305 2x 17424 4.0 705 3.7 652
 *HM All-American 4 YR Old 2014
 *Nom All-American Jr 3 YR Old 2013
 -1st 5 YR Old Eastern National 2015
 -3rd 4YR Old International 2014
 -1st 4 YR Old Eastern National 2014
 -2nd 4 YR Old Southeast National 2014
 -5th Jr 3 YR Old International 2013
 -1st Jr 3 YR Old Eastern National 2013
 Dam of NUMEROUS All-American heifers and cows!

Consigned by:
Encore Genetics
Fennimore, WI

Jo-Dee Royal Hill Rasta

840003135087427 A2A2 2/16/2016
 PTA -232M -25F -7P -27PPR 83%R
 PTA -\$162NM -.07%F OP
 PTA +1.0PL +.69UDC 3.9SCS +.80T 77%T

Round Hill Cartr Wyoming-ET

840003142483699 9/05/2019
 Will be scored soon Extreme Udder Quality
 1-10 305 26620 962F 907P 39664ME Milk

Full Sister to Round Hill Carter Watson-ET
 *Jr Champion MN State Fair 2019
 *Reserve Grand & 1st Fall Calf MW Spring Show 2019

Round-Hill Pre Wishful-ET 2E-E91
 AA Winter Calf 2003
Top Acres Jetway Wish ET 2E-E91 92MS
 HM AA Fall Heifer Calf
Top Acres EJ Whizzbang 5E-E93 92MS
 Lifetime Milk 168,310 8547F 6068P
 National Total Performance 96'
 All-American 5YR Old 95'
 All-American Jr2 & Jr3 92' & 93'
 All-American Spring Yrlg 1991
 Member AA Sr Best 3 Females 95'
 Dam of the Famous "Wonderment"
My T Fine Whisper *TW
 Reserve AA Aged Cow 92'
 Reserve AA 5 YR-Old 91'
 HM AA 4 YR-Old 90'



RBCC-Xtreme V Sid-Evil EX-92

4

5

RBCC-Xtreme V Eeny-Meeny-TW

840003239087797 3/21/21

RBCC-Xtreme V Eeny-Weeny-TW

840003239087796 3/21/21

Consigned by:
Xtreme Genetics
Ellsworth, WI

Stantons Chief-ET

840003129015989 3/05/2015 A2A2
PTA +659M +8F +17P 99R 12/21
PTA +21NM\$ -.06%F -.01%P
PTA +.8PL +2.73SCS -.4DPR +3.1DCE
PTA +.2.04T +2.29UDC +.44FLC 99R 12/21
GTPI: +2282

RBCC-Xtreme V Solm Evilseye

144469541 99RHA%-I 9/6/17
3-03 VG85 EVV++
2-05 2x 305d 20610m 3.8 773F 2.8 573P
*4th Mid-W Fall Nat'L Fall Heifer Class 18'

Amighetti Numero-Uno ET

17990915143 TY TV TL
PTA -829M +30F -13P 99R 12/21
PTA +1.4PL +2.76SCS +2.8DPR 2.8DCE
PTA +.98T +1.01UDC -.45FLC 99R 12/21
GTPI +2240

Rockymountain Uno Cheyenne

11445880 9/13/2012 VG85

Walnutlawn Solomon-ET

11775998 99%RHA-I TR TP TY TV TL TD
PTA -477M -13F -9P 99R 12/21
PTA -1.3PL 2.88SCS -.1DPR 2.7%DCE
PTA +2.57T +1.62UDC +.29FLC 99R 12/21
GTPI +1958G

RBCC-Xtreme V Sid-Evil

73933482 100RHA-NA
5-07 EX92 EE+VE
2--06 2x 304d 21480 4.2 896F 3.0 654P
3-06 2x 260d 14060 4.3 607F 3.5 490P
4-05 2x 305d 24260 4.6 1113F 2.8 676P
5-06 2x 247d 16620 4.6 761F 2.8 461P
*5th Int'l 4Y Cow 2018

Velthuis Goldwyn Elegant-ET

4-11 90 EVVVEE

Budjon-JK-I Derry Elegance-ET

VG86 2Y

2-09 3x 365 30266 4.0 1223 3.0 898

5-06 365 31089 4.1 1261 2.7 853

Krull Broker Elegance Ex 96-2E EEEEE

Gold Medal Dam & Dam of Merit

5-07 365d 40,953 lbs 3.7% 1,522F 3.3% 1,350P

Lifetime: 183,714 lbs 3.7% 6,878F 3.3% 6,140P

World's only cow to have a progeny group win the coveted "Premier Breeder" Banner THREE TIMES at World Dairy Expo!

H.M. All-American Aged Cow 1999 - 2000

H.M. All-Canadian Mature Cow 1999

Dam of Winning Produce International Holstein Show 2001 - 2004

Dam of 17 Excellent daughters 3 - 95pts 3 - 93pts

51 of 59 daughters and granddaughters VG at 2yrs

20 All-American nominations in her maternal line

More than 30 Sons from the Family in AI



Ocean-View Roy Donatella EX-93

6

RBCC-Xtreme Denver Damascus

540003239087794 12/01/2020

Consigned by:
Xtreme Genetics
Ellsworth, WI

Brenland Denver

12074893 99RHA-I *TR *TC *TY *TV *TL *TD
PTA +359M +25F +8P 99R 12/21
PTA -81 NM\$ +.04%F -.01%P
PTA -1.0PL +2.83SCS -2.8DPR 3.3DCE
PTA +.2.9T +1.70UDC +.64FLC 99R 12/21
GTPI: +2152

Ocean-View Dirty Diamond

144470709 99RHA-I 12/11/2017
3-00 GP82 +GV++

Stantons High Octane

11696704 *TP *TY *TR *TV *TL *TD
PTA +1080M +11F +14P 99R 12/21
PTA -1.4PL +2.86SCS -1.8DPR +2.6DCE
PTA +2.43T +2.18UDC +.57FLC 99R 12/21
GTPI +2153

CO-Vista Atwood Desire-ET

69058395 VG87
2-03 2x 365 26910m 3.9 1057F 3.4 926P

MR D Apple Diamondback

840003013721049 EX-93 GPTA +1886G
*RC TP TY TL TD 99%RHA-NA
PTA -395M -25F -1P 99%R 8/21
PTAT +2.47 UC +1.93 99%R 8/21

Ocean-View Atwood Danica

143651354 100%RHA-NA 9/01/2015
3-06 VG86 VE+++
2-03 2x 305d 20020 3.8 751F 2.9 588P
4-00 2x 284d 15370 4.0 620F 2.9 448P

Ocean-View Roy Donatella-TW

6-04 EX93 EEEEE 2E
2-02 2x 305d 18660 4.1 762F 3.1 575P
3-02 2x 305d 24520 3.6 894F 2.9 704P
4-08 2x 365d 37930 3.9 1275F 2.9 964P
5-11 2x 305d 31040 3.9 1223F 3.0 923P
7-02 2x 301d 35260 3.6 1284F 2.8 1003P
Life 1851d 166490m 3.8 6405F 3.0 5014P

Ocean-View Derry Donella VG88

4-05 2x 365d 28180 3.6 1028F 3.1 862P

Ocean View Silky Donna VG85

Ocean-View Leadman Donna-ET EX90-2E EX
-MS

Hilltop-Hanover-B Dawn-ET

EX-91-2E EEEEE

Ocean-View Elevation Debbie

EX-91-2E GMD & DOM



Budjon-JK-I Derry Elegance-ET

07

Pending
7/19/21

Consigned by:
Xtreme Genetics
Ellsworth, WI

Maple-Downs-I G W Atwood-ET

8956379 EX-90 *TR *TP *TY *TV *TL *TD
PTA -375M +11F -10P 99R 12/20
PTA=171 NM\$ +.09%F +.01P
PTA -2.5PL +3.12SCS -4.6DPR +4.4DCE
PTA +2.96T +1.93UDC +2.14FLC 99R 12/20
GTPI: +1921

RBCC-Xtreme Undenied Eerie

840003151201728 99RHA-NA
VG88 EX-MS VV+VE 2Y 8/21
1-11 2x 256 13470 4.3 583 3.0 409
5th MW Fall Nat'I Sr 2Y Cow 2021

Braedale Goldwyn

10705608C TY TV TL
PTA -730M -7F -13P 99R 8/20
PTA -1.5PL +2.63SCS -1.2DPR +.07DCE
PTA +.98T +.55UDC +.83FLC 99R 8/20
GTPI +1862

MD-Delight Durham Atlee ET

1317041030EX-92 EEEEE GMD DOM
3-11 2x 365 38290 5.5 2091 3.4 1177
*All-American Sr 3Y-Old 2005

Our-Favorite Undenied-ET

840003125220760 *TC *TP *TR
PTA -37M +22F -4P 98R 4/21
PTA -1.8PL 3.04SCS -2.1DPR 2.5%DCE
PTA +3.16T +.88UDC +1.17FLC 96R
4/21 GTPI +2068

Velthuis Snowman Elegance-ET

11294812C VV+++ 2Y

Velthuis Goldwyn Elvena-ET

VG-88 4YR

2-04 2x 365 26173 4.2 1104 3.1 814
3-10 365 35240 3.8 1353 2.9 1024

Budjon-JK-I Derry Elegance-ET

VG86 2Y

2-09 3x 365 30266 4.0 1223 3.0 898
5-06 365 31089 4.1 1261 2.7 853

Krull Broker Elegance Ex 96-2E EEEEE

Gold Medal Dam & Dam of Merit

5-07 365d 40,953 lbs 3.7% 1,522F 3.3%
1,350P

Lifetime: 183,714 lbs 3.7% 6,878F 3.3%
6,140P

World's only cow to have a progeny group win
the coveted "Premier Breeder" Banner THREE
TIMES at World Dairy Expo!

H.M. All-American Aged Cow 1999 - 2000

H.M. All-Canadian Mature Cow 1999

Dam of Winning Produce International Holstein
Show 2001 - 2004

Dam of 17 Excellent daughters 3 - 95pts 3 - 93pts
51 of 59 daughters and granddaughters VG at
2yrs

20 All-American nominations in her maternal line
More than 30 Sons from the Family in AI



Pending

Fall Calf

08

Co-op Renegade-ET

840003011816312 *TC *TP *TR
PTA +5980 +61F +24P 99R 12/21
PTA -.2PL +3.08SCS -.3DPR 2.4%DCE
PTA +1.73T +1.25UDC +1.56FLC 98R 12/21
TPI: +2505

RBCC-Xtreme V Build Elixir

840003138425649 99%RHA-I 3-10-17
VG-86 VV+VV 3Y

Maternal Sister to RBCC-Xtreme V Sid
-Evil EX-92

4-05 2x 305 24,200 4.6 113 2.8 676
5th Int'l 4Y Cow 18'

De-Su Bkm McCutchen 1174-ET

69990138 *TC *TP *TR
PTA +268M +27F +12P 99R 4/21
PTA -.9PL 2.92SCS -2.3DPR 2.5%DCE
PTA +2.20 +1.41UDC +1.00FLC 99R 4/21

Co-op-M-P Atwood Rosette-ET

HOUSA000069816679 VG-88
03-08 3x 305 32050m 5.2 1673f 3.6 1141P

Velthuis Builder

HOCAN11426899
PTA +1228+4F +25P 99R 12/21
PTA -1.9 +3.09SCS -4.7DPR 3.3%DCE
PTA +1.85T +1.10UDC +1.09FLC 81R 12/21
TPI: +1991

Velthuis Goldwyn Elegant-ET

11294792C EX90 EVVEE 4YR

Consigned by: Xtreme Genetics,
Ellsworth, WI

Budjon-JK-I Derry Elegance-ET

VG86 2Y

2-09 3x 365 30266 4.0 1223 3.0 898
5-06 365 31089 4.1 1261 2.7 853

Krull Broker Elegance Ex 96-2E EEEEE

Gold Medal Dam & Dam of Merit

5-07 365d 40,953 lbs 3.7% 1,522F 3.3% 1,350P
Lifetime: 183,714 lbs 3.7% 6,878F 3.3% 6,140P
World's only cow to have a progeny group win the
coveted "Premier Breeder" Banner THREE TIMES at
World Dairy Expo!

H.M. All-American Aged Cow 1999 - 2000
H.M. All-Canadian Mature Cow 1999

Dam of Winning Produce International Holstein
Show 2001 - 2004

Dam of 17 Excellent daughters 3 - 95pts 3 - 93pts
51 of 59 daughters and granddaughters VG at 2yrs
20 All-American nominations in her maternal line
More than 30 Sons from the Family in AI



RBCC-Xtreme V Den Elevation

840003239087793
09/06/2020

Consigned by:
Xtreme Genetics
Ellsworth, WI

Brenland Denver

12074893 99RHA-I *TR *TC *TY *TV *TL *TD
PTA +359M +25F +8P 99R 12/21
PTA -81 NM\$ +.04%F -.01%P
PTA -1.0PL +2.83SCS -2.8DPR 3.3DCE
PTA +2.9T +1.70UDC +.64FLC 99R 12/21
GTPI: +2152

RBCC-Xtreme Undenied Eerie

840003151201728 99RHA-NA
VG88 EX-MS VV+VE 2Y 8/21
1-11 2x 256 13470 4.3 583 3.0 409
5th MW Fall Nat'l Sr 2Y Cow 2021

Stantons High Octane

11696704 *TP *TY *TR *TV *TL *TD
PTA +1080M +11F +14P 99R 12/21
PTA -1.4PL +2.86SCS -1.8DPR +2.6DCE
PTA +2.43T +2.18UDC +.57FLC 99R 12/21
GTPI +2153

CO-Vista Atwood Desire-ET

69058395 VG87
2-03 2x 365 26910m 3.9 1057F 3.4 926P

Our-Favorite Undenied-ET

840003125220760 *TC *TP *TR
PTA -37M +22F -4P 98R 4/21
PTA -1.8PL 3.04SCS -2.1DPR 2.5%DCE
PTA +3.16T +.88UDC +1.17FLC 96R
4/21 GTPI +2068

Velthuis Snowman Elegance-ET

11294812C VV+++ 2Y

Velthuis Goldwyn Elvena-ET

VG-88 4YR

2-04 2x 365 26173 4.2 1104 3.1 814
3-10 365 35240 3.8 1353 2.9 1024

Budjon-JK-I Derry Elegance-ET

VG86 2Y

2-09 3x 365 30266 4.0 1223 3.0 898
5-06 365 31089 4.1 1261 2.7 853

Krull Broker Elegance Ex 96-2E EEEEE

Gold Medal Dam & Dam of Merit

5-07 365d 40,953 lbs 3.7% 1,522F 3.3%
1,350P
Lifetime: 183,714 lbs 3.7% 6,878F 3.3%
6,140P

World's only cow to have a progeny group win the
coveted "Premier Breeder" Banner THREE
TIMES at World Dairy Expo!

H.M. All-American Aged Cow 1999 - 2000
H.M. All-Canadian Mature Cow 1999

Dam of Winning Produce International Holstein
Show 2001 - 2004

Dam of 17 Excellent daughters 3 - 95pts 3 - 93pts
51 of 59 daughters and granddaughters VG at
2yrs

20 All-American nominations in her maternal line
More than 30 Sons from the Family in AI



Pending
6/1/2021

Regancrest Boom

HO840003137164654 *TC *TR
PTA +877M +24F +32P 82R 12/21
PTA -5PL 3.16SCS -1.6DPR 2.5%DCE
PTA +3.76T +2.42UDC +1.80FLC 81R 12/22
TPI: +2389

RBCC-Xtreme V Altitude Jetlag

840003138425648
VG85 86MS

Woodcrest King Doc

HO840003132417775 *TC *TP *TR
PTA +1574M +69F +54P 99R 12/21
PTA +3.54T +2.36UDC +2.10FLC
TPI: +2783

Regancrest Ms Brooklyn

HO840003134518803 VG88

Farner Altitude-Red ET

840003128013348 *TC
PTA +194M +19F +16P 99%R 12/21
PTAT +2.92 UDC +2.32 99%R 12/21

Willows-Edge Sid Jill

840003137150788 100RHA-NA
4-06 GP84 ++G+V
1-08 2x 140d 8630m 3.5 306F 2.8 243P

Consigned by:
Xtreme Genetics
Ellsworth, WI

Willows-Edge Gold Juice-ET
VG86
MS Jacobs Sanchez Janna-ET
5-02 EX93 EEEEE
Life: 1373d 115500m 4649F 3455P
4th Mid-W Fall Natl' SR 3 Cow 2013



Pending
6/3/21

Maple-Downs-I G W Atwood-ET

8956379 EX-90 *TR *TP *TY *TV *TL *TD
PTA -375M +11F -10P 99R 12/20
PTA=171 NM\$ +.09%F +.01P
PTA -2.5PL +3.12SCS -4.6DPR +4.4DCE
PTA +2.96T +1.93UDC +2.14FLC 99R 12/20
GTPI: +1921

RBCC-Xtreme Diamond Paradox

840003151201729 99%RHA-I *RC 3/01/19
Fresh 9/1/21

Braedale Goldwyn

10705608C TY TV TL
PTA -730M -7F -13P 99R 8/20
PTA -1.5PL +2.63SCS -1.2DPR +.07DCE
PTA +.98T +.55UDC +.83FLC 99R 8/20
GTPI +1862

MD-Delight Durham Atlee ET

1317041030EX-92 EEEEE GMD DOM
3-11 2x 365 38290 5.5 2091 3.4 1177
*All-American Sr 3Y-Old 2005

MR D Apple Diamondback

840003013721049 EX-93 GPTA +1886G
*RC TP TY TL TD 99%RHA-NA
PTA -395M -25F -1P 99%R 8/21
PTAT +2.47 UC +1.93 99%R 8/21

Willows Edge BW Pipes-Red

840003141223834 VG-85 VVVV+ 4Y
100%RHA-NA CTPI +1488 8/21
2-02 2x 286d 16270 3.8 617 2.9 478
3-02 305d 15670 3.6 566 3.2 503

Consigned by:
Xtreme Genetics
Ellsworth, WI

Willows-Edge Armani Pisces
EX90
2-00 2x 305 17430 4.5 789 3.3 582
3-00 342 22150 4.8 1060 3.3 734
4-01 365 27370 4.5 1235 3.3 904
5-03 332 25250 4.3 1097 3.3 823
Willows-Edge Mesabi Pip-Red
VG86
Next 9 Dams: VG88, VG88, EX90,
EX92, GP83, VG85, VG86x, EX94x,
VG88



MS Jacobs Sanchez Janna-ET EX93

12

RBCX-Xtreme Junie B Jones

840003239087795 12/02/2020

Consigned by:
 Xtreme Genetics
 Ellsworth, WI

De-Su Bkm McCutchen 1174-ET

69990138 *TC *TP *TR
 PTA +268M +27F +12P 99R 4/21
 PTA -.9PL 2.92SCS -2.3DPR 2.5%DCE
 PTA +2.20 +1.41UDC +1.00FLC 99R 4/21

Co-op-M-P Atwood Rosette-ET

HOUSA000069816679 VG-88
 03-08 3x 305 32050m 5.2 1673f 3.6 1141P

Pine-Tree Sid ET

62175895 TR TP TY TL TD
 PTA -819M -19F -23P 99%R 12/21
 PTAT +1.54 UDC +1.02 99%R 12/21

Willows Edge Gold Juice-ET

840003012353606
 3-09 VG86 VVG+V

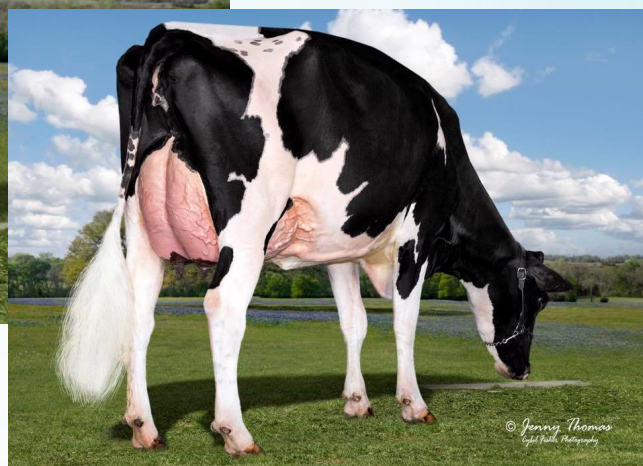
MS Jacobs Sanchez Janna-ET
 5-02 EX93 EEEEE
 Life: 1373d 115500m 4649F 3455P
 4th Mid-W Fall Natl' SR 3 Cow 2013

Co-op Renegade-ET

840003011816312 *TC *TP *TR
 PTA +5980 +61F +24P 99R 12/21
 PTA -.2PL +3.08SCS -.3DPR 2.4%DCE
 PTA +1.73T +1.25UDC +1.56FLC 98R 12/21
 TPI: +2505

Willows-Edge Sid Jill

840003137150788 100%RHA-NA
 4-06 GP84 ++G+V
 1-08 2x 140d 8630m 3.5 306F 2.8 243P



Tri-Koebel Gldchip Ronda-ET
Dam of Lot 13

© Jennie Thomas
Artistic Photography



Tri-Koebel Rockin Ronda-ET

840003207717256 9/1/2020
Service Date Coming

Consigned By:
Ethan Pietre, Owen WI

Dymenthom Mr Apples Avalanche

HOCAN000011957107 CV RC
PTA -10M +4F -1P 99R 4/21
PTA +3.87T +2.83UDC +2.47FLC
GTPI +2120T

De-Su Bkm McCutchen 1174-ET

69990138 *TC *TP *TR
PTA +268M +27F +12P 99R 4/21
PTA -.9PL 2.92SCS -2.3DPR 2.5%DCE
PTA +2.20 +1.41UDC +1.00FLC 99R 4/21

KHW Regiment Apple C-Red-ETN

CAN 70244494 VG-89-CAN 3-07
2x 365d 36949 4.2 1554 3.6 1332 • Res
Grand Champ, Supreme Dairy R&W 2014

Tri-Koebel Gldchip Ronda-ET

3123653012 EX-92 2E EEVVE
2-01 300 19160 3.6% 694F 3.2% 621P
5-02 365 30167 3.4% 1025F 3.0 894P
2nd Sr 3yr-old ME Spring Nat'l 2017

Mr Chassity Gold Chip-ET

HOUA000140145553 *TP *TR
PTA -625M -23F -28P 99R 4/21
PTA +.1PL 2.79SCS -1.6DPR 1.7%DCE
PTA +1.51T +1.09UDC +1.11FLC 99R 4/21

Indianhead Stormatic Rosa-ET

EX-90 EEVVE
2-02 286 16790 3.4% 574F 3.1% 514P
3-02 313 24440 3.7% 901F 3.2% 778P
4-03 365 32070 3.1% 979F 3.1% 982P

3rd Dam: Astrahoe R Gibson Renee-ET

EX-93 3E EEEEE

Lifetime: 196290 3.9% 7664F 3.2% 6375P

4th Dam: Pinehurst Royal Rosa-ET

EX-91 2E EEEEE

Lifetime: 115400 3.5% 4073F 3.1% 3593P

5th Dam: Pinehurst Roulade EX-92 2E EEEEE

6th Dam: Pinehurst Sweet Cleo EX-90 EEVVE

7th: Pinehurst Sweet Freedom EX-90

8th: Pinehurst Sweet Delight EX-91 3E

9th: Pinehurst Rapture EX-96 4E GMD

10th Dam: Pinehurst Fragrance EX-90 2E

11th Dam: EX-90

12th Dam: EX-90 2E

13th Dam: EX-90

14th Dam: Arlite Posch EX-92 GMD



Scientific Debutante Rae-ET EX-92 GMD DOM
5th Dam Lot 14

14

Swins Valley Skye Rae

145159670 12/09/2019
Fresh 1/5/2022
Milking 93# 39scc 4.1F 2.7P
Will be a high-scoring cow!

Consigned by:
Ethan Pietre, Owen, WI

Maple-Downs-I G W Atwood-ET

CAN8956379 EX-90 TR* TV* TL* TY* TD*
PTA -368M +11F -10P 99R 8/20
PTA -2.4PL +3.12SCS -4.5DPR 4.4%DCE
PTA +2.98T +1.70UDC +2.17FLC 99R 8/20
GTPI +1916

Braedale Goldwyn

10705608C TY TV TL
PTA -730M -7F -13P 99R 8/20
PTA -1.5PL +2.63SCS -1.2DPR +.07DCE
PTA +.98T +.55UDC +.83FLC 99R 8/20
GTPI +1862

MD-Delight Durham Atlee ET

1317041030EX-92 EEEEE GMD DOM
3-11 2x 365 38290 5.5 2091 3.4 1177
*All-American Sr 3Y-Old 2005

Val-Bisson Doorman-ET

HOCAN000107281711 *TR *TP *TY *TV *TL
PTA -503M +14F +8P 99R 4/21
PTA +.2PL 2.67SCS -2.2DPR 2.7%DCE
PTA +2.45T +1.59UDC +.73FLC 99R 4/21
GTPI +2167

Our-Favorite Shylo Rae-ET

142863750 3-07 VG86 VVV+V

Our-Favorite Sugar Rae

141507695 7-05 EX-93 2E EEEVE
2-02 3x 305 24410 2.8 692F 3.3 815P
3-03 3x 305 23820 3.7 888F 3.4 820P
4-05 2x 305 19520 3.5 684F 3.4 655P
7-00 2x 305 25460 3.5 885F 3.5 882P
8-01 2x 305 27970 3.5 973F 3.2 897P

3rd: Our-Favorite Shakira Rae EX-90
4th Dam: Scientific Gold Dish Rae EX-90
DOM

5th Dam: Scientific Debutante Rae-ET
EX-92 GMD DOM

2-0 2 365 27000 4.4 1191 3.2 863
3-0 2 208 19350 5.5 1066 2.9 560
All-American 4Y Cow 2005
HM All-American JR 3Y Cow 2004

6th: C Hanoverhill Tony Rae EX-96 3E GMD
DOM 5* Gr Champion Western National
1993

7th Dam: C Hanoverhill TT Roxette-ET
EX-94 2E GMD

8th Dam: Mil-R-Mor Roxette EX-CAN 30*

9th Dam: C Glenridge Citation Roxy EX-97
4E GMD 6* Queen of the Breed I & II'

10th Dam: C Norton Court Model Vee
EX-90 6* 7• All-American Produce of Dam
1977, '78, '79



Scientific Debutante Rae-ET EX-92 GMD DOM



Powerhaus Hancock Darcy

840003212152396 9/1/2021

Consigned by: Powerhaus Genetics
Jeremy Holthaus, WI

Woodcrest King Doc

3132417775 TR TC TY TV TL TD
 PTA +1574M +69F +54P 99R 12/21
 PTA +2.2PL 3.14SCS -1.5DPR 2.4%DCE
 PTA +3.54T +2.36UDC -2.10FLC 99R 12/21

Siemers Monterey Hanan-ET

840003131528231 VG-85
 2-00 3x 156 12470 4.1 517F 3.2 393P

Maple-Downs-I G W Atwood-ET

CAN8956379 EX-90 TR* TV* TL* TY* TD*
 PTA -368M +11F -10P 99R 8/20
 PTA -2.4PL +3.12SCS -4.5DPR 4.4%DCE
 PTA +2.98T +1.70UDC +2.17FLC 99R 8/20
 GTPI +1916

Scientific Darla Rae-ET

138904193 EX-94 EEEEE 2E
 2-02 2 365 24100 4.0 973 3.4 808
 4-05 2 298 28750 4.2 1198 3.2 927
 5-04 2 365 36160 4.3 1542 3.2 1162
 LIFE 1549 117950 4.3 5097 3.4 4059

Siemers Doc Hancock

840003144882821 *TC *TP *TR
 PTA +1239M +58F +44P 87R 12/21
 PTA +1.8PL 2.99SCS -2.0DPR 2.4%DCE
 PTA +3.75T +3.14UDC +1.62FLC 81R 12/21
 TPI +2728

Powerhaus AT Darlene Rae-ET

3140502630 2-04 GP82
 02-04 305d 3x 19821m 4.1 821F 3.3
 646P

Scientific Debutante Rae-ET

132416603 EX-92 GMD DOM
 2-0 2 365 27000 4.4 1191 3.2 863
 3-0 2 208 19350 5.5 1066 2.9 560
 All-American 4Y Cow 2005
 HM All-American JR 3Y Cow 2004

C Hanoverhill Tony Rae EX-96 3E GMD

DOM 5* Gr Champion Western
 National 1993

C Hanoverhill TT Roxette-ET

EX-94 2E GMD

Mil-R-Mor Roxette EX-CAN 30*

C Glenridge Citation Roxy EX-97 4E GMD 6*

Queen of the Breed I & II'

C Norton Court Model Vee EX-90 6* 7• All-

American Produce of Dam 1977, '78, '79



Rama-Emer Goldwyn Rosar-ET EX90



AM Kaiser Hancock Rona

840003148891378 12/1/2020

Consigned by:
Ashley Kaiser, Loyal WI

Woodcrest King Doc

3132417775 TR TC TY TV TL TD
PTA +1574M +69F +54P 99R 12/21
PTA +2.2PL 3.14SCS -1.5DPR 2.4%DCE
PTA +3.54T +2.36UDC -2.10FLC 99R 12/21

Siemers Monterey Hanan-ET

840003131528231 VG-85
2-00 3x 156 12470 4.1 517F 3.2 393P

Val Bisson Doorman-ET

107281711 TR TP TY TV TL TD
PTA -446M -10F -20P 99R 12/22
PTA +2.9PL +2.90SCS -2.5DPR 2.6%DCE
PTA +2.44T +1.58UDC +.67FLC 99R 12/22
GTPI +2164

Rama-Emer Goldwyn Rosar-ET

66676764 6-00 EX90 VEVVE
2-03 3x 305 22900 4.0 905F 3.0 696P
3-08 3x 296 27680 3.9 1086F 3.0 839P
4-07 3x 316 30790 3.7 1143F 3.0 933P
5-07 3x 365 35030 4.2 1462F 3.3 1154P
7-10 3 305 30940 4.1 1267F 3.3 1007P
Life 1957D 17640M 4.0 7108F 3.2 5663P

Siemers Doc Hancock

840003144882821 *TC *TP *TR
PTA +1239M +58F +44P 87R 12/21
PTA +1.8PL 2.99SCS -2.0DPR 2.4%DCE
PTA +3.75T +3.14UDC +1.62FLC 81R 12/21
TPI +2728

Emerling Dooman Reza-ET

3140766321 99%RHA-I TR CD TL TD
3-11 GP82 V+VF+

Pinehurst Royal Rosa 2E EX91
Pinehurst Roulade 2E EX92 EEEEE
Pinehurst Sweet Cleo EX90
Pinehurst Sweet Freedom EX90
Pinehurst Sweet Delight 3E91
Pinehurst Rapture 4E96 GMD
Pinehurst Fragrance 2E90
Hayssen Fond Ariel 2E90
Hayssen D V Audrey 2E90
Whirlhill Q Rag Apple Ariel EX92
Arlite Posch EX92 GMD
Audrey Posch 2E93 GMD

March 3, 2022



Ziems-LKH Outside MS Mud-ET
2nd Dam Lot 17, 3rd Dam of Lot 18



Ziems Awesome Molly

3213272656 9/20/2019
Fresh 11/24/21 Serviced to Doral-Red (Due 11/2/22 Pending)
Milking 65# 4.0F 3.1P

EDP-Acres Hanans Holly

840003248217804 11/24/2021 (Sired by Siemers Exc **Hanans** 7HO15325)

Consigned by:
Ethan Petre Owen WI

Luck-E Awesome-Red

72186797 *TC*TD*TL*TY
PTA -1891M -66F -61P 99R 8/20
PTA -1.8PL 3.18 SCS -1.8DPR 4.1%
DCE
PTA +2.08T +3.30UDC +.85FLC 99R
8/20 GTPI +1399

Apples Absolute-Red-ET

139358472 EX-94 *TC *TD*TL*TY
PTA -1972M -15F -26P 99R 8/20
PTA -5.9L 3.52SCS -4.9DPR 5.1%DCE
PTA +2.15T +2.65UDC +1.57FLC 99R
4/20
GTPI +1549

LUCK-E Advent Asia-ET

63437444 Excellent-94 2E *RC
6-02 2x 365d 40150 4.9 1984 3.3
1337
Life: 1282d 113730 5.1 5814 3.4

Erbachres Damion

130263722 EX-96 *TR *TY*TV*TL*TD
PTA -=1256M -93F .28P 99R 8/20
PTA +1.33T +.17UDC +1.68FLC 99R 8/20
GTPI +1346

Ziems-LKH Outside Ms Mud-ET

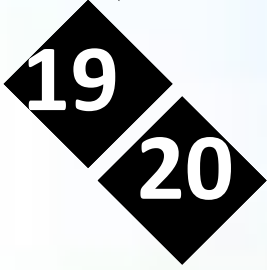
EX-94,3E EEEEE 2
-02 365 28880 4.8 1393 3.4 977
3-08 313 20950 4.7 980 3.7 769
6-00 365 25870 4.1 1069 3.5 906
7-03 365 22540 4.5 1010 3.5 782
9-08 363 32670 4.9 1600 3.4 1101
Lifetime 136100 4.6 6317 3.5 4734

Ziems-LKH Damion Muddy-ET

63837070 8-10 EX-92 2E
4-04 2 305 27240 4.1 1107 2.7 737
6-01 2 305 27740 3.7 1024 3.8 766
8-06 2 305 25440 4.1 1046 2.7 698

East-Cupcake Muddy Water

EX-95,4E EEEEE
4-11 305 22410 4.6 1037 3.3 749
*4 X All-New York!
*1st E Spring Sale Nat'l Champ B&O
'98
*1st E Spring Nat'l 4yr-old 1997
*1st E Spring Nat'l Jr 3yr-old 1996
*2nd E Spring Nat'l 125,000 lb 2002



Lonely-Mile DrkHorse Nugget

840003142750540 100%RHA-NA 9-02-18
2-04 VG86 VVV+V Fresh 8/31/21
Milking 80# 37Scc 4.0f 3.3p

Lonely-Mile Success Whopper

8/31/2021
Sired By: Vieuxsaule Success 94HO19491

Consigned By:
Ethan Pietre, Owen WI

Melarry Dark Horse

3135766709 TRTPCTYTVTLTD
PTA +971M +36F +32P 99R 12/21
PTA +1.64T +1.67UDC +.64FLC
GTPI +2469

Lonely-Mile Den French Fry

3012998499 100%RHA-I 7-16-2014
4-01 2x 297d 35140m 3.9 1370F 3.0
1067P

CookieCutter Hang-Time-ET

3013614200 TR TP TY TV TL TD
PTA +277M +44F +27P 99R 12/21
PTA +.1PL 3.09SCS -1.1DPR 2.6%DCE
PTA +1.23T +2.02UDC -.39FLC 99R 12/21

TJR Mogul Dinamite-ET

72127406 100RHA-I
5-03 VG87 EE++V
Lifet 1590d 158460m 4.1 6450F 3.3 5295P

OCD MA Denzel Washington-ET

3009532924 TR TP TY TV TL TD
PTA +726M +21F +16P 99%R 12/21
PTA +1.03T +1.40UDC -.16FLC 89%R 12/21

Lonely-Mile Kane Big Mac

66190787 100%RHA-NA
2-02 2x 284 24930 3.4 841F 2.7 668P
3-01 2x 305 30890 3.2 991F 2.7 829P
4-01 2x 305 37460 3.3 1236F 2.8 1060
2x 365 43170 3.3 1412F 2.8 1227P
5-06 2x 302 37480 3.3 1249F 2.9 1079P
Life: 1330D 142710 3.3 4700F 2.8 4007P



Lonely-Mile Coal Rita

840003206993413 99%RHA-I
2-03-2021

Consigned By:
Ethan Pietre, Owen WI

Woodcrest King Doc

3132417775 TR TC TY TV TL TD
PTA +1574M +69F +54P 99R 12/21
PTA +2.2PL 3.14SCS -1.5DPR 2.4%DCE
PTA +3.54T +2.36UDC -2.10FLC 99R 12/21

Scientific D Cambria Rae-ET

73202492 RC TY TL TD
4-11 EX 90 EEEVE
4-04 3x 305d 36690m 4.3 1586F 3.1 1129P

Scientific Doc Coal-ET

144436873 TR TP TC TY TV TL TD
PTA +331M +40F +20P 99R 12/21
PTA +3.14T +2.22UDC +1.87FLC
GTPI +2475

Lars-Acres Felices Favre-ET

64632190 TR TP TY TV TL TD
PTA +596M -16F +7P 99%R 12/21
PTA -165NM -.14F -.04P 40%US
PTA -.7PL 2.94SCS -3.2DPR 2.5DCE
PTA +1.45T +1.19UDC +.37FLC 98%R 12/21

Lonely-Mile Favre Ricci

3128701033 100%RHA-NA
2-02 2x 305d 24250 3.5 856F 3.2 770P
3-02 2x 274d 27150 3.5 944F 3.0 813P

Lonely-Mile Sajac Reba

3012998474 100%RHA-NA
2-00 2x 305 23910 3.8 911F 3.9 716P
2-11 2x 305 30910 3.7 1153F 3.0 926P
4-00 2x 305 34370 4.0 1365F 3.9 982P
365 40020 4.0 1608F 2.9 1168P



Welcome-Hill Brennan Dessa

840003205069588 74%RHA-I 07/17/19
2-01 VG85 VVG+V
Due 7-1-22 to Hannans 7HO (Ultrasound Female)
Milking 69# 117scc 4.1F 3.2P

Consigned By:
Ethan Pietre, Owen WI

Welcome-Tel Brennan 3158-ET

3129340894 99%RHA-I TR TP TC TY TV TL TD
PTA +730M +55F +31P 99R 12/21
PTA +1.93T +1.77UDC +.98FLC
GTPI +2564

Bacon-Hill Pety Modesty

3013654627 100%RHA-NA TRPTTCTYTVTLTD
PTA +234M +43F +17P 99R 12/21
PTA +3.4PL 3.29SCS +.1DPR 1.4%DCE
PTA -.07 +1.19UDC +.62FLC 99R 12/21
Markland Jacey Bree-ET
142789135 99%RHA-I TY TL TD
2-03 3x 305 28570 3.7 1067F 3.1 885P
3-06 3x 292

Welcome-Hill Tuscobia 63

144358571 49%RHA-I 7/11/2014
3-11 GP82 +V+G+

Co-OP Iota Tuscobia

70541546 99%RHA-I TP TC TY TV TL TD
PTA +632M +10F +22P 99%R 12/21
PTA +122NM -.05%F +.01%P 100%US
PTA +.63T +1.04UDC -.39FLC 95%R 12/21

Unavailable



Grade 6510

84000315041185
Due 5/11/2022 Warrior 7HO14477(Ultrasound Female)
Milking 65# 32scc 5.0f 3.6p

Consigned By:
Ethan Pietre, Owen WI

Sired By Flagship 7HO13373



Grade 908

Due 5/11/2022 To Tropic 250HO14605
Milking 80# 38scc 4.7f 3.6p

Consigned By:
Ethan Pietre, Owen WI



Top: Our-Favorite Endless EX-94 (2nd Dam of Lot 24)

Right: Our-Favorite Unlimited EX-94 EX-96MS
(3rd Dam Lot 24)



Zimmy-Land Sidekick Aaron

840003229264440 BULL 3/20/2021

GTPI: +2205 PTA 2.56T 2.16UDC 1.60FLC
Full Genomics Available on ST and at the sale

Consigned by:
Ethan Petre, Owen WI

Walnutlawn Sidekick

CAN12508113

PTA -1030M +13F -9P 96%R
PTA +.01PL +2.72SCS -.5DPR +2.1%DCE
PTA +2.92T +2.48UDC +.96FLC 97R 12/21
GTPI +2227

Willsbro Abbott-ET

GVR388380500583
PTA -298M +41F +8P 99R 12/22
PTA +1.77T +1.84UDC +.53FLC
GTPI +2426

Walnutlawn Mccutchen Summer EX95

1-10 2x 365d 270002m 4.6 1237f 3.1 837p

Dymenthalm Mr App Avalanche

CAN 11957107 *RC *CV *TL *TY *TD
PTA -18M +6F -2P 98R 8/20
PTA -2.3PL +2.88SCS -3.2DPR +3.1%DCE
PTA +3.9T +3.11UDC +2.49FLC 97R 8/20
GTPI +2151

Our-Favorite Avlcncche Ava-ET

3200856515 *RC

Our-Favorite Endless-ET

142863974 EX-94 GTPI +2214
2-0 3 305 21880 95 4.4 969 3.6 790
365 24790 95 4.6 1143 3.7 914
3-0 2 305 29390 93 4.7 1380 3.5 1029
365 35100 93 4.8 1686 3.6 1275

Unlimited

Our-Favorite Unlimited

141851721 EX-94 EX-96MS
2-08 3 303 27460 97 4.5 1247 3.2 888
3-08 3 305 27960 95 4.5 1248 3.5 967
365 31990 95 4.5 1439 3.5 1125
5-03 2 305 28540 95 4.2 1191 3.5 990
365 33640 95 4.3 1437 3.5 1182
LIFE: 1499 121790 4.6 5621 3.6 4330

Nominated 3 consecutive years for Holstein International's Global Impact Cow of the Year.



Windleway Polo Denver-Red

840003127590875 3/14/2020
Bred 10/15/21 Reeve Red (Confirmed)

Consigned By:
David and Dawn Windle

Aprilday Polo P-Red-ET

3132706852 PC TM TY TV TL TD
PTA +345M -18F +19P 97R 12/21
PTA +1.41T +1.47UDC +.66FLC
GTPI +2237

Apoll P-Red-ET

762042012 PO TY TV TL
PTA +159M +24F +48P 97R 12/21
PTA +1.5PL 2.80SCS -3.5DPR 2.6%DCE
PTA +.4T +.46UDC -.33FLC 99R 12/21

Aprilday WB Destiny-ET

3124628029 TL TD
3-10 VG88 VEV+E
3-00 3x 305d 35660m 4.2 1482F 2.9 1026P

Bacon-Hill Riley-Red-ET

3129340683 TP TY TV TL TD
PTA +202M +44F +5P 99%R 12/21
PTA +1.18T +1.31UDC 1.06FLC 91%R 12/21

Windleway Riley Dixie-Red

3146684432 100%RHA-NA 3/15/18
2-03 GP80 G+GG+
1-11 2x 165d 11090m 4.5 502F 3.4 373P

Windleway Danel Dericka-Red

3136308160 100%RHA-NA
3-03 G74 F+++FF
2-01 2x 249d 16630 4.7 774F 3.5 589P
3-00 2x 258d 17970 4.6 831F 3.3 588P



Windleway Escobar Panzi

840003127590882 99%RHA-I *RC
6/26/2020
Bred 9/11/21 McDonald-P Red (Confirmed)

Consigned By:
David and Dawn Windle

Y-Whisper Drake-Red-ET

3132417775 TR TC TY TV TL TD
PTA +1574M +69F +54P 99R 12/21
PTA +2.2PL 3.14SCS -1.5DPR 2.4%DCE
PTA +3.54T +2.36UDC -2.10FLC 99R 12/21

Seagull-Bay Ellen P-ET

3124720574 *RC PO

OCD Drake Escobar-P-Red-ET

3141428583 PC TC TY TV TL TD
PTA -470M +28F +10P 99R 12/21
PTA +.74T +.90UDC +.27FLC
GTPI +2239

Next Dams
Windleway Mrburn Panora-ET EX90
Coppertop Talent Patti-ET EX92
Any-Day Gibson Profit-ET EX90
JO Clar Jess Patsy EX93 DOM
Jo-Clar Lincoln Patches EX90
Jo-Clar Inspiration Penelope EX90

Windleway Diamdbck Puddin

3146684442 99%RHA-I
2-07 VG85 +VVVV

MR D Apple Diamondback

840003013721049 EX-93 GPTA +1886G
*RC TP TY TL TD 99%RHA-NA
PTA -395M -25F -1P 99%R 8/21
PTAT +2.47 UC +1.93 99%R 8/21

Windleway Precious-ET

72897755 100%RHA-NA
5-10 VG88 VV+VE
2-01 2x 305d 22270m 3.5 770F 3.1 695P
3-11 2x 305d 28840m 3.3 948F 3.1 888P
2x 365d 32840m 3.3 1085F 3.1 1022P
Life: 1314d 100620m 3.5 3499F 3.1 3119P



Windleway Escbar Devine-Red

840003228695999 99%RHA-I 10/29/2020
Bred 1/27/22 Mcdonald-P-Red

Consigned By:
David and Dawn Windle

OCD Drake Escobar-P-Red-ET

3141428583 PC TC TY TV TL TD
PTA -470M +28F +10P 99R 12/21
PTA +.74T +.90UDC +.27FLC
GTPI +2239

Windleway Simplicity Deva

3146684458 99%RHA-I
2-01 GP83 +V++V
1-09 2x 305d 24080 4.3 1043F 3.3 791P
365d 28260 4.4 1246F 3.4 959P

Y-Whisper Drake-Red-ET

3132417775 TR TC TY TV TL TD
PTA +1574M +69F +54P 99R 12/21
PTA +2.2PL 3.14SCS -1.5DPR 2.4%DCE
PTA +3.54T +2.36UDC -2.10FLC 99R 12/21

Seagull-Bay Ellen P-ET

3124720574 *RC PO

Holyland Simplicity-P-RC-ET

3136246981 99%RHA-I *RC PC TC TY TV TL TD
PTA +1075M +51F +34P 99%R 12/21
PTA +.81T +.66UDC +.27FLC 97%R 12/21

Windleway Aikman Dice

74280215 100%RHA-NA
3-06 VG87 +VV+E
3-02 2x 305 23610 5.0 1170F 3.5 819P



Windleway Polo Pretzel

840003224436514 99%RHA-I *RC
06/15/21

Consigned By:
Joey Ploeckelman

Apoll P-Red-ET

762042012 PO TY TV TL
PTA +159M +24F +48P 97R 12/21
PTA +1.5PL 2.80SCS -3.5DPR 2.6%DCE
PTA +.4T +.46UDC -.33FLC 99R 12/21

Aprilday WB Destiny-ET

3124628029 TL TD
3-10 VG88 VEV+E
3-00 3x 305d 35660m 4.2 1482F 2.9 1026P

MR D Apple Diamondback

840003013721049 EX-93 GPTA +1886G
*RC TP TY TL TD 99%RHA-NA
PTA -395M -25F -1P 99%R 8/21
PTAT +2.47 UC +1.93 99%R 8/21

Windleway Precious-ET

72897755 100%RHA-NA
5-10 VG88 VV+VE
2-01 2x 305d 22270m 3.5 770F 3.1 695P
3-11 2x 305d 28840m 3.3 948F 3.1 888P
2x 365d 32840m 3.3 1085F 3.1 1022P
Life: 1314d 100620m 3.5 3499F 3.1 3119P

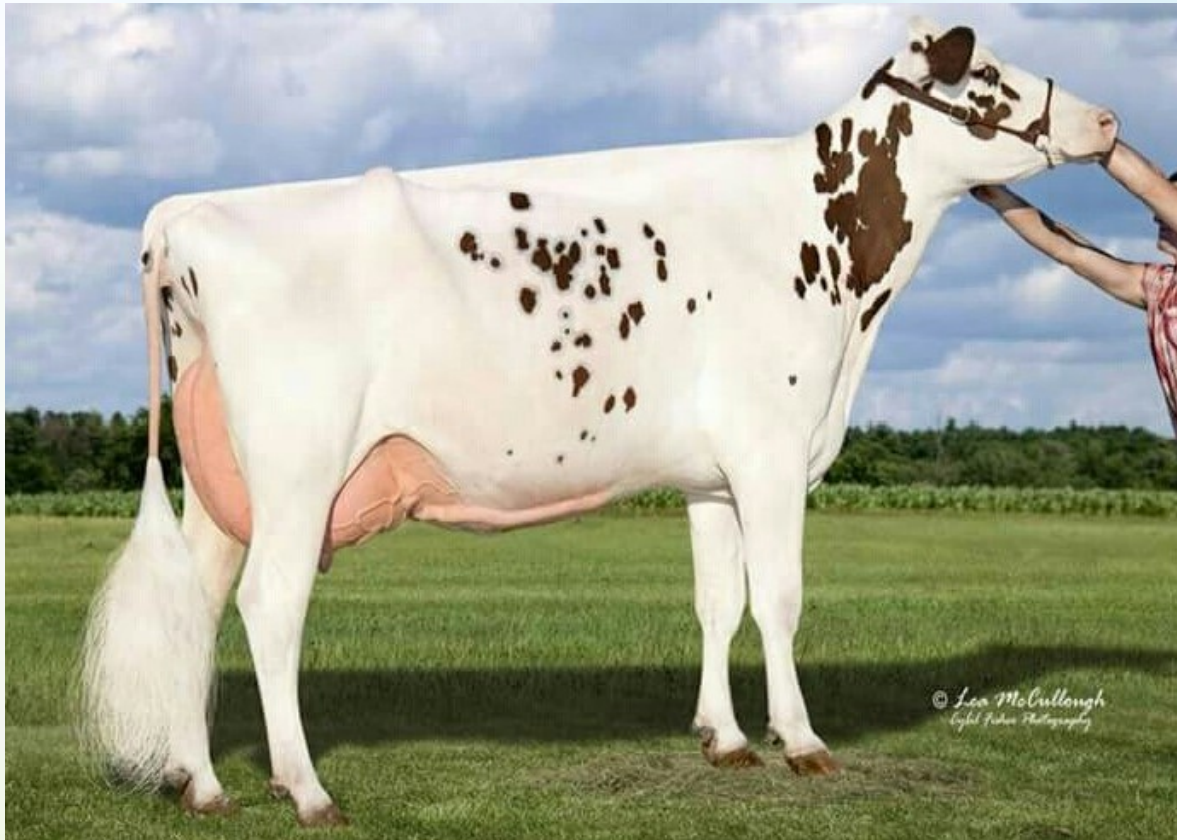
Aprilday Polo P-Red-ET

3132706852 PC TM TY TV TL TD
PTA +345M -18F +19P 97R 12/21
PTA +1.41T +1.47UDC +.66FLC
GTPI +2237

Windleway Diamdbck Puddin

3146684442 99%RHA-I
2-07 VG85 +VVVV

Next Dams
Windleway Mrburn Panora-ET EX90
Coppertop Talent Patti-ET EX92
Any-Day Gibson Profit-ET EX90
JO Clar Jess Patsy EX93 DOM
Jo-Clar Lincoln Patches EX90
Jo-Clar Inspiration Penelope EX90



Vande Shot Tiffany-Red ET

30

Kamps-Hollow Tang-Red

840003208643493 9/20/2019 GP81
*Fresh 10/1/2021 Bred 12/16/2021 Altitude (Sexed) Confirmed
2-00 96d 6901M 289F 202P
Milking 74# 31scc

Mr Apples MCGUCCI-ET

72353438 *RC *TY *TL *TD
PTA-1689M +11F -13P 96R 4/21
PTA +2.56T +1.79UDC +2.81FLC
GTPI +2071

Bryersquart Gchip Jail-P-ET

71402418 100%RHA-NA *RC *PO EX-90 3-06
1-11 3x 342d 31,580 3.9% 1233F 2.9% 925P

Scientific B Defiant-ET

141123484 4-08 VG87 EVV+
PTA +72M -52F -12P 99R 12/21
PTA -1.3PL 3.20SCS -3.0DPR 3.3%DCE
PTA +2.69T +1.73UDC +.97FLC 99R 12/21

JAS-K Atwood Tessa-Red-ET

70581927 EX-90 3-05
2-00 2 365 25440 3.1 796 3.0 756
3-01 2 365 33660 2.8 940 2.9 986
*2nd Winter Calf & HM Jr Champion 2014 District 3 Show *

Consigned By:
Nikki & Kelsi Steffenhagen,
Darlington WI

Cycle MCGUCCI Jordy-Red

3131666411 *CV *TC *TY *TL *TD
PTA -1186M -25F -42P 98R 4/21
PTA -2.4PL +3.02SCS -2.5DPR 3.8%DCE
PTA +2.89T +2.20UDC +2.88FLC 98R 4/21
GTPI +1727

Kamps-Hollow Tint-ET

3143597620 RC* DR1 TC TL TD
Dominant Red Cow

Jas-K Guth Treasure-Red-ET

70309488 7-05 EX91 EEEVE 2E
2-00 3x 305 19240 4.8 926F 3.2 618P
4-08 2x 295 22710 4.2 947F 3.3 743P
5-08 2x 305 25380 4.1 1040F 3.4 852P
6-11 2x 305 25420 4.0 1025F 3.2 930P
Life: 1645d 113230m 4.3 4901F 3.3 3762P

Vande Shot Tifany-Red-ET

2-06 2x 305 21,790 4.0 870F 3.1 674P
2nd 4 Year-Old & Grand Champion Jr.
Show, 2014 District 3 Show



Kamps-Hollow Altitude EX95 2E DOM

31

Kamps-Hollow A-Rockstar-Red-ET

840003133033975 10/10/2020

Mr Lr Edg Arvis 18196-ET

3125201960 RC TC
PTA -535M +8F +1P 97R 12/21
PTA +1.95T +2.09UDC +1.35FLC
GTPI +2157

Farnear-Tbr Asia Adler EX96

02-03 2x 365d 32440m 5.0 1609F 3.4 1107P

Mr Ansley Addiction-P-Red-ET

72128091 PC CD TY TV TL TD
PTA -1859M -10F -18P 99R 12/21
PTA +2.7PL 2.63SCS +1.7DPR 2.8%DCE
PTA +.7T +1.11UDC -.20FLC 98R 12/21

Kamps-Hollow Anthem-ET

139722770 100%RHA-NA *RC
6-02 EX92 EEEVE 2E
2-02 2x 305 26570 4.1 1079F 3.2 839P
2x 365 32410 4.1 1341F 3.2 1041P
3-10 2x 305 38810 4.5 1753F 2.9 1138P
2x 365 43830 4.5 1994F 3.0 1327P
6-02 2x 281 29520 4.0 1193F 2.7 806P
Life: 1457 135110 4.4 5993F 3.2 4305P

Maternal Sister to Kamps-Hollow Altitude
EX95 2E DOM (Dam of Apple)

Consigned By:
Nikki & Kelsi Steffenhagen,
Darlington WI

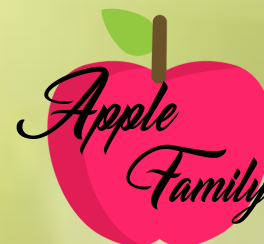
Clover-Mist Alisha-ET
12-07 EX93 EEEEE 3E GMD DOM
Life: 2999d 226470m 10659F 7720P
Clover-Mist Augy Star-ET
-EX94 4E DOM
7-10 3x 365d 43140m 5.0 2136f 3.3 1421p
D-R-A August
EX-96 4E DOM

Farnear Altitude-Red ET

840003128013348 *TC
PTA +194M +19F +16P 99%R 12/21
PTAT +2.92 UDC +2.32 99%R 12/21

Kamps-Hollow Ancelin-ET

840003013109516 RC PC TL TD





© Lea Jordan
Cybil Fisher Photography

Steffenhagen Letsdeal Chrome EX90

32

NK-Stef Unstopabull Clash RC PO

840003225617774 10/1/21

Consigned By:
Nikki & Kelsi Steffenhagen,
Darlington WI

Riverdown Unstopabull-Red

11801450 *TL*TV*TY
PTA -M -2F -10P 80R 8/20
PTA +1.0PL 2.89SCS +.06DPR 2.1%DCE
PTA +2.80T +2.66UDC +1.79FLC 99R 8/20
GTPI +2227

Steffenhagen Letsdeal Chrome

840003127334564
4-11 EX90 EEEVV

Dymenthom Mr Apples Avalanche

HOCAN000011957107 CV RC
PTA -10M +4F -1P 99R 4/21
PTA +3.87T +2.83UDC +2.47FLC
GTPI +2120T

Cherry Crest That's Neat

11432171 EX-92 CAN
2-02 2x 365d 28,146m 4.6 1299F 3.3 926p
3-06 2x 305d 28,049m 4.4 1241F 3.1 869P
2x 365d 31,197m 4.5 1393F 3.1 982P
4-07 2x 305d 28,342m 4.3 1228F 3.2 901P

Synergy Lets Deal

72798990 2-09 VG85 RC PC TY TV TL TD
PTA -51M +17F +8P 97R 12/21
PTA -.5PL 3.25SCS -1.4DPR 2.5%DCE
PTA -.19T +.23UDC -.38FLC 91R 12/21

Woods-Valley Braxton Cindy

142987186 100%RHA-NA
5-00 VG88 VE++V



NK-Stef America Cheers PO

840003133033969 6/22/2020
Bred 9/15/2021 Aristocrat (551HO03701)

Consigned By:
Nikki & Kelsi Steffenhagen,
Darlington WI

Luck-E America 684-ET

72186883 *RC TC
PTA -863M -15F -13P 90R 12/21
PTA -.5PL 3.02SCS -2.7DPR 3.6%DCE
PTA +3.14T +2.80UDC +1.91FLC 87R 12/21
GTPI +1962

Dymenthom Mr Apples Avalanche

HOCAN000011957107 CV RC
PTA -10M +4F -1P 99R 4/21
PTA +3.87T +2.83UDC +2.47FLC
GTPI +2120T

Luck-E Advent Asia-ET

*RC EX-94
4-10 2x 365d 32680m 5.7 1863F 3.2 1045P

Steffenhagen Letsdeal Chrome

840003127334564
4-11 EX90 EEEVV

Synergy Lets Deal

72798990 2-09 VG85 RC PC TY TV TL TD
PTA -51M +17F +8P 97R 12/21
PTA -.5PL 3.25SCS -1.4DPR 2.5%DCE
PTA -.19T +.23UDC -.38FLC 91R 12/21

Woods-Valley Braxton Cindy

142987186 100%RHA-NA
5-00 VG88 VE++V



East-Colt Hancock Daisy

840003209771525 6/1/2020
+2.3T +1.92UDC +1.10FLC
Bred 11/24/21 Hammer (Sexed) 734HO124

Consigned by: Tom Schaefer WI

Siemers Doc Hancock

840003144882821 *TC *TP *TR
PTA +1239M +58F +44P 87R 12/21
PTA +1.8PL 2.99SCS -2.0DPR 2.4%DCE
PTA +3.75T +3.14UDC +1.62FLC 81R 12/21
TPI +2728

Woodcrest King Doc

3132417775 TR TC TY TV TL TD
PTA +1574M +69F +54P 99R 12/21
PTA +2.2PL 3.14SCS -1.5DPR 2.4%DCE
PTA +3.54T +2.36UDC -2.10FLC 99R 12/21

Siemers Monterey Hanan-ET

840003131528231 VG-85
2-00 3x 156 12470 4.1 517F 3.2 393P

Canary Aftershock Winnie

840003135719988 3-08 GP-83 VVV+G
1-11 2x 305 21680 3.9 851F 2.9 636P
3-01 2x 235 21030 3.8 808F 3.0 622P

Ms Atlees Sht Aftershock-ET

65249839 EX-92 EEVE
PTA -457M -23F -31P 99R 4/21
PTA +1.43T +1.06UDC +.5FLC 99R 4/21
GTPI +1851

Canary Goldwyn Lil Gambler

70312165 6-04 EX90 VEVEV
2-00 3x 305 25750 3.7 960F 3.2 819P
3-00 3x 291 25650 3.2 827F 3.2 828P
5-04 2x 283 32000 4.1 1327F 3.5 1110P
6-04 2x 305 33290 4.2 1409F 3.3 1114P
8-01 2x 196 2x 19010 3.7 706F 2.8 528P
Life: 2135 202190m 4.0 8010F 3.4 6705P

Next Dams
Canary Allen Gambler EX92
Canary Durham Dolly VG86
Canary Jurist Sherry VG85



Windleway Escobar Beka P

8400032224436511 99%RHA-I 3/02/21

Consigned By:
Joey Ploeckelmann

Y-Whisper Drake-Red-ET

3132417775 TR TC TY TV TL TD
PTA +1574M +69F +54P 99R 12/21
PTA +2.2PL 3.14SCS -1.5DPR 2.4%DCE
PTA +3.54T +2.36UDC -2.10FLC 99R 12/21

Seagull-Bay Ellen P-ET

3124720574 *RC PO

OCD Drake Escobar-P-Red-ET

3141428583 PC TC TY TV TL TD
PTA -470M +28F +10P 99R 12/21
PTA +.74T +.90UDC +.27FLC
GTPI +2239

Windleway Doberman Beauty
5-04 GP81 +E+GG
Lifetime 1502d 130440m 4.0 5175F 3.5 4591P

Ja-Bob Rex PP-Red-ET

73130038 PO PP TC
PTA -911M -45F -12P 97R 12/21
PTA +1.9PL 2.95SCS -.3DPR 3.6%DCE
PTA -.25T +.56UDC +.22FLC 93R 12/21

Windleway Bertie

3146684427 99%RHA-I *RC
2-05 VG85 V+V+V

Windleway Bertha

74280205 99%RHA-I *RC
2-06 GP83 +V+++

Powerhaus Reeve Sylvie-Red

3212151994 9/18/2019
Fresh 12/24/2021 Serviced 2/16/2022 777HO11828 Redeye
Milking: 101.3# 4.1F 3.0P 13sc
Freestall/Parlor/Headlock

Consigned by: Holtland Holsteins, WI



Mr Stone-Front Reeve Red

313687210 A2A2
PTA +443M +54F +27P 88R 12/21
PTA +2.9PL 2.78SCS +1.5DPR 2.3%DCE
PTA +1.56T +1.22UDC +.65FLC 83R 12/21
TPI +2616

Mr Salvatore RC-ET

312907884 RC TP TC TY TV TL TD
PTA 1529M 38F 30P
PTA +5.6PL 2.65SCS -.1DPR 2.1DCE
PTA 1.72T 1.24UDC 1.41FLC 12/2021

Y-Whisper Silver Regal-ET

3130641761 2-11 87 VVVVV
2-03 3x 365 37990 3.3 1249F 3.1 1162P

Powerhaus Armani Sybella

3131148183 100%RHA-NA 4-10 83
2-00 3x 305 23230 4.7 1088F 3.5 812P
3-00 3x 300 26970 4.2 1141F 3.5 955P
4-00 3x 365 33870 5.1 1723F 3.4 1157P

Mr Apples Armani- ET

68571374 4-10 90
PTA -1776m +14F -14P
PTA -1.8PL 2.84scs +1.3DPR 2.3DCE
PTA .98T 1.53UDC +1.50FLC 99%R 12/21

Powerhaus Ladd-P Sybil-Red

74182937 5-01 VG85 VVG+V
2-00 3x 335 24380 3.0 742F 3.0 739P
3-01 2x 349 38960 3.7 1423F 3.0 1162P
4-02 3x 365 27500 2.7 675F 3.0 747P
5-07 3x 223 17890 2.9 520F 2.8 503P
Life 1316d 110590m 3.2 3560F 3.0 3321P



K-Ana Byway Dezi

840003141077870 3/14/17
Sells FRESH
2-11 375d 24030m 3.1 745F 3.2 764P
1-11 301d 21470 3.3 718F 3.2 681P

Pending

2/14/2022
Sired By: Mt-Glen Jonah *Lithium* 525HO134

Oh-River-Syc Byway-ET

71310557 TR TP TV TY TL TD
PTA +353M -30F -5P 99R 12/21
PTA +2.36T +2.24UDC -.06FLC
GTPI +1871

K-Anna Redliner Desert-Red

3126979341 100%RHA-NA
3-05 GP84 ++++V
1-10 2x 305d 23470m 3.9 921F 3.1 732P
3-02 2x 176d 12260m 4.1 509F 3.3 405P

Sully Hart Meridian-ET

69951907 TR TP TY TV TL TD
PTA +1925M +16F +37P 99R 12/21
PTA -1.0PL 3.04SCS -2.3DPR 1.8%DCE
PTA +2.11T +1.59UDC -.58FLC 99R 12/21

Sandy Valley Atwd Barbie-ET

69250651 EX91 EEEVE
5-03 VG87 EE++V
2-04 3x 365d 32120m 3.5 1118F 3.1 1010P
4-09 3x 365d 29490m 3.7 1091F 3.2 933P

Fradon Redliner-Red-ET

7528698 100%RHA-NA TV TL EX91
PTA -631M -61F -23P 99%R 12/21
PTA +.24T -.31UDC -1.14FLC 99%R 12/21

K-Anna Debonair Danish

71761811 100%RHA-NA RC

Consigned By:
John Ivan Oberholtzer



Powerhaus Tahiti 1715

840003212152358 89%RHA-I 6/1/2021

De-Su Frazz Tahiti 14104-ET

3141559498 TR TP TC TY TV TL TD
PTA +1723M +86F +58F 96R 12/21
PTA +5.4PL 2.99 SCS +.2DPR 2.4%DCE
PTA +.86T .46UDC -.62FLC 92%R 12/21

Powerhaus Jitterbug 696

3131148096 79%RHA-I
4-01 3x 362 35760 3.6 1277F 3.0 1081P

Melarry Josuper Frazzled

74261651 TRPTTCTYTVTLTD
PTA +1640M +72F +41P 99%R 12/21
PTA +6.6PL 2.48SCS -3.0DPR 3.0DCE
PTA +.02T +.86UDC -.77FLC 99% 12/21

DE-Su Delta 4900-ET

3127335727 2--03 81 DOM

CO-OP Robust Jitterbug

70541469 TP TC TY TV TL TD
PTA -584M +26F +OP
PTA +1.6PL 3.00 SCS +2.4DPR 1.3DCE
PTA -.91T -.09UDC -.36FLC 96%R 12/2021

35HAK8317

35HAK8317 59%RHA-NA 12/25/2013

Consigned by: Holtland Holsteins, WI



Oxbow Dairy Starlord Zinda

174284312 A2A2 3-2-21

**Consigned by:
Tom Schaefer**

River Valley Circus Craze-ET

75341001
PTA +45M +19F -2P 99R 12/21
PTA +3.4PL 2.97SCS +.3DPR

JX Ahlem Pflex Showgirl M1898 (6)

67811989

Primus Craze Starlord-ET

840003141725644 A2A2
PTA +58M +26F +3P 99R 12/21
PTA +4.1PL 2.90SCS +2.1DPR

Oxbow Dairy Chrome Zella

173768387 11/24/2018 A2A2
PA +353M 5F +10P
136CM\$ 138NM\$
PA +1.4T

River Valley Cece Chrome-ET

3012423929 A2A2
PTA +491M +32F +16P 99R 12/21
PTA +2.4PL 2.83SCS +.2DPR 99R 12/21

Oxbow Dairy Galvanize Zag

119402656 3-09 86%
2-03 305d 2x 17950 4.4 783F 3.3 595P
3-07 134d 2x 9400 3.6 339F 3.4 317P

3rd Dam:
Oxbow Dairy Surefire Ziggy
118534543 4-00 90%
2-01 305d 2x 18110 4.2 769F 3.5 628P
3-01 305 2x 20330 4.9 994F 3.6 731P
4-04 305 2x 20130 3.5 702F 3.4 682P
5-07 114 2x 8800 3.7 322F 3.4 298P
Oxbow Dairy Saber Zippy 90%



Bremer Ladd Music

3138978784 11-09-2018 2-00 85%
1-10 250d 2x 10420 5.5 575F 3.7 385P
Fresh 1-22-2022

**Consigned by:
Ferdie Szews
Sheldon, WI**

BW Karbala-ET

115611760 A2A2
PTA -376M +6F -15P 12/21
PTA +1.40PL 2.88SCS -.2DPR

Goldust Karbala Ladd-ET

117627303 A2A2
PTA -1060M +2F -26P 12/21
PTA +.9PL 2.95SCS -.5DPR

Goldust Legion Leanna

67161125 A1A2 94%
305 2x ME AVG 5L 22110M 1238F 809P

Norse Star Allstar Maiden

67223323 6-10 91%
1-10 295d 3x 19210 5.5 1056F 3.9 742P
2-10 304d 3x 19960 6.0 1193F 4.5 896P
3-09 297d 3x 20840 5.9 1229F 4.3 894P
6-08 267d 2x 9760 5.7 553F 4.0 386P
8-00 141d 2x 5980 5.3 319F 3.9 710P

Sunset Canyon Anthems Allstar-ET

114581918
PTA -886M +44F -9P 12/21
PTA -1.0PL 2.82SCS -1.3DPR 12/21

Norse Star Militia N2697

67102697 2-05 87%
2-05 305d 3x 19840 6.1 1219F 4.0 786P
3-05 305d 3x 18970 5.6 1071F 4.0 752P
305 2x ME AVG 2L 1854M 1110F 749P

MJ Candy DC *Godiva* Family!!!!



Woodmohr Marlos Ultra Divine-ET EX-95



Woodmohr Century Unbelievable

173819823 Fresh 5/28/2021
Service Date: 12/31 Mask P 525JE09

MDR-Ourdream Unique

174604778 05/28/2021
Sired by: Covington Oliver Mace-P A2A2

**Consigned by:
Marvin Reiff**

Sooner Centurion-ET

655767
PTA -1045M -38F -31P 12/21
PTA -2.4PL 3.11SCS +2.1DPR 12/21

Enniskillen Respect Suzy

7727846

Rapid Bay Indiana Gentry-ET

105762718
PTA -1880M -76F -68P 12/21
AJCA PTAT 91R 1.2 JUI 7.3 JPI -162

Woodmohr Marlos Ultra Divine-ET

116762834 95% 9-07
5-11 2x 305d 25830 5.6 1440F 3.7 949P
9-05 2x 305d 24530 5.7 1394F 3.5 849P
8-04 2x 305d 25970 5.6 1388F 3.4 847P
4-01 2x 297d 21460 6.0 1295F 3.7 792P
*Nom AA Production Cow 2017
*Member 1st Produce of Dam MSF 2013
*Member Nom. AA Produce of Dam 2013
*Member Nom. AA Best 3 Females 2013

Enniskillen Century

12038707
PTA -1968M -60F -60P 12/21
PTA -2.6PL 3.18SCS +2.6DPR 12/21

Woodmohr Ultra Violet

119803354 87%
2-09 2x 305d 15266 5.0 749F 3.8
572P

MJ Candy DC Godiva
3990001 17-02 EX-95%
9-10 2x 305 15460 4.6 717F 3.7 573P
10-11 2x 305 20570 5.1 1053F 3.7 771P
12-08 2x 305 21180 5.1 1081F 3.6 661P
15-10 2x 305 19780 5.3 1056F 3.6 709P
Lifetime Over 284,000m, 15000F 11,000P
*16 Excellent Daughters
*6 EX-95% Daughters
*5 EX-94% Daughters



Woodmohr Marlos Daylite

44
45

Woodmohr Gentry Daylily

173819131 7/01/2019

Fresh 8/28/2021

Bred 12/6/2021 Mace P 525JE06

MDR-Ourdream Diamond

174604787 8/28/2021

Sired by: Billings Jade Miner

Consigned by:
Marvin Reiff

Rapid Bay Indiana Gentry-ET

105762718

PTA -1699M -70F -63P 12/21

PTA -.3PL 3.39SCS +1.1DPR 12/21

Woodmohr AK Daytime

173148361 83%

Impressive Indiana-ET

112391117

PTA -1939M -105F -71P 12/21

PTA -3.2PL 3.31SCS +3.3DPR 12/21

Vandenberg Amedeo Gorgeous

8252544

Avonlea Kookies Conspiracy-ET

10989473

PTA -2235M -79F -67P 12/21

Woodmohr Marlos Daylite

118722261 5-02 92%

1-10 305 2x 15540 5.0 782F 3.7 582P

2-10 305 2x 19120 6.2 995F 3.7 706F

3-09 305 2x 21580 5.5 1193F 3.5 746F

5-00 305 2x 22540 4.9 1110F 3.4 762P

Nom AA ABA Fall Yrlg In Milk 2015

Woodmohr Godivas Delight

93%

MJ Candy DC Godiva

3990001 17-02 EX-95%

9-10 2x 305 15460 4.6 717F 3.7 573P

10-11 2x 305 20570 5.1 1053F 3.7 771P

12-08 2x 305 21180 5.1 1081F 3.6 661P

15-10 2x 305 19780 5.3 1056F 3.6 709P

Lifetime Over 284,000m, 15000F 11,000P

*16 Excellent Daughters

*6 EX-95% Daughters

*5 EX-94% Daughters



Woodmohr Marijane-ET

46

Summitview Woodmohr Miracle

02/05/2020
Fresh 1/28/2022

Consigned by:
Marvin Reiff

Arethusa Verbatim Response-

ET
116023076
PTA -1955M -44F -55P 12/21
PTA -2.8PL +.8DPR +3.3CCR +3.03SCS

Woodmohr Marigold

172926113
1-10 86d 2x 4470 5.0 224F 3.3 148P

Hollyline R Response-ET

660024 158JE19
PTA -1931M -77F -67P 12/21

Huronia Centurion Veronica 20J

10206465 EX97%

Rapid Bay Grand-Prix-ET

104411831
PTA -2177M -54F -67P 12/21
PTA -530CM\$ -530NM\$ -523FM\$

Woodmohr Marijane-ET

119458442 5-07 EX-94%
3-00 305 2x 19170 6.1 1121F 3.8 727P
4-02 305 2x 17700 7.1 1249F 3.8 679P
5-02 305 2x 20220 7.8 1574F 3.8 770P
6-02 130 2x 9210 9.4 865F 3.3 302P

3rd Dam
Woodmohr GD Marijo
117337723 EX95
3-02 305 2x 20730 6.0 1236F 3.9 804P
5-02 305 2x 20510 5.8 1181F 3.8 779P
6-02 305 2x 19930 6.4 1271F 4.1 818P
7-03 305 2x 22660 6.4 1442F 3.6 808P
Advancer Furor Mary
112342234 EX95%



West-Croix Pete Avery

173869819 9/10/2019 GP82%
Bred 11/30/21 Reckless 7JE1808
Fresh 9-3-21
2x 105d 4909m 5.2 257F 3.2 157P SCC20

**Consigned by:
Chris Van Dyke
West Croix Genetics**

Dutch Hollow Lexicon

115479865
PTA +248M +9F +11P
PTA +1.4PL +.7LIV -1.1DPR 2.84SCS

West-Croix Lexicon Pete

173136269
PTA -1013M -27F -30P 37%R
PTA -261CM -263NM -267FM

Townside Comerica Prarie

117817872 93%
305 2x ME Avg 3L 14005M 810F

**3rd Dam
ADVANCER FUROR ANDRA**
112347239 EX93 8-09
2-00 302 2x 7920 5.6 442F 3.9 305P
3-00 305 2x 7410 5.6 417F 4.2 310P
4-00 305 2x 9200 6.1 563F 4.2 385P
5-01 305 2x 8970 5.8 519F 4.0 361P
6-02 305 2x 13270 5.9 783F 4.1 547P
7-03 305 2x 14580 5.5 802F 4.0 579P
8-03 305 2x 14110 5.4 764F 4.0 565P
9-05 72 2x 3570 5.6 200F 3.9
140P

West-Croix Joel Arena

173136250 3-01 87%
1-11 276 2x 11020 4.7 518F 3.5 389P
2-10 305 2x 14950 5.0 746F 3.8 561P

Guimo Joeo-ET

106797223
PTA -1585M -59F -41P 12/21
PTA -521CM\$ -519NM\$ -5040FM\$

West-Croix Valid Angel-ET

118388861 3-08 85%
1-10 3-05 2x 12980 4.6 596F 3.4 445P
3-03 305 2x 14810 5.0 741F 3.4 509P
4-05 305 2x 15550 5.1 797F 3.5 549P
305 2x ME Avg 4L 13983M 676F 497P

Woodmohr Century Fame

173819814 05/09/2019
Due March 19, 2022 to Noble

**Consigned by:
Marvin Reiff**



Sooner Centurion-ET

655767
PTA -1045M -38F -31P 12/21
PTA -2.4PL 3.11SCS +2.1DPR 12/21

Enniskillen Century

12038707
PTA -1968M -60F -60P 12/21
PTA -2.6PL 3.18SCS +2.6DPR 12/21

Enniskillen Respect Suzy

7727846

**3rd Dam
Advancer Furor Faith**
EX-94
Advancer Saturn Farrah
EX-91
Advancer Knight Kalene
EX90

Woodmohr Impressive Fortune

172926131 VG85% 2-04

Rock Ella Impression-ET

11227649 A2A2
PTA -1593M -75F -59P 12/21
PTA -528CM\$ -519NM\$ -462FM\$

Woodmohr Verbatim Fame

117938540 4-06 91%
2-01 305 2x 15740 5.9 935F 3.8 605P
3-02 292 2x 20510 6.9 1418F 4.1 831P
4-01 305 2x 19830 6.2 1226F 4.2 824P
305 2x ME Avg 3L 20676M 1315F 835P



West-Croix Justify Cinderella

174106001
Pasture Bred Due March West-Croix V Charlie 174130378

**Consigned by:
Chris Van Dyke
West Croix Genetics**

Chilli Action Colton-ET

66738335 A2A2
PTA -1801M -28F -43P
PTA -.9PL +1.0LIV +.7DPR 3.24SCS

Discoverys Colton Justify

173537837
PTA -2470M -53F -66P 77%R
PTA -454CM -455NM -485FM

Discoverys Tequila Jewelene

117595860 EX96%
305 2x ME AVG 1L 17488M 972F 655P

**3rd Dam
Woodmohr Verbatim Creamy
VG88%
305 2x ME AVG 4L 13522 771F 546P**

West-Croix Lethal Cocoa

173326288
305 2x ME AVG 1L 9128M 386F 332P

Smokin Hot Lethal Weapon

3013717339
PTA -1507M -51F -35P 12/21
PTA -551CM\$ -555NM\$ -615FM\$

Woodmohr G Chocolate Cream

119776740 4-07 EX92%



West-Croix Andreas Candy

173827798 6-4-19
Bred 12/13/21 Magician 7JE1705
Fresh 7-14-21
2x 156d 7271m 4.08 291F 3.0 215P 20scc

**Consigned by:
Chris Van Dyke
West Croix Genetics**

Hollyline R Response-ET

660024 158JE19
PTA -1931M -77F -67P 12/21

Sunset Canyon Andreas

117597125
PTA -1968M -78F -60P 98%R 12/21
PTA -770CM -766NM -756FM

SUNSET CANYON JADE ANNA

112592581 EX94%
305 2x ME AVG 5L 21347M 1087F 792P

Woodmohr G Chocolate Cream

119776740 4-07 EX92%

Rapid Bay Indiana Gentry-ET

105762718
PTA -1699M -70F -63P 12/21
PTA -.3PL 3.39SCS +1.1DPR 12/21

Woodmohr Verbatim Creamy

VG88%
305 2x ME AVG 4L 13522 771F 546P

Colors of the Season



West-Croix Lexicon Virginia

173409781 6-21-18 3-06 84%
Bred 10-11-21 Rockwell 94JE4198
1-11 305d 2x 11720 5.4 632F 3.9 453P
2x 177d 9240m 4.5 416F 3.57 324P 23scc

West-Croix Justify Vanessa

174106019 5/23/20
Sired by Discoverys Colton Justify
Due March/April to West-Croix V Charlie (Pasture Bred)

March 3, 2022

Consigned by:
Chris Van Dyke
West Croix Genetics

Dutch Hollow Lexicon

115479865
PTA +248M +9F +11P
PTA +1.4PL +.7LIV -1.1DPR 2.84SCS

Woodstock Lexicon

112012496 A2A2
PTA -927M -7F -19P
PTA -2.1PL +.9LIV +1.1DPR 2.99SCS

3rd Dam
MJ Bev Vesta
111442511 EX93%
305 2x ME AVG 8L 19311m 1036F 735P

Woodmohr Synergy Velvet

118564647 6-02 91%
305 2x ME AVG 5L 12065m 611F 453P

Dutcn NHollow Rebel Diva-P

Centurion Synergy

114857415
PTA -2125M -56F -56P 12/21
PTA -623CM\$ -628NM\$ -665FM\$

Woodmohr Jade Vanessa

115346992 9-06 94%
305 2x ME AVG 8L 20667m 1294F 812P

Jersey



JDH Dozer Kathy

74399915 6-6-2015 4th Lactation
Fresh 12/6/2021 Milking 90# scc80 5.3F 3.0P

Covey-Farms Reno

145522

Covey-Farms Reno

1020932

Consigned by:
Julia Heiman, WI

Family AF-AYR Reno Dozer

100427602

Clover-Knoll Willis Andrea

100649101

Bonnie Brae Willis-ET

817014

Ball-Ayr R Angie

101374098

Ayrshire

Colors of the Season

Kieffer-RDG Lucky Strike Madea

84000320554587 3/21/2020

Bred 8/23/2021 091MS04665

March 3, 2022



Consigned by:

Amy Peters

Peters Sterling View Farm

Greenwood, WI

Rovin Mega All Abner-P

68309795

PTA -166M -17F -21P 70%R 4/20

PTA +.2T -.24UDC +.36FLC

Truelea Diamond Jack Lotto P

69303117 EX-90

2-05 2x 305 23240 3.5 803F 2.9 672P

3-06 2x 305 24280 3.9 952F 3.0 725P

4-10 2x 305 24620 4.5 1106F 2.8 699P

Circle B A Lucky Strike PP

68317996

PTA +130M +1F -8P

PTA -1.6PL +3.23SCS +.1DPR

Blue Moon C Tie Munich

68315009

Lands-Brook Mega C-Tie Exp ET

471000044 EX-91

PTA -282M -4f -9P 4/20

PTA +.1 PL +3.04 SCS +1.4DPR

Blue Moon Destiny Madrid

68308666 GP 83



Milking Shorthorn Heifer #21

Serviced to 14H15311 Sky-Mike Red

Consigned by:

Heck Farms

Neillsville WI

56

Mysha-Wo Mudslinger Ember

6832306 9-18-16

Fresh 12/2/2021 Milking 80# 150scc 4.3F 2.7P

Consigned by:

Julia Heiman, WI

Kuzmar Megadeth EX93

145522

Pinesedge BG ALFair-EXP

5E-E95

431075

Kuzmar Mudslinger

464007

Mysha-Wo Zippo Ring Of Fire

8400031260842

Semen and Additional Lots

-Semen Tank

-Breeding Kit

- Many Units of Semen will all be listed on additional sheet and listed on our Facebook Page. Semen lots will be sold individually. Any semen not sold will be included in the sale of the semen tank.

-Expecting Many additional dairy lots. Milking Cows and Heifers!

Live Internet Bidding At

www.cowbuyer.com

- View/Bid online in Real Time
Registration is required. Please register at least (1) hour prior to the sale time at www.cowbuyer.com
- High Speed Internet is required. Slower Speed will not permit you to bid and keep pace in real time.
- Terms: Purchasing online constitutes a legal contract and promise for payment of purchases. All purchases must be paid within (10) days of sale date and prior to load out or delivery of cattle purchased.
- Cowbuyer.com is a service provider and is not responsible for the activity or inactivity of any technology, internet connection at the sale site or connection and technology of the bidders.
- For iPad, Iphone, or Android users, be sure to download the COWBUYER App to utilize mobile bidding.
- For questions or information, contact:
Aaron Ray Tomkins- (336) 363-4639, atompkin@vt.edu



HOLSTEIN ASSOCIATION TERMS AND CONDITIONS FOR PUBLIC SALES

EFFECTIVE MARCH 2, 1996 - Amended October 1, 1997, June 28, 2000, June 23, 2002, March 26, 2010 and March 24, 2016

TERMS: The terms of the sale are cash unless arrangements are made prior to the sale or are printed in the sale catalog. Only when the above conditions are met will the buyer be entitled to the warranties listed below. In no case will animals be released unless settlement is made with the clerk of the sale.

RESPONSIBILITY: The seller, buyer, and manager of this sale are obligated to comply with the provisions of these terms and conditions.

EXPORT SALES: Buyer assumes all responsibility for health tests required by the importing country.

BIDS: The highest bidder is the buyer. Bidding parties or their agents are responsible for all bids placed. Every animal or lot presented for bidding is pledged to absolute sale. In case of dispute, the animal or lot will again be put up for advance bids, and if there is no advance bid, the animal or lot will be sold to the person the auctioneer accepted the last bid from. In case two or more claim the bid, the auctioneer will indicate the party whose bid he recognized. Other claimants will be given an opportunity to increase the bid and bidding will be restricted to the two or more claimants.

BY-BIDDING: Bidding directly or indirectly by the sole owner of any animal or lot is prohibited unless the intention to bid is disclosed specific to each animal in the catalog and announced when the animal enters the ring. Bidding by any member of a partnership, syndicate, or other entity having an ownership interest in an animal or lot is permitted.

TRANSFER OF OWNERSHIP: For all Registered HolsteinsSM, the transfer of ownership to the buyer will be recorded on the records of Holstein Association USA and a certificate of registration showing that transfer of ownership will be provided to the buyer free of charge. For embryos, the transfer of ownership to the buyer will be recorded on the records of Holstein Association USA free of charge to the buyer.

RISK: All animals located at sale site are at the purchaser's risk as soon as struck off, but will be cared for free of charge for a maximum of 24 hours following the end of the sale.

WARRANTIES:

- 1) Each consignor warrants clear title to the animal or lot, and the right to sell same.
- 2) To the best of the seller's knowledge, each animal is sound and healthy in every respect and embryos have been recovered, processed, frozen, transferred and graded in keeping with IETS recommendations unless otherwise noted in the catalog or announced from the auction stand. Every precaution will be taken to represent the physical condition of each lot exactly as is known. Examination of all purchases should be made immediately after the purchase and before the close of the sale, and if found not to be as represented, complaint must be reported to the sale management before the close of the sale. In the event no complaint is filed, it is understood that the buyer assumes full ownership in the case of animals at sale site together with all risks, after which no representations of the seller can be challenged through the sale management. Heifers that never calved are in no way guaranteed as to the condition of their udders following calving. The sex of an embryo or fetus is in no way guaranteed.

3) Breeding Warranty

The seller guarantees all animals to be breeders, but not beyond the purchase price, with the following understanding:

- a. Males - Should any bull after reaching the age of fourteen months fail to prove a breeder after being used for two months on cows or heifers known to be breeders, the matter shall be reported in writing to the seller within three months of the sale date. The report must include the animal's examination record, a written statement of treatment, and a statement of the animals' inability to breed,

by a licensed veterinarian. The seller has the option to refund the purchase price or make other settlement that is satisfactory to the buyer. In either case the rights of ownership of the animal return to the seller. The seller makes no guarantees with respect to the ability to freeze semen.

- b. Females - All females are guaranteed to be breeders with the exception of:
 1. Cows over 7 years of age when sold;
 2. Cows and/or heifers carrying a pregnancy that is the result of an embryo transfer.

Report of a non-breeder must occur in writing within 3 months of the date of sale or before the animal reaches 21 months of age and must be submitted to the seller. The report must include the animal's examination record, a written statement of treatment, and a statement of the animals' inability to breed, by a licensed veterinarian. The seller has the option to refund the purchase price or make other settlement that is satisfactory to the buyer. In either case the rights of ownership of the animal return to the seller.

Females bred when sold and pronounced in calf are presumed to be pregnant but pregnancy is not guaranteed unless so announced. The seller makes no warranty that pregnant cows will deliver calves or that they will carry calves full term.

- c. If, after the sale, embryos or oocytes are recovered from a female or an attempt is made to superovulate her, this negates the breeding warranty unless there is a separate written agreement between buyer and seller.

SHIPPING: Assistance will be given in arranging shipping of the animals after the sale. All costs, risks and responsibility will be borne by the purchaser.

PEDIGREE INFORMATION: All production, classification, type and production summaries are current. Only information recorded on Holstein Association USA pedigrees is used. Any production or classification records supplied by the seller or consignor will be properly identified as provided by owner. Records in progress are identified as such.

GENOMIC INFORMATION: If genomic information on the animal or embryo is available, it must be dated and disclosed at or before the time of sale.

EMBRYO TRANSFER: All registered animals that have resulted from embryo transfer are identified with one of the following suffixes in the name: ET, ETS (from split embryo), or ETN (from nuclear transfer). If unregistered, the appropriate technology will be identified. Donor dams are identified.

HEALTH WARRANTY: The seller will provide an official health certificate to the buyer for each animal showing the results of all health tests made in preparation for this sale as required by the state where the cattle reside. Other health tests completed for this sale will be disclosed.

ERRORS: The material in this catalog has been carefully edited. If any errors or omissions are discovered, they will be announced. Such announcements take precedence over that printed in this catalog.

ACCIDENT: The sale management, the consignors, and the owner of the grounds will not be responsible in any case for the condition of the grounds or the behavior of the animals and disclaim any liability in the event of personal accident or property loss.

LIMITATIONS OF WARRANTIES: Warranties contained herein, unless terminated earlier, will cease upon the resale of an animal.

