

Greene County Angus Association

Inaugural Bull Sale



Friday, March 4th 2022

7:00 P.M.

Greene County Fairgrounds • Greeneville, TN

SOUTHLAND

EQUIPMENT, LLC



**THE RIGHT EQUIPMENT
TO GET THE JOB DONE**



Cub Cadet



MASSEY FERGUSON



GREENEVILLE, TN



***farm*CREDIT**
MID-AMERICA

EDWARD SNODGRASS

NMLS#469937

FINANCIAL OFFICER | ed.snodgrass@e-farmcredit.com

100 Nevada Avenue, Greeneville, TN 37745

T 423-638-8151 F 423-638-1731 | e-farmcredit.com



Proud to serve Greene County
and surrounding areas

Sales - Parts - Service



2960 W. Andrew Johnson Highway
Greeneville, TN 37743
276-228-2513

MeadeTractor.com

Other Meade Tractor Locations
Johnson City - Abingdon
Kingsport - Wytheville
Mills River - Christiansburg

We're ready to work
when you're ready to work.



Compact Tractors Ask about our available implement package deals



110 BURNS ST, GREENEVILLE, TN

GREENE COUNTY KUBOTA | 423-636-1370 | GREENECOUNTYKUBOTA.COM

GREENE COUNTY ANGUS ASSOCIATION

2022 INAUGURAL BULL SALE

Greene County Fairgrounds • 123 Fairgrounds Circle • Greeneville, TN 37745

SELLING 28 LOTS

All lots are AM/NH/CA Free, or No Carrier Ancestor

Open Heifers • Bred Heifers • Bulls • Cow/Calf Pairs • Bred Cows

Sale Management & Sale Book Powered by:

GCAA Sales Committee

Sale Day Contacts:

Marcus Starnes 423.329.7247

Jacob Moore 423.863.1815

Dale Collette 423.823.0848

Terms & Conditions:

Cattle will sell under the suggested Terms and Conditions of the American Angus Association.

Herd Health:

All bulls have passed a complete BSE test. All bulls and females will have health papers available for immediate shipping.

Announcements:

A supplemental update sheet will be available on sale date to provide the most current breeding records, etc. All announcements made from the sale block take precedence over printed matter in this sale book.

Truckers:

Truckers believed to be reliable will be on hand to assist with transportation.

Sale Accommodations:

Hampton Inn

Hwy 11E, Greeneville, TN

423.638.3735

Quality Inn

Hwy 11E, Greeneville, TN

423.218.0068

Auctioneer:

Smith Reasor

Lic. # 6172 • Rural Retreat, VA

Marketing Agents:

Joe Beaver Angus
Marketing & Consulting
423.426.2986



Insurance:

Jim Bessler
815.762.2641



FOR MORE INFORMATION CONTACT:

Sales Committee:

Marcus Starnes
77 Johnson Rd.
Greeneville, TN 37743
423-329-7247

Milton Orr
3765 Warrensburg Rd.
Greeneville, TN 37743
423-552-4073

Jacob Moore
4193 Beech Creek Rd.
Rogersville, TN 37857
423-863-1815

GREENE COUNTY ANGUS ASSOCIATION DIRECTORS
Marcus Starnes • Edward Seay • Dale Collette • Stan Ritter

OFFICERS

Brent Stills President
Dale Collette..... Vice President
Marcus Starnes..... Sales Manager
Stan Ritter..... Secretary/Treasurer

COVID-19 STATEMENT

*It is important that we all remain aware of the risks associated with the Covid-19 virus.
The GCAA will request that all participants at our 2022 Bull Sale observe the current guidelines
published by the CDC and the state of Tennessee.
These guidelines will be posted prominently at several locations at the sale facility.*

FOOD WILL BE SOLD BY NORTH GREENE FFA ALUMNI

Email Requests for Electronic Catalog to: greenecountyangusassociation@gmail.com



**Watch
&
Bid Online!**

- Live Sale Broadcasting
- Online Auctions
- Pre-Bidding Option
- Buy-It-Now Option
- Mobile Bidding App
- Secure Bidder Approval
- Bidding Limits to Online Bidders
- Post Auction Summary Statistics
- Online Bidder Information

CONSIGNORS

SALE LOTS

| | | | |
|---|-------------------------------------|------------------------------|---------------------------|
| SHAVER, LARRY: Point Pleasant Angus 1404 Big Hollow Road, Blountville, TN 37617 | <i>pointpleasantangus@gmail.com</i> | 423.341.2718 | 1, 2 |
| FLANARY, SHON: CASVA Angus Farm 2644 Main Street, Surgoinsville, TN 37873 | <i>shon.flanary@gmail.com</i> | 423.360.3835 | 3, 4, 7 |
| IRELAND, NATHAN & KATIE CARMODY 4341 B E Reavis Road, Hamptonville, NC 27020 | <i>walkersbranchangus@gmail.com</i> | 336.428.6974 732.513.3382 | 5, 29 |
| WILSON, STEPHEN: Windy Hill Angus 1602 Conklin Road, Telford, TN 37690 | <i>stephengwilson1@gmail.com</i> | 423.677.1468 | 6, 28 |
| STARNES, MARCUS: Starnes Farms 1890 Dodd Branch Road, Greeneville, TN 37743 | <i>mstarnes85@gmail.com</i> | 423.329.7247 | 8, 10 |
| MOORE, DON & JACOB: Four Moore Angus Farm 4193 Beech Creek Rd., Rogersville, TN 37857 | <i>jlmooore722@yahoo.com</i> | 423.348.8591 423.823.1815 | 9 |
| JOHNSTON, STEVE: Chimney Top Angus 118 Fulkerson Road, Gray, TN 37615 | <i>steve@innovatemed.com</i> | 423.773.3396 423.854.9694 | 11,14 |
| STRICKLAND, GERALD: Hawks Nest Farm 51 Hawks Nest Road, Leicester, NC 28748 | <i>skysoldier17382@gmail.com</i> | 828.713.1285 | 12, 18, 24, 26, 27 |
| KLEPPER, MARK: Woodlawn Farms 3125 Horton Highway, Greeneville, TN 37745 | <i>mncklepper@yahoo.com</i> | 423.823.0900 | 13, 17, 19, 20, 21, 22 |
| VAN WINKLE, AMY: Skyview Farms P.O. Box 774, Bluff City, TN 37618 | <i>skyviewfarms.tn@gmail.com</i> | 423.534.0446 | 15 |
| GODSEY, WILLIAM: Godsey Angus 302 Miller Wood Road, Church Hill, TN 37642 | <i>toegodsey@gmail.com</i> | 423.276.4946 | 23, 25 |

• **REFERENCE SIRES** •



Hoover No Doubt
Sire of Lot 1



Byergo Black Magic
Sire of Lots 2 & 19



Woodhill Relevanc
Sire of Lots 4 & 14



Deer Valley Growth Fund
Sire of Lots 3, 5, 15, 24 & 27



Sydgen Enhance
Sire of Lot 6



SS Enforcer
Sire of Lots 7 & 11

• REFERENCE SIRES •



SAV Emblem
Sire of Lot 8



SAV America
Sire of Lot 9



SAV Seedstock
Sire of Lot 10



Sitz Stellar
Sire of Lot 12



Spring Cove Reno
Sire of Lot 13



EWA Peyton
Sire of Lot 18

• REFERENCE SIRES •



GB Fireball
Sire of Lots 17, 20, 22 & 28



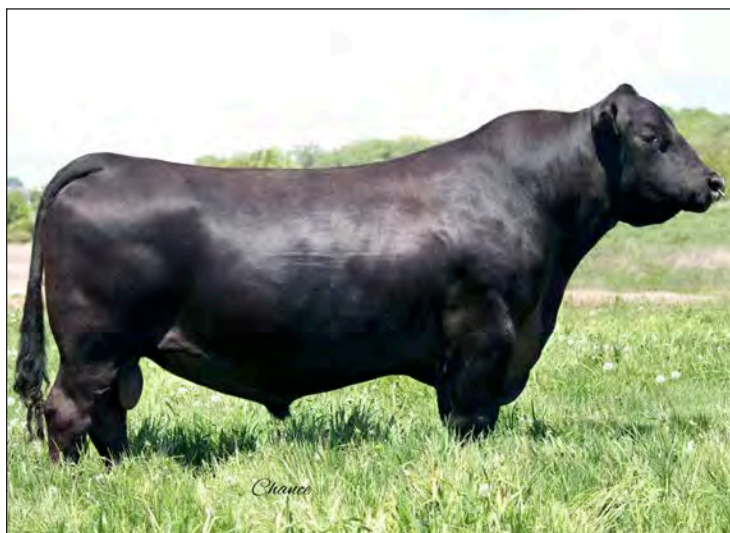
GAR Sure Fire
Sire of Lot 21



QHF WWA Black Onyx
Sire of Lot 23



VAR Discovery
Grand Sire of Lot 25



Jindra Acclaim
Sire of Lot 26



Baldrige Goalkeeper
Sire of Lot 29



Point P No Doubt 5119

BULL

Owner: Larry Shaver - Point Pleasant Angus Tattoo: 5119
Calved: 9/25/19 AAA# +*19530293

| | | |
|--------------------------|----------------------------|------------|
| Mogck Bullseye | MOGCK Sure Shot | \$B |
| Hoover No Doubt | Mogck Mary 1255 | +152 |
| AAA+*17882682 | SydGen CC&7 | \$G |
| Miss Blackcap Ellston J2 | Miss Blackcap Ellston D154 | +47 |
| | Sitz Upward 307R | \$C |
| Styles Upgrade J59 | Plainview Lassie 71B | +248 |
| Baldrige Isabel B758 | Baldrige Kaboom K243 KCF | \$W |
| AAA+*18060644 | Baldrige Isabel P4527 | +50 |
| | | Fat |
| Baldrige Isabel T935 | | +0.002 |

| CED | BW | WW | YW | Milk | YH | SC | CW | Marb. | RE |
|-----|------|-----|------|------|------|-------|-----|-------|-------|
| +0 | +3.5 | +66 | +123 | +17 | +0.2 | +1.88 | +53 | +0.47 | +0.92 |

Hoover No Doubt son out of Baldrige Isabel B758 dam, who has 60 Genomic progeny recorded. This mating supported by Styles Upgrade and the great Baldrige Isabel cow family. ET Bull.



Point P Black Magic 1420

BULL

Owner: Larry Shaver - Point Pleasant Angus Tattoo: 1420
Calved: 3/01/20 AAA# +*19691894

| | | |
|---------------------------|--------------------------|------------|
| Silveiras Conversion 8064 | BT Crossover 758N | \$B |
| Byergo Black Magic 3348 | EXG Saras Dream S609 R3 | +100 |
| AAA+*17803074 | Byergo Picasso | \$G |
| Byergo Elia Cupcake 5900 | Byergo Miss Cupcake 3600 | +46 |
| | Connealy Consensus | \$C |
| Connealy Consensus 7229 | Blue Lilly of Conanga 16 | +192 |
| SandPoint Henrietta 1610 | Connealy Onward | \$W |
| AAA+*17322679 | Sitz Henrietta Pride 81M | +61 |
| | | Fat |
| Sitz Henrietta Pride 643T | | +0.005 |

| CED | BW | WW | YW | Milk | YH | SC | CW | Marb. | RE |
|-----|------|-----|------|------|------|-------|-----|-------|-------|
| +3 | +3.8 | +63 | +113 | +27 | +0.6 | +1.70 | +20 | +0.60 | +0.40 |

Byergo Black Magic 3348 son out Sandpoint Henrietta 1610 dam back to all time great Sitz Henrietta Pride 643T cow who has 284 Genomic progeny on record. ET Bull.



CASVA Growth Fund 011

BULL

Owner: Shon Flanary - CASVA Angus Farm Tattoo: 11
Calved: 6/5/20 AAA# +*20195778

| | | |
|----------------------------|----------------------------|------------|
| Basin Payweight 1682 | Basin Payweight 006S | \$B |
| Deer Valley Growth Fund | 21AR O Lass 7017 | +151 |
| AAA+*18827828 | Plattmerr Weigh Up K360 | \$G |
| Deer Valley Rita 36113 | Deer Valley Rita 9457 | +42 |
| | Sitz Top Game 561X | \$C |
| JMB Traction 292 | JMB Emulota 013 | +274 |
| Deer Valley Blackbird 5301 | WMR Timeless 458 | \$W |
| AAA+*18185545 | Deer Valley Blackbird 9903 | +101 |
| | | Fat |
| Deer Valley Blackbird 3103 | | +0.03 |

| CED | BW | WW | YW | Milk | YH | SC | CW | Marb. | RE |
|-----|------|-----|------|------|------|-------|-----|-------|-------|
| +11 | +0.7 | +81 | +135 | +35 | +0.5 | +0.23 | +68 | +0.35 | +1.05 |

Deer Valley Growth Fund, who was number 2 in registrations in 2021, son out of Deer Valley Blackbird 5301 cow, back to Blackbird 3103 donor who records 108 Genomic progeny. ET Bull. Safe for Heifers.



Fore Relevant Force 05H

BULL

Owner: Shon Flanary - CASVA Angus Farm Tattoo: 05H
Calved: 8/26/20 AAA# +*19846921

| | | |
|----------------------------|-----------------------------|------------|
| Connealy Confidence Plus | Connealy Confidence 0100 | \$B |
| Woodhill Relevance | Elbanna of Conanga 1209 | +155 |
| AAA+*19197873 | Hoover Dam | \$G |
| Woodhill Blackbird X197-Z7 | Woodhill Blackbird U80-X197 | +67 |
| | Sitz Top Game 561X | \$C |
| JMB Traction 292 | JMB Emulota 013 | +286 |
| Deer Valley Blackbird 5301 | WMR Timeless 458 | \$W |
| AAA+*18185545 | Deer Valley Blackbird 9903 | +90 |
| | | Fat |
| Deer Valley Blackbird 3103 | | +0.038 |

| CED | BW | WW | YW | Milk | YH | SC | CW | Marb. | RE |
|-----|------|-----|------|------|------|-------|-----|-------|-------|
| +7 | +0.7 | +70 | +112 | +34 | +0.6 | +0.67 | +46 | +0.94 | +1.05 |

A Woodhill Relevance son out of Deer Valley Blackbird 5301, maternal brother to lot 3. ET Bull. Safe for Heifers.



WB Growth Fund H577

BULL

Owner: Nathan Ireland & Katie Carmody - Walker Branch Angus Tattoo: H577
Calved: 9/2/20 AAA# +*19930800

| | | |
|-------------------------|-------------------------|------------|
| Basin Payweight 1682 | Basin Payweight 006S | \$B |
| Deer Valley Growth Fund | 21AR O Lass 7017 | +129 |
| AAA+*18827828 | Plattmerr Weigh Up K360 | \$G |
| Deer Valley Rita 36113 | Deer Valley Rita 9457 | +39 |
| | HA Outside 3008 | \$C |
| HA Cowboy Up 5405 | HA Blackcap Lady 1602 | +248 |
| Wilks Rita 7377 | SMR 585B Outcross 0507 | \$W |
| AAA+*18884383 | Monarch Rita 1106 | +82 |
| | | Fat |
| Spruce Mtn Rita 3036 | | +0.063 |

| CED | BW | WW | YW | Milk | YH | SC | CW | Marb. | RE |
|-----|----|-----|------|------|------|-------|-----|-------|-------|
| +11 | +1 | +68 | +129 | +31 | +0.3 | +1.89 | +46 | +0.58 | +0.27 |

Growth Fund son back by the Wilks Rita 7377 cow, whose dam has 19 Genomic progeny. ET Bull. Safe for Heifers.



Wilson Enhance 1027

BULL

Owner: Stephen Wilson - Windy Hill Angus Tattoo: H1027
Calved: 9/5/20 AAA# +*19844115

| | | |
|--------------------|--------------------------|------------|
| SydGen Exceed 3223 | SydGen Googol | \$B |
| SydGen Enhance | SydGen Forever Lady 1255 | +214 |
| AAA18170041 | SydGen Liberty GA 8627 | \$G |
| SydGen Rita 2618 | Fox Run Rita 9308 | +79 |
| | GAR Progress | \$C |
| GAR Momentum | GAR Big Eye 1770 | +317 |
| GAR Momentum N1027 | GAR Prophet | \$W |
| AAA+*19083904 | GAR Daybreak 1201 | +73 |
| | | Fat |
| GAR Prophet F495 | | +0.025 |

| CED | BW | WW | YW | Milk | YH | SC | CW | Marb. | RE |
|-----|------|-----|------|------|------|-------|-----|-------|-------|
| +6 | +1.8 | +81 | +157 | +24 | +0.9 | +1.29 | +82 | +1.11 | +1.02 |

SydGen Enhance son out of a dam bred at Gardiner Angus Ranch, Ashland, KS. GAR Momentum N1027. Gardiner greats throughout the bottom of this pedigree. ET Bull.



CASVA Enforcer 031

BULL

Owner: Shon Flanary - CASVA Angus Farm Tattoo: 31
Calved: 9/13/20 AAA# +*20195045

| | | |
|----------------------------|----------------------------|------------|
| SydGen Enhance | SydGen Exceed 3223 | \$B |
| SS Enforcer E812 | SydGen Rita 2618 | +184 |
| AAA+*19274932 | SS Daybreak K011 | \$G |
| SS Miss Daybreak K011 3K17 | SS Miss Incentive X19 | +61 |
| | Sitz Top Game 561X | \$C |
| JMB Traction 292 | JMB Emulota 013 | +339 |
| Deer Valley Blackbird 5301 | WMR Timeless 458 | \$W |
| AAA+*18185545 | Deer Valley Blackbird 9903 | +103 |
| | | Fat |
| Deer Valley Blackbird 3103 | | +0.007 |

| CED | BW | WW | YW | Milk | YH | SC | CW | Marb. | RE |
|-----|------|-----|------|------|------|-------|-----|-------|-------|
| +10 | +0.1 | +87 | +155 | +33 | +0.6 | +1.54 | +76 | +0.66 | +1.25 |

S S Enforcer E812 son out of the Blackbird 5301 cow. Maternal brothers sell as lot 3 and 4. ET Bull. Safe for Heifers.



Starnes Emblem 0225

BULL

Owner: Marcus Starnes - Starnes Farms Tattoo: 225
Calved: 9/17/20 AAA# +*20004118

| | | |
|--------------------------|-----------------------------|------------|
| SAV Raindance 6848 | Coleman Charlo 0256 | \$B |
| SAV Emblem 8074 | SAV Blackcap May 4136 | +138 |
| AAA+*19250937 | SAV 707 Rito 9969 | \$G |
| SAV Emblynette 2369 | SAV Emblynette 7566 | +46 |
| | Rito 707 of Ideal 3407 7075 | \$C |
| SAV Recharge 3436 | SAV Blackcap May 4136 | +253 |
| Starnes Foreverlady 7112 | B/R New Frontier 095 | \$W |
| AAA+*18841488 | Warfields Forever Lady 957D | +79 |
| | | Fat |
| SF Foreverlady 511 | | +0.023 |

| CED | BW | WW | YW | Milk | YH | SC | CW | Marb. | RE |
|-----|------|-----|------|------|------|-------|-----|-------|-------|
| +3 | +1.9 | +72 | +127 | +29 | +0.8 | +0.86 | +56 | +0.44 | +0.75 |

S A V Emblem 8074 son out of Starnes Forever Lady 7112 who has 5 Genomic progeny, Grand-Dam records 18 Genomic progeny. ET Bull.

**9****BULL**

4M America 2011

Owner: Don & Jacob Moore - Four Moore Angus Farm Tattoo: 2011
Calved: 9/17/20 AAA# +*19992006

| | | | |
|--|-----------------------|-----------------------|------------|
| SAV America 8018 AAA+*19249580 | SAV President 6847 | Coleman Charlo 0256 | \$B |
| | | SAV Blackcap May 4136 | +178 |
| | SAV Madame Pride 0075 | SAF 598 Bando 5175 | \$G |
| | | SAV Madame Pride 8264 | +62 |
| | | | \$C |
| | SS Niagara Z29 | Hoover Dam | +268 |
| Starnes Black Miss 7132 AAA+*19104754 | | Jet SS X144 | \$W |
| | | TC Total 410 | +63 |
| | GVF Black Miss 1180 | GVF Black Miss 8160 | Fat |
| | | | +0.038 |

| CED | BW | WW | YW | Milk | YH | SC | CW | Marb. | RE |
|-----|----|-----|------|------|------|-------|-----|-------|-------|
| +1 | +4 | +75 | +136 | +25 | +0.7 | +1.16 | +68 | +0.87 | +0.94 |

S A V America 8018, who is all time record selling bull at \$1.8 million valuation, son out of Starnes Black Miss 7132 who has 5 Genomic progeny. Grand-Dam G V F Black Miss 1180 records 6 Genomic progeny. ET Bull.

**10****BULL**

Starnes Seedstock 0229

Owner: Marcus Starnes - Starnes Farms Tattoo: 229
Calved: 9/26/20 AAA# +*20004122

| | | | |
|-------------------------------------|-----------------------------|-----------------------------|------------|
| SAV Seedstock 4838 AAA+*17923480 | SAV Registry 2831 | Rito 707 of Ideal 3407 7075 | \$B |
| | | SAV Madame Pride 0075 | +107 |
| | SAV Blackcap May 4136 | SAV 8180 Traveler 004 | \$G |
| | | SAV May 2397 | +36 |
| | | | \$C |
| | B/R New Frontier 095 | B/R New Design 036 | +211 |
| SF Foreverylady 511 AAA17065781 | | White Fence Pride H1 | \$W |
| | | VDAR Lucys Boy | +51 |
| | Warfields Forever Lady 957D | Toebben Forever Lady 102G | Fat |
| | | | +0.006 |

| CED | BW | WW | YW | Milk | YH | SC | CW | Marb. | RE |
|-----|------|-----|-----|------|------|-------|-----|-------|------|
| +0 | +3.5 | +54 | +99 | +28 | +0.2 | +1.32 | +35 | +0.29 | +0.6 |

S A V Seedstock son out of the Starnes Farm Forever Lady 511 dam with 18 Genomic progeny on file. ET Bull.

**11****BULL**

Chimney Top Enforcer H32

Owner: Steve Johnston - Chimney Top Angus Tattoo: H32
Calved: 9/29/20 AAA# *19828153

| | | | |
|---|-----------------------------|------------------------------|------------|
| SS Enforcer E812 AAA*19274932 | SydGen Enhance | SydGen Exceed 3223 | \$B |
| | | SydGen Rita 2618 | +175 |
| | SS Miss Daybreak K011 3K17 | SS Daybreak K011 | \$G |
| | | SS Miss Incentive X19 | +73 |
| | | | \$C |
| | Quaker Hill Rampage 0A36 | MCC Daybreak | +303 |
| Chimney Top RPG Blackcap F5 AAA*19061045 | | QHF Blackcap 6E2 of4V16 4355 | \$W |
| | | Sitz Upward 307R | +82 |
| | Chimney Top UPW Blackcap B2 | DeBusk 112 BlackCap 5005 | Fat |
| | | | +0.06 |

| CED | BW | WW | YW | Milk | YH | SC | CW | Marb. | RE |
|-----|------|-----|------|------|------|------|-----|-------|------|
| +7 | +0.4 | +77 | +140 | +25 | +0.8 | +0.4 | +56 | +0.9 | +1.1 |

S S Enforcer E812 son out of the Chimney Top RPG Blackcap F5 dam. Supported by Rampage and Upward on the bottom side of pedigree. ET Bull. Safe for Heifers.

**12****BULL**

HNF Stellar 017

Owner: Gerald Strickland - Hawks Nest Farm Tattoo: 17
Calved: 10/1/20 AAA# 20047677

| | | | |
|-----------------------------------|------------------------|----------------------------|------------|
| Sitz Stellar 726D AAA*18397542 | Mohnen Substantial 272 | Benfield Substance 8506 | \$B |
| | | Mohnen Glyn Mawr Elba 1758 | +140 |
| | SITZ Pride 200B | Connealy Final Product | \$G |
| | | Sitz Pride 308Y | +40 |
| | | | \$C |
| | SS Niagara Z29 | Hoover Dam | +247 |
| SFA Barbara NE60 AAA19066897 | | Jet SS X144 | \$W |
| | | WAR Alliance 9126 6006 | +64 |
| | SFA Barbara WT73 | SFA Barbara BL08 | Fat |
| | | | +0.038 |

| CED | BW | WW | YW | Milk | YH | SC | CW | Marb. | RE |
|-----|------|-----|------|------|------|-------|------|-------|-------|
| +4 | +0.5 | +64 | +116 | +25 | +1.3 | +1.86 | +150 | +1.42 | +1.77 |

Sitz Stellar 726D son SFA Barbara NE60 dam by S S Niagara Z29 back to WAR Alliance 9126.

**13****BULL**

Woodlawn MP Reno 21

Owner: Mark Klepper - Woodlawn Farms Tattoo: 21
Calved: 10/2/20 AAA# 20256534

| | | | |
|--|----------------------|---------------------------|------------|
| Spring Cove Reno 4021 AAA*17926446 | KM Broken Bow 002 | Summitcrest Complete 1P55 | \$B |
| | | Summitcrest Princess 0P12 | +171 |
| | Spring Cove Liza 021 | CCA Emblazon 702 | \$G |
| | | Spring Cove Liza 721 | +73 |
| | | | \$C |
| | AAR Ten X 7008 SA | Mytty In Focus | +295 |
| Deer Valley Rita 5424 AAA+*18191709 | | AAR Lady Kelton 5551 | \$W |
| | | GAR Progress | +82 |
| | GAR Progress 830 | GAR 111 Rito 3346 | Fat |
| | | | +0.013 |

| CED | BW | WW | YW | Milk | YH | SC | CW | Marb. | RE |
|------|------|-------|--------|-------|------|---------|-------|---------|-------|
| +1+9 | +1+3 | +1+70 | +1+126 | +1+31 | +1+5 | +1+1.25 | +1+52 | +1+1.08 | +1+76 |

Spring Cove Reno 4021 son out Deer Valley Rita 5424 dam who has 15 Genomic progeny on file. Back to the great GAR Progress 830. ET Bull.

**14****BULL**

Chimney Top Relevance CH2

Owner: Steve Johnston - Chimney Top Angus Tattoo: CH2
Calved: 10/6/20 AAA# 20032670

| | | | |
|--|----------------------------|-----------------------------|------------|
| Woodhill Relevance AAA*19197873 | Connealy Confidence Plus | Connealy Confidence 0100 | \$B |
| | | Elbanna of Conanga 1209 | +164 |
| | Woodhill Blackbird X197-Z7 | Hoover Dam | \$G |
| | | Woodhill Blackbird U80-X197 | +66 |
| | | | \$C |
| | VAR Discovery 2240 | AAR Ten X 7008 SA | +261 |
| Chimney Top Disc Rita CD5 AAA+*18782088 | | Deer Valley Rita 0308 | \$W |
| | | GAR New Design 5050 | +77 |
| | Chair Rock 5050 GAR 9083 | Chair Rock Objective 7148 | Fat |
| | | | +0.015 |

| CED | BW | WW | YW | Milk | YH | SC | CW | Marb. | RE |
|-----|------|-----|------|------|------|-------|-----|-------|-------|
| +10 | +1.2 | +66 | +125 | +31 | +0.7 | +0.61 | +47 | +0.97 | +0.75 |

Woodhill Relevance son out of Chimney Top Disc Rita CD5 with 9 Genomic progeny on record, Grand-Dam Chair Rock 5050 GAR 9083 has 59 Genomic progeny record. ET Bull. Safe for Heifers.

**15****BULL**

SKVF Growth Fund 1002H

Owner: Amy Van Winkle - Skyview Farms Tattoo: 1002
Calved: 10/12/20 AAA# *20087019

| | | | |
|--|--------------------------|--------------------------|------------|
| Deer Valley Growth Fund AAA+*18827828 | Basin Payweight 1682 | Basin Payweight 006S | \$B |
| | | 21AR O Lass 7017 | +140 |
| | Deer Valley Rita 36113 | Plattemere Weigh Up K360 | \$G |
| | | Deer Valley Rita 9457 | +45 |
| | | | \$C |
| | KCF Bennett Fortress | Connealy Consensus | +252 |
| SKVF Alliance Y331 0502E AAA19026574 | | Thomas Patricia 9705 | \$W |
| | | Sitz Upward 307R | +89 |
| | HAR Upward Alliance A102 | GM 6595 Alliance G31 | Fat |
| | | | +0.032 |

| CED | BW | WW | YW | Milk | YH | SC | CW | Marb. | RE |
|-----|------|-----|------|------|------|-------|-----|-------|-------|
| +8 | +1.5 | +81 | +149 | +31 | +0.5 | +0.51 | +57 | +0.65 | +0.34 |

Deer Valley Growth Fund son out of SKVF Alliance Y331 0502E dam. Backed by KCF Bennett Fortress and Sitz Upward on the bottom of pedigree. Safe for Heifers.

**17****BULL**

Woodlawn MP Fireball 100

Owner: Mark Klepper - Woodlawn Farms Tattoo: 100
Calved: 10/21/20 AAA# +*20003097

| | | | |
|--|---------------------|----------------------|------------|
| GB Fireball 672 AAA*18690054 | GAR Sure Fire 6404 | GAR Sure Fire | \$B |
| | | GAR Complete N281 | +195 |
| | GB Anticipation 432 | GAR Anticipation | \$G |
| | | GB Ambush 269 | +86 |
| | | | \$C |
| | AAR Ten X 7008 SA | Mytty In Focus | +313 |
| Deer Valley Rita 5424 AAA+*18191709 | | AAR Lady Kelton 5551 | \$W |
| | | GAR Progress | +84 |
| | GAR Progress 830 | GAR 111 Rito 3346 | Fat |
| | | | +0.028 |

| CED | BW | WW | YW | Milk | YH | SC | CW | Marb. | RE |
|-----|----|-----|------|------|------|-------|-----|-------|-------|
| +14 | +0 | +71 | +128 | +31 | +0.7 | +1.09 | +57 | +1.27 | +0.98 |

GB Fireball 672 son out of Deer Valley Rita 5424 dam. Maternal brother sells as lot 13. ET Bull. Safe for Heifers.

**18**

HNF Peyton 019

BULL

Owner: Gerald Strickland - Hawks Nest Farm Tattoo: 19
Calved: 10/25/20 AAA# 20046692

| | | | | | | | | | |
|----------------------------------|--------------------------|-----------|---------------------------|-------------|------------|-----------|-----------|--------------|-----------|
| EWA Peyton 642 AAA*18675107 | Quaker Hill Manning 4EX9 | | EXAR Denver 2002B | | \$B | | | | |
| | | | Quaker Hill Blackcap 0A32 | | +157 | | | | |
| | EWA 444 of 968 Progress | | GAR Progress | | \$G | | | | |
| | | | Edgewood Lady 968 | | +60 | | | | |
| Primus Chloe 1818 AAA19144686 | Primus Excitement 1454 | | Basin Excitement | | \$C | | | | |
| | | | Primus Kem 9015 | | +270 | | | | |
| | Primus Chloe 1152 | | HAYNES Sterling 924 | | \$W | | | | |
| | | | Primus Chloe 7609 | | +84 | | | | |
| | | | | | Fat | | | | |
| | | | | | +1.031 | | | | |
| CED | BW | WW | YW | Milk | YH | SC | CW | Marb. | RE |
| +14 | +0.4 | +73 | +128 | +34 | +1.9 | +1.28 | +1.52 | +1.88 | +1.67 |

E W A Peyton 642 son out Primus Chole 1818 dam. Back to Haynes Sterling 924 sire.

**19**

Woodlawn MP Magic 16

BULL

Owner: Mark Klepper - Woodlawn Farms Tattoo: 16
Calved: 10/26/20 AAA# +*20003098

| | | | | | | | | | |
|---------------------------|------|--------------------------|------|-------|------|-------|-----|-------|-------|
| Silveiras Conversion 8064 | | BT Crossover 758N | | \$B | | | | | |
| Byergo Black Magic 3348 | | EXG Saras Dream S609 R3 | | +181 | | | | | |
| AAA*17803074 | | Byergo Picasso | | \$G | | | | | |
| Byergo Elia Cupcake 5900 | | Byergo Miss Cupcake 3600 | | +70 | | | | | |
| AAR Ten X 7008 SA | | Mytty In Focus | | \$C | | | | | |
| Deer Valley Rita 5424 | | AAR Lady Kelton 5551 | | +301 | | | | | |
| AAA+*18191709 | | GAR Progress | | \$W | | | | | |
| GAR Progress 830 | | GAR 111 Rito 3346 | | +83 | | | | | |
| | | | | Fat | | | | | |
| | | | | +0.03 | | | | | |
| CED | BW | WW | YW | Milk | YH | SC | CW | Marb. | RE |
| +3 | +2.9 | +80 | +152 | +31 | +1.2 | +1.29 | +64 | +0.94 | +0.86 |

Byergo Black Magic 3348 son out of Deer Valley Rita 5424 dam. He has maternal brothers selling as lot 13 and 16. ET Bull.

**20**

Woodlawn MP Fireball 36

BULL

Owner: Mark Klepper - Woodlawn Farms Tattoo: 36
Calved: 10/29/20 AAA# +*20003096

| GB Fireball 672 AAA*18690054 | GAR Sure Fire 6404 | | | | GAR Sure Fire | | | | \$B |
|--|---------------------|-----|------|------|----------------------|-------|-----|------------|------------|
| | | | | | GAR Complete N281 | | | | +181 |
| Deer Valley Rita 5424 AAA+*18191709 | GB Anticipation 432 | | | | GAR Anticipation | | | | \$G |
| | | | | | GB Ambush 269 | | | | +88 |
| | AAR Ten X 7008 SA | | | | Mytty In Focus | | | | \$C |
| | | | | | AAR Lady Kelton 5551 | | | | +311 |
| | GAR Progress 830 | | | | GAR Progress | | | | \$W |
| | | | | | GAR 111 Rito 3346 | | | | +89 |
| | | | | | | | | Fat | |
| | | | | | | | | +0.033 | |
| CED | BW | WW | YW | Milk | YH | SC | CW | Marb. | RE |
| +13 | +1.3 | +63 | +117 | +40 | +0.5 | +0.89 | +46 | +1.26 | +1.14 |

GB Fireball 672 son out of Deer Valley Rita 5424 dam. Full brother sells as lot 17. ET Bull. Safe for Heifers.

**21**

Woodlawn MP Surefire 25

BULL

Owner: Mark Klepper - Woodlawn Farms Tattoo: 25
Calved: 10/30/20 AAA# +*20100672

| GAR Sure Fire AAA+*17328461 | Connealy In Sure 8524 | | | | Mytty In Focus Entreena of Conanga 657 | | | | \$B +199 |
|--|--------------------------|-----|------|------|---|-------|-----|----------------------|--------------------|
| | Chair Rock 5050 GAR 8086 | | | | GAR New Design 5050 Chair Rock Grid Maker 2107 | | | | \$G +94 |
| Deer Valley Rita 5424 AAA+*18191709 | AAR Ten X 7008 SA | | | | Mytty In Focus AAR Lady Kelton 5551 | | | | \$C +320 |
| | GAR Progress 830 | | | | GAR Progress GAR 111 Rito 3346 | | | | \$W +78 |
| | | | | | | | | Fat +0.041 | |
| CED | BW | WW | YW | Milk | YH | SC | CW | Marb. | RE |
| +9 | +0.9 | +69 | +126 | +29 | +0.8 | +2.06 | +57 | +1.71 | +0.55 |

GAR Sure Fire son out of Deer Valley Rita 5424 dam. He has 4 maternal brothers in this sale. Rita 5424 records 15 Genomic progeny. ET Bull. Safe for Heifers.

**22**

Woodlawn MP Fireball 23

BULL

Owner: Mark Klepper - Woodlawn Farms Tattoo: 23
Calved: 11/4/20 AAA# 20258655

| GB Fireball 672 AAA*18690054 | GAR Sure Fire 6404 | | | | GAR Sure Fire GAR Complete N281 | | | | \$B +177 |
|---------------------------------------|----------------------|-------|--------|-------|---|---------|-------|---------|---|
| | GB Anticipation 432 | | | | GAR Anticipation GB Ambush 269 | | | | \$G +89 |
| FWY Rita 165 of 6108 AAA+*18305063 | Deer Valley All In | | | | AAR Ten X 7008 SA Deer Valley Rita 0274 | | | | \$C +283 |
| | DRMCTR 111 Rita 6108 | | | | Rito 111 of 2536 Rito 616 DRMCTR 2908s Design 2B02 | | | | \$W +70 Fat +1.044 |
| CED | BW | WW | YW | Milk | YH | SC | CW | Marb. | RE |
| +11.12 | +1.7 | +1.65 | +1.124 | +1.28 | +1.6 | +1.1.05 | +1.42 | +1.1.35 | +1.89 |

GB Fireball 672 son out of FWY Rita 165 of 6108 dam who has 22 Genomic progeny on record, Grand-Dam the great Rita 6108 cow records 163 Genomic progeny to date. ET Bull.

**23**

GAF Black Onyx 2046

BULL

Owner: William Godsey - Godsey Angus Tattoo: 2046
Calved: 12/15/20 AAA# *20030497

| QHF WWA Black Onyx 5Q11 AAA+*18463791 | Connealy Black Granite | | | | Connealy Consensus 7229 | | | | \$B |
|--|------------------------|-----|------|------|-------------------------------|-------|-----|-------|------------|
| | | | | | Eura Elga of Conanga 9109 | | | | +152 |
| | Wilks Blackcap 0D82 | | | | MCC Daybreak | | | | \$G |
| | | | | | QHF Blackcap 6E2 of 4V16 4355 | | | | +38 |
| GAF Miss Discovery 1904 AAA19427408 | GAF Discovery 1774 | | | | VAR Discovery 2240 | | | | \$C |
| | | | | | GAF Miss Blackcap 1567 | | | | +249 |
| | GAF Miss Forward 1412 | | | | GAF Boyd Forward 9058 | | | | \$W |
| | | | | | 606 208 Miss Shadow 33 | | | | +76 |
| | | | | | Fat | | | | |
| | | | | | +0.006 | | | | |
| CED | BW | WW | YW | Milk | YH | SC | CW | Marb. | RE |
| +2 | +2.4 | +77 | +141 | +29 | +1 | +0.56 | +69 | +0.28 | +0.77 |

QHF WWA Black Onyx 5Q11 son out of GAF Miss Discovery 1904 dam. Back Boyd Forward 6025 sire.

**24**

HNF DVGF 020

BULL

Owner: Gerald Strickland - Hawks Nest Farm Tattoo: 20
Calved: 1/1/21 AAA# 20046801

| Deer Valley Growth Fund AAA+*18827828 | Basin Payweight 1682 | | | | Basin Payweight 006S 21AR O Lass 7017 | | | | \$B +159 |
|--|------------------------|-----|------|------|---|-------|-------|----------------------|--------------------|
| | Deer Valley Rita 36113 | | | | Plattemere Weigh Up K360 Deer Valley Rita 9457 | | | | \$G +51 |
| EXAR Barbabara 6695 AAA*18567873 | EXAR Stud 4658B | | | | AAR Ten X 7008 SA BoBo Rita 1559 | | | | \$C +281 |
| | EXAR Barbabara 3383 | | | | Connealy Impression Exar Barbabara 84197 | | | | \$W +76 |
| | | | | | | | | Fat +1.031 | |
| CED | BW | WW | YW | Milk | YH | SC | CW | Marb. | RE |
| +8 | +1.7 | +78 | +141 | +26 | +1.4 | +1.81 | +1.58 | +1.75 | +1.46 |

Deer Valley Growth Fund son out of EXAR Barbabara 6695 dam. Back to Connelly Impression and three generations of EXAR Barbabara cow family. Safe for Heifers.

**25**

GAF Discovery 2149

BULL

Owner: William Godsey - Godsey Angus Tattoo: 2149
Calved: 1/5/21 AAA# 20030500

| | | | | | | | | | |
|-----------------------|------------------------|--------------------------|------|--------|------|-------|-----|-------|-------|
| VAR Discovery 2240 | | AAR Ten X 7008 SA | | \$B | | | | | |
| GAF Discovery 1774 | | Deer Valley Rita 0308 | | +98 | | | | | |
| AAA18801284 | | GAF Final Objective 1192 | | \$G | | | | | |
| | GAF Miss Blackcap 1567 | GAF Blackcap 1067 | | +26 | | | | | |
| | | GAR Grid Maker | | \$C | | | | | |
| | SAV Bismarck 5682 | SAV Abigale 0451 | | +201 | | | | | |
| GAF Miss Bismark 1364 | | GAF New Design 878 8026 | | \$W | | | | | |
| AAA17530756 | | WDB MHG Miss 095 192 705 | | +63 | | | | | |
| | GAF Frontier 878 1104 | | | Fat | | | | | |
| | | | | +0.033 | | | | | |
| CED | BW | WW | YW | Milk | YH | SC | CW | Marb. | RE |
| +3 | +1.3 | +61 | +110 | +25 | +0.9 | +0.67 | +30 | +0.02 | +0.55 |

GAF Discovery 1774 son out of GAF Miss Bismark 1364 dam, who is sired by S A V Bismarck 5682. Back to the B/R New Frontier 095 third dam from Baird Angus, Bluff City, TN.

26

BULL

HNF Acclaim 030

Owner: Gerald Strickland - Hawks Nest Farm Tattoo: 30
 Calved: 1/6/21 AAA# 20086525

| Jindra Acclaim AAA*17972810 | Jindra 3rd Dimension | Jindra Double Vision | \$B | | | | | | |
|--------------------------------------|-----------------------------|---------------------------|---------|--------|-------|--------|--------|--------|--------|
| | | Jindras Sapphire J 417 | +183 | | | | | | |
| | Jindra Blackbird Lassy 1111 | Connealy Impression | \$G | | | | | | |
| | | Jindras Enchantress J 102 | +57 | | | | | | |
| Primus Blackbird 1805 AAA19144988 | Plattemere Weigh Up K360 | Sitz Upward 307R | \$C | | | | | | |
| | | Barbara of Plattemere 337 | +290 | | | | | | |
| Primus Blackbird 1086 | | ALC Big Eye D09N | \$W | | | | | | |
| | | Primus Blackbird 9001 | +81 | | | | | | |
| | | | Fat | | | | | | |
| | | | +1+.007 | | | | | | |
| CED | BW | WW | YW | Milk | YH | SC | CW | Marb. | RE |
| +1+.6 | +1+.7 | +1+.74 | +1+.137 | +1+.30 | +1+.8 | +1+.54 | +1+.71 | +1+.81 | +1+.56 |

Jindra Acclaim son out of Primus Blackbird 1805, Plattemere Weight Up K360, dam. Backed by the Select Sires great ALC Big Eye D09N.

27

BULL

HNF DVGF 022

Owner: Gerald Strickland - Hawks Nest Farm Tattoo: 22
 Calved: 1/6/21 AAA# 20046768

| | | | |
|--|------------------------|---|-----------------------|
| Deer Valley Growth Fund AAA+*18827828 | Basin Payweight 1682 | Basin Payweight 006S 21AR O Lass 7017 | \$B +147 |
| | Deer Valley Rita 36113 | Plattemere Weigh Up K360 Deer Valley Rita 9457 | \$G +46 |
| Primus Rita 1608 AAA18852190 | Primus War Party 1324 | Werner War Party 2417 Primus Kem 6237 | \$C +268 |
| | Primus Rita 832 | SS Objective T510 OT26 Primus Rita 686 | \$W +81 |
| | | | Fat +1+.026 |

Deer Valley Growth Fund son out Primus Rita 1608 dam. Supporting greats Werner War Party 2147 and S S Objective T510 OT26. Safe for Heifers.

28

BULL

Wilson Ball of Fire 246-J02

Owner: Stephen Wilson - Windy Hill Angus Tattoo: J02
 Calved: 2/1/21 AAA# +*19983567

| | | | | | | | | | |
|--|---------------------|--------------------------|--------|------|------|-------|-----|-------|------|
| GB Fireball 672 AAA*18690054 | GAR Sure Fire 6404 | GAR Sure Fire | \$B | | | | | | |
| | | GAR Complete N281 | +169 | | | | | | |
| | GB Anticipation 432 | GAR Anticipation | \$G | | | | | | |
| | | GB Ambush 269 | +67 | | | | | | |
| Williams Skymere Up 165 AAA18104154 | Sitz Upward 307R | Connealy Onward | \$C | | | | | | |
| | | Sitz Henrietta Pride 81M | +282 | | | | | | |
| Williams Skymere 6116 | | Braco of Graham 48393 | \$W | | | | | | |
| | | Williams Skymere 420 | +84 | | | | | | |
| | | | Fat | | | | | | |
| | | | +0.039 | | | | | | |
| CED | BW | WW | YW | Milk | YH | SC | CW | Marb. | RE |
| +14 | +1.4 | +69 | +121 | +29 | +0.6 | +0.39 | +56 | +1.06 | +0.7 |

GB Fireball 672 son out of Williams Skymere Up 165, who has 10 Genomic progeny on record. Skymere Up 165 serving at Edmondson Farm, Mc Ewen, TN. ET Bull. Safe for Heifers.

29

BULL

WB Goalkeeper J116

Owner: Nathan Ireland & Katie Carmody - Walker Branch Angus Tattoo: J116
 Calved: 2/24/21 AAA# +*20063802

| | | | | | | | | | | |
|------------------------|------|-----|------|------|----------------------------|-------|-----|-------|-------|--------|
| SydGen Enhance | | | | | SydGen Exceed 3223 | | | | | \$B |
| Baldrige SR Goalkeeper | | | | | SydGen Rita 2618 | | | | | +148 |
| AAA*19356243 | | | | | Connealy Confidence Plus | | | | | \$G |
| Baldrige Isabel E030 | | | | | Baldrige Isabel Y69 | | | | | +52 |
| TEX Playbook 5437 | | | | | Basin Payweight 1682 | | | | | \$C |
| Rita 8P16 of 8J04 5437 | | | | | Rita 1C43 of 9M26 Complete | | | | | +279 |
| AAA+*19227300 | | | | | SS Objective T510 OT26 | | | | | \$W |
| DRMCTR Objective 8J04 | | | | | DRMCTR 111 Rita 6108 | | | | | +74 |
| | | | | | | | | | | Fat |
| | | | | | | | | | | +0.004 |
| CED | BW | WW | YW | Milk | YH | SC | CW | Marb. | RE | |
| +9 | +1.4 | +71 | +127 | +25 | +0.5 | +0.77 | +45 | +0.65 | +0.67 | |

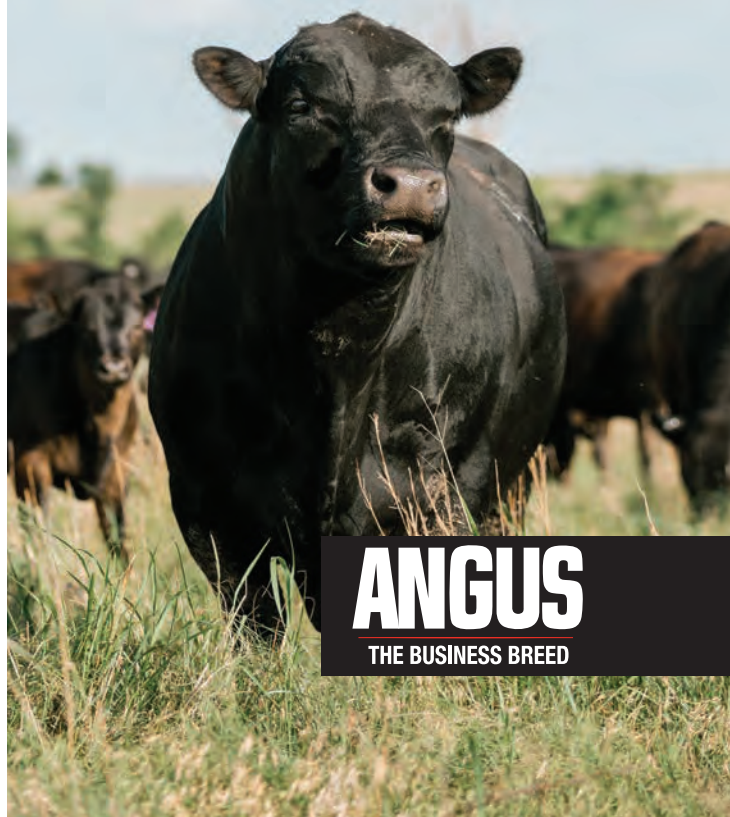
Baldrige SR Goalkeeper son out of the Tex Playbook 5347 donor, Rita 8P16 of 8J04 5437, who has 3 Genomic progeny record. Grand-Dam DRMCTR Objective 8J04 has 78 Genomic progeny on record. ET Bull. Safe for Heifers.

CATALOG CAN BE VIEWED ONLINE AT WWW.ANGUS.ORG

DIRECTOR OF HERD IMPROVEMENT.

With more Angus influenced cattle qualifying for the *Certified Angus Beef*® brand than ever before, it's clear that the Angus bull has become America's bull. He sires calving ease, growth and superior marbling. He works well in any environment, and on any cow, regardless of breed. Make sure that America's bull serves as your director of herd improvement.

Angus. America's breed. Go to www.Angus.org/businessbreed or call 816.383.5100 to learn more.



ANGUS
THE BUSINESS BREED

GCAA MEMBERS

| | | | |
|--|----------------------------------|--|----------------------------------|
| BERRYHILL, DAWSON 1435 Carter's Valley Road, Mosheim, TN 37818 | (423) 638-8438 (423) 620-2523 | SHELTON, ANTHONY 180 Wines Rd., Greeneville, TN 37745 | (423) 620-3241 |
| COLLETTE, WADE, DALE & KEVIN: Sideline Farms 55 Pleasant Vale Road, Chuckey, TN 37641 | (423) 823-0848 | STARNES, MARCUS & ANDREW: Starnes Farm 1890 Dodd Branch Road, Greeneville, TN 37743 | (423) 636-0232 (423) 329-7247 |
| CUTSHALL, LEE 600 Sleepy Hollow Lane, Greeneville, TN 37745 | (423) 620-7084 | STILLS, BRENT 5605 Lonesome Pine Trail, Greeneville, TN 37745 | (828) 206-9563 |
| DARNELL, REX & LISA: Barren Valley Farms 655 Brian Circle, Afton, TN 37616 | (423) 747-4101 | STONE, CHRIS 612 Weems Road, Greeneville, TN 37745 | (423) 329-6682 |
| DUCKWORTH, DR. LEE: Grassy Valley Farm 103 McCall Street, Greeneville, TN 37745 | (423) 638-5382 (423) 552-5405 | STONECYPHER, BEN: Lazy S Angus Farm 60 Algonquin Circle, Chuckey, TN 37641 | (423) 257-6682 |
| HODGES, TIM & BARBARA 559 Phillips Town Road, Bulls Gap, TN 37711 | (423) 234-1446 (423) 620-0054 | TERRY, GARLAND 3102 W. Allens Bridge Road, Greeneville, TN 37743 | (828) 273-5648 |
| HOLLAND, CURTIS & LORI: Holly Knoll Farms 1315 Brown Springs Road, Greeneville, TN 37743 | (423) 552-3697 (423) 442-9437 | WHITE, KEVIN: White Ridge Farms 269 Downey Road, Chuckey, TN 37641 | (423) 234-2111 (423) 444-3857 |
| HOLT, JOE 950 River Bend Road, Greeneville, TN 37743 | (423) 638-6132 | WILLS, KYLE: Wills Angus Farm 283 Whirlwind Road, Greeneville, TN 37743 | (423) 470-3180 |
| GCAA JUNIOR MEMBERS | | | |
| JESSIE, GEORGE: Big Ridge Farm 8632 Blue Springs Parkway, Mosheim, TN 37818 | (423) 422-7222 | GABY, HALEY GILLIAM, ELI GILLIAM, TATER JESSIE, COURTNEY MYERS, ELLA JAMES STARNES, ANTHONY | |
| JOHNSTON, STEVE: Chimney Top Angus 118 Fulkerson Road, Gray, TN 37615 | (423) 773-3396 (423) 854-9694 | GCAA ASSOCIATE MEMBERS | |
| KLEINLEIN, ERNEST: Hidden Creek Farm 531 Graham Lane, Greeneville, TN 37743 | (423) 639-0076 (423) 552-4514 | AUSTIN, BARRY & LYNN 1064 Banks Creek Road, Burnsville, NC 28714 | (828) 777-4309 |
| LEMONS, BRUCE 1115 Old Cemetary Rd., Greeneville, TN 37745 | (423) 329-4043 | BAIRD, WILLIAM 136 Rocklane Road, Bluff City, TN 37618 | (423) 538-7547 (423) 579-9011 |
| MAUPIN, RAY & LINDA T.: Maupin Farms 1185 Maupin Road, Chuckey, TN 37641 | (423) 257-2176 | BAKER, JERRY 3341 Cherokee Road, Jonesborough, TN 37659 | (423) 747-7600 |
| McGINN, JOHN: McGinn Angus 708 Opie Arnold Rd., Limestone, TN 37681 | (703) 395-4700 | BRAZIL, SCOTT 222 Gid Flynn Road, Marshall, NC 28753 | (828) 713-0140 |
| MOONEYHAN, MARK & REBECCA 5045 Old Asheville Hwy., Greeneville, TN 37743 | (407) 592-3784 (423) 823-7975 | COLLIER, ROWDEY 413 Hardwick Drive, Knoxville, TN 37923 | (865) 661-3479 |
| MOORE, DON & JACOB: Four Moore Angus 4193 Beech Creek Road, Rogersville, TN 37857 | (423) 348-8591 (423) 863-1815 | COX, RANDY 38405 Wilderness Road, Jonesville, VA 24263 | (276) 594-5401 |
| MYERS, DAVID 2621 W Allens Bridge Road, Greeneville, TN 37743 | (423) 470-0900 | FORE, JOE: Fore Front Farm 177 Forrestview Road, Surgoinsville, TN 37873 | (423) 341-8140 |
| MYERS, JOSHUA 380 Meadowview Road, Mosheim, TN 37818 | (423) 552-8136 | GREEN, KENT: Rock Bottom Farms 5128 Rocky Mist Road, Cosby, TN 37222 | (865) 640-8178 (865) 217-9553 |
| NEASE, CHRIS & AMY 241 Jarvis Street, Sneedville, TN 37869 | (423) 300-9823 (423) 300-3101 | HARR, KENNETH & MICHAEL 1300 Harttown Road, Blountville, TN 37617 | (423) 306-0391 (423) 323-9390 |
| NESSON, NICK 1487 Springvale Road, Morristown, TN 37813 | (406) 579-1516 | HODGES, JOHN 237 Harristown Road, Bulls Gap, TN 37711 | (423) 736-8839 |
| ORR, MILTON: Twin Oaks Farm 3765 Warrensburg Road, Greeneville, TN 37743 | (423) 639-8340 (423) 552-4073 | HODGES, JORDAN 258 Summit Hill Road, Bulls Gap, TN 37711 | (423) 754-3009 |
| ORR, SARAH: Twin Oaks Farm 500 Lawrence Lane, Mosheim, TN 37818 | (423) 552-8282 (423) 623-7531 | HURST, LARRY 1521 Quarles Road, Jefferson City, TN 37760 | (865) 475-0883 (423) 277-6798 |
| RADER, LARRY PO Box 15, Chuckey, TN 37641 | (423) 620-7594 | IRELAND, NATHAN & KATIE 4341 B E Reavis Road, Hampton, NC 27020 | (336) 428-6974 (732) 513-3382 |
| RITTER, STAN & SUE: Pigeon Creek Angus 1195 Pigeon Creek Road, Greeneville, TN 37743 | (423) 552-3019 (423) 638-4524 | ISENBERG, DAN 815 Brewers Hollow Road, Sharps Chapel, TN 37866 | (317) 431-5135 |
| SEAY, EDWARD & DIANE: Rockin S Angus 1820 Glenwood Drive, Mosheim, TN 37818 | (423) 620-9105 (423) 620-9106 | JENKINS, JAMIE & CHASITY 190 Sweet Water Road, Marshall, NC 28753 | (828) 206-1345 |
| SEAY, ROY T.: Seaybahn Angus Farm 400 Lawrence Lane, Mosheim, TN 37818 | (423) 638-1673 (423) 620-7062 | | |

GCAA ASSOCIATE MEMBERS CONT'D

| | |
|--|----------------------------------|
| LOVEDAY, WAYNE 176 Manning Ridge Drive, Sevierville, TN 37876 | (865) 654-3663 |
| LOWE, JOHN & JANEANN 351 Sam Aiken Road, Telford, TN 37690 | (423) 791-3751 (423) 257-5779 |
| MOORE, DON & JACOB 4193 Beech Creek Road, Rogersville, TN 37857 | (423) 348-8591 (423) 863-1815 |
| MYERS, JOSH 233 Melinda Ferry Road, Rogersville, TN 37857 | (423) 754-4669 |
| REEVES, KENNETH 414 Sandy Mush Creek Road, Leicester, NC 28748 | (828) 683-3817 (828) 273-6702 |
| REID, JOE 11 Warrior Court, Johnson City, TN 37604 | (423) 292-6464 |
| SENSABAUGH, DOUG 711 Hammond Avenue, Mt. Carmel, TN 37645 | (423) 357-7937 (423) 276-5744 |
| STRICKLAND, GERALD & KAREN 51 Hawks Nest Road, Leicester, NC 28748 | (282) 713-1285 |
| TAYLOR, FRANK 742 Quail Hollow Drive, Elizabethton, TN 37642 | (423) 213-4346 |
| TEAGUE, JOHN ABE 196 Shanks Road, Telford, TN 37690 | (423) 360-3336 |
| VAN WINKLE, ALLAN & AMY P.O. Box 774, Bluff City, TN 37618 | (423) 534-0446 |
| WILSON, STEPHEN & JANICE 1620 Conklin Road, Telford, TN 37690 | (423) 677-1468 |
| WIDNER, SAM 184 Vernon Road, Johnson City, TN 37615 | (423) 534-8565 (423) 929-1212 |
| WILLIAMS, DALE & CATHY 140 Double Heart Drive, Elizabethton, TN 37643 | (423) 957-0069 |
| WILLIAMS, GEORGE ALEX 2299 Boones Creek Road, Jonesborough, TN 37615 | (423) 341-7044 (423) 461-3554 |
| WILLIAMS, RICK & KRISTY 301 Emerald Chase Circle, Johnson City, TN 37615 | (423) 676-6533 (423) 828-4189 |
| WILSON, TRAVIS 156 Ridge Road, Lancing, TN 37770 | (423) 319-6714 |

GREENE COUNTY ANGUS ASSOCIATION SALE PROCEDURES & GUIDELINES

Last revised February 2018

1. Consignors must provide the sale committee with the AAA registration number for each animal (including an AHIR report for bulls over 8 months). Any notes to be included in the catalog should be provided in written form to the sale committee.
2. All pedigrees (including reference sires) or pictures included in the catalog are charged as a lot and carry fixed sales expenses.
3. All cattle are accepted at the discretion of the sale committee.
4. All cattle *must* be clipped and groomed approximately 30 days before sale date.
5. **All GCAA members, especially consignors, are expected to come to work sessions before the sale, help on the day of the sale and come to the work session the day after the sale.**
6. Cattle *must* be delivered to the sale site by noon of the day of the sale. Animals *must* have a numbered ear tag (white tag w/black numbers on both sides) corresponding to their lot number from the sale catalog. The consignor should provide one bale of good hay per animal.
7. Consignors are responsible for the registration and transfer of cattle to the new owner within 30 days after the sale.
8. **Any animal consigned for a GCAA sale with a potential AM, NH or CA carrier in their ancestry must be certified AM, NH or CA free.**
9. All cattle are expected to be sound, in good health, and meet the following requirements.
 - a. Cows must be less than 11 years old *on* date of sale.
 - b. Cows 2 years old or older must be bred or have calves at side.
 - c. All animals over 6 months old must have a certificate of veterinary inspection. This inspection must be conducted within 30 days of the sale.
 - d. Pregnancy status *must* be noted on the certificate of veterinary inspection.
 - e. All animals must have clear eyes, no white spots.
 - f. All animals must have EID tags.
10. Virgin bulls up to 24 months old may be consigned.
 - a. They must be entered in the Angus association AHIR program and have EPD's on their registration.
 - b. If over 365 days of age they must have a breeding soundness exam included with their health papers.
 - c. Bulls over 8 months old will not be sold at side of the dam and will be cataloged separately.
 - d. Bulls over 8 months old must have been genomically tested.
 - e. Bulls over 8 months old must have an adjusted weaning weight of 550 lb. or more at 205 days of age adjusted yearling weight of 950 lb. or more at 365 days of age. Adjusted weaning & yearly weights should be included with the health papers.

**CATALOG
CAN BE VIEWED
ONLINE AT
WWW.ANGUS.ORG**

FY 2021-22 TAEP

Beef EPD & Accuracy Requirements by Breed

| ANGUS | CALVING EASE Required Minimum CE (Acc.) | GROWTH Required | | <i>Milk - Suggested</i> |
|--------------|---|--------------------------------|----------------------|-------------------------|
| | | Minimum WW (Acc.) | Minimum YW (Acc.) | |
| | | | | Minimum Maximum |
| Balanced | 5 (0.15) | 53 (0.15) or 81 (0.15) | | 20 to 31 |
| Calving Ease | 9 (0.15) | 46 (0.15) or 78 (0.15) | | 20 to 31 |
| Terminal | 0 (0.15) | 60 (0.15) or 101 (0.15) | | |

NOTES

This image shows a blank sheet of white paper with horizontal ruling lines. The lines are evenly spaced and run across the width of the page. There are no margins, text, or other markings on the paper.



Driving the science of better breeding

There's little room for error in the cattle business. Producers need the most advanced information to make smart selection decisions, and Angus Genetics Inc. (AGI) provides it through genomic-enhanced expected progeny differences (GE-EPDs).

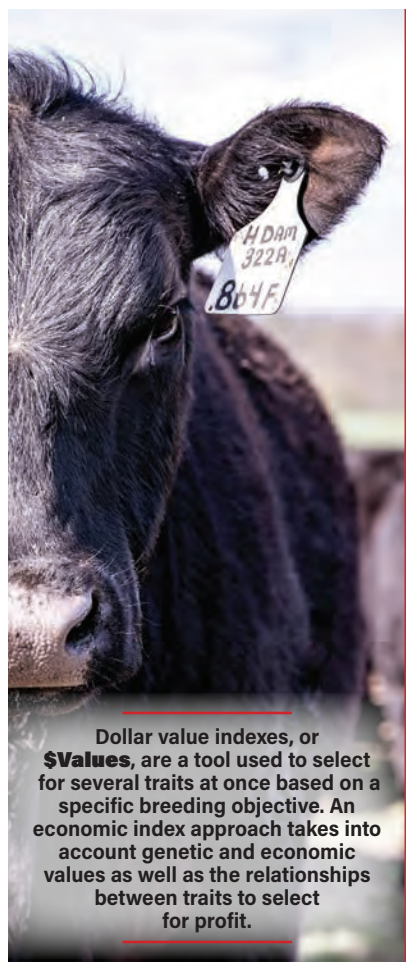
EPDs that traditionally contained all pedigree, performance and progeny information now also include results from available genomic, or DNA, tests. Breeders who use genomic technology give buyers access to AGI-generated GE-EPDs that provide:

- Increased predictability and decreased risk for young and unproven animals due to enhanced accuracy of EPDs
- Better characterization of genetics for difficult-to-measure performance traits (such as carcass traits, maternal traits and feed efficiency)
- The ability to make more rapid progress for traits that are important to you, due to:
 - more accurate selection
 - easier identification of genetic outliers
 - the ability to propagate young animals with confidence earlier in their lives

In fact, GE-EPDs on unproven animals have the same amount of accuracy as if they had recorded 8-33 calves, depending on the trait. That's valuable insight, offered regularly through the breed's weekly national cattle evaluation at www.angus.org.

How do you know if EPDs are genomic-enhanced?

Ask your breeder, refer to the registration paper, or look for the AGI GE-EPD logo, Angus GS™ powered by partner Neogen GeneSeek or the HD50k or i50k by partner Zoetis.



Dollar value indexes, or **\$Values**, are a tool used to select for several traits at once based on a specific breeding objective. An economic index approach takes into account genetic and economic values as well as the relationships between traits to select for profit.

American Angus Association \$Value Indexes

Maternal Weaned Calf Value (\$M), an index expressed in dollars per head, predicts profitability differences in progeny due to genetics from conception to weaning. \$M is built off of a self-replacing herd model where commercial cattlemen replace 25% of their breeding females in the first generation and 20% in subsequent generations. Remaining cull females and all male progeny are sold as feeder calves. Increased selection pressure on \$M aims to decrease overall mature cow size and improve foot structure and fertility while maintaining weaning weights consistent with today's production.

Weaned Calf Value (\$W), an index expressed in dollars per head, provides the expected difference in future progeny preweaning performance from birth to weaning. \$W assumes that producers retain 20% of their female progeny for replacements and sell the rest of their cull female and male progeny as feeder calves. Over time, increased selection pressure on \$W will increase pre-weaning growth through additional weaning weight and maternal milk with expenses adjustment for mature size and maternal milk.

Feedlot Value (\$F), an index expressed in dollars per head, is the expected average difference in future progeny performance for postweaning merit compared to progeny of other sires. The underlying objective assumes commercial producers will retain ownership of cattle through the feedlot phase and sell fed cattle on a carcass weight basis with no considerations of premiums or discounts for quality and yield grade.

Grid Value (\$G), an index expressed in dollars per carcass, is the expected average difference in future progeny performance for carcass grid merit, including quality and yield grade attributes, compared to progeny of other sires.

Beef Value (\$B), an index expressed in dollars per carcass, facilitates simultaneous multi-trait genetic selection for feedlot and carcass merit. \$B represents the expected average differences in the progeny post-weaning performance and carcass value compared to progeny of other sires. This index assumes commercial producers wean all male and female progeny, retain ownership of these animals through the feedlot phase and market these animals on a quality-based carcass grid.

Combined Value (\$C), an index expressed in dollars per head, includes all traits that make up both \$M and \$B with the objective that commercial producers will replace 20% of their breeding females per year with replacement heifers retained within their own herd. The remaining cull heifer and steer progeny are then assumed to be sent to the feedlot where the producers retain ownership of those cattle and eventually sell them on a quality-based carcass merit grid.

EPDS DIRECTLY INCORPORATED INTO EACH \$VALUE

| TRAIT | MATERNAL | | TERMINAL | | | |
|-------|----------|-----|----------|-----|-----|-----|
| | \$M | \$W | \$F | \$G | \$B | \$C |
| CED | ✓ | | | | | ✓ |
| BW | | ✓ | | | | |
| WW | ✓ | ✓ | | | | ✓ |
| YW | | | ✓ | | ✓ | ✓ |
| CEM | ✓ | | | | | ✓ |
| Milk | ✓ | ✓ | | | | ✓ |
| MW | ✓ | ✓ | | | | ✓ |
| DOC | ✓ | | | | | ✓ |
| HP | ✓ | | | | | ✓ |
| Claw | ✓ | | | | | ✓ |
| Angle | ✓ | | | | | ✓ |
| DMI | | | ✓ | | ✓ | ✓ |
| CW | | | ✓ | ✓ | ✓ | ✓ |
| RE | | | | ✓ | ✓ | ✓ |
| Marb | | | | ✓ | ✓ | ✓ |
| Fat | | | | ✓ | ✓ | ✓ |

Greene Farmers



1414 West Main Street
Greeneville, TN 37743

423-638-8101

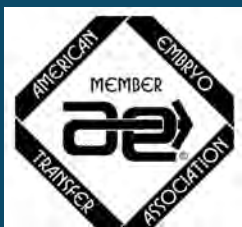
Commodity Beef Blends Now Available

Large Animal Service of East Tennessee



In-hospital or on-farm collection and transfer of embryos
Donor boarding available
IVF, fresh and frozen embryo transfer
Ultrasonography and fetal sexing
Breeding soundness evaluation of bulls

Mitchell Parks, DVM
1430 W. Main St.
Greeneville, TN 37743
(423) 636-1499





**VETERINARY
HOSPITAL^{INC}**

*Caring for His creatures,
and serving the people
who love them*

Dr. Alex Dulaney
Dr. Patrick Taylor
Dr. Claire Baskett
Dr. Megan Gilbert
Dr. Rachel Maness
Dr. Rebecca Bolton

(423) 620-3701

*1515 Industrial Road * Greeneville, TN 37745*
www.easttnvet.com



EQUIP YOUR OPERATION FOR HAY 2021.

Case IH Agriculture and West Hills Tractor work together to provide the best products, solutions, and service to ensure the hay gets in the barn. We thank you for your business and will continue to provide a helping hand for when you need it the most.



GREENE COUNTY ANGUS ASSOC.
P.O. BOX 400
Greeneville, TN 37744



Return Service Requested

NON-PROFIT ORG
US POSTAGE
PAID
KNOXVILLE, TN
PERMIT #309

GREENE COUNTY FAIRGROUNDS
FRIDAY, MARCH 4th 2022
7:00 PM

