

START THE NEW YEAR WITH

nextGEN^{eration} Ayrshires



Online Embryo & Pick of Flush Sale
WEDNESDAY, JANUARY 5 - SATURDAY, JANUARY 8

Bidding will be online at Cowbuyer.com

AUCTION CLOSING | SATURDAY, JANUARY 8
BEGINNING AT 4:00 PM EASTERN TIME

The auction will utilize an auto-extend, soft closing.

With this feature, the bidding will close up to two (2) lots at the same time starting with Lot 1 and working through the catalog. Once two (2) minutes have lapsed without any bidding activity, the bidding on those items will be closed.

Then the next set of lots will close in the same manner until they receive no additional bids, until all lots have closed.

SALE COMMITTEE

DAMIAN ULLMER - 920.639.2375

DONNA MERTZ - 920.382.7678

DON BENSON - 417.257.3175

KURT WOLF - 563.543.2986

KALEB KRUSE - 563.880.7495

STEVE SCHMIDT - 262.374.0051

BILLY BRANSTETTER - 270.528.6336

NEAL SMITH - 615.417.0759

GENE HALL JR. - 405.740.3085

RICHARD FRANTA - 715.307.0537

LYNN LEE - 615.390.6312

GREG EVANS - 315.456.8283

MARK CREEK - 301.471.2311



The online bidding will take place starting January 5 & closing January 8 beginning at 4 pm Eastern Time. Watch and bid from anywhere with this service at www.cowbuyer.com



614.335.0020 | INFO@USAYRSHIRE.COM
BECKY PAYNE - 614.595.7561 CELL

TERMS

1. Embryos are sold on a per embryo basis times the number of embryos offered in the package unless otherwise noted or announced.
2. The final bid must meet the seller's reserve price to be considered sold.
3. All purchases must be settled within 5 business days of the sale payable to the Ayrshire Breeders' Association, by check, wire transfer or credit card payment. All fees for such payments are the responsibility of the buyer.
4. It is the responsibility of the BUYER to pay all shipping costs associated with getting embryos to the location of their choice.
5. Should a buyer want embryos exported, please contact the seller directly, prior to the sale to determine exactly which countries the embryos are eligible for export to. All testing, health charts, charting and shipping fees will be the responsibility of the buyer.
6. No embryos will be shipped, or released from any facility until complete settlement has been made with the sale manager.
7. Buyers are provided with the deadlines to choose their pick of flush and should correspond directly with the seller.
8. Emails and contact phone numbers of each consignor have been supplied on each lot for buyers to contact sellers regarding shipping and handling.
9. All announcements will take precedence over printed material.

INDEX

Budjon Farms & Peter + Lyn Vail	8, 9	Irrthum Farm Inc & Clint Irrthum	15
Busch, Timothy & Katie	1	Rida, Andy & Bridget	12
Evans, Andrew + Abbie & Kim + Charlie Clark	13	Rida, Ryan & Marjorie	10
Family-Af-Ayr Farm LLC	20	Ridale Genetics & Hardy Farm	11
Ferme Charest Inc.	14	Schmidt, Steve, Pauline, Rebecca & Emily	3
Gordon, Edith	18, 19	Schneider, Steve, Sara, Adrianna & August	16
Hanson, David & Ashley Swenson	4	Topp, Tanner	21, 22, 23
Hanson, David & Linda	6	Topp, Tanner, Brennan, Marissa & Logan	2
Hanson, Matthew & Eric Houdek.	7	Ullmer, Mackenzie & Alexandra + Eva Jaskolski.	17
Hanson, Matthew & Kelsey Petit.	5		





GRAND-VIEW CALIMERO DEA-ET, EX-91 3E
EMBRYOS EXPORTED TO 5 DIFFERENT COUNTRIES
DAM OF LOT 1



GRAND-VIEW BBBK DREAMER
EX-94 5E
OVER 147,000M LIFETIME
GRANDDAM OF LOT 1

1 **\$375 PER**
EMBRYO RESERVE

EMBRYO PACKAGE
REYNOLDS X DEA

REYNOLDS X DEA MATING:
 97.685% AYRSHIRE

SELLING 4 #1 IVF EMBRYOS
REVERSE SORTED

EXPORTABLE

POTENTIAL 10TH GENERATION EXCELLENT!

BUSCH, TIMOTHY H. & KATIE
 N6470 HWY C
 CECIL WI 54111
 920-609-7476

PALMYRA LOCHINVAR REYNOLDS-ET

840003205149285						
PTA	+3.05SCC	+0.7PL	-1.4DPR			
PTA	+839M	+28F	+11P	51R		
PTA%		-.03	-.08			
PTAT	+.90T		49R	12/21		

GRAND-VIEW CALIMERO DEA-ET

95.37% AYRSHIRE		03/17/11 FEMALE	
100615777		95.37%	
8-10 91		3E P7 +403	
NM\$	-182		
PTA	+3.11SCC	-0.1PL	-0.6DPR
PTA	-537M	-11F	-14P 71R
PTA\$	-182CY		12/21
PTA%		+0.06	+0.02
PTAT	+1.00T		72R 12/21
PPA	-1340M	-20F	-23P
CLASS	ST8 SR6 BD7 DF6 RA4 RW6 LS4 FA6		
	FU5 UH6 UW4 UC7 UD7 TP7 TL3 LR7		
GOLD		%	FAT % PRT
2-00	2 365	21740 4.0	873 3.2 704
3-03	2 365	19770 3.9	777 3.3 661
5-05	2 299	14750 4.4	645 3.6 524
6-09	2 341	20280 3.9	787 3.2 647
8-03	2 275	17090 4.4	747 3.4 573
9-06	2 332	21800 4.3	931 3.3 728
LIFE	2042	117280 4.1	4839 3.3 3902

3RD SPRING YEARLING - 2012 INTERNATIONAL
 HM ALL-AMERICAN SPRING YEARLING - 2012
 2ND JR 2-YEAR-OLD - 2013 INTERNATIONAL
 RES ALL-AMERICAN JR 2-YEAR-OLD (TIE) - 2013
 1ST - 2014 WDE INTERNATIONAL FUTURITY
 1ST JR 3-YEAR-OLD - 2014 INTERNATIONAL
 ALL-AMERICAN JR 3-YEAR-OLD - 2014

LIBBY'S LOCHINVAR

100543021						
PTA	+2.98SCC	+0.5PL	-1.5DPR			
PTA	+1044M	+0F	+11P	96R		
PTA%		-.21	-.11			
PTAT	+.80T		95R	12/21		
D/AV	20241M 3.8	772F 3.1	622P 8.5T			

PALMYRA BERKELY P RUTH-ET

72394521		5-06 94		2E	
GOLD		%	FAT %	PRT	
2-00	2 264	18270 4.5	814 3.1	565	
2-10	2 320	26340 4.7	1239 3.1	825	
3-10	2 323	32060 3.9	1256 3.0	960	
4-10	2 328	29420 4.1	1218 3.1	916	
LIFE	1405	117140 4.3	5058 3.1	3662	

MARGOT CALIMERO

10310847C				90.75%	
PTA	+3.11SCC	-2.4PL	+0.3DPR		
PTA	-557M	-7F	-12P	97R	
PTA%		+0.08	+0.03		
PTAT	+.30T		96R	12/21	
D/AV	19457M 4.0	778F 3.2	621P 8.6T		

GRAND-VIEW BBBK DREAMER

100463697		11-06 94		5E	
GOLD		%	FAT %	PRT	
2-06	2 334	15770 4.5	702 3.4	531	
3-06	2 364	17560 3.6	640 3.3	581	
4-09	2 365	24310 4.4	1059 3.3	807	
6-08	2 365	23650 4.1	964 3.3	774	
8-08	2 365	26050 3.6	948 3.3	856	
10-09	2 305	13910 4.6	637 3.7	510	
LIFE	2750	147270 4.1	6059 3.4	5025	

3RD FALL YEARLING - 2008 CENTRAL NATIONAL
 HM ALL-AMERICAN FALL YEARLING - 2008
 1ST - 2010 WDE INTERNATIONAL FUTURITY
 NOM ALL-AMERICAN AGED COW - 2015
 NOM ALL-AMERICAN 100,000 LB COW - 2016

THIRD DAM:

GRAND-VIEW CORNELIUS DRAMA

100261866						
7-02 91						
5-06	2 314	21560 4.0	856 3.1	674		
6-06	2 279	21450 4.0	857 3.0	654		





TOPPGLEN WISHFUL THINKING, EX-94 3E
UNANIMOUS ALL-AMERICAN COMPONENT MERIT COW, 2021
DAM OF LOT 2



CONEBELLA SARGE'S WENDY, EX-93 4E
5-02 365D 30,690M 3.2% 980F 3.0% 916P
GRANDDAM OF LOT 2

2 \$1,000 PER
EMBRYO RESERVE

EMBRYO PACKAGE
BARCLAY X
WISHFUL THINKING

BARCLAY X WISHFUL THINKING MATING:
 PUREBRED AYRSHIRE

SELLING 5 #1 IVF EMBRYOS

NOT EXPORTABLE

TOPP, TANNER, BRENNAN, MARISSA &
 LOGAN
 1216 TOWNSHIP RD 13
 WEST SALEM OH 44287
 330-466-7184

OLD-BANKSTON JC BARCLAY-ET

840003144800005
 PTA +2.97SCC +0.1PL +0.3DPR
 PTA -34M +2F +3P 51R
 PTA% +.02
 PTAT +.20T 48R 12/21

TOPPGLEN WISHFUL THINKING-ET

PUREBRED AYRSHIRE 06/01/13 FEMALE
 100676079
 7-04 94 3E P9 +441
 NM\$ +111 NATIONAL CLASS LEADER
 PTA +2.95SCC +0.5PL -0.4DPR
 PTA -190M +21F +4P 61R
 PTA\$ +111CY 12/21
 PTA% +.15 +.05
 PTAT +.50T 52R 12/21
 PPA +1704M +141F +75P
 CLASS ST8 SR7 BD9 DF9 RA6 RW7 LS5 FA7
 FU9 UH9 UW9 UC9 UD7 TP4 TL7 LR8
 GOLD % FAT % PRT
 2-00 2 356 15040 4.0 598 3.3 497
 3-03 2 305 20210 6.7 1348 6.1 1232

 RES INT CHAMP - 2016 SOUTHERN NATIONAL JR
 SENIOR CHAMPION - 2018 CENTRAL NATIONAL JR
 GRAND CHAMPION - 2018 CENTRAL NATIONAL JR
 RES ALL-AMERICAN 5-YEAR-OLD - 2018
 UNAN JR ALL-AMERICAN 5-YEAR-OLD - 2018
 RES SR CHAMPION - 2019 CENTRAL NATIONAL JR
 RES GRAND CHAMPION - 2019 CENTRAL NAT'L JR
 RES SR CHAMPION - 2019 SOUTHERN NAT'L JR
 HM ALL-AMERICAN AGED COW - 2019
 UNAN JR ALL-AMERICAN AGED COW - 2019
 SR CHAMPION - 2020 SOUTHERN NATIONAL JR
 GRAND CHAMPION - 2020 SOUTHERN NATIONAL JR
 SENIOR CHAMPION - 2020 SOUTHERN NATIONAL JR
 GRAND CHAMPION - 2020 SOUTHERN NATIONAL JR
 UNAN ALL-AMERICAN AGED COW - 2020
 UNAN JR ALL-AMERICAN AGED COW - 2020
 SENIOR CHAMPION - 2021 CENTRAL NATIONAL JR
 GRAND CHAMPION - 2021 CENTRAL NATIONAL JR
 RES SENIOR CHAMPION - 2021 INTERNATIONAL
 UNAN ALL-AMERICAN LIFETIME COMPONENT MERIT
 - 2021
 UNAN JR ALL-AMERICAN LIFETIME COMPONENT
 MERIT -2021

FOREVER SCHOON PREDATOR-ET

11119921C
 PTA +2.94SCC -1.6PL -1.6DPR
 PTA +55M +2F -2P 95R
 PTA% - .02
 PTAT +.30T 94R 12/21
 D/AV 19985M 4.0 793F 3.2 630P 8.5T

STEAM-VALLEY WILTON MAGIC BRI

100475641 5-03 94 2E
 GOLD % FAT % PRT
 2-04 2 313 16280 4.1 673 3.3 537
 3-04 2 352 23530 3.6 845 3.1 726
 4-10 2 336 28210 3.6 1004 3.1 878
 5-11 2 364 32470 3.3 1058 3.0 977
 7-01 2 273 23050 3.2 732 3.0 695
 10-08 2 341 31820 4.0 1275 3.1 984
 LIFE 1979 155360 3.6 5587 3.1 4797

DE LA PLAINE PRIME

106061020C
 PTA +2.92SCC -1.3PL -2.7DPR
 PTA -344M +2F -7P 95R
 PTA% +.08 +.02
 PTAT +.50T 94R 12/21
 D/AV 19503M 4.0 787F 3.2 626P 8.6T

CONEBELLA SARGE'S WENDY

100476437 9-01 93 4E
 GOLD % FAT % PRT
 2-01 2 334 20820 4.0 833 3.1 652
 3-02 2 312 23570 3.9 908 3.1 723
 4-02 2 314 24270 4.1 988 3.1 759
 5-02 2 365 30690 3.2 980 3.0 916
 6-07 2 305 22080 2.9 645 3.0 665
 7-10 2 322 22320 3.9 874 3.0 666
 8-11 2 305 21810 3.3 726 2.8 606
 LIFE 2410 172795 3.6 6208 3.0 5230

 HM ALL-AMERICAN SR 2-YEAR-OLD - 2009
 JR ALL-AMERICAN SR 2-YEAR-OLD - 2009
 RES JR ALL-AMERICAN SR 3-YEAR-OLD - 2010
 SENIOR CHAMPION - 2011 CENTRAL NATIONAL JR
 GRAND CHAMPION - 2011 CENTRAL NATIONAL JR
 TOTAL PERFORMANCE WINNER - 2011 CENTRAL
 NAT'L JR
 RES ALL-AMERICAN 4-YEAR-OLD - 2011
 UNAN JR ALL-AMERICAN 4-YEAR-OLD - 2011
 RES JR ALL-AMERICAN 5-YEAR-OLD - 2012
 UNAN JR ALL-AMERICAN 100,000 LB COW - 2013

THIRD DAM:

CONEBELLA HELIGO'S WILLOW

100112582 5-04 82
 5-03 2 365 25740 3.5 900 3.1 795
 6-06 2 363 25250 3.7 938 3.1 778
 LIFE 2033 134990 3.8 5105 3.1 4159





MOY-AYR BURDETTE LIGHTNING-ET, EX-91
RES JR ALL-AMERICAN SR 3-YEAR-OLD, 2021
DAM OF LOT 3



MOY-AYR HAMMER LAVISH, EX-93 3E
OVER 121,000M LIFETIME
GRANDDAM OF LOT 3



MOY-AYR POKER LAVENDER-ET, EX-92 4E
OVER 118,000M LIFETIME
GREAT-GRANDDAM OF LOT 3

3 \$400 PER
EMBRYO RESERVE

**EMBRYO PACKAGE
GENTLEMAN X
LIGHTNING**

GENTLEMAN X LIGHTNING MATING:
98.26 AYRSHIRE

**SELLING 4 #1 IVF EMBRYOS
REVERSE SORTED
EXPORTABLE**

**FIFTH DAM:
MOY-AYR STAR BONOPARTE LICORICE, EX-92**
5X ALL-AMERICAN
GRAND CHAMPION, 2004 WORLD DAIRY EXPO

**SIXTH DAM:
MOY-AYR STAR KELLY'S LAUREN, EX-90**
3X ALL-AMERICAN
2X RES ALL-AMERICAN
2X WDE TOTAL PERFORMANCE WINNER

SCHMIDT, STEVE, PAULINE,
REBECCA & EMILY
W7864 TERRITORIAL RD
DELEVAN WI 53115
STEVE CELL 262-374-0051

DUO STAR GENTLEMAN-ET
106306758C 97.68%

PTA	+3.09SCC	-3.2PL	+0.2DPR	
PTA	-763M	-16F	-25P	92R
PTA%		+0.8		
PTAT	+0.80T		90R	4/21
D/AV	19454M 4.0	780F 3.2	615P	8.6T

MOY-AYR BURDETTE LIGHTNING-ET
98.84% AYRSHIRE 09/13/17 FEMALE
100738933 98.84%

	4-01	91	P-	+392
NM\$	-45			
PTA	+3.12SCC	-0.4PL	+0.1DPR	
PTA	-131M	-4F	+1P	46R
PTA\$	-45CY			12/21
PTA%		+0.1	+0.3	
PPA	+107M	+18F	+25P	
CLASS	ST8 SR6 BD9 DF8 RA5 RW8 LS6 FA6			
	FU9 UH8 UW7 UC8 UD6 TP5 TL5 LR7			
GOLD		%	FAT	%
	2-06 2 305 17970 4.1	738 3.2	584	
	350 20250 4.3	868 3.3	675	

NOM JR ALL-AMERICAN FALL YEARLING - 2019
NOM ALL-AMERICAN SR 2-YEAR-OLD - 2020
RES JR ALL-AMERICAN SR 2-YEAR-OLD - 2020
2ND SR 3-YEAR-OLD - 2021 CENTRAL NAT'L JR
RES INT CHAMPION - 2021 CENTRAL NAT'L JR
1ST SR 3-YEAR-OLD - 2021 SOUTHERN NAT'L JR
RES INT CHAMPION - 2021 SOUTHERN NAT'L JR
RES GRAND CHAMPION - 2021 SOUTHERN NAT'L JR
RES JR ALL-AMERICAN SR 3-YEAR-OLD - 2021

**FOURTH DAM:
MOY-AYR STAR LADY-LUCK, EX-91 3E**
4-06 2 365 25830 4.1 1049 3.1 794
LIFE 2547 134648 3.9 5288 3.0 4053

NOM ALL-AMERICAN 4-YEAR-OLD - 2006

PALMYRA TRI-STAR REALITY
100369452

PTA	+3.06SCC	-0.2PL	-0.2DPR	
PTA	+441M	+16F	+1P	97R
PTA%		-0.1	-0.7	
PTAT	+0.20T		96R	4/21
D/AV	21215M 3.9	835F 3.1	652P	8.6T

DUO STAR AMOUR-ET
103638586C 95.37%

DHI		%	FAT	%	PRT
4-09 2 365	31689 3.7	1173 3.3	1056		
6-07 2 365	31079 3.5	1089 3.2	999		
LIFE	1686 123634 3.8	4751 3.3	4089		

PALMYRA TRI-STAR BURDETTE-ET
100419568

PTA	+2.93SCC	+1.1PL	-0.8DPR	
PTA	+272M	+6F	+13P	99R
PTA%		-0.2	+0.2	
PTAT	+1.00T		99R	12/21
D/AV	19879M 3.9	785F 3.2	634P	8.6T

MOY-AYR HAMMER LAVISH
100651856 97.68%

	7-04	93	3E	
GOLD		%	FAT	%
2-00 2 365	15760 3.8	596 3.1	483	
3-09 2 365	21810 4.0	877 3.1	668	
5-00 2 310	19490 3.6	710 3.0	592	
6-00 2 365	17130 3.7	626 3.1	539	
7-02 2 365	23020 4.1	941 3.0	681	
7-03 2 305	19540 3.9	769 2.9	570	
LIFE	2206 121310 3.9	4699 3.0	3692	

1ST FALL YEARLING IN MILK - 2014 INTERNAT'L
ALL-AMERICAN FALL YEARLING IN MILK - 2014

**THIRD DAM:
MOY-AYR POKER LAVENDER-ET, EX-92 4E**
7-00 2 365 24940 4.3 1067 3.1 774
8-02 2 365 18900 4.3 807 3.3 631
LIFE 2254 118230 4.3 5036 3.3 3866

NOM ALL-AMERICAN 100,000 LB COW - 2017





OLD-N-LAZY REAGAN WREN-ET, VG-86
NOM ALL-AMERICAN JR 2-YEAR-OLD, 2021
DAM OF LOT 4



DE LA PLAINE REMINGTON WING-ET
EX-92 2E
4-11 322D 28,290M 4.5% 1274F 3.3% 934P
DAM OF LOT 4



FOREVER SCHOON PING, EX-95 4E
9-08 365D 27,015M 4.4% 1186F 3.5% 948P
GRANDDAM OF LOT 4

4 \$400 PER
EMBRYO RESERVE

EMBRYO PACKAGE
BURDETTE X WREN

BURDETTE X WREN MATING:
PUREBRED AYRSHIRE

SELLING 4 #1 IVF SEXED EMBRYOS

HANSON, DAVID & ASHLEY SWENSON
 45711 380TH STREET
 NICOLLET MN 56074
 218-686-2223

PALMYRA TRI-STAR BURDETTE-ET

100419568
 PTA +2.93SCC +1.1PL -0.8DPR
 PTA +272M +6F +13P 99R
 PTA% -.02 +.02
 PTAT +1.00T 99R 12/21
 D/AV 19879M 3.9 785F 3.2 634P 8.6T

OLD-N-LAZY REAGAN WREN-ET

PUREBRED AYRSHIRE 03/22/19 FEMALE
 840003205248422
 2-03 86 P- +389
 NM\$ -134
 PTA +2.95SCC -1.1PL -1.7DPR
 PTA -633M -3F -14P 49R
 PTA\$ -134CY 12/21
 PTA% +.12 +.03
 PTAT +.60T 44R 12/21
 PPA -3912M -81F -123P
 CLASS ST5 SR5 BD9 DF5 RA5 RW5 LS6 FA7
 FU6 UH6 UW5 UC5 UD7 TP5 TL4 LR8

NOM ALL-AMERICAN JR 2-YEAR-OLD - 2021

FOURTH DAM: FOREVER SCHOON PRETTY

7441960 EX-93 2E CAN
 6-07 2 305 23702 4.7 1102 3.3 794

FIFTH DAM: FOREVER SCHOON BK PORSHA-ET

8237763 EX-90 CAN
 7-00 2 305 22932 5.3 1210 3.2 743

PALMYRA TRI-STAR

150440
 PTA +2.87SCC -1.3PL -0.5DPR
 PTA +55M +2F +0P 97R
 PTA% -.01
 PTAT 95R 12/21
 D/AV 19685M 3.9 766F 3.1 616P 8.4T

PALMYRA RENO BETHANY-ET

100101191 3-06 90
 GOLD % FAT % PRT
 1-11 2 365 26925 3.9 1038 3.1 847
 3-01 2 365 30930 3.6 1104 3.3 1006
 4-08 2 365 35780 3.8 1374 3.1 1123
 LIFE 1551 120700 3.7 4496 3.2 3855

PALMYRA BERKELY REAGAN-ET

840003123620602
 PTA +3.14SCC -3.4PL -2.7DPR
 PTA -132M +9F -1P 97R
 PTA% +.07 +.02
 PTAT +.50T 94R 12/21
 D/AV 20073M 4.1 816F 3.2 640P 8.5T

DE LA PLAINE REMINGTON WING-ET

100618695 5-01 92 2E
 DHI % FAT % PRT
 3-06 3 318 18950 4.9 931 3.6 674
 4-11 3 322 28290 4.5 1274 3.3 934

2ND JR 3-YEAR-OLD - 2014 SOUTHERN NATIONAL

THIRD DAM: FOREVER SCHOON PING

9591001C EX-95 4E CAN
 5-02 2 365 27236 4.4 1210 3.6 972
 8-03 2 365 27007 4.6 1246 3.5 935
 9-08 2 365 27015 4.4 1186 3.5 948
 LIFE 2163 140157 4.5 6345 3.6 5042

ALL-AMERICAN SR 3, 2011
 RES ALL-CANADIAN SR 3, 2011
 RES ALL-AMERICAN, 2010
 GRAND CHAMPION, 2013 QUEBEC SPRING SHOW
 ALL-CANADIAN, 2013





GRAND-VIEW HP GIBBS DIPS-ET, EX-93
UNANIMOUS ALL-AMERICAN 5-YEAR-OLD, 2021
DAM OF LOT 5



GRAND-VIEW CALIMERO DEA-ET
EX-91 3E
OVER 117,000 M LIFETIME
GRANDDAM OF LOT 5



GRAND-VIEW BBBK DREAMER
EX-94 5E
OVER 147,000M LIFETIME
GREAT-GRANDDAM OF LOT 5

5
\$4,000 RESERVE

PICK OF FLUSH
RINGER X DIPS

PICK OF 2 CONFIRMED FEMALE PREGANCIAS
DUE SEPTEMBER 2022

TERMS: 25% DOWN, 75% AT PICK.

PICK BY DECEMBER 2022

RINGER X DIPS MATING: 95.85%

HEIFERS ARE POTENTIAL
11TH GENERATION EXCELLENT

HANSON, MATTHEW & KELSEY PETIT
 35400 ST HWY 1 NE
 GOODRIDGE MN 56725
 218-688-1839

BLUE-SPRUCE RINGER

840003139111319	94.02%
PTA +2.82SCC +3.0PL -0.5DPR	
PTA +604M +40F +20P	49R
PTA% +.08	
PTAT +.30T	43R 12/21

GRAND-VIEW HP GIBBS DIPS-ET

97.68% AYRSHIRE	03/03/16	FEMALE
100718340		97.68%
	4-04 93	P- +350
NM\$ -346		
PTA +3.15SCC -1.1PL		
PTA -581M -25F -28P		53R
PTA\$ -346CY		12/21
PTA% -.01		-.05
PTAT +.90T		57R 12/21
PPA -2250M -87F -102P		
CLASS ST8 SR6 BD8 DF7 RA4 RW8 LS5 FA6		
FU6 UH7 UW8 UC5 UD5 TP5 TL2 LR7		
DHI %	FAT %	PRT
2-02 3 305 13930 4.3	594 3.2	450
	325 14420 4.3	618 3.2 467
3-03 3 292 16140 3.7	605 2.9	464

NOM ALL-AMERICAN SPRING YEARLING - 2017
 3RD JR 3-YEAR-OLD - 2019 INTERNATIONAL
 HM ALL-AMERICAN JR 3-YEAR-OLD - 2019
 1ST 5-YEAR-OLD - 2021 INTERNATIONAL
 UNAN ALL-AMERICAN 5-YEAR-OLD - 2021

THIRD DAM: GRAND-VIEW BBBK DREAMER

100463697	11-06 94	5E
GOLD %	FAT %	PRT
4-09 2 365 24310 4.4	1059 3.3	807
6-08 2 365 23650 4.1	964 3.3	774
8-08 2 365 26050 3.6	948 3.3	856
LIFE 2750 147270 4.1	6059 3.4	5025

NOM ALL-AMERICAN FALL YEARLING - 2008
 NOM ALL-AMERICAN AGED COW - 2015
 NOM ALL-AMERICAN 100,000 LB COW - 2016

DES COTEAUX RUBICOM-ET

109287246C	88.04%
PTA +2.90SCC +3.7PL	
PTA +1397M +33F +36P	90R
PTA% -.11	-.04
PTAT +.20T	84R 12/21
D/AV 24493M 4.0 970F 3.2 784P	8.4T

DE LA PLAINE BINGO STINGER

100723904	5-09 94	2E
DHI %	FAT %	PRT
3-02 2 332 19142 4.7	907 3.3	631
4-03 2 365 30144 4.3	1298 3.1	935
5-05 2 302 25080 4.4	1096 3.1	788
6-05 2 305 26230 4.4	1157 3.2	829
LIFE 1388 106726 4.4	4696 3.2	3397

PALMYRA REALITY GIBBS-ET

69261849	
PTA +2.93SCC -2.0PL +0.4DPR	
PTA -189M -24F -26P	96R
PTA% -.09	-.10
PTAT -.20T	93R 12/21
D/AV 19554M 3.9 760F 3.0 596P	8.5T

GRAND-VIEW CALIMERO DEA-ET

100615777	8-10 91	3E
GOLD %	FAT %	PRT
2-00 2 365 21740 4.0	873 3.2	704
3-03 2 365 19770 3.9	777 3.3	661
5-05 2 299 14750 4.4	645 3.6	524
6-09 2 341 20280 3.9	787 3.2	647
8-03 2 275 17090 4.4	747 3.4	573
9-06 2 332 21800 4.3	931 3.3	728
LIFE 2042 117280 4.1	4839 3.3	3902

3RD SPRING YEARLING - 2012 INTERNATIONAL
 HM ALL-AMERICAN SPRING YEARLING - 2012
 2ND JR 2-YEAR-OLD - 2013 INTERNATIONAL
 RES ALL-AMERICAN JR 2-YEAR-OLD (TIE) - 2013
 1ST - 2014 WDE INTERNATIONAL FUTURITY
 1ST JR 3-YEAR-OLD - 2014 INTERNATIONAL
 ALL-AMERICAN JR 3-YEAR-OLD - 2014





HAZCROFT GIGI GABRIELLA-ET, EX-94
 3-09 324D 26,030M 4.5% 1169F 3.0% 772P
DAM OF LOT 6



PALMYRA POKER GIGI-ET, EX-90
 4-05 337D 24,780M 3.7% 911F 3.1% 780P
GRANDDAM OF LOT 6

6 \$4,000 RESERVE

PICK OF FLUSH

REAGAN X GABRIELLA

PICK OF 4 CONFIRMED FEMALE PREGANCIAS DUE SEPTEMBER 2022

TERMS: 25% DOWN, 75% AT PICK.

PICK BY DECEMBER 2022

REAGAN X GABRIELLA MATING:
 PUREBRED AYRSHIRE

HANSON, DAVID & LINDA
 45711 380TH ST
 NICOLLET MN 56074
 218-686-2223

PALMYRA BERKELY REAGAN-ET

840003123620602
 PTA +3.14SCC -3.4PL -2.7DPR
 PTA -132M +9F -1P 97R
 PTA% +.07 +.02
 PTAT +.50T 94R 12/21
 D/AV 20073M 4.1 816F 3.2 640P 8.5T

HAZCROFT GIGI GABRIELLA-ET

PUREBRED AYRSHIRE 06/01/13 FEMALE
 72511709
 6-05 94 P9 +429
 NM\$ -14
 PTA +3.05SCC -1.4PL -0.5DPR
 PTA +25M +9F -8P 58R
 PTA\$ -14CY 12/21
 PTA% +.04 -.05
 PTAT +1.30T 58R 12/21
 PPA +945M +86F +1P
 CLASS ST8 SR7 BD8 DF8 RA7 RW8 LS5 FA7
 FU8 UH9 UW9 UC9 UD4 TP6 TL7 LR7
 GOLD % FAT % PRT
 2-02 2 305 19340 4.3 829 3.0 572
 365 23260 4.3 1000 3.0 693
 3-09 2 305 25340 4.5 1140 2.9 746
 324 26030 4.5 1169 3.0 772
 4-09 2 305 22180 4.3 955 3.0 672
 365 25310 4.3 1086 3.1 784
 6-01 2 331 18040 4.1 741 3.0 535
 LIFE 1554 100160 4.3 4318 3.0 3041

2ND 4-YEAR-OLD - 2017 MID-ATLANTIC NAT'L
 NOM ALL-AMERICAN 4-YEAR-OLD - 2017
 NOM ALL-AMERICAN 5-YEAR-OLD - 2018

PALMYRA BENDIG BERKELY-ET

69261805
 PTA +3.08SCC -2.3PL -0.5DPR
 PTA -386M -19F -18P 96R
 PTA% -.02 -.03
 PTAT +.30T 95R 12/21
 D/AV 18950M 3.9 744F 3.1 589P 8.5T

PALMYRA POKER LH ROSY-ET

66596106 4-01 92
 GOLD % FAT % PRT
 2-00 2 298 19900 4.5 896 3.3 654
 3-00 2 365 26100 4.4 1161 3.5 910

PALMYRA BENDIG BERKELY-ET

69261805
 PTA +3.08SCC -2.3PL -0.5DPR
 PTA -386M -19F -18P 96R
 PTA% -.02 -.03
 PTAT +.30T 95R 12/21
 D/AV 18950M 3.9 744F 3.1 589P 8.5T

PALMYRA POKER GIGI-ET

65459562 4-07 90
 GOLD % FAT % PRT
 2-03 2 305 19810 4.3 850 3.1 605
 358 22110 4.3 951 3.1 682
 3-05 2 300 20780 3.4 708 3.0 631
 4-05 2 305 23690 3.6 857 3.1 737
 337 24780 3.7 911 3.1 780

2ND WINTER CALF - 2008 MID-ATLANTIC NAT'L
 1ST SR 2-YEAR-OLD - 2010 MID-ATLANTIC NAT'L
 NOM ALL-AMERICAN SR 2-YEAR-OLD - 2010
 3RD SR 3-YEAR-OLD - 2011 SOUTHERN NATIONAL

THIRD DAM:

PALMYRA RAVEN S. GINGER

100330199 6-03 89
 4-06 2 365 35760 4.5 1626 2.9 1052
 5-11 2 365 22720 4.0 899 2.9 670
 7-03 2 365 33490 4.3 1453 2.9 976
 LIFE 2484 166320 3.8 6358 3.0 4994

ALL-AMERICAN FALL CALF - 2004
 JR ALL-AMERICAN FALL CALF - 2004
 UNAN ALL-AMERICAN FALL YRLG IN MILK-2005
 UNAN JR ALL-AMERICAN FALL YRLG IN MILK-2005





OLD-BANKSTON-AL REAGAN BLEXY-ET, EX-91
RESERVE ALL-AMERICAN MILKING YEARLING, 2019
DAM OF LOT 7



GOOD-VUE RANEY BETHANY-ET, EX-90
4-03 363D 23,550M 4.1% 958F 3.1% 736P
GRANDDAM OF LOT 7

7 **\$3,000 RESERVE**

PICK OF FLUSH
RINGER X BLEXY

PICK OF 3 CONFIRMED FEMALE PREGANCIAS DUE MARCH 2022

TERMS: 25% DOWN, 75% AT PICK.

PICK BY JUNE 2022

RINGER X BLEXY MATING: 96.43% AYRSHIRE

BLUE-SPRUCE RINGER

840003139111319				94.02%
PTA	+2.82SCC	+3.0PL	-0.5DPR	
PTA	+604M	+40F	+20P	49R
PTA%		+0.8		
PTAT	+0.30T			43R 12/21

OLD-BANKSTON-AL REAGAN BLEXY-ET

98.84% AYRSHIRE				12/06/17 FEMALE
840003144799978				98.84%
	3-00	91		P8 +439
NM\$	+5			
PTA	+3.10SCC	-1.7PL	-0.9DPR	
PTA	-12M	+15F	+3P	50R
PTA\$	+5CY			12/21
PTA%		+0.8	+0.2	
PTAT	+0.90T			55R 12/21
PPA	+1206M	+112F	+48P	
CLASS	ST7 SR7 BD8 DF7 RA5 RW5 LS5 FA8			
	FU8 UH7 UW8 UC7 UD6 TP5 TL6 LR8			
DHI			% FAT % PRT	
1-09	3 279	15920 3.8	603 3.3	525

2ND FALL YRLG IN MILK - 2019 INTERNATIONAL
 RES ALL-AMERICAN FALL YRLG IN MILK - 2019

THIRD DAM:
PALMYRA TRI-STAR BETHANY-ET

65000847					6-06 91
GOLD		%	FAT %	PRT	
2-01	2 365	18360 3.8	697 3.2	588	
3-06	2 365	22880 3.6	814 3.3	762	
4-10	2 335	21230 3.3	704 3.1	649	
5-11	2 364	25050 3.4	853 3.1	768	
7-01	2 231	17250 3.5	598 3.0	520	
LIFE	1811	110930 3.6	3944 3.2	3527	

DES COTEAUX RUBICOM-ET

109287246C					88.04%
PTA	+2.90SCC	+3.7PL			
PTA	+1397M	+33F	+36P		90R
PTA%		-0.11	-0.04		
PTAT	+0.20T				84R 12/21
D/AV	24493M 4.0	970F 3.2	784P 8.4T		

DE LA PLAINE BINGO STINGER

100723904					5-09 94	2E
DHI		%	FAT %	PRT		
3-02	2 332	19142 4.7	907 3.3	631		
4-03	2 365	30144 4.3	1298 3.1	935		
5-05	2 302	25080 4.4	1096 3.1	788		
6-05	2 305	26230 4.4	1157 3.2	829		
LIFE	1388	106726 4.4	4696 3.2	3397		

PALMYRA BERKELY REAGAN-ET

840003123620602					
PTA	+3.14SCC	-3.4PL	-2.7DPR		
PTA	-132M	+9F	-1P		97R
PTA%		+0.7	+0.2		
PTAT	+0.50T				94R 12/21
D/AV	20073M 4.1	816F 3.2	640P 8.5T		

GOOD-VUE RANEY BETHANY-ET

840003009378987					97.68%
					3-07 90
DHI		%	FAT %	PRT	
2-01	2 323	18380 4.3	796 3.1	565	
3-02	2 361	26790 4.0	1072 3.0	806	
4-03	2 363	23550 4.1	958 3.1	736	
5-06	2 297	19900 4.0	790 3.1	612	





MARILIE GENTLEMAN KARMINA, EX-94
 6-08 365D 36,860M 3.6% 1334F 2.9% 1069P
GRAND CHAMPION, 2021 WORLD DAIRY EXPO
UNANIMOUS ALL-AMERICAN AGED COW, 2021
DAM OF LOT 8

PALMYRA LOCHINVAR REYNOLDS-ET

840003205149285
 PTA +3.05SCC +0.7PL -1.4DPR
 PTA +839M +28F +11P 51R
 PTA% -.03 -.08
 PTAT +.90T 49R 12/21

FAMILY-AF-AYR DISTINCTION

100578700
 PTA +3.08SCC +3.3PL +0.8DPR
 PTA -152M -15F -3P 90R
 PTA% -.05 +.01
 PTAT +1.00T 87R 12/21
 D/AV 20495M 3.8 786F 3.2 647P 8.7T

MARILIE GENTLEMAN KARMINA

98.84% AYRSHIRE 12/05/12 FEMALE
 100722088 98.84%
 5-11 94 P9 +405
 NM\$ -42
 PTA +2.98SCC -0.6PL
 PTA +591M +5F -9P 53R
 PTA\$ -42CY 12/21
 PTA% -.09 -.14
 PTAT +.70T 47R 12/21
 PPA +1825M -6F +23P
 CLASS ST7 SR7 BD8 DF9 RA5 RW7 LS5 FA8
 FU9 UH9 UW9 UC9 UD5 TP7 TL8 LR7
 GOLD % FAT % PRT
 3-03 2 305 25820 3.4 879 2.9 756
 365 29340 3.4 1007 3.0 873
 4-05 2 291 25200 3.3 843 2.9 736
 5-05 2 305 26610 3.5 921 3.0 793
 340 28630 3.5 999 3.0 857
 6-08 2 305 32430 3.6 1165 2.9 937
 365 36860 3.6 1334 2.9 1068
 LIFE 1392 121390 3.5 4244 3.0 3584

DUO STAR GENTLEMAN-ET

106306758C 97.68%
 PTA +3.10SCC -2.9PL
 PTA -830M -20F -29P 93R
 PTA% +.07 -.01
 PTAT +.80T 91R 12/21
 D/AV 19211M 4.0 773F 3.2 607P 8.6T

MARILIE POKER KARMA

106660271C

THIRD DAM: MARILIE CONN KIBBA

102959014C VG-85 CAN
 4-04 2 324 25296 4.0 1021 3.2 802
 5-04 2 335 19872 4.0 789 3.4 681

RES ALL-AMERICAN SR 3-YEAR-OLD - 2016
 UNAN ALL-AMERICAN 4-YEAR-OLD - 2017
 RES SENIOR CHAMPION - 2018 INTERNATIONAL
 RES GRAND CHAMPION - 2018 INTERNATIONAL
 UNAN ALL-AMERICAN 5-YEAR-OLD - 2018
 RES SENIOR CHAMPION - 2019 INTERNATIONAL
 RESERVE GRAND CHAMPION - 2019 INTERNAT'L
 RES SR CHAMPION - 2019 SOUTHERN NATIONAL
 ALL-AMERICAN 100,000 LB COW - 2019
 RES ALL-AMERICAN AGED COW - 2019
 HM ALL-AMERICAN AGED COW - 2020
 SENIOR CHAMPION - 2021 INTERNATIONAL
 GRAND CHAMPION - 2021 INTERNATIONAL
 UNAN ALL-AMERICAN AGED COW - 2021

8

**\$1100 PER
 EMBRYO RESERVE**

**EMBRYO PACKAGE
 REYNOLDS &
 DISTINCTION
 X KARMINA**

REYNOLDS X KARMINA MATING: 99.42% AYRSHIRE

DISTINCTION X KARMINA MATING:
 99.42% AYRSHIRE

**SELLING 2 #1 IVF SEXED REYNOLDS EMBRYOS
 & 2 #1 IVF REVERSE SORTED DISTINCTION
 EMBRYOS**

EXPORTABLE

BUDJON FARMS & PETER & LYN VAIL
 N9995 SOO RD
 LOMIRA WI 54048
 KELLI: 920-960-1484
 PETER: 518-755-0307

nextGEN^{eration}
 Ayrshires





BEAR-AYR BURDETTE RAY, EX-94 2E
7-01 365D 34,000M 3.3% 1128F 3.0% 1005P
4X ALL-AMERICAN IN MILKING FORM!
DAM OF LOT 9

9 \$600 PER
EMBRYO RESERVE

EMBRYO PACKAGE
REAGAN X RAY

REAGAN X RAY MATING:
 PUREBRED AYRSHIRE

SELLING 4 #1 IVF SEXED EMBRYOS

EXPORTABLE

BUDJON FARMS & PETER & LYN VAIL
 N9995 SOO RD
 LOMIRA WI 54048
 KELLI: 920-960-1484
 PETER: 518-755-0307

PALMYRA BERKELY REAGAN-ET

840003123620602
 PTA +3.14SCC -3.4PL -2.7DPR
 PTA -132M +9F -1P 97R
 PTA% +.07 +.02
 PTAT +.50T 94R 12/21
 D/AV 20073M 4.1 816F 3.2 640P 8.5T

BEAR-AYR BURDETTE RAY

PUREBRED AYRSHIRE 05/14/12 FEMALE
 100637522 5-07 94 2E P7 +449
 NM\$ +88
 PTA +2.86SCC +0.8PL -0.8DPR
 PTA +329M +9F +12P 54R
 PTA\$ +88CY 12/21
 PTA% -0.02 +.01
 PTAT +.60T 51R 12/21
 PPA +1958M +43F +57P
 CLASS ST7 SR9 BD9 DF7 RA5 RW9 LS4 FA6
 FU7 UH7 UW9 UC5 UD4 TP5 TL7 LR8
 GOLD % FAT % PRT
 2-00 2 365 21491 3.8 815 3.3 707
 3-10 2 348 28910 3.9 1126 3.1 905
 4-11 2 317 26100 3.4 897 3.2 830
 6-00 2 339 31240 4.1 1281 3.1 957
 7-01 2 365 34000 3.3 1128 3.0 1005
 LIFE 1781 144920 3.7 5369 3.1 4511

RESERVE SR CHAMPION - 2016 INTERNATIONAL
 RESERVE GRAND CHAMPION - 2016 INTERNAT'L
 ALL-AMERICAN 4-YEAR-OLD - 2016
 SENIOR CHAMPION - 2017 INTERNATIONAL
 RESERVE GRAND CHAMPION - 2017 INTERNAT'L
 ALL-AMERICAN 5-YEAR-OLD - 2017
 UNAN ALL-AMERICAN AGED COW - 2018
 TOTAL PERFORMANCE WINNER - 2019 INTERNAT'L
 SENIOR CHAMPION - 2019 SOUTHERN NATIONAL
 GRAND CHAMPION - 2019 SOUTHERN NATIONAL
 TOTAL PERFORMANCE WINNER - 2019 SOUTHERN
 NAT'L
 ALL-AMERICAN AGED COW - 2019
 RES ALL-AMERICAN 100,000 LB COW - 2019
 HM ALL-AMERICAN LIFETIME COMPONENT
 MERIT-2021

PALMYRA BENDIG BERKELY-ET

69261805
 PTA +3.08SCC -2.3PL -0.5DPR
 PTA -386M -19F -18P 96R
 PTA% -0.02 -0.03
 PTAT +.30T 95R 12/21
 D/AV 18950M 3.9 744F 3.1 589P 8.5T

PALMYRA POKER LH ROSY-ET

66596106 4-01 92
 GOLD % FAT % PRT
 2-00 2 298 19900 4.5 896 3.3 654
 3-00 2 365 26100 4.4 1161 3.5 910

PALMYRA TRI-STAR BURDETTE-ET

100419568
 PTA +2.93SCC +1.1PL -0.8DPR
 PTA +272M +6F +13P 99R
 PTA% -0.02 +.02
 PTAT +1.00T 99R 12/21
 D/AV 19879M 3.9 785F 3.2 634P 8.6T

DALTONDALE CAPTAIN ROSID-ET

100580624 7-06 92 3E
 GOLD % FAT % PRT
 2-05 2 322 16530 4.3 705 3.3 549
 3-05 2 337 24010 4.2 997 3.2 759
 4-06 2 363 26320 4.1 1081 3.3 869
 5-08 2 365 32590 4.3 1404 3.1 1023
 7-01 2 365 28520 4.1 1174 3.2 916
 8-09 2 319 26390 4.4 1166 3.2 842
 LIFE 2188 158770 4.2 6727 3.2 5128

NOM ALL-AMERICAN WINTER YEARLING - 2011
 1ST - 2013 WDE INTERNATIONAL FUTURITY
 NOM ALL-AMERICAN SR 3-YEAR-OLD - 2013

THIRD DAM: DALTONDALE BBK ROSIE

100274585 3-04 87
 4-02 2 346 17750 4.0 712 3.4 607
 5-04 2 305 18040 3.7 673 3.1 567

HM ALL-AMERICAN SUMMER YEARLING - 2003
 RES JR ALL-AMERICAN SUMMER YEARLING 2003





RIDALE NEMO SERENITY-ET, EX-94 2E
 5-11 291D 23,300M 4.8% 1117F 3.7% 857P
ALL-AMERICAN & NATIONAL SHOW CHAMPION!
DAM OF LOT 10



GEMINAECHO SHOWSTAR SHIRLEY
EX-91
 4-10 365D 22,210M 4.1% 913F 3.3% 722P
3X ALL-AMERICAN NOMINEE
GRANDDAM OF LOT 10



RIDALE BURDETTE SHIQUE-ET, EX-93 2E
 3-02 305D 22,790M 4.4% 1004F 3.1% 698P
RESERVE ALL-AMERICAN 5-YEAR-OLD, 2019
MATERNAL SISTER TO DAM OF LOT 10

10

\$500 PER EMBRYO RESERVE

**EMBRYO PACKAGE
 MUTUALLY AGREED
 UPON SIRE X SERENITY**

SELLING 4 #1 IVF EMBRYOS

EXPORTABLE

RIDA, RYAN & MARJORIE
 RIDALE GENETICS
 PO BOX 527 WORTHINGTON MA 01098
 413-588-6446

RIDALE NEMO SERENITY-ET

PUREBRED AYRSHIRE 06/01/14 FEMALE
 840003126490975
 5-03 94 2E P5 +426
 NM\$ -25
 PTA +3.08SCC -0.6PL -0.4DPR
 PTA -42M +11F +3P 53R
 PTA\$ -25CY 12/21
 PTA% +.07 +.02
 PTAT +.50T 44R 12/21
 PPA +2064M +138F +69P
 CLASS ST9 SR5 BD7 DF7 RA8 RW7 LS5 FA6
 FU6 UH9 UW8 UC7 UD6 TP5 TL5 LR7
 DHI % FAT % PRT
 2-01 2 302 16470 3.9 637 3.3 547
 3-03 2 305 22970 4.7 1071 3.2 728
 5-11 2 291 23300 4.8 1117 3.7 857

 1ST JR 2 - 2016 EASTERN STATES NAT'L
 2ND JR 2-YEAR-OLD - 2016 INTERNATIONAL
 RES ALL-AMERICAN JR 2-YEAR-OLD - 2016
 1ST JR 3 - 2017 EASTERN STATES NATIONAL
 INT CHAMP - 2017 EASTERN STATES NATIONAL
 GRAND CHAMPION - 2017 EASTERN STATES NAT'L
 1ST JR 3-YEAR-OLD - 2017 INTERNATIONAL
 ALL-AMERICAN JR 3-YEAR-OLD - 2017
 2ND 5-YEAR-OLD - 2019 EASTERN STATES NAT'L
 NOM ALL-AMERICAN 5-YEAR-OLD - 2019
 2ND AGED COW - 2020 SOUTHERN NATIONAL
 RES SR CHAMPION - 2020 SOUTHERN NATIONAL
 RES GRAND CHAMPION - 2020 SOUTHERN NAT'L
 RES ALL-AMERICAN AGED COW - 2020
 NOM ALL-AMERICAN LIFETIME COMPONENT MERIT
 - 2021

BEAU LAC NEMO-ET

100264962C
 PTA +3.14SCC -2.3PL -1.1DPR
 PTA -265M -5F -4P 87R
 PTA% +.03 +.02
 PTAT +.40T 80R 12/21
 D/AV 22129M 3.9 852F 3.2 699P 8.7T

GEMINAECHO SHOWSTAR SHIRLEY

100541841 5-01 91
 GOLD % FAT % PRT
 3-10 2 305 20090 3.3 667 3.0 609
 331 21300 3.4 718 3.1 653
 4-10 2 305 19490 4.1 790 3.2 624
 365 22210 4.1 913 3.3 722

 NOM ALL-AMERICAN FALL YEARLING - 2009
 RES INT CHAMP - 2011 SOUTHERN NATIONAL
 NOM ALL-AMERICAN SR 3-YEAR-OLD - 2011
 JR ALL-AMERICAN SR 3-YEAR-OLD - 2011
 SR CHAMPION - 2012 EASTERN STATES NAT'L JR
 GRAND CHAMPION - 2012 EASTERN STATES
 NATIONAL JR
 NOM ALL-AMERICAN 5-YEAR-OLD - 2013

THIRD DAM:

SELKIRK RISING STAR, EX-90 2E CAN
 4-06 2 305 21179 4.0 888 3.0 677
 5-06 2 305 21237 3.6 761 3.1 659
 6-06 2 365 20895 3.8 796 3.2 664





HARDY-FARM PRIME KRINGLE, EX-94 2E
 4-08 305D 21,320M 3.6% 773F 2.8% 589
ALL-AMERICAN & 2X RESERVE ALL-AMERICAN
DAM OF LOT 11

11 \$500 PER
 EMBRYO RESERVE

EMBRYO PACKAGE
MUTUALLY AGREED
UPON SIRE X KRINGLE

SELLING 4 #1 IVF EMBRYOS

EXPORTABLE

HARDY-FARM PRIME KRINGLE

PUREBRED AYRSHIRE 12/24/14 FEMALE
 74155676

	5-06	94	2E	P8	+422	
NM\$	+11					
PTA	+3.04SCC	+0.3PL	-1.6DPR			
PTA	+93M	+9F	+0P	44R		
PTA\$	+11CY				12/21	
PTA%		+0.3	-0.2			
PTAT	+0.80T		43R	12/21		
PPA	+1917M	+65F	+45P			
CLASS	ST8	SR7	BD9	DF9	RA4	RW7
	FU7	UH8	UW8	UC8	UD7	TP5
						TL4
						LR8
DHI			%	FAT	%	PRT
2-05	2	305	13790	4.1	564	3.0
		323	14460	4.1	594	3.0
3-05	2	302	19970	5.0	1001	3.0
4-08	2	305	21320	3.6	773	2.8

JR CHAMPION - 2015 EASTERN STATES NAT'L JR
 NOM JR ALL-AMERICAN WINTER CALF - 2015
 RES JR CHAMP - 2016 EASTERN STATES NAT'L JR
 NOM ALL-AMERICAN WINTER YEARLING - 2016
 HM JR ALL-AMERICAN WINTER YEARLING - 2016
 INT CHAMPION - 2018 EASTERN STATES NAT'L
 GRAND CHAMPION - 2018 EASTERN STATES NAT'L
 RES ALL-AMERICAN SR 3-YEAR-OLD - 2018
 ALL-AMERICAN 4-YEAR-OLD - 2019
 RES ALL-AMERICAN AGED COW - 2021

DE LA PLAINE PRIME

106061020C				
PTA	+2.92SCC	-1.3PL	-2.7DPR	
PTA	-344M	+2F	-7P	95R
PTA%		+0.8	+0.2	
PTAT	+0.50T		94R	12/21
D/AV	19503M	4.0	787F	3.2 626P 8.6T

HARDY FARM HANNIBAL KELBY

100577709	6-07	91	2E		
DHI			%	FAT % PRT	
2-01	2	317	13600	3.9	531 2.9 392
3-01	2	305	13600	3.7	501 3.0 414
4-03	2	344	19540	3.9	768 2.8 550
5-05	2	360	22650	3.5	796 2.8 638
6-07	2	305	20070	3.3	665 2.7 533
7-09	2	359	20050	3.5	695 2.8 570
LIFE	2146	114290	3.6	4164 2.8 3252	

THIRD DAM: HARDY-FARM WILTON KYA

100465578	2-02	86			
DHI			%	FAT % PRT	
1-11	2	318	13210	3.8	503 3.0 390
2-11	2	305	11900	3.8	455 3.0 354
4-06	2	321	14980	3.5	521 2.8 420

NOM JR ALL-AMERICAN SUMMER YEARLING - 2007

RIDALE GENETICS & HARDY FARM
 C/O MARJORIE RIDA
 PO BOX 527 WORTHINGTON MA 01098
 413-588-6446





CHALUKA NEMO XIOLI-ET, EX-93
 6-05 305D 24,260M 3.8% 928F 3.4% 822P
 GRANDDAM OF LOT 12

CHALUKA TUXEDO XARA-ET, VG-88 @ 2-00
 1ST JR 3 & RESERVE INTERMEDIATE CHAMPION, 2021 EASTERN STATES NATIONAL
 DAM OF LOT 12

12 \$400 PER
 EMBRYO RESERVE

**EMBRYO PACKAGE
 MUTUALLY AGREED
 UPON SIRE X XARA**

SELLING 4 #1 IVF EMBRYOS

EXPORTABLE

RIDA, ANDY & BRIDGET OF
 MORNING DEW FARM
 PO BOX 593 WORTHINGTON MA 01098
 413-537-1519

CHALUKA TUXEDO XARA-ET

96.22% AYRSHIRE 06/01/18 FEMALE
 100756766 96.22%
 2-00 88 P- +394
 NM\$ -93
 PTA +3.09SCC -0.4PL +0.6DPR
 PTA -248M +1F -5P 33R
 PTA\$ -93CY 12/21
 PTA% +.06 +.02
 PTAT +.20T 34R 12/21
 PPA -433M +27F -9P
 CLASS ST7 SR5 BD7 DF8 RA5 RW7 LS3 FA7
 FU8 UH8 UW7 UC8 UD8 TP5 TL3 LR7

1ST SUMMER YEARLING - 2019 EASTERN STATES
 NATIONAL
 JR CHAMPION - 2019 EASTERN STATES NATIONAL
 HM ALL-AMERICAN SUMMER YEARLING - 2019
 1ST JR 3-YEAR-OLD - 2021 EASTERN STATES
 NATIONAL
 RES INTERMEDIATE CHAMP-2021 EASTERN STATES
 NAT'L JR

RUISSEAU CLAIR TUXEDO-ET (AMC)

109844514C 92.45%
 PTA +2.98SCC +0.8PL +0.3DPR
 PTA +862M +22F +23P 86R
 PTA% -.06 -.02
 PTAT +.40T 73R 12/21
 D/AV 22438M 3.9 878F 3.2 708P 8.5T

CHALUKA NEMO XIOLI-ET

106247799C EX-93 CAN
 2-03 2 305 17044 4.2 721 3.5 595
 325 17910 4.2 756 3.5 628
 3-04 2 305 19681 3.8 739 3.5 683
 365 21843 3.8 833 3.5 776
 6-05 2 305 24260 3.8 928 3.4 822
 365 26786 3.9 1041 3.4 922

THIRD DAM: LAGACE BB BLANDIE-ET

101956076C VG-88 CAN
 2-06 2 305 16092 3.8 611 3.0 485
 324 16605 3.8 637 3.0 505
 3-06 2 305 19167 4.0 776 3.2 606
 359 20648 4.1 838 3.2 668
 5-06 2 305 19458 3.5 688 3.2 617
 7-03 2 284 16929 3.6 602 3.4 567
 8-03 2 256 14983 3.6 542 3.2 478

FOURTH DAM:

LACHUTE ROAD BBC BLANCHE 3-ET

814011C EX-90 2E CAN
 4-00 2 351 23834 3.8 911 3.3 776
 7-06 2 336 22937 4.7 1074 3.1 719





SUNNY-ACRES CA GINGER, EX-94 2E
 5-01 335D 26,160M 4.0% 1040F 3.5% 904P
 ALL-AMERICAN JR 3, 2015
 DAM OF LOT 13

13 \$375 PER
 EMBRYO RESERVE

**EMBRYO PACKAGE
 BARCLAY X GINGER**

RINGER X GINGER MATING:
 98.84% AYRSHIRE

**SELLING 4 #1 IVF EMBRYOS
 REVERSE SORTED**

EVANS, ANDREW & ABBIE, & CLARK,
 KIM & CHARLIE
 21 LALOR LN
 LITTLE MEADOWS PA 18830
 315-750-0719

nextGEN^{eration}
 Ayrshires

OLD-BANKSTON JC BARCLAY-ET

840003144800005
 PTA +2.97SCC +0.1PL +0.3DPR
 PTA -34M +2F +3P 51R
 PTA% +.02
 PTAT +.20T 48R 12/21

SUNNY-ACRES CA GINGER

97.68% AYRSHIRE 06/04/12 FEMALE
 100645545 97.68%
 5-08 94 2E P8 +463
 NM\$ +133
 PTA +3.10SCC +1.0PL +1.5DPR
 PTA +159M +4F +19P 47R
 PTA\$ +133CY 12/21
 PTA% -.01 +.07
 PTAT +.80T 41R 12/21
 PPA +359M +4F +65P
 CLASS ST7 SR6 BD7 DF7 RA3 RW7 LS5 FA6
 FU7 UH8 UW9 UC7 UD6 TP5 TL4 LR7
 GOLD % FAT % PRT
 2-00 2 305 16740 4.2 696 3.4 566
 323 17320 4.2 722 3.4 588
 3-00 2 305 20910 3.9 820 3.4 719
 329 21770 4.0 865 3.5 752
 4-01 2 276 20430 3.9 787 3.3 683
 5-01 2 305 24660 4.0 978 3.4 849
 335 26160 4.0 1040 3.5 904
 6-02 2 305 23390 3.7 868 3.5 821
 LIFE 1681 113740 3.9 4469 3.4 3919

1ST JR 2-YEAR-OLD - 2014 MID-ATLANTIC NAT'L
 RES INT CHAMP - 2014 MID-ATLANTIC NATIONAL
 NOM ALL-AMERICAN JR 2-YEAR-OLD - 2014
 1ST JR 3-YEAR-OLD - 2015 MID-ATLANTIC NAT'L
 RES INT CHAMP - 2015 MID-ATLANTIC NATIONAL
 1ST JR 3-YEAR-OLD - 2015 INTERNATIONAL
 ALL-AMERICAN JR 3-YEAR-OLD - 2015
 1ST 5-YEAR-OLD - 2017 MID-ATLANTIC NAT'L
 RES SR CHAMPION - 2017 MID-ATLANTIC NAT'L
 NOM ALL-AMERICAN 5-YEAR-OLD - 2017
 NOM ALL-AMERICAN AGED COW - 2018

FOREVER SCHOON PREDATOR-ET

11119921C
 PTA +2.94SCC -1.6PL -1.6DPR
 PTA +55M +2F -2P 95R
 PTA% -.02
 PTAT +.30T 94R 12/21
 D/AV 19985M 4.0 793F 3.2 630P 8.5T

STEAM-VALLEY WILTON MAGIC BRI

100475641 5-03 94 2E
 GOLD % FAT % PRT
 2-04 2 313 16280 4.1 673 3.3 537
 3-04 2 352 23530 3.6 845 3.1 726
 4-10 2 336 28210 3.6 1004 3.1 878
 5-11 2 364 32470 3.3 1058 3.0 977
 7-01 2 273 23050 3.2 732 3.0 695
 10-08 2 341 31820 4.0 1275 3.1 984
 LIFE 1979 155360 3.6 5587 3.1 4797

SUNNY-ACRES CLASS ACT

100579550 95.37%
 PTA +3.08SCC -1.3PL +0.3DPR
 PTA -469M -4F -6P 73R
 PTA% +.05
 PTAT +.40T 71R 12/21
 D/AV 20467M 4.1 833F 3.2 650P 8.5T

PALMYRA RAMIUS S. GINGER

65002982 6-10 90
 GOLD % FAT % PRT
 1-10 2 308 20020 4.0 792 3.2 641
 2-10 2 365 23311 4.1 951 3.3 779
 4-02 2 365 27263 4.0 1080 3.2 867
 LIFE 1742 108200 4.1 4395 3.2 3418

1ST FALL YRLG IN MILK - 2007 CENTRAL NAT'L
 ALL-AMERICAN FALL YEARLING IN MILK - 2007

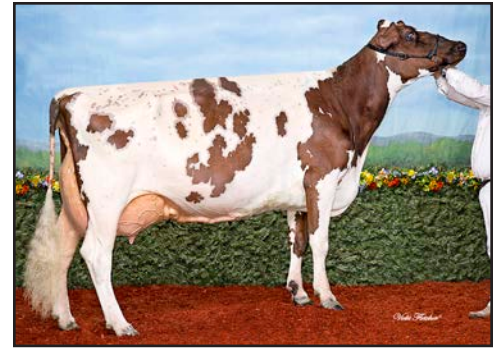
THIRD DAM: PALMYRA SATELLITE L GINGER

100164712 4-10 86
 5-01 2 299 23620 3.6 844 3.0 715
 6-00 2 298 25100 3.1 789 2.9 731
 LIFE 1569 105260 3.6 3752 3.0 3195

NOM JR ALL-AMERICAN SENIOR CALF - 2001
 RES ALL-AMERICAN MILKING SR YEARLING - 2002
 JR ALL-AMERICAN MILKING SR YEARLING - 2002



CHALUKA BIGTIME XENITA-ET, VG-89@2-11
ALL CANADIAN SPRING YEARLING, 2019
DAM OF LOT 14



CHALUKA NEMO XIOLI-ET, EX-93
6-05 305D 24,260M 3.8% 928F 3.4% 822P
GRANDDAM OF LOT 14

14 \$400 PER
EMBRYO RESERVE

EMBRYO PACKAGE
RINGER OR REAGAN
X XENITA

RINGER X XENITA MATING:
 93.87% AYRSHIRE

REAGAN X XENITA MATING:
 96.86% AYRSHIRE

SELLING 5 #1 SEXED EMBRYOS

EXPORTABLE

FERME CHAREST INC
 ST-ALEXANDRE DE KAMOURASKA QUE
 418-495-2566

BLUE-SPRUCE RINGER

840003139111319 94.02%
 PTA +2.82SCC +3.0PL -0.5DPR
 PTA +604M +40F +20P 49R
 PTA% +.08
 PTAT +.30T 43R 12/21

CHALUKA BIGTIME XENITA-ET

93.72% AYRSHIRE
 110821233C VG-89 @ 2-11 CAN
 1-09 2 299 13576 4.4 602 3.4 465
 2-09 2 305 19055 4.2 809 3.4 653
 327 20130 4.2 849 3.4 690

 ALL-CANADIAN SPRING YEARLING, 2019

FOURTH DAM:

LACHUTE ROAD BBC BLANCHE 3-ET

814011C EX-90 2E CAN
 4-00 2 351 23834 3.8 911 3.3 776
 7-06 2 336 22937 4.7 1074 3.1 719

PALMYRA BERKELY REAGAN-ET

840003123620602
 PTA +3.14SCC -3.4PL -2.7DPR
 PTA -132M +9F -1P 97R
 PTA% +.07 +.02
 PTAT +.50T 94R 12/21
 D/AV 20073M 4.1 816F 3.2 640P 8.5T

MARBRAE BIGTIME

109688487C 87.43%
 PTA +3.10SCC +1.3PL +0.4DPR
 PTA +553M +28F +25P 89R
 PTA% +.03 +.04
 PTAT 77R 12/21
 D/AV 25284M 4.0 1004F 3.3 842P 8.1T

CHALUKA NEMO XIOLI-ET

106247799C EX-93 CAN
 2-03 2 305 17044 4.2 721 3.5 595
 3-06 2 305 19167 4.0 776 3.2 606
 6-04 2 305 19681 3.8 739 3.5 683
 6-05 2 305 24260 3.8 928 3.4 822

 UNAN ALL-AMERICAN FALL YEARLING, 2012
 RES ALL-AMERICAN SR 2-YEAR-OLD, 2013
 RES ALL-CANADIAN

THIRD DAM: LAGACE BB BLANDIE-ET

101956076C VG-88 CAN
 2-06 2 305 16092 3.8 611 3.0 485
 3-06 2 305 19167 4.0 776 3.2 606
 5-06 2 305 19458 3.5 688 3.2 617
 7-03 2 284 16929 3.6 602 3.3 567
 8-03 2 256 14983 3.6 542 3.2 478

 NOM ALL-CANADIAN 2004





BAR-VUE BUTCH BINGO, EX-93 2E
 2-07 365D 20,700M 3.7% 763F 3.1% 642P
 FULL SISTER TO DAM OF LOT 15

© Lea Jordan
 Crystal Fisher Photography



BAR-VUE BUTCH BELLA, EX-90
 2ND SR 3-YEAR-OLD, 2020 MIDWEST
 REGIONAL AYRSHIRE SHOW
 DAM OF LOT 15

15

**\$225 PER
 EMBRYO RESERVE**

**EMBRYO PACKAGE
 DYNAMIC X BELLA**

DYNAMIC X BELLA MATING:
 98.99% AYRSHIRE

SELLING 4 #1 IVF SEXED EMBRYOS

IRRTHUM FARM INC & IRRTHUM, CLINT
 43424 135TH AVE WANAMINGO MN 55983
 651-380-0185

GOOD-VUE-KP DYNAMIC

840003205086279			98.26%
PTA	+2.97SCC	-0.2PL	-1.3DPR
PTA	+118M	+4F	-3P 40R
PTA%			-.03
PTAT	+.90T		37R 12/21

BAR-VUE BUTCH BELLA

97.98% AYRSHIRE	12/27/16	FEMALE
840003140707288		97.98%
	3-11 90	P- +381
NM\$	-106	
PTA	+3.09SCC	-1.1PL -0.9DPR
PTA	+57M	-10F -2P 46R
PTA\$	-106CY	12/21
PTA%		-.06 -.02
PPA	-471M	-35F -26P
CLASS	ST8 SR7 BD7 DF8 RA6 RW8 LS7 FA9	
	FU9 UH7 UW7 UC7 UD8 TP7 TL5 LR6	
GOLD	%	FAT % PRT
2-04 2 305	11040 3.8	418 3.1 337
	359 11940 3.8	459 3.1 367
3-05 2 285	11390 4.3	491 3.0 347

**BELLA'S DAUGHTER:
 BAR-VUE ROCKSTAR BROOKE**

2-04 2 PROJ	22171 4.0	529 3.0 403
-------------	-----------	-------------

PALMYRA BOOTH RADISSON

840003135447759			98.84%
PTA	+2.85SCC	+0.5PL	-0.7DPR
PTA	+190M	+8F	+1P 57R
PTA%			-.03
PTAT	+.60T		49R 12/21
D/AV	OM	OF	8.4T

GRAND-VIEW HP GIBBS DIPS-ET

100718340	4-04 93		
DHI	%	FAT %	PRT
2-02 3 305	13930 4.3	594 3.2	450
	325 14420 4.3	618 3.2	467
3-03 3 292	16140 3.7	605 2.9	464

BAR-VUE BUTCH-ET

70514670			95.97%
PTA	+3.12SCC	-1.0PL	+0.6DPR
PTA	+124M	-14F	+11P 86R
PTA%		-.10	+0.04
PTAT	-.30T		69R 12/21
D/AV	20447M 3.9	795F 3.2	654P 8.2T

BAR-VUE CAP WILD

66535274	9-07 91			3E
GOLD	%	FAT %	PRT	
2-03 2 305	13660 3.9	529 3.0	403	
	352 14830 3.9	579 3.0	439	
4-06 2 305	17240 3.8	654 3.3	566	
	363 19100 3.8	733 3.3	628	
5-08 2 305	16090 3.7	590 2.9	469	
6-09 2 305	19930 3.2	628 2.8	555	
	365 20910 3.2	661 2.8	589	
8-00 2 305	19660 3.2	625 2.7	538	
	365 21210 3.2	675 2.8	586	
9-05 2 305	16650 3.5	591 2.9	491	
	345 17240 3.5	607 3.0	513	
LIFE	2262 112660 3.5	3950 3.0	3328	





FOREST-PARK PERCY SWAY, EX-93 3E
 8-03 365D 28,360M 1064F 3.0% 859P
 3X ALL-AMERICAN NOMINEE
 DAM OF LOTS 16

16 \$175 PER
 EMBRYO RESERVE

**EMBRYO PACKAGE
 REYNOLDS X SWAY**

REYNOLDS X SWAY MATING:
 98.25% AYRSHIRE

SELLING 4 #1 IVF SEXED EMBRYOS

SCHNEIDER, STEVE & SARA &
 ADRIANNA & AUGUST
 W2443 REDWOOD DR
 PULASKI WI 54162
 920-948-8310

PALMYRA LOCHINVAR REYNOLDS-ET

840003205149285
 PTA +3.05SCC +0.7PL -1.4DPR
 PTA +839M +28F +11P 51R
 PTA% -0.03 -0.08
 PTAT +.90T 49R 12/21

FOREST-PARK PERCY SWAY

96.5% AYRSHIRE 12/02/11 FEMALE
 100630208 96.5%
 8-08 93 3E P9 +461

NM\$ +173
 PTA +2.91SCC -0.9PL -1.1DPR
 PTA +1000M +29F +24P 58R
 PTA\$ +173CY 12/21
 PTA% -0.05 -0.04
 PTAT -.10T 47R 12/21
 PPA +2704M +102F +89P

CLASS	ST7	SR5	BD6	DF6	RA3	RW6	LS5	FA7
	FU7	UH8	UW6	UC6	UD5	TP5	TL5	LR7
GOLD								
3-02	2	305	17080	4.3	738	3.3	562	
		358	19780	4.6	903	3.4	669	
4-03	2	305	20000	4.0	792	3.2	632	
		337	21290	4.0	845	3.2	678	
5-03	2	305	23810	3.7	889	3.0	723	
		315	24210	3.7	907	3.0	737	
6-02	2	305	22900	3.5	812	3.0	678	
		365	25600	3.6	912	3.0	769	
8-03	2	305	24550	3.5	863	3.0	728	
		365	28360	3.8	1064	3.0	859	
LIFE	2082	134620	3.9	5276	3.2	4245		

NOM ALL-AMERICAN 5-YEAR-OLD - 2017
 NOM ALL-AMERICAN AGED COW - 2018
 NOM ALL-AMERICAN LIFETIME COMPONENT MERIT
 - 2020

LIBBY'S LOCHINVAR

100543021
 PTA +2.98SCC +0.5PL -1.5DPR
 PTA +1044M +0F +11P 96R
 PTA% -.21 -.11
 PTAT +.80T 95R 12/21
 D/AV 20241M 3.8 772F 3.1 622P 8.5T

PALMYRA BERKELY P RUTH-ET

72394521 5-06 94 2E
 GOLD % FAT % PRT
 2-00 2 264 18270 4.5 814 3.1 565
 2-10 2 320 26340 4.7 1239 3.1 825
 3-10 2 323 32060 3.9 1256 3.0 960
 4-10 2 328 29420 4.1 1218 3.1 916
 LIFE 1405 117140 4.3 5058 3.1 3662

KILDARE PERCY-ET

103036515C 93%
 PTA +2.62SCC -2.1PL -2.7DPR
 PTA +1917M +66F +53P 92R
 PTA% -.05 -.04
 PTAT -.10T 82R 12/21
 D/AV 21072M 3.9 827F 3.1 660P 8.4T

FOREST-PARK COPPER'S SHARI

100501012 7-01 85
 GOLD % FAT % PRT
 2-04 2 305 13630 3.8 522 3.1 416
 331 14370 3.8 553 3.1 442
 3-05 2 284 14020 3.6 501 3.0 418
 4-05 2 351 14830 3.6 539 3.1 459
 5-08 2 305 12920 3.7 475 2.9 379
 346 13410 3.7 496 3.0 396
 6-09 2 300 15340 3.3 499 3.0 460

THIRD DAM:

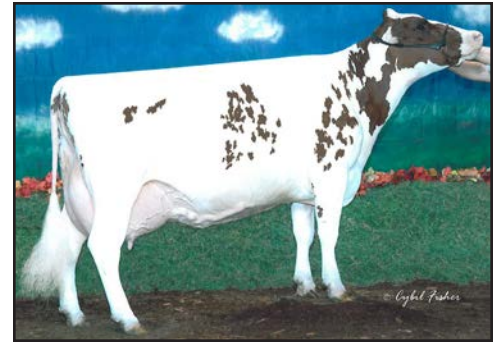
FOREST-PARK SPECIAL K SHONDI

100374922 4-07 89
 GOLD % FAT % PRT
 2-00 2 297 14650 4.1 606 3.2 463
 3-00 2 305 17080 3.9 664 3.2 551
 365 19000 3.9 746 3.3 618
 4-06 2 305 19140 4.1 794 3.3 633
 365 20710 4.2 867 3.3 689





STILLMORE-LEXY MIDORI-ET, EX-92
 3-11 321D 20,310M 4.8% 978F 3.2% 647P
 ALL-AMERICAN SR 3-YEAR-OLD, 2012
 FAMILY MEMBER OF LOT 17



VALEVUE BBK MINERVA, EX-96 2E
 LIFETIME: 2478D 219,766M
 5.0% 10,924F 3.3% 7,296P
 5X ALL-AMERICAN
 3X CENTRAL NATIONAL SHOW GRAND
 CHAMPION AT WDE
 GRANDDAM OF LOT 17

17

**\$200 PER
 EMBRYO RESERVE**

**EMBRYO PACKAGE
 REYNOLDS OR VICKING
 X MACEY**

REYNOLDS X MACEY MATING:
 PUREBRED AYRSHIRE

VICKING X MACEY MATING:
 PUREBRED AYRSHIRE

**SELLING 3 #1 IVF SEXED REYNOLDS EMBRYOS
 OR 3 #1 VICKING REVERSE SORTED EMBRYOS**

ULLMER, MACKENZIE & JASKOLSKI,
 ALEXANDRA & EVA
 N9268 STATE HWY 55
 SEYMOUR WI 54165
 920-639-2375

PALMYRA LOCHINVAR REYNOLDS-ET

840003205149285
 PTA +3.05SCC +0.7PL -1.4DPR
 PTA +839M +28F +11P 51R
 PTA% -.03 -.08
 PTAT +.90T 49R 12/21

STILLMORE REAL MACEY-ET

PUREBRED AYRSHIRE 09/03/16 FEMALE
 840003137017187
 3-11 90 P9 +459
 NM\$ -86
 PTA +0F +0P 0R
 PTA\$ -86CY 12/21
 PTAT +.20T 52R 12/21
 CLASS ST7 SR8 BD7 DF6 RA5 RW7 LS6 FA6
 FU7 UH9 UW8 UC9 UD7 TP6 TL3 LR7
 2-09 2 282 14399 4.0 575 3.3 474

**THIRD DAM:
 YELLOW BRIAR PATRICKS MINT**

10021216C VG-85 CAN
 2-05 2 305 16031 3.8 606 3.2 507
 3-04 2 305 16369 4.4 712 2.8 461
 4-06 2 305 19046 3.6 688 3.3 624

DE LA PLAINE VICKING-ET

107961868C
 PTA +2.55SCC +2.1PL +0.7DPR
 PTA -892M +7F -6P 92R
 PTA% +.23 +.12
 PTAT +.70T 90R 12/21
 D/AV 20011M 4.2 833F 3.3 656P 8.6T

PALMYRA TRI-STAR REALITY

100369452
 PTA +3.07SCC -0.5PL -0.5DPR
 PTA +423M +14F +1P 98R
 PTA% -.01 -.06
 PTAT +.30T 96R 12/21
 D/AV 21251M 3.9 836F 3.1 653P 8.6T

VALEVUE BBK MINERVA

100292194
 6-06 96 2E
 GOLD % FAT % PRT
 1-11 2 345 22874 4.1 943 3.5 801
 3-01 2 319 30926 5.5 1699 3.3 1019
 3-01 2 305 30029 5.5 1644 3.3 984
 4-01 2 365 35301 4.7 1653 3.4 1191
 5-09 2 365 38236 5.7 2162 3.2 1216
 9-04 2 288 22080 4.2 921 3.4 744
 LIFE 2478 219766 5.0 10924 3.3 7296

ALL-AMERICAN SUMMER YEARLING - 2003
 UNAN ALL-AMERICAN JR 2-YEAR-OLD - 2004
 GRAND CHAMPION - 2005 CENTRAL NATIONAL
 ALL-AMERICAN JR 3-YEAR-OLD - 2005
 GRAND CHAMPION - 2006 CENTRAL NATIONAL
 UNAN ALL-AMERICAN 4-YEAR-OLD - 2006
 HM ALL-AMERICAN 5-YEAR-OLD - 2007
 SENIOR CHAMPION - 2008 CENTRAL NATIONAL
 GRAND CHAMPION - 2008 CENTRAL NATIONAL
 ALL-AMERICAN AGED COW - 2008
 NOM ALL-AMERICAN AGED COW - 2009

nextGEN^{eration}
 Ayrshires





FAIRBURN SOAPY, EX-93 2E
6-06 305D 32,530M 3.9% 1272F 3.3% 1062P
GREAT-GRANDDAM OF LOT 18

18

**\$125 PER
EMBRYO RESERVE**

**EMBRYO PACKAGE
REYNOLDS X SURPRIZE**

REYNOLDS X SURPRIZE MATING:
PUREBRED AYRSHIRE

**SELLING 5 #2 IVF EMBRYOS
REVERSE SORTED**

GORDON, EDITH
21739 JEFFERSON BLVD
SMITHSBURG MD 21783
717-552-6750

PALMYRA LOCHINVAR REYNOLDS-ET

840003205149285
PTA +3.05SCC +0.7PL -1.4DPR
PTA +839M +28F +11P 51R
PTA% -.03 -.08
PTAT +.90T 49R 12/21

HOMESTEAD ACRES RIG'S SURPRIZE

PUREBRED AYRSHIRE 09/06/16 FEMALE
840003126595482
3-02 85 P8 +453
NM\$ +115
PTA +0F +0P 0R
PTA\$ +115CY 12/21
PTAT +.20T 44R 12/21
CLASS ST6 SR4 BD6 DF6 RA4 RW6 LS6 FA6
FU6 UH5 UW4 UC6 UD7 TP7 TL4 LR6

**THIRD DAM:
FAIRBURN SOAPY**

100561171 7-05 93 2E
DHI % FAT % PRT
2-06 2 309 22249 4.6 1029 3.4 748
3-06 2 305 32550 4.4 1443 3.3 1073
4-08 305 30870 5.4 1673 3.3 1034
6-06 2 305 32530 3.9 1272 3.3 1062
LIFE 1620 148654 4.6 6765 3.4 5057

LIBBY'S LOCHINVAR

100543021
PTA +2.98SCC +0.5PL -1.5DPR
PTA +1044M +0F +11P 96R
PTA% -.21 -.11
PTAT +.80T 95R 12/21
D/AV 20241M 3.8 772F 3.1 622P 8.5T

PALMYRA BERKELY P RUTH-ET

72394521 5-06 94 2E
GOLD % FAT % PRT
2-00 2 264 18270 4.5 814 3.1 565
2-10 2 320 26340 4.7 1239 3.1 825
3-10 2 323 32060 3.9 1256 3.0 960
4-10 2 328 29420 4.1 1218 3.1 916
LIFE 1405 117140 4.3 5058 3.1 3662

PALMYRA POKER RIGGINS-ET

65459499
PTA +3.39SCC +2.2PL +1.2DPR
PTA +10M +13F +1P 96R
PTA% +.07
PTAT -.10T 92R 12/21
D/AV 18757M 4.0 748F 3.1 588P 8.5T

MAULFAIR ACRES SOAPY SPECKLES-ET

74139221 2-10 87
DHI % FAT % PRT
1-11 2 305 15550 4.1 635 3.5 547
3-01 2 305 16560 3.9 651 3.3 548
4-10 2 305 16070 4.1 652 3.1 494
312 16280 4.0 657 3.1 503





GRAND-VIEW BUR DIDN'T KNOW-ET, VG-89 & EX-91 UDDER
GRANDDAM OF LOT 19



GRAND-VIEW BBBK DREAMER
EX-94 5E
GREAT-GRANDDAM OF LOT 19

TERRACE BANK MORE BEER-ET

109888093C					
PTA		+0F	+0P		0R
PTA%		-.02	-.03		
PTAT	-.60T		34R		12/21
D/AV	0M	0F			8.3T

FAUCHER OPPORTUNITY-ET

106675549C					
PTA	+3.12SCC	-1.7PL	-1.2DPR		
PTA	-144M	+8F	-1P		89R
PTA%		+.07	+.02		
PTAT	-.60T		85R		12/21
D/AV	19418M	4.0	774F	3.2	621P 8.3T

BLACKADDAR OLYMPIC MODEL

10314575C EX-96 CAN					
DHI		%	FAT	%	PRT
2-02	2	305	16909	3.9	657 3.0 514
3-07	2	305	20652	4.2	866 3.0 628
5-02	2	305	23822	4.7	1122 2.9 697
6-05	2	305	21208	3.8	816 3.1 653
8-01	2	305	21398	4.3	915 3.1 664
9-11	2	305	21870	3.3	732 3.0 650
LIFE	1830	125859	4.1	5108	3.0 3806

AND

HAWKSFIELD BENEDICT P

100702561					
PTA		+0F	+0P		0R
PTA%		+.07			
PTAT	+.20T		27R		12/21
D/AV	0M	0F			8.7T

CR-FARM POKER'S NED

100638402					
HAWKSFIELD SONG BRONARA-ET					
100538832 5-07 91 2E					
DHI		%	FAT	%	PRT
2-02	2	305	11001	4.7	518 3.3 361
			364	12873	4.7 606 3.3 429
3-02	2	305	13106	4.5	592 3.4 447
			364	16031	4.4 700 3.4 546
4-02	2	305	16220	3.3	533 3.1 496
5-04	2	305	16590	4.1	681 3.4 562

GRAND-VIEW FAMOUS DID NOT

98.43% AYRSHIRE 12/24/19 FEMALE					
840003205241926 98.43%					
P- +368					

HUNNINGTON FAMOUS

6182152C 96.87%					
PTA	+3.04SCC	-1.1PL	-3.0DPR		
PTA	-950M	-3F	-18P		73R
PTA%		+.19	+.07		
PTAT	+.40T		72R		12/21

THIRD DAM:

GRAND-VIEW BBBK DREAMER

100463697 11-06 94 5E					
GOLD		%	FAT	%	PRT
2-06	2	334	15770	4.5	702 3.4 531
3-06	2	364	17560	3.6	640 3.3 581
4-09	2	365	24310	4.4	1059 3.3 807
6-08	2	365	23650	4.1	964 3.3 774
8-08	2	365	26050	3.6	948 3.3 856
LIFE	2750	147270	4.1	6059	3.4 5025

GRAND-VIEW BUR DIDN'T KNOW-ET

100739813 3-06 89					
GOLD		%	FAT	%	PRT
2-03	2	300	15190	4.3	647 3.4 509
3-03	2	300	19656	4.2	834 3.1 609

3RD FALL YEARLING - 2008 CENTRAL NATIONAL
HM ALL-AMERICAN FALL YEARLING - 2008
1ST - 2010 WORLD DAIRY EXPO INTERNATIONAL
FUTURITY
NOM ALL-AMERICAN AGED COW - 2015
NOM ALL-AMERICAN 100,000 LB COW - 2016

19

**\$125 PER
EMBRYO RESERVE**

**EMBRYO PACKAGE
ACE AND BENEDICT
X DID NOT**

BENEDICT X DID NOT MATING:
99.215% AYRSHIRE

ACE X DID NOT MATING:
PUREBRED AYRSHIRE

**SELLING 4 #1 IVF BENEDICT REVERSE SORTED
EMBRYOS AND 2 #2 ACE EMBRYOS**

GORDON, EDITH
21739 JEFFERSON BLVD
SMITHSBURG MD 21783
717-552-6750





FAMILY-AF-AYR LOTO DECISION, EX-92 3E
OVER 101,000M
DAM OF LOT 20



FAMILY-AF-AYR CALIMERO DYNAMO, EX-94 3E
7-10 348D 29,040M 4.0% 1157F 2.8% 811P
GRANDDAM OF LOT 20



FAMILY-AF-AYR DK DESIREE, EX-95 4E
OVER 183,000M
ALL-AMERICAN 5-YEAR-OLD, 2002
GREAT-GRANDDAM OF LOT 20

20 \$450 PER EMBRYO RESERVE

EMBRYO PACKAGE BURDETTE X DECISION

BURDETTE X DECISION MATING:
98.84% AYRSHIRE

SELLING 4 #1 IVF SEXED EMBRYOS



FAMILY-AF-AYR LOCH DEVOTION, VG-88
2-10 309D 23,030M 3.9% 890F 3.1% 717P
MATERNAL SISTER OF LOT 20

FAMILY-AF-AYR FARM LLC
GREG BORCHARDT FAMILY
2880 KRUPKE RD CALEDONIA IL 61011
815-765-2506

PALMYRA TRI-STAR BURDETTE-ET

100419568
PTA +2.93SCC +1.1PL -0.8DPR
PTA +272M +6F +13P 99R
PTA% -0.02 +.02
PTAT +1.00T 99R 12/21
D/AV 19879M 3.9 785F 3.2 634P 8.6T

FAMILY-AF-AYR LOTO DECISION

97.68% AYRSHIRE 08/04/10 FEMALE
100605060 97.68%
7-02 92 3E P5 +374
NM\$ -102
PTA +3.17SCC +0.1PL +1.7DPR
PTA -498M -5F -19P 59R
PTA\$ -102CY 12/21
PTA% +.08 -.02
PTAT +.20T 61R 12/21
PPA -1391M -4F -57P

CLASS	ST9	SR8	BD8	DF6	RA5	RW8	LS4	FA4	FU6	UH6	UW5	UC8	UD7	TP9	TL5	LR8
GOLD																
2-04	2	307	16330	3.9	645	3.0	484									
3-07	2	342	20580	3.8	779	3.0	627									
5-00	2	304	20220	4.1	828	3.2	640									
6-00	2	347	19020	4.5	851	3.0	580									
7-01	2	225	14860	4.6	685	3.0	451									
8-07	2	229	10710	4.5	479	2.9	313									
LIFE	1754	101720	4.2	4267	3.0	3095										

NOM ALL-AMERICAN SUMMER YEARLING - 2011

THIRD DAM:

FAMILY-AF-AYR DK DESIREE, EX-95 4E

6-11 2 365 22680 3.8 851 3.0 677
8-11 2 365 22570 3.8 861 3.0 677
LIFE 3272 183150 3.8 6990 3.1 5614

RES GRAND CHAMPION - 2002 CENTRAL NATIONAL
GRAND CHAMPION - 2002 CENTRAL NATIONAL JR
ALL-AMERICAN 5-YEAR-OLD - 2002
JR ALL-AMERICAN 5-YEAR-OLD - 2002
NOM JR ALL-AMERICAN AGED COW - 2004
NOM ALL-AMERICAN AGED COW - 2004

PALMYRA TRI-STAR

150440
PTA +2.87SCC -1.3PL -0.5DPR
PTA +55M +2F +0P 97R
PTA% -.01
PTAT 95R 12/21
D/AV 19685M 3.9 766F 3.1 616P 8.4T

PALMYRA RENO BETHANY-ET

100101191 3-06 90
GOLD % FAT % PRT
1-11 2 365 26925 3.9 1038 3.1 847
3-01 2 365 30930 3.6 1104 3.3 1006
4-08 2 365 35780 3.8 1374 3.1 1123
LIFE 1551 120700 3.7 4496 3.2 3855

FAUCHER LOTO-ET

100310616C
PTA +3.33SCC -2.8PL -1.2DPR
PTA -527M -5F -5P 89R
PTA% +.09 +.06
PTAT +.20T 83R 12/21
D/AV 18947M 3.9 742F 3.2 601P 8.4T

FAMILY-AF-AYR CALIMERO DYNAMO

100470495 8-04 94 3E 95.37%
GOLD % FAT % PRT
2-08 2 365 23300 4.0 923 3.1 714
3-11 2 365 28400 3.8 1075 3.0 862
6-01 2 283 21760 3.6 783 2.8 606
7-10 2 348 29040 4.0 1157 2.8 811
9-00 2 206 16550 4.2 690 2.8 469
LIFE 1692 124260 3.9 4818 2.9 3629

2ND SUMMER YEARLING - 2007 CENTRAL NAT'L JR
RES JR ALL-AMERICAN SUMMER YEARLING - 2007
2ND 4-YEAR-OLD - 2010 INTERNATIONAL
RES ALL-AMERICAN 4-YEAR-OLD - 2010
NOM ALL-AMERICAN AGED COW - 2012
NOM (TIE) ALL-AMERICAN AGED COW - 2014



21

**\$40 PER
UNIT**

**5 UNITS
BEAR-AYR DISTINCT KINGSIRE
CONVENTIONAL SEMEN**

TOPP, TANNER
1216 TOWNSHIP RD 13
WEST SALEM OH 44287
330-466-7184

22

**\$90 PER
UNIT**

**5 UNITS
BEAR-AYR DISTINCT KINGSIRE
SEXED SEMEN**

TOPP, TANNER
1216 TOWNSHIP RD 13
WEST SALEM OH 44287
330-466-7184

23

**\$90 PER
UNIT**

**2 UNITS
DUO STAR GENTLEMAN
CONVENTIONAL SEMEN
+
1 UNIT
PALMYRA TRI-STAR REALITY
CONVENTIONAL SEMEN
+
2 UNITS
DE LA PLAINE PRIME
CONVENTIONAL SEMEN**

TOPP, TANNER
1216 TOWNSHIP RD 13
WEST SALEM OH 44287
330-466-7184





STEAM-VALLEY WILTON MAGIC BRI
EX-94 2E
5-11 364D 32,470M 3.3% 1058F 3.0% 977P
DAM OF LOT 24



DE LA PLAINE REMINGTON WING-ET
EX-92 2E
4-11 322D 28,290M 4.5% 1274F 3.3% 934P
DAM OF LOT 24



FOREVER SCHOON PING, EX-95 4E
9-08 365D 27,015M 4.4% 1186F 3.5% 948P
GRANDDAM OF LOT 24

24

\$2,000 RESERVE

PICK OF FLUSH

BENEDICT P X BRI OR WING

PICK OF 1 BENEBICT P X BRI PREGNANCY, OR 2 BENEDICT P X WING PREGANCIAS, ALL DUE APRIL 4, 2012 & FROM REVERSE SORTED EMBRYOS

TERMS: 25% DOWN, 75% AT PICK.

PICK WITHIN 60 DAYS FROM LOCATION IN LEBANON COUNTY, PA. AFTER 60 DAYS, DAILY HOUSING FEE WILL BE RESPONSIBILITY OF BUYER.

BENEDICT P X BRI MATING
PUREBRED AYRSHIRE

BENEDICT P X WING MATING:
PUREBRED AYRSHIRE

HAWKSFIELD BENEDICT P

100702561
PTA +0F +0P 0R
PTA% +.07
PTAT +.20T 27R 12/21
D/AV 0M 0F 8.7T

CR-FARM POKER'S NED

100638402

HAWKSFIELD SONG BRONARA-ET

100538832 5-07 91 2E
DHI % FAT % PRT
2-02 2 364 12873 4.7 606 3.3 429
3-02 2 364 16031 4.4 700 3.4 546
4-02 2 305 16220 3.3 533 3.1 496
5-04 2 305 16590 4.1 681 3.4 562

STEAM-VALLEY WILTON MAGIC BRI

PUREBRED AYRSHIRE 06/24/06 FEMALE
100475641 5-03 94 2E P8 +427
NM\$ -15
PTA +3.12SCC -0.3DPR
PTA +164M +6F +12P 72R
PTA\$ -15CY 12/21
PTA% +.03
PTAT 68R 12/21
PPA +1596M +35F +64P
CLASS ST9 SR8 BD9 DF9 RA5 RW9 LS6 FA7
FU5 UH9 UW9 UC8 UD4 TP5 TL7 LR9
GOLD % FAT % PRT
DHI
2-04 2 313 16280 4.1 673 3.3 537
3-04 2 352 23530 3.6 845 3.1 726
4-10 2 336 28210 3.6 1004 3.1 878
5-11 2 364 32470 3.3 1058 3.0 977
7-01 2 273 23050 3.2 732 3.0 695
10-08 2 341 31820 4.0 1275 3.1 984
LIFE 1979 155360 3.6 5587 3.1 4797

LABRIE WILTON-ET

10304106C
PTA +3.26SCC -2.4PL -1.9DPR
PTA -442M -27F +0P 97R
PTA% -.05 +.07
PTAT -.10T 95R 12/21
D/AV 18426M 3.8 705F 3.2 593P 8.4T

AYRDELL'S TRI MAGIC BARBIE

100381421 2-01 85
GOLD % FAT % PRT
2-00 2 265 15370 3.4 520 3.0 462
3-00 2 272 8030 3.9 316 2.9 229

NOM ALL-AMERICAN SUMMER YEARLING - 2005
HM JR ALL-AMERICAN SUMMER YEARLING - 2005

GRAND CHAMPION - 2011 INTERNATIONAL
UNAN ALL-AMERICAN 5-YEAR-OLD - 2011
ALL-WORLD 5-YEAR-OLD - 2011
HM ALL-AMERICAN AGED COW - 2012
1ST 100,000 LB COW - 2013 INTERNATIONAL
TOTAL PERFORMANCE WINNER - 2013 INTERNAT'L
UNAN ALL-AMERICAN 100,000 LB COW - 2013

DE LA PLAINE REMINGTON WING-ET

PUREBRED AYRSHIRE 03/01/11 FEMALE
100618695 5-01 92 2E P9 +476
NM\$ -151
PTA +0F +0P 0R
PTA\$ -151CY 12/21
PTAT +.60T 60R 12/21
DHI % FAT % PRT
3-06 3 318 18950 4.9 931 3.6 674
4-11 3 322 28290 4.5 1274 3.3 934

2ND JR 3-YEAR-OLD - 2014 SOUTHERN NATIONAL

MAPLEBURN REMINGTON -ET

10316238C
PTA +3.15SCC -0.8PL +0.3DPR
PTA -730M -47F -19P 92R
PTA% -.10 +.02
PTAT +.60T 88R 12/21
D/AV 18618M 3.8 700F 3.2 592P 8.6T

THIRD DAM: FOREVER SCHOON PRETTY

7441960 EX-93 2E CAN
6-07 2 305 23702 4.7 1102 3.3 794

FOURTH DAM: FOREVER SCHOON BK PORSHA-ET

8237763 EX-90 CAN
7-00 2 305 22932 5.3 1210 3.2 743

FOREVER SCHOON PING

9591001C EX-95 4E CAN
5-02 2 365 27236 4.4 1210 3.6 972
8-03 2 365 27007 4.6 1246 3.5 935
9-08 2 365 27015 4.4 1186 3.5 948
LIFE 2163 140157 4.5 6345 3.6 5042

ALL-AMERICAN SR 3, 2011
RES ALL-CANADIAN SR 3, 2011
RES ALL-AMERICAN, 2010
GRAND CHAMPION, 2013 QUEBEC SPRING SHOW
ALL-CANADIAN, 2013

LAWTON, THERESA
70 NORTH ST
FOXBORO MA 02035
774-444-5824

nextGEN
Ayrshires



25 \$25 PER UNIT

**5 UNITS
DE LA PLAINE VICKING
CONVENTIONAL SEMEN**

FAMILY-AF-AYR FARM LLC
GREG BORCHARDT FAMILY
2880 KRUPKE RD CALEDONIA IL 61011
815-765-2506

26 \$25 PER UNIT

**5 UNITS
DE LA PLAINE VICKING
CONVENTIONAL SEMEN**

FAMILY-AF-AYR FARM LLC
GREG BORCHARDT FAMILY
2880 KRUPKE RD CALEDONIA IL 61011
815-765-2506