

Ca Blackberry's HRL Lunette

PureBred Nubian Doeling
DOB: 01-29-21

Dam: GCH Big_HoofHearted RB Luna 2*M 04-04 89 E+EE
DS: Urban Acres LMO Big Red *B
DD: Big_Hoofhearted Princess Zelda 1*M 02-03 86 +VVE

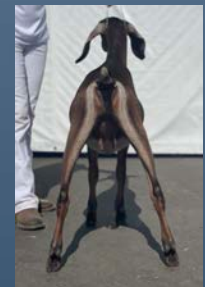
Sire: Urban Acres TB Hot Rod Lincoln *B
SD: GCH Urban Acres Cistalia 4*M 05-02 91 EEEE
SS: SG Urban Acres Charming Troubadour +*B

Lunette was taken to Louisville to show at Nationals in a very competitive Senior Class with over 50 beautiful does entered. She did not make the cut but we feel very strongly on the future of this doe. Our Sr. Kid possesses that elusive combination of size, length and strength of bone while excelling in general appearance with correctness of feet and legs, levelness over the topline. With a shoulder assembly that is smoothly blended. In addition, her fore legs are straight and placed squarely under the point of withers which affords her the ideal extension of brisket. Her pictures and success in the show ring speak for themselves but, in our opinion, her pedigree and immediate family members speak even louder to the promise this doe possesses.

URBAN ACRES TB HOT ROD LINCOLN x BIG_HOOFHEARTED RB LUNA - 11.09% Inbred

Top 10 Individual Contributors to Inbreeding %

Registered Name	Reg #	Inbreeding %
URBAN ACRES CISTALIA	N001601190	3.18
THE HILL'S ACRES SUCH A CHARM	N001296627	2.40
COPPER-HILL BREAKAWAY'S SONSET	N001253010	0.89
GLOBE THEATRE'S PORSCHE	N001363428	0.82
HILL'S ACRES CHARMED I'M SURE	N001158568	0.59
HILL'S ACRES GXY POLARIS NS	N001218464	0.57
LUCKY-K'S T.K. FANCY LADY	N000893555	0.29
COPPER-HILL WINTER SUNRISE	N001200588	0.21
COPPER-HILL ALGINONS BREAKAWAY	N000967801	0.20
GLOBE THEATRE'S CASSANDRA	N001161649	0.20



Dam:

GCH Big_Hoofhearted RB Luna 2*M Accomplishments:

- LA Score 04-04 89 E+EE
- Best in Show
- Placed 1st as a 4 year old at ADGA Nationals 2021
- Member of 5th place Dairy Herd ADGA Nationals 2021
- Member of 5th place Dam and Daughter ADGA Nationals 2021



	Milk	Fat	Prot	SCS			
Std	1810	68	68	1.70			
DCR	95	95	94	95			
Act	2931	107	112	1.83			
PER	-0.19	-0.16	-0.27	0.65			
Rel	54	50	51	33			
	DIM	Milk	Fat%	Prot%	SCS	Freq	Test Date
1	24	13.5	4.7	3.8	1.7	2	2021/02/21
2	52	11.4	3.4	3.6	0.8	2	2021/03/21
3	80	11.5	3.7	3.7	0.4	2	2021/04/18
4	115	10.5				2	2021/05/23
5	136	11.6	3.2	3.8	2.3	2	2021/06/13
6	164	8.9	3.0	3.8	3.5	2	2021/07/11
	164	1810	68	68			
	164	1852	71	72			<-- Calculated from th

Production Parameter	Value
SG	
Registry	PB
Fluid Merit \$	0
Lactations	1
Average STD Milk	3195
Average STD Fat	161
Average STD Protein	120
Milk PTA	5
Fat Reliability	34
Fat PTA	-0.5
Fat % PTA	-0.05
Protein Reliability	34
Protein PTA	2.5
Protein % PTA	0.13
Milk, Predicted Producing Ability	253
Fat, Predicted Producing Ability	82
Protein, Predicted Producing Ability	145
Percentile Rank	62

Sires Littermate Sister:

GCH Urban Acres TB Mustang Sally 5*M Accomplishments:

- LA Score 04-04 90 EEEV
- Best in Show
- 2 x Best of Breed
- Placed 7th as a 4 year old at ADGA Nationals 2021
- Placed 7th as a 2 year old at ADGA Nationals 2019
- Member of 5th place Dairy Herd ADGA Nationals 2021
- Member of 5th place Get of Sire ADGA Nationals 2021
- Member of 4th place Get of Sire ADGA Nationals 2019



	Milk	Fat	Prot	SCS			
Std	1760	79	69	4.40			
DCR	94	94	93	95			
Act	2993	132	120	3.98			
PER	-0.18	-0.16	-0.27	0.00			
Rel	53	49	50	31			
	DIM	Milk	Fat%	Prot%	SCS	Freq	Test Date
1	18	12.4	4.9	4.2	4.7	2	2021/02/21
2	46	12.9	4.3	3.7	3.4	2	2021/03/21
3	74	11.7	4.7	3.8	3.9	2	2021/04/18
4	109	11.3				2	2021/05/23
5	130	10.0	4.5	4.0	4.7	2	2021/06/13
6	158	10.2	3.8	4.1	5.3	2	2021/07/11
	158	1760	79	69			
	158	1798	81	71			<-- Calculated from th

Sire's Dam:

GCH Urban Acres Cistallia 4*M Accomplishments:

- LA Score 05-02 91 EEEE
- LA Score 04-01 91 EEEE
- LA Score 03-01 90 VEVE
- 2 x Best in Show
- Placed 3rd as a 5/6 year old at ADGA Nationals 2017
- Place 10th as a 3 year old at ADGA Nationals 2015



	Milk	Fat	Prot	SCS
Std	1750	92	70	5.04
DCR	100	100	100	100
Act	1965	106	78	4.94
PER	-0.19	-0.11	-0.27	0.86
Rel	75	74	74	60

DIM	Milk	Fat%	Prot%	SCS	Freq	Test Date
1	12	9.1	4.6	4.2	2.0	2 2017/03/13
2	40	10.5	4.6	3.7	5.3	2 2017/04/10
3	68	9.0	4.9	3.8	7.4	2 2017/05/08
4	102	7.2	3.8	3.1	3.2	2 2017/06/11
5	139	6.4	5.6	4.2	6.3	2 2017/07/18
6	159	7.5	7.6	4.3	2.6	2 2017/08/07
7	193	6.0	6.5	4.5	7.3	2 2017/09/10
8	221	3.0	5.1	4.2	6.4	2 2017/10/08

Production Parameter	Value
SG	GCH
Registry	PB
Fluid Merit \$	-13
Lactations	5
Average STD Milk	1997
Average STD Fat	104
Average STD Protein	82
Milk PTA	-113
Fat Reliability	64
Fat PTA	-2.4
Fat % PTA	0.18
Protein Reliability	64
Protein PTA	-1.2
Protein % PTA	0.19
Milk, Predicted Producing Ability	-262
Fat, Predicted Producing Ability	-70
Protein, Predicted Producing Ability	-10
Percentile Rank	27

Nominees Maternal Sister and Sires Paternal Sister:

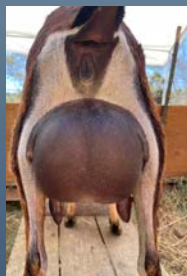
Ca Blackberry's TB Mat Trang Accomplishments:

- LA Score 01-04 85 V+V+
- Place 14th as a 1 year old at ADGA Nationals 2021
- Member of 5th place Dam and Daughter ADGA Nationals 2021



	Milk	Fat	Prot	SCS
Std	1140	47	43	1.70
DCR	92	92	91	93
Act	2131	85	83	1.66
PER	0.11	-0.08	-0.30	-0.05
Rel	49	45	20	33

DIM	Milk	Fat%	Prot%	SCS	Freq	Test Date
1	8	9.6	5.8	4.4	1.8	2 2021/02/21
2	36	9.0	3.7	3.6	1.8	2 2021/03/21
3	64	8.1	4.1	3.4	0.7	2 2021/04/18
4	99	7.2				2 2021/05/23
5	120	6.6	3.6	3.9	2.1	2 2021/06/13
6	148	6.5	3.4	4.0	2.3	2 2021/07/11
	148	1140	47	43		
	148	1165	48	44		<-- Calculated from

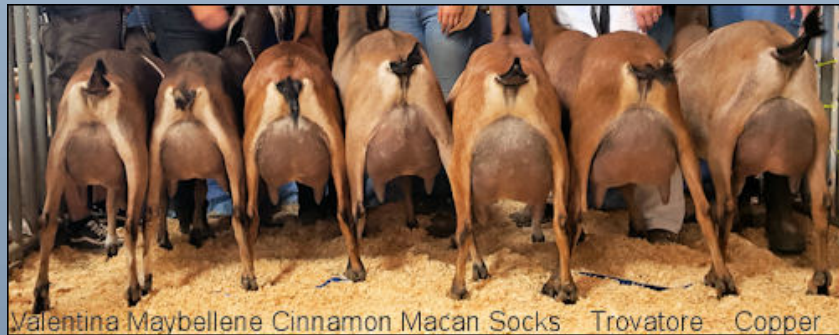


Sire's Sire:

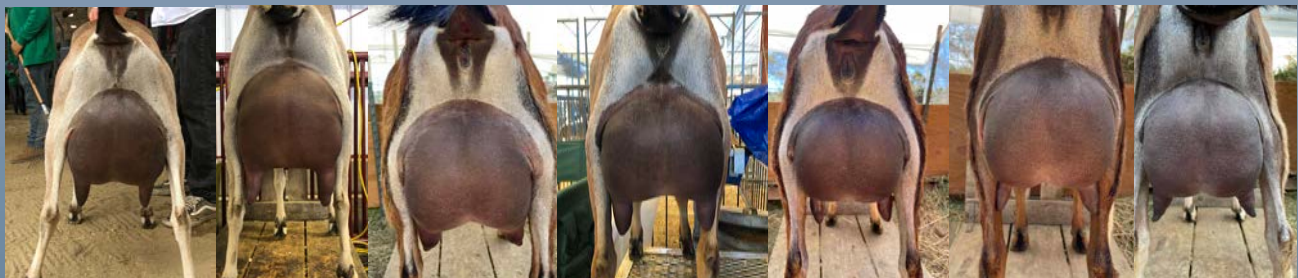
SG Urban Acres Charmng Troubadour +*B Accomplishments:

- 7 Superior Genetics Daughters
- 6 Champion Daughters
- 5th place Get of Sire ADGA Nationals 2021
- 4th and 6th place Get of Sire ADGA Nationals 2019
- 3rd place Get of Sire ADGA Nationals 2017
- 4th Place Get of Sire ADGA Nationals 2015

All Udder Pictures below of Sire's (Urban Acres TB Hot Rod Lincoln) Paternal Sisters



Valentina Maybellene Cinnamon Macan Socks Trovatore Copper



Cayman Sally Cabaret Tesla Trang Pumpkin Casey

URBAN ACRES TB HOT ROD LINCOLN x BIG_HOOFHEARTED RB LUNA

	SS : THE HILL'S ACRES SUCH A CHARM	SSS : HILL'S ACRES GXY POLARIS NS
S : URBAN ACRES CHARMNG TROUBADOUR	SDS : THESE GIRLS ROCK URBAN JAZZ	SSD : HILL'S ACRES CHARMED I'M SURE
URBAN ACRES TB HOT ROD LINCOLN	SDS : THESE GIRLS ROCK URBAN JAZZ	SDS : KASTDEMUR'S ROCK-2-THE-MUSIC
	SDS : THESE GIRLS ROCK URBAN JAZZ	SDD : THESE GIRLS ROCK JASPER
	DSS : COPPER-HILL ALGINONS BREAKAWAY	DDS : COPPER-HILL ALGINONS BREAKAWAY
D : URBAN ACRES CISTALIA	DS : COPPER-HILL BREAKAWAY'S SONSET	DSD : COPPER-HILL WINTER SUNRISE
	DD : GLOBE THEATRE'S PORSCHE	DDS : THE HILL'S ACRES SUCH A CHARM
	DDD : GLOBE THEATRE'S CASSANDRA	

	SS : LASSENWOOD MILLER OZZIE	SSS : PRAIRIE-PATCH MILLER
S : URBAN ACRES LMO BIG RED	SDS : URBAN ACRES CISTALIA	SSD : LASSENWOOD SHRM ZENOBIA
BIG_HOOFHEARTED RB LUNA	SDS : URBAN ACRES CISTALIA	SDS : COPPER-HILL BREAKAWAY'S SONSET
	SDS : URBAN ACRES CISTALIA	SDD : GLOBE THEATRE'S PORSCHE
	DSS : THE HILL'S ACRES SUCH A CHARM	DDS : THE HILL'S ACRES SUCH A CHARM
D : BIG_HOOFHEARTED PRINCESS ZELDA	DS : URBAN ACRES CHARMING KEN	DSD : ALLRED-FARMS CALIFORNIA GIRL
	DD : URBAN ACRES JJ QUEENOFDIAMONDS	DDS : URBAN ACRES JOHN'S JESTER
	DDD : URBAN ACRES CT CUTTING ACES	