



# 49<sup>th</sup> ANNUAL “MORE FOR YOUR MONEY” ANGUS SALE

**Saturday • October 23, 2021 • Noon**

*SALE SITE*

*Bottomly Farms*

*Southwest Virginia Bull Test Station Sale Barn*

*I-81, Exit 77 • Wytheville, VA*

---

## **To All Beef Producers,**

It is my privilege to welcome you to the 49th Annual “More For Your Money” Fall Sale. It is one of the longest continuous purebred consignment sales on the East Coast. The Southwest Virginia Angus Association is sponsoring this sale as they have done for many years. The SWVAA works to support the entire beef industry in the *Great Southwest*. The SWVAA adheres to the genetic evaluation policy of the American Angus Association. As with our Spring Double-Header Sale, if you do not feel comfortable attending in person due to the impact of COVID-19, we would like to remind you that the sale will also be streamed live on Cowbuyer.com where your bids will be received in real time. If you prefer to bid by phone, please contact either Smith Reasor or myself before sale day and we will provide you with a number you can call to place your bids that day.

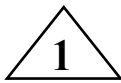
We have fifteen consignors participating from all over Southwest Virginia, West Virginia, North Carolina and East Tennessee. We are selling cow-calf pairs and some of the calves will be ready to split from their dams. There is a nice group of fall-calving cows with baby calves as well as open and bred heifers in this sale.

Don't hesitate to give me, George T. “Buddy” Johnstone Jr., a call (620-4901 or 228-8496) or Smith Reasor, Auctioneer (620-3123). We have a nice selection of cattle from which to choose. They will be available for your inspection after 12:00 on Friday, October 22, 2021.

**Southwest Virginia Angus Association hereby reserves the right in its absolute and total discretion to refuse to accept any bid from any person or individual or to issue a bid number for any reason, including but not limited to, a previous instance of non-payment in a Southwest Virginia Angus Association sale.**

*George T. Johnstone Jr.*

*Sale Coordinator*



# LRAF BEROSA 116

WERNER WAR PARTY 2417

DOB 1/7/16

Tatt 116

Reg. 18581320

R B TOUR OF DUTY 177

B A LADY 6807 305

BOYD NEW DAY 8005

CED	5
BW	1.8
WW	51
YW	94
M	27

GRAYSTONE BEROSA 945

GRAYSTONE BEROSA 9499

## COW

### Consignor: **ABRAMS CREEK FARM**

An own daughter of RB Tour of Duty 177 out of a Boys New Day 8005 daughter who lived out her days here on the farm. She has a heifer calf by her side born 5/8/21 sired by Abrams Creek Canyon 1017 a son of SAV Angus Valley 1867 which should make an outstanding brood cow. She sells pasture exposed to BF Confidence 807 a Connealy Confidence Plus son whos epds are as follows. BW +1.0 WW +62 YW +114 M +32.



**R B TOUR OF DUTY 177**



# MISS PROGRESSOR WMS RAMPAGE

QUAKER HILL RAMPAGE 0A36

DOB 6/16/20

Tatt 15H

Reg. 20144138

WILLIAMS RAMPAGE 282

WILLIAMS RITA 71

PROGRESSOR G 33A PROGRESS 27Y

CED	10
BW	.1
WW	60
YW	108
M	26

MISS PROGRESSOR 15E

MISS NEW DESIGN 2U10

## COW

### Consignor: **ACE IN THE HOLE**

A daughter of the Williams Rampage 282 bull bred in the Williams Angus herd in Johnson City, TN. Balanced EPDs on this heifer. Pasture exposed to Quantas G 39G Quantum 44C whose EPDs are: +14 +.4 +64 +119 +39 \$B+177 (Top10% of the breed) \$C+303 (Top 4% of the breed). Breeding update sale day.



# MISS ACEINTHEHOLE 14H

QUAKER HILL RAMPAGE 0A36

DOB 5/20/20

Tatt 14H

Reg. 20144137

WILLIAMS RAMPAGE 282

WILLIAMS RITA 71

PROGRESSOR G 33A PROGRESS 27Y

MISS ACEINTHEHOLE 14E

MISS ACEINTHEHOLE 2T10

CED	9
BW	.3
WW	60
YW	107
M	26

## COW

### Consignor: **ACE IN THE HOLE**

A daughter of the Williams Rampage 282 bull bred in the Williams Angus herd in Johnson City, TN. Balanced EPDs on this heifer. Pasture exposed to Quantas G 39G Quantum 44C whose EPDs are: +14 +.4 +64 +119 +39 \$B+177 (Top10% of the breed) \$C+303 (Top 4% of the breed). Breeding update sale day.



**BON VIEW NEW DESIGN 1407**



# MISSACEINTHEHOLE2Z10

C R A BEXTOR 872 5205 608

DOB 4/2/12

Tatt 2Z10

Reg. 18442793

BEXTOR G 8U BEX 80R

LETA G 80R RT PRD 70N

BON VIEW NEW DESIGN 1407

MISS G A A F 631 2N10

MISS G A A F 2D9 631

CED	7
BW	.5
WW	35
YW	66
M	28

## COW

### Consignor: **ACE IN THE HOLE**

A granddaughter of the Select Sires bull, C R A Bextor 872 5205 608 out of a dam bred in the Green Acres Angus Farm herd in Rocky Mount, VA. She has been pasture exposed to Williams Rampage 282 whose EPDs are: +7 +1.1 +72 +132 +22 \$B +157. Breeding update sale day.



# PRINCESS 26Y

C R A BEXTOR 872 5205 608

DOB 9/17/11

Tatt 26Y

Reg. 20008008

BEXTOR G 8U BEX 80R

LETA G 80R RT PRD 70N

JUSTAFEW NEW DESIGN 401

NEW DESIGN PRINCESS 206

598 PRINCESS 02

CED	9
BW	.1
WW	31
YW	59
M	29

## COW

### Consignor: **ACE IN THE HOLE**

Another proven cow from Randall Williams' Ace in the Hole Farm. Also a granddaughter of C R A Bextor 872 5205 608 out of a dam from the Princess cow family. Pasture exposed to Williams Rampage 282 whose EPDs are: +7 +1.1 +72 +132 +22 \$B +157. Breeding update sale day.



**B/R NEW DESIGN 036**



**S S NIAGARA Z29**



# 3ACES JESTRESS 9075

S A V BRILLIANCE 8077

DOB 11/10/15

PVF INSIGHT 0129

Tatt 9075

PVF MISSIE 790

Reg. 18556664

EXAR LUTTON 1831

GAMBLES JESTRESS 9035

GAMBLES JESTRESS 821

CED	0
BW	3.2
WW	61
YW	104
M	26

## COW

*DDP*

### Consignor: **COLE CATTLE COMPANY**

3ACES Jestress 9075 was one of Elizabeth's show heifers that has turned into a very nice cow. She was bred at Gambles Angus and is sired by the Popular GENEX bull, PVF Insight 0129. She has a very nice bull calf at side that was born 8/28/2021 and was sired by SS Niagara Z29. Bull calf's EPDs are: +3 +2.1 +66 +123 +26 \$B+166. We have retained two daughters of 9075 in our herd.



# COLE SARITA 62C

B C LOOKOUT 7024

DOB 1/4/16

Tatt 62C

Reg. 18427444

BC EAGLE EYE 110-7

B C PURE PRIDE ERICA D 110

S A V FINAL ANSWER 0035

COLE SARITA C91

COLE SARITA C72

CED	4
BW	.8
WW	55
YW	90
M	20

## COW

### Consignor: **COLE CATTLE COMPANY**

Cole Sarita 62C is a big volumed, 5 year old, brood cow. She is a granddaughter of the legendary SAV Final Answer 0035 and is sired by the GENEX bull, BC Eagle Eye. She has a bull calf at side that was born 6/28/2021 and was sired by the Select Sires calving ease heifer bull, Barstow Bankroll B73. Bull calf's EPDs are: +9 -.7 +57 +104 +21. She was AI serviced back to Bankroll on 9/13/2021. We have retained two daughters of 62C in our herd.



**BARSTOW BANKROLL B73**

# 8 DAWSON FARMS PRINCESS 1924

SUMMITCREST COMPLETE 1P55  
KM BROKEN BOW 002  
SUMMITCREST PRINCESS 0P12  
SITZ WISDOM 481T  
RS WISDOM R5 1417  
RS NEW FRONTIER JC750 R5

DOB 11/1/19  
 Tatt 1924  
 Reg. 19567229

CED	2
BW	2.4
WW	77
YW	133
M	16

## COW

### Consignor: DAWSON FARMS

This AI first calf heifer is a direct daughter of KM Broken Bow and RS Wisdom 1417. She is a growthy, deep bodied brood cow prospect with excellent feet and is CAB Certified. She sells with a 9/1/2021 bull calf (registration pending) by the Select Sires Bull Deer Valley Unique (Weigh Up x Henrietta Pride). The Unique calves are vigorous with good structure. Potential herd sire.



**SUMMITCREST COMPLETE 1P55**

# 9 DAWSON FARMS PRINCESS 1923

SUMMITCREST COMPLETE 1P55  
KM BROKEN BOW 002  
SUMMITCREST PRINCESS 0P12  
SITZ WISDOM 481T  
RS WISDOM R5 1417  
RS NEW FRONTIER JC750 R5

DOB 10/16/19  
 Tatt 1923  
 Reg. 19567227

CED	7
BW	1.6
WW	64
YW	110
M	25

## COW

### Consignor: DAWSON FARMS

This first calf ET heifer is a direct daughter of KM Broken Bow and our Donor Dam RS Wisdom 1417. She is a deep bodied brood cow prospect with excellent feet and carcass merit. She sells with a 8/28/2021 bull calf (registration pending) by the Select Sires Bull Deer Valley Unique (Weigh Up x Henrietta Pride). The Unique calves are vigorous with good structure. Potential herd sire.

# 10 DAWSON FARMS DONNA 1910

QUAKER HILL RAMPAGE 0A36  
MRA RAMPAGE E22  
COLEMAN DONNA 1354  
MCD LUCRATIVE 3320  
RS LUCRATIVE 1302 1505  
RS WINDY W4 1302

DOB 2/22/19  
 Tatt 1910  
 Reg. 19397784

CED	2
BW	2.0
WW	71
YW	116
M	24

## COW

### Consignor: DAWSON FARMS

This young cow has 6 Pathfinder in her pedigree, including Coleman Donna 714, maternal excellence with performance, Top 30% \$M, Top 15% \$W. We retained her Sure Fire daughter for our herd. She is bred to P/CC Ashland 7819, our herd sire with excellent growth (WW101/YW163) and carcass (Marb 1.31/RE.88) for a 3/25/2022 calf.



**PLATTEMERE WEIGH UP K360**

# 11 DAWSON FARMS ROSE 1907

PLATTEMERE WEIGH UP K360  
DEER VALLEY OLD HICKORY  
DEER VALLEY RITA 1126  
HOME ACRES REGIS 415  
DAWSON FARMS ROSE 1706  
RS GAME PLAN 1220 1530

DOB 2/6/19  
 Tatt 1907  
 Reg. 19398418

CED	14
BW	-.7
WW	55
YW	97
M	32

## COW

### Consignor: DAWSON FARMS

This young calving ease daughter of the Select Sire Bull Deer Valley Old Hickory reads well with a balanced set of EPDs, Top 4% \$M, Top 10% \$W and Top 30% \$C. 6 Pathfinders in her pedigree. She is bred to P/CC Ashland 7819, our herd sire with excellent growth (WW101/YW163) and carcass (Marb 1.31/RE .88) for a 2/22/2022 calf.

**12** **DAWSON FARMS LADY LUCY 1808**

CONNEALY BLACK GRANITE  
WERNER FLAT TOP 4136  
WERNER LADY 0304  
LUCY CONNEALY 7229 XD10  
WRP MONA 252 1605  
PARADISE MONA 252

DOB 1/31/18  
 Tatt 1808  
 Reg. 19070842

CED	8
BW	1.3
WW	65
YW	114
M	37

**COW**

Consignor: **DAWSON FARMS**

This Werner Flat Top daughter was our granddaughter's first fair calf. A nice young cow with a good disposition, top 20% \$M and top 2% \$W. She sells with a bull calf born 9/28/2021 out of our herd sire P/CC Ashland 7819 whose EPDs are: WW101/YW163, Marb 1.31/RE .88).



**DAWSON FARMS LADY LUCY 1808**



**JUSTAFEW BLK PEARL BONNIE803**

**14** **JUSTAFEW BLK PEARL BONNIE803**

SYDGEN TRUST 6228  
SYDGEN BLACK PEARL 2006  
SYDGEN ANITA 8611  
HARB PENDLETON 765 J H  
JUSTAFEW PENDLETON BONNIE104

DOB 9/9/18  
 Tatt 803  
 Reg. 19445045

CED	11
BW	.2
WW	53
YW	98
M	33

**COW**

Consignor: **JUSTAFEW ANGUS**

A productive young female to enhance any herd. Her first calf, a heifer, weaned off at 685 lbs, ratio 102. Will have a calf by sale day sired by KCF Bennett Southside who boasts EPDs of +3.2 +82 +150 +29. Cow is calfhooed vaccinated.

**13** **RS LUCRATIVE 1302 1505**

C C A UNO 049  
MCD LUCRATIVE 3320  
MCD JUANADA 981  
APEX WINDY 078  
RS WINDY W4 1302  
RS CONNECTION S1 W4

DOB 2/8/15  
 Tatt 1505  
 Reg. 18221085

CED	6
BW	1.6
WW	55
YW	95
M	27

**COW**

Consignor: **DAWSON FARMS**

The Lucrative daughter's have formed the basis of our herd, they are fertile and produce excellent females. The 1505 cow has produced 5 calves in a 345 day interval, fertility at it's best. She will have a P/CC Ashland 7819 calf at her side on sale day (due 10/3/2021).



**G A R ASHLAND**

15

**LAWSONS ELBA E108**

A A R TEN X 7008 S A

S A V TEN SPEED 3022

S A V MADAME PRIDE 1134

S A V PIONEER 7301

S A V ELBA 110

S A V ELBA 910

DOB 2/6/17

Tatt E108

Reg. 18927955

CED	9
BW	1.1
WW	62
YW	115
M	26



**S A V PIONEER 7301**

**COW**

**LAWSON FARM**

Consignor:

Nice 4-year-old completely S A V bred top to bottom going back to one of SAV proven cow families, the Elbas. She sells with a heifer calf born 1/27/2021 (BW 80 lbs) tattoo J835 sired by EXAR Equity 7435B whose EPDs are +10 +.1 +82 +155 +17 \$B+193. She is AI bred on 5/7/21 to S A V Renown 3439 then pasture exposed to TK Stunner F655B.

16

**SHADY BROOK SHAUNA 6544**

SOO LINE MOTIVE 9016

SHADY BROOK TITAN 1026

DAVIS RITA 4001

BASIN MAX 602C

JJ SHAUNA 3118

JJ SHAUNA 0042

DOB 9/29/16

Tatt 6544

Reg. 18678915

CED	6
BW	2.0
WW	50
YW	97
M	25

**COW**

**LAWSON FARM**

Consignor:

Nice 5-year-old going all the way back to the Sitz Angus on maternal side. She has a heifer calf born on 1/27/2021 (BW 78 lbs) by TK Stunner F383 whose EPDs are +2 +1.6 +81 +146 +32 \$B+156. Sells bred AI to Yon Deep Ridge on 5/6/21 then pasture from 5/20/21 to 9/1/21 to TK Stunner F655B.



**EXAR EQUITY 7435B**

17

**LAWSONS LUCY D35**

A A R TEN X 7008 S A

44 ENVISION

MAURER'S MS PREDESTINED W10

VERMILION PAYWEIGHT J847

BASIN LUCY S997

BASIN LUCY 3829

DOB 9/28/16

Tatt D35

Reg. 18804691

CED	12
BW	-.5
WW	42
YW	82
M	38

**COW**

**LAWSON FARM**

Consignor:

If you are looking for longevity here she is. Her dam, Basin Lucy S997 is 16 years old and raised a set of twins this year. She has been a great donor cow here at Lawson Family Farms. This is a great opportunity to buy a direct daughter. She sells with a bull calf born on 9/30/21 (BW 79 lbs) tattoo J954 sired by Lawsons Demarini E131 whose EPDs are +6 +.9 +76 +130 +19.

18

**LAWSONS DONNA D852**

Q A S TRAVELER 23-4

D H D TRAVELER 6807

BEMINDFUL MAID D H D 0807

N BAR EMULATION EXT

LAWSONS DONNA 1365

COLEMAN DONNA 714

DOB 2/10/16

Tatt D852

Reg. 18563384

CED	7
BW	.6
WW	37
YW	73
M	28

**COW**

**LAWSON FARM**

Consignor:

Selling a great 5-year-old with the proven genetics Traveler and EXT lineage along with underlying the great Coleman Donna 714. Has a heifer calf born on 2/28/21 (BW 84 lbs) sired by EXAR Equity 7435B. She sells pasture exposed from 4/20 to 9/1 to TK Stunner F655B whose EPDs are +6 +3.0 +96 +159 +16 \$B+195.



19

# LAWSONS HENRIETTA D854

A A R T E N X 7008 S A

DOB 2/6/16

Tatt D854

Reg. 18558052

CED	6
BW	2.7
WW	75
YW	132
M	17

S A V T E N S P E E D 3022

S A V M A D A M E P R I D E 1134

C O N N E A L Y I M P R E S S I O N

D E E R V A L L E Y H E N R I E T T A 2212

S I T Z H E N R I E T T A P R I D E 639T

## COW

### Consignor: **LAWSON FARM**

Nice 5-year-old going back to Lawson Family Farms foundation donor 2212 Henrietta cow. She sells with a bull calf born on 9/14/2021 (*BW 78 lbs*) by Sitz Stellar 715G whose EPDs are +2 +2.7 +80 +141 +33 \$B+158.



*A A R T E N X 7008 S A*



*C O L E M A N R E G I S 356*

21

# LAWSONS DONNA C789

C O L E M A N R E G I S 122

DOB 9/23/15

C O L E M A N R E G I S 356

Tatt C789

Reg. 18359220

C O L E M A N D O N N A 063

B O Y D N E W D A Y 8005

L A W S O N S X 3 D O N N A Z 397

A N G U S A L L I A N C E D O N N A 962

CED	7
BW	1.5
WW	57
YW	102
M	23

## COW

### Consignor: **LAWSON FARM**

Selling six-year-old cow double bred by the Donna Cow family. She sells with a heifer calf born on 7/31/2021 Tattoo J903 sired by EXAR Equity 7435B. This would make a great investment from Lawson Family Farms.

20

# JACS LADY 5919

B A S I N P A Y W E I G H T 006S

DOB 10/13/15

Tatt 5919

Reg. 18822743

CED	6
BW	1.0
WW	66
YW	116
M	27

B A S I N P A Y W E I G H T 1682

21A R O L A S S 7017

C O N N E A L Y I M P R E S S I O N

T H O M A S L A D Y 21244

T H O M A S L A D Y 91014

## COW

### Consignor: **LAWSON FARM**

Nice 6-year-old sired by Basin Payweight 1682 who has made super great daughters. She sells with a bull calf born on 9/21/21 tattoo J948 (*BW 62 lbs*) by Lawsons Demarini E131 whose EPDs are +6 +9 +76 +130 +19. He sired the 2nd top selling bull in SWVA sale this spring and is 3/4 brother in blood to ZWT Summit.



*C O N N E A L Y I M P R E S S I O N*

**22 SLC BLACKCAP 676**

G A R GRID MAKER  
S A V BISMARCK 5682  
S A V ABIGALE 0451  
BC 7022 RAVEN 7965  
 SLC BLACKCAP 114  
SAF H306 OF 712 9440

DOB 9/13/14  
 Tatt 676  
 Reg. 18113668

CED	3
BW	3.1
WW	53
YW	90
M	20

**COW**

**LAWSON FARM**

Consignor: Selling a great producing cow by S A V Bismarck 5682. She sells with a heifer calf sired by Lawsons Demarini E131 born on 9/26/21 Tattoo J951.



**S A V BISMARCK 5682**

**23 LUCAS LADY KNOW HOW 0610**

HOOVER NO DOUBT  
 HOOVER KNOW HOW  
BLKCP EMPRESS ELLSTON L265  
DEER VALLEY ALL IN  
LUCAS LADY ALL IN 5920  
LUCAS LADY IMPRESSION 259S

DOB 10/21/20  
 Tatt 0610  
 Reg. 20055126

CED	5
BW	2.5
WW	64
YW	127
M	23

**COW**

**LUCAS ANGUS FARM**

Consignor: A Granddaughter of Hoover No Doubt one of the hottest bulls in the Angus breed over the last several years. This yearling Know How daughter will make a great addition to any herd. The Granddam of 0610 is also the Granddam of Lucas Tonic who is owned by SEMEX. 0610 sells open.



**DEER VALLEY ALL IN**

**24 LUCAS LADY KNOW HOW M026S**

HOOVER NO DOUBT  
 HOOVER KNOW HOW  
BLKCP EMPRESS ELLSTON L265  
R B TOUR OF DUTY 177  
LUCAS LADY TOUR OF DUTY M671  
LUCAS LADY IMPRESSION M0530

DOB 9/12/20  
 Tatt 026S  
 Reg. 20055122

CED	3
BW	2.7
WW	66
YW	126
M	27

**COW**

**LUCAS ANGUS FARM**

Consignor: An attractive female sired by Hoover Know How. 026S' dam is an ideal cow with a perfect udder. Not only is this female attractive in person, but she also has an impressive EPD profile. She sells open and ready to breed to the bull of your choice.

**25 LUCAS LADY DL DUALLY M893S**

DL SONIC 444  
 DL DUALLY  
DL INCENTIVE 2103  
G A R PROPHET  
LUCAS LADY PROPHET M4880  
LUCAS LADY IMPRESSION M0530

DOB 9/27/18  
 Tatt 893S  
 Reg. 19448391

CED	9
BW	.9
WW	80
YW	140
M	17

**COW**

**LUCAS ANGUS FARM**

Consignor: Here is your chance to acquire a female sired by the popular, now deceased ABS sire DL Dually. This 3 year-old female is in her prime and ready to produce. 893S has an outstanding EPD profile, with WW and YW ranking her in the top 2% of the breed. She is selling with a heifer calf sired by the Semex growth sire Lucas Tonic. This heifer calf (reg# 20134064) born 9/18/21 ranks in the top 3% of the breed for WW and top 2% for YW. Excellent opportunity here to purchase a young pair with unlimited potential.





**CONNEALY COMRADE 1385**

**28**

**MATNEY COMRADE 1707-S0224**

CONNEALY COMRADE 1385

DOB 4/9/20

Tatt S0224

Reg. 19963204

MATNEY COMRADE 1707

MATNEY SHREK 1420

G A R SUNRISE 2153G

MATNEY SUNRISE 7124

MATNEY 1324-7601

CED	13
BW	-1.1
WW	62
YW	105
M	31

**COW**

**MATNEY ANGUS FARM**

Consignor: A granddaughter of the Select Sires bull, Connealy Comrade 1385. Nice, balanced EPDs. CED and BW EPDs are in the Top 10% of the Angus breed. Pasture exposed from 6/15/21 to 9/30/21 to Matney Blackhawk 2029 whose EPDs are +8 +.6 +79 +131 +24 \$B+146.

**26**

**LUCAS LADY DUALLY T861S**

DL SONIC 444

DOB 9/8/18

Tatt 861S

Reg. 19448392

DL DUALLY

DL INCENTIVE 2103

K C F BENNETT COMMONWEALTH

CED	7
BW	1.4
WW	73
YW	134
M	18

LUCAS LADY COMONWEALTH T464S

LUCAS LADY PROPHET T216F

**COW**

**LUCAS ANGUS FARM**

Consignor: Another opportunity to purchase a 3 yr old sired by the ABS high growth bull DL Dually. 861S is moderate made and easy keeping with high ranking EPDs. 861S comes from a cow family known for it's low birth weight. She sells with a heifer calf sired by Lucas Tonic born 9/26/2021.

**29**

**MATNEY NIAGARA 7125-S0222**

S S NIAGARA Z29

DOB 4/9/20

Tatt S0222

Reg. 19963210

MATNEY NIAGARA 7125

MATNEY DAYLIGHT 1567

G A R SUNRISE 2153G

MATNEY SUNRISE 1644

MATNEY CON 1218

CED	1
BW	3.3
WW	80
YW	140
M	28

**COW**

**MATNEY ANGUS FARM**

Consignor: A granddaughter of the popular Select Sires bull, S S Niagara Z29. This young bred heifer's WW EPD and YW EPD are in the Top 5% of the Angus breed. Pasture exposed from 6/15/21 to 9/30/21 to Matney Blackhawk 2029 whose EPDs are +8 +.6 +79 +131 +24 \$B+146.

**27**

**LUCAS LADY COMONWEALTH T4790**

K C F BENNETT ABSOLUTE

DOB 10/9/14

Tatt 4790

Reg. 18044014

K C F BENNETT COMMONWEALTH

K C F MISS QUALITY P164

CONNEALY IMPRESSION

LUCAS LADY IMPRESSION T0580

G A R RETAIL PRODUCT 3204

CED	11
BW	.1
WW	56
YW	94
M	29

**COW**

**LUCAS ANGUS FARM**

Consignor: A low birth weight cow sired by KCF Commonwealth with a maternal side stacked with the likes of great maternal bulls, Impression and Retail Product. 4790 is the right kind of cow, she is easy keeping, slick haired, ideal udder and always breeds right back A1. She sells with a really nice heifer calf (reg # 20134063) born 9/13/21 sired by the SEMEX bull Lucas Tonic.



**K C F BENNETT ABSOLUTE**

**30 MATNEY ACCLAIM 2066**

JINDRA 3RD DIMENSION

DOB 3/17/20

JINDRA ACCLAIM

Tatt 2066

JINDRA BLACKBIRD LASSY 1111

Reg. 19964714

S S NIAGARA Z29

CED	4
BW	1.9
WW	65
YW	117
M	26

MATNEY NIAGARA 7113

MATNEY PROPHET 1581

**COW**

**MATNEY ANGUS FARM**

Consignor: A daughter of the very popular Jindra Acclaim out of a dam sired by S S Niagara Z29. Balanced EPDs on this young genetic treasure. Her \$B +181 is in the Top 4% of the Angus breed. Pasture exposed from 6/15/21 to 9/30/21 to Connealy Tahoe 836N whose EPDs are: +20 -3.9 +71 +124 +38 \$B+149.



*JINDRA ACCLAIM*

**31 MATNEY ACCLAIM 2050**

JINDRA 3RD DIMENSION

DOB 3/15/20

JINDRA ACCLAIM

Tatt 2050

JINDRA BLACKBIRD LASSY 1111

Reg. 19964727

GAR DAYLIGHT H 3076

CED	2
BW	3.9
WW	84
YW	153
M	38

MATNEY DAYLIGHT 1557

MATNEY PRIDE-1008

**COW**

**MATNEY ANGUS FARM**

Consignor: Another daughter of the very popular Jindra Acclaim. Her dam is from the Whitestone Pride cow family. Her WW, YW, and Milk EPDs are in the Top 2% of the Angus breed. Her \$B +19 3 is also in the Top 2%. Pasture exposed from 6/15/21 to 9/30/21 to Connealy Tahoe 836N whose EPDs are: +20 -3.9 +71 +124 +38 \$B+149.

**32 MATNEY ACCLAIM 2033**

JINDRA 3RD DIMENSION

DOB 3/12/20

JINDRA ACCLAIM

Tatt 2033

JINDRA BLACKBIRD LASSY 1111

Reg. 19998420

G A R SUNRISE 2153G

CED	10
BW	1.5
WW	81
YW	137
M	34

MATNEY SUNRISE 7111

MATNEY LIME LIGHT 1370

**COW**

**MATNEY ANGUS FARM**

Consignor: Another daughter of the popular Jindra Acclaim. Her dam is also a member of the Whitestone Pride family. Her WW EPD is in the Top 4%. Her YW and Milk EPDs are in the Top 10%. Also, her \$B +177 is in the Top 10% of the Angus breed. Pasture exposed from 6/15/21 to 9/30/21 to Connealy Tahoe 836N whose EPDs are: +20 -3.9 +71 +124 +38 \$B+149.



*WERNER WAR PARTY 2417*

**33 MATNEY SUNRISE 2007**

G A R SUNRISE

DOB 2/25/20

G A R SUNRISE 2153G

Tatt 2007

G A R PREDESTINED A057

Reg. 19998424

WERNER WAR PARTY 2417

CED	4
BW	2.9
WW	73
YW	131
M	34

MATNEY WAR PARTY 1418

MATNEY 7606 OF HYL338

**COW**

*DDP*

**MATNEY ANGUS FARM**

Consignor: A daughter of the G A R Sunrise 2153G bull who worked very well in the Matney Angus herd. Notice her dam is sired by Werner War Party 2417, the Select Sires bull. Her WW EPD is in the Top 15%, YW EPD Top 10%, and Milk EPD is in the Top 5%. Pasture exposed from 6/15/21 to 9/30/21 to Connealy Tahoe 836N whose EPDs are: +20 -3.9 +71 +124 +38 \$B+149.



**G A R DAYLIGHT**



**MATNEY DAYLIGHT 1904**

G A R DAYLIGHT

DOB 3/9/19

GAR DAYLIGHT H 3076

Tatt 1904

V A R LADY JAYE 1139

Reg. 19557426

MATNEY 201-0663

MATNEY 1210

MATNEY RITA 8002

CED	8
BW	1.7
WW	58
YW	105
M	29

**COW**

*DDP*

**MATNEY ANGUS FARM**

Consignor:

Another daughter of the Matney Angus herd sire GAR Daylight H 3076. Her dam is from the Rita cow family at Matney Angus. Bred on 1/8/21 to G A R Sure Fire whose EPDs are +13 +0 +55 +106 +28 \$B+177. Pasture exposed from 1/30/21 to 4/30/21 to Connealy Ashland 7442.



**MATNEY SURE FIRE 9166**

CONNEALY IN SURE 8524

DOB 10/11/19

G A R SURE FIRE

Tatt 9166

CHAIR ROCK 5050 G A R 8086

Reg. 19783074

S A V MANDAN 5664

CED	4
BW	1.3
WW	59
YW	107
M	30

MATNEY MANDAN-1063

MATNEY EULIMA 8038

**COW**

*DDP*

**MATNEY ANGUS FARM**

Consignor:

A daughter of the Select Sires bull, G A R Sure Fire out of a dam sired by the S A V Mandan 5664 bull; also a Select Sires bull. Balanced EPDs on this female. Bred on 1/8/21 to Deer Valley Unique whose EPDs are +8 +.5 +70 +131 +25 \$B+167. Pasture exposed from 1/30/21 to 4/30/21 to Connealy Ashland 7442.



**S A V MANDAN 5664**



**MATNEY DAYLIGHT 1905**

G A R DAYLIGHT

DOB 3/11/19

GAR DAYLIGHT H 3076

Tatt 1905

V A R LADY JAYE 1139

Reg. 19557436

RITO 6EM6 OF 4L3 EMBLAZON

CED	8
BW	1.3
WW	66
YW	116
M	34

MATNEY PRIDE-1008

WHITESTONE LCE PRIDE D804

**COW**

*DDP*

**MATNEY ANGUS FARM**

Consignor:

A daughter of the Gardiner Angus Ranch-bred bull, GAR Daylight H 3076 who has seen heavy service in the Matney Angus herd. Balanced EPDs on this young female from the Whitestone Pride cow family. Bred on 1/8/21 to G A R Sure Fire whose EPDs are +13 +0 +55 +106 +28 \$B+177. Pasture exposed from 1/30/21 to 4/30/21 to Connealy Ashland 7442 whose EPDs are +11 +.5 +76 +124 +26 \$B+145.



**OGLE PALMETTO 1220**

CONNEALY CONFIDENCE PLUS

DOB 10/11/20

PRAIRIEDGE STEADFAST

Tatt 1220

PRAIRIEDGE BLACKBIRD 19

Reg. 19944775

YON PALMETTO

CED	4
BW	2.0
WW	74
YW	130
M	26

K C F MISS PALMETTO F644

K C F MISS CONTRAST Z405

**COW**

**OGLE FARM/DAVID OGLE**

Consignor:

A Prairiedge Steadfast daughter who looka a lot like her dam. Volume, thickness, spring of rib. Great EPDs: WW-top 10%, YW-top 15%, Carcass value +315-top 2% of the breed. BW 71, 205 Adj. Wt. 606.

**38** **OGLE MISS ESTELLA 520**

K C F BENNETT ABSOLUTE  
K C F BENNETT ASSERTIVE  
K C F MISS HOMESTEAD Z98  
S S NIAGARA Z29  
SFA ESTELLA NF66  
BLACK GROVE ESTELLA 507

DOB 9/20/20  
Tatt 520  
Reg. 19951859

CED	7
BW	.8
WW	58
YW	108
M	26

**COW**

Consignor: **OGLE FARM/DAVID OGLE**  
Sired by K C F Bennett Assertive, the Select Sires bull with -1.0 BEPD. Her dam is a descendant of the famous herd sire producing Pathfinder dam Ahlgrens Estella 2758 ETE. BW 66, 205 Adj. Wt. 552.



**K C F BENNETT ABSOLUTE**

**39** **SFA WITCH IG36**

EF COMMANDO 1366  
BALDRIDGE BRONC  
BALDRIDGE ISABEL Y69  
K C F BENNETT FORTRESS  
SFA WITCH FE31  
YON WITCH A205

DOB 9/10/19  
Tatt IG36  
Reg. 19677072

CED	9
BW	.6
WW	70
YW	128
M	33

**COW**

Consignor: **OGLE FARM/DAVID OGLE**  
A really nice bred heifer by Baldrige Bronc, Select Sires very popular BEPD -2.5 calving ease bull. She had a weaning ratio of 105. Bred to Ogle Evergreen Acclaim 129 - By Jindra Acclaim out of a great Pathfinder dam. Exposed 12/23/20 until 3/14/21.

**40** **OGLE LADY FORTRESS 519**

CONNEALY CONSENSUS  
K C F BENNETT FORTRESS  
THOMAS PATRICIA 9705  
S S NIAGARA Z29  
LUCAS LADY NIAGRA 700S  
LUCAS LADY CAPITALIST 34J

DOB 9/9/19  
Tatt 519  
Reg. 19608231

CED	6
BW	1.3
WW	72
YW	132
M	24

**COW**

Consignor: **OGLE FARM/DAVID OGLE**  
Bred heifer out of one of my top cows. Has multiple generations of AI Sires. Goes back to Connealy Capitalist 028, a great maternal sire. Heifer is top 15% WW, top 10% YW. Bred to Ogle Evergreen Acclaim 129 whose EPDs are +8 +1.2 +64 +123 +28. Exposed 12/23/20 until 3/14/21. BW 66, 205 Adj. Wt. 650.



**SYDGEN C C & 7**

**41** **OGLE CC&7 BONNIE 318**

S A F CONNECTION  
SYDGEN C C & 7  
SYDGEN FOREVER LADY 4087  
SYDGEN MANDATE 6079  
JUSTAFEW MANDATE BONNIE 219  
JUSTAFEW PENDLETON BONNIE103

DOB 9/15/18  
Tatt 318  
Reg. 19293328

CED	11
BW	.2
WW	50
YW	99
M	31

**COW**

Consignor: **OGLE FARM/DAVID OGLE**  
A really nice three year old who did a good job raising her first calf. She was sired by SydGen C C & 7 who has sired several top AI bulls. He is known for siring smooth shoulder, long neck, good udder cows. Her dam, Justafew Mandate Bonnie 219, has done a great job raising top calves. Bred to Ogle Evergreen Acclaim 129 whose EPDs are: +8 +1.2 +64 +123 +28, out of a top Pathfinder cow. Exposed 12/23/20 until 3/14/21. BW 67, 205 Adj. Wt. 573.

**42 JUSTAFEW UPSHOT MISS 712**

SITZ UPWARD 307R

DOB 9/21/17

EXAR UPSHOT 0562B

Tatt 712

EXAR BARBARA T020

Reg. 19147192

HA PROGRAM 5652

CED	7
BW	2.0
WW	56
YW	108
M	29

JUSTAFEW PROGRAM MISS 411

JUSTAFEW TARGETED MISS 901

**COW**

**OGLE FARM/DAVID OGLE**

Consignor: Nice four year old with eight Pathfinders in her pedigree. Has a good bull calf at side born 9/20/21 sired by Deer Valley Growth Fund who has great EPDs (top 1% in breed for WW & YW).



**EXAR UPSHOT 0562B**

**43 RIVERS BEND RITO R151**

S S OBJECTIVE T510 0T26

DOB 2/24/16

LEMMON OBJECTIVE Y40

Tatt R151

JARRELL MISS LADY STAR 73U

Reg. 18473298

LEMMON OBJECTIVE 171U

CED	2
BW	2.3
WW	55
YW	93
M	27

LEMMON BLACKCAP Z97

JARRELL BLACKCAP 93W

**COW**

*DDP*

**44 CEDAR SPRINGS LADY 53B**

LEACHMAN FULLBACK

DOB 9/23/14

RITO 9FB3 OF 5H11 FULLBACK

Tatt 53B

RITA 5H11 OF 1B14 RITO 9J9

Reg. 18442696

SKYWAY HILLS EQUATOR

CED	-5
BW	4.2
WW	36
YW	65
M	25

SKYWAY HILLS EQUATRIS 317

PRISCILLA STAR LADY

**COW**

*DDP*

Consignor: **RIVERS BEND RANCH**

A proven cow every year tracing back to the Traveler lines. She was AI bred on May 8th to Deer Valley Growth Fund. He ranks among the Angus breed's most elite at 1% in WW, YW, MW, CW, \$W & \$F. His EPDs are +9 +1.2 +91 +173. Following the AI, she was pasture exposed to our resident herd bull KCF Bennett E533, a Basin Payweight son, whose EPDs are +7 +9 +72 +128. Breeding update on sale day.

Consignor: **RIVERS BEND RANCH**

From the Pathfinder lines of Leachman Fullback & Rito, this cow sells AI bred safe to Tehama Tahoe whose EPDs are +11 +.0 +77 +133. He ranks in the top 1% of the breed in CED, 2% in \$W & top 10% WW & YW. She is due to calf on Nov 1st.



**S S OBJECTIVE T510 0T26**

**45 CEDAR SPRINGS ROSE 16B**

HF KODIAK 5R

DOB 6/3/14

SOO LINE MOTIVE 9016

Tatt 16B

TLA BEAUTY 5R

Reg. 18433613

S A V IRON MOUNTAIN 8066

CED	5
BW	.4
WW	45
YW	71
M	15

CEDAR SPRINGS ROSEBUD 16Z

SKYWAY HILLS PRIDE ROSE 170

**COW**

*DDP*

Consignor: **RIVERS BEND RANCH**

Another proven cow from the Pathfiner lines of HF Kodiak 5R & TC Gridiron 258. She has been an excellent mother, producing quality calves every year. She sells AI bred to Jindra Acclaim who ranks in the top 10% for CED, WW, YW & DOC. His EPDs are +5 +1.2 +71 +141. Breeding was on May 8th, followed up by pasture exposure to our resident herd bull KCF Bennett E533, a Basin Payweight son, whose EPDs are +7 +9 +72 +128. Breeding update on sale day.



***N BAR EMULATION EXT***



**GHS EPIC EILEEN 998**

THE WEST VIRGINIAN X134

OFF NG A390

OAK FRONT BANBANA 390

OFF POUNDER W83

GHS EPIC EILEEN 4106

GHS EPIC EILEEN 172S

**COW**

DOB 10/2/19

Tatt 998

Reg. 20137764

CED	5
BW	.1
WW	50
YW	95
M	30

Consignor: **STOVALL LIVESTOCK**

The Epic Eileen cows trace back to Dr. Lynn Wilson's herd. The A390 bull came from the Kinseys and produced lots of functional females. She is bred to MF Complement New Stan 1756 whose EPDs are: +0 +45 +91 \$B+148 \$C+245 for a late December calf.



**CEDAR SPRINGS RITA 7B**

N BAR EMULATION EXT

LEACHMAN SAUGAHATCHEE 3000C

LEACHMAN B C 7100

D H D TRAVELER 6807

RITA 7152 OF 2036 6807

LEACHMAN BLACKBIRD 2036

**COW**

DOB 3/1/14

Tatt 7B

Reg. 18442697

CED	-1
BW	2.2
WW	36
YW	64
M	32



**GHS CLOVA 93**

BASIN EXCITEMENT

HOOVER ELATION M123

PRIDE OF ELLSTON K68

K C F BENNETT FORTRESS

GHS CLOVA 765

GHS CLOVA 129S

**COW**

DOB 8/15/19

Tatt 93

Reg. 20138395

CED	11
BW	-.6
WW	57
YW	109
M	30

Consignor: **STOVALL LIVESTOCK**

Hoover Elation M123, K C F Bennett Fortress, Nichols Extra K205, and Rito 616 of 4B20 6807; this heifer has a royal pedigree. She will calve in April to the W H S High Weigh 44G bull whose EPDs read: +.6 +69 +121 +27 \$B+161 \$C+298.



**RX VIOLA 159H**

EXG RS FIRST RATE S903 R3

DAMERON FIRST CLASS

DAMERON NORTHERN MISS 3114

S A V BRILLIANCE 8077

CHECKERHILL VIOLA X42

CHECKERHILL VIOLA N10

**COW**

DOB 3/2/17

Tatt 159H

Reg. 18808120

CED	4
BW	2.6
WW	61
YW	101
M	19

Consignor: **RX ANGUS**

RX Viola 159H is a direct daughter of the immortal Dameron First Class. No bull in the history of the breed has produced more champions and his semen routinely brings in excess of \$10K per straw at auction. RX Viola's dam was produced at Checkerhill Angus in Missouri and has produced many national champions for that outstanding program. We sold this female's first calf as a show heifer and, the good news is, she has another promising show heifer prospect by her side born 9/25/21 and sired by Dameron Style.



***DAMERON FIRST CLASS***



50

# GHS CLOVA 92

BASIN EXCITEMENT

HOOVER ELATION M123

PRIDE OF ELLSTON K68

K C F BENNETT ABSOLUTE

GHS CLOVA 73

GHS CLOVA 558

## COW

### STOVALL LIVESTOCK

Consignor: The Clova cow family is perhaps my best cow family and traces back to a Wye cow. Her sire is the Select Sires bull, Hoover Elation M123. This heifer will calve in November to MF Complement New Stan 1756, our calving ease specialist.

DOB 8/12/19  
Tatt 92  
Reg. 20138392

CED	11
BW	-.7
WW	57
YW	111
M	25



*BASIN EXCITEMENT*

51

# GHS QUEEN B 91

BASIN EXCITEMENT

HOOVER ELATION M123

PRIDE OF ELLSTON K68

OFF PC C390

GHS QUEEN B 738

GHS QUEEN B 429

## COW

### STOVALL LIVESTOCK

Consignor: A Hoover Elation M123 daughter out of a cow that has Kinsey breeding and goes back to a cow who spent time in Daltons on the Sycamore's embryo transfer program. She is bred to calve in early December to MF Complement New Stan 1756.

DOB 8/11/19  
Tatt 91  
Reg. 20138393

CED	7
BW	.8
WW	54
YW	101
M	27

52

# GHS ERICA 896

HM TEN X 40U

OFF PC C390

OAK FRONT BANBANA 390

CONNELLY LEAD ON

GHS ERICA 328

BLACK VENTURE

## COW

### STOVALL LIVESTOCK

Consignor: Her dam is a Connelly Lead On daughter out of a dam sired by the immortal N Bar Emulation EXT and her sire came from Kinsey's Oak Front Farms and left several cows in our herd. She is bred to Off Cap F443 whose EPDs read: +2.3 +70 +115 +18 \$B+155 \$C+261 for a January calf.

DOB 9/29/18  
Tatt 896  
Reg. 19868499

CED	8
BW	.3
WW	41
YW	71
M	30



*S S NIAGARA Z29*

53

# GHS BLACKBIRD 869

HOOVER DAM

S S NIAGARA Z29

JET S S X144

WERNER WAR PARTY 2417

GHS BLACKBIRD 450

MATNEY BLACKBIRD M223

## COW

### STOVALL LIVESTOCK

Consignor: A S S Niagara Z29 daughter that goes back to a Matney cow; and the Matney's need no introduction in SWVA. Her WW and YW EPDs rank in the Top 1% of the breed. She sells bred for a March calf to the W H S High Weigh 44G bull who is a son of the Select Sires bull E W A High Weigh 3123.

DOB 9/20/18  
Tatt 869  
Reg. 19759182

CED	-.7
BW	4.3
WW	91
YW	161
M	31

54

# GHS LASS 843

CONNEALY CONSENSUS

DOB 9/14/18

K C F BENNETT FORTRESS

Tatt 843

THOMAS PATRICIA 9705

Reg. 19759180

CONNEALY CAPITALIST 028

W H S CAPITALIST LASS A5

W H S PREDESTINED LASS 77T

CED	11
BW	.7
WW	85
YW	147
M	19

## COW



*CONNEALY CONSENSUS*

## STOVALL LIVESTOCK

Consignor: This young cow is a Royally bred Virginia cow coming out of Knollcrest & Buddy Shelton's herds. She will be calving in April to W H S High Weigh 44G who has EPDs of: +.6 +69 +121 +27 \$B+161 \$C+298.



*GAR PROPHET*

56

# TAYLOR LAKOTA 747

G A R PROPHET

DOB 9/16/17

WILLIAMS PROPHET 834-190

Tatt 747

2 BAR 5050 NEW DESIGN 0494

Reg. 18914201

NICHOLS EXTRA K205

AB-LVS R LAKOTA 078

CED	9
BW	1.4
WW	63
YW	110
M	33

AB LVS RIGHT LAKOTA 678

## COW

## TAYLOR ANGUS

Consignor: A young granddaughter of the Select Sires bull, G A R Prophet out of a dam from the Lakota cow family. Sells pasture exposed from 6/3/21 until 10/15/21 to Williams Treasure 603-411 whose EPDs are +11 +.6 +75 +144 +23. Breeding update sale day.

55

# GHS MATILDA 88

KESSLERS FRONTMAN R001

DOB 8/20/18

CONNEALY FRONT & CENTER

Tatt 88

JAIS OF CONANGA 9585

Reg. 19874546

YON FINAL ANSWER A489

GHS MATILDA 634

GHS MATILDA 463

CED	10
BW	.2
WW	55
YW	96
M	34

## COW

## STOVALL LIVESTOCK

Consignor: Her dam traces back to a very productive Lazy Acres cow family that works well in our herd and she was her dam's first calf. She is bred to the W H S High Weigh 44G bull for a February calf.

57

# TAYLOR BLACKBIRD 637

SITZ UPWARD 307R

DOB 10/3/16

M A F 14U3

Tatt 637

M A F 11512

Reg. 18573203

QUAKER HILL OBJECTIVE 3J15

QUAKER HILL 3J15 CHOICE 7Q3

CED	6
BW	1.5
WW	68
YW	117
M	26

QUAKER HILL CHOICE GRID 4G10

## COW

## TAYLOR ANGUS

Consignor: A granddaughter of the Genex bull Sitz Upward 307R out of the Quaker Hill cow family. She was pasture exposed from 6/27/21 until 10/15/21 to Williams Treasure 603-411 whose EPDs are +11 +.6 +75 +144 +23. Breeding update sale day.



**JINDRA ACCLAIM**

**60**

**WHC RITA ACCLAIM**

JINDRA 3RD DIMENSION  
JINDRA ACCLAIM  
JINDRA BLACKBIRD LASSY 1111  
SITZ UPWARD 307R  
WILLIAMS UP RITA 822  
WILLIAMS OBJECTIVE 1630

DOB 11/19/19  
 Tatt 1933  
 Reg. 19596374

CED	5
BW	2.0
WW	76
YW	149
M	37

**COW**

Consignor: **WINDY HILL FARM**

WHC Rita Acclaim is a daughter of Jindra Acclaim and granddaughter of Genex Masterpiece sire, Sitz Upward 307R. A great opportunity here to own a Big stout heifer that is bred to BJ Surpass and due on 4/2/22. 12 EPD's in the top 10% of the breed. 300\$C with +37 Milk and 149 YW! This is a great package and one you will not want miss out on.

**58**

**WB BLACKCAP H572**

BASIN PAYWEIGHT 1682  
DEER VALLEY GROWTH FUND  
DEER VALLEY RITA 36113  
CONNELY ONWARD  
DEER VALLEY BLACKCAP 8972  
KAHN BLACKCAP M31

DOB 11/10/20  
 Tatt H572  
 Reg. 19875566

CED	6
BW	2.6
WW	80
YW	142
M	22

**COW**

Consignor: **WALKERS BRANCH ANGUS**

H572 is a beautifully designed Growth Fund heifer out of a highly productive Onward daughter, Deer Valley Blackcap 8972. H572 adds power with EPDs in the 5% for WW and YW.



**DEER VALLEY GROWTH FUND**

**59**

**WILSON EML ESTER H118**

CONNELY CONFIDENCE PLUS  
CONNELY EMERALD  
JACE OF CONANGA 6571  
SITZ UPWARD 307R  
CHIMNEY TOP UPW ESTHER B12  
SHAMROCK VALE OT26 9039

DOB 5/5/20  
 Tatt H18  
 Reg. 19724569

CED	12
BW	-.1
WW	60
YW	100
M	17

**COW**

Consignor: **WINDY HILL FARM**

A granddaughter of the Genex Masterpiece sire, Sitz Upward 307R. Very attractive young open heifer that is ready to be bred to the bull of your choice. Out of the very popular Connealy Emerald Bull. Double Digit Calving ease and negative BW

**61**

**WHC ASH LADY 1929**

G A R EARLY BIRD  
G A R ASHLAND  
CHAIR ROCK AMBUSH 1018  
G A R MOMENTUM  
G A R MOMENTUM N1027  
G A R PROPHET F495

DOB 10/11/19  
 Tatt 1929  
 Reg. 19555722

CED	10
BW	.7
WW	61
YW	104
M	20

**COW**

Consignor: **WINDY HILL FARM**

Straight out of the Gardiner program! A thick moderate heifer that will not make you wait long to start earning on your investment. She is due on 11/16/21 to EWA Peyton. She is out of the popular Ashland bull and has a marbling EPD of 1.32. If you like High Marbling and thick cattle, she is the one.

**ONLINE BIDDING**



**Pre-Registration & Pre-Approval Required**

**Contact Aaron Ray Tompkins  
336.363.4639**

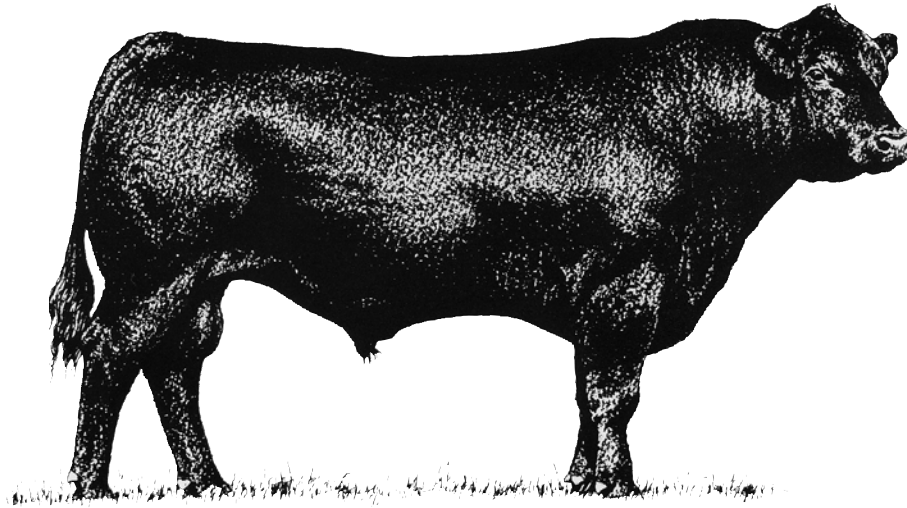
**LIVE INTERNET BIDDING AT  
[www.cowbuyer.com](http://www.cowbuyer.com)**

- View/bid online in Real Time
- **Registration is required.** Please register at least one (1) hour prior to sale time at [www.cowbuyer.com](http://www.cowbuyer.com)
- High Speed Internet is required. Slower speed will not permit you to bid and keep pace in real time.
- Terms: Purchasing online constitutes a legal contract and promise for payment of purchases. All purchases must be paid within ten (10) days of sale date and prior to load out or delivery of cattle purchased.
- Cowbuyer LLC is a service provider and is not responsible for the activity or inactivity of any technology, internet connection at the sale site or connection and technology of the bidders.
- No App required on mobile devices.

**Questions please contact:**

**Aaron Ray Tompkins – 336-363-4639**

# SOUTHWEST VIRGINIA'S FINEST ANGUS SALE

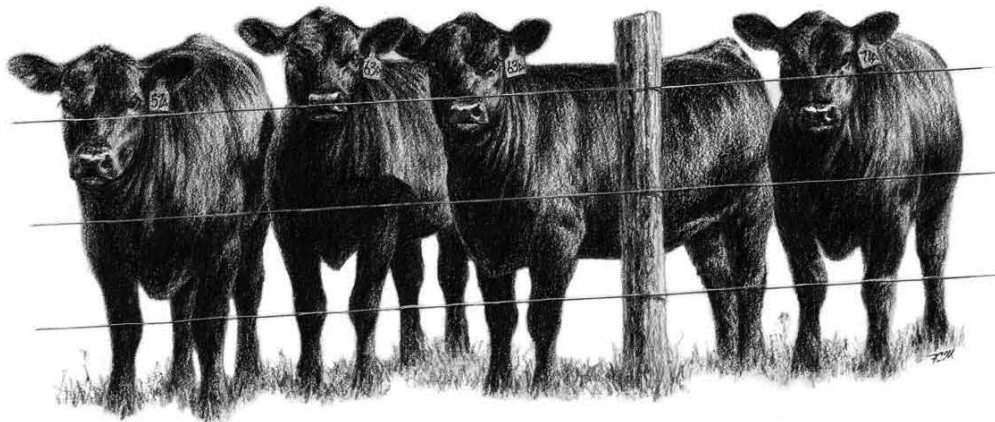


**SATURDAY, DECEMBER 4, 2021**

*12 noon • Washington County Fairgrounds*

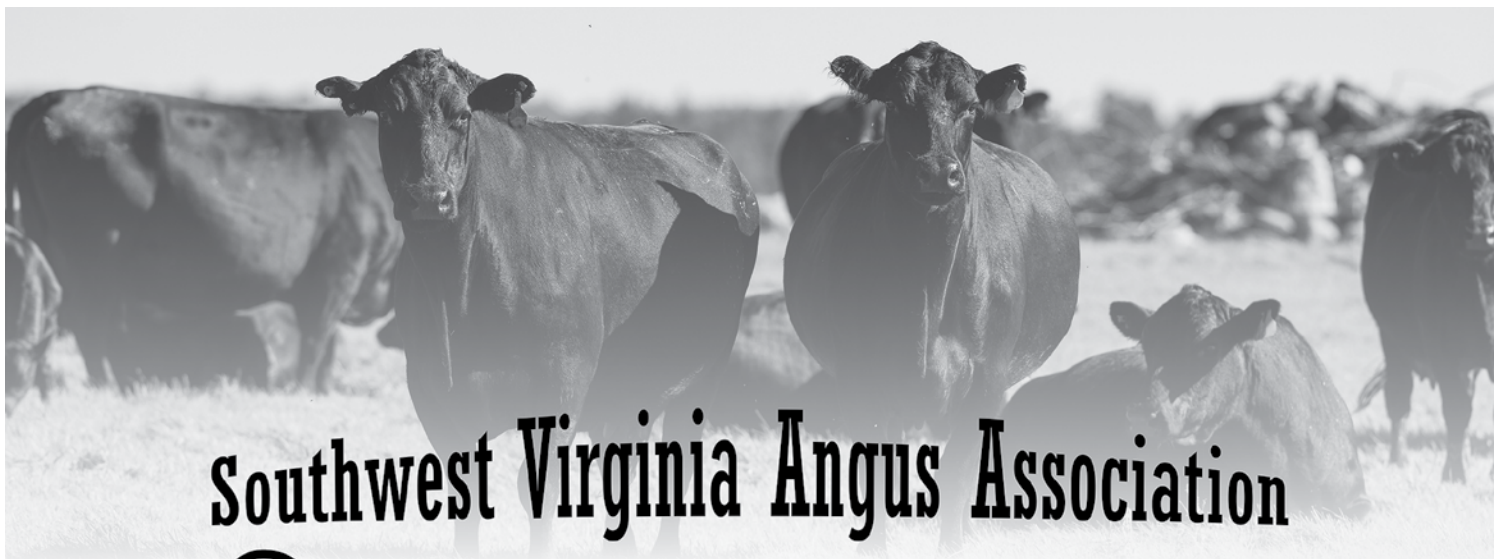
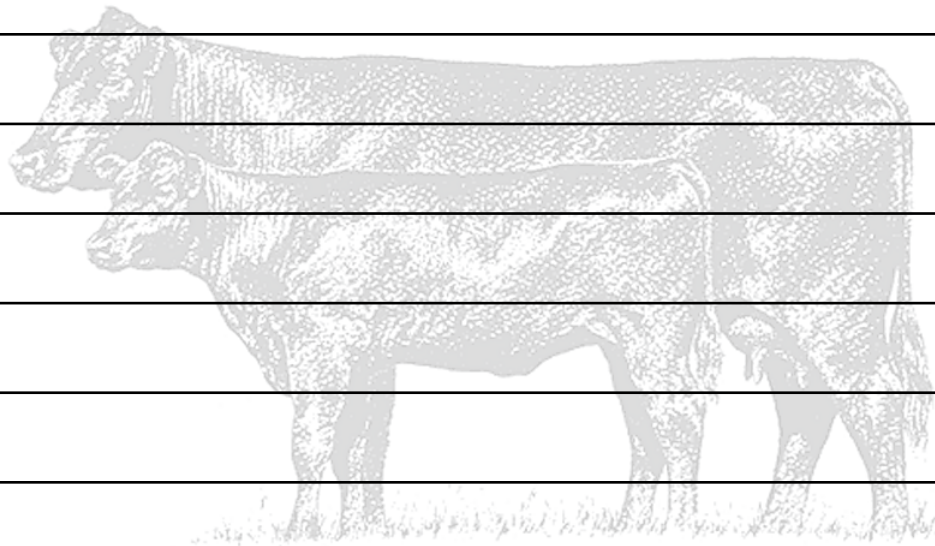
*Abingdon, VA*

*Selling Performance Tested Bulls & Registered Females*





# Notes



## Southwest Virginia Angus Association



Annual Sales in  
April, October, & December

Visit our Website:

[www.swvaangus.org](http://www.swvaangus.org)

