

**LADYS-MANOR ALLANAS DORI-ET EX-94 EEEEE 2E**  
3RD DAM OF LOT 115

*3rd-13th Dams*

**Ladys-Manor Allanas Dori-ET EX-94 EEEEE 2E**

4-10 2x 365d 25790 4.2 1073 3.4 882

3-05 2x 365d 25710 4.4 1131 3.5 901

• 1st 4-Yr-Old & HM Grand MD Spring Show 2012

• 1st Aged Cow MD Spring Show 2014

**Ms Durchan Lady Allana-ET EX-95 EX-95-MS \*TV**

3-07 2x 365d 40850 4.4 1793 3.1 1272

Life: 1351d 126420 4.2 5362 3.4 4305

• Unanimous All-American Milking Yearling 2007

• Int Champion Eastern Fall/Nat 2009

**Coldsprings Dur Chan 109-ET EX-95 2E DOM**

6-04 2x 365d 41850 4.3 1784 3.1 1292

Life: 1423d 130510 3.6 4695 3.1 4087

• Res All-American Aged Cow 2007

• All-American 4-Year-Old 2004

**C Bermaska Starbuck Chancel VG-89 EEVE DOM**

2-07 2x 365d 28400 4.3 1230 3.5 999

• All-American Senior 2-Year-Old 1992

**Danaco Enhancer Cheryl VG-87-CAN**

7-05 2x 305d 21462 4.8 1021 3.5 743

Life: 5 Lacs 106409 4.8 5148 3.6 3871

**Danaco Apache Chanda VG-88 VEEV**

4-11 2x 322d 19160 4.3 829 3.5 670

**Danaco Elevation Candace VG-86 DOM**

7-08 2x 365d 27681 3.8 1052 3.1 851

Life: 2564d 185599 3.7 6834

**Davis-Farm Maple Cindy EX-90 GMD**

5-03 2x 365d 23849 3.7 871

**Davis-Farm Heritage Candace EX-90 EEV**

2-06 2x 305d 12060 3.7 445

**Davis-Farm Model Lena VG-85**

4-02 2x 305d 14060 4.1 582

**Maview Candace Pilot EX-91 VEEE 3E**

Life: 3139d 151504 3.9 5825

115

NICK RAGGI  
443-762-8338

**DALMAR WILSON DENA**

840003144373744 99%RHA-I \*TR \*TC \*TL

Born: December 8, 2017 • Herd No. 27

GTPI +2.38T 2.03UDC +1.22FLC

Fresh: August 25, 2021

2nd Lactation in untested herd 1st lactation

“Fancy young cow!”

*Full sister to Dori*

**Ladys-Manor Allanas Dora EX-94 2E DOM**

**Vieuxsaule Wilson-ET**

109537169 99%RHA-I \*TR \*TP \*TY \*TV \*TL

PTA -1090M -53F -27P 97R 8/21

PTA -1.1PL 2.64SCS -3.0DPR 3.9%DCE

PTA +2.71T +2.30UDC +1.67FLC 95R 8/21

GTPI +1691G

**Goshens Archrival 4293-ET**

840003133184265 Very Good-85 VG-MS @ 2-09

**Eclipse Atwoods Archrival-ET**

1786521

PTA -748M -13F -27P 99R 8/21

PTA +2.48T +1.73UDC +.91FLC GTPI +1650G

**Rag-Mer Shotgun Della**

142643208 Good Plus-82 VG-MS @ 2-09

2-11 3x 305d 23180 4.3 987 3.2 752

2-00 3x 286d 19860 3.8 746 3.2 630

*Maternal sister to Della*

**Rag-Mer Dorcy Dinora-ET VG-87 DOM**



RO-MEYER PATTIE LEE-ET EX-92 3E GMD  
3RD DAM OF LOT 116

# 116

STEVEN MEYERS  
ST. THOMAS, PA 17252  
717-369-4910

## RO-MEYER UNION 4169

840003138042787 99%RHA-I VG-88 VG-MS  
Born: January 8, 2017 • Herd No. 4169  
3-04 2x 314d 29080 4.1 1192 3.1 894  
2-02 2x 305d 24140 4.1 979 3.1 745  
Fresh: July 14, 2021  
4-06 2x 45d 3589 4.8 174 2.8 100 RIP  
Milking: 99# 4.6F 2.5P SCC 13,000

### Our-Favorite Union 142-ET

142877974 99%RHA-I \*TR \*TP \*TY \*TV  
PTA -1161M +10F -14P 98R 8/21  
PTA +.1PL 2.59SCS -4.6DPR 4.2%DCE  
PTA +2.36T +1.82UDC +1.63FLC 96R 8/21  
GTPI +1994G

### Ro-Meyer Explode Pat 3770

72304540 Very Good-88  
4-07 2x 365d 32660 3.7 1210 3.0 965  
5-11 2x 365d 31190 3.9 1226 2.8 878  
3-07 2x 306d 30970 3.9 1200 2.9 885  
2-01 2x 365d 30540 3.6 1087 3.0 904  
Life: 1591d 134240 3.8 5060 2.9 3911

### Wabash-Way Explode-ET

138905680 Very Good-88 \*TY \*TV \*TL  
PTA +326M -28F -7P 99R 8/21  
PTA +1.07T +.38UDC -.30FLC GTPI +1743G

### Ro-Meyer Aftershock 3414-ET

69414911 Very Good-85  
3-01 2x 359d 34620 3.6 1255 3.0 1029  
2-01 2x 338d 31650 3.2 1000 2.8 881  
4-03 2x 365d 31320 3.3 1043 2.8 865  
Life: 1226d 107320 3.4 3640 2.8 3036

### 3rd Dam

#### Ro-Meyer Pattie Lee-ET EX-92 EEVVE 3E GMD

5-09 2x 365d 35860 4.3 1540 3.2 1151  
Life: 2334d 182560 4.0 7325 3.2 5787

### 4th Dam

#### Ms Brigeen Patsy Charles-ET EX-91 EEEEE 2E

5-01 2x 365d 29720 4.0 1191 3.2 948  
3-04 2x 365d 23880 4.3 1037 3.4 810

### 5th-13th Dams

#### Brigeen Black Papoose-ET EX-90 2E DOM

3-08 2x 365d 27610 3.8 1043 3.3 914  
Life: 2097d 132010 3.8 5021 3.4 4511

#### C Hanoverhill M Papoose-ET EX-94 3E EEEE DOM

3-04 2x 365d 27340 4.1 1115 3.7 1019  
Life: 1833d 131450 4.6 6128 3.8 5060

#### Sleepy-Hollow Astro Mi Papoose EX-92 2E GMD

4-02 2x 365d 27410 4.6 1273  
Life: 1528d 100490 4.4 4402

#### Sleepy-Hollow Marq I Papoose EX-91 GMD

Life: 2775d 162535 4.4 7088

#### Sleepy-Hollow Ivan Papoose VG-86 GMD

Life: 2092d 111740 4.3 4781

#### Sleepy Hollow Sen Papoose VG-88 VEVV

Life: 1907d 109280 3.7 4077

#### Sleepy Hollow Grand Papoose VG-85 GMD

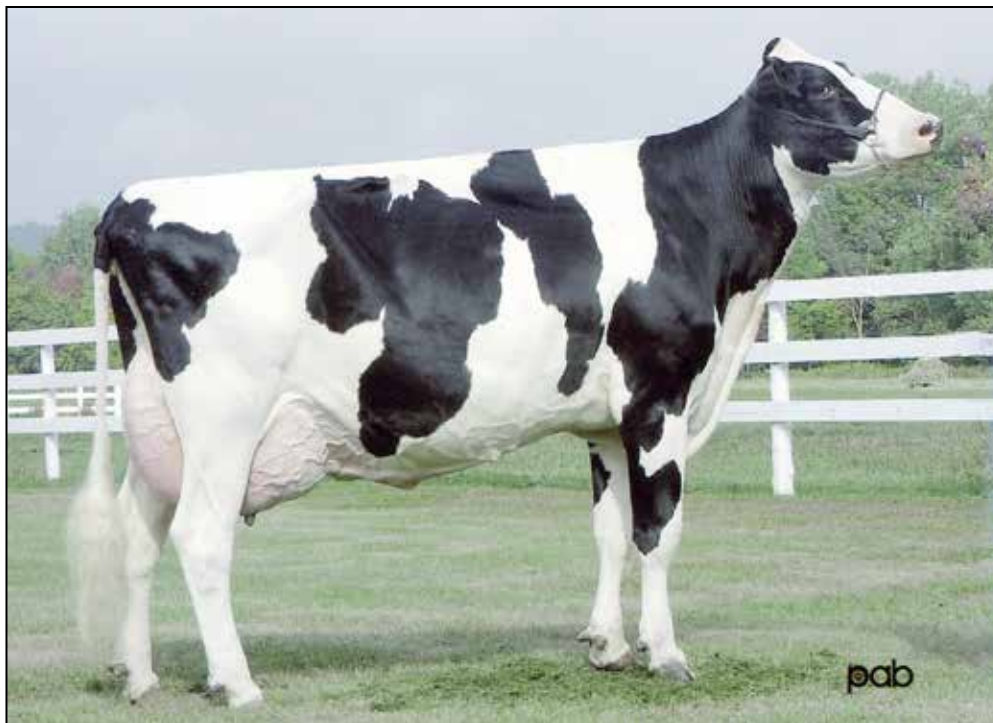
Life: 2324d 116481 4.2 4830

#### Skokie Roburke Papoose VG-87 GMD

Life: 2756d 130927 3.9 5007

#### Skokie Double Princess Papoose EX-90 GMD

3-10 3x 365d 19108 4.3 816



**FRALEY JED GLAMOUR EX-94 EEEEE 2E**  
**MATERNAL SISTER TO 3RD DAM OF LOT 118**

# 118

MEYERS BROS. DAIRY  
 ST. THOMAS, PA 17252  
 717-369-4910

## RO-MEYER ARMANI 4155

840003138042773 Good Plus-81 @ 3-06  
 Born: December 7, 2016 • Herd No. 4155  
 2-11 2x 365d 25290 4.9 1192 3.7 931  
 1-11 2x 319d 19620 4.4 857 3.7 727  
 4-07 2x 47d 3933 4.9 196 3.0 117 RIP  
 Fresh: July 12, 2021  
 Milking: 103# 3.9F 2.9P SCC 13,000

*Maternal sister to Georgie Gibson*

**Fra-Ley Jed Glamour EX-94 EEEEE 2E**  
 6-03 2x 365d 40640 3.8 1525 2.9 1188  
 Life: 2816d 226250 4.0 8962 3.1 7120  
 • Res All-American Sr 2-Yr-Old Cow 1997  
 • 2nd Sr 2-Yr-Old Cow International Show 1997

## Mr Apple Armani-ET

68571374 Excellent-90 \*RC \*CD \*TP \*TY  
 PTA -1795M +14F -15P 99R 8/21  
 PTA -1.8PL 2.83SCS +1.4DPR 2.3%DCE  
 PTA +.97T +1.50UDC +1.49FLC 99R 8/21  
 GTPI +2046G

## Ro-Meyer Skybuck 3945

840003126540770 Good Plus-82  
 2-00 2x 365d 22840 3.5 807 3.1 703  
 4-02 2x 334d 22570 3.4 758 3.3 734  
 3-03 2x 323d 22350 2.9 659 3.0 681

## Hanoverhill Skybuck

384550C Excellent-CAN  
 PTA -2222M -55F -55P 99R 8/21  
 PTA -.88T -2.46UDC +.94FLC GTPI +1312G

## Ro-Meyer Emph Geo 3535-ET

70332416 Good Plus-81  
 5-08 2x 310d 33730 2.8 933 2.8 945  
 4-08 2x 299d 31990 2.6 844 2.8 885  
 3-05 2x 365d 30010 3.0 886 2.8 845  
 2-04 2x 334d 28510 3.3 946 3.0 863  
 Life: 1411d 129970 2.9 3806 2.9 3713

*3rd Dam*

**Ro-Meyer Georgie Gibson-ET EX-91 EX-MS 2E**  
 3-04 2x 365d 31410 4.3 1357 3.3 1030  
 Life: 2107d 139620 4.3 6066 3.4 4690

*4th Dam*

**Chris-Gold S-Buck Glitz-ET EX-91 EEEEE 3E DOM**  
 4-02 2x 365d 35570 4.4 1560 3.0 1082  
 Life: 1843d 120501 4.2 5090 3.1 3794

*5th Dam*

**Cove-Run Reliance Gloria EX-91 2E DOM**  
 5-02 2x 305d 28230 3.7 1056 3.3 941

*6th Dam*

**Cove-Run Gladys A B Ginn EX-91 EEEE 2E**  
 3-10 2x 365d 28490 3.9 1098 3.5 990  
 Life: 2217d 126900 3.8 4893 3.4 4273