

Meadows Creek 11th Annual Arcadia Black & White Bull Sale



Selling 78 2-year-old Bulls

Online bidding
available at
CowBuyer.com



Along With ...
**Collins Farms &
Candler Cattle Company**

Invite you to attend the Black & White Bull Sale

Friday, October 22nd at 1:00 pm EST

39 Charolais • 1 Charolais x Angus • 26 Angus

• 9 SimAngus • 3 Brahman

Arcadia Stockyard, Arcadia, FL • (Hwy. 17 – 7 Miles N. of Arcadia)

For more information Contact: Carl McKettrick Jr. 863-444-1431

**Meadows Creek Farm
Charolais, Angus, SimAngus
Richard & Glenn Meadows
334-797-4870**

**Collins Farms
Angus Bulls
Jim Collins
478-957-6572**

**Candler Cattle Company
Brahman
Danny Candler
863-610-0001**

For catalogs and more information, please visit www.meadowscreekfarm.com

MEADOWS CREEK FARM CHAROLAIS

1		MC SCF Wind 9254 P			P Charolais	
Meadows Creek Farm-AL						
Born:		11/8/19	Tattoo	S9254	Reg#	M947373
Sire:		OHF Wind 4827 ET			Reg#	EM687985
MGS:		LT Stagecoach 8068 PLD			Reg#	M760644
*watch disposition						
BWT	WWT	BW	WW	YW	M	SC
74	665	-1.4	60	103	25	40
Adj WW/Ratio: 120		30%	35%	50%	35%	



2		MC SCF Stagecoach 9737 P			P Charolais	
Meadows Creek Farm-AL						
Born:		10/17/19	Tattoo	S9737	Reg#	M947386
Sire:		SCF Steele Stagecoach 5305 F			Reg#	M882880
MGS:		Bar H Impress 915			Reg#	M783316
BWT	WWT	BW	WW	YW	M	SC
80	580	-1.0	48	90	27	37
Adj WW/Ratio: 104		35%	85%	85%	20%	



3		MC SCF Stagecoach 9711 P TW			P Charolais	
Meadows Creek Farm-AL						
Born:		10/7/19	Tattoo	S9711	Reg#	M947353
Sire:		SCF Steele Stagecoach 5305P			Reg#	M882880
MGS:		Faraway Reuben 20Y			Reg#	M797426
BWT	WWT	BW	WW	YW	M	SC
81	570	-0.8	48	91	24	37
Adj WW/Ratio: 100		40%	85%	80%	35%	



4		MC SCF Stagecoach 9713 P			P Charolais	
Meadows Creek Farm-AL						
Born:		10/7/19	Tattoo	S9713	Reg#	M947354
Sire:		SCF Steele Stagecoach 5305P			Reg#	M882880
MGS:		SCF Steele Duke 7301 P			Reg#	M763853
BWT	WWT	BW	WW	YW	M	SC
72	472	-2.4	32	73	21	37
Adj WW/Ratio: 77		15%	100%	100%	65%	



5		MC SCF Robotics 9120 P			P Charolais	
Meadows Creek Farm-AL						
Born: 10/10/19		Tattoo S9120		Reg# M947404		
Sire: MC Robotics 385		Reg# M863483				
MGS: Cooley Lambeer 1410R		Reg# M698840				
BWT	WWT	BW	WW	YW	M	SC
76	538	-0.4	52	88	26	34
Adj WW/Ratio: 100		45%	75%	85%	30%	



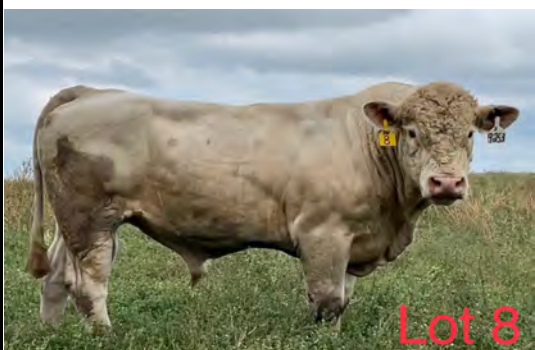
6		MC SCF Wind 9246 P			P Charolais	
Meadows Creek Farm-AL						
Born: 10/25/19		Tattoo S9246		Reg# M947358		
Sire: OHF Wind 4827 ET		Reg# EM856879				
MGS: SCF Steele Razor 4321		Reg# M713507				
BWT	WWT	BW	WW	YW	M	SC
75	532	-0.6	49	83	14	39
Adj WW/Ratio: 96		45%	85%	95%	95%	



7		MC SCF Robotics 9133 P			P Charolais	
Meadows Creek Farm-AL						
Born: 10/15/19		Tattoo S9133		Reg# M947436		
Sire: MC Robotics 385		Reg# M863483				
MGS: WCR Sir Duke 7340P		Reg# M745064				
BWT	WWT	BW	WW	YW	M	SC
81	724	-0.7	67	108	30	35
Adj WW/Ratio: 118		40%	15%	35%	9%	



8		MC SCF Wind 9253 P			P Charolais	
Meadows Creek Farm-AL						
Born: 11/5/19		Tattoo S9253		Reg# M947376		
Sire: OHF Wind 4827 ET		Reg# EM856879				
MGS: Lowery3		Reg# M838864				
BWT	WWT	BW	WW	YW	M	SC
76	547	-1.5	51	90	19	38
Adj WW/Ratio: 98		30%	75%	85%	75%	



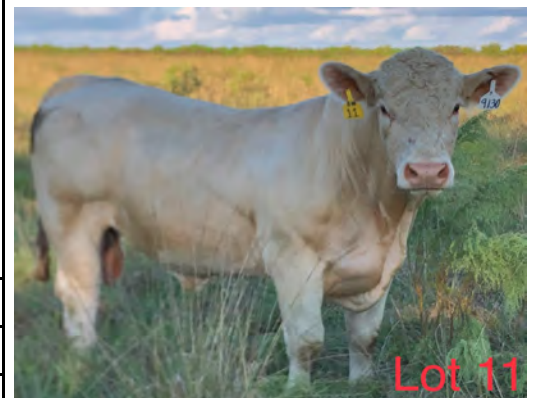
9		MC SCF Robotics 9105 P			P Charolais	
Meadows Creek Farm-AL						
Born: 10/1/19		Tattoo S9105		Reg# M947377		
Sire: MC Robotics 385		Reg# M863483				
MGS: WCR Sir Duke 7340		Reg# M745064				
BWT	WWT	BW	WW	YW	M	SC
78	507	-1.2	53	96	27	37
Adj WW/Ratio: 91		30%	70%	70%	20%	



10		MC SH Sir Walt 928			P Charolais	
Meadows Creek Farm-AL						
Born: 10/27/19		Tattoo SH928		Reg# M956880		
Sire: Yon Rapid Fire D29		Reg# M9865720				
MGS: MD Silver Smoke U1515		Reg# M769342				
BWT	WWT	BW	WW	YW	M	SC
75		0.1	49	86	14	35
Adj WW/Ratio:		55%	85%	90%	95%	



11		MC SCF Robotics 9130 P			P Charolais	
Meadows Creek Farm-AL						
Born: 10/13/19		Tattoo S9130		Reg# M947362		
Sire: MC Robotics 385		Reg# M863483				
MGS: SCF Steele Grazer 4321P		Reg# M713507				
BWT	WWT	BW	WW	YW	M	SC
77	524	-0.7	51	94	27	36
Adj WW/Ratio: 94		40%	75%	75%	25%	



12		MC SCF Stagecoach 9725 P			P Charolais	
Meadows Creek Farm-AL						
Born: 10/11/19		Tattoo S9725		Reg# M947359		
Sire: SCF Steele Stagecoach 5305 F		Reg# M882880				
MGS: Welcome Grove Royal 137		Reg# M796369				
BWT	WWT	BW	WW	YW	M	SC
77	632	-1.2	49	96	25	37
Adj WW/Ratio: 103		30%	85%	70%	35%	



13	MC SCF Wind 9242 P	P Charolais				
Meadows Creek Farm-AL						
Born:	10/22/19	Tattoo S9242 Reg# M947355				
Sire:	OHF Wind 4827 ET	Reg# EM856879				
MGS:	M6 Grid Maker 104 PET	Reg# EM633377				
*watch disposition						
BWT	WWT	BW	WW	YW	M	SC
79	492	-0.1	47	89	20	35
Adj WW/Ratio: 89		55%	90%	85%	70%	



14	MC SCF Stagecoach 9721 P	P Charolais				
Meadows Creek Farm-AL						
Born:	10/10/19	Tattoo S9721 Reg# M947380				
Sire:	SCF Steele Stagecoach 5305 F	Reg# M882880				
MGS:	NC Chisolm R8504 P	Reg# M759039				
BWT	WWT	BW	WW	YW	M	SC
76	497	-0.3	35	74	19	38
Adj WW/Ratio: 81		50%	100%	100%	75%	



15	MC SCF Wind 9260 P	P Charolais				
Meadows Creek Farm-AL						
Born:	11/25/19	Tattoo S9260 Reg# M947360				
Sire:	OHF Wind 4827 ET	Reg# EM856879				
MGS:	NF RL Rocco 3030 PLD	Reg# M673743				
BWT	WWT	BW	WW	YW	M	SC
71	544	-1.6	41	75	14	37
Adj WW/Ratio: 88		25%	100%	100%	95%	



16	MC SCF Robotics 9156 P	P Charolais				
Meadows Creek Farm-AL						
Born:	11/11/19	Tattoo S9156 Reg# M947382				
Sire:	MC Robotics 385	Reg# M863483				
MGS:	CC Sir Duke 805 P	Reg# M756099				
BWT	WWT	BW	WW	YW	M	SC
80	547	-0.7	51	93	29	36
Adj WW/Ratio: 98		40%	75%	80%	15%	



17	MC Rio Maker 949	P Charolais				
Meadows Creek Farm-AL						
Born:	9/24/20	Tattoo 949	Reg# M956966			
Sire:	Southern Rio Maker 38045	Reg# EM844674				
MGS:	OW Sandcreek S179	Reg# M731537				
*watch disposition						
BWT	WWT	BW	WW	YW	M	SC
85		-0.7	54	97	27	35
Adj WW/Ratio:		45%	65%	65%	25%	



18	MC SCF Robotics 9140 P	P Charolais				
Meadows Creek Farm-AL						
Born:	10/19/19	Tattoo S9140	Reg# M947350			
Sire:	MC Robotics 385	Reg# M863483				
MGS:	CC Sir Duke 805 P	Reg# M756099				
BWT	WWT	BW	WW	YW	M	SC
72	566	-1.9	47	86	30	38
Adj WW/Ratio: 92		20%	90%	90%	8%	



19	MC SCF Stagecoach 9761 P	P Charolais				
Meadows Creek Farm-AL						
Born:	11/30/19	Tattoo S9761	Reg# M947361			
Sire:	SCF Steele Stagecoah 5305 P	Reg# M882880				
MGS:	MC Robotics 385	Reg# M863483				
BWT	WWT	BW	WW	YW	M	SC
78	608	-1.4	55	100	28	35
Adj WW/Ratio: 109		30%	60%	60%	15%	



20	MC Rio Legend 920	P Charolais				
Meadows Creek Farm-AL						
Born:	10/1/19	Tattoo 920	Reg# M956962			
Sire:	Southern Legend 38027	Reg# EM844490				
MGS:	HEP Senor Rio 36N	Reg# M679261				
BWT	WWT	BW	WW	YW	M	SC
86		1.6	53	100	23	34
Adj WW/Ratio:		85%	70%	60%	45%	



21 MC Legend 914		P Charolais				
Meadows Creek Farm-AL						
Born:	10/31/19	Tattoo	914	Reg#	M956960	
Sire:	Southern Legend 38027		Reg#	EM844490		
MGS:	MD Cigar U1098		Reg#	M768514		
BWT	WWT	BW	WW	YW	M	SC
85		1.8	55	96	21	33
Adj WW/Ratio:		90%	60%	70%	60%	



22 MC SH Sir Thompson 925		P Charolais				
Meadows Creek Farm-AL						
Born:	12/6/19	Tattoo	SH925	Reg#	M956881	
Sire:	Yon Rapid Fire D29		Reg#	M865720		
MGS:	LR Montana 708		Reg#	M691434		
BWT	WWT	BW	WW	YW	M	SC
75		0.0	51	92	20	39
Adj WW/Ratio:		55%	75%	80%	65%	



23 MC Aubie 934		P Charolais				
Meadows Creek Farm-AL						
Born:	10/15/19	Tattoo	934	Reg#	M956964	
Sire:	DCF Roll Tide 504C		Reg#	M863581		
MGS:	VCR Sir Duke 914		Reg#	M297007		
BWT	WWT	BW	WW	YW	M	SC
71		-0.4	56	103	17	34
Adj WW/Ratio:		45%	55%	50%	85%	



24 MC War Eagle 932		P Charolais				
Meadows Creek Farm-AL						
Born:	9/25/19	Tattoo	932	Reg#	M956963	
Sire:	DCF Roll Tide 504C		Reg#	M863581		
MGS:	LR Montana 708		Reg#	M691434		
BWT	WWT	BW	WW	YW	M	SC
80		0.3	51	93	19	37
Adj WW/Ratio:		65%	75%	75%	75%	



25	MC BF Wrangler B94	P Charolais				
Meadows Creek Farm-AL						
Born:	9/12/19	Tattoo B94 Reg# M935228				
Sire:	MC Wrangler 4149	Reg# M879864				
MGS:	FSF Duke of Five Star 39	Reg# M748542				
*stub tail						
BWT	WWT	BW	WW	YW	M	SC
80		-0.3	64	104	26	37
Adj WW/Ratio:		50%	25%	50%	30%	



26	MC SH Sir Foster 930	P Charolais				
Meadows Creek Farm-AL						
Born:	12/6/19	Tattoo SH930 Reg# M956882				
Sire:	Yon Rapid Fire D29	Reg# M865720				
MGS:	MD Cigar U1098	Reg# M768514				
*watch disposition						
BWT	WWT	BW	WW	YW	M	SC
70		-0.3	52	91	17	33
Adj WW/Ratio:		50%	70%	80%	85%	



27	MC SCF Stagecoach 9749 P	P Charolais				
Meadows Creek Farm-AL						
Born:	10/29/19	Tattoo S9749 Reg# M947389				
Sire:	SCF Steele Stagecoach 5305 F	Reg# M882880				
MGS:	CC Sir Duke 805 P	Reg# M756099				
BWT	WWT	BW	WW	YW	M	SC
76	518	-1.5	37	79	32	35
Adj WW/Ratio: 93		30%	100%	95%	5%	



28	MC SH Sir Cook 926	P Charolais				
Meadows Creek Farm-AL						
Born:	11/24/19	Tattoo SH926 Reg# M956883				
Sire:	Yon Rapid Fire D29	Reg# M865720				
MGS:	BJR Super Silver 719 ET P	Reg# EM741313				
BWT	WWT	BW	WW	YW	M	SC
76		-0.7	54	98	19	34
Adj WW/Ratio:		45%	65%	65%	75%	



29		MC SCF Wind 9244 P			P Charolais	
Meadows Creek Farm-AL						
Born: 10/23/19		Tattoo S9244		Reg# M947393		
Sire: OHF Wind 4827 ET				Reg# EM856879		
MGS: CC Vendetta 467 P				Reg# M679993		
*knot on neck						
BWT	WWT	BW	WW	YW	M	SC
79	536	-0.6	44	77	18	38
Adj WW/Ratio: 87		45%	95%	100%	80%	



30		MC Kit Carson 950			P Charolais	
Meadows Creek Farm-AL						
Born: 11/1/19		Tattoo 950		Reg# M956967		
Sire: Southern Rio Maker 38045				Reg# EM844674		
MGS: Orr's Warrior 340P				Reg# M679733		
BWT	WWT	BW	WW	YW	M	SC
81		0.6	54	97	23	35
Adj WW/Ratio:		70%	65%	65%	50%	



31		MC Apache Rock 902			P Charolais	
Meadows Creek Farm-AL						
Born: 10/30/19		Tattoo 902		Reg# M956957		
Sire: Ace Orr Apache 705P				Reg# M908403		
MGS: LOF White Rock 46Z				Reg# M825838		
BWT	WWT	BW	WW	YW	M	SC
81		0.5	62	109	25	34
Adj WW/Ratio:		65%	30%	35%	35%	



32		MC SCF Stagecoach 9745 P			P Charolais	
Meadows Creek Farm-AL						
Born: 10/25/19		Tattoo S9745		Reg# M947357		
Sire: SCF Steele Stagecoach 5305 F				Reg# M882880		
MGS: CC Sir Duke 805 P				Reg# M756099		
BWT	WWT	BW	WW	YW	M	SC
76	593	-2.9	40	80	27	34
Adj WW/Ratio: 96		15%	100%	95%	25%	



33	MC SCF Stagecoach 9763 P	P Charolais				
Meadows Creek Farm-AL						
Born:	12/13/19	Tattoo S9763 Reg# M947368				
Sire:	SCF Steele Stagecoach 5305 F	Reg# M882880				
MGS:	CC Sir Duke 805 P	Reg# M756099				
*watch disposition						
BWT	WWT	BW	WW	YW	M	SC
72	584	-3.2	45	85	28	35
Adj WW/Ratio:	105	9%	95%	90%	15%	



34	MC SCF Wind 9267 P	Scurs Charolais				
Meadows Creek Farm-AL						
Born:	1/31/20	Tattoo S9267 Reg# M947405				
Sire:	OHF Wind 4827 ET	Reg# EM856879				
MGS:	MC Nebraska 2115	Reg# M848133				
BWT	WWT	BW	WW	YW	M	SC
78	607	-1.4	50	86	19	38
Adj WW/Ratio:	100	30%	80%	90%	75%	



35	MC SCF Wind 9222 P	P Charolais				
Meadows Creek Farm-AL						
Born:	10/10/19	Tattoo S9222 Reg# M947356				
Sire:	OHF Wind 4827 ET	Reg# EM856879				
MGS:	CC Sir Duke 805 P	Reg# M756099				
BWT	WWT	BW	WW	YW	M	SC
76	608	-1.3	53	90	22	40
Adj WW/Ratio:	109	30%	70%	85%	50%	



36	MC Legend 918	Scurs Charolais				
Meadows Creek Farm-AL						
Born:	10/5/19	Tattoo 918 Reg# M956961				
Sire:	Southern Legend 38027	Reg# EM844490				
MGS:	MD Silver Smoke U1515	Reg# M769342				
BWT	WWT	BW	WW	YW	M	SC
80		0.6	55	96	20	34
Adj WW/Ratio:		70%	60%	70%	70%	



37 MC SH Sir Pitts 929 P Charolais Meadows Creek Farm-AL						
Born: 10/28/19 Tattoo SH929 Reg# M956879						
Sire: Yon Rapid Fire D29 Reg# M865720						
MGS: M6 Schurrtop 5226 Reg# M710002						
BWT	WWT	BW	WW	YW	M	SC
85		1.0	60	105	14	37
Adj WW/Ratio:		75%	40%	45%	95%	



38 MC Tiger 941 P Charolais Meadows Creek Farm-AL						
Born: 10/21/19 Tattoo 941 Reg# M956965						
Sire: DCF Roll Tide 504C Reg# M863581						
MGS: NF RL Rocco 3030 Reg# M673743						
*watch disposition						
BWT	WWT	BW	WW	YW	M	SC
80		0.2	51	92	19	37
Adj WW/Ratio:		60%	80%	80%	75%	



39 MC SCF Stagecoach 9750 P P Charolais Meadows Creek Farm-AL						
Born: 10/31/19 Tattoo S9750 Reg# M948868						
Sire: SCF Steele Stagecoach 5305 F Reg# M882880						
MGS: CC Sir Duke 805 P Reg# M756099						
BWT	WWT	BW	WW	YW	M	SC
		-1.9	42	85	29	34
Adj WW/Ratio:		25%	95%	90%	15%	



MEADOWS CREEK FARM CHAROLAIS X SIM ANGUS

40 Logan G9 1/2 CH 1/2 AN Meadows Creek Farm-AL						
Born: 10/4/19 Tattoo G9 Reg#						
Sire: Basin Payweight 1862 Reg# 2940865						
MGS: OW Sandcreek 2022 Reg# M812619						
*grey						
BWT	WWT	BW	WW	YW	M	SC
72	631					38
Adj WW/Ratio: 100						



MEADOWS CREEK FARM SIM-ANGUS

41 LGNF G21		5/8 SM 3/8 AN				
Meadows Creek Farm-AL						
Born:	12/12/19	Tattoo	G21	Reg#	3659939	
Sire:	HPF Optimizer A512		Reg#	2728015		
MGS:	MR NLC Upgrade U8676		Reg#	2474338		
*knot on jaw						
BWT	WWT	BW	WW	YW	M	SC
77	660	0.6	84.4	136.3	19.9	40
Adj WW/Ratio: 98		55%	20%	15%	75%	



42 VHB G26		5/8 SM 3/8 AN				
Meadows Creek Farm-AL						
Born:	8/22/19	Tattoo	G26	Reg#	3734586	
Sire:	Black Rock B105		Reg#	2963412		
MGS:	BF Stock Broker S11		Reg#	2337683		
BWT	WWT	BW	WW	YW	M	SC
49	519	1.6	67.9	106.6	24.9	38
Adj WW/Ratio:		75%	80%	70%	30%	



43 LLCC Pride G914		3/4 SM 1/4 AN				
Meadows Creek Farm-AL						
Born:	9/11/19	Tattoo	G914	Reg#	3717210	
Sire:	MR CCF C101		Reg#	3139308		
MGS:	M2C King Jewell 151Y		Reg#	2745206		
BWT	WWT	BW	WW	YW	M	SC
72	651	2.1	79.1	116	20.8	35
Adj WW/Ratio: 113		85%	35%	50%	70%	



44 VHB G46		5/8 SM 11/32 AN 1/32 MX				
Meadows Creek Farm-AL						
Born:	8/23/19	Tattoo	G46	Reg#	3734564	
Sire:	Black Rock B105		Reg#	2963412		
MGS:	M C C O EXT 065		Reg#	2188594		
BWT	WWT	BW	WW	YW	M	SC
71	522	2.5	70.8	107	25.6	34
Adj WW/Ratio: 97		90%	65%	70%	25%	



45	LGNF G15	3/4 SM 1/4 AN				
Meadows Creek Farm-AL						
Born:	11/13/19	Tattoo G15 Reg# 3659935				
Sire:	DFF Bismarck C488	Reg# 3096611				
MGS:	LMF Cruising	Reg# 2530545				
BWT	WWT	BW	WW	YW	M	SC
73	677	1.4	78.4	115.6	25.4	45
Adj WW/Ratio: 101		70%	35%	50%	30%	



46	LLCC Zeus G909	3/4 SM 1/4 AN				
Meadows Creek Farm-AL						
Born:	9/7/19	Tattoo G909 Reg# 3717207				
Sire:	MR CCF C101	Reg# 3139308				
MGS:	M2C King Jewell 151Y	Reg# 2745206				
*BWF; watch disposition						
BWT	WWT	BW	WW	YW	M	SC
74	599	2.5	82.7	122.3	23.3	38
Adj WW/Ratio: 103		90%	25%	35%	45%	



47	LLCC Locked-Up G924	5/8 SM 3/8 AN				
Meadows Creek Farm-AL						
Born:	10/1/19	Tattoo G924 Reg# 3717198				
Sire:	W/C Locked Up 2101B	Reg# 2900378				
MGS:	MR CCF C101	Reg# 3139308				
BWT	WWT	BW	WW	YW	M	SC
58	627	0.8	72.5	113.3	21.9	36
Adj WW/Ratio: 109		60%	60%	55%	60%	



48	LLCC Deacon G919	5/8 SM 3/8 AN				
Meadows Creek Farm-AL						
Born:	9/5/19	Tattoo G919 Reg# 3717202				
Sire:	MR CCF C101	Reg# 3139308				
MGS:	LLCC Joker B402	Reg# 2970926				
BWT	WWT	BW	WW	YW	M	SC
72	593	1.2	75	112.7	16.6	35
Adj WW/Ratio: 103		65%	50%	55%	95%	



MEADOWS CREEK FARM ANGUS

49		MC CSF Emulous 936			Angus	
Meadows Creek Farm-AL						
Born:	10/19/19	Tattoo:	936	Reg#:	19844809 (DDP)	
Sire:	CSF Chase 405			Reg#:	18371545	
MGS:	TRM EXT 608			Reg#:	15407667	
BWT	WWT	BW	WW	YW	M	SC
70	555	0.7	30	50	19	35
Adj WW/Ratio:		40%	95%	95%	90%	



50		MC CSF Emulous 939			Angus	
Meadows Creek Farm-AL						
Born:	10/22/19	Tattoo:	939	Reg#:	19844835 (DDP)	
Sire:	CSF Chase 405			Reg#:	18371545	
MGS:	CSF Chase 806			Reg#:	13333706	
BWT	WWT	BW	WW	YW	M	SC
68	564	1.1	28	46	17	32
Adj WW/Ratio:		50%	95%	95%	95%	



51		MC CSF Emulous 916			Angus	
Meadows Creek Farm-AL						
Born:	10/11/19	Tattoo:	916	Reg#:	19844799 (DDP)	
Sire:	CSF Chase 405			Reg#:	18371545	
MGS:	TRM Mountain Man 108			Reg#:	16960394	
BWT	WWT	BW	WW	YW	M	SC
62	590	-0.6	31	51	21	35
Adj WW/Ratio:		15%	95%	95%	80%	



52		MC CSF Emulous 929			Angus	
Meadows Creek Farm-AL						
Born:	10/16/19	Tattoo:	929	Reg#:	19844852 (DDP)	
Sire:	CSF Chase 405			Reg#:	18371545	
MGS:	TRM EXT Barbara 617			Reg#:	15407671	
BWT	WWT	BW	WW	YW	M	SC
77	740	2.1	36	59	19	36
Adj WW/Ratio:		70%	95%	95%	90%	



53 MC CSF Emulous 917		Angus				
Meadows Creek Farm-AL						
Born:	10/11/19	Tattoo	917	Reg#	19844837 (DDP)	
Sire:	MC BBC Prime Time 655	Reg#	18562920			
MGS:	TRM Mountain Man 114	Reg#	16960399			
BWT	WWT	BW	WW	YW	M	SC
63	552	0.1	33	59	20	36
Adj WW/Ratio:		25%	95%	95%	85%	



54 MC CSF Emulous 932		Angus				
Meadows Creek Farm-AL						
Born:	10/18/19	Tattoo	932	Reg#	19844853 (DDP)	
Sire:	CSF Chase 405	Reg#	18371545			
MGS:	TRM EXT 608	Reg#	15407667			
BWT	WWT	BW	WW	YW	M	SC
60	516	0.8	30	50	19	34
Adj WW/Ratio:		40%	95%	95%	90%	



55 MC CSF Emulous 935		Angus				
Meadows Creek Farm-AL						
Born:	10/19/19	Tattoo	935	Reg#	19844797 (DDP)	
Sire:	CSF Chase 405	Reg#	18371545			
MGS:	TRM Mountain Man 114	Reg#	16960399			
BWT	WWT	BW	WW	YW	M	SC
72	515	0.9	35	58	20	35
Adj WW/Ratio:		45%	95%	95%	85%	



56 MC CSF Emulous 915		Angus				
Meadows Creek Farm-AL						
Born:	10/10/19	Tattoo	915	Reg#	19844832 (DDP)	
Sire:	MC BBC Prime Time 655	Reg#	18562920			
MGS:	TRM Mountain Man 114	Reg#	16960399			
BWT	WWT	BW	WW	YW	M	SC
68	574	0.9	36	65	20.0	34
Adj WW/Ratio:		45%	95%	95%	85%	



COLLINS FARMS ANGUS

60 JSC Niagara's Object 915G		Angus				
Collins Farms-AL		CAB-Targeting the Brand				
Born:	9/30/19	Tattoo	915G	Reg#	20146165	
Sire:	SS Niagara Z29			Reg#	17287387	
MGS:	JSC Objective Retail 034 1362			Reg#	18081544	
BWT	WWT	BW	WW	YW	M	SC
58	621	-0.5	50	98	29	41
Adj WW/Ratio: 100		15%	80%	65%	25%	



61 JSC PF Pride's Boy 279		Angus				
Collins Farms-AL						
Born:	8/26/19	Tattoo	G279	Reg#	19680721	
Sire:	SydGen CC & 7			Reg#	15330743	
MGS:	SAV International			Reg#	17318795	
BWT	WWT	BW	WW	YW	M	SC
68	720	0.9	54	107	33	44
Adj WW/Ratio: 105		45%	65%	50%	10%	



62 JSC PF Reserve 329		Angus				
Collins Farms-AL						
Born:	9/1/19	Tattoo	G329	Reg#	19792446	
Sire:	VAR Reserve 111			Reg#	16916944	
MGS:	SydGen CC & 7			Reg#	15330743	
BWT	WWT	BW	WW	YW	M	SC
69	730	1.5	64	113	34	40
Adj WW/Ratio: 107		60%	35%	35%	10%	



63 JSC HF SureFire Capital 1902		Angus				
Collins Farms-AL		CAB-Targeting the Brand				
Born:	9/15/19	Tattoo	1902	Reg#	19617099	
Sire:	GAR Sure Fire			Reg#	19328461	
MGS:	Connealy Capitalist 028			Reg#	16752262	
BWT	WWT	BW	WW	YW	M	SC
70	532	1.5	62	104	28	44
Adj WW/Ratio: 85		60%	40%	55%	30%	



64	JSC HF SureFire EXT 1927	Angus				
	Collins Farms-AL	CAB-Targeting the Brand				
Born:	11/7/19	Tattoo 1927 Reg# 19617122				
Sire:	GAR Sure Fire	Reg# 17328461				
MGS:	Hayfields EXT 2-878 410 706	Reg# 16004789				
BWT	WWT	BW	WW	YW	M	SC
58	677	0.7	58	103	14	35
Adj WW/Ratio:	115	40%	55%	55%	20%	



65	JSC HF SureFire Big Eye 1926	Angus				
	Collins Farms-AL	CAB-Targeting the Brand				
Born:	11/7/19	Tattoo 1926 Reg# 19617121				
Sire:	GAR Sure Fire	Reg# 17328461				
MGS:	ALC Big Eye D09N	Reg# 14560689				
BWT	WWT	BW	WW	YW	M	SC
60	757	2.4	50	83	32	43
Adj WW/Ratio:	129	75%	80%	85%	15%	



66	SC Blackstone 928	Angus				
	Collins Farms-AL					
Born:	9/16/19	Tattoo G928 Reg# 19673095				
Sire:	Byergo/Double GG Blackstone	Reg# 18842383				
MGS:	Plattemere Weigh Up K360	Reg# 16692552				
BWT	WWT	BW	WW	YW	M	SC
60	757	0.3	67	124	35	43
Adj WW/Ratio:	129	30%	30%	20%	5%	



67	SC Blackstone 918	Angus				
	Collins Farms-AL					
Born:	9/11/19	Tattoo G918 Reg# 19673101				
Sire:	Byergo/Double GG Blackstone	Reg# 18842383				
MGS:	WR Journey - 1X74	Reg# 16924332				
BWT	WWT	BW	WW	YW	M	SC
76	700	2.2	64	122	35	40
Adj WW/Ratio:	101	75%	35%	25%	5%	



68	JSC Absolute Classic 993G	Angus				
Collins Farms-AL						
Born:	11/3/19	Tattoo 993G Reg# 19829934				
Sire:	SRF Salute Absolute S722	Reg# 18985029				
MGS:	BC Classic 385-7	Reg# 15748956				
BWT	WWT	BW	WW	YW	M	SC
65	762	-0.3	56	95	24	36
Adj WW/Ratio: 100		20%	60%	70%	60%	



69	JSC Absolute Mentor 995G	Angus				
Collins Farms-AL						
Born:	11/8/19	Tattoo 995G Reg# 20145213				
Sire:	SRF Salute Absolute S722	Reg# 18985029				
MGS:	Connealy Mentor 7374	Reg# 15832714				
BWT	WWT	BW	WW	YW	M	SC
70	740	0.8	62	118	26	38
Adj WW/Ratio: 99		40%	40%	30%	45%	



70	JSC Absolute Answer 991G	Angus				
Collins Farms-AL						
Born:	11/20/19	Tattoo 991G Reg# 20145212				
Sire:	SRF Salute Absolute S722	Reg# 18985029				
MGS:	Connealy Answer 71	Reg# 15832579				
BWT	WWT	BW	WW	YW	M	SC
65	720	-0.7	57	109	27	35
Adj WW/Ratio: 96		15%	60%	45%	40%	



71	JSC Absolute 2-878 972G	Angus				
Collins Farms-AL						
Born:	11/20/19	Tattoo 972G Reg# 20145214				
Sire:	SRF Salute Absolute S722	Reg# 18985029				
MGS:	Hayfields EXT 2-878 410 706	Reg# 16004789				
BWT	WWT	BW	WW	YW	M	SC
65	758	0.2	59	103	21	38
Adj WW/Ratio: 101		30%	50%	55%	80%	



72	JSC Absolute Mentor G777	Angus				
Collins Farms-AL						
Born:	11/25/19	Tattoo G777 Reg# 20145216				
Sire:	SRF Salute Absolute S722	Reg# 18985029				
MGS:	Connealy Mentor 7374	Reg# 15832714				
BWT	WWT	BW	WW	YW	M	SC
63	742	0.8	52	94	25	36
Adj WW/Ratio: 99		40%	75%	70%	55%	



73	JSC Absolute Answer G770	Angus				
Collins Farms-AL						
Born:	11/24/19	Tattoo G770 Reg# 20145215				
Sire:	SRF Salute Absolute S722	Reg# 18985029				
MGS:	Yon Final Answer W494	Reg# 16524794				
BWT	WWT	BW	WW	YW	M	SC
60	746	-0.5	54	98	30	34
Adj WW/Ratio: 100		15%	65%	65%	20%	



74	JSC Game Mentor G778	Angus				
Collins Farms-AL						
Born:	12/20/19	Tattoo G778 Reg# 20145217				
Sire:	JSC BD Game Objective 260	Reg# 17491623				
MGS:	Connealy Mentor 7374	Reg# 15832714				
BWT	WWT	BW	WW	YW	M	SC
65	805	0.3	61	101	23	37
Adj WW/Ratio: 108		30%	45%	60%	70%	



75	JSC Gamer 878 G780	Angus				
Collins Farms-AL						
Born:	12/2/19	Tattoo G780 Reg# 20145218				
Sire:	JSC BD Game Objective 260	Reg# 17491623				
MGS:	Bon View New Design 878	Reg# 13062750				
BWT	WWT	BW	WW	YW	M	SC
68	716	0.3	51	95	29	36
Adj WW/Ratio: 96		30%	75%	70%	25%	



76	RC Territory 928	Angus				
Collins Farms-AL						
Born:	9/26/19	Tattoo 928 Reg# 19673871				
Sire:	Baldridge Territory Z068	Reg# 17314957				
MGS:	Sinclair Rito Legacy 3R9	Reg# 14378386				
*non-virgin/bred to group of heifers						
BWT	WWT	BW	WW	YW	M	SC
62	536	0.3	46	83	23	34
Adj WW/Ratio:	85	30%	85%	85%	70%	



77	JSC Bruiser 930G	Angus				
Collins Farms-AL						
Born:	10/31/19	Tattoo 930G Reg# 20147644				
Sire:	JSC Bruiser's Plainsman 702E	Reg# 19531514				
MGS:	JSC BD Game Objective 260	Reg# 17491623				
BWT	WWT	BW	WW	YW	M	SC
62	659					34
Adj WW/Ratio:	100					



78	JSC FoxTrot Product	Angus				
Collins Farms-AL						
Born:	9/15/19	Tattoo 405G Reg# Commercial				
Sire:	Deer Valley Fox Trot	Reg# 18232839				
MGS:	JSC RetailProd 878-6I6 1633	Reg# 18081526				
*non-virgin/bred to group of heifers						
BWT	WWT	BW	WW	YW	M	SC
60	630	1.5	68	118	15	42
Adj WW/Ratio:		Sire/MGS EPD's				



COLLINS FARMS SIM-ANGUS

79	JSC 6 Traction Hook 996GH	1/2 A 1/4 RA 1/4 SM				
Collins Farms-AL						
Born:	2/1/20	Tattoo 996G Reg# 3947554				
Sire:	Deer Valley Traction 4383	Reg# 18026755				
MGS:	Red Hill 36X 29X 55Z	Reg# 2659620				
BWT	WWT	BW	WW	YW	M	SC
70	678	-0.4	71	115	23	39
Adj WW/Ratio:	100	35%	65%	50%	45%	



CANDLER CATTLE COMPANY BRAHMAN

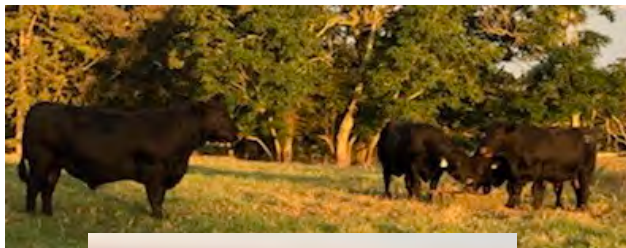
91	NC Chairman 272	Brahman				
Candler Cattle-FL						
Born:	1/23/20	Tattoo 272 Reg# 1022362				
Sire:	NC Polled Eli 131	Reg# 927671				
MGS:	JCC Brut S Manso 660/1	Reg# 885129				
BWT	WWT	BW	WW	YW	M	SC
74	567	2.6	11.4	16.8	5.8	34
Adj WW/Ratio:	102	75%	80%	80%	70%	



92	NC Polled Bo Duke 275	Brahman				
Candler Cattle-FL						
Born:	11/25/19	Tattoo 275 Reg# 1014844				
Sire:	LMC Polled Charley 291/0	Reg# 897099				
MGS:	S Bar MR 290/2	Reg# 823553				
BWT	WWT	BW	WW	YW	M	SC
74	596	1.0	4.5	10.9	4.4	38.5
Adj WW/Ratio:	102	30%	90%	90%	90%	



93	NC Polled Stetson 278	Brahman				
Candler Cattle-FL						
Born:	1/12/20	Tattoo 278 Reg# 1022363				
Sire:	NC Polled Eli 131	Reg# 927671				
MGS:	+ JDH MR Manso 236/3	Reg# 800995				
BWT	WWT	BW	WW	YW	M	SC
75	571	1.9	11.1	20	5.8	37
Adj WW/Ratio:	98	70%	85%	85%	90%	



Meadows Creek 11th Annual Arcadia Black & White Bull Sale



Selling 78 2-year-old Bulls

Online bidding
available at
CowBuyer.com



Along With ...
**Collins Farms &
Candler Cattle Company**

Invite you to attend the Black & White Bull Sale

Friday, October 22nd at 1:00 pm EST

39 Charolais • 1 Charolais x Angus • 26 Angus

• 9 SimAngus • 3 Brahman

Arcadia Stockyard, Arcadia, FL • (Hwy. 17 – 7 Miles N. of Arcadia)

For more information Contact: Carl McKettrick Jr. 863-444-1431

**Meadows Creek Farm
Charolais, Angus, SimAngus
Richard & Glenn Meadows
334-797-4870**

**Collins Farms
Angus Bulls
Jim Collins
478-957-6572**

**Candler Cattle Company
Brahman
Danny Candler
863-610-0001**

For catalogs and more information, please visit www.meadowscreekfarm.com