

GOLDEN FUTURE



EMBRYO SALE

Hosted by GMS

November 11 - 13, 2021 on Cowbuyer.com

GOLDEN FUTURE EMBRYO SALE

hosted by Guernsey Marketing Service

November 11-13, 2021 on Cowbuyer.com

Bidding closes 8:00pm EST on November 13.

- All sales are final.
- Payment is due at the end of the sale.
- A 3% convenience fee will be charged for all credit card payments.
- Confirmation of payment will be sent to consignor and purchaser within one week of sale.
- No embryos will ship prior to a full payment being received.
- Buyer is responsible for the coordination, cost, and liability of shipment.
- All embryos are for domestic shipment only unless otherwise specified.
- Final bid must meet the seller's reserve price to be considered sold.

Sales Staff

Guernsey Marketing Service

Robin Alden 614.339.5390

ralden@usguernsey.com

Payment - Guernsey Marketing Service

Rita Rittgers 614.339.5396

accounting@usguernsey.com

Monday - Thursday, 9:00am - 2:00pm EST

Cowbuyer

Aaron Ray Tompkins 336.363.4639



**View and bid online at
www.cowbuyer.com**

Aaron Ray Tompkins 336.363.4639

Buyers must be pre-registered.

Auction opens at 12:00pm EST on Nov. 11
and closes on 8:00pm EST on Nov. 13.

Contact Robin Alden if you are unable
to monitor the auction during this time:

614.339.5390





Hi Guern View Dancers Diva-ET EX-96
 142,100M 4.5% 6,461F 3.6% 5,145P Lifetime
 Unanimous All-American Aged Cow 2018
 Dam of Lot 1



Hi Guern View Diva Designer EX-93
 4-07 305D 22,600M 4.5% 1,018F 3.4% 771P
 Unanimous All-American Jr. 3-Year-Old 2018
 Maternal Sister to Lot 1

LOT 1 5 #1 VENGEANCE X DIVA IVF EMBRYOS

Breeder & Owner: DINDERMAN ALAINA, AMERY + AIDAN
 ORANGEVILLE IL

PA: -10M +0.09% +16F +0.06% +9P +150CM\$ +143NM\$
 +1.2PTAT +1.3UDC +1.5FLC -0.1DPR +1.9PL +61CPI 2.94SCS

MARODORE RANDALLS VENGEANCE USA000097006605 6GU113 A2A2

08/21 USDA GPTA +147M +0.12% +28F +0.02% +8P
 +0.1DPR +0.7PL +178NM\$ 58NM%ile +180CM\$ 52% Rel
 2.97SCS +0.3SCR -0.10HCR 29% Rel 0.20CCR 31% Rel
 0.70LIV 28% Rel -0.50GL 38% Rel 1.90EFC 29% Rel
 AGA 08/21 PTAT +0.8 +0.6UDC +1.3FLC 50%Rel PTI +59

HI GUERN VIEW DANCING DIVA-ET USA000068047311 A2A2

08/21 USDA GPTA -166M +0.06% +3F +0.09% +10P
 -0.3DPR +3.0PL +108NM\$ 64NM%ile +119CM\$ 67% Rel
 2.90SCS -1.40HCR 33% Rel -0.30CCR 42% Rel
 1.40LIV 40% Rel -0.70GL 41% Rel -1.90EFC 39% Rel
 5 Rec YDev: +179M +31F +41P
 5 App 08/21 PTAT +1.6 +1.9UDR +1.7FLC 63%Rel CPI +62
 Appraisal: EX 96 @ 9-00 (EEEEEE)

1-11 353D 2X 19070M 4.8% 915F 3.5% 666P 95
 3-01 318D 2X 20010M 4.7% 933F 3.4% 688P 94
 4-00 305D 2X 19030M 4.6% 871F 3.7% 706P 95
 5-04 319D 2X 22670M 4.6% 1034F 3.5% 803P 94
 6-04 305D 2X 22100M 4.3% 957F 3.5% 781P 92
 7-07 305D 2X 25620M 3.9% 1001F 3.5% 897P 94
 2192D 142100M 4.5% 6461F 3.6% 5145P LIFE

Unanimous All-American Aged Cow 2018
Member, Unanimous All-American Dam & Daughter 2018
Reserve All-American Four-Year-Old 2016
Honorable Mention All-American Five-Year-Old 2017
Nominated All-American Junior Three-Year-Old 2015
Grand Champion NGS-Louisville 2018
Reserve Grand Champion NGS-Madison 2018
1st Lifetime Production Cow NGS-Madison 2021

Son at ABS: HI GUERN VIEW LEVI DRONE GPTI +51
 Dtrs: HI GUERN VIEW DIVA DESIGNER 93 @ 6-05 (93/92)
 4-07 305D 2X 22600M 4.5% 1018F 3.4% 771P 95
Unanimous All-American Junior Three-Year-Old 2018
 HI GUERN VIEW LEVIS DENIM 90 @ 5-05 (89/88)
 3-07 305D 2X 18890M 4.3% 810F 3.4% 634P 95
 HI GUERN VIEW DIVAS DESTINY 87 @ 3-02 (83/88)
 1-09 317D 2X 17230M 4.0% 692F 3.2% 557P 94

- Five (5) #1 IVF embryos
- Reverse Sorted for Females
- Resulting calves will be A2A2 by extended parentage
- Resulting calves would rank in the top 200 CPI Heifers August '21
- Eligible for export to Canada and the United Kingdom
- Located at TransOva in Madison, Wisconsin
- Embryos must be in buyer's possession within 60 days of sale

DAIRYMAN COPPER RANDALL-ET 840003009973866 7GU471 A2A2

08/21 USDA GPTA +23M +0.02% +4F -0.01% -1P
 +0.8DPR +2.3PL +182NM\$ 58NM%ile +186CM\$ 80% Rel
 2.76SCS 0.60HCR 46% Rel 0.90CCR 45% Rel
 1.20LIV 34% Rel -0.40GL 90% Rel 2.20EFC 39% Rel
 AGA 08/21 PTAT -0.1 +0.3UDC +0.1FLC 72%Rel PTI +18

MARODORE BOOMERS VALIUM USA000068032668 A2A2

Appraisal: EX 94 @ 7-09 (EEEEEE)
 3-09 365D 2X 24540M 5.6% 1382F 3.6% 883P DHIA

EDGEWATER MEADOWS YOGIBEAR-ET USA000000604917 7GU402 A2A2

08/21 USDA GPTA -461M +0.12% +0F +0.03% -10P
 +0.1DPR +1.2PL -38NM\$ 23NM%ile -35CM\$ 99% Rel
 2.96SCS -1.60HCR 76% Rel -0.10CCR 95% Rel
 0.30LIV 85% Rel -1.10GL 99% Rel -0.40EFC 87% Rel
 AGA 08/21 PTAT +1.2 +1.4UDC +0.2FLC 99%Rel PTI +10

ADAMS CREEK REGAL DANCER USA000068019811

08/21 USDA GPTA -146M +0.04% +0F +0.02% -1P
 +0.4DPR -0.6PL -101NM\$ 18NM%ile -98CM\$ 60% Rel
 2.96SCS 0.10HCR 12% Rel 0.70CCR 27% Rel
 1.00LIV 21% Rel 0.10GL 22% Rel -4.10EFC 20% Rel
 2 Rec YDev: -90M +32F +9P
 2 App 08/21 PTAT +0.4 +0.1UDR -0.6FLC 51%Rel CPI -3
 Appraisal: 92 @ 3-07 (94/86)

2-01 298D 2X 14210M 4.8% 689F 3.5% 491P 95
 3-05 305D 2X 23750M 4.4% 1048F 3.3% 779P 50
All-American Four-Year-Old 2011

HI GUERN VIEW DANCERS DELITE-ET 91 @ 7-09 (91/78)
 3-04 305D 2X 16490M 4.9% 816F 3.5% 577P 94
 HI GUERN VIEW DANCERS DREAM-ET 90 @ 3-07 (88/87)
 2-10 315D 2X 22390M 3.9% 879F 3.2% 721P 94
 LAND OF LIVING A DEBUTANTE-ET 86 @ 3-11 (87/87)
 2-07 339D 2X 18130M 4.1% 750F 3.2% 585P 91



Coulee Crest Pilot Lava-ET EX-90
 4-01 365D 3X 27,730M 5.8% 1,618F 3.9% 1,071P
 #1 CPI Cow August 2021
 Nom. Jr. All-American Sr. 3-Year-Old 2019
 Dam of Lots 2 & 3

LOT 2 5 #1 NEWTON X LAVA IVF EMBRYOS

Breeder & Owner: COULEE CREST LLC
 CASHTON WI

PA: +631M +0.04% +35F +0.01% +22P +362CM\$ +358NM\$
 +0.6PTAT +1.2UDC +1.5FLC +1.1DPR +2.1PL +109CPI 2.92SCS

RIPLEY FARMS JAG NEWTON 840003130939306 7GU470 A2A2

08/21 USDA GPTA +280M +0.01% +14F +0.01% +11P
 +3.4DPR +4.4PL +364NM\$ 94NM%ile +368CM\$ 76% Rel
 2.88SCS 1.00HCR 37% Rel 3.70CCR 46% Rel
 1.90LIV 33% Rel -0.10GL 91% Rel 1.40EFC 39% Rel
 AGA 08/21 PTAT -0.1 +0.4UDC +0.6FLC 65%Rel PTI +75

COULEE CREST PILOT LAVA-ET USA000097000835

08/21 USDA GPTA +981M +0.06% +56F +0.00% +33P
 -1.3DPR -0.3PL +352NM\$ 95NM%ile +355CM\$ 63% Rel
 2.96SCS 0.10HCR 29% Rel -1.30CCR 36% Rel
 0.30LIV 28% Rel 1.10GL 41% Rel 2.40EFC 30% Rel
 2 Rec YDev: +1695M +154F +78P
 3 App 08/21 PTAT +1.3 +2.0UDR +2.3FLC 65%Rel CPI +142
 Appraisal: EX 90 @ 5-04 (EEVEV)
 2-11 365D 3X 27590M 5.6% 1558F 3.6% 997P DHIA
 4-01 365D 3X 27730M 5.8% 1618F 3.9% 1071P DHIA
#1 CPI Cow August 2021

Dam of 8 of the top 10 CPI Heifers August 2021
Dam of Tsunami at Semex and Hurricane at STGenetics
Nominated Jr. All-American Senior Three-Year-Old 2019

- Five (5) #1 IVF embryos
- Reverse Sorted for Females
- Resulting calves will be A2A2 by extended parentage
- Resulting calves would rank #2 on August 2021 CPI Heifer List
- Eligible for export to Canada and the United Kingdom
- Located at TransOva in Iowa

SPRINGHILL JOKES JAGUAR-ET USA000068031529 7GU458 A2A2

08/21 USDA GPTA +87M -0.03% -1F -0.04% -4P
 +0.8DPR +1.7PL +101NM\$ 41NM%ile +102CM\$ 90% Rel
 2.76SCS -1.00HCR 47% Rel 0.60CCR 67% Rel
 1.20LIV 44% Rel 1.90GL 95% Rel 0.40EFC 51% Rel
 AGA 08/21 PTAT +0.3 +1.1UDC +0.5FLC 89%Rel PTI +19

LANG HAVEN ALSTAR NAE-ET USA000068045949 A2A2

Appraisal: 86 @ 3-07 (86/85)
 4-03 365D 3X 27880M 4.0% 1123F 3.2% 886P DHIA

LINDRIAN GRUMPY PILOT-ET CAN000011632409 200GU307 A2A2

08/21 USDA GPTA -453M +0.14% +3F +0.05% -6P
 -0.1DPR +0.1PL +34NM\$ 41NM%ile +45CM\$ 86% Rel
 2.69SCS -0.90HCR 37% Rel 0.70CCR 60% Rel
 1.30LIV 40% Rel 2.60GL 90% Rel -0.60EFC 43% Rel
 AGA 08/21 PTAT +0.6 +1.5UDC +1.7FLC 81%Rel PTI +30

COULEE CREST LAREDO LALITA-ET USA000068039047 A2A2

08/21 USDA GPTA +973M +0.10% +63F -0.01% +30P
 -0.2DPR -0.7PL +388NM\$ 97NM%ile +387CM\$ 69% Rel
 3.05SCS-0.10HCR 34% Rel 0.10CCR 45% Rel
 0.40LIV 35% Rel -0.40GL 44% Rel 3.40EFC 36% Rel
 5 Rec YDev: +1849M +132F +66P
 3 App 08/21 PTAT +0.3 +0.6UDR -0.4FLC 69%Rel CPI +110
 Appraisal: 84 @ 4-06 (82/84) Gold Star Dam - 2020
 1-09 365D 3X 22370M 5.4% 1216F 3.7% 824P DHIA
 3-02 365D 3X 29720M 5.6% 1652F 3.7% 1094P DHIA
 4-05 333D 3X 23610M 5.4% 1275F 3.7% 867P 94
 5-06 358D 3X 26720M 5.5% 1458F 3.6% 975P 94
 6-07 365D 3X 30500M 5.9% 1786F 3.8% 1146P DHIA
 2150D 153860M 5.6% 8602F 3.7% 5756P LIFE
#8(T) CPI Cow August 2021

Next four generations EX!



Coulee Crest Pilot Lava-ET EX-90
 4-01 365D 3X 27,730M 5.8% 1,618F 3.9% 1,071P
 #1 CPI Cow August 2021
 Nom. Jr. All-American Sr. 3-Year-Old 2019
 Dam of Lots 2 & 3

LOT 3 5 #1 JAVA-P X LAVA IVF EMBRYOS

Breeder & Owner: COULEE CREST LLC
 CASHTON WI

PA: +614M +0.03% +34F +0.01% +22P +183CM\$ +180NM\$
 +1.2PTAT +1.6UDC +1.8FLC -2.1DPR -0.1PL +85CPI 2.94SCS

SPRINGHILL JAVA-ETV-P 840003151591431 200GU123 A2A2

08/21 USDA GPTA +246M +0.00% +11F +0.01% +10P
 -2.9DPR +0.2PL +8NM\$ 41NM%ile +11CM\$ 51% Rel
 2.91SCS -2.20HCR 27% Rel -3.40CCR 30% Rel
 -1.40LIV 29% Rel 0.20GL 29% Rel -1.50EFC 28% Rel
 AGA 08/21 PTAT +1.1 +1.2UDC +1.3FLC 49%Rel PTI +28

COULEE CREST PILOT LAVA-ET USA000097000835

08/21 USDA GPTA +981M +0.06% +56F +0.00% +33P
 -1.3DPR -0.3PL +352NM\$ 95NM%ile +355CM\$ 63% Rel
 2.96SCS 0.10HCR 29% Rel -1.30CCR 36% Rel
 0.30LIV 28% Rel 1.10GL 41% Rel 2.40EFC 30% Rel
 2 Rec YDev: +1695M +154F +78P
 3 App 08/21 PTAT +1.3 +2.0UDR +2.3FLC 65%Rel CPI +142
 Appraisal: EX 90 @ 5-04 (EEVEV)

2-11 365D 3X 27590M 5.6% 1558F 3.6% 997P DHIA
 4-01 365D 3X 27730M 5.8% 1618F 3.9% 1071P DHIA
 #1 CPI Cow August 2021

Dam of 8 of the top 10 CPI Heifers August 2021
Dam of Tsunami at Semex and Hurricane at STGenetics
Nominated Jr. All-American Senior Three-Year-Old 2019

- Five (5) #1 IVF embryos
- Made using sexed semen for females
- Resulting calves will be A2A2 by extended parentage
- Resulting calves would rank in the top 25 CPI Heifers Aug '21
- Eligible for export to Canada and the United Kingdom
- Located at TransOva in Iowa

IDLE GOLD A HERALD-P USA000097002947 54GU499 A2A2

08/21 USDA GPTA -288M +0.11% +6F +0.06% +0P
 -0.4DPR +0.9PL +28NM\$ 41NM%ile +35CM\$ 53% Rel
 2.87SCS -1.20HCR 25% Rel -1.10CCR 29% Rel
 -0.40LIV 25% Rel 0.00GL 27% Rel 0.10EFC 26% Rel
 AGA 08/21 PTAT +0.9 +1.2UDC +1.0FLC 47%Rel PTI +27

SPRINGHILL MENTOR JAZZY-ET USA000068031553 A2A2

Appraisal: EX 95 @ 6-09 (EEEEEE)
 4-06 365D 2X 34720M 5.2% 1799F 3.6% 1260P* DHIA

LINDRIAN GRUMPY PILOT-ET CAN000011632409 200GU307 A2A2

08/21 USDA GPTA -453M +0.14% +3F +0.05% -6P
 -0.1DPR +0.1PL +34NM\$ 41NM%ile +45CM\$ 86% Rel
 2.69SCS -0.90HCR 37% Rel 0.70CCR 60% Rel
 1.30LIV 40% Rel 2.60GL 90% Rel -0.60EFC 43% Rel
 AGA 08/21 PTAT +0.6 +1.5UDC +1.7FLC 81%Rel PTI +30

COULEE CREST LAREDO LALITA-ET USA000068039047 A2A2

08/21 USDA GPTA +973M +0.10% +63F -0.01% +30P
 -0.2DPR -0.7PL +388NM\$ 97NM%ile +387CM\$ 69% Rel
 3.05SCS-0.10HCR 34% Rel 0.10CCR 45% Rel
 0.40LIV 35% Rel -0.40GL 44% Rel 3.40EFC 36% Rel
 5 Rec YDev: +1849M +132F +66P

3 App 08/21 PTAT +0.3 +0.6UDR -0.4FLC 69%Rel CPI +110
 Appraisal: 84 @ 4-06 (82/84) Gold Star Dam - 2020

1-09 365D 3X 22370M 5.4% 1216F 3.7% 824P DHIA
 3-02 365D 3X 29720M 5.6% 1652F 3.7% 1094P DHIA
 4-05 333D 3X 23610M 5.4% 1275F 3.7% 867P 94
 5-06 358D 3X 26720M 5.5% 1458F 3.6% 975P 94
 6-07 365D 3X 30500M 5.9% 1786F 3.8% 1146P DHIA
 2150D 153860M 5.6% 8602F 3.7% 5756P LIFE

#8(T) CPI Cow August 2021

Next four generations EX!



Rozelyn Aaron Villa EX-94 2E
 163,750M 5.4% 8,778F 3.8% 6,190P Lifetime
 3x Total Performance Cow NGS-Puyallup
 Dam of Lots 4-6

LOT 4 5 #1 HURRICANE X VILLA IVF EMBRYOS

Breeder & Owner: ROZELYN FARM + VAN PATTEN + CLEMENTS
 LYNDEN WA

PA: +302M +0.22% +52F +0.08% +24P +453CM\$ +442NM\$
 +1.0PTAT +1.5UDC +1.3FLC -0.4DPR +1.9PL +116CPI 2.89SCS

COULEE CREST LAVAS HURRICANE-ETV 840003214098780 551GU915 A2A2

08/21 USDA GPTA +501M +0.17% +53F +0.06% +27P
 -0.2DPR +1.2PL +450NM\$ 99NM%ile +458CM\$ 46% Rel
 2.92SCS -0.70HCR 26% Rel -0.70CCR 29% Rel
 1.40LIV 25% Rel 0.70GL 30% Rel 2.00EFC 26% Rel
 AGA 08/21 PTAT +0.7 +1.3UDC +0.6FLC 45%Rel PTI +114

ROZELYN AARON VILLA USA000068042242 A2A2

08/21 USDA GPTA +103M +0.26% +50F +0.10% +21P
 -0.5DPR +2.6PL +434NM\$ 98NM%ile +447CM\$ 67% Rel
 2.85SCS 0.50HCR 36% Rel -0.80CCR 41% Rel
 -0.50LIV 38% Rel 0.80GL 39% Rel 2.60EFC 38% Rel
 5 Rec YDev: +797M +95F +52P
 3 App 08/21 PTAT +1.3 +1.7UDR +2.0FLC 70%Rel CPI +118
 Appraisal: EX 94 @ 10-05 (EEEE) 2E Gold Star Dam - 2016
 2-00 350D 2X 19580M 5.0% 987F 3.5% 691P 101
 3-01 365D 2X 23380M 5.2% 1225F 3.6% 841P 101
 4-06 331D 2X 24420M 5.2% 1269F 3.6% 891P 101
 5-07 365D 2X 26110M 5.3% 1384F 3.8% 997P 101
 6-09 365D 2X 23900M 5.6% 1330F 3.9% 933P 102
 9-03 365D 2X 25010M 5.3% 1321F 3.7% 915P 99
 2617D 163750M 5.4% 8778F 3.8% 6190P LIFE

#4 CPI Cow August 2021

Total Performance Cow NGS-Puyallup 2016, 2017, 2018

1st Five-Year-Old NGS-Puyallup 2016

Dtrs: ROZELYN GOTCHA VILLAMAE 91 @ 6-06 (92/91)

5-03 318D 2X 19610M 5.5% 1082F 3.7% 724P 100

1st Junior Three-Year-Old NGS-Puyallup 2018

ROZELYN L MAN VIANNE 91 @ 4-02 (92/90)

2-04 365D 2X 18070M 5.0% 909F 3.7% 669P 99

ROZELYN BEAU VELLA-ET 83 @ 2-10 (86/82)

- Five (5) #1 IVF embryos
- Sexed semen used for females
- Resulting calves are A2A2 by parentage
- Resulting calves would rank #2 on August 2021 CPI Heifer List
- Eligible for export to Canada & the UK
- Located at TransOva in Madison, Wisconsin

COULEE CREST TOBY KEITH-ET 840003012927834 551GU908 A2A2

08/21 USDA GPTA +134M +0.15% +32F +0.05% +13P
 -0.1DPR +2.1PL +352NM\$ 94NM%ile +360CM\$ 54% Rel
 2.83SCS -1.20HCR 33% Rel -1.00CCR 37% Rel
 1.40LIV 30% Rel 0.40GL 43% Rel 3.00EFC 32% Rel
 AGA 08/21 PTAT +0.4 +0.1UDC +0.9FLC 53%Rel PTI +65

COULEE CREST PILOT LAVA-ET USA000097000835

Appraisal: EX 90 @ 5-04 (EEVEV)
 4-01 365D 3X 27730M 5.8% 1618F 3.9% 1071P DHIA

SNIDERS OPTION AARON-ET USA000000604670 7GU395 A2A2

08/21 USDA GPTA +201M +0.15% +36F -0.01% +5P
 -3.4DPR -0.2PL +129NM\$ 41NM%ile +129CM\$ 99% Rel
 2.94SCS 0.40HCR 81% Rel -5.50CCR 95% Rel
 -3.00LIV 86% Rel 1.50GL 99% Rel 3.60EFC 89% Rel
 AGA 08/21 PTAT +0.8 +1.1UDC +0.8FLC 99%Rel PTI +36

ROZELYN SAMSON VIENNA USA000068018724 A2A2

08/21 USDA GPTA +117M +0.11% +25F +0.06% +14P
 +1.0DPR +2.8PL +323NM\$ 94NM%ile +332CM\$ 63% Rel
 2.85SCS 0.10HCR 25% Rel 2.40CCR 38% Rel
 -0.20LIV 33% Rel -0.20GL 30% Rel -0.30EFC 30% Rel
 5 Rec YDev: +646M +64F +33P
 4 App 08/21 PTAT +0.8 +0.6UDR +0.6FLC 65%Rel CPI +68
 Appraisal: 91 @ 8-03 (88/93)
 1-11 323D 2X 15730M 4.9% 770F 3.5% 554P 101
 2-11 365D 2X 18920M 5.0% 951F 3.6% 687P 102
 4-01 310D 2X 21340M 5.3% 1136F 3.5% 751P 102
 5-02 365D 2X 24330M 5.3% 1290F 3.6% 866P 101
 6-05 357D 2X 25240M 5.3% 1330F 3.5% 885P 102
 7-06 365D 2X 26530M 5.1% 1362F 3.6% 951P 101
 8-08 365D 2X 25370M 5.3% 1351F 3.6% 924P 102
 10-00 365D 2X 22710M 5.5% 1245F 3.8% 867P 101
 2925D 185590M 5.3% 9750F 3.6% 6705P LIFE



Rozelyn Gotcha Villamae EX-91
 5-03 318D 19,610M 5.5% 1,082F 3.7% 724P
 1st Jr. 3-Year-Old NGS-Puyallup 2018
 Maternal Sister to Lots 4-6

LOT 5 5 #1 THEO X VILLA IVF EMBRYOS

Breeder & Owner: ROZELYN FARM + VAN PATTTER + CLEMENTS
 LYNDEN WA

PA: -15M +0.25% +42F +0.08% +13P +473CM\$ +461NM\$
 +0.9PTAT +1.2UDC +1.7FLC +0.5DPR +3.7PL +101CPI 2.76SCS

RIPLEY FARMS NETWORK C THEO 840003146571505 6GU112 A2A2

08/21 USDA GPTA -133M +0.23% +34F +0.05% +5P
 +1.4DPR +4.8PL +487NM\$ 99NM%ile +499CM\$ 50% Rel
 2.67SCS -1.3SCR 0.40HCR 29% Rel 1.20CCR 33% Rel
 2.40LIV 29% Rel 0.20GL 39% Rel 3.40EFC 30% Rel
 AGA 08/21 PTAT +0.5 +0.6UDC +1.4FLC 47%Rel PTI +83

ROZELYN AARON VILLA USA000068042242 A2A2

08/21 USDA GPTA +103M +0.26% +50F +0.10% +21P
 -0.5DPR +2.6PL +434NM\$ 98NM%ile +447CM\$ 67% Rel
 2.85SCS 0.50HCR 36% Rel -0.80CCR 41% Rel
 -0.50LIV 38% Rel 0.80GL 39% Rel 2.60EFC 38% Rel
 5 Rec YDev: +797M +95F +52P
 3 App 08/21 PTAT +1.3 +1.7UDR +2.0FLC 70%Rel CPI +118
 Appraisal: EX 94 @ 10-05 (EEEE) 2E Gold Star Dam - 2016
 5-07 365D 2X 26110M 5.3% 1384F 3.8% 997P 101
 2617D 163750M 5.4% 8778F 3.8% 6190P LIFE
 #4 CPI Cow August 2021

- Five (5) #1 IVF embryos
- Reverse Sorted for Females
- Resulting calves are A2A2 by parentage
- Resulting calves would rank #5 on August 2021 CPI Heifer List
- Located at TransOva in Madison, Wisconsin

LANG HAVEN JUDGMENT NET WORTH-ET USA000078006591 14GU331 A2A2

08/21 USDA GPTA -449M +0.18% +10F +0.06% -5P
 +1.7DPR +4.2PL +279NM\$ 70NM%ile +286CM\$ 76% Rel
 2.90SCS 0.20HCR 34% Rel 1.80CCR 44% Rel
 2.20LIV 35% Rel -1.40GL 74% Rel 1.50EFC 38% Rel
 AGA 08/21 PTAT +0.2 +0.4UDC -0.1FLC 66%Rel PTI +30

RIPLEY FARMS DL C TILLIE-TW USA000068033397 A2A2

Appraisal: 88 @ 3-04 (90/87) Gold Star Dam - 2018
 3-01 365D 3X 22680M 4.8% 1099F 3.4% 766P DHIA

SNIDERS OPTION AARON-ET USA000000604670 7GU395 A2A2

08/21 USDA GPTA +201M +0.15% +36F -0.01% +5P
 -3.4DPR -0.2PL +129NM\$ 41NM%ile +129CM\$ 99% Rel
 2.94SCS 0.40HCR 81% Rel -5.50CCR 95% Rel
 -3.00LIV 86% Rel 1.50GL 99% Rel 3.60EFC 89% Rel
 AGA 08/21 PTAT +0.8 +1.1UDC +0.8FLC 99%Rel PTI +36

ROZELYN SAMSON VIENNA USA000068018724 A2A2

Appraisal: 91 @ 8-03 (88/93)
 7-06 365D 2X 26530M 5.1% 1362F 3.6% 951P 101
 2925D 185590M 5.3% 9750F 3.6% 6705P LIFE

LOT 6 6 #1 THEO & TSUNAMI X VILLA IVF EMBRYOS

Breeder & Owner: ROZELYN FARM + VAN PATTTER + CLEMENTS
 LYNDEN WA

TSUNAMI X VILLA PARENT AVERAGES:

PA: +377M +0.16% +46F +0.06% +23P +427CM\$ +417NM\$
 +1.2PTAT +1.6UDC +1.9FLC -0.7DPR +2.4PL +115CPI 2.86SCS

See above for Theo x Villa PAs & Villa pedigree

COULEE CREST TSUNAMI-ETV 840003214098840 200GU124 A2A2

08/21 USDA GPTA +650M +0.06% +41F +0.02% +25P
 -0.8DPR +2.1PL +400NM\$ 99NM%ile +406CM\$ 46% Rel
 2.87SCS -1.20HCR 27% Rel -1.50CCR 29% Rel
 1.40LIV 26% Rel 0.90GL 31% Rel 1.20EFC 27% Rel
 AGA 08/21 PTAT +1.1 +1.4UDC +1.7FLC 45%Rel PTI +112

ROZELYN AARON VILLA USA000068042242 A2A2

- Six (6) total embryos in package consisting of:
- Two (2) Theo x Villa IVF embryos made using sexed semen,
- Two (2) Theo x Villa IVF embryos made using conventional semen,
- Two (2) Tsunami x Villa IVF embryos made using conventional semen
- Resulting calves are A2A2 by parentage
- Theo calves would rank #5 on August 2021 CPI Heifer List
- Tsunami calves would rank #2 on August 2021 CPI Heifer List
- Located at TransOva in Madison, Wisconsin

COULEE CREST TOBY KEITH-ET 840003012927834 551GU908 A2A2

08/21 USDA GPTA +134M +0.15% +32F +0.05% +13P
 -0.1DPR +2.1PL +352NM\$ 94NM%ile +360CM\$ 54% Rel
 2.83SCS -1.20HCR 33% Rel -1.00CCR 37% Rel
 1.40LIV 30% Rel 0.40GL 43% Rel 3.00EFC 32% Rel
 AGA 08/21 PTAT +0.4 +0.1UDC +0.9FLC 53%Rel PTI +65

COULEE CREST PILOT LAVA-ET USA000097000835

Appraisal: EX 90 @ 5-04 (EEVEV)
 4-01 365D 3X 27730M 5.8% 1618F 3.9% 1071P DHIA



Valley Gem Luck Deidra EX-91
 2-11 282D 18,920M 4.8% 902F 3.0% 572P
 Res. All-American Jr. 3-Yr-Old 2019
 Dam of Lot 7

LOT 7 3 MAS X DEIDRA IVF EMBRYOS

Breeder & Owner: VALLEY GEM FARMS
 CUMBERLAND WI

- Three (3) IVF Embryos
- Sire to be mutually agreed upon by consignor & buyer
- Can be made export eligible

VALLEY GEM LUCK DEIDRA USA000097005385 A2A2

08/21 USDA GPTA +140M -0.02% +3F -0.04% -2P
 -0.9DPR +2.1PL +22NM\$ 42NM%ile +17CM\$ 63% Rel
 3.06SCS-2.20HCR 27% Rel -2.00CCR 31% Rel
 -0.80LIV 28% Rel -0.80GL 31% Rel -0.90EFC 28% Rel
 3 Rec YDev: -274M -11F -22P
 3 App 08/21 PTAT +1.3 +0.9UDR +1.5FLC 66%Rel CPI +25
 Appraisal: EX 91 @ 4-04 (EEEEEE)
 2-00 291D 2X 15570M 5.3% 827F 3.5% 540P 99
 2-11 282D 2X 18920M 4.8% 902F 3.0% 572P 96
 3-09 269D 2X 16050M 4.9% 784F 3.3% 531P 95
Unanimous All-American Four-Year-Old 2020
Reserve All-American Junior Three-Year-Old 2019
Nominated All-American Junior Two-Year-Old 2018
Reserve Grand Champion NGS-Louisville 2020
 Dtr: VALLEY GEM HIT IT DEVORA 86 @ 2-04 (87/85)
 1-11 276D 2X 14400M 5.1% 729F 3.7% 529P 94
All-American Junior Two-Year-Old 2020

FLAMBEAU MANOR LOTS OF LUCK USA000078003964

VALLEY GEM GRUMPYS DEE USA000068042408

08/21 USDA PTA +44M +0.01% +4F -0.02% -2P
 +1.7DPR +0.7PL +96NM\$ 61NM%ile +93CM\$ 40% Rel
 3.02SCS-0.10HCR 23% Rel 2.00CCR 32% Rel
 0.50LIV 26% Rel -1.00GL 33% Rel 3.50EFC 26% Rel
 3 App 08/21 PTAT -0.6 -0.7UDR -0.3FLC 58%Rel CPI +3
 Appraisal: 80 @ 4-10 (78/74)
 2-02 305D 2X 16730M 6.7% 1118F 3.0% 496P DHIA
 3-04 305D 2X 20830M 5.1% 1053F 3.3% 681P 91
 4-07 305D 2X 20640M 4.5% 929F 3.0% 619P 99
 6-01 305D 2X 20390M 4.3% 876F 3.5% 713P 76
 1836D 101570M 5.1% 5183F 3.3% 3319P LIFE

3D: VALLEY GEM ALIANCES DEE DEE-ET USA000068007260

Appraisal: 75 @ 4-06 (74/76)
 3-02 341D 3X 23060M 4.0% 933F 2.8% 655P 102

4D: VALLEY GEM LORDS DINAH USA000003058679

Appraisal: 88 @ 4-01 (88/85)
 3-10 365D 2X 20100M 5.9% 1184F 3.3% 660P 91

5D: VALLEY GEM HENRYS DEAR USA000003038744

Appraisal: 86 @ 3-09

6D: VALLEY GEM ELVIS DOZER USA000002994043

Appraisal: 85 @ 5-00



Valley Gem Hit It Devora
 All-American Jr. 2-Year-Old 2020
 Maternal Sister to Lot 7



Retso AP Kiya-ETV VG-86
 Res. Jr. All-American Spring Calf 2019
 3rd Jr. 2-Year-Old NGS-Madison 2021
 Dam of Lot 8

Howacres R Cara With A K
 Maternal Sister to Lot 8

LOT 8 4 METHOD OR MAS X KIYA IVF EMBRYOS

Breeder & Owner: JOHNSON SYLVIA
 TUNBRIDGE VT

PA: -454M -0.07% -33F -0.01% -16P -293CM\$ -290NM\$
 -0.2PTAT +0.4UDC +0.8FLC -0.8DPR -1.0PL -55CPI 3.06SCS

- Four (4) IVF embryos
- Sired by Method or a Mutually Agreeable Sire
- Method will be Reverse Sorted for Females
- MAS embryos can be made export eligible

MAR RAL METHOD-TW USA000078006539 A2A2
 08/21 USDA PTA -719M -0.07% -44F -0.02% -28P
 -0.9DPR -4.5PL -563NM\$ 0NM%ile -572CM\$ 61% Rel
 3.26SCS -0.20HCR 12% Rel -1.40CCR 24% Rel
 -3.10LIV 18% Rel -0.70GL 30% Rel -3.10EFC 19% Rel
 AGA 08/21 PTAT -0.1 +0.4UDC -0.1FLC 61%Rel PTI -104

VILLA CREST GH DIRECTOR USA000000603601
 08/21 USDA PTA -592M -0.11% -46F -0.07% -31P
 +0.2DPR -7.3PL -634NM\$ 0NM%ile -639CM\$ 81% Rel
 2.90SCS 2.50HCR 13% Rel 1.00CCR 50% Rel
 -4.00LIV 33% Rel -0.80GL 64% Rel -4.10EFC 32% Rel
 AGA 08/21 PTAT -1.0 -0.5UDC -0.3FLC 76%Rel PTI -125

RETSO AP KIYA-ETV USA000097007815 A2A2
 08/21 USDA GPTA -189M -0.07% -21F +0.01% -4P
 -0.6DPR +2.5PL -17NM\$ 34NM%ile -13CM\$ 54% Rel
 2.86SCS -2.20HCR 35% Rel -1.40CCR 40% Rel
 1.10LIV 35% Rel -0.50GL 41% Rel -1.90EFC 37% Rel
 1 App 08/21 PTAT -0.2 +0.4UDR +1.6FLC 59%Rel CPI -5
 Appraisal: VG 86 @ 2-02 (+V+VV)

MAR RAL TILLER MARTHA-ET USA000068044926
 Appraisal: 93 @ 4-09 (92/92)
 3-02 365D 2X 24150M 4.2% 1025F 3.1% 752P DHIA

Reserve Junior All-American Spring Calf 2019
Nominated All-American Spring Calf 2019
Nominated All-American Spring Yearling 2020
3rd Junior Two-Year-Old NGS-Madison 2021
1st Spring Calf NJS-Louisville 2019
Reserve Junior Champion New England Classic Open & Jr. 2019

INDIAN ACRES AMERICAN PIE USA000068016348 31GU618 A2A2
 08/21 USDA GPTA +145M -0.18% -25F -0.04% -3P
 -1.5DPR +2.7PL -36NM\$ 23NM%ile -35CM\$ 97% Rel
 2.77SCS -3.40HCR 67% Rel -2.80CCR 89% Rel
 0.80LIV 70% Rel 0.90GL 97% Rel -6.70EFC 76% Rel
 AGA 08/21 PTAT +0.2 +0.4UDC +2.3FLC 97%Rel PTI -4

3D: LUCKYVALE YOGI KIARA USA000068027293
 Appraisal: 88 @ 3-11 (88/86)
 2-07 365D 2X 20880M 3.7% 768F 3.3% 687P DHIA
Junior All-American & HM All-American Fall Calf 2010
Junior All-American & Res. All-American Fall Yearling 2011
Reserve Junior All-American Senior Two-Year-Old 2012
Junior Champion NJS-Madison 2011 & Res. Jr. Champion NGS
 Dtrs: LUCKYVALE GRUMPY KAT-ET 90 @ 4-02 (90/88)
 3-00 319D 3X 23710M 4.7% 1117F 3.5% 819P 88
 LUCKYVALE GRUMPY KAZ-ET 91 @ 4-01 (90/88)
 3-07 365D 2X 33150M 5.1% 1681F 3.5% 1145P 96

LUCKYVALE GRUMPY KISS-ET USA000078000733
 08/21 USDA PTA -13M +0.00% -1F +0.06% +10P
 +0.0DPR +1.6PL +88NM\$ 59NM%ile +95CM\$ 52% Rel
 2.96SCS -0.90HCR 25% Rel 0.20CCR 33% Rel
 0.70LIV 26% Rel -0.80GL 34% Rel 2.30EFC 28% Rel
 2 Rec YDev: +1120M +25F +62P
 2 App 08/21 PTAT +0.5 +1.0UDR +1.5FLC 44%Rel CPI +42
 Appraisal: 88 @ 4-02 (91/77)
 2-07 365D 2X 23860M 4.3% 1016F 3.4% 803P DHIA
Honorable Mention Junior All-American Fall Yearling 2015
 Dtr: RETSO AP KITKAT-ET 83 @ 2-00 (81/83)
 1-10 299D 2X 15440M 4.5% 694F 3.5% 541P 93
Reserve All-American Yearling in Milk 2020



Kadence Fames Lovely EX-94
 3-00 365D 25,010M 5.1% 1,287F 3.4% 852P
 All-American Jr. 3-Year-Old 2020
 Maternal Sister to Lot 9

LOT 9 3 #1 JAVA-P X LUSH IVF EMBRYOS

Breeder & Owner: KADENCE FARM
 NEW GLARUS WI

PA: +73M +0.02% +6F +0.01% +5P +51CM\$ +48NM\$
 +0.8PTAT +0.5UDC +1.8FLC -1.9DPR +1.4PL +30PTI 2.89SCS

- Three (3) #1 IVF embryos
- Made using sexed semen for females
- Located at Kadence Farm

SPRINGHILL JAVA-ETV-P 840003151591431 200GU123 A2A2
 08/21 USDA GPTA +246M +0.00% +11F +0.01% +10P
 -2.9DPR +0.2PL +8NM\$ 41NM%ile +11CM\$ 51% Rel
 2.91SCS -2.20HCR 27% Rel -3.40CCR 30% Rel
 -1.40LIV 29% Rel 0.20GL 29% Rel -1.50EFC 28% Rel
 AGA 08/21 PTAT +1.1 +1.2UDC +1.3FLC 49%Rel PTI +28

IDLE GOLD A HERALD-P USA000097002947 54GU499 A2A2
 08/21 USDA GPTA -288M +0.11% +6F +0.06% +0P
 -0.4DPR +0.9PL +28NM\$ 41NM%ile +35CM\$ 53% Rel
 2.87SCS -1.20HCR 25% Rel -1.10CCR 29% Rel
 -0.40LIV 25% Rel 0.00GL 27% Rel 0.10EFC 26% Rel
 AGA 08/21 PTAT +0.9 +1.2UDC +1.0FLC 47%Rel PTI +27

KADENCE PRADA LUSH USA000097000385 A1A2
 08/21 USDA PTA -100M +0.03% +0F +0.01% -1P
 -0.9DPR +2.6PL +87NM\$ 59NM%ile +91CM\$ 49% Rel
 2.86SCS -2.40HCR 22% Rel -1.60CCR 30% Rel
 0.00LIV 24% Rel 0.00GL 34% Rel -3.40EFC 26% Rel
 3 Rec YDev: -506M +6F -8P
 3 App 08/21 PTAT +0.4 +0.8UDR +2.2FLC 58%Rel CPI +31
 Appraisal: EX 90 @ 4-11 (EE+EV)
 2-01 365D 2X 14700M 5.1% 750F 3.3% 488P DHIA
 3-04 365D 2X 21100M 5.0% 1059F 3.3% 696P DHIA
 4-09 365D 2X 22380M 4.9% 1100F 3.4% 755P DHIA
 Dtr: KADENCE FAMES LOVELY 94 @ 4-07 (95/98)
 3-00 365D 2X 25010M 5.1% 1287F 3.4% 852P DHIA
 All-American Junior Three-Year-Old 2020
 2nd Four-Year-Old NGS-Madison 2021

SPRINGHILL MENTOR JAZZY-ET USA000068031553 A2A2
 Appraisal: EX 95 @ 6-09 (EEEE)
 4-06 365D 2X 34720M 5.2% 1799F 3.6% 1260P* DHIA

INDIAN ACRES PRADA-ET USA000068026022 200GU305 A1A2
 08/21 USDA GPTA -4M -0.12% -22F -0.03% -6P
 -1.2DPR +2.4PL -41NM\$ 23NM%ile -42CM\$ 95% Rel
 2.86SCS -0.50HCR 61% Rel -2.50CCR 83% Rel
 -0.30LIV 64% Rel 1.90GL 96% Rel 0.90EFC 68% Rel
 AGA 08/21 PTAT +0.7 +1.0UDC +2.7FLC 95%Rel PTI +5

KADENCE YOGI LUCKYCHARM USA000068042521
 08/21 USDA PTA -203M +0.07% +3F +0.03% -1P
 -0.4DPR -0.4PL -62NM\$ 24NM%ile -60CM\$ 38% Rel
 3.00SCS -1.40HCR 22% Rel -0.60CCR 29% Rel
 -0.80LIV 25% Rel -0.80GL 32% Rel -0.20EFC 26% Rel
 2 App 08/21 PTAT +0.4 +0.1UDR +0.2FLC 55%Rel CPI +2
 Appraisal: 83 @ 4-06 (83/77)
 3-01 365D 2X 15610M 5.5% 860F 3.5% 546P 96
 4-03 332D 2X 17360M 5.5% 954F 3.4% 595P 97

3D: KADENCE MP LEMON LIME USA000068014479
 Appraisal: 91 @ 6-11 (88/90)
 4-10 365D 2X 26290M 3.8% 986F 3.2% 844P DHIA



Knapps Spider Bank On Me-ET EX-94
 5-05 305D 28,590M 5.3% 1,525F 3.4% 964P
 Two-Time Reserve All-American
 Dam of Lot 10

LOT 10 4 MAS X BANK ON ME IVF EMBRYOS

Breeder & Owner: KNAPP LANDEN
 EPWORTH IA

- Four (4) IVF Embryos
- Sire to be mutually agreed upon by consignor & buyer
- Can be made export eligible

KNAPPS SPIDER BANK ON ME-ET USA000097000091

08/21 USDA GPTA +230M +0.05% +19F +0.04% +14P
 -1.4DPR +0.8PL +124NM\$ 67NM%ile +128CM\$ 67% Rel
 2.97SCS -1.50HCR 33% Rel -1.60CCR 40% Rel
 -1.60LIV 35% Rel 0.70GL 42% Rel 3.30EFC 36% Rel
 3 Rec YDev: +855M +51F +33P
 2 App 08/21 PTAT +1.4 +2.2UDR +1.0FLC 68%Rel CPI +59
 Appraisal: EX 94 @ 6-01 (EEEEVE)
 1-11 365D 2X 19560M 5.3% 1040F 3.6% 700P DHIA
 3-07 365D 2X 27770M 5.4% 1493F 3.4% 958P DHIA
 5-05 305D 2X 28590M 5.3% 1525F 3.4% 964P 96
Reserve All-American Junior Two-Year-Old 2017
Reserve All-American Four-Year-Old 2019
HM Jr. All-American & Nominated All-American Spring Yearling 2016
2nd Aged Cow NGS-Madison 2021
 Dtr: KNAPPS COPPER BANK ON IT 87 @ 4-01 (90/84)
 3-01 365D 2X 26170M 5.9% 1545F 3.5% 929P DHIA
Nominated All-American Junior Two-Year-Old 2019

COULEE CREST LUXURY SPIDER-ET USA000000604229 1GU415

08/21 USDA GPTA +267M +0.09% +28F +0.09% +25P
 -3.2DPR -3.1PL -44NM\$ 23NM%ile -41CM\$ 97% Rel
 3.28SCS -1.40HCR 69% Rel -3.10CCR 90% Rel
 -3.60LIV 75% Rel -0.30GL 98% Rel 7.40EFC 78% Rel
 AGA 08/21 PTAT +0.3 +0.0UDC -1.6FLC 97%Rel PTI +12

KNAPPS MR AMERICA MISS BESTANY USA000068026893

08/21 USDA PTA -370M +0.06% -7F -0.02% -15P
 +1.0DPR +1.1PL -19NM\$ 33NM%ile -13CM\$ 56% Rel
 2.61SCS -0.40HCR 16% Rel 1.00CCR 28% Rel
 0.40LIV 22% Rel 0.90GL 34% Rel 1.40EFC 22% Rel
 3 Rec YDev: -1054M -30F -40P
 2 App 08/21 PTAT +1.1 +1.4UDR +1.4FLC 57%Rel CPI +9
 Appraisal: 92 @ 6-07 (92/89)
 2-02 365D 2X 18700M 5.0% 938F 3.2% 604P DHIA
 3-10 365D 2X 23410M 5.5% 1297F 3.2% 748P DHIA
 5-10 365D 2X 24700M 5.8% 1438F 3.3% 817P DHIA
 2164D 120810M 5.8% 7034F 3.6% 4349P LIFE
Junior All-American & Nominated All-American Sr. Two-Yr-Old 2011

3D: KNAPPS ACE MISS BEST USA000068006305

Appraisal: 92 @ 5-08 (91/91)
 6-02 365D 2X 24730M 5.4% 1330F 3.2% 799P DHIA
 1837D 102260M 5.5% 5650F 3.4% 3430P LIFE
Honorable Mention Junior All-American Aged Cow 2011
Nominated Junior All-American Senior Two-Year-Old 2007
 Dtr: KNAPPS REGIS BLESSING 92 @ 5-07 (92/88)
 5-02 365D 2X 24940M 3.8% 939F 3.2% 800P DHIA



Warwick Manor LS Sweet-ET EX-90

3-04 365D 30,440M 5.1% 1,551F 3.1% 951P
Junior All-American Jr. 2-Year-Old 2019
Dam of Lot 11

Warwick Manor Caden Sexy EX-92

4-05 334D 27,700M 4.7% 1,306F 3.1% 866P
All-American Sr. 2-Year-Old 2015
Granddam of Lot 11

LOT 11 4 #2 MICHELANGELO X SWEET IVF EMBRYOS

Breeder: STOLTZFUS KAILA, KARLI & KOLBY
EAST EARL PA
Owner: PISKOROWSKI JOSEPH H DDS
ITHACA NY

- Four (4) #2 IVF Embryos
- Sexed semen used for females
- Resulting calves will be A2A2 by parentage
- Located at Warwick Manor Farm, East Earl, PA

PA: +341M -0.11% -3F -0.02% +10P -76CM\$ -73NM\$
+1.2PTAT +0.6UDC +1.4FLC -1.8DPR -1.2PL +14CPI 3.10SCS

GLADHEART MICHELANGELO-ET 840003206246837 54GU502 A2A2

08/21 USDA GPTA +426M -0.08% +5F +0.00% +15P
-1.2DPR -0.4PL +41NM\$ 41NM%ile +41CM\$ 52% Rel
3.07SCS -0.90HCR 33% Rel -1.40CCR 39% Rel
-1.40LIV 33% Rel -0.50GL 41% Rel 2.10EFC 34% Rel
AGA 08/21 PTAT +0.5 +0.2UDC +0.5FLC 51%Rel PTI +23

COULEE CREST GRUMPY LEGEND-ET USA000068045040 7GU451 A2A2

08/21 USDA GPTA +627M -0.09% +13F +0.02% +24P
-3.4DPR -0.9PL +20NM\$ 41NM%ile +19CM\$ 96% Rel
3.18SCS -1.20HCR 63% Rel -4.20CCR 82% Rel
-3.20LIV 57% Rel -1.00GL 98% Rel 5.60EFC 64% Rel
AGA 08/21 PTAT +1.1 +1.2UDC +1.2FLC 94%Rel PTI +45

WARWICK MANOR LS SWEET-ET USA000097002806 A2A2

08/21 USDA GPTA +255M -0.13% -11F -0.03% +4P
-2.3DPR -2.0PL -187NM\$ 9NM%ile -192CM\$ 66% Rel
3.13SCS-1.90HCR 28% Rel -3.00CCR 36% Rel
-2.20LIV 29% Rel 1.80GL 39% Rel 0.70EFC 31% Rel
2 Rec YDev: +179M -37F +0P
3 App 08/21 PTAT +1.9 +1.0UDR +2.2FLC 69%Rel CPI +3
Appraisal: EX 90 @ 4-01 (EEVEV)
2-04 314D 2X 21300M 4.8% 1028F 3.1% 655P 97
3-04 365D 2X 30440M 5.1% 1551F 3.1% 951P DHIA
Junior All-American & Res. All-American Junior Two-Year-Old 2019
HM Jr. All-American & Nom. All-American Sr. Three-Year-Old 2020
Reserve Intermediate Champion NGS-Harrisburg 2019
Son at Masterpiece: WARWICK MANOR SPARTACUS GPTI +2

MAPLEHURST LES MARZIPAN CAN000009594210 A2A2

Appraisal: EX 92 @ 7-10 (EEEEEE)

SPRINGHILL J LONE STAR-ET USA000068030411 31GU624 A2A2

08/21 USDA GPTA +317M -0.03% +10F +0.03% +16P
-3.5DPR -2.9PL -98NM\$ 17NM%ile -97CM\$ 94% Rel
3.10SCS -2.50HCR 53% Rel -4.50CCR 76% Rel
-3.60LIV 52% Rel 2.30GL 95% Rel 3.20EFC 60% Rel
AGA 08/21 PTAT +0.5 -0.6UDC +0.3FLC 93%Rel PTI -10

WARWICK MANOR CADEN SEXY USA000068038056

08/21 USDA PTA -150M +0.01% -6F +0.03% +0P
+0.1DPR -2.6PL -127NM\$ 15NM%ile -127CM\$ 59% Rel
3.13SCS-0.70HCR 6% Rel -0.40CCR 18% Rel
0.90LIV 9% Rel 0.40GL 21% Rel -0.90EFC 12% Rel
2 Rec YDev: +108M -19F +14P
2 App 08/21 PTAT +2.0 +2.2UDR +3.0FLC 61%Rel CPI +41
Appraisal: 92 @ 4-10 (92/90)
2-07 365D 2X 24270M 4.9% 1196F 3.5% 841P DHIA
4-05 334D 2X 27700M 4.7% 1306F 3.1% 866P 97
All-American Senior Two-Year-Old 2015
Reserve Intermediate Champion NGS-Harrisburg & Louisville 2015
Dtrs: WARWICK MANOR SEXY SORORITY 91 @ 3-11 (90/87)
2-01 365D 2X 28100M 5.4% 1515F 3.5% 975P DHIA
Two-Time Reserve Junior All-American
WARWICK MANOR SEXY BABY-ETV 85 @ 2-05 (86/83)
Intermediate Champion Guernsey Gold Showcase Jr. Show 2021

3D: WARWICK MANOR ALYMOS SELMA USA000068027396

Appraisal: 92 @ 3-04 (94/91)
All-American Junior Three-Year-Old 2012
Reserve All-American Junior Two-Year-Old 2011
Grand Champion NGS-Louisville 2012

4D: WARWICK MANOR O STEPHINE USA000068018784

Appraisal: 88 @ 3-04 (89/87)
3-02 310D 2X 19970M 4.6% 917F 3.2% 631P 98



Millborne Hillpoint S Fiesta-ET EX-93
 3-07 365D 21,830M 4.6% 1,010F 3.7% 801P
 Three-Time All-American
 Dam of Lot 12

LOT 12 4 #2 JC PENNEY X FIESTA IVF EMBRYOS

Breeder & Owner: SPRINGHILL
 BIG PRAIRIE OH

PA: -76M +0.05% +5F +0.04% +5P -131CM\$ -130NM\$
 +1.2PTAT +1.1UDC +1.4FLC -2.8DPR -1.5PL +12CPI 3.19SCS

SPRINGHILL JC PENNEY-ET 840003151591406 6GU114 A2A2

08/21 USDA GPTA +120M +0.04% +13F -0.01% +3P
 -2.7DPR +0.0PL -2NM\$ 41NM%ile -2CM\$ 54% Rel
 2.96SCS -0.5SCR -2.70HCR 34% Rel -3.60CCR 36% Rel
 0.10LIV 32% Rel 1.10GL 44% Rel -0.50EFC 31% Rel
 AGA 08/21 PTAT +1.3 +1.6UDC +1.4FLC 52%Rel PTI +32

MILLBORNE HILLPOINT S FIESTA-ET USA000068041840

08/21 USDA GPTA -271M +0.05% -3F +0.09% +6P
 -2.8DPR -2.9PL -258NM\$ 4NM%ile -259CM\$ 72% Rel
 3.41SCS -2.40HCR 35% Rel -3.60CCR 44% Rel
 -3.70LIV 36% Rel -0.10GL 53% Rel -0.30EFC 37% Rel
 3 Rec YDev: -1507M -32F -2P
 5 App 08/21 PTAT +1.0 +0.5UDR +1.4FLC 68%Rel CPI -9
 Appraisal: 93 @ 6-01 (92/93)
 2-04 365D 2X 18430M 5.0% 920F 3.6% 662P DHIA
 3-07 365D 2X 21830M 4.6% 1010F 3.7% 801P DHIA
 5-08 314D 2X 11670M 4.8% 558F 4.0% 469P 97
Unanimous All-American Sr. Two-Year-Old 2013
Unanimous All-American Four-Year-Old 2015
All-American Fall Yearling 2012
Junior All-American & Reserve All-American Fall Calf 2011
Honorable Mention All-American Sr. Three-Year-Old 2014
Nominated All-American Five-Year-Old 2016
Member, Unanimous All-American Dam & Daughter 2015
Grand Champion NGS-Harrisburg 2014
Reserve Grand Champion NGS-Madison & Harrisburg 2013 & 2015
 Dtrs: MILLBORNE HILLPOINT JAC FIZZ-ET 87 @ 3-02 (87/86)
 2-06 365D 2X 22660M 3.4% 775F 3.2% 725P DHIA
Reserve All-American Spring Calf 2014
 MILLBORNE HP ALYMO FINALLY-ETV 91 @ 4-08 (95/84)
 2-01 365D 2X 18765M 5.2% 977F 3.6% 681P DHIA
Reserve All-American Jr. Two-Year-Old 2018
 MILLBORNE HP FABULOUS-ETV 85 @ 2-05 (85/84)
Nom. All-American & Res. Jr. All-American Summer Yearling 2019

- Four (4) #2 IVF embryos
- Reverse sorted for females
- Located at TransOva Maryland

COULEE CREST NOVAK LAMBEAU-ET 840003128910115 7GU473 A2A2

08/21 USDA GPTA -145M +0.11% +12F -0.01% -7P
 -2.0DPR +0.2PL +28NM\$ 41NM%ile +26CM\$ 86% Rel
 3.03SCS +1.8SCR -2.40HCR 55% Rel -3.20CCR 52% Rel
 0.60LIV 44% Rel 2.20GL 93% Rel 3.00EFC 36% Rel
 AGA 08/21 PTAT +0.5 +1.2UDC +0.9FLC 76%Rel PTI +11

SPRINGHILL MENTOR JAZZY-ET USA000068031553 A2A2

Appraisal: EX 95 @ 6-09 (EEEE)
 4-06 365D 2X 34720M 5.2% 1799F 3.6% 1260P* DHIA

COULEE CREST LUXURY SPIDER-ET USA00000604229 1GU415

08/21 USDA GPTA +267M +0.09% +28F +0.09% +25P
 -3.2DPR -3.1PL -44NM\$ 23NM%ile -41CM\$ 97% Rel
 3.28SCS -1.40HCR 69% Rel -3.10CCR 90% Rel
 -3.60LIV 75% Rel -0.30GL 98% Rel 7.40EFC 78% Rel
 AGA 08/21 PTAT +0.3 +0.0UDC -1.6FLC 97%Rel PTI +12

MILLBORNE TILLER FANCY USA000068002577

08/21 USDA PTA -455M +0.01% -19F +0.03% -10P
 -2.9DPR -3.1PL -379NM\$ 0NM%ile -385CM\$ 58% Rel
 3.35SCS -3.00HCR 26% Rel -4.50CCR 36% Rel
 -3.70LIV 31% Rel 0.30GL 38% Rel -1.40EFC 32% Rel
 3 Rec YDev: -943M -34F -16P
 4 App 08/21 PTAT +0.9 +0.5UDR +1.9FLC 57%Rel CPI -40
 Appraisal: 92 @ 4-08 (90/92)
 2-00 365D 2X 18190M 4.2% 760F 3.4% 613P DHIA
 3-05 365D 2X 23380M 4.4% 1039F 3.6% 843P DHIA
 4-10 365D 2X 19300M 4.5% 876F 3.5% 680P DHIA
Nominated All-American Four-Year-Old 2008

3D: R WAY ROYAL OAK FAYE USA000003068719 A2A2

Appraisal: 94 @ 4-03 (94/91)
 4-00 365D 2X 19590M 4.6% 892F 3.5% 688P DHIA
Unanimous All-American Jr. Three-Year-Old 2003
All-American Jr. Two-Year-Old 2002
Reserve All-American Four-Year-Old 2004
Honorable Mention All-American Five-Year-Old 2005
Honorable Mention All-American Summer Yearling 2001
Three-Time National Reserve Grand Champion

4D: CALLUMLEA BILLBOARD FLOSSIE USA000003050310

Appraisal: 89 @ 5-05
Nominated All-American Fall Calf 1997



Springhill Double Jazmin-ET EX-92
 102,290M 6.2% 6,334F 3.8% 3,847P Lifetime
 Two-Time HM Jr. All-American
 Dam of Lot 13
 Maternal Family of Lots 14 & 15

LOT 13 3 #1 VENGEANCE X JAZMIN IVF EMBRYOS

Breeder & Owner: SPRINGHILL
 BIG PRAIRIE OH

PA: +147M +0.15% +34F +0.02% +8P +253CM\$ +250NM\$
 +0.9PTAT +1.1UDC +1.5FLC +0.0DPR +1.2PL +71CPI 2.92SCS

MARODORE RANDALLS VENGEANCE USA000097006605 6GU113 A2A2

08/21 USDA GPTA +147M +0.12% +28F +0.02% +8P
 +0.1DPR +0.7PL +178NM\$ 58NM%ile +180CM\$ 52% Rel
 2.97SCS +0.3SCR -0.10HCR 29% Rel 0.20CCR 31% Rel
 0.70LIV 28% Rel -0.50GL 38% Rel 1.90EFC 29% Rel
 AGA 08/21 PTAT +0.8 +0.6UDC +1.3FLC 50%Rel PTI +59

SPRINGHILL DOUBLE JAZMIN-ET USA000068031518

08/21 USDA GPTA +147M +0.18% +39F +0.01% +7P
 -0.1DPR +1.6PL +322NM\$ 94NM%ile +326CM\$ 74% Rel
 2.86SCS -1.30HCR 37% Rel -0.30CCR 46% Rel
 0.60LIV 38% Rel 1.30GL 49% Rel 2.80EFC 39% Rel
 4 Rec YDev: +480M +88F +22P
 5 App 08/21 PTAT +1.0 +1.5UDR +1.6FLC 76%Rel CPI +82
 Appraisal: 92 @ 5-03 (91/91)
 1-08 349D 2X 19490M 5.4% 1047F 3.5% 685P 101
 2-08 365D 2X 21090M 6.5% 1373F 3.5% 732P DHIA
 3-11 361D 2X 26290M 5.1% 1329F 4.0% 1047P 96
 5-00 365D 2X 28270M 7.3% 2060F*3.8% 1073P DHIA
 1628D 102290M 6.2% 6334F 3.8% 3847P LIFE

Honorable Mention Junior All-American Yearling in Milk 2013
Honorable Mention Junior All-American Winter Calf 2012
 Dtrs: SPRINGHILL LAREDO JOSLIN-ET 85 @ 6-11 (80/84)
 3-01 365D 2X 26200M 5.3% 1395F 3.5% 917P DHIA
 SPRINGHILL LAREDO JAZLYNN-ET 91 @ 6-00 (92/92)
 3-07 365D 2X 25770M 5.5% 1421F 3.6% 920P DHIA
 SPRINGHILL MM JORDAN-ETV 91 @ 4-08 (91/90)
 4-03 365D 2X 26480M 4.8% 1270F 3.7% 986P DHIA
 SPRINGHILL MM JOYRIDE-ETV 85 @ 2-04 (86/82)

3D: DIX LEE JIFFY JIPSY USA000003066162

Appraisal: 90 @ 5-01 (88/90)
 4-08 365D 2X 25080M 4.6% 1142F 3.4% 852P DHIA

4D: DIX LEE SMOKEY BEAR JIGGER USA000003036554

Appraisal: 84 @ 4-06

5D: DIX LEE BRETT'S BIONIC JINGLE USA000003004382

Appraisal: 86 @ 5-06

6D: DIX LEE FAYETTE JINGO USA000002984299

Appraisal: 90 @ 3-11
 4-02 305D 2X 21510M 4.6% 992F 3.6% 768P DHIR

- Three (3) #1 IVF embryos
- Reverse Sorted for Females
- Resulting calves would rank in the top 100 CPI Heifers August '21
- Eligible for export to Canada and the United Kingdom
- Located at TransOva Maryland

DAIRYMAN COPPER RANDALL-ET 840003009973866 7GU471 A2A2

08/21 USDA GPTA +23M +0.02% +4F -0.01% -1P
 +0.8DPR +2.3PL +182NM\$ 58NM%ile +186CM\$ 80% Rel
 2.76SCS 0.60HCR 46% Rel 0.90CCR 45% Rel
 1.20LIV 34% Rel -0.40GL 90% Rel 2.20EFC 39% Rel
 AGA 08/21 PTAT -0.1 +0.3UDC +0.1FLC 72%Rel PTI +18

MARODORE BOOMERS VALIUM USA000068032668 A2A2

Appraisal: EX 94 @ 7-09 (EEEEEE)
 3-09 365D 2X 24540M 5.6% 1382F 3.6% 883P DHIA

PINE RIDGE DOUBLE L-ET USA000000604312 200GU109 A1A2

08/21 USDA GPTA -91M +0.18% +27F -0.02% -6P
 +1.1DPR +4.8PL +471NM\$ 99NM%ile +477CM\$ 96% Rel
 2.63SCS -0.40HCR 61% Rel 1.30CCR 83% Rel
 2.90LIV 66% Rel 2.10GL 96% Rel 5.00EFC 67% Rel
 AGA 08/21 PTAT +0.8 +1.8UDC -0.2FLC 95%Rel PTI +57

DIX LEE TILLER JOKE USA000068001932

08/21 USDA GPTA +309M +0.02% +17F -0.03% +4P
 -1.1DPR +0.5PL +70NM\$ 55NM%ile +69CM\$ 88% Rel
 2.89SCS -2.30HCR 54% Rel -2.10CCR 75% Rel
 -1.20LIV 56% Rel 0.90GL 75% Rel 0.10EFC 60% Rel
 2 Rec YDev: +2340M +122F +64P
 2 App 08/21 PTAT +1.3 +1.5UDR +1.7FLC 89%Rel CPI +42
 Appraisal: 93 @ 5-08 (93/92)
 2-00 365D 2X 24167M 4.8% 1158F 3.3% 794P 92
 5-06 365D 2X 31350M 4.9% 1543F 3.3% 1033P DHIA
Dam of Jester, Judgment, Jackpot, Lone Star & Jaguar
All-American & Unan. Jr. All-American Jr. Two-Year-Old 2006
Reserve All-American 5-Year-Old 2009
Member, All-American Dam & Daughter 2009
Grand Champion NGS-Louisville 2009



Springhill Blue Judith-ET EX-93
 4-05 361D 28,170M 5.1% 1,448F 3.3% 925P
 Nom. All-American Jr. 3-Year-Old 2016
 Dam of Lot 14
 Full Sister to Dam of Lot 15

LOT 14 4 #1 MENTOR X JUDITH IVF EMBRYOS

Breeder & Owner: SPRINGHILL
 BIG PRAIRIE OH

PA: -40M -0.03% -7F -0.01% -4P -185CM\$ -182NM\$
 +1.1PTAT +1.0UDC +1.5FLC -1.6DPR -1.0PL +0CPI 3.08SCS

- Four (4) #1 IVF embryos
- Reverse Sorted for Females
- Eligible for export to Canada, the United Kingdom & the EU
- Located at TransOva Maryland

MAR RAL ROYAL MENTOR USA000000604702 31GU612 A2A2

08/21 USDA GPTA -533M -0.03% -30F +0.03% -13P
 -1.3DPR -0.3PL -340NM\$ 5NM%ile -344CM\$ 97% Rel
 3.24SCS -3.30HCR 55% Rel -2.90CCR 87% Rel
 1.40LIV 68% Rel -1.10GL 97% Rel -6.80EFC 71% Rel
 AGA 08/21 PTAT +0.6 +0.6UDC +1.2FLC 97%Rel PTI -34

JENSGOLDEN PROKING ROYAL OAK USA000000602216 7GU330 A2A2

08/21 USDA GPTA -16M +0.06% +10F +0.01% +2P
 -4.9DPR -1.7PL -197NM\$ 17NM%ile -195CM\$ 97% Rel
 2.97SCS -5.30HCR 75% Rel -6.90CCR 92% Rel
 -1.20LIV 85% Rel -1.40GL 93% Rel -12.60EFC 86% Rel
 AGA 08/21 PTAT +0.5 +0.2UDC -0.1FLC 97%Rel PTI -22

SPRINGHILL BLUE JUDITH-ET USA000068032723

08/21 USDA GPTA +454M -0.02% +17F -0.05% +6P
 -1.8DPR -1.7PL -23NM\$ 32NM%ile -25CM\$ 72% Rel
 2.91SCS-3.20HCR 39% Rel -2.50CCR 52% Rel
 -2.60LIV 41% Rel 0.60GL 50% Rel -5.30EFC 42% Rel
 4 Rec YDev: +1505M +75F +32P
 3 App 08/21 PTAT +1.6 +1.4UDR +1.8FLC 72%Rel CPI +34
 Appraisal: 93 @ 4-06 (92/93)
 1-11 318D 2X 19190M 4.8% 916F 3.3% 633P 95
 2-11 365D 2X 28100M 4.4% 1230F 3.4% 969P DHIA
 4-05 361D 2X 28170M 5.1% 1448F 3.3% 925P 96
 Nominated All-American Junior Three-Year-Old 2016
 Reserve Grand Champion Ohio State Fair 2016

RAEMELTON PRIME MAJESTIC USA000002982131

Appraisal: 94 @ 10-05
 7-09 365D 2X 26670M 3.8% 1010F 3.4% 920P DHIA

JENS GOLD C BLUE SPRUCE-ET USA000068012543 1GU436 A1A2

08/21 USDA GPTA +144M +0.01% +9F +0.00% +4P
 -1.7DPR -1.7PL -81NM\$ 17NM%ile -81CM\$ 97% Rel
 3.00SCS -3.70HCR 70% Rel -2.30CCR 91% Rel
 -3.30LIV 74% Rel 0.70GL 98% Rel -10.20EFC 78% Rel
 AGA 08/21 PTAT +0.5 +0.5UDC +0.5FLC 97%Rel PTI +5

DIX LEE TILLER JOKE USA000068001932

08/21 USDA GPTA +309M +0.02% +17F -0.03% +4P
 -1.1DPR +0.5PL +70NM\$ 55NM%ile +69CM\$ 88% Rel
 2.89SCS-2.30HCR 54% Rel -2.10CCR 75% Rel
 -1.20LIV 56% Rel 0.90GL 75% Rel 0.10EFC 60% Rel
 2 Rec YDev: +2340M +122F +64P
 2 App 08/21 PTAT +1.3 +1.5UDR +1.7FLC 89%Rel CPI +42
 Appraisal: 93 @ 5-08 (93/92)
 2-00 365D 2X 24167M 4.8% 1158F 3.3% 794P 92
 5-06 365D 2X 31350M 4.9% 1543F 3.3% 1033P DHIA



Springhill Mentor Joyce EX-93
 All-American Jr. 2-Year-Old 2019
 Granddaughter of "Judith"



Dix Lee Tiller Joke EX-93

5-06 365D 31,350M 4.9% 1,543F 3.3% 1,033P
 All-American Jr. 2-Year-Old 2006
 Grandam of Lots 13-15



Springhill Mentor Jazzy-ET EX-95

4-06 365D 34,720M 5.2% 1,799F 3.6% 1,260P
 Four-Time All-American
 Maternal Sister to Dams of Lots 13-15

LOT 15 3 #1 DRONE X JULIET IVF EMBRYOS

Breeder & Owner: SPRINGHILL
 BIG PRAIRIE OH

PA: +354M -0.05% +8F -0.01% +11P +82CM\$ +81NM\$
 +1.4PTAT +1.8UDC +2.5FLC -1.0DPR +1.2PL +58CPI 2.96SCS

- Three (3) #1 IVF embryos
- Reverse Sorted for Females
- Resulting calves are A2A2 by parentage
- Located at TransOva Maryland

HI GUERN VIEW LEVI DRONE USA000097004646 94GU959 A2A2

08/21 USDA GPTA +272M -0.08% -2F +0.01% +11P
 -0.1DPR +2.7PL +114NM\$ 41NM%ile +116CM\$ 56% Rel
 2.98SCS +0.1SCR -0.80HCR 35% Rel -0.80CCR 42% Rel
 -0.40LIV 36% Rel -0.40GL 42% Rel 0.80EFC 38% Rel
 AGA 08/21 PTAT +1.4 +1.2UDC +1.7FLC 53%Rel PTI +51

MARODORE AARONS LEVI-ET USA000068025119 7GU438 A2A2

08/21 USDA GPTA -158M -0.04% -15F -0.04% -12P
 +1.1DPR +1.9PL -42NM\$ 23NM%ile -45CM\$ 97% Rel
 2.97SCS 0.60HCR 64% Rel 0.00CCR 87% Rel
 -0.50LIV 64% Rel -0.60GL 98% Rel 4.30EFC 73% Rel
 AGA 08/21 PTAT +0.8 +0.4UDC +0.7FLC 96%Rel PTI -5

SPRINGHILL BLUE JULIET-ET USA000068032725 A2A2

08/21 USDA GPTA +435M -0.02% +17F -0.02% +10P
 -1.9DPR -0.4PL +48NM\$ 49NM%ile +47CM\$ 71% Rel
 2.94SCS -3.20HCR 40% Rel -2.50CCR 49% Rel
 -3.00LIV 41% Rel 0.90GL 51% Rel -5.40EFC 43% Rel
 4 Rec YDev: +774M +28F +16P
 3 App 08/21 PTAT +1.3 +2.4UDR +3.3FLC 72%Rel CPI +65
 Appraisal: EX 91 @ 7-02 (EEVEE) 2E
 1-11 365D 2X 19150M 5.0% 958F 3.6% 686P DHIA
 3-03 365D 2X 21130M 4.8% 1005F 3.6% 755P DHIA
 4-11 306D 2X 20890M 4.2% 876F 2.9% 596P 96
 6-04 358D 2X 26540M 4.1% 1082F 3.2% 850P 95
 #173(T) CPI Cow August 2021

HI GUERN VIEW DANCING DIVA-ET USA000068047311 A2A2

Appraisal: EX 96 @ 9-00 (EEEEEE)
 7-07 305D 2X 25620M 3.9% 1001F 3.5% 897P 94

JENS GOLD C BLUE SPRUCE-ET USA000068012543 1GU436 A1A2

08/21 USDA GPTA +144M +0.01% +9F +0.00% +4P
 -1.7DPR -1.7PL -81NM\$ 17NM%ile -81CM\$ 97% Rel
 3.00SCS -3.70HCR 70% Rel -2.30CCR 91% Rel
 -3.30LIV 74% Rel 0.70GL 98% Rel -10.20EFC 78% Rel
 AGA 08/21 PTAT +0.5 +0.5UDC +0.5FLC 97%Rel PTI +5

DIX LEE TILLER JOKE USA000068001932

08/21 USDA GPTA +309M +0.02% +17F -0.03% +4P
 -1.1DPR +0.5PL +70NM\$ 55NM%ile +69CM\$ 88% Rel
 2.89SCS -2.30HCR 54% Rel -2.10CCR 75% Rel
 -1.20LIV 56% Rel 0.90GL 75% Rel 0.10EFC 60% Rel
 2 Rec YDev: +2340M +122F +64P
 2 App 08/21 PTAT +1.3 +1.5UDR +1.7FLC 89%Rel CPI +42
 Appraisal: 93 @ 5-08 (93/92)
 2-00 365D 2X 24167M 4.8% 1158F 3.3% 794P 92
 5-06 365D 2X 31350M 4.9% 1543F 3.3% 1033P DHIA



Springhill Mentor Jamaica-ET EX-92

5-06 333D 27,670M 6.6% 1,815F 3.2% 885P
 Reserve Jr. All-American 4-Year-Old 2019
 Maternal Sister to Dams of Lots 13-15



Four Winds DC Candy-ET EX-92
 3-05 365D 25,740M 5.0% 1,284F 3.4% 870P
 All-American Jr. 2-Year-Old 2015
 Dam of Lot 16

LOT 16 3 #1 AMERICAN PIE OR JC PENNEY X CANDY EMBRYOS

Breeder & Owner: VALLEY GEM & FOUR WINDS
 CUMBERLAND WI

Sire choice 1:

INDIAN ACRES AMERICAN PIE USA000068016348 31GU618 A2A2

08/21 USDA GPTA +145M -0.18% -25F -0.04% -3P
 -1.5DPR +2.7PL -36NM\$ 23NM%ile -35CM\$ 97% Rel
 2.77SCS -3.40HCR 67% Rel -2.80CCR 89% Rel
 0.80LIV 70% Rel 0.90GL 97% Rel -6.70EFC 76% Rel
 AGA 08/21 PTAT +0.2 +0.4UDC +2.3FLC 97%Rel PTI -4

- Three (3) #1 IVF embryos
- Reverse Sorted for Females
- Resulting calves are A2A2 by parentage
- Buyer can choose either sire or a combination
- Located at Valley Gem Farm, Cumberland, WI

Sire choice 2:

SPRINGHILL JC PENNEY-ET 840003151591406 6GU114 A2A2

08/21 USDA GPTA +120M +0.04% +13F -0.01% +3P
 -2.7DPR +0.0PL -2NM\$ 41NM%ile -2CM\$ 54% Rel
 2.96SCS -0.5SCR -2.70HCR 34% Rel -3.60CCR 36% Rel
 0.10LIV 32% Rel 1.10GL 44% Rel -0.50EFC 31% Rel
 AGA 08/21 PTAT +1.3 +1.6UDC +1.4FLC 52%Rel PTI +32

FOUR WINDS DC CANDY-ET 840003012311922 A2A2

08/21 USDA GPTA -286M -0.02% -16F -0.01% -11P
 -2.4DPR -2.6PL -335NM\$ 1NM%ile -337CM\$ 67% Rel
 3.01SCS -1.20HCR 37% Rel -4.50CCR 46% Rel
 -1.10LIV 41% Rel 1.60GL 46% Rel -0.60EFC 42% Rel
 3 Rec YDev: +233M +1F +4P
 4 App 08/21 PTAT +1.2 +0.2UDR +1.0FLC 64%Rel CPI -44
 Appraisal: 92 @ 4-06 (92/91)
 2-00 365D 2X 18630M 4.8% 890F 3.5% 660P DHIA
 3-05 365D 2X 25740M 5.0% 1284F 3.4% 870P DHIA
 All-American & Unan. Jr. All-American Junior Two-Year-Old 2015
 Honorable Mention All-American Junior Three-Year-Old 2016
 Reserve Intermediate Champion NJS-Madison 2015
 Dtr: FOUR ROSES CHRISTMAS CANDY 86 @ 3-06 (85/86)

SNIDERS OPTION AARON-ET USA000000604670 7GU395 A2A2

08/21 USDA GPTA +201M +0.15% +36F -0.01% +5P
 -3.4DPR -0.2PL +129NM\$ 41NM%ile +129CM\$ 99% Rel
 2.94SCS 0.40HCR 81% Rel -5.50CCR 95% Rel
 -3.00LIV 86% Rel 1.50GL 99% Rel 3.60EFC 89% Rel
 AGA 08/21 PTAT +0.8 +1.1UDC +0.8FLC 99%Rel PTI +36

3D: FOUR WINDS MM DEE DESTINY-ET USA000003057100

Appraisal: 93 @ 4-06 (92/92)
 4-00 365D 2X 25410M 4.8% 1210F 3.3% 842P DHIA
 Unanimous All-American Junior Three-Year-Old 2001
 All-American Junior Two-Year-Old 2000
 All-American Four-Year-Old 2002

4D: WESTLYNN TOM DEE USA000002963901

Appraisal: 96 @ 10-05
 5-11 365D 2X 26540M 4.8% 1284F 3.6% 961P DHIA
 1807D 110740M 4.7% 5208F 3.6% 4001P LIFE
 All-American 1993, 1994, 1995 & 1996
 Reserve All-American 1991
 Reserve Supreme Champion World Dairy Expo
 Grand Champion NGS-Madison 1994, 1995 & 1996

FOUR WINDS DESTINY CHILD USA000003073037

08/21 USDA GPTA -843M -0.08% -52F +0.00% -28P
 -0.4DPR -2.9PL -559NM\$ 0NM%ile -562CM\$ 76% Rel
 3.10SCS -1.10HCR 22% Rel -1.00CCR 47% Rel
 3.20LIV 42% Rel 1.50GL 53% Rel -3.60EFC 40% Rel
 4 Rec YDev: -1357M -81F -49P
 3 App 08/21 PTAT +1.2 +0.5UDR +1.2FLC 74%Rel CPI -78
 Appraisal: 95 @ 6-10 (93/92)
 1-11 320D 2X 13870M 4.1% 564F 3.3% 457P 100
 3-00 365D 2X 20840M 4.6% 957F 3.3% 686P DHIA
 4-02 365D 2X 28090M 4.3% 1197F 3.0% 851P DHIA
 6-06 365D 2X 28230M 4.5% 1283F 2.9% 813P DHIA
 Unanimous All-American Junior Two-Year-Old 2012
 Unanimous All-American Junior Three-Year-Old 2004
 All-American Summer Yearling 2002
 All-American Four-Year-Old 2005
 All-American Aged Cow 2008
 Nominated All-American Total Performance Cow 2008
 Four-Time National Grand Champion



Sniders HP GG Pie Ashton-ETV VG-86

2-01 305D 18,520M 5.7% 1,047F 3.3% 604P
 Reserve All-American Jr. 2-Year-Old 2019
 Dam 1 of Lot 17

Prairie Cream Am Pie Cordova VG-85

3rd Sr. 3-Year-Old NGS-Madison 2021
 1st Sr. 3-Year-Old MN State Fair 2021
 Dam 2 of Lot 17

LOT 17 3 MAS X ASHTON OR CORDOVA IVF EMBRYOS

Breeder & Owner: PRAIRIE CREAM & VALLEY GEM
 CUMBERLAND WI

- Three (3) IVF Embryos
- Sire to be mutually agreed upon by consignor & buyer
- Choice of dams: Ashton or Cordova
- Can be made export eligible

Dam Choice 1:

SNIDERS HP GG PIE ASHTON-ETV 840003142494099 A2A2

08/21 USDA GPTA -518M +0.09% -8F +0.04% -10P
 +0.9DPR +3.6PL +90NM\$ 60NM%ile +95CM\$ 66% Rel
 2.91SCS-1.60HCR 33% Rel 0.80CCR 41% Rel
 1.60LIV 35% Rel 1.60GL 42% Rel -2.60EFC 36% Rel
 1 Rec YDev: +103M +34F -4P
 2 App 08/21 PTAT +0.7 +1.0UDR +1.5FLC 69%Rel CPI +19
 Appraisal: VG 86 @ 2-11 (VVVVV)
 2-01 305D 2X 18520M 5.7% 1047F 3.3% 604P 96
 Reserve All-American Junior Two-Year-Old 2019
 4th Four-Year-Old NGS-Madison 2021

2D: SNIDERS GARRETT ASHANTI-ET USA000068018756 A2A2

08/21 USDA GPTA -635M +0.29% +20F +0.12% -1P
 +0.5DPR +1.0PL +129NM\$ 68NM%ile +135CM\$ 72% Rel
 3.18SCS 0.30HCR 31% Rel 1.40CCR 42% Rel
 1.60LIV 36% Rel 1.90GL 41% Rel 0.00EFC 36% Rel
 4 Rec YDev: -996M +38F +2P
 3 App 08/21 PTAT +0.8 +1.4UDR +0.9FLC 75%Rel CPI +48
 Appraisal: EX 94 @ 12-01 (EEEEEE) 2E
 2-03 365D 2X 16150M 4.8% 777F 3.4% 544P DHIA
 3-07 365D 2X 18000M 5.0% 908F 3.7% 663P DHIA
 5-08 365D 2X 22060M 5.0% 1094F 3.5% 775P DHIA
 7-00 365D 2X 25960M 4.8% 1236F 3.4% 889P DHIA
 9-09 365D 2X 24290M 4.4% 1073F 3.1% 748P DHIA
 3302D 170730M 5.2% 8901F 3.8% 6434P LIFE
 All-American Aged Cow 2014
 Reserve All-American Aged Cow 2017
 Honorable Mention All-American Aged Cow 2019
 Grand Champion NGS-Louisville 2017

3D: SNIDERS BEN ALIYAH USA000003057464

Appraisal: 93 @ 4-08 (93/93) Gold Star Dam - 2003
 5-07 365D 2X 21930M 4.6% 1016F 3.7% 815P DHIA
 1998D 100930M 4.8% 4865F 3.6% 3655P LIFE

4D: CEDAR FRINGED ALTANN USA000003045188

Appraisal: 95 @ 6-11 (95/93) Gold Star Dam - 2001
 6-04 365D 2X 31150M 4.8% 1486F 3.0% 941P 94
 2999D 168160M 4.8% 8035F 3.3% 5522P LIFE
 Dam of Aaron, Alstar, Adacka, Alton, Alvin, Activate & Achieve
 All-American & Jr. All-American Four-Year-Old 2000

Dam Choice 2:

PRAIRIE CREAM AM PIE CORDOVA 840003143485732 A2A2

08/21 USDA GPTA +298M -0.13% -9F -0.07% -2P
 -1.0DPR +2.0PL -23NM\$ 32NM%ile -27CM\$ 65% Rel
 2.88SCS-1.90HCR 35% Rel -2.50CCR 41% Rel
 0.30LIV 37% Rel 1.20GL 44% Rel -2.90EFC 38% Rel
 1 Rec YDev: -7M -75F -35P
 0 App 08/21 PTAT +0.9 +1.0UDR +1.0FLC 56%Rel CPI +8
 Appraisal: VG 85 @ 2-11 (VV++V)
 3rd Senior Three-Year-Old NGS-Madison 2021

2D: FOUR WINDS DC CRYSTAL-ET 840003012311921 A2A2

08/21 USDA GPTA -448M +0.11% -2F -0.02% -18P
 -1.3DPR -0.2PL -174NM\$ 10NM%ile -175CM\$ 71% Rel
 2.97SCS-0.60HCR 37% Rel -2.80CCR 46% Rel
 0.10LIV 41% Rel 1.40GL 46% Rel -1.00EFC 41% Rel
 4 Rec YDev: -62M +27F -13P
 3 App 08/21 PTAT +1.5 +1.7UDR +1.8FLC 71%Rel CPI +0
 Appraisal: EX 90 @ 5-04 (EEVVE)
 2-02 365D 3X 24530M 5.3% 1305F 3.2% 791P DHIA
 3-06 365D 3X 27660M 5.7% 1579F 3.1% 864P DHIA
 4-09 365D 3X 27090M 5.4% 1452F 3.2% 878P DHIA

3D: FOUR WINDS DESTINY CHILD USA000003073037

Appraisal: 95 @ 6-10 (93/92)
 6-06 365D 2X 28230M 4.5% 1283F 2.9% 813P DHIA
 Unanimous All-American Junior Two-Year-Old 2012
 Unanimous All-American Junior Three-Year-Old 2004
 All-American Summer Yearling 2002
 All-American Four-Year-Old 2005
 All-American Aged Cow 2008
 Nominated All-American Total Performance Cow 2008
 Four-Time National Grand Champion

4D: FOUR WINDS MM DEE DESTINY-ET USA000003057100

Appraisal: 93 @ 4-06 (92/92)
 4-00 365D 2X 25410M 4.8% 1210F 3.3% 842P DHIA
 Unanimous All-American Junior Three-Year-Old 2001
 All-American Junior Two-Year-Old 2000
 All-American Four-Year-Old 2002

5D: WESTLYNN TOM DEE USA000002963901

Appraisal: 96 @ 10-05



Knapps Hillpoint Pie Teacup-ET EX-94
 279,390M 4.4% 12,394F 3.2% 9,056P Life
 Res. Jr. All-American Jr. 2-Year-Old 2011
 Dam of Lot 18

LOT 18 4 MAS X TEACUP IVF EMBRYOS

Breeder & Owner: KNAPP AUSTIN & LANDEN
 EPWORTH IA

- Four (4) IVF Embryos
- Sire to be mutually agreed upon by consignor & buyer
- Can be made export eligible

KNAPPS HILLPOINT PIE TEACUP-ET USA000068026559

08/21 USDA PTA +652M -0.26% -17F -0.05% +13P
 -0.4DPR +3.2PL +148NM\$ 72NM%ile +148CM\$ 62% Rel
 2.83SCS -1.40HCR 23% Rel -1.40CCR 35% Rel
 0.30LIV 28% Rel 0.50GL 35% Rel -2.70EFC 28% Rel
 5 Rec YDev: +1647M -21F +34P
 3 App 08/21 PTAT +0.8 +0.6UDR +1.0FLC 64%Rel CPI +21
 Appraisal: EX 94 @ 12-02 (VEEEE)
 1-11 363D 2X 26160M 4.1% 1083F 3.0% 796P 96
 3-00 365D 2X 29760M 4.4% 1295F 3.1% 928P DHIA
 4-03 365D 2X 29470M 4.1% 1210F 3.0% 890P DHIA
 5-07 365D 2X 34040M 4.9% 1653F 3.0% 1015P DHIA
 7-04 360D 2X 29980M 4.1% 1244F 3.3% 990P 97
 8-05 365D 2X 33380M 4.4% 1455F 3.2% 1081P DHIA
 10-04 365D 2X 23730M 4.3% 1010F 3.4% 812P DHIA
 11-06 305D 2X 32120M*5.2% 1663F*3.2% 1040P* 96
 3527D 279390M 4.4% 12394F 3.2% 9056P LIFE
 Res. Jr. All-American & HM All-American Jr. Two-Year-Old 2011
 Honorable Mention Junior All-American Jr. Three-Year-Old 2012
 Dtrs: KNAPPS REGIS TEABELLE 90 @ 4-07 (88/88)
 2-07 365D 2X 23820M 4.6% 1101F 3.1% 740P DHIA
 KNAPPS PAOKIE TRESSA-ETV 88 @ 3-04 (88/87)
 2-10 305D 2X 18040M 3.2% 586F 3.0% 549P 95
 Nominated All-American Senior Two-Year-Old 2019

INDIAN ACRES AMERICAN PIE USA000068016348 31GU618 A2A2

08/21 USDA GPTA +145M -0.18% -25F -0.04% -3P
 -1.5DPR +2.7PL -36NM\$ 23NM%ile -35CM\$ 97% Rel
 2.77SCS -3.40HCR 67% Rel -2.80CCR 89% Rel
 0.80LIV 70% Rel 0.90GL 97% Rel -6.70EFC 76% Rel
 AGA 08/21 PTAT +0.2 +0.4UDC +2.3FLC 97%Rel PTI -4

SUNRISE LUXURY TAMI USA000003068188

08/21 USDA PTA +81M -0.22% -35F -0.01% +1P
 +1.6DPR -0.7PL -124NM\$ 15NM%ile -126CM\$ 76% Rel
 3.05SCS 0.50HCR 24% Rel 0.70CCR 49% Rel
 -1.80LIV 39% Rel 0.20GL 37% Rel 3.60EFC 37% Rel
 5 Rec YDev: +337M -64F +7P
 4 App 08/21 PTAT +1.1 +0.3UDR -0.8FLC 77%Rel CPI -37
 Appraisal: 93 @ 5-04 (92/92)
 2-02 311D 2X 14630M 3.9% 571F 3.2% 474P 98
 3-10 365D 2X 28480M 4.2% 1198F 3.2% 907P DHIA
 5-00 307D 2X 25280M 3.8% 961F 3.1% 793P 93
 5-11 365D 2X 26130M 3.8% 989F 3.2% 848P DHIA
 7-00 365D 2X 24680M 4.0% 992F 3.2% 796P DHIA
 2395D 151070M 4.0% 6087F 3.2% 4888P LIFE
 Dtrs: KNAPPS ACE TAMERA 93 @ 9-07 (91/92)
 9-07 365D 2X 32350M 4.2% 1351F 3.2% 1036P DHIA
 KNAPPS DEEMAND TAMARO 92 @ 4-10 (90/90)
 4-05 365D 2X 22315M 4.4% 987F 3.4% 748P 99
 KNAPPS HILLPOINT C TIPSTER-ET 89 @ 2-09 (90/86)
 2-02 365D 2X 16810M 4.3% 723F 3.2% 534P DHIA
 KNAPPS HILLPOINT REGIS TRINKET-ET 89 @ 2-11 (90/84)
 2-02 346D 2X 25400M 4.1% 1035F 3.0% 760P DHIA
 KNAPPS HILLPOINT MR A TWISTER-ET 88 @ 4-05 (82/86)
 3-02 365D 3X 25410M 5.2% 1311F 3.4% 875P DHIA



Up The Creek Morey Andie EX-91 2E 94MS
 140,980M 5.1% 7,209F 3.5% 4,919P Lifetime
 Son headed to GGS!
 Dam of Lot 19

LOT 19 4 #1 RIVAL X ANDIE IVF EMBRYOS

Breeder & Owner: ANDERSON DAVID L
 LESTER PRAIRIE MN

PA: +278M +0.08% +25F +0.03% +14P +283CM\$ +278NM\$
 +0.5PTAT +0.2UDC +1.5FLC +0.7DPR +2.4PL +68CPI 2.86SCS

RIPLEY FARMS SUNRISE RIVAL USA000068011347 91GU5223 A2A2

08/21 USDA GPTA +925M +0.00% +42F +0.02% +34P
 -0.9DPR -0.4PL +249NM\$ 64NM%ile +253CM\$ 62% Rel
 2.94SCS -0.40HCR 31% Rel -1.60CCR 42% Rel
 -2.10LIV 32% Rel 1.90GL 43% Rel -2.30EFC 34% Rel
 AGA 08/21 PTAT +0.7 -0.4UDC +2.2FLC 59%Rel PTI +92

UP THE CREEK MOREY ANDIE USA000068042722 A2A2

08/21 USDA GPTA -372M +0.15% +8F +0.04% -6P
 +2.2DPR +5.1PL +306NM\$ 93NM%ile +313CM\$ 65% Rel
 2.77SCS -0.70HCR 30% Rel 2.40CCR 41% Rel
 2.20LIV 34% Rel -0.80GL 40% Rel -5.70EFC 32% Rel
 5 Rec YDev: -860M +15F -11P
 3 App 08/21 PTAT +0.2 +0.7UDR +0.7FLC 66%Rel CPI +43
 Appraisal: EX 91 @ 10-00 (EEE+E) 2E

2-03 307D 2X 13610M 4.9% 662F 3.4% 460P 97
 3-02 310D 2X 18480M 5.2% 970F 3.5% 640P 98
 4-02 303D 2X 18280M 5.4% 978F 3.5% 634P 98
 5-01 304D 2X 18720M 5.1% 949F 3.6% 668P 96
 6-00 365D 3X 20970M 5.1% 1068F 3.7% 768P DHIA
 7-02 296D 2X 15340M 4.8% 740F 3.5% 530P 96
 8-02 365D 2X 16190M 5.1% 820F 3.3% 542P DHIA
 9-08 323D 2X 15870M 5.2% 820F 3.4% 535P 98
 2699D 140980M 5.1% 7209F 3.5% 4919P LIFE
 Son: UP THE CREEK LONDON AUDREY GPTI +72
 Soon to be released from Guernsey Gold Sires!
 Dtrs: UP THE CREEK PRADA ANALEE 86 @ 4-05 (86/82)
 2-00 365D 2X 16030M 4.2% 681F 3.3% 536P DHIA
 UP THE CREEK COPPER AVACADO 90 @ 4-05 (92/86)
 3-00 314D 2X 14550M 4.8% 700F 3.2% 468P 97
 UP THE CREEK LOGO APPETITE 83 @ 2-04 (83/82)

- Four (4) #1 IVF embryos
- Reverse Sorted for Females
- Resulting calves are A2A2 by parentage
- Resulting calves would rank in top 100 CPI Heifers August 2021
- Located in Lester Prairie, Minnesota

RIPLEY FARMS RC SUNRISE USA000000605002

08/21 USDA PTA +1267M +0.01% +60F +0.00% +43P
 -1.7DPR -2.4PL +223NM\$ 64NM%ile +225CM\$ 88% Rel
 3.00SCS -1.20HCR 36% Rel -2.10CCR 63% Rel
 -5.70LIV 36% Rel 2.50GL 70% Rel -10.50EFC 40% Rel
 AGA 08/21 PTAT -0.6 -1.9UDC -1.2FLC 82%Rel PTI +62

RIPLEY FARMS G CONNI ROSE-ET USA000003083058

Appraisal: 91 @ 4-02 (92/91)
 4-01 305D 3X 23720M 4.5% 1060F 3.3% 781P 97

ADAMS CREEK REGAL MOREY-ET USA000068020971 200GU117 A2A2

08/21 USDA GPTA -773M +0.13% -14F +0.05% -18P
 -0.9DPR +3.3PL -42NM\$ 23NM%ile -35CM\$ 86% Rel
 2.83SCS 0.00HCR 32% Rel -0.90CCR 63% Rel
 4.40LIV 46% Rel -0.10GL 87% Rel -8.60EFC 45% Rel
 AGA 08/21 PTAT +0.4 +0.7UDC -0.4FLC 82%Rel PTI -24

UP THE CREEK CHALLENGES ADVENT USA000068019457

08/21 USDA PTA -389M +0.16% +10F +0.07% -1P
 +2.4DPR +1.6PL +182NM\$ 79NM%ile +192CM\$ 53% Rel
 2.83SCS -1.60HCR 25% Rel 2.50CCR 36% Rel
 -0.70LIV 28% Rel 0.40GL 34% Rel -2.70EFC 29% Rel
 3 Rec YDev: -1180M +12F -9P
 3 App 08/21 PTAT +0.5 +0.7UDR +2.4FLC 60%Rel CPI +54
 Appraisal: 90 @ 4-01 (90/91)
 1-11 329D 2X 13610M 5.3% 717F 3.5% 482P 97
 3-00 305D 2X 13940M 5.2% 727F 3.7% 513P 98
 3-11 294D 2X 15410M 5.1% 792F 3.5% 542P 97
 Dtr: UP THE CREEK SCOOBIE ANNIKA 88 @ 2-11 (90/84)
 2-05 349D 2X 19540M 5.3% 1032F 3.6% 709P 97

3D: UP THE CREEK DOUBLE L ATLANTA USA000068000477

Appraisal: 88 @ 4-04 (87/87)
 4-00 306D 2X 20530M 4.4% 900F 3.3% 685P 98



Idle Gold Patriot Hillary EX-90

5-10 305D 21,850M 4.6% 1,012F 3.3% 714P
 1st Aged Cow WI State Show 2021
 Dam of Lot 20



Idle Gold Stud Humorous EX-93

6-01 338D 22,420M 3.8% 859F 3.2% 708P
 Unanimous All-American 5-Year-Old 2014
 Granddam of Lot 20

LOT 20 3 MAS X HILLARY IVF EMBRYOS

Breeder & Owner: VALLEY GEM FARMS
 CUMBERLAND WI

- Three (3) IVF Embryos
- Sire to be mutually agreed upon by consignor & buyer
- Can be made export eligible

IDLE GOLD PATRIOT HILLARY USA000078000616 A2A2

08/21 USDA GPTA -407M +0.00% -19F +0.03% -9P
 -1.7DPR +0.7PL -141NM\$ 13NM%ile -136CM\$ 60% Rel
 2.83SCS-2.40HCR 25% Rel -2.30CCR 32% Rel
 -0.10LIV 27% Rel -0.10GL 28% Rel -3.20EFC 28% Rel
 5 Rec YDev: -251M -20F -2P
 2 App 08/21 PTAT +0.9 +1.4UDR +2.8FLC 63%Rel CPI +0
 Appraisal: EX 90 @ 6-09 (EE+VE)
 2-00 349D 2X 14600M 4.8% 700F 3.4% 500P 104
 3-00 365D 2X 12810M 5.8% 746F 4.3% 546P DHIA
 4-03 305D 2X 17480M 4.5% 793F 3.4% 595P 61
 5-10 305D 2X 21850M 4.6% 1012F 3.3% 714P 97
 1st Aged Cow Wisconsin State Show 2021
 2nd Five-Year-Old Wisconsin State Show 2018

INDIAN ACRES PIES PATRIOT-ET USA000068029883

08/21 USDA PTA +65M -0.12% -19F -0.03% -3P
 -4.1DPR -1.8PL -318NM\$ 11NM%ile -318CM\$ 78% Rel
 2.88SCS -4.10HCR 25% Rel -6.20CCR 47% Rel
 -0.70LIV 29% Rel 0.50GL 38% Rel -5.90EFC 33% Rel
 AGA 08/21 PTAT +0.8 +0.5UDC +2.1FLC 77%Rel PTI -28

IDLE GOLD STUD HUMOROUS USA000068029037

08/21 USDA PTA -502M +0.13% +0F +0.04% -10P
 -0.2DPR -2.3PL -145NM\$ 13NM%ile -144CM\$ 56% Rel
 3.09SCS-0.50HCR 7% Rel 0.10CCR 20% Rel
 -0.70LIV 15% Rel -0.80GL 21% Rel -0.90EFC 15% Rel
 3 Rec YDev: -694M +39F -15P
 3 App 08/21 PTAT +0.6 +0.9UDR +1.3FLC 60%Rel CPI +0
 Appraisal: 93 @ 6-05 (92/91)
 2-01 365D 2X 15450M 4.8% 749F 3.5% 545P DHIA
 4-01 297D 2X 14890M 5.3% 791F 3.5% 514P 73
 5-00 295D 2X 16630M 5.5% 917F 3.5% 574P 104
 6-01 338D 2X 22420M 3.8% 859F 3.2% 708P 81
 Unanimous All-American & Jr. All-American Five-Year-Old 2014
 Reserve All-American & Reserve Jr. All-American Aged Cow 2015
 Grand Champion NJS-Madison & Louisville 2014
 Grand Champion NGS-Louisville 2014
 Dtr: IDLE GOLD CARSON HILARIOUS 87 @ 4-03 (90/83)
 4-00 365D 2X 21010M 4.5% 942F 3.8% 789P DHIA



Luckyvale Grumpy Kaz-ET EX-91
 3-07 365D 33,150M 5.1% 1,681F 3.5% 1,145P
 HM All-American Fall Calf 2014
 Granddam of Lots 21 & 22

LOT 21 2 #1 JC PENNEY X KASSI IVF EMBRYOS

Breeder & Owner: FERRIS REX
 SOAP LAKE WA

PA: +277M +0.04% +25F +0.04% +12P +94CM\$ +91NM\$
 +1.2PTAT +1.0UDC +1.0FLC -1.8DPR +0.4PL +46CPI 2.95SCS

SPRINGHILL JC PENNEY-ET 840003151591406 6GU114 A2A2

08/21 USDA GPTA +120M +0.04% +13F -0.01% +3P
 -2.7DPR +0.0PL -2NM\$ 41NM%ile -2CM\$ 54% Rel
 2.96SCS -0.5SCR -2.70HCR 34% Rel -3.60CCR 36% Rel
 0.10LIV 32% Rel 1.10GL 44% Rel -0.50EFC 31% Rel
 AGA 08/21 PTAT +1.3 +1.6UDC +1.4FLC 52%Rel PTI +32

RY-SAR EXCALIBUR KASSI-ETV USA000097011526 A2A2

PA: +299M +0.03% +19F +0.04% +17P +153CM\$ +149NM\$
 +0.9PTAT +0.5UDC +1.6FLC -1.0DPR +1.2PL +60CPI 2.98SCS
September 2021 Official Genomics:
+433M +0.03% +25F +0.04% +21P +189CM\$ +183NM\$
+1.1PTAT +0.4UDC +0.5FLC -0.8DPR +0.8PL +60CPI 2.93SCS

3D: LUCKYVALE YOGI KIARA USA000068027293

Appraisal: 88 @ 3-11 (88/86)
 2-07 365D 2X 20880M 3.7% 768F 3.3% 687P DHIA
 Junior All-American & HM All-American Fall Calf 2010
 Junior All-American & Res. All-American Fall Yearling 2011
 Reserve Junior All-American Senior Two-Year-Old 2012
 Junior Champion NJS-Madison 2011 & Res. Jr. Champion NGS

- Two (2) #1 IVF embryos
- Reverse sorted for females
- Exportable to Canada
- Resulting calves are A2A2 by parentage
- Located at Boviteq, Madison, WI

COULEE CREST NOVAK LAMBEAU-ET 840003128910115 7GU473 A2A2

08/21 USDA GPTA -145M +0.11% +12F -0.01% -7P
 -2.0DPR +0.2PL +28NM\$ 41NM%ile +26CM\$ 86% Rel
 3.03SCS +1.8SCR -2.40HCR 55% Rel -3.20CCR 52% Rel
 0.60LIV 44% Rel 2.20GL 93% Rel 3.00EFC 36% Rel
 AGA 08/21 PTAT +0.5 +1.2UDC +0.9FLC 76%Rel PTI +11

SPRINGHILL MENTOR JAZZY-ET USA000068031553 A2A2

Appraisal: EX 95 @ 6-09 (EEEE)
 4-06 365D 2X 34720M 5.2% 1799F 3.6% 1260P* DHIA

BEECHGROVES EXCALIBUR GBR281005701400 522GU903 A2A2

08/21 USDA GPTA +119M +0.09% +22F +0.05% +12P
 -0.8DPR +0.4PL +113NM\$ 41NM%ile +118CM\$ 49% Rel
 2.98SCS -0.20HCR 31% Rel -2.10CCR 37% Rel
 -0.90LIV 33% Rel -0.10GL 38% Rel 0.60EFC 33% Rel
 AGA 08/21 PTAT +0.7 -0.2UDC +1.8FLC 47%Rel PTI +51

LUCKYVALE GRUMPY KAZ-ET USA000078000731

08/21 USDA GPTA +478M -0.04% +15F +0.03% +21P
 -1.1DPR +2.0PL +184NM\$ 79NM%ile +188CM\$ 49% Rel
 2.98SCS -1.10HCR 24% Rel -1.50CCR 32% Rel
 -0.30LIV 26% Rel -0.40GL 33% Rel 2.50EFC 27% Rel
 1 Rec YDev: +2566M +162F +99P
 2 App 08/21 PTAT +1.0 +1.2UDR +1.4FLC 50%Rel CPI +67
 Appraisal: 91 @ 4-01 (90/88)
 2-08 288D 2X 23000M 5.0% 1159F 3.4% 786P 94
 3-07 365D 2X 33150M 5.1% 1681F 3.5% 1145P 96
 Honorable Mention All-American Fall Calf 2014
 Nominated All-American 2015 & 2018
 Dtrs: RY-SAR COPPER KARMA-ET 85 @ 3-07 (84/85)
 RY-SAR COPPER KATRINA-ET 90 @ 4-10 (87/92)
 RY-SAR COPPER KALINA-ET 87 @ 4-07 (87/86)
 RY-SAR COPPER WILDKRATTS-ET 86 @ 3-09 (84/84)



Ry-Sar Copper Katrina-ET EX-90
1st Winter Calf NGS-Puyallup 2017
Maternal Sister to Dams of Lots 21 & 22
Granddam of Lot 23

LOT 22 3 #2 HELIOS X KALISHA IVF EMBRYOS

Breeder & Owner: FERRIS REX
SOAP LAKE WA

PA: +70M +0.06% +14F +0.05% +10P +165CM\$ +160NM\$
+1.1PTAT +0.7UDC +1.2FLC -0.3DPR +1.9PL +48CPI 2.94SCS

IDLE GOLD D HELIOS 840003126035468 6GU118 A2A2

08/21 USDA GPTA +109M +0.04% +12F +0.04% +11P
-0.3DPR +3.4PL +234NM\$ 64NM%ile +240CM\$ 48% Rel
2.90SCS -1.10HCR 28% Rel -0.70CCR 32% Rel
-0.30LIV 28% Rel -0.50GL 31% Rel 0.10EFC 29% Rel
AGA 08/21 PTAT +1.2 +0.9UDC +1.7FLC 48%Rel PTI +60

RY-SAR EXCALIBUR KALISHA-ETV USA000097011527 A2A2

PA: +299M +0.03% +19F +0.04% +17P +153CM\$ +149NM\$
+0.9PTAT +0.5UDC +1.6FLC -1.0DPR +1.2PL +60CPI 2.98SCS

September 2021 Official Genomics:

+30M +0.08% +15F +0.05% +9P +90CM\$ +85NM\$
+0.9PTAT +0.4UDC +0.6FLC -0.3DPR +0.4PL +36CPI 2.97SCS

- Three (3) #2 IVF embryos
- Reverse sorted for females
- Exportable to Canada
- Resulting calves are A2A2 by parentage
- Located at Boviteq, Madison, WI

IDLE GOLD A HERALD-P USA000097002947 54GU499 A2A2

08/21 USDA GPTA -288M +0.11% +6F +0.06% +0P
-0.4DPR +0.9PL +28NM\$ 41NM%ile +35CM\$ 53% Rel
2.87SCS -1.20HCR 25% Rel -1.10CCR 29% Rel
-0.40LIV 25% Rel 0.00GL 27% Rel 0.10EFC 26% Rel
AGA 08/21 PTAT +0.9 +1.2UDC +1.0FLC 47%Rel PTI +27

SPRINGHILL MENTOR JAZZY-ET USA000068031553 A2A2

Appraisal: EX 95 @ 6-09 (EEEEEE)
4-06 365D 2X 34720M 5.2% 1799F 3.6% 1260P* DHIA

BEECHGROVES EXCALIBUR GBR281005701400 522GU903 A2A2

LUCKYVALE GRUMPY KAZ-ET USA000078000731

Appraisal: 91 @ 4-01 (90/88)
3-07 365D 2X 33150M 5.1% 1681F 3.5% 1145P 96

LOT 23 3 #1 JAVA-P X KIA IVF EMBRYOS

Breeder & Owner: FERRIS REX
SOAP LAKE WA

PA: +310M +0.03% +19F +0.02% +13P +96CM\$ +92NM\$
+1.0PTAT +0.7UDC +1.0FLC -2.2DPR +0.7PL +39CPI 2.91SCS

SPRINGHILL JAVA-ETV-P 840003151591431 200GU123 A2A2

08/21 USDA GPTA +246M +0.00% +11F +0.01% +10P
-2.9DPR +0.2PL +8NM\$ 41NM%ile +11CM\$ 51% Rel
2.91SCS -2.20HCR 27% Rel -3.40CCR 30% Rel
-1.40LIV 29% Rel 0.20GL 29% Rel -1.50EFC 28% Rel
AGA 08/21 PTAT +1.1 +1.2UDC +1.3FLC 49%Rel PTI +28

RY-SAR EXCALIBUR KIA USA000097011528 A2A2

PA: +168M +0.05% +16F +0.03% +11P +155CM\$ +151NM\$
+0.9PTAT +0.5UDC +1.6FLC -0.9DPR +1.2PL +49CPI 2.95SCS

September 2021 Official Genomics:

+374M +0.05% +26F +0.02% +16P +180CM\$ +176NM\$
+0.8PTAT +0.2UDC +0.7FLC -1.4DPR +0.8PL +49CPI 2.91SCS

- Three (3) #1 IVF embryos
- Reverse sorted for females
- Exportable to Canada
- Resulting calves are A2A2 by parentage
- Located at Boviteq, Madison, WI

IDLE GOLD A HERALD-P USA000097002947 54GU499 A2A2

08/21 USDA GPTA -288M +0.11% +6F +0.06% +0P
-0.4DPR +0.9PL +28NM\$ 41NM%ile +35CM\$ 53% Rel
2.87SCS -1.20HCR 25% Rel -1.10CCR 29% Rel
-0.40LIV 25% Rel 0.00GL 27% Rel 0.10EFC 26% Rel
AGA 08/21 PTAT +0.9 +1.2UDC +1.0FLC 47%Rel PTI +27

SPRINGHILL MENTOR JAZZY-ET USA000068031553 A2A2

Appraisal: EX 95 @ 6-09 (EEEEEE)
4-06 365D 2X 34720M 5.2% 1799F 3.6% 1260P* DHIA

BEECHGROVES EXCALIBUR GBR281005701400 522GU903 A2A2

RY-SAR COPPER KATRINA-ET USA000097002791 A2A2

08/21 USDA GPTA +217M +0.00% +10F +0.01% +9P
-1.0DPR +2.0PL +189NM\$ 80NM%ile +192CM\$ 51% Rel
2.92SCS 0.70HCR 35% Rel -0.90CCR 40% Rel
-0.10LIV 34% Rel 0.20GL 42% Rel 4.30EFC 36% Rel
2 App 08/21 PTAT +1.0 +1.2UDR +1.3FLC 52%Rel CPI +45

Appraisal: EX 90 @ 4-10 (EEEEV)
1st Winter Calf NGS-Puyallup 2017

3D: LUCKYVALE GRUMPY KAZ-ET USA000078000731

Appraisal: 91 @ 4-01 (90/88)
3-07 365D 2X 33150M 5.1% 1681F 3.5% 1145P 96



Coulee Crest AP Lilac-ETV VG-87

2-02 365D 23,790M 4.8% 1,136F 3.2% 766P
 Nominated Jr. All-American Spring Calf 2014
 Granddam of Lot 24



Coulee Crest AP Lorilee EX-90

2-10 365D 3X 41,180M* 4.7% 1,945F* 3.5% 1,425P*
 Dam of Ernie, Logo & Latimer
 Full Sister to Granddam of Lot 24

LOT 24 2 #1 MICHELANGELO X LOONY IVF EMBRYOS

Breeder & Owner: PISKOROWSKI JOSEPH H DDS
 ITHACA NY

PA: +367M -0.07% +4F -0.02% +10P -17CM\$ -14NM\$
 +0.8PTAT +0.7UDC +1.4FLC -1.5DPR -0.7PL +26CPI 3.13SCS

GLADHEART MICHELANGELO-ET 840003206246837 54GU502 A2A2

08/21 USDA GPTA +426M -0.08% +5F +0.00% +15P
 -1.2DPR -0.4PL +41NM\$ 41NM%ile +41CM\$ 52% Rel
 3.07SCS -0.90HCR 33% Rel -1.40CCR 39% Rel
 -1.40LIV 33% Rel -0.50GL 41% Rel 2.10EFC 34% Rel
 AGA 08/21 PTAT +0.5 +0.2UDC +0.5FLC 51%Rel PTI +23

FEMARA LOONY-ETV 840003200059774

08/21 USDA PTA +308M -0.06% +3F -0.03% +5P
 -1.8DPR -0.9PL -68NM\$ 23NM%ile -74CM\$ 46% Rel
 3.18SCS -1.60HCR 18% Rel -2.90CCR 24% Rel
 -0.10LIV 18% Rel 0.80GL 33% Rel -1.90EFC 20% Rel
 1 Rec YDev: +1291M +16F +17P
 2 App 08/21 PTAT +1.0 +1.1UDR +2.2FLC 50%Rel CPI +29
 Appraisal: VG 87 @ 3-01 (VV+VV)
 2-01 305D 2X 26720M 5.2% 1385F 3.0% 810P 96

3D: COULEE CREST NICK LORILYN USA000068023988 A1A2

Appraisal: 91 @ 5-00 (90/91)
 3-05 365D 3X 42440M*5.3% 2254F*3.1% 1298P* DHIA
 1168D 107900M 5.3% 5707F 3.3% 3533P LIFE

4D: FLAMBEAU MANOR DECISION LORI-ET USA000068012709 A2A2

Appraisal: 90 @ 8-02 (88/90) Gold Star Dam - 2013
 3-09 365D 3X 44250M*5.9% 2600F*3.0% 1313P* 94
 2328D 184340M 5.4% 10017F 3.3% 6002P LIFE

5D: FLAMBEAU MANOR ENHANCER LANA USA000003043629

Appraisal: 92 @ 7-11 (90/90) Gold Star Dam - 2001
 5-10 365D 2X 30271M 5.4% 1645F 3.2% 968P DHIA
 1980D 130421M 4.9% 6454F 3.3% 4293P LIFE

6D: FLAMBEAU MANOR VOL LAURA USA000003022186

Appraisal: 90 @ 4-07
 4-02 305D 2X 18260M 4.2% 765F 3.7% 680P DHIA

7D: FLAMBEAU MANOR LESLIE USA000002947026

Appraisal: 90 @ 3-08 Gold Star Dam - 1992
 3-05 308D 2X 17320M 4.3% 738F 3.8% 655P DHIA

8D: FLAMBEAU MANOR LAUREL USA000002861817

Appraisal: 80 @ 9-04 Gold Star Dam - 1992
 3193D 167770M 4.6% 7639F 3.7% 6168P LIFE

- Two (2) #1 IVF embryos
- Sexed semen used for females
- Resulting calves will be A2A2 by extended parentage
- Eligible for export
- Located at TransOva Maryland

COULEE CREST GRUMPY LEGEND-ET USA000068045040 7GU451 A2A2

08/21 USDA GPTA +627M -0.09% +13F +0.02% +24P
 -3.4DPR -0.9PL +20NM\$ 41NM%ile +19CM\$ 96% Rel
 3.18SCS -1.20HCR 63% Rel -4.20CCR 82% Rel
 -3.20LIV 57% Rel -1.00GL 98% Rel 5.60EFC 64% Rel
 AGA 08/21 PTAT +1.1 +1.2UDC +1.2FLC 94%Rel PTI +45

MAPLEHURST LES MARZIPAN CAN000009594210 A2A2

Appraisal: EX 92 @ 7-10 (EEEEEE)

WARWICK MANOR ALYMO BO USA000078000794 120GU2591 A2A2

08/21 USDA GPTA -550M +0.04% -18F +0.05% -10P
 +0.1DPR -0.1PL -148NM\$ 17NM%ile -152CM\$ 81% Rel
 3.34SCS -0.40HCR 33% Rel -1.10CCR 49% Rel
 2.30LIV 32% Rel 1.00GL 83% Rel -2.50EFC 38% Rel
 AGA 08/21 PTAT +0.6 +1.0UDC +1.3FLC 76%Rel PTI -6

COULEE CREST AP LILAC-ET USA000078001389 A2A2

08/21 USDA GPTA +1013M -0.08% +32F -0.07% +21P
 -3.8DPR -1.7PL +88NM\$ 59NM%ile +84CM\$ 70% Rel
 2.96SCS -2.90HCR 39% Rel -4.70CCR 48% Rel
 -2.50LIV 39% Rel 0.60GL 49% Rel -1.40EFC 42% Rel
 3 Rec YDev: +2006M +61F +37P
 2 App 08/21 PTAT +0.5 +0.1UDR +2.5FLC 68%Rel CPI +57
 Appraisal: 87 @ 3-09 (86/87)
 2-02 365D 2X 23790M 4.8% 1136F 3.2% 766P DHIA
 3-06 305D 2X 19030M 4.3% 818F 3.4% 638P 98
 Nominated Junior All-American Spring Calf 2014



Knapps HP Pie Tracy-ETV EX-90
 3-03 358D 18,590M 4.9% 903F 3.4% 631P
 Dam of Lot 25

LOT 25 4 MAS X TRACY IVF EMBRYOS

Breeder & Owner: KNAPP LANDEN
 EPWORTH IA

- Four (4) IVF Embryos
- Sire to be mutually agreed upon by consignor & buyer
- Can be made export eligible

KNAPPS HP PIE TRACY-ETV 840003135940025

08/21 USDA PTA -217M -0.17% -39F -0.07% -19P
 -1.4DPR +1.9PL -231NM\$ 5NM%ile -236CM\$ 50% Rel
 2.94SCS-2.90HCR 22% Rel -2.50CCR 33% Rel
 0.30LIV 24% Rel 0.60GL 35% Rel -6.90EFC 26% Rel
 2 Rec YDev: -1898M -149F -91P
 1 App 08/21 PTAT +0.4 +1.1UDR +1.6FLC 48%Rel CPI -38
 Appraisal: EX 90 @ 4-03 (VE+EE)
 2-03 352D 2X 16090M 5.0% 810F 3.4% 547P 94
 3-03 358D 2X 18590M 4.9% 903F 3.4% 631P 95

INDIAN ACRES AMERICAN PIE USA000068016348 31GU618 A2A2

08/21 USDA GPTA +145M -0.18% -25F -0.04% -3P
 -1.5DPR +2.7PL -36NM\$ 23NM%ile -35CM\$ 97% Rel
 2.77SCS -3.40HCR 67% Rel -2.80CCR 89% Rel
 0.80LIV 70% Rel 0.90GL 97% Rel -6.70EFC 76% Rel
 AGA 08/21 PTAT +0.2 +0.4UDC +2.3FLC 97%Rel PTI -4

KNAPPS MENTOR TAMBORET USA000068045549

08/21 USDA PTA -240M -0.10% -29F -0.03% -14P
 -1.2DPR +0.2PL -252NM\$ 4NM%ile -257CM\$ 55% Rel
 3.07SCS-2.30HCR 22% Rel -2.60CCR 35% Rel
 -0.20LIV 28% Rel 0.00GL 39% Rel -4.60EFC 29% Rel
 4 Rec YDev: -387M -50F -27P
 3 App 08/21 PTAT +0.5 +1.0UDR +0.3FLC 51%Rel CPI -39
 Appraisal: 94 @ 6-06 (94/95)
 2-01 318D 2X 16600M 4.7% 783F 3.0% 501P 95
 3-01 363D 2X 22580M 4.7% 1053F 3.0% 685P 96
 4-01 365D 2X 21810M 5.1% 1117F 3.4% 748P DHIA
 6-02 305D 2X 23890M 5.0% 1190F 3.5% 832P 96
Junior All-American Aged Cow 2017

3D: KNAPPS REGIS TAMBOURINE-ET USA000068023077

Appraisal: 95 @ 7-04 (95/94)
 6-10 365D 2X 40160M*5.1% 2055F*3.3% 1338P* DHIA
 2475D 190040M 7.5%14236F 5.0% 9483P LIFE
Unanimous All-American & Jr. All-American Aged Cow 2015
Unanimous Jr All-American & Res. All-American Five-Year-Old 2013
All-American & Junior All-American Junior Two-Year-Old 2010
All-American & Junior All-American Junior Three-Year-Old 2011
Junior All-American & Reserve All-American Aged Cow 2016
Nominated All-American Total Performance Cow 2015
Grand Champion NJS-Madison 2011, 2015 & 2016
Reserve Grand Champion NJS- & NGS-Louisville 2015
Reserve Grand Champion NGS-Madison 2016

4D: KNAPPS ACE TAMERA USA000068006299

Appraisal: 93 @ 9-07 (91/92)
 9-07 365D 2X 32350M 4.2% 1351F 3.2% 1036P DHIA
 3038D 178720M 4.4% 7847F 3.4% 6004P LIFE

5D: SUNRISE LUXURY TAMI USA000003068188

Appraisal: 93 @ 5-04 (92/92)
 3-10 365D 2X 28480M 4.2% 1198F 3.2% 907P DHIA
 2395D 151070M 4.0% 6087F 3.2% 4888P LIFE



September '21 Full Sisters to Lot 26

LOT 26 4 #1 DRONE X MIRACLE IVF EMBRYOS

Breeder & Owner: SKODA RYAN & CRYSTIL LEE
CRARYVILLE NY

PA: +199M -0.01% +9F +0.05% +10P +144CM\$ +139NM\$
+0.9PTAT +0.7UDC +0.9FLC -0.2DPR +1.7PL +48CPI 2.98SCS

- Four (4) #1 IVF Embryos
- Sexed semen used for females
- Eligible for export to Canada
- Located at TransOva Maryland

HI GUERN VIEW LEVI DRONE USA000097004646 94GU959 A2A2

08/21 USDA GPTA +272M -0.08% -2F +0.01% +11P
-0.1DPR +2.7PL +114NM\$ 41NM%ile +116CM\$ 56% Rel
2.98SCS +0.1SCR -0.80HCR 35% Rel -0.80CCR 42% Rel
-0.40LIV 36% Rel -0.40GL 42% Rel 0.80EFC 38% Rel
AGA 08/21 PTAT +1.4 +1.2UDC +1.7FLC 53%Rel PTI +51

MARODORE AARONS LEVI-ET USA000068025119 7GU438 A2A2

08/21 USDA GPTA -158M -0.04% -15F -0.04% -12P
+1.1DPR +1.9PL -42NM\$ 23NM%ile -45CM\$ 97% Rel
2.97SCS 0.60HCR 64% Rel 0.00CCR 87% Rel
-0.50LIV 64% Rel -0.60GL 98% Rel 4.30EFC 73% Rel
AGA 08/21 PTAT +0.8 +0.4UDC +0.7FLC 96%Rel PTI -5

COYOTE RUN JACKSON MIRACLE USA000068047901 A1A2

08/21 USDA GPTA +126M +0.07% +19F +0.08% +18P
-0.2DPR +0.6PL +163NM\$ 75NM%ile +171CM\$ 60% Rel
2.98SCS 0.50HCR 26% Rel 0.50CCR 38% Rel
-0.20LIV 30% Rel -0.40GL 30% Rel -1.80EFC 28% Rel
4 Rec YDev: +992M +66F +57P
2 App 08/21 PTAT +0.3 +0.1UDR +0.1FLC 54%Rel CPI +45
Appraisal: EX 90 @ 8-01 (EEVVV)
1-11 305D 2X 15830M 5.3% 843F 3.5% 548P 96
3-01 305D 2X 20040M 5.3% 1069F 3.4% 687P 98
5-01 305D 2X 23270M 5.1% 1182F 3.2% 745P 98
6-09 305D 2X 26640M 4.8% 1275F 3.4% 910P 96
1966D 126980M 5.2% 6558F 3.4% 4340P LIFE

HI GUERN VIEW DANCING DIVA-ET USA000068047311 A2A2

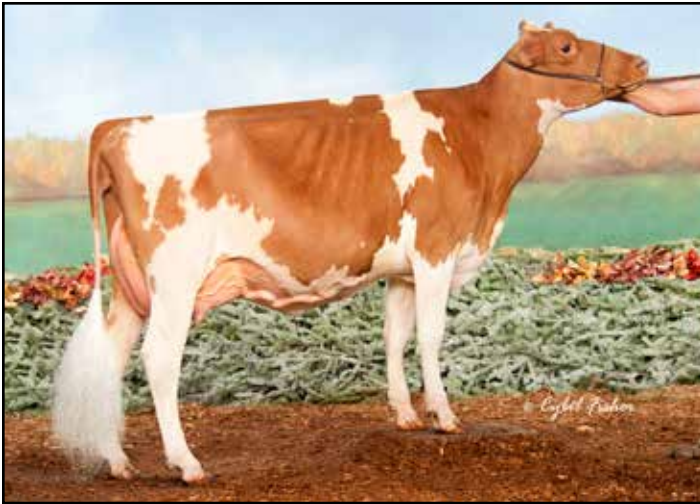
Appraisal: EX 96 @ 9-00 (EEEEEE)
7-07 305D 2X 25620M 3.9% 1001F 3.5% 897P 94

KNAPPS LES JACKSON USA000068045465

AGA 08/21 PTAT +0.6 +0.7UDC +0.7FLC 48%Rel

GR-KNAPPS REWARD MADISON USA000068016916

08/21 USDA PTA +94M -0.09% -12F +0.00% +4P
-0.1DPR -4.2PL -220NM\$ 6NM%ile -221CM\$ 49% Rel
3.11SCS 0.90HCR 15% Rel 1.10CCR 30% Rel
-4.90LIV 21% Rel -0.80GL 32% Rel -1.50EFC 23% Rel
3 Rec YDev: -425M -47F -4P
2 App 08/21 PTAT -0.2 -0.3UDR -0.3FLC 48%Rel CPI -34
Appraisal: 88 @ 3-08 (87/88)
2-05 334D 2X 21130M 4.8% 1007F 3.4% 713P 97
3-05 365D 2X 25020M 4.7% 1170F 3.4% 849P DHIA



Knapps Pies Superior-ETV

2-03 365D 25,140M 5.0% 1,254F 3.5% 881P
 Nominated All-American Sr. 2-Year-Old 2018
 Full Sister to Dam of Lot 27



Knapps Regis Sissy EX-94

169,790M 5.6% 9,545F 3.7% 6,237P Lifetime
 Five-Time Jr. All-American Nominee
 Granddam of Lot 27

LOT 27 4 JAMES DEAN X SHIMMER IVF EMBRYOS

Breeder & Owner: LEVESQUE ANDREW
 RUPERT VT

PA: +67M +0.03% +8F +0.03% +7P +67CM\$ +63NM\$
 +1.0PTAT +1.3UDC +1.0FLC -1.7DPR +1.1PL +31CPI 2.93SCS

SPRINGHILL JAMES DEAN-ETV 840003151591428 551GU911 A2A2

08/21 USDA GPTA -148M +0.14% +17F +0.07% +7P
 -1.5DPR +2.4PL +161NM\$ 47NM%ile +171CM\$ 48% Rel
 2.82SCS -1.90HCR 26% Rel -2.10CCR 29% Rel
 1.30LIV 28% Rel 0.10GL 29% Rel -2.20EFC 27% Rel
 AGA 08/21 PTAT +1.3 +2.0UDC +1.5FLC 46%Rel PTI +60

KNAPPS PIES SHIMMER-ETV USA000097005107

08/21 USDA PTA +281M -0.08% -1F -0.01% +7P
 -1.8DPR -0.3PL -36NM\$ 29NM%ile -38CM\$ 47% Rel
 3.03SCS -2.20HCR 20% Rel -2.50CCR 29% Rel
 -1.80LIV 23% Rel -0.10GL 32% Rel -6.00EFC 24% Rel
 2 Rec YDev: +1943M -4F +39P
 1 App 08/21 PTAT +0.6 +0.5UDR +0.5FLC 47%Rel CPI +2
 Appraisal: VG 87 @ 3-02 (VVV+E)
 1-09 325D 3X 17250M 4.5% 770F 3.3% 565P 50

3D: KNAPPS JESUS SISSY USA000003083554

Appraisal: 91 @ 3-11 (91/84)
 3-04 306D 2X 16590M 5.1% 838F 3.6% 595P 94
 Honorable Mention Junior All-American Sr. Two-Year-Old 2006

4D: GOLDEN POINT LORAL SISSY USA000003061554

Appraisal: 92 @ 5-01 (94/90)
 4-01 365D 2X 37170M*4.0% 1484F 3.0% 1106P DHIA
 1409D 108000M 4.2% 4520F 3.1% 3355P LIFE

- Two (2) #1 and Two (2) #2 IVF Embryos
- Made using sexed semen
- Located at Vytelle, New York

IDLE GOLD A HERALD-P USA000097002947 54GU499 A2A2

08/21 USDA GPTA -288M +0.11% +6F +0.06% +0P
 -0.4DPR +0.9PL +28NM\$ 41NM%ile +35CM\$ 53% Rel
 2.87SCS -1.20HCR 25% Rel -1.10CCR 29% Rel
 -0.40LIV 25% Rel 0.00GL 27% Rel 0.10EFC 26% Rel
 AGA 08/21 PTAT +0.9 +1.2UDC +1.0FLC 47%Rel PTI +27

SPRINGHILL MENTOR JAZZY-ET USA000068031553 A2A2

Appraisal: EX 95 @ 6-09 (EEEEEE)
 4-06 365D 2X 34720M 5.2% 1799F 3.6% 1260P* DHIA

INDIAN ACRES PIES-ET USA000068024088 94GU958 A2A2

08/21 USDA GPTA +353M -0.11% -4F +0.02% +16P
 -2.7DPR -0.7PL -53NM\$ 23NM%ile -53CM\$ 92% Rel
 3.13SCS -3.30HCR 50% Rel -3.00CCR 72% Rel
 -1.20LIV 54% Rel -1.20GL 91% Rel -9.80EFC 58% Rel
 AGA 08/21 PTAT +0.9 +0.5UDC +2.6FLC 87%Rel PTI +24

KNAPPS REGIS SISSY USA000068012759 A1A2

08/21 USDA GPTA -319M +0.11% +4F +0.00% -10P
 -1.2DPR +0.1PL -46NM\$ 28NM%ile -44CM\$ 71% Rel
 2.88SCS -1.20HCR 30% Rel -1.90CCR 43% Rel
 -2.30LIV 38% Rel 1.10GL 39% Rel -2.10EFC 38% Rel
 5 Rec YDev: -856M +9F -20P
 3 App 08/21 PTAT +0.4 +0.8UDR -1.6FLC 73%Rel CPI -28
 Appraisal: 94 @ 8-04 (94/92)

2-02 350D 2X 18010M 5.5% 990F 3.4% 612P DHIA
 3-02 365D 2X 24460M 5.3% 1304F 3.5% 868P DHIA
 4-05 365D 2X 29960M 5.4% 1630F 3.5% 1044P DHIA
 5-08 317D 2X 13090M 5.4% 713F 3.6% 474P 98
 7-07 365D 2X 25380M 5.4% 1361F 3.4% 858P DHIA
 2886D 169790M 5.6% 9545F 3.7% 6237P LIFE
 Unanimous Jr. All-American & Nom. All-American Aged Cow 2014
 Res. Jr. All-American & HM All-American Aged Cow 2013
 HM Jr. All-American & Nom. All-American Four-Year-Old 2010
 Honorable Mention Junior All-American Five-Year-Old 2011
 Nominated Junior All-American Senior Three-Year-Old 2009
 Reserve Senior Champion NJS-Madison 2011
 Several VG & EX daughters with All-American credits!



Golden I Sunrise Leora EX-90 GSD
 151,500M 5.4% 8,235F 3.7% 5,539P Lifetime
 #2 CPI Cow August 2021
 Granddam of Lot 28
 Dam of Lot S29

LOT 28 RIGHTS TO IVF OF IDLE GOLD JONATHAN LEIA

Consignor: IDLE GOLD ASSOCIATES
 LETTS IA

Selling price is per embryo. Buyer pays price of one embryo on sale day and will be invoiced when remaining embryos are made. Buyer is responsible for all costs of aspiration and mating sire decisions. Buyer has the option of up to three (3) IVF sessions. Total embryos is unlimited.

GOLDEN I JONATHAN LEIA USA000097001088 A2A2

08/21 USDA PTA +75M +0.17% +34F +0.08% +17P
 +3.0DPR +2.1PL +393NM\$ 97NM%ile +406CM\$ 51% Rel
 2.75SCS 0.40HCR 18% Rel 3.30CCR 26% Rel
 1.70LIV 21% Rel 0.70GL 34% Rel -0.30EFC 21% Rel
 3 Rec YDev: +25M +74F +35P
 Appraisal: VG 85 @ 5-06 (VVVV+)
 2-02 354D 2X 13510M 5.2% 699F 3.6% 483P 104
 3-03 365D 2X 16210M 5.3% 865F 3.8% 621P DHIA
 4-05 340D 2X 17330M 5.0% 871F 3.8% 650P 104
 #182(T) CPI Cow August 2021 (+64CPI)
 Dtr: GOLDEN I COIN LIEBE 82 @ 2-02 (82/82)
 #49(T) CPI Cow August 2021 (+87GCPI)

Dam has never been embryo donor. Granddam was very successful IVF donor. Dam is currently pregnant to a 9/16/21 breeding.

ROZELYN GOLIATHS JONATHAN-ET USA000068010155 31GU621 A2A2

08/21 USDA GPTA -618M +0.23% +10F +0.07% -8P
 +5.0DPR +3.4PL +341NM\$ 88NM%ile +353CM\$ 86% Rel
 2.69SCS 0.70HCR 42% Rel 5.30CCR 61% Rel
 3.30LIV 50% Rel 0.30GL 90% Rel 4.70EFC 51% Rel
 AGA 08/21 PTAT -2.3 -1.5UDC -4.0FLC 81%Rel PTI -9

3D: PINECREST ACRES NATURAL LEAH USA000068013765

Appraisal: 93 @ 7-07 (94/91)
 4-09 365D 2X 17510M 4.2% 735F 3.4% 601P DHIA

4D: PINECREST ACRES CHARLES LESTI USA000003077044

Appraisal: 90 @ 5-11 (88/90) Gold Star Dam - 2007
 6-06 365D 2X 18830M 5.3% 997F 3.7% 694P DHIA
 2132D 100350M 5.0% 5034F 3.7% 3664P LIFE

5D: PINECREST ACRES LEROY LES USA000003057075

Appraisal: 87 @ 3-00

GOLDEN I SUNRISE LEORA USA000068040746 A2A2

08/21 USDA GPTA +704M +0.08% +47F +0.08% +38P
 +1.0DPR +0.7PL +375NM\$ 96NM%ile +386CM\$ 69% Rel
 2.88SCS 0.00HCR 29% Rel 1.30CCR 41% Rel
 0.20LIV 34% Rel 1.10GL 48% Rel -5.30EFC 34% Rel
 5 Rec YDev: +2108M +147F +94P

4 App 08/21 PTAT +0.7 +0.1UDR +1.3FLC 70%Rel CPI +123

Appraisal: 90 @ 4-11 (90/87) Gold Star Dam - 2018

2-02 365D 2X 18160M 4.8% 865F 3.7% 669P DHIA

3-06 365D 2X 18930M 4.7% 885F 3.6% 677P DHIA

4-08 304D 2X 24590M 5.4% 1333F 3.4% 842P 104

5-07 319D 2X 24510M 5.7% 1400F 3.6% 873P 104

6-07 365D 2X 28660M 5.3% 1519F 3.7% 1051P DHIA

8-01 365D 2X 27530M 5.9% 1638F 3.7% 1016P DHIA

2355D 151500M 5.4% 8235F 3.7% 5539P LIFE

#2 CPI Cow August 2021

Sons: GOLDEN I LONDON PTI +84

GOLDEN I LOCKLEY-ET-P GPTI +53 at Masterpiece

Dtrs: GOLDEN I CASSANOVA LEELAH 84 @ 3-07 (82/85)

4-05 365D 2X 18840M 4.6% 874F 3.7% 694P DHIA

GOLDEN I DRONE LUGIA-ET

#19 CPI Heifer August 2021

Four additional daughters in top 150 CPI Heifers

LOT S29 5 UNITS OF GOLDEN I LONDON SA000068039423 54GU481 A2A2

Consignor: IDLE GOLD ASSOCIATES

Former #1 Active PTI Bull

08/21 USDA PTA +825M -0.06% +26F -0.02% +24P
 -0.2DPR -1.6PL +111NM\$ 41NM%ile +110CM\$ 76% Rel
 3.03SCS 0.50HCR 22% Rel 0.30CCR 44% Rel
 -1.90LIV 22% Rel 0.60GL 86% Rel -4.80EFC 24% Rel
 AGA 08/21 PTAT +1.4 +0.9UDC +2.3FLC 70%Rel PTI +84

Buyer responsible for shipping from Hawkeye Genetics, IA

Registering Embryo Calves with the American Guernsey Association

New Guernsey Owners

- Visit www.usguernsey.com to learn about membership with the American Guernsey Association. Membership is not required to register calves, but will reduce your registration fees!
- Calf registration can be done online at www.usguernsey.com or using paper forms - contact the office if you desire paper forms.
- It is recommended to contact AGA prior to registration to obtain an owner number.

Requirements of registration

- All donor dams **MUST** be DNA tested. For embryos made after May 2017, donor dams must have been genomic tested. Be sure to ask the consignor about the dam's DNA status before submitting registrations.
- As with any calf registration, you must have the complete registration number and name of both the sire and dam of the calf.
- You must specify who the owner is of each calf registered.
- The AGA does not require any veterinary paperwork to be submitted before registration; although AGA reserves the right to request paperwork if deemed necessary.

Foreign Registration

Each country association has its own rules for embryo registration. Buyers should check with their respective association to see what paperwork and DNA requirements need met. Foreign buyers without a home association could be eligible for AGA registration. Contact the office directly to inquire. AGA will not register calves for buyers with a Guernsey registration association within their country.

