

The Fall Sale

NOVEMBER 6, 2021

12:00 NOON CST

8415 State Highway 97S
Letohatchee, AL 36047
Mid-State Stockyards

SELLING

136 Virgin Two year old
94 Charolais, 42 Angus & Semi Angus Bulls
25 Charolais & Angus Heifers
Very Fancy
Very Consistent
You will be impressed!

EXTRA MEAT
EXTRA MUSCLE
EXCELLENT FEET



FALL SALE PARTNERS

Garry Henry
HENRY CATTLE COMPANY
Est. 1970
334-850-1423

Chad Bradford
BRADFORD AGRICULTURE
Est. 2008
334-830-5410

David Downey
DAL-DAV CHAROLAIS
Est. 1972
334-595-3956

Bobby Keahey
KEAHEY CHAROLAIS
Est. 1988
334-456-2547

Davis & Porter Henry
PINTLALA CATTLE COMPANY
Est. 1932
334-315-4458

Willie Sykes
SYKES FARM
Est. 1960
205-474-5017

Allen Cruise
CRUISE CHAROLAIS
Est. 2000
334-799-5972

Mitch & Cindy Henry
PRAIRIE OAK FARM
334-850-7825



The Fall Sale

NOVEMBER 6, 2021 • 12:00 NOON CST

8415 State Highway 97S • Letohatchee, AL 36047

LOCATION:

Mid-State Stockyard
8415 State Highway 97S • Letohatchee, Alabama 36047
Exit 151 off of I-65 • PH: (334) 227-8000

SALE HEADQUARTERS:

Fairfield Inn & Suites

Exit 164 off I-65: 7560 Mobile Highway • Montgomery, Alabama 36105
(334) 281-6882

Numerous hotels in Montgomery and Greenville area!

AUCTIONEER:

Billy Younkin AL#1251(334) 313-3542

RING MAN:

Col. Jason Sasser • Col. Richard Mooney • Col. Mike Boswel

SPECIAL GUESTS:

Erin Beasley, Executive Vice President of Alabama Cattleman's Association
and Floyd Wampler, Regional Director of American International Charolais

TRUCKING

Trucking will be available for hire

CONSIGNERS:

Individual lot numbers and phone numbers are listed on the back cover.

HEALTH

All bulls trichomoniasis, semen, fertility tested, and examined within 30 days prior to sale

Health papers will be available for out of state

All heifers have been calfhooed vaccinated, wormed, given 7-way blackleg and inspected for breeding soundness

TERMS & CONDITIONS

All settlement due upon conclusion of sale. The sale will be conducted under standard sale conditions.

SALE SCHEDULE:

Friday, November 5, 2021

10:00 a.m. Cattle arrive and available for viewing all day

Saturday, November 6, 2021

8:00 a.m. Bulls and heifers available for viewing

11:00 a.m. Complimentary lunch

12:00 p.m. Sale starts promptly

Welcome to the Fall Sale November 6, 2021 in Letohatchee, Alabama!

The Fall Sale partners are presenting you with 135 Charolais, Semi-Angus and Angus 2 year old bulls from 7 breeders in southern Alabama....the largest group of 2 year old bulls east of the Mississippi this year!

These bulls all have been grouped and fed in large 40 acre pastures since weaning. Once selected for the sale, no bulls have been sold or picked through from the top. The bulls have been trich tested, semen tested, and again pre-sale. They are sound footed, heavy muscled, athletic bulls ready to go to work to breed cows and produce heavier weanling calves that will continue to perform in the feedlot. These bulls are hard and will not fall apart and are very uniform.

The bulls have good dispositions. The quality of these bulls is consistent and runs very deep in this sale. The bulls are available to be seen in the pastures before sale day in Pinlala, Alabama by the Love's, Exit 158 and will be stalled in the morning of November 5th at Mid State Stockyards LLP located at 8415 State Hwy 978 Letohatchee, AL.

We will also be offering some high quality females, 9 open Charolais heifers, 4 breed Charolais heifers and a group of Angus heifers will catch your eye on sale day. The open heifers have been a big draw and these are the best ever! Show and donor quality.

Look forward to seeing you at the sale if you have any questions please give us a call.

*God Bless you,
Bobby Keahey*

SYKES FARM • LOTS 1-20 CHAROLAIS BULLS



LOT 1

1

SF SAMSON 901P

DOB: 9/10/2019 Polled M936798 SF901

RDK SAMSON 815 P TW MACHO 0184 P/S
RDK SAMSON 523P RDK LADY DUKE 508 P
 M856646 RDK MARY T 503 P
 TW UNLIMITED 9273
 TW FANTASIE 708
 M6 COOL WIND 1140 P ET
WEAVERS COOL BETSY 1534 M6 COOL REP 8108 ET
 F1210224 WEAVERS BLUE BETSY 1234 M6 0383 GERMAINE 8163 P ET
 M6 BLUEGRASS 1001
 WELCOME GROVE QUEEN 134

CE	BW	WW	YW	Milk	MCE	MTL
8.1	-0.5	56	109	31	8.2	59
CW	REA	Fat	Marb	TSI	SC	
21	0.85	0.004	0.07	254.30	39	
BW	WWT	Ratio	YWT	RATIO	FS	
84	780	106	1220	110	5.7	

2

SF SAMSON 904P

DOB: 9/16/2019 Polled M936799 SF904

RDK SAMSON 815 P TW MACHO 0184 P/S
RDK SAMSON 523P RDK LADY DUKE 508 P
 M856646 RDK MARY T 503 P
 TW UNLIMITED 9273
 TW FANTASIE 708
 WCR SIR DESIGN 7268 P
SF MISS BECK 911 P KC DESIGN 4246 P
 F1120114 CC MISS MOLLY 016P WCR MS PAUL 4033 ETP
 WCR SIR DUKE 0267
 CC MISS IMPACT 717P

CE	BW	WW	YW	Milk	MCE	MTL
6.8	-0.3	53	102	23	6.3	50
CW	REA	Fat	Marb	TSI	SC	
16	0.60	0.010	0.09	246.07	37	
BW	WWT	Ratio	YWT	RATIO	FS	
87	710	96	1140	103	5.3	

3

SF SAMSON 906P

DOB: 9/17/2019 Polled M936800 SF906

RDK SAMSON 815 P TW MACHO 0184 P/S
RDK SAMSON 523P RDK LADY DUKE 508 P
 M856646 RDK MARY T 503 P
 TW UNLIMITED 9273
 TW FANTASIE 708
 M6 BLUEGRASS 1001
WEAVERS BLUE BETSY 1234 IT BLUEGRASS 4017 P
 F1188952 WELCOME GROVE QUEEN 134 WEAVERS MISS JESSIE
 EATONS ROYAL DYNASTY 6164
 MR MS IMPRESSIVE 405

CE	BW	WW	YW	Milk	MCE	MTL
7.3	0.2	46	105	28	8.8	51
CW	REA	Fat	Marb	TSI	SC	
21	0.84	0.007	0.08	253.38	38	
BW	WWT	Ratio	YWT	RATIO	FS	
86	625	85	1100	101	5.8	

4

SF SAMSON 907P

DOB: 9/18/2019 Polled M936801 SF907

RDK SAMSON 815 P TW MACHO 0184 P/S
RDK SAMSON 523P RDK LADY DUKE 508 P
 M856646 RDK MARY T 503 P
 TW UNLIMITED 9273
 TW FANTASIE 708
 HBR PROFIT 549 P
CC PROFIT LADY 118 P SC SHADOWBROOK 449 ET
 F1137162 CC LADY KATE 731 P HBR LADY MAGNUM 309 P
 CC SIR DUKE 300 P
 CC DAWN HORIZON 73 P

CE	BW	WW	YW	Milk	MCE	MTL
9.4	-0.5	60	106	32	10.5	62
CW	REA	Fat	Marb	TSI	SC	
15	0.48	0.008	0.05	244.94	37	
BW	WWT	Ratio	YWT	RATIO	FS	
88	830	113	1220	110	6.8	

SYKES FARMS • LOTS 1-20 CHAROLAIS BULLS

5 SF SAMSON 908P

DOB: 9/20/2019 Polled M936802 SF908
 RDK SAMSON 815 P TW MACHO 0184 P/S
RDK SAMSON 523P RDK LADY DUKE 508 P
 M856646 RDK MARY T 503 P TW UNLIMITED 9273
 TW FANTASIE 708
 CC ALABAMA FLASH 826P MV MR FLASH 500 P
SF MISS REBECCA 220 P MV MISS ALABAMA 355 P
 F1169403 CC MISS MAGNUM 480 P WCR SIR TRADIT 9913 ET P
 WCR MISS L-MAC 7325

CE	BW	WW	YW	Milk	MCE	MTL
6.1	0.3	54	95	31	7.7	58
CW	REA	Fat	Marb	TSI	SC	
16	0.64	0.002	0.11	237.17	36	
BW	WWT	Ratio	YWT	RATIO	FS	
88	780	107	1130	102	4.8	

7 SF SAMSON 913P

DOB: 9/25/2019 Polled MP3558 SF913
 RDK SAMSON 815 P TW MACHO 0184 P/S
RDK SAMSON 523P RDK LADY DUKE 508 P
 M856646 RDK MARY T 503 P TW UNLIMITED 9273
 TW FANTASIE 708
 WCR SIR TRADIT 9913 ET P WCR SIR TRADITION 066
SF MISS MAGNUM 423 P TW HBR LADY MAGNUM 595 P
 RF701945 SF 19 SF 831
 BROWN SWISS/BROWN SWISS

CE	BW	WW	YW	Milk	MCE	MTL
8.1	-0.9	46	87	26	7.6	49
CW	REA	Fat	Marb	TSI	SC	
13	0.51	0.004	0.06	231.19	37	
BW	WWT	Ratio	YWT	RATIO	FS	
84	685	101	1055	100	5.9	

9 SF SAMSON 910P

DOB: 9/21/2019 Polled M936804 SF910
 RDK SAMSON 815 P TW MACHO 0184 P/S
RDK SAMSON 523P RDK LADY DUKE 508 P
 M856646 RDK MARY T 503 P TW UNLIMITED 9273
 TW FANTASIE 708
 CC ALABAMA FLASH 826P MV MR FLASH 500 P
SF MISS FLASH 316 P MV MISS ALABAMA 355 P
 F1183799 CC MISS VICKIE 907 P CC SOUTHERN AJ 079 P ET
 CC MISS VEDVEI 520P

CE	BW	WW	YW	Milk	MCE	MTL
8.1	-0.2	40	93	25	9.3	45
CW	REA	Fat	Marb	TSI	SC	
14	0.57	0.006	0.09	241.45	35	
BW	WWT	Ratio	YWT	RATIO	FS	
87	535	75	985	92	6.3	

11 SF SAMSON 923P

DOB: 10/2/2019 Polled M936809 SF923
 RDK SAMSON 815 P TW MACHO 0184 P/S
RDK SAMSON 523P RDK LADY DUKE 508 P
 M856646 RDK MARY T 503 P TW UNLIMITED 9273
 TW FANTASIE 708
 HBR CANNON 2251 P/S ET VCR SIR DUKE 914 PLD
PHR MS MAGNUM 814 HBR LADY GI 207 P ET
 F1098336 HBR LADY MAGNUM 779 P HBR MAGNUM 93 P
 HBR MS PERFORMER 458PTWN

CE	BW	WW	YW	Milk	MCE	MTL
8.0	0.0	45	92	32	8.9	54
CW	REA	Fat	Marb	TSI	SC	
17	0.48	0.000	0.12	237.53	37	
BW	WWT	Ratio	YWT	RATIO	FS	
85	605	89	1010	92	4.7	

6 SF SAMSON 919P

DOB: 9/29/2019 Polled M936807 SF919
 RDK SAMSON 815 P TW MACHO 0184 P/S
RDK SAMSON 523P RDK LADY DUKE 508 P
 M856646 RDK MARY T 503 P TW UNLIMITED 9273
 TW FANTASIE 708
 WCR SIR TRADIT 9913 ET P WCR SIR TRADITION 066
SF MISS MAGNUM 517P HBR LADY MAGNUM 595 P
 F1042534 CC MISS SANDY 821 P SCR NEW TREND 3237
 CC MISS MARY 3309 P

CE	BW	WW	YW	Milk	MCE	MTL
9.3	-1.3	46	77	25	8.5	48
CW	REA	Fat	Marb	TSI	SC	
16	0.63	0.003	0.07	219.16	35	
BW	WWT	Ratio	YWT	RATIO	FS	
84	635	95	900	86	3.9	

8 SF SAMSON 914P

DOB: 9/25/2019 Polled M936805 SF914
 RDK SAMSON 815 P TW MACHO 0184 P/S
RDK SAMSON 523P RDK LADY DUKE 508 P
 M856646 RDK MARY T 503 P TW UNLIMITED 9273
 TW FANTASIE 708
 HF WHAT ABOUT IT LT BLUEGRASS 4017 P
SF MISS BLUE BREEZE 417P ACE MS HOO DOO 460 APIO-91 ET
 F1201570 SF MISS BECK 911 P WCR SIR DESIGN 7268 P
 CC MISS MOLLY 016P

CE	BW	WW	YW	Milk	MCE	MTL
8.8	-0.8	52	95	28	8.4	54
CW	REA	Fat	Marb	TSI	SC	
15	0.62	0.014	0.10	237.99	37	
BW	WWT	Ratio	YWT	RATIO	FS	
85	700	99	1050	97	6.4	

10 SF SAMSON 920P

DOB: 10/1/2019 Polled M936808 SF920
 RDK SAMSON 815 P TW MACHO 0184 P/S
RDK SAMSON 523P RDK LADY DUKE 508 P
 M856646 RDK MARY T 503 P TW UNLIMITED 9273
 TW FANTASIE 708
 MF BAM 330 PLD MF BAM BAM 813 PLD
RDK MAGGIE BELL 713P MF ELVIRA 1013 PLD
 F1233848 RDK MAGGIE MAKER 106P RAY'S GRID MAKER
 RDK MARY T 503 P

CE	BW	WW	YW	Milk	MCE	MTL
8.2	-0.2	50	93	24	8.3	48
CW	REA	Fat	Marb	TSI	SC	
16	0.64	0.004	0.10	237.00	39	
BW	WWT	Ratio	YWT	RATIO	FS	
84	600	93	935	90	5.2	



LOT 11

SYKES FARMS • LOTS 1-20 CHAROLAIS BULLS

12

SF SAMSON 924P

DOB: 10/7/2019 Polled M936810 SF924

RDK SAMSON 815 P TW MACHO 0184 P/S
RDK SAMSON 523P RDK LADY DUKE 508 P
 M856646 RDK MARY T 503 P TW UNLIMITED 9273
 TW FANTASIE 708
 LHD FRASER N39
 BM FIRST CLASS S6148 MS ALIPROMISE G61A
PJ SUSIE 937 P LHD CIGAR E46
 F1098064 PJ SUSIE 215 P M6 MS DUKE 9114 PLD

CE	BW	WW	YW	Milk	MCE	MTL
4.6	1.2	67	116	27	7.4	61
CW	REA	Fat	Marb	TSI	SC	
33	1.06	-0.009	0.00	253.71	40	
BW	WWT	Ratio	YWT	RATIO	FS	
88	805	119	1240	115	5.8	



LOT 12

SF SAMSON 933P

15

DOB: 11/27/2019 Polled M936828 SF933

WCR SIR DUKE 0267 BR DUKE 261
RDK SIR DUKE 704P WCR MISS MAC 8401
 M887674 SF MISS BLUE BREEZE 417P HF WHAT ABOUT IT
 SF MISS BECK 911 P
 RDK-SW JOSHUA 501 P M6 COOL REP 8108 ET
SF MISS REBECCA DELILIAH 704P WEAVERS FRESH MARY 1101
 F1253849 SF MISS MAGNUM 622 P CC SIR KOJACK 304 P
 SF MISS MAGNUM 423 P TW WCR SIR TRADIT 9913 ET P
 WCR MS INTIMIDATOR6013ET

CE	BW	WW	YW	Milk	MCE	MTL
4.9	0.9	62	113	27	5.6	58
CW	REA	Fat	Marb	TSI	SC	
21	0.70	0.003	0.09	252.90	35	
BW	WWT	Ratio	YWT	RATIO	FS	
86	500	104	920	103	6.4	

14

SF SAMSON 931P

DOB: 11/9/2019 Polled M936827 SF931

WCR SIR DUKE 0267 BR DUKE 261
RDK SIR DUKE 704P WCR MISS MAC 8401
 M887674 SF MISS BLUE BREEZE 417P HF WHAT ABOUT IT
 SF MISS BECK 911 P
 RDK-SW JOSHUA 501 P M6 COOL REP 8108 ET
SF REBECCA JAELE 729P WEAVERS FRESH MARY 1101
 RF711287 SF MISS FASTTRACK 706 P CC SIR KOJACK 304 P
 SF MISS MAGNUM 423 P TW

CE	BW	WW	YW	Milk	MCE	MTL
4.6	0.9	72	106	28	5.2	64
CW	REA	Fat	Marb	TSI	SC	
15	0.69	-0.005	0.03	238.81	39	
BW	WWT	Ratio	YWT	RATIO	FS	
82	585	111	830	95	5.2	

16

SF SAMSON 934P

DOB: 11/27/2019 Polled RM102698 SF934

RDK SAMSON 815 P TW MACHO 0184 P/S
RDK SAMSON 523P RDK LADY DUKE 508 P
 M856646 RDK MARY T 503 P TW UNLIMITED 9273
 TW FANTASIE 708
 CC SIR KOJACK 304 P BALDRIDGE KOJACK 29K
SF MISS FASTTRACK 706 P MV SUGAR PIE 60 P
 RF703823 SF MISS MAGNUM 423 P TW WCR SIR TRADIT 9913 ET P
 SF 19

CE	BW	WW	YW	Milk	MCE	MTL
9.3	-0.9	46	92	27	8.5	50
CW	REA	Fat	Marb	TSI	SC	
14	0.66	0.003	0.03	237.43	38	
BW	WWT	Ratio	YWT	RATIO	FS	
87	485	90	930	96	5.4	

17

SF SIR AMOS 935P

DOB: 12/5/2019 Polled M936817 SF935

WCR COUNTY LINE 3132 P WCR KINGSBURY 116 P
WCR SIR COUNTYLINE 551 P WCR MS NO QUESTION 1237 P
 M862741 WCR MS BIG BEN 318 P WC BIG BEN 9036 P
 WCR MS DESIGN 1148 P
 HF WHAT ABOUT IT LT BLUEGRASS 4017 P
SF MISS BLUE BREEZE 612P ACE MS HOO DOO 460 APIO-91 ET
 F1234577 SF MISS MAGNUM 502P WCR SIR TRADIT 9913 ET P
 TW DAISYE 5247 P/S

CE	BW	WW	YW	Milk	MCE	MTL
9.0	0.0	52	90	21	8.7	47
CW	REA	Fat	Marb	TSI	SC	
11	0.39	0.015	0.06	229.28	35	
BW	WWT	Ratio	YWT	RATIO	FS	
90	515	93	880	94	5.0	

19

SF SIR AMOS 937P

DOB: 12/24/2019 Polled M936820 SF937

WCR COUNTY LINE 3132 P WCR KINGSBURY 116 P
WCR SIR COUNTYLINE 551 P WCR MS NO QUESTION 1237 P
 M862741 WCR MS BIG BEN 318 P WC BIG BEN 9036 P
 WCR MS DESIGN 1148 P
 HF WHAT ABOUT IT LT BLUEGRASS 4017 P
SF BLUE BREEZE 613P ACE MS HOO DOO 460 APIO-91 ET
 F1234578 CMF 410T RUBY 482Y CMF 241 RIO BLANCO 378R
 CMF H103 CLARISSA 410T

CE	BW	WW	YW	Milk	MCE	MTL
9.9	-0.7	64	98	21	9.2	53
CW	REA	Fat	Marb	TSI	SC	
16	0.49	0.017	0.04	231.82	41	
BW	WWT	Ratio	YWT	RATIO	FS	
78	545	108	840	97	4.7	

20

SF SIR BUCK 938P

DOB: 1/16/2020 Polled M936824 SF938X

WCR SIR DUKE 0267 BR DUKE 261
RDK SIR DUKE 704P WCR MISS MAC 8401
 M887674 SF MISS BLUE BREEZE 417P HF WHAT ABOUT IT
 SF MISS BECK 911 P
 RDK-SW JOSHUA 501 P M6 COOL REP 8108 ET
SF REBECCA JAELE 731P/S WEAVERS FRESH MARY 1101
 F1253861 SF LADY SUE 842S CC SIR DUKE 166 P
 SF MISS MAGNUM 518P

CE	BW	WW	YW	Milk	MCE	MTL
3.2	1.7	70	120	30	4.1	64
CW	REA	Fat	Marb	TSI	SC	
27	0.88	-0.005	0.09	258.60	38	
BW	WWT	Ratio	YWT	RATIO	FS	
84	435	103	900	109	5.6	

KEAHEY CHAROLAIS • LOTS 21-48 CHAROLAIS BULLS

21

RDK SIR AMOS 04P

DOB: 11/20/2019 Polled M932730 K04
 WCR COUNTY LINE 3132 P WCR KINGSBURY 116 P
WCR SIR COUNTYLINE 551 P WCR MS NO QUESTION 1237 P
 M862741 WCR MS BIG BEN 318 P WC BIG BEN 9036 P
 WCR MS DESIGN 1148 P
 RDK SAMSON 523P RDK SAMSON 815 P
RDK PAM'S DELILIAH 810P RDK MARY T 503 P
 F1253618 SF LADY REBECCA 808 P CC SIR DUKE 166 P
 SF MISS MAGNUM 517P

CE	BW	WW	YW	Milk	MCE	MTL
7.3	1.1	57	107	22	8.0	50
CW	REA	Fat	Marb	TSI	SC	
18	0.60	0.011	0.08	247.93	39	
BW	WWT	Ratio	YWT	RATIO	FS	
87	695	95	1030	103	6.8	



LOT 22

22

RDK SIR SAMSON 012P

DOB: 12/8/2019 Polled M932550 K012
 RDK SAMSON 815 P TW MACHO 0184 P/S
RDK SAMSON 523P RDK LADY DUKE 508 P
 M856646 RDK MARY T 503 P TW UNLIMITED 9273
 TW FANTASIE 708
 M6 COOL HAND 419 ET M6 COOL REP 8108 ET
GF COOL JEWEL 704 M6 MS NEW JEWEL 0155 PLD
 F1236746 CMC LADY ROYCE 074 P CMC MR ROYCE 181 PLD
 CMC MISS OPIE 690 PLD

CE	BW	WW	YW	Milk	MCE	MTL
6.0	0.7	64	111	29	7.1	61
CW	REA	Fat	Marb	TSI	SC	
25	0.86	0.006	0.11	251.23	37	
BW	WWT	Ratio	YWT	RATIO	FS	
87	795	108	1060	106	5.0	

23

RDK SIR SAMSON 015P

DOB: 12/13/2019 Polled M932551 K015
 RDK SAMSON 815 P TW MACHO 0184 P/S
RDK SAMSON 523P RDK LADY DUKE 508 P
 M856646 RDK MARY T 503 P TW UNLIMITED 9273
 TW FANTASIE 708
 M6 COOL REP 8108 ET M6 COOL DUDE 6463 P ET
CAREY FARMS LADY 1628 SR LADY EASE 914 ET
 EF1237461 CAREY FRMS LADY 617 M6 RANCHER CHOICE 9469 P
 CAREY FRMS LADY 223

CE	BW	WW	YW	Milk	MCE	MTL
8.9	-0.7	47	91	27	6.5	51
CW	REA	Fat	Marb	TSI	SC	
19	0.80	0.002	0.06	236.14	38	
BW	WWT	Ratio	YWT	RATIO	FS	
78	640	90	910	93	5.6	

24

RDK SIR SAMSON 017P

DOB: 12/19/2019 Polled M932552 K017
 RDK SAMSON 815 P TW MACHO 0184 P/S
RDK SAMSON 523P RDK LADY DUKE 508 P
 M856646 RDK MARY T 503 P TW UNLIMITED 9273
 TW FANTASIE 708
 M6 COOL REP 8108 ET M6 COOL DUDE 6463 P ET
CAREY FARMS LADY 1625 SR LADY EASE 914 ET
 EF1237459 CAREY FRMS LADY 617 M6 RANCHER CHOICE 9469 P
 CAREY FRMS LADY 223

CE	BW	WW	YW	Milk	MCE	MTL
5.4	1.3	52	99	28	5.8	54
CW	REA	Fat	Marb	TSI	SC	
16	0.79	0.001	0.00	239.77	41	
BW	WWT	Ratio	YWT	RATIO	FS	
89	670	96	955	99	5.7	



LOT 24

25

RDK SAMSON K019

DOB: 12/21/2019 Polled M932553 K019
 RDK SAMSON 815 P TW MACHO 0184 P/S
RDK SAMSON 523P RDK LADY DUKE 508 P
 M856646 RDK MARY T 503 P TW UNLIMITED 9273
 TW FANTASIE 708
 SC SHADOWBROOK 484 ET LC BUSINESS 06P
HEP MISS JOAN 35U RSCR CRYSTAL 7J P
 F1103602 HEP MISS JOAN 43R LT RIO BLANCO 1234 P
 HEP MISS JOAN 3E

CE	BW	WW	YW	Milk	MCE	MTL
5.5	1.0	56	94	26	8.8	54
CW	REA	Fat	Marb	TSI	SC	
19	0.73	0.004	0.01	231.15	38	
BW	WWT	Ratio	YWT	RATIO	FS	
85	710	98	905	91	5.2	

26

RDK SIR SAMSON 023P

DOB: 12/23/2019 Polled M932554 K023
 RDK SAMSON 815 P TW MACHO 0184 P/S
RDK SAMSON 523P RDK LADY DUKE 508 P
 M856646 RDK MARY T 503 P TW UNLIMITED 9273
 TW FANTASIE 708
 M&M ROYCE 2569 PLD ET COOLEY ROYCE 1107T39
M&M MS 2569 5505 PLD MS COOLEY ORIG 1107N33
 F1120488 M&M MS STEALTH 7550 PLD DR STEALTH 574
 BALDRIDGE ELVIRA 43M PLD

CE	BW	WW	YW	Milk	MCE	MTL
8.5	-1.2	50	84	27	7.7	52
CW	REA	Fat	Marb	TSI	SC	
21	0.82	0.013	0.05	226.47	38	
BW	WWT	Ratio	YWT	RATIO	FS	
75	665	93	875	89	5.2	

KEAHEY CHAROLAIS • LOTS 21-48 CHAROLAIS BULLS

27

RDK SIR SAMSON 028P

DOB: 12/31/2019 Polled M932557 K028

RDK SAMSON 815 P
RDK SAMSON 523P
 M856646 RDK MARY T 503 P

RDK SAMSON 815 P
RDK MAGGIES DELILAH 519P
 F1199089 RDK MAGGIE MAKER 106P

TW MACHO 0184 P/S
 RDK LADY DUKE 508 P
 TW UNLIMITED 9273
 TW FANTASIE 708
 TW MACHO 0184 P/S
 RDK LADY DUKE 508 P
 RAY'S GRID MAKER
 RDK MARY T 503 P

CE	BW	WW	YW	Milk	MCE	MTL
7.4	0.5	56	115	32	8.0	60
CW	REA	Fat	Marb	TSI	SC	
28	0.92	0.014	0.10	260.53	41	
BW	WWT	Ratio	YWT	RATIO	FS	
86	700	100	1075	111	6.8	

28

RDK SIR SAMSON 031P

DOB: 1/1/2020 Polled M933788 K031

RDK SAMSON 815 P
RDK SAMSON 523P
 M856646 RDK MARY T 503 P

RDK SAMSON 815 P
SF REBECCA DELILAH 504P
 F1215460 SF MISS BECK 911 P

TW MACHO 0184 P/S
 RDK LADY DUKE 508 P
 TW UNLIMITED 9273
 TW FANTASIE 708
 TW MACHO 0184 P/S
 RDK LADY DUKE 508 P
 WCR SIR DESIGN 7268 P
 CC MISS MOLLY 016P

CE	BW	WW	YW	Milk	MCE	MTL
6.5	0.2	44	84	27	6.3	49
CW	REA	Fat	Marb	TSI	SC	
N/A	N/A	N/A	N/A	N/A	34	
BW	WWT	Ratio	YWT	RATIO	FS	
86	595	87	820	86	5.4	

29

RDK SIR SAMSON 034P

DOB: 1/10/2020 Polled M932559 K034

RDK SAMSON 815 P
RDK SAMSON 523P
 M856646 RDK MARY T 503 P

WCR SIR DUKE 0267
RDK MOLLY'S BREEZE 703P
 F1233854 SF MISS BLUE BREEZE 422P

TW MACHO 0184 P/S
 RDK LADY DUKE 508 P
 TW UNLIMITED 9273
 TW FANTASIE 708
 BR DUKE 261
 WCR MISS MAC 8401
 HF WHAT ABOUT IT
 CC MISS MOLLY 016P

CE	BW	WW	YW	Milk	MCE	MTL
3.5	1.6	52	90	30	5.3	56
CW	REA	Fat	Marb	TSI	SC	
13	0.58	0.007	0.19	231.74	38	
BW	WWT	Ratio	YWT	RATIO	FS	
88	620	98	850	95	5.0	

30

RDK SIR SAMSON 035P

DOB: 1/12/2020 Polled M932560 K035

RDK SAMSON 815 P
RDK SAMSON 523P
 M856646 RDK MARY T 503 P

HF WHAT ABOUT IT
SF MISS BLUE BREEZE 422P
 F1201571 CC MISS MOLLY 016P

TW MACHO 0184 P/S
 RDK LADY DUKE 508 P
 TW UNLIMITED 9273
 TW FANTASIE 708
 LT BLUEGRASS 4017 P
 ACE MS HOO DOO 460 APIO-91 ET
 WCR SIR DUKE 0267
 CC MISS IMPACT 717P

CE	BW	WW	YW	Milk	MCE	MTL
11.7	-2.2	43	84	29	10.0	51
CW	REA	Fat	Marb	TSI	SC	
14	0.56	0.012	0.09	229.95	34	
BW	WWT	Ratio	YWT	RATIO	FS	
70	615	93	770	84	6.0	

31

RDK SIR BUCK 038P

DOB: 2/29/2020 Polled M934908 K038

WCR SIR DUKE 0267
RDK SIR DUKE 704P
 M887674 SF MISS BLUE BREEZE 417P

RAY'S GRID MAKER
RDK MISS LEXI 231
 F1152845 RDK MARY HANNA 701

BR DUKE 261
 WCR MISS MAC 8401
 HF WHAT ABOUT IT
 SF MISS BECK 911 P
 M6 GRID MAKER 104 PET
 M6 MS D040 DUKE 3134 P
 CC BUDDY BOY 332
 RDK MARY T 503 P

CE	BW	WW	YW	Milk	MCE	MTL
3.5	1.8	65	117	30	4.0	63
CW	REA	Fat	Marb	TSI	SC	
18	0.57	-0.001	0.09	255.10	40	
BW	WWT	Ratio	YWT	RATIO	FS	
86	575	100	725	100	6.3	



32

RDK EXCEL 1931 P

DOB: 12/6/2019 Polled M945534 1931

M6 GRID MAKER 104 PET
MCF CHOICE MAKER E601 P
 EM915916 FRED'S MS ULTIMATE 2158 P

CC SIR KOJACK 304 P
CC LADY KOJACK 931P
 F1108776 CC MISS CAROL 656 P

WCR SIR TRADITION 066
 VCR MISS MAC IV 317
 FRED'S ULTIMATE 8100 PLD
 FRED'S MS NIFTY 9175 PLD
 BALDRIDGE KOJACK 29K
 MV SUGAR PIE 60 P
 WCR SIR TRADITION 3464
 CC LADY SILVER 326

CE	BW	WW	YW	Milk	MCE	MTL
10.9	-2.5	51	93	25	7.7	50
CW	REA	Fat	Marb	TSI	SC	
N/A	N/A	N/A	N/A	N/A	36	
BW	WWT	Ratio	YWT	RATIO	FS	
70	600	92	1140	94		



LOT 32

KEAHEY CHAROLAIS • LOTS 21-48 CHAROLAIS BULLS

33

RDK EXCEL 1956 P

DOB: 12/25/2019 Polled M945535 1956
 M6 GRID MAKER 104 PET
MCF CHOICE MAKER E601 P
 EM915916 FRED'S MS ULTIMATE 2158 P
 RSCR TARGET L055 P ET
HCF MISS TARGET 256
 F1134531 HCF MISS GRAZER 188
 WCR SIR TRADITION 066
 VCR MISS MAC IV 317
 FRED'S ULTIMATE 8100 PLD
 FRED'S MS NIFTY 9175 PLD
 VCR SIR DUKE 914 PLD
 BALDRIDGE SWEETHEART 53D
 HEP SIR GRAZER 84L
 GM MISS SASSY

CE	BW	WW	YW	Milk	MCE	MTL
6.3	1.1	60	108	26	6.9	56
CW	REA	Fat	Marb	TSI	SC	
17	0.66	-0.013	0.12	249.31	40	
BW	WWT	Ratio	YWT	RATIO	FS	
88	650	108	1220	106		

35

RDK LEXUS 0832 P

DOB: 1/30/2020 Polled M941828 0832
 ACC 722
ACC 818 P
 M812174 ACC 818P
 ACE-ORR LEXUS 1004P
DRY LAKE MISS LEXUS 6549
 F1271044 DRY LAKE YOLONDA
 CC SIR BUD 649P
 ACC 222P
 HEP POLLED BUSINESS 68K
 DRY LAKE KATHLENA
 M6 GRID MAKER 104 PET
 ORR MS MARY 764P
 DRY LAKE NICK
 DRY LAKE MISS DUKE 4217

CE	BW	WW	YW	Milk	MCE	MTL
5.9	-0.3	52	93	25	5.6	51
CW	REA	Fat	Marb	TSI	SC	
N/A	N/A	N/A	N/A	N/A	37	
BW	WWT	Ratio	YWT	RATIO	FS	
80			1150			

38

RDK DUKE 178 P

DOB: 2/2/2020 Polled M941250 H178
 VCR SIR DUKE 914 PLD
MV 2070 DUKE-CIGAR 360
 EM860960 DVCR LADY CIGAR 2070 P
 LT LEDGER 0332 P
HCF LEDGER 735
 F1198430 HCF GRAZER 461
 WCR SIR DUKE 761
 WCR MISS MAC IV 534
 LHD CIGAR E46
 EATONS MISS WHITNEY 7887
 LT BLUEGRASS 4017 P
 LT BRENDA 6120 PLD
 HEP SIR GRAZER 84L
 HCH TARGET 267

CE	BW	WW	YW	Milk	MCE	MTL
9.0	-0.3	70	123	27	7.3	62
CW	REA	Fat	Marb	TSI	SC	
29	0.72	0.016	0.03	260.20	38	
BW	WWT	Ratio	YWT	RATIO	FS	
70	785	106	1225	101		



LOT 40

34

RDK LEXUS 0822 P

DOB: 1/20/2020 Polled M941827 0822
 ACC 722
ACC 818 P
 M812174 ACC 818P
 ACE-ORR LEXUS 1004P
DRY LAKE MISS LEXUS 6691
 F1271030 DRY LAKE MS ALVAREZ 133
 CC SIR BUD 649P
 ACC 222P
 HEP POLLED BUSINESS 68K
 DRY LAKE KATHLENA
 M6 GRID MAKER 104 PET
 ORR MS MARY 764P
 DRY LAKE ALVAREZ
 SF MISS MAGNUM 33 P

CE	BW	WW	YW	Milk	MCE	MTL
7.1	-0.1	46	87	22	7.3	45
CW	REA	Fat	Marb	TSI	SC	
N/A	N/A	N/A	N/A	N/A	37	
BW	WWT	Ratio	YWT	RATIO	FS	
85	675	92	1130	96		

37

RDK DUKE 176 TW

DOB: 2/1/2020 Polled M941237 H176
 VCR SIR DUKE 914 PLD
MV 2070 DUKE-CIGAR 360
 EM860960 DVCR LADY CIGAR 2070 P
 FOF BOJACK P1307
HCF BOJACK 657
 F1169632 HCF GRAZER 457
 WCR SIR DUKE 761
 WCR MISS MAC IV 534
 LHD CIGAR E46
 EATONS MISS WHITNEY 7887
 BALDRIDGE KOJACK 29K
 FOF MISS MARIA P9221
 HEP SIR GRAZER 84L
 HCF TRACKER 363

CE	BW	WW	YW	Milk	MCE	MTL
11.6	-1.1	63	110	30	9.8	62
CW	REA	Fat	Marb	TSI	SC	
24	0.63	-0.003	-0.02	247.93	36	
BW	WWT	Ratio	YWT	RATIO	FS	
55	655	100	1045	100		

39

RDK LEXUS 0635 P

DOB: 2/2/2020 Polled M941829 0635
 M6 GRID MAKER 104 PET
ACE-ORR LEXUS 1004P
 M797441 ORR MS MARY 764P
 PI WIND TREE
DRY LAKE MISS WIND 9198
 F1120333 DRY LAKE HATTIE 6263
 WCR SIR TRADITION 066
 VCR MISS MAC IV 317
 ORR'S TRADITION 208 P ET
 ORR'S MS MARY 413P TW
 THREE TREES WIND 0383 ET
 ORR'S MS PRIME 317 TWIN
 DRY LAKE DUKE 3116
 DRY LAKE ROYAL LIZ

CE	BW	WW	YW	Milk	MCE	MTL
8.0	-2.0	43	81	17	5.8	38
CW	REA	Fat	Marb	TSI	SC	
12	0.46	-0.003	0.09	227.33	36	
BW	WWT	Ratio	YWT	RATIO	FS	
82	685	95	1110	95		

40

RDK LEXUS 0777 P

DOB: 2/11/2020 Polled M941830 0777
 ACC 722
ACC 818 P
 M812174 ACC 818P
 ACE-ORR LEXUS 1004P
DRY LAKE MISS ANGELA
 F1194547 DRY LAKE MISS MAGGIE
 CC SIR BUD 649P
 ACC 222P
 HEP POLLED BUSINESS 68K
 DRY LAKE KATHLENA
 M6 GRID MAKER 104 PET
 ORR MS MARY 764P
 DRY LAKE BUD 8307
 DRY LAKE MITZI

CE	BW	WW	YW	Milk	MCE	MTL
7.8	-0.7	43	75	21	8.5	42
CW	REA	Fat	Marb	TSI	SC	
N/A	N/A	N/A	N/A	N/A	34	
BW	WWT	Ratio	YWT	RATIO	FS	
82	645	91	1020	88		

KEAHEY CHAROLAIS • LOTS 21-48 CHAROLAIS BULLS

41

RDK GRIDMAKER 004 P

DOB: 2/15/2020 Polled M940663 004

LT VENTURE 3198 PLD
WELCOME GROVE VISTOR
 M884789 WELCOME GROVE BELL 630

BAMBOO DUKE 157 ET
BMD DUKES GRIDMAKER 9513
 F1202919 BC GRIDMAKER'S MISS MAC 9513BC GRIDMAKER 6409
 JBC MS DUKE 513 P/S ET

CE	BW	WW	YW	Milk	MCE	MTL
7.9	0.1	66	112	25	5.0	57
CW	REA	Fat	Marb	TSI	SC	
27	0.69	-0.005	0.02	249.36	41	
BW	WWT	Ratio	YWT	RATIO	FS	
82	890	103	1245	98		

43

RDK BUD 0824 P

DOB: 2/21/2020 Polled M941832 0824

ACC 722
ACC 818 P
 M812174 ACC 818P

ACE-ORR LEXUS 1004P
DRY LAKE MISS LEXUS 6695
 F1271036 DRY LAKE DAISY MAE

CC SIR BUD 649P
 ACC 222P
 HEP POLLED BUSINESS 68K
 DRY LAKE KATHLENA
 M6 GRID MAKER 104 PET
 ORR MS MARY 764P
 DRY LAKE BUD 8307
 DRY LAKE MISS SUE

CE	BW	WW	YW	Milk	MCE	MTL
-7.2	6.1	55	108	21	1.8	48
CW	REA	Fat	Marb	TSI	SC	
N/A	N/A	N/A	N/A	N/A	36	
BW	WWT	Ratio	YWT	RATIO	FS	
120	635	96	1165	105		

46

RDK LEXUS 0683 P

DOB: 3/9/2020 Polled M941834 0683

M6 GRID MAKER 104 PET
ACE-ORR LEXUS 1004P
 M797441 ORR MS MARY 764P

DRY LAKE ALVAREZ
DRY LAKE MS ALVAREZ 048
 F1135332 SCF MISS QUEEN 7121P TW

WCR SIR TRADITION 066
 VCR MISS MAC IV 317
 ORR'S TRADITION 208 P ET
 ORR'S MS MARY 413P TW
 TCF BUD Q134
 DRY LAKE MISS DEAL 8177
 SKYMONT EASE 2078
 CC SOUTHERN QUEEN 613 P

CE	BW	WW	YW	Milk	MCE	MTL
2.3	0.7	51	108	25	-0.6	50
CW	REA	Fat	Marb	TSI	SC	
N/A	N/A	N/A	N/A	N/A	37	
BW	WWT	Ratio	YWT	RATIO	FS	
90	685	106	1245	114		

48

RDK EXCEL 2026 P

DOB: 4/6/2020 Dehorned M945537 2026

M6 GRID MAKER 104 PET
MCF CHOICE MAKER E601 P
 EM915916 FRED'S MS ULTIMATE 2158 P

LT SUNDANCE 2251 PLD
VCC BATTET 826
 F1267867 VCC DANA 1MGM 522

WCR SIR TRADITION 066
 VCR MISS MAC IV 317
 FRED'S ULTIMATE 8100 PLD
 FRED'S MS NIFTY 9175 PLD
 LT LEDGER 0332 P
 LT BALLETT 9219 POLLED
 WC HOODOO SANDPOINT 2013
 ABC LOTHARIA DANA 1MGM

CE	BW	WW	YW	Milk	MCE	MTL
-0.1	4.1	66	127	23	1.3	56
CW	REA	Fat	Marb	TSI	SC	
24	0.81	-0.002	0.19	268.90	38	
BW	WWT	Ratio	YWT	RATIO	FS	
87	510	108	1250	112		

42

RDK LEXUS 0806 P

DOB: 2/16/2020 Polled M941831 0806

M6 GRID MAKER 104 PET
ACE-ORR LEXUS 1004P
 M797441 ORR MS MARY 764P

ACE-ORR DESPERADO 1052P
DRY LAKE MISS WANDA
 F1242654 DRY LAKE MISS RC 3401

WCR SIR TRADITION 066
 VCR MISS MAC IV 317
 ORR'S TRADITION 208 P ET
 ORR'S MS MARY 413P TW
 TR MR FIRE WATER 5792RET
 ORR'S LADY NANCY 229 P
 DRY LAKE ROYAL CECIL
 HEP MISS JOAN 69C

CE	BW	WW	YW	Milk	MCE	MTL
5.1	-0.1	58	93	28	5.4	58
CW	REA	Fat	Marb	TSI	SC	
16	0.65	-0.001	0.10	231.72	34	
BW	WWT	Ratio	YWT	RATIO	FS	
84	825	120	1180	103		

45

RDK EASY 198

DOB: 3/5/2020 Polled M941251 H198

LOF EASY DUKE 67Z
HCF EASY DUKE 852
 M878759 CCF MS POLL GRID 365

RC MR GAME CHANGER 230
HCF GAME CHANGER 745
 F1200078 HCF GRAZER 467

OAKDALE DUKE 9003P
 LOF PRISCILLA MADELINE 32Y
 OHF MR GRID H106 P
 CCF MS POLL VALUE 05
 BJR UNLIMITED DUKE 964 ET P
 RC MS CIGAR DUKE 937
 HEP SIR GRAZER 84L
 HCF TARGET 235

CE	BW	WW	YW	Milk	MCE	MTL
1.6	3.1	67	116	30	4.8	63
CW	REA	Fat	Marb	TSI	SC	
21	0.65	-0.009	0.00	249.93	36	
BW	WWT	Ratio	YWT	RATIO	FS	
85	675	105	1090	99		

47

RDK LEDGERS CROWN 009 P

DOB: 3/17/2020 Polled M941753 009

LT VENTURE 3198 PLD
WELCOME GROVE VISTOR
 M884789 WELCOME GROVE BELL 630

LT LEDGER 0332 P
BMD LEDGERS WINDY 817
 F1185060 WELCOME GROVE WINDY 817

LT STAGECOACH 8068 PLD
 LT BALLETT 9219 POLLED
 MAY PAYROLL 3021 ET
 MR MS IMPRESSIVE 405
 LT BLUEGRASS 4017 P
 LT BRENDA 6120 PLD
 NF RL ROCCO 3030 PLD
 CMF 265 WINDY 349N

CE	BW	WW	YW	Milk	MCE	MTL
7.1	-0.2	63	120	19	5.4	51
CW	REA	Fat	Marb	TSI	SC	
27	0.71	0.028	0.03	259.90	38	
BW	WWT	Ratio	YWT	RATIO	FS	
80	770	99	1205	103		



BRADFORD AGRICULTURE • LOTS 49-59 CHAROLAIS BULLS

49

CB LAW AND ORDER 001 P

DOB: 9/26/2019 Polled M935432 001

M6 COOL REP 8108 ET
M6 LAW & ORDER 577 P
 M875914 M6 MS NEW NANCY 274 P ET
 M6 NEW STANDARD 842 P ET
 M6 MS 761 NANCY 6100 P ET
 JDJ ALI COMMAND W1760 PET
REAVES MS SMOKE COMMAND 360
 F1244796 KTR MS DUKE SMOKE 305
 M6 COOL DUDE 6463 P ET
 SR LADY EASE 914 ET
 M6 MS 761 NANCY 6100 P ET
 LHD ALI MARK T214
 JD MS COMMANDER B309
 JDJ SMOKESTER J1377 P ET
 MCF LADY GI DUKE 5003PET

CE	BW	WW	YW	Milk	MCE	MTL
4.3	1.1	60	108	31	1.5	61
CW	REA	Fat	Marb	TSI	SC	
21	0.84	-0.026	0.03	249.17	35	
BW	WWT	Ratio	YWT	RATIO	FS	
77	565	100	970	100	4.7	

50

CB SIR DUKE 007 P

DOB: 11/9/2019 Polled M935696 B007

BR DUKE 261
WCR SIR DUKE 0267
 M318081 WCR MISS MAC 8401
 BR DUKE 295
 BR ANN 14
 WCR SIR FAB MAC 809
 MISS JAMBO 0016-80
 M6 COOL REP 8108 ET
 WEAVERS FRESH MARY 1101
 WCR SIR PAUL 5013P
 WCR MISS DUKE 3173 P/S
 RDK-DW JOSHUA 501 P
SF REBECCA Jael 738P
 F1253864 SF MISS BECK 932 P

CE	BW	WW	YW	Milk	MCE	MTL
4.8	-0.2	52	93	26	1.3	52
CW	REA	Fat	Marb	TSI	SC	
13	0.50	-0.001	0.11	235.12	39	
BW	WWT	Ratio	YWT	RATIO	FS	
73	658	91	895	98	5.2	

51

CB PROBATE JUDGE B025P

DOB: 1/2/2020 Polled M935476 B025

WCR SIR COUNTYLINE 551 P
SF SIR AMOS 716P
 M905553 WEAVERS COOL BETSY 1534
 RDK SAMSON 308P
CB MISS SILVER RESOLUTE 830 P
 F1254029 RDK MARY HANNA 701
 WCR COUNTY LINE 3132 P
 WCR MS BIG BEN 318 P
 M6 COOL WIND 1140 P ET
 WEAVERS BLUE BETSY 1234
 RDK SAMSON 815 P
 RDK MARY T 503 P
 CC BUDDY BOY 332
 RDK MARY T 503 P

CE	BW	WW	YW	Milk	MCE	MTL
5.3	1.3	53	88	30	5.9	56
CW	REA	Fat	Marb	TSI	SC	
N/A	N/A	N/A	N/A	N/A	36	
BW	WWT	Ratio	YWT	RATIO	FS	
88	558	92	700	87	4.4	



LOT 50

53

CB CIRCUIT JUDGE 037 P

DOB: 1/26/2020 Polled M935478 B037

RDK SAMSON 523P
SF SAMSON 723P
 M905556 WEAVERS BLUE BETSY 1234
 AC WESTERN EDGE 2024 PLD ET
GH MS 2024 5509 PLD
 F1220493 GH MS RAPTOR 1110 PLD
 RDK SAMSON 815 P
 RDK MARY T 503 P
 M6 BLUEGRASS 1001
 WELCOME GROVE QUEEN 134
 LT WESTERN EDGE 4057 PLD
 M&M MS SLASHER 8506 PLD ET
 M&M RAPTOR 8122 PLD
 M&M MS CARBINE 9075 PLD

CE	BW	WW	YW	Milk	MCE	MTL
3.6	0.4	60	102	31	4.8	61
CW	REA	Fat	Marb	TSI	SC	
22	0.79	0.001	0.08	241.61	41	
BW	WWT	Ratio	YWT	RATIO	FS	
89	636	103	830	101	5.2	

54

CB CIRCUIT JUDGE 036 P

DOB: 1/29/2020 Polled M935479 B036

RDK SAMSON 523P
SF SAMSON 723P
 M905556 WEAVERS BLUE BETSY 1234
 M6 COOL WIND 1140 P ET
WEAVERS COOL CLARICE 1510
 F1210226 CMF H103 CLARISSA 410T
 RDK SAMSON 815 P
 RDK MARY T 503 P
 M6 BLUEGRASS 1001
 WELCOME GROVE QUEEN 134
 M6 COOL REP 8108 ET
 M6 0383 GERMAINE 8163 P ET
 WCR PRIME TIME 908 P
 JWK CLARISSA H103 TWIN

CE	BW	WW	YW	Milk	MCE	MTL
7.1	-0.2	55	104	25	6.4	53
CW	REA	Fat	Marb	TSI	SC	
21	0.82	-0.004	0.08	248.10	42	
BW	WWT	Ratio	YWT	RATIO	FS	
88	582	96	820	102	6.3	

55

CB PROBATE JUDGE B 038

DOB: 1/31/2020 Polled M935480 B038

WCR SIR COUNTYLINE 551 P
SF SIR AMOS 716P
 M905553 WEAVERS COOL BETSY 1534
 CC BUDDY BOY 332
RDK MARY HANNA 701
 F1067646 RDK MARY T 503 P
 WCR COUNTY LINE 3132 P
 WCR MS BIG BEN 318 P
 M6 COOL WIND 1140 P ET
 WEAVERS BLUE BETSY 1234
 MCF BUDDY K38 P ET
 CC MISS MOLLY 934
 TW UNLIMITED 9273
 TW FANTASIE 708

CE	BW	WW	YW	Milk	MCE	MTL
6.8	0.4	61	100	32	5.5	63
CW	REA	Fat	Marb	TSI	SC	
10	0.34	0.004	0.04	235.93	42	
BW	WWT	Ratio	YWT	RATIO	FS	
91	672	113	850	107	5.8	



BRADFORD AGRICULTURE • LOTS 49-59 CHAROLAIS BULLS

56

CB JOSHUA 046 P

DOB: 3/2/2020 Polled M935698 B046

M6 COOL REP 8108 ET M6 COOL DUDE 6463 P ET

RDK-DW JOSHUA 501 P
M865763 WEAVERS FRESH MARY 1101

RDK SAMSON 308P RDK MARY T 503 P

CB MISS KARIE ANNE 736 P
F1234542 LADY BROOK 418
CC SIR PROFIT 101 P
CC MISS VEDVEI 820

CE	BW	WW	YW	Milk	MCE	MTL
4.5	1.5	71	118	35	5.5	71
CW	REA	Fat	Marb	TSI	SC	
N/A	N/A	N/A	N/A	N/A	44	
BW	WWT	Ratio	YWT	RATIO	FS	
89	560	113	785	113	5.3	



57

CB JOSHUA 050 P

DOB: 3/7/2020 Polled M935699 B050

M6 COOL REP 8108 ET M6 COOL DUDE 6463 P ET

RDK-DW JOSHUA 501 P
M865763 WEAVERS FRESH MARY 1101

MF BAM 330 PLD MF BAM BAM 813 PLD

RDK LEXI BELL 705P
F1233853 HEP MISS JOAN 35U
SC SHADOWBROOK 484 ET
HEP MISS JOAN 43R

CE	BW	WW	YW	Milk	MCE	MTL
1.1	2.8	73	113	22	5.1	58
CW	REA	Fat	Marb	TSI	SC	
22	0.81	-0.009	0.06	246.07	36	
BW	WWT	Ratio	YWT	RATIO	FS	
88	508	106	700	103	4.9	

59

CB PROBATE JUDGE 061 P

DOB: 4/5/2020 Polled M936126 B061

WCR SIR COUNTYLINE 551 P WCR COUNTY LINE 3132 P

SF SIR AMOS 716P
M905553 WEAVERS COOL BETSY 1534

M6 COOL WIND 1140 P ET M6 COOL REP 8108 ET

WEAVERS COOL HANNA 1537
F1210232 WEAVERS HANNA 1137
M6 0383 GERMAINE 8163 P ET
HIGHBAUGHS 068 WIND
HANNA SI

CE	BW	WW	YW	Milk	MCE	MTL
7.5	-0.3	63	104	30	6.7	61
CW	REA	Fat	Marb	TSI	SC	
16	0.68	-0.001	0.04	242.70	42	
BW	WWT	Ratio	YWT	RATIO	FS	
90	510	111	670			

58

CB JOSHUA 054 P

DOB: 3/24/2020 Polled M935721 B054

M6 COOL REP 8108 ET M6 COOL DUDE 6463 P ET

RDK-DW JOSHUA 501 P
M865763 WEAVERS FRESH MARY 1101

M6 GRID REP 0127 PLD SR/NC FIELD REP 2158 P ET

SNA MISS KY VICTORY 1745
F1252115 JDS VICTORIA 757 P
M6 MS GRID MAKER 597 P ET
M6 WYOMING WIND 4298 PLD
JDS VICTORIA P L00 ET

CE	BW	WW	YW	Milk	MCE	MTL
0.9	2.8	71	118	25	4.3	61
CW	REA	Fat	Marb	TSI	SC	
23	0.84	-0.010	0.01	251.42	36	
BW	WWT	Ratio	YWT	RATIO	FS	
90	480	104	580			



LOT 61

DAL-DAV CHAROLAIS LOTS 60-62 CHAROLAIS BULLS

60

DDC CLAYTON RAY G61P

DOB: 12/2/2019 Polled M938025 G61

LT LEDGER 0332 P LT BLUEGRASS 4017 P

RDK LEDGER 7930 P ET
EM904159 OHF VANESSA B901

MF BAM 330 PLD MF BAM BAM 813 PLD

RDK MISS CATY BELL 720P
F1233844 CC LADY CATE 124
CC SIR DUKE 300 P
CC MISS MAGGIE 134 P

CE	BW	WW	YW	Milk	MCE	MTL
11.6	-2.0	46	81	20	9.7	43
CW	REA	Fat	Marb	TSI	SC	
20	0.72	0.016	0.11	225.85	35	
BW	WWT	Ratio	YWT	RATIO	FS	
65	450	89	750	87	1.9	

61

DDC RAY G59P

DOB: 11/1/2019 Polled M938026 G58

LT LEDGER 0332 P LT BLUEGRASS 4017 P

RDK LEDGER 7930 P ET
EM904159 OHF VANESSA B901

RDK SAMSON 815 P

RDK MISS MARY 405P
F1177975 RDK MARY T 503 P
TW MACHO 0184 P/S
RDK LADY DUKE 508 P
TW UNLIMITED 9273
TW FANTASIE 708

CE	BW	WW	YW	Milk	MCE	MTL
8.6	-0.6	63	112	29	8.6	60
CW	REA	Fat	Marb	TSI	SC	
N/A	N/A	N/A	N/A	N/A	42	
BW	WWT	Ratio	YWT	RATIO	FS	
	745	118	1160	116	6.1	

DAL-DAV CHAROLAIS • LOTS 60-62 CHAROLAIS BULLS



LOT 62

62

DDC PENDULUM H01

DOB: 1/20/2020 Polled M955364 H01
 LT STAGECOACH 8068 PLD LT WESTERN EDGE 4057 PLD
LT VENTURE 3198 PLD LT LADY MACBETH 2131 PLD
 M835612 LT BALLET 9219 POLLED LT EASY PRO 1158 PLD
 LT BALLET 6233
 RAY'S GRID MAKER M6 GRID MAKER 104 PET
RDK MISS PAM 238P M6 MS D040 DUKE 3134 P
 F1152848 MCF QUEEN 7221 P JDS HE'SMYKING 2038 P ET
 MCF LADY VALUE 453 P

CE	BW	WW	YW	Milk	MCE	MTL
7.3	-0.9	55	110	14	7.4	42
CW	REA	Fat	Marb	TSI	SC	
28	0.83	0.015	0.07	254.28	37	
BW	WWT	Ratio	YWT	RATIO	FS	
85	583	91	810	100		

CRUISE CHAROLAIS • LOTS 65-77 CHAROLAIS BULLS

65

H7C56

DOB: 10/28/2019 Polled M938884 H7C56
 M6 CONFIDENCE 503 M6 NEW DEAL 246
SOUTHERN CONFIENCE 71645 MR MS STANDARD ISSUE 334
 M891353 SOUTHERN NELLIE 35019 LT LEDGER 0332 P
 DA MS MARION 328 P ET
 BJR SUPER SILVER X015 P BJR SUPER SILVER 719 ET P
ACC MISS 56C BF MS BEAUMARK 619 P
 F1215365 ACC MISS 5680 HEP SENOR RIO
 MS MAC 56 PLD

CE	BW	WW	YW	Milk	MCE	MTL
6.5	1.1	55	105	21	8.0	48
CW	REA	Fat	Marb	TSI	SC	
16	0.56	0.012	0.11	246.98	35	
BW	WWT	Ratio	YWT	RATIO	FS	
85	695	96			5.0	

66

318H

DOB: 11/30/2019 Polled M945010 318H
 M6 CONFIDENCE 503 M6 NEW DEAL 246
SOUTHERN CONFIENCE 71645 MR MS STANDARD ISSUE 334
 M891353 SOUTHERN NELLIE 35019 LT LEDGER 0332 P
 DA MS MARION 328 P ET
 BJR SIR THUNDER 8134 P LT THUNDERING WIND 5200P
ACC 318Z BJR MISS EASY PRO 3114 P
 F1187583 ACC 318R HEP POLLED BUSINESS 68K
 ACC 818P

CE	BW	WW	YW	Milk	MCE	MTL
4.2	2.6	55	103	20	7.2	47
CW	REA	Fat	Marb	TSI	SC	
19	0.67	0.018	0.10	242.30	37	
BW	WWT	Ratio	YWT	RATIO	FS	
94	601	94			3.9	

67

H79

DOB: 11/8/2019 Polled M945187 H79
 M6 CONFIDENCE 503 M6 NEW DEAL 246
SOUTHERN CONFIENCE 71645 MR MS STANDARD ISSUE 334
 M891353 SOUTHERN NELLIE 35019 LT LEDGER 0332 P
 DA MS MARION 328 P ET
 BJR SIR THUNDER 8134 P LT THUNDERING WIND 5200P
ACC 79 BJR MISS EASY PRO 3114 P
 F1187587 HEP MISS JOAN 79M GDR STANDOUT MAC 56 PLD
 HEP MISS JOAN ET35F

CE	BW	WW	YW	Milk	MCE	MTL
2.5	2.9	70	121	19	5.9	54
CW	REA	Fat	Marb	TSI	SC	
21	0.71	0.017	0.10	255.92	39	
BW	WWT	Ratio	YWT	RATIO	FS	
90	798	114			5.2	

68

H856

DOB: 12/10/2019 Polled M945188 H856
 MAY WINNER DUKE 1318 RC WINNER 9403 PD ET
ACC 05 MISS MAY CIGAR 9518
 M886404 ACC-TW 525 BJR SIR THUNDER 8134 P
 SCC MISS AJ J525 PET
 ACC 818 P ACC 722
ACC MISS 856 ACC 818P
 F1192316 ACC 856 HF TRADEMARK H45 JR PLD
 ACC BUSY GIRL 56N

CE	BW	WW	YW	Milk	MCE	MTL
4.6	1.8	62	102	26	6.9	57
CW	REA	Fat	Marb	TSI	SC	
N/A	N/A	N/A	N/A	N/A	37	
BW	WWT	Ratio	YWT	RATIO	FS	
88	718	102				



LOT 69

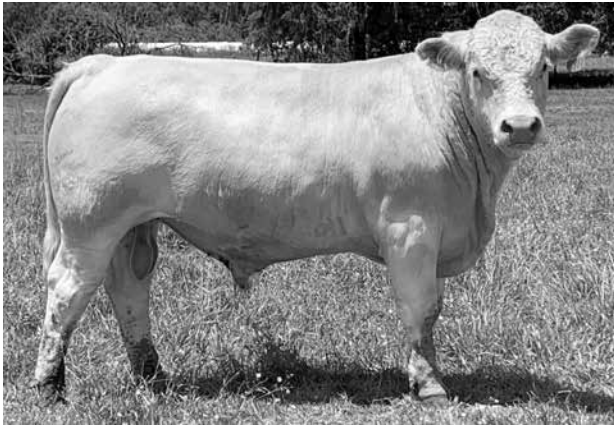
69

H69

DOB: 12/21/2019 Polled M945616 H69
 EC NO DOUBT 2022 P M6 GRID MAKER 104 PET
ABJR SIR NO DOUBT 351 P EC LADY DUKE 2022 P
 M842196 BJR MISS DISTANCE 122 P LT SILVER DISTANCE 5342P
 BJR MISS SUPREME 894 P
 LT RIO BLANCO 1234 P WCR PRIME CUT 764 PLD
ACC MISS RIO-R LT PRAIRIE MAID 4054
 F1028739 HEP MISS JOAN PLD 69L HEP SUPREME GRAZER 102HET
 TW ALEXIS 2129

CE	BW	WW	YW	Milk	MCE	MTL
2.4	1.9	54	104	17	5.6	44
CW	REA	Fat	Marb	TSI	SC	
18	0.55	0.024	0.10	244.18	40	
BW	WWT	Ratio	YWT	RATIO	FS	
90	630					

CRUISE CHAROLAIS • LOTS 65-77 CHAROLAIS BULLS



LOT 70

71

DOB: 12/6/2019 Polled M945736 H210

ACC 05
M886404

MAY WINNER DUKE 1318

ACC-TW 525

HEP SENOR RIO

ACC MISS 210 RIO

F1091610 SCC MISS JEAN H210 P ET

RC WINNER 9403 PD ET
MISS MAY CIGAR 9518
BJR SIR THUNDER 8134 P
SCC MISS AJ J525 PET
LT RIO BLANCO 1234 P
HEP MISS JOAN 112K
KEYS POLLED COMPASS
IDEAL 809 45 OF 25

CE	BW	WW	YW	Milk	MCE	MTL
3.5	2.2	59	102	24	8.1	54
CW	REA	Fat	Marb	TSI	SC	
19	0.56	0.017	0.04	237.63	36	
BW	WWT	Ratio	YWT	RATIO	FS	
84	660	95			5.0	

73

DOB: 1/10/2020 Polled M951090 H366

ABJR SIR NO DOUBT 351 P

M842196 BJR MISS DISTANCE 122 P

ACC 818 P

CC MISS 366D

F1230454 ACC 366

M6 GRID MAKER 104 PET
EC LADY DUKE 2022 P
LT SILVER DISTANCE 5342P
BJR MISS SUPREME 894 P
ACC 722
ACC 818P
BJR SIR THUNDER 8134 P
SCC MS STONEY 2312

CE	BW	WW	YW	Milk	MCE	MTL
4.8	1.3	51	93	20	5.6	45
CW	REA	Fat	Marb	TSI	SC	
N/A	N/A	N/A	N/A	N/A	38	
BW	WWT	Ratio	YWT	RATIO	FS	
82	600					

75

DOB: 12/30/2019 Polled M954098 H1685

SOUTHERN CONFIENCE 71645

M891353 SOUTHERN NELLIE 35019

JDJ MAXIMO A18 P

MISS CC 24D

F1278416 MISS ACC 24B

M6 NEW DEAL 246
MR MS STANDARD ISSUE 334
LT LEDGER 0332 P
DA MS MARION 328 P ET
LT LEDGER 0332 P
JDJ MS TRUEMARK Y322
ACC 818 P
ACC 224 LN

CE	BW	WW	YW	Milk	MCE	MTL
7.7	0.7	67	116	24	7.8	58
CW	REA	Fat	Marb	TSI	SC	
15	0.49	0.014	0.06	251.69	37	
BW	WWT	Ratio	YWT	RATIO	FS	
	471	100	905			

70

DOB: 11/14/2019 Horned M945632 H911

CC 1643
M884110

SC PRO-LINE 1228 P

ACC 43

PI WIND TREE

DRY LAKE MISS 911

F1120345 FCF MISS ELROD

H911

LT PRO-LINE 7039 P
SC MISS WESTERN EDGE 0612 P
BJR SIR THUNDER 8134 P
HEP MISS JOAN 43P
THREE TREES WIND 0383 ET
ORR'S MS PRIME 317 TWIN
GCF ELROD H-67
FCF MONTE 1 CASEY

CE	BW	WW	YW	Milk	MCE	MTL
8.8	-1.5	46	85	17	8.5	40
CW	REA	Fat	Marb	TSI	SC	
13	0.37	0.011	0.06	227.42	36	
BW	WWT	Ratio	YWT	RATIO	FS	
82	650	95			3.7	

72

DOB: 1/21/2020 Polled M951089 H01

ABJR SIR NO DOUBT 351 P

M842196 BJR MISS DISTANCE 122 P

MAY WINNER DUKE 1318

ACC 1 UXC

F1215338 ACC 127UX

M6 GRID MAKER 104 PET
EC LADY DUKE 2022 P
LT SILVER DISTANCE 5342P
BJR MISS SUPREME 894 P
RC WINNER 9403 PD ET
MISS MAY CIGAR 9518
ACC 722
ACC 127U

CE	BW	WW	YW	Milk	MCE	MTL
6.7	0.2	57	101	24	5.2	52
CW	REA	Fat	Marb	TSI	SC	
8	0.40	0.011	0.03	239.00	38	
BW	WWT	Ratio	YWT	RATIO	FS	
78	584	108				

74

DOB: 1/7/2020 Polled M951092 H454

ABJR SIR NO DOUBT 351 P

M842196 BJR MISS DISTANCE 122 P

BJR SUPER SILVER X015 P

ACC MISS 9454

F1215368 DRY LAKE MISS WIND 454

M6 GRID MAKER 104 PET
EC LADY DUKE 2022 P
LT SILVER DISTANCE 5342P
BJR MISS SUPREME 894 P
BJR SUPER SILVER 719 ET P
BF MS BEAUMARK 619 P
PI WIND TREE
DRY LAKE MEREDITH

CE	BW	WW	YW	Milk	MCE	MTL
8.5	-0.5	45	92	21	5.3	44
CW	REA	Fat	Marb	TSI	SC	
11	0.50	0.012	0.08	236.96	37	
BW	WWT	Ratio	YWT	RATIO	FS	
80	570	99			4.4	

76

DOB: 12/31/2019 Polled M954099 H1625

SOUTHERN CONFIENCE 71645

M891353 SOUTHERN NELLIE 35019

BJR SUPER SILVER X015 P

ACC MISS 224XB

F1192301 ACC 224 TW

M6 NEW DEAL 246
MR MS STANDARD ISSUE 334
LT LEDGER 0332 P
DA MS MARION 328 P ET
BJR SUPER SILVER 719 ET P
BF MS BEAUMARK 619 P
BJR SIR THUNDER 8134 P
ACC SMOOTH GRAZER K

CE	BW	WW	YW	Milk	MCE	MTL
3.2	2.8	61	112	20	6.4	51
CW	REA	Fat	Marb	TSI	SC	
18	0.62	0.016	0.12	250.42	38	
BW	WWT	Ratio	YWT	RATIO	FS	
90	600	100	715	100	4.8	

CRUISE CHAROLAIS • LOTS 65-77 CHAROLAIS BULLS



LOT 77

77

DOB: 1/15/2020 Polled M954102 H480
 MAY WINNER DUKE 1318 RC WINNER 9403 PD ET
ACC 05 MISS MAY CIGAR 9518
 M886404 ACC-TW 525 BJR SIR THUNDER 8134 P
 SCC MISS AJ J525 PET
 CEDAR ROOST SUPERSTAR C107 CCR HAMS SUPERSTAR U323P
ACC MISS 1441 ORR'S SUPER VALUE 353
 F1192310 ACC MISS 69T HEP SENOR RIO
 HEP MISS JOAN PLD 69L

CE	BW	WW	YW	Milk	MCE	MTL
5.2	1.2	63	105	24	9.2	55
CW	REA	Fat	Marb	TSI	SC	
19	0.59	0.017	0.05	241.02	35	
BW	WWT	Ratio	YWT	RATIO	FS	
82	660	100	725	100	5.1	

PINTLALA CATTLE COMPANY • LOTS 78-92 CHAROLAIS BULLS



LOT 78

78

Comm Charolais Bull

1

Tattoo: 1

SC
41

79

Comm Charolais/Angus Bull

2

Tattoo: 2

SC
38

81

Comm Charolais Bull

5

Tattoo: 5

SC
38

83

Comm Charolais Bull

8

Tattoo: 8

SC
36

84

Comm Charolais Bull

9

Tattoo: 9

SC
39

85

Comm Charolais Bull

10

Tattoo: 10

SC
36

86

Comm Charolais Bull

11

Tattoo: 11

SC
39

87

Comm Charolais Bull

12

Tattoo: 12

SC
36

88

Comm Charolais Bull

14

Tattoo: 14

SC
39



LOT 85



LOT 86

PINTLALA CATTLE COMPANY • LOTS 78-92 CHAROLAIS BULLS

89

15

Comm Charolais/Angus Bull Tattoo: 15

SC
38

91

20

Comm Charolais Bull Tattoo: 20

SC
37

90

17

Comm Red Angus Bull Tattoo: 17

SC
41

92

87

Comm Charolais Bull Tattoo: 87

SC
36

HENRY • LOTS 93-108 ANGUS & SIMM-ANGUS BULLS

93

HCC VALOR 845 [DOP]

DOB: 10-14-2019 20057892 845

+*SAV Hesston 2217 #*SAV Harvester 0338
 +*SAV Emblynette 3301
 RR 7407 Rainmaker 2154
 Terrlene Beauty 35F
 #Connealy Thunder #Baldridge Kaboom K243 KCF
TOF Erica Thunder 292 #Parka of Conanga 241
 16462672 TOF Erica 2-878 674 #*Rito 2 878 of 2536 BVND 878
 +Homestead Erica 723

CE	BW	WW	YW	Milk	SEN	SW	SF	SC
+7	+7	+44	+85	+27	-14	+45	+76	40
BW	WWT	Ratio	YWT	RATIO				
73	630	96	990	102				

94

HCC VALOR 846

DOB: 11-01-2019 20057893 846

+*SAV Hesston 2217 #*SAV Harvester 0338
 +*SAV Emblynette 3301
 RR 7407 Rainmaker 2154
 Terrlene Beauty 35F
 #SAV 8180 Traveler 004 #Sitz Traveler 8180
+Pintlala Barb 004 117 +Boyd Forever Lady 8003
 17596362 Springfield Barbara 9117 #+GDAR SVF Traveler 234D
 Back Creek SE Barbara B99

CE	BW	WW	YW	Milk	SEN	SW	SF	SC
+5	+1.7	+40	+69	+26	-5	+41	+62	33
BW	WWT	Ratio	YWT	RATIO				
74	610	97	840	89				

95

H3 VALOR G844

DOB: 10/07/2019 3916464 G844

SAV Hesston 2217 SAV Harvester 0338
 SAV Emblynette 3301
 RR 7407 Rainmaker 2154
 Terrlene Beauty 35F
 Gibbs 1132Y SM LSP 7241T Long's Shear Pleasure
H3 Miss C218 Gibbs 7241T SM Bet L138
 16462672 TOF Pintlala Blackclass 1013 Vermilion Yellowstone
 W C C Blackclass F5

CE	BW	WW	YW	Milk	Marb	REA	API	TI	SC
10.5	1.3	69.1	108.6	18.5	0.41	0.32	115.7	71.8	34
BW	WWT	Ratio	YWT	RATIO					
	695		1075						



LOT 95

98

HCC VALOR866

DOB: 12-11-2019 20057897 866

+*SAV Hesston 2217 #*SAV Harvester 0338
 +*SAV Emblynette 3301
 RR 7407 Rainmaker 2154
 Terrlene Beauty 35F
 *ZWT Titan 4057 +*SAV Response 2411
HCC Barbara Titian 522 OCC Lady Blackcap 753L
 19970044 +Pintlala Barbara 004 807 #SAV 8180 Traveler 004
 Springfield Barbara 9117

CE	BW	WW	YW	Milk	SEN	SW	SF	SC
+4	+2.4	+53	+94	+26	-19	+50	+75	35
BW	WWT	Ratio	YWT	RATIO				
72	550	108	875	107				

99

HCC TOP GUN 485 869 [DOP]

DOB: 11-27-2019 20057898 869

*ZWT Titan 4057 +*SAV Response 2411
HCC Titian 485 OCC Lady Blackcap 753L
 19210869 +HCC Rita Bismark 803 #+SAV Bismarck 5682
 #+SAV Bismarck 5682 +CSP Queen B R068
+HCC Rita Bismark 803 #+*GAR Grid Maker
 18074970 +CSP Queen B R068 SAV Abigale 0451
 #B/R New Design 036
 +MF OSC3 Queen B 8EX5

CE	BW	WW	YW	Milk	SEN	SW	SF	SC
+8	+2.2	+55	+105	+28	-22	+54	+94	36
BW	WWT	Ratio	YWT	RATIO				
77	595	99	985	108				

HENRY • LOTS 93-108 ANGUS BULLS

100 HCC TOP GUN 485 874 [DDP] **874**
DOB: 08-06-2019 20057899
 *ZWT Titan 4057 +*SAV Response 2411
HCC Titan 485 OCC Lady Blackcap 753L
 19210869 +HCC Rita Bismark 803 #+SAV Bismarck 5682
 +CSP Queen B R068
 #HA Program 5652 *HA Future Direction 3540
HCC Blackclass 268 +HA Blackcap Lady 2782
 19989339 TOF Expectation 481 #+GAR Expectation 4915
 Twin Valley Bkclass 750

CE	BW	WW	YW	Milk	SEN	SW	SF	SC
+9	+1.4	+51	+92	+29	-13	+54	+77	39
BW	WWT	Ratio	YWT	RATIO				
74	630	99	895	101				

101 HCC TOP GUN 485 875 [DDP] **875**
DOB: 05-20-2019 20057900
 *ZWT Titan 4057 +*SAV Response 2411
HCC Titan 485 OCC Lady Blackcap 753L
 19210869 +HCC Rita Bismark 803 #+SAV Bismarck 5682
 +CSP Queen B R068
 #*Connealy Mentor 7374 #GAR Retail Product
HCC Rita Mentor 783 #Executa of Conanga 939
 18071571 +HCC In Focus Rita 932 #*Mytty In Focus
 +TOF E161 Rita 172

CE	BW	WW	YW	Milk	SEN	SW	SF	SC
+8	+1.6	+52	+96	+27	N/A	+52	N/A	38
BW	WWT	Ratio	YWT	RATIO				
76	640	100	935	100				

102 HCC TOP GUN 485 876 [DDP] **876**
DOB: 07-24-2019 20057901
 *ZWT Titan 4057 +*SAV Response 2411
HCC Titan 485 OCC Lady Blackcap 753L
 19210869 +HCC Rita Bismark 803 #+SAV Bismarck 5682
 +CSP Queen B R068
 #B/R New Design 036 #VDAR New Trend 315
JLM Blackcap 518X B/R Blackcap Empress 76
 16743999 +PL Precision T949 #+Woodhill Foresight
 +GAR Precision 129

CE	BW	WW	YW	Milk	SEN	SW	SF	SC
+8	+1.4	+47	+83	+28	-10	+50	+74	40
BW	WWT	Ratio	YWT	RATIO				
74	685	102	910	98				

103 HCC TOP GUN 485 879 [DDP] **879**
DOB: 07-20-2019 20057902
 *ZWT Titan 4057 +*SAV Response 2411
HCC Titan 485 OCC Lady Blackcap 753L
 19210869 +HCC Rita Bismark 803 #+SAV Bismarck 5682
 +CSP Queen B R068
 #*Plattemere Weigh Up K360 #*Sitz Upward 307R
HCC Blackcap WUP 253 #Barbara of Plattemere 337
 19973455 JLM Blackcap 518X #B/R New Design 036
 +PL Precision T949

CE	BW	WW	YW	Milk	SEN	SW	SF	SC
+7	+2.3	+54	+101	+28	-16	+52	+86	35
BW	WWT	Ratio	YWT	RATIO				
76	630	99	900	101				

105 HCC VALOR 886 **886**
DOB: 12-31-2019 20057904
 +*SAV Hesston 2217 #*SAV Harvester 0338
+*ZWT Valor 4059 +SAV Emblynette 3301
 17911830 TLA Beauty 5R RR 7407 Rainmaker 2154
 Terrlene Beauty 35F
 #*Deer Valley All In #*AAR Ten X 7008 SA
+HCC Sarah All In 248 #*Deer Valley Rita 0274
 19970043 +*Yon Sarah X405 #CRA Bextor 872 5205 608
 Yon Sarah N170

CE	BW	WW	YW	Milk	SEN	SW	SF	SC
N/A	N/A	N/A	N/A	N/A	N/A	N/A	N/A	35
BW	WWT	Ratio	YWT	RATIO				
70	555	100	795	100				

107 HCC VALOR 890 **890**
DOB: 12-04-2019 20057906
 +*SAV Hesston 2217 #*SAV Harvester 0338
+*ZWT Valor 4059 +SAV Emblynette 3301
 17911830 TLA Beauty 5R RR 7407 Rainmaker 2154
 Terrlene Beauty 35F
 #*Plattemere Weigh Up K360 #*Sitz Upward 307R
HCC Blackclass 230 #Barbara of Plattemere 337
 19973454 HCC Blackclass 2-878 903 #+*Rito 2 878 of 2536 BVND 878
 +Twin Valley Blackclass 580

CE	BW	WW	YW	Milk	SEN	SW	SF	SC
+6	+1.1	+45	+75	+26	-3	+48	+66	
BW	WWT	Ratio	YWT	RATIO				
74	545	96	760	87				

108 HCC BLACKHAWK 896 **896**
DOB: 10-06-2019 20057907
 #*VAR Generation 2100 #*Connealy Consensus 7229
HCC 2100 Blackhawk 600 +*Sandpoint Blackbird 8809
 20000356 +*BBC Blackbird 420 #*EXAR Denver 2002B
 Deer Valley Blackbird 8189
 +*ZWT Valor 4059 +*SAV Hesston 2217
HCC Blackclass Valor 398 TLA Beauty 5R
 19841348 Pintlala Blackclass 522 +Circle B Bartimaeus
 Pintlala Blackclass 175

CE	BW	WW	YW	Milk	SEN	SW	SF	SC
+5	+2.6	+60	+109	+23	-15	+51	+85	
BW	WWT	Ratio	YWT	RATIO				
75	685	105	1020	106				



LOT 108

PRAIRIE OAKS FARM • MITCH AND CINDY HENRY • LOTS 109-121 ANGUS BULLS

109 PRAIRIE OAK COWBOY 902 [DDP] **902**

DOB: 10-18-2019 19830492
 *ZWT Titan 4057 +*SAV Response 2411
HCC Titan 465 OCC Lady Blackcap 753L
 19210863 TOF Lucy EXP 477 #+GAR Expectation 4915
 Davis Lucy 9367
 GR CC&7 206 #*SydGen CC&7
Prairie Oak Cowboy Angel 713 GR Sandra 806
 19802809 Prairie Lutzi Density 39 HCC Density 626
 Prarie Bean Bex 0785

CE	BW	WW	YW	Milk	SEN	SW	SF	SC
+6	+1.3	+53	+95	+26	N/A	+53	N/A	35
BW	WWT	Ratio	YWT	RATIO				
68	626	N/A	875	91				

110 PRAIRIE OAK COWBOY 903 [DDP-OHP] **903**

DOB: 10-19-2019 19830493
 *ZWT Titan 4057 +*SAV Response 2411
HCC Titan 465 OCC Lady Blackcap 753L
 19210863 TOF Lucy EXP 477 #+GAR Expectation 4915
 Davis Lucy 9367
 GR CC&7 206 #*SydGen CC&7
Prairie Oak Cowboy 709 GR Sandra 806
 19797113 Prairie Ocho Density 08 HCC Density 626
 Prarie Daisy Bex 0799

CE	BW	WW	YW	Milk	SEN	SW	SF	SC
+6	+1.3	+53	+95	+26	N/A	+53	N/A	36
BW	WWT	Ratio	YWT	RATIO				
70	654	N/A	1055	109				

111 PRAIRIE OAK LAWYER 904 [DDP] **904**

DOB: 11-10-2019 19797123
 *ZWT Titan 4057 +*SAV Response 2411
HCC Titan 465 OCC Lady Blackcap 753L
 19210863 TOF Lucy EXP 477 #+GAR Expectation 4915
 Davis Lucy 9367
 GR CC&7 206 #*SydGen CC&7
Prairie Oak Cowboy Y174 GR Sandra 806
 19526368 Twin Valley Queen 2670 +Twin Valley Venture G 668
 +Twin Valley Q Mother 5038

CE	BW	WW	YW	Milk	SEN	SW	SF	SC
+5	+1.3	+55	+102	+27	-20	+55	+82	35
BW	WWT	Ratio	YWT	RATIO				
68	726	100	1080	106				

112 PRAIRIE OAK LAWYER 906 [DDP] **906**

DOB: 12-05-2019 19797120
 *ZWT Titan 4057 +*SAV Response 2411
HCC Titan 465 OCC Lady Blackcap 753L
 19210863 TOF Lucy EXP 477 #+GAR Expectation 4915
 Davis Lucy 9367
 GR CC&7 206 #*SydGen CC&7
Prairie Oak Angel 0633 GR Sandra 806
 19524281 Prairie Lutzi Density 39 HCC Density 626
 Prarie Bean Bex 0785

CE	BW	WW	YW	Milk	SEN	SW	SF	SC
+6	+1.3	+53	+94	+25	-9	+52	+76	36
BW	WWT	Ratio	YWT	RATIO				
65	630	100	925	100				

114 PRAIRIE OAK LAWYER 909 [DDP-OHP] **909**

DOB: 11-15-2019 19797115
 *ZWT Titan 4057 +*SAV Response 2411
HCC Titan 465 OCC Lady Blackcap 753L
 19210863 TOF Lucy EXP 477 #+GAR Expectation 4915
 Davis Lucy 9367
 HCC Density 626 #+SAV 004 Density 4336
Prairie Ocho Density 08 Miss Rita JH 944
 17139712 Prarie Daisy Bex 0799 #CRA Bextor 872 5205 608
 GARRISON Blackcap 256

CE	BW	WW	YW	Milk	SEN	SW	SF	SC
+5	+1.4	+50	+83	+25	-2	+51	+67	37
BW	WWT	Ratio	YWT	RATIO				
68	770	104	1020	94				

115 PRAIRIE OAK LAWYER 910 [DDP] **910**

DOB: 11-30-2019 19797119
 *ZWT Titan 4057 +*SAV Response 2411
HCC Titan 465 OCC Lady Blackcap 753L
 19210863 TOF Lucy EXP 477 #+GAR Expectation 4915
 Davis Lucy 9367
 JLM Protege 544X #+*GAR-EGL Protege
Prairie Protege 404 +JLM Blackcap 046U
 18510688 +Prarie 172 In Focus 830 #*Mytty In Focus
 +TOF E161 Rita 172

CE	BW	WW	YW	Milk	SEN	SW	SF	SC
+6	+1.1	+56	+100	+23	-11	+53	+80	40
BW	WWT	Ratio	YWT	RATIO				
67	698	100	1015	100				

116 PRAIRIE OAK LAWYER 912 [DDP] **912**

DOB: 11-01-2019 19797114
 *ZWT Titan 4057 +*SAV Response 2411
HCC Titan 465 OCC Lady Blackcap 753L
 19210863 TOF Lucy EXP 477 #+GAR Expectation 4915
 Davis Lucy 9367
 JLM Protege 544X #+*GAR-EGL Protege
Prairie Protege 411 +JLM Blackcap 046U
 18420560 +Prarie 42 Pred 0200 #*GAR Predestined
 Springfield Barbara 9117

CE	BW	WW	YW	Milk	SEN	SW	SF	SC
+6	+1.4	+53	+101	+21	-11	+45	+82	35
BW	WWT	Ratio	YWT	RATIO				
65	722	95	1090	105				

117 PRAIRIE OAK LAWYER 913 [DDP] **913**

DOB: 11-23-2019 19797116
 *ZWT Titan 4057 +*SAV Response 2411
HCC Titan 465 OCC Lady Blackcap 753L
 19210863 TOF Lucy EXP 477 #+GAR Expectation 4915
 Davis Lucy 9367
 BE New Design 120 #Bon View New Design 1407
Prairie Dixie Bonners Blackberry 120K
 1612261 MLF Blackbird 405-510 #BCC Bushwacker 41-93
 MLF New Design 510

CE	BW	WW	YW	Milk	SEN	SW	SF	SC
+4	+1.3	+55	+96	+27	-13	+57	+77	36
BW	WWT	Ratio	YWT	RATIO				
67	730	104	1055	104				

HENRY • LOTS 93-121 ANGUS BULLS



LOT 118

118 PRAIRIE OAK LAWYER 914 [DDP]

DOB: 11-16-2019 19797122 914

*ZWT Titan 4057 *SAV Response 2411
HCC Titan 465 OCC Lady Blackcap 753L
 19210863 TOF Lucy EXP 477 #+GAR Expectation 4915
 Davis Lucy 9367
 Pintlala HCC Mentor 915 #*Connealy Mentor 7374
Prairie Oak Angel 0641 +HCC Blackclass 2-878 114
 19524263 Prairie Protege 404 JLM Protege 544X
 +Prairie 172 In Focus 830

CE	BW	WW	YW	Milk	SEN	SW	SF	SC
+5	+1.6	+61	+112	+24	-19	+56	+87	35
BW		WWT		Ratio	YWT		RATIO	
66		738		105	1095		109	

119 PRAIRIE OAK COWBOY 918 [DDP]

DOB: 11-06-2019 19830491 918

*ZWT Titan 4057 +*SAV Response 2411
HCC Titan 465 OCC Lady Blackcap 753L
 19210863 TOF Lucy EXP 477 #+GAR Expectation 4915
 Davis Lucy 9367
 GR CC&7 206 #*SydGen CC&7
Prairie Oak Y190 Miss Das GR Sandra 806
 19820017 Prarie Chester 917 HCC Density 626
 MLF Beauty 4145-364

CE	BW	WW	YW	Milk	SEN	SW	SF	SC
+7	+8	+52	+93	+25	N/A	+52	N/A	37
BW		WWT		Ratio	YWT		RATIO	
71		746		100	975		100	

120 PRAIRIE OAK LAWYER 915 [DDP-OHP]

DOB: 11-30-2019 19797117 915

*ZWT Titan 4057 +*SAV Response 2411
HCC Titan 465 OCC Lady Blackcap 753L
 19210863 TOF Lucy EXP 477 #+GAR Expectation 4915
 Davis Lucy 9367
 JLM Protege 544X #+*GAR-EGL Protege
Prairie Protege 401 +JLM Blackcap 046U
 18420559 GARRISON Blackcap 256 #Bon View New Design 1407
 GARRISON Blackcap 334

CE	BW	WW	YW	Milk	SEN	SW	SF	SC
+8	+0	+49	+93	+22	-8	+45	+80	40
BW		WWT		Ratio	YWT		RATIO	
60		672		93	1015		100	

121 PRAIRIE OAK LAWYER 919

DOB: 11-19-2019 19797118 919

*ZWT Titan 4057 +*SAV Response 2411
HCC Titan 465 OCC Lady Blackcap 753L
 19210863 TOF Lucy EXP 477 #+GAR Expectation 4915
 Davis Lucy 9367
 Pintlala HCC Mentor 915 #*Connealy Mentor 7374
Prairie Oak Cowboy 450 +HCC Blackclass 2-878 114
 19526371 Prairie Protege 319 HCC Traveler 004 326
 GARRISON Nellie 516

CE	BW	WW	YW	Milk	SEN	SW	SF	SC
+3	+2.1	+50	+91	+23	-5	+44	+76	38
BW		WWT		Ratio	YWT		RATIO	
69		674		94	975		95	

HENRY • LOTS 122-134 SIMI-ANGUS BULLS

122 H3 BLACKJACK B112

DOB: 2019-10-16 3900684 G112

GIBBS 1132Y SM LSP 7241T LONG'S SHEAR PLEASURE
H3 BLACKJACK B084 GIBBS 7241T SM BET L138
 3899721 TOF BLACKCLASS EXP 820 G A R EXPECTATION 4915
 TWIN VALLEY BKCLASS 750
 S A V NET WORTH 4200 S A V 8180 TRAVELER 004
HCC EVERGREEN NW 671 S A V MAY 2410
 3855843 HCC EVERGREEN 403 922 PINTLALA FRONTIER MAX 403
 T O F H P EVERGREEN 315

CE	BW	WW	YW	Milk	Marb	REA	API	TI	SC
10.8	1.7	68.9	110.0	19.2	0.41	0.42	122.2	71.7	42
BW		WWT		Ratio	YWT		RATIO		
660		660			1015				

123 H3 BLACKJACK B109

DOB: 2019-10-10 3900681 G109

GIBBS 1132Y SM LSP 7241T LONG'S SHEAR PLEASURE
H3 BLACKJACK B084 GIBBS 7241T SM BET L138
 3899721 TOF BLACKCLASS EXP 820 G A R EXPECTATION 4915
 TWIN VALLEY BKCLASS 750
 CONNEALY MENTOR 7374 G A R RETAIL PRODUCT
HCC BLACKCLASS 912 EXECUTA OF CONANGA 939
 3855818 H C C IN FOCUS RITA 938 MYTTY IN FOCUS
 T O F E161 RITA 172

CE	BW	WW	YW	Milk	Marb	REA	API	TI	SC
12.5	0.6	70.9	114.1	18.5	0.41	0.43	126.7	74.5	39
BW		WWT		Ratio	YWT		RATIO		
680		680			1005				

124 H3 BLACKJACK B104

DOB: 2019-09-26 3900676 G104

GIBBS 1132Y SM LSP 7241T LONG'S SHEAR PLEASURE
H3 BLACKJACK B084 GIBBS 7241T SM BET L138
 3899721 TOF BLACKCLASS EXP 820 G A R EXPECTATION 4915
 TWIN VALLEY BKCLASS 750
 S A V THUNDERBIRD 9061 S A V FINAL ANSWER 0035
HCC MISS WIX TB 635 S A V EMBLYNETTE 7411
 3855805 PINTLALA MIS EXPECTATION 530 G A R EXPECTATION 4915
 SHADY BROOK MISS WIX 29J

CE	BW	WW	YW	Milk	Marb	REA	API	TI	SC
12.3	0.6	73.9	116.3	18.9	0.32	0.37	122.7	73.8	40
BW		WWT		Ratio	YWT		RATIO		
660		660			1050				

HENRY • LOTS 122-134 SIMI-ANGUS BULLS

125 H3 BLACKJACK B108

DOB: 2019-09-17 3900680 G108
 GIBBS 1132Y SM LSP 7241T LONG'S SHEAR PLEASURE
H3 BLACKJACK B084 GIBBS 7241T SM BET L138
 3899721 TOF BLACKCLASS EXP 820 G A R EXPECTATION 4915
 TWIN VALLEY BKCLASS 750
 ZWT 9375 STIMULUS 0039 DUFF STIMULUS 856
HCC BARBARA 886 WK GEORGINA 9375
 3855847 PINTLALA BARBARA 004 807 S A V 8180 TRAVELER 004
 SPRINGFIELD BARBARA 9117

CE	BW	WW	YW	Milk	Marb	REA	API	TI	SC
11.6	1.4	69.2	108.8	19.9	0.35	0.40	119.4	70.7	38
BW	WWT	Ratio	YWT	RATIO					
	640		1005						

126 H3 BLACKJACK B111

DOB: 2019-09-15 3900683 G111
 GIBBS 1132Y SM LSP 7241T LONG'S SHEAR PLEASURE
H3 BLACKJACK B084 GIBBS 7241T SM BET L138
 3899721 TOF BLACKCLASS EXP 820 G A R EXPECTATION 4915
 TWIN VALLEY BKCLASS 750
 ZWT 9375 STIMULUS 0039 DUFF STIMULUS 856
HCC BLACKCLASS 981 WK GEORGINA 9375
 3855840 HCC BLACKCLASS 2-878 903 RITO 2 878 OF 2536 BVND 878
 TWIN VALLEY BLACKCLASS 580

CE	BW	WW	YW	Milk	Marb	REA	API	TI	SC
12.0	1.0	66.4	103.7	20.0	0.35	0.38	117.4	69.6	36
BW	WWT	Ratio	YWT	RATIO					
	715		1095						

127 H3 BLACKJACK B110

DOB: 2019-09-11 3900682 G110
 GIBBS 1132Y SM LSP 7241T LONG'S SHEAR PLEASURE
H3 BLACKJACK B084 GIBBS 7241T SM BET L138
 3899721 TOF BLACKCLASS EXP 820 G A R EXPECTATION 4915
 TWIN VALLEY BKCLASS 750
 CONNEALY IMPRESSION CONNEALY REFLECTION
HCC LADY IMP 815 PEARL PAMMY OF CONANGA 194
 3855825 SH LADY 2P61 6036 RITO 111 OF 2536 RITO 616
 SINCLAIR LADY 2P61 4465

CE	BW	WW	YW	Milk	Marb	REA	API	TI	SC
12.4	0.9	73.0	114.0	17.9	0.39	0.42	123.1	74.5	39
BW	WWT	Ratio	YWT	RATIO					
	735		1110						

128 H3 BLACKJACK B101

DOB: 2019-09-10 3900673 G101
 GIBBS 1132Y SM LSP 7241T LONG'S SHEAR PLEASURE
H3 BLACKJACK B084 GIBBS 7241T SM BET L138
 3899721 TOF BLACKCLASS EXP 820 G A R EXPECTATION 4915
 TWIN VALLEY BKCLASS 750
 S A V 8180 TRAVELER 004 SITZ TRAVELER 8180
PINTLALA BARB 004 117 BOYD FOREVER LADY 8003
 3855841 SPRINGFIELD BARBARA 9117 GDAR SVF TRAVELER 234D
 BACK CREEK S E BARBARA B99

CE	BW	WW	YW	Milk	Marb	REA	API	TI	SC
10.9	1.6	68.5	106.9	19.1	0.34	0.35	117.3	69.6	40
BW	WWT	Ratio	YWT	RATIO					
	665		1020						

130 H3 BLACKJACK B105

DOB: 2019-09-08 3900677 G105
 GIBBS 1132Y SM LSP 7241T LONG'S SHEAR PLEASURE
H3 BLACKJACK B084 GIBBS 7241T SM BET L138
 3899721 TOF BLACKCLASS EXP 820 G A R EXPECTATION 4915
 TWIN VALLEY BKCLASS 750
 CONNEALY IMPRESSION CONNEALY REFLECTION
HCC LADY IMP 782 PEARL PAMMY OF CONANGA 194
 3855822 SH LADY 2P61 6036 RITO 111 OF 2536 RITO 616
 SINCLAIR LADY 2P61 4465

CE	BW	WW	YW	Milk	Marb	REA	API	TI	SC
12.4	0.9	73.0	114.0	17.9	0.39	0.42	123.1	74.5	41
BW	WWT	Ratio	YWT	RATIO					
	755		1125						

131 H3OBLACKJACK B103

DOB: 2019-09-05 3900675 G103
 GIBBS 1132Y SM LSP 7241T LONG'S SHEAR PLEASURE
H3 BLACKJACK B084 GIBBS 7241T SM BET L138
 3899721 TOF BLACKCLASS EXP 820 G A R EXPECTATION 4915
 TWIN VALLEY BKCLASS 750
 MCCO OLD PATH 909 O C C MISSING LINK 830M
HCC SARAH 796 MCCO IN FOCUS 703
 3855844 YON SARAH X405 C R A BEXTOR 872 5205 608
 YON SARAH N170

CE	BW	WW	YW	Milk	Marb	REA	API	TI	SC
13.1	0.1	69.6	110.2	20.2	0.42	0.38	129.5	74.6	36
BW	WWT	Ratio	YWT	RATIO					
	775		1180						



LOT 132

132 859 Commercial

S A V Hesston 2217 S A V Harvester 0338
ZWT Valor 4059 S A V Emblynette 3301
 17911830 TLA Beauty 5R RR 7407 Rainmaker 2154
 Terrlene Beauty 35F

Simm-Angus Cow #159

CE	BW	WW	YW	Milk	SEN	SW	SF	SC
N/A	N/A	N/A	N/A	N/A	N/A	N/A	N/A	42
BW	WWT	Ratio	YWT	RATIO				
	795		1200					

SYKES FARM • LOTS 135-143 OPEN CHAROLAIS HEIFERS

140 SF MS BECK DELILAH 017P

DOB: 10/11/2020 Polled F1303003 SF017
 RDK SAMSON 815 P TW MACHO 0184 P/S
RDK SAMSON 523P RDK LADY DUKE 508 P
 M856646 RDK MARY T 503 P TW UNLIMITED 9273
 TW FANTASIE 708
 WCR SIR PAUL 5013P WCR SIR PAUL 9803 ET P
SF MISS BECK 932 P WCR MISS EASE 9931 P
 F1120107 WCR MISS DUKE 3173 P/S JWK TALISMAN H023
 WCR MISS EASE 0347

CE	BW	WW	YW	Milk	MCE	MTL
1.8	1.5	49	91	28	1.5	52
CW	REA	Fat	Marb	TSI		
18	0.68	0.007	0.02	231.33		
BW	WWT	Ratio	YWT	RATIO		
90	615	95				

142 SF MS OKIE DELILAH 025P

DOB: 10/26/2020 Polled F1303008 SF025
 RDK SAMSON 815 P TW MACHO 0184 P/S
RDK SAMSON 523P RDK LADY DUKE 508 P
 M856646 RDK MARY T 503 P TW UNLIMITED 9273
 TW FANTASIE 708
 COOLEY ROYCE 1107T39 SCHURRTOP HCR RANCHER
M&M MS ROYCE 4023 PLD ET MS COOLEY S DUKE 1107N60
 EF1195998 M&M MS STEALTH 9525 ET DR STEALTH 574
 M&M MS WYO WIND4614PLDET

CE	BW	WW	YW	Milk	MCE	MTL
3.6	1.2	62	111	32	5.6	63
CW	REA	Fat	Marb	TSI		
22	0.81	0.012	0.12	251.38		
BW	WWT	Ratio	YWT	RATIO		
89	705	114				

141 SF MS BLUE DELILAH 022P

DOB: 10/19/2020 Polled F1303007 SF022
 RDK SAMSON 815 P TW MACHO 0184 P/S
RDK SAMSON 523P RDK LADY DUKE 508 P
 M856646 RDK MARY T 503 P TW UNLIMITED 9273
 TW FANTASIE 708
 HF WHAT ABOUT IT LT BLUEGRASS 4017 P
SF MISS BLUE BREEZE 612P ACE MS HOO DOO 460 APIO-91 ET
 F1234577 SF MISS MAGNUM 502P WCR SIR TRADIT 9913 ET P
 TW DAISYE 5247 P/S

CE	BW	WW	YW	Milk	MCE	MTL
11.7	-2.1	45	88	28	9.9	50
CW	REA	Fat	Marb	TSI		
14	0.58	0.011	0.08	234.89		
BW	WWT	Ratio	YWT	RATIO		
78	600	97				

143 SF MS BECK DELILAH 027P

DOB: 10/30/2020 Polled F1303010 SF027
 RDK SAMSON 815 P TW MACHO 0184 P/S
RDK SAMSON 523P RDK LADY DUKE 508 P
 M856646 RDK MARY T 503 P TW UNLIMITED 9273
 TW FANTASIE 708
 RDK SAMSON 523P RDK SAMSON 815 P
SF MISS REBECCA DELILAH 704P RDK MARY T 503 P
 F1253849 SF MISS MAGNUM 622 P WCR SIR TRADIT 9913 ET P
 WCR MS INTIMIDATOR6013ET

CE	BW	WW	YW	Milk	MCE	MTL
9.2	-1.1	48	94	28	8.4	52
CW	REA	Fat	Marb	TSI		
20	0.77	0.007	0.10	239.86		
BW	WWT	Ratio	YWT	RATIO		
78	550	96				

KEAHEY CHAROLAIS • LOTS 144-147 BREED CHAROLAIS HEIFERS

144 DDC DELIAH RAE G55P

DOB: 10/22/2019 Polled F1289104 G55
 LT LEDGER 0332 P LT BLUEGRASS 4017 P
RDK LEDGER 7930 P ET LT BRENDA 6120 PLD
 EM904159 OHF VANESSA B901 LHD CIGAR E46
 RDK SAMSON 815 P JWK VANESSA G224 ET
RDK MARY DELIAH 612P TW MACHO 0184 P/S
 F1215390 RDK MARY T 503 P RDK LADY DUKE 508 P
 TW UNLIMITED 9273
 TW FANTASIE 708

CE	BW	WW	YW	Milk	MCE	MTL
11.8	-2.3	46	89	24	9.4	47
CW	REA	Fat	Marb	TSI		
N/A	N/A	N/A	N/A	N/A		
BW	WWT	Ratio	YWT	RATIO		
71	650	91				

◆ Safe AI'd date 1/30/2020 to WCR Sir Countyline 551P (M862741).

146 RDK MARY DELILAH 026P

DOB: 12/30/2019 Polled F1283873 K026
 RDK SAMSON 815 P TW MACHO 0184 P/S
RDK SAMSON 523P RDK LADY DUKE 508 P
 M856646 RDK MARY T 503 P TW UNLIMITED 9273
 TW FANTASIE 708
 WCR SIR DUKE 0267 BR DUKE 261
RDK MOLLY'S DELILAH 701P WCR MISS MAC 8401
 F1233856 RDK MAGGIES DELILAH 519P RDK SAMSON 815 P
 RDK MAGGIE MAKER 106P

CE	BW	WW	YW	Milk	MCE	MTL
10.4	-1.9	50	90	32	8.0	57
CW	REA	Fat	Marb	TSI		
17	0.64	0.003	0.17	236.70		
BW	WWT	Ratio	YWT	RATIO		
64	570	99	695	90		

◆ Due January to RDK Smokster 1901 P ET (EM922756).

145 SF MS MOLLY SUE 930P

DOB: 11/7/2019 Polled F1288157 SF930
 WCR SIR DUKE 0267 BR DUKE 261
RDK SIR DUKE 704P WCR MISS MAC 8401
 M887674 SF MISS BLUE BREEZE 417P HF WHAT ABOUT IT
 SF MISS BECK 911 P
 J&PABC9BUSTER 2 ABC B9
SF MISS REBECCA SUE 711P DOUBLE D SMOKIN LIBBY PLD 859
 F1253852 PJ SUSIE 937 P BM FIRST CLASS S6148
 PJ SUSIE 215 P

CE	BW	WW	YW	Milk	MCE	MTL
3.5	1.3	59	104	27	5.5	57
CW	REA	Fat	Marb	TSI		
20	0.74	0.002	0.02	242.17		
BW	WWT	Ratio	YWT	RATIO		
72	480	101	731	98		

◆ Safe AI'd date 1/30/2020 to WCR Sir Countyline 551P (M862741).

147 RDK MARY DELILAH 036P

DOB: 1/13/2020 Polled F1283876 K036
 RDK SAMSON 815 P TW MACHO 0184 P/S
RDK SAMSON 523P RDK LADY DUKE 508 P
 M856646 RDK MARY T 503 P TW UNLIMITED 9273
 TW FANTASIE 708
 WC MILESTONE 5223 P WC BENELLI 2134 P ET
GF MS MILESTONE CASH WC LADY BLUE 0506 P
 F1241173 M6 MS NEW CASH 307 P ET M6 NEW STANDARD 842 P ET
 M6 MS CASH 691

CE	BW	WW	YW	Milk	MCE	MTL
5.6	0.6	58	105	27	6.2	56
CW	REA	Fat	Marb	TSI		
22	0.73	0.001	0.09	247.04		
BW	WWT	Ratio	YWT	RATIO		
83	545	101	710	97		

◆ Safe AI'd date 1/30/2020 to WCR Sir Countyline 551P (M862741).

HCC FARMS • LOTS 148-157 ANGUS & SIMM-ANGUS OPEN & BRED HEIFERS

148 Heifer **142** Tattoo: 142
4 Mo. Bred

153 Heifer **383** Tattoo: 383
4 Mo. Bred

149 Heifer **145** Tattoo: 145

154 Heifer **384** Tattoo: 384

150 Heifer **147** Tattoo: 147

155 Heifer **3** Tattoo: 3

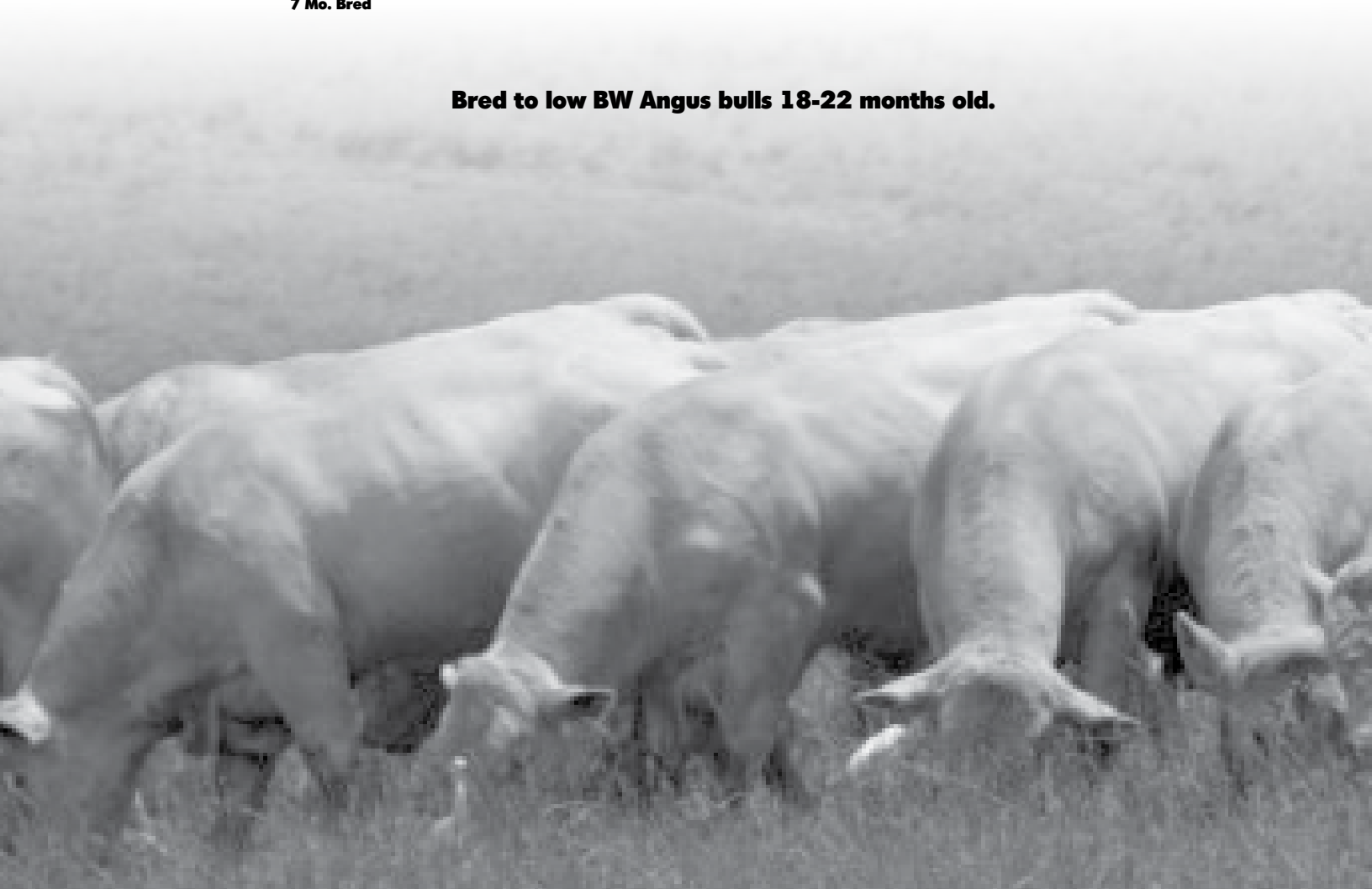
151 Heifer **149** Tattoo: 149

156 Heifer **906** Tattoo: 906

152 Heifer **159** Tattoo: 159
7 Mo. Bred

157 Heifer **99** Tattoo: 99

Bred to low BW Angus bulls 18-22 months old.



NOTES



Bobby Keahey
PO Box 207
Grove Hill, AL 36451

PRST First Class
US Postage
PAID
Boelte-Hall
Litho, Inc.
66205

The Fall Sale

NOVEMBER 6, 2021 • 12:00 NOON CST

8415 State Highway 97S • Letohatchee, AL 36047

Willie Sykes, Sykes Farms • (205) 474-5017

Lots 1-20 • Charolais Bulls

Lots 135-143 • Charolais Heifers

Bobby Keahey, Keahey Charolais • (334) 456-2547

Lots 21-48 • Charolais Bulls

Lots 144-147 • Charolais Heifers

Chad Bradford, Bradford Agriculture • (334) 830-5410

Lots 49-59 • Charolais Bulls

David Downey, Dal-Dav Charolais • (334) 595-3956

Lots 60-63 • Charolais Bulls

Allen Cruise, Cruise Charolais

Lots 65-77 • Charolais Bulls

Porter & Davis Henry, Pintlala Cattle Company • (334) 315-4458

Lots 78-92 • Charolais Bulls

Lots 148-157 • Angus & Sim-Angus Bulls

Garry Henry, HCC Farms • (334) 850-1423

Lots 93-134 • Angus & Sim-Angus Bulls

Lots 139-148 • Commercial Heifers