

*Western Spring National  
Heritage Sale*



**Wednesday, May 12th, 2021  
Richmond, Utah**

# *Western Spring National Show*

## **RICHMOND BLACK & WHITE DAYS**

**Open Show Judge  
Eddie Bue**

### **SCHEDULE OF EVENTS**

#### **WEDNESDAY, MAY 12**

9:00 AM Richmond B&W Days Junior Show

**6:00 PM Western Spring National Heritage Sale**

#### **THURSDAY, MAY 13**

12:00 PM Western Spring National Show - Heifers

#### **FRIDAY, MAY 14**

9:30 AM Western Spring National Show - Milking Cows & Groups

10:00 AM Western Spring National Futurity

# Western Spring National Heritage Sale

WEDNESDAY, MAY 12, 2021 • 6:00 PM MDT • RICHMOND FAIRGROUNDS  
RICHMOND, UTAH

*First State Sponsored Sale ~ Established in 1915*

**Western Ag Credit Barbeque starts at 4:00 PM**

---

## SALE STAFF

**Marty Mickelson, Auctioneer**  
435-999-4669

.....

**Ryan Matheron, Pedigrees**  
209-652-3511

.....

**Blair Mickelson**  
208-539-6152

.....

**Matt Leak**  
435-757-6726

.....

**Jon Schumann**  
435-757-6243

.....

**Donovan Miguel**  
209-534-9135

.....

**Robert Teixeira**  
385-495-0367

---

## SALE CHAIRMAN

**Zach Damrow**  
920-344-2065

---

## HOLSTEIN USA FIELD REPS

**Andrew King**  
360-981-3801

**Ross Zilles**  
435-655-5990

---

## SALE CREW

**Michael Bosley**  
717-968-8905

**Bob Nagel**  
716-499-9308

---

## TRUCKING

**Todd Searles**  
507-208-1333

**Allyn 'Spud' Paulson**  
605-868-9028

**Marty Mickelson, Auctioneer**  
435-999-4669

## SHOW & SALE HEADQUARTERS:

**HOLIDAY INN EXPRESS**  
435-752-3444  
2235 North Main Street  
Logan, UT

## ONLINE BIDDING AVAILABLE THROUGH:



**Katie Shultz**  
717-543-7883

# *Semen Sale*

**SELECT SIRES** 10 Units of AOT Silver Helix 14HO7770  
10 Units of Woodcrest King Doc 250HO12961  
10 Units of Mr Blondin Warrior-Red 7HO14477  
10 Units of Siemers Hanley 250HO15322

**VANTAGE DAIRY SUPPLY** 10 Units of Our-Favorite On Point-ET 566HO1283  
Wally Bingham/IPS 10 Units of Adaway Donzino-ET 566HO1328

**SEMEX / ST GENETICS** 10 Units of Walnutlawn Sidekick 200HO10992  
Ed Nash 10 Units of Farnear Altitude-Red-ET (SEXED) 551HO3617

**CRI** 10 Units of Winstar Curfew 1HO15517  
Jeff Hollingsworth 10 Units of Maplehurst Delroy Torro-ET 1HO14127  
208-339-1702 10 Units of TOG Fortunate-ET 1JE7232  
10 Units of JX Crosswind Alert {4}-ET 1JE7017

**REVOLUTION GENETICS** 10 Units of Mr Winstar DJ-ET (SEXED) 510HO12166  
John Azevedo

**ABS** 10 Units of Milksource-FV Metallica 94JE236  
Don Durrant 10 Units of Mr Winstar Barbarian 94HO19669  
435-770-0113 10 Units of Farnear Aria Addison \*RC 94HO18820

**TRIPLE HIL SIRES** 10 Units of Wilonna Whiteout-ET 99HO9715  
855-955-2100 10 Units of Mt-Glen Jonah Lithium 525HO134

**TOP NOTCH GENETICS** 10 Units of Brenland Domino \*RC 705HO14  
717-222-6140 10 Units of Sugar-C Aristo Andrew-Red 705HO29

**CRAIG HARRIS** 10 Units of Blexys Best Sidekick #840 3205758109  
435-881-5135 10 Units of Sheeknoll Av Landslide-ET #840 3148923642

**STEPHEN MAST** 10 Units of Calori-D Crs Tropic Maestro #840 3202160275  
209-613-8872

# Western Spring National Sale 2021



**MS APPLE ARRIELLA-ET EX-92**  
DAM OF LOT 1



**KHW APPLE REGIMENT-RED-ET EX-96 4E**  
2ND DAM OF LOT 1

All-American R&W 125,000 Lb Cow 2013

## Lot 1

**ROYALMAID HOLSTEINS**  
12736 LA MIRADA LN  
MELBA, ID 83641  
208-899-1570

### Riverdown Unstopabull-Red

CAN 11801450 \*TY \*TV  
PTA -155M -14F -12P 95R 4/21  
PTA +.8PL 2.91SCS +.8DPR 2.3%DCE  
PTA +2.80T +2.47UDC +1.94FLC 92R 4/21  
GTPI +2146G

### Ms Apple Arriella-ET

840 3124554021 Excellent-92 EEEEE @ 5-10  
PTA +3.53T +1.83UDC +2.93FLC 87R 4/21  
3-03 2x 305d 30960 4.6 1431 3.4 1065  
1-11 2x 305d 26810 5.0 1348 3.4 922

### BLACKNCHERRY ADAEZE-RED-ET

840 3151399807 99%RHA \*CV  
Born: December 8, 2018 HM: 474  
GTPI +2039 +3.41T +2.44UDC +2.81FLC 4/21

Fresh: March 20, 2021  
Milking 83# 4.5% 2.8p SCC: 46

### Dymenthalm Mr App Avalanche-TW

CAN 11957107 \*RC \*CV \*TL \*TY \*TD  
PTA -10M +4F -1P 99R 4/21  
PTA +3.87T +2.83UDC +2.47FLC GTPI +2120G

### Cherry Crest Thats Neat

CAN 11432171 EX-91-3E-CAN \*RC  
6-02 2x 365d 37621 3.9 1481 3.4 1261  
4-07 2x 365d 32416 4.4 1411 3.4 1107

### Maple-Downs-I G W Atwood-ET

CAN 8956379 Excellent-90 \*TR \*TV \*TL \*TY \*TD  
PTA -366M +11F -10P 99R 4/21  
PTA +2.95T +1.94UDC +2.14FLC GTPI +1909G

### KHW Regiment Apple-Red-ET

135511521 Excellent-96 EEEEE 4E DOM 32\*  
9-01 2x 365d 36750 4.3 1582 3.3 1211  
4-01 2x 365d 35750 4.7 1682 3.7 1314  
7-00 2x 365d 33280 5.0 1527 3.6 1191  
Life: 2898d 240640 4.7 11394 3.7 9013

### APPLE!

- All-American R&W 125,000 Lb Cow 2013
- All-American R&W Aged Cow 2011
- Grand Champion International R&W Show 2011
- HHM All-American Jr 3-Year-Old 2007
- Unanimous All-American Jr 2-Year-Old 2006

### 3rd Dam

#### Kamps-Hollow Altitude-ET EX-95 2E DOM \*RC

7-00 2x 365d 39690 4.7 1849 3.5 1385  
Life: 1844d 144460 4.4 6295 3.7 5288

### 4th Dam

#### Clover-Mist Alisha-ET EX-93 3E DOM

8-07 2x 365d 36920 4.2 1553 3.4 1258  
Life: 2999d 226470 4.7 10659 3.6 8149

### 5th Dam

#### Clover-Mist Augy Star-ET EX-94 4E DOM

7-10 2x 365d 43140 5.0 2136 3.3 1421  
Life: 2486d 206250 4.7 9793 3.5 7187

### 6th Dam

#### D-R-A August EX-96 4E DOM

8-05 3x 365d 27460 4.3 1187 3.2 871  
Life: 3443d 190200 4.4 8281 3.5 4818

- Nominated All-American Aged Cow 1986

### 7th Dam

#### D-R-A Ideal Precious Leader EX-90 2E

Life: 2456d 133250 4.0 5308

### 8th Dam

#### D-R-A Princess Lad Leader EX-90 3E

9-05 2x 305d 19160 4.2 809

# Western Spring National Sale 2021



**BUTLerview WIN CHARMER-ET EX-94**  
DAM OF LOT 2



**SILVERMAPLE WINDHAM CAMILLE-ET EX-92**  
MATERNAL SISTER TO DAM OF LOT 2  
*Supreme Champion, WDE Junior Show 2016*

## Lot 2

**CHRISTIAN CUNNINGHAM & MILES PRICE**  
4338 LICHAU RD  
PENNGROVE, CA 94951  
707-792-1496

### Duckett Crush Tatoo-ET

840 3137052923 \*TY \*TV  
PTA -583M -32F -3P 96R 4/21  
PTA +2.3PL 2.65SCS -.7DPR 2.1%DCE  
PTA +2.78T +2.20UDC +.97FLC 94R 4/21  
GTPI +2089G

### Butlerview Win Charmer-ET

840 3128968077 Excellent-94 EEEEE @ 5-04  
2-01 2x 305d 23360 4.2 991 3.4 789

- HM Junior All-American Jr 3-Year-Old 2017
- 1st Junior 2-Year-Old, Mideast Fall Nat'l 2017
- 1st Junior 2-Year-Old & Res Int Champion, Grand National Junior Show 2017

### MS R-JOHN TATOO CUBONE-ET

840 3142774919 99%RHA  
Born: December 26, 2019

### Maverick Crush

CAN 12042760 \*TY \*TV \*TL \*TD  
PTA -943M -52F -15P 99R 4/21  
PTA +2.55T +1.51UDC +1.43FLC GTPI +2035G

### Duckett G Chip Tokyo-ET

72366991 Excellent-93  
3-09 2x 365d 32930 3.9 1277 3.5 1138  
• Reserve All-American Milking Yearling 2015

### Gillette Windbrook-ETS

CAN 7816429 EX-97-CAN EXTRA'10 \*TV \*TL \*TY \*TD  
PTA -55M +17F +5P 99R 4/21  
PTA +1.56T +.73UDC +1.52FLC GTPI +1976G

### Silvermaple Damion Camomile

CAN 9732453 Excellent-95 EEEEE 4\*  
3-03 2x 365d 32269 4.1 1327 3.6 1160  
Life: 1536d 130677 4.2 5506 3.5 4555  
• All-American Junior 3-Year-Old 2011  
• All-Canadian Junior 3-Year-Old 2011  
• All-American Junior 2-Year-Old 2010  
• All-Canadian Junior 2-Year-Old 2010

*Maternal sisters to Win Charmer*

**Butlerview Door Camilla-ET EX-92 EEEEE**  
3-04 2x 305d 35950 3.7 1324 3.3 1197

- 1st Junior 3-Year-Old, Mid-East Fall National 2017
- Res Grand Champion, Western Sprg Nat'l 2016

**Silvermaple Windham Camille-ET EX-92 EEEEE**

- Junior All-American Senior 3-Year-Old 2016
- Supreme Champion, WDE Junior Show 2016
- HM All-Canadian Senior 3-Year-Old 2016
- Reserve All-American Senior 2-Year-Old 2015
- Reserve All-Canadian Senior 2-Year-Old 2015

*3rd Dam*

**Stanhope Camila Goldwyn EX-90-CAN 2\***  
4-01 2x 365d 30461 4.9 1486 3.3 1010  
Life: 6 Lacs 141747 4.9 6938 3.4 4879

*4th Dam*

**Kendu Triumphant Charity EX-93 EEEE-CAN 3\***  
3-04 2x 365d 28519 3.7 1065 3.1 888  
• HM Grand Champion Vancouver Island 2006

# Western Spring National Sale 2021



**WEBB VIEW BETSY SANCHEZ EX-94 2E**  
DAM OF LOT 3

## Lot 3

**CalLEN DAMROW & JADEN WILKS**  
8989 W POCATELLO CREEK RD  
POCATELLO, ID 83201  
920-344-2065

### FIRST CHOICE FEMALE

Due: March, 2022 by Mutually Agreeable Sire

- 35% down; balance due by selection at 4 months of age

#### Mutually Agreeable Sire

#### Webb View Betsy Sanchez

CAN 11651884 Excellent-94 EEEEE 2E  
6-11 2x 305d 29410 3.9 1150 3.1 906  
5-03 2x 328d 28350 2.5 722 2.6 736  
2-09 2x 306d 22095 3.4 743 2.9 648  
3-09 2x 320d 20657 3.6 734 3.1 631

- 4th Aged Cow, WI Championship Show 2020
- Nominated Junior All-American 5-Year-Old 2018
- 3rd 5-Year-Old, Northeast Spring National 2018
- 4th 5-Year-Old International Jr Holstein Show 2018
- Res Sr Champion, IL Championship Show 2018

#### Gen-Mark Stmatic Sanchez

134422312 Excellent-94 \*TY \*TV  
PTA +117M -38F -8P 99R 4/21  
PTA +1.17T +.13UDC +.86FLC GTPI +1567G

#### Webb View Betty Final Cut

CAN 9538504 VG-87-5YR-CAN  
5-05 2x 365d 31140 3.3 1038 2.9 891  
6-08 2x 352d 26462 3.9 1043 2.9 758  
3-03 2x 365d 25558 3.9 1003 3.1 791  
Life: 1751d 130279 3.7 4850 2.9 3820

#### 3rd Dam

#### Webb View Betty Gibson VG-88-CAN 2\*

3-04 2x 365d 28849 3.6 1038 2.9 827  
Life: 6 Lacs 135720 3.5 4799 3.0 4026

#### 4th Dam

#### Webb View Betsy Rudolph VG-87-CAN

4-00 2x 365d 33358 2.8 937 3.1 1041

#### 5th Dam

#### Webb View Bambi Jubilant GP-81-CAN

7-00 2x 306d 26673 3.7 977 3.3 871  
Life: 5 Lacs 121533 3.7 4504 3.3 4067

- 1st Senior Yearling, Northumberland 1993

#### 6th Dam

#### Webb View Bobbi Tempo EX-CAN 4\*

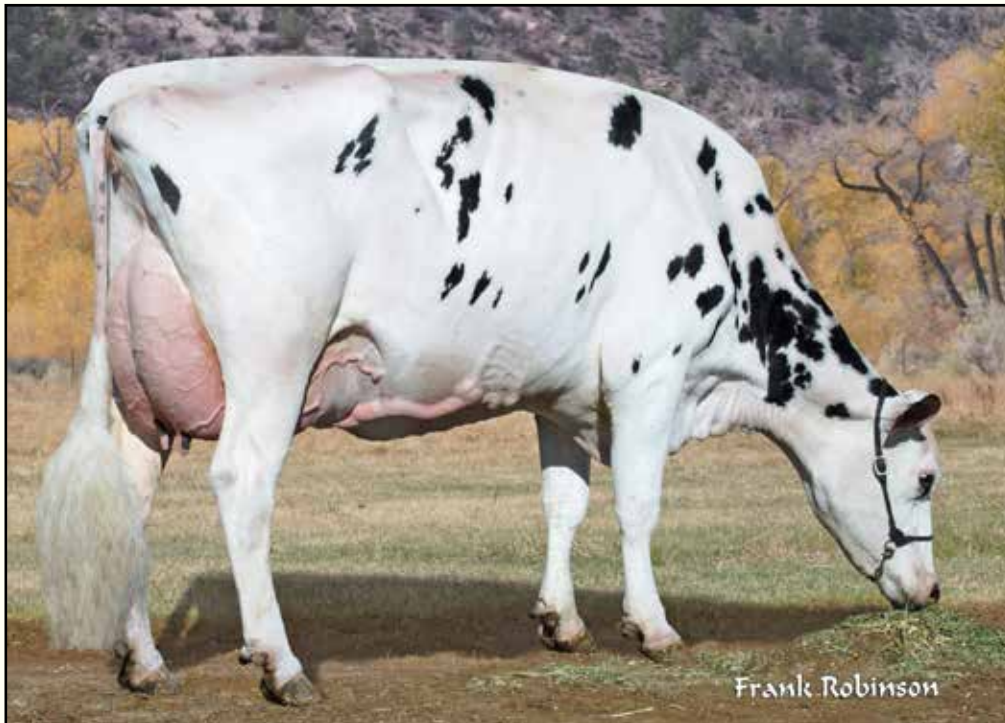
5-11 2x 365d 25139 3.9 983  
Life: 7 Lacs 165025 3.8 6343

#### 7th Dam

#### Webb View Olga Kemp VG-85-CAN 9\*

6-04 2x 365d 22789 4.6 1047  
Life: 8 Lacs 155206 4.2 6590

# Western Spring National Sale 2021



Frank Robinson

**CANYON-BREEZE HRL ARIEL-ET EX-91 2E**  
3RD DAM OF LOT 4

## Lot 4

STEVEN GILLINS  
C/O COREY GILLINS  
PO BOX 291  
MINERSVILLE, UT 84752  
435-386-2458

### Mr Blondin Warrior-Red-ET

840 3139655530 99%RHA \*TY \*TV  
PTA -133M -4F -2P 80R 4/21  
PTA -2.3PL 2.85SCS -2.5DPR 3.4%DCE  
PTA +3.34T +2.05UDC +1.56FLC 78R 4/21  
GTPI +2032G

### Canyon-Breeze More Arlexia

73684991 Excellent-91 EEVVE 2E  
3-02 3x 365d 35070 3.1 1103 3.2 1134  
2-01 3x 364d 30560 3.4 1036 3.2 986  
5-00 2x 365d 29530 3.6 1061 3.2 951  
Life: 1336d 109150 3.4 3668 3.3 3582

- 1st Senior 3-Year-Old, Western Fall National 2018
- 2nd Senior 3-Year-Old, Western Spring Nat'l 2018

### CANYON-BREEZE ANASTASIA-ET

840 3129406073 99%RHA \*RC  
Born: December 4, 2020

Maternal sister to Dund Andie

**Canyon-Breeze A Alexia-ET EX-90 EEVVE**  
6-01 3x 365d 38190 3.4 1281 2.9 1124  
Life: 1270d 113690 3.3 3700 3.1 3486

### Dymenthalm Mr App Avalanche-TW

CAN 11957107 \*RC \*CV \*TL \*TY \*TD  
PTA -10M +4F -1P 99R 4/21  
PTA +3.87T +2.83UDC +2.47FLC GTPI +2120G

### Triplecrown-JW Door Wisp-ET

840 3128860372 VG-85-CAN  
3-03 2x 365d 35587 4.0 1424 3.5 1246  
2-01 2x 310d 17068 4.0 688 3.5 589

### Scottmore Moregold-ET

70597483 Excellent-90 \*TY \*TV  
PTA -1226M -44F -32P 99R 4/21  
PTA +1.71T +1.03UDC +1.01FLC GTPI +1810G

### Canyon-Breeze Dund Andie-ET

63175395 Excellent-91 EEEEE 2E  
8-00 3x 365d 35550 3.7 1304 3.5 1228  
3-01 3x 365d 31000 3.3 1008 3.6 1110  
6-09 3x 365d 31300 3.1 958 3.5 1086  
Life: 1938d 154150 3.5 5409 3.6 5621

- 5th Senior 3-Year-Old, Western Spring Nat'l 2010

3rd Dam

### Canyon-Breeze Hrl Ariel-ET

131577228 Excellent-91 VEVVE 2E DOM  
3-07 3x 365d 38470 3.4 1313 3.1 1185  
2-01 3x 365d 36010 3.3 1204 3.1 1132  
6-05 3x 240d 27480 3.3 898 2.9 809  
Life: 1510d 138180 3.3 4628 3.1 4347

### Canyon-Breeze Em August-ET EX-92 2E GMD

5-06 3x 365d 37380 3.7 1386 3.2 1182  
Life: 1485d 125770 3.8 4817 3.2 4029

7th Dam

### Canyon-Breeze Wst Amber-ET EX-93 GMD DOM

2-10 3x 365d 38790 3.7 1420 3.3 1282  
Life: 1486d 137960 3.7 5149 3.3 4602

- 1st 4-Year-Old, Western Spring National 1996
- 1st Sr 3-Year-Old, Western Spring National 1995

8th Dam

### Clarney W C Mark Abigail EX-91 2E GMD DOM

8-00 3x 365d 41250 3.6 1502 3.1 1286  
Life: 2379d 205659 3.7 7711 3.3 6705

9th Dam



# Western Spring National Sale 2021



**VT-POND-VIEW ATWOOD LADY-ET EX-93**  
3RD DAM OF LOT 5

## Lot 5

SCHMIDT, MAST & BERRY  
PO BOX 245  
TOMALES, CA 94971  
608-797-2855

### RuAnn Jake-75936-ET

840 3146410272 Very Good-89  
PTA -127M -11F +7P 79R 4/21  
PTA -2.5PL 2.91SCS -2.2DPR 2.0%DCE  
PTA +3.54T +1.93UDC +1.12FLC 78R 4/21  
GTPI +2055G

### Miss Lovely Delight-ET

840 3148330381 Very Good-86 VVVVV @ 2-07  
1-08 3x 339d 19660 4.0 796 3.5 697

### MISS CALORI-D BMS LUCKLADY

840 3209890577 99%RHA  
Born: March 1, 2020  
PTA +3.47T +1.77UDC +.98FLC 75R 4/21

### Rayon D'Or Kashmir

CAN 108920733 VG-85-CAN \*TY \*TV  
PTA -426M +12F +2P 94R 4/21  
PTA +3.34T +2.68UDC +1.09FLC GTPI +2225G

### RuAnn Doorman Jean-55162-ET

840 3130274541 Excellent-92 EEEEE  
3-06 2x 365d 38840 3.5 1348 3.6 1415  
2-04 2x 365d 37140 3.2 1204 3.5 1282

### Car-J Brokasa Delight

840 3129040531 \*TY \*TV  
PTA -830M -16F -21P 95R 4/21  
PTA +3.46T +2.67UDC +1.59FLC GTPI +1829G

### Fairmont Doorman Lucia-ET

840 3132555024 Very Good-88 EEEVV @ 3-11  
2-00 2x 365d 28380 4.3 1213 3.5 1001  
3-05 2x 291d 29510 4.3 1269 3.2 955

#### 3rd Dam

**VT-Pond-View Atwood Lady-ET EX-93 EEEVE**  
4-08 3x 305d 29060 3.8 1094 3.3 968

#### 4th Dam

**VT-Pond-View Jaspr Lassa-ET EX-94 EEEEE**  
5-03 2x 365d 33770 5.4 1836 3.0 1021  
Life: 2192d 172250 4.7 8127 3.1 5288

#### 5th Dam

**VT-Pond-View Rubens Lilyana EX-95 4E**  
11-9 2x 365d 34380 3.8 1311 3.0 1018  
Life: 3049d 255670 4.2 10658 3.3 8357

- 1st 150,000 Lb Cow, Northeast Fall Nat'l 2015
- Senior Champion, VT State Show 2014

#### 6th Dam

**Twin-Wind-TC Broker Lass-ET EX-95 EEEEE 4E**  
8-01 2x 365d 33390 4.5 1495 3.2 1073  
Life: 3712d 254410 5.0 12659 3.6 9192

- Res Grand Champ, Northeast Fall National 2002
- 1st Jr 2-Year-Old, Northeast Fall National 1996

#### 7th Dam

**C Grossville Ultimate Libby EX-92 EEEEV**  
5-06 2x 365d 27230 4.1 1103 3.1 834  
• Nominated All-American 4-Year-Old 1994

- All-American Spring Yearling 1991
- All-American Spring Calf 1990

#### 8th Dam

**Grossville Freddy Lynn VG-85-CAN**  
3-06 2x 299d 17046 3.9 668

# Western Spring National Sale 2021



**ARROYO-VISTA DOORMAN REV-ET EX-91**  
DAM OF LOT 6



**T-C-G ADVENT RAVEN-RED-ET EX-93 2E**  
2ND DAM OF LOT 6

## Lot 6

CHLOE & CHASE VANDER EYK  
PO BOX 957  
TIPTON, CA 93272  
559-804-7500

### Siemers Apples Army-ET

3134506807 \*RC \*TY \*TV  
PTA -201M -11F -11P 93R 4/21  
PTA -.1PL 3.00SCS -.9DPR 3.1%DCE  
PTA +1.90T +1.92UDC +1.34FLC 90R 4/21  
GTPI +1986G

### Arroyo-Vista Doorman Rev-ET

840 3130272581 Excellent-91 EEEEE @ 4-07 \*RC  
3-04 2x 305d 23540 4.4 1038 3.5 821  
2-01 2x 365d 21270 4.7 1002 3.5 743

### EYKS ARMY ROCHELLE-RED

840 3206066886 99%RHA  
Born: Decmeber 3, 2020 HM: 65

### Stantons High Octane-ET

CAN 11696704 EX-93-CAN ST'17 \*TY \*TV  
PTA +985M +10F +13P 99R 4/21  
PTA +2.42T +2.06UDC +.06FLC GTPI +2132G

### Siemers Mogul Apple-Star-ET

840 3011130010 Excellent-91 GMD  
4-03 2x 358d 40781 4.3 1772 3.6 1459  
3-03 2x 316d 39040 4.7 1825 3.4 1310

### Val-Bisson Doorman-ET

CAN 107281711 EX-90-CAN ST'16 \*TV \*TY  
PTA -503M +14F +8P 99R 4/21  
PTA +2.45T +1.59UDC +.73FLC GTPI +2167G

### T-C-G Advent Raven-Red-ET

62997253 Excellent-93 EEEEE 2E  
5-01 3x 305d 27360 5.0 1368 3.1 841  
2-01 3x 365d 26970 3.6 966 3.1 849

- All-Idabo Winter Yearling 2009
- All-Idabo Winter Calf 2008

### 3rd Dam

**Pappys Sept Storm Rhonda-ET VG-86 \*RC**  
2-08 3x 355d 22410 3.9 831 3.3 692"

### 4th Dam

**Markwell Durham Raven-ET 93 EEEEE 3E \*TV**  
4-07 2x 365d 38050 3.7 1422 3.2 1210  
Life: 1686d 158750 3.6 5691 3.2 5077

- 1st 5-Year-Old, All-Utah Show 2009
- 1st Junior 2-Year-Old, Western Sprg Nat'l 2006

### 5th Dam

**Markwell Rudolph Rhoda-ET EX-92 3E DOM**  
3-11 2x 365d 33890 4.0 1345 3.3 1114  
Life: 2371d 153380 3.8 5854 3.4 5232

### 6th Dam

**Markwell Bstar E Raven-ET EX-95 3E GMD DOM**  
4-09 2x 365d 37610 4.3 1580 3.4 1255  
Life: 2387d 160020 4.1 6623 3.6 5763

- 1st Dry Aged Cow Western Fall/Nat 1997

### 7th Dam

**Markwell Mark Elite EX-92 4E GMD DOM**  
7-00 2x 365d 36230 3.9 1426 3.2 1165  
Life: 3736d 211430 3.8 8108 3.6 7533

### 8th Dam

**Rockalli Mars Emily EX-94 EEEEE 4E GMD DOM**  
3-10 2x 365d 28270 3.7 1050 3.5 988  
Life: 3113d 182970 3.8 7016 3.5 6330

# Western Spring National Sale 2021



**RASBERRY DOC 51872-ET VG-85**  
DAM OF LOT 7



**GOLDEN-ROSE RASBERRY-ET EX-91**  
4TH DAM OF LOTS 7 & 8

## Lot 7

ARIZONA DAIRY CO  
C/O JUSTIN STEWART  
19135 E ELLIOT RD  
MESA, AZ 85212  
480-380-7955

### Mr Blondin Warrior-Red-ET

840 3139655530 99%RHA \*TY \*TV  
PTA -133M -4F -2P 80R 4/21  
PTA -2.3PL 2.85SCS -2.5DPR 3.4%DCE  
PTA +3.34T +2.05UDC +1.56FLC 78R 4/21  
GTPI +2032G

### Raspberry Doc 51872-ET

840 3147037294 Very Good-85 VG-MS @ 2-06  
GTPI +2608 +634M +41F +29P +230T 4/21

### ARIZONA-RF WARRIOR 33930-ET

840 3206595256 99%RHA \*RC  
Born: June 1, 2020 HM: 33930  
GTPI +2432 +44M +20F +12P 76R 4/21  
PTA +2.70T +2.27UDC +1.56FLC 2.79SCS

### Dymenthalm Mr App Avalanche-TW

CAN 11957107 \*RC \*CV \*TL \*TY \*TD  
PTA -10M +4F -1P 99R 4/21  
PTA +3.87T +2.83UDC +2.47FLC GTPI +2120G

### Triplecrown-JW Door Wisp-ET

840 3128860372 VG-85-CAN  
3-03 2x 365d 35587 4.0 1424 3.5 1246  
2-01 2x 310d 17068 4.0 688 3.5 589

### Woodcrest King Doc

840 3132417775 Excellent-90 \*TY \*TV \*TL \*TD  
PTA +1708M +77F +60P 99R 4/21  
PTA +3.40T +2.41UDC +2.14FLC GTPI +2836G

### GDR-Kings Drsopen 50391-ET

840 3132991768 Good Plus-82 @ 2-08  
2-03 2x 365d 19760 4.9 963 3.8 760

### 3rd thru 13th Dams

**Roylane-KH Defend Ras-ET VG-88 EX-MS**  
4-08 2x 353d 27560 4.1 1134 3.5 974  
**Golden-Rose Raspberry-ET EX-91 EX-MS**  
3-03 2x 267d 26230 4.3 1125 3.6 948  
**Golden-Rose Atwood Ritzi EX-93 2E GMD**  
6-03 2x 305d 35670 4.1 1473 3.2 1125  
**Oakfield Pronto Ritzi EX-93 EEEEE**  
3-01 2x 365d 36751 3.5 1285 3.1 1140  
**Astrahoe Stormatic Radiant EX-91 GMD**  
5-02 3x 365d 49840 4.2 2087 2.7 1343  
Life: 1163d 130530 4.0 5182 3.0 3914  
**Astrahoe LJ Rosa Rebel-ET EX-92 EEEVV 2E**  
7-05 2x 365d 48580 4.2 2021 3.0 1468  
Life: 1186d 110960 3.9 4326 3.2 3529  
**Pinehurst Royal Rose-ET EX-91 EEEEE 2E**  
3-10 3x 365d 41400 3.3 1358 3.0 1223  
Life: 1212d 115400 3.5 4073 3.1 3593  
**Pinehurst Roulade EX-92 EEEEE 2E**  
5-00 3x 365d 35130 3.6 1271 3.2 1115  
Life: 1761d 142070 3.8 5395 3.3 4705  
**Pinehurst Sweet Cleo EX-90 EEEVV**  
6-00 3x 365d 40380 4.4 1776 3.2 1305  
**Pinehurst Sweet Freedom EX-90 VEVE**  
5-07 3x 330d 34520 4.3 1500 3.1 1084  
**Pinehurst Sweet Delite EX-91 3E GMD**  
Life: 2228d 151600 4.0 6116 3.2 4907

Next seven dams Excellent

# Western Spring National Sale 2021

## Lot 8

MATT LEAK  
13322 N 4400 W  
CORNISH, UT 84308  
435-258-2250

### WHEY-MAT HANDSOME BOVINE

840 3212608970 99%RHA  
Born: September 3, 2020 HM: 869

#### Siemers Doc Handsome-ET

840 314 \*TY \*TV  
PTA +1160M +73F +47P 80R 4/21  
PTA +.4PL 3.06SCS -2.4DPR 2.2%DCE  
PTA +3.23T +2.54UDC +1.73FLC 80R 4/21  
GTPI +2728G

#### Pappys Sid Sugerplum

840 3126310431 Very Good-88 EVEVV @ 5-04  
2-03 2x 365d 26340 4.0 1058 3.5 931  
3-07 2x 282d 24110 4.5 1086 3.5 848  
4-06 2x 301d 22840 3.9 894 3.5 807

#### Woodcrest King Doc

840 3132417775 Excellent-90 \*TY \*TV \*TL \*TD  
PTA +1708M +77F +60P 99R 4/21  
PTA +3.40T +2.41UDC +2.14FLC GTPI +2836G

#### Siemers Monterey Hanan-ET

840 3131528231 Very Good-85  
2-00 3x 156d 12470 4.1 517 3.3 416

#### Pine-Tree Sid-ET

62175895 VG-86-CAN ST'10 \*TV \*TL \*TY \*TD  
PTA -822M -18F -23P 99R 4/21  
PTA +1.46T +.95UDC -.88FLC GTPI +1535G

#### Pappys Niles Suger

63355866 Very Good-88 VVVV @ 5-11  
5-01 2x 340d 29550 3.5 1033 3.3 980  
3-11 2x 365d 28790 3.5 998 3.3 960  
2-10 2x 333d 24780 3.4 854 3.5 857  
Life: 2327d 181300 3.5 6336 3.3 5995

#### 3rd Dam

#### Pappys Roy Sabetha VG-88 EVEVV

7-03 2x 365d 40760 3.1 1247 3.0 1226  
Life: 2274d 199360 3.4 6692 3.1 4638

#### 4th Dam

#### Pappys Landon Sacha

2-03 2x 200d 17590 3.5 621 3.2 556

#### 5th Dam

#### Pappys Leadership Sacha VG-88 VG-MS

4-05 3x 365d 34630 3.6 1263 3.2 1113

## Lot 9

PAPPYS FARMS, LLC  
C/O TED PAPAGEORGE  
1594 W FARR WEST DR  
OGDEN, UT 84404  
801-389-6967

### PAPPYS CHEERS LILA

840 3201362834  
Born: June 1, 2020 HM: 619

#### Milksource Cheers-ET

840 3132912604 \*TY \*TV  
PTA +53M -2F +5P 79R 4/21  
PTA +1.3PL 2.96SCS -1.1DPR 3.0%DCE  
PTA +2.08T +2.37UDC +1.38FLC 79R 4/21  
GTPI +2171G

#### Pappys Atwood Lauren

840 3126310510 Very Good-88 EX-MS @ 4-09  
3-00 2x 365d 31410 3.4 1068 3.3 1028  
2-00 2x 303d 20350 3.6 727 3.2 656

#### Mr Sunrose Saturn

142925043 Excellent-91 \*TY  
PTA +704M +0F +9P 95R 4/21  
PTA +2.67T +2.90UDC +.84FLC GTPI +2071G

#### Brackleyfarm Chelios Cheerio

CAN 10848075 Excellent-96 EEEEE 2E  
5-10 2x 365d 40070 4.8 1921 3.4 1351  
• All-American 4-Year-Old 2015

#### Maple-Downs-I G W Atwood-ET

CAN 8956379 Excellent-90 \*TR \*TV \*TL \*TY \*TD  
PTA -366M +11F -10P 99R 4/21  
PTA +2.95T +1.94UDC +2.14FLC GTPI +1909G

#### Pappys Blitz Laurena

63355991 Very Good-86 VEVV @ 5-00  
4-08 2x 365d 39050 3.1 1212 2.9 1115  
3-02 2x 365d 36520 3.1 1137 2.9 1051  
2-01 2x 334d 28060 3.2 909 2.8 797

#### 3rd Dam

#### Pappys Fireball Lauren VG-88 EX-MS

3-00 2 338d 29350 3.2 941 3.1 897

#### 4th Dam

#### Pappys Highlight Lauren EX-91 EEEEE 4E

10-5 2x 365d 40050 3.5 1389 3.1 1232  
Life: 3526d 345860 3.4 11630 3.2 10968

#### 5th Dam

#### Pappy Nick Lynette VG-85 VG-MS

2-02 2x 365d 22130 3.9 863 3.5 777

#### 6th Dam

#### Pappys Liza VG-87 VVEEV

5-04 2x 344d 27140 4.1 1121 3.2 868

#### 7th Dam

#### Treger Chief Lauren EX-90 VEEE 3E DOM

8-10 2x 365d 27160 4.5 1230 3.6 990  
Life: 2504d 161700 4.8 7723 3.7 4616

#### 8th Dam

#### Treger KSFH Lana EX-91 EEEE

11-1 2x 343d 21960 4.4 959

Life: 2928d 178730 4.1 7324

#### 9th Dam

#### Treger Duke Lassie VG-85 VG-MS

7-07 2x 341d 18820 4.7 886

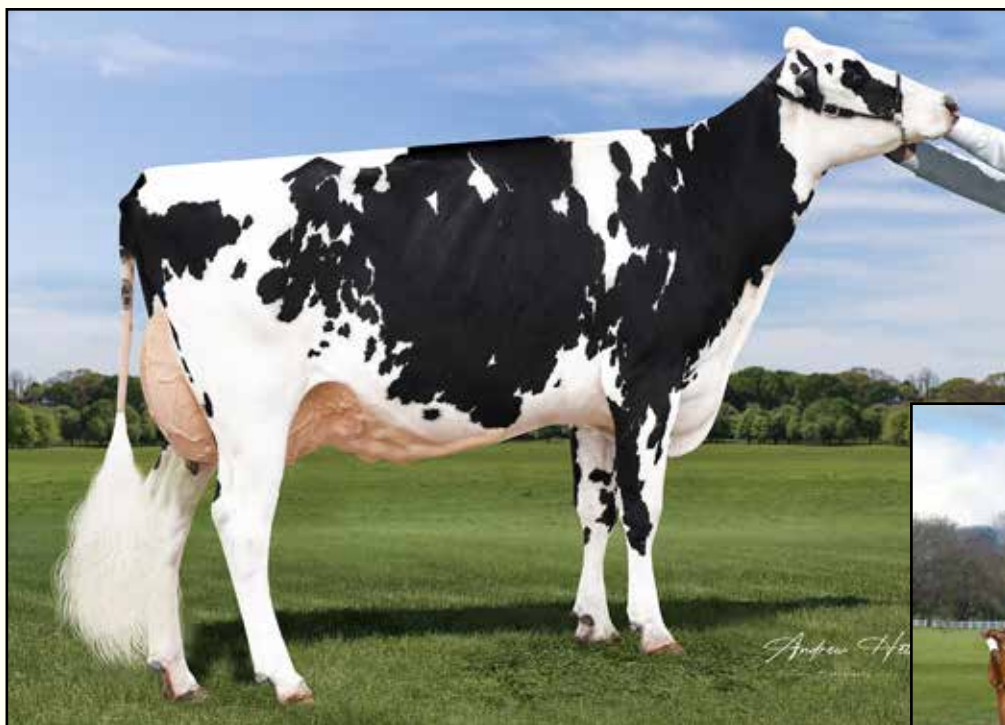
#### 10th Dam

#### Treger Silver Lana VG-86 EX-MS

7-07 2x 365d 20400 3.5 719

Life: 2930d 146380 3.8 5551

# Western Spring National Sale 2021



**MS APPLE ANJEELE-ET EX-93**  
2ND DAM OF LOT 10



**KHW REGIMENT APPLE-RED-ET EX-96 4E**  
3RD DAM OF LOT 10  
*All-American R&W Aged Cow 2011*

## Lot 10

MICHAEL & JESSICA OLIVER  
PO BOX 1713  
ZILLAH, WA 98953  
360-318-3357  
360-420-9383

### Our-Favorite Undenied-ET

840 3125220760 99%RHA \*TY\*TV\*TL\*TD  
PTA -37M +22F -4P 98R 4/21  
PTA -1.8PL 3.04SCS -2.1DPR 2.5%DCE  
PTA +3.16T +.88UDC +1.17FLC 96R 4/21  
GTPI +2177G

### Skykomish Tatoo Amelia-ET

144693777 Very Good-85 VG-MS @ 2-01  
PTA +2.60T +156UDC +1.80FLC 82R 4/21

### SKYKOMISH UNDENIED ANNE

145113377 99%RHA  
Born: October 25, 2020

### Walnutlawn Solomon-ET

CAN 11775998 99%RHA \*TV\*TL\*TY\*TD  
PTA -557M -15F -11P 99R 4/21  
PTA +2.61T +1.68UDC +.41FLC GTPI +1974G

### Our-Favorite Unlimited-ET

141851721 Excellent-94 2E  
5-03 2x 365d 33640 4.3 1437 3.7 1245  
3-08 3x 365d 31990 4.5 1439 3.5 1125

### Duckett Crush Tatoo-ET

840 3137052923 \*TY\*TV  
PTA -583M -32F -3P 96R 4/21  
PTA +2.78T +2.20UDC +.97FLC GTPI +2089G

### Ms Apple Anjelee-ET

840 3131999859 Excellent-93 EEEEE @ 5-06 \*RC  
2-01 2x 321d 23260 4.2 990 3.6 840  
• 1st 4-Year-Old, Western National Show 2020  
• Washington Futurity Winner 2019  
• Reserve Senior Champion, WA State Show 2019

### 3rd Dam

#### KHW Regiment Apple-Red-ET EX-96 4E 32\*

9-01 2x 365d 36750 4.3 1582 3.3 1211  
Life: 2898d 240640 4.7 11394 3.7 9013

• All-American R&W 125,000 Lb Cow 2013

### 4th Dam

#### Kamps-Hollow Altitude-ET EX-95 2E DOM \*RC

7-00 2x 365d 39690 4.7 1849 3.5 1385  
Life: 1844d 144460 4.4 6295 3.7 5288

### 5th Dam

#### Clover-Mist Alisha-ET EX-93 3E DOM

8-07 2x 365d 36920 4.2 1553 3.4 1258  
Life: 2999d 226470 4.7 10659 3.6 8149

### 6th Dam

#### Clover-Mist Augy Star-ET EX-94 4E DOM

7-10 2x 365d 43140 5.0 2136 3.3 1421  
Life: 2486d 206250 4.7 9793 3.5 7187

### 7th Dam

#### D-R-A August EX-96 4E DOM

8-05 3x 365d 27460 4.3 1187 3.2 871  
Life: 3443d 190200 4.4 8281 3.5 4818

• Nominated All-American Aged Cow 1986

### 8th Dam

#### D-R-A Ideal Precious Leader EX-90 2E

Life: 2456d 133250 4.0 5308

### 9th Dam

#### D-R-A Princess Lad Leader EX-90 3E

9-05 2x 305d 19160 4.2 809

# Western Spring National Sale 2021



**PORPO GOLDWYN BARBY-ET EX-94**  
DAM OF LOTS 11A & 11B

*Reserve Grand Champion, Midwest Spring National 2015*



**ROSIERS BLEXY GOLDWYN-ET EX-97 3E**  
SAME MATERNAL FAMILY AS LOTS 11A & 11B

*Supreme Champion, World Dairy Expo 2017*

## Lot 11A

### FOUR #1 IVF EMBRYOS

Sire: Farnear Delta-Lambda-ET

- Embryos made with sexed semen

#### Farnear Delta-Lambda-ET

840 3125993715 GM 12/20 \*TY \*TV  
PTA +1074M +51F +42P 99R 4/21  
PTA +4.2PL 2.78SCS -.8DPR 2.6%DCE  
PTA +2.58T +2.84UDC +.87FLC 98R 4/21  
GTPI +2749G

#### Porpo Goldwyn Barby-ET

CAN 106016750 Excellent-94 EEEEE @ 5-07  
7-05 2x 365d 36030 3.7 1339 3.4 1212  
5-00 2x 365d 35200 3.8 1349 3.3 1160  
3-08 2x 365d 33480 3.8 1264 3.6 1200  
Life: 2027d 174994 3.8 6626 3.4 6036

## Lot 11B

### FOUR #1 IVF EMBRYOS

Sire: Walnutlawn Sidekick

- Embryos made with sexed semen

#### Walnutlawn Sidekick

CAN 12508113 VG-85-CAN \*TY \*TV A2/A2  
PTA -975M +14F -8P 93R 4/21  
PTA -.6PL 2.70SCS -.5DPR 2.4%DCE  
PTA +3.04T +2.73UDC +1.05FLC 89R 4/21  
GTPI +2261G

#### Braedale Goldwyn

CAN 10705608 GP-CAN GM 12/11 \*TY \*TL  
PTA -728M -7F -13P 99R 4/21  
PTA +.99T +.56UDC +.72FLC GTPI +1838G

#### Rosiers Barka Triumphant-ET

CAN 101324221 EX-90-CAN 2\*  
4-06 2x 365d 35211 3.8 1355 3.2 1126  
2-05 2x 365d 27359 4.0 1104 3.2 877

- 1st 4-Year-Old, Victoriaville 2007
- 1st Senior 2-Year-Old, Montmagny 2005

#### NDIRA, INC.

PO BOX 221753  
CARMEL, CA 93922  
831-626-0451

#### BARBY!

- 1st 5-Year-Old & Res Senior Champion, Mideast Spring National Show 2015
- Res Gr Champ, Mideast Sprng Nat'l Jr Show 2015
- Nominated All-American Senior 2-Year-Old 2012
- Nominated All-Canadian Senior 2-Year-Old 2012

Same family as

#### Rosiers Blexy Goldwyn-ET EX-97 EEEEE 3E

- All-American Aged Cow 2017
- All-Canadian Mature Cow 2017
- Supreme Champion, World Dairy Expo 2017
- 1st Mature Cow, Royal Winter Fair 2017

2nd Dam

**Rosiers Burdy Vision** VG-87-3YR-CAN 9\*  
6-07 2x 365d 26718 4.9 1310 3.4 910  
Life: 6 Lacs 141145 5.0 6937 3.4 4846

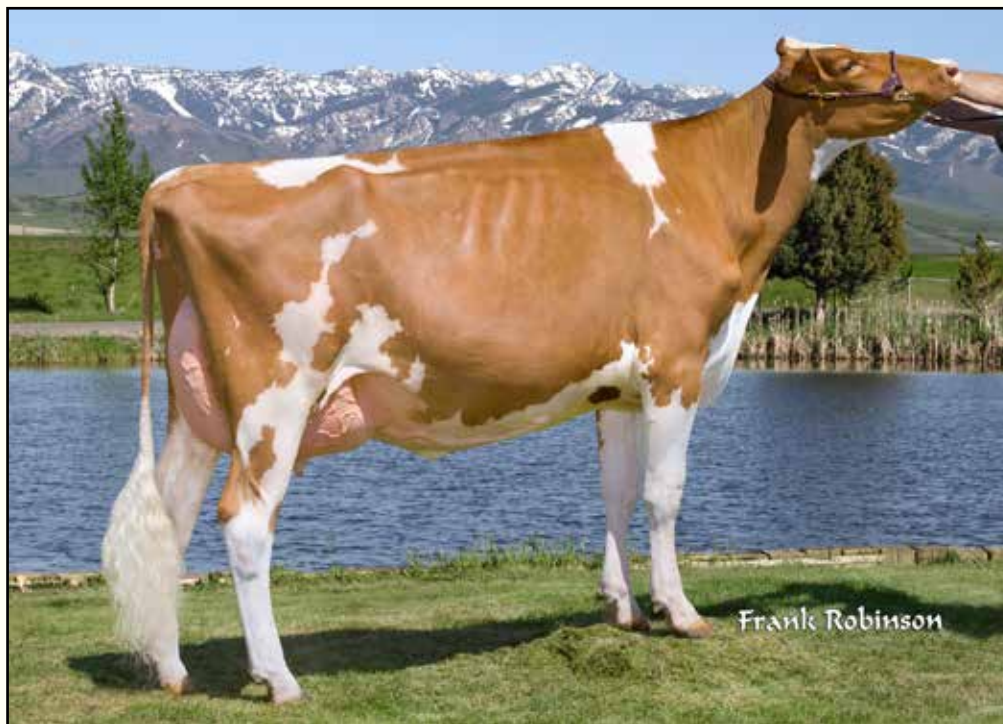
3rd Dam

**Rosiers Branda Prelude** VG-88-CAN 2\*  
10-1 2x 365d 24980 4.5 1133 3.3 925  
Life: 8 Lacs 174997 4.2 7400 3.3 5773

4th Dam

**Rosiers Bernet Persistent** EX-4E-CAN 12\*  
7-08 2x 305d 26468 3.3 886 3.3 871  
Life: 9 Lacs 220367 3.4 7458 3.3 6239

# Western Spring National Sale 2021



**RAINYRIDGE REGEMINT JACKIE-RED EX-91**  
3RD DAM OF LOT 12

## Lot 12

HARRIS DAIRYLAND  
360 N HIGHWAY 91  
RICHMOND, UT 84333  
435-881-0759

### CACHE-VALLEY JILLY-RED-ET

840 3220131185 99%RHA  
Born: September 7, 2020

#### Cycle McGucci Jordy-Red

840 3131666411 \*CV \*TY  
PTA -1186M -25F -42P 98R 4/21  
PTA -2.4PL 3.02SCS -2.5DPR 3.3%DCE  
PTA +2.89T +2.20UDC +2.88FLC 98R 4/21  
GTPI +1726G

#### Cache-Valley Defiant Roar

840 3137019806 Very Good-88 EVEVV @ 3-03  
2-00 2x 365d 24390 3.4 833 3.0 732

#### Mr Apples McGucci-ET

72353438 99%RHA \*RC \*TY \*TL \*TD  
PTA -1689M +11F -13P 95R 4/21  
PTA +2.56T +1.79UDC +2.81FLC GTPI +2071G

#### Bryersquart GChip Jail-P-ET

71402418 Excellent-90 \*RC \*PO  
1-11 3x 341d 31581 3.9 1232 3.1 985

#### Scientific B Defiant-ET

141123484 Very Good-87 \*RC \*TV \*TL \*TY \*TD  
PTA +54M -54F -13P 99R 4/21  
PTA +2.66T +1.71UDC +.91FLC GTPI +1658G

#### Cache-Valley Heztry Luxi

71927740 Very Good-87 VG-MS @ 3-08 \*RC  
3-04 3x 316d 21900 3.3 724 3.5 765  
4-04 2x 329d 19810 2.9 581 3.3 647  
• 5th Junior 2-Year-Old, Western Spring Nat'l 2015  
• 5th Spring Yearling, Western Spring Nat'l 2014

#### 3rd Dam

**Rainyridge Regemint Jackie-Red EX-91 EEVVE**  
4-11 3x 365d 36900 3.7 1363 3.1 1145

- 2nd Junior 2-Yr-Old, Western Spring Nat'l 2010
- 3rd 4-Year-Old, Western Spring National 2012
- 5th Aged Cow, Western Spring National 2015

#### 4th Dam

**Rainyridge Talent Jass-Red-ET EX-90 EEEVE**  
3-05 2x 342d 19760 4.2 823 3.3 661

#### 5th Dam

**Viallet R M Jacinda VG-88-CAN 2\***  
3-10 2x 365d 30040 3.3 983 3.3 983  
• Junior Champion, Brandon Ag Ex 2001

# Western Spring National Sale 2021



**LOVHILL GOLDWYN KATRYSHA EX-96 2E**  
**3RD DAM OF LOT 13**

*Supreme Champion World Dairy Expo 2015*

## Lot 13

**MADISON VAN EXEL**  
 20002 N THORNTON RD  
 LODI, CA 95242  
 209-334-3292

### Siemers Doc Hanford-ET

840 3148093471 \*TY \*TV  
 PTA +620M +52F +31P 80R 4/21  
 PTA +.6PL 3.05SCS -1.1DPR 2.1%DCE  
 PTA +3.32T +2.94UDC +1.29FLC 80R 4/21  
 GTPI +2633G

### Exels Doorman Kahlua-ET

840 3151027361 Very Good-87 VVVV @ 2-04  
 • 3rd Fall Calf, Western Fall National 2019

### EXELS HANFORD KOKO

840 3220100912  
 Born: September 5, 2020

### Woodcrest King Doc

840 3132417775 Excellent-90 \*TY \*TV \*TL \*TD  
 PTA +1708M +77F +60P 99R 4/21  
 PTA +3.40T +2.41UDC +2.14FLC GTPI +2836G

### Siemers Monterey Hanan-ET

840 3131528231 Very Good-85  
 2-00 3x 156d 12470 4.1 517 3.3 416

### Val-Bisson Doorman-ET

CAN 107281711 EX-90-CAN ST'16 \*TV \*TY  
 PTA -503M +14F +8P 99R 4/21  
 PTA +2.45T +1.59UDC +.73FLC GTPI +2167G

### Miss Kats Karma

71435073 Excellent-91 EEVEE @ 3-09  
 30-5 2x 365d 27110 4.0 1071 3.2 862  
 2-06 3x 269d 20380 3.8 784 3.1 626

### KATRYSHA!

- Reserve All-American 150,000 Lb Cow 2017
- All-American Aged Cow 2015
- Res All-Canadian Mature Cow 2015
- Supreme Champion, World Dairy Expo 2015
- Grand Champion, WI Championship Show 2015
- Unanimous All-American 5-Year-Old 2014
- All-Canadian 5-Year-Old 2014
- Res Grand Champion Royal Winter Fair 2014
- Res Grand Champion International Show 2014

#### 3rd Dam

**Lovhill Goldwyn Katrysha EX-96 EEEEE 2E**  
 9-09 2x 365d 40490 4.4 1782 3.2 1285  
 Life: 2649d 234740 4.4 10419 3.3 7778

#### 4th Dam

**Bienert Encounter Kim EX-90-4E-CAN 4\***  
 9-01 2x 365d 21333 4.5 961 3.3 696  
 Life: 2244d 125742 4.7 5956 3.4 4261

#### 5th Dam

**Bienert Inspiration Kesha VG-87 VVEV 1\***  
 8-02 2x 365d 21688 4.2 917 3.5 756  
 Life: 2769d 159594 4.3 6802 3.5 5525

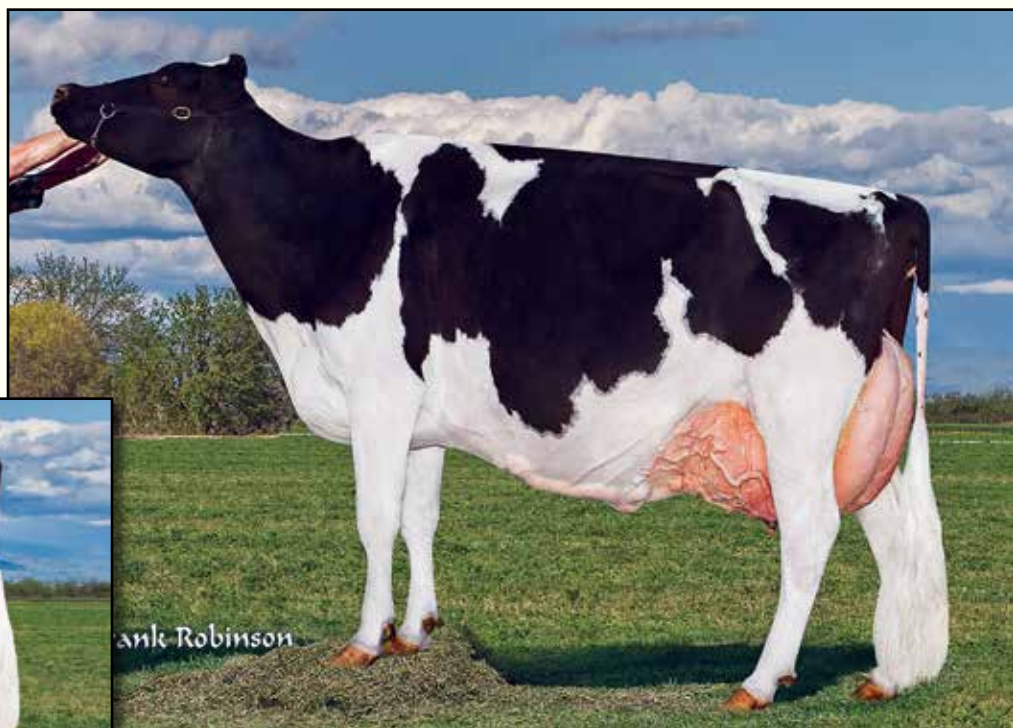
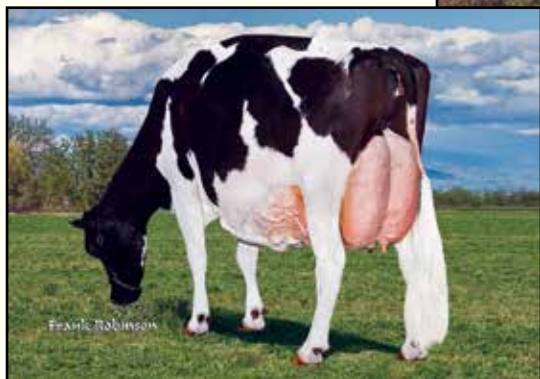
#### 6th Dam

**Bienert Sheik Katherine-ET VG-86 VG-MS-CAN**  
 11-4 2x 365d 25179 3.7 937 3.1 747  
 Life: 9 Lact 198870 3.8 7626 3.2 6356

*Next three dams VG- & EX-CAN*



# Western Spring National Sale 2021



**MI-SHA DUNDEE MOLLY-ET EX-95 3E**  
**2ND DAM OF LOT 14**

*Grand Champion, CA State Show 2014*

## Lot 14

PHILLIP AIROSA  
 PO BOX 1087  
 TIPTON, CA 93272  
 559-967-5258

### AIR-OSA-MH UNSTOP 29097-RED

840 3222974960 99%RHA  
 Born: September 25, 2020

### Riverdown Unstopabull-Red

CAN 11801450 \*TY \*TV  
 PTA -155M -14F -12P 95R 4/21  
 PTA +.8PL 2.91SCS +.8DPR 2.3%DCE  
 PTA +2.80T +2.47UDC +1.94FLC 92R 4/21  
 GTPI +2146G

### Air-Osa-MH Dmndbck 25271-ET

840 3201703404 Very Good-85 VG-MS @ 2-03

### Dymenthalm Mr App Avalanche-TW

CAN 11957107 \*RC \*CV \*TL \*TY \*TD  
 PTA -10M +4F -1P 99R 4/21  
 PTA +3.87T +2.83UDC +2.47FLC GTPI +2120G

### Cherry Crest Thats Neat

CAN 11432171 EX-91-3E-CAN \*RC  
 6-02 2x 365d 37621 3.9 1481 3.4 1261  
 4-07 2x 365d 32416 4.4 1411 3.4 1107

### Mr D Apple Diamondback

840003013721049 Excellent-93 \*RC \*TV \*TL \*TY  
 PTA -393M -25F +0P 99R 4/21  
 PTA +2.42T +1.82UDC +1.36FLC GTPI +1892G

### Mi-Sha Dundee Molly-ET

140296286 Excellent-95 EEEEE 3E  
 7-00 3x 305d 39400 3.0 1181 3.2 1271  
 3-06 3x 365d 31360 3.1 960 3.0 931  
 5-02 3x 305d 28790 3.0 877 3.1 883  
 Life: 2095d 186780 3.1 5789 3.2 5945

• Grand Champion, CA State Show 2014

*3rd Dam*

**Silver-Link Mort Maggie EX-93 EEEEE**  
 5-03 3x 365d 36873 2.8 1049 2.9 1056"

*4th Dam*

**Silver-Link Roy Dolly**

*5th Dam*

**Silver-Link Durham Della VG-85-VG-MS**  
 3-02 3x 357d 32200 2.4 779 3.0 972  
 Life: 1322d 104160 2.7 2789 3.0 3074

# Western Spring National Sale 2021



**PAULO-BRO-SP SHARI-RED-ET EX-94 2E**  
**DAM OF LOTS 15, 16A & 16B**  
*Grand Champion, CA Spring R&W Show 2014*



**PAULO-BRO-SP SHAR-RED-ET EX-94**  
**FULL SISTER TO DAM OF LOTS 15, 16A & 16B**  
*HM All-American R&W 125,000 Lb Cow 2015*

## Lot 15

MIKE HAY  
 375 APRICOT ST  
 NIPOMO, CA 93444  
 805-448-3661

### Cycle McGucci Jordy-Red

840 3131666411 \*CV \*TY  
 PTA -1186M -25F -42P 98R 4/21  
 PTA -2.4PL 3.02SCS -2.5DPR 3.3%DCE  
 PTA +2.89T +2.20UDC +2.88FLC 98R 4/21  
 GTPI +1726G

### Paulo-Bro-SP Shari-Red-ET

139538645 Excellent-94 EEEEE 3E \*TL \*TD  
 6-06 2x 342d 39010 3.4 1309 3.2 1230  
 6-06 2x 305d 35920 3.3 1187 3.1 1127  
 5-05 2x 316d 33390 3.7 1227 3.5 1165  
 Life: 2423d 215690 3.7 7887 3.3 7043  
 • Grand Champion, CA Spring R&W Show 2014  
 • Grand Champion, Western Nat'l R&W Show 2014  
 • 1st 5-Year-Old, Western Spring National 2014

### R-JOHN JDY SHOCKWAVE-RED-ET

840 3146764803  
 Born: December 30, 2019

### Mr Apples McGucci-ET

72353438 99%RHA \*RC \*TY \*TL \*TD  
 PTA -1689M +11F -13P 95R 4/21  
 PTA +2.56T +1.79UDC +2.81FLC GTPI +2071G

### Bryersquart GChip Jail-P-ET

71402418 Excellent-90 \*RC \*PO  
 1-11 3x 341d 31581 3.9 1232 3.1 985

### KHW Kite Advent-Red-ET

133002953 Excellent-94 \*TV \*TL \*TD  
 PTA -1639M -44F -44P 99R 4/21  
 PTA +1.25T +.30UDC +.71FLC GTPI +1603G

### Budjon Redmarker Shar-ET

133780446 Excellent-94 EEEEE @ 4-10 \*RC  
 4-03 2x 365d 30040 3.7 1118 3.2 958  
 3-03 2x 328d 26580 3.6 956 3.1 815  
 2-03 2x 303d 20530 3.7 761 3.0 609  
 • Reserve All-Wisconsin 4-Year-Old 2007  
 • Member All-Wisconsin Produce of Dam 2007

## Lot 16A

### FIVE #1 IVF EMBRYOS

Sire: Cycle Jails Journey-Red-ET 7H05210  
 Dam: Paulo-Bro-SP Shari-Red-ET EX-94 3E

## Lot 16B

### FIVE #1 IVF EMBRYOS

Two embryos sired by Mr D Apple Diamondback  
 Three embryos sired by Mr Blondin Warrior-Red  
 Dam: Paulo-Bro-SP Shari-Red-ET EX-94 3E

#### 3rd Dam

**Budjon Encore Sharlene** EX-93 EEEEE 2E  
 2-07 2x 365d 31420 3.5 1100 3.3 1051

#### 4th Dam

**Budjon Beautician Suzette** EX-94 EEEEE 2E  
 7-05 2x 365d 23400 4.1 961 2.9 678  
 Life: 1900d 114930 4.1 4647 3.1 3586

#### 5th Dam

**Budjon Mark Sue** EX-91 VEEE  
 6-04 2x 338d 21080 4.1 867 3.0 632  
 • Res Junior All-Wisconsin 5-Year-Old 1992  
 Next dam VG-87

# Western Spring National Sale 2021



**LUCK-E AVALANCHE ATHENA EX-90**  
DAM OF LOT 17



**LUCK-E ADVENT ASIA-ET EX-94 3E**  
3RD DAM OF LOT 17

## Lot 17

**AIDAN AZEVEDO & WESTON SILVA**  
2760 JUBILEE DR  
TURLOCK, CA 95380  
209-595-0055

### Siemers Doc Hanford-ET

840 3148093471 \*TY \*TV  
PTA +1232M +61F +45P 80R 4/21  
PTA +.8PL 2.98SCS -1.7DPR 2.3%DCE  
PTA +3.55T +3.06UDC +1.53FLC 80R 4/21  
GTPI +2735G

### Luck-E Avalanche Athena

840 3139051628 Excellent-90 EVEVE @ 3-01  
2-10 2x 305d 19110 4.0 758 3.5 663

### WEST-ADUB HANCOCK ARIA-ET

840 3210672816 99%RHA  
Born: January 24, 2020 Tag: 13168  
GTPI +2202 +3.43T +2.81UDC +2.00FLC 76R 4/21

### Woodcrest King Doc

840 3132417775 Excellent-90 \*TY \*TV \*TL \*TD  
PTA +1708M +77F +60P 99R 4/21  
PTA +3.40T +2.41UDC +2.14FLC GTPI +2836G

### Siemers Monterey Hanan-ET

840 3131528231 Very Good-85  
2-00 3x 156d 12470 4.1 517 3.3 416

### Dymenthalm Mr App Avalanche-TW

CAN 11957107 \*RC \*CV \*TL \*TY \*TD  
PTA -10M +4F -1P 99R 4/21  
PTA +3.87T +2.83UDC +2.47FLC GTPI +2120G

### Luck-E Contender Athena

69873698 Excellent-92 EEEVE 2E \*RC  
6-04 2x 343d 27440 5.1 1400 3.4 928  
4-04 2x 285d 20760 5.1 1068 3.7 758  
5-04 2x 274d 19760 4.6 907 3.3 660  
Life: 1493d 100960 5.0 5049 3.5 3527

### 3rd Dam

#### Luck-E Advent Asia-ET EX-94 EEEEE 3E \*RC

6-02 2x 365d 40150 4.9 1984 3.3 1337  
Life: 1282d 113730 5.1 5814 3.4 3860  
• Dam of Luck-E Awesome-Red +2.76UDC!  
• Dam of Luck-E America \*RC +3.13T!

### 4th Dam

#### Luck-E Blitz Australia-ET VG-87 VG-MS GMD

2-02 2x 365d 37990 4.0 1528 2.8 1060

### 5th Dam

#### Luck-E Skychief Arizona-ET EX-90 GMD DOM

5-01 2x 365d 56280 5.1 2872 3.3 1855  
Life: 1301d 125490 5.2 6512 3.6 4464

### 6th Dam

#### Hart-Lyn Starbuck Ashley EX-94 2E GMD DOM

6-06 2x 365d 35720 4.2 1504 3.4 1200  
Life: 1753d 124040 4.0 4994 3.4 4239

### 7th Dam

#### Kachina Valiant Act-ET VG-86 VG-MS

7-05 2x 365d 23450 4.4 1041 3.3 764  
Life: 2103d 110050 4.6 5037 3.4 3742

### 8th Dam

#### Dodeb Matt Actress EX-93 EEEE 3E

3-00 3x 305d 27110 4.2 1131  
Life: 2348d 141870 4.3 6058

### 9th Dam

#### Lamkinland B Matt Actress VG-85 VG-MS

5-04 3x 305d 20780 3.9 820

# Western Spring National Sale 2021

## Lot 18

PAPPYS FARMS, LLC  
C/O TED PAPAGEORGE  
1594 W FARR WEST DR  
OGDEN, UT 84404  
801-389-6967

### Brenland Denver

CAN 12074893 \*TY \*TV  
PTA +469M +27F +12P 96R 4/21  
PTA -5PL 2.81SCS -2.7DPR 3.2%DCE  
PTA +2.88T +1.78UDC +.02FLC 94R 4/21  
GTPI +2180G

### Pappys Gold Chip Margie

840 3126310562 Very Good-85 VG-MS @ 3-07  
3-01 2x 314d 29110 4.2 1228 3.2 941  
2-00 2x 317d 22440 4.4 981 3.4 772

### PAPPYS DENVER MAGGIE

840 3201362795 99%RHA  
Born: December 2, 2019 Tag: 580  
• Reserve All-Utah Winter Calf 2020

Due: December 1, 2021 to  
Whey-Mat Doorman Rockstar

### Stantons High Octane-ET

CAN 11696704 EX-93-CAN ST'17 \*TY \*TV  
PTA +985M +10F +13P 99R 4/21  
PTA +2.42T +2.06UDC +.06FLC GTPI +2132G

### Brenland Doorman Desirable-ET

CAN 9913324 EX-90-CAN 2\*  
5-06 2x 365d 35644 5.2 1856 3.2 1149  
2-01 2x 365d 28281 4.6 1307 3.3 926

### Mr Chassity Gold Chip-ET

140145553 Excellent-95 ST'14 \*TY \*TV  
PTA -619M -23F -38P 99R 12/20  
PTA +1.52T +1.10UDC +1.14FLC GTPI +1753T

### Pappys Nadstar Margie-TW

65468297 Very Good-85 @ 5-01  
6-02 2x 362d 34190 3.8 1290 3.0 1013  
3-04 2x 365d 32420 3.9 1268 3.1 1014  
7-03 2x 365d 32730 3.9 1272 3.0 976  
Life: 2226d 190080 4.0 7541 3.0 5776

#### 3rd Dam

**Pappys R-Marker Margie-ET** EX-90 EEEV 2E  
5-02 2x 365d 48630 3.8 1863 3.0 1463  
1st Utah Milk & 3rd Utah Fat

Life: 1741d 171890 4.0 6864 3.2 2785

#### 4th Dam

**Wilonna Jubilant Melissa** EX-92 EEEV GMD  
4-11 2x 365d 46820 3.5 1640 3.1 1465

1st Utah Milk

Life: 2223d 202150 3.3 6653 3.2 6442

#### 5th Dam

**Wilonna Pontiac Melissa-ET** GP-80 DOM  
6-10 2x 365d 32520 3.7 1209 3.2 1052

#### 6th Dam

**Willowland Enhancer Molly** VG-85 DOM  
5-00 2x 365d 27420 4.3 1188 3.1 851  
Life: 1675d 108630 4.3 4673 3.1 3421

#### 7th Dam

**Willowland P Valiant Melissa** VG-89 VEEV  
4-03 2x 365d 28880 3.8 1091 3.2 916

#### 8th Dam

**Willowland Marvex Marilyn** VG-85 GMD  
9-04 2x 365d 25580 3.4 865 3.0 764  
Life: 2784d 175370 3.3 5806 3.1 4936

#### 9th Dam

**White-Lea Transmitter Margo** VG-86  
5-08 2x 301d 21570 3.2 684

## Lot 19

PAPPYS FARMS, LLC  
C/O TED PAPAGEORGE  
1594 W FARR WEST DR  
OGDEN, UT 84404  
801-389-6967

### Mr D Apple Diamondback

840003013721049 Excellent-93 \*RC \*TV \*TL \*TY  
PTA -393M -25F +0P 99R 4/21  
PTA +.1PL 3.12SCS -2.5DPR 2.8%DCE  
PTA +2.42T +1.82UDC +1.36FLC 99R 4/21  
GTPI +1892G

### Pappys Cinderdoor Paige

840 3139659134 Very Good-88 VEVV @ 3-07  
3-00 2x 287d 28820 4.1 1175 3.3 944  
2-00 2x 280d 23270 3.6 828 3.3 769

### PAPPYS D BACK PLAYFUL

840 3201362766 99%RHA  
Born: June 1, 2019 Tag: 551

Due: May 30, 2021 to  
Whey-Mat Doorman Rockstar

### Val-Bisson Doorman-ET

CAN 107281711 EX-90-CAN ST'16 \*TV \*TY  
PTA -503M +14F +8P 99R 4/21  
PTA +2.45T +1.59UDC +.73FLC GTPI +2167G

### Ms Delicious Apple-Red-ET

139236776 Excellent-94 2E  
7-02 2x 365d 46510 4.0 1844 3.3 1512  
• Reserve All-American R&W 125,000 Lb Cow 2015

### KH Cinderdoor-ET

NLD 969096262 \*TY \*TV  
PTA +409M -2F +21P 98R 4/21  
PTA +2.39T +.83UDC +.52FLC GTPI +1983G

### Pappys Sanchez Pinky

68786334 Excellent-91 EEV 2E  
5-04 2x 365d 29100 4.1 1184 3.1 901  
6-06 2x 313d 26430 4.3 1137 3.1 815  
4-02 2x 316d 25390 3.7 934 3.1 793  
Life: 1915d 149680 3.9 5900 3.2 4727

#### 3rd Dam

**Pappys Niles Peanut** VG-85 VG-MS  
6-11 2x 365d 26140 4.8 1247 3.5 918  
Life: 2337d 173420 4.6 7896 3.5 5291

# Western Spring National Sale 2021



**LA-FOSTER DUNDEE ADDIE-ET EX-91**  
3RD DAM OF LOT 20



**WHEY-MAT UNDENIED KELSI VG-85**  
DAM OF LOT 20

*Member Nom All-American Junior Best Three 2019*

## Lot 20

**MATTI, KAEL, TREY, KAYSON & STOCKTON LEAK**  
13322 N 4400 W  
CORNISH, UT 84308  
435-258-2250

### Croteau Lesperron Unix-ET

CAN 107567492 EX-96-CAN ST'17 \*TY \*TV  
PTA +549M +25F +12P 99R 4/21  
PTA +.7PL 2.91SCS -.2DPR 2.2%DCE  
PTA +2.45T +2.47UDC +.04FLC 98R 4/21  
GTPI +2366G

### Whey-Mat Undenied Kelsi

840 3150592983 Very Good-85 VVVVV @ 2-03  
• Member Nom All-American Jr Best Three 2019  
• 3rd Fall Calf, Western Spring National 2019  
• 4th Fall Calf, Western Fall National 2019  
• All-Utah Fall Calf 2019  
• Junior Champion, All-Utah Show 2019

### WHEY-MAT UNIX KASS

840 3212608961  
Born: June 21, 2020

### Amighetti Numero Uno-ET

ITA 17990915143 EX-90-HUN ST'15  
PTA -807M +32F -13P 99R 4/21  
PTA +.96T +1.02UDC -.45FLC GTPI +2247G

### Regan-ALH Domain Daya-ET

66625459 EX-93-2E-CAN 12\*  
7-10 2x 365d 45197 4.8 2165 3.6 1623  
Life: 5 Lacs 212195 4.3 9021 3.6 7657

### Our-Favorite Undenied-ET

840 3125220760 99%RHA \*TY \*TV \*TL \*TD  
PTA -37M +22F -4P 98R 4/21  
PTA +3.16T +.88UDC +1.17FLC GTPI +2177G

### R-John Aftershock Harlan-ET

840 3125545486 Very Good-88 EEEEE @ 6-01

#### 3rd Dam

**La-Foster Dundee Addie-ET EX-91 EEEVV**  
4-03 2x 305d 27270 3.7 1000 3.2 876

• Res Grand Champion, CA Jr State Show 2011

#### 4th Dam

**Dougal Lea Patience Amour EX-93 EEEEE 3E**  
9-11 2x 365d 32580 3.6 1176 3.1 998  
Life: 1852d 142990 4.2 5976 3.1 4394

#### 5th Dam

**Dougal Lea Kay Patience VG-88-CAN 2\***  
8-11 2x 365d 26488 4.4 1153 3.2 847  
Life: 7 Lacs 160019 4.3 6859 3.3 5340

#### 6th Dam

**Dougal Lea Dixie Kay EX-90**  
8-02 2x 365d 20139 3.9 787 4.0 796

#### 7th Dam

**Dougal Lea Ashley Empress VG-88-CAN**  
4-06 2x 330d 17017 3.8 650 3.1 529  
Life: 7 Lacs 102040 4.0 4065 3.3 3342

#### 8th Dam

**Dougal Lea Char Ashley VG-CAN 1\***  
6-08 2x 365d 17108 4.0 690 3.2 551

#### 9th Dam

**Dougal Midnight Charlotte VG-87-CAN**  
5-05 2x 365d 20262 3.5 712  
Life: 6 Lacs 101762 3.7 3750

#### 10th Dam

**Dougal Midnight Royal Jo VG-CAN**  
8-06 2x 305d 17011 4.2 421

# Western Spring National Sale 2021



**KM&EW SASHA RAE-RED-ET VG-87**  
DAM OF LOT 21



**SCIENTIFIC SWEETIE RAE-ET EX-92 2E**  
2ND DAM OF LOT 21

## Lot 21

**KENT, ROBYN & PAUL BUTTARS**  
550 S 1600 W  
LEWISTON, UT 84230  
435-258-2682

### BUTTER-DELL BAR SADI-RED-ET

840 3147814581 99%RHA  
Born: March 3, 2019 HM: 2559

Fresh: April 4, 2021

### Hylite Barbwire-Red-ET

CAN 9748330 Very Good-87 \*TY \*TV  
PTA -1091M -29F -25P 99R 4/21  
PTA -2.9PL 3.14SCS -2.9DPR 4.9%DCE  
PTA +1.21T -.121UDC +.76FLC 99R 4/21  
GTPI +1450G

### KM&EW Sasha Rae-Red-ET

66605510 Very Good-87 VG-MS @ 5-01  
4-11 2x 365d 31330 4.1 1280 3.4 1074  
6-04 2x 365d 29080 4.3 1254 3.6 1059  
3-07 2x 365d 26460 4.5 1195 3.6 965  
2-04 2x 365d 24250 4.2 1012 3.6 867  
Life: 1714d 122980 4.3 5318 3.6 4446

### Deslacs Shaquille-ET

CAN 103512991 GP-82-CAN \*RC \*TY \*TV  
PTA -720M -43F -36P 99R 4/21  
PTA +.36T +.06UDC +.83FLC GTPI +1516G

### Rainyridge Talent Barbara

CAN 7543170 Excellent-95 \*RC 14\*  
3-04 2x 365d 34465 3.6 1257 3.3 1133

• Unanimous All-American 5-Year-Old 2010

### KHW Kite Advent-Red-ET

133002953 Excellent-94 \*TV \*TL \*TD  
PTA -1639M -44F -44P 99R 4/21  
PTA +1.25T +.30UDC +.71FLC GTPI +1603G

### Scientific Sweetie Rae-ET

129869086 Excellent-92 EEEEE 2E \*RC \*TL \*TD  
3-11 2x 365d 28020 4.2 1189 3.3 924  
5-07 2x 305d 24390 5.0 1212 3.5 860  
2-03 2x 365d 21020 4.1 896 3.5 739

#### 3rd Dam

**Scientific Jubilant Rae-ET** EX-90 EEEVV DOM \*RC  
5-11 2x 365d 38880 4.1 1608 3.6 1403  
Life: 1394d 117590 4.0 4707 3.6 4242

#### 4th Dam

**C Hanoverhill Tony Rae** EX-96 3E GMD DOM \*TR  
6-11 2x 365d 40220 4.1 1661 3.3 1331  
Life: 2247d 166396 4.1 6904 3.4 5612

• Gr Champion Western National 1993

#### 5th Dam

**C Hanoverhill TT Roxette-ET** EX-94 2E GMD  
10-0 3x 365d 35040 4.3 1519 3.0 1063  
Life: 2104d 164789 4.1 6760 3.1 3587

#### 6th Dam

**Mil-R-Mor Roxette** EX-CAN 30\*  
Life: 6 Lact 121418 4.7 5728

#### 7th Dam

**C Glenridge Citation Roxy** EX-97 4E GMD 6\*  
10-1 2x 365d 25280 4.2 1061  
Life: 3620d 209784 4.5 9471

#### 8th Dam

**C Norton Court Model Vee** EX-90 6\*  
Life: 4183d 218629 3.9 8581

#### 9th Dam

**Norton Court Reflection Val** VG-85 5\*  
Life: 14 Lact 249583 3.7 9295

# Western Spring National Sale 2021



**GEN-ACE EPIC RYLEE 7580-ET VG-88**  
DAM OF LOT 22

## Lot 22

**KENT & DANIEL BUTTARS**  
550 S 1600 W  
LEWISTON, UT 84230  
435-258-2682

### BUTTER-DELL DOC RYLEA-ET

840 31478146191 99%RHA  
Born: July 10, 2019 HM: 2597

Due: June 26, 2021 to Peak Tropic-ET  
250H14605

### Woodcrest King Doc

840 3132417775 Excellent-90 \*TY \*TV \*TL \*TD  
PTA +1708M +77F +60P 99R 4/21  
PTA +.7PL 3.06SCS -1.7DPR 2.2%DCE  
PTA +3.40T +2.41UDC +2.14FLC 99R 4/21  
GTPI +2836G

### Gen-Ace Epic Rylee 7580-ET

72134402 Very Good-88 VG-MS @ 3-00  
3-09 2x 365d 25140 4.3 1081 3.1 777"

### Morningview McC Kingboy-ET

72044077 Excellent-92 \*TV \*TL \*TY \*TD  
PTA +825M +23F +23P 99R 4/21  
PTA +1.91T +1.56UDC +.22FLC GTPI +2341G

### WBC-ZBW Mack Daddy-ET

840 3012506777 Very Good-88  
3-01 3x 365d 39560 3.3 1303 3.4 1355  
1-11 3x 365d 37410 3.1 1154 3.2 1188

### Generations Epic-ET

CAN 111040016 Excellent-94 GM 12/14 \*TY \*TV  
PTA +682M +6F +18P 99R 4/21  
PTA +.95T +.36UDC +.77FLC GTPI +2175G

### Gen-Ace Outside Rylee-ET

61277756 Excellent-90 EVVEV @ 6-00  
1-11 2x 365d 26930 4.1 1104 3.4 905  
3-02 3x 365d 25570 3.6 911 3.3 854  
5-00 3x 295d 23010 3.3 770 3.2 746

#### 3rd Dam

**Markwell Durham Rylee-ET** EX-94 3E  
6-03 2x 365d 30190 4.0 1196 3.0 898  
Life: 1987d 137770 3.7 5062 3.2 4345

#### 4th Dam

**Markwell Bstar E Raven-ET** EX-95 3E GMD DOM  
4-09 2x 365d 37610 4.3 1580 3.4 1255  
Life: 2387d 160020 4.1 6623 3.6 5763

• 1st Dry Aged Cow Western Fall/Nat 1997  
5th Dam

**Markwell Mark Elite** EX-92 4E GMD DOM  
7-00 2x 365d 36230 3.9 1426 3.2 1165  
Life: 3736d 211430 3.8 8108 3.6 7533

#### 6th Dam

**Rockalli Mars Emily** EX-94 EEEEE 4E GMD DOM  
3-10 2x 365d 28270 3.7 1050 3.5 988  
Life: 3113d 182970 3.8 7016 3.5 6330

# Western Spring National Sale 2021

## Lot 23

UTAH STATE UNIVERSITY  
WELLSVILLE, UT 84339  
435-770-6781

### OH-River-Syc Byway-ET

71310557 VG-85-CAN ST'17 \*TY \*TV  
PTA +323M -30F -5P 99R 4/21  
PTA -1.0PL 2.97SCS -1.6DPR 2.7%DCE  
PTA +2.38T +2.26UDC +.17FLC 99R 4/21  
GTPI +1891G

### Utag Absolute Babbs

840 3133588340 Very Good-87 VVEVW \*RC

### UTAG BYWAY BABBLE

840 3149240039  
Born: May 1, 2019 HM: 2884

Due: June 24, 2021 to Our-Favorite C Limitless-ET

### Sully Hart Meridian-ET

69951907 GM 8/15 \*TY \*TV  
PTA +1939M +17F +38P 99R 4/21  
PTA +2.15T +1.61UDC -.50FLC GTPI +2266G

### Sandy-Valley Atwd Barbie-ET

69250651 Excellent-91  
2-04 3x 365d 32120 3.5 1118 3.3 1071  
4-09 3x 365d 29490 3.7 1091 3.4 989

### Apples Absolute-Red-ET

139358472 Excellent-94 \*CV \*TL \*TY \*TD  
PTA -1953M -15F -25P 99R 4/21  
PTA +2.14T +2.38UDC +1.58FLC GTPI +1513G

### Utag Baxter Barbie

66446743 Very Good-85 @ 5-03  
3-11 2x 365d 29700 4.5 1339 3.4 1014  
6-08 2x 365d 31470 4.0 1271 3.4 1059  
5-07 2x 333d 28600 4.1 1171 3.3 952  
Life: 1789d 139070 4.2 5872 3.4 4742

3rd Dam

### Utag Jolt Barbara-ET GP-80

4-06 2x 320d 30910 3.9 1214 3.4 1047  
Life: 2876d 226080 3.7 8289 3.4 7622

4th Dam

### Utag Aerostar Betsy Le-TW VG-85

8-09 2x 365d 29930 4.2 1264 3.1 940  
Life: 2403d 169810 4.1 6983 3.3 5642

5th Dam

### Utag Troy Baron 5 Betsy VG-85 VG-MS

2-02 2x 305d 19810 4.4 880 3.4 669

6th Dam

### Memorial-Acres SWD Baron 5-ET EX-91 2E

6-06 2x 365d 27480 3.1 858 3.0 826

7th Dam

### Montdalian Baha Baroness VG-88 VEEV DOM

5-07 2x 365d 27040 3.2 867 3.1 826

## Lot 24

UTAH STATE UNIVERSITY  
WELLSVILLE, UT 84339  
435-770-6781

### Mr Eskdale Incorruptible-ET

840 3128590789 \*TL \*TD  
PTA -165M +26F -17P 81R 4/21  
PTA -2.2PL 2.92SCS -2.6DPR 4.4%DCE  
PTA +2.22T +1.93UDC +.36FLC 79R 4/21  
GTPI +1955G

### Utag Chelios Chenille-ET

72429420 Excellent-90 EEEV 2E  
3-02 2x 365d 30760 4.2 1282 3.4 1036  
1-11 2x 365d 26310 4.0 1063 3.4 911

### UTAG INCOR CHIPPER

840 3142940043  
Born: May 13, 2019 HM: 2888

Due: June 7, 2021 to Mr D Apple Diamondback

Maternal sister to Effort Chintz

### Utag Atwood Chintzee EX-93 EEEEE 2E

2-11 2x 365d 26330 3.8 1005 3.5 925  
Life: 1596d 117130 3.8 4498 3.4 3982

### Even-Par Corey-ET

71630805 \*CD \*TY \*TV  
PTA +240M +26F +1P 99R 4/21  
PTA +1.92T +1.90UDC +.76FLC GTPI +2169G

### Ms Eskdale Hero Amazon-ET

72323220 Very Good-88

### Domicole Chelios-ET

CAN 7927543 VG-86-CAN EXTRA'12 \*TV \*TY  
PTA -33M +34F +7P 99R 4/21  
PTA +1.86T +1.20UDC +1.87FLC GTPI +2053G

### Utag Effort Chintz

66446721 Excellent-94 EEEV 3E  
8-10 2x 365d 29080 3.7 1066 3.4 986  
5-10 2x 350d 27100 3.7 991 3.3 893  
7-07 2x 365d 24460 3.7 916 3.4 825  
Life: 2230d 150640 3.7 5618 3.3 5039

3rd Dam

### Utag Milan Chintz-ET VG-87

4-00 2x 292d 25760 3.9 995 3.2 830  
Life: 1652d 117250 3.6 4221 3.2 3795

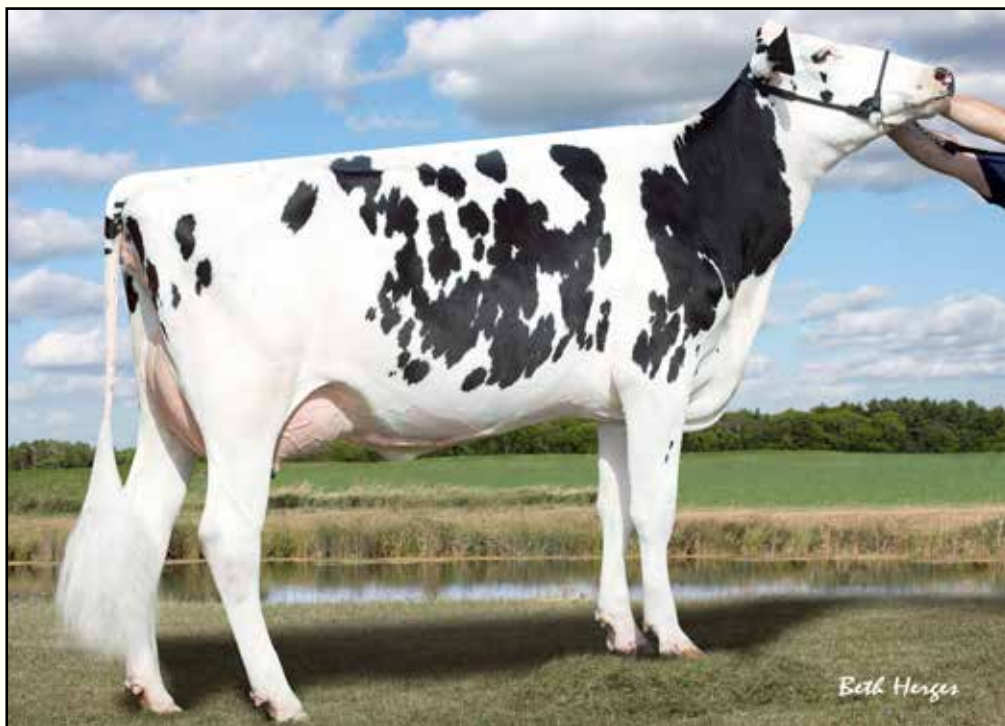
4th Dam

### Utag Sierra Elicit Chic-TW VG-87 EX-MS

4-04 2x 329d 28320 4.2 1191 3.1 874



# Western Spring National Sale 2021



**MS ROCKHOME BAXTER LUCKY-ET VG-87**  
2ND DAM OF LOT 25

## Lot 25

STEVEN GILLINS  
C/O COREY GILLINS  
PO BOX 291  
MINERSVILLE, UT 84752  
435-386-2458

### Holyland Simplicity-P-RC-ET

840 3136246981 \*RC \*PC \*TY \*TV  
PTA +1093M +45F +35P 97R 4/21  
PTA +3.8PL 3.10SCS -1.1DPR 1.7%DCE  
PTA +1.14T +1.16UDC +1.05FLC 91R 4/21  
GTPI +2512G

### Canyon-Breeze S Laurissa-ET

72713898 Very Good-85 VG-MS @ 3-09 \*PC \*TR  
4-02 3x 365d 30960 4.0 1249 3.5 1098  
3-02 3x 297d 27100 4.1 1117 3.5 958  
5-06 3x 242d 22260 4.0 893 3.4 749  
2-00 3x 365d 22760 4.3 989 3.7 836  
Life: 1327d 105490 4.1 4367 3.5 3742

### CANYON-BREEZE SIMP CRYSTAL

840 3129405646 99%RHA  
Born: March 25, 2019 Tag: 7324

Due: June 11, 2021 to Cycle Jails Journey-Red-ET  
7H015210

### Bacon-Hill Pety Modesty-ET

3013654627 Very Good-86 GM 8/18 TR TP TC TV TY  
PTA +247M +48F +18P 99R 4/21  
PTA -.05T +1.17UDC +.63FLC GTPI +2434G

### Ms Sunview Relief Sundew-ET

840 3012643765 Very Good-87 GMD  
2-01 4x 365d 35340 4.0 1405 3.4 1211  
Life: 1494d 118160 3.8 4511 3.3 3892

### Erbcrest Satchel P

CAN 11103473 \*RC \*PO \*TY  
PTA -553M -36F -11P 99R 4/21  
PTA +.56T +.69UDC -.28FLC GTPI +1685G

### Ms Rockhome Baxter Lucky-ET

65503364 Very Good-87 VG-MS  
2-01 2x 365d 23760 4.5 1069 3.2 756

#### 3rd Dam

**Calbrett Shottle Linda-ET VG-88 VEVVV**  
2-04 3x 365d 46200 5.3 2428 3.2 1471

#### 4th Dam

**Petinesca-I Durham Ladina-ET VG-89-CAN**  
3-02 2x 365d 33497 4.1 1367 3.3 1116

#### 5th Dam

**Savage-Leigh Bellwood Linda EX-92 2E GMD**  
2-10 2x 365d 40240 5.8 2349 3.4 1358  
Life: 1312d 126760 5.2 6576 3.2 4076

#### 6th Dam

**Savage-Leigh Star Linda-ET VG-87 EX-MS GMD**  
2-02 2x 365d 30890 4.0 1236 3.1 952

#### 7th Dam

**Savage-Leigh Glenview Linda EX-90 GMD**  
6-08 2x 365d 41820 4.6 1936 3.0 1247  
Life: 1892d 150300 4.4 6636 3.2 4813

#### 8th Dam

**Savage-Leigh Lindas Chairman GP-84**  
5-10 2x 365d 30620 3.8 1167 3.3 1013  
Life: 1972d 121550 3.9 4718 3.3 4013

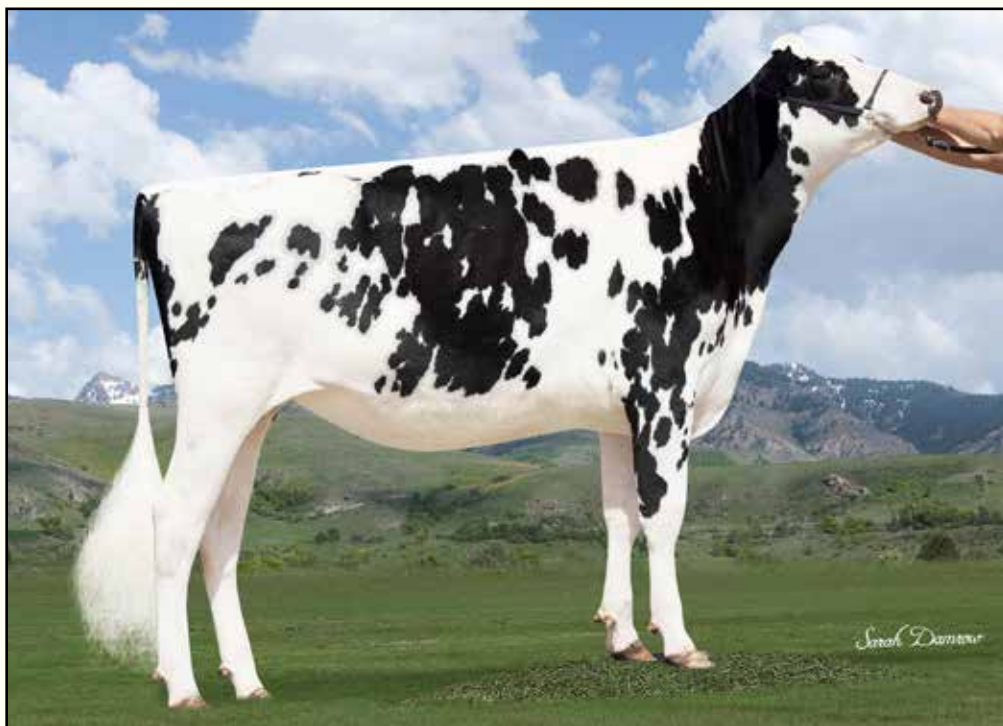
#### 9th Dam

**Savage-Leigh Creek Lydia VG-88 VVVV**  
4-11 2x 344d 16390 4.2 685 3.1 511

#### 10th Dam

**Savage-Leigh Kate Linda VG-85**  
6-01 2x 305d 19940 4.0 793

# Western Spring National Sale 2021



**BLACKSTONE SOLOMON MS DIOR**  
**DAM OF LOT 26**

*1st Fall Yearling, Western National Show 2020*

## Lot 26

ZACHARY & DANIELLE DAMROW  
8989 W POCATELLO CREEK RD  
POCATELLO, ID 83201  
920-344-2065

### BLACKSTONE A ASHOKA

840 3216973946 99%RHA \*RC  
Born: December 2, 2020 Tag: 2460

### Mr Ansly Addiction-P-Red-ET

72128091 Excellent-90 \*PC \*CD \*TY \*TV  
PTA -1951M -11F -19P 99R 4/21  
PTA +2.3PL 2.64SCS +1.9DPR 2.7%DCE  
PTA +.70T +1.04UDC -.12FLC 98R 4/21  
GTPI +2007G

### Blackstone Solomon Ms Dior

840 3200121995

• *1st Fall Yearling, Western National Show 2020*

### Tiger-Lily Ladd P-Red-ET

69405976 Excellent-91 \*PC \*CD \*TY \*TV  
PTA -1371M -15F -13P 99R 4/21  
PTA +1.29T +.83UDC +.36FLC GTPI +2068G

### Ms Apples Ainsley-ET

69822262 Excellent-90 \*RC \*CV  
2-04 2x 277d 19050 4.5 855 3.4 641

### Walnutlawn Solomon-ET

CAN 11775998 99%RHA \*TV \*TL \*TY \*TD  
PTA -557M -15F -11P 99R 4/21  
PTA +2.61T +1.68UDC +.41FLC GTPI +1974G

### CL&BSG Dolce & Gabbana

840 3135938834 Good Plus-80 @ 2-05  
1-11 3x 261d 15510 3.8 582 3.6 564  
• *5th Fall Yearling, Western Spring National 2018*  
• *All-Idaho Fall Calf 2017*  
• *Junior All-Idaho Fall Calf 2017*

### Mr D Apple Diamondback

840003013721049 Excellent-93 \*RC \*TV \*TL \*TY  
PTA -393M -25F +0P 99R 4/21  
PTA +2.42T +1.82UDC +1.36FLC GTPI +1892G

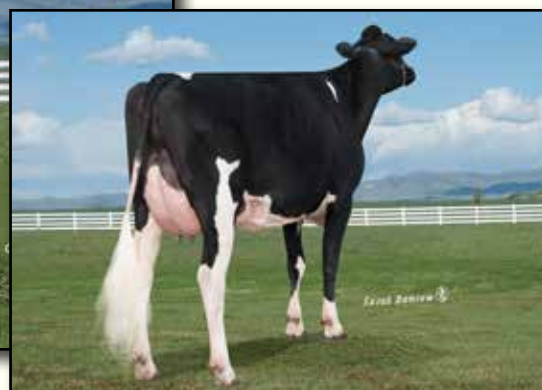
### SDG-GH Gold Chip Georgia

840 3009640487 Very Good-87 VG-MS @ 3-10

# Western Spring National Sale 2021



**CL&BSG BRAWLIN GUCCI VG-85**  
DAM OF LOT 27



**SDG-GH GOLD CHIP GEORGIA VG-87**  
2ND DAM OF LOT 27; 3RD DAM OF LOT 26

## Lot 27

ZACHARY & DANIELLE DAMROW  
8989 W POCATELLO CREEK RD  
POCATELLO, ID 83201  
920-344-2065

### BLACKSTONE GUCCI BANDANA

840 314598014 Good Plus-83 @ 2-02  
Born: March 6, 2018 Tag: 1516  
1-11 3x 305d 20780 3.8 799 3.5 719

Fresh: April 7, 2021

### Walnutlawn Solomon-ET

CAN 11775998 \*TY \*TV A2A2  
PTA -557M -15F -11P 99R 4/21  
PTA -1.3PL 2.87SCS +0.2DPR 2.6%DCE  
PTA +2.61T +1.68UDC +.41FLC 99R 4/21  
GTPI +1974G

### CL&BSG Brawlin Gucci

840 3128978137 Very Good-85 VG-MS @ 2-10  
2-04 3x 365d 28790 3.3 960 3.5 1011  
3-08 3x 163d 17230 3.9 666 3.4 580

### Val-Bisson Doorman-ET

CAN 107281711 EX-90-CAN \*TY \*TV A2A2  
PTA -503M +14F +8P 99R 4/21  
PTA +2.45T +1.59UDC +.73FLC GTPI +2167G

### Misty Springs Lavanguard Sue

CAN 9979603 VG-89 VVEE-CAN 11\*  
4-03 2x 365d 30124 4.6 1380 3.2 968  
2-01 2x 365d 27487 4.4 1197 3.3 906

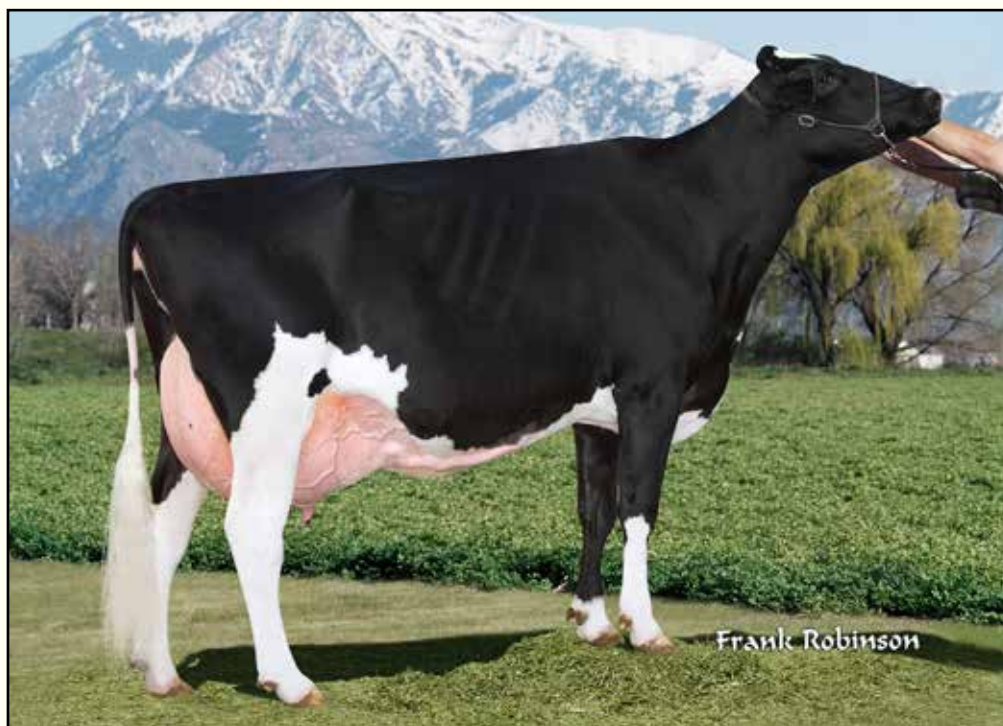
### Gen-I-Beq Brawler-ET

CAN 104854291 VG-87-CAN \*TY \*TV  
PTA +329M +3F +17P 99R 4/21  
PTA +.31T -.04UDC +.30FLC GTPI +2092G

### SDG-GH Gold Chip Georgia

840 3009640487 Very Good-87 VG-MS @ 3-10

# Western Spring National Sale 2021



**PAPPYS GOLDWYN REBECA-ET EX-92 EEEV 2E**  
3RD DAM OF LOT 28

## Lot 28

**JAMES MANNI**  
1630 FARR WEST DR  
OGDEN, UT 84404  
385-405-8021

### Scientific Drive-ET

143785826 \*TY \*TV  
PTA +0M -3F +0P 96R 4/21  
PTA -2.2PL 2.75SCS -3.8DPR 2.9%DCE  
PTA +3.01T +1.95UDC .98FLC 94R 4/21  
GTPI +1997G

### Manni O Kaliber Reba

840 3126310533 Excellent-90 VEVVE @ 4-04  
3-01 2x 306d 22990 4.5 1044 3.6 825

### MANNI DRIVE RIGINA

840 3201362783 99%RHA  
Born: September 3, 2019 Tag: 568

Due: August 3, 2021 to Maverick Crush (sexed)

### Pen-Col Merrick

71647617 \*TY \*TV  
PTA +388M +34F +2P 99R 4/21  
PTA +2.57T +2.36UDC +.72FLC GTPI +2226G

### Scientific D Cambria Rae-ET

73202492 Excellent-90 \*RC \*TY  
4-04 3x 347d 39880 4.4 1743 3.3 1310  
2-05 3x 365d 31000 4.4 1373 3.5 1077

### GS Alliance O Kaliber

CHE 120100409489  
PTA -479M +32F +6P 97R 4/21  
PTA +2.23T +1.72UDC +.51FLC GTPI +2177G

### Pappys Windbrook Rebeca-ET

840 3126310395 Excellent-90 EX-MS 2E  
4-10 2x 365d 34270 4.2 1443 3.2 1095  
3-09 2x 311d 27700 4.1 1135 3.2 890  
2-09 2x 307d 27600 3.9 1070 3.2 877  
Life: 1279d 109570 4.0 4420 3.2 3496

### 3rd Dam

#### Pappys Goldwyn Rebeca-ET EX-92 EEEV 2E

6-05 2x 364d 35280 3.3 1173 3.1 1079  
• 3rd Junior 2-Year-Old, Western Sprg Nat'l 2010

### 4th Dam

#### Markwell Durham Raven-ET EX-93 EEEEE 3E

4-07 2x 365d 38050 3.7 1422 3.2 1210  
Life: 1686d 158750 3.6 5691 3.2 5077  
• 1st 5-Yr-Old & HM Gr Champ, All-UT Show 2009  
• 1st Junior 2-Year-Old, Western Sprg Nat'l 200

### 5th Dam

#### Markwell Rudolph Rhoda-ET EX-92 3E DOM

3-11 2x 365d 33890 4.0 1345 3.3 1114  
Life: 2371d 153380 3.8 5854 3.4 5232

### 6th Dam

#### Markwell Bstar E Raven-ET EX-95 3E GMD DOM

4-09 2x 365d 37610 4.3 1580 3.4 1255  
Life: 2387d 160020 4.1 6623 3.6 5763

### 7th Dam

#### Markwell Mark Elite EX-92 4E GMD DOM

7-00 2x 365d 36230 3.9 1426 3.2 1165  
Life: 3736d 211430 3.8 8108 3.6 7533

### 8th Dam

#### Rockalli Mars Emily EX-94 EEEEE 4E GMD DOM

3-10 2x 365d 28270 3.7 1050 3.5 988  
Life: 3113d 182970 3.8 7016 3.5 6330

# Western Spring National Sale 2021



**PAPPYS GOLDWYN RAVE-ET EX-91-CAN**  
**FULL SISTER TO 3RD DAM OF LOT 29**  
*Reserve All-Americian Senior 2-Year-Old 2012*

## Lot 29

**JAMES MANNI**  
 1630 FARR WEST DR  
 OGDEN, UT 84404  
 385-405-8021

### **Pappys Atwood JD-ET**

840 3201362719 \*TY \*TV  
 PTA -399M -25F -16P 46R 4/21  
 PTA -1.2PL 2.99SCS -1.6DPR 3.6%DCE  
 PTA +1.44T +.68UDC +.15FLC 46R 4/21  
 PTPI +1682

### **Manni Doorman Regina**

840 3139659219 Good Plus-81 @ 2-06

### **MANNI JD REGINA**

840 3201362853 99%RHA  
 Born: September 2, 2020 Tag: 638

### **Maple-Downs-I G W Atwood-ET**

CAN 8956379 Excellent-90 \*TR \*TV \*TL \*TY \*TD  
 PTA -366M +11F -10P 99R 4/21  
 PTA +2.95T +1.94UDC +2.14FLC GTPI +1909G

### **Pappys Ryan Felma**

62195057 Excellent-93 3E  
 Life: 3291d 323900 3.0 9799 3.2 10277  
 • 1st 125,000 Lb Cow, Western Spring Nat'l 2013

### **Val-Bisson Doorman-ET**

CAN 107281711 EX-90-CAN ST'16 \*TV \*TY  
 PTA -503M +14F +8P 99R 4/21  
 PTA +2.45T +1.59UDC +.73FLC GTPI +2167G

### **Pappys Windbrook Rebeca-ET**

840 3126310395 Excellent-90 EX-MS 2E  
 4-10 2x 365d 34270 4.2 1443 3.2 1095  
 3-09 2x 311d 27700 4.1 1135 3.2 890  
 2-09 2x 307d 27600 3.9 1070 3.2 877  
 Life: 1279d 109570 4.0 4420 3.2 3496

### *3rd Dam*

#### **Pappys Goldwyn Rebeca-ET EX-92 EEEVV 2E**

6-05 2x 364d 35280 3.3 1173 3.1 1079  
 • 3rd Junior 2-Year-Old, Western Sprg Nat'l 2010  
*4th Dam*

#### **Markwell Durham Raven-ET EX-93 EEEEE 3E**

4-07 2x 365d 38050 3.7 1422 3.2 1210  
 Life: 1686d 158750 3.6 5691 3.2 5077  
 • 1st 5-Yr-Old & HM Gr Champ, All-UT Show 2009  
 • 1st Junior 2-Year-Old, Western Sprg Nat'l 200  
*5th Dam*

#### **Markwell Rudolph Rhoda-ET EX-92 3E DOM**

3-11 2x 365d 33890 4.0 1345 3.3 1114  
 Life: 2371d 153380 3.8 5854 3.4 5232  
*6th Dam*

#### **Markwell Bstar E Raven-ET EX-95 3E GMD DOM**

4-09 2x 365d 37610 4.3 1580 3.4 1255  
 Life: 2387d 160020 4.1 6623 3.6 5763  
*7th Dam*

#### **Markwell Mark Elite EX-92 4E GMD DOM**

7-00 2x 365d 36230 3.9 1426 3.2 1165  
 Life: 3736d 211430 3.8 8108 3.6 7533  
*8th Dam*

#### **Rockalli Mars Emily EX-94 EEEEE 4E GMD DOM**

3-10 2x 365d 28270 3.7 1050 3.5 988  
 Life: 3113d 182970 3.8 7016 3.5 6330

# Western Spring National Sale 2021



**BUDJON-JK EMILYS EDAIR-ET EX-95 2E**  
**DAM OF LOT 30**

*Reserve All-American Junior 3-Year-Old 2010*

## Lot 30

**CRANEHILL GENETICS & JOHNNY MACHADO**  
 C/O RYAN MATHERON  
 21859 CRANE AVE  
 HILMAR, CA 95324  
 209-634-7523

### Braedale Goldwyn

CAN 10705608 GP-CAN GM 12/11 \*CD \*TV \*TL  
 PTA -728M -7F -13P 99R 4/21  
 PTA -1.6PL 2.83SCS -1.2DPR 2.5%DCE  
 PTA +.99T +.56UDC +.72FLC 99R 4/21  
 GTPI +1838G

### Budjon-JK Emilys Eclair-ET

138418546 Excellent-95 EEEEE 2E  
 4-03 2x 365d 38420 3.2 1241 3.3 1264  
 5-11 2x 365d 37850 3.5 1307 3.2 1204  
 3-03 2x 330d 27000 3.5 957 3.3 904  
 Life: 1591d 148190 3.4 5020 3.3 4850  
 • Reserve All-American Junior 3-Year-Old 2010  
 • Reserve All-Canadian Junior 3-Year-Old 2010

### CAL-DENIER-I GLDWYN EPPY-ET

840 3214633461 \*CD  
 Born: September 2, 2020 Tag: 17852

### Shoremar James

CAN 5902195 GP-81-CAN GM 2/04 \*TV \*TL  
 PTA -1397M -31F -24P 99R 4/21  
 PTA -1.09T -1.44UDC -1.46FLC GTPI +1267G

### Braedale Baler Twine-ETS

CAN 6860888 VG-86-CAN 33\*  
 2-01 2x 365d 30906 4.9 1521 3.2 993

### Regancrest Dundee-ET

127640114 Excellent-95 \*TV \*TL \*TY  
 PTA -1078M -58F -32P 99R 4/21  
 PTA +.42T +.55UDC -.29FLC GTPI +1339G

### Budjon-JK Storm Emily-ET

133351712 Excellent-92 EEEEE 2E DOM  
 4-08 2x 365d 41090 3.7 1515 3.2 1329  
 2-04 2x 365d 32730 3.7 1198 3.3 1071  
 Life: 1143d 105520 3.6 3831 3.3 3468  
 • Reserve All-American Senior 2-Year-Old 2005

### 3rd Dam

**Budjon-JK Linjet Eileen-ET EX-96 4E GMD DOM**  
 5-06 2x 365d 44703 3.7 1647 3.3 1467  
 Life: 2106d 194050 3.6 6935 3.4 6518  
 • Reserve All-American Aged Cow 2005  
 • All-American 5-Year-Old 2004

### 4th Dam

**Budjon-JK Encore Electra-ET EX-95 2E GMD 4\***  
 6-04 2x 365d 46830 4.0 1866 2.8 1294  
 Life: 2123d 1192280 3.6 6858 3.0 5733  
 • HM All-American 125,000 Lb Cow 2005  
 • HM All-American Aged Cow 2004  
 • Reserve All-American Senior 3-Year-Old 2001

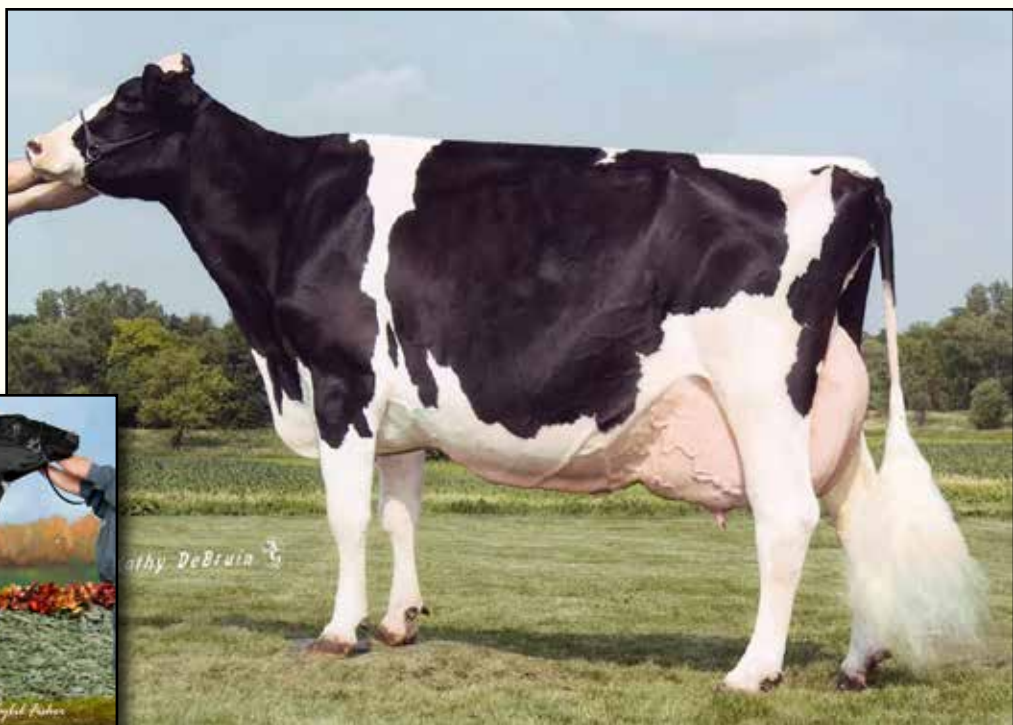
### 5th Dam

**Krull Broker Elegance EX-96 3E GMD DOM 1\***  
 5-07 2x 365d 40950 3.7 1522 3.3 1350  
 Life: 2356d 183710 3.7 6878 3.4 6267  
 • HM All-American Aged Cow 1999  
 • HM All-Canadian Mature Cow 1999

### 6th thru 9th Dams

**Krull Starbuck Excellency EX-90 GMD DOM**  
 3-03 2x 365d 27140 3.5 937 3.4 930  
**Krull TT Excellency EX-90 VEEE DOM**  
 3-02 2x 363d 24319 3.5 862 3.4 829  
 Life: 1733d 109780 3.7 4077 3.3 3605  
**Krull Boot Mark Excellency EX-92 2E GMD**  
 6-06 2x 365d 27410 3.8 1040 3.1 868  
 Life: 3026d 201440 3.5 7105 3.0 4634  
**Krull Kingstead Excellency EX-92 4E GMD**  
 Life: 3364d 179790 3.6 6436

# Western Spring National Sale 2021



**GOLDEN-OAKS CHAMP RAE EX-93 3E**  
3RD DAM OF LOT 31



**GOLDEN-OAKS SID CHARLISE VG-88-CAN**  
MATERNAL SISTER TO DAM OF LOT 31  
*Junior Champion, International Show 2015*

## Lot 31

JAXON BETTENCOURT  
PO BOX 942  
HILMAR, CA 95324  
209-262-4019

### Brenland Denver

CAN 12074893 \*TY \*TV  
PTA +469M +27F +12P 96R 4/21  
PTA -.5PL 2.81SCS -2.7DPR 3.2%DCE  
PTA +2.88T +1.78UDC +.02FLC 94R 4/21  
GTPI +2180G

### Golden-Oaks Defi Chelle-ET

840 3133012645 Very Good-85 VVVVV @ 3-01  
2-06 2x 322d 24260 3.4 866 3.3 837

*Maternal sister to Defi Chelle*

### Golden-Oaks Sid Charlise VG-88-CAN

- Unanimous All-American Fall Calf 2015
- Junior Champion, International Show 2015

### BEST-BETT DENVER CHELLE

840 3214632778 99%RHA  
Born: March 3, 2020 Tag: 17169

### Stantons High Octane-ET

CAN 11696704 EX-93-CAN ST'17 \*TY \*TV  
PTA +985M +10F +13P 99R 4/21  
PTA +2.42T +2.06UDC +.06FLC GTPI +2132G

### Brenland Doorman Desirable-ET

CAN 9913324 EX-90-CAN 2\*  
5-06 2x 365d 35644 5.2 1856 3.2 1149  
2-01 2x 365d 28281 4.6 1307 3.3 926

### Scientific B Defiant-ET

141123484 Very Good-87 \*RC \*TV \*TL \*TY \*TD  
PTA +54M -54F -13P 99R 4/21  
PTA +2.66T +1.71UDC +.91FLC GTPI +1658G

### Golden-Oaks GC Chalise-ET

71639870 Excellent-91 EEVVE @ 3-07  
3-04 3x 365d 30120 4.3 1296 3.6 1071  
5-06 3x 167d 15590 5.1 790 3.3 521  
2-02 3x 199d 14890 4.7 699 3.5 521

### 3rd Dam

**Golden-Oaks Champ Rae EX-93 EEVVE 3E**  
6-04 3x 365d 41590 4.1 1714 3.2 1319  
Life: 1455d 134060 4.4 5884 3.4 4522

### 4th Dam

**Scientific Beauty Rae-ET EX-90 VEEVV DOM**  
4-03 2x 365d 33710 4.7 1595 3.7 1243

### 5th Dam

**Scientific Jubilant Rae-ET EX-90 DOM \*RC**  
5-11 2x 365d 38880 4.1 1608 3.6 1403  
Life: 1394d 117590 4.0 4707 3.6 4242

### 6th Dam

**C Hanoverhill Tony Rae EX-96 3E GMD DOM 5\***  
6-11 2x 365d 40220 4.1 1661 3.3 1331  
Life: 2247d 166396 4.1 6904 3.4 5612

- HM All-American Junior 2-Year-Old 1988

### 7th Dam

**C Hanoverhill TT Roxette-ET EX-94 2E GMD**  
10-0 3x 365d 35040 4.3 1519 3.0 1063  
Life: 2104d 164789 4.1 6760 3.1 3587

### 8th thru 10th Dams

**Mil-R-Mor Roxette EX-CAN 30\***

Life: 6 Lact 121418 4.7 5728

**C Glenridge Citation Roxy EX-97 4E GMD**

10-1 2x 365d 25280 4.2 1061

Life: 3620d 209784 4.5 9471

**C Norton Court Model Vee EX-90**

Life: 4183d 218629 3.9 8581

# Western Spring National Sale 2021



**GOLDEN-OAKS BEEMER CHLOE VG-86**  
DAM OF LOT 32

## Lot 32

BRANDON ALMEIDA

### Brenland Denver

CAN 12074893 \*TY \*TV  
PTA +469M +27F +12P 96R 4/21  
PTA -.5PL 2.81SCS -2.7DPR 3.2%DCE  
PTA +2.88T +1.78UDC +.02FLC 94R 4/21  
GTPI +2180G

### Golden-Oaks Beemer Chloe-ET

840 3132672313 Very Good-86 VG-MS @ 2-03

Maternal sister to Beemer Chloe

### Golden-Oaks Sid Charlise VG-88-CAN

- Unanimous All-American Fall Calf 2015
- Junior Champion, International Show 2015

### BRAND-O DENVER COCO-ET

840 3214632797 99%RHA  
Born: March 8, 2020 Tag: 17188

### Stantons High Octane-ET

CAN 11696704 EX-93-CAN ST'17 \*TY \*TV  
PTA +985M +10F +13P 99R 4/21  
PTA +2.42T +2.06UDC +.06FLC GTPI +2132G

### Brenland Doorman Desirable-ET

CAN 9913324 EX-90-CAN 2\*  
5-06 2x 365d 35644 5.2 1856 3.2 1149  
2-01 2x 365d 28281 4.6 1307 3.3 926

### Pol Butte Mc Beemer-ET

CAN 7525863 EX-92 \*TY \*TV  
PTA -37M -4F -6P 99R 4/21  
PTA +2.34T +1.48UDC +.88FLC GTPI +1750G

### Golden-Oaks GC Chalise-ET

71639870 Excellent-91 EEVVE @ 3-07  
3-04 3x 365d 30120 4.3 1296 3.6 1071  
5-06 3x 167d 15590 5.1 790 3.3 521  
2-02 3x 199d 14890 4.7 699 3.5 521

### 3rd Dam

**Golden-Oaks Champ Rae** EX-93 EEVVE 3E  
6-04 3x 365d 41590 4.1 1714 3.2 1319  
Life: 1455d 134060 4.4 5884 3.4 4522

### 4th Dam

**Scientific Beauty Rae-ET** EX-90 VEEVV DOM  
4-03 2x 365d 33710 4.7 1595 3.7 1243

### 5th Dam

**Scientific Jubilant Rae-ET** EX-90 DOM \*RC  
5-11 2x 365d 38880 4.1 1608 3.6 1403  
Life: 1394d 117590 4.0 4707 3.6 4242

### 6th Dam

**C Hanoverhill Tony Rae** EX-96 3E GMD DOM 5\*  
6-11 2x 365d 40220 4.1 1661 3.3 1331  
Life: 2247d 166396 4.1 6904 3.4 5612

- HM All-American Junior 2-Year-Old 1988

### 7th Dam

**C Hanoverhill TT Roxette-ET** EX-94 2E GMD  
10-0 3x 365d 35040 4.3 1519 3.0 1063  
Life: 2104d 164789 4.1 6760 3.1 3587

### 8th thru 10th Dams

**Mil-R-Mor Roxette** EX-CAN 30\*  
Life: 6 Lact 121418 4.7 5728

**C Glenridge Citation Roxy** EX-97 4E GMD  
10-1 2x 365d 25280 4.2 1061  
Life: 3620d 209784 4.5 9471

**C Norton Court Model Vee** EX-90  
Life: 4183d 218629 3.9 8581



# Western Spring National Sale 2021

## Lot 33

WILLIAM STOLTZFUS  
3694 N 1400 E  
BUHL, ID 83316  
208-420-4723

### Mapel Wood Brewmaster

CAN 11161715 EX-95-CAN EXTRA'15  
PTA +627M +91F +23P 99R 4/21  
PTA +.5PL 2.83SCS -.9DPR 2.1%DCE  
PTA +.87T -.11UDC +.47FLC 99R 4/21  
GTPI +2526G

### Wilonna Dillon Fresca-Red

141973070 Excellent-90 EEEVV @ 7-07  
3-11 2x 305d 20570 3.6 750 3.3 689  
3-00 2x 304d 19490 3.3 641 3.3 652  
6-02 2x 305d 18720 4.4 833 3.3 621  
5-01 2x 305d 18930 4.1 778 3.3 622  
7-04 2x 305d 18420 4.1 754 3.5 639  
Life: 1940d 113760 3.9 4484 3.4 3838

### WILONNA BREW FABLE

840 3161002965 \*RC  
Born: July 28, 2019 Tag: 146

Due: September 1, 2021 to Ja-Bob Jordan-Red

### Schillview Garrett-ET

52805710 GM 8/10 SP'13  
PTA +486M +0F +9P 99R 4/21  
PTA -.46T -1.27UDC +.11FLC GTPI +1979

### Gen-I-Beq Shottle Bombi

CAN 102438051 EX-94-2E 26\*  
5-10 2x 365d 55289 3.7 2028 3.3 1819  
2-01 2x 365d 31870 5.0 1609 3.4 1087

### K-Giltex Adve Dillon-Red-ET

138736983 Very Good-85  
PTA -1196M -51F -50P 93R 4/21  
PTA +.55T -.62UDC -.16FLC GTP +1437G

### Wilonna Redman Fayvor

139481505 Very Good-86 VG-MS @ 5-06 \*RC  
5-02 2x 305d 23790 4.5 1071 3.4 799

### 3rd Dam

**Free-State Linjet Fancy-ET** EX-92 EEEEE 4E  
5-04 2x 305d 21000 4.2 875 3.4 722  
Life: 3502d 210740 4.1 8554 3.5 7400

### 4th Dam

**Wilonna C Fancy Gay-ET** EX-92 VEVEE 3E  
4-02 2x 365d 24970 4.1 1020 3.5 864  
Life: 3684d 196870 4.1 8081 3.4 6776

### 5th Dam

**Skagvale Fancy Gay** EX-90 EEEV  
3-04 2x 362d 22700 4.7 1070 3.5 794  
Life: 3578d 209000 4.2 8793 3.3 6906

### 6th Dam

**Skagvale Proud Gay** EX-91 2E  
Life: 1890d 119880 3.8 4291 2.8 3490

### 7th Dam

**Skagvale Telstar Gay** EX-92 2E  
Life: 1912d 117870 4.1 4723

### 8th Dam

**Skagvale Gay Rockette** EX-93 4E GMD  
Life: 3636d 218810 3.6 7975

### 9th thru 11th Dams

**Skagvale Delightful Gay** EX-90  
Life: 4678d 236850 4.1 9670

**Skagvale Netherland Gay** EX-90 3E  
Life: 12 Lact 191641 3.8 7374

**Puget Sound Netherland Grace** EX-93 3E  
Life: 11 Lact 217546 3.5 7544

## Lot 34

ZAIDIE HARRIS  
300 N HIGHWAY 91  
RICHMOND, UT 84333  
435-881-5135

### Maverick Crush

CAN 12042760 \*TY \*TV  
PTA -943M -52F -15P 99R 4/21  
PTA +2.5PL 2.33SCS +2.1DPR 2.6%DCE  
PTA +2.55T +1.51UDC +1.43FLC 99R 4/21  
GTPI +2035G

### Cache-Valley Xanders Joy

840 3131847321 Very Good-85 @ 3-09  
4-03 2x 305d 22760 3.5 798 3.0 690  
3-03 3x 322d 21420 3.5 760 3.1 670  
1-11 2x 365d 21830 3.8 825 3.4 732

### CACHE-VALLEY CRUSH LUNA

840 3144929561 Good Plus-80 @ 2-05  
Born: December 6, 2017 Tag: 3251  
2-01 2x 272d 17390 4.0 700 3.5 610

### Val-Bisson Doorman-ET

CAN 107281711 EX-90-CAN \*TY \*TV A2A2  
PTA -503M +14F +8P 99R 4/21  
PTA +2.45T +1.59UDC +.73FLC GTPI +2167G

### EDG Claire Cling-ET

71494758 VG-85-CAN 7\*  
2-00 2x 365d 28929 4.7 1369 3.5 1003

### Cache-Valley Alexander 354

72848820  
PTA -369M +1F -19P 79R 4/21  
PTA +.72T -.02UDC +.09FLC TPI +1709

### Cache-Valley Laramie 2294

66959303 Excellent-91 EEEVE @ 5-01  
4-09 3x 365d 41730 3.1 1309 2.9 1230  
3-03 3x 365d 40160 2.9 1147 3.1 1241  
6-06 3x 365d 39510 2.8 1097 2.9 1146  
Life: 1808d 171730 3.0 5091 3.0 5220  
• 3rd 5-Year-Old, Western Spring Nat'l 2014

### Pine-Shelter Laramie Mor-ET

134170608 Excellent-90 \*TV \*TL A2A2  
PTA +558M -42F -1P 99R 4/21  
PTA +.70T -.55UDC +.58FLC GTPI +1416

### Cache-Valley Ken Champin-ET

61556866 Very Good-88 VG-MS @ 7-09  
4-11 3x 364d 36900 2.1 767 3.0 1114  
3-04 3x 365d 32950 2.6 869 3.2 1048  
6-01 3x 365d 33070 2.9 964 3.0 996  
Life: 1928d 164760 2.8 4594 3.1 5085

# Western Spring National Sale 2021



RANCHO-VISTA JAMES KARENA EX-94 3E  
3RD DAM OF LOT 35

## Lot 35

JOEY AIROSO & KEN MELVOLD  
PO BOX 1087  
TIPTON, CA 93272  
559-431-5954

### AIR-OSA-KM DENVER 29462

840 3222975325 99%RHA  
Born: December 1, 2020 Tag: 29462

### Brenland Denver

CAN 12074893 \*TY \*TV  
PTA +469M +27F +12P 96R 4/21  
PTA -.5PL 2.81SCS -2.7DPR 3.2%DCE  
PTA +2.88T +1.78UDC +.02FLC 94R 4/21  
GTPI +2180G

### Air-Osa-KM Beemer 22502

840 3141658213 Very Good-87 VG-MS @ 3-01  
2-11 3x 305d 33110 3.7 1239 3.3 1081  
1-11 3x 268d 23730 3.4 797 3.3 779

### Stantons High Octane-ET

CAN 11696704 EX-93-CAN ST'17 \*TY \*TV  
PTA +985M +10F +13P 99R 4/21  
PTA +2.42T +2.06UDC +.06FLC GTPI +2132G

### Brenland Doorman Desirable-ET

CAN 9913324 EX-90-CAN 2\*  
5-06 2x 365d 35644 5.2 1856 3.2 1149  
2-01 2x 365d 28281 4.6 1307 3.3 926

### Pol Butte Mc Beemer-ET

CAN 7525863 EX-92 \*TY \*TV  
PTA -37M -4F -6P 99R 4/21  
PTA +2.34T +1.48UDC +.88FLC GTPI +1750G

### Air-Osa-KM Wb Rose19491-ET

840 3125501731 Very Good-85 VG-MS @ 2-09  
3-01 3x 365d 32900 3.6 1175 3.4 1134  
2-01 3x 305d 31000 3.8 1176 3.3 1011

#### 3rd Dam

### Rancho-Vista James Karena EX-94 EEEEE 3E

2-10 2x 365d 31650 3.9 1239 3.2 1002  
Life: 2294d 169790 3.8 6485 3.4 3365

#### 4th Dam

### Rancho-Vista Roy Juliette VG-86 EX-MS

3-04 2x 318d 28370 3.9 1119 3.3 931

# Western Spring National Sale 2021



**GAMLAKE DESTRY SALLIE EX-94 2E**  
**2ND DAM OF LOT 36**

*Reserve Supreme Champion, WDE Junior Show 2018*

## Lot 36

**CHRISTIAN CUNNINGHAM**  
 4338 LICHAU RD  
 PENNGROVE, CA 94951  
 707-974-8700

### Brenland Denver

CAN 12074893 \*TY \*TV  
 PTA +469M +27F +12P 96R 4/21  
 PTA -.5PL 2.81SCS -2.7DPR 3.2%DCE  
 PTA +2.88T +1.78UDC +.02FLC 94R 4/21  
 GTPI +2180G

### S-Gambo Crush Seleste

840 3145077905 Very Good-86 VG-MS @ 2-09  
 2-05 3x 340d 25300 4.0 1001 3.5 876

### R-JOHN DENVER SALLIE

840 3142774923 99%RHA  
 Born: March 1, 2020 Tag: 1499

### Stantons High Octane-ET

CAN 11696704 EX-93-CAN ST'17 \*TY \*TV  
 PTA +985M +10F +13P 99R 4/21  
 PTA +2.42T +2.06UDC +.06FLC GTPI +2132G

### Brenland Doorman Desirable-ET

CAN 9913324 EX-90-CAN 2\*  
 5-06 2x 365d 35644 5.2 1856 3.2 1149  
 2-01 2x 365d 28281 4.6 1307 3.3 926

### Maverick Crush

CAN 12042760 \*TY \*TV  
 PTA -943M -52F -15P 99R 4/21  
 PTA +2.55T +1.51UDC +1.43FLC GTPI +2035G

### Gamlake Destry Sallie

70035677 Excellent-94 EEEEE 2E  
 5-03 2x 365d 43220 3.7 1582 3.3 1433  
 7-06 2x 301d 35580 3.8 1342 3.3 1167  
 4-00 2x 365d 29820 3.8 1135 3.6 1060  
 Life: 1933d 175760 3.8 6636 3.5 6124

### SALLIE!

- Reserve Supreme Champion, WDE Jr Show 2018
- 1st Aged Cow, Senior & Grand Champion, International Junior Holstein Show 2018
- Junior All-American Aged Cow 2018
- Grand Champion, Western Fall Nat'l Jr Show 2018
- Res Grand Champ, Western Fall National 2018
- Res Grand Champion, CA State Show 2018
- Grand Champion, CA State Junior Show 2018
- Res Grand Champion, BC Spring Show 2018
- Nom Junior All-American 5-Year-Old 2017
- 1st 5-Year-Old, Mideast Fall National 2017
- 3rd 5-Year-Old, International Jr Show 2017

*Maternal sister to Sallie*

### Gamlake Marconi Teresa EX-92 2E

6-07 2x 365d 33130 3.9 1308 3.2 1069  
 Life: 2513d 204390 3.8 7703 3.2 6625

*3rd Dam*

### Gamlake Garrison Celeste EX-91 VEVVE 3E

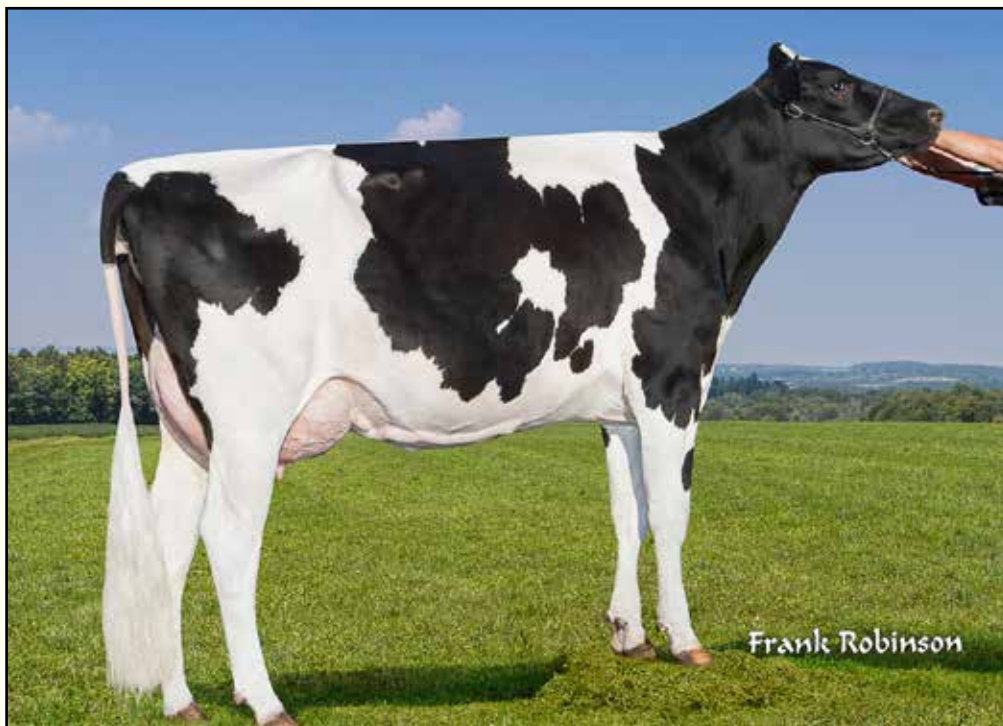
6-11 2x 330d 28050 4.2 1171 3.5 972  
 Life: 2383d 184080 4.2 7744 3.3 1646

*4th Dam*

### Gamlake Damion Sal VG-85 VG-MS

4-00 2x 332d 25740 3.6 920 3.0 778

# Western Spring National Sale 2021



**GEN-ACE MOGUL MONICA7687-ET EX-90**  
2ND DAM OF LOT 37

## Lot 37

**KEN MELVOLD**  
6178 N BLOSSER AVE  
FRESNO, CA 93711  
559-906-1714

### Morningview McC Kingboy-ET

72044077 Excellent-92 \*TY\*TV A2A2  
PTA +825M +23F +23P 99R 4/21  
PTA -.8PL 2.81SCS +.8DPR 2.1%DCE  
PTA +1.91T +1.56UDC +0.22FLC 99R 4/21  
GTPI +2341G

### Gen-Ace Spark Monica9795-ET

840 3133276905 Very Good-87 VEVVV @ 3-03  
4-00 3x 274d 25870 4.6 1197 3.4 871  
2-00 3x 316d 26660 3.8 1001 3.3 872  
3-01 3x 275d 25630 3.6 928 3.3 834

### GEN-ACE KGBY MONICA 3527

840 3214202035 99%RHA  
Born: March 2, 2020 Tag: 3527

### De-Su Bkm McCutchen 1174-ET

69990138 Excellent-93 GM 8/15 \*TV \*TL \*TY \*TD  
PTA +268M +27F +12P 99R 4/21  
PTA +2.20T +1.41UDC +1.00FLC GTPI +2233G

### Morningview Super Megan-ET

68654508 Excellent-91 EEVVE DOM  
4-02 2x 365d 37720 3.7 1405 3.1 1165  
Life: 1239d 113410 3.7 4194 3.1 3512

### Webb-Vue Spark 2060-ET

72850448 \*TY\*TV  
PTA +2003M +36F +49P 99R 4/21  
PTA +.65T +1.03UC -1.23FLC GTPI +2392G

### Gen-Ace Mogul Monica7687-ET

72419722 Excellent-90 EEVVV @ 6-02  
5-04 3x 365d 32900 4.2 1367 3.5 1150  
3-04 3x 320d 29750 4.4 1291 3.5 1032  
1-08 3x 365d 25680 4.7 1208 3.5 902  
Life: 1535d 123560 4.4 5418 3.6 4409

#### 3rd Dam

**Genie-J Shottle Monica-ET VG-89 EEEVV**  
4-00 2x 365d 33940 4.3 1447 3.3 1133  
Life: 2348d 191100 3.9 7480 3.2 6048

#### 4th Dam

**Markwell Goldwyn Mitzi-ET VG-88 EVVVV DOM**  
2-00 2x 365d 26840 4.2 1120 3.6 956

#### 5th Dam

**Markwell Morty Fancy-ET EX-91 EEEEE**  
5-09 2x 350d 31290 4.7 1478 3.5 1081

#### 6th Dam

**Markwell Outside Fawn-ET VG-88 GMD DOM**  
3-11 2x 365d 35960 4.4 1594 3.2 1167

#### 7th Dam

**Ms Markwell Rudlp Rarity-ET VG-88 VG-MS**  
2-03 2x 365d 26080 3.9 1016 3.2 841

#### 8th Dam

**Markwell Thor Renee-ET VG-87-CAN**  
2-02 2x 348d 27269 4.2 1153 3.8 1025

#### 9th thru 11th Dams

**Markwell Bstar E Raven-ET EX-95 3E GMD DOM**  
4-09 2x 365d 37610 4.3 1580 3.4 1255  
Life: 2387d 160020 4.1 6623 3.6 5763

**Markwell Mark Elite EX-92 4E GMD DOM**  
7-00 2x 365d 36230 3.9 1426 3.2 1165  
Life: 3736d 211430 3.8 8108 3.6 7533

**Rockalli Mars Emily EX-94 EEEEE 4E GMD DOM**  
3-10 2x 365d 28270 3.7 1050 3.5 988  
Life: 3113d 182970 3.8 7016 3.5 6330

# Western Spring National Sale 2021



LEGACY-RANCH JORDY ATLEE-ET VG-87  
DAM OF LOT 38

## Lot 38

CHLOE & CHASE VANDER EYK  
PO BOX 957  
TIPTON, CA 93272  
559-804-7500

### Mr All About It-ET

72227624 Very Good-86 \*RC \*CD \*TY \*TV  
PTA -133M +22F +3P 98R 4/21  
PTA -2.0PL 3.12SCS -1.9DPR 2.3%DCE  
PTA +1.05T +161UDC +.97FLC 97R 4/21  
GTPI +2081G

### Legacy-Ranch Jordy Atlee-ET

840 3148554296 Very Good-87 VVVV @ 2-10 \*RC

### EYKS ALL ABOUT IT ANIKA-RED

840 3206066880 99%RHA  
Born: June 6, 2020 Tag: 59

### De-Su Bkm McCutchen 1174-ET

69990138 Excellent-93 GM 8/15 \*TV \*TL \*TY \*TD  
PTA +268M +27F +12P 99R 4/21  
PTA +2.20T +1.41UDC +1.00FLC GTPI +2233G

### Ms Carmel Apple-Red-ET

69561887 VG-86-CAN \*CV  
4-04 3x 310d 26365 4.2 1109 3.4 854  
2-05 2x 365d 23927 3.9 926 3.5 849

### Cycle McGucci Jordy-Red

840 3131666411 \*CV \*TY  
PTA -1186M -25F -42P 98R 4/21  
PTA +2.89T +2.20UDC +2.88FLC GTPI +1726G

### M-Riverview Apple Avalon

66347585 Excellent-91 EEEEE 2E \*RC  
6-02 3x 365d 30960 4.1 1271 3.5 1091  
4-11 3x 364d 29250 4.0 1164 3.4 988

### 3rd Dam

**Greenlea Adv Anna-ET** EX-94 EEEVE 3E \*RC  
4-11 2x 305d 29030 4.2 1228 3.2 927  
Life: 3145d 251050 4.0 9980 3.2 8043

### 4th Dam

**La-Foster Astrmcal Anna-ET** EX-90 VEEEE  
4-11 2x 365d 30490 3.8 1159 3.5 1081

### 5th Dam

**MD-Delight Durham Atlee-ET** EX-92 GMD 10\*  
3-11 2x 365d 38290 5.5 2091 3.1 1177  
• All-American Senior 3-Year-Old 2005

### 6th Dam

**MD-Delight Strm Amberlee-ET** VG-88 DOM  
4-07 3x 350d 33320 3.4 1139 3.1 1021

### 7th Dam

**Ms Kingstead Chief Adeen-ET** EX-94 2E 11\*  
3-05 2x 310d 30180 4.0 1209 3.6 1077  
Life: 1382d 100760 4.0 4010 3.6 3649

• Nom All-American Junior 3-Year-Old 2000  
• Nom All-American 4-Year-Old 2001

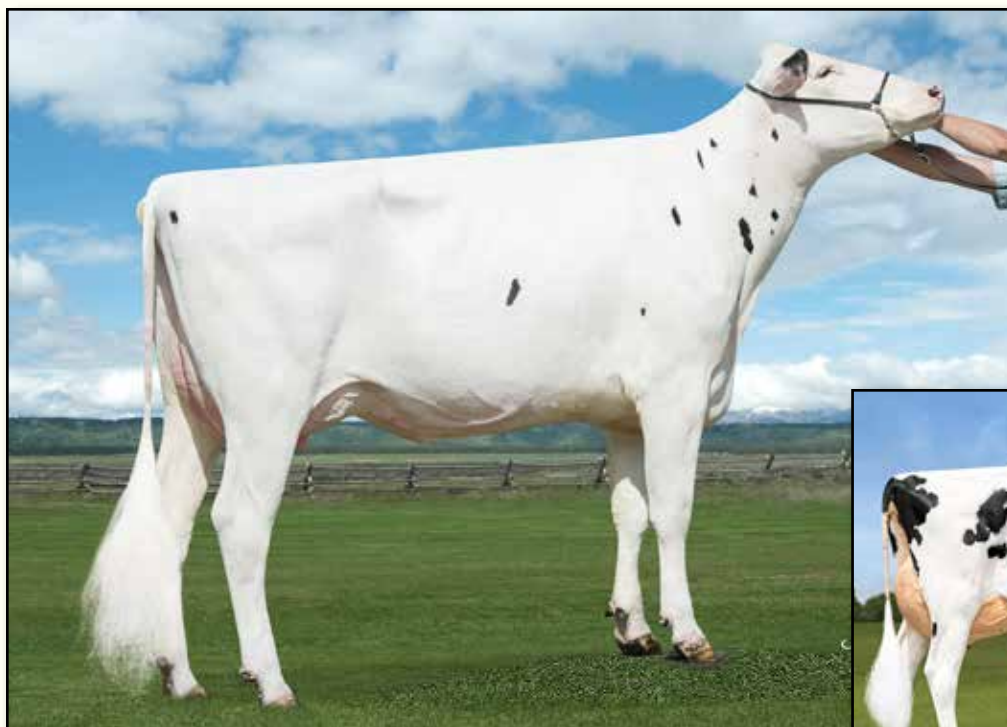
• Member All-American Produce '00 & '01

### 8th Dam

**C Aitkenbrae Starbuck Ada** EX-94 2E DOM 4\*  
13-8 2x 365d 25150 3.0 764 3.4 843  
Life: 6 Lact 137732 3.4 4749 3.4 4647

• All-American Produce of Dam 2000, 2001  
• All-American 3-Year-Old 1990

# Western Spring National Sale 2021



**MS TRIPLECROWN KB BARBI-ET VG-85**  
2ND DAM OF LOTS 39 & 40



**MS GOLD BARBARA BRISK-ET EX-93 2E**  
3RD DAM OF LOT 39

## Lot 39

**WINSTAR GENETICS LLC & MITCHELL HOCKETT**  
1470 N 750 E  
SHELLEY, ID 83274  
208-221-0904

### Claynook Discjockey-ET

CAN 12731113 \*TY\*TV  
PTA +41M +48F +24P 80R 4/21  
PTA +3.4PL 2.75SCS +1.3DPR 2.4%DCE  
PTA +2.23T +2.75UDC -.03FLC 79R 4/21  
GTPI +2661G

### Ms Triplecrown 78891-ET

840 3132352725 Very Good-87 VVVV @ 3-01  
GTPI +2268 +3.14T +3.27UDC +1.01FLC 4/21  
2-05 3x 330d 22260 3.4 762 3.2 721

### MS WINSTER DJ BRINA

840 3209818737 99%RHA  
Born: September 21, 2019 Tag: 2051  
GTPI +2410 +259M +6F +5P +2.36T 4/21

Bred: April 18, 2021 to SHG Avalanche Lotto-Red  
515H000359 (sexed) and D&D Deb Goldwyn-P-Red-ET

### Progenesis Fortune-ET

CAN 12302930 \*TY\*TV  
PTA -131M +16F +13P 99R 4/21  
PTA +75T +1.07UDC -2.01FLC GTPI +2306G

### Claynook Dewdrop Monterey-ET

CAN 12208448

### Farnear-BH 1st Grade-ET

840 3125993676 \*TY\*TV  
PTA +298M -15F -10P 98R 4/21  
PTA +2.15T +2.78UDC +.16FLC GTPI +2186G

### Ms Triplecrown KB Barbi-ET

840 3128860421 Very Good-85 VG-MS @ 2-11  
GTPI +2213 +2.92T +2.68UDC +1.12FLC 4/21

#### 3rd Dam

#### Ms Gold Barbara Brisk-ET EX-93 EEEVE 2E

4-05 3x 365d 41220 3.7 1510 3.3 1375

Life: 1360d 128590 3.6 4660 3.5 4445

• 2nd Senior 2-Year-Old, Western Sprg Nat'l 2016

#### 4th Dam

#### Butz-Butler Gold Barbara-ET EX-96 3E GMD 3\*

3-07 2x 365d 41820 3.9 1612 3.1 1243

Life: 2078d 201519 4.2 8610 3.3 6330

• All-American Lifetime Production Cow 2020

• All-American Lifetime Production Cow 2020

• Nominated All-American Aged Cow 2017

• Reserve All-Canadian Mature Cow 2016

• HM All-American Aged Cow 2016

• All-American 4-Year-Old 2014

• All-American Senior 3-Year-Old 2013

• All-American Senior 2-Year-Old 2012

#### 5th Dam

#### Regancrest Brasilia-ET EX-92 EEEVE 2E DOM 16\*

2-03 3x 365d 33180 3.6 1186 2.8 926

#### 6th Dam

#### Regancrest-PR Barbie-ET EX-92 GMD DOM 6\*

2-06 2x 365d 31690 3.9 1237 3.3 1050

• HM All-American Jr 3-Year-Old Cow 2004

#### 7th Dam

#### Regancrest Juror Brina-ET EX-92 EEEVE GMD

4-04 2x 365d 40640 3.6 1478 3.0 1217

• Res Grand Champion, IA State Fair 2000

Next three dams Excellent

# Western Spring National Sale 2021



**BUTZ-BUTLER GOLD BARBARA-ET EX-96 3E**  
**4TH DAM OF LOT 40**

*All-American Lifetime Production Cow 2020*

## Lot 40

**TOONE DAIRY FARM, INC.**  
**C/O STEVEN TOONE**  
**536 HWY 34**  
**GRACE, ID 83241**  
**208-425-3284**

### Woodcrest King Doc

840 3132417775 Excellent-90 \*TY \*TV \*TL \*TD  
 PTA +1708M +77F +60P 99R 4/21  
 PTA +.7PL 3.06SCS -1.7DPR 2.2%DCE  
 PTA +3.40T +2.41UDC +2.14FLC 99R 4/21  
 GTPI +2836G

### Ms Winstar Denver 4860-ET

840 3146121058  
 GTPI +2199 +2.57T +1.92UDC +.20FLC 4/21  
 2-00 2x 305d 22610 3.8 854 3.2 731

### TOONE DOC 8103

840 3214286669 99%RHA  
 Born: March 18, 2020

### Morningview McC Kingboy-ET

72044077 Excellent-92 \*TV \*TL \*TY \*TD  
 PTA +825M +23F +23P 99R 4/21  
 PTA +1.91T +1.56UDC +.22FLC GTPI +2341G

### WBC-ZBW Mack Daddy-ET

840 3012506777 Very Good-88  
 3-01 3x 365d 39560 3.3 1303 3.4 1355  
 1-11 3x 365d 37410 3.1 1154 3.2 1188

### Brenland Denver

CAN 12074893 \*TY \*TV  
 PTA +469M +27F +12P 96R 4/21  
 PTA +2.88T +1.78UDC +.02FLC GTPI +2180G

### Ms Triplecrown KB Barbi-ET

840 3128860421 Very Good-85 VG-MS @ 2-11  
 GTPI +2213 +2.92T +2.68UDC +1.12FLC 4/21

#### 3rd Dam

### Ms Gold Barbara Brisk-ET EX-93 EEEVE 2E

4-05 3x 365d 41220 3.7 1510 3.3 1375

Life: 1360d 128590 3.6 4660 3.5 4445

- 2nd Senior 2-Year-Old, Western Sprng Nat'l 2016

#### 4th Dam

### Butz-Butler Gold Barbara-ET EX-96 3E GMD 3\*

3-07 2x 365d 41820 3.9 1612 3.1 1243

Life: 2078d 201519 4.2 8610 3.3 6330

- All-American Lifetime Production Cow 2020

- All-American Lifetime Production Cow 2020

- Nominated All-American Aged Cow 2017

- Reserve All-Canadian Mature Cow 2016

- HM All-American Aged Cow 2016

- All-American 4-Year-Old 2014

- All-American Senior 3-Year-Old 2013

- All-American Senior 2-Year-Old 2012

#### 5th Dam

### Regancrest Brasilia-ET EX-92 EEEVE 2E DOM 16\*

2-03 3x 365d 33180 3.6 1186 2.8 926

#### 6th Dam

### Regancrest-PR Barbie-ET EX-92 GMD DOM 6\*

2-06 2x 365d 31690 3.9 1237 3.3 1050

- HM All-American Jr 3-Year-Old Cow 2004

#### 7th Dam

### Regancrest Juror Brina-ET EX-92 EEEVE GMD

4-04 2x 365d 40640 3.6 1478 3.0 1217

- Res Grand Champion, IA State Fair 2000

Next three dams Excellent

# Western Spring National Sale 2021



**MOW-TEN-VUE CC PRETTY EX-94 2E**  
**5TH DAM OF LOT 41**

*1st 4-Year-Old, Western Spring National 1995*

## Lot 41

**PAPPYS FARMS, LLC**  
C/O TED PAPAGEORGE  
1594 W FARR WEST DR  
OGDEN, UT 84404  
801-389-6967

### **R-John Pappys Cameron-ET**

840 3126310541 \*TL \*TD  
PTA -627M +10F +1P 79R 4/21  
PTA -4.0PL 2.96SCS -4.78DPR 3.3%DCE  
PTA +3.63T +2.47UDC +1.59FLC 79R 4/21  
GTPI +2017G

### **Pappys Dempsey Prudence**

72546282 Very Good-85 @ 3-11  
3-06 2x 365d 29240 4.0 1155 3.5 1011  
2-01 2x 365d 24140 3.8 927 3.3 802

### **PAPPYS CAMERON PRETTY**

840 3201362745 99%RHA  
Born: January 20, 2019 Tag: 530

Due: June 8, 2021 to Maverick Crush (sexed)

### **Val-Bisson Doorman-ET**

CAN 107281711 EX-90-CAN \*TY \*TV A2A2  
PTA -503M +14F +8P 99R 4/21  
PTA +2.45T +1.59UDC +.73FLC GTPI +2167G

### **Silvermaple Windham Camille-ET**

11580934 Excellent-92  
2-01 2x 365d 32095 3.9 1247 3.1 898  
• Res All-American Senior 2-Year-Old 2015

### **Lirr Drew Dempsey**

61083609 Excellent-93 EXTRA'11 \*TV \*TL \*TY \*TD  
PTA -760M -5F -6P 99R 4/21  
PTA +1.60T +1.01UDC +1.04FLC GTPI +1900G

### **Pappys Nadstar Prudence**

65468293 Very Good-85 @ 5-01  
4-07 2x 365d 31040 5.6 1731 3.4 1053  
7-02 2x 365d 29930 5.1 1537 3.5 1049  
3-06 2x 357d 29300 4.7 1368 3.5 1036  
Life: 1990d 154150 5.0 7646 3.5 5443

### *3rd Dam*

#### **Pappys Durham Prudence VG-88 VVVE @**

3-09 2x 365d 33720 4.0 1359 3.5 1174

### *4th Dam*

#### **Pappys Linjet Poppy-ET GP-82**

4-01 2x 352d 26920 4.4 1181 3.4 911

### *5th Dam*

#### **Mow-Ten-Vue CC Pretty EX-94 EEEEE 2E**

4-06 2x 365d 32730 4.3 1397 3.5 1132

Life: 1915d 131420 4.5 5939 3.5 4631

• 1st 4-Year-Old, Western Spring National 1995

• HM Grand Champion, Western Spring Nat'l 1996

• 3x All-Utah Grand Champion

### *6th Dam*

#### **Mow-Ten-Vue GE Prim-ET VG-86**

6-00 2x 302d 24260 4.1 1006 3.2 776

Life: 1687d 108550 4.5 4857 3.4 3728

### *7th Dam*

#### **Mow-Ten-Vue Elevation Peach EX-92 2E DOM**

8-03 2x 356d 23680 3.8 898

Life: 2357d 141770 3.9 5596

### *8th Dam*

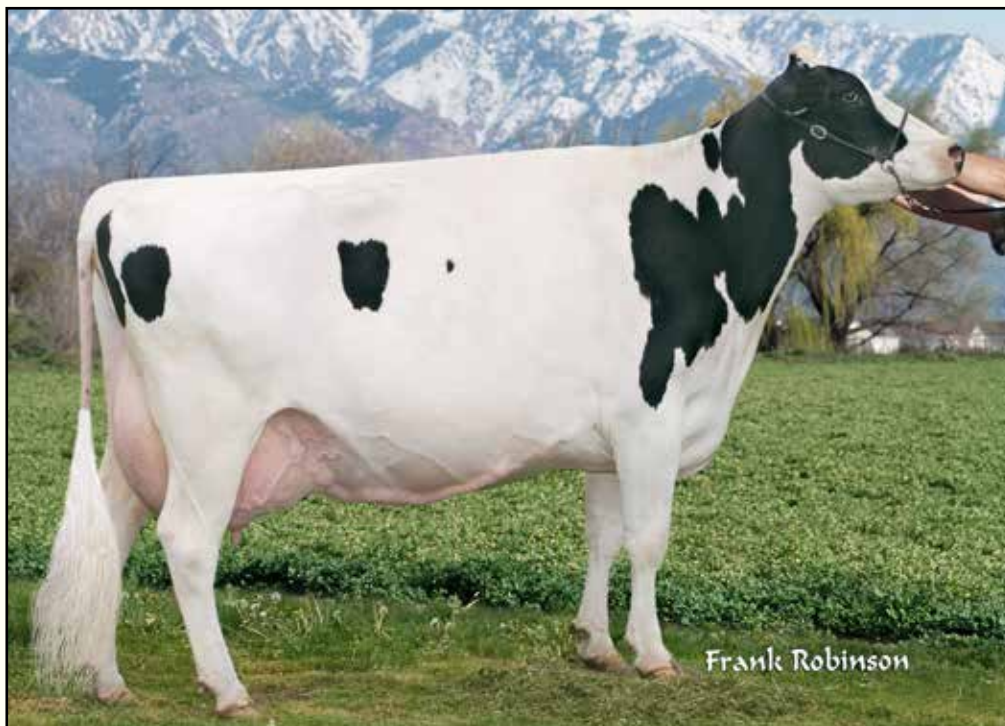
#### **LLan-O-West Royal Peach VG-89 VEEV GMD DOM**

4-07 2x 359d 30130 3.7 1122

Life: 2140d 156540 3.5 5483



# Western Spring National Sale 2021



**PAPPYS OUTSIDE KAT-TW EX-90 3E**  
**3RD DAM OF LOT 42**  
*All-Utah Junior 2-Year-Old 2004*

## Lot 42

PAPPYS FARMS, LLC  
C/O TED PAPAGEORGE  
1594 W FARR WEST DR  
OGDEN, UT 84404  
801-389-6967

### PAPPYS CAMERON KAISLEY

840 3201362756 99%RHA  
Born: March 28, 2019 Tag: 53031

Due: June 6, 2021 to Woodcrest King Doc

### R-John Pappys Cameron-ET

840 3126310541 \*TL \*TD  
PTA -627M +10F +1P 79R 4/21  
PTA -4.0PL 2.96SCS -4.78DPR 3.3%DCE  
PTA +3.63T +2.47UDC +1.59FLC 79R 4/21  
GTPI +2017G

### Pappys Aftershock Kelly

840 3126310412 Very Good-87 @ 5-00  
4-05 2x 365d 34310 3.7 1283 3.4 1174  
3-01 2x 365d 31510 3.5 1107 3.3 1028  
1-11 2x 353d 26750 3.6 967 3.2 854

### Val-Bisson Doorman-ET

CAN 107281711 EX-90-CAN \*TY \*TV A2A2  
PTA -503M +14F +8P 99R 4/21  
PTA +2.45T +1.59UDC +.73FLC GTPI +2167G

### Silvermaple Windham Camille-ET

11580934 Excellent-92  
2-01 2x 365d 32095 3.9 1247 3.1 898  
• Res All-American Senior 2-Year-Old 2015

### Mr Atlees Sht Aftershock-ET

65249839 Excellent-92 ST'12 TC TY TV TL TD  
PTA -457M -23F -31P 99R 4/21  
PTA +1.43T +1.06UDC +.50FLC GTPI +1665G

### Pappys Sanchez Kally-ET

68786395 Very Good-88 VG-MS @ 5-05  
4-09 2x 365d 30020 3.6 1083 3.2 970  
2-01 2x 365d 28310 3.6 1010 3.2 908  
3-04 2x 365d 28720 3.3 852 3.4 975  
• 4th Junior 3-Year-Old, Western Sprng Nat'l 2014

#### 3rd Dam

**Pappys Outside Kat-TW EX-90 EEEVE 3E**  
8-02 2x 365d 40140 4.2 1682 3.0 1214  
Life: 2062d 179890 4.5 8072 3.4 6096

- 3rd 125,000 Lb Cow, Western Spring Nat'l 2011
  - Reserve All-Utah Aged Cow 2008
  - All-Utah Junior 2-Year-Old 2004
  - 2nd Jr 2-Yr-Old, Western Sprng Nat'l 2004
- #### 4th Dam

**Pappys-M Highlight Kamalot EX-90 EEEVV**  
4-05 2x 353d 27840 3.9 1072 3.3 914

#### 5th Dam

**Mow-Ten-Vue CB Kamalot EX-90 EVEEV**  
4-04 2x 286d 24020 4.8 1142 3.5 829  
• Junior Champion, Western National 1993

# Western Spring National Sale 2021



**MILKSOURCE GOLDWYN AZTEC-ET EX-92 2E**  
2ND DAM OF LOT 43



**ERNEST-ANTHONY ANDORRA-ET EX-90**  
3RD DAM OF LOT 43

## Lot 43

MICHAEL BRUBAKER  
BUHL, ID

### YARD-O-UTE HIGH OCTANE 3126

840 3204072569 99%RHA  
Born: January 8, 2019 Tag: 3126

#### Stantons High Octane-ET

CAN 11696704 EX-93-CAN ST'17 \*TY \*TV  
PTA +985M +10F +13P 99R 4/21  
PTA -1.4PL 2.85SCS -1.8DPR 2.6%DCE  
PTA +2.42T +2.06UDC +.06FLC 98R 4/21  
GTPI +2132G

#### Hilrose Doorman Admire-ET

840 3134165072 Excellent-90 EEEVE @ 3-10  
3-01 2x 352d 29920 3.3 993 3.4 1019  
4-02 2x 288d 27980 3.5 993 3.3 918

#### De-Su Bkm McCutchen 1174-ET

69990138 Excellent-93 GM 8/15 \*TV \*TL \*TY \*TD  
PTA +268M +27F +12P 99R 4/21  
PTA +2.20T +1.41UDC +1.00FLC GTPI +2233G

#### Ms Chassity Obs Claire-ET

141008075 VG-87-CAN 24\*  
1-10 2x 365d 43545 3.7 1625 2.9 1263

#### Val-Bisson Doorman-ET

CAN 107281711 EX-90-CAN \*TY \*TV A2A2  
PTA -503M +14F +8P 99R 4/21  
PTA +2.45T +1.59UDC +.73FLC GTPI +2167G

#### Milksource Goldwyn Aztec-ET

69954136 Excellent-92 EEEEE 2E  
5-07 2x 365d 46240 2.8 1312 3.0 1372  
3-03 2x 362d 39680 4.0 1578 3.0 1191  
2-00 2x 365d 33400 3.3 1106 3.0 993  
Life: 1757d 196240 3.1 6017 3.0 5881

#### 3rd Dam

**Ernest-Anthony Andorra-ET EX-90 EX-MS 2E**  
2-02 2x 365d 34770 3.6 1244 3.3 1150

#### 4th Dam

**EK-Oseana Ambrosia-ET EX-95 EEEEE 2E GMD**  
6-04 2x 365d 44140 4.2 1852 3.2 1399

Life: 1519d 144090 4.7 6749 3.3 4763

• Res All-American 4-Year-Old 2007

• Res All-American Junior 2-Year-Old 2005

#### 5th Dam

**Tri-Day Ashlyn-ET EX-96 EEEEE 2E GMD DOM**  
4-09 2x 365d 43090 4.8 2079 3.5 1503

• All-American 4 Year Old 2001

• All Canadian 4-Year-Old 2001

• All-American Senior 3-Year-Old 2000

• Res All Canadian Senior 3-Year-Old 2000

#### 6th Dam

**Bendy-Brook Odyssey Favorite EX-92 2E DOM**  
6-01 2x 337d 22670 3.4 770 3.1 706

• Res All-American Produce of Dam 2001

• Nom Jr All-American Aged Cow 1995

#### 7th Dam

**Bendy-Brook Star Fonda VG-86 VG-MS**  
3-11 2x 290d 23390 3.5 826 3.1 724

# Western Spring National Sale 2021



**DON-MAIR RMT VANESSA EX-91**  
2ND DAM OF LOT 44



**DON-MAIR SIDEKICK SNOWBANK**  
SELLS AS LOT 44

## Lot 44

DYMENTHOLM GENETICS  
468 FALLSVIEW RD  
DUNDAS, ON L9H 5E2  
905-308-1008

### Walnutlawn Sidekick

CAN 12508113 VG-85-CAN \*TY\*TV A2/A2  
PTA -975M +14F -8P 93R 4/21  
PTA -.6PL 2.70SCS -.5DPR 2.4%DCE  
PTA +3.04T +2.73UDC +1.05FLC 89R 4/21  
GTPI +2261G

### Don-Mair High Octane Snowwhite

12556148 VG-86-3YR-CAN  
2-00 2x 320d 20322 4.7 946 3.4 690  
3-03 2x 215d 18117 4.0 721 3.1 569 RIP

### DON-MAIR SIDEKICK SNOWBANK

CAN 13642401  
Born: June 18, 2020 Tag: 57

### Willsbro Abbott

GBR 388380500583 \*TY\*TV A2/A2  
PTA -304M +40F +9P 98R 4/21  
PTA +1.86T +1.91UDC +.42FLC GTPI +2428G

### Walnutlawn McCutchen Summer-ET

CAN 11120480 Excellent-95 EEEEE 9\*  
7-02 2x 305d 32230 4.5 1462 3.4 1082  
• Nom All-Canadian Mature Cow 2020

### Stantons High Octane-ET

CAN 11696704 EX-93-CAN ST'17 \*TY\*TV  
PTA +985M +10F +13P 99R 4/21  
PTA +2.42T +2.06UDC +.06FLC GTPI +2132G

### Don-Mair Rmt Vanessa

CAN 11305149 EX-91-CAN  
4-10 2x 318d 24013 4.3 1041 3.0 719  
3-07 2x 316d 22432 3.7 836 3.1 688  
2-08 2x 304d 19855 4.5 893 3.2 628

### 3rd Dam

#### Don-Mair S Storm Venus VG-85-CAN

6-04 2x 307d 27502 3.7 1019 3.9 798  
Life: 5 Lacs 125049 3.6 4541 2.9 3635

### 4th Dam

#### Don-Mair Outside Maple VG-87-CAN

5-11 2x 348d 25979 3.1 813 2.7 670  
Life: 5 Lacs 111928 3.0 3311 2.8 3166

# Western Spring National Sale 2021



**REAGANCREST G BROCADE-ET EX-92**  
5TH DAM OF LOT 45

*Former #1 Type Cow of the Breed*

## Lot 45

ESKDALE DAIRY  
1100 CIRCLE RD  
ESKDALE, UT 84728  
435-209-0002

### Mr Blondin Warrior-Red-ET

840 3139655530 99%RHA \*TY \*TV  
PTA -133M -4F -2P 80R 4/21  
PTA -2.3PL 2.85SCS -2.5DPR 3.4%DCE  
PTA +3.34T +2.05UDC +1.56FLC 78R 4/21  
GTPI +2032G

### Eskdale Plut Brocade-Red

840 3139120131 Good Plus-82 @ 2-04

### ESKDALE WARRIOR BARBARY-RED

840 3214540491 99%RHA

Born: June 23, 2020

### Dymenthalm Mr App Avalanche-TW

CAN 11957107 \*RC \*CV \*TL \*TY \*TD  
PTA -10M +4F -1P 99R 4/21  
PTA +3.87T +2.83UDC +2.47FLC GTPI +2120G

### Triplecrown-JW Door Wisp-ET

840 3128860372 VG-85-CAN  
3-03 2x 365d 35587 4.0 1424 3.5 1246  
2-01 2x 310d 17068 4.0 688 3.5 589

### Eskdale Plutarch-Red

8403134516394  
PTA -133M -14F -3P 79R 4/21  
PTA +1.84T +1.62UDC +1.02FLC 79R 4/21

### Eskdale Cal Barbie-Red

840 3135144806 Very Good-86 VG-MS @ 4-09  
3-10 2x 365d 32760 4.3 1393 3.7 1205  
2-05 2x 365d 27270 4.4 1190 3.7 998

#### 3rd Dam

**Eskdale Absolute Bess VG-85 VG-MS**  
2-00 2x 238d 14720 3.8 560 3.2 475

#### 4th Dam

**Farnear Brocades Babette-ET VG-86**  
5-07 2x 355d 31700 3.1 982 3.2 1010  
Life: 1438d 107670 3.2 3392 3.2 3412

#### 5th Dam

**Regancrest G Brocade-ET EX-92 EEEEE**  
4-00 2x 365d 38890 3.9 1517 3.5 1346

#### 6th Dam

**Regancrest-PR Barbie-ET EX-92 GMD DOM 6\***  
2-06 2x 365d 31690 3.9 1237 3.3 1050

• HM All-American Jr 3-Year-Old Cow 2004

#### 7th Dam

**Regancrest Juror Brina-ET EX-92 EEEVE GMD**  
4-04 2x 365d 40640 3.6 1478 3.0 1217

• Res Grand Champion, IA State Fair 2000

#### 8th Dam

**Regancrest Aerostar Bert-ET EX-90 GMD DOM**  
5-05 2x 365d 37790 3.6 1357 3.2 1215

Life: 4 Lact 109350 3.7 4030 3.3 3556

#### 9th Dam

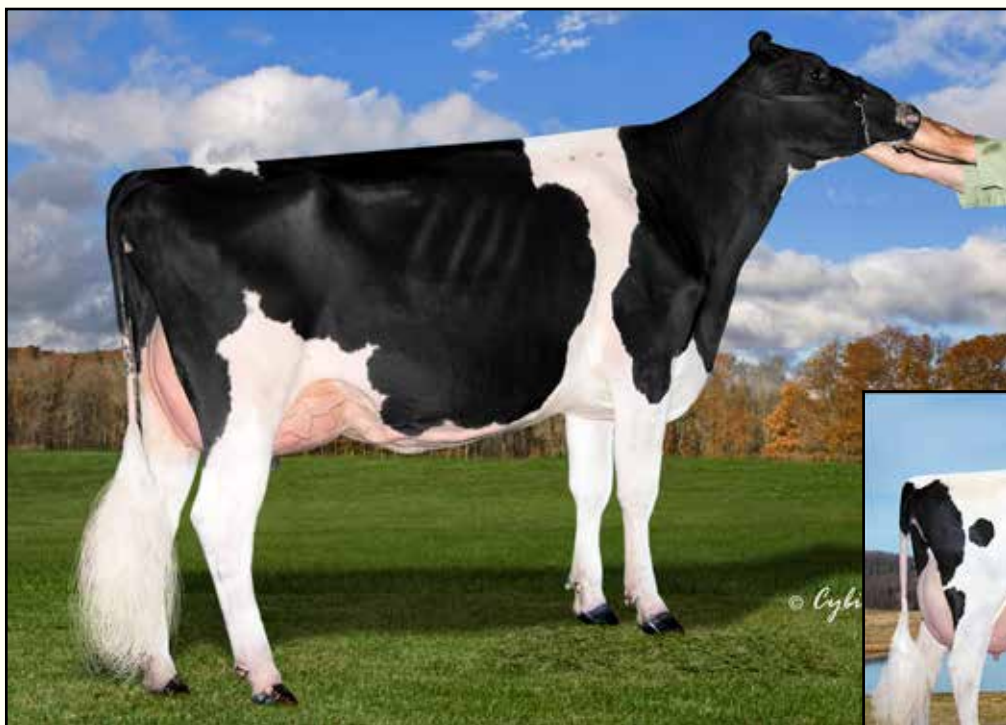
**Regancrest Mark Chairman Bea EX-91 2E GMD**  
7-09 2x 365d 33630 3.8 1278 3.1 1052

Life: 2036d 140130 4.1 5711 3.3 4616

#### 10th Dam

**Regancrest Board Chairman Bea EX-90 EX-MS**  
5-09 2x 365d 26010 4.1 1059 3.4 884

# Western Spring National Sale 2021



**VT-POND-VIEW ATWOOD LADY-ET EX-93**  
3RD DAM OF LOT 46



**VT-POND-VIEW RUBENS LILYANA EX-95 4E**  
4TH DAM OF LOT 46  
*1st 150,000 Lb Cow, Northeast Fall National 2015*

## Lot 46

**CALORI-D HOLSTEINS, STEPHEN MAST & MIKE BERRY**  
2625 HALL RD  
DENAIR, CA 95316  
209-667-7783

### Milksource Cheers-ET

840 3132912604 \*TY \*TV  
PTA +53M -2F +5P 79R 4/21  
PTA +1.3PL 2.96SCS -1.1DPR 3.0%DCE  
PTA +2.08T +2.37UDC +1.38FLC 79R 4/21  
GTPI +2171G

### Fairmont Doorman Lucia-ET

840 3132555024 Very Good-88 EEEV @ 3-11  
3--05 2x 291d 29510 4.3 1269 3.2 955

### MISS CALORI-D MB CHRS LUCIS

840 3216818185 99%RHA  
Born: July 17, 2020 Tag: 2634  
PTA +2.67T +1.91UDC +1.12FLC 76R 4/21

### Mr Sunrose Saturn

142925043 Excellent-91 \*TY  
PTA +704M +0F +9P 95R 4/21  
PTA +2.67T +2.90UDC +.84FLC GTPI +2071G

### Brackleyfarm Chelios Cheerio

CAN 10848075 Excellent-96 EEEEE 2E  
5-10 2x 365d 40070 4.8 1921 3.4 1351  
• All-American 4-Year-Old 2015

### Val-Bisson Doorman-ET

CAN 107281711 EX-90-CAN ST'16 \*TV \*TY  
PTA -503M +14F +8P 99R 4/21  
PTA +2.45T +1.59UDC +.73FLC GTPI +2167G

### VT-Pond-View Atwood Lady-ET

141962513 Excellent-93 EEEV @ 5-02  
4-08 3x 305d 29060 3.8 1094 3.3 968  
3-02 2x 358d 26520 3.1 813 3.2 836  
2-03 3x 312d 21770 3.6 791 3.1 682

### 3rd Dam

#### VT-Pond-View Jaspr Lassa-ET EX-94 EEEEE

5-03 2x 365d 33770 5.4 1836 3.0 1021  
Life: 2192d 172250 4.7 8127 3.1 5288

### 4th Dam

#### VT-Pond-View Rubens Lilyana EX-95 4E

11-9 2x 365d 34380 3.8 1311 3.0 1018  
Life: 3049d 255670 4.2 10658 3.3 8357

• 1st 150,000 Lb Cow, Northeast Fall Nat'l 2015

• Senior Champion, VT State Show 2014

### 5th Dam

#### Twin-Wind-TC Broker Lass-ET EX-95 EEEEE 4E

8-01 2x 365d 33390 4.5 1495 3.2 1073  
Life: 3712d 254410 5.0 12659 3.6 9192

• Res Grand Champ, Northeast Fall National 2002

• 1st Jr 2-Year-Old, Northeast Fall National 1996

### 6th Dam

#### C Grossville Ultimate Libby EX-92 EEEEV

5-06 2x 365d 27230 4.1 1103 3.1 834  
• Nominated All-American 4-Year-Old 1994

• All-American Spring Yearling 1991

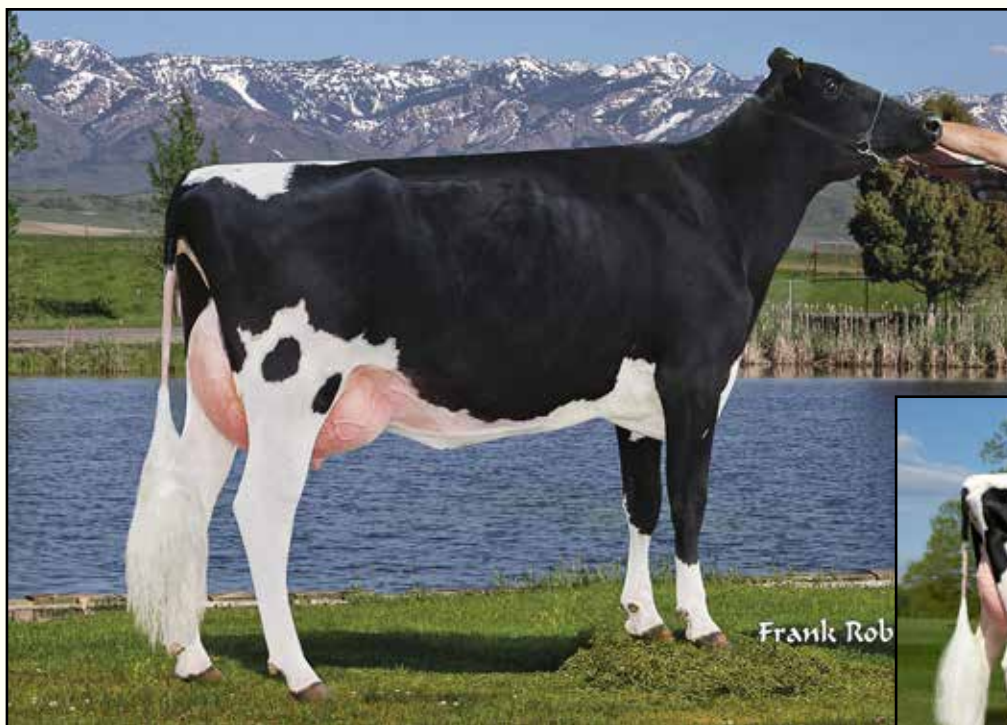
• All-American Spring Calf 1990

### 7th Dam

#### Grossville Freddy Lynn VG-85-CAN

3-06 2x 299d 17046 3.9 668

# Western Spring National Sale 2021



**BLONDIN DIAMOND EXPRESS-ET VG-86**  
2ND DAM OF LOT 47



**RYAN-CREST SANZ EXTACY-ET EX-92**  
MATERNAL SISTER TO 2ND DAM OF LOT 47

## Lot 47

WADE YARDLEY  
638 N 300 W  
LEHI, UT 84043  
801-558-9431

### Pappys Atwood Ralf

71241646 Very Good-86  
PTA -707M -36F -24P 89R 4/21  
PTA -1.9PL 2.91SCS -2.0DPR 3.5%DCE  
PTA +1.99T +.92UDC +.50FLC 81R 4/21  
GTPI +1662G

### Yard-O-Ute DM Ellie-ET

143559120 Excellent-90 VG-MS @ 5-03  
2-07 2x 365d 34410 4.0 1387 3.3 1145  
4-02 2x 296d 30850 3.6 1125 3.3 1009

### YARD-O-UTE RALF ELLIE

840 3212608910 99%RHA  
Born: November 9, 2019 Tag: 809

Bred: March 31, 2021 to Maverick Crush

### Maple-Downs-I G W Atwood-ET

CAN 8956379 Excellent-90 \*TR \*TV \*TL \*TY \*TD  
PTA -366M +11F -10P 99R 4/21  
PTA +2.95T +1.94UDC +2.14FLC GTPI +1909G

### Markwell Durham Raven-ET

61448071 Excellent-93 EEEEE 3E \*TV  
4-07 2x 365d 38050 3.7 1422 3.2 1210  
Life: 1686d 158750 3.6 5691 3.2 5077

### Val-Bisson Doorman-ET

CAN 107281711 EX-90-CAN ST'16 \*TV \*TY  
PTA -503M +14F +8P 99R 4/21  
PTA +2.45T +1.59UDC +.73FLC GTPI +2167G

### Blondin Diamond Express-ET

CAN 108573531 Very Good-86 VG-MS @ 2-11  
3-02 2x 321d 31840 3.5 1104 3.5 1125  
4-02 2x 298d 30980 3.3 1020 3.5 1082

Maternal sister to Diamond Express

### Blondin Integral Elmira EX-91-CAN

3-00 2x 365d 32132 4.4 1420 3.4 1089

Maternal sister to Arm Exquisite

### Ryan-Crest Sanz Extacy-ET EX-92 EEVEE

4-08 2x 365d 42560 4.5 1922 3.4 1454  
Life: 1157d 106590 4.5 4807 3.6 3791

• 3x Junior All-American Nominee

3rd Dam

### Ryan-Crest Arm Exquisite-ET EX-90-2E-CAN 2\*

5-09 2x 365d 28583 5.0 1422 3.7 1067  
Life: 6 Lacs 169375 4.3 7271 3.5 5884

4th Dam

### Nova-TMJ Golden Erin-ET EX-90 2E GMD DOM

5-07 2x 365d 37697 4.9 1863 3.3 1240

5th Dam

### UFM-Dubs Eroy VG-87 VG-MS GMD DOM

4-06 2x 365d 40331 4.4 1789 3.1 1239

6th thru 9th Dams

### UFM-Dubs Sam Erin EX-90 EEEVE 2E GMD DOM

4-02 2x 365d 39450 4.1 1631 3.1 1219

Life: 1282d 106440 4.3 4526 3.2 3424

### UFM-Dubs Patron Ellen EX-90 EEEVE

2-11 2x 365d 26330 4.2 1106 3.3 878

Life: 1582d 110460 4.1 4559 3.3 3604

### UFM Antci Bell VG-87 VEVVV

4-00 2x 365d 29120 3.6 1060 3.2 928

Life: 1744d 122410 3.8 4647 3.2 3901

### UFM Jax Antci VG-85 GMD DOM

4-01 2x 305d 27360 3.7 1012 3.0 832

Life: 1839d 138700 3.8 5237 3.0 4164

# Western Spring National Sale 2021

## Lot 48

ESKDALE DAIRY  
1100 CIRCLE RD  
ESKDALE, UT 84728  
435-209-0002

### Val-Bisson Doorman-ET

CAN 107281711 EX-90-CAN ST'16 \*TV \*TY  
PTA -503M +14F +8P 99R 4/21  
PTA +.2PL 2.67SCS -2.2DPR 2.6%DCE  
PTA +2.45T +1.59UDC +.73FLC 99R 4/21  
GTPI +2167G

### Eskdale Deman Laugh

840 3135144846 Very Good-85 @ 3-05  
2-02 2x 303d 22220 4.8 1062 3.7 816

### ESKDALE DOORMAN LALA

840 3139120137 Very Good-85 VG-MS @ 2-03  
Born: August 5, 2018  
1-11 2x 258d 18680 4.8 903 3.5 692

Due: June 13, 2021 to Our-Favorite Charisma-ET

### De-Su 521 Bookem-ET

66636657 Excellent-90 GM 8/15 \*TV \*TL \*TY \*TD  
PTA +844M +3F +31P 99R 4/21  
PTA +.58T +.50UDC +.48FLC GTPI +2270G

### Val-Bisson Shottle Imelda-ET

CAN 106173432 Excellent-94 10\*  
4-03 2x 365d 40505 3.8 1550 3.6 1455  
6-08 2x 322d 32340 4.6 1483 3.9 1246

### EDG Deman-ET

71494672 \*TY \*TV  
PTA -263M +48F +19P 98R 4/21  
PTA +2.48T +1.97UDC +2.36FLC GTPI +2365G

### Eskdale SStorm Laura-ET

69102963 Very Good-85 @ 5-07  
5-00 2x 365d 40530 3.3 1347 3.3 1322  
6-03 2x 365d 33060 3.7 1234 3.3 1082  
4-00 2x 303d 27850 4.0 1105 3.1 866  
Life: 2331d 204690 3.8 7836 3.2 6646

3rd Dam

### Eskdale Allen Sephia Loren VG-86

3-02 2x 362d 30530 4.0 1220 3.1 939  
Life: 1419d 101100 3.9 3913 3.1 3150

4th Dam

### Eskdale Mstar Kia Sephia-TW GP-83

4-02 2x 365d 36430 3.8 1369 3.1 1125

## Lot 49

DALE CHUGG  
1520 FARR WEST DR  
OGDEN, UT 84404

### River Valley Ricki Rockstar

840 3126479237 200JE10009  
CDCB 4/21 GPTA 93%R -1436M -47F -46P  
AJCA 4/21 GPTAT 90%R +0.9 GJPI 87%R -92

### DC Tequila Ghostly Glow

75241024 3-07 VG-86%  
5-00 2x 269d 16440 5.6 925 3.8 624  
4-00 2x 282d 15040 5.8 868 3.8 573  
3-01 2x 272d 14490 5.6 813 3.7 537  
2-02 2x 287d 12330 5.7 704 3.6 448

### DC ROCKSTAR GLOW

67721479  
Born: June 1, 2020 AMID: 1479

### River Valley Cece Chrome-ET

840 3012423929 7JE5004  
CDCB 4/21 GPTA 99%R +647M +41F +21P  
AJCA 4/21 GPTAT 99%R +2.1 GJPI 99%R +101

### Cowbell Guapo Ricochet

116707378 8-06 EX-95%  
6-03 2x 305d 17670 5.7 1016 3.5 627  
• Reserve All-American Aged Cow 2017

### Tower Vue Prime Tequila-ET

114816452 76JE156  
CDCB 4/21 GPTA 99%R -2027M -56F -57P  
AJCA 4/21 GPTAT 99%R +1.2 GJPI 99%R -207

### DC Rocket Ghost

67048331 7-10 EX-92%  
8-02 2x 305d 19820 5.3 1056 3.3 654  
7-03 2x 289d 15570 5.0 771 3.4 527

3rd Dam

### DC Jace Ghost EX-92%

7-02 2x 305d 20220 5.0 1006 3.4 688

4th Dam

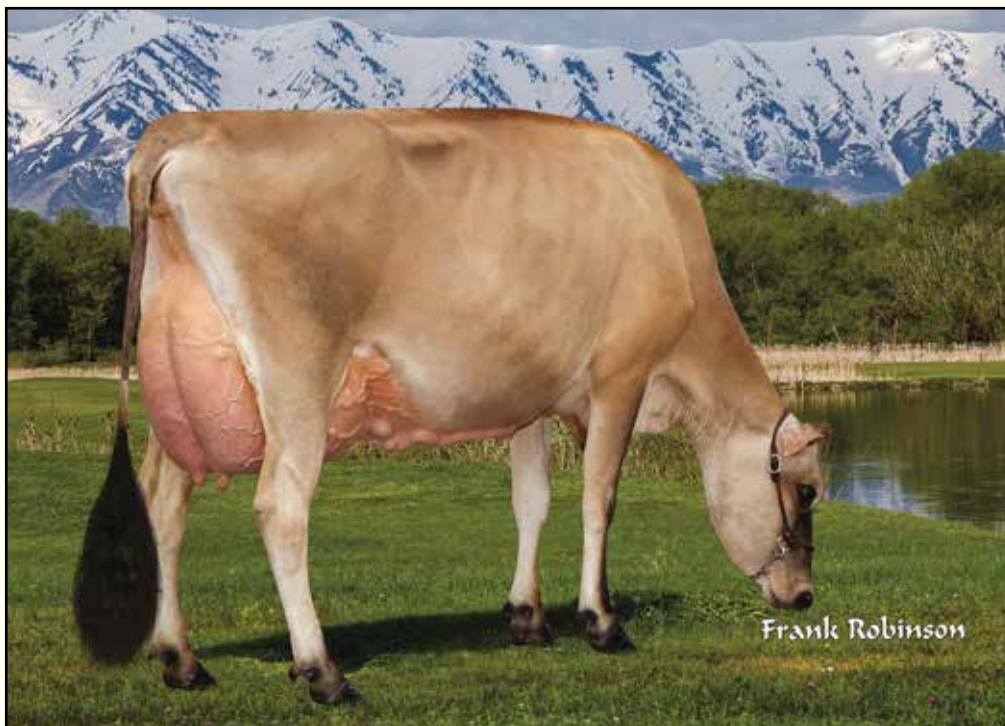
### DC Regency Berretta Ghost EX-90%

5-00 2x 305d 14570 4.4 648 3.3 483

5th Dam

### Berretta Legend Ghost EX-90%

# Western Spring National Sale 2021



**DC CHROME DREAM MAKER EX-93%**  
2ND DAM OF LOT 50

## Lot 50

UTAH STATE UNIVERSITY  
CAINE DAIRY CENTER  
4300 S HIGHWAY 89  
WELLSVILLE, UT 84339

### JX Hawarden R Force {4}

67147975 JH1F JNSF A2A2  
CDCB 4/21 GPTA 77%R -325M +22F +21P  
AJCA 4/21 GPTAT 79%R +1.5 GJPI 73%R +27

### DC Neptune Bonnie

840 314644524 3-02 VG-85%

### JX UTAG FORCE BONNIE-N-CLYDE {5}

840 3205334436  
Born: August 1, 2019 AMID: 588

Due: June 24, 2021 to JX Lonestar {6}

### JX Faria Brothers Ronaldinho {3}

840 3126052015 7JE1503  
CDCB 4/21 GPTA 99%R +900M +42F +48P  
AJCA 4/21 GPTAT 98%R +1.8 GJPI 97%R +38

### River Valley Primero Fire-N-Ice-ET

840 3126479183 EX-90%  
2-08 2x 305d 14360 5.8 827 4.2 606  
1-09 2x 288d 11960 5.6 674 4.3 509

### DC Irwin Neptune

67208946 JH1F JNSF  
CDCB 4/21 GPTA 80%R -118M +0F -9P  
AJCA 4/21 GPTAT 81%R +0.4 GJPI 76%R +18

### DC Chrome Dream Maker

75241061 4-02 EX-93%  
3-01 3x 288d 18580 5.0 926 4.0 750

#### 3rd Dam

**DC Action Dream Maker VG-87%**  
4-00 2x 305d 15540 3.7 579

#### 4th Dam

**DC Kaptain Dream II VG-86%**  
2-11 2x 305d 13120 6.0 785 4.1 535

#### 5th Dam

**Avery Dreamer VG-84%**  
3-11 2x 305d 18610 6.3 1180 4.0 744



# Western Spring National Sale 2021



**REICH-DALE VADEN STROLLIN EX-93%**  
**SAME FAMILY AS LOT 51**

*Reserve Grand Champion, All-American Show 2017*

## Lot 51

**DALE CHUGG**  
 1520 FARR WEST DR  
 OGDEN, UT 84404

### DC LEMONHEAD SANDY

67721408  
 Born: June 15, 2019 AMID: 1408

Due: June, 2021 to Cairnbrae Bontino-ET  
 AUS 691603

*Same family as Lemonhead Sandy*

**Reich-Dale Vaden Strollin EX-94%**  
 4-11 2x 304d 15860 5.4 850 4.0 636

- *Nom ABA All-American 4-Year-Old 2017*
- *Res Grand Champion, All-American Show 2017*
- *Res Grand Champion, PA All American 2017*

### Steinhauers Samson Lemonhead

118662185 JH1F JNSF 14JE670  
 CDCB 4/21 GPTA 99%R -371M +19F +3P  
 AJCA 4/21 GPTAT 99%R +1.0 GJPI 99%R +38

### DC Valentino Sandra Dee

67931103 4-08 EX-92%  
 4-00 2x 277d 17540 4.2 737 3.5 610  
 3-00 2x 305d 16660 4.1 680 3.6 599  
 2-00 2x 303d 13010 4.4 566 3.5 457

### DP Valentino Samson

67106977 JH1F JNSF 14JE576  
 CDCB 4/21 GPTA 99%R +256M +10F +8P  
 AJCA 4/21 GPTAT 99%R +1.4 GJPI 97%R +16

### Steinhauers Renegade Lemonpie-ET

117255575 VG-88%  
 3-00 2x 305d 15690 5.0 785 4.0 635  
 2-00 2x 305d 14420 4.9 705 4.0 572

### All Lynns Louie Valentino-ET

116279413 7JE1038  
 CDCB 4/21 GPTA 99%R +270M -7F +4P  
 AJCA 4/21 GPTAT 99%R +1.0 GJPI 99%R +9

### DC Regency Sandra Dee

67060489 6-03 EX-92%  
 5-11 2x 305d 15310 4.3 656 3.0 466  
 3-10 2x 305d 12370 4.0 499 3.4 415  
 4-11 2x 280d 12810 3.4 433 3.0 389

*3rd Dam*

**DC First Prize Sandra Dee-ET EX-93%**  
 8-08 2x 305d 19040 5.1 971 3.4 647

*4th Dam*

**Montana Lassy EX-91%**  
 2-08 2x 305d 23410 5.0 1161 3.7 874

*5th Dam*

**RD/TV Mirage Sassy EX-92%**  
 5-02 2x 260d 15320 3.8 584 3.6 545

*6th Dam*

**Reich-Dale Galaxy Sandra EX-90%**  
 4-02 2x 305d 17680 5.0 885 3.8 679

*7th Dam*

**Reich-Dale Brigadier Sandra Dee EX-94%**  
 8-10 2x 305d 21860 4.1 907 3.4 754

- *Grand Champ, All-American Jr Show 1997*
- *Res Grand, All-American Jr Show 1999*
- *2nd 5-Year-Old, World Dairy Expo 1997*
- *Res Grand, WDE Junior Show 1997*

# Western Spring National Sale 2021



**SCARLETRIDGE FUROR ZADEE EX-91%**  
**2ND DAM OF LOT 52**

*Intermediate Champion, Weber Co Dairy Days 2008*

## Lot 52

QUINTON ZILLES  
3855 W 2200 S  
WESTON, ID 83286  
208.747.3356 ROSS

### Sunset Canyon Dazzler-ET

117925081 JH1F JSSF 29JE3830  
CDCB 4/21 GPTA 99%R -497M +1F -5P  
AJCA 4/21 GPTAT 98%R +1.1 GJPI 97%R +105

### Lazy Q Hired Gun Zenus-ET

119297209 3-04 EX-91%  
3-02 2x 305d 13030 5.2 669 3.5 501

### LAZEE Q DAZZLER ZODIAK

173958584  
Born: May 19, 2019 Tattoo: S8

### Hawarden Impuls Premier

67107510 29JE3756  
CDCB 4/21 GPTA 99%R -1059M -3F -12P  
AJCA 4/21 GPTAT 99%R +0.4 GJPI 99%R +17

### Pearlont Restore Dixie-ET

116341888 EX-90%  
5-06 3x 305d 24280 4.4 1072 3.4 833  
2-00 2x 365d 22546 4.3 975 3.5 789

### SV Jade Hired Gun-ET

115093063 94JE3720  
CDCB 4/21 GPTA 99%R -1878M -49F -50P  
AJCA 4/21 GPTAT 99%R +0.1 GJPI 98%R -93

### Scarletridge Furor Zadee

114114804 8-11 EX-91%  
6-06 2x 305d 16430 3.9 642 3.4 556  
4-00 2x 305d 13590 4.2 574 3.7 508

- *Int Champion, Weber Co Dairy Days 2008*
- *Int Champion, Weber Co Dairy Days 2007*
- *Junior Champion, Weber Cp Dair Days 2005*

### Piedmont Nadine Furor

CAN 10030510 11JE671  
CDCB 4/21 GPTA 99%R -3050M -75F -83P  
AJCA 4/21 GPTAT 99%R -0.5 GJPI 97%R -156

### Hawarden Master Zinnia

4010912 5-11 EX-91%  
3-00 2x 305d 18170 3.6 654 3.5 627  
4-01 2x 189d 12110 3.7 443 3.6 430

# Western Spring National Sale 2021



**SUNSET CANYON MOTION GG ANTHEM-ET**  
**2ND DAM OF LOT 53**

*Reserve All-WA Senior 2-Year-Old 2016*

## Lot 53

**LAURYN YOUNG**  
 282 HIGHWAY 603  
 CLAQUATO, WA 98532

### **Elliotts Regency Casino-ET**

840 3125141657 14JE725  
 CDCB 4/21 GPTA 99%R -373M -2F +11P  
 AJCA 4/21 GPTAT 98%R +2.0 GJPI 94%R +22

### **Claquato Full Throttle M Anthem**

840 3135448002 3-02 VG-84%

### **CLAQUATO CASINO FT ANTHEM**

840 3214929056  
 Born: June 22, 2020 AMID: 5786

#### **TJF Visionary Regency**

67248196 14JE662  
 CDCB 4/21 GPTA 99%R +1146M +24F +51P  
 AJCA 4/21 GPTAT 99%R +1.3 GJPI 99%R +54

#### **Chilli Premier Cinema-ET**

71577202 4-01 EX-93%  
 4-01 2x 305d 21170 5.6 1187 3.9 824  
 • ABA All-American Junior 3-Year-Old 2015

#### **Royalty Ridge MB Full Throttle**

118534918 147JE6221  
 CDCB 4/21 GPTA 90%R -1680M -55F -49P  
 AJCA 4/21 GPTAT 88%R +0.2 GJPI 85%R -81

#### **Sunset Canyon Motion GG Anthem-ET**

118662952 2-10 EX-90%  
 2-09 2x 276d 15090 4.2 641 3.7 552  
 1-08 2x 305d 13000 5.2 675 3.6 469  
 • Reserve All-WA Senior 2-Year-Old 2016  
 • All-WA Milking Yearling 2015  
 • 2nd Milking Yearling, Western National 2015  
 • Nom ABA All-American Fall Calf 2014  
 • All-WA Fall Calf 2014  
 • 5th Fall Calf, International Show 2014

#### *3rd Dam*

**Sunset Canyon Paradise Anthem-ET EX-90%**  
 3-06 2x 305d 19660 5.3 1038 3.5 694

#### *4th Dam*

**Sunset Canyon Sultan T Anthem-ET EX-95%**  
 4-03 2x 305d 24160 4.3 1033 3.3 798

#### *5th Dam*

**Sunset Canyon Thunder Anthem 3-ET EX-93%**  
 4-04 2x 365d 30118 5.2 1573 3.7 1125

#### *6th Dam*

**Sunset Canyon MBSB Anthem-ET EX-95%**  
 5-04 2x 365d 37087 4.7 1732 3.7 1383

- National Jersey Jug Futurity Winner 2000
- Premier Performance Cow, All-American 2000
- Reserve Grand Champion, Western Nat'l 2000
- 1st 4-Year-Old, Western National 2001
- 1st 5-Year-Old, Western National 2002

#### *7th Dam*

**Sunset Canyon Brook Amity-ET EX-90%**  
 4-11 2x 365d 32214 5.0 1601 3.6 1153

#### *8th Dam*

**Goodnow Midnight Blue-ET EX-93%**  
 6-03 2x 305d 24610 4.6 1132 3.6 893

#### *9th Dam*

**Observer Althea Anna EX-90%**  
 7-04 2x 305d 23720 4.5 1071 3.6 857

# Western Spring National Sale 2021

## Lot 54

UTAH STATE UNIVERSITY  
CAINE DAIRY CENTER  
4300 S HIGHWAY 89  
WELLSVILLE, UT 84339

### UTAG CHROME BRANDY

840 3205334413

Born: June 6, 2019 AMID: 565

Due: June 18, 2021 to Elliotts Regency Casino-ET

### River Valley Cece Chrome-ET

840 3012423929 7JE5004

CDCB 4/21 GPTA 99%R +647M +41F +21P

AJCA 4/21 GPTAT 99%R +2.1 GJPI 99%R +101

### Uttag Showdown Brandy

840 3146445207 3-00 VG-86%

2-11 3x 252d 14860 5.2 766 3.6 539

1-11 3x 289d 10560 5.1 536 3.3 353

### Schultz Legal Critic-P

117217618 11JE1098

CDCB 4/21 GPTA 99%R -41M +9F +5P

AJCA 4/21 GPTAT 99%R +0.9 GJPI 99%R +50

### Lyon Celebrity Cece-ET

117046049 EX-91%

4-05 3x 271d 22660 4.4 999 3.6 823

2-02 2x 305d 18470 4.7 865 3.4 633

### River Valley Spice Showdown

840 3012423904 7JE5015

CDCB 4/21 GPTA 98%R -905M -15F -12P

AJCA 4/21 GPTAT 97%R +0.3 GJPI 93%R -38

### Dupat Morris 14703

840 3128791245 4-04 EX-90 %

2-09 3x 305d 16410 4.9 801 4.3 711

4-02 3x 305d 10490 4.9 513 4.1 434

1-10 2x 288d 9670 5.7 553 4.2 405

*3rd Dam*

**Dupat Eclipses 9405** VG-82%

3-08 2x 305d 23950 4.9 1163 3.8 912

*4th Dam*

**Dupat Dunkirk J296 {6}** VG-86%

6-00 2x 305d 24630 5.0 1238 3.8 933

*5th Dam*

**Dupat Poseidon 7755 {5}** VG-85%

2-04 2x 305d 16830 5.0 842 3.8 636

*6th Dam*

**Dupat G Magic 3312 {4}** VG-83%

6-06 2x 280d 18170 4.7 848 3.8 686



# HOLSTEIN ASSOCIATION TERMS AND CONDITIONS FOR PUBLIC SALES

EFFECTIVE MARCH 2, 1996 - Amended October 1, 1997, June 28, 2000, June 23, 2002, and March 26, 2010

**TERMS:** The terms of the sale are cash unless arrangements are made prior to the sale or are printed in the sale catalog. Only when the above conditions are met will the buyer be entitled to the warranties listed below. In no case will animals be released unless settlement is made with the clerk of the sale.

**RESPONSIBILITY:** The seller, buyer, and manager of this sale are obligated to comply with the provisions of these terms and conditions.

**EXPORT SALES:** Buyer assumes all responsibility for health tests required by the importing country.

**BIDS:** The highest bidder is the buyer. Bidding parties or their agents are responsible for all bids placed. Every animal or lot presented for bidding is pledged to absolute sale. In case of dispute, the animal or lot will again be put up for advance bids, and if there is no advance bid, the animal or lot will be sold to the person the auctioneer accepted the last bid from. In case two or more claim the bid, the auctioneer will indicate the party whose bid he recognized. Other claimants will be given an opportunity to increase the bid and bidding will be restricted to the two or more claimants.

**BY-BIDDING:** Bidding directly or indirectly by the sole owner of any animal or lot is prohibited unless the intention to bid is disclosed specific to each animal in the catalog and announced when the animal enters the ring. Bidding by any member of a partnership, syndicate, or other entity having an ownership interest in an animal or lot is permitted.

**TRANSFER OF OWNERSHIP:** For all Registered Holsteins<sup>SM</sup>, the transfer of ownership to the buyer will be recorded on the records of Holstein Association USA and a certificate of registration showing that transfer of ownership will be provided to the buyer free of charge. For embryos, the transfer of ownership to the buyer will be recorded on the records of Holstein Association USA free of charge to the buyer.

**RISK:** All animals located at sale site are at the purchaser's risk as soon as struck off, but will be cared for free of charge for a maximum of 24 hours following the end of the sale.

## WARRANTIES:

- 1) Each consignor warrants clear title to the animal or lot, and the right to sell same.
- 2) To the best of the seller's knowledge, each animal is sound and healthy in every respect and embryos have been recovered, processed, frozen, transferred and graded in keeping with IETS recommendations unless otherwise noted in the catalog or announced from the auction stand. Every precaution will be taken to represent the physical condition of each lot exactly as is known. Examination of all purchases should be made immediately after the purchase and before the close of the sale, and if found not to be as represented, complaint must be reported to the sale management before the close of the sale. In the event no complaint is filed, it is understood that the buyer assumes full ownership in the case of animals at sale site together with all risks, after which no representations of the seller can be challenged through the sale management. Heifers that never calved are in no way guaranteed as to the condition of their udders following calving.
- 3) **Breeding Warranty**

The seller guarantees all animals to be breeders, but not beyond the purchase price, with the following understanding:

- a. Males - Should any bull after reaching the age of fourteen months fail to prove a breeder after being used for two months on cows or heifers known to be breeders, the matter shall be reported in writing to the seller within three months of the sale date. The report must include the animal's examination record, a written statement of treatment, and a statement of the animals' inability to breed,

by a licensed veterinarian. The seller has the option to refund the purchase price or make other settlement that is satisfactory to the buyer. In either case the rights of ownership of the animal return to the seller. The seller makes no guarantees with respect to the ability to freeze semen.

- b. Females - All females are guaranteed to be breeders with the exception of:
  1. Cows over 7 years of age when sold;
  2. Cows and/or heifers carrying a pregnancy that is the result of an embryo transfer.

Report of a non-breeder must occur in writing within 3 months of the date of sale or before the animal reaches 21 months of age and must be submitted to the seller. The report must include the animal's examination record, a written statement of treatment, and a statement of the animals' inability to breed, by a licensed veterinarian. The seller has the option to refund the purchase price or make other settlement that is satisfactory to the buyer. In either case the rights of ownership of the animal return to the seller.

Females bred when sold and pronounced in calf are presumed to be pregnant but pregnancy is not guaranteed unless so announced. The seller makes no warranty that pregnant cows will deliver calves or that they will carry calves full term.

- c. If, after the sale, embryos or oocytes are recovered from a female or an attempt is made to superovulate her, this negates the breeding warranty unless there is a separate written agreement between buyer and seller.

**SHIPPING:** Assistance will be given in arranging shipping of the animals after the sale. All costs, risks and responsibility will be borne by the purchaser.

**PEDIGREE INFORMATION:** All production, classification, type and production summaries are current. Only information recorded on Holstein Association USA pedigrees is used. Any production or classification records supplied by the seller or consignor will be properly identified as provided by owner. Records in progress are identified as such.

**GENOMIC INFORMATION:** If genomic information on the animal or embryo is available, it must be dated and disclosed at or before the time of sale.

**EMBRYO TRANSFER:** All registered animals that have resulted from embryo transfer are identified with one of the following suffixes in the name: ET, ETS (from split embryo), or ETN (from nuclear transfer). If unregistered, the appropriate technology will be identified. Donor dams are identified.

**HEALTH WARRANTY:** The seller will provide an official health certificate to the buyer for each animal showing the results of all health tests made in preparation for this sale as required by the state where the cattle reside. Other health tests completed for this sale will be disclosed.

**ERRORS:** The material in this catalog has been carefully edited. If any errors or omissions are discovered, they will be announced. Such announcements take precedence over that printed in this catalog.

**ACCIDENT:** The sale management, the consignors, and the owner of the grounds will not be responsible in any case for the condition of the grounds or the behavior of the animals and disclaim any liability in the event of personal accident or property loss.

**LIMITATIONS OF WARRANTIES:** Warranties contained herein, unless terminated earlier, will cease upon the resale of an animal.

# Index

AIROSA, PHILLIP.....	14
AIROSO, JOEY & MELVOLD, KEN.....	35
ALMEIDA, BRANDON.....	32
ARIZONA DAIRY CO.....	7
AZEVEDO, AIDAN & SILVA, WESTON.....	17
BETTENCOURT, JAXON.....	31
BUTTARS, KENT, ROBYN & PAUL.....	21
BUTTARS, KENT & DANIEL.....	22
CALORI-D HOLSTEINS, MAST, STEPHEN & BERRY, MIKE.....	46
CHUGG, DALE.....	49, 51
CRANEHILL GENETICS & JOHNNY MACHADO.....	30
CUNNINGHAM, CHRISTIAN.....	36
CUNNINGHAM, CHRISTIAN & PRICE, MILES.....	2
DAMROW, CALLEN & WILKS, JADEN.....	3
DAMROW, ZACHARY & DANIELLE.....	26, 27
DYMENTHOLM GENETICS.....	44
ESKDALE DAIRY.....	45, 48
GILLINS, STEVEN.....	4, 25
HAY, MIKE.....	15, 16A, 16B
HARRIS, ZAIDIE.....	34
HARRIS DAIRYLAND.....	12
LEAK, MATT.....	8
LEAK, MATTI, KAEL, TREY, KAYSON & STOCKTON.....	20
MANNI, JAMES.....	28, 29
MELVOLD, KEN.....	37
NDIRA, INC.....	11A, 11B
OLIVER, MICHAEL & JESSICA.....	10
PAPPYS FARMS, LLC.....	9, 18, 19, 41, 42
ROYALMAID HOLSTEINS.....	1
SCHMIDT, MAST & BERRY.....	5
STOLTZFUS, WILLIAM.....	33
TOONE DAIRY INC.....	40
UTAH STATE UNIVERSITY.....	23, 24, 50, 54
VANDER EYK, CHLOE & CHASE.....	6, 38
VAN EXEL, MADISON.....	13
WINSTAR GENETICS & HOCKETT, MITCHELL.....	39
YARDLEY, WADE.....	43, 47
YOUNG, LAURYN.....	53
ZILLES, QUINTON.....	52

