

GENETIC DREAMS



AT GRAND-VIEW
MAY 1, 2021

Terms and Conditions Of Sale

TERMS: The terms are cash or check on sale day made payable to the Ayrshire Breeders' Association, in US funds. All sales are final. Settlements are to be made in full unless otherwise announced at the time of the sale of the individual lots. All payments must be made to the clerk of the sale. Compliance with the above terms of payment on the part of the buyer will then entitle him/her to guarantees offered by the seller and listed below.

EXPORT SALES: Arrangements regarding health requirements and health tests for a specific importing country shall be a matter of agreement prior to the sale between the seller, sale management and the potential buyer or agent. Otherwise, the buyer assumes all responsibility for all health tests.

BIDS: The highest bidder shall be the buyer. Every animal is pledged to absolute sale. In case of disputes, the animal shall be again put up for advanced bids, and if there be no advance bids, the animal shall be sold to the person from whom the auctioneer on the stand accepted the last bid. In case two or more claim the bid, the auctioneer in the box shall indicate the party whose bid he/she recognized. Other claimants will be given an opportunity to increase the bid, and bidding will be restricted to the two or more claimants.

BY-BIDDING: Bidding directly or indirectly on an animal in which the bidder or any person for whom the bid is made has an ownership interest is prohibited unless the intention to bid is disclosed specific to each animal in the catalog and announced when the animal enters the ring. Consignors do have the right to be a party to a purchasing partnership or syndicate of their consignment if they choose to do so. Such partnerships need not be announced before the sale but are encouraged to be communicated to sale management.

RISK: All animals are at the purchaser's risk as soon as struck off, but will be cared for free of charge for 24 hours. Purchasers must make arrangements with sales staff immediately following the sale. Consignments kept after 24 hours will be charged \$20.00/day/US unless prior arrangements have been made with sale management. Animals are solely at the consignor's risk prior to selling in the event of fire or other eventuality.

CERTIFICATES OF REGISTRY: Each animal is recorded, or will be recorded, in the herd-book of the Association. The certificates of registry with recorded transfer will be furnished by the seller to the purchaser.

WARRANTIES:

- 1) The seller guarantees right and title to property.
- 2) Unless otherwise noted in the catalog or announced from auction stand, each animal is sold as sound.
- 3) Limited Warranties. The Seller makes no other warranties, express or implied, including without limitation, merchantability or fitness for a particular purpose. All warranties cease when an animal is resold or transferred by the original purchaser.
- 4) Each animal is sold as a breeder, subject to the following conditions:

a) **MALES:** Should any bull over 15 months of age fail to be proven a breeder, the seller must either return the purchase amount or provide a viable and agreed upon replacement.

b) **FEMALES:** Any female pregnant when sold, or that calved normally within 90 days of the sale, will be considered a breeder. Bred females sold as "pregnant" to the best of the breeder's knowledge and the result of pregnancy examinations will be announced from the stand. However, the seller does not guarantee that a pregnant female will deliver a live calf or carry the calf full term. Any female not pregnant when sold, or that upon reaching the age of 18 months should fail to conceive after having been bred regularly for four months by a bull known to be a proven breeder and treated by a competent veterinarian, should be reported in writing to the seller. The seller will then be granted the privilege of a further period of four months to prove the female a breeder on his/her premises before refunding the purchase price as full adjustment or make other settlement satisfactory to the purchaser.

Superovulation or flushing of a female after the sale negates any breeding warranty. Unless notice has been given to the sale manager prior to sale date and is noted in the catalog or announced from the auction stand that a female has been superovulated or flushed prior to sale date, the seller warrants that such is not the case.

c) **EMBRYOS:** Only Grade 1 embryos collected and processed by an embryo transfer business (ETB) certified by the American Embryo Transfer Association (AETA) will be sold. Sale manager will have a copy of the Certificate of Embryo Recovery and Certificate of Freezing (AETA Forms A and C) before and during any sale.

d) **CHOICE OF PREGNANCY:** Should an animal chosen from a specified flush fail to meet the breeding warranties, or should an animal of the sex specified by the buyer not result from a specified flush, the buyer and seller will take the following steps:

1. Seller will offer the choice of remaining animals from the specified flush, and/or
2. Seller will offer the choice of another flush already implanted or of a future flush. If the buyer accepts the choice of a future flush, unless otherwise agreed no interest will be charged to the buyer, but payment schedules will remain the same.
3. If neither of the above options are acceptable to the buyer, the seller will make full refund of all payments received.
4. The seller is not responsible for damage caused by foreign bodies after the animal is sold, inclusive of mummified calves, nor sickness apparent at sale time.

SHIPPING: Assistance will be given in shipping the animals after the sale. All costs, risks and responsibilities will be borne by the purchaser.

ON-FARM SELECTIONS: Buyers of "Choice" lots must make their on-farm selections by the time the youngest calf resulting reaches four months of age, unless other arrangements have been made with seller.

HEALTH WARRANTY: The seller will provide the purchaser an official health certificate to the buyer for each animal. The results of any future health test are not guaranteed.

ACCIDENT: The sale management, the consignors and the owner of the grounds will not be responsible in any case for the condition of the grounds or the behavior of the animals and disclaim any liability in the event of personal accident or property loss.

ERRORS: The material in this catalog has been carefully edited. If any errors are detected, they will be announced. Such announcements take precedence over the matter printed in this catalog.

GENETIC DREAMS



AT GRAND-VIEW MAY 1, 2021

SALE TIME - 11:00 AM
FRIDAY SALE PREVIEW
& DINNER 6:30 PM

At The Farm
N6470 Hwy C
Cecil, WI 54111

*Grand-View
Ayrshires*

TIM & KATIE BUSCH
Cecil, WI
920-609-7476
tb1972@frontiernet.net

Auctioneer

Lynn Lee 615-390-6312

Pedigrees

Steve Searles 507-261-3062

Sales Staff

Damion Ullmer 920-639-2375

Kurt Wolf 563-543-2986

Greg Evans 315-456-8283

Lynn Harbaugh 920-420-1524

Clerking

Becky Payne 614-595-7561

Cattle Fitting

Brandon Smith 715-509-0025

Brent Kinnard 920-362-6154

Trucking will be available.

Airports

Appleton (ATW)

Green Bay (GRB)

Accommodations

Cobblestone Hotel & Suites

Pulaski, WI 920-822-0822

20 minutes away

Quality Inn & Suites

Shawano, WI 715-526-2044

18 minutes away



The sale will be broadcast LIVE!

Watch and bid from anywhere

online with this service at

www.cowbuyer.com

For assistance pre-registering,

contact Aaron Ray Tompkins

at 336-363-4639.

The "Dreamer" lineage has
made a huge impact on the
Genetic Dreams at Grand-View

**8th GENERATION EXCELLENT
GRAND-VIEW BBBK DREAMER**

100463697		11-06 94		5E	
GOLD		%		FAT	PRT
2-06	2 305	14610	4.4	646	3.3 489
	334	15770	4.5	702	3.4 531
3-06	2 305	16510	3.6	598	3.3 541
	364	17560	3.6	640	3.3 581
4-09	2 305	21150	4.5	958	3.3 695
	365	24310	4.4	1059	3.3 807
6-08	2 305	20170	4.1	835	3.2 650
	365	23650	4.1	964	3.3 774
8-08	2 305	21900	3.5	769	3.3 715
	365	26050	3.6	948	3.3 856
10-09	2 305	13910	4.6	637	3.7 510
LIFE	2750	147270	4.1	6059	3.4 5025

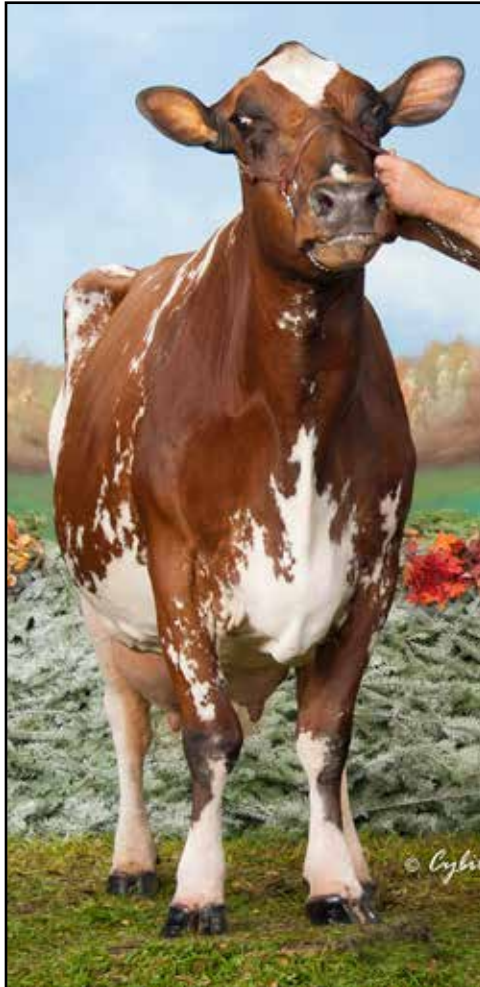
3RD FALL YEARLING - 2008 CENTRAL NATIONAL
HM ALL-AMERICAN FALL YEARLING - 2008
1ST - 2010 WDE INTERNATIONAL FUTURITY
NOM ALL-AMERICAN AGED COW - 2015
NOM ALL-AMERICAN 100,000 LB COW - 2016

**7th GENERATION EXCELLENT
GRAND-VIEW CORNELIUS DRAMA**

100261866		7-02 91			
GOLD		%		FAT	PRT
2-03	2 236	12810	4.1	522	3.1 399
	305	16220	4.1	668	3.2 511
	312	16510	4.1	680	3.2 521
3-03	2 268	13910	4.0	554	3.2 447
4-03	2 305	17950	4.0	715	3.2 570
5-06	2 305	21160	4.0	837	3.1 660
	314	21560	4.0	856	3.1 674
6-06	2 279	21450	4.0	857	3.0 654

**6th GENERATION EXCELLENT
GRAND-VIEW OLY 2 DIVA**

100033814		11-07 90		2E P5 +358	
GOLD		%		FAT	PRT
2-00	2 280	14810	3.9	578	2.8 416
3-00	2 305	17210	3.9	668	2.9 507
	313	17500	3.9	683	3.0 517
4-00	2 355	19030	4.2	798	3.0 570
5-02	2 295	18870	4.3	804	2.9 547
6-02	2 291	18010	3.9	704	3.1 552
	331	19390	4.0	773	3.1 597
7-03	2 301	17930	4.1	736	3.0 530
8-03	2 305	18430	4.1	748	3.0 560
	348	20590	4.1	842	3.0 627
9-04	2 305	19500	4.1	802	3.0 590
10-07	2 287	20220	4.1	835	2.8 566
11-06	2 305	20340	4.0	821	2.9 585
	341	21660	4.1	885	2.9 632
12-08	2 230	12700	4.2	528	2.9 372
LIFE	3462	205340	4.1	8405	3.0 6067



GRAND-VIEW BBBK DREAMER
EX-94 5E

**5th GENERATION EXCELLENT
CHAPEL-HILL-AYR'S HELIGO DELET 1000073**

5-00 91		P7 +350			
GOLD		%		FAT	PRT
2-06	2 305	14520	4.0	579	2.9 427
3-10	2 305	17350	3.5	613	3.0 516
	307	17400	3.5	615	3.0 518

**4th GENERATION EXCELLENT
WILL-AYR'S DYNAMIC**

980686		9-11 90		2E P8 +305	
GOLD		%		FAT	PRT
5-09	305	19080	4.1	782	3.0 580
	309	19170	4.1	785	3.0 583
7-01	2 281	20600	3.8	784	3.2 650
8-00	2 305	17030	4.0	689	3.1 524
	365	18020	4.0	725	3.1 551
9-06	2 305	18700	3.7	683	2.8 519
	365	20500	3.6	743	2.8 570

**3rd GENERATION EXCELLENT
WILL-AYR'S DESTINY**

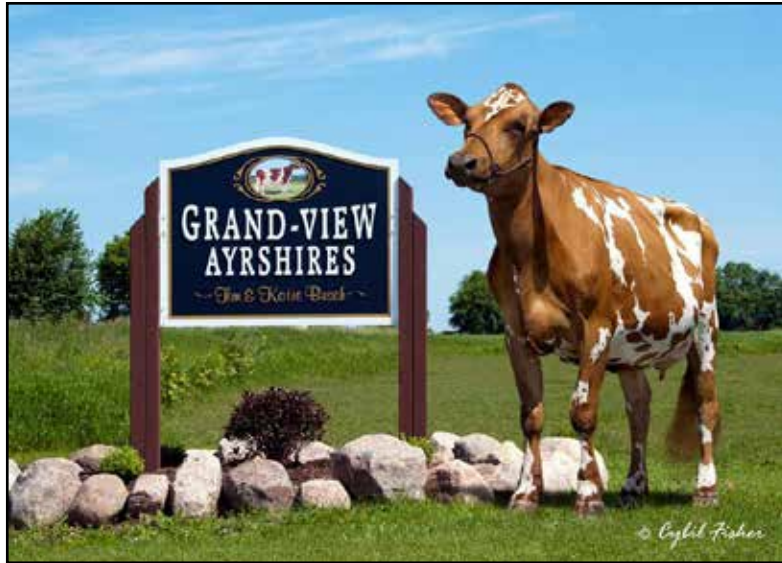
936342		4-04 90		VEV E P- +362	
DHIR		%		FAT	PRT
2-01	2 289	13570	4.2	569	3.2 438
3-01	2 302	18930	3.9	743	3.1 581
4-01	2 253	18470	3.5	639	3.0 552
5-04	2 273	18570	3.9	716	3.0 558

**2nd GENERATION EXCELLENT
WILL-AYR'S DIZZY**

916333		6-06 90		EVE V 2E P- +296	
DHIR		%		FAT	PRT
2-02	3 305	14710	4.1	604	3.3 488
	343	16070	4.2	673	3.4 544
3-03	3 305	17980	4.0	713	3.2 575
	322	18360	4.0	734	3.2 592
4-04	2 277	17330	3.9	670	3.2 553
5-03	2 305	20420	3.9	796	3.2 648
7-00	2 305	16020	4.1	661	3.1 495
8-03	2 305	19160	3.9	740	3.1 586
9-08	2 305	15040	3.8	574	3.4 509
LIFE	2571	132230	4.0	5245	3.2 4293

**1st GENERATION EXCELLENT
WILL-AYR'S DUCHESS**

895059		6-00 90		P- +248	
DHIR		%		FAT	PRT
2-01	2 305	14460	4.2	603	3.3 484
3-02	2 305	15780	4.2	659	3.3 524
	322	16220	4.2	682	3.3 542
4-02	3 305	16830	4.3	730	3.4 564
	308	16920	4.3	735	3.4 567
5-02	3 305	20910	4.3	901	3.3 684
6-06	2 278	18180	4.1	742	3.2 580
7-05	2 275	17670	3.8	671	3.2 566
LIFE	1921	109860	4.2	4560	3.3 3619



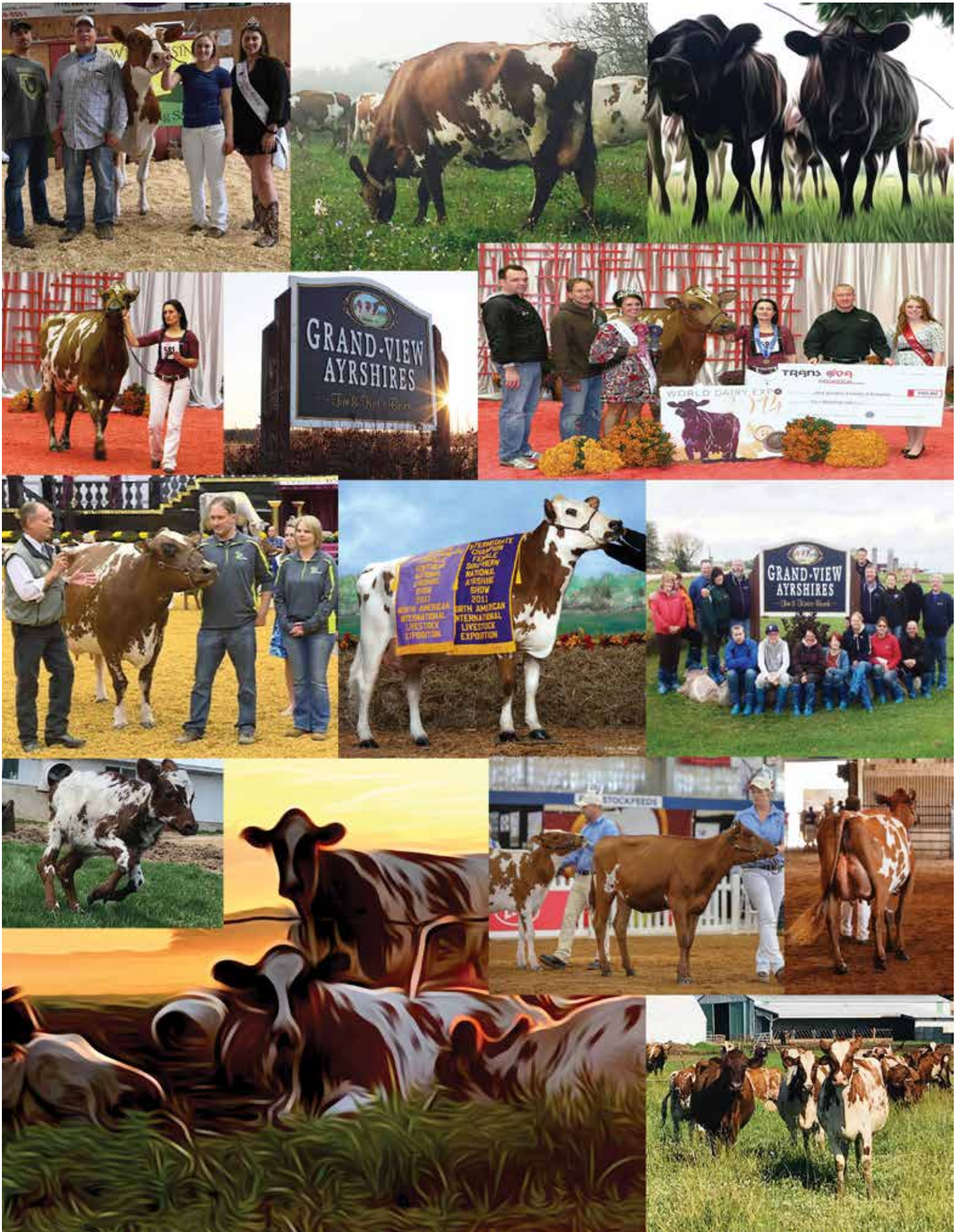
Welcome to Grand-View Ayrshires for the Genetic Dreams sale. This event has been a dream of mine for many years, and I am thrilled for you to be part of it!

Since taking over the farm in 1995, my goal has been to fill the barn with Ayrshires that are equally strong at producing milk as looking good in a show string over a long lifetime. Over the past 20+ years, our cow families are living up to that goal, generation after generation after generation. In recent years, I've decided it's time to build up the herd enough to make some of these strong genetics available to you. Through the purchases and breeding decisions I've made, along with the flushes, showstrings, and sale consignments, I've put together a lineup that I'm hopeful will fulfill some of your goals and dreams as well. You'll see in today's sale calves that are potential 11 generations Excellent. You'll see heifers with multiple All-American nominations in their pedigrees. You'll see cows whose offspring have starred in showrings all over the world.

As much as this event has been my personal dream, it would not be possible without the support of many others. I want to thank Damian Ullmer for his expertise and guidance on planning, Jeremy and Monica Schwittay for housing and caring for animals as their own as the herd outgrew my space.

Most of all, thank you for joining the Genetic Dreams at Grand-View Ayrshires event. Whether you are with us on the farm or joining on Cowbuyer, I appreciate the opportunity to showcase my genetic dreams and hopefully fulfill some of your dreams today!

Tim Busch



Genetic Dreams at Grand-View



GRAND-VIEW DREAMER DAVY-ET, EX-92
SELLING AS LOT 1



GRAND-VIEW DREAMER DAVY-ET, EX-92
SELLING AS LOT 1



GRAND-VIEW DREAMER SUMTOTAL DIVOT, EX-94 4E
DAM OF LOT 1

1

\$ _____

GRAND-VIEW DREAMER DAVY-ET

94.9% AYRSHIRE 03/01/16 FEMALE
100715767 94.9%

	4-05 92	P5 +404	
NM\$	-67		
PTA	+2.98SCC -1.4PL	-1.6DPR	
PTA	-498M -4F	-5P	58R
PTA\$	-67CY		12/20
PTA%	+0.8	+0.6	
PTAT	+0.70T	60R	12/20
PPA	+1352M +64F	+72P	
CLASS	ST8 SR6 BD9 DF9 RA5 RW7 LS4 FA6		
	FU9 UH9 UW9 UC9 UD6 TP8 TL6 LR8		
GOLD		%	FAT % PRT
2-03	2 286 17890 4.1	739 3.4	605
3-03	2 305 22600 4.1	916 3.3	743
	313 23020 4.1	934 3.3	759
4-03	2 277 20316 3.6	727 3.4	686
			INC

DUE 6/11/21 TO
BLUE-SPRUCE RINGER
CONFIRMED PREGNANT WITH FEMALE

DAVY HAS ONLY BEEN SERVICED 4 TIMES
RESULTING IN 4 PREGNANCIES!
9 GENERATIONS EXCELLENT!

NEXUS DREAMER

103734662C		89.81%
PTA	+3.25SCC -4.1PL	-4.1DPR
PTA	-200M +5F	-5P 96R
PTA%	+0.07	+0.01
PTAT	+0.20T	96R 12/20
D/AV	20126M 4.1 816F 3.2	641P 8.6T

GRAND-VIEW SUMTOTAL DIVOT

100505762	9-04 94	4E
GOLD		%
2-05	2 305 19310 4.0	773 3.2 613
	365 22870 4.0	926 3.2 737
3-11	2 305 22930 3.9	905 3.2 742
	365 26430 3.9	1027 3.3 863
5-10	2 305 25230 3.8	963 3.2 799
	365 29390 3.8	1113 3.2 942
7-05	2 305 21770 3.6	780 3.2 694
	365 25220 3.6	914 3.2 819
8-08	2 305 16640 3.7	611 3.1 510
	365 18900 3.7	701 3.1 588
LIFE	2409 152300 3.9	5897 3.3 5007

1ST FALL YEARLING - 2009 INTERNATIONAL JR
RESERVE JR CHAMPION - 2009 INTERNAT'L JR
JR ALL-AMERICAN FALL YEARLING - 2009
1ST SR 3-YEAR-OLD - 2011 SOUTHERN NATIONAL
INT CHAMPION - 2011 SOUTHERN NATIONAL
RES GRAND CHAMPION - 2011 SOUTHERN NAT'L
NOM ALL-AMERICAN SR 3-YEAR-OLD - 2011
NOM ALL-AMERICAN 4-YEAR-OLD - 2012
3RD 100,000 LB COW - 2015 INTERNATIONAL
TOTAL PERFORMANCE WINNER - 2015 INTERNAT'L
HM ALL-AMERICAN 100,000 LB COW - 2015

MARGOT CALIMERO

10310847C		90.75%
PTA	+3.13SCC -2.7PL	+0.4DPR
PTA	-543M -7F	-12P 97R
PTA%	+0.08	+0.03
PTAT	+0.30T	96R 12/20
D/AV	19414M 4.0 774F 3.2	621P 8.6T

DU PETIT PONT TRADITION PASTEL

102205401C		88.87%
DHI		%
2-01	2 305 22891 3.5	794 3.3 756
	365 27128 3.5	961 3.4 911
3-07	2 305 22544 3.5	778 3.3 750
	341 23973 3.5	831 2.9 701
4-08	2 305 22201 3.7	831 3.2 701
	365 23764 3.8	895 3.2 763
5-10	2 305 25959 4.5	1160 3.2 836
	365 29668 4.6	1362 3.3 979
LIFE	1940 123882 4.0	4920 3.3 4127

MAPLE-DELL SUM TOTAL-ET

100397787		
PTA	+3.13SCC -0.5PL	-0.3DPR
PTA	-598M -29F	-15P 82R
PTA%	-0.03	+0.02
PTAT	+0.30T	77R 12/20
D/AV	19346M 3.8 729F 3.1	599P 8.5T

GRAND-VIEW PADDY DECEMBER

100197592	6-08 90	
GOLD		%
2-02	2 295 14030 4.1	570 3.0 420
3-02	2 305 15480 4.0	619 3.0 470
	365 18230 4.1	745 3.1 558
4-04	2 270 14990 3.7	559 3.0 456
5-03	2 305 15060 4.2	634 3.2 482
	311 15210 4.2	640 3.2 488
6-04	2 305 20540 3.9	796 3.1 641



GRAND-VIEW DREAM DAIQUIRI-ET
ALL-AMERICAN SUMMER YEARLING, 2017
JR CHAMPION, MIDWEST SPRING SHOW 2017
MATERNAL SISTER OF LOT 2

2

\$ _____

**GRAND-VIEW TUXEDO
 DREAM BIG**

96.22% AYRSHIRE
 840003205241935

06/01/20 FEMALE
 96.22%
 P6 +433

RUISSEAU CLAIR TUXEDO-ET

109844514C				92.45%
PTA	+2.90SCC	+0.7PL	+0.3DPR	
PTA	+1055M	+44F	+30P	48R
PTA%		+0.1	-0.02	
PTAT	+0.50T		55R	12/20
D/AV	OM	OF		8.8T

GRAND-VIEW GIBBS DENISE-ET

100673067	5-01	88			
GOLD		%	FAT %	PRT	
3-02	2	305	17570 3.8	671 3.2	556
			365 19850 3.8	756 3.2	633
4-07	2	278	19920 3.8	762 3.1	612
5-06	2	305	22310 3.6	803 3.0	666
			356 24510 3.6	885 3.0	733

THIRD DAM:

GRAND-VIEW BBBK DREAMER

100463697	11-06	94		5E	
GOLD		%	FAT %	PRT	
2-06	2	305	14610 4.4	646 3.3	489
			334 15770 4.5	702 3.4	531
3-06	2	305	16510 3.6	598 3.3	541
			364 17560 3.6	640 3.3	581
4-09	2	305	21150 4.5	958 3.3	695
			365 24310 4.4	1059 3.3	807
6-08	2	305	20170 4.1	835 3.2	650
			365 23650 4.1	964 3.3	774
8-08	2	305	21900 3.5	769 3.3	715
			365 26050 3.6	948 3.3	856
10-09	2	305	13910 4.6	637 3.7	510
LIFE			2750 147270 4.1	6059 3.4	5025

3RD FALL YEARLING - 2008 CENTRAL NATIONAL
 HM ALL-AMERICAN FALL YEARLING - 2008
 1ST - 2010 WDE INTERNATIONAL FUTURITY
 NOM ALL-AMERICAN AGED COW - 2015
 NOM ALL-AMERICAN 100,000 LB COW - 2016

KAMOURASKA VOLVO-ET

106530705C				87.22%
PTA	+2.86SCC	+1.9PL	-0.5DPR	
PTA	+365M	+33F	+25P	91R
PTA%		+0.9	+0.7	
PTAT	-.10T		84R	12/20
D/AV	19320M 4.1	787F 3.3	633P 8.4T	

DUO STAR AMICALE-ET

107377079C				97.68%
------------	--	--	--	--------

PALMYRA REALITY GIBBS-ET

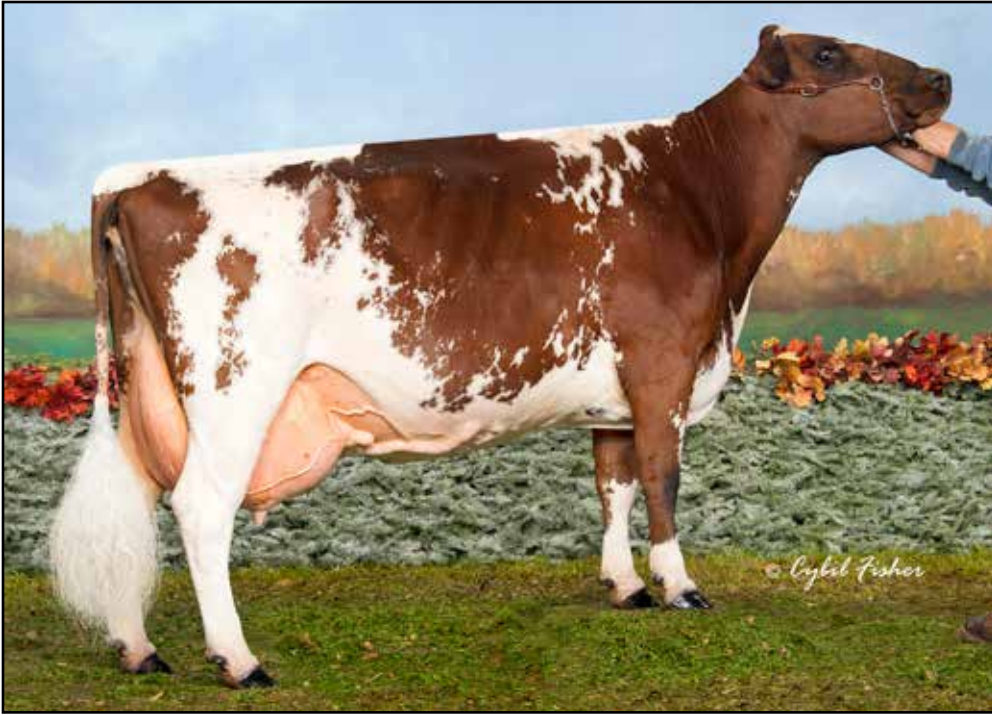
69261849				
PTA	+2.94SCC	-2.2PL	+0.1DPR	
PTA	-125M	-24F	-23P	95R
PTA%		-0.10	-0.10	
PTAT	-.10T		92R	12/20
D/AV	19528M 3.9	760F 3.0	595P 8.5T	

GRAND-VIEW BURDETTE DIAMOND

100564512	3-06	91			
GOLD		%	FAT %	PRT	
2-03	2	305	14910 4.0	592 3.4	504
			330 15900 3.9	625 3.4	542
3-04	2	305	15840 3.8	605 3.3	523
			327 16210 3.8	618 3.3	536

3RD SPRING YEARLING - 2010 INTERNATIONAL
 HM ALL-AMERICAN SPRING YEARLING - 2010
 1ST - 2012 WDE INTERNATIONAL FUTURITY
 2ND JR 3-YEAR-OLD - 2012 INTERNATIONAL
 RES ALL-AMERICAN JR 3-YEAR-OLD - 2012

Genetic Dreams at Grand-View



GRAND-VIEW BBBK DREAMER, EX-94 5E
WISCONSIN COW OF THE YEAR 2016
DAM OF LOT 3



GRAND-VIEW BURDETTE DIAMOND
EX-91
RES ALL-AMERICAN JR 3-YEAR-OLD, 2012
FULL SISTER OF LOT 3
GRANDDAM OF LOT 2

3

\$ _____

GRAND-VIEW BURDETTE DREAMS TOO-ET

PUREBRED AYRSHIRE 12/13/20 FEMALE
 840003226712490
 P- +396

POTENTIAL 9TH GENERATION EXCELLENT

8 EXCELLENT FULL SISTERS!

SISTERS IN NUMEROUS COUNTRIES

PALMYRA TRI-STAR BURDETTE-ET

100419568
 PTA +2.94SCC +1.1PL -0.6DPR
 PTA +261M +6F +13P 99R
 PTA% -0.02 +.02
 PTAT +.90T 99R 12/20
 D/AV 19858M 3.9 783F 3.2 633P 8.6T

GRAND-VIEW BBBK DREAMER

100463697 11-06 94 5E
 GOLD % FAT % PRT
 2-06 2 305 14610 4.4 646 3.3 489
 334 15770 4.5 702 3.4 531
 3-06 2 305 16510 3.6 598 3.3 541
 364 17560 3.6 640 3.3 581
 4-09 2 305 21150 4.5 958 3.3 695
 365 24310 4.4 1059 3.3 807
 6-08 2 305 20170 4.1 835 3.2 650
 365 23650 4.1 964 3.3 774
 8-08 2 305 21900 3.5 769 3.3 715
 365 26050 3.6 948 3.3 856
 10-09 2 305 13910 4.6 637 3.7 510
 LIFE 2750 147270 4.1 6059 3.4 5025

3RD FALL YEARLING - 2008 CENTRAL NATIONAL
 HM ALL-AMERICAN FALL YEARLING - 2008
 1ST - 2010 WDE INTERNATIONAL FUTURITY
 NOM ALL-AMERICAN AGED COW - 2015
 NOM ALL-AMERICAN 100,000 LB COW - 2016

PALMYRA TRI-STAR

150440
 PTA +2.87SCC -1.3PL -0.5DPR
 PTA +94M +3F +1P 97R
 PTA% -0.01
 PTAT 95R 12/20
 D/AV 19683M 3.9 766F 3.1 616P 8.4T

PALMYRA RENO BETHANY-ET

100101191 3-06 90
 GOLD % FAT % PRT
 1-11 2 305 22700 3.8 867 3.1 701
 365 26925 3.9 1038 3.1 847
 3-01 2 305 26910 3.6 959 3.3 875
 365 30930 3.6 1104 3.3 1006
 4-08 2 305 31920 3.9 1233 3.1 982
 365 35780 3.8 1374 3.1 1123
 LIFE 1551 120700 3.7 4496 3.2 3855

BLACKADDAR B B KELLOGG

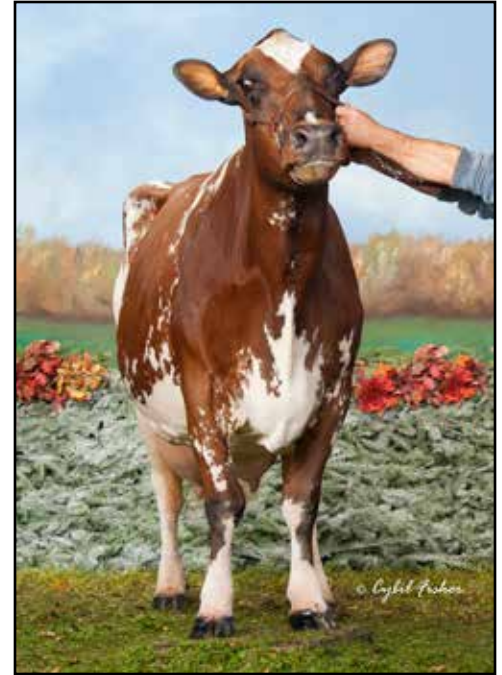
777850C
 PTA +3.15SCC -0.2PL -0.2DPR
 PTA -1146M -51F -26P 98R
 PTA% -0.03 +.06
 PTAT +.20T 98R 12/20
 D/AV 17928M 3.9 693F 3.2 574P 8.5T

GRAND-VIEW CORNELIUS DRAMA

100261866 7-02 91
 GOLD % FAT % PRT
 2-03 2 236 12810 4.1 522 3.1 399
 305 16220 4.1 668 3.2 511
 312 16510 4.1 680 3.2 521
 3-03 2 268 13910 4.0 554 3.2 447
 4-03 2 305 17950 4.0 715 3.2 570
 5-06 2 305 21160 4.0 837 3.1 660
 314 21560 4.0 856 3.1 674
 6-06 2 279 21450 4.0 857 3.0 654



GRAND-VIEW HP CALIMERO DANE-ET, EX-94 3E
DAM OF LOTS 4 & 5



GRAND-VIEW BBBK DREAMER
EX-94 5E
GRANDDAM OF LOTS 4 & 5

4 \$ _____

GRAND-VIEW VICKING DREAM LOTS-ET

97.68% AYRSHIRE 09/06/20 FEMALE
840003205241948 97.68%
P- +409

POTENTIAL 10TH GENERATION EXCELLENT!

DE LA PLAINE VICKING-ET

107961868C
PTA +2.56SCC +2.5PL +0.9DPR
PTA -924M +6F -7P 90R
PTA% +.23 +.12
PTAT +.80T 87R 12/20
D/AV 19814M 4.2 824F 3.3 648P 8.5T

GRAND-VIEW HP CALIMERO DANE-ET

100651744 8-01 94 3E 95.37%
GOLD % FAT % PRT
2-02 2 305 18030 3.1 561 3.1 556
365 21150 3.2 679 3.1 660
3-09 2 269 18870 2.7 517 3.0 562
4-10 2 305 23510 3.9 909 3.1 739
365 25300 3.9 993 3.2 801
6-03 2 305 19710 4.4 861 3.2 637
365 21670 4.4 944 3.2 703

3RD 5-YEAR-OLD - 2017 INTERNATIONAL
NOM ALL-AMERICAN 5-YEAR-OLD - 2017

5 \$ _____

GRAND-VIEW VICKING DREAM ON-ET

97.68% AYRSHIRE 09/03/20 FEMALE
840003205241946 97.68%
P- +409

POTENTIAL 10TH GENERATION EXCELLENT!

PALMYRA TRI-STAR BURDETTE-ET

100419568
PTA +2.94SCC +1.1PL -0.6DPR
PTA +261M +6F +13P 99R
PTA% -.02 +.02
PTAT +.90T 99R 12/20
D/AV 19858M 3.9 783F 3.2 633P 8.6T

FOREVER SCHOON PING

9591001C
DHI % FAT % PRT
2-03 2 365 19628 4.6 902 3.7 732
3-08 2 365 26989 4.6 1239 3.5 946
5-02 2 365 27236 4.4 1210 3.6 972
8-03 2 365 27007 4.6 1246 3.5 935
9-08 2 365 27015 4.4 1186 3.5 948
LIFE 2163 140157 4.5 6345 3.6 5042

MARGOT CALIMERO

10310847C 90.75%
PTA +3.13SCC -2.7PL +0.4DPR
PTA -543M -7F -12P 97R
PTA% +.08 +.03
PTAT +.30T 96R 12/20
D/AV 19414M 4.0 774F 3.2 621P 8.6T

GRAND-VIEW BBBK DREAMER

100463697 11-06 94 5E
GOLD % FAT % PRT
2-06 2 334 15770 4.5 702 3.4 531
3-06 2 364 17560 3.6 640 3.3 581
4-09 2 365 24310 4.4 1059 3.3 807
6-08 2 365 23650 4.1 964 3.3 774
8-08 2 365 26050 3.6 948 3.3 856
LIFE 2750 147270 4.1 6059 3.4 5025

3RD FALL YEARLING - 2008 CENTRAL NATIONAL
HM ALL-AMERICAN FALL YEARLING - 2008
1ST - 2010 WDE INTERNATIONAL FUTURITY
NOM ALL-AMERICAN AGED COW - 2015
NOM ALL-AMERICAN 100,000 LB COW - 2016



GRAND-VIEW BURDETTE DEBRA-ET, EX-91 2E
DAM OF LOT 6

6

\$ _____

**GRAND-VIEW REAGAN
DIVA TOO-ET**

PUREBRED AYRSHIRE 03/04/21 FEMALE
840003226712503

P6 +433

POTENTIAL 10TH GENERATION EXCELLENT!

PALMYRA BERKELY REAGAN-ET

840003123620602
PTA +3.09SCC -0.8PL -2.4DPR
PTA +158M +22F +5P 93R
PTA% +.08
PTAT +.70T 87R 12/20
D/AV 20182M 4.0 814F 3.2 642P 8.5T

GRAND-VIEW BURDETTE DEBRA-ET

100667998 6-07 91 2E
GOLD % FAT % PRT
2-04 2 305 22240 3.5 782 2.9 646
306 22290 3.5 784 2.9 647
3-04 2 305 23190 3.7 869 3.1 727
306 23210 3.7 870 3.1 728
5-06 2 288 22610 3.9 884 3.0 674
6-06 2 281 25870 3.6 939 3.0 770
7-06 PROJ 29504

PALMYRA BENDIG BERKELY-ET

69261805
PTA +3.08SCC -1.7PL -0.4DPR
PTA -419M -15F -14P 95R
PTA% +.01
PTAT +.30T 93R 12/20
D/AV 19058M 4.0 753F 3.1 593P 8.5T

PALMYRA POKER LH ROSY-ET

66596106 4-01 92 ELITE
GOLD % FAT % PRT
2-00 2 298 19900 4.5 896 3.3 654
3-00 2 305 22420 4.5 1012 3.5 789
365 26100 4.4 1161 3.5 910

PALMYRA TRI-STAR BURDETTE-ET

100419568
PTA +2.94SCC +1.1PL -0.6DPR
PTA +261M +6F +13P 99R
PTA% -.02 +.02
PTAT +.90T 99R 12/20
D/AV 19858M 3.9 783F 3.2 633P 8.6T

GRAND-VIEW SUMTOTAL DAYDREAM

100518342 3-10 90
GOLD % FAT % PRT
2-02 2 305 20160 3.7 751 3.1 618
312 20520 3.7 766 3.1 630
3-02 2 305 26760 3.5 949 3.0 807
349 28380 3.6 1027 3.1 867
4-04 2 305 24620 3.3 805 3.0 731
365 27220 3.3 906 3.0 815
5-10 2 294 17540 3.6 633 3.1 544

NOM ALL-AMERICAN WINTER CALF - 2008
2ND WINTER YEARLING - 2009 INTERNATIONAL JR
HM JR ALL-AMERICAN WINTER YEARLING - 2009

DAYDREAM IS A MATERNAL SISTER
TO DREAMER



GRAND-VIEW CALIMERO DEA-ET, EX-91 3E
 EMBRYOS EXPORTED TO 5 DIFFERENT COUNTRIES
 GRANDDAM OF LOT 7



GRAND-VIEW HP GIBBS DIPS-ET, EX-93
 HM ALL-AMERICAN JR 3-YEAR-OLD, 2019
 MATERNAL SISTER TO DAM OF LOT 7
 MATERNAL SISTER OF LOT 8

7 \$ _____

GRAND-VIEW REAGAN DOIN

98.84% AYRSHIRE 03/01/20 FEMALE
 840003205241929 98.84%
 P5 +428

POTENTIAL 11TH GENERATION EXCELLENT!

PALMYRA BERKELY REAGAN-ET

840003123620602
 PTA +3.09SCC -0.8PL -2.4DPR
 PTA +158M +22F +5P 93R
 PTA% +.08
 PTAT +.70T 87R 12/20
 D/AV 20182M 4.0 814F 3.2 642P 8.5T

GRAND-VIEW PREDATOR DEL RAY-ET

100718359 97.68%
 3-02 90 NOW 2E!
 GOLD % FAT % PRT
 2-00 2 287 17060 3.7 638 3.2 554
 2-11 2 270 18370 3.6 663 3.3 614
 3-11 2 282 20880 3.7 777 3.1 651

PALMYRA BENDIG BERKELY-ET

69261805
 PTA +3.08SCC -1.7PL -0.4DPR
 PTA -419M -15F -14P 95R
 PTA% +.01
 PTAT +.30T 93R 12/20
 D/AV 19058M 4.0 753F 3.1 593P 8.5T

PALMYRA POKER LH ROSY-ET

66596106 4-01 92 ELITE
 GOLD % FAT % PRT
 2-00 2 298 19900 4.5 896 3.3 654
 3-00 2 305 22420 4.5 1012 3.5 789
 365 26100 4.4 1161 3.5 910

FOREVER SCHOON PREDATOR-ET

11119921C
 PTA +2.89SCC -1.8PL -1.7DPR
 PTA +41M +1F -2P 94R
 PTA% -.02
 PTAT +.50T 93R 12/20
 D/AV 19978M 4.0 791F 3.2 630P 8.5T

GRAND-VIEW CALIMERO DEA-ET

100615777 95.37%
 8-10 91 3E
 GOLD % FAT % PRT
 2-00 2 305 18970 4.0 753 3.2 609
 365 21740 4.0 873 3.2 704
 3-03 2 305 17860 3.9 701 3.3 596
 365 19770 3.9 777 3.3 661
 5-05 2 256 13540 4.4 596 3.6 481
 299 14750 4.4 645 3.6 524
 6-09 2 305 19420 3.8 747 3.2 615
 341 20280 3.9 787 3.2 647
 8-03 2 275 17090 4.4 747 3.4 573

3RD SPRING YEARLING - 2012 INTERNATIONAL
 HM ALL-AMERICAN SPRING YEARLING - 2012
 2ND JR 2-YEAR-OLD - 2013 INTERNATIONAL
 RES ALL-AMERICAN JR 2-YEAR-OLD (TIE) - 2013
 1ST - 2014 WDE INTERNATIONAL FUTURITY
 1ST JR 3-YEAR-OLD - 2014 INTERNATIONAL
 ALL-AMERICAN JR 3-YEAR-OLD - 2014



GRAND-VIEW CALIMERO DEA-ET, EX-91 3E
DAM OF LOT 8



GRAND-VIEW BBK DREAMER
EX-94 5E
GRANDDAM OF LOT 8

8

\$ _____

GRAND-VIEW REAGAN DREAMING-ET

97.68% AYRSHIRE 12/12/20 FEMALE
840003226712489 97.68%
P6 +428

POTENTIAL 10TH GENERATION EXCELLENT!

PALMYRA BERKELY REAGAN-ET

840003123620602
PTA +3.09SCC -0.8PL -2.4DPR
PTA +158M +22F +5P 93R
PTA% +.08
PTAT +.70T 87R 12/20
D/AV 20182M 4.0 814F 3.2 642P 8.5T

GRAND-VIEW CALIMERO DEA-ET

100615777 95.37%

		8-10 91		3E			
GOLD			%	FAT	%	PRT	
2-00	2	305	18970	4.0	753	3.2	609
		365	21740	4.0	873	3.2	704
3-03	2	286	17170	3.9	673	3.3	570
		305	17860	3.9	701	3.3	596
		365	19770	3.9	777	3.3	661
5-05	2	256	13540	4.4	596	3.6	481
		299	14750	4.4	645	3.6	524
6-09	2	305	19420	3.8	747	3.2	615
		341	20280	3.9	787	3.2	647
8-03	2	275	17090	4.4	747	3.4	573

3RD SPRING YEARLING - 2012 INTERNATIONAL
HM ALL-AMERICAN SPRING YEARLING - 2012
2ND JR 2-YEAR-OLD - 2013 INTERNATIONAL
RES ALL-AMERICAN JR 2-YEAR-OLD (TIE) - 2013
1ST - 2014 WDE INTERNATIONAL FUTURITY
1ST JR 3-YEAR-OLD - 2014 INTERNATIONAL
ALL-AMERICAN JR 3-YEAR-OLD - 2014

PALMYRA BENDIG BERKELY-ET

69261805
PTA +3.08SCC -1.7PL -0.4DPR
PTA -419M -15F -14P 95R
PTA% +.01
PTAT +.30T 93R 12/20
D/AV 19058M 4.0 753F 3.1 593P 8.5T

PALMYRA POKER LH ROSY-ET

66596106 4-01 92 ELITE
GOLD % FAT % PRT
2-00 2 298 19900 4.5 896 3.3 654
3-00 2 305 22420 4.5 1012 3.5 789
365 26100 4.4 1161 3.5 910

MARGOT CALIMERO

10310847C 90.75%
PTA +3.13SCC -2.7PL +0.4DPR
PTA -543M -7F -12P 97R
PTA% +.08 +.03
PTAT +.30T 96R 12/20
D/AV 19414M 4.0 774F 3.2 621P 8.6T

GRAND-VIEW BBK DREAMER

100463697 11-06 94 5E
GOLD % FAT % PRT
2-06 2 305 14610 4.4 646 3.3 489
334 15770 4.5 702 3.4 531
3-06 2 305 16510 3.6 598 3.3 541
364 17560 3.6 640 3.3 581
4-09 2 305 21150 4.5 958 3.3 695
365 24310 4.4 1059 3.3 807
6-08 2 305 20170 4.1 835 3.2 650
365 23650 4.1 964 3.3 774
8-08 2 305 21900 3.5 769 3.3 715
365 26050 3.6 948 3.3 856
LIFE 2750 147270 4.1 6059 3.4 5025

3RD FALL YEARLING - 2008 CENTRAL NATIONAL
HM ALL-AMERICAN FALL YEARLING - 2008
1ST - 2010 WDE INTERNATIONAL FUTURITY
NOM ALL-AMERICAN AGED COW - 2015
NOM ALL-AMERICAN 100,000 LB COW - 2016



GRAND-VIEW BURDETTE BURGANDY,
EX-94
 5-01 365D 25,970M 4.4% 1130F 3.5% 908P
 MATERNAL SISTER OF LOT 9



GRAND-VIEW DEMPSEY BLACKBERRY, EX-93
 3-01 328D 22,890M 3.9% 882F 3.2% 725P
 MATERNAL SISTER OF LOT 9

9

\$ _____

**GRAND-VIEW
 GENTLE BLUES**

98.84% AYRSHIRE 12/01/19 FEMALE
 840003205241925 98.84%
 P- +394

POTENTIAL 8TH GENERATION EXCELLENT!

DUO STAR GENTLEMAN-ET

106306758C 97.68%
 PTA +3.05SCC -3.7PL +0.1DPR
 PTA -736M -17F -26P 91R
 PTA% +.07 -.01
 PTAT +.80T 88R 12/20
 D/AV 19300M 4.0 769F 3.1 607P 8.6T

HAWKSFIELD GVA PARDNER BLUE-ET

100576838 11-01 91 5E
 GOLD % FAT % PRT
 2-01 2 305 18940 4.2 801 3.2 598
 337 20700 4.2 877 3.2 657
 3-02 2 303 22530 4.1 919 3.1 700
 4-02 2 305 20810 4.1 863 3.2 662
 325 21670 4.1 894 3.2 693
 5-03 2 289 23020 4.3 993 3.2 735
 6-03 2 288 24780 4.5 1118 3.0 742
 7-02 2 229 17050 4.8 815 3.2 541
 292 19690 4.7 919 3.2 633
 8-02 2 287 21490 4.3 918 3.2 688
 9-01 2 305 16720 4.7 779 3.4 564
 365 18640 4.6 856 3.4 629
 10-05 2 305 18610 4.4 816 3.0 564
 340 19630 4.5 874 3.1 603
 LIFE 2837 192420 4.4 8377 3.2 6089

NOM ALL-AMERICAN SUMMER YEARLING - 2010

PALMYRA TRI-STAR REALITY

100369452
 PTA +3.05SCC -0.3DPR
 PTA +437M +17F +1P 97R
 PTA% -.07
 PTAT +.20T 96R 12/20
 D/AV 21203M 3.9 835F 3.1 651P 8.6T

DUO STAR AMOUR-ET

103638586C 95.37%
 DHI % FAT % PRT
 2-01 2 305 22320 4.2 948 3.3 730
 350 24709 4.3 1058 3.3 818
 3-04 2 305 24112 3.9 939 3.2 776
 365 27571 3.8 1058 3.2 895
 4-09 2 305 28213 3.7 1036 3.3 933
 365 31689 3.7 1173 3.3 1056
 6-07 2 305 27761 3.5 972 3.2 884
 365 31079 3.5 1089 3.2 999
 LIFE 1686 123634 3.8 4751 3.3 4089

WOODLAND VIEW PARDNER-ET

811799C
 PTA +2.97SCC +1.4PL -0.8DPR
 PTA +183M +16F +2P 98R
 PTA% +.04 -.02
 PTAT -.40T 97R 12/20
 D/AV 19268M 3.9 750F 3.1 601P 8.4T

HAWKSFIELD SHARON BUDROSE

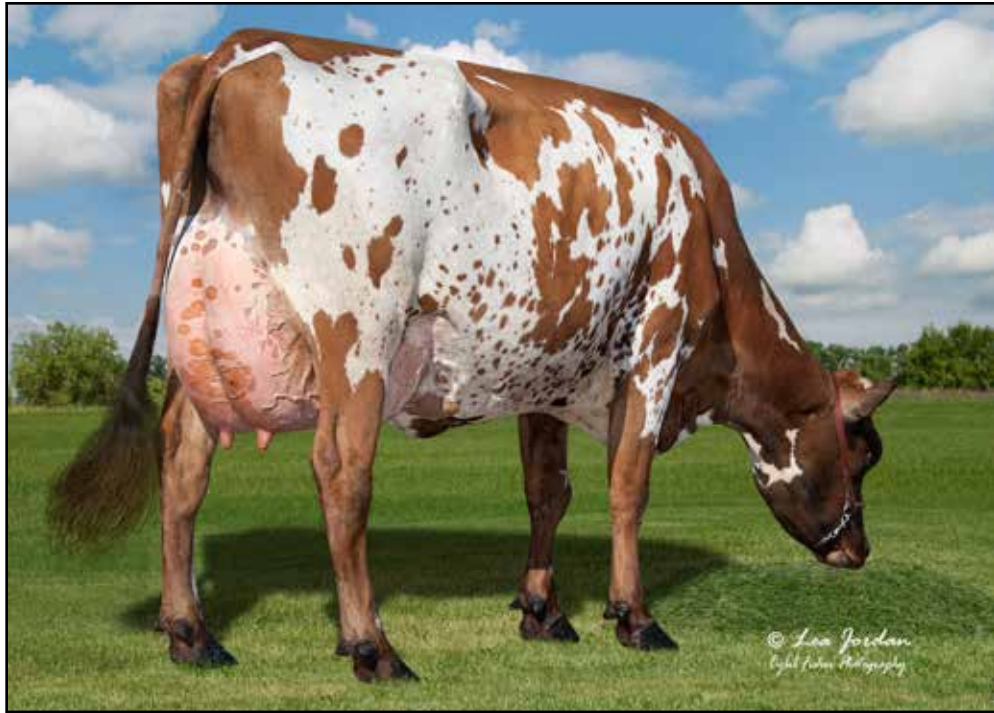
1017240 6-00 92 2E
 GOLD % FAT % PRT
 2-02 2 305 13730 4.2 581 3.7 503
 3-04 2 305 16300 3.8 620 3.4 547
 333 17790 3.7 664 3.3 590
 4-04 2 365 19810 4.2 837 3.3 653
 5-04 2 305 19840 3.7 736 3.2 635
 6-10 2 305 22660 4.1 931 3.1 705
 325 23340 4.1 954 3.1 723
 8-01 2 305 12490 4.0 499 3.5 433
 LIFE 2484 142060 4.3 6076 3.4 4832

THIRD DAM:

ENGLAN ROYAL COMMAND BUD, EX-95 3E

6-05 2 318 21490 3.8 820 3.2 694
 7-04 2 356 23770 3.7 882 3.2 771
 LIFE 2349 118950 4.0 4802 3.3 3957

Genetic Dreams at Grand-View



**GRAND-VIEW BUR DIDN'T KNOW-ET, VG-89 EX-91 UDDER
SELLING AS LOT 10**

10

\$ _____

GRAND-VIEW BUR DIDN'T KNOW-ET

PUREBRED AYRSHIRE 09/06/17 FEMALE
100739813
NOW VG-89, EX-91 UDDER P- +384
NM\$ -31
PTA +2.90SCC +1.1PL +0.8DPR
PTA -653M -17F -13P 50R
PTA\$ -31CY 12/20
PTA% +.05 +.04
PTAT +.70T 55R 12/20
PPA -1423M -35F -37P
CLASS ST3 SR6 BD5 DF5 RA4 RW6 LS2 FA6
FU8 UH7 UW6 UC6 UD7 TP4 TL6 LR6
GOLD % FAT % PRT
2-03 2 300 15190 4.3 647 3.4 509
3-03 PROJ 19656 4.2 834 3.1 609

POTENTIAL 9TH GENERATION EXCELLENT
BRED 3/15/21 TO
MARGOT PLAYER
CONFIRMED PREGNANT

8 EXCELLENT FULL SISTERS
DAUGHTERS SELL AS LOTS 39 & 49

PALMYRA TRI-STAR BURDETTE-ET

100419568
PTA +2.94SCC +1.1PL -0.6DPR
PTA +261M +6F +13P 99R
PTA% -.02 +.02
PTAT +.90T 99R 12/20
D/AV 19858M 3.9 783F 3.2 633P 8.6T

GRAND-VIEW BBBK DREAMER

100463697 11-06 94 5E
GOLD % FAT % PRT
2-06 2 305 14610 4.4 646 3.3 489
334 15770 4.5 702 3.4 531
3-06 2 305 16510 3.6 598 3.3 541
364 17560 3.6 640 3.3 581
4-09 2 305 21150 4.5 958 3.3 695
365 24310 4.4 1059 3.3 807
6-08 2 305 20170 4.1 835 3.2 650
365 23650 4.1 964 3.3 774
8-08 2 305 21900 3.5 769 3.3 715
365 26050 3.6 948 3.3 856
10-09 2 305 13910 4.6 637 3.7 510
LIFE 2750 147270 4.1 6059 3.4 5025

3RD FALL YEARLING - 2008 CENTRAL NATIONAL
HM ALL-AMERICAN FALL YEARLING - 2008
1ST - 2010 WDE INTERNATIONAL FUTURITY
NOM ALL-AMERICAN ACED COW - 2015
NOM ALL-AMERICAN 100,000 LB COW - 2016

PALMYRA TRI-STAR

150440
PTA +2.87SCC -1.3PL -0.5DPR
PTA +94M +3F +1P 97R
PTA% -.01
PTAT 95R 12/20
D/AV 19683M 3.9 766F 3.1 616P 8.4T

PALMYRA RENO BETHANY-ET

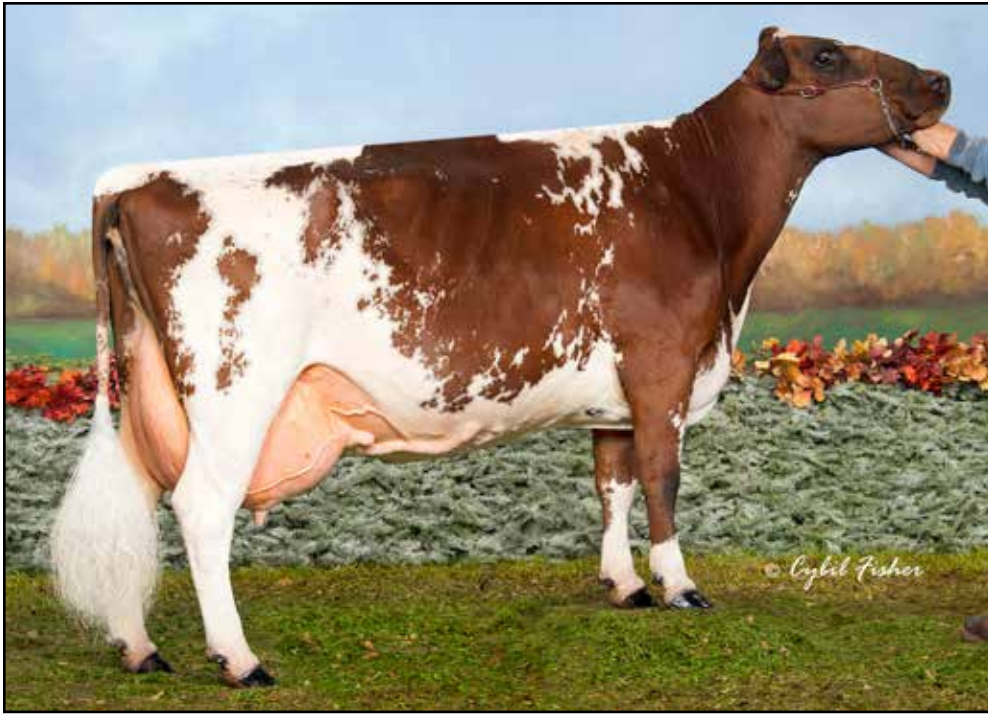
100101191 3-06 90
GOLD % FAT % PRT
1-11 2 305 22700 3.8 867 3.1 701
365 26925 3.9 1038 3.1 847
3-01 2 305 26910 3.6 959 3.3 875
365 30930 3.6 1104 3.3 1006
4-08 2 305 31920 3.9 1233 3.1 982
365 35780 3.8 1374 3.1 1123
LIFE 1551 120700 3.7 4496 3.2 3855

BLACKADDAR B B KELLOGG

777850C
PTA +3.15SCC -0.2PL -0.2DPR
PTA -1146M -51F -26P 98R
PTA% -.03 +.06
PTAT +.20T 98R 12/20
D/AV 17928M 3.9 693F 3.2 574P 8.5T

GRAND-VIEW CORNELIUS DRAMA

100261866 7-02 91
GOLD % FAT % PRT
2-03 2 305 16220 4.1 668 3.2 511
312 16510 4.1 680 3.2 521
3-03 2 268 13910 4.0 554 3.2 447
4-03 2 305 17950 4.0 715 3.2 570
5-06 2 305 21160 4.0 837 3.1 660
314 21560 4.0 856 3.1 674
6-06 2 279 21450 4.0 857 3.0 654



GRAND-VIEW BBBK DREAMER, EX-94 5E
DAM OF LOT 10

11

\$ _____

GRAND-VIEW GENTLE DUMPLING-ET

98.84% AYRSHIRE 03/14/18 FEMALE
840003151128528 98.84%
2-09 85 P- +345

CLASS ST2 SR4 BD5 DF5 RA5 RW5 LS4 FA4
FU6 UH4 UW6 UC6 UD9 TP5 TL3 LR8
2-02 2 289 13511 4.3 587 3.4 455
INC

DUE 7/22/21 TO
PALMYRA BERKELY REAGAN-ET
CONFIRMED PREGNANT WITH A MALE

POTENTIAL 9TH GENERATION EXCELLENT!

12

\$ _____

GRAND-VIEW GENTLE DOWNPOUR-ET

98.84% AYRSHIRE 03/08/18 FEMALE
840003151128527 98.84%
2-09 85 P- +348

CLASS ST4 SR5 BD5 DF5 RA6 RW7 LS5 FA4
FU7 UH6 UW7 UC7 UD9 TP5 TL4 LR9
2-01 2 289 13998 4.1 567 3.4 474
INC

DUE 7/9/21 TO
PALMYRA BERKELY REAGAN-ET
CONFIRMED PREGNANT WITH A FEMALE

POTENTIAL 9TH GENERATION EXCELLENT!

DUO STAR GENTLEMAN-ET

106306758C 97.68%
PTA +3.05SCC -3.7PL +0.1DPR
PTA -736M -17F -26P 91R
PTA% +.07 -.01
PTAT +.80T 88R 12/20
D/AV 19300M 4.0 769F 3.1 607P 8.6T

GRAND-VIEW BBBK DREAMER

100463697 11-06 94 5E
GOLD % FAT % PRT
2-06 2 305 14610 4.4 646 3.3 489
334 15770 4.5 702 3.4 531
3-06 2 305 16510 3.6 598 3.3 541
364 17560 3.6 640 3.3 581
4-09 2 305 21150 4.5 958 3.3 695
365 24310 4.4 1059 3.3 807
6-08 2 305 20170 4.1 835 3.2 650
365 23650 4.1 964 3.3 774
8-08 2 305 21900 3.5 769 3.3 715
365 26050 3.6 948 3.3 856
10-09 2 305 13910 4.6 637 3.7 510
LIFE 2750 147270 4.1 6059 3.4 5025

3RD FALL YEARLING - 2008 CENTRAL NATIONAL
HM ALL-AMERICAN FALL YEARLING - 2008
1ST - 2010 WDE INTERNATIONAL FUTURITY
NOM ALL-AMERICAN AGED COW - 2015
NOM ALL-AMERICAN 100,000 LB COW - 2016

PALMYRA TRI-STAR REALITY

100369452
PTA +3.05SCC -0.3DPR
PTA +437M +17F +1P 97R
PTA% -.07
PTAT +.20T 96R 12/20
D/AV 21203M 3.9 835F 3.1 651P 8.6T

DUO STAR AMOUR-ET

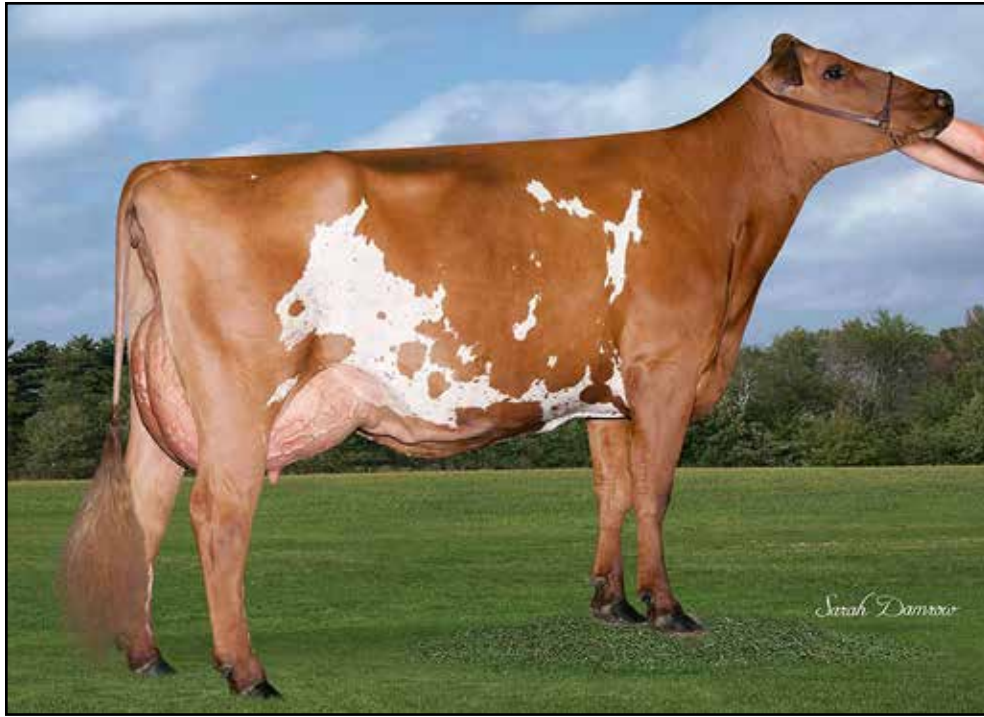
103638586C 95.37%
DHI % FAT % PRT
2-01 2 305 22320 4.2 948 3.3 730
350 24709 4.3 1058 3.3 818
3-04 2 305 24112 3.9 939 3.2 776
365 27571 3.8 1058 3.2 895
4-09 2 305 28213 3.7 1036 3.3 933
365 31689 3.7 1173 3.3 1056
6-07 2 305 27761 3.5 972 3.2 884
365 31079 3.5 1089 3.2 999
LIFE 1686 123634 3.8 4751 3.3 4089

BLACKADDAR B B KELLOGG

777850C
PTA +3.15SCC -0.2PL -0.2DPR
PTA -1146M -51F -26P 98R
PTA% -.03 +.06
PTAT +.20T 98R 12/20
D/AV 17928M 3.9 693F 3.2 574P 8.5T

GRAND-VIEW CORNELIUS DRAMA

100261866 7-02 91
GOLD % FAT % PRT
2-03 2 236 12810 4.1 522 3.1 399
305 16220 4.1 668 3.2 511
312 16510 4.1 680 3.2 521
3-03 2 268 13910 4.0 554 3.2 447
4-03 2 305 17950 4.0 715 3.2 570
5-06 2 305 21160 4.0 837 3.1 660
314 21560 4.0 856 3.1 674
6-06 2 279 21450 4.0 857 3.0 654



GRAND-VIEW HP BURDETTE DROP-ET, EX-92
9TH GENERATION EXCELLENT WITH OVER 134,000M LIFETIME
MATERNAL SISTER OF LOT 10

13

\$ _____

GRAND-VIEW PREDATOR DANCE-ET

PUREBRED AYRSHIRE 06/21/18 FEMALE
 840003151128544
 2-06 84 P- +377

NM\$ -175
 PTA +2.92SCC -0.4PL -0.8DPR
 PTA -822M -27F -22P 47R
 PTA\$ -175CY 12/20

PPA -1828M -81F -47P
 CLASS ST4 SR5 BD4 DF5 RA5 RW7 LS5 FA5
 FU6 UH6 UW6 UC6 UD7 TP5 TL3 LR8

2-01 2 230 10762 3.5 372 3.3 358
 INC

DANCE WILL BE DRY BY SALE DAY

DUE 6/27/21 TO
 CEDARCUT COLATA'S CHAMPION
 CONFIRMED PREGNANT WITH A FEMALE

POTENTIAL 9TH GENERATION EXCELLENT!

FOREVER SCHOON PREDATOR-ET

11119921C
 PTA +2.89SCC -1.8PL -1.7DPR
 PTA +41M +1F -2P 94R
 PTA% -0.02
 PTAT +.50T 93R 12/20
 D/AV 19978M 4.0 791F 3.2 630P 8.5T

GRAND-VIEW BBBK DREAMER

100463697 11-06 94 5E
 GOLD % FAT % PRT
 2-06 2 305 14610 4.4 646 3.3 489
 334 15770 4.5 702 3.4 531
 3-06 2 305 16510 3.6 598 3.3 541
 364 17560 3.6 640 3.3 581
 4-09 2 305 21150 4.5 958 3.3 695
 365 24310 4.4 1059 3.3 807
 6-08 2 305 20170 4.1 835 3.2 650
 365 23650 4.1 964 3.3 774
 8-08 2 305 21900 3.5 769 3.3 715
 365 26050 3.6 948 3.3 856
 10-09 2 305 13910 4.6 637 3.7 510
 LIFE 2750 147270 4.1 6059 3.4 5025

3RD FALL YEARLING - 2008 CENTRAL NATIONAL
 HM ALL-AMERICAN FALL YEARLING - 2008
 1ST - 2010 WDE INTERNATIONAL FUTURITY
 NOM ALL-AMERICAN AGED COW - 2015
 NOM ALL-AMERICAN 100,000 LB COW - 2016

PALMYRA TRI-STAR REALITY

100369452
 PTA +3.05SCC -0.3DPR
 PTA +437M +17F +1P 97R
 PTA% -0.07
 PTAT +.20T 96R 12/20
 D/AV 21203M 3.9 835F 3.1 651P 8.6T

FOREVER SCHOON PRETTY

7441960C
 DHI % FAT % PRT
 2-05 2 305 17130 4.8 825 3.5 608
 313 17496 4.8 844 3.6 624
 3-05 2 305 20686 4.8 1001 3.8 778
 342 22425 4.8 1082 3.8 849
 4-07 2 305 22646 4.4 1001 3.5 798
 359 25064 4.4 1098 3.6 895
 6-07 2 305 23702 4.6 1102 3.3 794
 365 26026 4.6 1206 3.4 884

BLACKADDAR B B KELLOGG

777850C
 PTA +3.15SCC -0.2PL -0.2DPR
 PTA -1146M -51F -26P 98R
 PTA% -0.03 +0.06
 PTAT +.20T 98R 12/20
 D/AV 17928M 3.9 693F 3.2 574P 8.5T

GRAND-VIEW CORNELIUS DRAMA

GOLD % FAT % PRT
 2-03 2 236 12810 4.1 522 3.1 399
 305 16220 4.1 668 3.2 511
 312 16510 4.1 680 3.2 521
 3-03 2 268 13910 4.0 554 3.2 447
 4-03 2 305 17950 4.0 715 3.2 570
 5-06 2 305 21160 4.0 837 3.1 660
 314 21560 4.0 856 3.1 674
 6-06 2 279 21450 4.0 857 3.0 654



GRAND-VIEW CONN RAIN, EX-90
GRANDDAM OF LOT 14

14

\$ _____

**GRAND-VIEW
DISTINCT READY**

PUREBRED AYRSHIRE 06/01/18 FEMALE
840003151128540
2-06 88 P8 +446

NM\$ +175
PTA +2.99SCC +3.2PL +0.2DPR
PTA +184M +5F +11P 41R
PTA\$ +175CY 12/20
PTA% -.01 +.03

PPA +1581M +28F +59P
CLASS ST7 SR5 BD6 DF6 RA4 RW7 LS5 FA5
FU6 UH6 UW8 UC9 UD8 TP4 TL2 LR8

2-01 2 237 17775 3.9 691 3.3 593
PROJ 23424 3.9 921 3.4 792
113 SCC

DUE 7/15/21 TO
RUISSEAU CLAIR TUXEDO-ET
CONFIRMED PREGNANT WITH A FEMALE

THIS PEDIGREE GOES BACK TO LH ROSY!

FAMILY-AF-AYR DISTINCTION

100578700
PTA +3.01SCC +4.1PL +1.0DPR
PTA -104M -18F -1P 88R
PTA% -.07 +.01
PTAT +1.10T 86R 12/20
D/AV 20127M 3.8 761F 3.2 641P 8.6T

GRAND-VIEW BURDETTE RAZZLE

100642261 5-07 92 2E
GOLD % FAT % PRT
2-04 2 284 18920 4.5 856 3.2 605
3-03 2 305 21480 3.8 817 3.2 682
4-03 2 305 25840 3.8 982 3.1 792
324 27240 3.8 1045 3.1 840
5-03 2 305 21380 4.4 944 3.3 706
306 21410 4.4 945 3.3 706
6-03 2 305 21960 4.1 902 3.2 696
322 22450 4.1 926 3.2 713
7-05 2 259 15490 4.0 627 3.2 495
LIFE 1800 126990 4.1 5216 3.2 4041

MAPLEBURN REMINGTON -ET

10316238C
PTA +3.12SCC -0.6PL +0.8DPR
PTA -721M -47F -19P 92R
PTA% -.10 +.02
PTAT +.60T 88R 12/20
D/AV 18571M 3.8 697F 3.2 591P 8.6T

FAMILY-AF-AYR CORNELIUS DAISY

100136647 14-10 94 5E
GOLD % FAT % PRT
2-04 2 327 16220 4.1 672 3.3 530
3-05 2 339 20630 4.2 862 3.3 690
4-05 2 360 19660 4.2 816 3.3 656
5-07 2 318 20770 4.3 894 3.3 684
6-07 2 320 20770 4.1 852 3.4 700
LIFE 3867 222570 4.2 9262 3.3 7295

PALMYRA TRI-STAR BURDETTE-ET

100419568
PTA +2.94SCC +1.1PL -0.6DPR
PTA +261M +6F +13P 99R
PTA% -.02 +.02
PTAT +.90T 99R 12/20
D/AV 19858M 3.9 783F 3.2 633P 8.6T

GRAND-VIEW CONN RAIN

100578063 3-11 90
GOLD % FAT % PRT
2-06 2 305 22130 3.6 802 3.0 673
327 23500 3.7 859 3.1 723
3-07 2 305 26330 3.9 1015 3.2 831
365 29800 3.9 1173 3.2 959
4-09 2 305 25660 3.3 849 3.1 802
365 29590 3.4 1000 3.2 944
6-00 2 300 22730 3.9 880 3.2 717
7-00 2 280 20740 3.5 736 3.1 647
7-11 2 305 22420 4.2 934 3.2 722
365 24240 4.1 1005 3.2 783
LIFE 2371 177300 3.8 6759 3.2 5625



GRAND-VIEW BURDETTE DECIDUOUS, EX-90
DAM OF LOT 15

15

\$ _____

GRAND-VIEW DOUBLWHAMMY DUTS

97.68% AYRSHIRE 08/09/18 FEMALE
840003151128551 97.68%
P5 +414

NOW VG-85!

FRESH 2/18/21
FIRST TEST: 81 LBS, 4.5%F 3.0%P 38SCC

POTENTIAL 10 GENERATIONS EXCELLENT!

FAMILY-AF-AYR DOUBLWHAMMY-ET

100516902 95.37%
PTA +3.13SCC -4.1PL -1.0DPR
PTA -321M -9F -10P 93R
PTA% +.02
PTAT +.50T 91R 12/20
D/AV 19606M 4.0 782F 3.2 625P 8.6T

GRAND-VIEW BURDETTE DECIDUOUS

100724419 3-07 90
GOLD % FAT % PRT
2-01 2 305 17490 4.5 784 3.4 593
321 18370 4.5 830 3.4 625
3-02 2 298 19720 4.2 831 3.4 666

MARGOT CALIMERO

10310847C 90.75%
PTA +3.13SCC -2.7PL +0.4DPR
PTA -543M -7F -12P 97R
PTA% +.08 +.03
PTAT +.30T 96R 12/20
D/AV 19414M 4.0 774F 3.2 621P 8.6T

FAMILY-AF-AYR DK DESIREE

1020932 12-02 95 4E
GOLD % FAT % PRT
2-04 2 365 20970 4.0 834 3.1 660
3-09 2 336 17400 4.0 696 3.3 567
4-10 2 365 19290 3.6 686 3.1 601
6-11 2 365 22680 3.8 851 3.0 677
8-11 2 365 22570 3.8 861 3.0 677
LIFE 3272 183150 3.8 6990 3.1 5614

PALMYRA TRI-STAR BURDETTE-ET

100419568
PTA +2.94SCC +1.1PL -0.6DPR
PTA +261M +6F +13P 99R
PTA% -.02 +.02
PTAT +.90T 99R 12/20
D/AV 19858M 3.9 783F 3.2 633P 8.6T

GRAND-VIEW SUMTOTAL DIVOT

100505762 9-04 94 4E
GOLD % FAT % PRT
2-05 2 365 22870 4.0 926 3.2 737
3-11 2 365 26430 3.9 1027 3.3 863
5-10 2 365 29390 3.8 1113 3.2 942
7-05 2 365 25220 3.6 914 3.2 819
8-08 2 365 18900 3.7 701 3.1 588
LIFE 2409 152300 3.9 5897 3.3 5007

1ST FALL YEARLING - 2009 INTERNATIONAL JR
RES JR CHAMPION - 2009 INTERNATIONAL JR
JR ALL-AMERICAN FALL YEARLING - 2009
1ST SR 3-YEAR-OLD - 2011 SOUTHERN NATIONAL
INT CHAMPION - 2011 SOUTHERN NATIONAL
RES GRAND CHAMPION - 2011 SOUTHERN NAT'L
NOM ALL-AMERICAN SR 3-YEAR-OLD - 2011
NOM ALL-AMERICAN 4-YEAR-OLD - 2012
3RD 100,000 LB COW - 2015 INTERNATIONAL
TOTAL PERFORMANCE WINNER - 2015 INTERNAT'L
HM ALL-AMERICAN 100,000 LB COW - 2015

Genetic Dreams at Grand-View



GRAND-VIEW NELSON DEENA, EX-92
GRANDDAM OF LOT 16

16

\$ _____

GRAND-VIEW BBBK DELMERA

PUREBRED AYRSHIRE 03/01/19 FEMALE
 840003151128572

P- +391

FRESH 3/16/21

POTENTIAL 9 GENERATIONS EXCELLENT!

BLACKADDAR B B KELLOGG

777850C						
PTA	+3.15SCC	-0.2PL	-0.2DPR			
PTA	-1146M	-51F	-26P	98R		
PTA%		-.03	+.06			
PTAT	+.20T			98R	12/20	
D/AV	17928M	3.9	693F	3.2	574P	8.5T

GRAND-VIEW BURDETTE DISCO

100644384 5-02 91 2E						
GOLD						
		%	FAT	%	PRT	
2-02	2	299	20480	4.5	913	3.1 641
3-03	2	305	26090	4.2	1086	3.1 798
			328	27780	4.1	1152 3.1 854
4-04	2	305	25280	4.1	1025	3.2 808
			330	26000	4.1	1056 3.2 838
5-06	2	305	18950	3.9	734	3.3 626
6-07	2	278	20150	4.0	806	3.2 642
7-06	2	243	14850	4.5	663	3.4 508
LIFE	1783	128210	4.2	5324	3.2	4109

BONNIE BRAE KELLOGG

140914						
PTA	+2.93SCC	+1.9PL	+2.1DPR			
PTA	-1607M	-55F	-47P	97R		
PTA%		+.05	+.02			
PTAT	+.20T			94R	12/20	
D/AV	15361M	3.9	597F	3.1	483P	8.3T

BLACKADDAR MILKY MODEL

727084C						
DHI						
			%	FAT	%	PRT
2-09	2	305	18854	3.7	694	3.2 608
3-10	2	305	19967	3.7	745	3.2 648
5-02	2	305	21288	3.9	822	3.3 708
6-02	2	305	20137	3.9	785	3.2 653
7-04	2	305	23893	4.4	1047	3.2 761
8-09	2	305	20955	4.1	853	3.1 655
LIFE	1830	125094	4.0	4946	3.2	4033

PALMYRA TRI-STAR BURDETTE-ET

100419568						
PTA	+2.94SCC	+1.1PL	-0.6DPR			
PTA	+261M	+6F	+13P	99R		
PTA%		-.02	+.02			
PTAT	+.90T			99R	12/20	
D/AV	19858M	3.9	783F	3.2	633P	8.6T

GRAND-VIEW NELSON DEENA

100463660 6-05 92						
GOLD						
			%	FAT	%	PRT
2-05	2	305	19930	3.5	699	3.0 598
			310	20180	3.5	710 3.0 606
3-05	2	305	22490	3.1	706	3.1 702
			365	25570	3.1	802 3.2 815
4-08	2	305	23420	3.2	758	3.2 750
			364	25650	3.2	829 3.3 839
5-10	2	305	22110	3.5	783	3.2 711
			328	22920	3.5	813 3.2 744
6-09	2	276	16280	3.5	574	3.3 532
7-10	2	283	22170	3.7	810	3.0 670
LIFE	1955	133880	3.4	4579	3.2	4249



LOMBARD DALE WILTON ICING, EX-96
 5-01 365D 29,917M 3.6% 1091F 3.3% 979P
 THIRD DAM OF LOT 17

17

\$ _____

**GRAND-VIEW
 REAGAN ICONIC**

98.84% AYRSHIRE 02/17/19 FEMALE
 840003151128570 98.84%
 P- +397

DUE 6/26/21 TO
 BLUE-SPRUCE RINGER
 CONFIRMED PREGNANT WITH A FEMALE

PALMYRA BERKELY REAGAN-ET

840003123620602
 PTA +3.09SCC -0.8PL -2.4DPR
 PTA +158M +22F +5P 93R
 PTA% +.08
 PTAT +.70T 87R 12/20
 D/AV 20182M 4.0 814F 3.2 642P 8.5T

BLUE-SPRUCE CAPTAIN 11678-ET

840003012472927 97.68%
 2-11 85

GOLD				%	FAT %	PRT	
2-04	2	305	21300	3.5	746 3.0	631	
			332	22952	3.6	820 3.0	689
3-05	2	283	19550	3.6	704 3.1	602	
4-05	2	305	18640	3.9	729 3.2	589	
			317	18840	3.9	739 3.2	597
5-06	2	305	19310	3.8	736 3.0	584	
			327	19710	3.8	751 3.0	598
6-08	2	244	17290	4.0	688 2.9	502	

PALMYRA BENDIG BERKELY-ET

69261805
 PTA +3.08SCC -1.7PL -0.4DPR
 PTA -419M -15F -14P 95R
 PTA% +.01
 PTAT +.30T 93R 12/20
 D/AV 19058M 4.0 753F 3.1 593P 8.5T

PALMYRA POKER LH ROSY-ET

66596106 4-01 92 ELITE

GOLD				%	FAT %	PRT	
2-00	2	298	19900	4.5	896 3.3	654	
3-00	2	305	22420	4.5	1012 3.5	789	
			365	26100	4.4	1161 3.5	910

AYR BAY CAPTAIN

7510475C
 PTA +2.84SCC +1.2PL -0.9DPR
 PTA -372M -5F -20P 93R
 PTA% +.05 -.04
 PTAT -.50T 90R 12/20
 D/AV 17655M 3.9 690F 3.0 538P 8.4T

BAVAROISE CALIMERO IVY

100613243 95.37%
 2-08 87

1ST SPRING YEARLING - 2011 EASTERN STATES NATIONAL



GRAND-VIEW SUMTOTAL DIVOT, EX-94 4E
 5-10 365D 29,390M 3.8% 1113F 3.2% 942P
 FOURTH DAM OF LOT 18

18

\$ _____

**GRAND-VIEW
 DISTINCT DOMINO**

98.72% AYRSHIRE 12/29/18 FEMALE
 840003151128567 98.72%
 P5 +414

DUE 7/20/21 TO
 DYNAMO
 CONFIRMED PREGNANT WITH A FEMALE

FAMILY-AF-AYR DISTINCTION

100578700
 PTA +3.01SCC +4.1PL +1.0DPR
 PTA -104M -18F -1P 88R
 PTA% - .07 +.01
 PTAT +1.10T 86R 12/20
 D/AV 20127M 3.8 761F 3.2 641P 8.6T

GRAND-VIEW RONDO DALLIS

100726831 97.45%
 4-03 87
 GOLD % FAT % PRT
 2-03 2 305 20600 3.7 765 3.1 638
 365 24440 3.8 936 3.2 774
 3-11 2 220 18983 4.7 891 3.3 626
 PROJ 25250 4.7 1184 3.4 846

THIRD DAM:

GRAND-VIEW CONN DYNASTY, VG-87
 2-02 2 342 18480 4.3 787 3.2 600

FOURTH DAM:

GRAND-VIEW SUMTOTAL DIVOT, EX-94 4E
 5-10 2 365 29390 3.8 1113 3.2 942
 LIFE 2409 152300 3.9 5897 3.3 5007

MAPLEBURN REMINGTON -ET

10316238C
 PTA +3.12SCC -0.6PL +0.8DPR
 PTA -721M -47F -19P 92R
 PTA% - .10 +.02
 PTAT +.60T 88R 12/20
 D/AV 18571M 3.8 697F 3.2 591P 8.6T

FAMILY-AF-AYR CORNELIUS DAISY

100136647 14-10 94 5E
 GOLD % FAT % PRT
 2-04 2 305 15240 4.1 627 3.3 497
 327 16220 4.1 672 3.3 530
 3-05 2 305 19620 4.1 809 3.3 653
 339 20630 4.2 862 3.3 690
 4-05 2 305 17670 4.1 729 3.3 585
 360 19660 4.2 816 3.3 656
 5-07 2 305 20390 4.3 881 3.3 671
 318 20770 4.3 894 3.3 684
 6-07 2 305 20240 4.1 829 3.4 681
 320 20770 4.1 852 3.4 700
 LIFE 3867 222570 4.2 9262 3.3 7295

PALMYRA BURDETTE LH RONDO-ET

70270075
 PTA +3.02SCC +1.3PL +1.1DPR
 PTA -157M +1F -8P 78R
 PTA% +.04 -.02
 PTAT +.30T 72R 12/20
 D/AV 19013M 4.0 755F 3.2 604P 8.5T

GRAND-VIEW DREAMER DIANE

100689323 2-07 87
 GOLD % FAT % PRT
 2-02 2 232 15360 4.2 651 3.2 489
 305 19250 4.2 818 3.2 625
 365 22140 4.3 946 3.3 728



GRAND-VIEW BURDETTE DEBRA-ET, EX-91 2E
 DAM OF LOT 19

19

\$ _____

**GRAND-VIEW
 SUMTOTAL DANTE**

PUREBRED AYRSHIRE 12/01/18 FEMALE
 840003151128563 P- +393

FRESH 3/2/21
 FIRST TEST 70 LBS

MAPLE-DELL SUM TOTAL-ET

100397787
 PTA +3.13SCC -0.5PL -0.3DPR
 PTA -598M -29F -15P 82R
 PTA% -0.03 +.02
 PTAT +.30T 77R 12/20
 D/AV 19346M 3.8 729F 3.1 599P 8.5T

GRAND-VIEW BURDETTE DEBRA-ET

100667998 6-07 91 2E
 GOLD % FAT % PRT
 2-04 2 305 22240 3.5 782 2.9 646
 306 22290 3.5 784 2.9 647
 3-04 2 305 23190 3.7 869 3.1 727
 306 23210 3.7 870 3.1 728
 5-06 2 288 22610 3.9 884 3.0 674
 6-06 2 281 25870 3.6 939 3.0 770

BLACKADDAR B B KELLOGG

777850C
 PTA +3.15SCC -0.2PL -0.2DPR
 PTA -1146M -51F -26P 98R
 PTA% -0.03 +.06
 PTAT +.20T 98R 12/20
 D/AV 17928M 3.9 693F 3.2 574P 8.5T

MAPLE-DELL TRIDENT SONG

100103830 4-04 91
 GOLD % FAT % PRT
 2-00 2 277 18420 4.3 785 3.3 602
 3-00 2 305 23350 4.3 1011 3.3 770
 321 24070 4.3 1041 3.3 793
 4-00 2 262 24750 5.4 1345 3.2 780

PALMYRA TRI-STAR BURDETTE-ET

100419568
 PTA +2.94SCC +1.1PL -0.6DPR
 PTA +261M +6F +13P 99R
 PTA% -0.02 +.02
 PTAT +.90T 99R 12/20
 D/AV 19858M 3.9 783F 3.2 633P 8.6T

GRAND-VIEW SUMTOTAL DAYDREAM

100518342 3-10 90
 GOLD % FAT % PRT
 2-02 2 305 20160 3.7 751 3.1 618
 312 20520 3.7 766 3.1 630
 3-02 2 305 26760 3.5 949 3.0 807
 349 28380 3.6 1027 3.1 867
 4-04 2 305 24620 3.3 805 3.0 731
 365 27220 3.3 906 3.0 815
 5-10 2 294 17540 3.6 633 3.1 544

NOM ALL-AMERICAN WINTER CALF - 2008
 2ND WINTER YEARLING - 2009 INTERNATIONAL JR
 HM JR ALL-AMERICAN WINTER YEARLING - 2009



GRAND-VIEW BURDETTE DIAMOND, EX-91
 RES ALL-AMERICAN JR 3-YEAR-OLD, 2012
 FAMILY MEMBER OF LOT 20

20

\$ _____

**GRAND-VIEW CHAMP
 DIVERSION**

96.87% AYRSHIRE 10/08/19 FEMALE
 840003205241921 96.87%
 P6 +429

DUE 9/13/21 TO
 HEYDALE WHITE WILLOW
 (UK YOUNG SIRE, DAM EX-94 9E)
 CONFIRMED PREGNANT WITH FEMALE

CEDARCUT COLATA'S CHAMPION

100722079 94.9%
 PTA +2.98SCC -1.4PL -3.0DPR
 PTA +337M +17F +15P 47R
 PTA% +.02 +.02
 PTAT +.70T 45R 12/20

GRAND-VIEW REAGAN DOWN

100739804 98.84%
 3-04 87
 GOLD % FAT % PRT
 2-02 2 305 16250 3.9 637 3.5 565
 326 16960 4.0 672 3.5 594

NEXUS DREAMER

103734662C 89.81%
 PTA +3.25SCC -4.1PL -4.1DPR
 PTA -200M +5F -5P 96R
 PTA% +.07 +.01
 PTAT +.20T 96R 12/20
 D/AV 20126M 4.1 816F 3.2 641P 8.6T

CEDARCUT BURDETTE CLOVE COLATA

100634136 7-09 94 3E
 DHI % FAT % PRT
 2-07 2 299 21946 4.3 951 3.4 750
 3-06 2 305 32986 4.1 1363 3.3 1080
 308 33242 4.1 1376 3.3 1089
 4-06 2 305 32210 3.4 1090 3.2 1041
 318 33103 3.4 1119 3.2 1072
 5-06 2 305 32930 3.6 1180 3.0 1000
 LIFE 1477 141528 3.8 5433 3.3 4615

PALMYRA BERKELY REAGAN-ET

840003123620602
 PTA +3.09SCC -0.8PL -2.4DPR
 PTA +158M +22F +5P 93R
 PTA% +.08
 PTAT +.70T 87R 12/20
 D/AV 20182M 4.0 814F 3.2 642P 8.5T

GRAND-VIEW DW LAST DIAMOND-ET

100708080 97.68%
 2-00 85
 GOLD % FAT % PRT
 1-10 2 294 14580 4.1 600 3.4 495



GRAND-VIEW CONN RAIN, EX-90
GRANDDAM OF LOT 21

21

\$ _____

**GRAND-VIEW
TUXEDO RAINE**

96.22% AYRSHIRE 09/02/19 FEMALE
840003205241915 96.22%
P9 +479

DUE 9/5/21 TO
HEYDALE WHITE WILLOW
(UK YOUNG SIRE, DAM EX-94 9E)
CONFIRMED PREGNANT WITH FEMALE

RUISSEAU CLAIR TUXEDO-ET

109844514C 92.45%
PTA +2.90SCC +0.7PL +0.3DPR
PTA +1055M +44F +30P 48R
PTA% +.01 -.02
PTAT +.50T 55R 12/20
D/AV 0M 0F 8.8T

GRAND-VIEW DEMPSEY RAY

100724165 4-05 90
GOLD % FAT % PRT
2-01 2 302 18890 4.3 809 3.3 626
3-01 2 305 20580 4.1 851 3.4 690

KAMOURASKA VOLVO-ET

106530705C 87.22%
PTA +2.86SCC +1.9PL -0.5DPR
PTA +365M +33F +25P 91R
PTA% +.09 +.07
PTAT -.10T 84R 12/20
D/AV 19320M 4.1 787F 3.3 633P 8.4T

DUO STAR AMICALE-ET

107377079C 97.68%

MAPLE-DELL BURDETTE DEMPSEY-ET

65302787
PTA +2.81SCC -1.7PL +0.3DPR
PTA -736M -17F -6P 93R
PTA% +.07 +.09
PTAT +.80T 89R 12/20
D/AV 18855M 4.1 770F 3.3 614P 8.5T

GRAND-VIEW CONN RAIN

100578063 3-11 90
GOLD % FAT % PRT
2-06 2 305 22130 3.6 802 3.0 673
327 23500 3.7 859 3.1 723
3-07 2 305 26330 3.9 1015 3.2 831
365 29800 3.9 1173 3.2 959
4-09 2 305 25660 3.3 849 3.1 802
365 29590 3.4 1000 3.2 944
6-00 2 300 22730 3.9 880 3.2 717
7-00 2 280 20740 3.5 736 3.1 647
7-11 2 305 22420 4.2 934 3.2 722
365 24240 4.1 1005 3.2 783
LIFE 2371 177300 3.8 6759 3.2 5625



GRAND-VIEW DOUBLWHAMMY RAISIN
 2ND FALL YEARLING, 2014 INTERNATIONAL SHOW AT WDE
 FAMILY MEMBER OF LOT 22

22

\$ _____

**GRAND-VIEW
 CHAMP RAE**

97.45% AYRSHIRE 01/18/19 FEMALE
 840003151128569 97.45%
 P8 +435

DUE 7/31/21 TO
 DUO STAR ARMANI
 CONFIRMED PREGNANT WITH MALE

CEDARCUT COLATA'S CHAMPION

100722079 94.9%
 PTA +2.99SCC -1.5PL -3.0DPR
 PTA +153M +12F +13P 47R
 PTA% +.03 +.04
 PTAT +.70T 46R 4/21

GRAND-VIEW NAPIER RAINY-ET

100727999 3-03 87
 GOLD % FAT % PRT
 2-03 2 283 15760 4.1 652 3.2 504
 3-02 2 250 14860 3.8 572 3.2 480

NEXUS DREAMER

103734662C 89.81%
 PTA +3.23SCC -4.2PL -4.0DPR
 PTA -233M +6F -7P 96R
 PTA% +.08
 PTAT +.30T 96R 4/21
 D/AV 20078M 4.1 814F 3.2 640P 8.6T

CEDARCUT BURDETTE CLOVE COLATA

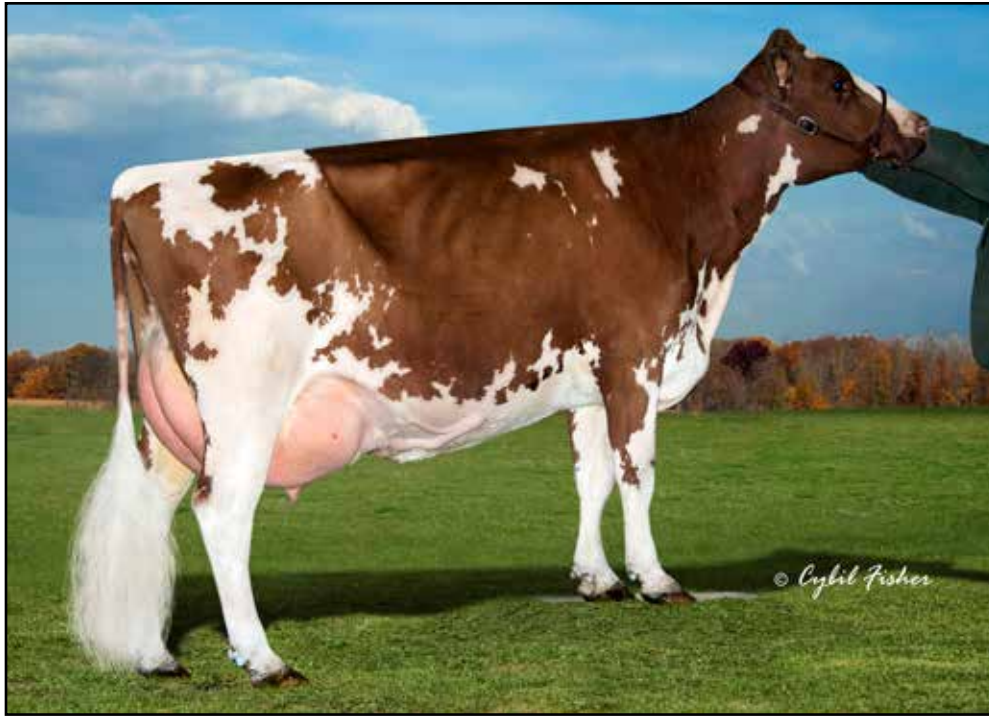
100634136 7-09 94 3E
 DHI % FAT % PRT
 2-07 2 299 21946 4.3 951 3.4 750
 3-06 2 305 32986 4.1 1363 3.3 1080
 308 33242 4.1 1376 3.3 1089
 4-06 2 305 32210 3.4 1090 3.2 1041
 318 33103 3.4 1119 3.2 1072
 5-06 2 305 32930 3.6 1180 3.0 1000
 LIFE 1477 141528 3.8 5433 3.3 4615

ARDMORE CROWN NAPIER

03000006180947C

GRAND-VIEW CONN RAIN

100578063 3-11 90
 GOLD % FAT % PRT
 2-06 2 305 22130 3.6 802 3.0 673
 327 23500 3.7 859 3.1 723
 3-07 2 305 26330 3.9 1015 3.2 831
 365 29800 3.9 1173 3.2 959
 4-09 2 305 25660 3.3 849 3.1 802
 365 29590 3.4 1000 3.2 944
 6-00 2 300 22730 3.9 880 3.2 717
 7-00 2 280 20740 3.5 736 3.1 647
 7-11 2 305 22420 4.2 934 3.2 722
 365 24240 4.1 1005 3.2 783
 LIFE 2371 177300 3.8 6759 3.2 5625



GRAND-VIEW BENEVOLA DAWN, EX-92 4E
GRANDDAM OF LOT 23

23

\$ _____

**GRAND-VIEW
 TUXEDO DAMITA**

96.22% AYRSHIRE 04/14/20 FEMALE
 840003205241931 96.22%
 P9 +476

POTENTIAL 9TH GENERATION EXCELLENT!

RUISSEAU CLAIR TUXEDO-ET

109844514C 92.45%
 PTA +2.90SCC +0.7PL +0.3DPR
 PTA +1055M +44F +30P 48R
 PTA% +.01 -.02
 PTAT +.50T 55R 12/20
 D/AV OM OF 8.8T

GRAND-VIEW DEMPSEY DOT TO DOT

100729665 3-08 91
 GOLD % FAT % PRT
 2-03 2 305 14030 5.0 708 3.7 517
 347 15680 5.1 793 3.7 578
 3-04 2 285 18112 4.5 809 3.5 626
 INC

KAMOURASKA VOLVO-ET

106530705C 87.22%
 PTA +2.86SCC +1.9PL -0.5DPR
 PTA +365M +33F +25P 91R
 PTA% +.09 +.07
 PTAT -.10T 84R 12/20
 D/AV 19320M 4.1 787F 3.3 633P 8.4T

DUO STAR AMICALE-ET

107377079C 97.68%

MAPLE-DELL BURDETTE DEMPSEY-ET

65302787
 PTA +2.81SCC -1.7PL +0.3DPR
 PTA -736M -17F -6P 93R
 PTA% +.07 +.09
 PTAT +.80T 89R 12/20
 D/AV 18855M 4.1 770F 3.3 614P 8.5T

GRAND-VIEW BENEVOLA DAWN

100621529 9-03 92 4E
 GOLD % FAT % PRT
 2-03 2 305 16570 4.8 791 3.4 559
 325 17540 4.7 832 3.4 593
 3-04 2 305 21870 4.1 895 3.5 771
 365 25030 4.1 1033 3.5 884
 4-06 2 305 21560 4.1 879 3.5 758
 313 21960 4.1 898 3.5 774
 5-07 2 305 21640 4.4 960 3.6 779
 331 22580 4.5 1009 3.6 819
 6-07 2 289 21330 4.4 940 3.5 753
 7-07 2 305 20970 4.3 906 3.5 743
 LIFE 2298 150430 4.4 6644 3.5 5337



GRAND-VIEW MASTERPIECE DAE, EX-90
8 GENERATIONS EXCELLENT
GRANDDAM OF LOT 24

24

\$ _____

**GRAND-VIEW
TUXEDO DEVA**

95.64% AYRSHIRE 04/24/20 FEMALE
840003205241932 95.64%
P8 +458

RUISSEAU CLAIR TUXEDO-ET

109844514C 92.45%
PTA +2.90SCC +0.7PL +0.3DPR
PTA +1055M +44F +30P 48R
PTA% +.01 -.02
PTAT +.50T 55R 12/20
D/AV OM OF 8.8T

GRAND-VIEW GENTLE DIVVA

840003151128533 98.84%
2-08 86
2-00 2 286 16619 3.9 644 3.3 551
INC

KAMOURASKA VOLVO-ET

106530705C 87.22%
PTA +2.86SCC +1.9PL -0.5DPR
PTA +365M +33F +25P 91R
PTA% +.09 +.07
PTAT -.10T 84R 12/20
D/AV 19320M 4.1 787F 3.3 633P 8.4T

DUO STAR AMICALE-ET

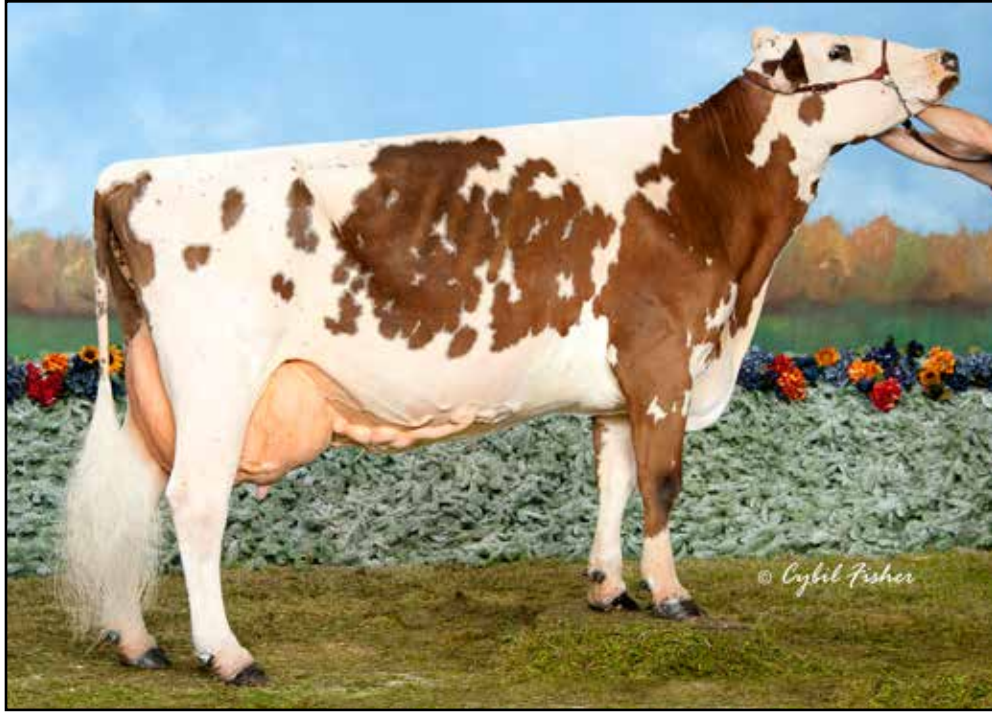
107377079C 97.68%

DUO STAR GENTLEMAN-ET

106306758C 97.68%
PTA +3.05SCC -3.7PL +0.1DPR
PTA -736M -17F -26P 91R
PTA% +.07 -.01
PTAT +.80T 88R 12/20
D/AV 19300M 4.0 769F 3.1 607P 8.6T

GRAND-VIEW MASTERPIECE DAE

100689350 5-11 90
GOLD % FAT % PRT
2-05 2 305 21170 3.9 832 3.1 650
346 23640 4.0 946 3.1 732
3-07 2 305 22980 4.0 912 3.0 694
365 25680 4.1 1050 3.1 792
5-06 2 297 25630 4.2 1072 3.1 796



GRAND-VIEW SUMTOTAL DIVOT, EX-94 4E
THIRD DAM OF LOT 25

25

\$ _____

**GRAND-VIEW
TUXEDO DELANEY**

96.22% AYRSHIRE 07/07/20 FEMALE
840003205241938 96.22%
P8 +456

RUISSEAU CLAIR TUXEDO-ET

109844514C 92.45%
PTA +2.90SCC +0.7PL +0.3DPR
PTA +1055M +44F +30P 48R
PTA% +.01 -.02
PTAT +.50T 55R 12/20
D/AV 0M 0F 8.8T

GRAND-VIEW JAMISON DEEVA P

840003151128536 2-07 86

KAMOURASKA VOLVO-ET

106530705C 87.22%
PTA +2.86SCC +1.9PL -0.5DPR
PTA +365M +33F +25P 91R
PTA% +.09 +.07
PTAT -.10T 84R 12/20
D/AV 19320M 4.1 787F 3.3 633P 8.4T

DUO STAR AMICALE-ET

107377079C 97.68%

HAWKSFIELD JAMISON P *TF TF

100674161
PTA +2.92SCC +0.1PL +0.7DPR
PTA -812M -31F -23P 74R
PTA% +.01 +.02
PTAT -.20T 60R 12/20
D/AV 19307M 4.1 788F 3.1 606P 8.3T

GRAND-VIEW HP RIGGINS DART-ET

100662144 5-10 90
GOLD % FAT % PRT
2-01 2 305 17060 3.5 593 3.0 520
349 19190 3.5 679 3.1 587
3-02 2 305 21130 3.5 746 3.0 644
342 23390 3.6 835 3.0 713
4-03 2 305 23360 3.4 793 3.0 699
315 23880 3.4 814 3.0 716
5-03 2 305 23510 3.6 845 3.1 722
365 26520 3.7 970 3.1 819
LIFE 1573 105330 3.6 3771 3.1 3213



GRAND-VIEW BURDETTE DIAMOND, EX-91
 RES ALL-AMERICAN JR 3-YEAR-OLD, 2012
 FAMILY MEMBER OF LOT 26

26

\$ _____

**GRAND-VIEW
 SUMTOTAL DECO**

PUREBRED AYRSHIRE 06/22/20 FEMALE
 840003205241937

P- +365

POTENTIAL 10TH GENERATION EXCELLENT!

MAPLE-DELL SUM TOTAL-ET

100397787						
PTA	+3.13SCC	-0.5PL	-0.3DPR			
PTA	-598M	-29F	-15P	82R		
PTA%		-.03	+.02			
PTAT	+.30T		77R	12/20		
D/AV	19346M	3.8	729F	3.1	599P	8.5T

GRAND-VIEW HP BURDETTE DREA-ET

100651799 7-11 90 2E						
GOLD		%	FAT	%	PRT	
2-03	2	305	14580	4.0	582	3.3 485
		365	16580	4.1	672	3.4 565
4-05	2	241	13080	3.9	508	3.3 432
5-06	2	230	13770	4.0	549	3.3 452
6-06	2	242	14320	4.0	571	3.2 463

BLACKADDAR B B KELLOGG

777850C						
PTA	+3.15SCC	-0.2PL	-0.2DPR			
PTA	-1146M	-51F	-26P	98R		
PTA%		-.03	+.06			
PTAT	+.20T		98R	12/20		
D/AV	17928M	3.9	693F	3.2	574P	8.5T

MAPLE-DELL TRIDENT SONG

100103830 4-04 91						
GOLD		%	FAT	%	PRT	
2-00	2	277	18420	4.3	785	3.3 602
3-00	2	321	24070	4.3	1041	3.3 793
4-00	2	262	24750	5.4	1345	3.2 780

PALMYRA TRI-STAR BURDETTE-ET

100419568						
PTA	+2.94SCC	+1.1PL	-0.6DPR			
PTA	+261M	+6F	+13P	99R		
PTA%		-.02	+.02			
PTAT	+.90T		99R	12/20		
D/AV	19858M	3.9	783F	3.2	633P	8.6T

GRAND-VIEW BBBK DREAMER

100463697 11-06 94 5E						
GOLD		%	FAT	%	PRT	
2-06	2	305	14610	4.4	646	3.3 489
		334	15770	4.5	702	3.4 531
3-06	2	305	16510	3.6	598	3.3 541
		364	17560	3.6	640	3.3 581
4-09	2	305	21150	4.5	958	3.3 695
		365	24310	4.4	1059	3.3 807
6-08	2	305	20170	4.1	835	3.2 650
		365	23650	4.1	964	3.3 774
8-08	2	305	21900	3.5	769	3.3 715
		365	26050	3.6	948	3.3 856
LIFE	2750	147270	4.1	6059	3.4	5025

3RD FALL YEARLING - 2008 CENTRAL NATIONAL
 HM ALL-AMERICAN FALL YEARLING - 2008
 1ST - 2010 WDE INTERNATIONAL FUTURITY
 NOM ALL-AMERICAN AGED COW - 2015
 NOM ALL-AMERICAN 100,000 LB COW - 2016

Genetic Dreams at Grand-View



GRAND-VIEW CALIMERO DEA-ET, EX-91 3E
 MATERNAL SISTER TO DAM OF LOT 27

27

\$ _____

**GRAND-VIEW
 B-KING DIGNITY**

97.1% AYRSHIRE 06/01/20 FEMALE
 840003205241936 97.1%
 P- +395

DE LA PLAINE B-KING 95.37%
 109500046C
 PTA +3.11SCC -1.0PL -0.3DPR
 PTA +26M +25F +4P 54R
 PTA% +.12 +.02
 PTAT +.70T 41R 12/20
 D/AV 0M 0F 8.4T

GRAND-VIEW GENTLE DUMPLING-ET 98.84%
 840003151128528
 2-09 85
 2-02 2 289 13511 4.3 587 3.4 455
 INC

 DUMPLING SELLS AS LOT 27

CHALUKA VIRGILE-ET

105776780C 90.75%
 PTA +3.20SCC +0.5PL -0.1DPR
 PTA +410M +44F +19P 84R
 PTA% +.14 +.03
 PTAT +.10T 69R 12/20

DE LA PLAINE BURDETTE BLING-ET

107961839C
 DHI % FAT % PRT
 2-01 2 314 19275 4.6 895 3.6 699
 3-02 2 365 28682 4.4 1250 3.6 1043
 5-03 2 365 37823 4.3 1645 3.4 1272
 LIFE 1408 105258 4.5 4742 3.6 3790

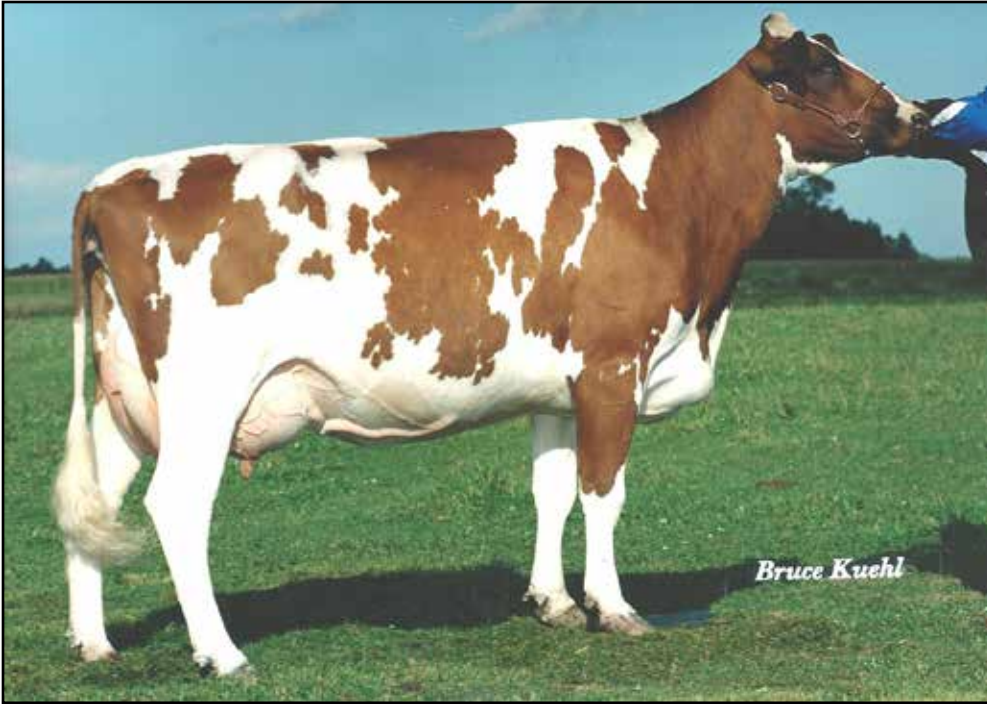
DUO STAR GENTLEMAN-ET

106306758C 97.68%
 PTA +3.05SCC -3.7PL +0.1DPR
 PTA -736M -17F -26P 91R
 PTA% +.07 -.01
 PTAT +.80T 88R 12/20
 D/AV 19300M 4.0 769F 3.1 607P 8.6T

GRAND-VIEW BBBK DREAMER

100463697 11-06 94 5E
 GOLD % FAT % PRT
 2-06 2 305 14610 4.4 646 3.3 489
 334 15770 4.5 702 3.4 531
 3-06 2 305 16510 3.6 598 3.3 541
 364 17560 3.6 640 3.3 581
 4-09 2 305 21150 4.5 958 3.3 695
 365 24310 4.4 1059 3.3 807
 6-08 2 305 20170 4.1 835 3.2 650
 365 23650 4.1 964 3.3 774
 8-08 2 305 21900 3.5 769 3.3 715
 365 26050 3.6 948 3.3 856
 LIFE 2750 147270 4.1 6059 3.4 5025

 3RD FALL YEARLING - 2008 CENTRAL NATIONAL
 HM ALL-AMERICAN FALL YEARLING - 2008
 1ST - 2010 WDE INTERNATIONAL FUTURITY
 NOM ALL-AMERICAN AGED COW - 2015
 NOM ALL-AMERICAN 100,000 LB COW - 2016



SPRING-VALLEY TRIDENT BRITTA, EX-91 2E
THIRD DAM OF LOT 28



SPRING-VALLEY HELIGO HELENA
EX-91
FOURTH DAM OF LOT 28

28

\$ _____

**GRAND-VIEW
CHAMP BLUEJEANS**

96.87% AYRSHIRE 07/13/20 FEMALE
840003205241939 96.87%
P- +406

CEDARCUT COLATA'S CHAMPION

100722079 94.9%
PTA +2.98SCC -1.4PL -3.0DPR
PTA +337M +17F +15P 47R
PTA% +.02 +.02
PTAT +.70T 45R 12/20

GRAND-VIEW GENTLEMAN BYLINE

100711745 98.84%
4-07 87
GOLD % FAT % PRT
2-05 2 305 18630 4.0 747 3.3 617
348 20350 4.0 823 3.3 680
3-06 2 263 13800 4.3 600 3.3 450

THIRD DAM:

SPRING-VALLEY TRIDENT BRITTA, EX-91 2E
6-03 2 365 23090 4.0 918 3.0 685
7-11 2 305 21320 3.7 799 2.9 616
9-09 2 305 22150 3.6 803 3.1 695
11-00 2 365 22420 3.7 837 3.0 679
LIFE 2838 163670 3.8 6299 3.0 4976

FOURTH DAM:

SPRING-VALLEY HELIGO HELENA, EX-91
4-04 2 365 29254 3.7 1070 3.1 903
7-02 2 305 23530 5.1 1207 2.7 628
9-00 2 206 19020 5.5 1050 2.7 505
10-11 2 305 22570 3.8 856 2.6 585
LIFE 2681 168187 4.2 7060 2.9 4861

NEXUS DREAMER

103734662C 89.81%
PTA +3.25SCC -4.1PL -4.1DPR
PTA -200M +5F -5P 96R
PTA% +.07 +.01
PTAT +.20T 96R 12/20
D/AV 20126M 4.1 816F 3.2 641P 8.6T

CEDARCUT BURDETTE CLOVE COLATA

100634136 7-09 94 3E
DHI % FAT % PRT
2-07 2 299 21946 4.3 951 3.4 750
3-06 2 305 32986 4.1 1363 3.3 1080
308 33242 4.1 1376 3.3 1089
4-06 2 305 32210 3.4 1090 3.2 1041
318 33103 3.4 1119 3.2 1072
5-06 2 305 32930 3.6 1180 3.0 1000
LIFE 1477 141528 3.8 5433 3.3 4615

DUO STAR GENTLEMAN-ET

106306758C 97.68%
PTA +3.05SCC -3.7PL +0.1DPR
PTA -736M -17F -26P 91R
PTA% +.07 -.01
PTAT +.80T 88R 12/20
D/AV 19300M 4.0 769F 3.1 607P 8.6T

GRAND-VIEW POKER BLOWPOP-ET

100579934 4-11 88
GOLD % FAT % PRT
2-03 2 285 16850 3.9 650 3.0 500
3-03 2 305 23960 3.8 920 3.0 722
315 24580 3.9 950 3.0 742
4-04 2 296 22940 3.5 814 2.9 671
5-03 2 285 23210 3.3 764 3.0 698



GRAND-VIEW BBBK DREAMER, EX-94 5E
GRANDDAM OF LOT 29

29

\$ _____

GRAND-VIEW CHAMP
DAYBREAK

97.45% AYRSHIRE
 840003205241940

07/30/20 FEMALE
 97.45%
 P- +431

CEDARCUT COLATA'S CHAMPION

100722079 94.9%
 PTA +2.98SCC -1.4PL -3.0DPR
 PTA +337M +17F +15P 47R
 PTA% +.02 +.02
 PTAT +.70T 45R 12/20

GRAND-VIEW PREDATOR DANCE-ET

840003151128544 2-06 84
 2-01 2 230 10762 3.5 372 3.3 358
 INC

 DANCE SELLS AS LOT 13

NEXUS DREAMER

103734662C 89.81%
 PTA +3.25SCC -4.1PL -4.1DPR
 PTA -200M +5F -5P 96R
 PTA% +.07 +.01
 PTAT +.20T 96R 12/20
 D/AV 20126M 4.1 816F 3.2 641P 8.6T

CEDARCUT BURDETTE CLOVE COLATA

100634136 7-09 94 3E
 DHI % FAT % PRT
 2-07 2 299 21946 4.3 951 3.4 750
 3-06 2 308 33242 4.1 1376 3.3 1089
 4-06 2 318 33103 3.4 1119 3.2 1072
 5-06 2 305 32930 3.6 1180 3.0 1000
 LIFE 1477 141528 3.8 5433 3.3 4615

FOREVER SCHOON PREDATOR-ET

11119921C
 PTA +2.89SCC -1.8PL -1.7DPR
 PTA +41M +1F -2P 94R
 PTA% -.02
 PTAT +.50T 93R 12/20
 D/AV 19978M 4.0 791F 3.2 630P 8.5T

GRAND-VIEW BBBK DREAMER

100463697 11-06 94 5E
 GOLD % FAT % PRT
 2-06 2 305 14610 4.4 646 3.3 489
 334 15770 4.5 702 3.4 531
 3-06 2 305 16510 3.6 598 3.3 541
 364 17560 3.6 640 3.3 581
 4-09 2 305 21150 4.5 958 3.3 695
 365 24310 4.4 1059 3.3 807
 6-08 2 305 20170 4.1 835 3.2 650
 365 23650 4.1 964 3.3 774
 8-08 2 305 21900 3.5 769 3.3 715
 365 26050 3.6 948 3.3 856
 LIFE 2750 147270 4.1 6059 3.4 5025

 3RD FALL YEARLING - 2008 CENTRAL NATIONAL
 HM ALL-AMERICAN FALL YEARLING - 2008
 1ST - 2010 WDE INTERNATIONAL FUTURITY
 NOM ALL-AMERICAN AGED COW - 2015
 NOM ALL-AMERICAN 100,000 LB COW - 2016



GRAND-VIEW BURDETTE CHEERS, EX-93 2E
 4-05 320D 25,420M 3.5% 888F 3.0% 775P
 MATERNAL SISTER TO DAM OF LOT 30

30

\$ _____

**GRAND-VIEW
 REMSBERG CLARA**

93.26% AYRSHIRE 09/17/20 FEMALE
 840003205241950 93.26%
 P- +432

PALMYRA POWER REMSBERG
 840003135447744 90%
 PTA +2.98SCC -0.9PL
 PTA +50M +26F +9P 47R
 PTA% +.12 +.04
 PTAT +.30T 45R 12/20

GRAND-VIEW GENTLEMAN CRAYOLA
 840003151128525 96.52%
 2-09 82
 2-06 2 PROJ 15236 4.2 646 3.2 487

THIRD DAM:
MARGOT GVA CONN CALLIE-ET, VG-85
 6-01 2 365 30400 3.7 1117 2.9 895
 LIFE 2237 166760 3.8 6334 2.9 4910
 MATERNAL SISTER TO MARGOT CALIMERO

ANMAR PETER POWER-ET

64394151 80%
 PTA +2.87SCC +0.8PL +1.7DPR
 PTA -33M +17F +8P 95R
 PTA% +.10 +.05
 PTAT -.40T 89R 12/20
 D/AV 20410M 4.1 835F 3.2 656P 8.4T

PALMYRA BERKELY P RUTH-ET

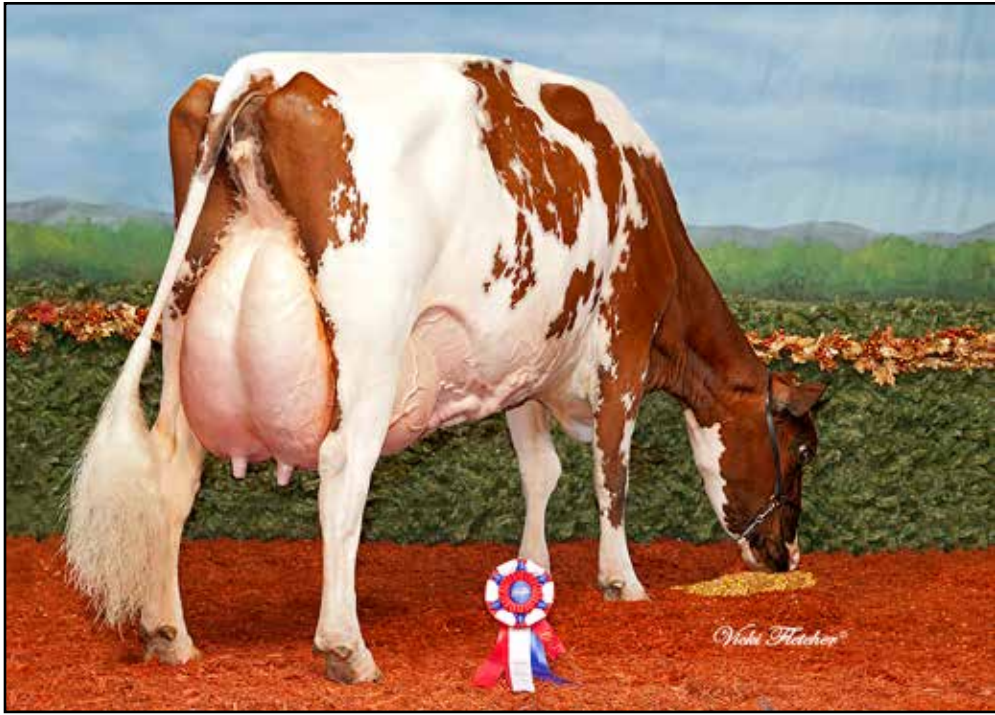
72394521 5-06 94 2E
 GOLD % FAT % PRT
 2-00 2 264 18270 4.5 814 3.1 565
 2-10 2 305 25260 4.7 1196 3.1 789
 320 26340 4.7 1239 3.1 825
 3-10 2 305 30440 3.8 1171 3.0 912
 323 32060 3.9 1256 3.0 960
 4-10 2 305 27690 4.2 1155 3.1 860
 328 29420 4.1 1218 3.1 916
 LIFE 1405 117140 4.3 5058 3.1 3662

DUO STAR GENTLEMAN-ET

106306758C 97.68%
 PTA +3.05SCC -3.7PL +0.1DPR
 PTA -736M -17F -26P 91R
 PTA% +.07 -.01
 PTAT +.80T 88R 12/20
 D/AV 19300M 4.0 769F 3.1 607P 8.6T

GRAND-VIEW SUMTOTAL CRAYON

100651717 95.37%
 3-09 86
 GOLD % FAT % PRT
 2-03 2 305 18640 4.1 758 2.9 544
 324 19440 4.1 795 2.9 572
 3-03 2 303 20170 3.6 723 2.9 583
 4-03 2 266 18810 3.9 728 2.9 552



STEAM-VALLEY WILTON MAGIC BRI, EX-94 2E
GRANDDAM OF LOT 31

31

\$ _____

**GRAND-VIEW
CHARITON BREA**

PUREBRED AYRSHIRE 09/27/20 FEMALE
840003205241953

P- +375

MINI-AYR CHARLENE C CHARITON
100240106

OLD-BANKSTON JC TSB BRANDI-ET
840003137167575 3-09 91

GOLD	%	FAT	%	PRT
2-02 2 305	16070	4.1	653	3.3 538
354	17050	4.1	701	3.4 572
3-06 2 PROJ	18552	4.3	793	3.5 642

MINI-AYR RAMS CHARLTON-ET
145879

MINI-AYR IC CHARLENEC
976967 11-02 92

GOLD	%	FAT	%	PRT
2-06 2 351	26960	4.2	1133	3.4 923
3-06 2 365	35310	3.9	1388	3.5 1243
4-09 2 365	56760	3.9	2199	3.4 1904
6-07 2 365	57528	3.9	2237	3.3 1878
8-07 2 365	69460	3.7	2538	3.2 2189
LIFE	2875 392754	3.9	15338	3.2 1269

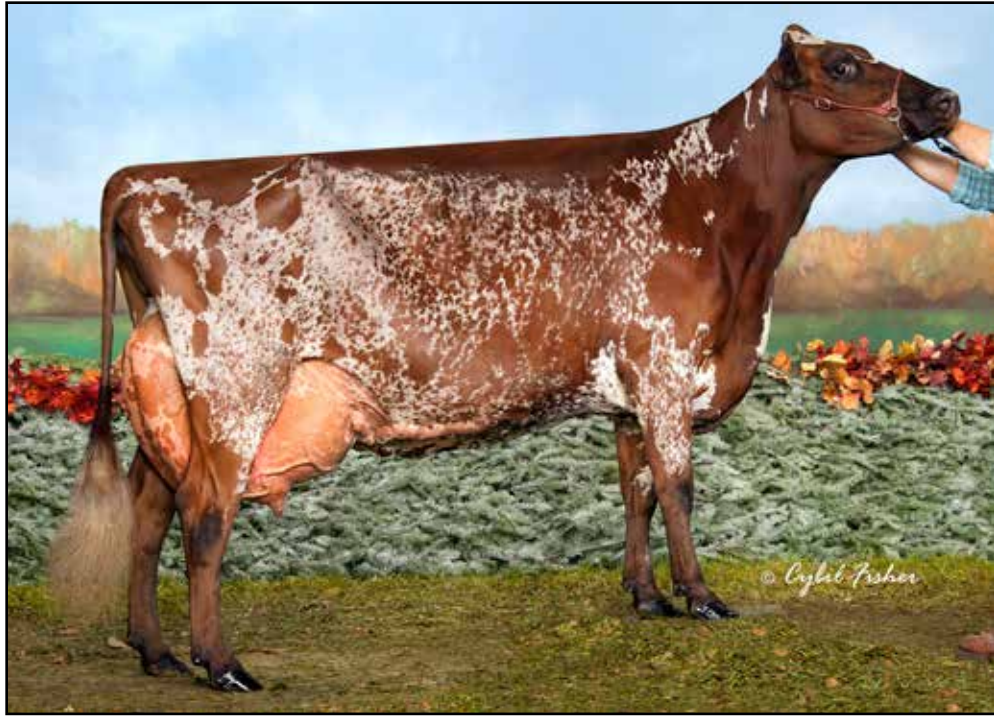
PALMYRA TRI-STAR BURDETTE-ET
100419568

PTA	+2.94SCC	+1.1PL	-0.6DPR	
PTA	+261M	+6F	+13P	99R
PTA%		-.02	+.02	
PTAT	+.90T			99R 12/20
D/AV	19858M	3.9	783F	3.2 633P 8.6T

STEAM-VALLEY WILTON MAGIC BRI
100475641 5-03 94 2E

GOLD	%	FAT	%	PRT
2-04 2 313	16280	4.1	673	3.3 537
3-04 2 352	23530	3.6	845	3.1 726
4-10 2 336	28210	3.6	1004	3.1 878
5-11 2 364	32470	3.3	1058	3.0 977
10-08 2 341	31820	4.0	1275	3.1 984
LIFE	1979 155360	3.6	5587	3.1 4797

3RD SUMMER YEARLING - 2007 CENTRAL NAT'L
1ST 5-YEAR-OLD - 2011 INTERNATIONAL
SENIOR CHAMPION - 2011 INTERNATIONAL
GRAND CHAMPION - 2011 INTERNATIONAL
UNAN ALL-AMERICAN 5-YEAR-OLD - 2011
ALL-WORLD 5-YEAR-OLD - 2011
3RD AGED COW - 2012 INTERNATIONAL
HM ALL-AMERICAN AGED COW - 2012
1ST 100,000 LB COW - 2013 INTERNATIONAL
TOTAL PERFORMANCE WINNER - 2013 INTERNAT'L
UNAN ALL-AMERICAN 100,000 LB COW - 2013



GRAND-VIEW BURDETTE BURGANDY, EX-94
8 GENERATIONS EXCELLENT
GRANDDAM OF LOT 32

32

\$ _____

**GRAND-VIEW
 BIGSTAR BRIELLE**

92.25% AYRSHIRE 10/14/20 FEMALE
 840003226712481 92.25%
 P8 +455

KAMOURASKA BIGSTAR-ET

107821541C 86.82%
 PTA +3.07SCC +2.7PL +1.1DPR
 PTA +1020M +32F +37P 87R
 PTA% - .04 +.02
 PTAT +.10T 79R 12/20
 D/AV 0M 0F 8.4T

GRAND-VIEW DOUBLWHAMMY BERRY

840003142914526 97.68%
 2-09 87
 2-07 2 152 9181 4.3 397 3.4 312
 INC

3RD SPRING CALF - 2018 CENTRAL NATIONAL JR
 HM JR ALL-AMERICAN SPRING CALF - 2018

THIRD DAM:

HAWKSFIELD GVA PARDNER BLUE-ET, EX-91 5E
 6-03 2 288 24780 4.5 1118 3.0 742
 LIFE 2837 192420 4.4 8377 3.2 6089

GENIAL SITUATION-ET

106902365C 95%
 PTA +3.08SCC +1.9PL +1.6DPR
 PTA +376M +11F +4P 85R
 PTA% - .02 - .04
 PTAT +.20T 78R 12/20
 D/AV 0M 0F 8.5T

KAMOURASKA JUPI UBY-ET

105759438C 78.64%
 DHI % FAT % PRT
 1-11 2 305 21713 4.7 1012 3.8 818
 355 23947 4.7 1127 3.8 917
 3-00 2 305 21901 4.2 919 3.8 833
 365 23563 4.2 1001 3.9 911
 4-02 2 305 22531 4.2 939 3.8 853
 365 24731 4.3 1052 3.9 957

FAMILY-AF-AYR DOUBLWHAMMY-ET

100516902 95.37%
 PTA +3.11SCC -4.1PL -1.0DPR
 PTA -321M -9F -10P 93R
 PTA% +.02
 PTAT +.50T 91R 12/20
 D/AV 19606M 4.0 782F 3.2 625P 8.6T

GRAND-VIEW BURDETTE BURGANDY

100623893 6-08 94 ELITE
 GOLD % FAT % PRT
 2-00 2 289 16720 4.4 740 3.3 558
 3-00 2 305 21830 3.6 796 3.3 719
 331 23480 3.7 874 3.3 777
 4-01 2 296 21680 4.1 879 3.4 746
 5-01 2 243 18580 4.5 828 3.4 639
 305 22610 4.4 992 3.5 785
 365 25970 4.4 1130 3.5 908
 LIFE 1487 103820 4.1 4300 3.3 3475



GRAND-VIEW HP CALIMERO DANE-ET, EX-94 3E
 4-10 365D 25,300M 3.9% 993F 3.2% 801P
 NOM ALL-AMERICAN 5-YEAR-OLD, 2017
 MATERNAL SISTER TO DAM OF LOT 33

33

\$ _____

**GRAND-VIEW
 RADISSON DREAMS**

97.1% AYRSHIRE 09/01/20 FEMALE
 840003205241945 97.1%
 P- +390

POTENTIAL 10 GENERATIONS EXCELLENT!

PALMYRA BOOTH RADISSON

840003135447759 98.84%
 PTA +2.94SCC +0.2PL -0.4DPR
 PTA +205M +15F +3P 46R
 PTA% +.03 -.02
 PTAT +.70T 43R 12/20

GRAND-VIEW CALIMERO DILEMMA-ET

100726895 95.37%
 4-03 90
 GOLD % FAT % PRT
 2-00 2 259 11010 4.3 470 3.2 356
 2-11 2 253 11430 3.8 429 3.3 376
 3-11 2 PROJ 16021 4.5 718 3.4 543

PALMYRA PREDATOR BOOTH

840003123620601 97.68%
 PTA +2.88SCC -2.2PL -0.8DPR
 PTA -222M -3F -10P 76R
 PTA% +.03 -.02
 PTAT +.10T 70R 12/20
 D/AV 18153M 4.1 737F 3.1 568P 8.4T

PALMYRA BURDETTE P RAYNA-ET

72394511 7-05 94 3E ELITE
 GOLD % FAT % PRT
 1-11 2 365 22930 4.4 1009 3.3 764
 3-03 2 365 38010 4.6 1748 3.2 1223
 4-06 2 347 29710 4.9 1444 3.3 980
 5-08 2 365 35590 4.8 1704 3.2 1138
 LIFE 1614 136200 4.7 6386 3.3 4460

MARGOT CALIMERO

10310847C 90.75%
 PTA +3.13SCC -2.7PL +0.4DPR
 PTA -543M -7F -12P 97R
 PTA% +.08 +.03
 PTAT +.30T 96R 12/20
 D/AV 19414M 4.0 774F 3.2 621P 8.6T

GRAND-VIEW BBBK DREAMER

100463697 11-06 94 5E
 GOLD % FAT % PRT
 2-06 2 305 14610 4.4 646 3.3 489
 334 15770 4.5 702 3.4 531
 3-06 2 305 16510 3.6 598 3.3 541
 364 17560 3.6 640 3.3 581
 4-09 2 305 21150 4.5 958 3.3 695
 365 24310 4.4 1059 3.3 807
 6-08 2 305 20170 4.1 835 3.2 650
 365 23650 4.1 964 3.3 774
 8-08 2 305 21900 3.5 769 3.3 715
 365 26050 3.6 948 3.3 856
 LIFE 2750 147270 4.1 6059 3.4 5025

3RD FALL YEARLING - 2008 CENTRAL NATIONAL
 HM ALL-AMERICAN FALL YEARLING - 2008
 1ST - 2010 WDE INTERNATIONAL FUTURITY
 NOM ALL-AMERICAN AGED COW - 2015
 NOM ALL-AMERICAN 100,000 LB COW - 2016



DES CHAMOIS PALEO-ET, EX-93 2D
GRANDDAM OF LOT 34

34

\$ _____

**GRAND-VIEW
KINGSIRE PERLA**

99.42% AYRSHIRE 09/10/20 FEMALE
840003205241949 99.42%
P6 +426

BEAR-AYR DISTINCT KINGSIRE

840003132388711
PTA +2.99SCC +2.1PL +1.0DPR
PTA -41M -13F +6P 47R
PTA% -.06 +.04
PTAT +1.10T 44R 12/20

OLD-BANKSTON MIDAS PRUDENCE-ET

840003151128541 98.84%
2-06 86
2-03 3 PROJ 16965 4.4 739 3.4 585

**THIRD DAM:
MARILIE B B POLKIE-ET, EX-95**

6-10 2 305 24425 3.9 950 3.3 816
365 28790 4.0 1146 3.4 974
8-05 2 305 27244 4.8 1318 3.3 886
365 30779 4.8 1482 3.4 1032
10-08 2 305 21129 4.4 924 3.4 728
323 22064 4.4 968 3.5 765
LIFE 192887 4.4 8408 3.5 6848

FAMILY-AF-AYR DISTINCTION

100578700
PTA +3.01SCC +4.1PL +1.0DPR
PTA -104M -18F -1P 88R
PTA% -.07 +.01
PTAT +1.10T 86R 12/20
D/AV 20127M 3.8 761F 3.2 641P 8.6T

DALTONDALE BBK KUDDLES

100483655 10-02 92 4E
GOLD % FAT % PRT
3-10 2 305 19610 4.2 821 3.3 645
5-02 2 305 18700 3.5 663 3.3 613
365 20630 3.6 740 3.4 694
6-03 2 305 25780 3.8 983 3.2 832
365 27520 3.8 1041 3.3 900
7-06 2 305 29170 3.7 1083 3.2 922
9-04 2 305 23430 4.0 931 3.4 800
365 27760 4.0 1113 3.4 954
LIFE 2459 158770 3.9 6159 3.4 5322

FAUCHER MIDAS-ET

107379169C 97.68%
PTA +2.86SCC -0.1PL -0.9DPR
PTA +255M +8F +1P 79R
PTA% -.01 -.04
PTAT +.40T 62R 12/20
D/AV 17513M 3.8 671F 3.1 549P 8.3T

DES CHAMOIS PALEO-ET

100563182 6-01 93 2E
GOLD % FAT % PRT
3-09 3 305 24070 4.4 1060 3.3 791
365 27480 4.4 1201 3.3 918

NOM ALL-AMERICAN SR 3-YEAR-OLD - 2009



GRAND-VIEW NELSON DEENA, EX-92
GRANDDAM OF LOT 35

35

\$ _____

**GRAND-VIEW
 KINGSIRE DOTES-ET**

PUREBRED AYRSHIRE 09/06/20 FEMALE
 840003205241947 P8 +454

BEAR-AYR DISTINCT KINGSIRE

840003132388711
 PTA +2.99SCC +2.1PL +1.0DPR
 PTA -41M -13F +6P 47R
 PTA% -0.06 +.04
 PTAT +1.10T 44R 12/20

GRAND-VIEW BURDETTE DISCO

100644384 5-02 91 2E
 GOLD % FAT % PRT
 2-02 2 299 20480 4.5 913 3.1 641
 3-03 2 305 26090 4.2 1086 3.1 798
 328 27780 4.1 1152 3.1 854
 4-04 2 305 25280 4.1 1025 3.2 808
 330 26000 4.1 1056 3.2 838
 5-06 2 305 18950 3.9 734 3.3 626
 6-07 2 278 20150 4.0 806 3.2 642
 7-06 2 243 14850 4.5 663 3.4 508
 LIFE 1783 128210 4.2 5324 3.2 4109

FAMILY-AF-AYR DISTINCTION

100578700
 PTA +3.01SCC +4.1PL +1.0DPR
 PTA -104M -18F -1P 88R
 PTA% -0.07 +.01
 PTAT +1.10T 86R 12/20
 D/AV 20127M 3.8 761F 3.2 641P 8.6T

DALTONDALE BBK KUDDLERS

100483655 10-02 92 4E
 GOLD % FAT % PRT
 3-10 2 305 19610 4.2 821 3.3 645
 5-02 2 365 20630 3.6 740 3.4 694
 6-03 2 365 27520 3.8 1041 3.3 900
 7-06 2 305 29170 3.7 1083 3.2 922
 9-04 2 365 27760 4.0 1113 3.4 954
 LIFE 2459 158770 3.9 6159 3.4 5322

PALMYRA TRI-STAR BURDETTE-ET

100419568
 PTA +2.94SCC +1.1PL -0.6DPR
 PTA +261M +6F +13P 99R
 PTA% -0.02 +.02
 PTAT +.90T 99R 12/20
 D/AV 19858M 3.9 783F 3.2 633P 8.6T

GRAND-VIEW NELSON DEENA

100463660 6-05 92
 GOLD % FAT % PRT
 2-05 2 305 19930 3.5 699 3.0 598
 310 20180 3.5 710 3.0 606
 3-05 2 305 22490 3.1 706 3.1 702
 365 25570 3.1 802 3.2 815
 4-08 2 305 23420 3.2 758 3.2 750
 364 25650 3.2 829 3.3 839
 5-10 2 305 22110 3.5 783 3.2 711
 328 22920 3.5 813 3.2 744
 6-09 2 276 16280 3.5 574 3.3 532
 7-10 2 283 22170 3.7 810 3.0 670
 LIFE 1955 133880 3.4 4579 3.2 4249



GRAND-VIEW PREDATOR DELUGE, VG-88
 2-05 341D 22,330M 4.2% 932F 3.2% 709P
 MATERNAL SISTER OF LOT 36



GRAND-VIEW BURDETTE DEBRA-ET,
EX-91 2E
 DAM OF LOT 36

36

\$ _____

**GRAND-VIEW
 GENTLE DRIFTER**

98.84% AYRSHIRE 12/08/20 FEMALE
 840003226712487 98.84%
 P- +393

POTENTIAL 10TH GENERATION EXCELLENT!

DUO STAR GENTLEMAN-ET

106306758C 97.68%
 PTA +3.05SCC -3.7PL +0.1DPR
 PTA -736M -17F -26P 91R
 PTA% +.07 -.01
 PTAT +.80T 88R 12/20
 D/AV 19300M 4.0 769F 3.1 607P 8.6T

GRAND-VIEW BURDETTE DEBRA-ET

100667998 6-07 91 2E
 GOLD % FAT % PRT
 2-04 2 305 22240 3.5 782 2.9 646
 306 22290 3.5 784 2.9 647
 3-04 2 305 23190 3.7 869 3.1 727
 306 23210 3.7 870 3.1 728
 5-06 2 288 22610 3.9 884 3.0 674
 6-06 2 281 25870 3.6 939 3.0 770

PALMYRA TRI-STAR REALITY

100369452
 PTA +3.05SCC -0.3DPR
 PTA +437M +17F +1P 97R
 PTA% -.07
 PTAT +.20T 96R 12/20
 D/AV 21203M 3.9 835F 3.1 651P 8.6T

DUO STAR AMOUR-ET

103638586C 95.37%
 DHI % FAT % PRT
 2-01 2 350 24709 4.3 1058 3.3 818
 3-04 2 365 27571 3.8 1058 3.2 895
 4-09 2 365 31689 3.7 1173 3.3 1056
 6-07 2 365 31079 3.5 1089 3.2 999
 LIFE 1686 123634 3.8 4751 3.3 4089

PALMYRA TRI-STAR BURDETTE-ET

100419568
 PTA +2.94SCC +1.1PL -0.6DPR
 PTA +261M +6F +13P 99R
 PTA% -.02 +.02
 PTAT +.90T 99R 12/20
 D/AV 19858M 3.9 783F 3.2 633P 8.6T

GRAND-VIEW SUMTOTAL DAYDREAM

100518342 3-10 90
 GOLD % FAT % PRT
 2-02 2 305 20160 3.7 751 3.1 618
 312 20520 3.7 766 3.1 630
 3-02 2 305 26760 3.5 949 3.0 807
 349 28380 3.6 1027 3.1 867
 4-04 2 305 24620 3.3 805 3.0 731
 365 27220 3.3 906 3.0 815
 5-10 2 294 17540 3.6 633 3.1 544

NOM ALL-AMERICAN WINTER CALF - 2008
 2ND WINTER YEARLING - 2009 INTERNATIONAL JR
 HM JR ALL-AMERICAN WINTER YEARLING - 2009



GRAND-VIEW NELSON DEENA, EX-92
GRANDDAM OF LOT 37

37

\$ _____

**GRAND-VIEW
 PREDATOR DEBETTE**

PUREBRED AYRSHIRE 12/30/20 FEMALE
 840003226712495

P7 +436

POTENTIAL 9 GENERATIONS EXCELLENT!

FOREVER SCHOON PREDATOR-ET

11119921C										
PTA	2	+2.89SCC	-1.8PL	-1.7DPR						
PTA		+41M	+1F	-2P	94R					
PTA%				-0.02						
PTAT		+0.50T		93R	12/20					
D/AV	19978M	4.0	791F	3.2	630P	8.5T				

GRAND-VIEW BURDETTE DISCO

100644384 5-02 91 2E										
GOLD			%	FAT	%	PRT				
2-02	2	299	20480	4.5	913	3.1	641			
3-03	2	305	26090	4.2	1086	3.1	798			
			328	27780	4.1	1152	3.1	854		
4-04	2	305	25280	4.1	1025	3.2	808			
			330	26000	4.1	1056	3.2	838		
5-06	2	305	18950	3.9	734	3.3	626			
6-07	2	278	20150	4.0	806	3.2	642			
7-06	2	243	14850	4.5	663	3.4	508			
LIFE	1783	128210	4.2	5324	3.2	4109				

PALMYRA TRI-STAR REALITY

100369452										
PTA	2	+3.05SCC		-0.3DPR						
PTA		+437M	+17F	+1P	97R					
PTA%				-0.07						
PTAT		+0.20T		96R	12/20					
D/AV	21203M	3.9	835F	3.1	651P	8.6T				

FOREVER SCHOON PRETTY

7441960C										
DHI			%	FAT	%	PRT				
2-05	2	305	17130	4.8	825	3.5	608			
			313	17496	4.8	844	3.6	624		
3-05	2	305	20686	4.8	1001	3.8	778			
			342	22425	4.8	1082	3.8	849		
4-07	2	305	22646	4.4	1001	3.5	798			
			359	25064	4.4	1098	3.6	895		
6-07	2	305	23702	4.6	1102	3.3	794			
			365	26026	4.6	1206	3.4	884		

PALMYRA TRI-STAR BURDETTE-ET

100419568										
PTA	2	+2.94SCC	+1.1PL	-0.6DPR						
PTA		+261M	+6F	+13P	99R					
PTA%			-0.02	+0.02						
PTAT		+0.90T		99R	12/20					
D/AV	19858M	3.9	783F	3.2	633P	8.6T				

GRAND-VIEW NELSON DEENA

100463660 6-05 92										
GOLD			%	FAT	%	PRT				
2-05	2	305	19930	3.5	699	3.0	598			
			310	20180	3.5	710	3.0	606		
3-05	2	305	22490	3.1	706	3.1	702			
			365	25570	3.1	802	3.2	815		
4-08	2	305	23420	3.2	758	3.2	750			
			364	25650	3.2	829	3.3	839		
5-10	2	305	22110	3.5	783	3.2	711			
			328	22920	3.5	813	3.2	744		
6-09	2	276	16280	3.5	574	3.3	532			
7-10	2	283	22170	3.7	810	3.0	670			
LIFE	1955	133880	3.4	4579	3.2	4249				



GRAND-VIEW CONN RAIN, EX-90
GRANDDAM OF LOT 38

38

\$ _____

**GRAND-VIEW
 KINGSIRE RYLEIGH**

98.84% AYRSHIRE 12/01/20 FEMALE
 840003226712485 98.84%
 P6 +426

BEAR-AYR DISTINCT KINGSIRE

840003132388711
 PTA +2.99SCC +2.1PL +1.0DPR
 PTA -41M -13F +6P 47R
 PTA% -0.06 +.04
 PTAT +1.10T 44R 12/20

GRAND-VIEW DW REINA

840003151128555 GP-84 97.68%
 2-02 2 PROJ 19600 4.0 493 3.2 625

JR CHAMPION, WI STATE SHOW 2019

FAMILY-AF-AYR DISTINCTION

100578700
 PTA +3.01SCC +4.1PL +1.0DPR
 PTA -104M -18F -1P 88R
 PTA% -.07 +.01
 PTAT +1.10T 86R 12/20
 D/AV 20127M 3.8 761F 3.2 641P 8.6T

DALTONDALE BBK KUDDLERS

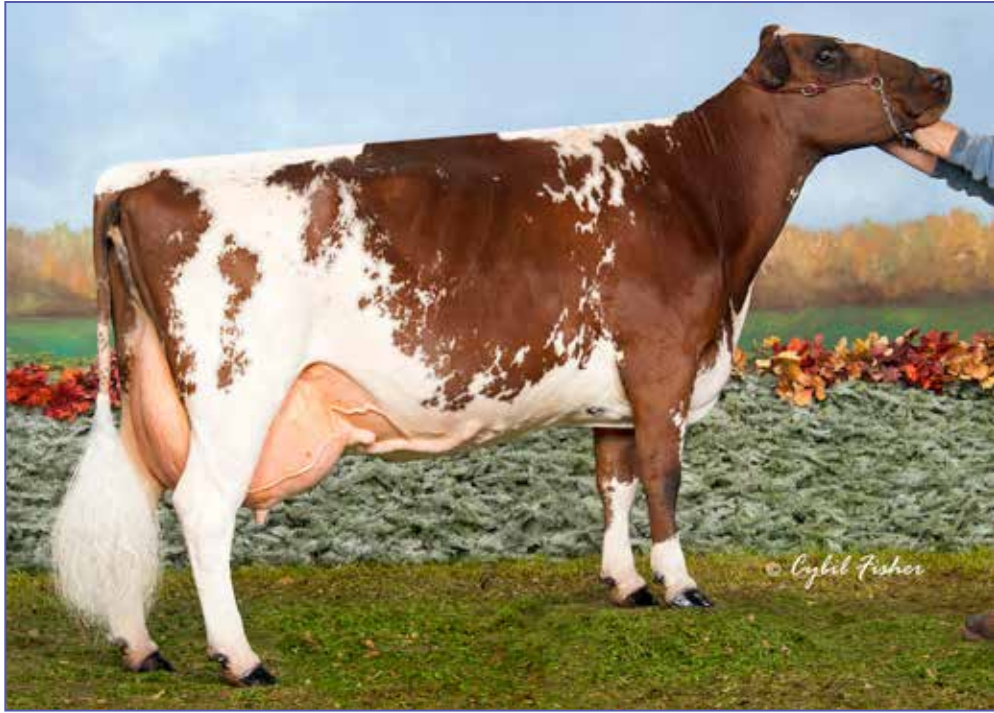
100483655 10-02 92 4E
 GOLD % FAT % PRT
 3-10 2 305 19610 4.2 821 3.3 645
 5-02 2 365 20630 3.6 740 3.4 694
 6-03 2 365 27520 3.8 1041 3.3 900
 7-06 2 305 29170 3.7 1083 3.2 922
 9-04 2 365 27760 4.0 1113 3.4 954
 LIFE 2459 158770 3.9 6159 3.4 5322

FAMILY-AF-AYR DOUBLWHAMMY-ET

100516902 95.37%
 PTA +3.11SCC -4.1PL -1.0DPR
 PTA -321M -9F -10P 93R
 PTA% +.02
 PTAT +.50T 91R 12/20
 D/AV 19606M 4.0 782F 3.2 625P 8.6T

GRAND-VIEW CONN RAIN

100578063 3-11 90
 GOLD % FAT % PRT
 2-06 2 305 22130 3.6 802 3.0 673
 327 23500 3.7 859 3.1 723
 3-07 2 305 26330 3.9 1015 3.2 831
 365 29800 3.9 1173 3.2 959
 4-09 2 305 25660 3.3 849 3.1 802
 365 29590 3.4 1000 3.2 944
 6-00 2 300 22730 3.9 880 3.2 717
 7-00 2 280 20740 3.5 736 3.1 647
 7-11 2 305 22420 4.2 934 3.2 722
 365 24240 4.1 1005 3.2 783
 LIFE 2371 177300 3.8 6759 3.2 5625



GRAND-VIEW BBBK DREAMER, EX-94 5E
GRANDDAM OF LOT 39

39

\$ _____

**GRAND-VIEW TUXEDO
 DID DREAM**

96.22% AYRSHIRE 12/30/20 FEMALE
 840003226712494 96.22%
 P8 +450

POTENTIAL 10TH GENERATION EXCELLENT!

RUISSEAU CLAIR TUXEDO-ET

109844514C 92.45%
 PTA +2.90SCC +0.7PL +0.3DPR
 PTA +1055M +44F +30P 48R
 PTA% +.01 -.02
 PTAT +.50T 55R 12/20
 D/AV 0M 0F 8.8T

GRAND-VIEW BUR DIDN'T KNOW-ET

100739813 NOW VG-89, EX-91 UDDER
 GOLD % FAT % PRT
 2-03 2 300 15190 4.3 647 3.4 509
 3-03 PROJ 19656 4.2 834 3.1 609

SELLS AS LOT 10

KAMOURASKA VOLVO-ET

106530705C 87.22%
 PTA +2.86SCC +1.9PL -0.5DPR
 PTA +365M +33F +25P 91R
 PTA% +.09 +.07
 PTAT -.10T 84R 12/20
 D/AV 19320M 4.1 787F 3.3 633P 8.4T

DUO STAR AMICALE-ET

107377079C 97.68%

PALMYRA TRI-STAR BURDETTE-ET

100419568
 PTA +2.94SCC +1.1PL -0.6DPR
 PTA +261M +6F +13P 99R
 PTA% -.02 +.02
 PTAT +.90T 99R 12/20
 D/AV 19858M 3.9 783F 3.2 633P 8.6T

GRAND-VIEW BBBK DREAMER

100463697 11-06 94 5E
 GOLD % FAT % PRT
 2-06 2 305 14610 4.4 646 3.3 489
 334 15770 4.5 702 3.4 531
 3-06 2 305 16510 3.6 598 3.3 541
 364 17560 3.6 640 3.3 581
 4-09 2 305 21150 4.5 958 3.3 695
 365 24310 4.4 1059 3.3 807
 6-08 2 305 20170 4.1 835 3.2 650
 365 23650 4.1 964 3.3 774
 8-08 2 305 21900 3.5 769 3.3 715
 365 26050 3.6 948 3.3 856
 LIFE 2750 147270 4.1 6059 3.4 5025

3RD FALL YEARLING - 2008 CENTRAL NATIONAL
 HM ALL-AMERICAN FALL YEARLING - 2008
 1ST - 2010 WDE INTERNATIONAL FUTURITY
 NOM ALL-AMERICAN AGED COW - 2015
 NOM ALL-AMERICAN 100,000 LB COW - 2016



GRAND-VIEW CALIMERO DEA-ET, EX-91 3E
DAM OF LOT 40

40

\$ _____

**EMBRYO PACKAGE
SEXED REAGAN X DEA**

REAGAN X DEA MATING:
97.685% AYRSHIRE

**SELLING 4 #1 IVF EMBRYOS
EXPORTABLE TO THE EU & CANADA**

PALMYRA BERKELY REAGAN-ET

840003123620602
PTA +3.09SCC -0.8PL -2.4DPR
PTA +158M +22F +5P 93R
PTA% +.08
PTAT +.70T 87R 12/20
D/AV 20182M 4.0 814F 3.2 642P 8.5T

GRAND-VIEW CALIMERO DEA-ET

95.37% AYRSHIRE 03/17/11 FEMALE
100615777 95.37%
8-10 91 3E P7 +413

NM\$ -63
PTA +3.08SCC -1.1PL -0.4DPR
PTA -432M -7F -11P 70R
PTA\$ -63CY 12/20
PTA% +.05 +.01
PTAT +1.00T 71R 12/20
PPA -1344M -22F -24P

CLASS ST8 SR6 BD7 DF6 RA4 RW6 LS4 FA6
FU5 UH6 UW4 UC7 UD7 TP7 TL3 LR7

GOLD				%	FAT	%	PRT
2-00	2	305	18970	4.0	753	3.2	609
		365	21740	4.0	873	3.2	704
3-03	2	286	17170	3.9	673	3.3	570
		305	17860	3.9	701	3.3	596
		365	19770	3.9	777	3.3	661
5-05	2	256	13540	4.4	596	3.6	481
		299	14750	4.4	645	3.6	524
6-09	2	305	19420	3.8	747	3.2	615
		341	20280	3.9	787	3.2	647
8-03	2	275	17090	4.4	747	3.4	573

3RD SPRING YEARLING - 2012 INTERNATIONAL
HM ALL-AMERICAN SPRING YEARLING - 2012
2ND JR 2-YEAR-OLD - 2013 INTERNATIONAL
RES ALL-AMERICAN JR 2-YEAR-OLD (TIE) - 2013
1ST - 2014 WDE INTERNATIONAL FUTURITY
1ST JR 3-YEAR-OLD - 2014 INTERNATIONAL
ALL-AMERICAN JR 3-YEAR-OLD - 2014

PALMYRA BENDIG BERKELY-ET

69261805
PTA +3.08SCC -1.7PL -0.4DPR
PTA -419M -15F -14P 95R
PTA% +.01
PTAT +.30T 93R 12/20
D/AV 19058M 4.0 753F 3.1 593P 8.5T

PALMYRA POKER LH ROSY-ET

66596106 4-01 92 ELITE
GOLD % FAT % PRT
2-00 2 298 19900 4.5 896 3.3 654
3-00 2 305 22420 4.5 1012 3.5 789
365 26100 4.4 1161 3.5 910

MARGOT CALIMERO

10310847C 90.75%
PTA +3.13SCC -2.7PL +0.4DPR
PTA -543M -7F -12P 97R
PTA% +.08 +.03
PTAT +.30T 96R 12/20
D/AV 19414M 4.0 774F 3.2 621P 8.6T

GRAND-VIEW BBBK DREAMER

GOLD				%	FAT	%	PRT	
2-06	2	305	14610	4.4	646	3.3	489	
		334	15770	4.5	702	3.4	531	
3-06	2	305	16510	3.6	598	3.3	541	
		364	17560	3.6	640	3.3	581	
4-09	2	305	21150	4.5	958	3.3	695	
		365	24310	4.4	1059	3.3	807	
6-08	2	305	20170	4.1	835	3.2	650	
		365	23650	4.1	964	3.3	774	
8-08	2	305	21900	3.5	769	3.3	715	
		365	26050	3.6	948	3.3	856	
10-09	2	305	13910	4.6	637	3.7	510	
		LIFE	2750	147270	4.1	6059	3.4	5025

3RD FALL YEARLING - 2008 CENTRAL NATIONAL
HM ALL-AMERICAN FALL YEARLING - 2008
1ST - 2010 WDE INTERNATIONAL FUTURITY
NOM ALL-AMERICAN AGED COW - 2015
NOM ALL-AMERICAN 100,000 LB COW - 2016

THIRD DAM:

GRAND-VIEW CORNELIUS DRAMA

GOLD				%	FAT	%	PRT
2-03	2	312	16510	4.1	680	3.2	521
3-03	2	268	13910	4.0	554	3.2	447
4-03	2	305	17950	4.0	715	3.2	570
5-06	2	314	21560	4.0	856	3.1	674
6-06	2	279	21450	4.0	857	3.0	654



GRAND-VIEW CALIMERO DEA-ET, EX-91 3E
DAM OF LOT 41

41

\$ _____

EMBRYO PACKAGE SORTED PREDATOR X DEA

PREDATOR X DEA MATING:
97.685% AYRSHIRE

**SELLING 4 #1 IVF EMBRYOS
EXPORTABLE TO THE EU & CANADA**

FOREVER SCHOON PREDATOR-ET

11119921C
PTA +2.89SCC -1.8PL -1.7DPR
PTA +41M +1F -2P 94R
PTA% - .02
PTAT +.50T 93R 12/20
D/AV 19978M 4.0 791F 3.2 630P 8.5T

GRAND-VIEW CALIMERO DEA-ET

95.37% AYRSHIRE 03/17/11 FEMALE
100615777 95.37%
8-10 91 3E P7 +413

NM\$ -63
PTA +3.08SCC -1.1PL -0.4DPR
PTA -432M -7F -11P 70R
PTA\$ -63CY +.05 +.01 12/20
PTAT +1.00T 71R 12/20
PPA -1344M -22F -24P
CLASS ST8 SR6 BD7 DF6 RA4 RW6 LS4 FA6
FU5 UH6 UW4 UC7 UD7 TP7 TL3 LR7

GOLD					FAT %	PRT
2-00	2	305	18970	4.0	753 3.2	609
		365	21740	4.0	873 3.2	704
3-03	2	286	17170	3.9	673 3.3	570
		305	17860	3.9	701 3.3	596
		365	19770	3.9	777 3.3	661
5-05	2	256	13540	4.4	596 3.6	481
		299	14750	4.4	645 3.6	524
6-09	2	305	19420	3.8	747 3.2	615
		341	20280	3.9	787 3.2	647
8-03	2	275	17090	4.4	747 3.4	573

3RD SPRING YEARLING - 2012 INTERNATIONAL
HM ALL-AMERICAN SPRING YEARLING - 2012
2ND JR 2-YEAR-OLD - 2013 INTERNATIONAL
RES ALL-AMERICAN JR 2-YEAR-OLD (TIE) - 2013
1ST - 2014 WDE INTERNATIONAL FUTURITY
1ST JR 3-YEAR-OLD - 2014 INTERNATIONAL
ALL-AMERICAN JR 3-YEAR-OLD - 2014

PALMYRA TRI-STAR REALITY

100369452
PTA +3.05SCC -0.3DPR
PTA +437M +17F +1P 97R
PTA% - .07
PTAT +.20T 96R 12/20
D/AV 21203M 3.9 835F 3.1 651P 8.6T

FOREVER SCHOON PRETTY

7441960C
DHI % FAT % PRT
2-05 2 313 17496 4.8 844 3.6 624
3-05 2 342 22425 4.8 1082 3.8 849
4-07 2 359 25064 4.4 1098 3.6 895
6-07 2 365 26026 4.6 1206 3.4 884

MARGOT CALIMERO

10310847C 90.75%
PTA +3.13SCC -2.7PL +0.4DPR
PTA -543M -7F -12P 97R
PTA% +.08 +.03
PTAT +.30T 96R 12/20
D/AV 19414M 4.0 774F 3.2 621P 8.6T

GRAND-VIEW BBBK DREAMER

GOLD					FAT %	PRT
2-06	2	305	14610	4.4	646 3.3	489
		334	15770	4.5	702 3.4	531
3-06	2	305	16510	3.6	598 3.3	541
		364	17560	3.6	640 3.3	581
4-09	2	305	21150	4.5	958 3.3	695
		365	24310	4.4	1059 3.3	807
6-08	2	305	20170	4.1	835 3.2	650
		365	23650	4.1	964 3.3	774
8-08	2	305	21900	3.5	769 3.3	715
		365	26050	3.6	948 3.3	856
10-09	2	305	13910	4.6	637 3.7	510
		LIFE	2750 147270	4.1	6059 3.4	5025

3RD FALL YEARLING - 2008 CENTRAL NATIONAL
HM ALL-AMERICAN FALL YEARLING - 2008
1ST - 2010 WDE INTERNATIONAL FUTURITY
NOM ALL-AMERICAN AGED COW - 2015
NOM ALL-AMERICAN 100,000 LB COW - 2016

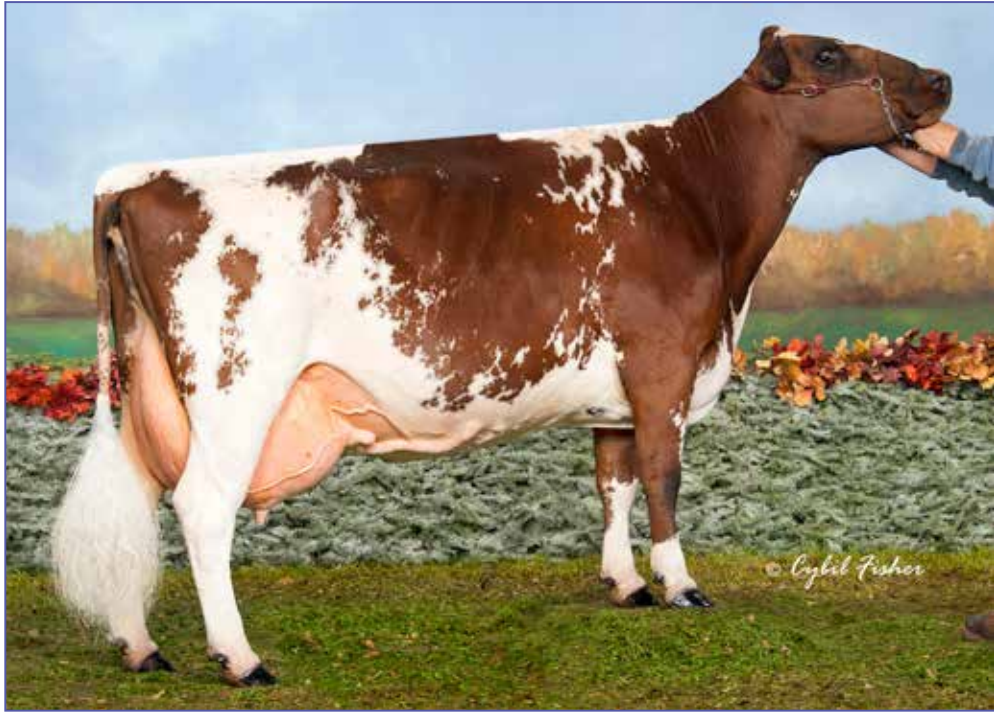
THIRD DAM:

GRAND-VIEW CORNELIUS DRAMA

100261866 7-02 91

GOLD					FAT %	PRT
2-03	2	312	16510	4.1	680 3.2	521
3-03	2	268	13910	4.0	554 3.2	447
4-03	2	305	17950	4.0	715 3.2	570
5-06	2	314	21560	4.0	856 3.1	674
6-06	2	279	21450	4.0	857 3.0	654

Genetic Dreams at Grand-View



GRAND-VIEW BBBK DREAMER, EX-94 5E
DAM OF LOT 42

42

\$ _____

**EMBRYO PACKAGE
SORTED PREDATOR X
DREAMER**

PREDATOR X DREAMER MATING:
PUREBRED AYRSHIRE

**SELLING 4 #2 IVF EMBRYOS
EXPORTABLE TO THE EU & CANADA**

THIRD DAM:

GRAND-VIEW OLY 2 DIVA

					2E		
GOLD	%	FAT	%	PRT			
100033814	11-07	90					
2-00	2	280	14810	3.9	578	2.8	416
3-00	2	305	17210	3.9	668	2.9	507
			313	17500	3.9	683	3.0
4-00	2	355	19030	4.2	798	3.0	570
5-02	2	295	18870	4.3	804	2.9	547
6-02	2	291	18010	3.9	704	3.1	552
			331	19390	4.0	773	3.1
7-03	2	301	17930	4.1	736	3.0	530
8-03	2	305	18430	4.1	748	3.0	560
LIFE			3462	205340	4.1	8405	3.0

FOREVER SCHOON PREDATOR-ET

11119921C							
PTA	+2.89SCC	-1.8PL	-1.7DPR				
PTA	+41M	+1F	-2P	94R			
PTA%			-0.02				
PTAT	+0.50T		93R	12/20			
D/AV	19978M	4.0	791F	3.2	630P	8.5T	

GRAND-VIEW BBBK DREAMER

PUREBRED AYRSHIRE	09/11/06	FEMALE					
100463697							
	11-06	94			5E	P5	+345
NM\$	-158						
PTA	+2.95SCC	+1.0PL	+0.2DPR				
PTA	-1390M	-34F	-29P	77R			
PTA\$	-158CY						12/20
PTA%		+0.12	+0.09				
PTAT	+0.60T		77R	12/20			
PPA	-2231M	-6F	-32P				
CLASS	ST7	SR7	BD8	DF7	RA4	RW8	LS4
	FU6	UH7	UW7	UC7	UD5	TP6	TL6
						LR7	
GOLD						FAT	%
							PRT
2-06	2	305	14610	4.4	646	3.3	489
			334	15770	4.5	702	3.4
3-06	2	305	16510	3.6	598	3.3	541
			364	17560	3.6	640	3.3
4-09	2	305	21150	4.5	958	3.3	695
			365	24310	4.4	1059	3.3
6-08	2	305	20170	4.1	835	3.2	650
			365	23650	4.1	964	3.3
8-08	2	305	21900	3.5	769	3.3	715
			365	26050	3.6	948	3.3
10-09	2	305	13910	4.6	637	3.7	510
LIFE			2750	147270	4.1	6059	3.4

3RD FALL YEARLING - 2008 CENTRAL NATIONAL
HM ALL-AMERICAN FALL YEARLING - 2008
1ST - 2010 WDE INTERNATIONAL FUTURITY
NOM ALL-AMERICAN AGED COW - 2015
NOM ALL-AMERICAN 100,000 LB COW - 2016

PALMYRA TRI-STAR REALITY

100369452							
PTA	+3.05SCC		-0.3DPR				
PTA	+437M	+17F	+1P	97R			
PTA%			-0.07				
PTAT	+0.20T		96R	12/20			
D/AV	21203M	3.9	835F	3.1	651P	8.6T	

FOREVER SCHOON PRETTY

7441960C							
DHI			%	FAT	%	PRT	
2-05	2	313	17496	4.8	844	3.6	624
3-05	2	342	22425	4.8	1082	3.8	849
4-07	2	359	25064	4.4	1098	3.6	895
6-07	2	365	26026	4.6	1206	3.4	884

BLACKADDAR B B KELLOGG

777850C							
PTA	+3.15SCC	-0.2PL	-0.2DPR				
PTA	-1146M	-51F	-26P	98R			
PTA%		-0.03	+0.06				
PTAT	+0.20T		98R	12/20			
D/AV	17928M	3.9	693F	3.2	574P	8.5T	

GRAND-VIEW CORNELIUS DRAMA

100261866	7-02	91					
GOLD						FAT	%
							PRT
2-03	2	236	12810	4.1	522	3.1	399
			305	16220	4.1	668	3.2
			312	16510	4.1	680	3.2
3-03	2	268	13910	4.0	554	3.2	447
4-03	2	305	17950	4.0	715	3.2	570
5-06	2	305	21160	4.0	837	3.1	660
			314	21560	4.0	856	3.1
6-06	2	279	21450	4.0	857	3.0	654

Genetic Dreams at Grand-View



43

\$ _____

EMBRYO PACKAGE SEXED REAGAN X DANE OR SORTED VICKING X DANE

VICKING X DANE MATING:
97.685% AYRSHIRE
REAGAN X DANE MATING:
97.685% AYRSHIRE

SELLING 4 #1 SEXED REAGAN IVF EMBRYOS
OR
4 #2 VICKING SORTED IVF EMBRYOS

BOTH ARE EXPORTABLE TO THE EU & CANADA

THIRD DAM: GRAND-VIEW CORNELIUS DRAMA

100261866 7-02 91									
GOLD		%		FAT		%		PRT	
2-03	2	236	12810	4.1	522	3.1	399		
		305	16220	4.1	668	3.2	511		
		312	16510	4.1	680	3.2	521		
3-03	2	268	13910	4.0	554	3.2	447		
4-03	2	305	17950	4.0	715	3.2	570		
5-06	2	305	21160	4.0	837	3.1	660		
		314	21560	4.0	856	3.1	674		
6-06	2	279	21450	4.0	857	3.0	654		

PALMYRA BERKELY REAGAN-ET

840003123620602									
PTA	+3.09	SCC	-0.8	PL	-2.4	DPR			
PTA	+158M	+22F	+5P				93R		
PTA%		+0.8							
PTAT	+0.70T					87R	12/20		
D/AV	20182M	4.0	814F	3.2	642P	8.5T			

DE LA PLAINE VICKING-ET

107961868C									
PTA	+2.56	SCC	+2.5	PL	+0.9	DPR			
PTA	-924M	+6F	-7P				90R		
PTA%		+0.23	+0.12						
PTAT	+0.80T					87R	12/20		
D/AV	19814M	4.2	824F	3.3	648P	8.5T			

GRAND-VIEW HP CALIMERO DANE-ET

95.37% AYRSHIRE 06/29/12 FEMALE									
100651744 95.37%									
		8-01		94		3E		P5 +392	
NM\$	-142								
PTA	+3.16	SCC	-1.9	PL	-1.1	DPR			
PTA	-406M	-18F	-8P				61R		
PTA\$	-142CY						12/20		
PTA%		-0.01	+0.03						
PTAT	+0.70T					61R	12/20		
PPA	-905M	-69F	-22P						
CLASS	ST8	SR9	BD9	DF7	RA3	RW9	LS5	FA6	
	FU9	UH8	UW7	UC7	UD5	TP6	TL5	LR7	
GOLD									
2-02	2	305	18030	3.1	561	3.1	556		
		365	21150	3.2	679	3.1	660		
3-09	2	269	18870	2.7	517	3.0	562		
4-10	2	305	23510	3.9	909	3.1	739		
		365	25300	3.9	993	3.2	801		
6-03	2	305	19710	4.4	861	3.2	637		
		365	21670	4.4	944	3.2	703		

3RD 5-YEAR-OLD - 2017 INTERNATIONAL
NOM ALL-AMERICAN 5-YEAR-OLD - 2017

GRAND-VIEW HP CALIMERO DANE-ET EX-94 3E DAM OF LOT 43

PALMYRA BENDIG BERKELY-ET

69261805									
PTA	+3.08	SCC	-1.7	PL	-0.4	DPR			
PTA	-419M	-15F	-14P				95R		
PTA%		+0.01							
PTAT	+0.30T					93R	12/20		
D/AV	19058M	4.0	753F	3.1	593P	8.5T			

PALMYRA POKER LH ROSY-ET

66596106 4-01 92 ELITE									
GOLD									
2-00	2	298	19900	4.5	896	3.3	654		
3-00	2	305	22420	4.5	1012	3.5	789		
		365	26100	4.4	1161	3.5	910		

PALMYRA TRI-STAR BURDETTE-ET

100419568									
PTA	+2.94	SCC	+1.1	PL	-0.6	DPR			
PTA	+261M	+6F	+13P				99R		
PTA%		-0.02	+0.02						
PTAT	+0.90T					99R	12/20		
D/AV	19858M	3.9	783F	3.2	633P	8.6T			

FOREVER SCHOON PING

9591001C									
DHI									
2-03	2	365	19628	4.6	902	3.7	732		
3-08	2	365	26989	4.6	1239	3.5	946		
5-02	2	365	27236	4.4	1210	3.6	972		
8-03	2	365	27007	4.6	1246	3.5	935		
9-08	2	365	27015	4.4	1186	3.5	948		
LIFE	2163	140157	4.5	6345	3.6	5042			

MARGOT CALIMERO

10310847C 90.75%									
PTA	+3.13	SCC	-2.7	PL	+0.4	DPR			
PTA	-543M	-7F	-12P				97R		
PTA%		+0.08	+0.03						
PTAT	+0.30T					96R	12/20		
D/AV	19414M	4.0	774F	3.2	621P	8.6T			

GRAND-VIEW BBBK DREAMER

100463697 11-06 94 5E									
GOLD									
2-06	2	334	15770	4.5	702	3.4	531		
3-06	2	364	17560	3.6	640	3.3	581		
4-09	2	365	24310	4.4	1059	3.3	807		
6-08	2	365	23650	4.1	964	3.3	774		
8-08	2	365	26050	3.6	948	3.3	856		
10-09	2	305	13910	4.6	637	3.7	510		
LIFE	2750	147270	4.1	6059	3.4	5025			

3RD FALL YEARLING - 2008 CENTRAL NATIONAL
HM ALL-AMERICAN FALL YEARLING - 2008
1ST - 2010 WDE INTERNATIONAL FUTURITY
NOM ALL-AMERICAN AGED COW - 2015
NOM ALL-AMERICAN 100,000 LB COW - 2016

Genetic Dreams at Grand-View



GRAND-VIEW PERFECT CLARITY, VG-85
SELLING AS LOT 44



GRAND-VIEW BURDETTE CHEERS
EX-93 2E
DAM OF LOT 44

44

\$ _____

**GRAND-VIEW
PERFECT CLARITY**

94.55% AYRSHIRE 04/11/17 FEMALE
100732610 94.55%
NOW EX-90 EX-92 MS P7 +425
NM\$ +116
PTA +2.98SCC +1.2PL -2.0DPR
PTA +579M +6F +9P 43R
PTA\$ +116CY 12/20
PTA% -.09 -.05
PTAT +.30T 46R 12/20
PPA +3119M +47F +63P
CLASS ST7 SR5 BD5 DF7 RA6 RW6 LS4 FA8
FU4 UH8 UW6 UC7 UD7 TP5 TL6 LR8
GOLD % FAT % PRT
2-02 2 305 22910 3.6 823 3.0 687
365 26490 3.6 963 3.0 796
3-09 2 PROJ 22210 3.5 781 3.1 684

FRESH 2/4/21

DES FLEURS PERFECT-ET

105252735C 91.42%
PTA +2.94SCC +0.7PL -2.9DPR
PTA +644M +29F +8P 91R
PTA% +.02 -.06
PTAT -.10T 88R 12/20
D/AV 19836M 4.0 786F 3.1 623P 8.4T

GRAND-VIEW BURDETTE CHEERS

100695764 97.68%
5-07 93 2E
GOLD % FAT % PRT
2-03 2 305 19900 3.4 679 3.1 614
365 22870 3.5 810 3.1 714
3-05 2 293 23120 3.6 829 3.1 707
4-05 2 305 24990 3.5 872 3.0 761
320 25420 3.5 888 3.0 775

THIRD DAM:

MARGOT GVA CONN CALLIE-ET, VG-85
6-01 2 365 30400 3.7 1117 2.9 895
LIFE 2237 166760 3.8 6334 2.9 4910
MATERNAL SISTER TO MARGOT CALIMERO

DES CHAMOIS POKER-ET

8401621C
PTA +2.90SCC +0.9PL -2.1DPR
PTA +33M +16F -1P 98R
PTA% +.08 -.01
PTAT 98R 12/20
D/AV 19241M 4.0 764F 3.1 605P 8.5T

DES FLEURS JURIST PARFETTE

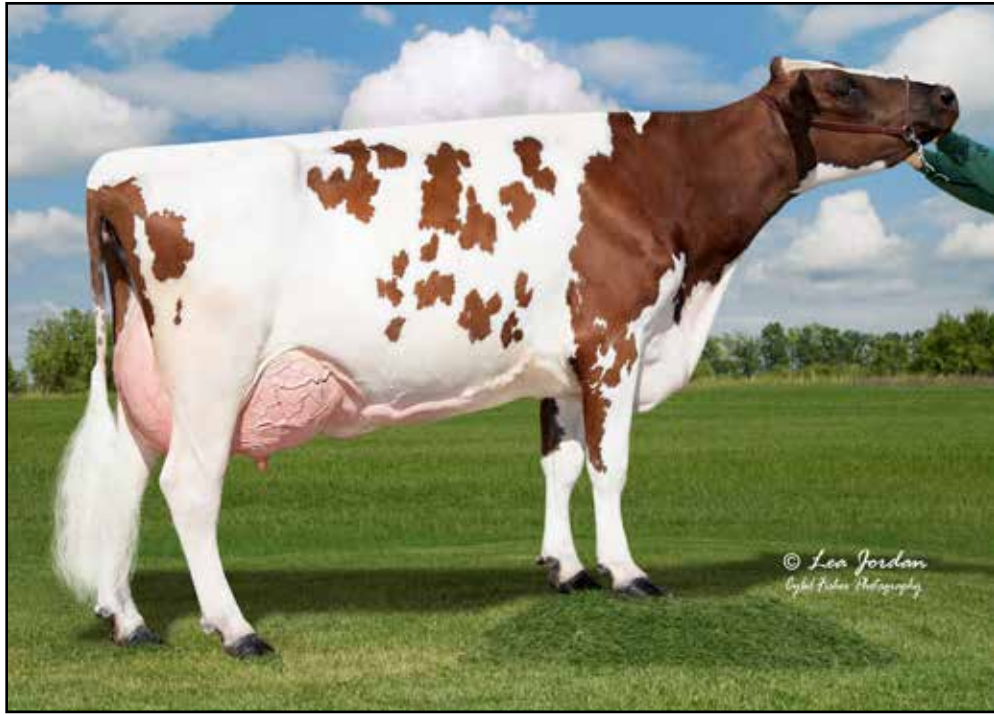
101672960C 82.85%
DHI % FAT % PRT
2-01 2 305 18744 3.7 697 3.4 637
365 21583 3.9 833 3.5 752
3-06 2 305 17476 4.4 774 3.6 635
365 19650 4.5 875 3.7 725
4-11 2 305 24110 3.8 922 3.4 822
322 24643 3.9 952 3.4 849
5-11 2 305 19992 3.9 785 3.4 670
365 22309 4.1 904 3.5 772
7-06 2 303 20873 4.1 847 3.6 752
8-06 2 305 18554 4.2 778 3.6 666
365 20496 4.2 866 3.6 745
LIFE 2594 148840 4.1 6139 3.6 5317

PALMYRA TRI-STAR BURDETTE-ET

100419568
PTA +2.94SCC +1.1PL -0.6DPR
PTA +261M +6F +13P 99R
PTA% -.02 +.02
PTAT +.90T 99R 12/20
D/AV 19858M 3.9 783F 3.2 633P 8.6T

GRAND-VIEW SUMTOTAL CRAYON

100651717 95.37%
3-09 86
GOLD % FAT % PRT
2-03 2 305 18640 4.1 758 2.9 544
324 19440 4.1 795 2.9 572
3-03 2 303 20170 3.6 723 2.9 583
4-03 2 266 18810 3.9 728 2.9 552



**GRAND-VIEW REAGAN BLUEFINN, NOW EX-90!
SELLING AS LOT 45**

45

\$ _____

**GRAND-VIEW
REAGAN BLUEFINN**

PUREBRED AYRSHIRE 09/07/17 FEMALE
100739822

NOW EX-90! P8 +439

NM\$	+145								
PTA	+2.95SCC	+1.7PL	-0.5DPR						
PTA	+80M	+25F	+3P	45R					
PTA\$	+145CY				12/20				
PTA%		+ .11							
PTAT	+ .50T			48R	12/20				
PPA	+270M	+50F	+9P						
CLASS	ST9	SR9	BD8	DF7	RA5	RW7	LS3	FA7	
	FU8	UH7	UW4	UC4	UD8	TP5	TL5	LR4	
GOLD									
		%		FAT	%			PRT	
2-03	2	305	18700	4.3	803	3.2		606	
			320	19280	4.3	835	3.3	630	
3-04	2	PROJ	22505	3.8	864	3.2		723	

FRESH 1/18/21
BRED 4/13/21 TO
OLD-BANKSTON JC BARCLAY

8 GENERATIONS EXCELLENT!

PALMYRA BERKELY REAGAN-ET

840003123620602

PTA	+3.09SCC	-0.8PL	-2.4DPR					
PTA	+158M	+22F	+5P	93R				
PTA%		+ .08						
PTAT	+ .70T			87R	12/20			
D/AV	20182M	4.0	814F	3.2	642P	8.5T		

HAWKSFIELD GVA PARDNER BLUE-ET

100576838 11-01 91 5E

GOLD				%	FAT	%	PRT	
2-01	2	305	18940	4.2	801	3.2	598	
			337	20700	4.2	877	3.2	657
3-02	2	303	22530	4.1	919	3.1	700	
4-02	2	305	20810	4.1	863	3.2	662	
			325	21670	4.1	894	3.2	693
5-03	2	289	23020	4.3	993	3.2	735	
6-03	2	288	24780	4.5	1118	3.0	742	
7-02	2	229	17050	4.8	815	3.2	541	
			292	19690	4.7	919	3.2	633
8-02	2	287	21490	4.3	918	3.2	688	
9-01	2	305	16720	4.7	779	3.4	564	
			365	18640	4.6	856	3.4	629
10-05	2	305	18610	4.4	816	3.0	564	
			340	19630	4.5	874	3.1	603
LIFE	2837	192420	4.4	8377	3.2	6089		

NOM ALL-AMERICAN SUMMER YEARLING - 2010

PALMYRA BENDIG BERKELY-ET

69261805

PTA	+3.08SCC	-1.7PL	-0.4DPR				
PTA	-419M	-15F	-14P	95R			
PTA%		+ .01					
PTAT	+ .30T			93R	12/20		
D/AV	19058M	4.0	753F	3.1	593P	8.5T	

PALMYRA POKER LH ROSY-ET

66596106 4-01 92 ELITE

GOLD				%	FAT	%	PRT	
2-00	2	298	19900	4.5	896	3.3	654	
3-00	2	305	22420	4.5	1012	3.5	789	
			365	26100	4.4	1161	3.5	910

WOODLAND VIEW PARDNER-ET

811799C

PTA	+2.97SCC	+1.4PL	-0.8DPR				
PTA	+183M	+16F	+2P	98R			
PTA%		+ .04	- .02				
PTAT	- .40T			97R	12/20		
D/AV	19268M	3.9	750F	3.1	601P	8.4T	

HAWKSFIELD SHARON BUDROSE

1017240 6-00 92 2E

GOLD				%	FAT	%	PRT	
2-02	2	305	13730	4.2	581	3.7	503	
3-04	2	305	16300	3.8	620	3.4	547	
			333	17790	3.7	664	3.3	590
4-04	2	365	19810	4.2	837	3.3	653	
5-04	2	305	19840	3.7	736	3.2	635	
6-10	2	305	22660	4.1	931	3.1	705	
			325	23340	4.1	954	3.1	723
8-01	2	305	12490	4.0	499	3.5	433	
LIFE	2484	142060	4.3	6076	3.4	4832		



GRAND-VIEW REAGAN BLUEFINN, NOW EX-90!
DAM OF LOT 46

46

\$ _____

**GRAND-VIEW
VICKING BUBBLY**

PUREBRED AYRSHIRE 01/19/21 FEMALE
840003226712497 P6 +433

DE LA PLAINE VICKING-ET

107961868C
PTA +2.56SCC +2.5PL +0.9DPR
PTA -924M +6F -7P 90R
PTA% +.23 +.12
PTAT +.80T 87R 12/20
D/AV 19814M 4.2 824F 3.3 648P 8.5T

GRAND-VIEW REAGAN BLUEFINN

100739822 NOW EX-90!
GOLD % FAT % PRT
2-03 2 305 18700 4.3 803 3.2 606
320 19280 4.3 835 3.3 630
3-04 2 PROJ 22505 3.8 864 3.2 723

PALMYRA TRI-STAR BURDETTE-ET

100419568
PTA +2.94SCC +1.1PL -0.6DPR
PTA +261M +6F +13P 99R
PTA% -.02 +.02
PTAT +.90T 99R 12/20
D/AV 19858M 3.9 783F 3.2 633P 8.6T

FOREVER SCHOON PING

9591001C
DHI % FAT % PRT
2-03 2 365 19628 4.6 902 3.7 732
3-08 2 365 26989 4.6 1239 3.5 946
5-02 2 365 27236 4.4 1210 3.6 972
8-03 2 365 27007 4.6 1246 3.5 935
9-08 2 365 27015 4.4 1186 3.5 948
LIFE 2163 140157 4.5 6345 3.6 5042

PALMYRA BERKELY REAGAN-ET

840003123620602
PTA +3.09SCC -0.8PL -2.4DPR
PTA +158M +22F +5P 93R
PTA% +.08
PTAT +.70T 87R 12/20
D/AV 20182M 4.0 814F 3.2 642P 8.5T

HAWKSFIELD GVA PARDNER BLUE-ET

100576838 11-01 91 5E
GOLD % FAT % PRT
2-01 2 305 18940 4.2 801 3.2 598
337 20700 4.2 877 3.2 657
3-02 2 303 22530 4.1 919 3.1 700
4-02 2 305 20810 4.1 863 3.2 662
325 21670 4.1 894 3.2 693
5-03 2 289 23020 4.3 993 3.2 735
6-03 2 288 24780 4.5 1118 3.0 742
7-02 2 229 17050 4.8 815 3.2 541
292 19690 4.7 919 3.2 633
8-02 2 287 21490 4.3 918 3.2 688
LIFE 2837 192420 4.4 8377 3.2 6089

NOM ALL-AMERICAN SUMMER YEARLING - 2010



GRAND-VIEW CONN RAIN, EX-90
THIRD DAM OF LOT 47

47

\$ _____

**GRAND-VIEW
CHARITON RIYA**

PUREBRED AYRSHIRE 07/31/20 FEMALE
840003205241941

P- +376

MINI-AYR CHARLENE C CHARITON
100240106

GRAND-VIEW DISTINCT READY
840003151128540

	2-01	2	237	17775	3.9	691	3.3	593
			PROJ	23424	3.9	921	3.4	792

SELLING AS LOT 14

MINI-AYR RAMS CHARLTON-ET
145879

MINI-AYR IC CHARLENEC
976967 11-02 92

GOLD				%	FAT	%	PRT
2-06	2	305	23890	4.1	989	3.3	800
		351	26960	4.2	1133	3.4	923
3-06	2	305	30190	3.8	1152	3.5	1050
		365	35310	3.9	1388	3.5	1243
4-09	2	305	48650	3.9	1888	3.3	1611
		365	56760	3.9	2199	3.4	1904
6-07	2	305	48070	3.9	1874	3.3	1567
		365	57528	3.9	2237	3.3	1878
8-07	2	305	59240	3.6	2162	3.1	1849
		365	69460	3.7	2538	3.2	2189
LIFE		2875	392754	3.9	15338	3.2	1269

FAMILY-AF-AYR DISTINCTION
100578700

PTA	+3.01	SCC	+4.1	PL	+1.0	DPR	
PTA	-104	M	-18	F	-1	P	88R
PTA%			-07		+01		
PTAT	+1.10	T			86R		12/20
D/AV	20127	M	3.8	761	F	3.2	641P 8.6T

GRAND-VIEW BURDETTE RAZZLE
100642261 5-07 92

GOLD				%	FAT	%	PRT
2-04	2	284	18920	4.5	856	3.2	605
3-03	2	305	21480	3.8	817	3.2	682
4-03	2	305	25840	3.8	982	3.1	792
		324	27240	3.8	1045	3.1	840
5-03	2	305	21380	4.4	944	3.3	706
		306	21410	4.4	945	3.3	706
6-03	2	305	21960	4.1	902	3.2	696
		322	22450	4.1	926	3.2	713
7-05	2	259	15490	4.0	627	3.2	495
LIFE		1800	126990	4.1	5216	3.2	4041



GRAND-VIEW RIGGINS DEWDEW, EX-91 2E
DAM OF LOT 48

48

\$ _____

**GRAND-VIEW
VICKING DIETDEW**

99.42% AYRSHIRE 08/05/20 FEMALE
840003205241942 99.42%
P- +408

DE LA PLAINE VICKING-ET

107961868C
PTA +2.56SCC +2.5PL +0.9DPR
PTA -924M +6F -7P 90R
PTA% +.23 +.12
PTAT +.80T 87R 12/20
D/AV 19814M 4.2 824F 3.3 648P 8.5T

GRAND-VIEW RIGGINS DEWDEW

840003013255226 98.84%
6-09 91 2E
GOLD % FAT % PRT
3-00 3 305 29580 3.6 1076 3.0 875
329 31060 3.6 1127 3.0 924
4-02 3 305 33740 3.4 1135 2.8 950
344 37260 3.4 1279 2.8 1057
365 38170 3.5 1327 2.9 1089
5-04 2 305 22400 3.7 818 2.9 654
311 22620 3.7 826 2.9 661

THIRD DAM:

GRAND-VIEW WILTON DATE, VG-86
6-05 2 278 18070 3.3 599 3.1 569

FOURTH DAM:

GRAND-VIEW OLY 2 DIVA, EX-90 2E
11-06 2 341 21660 4.1 885 2.9 632
LIFE 3462 205340 4.1 8405 3.0 6067

PALMYRA TRI-STAR BURDETTE-ET

100419568
PTA +2.94SCC +1.1PL -0.6DPR
PTA +261M +6F +13P 99R
PTA% -.02 +.02
PTAT +.90T 99R 12/20
D/AV 19858M 3.9 783F 3.2 633P 8.6T

FOREVER SCHOON PING

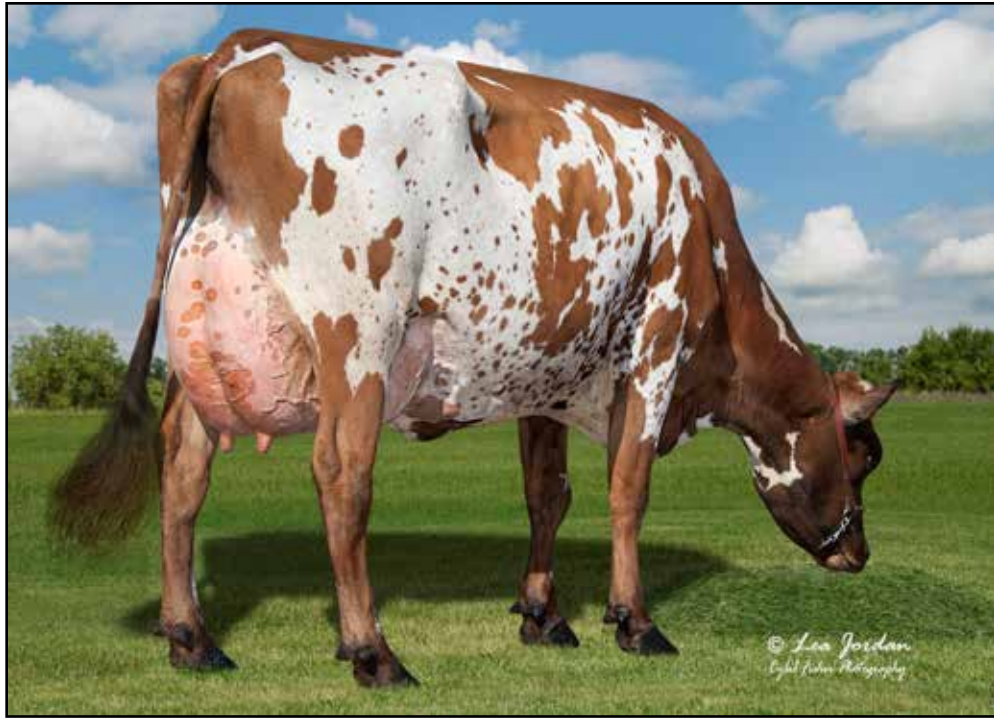
9591001C
DHI % FAT % PRT
2-03 2 305 16407 4.5 739 3.7 604
365 19628 4.6 902 3.7 732
3-08 2 305 23294 4.6 1060 3.5 805
365 26989 4.6 1239 3.5 946
5-02 2 305 23616 4.4 1045 3.5 825
365 27236 4.4 1210 3.6 972
8-03 2 305 23649 4.6 1096 3.4 807
365 27007 4.6 1246 3.5 935
9-08 2 305 23891 4.4 1041 3.4 822
365 27015 4.4 1186 3.5 948
LIFE 2163 140157 4.5 6345 3.6 5042

PALMYRA POKER RIGGINS-ET

65459499
PTA +3.39SCC +2.2PL +1.4DPR
PTA +82M +16F +2P 96R
PTA% +.07
PTAT 92R 12/20
D/AV 18802M 4.0 750F 3.1 590P 8.5T

GRAND-VIEW DW DEWDROP

100608906 97.68%



**GRAND-VIEW BUR DIDN'T KNOW-ET, NOW VG-89 & EX-91 UDDER
DAM OF LOT 49**

49

\$ _____

GRAND-VIEW FAMOUS DID NOT

98.43% AYRSHIRE 12/24/19 FEMALE
840003205241926 98.43%
P- +371

POTENTIAL 10TH GENERATION EXCELLENT!

HUNNINGTON FAMOUS

6182152C EX-94 96.87%
PTA +2.99SCC -1.0PL -0.3DPR
PTA -899M -12F -19P 70R
PTA% +.13 +.05
PTAT +.20T 67R 12/20

GRAND-VIEW BUR DIDN'T KNOW-ET

100739813 NOW VG-89, EX-91 UDDER
GOLD % FAT % PRT
2-03 2 300 15190 4.3 647 3.4 509
3-03 PROJ 19656 4.2 834 3.1 609

SELLS AS LOT 10

DE LA PLAINE PRIME

106061020C
PTA +2.89SCC -1.4PL -2.3DPR
PTA -396M +0F -10P 95R
PTA% +.08 +.01
PTAT +.50T 94R 12/20
D/AV 19539M 4.0 789F 3.2 627P 8.6T

HUNNINGTON FRAGY 12

1487109C EX-97 93.75%

PALMYRA TRI-STAR BURDETTE-ET

100419568
PTA +2.94SCC +1.1PL -0.6DPR
PTA +261M +6F +13P 99R
PTA% -.02 +.02
PTAT +.90T 99R 12/20
D/AV 19858M 3.9 783F 3.2 633P 8.6T

GRAND-VIEW BBBK DREAMER

100463697 11-06 94 5E
GOLD % FAT % PRT
2-06 2 305 14610 4.4 646 3.3 489
334 15770 4.5 702 3.4 531
3-06 2 305 16510 3.6 598 3.3 541
364 17560 3.6 640 3.3 581
4-09 2 305 21150 4.5 958 3.3 695
365 24310 4.4 1059 3.3 807
6-08 2 305 20170 4.1 835 3.2 650
365 23650 4.1 964 3.3 774
8-08 2 305 21900 3.5 769 3.3 715
365 26050 3.6 948 3.3 856
LIFE 2750 147270 4.1 6059 3.4 5025

3RD FALL YEARLING - 2008 CENTRAL NATIONAL
HM ALL-AMERICAN FALL YEARLING - 2008
1ST - 2010 WDE INTERNATIONAL FUTURITY
NOM ALL-AMERICAN AGED COW - 2015
NOM ALL-AMERICAN 100,000 LB COW - 2016



HAWKSFIELD GVA PARDNER BLUE-ET, EX-91 5E
GRANDDAM OF LOT 50

50

\$ _____

**GRAND-VIEW
KINGSIRE BUBBLE**

98.84% AYRSHIRE 12/02/20 FEMALE
840003226712486 98.84%
P7 +426

BEAR-AYR DISTINCT KINGSIRE

840003132388711
PTA +2.99SCC +2.1PL +1.0DPR
PTA -41M -13F +6P 47R
PTA% - .06 +.04
PTAT +1.10T 44R 12/20

GRAND-VIEW B-KING BOLA

840003151128552 97.68%

FAMILY-AF-AYR DISTINCTION

100578700
PTA +3.01SCC +4.1PL +1.0DPR
PTA -104M -18F -1P 88R
PTA% - .07 +.01
PTAT +1.10T 86R 12/20
D/AV 20127M 3.8 761F 3.2 641P 8.6T

DALTONDALE BBK KUDDLER

100483655 10-02 92 4E
GOLD % FAT % PRT
3-10 2 305 19610 4.2 821 3.3 645
5-02 2 365 20630 3.6 740 3.4 694
6-03 2 365 27520 3.8 1041 3.3 900
7-06 2 305 29170 3.7 1083 3.2 922
9-04 2 365 27760 4.0 1113 3.4 954
LIFE 2459 158770 3.9 6159 3.4 5322

DE LA PLAINE B-KING

109500046C 95.37%
PTA +3.11SCC -1.0PL -0.3DPR
PTA +26M +25F +4P 54R
PTA% +.12 +.02
PTAT +.70T 41R 12/20
D/AV 0M 0F 8.4T

HAWKSFIELD GVA PARDNER BLUE-ET

100576838 11-01 91 5E
GOLD % FAT % PRT
2-01 2 305 18940 4.2 801 3.2 598
337 20700 4.2 877 3.2 657
3-02 2 303 22530 4.1 919 3.1 700
4-02 2 305 20810 4.1 863 3.2 662
325 21670 4.1 894 3.2 693
5-03 2 289 23020 4.3 993 3.2 735
6-03 2 288 24780 4.5 1118 3.0 742
7-02 2 229 17050 4.8 815 3.2 541
292 19690 4.7 919 3.2 633
8-02 2 287 21490 4.3 918 3.2 688
LIFE 2837 192420 4.4 8377 3.2 6089

NOM ALL-AMERICAN SUMMER YEARLING - 2010



GRAND-VIEW CONN RAIN, EX-90
GRANDDAM OF LOT 51

51

\$ _____

**GRAND-VIEW
 GENTLE REZA**

98.84% AYRSHIRE 09/01/20 FEMALE
 840003205241944 98.84%
 P- +418

DUO STAR GENTLEMAN-ET

106306758C 97.68%
 PTA +3.05SCC -3.7PL +0.1DPR
 PTA -736M -17F -26P 91R
 PTA% +.07 -.01
 PTAT +.80T 88R 12/20
 D/AV 19300M 4.0 769F 3.1 607P 8.6T

GRAND-VIEW BURDETTE ROSES

100738830 3-05 88
 GOLD % FAT % PRT
 2-02 2 297 21290 4.5 962 3.3 702
 3-01 2 PROJ 20347 4.8 967 3.5 704

PALMYRA TRI-STAR REALITY

100369452
 PTA +3.05SCC -0.3DPR
 PTA +437M +17F +1P 97R
 PTA% -.07
 PTAT +.20T 96R 12/20
 D/AV 21203M 3.9 835F 3.1 651P 8.6T

DUO STAR AMOUR-ET

103638586C 95.37%
 DHI % FAT % PRT
 2-01 2 350 24709 4.3 1058 3.3 818
 3-04 2 365 27571 3.8 1058 3.2 895
 4-09 2 365 31689 3.7 1173 3.3 1056
 6-07 2 365 31079 3.5 1089 3.2 999
 LIFE 1686 123634 3.8 4751 3.3 4089

PALMYRA TRI-STAR BURDETTE-ET

100419568
 PTA +2.94SCC +1.1PL -0.6DPR
 PTA +261M +6F +13P 99R
 PTA% -.02 +.02
 PTAT +.90T 99R 12/20
 D/AV 19858M 3.9 783F 3.2 633P 8.6T

GRAND-VIEW CONN RAIN

100578063 3-11 90
 GOLD % FAT % PRT
 2-06 2 305 22130 3.6 802 3.0 673
 327 23500 3.7 859 3.1 723
 3-07 2 305 26330 3.9 1015 3.2 831
 365 29800 3.9 1173 3.2 959
 4-09 2 305 25660 3.3 849 3.1 802
 365 29590 3.4 1000 3.2 944
 6-00 2 300 22730 3.9 880 3.2 717
 7-00 2 280 20740 3.5 736 3.1 647
 7-11 2 305 22420 4.2 934 3.2 722
 365 24240 4.1 1005 3.2 783
 LIFE 2371 177300 3.8 6759 3.2 5625



GRAND-VIEW CALIMERO DEA-ET, EX-91 3E
GRANDDAM OF LOT 52

52

\$ _____

**GRAND-VIEW
 BURDETTE DEVI**

98.84% AYRSHIRE 03/01/21 FEMALE
 840003226712500 98.84%
 P5 +430

POTENTIAL 11 GENERATIONS EXCELLENT!

PALMYRA TRI-STAR BURDETTE-ET

100419568
 PTA +2.94SCC +1.1PL -0.6DPR
 PTA +261M +6F +13P 99R
 PTA% - .02 +.02
 PTAT +.90T 99R 12/20
 D/AV 19858M 3.9 783F 3.2 633P 8.6T

GRAND-VIEW PREDATOR DEL RAY-ET

100718359 97.68%
 3-02 90
 GOLD % FAT % PRT
 2-00 2 287 17060 3.7 638 3.2 554
 2-11 2 270 18370 3.6 663 3.3 614
 3-11 2 282 20880 3.7 777 3.1 651

PALMYRA TRI-STAR

150440
 PTA +2.87SCC -1.3PL -0.5DPR
 PTA +94M +3F +1P 97R
 PTA% - .01
 PTAT 95R 12/20
 D/AV 19683M 3.9 766F 3.1 616P 8.4T

PALMYRA RENO BETHANY-ET

100101191 3-06 90
 GOLD % FAT % PRT
 1-11 2 365 26925 3.9 1038 3.1 847
 3-01 2 365 30930 3.6 1104 3.3 1006
 4-08 2 365 35780 3.8 1374 3.1 1123
 LIFE 1551 120700 3.7 4496 3.2 3855

FOREVER SCHOON PREDATOR-ET

11119921C
 PTA +2.89SCC -1.8PL -1.7DPR
 PTA +41M +1F -2P 94R
 PTA% - .02
 PTAT +.50T 93R 12/20
 D/AV 19978M 4.0 791F 3.2 630P 8.5T

GRAND-VIEW CALIMERO DEA-ET

100615777 95.37%
 8-10 91 3E
 GOLD % FAT % PRT
 2-00 2 305 18970 4.0 753 3.2 609
 365 21740 4.0 873 3.2 704
 3-03 2 286 17170 3.9 673 3.3 570
 305 17860 3.9 701 3.3 596
 365 19770 3.9 777 3.3 661
 5-05 2 256 13540 4.4 596 3.6 481
 299 14750 4.4 645 3.6 524
 6-09 2 305 19420 3.8 747 3.2 615
 341 20280 3.9 787 3.2 647
 8-03 2 275 17090 4.4 747 3.4 573

3RD SPRING YEARLING - 2012 INTERNATIONAL
 HM ALL-AMERICAN SPRING YEARLING - 2012
 2ND JR 2-YEAR-OLD - 2013 INTERNATIONAL
 RES ALL-AMERICAN JR 2-YEAR-OLD (TIE) - 2013
 1ST - 2014 WDE INTERNATIONAL FUTURITY
 1ST JR 3-YEAR-OLD - 2014 INTERNATIONAL
 ALL-AMERICAN JR 3-YEAR-OLD - 2014



GRAND-VIEW HP REAL DAILY-ET, EX-92 2E
DAM OF LOT 53

53

\$ _____

**GRAND-VIEW
 CHAMP DEMZELA**

97.45% AYRSHIRE 03/01/21 FEMALE
 840003226712501 97.45%
 P6 +438

POTENTIAL 10 GENERATIONS EXCELLENT!

CEDARCUT COLATA'S CHAMPION

100722079 94.9%
 PTA +2.98SCC -1.4PL -3.0DPR
 PTA +337M +17F +15P 47R
 PTA% +.02
 PTAT +.70T 45R 12/20

GRAND-VIEW HP REAL DAILY-ET

100690460 5-04 92 2E
 GOLD % FAT % PRT
 1-11 2 249 13310 4.3 573 3.3 435
 305 16040 4.4 699 3.3 533
 351 17940 4.4 797 3.4 606
 3-01 2 305 19180 4.4 844 3.4 654
 322 19840 4.4 876 3.4 679
 4-00 2 305 13970 4.7 654 3.5 491
 313 14210 4.7 666 3.5 500
 5-03 2 305 23940 3.9 923 3.3 787
 365 26100 3.9 1027 3.3 871

NEXUS DREAMER

103734662C 89.81%
 PTA +3.25SCC -4.1PL -4.1DPR
 PTA -200M +5F -5P 96R
 PTA% +.07 +.01
 PTAT +.20T 96R 12/20
 D/AV 20126M 4.1 816F 3.2 641P 8.6T

CEDARCUT BURDETTE CLOVE COLATA

100634136 7-09 94 3E
 DHI % FAT % PRT
 2-07 2 299 21946 4.3 951 3.4 750
 3-06 2 308 33242 4.1 1376 3.3 1089
 4-06 2 318 33103 3.4 1119 3.2 1072
 5-06 2 305 32930 3.6 1180 3.0 1000
 LIFE 1477 141528 3.8 5433 3.3 4615

PALMYRA TRI-STAR REALITY

100369452
 PTA +3.05SCC -0.3DPR
 PTA +437M +17F +1P 97R
 PTA% -.07
 PTAT +.20T 96R 12/20
 D/AV 21203M 3.9 835F 3.1 651P 8.6T

GRAND-VIEW SUMTOTAL DIVOT

100505762 9-04 94 4E
 GOLD % FAT % PRT
 2-05 2 365 22870 4.0 926 3.2 737
 3-11 2 365 26430 3.9 1027 3.3 863
 5-10 2 365 29390 3.8 1113 3.2 942
 7-05 2 365 25220 3.6 914 3.2 819
 8-08 2 365 18900 3.7 701 3.1 588
 LIFE 2409 152300 3.9 5897 3.3 5007

1ST FALL YEARLING - 2009 INTERNATIONAL JR
 RES JR CHAMPION - 2009 INTERNATIONAL JR
 JR ALL-AMERICAN FALL YEARLING - 2009
 1ST SR 3-YEAR-OLD - 2011 SOUTHERN NATIONAL
 INT CHAMPION - 2011 SOUTHERN NATIONAL
 RES GRAND CHAMPION - 2011 SOUTHERN NAT'L
 NOM ALL-AMERICAN SR 3-YEAR-OLD - 2011
 NOM ALL-AMERICAN 4-YEAR-OLD - 2012
 3RD 100,000 LB COW - 2015 INTERNATIONAL
 TOTAL PERFORMANCE WINNER - 2015 INTERNAT'L
 HM ALL-AMERICAN 100,000 LB COW - 2015



GRAND-VIEW BURDETTE DEBRA-ET, EX-91 2E
GRANDDAM OF LOT 54

54

\$ _____

**GRAND-VIEW
PRETZEL DARRAGH**

92.11% AYRSHIRE 03/02/21 FEMALE
840003226712502 92.11%
P8 +470

7 OAKS PRETZEL-ET

840003145792725 84.23%
PTA +2.97SCC +1.0PL -0.4DPR
PTA +912M +47F +40P 43R
PTA% +.05 +.05
PTAT +.60T 38R 12/20

GRAND-VIEW SUMTOTAL DANTE

840003151128563

GUIMOND YALE-ET

109186197C 76.35%
PTA +3.10SCC -0.4PL -0.7DPR
PTA +1215M +56F +51P 76R
PTA% +.04 +.06
PTAT +.20T 59R 12/20

FOREVER SCHOON POINGLE-ET

100707829 92.12%
3-01 90
DHI % FAT % PRT
2-00 2 305 17560 3.6 637 3.3 576
331 18740 3.7 687 3.3 615
3-01 2 305 16620 4.3 707 3.2 537
310 16750 4.3 712 3.2 541
4-01 2 349 21830 3.7 797 3.1 685

MAPLE-DELL SUM TOTAL-ET

100397787
PTA +3.13SCC -0.5PL -0.3DPR
PTA -598M -29F -15P 82R
PTA% -.03 +.02
PTAT +.30T 77R 12/20
D/AV 19346M 3.8 729F 3.1 599P 8.5T

GRAND-VIEW BURDETTE DEBRA-ET

100667998 6-07 91 2E
GOLD % FAT % PRT
2-04 2 305 22240 3.5 782 2.9 646
306 22290 3.5 784 2.9 647
3-04 2 305 23190 3.7 869 3.1 727
306 23210 3.7 870 3.1 728
5-06 2 288 22610 3.9 884 3.0 674
6-06 2 281 25870 3.6 939 3.0 770



GRAND-VIEW BENEVOLA DAWN, EX-92 4E
GRANDDAM OF LOT 55

55

\$ _____

GRAND-VIEW DW DING

97.68% AYRSHIRE 03/25/21 FEMALE
 840003226712505 97.68%
 P- +413

POTENTIAL 10 GENERATIONS EXCELLENT!

FAMILY-AF-AYR DOUBLWHAMMY-ET

100516902 95.37%
 PTA +3.11SCC -4.1PL -1.0DPR
 PTA -321M -9F -10P 93R
 PTA% +.02
 PTAT +.50T 91R 12/20
 D/AV 19606M 4.0 782F 3.2 625P 8.6T

GRAND-VIEW DEMPSEY DOT TO DOT

100729665 3-08 91
 GOLD % FAT % PRT
 2-03 2 305 14030 5.0 708 3.7 517
 347 15680 5.1 793 3.7 578

MARGOT CALIMERO

10310847C 90.75%
 PTA +3.13SCC -2.7PL +0.4DPR
 PTA -543M -7F -12P 97R
 PTA% +.08 +.03
 PTAT +.30T 96R 12/20
 D/AV 19414M 4.0 774F 3.2 621P 8.6T

FAMILY-AF-AYR DK DESIREE

1020932 12-02 95 4E
 GOLD % FAT % PRT
 2-04 2 365 20970 4.0 834 3.1 660
 3-09 2 336 17400 4.0 696 3.3 567
 4-10 2 365 19290 3.6 686 3.1 601
 6-11 2 365 22680 3.8 851 3.0 677
 8-11 2 365 22570 3.8 861 3.0 677
 LIFE 3272 183150 3.8 6990 3.1 5614

MAPLE-DELL BURDETTE DEMPSEY-ET

65302787
 PTA +2.81SCC -1.7PL +0.3DPR
 PTA -736M -17F -6P 93R
 PTA% +.07 +.09
 PTAT +.80T 89R 12/20
 D/AV 18855M 4.1 770F 3.3 614P 8.5T

GRAND-VIEW BENEVOLA DAWN

100621529 9-03 92 4E
 GOLD % FAT % PRT
 2-03 2 305 16570 4.8 791 3.4 559
 325 17540 4.7 832 3.4 593
 3-04 2 305 21870 4.1 895 3.5 771
 365 25030 4.1 1033 3.5 884
 4-06 2 305 21560 4.1 879 3.5 758
 313 21960 4.1 898 3.5 774
 5-07 2 305 21640 4.4 960 3.6 779
 331 22580 4.5 1009 3.6 819
 6-07 2 289 21330 4.4 940 3.5 753
 7-07 2 305 20970 4.3 906 3.5 743
 LIFE 2298 150430 4.4 6644 3.5 5337



GRAND-VIEW BBK DREAMER, EX-94 5E
GRANDDAM OF LOT 56

56

\$ _____

**GRAND-VIEW
 VICKING DIA**

PUREBRED AYRSHIRE
 840003226712493

12/24/20 FEMALE
 P- +417

DE LA PLAINE VICKING-ET

107961868C
 PTA +2.56SCC +2.5PL +0.9DPR
 PTA -924M +6F -7P 90R
 PTA% +.23 +.12
 PTAT +.80T 87R 12/20
 D/AV 19814M 4.2 824F 3.3 648P 8.5T

GRAND-VIEW PREDATOR DRIVAS-ET

840003151128542 GP-83

PALMYRA TRI-STAR BURDETTE-ET

100419568
 PTA +2.94SCC +1.1PL -0.6DPR
 PTA +261M +6F +13P 99R
 PTA% -.02 +.02
 PTAT +.90T 99R 12/20
 D/AV 19858M 3.9 783F 3.2 633P 8.6T

FOREVER SCHOON PING

9591001C
 DHI % FAT % PRT
 2-03 2 365 19628 4.6 902 3.7 732
 3-08 2 365 26989 4.6 1239 3.5 946
 5-02 2 365 27236 4.4 1210 3.6 972
 8-03 2 365 27007 4.6 1246 3.5 935
 9-08 2 365 27015 4.4 1186 3.5 948
 LIFE 2163 140157 4.5 6345 3.6 5042

FOREVER SCHOON PREDATOR-ET

11119921C
 PTA +2.89SCC -1.8PL -1.7DPR
 PTA +41M +1F -2P 94R
 PTA% -.02
 PTAT +.50T 93R 12/20
 D/AV 19978M 4.0 791F 3.2 630P 8.5T

GRAND-VIEW BBK DREAMER

100463697 11-06 94 5E
 GOLD % FAT % PRT
 2-06 2 305 14610 4.4 646 3.3 489
 334 15770 4.5 702 3.4 531
 3-06 2 305 16510 3.6 598 3.3 541
 364 17560 3.6 640 3.3 581
 4-09 2 305 21150 4.5 958 3.3 695
 365 24310 4.4 1059 3.3 807
 6-08 2 305 20170 4.1 835 3.2 650
 365 23650 4.1 964 3.3 774
 8-08 2 305 21900 3.5 769 3.3 715
 365 26050 3.6 948 3.3 856
 LIFE 2750 147270 4.1 6059 3.4 5025

3RD FALL YEARLING - 2008 CENTRAL NATIONAL
 HM ALL-AMERICAN FALL YEARLING - 2008
 1ST - 2010 WDE INTERNATIONAL FUTURITY
 NOM ALL-AMERICAN AGED COW - 2015
 NOM ALL-AMERICAN 100,000 LB COW - 2016



DES CHAMOIS PALEO-ET, EX-93 2E
DAM OF LOT 57

57

\$ _____

**OLD-BANKSTON
MIDAS POSER-ET**

98.84% AYRSHIRE 09/12/18 FEMALE
840003151128557 98.84%
P7 +427

FRESH: 3/5/21

FIRST TEST: 70 LBS

FAUCHER MIDAS-ET

107379169C 97.68%
PTA +2.86SCC -0.1PL -0.9DPR
PTA +255M +8F +1P 79R
PTA% -.01 -.04
PTAT +.40T 62R 12/20
D/AV 17513M 3.8 671F 3.1 549P 8.3T

DES CHAMOIS PALEO-ET

100563182 6-01 93 2E
GOLD % FAT % PRT
3-09 3 305 24070 4.4 1060 3.3 791
365 27480 4.4 1201 3.3 918

NOM ALL-AMERICAN SR 3-YEAR-OLD - 2009

PALMYRA TRI-STAR BURDETTE-ET

100419568
PTA +2.94SCC +1.1PL -0.6DPR
PTA +261M +6F +13P 99R
PTA% -.02 +.02
PTAT +.90T 99R 12/20
D/AV 19858M 3.9 783F 3.2 633P 8.6T

FAUCHER CALIMERO MEDIA

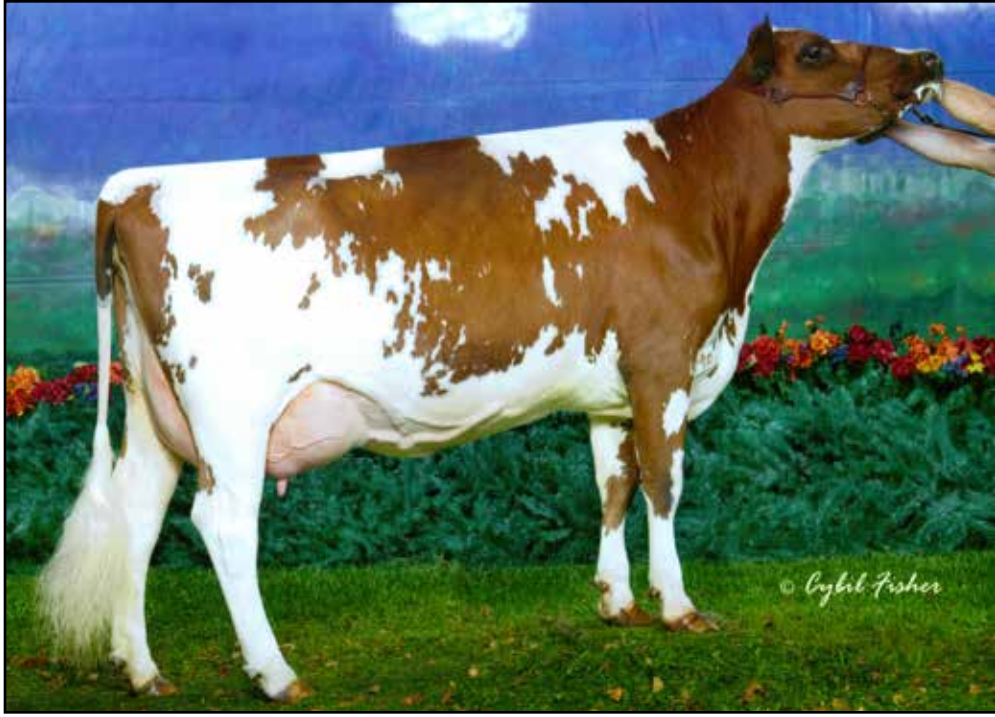
103504307C 95.37%
DHI % FAT % PRT
2-03 2 305 23018 4.0 930 3.1 703
309 23265 4.0 941 3.1 712
3-04 2 305 27073 4.0 1093 3.2 853
4-07 2 305 30325 4.5 1356 3.3 1003
365 35003 4.5 1565 3.3 1162
5-03 2 365 31356 4.1 1274 3.2 990
6-02 2 305 28781 3.9 1122 3.1 897
307 28931 3.9 1129 3.1 902
LIFE 1890 159358 4.2 6655 3.2 5097

SHADY WALNUT CONN

10304939C
PTA +3.09SCC -0.8PL -1.7DPR
PTA -325M +18F -6P 97R
PTA% +.16 +.02
PTAT -.90T 95R 12/20
D/AV 19148M 4.0 770F 3.1 603P 8.3T

MARILIE B B POLKIE-ET

10014952C EX-95 5E
DHI % FAT % PRT
5-08 2 305 23042 3.9 891 3.4 780
6-10 2 305 24425 3.9 950 3.3 816
8-05 2 305 27244 4.8 1318 3.3 886
10-08 2 305 21129 4.4 924 3.4 728



GRAND-VIEW WILTON DITHER, VG-88
 3-05 326D 21,490M 3.8% 823F 3.3% 713P
 GREAT-GRANDDAM OF LOT 58

58

\$ _____

**GRAND-VIEW
 BIGSTAR DITS**

92.83% AYRSHIRE
 840003226712504

03/20/21 FEMALE
 92.83%
 P6 +455

KAMOURASKA BIGSTAR-ET

107821541C 86.82%
 PTA +3.07SCC +2.7PL +1.1DPR
 PTA +1020M +32F +37P 87R
 PTA% -0.04 +.02
 PTAT +.10T 79R 12/20
 D/AV OM OF 8.4T

GRAND-VIEW CHARITON DODGE

840003151128561 98.84%

THIRD DAM:

GRAND-VIEW WILTON DITHER

100378739 5-01 88 P6 +377
 3-05 2 326 21490 3.8 823 3.3 713
 RES ALL-AMERICAN WINTER CALF - 2005

FOURTH DAM:

GRAND-VIEW HELIGO DIMPLE, VG-86

7-05 2 305 33110 5.1 1684 2.9 971
 325 34370 5.0 1727 2.9 1010
 LIFE 2935 231410 4.3 10058 2.9 6769

GENIAL SITUATION-ET

106902365C 95%
 PTA +3.08SCC +1.9PL +1.6DPR
 PTA +376M +11F +4P 85R
 PTA% -0.02 -0.04
 PTAT +.20T 78R 12/20
 D/AV OM OF 8.5T

KAMOURASKA JUPI UBY-ET

105759438C 78.64%
 DHI % FAT % PRT
 1-11 2 305 21713 4.7 1012 3.8 818
 355 23947 4.7 1127 3.8 917
 3-00 2 305 21901 4.2 919 3.8 833
 365 23563 4.2 1001 3.9 911
 4-02 2 305 22531 4.2 939 3.8 853
 365 24731 4.3 1052 3.9 957

MINI-AYR CHARLENE C CHARITON

100240106

GRAND-VIEW DW DUST-ET

100726653 97.68%
 2-09 85
 GOLD % FAT % PRT
 2-02 2 275 16980 4.1 704 3.2 544

