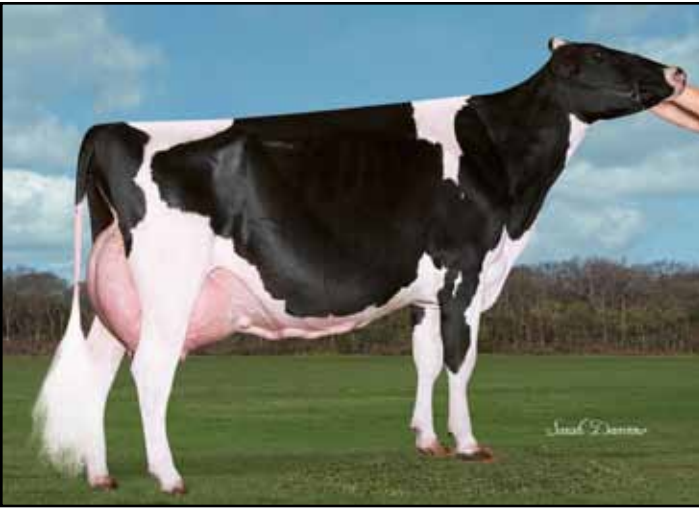


# 2021 Clinton County Classic



CARTERS-CORNER ATWOOD PRISS 3E-94  
Maternal Sister to Dam of Lot 19



MOHRFIELD SUPRA PRECIOUS 3E-94  
Granddam of Lot 19

## Lot 94

Blake Meyer & Kylie & Cole Saathoff  
1000 W Shore Blvd  
Manteno, Illinois 60950  
815-791-7764

### BRI-MEL-ACRES ABIGAIL

840 3137295936 99%RHA  
Born: March 6, 2020

### REGANCREST DUNDEE-ET

127640114 EX-95 TY TV TL 100%NA  
PTA -1081M -58F -32P 99%R 12/20  
PTA -.06%F +.01%P 41%US  
PTA -590NM -4.8PL 3.22SCS -.5DPR  
PTA +.42T +.56UDC -.29FLC 99%R  
GTPI +1336G

### BRI-MEL-ACRES ARIEL

VG-87-2Y VVEVV 3137388469 99%RHA  
2-05 283 2X 18,230 3.7 671 3.0 539

### MARCREST ENCORE

2048702 MEX-96 GM TV TL 99%NA  
PTA -1499M -55F -50P -686NM 99%R  
PTA -.52T -1.03UDC -1.32FLC GTPI +1127G

### SNOW-N DENISES DELLIA

EX-95-2E GMD DOM 12895802 100%RHA  
7-06 365 2X 35,610 4.0 1431 2.9 1035

### VAL-BISSON DOORMAN-ET

C 107281711 EX-90 TR TP TY TV TL TD 100%NA  
PTA -446M +15F +10P +73NM 99%R  
PTA +2.48T +1.63UDC +.80FLC GTPI +2200G

### BRI-MEL-ACRES ARMAGEDDON

8403013109555 100%RHA

## Corrected pedigree for Lot 19

### Lot 19

Tyler Carter  
211 IL Rte 127  
Greenville, Illinois 62246  
618-664-1825

### CARTERS-CORNER GOLDCHIP PIE

840 3204594496 99%RHA  
Born: June 2, 2019

Due March 20, 2021 to **Plain-Knoll-View  
King Royal-ET 74564764**

### MR CHASSITY GOLD CHIP-ET

140145553 EX-95 TR TP TY TV TL 100%NA  
PTA -619M -23F -38P 99%R 12/20  
PTA -187NM +2PL 2.77SCS -1.6DPR  
PTA +1.52T +1.10UDC +1.14FL 99%R  
PTPI +1753G

### CARTERS-CORNER D PROMISE-ET

G+82-2Y VVVG+ 8403141095529 99%RHA  
2-02 153 2X 13,680 4.3 593 3.2 439

### Maternal Sister:

#### Carters-Corner Atwood Priss 2E-94

5-05 365 2x 39,440 3.5 1394 2.9 1139  
Grand Champion, Southern Spring Nat'l 2016

### 3rd through 6th Dams:

#### Speedside Jed Pia-ET 2E-94

2-00 340 2x 19,170 3.9 747 3.0 584

Nom. All-American 4-Yr Old 2002

1st 5-Yr Old, Mid-East Spring Nat'l 2003

#### Newhome Jethro Pinata 2E

7-00 365 2x 25,472 4.1 1052 3.5 891

#### Norhurst Chris Pinata 3E

6-06 295 2x 18,210 3.8 699 3.5 631

Lft: 14 lacts 272,048 3.5 9654 3.4 7749

### VAL-BISSON DOORMAN-ET

C 107281711 EX-90 TR TP TY TV TL TD 100%NA

PTA -446M +15F +10P +73NM 99%R

PTA +2.48T +1.63UDC +.80FLC GTPI +2200G

### MOHRFIELD SUPRA PRECIOUS

EX-94-3E EEEEE 137663859 100%RHA

5-00 305 2X 25,720 4.5 1156 3.1 787

2-03 365 2X 21,070 4.7 982 3.4 720

3-06 299 2X 19,170 4.3 829 3.2 620

1st 4-Yr Old, Mid-East Fall National 2011

2nd Fall Calf, Mid-East Summer National '07

Jr. All-Illinois 5-Yr Old 2012

Res. Sr. Champion, IL State Show 2011

# 2021 Clinton County Classic

## Lot 105 FREEMANS VICTORIOUS MISSY

67741413 AIM: 1413  
Born: June 1, 2019

David & Diana Freeman  
1035 15th Ave  
Greenville, Illinois 62246

Due May 13, 2021 to **St-Lo Nuance-ET**

### RIVER VALLEY VICTORIOUS-ET

8403126479524 7JE5032  
CDCB 12/20 GPTA 98%R -886M -8F -12P  
AJCA 12/20 GPTAT 99%R +1.5  
GJPI 97%R -24

### JX FREEMANS OLIVER MILLY -P

67561385 3-04 EX-90%  
1-10 305 3X 19,190 4.2 803 3.3 639

### JARS OF CLAY BARNABAS

67342492 7JE1294  
CDCB 12/20 GPTA 99%R +186M +10F +5P  
AJCA 12/20 GPTAT 99%R +1.7 GJPI 99%R -15

### AVONLEA IATOLA VICTORIA

C10989478 EX-94%  
3-01 305 2X 17,409 4.6 808 3.6 629

### DUTCH HOLLOW OLIVER-P

67184544 7JE1219  
CDCB 12/20 GPTA 99%R +368M +19F +4P  
AJCA 12/20 GPTAT 99%R +1.5 GJPI 99%R +18

### JX FREEMANS SANTANA MILLICENT -P

67561353 3-06 VG-86%  
4-03 305 2X 20,590 5.2 1069 3.5 721  
3-02 189 2X 7,410 5.3 467 4.5 336

### 3rd through 8th Dams:

**JX Freemans Saber Milly EX-90%**  
3-08 305 22,550 4.8 1079 3.6 804  
**JX Freemans Dale Miley VG-84%**  
1-10 234 2x 8,960 5.4 484 3.7 331  
**Freemans Iatola 3M VG-85%**  
2-11 305 2x 18,370 4.5 831 3.6 655  
**Freemans Kava Minnie Mae EX-90%**  
4-09 295 2x 20,760 3.9 817 3.2 665  
**Counciller Mae of Freedom EX-92%**  
3-01 305 2x 21,370 3.9 842 3.4 727  
**Bohnerts Select Miracle G+80%**  
2-11 305 2x 17,020 4.0 683 3.5 603

---