

*Plum-Line*  
HOLSTEINS  
& *Friends*



*Breeder's Select Sale*

FEBRUARY 19, 2021 ~ FRALEY AUCTION CO.

*Muncy, PA*









# Breeder's Select Sale

FEBRUARY 19, 2021 | 6PM

Fraley Auction Co. | 1515 Kepner Hill Rd. Muncy, PA 17756

**Sale order: Semen | Milking Animals | Heifers & Calves**

*Come join us for a fantastic time!! Beverages & food will be available*

**TRUCKING WILL BE AVAILABLE TO ANYWHERE**

## SALE STAFF

Auctioneer: ADAM FRALEY.... 570-772-6837

Lic # AU003538L

Pedigrees: JACK LOME0.... 315-779-7783

MIKE HEATH ... 443-375-8048

PATRICK CAREY ... 814-827-4835

PAT CONROY... 260-402-4494

ANTHONY LIDDLE ... 518-361-2233

JUSTIN KAUFMAN ... 814-443-9553

KEVIN DOEBERINER... 814-573-6982

EVAN CREEK ... 301-514-4213

RENEE PIERECK ... 608-448-1658

MICHAEL BOSELY ... 717-968-8905

BOB NAGEL... 716-499-9308



Auction Co., inc.  
570-546-6907



Sale will be broadcast live via Cowbuyer.com, with real-time bidding to pre-approved buyers

Contact Aaron Ray Tomkins 336-363-4639

Terms: Cash or Good Check day of auction. If purchasing through an agent or Cowbuyer, immediate payment required.

**NO CATTLE RELEASED UNTIL PAID FOR IN FULL.**

All cattle vaccinated. Vet on hand to write health charts day of sale.







**PLUM-LINE EXTRA NAUGHTY**  
Dam of Lot



## Plum-Line Diamond Elsa

840003149950014 99%RHA Born: 3/28/2019 Herd#: 369  
Due 6/27/21 to Luck-E America-ET  
Jr 2 Yr Old

**MR D APPLE DIAMONDBACK**  
840003013721049 99%RHA RC TP TC TY TV EX-93  
PTA +2.41T +1.84UDC +1.37FLC GTPI +1902G  
Doorman x MS Delicious Apple-Red-ET EX-94-2E

**PLUM-LINE EXTRA NAUGHTY**  
840003141692236 2-10 Very Good-88 VVVVV  
2-00 2 288 21620 4.1 889 3.2 702 RIP  
3rd Jr 2, Premier National Jr Show 2019  
2nd Jr 2, PA Fall Show 2019  
Reserve Jr All-American Spring Yearling 2018  
1st Spring Yrlg, Western PA Show 2018  
3rd Spring Yrlg, Premier National 2018  
2nd Spring Yrlg, PA Fall Show 2018  
Jr Champ, PA Fall Champ Jr Show 2018  
2nd Spring Yrlg, WDE Jr Show 2018  
9th Spring Yrlg, World Dairy Expo 2018

Maternal Sisters to Dam  
**Plum-Line Diamond Earring**  
Nom Jr All-American Winter Calf 2019  
4th Winter Calf, WDE Jr Show 2019  
3rd Winter Calf, Eastern National 2019  
1st & Reserve Jr Champion Premier National 2019  
HM Jr Champion, PA Fall Show 2019  
Reserve Jr Champion, PA Fall Jr Show 2019  
**Plum-Line GC Elastigirl**  
Nom Jr All-American Fall Calf 2019  
5th Fall Calf, Eastern National 2019  
2nd Fall Calf, Premier National Jr Show 2019

Maternal Sisters to 2nd Dam  
**Rolling-Spring Eccentric-ET EX-92 2E**  
**Budjon-JK Absolut Eloise-ET EX-91**  
**Rolling-Spring Schz Ella-ET EX-92**  
Nominated All-American Jr 2-Yr-Old 2013  
5th Jr 2 Yr Old, World Dairy Expo 2013  
2nd Jr 2 Yr Old, Eastern National 2013  
1st, Int & Grand, Western PA Champ Show '13  
5th Generation of All-American Nominee  
**Budjon-JK Abslt Enstant-ET EX-90**

2nd-10th Dams  
**Rolling Spring Sid Ellen-ET EX-93-2E**  
7-03 2 305 36070 3.9 1411 3.0 1087  
Life: 2,071d 198,800 4.0% 7,880 3.3% 6541  
3 lactations over 30,000  
**Rolling-Spring G Escence-ET EX-95-2E**  
5-06 2 365 40,500 4.1% 1,646 3.0% 1,231  
Nominated All-American 4 Yr Old 2010  
Grand Champion, Midwest National Spring Show 2010  
4th Generation All-American Nominee in milking form  
**Budjon-JK Dur Esquisite-ET EX-92 GMD DOM**  
3-07 2x 365d 40,300 3.9% 1,555 3.0% 1,199  
Nom All-American Sr 2 Yr Old Cow 2006  
**Budjon-JK Encore Electra-ET EX-95-2E GMD DOM**  
6-04 2x 365d 46,830 4.0% 1,866 3.0% 1,382  
Life: 1,806d 192,280lbs 3.6% 6,858f 3.2% 6,097p  
HM All-American 125,000 Lb Cow 2005  
HM All-American Aged Cow 2004  
Reserve All-American Sr 3 Yr Old 2001  
All-American Winter Yearling 1999  
**Krull Broker Elegance EX-96 3E GMD DOM**  
5-07 2x 365d 40,950 3.7% 1,522 3.3% 1,350  
Life: 2,356d 183,710lbs 3.7% 6,878f 3.4% 6,267p  
HM All-American Aged Cow 1999 & 2000  
HM All-Canadian Mature Cow 1999  
**Krull Starbuck Excellency EX-90 GMD DOM**  
3-03 2x 365d 27,140 3.5% 937 3.4% 930  
**Krull TT Excellency EX-90 VEEE DOM**  
3-02 2x 363d 24,319 3.5% 862 3.4% 829  
**Krull Boot Mark Excellency EX-92 2E GMD**  
6-06 2x 365d 27,410 3.8% 1,040 3.1% 868  
Life: 3,026d 201,440 3.5% 7,105f 3.0% 4,634p  
**Krull Kingstead Excellency EX-92 4E GMD**  
Life: 3,364d 179,790lbs 3.6% 6,436f





**PLUM-LINE GC ELASTIGIRL**  
Full Sister to Lot



**PLUM-LINE DIAMOND EARRING**  
Maternal Sister to Lot



## Plum-Line GC Ethel-ET

840003149950008 100%RHA Born: 3/1/2019 Herd#: 363  
Due 5/2/21 to 200HO03913 Unix  
Jr 2 Yr Old

**MR CHASSITY GOLD CHIP-ET**  
140145553 100%RHA TR TP TY TV TL EX-95  
PTA +1.52T +1.10UDC +1.14FLC GTPI +1753G  
Goldwyn x Regancrest S Chassity-ET EX-92 GMD DOM

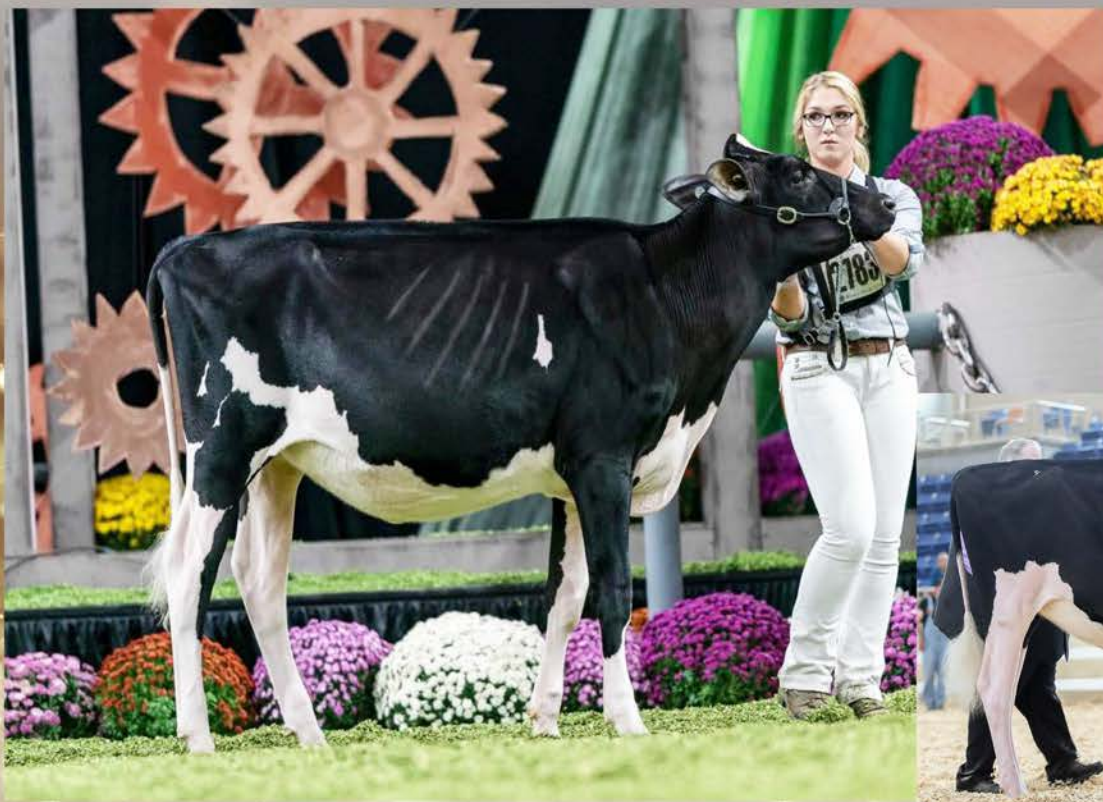
**ROLLING-SPRING SID ELLEN-ET**  
141875251 8-04 Excellent-93 EEVEE 2E  
2-06 2 293 30210 3.5 1050 3.2 969  
5-05 2 305 32890 3.7 1207 3.0 991  
7-03 2 305 36070 3.9 1411 3.0 1087  
Life: 2,071 198,800 4.0% 7,880 3.3% 6,541

Maternal Sisters to Dam  
**Rolling-Spring Eccentric-ET EX-92 2E**  
**Budjon-JK Absolut Eloise-ET EX-91**  
**Rolling-Spring Schz Ella-ET EX-92**  
Nominated All-American Jr 2-Yr-Old 2013  
5th Jr 2 Yr Old, World Dairy Expo 2013  
2nd Jr 2 Yr Old, Eastern National 2013  
1st, Int & Grand, Western PA Champ Show '13  
5th Generation of All-American Nominee  
**Budjon-JK Abst Enstant-ET EX-90**

Full Sister to Lot  
**Plum-Line GC Elastigirl**  
Nom Jr All-American Fall Calf 2019  
5th Fall Calf, Eastern National 2019  
2nd Fall Calf, Premier National Jr Show 2019  
Maternal Sisters to Lot  
**Plum-Line Extra Naughty**  
3rd Jr 2, Premier National Jr Show 2019  
2nd Jr 2, PA Fall Show 2019  
Reserve Jr All-American Spring Yearling 2018  
1st Spring Yrlg, Western PA Show 2018  
3rd Spring Yrlg, Premier National 2018  
2nd Spring Yrlg, PA Fall Show 2018  
Jr Champ, PA Fall Champ Jr Show 2018  
2nd Spring Yrlg, WDE Jr Show 2018  
9th Spring Yrlg, World Dairy Expo 2018  
**Plum-Line Diamond Earring**  
Nom Jr All-American Winter Calf 2019  
4th Winter Calf, WDE Jr Show 2019  
3rd Winter Calf, Eastern National 2019  
1st & Reserve Jr Champion Premier National 2019  
HM Jr Champion, PA Fall Show 2019  
Reserve Jr Champion, PA Fall Jr Show 2019

2nd-9th Dams  
**Rolling-Spring G Escence-ET EX-95-2E**  
5-06 2 365 40,500 4.1% 1,646 3.0% 1,231  
Nominated All-American 4 Yr Old 2010  
Grand Champion, Midwest National Spring Show 2010  
4th Generation All-American Nominee in milking form  
**Budjon-JK Dur Esquisite-ET EX-92 GMD DOM**  
3-07 2x 365d 40,300 3.9% 1,555 3.0% 1,199  
Nom All-American Sr 2 Yr Old Cow 2006  
**Budjon-JK Encore Electra-ET EX-95-2E GMD DOM**  
6-04 2x 365d 46,830 4.0% 1,866 3.0% 1,382  
Life: 1,806d 192,280lbs 3.6% 6,858f 3.2% 6,097p  
HM All-American 125,000 Lb Cow 2005  
HM All-American Aged Cow 2004  
Reserve All-American Sr 3 Yr Old 2001  
All-American Winter Yearling 1999  
**Krull Broker Elegance EX-96 3E GMD DOM**  
5-07 2x 365d 40,950 3.7% 1,522 3.3% 1,350  
Life: 2,356d 183,710lbs 3.7% 6,878f 3.4% 6,267p  
HM All-American Aged Cow 1999 & 2000  
HM All-Canadian Mature Cow 1999  
**Krull Starbuck Excellency EX-90 GMD DOM**  
3-03 2x 365d 27,140 3.5% 937 3.4% 930  
**Krull TT Excellency EX-90 VEVEE DOM**  
3-02 2x 363d 24,319 3.5% 862 3.4% 829  
**Krull Boot Mark Excellency EX-92 2E GMD**  
6-06 2x 365d 27,410 3.8% 1,040 3.1% 868  
Life: 3,026d 201,440 3.5% 7,105f 3.0% 4,634p  
**Krull Kingstead Excellency EX-92 4E GMD**  
Life: 3,364d 179,790lbs 3.6% 6,436f





**PLUM-LINE DIAMOND EARRING**  
Maternal Sister to Lot



**PLUM-LINE EXTRA NAUGHTY**  
Maternal Sister to Lot



*Plum-Line Awesome Elite-ET \*RC*

840003212824063 100%RHA Born: 12/4/2019 Herd#: 406

**Winter Yearling**

Maternal Sisters to Lot

**Plum-Line Extra Naughty**

- 3rd Jr 2, Premier National Jr Show 2019
- 2nd Jr 2, PA Fall Show 2019
- Reserve Jr All-American Spring Yearling 2018
- 1st Spring Yrlg, Western PA Show 2018
- 3rd Spring Yrlg, Premier National 2018
- 2nd Spring Yrlg, PA Fall Show 2018
- Jr Champ, PA Fall Champ Jr Show 2018
- 2nd Spring Yrlg, WDE Jr Show 2018
- 9th Spring Yrlg, World Dairy Expo 2018
- Plum-Line Diamond Earring**
- Nom Jr All-American Winter Calf 2019
- 4th Winter Calf, WDE Jr Show 2019
- 3rd Winter Calf, Eastern National 2019
- 1st & Reserve Jr Champion Premier National 2019
- HM Jr Champion, PA Fall Show 2019
- Reserve Jr Champion, PA Fall Jr Show 2019
- Plum-Line GC Elastigirl**
- Nom Jr All-American Fall Calf 2019
- 5th Fall Calf, Eastern National 2019
- 2nd Fall Calf, Premier National Jr Show 2019

**LUCK-E AWESOME-RED**

72186769 100%RHA CV TC TY TL TD  
PTA +2.02T +2.80UDC +.76FLC GTP1 +1404G  
Absolute x Luck-E Advent Asia-ET EX-94-3E

**ROLLING-SPRING SID ELLEN-ET**

141875251 8-04 Excellent-93 EEVEE 2E  
2-06 2 293 30210 3.5 1050 3.2 969  
5-05 2 305 32890 3.7 1207 3.0 991  
7-03 2 305 36070 3.9 1411 3.0 1087  
Life: 2,071 198,800 4.0% 7,880 3.3% 6,541

Maternal Sisters to Dam

- Rolling-Spring Eccentric-ET EX-92 2E**
- Budjon-JK Absolut Eloise-ET EX-91**
- Rolling-Spring Schz Ella-ET EX-92**
- Nominated All-American Jr 2-Yr-Old 2013
- 5th Jr 2 Yr Old, World Dairy Expo 2013
- 2nd Jr 2 Yr Old, Eastern National 2013
- 1st, Int & Grand, Western PA Champ Show '13
- 5th Generation of All-American Nominee
- Budjon-JK Absit Enstant-ET EX-90**

2nd-9th Dams

- Rolling-Spring G Escence-ET EX-95-2E**
- 5-06 2 365 40,500 4.1% 1,646 3.0% 1,231
- Nominated All-American 4 Yr Old 2010
- Grand Champion, Midwest National Spring Show 2010
- 4th Generation All-American Nominee in milking form
- Budjon-JK Dur Esquisite-ET EX-92 GMD DOM**
- 3-07 2x 365d 40,300 3.9% 1,555 3.0% 1,199
- Nom All-American Sr 2 Yr Old Cow 2006
- Budjon-JK Encore Electra-ET EX-95-2E GMD DOM**
- 6-04 2x 365d 46,830 4.0% 1,866 3.0% 1,382
- Life: 1,806d 192,280lbs 3.6% 6,858f 3.2% 6,097p
- HM All-American 125,000 Lb Cow 2005
- HM All-American Aged Cow 2004
- Reserve All-American Sr 3 Yr Old 2001
- All-American Winter Yearling 1999
- Krull Broker Elegance EX-96 3E GMD DOM**
- 5-07 2x 365d 40,950 3.7% 1,522 3.3% 1,350
- Life: 2,356d 183,710lbs 3.7% 6,878f 3.4% 6,267p
- HM All-American Aged Cow 1999 & 2000
- HM All-Canadian Mature Cow 1999
- Krull Starbuck Excellency EX-90 GMD DOM**
- 3-03 2x 365d 27,140 3.5% 937 3.4% 930
- Krull TT Excellency EX-90 VEEE DOM**
- 3-02 2x 363d 24,319 3.5% 862 3.4% 829
- Krull Boot Mark Excellency EX-92 2E GMD**
- 6-06 2x 365d 27,410 3.8% 1,040 3.1% 868
- Life: 3,026d 201,440 3.5% 7,105f 3.0% 4,634p
- Krull Kingstead Excellency EX-92 4E GMD**
- Life: 3,364d 179,790lbs 3.6% 6,436f





**PLUM-LINE EXTRA NAUGHTY**  
Maternal Sister to Lot



*Plum-Line Awesome Effort-ET RC*

840003212824066 100%RHA Born: 1/18/2020 Herd#: 409

**Winter Yearling**

*Maternal Sisters to Lot*

**Plum-Line Extra Naughty**

- 3rd Jr 2, Premier National Jr Show 2019
- 2nd Jr 2, PA Fall Show 2019
- Reserve Jr All-American Spring Yearling 2018
- 1st Spring Yrlg, Western PA Show 2018
- 3rd Spring Yrlg, Premier National 2018
- 2nd Spring Yrlg, PA Fall Show 2018
- Jr Champ, PA Fall Champ Jr Show 2018
- 2nd Spring Yrlg, WDE Jr Show 2018
- 9th Spring Yrlg, World Dairy Expo 2018

**Plum-Line Diamond Earring**

- Nom Jr All-American Winter Calf 2019
- 4th Winter Calf, WDE Jr Show 2019
- 3rd Winter Calf, Eastern National 2019
- 1st & Reserve Jr Champion Premier National 2019
- HM Jr Champion, PA Fall Show 2019
- Reserve Jr Champion, PA Fall Jr Show 2019

**Plum-Line GC Elastigirl**

- Nom Jr All-American Fall Calf 2019
- 5th Fall Calf, Eastern National 2019
- 2nd Fall Calf, Premier National Jr Show 2019

**LUCK-E AWESOME-RED**

72186769 100%RHA CV TC TY TL TD  
PTA +2.02T +2.80UDC +.76FLC GTPI +1404G  
Absolute x Luck-E Advent Asia-ET EX-94-3E

**ROLLING-SPRING SID ELLEN-ET**

141875251 8-04 Excellent-93 EEVEE 2E  
2-06 2 293 30210 3.5 1050 3.2 969  
5-05 2 305 32890 3.7 1207 3.0 991  
7-03 2 305 36070 3.9 1411 3.0 1087  
Life: 2,071 198,800 4.0% 7,880 3.3% 6,541

*Maternal Sisters to Dam*

- Rolling-Spring Eccentric-ET EX-92 2E**
- Budjon-JK Absolut Eloise-ET EX-91**
- Rolling-Spring Schz Ella-ET EX-92**
- Nominated All-American Jr 2-Yr-Old 2013
- 5th Jr 2 Yr Old, World Dairy Expo 2013
- 2nd Jr 2 Yr Old, Eastern National 2013
- 1st, Int & Grand, Western PA Champ Show '13
- 5th Generation of All-American Nominee
- Budjon-JK Abslt Enstant-ET EX-90**

*2nd-9th Dams*

- Rolling-Spring G Escence-ET EX-95-2E**
- 5-06 2 365 40,500 4.1% 1,646 3.0% 1,231
- Nominated All-American 4 Yr Old 2010
- Grand Champion, Midwest National Spring Show 2010
- 4th Generation All-American Nominee in milking form
- Budjon-JK Dur Esquisite-ET EX-92 GMD DOM**
- 3-07 2x 365d 40,300 3.9% 1,555 3.0% 1,199
- Nom All-American Sr 2 Yr Old Cow 2006
- Budjon-JK Encore Electra-ET EX-95-2E GMD DOM**
- 6-04 2x 365d 46,830 4.0% 1,866 3.0% 1,382
- Life: 1,806d 192,280lbs 3.6% 6,858f 3.2% 6,097p
- HM All-American 125,000 Lb Cow 2005
- HM All-American Aged Cow 2004
- Reserve All-American Sr 3 Yr Old 2001
- All-American Winter Yearling 1999
- Krull Broker Elegance EX-96 3E GMD DOM**
- 5-07 2x 365d 40,950 3.7% 1,522 3.3% 1,350
- Life: 2,356d 183,710lbs 3.7% 6,878f 3.4% 6,267p
- HM All-American Aged Cow 1999 & 2000
- HM All-Canadian Mature Cow 1999
- Krull Starbuck Excellency EX-90 GMD DOM**
- 3-03 2x 365d 27,140 3.5% 937 3.4% 930
- Krull TT Excellency EX-90 VEEE DOM**
- 3-02 2x 363d 24,319 3.5% 862 3.4% 829
- Krull Boot Mark Excellency EX-92 2E GMD**
- 6-06 2x 365d 27,410 3.8% 1,040 3.1% 868
- Life: 3,026d 201,440 3.5% 7,105f 3.0% 4,634p
- Krull Kingstead Excellency EX-92 4E GMD**
- Life: 3,364d 179,790lbs 3.6% 6,436f





**PLUM-LINE DIAMOND EARRING**  
Maternal Sister to Lot



*Plum-Line Awsm Electrify-ET \*RC*

840003212824101 100%RHA Born: 9/18/2020 Herd#: 444

**Senior Calf**

*Maternal Sisters to Lot*

**Plum-Line Extra Naughty**

3rd Jr 2, Premier National Jr Show 2019

2nd Jr 2, PA Fall Show 2019

Reserve Jr All-American Spring Yearling 2018

1st Spring Yrlg, Western PA Show 2018

3rd Spring Yrlg, Premier National 2018

2nd Spring Yrlg, PA Fall Show 2018

Jr Champ, PA Fall Champ Jr Show 2018

2nd Spring Yrlg, WDE Jr Show 2018

9th Spring Yrlg, World Dairy Expo 2018

**Plum-Line Diamond Earring**

Nom Jr All-American Winter Calf 2019

4th Winter Calf, WDE Jr Show 2019

3rd Winter Calf, Eastern National 2019

1st & Reserve Jr Champion Premier National 2019

HM Jr Champion, PA Fall Show 2019

Reserve Jr Champion, PA Fall Jr Show 2019

**Plum-Line GC Elastigirl**

Nom Jr All-American Fall Calf 2019

5th Fall Calf, Eastern National 2019

2nd Fall Calf, Premier National Jr Show 2019

**LUCK-E AWESOME-RED**

72186769 100%RHA CV TC TY TL TD

PTA +2.02T +2.80UDC +.76FLC GTPi +1404G

Absolute x Luck-E Advent Asia-ET EX-94-3E

**ROLLING-SPRING SID ELLEN-ET**

141875251 8-04 Excellent-93 EEVEE 2E

2-06 2 293 30210 3.5 1050 3.2 969

5-05 2 305 32890 3.7 1207 3.0 991

7-03 2 305 36070 3.9 1411 3.0 1087

Life: 2,071 198,800 4.0% 7,880 3.3% 6,541

*Maternal Sisters to Dam*

**Rolling-Spring Eccentric-ET EX-92 2E**

**Budjon-JK Absolut Eloise-ET EX-91**

**Rolling-Spring Schz Ella-ET EX-92**

Nominated All-American Jr 2-Yr-Old 2013

5th Jr 2 Yr Old, World Dairy Expo 2013

2nd Jr 2 Yr Old, Eastern National 2013

1st, Int & Grand, Western PA Champ Show '13

5th Generation of All-American Nominee

**Budjon-JK Absit Enstant-ET EX-90**

*2nd-9th Dams*

**Rolling-Spring G Escence-ET EX-95-2E**

5-06 2 365 40,500 4.1% 1,646 3.0% 1,231

Nominated All-American 4 Yr Old 2010

Grand Champion, Midwest National Spring Show 2010

4th Generation All-American Nominee in milking form

**Budjon-JK Dur Esquisite-ET EX-92 GMD DOM**

3-07 2x 365d 40,300 3.9% 1,555 3.0% 1,199

Nom All-American Sr 2 Yr Old Cow 2006

**Budjon-JK Encore Electra-ET EX-95-2E GMD DOM**

6-04 2x 365d 46,830 4.0% 1,866 3.0% 1,382

Life: 1,806d 192,280lbs 3.6% 6,858f 3.2% 6,097p

HM All-American 125,000 Lb Cow 2005

HM All-American Aged Cow 2004

Reserve All-American Sr 3 Yr Old 2001

All-American Winter Yearling 1999

**Krull Broker Elegance EX-96 3E GMD DOM**

5-07 2x 365d 40,950 3.7% 1,522 3.3% 1,350

Life: 2,356d 183,710lbs 3.7% 6,878f 3.4% 6,267p

HM All-American Aged Cow 1999 & 2000

HM All-Canadian Mature Cow 1999

**Krull Starbuck Excellency EX-90 GMD DOM**

3-03 2x 365d 27,140 3.5% 937 3.4% 930

**Krull TT Excellency EX-90 VEEE DOM**

3-02 2x 363d 24,319 3.5% 862 3.4% 829

**Krull Boot Mark Excellency EX-92 2E GMD**

6-06 2x 365d 27,410 3.8% 1,040 3.1% 868

Life: 3,026d 201,440 3.5% 7,105f 3.0% 4,634p

**Krull Kingstead Excellency EX-92 4E GMD**

Life: 3,364d 179,790lbs 3.6% 6,436f





**PLUM-LINE DIAMOND EARRING**  
Maternal Sister to Lot



**ROLLING-SPRING G ESCENCE-ET EX-95-2E**  
3rd Dam of Lot



**PLUM-LINE GC ELASTIGIRL**  
Maternal Sister to Lot



*Plum-Line Dempsey Ellie*

840003212824105 100%RHA Born: 12/4/2020

**Winter Calf**

**LIRR DREW DEMPSEY**

61083609 100%RHA TR CD TP TY TV EX-93  
PTA +1.60T +1.01UDC +1.03FLC GTP1 +1908G  
Goldwyn x Kernt Sneezzy Derry Drew VG-88

**PLUM-LINE EXTRA TERRESTRIAL**

840003149949996  
1-11 2 44d 3,336 3.8 126 2.8 93  
Just fresh 2yr old - Sired by Windhammer

*Maternal Sisters to Dam*

**Plum-Line Extra Naughty**

3rd Jr 2, Premier National Jr Show 2019  
2nd Jr 2, PA Fall Show 2019  
Reserve Jr All-American Spring Yearling 2018  
1st Spring Yrlg, Western PA Show 2018  
3rd Spring Yrlg, Premier National 2018  
2nd Spring Yrlg, PA Fall Show 2018  
Jr Champ, PA Fall Champ Jr Show 2018  
2nd Spring Yrlg, WDE Jr Show 2018  
9th Spring Yrlg, World Dairy Expo 2018  
**Plum-Line Diamond Earring**  
Nom Jr All-American Winter Calf 2019  
4th Winter Calf, WDE Jr Show 2019  
3rd Winter Calf, Eastern National 2019  
1st & Reserve Jr Champion Premier National 2019  
HM Jr Champion, PA Fall Show 2019  
Reserve Jr Champion, PA Fall Jr Show 2019

**Plum-Line GC Elastigirl**

Nom Jr All-American Fall Calf 2019  
5th Fall Calf, Eastern National 2019  
2nd Fall Calf, Premier National Jr Show 2019

*Maternal Sisters to 2nd Dam*

**Rolling-Spring Eccentric-ET EX-92 2E**  
**Budjon-JK Absolut Eloise-ET EX-91**  
**Rolling-Spring Schz Ella-ET EX-92**  
Nominated All-American Jr 2-Yr-Old 2013  
5th Jr 2 Yr Old, World Dairy Expo 2013  
2nd Jr 2 Yr Old, Eastern National 2013  
1st, Int & Grand, Western PA Champ Show '13  
5th Generation of All-American Nominee  
**Budjon-JK Abslt Enstant-ET EX-90**

*2nd-10th Dams*

**Rolling Spring Sid Ellen-ET EX-93-2E**  
7-03 2 305 36070 3.9 1411 3.0 1087  
Life: 2,071d 198,800 4.0% 7,880 3.3% 6541  
3 lactations over 30,000  
**Rolling-Spring G Escence-ET EX-95-2E**  
5-06 2 365 40,500 4.1% 1,646 3.0% 1,231  
Nominated All-American 4 Yr Old 2010  
Grand Champion, Midwest National Spring Show 2010  
4th Generation All-American Nominee in milking form  
**Budjon-JK Dur Esquisite-ET EX-92 GMD DOM**  
3-07 2x 365d 40,300 3.9% 1,555 3.0% 1,199  
Nom All-American Sr 2 Yr Old Cow 2006  
**Budjon-JK Encore Electra-ET EX-95-2E GMD DOM**  
6-04 2x 365d 46,830 4.0% 1,866 3.0% 1,382  
Life: 1,806d 192,280lbs 3.6% 6,858f 3.2% 6,097p  
HM All-American 125,000 Lb Cow 2005  
HM All-American Aged Cow 2004  
Reserve All-American Sr 3 Yr Old 2001  
All-American Winter Yearling 1999  
**Krull Broker Elegance EX-96 3E GMD DOM**  
5-07 2x 365d 40,950 3.7% 1,522 3.3% 1,350  
Life: 2,356d 183,710lbs 3.7% 6,878f 3.4% 6,267p  
HM All-American Aged Cow 1999 & 2000  
HM All-Canadian Mature Cow 1999  
**Krull Starbuck Excellency EX-90 GMD DOM**  
3-03 2x 365d 27,140 3.5% 937 3.4% 930  
**Krull TT Excellency EX-90 VEEE DOM**  
3-02 2x 363d 24,319 3.5% 862 3.4% 829  
**Krull Boot Mark Excellency EX-92 2E GMD**  
6-06 2x 365d 27,410 3.8% 1,040 3.1% 868  
Life: 3,026d 201,440 3.5% 7,105f 3.0% 4,634p  
**Krull Kingstead Excellency EX-92 4E GMD**  
Life: 3,364d 179,790lbs 3.6% 6,436f





© Cybil Fisher

**PLUM-LINE CHAMPION ALEXIS EX-94-2E**

5th Dam of Lot



*Plum-Line America Adelee*

840003212824058 99%RHA Born: 12/2/2019 Herd#: 401

**Winter Yearling**

**LUCK-E AMERICA 684-ET**

72186883 99%RHA RC TC TL TD EX-92 3YR  
PTA +3.05T +2.63UDC +1.87FLC GTPI +1992G  
*Avalanche x Luck-E Advent Asia-ET EX-94-3E*

**PLUM-LINE DIAMOND AVENUE**

840003141692265 2-04 Good Plus-83 +V+G+  
2-02 2 257 19680 3.2 620 2.9 577  
*Sells as Lot 10!!*

*Maternal Sisters to 4th Dam*

**Plum-Line Damion Ariel EX-94-2E**

**Plum-Line Jasper Alivia EX-93-3E**

*2nd-14th Dams*

**Plum-Line Goldsun Angela VG-87 EX-MS**

6-06 2 305 36150 2.9 1066 3.0 1081

**Plum-Line Final Cut Anita VG-85**

3-05 2 294 29650 94 2.7 811 2.9 856

**Plum-Line Dundee Alania-ET EX-92-3E**

3-02 2 305 32320 2.7 864 2.9 951

Life: 2,623d 251,490lb 3.6% 9,016f 3.1% 7,805p

**Plum-Line Champion Alexis EX-94-2E**

5-05 2 305 40800 93 4.6 1869 2.8 1139

**Plum-Line Charles Aisha EX-90**

6-04 2 305 27070 4.2 1138 3.1 841

Life: 1,984d 160,150lb 4.4% 6,991 3.2% 5087

**Plum-Line Fancy Paul Abby**

3-06 3 305 32660 3.2 1047 2.5 803

**Plum-Line Stardust Ashley VG-89 EX-MS**

5-07 3 305 39650 3.1 1227 2.5 998

**Plum-Line Melvin Autumn EX-94-2E**

5-05 3 305 36830 3.1 1150 2.9 1079

7-06 3 305 37790 2.9 1091 2.7 1035

*Jr All-American Sr 2 Yr Old 1991*

*Grand & B&O, PA Fall Show 1992*

**Campbell-Run Segis Sara VG-88**

9-05 3 305 32060 3.3 1067 3.1 1008

Life: 1,814d 142,250lb 3.3% 4,669 3.1% 4,428

**Campbell-Run Stardom Sadie EX-91-3E**

9-01 2 365 23050 3.3 763 3.1 708

**Campbell-Run Citation Salty VG-85**

3-10 2 305 21450 3.2 682

**Wagnerscrest Salt & Pepper VG-86**

8-01 2 305 20200 3.5 700

**Pat-Bern Whirlhill Snow Drop VG-86**

8-00 2 330 21840 4.0 864





# Plum-Line Diamond Avenue

840003141692265 99%RHA Born: 9/25/2017 Herd#: 286  
 2-02 2 257 19680 3.2 620 2.9 577  
 3-02 2 50 4,321 3.5% 151 2.7% 121  
 Last test: 94lbs 3.1% 2.6% 13SCC  
**Calved 11/28/21**  
**Serviced 1/12/21 to 551HO03617 Altitude**  
**Good Plus-83 +V+G+ @ 2-04**  
**Sr 3 Yr Old**

**MR D APPLE DIAMONDBACK**  
 840003013721049 99%RHA RC TP TC TY TV EX-93  
 PTA +2.41T +1.84UDC +1.37FLC GTPI +1902G  
*Doorman x MS Delicious Apple-Red-ET EX-94-2E*

**PLUM-LINE GOLDSUN ANGELA**  
 142357163 5-01 Very Good-87 VV+GE  
 3-04 2 305 31660 3.0 959 2.9 908  
 4-06 2 279 29640 3.0 903 3.1 909  
 5-05 2 305 29490 3.3 973 3.1 918  
 6-06 2 305 36150 2.9 1066 3.0 1081  
 Life: 1,695d 167,130 3.1% 5,225 3.0% 5,083

*2nd-13th Dams*

**Plum-Line Final Cut Anita VG-85**  
 3-05 2 294 29650 94 2.7 811 2.9 856  
**Plum-Line Dundee Alania-ET EX-92-3E**  
 3-02 2 305 32320 2.7 864 2.9 951  
 Life: 2,623d 251,490lb 3.6% 9,016f 3.1% 7,805p  
**Plum-Line Champion Alexis EX-94-2E**  
 5-05 2 305 40800 93 4.6 1869 2.8 1139  
**Plum-Line Charles Aisha EX-90**  
 6-04 2 305 27070 4.2 1138 3.1 841  
 Life: 1,984d 160,150lb 4.4% 6,991 3.2% 5087  
**Plum-Line Fancy Paul Abby**  
 3-06 3 305 32660 3.2 1047 2.5 803  
**Plum-Line Stardust Ashley VG-89 EX-MS**  
 5-07 3 305 39650 3.1 1227 2.5 998  
**Plum-Line Melvin Autumn EX-94-2E**  
 5-05 3 305 36830 3.1 1150 2.9 1079  
 7-06 3 305 37790 2.9 1091 2.7 1035  
*Jr All-American Sr 2 Yr Old 1991*  
*Grand & B&O, PA Fall Show 1992*  
**Campbell-Run Segis Sara VG-88**  
 9-05 3 305 32060 3.3 1067 3.1 1008  
 Life: 1,814d 142,250lb 3.3% 4,669 3.1% 4,428  
**Campbell-Run Stardom Sadie EX-91-3E**  
 9-01 2 365 23050 3.3 763 3.1 708  
**Campbell-Run Citation Salty VG-85**  
 3-10 2 305 21450 3.2 682  
**Wagnerscrest Salt & Pepper VG-86**  
 8-01 2 305 20200 3.5 700  
**Pat-Bern Whirlhill Snow Drop VG-86**  
 8-00 2 330 21840 4.0 864



# Plum-Line Crank It Up \*RC

840003141692274 100%RHA Born: 12/2/2017 Herd#: 295  
 2-00 2 300 19960 4.0 789 3.0 594  
**Calved 1/15/21**  
**Sr 3 Yr Old**

**3 EX-94 Dams in a Row!!**

**Absolute sister sell as Lot 10**

**LUCK-E AWESOME-RED**  
 72186769 100%RHA CV TC TY TL TD  
 PTA +2.02T +2.80UDC +.76FLC GTPI +1404G  
*Absolute x Luck-E Advent Asia-ET EX-94-3E*

**PLUM-LINE REGINALD CASSIE**  
 72769244 5-11 Excellent-90 VE+VE  
 3-02 2 305 26850 3.6 959 3.2 854  
 4-03 2 305 26230 3.8 985 3.2 846

*Maternal Sisters to 3rd Dam*  
**Plum-Line Jasper Alivia EX-93-3E**  
**Plum-Line Dundee Alania-ET EX-92-3E**



**Plum-Line Jasper Alivia EX-93-3E**  
*Maternal sister to 3rd Dam*

*2nd-13th Dams*

**Plum-Line Dstry Achelsea-ET EX-94-2E**  
 6-00 2 305 29830 3.9 1173 3.2 940  
**Plum-Line Damion Ariel EX-94-3E**  
 6-03 2 305 33820 4.4 1478 3.1 1054  
 Life: 2,329d 194,130lb 4.1% 8,043 3.1% 6,090  
**Plum-Line Champion Alexis EX-94-2E**  
 5-05 2 305 40800 93 4.6 1869 2.8 1139  
**Plum-Line Charles Aisha EX-90**  
 6-04 2 305 27070 4.2 1138 3.1 841  
 Life: 1,984d 160,150lb 4.4% 6,991 3.2% 5087  
**Plum-Line Fancy Paul Abby**  
 3-06 3 305 32660 3.2 1047 2.5 803  
**Plum-Line Stardust Ashley VG-89 EX-MS**  
 5-07 3 305 39650 3.1 1227 2.5 998  
**Plum-Line Melvin Autumn EX-94-2E**  
 5-05 3 305 36830 3.1 1150 2.9 1079  
 7-06 3 305 37790 2.9 1091 2.7 1035  
*Jr All-American Sr 2 Yr Old 1991*  
*Grand & B&O, PA Fall Show 1992*  
**Campbell-Run Segis Sara VG-88**  
 9-05 3 305 32060 3.3 1067 3.1 1008  
 Life: 1,814d 142,250lb 3.3% 4,669 3.1% 4,428  
**Campbell-Run Stardom Sadie EX-91-3E**  
 9-01 2 365 23050 3.3 763 3.1 708  
**Campbell-Run Citation Salty VG-85**  
 3-10 2 305 21450 3.2 682  
**Wagnerscrest Salt & Pepper VG-86**  
 8-01 2 305 20200 3.5 700  
**Pat-Bern Whirlhill Snow Drop VG-86**  
 8-00 2 330 21840 4.0 864





**PLUM-LINE JASPER ALIVIA EX-93-3E**  
Maternal Sister to 4th Dam



## Plum-Line Diamond Chase

840003212824060 99%RHA Born: 12/6/2019

**Winter Yearling**

**Dam sells as Lot 9**

**MR D APPLE DIAMONDBACK**

840003013721049 99%RHA RC TP TC TY TV EX-93  
PTA +2.41T +1.84UDC +1.37FLC GTPI +1902G  
Doorman x MS Delicious Apple-Red-ET EX-94-2E

**PLUM-LINE CRANK IT UP**

840003141692274 2-01 Good Plus-83 +V+GV  
2-00 2 300 19960 4.0 789 3.0 594  
(Sired by Awesome)

*Maternal Sisters to 4th Dam*

**Plum-Line Damion Ariel EX-94-2E**  
**Plum-Line Dundee Alania-ET EX-92-3E**



**Plum-Line Champion Alexis EX-94-2E**  
2nd Dam

*2nd-14th Dams*

**Plum-Line Reginald Cassie EX-90 EX-MS**  
4-03 2 305 26230 3.8 985 3.2 846  
**Plum-Line Dstry Achelsea-ET EX-94-2E**  
6-00 2 305 29830 3.9 1173 3.2 940  
**Plum-Line Damion Ariel EX-94-3E**  
6-03 2 305 33820 4.4 1478 3.1 1054  
Life: 2,329d 194,130lb 4.1% 8,043 3.1% 6,090  
**Plum-Line Champion Alexis EX-94-2E**  
5-05 2 305 40800 93 4.6 1869 2.8 1139  
**Plum-Line Charles Aisha EX-90**  
6-04 2 305 27070 4.2 1138 3.1 841  
Life: 1,984d 160,150lb 4.4% 6,991 3.2% 5087  
**Plum-Line Fancy Paul Abby**  
3-06 3 305 32660 3.2 1047 2.5 803  
**Plum-Line Stardust Ashley VG-89 EX-MS**  
5-07 3 305 39650 3.1 1227 2.5 998  
**Plum-Line Melvin Autumn EX-94-2E**  
5-05 3 305 36830 3.1 1150 2.9 1079  
7-06 3 305 37790 2.9 1091 2.7 1035  
*Jr All-American Sr 2 Yr Old 1991*  
*Grand & B&O, PA Fall Show 1992*  
**Campbell-Run Segis Sara VG-88**  
9-05 3 305 32060 3.3 1067 3.1 1008  
Life: 1,814d 142,250lb 3.3% 4,669 3.1% 4,428  
**Campbell-Run Stardom Sadie EX-91-3E**  
9-01 2 365 23050 3.3 763 3.1 708  
**Campbell-Run Citation Salty VG-85**  
3-10 2 305 21450 3.2 682  
**Wagnerscrest Salt & Pepper VG-86**  
8-01 2 305 20200 3.5 700  
**Pat-Bern Whirlhill Snow Drop VG-86**  
8-00 2 330 21840 4.0 86464



11

## Plum-Line Absolute Calypso \*RC

840003134372158 100%RHA Born: 12/4/2016 Herd#: 236

2-00 2 267 20220 4.6 936 3.2 645

3-00 2 255 19020 4.5 849 3.5 666

Calved 1/15/21

Four Yr Old

3 EX-94 Dams in a Row!!

Awesome sister sell as Lot 9!

## APPLES ABSOLUTE-RED-ET

139358472 100%RHA CV TC TY TL TD EX-94

PTA +2.16T +2.39UDC +1.59FLC GTPI +1534G

Talent x KHW Regiment Apple-Red-ET EX-96-4E DOM

## PLUM-LINE REGINALD CASSIE

72769244 5-11 Excellent-90 VE+VE

3-02 2 305 26850 3.6 959 3.2 854

4-03 2 305 26230 3.8 985 3.2 846

Maternal Sisters to 3rd Dam

Plum-Line Jasper Alivia EX-93-3E

Plum-Line Dundee Alania-ET EX-92-3E

## 2nd-13th Dams

Plum-Line Dstry Achelsea-ET EX-94-2E

6-00 2 305 29830 3.9 1173 3.2 940

Plum-Line Damion Ariel EX-94-3E

6-03 2 305 33820 4.4 1478 3.1 1054

Life: 2,329d 194,130lb 4.1% 8,043 3.1% 6,090

Plum-Line Champion Alexis EX-94-2E

5-05 2 305 40800 93 4.6 1869 2.8 1139

Plum-Line Charles Aisha EX-90

6-04 2 305 27070 4.2 1138 3.1 841

Life: 1,984d 160,150lb 4.4% 6,991 3.2% 5087

Plum-Line Fancy Paul Abby

3-06 3 305 32660 3.2 1047 2.5 803

Plum-Line Stardust Ashley VG-89 EX-MS

5-07 3 305 39650 3.1 1227 2.5 998

Plum-Line Melvin Autumn EX-94-2E

5-05 3 305 36830 3.1 1150 2.9 1079

7-06 3 305 37790 2.9 1091 2.7 1035

Jr All-American Sr 2 Yr Old 1991

Grand &amp; B&amp;O, PA Fall Show 1992

Campbell-Run Segis Sara VG-88

9-05 3 305 32060 3.3 1067 3.1 1008

Life: 1,814d 142,250lb 3.3% 4,669 3.1% 4,428

Campbell-Run Stardom Sadie EX-91-3E

9-01 2 365 23050 3.3 763 3.1 708

Campbell-Run Citation Salty VG-85

3-10 2 305 21450 3.2 682

Wagnerscrest Salt &amp; Pepper VG-86

8-01 2 305 20200 3.5 700

Pat-Bern Whirlhill Snow Drop VG-86

8-00 2 330 21840 4.0 864

12

## Plum-Line DB Addiction

840003212824059 99%RHA Born: 12/3/2019 Herd#: 402

Serviced 12/17/2020 to sexed 551HO03617 Altitude

Winter Yearling

## MR D APPLE DIAMONDBACK

840003013721049 99%RHA RC TP TC TY TV EX-93

PTA +2.41T +1.84UDC +1.37FLC GTPI +1902G

Doorman x MS Delicious Apple-Red-ET EX-94-2E

## PLUM-LINE ACME ANEKKA

840003128162436 3-05 Very Good-85 VV+VV

1-10 2 305 22550 3.9 879 3.0 680

2-11 2 305 26150 3.6 947 3.1 809

## 2nd-13th Dams

Plum-Line Sanchez Addison VG-86 @ 2-07

2-00 2 305 23130 3.4 788 2.9 682

Plum-Line Dundee Andria-ET EX-92-3E

3-03 2 305 30470 3.3 1010 3.1 937

Plum-Line Champion Alexis EX-94-2E

5-05 2 305 40800 93 4.6 1869 2.8 1139

Plum-Line Charles Aisha EX-90

6-04 2 305 27070 4.2 1138 3.1 841

Life: 1,984d 160,150lb 4.4% 6,991 3.2% 5087

Plum-Line Fancy Paul Abby

3-06 3 305 32660 3.2 1047 2.5 803

Plum-Line Stardust Ashley VG-89 EX-MS

5-07 3 305 39650 3.1 1227 2.5 998

Plum-Line Melvin Autumn EX-94-2E

5-05 3 305 36830 3.1 1150 2.9 1079

7-06 3 305 37790 2.9 1091 2.7 1035

Jr All-American Sr 2 Yr Old 1991

Grand &amp; B&amp;O, PA Fall Show 1992

Campbell-Run Segis Sara VG-88

9-05 3 305 32060 3.3 1067 3.1 1008

Life: 1,814d 142,250lb 3.3% 4,669 3.1% 4,428

Campbell-Run Stardom Sadie EX-91-3E

9-01 2 365 23050 3.3 763 3.1 708

Campbell-Run Citation Salty VG-85

3-10 2 305 21450 3.2 682

Wagnerscrest Salt &amp; Pepper VG-86

8-01 2 305 20200 3.5 700

Pat-Bern Whirlhill Snow Drop VG-86

8-00 2 330 21840 4.0 864





© Jenny Thomas  
Crystal Lake Photography

**PLUM-LINE JASPER ALIVIA EX-93-3E**  
Dam of Lot 17



*Plum-Line After Party*

840003141692272 99%RHA Born: 12/1/2017 Herd#: 293  
2-00 2 256 14360 4.5 647 3.1 449  
2-11 2 61 5,782 4.1% 251 3.0% 178  
Last test:100lbs 3.9% 3.0% 13SCC  
**Calved 11/17/20**  
**Serviced 1/16/21 to 250HO12589 Jacoby**  
**Sr 3 Yr Old**

**Daughter sells as Lot 14**

**MR D APPLE DIAMONDBACK**  
840003013721049 99%RHA RC TP TC TY TV EX-93  
PTA +2.41T +1.84UDC +1.37FLC GTPI +1902G  
Doorman x MS Delicious Apple-Red-ET EX-94-2E  
**PLUM-LINE JASPER ALIVIA**  
141146539 9-07 Excellent-93 EEEEE 3E  
8-10 2 305 29350 4.3 1257 3.1 914  
Life: 2,044d 159,430 4.5% 7,220 3.2% 5,104

*Maternal Sisters to Dam*  
**Plum-Line Damion Ariel EX-94-2E**  
**Plum-Line Dundee Alania-ET EX-92-3E**



**Plum-Line Champion Alexis EX-94-2E**  
2nd Dam

*2nd-11th Dams*

**Plum-Line Champion Alexis EX-94-2E**  
5-05 2 305 40800 93 4.6 1869 2.8 1139  
**Plum-Line Charles Aisha EX-90**  
6-04 2 305 27070 4.2 1138 3.1 841  
Life: 1,984d 160,150lb 4.4% 6,991 3.2% 5087  
**Plum-Line Fancy Paul Abby**  
3-06 3 305 32660 3.2 1047 2.5 803  
**Plum-Line Stardust Ashley VG-89 EX-MS**  
5-07 3 305 39650 3.1 1227 2.5 998  
**Plum-Line Melvin Autumn EX-94-2E**  
5-05 3 305 36830 3.1 1150 2.9 1079  
7-06 3 305 37790 2.9 1091 2.7 1035  
*Jr All-American Sr 2 Yr Old 1991*  
*Grand & B&O, PA Fall Show 1992*  
**Campbell-Run Segis Sara VG-88**  
9-05 3 305 32060 3.3 1067 3.1 1008  
Life: 1,814d 142,250lb 3.3% 4,669 3.1% 4,428  
**Campbell-Run Stardom Sadie EX-91-3E**  
9-01 2 365 23050 3.3 763 3.1 708  
**Campbell-Run Citation Salty VG-85**  
3-10 2 305 21450 3.2 682  
**Wagnerscrest Salt & Pepper VG-86**  
8-01 2 305 20200 3.5 700  
**Pat-Bern Whirlhill Snow Drop VG-86**  
8-00 2 330 21840 4.0 864





**PLUM-LINE JASPER ALIVIA EX-93-3E**  
2nd Dam of Lot



*Plum-Line Awe After Hours \*RC*

840003212824061 99%RHA Born: 12/3/2019 Herd#: 404

**Winter Yearling**

**Dam sells as Lot 17**

**LUCK-E AWESOME-RED**

72186769 100%RHA CV TC TY TL TD  
PTA +2.02T +2.80UDC +.76FLC GTPI +1404G  
Absolute x Luck-E Advent Asia-ET EX-94-3E

**PLUM-LINE AFTER PARTY**

840003141692272  
2-00 2 256 14360 4.5 647 3.1 449  
Sired by Diamondback

*Maternal Sisters to 2nd Dam*

**Plum-Line Damion Ariel EX-94-2E**  
**Plum-Line Dundee Alania-ET EX-92-3E**



**Plum-Line Champion Alexis EX-94-2E**  
3rd Dam

**2nd-12th Dams**

**Plum-Line Jasper Alivia EX-93-3E**

8-10 2 305 29350 4.3 1257 3.1 914  
Life: 2,044d 159,430lb 4.5% 7,220f 3.2% 5,104p

**Plum-Line Champion Alexis EX-94-2E**

5-05 2 305 40800 93 4.6 1869 2.8 1139

**Plum-Line Charles Aisha EX-90**

6-04 2 305 27070 4.2 1138 3.1 841

Life: 1,984d 160,150lb 4.4% 6,991 3.2% 5087

**Plum-Line Fancy Paul Abby**

3-06 3 305 32660 3.2 1047 2.5 803

**Plum-Line Stardust Ashley VG-89 EX-MS**

5-07 3 305 39650 3.1 1227 2.5 998

**Plum-Line Melvin Autumn EX-94-2E**

5-05 3 305 36830 3.1 1150 2.9 1079

7-06 3 305 37790 2.9 1091 2.7 1035

*Jr All-American Sr 2 Yr Old 1991*

*Grand & B&O, PA Fall Show 1992*

**Campbell-Run Segis Sara VG-88**

9-05 3 305 32060 3.3 1067 3.1 1008

Life: 1,814d 142,250lb 3.3% 4,669 3.1% 4,428

**Campbell-Run Stardom Sadie EX-91-3E**

9-01 2 365 23050 3.3 763 3.1 708

**Campbell-Run Citation Salty VG-85**

3-10 2 305 21450 3.2 682

**Wagnerscrest Salt & Pepper VG-86**

8-01 2 305 20200 3.5 700

**Pat-Bern Whirlhill Snow Drop VG-86**

8-00 2 330 21840 4.0 864



15

# Plum-Line Dempsey Alcatraz

840003149950015 100%RHA Born: 4/9/2019 Herd#: 370

Due 5/3/2021 to 7HO12587 Diamondback  
Jr 2 Yr Old

**LIRR DREW DEMPSEY**

61083609 100%RHA TR CD TP TY TV EX-93  
PTA +1.60T +1.01UDC +1.03FLC GTPI +1908G  
Goldwyn x Kernt Snezy Derry Drew VG-88

**PLUM-LINE FEVER ANGIE**

141919850 6-01 Very Good-87 EE+VV  
5-09 2 305 29680 4.4 1317 3.1 917



Plum-Line Goldsun Atrix  
Same Family as Lot 13

*2nd-12th Dams*

**Plum-Line Dundee Alania-ET EX-92-3E**  
3-02 2 305 32320 2.7 864 2.9 951  
Life: 2,623d 251,490lb 3.6% 9,016f 3.1% 7,805p  
**Plum-Line Champion Alexis EX-94-2E**  
5-05 2 305 40800 93 4.6 1869 2.8 1139  
**Plum-Line Charles Aisha EX-90**  
6-04 2 305 27070 4.2 1138 3.1 841  
Life: 1,984d 160,150lb 4.4% 6,991 3.2% 5087  
**Plum-Line Fancy Paul Abby**  
3-06 3 305 32660 3.2 1047 2.5 803  
**Plum-Line Stardust Ashley VG-89 EX-MS**  
5-07 3 305 39650 3.1 1227 2.5 998  
**Plum-Line Melvin Autumn EX-94-2E**  
5-05 3 305 36830 3.1 1150 2.9 1079  
7-06 3 305 37790 2.9 1091 2.7 1035  
*Jr All-American Sr 2 Yr Old 1991*  
*Grand & B&O, PA Fall Show 1992*  
**Campbell-Run Segis Sara VG-88**  
9-05 3 305 32060 3.3 1067 3.1 1008  
Life: 1,814d 142,250lb 3.3% 4,669 3.1% 4,428  
**Campbell-Run Stardom Sadie EX-91-3E**  
9-01 2 365 23050 3.3 763 3.1 708  
**Campbell-Run Citation Salty VG-85**  
3-10 2 305 21450 3.2 682  
**Wagnerscrest Salt & Pepper VG-86**  
8-01 2 305 20200 3.5 700  
**Pat-Bern Whirlhill Snow Drop VG-86**  
8-00 2 330 21840 4.0 864

16

# Plum-Line Armani Alanis

840003134372145 100%RHA Born: 7/12/2016 Herd#: 223

2-02 2 278 18010 4.6 824 3.5 634  
3-01 2 305 22920 4.2 963 3.6 822  
4-03 2 71 7,847 3.3 257 2.9 232

Last test: 122lbs 3.5% 3.0% 13SCC  
**Very Good-85 V++V+ @ 3-06**  
**Five Yr Old**

**2 EX-94 Dams in a Row!!**

**Maternal sister sells as lot 17**

**MR APPLES ARMANI-ET**

68571374 100%RHA RC CD TP TY TV EX-90  
PTA +.96T +1.50UDC +1.51FLC GTPI +2073G  
Goldwyn x KHW Regiment Apple-Red-ET EX-96-4E

**PLUM-LINE CHELIOS AMANDA**

72769246 5-04 Very Good-88 VEVEV  
3-11 2 265 26450 3.9 1044 3.1 815

*Maternal Sisters to 3rd Dam*

**Plum-Line Jasper Alivia EX-93-3E**  
**Plum-Line Dundee Alania-ET EX-92-3E**



Plum-Line Champion Alexis EX-94-2E  
4th Dam

*2nd-13th Dams*

**Plum-Line Sid Alli-ET VG-87 @ 2-08**  
2-00 2 305 17480 3.9 681 3.4 592  
**Plum-Line Damion Ariel EX-94-3E**  
6-03 2 305 33820 4.4 1478 3.1 1054  
Life: 2,329d 194,130lb 4.1% 8,043 3.1% 6,090  
**Plum-Line Champion Alexis EX-94-2E**  
5-05 2 305 40800 93 4.6 1869 2.8 1139  
**Plum-Line Charles Aisha EX-90**  
6-04 2 305 27070 4.2 1138 3.1 841  
Life: 1,984d 160,150lb 4.4% 6,991 3.2% 5087  
**Plum-Line Fancy Paul Abby**  
3-06 3 305 32660 3.2 1047 2.5 803  
**Plum-Line Stardust Ashley VG-89 EX-MS**  
5-07 3 305 39650 3.1 1227 2.5 998  
**Plum-Line Melvin Autumn EX-94-2E**  
5-05 3 305 36830 3.1 1150 2.9 1079  
7-06 3 305 37790 2.9 1091 2.7 1035  
*Jr All-American Sr 2 Yr Old 1991*  
*Grand & B&O, PA Fall Show 1992*  
**Campbell-Run Segis Sara VG-88**  
9-05 3 305 32060 3.3 1067 3.1 1008  
Life: 1,814d 142,250lb 3.3% 4,669 3.1% 4,428  
**Campbell-Run Stardom Sadie EX-91-3E**  
9-01 2 365 23050 3.3 763 3.1 708  
**Campbell-Run Citation Salty VG-85**  
3-10 2 305 21450 3.2 682  
**Wagnerscrest Salt & Pepper VG-86**  
8-01 2 305 20200 3.5 700  
**Pat-Bern Whirlhill Snow Drop VG-86**  
8-00 2 330 21840 4.0 864





## Plum-Line Solomon Arrow

840003141692266 99%RHA Born: 10/3/2017 Herd#: 287  
 1-10 2 305 17460 4.4 774 3.4 599  
 Last test @ 24DIM: 90lbs 4.3% 2.3% 13SCC  
 Calved 12/24/20

**Good Plus-83 ++G+V @ 2-03**  
**Sr 3 Yr Old**

**2 EX-94 Dams in a Row!!**

**Maternal sister sells as lot 16**

**WALNUTLAWN SOLOMON-ET**  
 11775998 99%RHA TR TP TY TV TL TD  
 PTA +2.59T +1.72UDC +.43FLC GTPI +1997G  
 Doorman x Misty Springs Lavanguard Sue VG-89-CAN

**PLUM-LINE CHELIOS AMANDA**  
 72769246 5-04 Very Good-88 VEVEV  
 3-11 2 265 26450 3.9 1044 3.1 815

*Maternal Sisters to 3rd Dam*  
**Plum-Line Jasper Alivia EX-93-3E**  
**Plum-Line Dundee Alania-ET EX-92-3E**

*2nd-13th Dams*

**Plum-Line Sid Alli-ET VG-87 @ 2-08**  
 2-00 2 305 17480 3.9 681 3.4 592  
**Plum-Line Damion Ariel EX-94-3E**  
 6-03 2 305 33820 4.4 1478 3.1 1054  
 Life: 2,329d 194,130lb 4.1% 8,043 3.1% 6,090  
**Plum-Line Champion Alexis EX-94-2E**  
 5-05 2 305 40800 93 4.6 1869 2.8 1139  
**Plum-Line Charles Aisha EX-90**  
 6-04 2 305 27070 4.2 1138 3.1 841  
 Life: 1,984d 160,150lb 4.4% 6,991 3.2% 5087  
**Plum-Line Fancy Paul Abby**  
 3-06 3 305 32660 3.2 1047 2.5 803  
**Plum-Line Stardust Ashley VG-89 EX-MS**  
 5-07 3 305 39650 3.1 1227 2.5 998  
**Plum-Line Melvin Autumn EX-94-2E**  
 5-05 3 305 36830 3.1 1150 2.9 1079  
 7-06 3 305 37790 2.9 1091 2.7 1035  
*Jr All-American Sr 2 Yr Old 1991*  
*Grand & B&O, PA Fall Show 1992*  
**Campbell-Run Segis Sara VG-88**  
 9-05 3 305 32060 3.3 1067 3.1 1008  
 Life: 1,814d 142,250lb 3.3% 4,669 3.1% 4,428  
**Campbell-Run Stardom Sadie EX-91-3E**  
 9-01 2 365 23050 3.3 763 3.1 708  
**Campbell-Run Citation Salty VG-85**  
 3-10 2 305 21450 3.2 682  
**Wagnerscrest Salt & Pepper VG-86**  
 8-01 2 305 20200 3.5 700  
**Pat-Bern Whirlhill Snow Drop VG-86**  
 8-00 2 330 21840 4.0 864



## Plum-Line Gold Chip Adorn

840003149949995 100%RHA Born: 12/9/2018 Herd#: 350  
 1-11 2 47 3,479 4.0 148 3.0 112 RIP  
 Last test: 84lbs 3.4% 2.7% 81SCC  
 Calved 12/1/2020

**Serviced 1/20/21 to 799HO00007 Thunderstorm**  
**Sr 2 Yr Old**

**2 EX-94 Dams in a Row!!**

**MR CHASSITY GOLD CHIP-ET**  
 140145553 100%RHA TR TP TY TV TL EX-95  
 PTA +1.52T +1.10UDC +1.14FLC GTPI +1753G  
 Goldwyn x Regancrest S Chassity-ET EX-92 GMD

**PLUM-LINE AFTERSHOCK ALIYAH**  
 840003141692234 3-07 Very Good-87 VVV+V  
 3-02 2 263 30,865 3.1 947 2.7 846

*Maternal Sisters to 3rd Dam*  
**Plum-Line Jasper Alivia EX-93-3E**  
**Plum-Line Dundee Alania-ET EX-92-3E**



**Plum-Line Jasper Alivia EX-93-3E**  
*Maternal sister to 3rd Dam*

*2nd-13th Dams*

**Plum-Line Jasper Ashanti EX-91-2E**  
 5-09 2 305 28710 3.8 1097 2.9 845  
 Life: 2,099d 168,810 3.7% 6,216 3.0% 5,083  
**Plum-Line Damion Ariel EX-94-3E**  
 6-03 2 305 33820 4.4 1478 3.1 1054  
 Life: 2,329d 194,130lb 4.1% 8,043 3.1% 6,090  
**Plum-Line Champion Alexis EX-94-2E**  
 5-05 2 305 40800 93 4.6 1869 2.8 1139  
**Plum-Line Charles Aisha EX-90**  
 6-04 2 305 27070 4.2 1138 3.1 841  
 Life: 1,984d 160,150lb 4.4% 6,991 3.2% 5087  
**Plum-Line Fancy Paul Abby**  
 3-06 3 305 32660 3.2 1047 2.5 803  
**Plum-Line Stardust Ashley VG-89 EX-MS**  
 5-07 3 305 39650 3.1 1227 2.5 998  
**Plum-Line Melvin Autumn EX-94-2E**  
 5-05 3 305 36830 3.1 1150 2.9 1079  
 7-06 3 305 37790 2.9 1091 2.7 1035  
*Jr All-American Sr 2 Yr Old 1991*  
*Grand & B&O, PA Fall Show 1992*  
**Campbell-Run Segis Sara VG-88**  
 9-05 3 305 32060 3.3 1067 3.1 1008  
 Life: 1,814d 142,250lb 3.3% 4,669 3.1% 4,428  
**Campbell-Run Stardom Sadie EX-91-3E**  
 9-01 2 365 23050 3.3 763 3.1 708  
**Campbell-Run Citation Salty VG-85**  
 3-10 2 305 21450 3.2 682  
**Wagnerscrest Salt & Pepper VG-86**  
 8-01 2 305 20200 3.5 700  
**Pat-Bern Whirlhill Snow Drop VG-86**  
 8-00 2 330 21840 4.0 864





© Jenny Thomas  
Light Photography

**PLUM-LINE GOLDSUN ATRIX EX-90 EX-MS**  
2nd Dam of Lot 18



# Plum-Line Saloon Allabuzz

840003212824092 99%RHA Born: 9/5/2020 Herd#: 435

**Fall Calf**

**SANDY-VALLEY SALOON-ET**  
70358061 100%RHA TR TP TY TL TD  
PTA +2.12T +.84UDC +.07FLC GTPI +2528G  
Altalota x Sandy-Valley Plane Sapphire VG-87 @ 2-03

**PLUM-LINE AFTER HOURS**  
840003149949967  
2-03 2 134 11542 3.9 423 3.4 377

**2nd-13th Dams**

**Plum-Line Goldsun Atrix EX-90 EX-MS**

**Plum-Line Lightning Alice VG-88**  
3-03 2 305 27230 3.9 1058 3.2 876

**Plum-Line Dundee Ashley VG-88**  
5-05 2 305 32970 3.5 1144 2.9 954

**Plum-Line Charles Aisha EX-90**  
6-04 2 305 27070 4.2 1138 3.1 841

Life: 1,984d 160,150lb 4.4% 6,991 3.2% 5087

**Plum-Line Fancy Paul Abby**  
3-06 3 305 32660 3.2 1047 2.5 803

**Plum-Line Stardust Ashley VG-89 EX-MS**  
5-07 3 305 39650 3.1 1227 2.5 998

**Plum-Line Melvin Autumn EX-94-2E**  
5-05 3 305 36830 3.1 1150 2.9 1079

7-06 3 305 37790 2.9 1091 2.7 1035

*Jr All-American Sr 2 Yr Old 1991*

*Grand & B&O, PA Fall Show 1992*

**Campbell-Run Segis Sara VG-88**  
9-05 3 305 32060 3.3 1067 3.1 1008

Life: 1,814d 142,250lb 3.3% 4,669 3.1% 4,428

**Campbell-Run Stardom Sadie EX-91-3E**  
9-01 2 365 23050 3.3 763 3.1 708

**Campbell-Run Citation Salty VG-85**  
3-10 2 305 21450 3.2 682

**Wagnerscrest Salt & Pepper VG-86**  
8-01 2 305 20200 3.5 700

**Pat-Bern Whirlhill Snow Drop VG-86**  
8-00 2 330 21840 4.0 864





## Plum-Line Redliner Angel

840003212824086 100%RHA Born: 9/4/2020 Herd#: 429

**Fall Calf**

*Maternal sister sells as lot 20*

**FRADON REDLINER-RED-ET**  
7528698 100%RHA TV TL EX-91-CAN  
PTA +.18T -.40UDC -1.20FLC GTPI +1270G  
*Talent x Fradon Rudolph Jodie EX-2E-CAN*

**PLUM-LINE ANGEL DUST-TW**  
840003141692240  
1-11 2 305 21750 3.3 714 3.3 710

2nd-14th Dams

**Plum-Line Acme Azalea VG-88 EX-MS**  
3-04 2 305 31640 3.3 1047 3.1 994  
**Plum-Line Butze Alea EX-91 EX-MS**  
6-00 2 305 29560 3.8 1114 3.0 889  
**Plum-Line Champion A Seven EX-92-2E**  
3-03 2 305 34430 2.7 918 2.7 930  
4-04 2 305 34540 3.5 1205 2.9 1002  
7-04 2 305 35010 3.5 1234 2.7 942  
Life: 2,218d 230,850lb 3.2% 7,351 2.8% 6,482  
**Plum-Line Linjet Athena GP-83 2YR**  
2-02 2 305 18410 4.1 748 3.1 579  
**Plum-Line Rubens Autumn VG-87**  
**Plum-Line Fancy Paul Abby**  
3-06 3 305 32660 3.2 1047 2.5 803  
**Plum-Line Stardust Ashley VG-89 EX-MS**  
5-07 3 305 39650 3.1 1227 2.5 998  
**Plum-Line Melvin Autumn EX-94-2E**  
5-05 3 305 36830 3.1 1150 2.9 1079  
7-06 3 305 37790 2.9 1091 2.7 1035  
*Jr All-American Sr 2 Yr Old 1991*  
*Grand & B&O, PA Fall Show 1992*  
**Campbell-Run Segis Sara VG-88**  
9-05 3 305 32060 3.3 1067 3.1 1008  
Life: 1,814d 142,250lb 3.3% 4,669 3.1% 4,428  
**Campbell-Run Stardom Sadie EX-91-3E**  
9-01 2 365 23050 3.3 763 3.1 708  
**Campbell-Run Citation Salty VG-85**  
3-10 2 305 21450 3.2 682  
**Wagnerscrest Salt & Pepper VG-86**  
8-01 2 305 20200 3.5 700  
**Pat-Bern Whirlhill Snow Drop VG-86**  
8-00 2 330 21840 4.0 864



## Plum-Line Diamond Allegra

840003149950003 99%RHA Born: 3/2/2019 Herd#: 358

*Due 4/26/21 to 250HO12961 Doc*

**Jr 2 Yr Old**

*Maternal sister sells as lot 19*

**MR D APPLE DIAMONDBACK**  
840003013721049 99%RHA RC TP TC TY TV EX-93  
PTA +2.41T +1.84UDC +1.37FLC GTPI +1902G  
*Doorman x MS Delicious Apple-Red-ET EX-94-*

**PLUM-LINE ANGEL DUST-TW**  
840003141692240  
1-11 2 305 21750 3.3 714 3.3 710

2nd-14th Dams

**Plum-Line Acme Azalea VG-88 EX-MS**  
3-04 2 305 31640 3.3 1047 3.1 994  
**Plum-Line Butze Alea EX-91 EX-MS**  
6-00 2 305 29560 3.8 1114 3.0 889  
**Plum-Line Champion A Seven EX-92-2E**  
3-03 2 305 34430 2.7 918 2.7 930  
4-04 2 305 34540 3.5 1205 2.9 1002  
7-04 2 305 35010 3.5 1234 2.7 942  
Life: 2,218d 230,850lb 3.2% 7,351 2.8% 6,482  
**Plum-Line Linjet Athena GP-83 2YR**  
2-02 2 305 18410 4.1 748 3.1 579  
**Plum-Line Rubens Autumn VG-87**  
**Plum-Line Fancy Paul Abby**  
3-06 3 305 32660 3.2 1047 2.5 803  
**Plum-Line Stardust Ashley VG-89 EX-MS**  
5-07 3 305 39650 3.1 1227 2.5 998  
**Plum-Line Melvin Autumn EX-94-2E**  
5-05 3 305 36830 3.1 1150 2.9 1079  
7-06 3 305 37790 2.9 1091 2.7 1035  
*Jr All-American Sr 2 Yr Old 1991*  
*Grand & B&O, PA Fall Show 1992*  
**Campbell-Run Segis Sara VG-88**  
9-05 3 305 32060 3.3 1067 3.1 1008  
Life: 1,814d 142,250lb 3.3% 4,669 3.1% 4,428  
**Campbell-Run Stardom Sadie EX-91-3E**  
9-01 2 365 23050 3.3 763 3.1 708  
**Campbell-Run Citation Salty VG-85**  
3-10 2 305 21450 3.2 682  
**Wagnerscrest Salt & Pepper VG-86**  
8-01 2 305 20200 3.5 700  
**Pat-Bern Whirlhill Snow Drop VG-86**  
8-00 2 330 21840 4.0 864





© Jenny Thomas  
Lifelife Photography

**MS PLUM-LINE SID LEGACY EX-91-2E EX-MS**  
2nd Dam



# Plum-Line Damion Lexi

840003212824083 99%RHA Born: 9/1/2020 Herd#: 426

## Fall Calf

Full Sister to Lot

**Plum-Line Damion Legend EX-91-2E**

### ERBACRES DAMION

130263722 100%RHA TR TY TV TL TD EX-96  
PTA +1.33T +.30UDC +1.69FLC GTPI +1360G  
Durham x Regancrest Encore Dahlia-ET VG-89

### PLUM-LINE LAFFY TAFFY

840003149949949 (Sired by Crush)  
Sold for Dairy

### 2nd Dam

#### Plum-Line Sid Legacy EX-91-2E EX-MS

3-01 2x 299d 26460 3.8 998 3.1 817  
4-08 2x 305d 26790 3.9 1034 2.8 757  
6-01 2x 305d 31510 3.4 1087 2.9 918

### 3rd Dam

#### Ettinger Leader Rachel EX-94-3E

3-01 2x 294d 25399 2.6 669 2.6 671  
4-02 2x 292d 24860 2.8 691 2.8 703  
5-02 2x 354d 33531 2.8 952 2.7 910  
9-08 2x 313d 30662 2.5 761 2.6 784

Maternal sister to 2nd Dam

#### MS Plum-Line Aspen Libby EX-94-3E

5-04 2x 305d 35890 3.9 1394 3.2 1132  
Life: 2271d 215850 3.8 8201 3.3 7044





© Jenny Thomas  
Light Field Photography

**MS PLUM-LINE ASPEN LIBBY EX-94-3E EX-MS**  
Maternal Sister to 2nd Dam



## Plum-Line Diamond Luella

840003149950001 99%RHA Born: 12/17/2018 Herd#: 356  
Last test @ 12 days fresh: 86lbs 4.8% 3.0% 13SCC  
Fresh 1/5/21  
Sr 2 Yr Old

**MR D APPLE DIAMONDBACK**  
840003013721049 99%RHA RC TP TC TY TV EX-93  
PTA +2.41T +1.84UDC +1.37FLC GTPI +1902G  
Doorman x MS Delicious Apple-Red-ET EX-94

**PLUM-LINE DAMION LEGEND**  
72769232 6-05 Excellent-91 EEEEE 2E  
4-09 2 305 32540 3.0 976 3.1 1023  
5-09 2 305 31070 2.4 748 3.1 948

2nd Dam

**Plum-Line Sid Legacy EX-91-2E EX-MS**

3-01 2x 299d 26460 3.8 998 3.1 817  
4-08 2x 305d 26790 3.9 1034 2.8 757  
6-01 2x 305d 31510 3.4 1087 2.9 918

3rd Dam

**Ettinger Leader Rachel EX-94-3E**

3-01 2x 294d 25399 2.6 669 2.6 671  
4-02 2x 292d 24860 2.8 691 2.8 703  
5-02 2x 354d 33531 2.8 952 2.7 910  
9-08 2x 313d 30662 2.5 761 2.6 784

Maternal sister to 2nd Dam

**MS Plum-Line Aspen Libby EX-94-3E**

5-04 2x 305d 35890 3.9 1394 3.2 1132  
Life: 2271d 215850 3.8 8201 3.3 7044



© Jenny Thomas  
Light Field Photography

2nd Dam  
**Plum-Line Sid Legacy EX-91-2E EX-MS**  
6-01 2x 305d 31510 3.4 1087 2.9 918





PLUM-LINE ASPEN KARAMEL EX-93 @ 4-07  
3rd Dam



## Plum-Line Awesome Kissable \*RC

840003212824071 100%RHA Born: 2/18/2020 Herd#: 414

Winter Yearling

**LUCK-E AWESOME-RED**

72186769 100%RHA CV TC TY TL TD  
PTA +2.02T +2.80UDC +.76FLC GTPI +1404G  
Absolute x Luck-E Advent Asia-ET EX-94-3E

**PLUM-LINE GC KLEOPATRA**

840003149949946 (Sired by Gold Chip)  
1-11 2x 79d 2,637 4.5% 92 3.2% 86

2nd Dam

**Plum-Line Rubens Kori VG-87**

6-01 2 305 28060 3.9 1086 3.2 909

3rd Dam

**Plum-Line Aspen Karamel EX-93 @ 4-07**

4-01 2 305 28680 4.9 1392 3.2 924

Sr & Grand Champion, Western PA Champ Show 2014

Sr & Grand Champion, Western PA Champ Jr Show 2014

5th Jr 3, Eastern Fall National 2013

1st Jr 3 & Int Champion, Western PA Champ Jr Show 2013

1st Jr 2, Premier National Jr Show 2013

1st Jr 2 & Int Champion, Western PA Champ Jr Show 2012

Nominated Jr All-American Spring Yearling 2011

6th Spring Yearling, World Dairy Expo Jr Show 2011

2nd Spring Yearling, Eastern National 2011

All-PA Spring Yearling 2011

1st & Jr Champion, PA Fall Show 2011

1st & Jr Champion, Western PA Champ Show 2011

4th Dam

**Plum-Line Gibson Krackle EX-93-3E GMD**

8-06 2 305 28730 4.5 1279 2.9 819

Life: 2,238d 153,600 4.7% 7,263 3.2% 4,839

Res Grand Champion, Western PA Champ Show 2012

Grand Champion, Western PA Champ Jr Show 2012

5th Dam

**Plum-Line Kit Kat VG-86**

5-09 2 305 27450 4.0 1088 2.9 791

6th Dam

Keg Lane Raider Diane EX-90 2E





# Plum-Line Diamond Kamrey

840003149950021 99%RHA Born: 7/2/2019 Herd#: 376  
Served 1/6/21 to 250HO12589 Jacoby  
Summer Jr 2

**MR D APPLE DIAMONDBACK**  
840003013721049 99%RHA RC TP TC TY TV EX-93  
PTA +2.41T +1.84UDC +1.37FLC GTPI +1902G  
Doorman x MS Delicious Apple-Red-ET EX-94

**PLUM-LINE AFTERSHOCK KANSAS**  
840003134372151  
2-09 2 305 19860 4.0 796 3.2 640

2nd Dam  
**Plum-Line James Kendra**  
1-10 2 165 10310 4.0 408 3.2 325  
3rd Dam  
**Plum-Line Champion Kondike EX-91-3E EX-MS**  
8-02 2x 305d 31500 3.2 1011 2.9 917  
Life: 2,245d 195,900 3.4 6,678 3.0 5,882  
5th Dam  
**Plum-Line Kit Kat VG-86 VG-MS**  
5-09 2 305d 27450 4.0 1088 2.9 791  
6th Dam  
**Keg Lane Raider Diane EX-90 2E**



# Plum-Line Windhammer Kirby

840003149950035 100%RHA Born: 9/2/2019 Herd#: 390  
Served 1/14/21 to 200HO10992 Sidekick  
Fall Yearling

**GILLETTE WINDHAMMER-ETS**  
8932157 100%RHA BY TV TL TD EX-97-CAN  
PTA +1.77T +1.47UDC +1.18FLC GTPI +1899G  
Bolton x Gillette Blitz 2nd Wind-ET VG-88-3YR-CAN

**PLUM-LINE FEVER KENDALL**  
840003128162439 4-10 Very Good-88 VVEVE  
4-05 2 305 27910 4.8 1335 3.6 1012

2nd Dam  
**Plum-Line Rubens Kori VG-87**  
6-01 2 305 28060 3.9 1086 3.2 909  
3rd Dam  
**Plum-Line Aspen Karamel EX-93 @ 4-07**  
4-01 2 305 28680 4.9 1392 3.2 924  
Sr & Grand Champion, Western PA Champ Show 2014  
Sr & Grand Champion, Western PA Champ Jr Show 2014  
5th Jr 3, Eastern Fall National 2013  
1st Jr 3 & Int Champion, Western PA Champ Jr Show 2013  
1st Jr 2, Premier National Jr Show 2013  
1st Jr 2 & Int Champion, Western PA Champ Jr Show 2012  
Nominated Jr All-American Spring Yearling 2011  
6th Spring Yearling, World Dairy Expo Jr Show 2011  
2nd Spring Yearling, Eastern National 2011  
All-PA Spring Yearling 2011  
1st & Jr Champion, PA Fall Show 2011  
1st & Jr Champion, Western PA Champ Show 2011  
4th Dam  
**Plum-Line Gibson Krackle EX-93-3E GMD**  
8-06 2 305 28730 4.5 1279 2.9 819  
Life: 2,238d 153,600 4.7% 7,263 3.2% 4,839  
Res Grand Champion, Western PA Champ Show 2012  
Grand Champion, Western PA Champ Jr Show 2012  
5th Dam  
**Plum-Line Kit Kat VG-86**  
5-09 2 305 27450 4.0 1088 2.9 791  
6th Dam  
**Keg Lane Raider Diane EX-90 2E**



3rd Dam  
**Plum-Line Aspen Karamel EX-93**





© Cybil Fisher

PLUM-LINE ASPEN KARAMEL EX-93 @ 4-07  
Maternal Sister to Dam



## Plum-Line Jordy Kenya\*RC

840003149950034 99%RHA Born: 9/3/2019 Herd#: 389

Serviced 12/17/20 to THO14477 Warrior  
Fall Yearling

**CYCLE MCGUCCI JORDY-RED**

840003131666411 99%RHA CV TC TY TL TD  
PTA +2.93T +2.16UDC +2.94FLC GTPI +1760G  
McGucci x Bryersquart G Chip Jail-P-ET EX-90 3YR

**PLUM-LINE KING KEELEY**

840003141692257 2-04 Very Good-85 VVVV+  
1-11 2 305 20820 3.6 748 3.3 688

**2nd Dam**

**Plum-Line Gibson Krackle EX-93-3E GMD**

8-06 2 305 28730 4.5 1279 2.9 819  
Life: 2,238d 153,600 4.7% 7,263 3.2% 4,839  
Res Grand Champion, Western PA Champ Show 2012  
Grand Champion, Western PA Champ Jr Show 2012  
3rd Dam

**Plum-Line Kit Kat VG-86**

5-09 2 305 27450 4.0 1088 2.9 791

**4th Dam**

**Keg Lane Raider Diane EX-90 2E**

**Maternal Sister to Dam**

**Plum-Line Aspen Karamel EX-93 @ 4-07**

4-01 2 305 28680 4.9 1392 3.2 924  
Sr & Grand Champion, Western PA Champ Show 2014  
Sr & Grand Champion, Western PA Champ Jr Show 2014  
5th Jr 3, Eastern Fall National 2013  
1st Jr 3 & Int Champion, Western PA Champ Jr Show 2013  
1st Jr 2, Premier National Jr Show 2013  
1st Jr 2 & Int Champion, Western PA Champ Jr Show 2012  
Nominated Jr All-American Spring Yearling 2011  
6th Spring Yearling, World Dairy Expo Jr Show 2011  
2nd Spring Yearling, Eastern National 2011  
All-PA Spring Yearling 2011  
1st & Jr Champion, PA Fall Show 2011  
1st & Jr Champion, Western PA Champ Show 2011



28

## Plum-Line Sid Kinkaid

840003149950042 99%RHA Born: 10/4/2019 Herd#: 397

Serviced 1/9/21 to 551HO03855 Moovin

Fall Yearling

### PINE-TREE SID-ET

62175895 100%RHA TR TP TY TL TD

PTA +1.47T +.94UDC -.85FLC GTPI +1550G

Mr Sam x Pine-Tree Finley Minnie-ET EX-90 DOM

### PLUM-LINE SOLOMON KEYSTONE

840003141692270 2-03 Good Plus-83 ++GGV

1-11 2 295 19030 4.6 883 3.4 654

2nd Dam

Plum-Line Windbrook Kayla VG-85-3YR

3-00 2 269 23350 4.5 1044 3.4 797

3rd Dam

Plum-Line Gibson Kristen GP-82-2YR

2-01 2 299 19660 4.1 807 3.1 606

4th Dam

Plum-Line Norman Kolleen EX-90 EX-MS 3YR

3-00 2 269 23350 4.5 1044 3.4 797

5th Dam

Plum-Line Durham Kate VG-88

5-04 2 275 30250 2.4 721 2.8 861

LIFE: 1,728d 154,670 2.8 4,382 3.0 4,627

5th Dam

Plum-Line Kit Kat VG-86

5-09 2 305 27450 4.0 1088 2.9 791

6th Dam

Keg Lane Raider Diane EX-90 2E

29

## Plum-Line Dempsey Kenosha

840003149950041 100%RHA Born: 9/29/2019 Herd#: 396

Fall Yearling

### LIRR DREW DEMPSEY

61083609 100%RHA TR CD TP TY TV EX-93

PTA +1.60T +1.01UDC +1.03FLC GTPI +1908G

Goldwyn x Kernt Sneezy Derry Drew VG-88

### PLUM-LINE CORVETTE KADANCE

840003128162417 4-04 Excellent-90 EEVVE

4-00 2 270 22790 4.4 1014 3.5 807

2nd Dam

Plum-Line Windbrook Kayla VG-85-3YR

3-00 2 269 23350 4.5 1044 3.4 797

3rd Dam

Plum-Line Gibson Kristen GP-82-2YR

2-01 2 299 19660 4.1 807 3.1 606

4th Dam

Plum-Line Norman Kolleen EX-90 EX-MS 3YR

3-00 2 269 23350 4.5 1044 3.4 797

5th Dam

Plum-Line Durham Kate VG-88

5-04 2 275 30250 2.4 721 2.8 861

LIFE: 1,728d 154,670 2.8 4,382 3.0 4,627

5th Dam

Plum-Line Kit Kat VG-86

5-09 2 305 27450 4.0 1088 2.9 791

6th Dam

Keg Lane Raider Diane EX-90 2E





**PLUM-LINE GIBSON KRACKLE EX-93-3E GMD**  
Maternal Sister to 2nd Dam



# Plum-Line Undenied Katrina

840003149950022 99%RHA Born: 7/5/2019 Herd#: 377

Due 6/11/21 to 799HO00007 Thunderstorm

Summer Jr 2

**OUR-FAVORITE UNDENIED-ET**

840003125220760 99%RHA-I TR TP TC TY TV  
PTA +3.35T +1.20UDC +1.00FLC GTP1 +2055G  
Solomon x Our-Favorite Unlimited-ET EX-94-2E

**PLUM-LINE SANCHEZ KAHLUA**

142217698 7-04 Excellent-90 EEVEV  
6-10 2 305 28820 3.4 967 2.9 822

**2nd Dam**

**Plum-Line Champion Kondike EX-91-3E EX-MS**

8-02 2x 305d 31500 3.2 1011 2.9 917  
Life: 2,245d 195,900 3.4 6,678 3.0 5,882

**3rd Dam**

**Plum-Line Kit Kat VG-86 VG-MS**

5-09 2 305d 27450 4.0 1088 2.9 791

**4th Dam**

**Keg Lane Raider Diane EX-90 2E**

**Maternal Sister to 2nd Dam**

**Plum-Line Gibson Krackle EX-93-3E GMD**

8-06 2 305 28730 4.5 1279 2.9 819

Life: 2,238d 153,600 4.7% 7,263 3.2% 4,839

Res Grand Champion, Western PA Champ Show 2012

Grand Champion, Western PA Champ Jr Show 2012



31

# Plum-Line Dempsey Cherrypop

840003212824090 99%RHA Born: 9/3/2020 Herd#: 433

Fall Calf

**LIRR DREW DEMPSEY**

61083609 100%RHA TR CD TP TY TV EX-93  
PTA +1.60T +1.01UDC +1.03FLC GTPI +1908G  
Goldwyn x Kernt Sneazy Derry Drew VG-88

**PLUM-LINE SHES MY CHERRYPIE**

840003149949963 (Sired by Solomon)  
2-03 2 136 10,865 4.7% 436 3.1% 328  
Last test: 72lbs 4.7% 3.1%

2nd Dam

**Plum-Line Gold Chip Cupid EX-91**  
4-08 2 305 31100 3.6 1126 3.2 980

3rd Dam

**Plum-Line Sid Cosmo-ET EX-91-2E**  
6-00 2 305 33030 4.4 1444 3.1 1010

4th Dam

**Plum-Line Jasper Cheerio EX-91 EX-MS**  
5-05 2 305 27820 4.2 1181 3.4 945

5th Dam

**Plum-Line Mr Shane Chelsea VG-85**  
4-01 3 282 23200 3.5 818 3.0 688

6th Dam

**Plum-Line RM California EX-91 EX-MS**  
4-10 2 305 25590 4.5 1147 3.4 875



Dam

**Plum-Line Shes My Cherrypie**

4th Summer Yearling, New York Spring Show 2019

BLODGETT COMMUNICATIONS

32

# Plum-Line Bradnick Chesty

840003149950029 100%RHA Born: 9/1/2019 Herd#: 384

Serviced 12/6/20 to 94HO19074 Cheers

Fall Yearling

Maternal Sister sells as Lot 33

**REGANCREST-GV S BRADNICK-ET**

66625940 100%RHA TR TP TY TV TL EX-96  
PTA +1.71T +1.80UDC +1.76FLC GTPI +1854G  
Sanchez x Regancrest Breya-ET EX-90 GMD DOM

**PLUM-LINE ARMANI CLEAVAGE**

840003134372147 3-04 Very Good-85 +VV+V  
2-00 2 302 16250 4.8 783 3.4 549

Maternal Sister

**Plum-Line Gold Chip Cupid EX-91**

2nd Dam

**Plum-Line Sid Cosmo-ET EX-91-2E**  
6-00 2 305 33030 4.4 1444 3.1 1010

3rd Dam

**Plum-Line Jasper Cheerio EX-91 EX-MS**  
5-05 2 305 27820 4.2 1181 3.4 945

4th Dam

**Plum-Line Mr Shane Chelsea VG-85**  
4-01 3 282 23200 3.5 818 3.0 688

5th Dam

**Plum-Line RM California EX-91 EX-MS**  
4-10 2 305 25590 4.5 1147 3.4 875





## Plum-Line Diamond C-Cups

840003149949976 99%RHA Born: 9/2/2018 Herd#: 331

2-02 2x 47d 3,195 4.2% 148 3.0% 107

Last test: 84lbs 4.2% 3.0% 13SCC

Calved 12/1/20

Sr 2 Yr Old

Maternal Sister sells as Lot 32

### MR D APPLE DIAMONDBACK

840003013721049 99%RHA RC TP TC TY TV EX-93

PTA +2.41T +1.84UDC +1.37FLC GTPI +1902G

Doorman x MS Delicious Apple-Red-ET EX-94

### PLUM-LINE ARMANI CLEAVAGE

840003134372147 3-04 Very Good-85 +VV+V

2-00 2 302 16250 4.8 783 3.4 549

Maternal Sister

Plum-Line Gold Chip Cupid EX-91

2nd Dam

Plum-Line Sid Cosmo-ET EX-91-2E

6-00 2 305 33030 4.4 1444 3.1 1010

3rd Dam

Plum-Line Jasper Cheerio EX-91 EX-MS

5-05 2 305 27820 4.2 1181 3.4 945

4th Dam

Plum-Line Mr Shane Chelsea VG-85

4-01 3 282 23200 3.5 818 3.0 688

5th Dam

Plum-Line RM California EX-91 EX-MS

4-10 2 305 25590 4.5 1147 3.4 875



## Plum-Line Undenied Catwalk

840003212824093 99%RHA Born: 9/6/2020 Herd#: 436

Fall Calf

### OUR-FAVORITE UNDENIED-ET

840003125220760 99%RHA-I TR TP TC TY TV

PTA +3.35T +1.20UDC +1.00FLC GTPI +2055G

Solomon x Our-Favorite Unlimited-ET EX-94-2E

### PLUM-LINE ARMANI CYNTHIA

840003134372132 3-10 Very Good-88 VVVVE

2-11 2 305 23040 4.5 1027 3.3 771

2nd Dam

Plum-Line Sid Ceicla-ET EX-91-2E

5-09 2 305 27290 4.5 1235 3.4 917

3rd Dam

Plum-Line Linjet Cameo EX-92-3E EX-MS

6-07 2 305 28150 3.5 995 3.1 886

Life: 2,226d 161,770 3.8% 6,123 3.2% 5,124

4th Dam

Plum-Line Rudolph Camille VG-87

3-05 2 286 28810 3.9 1115 3.1 879

4-05 2 305 28050 3.8 1055 3.1 872

5-08 2 305 28340 4.3 1221 3.1 869

5th-9th Dams

Plum-Line Adan Chentel EX-93-4E

2-07 2 305 22080 3.6 785 3.2 702

Campbell-Run Segis Sara VG-88

9-05 3 305 32060 3.3 1067 3.1 1008

Life: 1,814d 142,250lb 3.3% 4,669 3.1% 4,428

Campbell-Run Stardom Sadie EX-91-3E

9-01 2 365 23050 3.3 763 3.1 708

Campbell-Run Citation Salty VG-85

3-10 2 305 21450 3.2 682

Wagnerscrest Salt & Pepper VG-86

8-01 2 305 20200 3.5 700

Pat-Bern Whirlhill Snow Drop VG-86

8-00 2 330 21840 4.0 864

Same Family

Plum-Line Attic Atlee

Nominated All-American Fall Yearling 2017

Nominated Jr All-American Fall Yearling 2017

1st Fall Yearling, Eastern Fall Nat'l 2017

3rd Fall Yearling, World Dairy Expo 2017







# Plum-Line Sirwood Cinnamon

840003141692244 99%RHA Born: 6/1/2017 Herd#: 365

2-03 2x 327 19,640 4.6% 913 3.4% 672

3-06 2x 21d 2,032 4.2% 94 2.9% 67

Last test: 116lbs 4.2% 2.9% 57SCC

**Four Yr Old**

**Very Good-86 VVVVV @ 2-07**

**MATTENHOF SIRWOOD**

120065814601 99%RHA TR TY TV TL

PTA +1.80T +1.34UDC +.95FLC GTPI +15330

Sid x Galys VRay EX-94

**PLUM-LINE LINJET CAMEO**

138337876 9-04 Excellent-92 EEEVE 3E

3-08 2 305 27580 3.4 929 3.0 832

5-02 2 305 27020 4.1 1118 3.2 856

6-07 2 305 28150 3.5 995 3.1 886

Life: 2,226d 161,770 3.8% 6,123 3.2% 5,124



Same Family

**Plum-Line Attic Atlee**

Nominated All-American Fall Yearling 2017

Nominated Jr All-American Fall Yearling 2017

1st Fall Yearling, Eastern Fall Nat'l 2017

3rd Fall Yearling, World Dairy Expo 2017

2nd Dam

**Plum-Line Rudolph Camille VG-87**

3-05 2 286 28810 3.9 1115 3.1 879

4-05 2 305 28050 3.8 1055 3.1 872

5-08 2 305 28340 4.3 1221 3.1 869

3rd Dam

**Plum-Line Adan Chentel EX-93-4E**

2-07 2 305 22080 3.6 785 3.2 702

3rd Dam

**Campbell-Run Segis Sara VG-88**

9-05 3 305 32060 3.3 1067 3.1 1008

Life: 1,814d 142,250lb 3.3% 4,669 3.1% 4,428

4th Dam

**Campbell-Run Stardom Sadie EX-91-3E**

9-01 2 365 23050 3.3 763 3.1 708

5th Dam

**Campbell-Run Citation Salty VG-85**

3-10 2 305 21450 3.2 682

6th Dam

**Wagnerscrest Salt & Pepper VG-86**

8-01 2 305 20200 3.5 700

7th Dam

**Pat-Bern Whirlhill Snow Drop VG-86**

8-00 2 330 21840 4.0 864



# Plum-Line Byway Vicious

840003212824091 99%RHA Born: 9/1/2020 Herd#: 434

**Fall Calf**

**OH-RIVER-SYC BYWAY-ET**

71310557 100%RHA-NA TR TP TY TV TL

PTA +2.42T +2.28UDC +.21FLC GTPI +1893G

Meridian x Sandy-Valley ATWD Barbie-ET EX-91

**PLUM-LINE FEVER VENTURE**

72769226 6-01 Excellent-90 EVVEV

4-10 2 267 26650 4.0 1060 3.2 864



2nd Dam

**Plum-Line Progress Violet VG-86**

6-02 2 305 25860 94 3.8 976 2.9 757 94

Life: 2,294d 183,580 4.1 7,485 3.1 5,602

3rd Dam

**Plum-Line RM Virginia EX-91 EX-MS**

5-02 2 272 23680 4.4 1051 2.9 685

4th Dam

**Laurmac Vanessa Renegade-ET EX-91-2E**

5th Dam

**Laurmac Michelle T T VG-85-CAN**

7-06 2 333 19550 4.1 798 3.1 608

6th Dam

**Laurmac Maggie Attract-ET VG-86-CAN**

6-09 2 365 21585 4.3 8926 3.3 703

Life: 146,498lb 4.1 5,988 3.0 4,392

7th Dam

**Alblas Fury Lad Maggie VG-85-CAN**

6-01 2 365 25,042 3.5 886

8th Dam

**Alblas Medalist Denise VG-85-CAN**

3-10 2 305 21450 3.2 682

Same Family as

**Plum-Line Reginald Velour EX-94**

Supreme Champion, Premier National Jr Show 2018





# Plum-Line Vegas Bomb

840003212824076 100%RHA Born: 6/1/2020 Herd#: 419

**Summer Yearling**

**OH-RIVER-SYC BYWAY-ET**

71310557 100%RHA-NA TR TP TY TV TL  
PTA +2.42T +2.28UDC +.21FLC GTPI +1893G  
Meridian x Sandy-Valley ATWD Barbie-ET EX-91

**PLUM-LINE REGINALD VIOLA**

840003128162444 3-01 Very Good-86 +VGVV  
3-11 2 305 22260 4.7 1055 3.2 710

*2nd Dam*

**Plum-Line Alexander Vail EX-90-2E**  
4-07 2 305 25210 4.6 1157 3.3 827

*3rd Dam*

**Plum-Line Progress Violet VG-86**  
6-02 2 305 25860 94 3.8 976 2.9 757 94  
Life: 2,294d 183,580 4.1 7,485 3.1 5,602

*4th Dam*

**Plum-Line RM Virginia EX-91 EX-MS**  
5-02 2 272 23680 4.4 1051 2.9 685

*5th Dam*

**Laurmac Vanessa Renegade-ET EX-91-2E**  
6th Dam

**Laurmac Michelle T T VG-85-CAN**  
7-06 2 333 19550 4.1 798 3.1 608

*7th Dam*

**Laurmac Maggie Attract-ET VG-86-CAN**  
6-09 2 365 21585 4.3 8926 3.3 703  
Life: 146,498lb 4.1 5,988 3.0 4,392

*8th Dam*

**Alblas Fury Lad Maggie VG-85-CAN**  
6-01 2 365 25,042 3.5 886

*9th Dam*

**Alblas Medalist Denise VG-85-CAN**  
3-10 2 305 21450 3.2 682



# Plum-Line Unstopabull Vixen \*RC

840003212824104 99%RHA Born: 12/3/2020 Herd#: 447

**Winter Calf**

**RIVERDOWN UNSTOPABULL-RED**

11801450 99%RHA TY TV TL  
PTA +2.67T +2.44UDC +1.74FLC GTPI +2144G  
Avalanche x Cherry Crest Thats Neat EX-91-3E CAN

**PLUM-LINE VICTORIAS SECRET**

840003149949998 (Sired by Diamondback)  
1-11 2 45d 2,707 3.7 105 2.9 75  
Last test: 88lbs 3.7% 2.9%

Same Family as

**Plum-Line Reginald Velour EX-94**

Supreme Champion, Premier National Jr Show 2018



*2nd Dam*

**Plum-Line Fever Vanilla EX-91 EX-MS**  
3-08 2 305 28870 3.5 1024 2.9 839

*3rd Dam*

**Plum-Line Sanchez Vixen EX-91-2E**  
5-11 2 305 28680 4.3 1243 3.0 848

*4th Dam*

**Plum-Line Roy Velma VG-86**  
5-03 2 305 39340 4.3 1679 3.0 1180

*5th Dam*

**Plum-Line Progress Violet VG-86**  
6-02 2 305 25860 94 3.8 976 2.9 757 94  
Life: 2,294d 183,580 4.1 7,485 3.1 5,602

*6th Dam*

**Plum-Line RM Virginia EX-91 EX-MS**  
5-02 2 272 23680 4.4 1051 2.9 685

*7th Dam*

**Laurmac Vanessa Renegade-ET EX-91-2E**  
8th Dam

**Laurmac Michelle T T VG-85-CAN**  
7-06 2 333 19550 4.1 798 3.1 608

*9th Dam*

**Laurmac Maggie Attract-ET VG-86-CAN**  
6-09 2 365 21585 4.3 8926 3.3 703  
Life: 146,498lb 4.1 5,988 3.0 4,392

*10th Dam*

**Alblas Fury Lad Maggie VG-85-CAN**  
6-01 2 365 25,042 3.5 886

*11th Dam*

**Alblas Medalist Denise VG-85-CAN**  
3-10 2 305 21450 3.2 682





# Plum-Line King Venom-TW

840003149949948 100%RHA Born: 3/4/2018 Herd#: 303  
 1-07 2x 86d 3,831 197f 129p  
 2-07 2x 77d 7,464 289 212  
 Last test: 100lb 3.5% 3.0% 13SCC  
**Calved 11/1/20**  
**Serviced 1/21/21 to 94HO19370 Summerfest**  
**Jr 3 Yr Old**

**PLUM-LINE LAUTHORITY KING**  
 840003128162428 100%RHA VG-88 @ 2-03  
 PTA +1.22T# -.04UDC# +.01FLC# PTPI +1699G  
*Lauthority x Plum-Line Aspen Karamel EX-93-4YR*

**PLUM-LINE CORVETTE VENDETTA**  
 840003128162426

*2nd Dam*  
**Plum-Line Mr Shane Veronica VG-88**  
 2-00 2 305 23640 3.8 904 3.0 699  
*3rd Dam*  
**Claurmac Liuetenant Vanity VG-89**  
 5-05 3 305 35260 3.0 1075 2.9 1022  
 6-06 3 305 30940 4.1 1267 2.9 910  
 7-11 3 305 39280 3.7 1443 2.7 1056  
 Life: 2,228d 195,120 3.7% 7,172 2.9% 5,696  
*5th Dam*  
**Laurmac Vanessa Renegade-ET EX-91-2E**  
*6th Dam*  
**Laurmac Michelle T T VG-85-CAN**  
 7-06 2 333 19550 4.1 798 3.1 608  
*7th Dam*  
**Laurmac Maggie Attract-ET VG-86-CAN**  
 6-09 2 365 21585 4.3 8926 3.3 703  
 Life: 146,498lb 4.1 5,988 3.0 4,392  
*8th Dam*  
**Alblas Fury Lad Maggie VG-85-CAN**  
 6-01 2 365 25,042 3.5 886  
*9th Dam*  
**Alblas Medalist Denise VG-85-CAN**  
 3-10 2 305 21450 3.2 682



# Plum-Line Victorias Secret

8400031499499984 99%RHA Born: 12/17/2018 Herd#: 353  
 1-11 2 45d 2,707 3.7 105 2.9 75  
 Last test: 88lbs 3.7% 2.9%  
**Calved 12/3/20**  
**Serviced 1/15/21 to 799HO00007 Thunderstorm**  
**Sr 2 Yr Old**

**MR D APPLE DIAMONDBACK**  
 840003013721049 99%RHA RC TP TC TY TV EX-93  
 PTA +2.41T +1.84UDC +1.37FLC GTPI +1902G  
*Doorman x MS Delicious Apple-Red-ET EX-94*

**PLUM-LINE FEVER VANILLA**  
 142372872 5-01 Excellent-91 EEVVE  
 3-08 2 305 28870 3.5 1024 2.9 839

*2nd Dam*  
**Plum-Line Sanchez Vixen EX-91-2E**  
 5-11 2 305 28680 4.3 1243 3.0 848  
*4th Dam*  
**Plum-Line Roy Velma VG-86**  
 5-03 2 305 39340 4.3 1679 3.0 1180  
*5th Dam*  
**Plum-Line Progress Violet VG-86**  
 6-02 2 305 25860 94 3.8 976 2.9 757 94  
 Life: 2,294d 183,580 4.1 7,485 3.1 5,602  
*6th Dam*  
**Plum-Line RM Virginia EX-91 EX-MS**  
 5-02 2 272 23680 4.4 1051 2.9 685  
*7th Dam*  
**Laurmac Vanessa Renegade-ET EX-91-2E**  
*8th Dam*  
**Laurmac Michelle T T VG-85-CAN**  
 7-06 2 333 19550 4.1 798 3.1 608  
*9th Dam*  
**Laurmac Maggie Attract-ET VG-86-CAN**  
 6-09 2 365 21585 4.3 8926 3.3 703  
 Life: 146,498lb 4.1 5,988 3.0 4,392  
*10th Dam*  
**Alblas Fury Lad Maggie VG-85-CAN**  
 6-01 2 365 25,042 3.5 886  
*11th Dam*  
**Alblas Medalist Denise VG-85-CAN**  
 3-10 2 305 21450 3.2 682





# Plum-Line Unstopabu Lullaby \*RC

840003212824094 99%RHA Born: 9/2/2020 Herd#: 437

Fall Calf

**RIVERDOWN UNSTOPABULL-RED**

11801450 99%RHA TY TV TL  
PTA +2.67T +2.44UDC +1.74FLC GTPI +2144G  
Avalanche x Cherry Crest Thats Neat EX-91-3E CAN

**PLUM-LINE LINDSAY BOWEN**

840003149949966 (Sired by Windhammer)  
2-02 2 90 6710 4.0 268 3.1 207

2nd Dam

**Plum-Line O Kaliber Layla EX-90 @ 3-07**

2-00 2 305 25100 4.2 1042 3.2 791

3rd Dam

**Plum-Line Seaver Lace GP-83**

4-03 2 305 29040 4.0 1149 3.2 941

4th Dam

**Plum-Line Jasper Lush VG-85**

2-03 2 285 20440 4.1 829 3.2 656

5th Dam

**Plum-Line Goldwyn Linsey-ET EX-90 EX-MS**

4-03 2 302 25870 3.7 945 3.3 845

6th Dam

**Plum-Line Gibson Lola EX-93 EX-MS**

3-11 2x 305d 24540 4.8 1180 3.3 810

Life: 1619d 117670 4.6 5442 3.1 3689

7th Dam

**Plum-Line Encore Lucy VG-85**

6-07 2x 305d 41110 3.8 1573 2.9 1181

Life: 1885d 184300 3.7 6793 2.9 5289

8th Dam

**Plum-Line Milan Linette VG-85**

5-03 3x 305d 35090 4.0 1398 3.0 1060

9th Dam

**Plum-Line Jethro Louann VG-86**

7-05 3x 305d 34150 3.3 1134 3.0 1030



# Plum-Line Sanchez Lizzy

840003149950023 100%RHA Born: 7/13/2019 Herd#: 378

Serviced 1/19/21 to 200HO10992 Sidekick

Summer Jr 2 Yr Old

**GEN-MARK STMATIC SANCHEZ**

134422312 100%RHA TR TP TY TV TL EX-94  
PTA +1.20T +.15UDC +.88FLC GTPI +1564G  
Stormatic x Gen-Mark BW Mar Winnie-ET EX-90-2E GMD

**PLUM-LINE WINDHAMMER LULU**

840003128162429 4-07 Very Good-88 VVVVE  
4-01 2 305 24830 3.3 819 3.2 797

2nd Dam

**Plum-Line Ruben Lauren VG-86**

4-06 2 301 26160 2.9 747 3.0 794

3rd Dam

**Plum-Line James Lisa EX-90 EX-MS**

2-01 2 305 23970 4.0 950 3.3 794

4th Dam

**Plum-Line Lee Lauren VG-87**

5th Dam

**Plum-Line Encore Lucy VG-85**

6-07 2x 305d 41110 3.8 1573 2.9 1181

Life: 1885d 184300 3.7 6793 2.9 5289

6th Dam

**Plum-Line Milan Linette VG-85**

5-03 3x 305d 35090 4.0 1398 3.0 1060

7th Dam

**Plum-Line Jethro Louann VG-86**

7-05 3x 305d 34150 3.3 1134 3.0 1030





# Plum-Line Absolute Lemon \*RC

840003149950002 100%RHA Born: 1/30/2019 Herd#: 357

1-11 2 18d 881lbs 4.9 47 3.2 32

Last test: 62lbs 4.9% 3.2% 33SCC

Calved 12/30/20

Sr 2 Yr Old

### APPLES ABSOLUTE-RED-ET

139358472 100%RHA CV TC TY TL TD EX-94

PTA +2.16T +2.39UDC +1.59FLC GTPI +1534G

Talent x KHW Regiment Apple-Red-ET EX-96-4E DOM

### PLUM-LINE SEAVER LACE

72769210 4-10 Good Plus-83 VVV+G

4-03 2 305 29040 4.0 1149 3.2 941

2nd Dam

Plum-Line Jasper Lush VG-85

2-03 2 285 20440 4.1 829 3.2 656

3rd Dam

Plum-Line Goldwyn Linsey-ET EX-90 EX-MS

4-03 2 302 25870 3.7 945 3.3 845

4th Dam

Plum-Line Gibson Lola EX-93 EX-MS

3-11 2x 305d 24540 4.8 1180 3.3 810

Life: 1619d 117670 4.6 5442 3.1 3689

5th Dam

Plum-Line Encore Lucy VG-85

6-07 2x 305d 41110 3.8 1573 2.9 1181

Life: 1885d 184300 3.7 6793 2.9 5289

6th Dam

Plum-Line Milan Linette VG-85

5-03 3x 305d 35090 4.0 1398 3.0 1060

7th Dam

Plum-Line Jethro Louann VG-86

7-05 3x 305d 34150 3.3 1134 3.0 1030



# Plum-Line Lil Britches

840003149950007 100%RHA Born: 3/1/2019 Herd#: 362

Due 5/14/21 to 200HO03913 Unix

Summer Jr 2 Yr Old

### BUTZ-BUTLER ATWOOD BRADY-ET

140610404 100%RHA TC TY TV TL TD EX-93

PTA +2.22T +1.83UDC +.61FLC GTPI +1458G

Atwood x Regancrest Brasilia-ET EX-92-2E DOM

### PLUM-LINE PRONTO BRIE

139700064 10-06 Excellent-92 EEEEE 3E

5-05 2 285 24470 2.9 710 3.1 751

6-04 2 256 24850 2.7 677 3.0 755

Life: 2,550d 202,290lb 3.3% 6,669 3.1% 6,203

2nd Dam

Plum-Line Beautys Brit EX-90 EX-MS 3YR

4-02 2 305 25930 3.9 999 3.1 816

3rd Dam

Plum-Line Approval Beauty VG-85

3-03 2 305 30750 3.6 1120 2.8 871

4th Dam

Plum-Line Encore Barbie

5-01 3 305 37290 4.3 1603 2.5 947

5th Dam

Plum-Line Jet Beaula VG-88

6-09 3 305 24150 3.5 856 3.1 740

6th Dam

Dodd-Farms Adabelle VG-86

9-06 3 305 29320 3.6 1058 2.9 847

Life: 2,034d 154,400 3.4 5,214 2.8 4,367

7th Dam

Plum-Line Jethro Louann VG-86

7-05 3x 305d 34150 3.3 1134 3.0 1030





**ROCKYMOUNTAIN TALENT LICORICE EX-95**  
4th dam



*Plum-Line Unstopabul Luxury \*RC*

840003212824097 99%RHA Born: 9/6/2020 Herd#: 440

**Fall Calf**

**RIVERDOWN UNSTOPABULL-RED**  
11801450 99%RHA TY TV TL  
PTA +2.67T +2.44UDC +1.74FLC GTPI +2144G  
*Avalanche x Cherry Crest Thats Neat EX-91-3E CAN*

**PLUM-LINE HAMMER LINGERIE**  
840003149949988 (Sired by Windhammer)  
1-10 2 133 9,227 293 279  
First test: 66lbs 3.7% 3.0%

*Maternal Sisters 3rd Dam (Pictured Below)*  
**Blondin Lauthory Libye-ET EX-92**  
3-04 2x 365d 35780 3.4 1210 3.1 1111  
*Int. Champion, Quebec Spring Show 2014*  
*1st Sr. 2, Quebec Spring Show 2014*



*2nd-14th Dams*

**Butlerview Defnt Laurel-ET VG-87**  
3-03 2 305 22230 3.6 799 3.1 693  
**MS Licorices Gold Legacy-ET vg-85 @ 2-05**  
2-03 2 305 24270 4.6 1124 3.3 808  
**Rockymountain Talent Licorice EX-95**  
3-10 2 323 34770 4.0 1384 3.2 1106  
*All-American & All-Canadian 4yr Old 2011*  
*HM Grand Champion, Royal Winter Fair 2010*  
*1st 4yr Old, World Dairy Expo 2011*  
*Grand Champion, Quebec Spring Show 2011*  
*Grand Champion, NY Spring Show 2011*  
*Intermediate Champion, Royal Winter Fair 2010*  
**Idee Rudolph Liberty VG-89-CAN 3YR (Max) 3\***  
4-05 2 365 32,366 3.5 1,129 3.3 1,078  
5-11 2 365 33,839 3.4 1,164 3.3 1,102  
11-04 2 349 32,847 4.0 1,323 2.9 961  
Life:151,496lb 3.7% 5,553 3.2% 4,903  
*2nd Jr 3, Westerner Champ 2004*  
*3rd Jr 3, Saskatoon Expo 2004*  
*7 Star Brood Production Award Winner*  
**Idee Skychief Latoya VG-88-CAN 8\***  
5-07 2 365 32,527 4.2 1,362 3.2 1,049  
7-00 2 365 32,159 4.3 1,389 3.2 1,021  
*Maternal sister to Idee Lustre EX-95-USA 3E*  
*10 Star Brood Production Award Winner*  
**Ravenswell Lydia EX-92-USA DOM 19\***  
**Spring Farm Miss Lynn-ET VG-85-CAN-3YR**  
**Spring Farm Miss Connie VG-88-CAN 2\***  
**Spring Farm Miss Citation VG-87-CAN 3\***  
**Spring Farm Miss Pathfinder EX-CAN 8\***  
**Spring Farm Fond Pathfinder VG-CAN 5\***  
**Eveermot Pathfinder Ormsby VG-CAN 3\***  
**Eveermot Pabst Ormsby VG-CAN 3\***





PIERSTEIN DAMION LINDSAY-ET EX-94  
Dam



G-M-C GoldChip Lucky-ET

840003212824064 100%RHA Born: 1/9/2020 Herd#: 407

Winter Yearling

**MR CHASSITY GOLD CHIP-ET**  
140145553 100%RHA TR TP TY TV TL EX-95  
PTA +1.52T +1.10UDC +1.14FLC GTPI +1753G  
Goldwyn x Regancrest S Chassity-ET EX-92 GMD

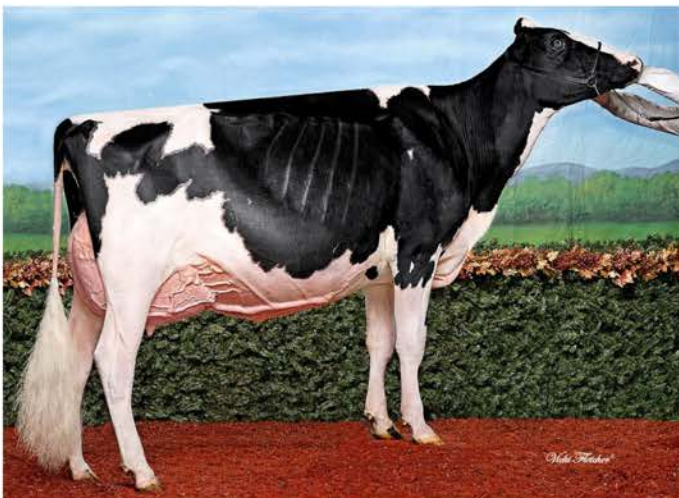
**PIERSTEIN DAMION LINDSAY-ET**  
105962823 7-00 Excellent-94 EEEEE  
3-03 2 365 34874 3.8 1335 3.0 1058  
4-11 2 344 30940 3.0 927 3.1 954  
6-01 2 365 33420 3.1 1034 3.1 1030  
7-05 365 37644 2.7 1016 2.9 1091  
Life: 2,429d 205,574 3.2% 6,675 3.1% 6,282

2nd Dam

**Redama Allen Lice, EX93-3E-CAN 9\***  
1-11 355 25459 3.6 919 3.1 781  
3-00 365 38622 3.4 1325 3.1 1197  
4-05 365 34028 3.2 1085 3.1 1040  
5-11 307 33100 3.5 1153 2.8 929  
Life: 161,196lb 3.5% 5,591 3.2% 5,137  
Nominated All-Quebec 4 Yr Old 2009  
HM All-Quebec Jr 3 Yr Old 2008  
Nominated All-Quebec Jr 2 Yr Old 2007

3rd Dam

**Redama Chrome Lyso, EX90-2E-CAN 10\***  
5-06 365 32341 3.5 1138 3.2 1023  
Life: 193,017lb 3.6% 6,874 3.1% 6,043



Maternal Sisters Dam  
**Jacobs Gold Liann EX-93**  
All-American & All-Canadian Jr 3 Yr Old 2016  
Grand Champion, Royal Winter Fair 2016  
Reserve Grand Champion, Trois-Rivieres 2016  
1st Jr 3 & Int Champion, Royal Winter Fair 2016





PIERSTEIN DAMION LINDSAY-ET EX-94  
Dam



G-M-C GoldChip Lexus-ET

3212824069 100%RHA Born: 3/3/2020 Herd#: 412

Spring Yearling

MR CHASSITY GOLD CHIP-ET  
140145553 100%RHA TR TP TY TV TL EX-95  
PTA +1.52T +1.10UDC +1.14FLC GTPI +1753G  
Goldwyn x Regancrest S Chassity-ET EX-92 GMD

PIERSTEIN DAMION LINDSAY-ET  
105962823 7-00 Excellent-94 EEEEE  
3-03 2 365 34874 3.8 1335 3.0 1058  
4-11 2 344 30940 3.0 927 3.1 954  
6-01 2 365 33420 3.1 1034 3.1 1030  
7-05 365 37644 2.7 1016 2.9 1091  
Life: 2,429d 205,574 3.2% 6,675 3.1% 6,282

2nd Dam

Redama Allen Lice, EX93-3E-CAN 9\*  
1-11 355 25459 3.6 919 3.1 781  
3-00 365 38622 3.4 1325 3.1 1197  
4-05 365 34028 3.2 1085 3.1 1040  
5-11 307 33100 3.5 1153 2.8 929  
Life: 161,196lb 3.5% 5,591 3.2% 5,137  
Nominated All-Quebec 4 Yr Old 2009  
HM All-Quebec Jr 3 Yr Old 2008  
Nominated All-Quebec Jr 2 Yr Old 2007

3rd Dam

Redama Chrome Lyso, EX90-2E-CAN 10\*  
5-06 365 32341 3.5 1138 3.2 1023  
Life: 193,017lb 3.6% 6,874 3.1% 6,043



Maternal Sisters Dam  
Jacobs Gold Liann EX-93  
All-American & All-Canadian Jr 3 Yr Old 2016  
Grand Champion, Royal Winter Fair 2016  
Reserve Grand Champion, Trois-Rivieries 2016  
1st Jr 3 & Int Champion, Royal Winter Fair 2016





**RIDGEDALE-T RAICHU-RED-ET EX-96-4E**  
Maternal Sister to 3rd Dam



**RIDGEDALE RUNWAY-RED-ET EX-95**  
Maternal Sister to 3rd Dam



## Plum-Line Solomon Rackcity

840003212824100 99%RHA Born: 8/11/2020 Herd#: 443

### Summer Yearling

**WALNUTLAWN SOLOMON-ET**  
11775998 99%RHA TR TP TY TV TL TD  
PTA +2.59T +1.72UDC +43FLC GTPI +1997G  
Doorman x Misty Springs Lavanguard Sue VG-89-

**RIDGEDALE RAKE IT UP-ET**  
840003139044644 2-04 Good Plus-83 G+V+V  
2-00 2 264 14110 3.7 516 3.3 459

Maternal Sisters 3rd Dam  
**Ridgedale-T Raichu-Red EX-96-4E**  
5 Time Nom All-American R&W in milking form!!  
1st 5-Yr-Old, World Dairy Expo R&W Show 2015  
Res. Grand Champ, WDE Jr Show 2015  
Res. Grand Champ, NYSF Open & Jr. Show 2013  
Res. Jr All-American R&W Jr 3 Yr Old 2008

Maternal Sisters to 3rd Dam  
**Ridgedale Runway-Red-ET EX-95**  
Nominated Jr. All-American Aged Cow 2017  
1st Aged Cow & Sr Champ, All-American 2014  
**Ridgedale-T Relish-ET EX-94**  
**Ridgedale Rhapsody-ET EX-94**  
**Ridgedale Rendezvous-Red-ET EX-92**  
**Ridgedale Raizel-Red-ET EX-92**  
**Ridgedale Rhoda-Red-ET EX-91 2E**  
**Ridgedale-T Radiance-ET \*RC EX-90**

2nd Dam  
**Ridgedale Rhapsody-ET EX-94-2E**  
6-10 3 365 30420 3.7 1116 3.1 936  
3rd Dam  
**Ridgedale-T Rehema-Red-ET EX-93-2E DOM**  
6-02 3 365 26100 4.1 1065 2.9 750  
4th-10th Dams  
**Hanover-Hill-R Mi Rochelle EX-93**  
5-10 3x 365d 24,980 4.6% 1,154 3.6% 887  
1st Winter Yearling, Eastern Spring National 1996  
**Hanover-Hill-R Rhonda-TW EX-94 4E GMD DOM**  
6-02 2x 365d 38,820 4.0% 1,562 2.9% 1,141  
Life: 2,823d 196,650lbs 4.3% 8,448f 3.2% 6,215p  
**C Hanoverhill Star Roxy-ET EX-92 2E GMD DOM**  
4-05 3x 365d 31,780 4.4% 1,394 3.1% 994  
Reserve All-American Produce of Dam 1997  
**Mil-R-Mor Roxette EX-90 EEEV GMD DOM**  
7-01 2x 365d 24530 4.7 1153  
**C Glenridge Citation Roxy EX-97 4E GMD**  
Life: 3,620d 209,784lbs 4.5% 9,471f  
'Queen of the Breed'  
**C Norton Court Model Vee EX-90**  
Life: 4,183d 218,629lbs 3.9% 8,581f  
All-American Produce of Dam 1977-1979  
Grand Champion, Brandon Show 1969  
**Norton Court Reflection Val VG-85 5\***  
Life: 14 Lactations 249,583lbs 3.7% 9,295f





# Plum-Line Saloon Roxanne

840003212824073 100%RHA Born: 3/14/2020 Herd#: 416

**Spring Yearling**

**SANDY-VALLEY SALOON-ET**  
70358061 100%RHA TR TP TY TL TD  
PTA +2.12T +.84UDC +.07FLC GTPI +2528G  
*Altalota x Sandy-Valley Plane Sapphire VG-87 @ 2-03*

**PLUM-LINE ATWOOD RUBY**  
840003128162419 4-11 Very Good-88 EEV+V  
1-10 2 305 23910 4.4 1048 3.1 741

*2nd Dam*

**Plum-Line Sid Rockon VG-85**  
4-06 2 305 29200 95 4.3 1270 3.1 910

*3rd Dam*

**Plum-Line Encounter Renee EX-90 EX-MS**  
7-10 2 305 30170 3.9 1184 2.9 887  
Life: 1,768d 146,140lb 3.9% 5,701 3.0% 4,356

*4th Dam*

**Plum-Line Lee Reonna EX-90-2E EX-MS**  
4-06 2 305 35230 4.7 1645 3.0 1049

*5th Dam*

**Ebe-Tide Rosemond Alta-ET EX-90 EX-MS GMD**  
7-10 3 305 36250 3.6 1315 3.0 1085  
Life: 1,704d 148,000lb 3.5% 5,227 3.1% 4,611

*6th Dam*

**Ebe-Tide Roseanna Alta-ET EX-90-3E EX-MS GMD**  
8-07 3 365 32520 3.3 1061 2.8 899  
Life: 2,723d 202,100lb 3.4% 6,972 3.0% 5,992

*7th Dam*

**Rosalind Ebe-Tide Alta EX-91 GMD DOM**  
5-09 2 365 29457 3.6 1074

*8th Dam*

**C Roselandvale Senator Alta EX-95-2E**  
5-00 2 303 22170 3.6 796

*3rd Aged Cow, Eastern National 1977*

*9th Dam*

**C Roselandvale Princess Alta VG-85**  
11-06 2 305 20710 3.7 763



# Plum-Line Archrival Caliber

840003149949955 100%RHA Born: 3/19/2018 Herd#: 310

Last test: 56lbs 5.7% 2.8% 93SCC

**Jr 3 Yr Old**

**ECLIPSE ATWOODS ARCHRIVAL-ET**  
H01786521 100%RHA  
PTA +2.59T +1.80UDC +.96FLC GTPI +1624G  
*Atwood x Anya-ET*

**PLUM-LINE LAUTHORITY CHACHA**  
840003134372128

*2nd Dam*

**Plum-Line Schez Cher-ET VG-87**  
2-10 2 305 25480 3.8 966 3.0 762

*3rd Dam*

**Plum-Line Linjet Cameo EX-92-3E EX-MS**  
6-07 2 305 28150 3.5 995 3.1 886  
Life: 2,226d 161,770 3.8% 6,123 3.2% 5,124

*4th Dam*

**Plum-Line Rudolph Camille VG-87**  
3-05 2 286 28810 3.9 1115 3.1 879

4-05 2 305 28050 3.8 1055 3.1 872  
5-08 2 305 28340 4.3 1221 3.1 869

*5th-9th Dams*

**Plum-Line Adan Chentel EX-93-4E**  
2-07 2 305 22080 3.6 785 3.2 702

**Campbell-Run Segis Sara VG-88**  
9-05 3 305 32060 3.3 1067 3.1 1008

Life: 1,814d 142,250lb 3.3% 4,669 3.1% 4,428

**Campbell-Run Stardom Sadie EX-91-3E**  
9-01 2 365 23050 3.3 763 3.1 708

**Campbell-Run Citation Salty VG-85**  
3-10 2 305 21450 3.2 682

**Wagnerscrest Salt & Pepper VG-86**  
8-01 2 305 20200 3.5 700

**Pat-Bern Whirlhill Snow Drop VG-86**  
8-00 2 330 21840 4.0 864



*Same Family*

**Plum-Line Attic Atlee**

*Nominated All-American Fall Yearling 2017*

*Nominated Jr All-American Fall Yearling 2017*

*1st Fall Yearling, Eastern Fall Nat'l 2017*

*3rd Fall Yearling, World Dairy Expo 2017*





# Plum-Line Solomon Maya

840003212824077 99%RHA Born: 6/2/2020 Herd#: 420

**Summer Yearling**

**WALNUTLAWN SOLOMON-ET**  
11775998 99%RHA TR TP TY TV TL TD  
PTA +2.59T +1.72UDC +.43FLC GTPI +1997G  
Doorman x Misty Springs Lavanguard Sue VG-89

**PLUM-LINE ABSOLUTE MISSY**  
840003128162437 4-08 Very Good-87 VVVVV  
3-09 2 305 26000 4.6 1194 3.4 888

2nd Dam

**Plum-Line Norman Maggie EX-92-2E**

3-05 2 305 29970 3.5 1037 3.0 907

5-00 2 305 29530 3.6 1075 3.1 909

Life: 1,682d 146,190lb 3.7% 5,416 3.1% 4,524

3rd Dam

**Plum-Line Kite Maggie VG-89**

4-04 2 365 31600 3.6 1132 3.3 1043

Life: 2,249d 153,770lb 3.9% 5,980 3.3% 5,016

4th Dam

**Plum-Line Lee Mary VG-87**

6-04 2 305 31840 3.7 1185 3.1 1000

Life: 1,923d 162,500lb 4.0% 6,481 3.3% 5,345

5th Dam

**Plum-Line BJ Mickey EX-93-3E**

4-00 3 305 33710 3.8 1278 3.1 1051

5-01 3 305 29140 3.9 1137 3.2 938

7-00 3 305 39260 3.9 1534 2.8 1083

9-00 2 305 31610 4.5 1436 3.1 981

Life: 1,657d 157,820lb 4.0% 6,343 3.1% 4,899

6th Dam

**Goodig Lindy Melissa EX-90-2E EX-MS**



# Plum-Line Crush Milly

840003149950020 99%RHA Born: 6/26/2019 Herd#: 375

*Due 6/22/21 to 7H014477 Warrior*

**Summer Jr 2 Yr Old**

**MAVERICK CRUSH**

12042760 99%RHA TC TY TV TL TD

PTA +2.49T +1.56UDC +1.46FLC GTPI +2039G

Doorman x EDG Claire Cling-ET

**PLUM-LINE MONEY 4 NOTHIN-TW**

840003141692250 3-02 Very Good-86 VVV+V

2-00 2 284 19460 4.0 776 2.9 565

2nd Dam

**Plum-Line DBNair Magnum-Red EX-92 EX-MS**

3-00 2 305 26940 4.4 1175 3.1 822

3rd Dam

**Plum-Line Charles Marie-Red VG-86**

6-01 2 305 28430 4.2 1203 3.1 869

7-03 2 305 28940 3.3 962 3.1 900

4th Dam

**Plum-Line RM Marguerite EX-91-2E**

4-10 2 305 31790 4.9 1553 2.8 895

5th Dams

**Plum-Line BJ Mickey EX-93-3E**

4-00 3 305 33710 3.8 1278 3.1 1051

5-01 3 305 29140 3.9 1137 3.2 938

7-00 3 305 39260 3.9 1534 2.8 1083

9-00 2 305 31610 4.5 1436 3.1 981

Life: 1,657d 157,820lb 4.0% 6,343 3.1% 4,899

6th Dam

**Goodig Lindy Melissa EX-90-2E EX-MS**



2nd Dam

**Plum-Line DBNair Magnum-Red EX-92 EX-MS**

© Jenny Thomas  
Light Path Photography





©2018 Randall S. Blodgett

PLUM-LINE HAPPY GO LUCKY VG-85 @ 2-04  
Dam



Plum-Line Saloons Highlife

840003149950033 99%RHA Born: 9/4/2019 Herd#: 388  
Serviced 12/8/20 to 94HO19074 Cheers  
Fall Yearling

**SANDY-VALLEY SALOON-ET**  
70358061 100%RHA TR TP TY TL TD  
PTA +2.12T +.84UDC +.07FLC GTPI +2528G  
Altalota x Sandy-Valley Plane Sapphire VG-87 @ 2-03

**PLUM-LINE HAPPY GO LUCKY**  
840003141692255 2-04 Very Good-85 +VV+V  
1-11 2 240 16220 4.4 708 3.3 532  
Sired by Doorman

4th Dam  
Plum-Line Charles Holly EX-94-3E



2nd Dam

**Plum-Line Alexander Hollie EX-90 EX-MS**  
6-00 2 305 26350 4.5 1177 3.3 866

3rd Dam

**Plum-Line Dundee Jalapeno-ET VG-86-2YR**  
5-06 365 32341 3.5 1138 3.2 1023

Life: 193,017lb 3.6% 6,874 3.1% 6,043

4th Dam

**Plum-Line Charles Holly EX-94-3E**

4-09 3x 305d 31740 3.8 1203 2.7 843

Life: 2191d 176390 4.2 7477 3.2 5644

3X Grand Champ Western PA Champ Show

3rd Aged Cow Eastern Nat'l 2011

5th Dam

**C Patience Vanguard Heather NC**

6th Dam

**Provale Majesty Helena VG-85-CAN**

4-10 2x 365d 22020 3.9 869 3.5 780

7th Dam

**Provale Triple Helen VG-85-CAN 1\***

3-06 2x 324d 16546 4.5 747 4.4 730





**ROSEDALE LUCKY-ROSE-RED EX-94-2E**  
2nd Dam



*MS Plum-Line RW Sid Dixie \*RC*

840003149950031 100%RHA Born: 9/422019 Herd#: 386  
Served 12/21/20 to 7HO14477 Warrior  
Fall Yearling

**PINE-TREE SID-ET**  
62175895 100%RHA TR TP TY TL TD  
PTA +1.47T +.94UDC -.85FLC GTPi +1550G  
Mr Sam x Pine-Tree Finley Minnie-ET EX-90 DOM

**ROSEDALE DEVASTATING-RED-ET**  
840003130798727 4-04 Excellent-91 VEEEEE  
2-00 2 305 27330 3.8 1034 3.2 868  
3-03 3 317 26240 3.3 865 2.9 766  
Sired by Heztry



Maternal Sister to Dam  
**Rosedale Avala Lollipop-Red**  
Unanimous All-American Summer Yearling 2018  
All-Canadian Summer Yearling 2018  
Junior Champion, Royal R&W Show '18

2nd Dam  
**Rosedale Lucky-Rose-Red EX-94-2E**  
3-07 2 365 38090 4.5 1716 3.1 1175  
1st Aged Cow & HM Sr Champion, NY Spring R&W Show 2018  
HHM All-American R&W Aged Cow 2017  
1st Aged Cow, Sr & Grand Champion, NY State Fair R&W 2017  
Nom. All-American R&W 5 Yr Old, 4 Yr Old, & Jr 3  
HM All-American R&W Junior 2 Yr Old 2013  
Unanimous All-American R&W Summer Yearling 2012

3rd Dam  
**Northrose-I Lavender EX-90 EX-MS 4\***  
3-10 2 305 26,160 3.6 945 3.4 894

4th Dam  
**Rosedale Lea-Ann Excellent-93-2E GMD**  
2.06 365 35,201 3.3 1,164 3.1 1,093  
4.08 365 39,370 3.4 1,325 3.1 1,202

5th Dam  
**Stookey Elm Park Blackrose-ET \*RC EX-96-3E GMD DOM**  
5-03 3 365 42,230 4.6 1,939 3.4 1,432  
7-03 3 365 41,960 4.3 1,796 3.1 1,285  
Life: 1,609d 149,880lb 4.4% 6,621 3.3% 4,940

6th Dam  
**Nandette TT Speckle Red EX-93 DOM**  
4-08 365 25,289 4.7 1,195  
3 All-Canadian & American Championship titles

7th Dam  
**Nandette Riley Nana-Red VG-87**  
7-01 2 365 20,070 3.4 677 3.1 621

8th Dam  
**Nandette Bootmaker Gale VG-89**  
5-07 2 305 22,300 4.0 896





**WINDY-KNOLL-VIEW PROSPER VG-87**  
Dam



*Plum-Line Solomon Platinum*

840003149950024 99%RHA Born: 7/19/2019 Herd#: 379  
Served 1/5/21 to 94HO17973 Hypnotic  
Summer Jr 2 Yr Old

**WALNUTLAWN SOLOMON-ET**  
11775998 99%RHA TR TP TY TV TL TD  
PTA +2.59T +1.72UDC +.43FLC GTP1 +1997G  
Doorman x Misty Springs Lavanguard Sue VG-89

**RIDGEDALE-W PERCOCET-ET**  
840003141692262 2-04 Good Plus-82 +++G+  
1-10 2 235 14830 4.4 650 3.0 442  
Sired by Brady

4th Dam (Pictured Below)  
Windy-Knoll-View Promis-ET EX-95-2E



2nd Dam  
**Pineland Goldwyn Pacey-ET EX-92-3E**  
8-05 3 365 30290 4.1 1249 2.9 891  
3rd Dam  
**Windy-Knoll-View Prosper-ET VG-87**  
3-11 2 365 31,530 4.3 1364 2.9 926  
4th Dam  
**Windy-Knoll-View Promis-ET EX-95-2E**  
4-08 365d 44,120 3.7 1633 3.2 1401  
LIFE: 1,680d 143,630 3.7% 5,339f 3.3% 4,712p  
Reserve All-American 5 Yr Old 2003  
Sr & Grand Champ Eastern Fall National 2003  
3rd 5 Yr Old, World Dairy Expo 2003  
HHM All-American Sr 3 Yr Old  
3rd Sr 3, World Dairy Expo 2001  
5th Dam  
**Windy-Knoll-View Ultimate Pala, EX-94-3E DOM**  
5-08 365d 27970 4.5 1,267 3.1 879  
5X All-PA  
6th Dam  
**Windy-Knoll-View Creek Pauline VG88**  
4-09 2 305 18,960 3.6 690 2.8 537

Maternal sisters to 2nd Dam  
**Pineland-Goldwyn Pride-ET EX-95**  
**Pineland Goldwyn Paige-ET EX-92-3E**  
**Pineland Goldwyn Penelope-ET EX-91-2E**  
7-10 2 365 50,432 4.8 2,416 2.8 1,453  
**Pineland Sanchez Prius-ET EX-91-2E**





*Plum-Line*  
HOLSTEINS  
& *Friends*

*Breeder's Select Sale*

*Consignments*





SMITHDEN GOLDWYN ALEXANDRA EX-94-CAN  
3rd Dam of Lot



# Earincliffe Sid Addison

Consigned by Barton

12716206 99%RHA Born: 12/3/2016  
2-02 2 365 36660 3.3 1216 3.0 1097  
RIP 3-09 2 102 13002 4.0 522 2.7 357  
Last test: 124lbs 40SCC  
**Serviced to Sidekick**  
**Four Yr Old**  
**Very Good-87 VVVVV @ 3-10**

**PINE-TREE SID-ET**  
62175895 100%RHA TR TP TY TL TD  
PTA +1.47T +.94UDC -.85FLC GTPI +1550G  
Mr Sam x Pine-Tree Finley Minnie-ET EX-90 DOM

**EARINCLIFFE FLORIAN AKIKA**  
11793246 VG-85-4YR-CAN  
4-00 2 365 26,748 4.3 1,160 3.4 897

**2nd Dam**  
**MS Rock-Home Alexd April-ET EX-93-3E-CAN 1\***  
5-08 2 365 30,373 4.0 1,199 3.3 1,001  
**3rd Dam**  
**Smithden Goldwyn Alexandra EX-94-7YR-CAN 23\***  
4-08 2 365 39,467 4.3 1,693 3.4 1,327  
6 EX & 16 VG daughters  
97% daughters GP or better!  
**4th Dam**  
**Smithden Allen Alison VG-88-5YR-CAN 33\***  
7-11 2 365 44,226 3.8 1,698 3.2 1,426  
7 EX & 13 VG daughters  
100% daughters GP or better!  
**5th Dam**  
**Smithden Rudolph Lana VG-89-4YR-CAN 4\***  
3-11 2 365 44,403 3.2 1,409 3.1 1,378  
**6th Dam**  
**Smithden Lindy Lucille VG-87-3YR-CAN 3\***  
4-09 2 365 36,960 4.5 1,656 3.3 1,221  
Life: 219,552lb 4.5% 9,877 3.4% 7,410  
**7th Dam**  
**Smithden SC Tara EX-5YR-CAN 8\***  
13-00 2 365 30,774 4.0 1,221 3.2 990  
Life: 238,262lb 4.2% 9,969 3.3% 7,939





**FOXMONT-J GOLDWYN DENA-ET EX-94-2E**  
3rd Dam



**JB-GLENVAL APPROVAL DENA EX-94-2E**  
4th Dam



*Foxmont-J Doorman Debut*

840003202558872 99%RHA Born: 12/27/2018  
Due 2/24/21 to THO10920 Gold Chip  
Sr 2 Yr Old

**VAL-BISSON DOORMAN-ET**  
107281711 99%RHA TR TP TY TV TL EX-90 CAN  
PTA +2.48T +1.63UDC +.80FLCGTPI +2200G  
Bookem x Val-Bisson Shottle Imelda EX-94

**FOXMONT-J SID DANCER**  
840003141274785 2-09 Very Good-85 VV++V  
2-00 3 305 21360 4.1 881 3.2 677

3rd Dam  
**Foxmont-J Goldwyn Dena-ET EX-94-2E**  
4-09 3 305 32480 109 3.6 1166 3.0 987  
2nd 5 Yr Old, Eastern Fall National 2018  
2nd 5 Yr Old, Mid-East Fall National 2018  
5th Sr 3, Mid-East Fall National 2016  
4th Dam  
**JB-Glenval Approval Dena EX-94-2E**  
6-05 2 305 31520 95 3.2 1020 2.9 899  
1st Aged Cow, Mid-East Fall National 2010  
5th Aged Cow, Eastern Fall National 2010  
Supreme Champion, NAILE Youth Show 2009  
1st & Grand Champion Jr, Mid-East Fall National 2009  
1st & Reserve Grand, Mid-East Fall National 2009  
3rd 5 Yr Old, Eastern Fall National 2009  
All-PA Sr 2 Yr Old 2006

Consigned by Fox

2nd Dam  
**Foxmont-J Windbrook Dart-ET VG-87**  
4-10 3 305 26940 4.3 1160 2.9 785  
3rd Dam  
**Foxmont-J Goldwyn Dena-ET EX-94-2E**  
4-09 3 305 32480 109 3.6 1166 3.0 987  
4th Dam  
**JB-Glenval Approval Dena EX-94-2E**  
6-05 2 305 31520 95 3.2 1020 2.9 899  
5th Dam  
**JB-Glenval Durham Debbie VG-87**  
5-04 2 283 24700 3.5 874 3.4 837  
6th-14th Dam  
**JB-Glenval Ice Denise VG-85**  
5-04 2 361 24990 3.8 948 3.3 830  
**Rothrock Pappy Desma-ET GP-82**  
4-04 2 289 25180 3.6 907 3.1 792  
**Rothrock Lit Dew Drip-TW VG-87**  
2-02 2 365 29640 3.7 1083 3.2 956  
**Rothrock AI Dew VG-89 EX-MS**  
3-00 2 365 28270 4.1 1147 3.3 921  
**Hilltop-Hanover-B Darby-ET VG-86 GMD**  
4-09 2 365 28470 3.1 876 3.1 876  
**Ocean-View Elevation Debbie EX-91-2E GMD DOM**  
3-07 2 365 41220 4.3 1767 3.1 1289  
**Fleetridge Bootmaker Dixie EX-90-2E GMD DOM**  
6-07 2 365 43430 3.1 1349  
**Fleetridge Mona Dixie EX-92-2E**  
10-01 2 365 40010 3.5 1413  
**Fleetridge Grand Dixie VG-87**  
4-10 2 342 24190 3.5 851





**ALL-GLO GOLD C KAPPUCINO-ET EX-91 @ 3-09**  
 Dam of Lot



*All-Glo Doorman Kanilla*

840003202160125 99%RHA Born: 6/7/2019 Herd#: 328  
 Due 7/24/21 to All-Glo Byway Morsmorde-ET Reg#: 3138537470  
**Summer Jr 2 Yr Old**

**Pregnant to full brother to  
 All-Glo Byway Montral-ET  
 Nominated All-American & All-Canadian  
 Winter Calf 2018  
 Jr Champion, Autumn Opportunity 2019  
 Byway x Pennwood Gold Chip Madison**

**VAL-BISSON DOORMAN-ET**  
 107281711 99%RHA TR TP TY TV TL EX-90 CAN  
 PTA +3.23T +2.97UDC +1.95FLC GTPI +1991G  
 Bookem x Val-Bisson Shottle Imelda EX-94  
**ALL-GLO GOLD C KAPPUCINO-ET**  
 840003131924803 3-09 Excellent-91 EE+VE  
 5th Sr 3, Eastern Fall National 2019  
 3rd Winter Yearling, Eastern Fall National 2017  
 7th Winter Yearling, World Dairy Expo 2017  
 Reserve All-American Winter Calf 2016  
 2nd Winter Calf, World Dairy Expo 2016

2nd Dam *Consigned by Kaufman*

**Pennwood Damion Krayola EX-90**  
 3-05 3 272 18590 3.0 554 3.2 590  
 3rd Dam  
**Pennwood Reece Raleigh EX-90-2E**  
 3-03 301 3 31,680 2.6% 822 2.7% 849  
 LIFE: 3,291d 270,780lb 3.1% 8,352f 2.9% 7,727p

*Maternal Sisters to 2nd Dam*  
**Pennwood Troy Kalahari EX-93-2E (Pictured Below)**  
 HM Junior All-American 5 Yr Old 2012  
 HM Grand Champion, PA State Show 2013  
 Reserve All-PA 5 Yr Old 2013  
 Supreme Champion, PA Farm Show 2014  
 Res. Grand Champion, Central PA Champ Show 2013  
 4th 5 Yr Old, All-American Dairy Show 2013  
 2nd 5 Yr Old, PA Fall Championship Show 2013  
**Pennwood Sid Kalamari EX-90**



Full Sire to Sire Lot is Serviced to  
 All-Glo Byway Montral



Dam of Sire Lot is Serviced to  
 Pennwood Gold C Madison EX-91







**PENNWOOD DUNDEE DELILAH EX-90**  
Same Family as Lot



# All-Glo Kenosha Dolly

840003219944288 99%RHA Born: 6/28/2020 Herd#: 7618

**Summer Yearling**

**LARCREST KENOSHA 2515-ET**  
74630765 99%RHA TR TP TC TY TV TL EX-91  
PTA +2.36T +2.20UDC +1.12FLC GTPI +2082G  
Kingboy x Larcrest Cordial-ET EX-92 DOM  
**ALL-GLO SEAVER DOLORES**  
840003126310819 5-07 Very Good-88 VEV+V  
4-02 3 305 25440 3.0 757 3.0 759

Consigned by Kaufman

**2nd Dam**  
**Pennwood Alexandr Davinci VG-85**  
4-11 3 305 31110 3.1 954 2.8 860  
**3rd Dam**  
**Pennwood Electricity Daley VG-88**  
2-02 3 299 30860 3.1 942 2.9 891  
3-02 3 305 35390 3.1 1093 3.0 1072  
4-02 3 293 34580 3.1 1056 2.7 950  
5-02 3 305 33440 3.5 1180 2.6 857  
Life: 2,163d 211,530lb 3.2% 6,752 2.8% 5,892  
**4th Dam**  
**Pennwood Jabot Dawna VG-86 3YR**  
2-08 3 305 31810 2.1 663 2.9 929  
3-11 3 283 32470 3.0 967 2.9 939  
4-10 3 305 30920 3.3 1017 2.8 874  
Life: 2,076d 176,830lb 2.9% 5,178 2.9% 5,193  
**5th Dam**  
**Pennwood Mandel Dove**  
5-05 3 305 28880 2.3 658 3.1 884  
**6th Dam**  
**Pennwood Wister Dawn VG-85 3YR**  
3-08 2 365 33310 3.4 1125 3.1 1033  
**7th Dam**  
**Pennwood Valet Dorothy VG-86**  
4-07 2 365 25220 4.0 1005 2.9 726  
**8th-10th Dams**  
**Pennwood Alex Delight GP-82**  
**Pennwood Jerry Desire EX-90-2E**  
9-02 2 305 20160 3.8 756 3.1 622  
Life: 3,163d 162,040lb 3.8% 6,176 3.2% 3,147  
**Pennwood Star Deann VG-85**  
5-00 2 305 19110 4.0 762





LINDLAUR DIAMONDBACK ANDIE VG-86 @ 2-05

Dam of Lot



Lindlaur Warrior Aerosmith \*RC

Consigned by Lamoreaux

74155572 99%RHA Born: 6/2/2020

Summer Yearling

MR BLONDIN WARRIOR-RED-ET  
840003139655530 99%RHA TP TC TY TV TL  
PTA +3.39T +2.18UDC +1.57FLC GTPI +2047G  
Avalanche x Triple-Crown JW Door Wisp-ET VG-85 CAN

LINDLAUR DIAMONDBACK ANDIE  
74155210 2-05 Very Good-86 VV+VV  
Nominated Jr All-American Spring Calf 2018  
4th Spring Calf, Mid-East Summer National 2018

2nd Dam  
Klingendale Gold Chip Addie VG-86 @ 2-01  
2-00 3 365 26410 3.5 928 2.7 724  
3rd Spring Yearling, Mid-East Fall National 2017  
3rd Dam  
Klingendale Redliner Almond VG-87 EX-MS  
2-06 2 313 25060 3.8 949 3.1 777  
4th Dam  
Klingendale Affirmed Aussie VG-89 EX-MS  
4-07 2 365 24470 4.1 999 3.2 793  
5th Dam  
Klingendale Bond Abigail VG-85  
4-01 2 267 29670 3.6 1079 2.9 870





John Erbsen

**MS APPLÉS ANGEL-ET EX-94-2E**  
3rd Dam of Lot



Beth Henges

**MS D ANGEL DENISHA-ET EX-94**  
Maternal Sister to 2nd Dam of Lot



## Lindlaur Jordy Daisy

74155471 Born: 9/1/2019

**Pregnant to 12/5/20 breeding to sexed 799HO00007 Thunderstorm**  
**Fall Yearling**

Maternal sister to 2nd Dam of Lot:

**Ms D Angel Denisha-ET EX-94**

Grand Champion WI Dist. 1 Show 2020

**Ms Im An Angel-ET \*RC EX-92 EX-MS**

Res. Jr. All-American Jr 2 Yr Old 2014

**Ms Angel Dellucci EX-92 EX-MS**

3-08 2x 305d 24,778 4.2 1051 3.4 836

Grand Champion Midwest Spr. Nat'l Jr. Sh. 2014

**Ms Angel Ana-ET \*RC EX-92 EX-MS**

2-03 3x 305d 24,580 4.9 1197 3.1 771

**Ms Angel Abra-ET \*RC EX-90 EX-MS**

2-03 3x 365d 25,170 4.4 1106 3.6 901

**Ms D Angel Daelyn-ET EX-92**

**Ms D Angel Dezirae-ET EX-91**

**Ms D Angel Darnisha-ET EX-90 EX-MS**

2-03 2x 365d 30,170 4.4 1325 3.2 961

**Ms Apple of My Eye-Red-ET EX-90 EX-MS**

3-07 2x 365d 25,590 3.9 1001 3.2 810

**CYCLE MCGUCCI JORDY-RED**

840003131666411 99%RHA CV TC TY TL TD

PTA +2.93T +2.16UDC +2.94FLC GTPI +1760G

McGucci x Briersquart G Chip Jail-P-ET EX-90 3YR

**LINDLAUR DANTE DARIA**

74155071 Good Plus-83 +++V+ @ 3-02

2-02 3 365 28010 4.1 1161 3.3 917



John Erbsen

**KHW REGIMENT APPLE-RED-ET EX-96-4E**  
4th Dam

2nd Dam Consigned by Lamoreaux 330-309-6575

**MS D Angel Dezirae-ET EX-91 EX-MS**

3-05 3 365 32020 4.0 1290 3.2 1027

3rd Dam

**MS Apples Angel-ET EX-94-2E**

4-04 2 365 30230 4.0 1218 3.4 1036

6-00 2 365 44410 4.0 1771 3.3 1480

9-00 2 305 29340 4.1 1192 3.3 976

4th Dam

**KHW Regiment Apple-Red-ET EX-96-4E DOM 28\***

9-01 2 365 36,750 4.3 1,582 3.3 1,211

2013 HI Red Impact Cow of the Year

Res Grand Champion, Grand Int'l R&W Show 2013

Grand Champion, Grand Int'l R&W Show 2011

All-American R&W Aged Cow 2011

HI World Champion R&W Cow 2010

Nom All-American R&W 5-Yr-Old 2009

Res Grand Champ, Royal Winter R&W 2009

HHM All-American Jr 3-Yr-Old 2007

Unanimous All-American Jr 2-Yr-Old 2006

All-American R&W Jr 2-Yr-Old 2006

5th Dam

**Kamps-Hollow Altitude-ET RC EX-95-2E DOM**

7-00 2 365 39,690 4.7 1,850 3.5 1,385

Red Impact Cow of the Year 2009

Wisconsin Cow of the Year 2009

6th Dam:

**Clover-Mist Alisha EX-93-3E DOM GMD**

8-07 2 365 36,921 4.2 1,552 3.4 1,259

7th Dam: **Clover-Mist Augy Star EX-94 4E DOM**

8th Dam: **D-R-A August EX-96 4E DOM**

9th Dam: **D-R-A Ideal Precious Leader EX-90 2E**

10th Dam: **D-R-A Princess Lad Leader EX-90 3E**





**ERBACRES ATWOOD DIVINITY-ET EX-94**  
Full Sister to 3rd Dam



# Lindlaur D Back Debshine

Consigned by Lamoreaux

74155612 99%RHA Born: 9/1/2020

**Fall Calf**

**MR D APPLE DIAMONDBACK**

840003013721049 99%RHA RC TP TC TY TV EX-93  
PTA +2.41T +1.84UDC +1.37FLC GTPI +1902G

**LINDLAUR SHOWCASE DAFFY**

74154851 4-05 Very Good-88 VEV+E

2nd Dam

**Lindlaur Caronlina Dawb**

3rd Dam

**Erbacres Atwood Divine-ET VG-89**

3-07 3 365 37140 3.9 1466 3.1 1160

4th Winter Calf, Mid-East Spring National 2011

4th Dam

**Erbacres Lyster Doriah EX-93-2E**

3-06 2 365 32570 3.5 1142 3.1 1003

Life: 2,089d 145,010lb 3.7% 5,394 3.2% 4,572

5th Dam

**Erbacres Skychief Dellia-ET**

4-01 2 365 32430 3.6 1183 3.0 968

6th Dam

**Regancrest Encore Dahlia-ET VG-89**

2-01 2 365 29250 3.3 971 3.1 913

7th Dam

**Snow-N Denises Delia EX-95-2E GMD DOM**

7-06 2 365 35610 4.0 1431 2.9 1035

Life: 2,558d 180,240lb 3.9% 7,108 3.2% 5,723

1st, Best Udder & Res Grand, WI Spring Show 1993

1st, Best Udder & Grand, WI Spring Show 1991

32 EX & 49 VG Offspring

Queen of the Breed II Runner Up

8th Dam

**Snow-N Dorys Denise**

**2E-90 EX-MS GMD DOM**

5-09 2 365 33350 3.8 1256 3.1 1038





Both Herzes

KINGSMILL GOLDWYN JEWEL EX-94-3E  
4th Dam of Lot



Lindlaur Jordy Jamison \*RC

Consigned by Lamoreaux

74155473 99%RHA Born: 9/2/2019

Serviced 12/5/2020 to sexed 799HO00007 Thunderstorm

Fall Yearling

CYCLE MCGUCCI JORDY-RED

840003131666411 99%RHA CV TC TY TL TD  
PTA +2.93T +2.16UDC +2.94FLC GTPI +1760G  
McGucci x Bryersquart G Chip Jail-P-ET EX-90 3YR

SPRINGHILL-OH MERIDIAN JIN

840003141691100 2-07 Good Plus-83 +++GV  
2-03 3 365 40120 2.9 1144 3.0 1194

2nd-13th Dams

Springhill-OH Atwood Jade GP-84 3YR

2-03 2 305 26770 3.8 1005 3.2 867

Springhill-OH Jazlyn VG-88

3-01 2 305 31310 3.5 1093 2.8 868

4-01 2 305 33930 3.7 1267 2.8 952

Kingsmill Goldwyn Jewel EX-94-3E

3-04 2 329 30440 4.2 1271 3.2 962

4-04 2 319 33170 4.1 1370 3.1 1030

9-00 2 365 30680 4.3 1329 2.8 873 93

Life: 2,507d 209,000lb 4.2% 8,839 3.2% 6670

Ocean-View Derry Joules EX-93-3E

2-05 3 365 30,010 4.5 1,342 3.0 901

Ocean-View Durham Jewel EX-91-2E GMD DOM

3-06 3 365 39,225 3.2 1,262 3.4 1,351

Ocean-View Rudolph Jewel-ET VG-85 GMD DOM

4-00 2 365 31,770 3.7 1,168 3.3 1,049

Maspringhill Joy-ET VG-86 GMD DOM

4-09 2 365 37,620 4.7 1,763 3.1 1,154

Langacres Cleitus Jewel-ET EX-93-3E GMD DOM

Life: 2,455d 181,330lb 3.9% 7,114 3.3% 5,988

Langacres Mars Holly EX-90 GMD DOM

3-06 2 365 31,310 3.9 1,230 2.8 891

Langacres Glendell Heather EX-91-3E GMD DOM

Life: 2,508d 181,310lb 3.9% 7,039 2.9% 4,518

Langacres Elevation Hope EX-91-2E GMD DOM

Life: 3,562d 305,060lb 4.4% 9,093 3.0% 3,904

Dojimar Reflection Hope VG-88 DOM





Both Herzes

KINGSMILL GOLDWYN JEWEL EX-94-3E  
4th Dam of Lot



# Lindlaur Meridian Jin

Consigned by Lamoreaux

840003141691100 100%RHA Born: 6/1/2017  
2-03 3 365 40,120 2.9% 1,144 3.0% 1,194  
Calved 12/2020

Four Yr Old  
Good Plus-83 +++GV @ 2-07

**SULLY HART MERIDIAN-ET**  
840003131666411 99%RHA CV TC TY TL TD  
PTA +2.12T +1.64UDC -.51FLC GTPI +2260G  
Atwood x Sully Planet Manitoba DOM

**SPRINGHILL-OH ATWOOD JADE**  
840003126504969 3-05 Good Plus-84 +VV++  
2-03 2 305 26770 3.8 1005 3.2 867

2nd-12th Dams

- Springhill-OH Jazlyn VG-88**  
3-01 2 305 31310 3.5 1093 2.8 868  
4-01 2 305 33930 3.7 1267 2.8 952
- Kingsmill Goldwyn Jewel EX-94-3E**  
3-04 2 329 30440 4.2 1271 3.2 962  
4-04 2 319 33170 4.1 1370 3.1 1030  
9-00 2 365 30680 4.3 1329 2.8 873 93  
Life: 2,507d 209,000lb 4.2% 8,839 3.2% 6670
- Ocean-View Derry Joules EX-93-3E**  
2-05 3 365 30,010 4.5 1,342 3.0 901
- Ocean-View Durham Jewel EX-91-2E GMD DOM**  
3-06 3 365 39,225 3.2 1,262 3.4 1,351
- Ocean-View Rudolph Jewel-ET VG-85 GMD DOM**  
4-00 2 365 31,770 3.7 1,168 3.3 1,049
- Maspringhill Joy-ET VG-86 GMD DOM**  
4-09 2 365 37,620 4.7 1,763 3.1 1,154
- Langacres Cleitus Jewel-ET EX-93-3E GMD DOM**  
Life: 2,455d 181,330lb 3.9% 7,114 3.3% 5,988
- Langacres Mars Holly EX-90 GMD DOM**  
3-06 2 365 31,310 3.9 1,230 2.8 891
- Langacres Glendell Heather EX-91-3E GMD DOM**  
Life: 2,508d 181,310lb 3.9% 7,039 2.9% 4,518
- Langacres Elevation Hope EX-91-2E GMD DOM**  
Life: 3,562d 305,060lb 4.4% 9,093 3.0% 3,904
- Dojimar Reflection Hope VG-88 DOM**





**WILSTAR TLT LIMITED-RED EX-94-2E**  
Dam of Lot



# OCD Awesome Lyric-Red

840003134445026 100%RHA Born: 9/3/2017

Due 3/24/21 to 7HO14324 Backflip

Sr 3 Yr Old

Good Plus-82 VG+++ @ 3-02

**LUCK-E AWESOME-RED**

72186769 100%RHA CV TC TY TL TD  
PTA +2.02T +2.80UDC +.76FLC GTPI +1404G  
Absolute x Luck-E Advent Asia-ET EX-94-3E

**WILSTAR-RS TLT LIMITED-RED**

62371079 6-02 Excellent-94 EEEVE 2E  
3-07 2 365 37420 4.1 1519 3.3 1221  
5-09 2 365 35360 3.8 1327 3.2 1118

Consigned by Logansway

2nd Dam

**Wilstar-RS Kite Lover-Red EX-91-2E**

3-03 2 365 32070 3.6 1170 3.1 999  
4-07 2 365 41700 3.9 1627 3.1 1297

3rd Dam

**Wilstar-RS Rub Lazer-Red-TW EX-91-2E**

4-02 2 365 40,920 3.7 1,532 3.3 1,356  
3rd 4 Yr Old, World Dairy Expo 2005

4th Dam

**WVA-Greystone M Lexus-ET EX-9-2E**

4-04 2 365 28,490 3.1 891 3.0 842

5th-10th Dams

**Hanover-Hill Charlylu-Red VG-85 DOM**

4-11 3 365 35,320 4.1 1,464 3.6 1,281

**Hanover-Hill-R Lulu-Red-ET EX-91-2E**

**Hanoverhill Shiek Lulu EX-94-3E GMD DOM 4\***

**Tora Triple Threat Lulu EX-96 GMD DOM 11\***

**Ormsby Lougo Alta EX-90-2E GMD**

**Ormsby Alta Pride VG-85**



Full Sister to Lot

**OCD Dfiant Lustrous-Red-ET**

9th Fall Calf, World Dairy Expo R&W Show '18

1st Fall Calf, Big E R&W '18

1st Fall Calf, WNY Spring Preview '18

2nd Fall Calf, WNY R&W Regional '18





**EASTRIVER GOLD SHIMMER EX-94-3E**  
3rd Dam of Lot



## A-Logansway Shiny Beemer

Consigned by Logansway

840003151399546 100%RHA Born: 6/4/2019

Due 5/26/21 to sexed 7HO14920 Select

Summer Jr 2 Yr Old

**POL BUTTE MC BEEMER-ET**

7525863 99%RHA TP TC TY TV TL TD EX-92

PTA +2.36T +1.51UDC +.92FLC GTPI +1759G

McCutchen x Butz-Butler Gold Banner-ET

**A-LOGANSWAY DIMONDBACK 1763**

840003140420808 3-05 Very Good-85 VV++V

2nd Dam

**MS Shimmer's Showtime**

3rd Dam

**Eastriver Gold Shimmer EX-94-3E**

5-05 2 305 37140 4.2 1557 2.7 992

2nd 4 Yr Old, Mid-East Summer National 2015

4th 4 Yr Old, Eastern Fall National 2015

1st & Grand Champion, Atlantic Summer Show 2014

4th Dam

**Eastriver Fastoken Brucie VG-86-2YR-CAN**





**A-LOGANSWAY ARMANI WANDA EX-90**  
Same Family as Lot



# A-Logansway Undenied Wish

Consigned by Logansway

840003151399538 99%RHA Born: 4/16/2019  
Due 3/21/21 to sexed THO14920 Select  
Jr 2 Yr Old

**OUR-FAVORITE UNDENIED-ET**

840003125220760 99%RHA-I TR TP TC TY TV  
PTA +3.35T +1.20UDC +1.00FLC GTPI +2055G  
Solomon x Our-Favorite Unlimited-ET EX-94-2E

**A-LOGANSWAY BRADNICK WILLOW**

840003140420790 3-08 Very Good-88 VV+VE  
2-01 2 305 25950 4.0 1049 3.0 781

**2nd Dam**

**A-Logansway G Chip Wiplash EX-90 @ 3-01**  
2-11 2 305 27450 4.1 1118 3.3 910  
4-00 2 305 31270 3.5 1109 3.0 943

**3rd Dam**

**A-Logansway Shock Wishbone VG-86 3YR**  
2-11 2 294 23620 3.7 882 3.1 744

**4th Dam**

**Riceton Elvis Wine VG-86**  
3-00 2 320 35040 3.8 1331 3.3 1143  
4-00 2 297 38980 4.1 1615 3.3 1271

**2nd OH Protein**

**5th Dam**

**Riceton C Light Whip EX-93-3E**  
5-00 2 365 37680 4.2 1583 3.3 1247  
8-00 2 365 37680 4.1 1557 3.1 1155  
Life: 1,848d 151,980lb 4.3% 6,481 3.4% 5,094

**Riceton Encore White GP-82**

3-03 2 365 28410 4.3 1233 3.5 983

**Ebe-Tide Sinclair Wanda VG-86**

3-01 2 305 30020 4.3 1282 3.3 983  
4-05 2 311 30210 4.4 1332 3.2 963

**Ebe-Tide B J Wenona VG-86**

**Ebe-Tide A Jet Wendy VG-87**  
5-09 3 365 30390 3.9 1179 3.3 1010

**Ebe-Tide R M Wendy EX-91**

4-10 2 365 22570 3.0 679 2.8 636

**Mar-V-Nic Wendy Skokie EX-92-3E**

11-11 2 305 22850 3.0 688

Life: 2,745d 176,580lb 3.3% 5,745f





A-LOGANSWAY DBACK WISKERS VG-87 2YR  
Same Family as Lot



# A-Logansway Excaliber 1956

Consigned by Logansway

840003212609028 99%RHA Born: 6/1/2020

Summer Yearling

**SANDY-VALLEY KR EXCALIBUR**

840003140616380 99%RHA TR TP TC TY TV  
PTA +2.66T +1.96UDC +1.22FLC GTPI +2847G  
King Royal x Sandy-Valley SLV Essence-ET EX-92

**A-LOGANSWAY BRADNICK WILLOW**

840003140420790 3-08 Very Good-88 VV+VE  
2-01 2 305 25950 4.0 1049 3.0 781

**2nd Dam**

**A-Logansway G Chip Wiplash EX-90 @ 3-01**  
2-11 2 305 27450 4.1 1118 3.3 910  
4-00 2 305 31270 3.5 1109 3.0 943

**3rd Dam**

**A-Logansway Shock Wishbone VG-86 3YR**  
2-11 2 294 23620 3.7 882 3.1 744

**4th Dam**

**Riceton Elvis Wine VG-86**  
3-00 2 320 35040 3.8 1331 3.3 1143  
4-00 2 297 38980 4.1 1615 3.3 1271

**2nd OH Protein**

**5th Dam**

**Riceton C Light Whip EX-93-3E**  
5-00 2 365 37680 4.2 1583 3.3 1247  
8-00 2 365 37680 4.1 1557 3.1 1155  
Life: 1,848d 151,980lb 4.3% 6,481 3.4% 5,094

**Riceton Encore White GP-82**

3-03 2 365 28410 4.3 1233 3.5 983  
**Ebe-Tide Sinclair Wanda VG-86**  
3-01 2 305 30020 4.3 1282 3.3 983  
4-05 2 311 30210 4.4 1332 3.2 963

**Ebe-Tide B J Wenona VG-86**

**Ebe-Tide A Jet Wendy VG-87**  
5-09 3 365 30390 3.9 1179 3.3 1010

**Ebe-Tide R M Wendy EX-91**

4-10 2 365 22570 3.0 679 2.8 636  
**Mar-V-Nic Wendy Skokie EX-92-3E**

11-11 2 305 22850 3.0 688

Life: 2,745d 176,580lb 3.3% 5,745f





John Erbsen

LORAWAE DURHAM DINA  
Same Family as Lot



Do-Ra-Me Crushed Dreams

Consigned by Logansway

840003135646407 99%RHA Born: 12/4/2017  
2-01 2 305 25880 4.6 1203 3.4 886  
Due 4/6/21 to 7HO14675 Armstrong  
Sr 3 Yr Old  
Good Plus-83 ++G++ @ 2-11

**MAVERICK CRUSH**  
12042760 99%RHA TC TY TV TL TD  
PTA +2.49T +1.56UDC +1.46FLC GTPI +2039G  
Doorman x EDG Claire Cling-ET

**LORAWAE WINDBROOK DAISY**  
840003131022056 2-09 Good Plus-83 V++++  
2-02 2 305 22960 2.9 674 3.0 682

**2nd Dam**  
Lorawea HP Gldwyn Dayna-ETS EX-91 EX-MS  
3-05 2 315 28590 4.0 1150 3.2 921  
5-06 2 305 31150 3.8 1197 3.1 975  
**3rd Dam**  
Lorawae Durham Dinah EX-93-3E  
4-05 365 34410 3.7 1285 3.2 1085  
Life: 201,800lb 3.8% 7,628 3.3% 6,615  
**4th Dam**  
Klingendale Rudolph Acura EX-93-5E GMD DOM  
6-10 332 32010 3.7 1174 3.2 1011  
Life: 323,640lb 3.7% 12,060 3.2% 10,200  
**5th Dam**  
Klingendale Clyde Angel EX-90 GMD  
5-10 304 29780 4.3 1273 3.0 905  
Life: 188,230lb 4.2% 7953 3.1 5832  
**6th Dam:**  
Klingendale Odin America EX-93-3E GMD DOM  
8-05 365 43260 3.9 1668 3.1 1328  
Life: 207,840lb 3.9% 8,112 3.2% 6,725  
**7th Dam**  
Klingendale Command April VG-89  
2-00 365 22750 4.1 924 3.3 750





**LUCK-E GOLDWYN AALYAH-ET EX-94 2E**  
Maternal Sister to Lot



**LUCK-E OUSIDE ANXIOUS EX-94-3E**  
Dam of Lot



*This-Is-It Sid Annie-ET*

840003142774871 100%RHA Born: 9/5/2017  
2-02 2 19541 4.4 852 3.2 622  
Fresh 1/3/21  
Sr 3 Yr Old  
Good Plus-84 VVV++ @ 2-09

**PINE-TREE SID-ET**  
62175895 100%RHA TR TP TY TL TD  
PTA +1.47T +.94UDC -.85FLC GTPI +1550G  
Mr Sam x Pine-Tree Finley Minnie-ET EX-90 DOM

**LUCK-E OUTSIDE ANXIOUS**  
61893642 10-00 Excellent-94 EEEEE 3E  
5-04 2 365 35,950 4.1% 1,486 3.2% 1,146  
LIFE: 2,505d 202,480lbs 4.5% 9,061f 3.3% 6,612p

Maternal Sisters to Lot  
**Luck-E Goldwyn Aalyah-ET EX-94 2E**  
5-05 2 305 35,590 4.7% 1,659 3.2% 1,129  
Reserve Jr All-American Aged Cow 2015  
2nd Aged Cow, World Dairy Expo Jr Show 2015  
Reserve Grand Champion, Premier National 2015  
HM Grand, PA Fall Championship Show 2015  
Reserve Grand Champion, MD State Fair 2016  
4th Aged Cow, Eastern Fall National 2016  
2nd 150,000lb Cow, Eastern National 2017  
**Luck-E Goldwyn Amber EX-93**  
**Luck-E Braxton Apocalypse EX-92 3yr**  
**Luck-E Jordan Accalia EX-91**  
**Luck-E Drake Atisha EX-90**  
**Luck-E Sanchez Adora EX-90**

Consigned by McWilliams

2nd Dam:  
**Luck-E Blacklice Artic-ET EX-90 EX-MS 2E**  
3-09 2 365 34,670 4.4% 1,512 3.5% 1,205  
3rd Dam:  
**Luck-E Charles Angel-ET EX-93 3E GMD DOM**  
7-09 2 365 43,860 4.2% 1,827 3.7% 1,607  
LIFE: 2,376d 208,510lbs 4.4% 9,222f 3.8% 7,957p  
4th Dam:  
**Hart-Lyn Starbuck Ashley 2E-94 GMD DOM**  
6-06 365 35,720 4.2 1504 3.4 1200  
Grand Champion, IL State Show '89  
5th Dam:  
**Kachina Valient Act-ET VG-86**  
7-05 365 23,450 4.4 1041 3.3 764  
6th Dam:  
**Dodeb Matt Actress 3E-93**  
3-00 305 27,110 4.2 1131  
Res Grand IL State Show  
7th Dam:  
**Lamkinland B Matt Actress VG-85**





**SAVAGE-LEIGH LAVISH EX-94-2E GMD**  
2nd Dam of Lot



**SAVAGE-LEIGH LICORICE EX-92 GMD DOM**  
3rd Dam of Lot



McWilliams Leichtenstein

840003202765585 99%RHA Born: 6/29/2019  
Due 6/17/21 to 551H3617 Altitude  
Summer Jr 2

**MR CORONA BUBBA-ET**  
122030614 99%RHA-I TP TC TY TV TL  
PTA +2.81T +1.56UDC +1.26FLC GTPI +1884G  
Beemer x Farnear-TBR-BH AT Corona-ET EX-92

**ENTOURAGE-LC HYPNTC LANA-ET**  
840003143018437 3-05 Very Good-88 VV+VE  
2-00 2 318 20690 4.5 933 3.2 661

Consigned by McWilliams

2nd Dam  
**Savage-Leigh Lavish-ET EX-94-2E GMD**  
4-04 2 365 40290 4.2 1711 2.9 1188  
6-06 2 365 47050 4.2 1980 3.0 1424  
2nd 125,000lb Cow, Eastern National 2011  
2nd Sr 2, Eastern National 2007  
3rd Dam  
**Savage-Leigh Licorice-ET EX-92 GMD DOM**  
4-02 2x 365d 51,220 4.3% 2,179 3.1% 1,596  
Nominated All-American Produce of Dam 2007  
HHM All-American 5-Yr-Old Cow 2006  
Grand Champion, New York Spring Show 2006  
Res Gr Champion, New York Spring 2004  
4th Dam  
**Savage-Leigh Bellwood Linda EX-92 2E GMD DOM**  
2-10 2x 365d 40,240 5.8% 2,349 3.4% 1,358  
Nom All-American Jr 3-Yr-Old Cow 1999  
5th Dam  
**Savage-Leigh Star Linda-ET VG-87 EXMS GMD**  
2-02 2x 365d 30,890 4.0% 1,236 3.1% 952  
6th Dam  
**Savage-Leigh Glenview Linda EX-90 GMD**  
6-08 2x 365d 41,820 4.6% 1,936 3.0% 1,247  
Life: 1,892d 150,300lbs 4.4% 6,636 3.2% 4,813  
7th Dam  
**Savage-Leigh Lindas Chairman GP-84**  
5-10 2x 365d 30,620 3.8% 1,167 3.3% 1,013  
Next dams: **VG-88, VG-85**





MCWILLIAMS AMMO P SUSAN EX-91 EX-MS @ 3-04  
Dam of Lot



## McWilliams Hypno Soul-Red

840003219480470 99%RHA Born: 6/1/2020

**Summer Yearling**

Consigned by McWilliams

**MR HOTSTUFFS HYPNOTIC-ET**

840003012554421 100%RHA RC TP TC TY

PTA +2.01T +1.38UDC +1.54FLC GTPI +1965G

Windbrook x Starmark Ad Hotstuff-Red-ET EX-94 2E

2nd Dam

**McWilliams Frizz Sully EX-91 EX-MS**

4-03 2 305 25283 4.4 1,111 3.1 788

**MCWILLIAMS AMMO P SUSAN**

840003142774862 3-04 Excellent-91 VEVEE

1-10 2 291 19300 3.9 755 3.2 614

1st Jr 3, Western PA Championship Show 2020

5th Summer Jr 2, Eastern National 2019





# McWilliams Lotus Vox

Consigned by McWilliams

840003142221887 96%RHA Born: 8/1/2018

Fresh 1/11/21

Jr 3 Yr Old

**BLONDIN LOTUS-ET**

107308984 100%RHA RC TC TY TV TL

PTA +1.60T +.68UDC -.11FLC GTPI +1251G

Goldwyn x Rockymountain Tal Licorice-ET EX-95

**MCWILLIAMS SUNTAN VENTURA**

72294713 5-07 Very Good-86 VE+++

2-11 2 346 24,237 3.9 946 3.3 808

*2nd Dam*

**McWilliams Atlas Victoria EX-90-2E**

4-06 2 343 27930 3.9 1,089 3.4 936

*3rd Dam*

**McWilliams James Velvet GP-81 @ 2-03**

1-11 2 290 20720 7.2 1497 2.5 525

*4th Dam*

**McWilliams Gregory Viola VG-88**



# Green Broke Delight Crunch

Consigned by Wilcox

840003208014304 100%RHA Born: 6/1/2019

Summer Jr 2 Yr Old

**CAR-J BROKASA DELIGHT**

840003129040531 100%RHA-NA TR TP TC TY

+3.44T +2.75UDC +1.64FLC GTPI +1888G

Defiant x Glennholme Atwood Brokasa-ET EX-92-3YR

**GREEN-BROKE APPLECRISP**

840003134375780

1-11 2 288 15600 4.1 636 3.4 529

*2nd Dam*

**Green Broke A Hvesda-Red**

*3rd Dam*

**Green-Broke P Strabery-Red GP-83**

3-02 2 305 17730 3.1 557 2.8 505

*4th Dam*

**Hi-Ho-View Dundee Hershey VG-88 EX-MS**

5-07 2 305 22880 3.0 684 2.8 651

*5th Dam*

**Ju-Vindale Marashino-Red VG-85**

5-02 2 305 21900 4.1 904 3.1 668

*6th Dam*

**Ju-Vindale Marshmallow-Red GP-82 2YR**

3-02 2 305 19240 3.1 600 2.9 564

*7th Dam*

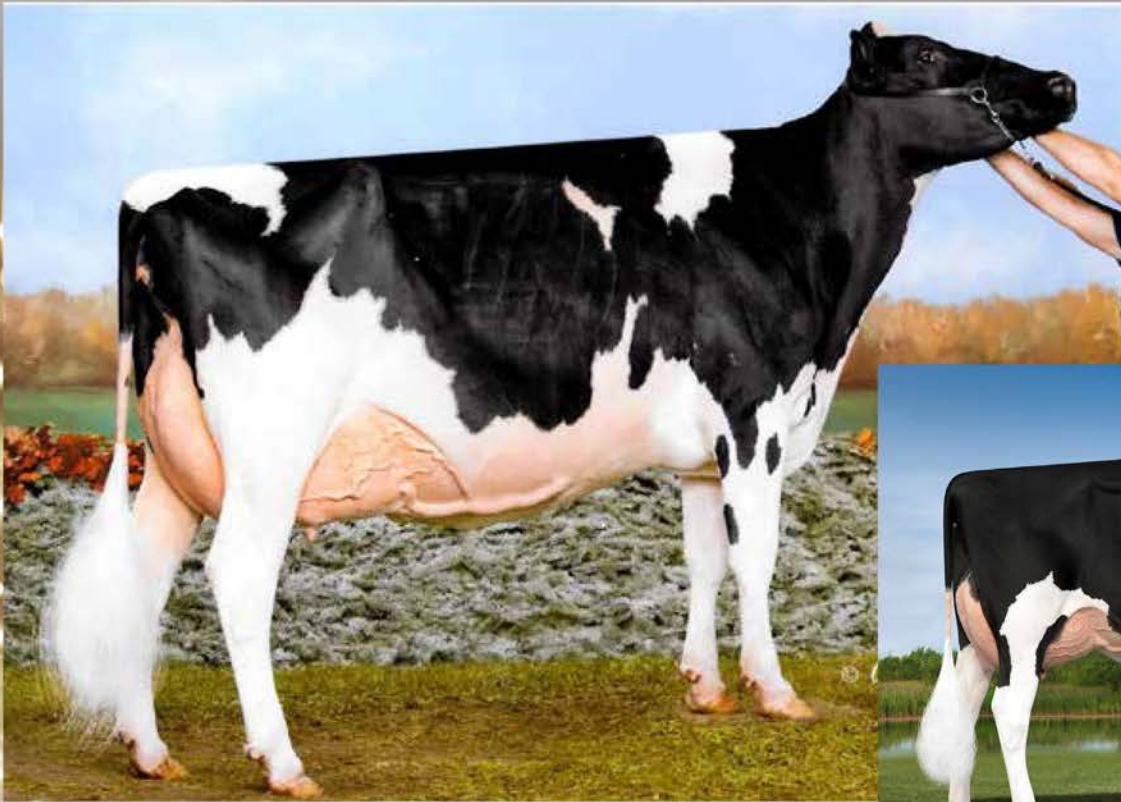
**Ju-Vindale Frontline Maxie VG-87**

6-07 2 365 31110 3.9 1216 3.1 979



Green Broke Delight Crunch  
April 2020





**CRAIGCREST REJOICES WIND CHIME-ET EX-93-2E**  
 Dam of Lot



**CRAIGCREST REJOICES SIDNEY-ET EX-93**  
 Maternal Sister to Dam



*Class-L Watchout-ET*

840003140437748 99%RHA-I TR CD TL TD 99%RHA Born: 9/11/2018 Herd#: 4480  
 +2.49T +1.53UDC +1.76FLC A2A2  
 Last test: 13DIM 78lbs 4.3% 3.9% 13SCC  
**Calved 12/6/20**  
**Sr 2 Yr Old**

**Full sister sells as Lot 59**

Maternal Sister to Dam:  
**Craigcrest Rejoices Sidney EX-94**  
 Full Sister to Lot: **Class L Wildfire-ET**  
 Nominated Jr All-American Winter Yrlg 2020  
 2nd Dam: **Craigcrest Rubies Gold Rejoice EX-94**

**MAVERICK CRUSH**  
 12042760 99%RHA TC TY TV TL TD  
 PTA +2.49T +1.56UDC +1.46FLC GTPI +2039G  
 Doorman x EDG Claire Cling-ET

**CRAIGCREST REJOICES WIND CH-ET**  
 11484609 6-04 Excellent-93 EEEEE 2E  
 2-10 2 365 29900 5.3 1591 3.7 1092 88  
 4-03 2 365 34900 6.7 2340 3.6 1245  
 Supreme Champ. MI Dairy Show 2018  
 All-Michigan Aged Cow 2018



Consigned by Moser

2nd Dam:  
**Craigcrest Rubies Gold Rejoice EX-94**  
 3-04 335 36640 4.3 1430 3.5 1150  
 All-American & All-Canadian Sr 2 Yr Old 2011  
 Reserve Int. Champion, World Dairy Expo 2011  
 All-American & All-Canadian Winter Yearling 2010  
 Reserve Jr Champion, Royal Winter Fair 2010  
 All-American & All-Canadian Winter Calf 2009  
 Only animal ever that was All-American &  
 All-Canadian as calf, yearling & milking form!

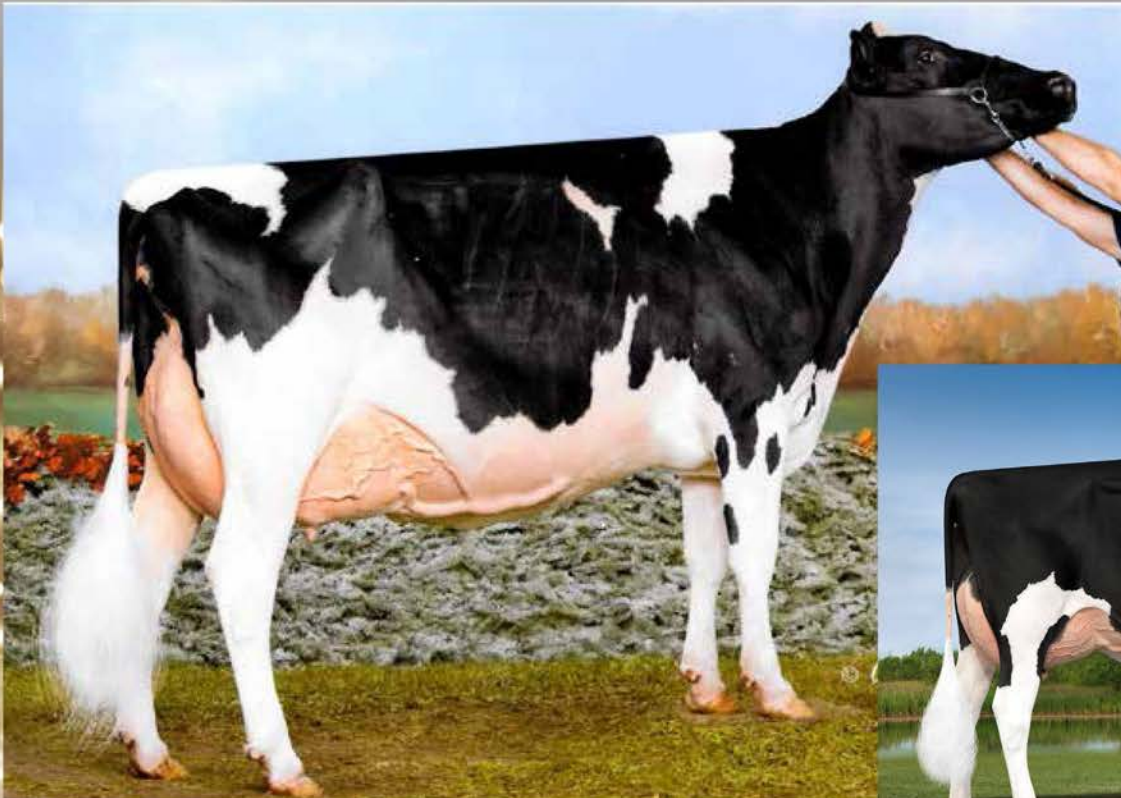
3rd Dam:  
**Montdale Dundee Rubie-TW EX-93-CAN**  
 2-05 365 27600 4.0 1102 3.4 950  
 4-08 329 27691 4.1 1135 3.3 921  
 5-07 365 27063 3.9 1053 3.3 895  
 \*Nom. All-Canadian 2002

4th Dam:  
**KAS Carlton Ruby EX-91-5E-CAN**  
 6-03 365 30593 4.0 1232 3.1 941  
 8-02 365 29897 3.8 1142 3.0 893  
 Life: 188,075lb 3.7% 6,966 3.0% 5,700

5th Dam:  
**KAS Status Quo Closure EX-90-CAN**  
 9-10 309 19178 3.8 721 2.9 558  
 Life: 222,638 4.2% 9,416 3.1% 7,015

Maternal sister to 2nd Dam:  
**Craigcrest Rubies Rachelle EX-94**  
 HM All-American Jr 3 Yr Old 2016





**CRAIGCREST REJOICES WIND CHIME-ET EX-93-2E**  
 Dam of Lot



**CRAIGCREST REJOICES SIDNEY-ET EX-93**  
 Maternal Sister to Dam



*Class-L Crush Wildchild-ET*

840003140437753 99%RHA TR TC TL TD 99%RHA Born: 12/4/2018 Herd#: 4543

**2nd Winter Yearling, Indiana Summer Show 2020**

Last test: 19DIM 85lbs 4.9% 4.0% 14SCC

**Calved 12/1/20**

**Sr 2 Yr Old**

**Full sister sells as Lot 58**

Maternal Sister to Dam:

**Craigcrest Rejoices Sidney EX-94**

Full Sister to Lot: **Class L Wildfire-ET**

Nominated Jr All-American Winter Yrlg 2020

2nd Dam: **Craigcrest Rubies Gold Rejoice EX-94**

**MAVERICK CRUSH**

12042760 99%RHA TC TY TV TL TD

PTA +2.49T +1.56UDC +1.46FLC GTPI +2039G

Doorman x EDG Claire Cling-ET

**CRAIGCREST REJOICES WIND CH-ET**

11484609 6-04 Excellent-93 EEEEE 2E

2-10 2 365 29900 5.3 1591 3.7 1092 88

4-03 2 365 34900 6.7 2340 3.6 1245

Supreme Champ. MI Dairy Show 2018

All-Michigan Aged Cow 2018

Consigned by Moser

2nd Dam:

**Craigcrest Rubies Gold Rejoice EX-94**

3-04 335 36640 4.3 1430 3.5 1150

All-American & All-Canadian Sr 2 Yr Old 2011

Reserve Int. Champion, World Dairy Expo 2011

All-American & All-Canadian Winter Yearling 2010

Reserve Jr Champion, Royal Winter Fair 2010

All-American & All-Canadian Winter Calf 2009

Only animal ever that was All-American &

All-Canadian as calf, yearling & milking form!

3rd Dam:

**Montdale Dundee Rubie-TW EX-93-CAN**

2-05 365 27600 4.0 1102 3.4 950

4-08 329 27691 4.1 1135 3.3 921

5-07 365 27063 3.9 1053 3.3 895

\*Nom. All-Canadian 2002

4th Dam:

**KAS Carlton Ruby EX-91-5E-CAN**

6-03 365 30593 4.0 1232 3.1 941

8-02 365 29897 3.8 1142 3.0 893

Life: 188,075lb 3.7% 6,966 3.0% 5,700

5th Dam:

**KAS Status Quo Closure EX-90-CAN**

9-10 309 19178 3.8 721 2.9 558

Life: 222,638 4.2% 9,416 3.1% 7,015

Maternal sister to 2nd Dam:

**Craigcrest Rubies Rachelle EX-94**

HM All-American Jr 3 Yr Old 2016







**RIDGEDALE RUNWAY-RED-ET EX-95-4E**  
4th Dam



# Ridgedale Diamond Royce

Consigned by Ridgedale

840003201363034 99%RHA Born: 3/25/2019 Herd#: 369

**Due 3/28/21 to Ridgedale**  
**Jr 2 Yr Old**

**MR D APPLE DIAMONDBACK**

840003013721049 99%RHA RC TP TC TY TV EX-93  
PTA +2.41T +1.84UDC +1.37FLC GTPI +1902G  
Doorman x MS Delicious Apple-Red-ET EX-94-CAN

**RIDGEDALE ON THE ROX**

840003131023804 4-00 Very Good-85 VVV++  
3-00 3 365 28350 3.1 882 3.0 859

*Maternal Sisters 4th Dam*

**Ridgedale-T Raichu-Red EX-96-4E**

5 Time Nom All-American R&W in milking form!!  
1st 5-Yr-Old, World Dairy Expo R&W Show 2015  
Res. Grand Champ, WDE Jr Show 2015  
Res. Grand Champ, NYSF Open & Jr. Show 2013  
Res. Jr All-American R&W Jr 3 Yr Old 2008

*Maternal Sistes to 4th Dam*

**Ridgedale-T Relish-ET EX-94**

**Ridgedale Rhapsody-ET EX-94**

**Ridgedale Rendezvous-Red-ET EX-92**

**Ridgedale Raizel-Red-ET EX-92**

**Ridgedale Rhoda-Red-ET EX-91 2E**

**Ridgedale-T Radiance-ET \*RC EX-90**



*2nd Dam*

**Ridgedale Destry Rox EX-91-2E**  
5-06 3 279 28190 3.3 918 2.9 807

*3rd Dam*

**Ridgedale Roxann EX-90 EX-MS**  
4-00 3 365 28400 3.9 1096 3.1 868

*4th Dam*

**Ridgedale Runway-Red-ET EX-95-4E**

7-11 3 365 35380 4.2 1483 3.1 1094  
11-04 3 365 40630 4.2 1692 2.7 1103  
Life: 3,085d 228,520lb 4.2% 9,574 3.0% 6,940  
*5th-10th Dams*

**Hanover-Hill-R Mi Rochelle EX-93**

5-10 3x 365d 24,980 4.6% 1,154 3.6% 887  
1st Winter Yearling, Eastern Spring National 1996  
**Hanover-Hill-R Rhonda-TW EX-94 4E GMD DOM**  
6-02 2x 365d 38,820 4.0% 1,562 2.9% 1,141  
Life: 2,823d 196,650lbs 4.3% 8,448f 3.2% 6,215p

**C Hanoverhill Star Roxy-ET EX-92 2E GMD DOM**

4-05 3x 365d 31,780 4.4% 1,394 3.1% 994  
Reserve All-American Produce of Dam 1997

**Mil-R-Mor Roxette EX-90 EEEV GMD DOM**

7-01 2x 365d 24530 4.7 1153  
**C Glenridge Citation Roxy EX-97 4E GMD**

Life: 3,620d 209,784lbs 4.5% 9,471f  
*'Queen of the Breed'*

**C Norton Court Model Vee EX-90**

Life: 4,183d 218,629lbs 3.9% 8,581f  
All-American Produce of Dam 1977-1979  
Grand Champion, Brandon Show 1969  
**Norton Court Reflection Val VG-85 5\***  
Life: 14 Lactations 249,583lbs 3.7% 9,295f





**RIDGEDALE ELYSIAN-ET EX-93**  
Maternal Sister to Dam



Ridgedale Estey

Consigned by Ridgedale

840003201363015 99%RHA Born: 1/5/2019 Herd#: 350  
Due 5/2/21 to Ridgedale Incredibull  
Sr 2 Yr Old

3 EX-95 Dams in a row!!

**MR D APPLE DIAMONDBACK**  
840003013721049 99%RHA RC TP TC TY TV EX-93  
PTA +2.41T +1.84UDC +1.37FLC GTPI +1902G

**RIDGEDALE ESTIMATE-ET**  
142341991 7-03 Excellent-90 EEVEV 2E  
6-11 3 305 28150 3.4 969 2.6 736  
Life: 1,739d 141,900 3.5% 4,920 2.7% 3,873

**2nd Dam**  
**Ridgedale Estel EX-95-5E**  
7-05 3 365 30160 4.1 1224 2.7 814  
9-07 3 365 29340 3.9 1156 2.8 820  
Life: 4,034d 258,530 3.8% 9,748 2.8% 7,287

**3rd Dam**  
**Ridgedale Estelle EX-95-3E**  
4-10 3x 365 35,580 3.9 1,403 2.7 945  
Life: 194,340lb 3.7% 7,281 2.8% 5,459  
8 EX and 8 VG offspring

**4th Dam**  
**Ridgedale Fond Example EX-95 3E GMD**  
7-04 3x 365d 46,050 3.8 1741 2.9 1354  
Life: 2384d 185,450 3.7 6854 3.1 5829  
3rd Eastern Spring National Produce 1996

**5th Dam**  
**Ridgedale Quality Extra EX-90**  
8-02 2x 355d 26,860 3.3 898 3.0 793

**6th Dam**  
**Ridgedale SS Emmy VG-87**  
5-04 2x 365d 24,010 3.5 840

**7th Dam**  
**Ridgeale Originator M&M EX-90 2E**  
6-04 2x 365d 19,100 4.4 837

**8th Dam**  
**Birchmere Reflection Emma VG**



2nd Dam  
Ridgedale Estel EX-95-5E





SHOREMAR S ALICIA EX-97  
3rd Dam



# Ridgedale Aaliyah

Consigned by Ridgedale

840003201363003 100%RHA Born: 12/3/2018 Herd#: 338  
Due 4/2/21 to Ridgedale Incredibull  
Sr 2 Yr Old

**SCIENTIFIC B DEFIANT-ET**  
141123484 100%RHA RC TP TC TY TV VG-87  
PTA +2.69T +1.76UDC +.94FLC GTPI +1664G

**RIDGEDALE-L ALANNA-ET**  
139659050 9-06 Excellent-92 EEVVEE 3E  
6-04 3 365 33300 3.3 1091 2.8 942  
7-07 3 365 31350 3.6 1113 3.0 928  
Life: 2,343d 158,470lb 3.6% 5645 3.0 4724

Maternal Sister to 2nd Dam  
BKB Abby-ET EX-95-3E



2nd Dam

**BKB Triumphant Annette-ET EX-94-4E**  
10-06 3 365 28910 4.0 1164 2.9 843  
Life: 3,182d 184,140lb 4.1% 7,504 3.1% 5,766

Maternal sister

**BKB Abby-ET EX-95-3E DOM**  
4-03 2 365 35,300 4.1 1,430 3.4 1,204

3rd Dam

**Shoremar S Alicia-ET EX-97-3E**  
8-11 2 362 38,250 4.3% 1,650 3.1% 1,198  
HM All-American 125,000lb Cow 2005  
Reserve All-American 125,000lb Cow 2004  
All-American 5 Yr Old 2001 & Aged Cow 2003  
1st 5 Yr Old, World Dairy Expo 2000

4th Dam

**C Aitkenbrae Starbuck Ada EX-94-2E DOM**  
13-08 2 365 25,150 3.0 764 3.4 843  
All-American Three Year Old 1990  
All-American Produce of Dam 2000 & 2001

Full Sister to 3rd Dam

**Miss Kingstead Chief Adeen EX-94-2E DOM**  
3-05 2 365 30,180 4.0 1,209 3.6 1,077  
Nominated All-American Jr. 3 Year Old 2000  
Nominated All-American Four Year Old 2001  
Member All-American Produce of Dam 2000 & 2001





**RIDGEDALE RAQUEL-ET VG-89**  
Maternal Sister to 2nd Dam



Pending

Pending 99%RHA Born: 6/4/2020  
**Summer Yearling**



Maternal Sister to 3rd Dam:  
**Ridgedale Raichu-Red-ET EX-96-4E**



Maternal Sister to 3rd Dam:  
**Ridgedale Runway-Red-ET EX-95**

**RIVERDOWN UNSTOPABULL-RED**  
11801450 99%RHA TY TV TL  
PTA +2.67T +2.44UDC +1.74FLC GTP1 +2144G  
Avalanche x Cherry Crest Thats Neat EX-91-3E

**RIDGEDALE ROCK-A-BYE**  
840003147393070 100%RHA RC  
Sired by Absolute

Maternal Sister to 2nd Dam:  
**Ridgedale Raquel-ET VG-89**  
Nominated All-American Sr 2 Yr Old 2020  
All-NY Sr 2 Yr Old 2020

Maternal Sistes to 3rd Dam  
**Ridgedale-T Raichu-Red EX-96-4E**  
5 Time Nom All-American R&W in milking form!!  
1st 5-Yr-Old, World Dairy Expo R&W Show 2015  
Res. Grand Champ, WDE Jr Show 2015  
Res. Grand Champ, NYSF Open & Jr. Show 2013  
Res. Jr All-American R&W Jr 3 Yr Old 2008  
**Ridgedale Runway-Red-ET EX-95**  
Nominated Jr. All-American Aged Cow 2017  
1st Aged Cow & Sr Champ, All-American 2014  
**Ridgedale-T Relish-ET EX-94**  
**Ridgedale Rhapsody-ET EX-94**  
**Ridgedale Rendezvous-Red-ET EX-92**  
**Ridgedale Raizel-Red-ET EX-92**  
**Ridgedale Rhoda-Red-ET EX-91-2E**  
**Ridgedale-T Radiance-ET \*RC EX-90**

2nd-12th Dams

**Ridgedale Rhowe EX-90 EX-MS**  
3-09 3 365 33890 99 3.8 1282 2.7 928  
**Ridgedale Rhian EX-92-2E**  
7-04 3 365 33070 4.3 1423 3.0 996  
4th Aged Cow, Northeast Spring National 2018  
**Ridgedale Rhapsody-ET EX-94-2E**  
6-10 3 365 30420 3.7 1116 3.1 936  
**Ridgedale-T Rehema-Red-ET EX-93-2E DOM**  
6-02 3 365 26100 4.1 1065 2.9 750  
**Hanover-Hill-R Mi Rochelle EX-93**  
5-10 3x 365d 24,980 4.6% 1,154 3.6% 887  
1st Winter Yearling, Eastern Spring National 1996  
**Hanover-Hill-R Rhonda-TW EX-94 4E GMD DOM**  
6-02 2x 365d 38,820 4.0% 1,562 2.9% 1,141  
Life: 2,823d 196,650lbs 4.3% 8,448f 3.2% 6,215p  
**C Hanoverhill Star Roxy-ET EX-92 2E GMD DOM**  
4-05 3x 365d 31,780 4.4% 1,394 3.1% 994  
Reserve All-American Produce of Dam 1997  
**Mil-R-Mor Roxette EX-90 EEEV GMD DOM**  
7-01 2x 365d 24530 4.7 1153  
**C Glenridge Citation Roxy EX-97 4E GMD**  
Life: 3,620d 209,784lbs 4.5% 9,471f  
'Queen of the Breed'  
**C Norton Court Model Vee EX-90**  
Life: 4,183d 218,629lbs 3.9% 8,581f  
All-American Produce of Dam 1977-1979  
Grand Champion, Brandon Show 1969  
**Norton Court Reflection Val VG-85 5\***  
Life: 14 Lactations 249,583lbs 3.7% 9,295f

Consigned by Ridgedale





**CLAIRCREST DOORMAN LILA EX-90**  
Sells



## Claircrest Doorman Lila

12275234 99%RHA Born: 12/3/2015  
2-07 2 287 23,722 4.6 1,095 3.7 869  
3-07 2 365 33,686 4.1 1,382 3.5 1,195  
Last test: 142lbs @ 15DIM

**Fresh 12/21/20**

**Excellent-90 EEVVE @ 4-03**  
**Five Yr Old**

**VAL-BISSON DOORMAN-ET**

107281711 99%RHA TR TP TY TV TL EX-90 CAN  
PTA +3.23T +2.97UDC +1.95FLC GTPI +1991G  
*Bookem x Val-Bisson Shottle Imelda EX-94*

**CLAIRCREST MOBILE LIBERTY**

CAN 03Y VG-85  
2-03 2 308 18258 3.7 679 3.0 549

*Consigned by Sekarak*

*2nd Dam*

**Claircrest Samuelo Lilac EX-90-4E CAN**  
4-03 2 345 22207 3.6 791 3.4 756

*3rd Dam*

**Raensons Allen Lily EX-90-2E CAN**  
6-07 2 365 24548 3.4 825 3.3 809

*4th Dam*

**Raensons Russel Lindsay VG-87-4YR CAN**  
3-11 2 365 18777 3.4 646 3.1 573

*5th Dam*

**Raensons Lancelot Licka VG-85-4YR CAN**  
3-02 2 365 28982 3.8 1087 3.1 913





LAFOUGERE SIDE SUNSHINE-ET VG-86 @ 2-00

Sells



# Lafougere Side Sunshine-ET

840003146617624 99%RHA TC TY TV TL TD Born: 10/15/2018

RIP 1-10 2 105 7,810 4.3 336 3.2 250

Last test: 94lbs 13SCC

Fresh 9/1/20

**2 SONS @ ST GENETICS!!!**

**Very Good-86 VVV+V @ 2-00**

**Senior 2 Yr Old**

01/2021	CDCB SUMMARY GENOMICCOW				NMS -24
Milk	-390	77%R	Fluid Merit \$		-76
Fat	-3	+0.04%	Cheese Merit \$		+1
Protein	+1	+0.05%	Grazing Merit \$		-26
SCS	2.77	%R	Gestation Len. +0 Fert. Index	-0.7	
PL	-0.3	%R	Livability -4.1	Mastitis +2.0	
DPR	-0.7	%R	EFI %	gEFI 10.7%	
HCR	+0.2				
CCR	-0.7				0 Dtrs 0 Herds % US

01/2021	CALVING SUMMARY			SCE 2.5 %
Sire Calving Ease	2.5%	%R		Obs
Daughter Calving Ease	2.2%	%R		N/A Obs
Sire Stillbirth	6.2%	%R		Obs
Daughter Stillbirth	6.5%	%R		N/A Obs

01/2021	GHA TYPE SUMMARY				TPI +2166
PTAT	+3.06	81%R	UDC+2.23	FLC+0.97	BSC +3.31 0 D / 0 H
Stature	+3.93	Tall			
Strength	+2.54	Strong			
Body Depth	+2.82	Deep			
Dairy Form	+1.84	Open Rib			
Rump Angle	-0.59	High Pins			
Thurl Width	+2.88	Wide			
Rear Legs-Side	+0.21	Sickle			
Rear Legs-Rear	+1.52	Straight			
Foot Angle	+2.82	Steep			
Feet & Legs Score	+1.71	High			
Fore Udder	+3.86	Strong			
Attachment	+2.85	High			
Rear Udder Height	+2.42	Wide			
Rear Udder Width	+2.43	Strong			
Udder Cleft	+3.80	Shallow			
Udder Depth	+1.26	Close			
Front Teat Placement	+1.22	Close			
Rear Teat Placement	+1.26	Long			
Teat Length					

**WALNUTLAWN SIDEKICK**

12508113 99%RHA TR TY TV TL TD

PTA +3.26T +2.81UDC +.99FLC GTPI +2328G

Abbott x Walnutlawn McCutchen Summer EX-94

**CERPOLAIT PETER SUNSET-ET**

110192309

2-03 2 218 18168 3.7 664 3.5 633

Consigned by ST Genetics & ZBW

**2nd Dam**

Cerpolaite Doorman Summum EX-90 91MS CAN

3-03 2 294 25953 3.8 972 3.2 840

**3rd Dam**

D-Ray Dempsey Summit VG-88-3YR 1\* CAN

2-02 2 365 28082 4.0 1116 3.3 922

**4th Dam**

Gen-I-Beq Dundee Supra EX-90-2E 3\* CAN

5-00 2 365 33860 3.7 1268 3.0 1030

**5th Dam**

Gen-I-Beq Durham Sunshine VG-88-4YR 7\* CAN

4-04 2 365 35512 3.9 1369 3.1 1116

**6th Dam**

Glen Drummond Splendor VG-86-2YR 39\* CAN

4-10 2 314 26510 4.2 1124 3.2 840

**7th Dam**

Glen Drummond Aero Flower VG-88-3YR 18\* CAN

2-03 2 326 25622 4.0 1032 3.4 882

**8th Dam**

Glen Drummond Shower-ET EX-5YR 14\* CAN

4-10 2 365 28583 4.8 1380 3.6 1016

**9th Dam**

Glen Drummond S C Jo Beth EX-2E 7\* CAN

5-09 3 305 31358 4.0 1263 3.1 974

**10th Dam**

Glen Drummond Matt Beth VG-85-3YR 4\* CAN

11-10 2 365 25038 3.7 935 2.8 697

**11th Dam**

Glen Drummond Marquis Beth VG-CAN





**PLUM-LINE JASPER ALIVIA EX-93-3E**  
Maternal Sister to 3rd Dam



## Plum-Line Dempsey Airhead

840003212824074 100%RHA Born: 3/13/2020 Herd#: 417

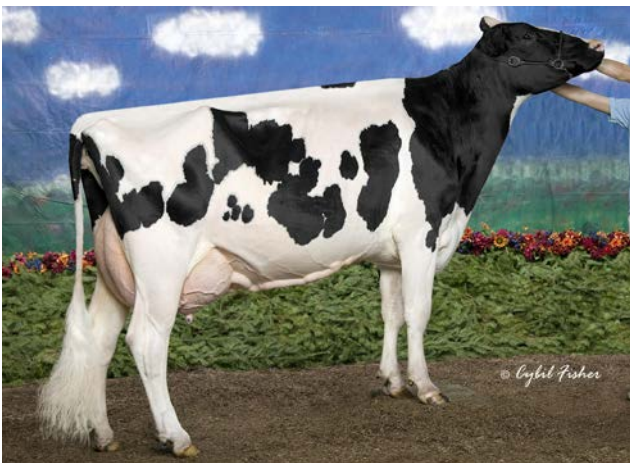
**Spring Yearling**

**LIRR DREW DEMPSEY**

61083609 100%RHA TR CD TP TY TV EX-93  
PTA +1.60T +1.01UDC +1.03FLC GTPI +1908G  
Goldwyn x Kernt Sneezy Derry Drew VG-88

**PLUM-LINE AFTERSHOCK ALIYAH**

840003141692234 3-07 Very Good-87 VVV+V  
3-02 2 263 30870 3.1 954 2.7 847



4th Dam: Plum-Line Champion Alexis EX-94-2E

**2nd-13th Dams**

**Plum-Line Jasper Ashanti EX-91-2E**

5-09 2 305 28710 3.8 1097 2.9 845  
Life: 2,099d 168,810lb 3.7% 6,216 3.0% 5,0836

**Plum-Line Damion Ariel EX-94-3E**

6-03 2 305 33820 4.4 1478 3.1 1054  
Life: 2,329d 194,130lb 4.1% 8,043 3.1% 6,090

**Plum-Line Champion Alexis EX-94-2E**

5-05 2 305 40800 93 4.6 1869 2.8 1139

**Plum-Line Charles Aisha EX-90**

6-04 2 305 27070 4.2 1138 3.1 841  
Life: 1,984d 160,150lb 4.4% 6,991 3.2% 5087

**Plum-Line Fancy Paul Abby**

3-06 3 305 32660 3.2 1047 2.5 803

**Plum-Line Stardust Ashley VG-89 EX-MS**

5-07 3 305 39650 3.1 1227 2.5 998

**Plum-Line Melvin Autumn EX-94-2E**

5-05 3 305 36830 3.1 1150 2.9 1079

7-06 3 305 37790 2.9 1091 2.7 1035

Jr All-American Sr 2 Yr Old 1991

Grand & B&O, PA Fall Show 1992

**Campbell-Run Segis Sara VG-88**

9-05 3 305 32060 3.3 1067 3.1 1008

Life: 1,814d 142,250lb 3.3% 4,669 3.1% 4,428

**Campbell-Run Stardom Sadie EX-91-3E**

9-01 2 365 23050 3.3 763 3.1 708

**Campbell-Run Citation Salty VG-85**

3-10 2 305 21450 3.2 682

**Wagnerscrest Salt & Pepper VG-86**

8-01 2 305 20200 3.5 700

**Pat-Bern Whirlhill Snow Drop VG-86**

8-00 2 330 21840 4.0 864





# HOLSTEIN ASSOCIATION TERMS AND CONDITIONS FOR PUBLIC SALES

EFFECTIVE MARCH 2, 1996 - Amended October 1, 1997, June 28, 2000, June 23, 2002, March 26, 2010 and March 24, 2016

**TERMS:** The terms of the sale are cash unless arrangements are made prior to the sale or are printed in the sale catalog. Only when the above conditions are met will the buyer be entitled to the warranties listed below. In no case will animals be released unless settlement is made with the clerk of the sale.

**RESPONSIBILITY:** The seller, buyer, and manager of this sale are obligated to comply with the provisions of these terms and conditions.

**EXPORT SALES:** Buyer assumes all responsibility for health tests required by the importing country.

**BIDS:** The highest bidder is the buyer. Bidding parties or their agents are responsible for all bids placed. Every animal or lot presented for bidding is pledged to absolute sale. In case of dispute, the animal or lot will again be put up for advance bids, and if there is no advance bid, the animal or lot will be sold to the person the auctioneer accepted the last bid from. In case two or more claim the bid, the auctioneer will indicate the party whose bid he recognized. Other claimants will be given an opportunity to increase the bid and bidding will be restricted to the two or more claimants.

**BY-BIDDING:** Bidding directly or indirectly by the sole owner of any animal or lot is prohibited unless the intention to bid is disclosed specific to each animal in the catalog and announced when the animal enters the ring. Bidding by any member of a partnership, syndicate, or other entity having an ownership interest in an animal or lot is permitted.

**TRANSFER OF OWNERSHIP:** For all Registered Holsteins<sup>SM</sup>, the transfer of ownership to the buyer will be recorded on the records of Holstein Association USA and a certificate of registration showing that transfer of ownership will be provided to the buyer free of charge. For embryos, the transfer of ownership to the buyer will be recorded on the records of Holstein Association USA free of charge to the buyer.

**RISK:** All animals located at sale site are at the purchaser's risk as soon as struck off, but will be cared for free of charge for a maximum of 24 hours following the end of the sale.

## WARRANTIES:

- 1) Each consignor warrants clear title to the animal or lot, and the right to sell same.
- 2) To the best of the seller's knowledge, each animal is sound and healthy in every respect and embryos have been recovered, processed, frozen, transferred and graded in keeping with IETS recommendations unless otherwise noted in the catalog or announced from the auction stand. Every precaution will be taken to represent the physical condition of each lot exactly as is known. Examination of all purchases should be made immediately after the purchase and before the close of the sale, and if found not to be as represented, complaint must be reported to the sale management before the close of the sale. In the event no complaint is filed, it is understood that the buyer assumes full ownership in the case of animals at sale site together with all risks, after which no representations of the seller can be challenged through the sale management. Heifers that never calved are in no way guaranteed as to the condition of their udders following calving. The sex of an embryo or fetus is in no way guaranteed.

### 3) Breeding Warranty

The seller guarantees all animals to be breeders, but not beyond the purchase price, with the following understanding:

- a. Males - Should any bull after reaching the age of fourteen months fail to prove a breeder after being used for two months on cows or heifers known to be breeders, the matter shall be reported in writing to the seller within three months of the sale date. The report must include the animal's examination record, a written statement of treatment, and a statement of the animals' inability to breed,

by a licensed veterinarian. The seller has the option to refund the purchase price or make other settlement that is satisfactory to the buyer. In either case the rights of ownership of the animal return to the seller. The seller makes no guarantees with respect to the ability to freeze semen.

- b. Females - All females are guaranteed to be breeders with the exception of:
  1. Cows over 7 years of age when sold;
  2. Cows and/or heifers carrying a pregnancy that is the result of an embryo transfer.

Report of a non-breeder must occur in writing within 3 months of the date of sale or before the animal reaches 21 months of age and must be submitted to the seller. The report must include the animal's examination record, a written statement of treatment, and a statement of the animals' inability to breed, by a licensed veterinarian. The seller has the option to refund the purchase price or make other settlement that is satisfactory to the buyer. In either case the rights of ownership of the animal return to the seller.

Females bred when sold and pronounced in calf are presumed to be pregnant but pregnancy is not guaranteed unless so announced. The seller makes no warranty that pregnant cows will deliver calves or that they will carry calves full term.

- c. If, after the sale, embryos or oocytes are recovered from a female or an attempt is made to superovulate her, this negates the breeding warranty unless there is a separate written agreement between buyer and seller.

**SHIPPING:** Assistance will be given in arranging shipping of the animals after the sale. All costs, risks and responsibility will be borne by the purchaser.

**PEDIGREE INFORMATION:** All production, classification, type and production summaries are current. Only information recorded on Holstein Association USA pedigrees is used. Any production or classification records supplied by the seller or consignor will be properly identified as provided by owner. Records in progress are identified as such.

**GENOMIC INFORMATION:** If genomic information on the animal or embryo is available, it must be dated and disclosed at or before the time of sale.

**EMBRYO TRANSFER:** All registered animals that have resulted from embryo transfer are identified with one of the following suffixes in the name: ET, ETS (from split embryo), or ETN (from nuclear transfer). If unregistered, the appropriate technology will be identified. Donor dams are identified.

**HEALTH WARRANTY:** The seller will provide an official health certificate to the buyer for each animal showing the results of all health tests made in preparation for this sale as required by the state where the cattle reside. Other health tests completed for this sale will be disclosed.

**ERRORS:** The material in this catalog has been carefully edited. If any errors or omissions are discovered, they will be announced. Such announcements take precedence over that printed in this catalog.

**ACCIDENT:** The sale management, the consignors, and the owner of the grounds will not be responsible in any case for the condition of the grounds or the behavior of the animals and disclaim any liability in the event of personal accident or property loss.

**LIMITATIONS OF WARRANTIES:** Warranties contained herein, unless terminated earlier, will cease upon the resale of an animal.



# Index

Plum-Line animals first 55 lots  
 Consignments from Lot 56-82, listed in alphabetical order by consignor last name

Lot #	Consignor	Lot Name	Lot #	Consignor	Lot Name
1	Plum-Line	Plum-Line Diamond Elsa	47	Plum-Line	G-M-C Gold Chip Lexus-ET
2	Plum-Line	Plum-Line GC Ethel-ET	48	Plum-Line	Plum-Line Solomon Rackcity
3	Plum-Line	Plum-Line Awesome Elite-ET *RC	49	Plum-Line	Plum-Line Saloon Roxanne
4	Plum-Line	Plum-Line Aweosme Effort-ET *RC	50	Plum-Line	Plum-Line Archrival Caliber
5	Plum-Line	Plum-Line Awsm Electrify-ET *RC	51	Plum-Line	Plum-Line Solomon Maya
6	Plum-Line	Plum-Line Dempsey Ellie	52	Plum-Line	Plum-Line Crush Milly
7	Plum-Line	Plum-Line America Adelee	53	Plum-Line	Plum-Line Saloons Highlife
8	Plum-Line	Plum-Line Diamond Avenue	54	Plum-Line	MS Plum-Line RW Sid Dixie *RC
9	Plum-Line	Plum-Line Crank It Up *RC	55	Plum-Line	Plum-Line Solomon Platnum
10	Plum-Line	Plum-Line Diamond Chase	56	Kyle Barton	Earincliffe Sid Addison
11	Plum-Line	Plum-Line Absolute Kalypso *RC	57	Foxmont	Foxmont-J Doorman Debut
12	Plum-Line	Plum-Line DB Addiction	58	Kaufman/All-Glo	All-Glo Doorman Kanilla
13	Plum-Line	Plum-Line After Party	59	Kaufman/All-Glo	All-Glo Kenosha Dolly
14	Plum-Line	Plum-Line Awe After Hours *RC	60	Lamoreaux/Lindlaur	Lindlaur Warrior Aerosmith *RC
15	Plum-Line	Plum-Line Dempsey Alcatraz	61	Lamoreaux/Lindlaur	Lindlaur Jordy Daisy
16	Plum-Line	Plum-Line Armani Alanis	62	Lamoreaux/Lindlaur	Lindlaur D Back Debshine
17	Plum-Line	Plum-Line Solomon Arrow	63	Lamoreaux/Lindlaur	Lindlaur Jordy Jamison
18	Plum-Line	Plum-Line Gold Chip Adorn	64	Lamoreaux/Lindlaur	Lindlaur Meridian Jin
19	Plum-Line	Plum-Line Saloon Allabuzz	65	Logansway	OCD Awesome Lyric-Red
20	Plum-Line	Plum-Line Redliner Angel	66	Logansway	A-Logansway Shiny Beemer
21	Plum-Line	Plum-Line Diamond Allegra	67	Logansway	A-Logansway Undenied Wish
22	Plum-Line	Plum-Line Damion Lexi	68	Logansway	A-Logansway Excalibut 1956
23	Plum-Line	Plum-Line Diamond Luella	69	Logansway	Do-Ra-Me Crushed Dreams
24	Plum-Line	Plum-Line Awesome Kissable *RC	70	McWilliams	This-Is-It Sid Annie-ET
25	Plum-Line	Plum-Line Diamond Kamrey	71	McWilliams	McWilliams Leichtenstein
26	Plum-Line	Plum-Line Windhammer Kirby	72	McWilliams	McWilliams Hypno Soul
27	Plum-Line	Plum-Line Jordy Kenya *RC	73	McWilliams	McWilliams Lotus Vox
28	Plum-Line	Plum-Line Sid Kinkaid	74	Green-Broke/Wilcox	Green-Broke Delight Crunch
29	Plum-Line	Plum-Line Dempsey Kenosha	75	Moser/Class-L	Class-L Watchout-ET
30	Plum-Line	Plum-Line Undenied Katrina	76	Moser/Class-L	Class-L Crush Wildchild-ET
31	Plum-Line	Plum-Line Dempsey Cherrypop	77	Ridgedale	Ridgedale Diamond Royce
32	Plum-Line	Plum-Line Bradnick Chesty	78	Ridgedale	Ridgedale Estey
33	Plum-Line	Plum-Line Diamond C-Cups	79	Ridgedale	Ridgedale Aaliyah
34	Plum-Line	Plum-Line Undenied Catwalk	80	Ridgedale	Unstopabull x Ridgedale Rock-A-Bye
35	Plum-Line	Plum-Line Sirwood Cinnamon	81	Sekarak	Clairecrest Doorman Lila
36	Plum-Line	Plum-Line Byway Vicious	82	ST Genetics/ ZBW	Lauougere Side Sunshine-ET
37	Plum-Line	Plum-Line Vegas Bomb			
38	Plum-Line	Plum-Line Unstopabul Vixen *RC			
39	Plum-Line	Plum-Line King Venom-TW			
40	Plum-Line	Plum-Line Victorias Secret			
41	Plum-Line	Plum-Line Unstopabul Lullaby *RC			
42	Plum-Line	Plum-Line Sanchez Lizzy			
43	Plum-Line	Plum-Line Absolute Lemon * RC			
44	Plum-Line	Plum-Line Lil Britches			
45	Plum-Line	Plum-Line Unstopabul Luxury *RC			
46	Plum-Line	G-M-C Gold Chip Lucky-ET			



