



THE SPECIAL
Milk & More Dairy Sale

FRIDAY DECEMBER 4, 2020
11AM

FISHER'S QUALITY DAIRY SALES
RONKS, PA



The Special Milk & More Dairy Sale

Friday December 4, 2020 • 11AM

Fisher's Quality Dairy Sales Facility

GPS Address: 3304-C Old Philadelphia Pike, Ronks, PA

SALE PERSONNEL

MEL HOOVER

Auctioneer AU003111-L

DAVID J. LENTZ

717-329-9202

Pedigrees

JAKE & JONAS FISHER

717-768-3297

DANIEL ALBRIGHT

717-789-3241

JEFF WILLIAMS

570-289-4467

DAVID KING

484-886-9736

LARGE VOLUME BUYERS & OUT OF STATE BUYERS NEED PRIOR APPROVAL FROM SALE MANAGEMENT IF BUYING VIA COWBUYER.COM OR SALE STAFF THEN FULL PAYMENT MUST BE MADE BY MONDAY DECEMBER 7, 2020 VIA WIRE TRANSFER, CREDIT CARD OR OVERNIGHT SHIPPED CERTIFIED CHECK! NO EXCEPTIONS

REAL-TIME BIDDING ONLINE AT WWW.COWBUYER.COM

AARON RAY TOMPKINS

336-363-4639



Sale Managers Note: This Sale features roughly 120 young cows and springers from numerous overstocked herds. The following herds are offering their Best: Heart & Soul, Sweet-Peas, McWilliams, King-Lane, Pheasant-Echos, Appealing, Burlin, Albright, Mel-Crest, R-Pinehill, Spungold, Clear-Mooo, JA-LA-Rose, Pennwood, Schuler Farms, Arthaven, Rainbow-C and Wea-Land! They're sending Milky Cows and Fantastic Bred Heifers!

Semen tank and semen from top holstein bulls like, King Doc, Unstopabull-Red & Mogul Denver.

Exciting embryo package: Undenied X Byway's EX-91 Atwood Dam

Plus many more good young, sire ID cows and heifers with lots of milk.

Something for Everyone!!

Catalog and updates will be online through PA Holstein Facebook Page

Sale Managed By

Fisher's Quality Dairy Sales

Jake & Jonas Fisher

3304-C Old Philadelphia Pike, Ronks, PA

717-768-3297

- And -

Pennsylvania Holstein Association

839 Benner Pike, State College, PA 16801

814-234-0364 Fax 814-234-1698

email: contact@paholsteins.com

Fisher's Quality Dairy Sales and PHA are not responsible for accidents!



SAVAGE-LEIGH ATWD LIC-ET EX-93 EX-MS 2E
DAM OF LOT 1

Maternal sister to Lic

Savage-Leigh Leona-ET EX-96 EEEEE 3E GMD

- Nom All-American 125,000 lb Cow 2014, 2013, 2012
- 2nd 125,000 lb Cow WDE 2012
- Grand Champ Eastern Fall National 2012
- Supreme Champ MD State Fair 2012
- Nom All-American/All-Canadian 5-Year-Old 2010
- HHM All-American Jr. 2-Year-Old 2007
- Member of Nom All-American Produce of Dam 2011
- Res Sr. Champion Eastern Fall National 2011
- Grand Champion MD Spring Show 2011
- Res. Grand Champion MD State Fair 2011
- Res. Grand Champion Eastern National 2010
- Sup/Grand Champ MD State Fair 2008

1

IHC & SWEET PEAS HOLSTEIN
CLEAR SPRING, MD 21722
717-360-7848

Walnutlawn Solomon-ET

11775998C 99%RHA-I *TR *TP *TY *TV *TL
 PTA -450M -13F -8P 99R 8/20
 PTA -1.7PL 2.86SCS +.1DPR 2.6%DCE
 PTA +2.69T +1.69UDC +.60FLC 99R 8/20
 GTPI +1993G

Savage-Leigh Atwd Lic-ET

840003007810317 Excellent-93 EX-MS 2E
 2-05 2x 365d 28840 3.7 1065 2.8 814
 5-01 2x 305d 28450 3.6 1012 2.8 795
 3-09 2x 305d 27380 3.4 931 2.8 760
 7-06 2x 310d 23690 3.5 836 2.6 620
 Life: 1610d 132480 3.6 4713 2.8 3722
 • Nom All-American & Jr AA 4-Yr-Old 2015
 • 1st 4-Yr-Old Eastern Nat'l 2015
 • HM Sr Champ Eastern Nat'l 2015
 • Supreme & Grand Champ Premier Nat'l Jr. 2015
 • Supreme & Grand Champ MD State Fair 2015
 • 5th 4-Yr-Old World Dairy Expo 2015
 • Jr All-American Jr 3-Yr-Old 2014

BULLDOG SOLOMON LUCIANA

840003150434961 99%RHA-I
 Born: December 15, 2018 • Herd No. 848

Due: January 10, 2021 to Avant-Garde Unix Select-ET
 (Ultrasounded Female) 7H014920

Maple-Downs-I G W Atwood-ET

8956379C Excellent-90 *TR *TP *TY *TV *TL
 PTA -368M +11F -10P 99R 8/20
 PTA +2.98T +1.70UDC +2.17FLC GTPI +1916G

Savage-Leigh Licorice-ET

60317090 Excellent-92 EEVVE GMD DOM *TV
 4-02 2x 365d 51220 4.3 2179 3.1 1596
 2-04 2x 365d 38310 4.5 1716 3.2 1218
 Life: 1018d 113740 4.4 4968 3.2 3643
 • Nom All-American Produce of Dam 2007
 • HHM All-American 5-Yr-Old Cow 2006
 • Grand Champion New York Sprg/Internat'l 2006
 • Res Gr Champion New York Intern'l/Sprg 2004

3rd-8th Dams

Savage-Leigh Bellwood Linda EX-92 2E GMD DOM

2-10 2x 365d 40240 5.8 2349 3.4 1358
 Life: 1312d 126760 5.2 6576 3.2 4076

- Nom All-American Jr 3-Yr-Old Cow 1999

Savage-Leigh Star Linda-ET VG-87 EX-MS GMD

2-02 2x 365d 30890 4.0 1236 3.1 952

Savage-Leigh Glenview Linda EX-90 GMD

6-08 2x 365d 41820 4.6 1936 3.0 1247
 Life: 1892d 150300 4.4 6636 3.2 4813

Savage-Leigh Lindas Chairman GP-84

5-10 2x 365d 30620 3.8 1167 3.3 1013
 Life: 1972d 121550 3.9 4718 3.3 4013

Savage-Leigh Creek Lydia VG-88 VVVV

4-11 2x 344d 16390 4.2 685 3.1 511

Savage-Leigh Kate Linda VG-85

6-01 2x 305d 19940 4.0 793



BVK ATWOOD ABBIE-ET EX-95 EEEEE 2E
DAM OF LOTS 2 & 3



SWEET-PEAS GCHIP ALEX VG-89
MATERNAL SISTER TO LOTS 2 & 3

2

SWEET PEAS HOLSTEIN
SUSQUEHANNA, PA 18847
570-442-1491

Mr Chasity Gold Chip

140145553 Excellent-95 *TR *TP *TY *TV *TL
PTA -638M -23F -39P 99R 8/20
PTA +.1PL 2.78SCS -1.6DPR 1.5%DCE
PTA +1.52T +1.30UDC +1.17FLC 99R 8/20
GTPI +1757G

BVK Atwood Abbie-ET

70476955 Excellent-95 EEEEE 2E *TL
4-03 2x 365d 54790 3.9 2134 3.1 1696
3-02 2x 346d 42190 4.1 1726 3.0 1281
5-08 2x 365d 36060 4.7 1710 3.4 1211
1-10 2x 365d 35180 3.6 1280 3.0 1058
Life: 1820d 199370 4.1 8252 3.2 6374
• Grand Champ PA Spring Show 2016
• 2nd Jr 3-Yr-Old/Nasco Prod Award WDE 2014
• Res Grand Champ Eastern Nat'l 2014

SWEET-PEAS GC AUSSIE-ET

840003129013830 Very Good-87 VG-MS
Born: April 20, 2016
2-06 2x 365d 24459 3.1 762 2.7 663
3-09 2x 314d 23907 3.4 806 2.5 592
• Sells Fresh

Maternal sisters to Aussie

Sweet-Peas Gchip Alex VG-89

• HHM All-American Jr 2-Yr-Old 2019

Sweet-Peas GC Affection-ET VG-89

Maple-Downs-I G W Atwood-ET

8956379C Excellent-90 *TR *TP *TY *TV *TL
PTA -368M +11F -10P 99R 8/20
PTA +2.98T +1.70UDC +2.17FLC GTPI +1916G

Ms Kingstead Chief Adeen-ET

17302711 Excellent-94 2E DOM
3-05 2x 310d 30180 4.0 1209 3.6 1077
6-04 2x 365d 28820 4.1 1191 3.5 1013
Life: 1382d 100760 4.0 4010 3.6 3649
• Nom All-American Jr 3-Yr-Old Cow 2000
• Nom All-American 4-Yr-Old Cow 2001
• Member All-American Produce 2000

Full sisters to Abbie

BVK Atwood Arianna EX-94

- 1st Jr 3-Yr-Old NY Int'l Spring Show 2013
- Un. All-American Jr 2-Yr- Old 2012
- All-Canadian Jr 2-Yr-Old 2012
- 1st Jr 2-Yr-Old WDE 2012
- 1st Jr 2-Yr-Old & Int Champ IL Champ Show 2012
- Nom All-American Spring Yearling 2011
- 1st Spring Yrlg/Jr. Champ Midwest Nat'l Sp 2011

BVK Atwood Abrianna-ET EX-92

- Res All-American Jr 3-Yr-Old 2013
- 2nd Jr 3-Yr-Old Best B&O WDE 2013
- 1st Jr 3-Yr-Old/Grand Champ IL State Fair 2013
- 1st Jr 3-Yr-Old/Grand Champ IL Champ Show 2013
- Sale topper \$49,000 Impact of Ada sale

BVK Atwood Andrea EX-92

- 3rd Jr 3-Yr-Old WDE 2013
- HM All-American Jr 3-Yr-Old 2013

Maternal sister to Abbie

BVK Shottle Anna-ET EX-94 EX-MS

3rd Dam

C Aitkenbrae Starbuck Ada EX-94 EEEE 2E DOM

13-8 2x 365d 25150 3.0 764 3.4 843
Life: 6 Lact 137732 3.4 4749 3.4 4647
• All-American Produce of Dam 2000, 2001
• Res All-Time All-American Sr 3-Yr-Old
• All-American 3-Yr-Old Cow 1990
• Grand Champion Eastern National 1990

3

SWEET PEAS HOLSTEIN
SUSQUEHANNA, PA 18847
570-442-1491

Braedale Goldwyn

10705608C Good Plus-84-CAN *CD *TY *TV *TL
PTA -730M -7F -13P 99R 8/20
PTA -1.5PL 2.83SCS -1.2DPR 2.5%DCE
PTA+.98T +.55UDC +.83FLC 99R 8/20
GTPI +1317G

BVK Atwood Abbie-ET

70476955 Excellent-95 EEEEE 2E *TL
4-03 2x 365d 54790 3.9 2134 3.1 1696
3-02 2x 346d 42190 4.1 1726 3.0 1281
5-08 2x 365d 36060 4.7 1710 3.4 1211
1-10 2x 365d 35180 3.6 1280 3.0 1058
Life: 1820d 199370 4.1 8252 3.2 6374
• Grand Champ PA Spring Show 2016
• 2nd Jr 3-Yr-Old/Nasco Prod Award WDE 2014
• Res Grand Champ Eastern Nat'l 2014

SWEET-PEAS GWYN AMUSE-ET

840003129013851 Very Good-86 VG-MS
Born: June 5, 2016
2-06 2x 365d 26230 4.1 1081 3.3 857

Due: July 9, 2021 to KCCCK AMARETTO-RED-ET
551H003726

Maternal sisters to Amuse

Sweet-Peas Gchip Alex VG-89

• HHM All-American Jr 2-Yr-Old 2019

Sweet-Peas GC Affection-ET VG-89

Maple-Downs-I G W Atwood-ET

8956379C Excellent-90 *TR *TP *TY *TV *TL
PTA -368M +11F -10P 99R 8/20
PTA +2.98T +1.70UDC +2.17FLC GTPI +1916G

Ms Kingstead Chief Adeen-ET

17302711 Excellent-94 2E DOM
3-05 2x 310d 30180 4.0 1209 3.6 1077
6-04 2x 365d 28820 4.1 1191 3.5 1013
Life: 1382d 100760 4.0 4010 3.6 3649
• Nom All-American Jr 3-Yr-Old Cow 2000
• Nom All-American 4-Yr-Old Cow 2001
• Member All-American Produce 2000

Full sisters to Abbie

BVK Atwood Arianna EX-94

- 1st Jr 3-Yr-Old NY Int'l Spring Show 2013
- Un. All-American Jr 2-Yr-Old 2012
- All-Canadian Jr 2-Yr-Old 2012
- 1st Jr 2-Yr-Old WDE 2012
- 1st Jr 2-Yr-Old & Int Champ IL Champ Show 2012
- Nom All-American Spring Yearling 2011
- 1st Spring Yrlg/Jr. Champ Midwest Nat'l Sp 2011

BVK Atwood Abrianna-ET EX-92

- Res All-American Jr 3-Yr-Old 2013
- 2nd Jr 3-Yr-Old Best B&O WDE 2013
- 1st Jr 3-Yr-Old/Grand Champ IL State Fair 2013
- 1st Jr 3-Yr-Old/Grand Champ IL Champ Show 2013
- Sale topper \$49,000 Impact of Ada sale

BVK Atwood Andrea EX-92

- 3rd Jr 3-Yr-Old WDE 2013
- HM All-American Jr 3-Yr-Old 2013

Maternal sister to Abbie

BVK Shottle Anna-ET EX-94 EX-MS

3rd Dam

C Aitkenbrae Starbuck Ada EX-94 EEEE 2E DOM

13-8 2x 365d 25150 3.0 764 3.4 843

Life: 6 Lact 137732 3.4 4749 3.4 4647

- All-American Produce of Dam 2000, 2001
- Res All-Time All-American Sr 3-Yr-Old
- All-American 3-Yr-Old Cow 1990
- Grand Champion Eastern National 1990

4

CHRIST FISHER
LANCASTER, PA
717-368-7735

4A

ONE UNIT SEXED UNSTOPABULL-RED

799H000004

4B

THREE UNITS SEXED KING DOC

250H012961

4C

SIX UNITS KING DOC

250H012961

SEMEN LOTS

4D

TEN UNITS MR MOGUL DENVER 1426-ET

551H000690

4E

FIVE UNITS WILRA HARVEST-ET

29H018043

ONE UNIT OCD LEGENDARY COFFEE-ET

250H014310

ONE UNIT TRENT-WAY-JS RONALD-ET

250H014465



ARETHUSA DUNDEE MELISSA-ET EX-93 EEEEE GMD
2ND DAM OF LOT 5

MELANIE!

- Supreme Champion World Dairy Expo 2004
- Unanimous All-American Aged Cow 2004
- All-American 5-Yr-Old Cow 2003
- Unanimous All-American 4-Yr-Old Cow 2002
- Unanimous All-Canadian 4-Yr-Old Cow 2002
- 1st 4-Yr-Old Cow International Show 2002
- 1st 4-Yr-Old Cow Royal Winter Fair 2002
- 1st 4-Yr-Old Cow Eastern Fall/Nat 2002
- Res All-Canadian Jr 3-Yr-Old Cow 2001

Full Sister to Melissa

Arethusa Dundee Mallory-ET 2E-94

Maternal sisters to Melissa

Arethusa SS Macy-ET VG-87 VG-MS *RC

Arethusa SS Melody-ET EX-93

Arethusa Mercedes SS-ET 2E-91

4-01 2x 365d 37250 4.2 1573 2.9 1087

Arethusa SS Marisa-ET EX-90

3rd-6th Dams

Hillcroft Leader Melanie EX-96 EEEEE 3E

8-04 2x 365d 46890 4.7 2192 3.1 1471

Life: 1827d 181951 4.3 7845 3.2 5815

Hillcroft Skychief Michelle VG-89 *1 STAR

7-07 2x 360d 29434 3.8 1111 3.3 974

Life: 2066d 139512 3.9 5451 3.2 4488

Hillcroft Cascade Minie VG-88-CAN *2 STAR

10-0 2x 365d 32458 3.2 1052 2.9 955

Life: 3392d 236707 3.3 7765 3.2 7558

Hillcroft Comm Maria VG-85-CAN

7-07 2x 291d 18774 3.7 690 3.3 624

Life: 8 Lact 135387 3.8 5104 3.4 4632

5

SWEET PEAS HOLSTEIN
SUSQUEHANNA, PA 18847
570-442-1491

SWEET-PEAS ATWOOD MURPHY

73506723 Excellent-91 EEEEE 2E

Born: December 5, 2013

4-03 2x 365d 33640 4.0 1352 3.0 1003

5-06 2x 360d 30830 4.0 1248 3.2 973

3-03 2x 315d 30000 3.6 1084 3.1 938

2-03 2x 305d 24170 3.9 936 3.3 791

Life: 1345d 118640 3.9 4620 3.1 3705

- Sells Fresh

Maple-Downs-I G W Atwood-ET

8956379C Excellent-90 *TR *TP *TY *TV *TL

PTA -368M +11F -10P 99R 8/20

PTA -2.4PL 3.12SCS -4.5DPR 4.4%DCE

PTA +2.98T +1.70UDC +2.17FLC 99R 8/20

GTPI +1916G

Sweet-Peas Aster Maple-ET

71118958 Very Good-85

2-03 2x 322d 22300 3.8 838 3.0 662

Maternal sister to Maple

Sweet-Peas Atwod Marissa-ET EX-94 EEEEE 2E

- 4th 4-Yr-Old Eastern National 2016

Kingsmill Gdwyn Asteroid-ET

63016175 Very Good-85

PTA -1810M -26F -56P 98R 8/20

PTA +.62T -.15UDC +.70FLC GTPI +1314G

Arethusa Dundee Melissa-ET

138012786 Excellent-93 EEEEE GMD

4-11 2x 365d 42770 4.4 1902 2.9 1259

1-11 2x 346d 21620 4.3 928 3.5 748

3-00 2x 286d 20510 3.4 703 3.6 733

Life: 1437d 115390 3.3 3767 2.5 2938

6

SWEET PEAS HOLSTEIN
SUSQUEHANNA, PA 18847
570-442-1491

Val-Bisson Doorman-ET

107281711C Excellent-90-CAN *TR *TP *TY *TL
PTA -467M +14F +9P 99R 8/20
PTA +.2PL 2.64SCS -2.2DPR 2.7%DCE
PTA +2.57T +1.61UDC +.99FLC 99R 8/20
GTPI +2204G

Sweet-Peas Atwod Marissa-ET

71502618 Excellent-94 EEEEE 2E
2-06 2x 310d 30310 4.1 1235 3.1 954
3-05 2x 323d 34760 4.2 1459 3.3 1159
4-05 2x 365d 39400 4.0 1566 3.1 1239
Life: 1275d 119850 4.2 5012 3.3 3925
• 4th 4-Yr-Old Eastern National 2016

SWEET-PEAS DRMAN MELANIE-ET

840003200009548 99%RHA-I *TR *TC *TL
Born: March 4, 2018 • Herd No. 197
19K GTPI +2093G +2.19T +.94UDC +1.05FC 8/20

Fresh: August 18, 2020
Milking 80#

Bred: November 26, 2020 to Folke

Maple-Downs-I G W Atwood-ET

8956379C Excellent-90 *TR *TP *TY *TV *TL
PTA -368M +11F -10P 99R 8/20
PTA +2.98T +1.70UDC +2.17FLC GTPI +1916G

Arethusa Dundee Melissa-ET

138012786 Excellent-93 EEEEE GMD
4-11 2x 365d 42770 4.4 1902 2.9 1259
1-11 2x 346d 21620 4.3 928 3.5 748
3-00 2x 286d 20510 3.4 703 3.6 733
Life: 1437d 115390 3.3 3767 2.5 2938

MELANIE!

- Supreme Champion World Dairy Expo 2004
- Unanimous All-American Aged Cow 2004
- All-American 5-Yr-Old Cow 2003
- Unanimous All-American 4-Yr-Old Cow 2002
- Unanimous All-Canadian 4-Yr-Old Cow 2002
- 1st 4-Yr-Old Cow International Show 2002
- 1st 4-Yr-Old Cow Royal Winter Fair 2002
- 1st 4-Yr-Old Cow Eastern Fall/Nat 2002
- Res All-Canadian Jr 3-Yr-Old Cow 2001

Full Sister to Melissa

Arethusa Dundee Mallory-ET 2E-94

Maternal sisters to Melissa

Arethusa SS Macy-ET VG-87 VG-MS *RC

Arethusa SS Melody-ET EX-93

Arethusa Mercedes SS-ET 2E-91

4-01 2x 365d 37250 4.2 1573 2.9 1087

Arethusa SS Marisa-ET EX-90

3rd-6th Dams

Hillcroft Leader Melanie EX-96 EEEEE 3E

8-04 2x 365d 46890 4.7 2192 3.1 1471
Life: 1827d 181951 4.3 7845 3.2 5815

Hillcroft Skychief Michelle VG-89 *1 STAR

7-07 2x 360d 29434 3.8 1111 3.3 974
Life: 2066d 139512 3.9 5451 3.2 4488

Hillcroft Cascade Minie VG-88-CAN *2 STAR

10-0 2x 365d 32458 3.2 1052 2.9 955
Life: 3392d 236707 3.3 7765 3.2 7558

Hillcroft Comm Maria VG-85-CAN

7-07 2x 291d 18774 3.7 690 3.3 624
Life: 8 Lact 135387 3.8 5104 3.4 4632

7

SWEET PEAS HOLSTEIN
SUSQUEHANNA, PA 18847
570-442-1491

Walnutlawn Solomon-ET

11775998C 99%RHA-I *TR *TP *TY *TV *TL
PTA -450M -13F -8P 99R 8/20
PTA -1.7PL 2.86SCS +.1DPR 2.6%DCE
PTA +2.69T +1.69UDC +.60FLC 99R 8/20
GTPI +1993G

Sweet-Peas Dempsey Bonus-ET

73532917 Excellent-90 EEEVE *TL
3-08 2x 323d 34450 3.2 1106 3.1 1075
2-06 2x 365d 31110 3.4 1066 3.2 995
4-08 2x 359d 24880 3.7 916 3.3 809
Life: 1255d 111670 3.4 3841 3.2 3519

SWEET-PEAS SOLOMON BAILEY

840003200009552 99%RHA-I
Born: March 2, 2018 • Herd No. 201

Due: December 24, 2020 to Golden-Oaks Master
(Ultrasounded female) 799H000016

Lirr Drew Dempsey

61083609 Excellent-93 *TR *CD *TP *TY *TV *TL
PTA -766M -5F -6P 99R 8/20
PTA +1.60T +.90UDC +1.06FLC GTPI +1908G

Sweet-Peas Dundee Bentley

65682019 Excellent-91 EEEVE
3-08 2x 365d 44340 3.2 1403 3.1 1372
2-05 2x 365d 39370 3.3 1303 3.2 1244

3rd Dam

Sweet-Peas Terrason Betrice VG-85 VG-MS

3-06 2x 365d 39150 3.8 1485 3.1 1222
2-03 2x 365d 29660 4.0 1186 3.4 1004

4th Dam

Sweet-Peas Leader Betty VG-88 VG-MS

5-02 2x 365d 48070 3.5 1679 3.1 1505
Life: 1601d 180340 3.7 6658 3.2 5767

5th Dam

Sweet-Peas Schif Barbra Ann VG-85

5-07 2x 325d 35980 4.3 1537 2.9 1051
Life: 1457d 142390 3.8 5417 3.1 4454

6th Dam

C Lochill Betty Lin VG-87

5-05 2x 365d 38440 4.0 1543 3.1 1184
Life: 1294d 110570 3.9 4342 3.1 3472

7th Dam

Lochill Bernadette VG-88-CAN

4-00 2x 365d 27405 3.5 948 3.2 884
Life: 5 Lact 130609 3.5 4515 3.3 4321

Lochill Ashley VG-86-CAN 4*

6-04 2x 365d 25062 4.2 1058 3.2 813
Life: 7 Lact 131460 4.2 5564 3.5 4544

Lochill Bethany VG-85-CAN

3-07 2x 365d 18122 3.5 635 3.2 584
Life: 4 Lact 55307 3.6 1986 2.2 1224

Lochill Isabell VG-87-CAN

5-08 2x 365d 21920 3.7 820
Life: 8 Lact 139344 3.7 5179 1.6 2231



DUCKETT-SA GOLD FAME-ET EX-94 EX-MS 2E
2ND DAM OF LOT 8

Frosty

- All-American Aged Cow 2010
- Grand & Supreme Champion International Show 2010
- Unanimous All-American 5-Yr-Old Cow 2009
- 1st 5-Yr-Old Cow International Show 2009
- All-World & People's Choice 2009
- Grand & Supreme Champion, World Dairy Expo 2009
- Unanimous All-Canadian 5-Yr-Old Cow 2009
- Res Grand Champion Royal Winter Fair 2009
- 1st 5-Yr-Old Cow Royal Winter Fair 2009
- All-American Sr 3-yr-Old Cow 2007
- Res Grand Champion International Show 2007
- Intermediate Champion International Show 2007
- 1st Sr 3-Yr-Old Cow International Show 2007
- Nom All-American Sr 2-Yr-Old Cow 2006

8

SWEET PEAS HOLSTEIN
SUSQUEHANNA, PA 18847
570-442-1491

SWEET-PEAS GD DREAMER-ET

840003128019888
 Born: July 10, 2018 • Herd No. 169

Fresh: November 9, 2020

Maternal sisters to Fame

- Duckett-SA Atwd Farrah-ET EX-94 GMD**
- Duckett-SA Braxtn Frisco-ET EX-94**
- Duckett-SA Shot Furgi-ET EX-92**

Heavenly Golden Dreams-ET

642262 *TV *TL
 PTA -1520M -23F -39P 99R 8/20
 PTA -1.7PL 2.71SCS -.3DPR 2.6%DCE
 PTA +1.64T +1.77UDC +.69FLC 99R 8/20
 GTPI +1775G

Duckett-SA Gold Fame-ET

68793386 Excellent-94 EX-MS 2E
 5-09 2x 365d 50280 3.7 1863 3.1 1580
 7-06 2x 365d 43820 4.4 1923 2.8 1234
 4-02 2x 365d 41490 4.4 1813 3.1 1292
 2-06 2x 359d 24170 4.7 1139 3.2 765
 Life: 2088d 201030 4.3 8552 3.1 6330
 • 5th Sr 2-Yr-Old Mid-West Spring National
 • Region 2 Elite Performer

Braedale Goldwyn

10705608C Good Plus-84-CAN *CD *TY *TV *TL
 PTA -730M -7F -13P 99R 8/20
 PTA+.98T +.55UDC +.83FLC GTPI +1317G

Harvue Roy Frosty

52378753 Excellent-97 EEEEE 3E GMD
 5-07 2x 365d 44710 5.0 2222 3.0 1332
 8-05 2x 365d 41280 4.8 2001 2.8 1173
 6-08 2x 365d 40600 5.3 2154 2.9 1170
 3-10 2x 365d 37496 4.5 1679 2.9 1103
 2-03 2x 365d 24750 4.2 1043 3.1 768
 Life: 2285d 217250 4.8 10507 3.0 6447

3rd Dam

Harvue Sam Heidi EX-93 EEEEE 3E DOM
 5-07 2x 365d 34700 4.6 1586 3.2 1115
 Life: 2480d 183870 4.5 8335 3.4 6312

4th Dam

Harvue Skybuck Harmony VG-88 EEV VV
 2-00 2x 263d 17520 4.4 775 3.4 600
 • 2nd Summer Yrlg Eastern National 1994

5th Dam

Harvue Melvin Hallie VG-86
 4-08 2x 365d 33690 4.4 1490 3.2 1093
 Life: 1234d 102120 4.2 4270 3.3 3355

6th Dam

Harvue Bell Harrison VG-86 GMD DOM
 10-4 2x 365d 38040 3.4 1301 3.0 1124
 Life: 3171d 264120 3.5 9273 3.1 8221

7th Dam

Harvue Libido Harrison VG-87
 6-00 2x 365d 22360 3.8 843



WELK-SHADE AFTER KATNESS-ET VG-87
MATERNAL SISTER TO DAM OF LOT 9

9

JOHN ERVIN STOLTZFUS
GORDONVILLE, PA 17529
717-824-9639

PROMISE-HAVEN DOC KAYLA

840003203042622 99%RHA-I *TR *TC *TL
 Born: December 17, 2018 • Herd No. 9
 Fresh: November 1, 2020

Maternal Sisters to Kylee

Welk-Shade After Katness-ET VG-87

- 1st Winter Yearling Eastern Fall Nat'l 2015
- Res All-PA & Jr All-PA Winter Yearling 2015
- Jr Champ Jr & Res Champ Open SE PA Champ Show 2015

Welk-Shade Aspen Kassy-ET VG-86

- 2nd Winter Calf PA State 4-H Show 2012
- Reserve JC Lampeter Fair 2012

Welk-Shade Sanchez Kate-ET

- Reserve All-American Summer Yearling 2012
- 1st Summer Yearling Eastern National 2012
- 2nd Summer Yrlg International Holstein Show 2012

Woodcrest King Doc

840003132417775 99%RHA-I *TR *TP *TC *TY *TV *TL
 PTA +1668M +69F +52P 97R 8/20
 PTA -.2PL 3.07SCS -.5DPR 2.8%DCE
 PTA +3.32T +2.23UDC +1.92FLC 95F 8/20
 GTPI +2755G

Welk-Shade Doorman Kylee-ET

840003132247450 99%RHA-I Very Good-86 EX-MS
 2-03 2x 295d 21050 4.0 838 3.2 672

Maternal sisters to Kayla

- Welk-Shade Atwood Koko-ET EX-95**
- Welk-Shade Durham Kit-ET EX-91**

Val-Bisson Doorman-ET

107281711C Excellent-90-CAN *TR *TP *TY *TL
 PTA -467M +14F +9P 99R 8/20
 PTA +2.57T +1.61UDC +.99FLC GTPI +2204G

Welk-Shade Goldwyn Kayla

64965357 Very Good-87 VG-MS @ 2-10
 2-04 2x 365d 21923 4.5 917 3.5 718

Full sisters to Kayla

- Welk-Shade Goldwyn Klara-ET EX-90**
- Welk-Shade Gdwyn Karamel-ET VG-88**
- Welk-Shade Gdwyn Kristin-ET VG-87**

3rd Dam

Miss Triumphant Kandy-ET EX-91 EEEVE

2-03 2x 365d 25310 4.2 1074 3.2 811
 3-06 2x 365d 21590 4.1 890 3.6 774

4th Dam

Welk-Shade Charles Kitty EX-93 2E DOM *B/R

6-06 2x 365d 36160 4.1 1487 3.2 1148
 Life: 1625d 122730 4.0 4891 3.5 4285

5th Dam

Welk-Shade Sterling Kizzy EX-94 3E *RC

9-00 2x 365d 35360 3.7 1324 3.0 1059
 Life: 2375d 187300 3.7 6977 3.2 6070

10

CALLISTA WELCH
BERLIN, PA 15530
814-267-5675

RAINBOW-C DOORMAN EMPRESS

840003202558950 99%RHA-I
Born: March 9, 2019 • Herd No. 7188

Due: April 16, 2021 to Walnutlawn Sidekick
200HO10992

Val-Bisson Doorman-ET

107281711C Excellent-90-CAN *TR *TP *TY *TL
PTA -467M +14F +9P 99R 8/20
PTA +2.57T +1.61UDC +.99FLC GTPI +2204G

Rainbow-C Atwood Ellie May

840003131924767 Excellent-90 EX-MS
3-04 3x 305d 26180 3.6 952 2.8 743
2-04 2x 305d 21350 3.5 743 2.9 623

2nd-11th Dams

Rainbow-C Bradnick Ellen EX-90 EX-MS 2E

5-09 3x 305d 31430 2.7 856 2.9 907
Life: 1379d 123080 2.9 3560 2.9 3585

Diamond-Cut Fever Elor-ET VG-85 VG-MS

4-03 3x 305d 24810 3.8 945 3.0 742
3-01 3x 305d 23470 3.6 834 3.1 738

Diamond-Cut Durham Ell-ET EX-91 EEEVE

6-03 2x 365d 28200 4.4 1235 3.2 893
4-08 2x 365d 24450 4.3 1046 3.3 815

Diamond-Cut Lduc Eclipse-ET VG-86 VG-MS

2-02 2x 365d 17770 4.0 704 3.2 564

Diamond-Cut Mike Eclipse-ET EX-90 EX-MS

4-01 2x 305d 23490 3.8 904 3.2 742

Diamond-Cut Mark Envy EX-90 VEEV DOM

2-01 2x 365d 22033 4.7 1044 3.4 748

Vonderbar Bell Emblem EX-91 2E DOM

4-05 2x 365d 30781 4.1 1248

Life: 1924d 126330 4.3 5453

Vonderbar Apollo Empress VG-88

4-11 2x 365d 28671 3.7 1032

Life: 1623d 106781 3.7 3904

Vonderbar Empress EX-90 2E GMD DOM

6-02 2x 305d 21609 4.6 983

Life: 1989d 115779 4.4 5140

Bilhome Flying Sally EX-90

7-06 2x 357d 20138 4.1 831

Life: 137513 4.2 5816

11

CALLISTA WELCH
BERLIN, PA 15530
814-267-5675

RAINBOW-C GUTHRIE ESTELLE

84000320558800 99RHA-I
Born: October 10, 2018 • Herd No. 7138

Due: April 9, 2021 to Walnutlawn Sidekick
200HO10992

Fustead Goldwyn Guthrie-ET

137191143 Excellent-94 *TR *TP *TY *TV *TL *TD
PTA -258M +10F +5P 99R 8/20
PTA +2.62T +2.11UDC +1.42FLC GTPI +1950G

Rainbow-C Conection Express (Solomon)

840003138537330 Very Good-85 VG-MS
2-00 2x 299d 22400 3.5 781 3.0 680

12

CALLISTA WELCH
BERLIN, PA 15530
814-267-5675

RAINBOW-C GUTHRIE ELAINE

840003202558798
Born: October 9, 2018 • Herd No. 7136

Due: April 9, 2021 to Walnutlawn Sidekick
200HO10992

Fustead Goldwyn Guthrie-ET

137191143 Excellent-94 *TR *TP *TY *TV *TL *TD
PTA -258M +10F +5P 99R 8/20
PTA +2.62T +2.11UDC +1.42FLC GTPI +1950G

Rainbow-C Atwood Eunice

840003138537287
2-01 3x 196d 10320 3.9 399 3.4 347

2nd Dam

Rainbow-C Afterglow Elor EX-92 EEEEEE

5-01 3x 305d 22870 3.8 875 3.0 681
4-00 3x 305d 21920 3.8 837 3.1 689

3rd Dam

Diamond-Cut Fever Elor-ET *Extended Pedigree Above*



BUTTWOOD DURHAM PERFUME EX-94 3E DOM
4TH DAM OF LOTS 13 & 14



LIN-RO ALEX PRINCESS-ET EX-92 EX-MS 2E
2ND DAM OF LOT 14

13

DAVID F. KING
COATESVILLE, PA 19320
484-886-9736

KING-LANE BANDARES PROGRESS

840003151890391 99%RHA-I
Born: May 1, 2018 • Herd No. 813
Fresh: September 13, 2020

Wa-Del Yoder Bandares-ET

143189741 *TR *TP *TC *TY *TV *TL
PTA -790M +16F +3P 99R 8/20
PTA +.83T +1.91UDC +.78FLC GTPI +2339G

King-Lane Supersire Protege

840003129460160 99%RHA-I VG-88 VG-MS

2nd-5th Dams

King-Lane Mctn Paramount-ET VG-85 VG-MS

3-10 2x 305d 27350 3.1 846 3.1 859
2-07 2x 305d 26720 3.3 882 3.2 850

King-Lane Super-Power-ET VG-87 VG-MS

2-05 2x 324d 21920 3.5 761 3.2 696
3-05 2x 305d 24990 3.9 984 3.3 822

Buttwood Durham Perfume EX-94 3E DOM

7-11 3x 365d 37680 4.1 1551 3.2 1208
Life: 2195d 190260 3.6 6923 3.3 6302

Buttwood Jolt Pamper VG-85

7-03 2x 365d 33400 3.5 1165 3.1 1027
Life: 3510d 244130 3.9 9413 3.2 7730

14

DAVID F. KING
COATESVILLE, PA 19320
484-886-9736

KING-LANE POLISH PRIOR

840003151890406 99%RHA-I
Born: July 23, 2018 • Herd No. 828
Fresh: November 10, 2020

King-Lane As Beemer Polish

73787492 99%RHA-I
PTA -308M -33F -11P 38R 8/20
PTA +1.81T +1.25UDC +.95FLC PTPI +1721

King-Lane Penquin-ET

72428136 99%RHA-I Good Plus-81
2-07 2x 365d 23780 3.1 747 3.4 802

2nd-5th Dams

Lin-Ro Alex Princess-ET EX-92 EX-MS 2E

6-03 2x 343d 38090 3.7 1427 2.8 1069
Life: 2898d 237910 3.4 8139 2.9 6838

King-Lane Shtle Polkadot-ET VG-88

2-05 2x 365d 32410 3.8 1222 3.2 1052

Buttwood Durham Perfume EX-94 3E DOM

7-11 3x 365d 37680 4.1 1551 3.2 1208
Life: 2195d 190260 3.6 6923 3.3 6302

Buttwood Jolt Pamper VG-85

7-03 2x 365d 33400 3.5 1165 3.1 1027
Life: 3510d 244130 3.9 9413 3.2 7730

15

DAVID F. KING
COATESVILLE, PA 19320
484-886-9736

Luck-E Awesome-Red

72186769 *CV *TC *TY *TL
PTA -1891M -66F -61P 99R 8/20
PTA -1.8PL 3.18SCS -1.8DPR 4.1%DCE
PTA +2.08T +3.30UDC +.85FLC 98R 8/20
GTPI +1398G

Peilas Cntdr Missy-Red-ET

141538231 Excellent-91 EX-MS 2E
4-07 2x 365d 31489 3.7 1160 2.9 921
7-03 2x 322d 26030 3.2 839 2.9 767
3-07 2x 279d 25380 3.7 945 2.8 719
2-06 2x 321d 21690 4.6 990 2.9 635
LTD: 1795d 144720 3.8 5446 3.0 4281

ER-JOY AWESOME MILLY-RED-ET

840003132586474
Born: June 7, 2017 • Herd No. 363
2-02 2x 325d 19333 3.8 741 3.0 584 SCC 2
Fresh: October 5, 2020



PEILAS CNTDR MISSY-RED-ET EX-91 2E EX-MS
DAM OF LOT 15

Patience Sholine Contender-Red

7483577C Excellent-95 *TV *TL
PTA -2705M -71F -76P 99R 8/20
PTA +1.13T +2.55UDC +.57FLC GTPI +1508

Arethusa Mahogany-Red-ET

139751332 Excellent-90
6-00 2x 305d 39760 4.4 1747 2.8 1104
4-04 2x 305d 35770 3.9 1407 2.7 874
7-09 2x 365d 34565 3.9 1351 3.2 1098
2-03 2x 364d 38736 3.3 1269 2.8 1073
Life: 213910 3.9 8271 3.0 6447

Full sisters to Mahogany

Arethusa Advent Mascara-ET EX-92 *RC
Arethusa Advent Mariner-ET VG-87 *RC
Arethusa Advent Mustang-ET VG-86 *RC
Arethusa Advent Marley-ET VG-86

3rd Dam

Arethusa Mercedes SS-ET EX-91 EEEEE 2E
4-01 2x 365d 37250 4.2 1573 2.9 1087
Life: 1301d 120730 4.5 5390 3.0 3593

Hillcroft Leader Melanie EX-96 EEEEE 3E
Life: 1827d 181951 4.3 7845 3.2 5815

- Supreme Champion World Dairy Expo 2004
- Unanimous All-American Aged Cow 2004
- All-American 5-Yr-Old Cow 2003
- Unanimous All-American 4-Yr-Old Cow 2002
- Unanimous All-Canadian 4-Yr-Old Cow 2002
- Res All-Canadian Jr 3-Yr-Old Cow 2001

Hillcroft Skychief Michelle VG-89 1*
Life: 2066d 139512 3.9 5451 3.2 4488

Hillcroft Cascade Minie VG-88-CAN 2*
Life: 3392d 236707 3.3 7765 3.2 7558

Hillcroft Comm Maria VG-85-CAN
Life: 8 Lact 135387 3.8 5104 3.4 4632

16

DAVID F. KING
COATESVILLE, PA 19320
484-886-9736

Mr Ansly Addiction-P-Red-ET

72128091 Excellent-90 *PC *CD *TY *TV *TL
PTA -1929M -13F -20P 99R 8/20
PTA +2.3PL 2.63SCS +1.6DPR 3.1%DCE
PTA +.75T +1.39UDC +.05FLC 98R 8/20
GTPI +2039G

Jericho-Dairy Magenta Elan

143995120 Very Good-85 VG-MS *RC
3-02 2x 253d 17210 4.2 731 3.2 557
2-03 2x 290d 16910 4.4 746 3.1 527

DA-VUE ADDICTION ELAINE

840003140239265 *RC
Born: March 4, 2018 • Herd No. 1797
Fresh: August 31, 2020
Milking: 79# 3.6F 2.8P SCC 107,000



BRAVEHEART THUNDERSTORM ELLIS EX-94 4E
4TH DAM OF LOT 16

Eskdale Magenta-Red-ET

141304939 *TY *TV UTL *TD
PTA -158M +27F -2P 99R 8/20
PTA +.89T +.52UDC +2.06FLC GTPI +2111G

Jericho-Dairy Braxt Elantra

142931925 Very Good-88 VG-MS
3-04 2x 305d 20260 3.5 702 2.8 566
4-04 2x 259d 15670 2.8 445 2.8 439

3rd Dam

Jericho-Dairy Elegance-ET EX-90 EX-MS
6-06 2x 291d 21090 4.0 849 2.8 595
5-06 2x 312d 20990 3.9 818 3.0 626

4th Dam

Braveheart Thunderstorm Ellis EX-94 4E
4-10 2x 365d 31190 4.3 1352 3.1 974
Life: 237283 3.8 9014 3.0 7109

- 6X All-PA or Jr All-PA!
- National 3-Yr-Old Futurity Winner

5th Dam

Mervel Astre Evelyn GP-80-CAN
3-03 2x 365d 19266 3.6 690 3.2 617

6th Dam

Mervel Broker Eve VG-85-CAN
3-03 2x 365d 22253 3.7 820 3.2 719

17

DAVID F. KING
COATESVILLE, PA 19320
484-886-9736

Reu-Hel Coronado Orson

Tran-Acres Dback Emilee
840003147442130 99%RHA-I

TRAN-ACRES ORSON EMMA

Registration Pending
Born: July 13, 2020



ERNEST-ANTHONY ANASTASIA EX-92 EX-MS 3E
3RD DAM OF LOT 17

Ernest-Anthony Anastasia EX-92 EEVVE 3E

Life: 1749d 145160 4.3 6214 3.4 4877

Ernest-Anthony Aphrodite-ET EX-95 EEEEE 2E

Life: 1591d 154120 4.5 6972 3.2 4938

• 2nd 4-Yr-Old Cow Eastern Fall/Nat 2007

• 3rd Aged Cow North East Fall National 2009

Tri-Day Ashlyn-ET EX-96 2E GMD DOM

Life: 1374d 144770 4.6 6665 3.5 5135

• All-Time All-American 4-Yr-Old Cow

• HHM All-Time All-American Sr 3-Yr-Old Cow

• Voted All-World 2001 by Holstein International

• All-American 4-Yr-Old Cow 2001

• All Canadian 4-Yr-Old Cow 2001

• Supreme Champion World Dairy Expo 2001

• Grand Champion Royal Winter Fair 2001

• All-American Sr 3-Yr-Old Cow 2000

• Res All Canadian Sr 3-Yr-Old Cow 2000

Bendy-Brook Odyssey Favorite EX-92 2E DOM

6-01 2x 337d 22670 3.4 770 3.1 706

• Res All-American Produce of Dam 2001

Bendy-Brook Star Fonda VG-86 VG-MS

3-11 2x 290d 23390 3.5 826 3.1 724

Mr D Apple Diamondback

840003013721049 99%RHA-I EX-93 *RC *TP *TC *TY *TV *TL

PTA -427M -26F -1P 99R 8/20

PTA +2.43T +2.04UDC +1.32FLC GTPI +1917G

Tran-Acres Gold Ashtyn-ET

840003131068532 Very Good-86 VG-MS *TR *TC *TL

Maternal sisters to Ashtyn

Tran-Acres At Alexis-ET EX-92

Tran-Acres Atwood Alice-ET EX-91

18

DAVID F. KING
COATESVILLE, PA 19320
484-886-9736

Our-Favorite Undenied-ET

840003125220760 99%RHA-NA

PTA -345M +19F -9P 86R 8/20

PTA -1.9PL 3.05SCS -1.4DPR 2.5%DCE

PTA +3.27T +1.15UDC +1.37FLC 81R 8/20

GTPI +2078G

Beshore Doorman Kandy Kane

840003129376653 99%RHA-I

BESHORE UNDENIED HEIFER

Registration Pending
Born: August 5, 2020 • Herd No. 355

Val-Bisson Doorman-ET

107281711C Excellent-90-CAN *TR *TP *TY *TL

PTA -467M +14F +9P 99R 8/20

PTA +2.57T +1.61UDC +.99FLC GTPI +2204G

Beshore X Kit Kat Sue

142610811 Good Plus-83

2-01 2x 305d 19050 4.6 872 3.1 600

Maternal sister to Kit Kat Sue

Beshore Marcus Katie VG-86 VG-MS

3rd Dam

Beshore Damion Kayla Sue EX-90 EX-MS

6-09 2x 355d 29800 3.9 1149 3.0 886

Life: 1757d 134040 3.6 4799 3.0 4079

4th Dam

Beshore Popular Chrissy Sue GP-82 VG-MS

2-00 2x 303d 18280 3.9 720 3.0 542

3-00 2x 305d 18000 3.6 649 3.1 550

5th Dam

Kerchenhill P Minnie Sue EX-91 EEEVE

5-10 2x 365d 31720 3.5 1124 2.9 915

Life: 1591d 117460 3.5 4058 3.0 3500

6th Dam

Kerchenhill En Goofy Sue EX-90 EEVVE 2E

5-05 2x 365d 25280 3.3 835 2.9 722

Life: 2381d 128670 3.5 4507 2.9 3781

7th Dam

Mookown-M Simon Sue VG-87 EX-MS DOM

6-06 2x 305d 24250 3.1 749 2.9 693

Life: 2735d 187250 3.3 6154 2.9 5437



SANDY-VALLEY ATWD BARBIE-ET EX-91
DAM OF LOT 19

19

RICHARD PINE
MERCERSBURG, PA 17236
717-809-3068

Our-Favorite Undenied-ET

840003125220760 99%RHA-NA
PTA -345M +19F -9P 86R 8/20
PTA -1.9PL 3.05SCS -1.4DPR 2.5%DCE
PTA +3.27T +1.15UDC +1.37FLC 81R 8/20
GTPI +2078G

Sandy-Valley Atwd Barbie-ET

69250651 Excellent-91 EX-MS
2-04 3x 365d 32120 3.5 1118 3.1 1010
4-09 3x 365d 29490 3.7 1091 3.2 933
• Dam of Ob-River-Syc Byway

FIVE-IVF FEMALE SORTED EMBRYOS

(Four #1 & One #2)

Maple-Downs-I G W Atwood-ET

8956379C Excellent-90 *TR *TP *TY *TV *TL
PTA -368M +11F -10P 99R 8/20
PTA +2.98T +1.70UDC +2.17FLC GTPI +1916G

Regancrest Brynna-ET

62496851 Excellent-91 EEEEE GMD
2-04 2x 365d 32060 3.6 1166 3.2 1019
4-11 2x 328d 24340 4.4 1065 3.1 753
• Full sister to Regancrest S Braxton-ET
• Sons in AI

3rd Dam

Regancrest-PR Barbie-ET EX-92 EEEEE GMD DOM
2-06 2x 365d 31690 3.9 1237 3.3 1050
• HM All-American Jr 3-Year-Old 2004

4th Dam

Regancrest Juror Brina-ET EX-92 EEEVE GMD
4-04 2x 365d 40640 3.6 1478 3.0 1217
• Res Grand Champion, IA State Fair 2000
• Res Grand Champion, IA State Show 2002

5th Dam

Regancrest Aerostar Bert-ET EX-90 GMD DOM
5-05 2x 365d 37790 3.6 1357 3.2 1215
Life: 4 Lact 109350 3.7 4030 3.3 3556

6th Dam

Regancrest Mark Chairman Bea EX-91 2E GMD DOM
7-09 2x 365d 33630 3.8 1278 3.1 1052
Life: 2036d 140130 4.1 5711 3.3 4616

7th Dam

Regancrest Board Chairman Bea EX-90 EX-MS
5-09 2x 365d 26010 4.1 1059 3.4 884

8th Dam

Regancrest Apache Standout Bea VG-86 EX-MS
4-10 2x 320d 19070 4.0 766
Life: 2432d 131940 3.6 4744

20

RICHARD PINE
MERCERSBURG, PA 17236
717-809-3068

Ri-Val-Re Rager-Red-ET

72353457 99%RHA-I Excellent-90
PTA +655M +47F +31P 99R 8/20
PTA +5.0PL 2.87SCS -.1DPR 3.9%DCE
PTA +1.45T +.51UDC +1.17FLC 99R 8/20
GTPI +2528G

Kulp-Dale Car Dara-Red-ET

840003139217023 Good Plus-84

R-PINEHILL RAGER DAISY-RED

84000314204504 99%RHA-I
Born: November 20, 2018 • Herd No. 115
Fresh: August 9, 2020
Bred: November 17, 2020 to CYCLE JAILS JOURNEY-RED-ET
7H015210

MD-Valleyvue Carson-Red-ET

66463056 Excellent-94 *TP *TY *TV *TL
PTA +781M -16F +6P 99R 8/20
PTA +.79T +.90UDC +.70FLC GTPI +1996G

Peila-Kulp Acn Diane-Red-ET

143289160 Very Good-86 VG-MS
2-05 2x 365d 18750 3.9 734 3.5 657

3rd-9th Dams

Milksource Cntndr Diva-Red VG-89 EX-MS

2-08 2x 331d 25080 4.3 1083 3.2 797

Budjon-Nitzzy Destiny-Red-ET EX-94 EEEEE

3-02 2x 310d 32250 3.3 1070 3.2 1047

- Unanimous All-American R&W 4-Yr-Old 2011
- 1st 4-Yr-Old/HM Sr. Champ Grand Int R&W Show 2011
- 1st 4-Yr-Old Royal Winter Fair R&W 2011
- Res All-Canadian R&W Jr-3-Yr Cow 2010
- Unanimous All-American R&W Jr 3-yr-Old 2010
- 1st Jr 3-Yr-Old Cow Royal Winter R&W Show 2010
- 1st International R&W Futurity 2010
- Int Champion Grand International Show 2010

Budjon Redmarker Desire EX-96 4E GMD *RC

Life: 2289d 223150 4.0 9001 2.8 6327

- HM Sr Champion WI Championship Show 2010
- Res All-American 125,000 Lb. Cow 2007
- All-American 5-Yr-Old Cow 2005
- Res Sup Champion/Grand Champ Int'l Holstein Show 2005
- HM All-American 4-Yr-Old Cow 2004
- Nom All-American Jr 3 Yr Old Cow 2003

Triple-A Danee EX-92 EEEEE 3E

Life: 1957d 148520 4.1 6058 3.3 4963

Triple-A Linc Fancy EX-90 EEEVE 2E

7-06 2x 365d 23120 4.4 1025 3.3 758

C Lessia Warden Pre Foxie EX-90 EEEV

Life: 2251d 120216 4.0 4771 3.2 3902

Lessia Pre Foxie VG-85-2YR-CAN 1*

Life: 10 Lact 194459 4.0 7738 3.2 5765

21

RICHARD PINE
MERCERSBURG, PA 17236
717-809-3068

R-PINEHILL JEDI BEATRIS-ET

840003142045048 99%RHA-I
Born: May 19, 2018 • Herd No. 109
Fresh: October 24, 2020

S-S-I Montross Jedi-ET

840003123886035 99%RHA-I *TR *TP *TC *TY *TV *TL
PTA +2160M +16F +69P 99R 8/20
PTA +5.5PL 2.81SCS +.7DPR 1.7%DCE
PTA +.71T +.88UDC -1.42FLC 99R 8/20
GTPI +2543G

Robella Lrb Halogen Barbied-ET

11975460C
2-01 2x 365d 25003 5.6 1403 3.3 821

Maternal sisters to Barbied

Benbie Lrr Olympian Breea VG-85-CAN @ 2Yrs

Benbie Lrr Deman Brittany VG-87-CAN @ 3Yrs

22

R-PINEHILL JEDI BEAN-ET

840003142045051 99%RHA-I
Born: June 13, 2018 • Herd No. 112
Fresh: November 16, 2020

Cookiecutter Petron Halogen

840003008710387 *TP *TY *TV *TL *TD
PTA -608M -22F -20P 99R 8/20
PTA +.60T +1.43UDC +.02FLC GTPI +2220G

Calbrett Uno Baby Girl

107964139C Very Good-87 1*
2-08 2x 365d 31976 3.7 1195 3.6 1138

3rd-7th Dams

Rainyridge Super Beth-ET VG-86-CAN *RC

2-03 2x 330d 25904 3.6 941 3.2 821

Rainyridge Talent Barbara EX-95 EEEEE *RC

3-04 2x 365d 34465 3.6 1257 3.1 1068

Life: 1266d 104815 3.9 4064 3.1 3259

- Res Grand Champ, NY Sprg/Internat'l 2011
- Unanimous All-American 5-Year-Old 2010
- Unanimous All-Canadian 5-Year-Old 2010
- Nom All-American Junior 3-Year-Old 2008
- Nom All-Canadian Jr 3-Yr-Old Cow 2008
- Sold for a record of \$210,000 at Kueffner Sale

RF Outside Breeze-ET EX-95 EEEEE 2E

5-03 2x 365d 37607 4.3 1623 3.3 1237

Life: 1896d 165379 4.6 7560 3.4 5659

- Grand Champion Southern Spring Show 2011

Rayverley Briana Milan-ET EX-2E-CAN 5*

6-03 2x 365d 27075 3.4 928 3.2 862

Rainyridge Tony Beauty EX-5E-CAN 9*

10-5 2x 365d 29081 3.5 1005 3.1 913

Life: 8 Lact 199869 3.3 6592 3.2 6455

- All-Canadian Mature Cow 1992-93-95-99
- All-American Aged Cow 1992-95-99
- Supreme Champion WDE 1995 & 1999
- Res Grand Champion Royal Winter Fair 1999
- All-American People's Choice Winner 1999
- Holstein International Cow of Year 1999
- Res Grand Champion Royal Winter Fair 1995
- Grand Champion Royal Winter Fair 1993
- Nom All-Canadian Mature Cow 1991
- HM All-Canadian 4-Year-Old 1989

23

BYRON & DEBORAH STAMBAUGH
WESTMINSTER, MD 21158
410-984-0322

PHEASANT-ECHOS DFINT POTENT

144160022 Good-78 @ 2-10 *RC
Born: April 9, 2017
2-05 2x 310d 22890 3.8 880 3.1 701
Fresh: September 26, 2020
Milking: 118# SCC 0.8

Scientific B Defiant-ET

141123484 Very Good-87 *RC *TP
PTA +50M -54F -13P 99R 8/20
PTA -1.3PL 3.20SCS -2.7DPR 3.2%DCE
PTA +2.73T +1.59UDC +.99FLC 99R 8/20
GTPI +1658G

Pheasant-Echos Potion-Red

139545229 Good Plus-82
5-03 2x 305d 29010 4.1 1175 3.1 890
6-05 2x 272d 24280 3.7 891 3.2 782
4-04 2x 239d 22220 3.6 802 3.0 667
2-03 2x 305d 19960 3.9 772 3.2 646
Life: 1920d 163550 3.8 6199 3.1 5055

Carrousel Resurrect-Red-ET

136051246
PTA -922M -35F -19P 98R 8/20
PTA -.68T -.73UDC -1.47FLC GTPI +1575G

Pheasant-Echos J Poison-Red

137627341 Good Plus-82
4-08 2x 305d 22140 4.3 954 3.1 679
3-04 2x 305d 20240 4.1 822 3.1 636
2-03 2x 284d 13320 4.0 529 3.0 402

24

BYRON & DEBORAH STAMBAUGH
WESTMINSTER, MD 21158
410-984-0322

PHEASANT-ECHOS UNION LEOTIE

144269413 99%RHA-I Good Plus-80 @ 2-07
Born: July 6, 2017
2-01 2x 291d 19690 4.3 844 3.1 616
Fresh: September 3, 2020
Milking: 98# SCC 0.2

Our-Favorite Union 142-ET

142877984 99%RHA-I VG-88 *TR *TP *TY *TV * TL
PTA -1292M +7F -17P 98R 8/20
PTA -.6PL 2.61SCS -4.3DPR 4.2%DCE
PTA +2.46T +1.80UDC +1.83FLC 96R 8/20
GTPI +1976G

Pheasant-Echos Destry Leoly

141523024 Very Good-88 VG-MS
7-00 2x 305d 33390 4.0 1332 3.0 1013
3-05 2x 305d 31940 3.3 1050 2.9 935
4-06 2x 305d 29270 4.4 1281 3.0 873
5-10 2x 305d 29140 4.0 1172 3.0 865
2-03 2x 305d 23270 3.9 918 3.0 691
Life: 1832d 166960 3.9 6579 3.0 5064

Scientific Destry-ET

138122625 Excellent-92 *RC *CD *TY *TV *TL
PTA -972M -36F -12P 99R 8/20
PTA +1.19T +1.22UDC -.30FLC GTPI +1912G

Pheasant-Echos Wyatt Leola

137029161 Very Good-85 VG-MS
4-00 2x 305d 25700 3.7 950 3.0 762
2-11 2x 305d 21260 4.0 847 3.1 656

3rd Dam

Pheasant-Echos Lee Leoda EX-90 EX-MS

5-05 2x 305d 25920 4.0 1034 3.0 783
Life: 1342d 100100 3.9 3887 3.2 3159

4th Dam

Pheasant-Echos Zebo Leona VG-86 VG-MS

6-09 2x 254d 26130 3.8 982 3.0 781
Life: 1568d 122960 3.9 4765 3.1 3848

5th Dam

Pheasant-Echos Oscar Leeza VG-88 EX-MS

4-08 2x 305d 22320 4.4 977 3.3 726

25

ATLEY MILLER
WESTMINSTER, MD 21158
410-857-1829

PHEASANT-ECHOS CINDRDR OLLY

144441419 99%RHA-I Very Good-85 VG-MS @ 2-09
Born: December 14, 2017
2-01 2x 291d 19690 4.3 844 3.1 616
Fresh: June 15, 2020
Bred: November 13, 2020 to Angus
Milking: 109# SCC 0.9

KH Cinderdoor-ET

969096292 99%RHA-I *TR *TP *TY *TV *TL
PTA +431M -1F +21P 98R 8/20
PTA -4.3PL 2.88SCS -3.2DPR 2.7%DCE
PTA +2.41T +.64UDC +.71FLC 97R 8/20
GTPI +1998G

Pheasant-Echos Deps Olympic

142195004 Very Good-87 VG-MS
4-04 2x 263d 26150 3.7 972 2.8 738
5-04 2x 246d 26150 3.2 838 2.9 758
3-04 2x 302d 26030 3.5 915 2.9 746
2-03 2x 305d 22250 3.4 746 2.9 649
Life: 1129d 101280 3.5 3497 2.9 2915

Lirr Drew Dempsey

61083609 Excellent-93 *TR *CD *TP *TY *TV *TL
PTA -766M -5F -6P 99R 8/20
PTA +1.60T +.90UDC +1.06FLC GTPI +1908G

Pheasant-Echos Outbond Opee

140531352 Good Plus-82
5-05 2x 297d 31130 2.9 901 2.6 810
4-05 2x 280d 28760 2.8 799 2.7 770
3-05 2x 281d 26410 3.3 880 2.6 696
2-04 2x 305d 22460 3.4 762 2.7 617
Life: 1182d 109950 3.1 3385 2.7 2927

3rd Dam

Pheasant-Echos Dramatic Oprah VG-87
4-02 2x 305d 27350 2.9 798 2.9 797
Life: 2014d 171250 2.9 4975 2.8 4877

26

KENNY STAMBAUGH
WESTMINSTER, MD 21158
410-775-2964

PHEASANT-ECHOS CA MARTINI

144564273 99%RHA-I *RC
Born: June 9, 2018 • Herd No. 51WER0675
Fresh: October 25, 2020



DANVILLE-ML MARGAUX-ET EX-94 EEEEE
2ND DAM OF LOT 26

EK-STJ California-Red-ET

840003013232758 *CD
PTA +762M +16F +17P 99R 8/20
PTA -1.2PL 3.22SCS -3.4DPR 4.0%DCE
PTA +1.40T +2.09UDC +.61FLC 97R 8/20
GTPI +2117G

OCD Diamondback Marina-ET

84000313444670 Good Plus-82 @ 2-06
3-00 2x 279d 29320 2.9 853 3.0 875
2-00 2x 305d 22380 3.5 774 3.2 726

Maternal sisters to Marina

OCD Fever Margo-ET EX-92
OCD Pronto Maggie-ET EX-91
OCD Lou Maria VG-88
OCD Fever Margo-ET VG-87
OCD Fever Martini-ET VG-87

Mr D Apple Diamondback

840003013721049 99%RHA-I EX-93 *RC *TP *TC *TY
PTA -427M -26F -1P 99R 8/20
PTA +2.43T +2.04UDC +1.32FLC GTPI +1917G

Danville-ML Margaux-ET

136346933 Excellent-94 EEEEE
3-07 2x 365d 31500 4.1 1277 3.2 1012
5-00 2x 365d 30560 3.6 1093 3.1 951
2-07 3x 282d 25390 3.7 928 3.0 766

3rd-9th Dams

Mayerlane-DK My Maria-ET EX-92 EX-MS 2E GMD
3-05 3x 365d 40070 3.9 1548 2.9 1156
Life: 2067d 189590 3.9 7331 2.8 5357
Golden-Oaks Mark Marion-ET EX-92 2E GMD
5-09 3x 365d 46420 4.0 1838 3.1 1440
Life: 3282d 299230 3.7 10951 3.2 9590
Ogden Hanover Sex Prudence EX-91 EEVE DOM
3-02 2x 365d 23980 4.6 1108 3.7 876
Dreamstreet RORAE Pocohontis EX-93 2E GMD
5-10 2x 365d 28290 4.0 1132 3.3 944
Sher-Mar Highmark Hiawatha EX-94 4E GMD
6-10 2x 365d 37470 5.0 1869
Life: 2496d 156568 4.0 6260
Sher-Mar Lee Mitzi EX-91 4E GMD DOM
7-11 2x 365d 41390 4.2 1731
Life: 2683d 200451 3.6 7288
Sher-Mar Mingo Mimi EX-90 2E
11-11 365d 28430 4.0 1146
Life: 2738d 161990 3.9 6281

27

BRYCE ZEPP
NEW WINDSOR, MD 21776
410-848-1018

JUSTA-BEAUTY WM SHAY-RED

840003203097842 99%RHA-I
Born: July 15, 2018 • Herd No. 467
Fresh: September 10, 2020
Milking: 91# SCC 1.5



JUSTA-BEAUTY ADVNT SHAE-RED EX-90 EX-MS
2ND DAM OF LOT 27

Cycle Mcgucci Jordy-Red

840003131666411 99%RHA-I *CV *TC *TY *TL
PTA -917M -22F -36P 96R 8/20
PTA -2.6PL 2.9SCS -2.9DPR 3.6%DCE
PTA +3.03T +2.29UDC +2.74FLC 93R 8/20
GTPI +1785G

Justa-Beauty Dback Shiraz

840003136716285 99%RHA-NA Good Plus-82 *RC
2-11 2x 305d 21640 2.7 590 3.1 681
2-00 2x 279d 20860 3.5 740 3.0 628

Mr D Apple Diamondback

840003013721049 99%RHA-I EX-93 *RC *TP *TC *TY
PTA -427M -26F -1P 99R 8/20
PTA +2.43T +2.04UDC +1.32FLC GTPI +1917G
Justa-Beauty Advnt Shae-Red-ET
72228928 Excellent-90 EX-MS
2-02 2x 334d 25930 4.3 1112 3.0 775
3-02 2x 365d 27864 3.5 934 3.0 836

3rd Dam

Justa-Beauty Jet Shelby VG-86 VG-MS
3-04 2x 335d 26870 3.2 869 2.7 714
2-03 2x 347d 26330 2.9 760 2.6 689

KHW Kite Advent-Red-ET

133002953 Excellent-94 *TV *TL *TD
Justa-Beauty Shakira-Red
69863263 Very Good-85 VG-MS @ 2-04
3-11 2x 296d 26140 3.8 991 2.7 714
2-09 2x 349d 24280 4.6 1108 3.0 728
1-10 2x 307d 21180 4.8 1026 2.8 586

28

DALE & DEANNA BENDIG
GETTYSBURG, PA 17325
717-253-3319

SPUNGOLD ATLE DOT

840003142063081 99%RHA-I *RC
Born: June 1, 2018 • Herd No. 138
Fresh: October 20, 2020
Milking: 65# 4.6F 3.4P SCC 31,000

Kulp-Dale Ag Dr Axel-Red-ET

840003127359450 99%RHA-I *TP *TY *TV *TL
PTA +602M +24F +21P 96R 8/20
PTA +1.7PL 2.69SCS -1.2DPR 3.2%DCE
PTA +1.40T +2.03UDC +.86FLC 91R 8/20
GTPI +2329G

Spungold Livewire Dotty

840003133417770 99%RHA-I

Snowbiz Livewire-ET

108250961C 99%RHA-I *TR *TP *TY *TV *TL
PTA +813M +15F +19P 98R 8/20
PTA +1.54T +1.04UDC +.94FLC GTPI +2245G

Spungold Redburst Dorthy

840003012241796 Good Plus-83 *RC
3-01 2x 310d 26180 4.3 1126 3.3 875
4-00 2x 313d 25970 4.3 1120 3.3 853
2-00 2x 324d 22190 4.5 988 3.3 725

29

DALE & DEANNA BENDIG & HANNAH BOOP
GETTYSBURG, PA 17325
717-253-3319

Kulp-Dale Ag Dr Axel-Red-ET

840003127359450 99%RHA-I *TP *TY *TV *TL

PTA +602M +24F +21P 96R 8/20
PTA +1.7PL 2.69SCS -1.2DPR 3.2%DCE
PTA +1.40T +2.03UDC +.86FLC 91R 8/20
GTPI +2329G

Ms Spungold Blaze Bess-Red

840003133417760 Very Good-85-CAN 85-MS

2-05 2x 365d 29330 4.2 1221 3.5 1038
3-07 2x 365d 25732 4.4 1138 3.7 959

MS SPUNGOLD EXLE BRAZIL-RED

840003142063082 99%RHA-I

Born: June 1, 2018 • Herd No. 139

Fresh: October 14, 2020

Milking: 70# 4.5F 3.3P SCC 18,000



BLAZE-N-SUN SUNNY-RED-ET EX-94
MATERNAL SISTER TO 2ND DAM OF LOT 29

Luck-E Awesome-Red

72186769 *CV *TC *TY *TL

PTA -1891M -66F -61P 99R 8/20

PTA +2.08T +3.30UDC +.85FLC GTPI +1398G

Blaze-N-Sun RS Bless-Red-ET

140883114 Very Good-87 VG-MS

4-00 2x 365d 32010 4.0 1285 3.3 1066

5-02 2x 365d 30110 3.9 1166 3.3 992

2-06 2x 365d 26290 4.1 1080 3.4 902

Life: 1316d 103580 4.1 4203 3.4 3510

Maternal sister to Bless

Blaze-N-Sun Sunny-Red-ET EX-94

• Res All-American R&W Sr 2-Yr-Old Cow 2007

• HM All-American R&W Fall Yrlg 2006

• Nom All-American R&W Fall Calf 2005

Carrousel Resurrect-Red-ET

136051246

HC-Gen Cinamon Blaze-Red-ET

133412938 Very Good-85 VG-MS @ 4-01

2-05 3x 365d 27922 3.7 1034 3.1 862

• Nom All-American R&W Fall Yrlg 2004

30

DALE & DEANNA BENDIG
GETTYSBURG, PA 17325
717-253-3319

Sonnek GC Corvette-ET

71391400 Excellent-92 EEEE *TR *TP *TY *TV *TL

PTA -181M -3F +0P 99R 8/20

PTA -3.1PL 2.88SCS -1.8DPR 2.0%DCE

PTA +1.99T +1.02UDC +1.59FLC 99R 8/20

GTPI +1941G

Spungold Okalief Amber

840003133417757 93%RHA-NA VG-86 VG-MS *RC

3-06 2x 365d 34650 3.0 1109 3.1 1122

2-07 2x 284d 22570 3.0 676 3.0 666

SPUNGOLD CORVETT AVA

840003142063084 96%RHA-NA

Born: June 2, 2018 • Herd No. 141

Fresh: October 23, 2020

GS Alliance O Kalif-Red-ET

120100409625 *TY *TV *TL

PTA -224M -20F -8P 97R 8/20

PTA +.40T +.34UDC -.69FLC GTPI +1898G

Spungold Sympatico Ashlee

840003012241804 Excellent-91 EX-MS 2E

2-01 2x 298d 22700 3.7 836 2.9 662

3rd Dam

Spungold Radiant April VG-85

31

SAM MCWILLIAMS
SOMERSET, PA
814-279-0484

Erbacres Damion

130263722 Excellent-96 *TR *TY *TV *TL
PTA -1256M -93F -28P 99R 8/20
PTA -2.4PL 3.21SCS -.9DPR 2.5%DCE
PTA +1.33T +.17UDC +1.68FLC
GTPI +1343G

McWilliams Taz Perfection

840003009902875 Very Good-85 VG-MS

MCWILLIAMS DAMOIN PENELOPE

840003142221879

Born: June 24, 2018 • Herd No. 551

Fresh: September 20, 2020

Milksource Taz-Red

71251985 Very Good-85
PTA -1155M -25F -24P 83R 12/20
PTA +1.83T +1.09UDC +1.32FLC GTPI +1807G

McWilliams Champ Patience

72294652 Good Plus-83
3-04 2x 347d 27680 3.0 826 3.1 864
2-04 3x 301d 22440 2.7 595 3.1 685

Maternal sister to Patience

McWilliams Champion Papaya EX-92 EEEEE 2E

3rd Dam

Triple-Silo Wade Pamella EX-90 EEEVE 2E

8-04 2x 324d 26590 3.3 887 2.8 753

Life: 3173d 222760 3.6 8125 2.9 6379

4th Dam

Triple-Silo Ryan Patience EX-90 EEEVV

5-05 2x 365d 29210 4.2 1223 3.0 866

Life: 2860d 202150 4.1 8296 3.0 6093

5th Dam

Triple-Silo Mark Phyllis EX-91 EEEVE 4E

8-08 2x 365d 26290 4.6 1204 3.1 812

Life: 3384d 215910 4.6 10016 3.2 6972

6th Dam

Triple-Silo Elmer Petunia VG-85 EX-MS

4-05 2x 365d 22910 5.1 1178 3.6 829

Life: 2208d 132510 5.1 6736 3.5 4628

7th Dam

A-Grand-View Star Pamela VG-86 VG-MS

6-02 2x 365d 20700 5.2 1071 3.4 700

Life: 2623d 139870 4.9 6855 3.5 4840

32

SAM MCWILLIAMS
SOMERSET, PA
814-279-0484

Milksource Taz-Red-ET

71251985 Very Good-85
PTA -1184M -26F -25P 83R 8/20
PTA -2.0PL 3.20SCS +1.2DPR 4.3%DCE
PTA +1.90T +1.13UDC +1.34FLC 79R 8/20
GTPI +1804G

McWilliams Bradel Lori

840003009902857 Very Good-85 VG-MS
2-00 2x 365d 24650 3.6 878 3.2 793

MCWILLIAMS TAZ LORILEI

840003142221884 *RC

Born: July 8, 2018 • Herd No. 5556

Fresh: November 3, 2020

Regancrest Mac Bradell-ET

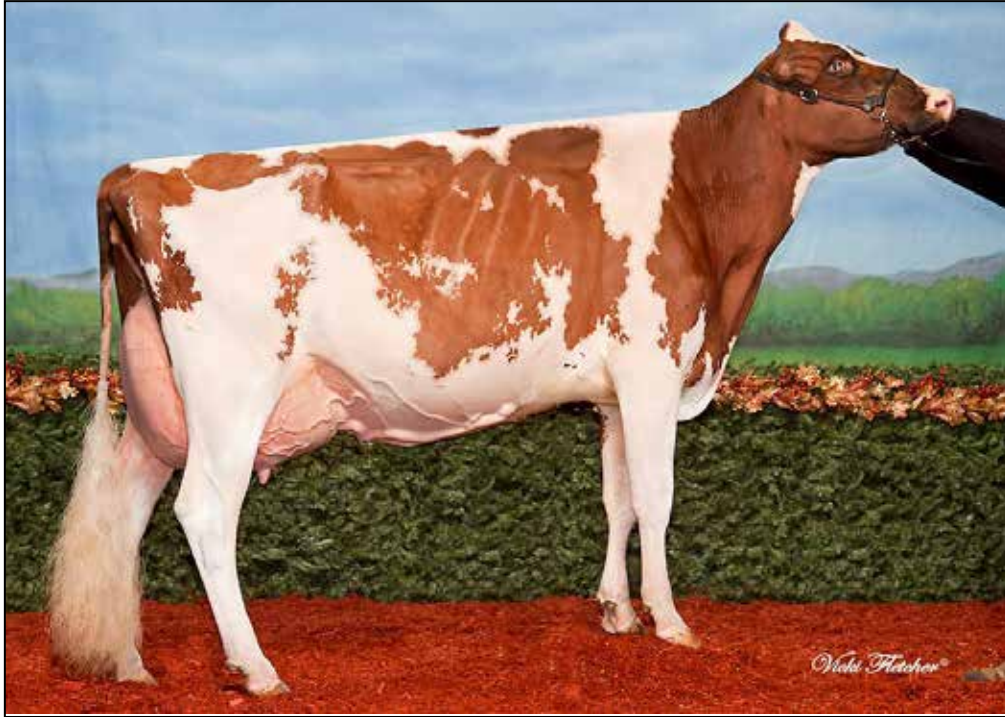
62744589
PTA +145M -30F -23P 98R 8/20
PTA +1.32T +1.38UDC -.29FLC GTPI +1768G

McWilliams Lheros Lavan

66619572 Excellent-90 EVEVE

3rd Dam

McWilliams Harel Linnie VG-86



MS GLAD RAY MORE FUN-RED EX-93 EEEEE
SAME FAMILY AS LOT 33

33

WEA-LAND FARMS
C/O LANDIS WEAVER
QUARRYVILLE, PA 17566
717-529-3034

Mr Ansly Addiction-P-Red-ET

72128091 Excellent-90 *PC *CD *TY *TV *TL
 PTA -1929M -13F -20P 99R 8/20
 PTA +2.3PL 2.63SCS +1.6DPR 3.1%DCE
 PTA +.75T +1.39UDC +.05FLC 98R 8/20
 GTPI +2039G

Greenlea Advent Miami-Red

139186035 Excellent-90 EX-MS @ 3-10
 5-04 2x 365d 35600 4.2 1511 3.0 1064
 6-09 2x 365d 33750 4.1 1391 3.2 1083
 3-05 2x 365d 33440 4.7 1579 3.3 1119
 2-03 2x 365d 30720 4.1 1261 3.3 1000
 Life: 1862d 156510 4.3 6715 3.3 5098

WEA-LAND AD MISCHEIF-RED-ET

144619478
 Born: March 7, 2018
 Fresh: October 13, 2020
 Milking: 75#

Maternal sister to Mischeif
Wea-Land Contndr Mae-Red-ET EX-90

Maternal sister to Miami-Red
Greenlea Redl Mi-Red-ET VG-85

Her Daughter

Ms Glad Ray More Fun-Red EX-93 EEEEE

4-08 2x 305d 31600 4.3 1368 3.1 970
 • 3rd 4-Yr-Old Royal R&W Show 2014
 • Nom All-American R&W Jr. 2-Yr-Old 2012
 • 1st Jr. 2-Yr-Old/Int Champi All-Am R&W Show 2012
 • 1st Jr. 2-Yr-Old NY State Fair R&W Show 2012
 • Res. Sr./Res. Grand Champ NYSF R&W Jr. Show 2012
 • Unanimous All-American R&W Spring Yearling 2011
 • Jr Champion RWF R&W Show 2011
 • HM Jr Champ Grand International R&W Show 2011
 • Nom. All-American Spring Calf 2010

KHW Kite Advent-Red-ET

133002953 Excellent-94 *TV *TL *TD
 PTA -1654M -44F -45P 99R 8/20
 PTA +.98T +.18UDC +.72FLC GTPI +1591G

Wea-Land SS Mia-Red

137283987 Excellent-92 EEEEE
 3-07 2x 365d 27590 3.6 989 3.2 881
 2-02 2x 365d 26520 3.4 895 3.0 786
 • Nom All-American R&W Sr 3-Year-Old 2009
 • 5th Sr 3-Year-Old, Grand Intn'l R&W Show 2009

3rd Dam

Creek-Knoll Mae Distrig-Red EX-94 EEEEE 2E

5-10 2x 358d 41014 3.5 1471 2.9 1206
 4-05 2x 365d 37759 3.4 1303 2.9 1120
 • All-American R&W 125,000 Lb Cow 2009
 • All-American R&W 4-Year-Old 2007
 • Nom All-American R&W Sr 3-Year-Old '06

34

WEA-LAND FARMS
C/O LANDIS WEAVER
QUARRYVILLE, PA 17566
717-529-3034

Bacon-Hill Dubday 2929-Red

840003129340665 *TP *TY *TV *TL
PTA +512M +33F +12P 94R 8/20
PTA +1.7PL 2.81SCS +.2DPR 2.4%DCE
PTA +1.17T +.74UDC +1.31FLC 85R 8/20
GTPI +2333G

Mel-Crest Rburst Radiance

73329353 Good Plus-82 VG-MS @ 2-03
1-11 2x 305d 23400 2.8 648 3.1 722

MEL-CREST DUB RELUCTANT-RED

840003143975584

Born: September 1, 2018 • Herd No. 976

Due: January 30, 2021 to Siemers Oct Apple-Crisp-ET
07H013778

Lookout P Redburst-Red-ET

106030980 *TY *TV *TL
PTA -262M -13F +0P 99R 8/20
PTA +1.37T +1.34UDC +.89FLC GTPI +2160G

Mel-Crest Pcl Radinka-ET

73329328 Very Good-86 VG-MS *RC
3-04 2x 297d 27840 3.7 1029 2.9 804
2-00 2x 364d 25020 3.6 912 3.1 786

Maternal sisters to Radinka

Mel-Crest Rollick-ET EX-91 *RC

Mel-Crest Attit Race-Red-ET EX-90 EX-MS

3rd-9th Dam

Mel-Crest Rochelleena-ET EX-90 *RC

7-05 2x 365d 42050 3.0 1263 2.8 1180

Life: 2718d 245810 3.1 7564 3.0 7473

Mel-Crest Rochelle Raven-ET VG-86 VG-MS

2-07 2x 365d 33060 3.5 1150 3.0 988

3-11 2x 289d 27660 3.2 884 2.9 796

Markwell Marshall Feather VG-88 VVVVE

6-11 2x 365d 38660 3.5 1346 2.7 1046

Life: 1847d 153570 4.0 6151 2.9 4393

• Two sons in AI

Markwell Mandel Rebecca-ET VG-86 DC

4-01 2x 333d 24930 4.7 1128 3.2 806

Markwell Bstar E Raven-ET EX-95 3E GMD DOM

4-09 2x 365d 37610 4.3 1580 3.4 1255

Life: 2387d 160020 4.1 6623 3.6 5763

Markwell Mark Elite EX-92 4E GMD DOM

7-00 2x 365d 36230 3.9 1426 3.2 1165

Life: 3736d 211430 3.8 8108 3.6 7533

Rockalli Mars Emily EX-94 EEEEE 4E GMD DOM

3-10 2x 365d 28270 3.7 1050 3.5 988

Life: 3113d 182970 3.8 7016 3.5 6330

35

WEA-LAND FARMS
C/O LANDIS WEAVER
QUARRYVILLE, PA 17566
717-529-3034

Mapel Wood Brewmaster-ET

11161715C Excellent-95-CAN *TR *TP *TC *TY *TV *TL
PTA +666M +92F +24P 99R 8/20
PTA +.4PL 2.83SCS -.5DPR 2.0%DCE
PTA +.83T -.06UDC +.55FLC 98R 8/20
GTPI +2542G

Mel-Crest Lindel Fairlit

840003131564122 Good Plus-81 @ 2-03

MEL-CREST BMASTER FLARE

840003143975746

Born: September 26, 2018 • Herd No. 388

Due: January 19, 2021 to Kerndtway Kingpin-ET
7H012228

Hartline Lindell-ET

70673475 Very Good-87 *TR *TY *TV *TL
PTA +184M -8F +15P 97R 8/20
PTA +1.62T +1.33UDC +.81FLC GTPI +2253G

Mel-Crest Fairlite-ET

139938762 Good Plus-83
5-03 2x 365d 39320 3.3 1290 3.0 1175
4-01 2x 365d 39100 3.3 1295 3.0 1160
3-02 2x 283d 27210 3.1 842 3.1 840
7-06 2x 313d 26140 3.8 986 3.0 779
6-06 2x 320d 26030 3.9 1016 3.1 797
2-03 2x 291d 22880 3.4 777 2.9 674
Life: 2058d 190400 3.5 6588 3.0 5724

3rd-11th Dams

Markwell Goldwyn Faryl VG-85 VG-MS

2-01 2x 365d 31270 3.5 1085 3.0 934

3-04 2x 301d 20560 3.8 782 3.2 661

Markwell Roy Festive EX-90 EEEEE 2E

4-09 2x 365d 39460 3.8 1494 2.9 1151

Life: 1270d 107570 3.8 4100 3.0 3224

Markwell Wade Fantasy EX-90

3-02 2x 365d 38210 3.5 1343 3.2 1221

Life: 1562d 139000 3.3 4538 3.1 4362

Markwell Mandel Fascinate EX-93 EEEEE 2E

3-06 2x 365d 39380 3.3 1288 3.0 1173

Life: 2084d 175910 3.2 5549 3.1 5376

• 2nd Aged Cow Western Fall/Nat 2003

Markwell Merrill Rosita-ET EX-92 2E GMD DOM

5-05 2x 365d 36840 4.1 1521 3.2 1180

Life: 1772d 140240 4.0 5672 3.3 4685

Markwell Bstar E Raven-ET EX-95 3E GMD DOM

4-09 2x 365d 37610 4.3 1580 3.4 1255

Life: 2387d 160020 4.1 6623 3.6 5763

Markwell Mark Elite EX-92 4E GMD DOM

7-00 2x 365d 36230 3.9 1426 3.2 1165

Life: 3736d 211430 3.8 8108 3.6 7533

Rockalli Mars Emily EX-94 EEEEE 4E GMD DOM

3-10 2x 365d 28270 3.7 1050 3.5 988

Life: 3113d 182970 3.8 7016 3.5 6330

Rockalli He-Man Eloise GP-84 GMD

7-03 2x 365d 23030 3.8 878

Life: 2146d 111260 4.0 4445

36

DREAM-ON HOLSTEINS
LEBANON, PA 17046
717-933-4782

Scientific Doppler

143754338 99%RHA-I *RC *TP *TC *TY *TV *TL
PTA +302M +26F +18P 83R 8/20
PTA +.4PL 2.90SCS -2.9DPR 3.0%DCE
PTA +2.27T +1.74UDC +.84FLC 80R 8/20
GTPI +2228G

Dream-On Olympian Fanta

840003131951305 Good Plus-82 @ 2-10
3-00 2x 323d 27650 3.5 973 3.1 860
1-11 2x 320d 27340 3.9 1073 3.1 842

DREAM-ON DOPPLER FANTASIA

840003144855300 99%RHA-I
Born: Novmeber 26, 2018 • Herd No. 992
Fresh: November 6, 2020

3rd-10th Dams

Dream-On Freelance Freckles EX-91 2E

5-09 2x 365d 48720 2.9 1413 2.7 1301
Life: 2296d 264110 3.0 7940 2.8 7477

Dream-On Blitz Frances-ET VG-85 VG-MS GMD

4-05 2x 365d 37300 3.0 1108 2.9 1084
Life: 1378d 121510 3.1 3770 2.9 3552

Plushanski Wade Farquhar-ET VG-87 GMD DOM

2-03 2x 365d 32070 4.1 1301 3.4 1083

Plushanski Geoffrey Farga-ET VG-85 GMD DOM

2-03 2x 365d 37590 4.0 1510 3.3 1240

Plushanski Cleitus Farci VG-87 GMD DOM

4-11 2x 305d 36110 4.6 1666 3.5 1268

Plushanski Al Farr-ET GP-83 DOM

6-02 2x 336d 35168 4.2 1486 3.4 1189

Life: 1940d 165283 4.2 6966 3.3 5301

Plushanski Nugget Fobes-ET VG-88 GMD DOM

4-07 2x 365d 33471 5.2 1746 3.4 1133

Life: 1460d 123059 5.0 6206 3.4 4135

Plushanski Chief Faith EX-94 4E GMD

9-01 2x 365d 37720 5.1 1913

Life: 2135d 195750 4.5 8825

Ladys-Manor Olympian

71592946 *RC *TP *TY *TV *TL
PTA +196M -36F +11P 99R 8/20
PTA +.51T +1.80UDC -.74FLC GTPI +2200G

Dream-On Acme Fashion

68762183 Good Plus-82
3-05 2x 301d 33690 3.6 1197 2.8 939
1-10 2x 365d 35020 3.0 1067 2.7 948
4-04 2x 270d 28740 2.9 827 2.7 782
Life: 1102d 110910 3.2 3585 2.8 3084

37

PHA
MIDDLETOWN, PA
717-329-9202

Bush-Bros Jsupr Bancroft-ET

840003125645186 99%RHA-I *TR *TP *TC *TY *TV *TL
PTA +993M +72F +52P 98R 8/20
PTA +3.8PL 2.59SCS +.0DPR 2.5%DCE
PTA -.45T +.51UDC -.90FLC 89R 8/20
GTPI +2661G

South-Mont Massey Hillary

840003129454762
2-09 3x 365d 36080 3.6 1300 3.1 1121
1-09 3x 294d 26120 3.5 907 3.1 820

SOUTH-MONT BANCROFT 1710

840003201714207 99%RHA-I *A2A2
Born: January 25, 2019 • Herd No. 1710
Fresh: November 15, 2020

Co-Op Bosside Massey-ET

63026939 *TP *TC *TY *TV *TL
PTA +244M +19F +23P 99R 8/20
PTA +.06T +.42UDC +.14FLC GTPI +2224G

South-Mont Emphasis Hatch

69301915 Good Plus-83 VG-MS
3-11 3x 365d 44060 2.7 1175 2.9 1271
3-00 3x 307d 36630 2.4 888 2.7 996
5-04 3x 240d 30060 3.2 965 2.7 808
2-00 3x 309d 25820 2.3 600 3.0 768



GALOR KAMLAKE ANABEL-RED-ET VG-89 EX-MS
DAM OF LOT 38

38

MATTHEW BOOP & TAYLOR WOLFE
MILLMONT, PA 17845
570-713-4567

Luck-E Awesome-Red

72186769 *CV *TC *TY *TL
PTA -1891M -66F -61P 99R 8/20
PTA -1.8PL 3.18SCS -1.8DPR 4.1%DCE
PTA +2.08T +3.30UDC +.85FLC 98R 8/20
GTPI +1398G

Galor Kamlake Anabel-Red-ET

107407907 Very Good-89 EX-MS
2-00 2x 365d 26953 3.7 1005 3.4 926
• 2nd Sr 2-Yr-Old All-American R&W Show 2015
• Grand Champ Northern Tier R&W Jr Show 2015
• Res Grand Champ Northern Tier R&W Open 2015

HEART&SOUL ANGEL-RED-ET

840003146853279 Excellent-90 EX-MS
Born: June 7, 2017
2-00 2x 365d 25060 3.6 912 3.0 762
Fresh: September 18, 2020

Scientific Destry-ET

138122625 Excellent-92 *RC *CD *TY *TV *TL
PTA -972M -36F -12P 99R 8/20
PTA +1.19T +1.22UDC -.30FLC GTPI +1912G

Hilrose Advent Autumn-Red

61986267 Excellent-91 EX-MS
2-07 2x 365d 26910 3.8 1032 3.5 948
• Res All-American R&W 4-Yr-Old 2009
• Res All-American R&W Spring Yrlg Heifer 2006

3rd Dam

Wilstar Derry Alissa-ET EX-91 EEEEE 2E GMD *RC
3-01 2x 365d 42030 4.8 2030 3.4 1423
2-00 2x 360d 30600 4.2 1285 3.5 1057

4th Dam

Wilstar-RS Ldr Angel-Red-ET EX-91 EEEVE 2E GMD
4-07 2x 365d 36810 4.4 1613 3.1 1152
Life: 1326d 106070 3.9 4168 3.2 3415

- Sons in AI & Embryos exported

5th Dam

Dreamstreet Enhancer Alicia EX-94 3E GMD DOM
8-05 2x 365d 36370 4.9 1773 2.9 1069
Life: 3559d 224670 4.4 9974 3.1 7072

6th Dam

Dreamstreet Triple Ali-Red-ET EX-90 EVEE
5-02 2x 365d 24380 3.9 962 3.4 841

7th Dam

Cha-Liz R Maple B Ann EX-91 EEEE 2E
7-10 2x 365d 23290 3.9 909
Life: 2190d 109421 3.8 4208

8th-10th Dams

Cha-Liz F Mini Ann B EX-92 3E
7-09 2x 305d 19080 3.7 712
Life: 2122d 108160 4.1 4422

Cha-Liz P V Ann Adeu B EX-92 VEEE 2E
10-0 2x 347d 23760 4.0 962
Life: 3200d 196887 3.7 7371

Wenron Adeu Ann Champion B EX-91 3E GMD
7-02 2x 305d 23948 3.6 868
Life: 3600d 196626 3.7 7187



HEART&SOULD GCHIP ROSANNE-TW EX-92 EEEEE
DAM OF LOT 39

Full sisters to Rhyme

Heart&Soul Dundee Rhythm-ET EX-94
Heart&Soul DD Recess-ET EX-90 EX-MS
Heart&Soul DD Reminiscence-ET EX-90

Maternal sisters to Rhyme

Heart&Soul C Me Im Radiant EX-93
• *Nom Jr All-American 5-Yr-Old 2014*
• *HM Jr All-PA 5-Yr-Old 2014*
• *2nd 5-Yr-Old Premier Nat'l Jr. Show 2014*
• *2nd 5-Yr-Old Pa Fall Show 2014*
• *3rd 5-Yr-Old Eastern Nat'l 2014*
Heart&Soul SS Rosette-ET EX-92
Heart&Soul CS Ripple-ET EX-90
Heart&Soul S Roulette-ET EX-90
Heart&Soul Advent Ray-ET EX-90

39

MATTHEW BOOP
MILLMONT, PA 17845
570-713-4567

HEART&SOUL DIAMOND ROSALYN

840003146853290 99%RHA-I VG-86 VG-MS @ 2-10
Born: December 12, 2017
Fresh: June 3, 2020

Bred: November 5, 2020 to Sandy-Valley J Pharo-ET
250H012975

Mr D Apple Diamondback

840003013721049 99%RHA-I EX-93 *RC *TP *TC *TY *TV *TL
PTA -427M -26F -1P 99R 8/20
PTA +.0PL 3.09SCS -2.4DPR 2.7%DCE
PTA +2.43T +2.04UDC +1.32FLC 99R 8/20
GTPI +1917G

Heart&Soul Gchip Rosanne-TW

840003146913461 Excellent-92 EEEEE
2-03 2x 354d 23260 4.1 949 3.2 748
• *Int/Res Champ/BBO/1st Sr 3-Yr-Old NE Spring Nat'l Jr Show 2019*
• *3rd Sr 3-Yr-Old North East Spring Nat'l 2019*
• *3rd Open Sr 3-Yr-Old NYSS 2019*
• *Int Champ/BBO /1st Sr 3-Yr-Old PA Spring Jr 2019*

Mr Chasity Gold Chip

140145553 Excellent-95 *TR *TP *TY *TV *TL
PTA -638M -23F -39P 99R 8/20
PTA +1.52T +1.30UDC +1.17FLC GTPI +1757G

Heart&Soul Dundee Rhyme-ET

141830315 Excellent-93 EX-MS 2E
4-08 2x 365d 27930 4.7 1312 3.5 964
2-01 2x 365d 24540 4.6 1136 3.6 894
3-08 2x 301d 23820 4.3 1030 3.5 839
7-05 2x 365d 19720 4.3 853 3.1 618
Life: 2042d 125650 4.8 6009 3.7 4666
• *HM Jr. All-Pa Sr 2-Yr-Old 2014*
• *HM All-American Winter Calf 2012*
• *2nd Winter Calf Int'l Holstein Show 2012*

3rd Dam

Heart&Soul Alegnc Ribbon-ET EX-94 EEEVE
4-03 2x 365d 27230 4.2 1138 3.2 869
• *All-PA 4-Yr-Old 2009*
• *Grand Champion Northern-Tier 2009*
• *Grand Champion PA Fall Show 2009*
• *5th 4-Yr-Old All-American Dairy Show 2009*
• *10th 4-Yr-Old World Dairy Expo 2009*
• *All-PA Jr. 3-Yr-Old 2008*
• *Res. Grand Champion PA Fall Show 2008*
• *Grand Champ NE PA Championship Show 2008*
• *3rd Jr 3-Yr-Old Cow Eastern Fall/Nat'l 2008*

Heart&Soul CS Roxanna-TW EX-94 2E DOM

4-07 2x 365d 37670 3.3 1244 2.9 1109
Life: 1913d 162330 3.6 5918 3.1 4997

J&K-Vue Durham Roxy-ET EX-90 EEEVE DOM

4-00 2x 305d 28520 4.1 1168 3.1 892

Garstlyn Broker Reba EX-93 EEEEE 2E

6-03 3x 365d 37018 4.1 1251 3.1 931"

Garstlyn Uphold Rip VG-85

7-11 2x 365d 29120 3.2 926 2.8 802
Life: 2249d 144790 3.3 4731 2.9 4235

Lovdal Chief Mark Ripple EX-90 EEEVE 2E

3-10 2x 365d 34460 3.4 1171 2.7 924
Life: 1453d 103510 3.5 3656 2.9 3012

Lovdal Charsam Rosetta VG-85

5-09 2x 302d 19300 3.7 706 2.7 515

Stonebrook Gay Ideal Reba GP-83

5-00 2x 365d 23720 3.9 930
Life: 2155d 112210 3.9 4383

Stonebrook Double Triune Rita EX-90 EEEVE

Life: 1991d 106350 4.2 4414



MEL-CREST ATTIT RACE-RED-ET EX-91
MATERNAL SISTER TO LOT 40 & 41

40

MELVIN FAUS
RICHFIELD, PA 17086
570-495-3538

MEL-CREST ATC ROSAANNA-ET

73329352 Good Plus-83 @ 2-11
 Born: September 22, 2016 • Herd No. 941
 2-02 2x 305d 24030 3.1 741 3.1 737
 • Sells Fresh

Maternal sisters to Rosaanna

Mel-Crest Rollick-ET EX-91 *RC
 2-01 2x 330d 26283 3.1 819 2.9 763"
Mel-Crest Attit Race-Red-ET EX-91 EX-MS

41

MEL-CREST DARK RESONATE-ET

73329332 Very Good-85 *TR
 Born: March 30, 2015 • Herd No. 921
 4-03 2x 305d 27010 3.5 954 3.1 829
 3-01 2x 305d 25170 3.3 824 3.1 783
 2-00 2x 316d 22900 3.6 826 3.1 719
 Fresh: November 10, 2020

Gen-I-Beq Attico-Red-ET

108490894 *TR *TY *TV *TL
 PTA +396M +36F +17P 97R 8/20
 PTA +1.7PL 3.01SCS -2.8DPR 2.8%DCE
 PTA +1.19T +1.18UDC +1.00FLC 94R 8/20
 GTPI +2271G

Mel-Crest Rochelleena-ET

138928883 Excellent-90 *RC
 7-05 2x 365d 42050 3.0 1263 2.8 1180
 9-03 2x 365d 40700 3.0 1228 2.9 1179
 6-03 2x 365d 38110 3.0 1129 2.8 1084
 3-11 2x 365d 34810 2.8 988 3.1 1075
 2-05 2x 365d 22850 3.3 759 3.1 716
 Life: 2718d 245810 3.1 7564 3.0 7473

And

Scientific Shot In The Dark

140085329 Very Good-88 *RC *TV *TL
 PTA -853M +1F -24P 96R 8/20
 PTA -1.9PL 3.09SCS -1.4DPR 4.5%DCE
 PTA +1.65T +1.12UDC +.01FLC 93R 8/20
 GTPI +1793G

Lystel Starfire-ET

7221650C *RC *TV *TL
 PTA -1050M -38F -23P 98R 8/20
 PTA -.30T -.03UDC -.69FLC GTPI +1585G
Mel-Crest Rochelle Raven-ET
 135061905 Very Good-86 VG-MS
 2-07 2x 365d 33060 3.5 1150 3.0 988
 3-11 2x 289d 27660 3.2 884 2.9 796

3rd Dam

Markwell Marshall Feather VG-88 VVVE
 6-11 2x 365d 38660 3.5 1346 2.7 1046
 Life: 1847d 153570 4.0 6151 2.9 4393
 • Two sons in AI

4th Dam

Markwell Mandel Rebecca-ET VG-86 DC
 4-01 2x 333d 24930 4.7 1128 3.2 806

5th Dam

Markwell Bstar E Raven-ET EX-95 3E GMD DOM
 4-09 2x 365d 37610 4.3 1580 3.4 1255
 Life: 2387d 160020 4.1 6623 3.6 5763

6th Dam

Markwell Mark Elite EX-92 4E GMD DOM
 7-00 2x 365d 36230 3.9 1426 3.2 1165
 Life: 3736d 211430 3.8 8108 3.6 7533

7th Dam

Rockalli Mars Emily EX-94 EEEEE 4E GMD DOM
 3-10 2x 365d 28270 3.7 1050 3.5 988
 Life: 3113d 182970 3.8 7016 3.5 6330

42

MELVIN FAUS
RICHFIELD, PA 17086
570-495-3538

Mt-Glen Adolph Johah

70254583 Excellent-94 EEEE *BR *TL
PTA -959M -30F -49P 96R 8/20
PTA -3.3PL 3.16SCS -2.0DPR 3.4%DCE
PTA -.08T -.83UDC +.10FLC 91R 8/20
GTPI +1349G

Mel-Crest Redb Rustic-ET

142292747 Very Good-88 EVEVV
3-09 2x 300d 30920 3.2 979 3.0 931
2-10 2x 313d 26280 3.3 871 3.0 796
4-09 2x 305d 30920 3.2 979 3.0 931
1-11 2x 294d 21780 3.1 671 3.0 645
Life: 1315d 112120 3.3 3714 3.1 3458

MEL-CREST JONAH RUDY

840003143975599
Born: January 18, 2019 • Herd No. 991
• Sells Fresh

Maternal sisters to Rustic

Mel-Crest Rollick-ET EX-91 *RC
2-01 2x 330d 26283 3.1 819 2.9 763"
Mel-Crest Attit Race-Red-ET EX-91 EX-MS

Lookout P Redburst-Red-ET

106030980 *TY *TV *TL
PTA -262M -13F +0P 99R 8/20
PTA +1.37T +1.34UDC +.89FLC GTPI +2160G

Mel-Crest Rochelleena-ET

138928883 Excellent-90 *RC
7-05 2x 365d 42050 3.0 1263 2.8 1180
9-03 2x 365d 40700 3.0 1228 2.9 1179
6-03 2x 365d 38110 3.0 1129 2.8 1084
3-11 2x 365d 34810 2.8 988 3.1 1075
2-05 2x 365d 22850 3.3 759 3.1 716
Life: 2718d 245810 3.1 7564 3.0 7473

3rd-8th Dams

Mel-Crest Rochelle Raven-ET VG-86 VG-MS
2-07 2x 365d 33060 3.5 1150 3.0 988
3-11 2x 289d 27660 3.2 884 2.9 796
Markwell Marshall Feather VG-88 VVVVE
6-11 2x 365d 38660 3.5 1346 2.7 1046
Life: 1847d 153570 4.0 6151 2.9 4393
• *Two sons in AI*
Markwell Mandel Rebecca-ET VG-86 DC
4-01 2x 333d 24930 4.7 1128 3.2 806
Markwell Bstar E Raven-ET EX-95 3E GMD DOM
4-09 2x 365d 37610 4.3 1580 3.4 1255
Life: 2387d 160020 4.1 6623 3.6 5763
Markwell Mark Elite EX-92 4E GMD DOM
7-00 2x 365d 36230 3.9 1426 3.2 1165
Life: 3736d 211430 3.8 8108 3.6 7533
Rockalli Mars Emily EX-94 EEEEE 4E GMD DOM
3-10 2x 365d 28270 3.7 1050 3.5 988
Life: 3113d 182970 3.8 7016 3.5 6330

43

MELVIN FAUS
RICHFIELD, PA 17086
570-495-3538

Seagull-Bay Silver-ET

72156794 *TC *TY *TV *TL
PTA +617M +73F +31P 99R 8/20
PTA +1.1PL 3.01SCS -2.2DPR 2.0%DCE
PTA +1.61T +2.00UDC +1.33FLC 99R 8/20
GTPI +2561G

Mel-Crest Manoman Rivlet

73451021 Very Good-87 VG-MS
3-00 2x 305d 30880 3.5 1069 3.1 951
2-00 2x 306d 27520 3.5 971 3.0 825

MEL-CREST SILVER RIVALRY

840003143975700 Good-79 @ 2-02
Born: January 15, 2018 • Herd No. 342
Fresh: October 26, 2020

Long-Langs Oman Oman 2-ETN

84003006030062 Excellent-92 EEEE
PTA +109M +22F +30P 99R 8/20
PTA -.56T -.52UDC -1.24FLC GTPI +2078G

Mel-Crest Dark Rivette

141693787 Excellent-90 EX-MS 2E
5-07 2x 357d 30820 3.5 1082 2.9 883
4-02 2x 350d 30690 3.3 1007 2.9 878
3-02 2x 305d 28130 3.3 917 2.8 795
2-00 2x 360d 27950 2.9 822 2.8 791
Life: 1511d 130550 3.2 4219 2.9 3741

3rd-8th Dams

Mel-Crest Rochelle Raven-ET VG-86 VG-MS
2-07 2x 365d 33060 3.5 1150 3.0 988
3-11 2x 289d 27660 3.2 884 2.9 796
Markwell Marshall Feather VG-88 VVVVE
6-11 2x 365d 38660 3.5 1346 2.7 1046
Life: 1847d 153570 4.0 6151 2.9 4393
• *Two sons in AI*
Markwell Mandel Rebecca-ET VG-86 DC
4-01 2x 333d 24930 4.7 1128 3.2 806
Markwell Bstar E Raven-ET EX-95 3E GMD DOM
4-09 2x 365d 37610 4.3 1580 3.4 1255
Life: 2387d 160020 4.1 6623 3.6 5763
Markwell Mark Elite EX-92 4E GMD DOM
7-00 2x 365d 36230 3.9 1426 3.2 1165
Life: 3736d 211430 3.8 8108 3.6 7533
Rockalli Mars Emily EX-94 EEEEE 4E GMD DOM
3-10 2x 365d 28270 3.7 1050 3.5 988
Life: 3113d 182970 3.8 7016 3.5 6330

44

MELVIN FAUS
RICHFIELD, PA 17086
570-495-3538

Vogue Revival-Red-ET

12111876C *TC *TY *TV *TL
PTA -310M +58F +7P 87R 8/20
PTA +2.5PL 2.84SCS +.7DPR 2.0%DCE
PTA +.30T +.73UDC +.45FLC 79R 8/20
GTPI +2418G

Mel-Crest B-WX Jumper

73329356 *RC

MEL-CREST REVIVAL JOLLY-RED

840003143975593

Born: November 30, 2018 • Herd No. 985

Fresh: October 22, 2020

Mapel Wood Ball Of Wax-ET

11841699C *RC *PP *TY *TV
PTA +571M +7F +0P 92R 8/20
PTA +.28T +.65UDC +.70FLC GTPI +2048G

Mel-Crest A Judith-P-Red-ET

73329314 Very Good-85 VG-MS *PO *TL
5-06 2x 305d 31940 3.4 1084 3.0 955
4-02 2x 305d 29090 3.9 1128 3.1 912
3-02 2x 308d 26130 4.3 1122 3.2 843
Life: 1397d 118660 3.9 4633 3.2 3787

3rd-17th Dams

Mel-Crest Colt Jingle P-Red VG-85 VG-MS *PO

Life: 1357d 114040 3.5 4026 3.1 3491

Warrencrest Jizzy-Red-ET EX-90

3-04 2x 365d 29790 3.3 971 3.2 956

Warrencrest Rdm Jody-Red-ET VG-87

3-01 2x 365d 30120 3.5 1061 3.2 952

Hy-Class Jordan Jara-Red VG-87 EX-MS

2-02 2x 365d 27040 4.8 1288 3.2 873

Hy-Class Rang Jathne-Red-TW EX-90 VEEVE

5-00 2x 305d 31780 3.5 1106 2.8 880

Hy-Class Jacob Jackie-Red EX-91 EEVEE

4-10 2x 365d 27800 2.8 785 3.0 827

Jandi-Mac June Logic-Red-ET EX-91 2E DOM

3-05 2x 305d 32790 3.5 1158 3.2 1043

Ja-Bob Harry Jerry-Red-ET EX-90 EEVEV 2E

6-00 2x 365d 30570 3.9 1183 3.4 1038

Life: 2898d 191560 3.7 7044 3.3 6390

Ja-Bob Harmony Joy-Red-ET EX-90 EX-MS

6-08 2x 365d 32901 3.4 1105 3.0 1001

Ja-Bob Mark Heavenly Joy EX-92 2E 13*

7-03 2x 365d 33093 3.5 1155 3.2 1054

Sky-Hi Mars Helen-ET EX-92 4E GMD DOM

Life: 7 Lact 235830 4.0 9407 3.4 7317

Sky-Hi Boots Honey VG-86 EX-MS GMD

Life: 4327d 233390 4.5 10475

Sky-Hi Majority Honey EX-90 3E GMD

Terrace Heights Honey Sky Hi VG-86 VG-MS

Twincrest Burke Winnie VG-86

45

MELVIN FAUS
RICHFIELD, PA 17086
570-495-3538

Zimmerview Luck PP-Red-ET

74228150 *PP *TY *TV *TL
PTA -1638M -49F -26P 98R 8/20
PTA +4.4PL 2.69SCS +1.5DPR 1.7%DCE
PTA -.19T +1.28UDC +.96FLC 94R 8/20
GTPI +1925G

Mel-Crest Silver Rose

73329345 Very Good-85
2-11 2x 331d 23830 3.7 877 2.9 686
1-11 2x 306d 23080 3.6 841 2.8 656

MEL-CREST LUCKY ROSA-P

840003143975570 Good-78 @ 2-05

Born: October 8, 2017 • Herd No. 962

1-11 2x 297d 20084 3.9 790 3.3 659

Fresh: October 5, 2020

Milking: 88# 3.8F 3.1P SCC 27,000

Seagull-Bay Silver-ET

72156794 *TC *TY *TV *TL
PTA +617M +73F +31P 99R 8/20
PTA +1.61T +2.00UDC +1.33FLC GTPI +2561G

Mel-Crest Escalad Whiterose

142311664 Very Good-86 VG-MS *TL
2-11 2x 310d 23080 3.9 899 3.0 697
2-00 2x 286d 20830 3.7 761 2.8 589

3rd Dam

Mel-Crest Rosebud Raven-ET VG-86 EX-MS

3-02 2x 365d 36440 3.1 1132 3.0 1107

2-01 2x 365d 32950 3.1 1033 2.9 957

4th Dam

Mel-Crest Royale Raven-ET VG-88 VVVVE

4-07 2x 305d 32500 3.0 991 2.9 941

2-01 2x 365d 32950 3.1 1033 2.9 957

5th Dam

Markwell Marshall Feather VG-88 VVVVE

4-04 2x 365d 33740 4.5 1532 2.9 962

Life: 1386d 106690 4.2 4522 2.9 3111

6th Dam

Markwell Mandel Rebecca-ET VG-86

4-01 2x 333d 24930 4.7 1128 3.2 806

2-04 2x 365d 21520 4.6 993 3.3 702

7th Dam

Markwell Bstar E Raven-ET EX-95 3E GMD DOM

4-09 2x 365d 37610 4.3 1580 3.4 1255

Life: 2387d 160020 4.1 6623 3.6 5763

8th Dam

Markwell Mark Elite EX-92 4E GMD DOM

7-00 2x 365d 36230 3.9 1426 3.2 1165

Life: 3736d 211430 3.8 8108 3.6 7533

9th Dam

Rockalli Mars Emily EX-94 EEEEE 4E GMD DOM

3-10 2x 365d 28270 3.7 1050 3.5 988

Life: 3113d 182970 3.8 7016 3.5 6330

46

MELVIN FAUS
RICHFIELD, PA 17086
570-495-3538

Hanover-Hill Triple Threat-Red

1629391 Very Good-89 *BR *TL
PTA -3064M -73F -93P 99R 8/20
PTA +2.8PL 2.87SCS +6.6DPR 3.3%DCE
PTA -2.57T -3.20UDC -.71FLC 99R 8/20
TPI +1160

Mel-Crest Fruitcake-Red

142471674 Excellent-90 EX-MS
3-00 2x 296d 24040 3.4 821 3.1 736
4-01 2x 303d 22730 3.4 772 3.0 683
1-10 2x 336d 20900 3.6 746 3.0 627

MEL-CREST TT FIDDLE-RED-ET

840003143975572
Born: November 22, 2017 • Herd No. 964
1-11 2x 313d 20964 2.9 617 2.8 592 SCC 180,000
• Sells Fresh

Scientific B Defiant-ET

141123484 Very Good-87 *RC *TP
PTA +50M -54F -13P 99R 8/20
PTA +2.73T +1.59UDC +.99FLC GTPI +1658G

Sweet-Peas Fruitful-Red-ET

139497599 Very Good-85 VG-MS *CD *TL
8-06 2x 365d 38180 3.7 1394 3.1 1188
6-10 2x 365d 37590 3.6 1347 3.1 1175
5-08 2x 354d 34820 3.5 1209 3.1 1087
4-08 2x 291d 27660 3.3 911 3.2 874
2-02 2x 365d 28940 3.5 1027 3.1 897
3-08 2x 288d 27110 3.1 841 3.3 886
Life: 2275d 209580 3.5 7358 3.2 6708

3rd Dam

Sweet-Peas Rbn Faith-Red-ET EX-91 EX-MS GMD

5-09 2x 365d 53390 5.1 2738 3.4 1809
Life: 1527d 154190 5.3 8191 3.7 5703

4th Dam

Peasedale Caveman Florie EX-94 3E GMD DOM

12-07 2x 365d 53560 5.9 3152 3.1 1681
2nd National Fat & 1st PA Fat
9-09 2x 365d 52380 5.0 2594 3.5 1836
Life: 3741d 338853 5.2 17597 3.6 12031
World record for Lifetime Fat

47

MELVIN FAUS
RICHFIELD, PA 17086
570-495-3538

Gen-I-Beq Aikman-ET

106807394C Very Good-86-CAN *RC *TP *TY *TV *TL
PTA -14M +46F +22P 99R 8/20
PTA -.2PL 2.90SCS -1.1DPR 3.3%DCE
PTA -.15T +.39UDC +.47FLC 98R 8/20
GTPI +2295G

Sweet-Peas Fruitful-Red-ET

139497599 Very Good-85 VG-MS *CD *TL
8-06 2x 365d 38180 3.7 1394 3.1 1188
6-10 2x 365d 37590 3.6 1347 3.1 1175
5-08 2x 354d 34820 3.5 1209 3.1 1087
4-08 2x 291d 27660 3.3 911 3.2 874
2-02 2x 365d 28940 3.5 1027 3.1 897
3-08 2x 288d 27110 3.1 841 3.3 886
Life: 2275d 209580 3.5 7358 3.2 6708

MEL-CREST AKM FROSTY-RED-ET

840003131564113 Good Plus-80
Born: August 25, 2016 • Herd No. 262
2-11 2x 305d 32940 3.2 1042 2.9 965
1-10 2x 305d 21340 3.5 738 3.1 658
Fresh: August 20, 2020
Milking: 132# 3.5F 2.0P

Bred: November 4, 2020 to Luck-E Artisan-Red-ET
7H014458

Fradon Redliner-Red-ET

7528698C Excellent-91-CAN *TV
PTA -656M -62F -24P 99R 8/20
PTA +.17T -.35UDC -1.22FLC GTPI +1269G

Sweet-Peas Rbn Faith-Red-ET

130669863 Excellent-91 EX-MS GMD
5-09 2x 365d 53390 5.1 2738 3.4 1809
2-10 2x 365d 46390 4.9 2255 3.5 1634
Life: 1527d 154190 5.3 8191 3.7 5703

3rd Dam

Peasedale Caveman Florie EX-94 3E GMD DOM

12-07 2x 365d 53560 5.9 3152 3.1 1681
2nd National Fat & 1st PA Fat
9-09 2x 365d 52380 5.0 2594 3.5 1836
Life: 3741d 338853 5.2 17597 3.6 12031
World record for Lifetime Fat



MARKWELL ROY FESTIVE EX-92 EEEEE 2E
5TH DAM OF LOT 48

48

MELVIN FAUS
RICHFIELD, PA 17086
570-495-3538

Siemers Bloomfield-ET

840003130920421 *TR *TP *TY *TV *TL
PTA -497M +84F +4P 98R 8/20
PTA +3.4PL 2.78SCS +1.9DPR 3.2%DCE
PTA +1.47T +2.07UDC -.05FLC 95R 8/20
GTPI +2656G

Mel-Crest Exacter Fanny

840003131564067 Good Plus-81 @ 3-03
3-02 2x 321d 28210 3.1 872 2.9 817

MEL-CREST BLOOMFD FLINTA

840003143975597
Born: December 27, 2018 • Herd No. 989
Fresh: November 13, 2020

Mountfield Altaexacter

65689792 *TY *TV *TL
PTA +211M -1F +5P 99R 8/20
PTA +.84T +.38UDC +.53FLC GTPI +2030G

Mel-Crest Fairest

141372114 Good Plus-83
3-01 2x 338d 36320 2.8 1015 2.7 968
2-01 2x 329d 30600 3.2 976 2.6 806
4-03 2x 307d 29750 3.5 1035 2.8 825
Life: 1096d 110620 3.2 3524 2.7 2959

3rd-11th Dams

Mel-Crest Fairlite-ET GP-83

5-03 2x 365d 39320 3.3 1290 3.0 1175
Life: 2058d 190400 3.5 6588 3.0 5724

Markwell Goldwyn Faryl VG-85 VG-MS

2-01 2x 365d 31270 3.5 1085 3.0 934

Markwell Roy Festive EX-92 EEEEE 2E

4-09 2x 365d 39460 3.8 1494 2.9 1151
Life: 1699d 145410 3.9 5702 3.0 4328

Markwell Wade Fantasy EX-90 EVEVE

3-02 2x 365d 38210 3.5 1343 3.0 1149
Life: 1562d 139000 3.3 4538 2.9 4100

Markwell Mandel Fascinate EX-94 EEEEE 3E

3-06 2x 365d 39380 3.3 1288 2.8 1099
Life: 2149d 183880 3.1 5771 2.9 5251

• 2nd Aged Cow Western Fall/Nat 2003

Markwell Merrill Rosita-ET EX-92 2E GMD DOM

5-05 2x 365d 36840 4.2 1521 3.0 1111
Life: 1772d 140420 4.0 5672 3.1 4419

Markwell Bstar E Raven-ET EX-95 3E GMD DOM

4-09 2x 365d 37610 4.3 1580 3.4 1255
Life: 2387d 160020 4.1 6623 3.6 5763

Markwell Mark Elite EX-92 4E GMD DOM

7-00 2x 365d 36230 3.9 1426 3.2 1165
Life: 3736d 211430 3.8 8108 3.6 7533

Rockalli Mars Emily EX-94 EEEEE 4E GMD DOM

3-10 2x 365d 28270 3.7 1050 3.5 988
Life: 3113d 182970 3.8 7016 3.5 6330

49

JAMES, JUDITH, JOLENE & JOYCE CAMPBELL
CLEAR SPRING, MD 21722
301-842-3782

CLEAR-MOOO ANGELO ABERY

840003137444308

Born: August 24, 2016 • Herd No. 1423

• Sells Dry

Due: January 13, 2020 to S-S-I Montross Jedi-ET
7H013250

ALICIA!

- HHM All-Time All-American 5-Yr-Old Cow
- HHM All-American 125,000 Lb. Cow 2005
- Res All-American Aged Cow 2004
- All-American Aged Cow 2003
- HHM All-American Aged Cow 2002
- Res All-Canadian Mature Cow 2002
- All-American 5-Yr-Old Cow 2000
- All-Canadian 5-Yr-Old Cow 2000
- All-Canadian 4-Yr-Old Cow 1999
- All-Canadian Jr 2-Yr-Old Cow 1997

Sevensisters Aval Angelo-ET

74000420

PTA -731M -38F -25P 46R 8/20

PTA -2.6PL 3.15SCS -1.5DPR 3.6%DCE

PTA +.78T +.68UDC +.27FLC 46R 8/20

PTPI +1580

Miss Alicia N Atwoods Aw-ET

71794045

Maternal sisters to Anne (3rd Dam)

BKB Abby-ET EX-95 EEEEE 2E DOM

4-03 2x 365d 35300 4.1 1430 3.4 1204

BKB Durham Amelia-ET EX-94 EEEEE 2E

Maple-Downs-I G W Atwood-ET

8956379C Excellent-90 *TR *TP *TY *TV *TL

PTA -368M +11F -10P 99R 8/20

PTA +2.98T +1.70UDC +2.17FLC GTPI +1916G

Cowtown Durham Avery-ET

63651147 Excellent-92 EEEEE *TD

7-02 2x 342d 23830 3.7 893 3.2 752

2-02 2x 365d 23740 4.0 952 3.3 795

3rd Dam

BKB Cousteau Anne-ET EX-92 EX-MS

4-11 2x 365d 36940 4.0 1496 2.9 1069

2-04 2x 365d 26790 3.6 965 3.2 861

4th Dam

Shoremor S Alicia-ET EX-97 EEEEE 3E *BL

6-10 2x 365d 35760 4.3 1544 3.4 1214

Life: 2102d 185002 4.2 7731 3.2 5939

5th Dam

C Aitkenbrae Starbuck Ada EX-94 2E DOM 4* *BL

5-06 2x 356d 30055 3.5 1043 3.5 1049

Life: 6 Lact 137732 3.4 4749 3.4 4647

• All-American Produce of Dam 2000, 2001

• All-American 3-Yr-Old Cow 1990

50

JAMES & JUDITH CAMPBELL
CLEAR SPRING, MD 21722
301-842-3782

JA-LA-ROSE HD LANA TAE-TW

840003142756683

Born: April 22, 2017 • Herd No. 1470

Fresh: November 8, 2020

Milking: 90#

3rd-11th Dams

Gloryland Lori Rae-ET EX-94 EEEEE 3E DOM

8-02 2x 365d 26720 3.5 939 3.2 856

Life: 2420d 127010 3.4 4323 3.2 4087

Gloryland Lana Rae EX-94 EEEEE 2E DOM

5-06 2x 365d 29011 4.0 1159 3.4 993

Life: 2113d 129620 3.7 4768 3.5 4587

Scientific Liza Rae-ET EX-90

4-09 2x 365d 26710 2.9 786 3.3 878

C Hanoverhill Tony Rae EX-96 3E GMD DOM

6-11 2x 365d 40220 4.1 1661 3.3 1331

Life: 2247d 166396 4.1 6904 3.4 5612

• Grand Champion, Western National 1993

• HM All-American Jr 2-Yr-Old Cow 1988

C Hanoverhill TT Roxette-ET EX-94 2E GMD

10-0 3x 365d 35040 4.3 1519 3.0 1063

Life: 2104d 164789 4.1 6760 3.1 3587

Mil-R-Mor Roxette EX-CAN GMD DOM 30*

7-01 2x 365d 24531 4.7 1153

Life: 6 Lacs 121418 4.7 5728

C Glenridge Citation Roxy EX-97 4E GMD 6*

10-1 2x 365d 25280 4.2 1061

Life: 3620d 209784 4.5 9471

'Queen of the Breed I & II'

C Norton Court Model Vee EX-90 6*

Life: 4183d 218629 3.9 8581

• All-American Produce of Dam 1977, '78, '79

Norton Court Reflection Vale VG-85-CAN 5*

Life: 14 Lact 249583 3.7 9295

Seagull-Bay Headliner-ET

69981350 Very Good-87 VG-MS *TR *TP *TY *TV *TL

PTA +1217M +49F +44P 99R 8/20

PTA -2.0PL 3.21SCS -2.9DPR 2.9%DCE

PTA +1.42T +.66UDC +1.14FLC 99R 8/20

GTPI +2361G

Miss Ashock Lana Rae-ET

73250538 *TL

1-11 2x 112d 8030 3.9 317 2.7 220

Full sisters to Lana Rae

Ms Cedarcrest A Kristina-ET VG-88

Ms Cedarcrest AFS Kayla-ET VG-87

Maternal sister to Lana Rae

Ms Cedarcrest Brax Kelly-ET VG-88

Ms Atlees Sht Aftershock-ET

65249839 Excellent-92 *TC *TY *TV *TL

PTA -469M -22F -31P 99R 8/20

PTA +1.43T +1.08UDC +.57FLC GTPI +1674G

Ms Glorylandgw Libby Rae-ET

69393524 Very Good-87 EX-MS

4-02 2x 365d 29280 3.9 1153 3.1 898

2-09 2x 365d 26150 3.9 1014 3.2 848

51

JA-LA-ROSE BOASTFUL HEIDI

840003142756691

Born: June 4, 2017 • Herd No. 1478

Fresh: September 30, 2020

Milking: 93#

JAMES & JUDITH CAMPBELL
CLEAR SPRING, MD 21722
301-842-3782

Bryceholme SS Boastful-ET

11857447C *TC *TY *TV *TL
PTA -499M +32F +11P 99R 8/20
PTA +4.5PL 2.76SCS +2.00DPR 1.5%DCE
PTA +.07T +1.03UDC -.25FLC 98R 8/20
GTPI +2414G

Appealing Mogul Helado-ET

70803544 Good Plus-81 VG-MS @ 2-00

Maternal sister to Helado

Appealing Observer Hazel-ET VG-86 VG-MS

52

JA-LA-ROSE CRUSH HUDSON

840003148355191 99%RHA-I

Born: May 27, 2018 • Herd No. 1577

Due: December 21, 2020 to Sonnek Gc Corvette-ET
7H012042

And

Maverick Crush

12042760C 99%RHA-I *TC *TY *TV *TL
PTA -990M -50F -15P 99R 8/20
PTA +2.1PL 2.34SCS +1.1DPR 2.6%DCE
PTA +2.52T +1.65UDC +1.55FLC 98R 8/20
GTPI +2020G

Mountfield SSI Dcy Mogul-ET

840003006972816 Excellent-93 *TR *TP *TC *TY *TV *TL
PTA +583M +47F +17P 99R 8/20
PTA +1.39T +2.28UDC +1.29FLC GTPI +2342G

Appealing Shottle Hannah-ET

62669860 Very Good-86 GMD DOM
4-01 2x 365d 45980 3.2 1458 2.8 1296
1-09 2x 365d 39070 3.5 1386 2.9 1116
Life: 1521d 150460 3.4 5057 3.0 4495

3rd Dam

Ladys-Manor Hadara T-ET VG-88 VG-MS DOM

3-03 2x 365d 39850 3.8 1532 2.9 1169

Life: 1511d 132260 3.9 5173 3.1 4073

4th Dam

Ladys-Manor Tawny-ET VG-88 GMD DOM

5-00 2x 365d 37660 3.7 1412 3.0 1129

Life: 1441d 118940 4.1 4882 3.2 3828

5th Dam

Ladys-Manor Tippy Tonya-ET VG-87 DOM

4-06 2x 365d 42030 3.8 1604 2.8 1191

Life: 1398d 127510 3.8 4801 3.0 3831

6th Dam

Ladys-Manor Topgun Tippy-ET VG-86 GMD DOM

2-01 2x 365d 29156 3.8 1116 3.0 878

7th Dam

Ladys-Manor Top Gun Gemini-ET EX-93 3E GMD

3-11 2x 365d 36080 3.5 1246 3.1 1106

Life: 2089d 150300 3.8 5699 3.0 4495

8th Dam

Ladys-Manor Delightful Jem VG-88 GMD

6-02 2x 365d 31890 4.1 1314 2.9 933

Life: 1940d 147650 4.0 5946 3.0 4415

9th Dam

Ladys-Manor Donnas Delight VG-85

Life: 2392d 166610 3.7 6114

10th Dam

Ladys-Manor Nancy Archie EX-90 2E GMD

Life: 2647d 156000 3.7 5834

53

CLEAR-MOOO MAYFIELD RAYLENE

840003148355221

Born: August 30, 2018 • Herd No. 1607

Fresh: November 18, 2020

JAMES, JUDITH, JOLENE & JOYCE CAMPBELL
CLEAR SPRING, MD 21722
301-842-3782

De-Su D Mayfield 893-ET

69473980 Excellent-90 *TR *TP *TY *TV *TL
PTA +728M +2F +6P 99R 8/20
PTA +.2PL 3.08SCS +.4DPR 1.4%DCE
PTA +.78T +.67UDC -.28FLC 99R 8/20
GTPI +2043G

Kulp-Dale OS Reform-P-ET

840003127359424 *PO *TL

Pine-Tree Ohio Style- P-ET

71178738 *TR *PC *TY *TV *TL
PTA +1224M +24F +21P 99R 8/20
PTA -1.13T -.42UDC -.29FLC GTPI +2097G

Kulp-Dale Ernht Reba P-ET

72234100 Very Good-86 *RC *PO *TL
4-09 2x 349d 29540 3.7 1081 3.5 1043
3-06 2x 365d 28910 4.0 1158 3.5 1020
5-10 2x 352d 26120 4.1 1069 3.5 910
2-03 2x 365d 22750 4.0 913 3.4 781
Life: 1500d 110820 4.0 4386 3.5 3908

3rd-12th Dams

Golden-Oaks Rmn Rae2-Red-ET EX-90 EX-MS

7-08 2x 365d 30380 4.6 1394 3.4 1034

4-08 2x 365d 28390 4.4 1255 3.4 966

Golden-Oaks Perk Rae-Red-ET EX-90 EEVEE *PO

1-11 3x 365d 31030 3.7 1161 3.2 983

Scientific Beauty Rae-ET EX-90 VEEVV *RC DOM

4-03 2x 365d 33710 4.7 1595 3.7 1243

Scientific Jubilant Rae-ET EX-90 EEVEV DOM

5-11 3x 365d 38880 4.1 1607 3.6 1402

Life: 4 Lact 117589 4.0 4707 3.6 4242

C Hanoverhill Tony Rae EX-96 3E GMD DOM

6-11 3x 365d 40220 4.1 1661 3.3 1331

Life: 2247d 166396 4.1 6904 3.4 5612

C Hanoverhill TT Roxette-ET EX-94 2E GMD

10-0 3x 365d 35040 4.3 1518 3.0 1063

Life: 2104d 164789 4.1 6760 3.1 3587

Mil-R-Mor Roxette EX-90 EEVEV GMD DOM

7-01 2x 365d 24530 4.7 1153

Life: 2150d 121417 4.7 5725

C Glenridge Citation Roxy EX-97 4E GMD

10-1 2x 365d 25280 4.2 1061

Life: 3620d 209784 4.5 9471

'Queen of the Breed'

C Norton Court Model Vee EX-90

7-09 2x 357d 20362 3.9 793

Life: 4183d 218629 3.9 8581

• *All-American Produce of Dam 1977 - 1979*

Norton Court Reflection Val VG-85 5*

8-11 2x 332d 20631 3.7 765

Life: 14 Lact 249583 3.7 9295

54

JAMES, JUDITH, JOLENE & JOYCE CAMPBELL
CLEAR SPRING, MD 21722
301-842-3782

Mr Chasity Gold Chip

140145553 Excellent-95 *TR *TP *TY *TV *TL
PTA -638M -23F -39P 99R 8/20
PTA +.1PL 2.78SCS -1.6DPR 1.5%DCE
PTA +1.52T +1.30UDC +1.17FLC 99R 8/20
GTPI +1757G

Scarlet-Maple Impress Fanta

72787173 99%RHA-I *RC

CLEAR-MOOO GOLD CHIP FIZZLE

840003148355192 99%RHA-I
Born: June 4, 2018 • Herd No. 1578

Due: January 8, 2021 to Welcome Trilogly 3553-ET
7H014439

Monument Impression-ET

66382657 *TR *TP *TY *TL
PTA +295M +5F +1P 99R 8/20
PTA +1.25T +.95UDC +.52FLC GTPI +2111G

Misty-Crest Fanta-Red

70381741 99%RHA-I Good Plus-83 VG-MS
2-05 2x 345d 24430 3.4 832 3.1 748

3rd-10th Dams

MS Fanta-ET VG-87 VG-MS
3-10 2x 365d 27800 3.8 1047 3.2 887
5-05 2x 305d 24850 3.4 837 2.9 719
Whittier-Farms Tal Fantasia VG-87 *RC
4-05 2x 365d 34760 3.7 1283 3.2 1107
Life: 2025d 162870 3.6 5851 3.1 5129
Quietcove Durham Filly-ET EX-92 EEEEE 3E
6-07 2x 362d 32490 3.7 1215 3.2 1041
Life: 1880d 138070 3.8 5237 3.2 4430
Quietcove Titan Flurry EX-93 EEEVE
3-10 2x 365d 33880 4.5 1509 3.1 1061
Quietcove Valiant Fawn EX-95 2E GMD DOM
4-09 2x 365d 36670 4.1 1500 2.9 1060
Life: 1500d 115950 4.0 4640 2.9 3326
• Res All-American 4-Yr-Old Cow 1987
• HM All-American 5-Yr-Old Cow 1988
Quietcove Pete Fresca EX-91 VEEE DOM
4-04 2x 305d 19770 3.8 753 3.1 608
Kohl Elevation Fern EX-90 VEEE 2E
5-03 2x 365d 27170 4.3 1173
Life: 1750d 121370 4.2 5145
Kohl Ned Colleen VG-85
4-04 2x 293d 16150 3.4 548

55

JAMES, JUDITH, JOLENE & JOYCE CAMPBELL
CLEAR SPRING, MD 21722
301-842-3782

Maverick Crush

12042760C 99%RHA-I *TC *TY *TV *TL
PTA -990M -50F -15P 99R 8/20
PTA +2.1PL 2.34SCS +1.1DPR 2.6%DCE
PTA +2.52T +1.65UDC +1.55FLC 98R 8/20
GTPI +2020G

Oakfield Mayfield Candy-TW

142608616 99%RHA-NA
2-02 2x 238d 17270 4.0 697 3.0 518

CLEAR-MOOO CRUSH CANDYKANE

840003148355219 99%RHA-I
Born: August 8, 2018 • Herd No. 1605

Due: February 9, 2021 to De-Su Frazz Tahiti 14104-ET
7H014229

De-Su D Mayfield 893-ET

69473980 Excellent-90 *TR *TP *TY *TV *TL
PTA +728M +2F +6P 99R 8/20
PTA +.78T +.67UDC -.28FLC GTPI +2043G

Oakside Lou Caralee

139054127 Very Good-88 VG-MS
3-02 2x 305d 24550 3.4 837 3.3 810
5-07 2x 305d 22310 3.4 758 3.1 700
4-04 2x 305d 21100 3.8 808 3.2 680
2-00 2x 305d 20140 3.6 720 3.1 629
Life: 1669d 119660 3.7 4398 3.2 3873

3rd-5th Dams

Oakside Norman Cara EX-90 EX-MS 2E
8-10 2x 305d 29820 3.3 983 2.9 862
Life: 2860d 238330 3.4 8174 3.0 7177
Oakside Leduc Carrie NC
2-10 2x 305d 27270 3.4 931 3.3 889
Oakside Patron Calida VG-88 VG-MS
4-06 2x 305d 31340 3.2 1018 3.2 994

56

JAMES & JUDITH CAMPBELL
CLEAR SPRING, MD 21722
301-842-3782

JA-LA-ROSE GOLDCHIP LANTERN

Registration Pending 840003148355248
Born: February 18, 2019 • Herd No. 1634

Due: December 26, 2021 to
De-Su Frazz Tahiti 14104-ET 7H014229

Mr Chasity Gold Chip

140145553 Excellent-95 *TR *TP *TY *TV *TL
PTA -638M -23F -39P 99R 8/20
PTA +.1PL 2.78SCS -1.6DPR 1.5%DCE
PTA +1.52T +1.30UDC +1.17FLC 99R 8/20
GTPI +1757G

Ja-La-Rose Damion Lakota

840003133147976

Erbacres Damion

130263722 Excellent-96 *TR *TY *TV *TL
PTA -1256M -93F -28P 99R 8/20
PTA +1.33T +.17UDC +1.68FLC GTPI +1343G

Ja-La-Rose Al Luciana

72262576

3rd Dam

Ja-La-Rose Lightning Lucia NC

3-06 2x 365d 27830 3.3 926 2.9 811
2-01 2x 365d 24500 3.5 859 3.0 729

57

MICHAEL KUNKLE
JONESTOWN, PA 17038
717-865-2846

CLAY-FARM PEDRO VIENNA

840003120765921
Born: June 15, 2018 • Herd No. 753
• Sells Fresh

Donegal-Creek Bxtr Pedro-ET

139932533 Excellent-94 EEEE *TL
PTA +16M +19F -17P 98R 8/20
PTA +2.0PL 2.77SCS -.2DPR 3.1%DCE
PTA -.07T -.47UDC -.25FLC 93R 8/20
GTPI +1984G

Clay-Farm Planet Viola

72652521
3-04 2x 305d 29660 3.3 979 3.1 913
2-01 2x 305d 25340 3.4 855 3.1 788
4-03 2x 305d 18300 3.7 680 3.3 606

Esebadaba Taboo Planet-ET

60597003 Excellent-92 *TR *TP *TC *TY *TV *TL
PTA +1031M +14F +27P 99R 8/20
PTA -.39T -.37UDC -1.40FLC GTPI +2057

Clay-Farm Shottle Veronica

69844942 Good Plus-83
3-02 2x 305d 29500 3.1 927 2.9 857
2-02 2x 300d 23350 3.3 781 2.9 671

3rd Dam

Clay-Farm Talent Valerie VG-86 VG-MS

4-03 2x 305d 32250 3.5 1115 3.0 973
Life: 1139d 101860 3.5 3560 3.1 3120

4th Dam

Clay-Farm Encino Violet EX-92 EX-MS 3E

7-11 2x 305d 36700 3.5 1291 3.0 1084
Life: 2284d 223680 3.6 7998 3.1 6853

5th Dam

Clay-Farm Durham Vanessa VG-87 VG-MS

5-07 2x 305d 26890 3.3 896 3.1 847
Life: 1446d 111470 3.7 4084 3.2 3594

6th Dam

Clay-Farm Rudolph Vanita VG-87 VG-MS

5-11 2x 305d 30520 4.0 1226 3.1 933
Life: 1580d 131250 4.1 5390 3.2 4142

58

MICHAEL KUNKLE
JONESTOWN, PA 17038
717-865-2846

Woodcrest King Doc

840003132417775 99%RHA-I *TR *TP *TC *TY *TV *TL
PTA +1668M +69F +52P 97R 8/20
PTA -.2PL 3.07SCS -.5DPR 2.8%DCE
PTA +3.32T +2.23UDC +1.92FLC 95F 8/20
GTPI +2755G

Old-Pike Spring Angel

840003141725916 99%RHA-I GP-82 VG-MS @ 2-01
1-07 2x 291d 22533 3.6 820 3.0 667

LYTLE-HYLL DOC ANNABELLE

840003147813269 99%RHA-I
Born: October 29, 2018 • Herd No. 1111
Fresh: October 12, 2020

Westenrade Altaspring-ET

949033666 99%RHA-I *TR *TP *TC *TY *TV *TL
PTA +650M +56F +34P 99R 8/20
PTA +1.38T +2.23UDC +.83FLC GTPI +2540G

Old-Pike Donate Annika-ET

143138334 Very Good-88 EX-MS
3-01 3x 344d 33280 3.8 1269 3.0 1013
4-02 2x 290d 29190 3.9 1145 2.9 837
2-02 3x 280d 24850 3.7 926 3.0 756

3rd Dam

VT-Pond-View Shot Angel-ET EX-91 EEEEE 2E
7-05 3x 305d 37090 3.4 1270 2.7 1002
Life: 1998d 196350 3.4 6703 2.8 5584

4th Dam

VT-Pond-View Gold Angel-ET VG-88
5-05 2x 362d 30560 4.1 1252 3.2 988
Life: 107480 4.0 4309 3.3 3556

5th Dam

BVK Stormatic Destiny-ET VG-87 VG-MS
2-04 2x 365d 23660 3.4 815 3.1 732

6th Dam

Ms Kingstead Chief Adeen-ET EX-94 EEEEE 2E DOM
3-05 2x 310d 30180 4.0 1209 3.6 1077
Life: 1382d 100760 4.0 4010 3.6 3649

- Nom All-American Jr 3-Yr-Old Cow 2000
- Nom All-American 4-Yr-Old Cow 2001
- Member All-American Produce 2000

7th Dam

C Aitkenbrae Starbuck Ada EX-94 EEEE 2E DOM
13-8 2x 365d 25150 3.0 764 3.4 843
Life: 6 Lact 137732 3.4 4749 3.4 4647

- All-American Produce of Dam 2000, 2001
- Res All-Time All-American Sr 3-Yr-Old
- All-American 3-Yr-Old Cow 1990
- Grand Champion Eastern National 1990

59

LINCOLN MONGOLD & ERIC & FAITH BURAL
NEW WINDSOR, MD 21776
443-277-2817

Bacon-Hill Montross-ET

71703339 Excellent-92 *TR *TP *TC *TY *TV *TL
PTA +2090M +42F +58P 99R 8/20
PTA +1.5PL 3.21SCS -1.8DPR 2.3%DCE
PTA +.78T +1.30UDC +.03FLC 99R 8/20
GTPI +2411G

Windsor-Manor Z Ashley

69998036 Very Good-87 VG-MS *TR *TL *TD
1-09 2x 290d 20470 3.4 692 2.8 580

BURLIN MONTROSS ZMONEY 1157

840003147004450 Good Plus-81 @ 2-04
Born: October 28, 2017 • Herd No. 1157

Fresh: October 16, 2020



WINDSOR-MANOR ZE SHILOH-ET EX-91 EX-MS 2E
2ND DAM OF LOT 59

Maple-Downs-I G W Atlantic-ET

8956383 Very Good-88 *TR *TY *TV *TL
PTA -20M -35F -15P 99R 8/20
PTA +1.07T +1.15UDC +.85FLC GTPI +1754G

Windsor-Manor Ze Shiloh-ET

136821162 Excellent-91 EX-MS 2E
7-06 2x 365d 40970 2.8 1164 2.7 1087
6-00 2x 365d 38590 3.0 1133 2.8 1083
4-03 2x 365d 38590 3.7 1432 3.0 1164
2-02 2x 365d 30970 3.7 1160 3.1 966
Life: 2012d 186200 3.3 6189 3.0 5515

3rd-13th Dams

Windsor-Manor Zebee-ET EX-91 2E GMD DOM
4-06 2x 365d 34580 3.9 1346 3.0 1030
Life: 2490d 180230 3.7 6626 3.0 5490

- Embryos exported

Windsor-Manor Rud Zip EX-95 4E GMD DOM
4-07 2x 365d 39230 3.8 1490 3.1 1224
Life: 2468d 203770 4.2 8620 3.4 6841

Windsor-Manor Jolt Zippy EX-90 EX-MS 3E DOM
7-07 2x 361d 34090 3.7 1255 2.9 987
Life: 2559d 194060 3.8 7368 3.2 6234

Windsor-Manor Che Zipper-ET GP-83 VG-MS
5-03 2x 365d 36410 3.1 1127 2.8 1029
Life: 1846d 167380 3.2 5368 2.9 4907

Windsor-Manor Star Zara EX-91 2E GMD DOM
6-01 2x 365d 41590 3.5 1453 3.2 1315
Life: 2421d 204030 3.7 7450 3.3 6657

Windsor-Manor Melvin Zebra VG-85 VG-MS
3-08 2x 365d 27820 3.8 1050 3.3 907

Del-Myr Tony Zadio VG-87

2-03 2x 365d 23600 3.5 835 3.4 797

Big-Sinks Jerry Zinna Addie VG-85

3-01 2x 365d 22650 3.0 673 3.1 710

Big-Sinks Elevation Maym Zinna EX-90 2E GMD
Life: 3508d 241760 3.3 7868

Big-Sinks Bootmaker Ariel Maym VG-85 GMD
4-00 2x 365d 23510 3.5 812

Emperor Alice Ariel VG-85 GMD

Life: 2745d 169080 3.6 6155

60

SCOTT COOPER
DELTA, PA 17314
717-817-4962

View-Home Monterey-ET

69087180 99%RHA-I *TC *TY *TV *TL
PTA +127M +27F +20P 99R 8/20
PTA +2.3PL 3.02SCS -1.0DPR 1.3%DCE
PTA +2.32t +2.02UDC +1.12FLC 99R 8/20
GTPI +2545G

Appealing H Gemini-ET

72209823 99%RHA-I Excellent-91 EEVEE 2E
2-05 2x 365d 41350 3.5 1447 2.8 1172
4-00 2x 365d 46420 3.6 1687 3.0 1373
Life: 1292d 152480 3.4 5191 2.9 4481
• Region 2 Elite Performer

Maternal sister to Gemini

Appealing Active Holly-ET EX-91 EX-MS 3E GMD

APPEALING MONTEREY GEM

840003131049509 99%RHA-I GP-83 @ 2-07 *TR *TL
Born: April 14, 2017
19K GTPI +2186G
2-04 2x 365d 34430 4.1 1399 3.2 1101
Fresh: November 21, 2020



APPEALING ACTIVE HOLLY-ET EX-91 EX-MS 3E GMD
SAME FAMILY AS LOTS 60-63

3rd-9th Dams

Ladys-Manor Hadara T-ET VG-88 VG-MS DOM
3-03 2x 365d 39850 3.8 1532 2.9 1169
Life: 1511d 132260 3.9 5173 3.1 4073
Ladys-Manor Tippy Tonya-ET VG-87 DOM
4-06 2x 365d 42030 3.8 1604 2.8 1191
Life: 1398d 127510 3.8 4801 3.0 3831
Ladys-Manor Topgun Tippy-ET VG-86 GMD DOM
2-01 2x 365d 29156 3.8 1116 3.0 878
Ladys-Manor Top Gun Jemini-ET EX-93 3E GMD
3-11 2x 365d 36080 3.5 1246 3.1 1106
Life: 2089d 150300 3.8 5699 3.0 4495
Ladys-Manor Delightful Jem VG-88 GMD
6-02 2x 365d 31890 4.1 1314 2.9 933
Life: 1940d 147650 4.0 5946 3.0 4415
Ladys-Manor Donnas Delight VG-85
Life: 2392d 166610 3.7 6114
Ladys-Manor Nancy Archie EX-90 2E GMD
Life: 2647d 156000 3.7 5834

61

SCOTT COOPER
DELTA, PA 17314
717-817-4962

S-S-I Montross Jedi-ET

840003123886035 99%RHA-I *TR *TP *TC *TY *TV *TL
PTA +2160M +16F +69P 99R 8/20
PTA +5.5PL 2.81SCS +.7DPR 1.7%DCE
PTA +.71T +.88UDC -1.42FLC 99R 8/20
GTPI +2543G

Appealing Monterey Hermandy

840003131049454 99%RHA-I Very Good-85 VG-MS
2-10 2x 365d 32190 3.0 980 3.0 961
1-10 2x 318d 28460 3.5 983 2.8 797

APPEALING JEDI HEMOJI

840003203113693 99%RHA-I
Born: November 30, 2018 • Herd No. 906
Fresh: November 21, 2020

62

APPEALING TROPIC HEIFER

840003217134075 Pending
Born: November 21, 2020 • Herd No. 973
Sire: **Peak Tropic-ET** 250HO14605 GTPI +2782G
Dam: **Appealing Jedi Hemoji**

View-Home Monterey-ET

69087180 99%RHA-I *TC *TY *TV *TL
PTA +127M +27F +20P 99R 8/20
PTA +2.32t +2.02UDC +1.12FLC GTPI +2545G

Appealing Mogul Hermana-ET

70803546 Very Good-88 EX-MS
4-07 2x 365d 44470 4.1 1835 3.1 1371
3-02 2x 342d 36540 4.2 1525 3.1 1120
2-01 2x 354d 35100 4.3 1509 3.1 1071
Life: 1158d 122390 4.2 5130 3.1 3790

Full sister to Hermana

Appealing Mogul Hosana-ET EX-90

3rd Dam

Appealing Shottle Hannah-ET VG-86 GMD DOM
4-01 2x 365d 45980 3.2 1458 3.0 1383
Life: 1521d 150460 3.4 5057 3.0 4495

4th Dam

Ladys-Manor Hadara T-ET VG-88 VG-MS DOM
3-03 2x 365d 39850 3.8 1532 2.9 1169
Life: 1511d 132260 3.9 5173 3.1 4073

5th-10th Dams

Ladys-Manor Tippy Tonya-ET VG-87 DOM
4-06 2x 365d 42030 3.8 1604 2.8 1191
Life: 1398d 127510 3.8 4801 3.0 3831
Ladys-Manor Topgun Tippy-ET VG-86 GMD DOM
2-01 2x 365d 29156 3.8 1116 3.0 878
Ladys-Manor Top Gun Jemini-ET EX-93 3E GMD
3-11 2x 365d 36080 3.5 1246 3.1 1106
Life: 2089d 150300 3.8 5699 3.0 4495
Ladys-Manor Delightful Jem VG-88 GMD
6-02 2x 365d 31890 4.1 1314 2.9 933
Life: 1940d 147650 4.0 5946 3.0 4415
Ladys-Manor Donnas Delight VG-85
Life: 2392d 166610 3.7 6114
Ladys-Manor Nancy Archie EX-90 2E GMD
Life: 2647d 156000 3.7 5834

63

SCOTT COOPER
DELTA, PA 17314
717-817-4962

Cookiecutter Humblekind-ET

840003130915852 Very Good-87 *TR *TP *TC
PTA +439M +29F +23P 91R 8/20
PTA +5.3PL 2.97SCS +1.9DPR 1.6%DCE
PTA +1.61T +2.10UDC +1.74FLC 85R 8/20
GTPI +2613G

Appealing Exactly Haydex

840003131049493 Very Good-88 EX-MS
2-01 2x 361d 42690 3.2 1363 2.6 1129
• 3rd PA Milk
3-02 2x 302d 41137 3.9 1413 2.5 1039"
"Peaked at 160# milk as 2 & 3 Yr-Old"

APPEALING HNK HUMBLE

840003203113697
Born: December 5, 2018 • Herd No. 910
Fresh: November 12, 2020

Holyland Elite Exactly-ET

840003013475226 *TR *TP *TY *TV
PTA +157M +54F +0P 99R 8/20
PTA +1.84T +1.06UDC +.64FLC GTPI +2514G

Appealing Montross Haydu

73625651 Very Good-85 VG-MS
3-00 2x 365d 41570 2.9 1214 2.8 1173
1-09 2x 365d 40920 3.3 1337 2.8 1126
Life: 975d 104230 3.1 3255 2.9 3005

3rd-11th Dams

Appealing Robust Haydee-ET GP-83
Appealing Shottle Hannah-ET VG-86 GMD DOM
4-01 2x 365d 45980 3.2 1458 3.0 1383
Life: 1521d 150460 3.4 5057 3.0 4495
Ladys-Manor Hadara T-ET VG-88 VG-MS DOM
3-03 2x 365d 39850 3.8 1532 2.9 1169
Life: 1511d 132260 3.9 5173 3.1 4073
Ladys-Manor Tippy Tonya-ET VG-87 DOM
4-06 2x 365d 42030 3.8 1604 2.8 1191
Life: 1398d 127510 3.8 4801 3.0 3831
Ladys-Manor Topgun Tippy-ET VG-86 GMD DOM
2-01 2x 365d 29156 3.8 1116 3.0 878
Ladys-Manor Top Gun Gemini-ET EX-93 3E GMD
3-11 2x 365d 36080 3.5 1246 3.1 1106
Life: 2089d 150300 3.8 5699 3.0 4495
Ladys-Manor Delightful Jem VG-88 GMD
6-02 2x 365d 31890 4.1 1314 2.9 933
Life: 1940d 147650 4.0 5946 3.0 4415
Ladys-Manor Donnas Delight VG-85
Life: 2392d 166610 3.7 6114
Ladys-Manor Nancy Archie EX-90 2E GMD
Life: 2647d 156000 3.7 5834

64

SCOTT COOPER
DELTA, PA 17314
717-817-4962

Sandy-Valley Saloon-ET

70358061 *TR *TP *TY *TL
PTA +2020M +73F +64P 99R 8/20
PTA -1.6PL 3.08SCS -2.4DPR 2.7%DCE
PTA +2.16T +.44UDC +.09FLC 99R 8/20
GTPI +2562G

Appealing Hadeva Tangelo

73625644 Very Good-86 VG-MS *TR *TL
1-10 2x 365d 38010 4.1 1552 3.2 1202
3-07 2x 365d 37270 3.3 1224 3.2 1184
4-11 2x 305d 33610 4.1 1367 3.2 1063
Life: 1280d 130730 3.9 5141 3.3 4283

APPEALING SALOON TOOTSIE

840003147536685 *TR *TC *TL
Born: July 9, 2018 • Herd No. 884
19K GTPI +2575G +1108M +63F +39P 79R 8/20
PTA +451NM +.07%F -.02%P
PTA +1.5PL 2.93SCS -.1DPR 2.2%DCE
PTA +1.6T +1.03UDC +.32FLC 79R 8/20
PTA +131FE +0.2FI 2.3%SCE
Fresh: November 18, 2020

Mr Welcome Hill Tango-ET

70750485 *TP *TC *TY *TV *TL
PTA +1283M +35F +31P 99R 8/20
PTA +.75T +.64UDC +.04FLC GTPI +2310G

Appealing Mogul Hadeva-ET

70803539 Very Good-85 VG-MS
2-01 2x 321d 32010 3.6 1140 3.0 947

3rd-12th Dams

Appealing Observer Havada EX-90
3-07 2x 3329d 9870 3.3 1314 2.9 1161
Life: 2192d 214110 3.3 7117 2.8 6296
Appealing Active Havanah-ET VG-87 VG-MS
3-06 2x 363d 39890 3.6 1447 3.2 1259
Life: 1125d 118250 3.7 4362 3.1 3705
Appealing Shottle Hannah-ET VG-86 GMD DOM
4-01 2x 365d 45980 3.2 1458 3.0 1383
Life: 1521d 150460 3.4 5057 3.0 4495
Ladys-Manor Hadara T-ET VG-88 VG-MS DOM
3-03 2x 365d 39850 3.8 1532 2.9 1169
Life: 1511d 132260 3.9 5173 3.1 4073
Ladys-Manor Tippy Tonya-ET VG-87 DOM
4-06 2x 365d 42030 3.8 1604 2.8 1191
Life: 1398d 127510 3.8 4801 3.0 3831
Ladys-Manor Topgun Tippy-ET VG-86 GMD DOM
2-01 2x 365d 29156 3.8 1116 3.0 878
Ladys-Manor Top Gun Gemini-ET EX-93 3E GMD
3-11 2x 365d 36080 3.5 1246 3.1 1106
Life: 2089d 150300 3.8 5699 3.0 4495
Ladys-Manor Delightful Jem VG-88 GMD
6-02 2x 365d 31890 4.1 1314 2.9 933
Life: 1940d 147650 4.0 5946 3.0 4415
Ladys-Manor Donnas Delight VG-85
Life: 2392d 166610 3.7 6114
Ladys-Manor Nancy Archie EX-90 2E GMD
Life: 2647d 156000 3.7 5834

65

COLLIN STOLTZFUS
MEYERSDALE, PA 15552
814-267-6691

PENNWOOD MERIDAN KARLING

840003150413347 Good Plus-82 @ 2-03

Born: August 24, 2018

Fresh: July 27, 2020

Milking: 82# 2.7F 2.8P SCC 13,000

Due: July 7, 2021 to Siemers Avz Hanley 31445-ET
250H015322

Sully Hart Meridian-ET

69951907 *TR *TP *TY *TV *TL
PTA +1941M +17F +38P 99R 8/20
PTA -.6PL 3.05SCS -1.9DPR 1.9%DCE
PTA +2.18T +1.50UDC -.40FLC 99R 8/20
GTPI +2260G

Pennwood Aftershock Klishe

73494276 Very Good-86 VG-MS
5-04 3x 305d 22010 3.1 692 2.6 574
3-04 3x 305d 20240 3.3 658 2.6 534
4-04 3x 305d 19680 3.1 609 2.7 523
2-05 3x 299d 17810 3.5 620 2.8 501

Ms Atlees Sht Aftershock-ET

65249839 Excellent-92 *TC *TY *TV *TL
PTA -469M -22F -31P 99R 8/20
PTA +1.43T +1.08UDC +.57FLC GTPI +1674G

Pennwood Pontiac K Love

65445539 Very Good-85 VG-MS
7-00 3x 304d 30930 3.0 937 2.8 861
8-00 3x 305d 29580 3.2 961 2.8 833
6-00 3x 305d 24220 2.9 700 2.8 671
4-01 3x 300d 19270 3.1 607 2.8 535
3-00 3x 305d 17900 3.1 546 2.8 504
5-01 3x 273d 17390 3.0 517 2.6 456
2-01 3x 279d 14630 2.9 428 2.7 402
Life: 2118d 156710 3.1 4788 2.8 4341

66

CLYDE & CHARLENE MCWILLIAMS
SOMERSET, PA 15501
814-442-4327

MCWILLIAMS VERTISERUM-TW

840003202765543 98%RHA-I

Born: September 5, 2018 • Herd No. 5576

Fresh: November 7, 2020

Mr Chasseps Sid Connoisseur

840003013244922 99%RHA-I *TR *TC *TY *TV *TL
PTA -279M +0F -8P 80R 8/20
PTA -2.3PL 2.87SCS -3.5DPR 2.8%DCE
PTA +2.06T +1.31UDC -.22FLC 80R 8/20
GTPI +1867G

Mcwilliams Dreams Vicious

840003009902913 Very Good-86 VG-MS @ 3-05
3-00 2x 277d 20380 4.2 852 3.7 748
2-00 2x 288d 18690 3.8 719 3.5 655

Heavenly Golden Dreams-ET

642262 *TV *TL
PTA -1520M -23F -39P 99R 8/20
PTA +1.64T +1.77UDC +.69FLC GTPI +1775G

Mcwilliams Suntan Ventura

72294713 Very Good-86
2-11 2x 346d 24237 3.9 946 3.3 808
4-01 2x 273d 20916 3.4 703 3.3 698
5-00 2x 298d 20223 3.3 664 3.4 680
2-01 2x 252d 15140 4.0 605 3.3 506

3rd Dam

Mcwilliams Atlas Victoria EX-90 2E

4-06 2x 343d 27930 3.9 1089 3.3 936

Life: 117062 4.0 4657 3.3 3871



REGANCREST GOLD IRESHA-ET EX-90
3RD DAM OF LOT 66

67

RICHARD MELLINGER
LANCASTER, PA 17601
717-390-2855

Scientific B Defiant-ET

141123484 Very Good-87 *RC *TP
PTA +50M -54F -13P 99R 8/20
PTA -1.3PL 3.20SCS -2.7DPR 3.2%DCE
PTA +2.73T +1.59UDC +.99FLC 99R 8/20
GTPI +1658G

Ms Scarlet-Maple Icepop-ET

72765118

SCARLET-MAPLE DEFANT ICICLE

840003129844574 Very Good-85 VG-MS
Born: June 22, 2016
2-08 2x 305d 1 9290 4.1 796 3.0 583
Fresh: October 21, 2020
Milking: 103# 4.9F 3.0P SCC 93,000

Ms Atlees Sht Aftershock-ET

65249839 Excellent-92 *TC *TY *TV *TL
PTA -469M -22F -31P 99R 8/20
PTA +1.43T +1.08UDC +.57FLC GTpl +1674G

Regancrest Mac Ieshia-ET

63606804 Excellent-92 EEVEE 2E
5-03 2x 305d 28130 3.6 1008 2.9 812
1-10 2x 365d 27670 4.3 1183 3.1 854
8-07 2x 299d 23940 3.0 715 3.0 724
4-00 2x 331d 22300 3.6 794 3.1 702
Life: 1514d 113220 3.7 4137 3.1 3457

3rd-14th Dams

Regancrest Gold Iresha-ET EX-90

3-05 2x 365d 34060 4.2 1427 3.4 1147

Sam-Sim Diehard Irish EX-91 EEEEE GMD DOM

3-10 2x 289d 29750 3.7 1104 3.2 955

2-01 2x 365d 28860 3.6 1052 3.4 995

Chaseholm Mandel Irish EX-91 EEVEE 2E

4-08 2x 319d 29580 4.0 1196 3.2 933

Life: 1610d 132340 3.9 5117 3.2 4265

Chaseholm Jed Innocent EX-91 EEVVE

4-10 2x 365d 22110 3.7 825 3.2 704

Life: 1860d 105197 3.9 4062 3.1 3308

Winfarm Chaseholm Tony Ithaca EX-94 3E DOM

6-04 2x 365d 25670 4.0 1015 3.1 792

Life: 2335d 144991 3.8 5580 3.1 4487

Winfarm JM Ivis EX-94 EEEEE 5E DOM

9-04 2x 365d 25780 4.0 1038 3.1 811

Life: 3228d 191950 4.1 7827 3.3 6290

Winfarm Tippy Ivy VG-87 VVEV

5-05 2x 365d 21910 4.5 987 3.4 753

Winfarm Originator Indigo EX-90 2E GMD DOM

4-07 2x 365d 25110 3.9 989

Life: 1854d 108650 4.1 4502

Winfarm Maple Iris VG-87 VVVV

4-10 2x 305d 22310 3.9 869

Life: 1741d 113640 3.9 4377

Winfarm Magic Inez VG-85

13-10 2x 355d 21890 3.6 795

Life: 3534d 209230 3.7 7695

Winfarm Schoolmaster Ida VG-85

11-9 2x 305d 18680 3.5 661

Life: 2993d 154200 3.9 6037

Winfarm Model Ijoe VG-85

68

SCHULER FARMS LLC
C/O DAVID SCHULER
FLEETWOOD, PA 19522
610-944-0485

Silverbridge V Allclass-ET

12033673C 99%RHA-I *TR *TP *TY 8TV *TL
PTA +171M +23F +9P 95R 8/20
PTA +1.9PL 2.70SCS -1.9DPR 3.1%DCE
PTA +1.99T +3.68UDC +.22FLC 92R 8/20
GTPI +2384G

S-Pine-Lawn Solomon Pocono

840003134385858 99%RHA-I VG-85 VG-MS @ 2-10
1-10 2x 291d 23730 3.1 747 3.1 728
2-09 2x 216d 19360 2.9 554 2.9 565

S-PINE-LAWN ALLCLASS POSH

840003142353441 99%RHA-I
Born: October 29, 2018 • Herd No. 1034
Fresh: October 31, 2020

Walnutlawn Solomon-ET

11775998C 99%RHA-I *TR *TP *TY *TV *TL
PTA -450M -13F -8P 99R 8/20
PTA +2.69T +1.69UDC +.60FLC GTPI +1993G

S-Pine-Lawn Busines Peabod

840003126256389 Very Good-86
2-01 2x 327d 30100 3.7 1111 3.0 895

3rd Dam

S-Pine-Lawn Bltn Punch-ET VG-87 VG-MS

4-10 2x 291d 26300 4.2 1108 2.9 775
Life: 1326d 116400 4.2 4820 3.0 3459

4th Dam

Galestone-TM Philly-ET VG-87 VG-MS

4-10 2x 360d 34060 3.5 1193 3.2 1092
Life: 1410d 111620 3.5 3878 3.2 3602

5th Dam

Roc-Hil-Val Puffy-ET EX-93 EEEEE 2E

5-00 2x 365d 31830 4.5 1430 3.6 1131
3-10 2x 305d 17650 3.9 690 3.3 577

6th Dam

C Maple Arch Jethro Patches EX-95 EEEE 3E GMD

6-03 2x 305d 30611 3.1 955 3.3 1005
4-04 2x 365d 33850 2.9 977 2.9 979

- Nom All-American 5-Yr-Old Cow 1994
- Res Gr Champion Eastern National 1994
- 1st Dry 3&4-Yr-Old Eastern National 1993

7th Dam

Maple Arch Elevator Pandey VG-86-CAN

3-02 2x 343d 18847 4.0 750 3.5 655

69

SCHULER FARMS LLC
C/O DAVID SCHULER
FLEETWOOD, PA 19522
610-944-0485

Sully Hart Meridian-ET

69951907 *TR *TP *TY *TV *TL
PTA +1941M +17F +38P 99R 8/20
PTA -.6PL 3.05SCS -1.9DPR 1.9%DCE
PTA +2.18T +1.50UDC -.40FLC 99R 8/20
GTPI +2260G

S-Pine-Lawn Dempsey Lustre

72091553 Excellent-91 EEVEE 2E
2-10 2x 323d 27500 3.1 864 3.0 823
4-01 2x 296d 27690 3.4 930 2.9 814
6-00 2x 291d 24470 3.5 864 2.8 696
5-00 2x 254d 24110 3.6 859 2.9 707
1-10 2x 288d 17680 3.7 648 3.0 525
Life: 1452d 121450 3.4 4165 2.9 3565

S-PINE-LAWN MERIDN LANGDON

840003142353333 Good Plus-83 @ 2-03
Born: July 17, 2017 • Herd No. 926
Fresh: November 4, 2020

Lirr Drew Dempsey

61083609 Excellent-93 *TR *CD *TP *TY *TV *TL
PTA -766M -5F -6P 99R 8/20
PTA +1.60T +.90UDC +1.06FLC GTPI +1908G

D-S-Pine-Lawn Damn Lizz-TW

68749434
1-11 2x 287d 18950 3.2 602 3.2 603

3rd Dam

D-S-Pine-Lawn Astronom Lou EX-92 EX-MS 2E

4-00 2x 365d 38520 3.2 1235 3.3 1253
Life: 1539d 147640 3.1 4645 3.2 4686

4th Dam

D-S-Pine-Lawn Astre Luise EX-90 EX-MS 2E

6-01 2x 365d 37050 3.3 1235 3.0 1112
Life: 2383d 209810 3.3 6994 3.0 6228

5th Dam

D-S-Pine-Lawn Horton Lorton VG-85 VG-MS

3-01 2x 365d 38450 3.5 1333 2.8 1079
2-00 2x 317d 26360 3.6 936 2.9 776

6th Dam

D-S-Pine-Lawn Tesk Loyal GP-83

3-10 2x 365d 28190 3.6 1021 2.9 824

7th Dam

D-S-Pine-Lawn Symbol Louise GP-82

3-11 2x 308d 23260 4.6 1069 3.1 713

8th Dam

D-S-Pine-Lawn Elmer Lona VG-86 EX-MS

Life: 1825d 155310 3.8 5883 2.7 4188

70

SCHULER FARMS LLC
C/O DAVID SCHULER
FLEETWOOD, PA 19522
610-944-0485

S-PINE-LAWN DMNDBK BROWNIE

840003204926534 99%RHA-I
Born: February 5, 2019 • Herd No. 1065

Due: January 2, 2021 to Mapel Wood Light My Fire
250H012879

Mr D Apple Diamondback

840003013721049 99%RHA-I EX-93 *RC *TP *TC *TY *TV *TL

PTA -427M -26F -1P 99R 8/20
PTA +.0PL 3.09SCS -2.4DPR 2.7%DCE
PTA +2.43T +2.04UDC +1.32FLC 99R 8/20
GTPI +1917G

S-Pine-Lawn Gld Chp Brittle

840003134385800 Good Plus-82
2-11 2x 329d 28560 3.7 1047 3.1 874
1-11 2x 299d 19970 3.8 757 3.0 605

Mr Chasity Gold Chip

140145553 Excellent-95 *TR *TP *TY *TV *TL
PTA -638M -23F -39P 99R 8/20
PTA +1.52T +1.30UDC +1.17FLC GTPI +1757G

D-S-Pine-Lawn Ross Birch

68749404 Excellent-90 EEVEE 2E
4-00 2x 313d 28210 3.0 838 3.1 880
8-00 2x 281d 27830 3.3 931 3.0 845
3-00 2x 351d 27720 3.0 819 3.0 845
7-00 2x 292d 26830 3.0 817 3.0 814
5-01 2x 275d 24550 2.8 681 3.0 731
6-01 2x 278d 24070 3.0 719 3.1 736
2-01 2x 306d 18990 3.1 593 3.3 620
Life: 2257d 194500 3.0 5932 3.1 5980

3rd Dam

D-S-Pine-Lawn Astron Buffy VG-85
3-01 2x 365d 29030 3.2 922 2.9 832
2-00 2x 341d 20680 3.3 679 2.7 567

4th Dam

D-S-Pine-Lawn Astre Bunnie EX-90 EX-MS 3E
8-08 2x 365d 36950 3.5 1279 2.7 1012
Life: 2731d 223260 3.4 7639 2.9 6388

5th Dam

D-S-Pine-Lawn Emory Barbie VG-86
4-05 2x 365d 29810 3.6 1084 2.9 875
2-00 2x 365d 25600 3.7 937 2.8 719

6th Dam

D-S-Pine-Lawn Steady Barb VG-85

71

SCHULER FARMS LLC
C/O DAVID SCHULER
FLEETWOOD, PA 19522
610-944-0485

S-PINE-LAWN BLMFLD EGGNOG

840003142353450 99%RHA-I
Born: December 1, 2018 • Herd No. 1043

Due: December 27, 2020 to Stantons Alligator-ET
200H010593

Siemers Bloomfield-ET

840003130920421 *TR *TP *TY *TV *TL
PTA -497M +84F +4P 98R 8/20
PTA +3.4PL 2.78SCS +1.9DPR 3.2%DCE
PTA +1.47T +2.07UDC -.05FLC 95R 8/20
GTPI +2656G

S-Pine-Lawn Solomon Espn

840003134385869 99%RHA-I Good Plus-82 @ 2-02
2-10 2x 262d 24070 2.5 597 2.9 703
1-10 2x 301d 20690 3.0 627 3.1 647

Walnutlawn Solomon-ET

11775998C 99%RHA-I *TR *TP *TY *TV *TL
PTA -450M -13F -8P 99R 8/20
PTA +2.69T +1.69UDC +.60FLC GTPI +1993G

S-Pine-Lawn Elite Eagle

840003126256416 Good Plus-81
2-09 2x 348d 29100 3.5 1030 3.2 928
1-09 2x 300d 22130 3.3 734 3.1 690

Wabash-Way Elite-ET

65367561 Excellent-94 *TY *TV *TL
S-Pine-Lawn Atwood Essence
70599895 Very Good-85 VG-MS
2-08 2x 308d 28750 4.1 1172 3.2 927
3-09 2x 315d 23780 3.2 772 3.2 764
4-10 2x 256d 22670 3.4 775 3.0 687
1-10 2x 278d 19590 3.8 739 3.1 617