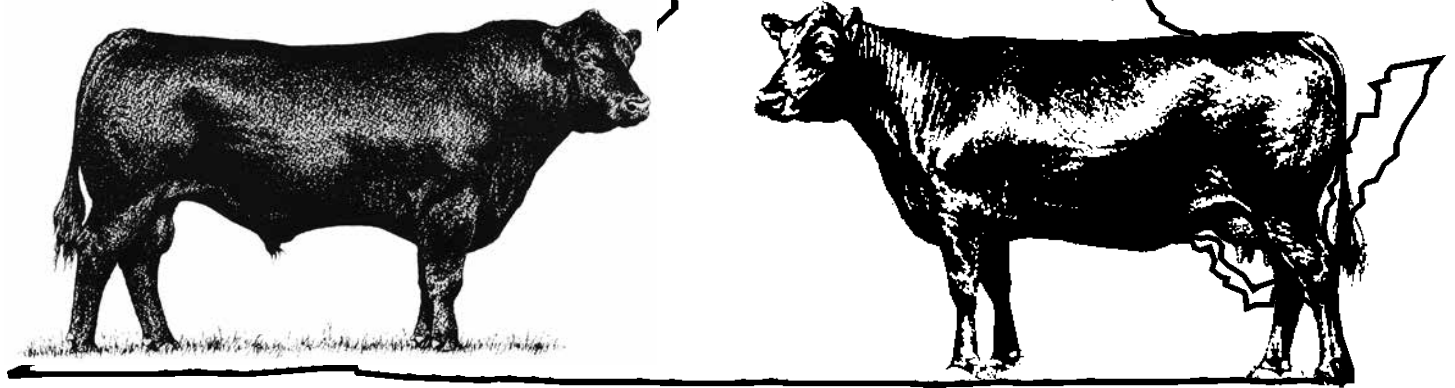


# SOUTHWEST VIRGINIA'S FINEST ANGUS SALE



**Saturday • December 5th, 2020 • Noon**

***SALE SITE***

***Washington County Fairgrounds • Abingdon, VA***

---

## **To All Beef Producers,**

We invite you to be with us on Saturday, December 5th for the 2020 version of the Southwest Virginia Finest Angus Sale. This year we will be selling 55 lots of registered Angus females, which consist of bred cows, bred heifers, open heifers and cow/calf pairs. As with previous sales for 2020, if you do not feel comfortable attending in person due to the impact of COVID-19, we would like to remind you that the sale will also be streamed live on Cowbuyer.com where your bids will be received in real time. If you prefer to bid by phone, please contact either Smith Reasor or myself before sale day and we will provide you with a number you can call to place your bids that day.

The fall group of yearling Angus bulls from the SWVAA Performance Test will sell first, followed by the registered females. Forty-four bulls were chosen to sell. They were all fed as a group at G&E Farms in Gretna, VA. They were weighed off test on 11/6/2020 and were evaluated by VDACS state graders. This is a good group of bulls from the SWVAA consignors. All of the bulls qualified under the Virginia Quality Assurance program and are designated with a VQA symbol underneath the EPDs. Negative BVD PI test at delivery on all bulls.

The sale starts at 12 noon with the bulls selling first. You are welcome to come by on Friday, December 4th in the afternoon or on Saturday morning prior to the sale to evaluate the cattle being offered for sale.

I encourage you to study the pedigrees and performance information on these cattle. Many selling are sired by some of the most proven bulls available in the breed. The consignors of these cattle offered in this sale have been in business for a number of years. They are offering some of their best genetics from which you may select. The EPDs and pedigrees along with individual performance, will assist you in making your selections.

We look forward to seeing you on Saturday, December 5th. Please feel free to contact any of the consignors or the sale coordinator, George T. Johnstone, Jr. at 620-4901, or the sale auctioneer, Smith Reasor at 620-3123.

**Southwest Virginia Angus Association hereby reserves the right in its absolute and total discretion to refuse to accept any bid from any person or individual or to issue a bid number for any reason, including but not limited to, a previous instance of non-payment in a Southwest Virginia Angus Association sale.**

*George T. Johnstone Jr.*

1

**CLARKBOYS IMPRESSION 949**

DOB 10/5/20

S A V BRILLIANCE 8077

Tatt 949

Reg. Pending

DAMERON FIRST IMPRESSION

DAMERON NORTHERN MISS 3114

LEACHMAN SAUGAHATCHEE 3000C

D C C MISS EVERGREEN 441

CAR DON MISS EVERGREEN B463

	Sire	Dam
CED	1	1
BW	2.2	4.4
WW	47	43
YW	82	75
M	27	27

	BW	WW	ADG	YW
Weight	70	721	4.39	1103
Ratio	100	100	110	96

**VQA  
BULL**

Consignor: **CLARKBOYS AT ELBA  
WEST**



**S A V BISMARCK 5682**

2

**CLARKBOYS SYNERGY 940**

DOB 9/29/19

KR CADILLAC JACK

Tatt 940

KR SYNERGY

Reg. 19873144

DICKAUS 2U66 FW 416

EXAR TURNING POINT 3510B

CLARKBOYS ERICA 641

DALTONS ERICA 220 OF MPA

	Sire	Dam
CED	9	
BW	.8	
WW	59	
YW	106	
M	21	

	BW	WW	ADG	YW
Weight	70	616	4.80	1075
Ratio	100	98	120	94

**VQA  
BULL**

Consignor: **CLARKBOYS AT ELBA  
WEST**

3

**JUSTAFEW SOUTHSIDE 908**

DOB 9/14/19

NICHOLS EXTRA K205

Tatt 908

K C F BENNETT SOUTHSIDE

Reg. 19750195

K C F MISS 208 S11

HARB PENDLETON 765 J H

JUSTAFEW PENDLETON BONNIE104

JUSTAFEW DESIGNER BONNIE 209

	Sire	Dam
CED	6	
BW	2.0	
WW	69	
YW	126	
M	32	

	BW	WW	ADG	YW
Weight	76	763	5.48	1376
Ratio	107	115	137	120

**VQA  
BULL**

Consignor: **JUSTAFEW ANGUS**



**NICHOLS EXTRA K205**

4

**JUSTAFEW SOUTHSIDE 906**

DOB 9/6/19

NICHOLS EXTRA K205

Tatt 906

K C F BENNETT SOUTHSIDE

Reg. 19750194

K C F MISS 208 S11

SYDGEN C C & 7

JUSTAFEW CC&7 BONNIE 107

JUSTAFEW STRATEGIC BONNIE410

	Sire	Dam
CED	5	
BW	2.6	
WW	73	
YW	132	
M	32	

	BW	WW	ADG	YW
Weight	74	776	5.09	1423
Ratio	104	117	127	124

**VQA  
BULL**

Consignor: **JUSTAFEW ANGUS**

# 5 JUSTAFEW SOUTHSIDE 901

NICHOLS EXTRA K205  
K C F BENNETT SOUTHSIDE

K C F MISS 208 S11  
HARB PENDLETON 765 J H  
JUSTAFEW PENDLTN BONNIE 001  
JUSTAFEW BONNIE KAYE 111

DOB 9/2/19  
 Tatt 901  
 Reg. 19750192

CED	8
BW	1.2
WW	73
YW	127
M	29

**VQA  
BULL**

	BW	WW	ADG	YW
Weight	70	756	4.59	1278
Ratio	100	114	114	111

Consignor: **JUSTAFEW ANGUS**



**COLEMAN REGIS 356**

# 6 LAWSONS ENGAGE G619

COLEMAN CHARLO 0256  
COLEMAN ENGAGE 5255

COLEMAN EVERELDA ENTENSE1169  
S A V RENOWN 3439  
LAWSONS CHLOE D907

DOB 10/15/19  
 Tatt G619  
 Reg. 19772166

CED	9
BW	.5
WW	80
YW	137
M	29

**VQA  
BULL**

	BW	WW	ADG	YW
Weight	73	732	4.07	1219
Ratio	95	123	102	106

Consignor: **LAWSON FAMILY FARMS**

# 7 LAWSONS DISCOVERY G604

V A R DISCOVERY 2240  
LAWSONS DISCOVERY D990

PF HENRIETTA PRIDE 1009 EXAR  
S A V RENOWN 3439  
LAWSONS LUCY C657  
BASIN LUCY S997

DOB 9/29/19  
 Tatt G604  
 Reg. 19772162

CED	2
BW	2.5
WW	61
YW	111
M	22

**VQA  
BULL**

	BW	WW	ADG	YW
Weight	83	584	4.30	1059
Ratio	105	98	107	92

Consignor: **LAWSON FAMILY FARMS**

# 8 LAWSONS EQUITY G603

3F EPIC 4631  
EXAR EQUITY 7435B

EXAR BLACKCAP 4555  
COLEMAN REGIS 356  
LAWSONS REGIS D950

LAWSONS LUCY 4007

DOB 9/29/19  
 Tatt G603  
 Reg. 19772159

CED	5
BW	1.5
WW	74
YW	137
M	22

**VQA  
BULL**

	BW	WW	ADG	YW
Weight	79	596	4.11	1034
Ratio	103	100	102	90

Consignor: **LAWSON FAMILY FARMS**



**COLEMAN CHARLO 0256**



**SITZ UPWARD 307R**

**11 LAWSONS SUMMIT G585**

S A V RENOWN 3439

DOB 9/2/19

ZWT SUMMITT 6507

Tatt G585

COLEMAN DONNA 714

Reg. 19780885

SITZ UPWARD 307R

LAWSONS WITCH Z321

CED	12
BW	-.4
WW	58
YW	104
M	27

YON WITCH S379

	BW	WW	ADG	YW
Weight	76	790	3.20	1151
Ratio	100	100	80	100

**VQA  
BULL**

Consignor: **LAWSON FAMILY FARMS**

**9 LAWSONS GROWTH FUND G599**

BASIN PAYWEIGHT 1682

DOB 9/23/19

DEER VALLEY GROWTH FUND

Tatt G599

DEER VALLEY RITA 36113

Reg. 19772160

SITZ INVESTMENT 660Z

CED	4
BW	1.9
WW	69
YW	129
M	29

LAWSONS LUCY 4007

BASIN LUCY 6T35

	BW	WW	ADG	YW
Weight	79	550	4.52	1027
Ratio	99	92	113	90

**VQA  
BULL**

Consignor: **LAWSON FAMILY FARMS**

**12 LUCAS UPWARD W538 9760**

SITZ UPWARD 307R

DOB 10/12/19

K C F BENNETT UPWARD W538

Tatt 9760

K C F MISS RETAIL PROD S480

Reg. 19746645

CONNEALY IMPRESSION

LUCAS LADY IMPRESSION 259S

LUCAS LADY IN FOCUS 019J

CED	4
BW	2.5
WW	65
YW	114
M	23

	BW	WW	ADG	YW
Weight	76	639	3.54	1136
Ratio	104	94	88	99

**VQA  
BULL**

Consignor: **LUCAS FARM**

**10 LAWSONS WALL STREET G595**

BASIN PAYWEIGHT 1682

DOB 9/18/19

DEER VALLEY WALL STREET

Tatt G595

DEER VALLEY RITA 36113

Reg. 19772161

S A V RENOWN 3439

CED	4
BW	1.6
WW	70
YW	126
M	26

LAWSONS BURGESS D28

YON BURGESS W38

	BW	WW	ADG	YW
Weight	76	608	4.50	1108
Ratio	99	102	112	96

**VQA  
BULL**

Consignor: **LAWSON FAMILY FARMS**



**S A V RENOWN 3439**



**WERNER FLAT TOP 4136**

**15**

**LUCAS FLAT TOP M967S**

CONNEALY BLACK GRANITE

WERNER FLAT TOP 4136

WERNER LADY 0304

R B TOUR OF DUTY 177

LUCAS LADY TOUR OF DUTY M671

LUCAS LADY IMPRESSION M0530

DOB 9/30/19

Tatt 967S

Reg. 19689117

CED	12
BW	-.1
WW	59
YW	111
M	33

**VQA  
BULL**

	BW	WW	ADG	YW
Weight	68	664	3.77	1159
Ratio	93	97	94	101

Consignor: **LUCAS FARM**

**13**

**LUCAS MANNING T9740**

EXAR DENVER 2002B

DOB 10/10/19

Tatt 9740

Reg. 19689129

QUAKER HILL MANNING 4EX9

QUAKER HILL BLACKCAP 0A32

K C F BENNETT COMMONWEALTH

LUCAS LADY COMMONWEALTH T673

LUCAS LADY UPWARD W538 T389N

CED	7
BW	2.1
WW	69
YW	121
M	27

	BW	WW	ADG	YW
Weight	75	691	4.71	1279
Ratio	107	101	118	111

**VQA  
BULL**

Consignor: **LUCAS FARM**

**16**

**LUCAS MANNING 952S**

EXAR DENVER 2002B

DOB 9/18/19

Tatt 952S

Reg. 19689127

QUAKER HILL MANNING 4EX9

QUAKER HILL BLACKCAP 0A32

K C F BENNETT FORTRESS

LUCAS LADY FORTRESS 679S

LUCAS LADY PERFORMER 712F

CED	7
BW	1.8
WW	75
YW	125
M	21

	BW	WW	ADG	YW
Weight	68	704	4.14	1254
Ratio	97	103	103	109

**VQA  
BULL**

Consignor: **LUCAS FARM**

**14**

**LUCAS MANNING 9720**

EXAR DENVER 2002B

DOB 10/8/19

Tatt 9720

Reg. 19689128

QUAKER HILL MANNING 4EX9

QUAKER HILL BLACKCAP 0A32

G A R PROPHET

LUCAS LADY PROPHET 314F

LUCAS LADY 2V1 6310

CED	6
BW	2.5
WW	63
YW	110
M	26

	BW	WW	ADG	YW
Weight	77	609	4.23	1171
Ratio	105	89	106	102

**VQA  
BULL  
DDP**

Consignor: **LUCAS FARM**



**EXAR DENVER 2002B**



**MYTTY IN FOCUS**

**19 MATNEU SURE FIRE 9171**

CONNEALY IN SURE 8524  
G A R SURE FIRE

DOB 10/14/19  
 Tatt 9171  
 Reg. 19782533

CHAIR ROCK 5050 G A R 8086  
GAR DAYLIGHT H 3076  
MATNEY DAYLIGHT 1782  
MATNEY SAFEGUARD 1403

CED	8
BW	1.5
WW	67
YW	123
M	30

Weight	BW	WW	ADG	YW
Ratio	71	756	3.95	1286
	104	115	98	112

**VQA  
BULL  
DDP**

Consignor: **MATNEY ANGUS FARM**

**17 LUCAS TONIC D950S**

DOB 9/18/19  
 Tatt 950S  
 Reg. 19683125

CTS REMEDY 1T01  
LUCAS TONIC 654S  
LUCAS LADY PROPHET 462S  
STEVENSON ROCKMOUNT RX933  
LUCAS LADY ROCKMOUNT D652S  
LUCAS LADY COMMONWEALTH 452S

CED	6
BW	.6
WW	72
YW	131
M	29

Weight	BW	WW	ADG	YW
Ratio	64	700	3.93	1211
	92	102	98	105

**VQA  
BULL**

Consignor: **LUCAS FARM**

**20 MATNEU GROWTH FUND 9165**

DOB 10/11/19  
 Tatt 9165  
 Reg. 19763140

BASIN PAYWEIGHT 1682  
DEER VALLEY GROWTH FUND  
DEER VALLEY RITA 36113  
MATNEU 201-0663

CED	13
BW	-1.4
WW	55
YW	100
M	31

MATNEU 1222  
MATNEU MISS BANDO 0563

Weight	BW	WW	ADG	YW
Ratio	70	600	4.09	1213
	95	105	102	106

**VQA  
BULL**

Consignor: **MATNEY ANGUS FARM**

**18 LUCAS JET BLACK 929A**

DOB 8/30/19  
 Tatt 929A  
 Reg. 19756595

CONNEALY BLACK GRANITE  
BAR R JET BLACK 5063  
BAR R IRIS ANITA 0113  
A A R TEN X 7008 S A  
LUCAS LADY TEN X 448S  
LUCAS LADY PROPHET 2700

CED	7
BW	1.7
WW	69
YW	144
M	19

Weight	BW	WW	ADG	YW
Ratio	77	549	4.41	1160
	103	80	110	101

**VQA  
BULL**

Consignor: **LUCAS FARM**



**CONNEALY BLACK GRANITE**

**21 MATNEY BLACKHAWK 9163**

CONNEALY ARMORY  
CONNEALY BLACKHAWK 6198

PRECIOUS OF CONANGA 380X  
WERNER WAR PARTY 2417

MATNEY 1315-PARTY

MATNEY MISS BANDO 0563

DOB 10/10/19  
Tatt 9163  
Reg. 19763134

CED	0
BW	3.6
WW	79
YW	135
M	31

	BW	WW	ADG	YW
Weight	83	629	3.80	1242
Ratio	112	110	95	108

**VQA BULL**

Consignor: **MATNEY ANGUS FARM**



**WERNER WAR PARTY 2417**

**22 MATNEY GROWTH FUND 9162**

BASIN PAYWEIGHT 1682  
DEER VALLEY GROWTH FUND

DEER VALLEY RITA 36113  
WERNER WAR PARTY 2417

MATNEY PARTY 1464

MATNEY 1222

DOB 10/10/19  
Tatt 9162  
Reg. 19763139

CED	0
BW	2.5
WW	80
YW	139
M	39

	BW	WW	ADG	YW
Weight	77	614	4.55	1304
Ratio	104	108	114	114

**VQA BULL**

Consignor: **MATNEY ANGUS FARM**

**23 MATNEY ACCLAIM 1787**

JINDRA 3RD DIMENSION  
JINDRA ACCLAIM

JINDRA BLACKBIRD LASSY 1111  
GAR DAYLIGHT H 3076

MATNEY DAYLIGHT 1787

MATNEY SHREK 1422

DOB 10/9/19  
Tatt 9161  
Reg. 19782529

CED	3
BW	2.2
WW	66
YW	127
M	31

	BW	WW	ADG	YW
Weight	72	672	4.38	1251
Ratio	107	102	109	109

**VQA BULL**

Consignor: **MATNEY ANGUS FARM / TAYLOR ESTEP**



**DEER VALLEY GROWTH FUND**

**24 MATNEY GROWTH FUND 9155**

BASIN PAYWEIGHT 1682  
DEER VALLEY GROWTH FUND

DEER VALLEY RITA 36113  
G A R CONCRETE

MATNEY CON 1205

MATNEY MISS 0880

DOB 10/8/19  
Tatt 9155  
Reg. 19763138

CED	9
BW	2.7
WW	84
YW	143
M	31

	BW	WW	ADG	YW
Weight	71	599	4.16	1155
Ratio	96	105	104	101

**VQA BULL**

Consignor: **MATNEY ANGUS FARM**



**V A R Discovery 2240**



**PRIMROSE DISCOVERY 9148**

A A R T E N X 7008 S A  
V A R DISCOVERY 2240  
DEER VALLEY RITA 0308  
PINE RIDGE 112 K202  
DMB MISS PRIMROSE 2100  
GARRISON PRIMROSE 1806

DOB 10/6/19  
 Tatt 9148  
 Reg. 19770024

CED	1
BW	1.5
WW	71
YW	129
M	28

	BW	WW	ADG	YW
Weight	72	543	4.57	1244
Ratio	97	95	114	108

**VQA BULL**

Consignor: **MATNEY ANGUS FARM / TAYLOR ESTEP**



**MATNEY GROWTH FUND 9150**

DOB 10/7/19  
 Tatt 9150  
 Reg. 19770575

CED	6
BW	1.9
WW	55
YW	94
M	24

**VQA BULL DDC**

BASIN PAYWEIGHT 1682  
DEER VALLEY GROWTH FUND  
DEER VALLEY RITA 36113  
MATNEY 7601 OF T510  
MATNEY 1302-7601  
MATNEY MISS RITA 8003

	BW	WW	ADG	YW
Weight	70	607	3.86	1182
Ratio	100	100	96	103

Consignor: **MATNEY ANGUS FARM**



**MATNEY BLACKHAWK 9143**

DOB 10/5/19  
 Tatt 9143  
 Reg. 19763130

CED	10
BW	.3
WW	68
YW	121
M	25

**VQA BULL**

CONNEALY ARMORY  
CONNEALY BLACKHAWK 6198  
PRECIOUS OF CONANGA 380X  
WERNER WAR PARTY 2417  
MATNEY WAR PARTY 1436  
MATNEY R T 8026

	BW	WW	ADG	YW
Weight	71	573	3.45	1222
Ratio	96	101	86	106

Consignor: **MATNEY ANGUS FARM**



**MATNEY BLACKHAWK 9146**

DOB 10/6/19  
 Tatt 9146  
 Reg. 19763131

CED	-1
BW	3.0
WW	85
YW	149
M	34

**VQA BULL**

CONNEALY ARMORY  
CONNEALY BLACKHAWK 6198  
PRECIOUS OF CONANGA 380X  
WERNER WAR PARTY 2417  
MATNEY PARTY 1511  
MATNEY BLACKCAP 8005

	BW	WW	ADG	YW
Weight	82	621	4.07	1240
Ratio	112	109	102	108

Consignor: **MATNEY ANGUS FARM**



**CONNEALY BLACKHAWK 6198**





**PLATTEMERE WEIGH UP K360**

**31 MSA ACCELERATOR 9G10**

PLATTEMERE WEIGH UP K360  
KB-FULL MEASURE C40  
KB-EMMA-TEN X-B02  
EXAR UPSHOT 0562B

DOB 9/13/19  
 Tatt 9G10  
 Reg. 19578849

TRIPLE E ROSEMARY  
ECHO RIDGE BLACKBIRD 1768

CED	18
BW	-1.9
WW	61
YW	108
M	27

	BW	WW	ADG	YW
Weight	63	676	3.55	1107
Ratio	86	92	89	96

**VQA BULL**

Consignor: **MOSSY SPRING ANGUS**

**29 MATNEY BLACKHAWK 9141**

CONNEALY ARMORY  
CONNEALY BLACKHAWK 6198  
PRECIOUS OF CONANGA 380X  
SITZ UPWARD 307R  
MATNEY UPWARD 1463  
MATNEY 616 1203

DOB 10/4/19  
 Tatt 9141  
 Reg. 19763129

CED	12
BW	-1.3
WW	50
YW	96
M	35

	BW	WW	ADG	YW
Weight	71	510	3.45	1060
Ratio	96	89	86	92

**VQA BULL**

Consignor: **MATNEY ANGUS FARM**

**32 M A F 20F23**

CONNEALY CONSENSUS  
K C F BENNETT FORTRESS  
THOMAS PATRICIA 9705  
HARB PENDLETON 765 J H

DOB 9/3/19  
 Tatt 23  
 Reg. 19525144

M A F 10P9  
G V F ERICA 6171

CED	9
BW	.1
WW	71
YW	122
M	31

	BW	WW	ADG	YW
Weight	71	759	4.23	1329
Ratio	97	108	106	116

**VQA BULL**

Consignor: **MULLINS ANGUS FARM**

**30 MSA STAR PLAYER 9G14**

JINDRA 3RD DIMENSION  
JINDRA ACCLAIM  
JINDRA BLACKBIRD LASSY 1111  
HOOVER DAM  
TRIPLE E BASIL  
TRIPLE E SAGE

DOB 10/20/19  
 Tatt 9G14  
 Reg. 19578852

CED	-3
BW	3.4
WW	80
YW	152
M	29

	BW	WW	ADG	YW
Weight	83	794	5.07	1401
Ratio	114	108	126	122

**VQA BULL**

Consignor: **MOSSY SPRING ANGUS**



**HOOVER DAM**

33

# MAF 20J20

JINDRA 3RD DIMENSION

JINDRA ACCLAIM

JINDRA BLACKBIRD LASSY 1111

PLATTEMERE WEIGH UP K360

MAF 18W3

GRACE MEADOWS NEW DESIGNU078

	BW	WW	ADG	YW
Weight	69	667	4.59	1300
Ratio	104	95	114	113

DOB 9/1/19  
Tatt 20  
Reg. 19525149

CED	8
BW	1.6
WW	74
YW	138
M	30

## VQA BULL

Consignor: **MULLINS ANGUS FARM**



### JINDRA ACCLAIM

34

# MAF 20J19

JINDRA 3RD DIMENSION

JINDRA ACCLAIM

JINDRA BLACKBIRD LASSY 1111

QUAKER HILL RAMPAGE 0A36

MAF 18R11

MAF 14U29

	BW	WW	ADG	YW
Weight	71	737	4.27	1247
Ratio	107	105	106	109

DOB 9/1/19  
Tatt 19  
Reg. 19525143

CED	6
BW	1.8
WW	74
YW	136
M	29

## VQA BULL

Consignor: **MULLINS ANGUS FARM**

35

# MAF 20B16

CONNEALY ARMORY

CONNEALY BLACKHAWK 6198

PRECIOUS OF CONANGA 380X

SITZ UPWARD 307R

MAF 14U5

MAF 7Y6

	BW	WW	ADG	YW
Weight	71	616	4.04	1157
Ratio	96	88	101	101

DOB 9/1/19  
Tatt 16  
Reg. 19525141

CED	7
BW	1.5
WW	61
YW	115
M	30

## VQA BULL

Consignor: **MULLINS ANGUS FARM**



### SS OBJECTIVE T510 0T26

36

# MAF 20W10

SITZ UPWARD 307R

PLATTEMERE WEIGH UP K360

BARBARA OF PLATTEMERE 337

SS OBJECTIVE T510 0T26

GRACE MEADOWS NEW DESIGNU078

G A R RETAIL PRODUCT 3416

	BW	WW	ADG	YW
Weight	70	697	4.86	1237
Ratio	96	99	121	108

DOB 9/1/19  
Tatt 10  
Reg. 19525138

CED	12
BW	.4
WW	70
YW	124
M	26

## VQA BULL

Consignor: **MULLINS ANGUS FARM**

37

# M A F 20F12

DOB 9/1/19  
Tatt 12  
Reg. 19525139

CONNEALY CONSENSUS

K C F BENNETT FORTRESS

THOMAS PATRICIA 9705

SITZ UPWARD 307R

M A F 15U3

GRACE MEADOWS NEW DESIGNU078

CED	12
BW	0
WW	70
YW	124
M	27

	BW	WW	ADG	YW
Weight	70	731	4.96	1313
Ratio	95	104	124	114

## VQA BULL

Consignor: **MULLINS ANGUS FARM**



### K C F BENNETT FORTRESS

38

# S A F THE ROCK 1935

DOB 11/23/19  
Tatt 1935  
Reg. 19582533

K C F BENNETT SOUTHSIDE

K C F BENNETT THEROCK A473

K C F MISS PROTEGE W148

K C F BENNETT ABSOLUTE A317

SAF ELBA 2354 1610

WILLIAMS ELBA 354

CED	5
BW	2.8
WW	77
YW	141
M	23

	BW	WW	ADG	YW
Weight	89	642	4.91	1396
Ratio	100	100	122	122

## VQA BULL

Consignor: **OGLE FARM / DAVID OGLE**

39

# GHS FORTRESS 9124

DOB 10/28/19  
Tatt 9124  
Reg. 19759178

CONNEALY CONSENSUS

K C F BENNETT FORTRESS

THOMAS PATRICIA 9705

G A R PROPHET

WHS PROPHET LASS C4

W H S PREDESTINED LASS 77T

CED	10
BW	.9
WW	73
YW	124
M	27

	BW	WW	ADG	YW
Weight	69	620	4.54	1123
Ratio	93	127	113	98

## VQA BULL

Consignor: **STOVALL LIVESTOCK**



### K C F BENNETT ABSOLUTE

40

# GHS A390 977

DOB 9/19/19  
Tatt 977  
Reg. 19758850

THE WEST VIRGINIAN X134

OFF NG A390

OAK FRONT BANBANA 390

K C F BENNETT ABSOLUTE

GHS ERICA 58

GHS ERICA 316

CED	-9
BW	4.5
WW	75
YW	133
M	23

	BW	WW	ADG	YW
Weight	84	588	4.05	1053
Ratio	115	120	101	92

## VQA BULL

Consignor: **STOVALL LIVESTOCK**



**S S NIAGARA Z29**



**GHS NIAGARA 928**

HOOVER DAM

S S NIAGARA Z29

JET S S X144

DALTONS PROTEGE 829

GHS BLACKBIRD 485

GHS BLACKBIRD S929 5664 M223

	BW	WW	ADG	YW
Weight	75	544	4.68	1093
Ratio	101	111	117	95

DOB 9/10/19  
Tatt 928  
Reg. 19759185

CED	7
BW	-.5
WW	58
YW	98
M	31

**VQA  
BULL**

Consignor: **STOVALL LIVESTOCK**



**GHS NIAGARA 961**

HOOVER DAM

DOB 9/17/19  
Tatt 961  
Reg. 19758846

S S NIAGARA Z29

JET S S X144

RITO 6EM6 OF 4L3 EMBLAZON

GHS RITA 123S

RITA 6R37 OF 9H16 RITO 9M9

CED	7
BW	.9
WW	63
YW	117
M	26

	BW	WW	ADG	YW
Weight	83	583	4.32	1109
Ratio	112	119	108	97

**VQA  
BULL**

Consignor: **STOVALL LIVESTOCK**



**GHS NIAGARA 926**

HOOVER DAM

S S NIAGARA Z29

JET S S X144

DALTONS PROTEGE 829

GHS CLOVA 487

GHS MISS NOBLE R40 C804 036

	BW	WW	ADG	YW
Weight	77	544	5.21	1158
Ratio	104	111	130	101

DOB 9/10/19  
Tatt 926  
Reg. 19759184

CED	-1
BW	3.4
WW	73
YW	139
M	30

**VQA  
BULL**

Consignor: **STOVALL LIVESTOCK**



**GHS SWAMP FOX 949**

YON FINAL ANSWER W494

DOB 9/14/19  
Tatt 949  
Reg. 19759211

YON SWAMP FOX C649

YON SARAH A537

ECHO RIDGE RITO 112 35

WAF RITO 112 92688

W A F ERICA 2688

CED	9
BW	.7
WW	62
YW	116
M	29

	BW	WW	ADG	YW
Weight	65	532	4.48	1078
Ratio	89	109	112	94

**VQA  
BULL**

Consignor: **STOVALL LIVESTOCK**



**YON FINAL ANSWER W494**

**45** **ABRAMS CREEK BEROSA 917**

CONNEALY IMPRESSION  
CONNEALY IMPRINT 8317  
ELLINA OF CONANGA 868 7127  
CONNEALY IN SURE 8524  
LRAF BEROSA 113  
LRAF BEROSA 311

DOB 7/19/17  
Tatt 917  
Reg. 19068017

CED	11
BW	.8
WW	51
YW	91
M	20

**COW**

Consignor: **ABRAMS CREEK FARM**

A nice young Connealy Imprint daughter out of a Connealy Insure dam from Abrams Creek Farm. Good epds throughout moderate size and easy keeping. She has gotten out of our calving season due to no fault of her own. She was AI bred on 11/4/20 to SAV Angus Valley 1867 which should compliment her well.

**48** **BF ABERDINE 526**

C R A BEXTOR 872 5205 608  
TC ABERDEEN 759  
TC BLACKBIRD 4034  
GRAYSTONE WAR ALLIANCE 496  
B F BIG BIRD ALLIANCE 964  
B F BIG BIRD

DOB 1/24/15  
Tatt 526  
Reg. 18246020

CED	9
BW	-.1
WW	39
YW	74
M	26

**COW**

Consignor: **BULLOCK FARM**

Another nice cow from Bullock farms in this daughter of TC Aberdeen 759 who stems back to the Graystone War Alliance 496 who was so successful in several herds in SWVA. She is pasture exposed to BF Confidence 807. Breeding update sale day.

**46** **LRAF MISS CLOVA 515**

SITZ TRAVELER 8180  
SITZ ALLIANCE 6595  
SITZ BARBARAMERE JET 2698  
CONNEALY RIGHT ANSWER 746  
LRAF MISS CLOVA  
LRAF MISS CLOVA 409

DOB 2/22/15  
Tatt 515  
Reg. 18518597

CED	6
BW	1.3
WW	48
YW	88
M	28

**COW**

Consignor: **ABRAMS CREEK FARM**

A very nice Sitz Alliance 6595 daughter out of a Connealy Right Answer 746 dam from Abrams Creek. This cow raised the top heifer this year which we are retaining in our herd currently. She has gotten out of our calving season as well due to no fault of her own. She was AI bred on 11/8/20 to SAV Angus Valley 1867 which is the same cross she produced so well for us.

**49** **BF IDENTITY 431**

TC ABERDEEN 759  
ELLINGSON IDENTITY 9104  
EA QUEEN DOLLY 7813  
SITZ UPWARD 307R  
BF PRINCESS UPWARD 205  
B F SKY

DOB 3/21/14  
Tatt 431  
Reg. 17918070

CED	6
BW	1.5
WW	46
YW	83
M	24

**COW**

Consignor: **BULLOCK FARM**

Nice Ellington Identity from a Sitz Upward Dam from Bullock Farms. Solid EPDs across the board, cow making genetics throughout her pedigree that has withstood the test of times. Selling exposed to BF Aberdeen 886 (EPD's +9 +0 +41 +79 +26) who is a son of TC Aberdeen 759. Breeding update sale day.

**47** **BF IDENTITY 533**

TC ABERDEEN 759  
ELLINGSON IDENTITY 9104  
EA QUEEN DOLLY 7813  
BENFIELD SUBSTANCE 8506  
BF BELLES SUBSTANCE 364  
B F BELLES 2RT2 747

DOB 2/27/15  
Tatt 533  
Reg. 18246022

CED	7
BW	1.0
WW	35
YW	66
M	18

**COW**

Consignor: **BULLOCK FARM**

A nice Ellington Identity 9104 daughter who derives from a Benfield Substance 8506 Dam. Another maternally packed pedigree to make replacements for you to keep for years to come. Pasture exposed to BF Confidence 807 whose EPD's are +9 +9 +61 +111 +32 \$B +140. Breeding update sale day.

**50** **BF LAVANA IDENTITY 366**

TC ABERDEEN 759  
ELLINGSON IDENTITY 9104  
EA QUEEN DOLLY 7813  
GRAYSTONE RITO 616 942  
GRAYSTONE LOVANA 616  
B F LOVANA CHRISTMAS

DOB 1/30/13  
Tatt 366  
Reg. 17625908

CED	8
BW	0
WW	31
YW	59
M	23

**COW**

Consignor: **BULLOCK FARM**

An own daughter of Ellington Identity 9104 stemming back to some old school genetics on her dams side such as 616 and Big Sky. A solid cow from Bullock farms. Pasture exposed to BF Confidence 807, a Connealy Confidence Plus son whose EPD's are +9 +9 +61 +111 +32 \$B +140. Breeding update sale day.

**51** **BF LOVANA NEW DAY 201**

A A R NEW TREND

DOB 2/11/12

BOYD NEW DAY 8005

Tatt 201

S V F FOREVER LADY 57D

Reg. 17336358

GRAYSTONE RITO 616 942

CED	8
BW	.4
WW	41
YW	79
M	24

GRAYSTONE LOVANA 616

B F LOVANA CHRISTMAS

**COW**

Consignor: **BULLOCK FARM**

This cows sire needs no introduction as Boyd New Day 8005 is known throughout any cattleman's vocabulary. Her bottom side shows Rito 616 and Big Sky lineage which was legends in their own right. She sells pasture exposed to BF Confidence 807 whose EPD's are +9 +.9 +61 +111 +32 \$B +140. Breeding update sale day.



**Boyd New Day 8005**

**52** **BF QUEEN UPWARD 206**

CONNEALY ONWARD

DOB 2/1/12

SITZ UPWARD 307R

Tatt 206

SITZ HENRIETTA PRIDE 81M

Reg. 17336348

SUMMETT 001

CED	7
BW	1.1
WW	34
YW	62
M	24

B F BLACK

B F BIG BLACKBIRD

**COW**

Consignor: **BULLOCK FARM**

An own daughter of the immortal Sitz Upward 307R. Old meets new in this pedigree but a quality herd matriarch none the less. She has several years left and many options for breeding with her pedigree. Pasture exposed to BF Confidence 807. Breeding update sale day.

**54A** **COLE SARITA 915C**

CONNEALY BLACK GRANITE

DOB 1/16/20

WERNER FLAT TOP 4136

Tatt 915C

WERNER LADY 0304

Reg. 19671924

S A V ANGUS VALLEY 1867

CED	10
BW	-.5
WW	54
YW	106
M	28

COLE SARITA 711C

COLE SARITA 62C

**COW**

Consignor: **COLE CATTLE COMPANY**

Cole Sarita 915C is an open heifer, brood cow prospect sired by the popular Select Sires bull Werner Flat Top 4136. Her dam is an impressive first calf heifer and daughter of the Genex bull SAV Angus Valley. If you're breeding for low birth weight test bulls, check her out.

**53** **B F NEW DAYS 011**

A A R NEW TREND

DOB 4/1/10

BOYD NEW DAY 8005

Tatt 011

S V F FOREVER LADY 57D

Reg. 16723716

SUMMETT 001

CED	3
BW	2.5
WW	38
YW	69
M	24

B F BLACK

B F BIG BLACKBIRD

**COW**

Consignor: **BULLOCK FARM**

Another Boyd New Day 8005 daughter. You can't go wrong with adding these cow making genetics into your herd. Older pedigree on the bottom side which opens many options for breeding. Pasture exposed to BF Confidence 807. Breeding update sale day.

**54B** **COLE BLACKCAP 910C**

S A V BRILLIANCE 8077

DOB 12/5/19

PVF INSIGHT 0129

Tatt 910C

PVF MISSIE 790

Reg. 19683166

S A V FINAL ANSWER 0035

CED	3
BW	2.6
WW	61
YW	106
M	23

COLE BLACKCAP 45C

COLE BLACKCAP 21C

**COW**

Consignor: **COLE CATTLE COMPANY**

Cole Blackcap 910C is a halter broke, open heifer, brood cow and show heifer prospect born 12/5/2019. She is sired by PVF Insight 0129 out of a daughter of the legendary SAV Final Answer 0035.

55

# COLE LASSIE 68C

DAMERON FIRST CLASS

DOB 11/1/16

SCC FIRST-N-GOAL GAF 114

Tatt 68C

S C C ROYAL BLACKBIRD 502

Reg. 18973972

KAH FULLBACK ANDI

CED	1
BW	4.0
WW	46
YW	71
M	26

KAH FULLBACK KT

KINGSWAY LASSIE 10

**COW**

**OHP**

Consignor: **COLE CATTLE COMPANY**

Cole Lassie 68C is a moderate framed 4 year old cow with a beautiful udder that raises big calves. 68C is sired by the Select Sires bull SCC First-N-Goal. She has a bull calf at side that was sired by the Select Sires bull Connealy Blackhawk 6198 born 8/27/2020. Her first calf is now a beautiful bred heifer that has been retained by Cole Cattle Company. 68C was AI serviced back to Connealy Blackhawk 6198 on 10/28/2020.



## CONNELY BLACKHAWK 6198



## PARADISE MONA 252

56

## PARADISE MONA 252

TC GRID TOPPER 355

DOB 4/21/12

PARADISE GRID TOPPER 014

Tatt P252

PARADISE ERICA 414

Reg. 17475208

EXAR NEW LOOK 2971

PARADISE MONA 814

CED	2
BW	3.1
WW	45
YW	79
M	15

PARADISE MONA 532

**COW**

Consignor: **DAWSON FARMS**

This is the most fertile cow to have grazed our farm. She has a 338 day calving interval on 8 natural calves. She sells with her 9/27/2020 bull calf (AAA 19832826) out of Connealy Glory 4127. We are pleased with the Glory calves and this calf has top15% RADG and DMI, a rare combination of feed efficiency and growth. Cow is open and ready to breed to the sire of your choice.



## PRIMUS RITA 9018

57

## PRIMUS RITA 9018

BON VIEW NEW DESIGN 208

DOB 4/10/09

TC TOTAL 410

Tatt 9018

TC ERICA EILEEN 2047

Reg. 16876997

B/R DESTINATION 727-928

PRIMUS RITA 686

CED	7
BW	1.3
WW	55
YW	93
M	23

D/D RITA 3153

**COW**

Consignor: **DAWSON FARMS**

This daughter of TC Total 410 has excellent feet and udder, she has a good disposition and always raises a good calf. She is fertile and already cycling. We retained her 2019 Jindra Acclaim heifer. She is parent qualified and Angus GS DNA tested. She sells with a Connealy Glory bull calf born 10/1/2020, AAA19832827, top 30% \$W, \$F, \$G, \$B and \$C a really nice calf.

# 58 DCF EMMALOU 910

W C B MR FORWARD 7505 040

DOB 9/10/17

WDB MR 040 005 1318

Tatt 910

W D B MISS 8177 506 005

Reg. 19067808

P J CC&7 1005

CED	5
BW	1.3
WW	53
YW	94
M	28

BRF EMULOUS T20 122

BRF EMULOUS 9194 T20

**COW**

Consignor: **DMB ANGUS**

A nice three year old cow that is stacked with performance genetics from East Tennessee. She reads with a balanced set of EPD's and sell bred to DMB Tanker 318 whose EPD's are +2 +2.4 +76 +140 +26 \$B +139.

# 60 DMB BLACKBIRD 927

MUSGRAVE FOUNDATION

DOB 2/19/17

WHITESTONE INTUITION C106

Tatt 927

BOYD CHLOE 0031

Reg. 18747245

DMB MR UPWARD 111

CED	2
BW	3.5
WW	70
YW	131
M	20

DMB MS BLACKBIRD 223

DMB MS BLACKBIRD OF 112 130

**COW**

Consignor: **DMB ANGUS**

This female stems from our Blackbird cow family. She reads with a good set of EPD's to go along with a lot of capacity and thickness that we look for in production cattle. She sells bred to DMB Tanker 318 whose EPD's are +2 +2.4 +76 +140 +26 \$B +139 and should calve by sale date.

# 59 DCF SPECIAL 84

W C B MR FORWARD 7505 040

DOB 8/4/17

WDB MR 040 005 1318

Tatt 84

W D B MISS 8177 506 005

Reg. 19060363

FHF ROAD WARRIOR 889

CED	6
BW	1.1
WW	47
YW	85
M	30

D C F SPECIAL 14

RX SPECIAL DIVIDEND 599

**COW**

Consignor: **DMB ANGUS**

A nice young productive cow/calf pair again that is full of performance genetics. The cow is just a three year old and is nursing a heifer calf that was born on Oct. 10,2020. The calf is sired by DMB Tanker 318 whose EPD's are +2 +2.4 +76 +140 +26 \$B +139.

# 61 GAF MISS ANSWER 095 1548

S A V FINAL ANSWER 0035

DOB 2/12/15

GAF FINAL OBJECTIVE 1192

Tatt 1548

LUCAS LADY OBJ 3J15 872N

Reg. 18139592

B/R NEW FRONTIER 095

CED	4
BW	1.7
WW	52
YW	92
M	26

ABERLEA UTP BLACKCAP 126

ABERLEA UTP BLACKCAP 44

**COW**

Consignor: **GODSEY ANGUS FARM**

5 year old calving ease Granddaughter of S A V Final Answer 0035 on the Sire side and B/R New Frontier 095 Granddaughter on Dam side. Extremely well made cow with length and balanced EPD's. Bred to calve 2/28/21 to GAF Discovery 1774 whose EPD's are BW 1.9, WW 71, YW 132, M 31.



**S A V FINAL ANSWER 0035**

# 62 GAF MISS ANSWER BEXTOR 1545

S A V FINAL ANSWER 0035

DOB 2/7/15

GAF FINAL OBJECTIVE 1192

Tatt 1545

LUCAS LADY OBJ 3J15 872N

Reg. 18139590

C R A BEXTOR 872 5205 608

CED	6
BW	1.6
WW	49
YW	87
M	23

GAF BAXTOR 9050

ABERLEA ELBA 46

**COW**

Consignor: **GODSEY ANGUS FARM**

5 year old calving ease Granddaughter of S A V Final Answer 0035 on the Sire side and C R A Bextor 872 5205 608 Granddaughter on Dam side. Extremely well made cow with length and balanced EPD's. Bred to calve 2/7/21 to GAF Discovery 1774 whose EPD's are BW 1.9, WW 71, YW 132, M 31.



## 63A LAWSONS DONNA G710

S A V RENOWN 3439

DOB 3/6/20

ZWT SUMMITT 6507

Tatt G710

COLEMAN DONNA 714

Reg. 19870504

S A V RAINFALL 6846

CED	12
BW	1.2
WW	68
YW	126
M	25

LAWSONS DONNA F318

LAWSONS DONNA D910

### COW

Consignor: **LAWSON FAMILY FARMS**

A superior set of ZWT Summitt 6507 heifers leads off the Lawson Family Farms consignment to the December's Finest Sale. These three open heifers are at the top of our Spring calves! These are deep bodied, huge topped females. You don't want to miss out on these three heifers!

## 63C LAWSONS ELBA G687

S A V RENOWN 3439

DOB 2/19/20

ZWT SUMMITT 6507

Tatt G687

COLEMAN DONNA 714

Reg. 19870502

S A V SENSATION 5615

CED	7
BW	1.2
WW	61
YW	106
M	21

LAWSONS ELBA E283

S A V ELBA 110

### COW

Consignor: **LAWSON FAMILY FARMS**

A superior set of ZWT Summitt 6507 heifers leads off the Lawson Family Farms consignment to the December's Finest Sale. These three open heifers are at the top of our Spring calves! These are deep bodied, huge topped females. You don't want to miss out on these three heifers!

## 63B LAWSONS HENRIETTA PRIDE G696

S A V RENOWN 3439

DOB 2/29/20

ZWT SUMMITT 6507

Tatt G696

COLEMAN DONNA 714

Reg. 19870503

BASIN PAYWEIGHT 1682

CED	6
BW	.7
WW	73
YW	126
M	24

LAWSONS HENRIETTA PRIDE F364

DEER VALLEY HENRIETTA 2212

### COW

Consignor: **LAWSON FAMILY FARMS**

A special highlight here, her dam sold 1/2 interest in the Spring 2019 Sale to Travis Bowen for \$7,500. This is her first calf! WOW: had a 205 Adj WW 712#. Henrietta Pride 2212 donor has been outstanding in our herd! These three open heifers are at the top of our Spring calves! These are deep bodied, huge topped females. You don't want to miss out on these three heifers!



**HENRIETTA PRIDE 2212**

## 64A LAWSONS WITCH G544

COLEMAN REGIS 122

DOB 3/3/19

COLEMAN REGIS 356

Tatt G544

COLEMAN DONNA 063

Reg. 19588923

S A V REGISTRY 2831

CED	5
BW	1.2
WW	55
YW	84
M	20

LAWSONS WITCH B550

LAWSONS WITCH W81

### COW

Consignor: **LAWSON FAMILY FARMS**

Nice bred heifer going back to the Witch cow family out of Yon Family Farms in South Carolina. She sells due on February 24, 2021 bred to ZWT Summitt 6507. The Summit calves are super nice, just have a look yourself!

## 64B LAWSONS WITCH G534

COLEMAN REGIS 122

DOB 2/10/19

COLEMAN REGIS 356

Tatt G534

COLEMAN DONNA 063

Reg. 19588925

COLEMAN REGIS 356

LAWSONS REGIS C761

LAWSONS WITCH A405

CED	6
BW	2.4
WW	79
YW	128
M	22

### COW

Consignor: **LAWSON FAMILY FARMS**

Sells bred to Sitz Stellar 715G whose EPD's are +2 +2.4 +76 +134 +33 \$B +153. Expecting to calve February 10, 2021. This is another super bred heifer going back into the great Witch cow family.



# LAWSONS DONNA 1914

CONNEALY FINAL PRODUCT

DOB 2/13/19

SITZ INVESTMENT 660Z

Tatt 1914

SITZ ELLUNAS ELITE 656T

Reg. 19607818

S A V RENOWN 3439

CED	4
BW	1.2
WW	62
YW	107
M	30

LAWSONS DONNA C801

LAWSONS DONNA 1365

**COW**

## LAWSON FAMILY FARMS

Consignor: Big powerful bred heifer with all the right pedigrees. Embryo transferred calf out of our Donna donor C801 which goes back to the Great Ext X 714 Donna mating. Sells bred to calf February 22, 2021 to Musgrave Stunner, then pasture exposed to TK Stunner whose EPD's are +1 +2.0 +79 +146 +30.



## SITZ INVESTMENT 660Z



# LAWSONS HENRIETTA PRIDE G524

COLEMAN CHARLO 0256

DOB 1/18/19

COLEMAN ENGAGE 5255

Tatt G524

COLEMAN EVERELDA ENTENSE1169

Reg. 19529800

S A V RESOURCE 1441

CED	11
BW	.5
WW	56
YW	111
M	22

LAWSONS HENRIETTA PRIDE D928

PF HENRIETTA PRIDE 1009 EXAR

**COW**

## LAWSON FAMILY FARMS

Consignor: Selling a nice Coleman Engage 5255 sired heifer going back to the Lawson Family Farms cornerstone donor Henrietta Pride 1009 EXAR. Sells bred to calf, due February 26, 2021 to Musgrave Xclusive whose EPD's are +9 +.4 +74 +131 +22 (with sexed heifer semen). Pasture exposed to TK Stunner.



# LAWSONS LUCY 1911

COLEMAN CHARLO 0256

DOB 2/12/19

COLEMAN ENGAGE 5255

Tatt 1911

COLEMAN EVERELDA ENTENSE1169

Reg. 19560143

CONNEALY IMPRESSION

CED	10
BW	.9
WW	48
YW	83
M	24

44 LUCY 1661

BASIN LUCY 3829

**COW**

## LAWSON FAMILY FARMS

Consignor: The Great Lucy's - We have multiple here at Lawson Family Farms and they do excellent for us. We have pulled this bred heifer out of our embryo group of calves. Sells to calf early May 2021 to either TK Stunner or Sitz Stellar. Calf will have to be DNA tested. Either way it's a winner!.



# LAWSONS LADY F505

S A V RENOWN 3439

DOB 11/23/18

ZWT SUMMITT 6507

Tatt F505

COLEMAN DONNA 714

Reg. 19521433

O C C EMBLAZON 854E

SINCLAIR LADY 00E1 3410

CED	6
BW	.9
WW	59
YW	91
M	14

SINCLAIR LADY 3410-4465

**COW**

## LAWSON FAMILY FARMS

Consignor: "WOW" is what we have to say to this deep soggy heifer of the Donna/Lady cow families. Sells bred and expecting to calf mid-May 2021. Bred to Sitz Stellar 715G whose EPD's are +2 +2.4 +76 +134 +33. You don't want to miss out on this great investment!



## S A V RENOWN 3439



# LAWSONS POLLYANNA F452

67A

COLEMAN CHARLO 0256

DOB 9/7/18

S A V RAINFALL 6846

Tatt F452

S A V BLACKCAP MAY 4136

Reg. 19467668

QUAKER HILL RAMPAGE 0A36

CED	9
BW	-.4
WW	52
YW	99
M	30

BRIDGEVIEW POLLYANNA 1613

BRIDGEVIEW POLLYANNA 1435

**COW**



# COLEMAN ENGAGE 5255

## Consignor: **LAWSON FAMILY FARMS**

Nice, bred S A V Rainfall 6846 heifer going back to the Pollyanna cow family. Sells bred to calf on March 3, 2021 to Musgrave Stunner whose EPD's are +8 +.2 +69 120 +22. This deep bred female will make a marvelous addition for anyone.



# LAWSONS HENRIETTA PRIDE F371

67B

S A V REGISTRY 2831

DOB 2/10/18

S A V SENSATION 5615

Tatt F371

S A V BLACKCAP MAY 4136

Reg. 19271973

CONNEALY IMPRESSION

CED	9
BW	-.2
WW	45
YW	80
M	21

DEER VALLEY HENRIETTA 2212

SITZ HENRIETTA PRIDE 639T

**COW**



# LAWSONS LUCY D938

68

COLEMAN REGIS 122

DOB 3/30/16

COLEMAN REGIS 356

Tatt D938

COLEMAN DONNA 063

Reg. 18439863

COLEMAN REGIS 904

LAWSONS LUCY A521

BASIN LUCY S997

CED	7
BW	1.5
WW	61
YW	104
M	25

**COW**

## Consignor: **LAWSON FAMILY FARMS**

Our donor, Deer Valley Henrietta 2212 does not need any introduction here at SWVA. She has sold multiple bulls that perform great on test. This heifer will make a great addition to your herd. Due late March-April 10, 2021 to TK Stunner whose EPD's are +1 +2.0 +79 +146 +30.

## Consignor: **LAWSON FAMILY FARMS**

A nice four-year-old going back to the Great Lucy 3829. The S997 has been a star at Lawson Family Farms. She is still roaming the pasture fields at the coming age of fifteen years and is still fertile and health, along with her flush sister. Sells bred to calf in December to Coleman Engage 5255.



# 44 Lucy 1661



# LAWSONS LUCY D923

69

A A R T E N X 7008 S A

DOB 3/7/16

44 ENVISION

Tatt D923

MAURER'S MS PREDESTINED W10

Reg. 18439885

CONNEALY IMPRESSION

44 LUCY 1661

BASIN LUCY 3829

CED	12
BW	0
WW	48
YW	92
M	37

**COW**

## Consignor: **LAWSON FAMILY FARMS**

Another Lucy with loads of future potential and longevity. Sells with a heifer calf born 11/10/20 sired by Coleman Engage 5255.



## CONNEALY BLACKHAWK 6198

## 70 BRIDGEVIEW RITA 1444

BASIN FRANCHISE P142

DOB 9/14/14

EF COMPLEMENT 8088

Tatt 1444

EF EVERELDA ENTENSE 6117

Reg. 18257099

CONNEALY FINAL PRODUCT

CED	0
BW	2.9
WW	75
YW	135
M	31

BRIDGEVIEW RITA 022

BRIDGEVIEW RITA 903

**COW**

**DDP**

Consignor: **LAWSON FAMILY FARMS**

She produced a bull that sold in a high performance test category in a past SWVAA sale. She would make a great addition to any herd. A nice cow due to calf in December to Coleman Engage 5255.

## 71 PF 7229 HENRIETTA PRIDE 2525

CONNEALY CONSENSUS

DOB 9/11/12

CONNEALY CONSENSUS 7229

Tatt 2525

BLUE LILLY OF CONANGA 16

Reg. 17397352

S A V BISMARCK 5682

CED	16
BW	-1.2
WW	49
YW	95
M	18

PF 5682 HENRIETTA PRIDE 0533

SITZ HENRIETTA PRIDE 643T

**COW**

Consignor: **LAWSON FAMILY FARMS**

Selling a nice eight-year-old, going back to one of the great cow families in the breed, 643T. She has a bull calf born 10/29/20 (*BW 75 lbs*) sired by Coleman Regis 356.

## 72A LUCAS LADY BLACKHAWK T981N

CONNEALY ARMORY

DOB 11/1/19

CONNEALY BLACKHAWK 6198

Tatt 981N

PRECIOUS OF CONANGA 380X

Reg. 19689140

K C F BENNETT COMMONWEALTH

LUCAS LADY COMONWEALTH T4790

LUCAS LADY IMPRESSION T0580

CED	8
BW	.9
WW	70
YW	125
M	29

**COW**

Consignor: **LUCAS FARM**

A nice heifer sired by one of the breeds most elite growth sires, Connealy Blackhawk 6198. This low birth weight heifer is slick haired and has a solid pedigree that is stacked with some great AI sires of the Angus breed. 981N is a solid made heifer with excellent EPD's. She sells open and ready to breed.

## 72B LUCAS LADY BLACKHAWK 947S

CONNEALY ARMORY

DOB 9/16/19

CONNEALY BLACKHAWK 6198

Tatt 947S

PRECIOUS OF CONANGA 380X

Reg. 19689139

K C F BENNETT COMMONWEALTH

LUCAS LADY COMMONWEALTH 547S

LUCAS LADY 004 814F

CED	7
BW	.6
WW	69
YW	124
M	30

**COW**

Consignor: **LUCAS FARM**

Another smooth made deep bodied heifer sired by the Select Sires bull Connealy Blackhawk 6198. These Blackhawk heifers will certainly catch your eye with their looks, and they are loaded with growth. Sells open and ready to breed.

## 72C LUCAS LADY BLACKHAWK T938S

CONNEALY ARMORY

DOB 9/9/19

CONNEALY BLACKHAWK 6198

Tatt 938S

PRECIOUS OF CONANGA 380X

Reg. 19689136

K C F BENNETT COMMONWEALTH

LUCAS LADY COMONWEALTH T464S

LUCAS LADY PROPHET T216F

CED	8
BW	1.1
WW	67
YW	125
M	29

**COW**

Consignor: **LUCAS FARM**

This heifer sired by Connealy Blackhawk 6198 is deep bodied with a big top. These three Blackhawk heifers are about as similar as you could ask for, they are all out of Commonwealth cows and their EPD's are almost the same. They are also very stylish and powerful. Sells open and ready to breed.

**73A LUCAS LADY ACCLAIM T9780**

JINDRA 3RD DIMENSION DOB 10/13/19  
JINDRA ACCLAIM Tatt 9780  
JINDRA BLACKBIRD LASSY 1111 Reg. 19689135  
VT OBJECTIVE DAF 802  
LUCAS LADY VT OBJ T513N  
LUCAS LADY UPWARD W538 T2680

CED	9
BW	.3
WW	62
YW	122
M	29

**COW**

Consignor: **LUCAS FARM**

A very attractive heifer sired by the Accelerated Genetics superstar, Jindra Acclaim. This moderate framed heifer is smooth made just like her VT Objective dam. A low birth weight heifer with plenty of growth. 9780 had a BR of 86. She sells open and ready to breed.

**73B LUCAS LADY SURE FIRE 933S**

CONNEALY IN SURE 8524 DOB 9/3/19  
G A R SURE FIRE Tatt 933S  
CHAIR ROCK 5050 G A R 8086 Reg. 19689120  
K C F BENNETT TEN X C640  
LUCAS LADY 10X C640 731D  
LUCAS LADY MANDATE 0550

CED	11
BW	1.0
WW	63
YW	115
M	30

**COW**

Consignor: **LUCAS FARM**

A nice heifer sired by one of the good maternal bulls of the breed GAR Sure Fire. Her three year old dam looks to have a bright future at Lucas Farms. She is very nice uddered and nursing a standout bull calf this year. 933S is a calving ease heifer with a solid set of EPD's. She has a BR of 100 and a WR of 106. Sells open and ready to breed.

**73C LUCAS LADY BANKROLL M930A**

BARSTOW CASH DOB 8/30/19  
BARSTOW BANKROLL B73 Tatt 930A  
BARSTOW MISS DIANNA Z25 Reg. 19689115  
S S NIAGARA Z29  
LUCAS LADY NIAGRA M781S  
LUCAS LADY IMPRESSION M0530

CED	9
BW	.3
WW	64
YW	124
M	22

**COW**

Consignor: **LUCAS FARM**

A powerful and maternal made heifer sired by the Select Sires calving ease bull, Barstow Bankroll B73. 930A is backed by a great maternal cow family. Her three year old dam is a well balanced and neat uddered cow, who is doing a great job with her second calf. 930A has a nice set of EPD's with the looks to go with them. Sells open and ready to breed.

**74 LUCAS LADY NIAGARA 894S**

HOOVER DAM DOB 9/27/18  
S S NIAGARA Z29 Tatt 894S  
JET S S X144 Reg. 19445593  
K C F BENNETT COMMONWEALTH  
LUCAS LADY COMMONWEALTH 452S  
LUCAS LADY MANDATE 22J

CED	8
BW	.6
WW	67
YW	125
M	31

**COW**

Consignor: **LUCAS FARM**

This is a very attractive bred heifer sired by the Select Sires proven performance leader S S Niagara Z29. 894S is deep made and long bodied. She is a low birth weight cow that had a weaning ratio of 107. 894S has always stood out with her picture perfect looks in this crop of heifers at Lucas Farm. She sells bred to Lucas Bareback and should have a calf at side by sale time.

**75 LUCAS LADY RAMPAGE T685S**

MCC DAYBREAK DOB 9/29/16  
QUAKER HILL RAMPAGE 0A36 Tatt 685S  
QHF BLACKCAP 6E2 OF4V16 4355 Reg. 18758496  
CONNEALY IMPRESSION  
LUCAS LADY IMPRESSION T0580  
G A R RETAIL PRODUCT 3204

CED	11
BW	1.3
WW	72
YW	120
M	22

**COW**

Consignor: **LUCAS FARM**

A really nice young cow sired by the legendary Quaker Hill Rampage 0A36. This 4 year old is deep bodied, quiet dispositioned with a beautiful udder. This calving ease cow has a BR of 2-99 and a WR of 2-101. Solid pedigree and EPD's. 685S sells bred to the high growth sire, Lucas 9M25 A352 T842M and should have a calf by sale time.

**76 LUCAS LADY FORTRESS 679S**

CONNEALY CONSENSUS DOB 9/27/16  
K C F BENNETT FORTRESS Tatt 679S  
THOMAS PATRICIA 9705 Reg. 18758494  
K C F BENNETT PERFORMER  
LUCAS LADY PERFORMER 712F  
LUCAS PRINCESS 2B 7F4

CED	7
BW	1.1
WW	64
YW	111
M	16

**COW**

Consignor: **LUCAS FARM**

A nice powerful young cow sired by KCF Bennett Fortress. 679S is a deep bodied easy fleshing female. She has a BR of 2-99 and a WR of 2-100. A solid producing cow with solid EPD's. Her 2019 bull calf sells as Lot 16 in the bull section of the sale and is an attractive deep made Manning son. 679S sells bred to Lucas 9M25 A352 T842M (reg# 19127867) who is a high growth bull and should calve in December-January. Confirmed safe for a spring time calf.



## CONNEALY COMRADE 1385

## 77 LUCAS LADY PROPHET 314F

C R A BEXTOR 872 5205 608

DOB 2/3/13

G A R PROPHET

Tatt 314F

G A R OBJECTIVE 1885

Reg. 17533578

RITO 2V1 OF 2536 1407

CED	7
BW	1.3
WW	63
YW	109
M	26

LUCAS LADY 2V1 6310

W S ALUM BANK CF7

**COW**

**DDP**

Consignor: **LUCAS FARM**

A really nice cow sired by the legendary GAR Prophet. A full brother to 314F sold for \$8,000 in a previous SWVA BCIA Bull sale. Her 2019 bull calf sired by Manning sells in the bull sale as Lot 14. This low birth weight cow has a solid set of EPD's and sells with a herd sire prospect by her side sired by Deer Valley Wall Street born 10/26/20 (*BW 79 lbs*).

## 78 LUCAS LADY MANDATE 0550

S S OBJECTIVE T510 0T26

DOB 10/6/10

SYDGEN MANDATE 6079

Tatt 0550

SYDGEN GINA 4235

Reg. 16928773

RITO 6I6 OF 4B20 6807

CED	6
BW	3.5
WW	65
YW	123
M	29

LUCAS LADY 6I6 4033

LUCAS LADY 2F10 OF 5175

**COW**

Consignor: **LUCAS FARM**

A foundation female sired by the ABS bull Mandate. 0550 has been a major contributor to Lucas Farms. She has had several bulls that were top performing and high selling bulls through the VA. BCIA bull tests. She has a WR of 8-104 and a YR of 5-107. A lot of power in this big stout cow. She sells bred to Lucas Southwest, a Whitlock son whose progeny have been impressive. 0550 should calve around December-January.

## 79A MATNEY COMRADE 9131

CONNEALY COMRADE 1385

DOB 7/13/19

MATNEY COMRADE 1729A

Tatt 9131

MATNEY PARTY 1531

Reg. 19555589

GAR DAYLIGHT H 3076

CED	9
BW	0
WW	54
YW	95
M	30

MATNEY DAYLIGHT 1647

MATNEY SHREK 1421

**COW**

Consignor: **MATNEY ANGUS FARM**

A nice daughter of Matney Comrade 1729A who has seen heavy service in the Matney Angus Farm; he is a son of the popular Select Sires bull, Connealy Comrade 1385. A nice group of three-quarter sisters. Sells open to breed to the bull of your choice.

## 79B MATNEY COMRADE 9125

CONNEALY COMRADE 1385

DOB 6/14/19

MATNEY COMRADE 1729A

Tatt 9125

MATNEY PARTY 1531

Reg. 19557504

GAR DAYLIGHT H 3076

CED	8
BW	1.0
WW	54
YW	95
M	34

MATNEY DAYLIGHT 1641

MATNEY WAR PARTY 1429

**COW**

Consignor: **MATNEY ANGUS FARM**

A nice daughter of Matney Comrade 1729A who has seen heavy service in the Matney Angus Farm; he is a son of the popular Select Sires bull, Connealy Comrade 1385. A nice group of three-quarter sisters. Sells open to breed to the bull of your choice.

## 79C MATNEY COMRADE 9122

CONNEALY COMRADE 1385

DOB 6/5/19

MATNEY COMRADE 1729A

Tatt 9122

MATNEY PARTY 1531

Reg. 19555594

GAR DAYLIGHT H 3076

CED	12
BW	-.8
WW	51
YW	86
M	34

MATNEY DAYLIGHT 1638

MATNEY QUEEN 0885

**COW**

Consignor: **MATNEY ANGUS FARM**

A young female from the Matney Queen cow family. A nice daughter of Matney Comrade 1729A who has seen heavy service in the Matney Angus Farm; he is a son of the popular Select Sires bull, Connealy Comrade 1385. A nice group of three-quarter sisters. Sells open to breed to the bull of your choice.

# 80A MATNEY SUNRISE 9128

G A R SUNRISE

DOB 6/27/19

Tatt 9128

Reg. 19557454

G A R SUNRISE 2153G

G A R PREDESTINED A057

PA SAFEGUARD 021

MATNEY SAFEGUARD 1530

MATNEY BE 1206

CED	5
BW	3.2
WW	74
YW	133
M	33

**COW**

Consignor: **MATNEY ANGUS FARM**

A daughter of G A R Sunrise 2153G out of a dam sired by the ABS bull, PA Safeguard 021. Her WW EPD is in the Top 10% and her YW EPD is in the Top 4% of the Angus breed. Sells open ready to breed.

# 81A MATNEY COMRADE 9130

CONNEALY COMRADE 1385

DOB 7/3/19

Tatt 9130

Reg. 19555593

MATNEY COMRADE 1729A

MATNEY PARTY 1531

G A R SUNRISE 2153G

MATNEY SUNRISE 1597

MATNEY 1222

CED	13
BW	-7
WW	49
YW	90
M	30

**COW**

Consignor: **MATNEY ANGUS FARM**

A granddaughter of Connealy Comrade 1385 who is a member of the Select Sires program. Her dam is a daughter of G A R Sunrise 2153G who the Matneys bought from the Gardiner Angus herd in Kansas. Sells open, ready to breed to the bull of your choice.

# 80B MATNEY SUNRISE 9127

G A R SUNRISE

DOB 6/18/19

Tatt 9127

Reg. 19557462

G A R SUNRISE 2153G

G A R PREDESTINED A057

PA SAFEGUARD 021

MATNEY SAFEGUARD 1403

MATNEY CON 1218

CED	4
BW	2.3
WW	56
YW	106
M	25

**COW**

**DDP**

Consignor: **MATNEY ANGUS FARM**

A granddaughter of G A R Sunrise out of a dam also sired by the ABS bull, PA Safeguard 021. Nice group of open heifers from Matney Angus Farm. Sells open ready to breed to the bull of your choice.

# 81B MATNEY COMRADE 1997

CONNEALY COMRADE 1385

DOB 4/17/19

Tatt 1997

Reg. 19557410

MATNEY COMRADE 1707

MATNEY SHREK 1420

G A R SUNRISE 2153G

MATNEY SUNRISE 1765

MATNEY BE 1204

CED	8
BW	1.1
WW	55
YW	99
M	28

**COW**

**DDP**

Consignor: **MATNEY ANGUS FARM**

A granddaughter of the Select Sires bull, Connealy Comrade 1385 out of a dam sired by G A R Sunrise 2153G who has seen heavy service in the Matney Angus Farm herd. A member of the Pride cow family. Sells open and ready to breed to the bull of your choice.

# 80C MATNEY DAYLIGHT 1984

G A R DAYLIGHT

DOB 4/7/19

Tatt 1984

Reg. 19557457

GAR DAYLIGHT H 3076

V A R LADY JAYE 1139

WERNER WAR PARTY 2417

MATNEY WAR PARTY 1418

MATNEY 7606 OF HYL338

CED	8
BW	.9
WW	58
YW	106
M	33

**COW**

**DDP**

Consignor: **MATNEY ANGUS FARM**

A granddaughter of G A R Daylight out of a dam sired by the popular Select Sires bull, Werner War Party 2417. She is a member of the Pride cow family. Sells open ready to breed to the bull of your choice.

# 81C MATNEY COMRADE 1974

CONNEALY COMRADE 1385

DOB 4/1/19

Tatt 1974

Reg. 19557416

MATNEY COMRADE 1707

MATNEY SHREK 1420

WERNER WAR PARTY 2417

MATNEY PARTY 1703

MATNEY Y G 0882

CED	9
BW	.4
WW	50
YW	90
M	28

**COW**

Consignor: **MATNEY ANGUS FARM**

Another granddaughter of the Select Sires bull, Connealy Comrade 1385 out of a dam sired by Werner War Party 2415. Nice group of open heifers from Matney Angus Farm. An open heifer ready to breed to the bull of your choice.

## 82A MATNEY SUNRISE 8108

G A R SUNRISE

DOB 5/8/18

Tatt 8108

G A R SUNRISE 2153G

Reg. 19281182

G A R PREDESTINED A057

S S OBJECTIVE T510 0T26

CED	7
BW	1.7
WW	55
YW	97
M	28

MATNEY 7612 OF T26

HHF 3452 MISS 575 745

**COW**

Consignor: **MATNEY ANGUS FARM**

A bred heifer sired by G A R Sunrise 2153G, the Gardiner Angus Ranch bull working very well in the Matney herd. Her dam comes from the Lady cow family and is sired by the Angus breed legend, S S Objective T510 0T26. Bred to Matney Comrade 1707 whose EPD's are +14 -2.2 +50 +90 +28. Calving update announced sale day (should be calving within 60 days).

## 82B MATNEY SUNRISE 8100

G A R SUNRISE

DOB 4/30/18

Tatt 8100

G A R SUNRISE 2153G

Reg. 19277781

G A R PREDESTINED A057

G A R PREDESTINED

CED	1
BW	3.4
WW	64
YW	113
M	28

MATNEY PRIDE 0872

MATNEY PRIDE 0684

**COW**

**DDP**

Consignor: **MATNEY ANGUS FARM**

Another daughter of G A R Sunrise 2153G out of a dam from the Pride cow family at Matney Angus Farm. Notice her WW, YW and M EPD's are in the Top 25% of the Angus breed. Sells bred to Matney Comrade 1707 whose EPD's are +14 -2.2 +50 +90 +28. Calving update announced sale day (should be calving within 60 days).



**GAR DAYLIGHT**

## 83A MATNEY 1673-TOUR OF DUTY

G A R SUNRISE 2153G

DOB 5/3/18

Tatt 8105

MATNEY SUNRISE 1673

Reg. 19240050

MATNEY 6EM6-1006

R B TOUR OF DUTY 177

MATNEY TOUR OF DUTY 1635

MATNEY SAFEGUARD 1413

CED	1
BW	4.2
WW	67
YW	121
M	29

**COW**

Consignor: **MATNEY ANGUS FARM / JUSTIN MATNEY**

A daughter of Matney Sunrise 1673 out of a dam sired by the popular R B Tour of Duty 177. Her WW EPD of +67 is in the Top 15% of the Angus breed along with her YW of +121 is also in the Top 15%. Sells bred to Matney Comrade 1707 whose EPD's are +14 -2.2 +50 +90 +28. Calving update announced sale day (should be calving within 60 days).

## 83B MATNEY COMRADE 1810

CONNEALY CONSENSUS 7229

DOB 3/3/18

Tatt 1810

CONNEALY COMRADE 1385

Reg. 19240529

HAPPY GEE OF CONANGA 919

G A R SUNRISE 2153G

MATNEY SUNRISE 1659

MATNEY 7606 OF HYL338

CED	12
BW	-1.0
WW	50
YW	94
M	28

**COW**

**DDP**

Consignor: **MATNEY ANGUS FARM**

An own daughter of the popular Select Sires bull, Connealy Comrade 1385 out of a dam from the Pride cow family at Matney Angus Farm in Cedar Bluff, VA. Sells bred to Matney Comrade 1707 whose EPD's are +14 -2.2 +50 +90 +28. Calving update announced sale day (should be calving within 60 days).

## 84 MATNEY DAYLIGHT 1754

G A R DAYLIGHT

DOB 4/9/17

Tatt 1754

GAR DAYLIGHT H 3076

Reg. 18917608

V A R LADY JAYE 1139

G A R YIELD GRADE

MATNEY MISS RITA 8003

MATNEY RIGHT TIME 0617

CED	10
BW	-.2
WW	61
YW	108
M	32

**COW**

Consignor: **MATNEY ANGUS FARM**

A young cow sired by GAR Daylight H3076 out of a dam from the Rita cow family. Notice the dam is a G A R Yield Grade daughter out of a dam sired by Hyline Right Time 338. Sells with a heifer calf born 6/29/20 (BW 56 lbs) sired by Matney Sure Fire 1830 whose EPD's are +14 -1.7 +49 +91 +31.



**85 MATNEY COMRADE 1708**

CONNEALY CONSENSUS 7229  
CONNEALY COMRADE 1385  
HAPPY GEE OF CONANGA 919  
SITZ UPWARD 307R  
MATNEY UPWARD 1467  
MATNEY CON 1205

DOB 3/21/17  
Tatt 1708  
Reg. 18919819

CED	8
BW	1.4
WW	51
YW	96
M	32

**COW**

Consignor: **MATNEY ANGUS FARM**

A own daughter of Connealy Comrade 1385 out of a dam sired by the Genex Masterpiece sire, Sitz Upward 307R. Just a three year old with a Royal Pedigree. Sells with a bull calf born 9/30/20 (*BW 72 lbs*) sired by Metney Sure Fire 1830 whose EPD's are +14 -1.7 +49 +91 +31.



**SITZ UPWARD 307R**

**86 MATNEY WAR PARTY 1680**

CONNEALY ONWARD  
WERNER WAR PARTY 2417  
BAAR USA LADY JAYE 489  
MATNEY 7601 OF T510  
MATNEY 1116  
MATNEY Y G 0882

DOB 9/9/16  
Tatt 1680  
Reg. 18808518

CED	6
BW	.9
WW	56
YW	92
M	29

**COW**

**DDP**

Consignor: **MATNEY ANGUS FARM**

A daughter of the very popular Select Sires bull, Werner War Party 2417. A top-notch female coming from the heart of the Matney Angus Farm herd just reaching her prime production years. Sells with a heifer calf born 8/9/20 (*BW 62 lbs*) sired by Matney Sure Fire 1830 whose EPD's are +14 -1.7 +49 +91 +31.

**88 M A F 19U01**

CONNEALY ONWARD  
SITZ UPWARD 307R  
SITZ HENRIETTA PRIDE 81M  
QUAKER HILL OBJECTIVE 3J15  
M A F 8J20  
JUSTAFEW DESIGNER BONNIE 002

DOB 10/8/18  
Tatt 01  
Reg. 19252938

CED	5
BW	1.9
WW	67
YW	114
M	29

**COW**

**DDC**

Consignor: **MULLINS ANGUS FARM**

A daughter of the Genex Masterpiece sire Sitz Upward 307R out of a dam from the Bonnie cow family at Justafew Angus in Max Meadows, VA. Outstanding EPD's on this first calf heifer. Sells with a 9/26/20 heifer calf sired by VPI Whitlock 7E35. Heifer calf's EPD's are +6 +2.0 +65 +116 +31. Cow sells open.

**87 MSA RITA 9G1**

PLATTEMERE WEIGH UP K360  
DEER VALLEY UNIQUE 5635  
SITZ HENRIETTA PRIDE 643T  
K C F BENNETT ABSOLUTE  
VPI 3A23 RITA 6D32  
VPI 7T39 RITA 3A23

DOB 1/27/19  
Tatt 9G1  
Reg. 19412344

CED	4
BW	2.2
WW	64
YW	117
M	30

**COW**

Consignor: **MOSSY SPRING ANGUS**

Checkout the maternal pedigree of this Unique daughter. The Rita cow family has been highly productive in the Mossy Spring Angus and VA Tech herds. This bred heifer offers fertility, performance, pedigree, and phenotype in a moderately-framed package. 9G1's dam was a sale attraction in the 2019 Finest Sale and sold to Kevin Barber, Jonesville, VA. This outstanding female sells AI-bred to the ABS Global calving-ease legend, SS Objective T510 OT26, with a due date of January 17, 2021. Certified and Accredited herd.

**89 M A F 19W87**

WOODHILL MAINLINE  
R B BAROMETER 9721  
CHERRY CRK BLACKCAP 721  
S S OBJECTIVE T510 OT26  
GRACE MEADOWS NEW DESIGNU078  
G A R RETAIL PRODUCT 3416

DOB 9/3/18  
Tatt 87  
Reg. 19252924

CED	8
BW	.2
WW	60
YW	107
M	31

**COW**

Consignor: **MULLINS ANGUS FARM**

A daughter of R B Barometer 9721 out of a dam sired by the Angus Breed Legend, S S Objective T510 OT26. Her dam was purchased from Grace Meadows Farm in TN. Another nice first-calf heifer from Mullins Angus Farm in Clintwood, VA. Sells with a 10/10/20 heifer calf sired by VPI Whitlock 7E35. EPD's on the heifer calf are +8 +.9 +61 +112 +32. Cow sells open.

90

# M A F 19F86

CONNELY CONSENSUS

DOB 9/2/18

K C F BENNETT FORTRESS

Tatt 86

THOMAS PATRICIA 9705

Reg. 19252923

SITZ UPWARD 307R

CED	13
BW	-.1
WW	64
YW	110
M	25

M A F 15U3

GRACE MEADOWS NEW DESIGNU078

**COW**

## MULLINS ANGUS FARM

Consignor:

A daughter of the popular Select Sires bull K C F Bennett Fortress out of a dam sired by the Genex bull, Sitz Upward 307R. Another nice first-calf heifer from the Mullins herd. She sells with a 9/25/20 heifer calf sired by VPI Whitlock 7E35. Heifer calf's EPD's are +10 +1.1 +64 +114 +29. Cow sells open ready to breed to the bull of your choice.



### K C F BENNETT FORTRESS

91

# M A F 18RA7

S A V FINAL ANSWER 0035

DOB 9/7/17

CONNELY RIGHT ANSWER 746

Tatt 7

HAPPY DELL OF CONANGA 262

Reg. 18922595

SITZ UPWARD 307R

CED	10
BW	0
WW	73
YW	122
M	25

M A F 15U2

M A F 11512

**COW**

## MULLINS ANGUS FARM

Consignor:

A three year old sired by the Genex Sire, Connealy Right Answer 746 out of a dam sired by Sitz Upward 307R. Outstanding EPD's on this young cow; Top 3% for WW and Top 5% for YW. She sells with a 10/21/20 heifer calf sired by VPI Whitlock 7E35. Heifer calf's EPD's are +9 +.7 +68 +119 +29. She sells open ready to breed to the bull of your choice.

93

# RAINBOW MISS 284

S A V BRILLIANCE 8077

DOB 2/17/16

CURTIN LUMINEER 2001

Tatt 284

BLUESTON CAF FOREVERLADY0200

Reg. 18565540

S A V BISMARCK 5682

RAINBOW MISS 239

UT MISS 2620

CED	6
BW	-.1
WW	49
YW	87
M	31

**COW**

## RAINBOW ANGUS

Consignor:

Good EPD's on this four-year-old whose dam is sired by the Genex Masterpiece Sire, S A V Bismarck 5682. Sells with a bull calf born 9/25/20 sired by the Genex Masterpiece Sire, S A V 8180 Traveler 004 whose EPD's are +2 +3.1 +51 +90 +24.

92

# M A F 15U3

CONNELY ONWARD

DOB 8/26/14

SITZ UPWARD 307R

Tatt 153

SITZ HENRIETTA PRIDE 81M

Reg. 17973094

S S OBJECTIVE T510 0T26

CED	14
BW	.6
WW	61
YW	106
M	31

GRACE MEADOWS NEW DESIGNU078

G A R RETAIL PRODUCT 3416

**COW**

## MULLINS ANGUS FARM

Consignor:

A daughter of the Genex Masterpiece Sire, Sitz Upward 307R out of a dam from the Grace Meadows Farm herd. A proven producer from Mullins Angus Farm. She sells with a 9/25/20 heifer calf sired by VPI Whitlock 7E35. Heifer calf's EPD's are +12 +.2 +60 +108 +32. Cow sells open.

94

# SAF MISS RITA 504

HF KODIAK 5R

DOB 9/4/15

SOO LINE MOTIVE 9016

Tatt 504

TLA BEAUTY 5R

Reg. 18459940

WERNER WESTWARD 357

SAF MISS RITA 303

SAF MISS RITA 503

CED	3
BW	1.7
WW	49
YW	85
M	22

**COW**

## RAINBOW ANGUS

Consignor:

Just a five-year-old from the Rita cow family with Genex Masterpiece Sire, S A V 8180 Traveler 004 and G A R Predestined showing on the dam's side. Sells with a bull calf born 11/4/20 sired by Jindra Acclaim whose EPD's are +5 +1.2 +72 +142 +31 \$B +205.

# 95A GHS NORTHERN MISS 9108

THE WEST VIRGINIAN X134  
OFF NG A390  
OAK FRONT BANBANA 390  
B/R NEW DAY 454  
GHS NORTHERN MISS 241  
RX NORTHERN MISS 459

DOB 10/5/19  
 Tatt 9108  
 Reg. 19868506

CED	2
BW	1.8
WW	57
YW	107
M	27

**COW**

# 96A GHS QUEEN 957

CONNEALY IMPRESSION  
MAR INNOVATION 251  
MAR FINAL KAHUNA 856  
HARB PENDLETON 765 J H  
GHS QUEEN 449  
V T EXT S17

DOB 9/15/19  
 Tatt 957  
 Reg. 19873314

CED	-1
BW	3.1
WW	53
YW	89
M	25

**COW**

## STOVALL LIVESTOCK

Consignor: A little bit of show breeding but this heifer's dam had good calves period. My A390 daughters work very well and raise good calves and breed back, which is ultimately what we are after. She has a very balanced set of EPD's to go along with this. Sells open.

# 95B GHS SARITA 985

EXAR UPSHOT 0562B  
GHS UPSHOT 440  
CSFCC BLACKBIRD 444 9T9 EXT  
OFF POUNDER W83  
GHS SARITA 3149  
COLE SARITA C04

DOB 9/22/19  
 Tatt 985  
 Reg. 19868505

CED	7
BW	.6
WW	51
YW	87
M	30

**COW**

## STOVALL LIVESTOCK

Consignor: I noticed recently that I had more than a few Upshot 440 daughters in my herd and they all seem to perform like you want; they breed and have big calves. This heifer will be the same. Her dam is from a very productive cow family. Sells open.

# 95C GHS LADY 978

HOOVER DAM  
S S NIAGARA Z29  
JET S S X144  
S CHISUM 6175  
GHS LADY 257  
D R LADY 9572

DOB 9/20/19  
 Tatt 978  
 Reg. 19868504

CED	4
BW	1.8
WW	59
YW	116
M	24

**COW**

## STOVALL LIVESTOCK

Consignor: Her pedigree reads cow maker with Chisum and Niagara. All the cows I owned back to the Lady 7625 in her pedigree were easy keeping cows that bred up and raised big calves. She is the kind to build a herd around. Sells open.

# 96B GHS DORINDA 936

CONNEALY IMPRESSION  
MAR INNOVATION 251  
MAR FINAL KAHUNA 856  
DR COLE COMMITMENT  
D R DORINDA 5635  
D R DORINDA 2530

DOB 9/13/19  
 Tatt 936  
 Reg. 19873317

CED	1
BW	2.5
WW	49
YW	89
M	33

**COW**

## STOVALL LIVESTOCK

Consignor: Another Innovation, and her dam is as productive a cow as in the herd; she is like 10@365 while in our herd and her calves always sort to the top. This heifer will be no different, and you get the benefit of another cow making sire added too. Sells open.

# 96C GHS LASS 934

CONNEALY CONSENSUS  
K C F BENNETT FORTRESS  
THOMAS PATRICIA 9705  
CONNEALY CAPITALIST 028  
W H S CAPITALIST LASS A5  
W H S PREDESTINED LASS 77T

DOB 9/12/19  
 Tatt 934  
 Reg. 19871468

CED	10
BW	.1
WW	67
YW	116
M	24

**COW**

## STOVALL LIVESTOCK

Consignor: Fortress, Capitalist, and Limelight's dam; she is as well bred as you can find. Have full sibling in production so that is why she is for sale. Again, balanced EPD's and many rank in the top 25% of the breed. Don't let her get away from you. Sells open.

**97A WHC ENTENSE 198**

POSS EASY IMPACT 0119  
BALDRIDGE ALTERNATIVE E125  
BALDRIDGE BLACKBIRD A030  
DEER VALLEY COMPLETE POWER  
CANNON RIDGE ENTENSE E14  
JACS ENTENSE 5005

DOB 2/12/19  
 Tatt 198  
 Reg. 19400433

CED	10
BW	-.1
WW	67
YW	122
M	20

**COW**

Consignor: **WINDY HILL FARM**

Another stout bred heifer that has all of the qualities to make a front pasture cow. Study her EPD profile, top of the breed numbers for this heifer. She is out of Alternative who's heifer calves have been ringing the bell in sales throughout the country. To add to her value she is bred to Jindra Acclaim and due on 2/17/21 so you don't have to wait long to recoup your investment.

**97B WHC RITA 196**

POSS EASY IMPACT 0119  
BALDRIDGE ALTERNATIVE E125  
BALDRIDGE BLACKBIRD A030  
BALDRIDGE BRONC  
MVR RITA E727  
RWA INGENUITY W43

DOB 2/11/19  
 Tatt 196  
 Reg. 19400426

CED	17
BW	-.9
WW	74
YW	130
M	17

**COW**

Consignor: **WINDY HILL FARM**

Look at this spread on this Alternative Heifer, 17 CED and 130 YW. This calving ease superstar will make some farm a great front pasture cow as well as thickness and muscle to your herd. To make she even more appealing she is bred to calve on 4/1/21 to genomic and EPD superstar EWA Peyton.

**98 WHC HYLITE RAM 480**

QUAKER HILL RAMPAGE 0A36  
WILLIAMS RAMPAGE 230  
WILLIAMS UP BLACKCAP 818-528  
G A R PROPHET  
WILLIAMS PROP HYLITE 243  
WILLIAMS HYLITE 814

DOB 10/11/18  
 Tatt 0480  
 Reg. 19255619

CED	6
BW	1.8
WW	80
YW	145
M	25

**COW**

Consignor: **WINDY HILL FARM**

Big stout granddaughter to two of the top bulls in the angus breed Quaker Hill Ramage 0A36 and G A R Prophet. Outstanding EPD's for YW and WW. Bred to GAR Ashland who has sired some of the top selling bulls and heifers in sales all around the country Due on 1-16-21.

**99 POWELL LADY PRIDEVA 7032**

V A R DISCOVERY 2240  
MGR TREASURE  
SJH IMPRESSION OF 6108 1614  
WERNER WAR PARTY 2417  
R B LADY PARTY 167-305  
B A LADY 6807 305

DOB 4/18/17  
 Tatt 7032  
 Reg. 18773191

CED	10
BW	.2
WW	68
YW	133
M	29

**COW**

Consignor: **WINDY HILL FARM**

As the demand for Treasure daughters continues to grow here is your opportunity to get one. Nice EPD profile, very calm and nice looking young cow. Bred to calve to the hottest bull in the angus breed SS Enforcer on 3/31/21.

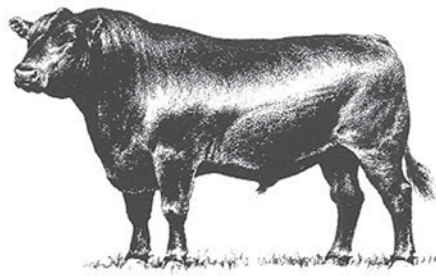
**Tommy Tabor**

**CATTLE PENS**  
 Home Repair  
 Barns Built  
 Paint



540-616-6181 (cell)  
 540-674-6181 (office)  
 540-674-1500 (fax)

6623 Aaron Lane  
 Dublin, VA 24084  
 tt43111@hotmail.com



# SEMEN

## Smith Reasor (Tank 1)

1AN1242	Full Power	2
1AN1278	Double Vision	4
1AN1299	Fortitude	1
7AN308	Concrete	1
7AN320	Prophet	9
7AN341	Ingenuity	1
7AN389	Sure Fire	5
7AN395	Fortress	2
7AN401	Elation	2
237AN2572	Black Pearl	5
237AN2394	Tour of Duty	4
AN1705	GAR Objective	3

## Smith Reasor (Tank 2)

1AN1017	Really Windy	10
90AN5428	Cincha 829	5
7AN92	Pine Drive Big Sky	2
AN95	Scotch Cap	1

**Semen will be at the auction for pick up, please bring your tank.**

Smith Reasor • 276-620-3123

**ONLINE BIDDING**



**Pre-Registration & Pre-Approval Required**

**Contact Aaron Ray Tompkins  
336.363.4639**

**LIVE INTERNET BIDDING AT  
[www.cowbuyer.com](http://www.cowbuyer.com)**

- View/bid online in Real Time
- **Registration is required.** Please register at least one (1) hour prior to sale time at [www.cowbuyer.com](http://www.cowbuyer.com)
- High Speed Internet is required. Slower speed will not permit you to bid and keep pace in real time.
- Terms: Purchasing online constitutes a legal contract and promise for payment of purchases. All purchases must be paid within ten (10) days of sale date and prior to load out or delivery of cattle purchased.
- Cowbuyer LLC is a service provider and is not responsible for the activity or inactivity of any technology, internet connection at the sale site or connection and technology of the bidders.
- No App required on mobile devices.

**Questions please contact:**

**Aaron Ray Tompkins – 336-363-4639**

# 2020 EXTRA BULL INFORMATION

LOT	FS	M	S	TS	SC	Rib Fat	Rump Fat	RE	IM	\$W	\$B
1	5.6	3	3	15	32.0	.23	.31	14.9	1.75		
2	5.0	3	3	15	36.5	.42	.33	13.9	3.79	+53	+104
3	7.1	3	3	15	40.0	.27	.37	12.0	4.60	+70	+157
4	7.5	3	3	15	40.0	.40	.42	13.2	4.42	+73	169
5	6.2	3	3	15	39.0	.32	.37	12.4	3.70	+77	+153
6	5.0	3	3	15	36.0	.57	.42	13.5	3.74	+88	+114
7	4.8	3	3	14	36.0	.35	.32	12.4	3.78	+51	+117
8	5.0	3	3	15	37.0	.35	.35	13.2	3.23	+64	+129
9	5.5	3	3	15	32.5	.41	.45	11.6	4.96	+67	+156
10	4.9	3	3	16	36.0	.53	.57	13.8	3.96	+67	+125
11	5.7	3	3	15	40.0	.42	.39	13.3	4.40	+68	+104
12	5.7	3	3	14	35.0	.48	.53	13.0	4.71	+59	+145
13	6.1	3	3	14	37.0	.50	.35	12.2	4.91	+66	+123
14	5.4	3	3	15	32.5	.49	.39	12.8	4.50	+60	+153
15	5.5	3	3	15	36.0	.31	.37	13.9	3.43	+67	+124
16	5.9	3	3	15	38.0	.45	.27	14.2	4.96	+70	+149
17	4.9	3	3	15	37.0	.48	.38	14.4	4.31	+73	+131
18	4.9	3	3	15	40.0	.22	.29	13.0	4.69	+56	+189
19	5.4	3	3	15	39.0	.59	.41	12.6	6.75	+68	+141
20	6.2	3	3	15	35.5	.55	.46	12.2	4.62	+68	+124
21	6.9	3	3	14	38.0	.43	.44	11.8	4.63	+79	+133
22	6.1	3	3	16	35.0	.33	.39	12.2	4.43	+94	+149
23	5.1	3	3	15	35.0	.26	.28	14.0	3.29	+63	131
24	6.1	3	3	14	37.5	.28	.33	13.4	3.34	+90	+156
25	5.6	3	3	15	38.0	.42	.52	13.6	4.61	+57	+129
26	6.1	3	3	15	38.0	.57	.53	13.2	5.23	+92	+137
27	5.6	3	3	14	41.5	.35	.42	11.5	7.29	+72	+169
28	5.3	3	3	14	43.0	.39	.32	11.3	4.57	+71	+133
29	5.1	3	3	14	38.0	.24	.35	12.1	3.01	+65	+119
30	6.8	4	3	16	38.5	.39	.33	15.6	3.60	+72	+184
31	5.1	3	3	15	33.0	.21	.26	12.9	4.26	+73	+161
32	5.7	3	3	16	40.5	.52	.65	13.7	4.22	+80	+129
33	6.7	3	3	16	35.5	.21	.18	11.5	4.33	+74	+193
34	6.0	3	3	16	36.0	.43	.51	14.3	5.44	+74	+182
35	5.2	3	3	16	41.0	.24	.26	12.1	3.16	+61	+134
36	5.7	3	3	16	37.0	.28	.36	14.9	3.98	+72	+168
37	5.7	3	3	15	39.0	.50	.42	14.5	5.64	+74	+151
38	6.2	3	3	15	39.0	.30	.43	13.5	4.06	+70	+155
39	5.1	3	3	15	33.0	.31	.37	13.9	4.22	+82	+156
40	5.4	3	3	15	37.0	.32	.31	12.0	2.84	+59	+134
41	4.9	3	3	15	34.0	.40	.44	13.4	3.67	+64	+127
42	5.4	3	3	15	38.5	.35	.37	12.2	3.25	+66	+130
43	5.3	3	3	15	36.5	.53	.44	14.3	4.3	+73	+142
44	5.1	3	3	14	36.0	.31	.28	12.6	4.06	+67	+151