

October 29 - 31st, 2020
on Cowbuyer.com

GOLDEN FUTURE



EMBRYO SALE
Hosted by GMS

www.guernseymarketingservice.com

GOLDEN FUTURE EMBRYO SALE

hosted by Guernsey Marketing Service

October 29-31, 2020 on Cowbuyer.com

Bidding opens at 12:00pm EST October 29th and closes 12:00pm EST October 31st.

Terms and Conditions

- All sales are final.
- Payment is due at the end of the sale.
- A 3% convenience fee will be charged for all credit card payments.
- Confirmation of payment will be sent to consignee and purchaser within one week of sale.
- No embryos will ship prior to a full payment being received.
- Buyer is responsible for the coordination, cost, and liability of shipment.
- All embryos are for domestic shipment only unless otherwise specified.
- Final bid must meet the seller's reserve price to be considered sold.

Sales Staff

Guernsey Marketing Service

Robin Alden 614.339.5390
ralden@usguernsey.com

Payment - Guernsey Marketing Service

Rita Rittgers 614.339.5396
accounting@usguernsey.com

Monday - Thursday, 8:30am - 2:00pm EST

Cowbuyer

Aaron Ray Tompkins 336.363.4639



**View and bid online at
www.cowbuyer.com**

Aaron Ray Tompkins 336.363.4639

Buyers must be pre-registered.

Auction opens at 12:00pm EST on Oct. 29
and closes on 12:00pm EST on Oct. 31.

Contact Robin Alden if you are unable
to monitor the auction during this time:

614.339.5390





Sniders Garrett Ashanti-ET EX-94 2E
 170,730M 5.2% 8,901F 3.8% 6,434P Life
 All-American Aged Cow 2014
 Dam of Lot 1

LOT 1 4 JC PENNEY X ASHANTI IVF EMBRYOS

Consigned by Aaron Gable, New Enterprise, PA
 Ph: 814.766.3272 Email: homesteadguernseys@yahoo.com

- Four (4) IVF embryos
- Reverse Sorted for Females
- Embryos are A2A2 by parentage

PA: -180M +0.15% +17F +0.06% +4P +128CM\$ +114NM\$
 +1.1PTAT +1.4UDC +1.2FLC -0.6DPR +0.8PL +46PTI 3.06SCS

SPRINGHILL JC PENNEY-ET 840003151591406 6GU114 A2A2

08/20 USDA GPTA +253M +0.05% +20F +0.01% +11P
 -1.3DPR +0.6PL +125NM\$ 64NM%ile +132CM\$ 46% Rel
 2.94SCS -1.80HCR 31% Rel -2.30CCR 33% Rel
 0.00LIV 29% Rel 0.90GL 33% Rel -0.70EFC 30% Rel
 AGA 08/20 PTAT +1.3 +1.3UDC +1.2FLC 45%Rel PTI +53

SNIDERS GARRETT ASHANTI-ET USA000068018756 A2A2

08/20 USDA GPTA -612M +0.25% +14F +0.10% -3P
 +0.2DPR +0.9PL +102NM\$ 72NM%ile +123CM\$ 69% Rel
 3.17SCS 0.00HCR 30% Rel 0.90CCR 42% Rel
 1.00LIV 36% Rel 1.70GL 42% Rel 0.10EFC 37% Rel
 4 Rec YDev: -878M +35F +3P
 3 App 08/20 PTAT +0.8 +1.4UDR +1.2FLC 71%Rel CPI +38
 Appraisal: EX 94 @ 12-01 (EEEE) 2E
 2-03 365D 2X 16150M 4.8% 777F 3.4% 544P DHIA
 3-07 365D 2X 18000M 5.0% 908F 3.7% 663P DHIA
 5-08 365D 2X 22060M 5.0% 1094F 3.5% 775P DHIA
 7-00 365D 2X 25960M 4.8% 1236F 3.4% 889P DHIA
 9-09 365D 2X 24290M 4.4% 1073F 3.1% 748P DHIA
 3302D 170730M 5.2% 8901F 3.8% 6434P LIFE

All-American Aged Cow 2014

Reserve All-American Aged Cow 2017

Honorable Mention All-American Aged Cow 2019

Grand Champion NGS-Louisville 2017

Reserve Grand Champion NGS-Louisville 2014

Total Performance Cow NGS-Harrisburg 2019

LAND OF LIVING P GARRETT-ET USA000000603126 72GU134 A2A2

PA: -881M +0.07% -30F +0.03% -25P -120CM\$ -129NM\$
 +0.1PTAT +0.1UDC +1.1FLC +2.2DPR +0.6PL -34PTI 2.67SCS

SNIDERS BEN ALIYAH USA000003057464

Appraisal: 93 @ 4-08 (93/93) Gold Star Dam - 2003
 2-02 324D 2X 17000M 4.7% 803F 3.4% 572P 95
 3-03 304D 2X 17640M 4.3% 758F 3.6% 629P DHIA
 4-02 305D 2X 21670M 5.5% 1196F 3.5% 762P 94
 5-07 365D 2X 21930M 4.6% 1016F 3.7% 815P DHIA
 7-00 365D 2X 12230M 4.7% 576F 3.6% 439P DHIA
 1998D 100930M 4.8% 4865F 3.6% 3655P LIFE
 Nominated All-American Aged Cow 2004

3D: CEDAR FRINGED ALTANN USA000003045188

Appraisal: 95 @ 6-11 (95/93) Gold Star Dam - 2001
 6-04 365D 2X 31150M 4.8% 1486F 3.0% 941P 94
 2999D 168160M 4.8% 8035F 3.3% 5522P LIFE
 All-American 4-Year-Old 2000
 Reserve All-American Jr. 2-Year-Old 1998
 HM All-American Aged Cow 2002
 HM Jr. All-American Jr. 2-Year-Old 1999
 Nom. All-American 5-Year-Old 2001



Coulee Crest Pilot Lava-ET VG-88
 2-11 365D 27,590M 5.6% 1,558F 3.6% 997P
 #4 CPI Cow August 2020
 Nom. Jr. All-American Sr. 3-Year-Old 2019
 Dam of Lots 2 & 3; Mat. Sister to Lot 4



LOT 2 4 THEO X LAVA #1 IVF EMBRYOS

Consigned by Coulee Crest LLC, Cashton, WI
 Ph: 608.633.2321 Email: couleecrest@hotmail.com

PA: +340M +0.15% +42F +0.03% +16P +342CM\$ +329NM\$
 +0.8PTAT +0.9UDC +1.8FLC +0.4DPR +2.4PL +102PTI 2.85SCS

- Four (4) #1 IVF embryos
- Embryos eligible for export - EU qualified
- Made with sexed semen for females
- Embryos are A2A2 by parentage
- Resulting calves would rank #1 on current Heifer CPI List

RIPLEY FARMS NETWORK C THEO 840003146571505 6GU112 A2A2

08/20 USDA GPTA -121M +0.24% +37F +0.05% +5P
 +1.3DPR +4.4PL +355NM\$ 99NM%ile +375CM\$ 48% Rel
 2.73SCS 0.10HCR 29% Rel 0.30CCR 32% Rel
 1.90LIV 29% Rel 0.10GL 39% Rel 4.00EFC 30% Rel
 AGA 08/20 PTAT +0.6 +0.7UDC +2.0FLC 42%Rel PTI +91

LINDRIAN GRUMPY PILOT-ET CAN000011632409 200GU307 A2A2

08/20 USDA GPTA -494M +0.16% +4F +0.07% -4P
 +0.0DPR -0.2PL +71NM\$ 47NM%ile +93CM\$ 82% Rel
 2.77SCS -1.10HCR 34% Rel 0.40CCR 54% Rel
 1.40LIV 38% Rel 2.30GL 87% Rel -0.80EFC 41% Rel
 AGA 08/20 PTAT +0.6 +1.4UDC +2.2FLC 75%Rel PTI +37

COULEE CREST PILOT LAVA-ET USA000097000835

08/20 USDA GPTA +801M +0.06% +47F +0.00% +27P
 -0.6DPR +0.3PL +302NM\$ 98NM%ile +308CM\$ 60% Rel
 2.96SCS 0.20HCR 27% Rel -1.30CCR 33% Rel
 0.20LIV 27% Rel 0.90GL 40% Rel 1.90EFC 28% Rel
 2 Rec YDev: +1158M +138F +66P
 1 App 08/20 PTAT +0.9 +1.1UDR +1.5FLC 58%Rel CPI +113
 Appraisal: VG 88 @ 4-05 (EVVVV)
 2-11 365D 3X 27590M 5.6% 1558F 3.6% 997P DHIA
 #4 CPI Cow August 2020
 Dam of 7 of the top 10 CPI Heifers
 Nominated Junior All-American Sr. Three-Year-Old 2019

COULEE CREST LAREDO LALITA-ET USA000068039047 A2A2

Appraisal: 84 @ 4-06 (82/84)
 3-02 365D 3X 29720M 5.6% 1652F 3.7% 1094P DHIA
 1571D 111560M 5.5% 6117F 3.7% 4127P LIFE

LOT 3 4 JAMES DEAN X LAVA #1 IVF EMBRYOS

Consigned by Coulee Crest LLC, Cashton, WI

PA: +276M +0.12% +33F +0.04% +16P +262CM\$ +247NM\$
 +1.1PTAT +1.5UDC +1.6FLC -0.5DPR +1.9PL +90PTI 2.91SCS

- Four (4) #1 IVF embryos
- Embryos eligible for export - EU qualified
- Made with sexed semen for females
- Embryos are A2A2 by parentage
- Resulting calves would rank in the top 10 on current CPI Heifer list

SPRINGHILL JAMES DEAN-ETV 840003151591428 551GU911 A2A2

08/20 USDA GPTA -250M +0.17% +18F +0.08% +5P
 -0.4DPR +3.4PL +192NM\$ 82NM%ile +215CM\$ 44% Rel
 2.85SCS -1.90HCR 26% Rel -1.40CCR 29% Rel
 0.40LIV 26% Rel 0.10GL 28% Rel -1.80EFC 27% Rel
 AGA 08/20 PTAT +1.3 +1.9UDC +1.7FLC 41%Rel PTI +67

COULEE CREST PILOT LAVA-ET USA000097000835

Appraisal: VG 88 @ 4-05 (EVVVV)
 2-11 365D 3X 27590M 5.6% 1558F 3.6% 997P DHIA



Flambeau Manor Decision Lori EX-90
 184,304M 5.4% 10,017F 3.3% 6,002P Life
 Granddam of Lot 4

LOT 4 4 JC PENNEY X LALITA #1 IVF EMBRYOS

Consigned by Coulee Crest LLC, Cashton, WI
 Ph: 608.633.2321 Email: couleecrest@hotmail.com

PA: +543M +0.07% +37F +0.00% +18P +214CM\$ +211NM\$
 +0.7PTAT +0.8UDC +0.3FLC -0.5DPR +0.2PL +72PTI 3.00SCS

SPRINGHILL JC PENNEY-ET 840003151591406 6GU114 A2A2

08/20 USDA GPTA +253M +0.05% +20F +0.01% +11P
 -1.3DPR +0.6PL +125NM\$ 64NM%ile +132CM\$ 46% Rel
 2.94SCS -1.80HCR 31% Rel -2.30CCR 33% Rel
 0.00LIV 29% Rel 0.90GL 33% Rel -0.70EFC 30% Rel
 AGA 08/20 PTAT +1.3 +1.3UDC +1.2FLC 45%Rel PTI +53

COULEE CREST LAREDO LALITA-ET USA000068039047 A2A2

08/20 USDA GPTA +832M +0.08% +53F -0.01% +25P
 +0.5DPR -0.2PL +296NM\$ 98NM%ile +295CM\$ 67% Rel
 3.05SCS 0.10HCR 34% Rel 0.20CCR 43% Rel
 0.30LIV 34% Rel -0.40GL 45% Rel 2.20EFC 36% Rel
 5 Rec YDev: +1729M +128F +63P
 3 App 08/20 PTAT +0.0 +0.2UDR -0.7FLC 67%Rel CPI +91
 Appraisal: 84 @ 4-06 (82/84) Gold Star Dam - 2020
 1-09 365D 3X 22370M 5.4% 1216F 3.7% 824P DHIA
 3-02 365D 3X 29720M 5.6% 1652F 3.7% 1094P DHIA
 4-05 333D 3X 23610M 5.4% 1275F 3.7% 867P 94
 5-06 358D 3X 26720M 5.5% 1458F 3.6% 975P 94
 6-07 305D 3X 26760M 5.8% 1558F 3.7% 995P 94
 1876D 138320M 5.5% 7675F 3.7% 5122P LIFE
 #21(T) CPI Cow August 2020

- Four (4) #1 IVF embryos
- Embryos eligible for export - EU Qualified
- Made with sexed semen for females
- Embryos are A2A2 by parentage
- Resulting calves would rank in the top 50 on current CPI Heifer list

OAK KNOB MAXIE LAREDO USA000068018049 54GU455 A1A2

08/20 USDA GPTA +291M +0.07% +26F -0.01% +8P
 +0.5DPR +1.3PL +201NM\$ 82NM%ile +198CM\$ 94% Rel
 3.10SCS 0.30HCR 58% Rel -0.30CCR 82% Rel
 2.00LIV 57% Rel -0.50GL 97% Rel 3.10EFC 63% Rel
 AGA 08/20 PTAT -0.3 +0.6UDC -1.2FLC 95%Rel PTI +41

FLAMBEAU MANOR DECISION LORI-ET USA000068012709 A2A2

Appraisal: 90 @ 8-02 (88/90) Gold Star Dam - 2013
 2-00 305D 3X 24725M 5.7% 1403F 3.0% 749P HIA
 3-09 365D 3X 44250M*5.9% 2600F*3.0% 1313P* 94
 6-10 365D 3X 26920M 5.6% 1497F 2.8% 766P DHIA
 2328D 184340M 5.4%10017F 3.3% 6002P LIFE

3D: FLAMBEAU MANOR ENHANCER LANA USA000003043629

Appraisal: 92 @ 7-11 (90/90) Gold Star Dam - 2001
 5-10 365D 2X 30271M 5.4% 1645F 3.2% 968P DHIA
 1980D 130421M 4.9% 6454F 3.3% 4293P LIFE

4D: FLAMBEAU MANOR VOL LAURA USA000003022186

Appraisal: 90 @ 4-07
 4-02 305D 2X 18260M 4.2% 765F 3.7% 680P DHIA

5D: FLAMBEAU MANOR LESLIE USA000002947026

Appraisal: 90 @ 3-08 Gold Star Dam - 1992



Royalty Manor HP Lite-It-Up-ETV VG-88
 Grand Champ. WI State Jr. Show 2020
 Dam of Lot 5



LOT 5 3 JAMES DEAN X LITE-IT-UP IVF EMBRYOS

Consigned by Haley Beukema & Valley Gem Farm, Cumberland, WI
 Ph: 715.419.0745 email: vgguernseys@gmail.com

PA: +23M +0.10% +19F +0.05% +9P +174CM\$ +159NM\$
 +1.3PTAT +1.7UDC +2.3FLC -0.8DPR +1.7PL +70PTI 2.87SCS

SPRINGHILL JAMES DEAN-ETV 840003151591428 551GU911 A2A2

08/20 USDA GPTA -250M +0.17% +18F +0.08% +5P
 -0.4DPR +3.4PL +192NM\$ 82NM%ile +215CM\$ 44% Rel
 2.85SCS -1.90HCR 26% Rel -1.40CCR 29% Rel
 0.40LIV 26% Rel 0.10GL 28% Rel -1.80EFC 27% Rel
 AGA 08/20 PTAT +1.3 +1.9UDC +1.7FLC 41%Rel PTI +67

ROYALTY MANOR HP LITE-IT-UP-ETV 840003142494116 A1A2

08/20 USDA PTA +295M +0.03% +19F +0.01% +12P
 -1.1DPR -0.1PL +126NM\$ 78NM%ile +133CM\$ 44% Rel
 2.88SCS -1.40HCR 14% Rel -1.60CCR 24% Rel
 -1.20LIV 16% Rel 1.20GL 22% Rel -1.90EFC 18% Rel
 1 Rec YDev: +670M +32F +27P
 1 App 08/20 PTAT +1.2 +1.4UDR +2.8FLC 46%Rel CPI +72
 Appraisal: VG 88 @ 2-07 (VVVVE)
 2-03 305D 2X 23342M 4.2% 969F 3.3% 766P Proj. Act.
 1st Sr 2 Year Old Wisconsin State Show 2020
 Grand Champion of the Jr. Show at the Wisconsin State Show 2020
 Honorable Mention Grand Champion Wisconsin State Show 2020



- Three (3) IVF embryos
- Sexed semen used for females
- Export eligible
- Resulting calves would rank in the top 60 CPI heifers on current list

SNIDERS GARRETT ALYMO-ET USA000068018751 179GU8

08/20 USDA PTA -633M +0.24% +11F +0.08% -8P
 +0.6DPR +0.9PL +95NM\$ 58NM%ile +112CM\$ 84% Rel
 3.01SCS -0.20HCR 23% Rel 0.20CCR 53% Rel
 0.90LIV 30% Rel 2.00GL 42% Rel -1.80EFC 33% Rel
 AGA 08/20 PTAT +1.0 +1.7UDC +1.8FLC 81%Rel PTI +44

COULEE CREST AP LEXI-ET USA000068039052 A1A2

Appraisal: 88 @ 2-09 (90/88)
 2-02 365D 2X 30470M 3.9% 1182F 3.1% 946P DHIA
 All-American Spring Calf 2013
 Reserve All-American Jr. 2-Year-Old 2015
 Reserve All-American Jr. 3-Year-Old 2016
 HM All-American & Res. Jr. All-American Spring Yearling 2014
 Junior Champion NGS-Louisville 2014

3D: COULEE CREST NICK LORILYN USA000068023988 A1A2

Appraisal: 91 @ 5-00 (90/91)
 3-05 365D 3X 42440M*5.3% 2254F*3.1% 1298P* DHIA
 1168D 107900M 5.3% 5707F 3.3% 3533P LIFE

4D: FLAMBEAU MANOR DECISION LORI-ET USA000068012709 A2A2

Appraisal: 90 @ 8-02 (88/90) Gold Star Dam - 2013
 3-09 365D 3X 44250M*5.9% 2600F*3.0% 1313P* 94
 2328D 184340M 5.4% 10017F 3.3% 6002P LIFE

Royalty Manor Fame LastCallCrush-ETV VG-87

Honorable Mention All-American Fall Calf 2018
 Maternal Sister to Dam of Lot 5



Golden I Sunrise Leora EX-90
 151,500M 5.4% 8,235F 3.7% 5,539P Life
 #9 CPI Cow August 2020
 Dam of #1 Active bull - London
 Dam of Lockley-P @ Masterpiece Genetics
 Dam of Lot 6

LOT 6 3 JC PENNEY X LEORA IVF EMBRYOS

Consigned by Edward C Crossland, Cumberland, MD
 Ph: 301.697.1328 Email: gladhearholsteins@gmail.com

- Three(3) #1 IVF embryos
- Made with sexed semen
- Resulting calves would rank in top 30 CPI heifers on current list

PA: +425M +0.06% +30F +0.05% +23P +235CM\$ +216NM\$
 +0.9PTAT +0.5UDC +1.0FLC -0.2DPR +0.9PL +77PTI 2.91SCS

SPRINGHILL JC PENNEY-ET 840003151591406 6GU114 A2A2

08/20 USDA GPTA +253M +0.05% +20F +0.01% +11P
 -1.3DPR +0.6PL +125NM\$ 64NM%ile +132CM\$ 46% Rel
 2.94SCS -1.80HCR 31% Rel -2.30CCR 33% Rel
 0.00LIV 29% Rel 0.90GL 33% Rel -0.70EFC 30% Rel
 AGA 08/20 PTAT +1.3 +1.3UDC +1.2FLC 45%Rel PTI +53

GOLDEN I SUNRISE LEORA USA000068040746

08/20 USDA GPTA +596M +0.06% +39F +0.08% +35P
 +1.0DPR +1.2PL +307NM\$ 98NM%ile +337CM\$ 66% Rel
 2.88SCS-0.10HCR 29% Rel 1.00CCR 39% Rel
 0.30LIV 32% Rel 1.40GL 47% Rel -4.70EFC 32% Rel
 5 Rec YDev: +2103M +146F +96P
 4 App 08/20 PTAT +0.5 -0.4UDR +0.8FLC 68%Rel CPI +101
 Appraisal: 90 @ 4-11 (90/87) Gold Star Dam - 2018
 2-02 365D 2X 18160M 4.8% 865F 3.7% 669P DHIA
 3-06 365D 2X 18930M 4.7% 885F 3.6% 677P DHIA
 4-08 304D 2X 24590M 5.4% 1333F 3.4% 842P 104
 5-07 319D 2X 24510M 5.7% 1400F 3.6% 873P 104
 6-07 365D 2X 28660M 5.3% 1519F 3.7% 1051P DHIA
 8-01 365D 2X 27530M 5.9% 1638F 3.7% 1016P DHIA
 2355D 151500M 5.4% 8235F 3.7% 5539P LIFE

#9 August 2020 CPI Cow List
 Dam of London - #1 Active bull August 2020

RIPLEY FARMS RC SUNRISE USA000000605002

08/20 USDA PTA +1247M +0.01% +60F +0.01% +43P
 -1.6DPR -2.2PL +196NM\$ 82NM%ile +206CM\$ 88% Rel
 2.98SCS -1.10HCR 36% Rel -2.10CCR 63% Rel
 -5.50LIV 35% Rel 2.50GL 70% Rel -10.40EFC 40% Rel
 AGA 08/20 PTAT -0.6 -2.0UDC -1.2FLC 82%Rel PTI +63

PINECREST ACRES NATURAL LEAH USA000068013765

Appraisal: 93 @ 7-07 (94/91)
 3-07 341D 2X 16780M 5.4% 900F 3.7% 618P 65
 4-09 365D 2X 17510M 4.2% 735F 3.4% 601P DHIA

3D: PINECREST ACRES CHARLES LESTI USA000003077044

Appraisal: 90 @ 5-11 (88/90) Gold Star Dam - 2007
 6-06 365D 2X 18830M 5.3% 997F 3.7% 694P DHIA
 2132D 100350M 5.0% 5034F 3.7% 3664P LIFE



Hi Guern View Diva Designer EX-92
 3-03 305D 16,620M 4.3% 708F 3.4% 572P
 Unan. All-American Jr. 3-Yr-Old 2018
 Dam of Lot 7

LOT 7 5 #1 LONDON X DESIGNER IVF EMBRYOS

Consigned by Brian & Kristi Dinderman, Orangeville, IL
 Ph: 815.297.4111 Email: dindermanb@gmail.com

PA: +297M +0.01% +14F +0.02% +13P +127CM\$ +121NM\$
 +1.3PTAT +0.9UDC +2.7FLC +0.3DPR +1.1PL +73PTI 3.00SCS

GOLDEN I LONDON USA000068039423 54GU481 A2A2

08/20 USDA PTA +694M -0.02% +28F +0.02% +26P
 +0.2DPR -0.7PL +174NM\$ 82NM%ile +183CM\$ 73% Rel
 2.98SCS 0.70HCR 20% Rel 0.40CCR 39% Rel
 -1.70LIV 21% Rel 1.20GL 83% Rel -3.70EFC 23% Rel
 AGA 08/20 PTAT +1.3 +0.5UDC +2.2FLC 64%Rel PTI +89

HI GUERN VIEW DIVA DESIGNER USA000078005623 A2A2

08/20 USDA GPTA -101M +0.03% +0F +0.01% -1P
 +0.4DPR +2.8PL +67NM\$ 62NM%ile +70CM\$ 61% Rel
 3.02SCS-0.30HCR 32% Rel 0.00CCR 40% Rel
 0.00LIV 33% Rel -0.70GL 41% Rel 1.60EFC 36% Rel
 3 Rec YDev: +22M +23F +13P
 3 App 08/20 PTAT +1.2 +1.2UDR +3.2FLC 51%Rel CPI +57
 Appraisal: EX 92 @ 5-03 (EEEEEE)
 2-00 305D 2X 14990M 4.7% 702F 3.1% 471P 93
 3-03 305D 2X 16620M 4.3% 708F 3.4% 572P 92
 4-07 305D 2X 22878M 4.4% 997F 3.4% 782P Proj. Act.
Unanimous All-American & Jr. All-American Jr. 3-Year-Old 2018
Member, Unanimous All-American Dam & Daughter 2018
Grand Champion NJS-Madison 2018
Intermediate Champion NGS-Madison 2018
 Dtr: HI GUERN VIEW DESIGNER DECOR-ET 85 @ 2-11 (87/78)
Nominated Junior All-American Fall Calf 2018

- Five (5) #1 IVF embryos
- Embryos are A2A2 by parentage
- Embryos are NOT SORTED for sex
- Resulting calves would rank in the top 50 heifers or 5 young sires on current CPI/PTI lists

MARODORE AARONS LEVI-ET USA000068025119 7GU438 A2A2

08/20 USDA GPTA -186M -0.03% -13F -0.04% -13P
 +1.5DPR +1.9PL -45NM\$ 23NM%ile -57CM\$ 96% Rel
 2.97SCS 1.00HCR 61% Rel 0.60CCR 84% Rel
 -1.40LIV 58% Rel -0.70GL 98% Rel 4.50EFC 69% Rel
 AGA 08/20 PTAT +0.7 +0.3UDC +1.3FLC 95%Rel PTI +1

HI GUERN VIEW DANCING DIVA-ET USA000068047311 A2A2

Appraisal: EX 96 @ 7-09 (EEEEEE)
 1-11 353D 2X 19070M 4.8% 915F 3.5% 666P 95
 3-01 318D 2X 20010M 4.7% 933F 3.4% 688P 94
 4-00 305D 2X 19030M 4.6% 871F 3.7% 706P 95
 5-04 319D 2X 22670M 4.6% 1034F 3.5% 803P 94
 6-04 305D 2X 22100M 4.3% 957F 3.5% 781P 92
 7-07 305D 2X 25620M 3.9% 1001F 3.5% 897P 94
 2097D 137410M 4.5% 6195F 3.6% 4937P LIFE
Unanimous All-American Aged Cow 2018
Member, Unanimous All-American Dam & Daughter 2018
Reserve All-American 4-Year-Old 2016
Honorable Mention All-American 5-Year-Old 2017
Nominated All-American Jr. 3-Year-Old 2015
Grand Champion NGS-Louisville 2018

3D: ADAMS CREEK REGAL DANCER USA000068019811

Appraisal: 92 @ 3-07 (94/86)
 3-05 305D 2X 23750M 4.4% 1048F 3.3% 779P 50
All-American 4-Year-Old 2011



Hi Guern View Dancers Delite-ET EX-91
 Nominated All-American Jr. 3-Year-Old 2015
 Dam of Lot 8



Hi Guern View Dancers Diva-ET EX-96
 Unanimous All-American Aged Cow 2018
 Full Sister to Dam of Lot 8
 Granddam of Lot 7

LOT 8 4 #1 JC PENNEY X DELITE IVF EMBRYOS

Consigned by Brian & Kristi Dinderman, Orangeville, IL
 Ph: 815.297.4111 Email: dindermanb@gmail.com

PA: -75M +0.07% +8F +0.02% +2P +49CM\$ +42NM\$
 +1.2PTAT +0.9UDC +0.6FLC -0.5DPR +0.6PL +24PTI 2.93SCS

SPRINGHILL JC PENNEY-ET 840003151591406 6GU114 A2A2

08/20 USDA GPTA +253M +0.05% +20F +0.01% +11P
 -1.3DPR +0.6PL +125NM\$ 64NM%ile +132CM\$ 46% Rel
 2.94SCS -1.80HCR 31% Rel -2.30CCR 33% Rel
 0.00LIV 29% Rel 0.90GL 33% Rel -0.70EFC 30% Rel
 AGA 08/20 PTAT +1.3 +1.3UDC +1.2FLC 45%Rel PTI +53

HI GUERN VIEW DANCERS DELITE-ET USA000068047312 A2A2

08/20 USDA GPTA -402M +0.08% -4F +0.03% -8P
 +0.3DPR +0.5PL -42NM\$ 28NM%ile -34CM\$ 66% Rel
 2.92SCS -1.10HCR 33% Rel 0.80CCR 41% Rel
 0.30LIV 37% Rel 0.10GL 40% Rel -2.60EFC 38% Rel
 3 Rec YDev: -1408M -10F -37P

2 App 08/20 PTAT +1.0 +0.5UDR -0.1FLC 62%Rel CPI -5
 Appraisal: EX 91 @ 7-09 (EEEEGE)

1-11 345D 2X 16650M 4.9% 818F 3.3% 551P 94
 3-04 305D 2X 16490M 4.9% 816F 3.5% 577P 94
 7-06 359D 2X 15700M 5.1% 796F 3.4% 536P

Nominated All-American Junior Three-Year-Old 2015

Dtr: HI GUERN VIEW LEVI DEMI-ET 88 @ 4-10 (87/83)

1-11 364D 2X 19720M 4.3% 847F 3.4% 661P 92

- Four (4) #1 IVF embryos
- Made with reverse-sort semen for females
- Embryos are A2A2 by parentage

EDGEWATER MEADOWS YOGIBEAR-ET USA00000604917 7GU402 A2A2

08/20 USDA GPTA -475M +0.12% -1F +0.04% -9P
 +0.1DPR +1.2PL +2NM\$ 41NM%ile +10CM\$ 99% Rel
 2.99SCS -1.70HCR 76% Rel -0.10CCR 95% Rel
 0.40LIV 84% Rel -1.20GL 99% Rel -0.60EFC 87% Rel
 AGA 08/20 PTAT +1.2 +1.2UDC +1.2FLC 99%Rel PTI +18

ADAMS CREEK REGAL DANCER USA000068019811

Appraisal: 92 @ 3-07 (94/86)

2-01 298D 2X 14210M 4.8% 689F 3.5% 491P 95
 3-05 305D 2X 23750M 4.4% 1048F 3.3% 779P 50

All-American Four-Year-Old 2011

Honorable Mention All-American Jr. Two-Year-Old 2009

Res. Senior Champion NGS-Madison & Harrisburg 2011

Dtrs: HI GUERN VIEW DANCING DIVA-ET 96 @ 7-09 (97/94)

5-04 319D 2X 22670M 4.6% 1034F 3.5% 803P 94

Unanimous All-American Aged Cow 2018

HI GUERN VIEW DANCERS DREAM-ET 90 @ 3-07 (88/87)

2-10 315D 2X 22390M 3.9% 879F 3.2% 721P 94

LAND OF LIVING A DEBUTANTE-ET 86 @ 2-10 (88/87)



Luckyvale Grumpy Kaz-ET EX-91
 3-07 365D 33,150M 5.1% 1,681F 3.5% 1,145P
 Four-Time All-American Nominee
 Dam of Lot 9
 Granddam of Lot 10

LOT 9 2 EXCALIBUR X KAZ IVF EMBRYOS

Consigned by Rex Ferris, Soap Lake, WA
 Ph: 509.760.1694 Email: rexpriority1@yahoo.com

- Two (2) IVF embryos
- Made using sexed semen for females
- Resulting calves would rank #52 on the current CPI Heifer List

PA: +381M +0.02% +21F +0.03% +18P +181CM\$ +169NM\$
 +0.7PTAT +0.7UDC +1.6FLC -0.4DPR +1.3PL +70PTI 2.96SCS

BEECHGROVES EXCALIBUR GBR281005701400 522GU903 A2A2

08/20 USDA GPTA +213M +0.08% +24F +0.03% +12P
 -0.5DPR +0.5PL +120NM\$ 64NM%ile +130CM\$ 46% Rel
 2.96SCS 1.00HCR 30% Rel -1.80CCR 36% Rel
 -1.60LIV 30% Rel -0.30GL 37% Rel 1.10EFC 31% Rel
 AGA 08/20 PTAT +0.6 +0.1UDC +1.5FLC 42%Rel PTI +54

LUCKYVALE GRUMPY KAZ-ET USA000078000731

08/20 USDA GPTA +549M -0.04% +18F +0.03% +24P
 -0.2DPR +2.1PL +218NM\$ 93NM%ile +232CM\$ 48% Rel
 2.95SCS-1.20HCR 24% Rel -0.30CCR 32% Rel
 1.00LIV 26% Rel -0.80GL 34% Rel 1.90EFC 27% Rel
 1 Rec YDev: +2670M +170F +103P
 2 App 08/20 PTAT +0.8 +1.3UDR +1.6FLC 47%Rel CPI +85
 Appraisal: 91 @ 4-01 (90/88)
 2-08 288D 2X 23000M 5.0% 1159F 3.4% 786P 94
 3-07 365D 2X 33150M 5.1% 1681F 3.5% 1145P 96
 Honorable Mention All-American Fall Calf 2014
 Nominated All-American 2015, 2016 & 2018
 Grand Champion NGS-Puyallup 2016 & 2017

GOLDEN J RONALD GRUMPY USA00000604960 7GU405 A2A2

08/20 USDA GPTA -89M +0.09% +12F +0.06% +7P
 +1.0DPR +3.6PL +250NM\$ 99NM%ile +269CM\$ 98% Rel
 2.84SCS -1.10HCR 76% Rel 1.40CCR 93% Rel
 2.70LIV 78% Rel -1.20GL 99% Rel 3.00EFC 83% Rel
 AGA 08/20 PTAT +0.1 +1.1UDC +0.3FLC 98%Rel PTI +54

LUCKYVALE YOGI KIARA USA000068027293

Appraisal: 88 @ 3-11 (88/86)
 2-07 365D 2X 20880M 3.7% 768F 3.3% 687P DHIA
 Jr. All-American & Res. All-American Fall Yearling 2011
 Jr. All-American & HM All-American Fall Calf 2010
 Reserve Junior All-American Sr. 2-Year-Old 2012
 Junior Champion NJS-Madison 2011
 Reserve Junior Champion NGS-Madison 2011

3D: RIPLEY FARMS ADACKA C KATHY USA000068013944

Appraisal: 83 @ 3-04 (79/86)

4D: RIPLEY FARMS G CONNI KATE-ET USA000003083059

Appraisal: 88 @ 3-05 (90/85)

3-01 305D 3X 22000M 4.4% 969F 3.4% 738P 97

5D: LOW BROOK GOLDFOOT CONNY USA000003067544

Appraisal: 90 @ 4-04 (86/90)

2-00 365D 2X 29014M 4.1% 1193F 3.1% 903P 70
 1715D 123780M 4.7% 5824F 3.6% 4404P LIFE



Ry-Sar Copper Kami-ET
 2nd Fall Calf NGS-Puyallup 2017
 Full Sister to Dam of Lot 10



Ry-Sar Copper Katrina-ET VG-88
 1st Winter Calf NGS-Puyallup 2017
 Full Sister to Dam of Lot 10

LOT 10 2 DRONE X KARMA IVF EMBRYOS

Consigned by Rex Ferris, Soap Lake, WA
 Ph: 509.760.1694 Email: rexpriority1@yahoo.com

- Two (2) IVF embryos
- Made using sexed semen for females
- Embryos are A2A2 by parentage

PA: +444M -0.07% +8F -0.02% +13P +106CM\$ +107NM\$
 +1.3PTAT +1.1UDC +1.4FLC -0.4DPR +1.4PL +52PTI 2.96SCS

HI GUERN VIEW LEVI DRONE USA000097004646 94GU959 A2A2

08/20 USDA GPTA +161M -0.05% -1F +0.01% +8P
 +0.4DPR +3.5PL +107NM\$ 64NM%ile +112CM\$ 54% Rel
 2.98SCS -1.0SCR -0.40HCR 34% Rel 0.00CCR 41% Rel
 -0.80LIV 35% Rel -0.40GL 42% Rel 1.00EFC 37% Rel
 AGA 08/20 PTAT +1.4 +1.1UDC +1.6FLC 50%Rel PTI +50

RY-SAR COPPER KARMA-ET USA000097002790 A2A2

08/20 USDA GPTA +726M -0.09% +17F -0.04% +17P
 -1.2DPR -0.7PL +106NM\$ 73NM%ile +100CM\$ 49% Rel
 2.94SCS 0.20HCR 34% Rel -1.40CCR 39% Rel
 -1.10LIV 32% Rel 0.00GL 41% Rel 4.10EFC 34% Rel
 0 App 08/20 PTAT +1.2 +1.1UDR +1.1FLC 48%Rel CPI +53
 Appraisal: VG 85 @ 3-07 (VV+V+)

JENS GOLD AARON COPPER-ET USA000068027038 14GU318 A2A2

08/20 USDA GPTA +343M +0.01% +18F -0.05% +2P
 -0.5DPR +0.8PL +141NM\$ 70NM%ile +131CM\$ 96% Rel
 2.88SCS 1.90HCR 67% Rel -0.40CCR 83% Rel
 -0.80LIV 59% Rel 0.50GL 98% Rel 4.40EFC 67% Rel
 AGA 08/20 PTAT +1.0 +1.1UDC +1.1FLC 96%Rel PTI +40

LUCKYVALE GRUMPY KAZ-ET USA000078000731

Appraisal: 91 @ 4-01 (90/88)
 2-08 288D 2X 23000M 5.0% 1159F 3.4% 786P 94
 3-07 365D 2X 33150M 5.1% 1681F 3.5% 1145P 96
 Honorable Mention All-American Fall Calf 2014
 Nominated All-American 2015, 2016 & 2018
 Grand Champion NGS-Puyallup 2016 & 2017



Luckyvale Yogi Kiara VG-88
 Junior All-American 2010 & 2011
 Granddam of Lot 9
 3rd Dam of Lot 10



Nells Glow Challenge Conny EX-93
 156,440M 4.9% 7,597F 3.7% 5,725P Life
 Res. Jr. All-American 2013
 Dam of Lot 11

LOT 11 4 #2 JC PENNEY X CONNY IVF EMBRYOS

Consigned by Springhill, Big Prairie, OH
 Ph: 330.473.9660 Email: springhill.chris@gmail.com

- Four (4) #2 IVF embryos
- Embryos eligible for export - EU Qualified
- Made with reverse sorted semen for females

PA: +310M +0.02% +18F +0.04% +17P +161CM\$ +148NM\$
 +1.0PTAT +0.6UDC +1.3FLC -0.8DPR +0.8PL +54PTI 2.98SCS

SPRINGHILL JC PENNEY-ET 840003151591406 6GU114 A2A2

08/20 USDA GPTA +253M +0.05% +20F +0.01% +11P
 -1.3DPR +0.6PL +125NM\$ 64NM%ile +132CM\$ 46% Rel
 2.94SCS -1.80HCR 31% Rel -2.30CCR 33% Rel
 0.00LIV 29% Rel 0.90GL 33% Rel -0.70EFC 30% Rel
 AGA 08/20 PTAT +1.3 +1.3UDC +1.2FLC 45%Rel PTI +53

NELLS GLOW CHALLENGE CONNY USA000068028537

08/20 USDA GPTA +366M -0.01% +15F +0.06% +23P
 -0.3DPR +1.0PL +170NM\$ 87NM%ile +189CM\$ 69% Rel
 3.02SCS -2.10HCR 37% Rel -0.50CCR 45% Rel
 -0.60LIV 40% Rel -0.30GL 45% Rel -5.60EFC 41% Rel
 5 Rec YDev: +1138M +53F +59P
 3 App 08/20 PTAT +0.7 -0.1UDR +1.3FLC 71%Rel CPI +54
 Appraisal: 93 @ 7-11 (92/91)
 2-03 3365D 2X 19560M 4.8% 930F 3.6% 695P 101
 3-05 305D 2X 21110M 4.5% 954F 3.4% 724P 102
 4-08 365D 2X 25430M 4.5% 1147F 3.4% 872P DHIA
 6-03 334D 2X 24810M 4.8% 1179F 3.6% 887P 102
 7-02 365D 2X 24990M 5.1% 1267F 4.0% 988P DHIA
 10-06 303D 2X 14320M 4.7% 677F 3.2% 463P 96
 2546D 156440M 4.9% 7597F 3.7% 5725P LIFE
 Reserve Junior All-American 5-Year-Old 2013

IDLE GOLD E CHALLENGE-ET USA000000604268 1GU418 A2A2

08/20 USDA GPTA -501M +0.15% +3F +0.10% +1P
 +1.2DPR +0.8PL +84NM\$ 52NM%ile +113CM\$ 98% Rel
 2.88SCS -3.00HCR 80% Rel 1.20CCR 94% Rel
 -0.70LIV 85% Rel -0.30GL 99% Rel -8.30EFC 88% Rel
 AGA 08/20 PTAT -0.3 -0.3UDC +0.8FLC 98%Rel PTI +11

RIPLEY FARMS SP CONI SUE-ET USA000068008643

Appraisal: 82 @ 2-10 (82/85)
 2-04 365D 2X 25550M 4.3% 1086F 3.3% 851P DHIA
 3-10 307D 2X 19580M 4.4% 863F 3.6% 697P 101

3D: LOW BROOK GOLDFOOT CONNY USA000003067544

Appraisal: 90 @ 4-04 (86/90)
 2-00 365D 2X 29014M 4.1% 1193F 3.1% 903P 70
 1715D 123780M 4.7% 5824F 3.6% 4404P LIFE



Valley Gem Luck Deidra EX-90
 2-11 282D 18,920M 4.8% 902F 3.0% 572P
 Res. All-American Jr. 3-Yr-Old 2019
 Dam of Lot 12

LOT 12 3 MAS X DEIDRA IVF EMBRYOS

Consigned by Valley Gem, Cumberland, WI
 Ph: 715.419.0745 Email: vgguernseys@gmail.com

MUTUALLY AGREEABLE SIRE

VALLEY GEM LUCK DEIDRA USA000097005385
 08/20 USDA PTA +31M -0.03% -3F -0.02% -2P
 +0.8DPR +0.5PL -22NM\$ 34NM%ile -28CM\$ 45% Rel
 3.08SCS-1.20HCR 11% Rel 0.20CCR 17% Rel
 -0.70LIV 12% Rel -0.80GL 19% Rel 1.50EFC 13% Rel
 3 Rec YDev: -111M -19F -17P
 2 App 08/20 PTAT +0.6 +0.2UDR +0.7FLC 46%Rel CPI +11
 Appraisal: EX 90 @ 3-03 (EEEEVE)
 2-00 291D 2X 15570M 5.3% 827F 3.5% 540P 99
 2-11 282D 2X 18920M 4.8% 902F 3.0% 572P 96
 3-09 305D 2X 21255M 5.1% 1079F 3.4% 721P Proj. Act.
 Reserve All-American Jr. 3 Year Old 2019
 Member, Reserve All-American Best Three Females 2019
 Nominated All-American Jr. 2 Year Old 2018

- Three (3) IVF embryos
- Can be done with reverse sorted or sexed semen
- Can be made export-eligible
- Choice to be made by January 1, 2021

FLAMBEAU MANOR LOTS OF LUCK USA000078003964
 PA: -277M +0.03% -9F +0.00% -10P -188CM\$ -181NM\$
 +0.9PTAT +0.7UDC +1.7FLC -1.6DPR -1.8PL -13PTI 3.20SCS

VALLEY GEM GRUMPYS DEE USA000068042408
 Appraisal: 80 @ 4-10 (78/74)
 2-02 305D 2X 16730M 6.7% 1118F 3.0% 496P DHIA
 3-04 305D 2X 20830M 5.1% 1053F 3.3% 681P 91
 4-07 305D 2X 20640M 4.5% 929F 3.0% 619P 99
 6-01 305D 2X 20390M 4.3% 876F 3.5% 713P 76
 1836D 101570M 5.1% 5183F 3.3% 3319P LIFE

3D: VALLEY GEM ALIANCES DEE DEE-ET USA000068007260
 Appraisal: 75 @ 4-06 (74/76)
 3-02 341D 3X 23060M 4.0% 933F 2.8% 655P 102

4D: VALLEY GEM LORDS DINAH USA000003058679
 Appraisal: 88 @ 4-01 (88/85)
 3-10 365D 2X 20100M 5.9% 1184F 3.3% 660P 91

5D: VALLEY GEM HENRYS DEAR USA000003038744
 Appraisal: 86 @ 3-09

6D: VALLEY GEM ELVIS DOZER USA000002994043
 Appraisal: 85 @ 5-00



Valley Gem Hit It Devora
 2nd Jr. 2-Year-Old Midwest Dairy Congress 2020
 Maternal Sister to Lot 12



Thurston Farms Primetime Trixie VG-87
 Unan. All-American Yearling in Milk 2019
 Grand Champion NE Fall Show 2020
 Dam of Lot 13
 Maternal Family of Lots 14 - 18

LOT 13 3 DRONE OR MAS X TRIXIE IVF EMBRYOS

Consigned by Glenn & Sheryl Taylor, Cassville, NY
 Ph: 315.292.4230 Email: twfarm.sheryl@gmail.com

PA: +510M -0.15% -4F -0.07% +6P -20CM\$ -4NM\$
 +1.2PTAT +0.7UDC +1.1FLC -0.7DPR +1.0PL +18CPI 2.98SCS

- Three (3) IVF embryos
- Drone embryos scheduled to be made in November; MAS choice needs made by Dec. 1 with embryos made by March 1
- Reverse Sorted for Females
- Can be made exportable anywhere by request
- Drone embryos are A2A2 by parentage

HI GUERN VIEW LEVI DRONE USA000097004646 94GU959 A2A2

08/20 USDA GPTA +161M -0.05% -1F +0.01% +8P
 +0.4DPR +3.5PL +107NM\$ 64NM%ile +112CM\$ 54% Rel
 2.98SCS -1.0SCR -0.40HCR 34% Rel 0.00CCR 41% Rel
 -0.80LIV 35% Rel -0.40GL 42% Rel 1.00EFC 37% Rel
 AGA 08/20 PTAT +1.4 +1.1UDC +1.6FLC 50%Rel PTI +50

THURSTON FARMS PRIMETIME TRIXIE 840003126794988 A2A2

08/20 USDA GPTA +859M -0.25% -6F -0.14% +3P
 -1.7DPR -1.6PL -115NM\$ 13NM%ile -151CM\$ 57% Rel
 2.98SCS -0.60HCR 24% Rel -2.70CCR 28% Rel
 -3.20LIV 27% Rel 0.80GL 34% Rel 2.80EFC 26% Rel
 1 Rec YDev: +114M -54F -60P
 1 App 08/20 PTAT +0.9 +0.3UDR +0.5FLC 54%Rel CPI -14
 Appraisal: VG 87 @ 2-01 (VVVVV)
 Unanimous All-American & Jr. All-American Yearling in Milk 2019
 Grand Champion NJS-Madison 2019
 Reserve Intermediate Champion NGS-Madison 2019
 Grand Champion Northeast Fall Guernsey Show 2020

KNAPPS PRADA PRIMETIME USA000078000324 54GU483

08/20 USDA PTA +359M -0.16% -12F -0.08% -2P
 -1.1DPR +1.0PL -33NM\$ 23NM%ile -50CM\$ 71% Rel
 2.85SCS -0.60HCR 23% Rel -2.60CCR 35% Rel
 -1.20LIV 26% Rel 0.40GL 65% Rel -1.00EFC 28% Rel
 AGA 08/20 PTAT +0.8 +0.6UDC +0.4FLC 64%Rel PTI -13

KNAPPS REGIS TROTTER-ETV USA000097000111 A2A2

Appraisal: VG 88 @ 4-03 (VE+VV)

3D: KNAPPS ACE TAMERA USA000068006299

Appraisal: 93 @ 9-07 (91/92)
 9-07 365D 2X 32350M 4.2% 1351F 3.2% 1036P DHIA
 3038D 178720M 4.4% 7847F 3.4% 6004P LIFE



Heritage Brook Lb Trillium-ETV
 1st Spring Calf Venango Fall Classic 2020
 3rd Spring Calf Guernsey Gold Showcase 2020
 Maternal Sister to Lot 13



Knapps Fame Tomorrow-ET EX-94
 121,020M 5.0% 6,087F 3.7% 4,485P Life
 HM Jr. All-American Sr. 3-Yr-Old 2015
 Dam of Lots 14 & 15
 Maternal Family of Lots 13 - 18

LOT 14 4 DRONE X TOMORROW IVF EMBRYOS

Consigned by Landen Knapp, Epworth, IA
 Ph: 563.590.5369 Email: knappsguernseys@aim.com

- Four (4) IVF embryos
- Reverse Sorted for Females

PA: -166M -0.08% -21F +0.02% -3P -20CM\$ -23NM\$
 +1.4PTAT +1.4UDC +1.7FLC -0.3DPR +2.8PL +10PTI 3.01SCS

HI GUERN VIEW LEVI DRONE USA000097004646 94GU959 A2A2

08/20 USDA GPTA +161M -0.05% -1F +0.01% +8P
 +0.4DPR +3.5PL +107NM\$ 64NM%ile +112CM\$ 54% Rel
 2.98SCS -1.0SCR -0.40HCR 34% Rel 0.00CCR 41% Rel
 -0.80LIV 35% Rel -0.40GL 42% Rel 1.00EFC 37% Rel
 AGA 08/20 PTAT +1.4 +1.1UDC +1.6FLC 50%Rel PTI +50

KNAPPS FAME TOMORROW-ET USA000068047818

08/20 USDA PTA -492M -0.10% -40F +0.02% -13P
 -1.0DPR +2.1PL -153NM\$ 8NM%ile -151CM\$ 59% Rel
 3.04SCS-2.80HCR 19% Rel -3.40CCR 34% Rel
 -0.70LIV 24% Rel 0.90GL 38% Rel 0.40EFC 26% Rel
 5 Rec YDev: -1181M -81F -31P
 4 App 08/20 PTAT +1.4 +1.7UDR +1.8FLC 59%Rel CPI -31
 Appraisal: 94 @ 6-01 (94/95)
 2-01 333D 2X 15500M 5.1% 798F 3.5% 547P 95
 3-01 365D 2X 20140M 5.1% 1024F 3.3% 664P DHIA
 4-05 365D 2X 26950M 4.9% 1333F 3.7% 991P DHIA
 5-10 365D 2X 21680M 5.1% 1116F 3.8% 821P DHIA
 7-09 305D 2X 17840M 4.6% 813F 3.8% 670P 96
 2173D 121020M 5.0% 6087F 3.7% 4485P LIFE
 Honorable Mention Jr. All-American Sr 3-Year-Old 2015

MILLBORNE TILLER FAYES FAME USA000068008443 91GU4843 A2A2

08/20 USDA PTA -173M -0.07% -21F +0.03% +0P
 -4.3DPR -3.2PL -273NM\$ 5NM%ile -274CM\$ 94% Rel
 3.47SCS -4.70HCR 48% Rel -7.20CCR 81% Rel
 -4.30LIV 54% Rel 1.40GL 95% Rel -0.80EFC 61% Rel
 AGA 08/20 PTAT +1.7 +1.9UDC +3.4FLC 94%Rel PTI -9

KNAPPS ACE TAMERA USA000068006299

Appraisal: 93 @ 9-07 (91/92)
 2-07 365D 2X 19960M 4.7% 935F 3.4% 670P DHIA
 3-08 365D 2X 24510M 4.3% 1044F 3.2% 786P DHIA
 5-06 365D 2X 24830M 4.6% 1146F 3.3% 809P DHIA
 9-07 365D 2X 32350M 4.2% 1351F 3.2% 1036P DHIA
 3038D 178720M 4.4% 7847F 3.4% 6004P LIFE

LOT 15 4 ALYMO X TOMORROW IVF EMBRYOS

Consigned by Landen Knapp, Epworth, IA
 Ph: 563.590.5369 Email: knappsguernseys@aim.com

- Four (4) IVF embryos
- Reverse Sorted for Females

PA: -563M +0.07% -15F +0.05% -11P -20CM\$ -29NM\$
 +1.2PTAT +1.7UDC +1.8FLC -0.2DPR +1.5PL +7PTI 3.03SCS

SNIDERS GARRETT ALYMO-ET USA000068018751 179GU8

08/20 USDA PTA -633M +0.24% +11F +0.08% -8P
 +0.6DPR +0.9PL +95NM\$ 58NM%ile +112CM\$ 84% Rel
 3.01SCS -0.20HCR 23% Rel 0.20CCR 53% Rel
 0.90LIV 30% Rel 2.00GL 42% Rel -1.80EFC 33% Rel
 AGA 08/20 PTAT +1.0 +1.7UDC +1.8FLC 81%Rel PTI +44

KNAPPS FAME TOMORROW-ET USA000068047818



Knapps Copper Tonic
 All-American Yearling in Milk 2018
 Dam of Lot 16
 Maternal Family of Lots 13 - 18

LOT 16 4 DRONE X TONIC IVF EMBRYOS

Consigned by Landen Knapp, Epworth, IA
 Ph: 563.590.5369 Email: knappsguernseys@aim.com

- Four (4) IVF embryos
- Reverse Sorted for Females

HI GUERN VIEW LEVI DRONE USA000097004646 94GU959 A2A2

08/20 USDA GPTA +161M -0.05% -1F +0.01% +8P
 +0.4DPR +3.5PL +107NM\$ 64NM%ile +112CM\$ 54% Rel
 2.98SCS -1.0SCR -0.40HCR 34% Rel 0.00CCR 41% Rel
 -0.80LIV 35% Rel -0.40GL 42% Rel 1.00EFC 37% Rel
 AGA 08/20 PTAT +1.4 +1.1UDC +1.6FLC 50%Rel PTI +50

KNAPPS COPPER TONIC USA000097004683

08/20 USDA PTA +105M -0.08% -10F -0.08% -10P
 -0.6DPR +1.0PL -18NM\$ 35NM%ile -35CM\$ 46% Rel
 2.82SCS 0.70HCR 22% Rel -0.70CCR 29% Rel
 -1.00LIV 21% Rel 1.00GL 34% Rel 2.10EFC 23% Rel
 1 Rec YDev: -1154M -76F -78P
 All-American Milking Yearling 2018
 1st Yearling in Milk NGS-Madison & NGS-Louisville 2018

JENS GOLD AARON COPPER-ET USA000068027038 14GU318 A2A2

08/20 USDA GPTA +343M +0.01% +18F -0.05% +2P
 -0.5DPR +0.8PL +141NM\$ 70NM%ile +131CM\$ 96% Rel
 2.88SCS 1.90HCR 67% Rel -0.40CCR 83% Rel
 -0.80LIV 59% Rel 0.50GL 98% Rel 4.40EFC 67% Rel
 AGA 08/20 PTAT +1.0 +1.1UDC +1.1FLC 96%Rel PTI +40

KNAPPS PRADA TAMBI-ET USA000078005093

Appraisal: 83 @ 2-02 (84/83)
 2nd Yearling in Milk NJS-Madison 2016



Knapps Regis Tambourine-ET EX-95

Four-Time All-American
 3rd Dam of Lot 16
 Maternal Family of Lots 13 - 18

3D: KNAPPS REGIS TAMBOURINE-ET USA000068023077

Appraisal: 95 @ 7-04 (95/94)
 2-02 359D 2X 20840M 4.4% 914F 3.1% 643P 97
 3-03 365D 2X 23960M 4.6% 1105F 3.2% 770P DHIA
 4-05 365D 2X 30700M 5.0% 1537F 3.1% 943P DHIA
 6-10 365D 2X 40160M*5.1% 2055F*3.3% 1338P* DHIA
 1841D 130210M 4.8% 6292F 3.2% 4201P LIFE
 Unan. All-American & Unan. Jr. All-American Aged Cow 2015
 Unan. Jr. All-American & Res. All-American Five-Year-Old 2013
 All-American & Jr. All-American Jr. Two-Year-Old 2010
 All-American & Jr. All-American Jr. Three-Year-Old 2011
 Junior All-American & Res. All-American Aged Cow 2016
 Nominated All-American Total Performance Cow 2015
 Grand Champion NJS-Madison 2011, 2015 & 2016

4D: KNAPPS ACE TAMERA USA000068006299

Appraisal: 93 @ 9-07 (91/92)
 9-07 365D 2X 32350M 4.2% 1351F 3.2% 1036P DHIA
 3038D 178720M 4.4% 7847F 3.4% 6004P LIFE



Knapps Kojack Tweets-ET GP-84
 3-01 365D 22,390M 5.7% 1,272F 4.1% 924P
 1st Sr. 3-Year-Old WI Spring Show 2018
 Dam of Lot 17
 Maternal Family of Lots 13 - 18

LOT 17 3 LADYS MAN X TWEETS IVF EMBRYOS

Consigned by Landen Knapp, Epworth, IA
 Ph: 563.590.5369 Email: knappsguernseys@aim.com

- Three (3) IVF embryos
- Reverse Sort for Females

PA: -333M -0.04% -22F +0.02% -7P -173CM\$ -175NM\$
 +0.8PTAT +0.6UDC +0.5FLC -0.6DPR -0.9PL -27PTI 3.14SCS

FLAMBEAU MANOR LADYS MAN USA000078006572 7GU468 A2A2

08/20 USDA GPTA -396M -0.09% -33F -0.03% -18P
 +0.2DPR -1.4PL -258NM\$ 5NM%ile -273CM\$ 86% Rel
 3.25SCS -1.7SCR -1.50HCR 45% Rel -1.70CCR 51% Rel
 -1.20LIV 36% Rel -1.60GL 93% Rel -0.60EFC 39% Rel
 AGA 08/20 PTAT +0.7 +0.4UDC +1.0FLC 74%Rel PTI -46

KNAPPS KOJACK TWEETS-ET USA000097000121

08/20 USDA PTA -269M +0.01% -10F +0.07% +4P
 -1.4DPR -0.3PL -92NM\$ 17NM%ile -73CM\$ 51% Rel
 3.02SCS -1.40HCR 15% Rel -2.50CCR 25% Rel
 -2.40LIV 19% Rel 0.60GL 23% Rel -0.70EFC 20% Rel
 3 Rec YDev: -1024M -20F +5P
 1 App 08/20 PTAT +0.8 +0.7UDR +0.0FLC 49%Rel CPI -8
 Appraisal: 84 @ 2-04 (85/83)
 2-01 298D 2X 12840M 5.9% 763F 4.1% 522P 95
 3-01 365D 2X 22390M 5.7% 1272F 4.1% 924P DHIA
 4-03 365D 2X 17960M 5.5% 988F 4.0% 713P DHIA
 1st Place Sr 3-Year-Old Wisconsin Spring Show 2018
 3rd Place Sr 3-Year-Old NGS-Louisville 2018

DIX LEE TILLER KOJACK-ET USA000068015493 49GU120

08/20 USDA PTA +261M -0.02% +8F +0.05% +18P
 -2.4DPR -3.3PL -78NM\$ 23NM%ile -66CM\$ 86% Rel
 3.22SCS -1.80HCR 30% Rel -3.60CCR 58% Rel
 -3.60LIV 39% Rel -0.20GL 45% Rel -1.00EFC 40% Rel
 AGA 08/20 PTAT +1.6 +1.6UDC +1.8FLC 86%Rel PTI +40

KNAPPS HILLPOINT REGIS TWEETIE-ETUSA000068028589

Appraisal: 93 @ 4-06 (93/92)
 2-04 306D 2X 15790M 4.7% 740F 3.2% 506P 96
 3-04 294D 2X 16250M 4.9% 797F 3.3% 540P 96
 4-03 365D 2X 26280M 4.8% 1254F 3.3% 871P DHIA
 Junior All-American & Nom. All-American 4-Year-Old 2014
 Res. Jr. All-American & HM All-American Sr. 3-Year-Old 2013
 Honorable Mention Junior All-American Fall Calf 2010
 Reserve Senior Champion NJS-Madison 2014

3D: KNAPPS ACE TAMERA USA000068006299

Appraisal: 93 @ 9-07 (91/92)
 9-07 365D 2X 32350M 4.2% 1351F 3.2% 1036P DHIA
 3038D 178720M 4.4% 7847F 3.4% 6004P LIFE



Knapps Hillpoint Regis Tweetie-ET EX-93
 Three-Time Jr. All-American Nominee
 Granddam of Lot 17
 Maternal Family of Lots 13 - 18



Twincounty Tapioca Pie-ET
 Res. Jr. All-American Fall Calf 2019
 Dam of Lot 18



Knapps Kringle Tappy-ET EX-90
 Unanimous Jr. All-American Winter Yearling 2017
 Granddam of Lot 18

LOT 18 3 LADYS MAN X TAPIOCA PIE IVF EMBRYOS

Consigned by Jesse Kelley, Albion, ME
 Ph: 207.949.5295 Email: jessejamesk12@yahoo.com

PA: -297M -0.08% -26F -0.02% -13P -198CM\$ -191NM\$
 +0.5PTAT +0.2UDC +0.6FLC -0.6DPR -0.6PL -42PTI 3.08SCS

FLAMBEAU MANOR LADYS MAN USA000078006572 7GU468 A2A2

08/20 USDA GPTA -396M -0.09% -33F -0.03% -18P
 +0.2DPR -1.4PL -258NM\$ 5NM%ile -273CM\$ 86% Rel
 3.25SCS -1.7SCR -1.50HCR 45% Rel -1.70CCR 51% Rel
 -1.20LIV 36% Rel -1.60GL 93% Rel -0.60EFC 39% Rel
 AGA 08/20 PTAT +0.7 +0.4UDC +1.0FLC 74%Rel PTI -46

TWINCOUNTY TAPIOCA PIE-ET 840003151783639 A2A2

PA: -197M -0.06% -19F +0.00% -7P -123CM\$ -123NM\$
 +0.3PTAT +0.0UDC +0.2FLC -1.4DPR +0.3PL -37CPI 2.90SCS

Reserve Junior All-American Fall Calf 2019
 Reserve Junior Champion NJS-Harrisburg 2019
 Junior Champion 2019 NY Spring Carousel Jr. Show 2019



Twincounty Whats On Tap-ET
 Unanimous All-American Winter Calf 2019
 Full Sister to Dam of Lot 18

- Three (3) IVF embryos
- Reverse Sorted for Females
- Embryos are A2A2 by parentage

INDIAN ACRES AMERICAN PIE USA000068016348 31GU618 A2A2

08/20 USDA GPTA +172M -0.15% -19F -0.04% -2P
 -1.2DPR +2.6PL -8NM\$ 29NM%ile -14CM\$ 97% Rel
 2.74SCS -2.80HCR 65% Rel -1.90CCR 88% Rel
 1.00LIV 68% Rel 1.00GL 97% Rel -5.60EFC 75% Rel
 AGA 08/20 PTAT +0.2 +0.4UDC +2.2FLC 97%Rel PTI +5

KNAPPS KRINGLE TAPPY-ET USA000097000131

Appraisal: EX 90 @ 4-03 (VEVEE)
 2-04 305D 2X 17340M 4.2% 728F 3.3% 568P 97
 Unanimous Jr. All-American & Res. All-American Winter Yrlg 2017
 HM Jr. All-American & HM All-American Winter Calf 2016
 HM Jr. All-American & Nom. All-American Sr. 2-Year-Old 2018
 Reserve Sr. Champion Guernsey Gold Showcase 2020
 Junior Champion NGS & NJS Harrisburg 2017
 Reserve Intermediate Champion NJS-Harrisburg 2018
 Reserve Junior Champion NJS-Madison 2017

3D: KNAPPS REGIS TAMILLA-ET USA000068023081

Appraisal: 90 @ 4-05 (90/90)
 3-01 365D 2X 27950M 4.4% 1238F 3.5% 968P DHIA

4D: KNAPPS ACE TAMERA USA000068006299

Appraisal: 93 @ 9-07 (91/92)
 9-07 365D 2X 32350M 4.2% 1351F 3.2% 1036P DHIA
 3038D 178720M 4.4% 7847F 3.4% 6004P LIFE



Flambeau Manor RO Lauren-ET EX-95
 168,820M 5.1% 8,537F 3.6% 6,139P Life
 Unanimous All-American '14, '15 & '16
 Grand Champion NGS-Madison '15 & '16
 Granddam of Lot 19

LOT 19 4 REPUTATION X LEANN #1 IVF EMBRYOS

Consigned by Coulee Crest LLC, Cashton, WI
 Ph: 608.633.2321 Email: couleecrest@hotmail.com

- Four (4) #1 IVF embryos
- Embryos eligible for export - EU Qualified
- Made with sexed semen for females

PA: -236M +0.03% -6F +0.01% -7P +9CM\$ +8NM\$
 +0.6PTAT +1.1UDC +1.4FLC -0.5DPR +1.3PL +12PTI 2.96SCS

MISS ME REBAS REPUTATION-TW 840003150515719 6GU109 A2A2

08/20 USDA GPTA -79M +0.09% +13F -0.01% -4P
 +1.2DPR +2.7PL +170NM\$ 76NM%ile +169CM\$ 52% Rel
 2.92SCS 0.70HCR 35% Rel 1.60CCR 39% Rel
 1.50LIV 34% Rel -0.70GL 41% Rel 1.70EFC 35% Rel
 AGA 08/20 PTAT +0.2 +1.1UDC +0.4FLC 48%Rel PTI +38

FLAMBEAU MANOR P LEANN-ET USA000078000706 A1A2

08/20 USDA GPTA -393M -0.03% -24F +0.02% -10P
 -2.1DPR -0.1PL -155NM\$ 8NM%ile -152CM\$ 63% Rel
 3.00SCS-2.80HCR 32% Rel -3.60CCR 41% Rel
 0.40LIV 32% Rel -0.60GL 47% Rel -5.40EFC 35% Rel
 2 Rec YDev: -618M -78F -27P
 2 App 08/20 PTAT +0.9 +1.1UDR +2.4FLC 65%Rel CPI -15
 Appraisal: VG 88 @ 4-09 (EV+EV)
 2-04 365D 2X 17030M 4.3% 731F 3.5% 590P DHIA
 4-02 365D 2X 16820M 4.0% 669F 3.4% 579P DHIA

INDIAN ACRES PHOENIX-ET USA000068029884 200GU306 A1A2

08/20 USDA GPTA -457M -0.08% -34F +0.01% -14P
 -2.5DPR -0.8PL -248NM\$ 5NM%ile -244CM\$ 90% Rel
 2.78SCS -2.30HCR 45% Rel -4.10CCR 69% Rel
 -0.80LIV 47% Rel 0.40GL 92% Rel -3.20EFC 53% Rel
 AGA 08/20 PTAT +0.2 +0.1UDC +1.9FLC 88%Rel PTI -52

FLAMBEAU MANOR RO LAUREN-ET USA000068043597

Appraisal: 95 @ 7-09 (96/92)
 2-00 323D 2X 14750M 5.1% 758F 3.8% 564P 97
 3-00 365D 2X 22910M 5.4% 1230F 3.8% 864P DHIA
 4-02 365D 2X 24890M 4.9% 1213F 3.5% 875P DHIA
 5-07 365D 2X 26310M 4.8% 1274F 3.4% 902P DHIA
 7-04 365D 2X 26980M 5.2% 1397F 3.4% 915P DHIA
 9-03 305D 2X 22440M 4.5% 1019F 3.3% 747P 98
 2685D 168820M 5.1% 8537F 3.6% 6139P LIFE

Dam of Ladys Man, Boman, and Lucifer
 Unanimous All-American in 2014, 2015 & 2016
 Grand Champion NGS-Madison 2014 & 2016
 Nominated All-American Total Performance Cow 2015

3D: FLAMBEAU MANOR G LAUREN USA000003056014

Appraisal: 92 @ 10-03 (90/89) Gold Star Dam - 2005
 4-06 365D 2X 26238M 5.1% 1335F 3.5% 909P DHIA
 2926D 167310M 5.2% 8728F 3.5% 5867P LIFE
 Dtr: FLAMBEAU MANOR HS LOTTY 90 @ 5-08 (90/82)
 Gold Star Dam - 2006
 5-07 365D 2X 31624M 4.9% 1540F 3.3% 1053P 93



Knapps Spider Bank On Me-ET VG-89
 3-07 365D 27,770M 5.4% 1,493F 3.4% 958P
 Reserve All-American 2017 & 2019
 Dam of Lots 20 & 21

LOT 20 4 DRONE X BANK ON ME IVF EMBRYOS

Consigned by Landen Knapp, Epworth, IA
 Ph: 563.590.5369 Email: knappsguernseys@aim.com

- Four (4) IVF embryos
- Reverse Sort for Females

PA: +126M +0.02% +9F +0.03% +10P +122CM\$ +112NM\$
 +1.3PTAT +1.4UDC +1.0FLC -0.6DPR +2.4PL +46PTI 2.95SCS

HI GUERN VIEW LEVI DRONE USA000097004646 94GU959 A2A2

08/20 USDA GPTA +161M -0.05% -1F +0.01% +8P
 +0.4DPR +3.5PL +107NM\$ 64NM%ile +112CM\$ 54% Rel
 2.98SCS -1.0SCR -0.40HCR 34% Rel 0.00CCR 41% Rel
 -0.80LIV 35% Rel -0.40GL 42% Rel 1.00EFC 37% Rel
 AGA 08/20 PTAT +1.4 +1.1UDC +1.6FLC 50%Rel PTI +50

KNAPPS SPIDER BANK ON ME-ET USA000097000091

08/20 USDA GPTA +90M +0.08% +18F +0.05% +11P
 -1.5DPR +1.3PL +117NM\$ 76NM%ile +132CM\$ 65% Rel
 2.92SCS -1.30HCR 32% Rel -1.60CCR 40% Rel
 -1.50LIV 34% Rel 0.70GL 42% Rel 3.30EFC 36% Rel
 2 Rec YDev: +543M +41F +22P
 1 App 08/20 PTAT +1.2 +1.6UDR +0.3FLC 62%Rel CPI +41
 Appraisal: 89 @ 2-01 (90/87)
 1-11 365D 2X 19560M 5.3% 1040F 3.6% 700P DHIA
 3-07 365D 2X 27770M 5.4% 1493F 3.4% 958P DHIA
 Reserve All-American 4-Year-Old 2019
 Reserve All-American Jr. 2-Year-Old 2017

3D: KNAPPS ACE MISS BEST USA000068006305

Appraisal: 92 @ 5-08 (91/91)
 6-02 365D 2X 24730M 5.4% 1330F 3.2% 799P DHIA
 1837D 102260M 5.5% 5650F 3.4% 3430P LIFE
 Honorable Mention Jr. All-American Aged Cow 2011

COULEE CREST LUXURY SPIDER-ET USA00000604229 1GU415

08/20 USDA GPTA +265M +0.08% +27F +0.10% +26P
 -3.0DPR -3.2PL -4NM\$ 35NM%ile +19CM\$ 97% Rel
 3.27SCS -1.00HCR 69% Rel -2.90CCR 90% Rel
 -3.60LIV 74% Rel -0.30GL 98% Rel 6.70EFC 78% Rel
 AGA 08/20 PTAT +0.3 +0.1UDC -1.5FLC 97%Rel PTI +15

KNAPPS MR AMERICA MISS BESTANY USA000068026893

Appraisal: 92 @ 6-07 (92/89)
 2-02 365D 2X 18700M 5.0% 938F 3.2% 604P DHIA
 3-10 365D 2X 23410M 5.5% 1297F 3.2% 748P DHIA
 5-10 365D 2X 24700M 5.8% 1438F 3.3% 817P DHIA
 2164D 120810M 5.8% 7034F 3.6% 4349P LIFE
 Junior All-American & Nom. All-American Sr. 2-Year-Old 2011

4D: KNAPPS MISS BEST USA000003060918

Appraisal: 93 @ 5-04 (93/93) Gold Star Dam - 2002
 3-04 365D 2X 28510M 6.4% 1812F*3.4% 959P DHIA
 1679D 116150M 6.0% 6954F 3.5% 4025P LIFE
 Reserve All-American Sr. 3-Year-Old 2001

LOT 21 4 AMERICAN PIE X BANK ON ME IVF EMBRYOS

Consigned by Landen Knapp, Epworth, IA
 Ph: 563.590.5369 Email: knappsguernseys@aim.com

- Four (4) IVF embryos
- Reverse Sort for Females

PA: +131M -0.04% -1F +0.01% +5P +59CM\$ +55NM\$
 +0.7PTAT +1.0UDC +1.3FLC -1.4DPR +2.0PL +23PTI 2.83SCS

INDIAN ACRES AMERICAN PIE USA000068016348 31GU618 A2A2

08/20 USDA GPTA +172M -0.15% -19F -0.04% -2P
 -1.2DPR +2.6PL -8NM\$ 29NM%ile -14CM\$ 97% Rel
 2.74SCS -2.80HCR 65% Rel -1.90CCR 88% Rel
 1.00LIV 68% Rel 1.00GL 97% Rel -5.60EFC 75% Rel
 AGA 08/20 PTAT +0.2 +0.4UDC +2.2FLC 97%Rel PTI +5

KNAPPS SPIDER BANK ON ME-ET USA000097000091



Knapps Top Notch Harlow EX-92
 2-08 365D 22,810M 4.9% 1,115F 3.3% 756P
 All-American 2017 & 2019
 Dam of Lots 22 & 23

LOT 22 2 DRONE X HARLOW EMBRYOS

Consigned by Landen Knapp, Epworth, IA
 Ph: 563.590.5369 Email: knappsguernseys@aim.com

- Two (2) IVF embryos
- Reverse Sort for Females

PA: +82M -0.08% -11F -0.02% +0P +3CM\$ +6NM\$
 +1.1PTAT +1.1UDC +1.7FLC -0.7DPR +2.5PL +20PTI 2.95SCS

HI GUERN VIEW LEVI DRONE USA000097004646 94GU959 A2A2

08/20 USDA GPTA +161M -0.05% -1F +0.01% +8P
 +0.4DPR +3.5PL +107NM\$ 64NM%ile +112CM\$ 54% Rel
 2.98SCS -1.0SCR -0.40HCR 34% Rel 0.00CCR 41% Rel
 -0.80LIV 35% Rel -0.40GL 42% Rel 1.00EFC 37% Rel
 AGA 08/20 PTAT +1.4 +1.1UDC +1.6FLC 50%Rel PTI +50

KNAPPS TOP NOTCH HARLOW USA000078001449

08/20 USDA PTA +3M -0.11% -20F -0.05% -8P
 -1.7DPR +1.4PL -96NM\$ 16NM%ile -107CM\$ 48% Rel
 2.91SCS -2.40HCR 14% Rel -2.60CCR 23% Rel
 -1.00LIV 16% Rel 0.20GL 29% Rel -5.90EFC 17% Rel
 3 Rec YDev: -135M -48F -25P
 2 App 08/20 PTAT +0.8 +1.1UDR +1.8FLC 48%Rel CPI -10
 Appraisal: 92 @ 4-04 (91/92)
 2-08 365D 2X 22810M 4.9% 1115F 3.3% 756P DHIA
 3-10 365D 2X 17790M 5.1% 902F 3.5% 614P DHIA
 5-00 365D 2X 19770M 4.7% 939F 3.3% 662P DHIA
 All-American Five-Year-Old 2019
 All-American Sr. Three-Year-Old 2017
 Junior All-American & HM All-American Sr. Two-Year-Old 2016
 Reserve Junior All-American & Nom. All-American Fall Calf 2014

KNAPPS APIE TOP NOTCH USA000068047498 54GU468

12/19 USDA PTA +416M -0.21% -19F -0.06% +3P
 -1.1DPR +4.3PL +72NM\$ 35NM%ile +62CM\$ 84% Rel
 2.76SCS -1.90HCR 24% Rel -1.90CCR 52% Rel
 0.30LIV 31% Rel 1.00GL 75% Rel -6.00EFC 34% Rel
 AGA 12/19 PTAT +1.0 +1.4UDC +0.8FLC 81%Rel PTI +16

KNAPPS MENTOR HARLEY USA000068045551

Appraisal: 94 @ 6-05 (94/94)
 2-01 365D 2X 17160M 5.8% 1001F 3.2% 544P DHIA
 3-06 365D 2X 30470M 5.2% 1570F 3.4% 1033P DHIA
 5-10 365D 2X 23830M 4.9% 1175F 3.4% 819P DHIA
 Res. All-American & Res. Jr. All-American Jr. Two-Year-Old 2013
 Nom. All-American & Nom. Jr. All-American Four-Year-Old 2015

3D: KNAPPS CHALLENGE HAYLEY USA000068020541

Appraisal: 84 @ 3-08 (82/87)
 2-09 355D 2X 26160M 4.6% 1213F 3.3% 855P 98

4D: GREEN RIDGE REGIS HAYLO USA000003082860

Appraisal: 91 @ 4-10 (91/91)
 4-01 365D 2X 29660M 3.7% 1105F 2.8% 842P DHIA
 Junior All-American & Res. All-American Jr. Three-Year-Old 2006
 Reserve Junior All-American Five-Year-Old 2008
 Grand Champion NJS-Madison 2006

LOT 23 4 ALYMO X HARLOW IVF EMBRYOS

Consigned by Landen Knapp, Epworth, IA
 Ph: 563.590.5369 Email: knappsguernseys@aim.com

- Four (4) IVF embryos
- Reverse Sort for Females

PA: -315M +0.07% -5F +0.02% -8P +3CM\$ -1NM\$
 +0.9PTAT +1.4UDC +1.8FLC -0.6DPR +1.2PL +17PTI 2.96SCS

SNIDERS GARRETT ALYMO-ET USA000068018751 179GU8

08/20 USDA PTA -633M +0.24% +11F +0.08% -8P
 +0.6DPR +0.9PL +95NM\$ 58NM%ile +112CM\$ 84% Rel
 3.01SCS -0.20HCR 23% Rel 0.20CCR 53% Rel
 0.90LIV 30% Rel 2.00GL 42% Rel -1.80EFC 33% Rel
 AGA 08/20 PTAT +1.0 +1.7UDC +1.8FLC 81%Rel PTI +44

KNAPPS TOP NOTCH HARLOW USA000078001449



Hartdale Alstar Cutie EX-92
 158,720M 4.2% 6,735F 3.1% 4,984P Life
 Res. Jr. All-American Jr. 3-Yr-Old 2014
 Dam of Lot 24

LOT 24 3 #1 JC PENNEY X CUTIE IVF EMBRYOS

Consigned by Hartdale Guernseys, Mulberry Grove, IL
 Ph: 618.292.9509 Email: hartdaleguernseys@frontiernet.net

- Three (3) #1 IVF embryos
- Reverse Sorted for Females
- Resulting calves are potential 6th generation Excellents

PA: +228M +0.05% +19F -0.01% +7P +185CM\$ +184NM\$
 +0.8PTAT +0.7UDC +0.7FLC +0.7DPR +2.6PL +56PTI 2.92SCS

SPRINGHILL JC PENNEY-ET 840003151591406 6GU114 A2A2

08/20 USDA GPTA +253M +0.05% +20F +0.01% +11P
 -1.3DPR +0.6PL +125NM\$ 64NM%ile +132CM\$ 46% Rel
 2.94SCS -1.80HCR 31% Rel -2.30CCR 33% Rel
 0.00LIV 29% Rel 0.90GL 33% Rel -0.70EFC 30% Rel
 AGA 08/20 PTAT +1.3 +1.3UDC +1.2FLC 45%Rel PTI +53

HARTDALE ALSTAR CUTIE USA000068043444

08/20 USDA GPTA +202M +0.04% +17F -0.03% +2P
 +2.7DPR +4.6PL +242NM\$ 95NM%ile +238CM\$ 66% Rel
 2.89SCS 0.60HCR 33% Rel 2.40CCR 45% Rel
 3.10LIV 37% Rel -0.60GL 41% Rel 2.10EFC 37% Rel
 5 Rec YDev: +939M +72F +18P
 5 App 08/20 PTAT +0.2 +0.1UDR +0.2FLC 62%Rel CPI +58
 Appraisal: EX 92 @ 8-07 (EEVEE)
 2-00 335D 2X 20840M 4.2% 866F 3.1% 653P 94
 3-00 288D 2X 23320M 4.2% 974F 3.1% 733P 97
 4-00 305D 2X 24690M 3.8% 938F 3.0% 753P 97
 5-03 305D 2X 22510M 4.4% 998F 3.0% 677P 97
 6-06 348D 2X 24360M 4.4% 1078F 3.2% 783P 97
 7-07 305D 2X 25510M 4.2% 1080F 3.0% 766P 98
 2315D 158720M 4.2% 6735F 3.1% 4984P LIFE

Res. Jr. All-American & Nom. All-American Jr. 3-Year-Old 2014
 Ranked in Top 200 CPI Cows August 2020

Daughters:

HARTDALE KRINGLE CLEMENTINE 90 @ 6-00 (89/92)
 5-10 305D 2X 19970M 4.7% 929F 3.5% 690P 97
 Nominated Jr. All-American 4-Year-Old 2017
 HARTDALE TOP NOTCH COCO 91 @ 5-06 (90/93)
 5-03 339D 2X 20040M 3.7% 741F 3.1% 617P 97
 Three-Time Reserve Jr. All-American & All-American Nominee
 HARTDALE MENTOR COCONUT 93 @ 5-02 (93/91)
 3-00 359D 2X 20190M 4.1% 828F 3.1% 635P 98
 Honorable Mention All-American Jr. 2-Year-Old 2017

SNIDERS RONALDS ALSTAR USA000000604761 7GU398 A2A2

08/20 USDA GPTA +935M -0.09% +26F -0.09% +15P
 +1.1DPR +2.9PL +242NM\$ 99NM%ile +220CM\$ 98% Rel
 3.05SCS 1.60HCR 72% Rel 1.70CCR 91% Rel
 0.80LIV 76% Rel -1.20GL 99% Rel 6.20EFC 80% Rel
 AGA 08/20 PTAT -0.5 -1.0UDC +0.4FLC 97%Rel PTI +58

HARTDALE SHOWTIME CONFETTI USA000068025982

Appraisal: 91 @ 7-05 (90/88)
 2-02 305D 2X 15490M 5.0% 771F 3.3% 509P 95
 3-11 355D 2X 22930M 4.5% 1037F 3.2% 733P 98
 5-01 319D 2X 22730M 4.2% 953F 3.2% 717P 98
 6-02 304D 2X 20750M 4.5% 943F 3.1% 645P 97
 7-03 305D 2X 19410M 4.6% 884F 3.1% 600P 98
 1919D 115530M 4.6% 5342F 3.2% 3711P LIFE
 Reserve All-American Winter Yearling 2010
 Nominated All-American Aged Cow 2015

3D: LEBANON VALLEY G CANDY USA000003046342

Appraisal: 92 @ 11-04 (91/90)
 3-02 365D 2X 22067M 5.4% 1181F 3.3% 739P DHIA
 2405D 115874M 5.1% 5911F 3.4% 3979P LIFE

4D: LEBANON VALLEY SUPREME KATIE USA000003023403

Appraisal: 93 @ 11-01 (93/90)
 5-04 305D 3X 23700M 4.0% 943F 3.3% 782P DHIR
 2509D 128950M 4.6% 5911F 3.3% 4266P LIFE

5D: LEBANON VALLEY SUPER KRUNCH USA000002986934

Appraisal: 91 @ 8-06
 8-05 365D 3X 22540M 4.2% 944F 3.3% 754P DHIA
 2279D 107080M 4.5% 4804F 3.4% 3589P LIFE



Up The Creek Toby Kadiddle-ET VG-88
 2-02 349D 18,390M 4.3% 795F 3.1% 575P
 Unanimous All-American Sr. 2-Yr-Old 2019
 Dam of Lot 25

LOT 25 5 #1 DRONE X KADIDDLE CONVENTIONAL EMBRYOS

Consigned by Karen Anderson Johnson, Lester Prairie, MN
 Ph: 320.395.2023 Email: dautc2@aol.com

- Five (5) #1 conventional embryos
- Embryos are A2A2 by parentage

PA: +220M -0.04% +4F +0.02% +11P +137CM\$ +129NM\$
 +0.9PTAT +0.4UDC +1.0FLC +1.0DPR +2.6PL +43PTI 2.94SCS

HI GUERN VIEW LEVI DRONE USA000097004646 94GU959 A2A2

08/20 USDA GPTA +161M -0.05% -1F +0.01% +8P
 +0.4DPR +3.5PL +107NM\$ 64NM%ile +112CM\$ 54% Rel
 2.98SCS -1.0SCR -0.40HCR 34% Rel 0.00CCR 41% Rel
 -0.80LIV 35% Rel -0.40GL 42% Rel 1.00EFC 37% Rel
 AGA 08/20 PTAT +1.4 +1.1UDC +1.6FLC 50%Rel PTI +50

UP THE CREEK TOBY KADIDDLE-ET 840003013954353 A2A2

08/20 USDA GPTA +278M -0.03% +8F +0.02% +13P
 +1.6DPR +1.6PL +151NM\$ 84NM%ile +161CM\$ 59% Rel
 2.89SCS 0.00HCR 28% Rel 1.50CCR 34% Rel
 -0.40LIV 27% Rel -0.10GL 40% Rel 2.60EFC 29% Rel
 2 Rec YDev: +675M +5F +33P
 1 App 08/20 PTAT +0.4 -0.3UDR +0.4FLC 60%Rel CPI +36
 Appraisal: VG 88 @ 3-09 (VE+VV)
 2-02 349D 2X 18390M 4.3% 795F 3.1% 575P 96
 3-03 305D 2X 15678M 4.4% 683F 3.4% 535P Proj. Act.
 Unanimous All-American Sr. 2-Year-Old 2019
 1st Sr. 2-Year-Old NGS-Madison 2019

RIPLEY FARMS PIE C TOBY USA000068047797 1GU446 A2A2

08/20 USDA GPTA +193M +0.09% +25F +0.05% +15P
 -0.2DPR +2.0PL +225NM\$ 94NM%ile +246CM\$ 88% Rel
 2.68SCS -2.9SCR -1.00HCR 49% Rel -0.90CCR 62% Rel
 AGA 08/20 PTAT +0.0 -0.2UDC +2.5FLC 84%Rel PTI +70

UP THE CREEK SUPER LUX KAZOOM-ET USA000068027972

Appraisal: 93 @ 4-06 (93/91)
 2-03 323D 2X 16050M 4.8% 771F 3.4% 548P 97
 3-03 365D 2X 18580M 5.3% 978F 3.5% 643P DHIA
 4-05 365D 2X 26440M 4.9% 1307F 3.4% 909P DHIA
 5-08 267D 2X 17690M 3.7% 655F 3.4% 598P 96
 All-American Sr. 3-Year-Old 2013
 Res. Jr. All-American & Nom. All-American Fall Yearling 2011

3D: UP THE CREEK OPTIONS KOOKIE USA000003076179

Appraisal: 90 @ 4-08 (90/90)
 4-00 365D 2X 20770M 4.8% 995F 3.5% 717P 99
 HM Jr. All-American & Nom. All-American Jr. 3-Year-Old 2005
 Nominated Jr. All-American 2006 & 2008

4D: UP THE CREEK BOSSMANS KIARA USA000003060905

Appraisal: 88 @ 4-08 (90/82)
 3-00 365D 2X 21290M 4.5% 966F 3.3% 699P 98

5D: WAGNERS G KARIN-TW USA000003049954

Appraisal: 87 @ 4-07
 4-02 365D 2X 21620M 4.8% 1027F 3.3% 703P DHIA

6D: FLOR VICK SMOKEYS KALI USA000003010075

Appraisal: 91 @ 5-05
 4-06 365D 2X 23520M 4.1% 954F 3.7% 860P DHIA
 Honorable Mention All-American 4-Year-Old 1996

7D: FLOR VICK PLAYBOYS FAY USA000002972484

Appraisal: 86 @ 3-03



H Broke Levi Tayte EX-93

Unanimous All-American Jr. 3-Year-Old 2019
Full Sister to Lot 26

LOT 26 4 #1 AARONS LEVI X TAYTOR IVF EMBRYOS

Consigned by Dana & Madison Sickles, Marengo, IA
Ph: 319.240.5715 Email: hbholsteins@gmail.com



H Broke Showtime Taytor EX-92

Junior All-American 4-Year-Old 2017
Dam of Lot 26

- Four (4) #1 IVF embryos
- Made with reverse sorted semen for females
- Embryos are A2A2 by parentage

MARODORE AARONS LEVI-ET USA000068025119 7GU438 A2A2

12/19 USDA GPTA +111M -0.03% +0F -0.04% -4P
+0.9DPR +2.7PL +63NM\$ 29NM%ile +53CM\$ 96% Rel
2.92SCS 0.80HCR 59% Rel -0.60CCR 81% Rel
-0.70LIV 55% Rel -0.60GL 98% Rel 2.80EFC 66% Rel
AGA 12/19 PTAT +1.2 +0.6UDC +1.2FLC 94%Rel PTI +31

H BROKE SHOWTIME TAYTOR USA000068039189 A2A2

PA: -892M +0.02% -38F +0.05% -23P -221CM\$ -227NM\$
+0.2PTAT +0.2UDC +1.0FLC +0.7DPR -0.8PL -55CPI 2.98SCS
Appraisal: EX 92 @ 5-10 (EEEEEE)
Junior All-American Four-Year-Old 2017
Res. Jr. All-American & Nominated All-American Five-Year-Old 2018
Nominated Junior All-American Sr. Two-Year-Old 2015
Dtrs: H BROKE LEVI TAYTE 93 @ 4-04 (94/96)
Unanimous All-American Jr. Three-Year-Old 2019
Reserve Grand Champion NGS-Harrisburg 2019
Intermediate Champion NGS-Madison 2019
H BROKE LEVI TOT 86 @ 2-04 (85/86)
Reserve All-American Spring Calf 2018
H BROKE PISTOLL TRISTAN 84 @ 3-04 (80/86)
Nominated Junior All-American Spring Calf 2017

FOUR WINDS SHOWTIME-ET USA000068002690 200GU941 A2A2

08/20 USDA GPTA -1589M +0.06% -64F +0.10% -37P
+2.1DPR -1.5PL -366NM\$ 0NM%ile -348CM\$ 94% Rel
2.94SCS -1.00HCR 50% Rel 0.30CCR 79% Rel
2.70LIV 62% Rel 0.80GL 94% Rel -4.80EFC 63% Rel
AGA 08/20 PTAT -0.3 -0.2UDC +1.9FLC 94%Rel PTI -88

GR-J SANDY HILL YOGIBEAR TAYLOR USA000068041761

Appraisal: 86 @ 2-04 (88/86)
2-02 305D 2X 18710M 5.0% 933F 3.2% 605P DHIA
3-05 276D 2X 14430M 4.4% 637F 3.3% 483P 95

H Broke Levi Tot VG-86

Reserve All-American Spring Calf 2018
Full Sister to Lot 26





Knapps Best Buy Quarrel
 2-01 365D 19,740M 4.6% 908F 3.2% 623P
 Dam of Lot 27

LOT 27 DRONE OR TOP GUN X QUARREL IVF EMBRYOS

Consigned by Landen Knapp, Epworth, IA
 Ph: 563.590.5369 Email: knappsguernseys@aim.com

- Buyer's choice of four (4) embryos total
- There are 4 embryos of each mating available
- Made with reverse sorted semen for females
- Resulting calves are potential 8th generation Excellents

SIRE CHOICE:

HI GUERN VIEW LEVI DRONE USA000097004646 94GU959 A2A2

08/20 USDA GPTA +161M -0.05% -1F +0.01% +8P
 +0.4DPR +3.5PL +107NM\$ 64NM%ile +112CM\$ 54% Rel
 2.98SCS -1.0SCR -0.40HCR 34% Rel 0.00CCR 41% Rel
 -0.80LIV 35% Rel -0.40GL 42% Rel 1.00EFC 37% Rel
 AGA 08/20 PTAT +1.4 +1.1UDC +1.6FLC 50%Rel PTI +50

OR

KNAPPS AP TOP GUN-ET USA000097001280 54GU492

PA: +161M -0.17% -22F -0.06% -5P -88CM\$ -76NM\$
 +0.6PTAT +0.7UDC +0.7FLC -1.2DPR +1.3PL -21PTI 2.80SCS

KNAPPS BEST BUY QUARREL USA000078001456

08/20 USDA PTA -382M -0.03% -22F -0.04% -19P
 +0.4DPR +0.8PL -112NM\$ 14NM%ile -120CM\$ 45% Rel
 2.78SCS -0.90HCR 10% Rel 0.40CCR 20% Rel
 0.10LIV 15% Rel 0.20GL 25% Rel -1.20EFC 16% Rel
 4 Rec YDev: -742M -55F -41P
 2 App 08/20 PTAT -0.3 -0.6UDR -1.1FLC 48%Rel CPI -65
 Appraisal: 90 @ 4-02 (90/88)
 2-01 365D 2X 19740M 4.6% 908F 3.2% 623P DHIA
 4-00 365D 2X 19700M 4.9% 965F 3.4% 662P DHIA
 5-02 365D 2X 19080M 5.4% 1021F 3.5% 668P DHIA
 6-05 305D 2X 21409M 4.8% 1023F 3.3% 706P Proj. Act.

KNAPPS REGIS BEST BUY USA000068047496 54GU466

08/20 USDA PTA -609M +0.00% -28F -0.04% -27P
 +0.3DPR +0.5PL -198NM\$ 11NM%ile -207CM\$ 74% Rel
 2.76SCS -0.10HCR 19% Rel -0.20CCR 40% Rel
 -0.20LIV 29% Rel 0.50GL 68% Rel -0.20EFC 29% Rel
 AGA 08/20 PTAT -0.2 -0.1UDC -1.0FLC 65%Rel PTI -73

KNAPPS CHALLENGE QUARTER-ET USA000068041506

Appraisal: 90 @ 4-11 (90/90)
 2-03 365D 2X 22150M 5.1% 1125F 3.2% 701P DHIA
 3-10 341D 2X 24250M 4.8% 1161F 3.1% 751P 97
 4-10 365D 2X 24230M 5.0% 1209F 3.6% 863P DHIA

3D: KNAPPS SENTRY QUIN-ET USA000003071812

Appraisal: 90 @ 4-06 (87/90)
 4-00 365D 2X 36360M*5.0% 1812F*3.1% 1135P DHIA
 2857D 187850M 4.6% 8604F 3.2% 6042P LIFE

4D:KNAPPS PERFECTO QUEEN ANDORA-ET USA000003027749

Appraisal: 90 @ 4-10
 3-05 365D 2X 25750M 4.4% 1138F 3.5% 893P DHI

5D: PINEBREEZE TELESTAR ANDORA USA000002891647

Appraisal: 95 @ 8-05
 4-07 365D 2X 26680M*4.1% 1084F 3.3% 893P DHIA
 2377D 156195M 4.5% 6976F 3.4% 5254P LIFE

Reserve All-American Three-Year-Old 1988

6D: MARFRED KH AGATHA USA000002853739

Appraisal: 91 @ 3-07
 3-03 305D 2X 17850M 4.0% 721F 3.3% 582P DHIR

7D: MARFRED TN AGNES USA000002816831

Appraisal: 91 @ 3-06



Walnut Ridge Russ Nope R EX-93
 122,160M 5.9% 7,249F 3.6% 4,354P Life
 Res. Jr. All-American Aged Cow 2012
 Maternal Sister to Lot 28

LOT 28 2 KASH OR MENTOR X NOPE EMBRYOS

Consigned by Walnut Ridge Farm, Middletown, MD
 Ph: 240.367.7568 Email: mohawkfarm@comcast.net

- Buyer's choice of two (2) Conventional embryos
- There are two of each embryo available
- Not direct thaw embryos
- Mentor embryos are A2A2 by parentage

SNIDERS MAGICMAN KASH USA000000603814 120GU601

08/20 USDA PTA -394M -0.04% -25F +0.04% -7P
 -0.6DPR -1.3PL -207NM\$ 11NM%ile -197CM\$ 76% Rel
 2.88SCS -0.10HCR 17% Rel 0.00CCR 39% Rel
 -0.10LIV 34% Rel -0.90GL 33% Rel -4.90EFC 33% Rel
 AGA 08/20 PTAT -0.3 -1.3UDC -0.1FLC 72%Rel PTI -57

OR

MAR RAL ROYAL MENTOR USA000000604702 31GU612 A2A2

08/20 USDA GPTA -560M -0.03% -31F +0.03% -13P
 -1.0DPR -0.3PL -232NM\$ 5NM%ile -231CM\$ 96% Rel
 3.23SCS -3.00HCR 55% Rel -2.50CCR 87% Rel
 1.30LIV 68% Rel -1.00GL 97% Rel -5.60EFC 71% Rel
 AGA 08/20 PTAT +0.5 +0.4UDC +0.9FLC 97%Rel PTI -38

WALNUT RIDGE PERFECT NOPE USA000003081798 A2A2

08/20 USDA PTA -436M +0.02% -17F +0.01% -13P
 +4.0DPR +4.4PL +68NM\$ 62NM%ile +72CM\$ 62% Rel
 2.78SCS -0.20HCR 17% Rel 4.10CCR 37% Rel
 2.60LIV 35% Rel 0.00GL 27% Rel 0.70EFC 30% Rel
 5 Rec YDev: -884M -35F -28P
 3 App 08/20 PTAT -0.1 -0.3UDR -0.1FLC 66%Rel CPI -1
 Appraisal: 90 @ 7-08 (87/90)
 2-01 300D 2X 16530M 5.3% 878F 3.2% 528P 91
 3-01 316D 2X 19960M 4.8% 967F 3.2% 642P 92
 4-01 306D 2X 18500M 4.0% 745F 3.3% 611P 93
 5-01 330D 2X 17090M 4.2% 715F 3.4% 578P 95
 6-02 331D 2X 19860M 4.4% 872F 3.5% 691P 95
 7-02 280D 2X 18870M 4.9% 924F 3.3% 623P 94
 8-01 365D 2X 23140M 4.5% 1046F 3.3% 767P 93
 9-04 321D 2X 17930M 4.3% 776F 3.4% 616P 94
 10-07 347D 2X 15730M 4.1% 640F 3.4% 534P 95
 11-11 365D 2X 18420M 4.6% 839F 3.6% 662P 96
 3369D 190970M 4.5% 8681F 3.4% 6456P LIFE

Honorable Mention Junior All-American 4-Year-Old 2007

LILY LANE PENNY PERFECTO-ET USA000000598133 1GU296

08/20 USDA GPTA -690M -0.04% -38F +0.03% -17P
 +1.0DPR +1.3PL -164NM\$ 11NM%ile -150CM\$ 99% Rel
 2.61SCS -2.70HCR 46% Rel -0.90CCR 92% Rel
 -0.90LIV 94% Rel 2.00GL 91% Rel -6.00EFC 95% Rel
 AGA 08/20 PTAT +0.0 -0.1UDC +1.4FLC 99%Rel PTI -41

WALNUT RIDGE METALLICA NONE YA USA000003064430

Appraisal: 88 @ 5-07 (90/86)
 2-01 305D 2X 15920M 4.6% 739F 3.5% 558P DHIA
 3-01 325D 2X 20440M 5.3% 1089F 3.4% 701P 90
 4-02 256D 2X 16420M 4.5% 744F 3.1% 516P 86
 5-02 274D 2X 17810M 4.8% 852F 3.1% 556P 88
 6-00 284D 2X 16410M 5.6% 923F 3.3% 548P 88
 7-00 295D 2X 13670M 4.6% 630F 3.3% 453P 92
 8-00 292D 2X 11420M 5.0% 568F 3.2% 370P 92
 2031D 112090M 4.9% 5545F 3.3% 3702P LIFE

3D: WALNUT RIDGE GONZO NO NAME USA000003053649

Appraisal: 84 @ 4-03
 4-11 319D 2X 21480M 5.1% 1097F 3.4% 732P DHIA



Lang Haven Prada Nugget-ET EX-90
 4-09 365D 20,530M 5.6% 1,129F 3.6% 717P
 #21(T) CPI Cow August 2020
 Granddam of Lot 29

LOT 29 5 MAS X NOUGET EMBRYOS

Consigned by Donna Anderson, Lester Prairie, MN
 Ph: 320.395.2023 Email: dautc2@aol.com

- Five (5) embryos
- Buyer's choice of IVF or conventional & sexing options
- Choice to be made by January 1, 2021

MUTUALLY AGREEABLE SIRE

LANG HAVEN CASPIAN NOUGET USA000078004996 A2A2

08/20 USDA GPTA +289M -0.08% -1F +0.00% +10P
 +1.7DPR +1.6PL +90NM\$ 69NM%ile +92CM\$ 61% Rel
 3.01SCS-0.90HCR 29% Rel 0.50CCR 38% Rel
 0.30LIV 30% Rel -0.40GL 42% Rel -4.20EFC 32% Rel
 3 Rec YDev: +1368M +58F +47P
 4 App 08/20 PTAT +1.0 +1.2UDR +2.6FLC 65%Rel CPI +70
 Appraisal: EX 90 @ 5-02 (EVVVE)
 2-00 297D 3X 17410M 4.3% 746F 3.3% 570P 93
 2-11 339D 2X 18780M 4.7% 883F 3.4% 633P 97
 4-00 365D 2X 18880M 4.7% 884F 3.4% 644P DHIA
 #102(T) CPI Cow August 2020
 Dtr: UP THE CREEK RIVAL N E ONE
 #12 CPI Heifer August 2020

IDLE GOLD J KING CASPIAN-ET USA000068022992 200GU119 A2A2

08/20 USDA GPTA +352M -0.03% +10F +0.01% +13P
 -0.8DPR -1.9PL -19NM\$ 29NM%ile -21CM\$ 92% Rel
 3.28SCS -2.00HCR 49% Rel -2.30CCR 74% Rel
 -1.50LIV 49% Rel -1.30GL 95% Rel -7.90EFC 55% Rel
 AGA 08/20 PTAT +0.2 +0.2UDC +0.2FLC 91%Rel PTI +19

LANG HAVEN PRADA NUGGET-ET USA000068045941 A2A2

Appraisal: EX 90 @ 8-10 (EVVVEV)
 2-07 329D 2X 17260M 6.2% 1069F 3.6% 613P 97
 3-08 328D 2X 20140M 5.6% 1129F 3.6% 717P 98
 4-09 365D 2X 20530M 4.9% 1002F 3.4% 688P DHIA
 6-03 365D 2X 15350M 5.4% 830F 3.5% 539P DHIA
 #21(T) CPI Cow August 2020
 Reserve Intermediate Champion WI State Show 2015

3D: LANG HAVEN LES NICOLETTE-ET USA000068009177

Appraisal: 91 @ 5-02 (92/92) Gold Star Dam - 2012
 3-04 365D 2X 34500M 4.5% 1540F 3.2% 1112P DHIA
 1283D 105270M 4.7% 4941F 3.3% 3463P LIFE

4D: LANG HAVEN DECISION NIAGARA-ET USA000003073421

Appraisal: 85 @ 4-03 (85/74)
 3-03 365D 2X 32820M*5.1% 1687F*3.1% 1026P DHIA

5D: LANG HAVEN PERFECTO NICOLE USA000003021234

Appraisal: 90 @ 4-03 Gold Star Dam - 1999
 5-03 305D 2X 22490M 4.3% 960F 3.3% 732P DHIA
 1693D 101780M 4.2% 4298F 3.3% 3317P LIFE

6D: DAIRYMAN FRANK NORMA USA000002990719

Appraisal: 87 @ 4-11
 4-10 305D 2X 16820M 3.9% 660F 3.2% 541P DHIA

7D: DAIRYMAN PATRICIAN NORA USA000002880402

Appraisal: 90 @ 3-11
 3-02 362D 2X 21250M 4.2% 884F 3.4% 719P DHIA



Lang Haven Les Nicolette-ET EX-91
 3-04 365D 34,500M 4.5% 1,540F 3.2% 1,112P
 Dam of Navajo, Navarro & Nico
 3rd Dam of Lot 29



Guernsey Grove HP AlmostMidnight-ETV VG-88

Res. Grand Champion WI State Show 2019

Dam of Lot 30

LOT 30 3 JAMES DEAN X ALMOSTMIDNIGHT IVF EMBRYOS

Consigned by Valley Gem & Prairie Cream, Cumberland, WI
Ph: 715.419.0745 email: vgguernseys@gmail.com

- Three (3) IVF embryos
- Made using sexed semen for females
- Eligible for export

PA: -96M +0.14% +20F +0.04% +3P +89CM\$ +82NM\$
+0.9PTAT +0.8UDC +0.8FLC -0.8DPR +1.0PL +34PTI 3.11SCS

SPRINGHILL JAMES DEAN-ETV 840003151591428 551GU911 A2A2

08/20 USDA GPTA -250M +0.17% +18F +0.08% +5P
-0.4DPR +3.4PL +192NM\$ 82NM%ILE +215CM\$ 44% REL
2.85SCS -1.90HCR 26% REL -1.40CCR 29% REL
0.40LIV 26% REL 0.10GL 28% REL -1.80EFC 27% REL
AGA 08/20 PTAT +1.3 +1.9UDC +1.7FLC 41%REL PTI +67

GUERNSEY GROVE HP ALMOSTMIDNIGHT-ETV 840003135939952

08/20 USDA GPTA +58M +0.10% +21F -0.01% +1P
-1.1DPR -1.5PL -28NM\$ 32NM%ile -37CM\$ 59% Rel
3.36SCS-1.10HCR 26% Rel -2.70CCR 37% Rel
-3.40LIV 30% Rel -0.50GL 39% Rel 4.10EFC 31% Rel
1 Rec YDev: +2903M +155F +74P
1 App 08/20 PTAT +0.4 -0.3UDR -0.1FLC 59%Rel CPI +1
Appraisal: VG 88 @ 3-01 (VEVVV)
2-06 346D 2X 22148M 4.8% 1063F 3.8% 842P
Reserve Grand Champion Minnesota State Fair 2019
Reserve Grand Champion Wisconsin State Show 2019

CHUPPS HILLPOINT GDUST KRINGLE-ET USA000068019860 31GU622 A2A2

08/20 USDA GPTA -918M +0.26% +2F +0.04% -23P
-2.1DPR -3.4PL -234NM\$ 5NM%ile -233CM\$ 92% Rel
3.28SCS -1.10HCR 42% Rel -2.70CCR 72% Rel
-3.50LIV 44% Rel -0.90GL 92% Rel 3.00EFC 51% Rel
AGA 08/20 PTAT +0.1 -0.5UDC -1.5FLC 90%Rel PTI -80

FOUR WINDS ALMOST DECEMBER USA000068020124

Appraisal: 91 @ 4-00 (93/88)
2-02 365D 2X 18510M 4.2% 778F 3.2% 586P DHIA
3-07 305D 2X 13150M 3.8% 494F 3.6% 468P 98
Honorable Mention All-American Sr. 3-Year-Old 2011
Nominated All-American Sr. 2-Year-Old 2010
Member, Res. All-American Produce of Dam 2011

3D: FOUR WINDS F O A JUNE USA000003078332

Appraisal: 94 @ 7-02 (93/94)
5-05 365D 2X 26730M 4.2% 1118F 3.3% 873P DHIA
1841D 107810M 4.5% 4868F 3.3% 3588P LIFE

4D: FOUR WINDS MM DEE MAY DAY-ET USA000003060413

Appraisal: 85 @ 2-01

5D: WESTLYNN TOM DEE USA000002963901

Appraisal: 96 @ 10-05
5-11 365D 2X 26540M 4.8% 1284F 3.6% 961P DHIA
1807D 110740M 4.7% 5208F 3.6% 4001P LIFE
All-American 1993, 1994, 1995 & 1996
Reserve All-American 1991
Reserve Supreme Champion World Dairy Expo
Grand Champion NGS-Madison 1994, 1995 & 1996



Terphill Pies Miney-ET EX-90
 2-11 330D 20,640M 5.6% 1,154F 3.7% 771P
 1st Jr. 3-Yr-Old WI State Show 2019
 Dam of Lot 31

LOT 31 4 #1 JAMES DEAN X MINEY IVF EMBRYOS

Breeder & Consignor: Terpstra, Richard, Sparta, WI
 Ph: 608.780.8963 Email: terphillfarm@gmail.com

PA: -189M +0.08% +4F +0.07% +6P +118CM\$ +100NM\$
 +1.3PTAT +1.9UDC +2.4FLC -0.4DPR +2.2PL +57PTI 3.00SCS

- Four (4) #1 IVF embryos
- Embryos eligible for export - EU Qualified
- Sexed semen used for females
- Embryos are A2A2 by parentage
- Resulting calves would rank in the top 200 CPI Heifers on current list

SPRINGHILL JAMES DEAN-ETV 840003151591428 551GU911 A2A2

08/20 USDA GPTA -250M +0.17% +18F +0.08% +5P
 -0.4DPR +3.4PL +192NM\$ 82NM%ile +215CM\$ 44% Rel
 2.85SCS -1.90HCR 26% Rel -1.40CCR 29% Rel
 0.40LIV 26% Rel 0.10GL 28% Rel -1.80EFC 27% Rel
 AGA 08/20 PTAT +1.3 +1.9UDC +1.7FLC 41%Rel PTI +67

TERPHILL PIES MINEY-ET USA000097001355 A2A2

08/20 USDA GPTA -127M -0.02% -10F +0.06% +6P
 -0.3DPR +1.0PL +8NM\$ 43NM%ile +21CM\$ 64% Rel
 3.15SCS-2.10HCR 31% Rel -0.90CCR 39% Rel
 0.00LIV 32% Rel -1.30GL 42% Rel -8.10EFC 35% Rel
 3 Rec YDev: +46M -5F +20P
 2 App 08/20 PTAT +1.3 +1.8UDR +3.0FLC 65%Rel CPI +47
 Appraisal: EX 90 @ 4-04 (EV+EE)
 1-11 330D 3X 16550M 5.0% 831F 3.6% 591P 93
 2-11 330D 3X 20640M 5.6% 1154F 3.7% 771P 94
 3-11 305D 3X 25545M 4.8% 1219F 3.6% 916P Proj. Act.
 1st Place Jr 3-Year-Old Wisconsin State Show 2019

INDIAN ACRES PIES-ET USA000068024088 94GU958 A2A2

08/20 USDA GPTA +273M -0.09% -4F +0.03% +14P
 -1.9DPR -0.9PL -17NM\$ 29NM%ile -9CM\$ 92% Rel
 3.09SCS -2.80HCR 49% Rel -2.50CCR 71% Rel
 -1.10LIV 52% Rel -1.20GL 91% Rel -9.90EFC 58% Rel
 AGA 08/20 PTAT +0.9 +0.5UDC +2.3FLC 85%Rel PTI +21

TERPHILL MENTOR MINER USA000068021572

Appraisal: 92 @ 7-05 (92/91)
 3-02 336D 3X 22610M 4.3% 980F 3.4% 775P 94
 4-09 302D 3X 24790M 4.5% 1108F 3.5% 862P 95
 5-09 365D 3X 30730M 4.9% 1504F 3.6% 1098P DHIA
 7-00 304D 3X 26630M 4.7% 1251F 3.5% 935P 91
 1362D 106880M 4.6% 4950F 3.5% 3757P LIFE

3D: TERPHILL LEWIS MINTER USA000068006941

Appraisal: 82 @ 2-08 (83/84)

4D: TERPHILL LOGIC MINT-ET USA000003066823

Appraisal: 77 @ 3-07 (75/83)

5D: TERPHILL PERFECTO MITZBY USA000003028157

Appraisal: 94 @ 10-06 (94/90)
 9-10 365D 2X 23110M 3.9% 900F 3.1% 725P DHIA
 Reserve All-American Aged Cow 2003



Terphill Perfecto Mitzby EX-94
 9-10 365D 23,110M 3.9% 900F 3.1% 725P
 Reserve All-American Aged Cow 2003
 5th Dam of Lot 31



Nicleys Comets Coole-ETV EX-90
 3-07 350D 18,550M 4.3% 797F 3.4% 625P
 Grand Champion SD State Fair 2020
 Dam of Lot 32

LOT 32 3 JAMES DEAN X COOLE

Consigned by Valley Gem Farm, Cumberland, WI
 Ph: 715.419.0745 email: vgguernseys@gmail.com

- Three (3) IVF embryos
- Sexed semen used for females
- Embryos are A2A2 by parentage
- Eligible for export

PA: +59M +0.00% +2F +0.04% +8P +150CM\$ +138NM\$
 +0.6PTAT +1.1UDC +1.4FLC +0.1DPR +2.7PL +46PTI 2.87SCS

SPRINGHILL JAMES DEAN-ETV 840003151591428 551GU911 A2A2

08/20 USDA GPTA -250M +0.17% +18F +0.08% +5P
 -0.4DPR +3.4PL +192NM\$ 82NM%ile +215CM\$ 44% Rel
 2.85SCS -1.90HCR 26% Rel -1.40CCR 29% Rel
 0.40LIV 26% Rel 0.10GL 28% Rel -1.80EFC 27% Rel
 AGA 08/20 PTAT +1.3 +1.9UDC +1.7FLC 41%Rel PTI +67

NICLEYS COMETS COOLE-ETV USA000068034434 A2A2

08/20 USDA PTA +367M -0.17% -14F -0.01% +10P
 +0.5DPR +2.0PL +84NM\$ 67NM%ile +85CM\$ 42% Rel
 2.88SCS 0.00HCR 16% Rel 1.70CCR 23% Rel
 3.30LIV 17% Rel -0.20GL 26% Rel -2.20EFC 19% Rel
 3 Rec YDev: +679M -37F +24P
 2 App 08/20 PTAT -0.1 +0.2UDR +1.1FLC 39%Rel CPI +25
 Appraisal: EX 90 @ 4-09 (VE+EE)
 2-06 313D 2X 12550M 4.4% 546F 3.5% 441P 97
 3-07 350D 3X 18550M 4.3% 797F 3.4% 625P 98
 4-08 305D 2X 18174M 4.3% 784F 3.4% 621P Proj. Act.
 Reserve Grand of the Jr. Show at the Wisconsin State Show 2020
 Reserve Senior Champion Wisconsin State Show 2020
 Grand Champion South Dakota State Fair 2020

INDIAN ACRES AMERICAN PIE USA000068016348 31GU618 A2A2

08/20 USDA GPTA +172M -0.15% -19F -0.04% -2P
 -1.2DPR +2.6PL -8NM\$ 29NM%ile -14CM\$ 97% Rel
 2.74SCS -2.80HCR 65% Rel -1.90CCR 88% Rel
 1.00LIV 68% Rel 1.00GL 97% Rel -5.60EFC 75% Rel
 AGA 08/20 PTAT +0.2 +0.4UDC +2.2FLC 97%Rel PTI +5

LANTZ CHUPPS HAILEYS COMET USA000068013782

Appraisal: 91 @ 4-10 (92/87)
 2-05 365D 2X 16830M 4.4% 745F 3.2% 543P DHIA
 4-07 365D 2X 19570M 4.1% 799F 3.1% 603P DHIA
 Reserve All-American 4-Year-Old 2011

3D: STOCKWELL FARMS HAILEY USA000068010287 A2A2

Appraisal: 94 @ 6-02 (95/94)
 5-11 365D 2X 24810M 3.8% 939F 3.2% 798P DHIA
 3x All-American
 Grand Champion NGS-Madison 2011

L: Lantz Chupps Haileys Comet EX-91

Reserve All-American 4-Year-Old 2011
 Granddam of Lot 32

R: Stockwell Farms Hailey EX-94

Three-Time All-American
 3rd Dam of Lot 32





Marodore Legend Peaceful EX-90
 3-10 305D 24,330M 5.1% 1,232F 3.2% 783P
 #54(T) CPI Cow Aug. 2020
 Dam of Lot 33

LOT 33 3 VENGEANCE X PEACEFUL IVF EMBRYOS

Consigned by Marodore Farm, Baltimore, OH
 Ph: 740.756.4533 Email: marodorefarm@gmail.com

PA: +489M +0.03% +28F -0.01% +15P +139CM\$ +138NM\$
 +1.1PTAT +1.0UDC +1.7FLC -1.0DPR +0.0PL +68PTI 3.02SCS

- Three (3) IVF embryos
- Exportable to Canada
- Made using sexed semen
- Embryos are A2A2 by parentage
- Resulting calves would rank #65 on the current Heifer CPI List

MARODORE RANDALLS VENGEANCE USA000097006605 6GU113 A2A2

08/20 USDA GPTA +199M +0.11% +29F +0.02% +10P
 -0.1DPR +0.7PL +174NM\$ 82NM%ile +182CM\$ 46% Rel
 2.94SCS 0.20HCR 28% Rel -0.20CCR 30% Rel
 -0.30LIV 28% Rel -0.30GL 34% Rel 2.00EFC 27% Rel
 AGA 08/20 PTAT +0.7 +0.5UDC +1.0FLC 44%Rel PTI +56

COULEE CREST GRUMPY LEGEND-ET USA000068045040 7GU451 A2A2

08/20 USDA GPTA +526M -0.09% +8F +0.02% +21P
 -1.9DPR -1.0PL +18NM\$ 41NM%ile +24CM\$ 95% Rel
 3.13SCS -1.90HCR 60% Rel -3.60CCR 79% Rel
 -3.50LIV 54% Rel -1.10GL 97% Rel 3.30EFC 61% Rel
 AGA 08/20 PTAT +1.0 +1.3UDC +2.2FLC 93%Rel PTI +55

MARODORE LEGEND PEACEFUL-ETV 840003135547826 A2A2

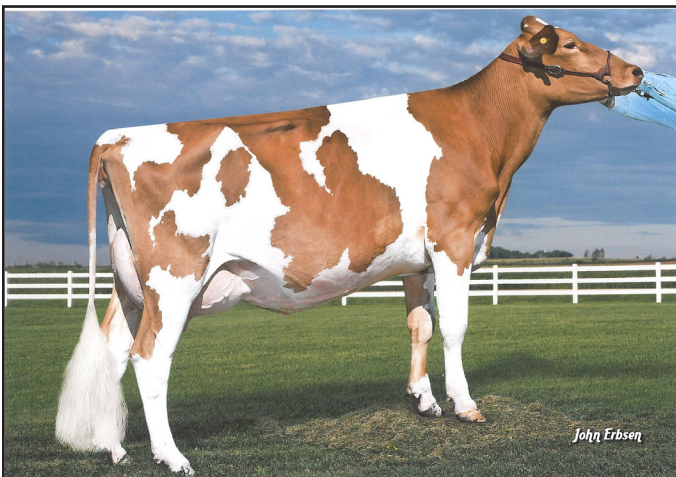
08/20 USDA GPTA +779M -0.05% +26F -0.03% +20P
 -1.9DPR -0.7PL +102NM\$ 72NM%ile +95CM\$ 64% Rel
 3.09SCS-2.10HCR 34% Rel -3.40CCR 42% Rel
 -2.30LIV 32% Rel -1.30GL 46% Rel 1.00EFC 35% Rel
 2 Rec YDev: +2271M +111F +65P
 2 App 08/20 PTAT +1.4 +1.4UDR +2.4FLC 65%Rel CPI +79
 Appraisal: EX 90 @ 4-04 (EE+VE)
 2-05 365D 2X 19610M 4.7% 916F 3.4% 662P DHIA
 3-10 305D 2X 24330M 5.1% 1232F 3.2% 783P 98
 1st 4-Year-Old Ohio Summer Dairy Jr. Show 2020
 #54(T) CPI Cow August 2020

MARODORE YOGIS PROMISE USA000068030933 A2A2

Appraisal: 90 @ 5-01 (89/86)
 2-08 365D 2X 26350M 4.4% 1165F 3.0% 801P DHIA
 4-00 365D 2X 36740M 5.0% 1824F 3.1% 1144P DHIA
 All-American & Jr. All-American Sr. 2-Year-Old 2012

3D: THREE BROOKS ALSTAR PIXIE USA000068008750 A2A2

Appraisal: 90 @ 4-08 (90/87) Gold Star Dam - 2010
 2-05 365D 2X 20180M 4.5% 909F 3.3% 661P 95
 3-06 330D 2X 20795M 5.1% 1066F 3.3% 696P 95
 4-05 365D 2X 33100M 4.4% 1456F 3.1% 1025P DHIA
 6-00 334D 2X 19200M 5.2% 994F 3.3% 631P 97



Marodore Yogis Promise EX-90
 4-00 365D 36,740M 4.0% 1,824F 3.1% 1,144P
 All-American Senior 2-Year-Old 2012
 Granddam of Lot 33



Walnut Ridge Mentor Sophia VG-88
 2-03 365D 29,660M 5.7% 1,691F* 3.5% 1,036P
 HM All-American Sr. 2-Year-Old 2014
 Dam of Lot 34
 Sister of Lots 34 & 35

LOT 34 2 YOGI X SOPHIA OR MENTOR X SIMPLICITY EMBRYOS

Consigned by Walnut Ridge Farm, Middletown, MD
 Ph: 240.367.7568 Email: mohawkfarm@comcast.net

- Buyer's choice of two (2) Conventional embryos total
- Two of each embryo are available
- Not direct thaw embryos
- All embryos are A2A2 by parentage

MATING 1:

PA: -321M +0.04% -9F +0.05% -2P -16CM\$ -27NM\$
 +0.7PTAT +0.3UDC +0.5FLC +0.2DPR +0.7PL +1PTI 3.05SCS

EDGEWATER MEADOWS YOGIBEAR-ET USA000000604917
7GU402 A2A2

08/20 USDA GPTA -475M +0.12% -1F +0.04% -9P
 +0.1DPR +1.2PL +2NM\$ 41NM%ile +10CM\$ 99% Rel
 2.99SCS -1.70HCR 76% Rel -0.10CCR 95% Rel
 0.40LIV 84% Rel -1.20GL 99% Rel -0.60EFC 87% Rel
 AGA 08/20 PTAT +1.2 +1.2UDC +1.2FLC 99%Rel PTI +18

MAR RAL ROYAL MENTOR USA000000604702 31GU612 A2A2

08/20 USDA GPTA -560M -0.03% -31F +0.03% -13P
 -1.0DPR -0.3PL -232NM\$ 5NM%ile -231CM\$ 96% Rel
 3.23SCS -3.00HCR 55% Rel -2.50CCR 87% Rel
 1.30LIV 68% Rel -1.00GL 97% Rel -5.60EFC 71% Rel
 AGA 08/20 PTAT +0.5 +0.4UDC +0.9FLC 97%Rel PTI -38

WALNUT RIDGE MENTOR SOPHIA USA000068046147 A2A2

08/20 USDA PTA -166M -0.05% -16F +0.06% +5P
 +0.2DPR +0.1PL -55NM\$ 25NM%ile -41CM\$ 49% Rel
 3.11SCS -0.70HCR 15% Rel -0.40CCR 28% Rel
 1.40LIV 20% Rel -1.10GL 28% Rel -4.00EFC 20% Rel
 2 Rec YDev: +177M -6F +29P
 1 App 08/20 PTAT +0.2 -0.7UDR -0.2FLC 46%Rel CPI -17
 Appraisal: 88 @ 2-09 (90/90)
 2-03 365D 2X 29660M 5.7% 1691F*3.5% 1036P 94
 HM All-American & HM Jr. All-American Sr. 2-Year-Old 2014

GR-WALNUT RIDGE BRANT SIMPLICITY USA000068015361 A2A2

Appraisal: 85 @ 5-09 (83/87)
 2-01 365D 2X 21580M 4.7% 1021F 3.6% 775P 94
 3-04 365D 2X 23570M 4.7% 1108F 3.6% 849P 94
 4-07 333D 2X 23250M 3.9% 901F 3.6% 840P 97
 5-07 365D 2X 25630M 4.6% 1176F 3.3% 858P 94
 1746D 110640M 4.4% 4882F 3.6% 3955P LIFE

MATING 2 (full siblings to Mentor Sophia, above):

PA: -222M -0.07% -23F +0.05% +2P -101CM\$ -112NM\$
 -0.2PTAT -0.9UDC -0.5FLC +0.2DPR -0.4PL -34PTI 3.14SCS

MAR RAL ROYAL MENTOR USA000000604702 31GU612 A2A2

08/20 USDA GPTA -560M -0.03% -31F +0.03% -13P
 -1.0DPR -0.3PL -232NM\$ 5NM%ile -231CM\$ 96% Rel
 3.23SCS -3.00HCR 55% Rel -2.50CCR 87% Rel
 1.30LIV 68% Rel -1.00GL 97% Rel -5.60EFC 71% Rel
 AGA 08/20 PTAT +0.5 +0.4UDC +0.9FLC 97%Rel PTI -38

GR-WALNUT RIDGE BRANT SIMPLICITY USA000068015361 A2A2

Appraisal: 85 @ 5-09 (83/87)
 1746D 110640M 4.4% 4882F 3.6% 3955P LIFE



Walnut Ridge Jackpot Starlet VG-87
 Nom. All-American Winter Yearling 2019
 Granddaughter of Simplicity
 (dam of Lots 34 & 35)

LOT 35 2 KASH X SIMPLICITY EMBRYOS

Consigned by Walnut Ridge Farm, Middletown, MD
 Ph: 240.367.7568 Email: mohawkfarm@comcast.net

- Two (2) Conventional embryos
- Not direct thaw embryos

PA: -139M -0.08% -20F +0.06% +5P -84CM\$ -99NM\$
 -0.6PTAT -1.7UDC -1.0FLC +0.4DPR -0.9PL -43PTI 2.96SCS

SNIDERS MAGICMAN KASH USA000000603814 120GU601

08/20 USDA PTA -394M -0.04% -25F +0.04% -7P
 -0.6DPR -1.3PL -207NM\$ 11NM%ile -197CM\$ 76% Rel
 2.88SCS -0.10HCR 17% Rel 0.00CCR 39% Rel
 -0.10LIV 34% Rel -0.90GL 33% Rel -4.90EFC 33% Rel
 AGA 08/20 PTAT -0.3 -1.3UDC -0.1FLC 72%Rel PTI -57

GR-WALNUT RIDGE BRANT SIMPLICITY USA000068015361 A2A2

08/20 USDA PTA +116M -0.11% -14F +0.07% +16P
 +1.3DPR -0.5PL +9NM\$ 43NM%ile +29CM\$ 53% Rel
 3.04SCS 1.50HCR 5% Rel 1.50CCR 18% Rel
 1.50LIV 14% Rel -1.50GL 14% Rel -2.60EFC 11% Rel
 4 Rec YDev: +546M -20F +41P
 3 App 08/20 PTAT -0.8 -2.1UDR -1.9FLC 55%Rel CPI -29
 Appraisal: 85 @ 5-09 (83/87)
 2-01 365D 2X 21580M 4.7% 1021F 3.6% 775P 94
 3-04 365D 2X 23570M 4.7% 1108F 3.6% 849P 94
 4-07 333D 2X 23250M 3.9% 901F 3.6% 840P 97
 5-07 365D 2X 25630M 4.6% 1176F 3.3% 858P 94
 1746D 110640M 4.4% 4882F 3.6% 3955P LIFE

SNIDERS FAYETTES BRANT USA000000604851

08/20 USDA PTA -557M -0.22% -63F -0.01% -21P
 +0.3DPR -5.8PL -508NM\$ 0NM%ile -517CM\$ 74% Rel
 3.07SCS -0.80HCR 16% Rel -0.80CCR 40% Rel
 -1.60LIV 34% Rel 0.00GL 36% Rel -5.80EFC 34% Rel
 AGA 08/20 PTAT -0.8 -2.0UDC -1.0FLC 74%Rel PTI -142

PR-WALNUT RIDGE CHEVRON SIMPLE USA000068010526

Appraisal: 84 @ 6-03 (84/87)
 2-02 356D 2X 25290M 5.2% 1316F 3.8% 950P 92
 3-03 302D 2X 21690M 5.2% 1126F 3.9% 837P 93
 4-04 344D 2X 20510M 3.8% 771F 3.7% 757P 95
 5-10 348D 2X 22850M 5.5% 1255F 4.0% 904P 97

SC Sunny Day Beau Star
 1st Spring Calf Dairyland Classic Show 2020
 Great-grand'dtr of Simplicity
 (dam of Lots 34 & 35)





Hi Guern View Dancers Delite-ET EX-91
 Nominated All-American Jr. 3-Year-Old 2015
 Dam of Lot 36



Hi Guern View Dancers Diva-ET EX-96
 Unanimous All-American Aged Cow 2018
 Full Sister to Dam of Lot 36

LOT 36 3 AMERICAN PIE X DELITE IVF EMBRYOS

Bred by Brian & Kristi Dinderman, Orangeville, IL
 Consigned by Dr. John Mozier, Louisburg, KS
 Ph: 913.707.1245 Email: jomdvm@aol.com

- Three (3) IVF embryos
- Made with reverse-sort semen for females
- Embryos are A2A2 by parentage

PA: -115M -0.04% -12F -0.01% -5P -24CM\$ -25NM\$
 +0.6PTAT +0.5UDC +1.1FLC -0.5DPR +1.6PL +0PTI 2.83SCS

INDIAN ACRES AMERICAN PIE USA000068016348 31GU618 A2A2

08/20 USDA GPTA +172M -0.15% -19F -0.04% -2P
 -1.2DPR +2.6PL -8NM\$ 29NM%ile -14CM\$ 97% Rel
 2.74SCS -2.80HCR 65% Rel -1.90CCR 88% Rel
 1.00LIV 68% Rel 1.00GL 97% Rel -5.60EFC 75% Rel
 AGA 08/20 PTAT +0.2 +0.4UDC +2.2FLC 97%Rel PTI +5

HI GUERN VIEW DANCERS DELITE-ET USA000068047312 A2A2

08/20 USDA GPTA -402M +0.08% -4F +0.03% -8P
 +0.3DPR +0.5PL -42NM\$ 28NM%ile -34CM\$ 66% Rel
 2.92SCS -1.10HCR 33% Rel 0.80CCR 41% Rel
 0.30LIV 37% Rel 0.10GL 40% Rel -2.60EFC 38% Rel
 3 Rec YDev: -1408M -10F -37P
 2 App 08/20 PTAT +1.0 +0.5UDR -0.1FLC 62%Rel CPI -5
 Appraisal: EX 91 @ 7-09 (EEEEGE)
 1-11 345D 2X 16650M 4.9% 818F 3.3% 551P 94
 3-04 305D 2X 16490M 4.9% 816F 3.5% 577P 94
 7-06 359D 2X 15700M 5.1% 796F 3.4% 536P
 Nominated All-American Junior Three-Year-Old 2015
 Dtr: HI GUERN VIEW LEVI DEMI-ET 88 @ 4-10 (87/83)
 1-11 364D 2X 19720M 4.3% 847F 3.4% 661P 92

EDGEWATER MEADOWS YOGIBEAR-ET USA00000604917 7GU402 A2A2

08/20 USDA GPTA -475M +0.12% -1F +0.04% -9P
 +0.1DPR +1.2PL +2NM\$ 41NM%ile +10CM\$ 99% Rel
 2.99SCS -1.70HCR 76% Rel -0.10CCR 95% Rel
 0.40LIV 84% Rel -1.20GL 99% Rel -0.60EFC 87% Rel
 AGA 08/20 PTAT +1.2 +1.2UDC +1.2FLC 99%Rel PTI +18

ADAMS CREEK REGAL DANCER USA000068019811

Appraisal: 92 @ 3-07 (94/86)
 2-01 298D 2X 14210M 4.8% 689F 3.5% 491P 95
 3-05 305D 2X 23750M 4.4% 1048F 3.3% 779P 50
 All-American Four-Year-Old 2011
 Honorable Mention All-American Jr. Two-Year-Old 2009
 Res. Senior Champion NGS-Madison & Harrisburg 2011
 Dtrs: HI GUERN VIEW DANCING DIVA-ET 96 @ 7-09 (97/94)
 5-04 319D 2X 22670M 4.6% 1034F 3.5% 803P 94
 Unanimous All-American Aged Cow 2018
 HI GUERN VIEW DANCERS DREAM-ET 90 @ 3-07 (88/87)
 2-10 315D 2X 22390M 3.9% 879F 3.2% 721P 94
 LAND OF LIVING A DEBUTANTE-ET 86 @ 2-10 (88/87)

Registering Embryo Calves with the American Guernsey Association

New Guernsey Owners

- Visit www.usguernsey.com to learn about membership with the American Guernsey Association. Membership is not required to register calves, but will reduce your registration fees!
- Calf registration can be done online at www.usguernsey.com or using paper forms - contact the office if you desire paper forms.
- It is recommended to contact AGA prior to registration to obtain an owner number.

Requirements of registration

- All donor dams **MUST** be DNA tested. For embryos made after May 2017, donor dams must have been genomic tested. Be sure to ask the consignor about the dam's DNA status before submitting registrations.
- As with any calf registration, you must have the complete registration number and name of both the sire and dam of the calf.
- You must specify who the owner is of each calf registered.
- The AGA does not require any veterinary paperwork to be submitted before registration; although AGA reserves the right to request paperwork if deemed necessary.

Foreign Registration

Each country association has its own rules for embryo registration. Buyers should check with their respective association to see what paperwork and DNA requirements need met. Foreign buyers without a home association could be eligible for AGA registration. Contact the office directly to inquire. AGA will not register calves for buyers with a Guernsey registration association within their country.

