



**OPPORTUNITY**  
— OF —  
**PICKS**

— TAG SALE & OPEN HOUSE —

**FRIDAY, JULY 3, 2026**  
**STRUM, WI**





**East-Colt Dairy**

**Registered Holsteins**

*Strum, Wi*

# OPPORTUNITY OF PICKS

## — TAG SALE & OPEN HOUSE —

Strum, WI | Open House 10:00AM - 3:00PM | Tag Sale closes at 3:00PM CST

*Enjoy Food & Drinks throughout the Open House!*

Can't make the sale? Sale animals will be available for viewing after June 24<sup>th</sup> by appointment only.

### *"Pick One, Leave One"*

Each animal is paired up! Pick your favorite from each pair to take home.

Each buyer will be entered into a drawing for

2 #2 **Alligator** embryos X **Rocky Run Mvn**

**Atlanta ET VG-88 2YR** - full sister to

Unanimous All-American Red & White

Rocky Run MVN **Arcadia** EX-92 4YR.

### *Sale Staff*

Ryan Krohlow.....920-639-5500

Scott Culbertson.....507-923-1881

Perry Phend.....715-533-0608

Chad Ryan.....920-960-1449

Bryan Stremcha.....608-790-1925

Sale managed by Cowbuyer.com

Internet bidding available on Cowbuyer.com

Aaron Ray Tompkins 336-363-4639 | atompkin@vt.edu

**Registration & approval is required prior to sale time.**



## **East-Colt Dairy**

Judson, Trish, Coltan & Eastan Brown

N42794 Roskos Rd | Strum, WI 54770

715.533.4402 | trishj03@yahoo.com



# Choose Your Favorite

## 1A

### EAST-COLT MALBEC SERAPHINA

840003286250586 99%RHA GTPI +2241

Born: 12/04/2024

Due Dec 1, 2026 to 799HO0087 MAXIMUM



MS ROCKYRUN WAR SERENDIPITY EX-91

Dam of Lot 1A

### TAPPENVALE MALBEC-ET

000014289610

PTA +105M +23F +5P 82%R 04/26

PTA +2.02T +1.14UDC +0.49FLC 80%R 04/26

GTPI +2598

### MS ROCKYRUN WAR SERENDIPITY

USA000145556842 EX-91 V E V E E

2-00 2X 300d 20748 3.3 830 3.9 639

3-00 2X 152d 15088 3.2 560 3.2 460 RIP

• 1<sup>st</sup> Winter Calf Mid-East Fall National 2023

• 1<sup>st</sup> Winter Yearling WI District 1 Holstein Show 2024

• 8<sup>th</sup> Winter SR 2-Year-Old Midwest Spring Show 2025

### MR BLONDIN WARRIOR-RED-ET

840003139655530 TP TE TC TY TV TL TD

PTA -1240M -63F -38P 99%R 04/26

PTA +2.05T +0.55UDC +0.84FLC TPI +1709

### MS WINTERFIELD DEF SERENITY

USA000144212297 EX-94 E E E E E 2E

2-02 2X 301d 16990 5.8 987 3.2 541

3-03 2X 305d 24100 4.7 1140 3.2 771

4-06 2X 365d 27580 4.9 1354 3.7 1020

5-09 2X 305d 25990 4.6 1195 3.2 830

Life: 1471d 103,160 5.0 5157 3.4 3503

• Res Senior Champion Mid-East Fall Show 2023

• 1<sup>st</sup> Aged Cow Grand National Junior Show

• 2<sup>nd</sup> Aged Cow Midwest Spring National Junior Show

• 3<sup>rd</sup> Aged Cow Wisconsin Championship Junior Show

3<sup>rd</sup> Dam

### Ms Winterfield Arm Salenra EX-90

6-05 2X 365d 27320 3.8 1026 3.5 954

Life: 1936d 123,780 4.4 5400 3.5 4276

4<sup>th</sup> Dam

### MS Winterfield Salenarae-ET EX-90

5<sup>th</sup> Dam

### Libertyraes Sasha-ET EX-94 2E

7-08 2X 305d 30550 5.2 1587 3.0 926

Life: 2342d 160,310 4.9 7873 3.3 5299

6<sup>th</sup> Dam

### Gloryland Liberty Rae EX-95 96MS 3E DOM

7-03 2X 365d 47059 4.2 1964 3.3 1572

Life: 1671d 116380 3.7 4305 3.3 3863

7<sup>th</sup> Dam

### Gloryland Lana Rae EX-94 2E

5-06 2X 365d 29011 4.0 1159 3.2 937

Life: 2113d 129,620 3.7 4768 3.4 4343

8<sup>th</sup> Dam

### Scientific Liza Rae EX-90

4-09 2X 365d 26764 2.9 776 3.3 882

9<sup>th</sup> Dam

### Haoverhill Tony Rae EX-96 3E GMD DOM

6-11 3X 365d 40221 4.1 1660 3.3 1332

• HM All-American JR 2-Year-Old 1988

• Nom All-American 5-Year-Old 1991

## 1B

### MISS SIDEKICK HAZEL-ET

840003291247766 99%RHA GTPI +2162

Born: 12/06/2024

Bred 2/222026 to 777HO03913 UNIX



HODGLYNN MIRAND HALO EX-92

Dam of Lot 1B

### WALNUTLAWN SIDEKICK

000012508113 TR TE TY TV TL TD

PTA -1710M -35F -31P 99%R 04/26

PTA +2.61T +1.47UDC +1.17FLC 99%R 04/26

GTPI +2246

### HODGLYNN MIRAND HALO

CAN000013742728 EX-92 E E E E E

• Junior All-American JR 2-Year-Old 2023

• 1<sup>st</sup> JR 2-Year-Old International Junior Show 2023

• 1<sup>st</sup> JR 2-Yr-Old & Res Int Champ Mideast Summer Nat'l 2023

• 3<sup>rd</sup> Spring Yearling Mideast Summer National 2022

• 4<sup>th</sup> Spring Yearling Mideast Spring National 2022

• 3<sup>rd</sup> Spring Calf Mideast Summer National 2021

### COOMBOONA ZIPIT MIRAND-IMP-ET

AUS000H01993596 RC PP

PTA +38M -19F -23P 99%R 04/26

PTA +1.78T +1.35UDC +0.15FLC TPI +2255

### HODGLYNN SOLOMON HADLEY-ET

CAN000012800010 EX-91-2E CAN

2-00 2X 279d 20474 3.8 787 3.1 644

2-11 2X 338d 27143 4.0 1091 3.3 888

4-02 2X 365d 37780 3.7 1413 3.1 1184

5-07 2X 323d 29844 4.0 1202 3.2 968

4 Lact: 117,618 3.9 4616 3.2 9781

3<sup>rd</sup> Dam

### St-Jacob Goldwyn Hazel-ET EX-94-4E CAN 10\*

6-10 2X 305d 33847 4.2 1415 3.1 1052

6 Lact: 174,774 3.9 6759 3.3 5796

• Grand Champion Autumn Opportunity 2015

• Res All-Ontario 4-Year-Old 2015

• HM All-Ontario 5-Year-Old 2016

4<sup>th</sup> Dam

### Dubeau Dundee Hezbollah EX-92

4-03 2X 365d 42046 4.4 1859 3.3 1379

• All-American & All-Canadian SR 2-Year-Old 2009

• Res All-American 4-Year-Old 2011

• 1<sup>st</sup> SR 2-Year-Old & Int Champ International Show 2009

• 2<sup>nd</sup> 4-Year-Old & HM SR Champ International Show 2011

• Grand Champion Midwest Spring National 2011

5<sup>th</sup> Dam

### Dubeau Lyne La Trent Huit B EX-90 CAN 6\*

5-05 2X 365d 28583 4.3 1230 3.4 983

5 Lact: 145,113 4.4 6404 3.6 5185

6<sup>th</sup> Dam

### Dubeau JY Antoinette VG-87 CAN 2\*

4-03 2X 321d 29112 3.9 1149 3.3 957

9 Lact: 233,712 4.1 9579 3.5 8157

# Choose Your Favorite

## 2A

### EAST-COLT DEMPSEY DONUT

840003209771527 100%RHA GTPI+2152  
 Born: 12/04/2020 EX-90 E E V V E @ 5/03  
 Fresh June 5, 2026

2-04 2X 305d 25500 3.9% 1000 3.1% 799  
 3-05 2X 353d 28507 3.9% 1121 3.3% 957  
 4-06 2X 305d 27800 3.7% 1042 3.4% 949



CANARY ATLANTIC LYNETTE EX-93  
 3<sup>rd</sup> Dam of Lot 2A

### LIRR DREW DEMPSEY

000061083609 TR CD TP TY TV TL TD  
 PTA -1268M -41F -27P 99%R 04/26  
 PTA +1.08T +0.22UDC +0.89FLC 99%R 04/26  
 GTPI +2015

### CANARY MERIDIAN WOLF

840003147303817 VG-88 VV + V E  
 2-00 2X 305d 21690 3.5 767 2.7 592  
 3-01 2X 276d 25800 3.2 815 2.7 705  
 4-00 2X 305d 30860 2.9 901 2.7 831  
 Life: 1004d 86,370 3.2 2744 2.7 2361

### SULLY HART MERIDIAN-ET

USA000069951907 TR TP TY TV TL TD  
 PTA +1437M -23F +12P 99%R 04/26  
 PTA +1.44T +0.68UDC -0.59FLC TPI +2329

### CANARY MOGUL SEASON

840003135719947 GP-83 + + G + V  
 1-11 2X 286d 23060 4.1 945 3.1 709  
 3-11 2X 157d 8150 4.0 323 3.1 252

3<sup>rd</sup> Dam

### Canary Atlantic Lynette EX-93

4-10 2X 299d 32440 3.5 1134 3.0 968  
 Life: 1231d 122,390 3.5 4267 2.9 3542

4<sup>th</sup> Dam

### Canary Bolton Josie EX-90 2E

5-03 3X 340d 32690 4.0 1319 3.1 1005  
 Life: 1577d 132,600 4.2 5603 3.2 4207

5<sup>th</sup> Dam

### Canary Morty Eleanor VG-88

4-01 2X 335d 25790 4.0 1041 3.2 836  
 Life: 1473d 106,680 4.0 4309 3.1 3348

6<sup>th</sup> Dam

### Canary Winfield Beth VG-88

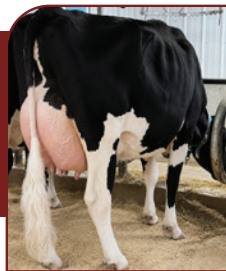
5-08 2X 337d 28180 4.1 1159 3.0 854  
 Life: 1682d 133,170 4.0 5284 3.1 4083

## 2B

### ROCKY-RUN ALTITUDE HIGHLY RC

840003209771530 99%RHA GTPI+2033  
 Born: 01/04/2021 EX-91 E E V E E @ 5/02  
 Due June 1, 2026 to 551H03617 BEEF

2-02 2X 267d 16910 4.8% 810 3.4% 570  
 3-01 2X 365d 25870 4.6% 1199 3.2% 855  
 4-05 2X 305d 23449 4.8% 1115 3.5% 815



MS-AOL BLACK DIAMOND-ET EX-92  
 Dam of Lot 2B

### FARNEAR ALTITUDE-RED-ET

003128013348 TE TCTY TV TL TD  
 PTA -419M -25F -11P 99%R 04/26  
 PTA +2.31T +1.58UDC +1.25FLC 99%R 04/26  
 GTPI +2217

### MS-AOL BLACK DIAMOND-ET

840003140616942 EX-92 E E V E E  
 2-04 2X 312d 21559 4.3 925 3.1 677  
 3-04 2X 365d 29240 3.4 991 2.9 864  
 • 6<sup>th</sup> SR 3-Year-Old Midwest Spring Show 2022

### MR D APPLE DIAMONDBACK

840003013721049 RC TP TE TCTY TV TL TD  
 PTA -923M -63F -24P 99%R 04/26  
 PTA +1.37T +0.96UDC +1.21FLC TPI +1954

### MISS ROXYS RECOVERY-RED

USA000141367082 EX-92 E E E E E  
 1-11 2X 305d 21850 4.0 878 3.1 673  
 3-06 2X 305d 23260 4.0 919 2.9 669  
 4-06 2X 305d 28650 4.2 1211 2.9 838  
 6-02 2X 305d 31730 4.2 1331 2.8 897  
 7-08 2X 291d 24680 4.3 1072 2.9 709  
 • HM All-American R&W Winter Yearling 2012

3<sup>rd</sup> Dam

### Galestone Ava Rae-Red-ET EX-91

3-09 2X 329d 24680 3.8 949 2.8 694  
 Life: 1454d 105,870 3.6 3800 2.7 2881

4<sup>th</sup> Dam

### Scientific Rubirae Socks-ET EX-93 3E DOM

5-08 2X 365d 43050 4.2 1809 2.9 1250  
 Life: 2043d 154,160 4.1 6388 3.1 4753

5<sup>th</sup> Dam

### Scientific Jubilant Rae-ET EX-90 DOM

5-11 2X 365d 38880 4.1 1608 3.6 1403  
 Life: 1394d 117,590 4.0 4707 3.6 4242

6<sup>th</sup> Dam

### C Hanoverhill Tony Rae EX-96 3E DOM GMD

6-11 3X 365d 40220 4.1 1661 3.3 1331  
 Life: 2247d 166,396 4.1 6904 3.4 5612  
 • HM All-American JR 2-Year-Old 1988  
 • Nom All-American 5-Year-Old 1991

7<sup>th</sup> Dam

### C Hanoverhill TT Roxette-ET EX-94 2E GMD

10-00 3X 365d 35040 4.3 1518 3.0 1063  
 Life: 2104d 164,789 4.1 6760 3.1 3587

8<sup>th</sup> Dam

### Mil-R-Mor Roxette EX-90 GMD DOM 30\*

7-01 2X 365d 24530 4.7 1153

# Choose Your Favorite

## 3A

### EAST-COLT SUGARUSH QUIET

840003302949842 99%RHA GTPI +2135  
Born: 06/01/2025



**CANARY CRUSH SKELETON VG-88**  
2<sup>nd</sup> Dam of Lot 3A

### KIRLEA SUGARUSH-ET

000013942572  
PTA +119M -26F -6P 89%R 04/26  
PTA +2.56T +1.37UDC +1.38FLC 84%R 04/26  
GTPI +2401

### EAST-COLT MASTER PAISLEY

840003257609730 GP-84 VVV ++  
1-10 2X 196d 14165 3.0 442 3.4 424

### GOLDEN-OAKS MASTER-ET

840003139216917 TR TP TC TL TD  
PTA -395M -28F -25P 99%R 04/26  
PTA +3.50T +1.93UDC +1.11FLCTPI +1986

### CANARY CRUSH SKELETON

840003209771516 VG-88 E E V V V  
2-05 2X 305d 24030 3.5 832 3.1 752

3<sup>rd</sup> Dam

### Canary Aftershock Ramsey VG-88

4-10 2X 305d 28060 3.2 900 3.0 842

4<sup>th</sup> Dam

### Canary Onyx Kenli VG-88

6-05 2X 336d 34750 3.8 11312 3.4 1182  
Life: 1743d 150,830 3.8 5681 3.4 5114

5<sup>th</sup> Dam

### Canary Lheros Helen GP-84

2-10 2X 289d 21040 3.8 791 3.6 759  
Life: 580d 41,500 3.7 1546 3.5 1455

## 3B

### EAST-COLT SUGARUSH QUIP

840003302949843 99%RHA GTPI +2372  
Born: 06/13/2025



**DJLPUREPRIDE HYPNT IESHA-ET VG-85**  
3<sup>rd</sup> Dam of Lot 3B

### KIRLEA SUGARUSH-ET

000013942572  
PTA +119M -26F -6P 89%R 04/26  
PTA +2.56T +1.37UDC +1.38FLC 84%R 04/26  
GTPI +2401

### EAST-COLT DOC PHOEBE

840003257609734 VG-86 VV ++ V  
1-10 2X 305d 24199 3.6 871 3.2 786

### WOODCREST KING DOC

840003132417775 TR TP TE TC TY TV TL TD  
PTA +992M +27F +29P 99%R 04/26  
PTA +2.38T +1.13UDC +1.60FLCTPI +2834

### DJLPUREPRIDE DEFI INDIA-RED

8400033234744361 VG-85 VVV + V  
2-01 2X 305d 20990 3.7 770 3.3 690

3<sup>rd</sup> Dam

### DJLPurepride Hypnt Iesha-ET VG-85 @ 2Yr

4<sup>th</sup> Dam

### Milksource RN Idelle-Red-ET EX-92

4-05 3X 365d 40520 3.5 1415 3.0 1221  
Life: 1142d 109,480 3.7 4053 3.1 3433

5<sup>th</sup> Dam

### Stone-Front Rub Indigo-Red EX-94 3E

6-08 2X 365d 42410 3.7 1568 3.1 1308  
Life: 2227d 220,650 3.8 8326 3.1 6885  
• Nom All-American R&W 125,000lb Cow 2010  
• Nom All-American R&W 5-Year-Old 2009

6<sup>th</sup> Dam

### Stone-Front R-Marker Isobel EX-91

3-05 2X 365d 29240 3.6 1062 2.8 822

7<sup>th</sup> Dam

### Sherwyn Merrill Inga-ET EX-92

4-03 2X 365d 34860 3.6 1266 2.8 959  
Life: 2207d 172,110 3.8 6516 2.8 4795

8<sup>th</sup> Dam

### Sandwater Blstr Ieva-ET VG-85 GMD DOM

3-06 2X 365d 33140 3.2 1070 3.0 994  
Life: 2067d 140,610 3.6 5114 3.1 4316

9<sup>th</sup> Dam

### Odyssey Chief Mark Ina-ET VG-89 GMD DOM

2-02 2X 357d 32480 4.7 1516 3.4 1103

# Choose Your Favorite

## 4A

### EAST-COLT JERRY LEWIS QUILL

840003302949849 99%RHA GTPI+2462  
Born: 06/26/2025



CANARY ATLANTIC LYNETTE EX-93

4<sup>th</sup> Dam of Lot 4A

### LADYS LAMBDA JERRY LEWIS-ET

003240650309 TR TE TC TY TV TL TD  
PTA +54M +12F +12P 82%R 04/26  
PTA +2.54T +1.62UDC +1.33FLC 82%R 04/26  
GTPI +2779

### EAST-COLT DEMPSEY DONUT

840003209771527 EX-90 E E V V E  
2-04 2X 365d 29195 3.9 1174 3.1 934  
3-05 2X 353d 28507 3.9 1121 3.3 957  
4-06 2X 605d 27800 3.7 1042 3.4 949

### LIRR DREW DEMPSEY

USA000061083609 TR CD TP TY TV TL TD  
PTA -1268M -41F -27P 99%R 04/26  
PTA +1.08T +0.22UDC +0.89FLC TPI +2015

### CANARY MERIDIAN WOLF

840003147303817 VG-88 VV + V E  
2-00 2X 305d 21690 3.5 767 2.7 592  
3-01 2X 276d 25800 3.2 815 2.7 705  
4-00 2X 305d 30860 2.9 901 2.7 831  
Life: 1004d 86,370 3.2 2744 2.7 2361

3<sup>rd</sup> Dam

### Canary Mogul Season GP-83

1-11 2X 286d 23060 4.1 945 3.1 709

4<sup>th</sup> Dam

### Canary Atlantic Lynette EX-93

4-10 2X 299d 32440 3.5 1134 3.0 968  
Life: 1231d 122,390 3.5 4267 2.9 3542

5<sup>th</sup> Dam

### Canary Bolton Josie EX-90 2E

5-03 3X 340d 32690 4.0 1319 3.1 1005  
Life: 1577d 132,600 4.2 5603 3.2 4207

6<sup>th</sup> Dam

### Canary Morty Eleanor VG-88

4-01 2X 335d 25790 4.0 1041 3.2 836  
Life: 1473d 106,680 4.0 4309 3.1 3348

7<sup>th</sup> Dam

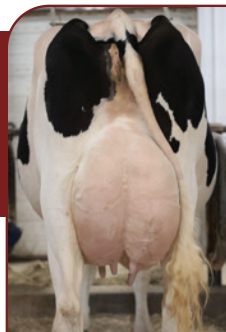
### Canary Winfield Beth VG-88

5-08 2X 337d 28180 4.1 1159 3.0 854  
Life: 1682d 133,170 4.0 5284 3.1 4083

## 4B

### EAST-COLT LGNDAIRY QUESTION

840003302949845 99%RHA GTPI+2277  
Born: 06/12/2025



EAST-COLT THUNDRSTORM HEIDI EX-91

Dam of Lot 4B

### TOWNLINEACRE LEGENDAIRY-ET

003245704322 TR TP TE TC TY TV TL TD  
PTA -260M -3F -4P 85%R 04/26  
PTA +2.53T +1.49UDC +1.06FLC 81%R 04/26  
GTPI +2553

### EAST-COLT THUNDRSTORM HEIDI

840003234744366 EX-91 E E E E E  
2-03 2X 355d 26016 3.5 917 2.9 767  
3-06 2X 305d 29403 3.0 892 3.0 875

### BLONDIN THUNDER STORM

CAN000110296922  
PTA -410M -75F -33P 98%R 04/26  
PTA +2.50T +1.41UDC +0.46FLC 98%R TPI +1858

### CANARY CRUSH AMY

840003147303832 EX-92 E E E E E 2E  
2-03 2X 280d 24370 3.6 875 3.0 733  
3-02 2X 305d 29920 3.6 1070 3.0 911  
4-09 2X 305d 26200 3.4 885 3.2 828  
5-10 2X 305d 29060 3.5 1003 3.2 923

3<sup>rd</sup> Dam

### Canary Golden Dreams Sage GP-83

1-11 2X 293d 21660 4.4 949 3.2 687

4<sup>th</sup> Dam

### Canary Shottle Kameron EX-93 2E

4-10 3X 294d 34950 3.8 1315 3.1 1100  
Life: 2325d 226,900 3.8 8639 3.3 7421

5<sup>th</sup> Dam

### Canary Allen Gambler EX-92 2E

3-03 2X 351d 29610 4.1 1217 3.3 974  
Life: 1504d 112,620 4.2 4723 3.3 3766

6<sup>th</sup> Dam

### Canary Durham Dolly VG-86

3-00 2X 305d 23380 3.4 793 3.0 708

7<sup>th</sup> Dam

### Canary Jurist Sherri VG-85

6-00 2X 305d 28700 3.5 1006 2.7 781

# Choose Your Favorite

## 5A

### EAST-COLT LEGENDAIRY QUOTE

840003302949844 99%RHA GTPI +2374  
Born: 06/10/2025



EAST-COLT LEGENDAIRY QUOTE

Lot 5A

### TOWNLINEACRE LEGENDAIRY-ET

003245704322 TR TP TE TCTY TV TL TD  
PTA -260M -3F -4P 85%R 04-26  
PTA +2.53T +1.49UDC +1.06FLC 81%R 04/26  
GTPI +2553

### EAST-COLT ACCELERATE HAWAII

840003234744362 EX-93 E E E E E  
2-00 2X 283d 22978 3.2 858 4.1 653  
2-11 2X 305d 28210 4.1 1145 3.1 862  
3-11 2X 305d 34347 3.8 1312 3.0 1019

### ROSEDALE ACCELERATE-RED-ET

840003130101492 TC TL TD  
PTA -2237M -76F -57P 99%R 04/26  
PTA -0.86T -1.61UDC -0.57FLC TPI +1556

### CANARY MOGUL TOPAZ

840003141205482 EX-90 V V E E E  
3-07 2X 305d 31490 3.6 1146 2.9 926  
5-11 2X 274d 29110 3.6 1058 2.9 851

3<sup>rd</sup> Dam

**Canary Aftershock Rachel VG-85**

4<sup>th</sup> Dam

**Canary Goldwyn Majic VG-87**

5-04 2X 319d 32690 4.4 1454 3.3 1086  
Life: 1662d 155,420 4.2 6573 3.4 5290

5<sup>th</sup> Dam

**Canary Gibson Gillian-TW EX-91 3E**

7-10 2X 305d 29570 4.6 1347 3.1 921  
Life: 2526d 201,080 4.4 8763 3.3 6635

6<sup>th</sup> Dam

**Canary Atley Bunny EX-93 4E**

9-04 2X 305d 38200 3.5 1342 3.0 1132  
Life: 4404d 390,120 3.8 14902 3.0 11868

7<sup>th</sup> Dam

**Canary Jurist Sherri VG-85**

6-00 2X 305d 28700 3.5 1006 2.7 781

## 5B

### EAST-COLT HANANS BETA

840003286250569 99%RHA GTPI +2553  
Born: 06/01/2024

Due July 18, 2026 to BEEF



EAST-COLT ACCELERATE HAWAII EX-93

Dam of Lot 5A & 5B

### SIEMERS EXC HANANS 31753-ET

003143986722 TR TP TE TCTY TV TL TD  
PTA -524M 49F 16P 99%R 202604  
PTA 2.85T 1.6UDC 1.47FLC 99%R 202604  
GTPI +2898

### EAST-COLT ACCELERATE HAWAII

840003234744362 EX-93 E E E E E  
2-00 2X 283d 22978 3.2 858 4.1 653  
2-11 2X 305d 28210 4.1 1145 3.1 862  
3-11 2X 305d 34347 3.8 1312 3.0 1019

### ROSEDALE ACCELERATE-RED-ET

840003130101492 TC TL TD  
PTA -2237M -76F -57P 99%R 04/26  
PTA -0.86T -1.61UDC -0.57FLC TPI +1556

### CANARY MOGUL TOPAZ

840003141205482 EX-90 V V E E E  
3-07 2X 305d 31490 3.6 1146 2.9 926  
5-11 2X 274d 29110 3.6 1058 2.9 851

3<sup>rd</sup> Dam

**Canary Aftershock Rachel VG-85**

4<sup>th</sup> Dam

**Canary Goldwyn Majic VG-87**

5-04 2X 319d 32690 4.4 1454 3.3 1086  
Life: 1662d 155,420 4.2 6573 3.4 5290

5<sup>th</sup> Dam

**Canary Gibson Gillian-TW EX-91 3E**

7-10 2X 305d 29570 4.6 1347 3.1 921  
Life: 2526d 201,080 4.4 8763 3.3 6635

6<sup>th</sup> Dam

**Canary Atley Bunny EX-93 4E**

9-04 2X 305d 38200 3.5 1342 3.0 1132  
Life: 4404d 390,120 3.8 14902 3.0 11868

7<sup>th</sup> Dam

**Canary Jurist Sherri VG-85**

6-00 2X 305d 28700 3.5 1006 2.7 781

# Choose Your Favorite

## 6A

### EAST-COLT POPPINHOT-RED-ET

840003302949837 99%RHA GTPI+1888

Born: 12/11/2024

Due 12/17/26 to 551H03379 Sexed DELTA-LAMDA



SELLCREST D CHEETO-RED EX-94 3E

Dam of Lot 6A & 6B

### HODGLYNN MAXIMUM-RED-ET

000014156509

PTA -557M -36F -31P 86%R 04/26

PTA +1.66T +1.18UDC +1.14FLC 81%R 04/26

GTPI +2107

### SELLCREST D CHEETO-RED

840003130966098 EX-94 E E E E E 3E

3-02 2X 328d 26277 4.1 1003 3.2 843

6-00 2X 354d 31023 4.0 1265 3.2 1007

7-03 2X 365d 33775 4.3 1479 3.3 1151

8-10 2X 305d 35090 4.3 1523 3.2 1136

Life: 198,308 8810F 6746P

- 1<sup>st</sup> 125,000lb Cow Midwest Spring R&W Show 2025
- 4<sup>th</sup> 125,000lb Cow International R&W Show 2025
- 4<sup>th</sup> Aged Cow International R&W Show 2022 & 2023
- 1<sup>st</sup> Aged Cow WI Championship R&W Show 2023
- 1<sup>st</sup> Aged Cow Midwest Fall National 2023
- Grand Champion Mideast Fall National 2020

### SHE-KEN BW DUNKIN-RED-ET

USA000072713010 TL TD

PTA -1956M -54F -46P 92%R 04/26

PTA +1.97T +0.86UDC +1.08FLC TPI +1807

### SELLCREST CATHY-RED

USA000069085958 VG-87 E V V + V

2-04 2X 363d 25420 3.4 862 3.1 784

3-05 2X 322d 19230 3.3 630 3.0 581

4-06 2X 365d 26270 3.6 938 3.0 783

5-11 2X 320d 21200 3.5 739 3.0 627

6-10 2X 284d 18440 3.4 626 3.1 571

Life: 1698d 111,930 3.4 3840 3.0 3391

### CHEETO!

Nom All-American R&W 125,000lb Cow 2025

Nom All-American R&W Aged Cow 2023 & 2022

Nom All-American R&W 4-Year-Old 2020

HHM JR All-American R&W Spring Yearling 2017

3<sup>rd</sup> Dam

### Sellcrest AD Char-Red-ET EX-91

5-08 2X 365d 29530 3.9 1147 3.2 945

Life: 1725d 119,390 4.2 5048 3.3 3969

4<sup>th</sup> Dam

### Sellcrest US Charity-ET VG-89

4-03 2X 365d 33490 4.6 1537 3.5 1181

5<sup>th</sup> Dam

### Hanover-Hill Rad Charity-ET EX-92 2E

5-11 2X 365d 27090 3.9 1053 3.1 850

Life: 1993d 123,320 4.0 4924 3.3 4039

6<sup>th</sup> Dam

### C Hanoverhill SWD Charity EX-94 2E DOM

7-01 3X 365d 27800 4.0 1116 3.2 888

7<sup>th</sup> Dam

### Brookview Tony Charity EX-97 DOM

5-11 3X 365d 39052 3.6 1415

Life: 1888d 162,210 3.7 5997 3.0 1057

• All-American Aged Cow 1984, 1985, 1987

• All-American 4-Year-Old 1982

• All-Time All-American 4-Year-Old

## 6B

### EAST-COLT ALLEYOOP CHILLI RC

840003302949838 99%RHA GTPI+2015

Born: 01/21/2025

Bred 6/10 to DANN & 6/11 to DAX-RED



SELLCREST D CHEETO-RED EX-94 3E

Dam of Lot 6A & 6B

### BRABANTDALE ALLEYOOP-ET

000042002534 TR TP TE TCTY TV TL TD

PTA +1153M -27F +11P 98%R 04/26

PTA +3.38T +1.92UDC +1.2FLC 97%R 04/26

GTPI +2365

### SELLCREST D CHEETO-RED

840003130966098 EX-94 E E E E E 3E

3-02 2X 328d 26277 4.1 1003 3.2 843

6-00 2X 354d 31023 4.0 1265 3.2 1007

7-03 2X 365d 33775 4.3 1479 3.3 1151

8-10 2X 305d 35090 4.3 1523 3.2 1136

Life: 198,308 8810F 6746P

- 1<sup>st</sup> 125,000lb Cow Midwest Spring R&W Show 2025
- 4<sup>th</sup> 125,000lb Cow International R&W Show 2025
- 4<sup>th</sup> Aged Cow International R&W Show 2022 & 2023
- 1<sup>st</sup> Aged Cow WI Championship R&W Show 2022 & 2023
- 1<sup>st</sup> Aged Cow Midwest Fall National 2023
- Grand Champion Mideast Fall National 2020

### SHE-KEN BW DUNKIN-RED-ET

USA000072713010 TL TD

PTA -1956M -54F -46P 92%R 04/26

PTA +1.97T +0.86UDC +1.08FLC TPI +1807

### SELLCREST CATHY-RED

USA000069085958 VG-87 E V V + V

2-04 2X 363d 25420 3.4 862 3.1 784

3-05 2X 322d 19230 3.3 630 3.0 581

4-06 2X 365d 26270 3.6 938 3.0 783

5-11 2X 320d 21200 3.5 739 3.0 627

6-10 2X 284d 18440 3.4 626 3.1 571

Life: 1698d 111,930 3.4 3840 3.0 3391

### CHEETO!

Nom All-American R&W 125,000lb Cow 2025

Nom All-American R&W Aged Cow 2023 & 2022

Nom All-American R&W 4-Year-Old 2020

HHM JR All-American R&W Spring Yearling 2017

3<sup>rd</sup> Dam

### Sellcrest AD Char-Red-ET EX-91

5-08 2X 365d 29530 3.9 1147 3.2 945

Life: 1725d 119,390 4.2 5048 3.3 3969

4<sup>th</sup> Dam

### Sellcrest US Charity-ET VG-89

4-03 2X 365d 33490 4.6 1537 3.5 1181

5<sup>th</sup> Dam

### Hanover-Hill Rad Charity-ET EX-92 2E

5-11 2X 365d 27090 3.9 1053 3.1 850

Life: 1993d 123,320 4.0 4924 3.3 4039

6<sup>th</sup> Dam

### C Hanoverhill SWD Charity EX-94 2E DOM

7-01 3X 365d 27800 4.0 1116 3.2 888

7<sup>th</sup> Dam

### Brookview Tony Charity EX-97 DOM

5-11 3X 365d 39052 3.6 1415

Life: 1888d 162,210 3.7 5997 3.0 1057

• All-American Aged Cow 1984, 1985, 1987

• All-American 4-Year-Old 1982

• All-Time All-American 4-Year-Old

# Choose Your Favorite

## 8A

### MS DB HIMALAYA 7031-ET

840003298329741 99%RHA GTPI +2498

Born: 03/02/2026

Bred May 8, 2026 to 799HO00034 ENERGY



**SHEEKNOLL DURHAM ARROW EX-96**

2<sup>nd</sup> Dam of Lot 8A

### KINGS-RANSOM DROPBOX-ET

003224437486 TR TP TE TCTY TV TL TD

PTA +526M +35F +39P 98%R 04/26

PTA +2.72T +1.77UDC +1.22FLC 98%R 04/26

GTPI +3063

### SHEEKNOLL CRUSH HARRIET-ET

840003148923669 EX-93 E E E E 2E

4-06 3X 365d 49950 3.1 1559 3.1 1526

### MAVERICK CRUSH

CAN 12042760 TE TCTY TV TL TD

PTA -1250M -86F -34P 99%R 04/26

PTA +1.85T +0.68UDC +1.13FLC TPI +2161

### SHEEKNOLL DURHAM ARROW

USA000066406394 EX-96 E E E E 2E

4-00 2X 306d 29090 3.8 1112 3.2 926

6-00 2X 365d 35750 3.9 1379 3.1 1122

Life: 1567d 140,201 3.9 5447 3.0 4252

- All-American Aged Cow 2016
- Grand Champion International Holstein Show 2016
- Grand Champion Midwest Fall Natl Holstein Show 2016
- 1<sup>st</sup> 4-Yr-Old, Res Grand Champion Midwest Fall Natl 2014

3<sup>rd</sup> Dam

### Sheeknoll Pronto Venture VG-85

3-01 2X 281d 20140 4.4 896 3.4 689

4<sup>th</sup> Dam

### Sheeknoll Stormin Roswel VG-85

5-00 2X 320d 24830 4.4 1087 3.2 804

5<sup>th</sup> Dam

### Sheeknoll Louie Nickel VG-85

3-10 2X 365d 36400 3.4 1233 3.2 1155

Life: 118,400 3.7 4346 3.2 3790

6<sup>th</sup> Dam

### Sheeknoll-R Judge Irmina VG-85

6-08 2X 365d 36400 3.4 1233 3.2 1155

Life: 170,380 4.6 7794 3.5 5982

7<sup>th</sup> Dam

### Sheeknoll-R Merrill Gidget VG-85 GMD

6-04 2X 328d 31630 4.4 1385 3.3 1053

Life: 215,270 4.4 9506 3.4 7315

## 8B

### EAST-COLT UNIX QUINCY

840003202949839 99%RHA GTPI +2259

Born: 03/01/2025

Bred May 8, 2026 to 799HO00058 SUGERUSH



**ROSEDALE LEXINGTON EX-95**

3<sup>rd</sup> Dam of Lot 8B

### CROTEAU LESPERRON UNIX-ET

000107567492 TR TP TE TY TV TL TD

PTA +186M -17F -8P 99%R 04/26

PTA +1.51T +1.14UDC +0.01FLC 99%R 04/26

GTPI +2382

### EAST-COLT BOOM JANESSA-ET

840003257609718 VG-87 V V V V V

2-03 2X 337d 26916 3.9 1062 3.4 934

3-04 2X 25d 2046 3.1 75 3.3 72 RIP

• 9<sup>th</sup> Winter SR 2-Year-Old Midwest Spring Show 2025

### REGANCREST BOOM

840003137164654 TR TCTL TD

PTA +208M -32F +5P 99%R 04/26

PTA +2.28T +1.12UDC +0.95FLC TPI +2312

### ROSEDALE UNSCRIPTEDDRAMA-ET

840003130798715 EX-93 E E E E 2E

3-03 2X 365d 28570 3.4 966 3.3 945

3<sup>rd</sup> Dam

### Rosedale Lexington EX-95

4-11 2X 365d 42780 4.6 1973 3.0 1289

- All-American 5-Year-Old 2013
- Res All-American JR 3-Year-Old 2011
- Res All-American JR 2-Year-Old 2010

4<sup>th</sup> Dam

### Rosedale Lexi VG-89

2-02 2X 365d 26800 5.1 1356 2.9 787

- Res Intermediate Champ Midwest Spring Nat'l 2007
- HM All-American Spring Yearling 2005

5<sup>th</sup> Dam

### Rosedale Lea-Ann EX-93 2E GMD

4-08 2X 365d 39370 3.4 1325 3.1 1202

6<sup>th</sup> Dam

### Stookey Elm Park Blackrose EX-96 3E GMD DOM

5-03 3X 365d 42229 4.6 1940 3.4 1433

- All-Time All-American JR 2-Yr-Old & JR 3-Yr-Old
- Res All-American 5-Year-Old 1995

7<sup>th</sup> Dam

### Nandette TT Speckle Red EX-93 DOM

4-08 2X 365d 25289 4.7 1195

8<sup>th</sup> Dam

### Nandette Riley Nana-Red VG-87

7-01 2X 365d 20071 3.4 677 3.1 622

# Choose Your Favorite

## 9A

### EAST-COLT LEGENDAIRY BRIGHT

840003286250585 99%RHA GTPI +2291

Born: 11/09/2024

Bred May 8, 2026 to 799HO00034 ENERGY



BELLA-ROSA GW SARA-ET EX-96

2<sup>nd</sup> Dam of Lot 9A & 9B

### TOWNLINEACRE LEGENDAIRY-ET

003245704322 TR TP TE TCTY TV TL TD

PTA -260M -3F -4P 85%R 04/26

PTA +2.53T +1.49UDC +1.06FLC 81%R 04/26

GTPI +2553

### OAKFIELD HO SOLARIS-ET

840003134445324 EX-94 E E E E E 2E

2-07 2X 305d 24134 3.4 821 3.0 714

3-08 2X 305d 26949 3.1 835 3.0 796

4-09 2X 305d 31498 3.0 935 2.9 906

6-02 2X 305d 36400 2.8 1014 2.9 1070

7-03 2X 128d 16565 2.6 508 4.0 465 RIP

Maternal Sister:

### Oakfield Solomon Sunset EX-95

• Grand Champion Eastern Fall National 2023

• Nom All-American SR 3-Year-Old 2022

### STANTONS HIGH OCTANE-ET

CAN000011696704 TR TP TY TV TL TD

PTA +661M -28F -6P 99%R 04/26

PTA +1.73T +1.21UDC +0.54FLC TPI +2190

### BELLA-ROSA GW SARA-ET

USA000066407984 EX-96 E E E E E 3E

7-06 3X 365d 32200 3.5 1140 2.9 921

8-06 3X 365d 29760 4.4 1295 3.2 950

Life: 2079d 160,610 4.0 6347 3.1 4964

• Nom All-American Aged Cow 2018 & 2017

• Grand Champion NE Fall National 2018

• 3<sup>rd</sup> Aged Cow International Show 2017

• Supreme Champion Western New York 2017

• All-New York Aged Cow 20216

3<sup>rd</sup> Dam

### Bella-Rosa Spendide EX-90

2-02 3X 320d 27740 3.5 984 3.2 897

4<sup>th</sup> Dam

### Beaumont Spendide Spirit EX-95

5-01 2X 365d 39780 3.1 1251 2.9 1153

• All-American 4-Year-Old 2003

• HM All-American Aged Cow 2004

• Res Grand Champion International Show 2003

• 1<sup>st</sup> Aged Cow Eastern Fall National 2006

## 9B

### EAST-COLT DROPBOX QUIP

840003302949855 99%RHA GTPI +2514

Born: 12/26/2025



BELLA-ROSA GW SARA-ET EX-96

2<sup>nd</sup> Dam of Lot 9A & 9B

### KINGS-RANSOM DROPBOX-ET

003224437486 TR TP TE TCTY TV TL TD

PTA +526M +35F +39P 98%R 04/26

PTA +2.72T +1.77UDC +1.22FLC 98%R 04/26

GTPI +3063

### OAKFIELD HO SOLARIS-ET

840003134445324 EX-94 E E E E E 2E

2-07 2X 305d 24134 3.4 821 3.0 714

3-08 2X 305d 26949 3.1 835 3.0 796

4-09 2X 305d 31498 3.0 935 2.9 906

6-02 2X 305d 36400 2.8 1014 2.9 1070

7-03 2X 128d 16565 2.6 508 4.0 465 RIP

Maternal Sister:

### Oakfield Solomon Sunset EX-95

• Grand Champion Eastern Fall National 2023

• Nom All-American SR 3-Year-Old 2022

### STANTONS HIGH OCTANE-ET

CAN000011696704 TR TP TY TV TL TD

PTA +661M -28F -6P 99%R 04/26

PTA +1.73T +1.21UDC +0.54FLC TPI +2190

### BELLA-ROSA GW SARA-ET

USA000066407984 EX-96 E E E E E 3E

7-06 3X 365d 32200 3.5 1140 2.9 921

8-06 3X 365d 29760 4.4 1295 3.2 950

Life: 2079d 160,610 4.0 6347 3.1 4964

• Nom All-American Aged Cow 2018 & 2017

• Grand Champion NE Fall National 2018

• 3<sup>rd</sup> Aged Cow International Show 2017

• Supreme Champion Western New York 2017

• All-New York Aged Cow 20216

3<sup>rd</sup> Dam

### Bella-Rosa Spendide EX-90

2-02 3X 320d 27740 3.5 984 3.2 897

4<sup>th</sup> Dam

### Beaumont Spendide Spirit EX-95

5-01 2X 365d 39780 3.1 1251 2.9 1153

• All-American 4-Year-Old 2003

• HM All-American Aged Cow 2004

• Res Grand Champion International Show 2003

• 1<sup>st</sup> Aged Cow Eastern Fall National 2006

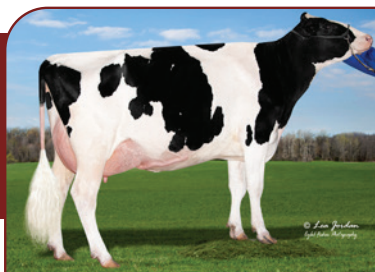
# Choose Your Favorite

## 10A

### EAST-COLT ENERGY PARIS

840003286250582 98%RHA GTPI +2187  
Born: 10/23/2024

Due August 28, 2026 to 799HO0034 DIRECT



CHAKELBURG BELIEVE POSSIBLE EX-92  
Dam of Lot 10A & 10B

### BLONDIN ENERGY-ET

CAN 120345175 TC TY TV TL TD  
PTA -282M -12F -20P 96%R 202604  
PTA 2.92T 2.26UDC 1.84FLC 96%R 202604  
GTPI +2284

### CHAKELBURG BELIEVE POSSIBLE

CAN 14076321 EX-92 E E E E E  
2-00 2X 305d 22517 3.8 852 3.2 720  
2-10 2X 305d 24310 3.7 889 3.4 820  
4-00 2X 151d 14318 3.4 462 2.6 460 RIP  
• Grand Champion WI District 2 Show 2024  
• JR All-American Winter Yearling 2023  
• Nom All-American Winter Yearling 2023  
• Nom All-American Winter Calf 2022  
• 4<sup>th</sup> Winter Calf International Show 2022

### AIJA BELIEVE-P-ET

CAN000013486161 RC PC  
PTA +153M -39F -22P 97R 04/26  
PTA +2.39T +1.57UDC +1.09FLC TPI +2265

### CHAKELBURG SOLOMON PEEKABOO

CAN 12775338 EX-91 3E CAN  
3-02 2X 210d 19248 4.1 794 3.4 646  
4-05 RX 331d 30060 3.7 1102 3.5 1038  
5-05 RX 312d 28087 3.9 1089 3.2 908  
5 Lact: 112,712 3.9 4398 3.3 3737

### 3<sup>rd</sup> Dam

**Chakelburg Dempsey Pixel EX-90 2E CAN**  
3-04 2X 362d 33303 4.2 1404 3.5 1162  
4 Lact: 112,036 4.2 4724 3.5 3920

### 4<sup>th</sup> Dam

**Chakelburg Baltimor Pixie EX-90 4E CAN**  
7-00 2X 324d 33620 4.2 1422 3.3 1113  
6 Lact: 161,549 4.0 6506 3.3 5344

### 5<sup>th</sup> Dam

**Atoz Igniter Prancer VG-87 CAN 2\***  
3-04 2X 317d 26563 3.6 948 3.4 893  
5 Lact: 111,500 3.7 4160 3.3 3662

### 6<sup>th</sup> Dam

**Atoz James Pogo EX-90 CAN 1\***  
5-11 2X 365d 30767 4.7 1457 3.7 1127  
5 Lact: 125,334 4.6 5805 3.7 4590

### 7<sup>th</sup> Dam

**Atoz Skychief Pringle VG-87 CAN 2\***  
3-04 2X 365d 35071 4.5 1590 3.4 1186  
6 Lact: 208,152 4.7 9744 3.5 7251

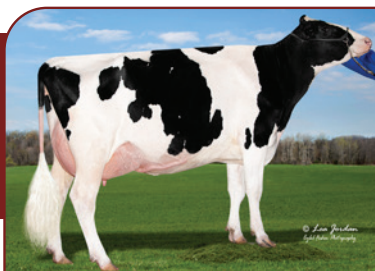
### 8<sup>th</sup> Dam

**Atoz Pete Perk EX-5E CAN 2\***  
9 Lact: 247,065 4.2 10489 3.4 8389

## 10B

### EAST-COLT ENERGY QUISCENT

840003302949854 98%RHA GTPI +2224  
Born: 12/03/2025



CHAKELBURG BELIEVE POSSIBLE EX-92  
Dam of Lot 10A & 10B

### BLONDIN ENERGY-ET

000120345175 TCTY TV TL TD  
PTA -282M -12F -20P 96%R 202604  
PTA 2.92T 2.26UDC 1.84FLC 96%R 202604  
GTPI +2284

### CHAKELBURG BELIEVE POSSIBLE

CAN 14076321 EX-92 E E E E E  
2-00 2X 305d 22517 3.8 852 3.2 720  
2-10 2X 305d 24310 3.7 889 3.4 820  
4-00 2X 151d 14318 3.4 462 2.6 460 RIP  
• Grand Champion WI District 2 Show 2024  
• JR All-American Winter Yearling 2023  
• Nom All-American Winter Yearling 2023  
• Nom All-American Winter Calf 2022  
• 4<sup>th</sup> Winter Calf International Show 2022

### AIJA BELIEVE-P-ET

CAN000013486161 RC PC  
PTA +153M -39F -22P 97R 04/26  
PTA +2.39T +1.57UDC +1.09FLC TPI +2265

### CHAKELBURG SOLOMON PEEKABOO

CAN 12775338 EX-91 3E CAN  
3-02 2X 210d 19248 4.1 794 3.4 646  
4-05 RX 331d 30060 3.7 1102 3.5 1038  
5-05 RX 312d 28087 3.9 1089 3.2 908  
5 Lact: 112,712 3.9 4398 3.3 3737

### 3<sup>rd</sup> Dam

**Chakelburg Dempsey Pixel EX-90 2E CAN**  
3-04 2X 362d 33303 4.2 1404 3.5 1162  
4 Lact: 112,036 4.2 4724 3.5 3920

### 4<sup>th</sup> Dam

**Chakelburg Baltimor Pixie EX-90 4E CAN**  
7-00 2X 324d 33620 4.2 1422 3.3 1113  
6 Lact: 161,549 4.0 6506 3.3 5344

### 5<sup>th</sup> Dam

**Atoz Igniter Prancer VG-87 CAN 2\***  
3-04 2X 317d 26563 3.6 948 3.4 893  
5 Lact: 111,500 3.7 4160 3.3 3662

### 6<sup>th</sup> Dam

**Atoz James Pogo EX-90 CAN 1\***  
5-11 2X 365d 30767 4.7 1457 3.7 1127  
5 Lact: 125,334 4.6 5805 3.7 4590

### 7<sup>th</sup> Dam

**Atoz Skychief Pringle VG-87 CAN 2\***  
3-04 2X 365d 35071 4.5 1590 3.4 1186  
6 Lact: 208,152 4.7 9744 3.5 7251

### 8<sup>th</sup> Dam

**Atoz Pete Perk EX-5E CAN 2\***  
9 Lact: 247,065 4.2 10489 3.4 8389

# Choose Your Favorite

## 11A

### MS ROCKYRUN WAR SERENDIPITY RC

USA000145556842 99%RHA GTPI +1893

Born: 12/02/2022 EX-91 VEVEE @ 3/03

Bred 05/08/26 to 799HO00063 Sexed DETECTIVE

2-00 2X 300d 20750 4.0% 830 3.1% 639



MS ROCKYRUN WAR SERENDIPITY EX-91

Lot 11A

- 1<sup>st</sup> Winter Calf Mid-East Fall National 2023
- 1<sup>st</sup> Winter Yearling WI District 1 Holstein Show 2024
- 8<sup>th</sup> Winter SR 2-Year-Old Midwest Spring Show 2025

### MR BLONDIN WARRIOR-RED-ET

003139655530 TP TE TC TY TV TL TD

PTA -1240M -63F -38P 99%R 202604

PTA 2.05T 0.55UDC 0.84FLC 99%R 202604

GTPI +1709

### MS WINTERFIELD DEF SERENITY

USA000144212297 EX-94 E E E E E 2E

2-02 2X 301d 16990 5.8 987 3.2 541

3-03 2X 305d 24100 4.7 1140 3.2 771

4-06 2X 365d 27580 4.9 1354 3.7 1020

5-09 2X 305d 25990 4.6 1195 3.2 830

Life: 1471d 103,160 5.0 5157 3.4 3503

- Res Senior Champion Mid-East Fall Show 2023
- 1<sup>st</sup> Aged Cow Grand National Junior Show
- 2<sup>nd</sup> Aged Cow Midwest Spring National Junior Show
- 3<sup>rd</sup> Aged Cow Wisconsin Championship Junior Show

### SCIENTIFIC B DEFIANT-ET

USA000141123484 RC TP TC TY TV TL TD

PTA -435M -87F -36P 99R 04/26

PTA +2.10T +0.89UDC +0.85FLC TPI +1747

### MS WINTERFIELD ARM SALENRAE

840003129753139 EX-90 E E E + E

3-11 2X 305d 21610 5.7 1222 3.2 702

5-05 2X 304d 20940 3.8 951 3.4 851

6-05 2X 365d 27320 3.8 1026 3.5 954

Life: 1936d 123,780 4.4 5400 3.5 4276

3<sup>rd</sup> Dam

### MS Winterfield Salenarae-ET EX-90

4<sup>th</sup> Dam

### Libertyraes Sasha-ET EX-94 2E

7-08 2X 305d 30550 5.2 1587 3.0 926

Life: 2342d 160,310 4.9 7873 3.3 5299

5<sup>th</sup> Dam

### Gloryland Liberty Rae EX-95 96MS 3E DOM

7-03 2X 365d 47059 4.2 1964 3.3 1572

Life: 1671d 116380 3.7 4305 3.3 3863

6<sup>th</sup> Dam

### Gloryland Lana Rae EX-94 2E

5-06 2X 365d 29011 4.0 1159 3.2 937

Life: 2113d 129,620 3.7 4768 3.4 4343

## 11B

### ERNEST-ANTHONY HAVE LOVE-ET TR TP TC TL TD

840003243347475 99%RHA GTPI +2913

Born: 11/12/2021 EX-90 EEE+E @ 4/04

Bred May 29, 2026 to 250HO17817 DANN

2-03 2X 292d 22860 4.5% 1031 3.4% 775



S-S-I DOC HAVE NOT 8783-ET

Dam of Lot 11B

### S-S-I PR RENEGADE-ET

003142352961 TR TP TE TC TY TV TL TD

PTA 811M 61F 43P 99%R 202604

PTA 1.19T 0.73UDC 1.76FLC 99%R 04/26

GTPI +3041

### S-S-I DOC HAVE NOT 8783-ET

840003143722146 EX-94 E E E E E 2E DOM

1-10 2X 365d 25480 4.8 1223 3.4 875

3-05 2X 305d 33380 4.7 1571 3.4 1131

4-05 2X 320d 35760 3.9 1404 3.3 4016

- Res All-American 4-Yr-Old 2022
- Nom All-American Milking Yearling 2019

### WOODCREST KING DOC

840003132417775 TR TP TE TC TY TV TL TD

PTA +992M +27F +29P 99R 04/26

PTA +2.38T +1.13UDC +1.60FLC TPI +2834

### FLY-HIGHER JEDI HAVENOT-ET

840003132362543 VG-86 V V V + V @ 2-06

3-05 3x 365d 31495 3.2 994 3.2 1000

4-07 2X 365d 31429 3.1 985 3.3 1034

3<sup>rd</sup> Dam

### Cookiecutter Masy Hashes-ET VG-85 @ 2-07

3-11 3x 365d 39630 3.6 1435 3.1 1208

Life: 1393d 121,290 3.9 4762 3.0 3691

4<sup>th</sup> Dam

### Cookiecutter MOM Halo-ET VG-88 DOM

2-00 2X 365d 35280 5.2 1819 3.7 1304

- Global Cow of the Year 2019

5<sup>th</sup> Dam

### Cookiecutter Gld Holler-ET VG-88 DOM

2-03 2X 365d 40730 3.5 1410 3.1 249

- Nom International Cow of the Year 2016

6<sup>th</sup> Dam

### Ms Knags-Rnsm Champ Haley-ET EX-90 GMD DOM

3-11 2X 365d 43690 3.7 1625 3.1 1357

7<sup>th</sup> Dam

### Regancrest-JDV Hanna-ET EX-90

4-07 2X 365d 45110 4.3 1922 3.2 1449

8<sup>th</sup> Dam

### Long-Haven Rudolph Dee-ET EX-90 2E GMD DOM

2-11 2X 365d 32720 4.8 1565 3.8 1252

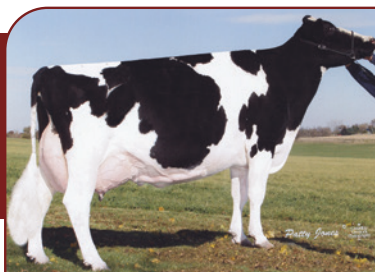
Life: 166,900 4.3 7099 3.5 5884

# Choose Your Favorite

## 12A

### EAST-COLT DOC BLISS

840003286250572 99%RHA GTPI +2346  
Born: 06/03/2024  
Fresh June 1, 2026



VANDYK-K INTEGRITY PARADISE EX-96 2E  
5<sup>th</sup> Dam of Lot 12A

### WOODCREST KING DOC

003132417775 TR TP TE TCTY TV TL TD  
PTA +992M +27F 29P 99%R 04/26  
PTA +2.38T +1.13UDC +1.6FLC 99%R 04/26  
GTPI +2834

### EAST-COLT BELIEVE JEM-ET

840003234744373 VG-88 V E + + V  
2-00 2X 352d 26807 3.6 991 3.1 830  
3-01 2X 305d 23470 3.5 814 3.3 765

### AIJA BELIEVE-P-ET

CAN000013486161 RC PC  
PTA +153M -39F -22P 97R 04/26  
PTA +2.39T +1.57UDC +1.09FLC TPI +2265

### ROSEDALE FLASHY PANTS

840003137843082 EX-93 E E E E E  
3-06 2X 291d 22680 4.2 947 3.1 701

### 3<sup>rd</sup> Dam

**Rosedale Panty Raid-ET EX-92**  
3-10 2X 365d 24790 4.6 1148 3.2 802

### 4<sup>th</sup> Dam

**Paradise-RV Paloma-ET EX-93 2E**  
3-03 2X 365d 32030 4.6 1463 3.3 1049

### 5<sup>th</sup> Dam

**Vandyk-K Integrity Paradise EX-96 2E DOM**  
5-10 2X 365d 39580 4.2 1670 3.3 1294  
Life: 1632d 133,420 4.0 5399 3.4 4574

### 6<sup>th</sup> Dam

**Vandyk-K Broker Pansy-ET EX-90 DOM**  
5-06 3X 365d 41460 3.7 1535 3.3 1385  
Life: 1538d 130,860 3.8 4951 3.3 4330

### 7<sup>th</sup> Dam

**Vandyk-K Mark Patty EX-94 2E DOM**  
4-09 2X 331d 27150 4.0 1074 3.2 686  
Life: 2490d 155,870 3.6 5679 3.3 5109

### 8<sup>th</sup> Dam

**Vandyk-K Melvin Pappy VG-88**  
4-03 2X 358d 24580 3.8 925 3.4 826

## 12B

### EAST-COLT DOC BABY

840003286250573 99%RHA GTPI +2507  
Born: 06/03/2024  
Fresh June 2, 2026



EAST-COLT BELIEVE JEWEL-ET EX-92  
Dam of Lot 12B

### WOODCREST KING DOC

003132417775 TR TP TE TCTY TV TL TD  
PTA +992M +27F 29P 99%R 04/26  
PTA +2.38T +1.13UDC +1.6FLC 99%R 04/26  
GTPI +2834

### EAST-COLT BELIEVE JEWEL-ET

840003234744372 EX-92 E E E E E  
2-01 2X 351d 24657 3.7 933 3.1 786  
3-02 2X 303d 27284 966f 874p RIP  
• 1<sup>st</sup> JR 2-Year-Old, BU, B&O WI District 2 Holstein Show 2024  
• Res Int Champion WI District 2 Holstein Show 2024

### AIJA BELIEVE-P-ET

CAN000013486161 RC PC  
PTA +153M -39F -22P 97R 04/26  
PTA +2.39T +1.57UDC +1.09FLC TPI +2265

### ROSEDALE FLASHY PANTS

840003137843082 EX-93 E E E E E  
3-06 2X 291d 22680 4.2 947 3.1 701

### 3<sup>rd</sup> Dam

**Rosedale Panty Raid-ET EX-92**  
3-10 2X 365d 24790 4.6 1148 3.2 802

### 4<sup>th</sup> Dam

**Paradise-RV Paloma-ET EX-93 2E**  
3-03 2X 365d 32030 4.6 1463 3.3 1049

### 5<sup>th</sup> Dam

**Vandyk-K Integrity Paradise EX-96 2E DOM**  
5-10 2X 365d 39580 4.2 1670 3.3 1294  
Life: 1632d 133,420 4.0 5399 3.4 4574

### 6<sup>th</sup> Dam

**Vandyk-K Broker Pansy-ET EX-90 DOM**  
5-06 3X 365d 41460 3.7 1535 3.3 1385  
Life: 1538d 130,860 3.8 4951 3.3 4330

### 7<sup>th</sup> Dam

**Vandyk-K Mark Patty EX-94 2E DOM**  
4-09 2X 331d 27150 4.0 1074 3.2 686  
Life: 2490d 155,870 3.6 5679 3.3 5109

### 8<sup>th</sup> Dam

**Vandyk-K Melvin Pappy VG-88**  
4-03 2X 358d 24580 3.8 925 3.4 826

# Choose Your Favorite

## 13A

### EAST-COLT ACCELERATE HAWAII RC

840003234744362 99%RHA GTPI +2206

Born: 06/27/2021 EX-93 EEEEE @ 4/09

Fresh May 27, 2026

2-00 2X 283d 22980 3.7% 858 2.8% 653

2-11 2X 325d 29706 4.1% 1210 3.1% 914

3-11 2X 309d 34761 3.8% 1330 3.0% 1033



EAST-COLT ACCELERATE HAWAII RC

Lot 13A

### ROSEDALE ACCELERATE-RED-ET

003130101492 TCTL TD

PTA -1003M -31F -35P 82%R 04/26

PTA 2.05T 1.11UDC 1.36FLC 81%R 04/26

GTPI +2039

### CANARY MOGUL TOPAZ

840003141205482 EX-90 VVEEE

3-07 2X 305d 31490 3.6 1146 2.9 926

5-11 2X 274d 29110 3.6 1058 2.9 851

### MOUNTFIELD SSI DCY MOGUL-ET

840003006972816 TR TP TC TY TV TL TD

PTA -170M +2F -12P 99R 04/26

PTA +0.59T +1.16UDC +0.87FLC TPI +2310

### CANARY AFTERSHOCK RACHEL

840003130387972 VG-85 +V++V

3<sup>rd</sup> Dam

### Canary Goldwyn Majic VG-87

5-04 2X 319d 32690 4.4 1454 3.3 1086

Life: 1662d 155,420 4.2 6573 3.4 5290

4<sup>th</sup> Dam

### Canary Gibson Gillian-TW EX-91 3E

7-10 2X 305d 29570 4.6 1347 3.1 921

Life: 2526d 201,080 4.4 8763 3.3 6635

5<sup>th</sup> Dam

### Canary Atley Bunny EX-93 4E

9-04 2X 305d 38200 3.5 1342 3.0 1132

Life: 4404d 390,120 3.8 14902 3.0 11868

6<sup>th</sup> Dam

### Canary Jurist Sherri VG-85

6-00 2X 305d 28700 3.5 1006 2.7 781

## 13B

### CHAKELBURG BELIEVE POSSIBLE

CAN000014076321 96%RHA GTPI +2172

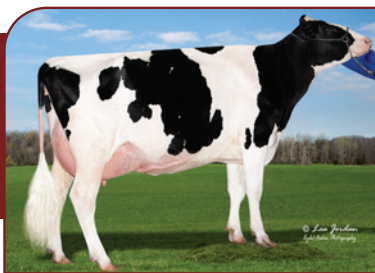
Born: 12/01/2021 EX-92 EEEEE @ 4/03

Bred 5/8/26 to 799HO00063 Sexed DETECTIVE

2-00 2X 305d 22520 3.8% 852 3.2% 720

2-10 2X 342d 27294 3.7% 974 3.4% 922

4-00 2X 151d 14318 3.4% 462 2.6% 460 RIP



CHAKELBURG BELIEVE POSSIBLE

Lot 13B

### AIJA BELIEVE-P-ET

000013486161 RC PC

PTA 153M -39F -22P 97%R 04/26

PTA 2.39T 1.57UDC 1.09FLC 97%R 04/26

GTPI +2265

### CHAKELBURG SOLOMON PEEKABOO

CAN000012775338 EX-91 3E CAN

2-02 2X 322d 24414 4.1 992 3.4 827

3-02 2X 210d 19248 4.1 794 3.4 646

4-05 RX 331d 30060 3.7 1102 3.5 1038

5-05 RX 312d 28087 3.9 1089 3.2 908

5 Lact: 112,712 3.9 4398 3.3 3737

### WALNUTLAWN SOLOMON-ET

CAN000011775998 TR TP TE TY TV TL TD

PTA -1083M -52F -33P 99R 04/26

PTA +2.08T +0.78UDC +0.27FLC TPI +1994

### CHAKELBURG DEMPSEY PIXEL

CAN000012317517 EX-90 2E CAN

3-04 2X 362d 33303 4.2 1404 3.5 1162

4 Lact: 112,036 4.2 4724 3.5 3920

- Grand Champion WI District 2 Show 2024
- JR All-American Winter Yearling 2023
- Nom All-American Winter Yearling 2023
- Nom All-American Winter Calf 2022
- 4<sup>th</sup> Winter Calf International Show 2022

3<sup>rd</sup> Dam

### Chakelburg Baltimor Pixie EX-90 4E CAN

7-00 2X 324d 33620 4.2 1422 3.3 1113

6 Lact: 161,549 4.0 6506 3.3 5344

4<sup>th</sup> Dam

### Atoz Igniter Prancer VG-87 CAN 2\*

3-04 2X 317d 26563 3.6 948 3.4 893

5 Lact: 111,500 3.7 4160 3.3 3662

5<sup>th</sup> Dam

### Atoz James Pogo EX-90 1\*

5-11 2X 365d 30767 4.7 1457 3.7 1127

5 Lact: 125,334 4.6 5805 3.7 4590

6<sup>th</sup> Dam

### Atoz Skychief Pringle VG-87 CAN 2\*

3-04 2X 365d 35071 4.5 1590 3.4 1186

6 Lact: 208,152 4.7 9744 3.5 7251

7<sup>th</sup> Dam

### Atoz Pete Perk EX-5E CAN 2\*

5-04 2X 336d 34650 4.0 1400 3.3 1144

9 Lact: 247,065 4.2 10489 3.4 8389

# Choose Your Favorite

## 14A

### EAST-COLT DOC PROMISE RC TC TL TD

840003257609722 99%RHA GTPI +2405

Born: 03/06/2023 VG-85 V +VVV @ 3/00

Fresh June 2, 2026

1-11 2X 365d 22095 4.8% 1076 3.4% 773



MS-AOL BLACK DIAMOND-ET EX-92

2<sup>nd</sup> Dam of Lot 14B

### WOODCREST KING DOC

003132417775 TR TP TE TCTY TV TL TD

PTA 992M 27F 29P 99%R 04/26

PTA 2.38T 1.13UDC 1.6FLC 99%R 04/26

GTPI +2834

### ROCKY-RUN ALTITUDE HIGHLY

840003209771530 EX-91 E E V E E

2-02 2X 267d 16909 3.7 810 5.3 570

3-01 2X 305d 22630 4.6 1033 3.2 730

4-05 2X 305d 23449 4.8 1115 3.5 815

### FARNEAR ALTITUDE-RED-ET

840003128013348 TE TCTY TV TL TD

PTA -419M -25F -11P 99%R 04/26

PTA +2.31T +1.58UDC +1.25FLC TPI +2217

### MS-AOL BLACK DIAMOND-ET

840003140616942 EX-92 E E V E E

2-04 2X 312d 21559 4.3 925 3.1 677

3-04 2X 365d 29240 3.4 991 2.9 864

3<sup>rd</sup> Dam

### Miss Roxys Recovery-Red EX-92 2E

6-02 2X 305d 31730 4.2 1331 2.8 897

• HM All-American R&W Winter Yearling 2012

5<sup>th</sup> Dam

### Galestone Ava Rae-Red-ET EX-91

3-09 2X 329d 24680 3.8 949 2.8 694

Life: 1454d 105,870 3.6 3800 2.7 2881

6<sup>th</sup> Dam

### Scientific Rubirae Socks-ET EX-93 3E DOM

5-08 2X 365d 43050 4.2 1809 2.9 1250

Life: 2043d 154,160 4.1 6388 3.1 4753

7<sup>th</sup> Dam

### Scientific Jubilant Rae-ET EX-90 DOM

5-11 2X 365d 38880 4.1 1608 3.6 1403

Life: 1394d 117,590 4.0 4707 3.6 4242

8<sup>th</sup> Dam

### C Hanoverhill Tony Rae EX-96 3E DOM GMD

Life: 2247d 166,396 4.1 6904 3.4 5612

• HM All-American JR 2-Year-Old 1988

• Nom All-American 5-Year-Old 1991

9<sup>th</sup> Dam

### C Hanoverhill TT Roxette-ET EX-94 2E GMD

10-00 3X 365d 35040 4.3 1518 3.0 1063

Life: 2104d 164,789 4.1 6760 3.1 3587

## 14B

### EAST-COLT UNIX BRIAR

840003286250565 99%RHA GTPI +2205

Born: 03/02/2024

Fresh May 12, 2026



MS-AOL BLACK DIAMOND-ET EX-92

2<sup>nd</sup> Dam of Lot 14B

### CROTEAU LESPERRON UNIX-ET

000107567492 TR TP TE TY TV TL TD

PTA 186M -17F -8P 99%R 04/26

PTA 1.51T 1.14UDC 0.01FLC 99%R 04/26

GTPI +2382

### ROCKY-RUN ALTITUDE HIGHLY

840003209771530 EX-91 E E V E E

2-02 2X 267d 16909 3.7 810 5.3 570

3-01 2X 305d 22630 4.6 1033 3.2 730

4-05 2X 305d 23449 4.8 1115 3.5 815

### FARNEAR ALTITUDE-RED-ET

840003128013348 TE TCTY TV TL TD

PTA -419M -25F -11P 99%R 04/26

PTA +2.31T +1.58UDC +1.25FLC TPI +2217

### MS-AOL BLACK DIAMOND-ET

840003140616942 EX-92 E E V E E

2-04 2X 312d 21559 4.3 925 3.1 677

3-04 2X 365d 29240 3.4 991 2.9 864

3<sup>rd</sup> Dam

### Miss Roxys Recovery-Red EX-92 2E

6-02 2X 305d 31730 4.2 1331 2.8 897

• HM All-American R&W Winter Yearling 2012

5<sup>th</sup> Dam

### Galestone Ava Rae-Red-ET EX-91

3-09 2X 329d 24680 3.8 949 2.8 694

Life: 1454d 105,870 3.6 3800 2.7 2881

6<sup>th</sup> Dam

### Scientific Rubirae Socks-ET EX-93 3E DOM

5-08 2X 365d 43050 4.2 1809 2.9 1250

Life: 2043d 154,160 4.1 6388 3.1 4753

7<sup>th</sup> Dam

### Scientific Jubilant Rae-ET EX-90 DOM

5-11 2X 365d 38880 4.1 1608 3.6 1403

Life: 1394d 117,590 4.0 4707 3.6 4242

8<sup>th</sup> Dam

### C Hanoverhill Tony Rae EX-96 3E DOM GMD

Life: 2247d 166,396 4.1 6904 3.4 5612

• HM All-American JR 2-Year-Old 1988

• Nom All-American 5-Year-Old 1991

9<sup>th</sup> Dam

### C Hanoverhill TT Roxette-ET EX-94 2E GMD

10-00 3X 365d 35040 4.3 1518 3.0 1063

Life: 2104d 164,789 4.1 6760 3.1 3587

# Choose Your Favorite

## 15A

### EAST-COLT SK CHEDDAR-ET RC

840003286250580 99%RHA GTPI+1958

Born: 09/16/2024

Due August 29, 2026 to 200HO10992 DIRECT



SELLCREST D CHEETO-RED EX-94 3E

Dam of ot 15A

### WALNUTLAWN SIDEKICK

CAN 12508113 TR TE TY TV TL TD

PTA -1710M -35F -31P 99%R 04/26

PTA +2.61T +1.47UDC +1.17FLC 99%R 04/26

GTPI +2246

### SELLCREST D CHEETO-RED

840003130966098 EX-94 E E E E E 3E

3-02 2X 328d 26277 4.1 1003 3.2 843

6-00 2X 354d 31023 4.0 1265 3.2 1007

7-03 2X 365d 33775 4.3 1479 3.3 1151

8-10 2X 305d 35090 4.3 1523 3.2 1136

Life: 198,308 8810F 6746P

• 1<sup>st</sup> 125,000lb Cow Midwest Spring R&W Show 2025

• 4<sup>th</sup> 125,000lb Cow International R&W Show 2025

• 4<sup>th</sup> Aged Cow International R&W Show 2022 & 2023

• 1<sup>st</sup> Aged Cow WI Championship R&W Show 2023

• 1<sup>st</sup> Aged Cow Midwest Fall National 2023

• Grand Champion Mideast Fall National 2020

### SHE-KEN BW DUNKIN-RED-ET

USA000072713010 TL TD

PTA -1956M -54F -46P 92%R 04/26

PTA +1.97T +0.86UDC +1.08FLC TPI +1807

### SELLCREST CATHY-RED

USA000069085958 VG-87 E V V + V

2-04 2X 363d 25420 3.4 862 3.1 784

3-05 2X 322d 19230 3.3 630 3.0 581

4-06 2X 365d 26270 3.6 938 3.0 783

5-11 2X 320d 21200 3.5 739 3.0 627

6-10 2X 284d 18440 3.4 626 3.1 571

Life: 1698d 111,930 3.4 3840 3.0 3391

### CHEETO!

Nom All-American R&W 125,000lb Cow 2025

Nom All-American R&W Aged Cow 2023 & 2022

Nom All-American R&W 4-Year-Old 2020

HMM JR All-American R&W Spring Yearling 2017

3<sup>rd</sup> Dam

### Sellcrest AD Char-Red-ET EX-91

5-08 2X 365d 29530 3.9 1147 3.2 945

Life: 1725d 119,390 4.2 5048 3.3 3969

4<sup>th</sup> Dam

### Sellcrest US Charity-ET VG-89

4-03 2X 365d 33490 4.6 1537 3.5 1181

5<sup>th</sup> Dam

### Hanover-Hill Rad Charity-ET EX-92 2E

5-11 2X 365d 27090 3.9 1053 3.1 850

Life: 1993d 123,320 4.0 4924 3.3 4039

6<sup>th</sup> Dam

### C Hanoverhill SWD Charity EX-94 2E DOM

7-01 3X 365d 27800 4.0 1116 3.2 888

7<sup>th</sup> Dam

### Brookview Tony Charity EX-97 DOM

5-11 3X 365d 39052 3.6 1415

Life: 1888d 162,210 3.7 5997 3.0 1057

• All-American Aged Cow 1984, 1985, 1987

• All-American 4-Year-Old 1982

• All-Time All-American 4-Year-Old

## 15B

### EAST-COLT DOC PHOEBE RC

840003234744361 99%RHA GTPI+2357

Born: 07/30/2026

Fresh June 2, 2026



DJLPURPRIDE HYPNT IESHA-ET RC

2<sup>nd</sup> Dam of Lot 15B

### WOODCREST KING DOC

840003132417775 TR TP TE TCTY TV TL TD

PTA +992M +27F +29P 99%R 04/26

PTA +2.38T +1.13UDC +1.60FLC 99%R 04/26

GTPI +2834

### DJLPUREPRIDE DEFI INDIA-RED

840003234744361 VG-85 V V V + V

2-01 2X 305d 20990 3.7 770 3.3 690

### SCIENTIFIC B DEFIANT-ET RC

USA141123484 TP TC TY TV TL TD

PTA -435M -87F -36P 99%R 04/26

PTA +2.10T +0.89UDC +0.85FLC TPI +1747

### DJLPURPRIDE HYPNT IESHA-ET RC

840003207027731 VG-85 + + + V V

3<sup>rd</sup> Dam

### Milksource RN Idelle-Red-ET EX-92

4-05 3X 365d 40520 3.5 1415 3.0 1221

Life: 1142d 109,480 3.7 4053 3.1 3433

4<sup>th</sup> Dam

### Stone-Front Rub Indigo-Red EX-94 3E

6-08 2X 365d 42410 3.7 1568 3.1 1308

Life: 2227d 220,650 3.8 8326 3.1 6885

• Nom All-American R&W 125,000lb Cow 2010

• Nom All-American R&W 5-Year-Old 2009

5<sup>th</sup> Dam

### Stone-Front R-Marker Isobel EX-91

3-05 2X 365d 29240 3.6 1062 2.8 822

6<sup>th</sup> Dam

### Sherwyn Merrill Inga-ET EX-92

4-03 2X 365d 34860 3.6 1266 2.8 959

Life: 2207d 172,110 3.8 6516 2.8 4795

7<sup>th</sup> Dam

### Sandwater Blstr Ieva-ET VG-85 GMD DOM

3-06 2X 365d 33140 3.2 1070 3.0 994

Life: 2067d 140,610 3.6 5114 3.1 4316

8<sup>th</sup> Dam

### Odyssey Chief Mark Ina-ET VG-89 GMD DOM

2-02 2X 357d 32480 4.7 1516 3.4 1103

# Choose Your Favorite

## 16A

### EAST-COLT UNIX BUTTERFINGER RC

840003286250566 99%RHA GTPI +2069

Born: 03/19/2024

Fresh May 10, 2026



INDIANHEAD BUTTERCUP-RED-ET

Dam of ot 16A

### CROTEAU LESPERRON UNIX-ET

000107567492 TR TP TE TY TV TL TD

PTA +186M -17F -8P 99%R 04/26

PTA +1.51T +1.14UDC +0.01FLC 99%R 04/26

GTPI +2382

### INDIANHEAD BUTTERCUP-RED-ET

840003214536199 EX-90 E E E V

2-01 2X 363d 30712 3.6 1098 2.8 875

3-02 2X 268d 25635 2.8 797 3.7 733

4-03 2X 116d 12725 2.3 344 3.5 344 RIP

• 7<sup>th</sup> SR 2-Year-Old Midwest Spring National R&W Show 2022

• 4<sup>th</sup> Winter Calf Mid-East Fall National R&W Show 2020

### CYCLE MCGUCCI JORDY-RED

840003131666411 CV TE TC TY TL TD

PTA -1213M -50F -56P 99%R 04/26

PTA +2.27T +1.35UDC +2.78FLC TPI +1757

### INDIANHEAD RDNK CANTINA-RED

840003133417404 EX-92 E E V E E

2-03 2X 291d 16000 3.9 624 3.4 552

3-02 2X 365d 23990 3.5 842 3.4 810

4-05 2X 345d 24050 3.6 857 3.3 804

#### 3<sup>rd</sup> Dam

### Indianhead Destrly Calina EX-90

3-01 3X 319d 27820 3.7 1041 3.3 942

#### 4<sup>th</sup> Dam

### Indianhead Rindy Cindy-Red EX-93

3-07 3X 305d 29410 3.5 1033 3.2 940

#### 5<sup>th</sup> Dam

### Greenlea Talent Cat-Red-ET EX-94 2E

5-05 3X 322d 36180 3.6 1316 3.2 1158

Life: 1224d 110,210 3.8 4200 3.3 3616

#### 6<sup>th</sup> Dam

### Yursden Kite Caramac-Red EX-92

4-02 2X 365d 31770 4.2 1325 3.1 979

• Res All-American JR 2 Yr Old 2004

#### 7<sup>th</sup> Dam

### Yursden TT Candy-Red-TW VG-87

3-05 2X 305d 21120 4.3 902 3.2 675

## 16B

### EAST-COLT HANCOCK BRIANNA

840003286250574 99%RHA GTPI +2313

Born: 06/24/2024

Fresh June 1, 2026

### SIEMERS DOC HANCOCK

003144882821 TR TP TM TE TC TY TV TL TD

PTA +684M +9F +17P 99%R 04/26

PTA +2.91T +2.41UDC +2.14FLC 99%R 04/26

GTPI +2825

### EAST-COLT ACCELERATE HAPPY

840003234744359 EX-91 E E E V E

1-10 2X 344d 25229 3.8 952 2.8 710

3-01 2X 305d 30930 3.4 1058 2.8 862

4-03 2X 195d 10917 3.2 431 4.5 354 RIP

### ROSEDALE ACCELERATE-RED-ET

840003130101492 TC TL TD

PTA -2237M -76F -57P 99%R 04/26

PTA -0.86T -1.61UDC -0.57FLC TPI +1556

### HOLMGREN BEEMER SNOW

840003146681516 GP-84 VV + + +

2-04 2X 305d 21090 4.3 910 3.1 657

#### 3<sup>rd</sup> Dam

### Winterview Atwood Sadie-ET EX-92

3-08 2X 362d 34390 3.7 1288 3.1 1081

#### 4<sup>th</sup> Dam

### Winterview Gibson Sunset EX-92

3-08 2X 344d 27830 4.0 1124 3.3 909

#### 5<sup>th</sup> Dam

### Winterview Linjet Sassy EX-90 2E

9-00 2X 343d 22980 3.6 833 3.0 697

#### 6<sup>th</sup> Dam

### Winterview BC Sadie VG-85

4-02 2X 365d 20730 3.8 796 3.1 645

Life: 2317d 126,330 4.0 5068 3.1 3958

#### 7<sup>th</sup> Dam

### C Benner Midnight Sophie EX-90 2E

3-06 2X 345d 21812 4.3 944 3.2 693

# Choose Your Favorite

## 17A

### EAST-COLT THSTRUCK PANSY

840003286250563 99%RHA GTPI +2251

Born: 12/31/2023

Fresh May 1, 2026

### OCD THUNDER STRUCK-ET

003204457423 TR TP TE TCTY TV TL TD

PTA -132M -14F -13P 99%R 04/26

PTA +2.56T +1.63UDC +0.19FLC 98%R 04/26

GTPI +2263

### CANARY KIMBALL ANCIE

840003147303828 EX-90

2-02 2X 365d 28173 4.7 1364 3.4 991

3-08 2X 365d 30859 4.6 1458 3.5 1096

5-03 2X 241d 24469 3.5 1091 4.8 792 RIP

### SEAGULL-BAY SLVR KIMBALL-ET

840003124720424 RC TCTY TV TL TD

PTA -573M +5F -7P 99%R 04/26

PTA +0.36T +1.14UDC +0.49FLC TPI +2593

### CANARY REALITY RAIN-RED

840003130387977 GP-83 ++ G ++

#### 3<sup>rd</sup> Dam

##### Canary Ladd P November-Red GP-83

2-11 2X 282d 22510 4.1 919 3.5 796

#### 4<sup>th</sup> Dam

##### Canary Jet Ket-Red EX-91

5-10 2X 305d 37910 3.0 1144 2.9 1107

Life: 2294d 236,530 3.2 7587 3.1 7282

#### 5<sup>th</sup> Dam

##### Canary Advent Ingrid VG-85

1-11 2X 303d 20380 4.2 850 3.4 683

#### 6<sup>th</sup> Dam

##### Canary Allen Gambler EX-92 2E

3-03 2X 351d 29610 4.1 1217 3.3 974

Life: 1504d 112,620 4.2 4723 3.3 3766

#### 7<sup>th</sup> Dam

##### Canary Durham Dolly VG-86

3-00 2X 305d 23380 3.4 793 3.0 708

#### 8<sup>th</sup> Dam

##### Canary Jurist Sherri VG-85

6-00 2X 305d 28700 3.5 1006 2.7 781

## 17B

### EAST-COLT HAVNOFEAR BABYBOP

840003286250576 99%RHA GTPI +2640

Born: 09/02/2024

Due October 5, 2026 to BEEF

### MR ERNESTANTHONY HAVNOFEAR

003217720891 TR TP TE TCTY TV TL TD

PTA +1360M +21F +47P 94%R 04/26

PTA +3.00T +2.35UDC +1.08FLC 91%R 04/26

GTPI +2967

### CANARY KINGBOY SANGARIA

840003209771514 VG-87 VV E V V

2-05 2X 365d 32519 4.1 1354 3.3 1095

3-10 2X 315d 28112 4.3 1200 3.6 1000

4-10 2X 110d 7345 3.7 304 3.9 252 RIP

### MORNINGVIEW MCC KINGBOY-ET

USA000072044077 TR TP TE TCTY TV TL TD

PTA +329M -18F -2P 99%R 04/26

PTA +1.14T +0.57UDC +0.11FLC TPI +2381

### CANARY MOGUL SARENA

840003135719952 EX-92 E E E E E

1-10 2X 277d 23693 1081F 744P

2-09 2X 344d 27795 4.0 1141 3.2 902

3-10 2X 365d 29069 4.0 1165 3.2 942

5-07 2X 365d 36489 3.9 1423 3.1 1145

7-06 2x 298d 33080 3.8 1268 3.1 1018

#### 3<sup>rd</sup> Dam

##### Canary Fever Rhianna GP-83

1-09 2X 337d 29340 3.4 994 3.2 936

#### 4<sup>th</sup> Dam

##### Canary Aftershock Mia EX-92

3-00 3X 305d 30380 3.9 1196 3.0 906

#### 5<sup>th</sup> Dam

##### Canary Aspen Ice-TW VG-87

6-11 3X 305d 32890 3.7 1224 3.1 1018

Life: 2160d 200,630 3.9 7771 3.3 6534

# Choose Your Favorite

## 18A

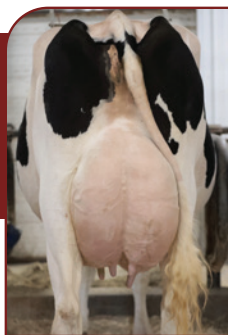
### EAST-COLT THUNDRSTORM HEIDI

840003234744366 99%RHA GTPI+2004

Born: 11/24/2021 EX-91 EEEEE @ 4/04

Fresh June 5, 2026

2-03 2X 305d 22370 3.5% 783 2.9% 650



EAST-COLT THUNDRSTORM HEIDI EX-91

Lot 18A

### BLONDIN THUNDER STORM

CAN 110296922

PTA -410M -75F -33P 98%R 04/26

PTA +2.50T +1.41UDC +0.46FLC 98%R 04/26

GTPI +1858

### CANARY CRUSH AMY

840003147303832 EX-92 EEEEE 2E

2-03 2X 280d 24370 3.6 875 3.0 733

3-02 2X 305d 29920 3.6 1070 3.0 911

4-09 2X 305d 26200 3.4 885 3.2 828

5-10 2X 305d 29060 3.5 1003 3.2 923

### MAVERICK CRUSH

CAN 12042760 TE TCTY TV TL TD

PTA -1250M -86F -34P 99%R 04/26

PTA +1.85T +0.68UDC +1.13FLC TPI +2161

### CANARY GOLDEN DREAMS SAGE

840003135719948 GP-83 ++ G ++

1-11 2X 293d 21660 4.4 949 3.2 687

3<sup>rd</sup> Dam

### Canary Shottle Kameron EX-93 2E

4-10 3X 294d 34950 3.8 1315 3.1 1100

Life: 2325d 226,900 3.8 8639 3.3 7421

4<sup>th</sup> Dam

### Canary Allen Gambler EX-92 2E

3-03 2X 351d 29610 4.1 1217 3.3 974

Life: 1504d 112,620 4.2 4723 3.3 3766

5<sup>th</sup> Dam

### Canary Durham Dolly VG-86

3-00 2X 305d 23380 3.4 793 3.0 708

6<sup>th</sup> Dam

### Canary Jurist Sherri VG-85

6-00 2X 305d 28700 3.5 1006 2.7 871

## 18B

### EAST-COLT THUNDRSTRM DAZZLE

840003209771528 99%RHA GTPI+1936

Born: 12/12/2020 EX-90 EVEVE @ 5/03

Due July 12, 2026 to 779HO0007 FOOTLOOSE



CANARY ATLANTIC LYNETTE EX-93

3<sup>rd</sup> Dam of Lot 18B

### BLONDIN THUNDER STORM

CAN 110296922

PTA -410M -75F -33P 98%R 04/26

PTA +2.50T +1.41UDC +0.46FLC 98%R 04/26

GTPI +1858

### CANARY DOORMAN ATHEENA

840003147303834 EX-91 EEEEE 2E

2-02 2X 220d 13510 4.4 593 3.5 467

3-01 2X 305d 22570 4.4 984 3.5 800

4-05 2X 305d 23130 4.3 1006 3.5 810

5-10 2X 305d 27470 4.5 1230 3.6 999

### VAL-BISSON DOORMAN-ET

CAN 107281711 TR TP TY TV TL TD

PTA -975M -25F -13P 99%R 04/26

PTA +1.88T +0.63UDC +0.60FLC TPI +2215

### CANARY MOGUL SEASON

840003135719947 GP-83 ++ G + V

1-11 2X 286d 23060 4.1 945 3.1 709

3-11 2X 157d 8150 4.0 323 3.1 252

3<sup>rd</sup> Dam

### Canary Atlantic Lynette EX-93

4-10 2X 299d 32440 3.5 1134 3.0 968

Life: 1231d 122,390 3.5 4267 2.9 3542

4<sup>th</sup> Dam

### Canary Bolton Josie EX-90 2E

5-03 3X 340d 32690 4.0 1319 3.1 1005

Life: 1577d 132,600 4.2 5603 3.2 4207

5<sup>th</sup> Dam

### Canary Morty Eleanor VG-88

4-01 2X 335d 25790 4.0 1041 3.2 836

Life: 1473d 106,680 4.0 4309 3.1 3348

6<sup>th</sup> Dam

### Canary Winfield Beth VG-88

5-08 2X 337d 28180 4.1 1159 3.0 854

Life: 1682d 133,170 4.0 5284 3.1 4083

# Choose Your Favorite

## 19A

### EAST-COLT DOC PAULA

840003257609720 99%RHA GTPI +2468

Born: 03/01/2023 VG-87 V V V V V @ 3/00

Bred May 8, 2026 to 799HO00034 ENERGY

2-00 2X 273d 20840 4.2% 875 3.3% 688



CANARY ATLANTIC LYNETTE EX-93

3<sup>rd</sup> Dam of Lot 19A

### WOODCREST KING DOC

840003132417775 TR TP TE TCTY TV TL TD

PTA +992M +27F +29P 99%R 04/26

PTA +2.38T +1.13UDC +1.6FLC 99%R 04/26

GTPI +2834

### CANARY DOORMAN ATHEENA

840003147303834 EX-91 E E E E E 2E

2-02 2X 220d 13510 4.4 593 3.5 467

3-01 2X 305d 22570 4.4 984 3.5 800

4-05 2X 305d 23130 4.3 1006 3.5 810

5-10 2X 305d 27470 4.5 1230 3.6 999

### VAL-BISSON DOORMAN-ET

CAN 107281711 TR TP TY TV TL TD

PTA -975M -25F -13P 99%R 04/26

PTA +1.88T +0.63UDC +0.60FLC TPI +2215

### CANARY MOGUL SEASON

840003135719947 GP-83 ++ G + V

1-11 2X 286d 23060 4.1 945 3.1 709

3-11 2X 157d 8150 4.0 323 3.1 252

#### 3<sup>rd</sup> Dam

### Canary Atlantic Lynette EX-93

4-10 2X 299d 32440 3.5 1134 3.0 968

Life: 1231d 122,390 3.5 4267 2.9 3542

#### 4<sup>th</sup> Dam

### Canary Bolton Josie EX-90 2E

5-03 3X 340d 32690 4.0 1319 3.1 1005

Life: 1577d 132,600 4.2 5603 3.2 4207

#### 5<sup>th</sup> Dam

### Canary Morty Eleanor VG-88

4-01 2X 335d 25790 4.0 1041 3.2 836

Life: 1473d 106,680 4.0 4309 3.1 3348

#### 6<sup>th</sup> Dam

### Canary Winfield Beth VG-88

5-08 2X 337d 28180 4.1 1159 3.0 854

Life: 1682d 133,170 4.0 5284 3.1 4083

## 19B

### EAST-COLT ANDREW JAYNE TR TC TL TD

840003234744370 99%RHA GTPI +2264

Born: 04/21/2022 EX-90 E E E V @ 3/11

Due Sept 21, 2026 to BEEF

2-01 2X 305d 23770 4.2% 988 3.4% 805



CANARY ANALYST NAOMI-RED

Same Family as Lot 19B

#### Naomi:

- 6<sup>th</sup> Spring Yearling International R&W Show 2023
- 1<sup>st</sup> Spring Yearling International R&W Junior Show 2023

### EAST-COLT CASE ANDREW

000145264439 TR TC TL TD

PTA -406M -12F -11P 81%R 202604

PTA 0.97T 0.31UDC -0.18FLC 80%R 202604

GTPI +2311

### CANARY HYPNOTIC DAWN

840003209771521 VG-87 V E V G V

2-02 2X 305d 20570 3.9 806 3.2 664

3-03 2X 162d 14060 3.8 540 2.9 410

### MR HOTSTUFFS HYPNOTIC-ET

840003012554421 RC TP TC TY TV TL TD

PTA -551M -32F -15P 99%R 04/26

PTA +1.34T +0.43UDC +1.06FLC TPI +2083

### CANARY BARBWIRE SHEA-RED

840003135719944 VG-86 E V V V V

2-00 2X 305d 22750 3.9 891 3.2 720

3-04 2X 290d 25810 3.2 831 2.9 760

4-05 2X 296d 21400 3.5 747 3.1 654

#### 3<sup>rd</sup> Dam

### Canary Attitude Naomi-Red EX-91 2E

5-01 2X 318d 35500 3.8 1353 3.1 1110

Life: 1413d 139,900 3.7 5192 3.2 4415

#### 4<sup>th</sup> Dam

### Canary Advent Lassie VG-86

3-01 3X 305d 30520 3.6 1093 3.0 919

#### 5<sup>th</sup> Dam

### Canary Pacific Jill VG-86

3-01 2X 305d 23740 4.3 1030 3.4 796

#### 6<sup>th</sup> Dam

### Canary Emerson Dawn VG-86

4-10 2X 305d 29630 3.8 1115 3.0 903

Life: 1924d 150,470 3.7 5497 3.2 4840

# Choose Your Favorite

## 20A

### OAKFIELD HO SOLARIS-ET TC TL TD

840003134445324 99%RHA GTPI+1973

Born: 09/01/2018 EX-94 E E E E E @ 7/06

Bred May 29, 2026 to 250HO17817 DANN

2-07 2X 305d 24130 3.4% 821 3.0% 714

3-08 2X 306d 27001 3.1% 836 3.0% 798

4-09 2X 341d 33424 3.0% 1007 2.9% 973

6-02 2X 365d 41934 2.8% 1170 2.9% 1253

Life: 146,313 4465F 4314P

Responds to Oxytocin



**BELLA-ROSE GW SARA-ET EX-96**

Dam of Lot 20A

### STANTONS HIGH OCTANE-ET

000011696704 TR TP TY TV TL TD

PTA +661M -28F -6P 99%R 04/26

PTA +1.73T +1.21UDC +0.54FLC 99%R 04/26

GTPI +2190

### BELLA-ROSA GW SARA-ET

USA000066407984 EX-96 E E E E E 3E

7-06 3X 365d 32200 3.5 1140 2.9 921

8-06 3X 365d 29760 4.4 1295 3.2 950

Life: 2079d 160,610 4.0 6347 3.1 4964

• Nom All-American Aged Cow 2018 & 2017

• Grand Champion NE Fall National 2018

• 3<sup>rd</sup> Aged Cow International Show 2017

• Supreme Champion Western New York 2017

• All-New York Aged Cow 20216

### BRAEDALE GOLDWYN

CAN000010705608 CD TY TV TL

PTA -1209M -43F -35P 99%R 04/26

PTA +0.49T -0.22UDC +0.72FLC TPI +1957

### BELLA-ROSA SPENDIDE

USA000134194268 EX-90 E E V V E

2-02 3X 320d 27740 3.5 984 3.2 897

3<sup>rd</sup> Dam

### Beaumont Spendide Spirit EX-95

5-01 2X 365d 39780 3.1 1251 2.9 1153

• All-American 4-Year-Old 2003

• HM All-American Aged Cow 2004

• Res Grand Champion International Show 2003

• 1<sup>st</sup> Aged Cow Eastern Fall National 2006

## 20B

### SELLCREST D CHEETO-RED TC TL TD

840003130966098 100%RHA GTPI+1679

Born: 03/01/2016 EX-94 E E E E E @ 9/05

Bred May 8, 2026 to 200HO13330 BURPEE

2-00 2X 353d 17436 4.3% 655 3.3% 589

3-02 2X 328d 26277 4.1% 1003 3.2% 843

4-03 2X 365d 25910 4.4% 1152 3.2% 739

6-00 2X 354d 31023 4.0% 1265 3.2% 1007

7-03 2X 365d 33775 4.3% 1479 3.3% 1151

8-10 2X 305d 35090 4.3% 1523 3.2% 1136

Life: 198,308 8810F 6746P

Responds to Oxytocin



**SELLCREST D CHEETO-RED EX-94 3E**

Lot 20B

• 1<sup>st</sup> 125,000lb Cow Midwest Spring R&W Show 2025

• 4<sup>th</sup> 125,000lb Cow International R&W Show 2025

• 4<sup>th</sup> Aged Cow International R&W Show 2022 & 2023

• 1<sup>st</sup> Aged Cow WI Championship R&W Show 2022 & 2023

• 1<sup>st</sup> Aged Cow Midwest Fall National 2023

• Grand Champion Mideast Fall National 2020

### SHE-KEN BW DUNKIN-RED-ET

000072713010 TL TD

PTA -1956M -54F -46P 92%R 04/26

PTA +1.97T +0.86UDC +1.08FLC 88%R 04/26

GTPI +1807

### SELLCREST CATHY-RED

USA000069085958 VG-87 E V V + V

2-04 2X 363d 25420 3.4 862 3.1 784

3-05 2X 322d 19230 3.3 630 3.0 581

4-06 2X 365d 26270 3.6 938 3.0 783

5-11 2X 320d 21200 3.5 739 3.0 627

6-10 2X 284d 18440 3.4 626 3.1 571

Life: 1698d 111,930 3.4 3840 3.0 3391

### SELLCREST JET ROBBY-RED

USA000063925791

PTA -1544M -92F -54P 38%R 04/26

PTA -1.34T -1.69UDC -1.24FLC TPI +1557

### SELLCREST AD CHAR-RED-ET

USA000063925781 EX-91 E E E E E

2-03 2X 365d 25320 4.4 1121 3.3 828

3-04 2X 359d 26680 4.2 1133 3.3 882

4-05 2X 365d 27110 4.2 1147 3.3 908

5-08 2X 365d 29530 3.9 1147 3.2 945

Life: 1725d 119,390 4.2 5048 3.3 3969

### CHEETO!

Nom All-American R&W 125,000lb Cow 2025

Nom All-American R&W Aged Cow 2023 & 2022

Nom All-American R&W 4-Year-Old 2020

HMM JR All-American R&W Spring Yearling 2017

3<sup>rd</sup> Dam

### Sellcrest AD Char-Red-ET EX-91

5-08 2X 365d 29530 3.9 1147 3.2 945

Life: 1725d 119,390 4.2 5048 3.3 3969

4<sup>th</sup> Dam

### Sellcrest US Charity-ET VG-89

4-03 2X 365d 33490 4.6 1537 3.5 1181

5<sup>th</sup> Dam

### Hanover-Hill Rad Charity-ET EX-92 2E

5-11 2X 365d 27090 3.9 1053 3.1 850

Life: 1993d 123,320 4.0 4924 3.3 4039

6<sup>th</sup> Dam

### C Hanoverhill SWD Charity EX-94 2E DOM

7-01 3X 365d 27800 4.0 1116 3.2 888

7<sup>th</sup> Dam

### Brookview Tony Charity EX-97 DOM

5-11 3X 365d 39052 3.6 1415

Life: 1888d 162,210 3.7 5997 3.0 1057

• All-American Aged Cow 1984, 1985, 1987

• All-American 4-Year-Old 1982

• All-Time All-American 4-Year-Old

# Choose Your Favorite

## 21A

### EAST-COLT BOOM JALISSA-ET TR TC TL TD

840003257609717 99%RHA GTPI+2137

Born: 12/01/2022 EX-90 V EVV E @ 3/03

Bred May 8, 2026 to 799HO00063 Sexed DETECTIVE

2-02 2X 305d 24590 3.8% 926 3.5% 854

3-03 2X 62d 6047 3.1% 260 3.1% 207

• 1<sup>st</sup> SR 2-Year Old WI District 2 Show 2025

• Res Intermediate Champion WI District 2 Show 2025



ROSEDALE LEXINGTON EX-95

2<sup>nd</sup> Dam of Lot 21A & 21B

### REGANCREST BOOM

003137164654 TR TC TL TD

PTA +208M -32F +5P 98%R 04/26

PTA +2.28T +1.12UDC +0.95FLC 98%R 04/26

GTPI +2312

### ROSEDALE UNSCRIPTEDDRAMA-ET

840003130798715 EX-93 E E E E E 2E

2-00 2X 365d 24010 4.0 960 3.3 789

3-03 2X 365d 28570 3.4 966 3.3 945

4-08 2X 220d 20080 3.3 657 3.1 621

Life: 1084d 79,700 3.6 2833 3.3 2608

### VAL-BISSON DOORMAN-ET

CAN 107281711 TR TP TY TV TL TD

PTA -975M -25F -13P 99%R 04/26

PTA +1.88T +0.63UDC +0.60FLC TPI +2215

### ROSEDALE LEXINGTON-ET

USA000139462007 EX-95 E E E E E

3-01 2X 365d 23730 5.1 1221 3.7 873

4-11 2X 365d 42780 4.6 1973 3.0 1289

• All-American 5-Year-Old 2013

• Res All-American JR 3-Year-Old 2011

• Res All-American JR 2-Year-Old 2010

3<sup>rd</sup> Dam

### Rosedale Lexi VG-89

2-02 2X 365d 26800 5.1 1356 2.9 787

• Res Intermediate Champ Midwest Spring Nat'l 2007

• HM All-American Spring Yearling 2005

4<sup>th</sup> Dam

### Rosedale Lea-Ann EX-93 2E GMD

4-08 2X 365d 39370 3.4 1325 3.1 1202

5<sup>th</sup> Dam

### Stokey Elm Park Blackrose EX-96 3E GMD DOM

5-03 3X 365d 42229 4.6 1940 3.4 1433

• All-Time All-American JR 2-Yr-Old & JR 3-Yr-Old

• Res All-American 5-Year-Old 1995

6<sup>th</sup> Dam

### Nandette TT Speckle Red EX-93 DOM

4-08 2X 365d 25289 4.7 1195

7<sup>th</sup> Dam

### Nandette Riley Nana-Red VG-87

7-01 2X 365d 20071 3.4 677 3.1 622

8<sup>th</sup> Dam

### Nandette Bootmaker Gale VG-89

5-07 2X 305d 22300 4.0 895

Life: 2181d 129,410 3.8 4916

## 21B

### EAST-COLT BOOM JANESSA-ET TR TC TL TD

840003257609718 99%RHA GTPI+2144

Born: 12/01/2022 VG-87 V V V V V @ 2/11

2-02 2X 305d 24590 3.8% 926 3.5% 854

3-03 2X 62d 6047 3.1% 260 3.1% 207 RIP

• 9<sup>th</sup> Winter SR 2-Year-Old Midwest Spring Show 2025



EAST-COLT BOOM JANESSA-ET VG-87

Lot 21B

### REGANCREST BOOM

003137164654 TR TC TL TD

PTA +208M -32F +5P 98%R 04/26

PTA +2.28T +1.12UDC +0.95FLC 98%R 04/26

GTPI +2312

### ROSEDALE UNSCRIPTEDDRAMA-ET

840003130798715 EX-93 E E E E E 2E

2-00 2X 365d 24010 4.0 960 3.3 789

3-03 2X 365d 28570 3.4 966 3.3 945

4-08 2X 220d 20080 3.3 657 3.1 621

Life: 1084d 79,700 3.6 2833 3.3 2608

### VAL-BISSON DOORMAN-ET

CAN 107281711 TR TP TY TV TL TD

PTA -975M -25F -13P 99%R 04/26

PTA +1.88T +0.63UDC +0.60FLC TPI +2215

### ROSEDALE LEXINGTON-ET

USA000139462007 EX-95 E E E E E

3-01 2X 365d 23730 5.1 1221 3.7 873

4-11 2X 365d 42780 4.6 1973 3.0 1289

• All-American 5-Year-Old 2013

• Res All-American JR 3-Year-Old 2011

• Res All-American JR 2-Year-Old 2010

3<sup>rd</sup> Dam

### Rosedale Lexi VG-89

2-02 2X 365d 26800 5.1 1356 2.9 787

• Res Intermediate Champ Midwest Spring Nat'l 2007

• HM All-American Spring Yearling 2005

4<sup>th</sup> Dam

### Rosedale Lea-Ann EX-93 2E GMD

4-08 2X 365d 39370 3.4 1325 3.1 1202

5<sup>th</sup> Dam

### Stokey Elm Park Blackrose EX-96 3E GMD DOM

5-03 3X 365d 42229 4.6 1940 3.4 1433

• All-Time All-American JR 2-Yr-Old & JR 3-Yr-Old

• Res All-American 5-Year-Old 1995

6<sup>th</sup> Dam

### Nandette TT Speckle Red EX-93 DOM

4-08 2X 365d 25289 4.7 1195

7<sup>th</sup> Dam

### Nandette Riley Nana-Red VG-87

7-01 2X 365d 20071 3.4 677 3.1 622

8<sup>th</sup> Dam

### Nandette Bootmaker Gale VG-89

5-07 2X 305d 22300 4.0 895

Life: 2181d 129,410 3.8 4916

# Choose Your Favorite

## 22A

### EAST-COLT BELIEVE JEWEL-ET TR TCTL TD

840003234744372 99%RHA GTPI +2152

Born: 05/03/2022 EX-92 E E E E E @ 3/06

Due Sept 25, 2026 to 200HO13005 HANEL P or BEEF

2-01 2X 305d 21540 3.7% 805 3.1% 678

3-02 2X 302d 27284 3.5% 966 3.8% 874 RIP

• 1<sup>st</sup> JR 2-Year Old, BU, B&O WI District 2 Show 2024

• Res Intermediate Champion WI District 2 Show 2024



EAST-COLT BELIEVE JEWEL-ET EX-92

Lot 22A

### AIJA BELIEVE-P-ET

000013486161 RC PC

PTA +153M -39F -22P 97%R 04/26

PTA +2.39T +1.57UDC +1.09FLC 97%R 04/26

GTPI +2265

### ROSEDALE FLASHY PANTS

840003137843082 EX-93 E E E E E

3-06 2X 291d 22680 4.2 947 3.1 701

### WALNUTLAWN SOLOMON-ET

CAN000011775998 TR TP TE TY TV TL TD

PTA -1083M -52F -33P 99R 04/26

PTA +2.08T +0.78UDC +0.27FLC TPI +1994

### ROSEDALE PANTY RAID-ET

USA000070891911 EX-92 E E E E E

3-10 2X 365d 24790 4.6 1148 3.2 802

#### 3<sup>rd</sup> Dam

#### Paradise-RV Paloma-ET EX-93 2E

3-03 2X 365d 32030 4.6 1463 3.3 1049

#### 4<sup>th</sup> Dam

#### Vandyk-K Integrity Paradise EX-96 2E DOM

5-10 2X 365d 39580 4.2 1670 3.3 1294

Life: 1632d 133,420 4.0 5399 3.4 4574

#### 5<sup>th</sup> Dam

#### Vandyk-K Broker Pansy-ET EX-90 DOM

5-06 3X 365d 41460 3.7 1535 3.3 1385

Life: 1538d 130,860 3.8 4951 3.3 4330

#### 6<sup>th</sup> Dam

#### Vandyk-K Mark Patty EX-94 2E DOM

4-09 2X 331d 27150 4.0 1074 3.2 686

Life: 2490d 155,870 3.6 5679 3.3 5109

#### 7<sup>th</sup> Dam

#### Vandyk-K Melvin Pappy VG-88

4-03 2X 358d 24580 3.8 925 3.4 826

## 22B

### EAST-COLT BELIEVE JEM-ET TR TC TL TD

840003234744373 99%RHA GTPI +2016

Born: 06/01/2022 VG-88 V E + + V @ 3/09

Bred May 30, 2026 to 7HO16491 LEGENDAIRY

2-00 2X 305d 23290 3.6% 850 3.1% 713

3-01 2X 305d 23470 3.5% 814 3.3% 765



VANDYK-K INTEGRITY PARADISE EX-96 2E

4<sup>th</sup> Dam of Lot 22A & 22B

### AIJA BELIEVE-P-ET

000013486161 RC PC

PTA 153M -39F -22P 97%R 202604

PTA 2.39T 1.57UDC 1.09FLC 97%R 202604

GTPI +2265

### ROSEDALE FLASHY PANTS

840003137843082 EX-93 E E E E E

3-06 2X 291d 22680 4.2 947 3.1 701

### WALNUTLAWN SOLOMON-ET

CAN000011775998 TR TP TE TY TV TL TD

PTA -1083M -52F -33P 99R 04/26

PTA +2.08T +0.78UDC +0.27FLC TPI +1994

### ROSEDALE PANTY RAID-ET

USA000070891911 EX-92 E E E E E

3-10 2X 365d 24790 4.6 1148 3.2 802

#### 3<sup>rd</sup> Dam

#### Paradise-RV Paloma-ET EX-93 2E

3-03 2X 365d 32030 4.6 1463 3.3 1049

#### 4<sup>th</sup> Dam

#### Vandyk-K Integrity Paradise EX-96 2E DOM

5-10 2X 365d 39580 4.2 1670 3.3 1294

Life: 1632d 133,420 4.0 5399 3.4 4574

#### 5<sup>th</sup> Dam

#### Vandyk-K Broker Pansy-ET EX-90 DOM

5-06 3X 365d 41460 3.7 1535 3.3 1385

Life: 1538d 130,860 3.8 4951 3.3 4330

#### 6<sup>th</sup> Dam

#### Vandyk-K Mark Patty EX-94 2E DOM

4-09 2X 331d 27150 4.0 1074 3.2 686

Life: 2490d 155,870 3.6 5679 3.3 5109

#### 7<sup>th</sup> Dam

#### Vandyk-K Melvin Pappy VG-88

4-03 2X 358d 24580 3.8 925 3.4 826

# Choose Your Favorite

## 23A

### EAST-COLT HANCOCK HERSHEY

840003234744364 99%RHA GTPI +2350

Born: 09/02/2021 EX-92 E E E E @ 4/02

Bred May 8, 2026 to 7HO16491 LEGENDAIRE

2-00 2X 305d 22460 4.2% 944 3.0% 666

3-06 2X 321d 35340 4.1% 1461 3.0% 1047



CANARY DOC REESE VG-85

Maternal Sister to Lot 23A

### SIEMERS DOC HANCOCK

003144882821 TR TP TM TE TCTY TV TL TD

PTA +684M +9F +17P 99%R 04/26

PTA +2.91T +2.41UDC +2.14FLC 99%R 04/26

GTPI +2825

### CANARY AFTERSHOCK REESE

840003130387985 EX-90 E E E V E 2E

1-11 2X 305d 23785 3.7 871 3.1 736

3-01 2X 297d 29004 2.7 1113 3.9 905

4-01 2X 269d 25781 3.5 911 4.3 730

9-10 2X 305d 34840 3.5 1211 3.1 109

11-02 2X 69d 7935 2.5 276 3.4 228 RIP

### MS ATLEES SHT AFTERSHOCK-ET

USA000065249839 TE TCTY TV TL TD

PTA -997M -61F -56P 99%R 04/26

PTA +0.99T +0.31UDC +0.53FLC TPI +1735

### CANARY GOLDWYN LIL GAMBLER

USA000070312165 EX-90 V E V E V

6-04 2X 305d 33290 4.2 1409 3.3 1114

3<sup>rd</sup> Dam

### Canary Allen Gambler EX-92 2E

3-03 2X 351d 29610 4.1 1217 3.3 974

Life: 1504d 112,620 4.2 4723 3.3 3766

4<sup>th</sup> Dam

### Canary Durham Dolly VG-86

3-00 2X 305d 23380 3.4 793 3.0 708

5<sup>th</sup> Dam

### Canary Jurist Sherri VG-85

6-00 2X 305d 28700 3.5 1006 2.7 871

## 23B

### EAST-COLT LXR CHERRY-RED-ET

840003234744360 99%RHA GTPI +1830

Born: 06/02/2021 EX-92 E E E V E @ 4/09

Due Dec 1, 2026 to 7HO16491 LEGENDAIRE

2-00 2X 305d 19110 4.7% 901 3.5% 666



EAST-COLT LXR CHERRY-RED EX-92

Lot 23B

### BLONDIN LUXOR-RED

000111239184 TY TV TL TD

PTA -937M -73F -34P 97%R 04/26

PTA +1.29T +0.88UDC -0.27FLC 95%R 04/26

GTPI +1667

### SELLCREST D CHEETO-RED

840003130966098 EX-94 E E E E E 3E

3-02 2X 328d 26277 4.1 1003 3.2 843

6-00 2X 354d 31023 4.0 1265 3.2 1007

7-03 2X 365d 33775 4.3 1479 3.3 1151

8-10 2X 305d 35090 4.3 1523 3.2 1136

Life: 198,308 8810F 6746P

- 1<sup>st</sup> 125,000lb Cow Midwest Spring R&W Show 2025
- 4<sup>th</sup> 125,000lb Cow International R&W Show 2025
- 4<sup>th</sup> Aged Cow International R&W Show 2022 & 2023
- 1<sup>st</sup> Aged Cow WI Championship R&W Show 2023
- 1<sup>st</sup> Aged Cow Midwest Fall National 2023
- Grand Champion Mideast Fall National 2020

### SHE-KEN BW DUNKIN-RED-ET

USA000072713010 TL TD

PTA -1956M -54F -46P 92%R 04/26

PTA +1.97T +0.86UDC +1.08FLC TPI +1807

### SELLCREST CATHY-RED

USA000069085958 VG-87 E V V + V

2-04 2X 363d 25420 3.4 862 3.1 784

3-05 2X 322d 19230 3.3 630 3.0 581

4-06 2X 365d 26270 3.6 938 3.0 783

5-11 2X 320d 21200 3.5 739 3.0 627

6-10 2X 284d 18440 3.4 626 3.1 571

Life: 1698d 111,930 3.4 3840 3.0 3391

### CHEETO!

Nom All-American R&W 125,000lb Cow 2025

Nom All-American R&W Aged Cow 2023 & 2022

Nom All-American R&W 4-Year-Old 2020

HMM JR All-American R&W Spring Yearling 2017

3<sup>rd</sup> Dam

### Sellcrest AD Char-Red-ET EX-91

5-08 2X 365d 29530 3.9 1147 3.2 945

Life: 1725d 119,390 4.2 5048 3.3 3969

4<sup>th</sup> Dam

### Sellcrest US Charity-ET VG-89

4-03 2X 365d 33490 4.6 1537 3.5 1181

5<sup>th</sup> Dam

### Hanover-Hill Rad Charity-ET EX-92 2E

5-11 2X 365d 27090 3.9 1053 3.1 850

Life: 1993d 123,320 4.0 4924 3.3 4039

6<sup>th</sup> Dam

### C Hanoverhill SWD Charity EX-94 2E DOM

7-01 3X 365d 27800 4.0 1116 3.2 888

7<sup>th</sup> Dam

### Brookview Tony Charity EX-97 DOM

5-11 3X 365d 39052 3.6 1415

Life: 1888d 162,210 3.7 5997 3.0 1057

- All-American Aged Cow 1984, 1985, 1987
- All-American 4-Year-Old 1982
- All-Time All-American 4-Year-Old

# Single Offering



**CANARY ANALYST NAOMI-RED**  
 Same Family as Lot 24  
 6<sup>th</sup> Spring Yearling International R&W Show 2023  
 1<sup>st</sup> Spring Yearling International R&W Junior Show 2023



**EAST-COLT THUNDERSTRUCK POSY**  
 Lot 24

# 24

## EAST-COLT THUNDERSTRUCK POSY

840003257609737 99%RHA GTPI +2165  
 Born: 10/24/2023 GP-83 VV + + + @ 2/05  
**Due Dec 30, 2026 to BEEF**

## OCD THUNDER STRUCK-ET

003204457423 TR TP TE TCTY TV TL TD  
 PTA -132M -14F -13P 99%R 04/26  
 PTA +2.56T +1.63UDC +0.19FLC 98%R 04/26  
 GTPI +2263

## CANARY KIMBALL ZEBRA

840003147303812 EX-90 E E E V E  
 2-08 2X 305d 24730 4.5 1115 3.3 817  
 3-09 2X 293d 23990 4.6 1092 3.3 800  
 4-09 2X 305d 25130 3.8 965 3.2 811  
 6-00 2X 365d 23610 4.6 1076 3.2 766  
 6-11 2X 169d 14730 4.9 725 3.5 514

## SEAGULL-BAY SLVR KIMBALL-ET

840003124720424 RC TCTY TV TL TD  
 PTA -573M +5F -7P 99%R 04/26  
 PTA +0.36T +1.14UDC +0.49FLC TPI +2593

## CANARY BARBWIRE SHEA-RED

840003135719944 VG-86 E V V V V  
 2-00 2X 305d 22750 3.9 891 3.2 720  
 3-04 2X 290d 25810 3.2 831 2.9 760  
 4-05 2X 296d 21400 3.5 747 3.1 654

### 3<sup>rd</sup> Dam

#### Canary Attitude Naomi-Red EX-91 2E

5-01 2X 318d 35500 3.8 1353 3.1 1110  
 Life: 1413d 139,900 3.7 5192 3.2 4415

### 4<sup>th</sup> Dam

#### Canary Advent Lassie VG-86

3-01 3X 305d 30520 3.6 1093 3.0 919

### 5<sup>th</sup> Dam

#### Canary Pacific Jill VG-86

3-01 2X 305d 23740 4.3 1030 3.4 796

### 6<sup>th</sup> Dam

#### Canary Emerson Dawn VG-86

6-09 2X 305d 30020 3.8 1146 3.1 926  
 Life: 1924d 150,470 3.7 5497 3.2 4840

# Single Offering



**CANARY DOC REESE VG-85**  
Maternal Sister to Lot 25

# 25

## EAST-COLT HOMECOMING PLEASE

840003286250562 100%RHA GTPI+2202

Born: 12/02/2023

Fresh May 20, 2026

## AOT HOMECOMING-ET

003210341497 TR TP TM TE TCTY TV TL TD

PTA -586M 8F -6P 99%R 04/26

PTA +1.88T +1.17UDC +0.3FLC 99%R 04/26

GTPI +2537

## CANARY AFTERSHOCK REESE

840003130387985 EX-90 E E E V E 2E

4-01 2X 269d 25780 3.5 911 2.8 730

5-00 2X 305d 25700 3.6 918 3.1 784

6-08 2X 302d 26470 3.6 954 3.0 799

7-07 2X 305d 30440 3.3 1011 3.1 940

8-11 2X 305d 28580 3.3 953 3.0 855

9-10 2X 305d 34840 3.5 1211 3.1 1091

## MS ATLEES SHT AFTERSHOCK-ET

USA000065249839 TE TCTY TV TL TD

PTA -997M -61F -56P 99%R 04/26

PTA +0.99T +0.31UDC +0.53FLC TPI +1735

## CANARY GOLDWYN LIL GAMBLER

USA000070312165 90 V E V E V

2-00 3X 232d 27130 3.7 1008 3.2 870

3-00 3X 291d 25650 3.2 827 3.2 828

4-00 3X 305d 32490 4.0 1298 3.3 1082

5-04 2X 283d 32000 4.1 1327 3.5 1110

6-04 2X 305d 33290 4.2 1409 3.3 1114

8-01 2X 196d 19010 3.7 706 2.8 528

Life: 2135d 202,190 4.0 8010 3.4 6795

3<sup>rd</sup> Dam

**Canary Allen Gambler EX-92 2E**

3-03 2X 351d 29610 4.1 1217 3.3 974

Life: 1504d 112,620 4.2 4723 3.3 3766

4<sup>th</sup> Dam

**Canary Durham Dolly VG-86**

3-00 2X 305d 23380 3.4 793 3.0 708

5<sup>th</sup> Dam

**Canary Jurist Sherri VG-85**

6-00 2X 305d 28700 3.5 1006 2.7 781

# Single Offering



**RYLA RESPECT BEA VG-88**  
Lot 26

# 26

## RYLA RESPECT BEA

CAN000014397106 99%RHA GTPI +1934

Born: 07/11/2022 VG-88 VE++E@3/08

Due September 1, 2026 to 799HO00063 Sexed DETECTIVE

2-02 2X 305d 18850 4.0% 749 3.4% 638

## BLONDIN-I RESPECT-ET

000111633673

PTA -770M -52F -38P 96%R 04/26

PTA +2.35T +1.11UDC +1.14FLC 95%R 04/26

GTPI +1927

## RYLA SOLOMON BAILEY

CAN000013563131 EX-92 CAN

2-11 2X 250d 17348 3.1 534 3.1 542

5-11 2X 277d 23234 3.8 871 3.2 752

2 Lact: 40,582 3.5 1404 3.2 1294

## WALNUTLAWN SOLOMON-ET

CAN000011775998 TR TP TETY TV TL TD

PTA -1083M -52F -33P 99%R 04/26

PTA +2.08T +0.78UDC +0.27FLC TPI +1994

## RYSONACRES COMINGO BAILEY

CAN000012393142 VG-87 CAN

2-04 2X 365d 25168 4.3 1069 3.1 789

3-11 2X 365d 29509 4.6 1349 3.2 941

5-05 2X 365d 32544 4.0 1296 3.2 1027

6-08 2X 365d 32227 4.4 1402 3.0 972

7-11 2X 365d 26898 4.3 1149 3.2 977

5 Lact: 172,241 4.3 7480 3.2 5540

### 3<sup>rd</sup> Dam

#### Rysonacres A S Bally VG-85 CAN

3-02 2X 365d 17833 4.0 708 3.1 553

2 Lact: 30,190 4.1 1226 3.1 939

### 4<sup>th</sup> Dam

#### Rysonacres Jasper Betty Lou VG-85 CAN

3-02 2X 365d 20362 3.7 754 3.0 608

3 Lact: 55,962 3.8 2101 3.0 1702

### 5<sup>th</sup> Dam

#### Ronbeth SS Baby VG-87 CAN

4-04 2X 365d 27771 4.3 1182 3.1 866

4 Lact: 97,013 4.2 4061 3.2 3062

### 6<sup>th</sup> Dam

#### Ronbeth Leduc Babe VG-88 CAN

5-06 2X 305d 29079 3.2 941 3.2 924

6 Lact: 135,675 3.5 4755 3.2 4277

### 7<sup>th</sup> Dam

#### Ronbeth Aerostar Betsy VG-88 CAN 3\*

4-06 2X 305d 25983 4.2 1085 3.1 811

10 Lact: 235,101 4.0 9374 3.1 7368

### 8<sup>th</sup> Dam

#### Ronbeth Stylist Betty EX-CAN 1\*

4-05 2X 305d 24248 3.8 924 2.8 688

6 Lact: 159,119 4.0 6415 3.0 3691

### 9<sup>th</sup> Dam

#### Ronbeth Rockman Babe VG-85 CAN 4\*

8-11 2X 365d 25040 3.7 924

10 Lact: 212,479 3.9 8329

### 10<sup>th</sup> Dam

#### Ronbeth Telstar Bertha EX-CAN 9\*

10-02 2X 365d 27432 3.6 1001

9 Lact: 195,224 3.7 7253

# Single Offering



**MS-AOL BLACK DIAMOND-ET EX-92 2E**  
3<sup>rd</sup> Dam of Lot 7

27

**EAST-COLT UNIX QUINN**

840003302949841 99%RHA GTPI +2388

Born: 03/02/2025

Bred May 8, 2026 to 200HO13330 BURPEE

**CROTEAU LESPERRON UNIX-ET**

000107567492 TR TP TE TY TV TL TD

PTA +186M -17F -8P 99%R 04/26

PTA +1.51T +1.14UDC +0.01FLC 99%R 04/26

GTPI +2382

**EAST-COLT DOC PROMISE**

840003257609722 VG-85 V + VVV

1-11 2X 365d 22095 3.8 1076 4.8 773

**WOODCREST KING DOC**

840003132417775 TR TP TE TCTY TV TL TD

PTA +992M +27F +29P 99%R 04/26

PTA +2.38T +1.13UDC +1.60FLC TPI +2834

**ROCKY-RUN ALTITUDE HIGHLY**

840003209771530 EX-91 E E V E E

2-02 2X 267d 16909 3.7 810 5.3 570

3-01 2X 305d 22630 4.6 1033 3.2 730

4-05 2X 305d 23449 4.8 1115 3.5 815

3<sup>rd</sup> Dam

**MS-AOL Black Diamond-ET EX-92 2E**

3-04 2X 365d 29240 3.4 991 2.9 864

4<sup>th</sup> Dam

**Miss Roxys Recovery-Red EX-92 2E**

6-02 2X 305d 31730 4.2 1331 2.8 897

• HM All-American R&W Winter Yearling 2012

5<sup>th</sup> Dam

**Galestone Ava Rae-Red-ET EX-91**

3-09 2X 329d 24680 3.8 949 2.8 694

Life: 1454d 105,870 3.6 3800 2.7 2881

6<sup>th</sup> Dam

**Scientific Rubirae Socks-ET EX-93 3E DOM**

5-08 2X 365d 43050 4.2 1809 2.9 1250

Life: 2043d 154,160 4.1 6388 3.1 4753

7<sup>th</sup> Dam

**Scientific Jubilant Rae-ET EX-90 DOM**

5-11 2X 365d 38880 4.1 1608 3.6 1403

Life: 1394d 117,590 4.0 4707 3.6 4242

8<sup>th</sup> Dam

**C Hanoverhill Tony Rae EX-96 3E DOM GMD**

Life: 2247d 166,396 4.1 6904 3.4 5612

• HM All-American JR 2-Year-Old 1988

• Nom All-American 5-Year-Old 1991

9<sup>th</sup> Dam

**C Hanoverhill TT Roxette-ET EX-94 2E GMD**

10-00 3X 365d 35040 4.3 1518 3.0 1063

Life: 2104d 164,789 4.1 6760 3.1 3587

# Single Offering



**HEATHERSTONE REDHOT-RED EX-92**  
2<sup>nd</sup> Dam of Lot 28

# 28

## JERIAN ALPHA RALLY-RED

840003208399322 99%RHA GTPI +2234

Born: 12/14/2024

Bred May 14, 2026 to HULU

**Kaylee Emma Mae & Carter K Jackson**  
BARRON, WI | 715.418.0876

## BLONDIN ALPHA-ET

000120345248 RC

PTA +138M -7F -11P 97%R 04/26

PTA +2.39T +1.52UDC +1.46FLC 96%R 04/26

GTPI +2432

## SIEMERS AL HOT 39095-RED-ET

840003250768441 VG-87 VVVVV

2-03 2X 365d 27340 4.5 1235 3.6 984

## FARNEAR ALTITUDE-RED-ET

840003128013348 TE TCTY TVTL TD

PTA -419M -25F -11P 99%R 04/26

PTA +2.31T +1.58UDC +1.25FLC TPI +2217

## HEATHERSTONE REDHOT-RED

840003014096953 EX-92 E E V E E

3-02 2X 348d 27982 4.3 1203 3.4 948

4-05 2X 281d 28640 4.2 1192 3.1 899

- All-American Red & White JR 3 Year Old 2017
- Intermediate Champion R&W World Dairy Expo 2017
- HM Grand Champion Royal Winter Fair 2017
- Intermediate, Res Grand Champion WI State R&W 2017
- Intermediate, Res Grand Champion World Dairy Expo 2016
- Intermediate, Res Grand Champion Royal Winter Fair 2016

### 3<sup>rd</sup> Dam

#### Heatherstone Razyzy-Red-ET EX-91 2E GMD

5-05 2x 365d 45500 3.8 1710 3.0 1364

Life: 1901d 171,220 4.0 6928 3.2 5480

- Res Junior All-American R&W Fall Calf 2009

### 4<sup>th</sup> Dam

#### Heatherstone Rose-Red-ET VG-87 GMD

4-09 2X 365d 46590 4.9 2276 3.1 1430

### 5<sup>th</sup> Dam

#### Early-Autumn Heroline-Red VG-85 GMD

4-05 2X 365d 36060 4.3 1546 3.5 1250

### 6<sup>th</sup> Dam

#### Roulette Damsel-ET \*RC EX-90 GMD

7-02 2X 365d 43880 3.3 1467 2.9 1293

### 7<sup>th</sup> Dam

#### Roulette Dewdrop-Red EX-91 3E GMD DOM

5-02 2X 365d 32110 4.3 1394 2.9 942

### 8<sup>th</sup> Dam

#### Roulette Jetstar Dot \*RC VG-88

7-09 2X 365d 31290 4.0 1244 3.0 954

# Single Offering



**BOELD DORITOS DRAGONFLY-ET**  
Lot 29

**29**

**BOELD DORITOS DRAGONFLY-ET TR TP TC TL TD**

840003282208840 99%RHA GTPI +2127

Born: 09/25/2024

Bred February 11, 2025 to ENERGY

Kaylee Emma Mae & Carter K Jackson  
BARRON, WI | 715.418.0876

**VAL-BISSON DOORMAN-ET**

000107281711 TR TP TY TV TL TD

PTA -975M -25F -13P 99%R 04/26

PTA +1.88T +0.63UDC +0.6FLC 99%R 04/26

GTPI +2215

**DORSLAND ALTI DORITO-RED-ET**

840003211117479 EX-91 E E E E

2-02 3X 365d 33490 3.9 1314 3.4 1146

3-08 3X 318d 42080 4.3 1796 3.4 1451

4-08 3X 365d 35190 4.6 1624 3.5 1231

Life: 1250d 142,420 4.3 5401 3.5 4376

**FARNEAR ALTITUDE-RED-ET**

840003128013348 TE TCTY TV TL TD

PTA -419M -25F -11P 99%R 04/26

PTA +2.31T +1.58UDC +1.25FLC TPI +2217

**DORSLAND DONE TOR A DORA**

840003130394252 EX-94 E E E E 3E

1-11 2X 303d 16410 4.0 657 3.3 546

2-10 2X 312d 22300 4.1 922 3.3 743

3-11 2X 284d 21700 4.2 910 3.2 690

4-10 2X 365d 27950 4.6 1275 3.4 961

6-00 2X 365d 34720 3.9 1342 3.2 1125

7-09 2X 365d 33820 4.2 1406 3.1 1056

Life: 2129d 161,660 4.1 6705 3.3 5297

*3<sup>rd</sup> Dam*

**Dorsland Done That VG-86**

2-02 2X 365d 19110 4.2 806 3.5 660

*4<sup>th</sup> Dam*

**Dorsland Daisy Drizella-ET EX-92**

3-03 2X 352d 26200 3.5 924 3.3 876

*5<sup>th</sup> Dam*

**Dorsland Gibson Daisy-ET EX-90**

3-02 2X 365d 25850 3.7 944 3.1 813

*6<sup>th</sup> Dam*

**Dorsland Dawns Day-Dreamer EX-90 2E**

7-03 2X 365d 36510 3.5 1267 2.9 1055

Life: 2401d 173,870 3.7 6444 3.0 5301

*7<sup>th</sup> Dam*

**Dorsland Deb Chair-Val Dawn EX-90**

4-00 2X 365d 38000 3.1 1181 2.9 1110

Life: 1382d 109,340 3.3 3624 3.0 3299

# Single Offering



**HILROSE ALTUDE PITBULL VG-88**  
Dam of Lot 30

**30**

**HILROSE ACETYLENE PIXIE RC**

840003286250583 99%RHA GTPI +2403

Born: 11/05/2024

Bred May 1, 2026 to BEEF

Kaylee Emma Mae Jackson  
BARRON, WI | 715.418.0876

**LUCK-E ACETYLENE-RED-ET**

003220169858 TP TM TE TC TY TV TL TD

PTA +332M +13F +13P 83%R 04/26

PTA +2.87T +1.67UDC +1.97FLC 82%R 04/26

GTPI +2650

**HILROSE ALTUDE PITBULL**

840003236376906 VG-88 V E + V V

• 3<sup>rd</sup> Winter Yearling Midwest Fall National 2024

• 9<sup>th</sup> Winter Calf International Junior Show 2023

**FARNEAR ALTITUDE-RED-ET**

840003128013348 TE TCTY TV TL TD

PTA -419M -25F -11P 99%R 04/26

PTA +2.31T +1.58UDC +1.25FLC TPI +2217

**HILROSE DENVER PURITY**

840003204898158 VG-85 + VV + V

2-02 2X 365d 34140 4.2 1422 3.1 1055

*3<sup>rd</sup> Dam*

**Hilrose On Point Pretzel VG-97**

4-00 2X 357d 37560 3.9 1457 3.0 1129

Life: 1182d 122,250 4.0 4884 3.0 3673

*4<sup>th</sup> Dam*

**Hilrose Dempsey Patty-ET EX-93 2E GMD**

6-00 2X 365d 45660 3.7 1703 3.0 1356

Life: 1968d 216,610 3.7 8074 3.0 6539

*5<sup>th</sup> Dam*

**Hilrose Baltimore Penny-ET EX-93 GMD**

4-05 2X 365d 42790 3.6 1552 2.9 1244

Life: 1248d 129,200 3.8 4849 3.0 3840

• 2<sup>nd</sup> Fall Yearling Midwest Spring National 2012

*6<sup>th</sup> Dam*

**Hilrose Rubens Patsy EX-93 3E GMD**

4-09 2X 365d 45970 3.8 1761 2.9 1345

Life: 1873d 188,950 3.8 7269 3.0 5642

• Res All-American Fall Yearling 2005

• 2<sup>nd</sup> Fall Yearling International Show 2005

*7<sup>th</sup> Dam*

**Hilrose Lee Princess EX-93 4E GMD DOM**

10-00 2X 365d 50450 3.7 1881 2.6 1333

Life: 3233d 349,220 3.9 13,787 3.0 10,400

• Nom JR All-American JR 3-Year-Old 2004

*8<sup>th</sup> Dam*

**Hilrose Progress Peerless-TW VG-85 GMD**

3-05 2X 352d 49310 3.7 1848 2.8 1399

*9<sup>th</sup> Dam*

**Hilrose Blackstar Paula VG-88 EX-MS**

6-07 2X 365d 36670 4.2 1548 2.9 1072

# Single Offering



**HILROSE ALTUDE PITBULL VG-88**  
Lot 31

**31**

**HILROSE ALTUDE PITBULL RC**

840003236376906 99%RHA GTPI +2161  
Born: 12/01/2022 VG-88 VE + VV @ 3/03

- 3<sup>rd</sup> Winter Yearling Midwest Fall National 2024
- 9<sup>th</sup> Winter Calf International Junior Show 2023

1-11 2X 305d 22698 4.2% 944 3.2% 717  
3-00 2X 152d 13487 3.1% 458 3.3% 424

**Kaylee Emma Mae Jackson**  
BARRON, WI | 715.418.0876

**FARNEAR ALTITUDE-RED-ET**

003128013348 TE TCTY TV TL TD  
PTA -419M -25F -11P 99%R 04/26  
PTA +2.31T +1.58UDC +1.25FLC 99%R 04/26  
GTPI +2217

**HILROSE DENVER PURITY**

840003204898158 VG-85 + VV + V  
2-02 2X 365d 34140 4.2 1422 3.1 1055

**BRENLAND DENVER**

CAN000012074893 TR TE TC TY TV TL TD  
PTA -56M -13F -18P 99%R 04/26  
PTA +1.82T +0.53UDC +0.21FLC TPI +2112

**HILROSE ON POINT PRETZEL**

840003204897991 VG-87 VE + VV  
1-11 2X 325d 30730 4.1 1267 3.1 952  
2-11 2X 339d 35080 4.1 1426 3.0 1040  
4-00 2X 357d 37560 3.9 1457 3.0 1129  
5-02 2X 161d 18880 3.9 734 2.9 552  
Life: 1182d 122,250 4.0 4884 3.0 3673

**3<sup>rd</sup> Dam**

**Hilrose Dempsey Patty-ET EX-93 2E GMD**

6-00 2X 365d 45660 3.7 1703 3.0 1356  
Life: 1968d 216,610 3.7 8074 3.0 6539

**4<sup>th</sup> Dam**

**Hilrose Baltimore Penny-ET EX-93 GMD**

4-05 2X 365d 42790 3.6 1552 2.9 1244  
Life: 1248d 129,200 3.8 4849 3.0 3840

- 2<sup>nd</sup> Fall Yearling Midwest Spring National 2012

**5<sup>th</sup> Dam**

**Hilrose Rubens Patsy EX-93 3E GMD**

4-09 2X 365d 45970 3.8 1761 2.9 1345  
Life: 1873d 188,950 3.8 7269 3.0 5642

- Res All-American Fall Yearling 2005
- 2<sup>nd</sup> Fall Yearling International Show 2005

**6<sup>th</sup> Dam**

**Hilrose Lee Princess EX-93 4E GMD DOM**

10-00 2X 365d 50450 3.7 1881 2.6 1333  
Life: 3233d 349,220 3.9 13,787 3.0 10,400

- Nom JR All-American JR 3-Year-Old 2004

**7<sup>th</sup> Dam**

**Hilrose Progress Peerless-TW VG-85 GMD**

3-05 2X 352d 49310 3.7 1848 2.8 1399

**8<sup>th</sup> Dam**

**Hilrose Blackstar Paula VG-88 EX-MS**

6-07 2X 365d 36670 4.2 1548 2.9 1072

# Single Offering



**APPLE-PTS ALEESA-RED-ET EX-91**  
Dam of Lot 32

# 32

## ROCKY-RUN LATE ADDY-RED-ET PO

840003241546937 99%RHA GTPI+1934

Born: 03/01/2023 VG-85 V + E GV @ 2/08

Bred December 30, 2025 to BEEF

2-06 2X 227d 17076 3.2% 739 4.9% 538

**Hadley G Olt**

GREENSBURG, KY | 270.405.1365

## AVANT-GARDE-I LATENITE-RED-ET

000013507027 PCTY TV TL TD

PTA +103M -36F -29P 98%R 04/26

PTA +1.77T +0.98UDC +0.56FLC 98%R 04/26

GTPI +1972

## APPLE-PTS ALEESA-RED-ET

840003147207058 EX-91 E E E V E

2-02 2X 365d 21720 4.1 891 3.3 714

3-07 2X 111d 6400 3.9 252 2.9 188

• Res Junior All-American R&W Summer JR 2-Year-Old 2022

• 1<sup>st</sup> Summer JR 2-Year-Old Mid-East Fall R&W Show 2022

• Intermediate Champion Mid-East Fall R&W Show 2022

## RIVERDOWN UNSTOPABULL-RED

CAN000011801450 TYTY TL

PTA -825M -58F -44P 99%R 04/26

PTA +1.32T +1.13UDC +0.97FLC TPI +2016

## KHW REGIMENT APPLE-RED-ET

USA000135511521 EX-96 E E E E 4E DOM

2-02 2X 365d 28930 4.5 1297 3.4 979

4-01 2X 365d 35750 4.7 1682 3.5 1247

5-03 2X 365d 30810 5.0 1527 3.7 1154

7-00 2X 365d 33280 5.0 1654 3.4 1128

9-01 2X 365d 36750 4.3 1582 3.3 1211

10-11 2X 365d 31780 4.5 1440 3.3 1062

• All-American Junior 2-Year-Old 2006

• HM All-American Junior 3-Year-Old 2007

3<sup>rd</sup> Dam

**Kamps-Hollow Altitude-ET \*RC EX-95 2E DOM**

Life: 1844d 144,458 4.3 6295 3.7 5288

• Red Impact Cow of the Year 2009

4<sup>th</sup> Dam

**Clover-Mist Alisha EX-93 3E GMD DOM**

8-07 2X 365d 36921 4.2 1552 3.4 1259

6 Lact: 226,470 4.8 10,659 3.6 8147

5<sup>th</sup> Dam

**Clover-Mist Augy Star EX-94 4E DOM**

5-11 3X 365d 41669 5.2 2156 3.5 1453

6 Lact: 194,920 4.7 9301 3.4 6624

6<sup>th</sup> Dam

**D-R-A August EX-96 4E DOM**

8-05 3X 365d 27460 4.3 1186 3.2 871

8 Lact: 190,200 4.4 8283 3.3 4456

7<sup>th</sup> Dam

**D-R-A Ideal Precious Leader EX-90 2E**

7-06 2X 358d 20090 3.9 787 3.4 675

9 Lact: 133,251 4.1 5310 3.3 1903

# IVF Offering



**MS ALPHA MYSTERY-RED-ET**  
Donor of Lot 33

# 33

## IVF Session - Donor MS ALPHA MYSTERY-RED-ET

840003281746366 99%RHA GTPI +2320

Born: 03/06/2024 VG-85 + V V GV @ 2/00

Fresh March 6, 2026

- 5<sup>th</sup> JR 2-Year-Old Midwest Spring National 2026
- 3<sup>rd</sup> JR 2-Year-Old Midwest Spring R&W Show 2026

**Buyer is guaranteed a minimum of eight (8) #1 or #2 embryos. Buyer is responsible for cost of IVF and semen.**

### BLONDIN ALPHA-ET

CAN 120345248 RC

PTA +138M -7F -11P 97%R 04/26

PTA +2.39T +1.52UDC +1.46FLC 96%R 04/26

GTPI +2432

### HODGLYNN UNSTBL MAGIC-RED-ET

CAN 14476507 VG-87 CAN

2-00 2X 365d 28082 4.0 1122 2.9 816

Full Sister:

### Blondin Unstopabu Maple-Red EX-94

• Unanimous All-American SR 3-Year-Old 2022

• Unanimous All-Canadian SR 3-Year-Old 2022

• All-American R&W SR 3-Year-Old 2022

• Unanimous All-Canadian R&W SR 3-Year-Old 2022

### RIVERDOWN UNSTOPABULL-RED

CAN000011801450 TYTV TL

PTA -825M -58F -44P 99%R 04/26

PTA +1.32T +1.13UDC +0.97FLC TPI +2016

### KAWARTHA ARMANI MEMORY

CAN 12232587 EX-92 CAN 1\*

2-02 2X 352d 25371 4.2 1065 3.3 842

3-05 2X 351d 28439 4.3 1217 3.4 970

5-03 2X 365d 33611 4.5 1517 3.3 1098

3 Lact: 95,968 4.5 4281 3.4 3278

• 3<sup>rd</sup> JR 2-Year-Old Royal Winter Fair 2017

• 3<sup>rd</sup> JR 2-Year-Old Royal Winter Fair R&W Show 2017

• 3<sup>rd</sup> JR 3-Year-Old Royal Winter Fair R&W Show 2018

• All-Ontario JR 2-Year-Old 2017

### 3<sup>rd</sup> Dam

#### Lochdale Shaquille Missy EX-93 2E

4 Lact: 122,150 3.9 4705 3.0 3702

• Res All-Canadian R&W JR 3-Year-Old 2013

• Int Champion Royal Winter Fair R&W Show 2013

• 1<sup>st</sup> JR 3-Year-Old Royal Winter Fair R&W Show 2013

• 3<sup>rd</sup> JR 2-Year-Old Royal Winter Fair R&W Show 2012

### 4<sup>th</sup> Dam

#### Lochdale Redman Melissa GP-84 3\*

3-03 2X 326d 19687 4.1 798 3.3 646

### 5<sup>th</sup> Dam

#### Lochdale Lee Macey VG-85 CAN

5-04 2X 340d 24256 4.1 1008 3.1 765

5 Lact: 113,508 4.1 4610 3.1 3576

### 6<sup>th</sup> Dam

#### Marvans Raider Lacey EX 6E CAN

11-02 2X 364d 26279 4.3 1138 3.2 853

10 Lact: 222,140 4.0 8964 3.2 7061

### 7<sup>th</sup> Dam

#### Marvans Tab Stacy EX 2E CAN 9\*

7-04 2X 365d 27655 3.5 977 3.0 836

7 Lact: 150,925 3.5 5234 3.1 4647



---

# INDEX

BOELD DORITOS DRAGONFLY-ET	31	EAST-COLT LXR CHERRY-RED-ET	25
CHAKELBURG BELIEVE POSSIBLE	15	EAST-COLT MALBEC SERAPHINA	4
EAST-COLT ACCELERATE HAWAII	15	EAST-COLT POPPINHOT-RED-ET	9
EAST-COLT ALLEYOOP CHILLI	9	EAST-COLT SK CHEDDAR-ET	17
EAST-COLT ANDREW JAYNE	21	EAST-COLT SUGARUSH QUIET	6
EAST-COLT BELIEVE JEM-ET	24	EAST-COLT SUGARUSH QUIP	6
EAST-COLT BELIEVE JEWEL-ET	24	EAST-COLT THSTRUCK PANSY	19
EAST-COLT BOOM JALISSA-ET	23	EAST-COLT THUNDRSTRM DAZZLE	20
EAST-COLT BOOM JANESEA-ET	23	EAST-COLT THUNDRSTROM HEIDI	20
EAST-COLT DEMPSEY DONUT	5	EAST-COLT THUNDRSTRUCK POSY	26
EAST-COLT DOC BABY	14	EAST-COLT UNIX BRIAR	16
EAST-COLT DOC BLISS	14	EAST-COLT UNIX BUTTERFINGER	18
EAST-COLT DOC PAULA	21	EAST-COLT UNIX QUINCY	10
EAST-COLT DOC PHOEBE-RC	17	EAST-COLT UNIX QUINN	29
EAST-COLT DOC PROMISE	16	ERNEST-ANTHONY HAVE LOVE-ET	13
EAST-COLT DROPBOX QUIP	11	HILROSE ACETYLENE PIXIE	32
EAST-COLT ENERGY PARIS	12	HILROSE ALTUDE PITBULL	33
EAST-COLT ENERGY QUISCENT	12	IVF SESSION - DONOR MS ALPHA MYSTERY-RED-ET	35
EAST-COLT HANANS BETA	8	JERIAN ALPHA RALLY-RED	30
EAST-COLT HANCOCK BRIANNA	18	MISS SIDEKICK HAZEL-ET	4
EAST-COLT HANCOCK HERSHEY	25	MS DB HIMALAYA 7031-ET	10
EAST-COLT HAVNOFEAR BABYBOP	19	MS ROCKYRUN WAR SERENDIPITY	13
EAST-COLT HOMECOMING PLEASE	27	OAKFIELD HO SOLARIS-ET	22
EAST-COLT JERRY LEWIS QUILL	7	ROCKY-RUN ALTITUDE HIGHLY	5
EAST-COLT LEGENDAIRY BRIGHT	11	ROCKY-RUN LATE ADDY-RED-ET	34
EAST-COLT LEGENDAIRY QUOTE	8	RYLA RESPECT BEA	28
EAST-COLT LGNDAIRY QUESTION	7	SELLCREST D CHEETO-RED	22



# HOLSTEIN ASSOCIATION TERMS AND CONDITIONS FOR PUBLIC SALES

EFFECTIVE MARCH 2, 1996 - Amended October 1, 1997, June 28, 2000, June 23, 2002, March 26, 2010 and March 24, 2016

**TERMS:** The terms of the sale are cash unless arrangements are made prior to the sale or are printed in the sale catalog. Only when the above conditions are met will the buyer be entitled to the warranties listed below. In no case will animals be released unless settlement is made with the clerk of the sale.

**RESPONSIBILITY:** The seller, buyer, and manager of this sale are obligated to comply with the provisions of these terms and conditions.

**EXPORT SALES:** Buyer assumes all responsibility for health tests required by the importing country.

**BIDS:** The highest bidder is the buyer. Bidding parties or their agents are responsible for all bids placed. Every animal or lot presented for bidding is pledged to absolute sale. In case of dispute, the animal or lot will again be put up for advance bids, and if there is no advance bid, the animal or lot will be sold to the person the auctioneer accepted the last bid from. In case two or more claim the bid, the auctioneer will indicate the party whose bid he recognized. Other claimants will be given an opportunity to increase the bid and bidding will be restricted to the two or more claimants.

**BY-BIDDING:** Bidding directly or indirectly by the sole owner of any animal or lot is prohibited unless the intention to bid is disclosed specific to each animal in the catalog and announced when the animal enters the ring. Bidding by any member of a partnership, syndicate, or other entity having an ownership interest in an animal or lot is permitted.

**TRANSFER OF OWNERSHIP:** For all Registered Holsteins<sup>SM</sup>, the transfer of ownership to the buyer will be recorded on the records of Holstein Association USA and a certificate of registration showing that transfer of ownership will be provided to the buyer free of charge. For embryos, the transfer of ownership to the buyer will be recorded on the records of Holstein Association USA free of charge to the buyer.

**RISK:** All animals located at sale site are at the purchaser's risk as soon as struck off, but will be cared for free of charge for a maximum of 24 hours following the end of the sale.

## WARRANTIES:

- 1) Each consignor warrants clear title to the animal or lot, and the right to sell same.
- 2) To the best of the seller's knowledge, each animal is sound and healthy in every respect and embryos have been recovered, processed, frozen, transferred and graded in keeping with IETS recommendations unless otherwise noted in the catalog or announced from the auction stand. Every precaution will be taken to represent the physical condition of each lot exactly as is known. Examination of all purchases should be made immediately after the purchase and before the close of the sale, and if found not to be as represented, complaint must be reported to the sale management before the close of the sale. In the event no complaint is filed, it is understood that the buyer assumes full ownership in the case of animals at sale site together with all risks, after which no representations of the seller can be challenged through the sale management. Heifers that never calved are in no way guaranteed as to the condition of their udders following calving. The sex of an embryo or fetus is in no way guaranteed.

### 3) Breeding Warranty

The seller guarantees all animals to be breeders, but not beyond the purchase price, with the following understanding:

- a. Males - Should any bull after reaching the age of fourteen months fail to prove a breeder after being used for two months on cows or heifers known to be breeders, the matter shall be reported in writing to the seller within three months of the sale date. The report must include the animal's examination record, a written statement of treatment, and a statement of the animals' inability to breed,

by a licensed veterinarian. The seller has the option to refund the purchase price or make other settlement that is satisfactory to the buyer. In either case the rights of ownership of the animal return to the seller. The seller makes no guarantees with respect to the ability to freeze semen.

- b. Females - All females are guaranteed to be breeders with the exception of:
  1. Cows over 7 years of age when sold;
  2. Cows and/or heifers carrying a pregnancy that is the result of an embryo transfer.

Report of a non-breeder must occur in writing within 3 months of the date of sale or before the animal reaches 21 months of age and must be submitted to the seller. The report must include the animal's examination record, a written statement of treatment, and a statement of the animals' inability to breed, by a licensed veterinarian. The seller has the option to refund the purchase price or make other settlement that is satisfactory to the buyer. In either case the rights of ownership of the animal return to the seller.

Females bred when sold and pronounced in calf are presumed to be pregnant but pregnancy is not guaranteed unless so announced. The seller makes no warranty that pregnant cows will deliver calves or that they will carry calves full term.

- c. If, after the sale, embryos or oocytes are recovered from a female or an attempt is made to superovulate her, this negates the breeding warranty unless there is a separate written agreement between buyer and seller.

**SHIPPING:** Assistance will be given in arranging shipping of the animals after the sale. All costs, risks and responsibility will be borne by the purchaser.

**PEDIGREE INFORMATION:** All production, classification, type and production summaries are current. Only information recorded on Holstein Association USA pedigrees is used. Any production or classification records supplied by the seller or consignor will be properly identified as provided by owner. Records in progress are identified as such.

**GENOMIC INFORMATION:** If genomic information on the animal or embryo is available, it must be dated and disclosed at or before the time of sale.

**EMBRYO TRANSFER:** All registered animals that have resulted from embryo transfer are identified with one of the following suffixes in the name: ET, ETS (from split embryo), or ETN (from nuclear transfer). If unregistered, the appropriate technology will be identified. Donor dams are identified.

**HEALTH WARRANTY:** The seller will provide an official health certificate to the buyer for each animal showing the results of all health tests made in preparation for this sale as required by the state where the cattle reside. Other health tests completed for this sale will be disclosed.

**ERRORS:** The material in this catalog has been carefully edited. If any errors or omissions are discovered, they will be announced. Such announcements take precedence over that printed in this catalog.

**ACCIDENT:** The sale management, the consignors, and the owner of the grounds will not be responsible in any case for the condition of the grounds or the behavior of the animals and disclaim any liability in the event of personal accident or property loss.

**LIMITATIONS OF WARRANTIES:** Warranties contained herein, unless terminated earlier, will cease upon the resale of an animal.



