



AJCC Research Foundation
Benefit Auction

Thursday, June 18, 2026

Bass Pro White River Convention Center, Springfield, MO

7:00 p.m. (CDT)

Auction Items



Lot #1A & 1B

1960s Advertising by the American Jersey Cattle Club

“Jerseys for Market Security and More \$\$ Profit”

“Jerseys – More Milk Solids the Natural Way”

Those aren't show-ring or breed-promotion slogans. They're commercial dairy marketing messages focused on: milk solids, profitability, processor demand, and market access.

Language that aligns almost perfectly with the objectives that led to the creation of National All-Jersey Inc. in 1957 and later Project Equity. AJCC and NAJ spent decades promoting the idea that Jersey milk should be valued for its higher butterfat and protein content rather than simply volume.

Donated by National All-Jersey Inc.



Lot #2 *Equity Giclée 4/9*

Equity Giclée 4/9, the final print in the series to be offered at public auction by David and Cathy Brandau, Wilton, Wis., will be auctioned in memory of the late Ray and Margaret Schooley.

Beautifully matted and framed, the giclée includes a commemorative placard recognizing “50 Years of Equity.” The presentation also features an original Project Equity sign-up card from the program’s early years mounted on the back.

The original watercolor by Michele Ackerman, a member of the AJCA communications department, was commissioned by David Brandau as a tribute to the Equity Project. It depicts three classic Jersey heads, beginning with Rosemary of P.H.P., selected by the AJCC board in 1949 as the breed’s ideal.

The initial series commemorated the leadership of Dr. Guy M. Crews, NAJ assistant secretary. Giclée 1/2 sold at the AJCC Research Foundation in 2011 to the Dalhart, Texas, division of the Hilmar Cheese Company for \$5,100. The artist retained Giclée 2/2.

Four prints from the second series have also been auctioned to benefit Jersey research. Walter and Joyce Owens, Frederic, Wis., purchased a print 7/9 at the research auction in San Diego, Calif., for \$3,500. David Endres, Lodi, Wis., purchased print 6/9 at the 2018 auction for \$2,100.

In 2023, giclée 5/9 generated \$8,400 for Jersey research. Initially purchased for \$4,200 by David Endres, it was donated back to the auction, where Donna Phillips and Dan Stock, Newton, Wis., matched the bid at \$4,200 to bring the piece home.

To date, the auction of Equity prints has generated \$19,100 for Jersey research.



Lot #3

A Celebration of Jersey History

Few pieces capture the beauty and legacy of the Jersey breed quite like this *one-of-a-kind* creation from Ted and Cheryl DeMent of Illinois.

Meticulously crafted from a variety of woods, this stunning work of art features woodburned portraits of the Ideal Jersey from different eras of breed history in each corner, culminating with The Jersey proudly showcased at the center. The intricate geometric design, natural wood tones and detailed craftsmanship create a visual tribute to the evolution of the breed and the breeders who have shaped it through the generations.

Known for their originality and creativity, Ted and Cheryl have once again transformed their passion for Jerseys into a remarkable piece of art. Whether displayed in a home, office, farm or sale facility, this unique creation is certain to become a centerpiece and conversation starter.

More than a decorative piece, it is a celebration of Jersey heritage, breed progress and the enduring dedication of Jersey enthusiasts.

Donated by Ted and Cheryl DeMent, Illinois

Lot #4

Vintage Butter Churn

Imagine a time when every pound of butter began with fresh cream from the family herd and a hand-cranked churn much like this one. This antique wooden barrel butter churn represents the foundation of the dairy industry and the rich butter-making heritage for which Jersey cattle became renowned.



Featuring its original stand, crank and lid, this beautifully preserved churn is both a functional piece of agricultural history and an impressive display item. Its aged wood and authentic farm character reflect generations of craftsmanship, perseverance and pride in dairying.

More than an antique, this churn celebrates the enduring legacy of Jersey breeders and the remarkable cows whose milk helped shape America's dairy industry. By bidding on this unique piece, you are not only acquiring a rare reminder of our past, but also helping support the future of the Jersey breed through Jersey Research Foundation initiatives.

Donated by John and Linda Marcoot, Illinois



Lot #5

#313 Blossom Figurine

Created by renowned Missouri artist Lowell Davis, *Blossom* was inspired by his own beloved Jersey cow and became one of the first six figurines produced in the celebrated Lowell Davis collection.

When Scottish sculptors working from Davis's original model remarked that the cow didn't look like a Jersey, Davis famously replied, "Well, it looks like a Missoura Jersey!" Decades later, that story makes this piece especially fitting as the Jersey community gathers in Missouri once again.

This numbered figurine, No. 313, captures the gentle character and dairy strength that have made Jersey cattle a favorite of breeders for generations. From the bell around her neck to the salt block at her feet, every detail reflects Davis's admiration for rural life and the cows that helped shape it.

More than a collectible, "Blossom" is a tribute to the Jersey breed, Missouri heritage and the enduring bond between Jersey breeders and the cows they cherish. Whether displayed in a home, office or farm, this charming piece is sure to be a treasured conversation starter for years to come.



Donated by the family of Duane and Pat Wickstrom, California



Lot #6

Original painting from the W.B. Coldwell Farm, Kansas

The story provided with the photo:

Lassie 34746 in the old bound columns of Jersey Herd Register. Her full name is Lady Royal's Lass, born on August 8, 1885. She was owned by W.B. Coldwell Farm in Oxford, KS. Unfortunately, we don't have a good way to find her calf in the paper herd registers because there's no index by dam. The homesite in the picture is about a half mile North of the main intersection in Oxford, KS. Connecting this property just to the west is the Oxford Cemetery. We learned this land was donated by the Coldwells for use as a cemetery. The farm is still there. There is a new home on the spot where the house in the picture was located. I am sure one of the outbuildings in the picture is still there, the building farthest to the right in the picture. We knew the picture had to be pre-1900, because Mr. Coldwell is buried in the cemetery. He died in October 1899, at the age of 60. Now that I have learned the bull in the picture, Sig Torlandseer 32921 who was bred by Ky. Agric Exp't Station in Lexington, KY, was born in February 1893. So we know the picture has to be done sometime between then and his death. My personal thought is that Mr. Coldwell was starting a registered cattle herd when he suddenly passed away.

Donated by Ron and Christy Ratliff, Kansas

Lot #7

First Prize – Hershey’s Collector Plate

Few moments in agriculture are more memorable than a young exhibitor’s first ribbon. This charming vintage Hershey’s collector plate captures that special experience, featuring a young girl proudly presenting a “First Prize” ribbon to her calf.

Bearing the slogan “Sharing the Good Things – Hershey’s,” the plate celebrates the values that have long connected dairy farm families—hard work, dedication and the special bond between youth and their animals.

Whether it reminds you of your first show calf, your children’s show-ring experiences or the generations of young people who have found their start through dairy projects, this nostalgic piece is sure to bring a smile and spark conversation.

A delightful addition to any collection of dairy, agricultural or Jersey memorabilia.



Donated by the Ray and Margaret Schooley collection



Images on shams are 5.5" x 6"

Originally donated by Helene and Doc Driesbach at the 2024 AJCA-NAJ Annual Meetings, the shams were auctioned separately from a matching handmade quilt purchased by Sam and Julie Bok. Believing the pieces belonged together, Benny and Janice Rector quietly reunited the shams with the quilt after purchasing them.

Now, these unique pillow shams are being offered once again to support Jersey-specific research.

A special piece of Jersey history—and a testament to the generosity that defines the Jersey community. Now, the story continues. The pillow shams have returned to support Jersey-specific research. Offered once again, they are ready to begin a new chapter with another Jersey family.

Donated by Sam and Julie Bok, Ohio and Benny and Janice Rector, Missouri

Lot #8

Pillow Shams featuring A-Nine Top Brass and The Jersey

Some Jersey items come with a history. This pair comes with a story.

These one-of-a-kind handsewn and hand-painted pillow shams featuring The Jersey and Top Brass have already made one memorable journey through the Jersey community for research.

Lot #9

Ties to Jersey History

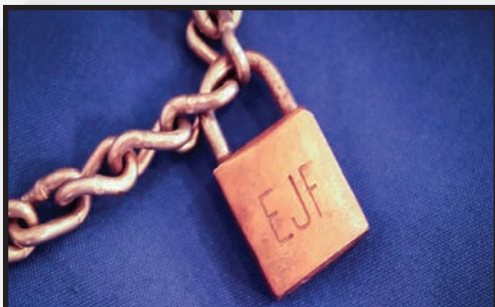
As former AJCA Director Jim Billman and his wife recently downsized, Jim discovered he may have been a bit of a clothes horse. Faced with reducing his wardrobe, he decided these two unique Jersey-themed ties deserved a new home—and a chance to support Jersey-specific research.

These ties accompanied Jim to countless Jersey events over the years, representing a lifetime of dedication to the breed and its organizations. In fact, rumor has it that one of them may have been worn on the evening in March 2000 when Neal Smith was hired as AJCA-NAJ Executive Secretary by the board of directors.

Now, as Neal attends his final Annual Meetings in that role, it seems only fitting that Jim offers these ties for auction.

A unique piece of Jersey memorabilia with a story woven into every thread.

Donated by Jim Billman, Ohio



Lot #10

Elliott Jersey Farm Horn Chain

A simple piece of hardware with a remarkable Jersey story.

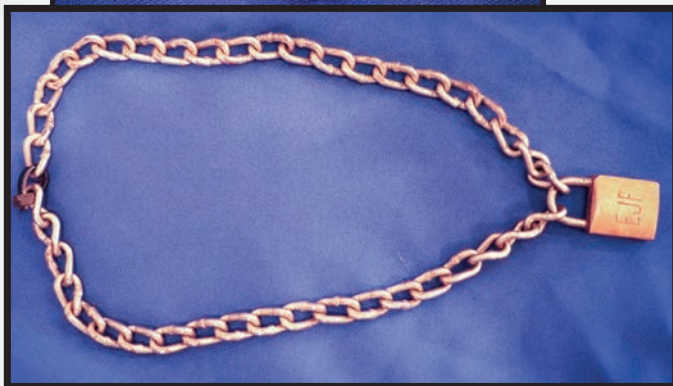
This vintage horn chain bears the initials EJF for Elliott Jersey Farm, one of Missouri's historic Jersey herds. The chain later made its way to Texas when Jersey breeder Clifford Ray Buchanan purchased a portion of the Elliott Jersey Farm herd.

The chain was gifted by Clifford's family to Trevor Stephens, who now offers it in support of Jersey-specific research.

More than a farm tool, this chain represents the generations of Jersey breeders who built

and preserved the breed's legacy. From Missouri to Texas and back again, it serves as a tangible link to Jersey history and the cattlemen and women who devoted their lives to the breed.

Donated by Trevor Stephens, Texas



Lot #11

Young Boy and his herd

This beautifully framed vintage-style print captures the timeless connection between Jersey cattle and rural life. Featuring a young boy alongside a Jersey cow and calf, the artwork reflects the heritage, stewardship and family traditions that have long defined the Jersey breed.

A charming addition to any home, office or farm, this piece is sure to be appreciated by anyone who treasures Jersey history and agricultural art.

Donated by David Parkinson, Washington



Lot #12

The Jersey Family - a framed print

This beautifully framed print, titled "The Jersey Family," depicts a Jersey cow, calf and herd in a pastoral setting, capturing the beauty, gentleness and enduring appeal of the breed. Originally published by C. Taber & Co., the artwork reflects the admiration Jerseys inspired during the breed's rise to prominence in America.

Rich in character and history, this piece offers a glimpse into how Jersey cattle were celebrated by earlier generations of breeders and artists alike.

Donated by Helene Driesbach, Pennsylvania

Lot #13

Rosalinde Jersey pitcher

Celebrate the breed you love with this charming Rosalinde porcelain pitcher featuring a beautifully detailed Jersey portrait. Combining function and artistry, this piece showcases the gentle expression and unmistakable character that have made Jersey cattle favorites of breeders around the world.

Whether displayed in a kitchen, office or farm home, this unique piece is sure to be appreciated by Jersey enthusiasts and collectors alike.

A timeless tribute to the Jersey cow and a wonderful addition to any collection.

Donated by the Ray and Margaret Schooley collection



Lot #14

Diamond Art design

With a sparkle as big as her personality, this sassy Jersey cow is sure to capture attention wherever she is displayed.

Created by Wisconsin Junior Jersey breeder Erica Neal Stock, this one-of-a-kind piece is crafted using diamond art, a process in which hundreds of tiny faceted resin “diamonds” are individually placed to create a colorful, mosaic-style image that catches the light and adds remarkable depth and texture.

Measuring approximately 18.5” x 22” framed, this eye-catching work combines creativity, patience and a love for the Jersey breed. Whether displayed in a home, office or farm, it’s sure to bring a smile to every Jersey enthusiast who sees it.

Donated by Erica Neal Stock

Lot #15

Floral Jersey art

A fresh and whimsical take on the Jersey cow, this charming artwork by Michelle Norman beautifully blends farm life and floral elegance.

Featuring a Jersey adorned with a delicate flower crown, the piece captures the gentle nature and unmistakable beauty of the breed while adding a touch of modern farmhouse style. The rustic frame complements the artwork perfectly, creating a display piece that is both warm and inviting.



Donated by Blake Fox, Ohio

Lot #16

She's Got the Look *Bonnie Mohr*



Bonnie Mohr's artwork has long celebrated the beauty and spirit of rural America, and *She's Got the Look* perfectly captures the confidence and character of the Jersey breed. Featuring a herd of Jerseys making their way down a country lane, this striking print showcases the elegance, strength and unmistakable presence that have made Jerseys a favorite among dairy enthusiasts.

A beloved piece by one of agriculture's most recognized artists, this framed print will make a beautiful addition to any home, office or farm.

Because when it comes to Jerseys, she's definitely got the look.

Donated from the Maurice E. Core collection, Ohio

Lot #17

Elsie Metal sign

Few cows have achieved celebrity status quite like Elsie the Cow.

Introduced by Borden Dairy in 1936, Elsie became America's most famous Jersey cow, serving as an ambassador for both the dairy industry and the breed for generations. Her friendly personality and unmistakable appearance made her one of the most recognizable advertising icons of the 20th century.

This colorful plasma-cut metal sign features Elsie in her iconic sunflower design, celebrating a Jersey who helped bring dairy farming into homes across America.

Whether displayed in a home, office, milk house or showbox room, this piece is a fun reminder that one Jersey cow became a household name—and helped generations of consumers fall in love with dairy cattle.

A tribute to the Jersey breed's most famous ambassador.

Donated by American Jersey Cattle Association



Lot #18

Elsie Cookie Jar

This vintage ceramic cookie jar features Elsie peeking out of a butter churn, complete with her signature flower collar and unmistakable smile. Embossed with phrases including “Elsie” and “She No Hooks”—a nod to the advertising campaigns that made her a household name—this piece celebrates one of the most beloved icons in dairy history.

For generations, Elsie represented the wholesome goodness of dairy products and helped make the Jersey cow America's favorite dairy celebrity. Today, she remains a cherished symbol of both the dairy industry and the Jersey breed.

Donated by Stephan Jerseys: Dan and Shari Strickhouser and Marilyn Susina, Wisconsin



Did You Know? The phrase “She No Hooks” was one of Elsie's classic advertising slogans, referring to a cow so gentle and well-behaved she didn't need to be tied in the barn.

Lot #19

Set of Stardust Jersey Wine Glasses

This pair of commemorative wine glasses celebrates Stardust Registered Jerseys, the renowned herd of James and Georgia Pappas, who were honored as AJCC Master Breeders in 1976. The Stardust herd earned national recognition for its impact on the Jersey breed and remains a respected name in Jersey history.

Featuring the distinctive Stardust Registered Jerseys logo, these glasses offer a unique connection to one of the breed's notable Master Breeder herds and the breeders whose dedication helped shape the Jersey cow we know today.

Originally created for the 90th birthday celebration of Master Breeder James Pappas, these glasses offer a unique opportunity to own a piece of Stardust Jersey history.



Donated by Kristin and Brian Paul, Wisconsin

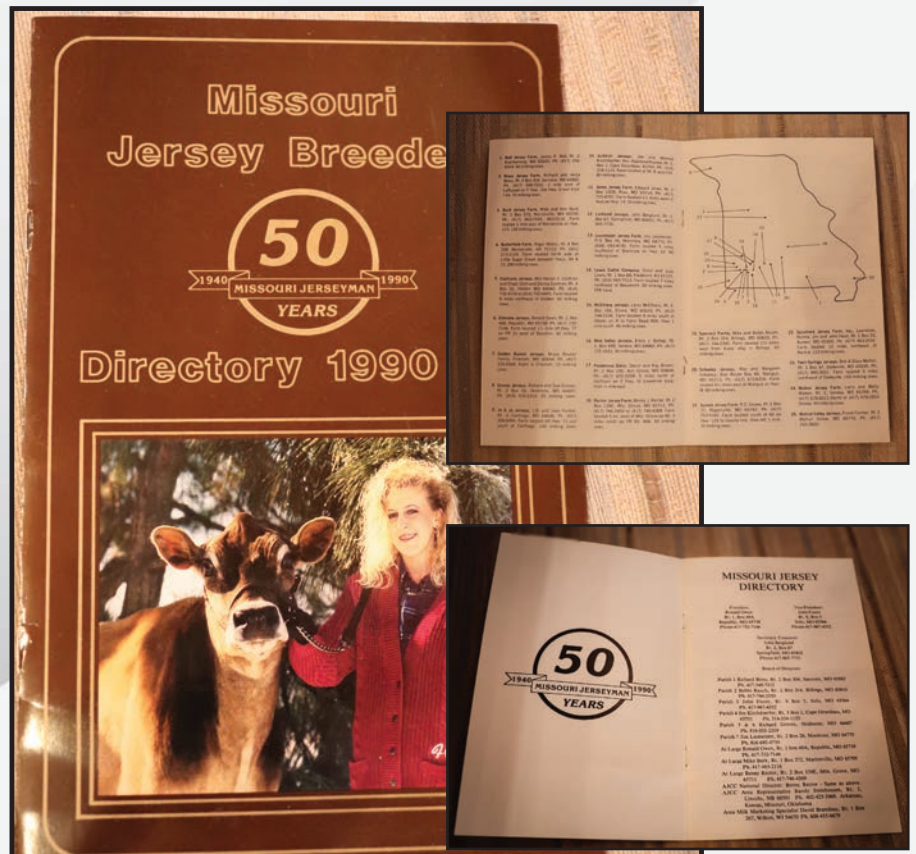
Lot #20

Missouri Jersey Directory

A commemorative book featuring the Missouri Jersey herds from 1990-1991. A 50-year look at the history of the state.

We believe there are many names in here you might recognize!

Donated by Trevor Stephens, Texas





Lot #21

Vintage Jersey Dairy Bottle Collection with Carrier

Step back into the era of home milk delivery with this unique collection of vintage Jersey dairy bottles. The set includes four embossed and painted bottles representing Jersey-branded dairies, including Green Acres Dairy (Dry Ridge, Kentucky), Mayfield's Jersey Milk, Jefferson Creamery Jersey Brand Milk & Cream, and an embossed Jersey Dairy bottle, along with a classic wire bottle carrier.

Featuring colorful graphics, advertising slogans, and the proud use of the Jersey name, these bottles offer a glimpse into a time when Jersey milk was marketed directly from farm to family. A wonderful display piece for Jersey enthusiasts, dairy memorabilia collectors, or anyone who appreciates agricultural history.

Donated by John and Linda Marcoot, Illinois

Lot #22

Hand-painted Jersey Cream Pitcher

A beautiful stoneware cream pitcher featuring a hand-painted Jersey cow portrait. With its warm earth-tone glaze and classic farmhouse styling, this piece captures the gentle beauty of the Jersey breed while serving as both a functional pitcher and decorative display item.

*Donated from the Ray and Margaret
Schooley collection*



Lot #23

Set of 7 Jersey Coffee Cups

Start your morning with a favorite breed! This ceramic mug features a classic illustration of a Jersey cow accented by a simple decorative border and the breed name. Both practical and collectible, it's perfect for coffee, tea, or displaying among a collection of Jersey memorabilia.

Whether used daily or showcased on a shelf, this mug is a charming reminder of the beauty and legacy of the Jersey breed.

Donated by Dave Parkinson, Washington

Lot #24

Wooden Jersey Cow collectible

This hand-painted wooden Jersey cow is believed to have served as a table centerpiece at a World Jersey Cattle Bureau annual meeting. While its exact origins remain unconfirmed, the piece reflects the international fellowship and breed pride that have been hallmarks of World Jersey gatherings for decades. The World Jersey Cattle Bureau, founded in 1951, brings together Jersey breeders from around the globe to celebrate and promote the breed.



This unique keepsake later surfaced through a Jersey research auction, where it was purchased by Kristin Paul and preserved as part of Jersey history.

Whether you collect Jersey memorabilia, enjoy one-of-a-kind folk art, or simply appreciate the stories behind the items, this charming wooden Jersey is sure to spark conversation and curiosity. A distinctive piece of Jersey heritage with a story still being written.

Donated by Kristin Paul, Wisconsin

Lot #25

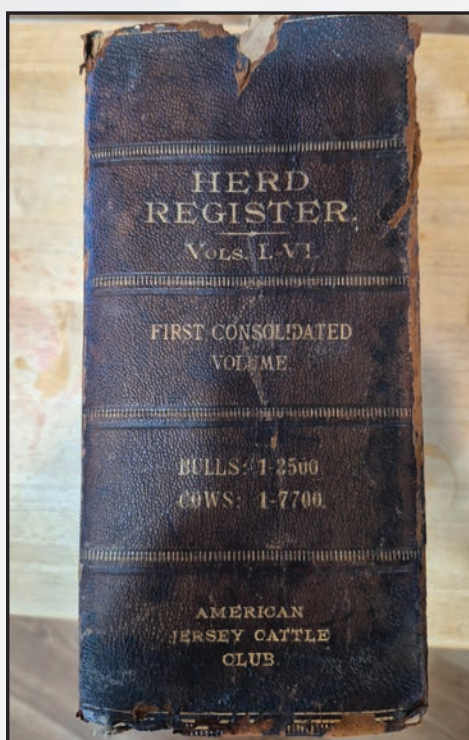
Volume 1, AJCC Herd Register

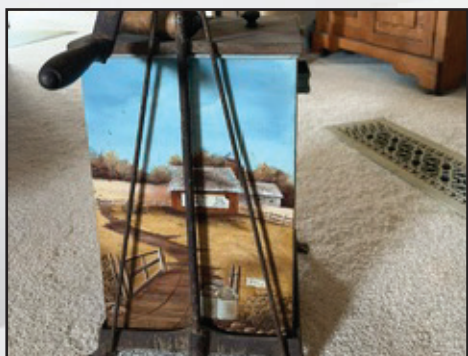
A remarkable piece of Jersey breed history, this original American Jersey Cattle Club Herd Register is the First Consolidated Volume. This historic register combines the earliest volumes of Jersey registrations and includes records for bulls numbered 1-3,500 and cows numbered 1-7,700.

Bound in its original leather cover and showing the wear expected of a reference book that helped build the foundation of the Jersey breed in America, this volume is a tangible connection to the pioneers of Jersey cattle breeding.

For breed historians, pedigree enthusiasts, and collectors of agricultural memorabilia, opportunities to own an early AJCC Herd Register are exceedingly rare.

Donated by Ron and Christy Ratliff, Kansas





Lot #26

Hand-Painted Four Seasons Churn

A unique piece of Jersey heritage and artistry, this vintage metal cream churn has been beautifully hand-painted by Nancy Miller. Each of the four sides depicts a different season, capturing the beauty of rural life throughout the year. The charming scenes make this churn a one-of-a-kind decorative piece for the home, office or farm.

Donated by Ted and Cheryl DeMent and Don and Shirley DeMent.



Lot #27

1975 Annual Meeting Commemorative Pitcher

A charming piece of Jersey history, this vintage pitcher was created to commemorate the 1975 AJCA-NAJ Annual Meetings held in Louisville, Ky. Accompanying documentation notes that the pitchers were handcrafted by developmentally challenged children in Kansas especially for the annual meeting, making each one a meaningful keepsake from a memorable event in Jersey history.

Donated from the Ray and Margaret Schooley collection

Sale Staff

Kristin Paul.....	Director of Field Services/Area Representative	209/402-5679
Neal Smith	AJCA-NAJ Executive Secretary	209/988-0601
Benny Rector	AJCA-NAJ Area Representative.....	614/313-5818
Greg Lavan	Parentage Qualification Coordinator	614/216-8838
Grady Auer.....	General Manager, National All-Jersey Inc.....	209/613-2286
Kim Billman.....	Director of Communications.....	614/203-6265
Vickie White	Clerk.....	Office: 614/322-4452
Chris Hill	Auctioneer	202/255-7907

Morgan Osborn-Wotthlie — National Jersey Queen



Not able to attend the in-person? No worries!
*Log on to CowBuyer.com and bid from the comfort of
your home!*