

- Intercourse Area -

Esh DISPERSAL AUCTION

82 Hd. Purebred Holstein Tie Stall Herd

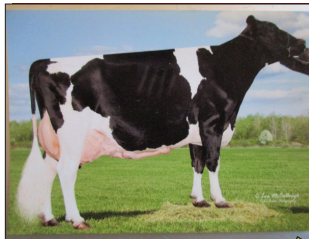
Mules - Skidloader - Power Carts

Farm Equip. - Baleage - TMR Mixer - Milkers

Tuesday, January 13, 2026 @ 8:30 AM

Location: 3736 E. Newport Rd, Gordonville PA

- East end of Intercourse along Rt. 772 -



EsHerd



Bobcat S185

**Outstanding
Group of
Cattle**

**Closed Herd
for 30 Years**

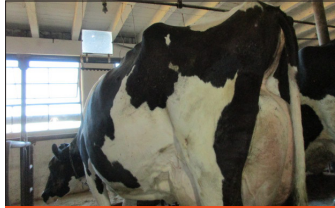
PHOTOS ON BACK



Miller 160 HP Power Cart



Hanans/EX90/2nd lac./84 lbs./4.9 BF/1
SCC/due April/Proj. 27,074



Rager-Red/113 lbs./Pkd.128/3.5 BF/1
SCC/due July 20/Proj. 27,432



Unix/EX93/136 lbs./3.3 BF/1 SCC



NH 790 w/NH 824 2RN
Head

- HERD INFO -

82 hd. Purebred Holstein tie-stall herd dispersal. Classified in Sept. - scoring up to 93 pts. Closed herd for 30 years. **52 cows & 30 heifers.** RHA 27566/1101 BF. **Nov. test: 79 lbs./4.3 BF/3.4 Pro./122,000 SCC.** (29) 1st lac & (18) 2nd, balance 3rd & up. 24 fresh since Sept. (13 Nov. & Dec./11 Sept. & Oct.) 7 due Jan. & Feb. sired by Select Sires, including: Perfect, Thunderstruck, King Royal, Unix, Doorman, Rager-Red, Landslide. Currently bred to Angus or Holstein. Only (1) 3 quartered cow in the herd. Cows are exercised regularly. Hooves were trimmed end of Oct. Herd was vaccinated in November w/ Master-Guard. Nutritionist: James Fry w/ 4-Ward Ag. On DHIA program. Life History Sheets available ringside. **Cattle can be kept a few days to accommodate trucking. Cows sold in heated tent. 30 Heifers.** 2 due in Jan., 7 in Feb., 1 in Mar., 4 in May, 2 in July, a few shortbred, plus a few smaller heifers from the better dams in the herd. **Semen.** Sells just prior to the herd. 13 Shottle, 13 Dempsey, 2 Windbrook, 4 Hanons, 5 Bolten, 3 sexed Crush, a few others & a few Angus.

Auctioneer Note: Attention Dairymen; This is a rare opportunity to find quality in this class for sale. You don't want to miss the chance to buy top-of-the-line genetics w/ wide udders, good udders, very well-balanced cows. Quality Throughout!

- 5 MULES - 1 HORSE -

Jenny: 14 yr. old, smooth, 16.1H sorrel molly lead mule, also offside lines
Rambo: 16 yr. old, smooth, blonde jack, offside or jockey, good-all-around mule
Kate: 20 yr. old, smooth, 16.2H sorrel molly, jockey or lines
Jigs: 12 yr. old, 17H blonde jack jockey mule
Dixie: smooth, 16.3H red sorrel molly, works lines or jockey
Sheila: smooth, 16.1H black Percheron/Morgan cross mare, works in lines, would make good produce patch horse.

- POWER CART-

Miller 4 whl. power cart w/ Deutz 1011 4 cyl. 52 HP dsl., Rockford 540 clutch, dual hyd., auto steer, brakes, & torsion axles

- FARM MACHINERY -

Hay Equipment: NH 456 mower w/ ESM 9' bar & 4 cyl. Wisconsin; NH 456 mower w/ 7' bar & 4 cyl. Wisconsin; NH 402 crimper; Morra 420 4 star 14' tedder w/ 13 HP Honda; Pequea HR 1140 rotary rake w/ 11 HP Honda w/ hyd.; **NH 648 4x5 rnd. baler,**

silage special, bale slice, net & twine, & 12 v. Gandy w/; blower; NH 311 baler w/ Wisc. TJD 2 cyl. eng.; Farm-Lund bale wrapper w/ lift arm, bale dump, & 13 HP Honda w/ hyd.; **Corn Equipment:** NH 790 harvester w/ **Horning processor and extended gooseneck and NH 824 2RN head (head sells separate);** JD 3960 harvester w/ Horning processor & table; JD 2R corn head; NH 28 blower; Gehl 14' forage wagon w/ 9"x34" wheels; JD 214 14' forage wagon on JD gear; IH 105 15' forage wagon w/ 9"x34" wheels; 1 hyd. drive PTO drive unit; NI 323 1R picker; Little Giant gravity wagon; Favorite 181 gravity wagon; Little Giant 28' elevator w/ hyd. motor; **Misc. Equipment:** '08 Fisher 200 gal. sprayer w/ 35' booms, foam marker, rinse tank, long tongue, & 5 1/2 HP Honda; '12 Conestoga 1300 gal. spreader w/ 6 1/2 HP Honda & 12" wide wheels; **White Horse 607 forecart w/ brakes & torsion;** 7x18 wagon on Farmbilt gear w/ wide wheels; MC 1 row cultivator

- FORAGES -

Baleage: 50 Alfalfa rnd. bales and 75 Trifolial Ig. square bales (analysis sale time)

- FEEDING & DAIRY EQUIPMENT -

NDE 1502 TMR mixer wagon w/ digital scales & liner; Martin 24" wide incline conveyor w/ hyd. motor (4' horizontal / 12' incline); Martin 18" wide incline conveyor (22' poly horizontal / 48' wooden incline); **Weaverline 430 feed cart** (new batteries in 2025) 3875 hrs. w/ 6" side extension; 5' silage cart; bedding chopper w/ Honda engine; cow stable sprinkler system w/ controls; 300 lb. Sputnik; 4 milkers w/ 300E claw, Delaval pulsators and 65 lb. buckets; (2) 75/80 lb. buckets; S.S. filter box; 15" S.S. washer & S.S. tub

- MISC FARM RELATED -

Portable hyd. unit w/ 13 HP Honda; Poly Square calf hutches; 48" portable fan w/ hyd. motor; 2 offset tongue adapters w/ wooden tongue; 7 leather draft harnesses, collars, bridles, lines, etc.; (2 to 7) horse hitch eveners; (1,000) tob. lath

- SELLING FOR OTHERS-

Miller 4 whl. power cart w/ 5.9 Cummins 6 cyl. dsl., 160 HP, Turbo, Taylora 1000 clutch, dual hyd., rubber tread whls., torsion axles, hyd. auto steer; '12 Bobcat S185 skidloader w/ joystick controls, aux. hyd., bucket, & solid flex wheels (5430 hrs.); pallet forks; dumping station & receiving jar; 330 lb. Sputnik; 4 Westfalia milkers w/ Westfalia pulsators and 300E claws; (3) 75 lb. & (2) 80 lb. buckets

- AUCTION INFO -

Join us for the Esh retirement auction. We will begin at 8:30 w/ smalls and misc. farm related, followed by TMR mixer and baleage. Farm machinery approx. 11:00 followed by mules. Dairy herd last approx. 12:30. Auction Co. and sellers are not responsible for accidents. Payment Terms: Cash, approved check, or credit card w/ 3% fee. Food stand. **Can't make it to the auction? Call Tim @ 717-354-9524 to arrange absentee bidding on equipment, etc. OR Dave @ 717-768-7526 on cattle.**

See more @ auctionzip.com, ID#25403

Auction for:

Amos & Marilyn Esh: 717-768-8304

Tim Weaver Auct. Svc.

Phone: 717-354-9524

Lic.# AY2109

Tim Weaver
AUCTION SERVICE
LLC

717-354-9524

Honesty • Integrity • Commitment

ONLINE BIDDING

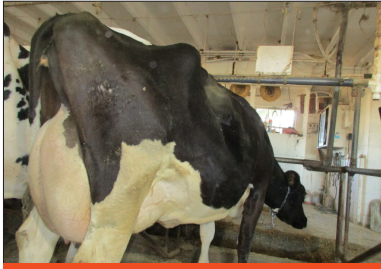
COWBUYER

LIVESTOCK MARKETING SOLUTIONS

Pre-Registration & Pre-Approval Required
Contact Aaron Ray Tompkins: 336.363.4639

**Auctioneers: Tim Weaver
Dave Stoltzfus, Steve Schuler
Tristan Sensenig**

Esh DISPERSAL AUCTION / Tuesday, January 13, 2026 @ 8:30 AM



Slam-Dunk/85 PT/100 lbs./3.8 BF/1 SCC



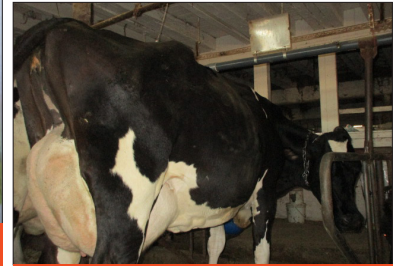
94 PT Cow. Her dam was EsHerd Hi-Metro-Grace. Made 177,904 LT, with lots of offspring VG or EX. Back a few more dams, went Gold Medal 300,000 LT 8 lact.



Thunderstruck/86 PT/74 lbs./3.9 BF/ Proj. 24,556



110 lbs./4.0 BF/2 SCC



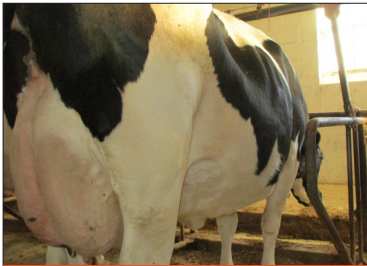
Rager-Red/82 lbs./5.0 BF/2 SCC/Due July/Proj. 24,586



Mules



Harvest/110 lbs./4.1 BF/0 SCC



King Royal/EX 90/2nd lac./5.6 BF/Due Jan./Proj. 32,306



NH 648 Silage Special



Gehl 14' Wagon



JD 214 14' Wagon



JD 3960



Pequea HR 1140



Farm-Lund Wrapper



Conestoga 1300 Spreader



Fisher 200 gal./35' Sprayer



Baleage

SEE FRONT FOR MORE INFO

Auctioneers: Tim Weaver
Dave Stoltzfus, Steve Schuler
Tristan Sensenig



Auction for:
Amos & Marilyn Esh: 717-768-8304

Tim Weaver Auct. Svc.
Phone: 717-354-9524
Lic.# AY2109