

**JERSEY**  
**YOUTH**  
**ACADEMY**



*Benefit Auction*

**SATURDAY, JUNE 28, 2025**  
**KEIGHTLEY & CORE JERSEY FARM**  
**SALVISA, KY 3:00 PM**





## Lot #1

### *Race to Kentucky Jersey—Memorabilia Basket*

*Donated by the American Jersey Cattle Association*

Celebrate your unforgettable week in Lexington with this one-of-a-kind memorabilia basket — the perfect keepsake for any Jersey enthusiast!

This basket is packed with unique items for the whole family, including:

- A 2-foot tall stand-up of “The Jersey” — a fun and eye-catching piece for home or office
- A special edition *Jersey Journal* featuring the 2025 Annual Meeting winners
- Three stylish t-shirts and two hats to rep your Jersey pride
- Drinking glasses for your favorite beverages
- A durable canvas tote featuring the GORGEOUS 2025 Annual Meeting logo

Whether you're adding to your collection or starting one, this basket is filled with meaningful souvenirs to help you remember your time in Kentucky for years to come.

*Don't miss your chance to take home this commemorative bundle — a true celebration of Jerseys, tradition, and community!*

## Lot #2

### *Clementine Jersey Figurine*

*Donated by American Jersey Cattle Association*

Add a touch of charm and Jersey pride to your home or office with Clementine — a beautifully crafted Jersey figurine that captures the gentle, curious spirit of the breed we all love.

This collectible piece features exquisite detail, from Clementine's soft eyes to her classic fawn coloring and lifelike stance. Whether displayed on a shelf, desk, or mantle, she's sure to spark conversations and smiles.

Perfect for any Jersey breeder, youth member, or dairy fan, Clementine makes a thoughtful gift — or a treasured keepsake just for you.

Make her yours, and let a little Jersey heart brighten your space.



## Lot #3

### *“The Jersey” Corn Hole Board Set*

*Made by Ted and Cheryl DeMent for the AJCA.*

Take your tailgate, backyard barbecue, or county fair hangout to the next level with this one-of-a-kind custom corn hole board set — featuring a bold front view of “The Jersey” herself!

Crafted with quality materials and detailed graphics, these regulation-size boards are more than just a game — they're a statement piece. Whether you're playing for bragging rights or just enjoying some friendly competition, these boards bring the Jersey spirit front and center.

Durable, eye-catching, and 100% unique, this set is perfect for Jersey fans, farm families, or anyone who loves a little fun with their herd pride. Don't miss the chance to own this custom creation!





## Lot #4

### *Vintage Mini Milk Bottle Collection*

*Donated by the John and Margie Billman,  
Gahanna, Ohio*

Take a nostalgic journey through dairy history with this charming set of four vintage mini milk bottles, beautifully packaged in a decorative tin bucket with custom Jersey cow-themed napkins.

Each bottle tells a story:

**Biltmore Dairy Farm** – a timeless piece from one of America's most iconic estates

**Westmoreland Farm Dairy** (1969) – featuring the distinctive All-Jersey label

**Windale Farms** (1942) – a true antique treasure

**Averill Dairy Company** – a classic reminder of hometown milk delivery

Nestled in a tin-tub and paired with green fabric napkins printed with Jersey cows, this thoughtfully curated set makes a unique display for your kitchen, office, or collector's shelf.

Whether you're a vintage dairy enthusiast or simply appreciate the charm of yesteryear, this collection is a one-of-a-kind tribute to Jersey heritage and dairy tradition.







## Lot #5

### *Signed Bonnie Mohr Jersey print*

*Donated and signed by Bonnie Mohr*

Celebrate the incredible dairy cow with this stunning 11x14 lithograph from Bonnie Mohr's newest series — a heartfelt tribute to the dedication, heritage, and beauty of dairy farming, an industry that never takes a day off.

This elegant head-and-neck profile honors one of the seven recognized dairy breeds, paired with thoughtful breed facts that educate as much as they inspire. Whether displayed solo or grouped with others from the series, this signed print adds timeless charm to any space — from farmhouse to office to gallery wall.

Known nationwide for her ability to capture the soul of rural life, Bonnie Mohr's work is cherished by farmers, breeders, and art lovers alike. This piece, personally signed and donated by the artist, is a must-have for any Jersey or dairy enthusiast.

Bring home this celebration of the dairy cow — and the passion behind every pour of milk.



## Lot #6

### *Handcrafted Black Walnut Fruit Bowl*

*Donated by Eric Silva, Beaver, Ore.*

This extraordinary handcrafted fruit bowl carries not just beauty, but deep meaning. Made from black walnut wood salvaged from the yard at Brentwood Farms, this piece is a tribute to one of the most iconic herds in Jersey breed history — and to two individuals who made a lasting impact on the Jersey community: Bob Bignami and Cari Wolfe.

Brentwood Farms, once owned by the late Bob Bignami, was the home of many legendary Jersey cows. During a visit last year, the fallen tree from the yard — once standing proudly at Brentwood — was salvaged and transformed into this one-of-a-kind bowl, keeping the legacy alive in a tangible, lasting way by Eric.

Cari Wolfe served for many years as the head of Genetic Improvement at the American Jersey Cattle Association. Her dedication to the Jersey cow was her life's calling. In a tribute to Cari on his Facebook page, Eric put it well ... "Cari was the scientist, the academic. I barely made it through high school. She saw cattle through the lens of data and science; I followed a gut feeling. We disagreed constantly — in the most respectful and enduring way. I used to try to get under her skin at meetings, but she never took the bait. She was sharp, determined, and unwavering in her devotion to this breed and its future."

Measuring 15 inches long, 12 inches wide, and 3 inches deep, the bowl is a functional work of art, sure to be treasured in any home.





## **Lot #7**

### ***Family Game Night Table***

*Donated by Ted and Cheryl DeMent, Kenney Illinois*

Make memories around this handcrafted Family Game Night Table, a stunning fusion of rural nostalgia and artistic flair. The table features a hand-painted Jersey cow jersey design on the tabletop, bringing a touch of farm life and fun to every game night.

Two vintage tractor seats are perfectly paired with repurposed milk cans for bases, offering a sturdy and whimsical place to sit. The table itself is also supported by a classic milk can, grounding the piece in authentic, rustic style.

Lovingly created by Ted and Cheryl DeMent, this unique piece is as functional as it is eye-catching — a true conversation starter for any room, and a tribute to farm heritage and family togetherness.

Perfect for game nights, cozy corners, or as a decorative centerpiece with purpose.



## Lot #8

### *Leroux Irish Cream Liqueur Sign*

*Donated by David Parkinson, Arizona*

Add vintage charm and a touch of whimsy to your space with this Imported Leroux Irish Cream Liqueur sign, featuring a beautifully illustrated Jersey cow. This unique piece pairs the elegance of classic liqueur branding with the warmth and familiarity of a beloved dairy breed.

Whether displayed in a farmhouse kitchen, bar area, or Jersey-themed collection, this sign is a standout item that celebrates both heritage and hospitality. A perfect blend of rustic character and nostalgic flair!



## Lot #9

### *Arethusa Farm Commemorative Shirt—A Tribute to “Veronica” and a Legacy of Excellence.*

*Donated by Jared Bramer, Minnesota*

Own a piece of dairy history with this exclusive Arethusa Farm shirt, featuring the iconic Huronia Centurion Veronica 20J—a cow whose name is synonymous with greatness in the Jersey breed. More than just a shirt, this is a wearable tribute to a legend whose influence continues to shape the breed through her powerful genetics and unforgettable presence.

But this shirt honors more than Veronica—it’s also a nod to Arethusa Farm’s extraordinary breeding legacy, a program that set the gold standard in type, production, and show ring success. Though Arethusa Farm is no longer breeding cows, its impact lives on through animals like Veronica and the generations she inspired.

Perfect for a golf outing, casual gathering, or a day at the fair, this shirt blends comfort with meaning. It’s a conversation starter, a collector’s item, and a heartfelt salute to a chapter of dairy excellence that will never be forgotten.



## Lot #10

### #2/500 Jersey Cow Painting

*Donated by the American Jersey Cattle Association*

This whimsical Jersey cow painting is perfect for any house, office or dorm room.



It measures 46 inches by 33 inches and is as cute in person as in this photo!

Framed in a simple black frame to go with any decor!



## Lot #11

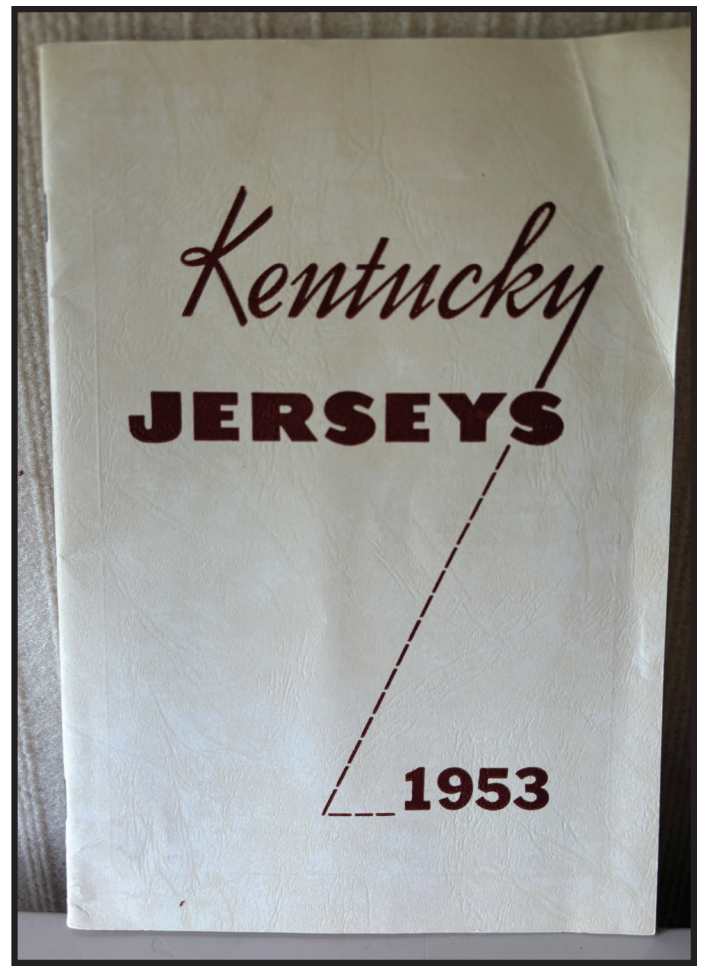
### *1953 Kentucky Jersey Directory*

*Donated by Jerry Emerich, New York*

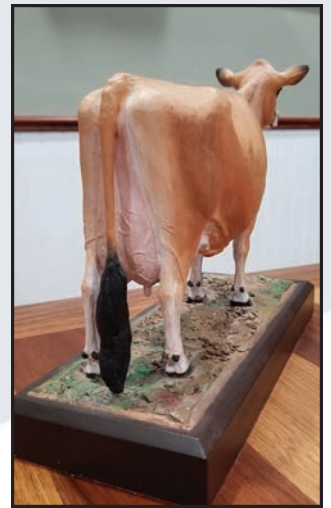
Step back in time with this 1953 Kentucky Jersey Directory, an essential keepsake for Jersey enthusiasts and history buffs alike. This vintage publication highlights the rich heritage of Kentucky Jersey cattle, showcasing prominent herds from years past that helped shape the breed's legacy in the Bluegrass State.

Inside, you'll find a comprehensive listing of all registered Jersey herds in Kentucky during that era — a remarkable snapshot of the state's dairy landscape more than 70 years ago.

Whether you're a breeder, collector, or simply passionate about agricultural history, this directory is a must-have treasure that preserves the proud tradition of Kentucky Jerseys.



Official Publication of the Kentucky Jersey Cattle Club		
<b>KENTUCKY JERSEYS</b>		
Vol. 6	1953	No. 1
<b>Kentucky Jersey Cattle Club</b>		
<b>OFFICERS</b>		
<b>President</b>		
R. D. Shipman	.....	Shelbyville
<b>Vice-Presidents</b>		
Catlett Buckner	.....	Paris
Thos. E. King	.....	Hopkinsville
<b>Secretary</b>		
A. Carman	.....	Murray
<b>Directors</b>		
H. V. Rouse	.....	Crittenden
President, Northern Ky. Parish		
Bernard Camenisch	.....	Stanford
President, Blue Grass Parish		
Paul McCarthy	.....	Lyndon
President, Louisville Parish		
Henry English	.....	Bowling Green
President, Mammoth Cave Parish		
Thomas E. King	.....	Hopkinsville
President, Pennyroyal Parish		
Edward Donoho	.....	Sedalia
President, Purchase Parish		
<b>Parish Officers</b>		
<b>PURCHASE</b>		
President, Edward Donoho	.....	Sedalia
Vice President, Thomas Bruce	.....	Fulton
Secretary-Treasurer,		
E. B. Howton	.....	Murray
<b>MAMMOTH CAVE</b>		
President, Henry English	.....	Bowling Green
Vice-President,		
H. H. Barlow, Jr.	.....	Cave City
Secretary-Treasurer,		
F. Y. Patterson	.....	Bowling Green
<b>BLUEGRASS</b>		
President, Bernard Camenisch	.....	Stanford
Vice President, H. G. McRay	.....	Lawrenceburg
Secretary-Treasurer,		
Alvin Gander	.....	Stanford
<b>PENNYROYAL</b>		
President, Thomas E. King	.....	Hopkinsville
Vice President, J. J. Crouch	.....	Elkton
Secretary-Treasurer,		
Bob McGaughey	.....	Hopkinsville
<b>LOUISVILLE</b>		
President, Paul McCarthy	.....	Lyndon
Vice President, Billy Gravitt	.....	Shelbyville
Secretary-Treasurer,		
Mrs. Dorothy Ellington	.....	Anchorage
<b>NORTHERN KENTUCKY</b>		
President, H. V. Rouse	.....	Crittenden
Vice President, Grant Maddox	.....	Florence
Secretary-Treasurer,		
Robert Crosby	.....	Maysville



## Lot #12

### *#54 Eustis Cow*

*Donated by Dan Oberschlake, Wisconsin for the Paul Jackson Memorial Scholarship fund*

Donated by Dr. Dan Oberschlake, this special Eustis Model Jersey was given to him by his father Dwight, a past president of the Ohio Jersey Breeders Association and early supporter of the Paul Jackson Scholarship Fund. He purchased the first heifer sold at auction that was used to start the Paul Jackson Scholarship fund. Crafted by F. W. Eustis, it has special history as F.W. Eustis mother started the renowned Breezy Hill Jersey Farm outside of Cincinnati where Paul Jackson was herdsman.

Jackson, a 1936 Klussendorf Trophy winner and the 1961 AJCA Distinguished Service Award honoree, was instrumental in launching young breeders' careers across the country. This donation honors his lasting impact on the breed and the people behind it.

Fun fact: The first dairy judging contest that Dan Oberschlake ever won (at age 8!) was held at Breezy Hill Jersey Farm. Paul was later the judge when "Danny" won his first showmanship contest!



## Lot #13

### *Edwin Douglas Milk Maid painting*

*Donated by Sheldon Sawyer, New Hampshire*

Edwin James Douglas (1848-1914, Scotland) started a series of paintings with Jersey cows titled The Channel Island Series in 1878. An article in the Art Journal of 1885 by Walter Armstrong describes the Channel Island Series of four paintings. The first painting of this series is titled "Jersey" shows a milk maid between two Jersey cows.

A beautiful nod to agricultural heritage — perfect for farmhouse décor, gallery walls, or Jersey memorabilia collections.



# THE DAIRY ALLIANCE

## Lot #14

### *The Dairy Alliance Goodie Basket*

*Donated by Elise Carpenter, Jersey Youth Academy Alumni, Kentucky*

A basket full of all kinds of dairy goodness will be offered at the Benefit Auction from The Dairy Alliance and Elise Carpenter



## Lot #15

### *1950s Elsie the Borden Cow Plush Toy & Children's Growth Chart*

*Donated by Donna Mercurio and Vickie White, Ohio*

Step into nostalgic charm with this 1950s Elsie the Borden Cow plush toy, a delightful piece of dairy advertising history. Soft, lovable, and full of personality, Elsie became one of the most beloved brand mascots of the 20<sup>th</sup> century — and this vintage plush captures her cheerful spirit perfectly. She is the cow that has pushed the Jersey breed to be recognized in the general public.

Paired with the original Elsie-themed children's growth chart, this duo makes a heartwarming set that celebrates classic Americana, family memories, and the golden age of dairy promotion. The growth chart features colorful illustrations of Elsie and friends, making it both a collectible and a whimsical way to track a child's early years.

Ideal for collectors, farm toy enthusiasts, or anyone who cherishes the joy and simplicity of days gone by. A rare find that combines play, nostalgia, and advertising history all in one!



## Lot #16

### *Crown Devon Cup and Saucer*

*Donated by Linda Peterson, Ohio*

This charming Crown Devon “Jersey” Series cup and saucer set beautifully blends classic English pottery craftsmanship with admiration for the beloved Jersey cow. Featuring a finely detailed image of a Jersey in a pastoral setting, this collectible piece from the renowned Crown Devon line is both functional and decorative.

Crafted in England, likely mid-20th century, the set boasts the signature warm glazes and fine detailing Crown Devon is known for, with gentle hues and gold accents that highlight the rural theme. Ideal for tea lovers, Jersey enthusiasts, or collectors of fine dairy memorabilia, this cup and saucer set adds a touch of refined country charm to any collection or display.

A rare and tasteful nod to breed heritage, perfect for showcasing your appreciation of both artistry and agriculture.



## Lot #17

### *Great Expectations by Joel Kirk*

*Donated by David Brandau, Wisconsin*

“Great Expectations” by renowned artist Joel Kirk captures the quiet anticipation and tender beauty of farm life. Known for his lifelike detail and love for rural subjects, Kirk brings this moment to life with warmth and realism.

The painting features a Jersey cow nearing calving, a tribute to the cycle of life and the deep connection between farmer and animal. With soft lighting, natural tones, and meticulous brushwork, “Great Expectations” reflects the hope, care, and reverence found in everyday farm moments.

A perfect addition for Jersey breeders, rural art collectors, or anyone who appreciates the gentle strength of animals and the beauty of life on the farm. This piece is both heartwarming and timeless — a true celebration of expectation and devotion.



— PHOTO COMING —

## Lot #18

*#1 version of the Jersey by artist Gary Sauder*

*Donated by Joey Pendleton, Kentucky*

Offered here is the #1 print of a stunning Jersey cow painting by well-known livestock artist Gary Sauder. Known for his exceptional detail and lifelike portrayal of dairy cattle, Sauder captures the elegance, strength, and gentleness of the Jersey breed in this remarkable piece.

This first-edition print is a highly collectible piece for Jersey enthusiasts and art lovers alike. Whether displayed in a home, office, or dairy barn, it reflects both artistic excellence and breed pride. A rare opportunity to own the very first print of what is sure to become a treasured work in Jersey art.



## Lot #19

### *Thatcher Glass Milk Bottle*

*Donated by John and Margie Billman, Ohio*

This vintage Thatcher Glass milk bottle holds more than just dairy history — it carries a story of connection and appreciation within the Jersey community. Personally gifted to John and Margie Billman by J.F. Cavanaugh, longtime Executive Secretary of the American Jersey Cattle Association, this bottle is a meaningful token from one of the breed's most respected leaders.

The Thatcher Glass Manufacturing Company played a pivotal role in revolutionizing milk packaging and dairy hygiene in the United States. Founded in 1904 in Elmira, New York, the company was built on the success of the first patented milk bottle, created by Dr. Hervey Thatcher, a druggist from Potsdam, NY, who was deeply concerned with the cleanliness and safety of milk distribution in the late 19th century.

Thatcher developed a glass milk bottle with a cap, a major advancement over the open pails and ladles that previously delivered milk door-to-door. This new design drastically improved sanitary standards and quickly became the industry norm. The Thatcher Glass Company went on to become one of the largest producers of milk bottles in the U.S., supplying dairies across the country with their now-iconic bottles, often embossed with creamery names, logos, or slogans.

Through the mid-1900s, Thatcher bottles became a staple of American dairy farms and urban households alike — a symbol of freshness, quality, and trust. By the 1980s, as paper cartons and plastic jugs took over, glass milk bottles like those from Thatcher became prized by collectors and dairy historians for their craftsmanship and place in agricultural heritage.





## Lot #20

### *"Jersey Cows Together" Mola* *Colombian Cow Art*

*Donated by American Jersey Cattle Association*

Designed for the 2012 Annual Meeting of the World Jersey Cattle Bureau hosted by Columbia. Molas reflect the synthesis of traditional Kuna culture with the influences of the modern world.

Molas are elaborate and vibrant textiles crafted by Kuna women in Panama, often using a reverse appliqué technique. Each panel is constructed of multiple layers of cloth of contrasting colors.



## Lot #21

### *Sassy and Sweet Jersey Cow Canvas*

*Donated by Kim Billman, Ohio*

Add a dose of charm and personality to your space with this adorable Jersey cow canvas, featuring a sweet-faced Jersey sticking her tongue out playfully, all topped off with a whimsical wreath of flowers on her head.

With soft, rustic tones and a splash of color from the floral crown, this canvas captures the gentle beauty and cheeky spirit of the beloved Jersey breed. Perfect for a farmhouse kitchen, nursery, office, or dairy-themed décor, it's sure to make guests smile and brighten any room.

Whether you're a Jersey cow lover, a farm girl at heart, or just looking for something cute and unique, this piece is a feel-good favorite that combines rural charm with a touch of sass!





## Lot #22

### *Jersey - by Larry Schultz*

*Donated by Donna Phillips, Wisconsin*

Created by Wisconsin artist Larry Schultz, the “Jersey Head” painting captures the unmistakable expression and elegance of the Jersey cow in stunning detail. Known for his agricultural and livestock art, Schultz brings a lifelike intensity and warmth to this piece, focusing on the breed’s signature features — gentle eyes, refined face, and intelligent expression.

Rendered with a mix of realism and artistic flair, this portrait is both bold and intimate, making it a striking centerpiece for any Jersey lover’s home, office, or barn. Schultz, a respected name in rural and dairy-themed art, honors the character and legacy of the breed with every brushstroke.



## Lot #23

### *Jersey Milk Tin*

*Donated by David Parkinson*

Donated by one of the Jersey breed's favorite Canadian's - David Parkinson ... you can now celebrate a sweet slice of vintage branding with this Nielsen Jersey Milk tin, a charming collectible that honors one of Canada's most iconic dairy treats. Known for its rich, creamy milk chocolate, Jersey Milk has been a household favorite for generations, and this tin captures the timeless appeal of the brand.

Featuring classic Nielsen branding with elegant script and possibly an image of a Jersey cow or pastoral motif, this tin once held individually wrapped chocolate squares — and now stands as a nostalgic piece of mid-century confectionery history.



## Lot #24

### *Harvey Peeler All-Jersey Milk bottle*

*Donated by Paula England, Ohio*

This vintage Harvey Peeler's Farm Dairy, milk bottle is a nostalgic piece of dairy heritage from Gaffney, S.C. It offers a glimpse into a time when milk was delivered fresh from the farm to the doorstep. Embossed or printed with the Harvey Peeler's Dairy name, this glass bottle likely hails from the local, family-run Jersey dairy operation since 1919.

It will be a great conversation piece in your kitchen or office, as you talk about the impact of the All-Jersey milk market in the south.



## Class I 2009

Karessa Mann; Colin Russell; Natalie Sanders; Lena Sweeney; Kelsey Burnham, Ivy Roberts; Amy Maxwell; Kortney Hoerbert; Brittany Core; Katherine Rashall; Rene Boardman; Sadie Green; Derek Dreier; Londa Johnson; Stephanie Kasper; Avery Lutz; Zachary Mason; Ted Christoph; Dorothea Baker; Cassie

Chittenden; Clark Egelston; Elena Ooms; Kyle Schirm; Jennifer Hansen; Kristin Hogan; Amber Ettinger; Brad Barham; Tyler Boyd; Daniel Fugate; Claire Stanley; Danielle Brown; Jonathan Holewinski; Wade Kessenich; Julie Orth; Abby Tauchen; and Rachel Rawn.



## Class II 2011

Tucker Hardy, Dylan Ellenburg, Jordan Dunn, Tyler Kirchdoerfer, Trey Huffard, Tanner Barham, Billy Grammer, Mitchell Gilpin, Colin Russell, Logan Karchner, and Steven Wetmore, Tommy Allen, Natalie Sanders, Kara Maxwell, Taryn Martin, Theresa Sweeney, Tricia Kirchdoerfer, and Charlie Moyer, Mary Katherine Rawn, Mariah Fjarlie, Kelli Carstensen, Cassy Krull, Jaylene Leshner, Charisse Orth, Alexandra

LaPrise, Jesse Kline, Stacey Theobald, Jessica Sentelle, Regina Grover, Maria Noble, Amanda Mitcheltree, Haley Ooms, Rylindahl, Laura Mahoney, Cassie Chittenden, Sydney Endres, Erin Williams and Kira Andre.





## **Class III** *2013*

Jessica Smith; Amy Gowell Drogue; Morgan Richard; Amber Gabel; Taylor Leach; Kim Kubio-  
siak; Meghan Chittenden; Miranda Randall; Morgan Randall; Kaitlyn Riley; and Katie Hutchins, Amy McBirney; Rylin Lindahl; Valery Silva; Meaghan Bolen; Emily Chittenden; Casey Porter; Allison Foster; Andrea Smaciarz;

Ashlan Wickstrom; Cassy Krull; Jon Frenchick; Jacob Leum; Olivia Pearson; Theresa Sweeney, Sean Brown; James Holton; Gerret Boer; Anneke Moss; Rebekah Gourley; Becky Thomas; Shannon Rodeffer; Janelle Remington; Chase Koon; and Mitchell Endres.

## **Class IV** *2015*

Katlyn Vencill; Logan Courtney, Jenna Preston, Anneke Boer, Liz Perreira, Austin Nauman, Cal Randall, Rebecca Sanders, Nicky Sanders, Megan Hill, Regina Pozzi, Meghan Skiba, Julia Owens, Emily Beebe, Matt Holton, Austin Woods, Drew Hill, Toni Jaque, Sammy Allen, Tyler French, Mandy Lagerwey and Blake Koehn.





## Class V 2017

Skylar Buell, Katie Pitchford, Kathryn Bosley, Willow Voegtlen, Jaydyn Isminger, Maggie LaPrise, Katarina Emerich, Samantha Schuessler, Catherine Savage, Kaila Wussow, Erin Leach, Korri Briggs, Ellen Harth, Allison Massey, Haley Christie, Elli Hayes, Case Schaap, Carly Olufs, Cort Rowley, Ethan Holland, Sarah Schonauer, Breanna Bowen, Maxwell Chittenden, Wesley Noble, Kylie Lehr, Kalli Corrick, Jarod Herron, and Tucker Peterson.



## Class VI 2019

Hannah Diehl, Meghan Hettinga, Alaina Johnson, Isabelle Kukor, Amber Foley, Sarah Alexander, Abby Shaw, Camryn Moyer, Hayley Fernandes, Elizabeth Reis, Hannah Sanders, Mary Holtz, Megan Gilliland, Lydia Chittenden, Sydnie Grossnickle, Lakaya Lyon, Natalie Berry, Madisen Peterson, Bailie Shultz, Kennedy Crothers, Caroline Arrowsmith, Elise

Carpenter, Nathan Merriam, Luke Wolfisberg, Josh Seals, Colin Wussow, Austin Baker, Greg Norris, Jayme Ozburn and Ruth Huettnner. Abby Grimm, Rileigh Mumbulo, Caroline Lafferty, Hannah Diehl, Grace Vos and Maria Joy Poock.





## Class VII 2021

Emily Rook, Evan Cooper, Jack Zina, Von Herron, Barry Nadon, Tyler Seals, Keenan Thygesen and Alison Graves. Middle row, from left: Hartley Silva, Nicole Arrowsmith, Elizabeth Hyman, Ali Bowman, Mia Berry, Addie Raber, Kylie Konyn, Gabby Rockwell, Grace Stroud,

Jessica Hewitt, Sophie Larson, Laura Caruso and Miriam Cook. Back row from left: Jacqueline Mudd, Emma Vos, Aspen Silva, Summer Schepper, Rachel Anderson, Morgan Osborn-Wotthlie, Madelynn Hoffman, Gracie Krahn, Kaitlyn Poitras, and Maleah Sickinger.

## Class VIII 2023

Summer Hammann, Sarah Cox, Lauryn Young, Regan Johnson, Lilly Johnson, Kerigan Alexander, Sophia Bollenbacher, Sara Reed, Meganne Chapman, Hope Avedisian, Emma Townsend, Jamie Gibbs, Baylee Bowen, Mykel Mull, Clancey Krahn, Regan Jackson, Mindy Anderson, Cade Claycomb, Logan Lancaster, Brae Dunham, Tyler Bohnert, Coltan Seals, and Nathan Knapp.



# Jersey Youth Academy

*The mission of the Jersey Youth Academy is to attract, educate and retain talented young people for careers in the Jersey dairy business. It will be achieved through cooperative efforts of the American Jersey Cattle Association and National All-Jersey Inc., Jersey owners everywhere, and allied industry.*

Jersey Youth Academy provides a unique educational experience that motivates youth of high school and college age to prepare for and succeed in their adult careers in some aspect of the dairy industry, but specifically working with Jersey cattle and/or Jersey products.

As authorized by the Board of Directors of the American Jersey Cattle Association in June of 2008, Jersey Youth Academy seeks to:

- Encourage, guide and train youth from Jersey farm families towards productive careers in the dairy industry;
- Identify and support talented youth from outside the Jersey community who are motivated to pursue a career in this industry;
- Strengthen the connection of these young people to the American Jersey Cattle Association and demonstrate the fundamental importance of its breed improvement, marketing and promotional programs;
- Expand knowledge and understanding of the range of professional careers associated with the dairy industry and the academic preparation necessary to achieve success in those careers;
- Through a strong fundraising effort, develop a high-quality program that will attract student participation and also provide substantial financial support based on need, interest and ability, and
- Contribute to the general development of competence, confidence, positive social connections, and character by Academy participants.

The aim of the Academy is to develop the human resources that will be required to sustain and develop Jersey dairy businesses in the United States. This project is envisioned as a cooperative effort among all dairy industry stakeholders. Without exception, these stakeholders need qualified, interested young people for the continuation and success of their businesses.

## *Program Objectives*

The program is designed around three broad objectives for participants:

- First, to learn why and how the Jersey breed has grown and prospered, and what the future holds for the Jersey business;
- Second, to meet leaders from the Jersey community and from across the support industry, to gain their unique insights about the dairy business with a specific focus on the Jersey cow; and
- Third, to learn about the range of career opportunities that involve the Jersey breed and Jersey products, and begin the begin that will take them to success working in the Jersey dairy business.

The program is conducted every two years, with participants chosen from a national pool of applicants. Selection is based on merit, motivation and preparation for the program as reflected in experiences, accomplishments and goal statement of the applicants. All program costs, including round-trip transportation for participants, are paid by the Academy.

## *Eligibility*

Applications are accepted from youth who will be seniors in high school the fall following an Academy class through students who are at least one year from completing a degree at an accredited vocational school, college or university.

Applications are accepted only from legal residents of the 50 United States and the District of Columbia.

A youth can participate in Jersey Youth Academy only one time.

## *Financial Support*

The Jersey Youth Academy is recognized by the International Revenue Service as a tax-exempt private educational foundation under section 501(c)(3). Contributors to this foundation are recognized on the Academy web site (<http://academy.usjersey.com>) and represent broad Jersey breeder and industry support. Administrative services are provided by the American Jersey Cattle Association.