



Make A Deal At The Beach

Online IVF Session Sale

Closes Tuesday March 25, 2025

Make A Deal At The Beach

Online IVF Session Sale

Tuesday, March 25th, 2025

Sale closes 2:00pm ET

Sale Staff

Kara Hale.....	503-812-2702	Zach Damrow.....	920-344-2065
Andrew King.....	360-981-3801	Alan Berry.....	503-559-3463
Mike Berry.....	517-282-6476	Chris Jansen.....	360-942-7471
Tony Van Lith.....	519-532-1776		

The auction will utilize an auto-extend, soft closing.

With this feature, the bidding will close up to two (2) lots at the same time starting with Lot 1 and working through the catalog. Once two (2) minutes have lapsed without any bidding activity, the bidding on those items will be closed. Then the next set of lots will close in the same manner until they receive no additional bids, until all lots have closed.

Buyers utilizing Cowbuyer may pay by credit card. Buyer's fees of 4% apply.
Invoices will be emailed and/or mailed immediately.

ALL purchases must be settled within 5 business days of the sale.

Buyer is purchasing rights to control the next IVF session(s). Buyer is guaranteed IVF sessions until a minimum of 8 #1 or #2 IVF embryos are produced. Embryo grades are determined at the time of transfer if fresh embryos or at time of freezing if freezing is requested by buyer.

Buyer keeps all resulting embryos from these controlled IVF sessions.
Buyer is responsible for all costs of the aspiration and mating sire decision.

ONLINE BIDDING AVAILABLE THROUGH:



Aaron Ray Tompkins

336-363-4639 www.cowbuyer.com

Make A Deal At The Beach Online IVF Session Sale



**VALIANT RBLs MUFFLER-RED-ET *PO VG-87
DONOR LOT 1**

Former #1 GTPI Red Polled Female in the Breed!

Lot 1

**MUFFLER SYNDICATE
ESKDALE, UT
435-209-0002**

• *Has made over 350 embryos!*

Hoogerhorst DG OH Rubels-Red

NLD 67950401 *TY *TV *A1A2 *BB
PTA +1203M +67F +52P 98R 12/24
PTA +709NM +.08%F +.05%P 9%US
PTA +3.2PL 2.77SCS -3.0DPR 3.1%DCE
PTA +2.56T +1.93UDC +1.45FLC 97R 12/24
GTPI +2755G

Aprilday Luster Muffin-ET

3207031363 VG-87-4YR-CAN VG-88-MS 1* *RC *PP
GTPI +2658 +766M +37F +24P +1.60T 12/24
3-09 Rx 365d 34059 4.5 1519 3.3 1116
2-02 Rx 365d 28417 4.2 1199 3.2 922

• *Former #1 Homozygous Polled Red Carrier GTPI & GLPI Female in the Breed! 2 Sons at AI Total!*

IVF SESSION FROM:

VALIANT RBLs MUFFLER-RED-ET

840 3231000266 Very Good-87 VVVVV *PO A1A2 BB
GTPI +2841 PTA +1067M +61F +45P 83R 12/24
PTA +778NM +.08%F +.04%P
PTA +5.1PL 2.76SCS -.5DPR 2.1%DCE
PTA +2.53T +1.91UDC +1.85FLC 83R 12/24
2-00 2x 346d 22910 4.1 934 3.5 809

• *Former #1 GTPI Red Polled Female in the Breed!*

Endco Argo-ET

840 3133064302 *RC *CD *TY *TV
PTA +679M +47F +34P 97R 12/24
PTA +1.66T +1.88UDC +.76FLC GTPI +2601G

OH DG Rubella-ET

NLD 711610976 *RC

Cherry-Lily Zip Luster-P-ET

840 3138843085 *PC *TC *TY *TV
PTA +1690M +81F +52P 99R 12/24
PTA +2.54T +2.05UDC +1.73FLC GTPI +2898G

Aprilday P Margarita-Red-ET

3145202024 Very Good-85 @ 5-06 *PP
5-01 3x 316d 32320 3.6 1148 3.5 1125
2-03 3x 333d 27410 4.4 1195 3.2 871
3-10 3x 312d 21700 3.7 812 3.6 777

3rd Dam

Aprilday Jax Martini-Red-ET VG-87 VVVVV *PC
3-00 3x 305d 28830 4.2 1223 3.3 953

4th Dam

Ms Cash Coin Margie-ET VG-85 *RC

5th Dam

Palmyra M-O-M Manhattan-ET VG-85 *RC
2-04 2x 365d 32440 4.2 1377 3.5 1124

6th Dam

Debaugh Rdman Manhattan-ET EX-91 *RC
3-03 2x 365d 32120 4.7 1511 3.2 1038
Life: 1619d 106830 4.5 4842 3.5 3732

7th Dam

Sutton Outside Mango VG-87 VG-MS DOM
2-11 2x 365d 32460 4.3 1385 3.0 978

8th Dam

Sutton Gilbert Marie EX-90 VEVVE 2E
5-06 3x 365d 41910 3.4 1411 2.8 1158
Life: 2382d 223540 3.6 8105 2.9 6308

9th Dam

Sutton Jolt Lil May-ET VG-87 EVEVV
6-05 2x 365d 30340 4.0 1205 3.0 907
Life: 1866d 141060 4.2 5947 3.1 4331

10th Dam

Windsor-Manor Del May-ET EX-90 EX-MS 3E
5-02 2x 365d 30520 4.1 1246 2.9 889

11th Dam

Windsor-Manor Mandy May EX-91 VEEEEE 3E
3-01 2x 365d 26020 3.8 978 3.1 810
Life: 2544d 164670 3.7 6165 3.0 4917

Make A Deal At The Beach Online IVF Session Sale



**VALIANT RBLS MUFFLER-RED-ET *PO VG-87
DAM OF DONOR LOT 2**

Former #1 GTPI Red Polled Female in the Breed!

Lot 2

**SNAKE RIVER DAIRIES LLC
MELBA, ID
208-941-6144**

• *Averaging 8 embryos per flush!*

Stantons Remover PP-ET

CAN 13440455 *PP *A2A2 *BB
PTA +1848M +98F +63P 90R 12/24
PTA +.9PL 3.05SCS -2.9DPR 2.4%DCE
PTA +1.95T +1.46UDC +.71FLC 84R 12/24
GTPI +2799G

Valiant RbIs Muffler-Red-ET

840 3231000266 Very Good-87 VVVVV *PO A1A2 BB
GTPI +2841G PTA +1067M +61F +45P 83R 12/24
PTA +5.1PL 2.76SCS -.5DPR 2.1%DCE
PTA +2.53T +1.91UDC +1.85FLC 83R 12/24

• *Eight sons in AI!*

IVF SESSION FROM:

ESKDALE REMOVER MANDY 12221-ET

840 3271802222 *RC *PC *A1A2 *BB
GTPI +2872 PTA +1815M +95F +60P 80R 12/24
PTA +814NM +.09%F +.01%P
PTA +2.6PL 2.86SCS -2.6DPR 2.3%DCE
PTA +2.40T +1.60UDC +1.13FLC 79R 12/24
PTA +259FE -1.8FI 2.2%SCE

• *Full brother in AI*

Cherry-Lily Zip Luster-P-ET

840 3138843085 *PC *TC *TY *TV
PTA +1690M +81F +52P 99R 12/24
PTA +2.54T +2.05UDC +1.73FLC GTPI +2898G

Stantons Bighit Maker-ET

CAN 13057148 VG-85-CAN 13*
2-01 2x 365d 36528 4.0 1459 3.6 1318
Life: 3 Lacs 130836 4.0 5287 3.7 4791

Hoogerhorst DG OH Rubels-Red

NLD 67950401 *TY *TV A1A2 BB
PTA +1203M +67F +52P 98R 12/24
PTA +2.56T +1.93UDC +1.45FLC GTPI +2755G

Aprilday Luster Muffin-ET

3207031363 VG-87-4YR-CAN VG-88-MS 1* *RC *PP
3-09 Rx 365d 34059 4.5 1519 3.3 1116
2-02 Rx 365d 28417 4.2 1199 3.2 922

• *Former #1 Homozygous Polled Red Carrier GTPI & GLPI Female in the Breed! 2 Sons at AI Total!*

3rd Dam

Aprilday P Margarita-Red-ET VG-85 *PP
5-01 3x 316d 32320 3.6 1148 3.5 1125

4th Dam

Aprilday Jax Martini-Red-ET VG-87 VVVVV *PC
3-00 3x 305d 28830 4.2 1223 3.3 953

5th Dam

Ms Cash Coin Margie-ET VG-85 *RC

6th Dam

Palmyra M-O-M Manhattan-ET VG-85 *RC
2-04 2x 365d 32440 4.2 1377 3.5 1124

7th Dam

Debaugh Rdman Manhattan-ET EX-91 *RC
3-03 2x 365d 32120 4.7 1511 3.2 1038

Life: 1619d 106830 4.5 4842 3.5 3732

8th Dam

Sutton Outside Mango VG-87 VG-MS DOM
2-11 2x 365d 32460 4.3 1385 3.0 978

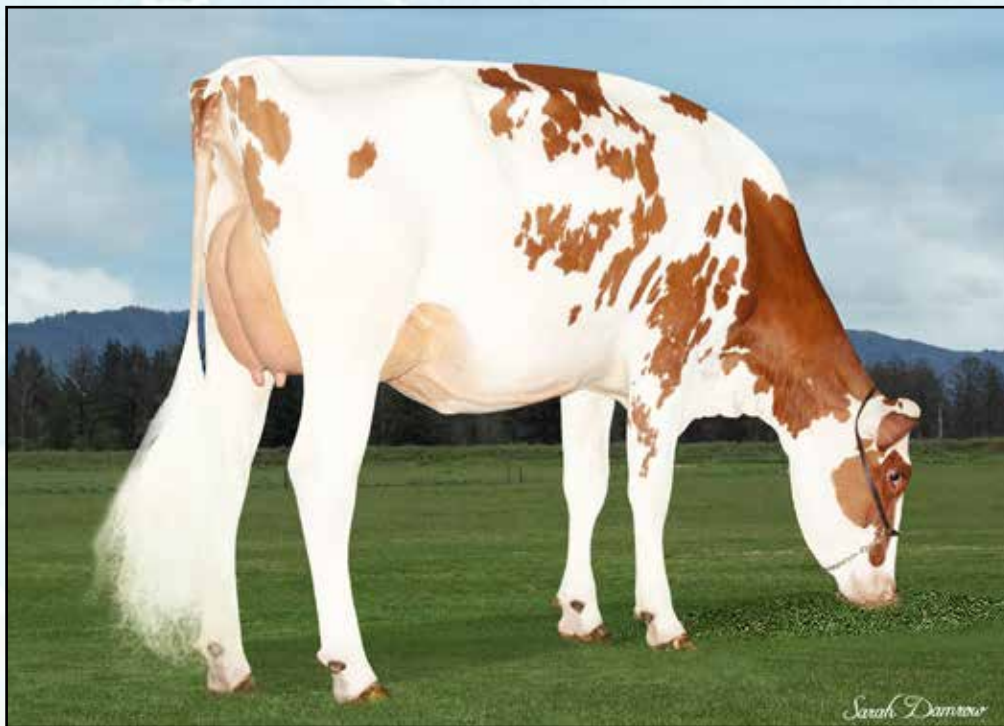
9th Dam

Sutton Gilbert Marie EX-90 VEVVE 2E
5-06 3x 365d 41910 3.4 1411 2.8 1158

Life: 2382d 223540 3.6 8105 2.9 6308

NEXT THREE DAMS VG & EX!

Make A Deal At The Beach Online IVF Session Sale



**VALIANT RBLS MUFFLER-RED-ET *PO VG-87
DAM OF DONOR LOT3**

Former #1 GTPI Red Polled Female in the Breed!

Lot 3

**SNAKE RIVER DAIRIES LLC
MELBA, ID
208-941-6144**

• *Averaging 5.5 embryos per flush!*

AOT Heatwave-Red

840 3208400852 *TY *TV *A1A2 *BE
PTA +906M +54F +30P 82R 12/24
PTA +4.5PL 2.71SCS +.8DPR 2.0%DCE
PTA +2.46T +1.79UDC +.98FLC 81R 12/24
GTPI +2717G

Valiant RbIs Muffler-Red-ET

840 3231000266 Very Good-87 VVVVV *PO A1A2 BB
GTPI +2841G PTA +1067M +61F +45P 83R 12/24
PTA +5.1PL 2.76SCS -.5DPR 2.1%DCE
PTA +2.53T +1.91UDC +1.85FLC 83R 12/24

• *Eight sons in AI!*

IVF SESSION FROM:

TLU HEATWAVE 13814 MEGAN-RED-ET

840 3280191737 *PC *A1A1 *BE
GTPI +2832 PTA +354M +65F +29P 79R 12/24
PTA +776NM +.20%F +.07%P
PTA +5.8PL 2.64SCS +1.5DPR 2.1%DCE
PTA +2.39T +1.69UDC +1.63FLC 78R 12/24
PTA +160FE +1.0FI 1.6%SCS

• *Full brother @ CRV*

Vogue Redeye P-Red

CAN 40001147 *PC *TE *TC *TY *TV
PTA +496M +41F +22P 98R 12/24
PTA +2.17T +1.52UDC +1.39FLC GTPI +2591G

AOT Swingman Halia-Red-ET

840 3146981006 Excellent-90
4-02 3x 351d 40720 4.0 1642 3.4 1378
3-03 3x 310d 37360 4.4 1639 3.3 1232

Hoogerhorst DG OH Rubels-Red

NLD 67950401 *TY *TV A1A2 BB
PTA +1203M +67F +52P 98R 12/24
PTA +2.56T +1.93UDC +1.45FLC GTPI +2755G

Aprilday Luster Muffin-ET

3207031363 VG-87-4YR-CAN VG-88-MS 1* *RC *PP
3-09 Rx 365d 34059 4.5 1519 3.3 1116
2-02 Rx 365d 28417 4.2 1199 3.2 922

• *Former #1 Homozygous Polled Red Carrier GTPI & GLPI Female in the Breed! 2 Sons at AI Total!*

3rd Dam

Aprilday P Margarita-Red-ET VG-85 *PP
5-01 3x 316d 32320 3.6 1148 3.5 1125

4th Dam

Aprilday Jax Martini-Red-ET VG-87 VVVVV *PC
3-00 3x 305d 28830 4.2 1223 3.3 953

5th Dam

Ms Cash Coin Margie-ET VG-85 *RC

6th Dam

Palmyra M-O-M Manhattan-ET VG-85 *RC
2-04 2x 365d 32440 4.2 1377 3.5 1124

7th Dam

Debaugh Rdman Manhattan-ET EX-91 *RC
3-03 2x 365d 32120 4.7 1511 3.2 1038

Life: 1619d 106830 4.5 4842 3.5 3732

8th Dam

Sutton Outside Mango VG-87 VG-MS DOM
2-11 2x 365d 32460 4.3 1385 3.0 978

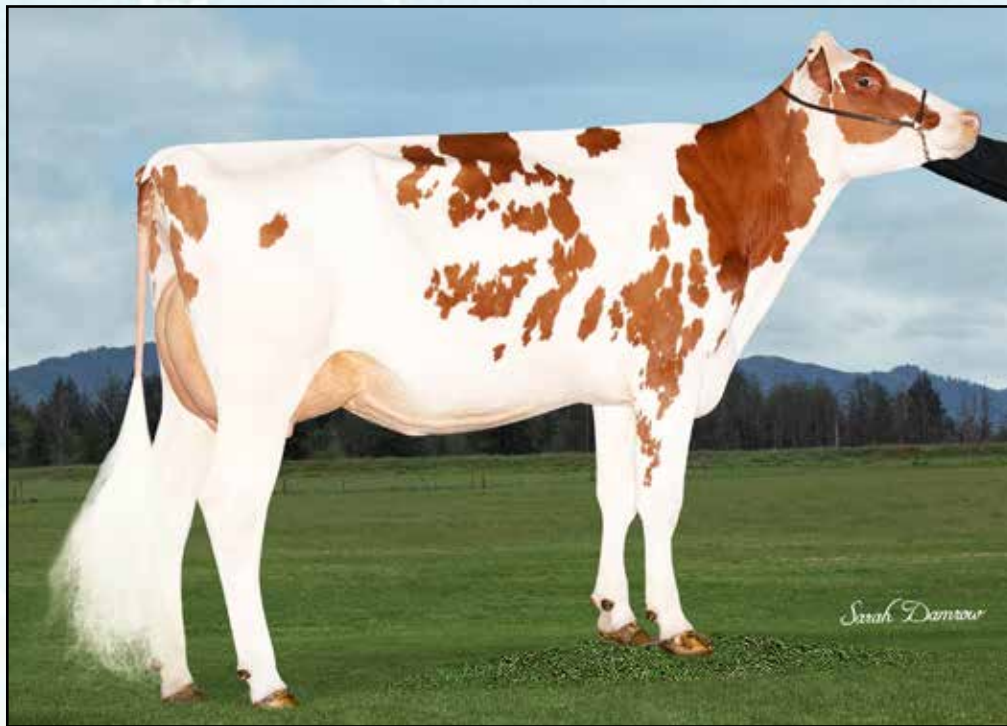
9th Dam

Sutton Gilbert Marie EX-90 VEVVE 2E
5-06 3x 365d 41910 3.4 1411 2.8 1158

Life: 2382d 223540 3.6 8105 2.9 6308

NEXT THREE DAMS VG & EX!

Make A Deal At The Beach Online IVF Session Sale



**VALIANT RBLS MUFFLER-RED-ET *PO VG-87
DAM OF DONOR LOT 4**

Former #1 GTPI Red Polled Female in the Breed!

Lot 4

**SNAKE RIVER DAIRIES LLC
MELBA, ID
208-941-6144**

• 41 oocytes on first procedure!

AOT Heatwave-Red

840 3208400852 *TY *TV *A1A2 *BE
PTA +906M +54F +30P 82R 12/24
PTA +4.5PL 2.71SCS +.8DPR 2.0%DCE
PTA +2.46T +1.79UDC +.98FLC 81R 12/24
GTPI +2717G

Valiant RbIs Muffler-Red-ET

840 3231000266 Very Good-87 VVVVV *PO A1A2 BB
GTPI +2841G PTA +1067M +61F +45P 83R 12/24
PTA +5.1PL 2.76SCS -.5DPR 2.1%DCE
PTA +2.53T +1.91UDC +1.85FLC 83R 12/24

• Eight sons in AI!

IVF SESSION FROM:

ESKDALE HTWAVE 14447 MIA-RED-ET

840 3285242435 *TP *A1A2 *BB
GTPI +2841 PTA +1195M +56F +46P 79R 12/24
PTA +710NM +.04%F +.03%P
PTA +4.2PL 2.69SCS -.1DPR 1.8%DCE
PTA +2.85T +2.36UDC +1.35FLC 79R 12/24
PTA +172FE +0.4FI 2.0%SCE

• Full brother @ CRV

Vogue Redeye P-Red

CAN 40001147 *PC *TE *TC *TY *TV
PTA +496M +41F +22P 98R 12/24
PTA +2.17T +1.52UDC +1.39FLC GTPI +2591G

AOT Swingman Halia-Red-ET

840 3146981006 Excellent-90
4-02 3x 351d 40720 4.0 1642 3.4 1378
3-03 3x 310d 37360 4.4 1639 3.3 1232

Hoogerhorst DG OH Rubels-Red

NLD 67950401 *TY *TV A1A2 BB
PTA +1203M +67F +52P 98R 12/24
PTA +2.56T +1.93UDC +1.45FLC GTPI +2755G

Aprilday Luster Muffin-ET

3207031363 VG-87-4YR-CAN VG-88-MS 1* *RC *PP
3-09 Rx 365d 34059 4.5 1519 3.3 1116
2-02 Rx 365d 28417 4.2 1199 3.2 922

• Former #1 Homozygous Polled Red Carrier GTPI & GLPI Female in the Breed! 2 Sons at AI Total!

3rd Dam

Aprilday P Margarita-Red-ET VG-85 *PP
5-01 3x 316d 32320 3.6 1148 3.5 1125

4th Dam

Aprilday Jax Martini-Red-ET VG-87 VVVVV *PC
3-00 3x 305d 28830 4.2 1223 3.3 953

5th Dam

Ms Cash Coin Margie-ET VG-85 *RC

6th Dam

Palmyra M-O-M Manhattan-ET VG-85 *RC
2-04 2x 365d 32440 4.2 1377 3.5 1124

7th Dam

Debaugh Rdman Manhattan-ET EX-91 *RC
3-03 2x 365d 32120 4.7 1511 3.2 1038

Life: 1619d 106830 4.5 4842 3.5 3732

8th Dam

Sutton Outside Mango VG-87 VG-MS DOM
2-11 2x 365d 32460 4.3 1385 3.0 978

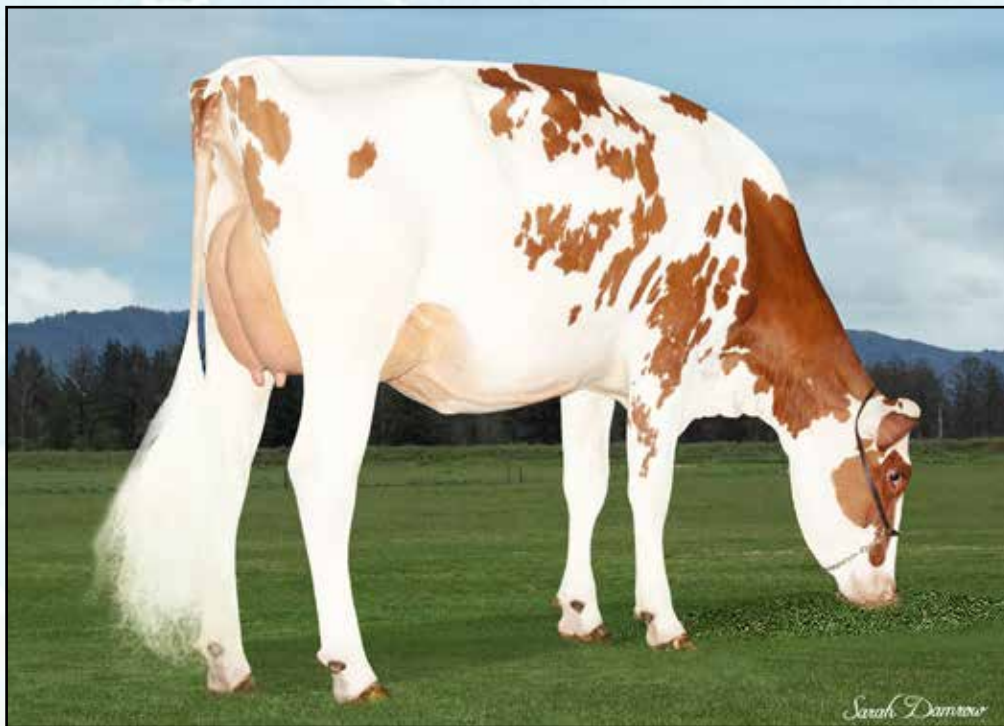
9th Dam

Sutton Gilbert Marie EX-90 VEVVE 2E
5-06 3x 365d 41910 3.4 1411 2.8 1158

Life: 2382d 223540 3.6 8105 2.9 6308

NEXT THREE DAMS VG & EX!

Make A Deal At The Beach Online IVF Session Sale



**VALIANT RBLS MUFFLER-RED-ET *PO VG-87
DAM OF DONOR LOT 5**

Former #1 GTPI Red Polled Female in the Breed!

Lot 5

**RASBERRY FUTURES LLC
GIG HARBOR, WA
360-895-9418**

• *Averaging 30 oocytes per flush!*

AOT Heatwave-Red

840 3208400852 *TY *TV *A1A2 *BE
PTA +906M +54F +30P 82R 12/24
PTA +4.5PL 2.71SCS +.8DPR 2.0%DCE
PTA +2.46T +1.79UDC +.98FLC 81R 12/24
GTPI +2717G

Valiant RbIs Muffler-Red-ET

840 3231000266 Very Good-87 VVVVV *PO A1A2 BB
GTPI +2841G PTA +1067M +61F +45P 83R 12/24
PTA +5.1PL 2.76SCS -.5DPR 2.1%DCE
PTA +2.53T +1.91UDC +1.85FLC 83R 12/24

• *Eight sons in AI!*

IVF SESSION FROM:

ESKDALE HTWAVE 13827 MEG-RED-ET

840 3280191750 *TP *A1A2 *BB
GTPI +2870 PTA +1138M +71F +42P 79R 12/24
PTA +855NM +.20%F +.10%P
PTA +5.4PL 2.69SCS +1.1DPR 1.6%DCE
PTA +2.14T +1.44UDC +1.07FLC 78R 12/24
PTA +206FE +0.9FI 1.7%SCE

• *Full brother @ CRV*

Vogue Redeye P-Red

CAN 40001147 *PC *TE *TC *TY *TV
PTA +496M +41F +22P 98R 12/24
PTA +2.17T +1.52UDC +1.39FLC GTPI +2591G

AOT Swingman Halia-Red-ET

840 3146981006 Excellent-90
4-02 3x 351d 40720 4.0 1642 3.4 1378
3-03 3x 310d 37360 4.4 1639 3.3 1232

Hoogerhorst DG OH Rubels-Red

NLD 67950401 *TY *TV A1A2 BB
PTA +1203M +67F +52P 98R 12/24
PTA +2.56T +1.93UDC +1.45FLC GTPI +2755G

Aprilday Luster Muffin-ET

3207031363 VG-87-4YR-CAN VG-88-MS 1* *RC *PP
3-09 Rx 365d 34059 4.5 1519 3.3 1116
2-02 Rx 365d 28417 4.2 1199 3.2 922

• *Former #1 Homozygous Polled Red Carrier GTPI & GLPI Female in the Breed! 2 Sons at AI Total!*

3rd Dam

Aprilday P Margarita-Red-ET VG-85 *PP
5-01 3x 316d 32320 3.6 1148 3.5 1125

4th Dam

Aprilday Jax Martini-Red-ET VG-87 VVVVV *PC
3-00 3x 305d 28830 4.2 1223 3.3 953

5th Dam

Ms Cash Coin Margie-ET VG-85 *RC

6th Dam

Palmyra M-O-M Manhattan-ET VG-85 *RC
2-04 2x 365d 32440 4.2 1377 3.5 1124

7th Dam

Debaugh Rdman Manhattan-ET EX-91 *RC
3-03 2x 365d 32120 4.7 1511 3.2 1038
Life: 1619d 106830 4.5 4842 3.5 3732

8th Dam

Sutton Outside Mango VG-87 VG-MS DOM
2-11 2x 365d 32460 4.3 1385 3.0 978

9th Dam

Sutton Gilbert Marie EX-90 VEVVE 2E
5-06 3x 365d 41910 3.4 1411 2.8 1158
Life: 2382d 223540 3.6 8105 2.9 6308

NEXT THREE DAMS VG & EX!

Make A Deal At The Beach Online IVF Session Sale



**VALIANT RBLS MUFFLER-RED-ET *PO VG-87
DAM OF DONOR LOT 6**

Former #1 GTPI Red Polled Female in the Breed!

Lot 6

**RASBERRY FUTURES LLC
GIG HARBOR, WA
360-895-9418**

• *Averaging 6.5 embryos per flush!*

AOT Heatwave-Red

840 3208400852 *TY *TV *A1A2 *BE
PTA +906M +54F +30P 82R 12/24
PTA +4.5PL 2.71SCS +.8DPR 2.0%DCE
PTA +2.46T +1.79UDC +.98FLC 81R 12/24
GTPI +2717G

Valiant RbIs Muffler-Red-ET

840 3231000266 Very Good-87 VVVVV *PO A1A2 BB
GTPI +2841G PTA +1067M +61F +45P 83R 12/24
PTA +5.1PL 2.76SCS -.5DPR 2.1%DCE
PTA +2.53T +1.91UDC +1.85FLC 83R 12/24

• *Eight sons in AI!*

IVF SESSION FROM:

ESKDALE HTWAVE 14485 MARIA-RED-ET

840 3285242473 *PP *A1A2 *BB
GTPI +2767 PTA +436M +54F +26P 79R 12/24
PTA +683NM +.14%F +.05%P
PTA +5.5PL 2.65SCS +1.3DPR 1.7%DCE
PTA +2.25T +1.83UDC +1.27FLC 78R 12/24
PTA +129FE +1.6FI 1.9%SCC

• *Full brother @ CRV*

Vogue Redeye P-Red

CAN 40001147 *PC *TE *TC *TY *TV
PTA +496M +41F +22P 98R 12/24
PTA +2.17T +1.52UDC +1.39FLC GTPI +2591G

AOT Swingman Halia-Red-ET

840 3146981006 Excellent-90
4-02 3x 351d 40720 4.0 1642 3.4 1378
3-03 3x 310d 37360 4.4 1639 3.3 1232

Hoogerhorst DG OH Rubels-Red

NLD 67950401 *TY *TV A1A2 BB
PTA +1203M +67F +52P 98R 12/24
PTA +2.56T +1.93UDC +1.45FLC GTPI +2755G

Aprilday Luster Muffin-ET

3207031363 VG-87-4YR-CAN VG-88-MS 1* *RC *PP
3-09 Rx 365d 34059 4.5 1519 3.3 1116
2-02 Rx 365d 28417 4.2 1199 3.2 922

• *Former #1 Homozygous Polled Red Carrier GTPI & GLPI Female in the Breed! 2 Sons at AI Total!*

3rd Dam

Aprilday P Margarita-Red-ET VG-85 *PP
5-01 3x 316d 32320 3.6 1148 3.5 1125

4th Dam

Aprilday Jax Martini-Red-ET VG-87 VVVVV *PC
3-00 3x 305d 28830 4.2 1223 3.3 953

5th Dam

Ms Cash Coin Margie-ET VG-85 *RC

6th Dam

Palmyra M-O-M Manhattan-ET VG-85 *RC
2-04 2x 365d 32440 4.2 1377 3.5 1124

7th Dam

Debaugh Rdman Manhattan-ET EX-91 *RC
3-03 2x 365d 32120 4.7 1511 3.2 1038

Life: 1619d 106830 4.5 4842 3.5 3732

8th Dam

Sutton Outside Mango VG-87 VG-MS DOM
2-11 2x 365d 32460 4.3 1385 3.0 978

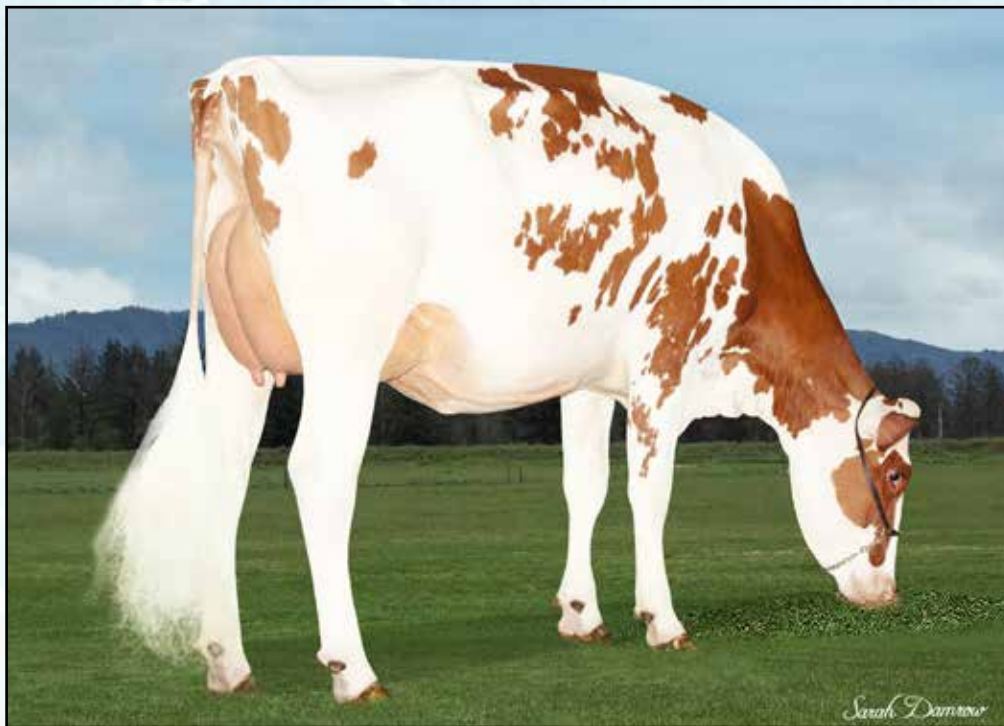
9th Dam

Sutton Gilbert Marie EX-90 VEVVE 2E
5-06 3x 365d 41910 3.4 1411 2.8 1158

Life: 2382d 223540 3.6 8105 2.9 6308

NEXT THREE DAMS VG & EX!

Make A Deal At The Beach Online IVF Session Sale



**VALIANT RBLS MUFFLER-RED-ET *PO VG-87
DAM OF DONOR LOT 7**

Former #1 GTPI Red Polled Female in the Breed!

Lot 7

RASBERRY FUTURES LLC
GIG HARBOR, WA
360-895-9418

• Made 9 embryos on first procedure!

AOT Heatwave-Red

840 3208400852 *TY *TV *A1A2 *BE
PTA +906M +54F +30P 82R 12/24
PTA +4.5PL 2.71SCS +.8DPR 2.0%DCE
PTA +2.46T +1.79UDC +.98FLC 81R 12/24
GTPI +2717G

Valiant RbIs Muffler-Red-ET

840 3231000266 Very Good-87 VVVVV *PO A1A2 BB
GTPI +2841G PTA +1067M +61F +45P 83R 12/24
PTA +5.1PL 2.76SCS -.5DPR 2.1%DCE
PTA +2.53T +1.91UDC +1.85FLC 83R 12/24

• Eight sons in AI!

IVF SESSION FROM:

ESKDALE HTWAVE 13827 MAE-RED-ET

840 3285242221 *PP *A1A2 *BE
GTPI +2744 PTA +758M +54F +30P 79R 12/24
PTA +687NM +.11%F +.05%P
PTA +4.6PL 2.74SCS -.9DPR 2.1%DCE
PTA +2.57T +2.00UDC +1.31FLC 79R 12/24
PTA +163FE -0.7FI 2.2%SCE

• Full brother @ CRV

Vogue Redeye P-Red

CAN 40001147 *PC *TE *TC *TY *TV
PTA +496M +41F +22P 98R 12/24
PTA +2.17T +1.52UDC +1.39FLC GTPI +2591G

AOT Swingman Halia-Red-ET

840 3146981006 Excellent-90
4-02 3x 351d 40720 4.0 1642 3.4 1378
3-03 3x 310d 37360 4.4 1639 3.3 1232

Hoogerhorst DG OH Rubels-Red

NLD 67950401 *TY *TV A1A2 BB
PTA +1203M +67F +52P 98R 12/24
PTA +2.56T +1.93UDC +1.45FLC GTPI +2755G

Aprilday Luster Muffin-ET

3207031363 VG-87-4YR-CAN VG-88-MS 1* *RC *PP
3-09 Rx 365d 34059 4.5 1519 3.3 1116
2-02 Rx 365d 28417 4.2 1199 3.2 922

• Former #1 Homozygous Polled Red Carrier GTPI & GLPI Female in the Breed! 2 Sons at AI Total!

3rd Dam

Aprilday P Margarita-Red-ET VG-85 *PP
5-01 3x 316d 32320 3.6 1148 3.5 1125

4th Dam

Aprilday Jax Martini-Red-ET VG-87 VVVVV *PC
3-00 3x 305d 28830 4.2 1223 3.3 953

5th Dam

Ms Cash Coin Margie-ET VG-85 *RC

6th Dam

Palmyra M-O-M Manhattan-ET VG-85 *RC
2-04 2x 365d 32440 4.2 1377 3.5 1124

7th Dam

Debaugh Rdman Manhattan-ET EX-91 *RC
3-03 2x 365d 32120 4.7 1511 3.2 1038
Life: 1619d 106830 4.5 4842 3.5 3732

8th Dam

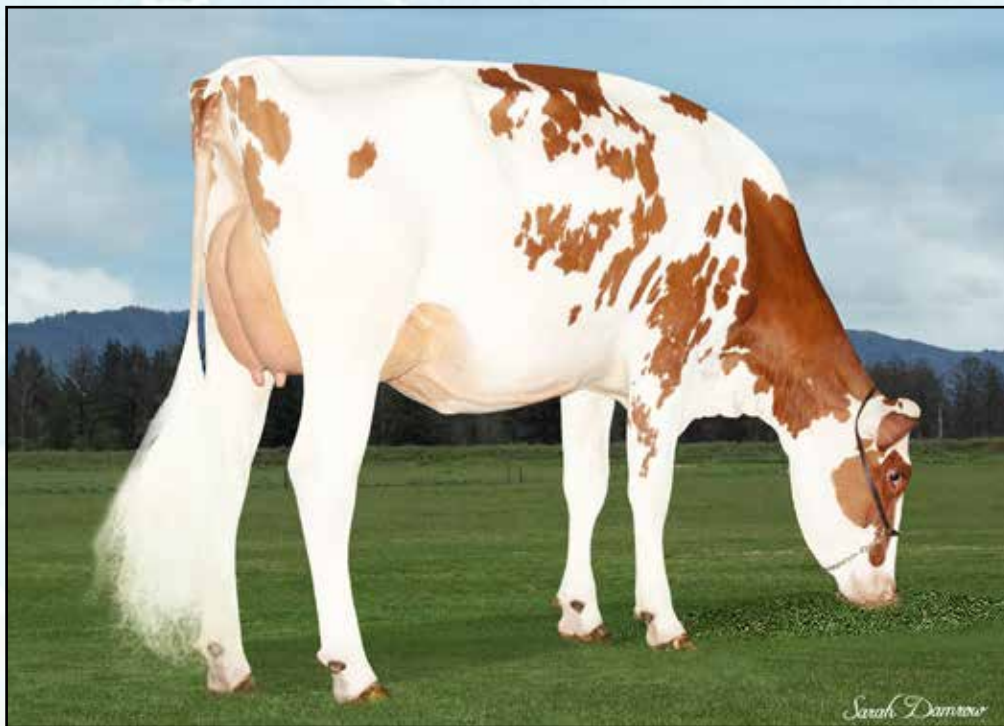
Sutton Outside Mango VG-87 VG-MS DOM
2-11 2x 365d 32460 4.3 1385 3.0 978

9th Dam

Sutton Gilbert Marie EX-90 VEVVE 2E
5-06 3x 365d 41910 3.4 1411 2.8 1158
Life: 2382d 223540 3.6 8105 2.9 6308

NEXT THREE DAMS VG & EX!

Make A Deal At The Beach Online IVF Session Sale



**VALIANT RBLS MUFFLER-RED-ET *PO VG-87
DAM OF DONOR LOT 8**

Former #1 GTPI Red Polled Female in the Breed!

Lot 8

MIDWAY DAIRY
CLOVERDALE, OR
503-392-3012

• *Averaging 61 oocytes per flush!*

AOT Redeye Haze-P-Red-ET

840 3232427677 99%RHA-I *PC *CD *TY *TV
PTA +904M +71F +43P 82%R 12/24
PTA +3.9PL 2.70SCS -.3DPR 2.5%DCE
PTA +2.12T +1.59UDC +.89FLC 81%R 12/24
GTPI +2798G

Valiant Rbls Muffler-Red-ET

840 3231000266 Very Good-87 VVVVV *PO A1A2 BB
GTPI +2841G PTA +1067M +61F +45P 83R 12/24
PTA +5.1PL 2.76SCS -.5DPR 2.1%DCE
PTA +2.53T +1.91UDC +1.85FLC 83R 12/24

• *Eight sons in AI!*

IVF SESSION FROM:

ESKDALE HAZE-P 14714 MARY-RED-ET

840 3285242702 *TP *A1A2 *AB
GTPI +2864 PTA +956M +62F +45P 79R 12/24
PTA +778NM +.10%F +.06%P
PTA +5.0PL 2.77SCS +1.7DPR 2.3%DCE
PTA +2.29T +1.79UDC +1.32FLC 79R 12/24
PTA +175FE +1.7FI 1.6%SCE

• *Eight maternal brothers in AI!*

Vogue Redeye P-Red

CAN 40001147 *PC *TE *TC *TY *TV
PTA +496M +41F +22P 98R 12/24
PTA +2.17T +1.52UDC +1.39FLC GTPI +2591G

AOT Hawai Holly-ET

840 3202768359 Excellent-91 DOM *RC *CD
4-01 3x 365d 45900 4.2 1940 3.4 1543
3-01 3x 314d 37250 3.8 1414 3.1 1337

Hoogerhorst DG OH Rubels-Red

NLD 67950401 *TY *TV A1A2 BB
PTA +1203M +67F +52P 98R 12/24
PTA +2.56T +1.93UDC +1.45FLC GTPI +2755G

Aprilday Luster Muffin-ET

3207031363 VG-87-4YR-CAN VG-88-MS 1* *RC *PP
3-09 Rx 365d 34059 4.5 1519 3.3 1116
2-02 Rx 365d 28417 4.2 1199 3.2 922

• *Former #1 Homozygous Polled Red Carrier GTPI & GLPI Female in the Breed! 2 Sons at AI Total!*

3rd Dam

Aprilday P Margarita-Red-ET VG-85 *PP
5-01 3x 316d 32320 3.6 1148 3.5 1125

4th Dam

Aprilday Jax Martini-Red-ET VG-87 VVVVV *PC
3-00 3x 305d 28830 4.2 1223 3.3 953

5th Dam

Ms Cash Coin Margie-ET VG-85 *RC

6th Dam

Palmyra M-O-M Manhattan-ET VG-85 *RC
2-04 2x 365d 32440 4.2 1377 3.5 1124

7th Dam

Debaugh Rdman Manhattan-ET EX-91 *RC
3-03 2x 365d 32120 4.7 1511 3.2 1038
Life: 1619d 106830 4.5 4842 3.5 3732

8th Dam

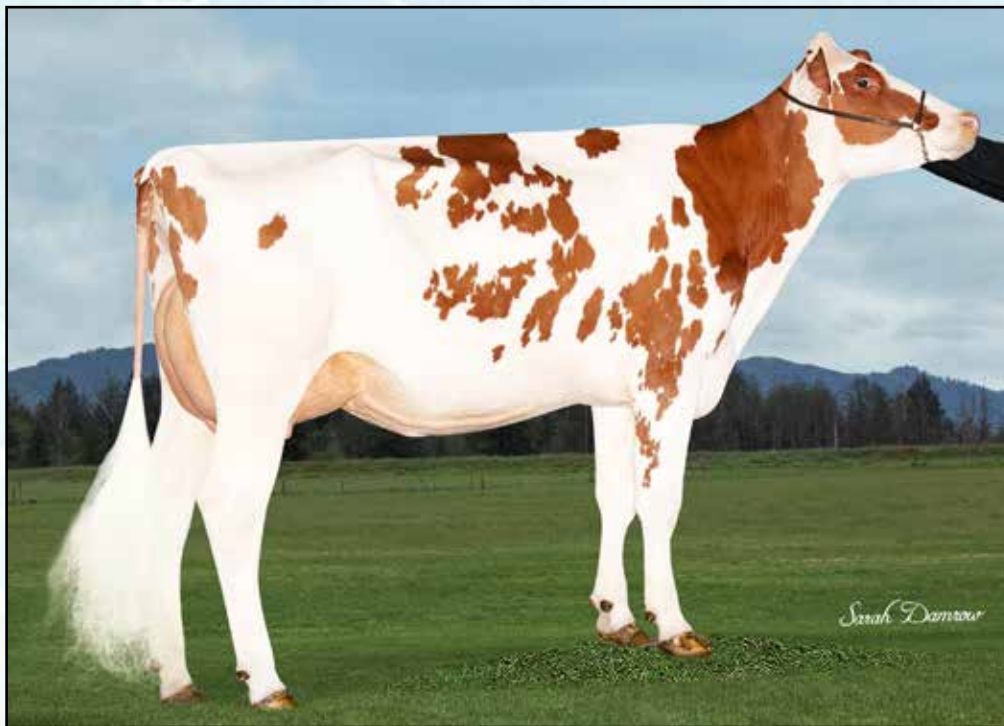
Sutton Outside Mango VG-87 VG-MS DOM
2-11 2x 365d 32460 4.3 1385 3.0 978

9th Dam

Sutton Gilbert Marie EX-90 VEVVE 2E
5-06 3x 365d 41910 3.4 1411 2.8 1158
Life: 2382d 223540 3.6 8105 2.9 6308

NEXT THREE DAMS VG & EX!

Make A Deal At The Beach Online IVF Session Sale



**VALIANT RBLS MUFFLER-RED-ET *PO VG-87
DAM OF DONOR LOT 9**

Former #1 GTPI Red Polled Female in the Breed!

Lot 9

MIDWAY DAIRY
CLOVERDALE, OR
503-392-3012

• *Averaging 10.5 embryos per flush!*

Drewholme Logic PP-ET

CAN 14213339 *PC*CD*TY*TV *A1A2 *BB
PTA +580M +109F +48P 82%R 12/24
PTA +2.1PL 2.80SCS -2.5DPR 2.0%DCE
PTA +2.24T +2.08UDC +.92FLC 80%R 12/24
GTPI +2883G

Valiant RbIs Muffler-Red-ET

840 3231000266 Very Good-87 VVVVV *PO A1A2 BB
GTPI +2841G PTA +1067M +61F +45P 83R 12/24
PTA +5.1PL 2.76SCS -5DPR 2.1%DCE
PTA +2.53T +1.91UDC +1.85FLC 83R 12/24

• *Eight sons in AI!*

IVF SESSION FROM:

ESKDALE LOGIC PP 14616 MAXINE-ET

840 3285242604 *RC *PC *A1A2 *BB
GTPI +2943 PTA +632M +100F +51P 79R 12/24
PTA +879NM +.29%F +.12%P
PTA +3.7PL 2.82SCS -1.5DPR 2.2%DCE
PTA +2.21T +1.93UDC +1.29FLC 78R 12/24
PTA +255FE -0.7FI 2.0%SCE

• *Eight maternal brothers in AI!*

Vogue A2P2-PP-ET

CAN 13446574 EX-95-CAN *PP A2A2 *AB
PTA +546M +103F +38P 95R 12/24
PTA +1.67T +2.05UDC +.24FLC GTPI +2694G

Drewholme Lambda Leysure P

CAN 13380365 EX-90-CAN 3* *PO
3-08 3x 365d 31815 4.1 1296 3.6 1146

• *Reserve All-ON Junior 2-Year-Old 2021*

Hoogerhorst DG OH Rubels-Red

NLD 67950401 *TY*TV A1A2 BB
PTA +1203M +67F +52P 98R 12/24
PTA +2.56T +1.93UDC +1.45FLC GTPI +2755G

Aprilday Luster Muffin-ET

3207031363 VG-87-4YR-CAN VG-88-MS 1* *RC *PP
3-09 Rx 365d 34059 4.5 1519 3.3 1116
2-02 Rx 365d 28417 4.2 1199 3.2 922

• *Former #1 Homozygous Polled Red Carrier GTPI & GLPI Female in the Breed! 2 Sons at AI Total!*

3rd Dam

Aprilday P Margarita-Red-ET VG-85 *PP
5-01 3x 316d 32320 3.6 1148 3.5 1125

4th Dam

Aprilday Jax Martini-Red-ET VG-87 VVVVV *PC
3-00 3x 305d 28830 4.2 1223 3.3 953

5th Dam

Ms Cash Coin Margie-ET VG-85 *RC

6th Dam

Palmyra M-O-M Manhattan-ET VG-85 *RC
2-04 2x 365d 32440 4.2 1377 3.5 1124

7th Dam

Debaugh Rdman Manhattan-ET EX-91 *RC
3-03 2x 365d 32120 4.7 1511 3.2 1038
Life: 1619d 106830 4.5 4842 3.5 3732

8th Dam

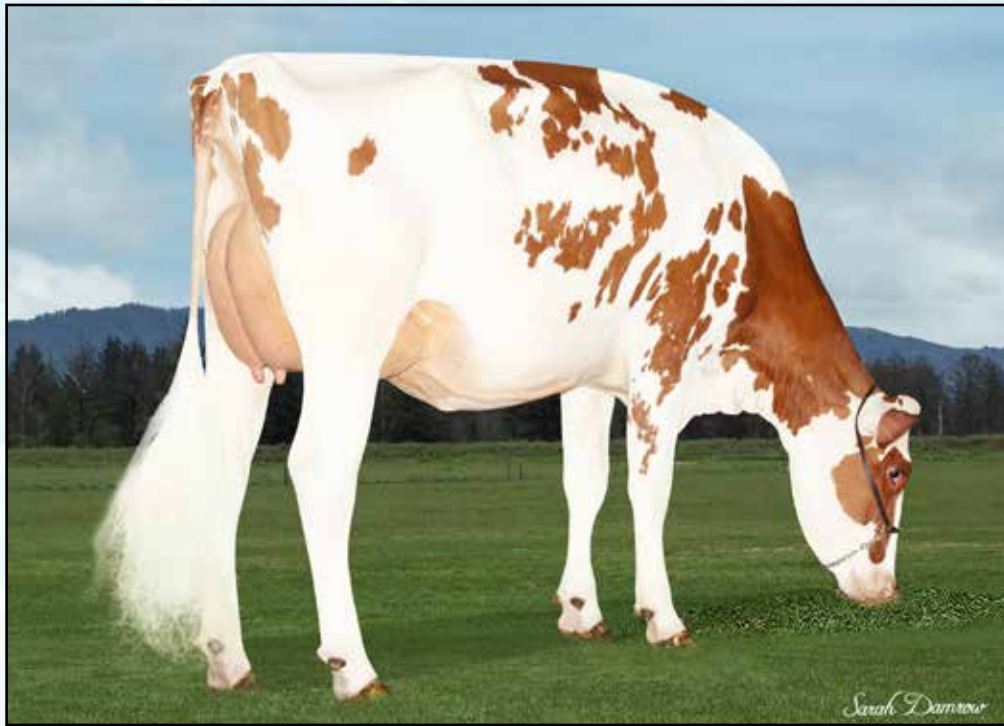
Sutton Outside Mango VG-87 VG-MS DOM
2-11 2x 365d 32460 4.3 1385 3.0 978

9th Dam

Sutton Gilbert Marie EX-90 VEVVE 2E
5-06 3x 365d 41910 3.4 1411 2.8 1158
Life: 2382d 223540 3.6 8105 2.9 6308

NEXT THREE DAMS VG & EX!

Make A Deal At The Beach Online IVF Session Sale



**VALIANT RBLS MUFFLER-RED-ET *PO VG-87
DAM OF DONOR LOT 10**

Former #1 GTPI Red Polled Female in the Breed!

Lot 10

**MUFFLER SYNDICATE
GARRISON, UT
435-209-0002**

• *Averaging 30 oocytes per flush!*

Siemers Wolf Hulu 37006-ET

840 3245702863 *RC *TP *TY *TV
PTA +989M +51F +50P 82R 12/24
PTA +3.2PL 2.79SCS +.0DPR 2.2%DCE
PTA +3.45T +2.91UDC +1.93FLC 80R 12/24
GTPI +2849G

Valiant RbIs Muffler-Red-ET

840 3231000266 Very Good-87 VVVVV *PO A1A2 BB
GTPI +2841G PTA +1067M +61F +45P 83R 12/24
PTA +5.1PL 2.76SCS -.5DPR 2.1%DCE
PTA +2.53T +1.91UDC +1.85FLC 83R 12/24

• *Eight sons in AI!*

IVF SESSION FROM:

TLU HULU FIRED UP-ET

840 3285242489 *RC *TP *A1A2 *BB
GTPI +2939 PTA +1272M +70F +55P 79R 12/24
PTA +780NM +.08%F +.06%P
PTA +4.3PL 2.78SCS -.2DPR 2.3%DCE
PTA +3.02T +2.35UDC +1.71FLC 78R 12/24
PTA +202FE +0.4FI 2.2%SCE

• *Eight maternal brothers in AI!*

Aija Wolfgang

CAN 13494527 *RC *PC A2A2
PTA +1188M +28F +34P 91R 12/24
PTA +2.63T +2.65UDC +1.41FLC GTPI +2542G

Siemers Lstr Hanan 33317-ET

840 3212996392 Excellent-91
3-03 2x 305d 35460 3.9 1371 3.5 1238
2-03 2x 281d 28180 4.3 1202 3.8 1075

Hoogerhorst DG OH Rubels-Red

NLD 67950401 *TY *TV A1A2 BB
PTA +1203M +67F +52P 98R 12/24
PTA +2.56T +1.93UDC +1.45FLC GTPI +2755G

Aprilday Luster Muffin-ET

3207031363 VG-87-4YR-CAN VG-88-MS 1* *RC *PP
3-09 Rx 365d 34059 4.5 1519 3.3 1116
2-02 Rx 365d 28417 4.2 1199 3.2 922

• *Former #1 Homozygous Polled Red Carrier GTPI & GLPI Female in the Breed! 2 Sons at AI Total!*

3rd Dam

Aprilday P Margarita-Red-ET VG-85 *PP
5-01 3x 316d 32320 3.6 1148 3.5 1125

4th Dam

Aprilday Jax Martini-Red-ET VG-87 VVVVV *PC
3-00 3x 305d 28830 4.2 1223 3.3 953

5th Dam

Ms Cash Coin Margie-ET VG-85 *RC

6th Dam

Palmyra M-O-M Manhattan-ET VG-85 *RC
2-04 2x 365d 32440 4.2 1377 3.5 1124

7th Dam

Debaugh Rdman Manhattan-ET EX-91 *RC
3-03 2x 365d 32120 4.7 1511 3.2 1038

Life: 1619d 106830 4.5 4842 3.5 3732

8th Dam

Sutton Outside Mango VG-87 VG-MS DOM
2-11 2x 365d 32460 4.3 1385 3.0 978

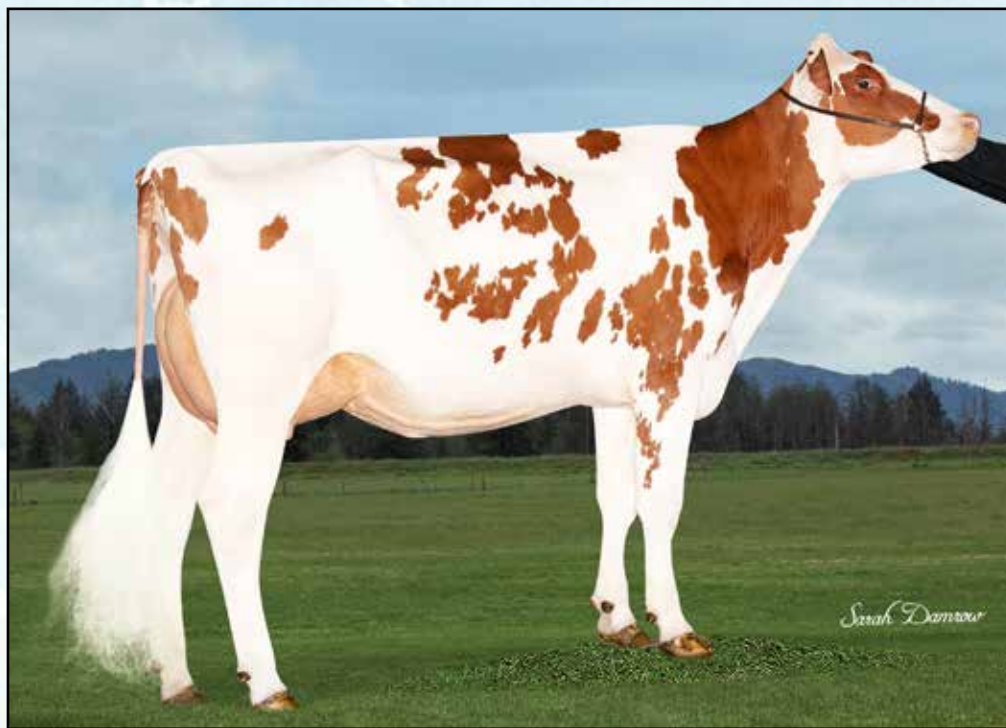
9th Dam

Sutton Gilbert Marie EX-90 VEVVE 2E
5-06 3x 365d 41910 3.4 1411 2.8 1158

Life: 2382d 223540 3.6 8105 2.9 6308

NEXT THREE DAMS VG & EX!

Make A Deal At The Beach Online IVF Session Sale



**VALIANT RBLS MUFFLER-RED-ET *PO VG-87
DAM OF DONOR LOT 11**

Former #1 GTPI Red Polled Female in the Breed!

Lot 11

**PATE FAMILY INVESTMENT
GIG HARBOR, WA**

• *Averaging 35 oocytes per flush!*

Stantons Remover PP-ET

CAN 13440455 *PP *A2A2 *BB
PTA +1848M +98F +63P 90R 12/24
PTA +.9PL 3.05SCS -2.9DPR 2.4%DCE
PTA +1.95T +1.46UDC +.71FLC 84R 12/24
GTPI +2799G

Valiant RbIs Muffler-Red-ET

840 3231000266 Very Good-87 VVVVV *PO A1A2 BB
GTPI +2841G PTA +1067M +61F +45P 83R 12/24
PTA +5.1PL 2.76SCS -.5DPR 2.1%DCE
PTA +2.53T +1.91UDC +1.85FLC 83R 12/24

• *Eight sons in AI!*

IVF SESSION FROM:

ESKDALE REMUFF PP-ET

840 3271802207 *RC *PP *A2A2 *BB
GTPI +2842 PTA +1439M +84F +48P 80R 12/24
PTA +732NM +.11%F +.01%P
PTA +3.0PL 2.92SCS -.9DPR 2.2%DCE
PTA +2.58T +2.04UDC +1.25FLC 79R 12/24
PTA +213FE -0.4FI 2.3%SCC

• *Full brother in AI!*

Cherry-Lily Zip Luster-P-ET

840 3138843085 *PC *TC *TY *TV
PTA +1690M +81F +52P 99R 12/24
PTA +2.54T +2.05UDC +1.73FLC GTPI +2898G

Stantons Bighit Maker-ET

CAN 13057148 VG-85-CAN 13*
2-01 2x 365d 36528 4.0 1459 3.6 1318
Life: 3 Lacs 130836 4.0 5287 3.7 4791

Hoogerhorst DG OH Rubels-Red

NLD 67950401 *TY *TV A1A2 BB
PTA +1203M +67F +52P 98R 12/24
PTA +2.56T +1.93UDC +1.45FLC GTPI +2755G

Aprilday Luster Muffin-ET

3207031363 VG-87-4YR-CAN VG-88-MS 1* *RC *PP
3-09 Rx 365d 34059 4.5 1519 3.3 1116
2-02 Rx 365d 28417 4.2 1199 3.2 922

• *Former #1 Homozygous Polled Red Carrier GTPI & GLPI Female in the Breed! 2 Sons at AI Total!*

3rd Dam

Aprilday P Margarita-Red-ET VG-85 *PP
5-01 3x 316d 32320 3.6 1148 3.5 1125

4th Dam

Aprilday Jax Martini-Red-ET VG-87 VVVVV *PC
3-00 3x 305d 28830 4.2 1223 3.3 953

5th Dam

Ms Cash Coin Margie-ET VG-85 *RC

6th Dam

Palmyra M-O-M Manhattan-ET VG-85 *RC
2-04 2x 365d 32440 4.2 1377 3.5 1124

7th Dam

Debaugh Rdman Manhattan-ET EX-91 *RC
3-03 2x 365d 32120 4.7 1511 3.2 1038

Life: 1619d 106830 4.5 4842 3.5 3732

8th Dam

Sutton Outside Mango VG-87 VG-MS DOM
2-11 2x 365d 32460 4.3 1385 3.0 978

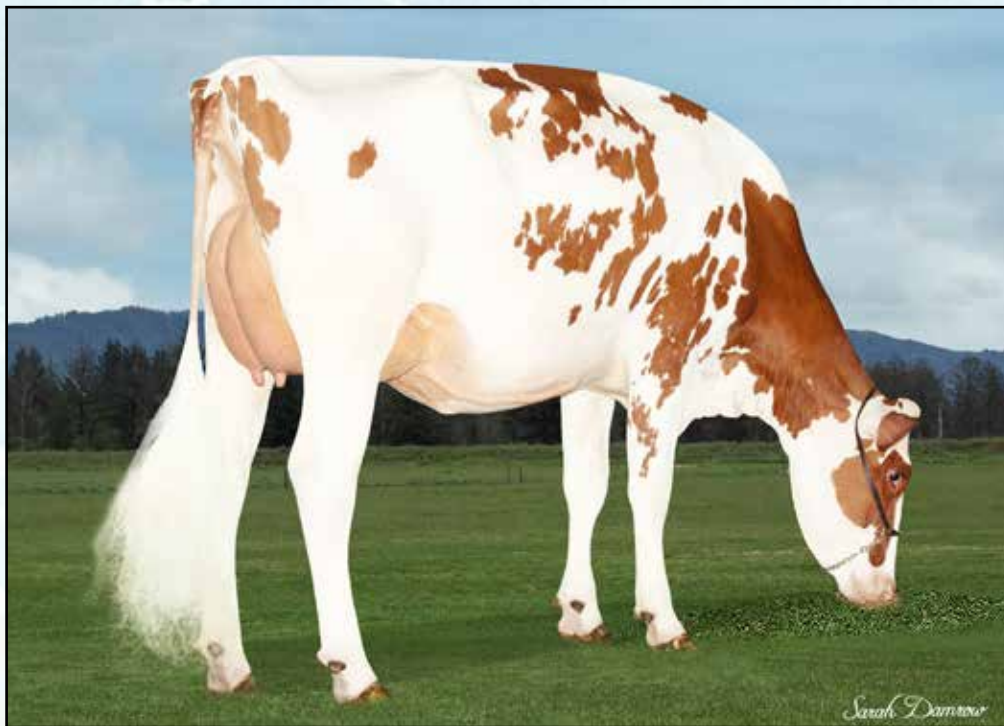
9th Dam

Sutton Gilbert Marie EX-90 VEVVE 2E
5-06 3x 365d 41910 3.4 1411 2.8 1158

Life: 2382d 223540 3.6 8105 2.9 6308

NEXT THREE DAMS VG & EX!

Make A Deal At The Beach Online IVF Session Sale



**VALIANT RBLS MUFFLER-RED-ET *PO VG-87
DAM OF DONOR LOT 12**

Former #1 GTPI Red Polled Female in the Breed!

Lot 12

**PATE FAMILY INVESTMENT
GIG HARBOR, WA**

• *Averaging 30 oocytes per flush!*

Eskdale Lustrous PP

840 3214540632 *PP *TR *A2A2 *BB
PTA +865M +71F +38P 87R 12/24
PTA +.5PL 2.95SCS -2.1DPR 2.1%DCE
PTA +3.12T +2.49UDC +1.74FLC 85R 12/24
GTPI +2710G

Valiant RbIs Muffler-Red-ET

840 3231000266 Very Good-87 VVVVV *PO A1A2 BB
GTPI +2841G PTA +1067M +61F +45P 83R 12/24
PTA +5.1PL 2.76SCS -.5DPR 2.1%DCE
PTA +2.53T +1.91UDC +1.85FLC 83R 12/24

• *Eight sons in AI!*

IVF SESSION FROM:

ESKDALE LUSTROS-PP MUFF-ET

840 3271802212 *RC *PP *A2/A2 *BB
GTPI +2839 PTA +1010M +74F +48P 80R 12/24
PTA +885NM +.13%F +.06%P
PTA +2.9PL 2.94SCS -.8DPR 2.0%DCE
PTA +2.98T +1.82UDC +2.05FLC 78R 12/24
PTA +194FE -0.2FI 2.3%SCS

• *Eight brothers in AI!* • *Son heading to AI!*

Cherry-Lily Zip Luster-P-ET

840 3138843085 *PC *TC *TY *TV
PTA +1690M +81F +52P 99R 12/24
PTA +2.54T +2.05UDC +1.73FLC GTPI +2898G

Eskdale Splendid Almah

840 3139120139 Excellent-91 EEEEE
3-10 2x 365d 35270 4.9 1722 3.8 1331
5-02 2x 365d 35570 4.6 1633 3.8 1351

Hoogerhorst DG OH Rubels-Red

NLD 67950401 *TY *TV A1A2 BB
PTA +1203M +67F +52P 98R 12/24
PTA +2.56T +1.93UDC +1.45FLC GTPI +2755G

Aprilday Luster Muffin-ET

3207031363 VG-87-4YR-CAN VG-88-MS 1* *RC *PP
3-09 Rx 365d 34059 4.5 1519 3.3 1116
2-02 Rx 365d 28417 4.2 1199 3.2 922

• *Former #1 Homozygous Polled Red Carrier GTPI & GLPI Female in the Breed! 2 Sons at AI Total!*

3rd Dam

Aprilday P Margarita-Red-ET VG-85 *PP
5-01 3x 316d 32320 3.6 1148 3.5 1125

4th Dam

Aprilday Jax Martini-Red-ET VG-87 VVVVV *PC
3-00 3x 305d 28830 4.2 1223 3.3 953

5th Dam

Ms Cash Coin Margie-ET VG-85 *RC

6th Dam

Palmyra M-O-M Manhattan-ET VG-85 *RC
2-04 2x 365d 32440 4.2 1377 3.5 1124

7th Dam

Debaugh Rdman Manhattan-ET EX-91 *RC
3-03 2x 365d 32120 4.7 1511 3.2 1038
Life: 1619d 106830 4.5 4842 3.5 3732

8th Dam

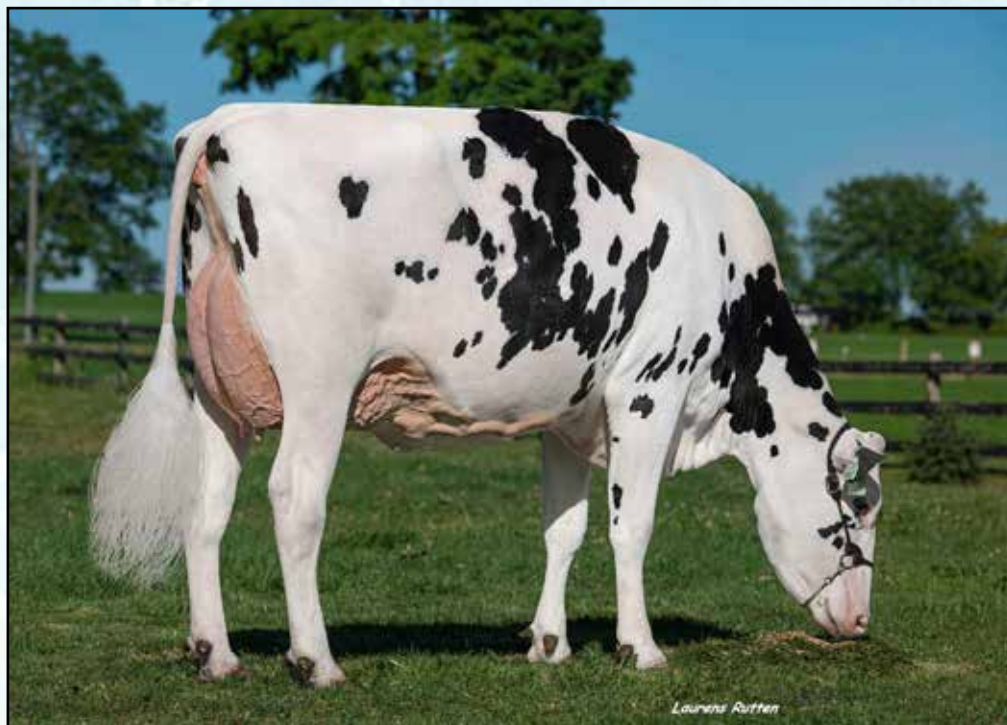
Sutton Outside Mango VG-87 VG-MS DOM
2-11 2x 365d 32460 4.3 1385 3.0 978

9th Dam

Sutton Gilbert Marie EX-90 VEVVE 2E
5-06 3x 365d 41910 3.4 1411 2.8 1158
Life: 2382d 223540 3.6 8105 2.9 6308

NEXT THREE DAMS VG & EX!

Make A Deal At The Beach Online IVF Session Sale



**APRILDAY LUSTER MUFFIN-ET VG-87-CAN
2ND DAM OF DONOR LOT 13**

Lot 13

**SNAKE RIVER DAIRIES & VALIANT GENETICS
MELBA, ID
208-941-6144**

• *Averaging 8 embryos per flush!*

Carters-Corners Dazzle-ET

840 3214540598 *TC *TY *TR *TP
PTA +1087M -1F +28P 81R 4/24
PTA +3.0PL 2.77SCS +1.3DPR 1.7%DCE
PTA +3.38T +3.18UDC +1.35FLC 80R 4/24
GTPI +2570G

Calmac Valiant McMuffin P

CAN 14126443 VG-85-2YR-CAN VVVV *PC *RC
GTPI +2778 +203M +59F +26P +1.97T 4/24
2-02 2x 319d 18926 5.7 1085 3.6 686

IVF SESSION FROM:

CALMAC VALIANT DZL MELODY 13504-ET

840 3280191427 *PC *RC *A1A2 *BE
GTPI +2701 PTA +678M +24F +30P 79R 4/24
PTA +481NM -.01%F +.03%P
PTA +4.2PL 2.76SCS +1.6DPR 1.5%DCE
PTA +3.11T +2.73UDC +1.61FLC 78R 12/24
PTA +73FE +1.7FI 2.0%SCE

Brabantdale Alleyoop-ET

CAN 42002534 *MWF *CDF* CVF *BYF *A2A2
PTA +1863M +21F +42P 99R 12/24
PTA +4.06T +2.76UDC 1.43FLC GTPI +2379

BGP Noble Dhrmy 695-ET

840 3203116400 Very Good-88
2-04 2x 365d 42000 3.7 1553 3.4 1439

Aprilday McDonald-P-Red-ET

840 3201598569 *PC *A1A2 AB
PTA +151M +52F +23P 98R 12/24
PTA +2.00T +1.93UDC +.93FLC GTPI +2653G

Aprilday Luster Muffin-ET

3207031363 VG-87-4YR-CAN VG-88-MS 1* *RC *PP
GTPI +2658 +766M +37F +24P +1.60T 12/24
3-09 Rx 365d 34059 4.5 1519 3.3 1116
2-02 Rx 365d 28417 4.2 1199 3.2 922

3rd Dam

Aprilday P Margarita-Red-ET VG-85 *PP *TC
2-03 3x 333d 27410 4.4 1195 3.2 871

4th Dam

Aprilday Jax Martini-Red-ET VG-87 VVVVV *PC
3-00 3x 305d 28830 4.2 1223 3.3 953

5th Dam

Ms Cash Coin Margie-ET VG-85 *RC

6th Dam

Palmyra M-O-M Manhattan-ET VG-85 *RC
2-04 2x 365d 32440 4.2 1377 3.5 1124

7th Dam

Debaugh Rdman Manhattan-ET EX-91 *RC
3-03 2x 365d 32120 4.7 1511 3.2 1038
Life: 1619d 106830 4.5 4842 3.5 3732

8th Dam

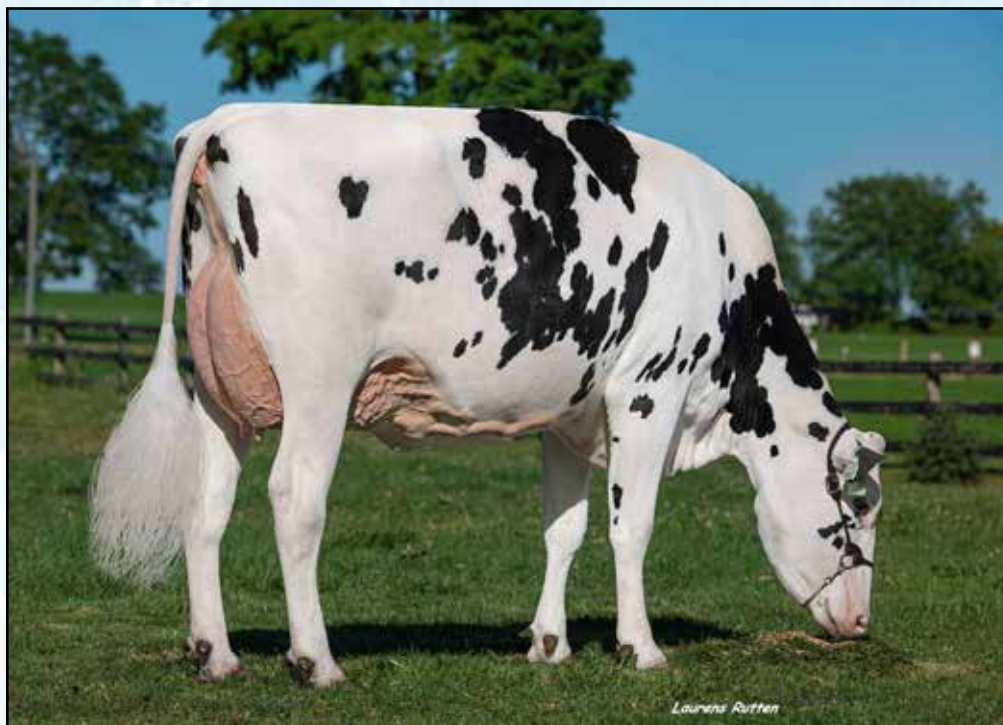
Sutton Outside Mango VG-87 VG-MS DOM
2-11 2x 365d 32460 4.3 1385 3.0 978

9th Dam

Sutton Gilbert Marie EX-90 VEVVE 2E
5-06 3x 365d 41910 3.4 1411 2.8 1158
Life: 2382d 223540 3.6 8105 2.9 6308

Next four dams VG & EX

Make A Deal At The Beach Online IVF Session Sale



**APRILDAY LUSTER MUFFIN-ET *PP *RC VG-87-CAN
2ND DAM OF DONOR LOT 14**

Lot 14

**SNAKE RIVER DAIRIES & RASBERRY FUTURES
MELBA, ID
208-941-6144**

• *Averaging 33 oocytes per flush!*

Siemers Hanan Hanx-P-ET

840 3243939096 *PC
PTA +709M +71F +50P 82R 12/24
PTA +3.7PL 2.72SCS -.2DPR 1.7%DCE
PTA +3.35T +2.48UDC +1.79FLC 82R 12/24
GTPI +2954G

Calmac Valiant McMuffin P

CAN 14126443 VG-85-2YR-CAN VVVV *PC *RC
GTPI +2778 +203M +59F +26P +1.97T 4/24
2-02 2x 319d 18926 5.7 1085 3.6 686

IVF SESSION FROM:

VALIANT CALMAC HANX MADDIE-ET

840 3280191772 *TP *TC *A1A2 *BB
GTPI +2920 PTA +302M +61F +36P 79R 12/24
PTA +750NM +.19%F +.10%P
PTA +5.1PL 2.76SCS +2.7DPR 1.9%DCE
PTA +2.49T +2.24UDC +1.63FLC 78R 12/24
PTA +151FE +2.9FI 2.2%SCC

Siemers Exc Hanans 31753-ET

3143986722 GM 12/23 *TY *TV A2A2 BB
PTA -1M +83F +41P 99R 12/24
PTA +3.56T +2.54UDC +2.06FLC GTPI +2841G

Siemers Lstr Hanan 33317-ET

840 3212996392 Excellent-91
3-03 2x 305d 35460 3.9 1371 3.5 1238
2-03 2x 281d 28180 4.3 1202 3.8 1075

Aprilday McDonald-P-Red-ET

840 3201598569 *PC *A1A2 AB
PTA +151M +52F +23P 98R 12/24
PTA +2.00T +1.93UDC +.93FLC GTPI +2653G

Aprilday Luster Muffin-ET

3207031363 VG-87-4YR-CAN VG-88-MS 1* *RC *PP
GTPI +2658 +766M +37F +24P +1.60T 12/24
3-09 Rx 365d 34059 4.5 1519 3.3 1116
2-02 Rx 365d 28417 4.2 1199 3.2 922

3rd Dam

Aprilday P Margarita-Red-ET VG-85 *PP *TC
2-03 3x 333d 27410 4.4 1195 3.2 871

4th Dam

Aprilday Jax Martini-Red-ET VG-87 VVVVV *PC
3-00 3x 305d 28830 4.2 1223 3.3 953

5th Dam

Ms Cash Coin Margie-ET VG-85 *RC

6th Dam

Palmyra M-O-M Manhattan-ET VG-85 *RC
2-04 2x 365d 32440 4.2 1377 3.5 1124

7th Dam

Debaugh Rdman Manhattan-ET EX-91 *RC
3-03 2x 365d 32120 4.7 1511 3.2 1038
Life: 1619d 106830 4.5 4842 3.5 3732

8th Dam

Sutton Outside Mango VG-87 VG-MS DOM
2-11 2x 365d 32460 4.3 1385 3.0 978

9th Dam

Sutton Gilbert Marie EX-90 VEVVE 2E
5-06 3x 365d 41910 3.4 1411 2.8 1158
Life: 2382d 223540 3.6 8105 2.9 6308

Next four dams VG & EX

Make A Deal At The Beach Online IVF Session Sale



PENELOPE - DONOR LOT 15



CHABLIS - DONOR LOT 16

Lot 15

IVF SESSION FROM:

Donor: Penelope

• Made 8 embryos on last procedure!

Penelope & Chablis are sired by the famous Micro Miniature Highland bull 'Ohno' from Rocking L Ranch. Their dam is a miniature Scottish Highland cow.

Lot 16

IVF SESSION FROM:

Donor: Chablis

• Made 11 #1 embryos on last procedure!

GRAND CRU MINIATURE CATTLE
BILL HELIKER
360-689-1399
GRANDCRUCATTLE@GMAIL.COM



CHABLIS AND PENELOPE
DONOR LOTS 15 & 16

Make A Deal At The Beach Online IVF Session Sale



MS RASBERRY ONE OF A KIND-ET VG-86
IVF DONOR - LOT 17



MS RASBERRY TROPIC 1070-ET EX-91
DAM OF DONOR LOT 17

Lot 17

KARL & DONNA HALE
CLOVERDALE, OR
503-812-2702

• Averages 4 embryos per flush!

Siemers DJ Hano 32442-ET

840 3208357067 *TY *TV
PTA +1196M +51F +54P 94R 12/24
PTA +2.1PL 2.97SCS +1.3DPR 2.2%DCE
PTA +2.61T +2.32UDC +.47FLC 90R 12/24
GTPI +2782G

Ms Raspberry Tropic 1070-ET

840 3210696248 Excellent-91 VEVVE @ 4-07
GTPI +2736G +1233M +59F +53P 85R 12/24
PTA +3.38T +2.45UDC +1.26FLC 84R 12/24
• Son at St Jacobs is +3.16T +1.0DPR GTPI +2951

IVF SESSION FROM:

MS RASBERRY ONE OF A KIND-ET

840 3250271331 Very Good-86 VVEVV @ 2-08
GTPI +2924 PTA +1198M +55F +61P 81R 12/24
PTA +640NM +.03%F +.09%P
PTA +2.8PL 2.89SCS +.8DPR 1.8%DCE
PTA +3.27T +2.60UDC +1.19FLC 80R 12/24
PTA +164FE +1.5FI 2.7%SCE *A2A2
• Sons in AI

Claynook Discjockey

CAN 12731113 * TC *TP
PTA -256M +28F +24P 99R 12/24
PTA +1.61T +2.51UDC -.86FLC GTPI +2456G

Siemers Doc Hanans 29100-ET

840 3148093490 Very Good-86 GMD
1-11 3x 321d 35540 4.2 1482 3.1 1101

Peak Tropic-ET

840 3145229820 Very Good-85 *TM
PTA +837M +73F +48P 99R 12/24
PTA +2.49T +1.95UDC +1.39FLC GTPI +2733G

GDR-Kings Doc 29358-ET

840 3147036280
GTPI +2477 +1119M +35F +42P 83R 12/24
PTA +3.17T +2.08UDC +1.15FLC 81R 12/24
• Reserve Junior Champion, OR State Show 2019
• All-Oregon Spring Yearling 2019

3rd Dam

GDR-Kings Montry 50468-ET EX-90 EEEVV
3-08 2x 365d 28660 3.3 954 3.3 944

4th Dam

Roylane-KH 5G Rece-ET VG-87 VVVVV
2-04 2x 365d 24610 5.1 1267 3.9 953

5th Dam

Golden-Rose Raspberry-ET EX-91 EX-MS
3-03 2x 267d 26230 4.3 1125 3.6 948

6th Dam

Golden-Rose Atwood Ritzi EX-93 2E GMD
6-03 2x 305d 35670 4.1 1473 3.2 1125

7th thru 11th Dams

Oakfield Pronto Ritzi EX-93 EEEEE
3-01 2x 365d 36751 3.5 1285 3.1 1140

Astrahoe Stormatic Radiant EX-91 GMD
5-02 3x 365d 49840 4.2 2087 2.7 1343

Life: 1163d 130530 4.0 5182 3.0 3914

Astrahoe LJ Rosa Rebel-ET EX-92 EEEVV 2E
7-05 2x 365d 48580 4.2 2021 3.0 1468

Life: 1186d 110960 3.9 4326 3.2 3529

Pinehurst Royal Rose-ET EX-91 EEEEE 2E
3-10 3x 365d 41400 3.3 1358 3.0 1223

Life: 1212d 115400 3.5 4073 3.1 3593

Pinehurst Roulade EX-92 EEEEE 2E
5-00 3x 365d 35130 3.6 1271 3.2 1115

Life: 1761d 142070 3.8 5395 3.3 4705

Next ten dams Excellent!

Make A Deal At The Beach Online IVF Session Sale



**VALIANT A2P2 RAPPA-P 2234 VG-88-2YR-CAN
DAM OF DONOR LOT 18**

Lot 18

**SNAKE RIVER DAIRIES & VALIANT GENETICS
MELBA, ID
208-941-6144**

Coldsprings All-Gone-PP

840 3210109717 *PP *TR *TC *A2A2 *AB
PTA +8965M +52F +27P 82R 12/24
PTA +3.0PL 2.77SCS -.5DPR 1.6%DCE
PTA +2.03T +2.31UDC +.89FLC 80R 12/24
GTPI +2611G

Valiant A2P2 Rappa-P 2234

CAN 14278733 VG-88-2YR-CAN *POC *A2A2 *AA
GTPI +2487 +7M +64F +10P 81R 12/24
PTA +2.94T +2.83UDC +.99FLC Conf +14 MS +11
2-04 2x 172d 12804 5.0 634 3.4 434 RIP

IVF SESSION FROM:

VALIANT ALL-GONEPP 14192 RAZZ-ET

840 3285242180 *PP *TC *A2A2 *AB
GTPI +2531 PTA +626M +43F +24P 79R 12/24
PTA +346NM +.07%F +.02%P
PTA +.8PL 2.84SCS -1.0DPR 2.0%DCE
PTA +2.43T +2.75UDC +.86FLC Conf +13 MS +12
PTA +100FE -0.2FI 2.2%SCE

Drumdale Allday-P-ET

CAN 111484905 *TR *PC *A2A2 *BB
PTA +653M +61F +41P 95R 12/24
PTA +1.84T +1.32UDC +.51FLC GTPI +2684G

Coldsprings Basic 112477-ET

840 3203043641 Excellent-90 *PC
3-02 3x 365d 33690 3.8 1267 3.4 1155
1-10 3x 305d 28500 3.9 1109 3.1 880

Vogue A2P2-PP-ET

CAN 13446574 EX-95-CAN *PP A2A2 *AB
PTA +546M +103F +38P 95R 12/24
PTA +1.67T +2.05UDC +.24FLC GTPI +2694G

Valiant Mirand Rapcity-P-ET

CAN 13630514 EX-90-4YR-CAN EEEE
3-11 2x 269d 23708 4.0 948 3.0 699
3-00 2x 278d 22225 4.3 948 3.0 661
1-09 2x 344d 19575 4.0 791 3.2 617

3rd Dam

Morningview Royley Roxette-ET VG-87-4YR-CAN
4-10 2x 365d 32353 4.0 1296 3.4 1111

4th Dam

Morningview Mentry Mercy-ET EX-92 EEEEE
4-05 2x 365d 36660 3.8 1408 3.2 1158

5th thru 11th Dams

Morningview Super Roxy EX-90 EEVVE GMD DOM
4-08 2x 365d 44550 3.5 1537 3.3 1453
Life: 1459d 138520 3.4 4761 3.3 4530

Morningview Pronto C-Rae-ET EX-90 2E *RC
4-07 2x 360d 37180 4.1 1529 3.2 1185
Life: 1674d 141160 4.1 5840 3.3 4702

Early-Autumn Golden Rae-ET EX-93 2E
4-01 2x 365d 42789 4.7 2026 3.3 1413
Life: 3 Lacs 132510 4.8 6332 3.4 4566

Scientific Beauty Rae-ET EX-90 VEEVE *RC
4-03 2x 365d 33710 4.7 1595 3.5 1179

Scientific Jubilant Rae-ET EX-90 DOM *RC
5-11 2x 365d 38880 4.1 1608 3.6 1403
Life: 1394d 117590 4.0 4707 3.6 4242

C Hanoverhill Tony Rae EX-96 3E GMD DOM 5*
6-11 2x 365d 40220 4.1 1661 3.3 1331
Life: 2247d 166396 4.1 6904 3.4 5612

• Gr Champion Western National 1993

C Hanoverhill TT Roxette-ET EX-94 2E GMD
Life: 2104d 164789 4.1 6760 3.1 3587

NEXT THREE DAMS EX INCLUDING ROXY EX-97!

Make A Deal At The Beach Online IVF Session Sale



**VALIANT A2P2 RAPPA-P 2234 VG-88-2YR-CAN
DAM OF DONOR LOT 19**

Lot 19

**SNAKE RIVER DAIRIES & VALIANT GENETICS
MELBA, ID
208-941-6144**

Coldsprings All-Gone-PP

840 3210109717 *PP*TR*TC *A2A2 *AB
PTA +8965M +52F +27P 82R 12/24
PTA +3.0PL 2.77SCS -.5DPR 1.6%DCE
PTA +2.03T +2.31UDC +.89FLC 80R 12/24
GTPI +2611G

Valiant A2P2 Rappa-P 2234

CAN 14278733 VG-88-2YR-CAN *POC*A2A2*AA
GTPI +2487 +7M +64F +10P 81R 12/24
PTA +2.94T +2.83UDC +.99FLC Conf +14 MS +11
2-04 2x 172d 12804 5.0 634 3.4 434 RIP

IVF SESSION FROM:

VALIANT ALLGONEPP 14157 ROXY-ET

840 3285242145 *PP*TC *A2A2 *AA
GTPI +2669 PTA +711M +56F +29P 79R 12/24
PTA +429NM +.11%F +.02%P
PTA +.8PL 2.85SCS -1.0DPR 1.6%DCE
PTA +3.18T +3.06UDC +1.27FLC Conf +12 MS +11
PTA +130FE +0.1FI 2.0%SCS

Drumdale Allday-P-ET

CAN 111484905 *TR*PC *A2A2 *BB
PTA +653M +61F +41P 95R 12/24
PTA +1.84T +1.32UDC +.51FLC GTPI +2684G

Coldsprings Basic 112477-ET

840 3203043641 Excellent-90 *PC
3-02 3x 365d 33690 3.8 1267 3.4 1155
1-10 3x 305d 28500 3.9 1109 3.1 880

Vogue A2P2-PP-ET

CAN 13446574 EX-95-CAN *PP A2A2 *AB
PTA +546M +103F +38P 95R 12/24
PTA +1.67T +2.05UDC +.24FLC GTPI +2694G

Valiant Mirand Rapcity-P-ET

CAN 13630514 EX-90-4YR-CAN EEEE
3-11 2x 269d 23708 4.0 948 3.0 699
3-00 2x 278d 22225 4.3 948 3.0 661
1-09 2x 344d 19575 4.0 791 3.2 617

3rd Dam

Morningview Royl Roxette-ET VG-87-4YR-CAN

4-10 2x 365d 32353 4.0 1296 3.4 1111

4th Dam

Morningview Mntry Mercy-ET EX-92 EEEEE

4-05 2x 365d 36660 3.8 1408 3.2 1158

5th thru 11th Dams

Morningview Super Roxy EX-90 EEVVE GMD DOM

4-08 2x 365d 44550 3.5 1537 3.3 1453

Life: 1459d 138520 3.4 4761 3.3 4530

Morningview Pronto C-Rae-ET EX-90 2E *RC

4-07 2x 360d 37180 4.1 1529 3.2 1185

Life: 1674d 141160 4.1 5840 3.3 4702

Early-Autumn Golden Rae-ET EX-93 2E

4-01 2x 365d 42789 4.7 2026 3.3 1413

Life: 3 Lacs 132510 4.8 6332 3.4 4566

Scientific Beauty Rae-ET EX-90 VEEVE *RC

4-03 2x 365d 33710 4.7 1595 3.5 1179

Scientific Jubilant Rae-ET EX-90 DOM *RC

5-11 2x 365d 38880 4.1 1608 3.6 1403

Life: 1394d 117590 4.0 4707 3.6 4242

C Hanoverhill Tony Rae EX-96 3E GMD DOM 5*

6-11 2x 365d 40220 4.1 1661 3.3 1331

Life: 2247d 166396 4.1 6904 3.4 5612

• Gr Champion Western National 1993

C Hanoverhill TT Roxette-ET EX-94 2E GMD

Life: 2104d 164789 4.1 6760 3.1 3587

NEXT THREE DAMS EX INCLUDING ROXY EX-97!

Make A Deal At The Beach Online IVF Session Sale



ESKDALE DJ HANO 10272-ET VG-86
DAM OF DONOR LOT 20



TERRA-LINDA DOC 794-ET EX-90
3RD DAM OF DONOR LOT 20

Lot 20

SNAKE RIVER DAIRIES & RASBERRY FUTURES
MELBA, ID
208-941-6144

Siemers Wolf Hulu 37006-ET

840 3245702863 *RC *TP *TY *TV
PTA +989M +51F +50P 82R 12/24
PTA +3.2PL 2.79SCS +.0DPR 2.2%DCE
PTA +3.45T +2.91UDC +1.93FLC 80R 12/24
GTPI +2849G

Eskdale DJ Hano 10272-ET

840 3250271438 Very Good-86 VVVV @ 2-07 *A2A2
GTPI +2927 +1063M +71F +55P 82R 12/24
PTA +3.17T +2.59UDC +1.38FLC 2.87SCS
• Sons headed to AI

IVF SESSION FROM:

TLU HULU 14089 RACHEL-ET

840 3285242077 *TP *TC *A2A2 *BB
GTPI +2976 PTA +844M +79F +56P 79R 12/24
PTA +743NM +.18%F +.11%P
PTA +3.4PL 2.73SCS -.7DPR 2.4%DCE
PTA +3.36T +2.76UDC +1.62FLC 78R 12/24
PTA +205FE -0.1FI 2.8%SCE
• Full brother in AI

Aija Wolfgang

CAN 13494527 *RC *PC A2A2
PTA +1188M +28F +34P 91R 12/24
PTA +2.63T +2.65UDC +1.41FLC GTPI +2542G

Siemers Lstr Hanan 33317-ET

840 3212996392 Excellent-91
3-03 2x 305d 35460 3.9 1371 3.5 1238
2-03 2x 281d 28180 4.3 1202 3.8 1075

Siemers DJ Hano 32442-ET

840 3208357067 *TY *TV
PTA +1196M +51F +54P 94R 12/24
PTA +2.61T +2.32UDC +.47FLC GTPI +2782G

Terra-Linda Trop Recover-ET

840 3214540539
GTPI +2732 +1045M +61F +45P 83R 12/24
PTA +2.93T +2.36UDC +1.47FLC 2.80SCS

3rd Dam

Terra-Linda Doc 794-ET EX-90 VEVVE
2-05 3x 365d 34140 3.6 1217 3.3 1143

4th Dam

Trifecta K Connie-ET VG-85 VG-MS

5th Dam

Triplecrown Kingboy 6-ET VG-86
3-02 2x 359d 32780 3.7 1213 3.2 1060

6th Dam

Triplecrown Ssire Darla-ET VG-87
2-00 3x 365d 32400 4.4 1433 3.3 1076

7th Dam

TCG-KM Desire Rae-Red-ET VG-87

8th Dam

Scientific Gold Dew Rae-ET VG-88

9th thru 12th Dams

Scientific Debutante Rae-ET EX-92 GMD DOM
2-02 2x 365d 32930 4.4 1440 3.4 1132

• All-American 4-Yr-Old Cow 2005

Scientific Jubilant Rae-ET EX-90 DOM RC
5-11 2x 365d 38880 4.1 1608 3.6 1403

Life: 1394d 117590 4.0 4707 3.6 4242

C Hanoverhill Tony Rae EX-96 3E GMD DOM

6-11 2x 365d 40220 4.1 1661 3.3 1331

Life: 2247d 166396 4.1 6904 3.4 5612

Next four dams Excellent including EX-97 Roxy!

Make A Deal At The Beach Online IVF Session Sale



ESKDALE DJ HANO 10272-ET VG-86
DAM OF DONOR LOT 21



TERRA-LINDA DOC 794-ET EX-90
3RD DAM OF DONOR LOT 21

Lot 21

SNAKE RIVER DAIRIES & RASBERRY FUTURES
MELBA, ID
208-941-6144

Siemers Wolf Hulu 37006-ET

840 3245702863 *RC *TP *TY *TV
PTA +989M +51F +50P 82R 12/24
PTA +3.2PL 2.79SCS +.0DPR 2.2%DCE
PTA +3.45T +2.91UDC +1.93FLC 80R 12/24
GTPI +2849G

Eskdale DJ Hano 10272-ET

840 3250271438 Very Good-86 VVVV @ 2-07 *A2A2
GTPI +2927 +1063M +71F +55P 82R 12/24
PTA +3.17T +2.59UDC +1.38FLC 2.87SCS
• Sons headed to AI

IVF SESSION FROM:

TLU HULU 14080 REBA-ET

840 3285242068 *TP *TC *A2A2 *AB
GTPI +2997 PTA +1119M +80F +58P 79R 12/24
PTA +770NM +.14%F +.08%P
PTA +2.8PL 2.94SCS +.1DPR 1.9%DCE
PTA +3.19T +3.15UDC +1.26FLC 78R 12/24
PTA +220FE +0.8FI 2.3%SCE
• Full brother in AI

Aija Wolfgang

CAN 13494527 *RC *PC A2A2
PTA +1188M +28F +34P 91R 12/24
PTA +2.63T +2.65UDC +1.41FLC GTPI +2542G

Siemers Lstr Hanan 33317-ET

840 3212996392 Excellent-91
3-03 2x 305d 35460 3.9 1371 3.5 1238
2-03 2x 281d 28180 4.3 1202 3.8 1075

Siemers DJ Hano 32442-ET

840 3208357067 *TY *TV
PTA +1196M +51F +54P 94R 12/24
PTA +2.61T +2.32UDC +.47FLC GTPI +2782G

Terra-Linda Trop Recover-ET

840 3214540539
GTPI +2732 +1045M +61F +45P 83R 12/24
PTA +2.93T +2.36UDC +1.47FLC 2.80SCS

3rd Dam

Terra-Linda Doc 794-ET EX-90 VEVVE
2-05 3x 365d 34140 3.6 1217 3.3 1143

4th Dam

Trifecta K Connie-ET VG-85 VG-MS

5th Dam

Triplecrown Kingboy 6-ET VG-86
3-02 2x 359d 32780 3.7 1213 3.2 1060

6th Dam

Triplecrown Ssire Darla-ET VG-87
2-00 3x 365d 32400 4.4 1433 3.3 1076

7th Dam

TCG-KM Desire Rae-Red-ET VG-87

8th Dam

Scientific Gold Dew Rae-ET VG-88

9th thru 12th Dams

Scientific Debutante Rae-ET EX-92 GMD DOM
2-02 2x 365d 32930 4.4 1440 3.4 1132

• All-American 4-Yr-Old Cow 2005

Scientific Jubilant Rae-ET EX-90 DOM RC
5-11 2x 365d 38880 4.1 1608 3.6 1403

Life: 1394d 117590 4.0 4707 3.6 4242

C Hanoverhill Tony Rae EX-96 3E GMD DOM

6-11 2x 365d 40220 4.1 1661 3.3 1331

Life: 2247d 166396 4.1 6904 3.4 5612

Next four dams Excellent including EX-97 Roxy!

Make A Deal At The Beach Online IVF Session Sale



TERRA-LINDA DOC 794-ET EX-90
2ND DAM OF DONOR LOT 22

Lot 22

SNAKE RIVER DAIRIES LLC
MELBA, ID
208-941-6144

• Made 11 embryos on last procedure!

Kings-Ransom Dynasty-ET

840 3224437469 A2A2 BB
PTA +863M +105F +48P 82R 12/24
PTA +4.0PL 2.78SCS -.3DPR 2.3%DCE
PTA +2.74T +2.24UDC +1.04FLC 81R 12/24
GTPI +3012G

Terra-Linda Hancok 9401-ET

840 3215528891 Very Good-86 VG-MS *A2A2
GTPI +2702 +1514M +59F +43P 83R 12/24
PTA +3.81T +2.85UDC +2.35FLC 2.86SCS

IVF SESSION FROM:

TERRA-LINDA DYNASTY DEVA-ET

840 3280191246 *TP *TC *A2A2 *BB
GTPI +2950 PTA +1004M +84F +44P 79R 12/24
PTA +711NM +.17%F +.05%P
PTA +4.2PL 2.69SCS -.7DPR 2.2%DCE
PTA +3.36T +2.71UDC +1.64FLC 78R 12/24
PTA +182FE +0.2FI 2.3%SCE

Siemers Rengd Parfect-ET

840 3200124761 GM 12/23 A2A2 BB
PTA +1431M +100F +67P 99R 12/24
PTA +2.37T +2.13UDC +2.16FLC GTPI +3064G

Kings-Ransom Lcgy Dakota-ET

840 3205234917 Excellent-90
3-01 3x 365d 37700 5.0 1893 3.5 1313
2-00 3x 335d 27170 4.6 1259 3.5 961

Siemers Doc Hancok

840 3144882821 *TY *TV A2A2
PTA +1282M +50F +42P 99R 12/24
PTA +3.56T +3.34UDC +2.43FLC GTPI +2741G

Terra-Linda Doc 794-ET

840 3203098728 Excellent-90 VEVVE @ 4-11
2-05 3x 365d 34140 3.6 1217 3.3 1143
4-08 3x 296d 31810 4.1 1318 3.2 1019

• 12 Sons in All!

3rd Dam

Trifecta K Connie-ET VG-85 VG-MS

4th Dam

Triplecrown Kingboy 6-ET VG-86

3-02 2x 359d 32780 3.7 1213 3.2 1060

5th Dam

Triplecrown Ssire Darla-ET VG-87

2-00 3x 365d 32400 4.4 1433 3.3 1076

6th Dam

TCG-KM Desire Rae-Red-ET VG-87

7th Dam

Scientific Gold Dew Rae-ET VG-88

8th Dam

Scientific Debutante Rae-ET EX-92 GMD DOM

2-02 2x 365d 32930 4.4 1440 3.4 1132

• All-American 4-Yr-Old Cow 2005

9th thru 11th Dams

Scientific Jubilant Rae-ET EX-90 DOM RC

5-11 2x 365d 38880 4.1 1608 3.6 1403

Life: 1394d 117590 4.0 4707 3.6 4242

C Hanoverhill Tony Rae EX-96 3E GMD DOM

6-11 2x 365d 40220 4.1 1661 3.3 1331

Life: 2247d 166396 4.1 6904 3.4 5612

C Hanoverhill TT Roxette-ET EX-94 2E GMD

Life: 2104d 164789 4.1 6760 3.1 3587

NEXT THREE DAMS EX INCLUDING ROXY EX-97!

Make A Deal At The Beach Online IVF Session Sale



**AIJA CHOICE BABY-ET VG-85
DONOR LOT 23**

Lot 23

**BABY SYNDICATE
GARRISON, UT
435-209-0002**

• Averaged over 20 embryos per flush in last lactation!

Siemers Fitters Choice-ET

840 3204593881 A2A2 *TY *TV
PTA +472M +20F +24P 95R 12/24
PTA +92NM +.01%F +.03%P 84%US
PTA +.1PL 2.986SCS -2.7DPR 2.7%DCE
PTA +3.54T +2.77UDC +1.71FLC 94R 12/24
GTPI +2429G

AIJA King-Doc Wichita-ET

CAN 13053962 EX-90-5YR-CAN EX-92-MS
5-02 2x 365d 43029 3.9 1669 3.4 1477
3-08 2x 365d 36532 4.1 1488 3.5 1290
Life: 4 Lacs 128312 4.0 5192 3.6 4564

IVF SESSION FROM:

AIJA CHOICE BABY-ET

840 3231000226 Very Good-85 VG-MS @ 2-05
GTPI +2655 PTA +748M +36F +41P 83R 12/24
PTA +366NM +.03%F +.07%P
PTA +1.9PL 2.95SCS -1.2DPR 2.6%DCE
PTA +3.68T +3.32UDC +2.00FLC 83R 12/24
2-02 2x 365d 24280 3.9 953 3.6 880

OH-River-Syc Crushabull-ET

840 3135145001 *TY
PTA +408M -20F +7P 99R 12/24
PTA +3.24T +2.66UDC +.80FLC GTPI +2110G

Siemers Doc Hanan 28618-ET

840 3144883130
1-11 3x 264d 24230 4.1 994 3.2 773

Woodcrest King Doc

840 3132417775 Excellent-90 GM 12/21 *TY *TV
PTA +1621M +66F +56P 99R 12/24
PTA +3.14 +2.02UDC +1.85FLC GTPI +2767G

Westcoast Comand Wisconsin 3788-ET

CAN 12371484 VG-86-2YR-CAN VG-87-MS 3*
2-00 2x 300d 24996 4.3 1085 3.6 895

3rd Dam

View-Home Drman Wsconsin-ET VG-88-CAN 8*
2-02 2x 365d 27070 4.3 1151 3.8 1014

4th Dam

Pine-Tree 2149Robst 4846-ET VG-86 DOM 3*
2-04 3x 365d 32000 4.8 1520 3.4 1096

5th Dam

Pine-Tree Zenith Sheen VG-87 VG-MS DOM
1-11 3x 305d 24500 3.9 959 3.2 786

6th Dam

Pine-Tree Martha Sheen-ET VG-85 VG-MS
1-11 3x 365d 31210 4.2 1305 3.1 968

7th Dam

Wesswood-HC Rudy Missy-ET EX-92 3E DOM
4-11 3x 365d 40880 4.1 1665 3.2 1308
Life: 1262d 119610 4.1 4885 3.2 3804

8th Dam

Wesswood Elton Mimi EX-90 GMD DOM
3-05 2x 365d 35380 3.3 1160 3.2 1121

9th Dam

Wesswood Mandingo Ivy VG-87 VEEV
6-05 2x 365d 36330 3.6 1305 3.0 1087
Life: 1835d 144060 3.4 4933 3.1 4412

Next two dams VG-87!

Make A Deal At The Beach Online IVF Session Sale



**AIJA CHOICE BABY-ET VG-85
DAM OF DONOR LOT 24**



**AIJA KING-DOC WICHITA EX-90-CAN
2ND DAM OF DONOR LOT 24**

Lot 24

MIDWAY DAIRY
CLOVERDALE, OR
503-392-3012

• Made 14 embryos on first procedure!

Siemers Wolf Hulu 37006-ET

840 3245702863 *RC *TP *TY *TV
PTA +989M +51F +50P 82R 12/24
PTA +3.2PL 2.79SCS +.0DPR 2.2%DCE
PTA +3.45T +2.91UDC +1.93FLC 80R 12/24
GTPI +2849G

Aija Choice Baby-ET

840 3231000226 Very Good-85 VG-MS @ 2-05
GTPI +2655 PTA +748M +36F +41P 83R 12/24
PTA +3.68T +3.32UDC +2.00FLC 83R 12/24
2-02 2x 365d 24280 3.9 953 3.6 880

IVF SESSION FROM:

MS HULU BESS-ET

840 3285242015 *A2A2 *BB
GTPI +2816 PTA +460M +59F +41P 79R 12/24
PTA +519NM +.16%F +.10%P
PTA +2.6PL 2.86SCS -.2DPR 2.1%DCE
PTA +3.81T +3.08UDC +2.09FLC 78R 12/24
PTA +140FE +0.0FI 2.6%SCE

Aija Wolfgang

CAN 13494527 *RC *PC *A2A2
PTA +1188M +28F +34P 91R 12/24
PTA +2.63T +2.65UDC +1.41FLC GTPI +2542G

Siemers Lstr Hanan 33317-ET

840 3212996392 Excellent-91
3-03 2x 305d 35460 3.9 1371 3.5 1238
2-03 2x 281d 28180 4.3 1202 3.8 1075

Siemers Fitters Choice-ET

840 3204593881 *TY *TV *A2A2
PTA +472M +20F +24P 95R 12/24
PTA +3.54T +2.77UDC +1.71FLC GTPI +2362G

AIJA King-Doc Wichita-ET

CAN 13053962 EX-90-5YR-CAN EX-92-MS
5-02 2x 365d 43029 3.9 1669 3.4 1477
3-08 2x 365d 36532 4.1 1488 3.5 1290
Life: 4 Lacs 128312 4.0 5192 3.6 4564

3rd Dam

Westcoast Comand Wisconsin 3788-ET VG-86 3*
2-00 2x 300d 24996 4.3 1085 3.6 895

4th Dam

View-Home Drman Wisconsin-ET VG-88-CAN 8*
2-02 2x 365d 27070 4.3 1151 3.8 1014

5th Dam

Pine-Tree 2149Robst 4846-ET VG-86 DOM 3*
2-04 3x 365d 32000 4.8 1520 3.4 1096

6th Dam

Pine-Tree Zenith Sheen VG-87 VG-MS DOM
1-11 3x 305d 24500 3.9 959 3.2 786

7th Dam

Pine-Tree Martha Sheen-ET VG-85 VG-MS
1-11 3x 365d 31210 4.2 1305 3.1 968

8th Dam

Wesswood-HC Rudy Missy-ET EX-92 3E DOM
4-11 3x 365d 40880 4.1 1665 3.2 1308
Life: 1262d 119610 4.1 4885 3.2 3804

9th Dam

Wesswood Elton Mimi EX-90 GMD DOM
3-05 2x 365d 35380 3.3 1160 3.2 1121

10th Dam

Wesswood Mandingo Ivy VG-87 VEEV
6-05 2x 365d 36330 3.6 1305 3.0 1087
Life: 1835d 144060 3.4 4933 3.1 4412
Next two dams VG-87!

Make A Deal At The Beach Online IVF Session Sale



ESKDALE POLLED QUEEN-ET
DONOR LOT 25



AIJA CHOICE BABY-ET VG-85
DAM OF DONOR LOT 25

Lot 25

PATE FAMILY INVESTMENTS
GIG HARBOR, WA

• Made 12 embryos on last procedure!

Eskdale Lustrous PP

840 3214540632 *PP *TR *A2A2 *BB
PTA +865M +71F +38P 87R 12/24
PTA +.5PL 2.95SCS -2.1DPR 2.1%DCE
PTA +3.12T +2.49UDC +1.74FLC 85R 12/24
GTPI +2710G

Aija Choice Baby-ET

840 3231000226 Very Good-85 VG-MS @ 2-05
GTPI +2655 PTA +748M +36F +41P 83R 12/24
PTA +3.68T +3.32UDC +2.00FLC 83R 12/24
2-02 2x 365d 24280 3.9 953 3.6 880

IVF SESSION FROM:

ESKDALE POLLED QUEEN P-ET

840 3266231905 *PO *A2A2 *BB
GTPI +2760 PTA +1032M +65F +49P 80R 12/24
PTA +491NM +.10%F +.06%P
PTA +.8PL 2.98SCS -2.6DPR 2.3%DCE
PTA +3.83T +3.10UDC +1.86FLC 79R 12/24
PTA +171FE -1.8FI 2.4%SCE

Cherry-Lily Zip Luster-P-ET

840 3138843085 *PC *TC *TY *TV
PTA +1690M +81F +52P 99R 12/24
PTA +2.54T +2.05UDC +1.73FLC GTPI +2898G

Eskdale Splendid Almah

840 3139120139 Excellent-91 EEEEE
3-10 2x 365d 35270 4.9 1722 3.8 1331
5-02 2x 365d 35570 4.6 1633 3.8 1351

Siemers Fitters Choice-ET

840 3204593881 *TY *TV *A2A2
PTA +472M +20F +24P 95R 12/24
PTA +3.54T +2.77UDC +1.71FLC GTPI +2362G

AIJA King-Doc Wichita-ET

CAN 13053962 EX-90-5YR-CAN EX-92-MS
5-02 2x 365d 43029 3.9 1669 3.4 1477
3-08 2x 365d 36532 4.1 1488 3.5 1290
Life: 4 Lacs 128312 4.0 5192 3.6 4564

3rd Dam

Westcoast Comand Wisconsin 3788-ET VG-86 3*
2-00 2x 300d 24996 4.3 1085 3.6 895

4th Dam

View-Home Drman Wisconsin-ET VG-88-CAN 8*
2-02 2x 365d 27070 4.3 1151 3.8 1014

5th Dam

Pine-Tree 2149Robst 4846-ET VG-86 DOM 3*
2-04 3x 365d 32000 4.8 1520 3.4 1096

6th Dam

Pine-Tree Zenith Sheen VG-87 VG-MS DOM
1-11 3x 305d 24500 3.9 959 3.2 786

7th Dam

Pine-Tree Martha Sheen-ET VG-85 VG-MS
1-11 3x 365d 31210 4.2 1305 3.1 968

8th Dam

Wesswood-HC Rudy Missy-ET EX-92 3E DOM
4-11 3x 365d 40880 4.1 1665 3.2 1308
Life: 1262d 119610 4.1 4885 3.2 3804

9th Dam

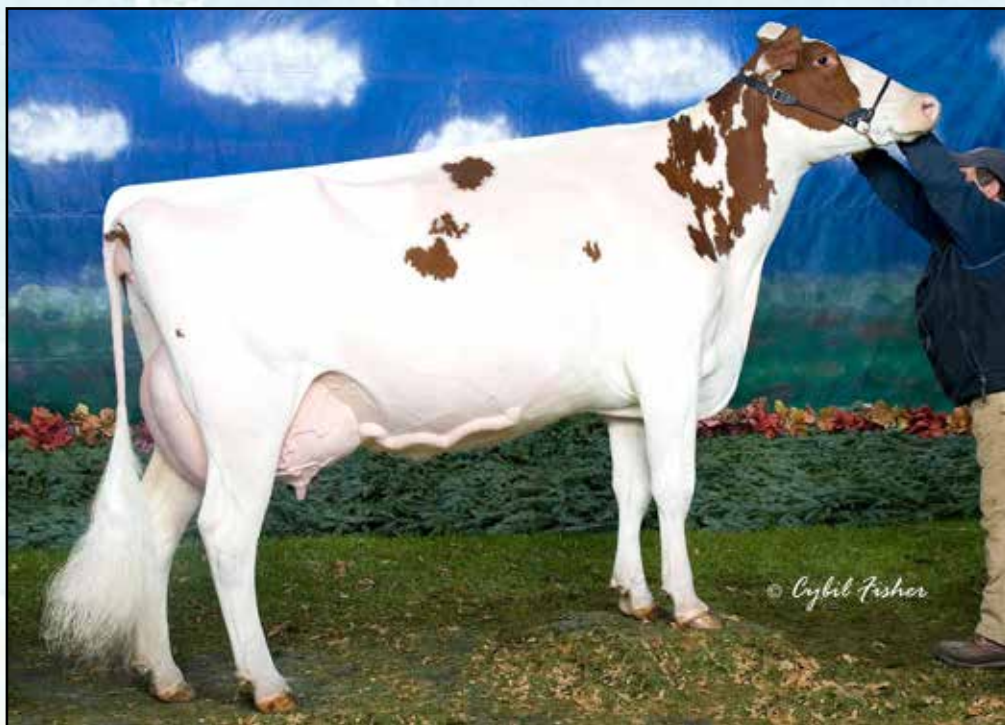
Wesswood Elton Mimi EX-90 GMD DOM
3-05 2x 365d 35380 3.3 1160 3.2 1121

10th Dam

Wesswood Mandingo Ivy VG-87 VEEVV
6-05 2x 365d 36330 3.6 1305 3.0 1087
Life: 1835d 144060 3.4 4933 3.1 4412

Next two dams VG-87!

Make A Deal At The Beach Online IVF Session Sale



RICHESSA STREAM RED MARKER-RED EX-91
7TH DAM OF LOT 26

Nominated All-American R&W 4-Year-Old 2006

Lot 26

PATE FAMILY INVESTMENTS
GIG HARBOR, WA

• *Made 11 embryos on last two procedures!*

StGen RC Redlea-ET

840 3213134224 *RC *TC *TY *TV
 PTA +1708M +117F +73P 82R 12/24
 PTA +5.0PL 2.83SCS -.5DPR 2.5%DCE
 PTA +1.62T +1.48UDC +.74FLC 81R 12/24
 GTPI +3131G

E-Lane Rubels 1099-Red-ET

840 3230381186 Good Plus-83 @ 2-09
 GTPI +2690 +1393M +57F +46P 83R 12/24
 PTA +5.2PL 2.57SCS -.24DPR 3.1%DCE
 PTA +2.11T +1.27UDC +1.06FLC 85R 12/24
 2-00 2x 303d 23700 4.5 1074 3.7 887

IVF SESSION FROM:

E-LANE REDLEA 1252 LISA-ET

840 3274459868 *RC
 GTPI +2945 PTA +1838M +81F +65P 79R 12/24
 PTA +941NM +.04%F +.03%P
 PTA +5.5PL 2.75SCS -.9DPR 2.8%DCE
 PTA +2.08T +1.49UDC +1.01FLC 77R 12/24
 PTA +253FE -0.1FI 2.3%SCE

• *Son in AI*

Genosource Captain-ET

840 3147118734 GM 12/23 *TC *TY *TV
 PTA +2542M +156F +91P 99R 12/24
 PTA +1.181 +1.65UDC +.10FLC GTPI +3336

Fairmont Salvatore Doris-ET

840 3146184436 Very Good-85 VG-MS @ 2-05
 4-08 3x 365d 41100 4.1 1689 3.6 1486
 5-11 3x 365d 38980 4.6 1783 3.7 1437

Hoogerhorst DG OH Rubels-Red

NLD 67950401 *TY *TV A1A2 BB
 PTA +1203M +67F +52P 98R 12/24
 PTA +2.56T +1.93UDC +1.45FLC GTPI +2755G

E-Lane Sal Layna-Red-ET

840 3140887616 Very Good-85 VG-MS @ 6-03
 3-04 2x 365d 32420 4.4 1434 3.7 1213
 4-11 2x 311d 23570 4.6 1079 3.8 897
 Life: 1446d 105150 4.5 4769 3.8 3994

3rd Dam

E-Lane Symion Layla-ET VG-88 VVVVV
 5-06 2x 365d 27310 5.6 1525 4.0 1104

4th Dam

E-Lane Doorman Lucky-ET EX-90 EEEEE *RC
 3-01 2x 305d 23840 5.2 1246 3.8 907

5th Dam

New-Trad Lady Luck-ET EX-93 EEEEE 3E *RC
 8-06 2x 365d 32560 4.8 1569 3.5 1126
 Life: 2407d 194090 4.4 8636 3.6 6928

6th Dam

Wide-Open Lady In-Red-ET VG-89
 6-07 2x 365d 25190 4.1 1034 3.4 844

7th Dam

Richessa Stream Red Marker-Red EX-91
 7-09 2x 305d 28720 4.1 1179 3.0 851
 • *Nom All-American R&W 4-Year-Old 2006*

8th thru 11th Dams

Richessa Stopoil Astre VG-87-CAN
 5-01 2x 365d 26325 3.0 800 3.2 842
Goloise Stora Jubilant VG-86-CAN 22*
 8-00 2x 305d 28810 3.5 1014 3.4 985
 Life: 5 Lacs 148270 3.9 5849 3.5 5165
Goloise Suby Starbuck VG-88-CAN 3*
 5-01 2x 365d 25611 3.6 930 3.4 864
 Life: 7 Lacs 141116 3.8 5366 3.5 4952
Bertelle Superbe Valiant ET VG-85-CAN 1*

Make A Deal At The Beach Online IVF Session Sale



TERRA-LINDA GAMEDY 11292-ET GP-83
DAM OF DONOR LOT 27

Lot 27

TERRA LINDA DAIRY
TULARE, CA
559-358-5345

• Averages 8 embryos per flush!

Wilra Gameday Kahn-ET

840 3231304539 *TC*
PTA +1796M +127F +75P 82R 12/24
PTA +5.2PL 2.70SCS -2.2DPR 2.9%DCE
PTA +1.52T +1.78UDC -.33FLC 81R 12/24
GTPI +3150G

Terra-Linda Gamedy 11292-ET

840 3236454992 Good Plus-83
GTPI +3089 +1809M +117F +65P 83R 12/24
PTA +1.61T +1.62UDC +.91FLC
2-01 3x 305d 30850 3.7 1147 3.2 977

IVF SESSION FROM:

TERRA-LINDA KAHN 9801-ET

840 3262456060 Born: April 4, 2024
GTPI +3092 PTA +2332M +117F +84P 79R 12/24
PTA +1096NM +.10%F +.04%P
PTA +4.5PL 2.87SCS -3.4DPR 2.3%DCE
PTA +2.06T +1.58UDC +.30FLC 78R 12/24

RMD-Dotterer SSI Gameday-ET

840 3205704153 GM 12/23 *TC*TY
PTA +1400M +130F +65P 99R 12/24
PTA +1.98T +2.36UDC +.14FLC GTPI +3182G

Wilra Lionel 1910-ET

840 3201829410 Excellent-90

RMD-Dotterer SSI Gameday-ET

840 3205704153 GM 12/23 *TC*TY
PTA +1400M +130F +65P 99R 12/24
PTA +1.98T +2.36UDC +.14FLC GTPI +3182G

Terra-Linda Acura 10688-ET

840 3204988940
GTPI +2801 +1945M +91F +55P 83R 12/24
PTA +.97T +.66UDC +1.41FLC

3rd Dam

Genosource Rubicon 9010-ET VG-85 DOM
2-06 2x 365d 33200 4.5 1480 3.7 1212

4th Dam

Peak Marq Leaf 994-ET VG-86 VG-MS
3-00 2x 330d 29690 3.7 1105 3.4 1000

5th Dam

Bryhill Ransom Marquise-ET GP-83 DOM 1*
2-02 2x 365d 27990 4.6 1278 3.6 995

6th Dam

Sully Robust 720-ET GP-83-2Y-CAN 1*
2-01 3x 365d 33360 4.0 1325 3.4 1140

7th Dam

Sully Planet Manitoba-ET VG-85-CAN DOM 17*
4-01 3x 365d 43669 3.6 1565 3.2 1402

7th Dam

Sully Shottle May-Tw EX-91 2E DOM
6-07 3x 365d 39960 3.9 1555 3.3 1302

9th thru 12th Dams

Ms Sully Oman Muetze-ET EX-90
3-08 2x 330d 32850 3.8 1264 3.3 1089

Johnan Marshall Mint VG-85 VG-MS
2-02 2x 365d 31030 3.1 961 3.0 941

Poly-Kow Durham Mincy-ET VG-88
5-08 2x 365d 40100 3.0 1222 3.1 1244

Poly-Kow Rudolph Mink-ET VG-86 GMD DOM
2-00 2x 365d 29290 3.6 1054 3.4 987

NEXT FIVE DAMS VERY GOOD!

Make A Deal At The Beach Online IVF Session Sale



PINE-TREE 7831 LION 598-ET VG-86
2ND DAM OF DONOR LOT 28

Lot 28

TERRA LINDA DAIRY
TULARE, CA
559-358-5345

• Averages 4 embryos per flush!

Ladys-Manor O Tamborine-ET

840 3238997218 *TY *A1A2 *BB
PTA +1773M +95F +73P 82R 12/24
PTA +5.0PL 2.93SCS +.6DPR 1.5%DCE
PTA +1.42T +1.54UDC +.53FLC 81R 12/24
GTPI +2986G

Danhof Monteverdi 2015-ET

840 3248971425 Good-79 @ 2-06 *TC
GTPI +3038 PTA +2184M +127F +77P 83R 12/24
PTA +1.19T +1.19UDC -.36FLC +332FE

IVF SESSION FROM:

TERRA-LINDA TAMBORINE 11006-ET

840 3251850133 Born: March 8, 2024
GTPI +3118 PTA +2151M +108F +75P 79R 12/24
PTA +1066NM +.09%F +.03%P
PTA +3.8PL 2.91SCS -.04DPR 1.9%DCE
PTA +1.87T +1.68UDC +.52FLC 78R 12/24

Ladys-Manor Outcome-ET

840 3200270290 *MW *TC *TY
PTA +691M +100F +50P 98R 12/24
PTA +1.27T +1.83UDC +.17FLC GTPI +2986G

Ladys-Manor Alphabt Tuba-ET

840 3205767119 Very Good-87 DOM
3-10 2x 365d 39110 4.7 1827 3.6 1411
2-05 2x 365d 30730 4.4 1341 3.4 1055

Progenesis Monteverdi-ET

CAN 13712919 GM 12/24 *TC *TY *TV
PTA +1590M +116F +72P 97R 12/24
PTA +.82T +1.11UDC -.59FLC GTPI +3038G

Pine-Tree 7831 Lion 598-ET

840 3208798889 Very Good-86 VG-MS @ 3-00
GTPI +3030 PTA +2681M +102F +86P +1.56T
3-11 3x 305d 43020 4.1 1757 3.4 1457
2-01 3x 365d 37650 4.4 1641 3.3 1238

3rd Dam

Pine-Tree 5976 Prop 7831-ET GP-80
3-07 2x 307d 28130 5.3 1482 4.0 1112

4th Dam

Sandy-Valley No Limit-ET VG-85
2-01 2x 365d 26442 5.0 1373 3.6 984

5th Dam

Sandy-Valley SS Psych-ET
2-01 2x 365d 30680 3.7 1146 3.4 1054

6th Dam

Pine-Tree Monica Planeta-ET VG-86 GMD DOM
2-01 2x 365d 30679 3.7 1146 3.4 1054

7th Dam

Pine-Tree Monica Suela-ET VG-87 DOM
1-11 3x 365d 33056 3.5 1111 3.3 1058

8th Dam

Pine-Tree Missy Monica-ET VG-85 GMD DOM
4-11 3x 305d 36010 3.5 1248 2.9 1034

9th Dam

Wesswood-HC Rudy Missy-ET EX-92 3E GMD
4-11 3x 365d 40880 4.1 1665 3.2 1308
Life: 1262d 119610 4.1 4885 3.2 3804

• Global Cow of the Year 2014

10th Dam

Wesswood Elton Mimi EX-90 GMD DOM
3-05 2x 365d 35380 3.3 1160 3.2 1121
NEXT THREE DAMS VG & EX!

Make A Deal At The Beach Online IVF Session Sale



TERRA-CALROY ZAZZLE ZITA-ET VG-86
2ND DAM OF DONOR LOT 29

Lot 29

TERRA LINDA DAIRY
TULARE, CA
559-358-5345

• Averages 8 embryos per flush!

Ladys-Manor O Tamborine-ET

840 3238997218 *TY *A1A2 *BB
PTA +1773M +95F +73P 82R 12/24
PTA +5.0PL 2.93SCS +.6DPR 1.5%DCE
PTA +1.42T +1.54UDC +.53FLC 81R 12/24
GTPI +2986G

Terra-Calroy Kvlow 11550-ET

840 3249796061
GTPI +3050 PTA +1920M +124F +86P 80R 12/24
PTA +1114NM +.18%F +.09%P
PTA +3.1PL 2.95SCS -2.5DPR 2.3%DCE
PTA +1.13T +1.08UDC -.76FLC +367FE

IVF SESSION FROM:

TERRA-LINDA TAMBORINE 11008-ET

840 3283085611 Born: April, 2024
GTPI +3210 PTA +1840M +128F +82P 79R 12/24
PTA +1229NM +.21%F +.09%P
PTA +4.6PL 2.96SCS -0.4DPR 1.9%DCE
PTA +1.43T +1.38UDC -.12FLC 78R 12/24

Ladys-Manor Outcome-ET

840 3200270290 *MW *TC *TY
PTA +691M +100F +50P 98R 12/24
PTA +1.27T +1.83UDC +.17FLC GTPI +2986G

Ladys-Manor Alphabt Tuba-ET

840 3205767119 Very Good-87 DOM
3-10 2x 365d 39110 4.7 1827 3.6 1411
2-05 2x 365d 30730 4.4 1341 3.4 1055

Peak AltaKevlow-ET

840 3212150639 *TC *TY *TV
PTA +1385M +149F +76P 90R 12/24
PTA +.49T +.55UDC -1.05FLC GTPI +3031G

Terra-Calroy Zazzle Zita-ET

840 3220410036 Very Good-86 VVVVV @ 2-08
2-02 3x 223d 24090 4.0 975 3.3 786

3rd Dam

Terra-Calroy Thiti 10385-ET GP-82
3-08 2x 358d 26270 4.4 1154 3.9 1024

4th Dam

Peak Jsette Eldrdo 8721-ET VG-85 VG-MS
3-01 2x 365d 32810 3.9 1269 3.4 1126

5th Dam

T-Spruce Josette-ET VG-87 DOM
3-10 2x 338d 28900 3.9 1135 3.0 853

6th Dam

EDG Riley Galaxy 2364-ET VG-85 GMD DOM
3-07 2x 305d 47690 3.5 1678 3.3 1572

7th thru 12th Dams

Co-Vista Robust Riley EX-90 DOM
2-01 2x 305d 27530 3.0 1069 3.5 972
Ms Pride Gold Invite 761-ET VG-89-CAN
3-08 2x 365d 35953 3.8 1376 3.4 1224

• Nom All-Canadian 4 Year Old 2013

Regancrest Shottle Ili-ET VG-88 DOM
2-01 2x 365d 33250 3.5 1158 3.2 1069

Regancrest Ito Isa VG-86 GMD
2-00 2x 365d 31510 3.6 1143 3.5 1110

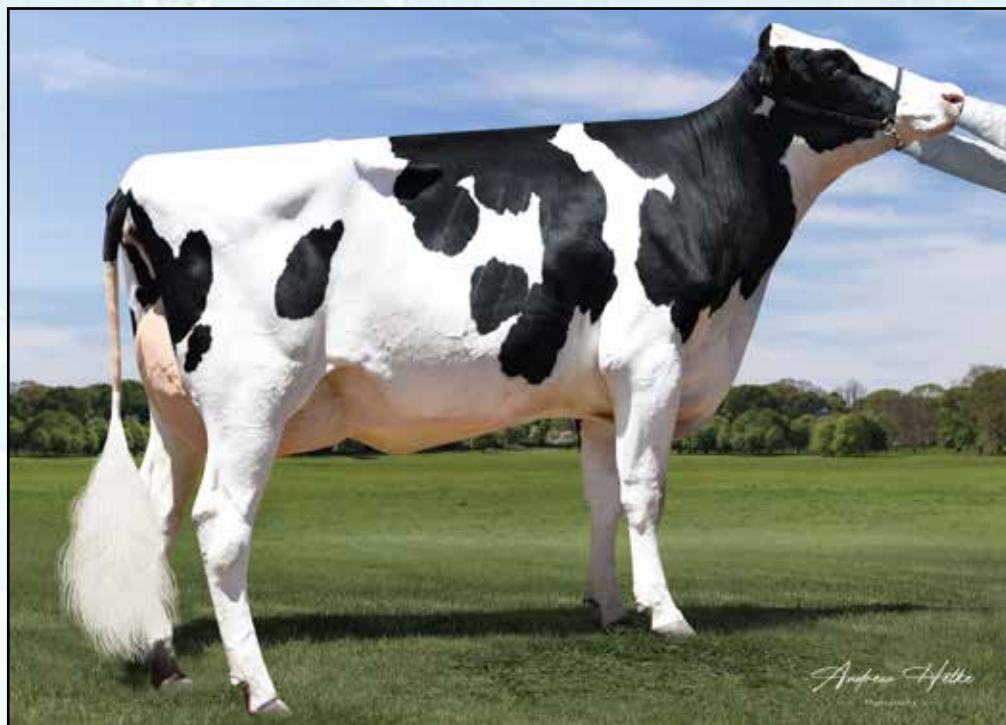
Regancrest Emory Dorissa-ET VG-86 GMD DOM
4-05 2x 365d 40890 3.8 1545 3.4 1390

Snow-N Denises Dellia EX-95 2E GMD DOM
7-06 2x 365d 35610 4.0 1431 3.1 1103

Life: 2558d 180240 3.9 7108 3.4 6065

• Global Cow of the Year 2005

Make A Deal At The Beach Online IVF Session Sale



DANHOF RENEGADE DORA-ET EX-90
3RD DAM OF DONOR LOT 30

Lot 30

TERRA LINDA DAIRY
TULARE, CA
559-358-5345

• Averages 3 embryos per flush!

Mr T-Spruce Frazz Lionel-ET

840 3142490309 *TC *TY *A2A2
PTA +3187M +146F +95P 99R 12/24
PTA +2.4PL 2.83SCS -4.4DPR 2.1%DCE
PTA +.76T +.78UDC -.84FLC 99R 12/24
GTPI +3108G

Terra-Linda Fantismo 114-ET

840 3243358226
GTPI +3047 PTA +2444M +97F +70P 82R 12/24
PTA +1086NM +.01%F -.03%P
PTA +5.2PL 2.83SCS -0.9DPR 2.0%DCE
PTA +1.34T +1.90UDC +.34FLC

IVF SESSION FROM:

TERRA-LINDA LIONEL 11001-ET

840 3245444303 Born: February 3, 2024
GTPI +3138 PTA +3016M +110F +85P 81R 12/24
PTA +1209NM -.02%F -.04%P
PTA +5.4PL 2.69SCS -1.2DPR 2.3%DCE
PTA +.98T +1.23UDC -.34FLC 79R 12/24

Melarry Josuper Frazzled-ET

74261651 *TM *TC *TY
PTA +1380M +59F +36P 99R 12/24
PTA -.14T +.71UDC -1.19FLC GTPI +2521G

No-Fla Montross 42446-ET

840 3132344381
4-03 3x 349d 20940 4.0 837 3.0 624

Peak Fantismo-ET

8403215425329 *TC *TY *TV
PTA +2600M +103F +73P 92R 12/24
PTA +.27T +1.22UDC -.28FLC GTPI +2908G

Terra-Linda Zazzle Dixie-ET

840 321556883 Excellent-90 EX-MS @ 4-01
GTPI +3005 PTA +2135M +84F +69P +1.79T
2-02 2x 365d 40130 4.1 1655 3.4 1354

3rd Dam

Danhof Renegade Dora-ET EX-90
3-00 3x 365d 43970 4.3 1883 3.2 1398

4th Dam

Vanden-Berge Frazled 826-ET EX-90 VVEVE
2-01 3x 365d 36950 4.4 1623 3.3 1223

5th Dam

Vanden-Berge D Sshot 404-ET VG-87 EX-MS
2-00 3x 335d 29410 3.7 1100 3.3 961

6th Dam

Dias&Dias Mogul 3027 EX-90 2E DOM
6-03 2x 365d 34510 4.0 1388 3.4 1161

