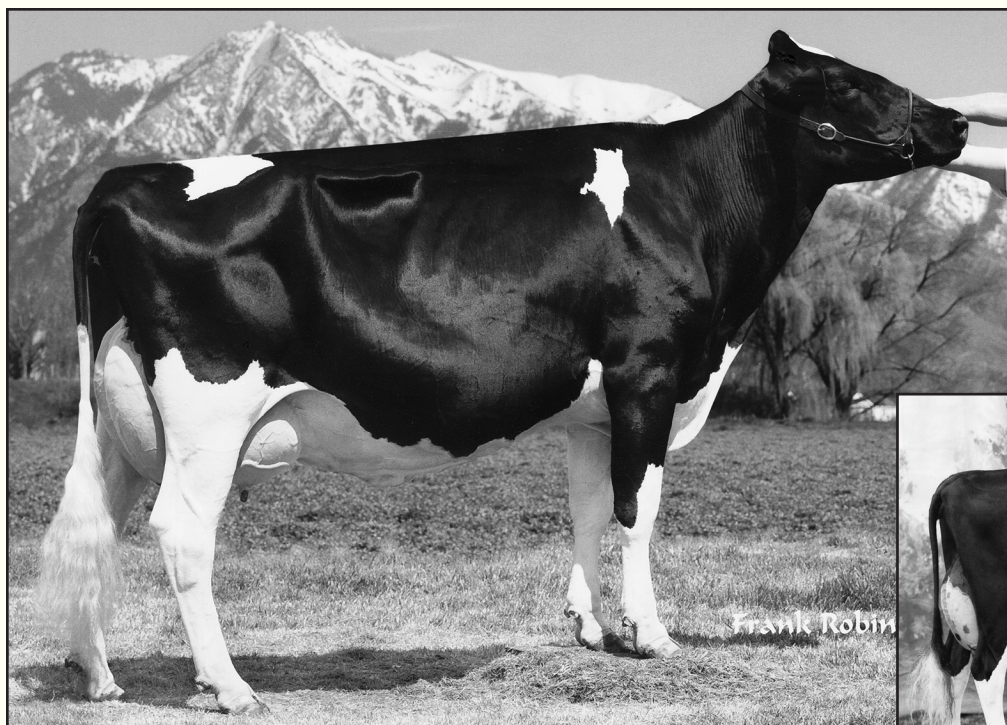


Western National Heritage Sale 2020



WILONNA ENCORE ASHLEY EX-94 4E
4TH DAM OF LOT 45



WILONNA SKYBUCK GAY EX-94 5E
5TH DAM OF LOT 45

45

WILLIAM STOLTZFUS
3694 N 1400 E
BUHL, ID 83316
208-420-4723

WILONNA FRIZZ ASHTON

840 3151002925 *RC
Born: July 11, 2018 Tag: 106

Due: October 18, 2020 to
Burkett-Falls Clique-Red-ET *PO #141816009

Tiger-Lily Ladd P-Red-ET

69405976 Excellent-91 *PC *CD *TY *TV
PTA -1418M -17F -14P 99R 8/20
PTA +1.32T +.85UDC +.46FLC GTPI +2063G

SRP Absolute Fantasy-Red-ET

66758640 Excellent-94 3E
6-00 2x 365d 388709 4.3 1680 3.6 1407
Life: 2253d 180810 4.4 7952 3.7 6678

Patience Showline Contender-Red

CAN 7483577 EX-95-CAN
PTA -2705M -71F -76P 99R 8/20
PTA +1.13T +2.55UDC +.57FLC TPI +1508M

Wilonna Iron Augusta

141230263 Excellent-90 EX-MS @ 4-09
3-03 2x 305d 19060 5.2 992 3.4 647
2-02 2x 305d 15470 5.0 780 3.5 543

Garden-State Ladd Frizz-Red

72735503 *PC *TV *TL *TD
PTA -1725M +5F -24P 91R 8/20
PTA +2.0PL 2.89SCS +1.4DPR 4.2%DCE
PTA +1.70T +1.07UDC +.75FLC 90R 8/20
GTPI +2051G

Wilonna Contender Atlanta

142539329 Excellent-90 EEEEE 2E *RC
5-04 2x 305d 19260 4.8 915 3.3 640
6-03 2x 285d 19940 4.2 844 3.3 654
4-00 2x 305d 19400 4.1 802 3.4 666
3-01 2x 290d 17280 4.2 729 3.4 590
1-11 2x 305d 14520 4.1 598 3.4 488

3rd Dam

Wilonna Advent Ashtin-TW EX-90 EEEEE *RC
3-07 2x 305d 18620 4.6 863 3.5 656

4th Dam

Wilonna Encore Ashley EX-94 EEEEE 4E
9-05 2x 365d 28810 3.9 1126 3.3 958
Life: 3178d 190340 4.0 7546 3.4 5141

5th thru 13th Dams

Wilonna Skybuck Gay EX-94 EEEEE 5E
5-01 2x 365d 26530 4.8 1265 3.6 955
Life: 3673d 206710 4.7 9720 3.5 7295

Skagvale Midnight Gay VG-85 VG-MS
9-06 2x 338d 26280 4.0 1055 3.4 903
Life: 3141d 212990 3.7 7898 3.4 7281

Skagvale Perfect Gay-2 EX-90 VEEE 2E
4-08 2x 365d 28160 3.6 1004 3.2 908
Life: 2131d 144940 3.5 5137 3.2 4698

Skagvale Proud Gay EX-91 2E
Life: 1890d 119880 3.8 4291 2.8 3490

Skagvale Telstar Gay EX-92 2E
Life: 1912d 117870 4.1 4723

Skagvale Gay Rockette EX-93 4E GMD
Life: 3636d 218810 3.6 7975

Skagvale Delightful Gay EX-90
Life: 4678d 236850 4.1 9670

Skagvale Netherland Gay EX-90 3E
Life: 12 Lact 191641 3.8 7374

Puget Sound Netherland Grace EX-93 3E
Life: 11 Lact 217546 3.5 7544