



OREGON MAIN EVENT
TAG SALE 2024

SATURDAY, DECEMBER 7, 2024



OREGON MAIN EVENT

TAG SALE

SATURDAY, DECEMBER 7, 2024 • 7:00PM PST

SALE PERSONNEL

CHRIS INGRAM
541-231-7921
Sale Chairman

MARC KOCH
503-936-7405
Sale Chairman

KARA HALE
503-812-2702

ALLEN HANSELMAN
503-580-5632

CHRIS JANSON
360-942-7471

ANDREW KING
360-981-3801

MARK YAND
FREEAGENTBULLS@GMAIL.COM

MIKE BERRY
517-282-6476

MICHAEL OLIVER
360-318-3357

IDA RUBY
503-394-2686
Sale Clerk

BILL HELIKER
360-689-1399

Plan on attending a new format for our Annual Meeting and Tag Sale, held at Scenic Valley Farms & Vineyard! Wine and beer will be available for purchase. Junior and Senior members, you won't want to miss the fellowship, tri-tip and chicken cordon bleu dinner, lots of items in the Silent Auction, farm presentations from the On-Farm Challenge competition and most of all, awesome puredbred Holstein consignments in the Tag Sale.

Sale will be done with \$100 increments until \$2500, then \$250 increments.

Please bring this catalog to the sale



© Jenny Thomas
Crystal Fisher Photography

BEATYVIEW BUCKEYE ALEXA-ET EX-92 EEEEE 3E
2ND DAM OF LOT 1



\$5,000
Min. Bid

HIGHTIDE HOLSTEINS
TILLAMOOK, OR 97141
503-842-8247

HIGHTIDE AVALANCHE ALDER-ET

145289483 99%RHA-I VG-88 @ 3-00

Born: September 13, 2021

"Will be bred prior to sale"

Dymentholm Mr App Avalache-TW

11957107C 99%RHA-I *RC *CV *TY *TL

PTA -281M -9F -8P 99R 8/24

PTA -2.8PL 2.95SCS -3.7DPR 3.2%DCE

PTA +3.55T +2.63UDC +2.03FLC 99R 8/24

GTPI +1847G

Hightide Ashlyns Adler-ET

141940656 Excellent-92 EEEEE 2E

3-10 2x 365d 28710 4.8 1389 3.7 1072

5-05 2x 365d 23950 4.9 1166 3.9 932

2-03 2x 365d 23170 4.4 1025 3.6 835

Maple-Downs-I G W Atwood-ET

8956379 Excellent-90 *TR *TP *TY *TV *TL

PTA -271M +13F -7P 99R 8/24

PTA +2.90T +1.85UDC +2.06FLC GTPI +1889G

Beatyview Buckeye Alexa-ET

64168803 Excellent-92 EEEEE 3E

3-08 2x 365d 38950 3.6 1413 3.0 1165

5-07 2x 365d 36420 3.3 1217 3.0 1096

2-03 2x 365d 33670 3.7 1256 2.8 937

Life: 1649d 132230 3.6 4727 3.0 3901

3rd Dam

Kingsmill Talent Alpine-ET EX-92 EX-MS 2E

2-04 2x 365d 25120 4.2 1058 3.0 755

5-01 2x 365d 25190 4.4 1098 2.8 716

Maternal sister to Alpine

EK-Oseeana Ambrosia-ET EX-95 EEEEE 2E GMD

• Res All-American 4-Yr-Old Cow 2007

4th Dam

Tri-Day Ashlyn-ET EX-96 EEEEE 2E GMD DOM

4-09 2x 365d 43090 4.8 2079 3.5 1503

Life: 1374d 144770 4.6 6665 3.5 5135

• All-Time All-American 4-Yr-Old Cow

• HHM All-Time All-American Sr 3-Yr-Old Cow

5th Dam

Bendy-Brook Odyssey Favorite EX-92 2E DOM

6-01 2x 337d 22670 3.4 770 3.1 706

2-02 2x 365d 18750 3.3 614 3.2 599

• Res All-American Produce of Dam 2001

6th Dam

Bendy-Brook Star Fonda VG-86 VG-MS

3-11 2x 290d 23390 3.5 826 3.1 724

Life: 1677d 108500 3.4 3725 3.2 3430



PEN-COL LEGACY BEST-ET EX-90 EX-MS
3RD DAM OF LOT 2



\$2,000
Min. Bid

FIT GENETICS
ELIZABETHTOWN, KY 42701
859-699-2998

Pen-Col 7173 Uber-ET

840003254468283 99%RHA-I *TR *TP *TC *TL
32K GTPI +3257G +979M +149F +70P 79R 12/24
PTA +1243NM +.42%F +.15%P
PTA +6.1PL 2.75SCS -1.4DPR 2.6%DCE
PTA +1.22T +1.22UDC +.52FLC 78R 12/24
PTA +342FE +0.2FI 2.3%SCE A1/A1 AA

IVF SESSION

**Buyer is purchasing rights to control the next IVF session(s). Buyer is guaranteed IVF sessions until a minimum of 8 #1 or #2 IVF embryos are produced. Embryo grades are determined at the time of transfer if fresh embryos or at time of freezing if freezing is requested by buyer. Buyer keeps all resulting embryos from these controlled IVF sessions. Buyer is responsible for all costs of the aspiration and mating sire decisions*

OCD Trooper Sheepster-ET

840003236792832 99%RHA-I *TR *TP *TE *TC *TY
PTA +1641M +140F +85P 83R 8/24
PTA +1223NM +.28%F +.12%P
PTA +5.5PL 2.93SCS -.8DPR 3.0%DCE
PTA +1.45T +1.07UDC +1.08FLC 81R 8/24

Pen-Col Gameday Bailey-ET

840003227859402 99%RHA-I VG-85 VG-MS @ 3-01
32K GTPI +3138G +593M +132F +46P 84R 12/24
PTA +1193NM +.42%F +.10%P
PTA +6.0PL 2.64SCS -.8DPR 2.6%DCE
PTA +1.42T +2.00UDC +.31FLC 84R 12/24
PTA +314FE +0.4FI 1.8%SCE A1/A1 AE

3rd-21st Dams

- Pen-Col Legacy Best-ET EX-90 EX-MS**
2-00 2x 365d 35233 3.6 1256 3.3 1150
- Pen-Col Modest Bernita-ET VG-87 VG-MS**
2-09 2x 360d 26862 4.0 1082 3.2 861
- Pen-Col Silver Bella-ET GP-82**
2-06 2x 326d 26700 4.8 1280 3.7 998
- Pen-Col SS Buffy-ET VG-85 Very Good-MS**
2-11 2x 365d 27450 4.8 1306 3.2 886
- Pen-Col Grafetti Bell-ET VG-87 VG-MS**
2-08 2x 365d 31455 4.5 1423 3.2 1030
- Vision-Gen Super Bonnie-ET VG-86 EX-MS DOM**
5-04 2x 322d 32731 4.4 1444 3.0 967
- Schultz Givenchy Blanca-ET VG-86 VG-MS**
2-03 2x 305d 21420 3.2 696 3.2 678
- Mrs Schultz BWM Blain-ET VG-88 EX-MS DOM**
2-03 2x 365d 36630 4.1 1485 3.4 1232
- Vantage-PT Addison Bonni-ET VG-85 VG-MS DOM**
- Poly-Kow Winchester Bobbi-ET EX-91 GMD DOM**
Life: 158290 3.9 6098 3.0 4808
- Banners Luke Bandit-ET VG-87 GMD DOM**
- Dixie-Lee Banner-ET VG-87 GMD-DOM**
- Prices Melwood Betsy-ET EX-91**
- Prices Valiants Bess-ET EX-91**
- Viethsons Bootpeg Bell Bess-ET EX-86**
- Holtex Elevation Bootpeg EX-90**
- Holtex Triune S Peggy EX-91**
- Holtex Sensational Peggy EX-93 GMD DOM**
- Holtex Duke Peggy VG-86**



\$2,000
Min. Bid

MCCARTY FAMILY FARMS LLC
REXFORD, KS 67753
785-465-9002

Elm-Kan-Mff Esq Maeve 87723

840003270394138 93%RHA-I *RC *TP *TC *TL
32K GTPI +3080G +2140M +94F +75P 79R 12/24
PTA +984NM +.04%F +.03%P
PTA +5.1PL 2.74SCS -.1DPR 1.5%DCE
PTA +2.08T +1.32UDC +.78FLC 79R 12/24
PTA +266FE +1.0FI 2.1%SCE A2/A2 BB

IVF SESSION

**Buyer is purchasing rights to control the next IVF session(s). Buyer is guaranteed IVF sessions until a minimum of 8 #1 or #2 IVF embryos are produced. Embryo grades are determined at the time of transfer if fresh embryos or at time of freezing if freezing is requested by buyer. Buyer keeps all resulting embryos from these controlled IVF sessions. Buyer is responsible for all costs of the aspiration and mating sire decisions*

Sandy-Valley Esquire-ET

840003209481391 99%RHA-I *TR *TP *TM *TE *TC
PTA +2338M +73F +79P 82R 8/24
PTA +6.1PL 2.61SCS +.1DPR 2.2%DCE
PTA +2.13T +1.86UDC +1.22FLC 81R 8/24
GTPI +3082G

Elm-Kan-Mff Perfect 67759

840003233875479 87%RHA-I VG-85
60K GTPI +2778G
1-10 3x 365d 31440 5.8 1832 3.6 1129



DUCKET PERFECT HALLIE-ET VG-87
PATERNAL SISTER TO 2ND DAM OF LOT 3



\$2,000
Min. Bid

COSTA-VIEW FARMS
MADERA, CA 93637
559-675-3131

Costa-View Shepser 89762-ET

840003281259251 99%RHA-I *Polled
60K GTPI +3085G +1724M +136F +80P 79R 12/24
PTA +1237NM +.26%F +.09%P
PTA +4.6PL 3.05SCS -4.1DPR 2.4%DCE
PTA +78T +1.19UDC +.99FLC 79R 12/24
PTA +397FE -2.7FI 1.8%SCE

IVF SESSION

**Buyer is purchasing rights to control the next IVF session(s). Buyer is guaranteed IVF sessions until a minimum of 8 #1 or #2 IVF embryos are produced. Embryo grades are determined at the time of transfer if fresh embryos or at time of freezing if freezing is requested by buyer. Buyer keeps all resulting embryos from these controlled IVF sessions. Buyer is responsible for all costs of the aspiration and mating sire decisions*

OCD Trooper Sheepster-ET

840003236792832 99%RHA-I *TR *TP *TE *TC *TY
PTA +1641M +140F +85P 83R 8/24
PTA +1223NM +.28%F +.12%P
PTA +5.5PL 2.93SCS -.8DPR 3.0%DCE
PTA +1.45T +1.07UDC +1.08FLC 81R 8/24

Costa-View Extra-P 83179-TW

840003249805089 Good Plus-81 @ 2-06 *PC
32K GTPI +2768G +862M +97F +51P 81R 12/24
PTA +888NM +.24%F +.51P
PTA +3.8PL 2.94SCS -3.8DPR 1.7%DCE
PTA +.99T +1.50UDC +.83FLC 84R 12/24
PTA +273FE -3.2FI 2.1%SCE A1/A2 BE

3rd & 4th Dams

Costa-View Testimony 72135 VG-88 VG-MS
4-04 3x 365d 42370 4.0 1690 3.5 1500
Life: 1120d 112500 4.1 4611 3.5 3966
Costa-View Gregarious 64606 VG-86



AIIA CHOICE BABY-ET VG-85 VG-MS @ 2-05
2ND DAM OF LOT 5



ESKDALE POLLED QUEEN-ET
DAM OF LOT 5



AIIA KING-DOC WICHITA EX-90-CAN
3RD DAM OF LOT 5



PATE FAMILY INVESTMENT

\$2,000
Min. Bid

Eskdale Polled Queen-ET

840003266231905 99%RHA-I *TR *PC *TC *TL
32K GTPI +2760G +1032M +65F +49P 80R 12/24
PTA +491NM +.10%F +.06%P
PTA +.8PL 2.98SCS -2.6DPR 2.3%DCE
PTA +3.83T +3.10UDC +1.86FLC 79R 12/24
PTA +171FE -1.8FI 2.4%SCE A2/A2 BB

IVF SESSION

**Buyer is purchasing rights to control the next IVF session(s). Buyer is guaranteed IVF sessions until a minimum of 8 #1 or #2 IVF embryos are produced. Embryo grades are determined at the time of transfer if fresh embryos or at time of freezing if freezing is requested by buyer. Buyer keeps all resulting embryos from these controlled IVF sessions. Buyer is responsible for all costs of the aspiration and mating sire decisions*

Eskdale Lustrous P

840003214540632 99%RHA-I *TR *PP *TE *TC *TY
PTA +799M +71F +35P 82R 8/24
PTA +.7PL 2.96SCS -2.0DPR 2.1%DCE
PTA +3.16T +2.41UDC +1.69FLC 81R 8/24
GTPI +2705G A2/A2

Aija Choice Baby-ET

840003231000226 99%RHA-I VG-85 VG-MS @ 2-05
32K GTPI +2655G +748M +36F +41P 83R 12/24
PTA 366NM +.03%F +.07%P
PTA +1.9PL 2.95SCS -1.2DPR 2.6%DCE
PTA +3.68T +3.32UDC +2.00FLC 83R 12/24 A2/A2

3rd-14th Dams

Aija King-Doc Wichita-ET EX-90-CAN
3-08 2x 365d 36532 4.1 1488 3.5 1290
2-01 2x 365d 31440 4.1 1301 3.7 1162
Westcoast Comand Wisconsin 3788-ET VG-86
2-00 2x 300d 24996 4.3 1085 3.6 895
View-Home Drman Wisconsin-ET VG-88-CAN 8*
2-02 2x 365d 27070 4.3 1151 3.8 1014
Pine-Tree 2149Robst 4846-ET VG-86 VG-MS DOM
2-04 3x 365d 32000 4.8 1520 3.2 1036
Pine-Tree Zenith Sheen VG-87 VG-MS DOM
1-11 3x 305d 24500 3.98 959 3.0 740
Pine-Tree Martha Sheen-ET VG-86 VG-MS DOM 1*
1-11 3x 365d 31210 4.2 1305 3.1 968
• Many Sons in AI
Pine-Tree Missy Martha-ET VG-86 DOM
3-05 3x 361d 32220 3.9 1242 3.4 1111
Wesswood-HC Rudy Missy-ET EX-92 3E GMD DOM
4-11 3x 365d 40880 4.1 1665 3.4 1385
Life: 1262d 119610 4.1 4885 3.4 4031
• 20+ Sons in AI
Wesswood Elton Mimi EX-90 EEEEE GMD DOM
3-05 2x 365d 35380 3.3 1160 3.2 1121
Wesswood Mandingo Ivy VG-87 VEEVV
6-05 2x 365d 36330 3.6 1305 3.0 1087
Life: 1835d 144060 3.4 4933 3.1 4412
Wesswood Astro Matt Esther VG-87 GMD DOM
Life: 1847d 140110 3.6 5029 3.2 4424
Wesswood Bell Claudette VG-87 GMD DOM
Life: 3634d 280980 3.6 9997 3.1 8625



VALIANT RBLS MUFLER-RED-ET VG-87 @ 2-06
DAM OF LOTS 6 & 7



SNAKERIVER & RASBERRY FUTURES

\$3,000
Min. Bid

SECOND CHOICE FEMALE

Due: June 2025
7 Pregnancies Mo-PP-Red (Female)



\$3,000
Min. Bid

SECOND CHOICE FEMALE

6 Pregnancies Unreal-Red (Female)
Due: May 2025

Mo-PP-Red-ET

541743745 *PP *TC
PTA +1099M +70F +49P 81R 8/24
PTA +4.4PL 2.60SCS -.10DPR
PTA +2.20T +1.78UDC +1.05FLC 79R 8/24
GTPI +2821G

And

Finger Ranger Unreal-Red

840003131415623 *TP *TE *TC
PTA +1079M +42F +43P 80R 8/24
PTA +4.4PL 2.96SCS +1.4DPR
PTA +2.98T +2.34UDC +.96FLC 79R 8/24
GTPI +2785G

Valiant RbIs Muffler-Red-ET

840003231000266 99%RHA-I VG-87 @ 2-06 *TC *TL
32K GTPI +2841G +1067M +61F +45P 83R 12/24
PTA +778NM +.08%F +.04%P
PTA +5.1PL 2.76SCS -.5DPR 2.1DCE
PTA +2.53T +1.91UDC +1.85FLC 83R 12/24
PTA +184FE -0.1FI 2.0%SCE A1/A2 BB

• 7 Sons in AI so far

Hoogerhorst DG OH Rubels-Red

679520401 *TE *TC *TY *TV *TL
PTA +1183M +67F +52P 98R 8/24
PTA +2.47T +1.76UDC +1.23FLC GTPI +2736G

Aprilday Luster Muffin-ET

840003207031363 99%RHA-I *RC *PP *TC *TL
19K GTPI +2658G +766M +37F +24P 85R 12/24
PTA +642NM +.03%F +.00%P
PTA +6.0PL 2.72SCS +1.7DPR 1.9%DCE
PTA +1.60T +1.20UDC +1.69FLC 82R 12/24

3rd-11th Dams

Aprilday P Margarita-Red VG-85

2-03 3x 333d 27410 4.4 1195 3.2 871

Aprilday Jax Martini-Red-ET VG-87

3-00 3x 305d 28830 4.2 1223 3.3 953

Palmyra M-O-M Manhattan-ET VG-85 VG-MS

2-04 2x 365d 32440 4.2 1377 3.3 1063

• Numerous Sons in AI • Embryos Exported

Debaugh Rdman Manhattan-ET EX-91 EX-MS*RC

3-03 2x 365d 32120 4.7 1511 3.2 1038

Life: 1619d 106830 4.5 4842 3.3 3530

• Sons in AI

Sutton Outside Mango VG-87 VG-MS DOM

2-11 2x 365d 32460 4.3 1385 3.0 978

5-10 2x 266d 24520 3.9 962 2.9 708

• Two sons in AI

Sutton Gilbert Marie EX-90 VEVVE 2E

5-06 3x 365d 41910 3.4 1411 2.8 1158

Life: 2382d 223540 3.6 8105 2.9 6308

Sutton Jolt Lil May-ET VG-87 EVEVV

6-05 2x 365d 30340 4.0 1205 3.0 907

Life: 1866d 141060 4.2 5947 3.1 4331

Windsor-Manor Del May-ET EX-90 EX-MS 3E

5-02 2x 365d 30520 4.1 1246 2.9 889

Life: 2873d 166020 4.2 7026 3.1 5193

Windsor-Manor Mandy May EX-91 VEEEE 3E

3-01 2x 365d 26020 3.8 978 3.1 810

Life: 2544d 164670 3.7 6165 3.0 4917



SKYKOMISH ALTITUDE ADORE-ET
SELLS AS LOT 8



APPLE-PTS ARAKEN-ET EX-94 EEEEE *RC
DAM OF LOT 8



\$3,000
Min. Bid

JACOB OLIVER
ZILLA, WA 98953
360-318-3357

SKYKOMISH ALTITUDE ADORE-ET

840003231483517 99%RHA-I *RC *TC *TL
Born: December 7, 2023
32K GTPI +2096G -14M +27F +6P 81R 8/24
PTA -64NM +.11%F +.03%P
PTA -.9PL 3.07SCS -3.9DPR 2.8%DCE
PTA +2.87T +2.19UDC +1.70FLC 81R 8/24
PTA +21FE -5.1FI 3.6%SCE
A2/A2 AA

Farnear Altitude-Red-ET

840003128013348 99%RHA-I *TE *TC *TY *TV *TL
PTA +281M +17F +18P 99R 8/24
PTA +.5PL 2.94SCS -3.0DPR 3.2%DCE
PTA +2.88T +2.52UDC +1.44FLC 99R 8/24
GTPI +2206G

Apple-Pts Araken-ET

840003135361135 Excellent-94 EEEEE *RC *CV *TL
3-02 2x 365d 28680 4.7 1339 3.6 1034
• 5th 4-Yr-Old Western Spring Nat'l 2021

Sonnek GC Corvette-ET

71391400 Excellent-92 EEEE *TR *TP *TY *TV
PTA -30M +2F +4P 99R 8/24
PTA +1.90T +.86UDC +1.28FLC GTPI +1927G

KHW Regiment Apple-Red-ET

135511521 Excellent-96 EEEEE 4E DOM *CV
9-01 2x 365d 36750 4.3 1582 3.3 1211
4-01 2x 365d 35754 4.1 1682 3.5 1247
7-00 2x 365d 33280 5.0 1653 3.4 1128
5-03 2x 365d 30810 5.0 1527 3.7 1154
2-02 2x 365d 28930 4.5 1297 3.4 979
10-11 2x 305d 27390 4.4 1210 3.3 900
Life: 2898d 240640 4.7 11394 3.6 8559

3rd-8th Dams

Kamps-Hollow Altitude-ET EX-95 2E DOM *RC

7-00 2x 365d 39690 4.7 1849 3.5 1385
Life: 1844d 144460 4.4 6295 3.7 5288

Clover-Mist Alisha-ET EX-93 3E GMD DOM *RC

8-07 2x 365d 36920 4.2 1553 3.4 1258
Life: 2999d 226470 4.7 10659 3.6 8149

Clover-Mist Augy Star-ET EX-94 4E DOM *RC

7-10 3x 365d 43140 5.0 2136 3.3 1421
Life: 2486d 206250 4.7 9793 3.5 7187

D-R-A August EX-96 4E DOM

8-05 2x 365d 27460 4.3 1187 3.2 871
Life: 3443d 190200 4.4 8281 3.3 4457

• Nominated All-American Aged Cow 1986
• All-Wisconsin Aged Cow 1987

D-R-A Ideal Precious Leader EX-90 2E

7-06 2x 358d 20090 3.9 787 3.4 675

D-R-A Princess Lad Leader EX-90 3E



MONUMENT DEFENDER JULIET-ET EX-93 EX-MS 2E
DAM OF LOT 9



DAVID AZEVEDO

\$1,500
Min. Bid

CHOICE OF THREE HEIFERS

Born: September 2024

Blondin Willows-Red

111633735C *PC *RC *TC
PTA +664M +4F +7P 91R 8/24
PTA +2.47T +1.64UDC +0.34FLC GTPI +2142G

And

Monument Defender Juliet-ET

74320487 Excellent-93 EX-MS 2E *TL
13K GTPI +2237G +48M +30F +2P 84R 8/23
PTA +128NM +.10%F +.00%P
PTA +.2PL 2.85SCS -1.3DPR 2.6%DCE
PTA +1.97T +1.89UDC +.94FLC 84R 8/23
PTA +43FE -1.1FI 2.0%SCE
4-09 3x 305d 32530 3.7 1197 3.4 1115
5-09 3x 305d 31230 4.4 1361 3.5 1085
3-01 3x 365d 28920 4.3 1256 3.4 989
2-02 3x 320d 24430 4.1 1011 3.4 835

Townlineacre Legendairy-ET

840003245704322 *TC *TE *TP *TR
PTA +578M +43F +28P 81R 8/24
PTA +3.39T +2.60UDC +1.29FLC GTPI +2620G

Farnear Altitude-Red-ET

840003128013348 99%RHA-I *TE *TC *TY *TV *TL
PTA +281M +17F +18P 99R 8/24
PTA +2.88T +2.52UDC +1.44FLC GTPI +2206G

S-S-I Mogul Defender-ET

840003009554569 *TR *TP *TY *TV
PTA -256M +5F +2P 99R 8/24
PTA 1.01T +1.44UDC +.71FLC GTPI +1974G

Monument Epic Julia-ET

72103055 Excellent-90
5-00 3x 365d 40730 3.9 1572 3.0 1225
3-08 3x 365d 36960 4.1 1514 3.3 1228
2-03 3x 365d 34230 4.0 1362 3.3 1114
Life: 1446d 139610 4.0 5575 3.2 4467

3rd Dam

Monument Colby Jade-ET EX-92 EX-MS 2E

6-10 3x 365d 44470 4.1 1818 3.3 1458
Life: 2170d 212530 4.1 8783 3.3 7004

4th Dam

River-Gorge Judy-ET EX-90 EX-MS DOM

2-01 3x 365d 36210 3.5 1272 3.3 1194
Life: 1278d 123650 3.5 4328 3.1 3831

5th Dam

Deronda Durham Jessie VG-88 EX-MS DOM

2-03 2x 365d 31760 3.9 1236 3.3 1055

6th Dam

Wilcoxview Lee Jamie-ET EX-91 GMD DOM

5-05 2x 365d 52350 4.1 2168 3.9 2028

7th Dam

Wilcoxview Bellwood Jasmine VG-87 GMD DOM

1-11 2x 305d 23640 3.9 917 3.3 776

8th Dam

Wilcoxview Cinder Julie EX-91 EX-MS

3-05 2x 318d 25980 3.8 979 3.2 830



\$2,500
Min. Bid

F. RAY TUBY RESIDUARY TRUST
C/O MICHELE RUBY
SCIO, OR 97374
503-394-2686

FIR-RIDGE PBJ MYRA 15291

840003274117835 99%RHA-I *TR *TP *TC*TL
Born: January 27, 2024 • Herd No. 15291
43K GTPI +2984G +906M +123F +56P 79R 12/24
PTA +961NM +.33%F +.10%P
PTA +3.2PL 2.79SCS -1.7DPR 2.7%DCE
PTA +1.27T +1.42UDC +.30FLC 78R 12/24
PTA +293FE -0.3FI 1.9%SCE A1/A2 AA

JC-Kow Gameday PBJ-ET

840003150905572 99%RHA-I *TR *TP *TC *TY
PTA +1169M +149F +66P 82R 8/24
PTA +3.6PL 2.70SCS -2.1DPR 3.2%DCE
PTA +1.96T +2.24UDC +.89FLC 80R 8/24
GTPI +3225G

Fir-Ridge Alpha Myra 13666

840003229292700 99%RHA-I GP-80 @ 2-07
32K GTPI +2634G
2-00 3x 281d 27760 4.5 1252 3.1 854

OCD Helix Alphabet-ET

840003145782119
PTA +2779M +107F +71P 99R 8/24
PTA +1.41T +1.38UDC -.32FLC GTPI +2868G

Fir-Ridge Rambo Myra 11424

840003145782119 99%RHA-I EX-91 2E
4-02 3x 365d 29380 4.3 1255 3.3 976
3-02 3x 298d 26160 4.5 1181 3.2 828
5-04 3x 317d 24630 4.4 1095 3.2 776
2-00 3x 344d 23440 3.6 835 3.5 816
Life: 1334d 104070 4.2 4393 3.3 3414

3rd-5th Dams

Fir-Ridge Shaman Myra 7521 VG-85 VG-MS

3-11 2x 365d 26410 3.9 1033 3.2 853

Fir-Ridge Golden Myra 5751 VG-85 VG-MS

3-04 3x 365d 22850 3.6 820 3.1 719

Fir-Ridge Manfred Myra 2997 VG-85 VG-MS

7-05 3x 365d 33380 3.8 1283 3.0 1012

Life: 212500 3.8 8142 3.0 6396



\$2,500
Min. Bid

MEADOWOOD DAIRY, LLC
TURNER, OR 97392
503-743-2062

MEADOWOOD DOC AMAYA

840003259994859 99%RHA-I
Born: February 6, 2023 • Herd No. 549

Due: May 10, 2025 to Morningview Choices
250HO16303

Woodcrest King Doc

3132417775 99%RHA-I *TR *TP *TE *TC *TY *TV *TL
PTA +1643M +67F +57P 99R 8/24
PTA +3.4PL 3.13SCS -1.7DPR 2.2%DCE
PTA +3.08T +2.04UDC +1.87FLC 99R 8/24
GTPI +2795G

Meadowood Flyhigh Anika

840003227951817 99%RHA-I VG-87 VG-MS
1-11 3x 365d 23610 4.1 969 3.4 813

Peak Altaflyhigh-ET

840003145229983 98%RHA-I *TR *TP *TC *TY *TV
PTA +73M +54F +28P 96R 8/24
PTA +1.60T +1.12UDC +.39FLC GTPI +2616G

Meadowood Greg Americus

840003143479499 Excellent-93 EEEEE 2E
5-03 3x 353d 35090 4.0 1401 3.4 1200
3-00 3x 365d 32600 4.1 1330 3.5 1134
4-02 3x 316d 30340 4.0 1217 3.4 1021
2-01 3x 300d 19470 4.1 793 3.4 661
Life: 1343d 118090 4.0 4767 3.4 4040

3rd-5th Dams

Meadowood Shakespeare Aflac VG-86

Meadowood Digger Annika VG-86

Meadowood Baymont Americus VG-85



\$200
Min. Bid to start

MIDWAY DAIRY
KARL & DONNA HALE
CLOVERDALE, OR 97112
503-812-2702

Blondin Legend

111239276
PTA -141M -26F -2P 94R 8/24
PTA -1.2PL 2.86SCS -3.0DPR
PTA +3.29T +2.65UDC +1.51FLC 93R 8/24
GTPI +1958G

Valiant Jagger Roxstar-ET

840003231000245 99%RHA-I VG-86 VG-MS @ 2-08
32K GTPI +2566G +663M +40F +38P 83R 8/24
PTA +327NM +.06%F +.07%P
PTA +.8PL 3.02SCS -1.9DPR 2.7%DCE
PTA +3.42T +2.86UDC +1.28FLC 84R 8/24
PTA +111FE -1.1FI 2.6%SCE A1/A2 AB

CHOOSE A PACKAGE OF EMBRYOS

SIX-#1 EMBRYOS



VALIANT JAGGER ROXSTAR-ET VG-86 VG-MS @ 2-08
DAM OF LOT 12A

Peak Jagger-ET

840003205436591 99%RHA-I *TR *TP *TE *TC *TY *TV
PTA -748M +35F +10P 97R 8/24
PTA +3.15T +2.50UDC +1.59FLC GTPI +2476G

Morningview Royl Roxette-ET

840003149587153 99%RHA-I GP-84-CAN
2-02 3x 351d 29387 3.8 1107 3.4 999

3rd-15th Dams

Morningview Mntry Mercy-ET EX-92 EX-MS
4-05 2x 365d 36660 3.8 1408 3.2 1158
Life: 1267d 106600 3.9 4135 3.3 3507
Morningview Mgl Rachel-ET VG-86 *RC
2-03 2x 365d 36550 3.9 1421 2.9 1044
Morningview Super Roxy EX-90 *RC
4-08 2x 365d 44550 3.5 1537 3.1 1369
Morningview Pronto C-Rae-ET EX-90 *RC
4-07 2x 360d 37180 4.1 1529 3.0 1115
Early-Autumn Golden Rae-ET EX-92
4-01 2x 365d 42790 4.7 2026 3.1 1332
Scientific Beauty Rae-ET EX-90 VEEVV *RC
4-03 2x 365d 33710 4.7 1595 3.7 1243
Scientific Jubilant Rae-ET EX-90 EEEVV DOM
5-11 3x 365d 38880 4.1 1607 3.6 1402
Life: 4 Lact 117589 4.0 4707 3.6 4242
C Hanoverhill Tony Rae EX-96 3E GMD DOM
6-11 3x 365d 40220 4.1 1661 3.3 1331
Life: 2247d 166396 4.1 6904 3.4 5612
• Grand Champion Western National 1993
C Hanoverhill TT Roxette-ET EX-94 2E GMD
Mil-R-Mor Roxette EX-90 EEEV GMD DOM
C Glenridge Citation Roxy EX-97 4E GMD
'Queen of the Breed'
C Norton Court Model Vee EX-90
• All-American Produce of Dam 1977 - 1979
• Grand Champion Brandon Show 1969
Norton Court Reflection Val VG-85 5*



\$200
Min. Bid to start

Golden-Oaks Master-ET

840003139216917 *TC *TP *TR
PTA +111M +12F -1P 97R 8/24
PTA -3.4PL 2.92SCS -4.3DPR
PTA +3.67T +2.88UDC +1.05FLC 97R 8/24
GTPI +1993G

Juniper-Haven Dfant Xochilt

840003133500376 Excellent-94 EEEEE 2E *RC
5-08 2x 365d 29590 3.8 1117 3.2 958
7-08 2x 305d 26170 3.6 942 3.1 820
4-02 2x 365d 24920 3.5 862 3.1 779
2-01 2x 365d 23590 3.7 881 3.5 818
Life: 1853d 120760 3.7 4494 3.3 4020
• 3rd 6-Yr-Old Western Spring Nat'l 2022
• 5th Sr 2-Yr-Old Western Fall Nat'l 2018

THREE-#1 SEXED EMBRYOS



JUNIPER-HAVEN DFANT XOCHILT EX-94 EEEEE 2E
DAM OF LOT 12B

Scientific B Defiant-ET

141123484 *RC *TP *TC *TY *TV *TL
PTA +136M -48F -11P 99R 8/24
PTA +2.67T +1.71UDC +.93FLC GTPI +1652G

Juniper-Haven Barb Roxy-Red

71541114 Very Good-87 VG-MS
3-05 2x 307d 22060 3.4 748 3.3 734
2-02 2x 365d 19850 3.7 726 3.5 695
4-06 2x 215d 17770 3.8 677 3.4 611

3rd-13th Dams

Juniper-Haven A Rose-Red-ET VG-85
7-08 2x 365d 29940 4.1 1220 3.2 961
Life: 1768d 130150 4.3 5634 3.2 4150
Married-Well Ta Reba-Red-ET EX-90
Golden-Oaks Gibs Raeann-ET EX-90
3-11 2x 365d 14084 4.1 581 3.2 456
2-03 2x 305d 12066 3.7 470 3.1 378
Scientific Beauty Rae-ET EX-90 VEEVV *RC
4-03 2x 365d 33710 4.7 1595 3.7 1243
Scientific Jubilant Rae-ET EX-90 EEEVV DOM
5-11 3x 365d 38880 4.1 1607 3.6 1402
Life: 4 Lact 117589 4.0 4707 3.6 4242
C Hanoverhill Tony Rae EX-96 3E GMD DOM
6-11 3x 365d 40220 4.1 1661 3.3 1331
Life: 2247d 166396 4.1 6904 3.4 5612
• Grand Champion Western National 1993
C Hanoverhill TT Roxette-ET EX-94 2E GMD
Life: 2104d 164789 4.1 6760 3.1 3587
Mil-R-Mor Roxette EX-90 EEEV GMD DOM
Life: 2150d 121417 4.7 5725
C Glenridge Citation Roxy EX-97 4E GMD
Life: 3620d 209784 4.5 9471
'Queen of the Breed'
C Norton Court Model Vee EX-90
Life: 4183d 218629 3.9 8581
• All-American Produce of Dam 1977 - 1979
• Grand Champion Brandon Show 1969
Norton Court Reflection Val VG-85 5*
Life: 14 Lact 249583 3.7 9295



KRESS-HILL SNOOKY-RED-ET VG-87 VVVV @ 2-05
DAM OF LOT 13

Maternal sisters to Snooky

Kress-Hill Spicy-Red-ET EX-92

- Int Champ Jr Show WI Summer Champ 2024
- Grand Champ Jr Show WI Summer Champ 2024
- 2nd Sr 3-Yr-Old Open Show WI Summer Champ 2024
- Res. All-American R&W Winter Yearling 2022
- 2nd Sr. 2-Yr-Old International Junior Show 2023
- Int. Champion WI Championship R&W Jr. Show 2023

Kress-Hill Sci-Fi-Red VG-88

- Champion B&O Cow WI Champ. R&W Jr. Show 2023
- 2nd Jr. 2-Yr-Old WI Championship R&W Show 2023
- Res. Grand Champion WI Dist. 10 Show 2023
- Jr All-American R&W Spring Yearling 2022

Kress-Hill Smoke-Red VG-87

- Unanimous Jr. All-American R&W Summer Yrlg 2021
- Res. Jr All-American Summer Jr 2-Yr-Old 2022

Kress-Hill Snooky-Red VG-87

- 2nd Milking Yearling WI Champ. R&W Show 2023

Kress-Hill Sly-Red

- Res. All-American R&W Summer Yearling 2022

Kress-Hill Sparkle-Red

- Reserve All-American R&W Fall Calf 2022

Kress-Hill Snazzy-Red-ET

- Nominated Jr. All-American Spring Calf 2023

13

\$200
Min. Bid to start

MICHAEL & JESSICA OLIVER
ZILLAH, WA 98953
360-420-9383

FIVE-#1 EMBRYOS

Siemers Wolf Hulu 37006-ET

840003245702863 *RC *TC *TE *TP
 PTA +1049M +55F +52P 81R 8/24
 PTA +3.2PL 2.79SCS +0.0DPR
 PTA +3.51T +2.88UDC +1.74FLC 80R 8/24
 GTPI +2876G

Kress-Hill Snooky-Red-ET

840003244967520 99%RHA-I VG-87 VVVV @ 2-05
 55K GTPI +1990G +3.51T +2.28UDC +2.06FLC
 1-09 2x 234d 17220 3.5 595 3.2 543
 • 8th Milking Yrlg WDE 2023

Mr Affection Analyst-Red-ET

840003136496608 99%RHA-I *TP *TE *TC *TY*TV *TL
 PTA +169M -34F -23P 99R 8/24
 PTA +2.02T +1.49UDC +1.14FLC GTPI +1762G

Ms Kress-Hil Sapphire-Red-ET

840003142582610 Excellent-92 EEEEE 2E
 19K GTPI +2049G +3.55T +2.73UDC +1.94FLC
 2-05 2x 305d 28301 4.1 1167 2.9 821"
 • Supreme Junior Champion WDE Jr. Show 2018
 • Junior Champion Int'l R&W Open & Jr. 2018
 • All-American R&W Fall Calf 2018
 • R&W Hfr of the Year; Jr. R&W Hfr of the Year 2018
 • Jr. All-American Fall Yearling 2019
 • Res. All-American Fall Yearling 2019
 • Nom. Jr. All-American R&W Sr. 2 Year Old 2020

Full sister to Sapphire

MS Kresshill Sunkiss-Red-ET EX-90

- Nominated Junior All-American 5-Yr-Old 2021

3rd-8th Dams

Siemers Destry Sunny-Red-ET EX-93 EEEEE 2E

3-08 2x 305d 32900 3.7 1232 3.3 1084
 2-02 2x 305d 24830 3.8 944 3.4 838

Jerian Advent Sunny-Red-ET VG-85 VG-MS

- Res. All-American R&W Winter Hfr Calf 2009

Jerian Rmrkr Saffron-Red-ET EX-91 GMD

4-00 3x 365d 39590 3.2 1276 2.9 1132
 • 3rd 4-Yr-Old Midwest Spr. Nat'l R&W Show 2007

Jerian Milestone Sherry *RC 4E-94 GMD DOM

Life: 4247d 410750 3.7 15265 3.0 12180
 • All-Wisconsin 5 Year Old 2000

Jerian Rookie Sunshine EX-94 3E GMD DOM

Life: 2855d 280990 4.0 11200 3.2 9009
 • Res. All-Wisconsin 125,000 lb. Cow 1998

Berkshire-Valley Star Siss EX-93 5E GMD DOM

Life: 4230d 363730 3.8 13986 3.1 11098



EAGLE VIEW

\$2,000
Min. Bid

IVF SESSION

**Buyer is purchasing rights to control the next IVF session(s). Buyer is guaranteed IVF sessions until a minimum of 8 #1 or #2 IVF embryos are produced. Embryo grades are determined at the time of transfer if fresh embryos or at time of freezing if freezing is requested by buyer. Buyer keeps all resulting embryos from these controlled IVF sessions. Buyer is responsible for all costs of the aspiration and mating sire decisions*

840003272461876

GTPI +3227G +1250M +126F +74P 79R 8/24
PTA +1089NM +.29%F +.13%P
PTA +5.2PL 2.79SCS -1.4DPR 2.8%DCE
PTA +2.39T +1.93UDC +1.47FLC 78R 8/24

OCD Trooper Sheepster-ET

840003236792832 99%RHA-I *TR *TP *TE *TC *TY
PTA +1641M +140F +85P 83R 8/24
PTA +1223NM +.28%F +.12%P
PTA +5.5PL 2.93SCS -.8DPR 3.0%DCE
PTA +1.45T +1.07UDC +1.08FLC 81R 8/24

840003230803879

GTPI +2763G +771M +88F +46P 80R 8/24
PTA +695NM +.22%F +.08%P
PTA +3.3PL 2.67SCS -3.2DPR 2.7%DCE
PTA +1.88T +1.60UDC +0.67FLC 79R 8/24



HIGHTIDE HOLSTEINS
TILLAMOOK, OR 97141
503-842-8247

\$3,000
Min. Bid

HIGHTIDE AVA BEAUTY-ET

145134765 99%RHA-I *RC *TC *TL *TD
Born: December 1, 2021 • Herd No. 1790
32K GTPI +1730G +3.30T +2.27UDC +1.97FLC
A1/A2 AA

Due: January 2025 to Waygu

Dymenthalm Mr App Avalache-TW

11957107C 99%RHA-I *RC *CV *TY *TL
PTA -281M -9F -8P 99R 8/24
PTA -2.8PL 2.95SCS -3.7DPR 3.2%DCE
PTA +3.55T +2.63UDC +2.03FLC 99R 8/24
GTPI +1847G

Wilstar-LB Beemer Bang-ET

840003127659260 99%RHA-I EX-90 EX-MS
3-07 2x 365d 33430 3.6 1189 3.2 1071
2-01 2x 365d 25240 3.1 786 3.4 858

Pol Butte Mc Beemer-ET

7525863C 99%RHA-I EX-92 EEEE *TP *TC *TY *TV *TL
PTA +52M -4F -3P 99R 8/24
PTA +2.25T +1.44UDC +.78FLC GTPI +1693G

Budjon-Vail Wbrk Beauty-ET

840003013251034 Excellent-93 EX-MS
4-07 2x 317d 40210 4.1 1631 3.2 1300
3-01 2x 365d 29990 4.5 1337 3.5 1048
2-02 2x 317d 28240 4.1 1151 3.4 957

3rd-5th Dams

Ehrhardt Gold Beauty-ET EX-92 EX-MS

3-01 2x 363d 28830 3.9 1110 3.2 932

2-00 2x 313d 19400 3.6 698 3.4 653

• *Unan. All-American Jr 3-Yr-Old 2013*

• *1st Jr 3-Yr-Old WDE 2013*

• *HM Int. Champ WDE 2013*

• *Grand Champ District 8 Show 2013*

Stanhope Brea Starbuck-ET EX-94 2E EEEEE

9-00 2x 305d 29430 5.3 1563 3.0 880

5-11 2x 305d 27240 4.8 1307 2.9 786

Rainyridge Tony Beauty EX-5E-CAN *9 STAR

10-5 2x 365d 29081 3.5 1005 3.1 913

Life: 8 Lact 199869 3.3 6592 3.2 6455

• *All-Canadian Mature Cow 1992-93-95-99*

• *All-American Aged Cow 1992-95-99*

• *Supreme Champion WDE 1995 & 1999*

• *Res Grand Champion Royal Winter Fair 1999*

• *All-American People's Choice Winner 1999*

• *Holstein International Cow of Year 1999*

• *Res Grand Champion Royal Winter Fair 1995*

• *Grand Champion Royal Winter Fair 1993*

• *Nom All-Canadian Mature Cow 1991*

• *HM All-Canadian 4-Year-Old 1989*

16

\$2,000
Min. Bid

GARY, LAURYN & KINLEY YOUNG
BUHL, ID 83316
360-880-7065

Robella Major

14104450C 99%RHA-I *TC *TY *TV *TL
PTA +876M +36F +23P 82R 8/24
PTA +.1PL 2.86SCS -4.2DPR 3.3%DCE
PTA +3.14T +2.42UDC +.68FLC 80R 8/24
GTPI +2292G

Claquato Allen Simon Says

840003223829560 99%RHA-I VG-88 EX-MS @ 3-03 *RC
2-02 2x 176d 8650 4.0 345 3.9 340

CLAQUATO SIMON SAYS STOP

840003285000019
Born: April 15, 2024 • Herd No. 6209

Luck-E Ammo 760-Red

840003141305496 99%RHA-I *TC *TL
PTA -74M +7F -10P 81R 8/24
PTA +2.91T +2.56UDC +2.02FLC GTPI +1942G

Claquato Byway Sarah

840003147825017 Excellent-90 EX-MS @ 3-10

3rd-15th Dams

Claquato Byway Brigham Sara VG-85

Claquato Sanchez Sara EX-93

Claquato Durham Spookie VG-86

Claquato Gibson Sarah-ET EX-92 EEEEE

2-03 2x 365d 26730 3.8 1029 3.1 822

Life: 137040 3.9 5287 3.1 4246

Holywell-I Encore Staci EX-90 EEEVV

3-00 2x 365d 32430 3.3 1057 3.3 1056

Vt-Pond-View Astre Stevi EX-92 VEEEE

4-00 2x 365d 26080 3.6 931 3.1 815

Vt-Pond-View Broker Staci EX-95 3E EEEEE

8-09 2x 365d 30320 4.4 1319 3.2 985

Life: 181940 4.2 7632 3.3 5952

Vt-Pond-View Sexy Star-ET EX-93 4E EEEEE

10-06 2x 365d 25600 4.4 1175 3.1 815

Life: 233430 4.4 10189 3.2 7488

Vt-Pond-View Bell Scarlet-ET EX-91 2E GMD

5-11 2x 338d 29160 4.3 1240 2.9 835

Vt-Pond-View Round Oak Sue EX-94 3E GMD-DOM

Nomad Golden R Sue EX-90 EX-MS

Townsend Ivanhoe Sharon VG-88 GMD

Sue Townsend Suzette VG-87

17

\$1,500
Min. Bid

Blondin-I Respect

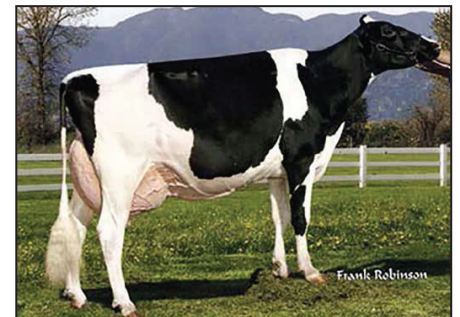
111633673
PTA -157M +1F -7P 93R 8/24
PTA -1.0PL 2.94SCS -2.6DPR
PTA +3.00T +1.91UDC +1.56FLC 92R 8/24
GTPI +1971G

Claquato Radio Rubienne

840003238750414 99%RHA-I VG-88 VG-MS @ 3-00
2-02 2x 331d 17180 3.8 649 3.3 571

HEIFER CALF

840003285000321 Pending
Born: September 2024



CLAQUATO GOLDWYN REGINA-ET EX-94 EX-MS 4E
4TH DAM OF LOT 17

3rd-7th Dams

Claquato Okaliber Ribbon-ET EX-90 EX-MS 2E

Claquato Goldwyn Regina-ET EX-94 EEEEE 4E

10-0 2x 365d 29480 3.9 1153 3.1 926

Life: 3129d 228190 3.8 8698 3.3 7570

• 4x Grand Champion, Washington State Show

• 2nd Aged Cow, Western Fall National 2013

Curtmar Supersire Robinetta-TW EX-95 EX-MS 3E

6-05 3x 365d 43350 3.9 1701 3.2 1384

Life: 1908d 172007 4.1 7070 3.1 5362

• 1st 125,000 Lb Cow, Western Fall Nat'l 2003

Leckbrook Algonquin Roberta VG-86-CAN

3-01 2x 353d 19361 4.1 785 3.5 677

Brudole Renown Rebecca VG-86-CAN 1*

7-01 2x 305d 19614 3.9 765 3.0 593

Life: 7 Lacs 103574 3.9 4006 3.1 3241

Morningview Radio-ET

840003140038654 99%RHA-I *TR *TP *TC *TY *TV
PTA +1437G +43F +32P 99R 8/24
PTA +2.95T +2.54UDC +.87FLC GTPI +2632G

Claquato Awesome Reisling

840003147825033 Excellent-92 EEEVE
5-07 2x 231d 11400 4.1 472 4.2 481



ESKDALE DJ HANO 10272-ET VG-86 @ 2-03
DAM OF LOTS 18 & 19



TERRA-LINDA DOC 794-ET EX-90
3RD DAM OF LOTS 18 & 19

18

FOUR-#1 SEXED EMBRYOS

\$200
Min. Bid to start

GRAND CRU CATTLE

19

HEIFER CALF

Registration Pending
Born: September 2024

\$2,000
Min. Bid

HAVEN MAID DAIRY
208-899-1570

Siemers Wolf Hulu 37006-ET

840003245702863 *RC *TC *TE *TP
PTA +1049M +55F +52P 81R 8/24
PTA +3.2PL 2.79SCS +0.0DPR
PTA +3.51T +2.88UDC +1.74FLC 80R 8/24
GTPI +2876G

Eskdale DJ Hano 10272-ET

840003250271438 99%RHA-I VG-86 VVVV @ 2-03
32K GTPI +2927G +1063M +71F +55P 82R 12/24
PTA +707NM +.11%F +.08%P
PTA +3.3PL 2.87SCS -.5DPR 2.2%DCE
PTA +3.17T +2.59UDC +1.38FLC 83R 12/24
A2/A2 AB

Siemers DJ Hano 32442-ET

840003208357067 99%RHa-I *TC *TY *TV *TL
PTA +806M +45F +46P 91R 8/24
PTA +2.47T +2.44UDC +.39FLC GTPI +2713G

Terra-Linda Trop Recover-ET

840003214540539 99%RHA-I *TR *TC *TL
36K GTPI +2732G +1045M +61F +45P 83R 12/24
PTA +2.0PL 2.80SCS -.24DPR 1.6%DCE
PTA +2.93T +2.36UDC +1.47FLC 83R 12/24

3rd-14th Dams

Terra-Linda Doc 794-ET EX-90

2-05 2x 365d 34140 3.6 1217 3.3 1143

Trifecta K Connie-ET VG-85

3-02 2x 359d 32780 3.7 1213 3.2 1060

Triplecrown Ssire Darla-ET VG-87

2-00 3x 365d 32400 4.4 1433 3.3 1076

TCG-KM Desire Rae-Red-ET VG-87

Scientific Gold Dew Rae-ET VG-88

Scientific Debutante Rae-ET EX-92 EEEEE GMD DOM

2-02 2x 365d 32930 4.4 1440 3.4 1132

• All-American 4-Yr-Old Cow 2005

Scientific Jubilant Rae-ET EX-90 EEEVV DOM *RC

Life: 1394d 117590 4.0 4707 3.6 4242

C Hanoverhill Tony Rae EX-96 3E GMD DOM 5*

6-11 2x 365d 40220 4.1 1661 3.3 1331

Life: 2247d 166396 4.1 6904 3.4 5612

C Hanoverhill TT Roxette-ET EX-94 2E GMD

10-0 3x 365d 35040 4.3 1519 3.0 1063

Life: 2104d 164789 4.1 6760 3.1 3587

Mil-R-Mor Roxette EX-CAN *30 STAR

7-01 2x 365d 24531 4.7 1153

Life: 6 Lact 121418 4.7 5728

C Glenridge Citation Roxy EX-97 4E GMD

10-1 2x 365d 25280 4.2 1061

Life: 3620d 209784 4.5 9471



SEAGULL-BAY MISS AMERICA-ET VG-87 VG-MS GMD DOM
7TH DAM OF LOT 20

20

\$1,000
Min. Bid

CALLUM MOSCRIPT

Terra-Linda Hayk 2030

840003274908784 99%RHA-I *TR *TP *TC *TL *TD
32K GTPI +3028G +1346M +80F +54P 79R 8/24
PTA +950NM +.11%F +.04%P
PTA +6.2PL 2.47SCS +1.1DPR 2.2%DCE
PTA +1.82T +1.97UDC +.49FLC 78R 8/24
PTA +222FE +2.1FI 2.2%SCE A1/A2 AB

IVF SESSION

**Buyer is purchasing rights to control the next IVF session(s). Buyer is guaranteed IVF sessions until a minimum of 8 #1 or #2 IVF embryos are produced. Embryo grades are determined at the time of transfer if fresh embryos or at time of freezing if freezing is requested by buyer. Buyer keeps all resulting embryos from these controlled IVF sessions. Buyer is responsible for all costs of the aspiration and mating sire decisions*

Welcome-Tel Taos Hayk-ET

840003214541122 99%RHA-I *TR *TP *TE *TC
PTA +1521M +105F +78P 82R 8/24
PTA +1.33T +1.26UDC +.44FLC GTPI +3188G

Terra-Linda Hghjimp 11333-ET

840003243358068 99%RHA-I GP-81 *TR *TP *TC *TL
32K GTPI +2837G +1691M +84F +86P 83R 8/24
PTA +849NM +.07%F +.01%P
PTA +4.3PL 2.77SCS -2.0DPR 1.7%DCE
PTA +1.43T +1.78UDC +.05FLC 83R 8/24
PTA +240FE -0.8FI 2.2%SCE
A2/A2 AB

3rd-15th Dams

Terra-Linda Solton 7110 NC

Terralindarf Matter 4670-ET GP-82

Ms DDS Metro 30917-ET VG-86

Ms America Metronomy-ET EX-91 EX-MS DOM

2-03 2x 305d 27310 3.6 982 3.4 920

Seagull-Bay Miss America-ET VG-87 GMD DOM

2-03 2x 365d 31750 4.3 1368 3.3 1060

Ammon-Peachey Shauna-ET EX-91 GMD DOM

2-01 3x 365d 35120 4.1 1427 3.1 1079

6-03 3x 365d 40290 3.7 1479 3.1 1233

Pine-Tree Martha Sheen-ET VG-86 VG-MS DOM 1*

1-11 3x 365d 31210 4.2 1305 3.3 1027

Pine-Tree Missy Martha-ET VG-86 DOM

3-05 3x 361d 32220 3.9 1242 3.4 1111

Wesswood-HC Rudy Missy-ET EX-92 3E GMD DOM

4-11 3x 365d 40880 4.1 1665 3.4 1385

Life: 1262d 119610 4.1 4885 3.4 4031

• Many Sons in AI

Wesswood Elton Mimi EX-90 EEEEE GMD DOM

3-05 2x 365d 35380 3.3 1160 3.2 1121

Wesswood Mandingo Ivy VG-87 VEEVV

6-05 2x 365d 36330 3.6 1305 3.0 1087

Life: 1835d 144060 3.4 4933 3.1 4412

Wesswood Astro Matt Esther VG-87 GMD DOM

6-08 2x 365d 31860 3.5 1125 3.1 982

Life: 1847d 140110 3.6 5029 3.2 4424

Wesswood Bell Claudette VG-87 GMD DOM

Life: 3634d 280980 3.6 9997 3.1 8625

21

\$3,000
Min. Bid

OK DAIRY/MIDWAY & KEVIN ORNELAS
EVERSON, WA 98247
360-410-7050

Westcoast Indeed-ET

14003945C 99%RHA-I *TR *TP *TC *TY *TV *TL
PTA +1050M +110F +57P 82R 8/24
PTA +4.5PL 2.89SCS +.2DPR 1.6%DCE
PTA +1.64T +2.18UDC +.36FLC 81R 8/24
GTPI +3103G

Terra-Calroy Ovrdo 11633-ET

840003249796144 99%RHA-I *TR *TP *TC *TL
32K GTPI +3011G +1246M +106F +57P 81R 12/24
PTA +1042NM +.22%F +.07%P
PTA +4.1PL 2.83SCS -.8DPR 1.7%DCE
PTA +1.67T +2.19UDC +.08FLC 79R 12/24
PTA +302FE +0.0FI 2.1%SCE A2/A2 BB

CAL-ROY-AL INDEED 3714-ET

840003281267224 99%RHA-I *TR *TP *TC *TL
Born: January 27, 2024 • Herd No. 3714
32K GTPI +3051G +1102M +103F +58P 79R 12/24
PTA +1091NM +.23%F +.09%P
PTA +4.4PL 2.98SCS +.1DPR 1.8%DCE
PTA +1.54T +2.29UDC +.47FLC 77R 12/24
PTA +310FE +1.3FI 1.9%SCE A2/A2 AB
• Donor Dam



T-SPRUCE JOSETTE-ET VG-87 VG-MS DOM
5TH DAM OF LOT 21

Ladys-Manor Overdo-ET

840003214324420 99%RHA-I *TR *MW *TP *TC
PTA +623M +118F +53P 85R 8/24
PTA +1.40T +2.01UDC +.54FLC GTPI +3084G

Terra-Calroy Zazzl 10914-ET

840003220410041 99%RHA-I VG-86 VG-MS
2-00 3x 340d 30780 4.3 1327 3.4 1054

3rd-13th Dams

Terra-Calroy Thiti 10385-ET GP-82

2-02 2x 365d 25400 4.4 1117 3.8 962

Peak Jsette Eldrdo 80721-ET VG-85

3-01 2x 365d 32810 3.9 1269 3.4 1126

T-Spruce Joseffe-ET VG-87 VEVV DOM

3-10 2x 338d 28900 3.9 1135 3.0 853

EDG Riley Galaxy 2364-ET VG-85 GMD-DOM

3-07 2x 305d 47690 3.5 1678 3.3 1572

Life: 113030 3.7 4203 3.5 4002

Co-Vista Robust Riley EX-90 EVVVE DOM

2-01 2x 305d 27530 3.0 1069 3.5 972

Ms Pride Gold Invite 761-ET VG-89-CAN 91-MS

3-08 2x 365d 35953 3.8 1376 3.4 1224

*Topped the 2011 Sale of Stars at \$170,000

*Nom. All-Canadian 4yr-old 2013

Regancrest Shottle Ili-ET VG-88 EVEV DOM

2-01 2x 365d 33250 3.5 1158 3.2 1069

Life: 101250 3.5 3567 3.1 3188

Regancrest Ito Isa VG-86 +E+V VV GMD

2-00 2x 365d 31510 3.6 1143 3.5 1110

Regancrest Emory Dorissa-ET VG-86 GMD-DOM

4-05 2x 365d 40890 3.8 1545 3.4 1390

Life: 158030 3.9 6129 3.5 5611

Snow-N Denises Dellia EX-95 2E GMD DOM

Life 2558d 180240 3.9 7108 3.4 6065

• Grand Champion Wisconsin Sprg/Nat 1991

• Global Cow of Year 2005

Snow-N Dorys Denise EX-90 2E GMD DOM

Life: 1604d 114010 3.6 4153 3.2 3649

FIRST CHOICE TWO CALVES

22

\$2,000
Min. Bid

JASON HALE
CLOVERDALE, OR 97112
503-392-3291

HALE-VALLEY YOLO-RED-ET

840003285008156
Born: June 2, 2024
43K GTPI +2928G +2237M +100F +75P 79R 12/24
PTA +916NM +.05%F +.02%P
PTA +3.0PL 2.98SCS -.2DPR 2.9%DCE
PTA +1.75T +1.19UDC +.77FLC 78R 12/24
PTA +296FE -1.1FI 2.1%SCE A2/A2 BB

HALE-VALLEY REDLEA YING-ETS

840003274454840
Born: February 8, 2024
32K GTPI +2954G +1564M +110F +63P 79R 12/24
PTA +923NM +.18%F +.05%P
PTA +3.3PL 2.78SCS -1.1DPR 2.6%DCE
PTA +1.58T +1.15UDC +.49FLC 78R 12/24
PTA +283FE -0.2FI 1.9%SCE A2/A2 AB

Stgen Rc Redlea-ET

840003213134224 99%RHA-I *RC *TE *TC *TY *TV
PTA +1693M +116F +73P 82R 8/24
PTA +5.2PL 2.82SCS -.3DPR 2.6%DCE
PTA +1.65T +1.50UDC +.72FLC 81R 8/24
GTPI +3133G

Golab Alphabet 19551

840003240218153 96%RHA-I GP-83 *RC @ 2-01
32K GTPI +2822G +2031M +94F +63P 83R 12/24
PTA +746NM +.06%F +.00%P
PTA +2.2PL 2.96SCS -.2DPR 2.9%DCE
PTA +2.00T +.99UDC +.57FLC 82R 12/24 A2/A2
1-09 2x 320d 22040 3.9 870 3.2 716

OCD Helix Alphabet-ET

840003142934708 *TR *TP *TE
PTA +2779M +107F +71P 99R 8/24
PTA +1.41T +1.38UDC -.32FLC GTPI +2868G

Golob Rager 16897

840003210754703 93%RHA-I *RC *TP *TC *TL
36K GTPI +2648G +435M +73F +36P 83R 12/24
PTA +1.74T +.68UDC +1.00FLC



VALIANT MCDONALD POPPY-ET
DAM OF EXAMPLE LOT 23

23

\$1,000
Min. Bid

This is an example of the pedigree and genetics from the Hale-Valley Herd

840003238890701-ET

840003238890701*PP*RC
GTPI +2876G +721M +68F +37P 79R 8/24
PTA +829NM +.15%F +.05%P
PTA +6.4PL 2.65SCS +1.8DPR 1.9%DCE
PTA +1.83T +1.47UDC +1.08FLC 78R 8/24

**IVF SESSION-CHOICE OF THE
HALE-VALLEY HERD**

**Buyer is purchasing rights to control the next IVF session(s). Buyer is guaranteed IVF sessions until a minimum of 8 #1 or #2 IVF embryos are produced. Embryo grades are determined at the time of transfer if fresh embryos or at time of freezing if freezing is requested by buyer. Buyer keeps all resulting embryos from these controlled IVF sessions. Buyer is responsible for all costs of the aspiration and mating sire decisions*

Aot Redeye Haze-P-Red-ET

840003232427677*CD*PC*PO*RC*TE
PTA +885M +73F +43P 82R 8/24
PTA +2.09T +1.62UDC +0.78FLC GTPI +2803G

Valiant Mcdonald Poppy-ET

840003248309895 99%RHA-I*RC*TC*TL
GTPI +2689G +856M +48F +37P 81R 8/24
PTA +637NM +.06%F +.04%P
PTA +4.7PL 2.73SCS +0.1DPR 1.9%DCE
PTA +1.77T +1.47UDC +1.26FLC 79R 8/24

Aprilday Luster Muffin-ET NC

Aprilday P Margarita-Red-ET VG-85 *PP*TC*TL
2-03 3x 333d 27410 4.4 1195 3.2 871
3-10 3x 312d 21700 3.7 812 3.6 777

Aprilday Jax Martini-Red-ET VG-87

Ms Cash Coin Margie-ET VG-85

Palmyra M-O-M Manhattan-ET VG-85 VG-MS
2-04 2x 365d 32440 4.2 1377 3.3 1063

• Numerous Sons in AI • Embryos Exported

Debaugh Rdman Manhattan-ET EX-91 EX-MS*RC

3-03 2x 365d 32120 4.7 1511 3.2 1038
Life: 1619d 106830 4.5 4842 3.3 3530

• Sons in AI

Sutton Outside Mango VG-87 VG-MS DOM

2-11 2x 365d 32460 4.3 1385 3.0 978
5-10 2x 266d 24520 3.9 962 2.9 708

• Two sons in AI

Sutton Gilbert Marie EX-90 VEVVE 2E

5-06 3x 365d 41910 3.4 1411 2.8 1158
Life: 2382d 223540 3.6 8105 2.9 6308

Sutton Jolt Lil May-ET VG-87 EVEVV

6-05 2x 365d 30340 4.0 1205 3.0 907
Life: 1866d 141060 4.2 5947 3.1 4331

Windsor-Manor Del May-ET EX-90 EX-MS 3E

5-02 2x 365d 30520 4.1 1246 2.9 889
Life: 2873d 166020 4.2 7026 3.1 5193

Windsor-Manor Mandy May EX-91 VEEEE 3E

3-01 2x 365d 26020 3.8 978 3.1 810
Life: 2544d 164670 3.7 6165 3.0 4917



RASBERRY AXL 1039-ET
DAM OF LOT 24

3rd-21st Dams

GDR-Kings Dorsopen 50429-ET EX-92 EEEEE
Golden-Rose Raspberry-ET EX-91 EX-MS
 3-03 2x 267d 26230 4.3 1125 3.4 899
 2-02 2x 365d 25290 4.8 1216 3.7 934
Golden-Rose Atwood Ritzi EX-93 EX-MS 2E GMD
 6-03 2x 305d 35670 4.1 1493 3.0 1058
 Life: 1621d 160730 4.0 6365 3.1 4989
Oakfield Pronto Ritzi EX-93 EEEEE 2E
 3-01 2x 305d 31310 3.4 1058 3.1 959
 Life: 1283d 121230 3.5 4275 3.1 3723
Castleholm Dund Rhapsody-ET EX-90 EX-MS
 2-01 2x 365d 28850 3.0 859 2.8 803
Astrahoe Stormatic Radiant EX-91 2E GMD
 5-02 3x 365d 49847 4.2 2089 2.9 1437
 Life: 1103d 124190 4.0 4924 3.2 3945
Astrahoe LJ Rosa Rebel-ET EX-92 2E
 7-05 2x 365d 48580 4.2 2021 3.0 1468
 Life: 1186d 110960 3.9 4326 3.2 3529
Pinehurst Royal Rosa-ET EX-91 EX-MS 2E
 3-10 3x 365d 41400 3.3 1358 3.0 1223
 Life: 1212d 115400 3.5 4073 3.1 3593
Pinehurst Roulade EX-92 EX-MS 2E
 3-05 3x 365d 34160 4.3 1474 3.4 1156
 Life: 1761d 142070 3.8 5395 3.3 4705
Pinehurst Sweet Cleo EX-90
 6-00 3x 365d 40380 4.4 1776 3.2 1305
 Life: 2173d 191570 3.9 7392 3.3 6238
Pinehurst Sweet Freedom EX-90 EX-MS
 5-07 3x 330d 34520 4.3 1500 3.1 1084
Pinehurst Sweet Delight EX-91 3E GMD
 8-10 3x 365d 28460 4.2 1194 3.2 917
 Life: 2228d 151600 4.0 6116 3.2 4907
Pinehurst Rapture EX-96 4E GMD
 8-02 3x 365d 30370 4.2 1290 3.1 948
 Life: 2297d 160790 3.9 6337 3.0 2469
Pinehurst Fragrance EX-90 2E
 4-08 3x 365d 34490 3.6 1234
 Life: 2004d 131700 3.5 4659
Hayssen Fond Ariel EX-90 2E
 8-06 2x 328d 23330 3.2 753
 Life: 1936d 105270 3.4 3559
Hayssen D V Audrey EX-90 2E
 9-03 2x 365d 23670 4.4 1035
 Life: 2413d 126251 4.4 5547
Whirlhill Q Rag Apple Ariel EX-92 EX-MS
 6-02 2x 365d 26755 4.2 1134
 Life: 3861d 228465 4.5 9595
Arlite Posch EX-92 EEVE GMD
 5-03 2x 365d 21193 3.7 779
 Life: 3586d 144739 3.7 5176
Audrey Posch EX-93 EEEE 2E GMD
 9-01 3x 365d 27012 3.8 1016
 Life: 4292d 227909 3.8 9039"

HEIFER CALF

Registration Pending
 Born: September 2, 2024

24

\$1,000
Min. Bid

TMK HOLSTEINS

Aprilday Mcdonald-P-Red-ET

84000320198569 *PC *RC
 PTA +406M +64F +23P 76R 8/24
 PTA +4.7PL 2.60SCS +0.4DPR
 PTA +2.28T +2.75UDC +2.02FLC 75R 8/24
 GTPI +2799G

Raspberry Axl 1039-ET

840003210696217 99%RHA-I VG-85 *TR *TP *TC *TL
 36K GTPI +2532G +688M +39F +28P 83R 8/24
 PTA +334NM +.05%F +.02%P
 PTA +1.6PL 3.02SCS -1.57FLC 84R 8/24 A2/A2 BB

Peak Axl-ET

840003145230125 99%RHA-I *TR *TP *TC *TY *TV
 PTA +540M +49F +31P 96R 8/24
 PTA +2.63T +2.23UDC +1.21FLC GTPI +2488G

Raspberry Doc 51800-ET

840003147037222 99%RHA-I *TR *TP *TC *TL
 Died



\$3,000
Min. Bid

KATRINA JOHNSON
GRANTS PASS, OR 97526-9346
503-949-7296

DREAMSVIEW ROMANV DASHA-RED

84000327202736596%RHA-I *TP *TC *TL
Born: February 20, 2023 • Herd No. 9304
32K GTPI +2547G

Due: March 2025 to Trent-Way Roper-Red-ET
(Sexed Semen) 551H05180

Siemers Romanov-Red-ET

840003212996528 *TC *TE
PTA +1269M +66F +46P 82R 8/24
PTA +3.5PL 3.05SCS -.8DPR
PTA +1.40T +0.58UDC +.16FLC 81R 8/24
GTPI +2652G

Dreamsview Reeve Lucinda

840003138744659 93%RHA-NA VG-85 VG-MS *RC
36K GTPI +2324G

Mr Stone-Front Reeve-Red-ET

840003136877210 *RC *TC *TE *TP
PTA +641M +47F +40P 99R 8/24
PTA +1.31T +1.38UDC +0.01FLC GTPI +2673G

Dreamsview Stamina Sadie

840003131110174 87%RHA-NA VG-87 VG-MS

3rd & 4th Dams

Mallories Jayz 9935 VG-85
Mallories Trend 5067 EX-90



\$3,000
Min. Bid

DONALD & REGINA BALL
MULINO, OR 97042
208-312-5573

BALLAND GOLD CINDERELLA-RED

145448389 99%RHA-NA
Born: August 5, 2022
• Sells Fresh

MD-Valleyvue Gold Chris-ET

137302783 Excellent-92 *RC *TY *TV *TL
PTA +29M -19F -11P 99R 8/24
PTA -1.0PL 2.79SCS +.4DPR 2.5%DCE
PTA +.34T -.56UDC +.78FLC 98R 8/24
GTPI +1848G

Balland Secure Claire-Red

144537426 99%RHA-NA GP-84

Crackholm Secure-Red-ET

104505308C Very Good-86
PTA -345M -15F +2P 99R 8/24
PTA +.28T -.08UDC -.13FLC GTPI +1830G

Balland Prst Coconut-Red-TW

143759575 99%RHA-NA

3rd-12th Dams

Balland Cm Charisma-Red GP-84
Balland Jazzs Butterfly VG-86
Lonte Encore Brook VG-85
Lonte Rubens Brandy VG-85
Lonte Benedict Brianne VG-87
Korncrest Justin Bingo-Red EX-90
Korncrest Christopher Ringo NC
Korncrest Tamlane Reba VG-88
Korncrest Apache Rita VG-88
Korncrest Transmitter Riva VG-88



BUDJON-JK WBRK EMERICAN-ET VG-87-CAN
3RD DAM OF LOTS 27 & 28, 4TH DAM OF LOT 29



ROLLING-SPRING G ESCENCE-ET EX-95 EEEEE 2E
4TH DAM OF LOTS 27 & 28, 5TH DAM OF LOT 29

27

\$2,000
Min. Bid

HOOD-VIEW SYNDICATE
C/O CHRIS JANSEN & BRIAN CHRISTIANSEN
360-942-7471
ALL ANIMALS HOUSED RAYMOND, WA

Sandy-Valley R Conway-ET

840003148929379 *TC *TR *TP *TR
PTA +447M +115F +59P 99R 8/24
PTA +2.3PL 3.06SCS -1.0DPR
PTA +1.90T +1.15UDC +1.28FLC 99R 8/24
GTPI +2962G

Hood-View Reeve Exotic

840003208034228 99%RHA-I GP-83 *RC

HOOD-VIEW CONWAY EBONY

840003288411231
Born: September 1, 2024

Mr Stone-Front Reeve-Red-ET

840003136877210 *RC *TC *TE *TP
PTA +641M +47F +40P 99R 8/24
PTA +1.31T +1.38UDC +0.01FLC GTPI +2673G

Ms Armcrest Drman Eclipse-ET

840003143479436 99%RHA-I VG-86 VG-MS@ 2-11
1-10 2x 365d 26740 3.9 1036 3.7 981
3-00 2x 282d 22550 4.1 918 3.5 784

3rd-11th Dams

Budjon-JK Wbrk EmERICAN-ET VG-87-CAN
2-06 2x 306d 20291 3.6 725 3.3 661

Rolling-Spring G Escence-ET EX-95 EEEEE 2E
5-06 2x 365d 40500 4.1 1646 3.0 1231

- Life: 1565d 148800 4.2 6285 3.3 4950
- Nom All-American 4-Yr-Old Cow 2010
 - 4th 4-Yr-Old Cow & BU International Show 2010
 - Grand Champion Midwest Nat/Spring 2010
 - 4th Gen of All-American Nom in milking form

Budjon-JK Dur Esquisite-ET EX-92 GMD DOM

- 3-07 2x 365d 40300 3.9 1555 3.0 1199
2-06 2x 365d 30940 3.5 1079 3.1 971
- Member Nom All-American Best Three 2007
 - Nom All-American Sr 2-Yr-Old Cow 2006

Budjon-JK Encore Electra-ET EX-95 2E GMD DOM

- 6-04 2x 365d 46830 4.0 1866 3.0 1382
Life: 1806d 192280 3.6 6858 3.2 6097
- HM All-American 125,000 Lb Cow 2005
 - HM All-American Aged Cow 2004
 - Res All-American Sr 3-Yr-Old Cow 2001
 - All-American Winter Yearling 1999

Krull Broker Elegance EX-96 3E GMD DOM

- 5-07 2x 365d 40950 3.7 1522 3.3 1350
Life: 2356d 183710 3.7 6878 3.4 6267
- HM All-American Aged Cow 1999 & 2000
 - HM All-Canadian Mature Cow 1999

Krull Starbuck Excellency EX-90 GMD DOM

3-03 2x 365d 27140 3.5 937 3.4 930

Krull TT Excellency EX-90 VEEE DOM

3-02 2x 363d 24319 3.5 862 3.4 829
Life: 1733d 109780 3.7 4077 3.3 3605

Krull Boot Mark Excellency EX-92 2E GMD

6-06 2x 365d 27410 3.8 1040 3.1 868
Life: 3026d 201440 3.5 7105 3.0 4634

Krull Kingstead Excellency EX-92 4E GMD

Life: 3364d 179790 3.6 6436



\$2,000
Min. Bid

Siemers TWn Parsly 32480-ET

840003208357105 *TC *TE *TP *TR
PTA +1625M +80F +70P 99R 8/24
PTA +5.3PL 2.89SCS -0.7DPR
PTA +1.41T +1.50UDC +.81FLC 96R 8/24
GTPI +2945G

Hood-View Reeve Exotic

840003208034228 99%RHA-I GP-83 *RC

HOOD-VIEW PARSLY ECHO

840003288411229
Born: July 10, 2023

Bred: September 25, 2024 to OCD Conner-ET
(Sexed Semen) 777H012667

Mr Stone-Front Reeve-Red-ET

840003136877210 *RC *TC *TE *TP
PTA +641M +47F +40P 99R 8/24
PTA +1.31T +1.38UDC +0.01FLC GTPI +2673G

Ms Armcrest Drman Eclipse-ET

840003143479436 99%RHA-I VG-86 VG-MS@ 2-11
1-10 2x 365d 26740 3.9 1036 3.7 981
3-00 2x 282d 22550 4.1 918 3.5 784

3rd-11th Dams

Budjon-JK Wbrk Emerican-ET VG-87-CAN

2-06 2x 306d 20291 3.6 725 3.3 661

Rolling-Spring G Escence-ET EX-95 EEEEE 2E

5-06 2x 365d 40500 4.1 1646 3.0 1231

Life: 1565d 148800 4.2 6285 3.3 4950

- Nom All-American 4-Yr-Old Cow 2010
- 4th 4-Yr-Old Cow & BU International Show 2010
- Grand Champion Midwest Nat/Spring 2010
- 4th Gen of All-American Nom in milking form

Budjon-JK Dur Esquisite-ET EX-92 GMD DOM

3-07 2x 365d 40300 3.9 1555 3.0 1199

2-06 2x 365d 30940 3.5 1079 3.1 971

- Member Nom All-American Best Three 2007
- Nom All-American Sr 2-Yr-Old Cow 2006

Budjon-JK Encore Electra-ET EX-95 2E GMD DOM

6-04 2x 365d 46830 4.0 1866 3.0 1382

Life: 1806d 192280 3.6 6858 3.2 6097

- HM All-American 125,000 Lb Cow 2005
- HM All-American Aged Cow 2004
- Res All-American Sr 3-Yr-Old Cow 2001
- All-American Winter Yearling 1999

Krull Broker Elegance EX-96 3E GMD DOM

5-07 2x 365d 40950 3.7 1522 3.3 1350

Life: 2356d 183710 3.7 6878 3.4 6267

- HM All-American Aged Cow 1999 & 2000
- HM All-Canadian Mature Cow 1999

Krull Starbuck Excellency EX-90 GMD DOM

3-03 2x 365d 27140 3.5 937 3.4 930

Krull TT Excellency EX-90 VEEE DOM

3-02 2x 363d 24319 3.5 862 3.4 829

Life: 1733d 109780 3.7 4077 3.3 3605

Krull Boot Mark Excellency EX-92 2E GMD

6-06 2x 365d 27410 3.8 1040 3.1 868

Life: 3026d 201440 3.5 7105 3.0 4634

Krull Kingstead Excellency EX-92 4E GMD

Life: 3364d 179790 3.6 6436



\$1,000
Min. Bid

Siemers Rengd Perfect-ET

840003200124761 *TC *TE *TP
PTA +1360M +103F +67P 99R 8/24
PTA +4.2PL 2.88SCS -0.8DPR
PTA +2.40T +2.21UDC +2.27FLC 99R 8/24
GTPI +3121G

Hood-View Warrior Entrance

840003237975080 99%RHA-I *RC
"Fresh heifer that looks extremely promising"

HOOD-VIEW PERFECT EXIT

840003288411233
Born: October 16, 2024

Mr Blondin Warrior-Red-ET

840003139655530 99%RHA-I *TP *TE *TC *TY *TV
PTA -674M -22F -13P 99R 8/24
PTA +2.76T +1.40UDC +1.16FLC GTPI +1681G

Hood-View Reeve Exotic

840003208034228 99%RHA-I GP-83 *RC

Mr Stone-Front Reeve-Red-ET

840003136877210 *RC *TC *TE *TP

Ms Armcrest Drman Eclipse-ET

840003143479436 99%RHA-I VG-86 VG-MS@ 2-11
1-10 2x 365d 26740 3.9 1036 3.7 981
3-00 2x 282d 22550 4.1 918 3.5 784



\$1,500
Min. Bid

REGINA DENISE BALL
MULINO, OR 97042
208-436-5992

BALLAND ANALYST VASHON-RED

145707921 99%RHA-I
Born: June 4, 2024

Mr Affection Analyst-Red-ET

840003136496608 99%RHA-I *TP *TE *TC *TY*TV *TL
PTA +169M -34F -23P 99R 8/24
PTA +0PL 2.73SCS -2.2DPR 2.4%DCE
PTA +2.02T +1.49UDC +1.14FLC 98R 8/24
GTPI +1762G

Balland Action Riva-Red

145448370 99%RHA-NA

Mr Apples Action-Red-ET

68571373 Excellent-93 EEEE
PTA -1887M -46F -30P 98R 8/24
PTA +1.57T +1.39UDC +1.74FLC GTPI +1624G

Balland Daffy Diva-Red

144537408 99%RHA-NA



\$1,000
Min. Bid

FREE AGENT BULLS
LORATA HOLSTEINS

SIRE SESSION SELLS

Pay for conventional semen session
minimum 100 units
This is the only Conventional semen that will be sold.

Lorita Dynasty Legend

840003286156600 *PC *TC
PTA +944M +112F +47P 79R 8/24
PTA +4.0PL 2.87SCS -0.4DPR
PTA +3.10T +2.71UDC +1.41FLC 78R 8/24
GTPI +3050G

Kings-Ransom Dynasty-ET

840003224437469 *TC
PTA +861M +107F +48P 82R 8/24
PTA +2.75T +2.28UDC +1.06FLC GTPI +3037G

Lorita Luster-P Lovely Lady

840 3240509942 99%RHA *PC A2A2 BB
GTPI +2955G +815M +101F +45P 83R 8/24
PTA +768NM +.26%F +.07%P
PTA +3.2PL 2.89SCS -0.8DPR 1.9%DCE
PTA +3.02T +2.04UDC +2.18FLC 82R 8/24

Lorita Doc Lovely Lady NC

Lorita Loveman Lady-ET GP-83 VG-MS
2-01 2x 328d 18660 3.9 724 4.1 760

Lortia Deman Lady-ET GP-81

Crasdale Lucky Uno VG-86-CAN VG-87-MS
2-07 2x 321d 25483 4.5 1140 3.5 893

Gloryland-I Goldwyn Locket-ET EX-94 EEEEE 2E

6-06 2x 349d 35800 4.4 1590 3.7 1310
Life: 1485d 137901 4.6 6400 3.6 4981

• Nominated All-Canadian Milking Yearling 2011

• 2nd Sr. Calf Atlantic Championship Show 2010

Gloryland Lakota Rae-ET VG-88 EX-MS

2-03 2x 365d 22850 3.8 857 3.3 751

Gloryland Lana Rae EX-94 EEEEE 2E DOM

5-06 2x 365d 29011 4.0 1159 3.4 993
Life: 2113d 129620 3.7 4768 3.5 4587

• Five EX daughters from EX-92 to EX-95

Scientific Liza Rae-ET EX-90 EEEEE

4-09 2x 365d 26710 2.9 786 3.3 878

C Hanoverhill Tony Rae EX-96 3E GMD DOM 5*

6-11 2x 365d 40220 4.1 1661 3.3 1331
Life: 2247d 166396 4.1 6904 3.4 5612

C Hanoverhill TT Roxette-ET EX-94 2E GMD

Mil-R-Mor Roxette EX-CAN 30*

C Glenridge Citation Roxy EX-97 4E GMD 6*

C Norton Court Model Vee EX-90 6*

Norton Court Reflection Vale VG-85-CAN 5*



**CHABLIS AND PENELOPE
DAM OF LOT 32 & 33**

32

**\$2,000
Min. Bid**

IVF SESSION

Dam: Chiblis on left
Silver Mini Highlander

GRAND CRU MINIATURE CATTLE

33

**\$2,000
Min. Bid**

IVF SESSION

Sire: Wallace (Chondro Negative, 43" Tall)
Dam: Penelope
Micro Mini Highlander