



Make A Deal At The Beach

Online Sale

July 31, 2024

Make A Deal At The Beach

Online Sale

MIDWAY DAIRY • 32845 US 101 South • Cloverdale, Oregon

Sale Schedule

Monday, July 29th: 3:00 - 5:00 PM - Cattle Viewing and Wine & Cheese sponsored by Grand Cru Miniature Cattle Ranch

Tuesday, July 30th: 12:00 Noon - 3:00 PM - Trans Ova Open House - OPU Demonstrations - lunch provided

Wednesday, July 31st: 10:00 AM - 12:00 Noon - Cattle Viewing with coffee and doughnuts

4:00 PM - Cowbuyer bidding starts to close

Sale Staff

Kara Hale.....	503-812-2702	Zach Damrow.....	920-344-2065
Andrew King.....	360-981-3801	Alan Berry.....	503-559-3463
Mike Berry.....	517-282-6476	Allan Hanselman.....	503-580-5642
Michael Oliver.....	360-318-3357	Tom De Groot.....	604-819-2879
Chris Jansen.....	360-942-7471		

The auction will utilize an auto-extend, soft closing.

With this feature, the bidding will close up to two (2) lots at the same time starting with Lot 1 and working through the catalog. Once two (2) minutes have lapsed without any bidding activity, the bidding on those items will be closed. Then the next set of lots will close in the same manner until they receive no additional bids, until all lots have closed.

Buyers utilizing Cowbuyer may pay by credit card. Buyer's fees of 4% apply.

Invoices will be emailed and/or mailed immediately.

ALL purchases must be settled within 5 business days of the sale.

Embryos sold on a per embryo basis times the number of embryos offered in the package unless otherwise noted.

Shipping arrangements or pickup of the embryos, including all expenses, are the buyer's responsibility.

No embryos will be released before payment is made.

ONLINE BIDDING AVAILABLE THROUGH:



Katie Shultz

717-543-7883

Registration and approval prior to sale time is required!

Make A Deal At The Beach Sale



**VALIANT RBLs MUFFLER-RED-ET *PO VG-87
DAM OF LOT 1**

Former #1 GTPI Red Polled Female in the Breed!

1

**MUFFLER SYNDICATE
ESKDALE, UT
435-209-0002**

• *Partners reserve the right to bid*

Hoogerhorst DG OH Rubels-Red

NLD 67950401 *TY *TV A1A2 BB
PTA +1035M +67F +48P 97R 4/24
PTA +683NM +.09%F +.05%P 8%US
PTA +3.0PL 2.76SCS -2.8DPR 2.8%DCE
PTA +2.32T +1.77UDC +1.18FLC 96R 4/24
GTPI +2711G

Aprilday Luster Muffin-ET

3207031363 VG-87-4YR-CAN VG-88-MS *RC *PP
GTPI +2654 +757M +36F +24P 83R 4/24
PTA +1.48T +1.24UDC +1.47FLC GLPI +3239
2-02 Rx 365d 28417 4.2 1199 3.2 922
3-09 Rx 269d 26358 4.4 1160 3.2 842 RIP

• *Seven sons heading to All!*

IVF SESSION FROM:

VALIANT RBLs MUFFLER-RED-ET

840 3231000266 Very Good-87 VVVVV *PO A1A2 BB
GTPI +2795G PTA +982M +59F +42P 82R 4/24
PTA +5.2PL 2.76SCS -3DPR 2.0%DCE
PTA +2.33T +1.76UDC +1.64FLC 82R 4/24
GPA LPI +3452 Conf +6 4/24

• *Former #1 GTPI Red Polled Female in the Breed!*

Endco Argo-ET

840 3133064302 *RC *CD *TY *TV
PTA +561M +46F +31P 97R 4/24
PTA +1.52T +1.89UDC +.58FLC GTPI +2580G

OH DG Rubella-ET

NLD 711610976 *RC

Cherry-Lily Zip Luster-P-ET

840 3138843085 *PC *TC *TY *TV
PTA +1592M +81F +49P 99R 4/24
PTA +2.57T +2.17UDC +1.70FLC GTPI +2892G

Aprilday P Margarita-Red-ET

3145202024 Very Good-85 @ 5-06 *PP
5-01 3x 316d 32320 3.6 1148 3.5 1125
2-03 3x 333d 27410 4.4 1195 3.2 871
3-10 3x 312d 21700 3.7 812 3.6 777

3rd Dam

Aprilday Jax Martini-Red-ET VG-87 VVVVV *PC

3-00 3x 305d 28830 4.2 1223 3.3 953

4th Dam

Ms Cash Coin Margie-ET VG-85 *RC

5th Dam

Palmyra M-O-M Manhattan-ET VG-85 *RC

2-04 2x 365d 32440 4.2 1377 3.5 1124

6th Dam

Debaugh Rdman Manhattan-ET EX-91 *RC

3-03 2x 365d 32120 4.7 1511 3.2 1038

Life: 1619d 106830 4.5 4842 3.5 3732

7th Dam

Sutton Outside Mango VG-87 VG-MS DOM

2-11 2x 365d 32460 4.3 1385 3.0 978

8th Dam

Sutton Gilbert Marie EX-90 VEVVE 2E

5-06 3x 365d 41910 3.4 1411 2.8 1158

Life: 2382d 223540 3.6 8105 2.9 6308

9th Dam

Sutton Jolt Lil May-ET VG-87 EVEVV

6-05 2x 365d 30340 4.0 1205 3.0 907

Life: 1866d 141060 4.2 5947 3.1 4331

10th Dam

Windsor-Manor Del May-ET EX-90 EX-MS 3E

5-02 2x 365d 30520 4.1 1246 2.9 889

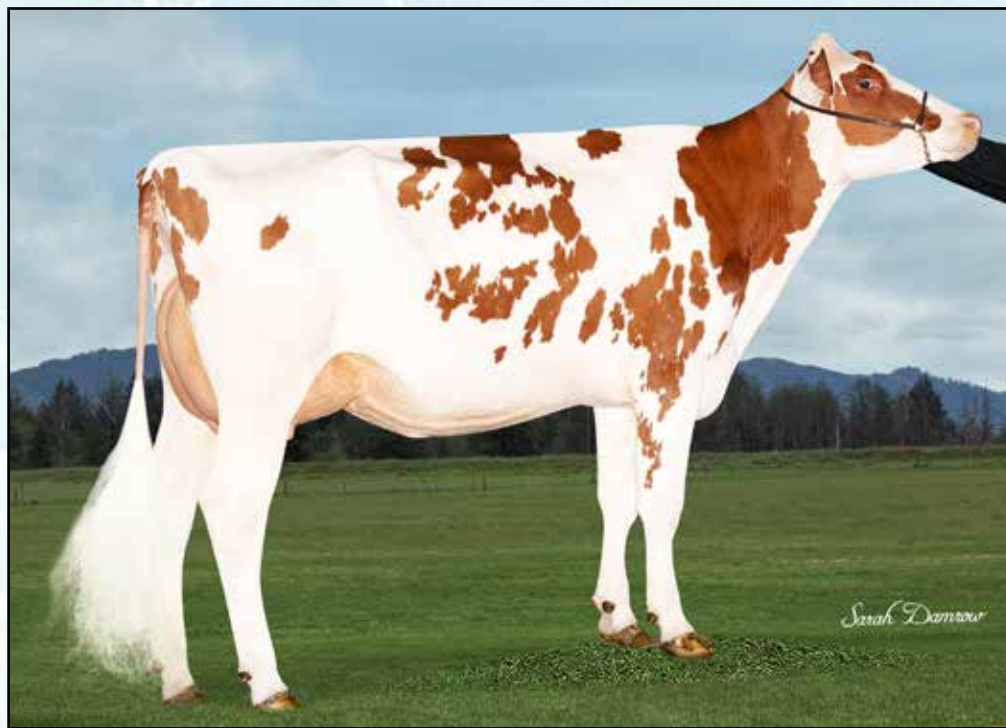
11th Dam

Windsor-Manor Mandy May EX-91 VEEEE 3E

3-01 2x 365d 26020 3.8 978 3.1 810

Life: 2544d 164670 3.7 6165 3.0 4917

Make A Deal At The Beach Sale



VALIANT RBLS MUFFLER-RED-ET *PO VG-87
DAM OF LOTS 2 & 3

Former #1 GTPI Red Polled Female in the Breed!

2

PENDING FEMALE-RED

840 3260118322 Born: December 29, 2023
 GTPI +2784 PTA +1167M +58F +51P 78R 4/24
 PTA +3.9PL 2.84SCS -.9DPR 2.2%DCE
 PTA +2.17T +2.08UDC +1.41FLC 77R 4/24

Trent-Way McLovin-Red-ET

840 3213816071 *TY *TV
 PTA +633M +73F +44P 81R 4/24
 PTA +4.0PL 2.69SCS -.8DPR 2.0%DCE
 PTA +1.91T +1.97UDC +1.08FLC 79R 4/24
 GTPI +2833

Valiant Rbls Muffler-Red-ET

840 3231000266 Very Good-87 VVVVV *PO A1A2 BB
 GTPI +2795G PTA +982M +59F +42P 82R 4/24
 PTA +5.2PL 2.76SCS -.3DPR 2.0%DCE
 PTA +2.33T +1.76UDC +1.64FLC 82R 4/24
 GPA LPI +3452 Conf +6 4/24
 • Seven sons heading to AI!
 • Former #1 GTPI Red Polled Female in the Breed!

3

FOUR #1 SEXED EMBRYOS

Sire: Finger Ranger Unreal-Red-ET

Finger Ranger Unreal-Red-ET

840 3131415623 *TC *TP
 PTA +1028M +45F +43P 79R 4/24
 PTA +4.5PL 2.95SCS +1.4DPR 1.9%DCE
 PTA +2.99T +2.31UDC +1.12FLC 78R 4/24
 GTPI +2790G

Hoogerhorst DG OH Rubels-Red

NLD 67950401 *TY *TV A1A2 BB
 PTA +1035M +67F +48P 97R 4/24
 PTA +2.32T +1.77UDC +1.18FLC GTPI +2711G
Aprilday Luster Muffin-ET
 3207031363 VG-87-4YR-CAN VG-88-MS *RC *PP
 GTPI +2654 +757M +36F +24P +1.48T 4/24
 2-02 Rx 365d 28417 4.2 1199 3.2 922
 3-09 Rx 269d 26358 4.4 1160 3.2 842 RIP

MUFFLER SYNDICATE
ESKDALE, UT
435-209-0002

• Partners reserve the right to bid

3rd Dam

Aprilday P Margarita-Red-ET VG-85 *PP
 5-01 3x 316d 32320 3.6 1148 3.5 1125

4th Dam

Aprilday Jax Martini-Red-ET VG-87 VVVVV *PC
 3-00 3x 305d 28830 4.2 1223 3.3 953

5th Dam

Ms Cash Coin Margie-ET VG-85 *RC

6th Dam

Palmyra M-O-M Manhattan-ET VG-85 *RC
 2-04 2x 365d 32440 4.2 1377 3.5 1124

7th Dam

Debaugh Rdman Manhattan-ET EX-91 *RC
 3-03 2x 365d 32120 4.7 1511 3.2 1038
 Life: 1619d 106830 4.5 4842 3.5 3732

8th Dam

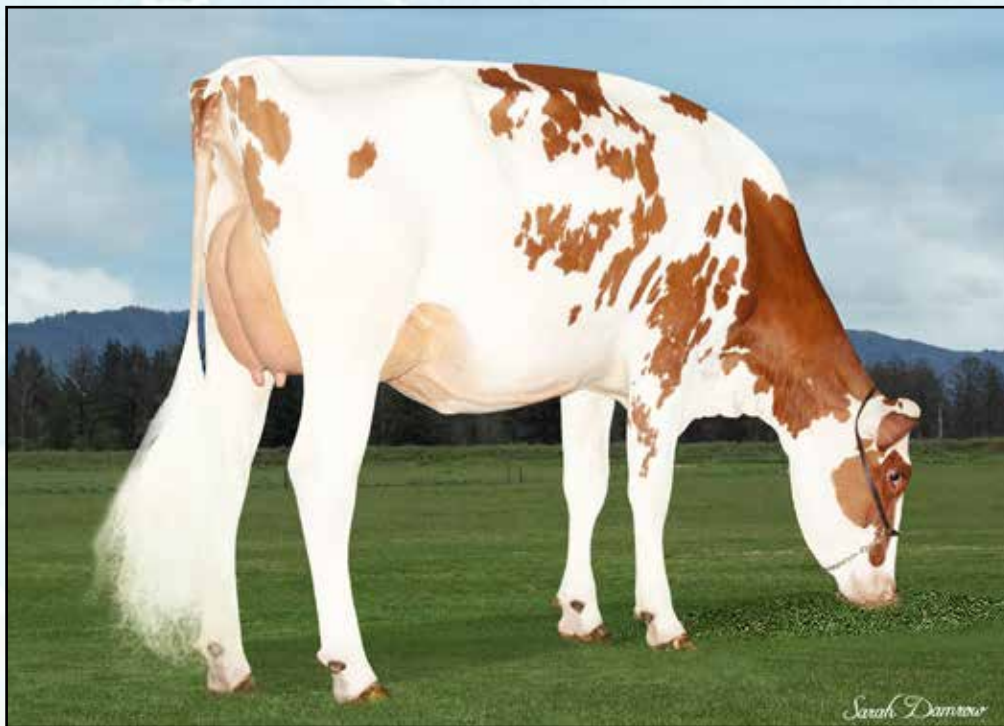
Sutton Outside Mango VG-87 VG-MS DOM
 2-11 2x 365d 32460 4.3 1385 3.0 978

9th Dam

Sutton Gilbert Marie EX-90 VEVVE 2E
 5-06 3x 365d 41910 3.4 1411 2.8 1158
 Life: 2382d 223540 3.6 8105 2.9 6308

Next three dams Very Good & Excellent!

Make A Deal At The Beach Sale



**VALIANT RBLS MUFFLER-RED-ET *PO VG-87
DAM OF LOT 4**

Former #1 GTPI Red Polled Female in the Breed!

4

**MUFFLER SYNDICATE
ESKDALE, UT
435-209-0002**

• *Partners reserve the right to bid*

Eskdale Lustrous PP

840 3214540632 *PP *TR *A2A2 *BB
PTA +734M +71F +33P 82R 4/24
PTA +.8PL 2.95SCS -1.7DPR 2.1%DCE
PTA +3.19T +2.52UDC +1.80FLC 81R 4/24
GTPI +2708G

Valiant RbIs Muffler-Red-ET

840 3231000266 Very Good-87 VVVVV *PO A1A2 BB
GTPI +2795G PTA +982M +59F +42P 82R 4/24
PTA +5.2PL 2.76SCS -3DPR 2.0%DCE
PTA +2.33T +1.76UDC +1.64FLC 82R 4/24
GPA LPI +3452 Conf +6 4/24

• *Seven sons heading to AI!*

IVF SESSION FROM:

ESKDALE LUSTROS-PP 12211-ET

840 3271802212 *RC *PP A2/A2 BB
PTA +892M +73F +44P 79R 4/2024
PTA +685NM +.13%F +.06%P
PTA +3.0PL 2.92SCS -.5DPR 1.9%DCE
PTA +2.93T +1.77UDC +1.95FLC 78R 4/2024

Cherry-Lily Zip Luster-P-ET

840 3138843085 *PC *TC *TY *TV
PTA +1592M +81F +49P 99R 4/24
PTA +2.57T +2.17UDC +1.70FLC GTPI +2892G

Eskdale Splendid Almah

840 3139120139 Excellent-91 EEEEE
3-10 2x 365d 35270 4.9 1722 3.8 1331
2-00 2x 365d 28800 5.0 1436 3.9 1116

Hoogerhorst DG OH Rubels-Red

NLD 67950401 *TY *TV A1A2 BB
PTA +1035M +67F +48P 97R 4/24
PTA +2.32T +1.77UDC +1.18FLC GTPI +2711G

Aprilday Luster Muffin-ET

3207031363 VG-87-4YR-CAN VG-88-MS *RC *PP
GTPI +2654 +757M +36F +24P +1.48T 4/24
2-02 Rx 365d 28417 4.2 1199 3.2 922
3-09 Rx 269d 26358 4.4 1160 3.2 842 RIP

3rd Dam

Aprilday P Margarita-Red-ET VG-85 *PP
5-01 3x 316d 32320 3.6 1148 3.5 1125

4th Dam

Aprilday Jax Martini-Red-ET VG-87 VVVVV *PC
3-00 3x 305d 28830 4.2 1223 3.3 953

5th Dam

Ms Cash Coin Margie-ET VG-85 *RC

6th Dam

Palmyra M-O-M Manhattan-ET VG-85 *RC
2-04 2x 365d 32440 4.2 1377 3.5 1124

7th Dam

Debaugh Rdman Manhattan-ET EX-91 *RC
3-03 2x 365d 32120 4.7 1511 3.2 1038
Life: 1619d 106830 4.5 4842 3.5 3732

8th Dam

Sutton Outside Mango VG-87 VG-MS DOM
2-11 2x 365d 32460 4.3 1385 3.0 978

9th Dam

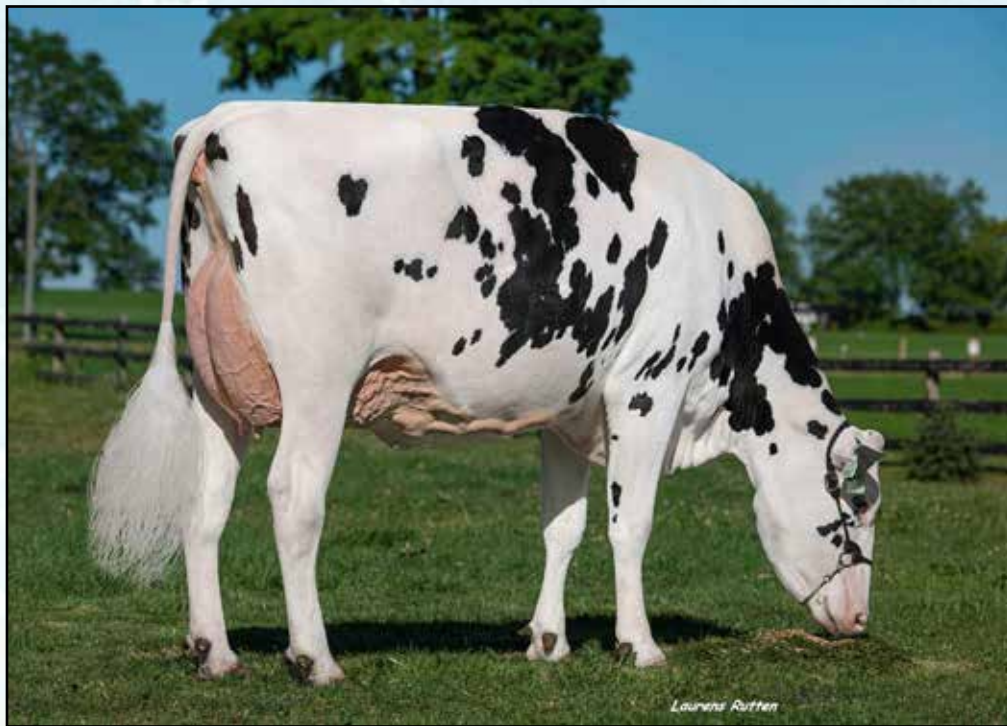
Sutton Gilbert Marie EX-90 VEVVE 2E
5-06 3x 365d 41910 3.4 1411 2.8 1158
Life: 2382d 223540 3.6 8105 2.9 6308

10th Dam

Sutton Jolt Lil May-ET VG-87 EVEVV
6-05 2x 365d 30340 4.0 1205 3.0 907
Life: 1866d 141060 4.2 5947 3.1 4331

Next two dams Excellent!

Make A Deal At The Beach Sale



APRILDAY LUSTER MUFFIN-ET *PP *RC VG-87-CAN
3RD DAM OF LOTS 5 & 6

5

FIVE #1 CONVENTIONAL EMBRYOS

Mo PP-Red-ET

DEU 541743745 *TY *TV *PP A2A2 AB
 PTA +1053M +65F +44P 80R 4/24
 PTA +736NM +.08%F +.04%P
 PTA +4.7PL 2.62SCS -.8DPR 2.4%DCE
 PTA +2.25T +1.95UDC +1.18FLC 77R 4/24
 GTPI +2824G

Eskdale Remuff-PP-RC-ET

840 3271802207 99%RHA *RC *PP A2A2 BB
 GTPI +2855 PTA +1330M +82F +47P 79R 4/24
 PTA +755NM +.11%F +.02%P
 PTA +3.3PL 2.92SCS -.3DPR 2.1%DCE
 PTA +2.54T +2.07UDC +1.14FLC 78R 8/24

6

FOUR #1 CONVENTIONAL EMBRYOS

Aprilday McDonald-P-Red-ET

840 3201598569 *PC *A1A2 AB
 PTA +212M +47F +20P 87R 4/24
 PTA +2.14T +2.54UDC +1.33FLC GTPI +2661G

Koepon Ruw Serena P-Red

DEU 541227620 98%RHA-I VG-86-2YR-DEU
 2-01 2x 305d 24897 3.9 974 3.5 882

Stantons Remover PP

CAN 13440455 *TY *TV *PP A2A2 BB
 PTA +1791M +101F +64P 83R 4/24
 PTA +1.92T +1.44UDC +.77FLC GTPI +2868G

Valiant Rbls Muffler-Red-ET

3231000266 Very Good-86 VVVVV *PO A1A2 BB
 GTPI +2795G PTA +982M +59F +42P 82R 4/24
 PTA +2.33T +1.76UDC +1.64FLC 82R 4/24
 GPA LPI +3452 Conf +6 4/24

• Seven sons heading to AI!

MUFF PP SYNDICATE
MELBA, ID
209-941-6144

• Partners reserve the right to bid

3rd Dam

Aprilday Luster Muffin-ET VG-87-CAN *RC *PP
 2-02 Rx 365d 28417 4.2 1199 3.2 922

4th Dam

Aprilday P Margarita-Red-ET VG-85 *PP *TC
 2-03 3x 333d 27410 4.4 1195 3.2 871

5th Dam

Aprilday Jax Martini-Red-ET VG-87 VVVVV *PC
 3-00 3x 305d 28830 4.2 1223 3.3 953

6th Dam

Ms Cash Coin Margie-ET VG-85 *RC

7th thru 10th Dams

Palmyra M-O-M Manhattan-ET VG-85 *RC

2-04 2x 365d 32440 4.2 1377 3.5 1124

Debaugh Rdman Manhattan-ET EX-91 *RC

3-03 2x 365d 32120 4.7 1511 3.2 1038

Life: 1619d 106830 4.5 4842 3.5 3732

Sutton Outside Mango VG-87 VG-MS DOM

2-11 2x 365d 32460 4.3 1385 3.0 978

Sutton Gilbert Marie EX-90 VEVVE 2E

5-06 3x 365d 41910 3.4 1411 2.8 1158

Life: 2382d 223540 3.6 8105 2.9 6308

Next four dams VG & EX

Make A Deal At The Beach Sale



APRILDAY LUSTER MUFFIN-ET *PP *RC VG-87-CAN
2ND DAM OF LOT 7

7

VALIANT GENETICS, CALMAC HOLSTEINS & RASBERRY FUTURES

• Partners reserve the right to bid

StGen RC Redlea-ET

840 3213134224 *RC *TC *TY *TV
PTA +1596M +115F +69P 82R 4/24
PTA +5.1PL 2.80SCS -.3DPR 2.7%DCE
PTA +1.70T +1.44UDC +.83FLC 81R 4/24
GTPI +3098G

Calmac Valiant McMuffin P

CAN 14126443 GP-83-2YR-CAN *PC *RC
GTPI +2763 +192M +56F +23P +1.98T 4/24
2-02 2x 84d 4572 5.5 249 3.3 152 RIP

IVF SESSION FROM:

VALIANT CALMAC REDL MIF-RED-ET

840 3280191641 *PC *RC BB
GTPI +3006 PTA +922M +110F +49P 79R 4/24
PTA +912NM +.26%F +.07%P
PTA +4.3PL 2.87SCS -.9DPR 2.7%DCE
PTA +2.47T +1.75UDC +1.71FLC 77R 4/24

Genosource Captain-ET

840 3147118734 GM 12/23 *TC *TY *TV
PTA +2360M +153F +84P 99R 4/23
PTA +1.18T +1.50UDC +.23FLC GTPI +3287

Fairmont Salvatore Doris-ET

840 3146184436 Very Good-85 VG-MS @ 2-05
4-08 3x 365d 41100 4.1 1689 3.6 1486

Aprilday McDonald-P-Red-ET

840 3201598569 *PC *A1A2 AB
PTA +212M +47F +20P 87R 4/24
PTA +2.14T +2.54UDC +1.33FLC GTPI +2661G

Aprilday Luster Muffin-ET

3207031363 VG-87-4YR-CAN VG-88-MS *RC *PP
GTPI +2654 +757M +36F +24P +1.48T 4/24
2-02 Rx 365d 28417 4.2 1199 3.2 922
3-09 Rx 269d 26358 4.4 1160 3.2 842 RIP

- #1 Red Polled GTPI Heifer in the breed!
- First IVF session from this heifer!

3rd Dam

Aprilday P Margarita-Red-ET VG-85 *PP *TC
2-03 3x 333d 27410 4.4 1195 3.2 871

4th Dam

Aprilday Jax Martini-Red-ET VG-87 VVVVV *PC
3-00 3x 305d 28830 4.2 1223 3.3 953

5th Dam

Ms Cash Coin Margie-ET VG-85 *RC

6th Dam

Palmyra M-O-M Manhattan-ET VG-85 *RC
2-04 2x 365d 32440 4.2 1377 3.5 1124

7th Dam

Debaugh Rdman Manhattan-ET EX-91 *RC
3-03 2x 365d 32120 4.7 1511 3.2 1038
Life: 1619d 106830 4.5 4842 3.5 3732

8th Dam

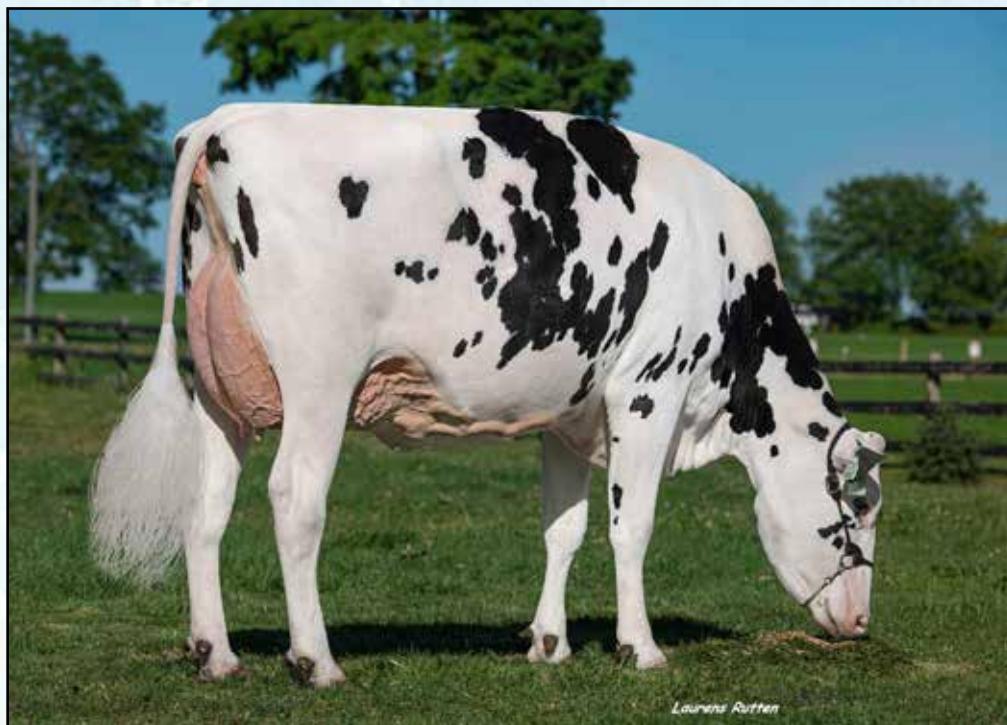
Sutton Outside Mango VG-87 VG-MS DOM
2-11 2x 365d 32460 4.3 1385 3.0 978

9th Dam

Sutton Gilbert Marie EX-90 VEVVE 2E
5-06 3x 365d 41910 3.4 1411 2.8 1158
Life: 2382d 223540 3.6 8105 2.9 6308

Next four dams VG & EX

Make A Deal At The Beach Sale



APRILDAY LUSTER MUFFIN-ET VG-87-CAN
2ND DAM OF LOTS 7, 8, 9

8

VALIANT CALMAC HANX MADDIE-ET

840 3280191772 *TP *TC
Born: February 7, 2024
GTPI +2922 PTA +365M +63F +34P 78R 4/24
PTA +5.3PL 2.76SCS +2.8DPR 2.0%DCE
PTA +2.52T +2.53UDC +1.68FLC 77R 4/24

Siemers Hanan Hanx-P-ET

840 3243939096 *PC
PTA +853M +78F +51P 82R 4/24
PTA +3.9PL 2.71SCS +.0DPR 1.9%DCE
PTA +3.43T +2.69UDC +1.71FLC 81R 4/24
GTPI +2988G

Calmac Valiant McMuffin P

CAN 14126443 GP-83-2YR-CAN *PC *RC
GTPI +2763 +192M +56F +23P +1.98T 4/24
2-02 2x 84d 4572 5.5 249 3.3 152 RIP

9

CALMAC VALIANT DZ L 13504-ET

840 3280191427 *PC *RC
Born: December 23, 2023
GTPI +2671 PTA +509M +25F +21P 78R 4/24
PTA +4.5PL 2.77SCS +1.8DPR 1.7%DCE
PTA +3.12T +2.73UDC +1.79FLC 77R 4/24

Carters-Corners Dazzle-ET

840 3214540598 *TC *TY *TR *TP
PTA +1087M -1F +28P 81R 4/24
PTA +3.0PL 2.77SCS +1.3DPR 1.7%DCE
PTA +3.38T +3.18UDC +1.35FLC 80R 4/24
GTPI +2570G

Aprilday McDonald-P-Red-ET

840 3201598569 *PC *A1A2 AB
PTA +212M +47F +20P 87R 4/24
PTA +2.14T +2.54UDC +1.33FLC GTPI +2661G

Aprilday Luster Muffin-ET

3207031363 VG-87-4YR-CAN VG-88-MS *RC *PP
GTPI +2654 +757M +36F +24P +1.48T 4/24
2-02 Rx 365d 28417 4.2 1199 3.2 922
3-09 Rx 269d 26358 4.4 1160 3.2 842 RIP

SNAKE RIVER DAIRIES LLC
% KEVIN TLUCEK
MELBA, ID
208-941-6144

3rd Dam

Aprilday P Margarita-Red-ET VG-85 *PP *TC
2-03 3x 333d 27410 4.4 1195 3.2 871

4th Dam

Aprilday Jax Martini-Red-ET VG-87 VVVVV *PC
3-00 3x 305d 28830 4.2 1223 3.3 953

5th Dam

Ms Cash Coin Margie-ET VG-85 *RC

6th Dam

Palmyra M-O-M Manhattan-ET VG-85 *RC
2-04 2x 365d 32440 4.2 1377 3.5 1124

7th Dam

Debaugh Rdman Manhattan-ET EX-91 *RC
3-03 2x 365d 32120 4.7 1511 3.2 1038
Life: 1619d 106830 4.5 4842 3.5 3732

8th Dam

Sutton Outside Mango VG-87 VG-MS DOM
2-11 2x 365d 32460 4.3 1385 3.0 978

9th Dam

Sutton Gilbert Marie EX-90 VEVVE 2E
5-06 3x 365d 41910 3.4 1411 2.8 1158
Life: 2382d 223540 3.6 8105 2.9 6308

Next four dams VG & EX

Make A Deal At The Beach Sale



VALIANT MCDONALD POPPY-ET
DAM OF LOT 10



POPPY CALVES SELLING
SELL AS LOT 10

10

FIRST CHOICE FEMALE

Three heifers born June & July 2024

SNAKE RIVER DAIRIES LLC
% KEVIN TLUCEK
MELBA, ID
208-941-6144

AOT Redeye Haze-P-Red-ET

840 3232427677 99%RHA-I *PC *CD *TY *TV
PTA +825M +70F +41P 82%R 4/2024
PTA +4.1PL 2.69SCS -.3DPR 2.5%DCE
PTA +2.14T +1.71UDC +.84FLC 81%R 4/2024
GTPI +2782

Valiant McDonald Poppy-ET

840 3248309895 *PP *RC
GTPI +2644 +769M +42F +31P 80R 4/24
PTA +4.8PL 2.74SCS +.4DPR 2.0%DCE
PTA +1.87T +1.66UDC +1.31FLC 78R 4/24

Vogue Redeye P-Red

CAN 40001147 *PC *TE *TC *TY *TV
PTA +447M +41F +20P 97R 4/24
PTA +2.22T +1.56UDC +1.41FLC GTPI +2573G

AOT Hawai Holly-ET

840 3202768359 Excellent-90 EX-MS DOM *RC *CD
4-01 3x 365d 45900 4.2 1940 3.4 1543
3-01 3x 314d 37250 3.8 1414 3.1 1337

Aprilday McDonald-P-Red-ET

840 3201598569 *PC *A1A2 AB
PTA +212M +47F +20P 87R 4/24
PTA +2.14T +2.54UDC +1.33FLC GTPI +2661G

Aprilday Luster Muffin-ET

3207031363 VG-87-4YR-CAN VG-88-MS *RC *PP
GTPI +2654 +757M +36F +24P +1.48T 4/24
2-02 Rx 365d 28417 4.2 1199 3.2 922
3-09 Rx 269d 26358 4.4 1160 3.2 842 RIP

3rd Dam

Aprilday P Margarita-Red-ET VG-85 *PP *TC
2-03 3x 333d 27410 4.4 1195 3.2 871

4th Dam

Aprilday Jax Martini-Red-ET VG-87 VVVVV *PC
3-00 3x 305d 28830 4.2 1223 3.3 953

5th Dam

Ms Cash Coin Margie-ET VG-85 *RC

6th Dam

Palmyra M-O-M Manhattan-ET VG-85 *RC
2-04 2x 365d 32440 4.2 1377 3.5 1124

7th Dam

Debaugh Rdman Manhattan-ET EX-91 *RC
3-03 2x 365d 32120 4.7 1511 3.2 1038
Life: 1619d 106830 4.5 4842 3.5 3732

8th Dam

Sutton Outside Mango VG-87 VG-MS DOM
2-11 2x 365d 32460 4.3 1385 3.0 978

9th Dam

Sutton Gilbert Marie EX-90 VEVVE 2E
5-06 3x 365d 41910 3.4 1411 2.8 1158
Life: 2382d 223540 3.6 8105 2.9 6308

Next four dams VG & EX

Make A Deal At The Beach Sale



KRESS-HILL SNOOKY-RED-ET VG-87
DAM OF LOT 11



MS KRESS-HILL SAPPHIRE-RED-ET-92
2ND DAM OF LOT 11

Junior Champion, International R&W Show 2018

11

MICHAEL & JESSICA OLIVER
ZILLAH, WA
360-318.-3357

FIVE #1 SEXED EMBRYOS

Siemers Wolf Hulu 37006-ET

840 3245702863 *RC *TP *TY *TV
PTA +1007M +60F +48P 80R 4/24
PTA +3.2PL 2.74SCS +.1DPR 1.9%DCE
PTA +3.75T +3.13UDC +1.57FLC 79R 4/24
GTPI +2900G

Kress-Hill Snooky-Red-ET

840 3244967520 Very Good-87 VVVVV @ 2-05
PTA +3.44T +2.17UDC +2.03FLC 4/24
1-09 2x 234d 17220 3.5 595 3.2 543
• 8th Milking Yrlng, International R&W Show 2023

Maternal sisters to Snooky-Red

Kress-Hill Spicy-Red-ET VG-88

• Reserve All-American R&W Winter Yearling 2022
• Res Jr All-American R&W Senior 2-Year-Old 2023

Kress-Hill Sci-Fi-Red-ET VG-88

• Nom All-American R&W Junior 2-Year-Old 2023
• Junior All-American R&W Junior 2-Year-Old 2023

Aija Wolfgang

CAN 13494527 *RC *PC A2A2
PTA +1193M +42F +34P 83R 4/24
PTA +2.82T +2.69UDC +1.07FLC GTPI +2616G

Siemers Lstr Hanan 33317-ET

840 3212996392 Very Good-89
2-03 2x 281d 28180 4.3 1202 3.8 1075

Mr Affection Analyst-Red-ET

840 3136496608 *TY *TV
PTA +92M -30F -22P 98R 4/24
PTA +2.09T +1.55UDC +1.18FLC GTPI +1795G

Ms Kress-Hill Sapphire-Red-ET

840 3142582610 Excellent-92 EEEEE @ 4-07
2-05 2x 305d 28301 4.1 1167 2.9 821
• Junior Champion, International R&W Show 2018
• Supreme Jr Champion, World Dairy Expo 2018
• All-American R&W Fall Calf 2018
• Jr Champion, WI Championship Jr Show 2019

3rd Dam

Siemers Destry Sunny-Red-ET EX-93 EEEEE 2E

3-08 2x 305d 32900 3.7 1232 3.3 1084
• Reserve Junior All-American R&W Aged Cow 2018
• Junior All-American R&W 5-Year-Old 2016
• Junior All-American R&W Senior 3-Year-Old 2014
• 6x Junior All-American R&W Nominee

4th Dam

Jerian Advent Sunny-Red-ET VG-85 VG-MS

5th Dam

Jerian Rmrkr Saffron-Red-ET EX-91 EEEEE GMD

4-00 3x 365d 39590 3.2 1276 2.9 1132
Life: 1160d 109330 3.5 3879 3.0 3286

6th Dam

Jerian Milestone Sherry EX-94 4E GMD DOM RC

6-00 3x 365d 49000 3.7 1797 2.8 1395
Life: 4247d 413760 3.7 15379 3.0 13063

• All-Wisconsin 5-Year-Old 2000

7th Dam

Jerian Rookie Sunshine EX-94 3E GMD DOM

8-08 3x 365d 51870 3.7 1937 3.0 1555
Life: 2855d 280990 4.0 11200 3.2 9009

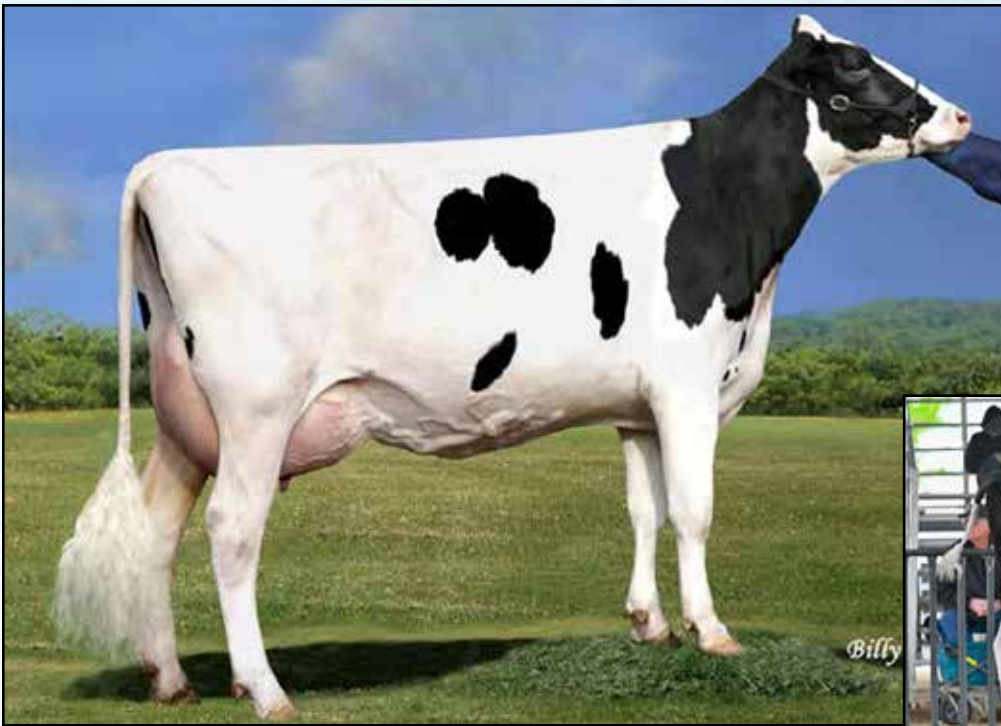
• Res All-Wisconsin 125,000 Lb Cow 1998

8th Dam

Berkshire-Valley Star Siss EX-93 5E GMD DOM

8-11 2x 365d 48430 3.8 1848 2.9 1411
Life: 4230d 363730 3.8 13986 3.1 11098

Make A Deal At The Beach Sale



CHERRYPENCOL LEE-ET EX-93
3RD DAM OF LOT 12



EXELS COMBINATION LOVELY-ET
FULL SISTER TO LOT 12
Reserve All-CA Fall Calf 2024

12

HENRY VAN EXEL & ESKDALE DAIRY
LODI, CA
209-334-3292

• *Partners reserve the right to bid*

Exels Combination-ET

840 3221284374 *TC *TY
PTA +1034M +72F +46P 82%R 4/2024
PTA +607NM +.11%F +.05%P 100%US
PTA +2.3PL 3.22SCS -.4DPR 2.9%DCE
PTA +3.01T +2.51UDC +2.08FLC 81%R 4/2024

Eskdale Hanans Lime-TW

840 3231000212 Very Good-85 VG-MS @ 2-10
GTPI +2856 PTA +973M +67F +55P 83R 4/24
PTA +791NM +.10%F +.09%P
PTA +4.5PL 2.72SCS -2.2DPR 1.9%DCE
PTA +2.60T +2.00UDC +1.39FLC 80R 4/2024

EXELS COMBINATION LINLEY-ET

840 3275859193 *TC *TL *TD
Born: September 12, 2023 Herd ID: 28918
GTPI +2951 +702M +93F +52P 79R 4/2024
PTA +765NM +.23%F +.11%P
PTA +3.0PL 2.99SCS -2.7DPR 2.5%DCE
PTA +3.66T +2.70UDC +2.32FLC 78R 4/24

Full sister to Linley

Exels Combination Lovely-ET

• *Reserve All-CA Fall Calf 2023*

Cookiecutter Logistics-ET

840 3200122612 *TP *TC
PTA -143M +83F +23P 99R 4/24
PTA +1.96T +1.76UDC +2.29FLC GTPI +2728G

Den-K Doc Jeanette 458-ET

144902060 Excellent-93 EEVEE 2E
4-10 3x 318d 36090 4.2 1499 3.6 1298
Life: 1180d 120440 4.0 4871 3.5 4240

Siemers Exc Hanans 31753-ET

3143986722 GM 12/23 *TY *TV A2A2 BB
PTA +232M +93F +45P 98R 4/24
PTA +3.58T +2.57UDC +2.34FLC GTPI +2921G

Cherrypencol L Lemon-ET

840 3208410650 Excellent-90 EX-MS @ 4-08
GTPI +2713 +889M +54F +44P +1.11 4/24
1-10 2x 365d 33240 4.3 1413 3.7 1237

3rd Dam

Cherrypencol Lee-ET EX-93 EX-MS

2-04 2x 365d 26710 4.6 1218 3.6 961

4th Dam

Cherry-Acres Jedi Lauri-ET VG-85

4-00 2x 314d 31140 3.5 1083 3.4 1049

5th Dam

MS TCF Cherry-Acres Lori-ET VG-87 DOM

1-11 3x 292d 27680 4.3 1201 3.2 895

Life: 2135d 177510 4.5 7951 3.2 5732

6th Dam

Tiger-Lily Uno Leah-ET VG-87

3-02 2x 341d 31990 4.5 1425 3.4 1072

7th Dam

Tiger-lily Planet Limbo VG-85 DOM

4-02 2x 365d 35750 3.7 1338 3.3 1193

8th Dam

Tiger-Lily Bret Lonnie GP-82 VG-MS

3-03 2x 338d 29440 4.2 1246 3.3 979

9th Dam

Tiger-Lily Magna Lucy-ET GP-82

2-02 2x 365d 30070 3.7 1123 3.3 995

10th Dam

B-Y-U Addison Leora-ET VG-86 GMDOM

3-11 2x 365d 37550 3.9 1458 3.4 1291

Next six dams VG & EX!

Make A Deal At The Beach Sale



CHERRY-ACRES JEDI LAURI-ET VG-85
3RD DAM OF LOT 13

13

FIT GENETICS
ELIZABETHTOWN, KY
859-699-2998

S-S-I BG Mnshnr Sleater-ET

840 3216213944 *TP *TC
PTA +1318M +111F +59P 82R 4/24
PTA +4.6PL 2.94SCS -.8DPR 2.6%DCE
PTA +1.46T +1.54UDC +.41FLC 81R 4.24
GTPI +2994G

Cherrypencol G 1000-ET

840 3217141062 *TP *TC
GTPI +3001 PTA +747M +83F +53P 82R 4/24
PTA +1072NM +.19F +.10%P
PTA +4.6PL 2.94SCS -.8DPR

IVF SESSION FROM:

TRAMILDA SLEATER LENA-ET

840 3272030574 *TP *TC
GTPI +3105 PTA +807M +114F +55P 79R 4/24
PTA +1243NM +.29%F +.10%P
PTA +7.2PL 2.62SCS +.5DPR 2.3%DCE
PTA +.79T +1.49UDC -.14FLC 78R 4/24

Fly-Higher Moonshiner-ET

840 3150997170 GM 12/23 *TP *TC
PTA +1712M +82F +66P 99R 4/24
PTA +1.69T +1.59UDC -.46FLC GTPI +2970G

Aardema Black Baccara-ET

840 3151564761 Good-75 @ 2-08
3-02 3x 211d 23680 4.8 1143 3.5 835

RMD-Dotterer SSI Gameday-ET

840 3205704153 GM 12/23 *TC *TY
PTA +1209M +125F +61P 99R 4/24
PTA +1.80T +2.22UDC +.07FLC GTPI +3163G

Cherrypencol L Lolly-ET

840 3208410555 Very Good-85 VG-MS @ 3-00
GTPI +2684 PTA +211M +28F +34P +.66T 4/24
2-05 2x 365d 31170 3.0 932 3.6 1126

3rd Dam

Cherry-Acres Jedi Lauri-ET VG-85 VG-MS
4-00 2x 314d 31140 3.5 1083 3.4 1049

4th Dam

Ms TCF Cherry-Acres Lori-ET VG-87 VVVVV DOM
4-05 2x 305d 29550 4.0 1183 3.2 933

5th Dam

Tiger-Lily Uno Leah-ET VG-87 VG-MS
4-03 2x 358d 31720 4.6 1448 3.3 1060

6th Dam

Tiger-Lily Planet Limbo VG-85 VG-MS DOM
4-02 2x 365d 35750 3.7 1338 3.3 1193

7th Dam

Tiger-Lily Bret Lonnie GP-82 VG-MS
3-03 2x 338d 29440 4.2 1246 3.3 979

8th Dam

Tiger-Lily Magna Lucy-ET GP-82
2-02 2x 365d 30070 3.7 1123 3.3 995

9th Dam

B-Y-U Addison Leora-ET VG-86 VG-MS GMD DOM
3-11 2x 365d 37550 3.9 1458 3.4 1291
Life: 1 783d 130140 3.7 4781 3.4 4403

10th Dam

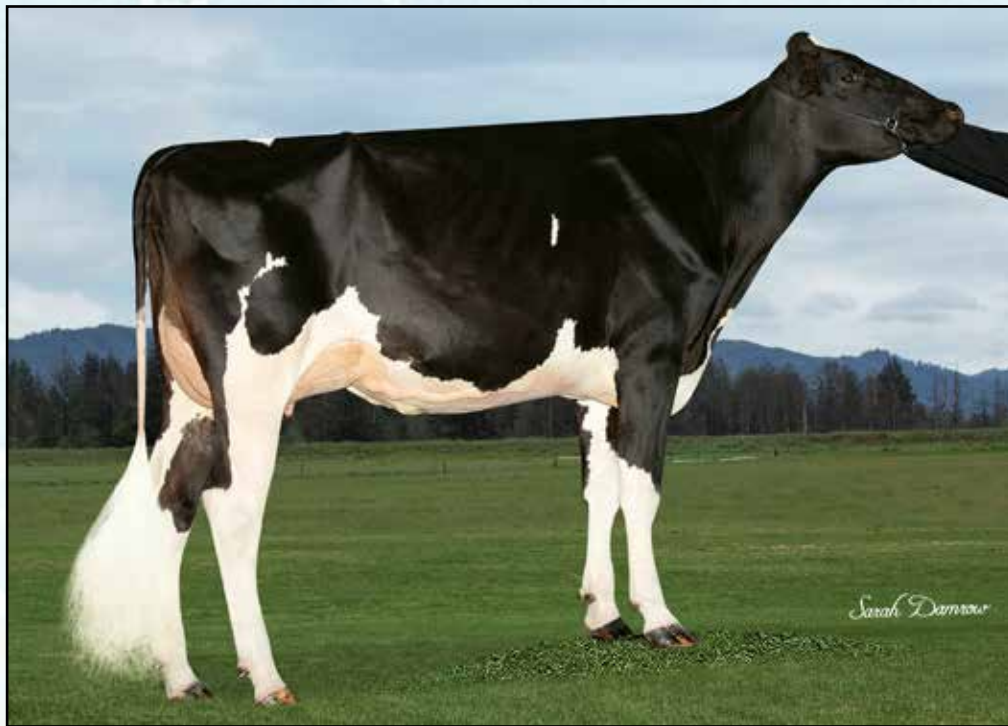
Glen-Toctin Win Loretta-ET VG-85 VG-MS GMD
2-01 2x 305d 29380 3.4 1002 3.2 946

11th Dam

Unicorn Celcius Lei-ET VG-86 VVEVV GMD DOM
2-00 2x 365d 27840 4.5 1240 3.6 1001

Next four dams Very Good & Excellent!

Make A Deal At The Beach Sale



AIJA CHOICE BABY-ET VG-85
DAM OF LOT 14

14

ESKDALE DAIRY
ESKDALE, UT
435-209-0002

Siemers Fitters Choice-ET

840 3204593881 A2A2 *TY *TV
PTA +422M +12F +20P 89R 4/24
PTA +83NM -.01%F +.02%P 100%US
PTA +.7PL 2.92SCS -1.9DPR 2.8%DCE
PTA +3.84T +3.00UDC +2.36FLC
GTPI +2429G

AIJA King-Doc Wichita-ET

CAN 13053962 EX-90-5YR-CAN EX-92-MS
GTPI +2660G +800M +34F +39P 84R 4/24
PTA +3.05T +2.80UDC +1.79FLC 83R 4/24
5-02 2x 364d 42948 3.9 1667 3.4 1473
3-08 2x 365d 36532 4.1 1488 3.5 1290

IVF SESSION FROM:

AIJA CHOICE BABY-ET

840 3231000226 Very Good-85 VG-MS @ 2-05
GTPI +2690 PTA +763M +37F +38P 81R 4/24
PTA +379NM +.03%F +.05%P
PTA +2.2PL 2.92SCS -8DPR 2.6%DCE
PTA +3.95T +3.43UDC +2.32FLC 82R 4/24

OH-River-Syc Crushabull-ET

840 3135145001 *TY
PTA +312M -19F +4P 99R 4/24
PTA +3.34T +2.74UDC +1.42FLC GTPI +2130G

Siemers Doc Hanan 28618-ET

840 3144883130
1-11 3x 264d 24230 4.1 994 3.2 773

Woodcrest King Doc

840 3132417775 Excellent-90 GM 12/21 *TY *TV
PTA +1561M +68F +54P 99R 4/24
PTA +3.15T +2.07UDC +1.90FLC GTPI +2789G

Westcoast Comand Wisconsin 3788-ET

CAN 12371484 VG-86-2YR-CAN VG-87-MS 3*
2-00 2x 300d 24996 4.3 1085 3.6 895

3rd Dam

View-Home Drman Wsconsin-ET VG-88-CAN 6*
2-02 2x 365d 27070 4.3 1151 3.8 1014

4th Dam

Pine-Tree 2149Robst 4846-ET VG-86 DOM 2*
2-04 3x 365d 32000 4.8 1520 3.4 1096

5th Dam

Pine-Tree Zenith Sheen VG-87 VG-MS DOM
1-11 3x 305d 24500 3.9 959 3.2 786

6th Dam

Pine-Tree Martha Sheen-ET VG-85 VG-MS
1-11 3x 365d 31210 4.2 1305 3.1 968

7th Dam

Wesswood-HC Rudy Missy-ET EX-92 3E DOM
4-11 3x 365d 40880 4.1 1665 3.2 1308
Life: 1262d 119610 4.1 4885 3.2 3804

8th Dam

Wesswood Elton Mimi EX-90 GMD DOM
3-05 2x 365d 35380 3.3 1160 3.2 1121

9th Dam

Wesswood Mandingo Ivy VG-87 VEEV
6-05 2x 365d 36330 3.6 1305 3.0 1087
Life: 1835d 144060 3.4 4933 3.1 4412
Next two dams VG-87!

Make A Deal At The Beach Sale



AIJA KING-DOC WICHITA-ET EX-90-CAN
2ND DAM OF LOTS 15, 16, 17

15

MS HULU BESS-ET

840 3285242015 Born: March 17, 2024
GTPI +2857 PTA +402M +66F +37P 78R 4/24
PTA +3.0PL 2.82SCS +.1DPR 2.0%DCE
PTA +4.01T +3.21UDC +2.03FLC 77R 4/24

Siemers Wolf Hulu 37006-ET

840 3245702863 *RC *TP *TY *TV
PTA +1007M +60F +48P 80R 4/24
PTA +3.2PL 2.74SCS +.1DPR 1.9%DCE
PTA +3.75T +3.13UDC +1.57FLC 79R 4/24
GTPI +2900G

Aija Choice Baby-ET

840 3231000226 Very Good-85 VG-MS @ 2-05
GTPI +2690 PTA +763M +37F +38P 81R 4/24
PTA +379NM +.03%F +.05%P
PTA +2.2PL 2.92SCS -.8DPR 2.6%DCE
PTA +3.95T +3.43UDC +2.32FLC 82R 4/24

ESKDALE DAIRY
ESKDALE, UT
435-209-0002

16

MS HULU BETSY-ET

840 3285242223 Born: April 19, 2024
GTPI +2804 PTA +708M +51F +41P 78R 4/24
PTA +3.1PL 2.74SCS -.5DPR 1.4%DCE
PTA +3.75T +3.30UDC +1.81FLC 78R 4/24

Kings-Ransom Dynasty-ET

840 3224437469 A2A2 BB
PTA +649M +106F +42P 82R 4/24
PTA +4.1PL 2.81SCS +.03DPR 2.4%DCE
PTA +2.76T +2.31UDC +.89FLC 81R 4/24
GTPI +2986G

Siemers Fitters Choice-ET

840 3204593881 A2A2 *TY *TV
PTA +422M +12F +20P 89R 4/24
PTA +3.84T +3.00UDC +2.36FLC GTPI +2429G

AIJA King-Doc Wichita-ET

CAN 13053962 EX-90-5YR-CAN EX-92-MS
GTPI +2660G +800M +34F +39P +3.05T 4/24
5-02 2x 364d 42948 3.9 1667 3.4 1473
3-08 2x 365d 36532 4.1 1488 3.5 1290

17

MS DYNASTY BET-ET

840 3210696250 Born: December 11, 2023
GTPI +2826 PTA +829M +72F +43P 79R 4/24
PTA +2.9PL 2.95SCS -.4DPR 3.2%DCE
PTA +3.20T +2.86UDC +1.77FLC 78R 4/24

3rd Dam

Westcoast Comand Wisconsin 3788-ET VG-86 3*
2-00 2x 300d 24996 4.3 1085 3.6 895

4th Dam

View-Home Drman Wisconsin-ET VG-88-CAN 6*
2-02 2x 365d 27070 4.3 1151 3.8 1014

5th Dam

Pine-Tree 2149Robst 4846-ET VG-86 DOM 2*
2-04 3x 365d 32000 4.8 1520 3.4 1096

6th Dam

Pine-Tree Zenith Sheen VG-87 VG-MS DOM
1-11 3x 305d 24500 3.9 959 3.2 786

7th Dam

Pine-Tree Martha Sheen-ET VG-85 VG-MS
1-11 3x 365d 31210 4.2 1305 3.1 968

Next five dams VG & EX!

Make A Deal At The Beach Sale



ESKDALE DJ HANO 10272-ET
SELLS AS LOT 18



18

SNAKE RIVER DAIRIES LLC
% KEVIN TLUCEK
MELBA, ID
208-941-6144

Siemers DJ Hano 32442-ET

840 3208357067 *TY *TV
PTA +624M +44F +42P 86R 4/24
PTA +2.1PL 2.95SCS +1.7DPR 2.4%DCE
PTA +2.61T +2.57UDC +.48FLC 81R 4/24
GTPI +2711G

Terra-Linda Trop Recover-ET

840 3214540539
GTPI +2731 +890M +61F +42P 82R 4/24
PTA +3.02T +2.47UDC +1.43FLC 2.79SCS

ESKDALE DJ HANO 10272-ET

840 3250271438 *TR *TP *TC A2A2
Born: June 8, 2022 • Donor Dam
GTPI +2891 +749M +69F +48P 79R 4/24
PTA +3.11T +2.77UDC +1.24FLC 2.85SCS
• First two sons headed to AI

Claynook Discjockey

CAN 12731113 * TC *TP
PTA -497M +25F +18P 99R 4/24
PTA +1.71T +2.58UDC -.62FLC GTPI +2434

Siemers Doc Hanans 29100-ET

840 3148093490 Very Good-86
1-11 3x 321d 35540 4.2 1482 3.1 1101

Peak Tropic-ET

840 3145229820 Very Good-85
PTA +628M +69F +42P 99R 4/24
PTA +2.52T +1.92UDC +1.42FLC GTPI +2682G

Terra-Linda Doc 794-ET

840 3203098738 Excellent-90 VEVVE
2-05 3x 365d 34140 3.6 1217 3.3 1143

- Sells as a package with her two Hulu daughters, 4 #1 Hulu embryos & 3 #1 Dropbox embryos - see next page

3rd Dam

Trifecta K Connie-ET VG-85 VG-MS

4th Dam

Triplecrown Kingboy 6-ET VG-86

3-02 2x 359d 32780 3.7 1213 3.2 1060

5th Dam

Triplecrown Ssire Darla-ET VG-87

2-00 3x 365d 32400 4.4 1433 3.3 1076

6th Dam

TCG-KM Desire Rae-Red-ET VG-87

8th Dam

Scientific Gold Dew Rae-ET VG-88

7th thru 10th Dams

Scientific Debutante Rae-ET EX-92 GMD DOM

2-02 2x 365d 32930 4.4 1440 3.4 1132

• All-American 4-Yr-Old Cow 2005

Scientific Jubilant Rae-ET EX-90 DOM RC

5-11 2x 365d 38880 4.1 1608 3.6 1403

Life: 1394d 117590 4.0 4707 3.6 4242

C Hanoverhill Tony Rae EX-96 3E GMD DOM

6-11 2x 365d 40220 4.1 1661 3.3 1331

Life: 2247d 166396 4.1 6904 3.4 5612

C Hanoverhill TT Roxette-ET EX-94 2E GMD

10-0 3x 365d 35040 4.3 1519 3.0 1063

Next three dams Excellent including EX-97 Roxy!

Make A Deal At The Beach Sale



ESKDALE DJ HANO 10272-ET
SELLS AS LOT 18



TERRA-LINDA DOC 794-ET EX-90
3RD DAM OF LOT 18

840003285242077-ET - FEMALE

840 3285242077 Born: March 26, 2024
GTPI +2973 PTA +667M +82F +51P 78R 4/24
PTA +3.6PL 2.70SCS -.2DPR 2.3%DCE
PTA +3.34T +2.82UDC +1.32FLC 76 4/24

• **Sells as a package with Eskdale DJ Hano 10272-ET - see previous page**

Siemers Wolf Hulu 37006-ET

840 3245702863 *RC *TP *TY *TV
PTA +1007M +60F +48P 80R 4/24
PTA +3.2PL 2.74SCS +.1DPR 1.9%DCE
PTA +3.75T +3.13UDC +1.57FLC 79R 4/24
GTPI +2900G

Eskdale DJ Hano 10272-ET

840 3250271438 *TR *TP *TC A2A2
GTPI +2891 +749M +69F +48P 79R 4/24
PTA +3.11T +2.77UDC +1.24FLC 2.85SCS

• *First two sons headed to AI*

SNAKE RIVER DAIRIES LLC
% KEVIN TLUCEK
MELBA, ID
208-941-6144

840003285242068-ET - FEMALE

840 3285242068 Born: March 25, 2024
GTPI +2994 PTA +992M +83F +53P 78R 4/24
PTA +2.8PL 2.70SCS +.4DPR 1.8%DCE
PTA +3.19T +3.28UDC +1.09FLC 76 4/24

Aija Wolfgang

CAN 13494527 *RC *PC A2A2
PTA +1193M +42F +34P 83R 4/24
PTA +2.82T +2.69UDC +1.07FLC GTPI +2616G

Siemers Lstr Hanan 33317-ET

840 3212996392 Very Good-89
2-03 2x 281d 28180 4.3 1202 3.8 1075

Siemers DJ Hano 32442-ET

840 3208357067 *TY *TV
PTA +624M +44F +42P 86R 4/24
PTA +2.61T +2.57UDC +.48FLC GTPI +2711G

Terra-Linda Trop Recover-ET

840 3214540539
GTPI +2731 +890M +61F +42P 82R 4/24
PTA +3.02T +2.47UDC +1.43FLC 2.79SCS

FOUR #1 SEXED EMBRYOS

Sire: Siemers Wolf Hulu 37006

THREE #1 SEXED EMBRYOS

Sire: Kings-Ransom Dropbox-ET

3rd Dam

Terra-Linda Doc 794-ET EX-90 VEVVE
2-05 3x 365d 34140 3.6 1217 3.3 1143

4th Dam

Trifecta K Connie-ET VG-85 VG-MS

5th Dam

Triplecrown Kingboy 6-ET VG-86
3-02 2x 359d 32780 3.7 1213 3.2 1060

6th Dam

Triplecrown Ssire Darla-ET VG-87
2-00 3x 365d 32400 4.4 1433 3.3 1076

7th Dam

TCG-KM Desire Rae-Red-ET VG-87

8th Dam

Scientific Gold Dew Rae-ET VG-88

9th thru 12th Dams

Scientific Debutante Rae-ET EX-92 GMD DOM
2-02 2x 365d 32930 4.4 1440 3.4 1132

• *All-American 4-Yr-Old Cow 2005*

Next six dams Excellent including EX-97 Roxy!

Make A Deal At The Beach Sale



ESKDALE POLLED QUEEN P-ET
DAM OF LOT 19

19

BABY SYNDICATE
MELBA, ID
208-941-6144

• Partners reserve the right to bid

FOUR #1 SEXED EMBRYOS

Siemers Haliant-P-ET

840 3257573274 * PC A2A2 BB
PTA +711M +79F +47P 80R 4/24
PTA +5.0 2.74SCS +1.0DPR 1.9%DCE
PTA +3.27T +2.45UDC +2.10FLC 79R 4/24
GTPI + 3027G

Eskdale Polled Queen P-ET

840 3266231905 *PO A2A2 BB
GTPI +2785 PTA +921M +63F +44P 79R 4/24
PTA +1.5PL 2.94SCS -1.9DPR 2.2%DCE
PTA +4.10T +3.20UDC +2.04FLC 78R 4/24

Siemers Rz Puzzle 34954-ET

840 3218556317 *TY *TV
PTA +547M +95F +48P 83R 4/24
PTA +3.17T +2.73UDC +1.96FLC GTPI +3044

Siemers Lstr Hanan 33317-ET

840 3212996392 *PC Excellent-90
2-03 2x 281d 28180 4.3 1202 3.6 1022

Eskdale Lustrous

840 3214540632 *PP *TR *A2A2 *BB
PTA +734M +71F +33P 82R 4/24
PTA +3.19T +2.52UDC +1.80FLC GTPI +2708G

AIJA Choice Baby-ET

840 3231000226 Very Good-85 VG-MS @ 2-05
GTPI +2690 PTA +763M +37F +38P 81R 4/24
PTA +2.2PL 2.92SCS -8DPR 2.6%DCE
PTA +3.95T +3.43UDC +2.32FLC 82R 4/24

3rd Dam

AIJA King-Doc Wichita-ET EX-90-CAN
3-08 2x 365d 36532 4.1 1488 3.5 1290

4th Dam

Westcoast Comand Wisconsin-ET VG-86-CAN 3*
2-00 2x 300d 24996 4.3 1085 3.6 895

5th Dam

View-Home Drman Wsconsin-ET VG-88-CAN 8*
2-02 2x 365d 27070 4.3 1151 3.8 1014

6th Dam

Pine-Tree 2149Robst 4846-ET VG-86 DOM 3*
2-04 3x 365d 32000 4.8 1520 3.4 1096

7th Dam

Pine-Tree Zenith Sheen VG-87 VG-MS DOM
1-11 3x 305d 24500 3.9 959 3.2 786

8th Dam

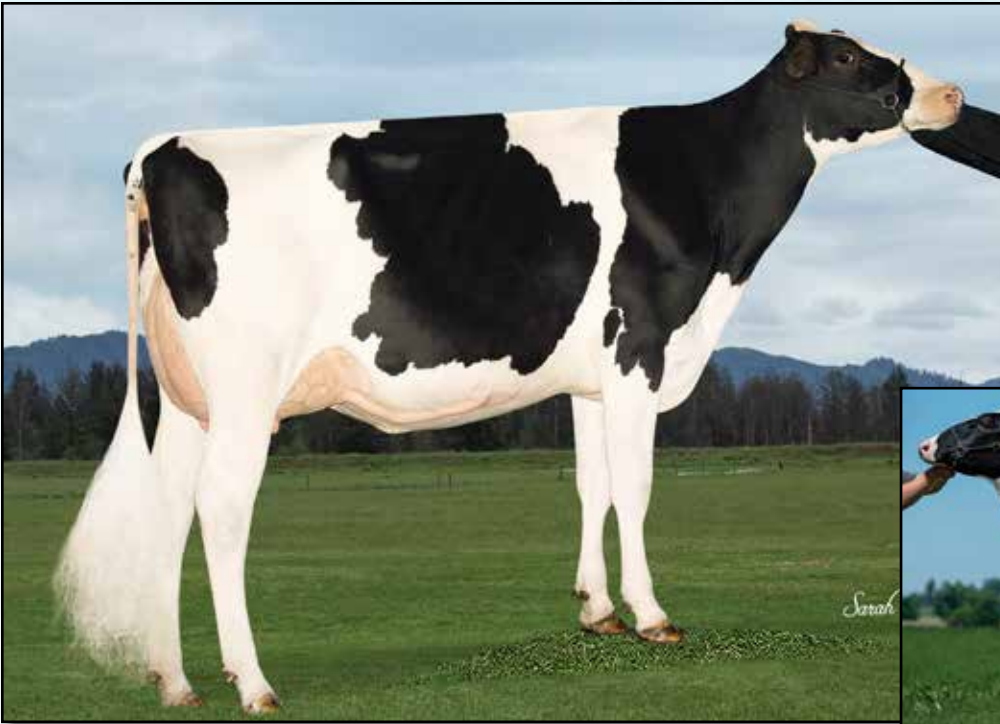
Pine-Tree Martha Sheen-ET VG-85 VG-MS
1-11 3x 365d 31210 4.2 1305 3.1 968

9th Dam

Wesswood-HC Rudy Missy-ET EX-92 3E DOM
4-11 3x 365d 40880 4.1 1665 3.2 1308
Life: 1262d 119610 4.1 4885 3.2 3804

Next four dams VG & EX!

Make A Deal At The Beach Sale



VALIANT JAGGER ROXSTAR-ET VG-86
DAM OF LOT 20



MORNINGVIEW ROYL ROXETTE-ET VG-87-CAN
2ND DAM OF LOT 20

20

ESKDALE DAIRY
ESKDALE, UT
435-209-0002

Siemers Wolf Hulu 37006-ET

840 3245702863 *RC *TP *TY *TV
PTA +1007M +60F +48P 80R 4/24
PTA +3.2PL 2.74SCS +.1DPR 1.9%DCE
PTA +3.75T +3.13UDC +1.57FLC 79R 4/24
GTPI +2900G

Valiant Jagger Roxstar-ET

840 3231000245 Very Good-86 VG-MS @ 2-08
PTA +730M +39F +37P 82R 4/24
PTA +3.59T +2.93UDC +1.55FLC

FEMALE

Born: June, 2024
GTPI +2772 PTA +3.73T +3.13UDC 7/24
PTA -.2DPR 2.4%SCE

Aija Wolfgang

CAN 13494527 *RC *PC A2A2
PTA +1193M +42F +34P 83R 4/24
PTA +2.82T +2.69UDC +1.07FLC GTPI +2616G

Siemers Lstr Hanan 33317-ET

840 3212996392 Very Good-89
2-03 2x 281d 28180 4.3 1202 3.8 1075

Peak Jagger-ET

840 3205436591 *TY *TV
PTA -590M +37F +13P 94R 4/24
PTA +3.50T +2.67UDC +2.00FLC GTPI +2511G

Morningview Royl Roxette-ET

840 3149587153 VG-87-4YR-CAN 88-MS
4-10 2x 355d 32353 4.0 1296 3.4 1111
3-10 2x 324d 28808 3.6 1047 3.3 955

3rd thru 12th Dams

Morningview Mntry Mercy-ET EX-92 EEEEE

4-05 2x 365d 36660 3.8 1408 3.2 1158

Morningview Super Roxy EX-90 EEVVE GMD DOM

4-08 2x 365d 44550 3.5 1537 3.3 1453

Life: 1459d 138520 3.4 4761 3.3 4530

Morningview Pronto C-Rae-ET EX-90 2E *RC

4-07 2x 360d 37180 4.1 1529 3.2 1185

Life: 1674d 141160 4.1 5840 3.3 4702

Early-Autumn Golden Rae-ET EX-93 2E

4-01 2x 365d 42789 4.7 2026 3.3 1413

Life: 3 Lacs 132510 4.8 6332 3.4 4566

Scientific Beauty Rae-ET EX-90 VEEVE *RC

4-03 2x 365d 33710 4.7 1595 3.5 1179

Scientific Jubilant Rae-ET EX-90 DOM *RC

5-11 2x 365d 38880 4.1 1608 3.6 1403

Life: 1394d 117590 4.0 4707 3.6 4242

C Hanoverhill Tony Rae EX-96 3E GMD DOM 5*

6-11 2x 365d 40220 4.1 1661 3.3 1331

Life: 2247d 166396 4.1 6904 3.4 5612

• Gr Champion Western National 1993

C Hanoverhill TT Roxette-ET EX-94 2E GMD

Life: 2104d 164789 4.1 6760 3.1 3587

Mil-R-Mor Roxette-ET EX-90 GMD DOM

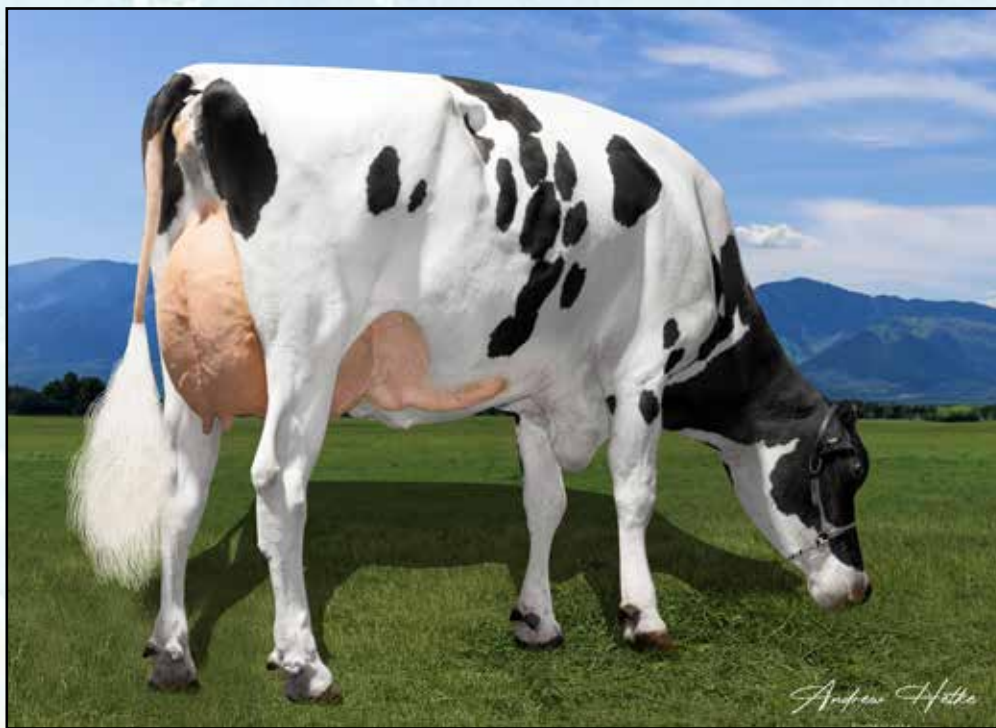
Life: 1921d 121417 4.7 5725

C Glenridge Citation Roxy EX-97 4E GMD 6*

Life: 3620d 209784 4.5 9471

C Norton Court Model Vee EX-90 6*

Make A Deal At The Beach Sale



ESKDALE RONALD ARC-ET EX-91
2ND DAM OF LOTS 21 & 22

21

TLU HULU 14307-RED-ET

840 3285242295 *TP *TC

Born: April 28, 2024

GTPI +2778 PTA +591M +31F +36P 79R 6/24

PTA +3.9PL 2.86SCS +1.2DPR 1.8%DCE

PTA +3.15T +2.85UDC +1.69FLC 78R 6/24

• THIS IS A SUBSTITUTE FROM AN EARLIER HEIFER!

Golden-Oaks Tango-Red-ET

840 3209185764 A2A2 *TY

PTA -531M +28F -2P 82R 4/24

PTA -.6PL 2.99SCS -3.2DPR 3.8%DCE

PTA +4.04T +2.88UDC +1.84FLC 81R 4/24

GTPI +2181G

Midway Oz 9752-ET

840 3234077351 Very Good-85 VG-MS @ 2-01 *RC

GTPI +2831 +1017M +59F +35P 82R 4/24

PTA +4.5PL 2.89SCS +1.4DPR 1.9%DCE

PTA +2.93T +2.36UDC +1.69FLC 83R 4/24

MIDWAY DAIRY
CLOVERDALE, OR
503-812-2702

22

TLU REDLEA OZ

840 3260118317

Born: December 16, 2023

GTPI +3013 PTA +1103M +97F +54P 79R 4/24

PTA +5.0PL 2.76SCS +1.1DPR 2.4%DCE

PTA +1.74T +1.41UDC +1.17FLC 78R 4/24

StGen RC Redlea-ET

840 3213134224 *RC *TC *TY *TV

PTA +1596M +115F +69P 82R 4/24

PTA +5.1PL 2.80SCS -.3DPR 2.7%DCE

PTA +1.70T +1.44UDC +.83FLC 81R 4/24

GTPI +3098G

Terra-Linda AZ Doc Oz-ET

840 3147989761 *TC *TY TV

PTA +1550M +62F +58P 97R 4/24

PTA +2.48T +2.37UDC +1.06FLC GTPI +2842G

Eskdale Ronald Arc-ET

840 3204593812 Excellent-91 VEEEE @ 4-04 *RC

2-09 2x 317d 21680 4.0 860 3.4 735

1-10 2x 294d 17040 4.0 683 3.3 562

3rd Dam

Eskdale Apprentice Joule-ET VG-85 VG-MS *RC

5-02 2x 365d 42170 3.9 1650 3.6 1520

Life: 1321d 143880 3.9 5647 3.6 5179

4th Dam

Eskdale Sender Amply Amp GP-83

5-03 2x 365d 37690 4.6 1725 3.7 1408

Life: 1433d 119060 4.8 5669 3.8 4540

5th Dam

Eskdale Dorcy Amply VG-85

4-11 2x 365d 35970 3.9 1470 3.5 1248

Life: 1558d 128190 3.8 4825 3.4 4354

6th Dam

Eskdale Lthority Amnesty-ET VG-86

6-03 2x 365d 37920 3.5 1335 3.1 1168

Life: 1796d 173610 3.4 5870 3.1 5448

7th Dam

Eskdale Shottle Amberly-ET VG-88 EVVEV GMD

4-05 2x 365d 35050 3.7 1280 3.2 1110

Life: 1972d 155890 3.6 5662 3.2 5031

Juniper Morty Amber-ET VG-86 VG-MS

3-09 2x 365d 33080 3.0 997 3.0 983

Carters-Corner Man Aldi-ET EX-90 VEVEE

1-11 2x 365d 35440 3.9 1398 3.1 1101

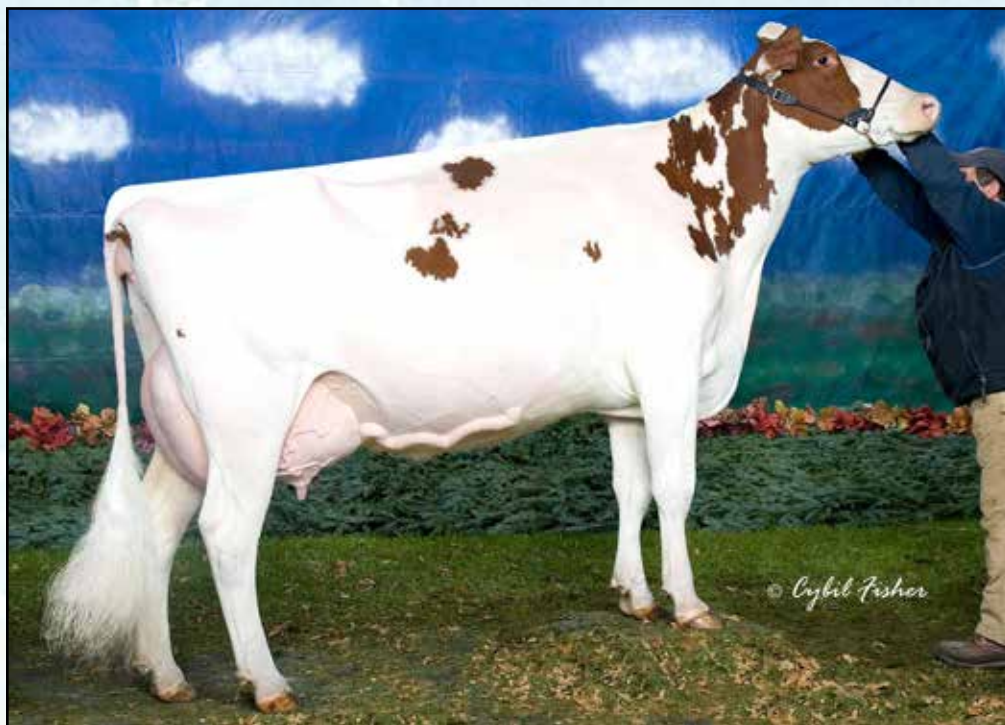
Neu-Way Aerostar Allie-ET VG-87 VG-MS GMD

2-03 2x 365d 32490 3.6 1169 3.1 1018

Neu-Way Melwood Allie VG-88 VEVVV

2-03 2x 365d 32820 3.3 1094 2.8 908

Make A Deal At The Beach Sale



RICHESSA STREAM RED MARKER-RED EX-91
7TH DAM OF LOT 23

Nominated All-American R&W 4-Year-Old 2006

23

JASON HALE
CLOVERDALE, OR
503-949-7953

StGen RC Redlea-ET

840 3213134224 *RC *TC *TY *TV
PTA +1596M +115F +69P 82R 4/24
PTA +5.1PL 2.80SCS -.3DPR 2.7%DCE
PTA +1.70T +1.44UDC +.83FLC 81R 4/24
GTPI +3098G

E-Lane Rubels 1099-Red-ET

840 3230381186 Good Plus-83 @ 2-09
GTPI +2702 +1341M +58F +46P 83R 4/24
PTA +5.3PL 2.60SCS -.22DPR 2.0%DCE
PTA +2.01T +1.30UDC +.93FLC 84R 4/24

IVF SESSION FROM:

E-LANE REDLEA 1252-ET

840 3274459868 *RC
GTPI +2923 PTA +1736M +78F +62P 79R 4/24
PTA +932NM +.04%F +.03%P
PTA +5.7PL 2.75SCS -.5DPR 2.7%DCE
PTA +2.07T +1.49UDC +.95FLC 78R 4/24

Genosource Captain-ET

840 3147118734 GM 12/23 *TC *TY *TV
PTA +2360M +153F +84P 99R 4/23
PTA +1.18T +1.50UDC +.23FLC GTPI +3287

Fairmont Salvatore Doris-ET

840 3146184436 Very Good-85 VG-MS @ 2-05
4-08 3x 365d 41100 4.1 1689 3.6 1486

Hoogerhorst DG OH Rubels-Red

NLD 67950401 *TY *TV A1A2 BB
PTA +1035M +67F +48P 97R 4/24
PTA +2.32T +1.77UDC +1.18FLC GTPI +2711G

E-Lane Sal Layna-Red-ET

840 3140887616 Very Good-85 VG-MS @ 6-03
3-04 2x 365d 32420 4.4 1434 3.7 1213
4-11 2x 311d 23570 4.6 1079 3.8 897
Life: 1446d 105150 4.5 4769 3.8 3994

3rd Dam

E-Lane Symion Layla-ET VG-88 VVVVV
5-06 2x 365d 27310 5.6 1525 4.0 1104

4th Dam

E-Lane Doorman Lucky-ET EX-90 EEEEE *RC
3-01 2x 305d 23840 5.2 1246 3.8 907

5th Dam

New-Trad Lady Luck-ET EX-93 EEEEE 3E *RC
8-06 2x 365d 32560 4.8 1569 3.5 1126
Life: 2407d 194090 4.4 8636 3.6 6928

6th Dam

Wide-Open Lady In-Red-ET VG-89
6-07 2x 365d 25190 4.1 1034 3.4 844

7th Dam

Richessa Stream Red Marker-Red EX-91
7-09 2x 305d 28720 4.1 1179 3.0 851
• Nom All-American R&W 4-Year-Old 2006

8th thru 11th Dams

Richessa Stopoil Astre VG-87-CAN
5-01 2x 365d 26325 3.0 800 3.2 842

Goloise Stora Jubilant VG-86-CAN 22*
8-00 2x 305d 28810 3.5 1014 3.4 985
Life: 5 Lacs 148270 3.9 5849 3.5 5165

Goloise Suby Starbuck VG-88-CAN 3*
5-01 2x 365d 25611 3.6 930 3.4 864
Life: 7 Lacs 141116 3.8 5366 3.5 4952

Bertelle Superbe Valiant ET VG-85-CAN 1*

Make A Deal At The Beach Sale



TERRA-LINDA EXCALIBUR MAY VG-88
2ND DAM OF LOT 24

24

SNAKE RIVER DAIRIES LLC
% KEVIN TLUCEK
MELBA, ID
208-941-6144

IVF SESSION FROM:

TERRA-LINDA DROPBX 13230-ET

840 3280191153 *TC *TL *TD A2A2 BB
GTPI +3107 PTA +1395M +113F +65P 79R 4/24
PTA +959NM +.20%F +.07%P
PTA +4.1PL 2.63SCS -1.6DPR 2.2%DCE
PTA +2.57T +2.22UDC +1.08FLC 78R 4/24

AOT Highjump-ET

3202768334 GM 12/23 *TY A2/A2
PTA +1465M +119F +67P 96R 4/24
PTA +2.15T +2.42UDC -.20FLC GTPI +2997G

Kings-Ransom Casp Daze-ET

3146394969 Excellent-94 EEEEE TR TC TL TD
3-01 3x 365d 43310 4.0 1722 3.5 1501
Life: 1030d 112530 4.1 4660 3.6 4105

Siemers Rengd Perfect-ET

840 3200124761 GM 12/23 A2A2 BB
PTA +1140M +100F +61P 99R 4/24
PTA +2.47T +2.22UDC +2.00FLC GTPI +3044G

Terra-Linda Excalibur May

840 3211630559 Very Good-88 VEVVV @ 2-05
GTPI +2954 +1168M +98F +56P +2.46T 4/24
3-02 3x 365d 42220 4.2 1778 3.2 1366

Kings-Ransom Dropbox-ET

3224437486 *TY *TV A2/A2
PTA +1080M +85F +58P 81R 4/24
PTA +3.3PL 2.70SCS -.5DPR 2.2%DCE
PTA +3.20T +3.13UDC +.89FLC 81R 4/24
GTPI +3012G

Terra-Linda Parf 11366-ET

840 3243358101 *TP *TC A2A2 BB
GTPI +3079 +982M +120F +63P 81R 4/24
PTA +896NM +.28%F +.11%P
PTA +2.0PL 2.77SCS -1.6DPR 1.9%DCE
PTA +2.58T +2.04UDC +1.53FLC 80R 4/24

3rd Dam

Terra-Linda Imax 428 VG-85 VG-MS
3-00 3x 365d 39690 3.7 1468 3.1 1237

4th Dam

Progenesis Bombero Mary-ET VG-88 EX-MS

5th Dam

Gil-Gar Predes Merlot-ET
2-05 2x 213d 23684 3.9 933 3.3 791

6th thru 17th Dams

Sully Hartford Snwmn 284-ET
Sully Planet Manitoba-ET VG-85-CAN DOM 17*
4-01 3x 365d 43669 3.6 1565 3.2 1402
Sully Shottle May-Tw EX-91 2E DOM
6-07 3x 365d 39960 3.9 1555 3.3 1302
Ms Sully Oman Muetze-ET EX-90
3-08 2x 330d 32850 3.8 1264 3.3 1089
Johnan Marshall Mint VG-85 VG-MS
2-02 2x 365d 31030 3.1 961 3.0 941
Poly-Kow Durham Mincy-ET VG-88
5-08 2x 365d 40100 3.0 1222 3.1 1244
Poly-Kow Rudolph Mink-ET VG-86 GMD DOM
2-00 2x 365d 29290 3.6 1054 3.4 987
Poly-Kow Lindy Mindy-ET VG-88 GMD DOM
3-08 2x 365d 39550 4.0 1589 3.0 1175
Footprint Nick Milan VG-89 GMD DOM
Footprint Mazda Command VG-85 GMD DOM
Footprint Ned Boy Mercedes VG-85
Footprint Cor-Vel Madonna-Tw VG-85

Make A Deal At The Beach Sale



COLDSPRINGS HAZE-P 14273-ET
DAM OF LOT 25

25

JASON HALE
CLOVERDALE, OR
503-949-7953

AOT Redeye Haze-P-Red-ET

840 3232427677 99%RHA-I *PC *CD *TY *TV
PTA +825M +70F +41P 82%R 4/2024
PTA +4.1PL 2.69SCS -.3DPR 2.5%DCE
PTA +2.14T +1.71UDC +.84FLC 81%R 4/2024
GTPI +2782

Coldsprings Banjo 12130-ET

840 3218763056 Very Good-88 EVVVV @ 3-08
1-09 3x 365d 36340 3.7 1331 3.5 1282

IVF SESSION FROM:

COLDSPRINGS HAZE-P 14273-ET

840 3269046248 *RC *TP *TC
GTPI +2929 PTA +971M +80F +49P 79R 4/24
PTA +726NM +.15%F +.07%P
PTA +3.9PL 2.70SCS +.6DPR 2.9%DCE
PTA +2.53T +2.17UDC +1.39FLC 78R 4/24

Vogue Redeye P-Red

CAN 40001147 *PC *TE *TC *TY *TV
PTA +447M +41F +20P 97R 4/24
PTA +2.22T +1.56UDC +1.41FLC GTPI +2573G

AOT Hawai Holly-ET

840 3202768359 Excellent-90 EX-MS DOM *RC *CD
4-01 3x 365d 45900 4.2 1940 3.4 1543
3-01 3x 314d 37250 3.8 1414 3.1 1337

England-Ammon Banjo-P-ET

840 3132923887 *TC *TY
PTA +1236M +81F +63P 97R 4/24
PTA +1.45T +1.39UDC +1.11FLC GTPI +2905

Coldsprings Rubicon 11000

840 3203043164 Very Good-87 VVVVV @ 3-01
2-10 3x 365d 45540 3.3 1509 3.2 1477
4-03 3x 305d 42350 3.5 1462 3.4 1427
Life: 1247d 144440 3.7 5500 3.4 4923

3rd Dam

Coldsprings Superstar 7309 EX-90 EEVVV
4-03 3x 365d 42790 3.7 1582 3.4 1459
Life: 1116d 114020 3.8 4341 3.4 3907

4th Dam

Coldsprings Casual 5583-ET VG-87 VG-MS
4-02 3x 355d 38240 3.4 1318 3.1 1199
Life: 1799d 189740 3.3 6259 3.1 5863

5th Dam

Coldsprings Planet 3818 VG-88 VG-MS DOM
5-01 3x 365d 41970 3.8 1597 3.3 1387
Life: 2150d 222210 3.9 8624 3.3 7376

6th Dam

Coldsprings Buckeye 2435 VG-85 EX-MS
3-10 3x 365d 33570 3.6 1223 3.1 1054

7th Dam

Coldsprings Durham 4991-ET EX-90 2E
5-04 2x 365d 40010 4.0 1589 3.1 1233

8th thru 12th Dams

Coldsprings Chesapeake Erma VG-88
Coldsprings B-Star Nolo-ET EX-90 GMD
Coldsprings Tradition Nova 2E-93 GMD DOM
Kit-Way Coldsprings Jaki-Twin 2E-92 GMD DOM
Gaydawn Rebel Cindy VG-89 GMD DOM

Make A Deal At The Beach Sale

26

JASON HALE
CLOVERDALE, OR
503-949-7953

Siemers Rengd Perfect-ET

840 3200124761 GM 12/23 A2A2 BB
PTA +1140M +100F +61P 99R 4/24
PTA +4.1PL 2.88SCS -.9DPR 1.9%DCE
PTA +2.47T +2.22UDC +2.00FLC 99R 4/24
GTPI +3044G

Golob Alphabet 19551

840 3240218153 Good Plus-83 @ 2-01 *RC
GTPI +2772 PTA +1920M +92F +58P 83R 4/24
PTA +2.06T +1.11UDC +.62FLC +233FE

GOLOB PERFECT GRINCH

840 3274454812 *RC *TC
Born: November 12, 2023 Herd ID: 945
GTPI +2879 PTA +2004M +65F +68P 81R 4/24
PTA +4.2PL 2.96SCS -.7DPR 2.3%DCE
PTA +2.26T +1.86UDC +1.44FLC 80R 4/24

S-S-I PR Rengade-ET

840 3142352961 GM 12/23 *TR *TC *TY
PTA +1025M +94F +60P 99R 4/24
PTA +1.91T +1.62UDC +1.98FLC GTPI +2953G

Siemers Lmda Paris 27856-ET

840 3141495692 Excellent-91 GMD DOM
3-05 2x 365d 38580 4.1 1579 3.7 1435
2-00 2x 365d 34200 4.5 1523 3.7 1257

OCD Helix Alphabet-ET

840 3142934708 GM 12/23 *TR *TP
PTA +2690M +106F +67P 99R 4/24
PTA +1.37T +1.35UDC -.40FLC GTPI +2841G

Golob Rager 16897

840 3210754703 93%RHA *RC *TP

3rd Dam

Golob Millington 12407 GP-81

4th Dam

Golob McCutchen 10230

1-11 2x 365d 29220 4.1 1204 3.3 978

27

JASON HALE
CLOVERDALE, OR 97112
503-949-7953

StGen RC Redlea-ET

840 3213134224 *RC *TC *TY *TV
PTA +1596M +115F +69P 82R 4/24
PTA +5.1PL 2.80SCS -.3DPR 2.7%DCE
PTA +1.70T +1.44UDC +.83FLC 81R 4/24
GTPI +3098G

Mi-Mi Argonaut Apricot

840 3242600856 Good Plus-82 @ 2-02
GTPI +2781 +1196M +62F +49P 79R 4/24
PTA +1196M +62F +49P 79R 4/24
PTA +5.0PL 2.67SCS -.4DPR 2.5%DCE
PTA +1.97T +1.87UDC +.44FLC 81R 4/24

IVF SESSION FROM:

MI-MI REDLEA CHERRY-RED-ET

840 3269677806
GTPI +2937 PTA +1807M +98F +72P 76R 4/24
PTA +919NM +.10%F +.05%P
PTA +3.7PL 2.91SCS -.22DPR 2.7%DCE
PTA +1.99T +1.70UDC +.75FLC 76R 4/24

Genosource Captain-ET

840 3147118734 GM 12/23 *TC *TY *TV
PTA +2360M +153F +84P 99R 4/23
PTA +1.18T +1.50UDC +.23FLC GTPI +3287

Fairmont Salvatore Doris-ET

840 3146184436 Very Good-85 VG-MS @ 2-05
4-08 3x 365d 41100 4.1 1689 3.6 1486

Mi-Mi Shimmer Argonaut

840 3215003591 *RC *TP *TC
PTA +1401M +43F +44P 82R 4/24
PTA +2.12T +1.78UDC +.86FLC GTPI +2727G

Mi-Mi Rapid Acai

840 3215003600 Very Good-86 EX-MS @ 3-05
1-09 3x 365d 34890 4.1 1418 3.4 1176
3-03 3x 307d 33820 3.7 1265 3.3 1113

3rd Dam

Mi-Mi Rapid Acai VG-86 EX-MS

1-09 2x 365d 34890 4.1 1418 3.4 1176

4th Dam

Mi-Mi Jedi Arielle-TW GP-83 VG-MS

1-10 2x 310d 26740 3.1 831 3.3 884

5th Dam

Golden-Oaks Pat Ambara-ET GP-84 VG-MS GMD

2-01 2x 365d 42870 3.7 1594 3.2 1380

Life: 1549d 134360 3.4 4548 3.2 4354

6th Dam

Ladys-Manor Olymp Amaris-ET EX-91 2E EEEVE

5-07 2x 365d 44890 3.8 1701 3.1 1411

Life: 1983d 180530 3.8 6794 3.4 6150

7th Dam

Ladys-Manor Mog Amoira-ET VG-86 VEGVV

1-11 2x 305d 25180 4.1 1029 3.2 808

8th Dam

Ladys-Manor Plnt Amira-ET EX-90 EVVEE GMD

3-10 2x 364d 39370 4.0 1566 3.3 1284

Life: 1933d 175640 4.0 6996 3.3 5735

9th Dam

Ladys-Manor Gold Amelia-ET VG-85 VG-MS DOM

1-10 2x 365d 31600 4.9 1535 3.6 1153

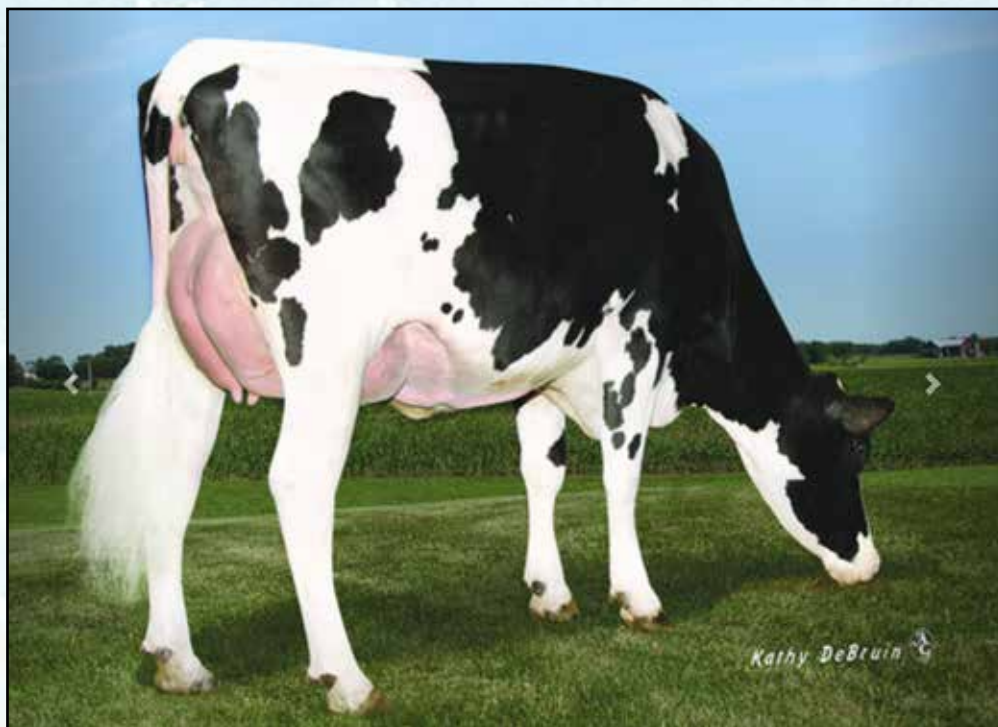
10th Dam

Ladys-Manor Amelia O-ET VG-85 VG-MS GMD

2-04 2x 365d 32110 4.0 1293 3.4 1086

Next eight dams all VG or EX!

Make A Deal At The Beach Sale



PINE-TREE 5976 PROP 7829-ET VG-87
3RD DAM OF LOT 28

28

FIT GENETICS
261 HOUSE LANE
ELIZABETHTOWN, KY 42701
859-699-2998

OCD Gameday Detroit-ET

840 3221358624 *TC *TY
PTA +716M +107F +48P 82R 4/24
PTA +6.6PL 2.59SCS +1.2DPR 2.2%DCE
PTA +1.38T +2.40UDC +.11FLC 81R 4/24
GTPI +3143G

BGP 20002 Cokezero-ET

840 3228176057 Very Good-85 VG-MS @ 2-10
GTPI +2954 +1492M +125F +62P 82R 4/24
PTA +3.0PL 2.91SCS -2.0DPR 1.5%DCE
PTA +.94T +.74UDC +.32FLC 80R 4/24

IVF SESSION FROM:

FIT CORBIN 6145 PEPSI-ET

840 3269405453 *TP *TC
GTPI +3120 PTA +1046M +130F +63P 79R 4/24
PTA +1218NM +.31%F +.11%P
PTA +4.9PL 2.80SCS -.4DPR 1.8%DCE
PTA +1.12T +1.21UDC +.06FLC 78R 4/24

RMD-Dotterer SSI Gameday-ET

840 3205704153 GM 12/23 *TC *TY
PTA +1209M +125F +61P 99R 4/24
PTA +1.80T +2.22UDC +.07FLC GTPI +3163G

OCD Option Detroit 47665-ET

840 3151643469 Very Good-87 VVEVV
3-02 3x 299d 32210 4.0 1287 3.5 1123
2-02 3x 321d 28270 4.6 1288 3.5 998

C-Haven Positive Deluxe-ET

840 3210987525 Good Plus-80 GM 12/23
PTA +1821M +144F +70P 96R 4/24
PTA +1.81T +1.03UDC +.32FLC GTPI +3048G

Pine-Tree 7829 Game 8410-ET

840 3150675482 Good Plus-83 @ 2-07
3-11 3x 196d 18280 4.0 724 3.4 618

3rd Dam

Pine-Tree 5976 Prop 7829-ET VG-87
3-01 2x 365d 29710 4.9 1648 4.4 1311

4th Dam

Sandy-Valley No Limit-ET VG-85
2-01 2x 365d 26442 5.0 1373 3.6 984

5th Dam

Sandy-Valley SS Psych-ET
2-01 2x 365d 30680 3.7 1146 3.4 1054

6th Dam

Pine-Tree Monica Planeta-ET VG-86 DOM
2-01 2x 365d 30679 3.7 1146 3.4 1054

7th Dam

Pine-Tree Monica Suela-ET VG-87 DOM
1-11 3x 365d 33056 3.5 1111 3.3 1058

8th Dam

Pine-Tree Missy Monica-ET VG-85 GMD DOM
4-11 3x 305d 36010 3.5 1248 2.9 1034

9th Dam

Wesswood-HC Rudy Missy-ET EX-92 3E DOM
4-11 3x 365d 40880 4.1 1665 3.2 1308

Life: 1262d 119610 4.1 4885 3.2 3804

10th Dam

Wesswood Elton Mimi EX-90 GMD DOM
3-05 2x 365d 35380 3.3 1160 3.2 1121

Next three dams VG & EX!

Make A Deal At The Beach Sale



WALLACE
SIRE OF LOTS 29 & 30



CHIBLIS AND PENELOPE
DAMS OF LOTS 29 & 30

29

THREE #1 EMBRYOS
TWO #2 EMBRYOS

Sire: Wallace (Chondro Negative, 43" tall)

Dam: Chiblis

- *Minimum bid \$8,000*
- *Embryos are conventional*

30

THREE #1 EMBRYOS
TWO #2 EMBRYOS

Sire: Wallace (Chondro Negative, 43" tall)

Dam: Penelope

- *Minimum bid \$10,000*
- *Embryos are conventional*

GRAND CRU MINIATURE CATTLE
BILL HELIKER
360-689-1389

