

AJCC RESEARCH FOUNDATION AUCTION



THURSDAY, JUNE 20, 2024
BASKETBALL HALL OF FAME
SPRINGFIELD, MA 7:00 PM

Live Auction Items



Live Lot #1

The Jersey 1938 American Jersey Cattle Club.

Printed by Edwin Megarge.

Wonderful Snowdrop and her calf are featured in this painting by Megarge.

She typifies great dairy ability combined with beauty in the true Jersey tradition - described Edwin Megarge when he painted this piece.

"Snowdrop" was named Reserve Grand Champion at the 1937 National Dairy Show and made a 365-day Herd Improvement Registry record of 14,234 lbs. milk, and 833 lbs. fat. That is a 5.86% fat test in the 1930s—truly America's Creamline Cow!

Donated by John and Elaine Kokoski, Mass.



Live Lot #2

Eight All-Jersey/Queen of Quality Drinking Glasses

Classic set of Vintage All-Jersey Milk glasses.

Jersey Milk for Economy, Flavour, Quality, and Highest Food Value, both above and below the cream line is printed on the classes along with the original Queen of Quality logo supporting All-Jersey milk.

Donated by David Parkinson, Ariz.

Live Lot #3

80" x 80" Jersey Quilt

Beautiful handmade quilt featuring The Jersey in the middle.



Images on shams are 5.5" x 6"



All donated by Helene Driesbach, Pa.

Live Lot #3A & B

Pillow Shams featuring A-Nine Top Brass and The Jersey

Two one-of-a-kind pillow shams featuring the best of the Jersey breed. Handsewn and painted.

Live Lot #4

The Jersey Rug

The only one of its kind... a 2' x 3' rug, featuring The Jersey side view. Perfect for your office or house entry way!

Donated by American Jersey Cattle Association



Donated by David Parkinson, Ariz.



Live Lot #5

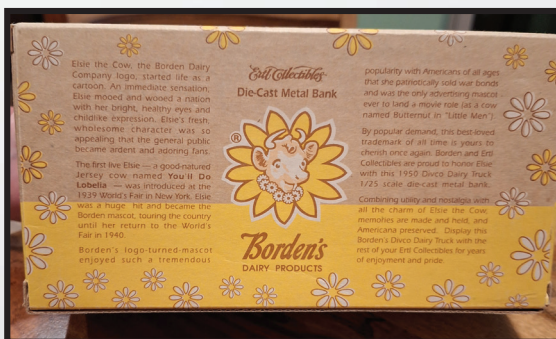
Borden Milk Bottle and Vintage Die-Cast Metal Bank

Elsie has mooed and wooed the nation through years with her bright, healthy eyes and childlike expression. Not to mention the fact she has helped portray the Jersey breed to the nation.

Borden and Ertl Collectibles teamed up to honor Elsie with this 1950 Divco Dairy Truck 1/25 scale die-cast metal bank.

The box has never been opened. Brand new and definitely a specialty!

Display it with the Borden milk bottle for a great conversation piece at your house!





Live Lot #6

Vintage Jersey Jug Sign

An original Jersey Jug sign from the early Futurity's held at the All American Shows in Columbus, Ohio.

Proudly displayed in the arena promoting the oldest and richest Jersey show in the world.

Donated by Caylei Rae Arnold, Mass.

Live Lot #7

1950s Model Jersey Cow



1950s model Ideal Jersey cow. From the heart and soul of Fair Weather Farm originally and now owned by Barbara (Chittenden) Benson and her husband, Larry.

Donated by Larry and Barbara Benson, NY



Live Lot #8

Thais Cassel original on canvas

These three heifers are ready to grace a wall in your house or barn office. Created by the very talented Thais Cassel, Dr. Norman has once again selected one of his most cherished possessions to donate for this auction. The painting is 3' by 2' and definitely one-of-a-kind.

Donated by Dr. Duane and Roslyn Norman, Md.

Artist's website: <https://sites.google.com/view/thaiscasselstudio/home>

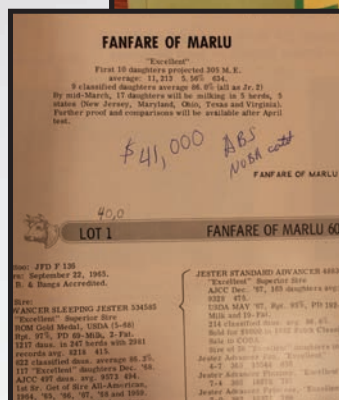
Live Lot #9

1970 Marlu Dispersal Sale catalog
Proceeds go to National Jersey
Queen fund

Purchased in the 2021 AJCC Research Auction
from a donation by Ray and Margaret School-
ey, Mo.

The catalog is complete with notes from Ray
and with a buyers list from the sale as well.

Donated by John Boer, Texas



Live Lot #10

1968 7th Marlu Choice Sale catalog

Another special Marlu catalog. It is in good condition with prices and notes written on each lot. Jerry received this catalog from John Hecker of Select Sires after his passing.

Donated by Jerry Emerich, N.Y.



Live Lot #11

Ahh, The Simple Life

#20 of 150

A beautiful collectible plate by Canadian artist, Nora Mickee, featuring two young children at the fence with a Jersey cow and calf.

Donated by David Parkinson,
Ariz.



Live Lot #12

Favorite Places, by Charlotte Sternberg

Charlotte Joan Sternberg, illustrator and fine artist, was born in Meriden, Connecticut in 1920. While she painted a variety of subjects, Charlotte was best known for her Americana themes, particularly snow scenes of historic New England. This piece is called “Favorite Places” and it is easy to see why it was one of her favorites. Donated by Ted and Cheryl DeMent, Ill.

Live Lot #13

Edwin Douglas Milk Maid painting

This vintage Dairy Maid art print is a giclee reproduction that features a lovely milk maid wearing a pink dress with a white apron and a matching hat. She is carrying her milk jug and has two dairy cows in tow ready for milking time.

Donated by Scott and Kristin Carson, N.Y.



< Live Lot #14

Centennial Banquet Program, 1968

A special collector's piece—the official Centennial program of the AJCCs 100th Annual Meeting. From the collection of Stanley Chittenden, Fair Weather Farm, N.Y.

Donated by KB Chittenden, N.Y.

[Form No. 11.]
Office of the American Jersey Cattle Club,
No. 8 W. Seventeenth St.,
New York, Apr 21, 1902.

Canvass of Votes.

Candidate for Membership.

C. E. Still,
Kirksville, Mo.

Nominated by
CHARLES A. SWEET, J. J. RICHARDSON,
H. C. TAYLOR, GEORGE E. PEER AND R. A. SIBLEY.

202 Ballots For.

2 " Against.

1 " Blank.

J. J. HEMINGWAY,
Secretary.

Approved: _____
of Board of Directors.

EARLIER DAYS
JFC

Live Lot #15 >

1902 Canvass of Votes for Candidates for Membership

Given to Stanley Chittenden by former Executive Secretary, James Cavanaugh approving the candidate for membership of the AJCC of C.E. Still, Kirksville, Mo.

Donated by KB Chittenden, N.Y.

Live Lot #16
*Abstract Jersey
painting*



Artist Diane Whitehead created this gorgeous painting of an abstract Jersey calf that will look great on any wall. It is printed on a 12" x 12" canvas!

Donated by Delaine Smith, Tenn.

Live Lot #17
Picture of Sybil's Gamboge

Sybil's Gamboge sold for \$65,000 in 1918 to LV Walkley of Southington, Conn. On the way to make the delivery, the train made a stop in Manhattan and he was paraded down Wall Street to display the investment value of Jersey genetics.



Donated by John and Elaine Kokoski, Mass.



Live Lot #18

Edwin Douglas photo

Another beautiful depiction of a Jersey herd and their caretaker. Created by artist Edwin Douglas, known for his Jersey photos. He even had his own herd of Jerseys.

Donated by Larry and Barbara Benson, N.Y.

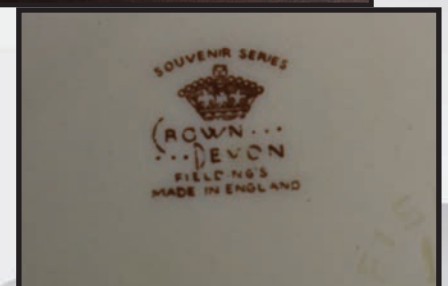
Live Lot #19

Crown Devon biscuit plate

Fieldings Crown Devon Souvenir Series in good condition, no chips. Cream and Sugar set with a Jersey pictured on both.

Crown Devon pottery has become quite a collector's dream. The company began in 1870 with Simon Fielding.

Donated by Linda Peterson, Ohio



Live Lot #20

Vintage AJCA Merch Basket of AJCA items

Proceeds to Jersey Youth Academy

A collector's dream—AJCA, Jersey Youth Academy, and other great pieces celebrating the best of the Jersey association.

- 150th anniversary sweatshirt (XL)
- Blanket featuring the Jersey head
- Poster celebrating 50 years of the National Jersey Jug Futurity
- Pair of vintage Jersey drinking glasses
- Jersey Youth Academy polo (XL)
- Youth vintage All American Junior Jersey Show shirt
- Wide Load ahead tumbler & poster
- Jersey Youth Academy water bottle
- Jersey notecards, collector plate, and Jersey keychain



*Donated by American Jersey
Cattle Association*

Live Lot #21

Kahlua Brownie Coffee Cheesecake

Get your tastebuds ready for this delicious treat made by Wanda Emerich ... people stop by from around the country for a piece of this delectable cheesecake.

Or ask Christine Sheesley-Rozler, what is on every All American and New York State Fair menu for the Cowbell crew.

Make many friends by purchasing this and sharing a bite!

Donated by Wanda Emerich, N.Y.



Silent Auction Items



Silent Auction Lot #1 *Vintage Original 1920s De Laval Cream Separator Jersey Cow & Calf Set*

A framed version of a Jersey cow and calf used in promoting the DeLaval Cream Separator in the 1920s.

Donated by Helene Driesbach, Pa.



Silent Auction Lot #2 *Jersey calf coffee mugs*

An adorable set of coffee mugs to bring an extra smile to your face each morning as you sip on your drink of choice! *Donated by Delaine Smith, Tenn.*



Silent Auction

Lot #3

Whiteholm and Tenney Farms Vintage Milk Bottles

Some of the finest from New England dairies. These milk bottles feature a Maine and a Massachusetts herd.

Donated by David Parkinson, Ariz.

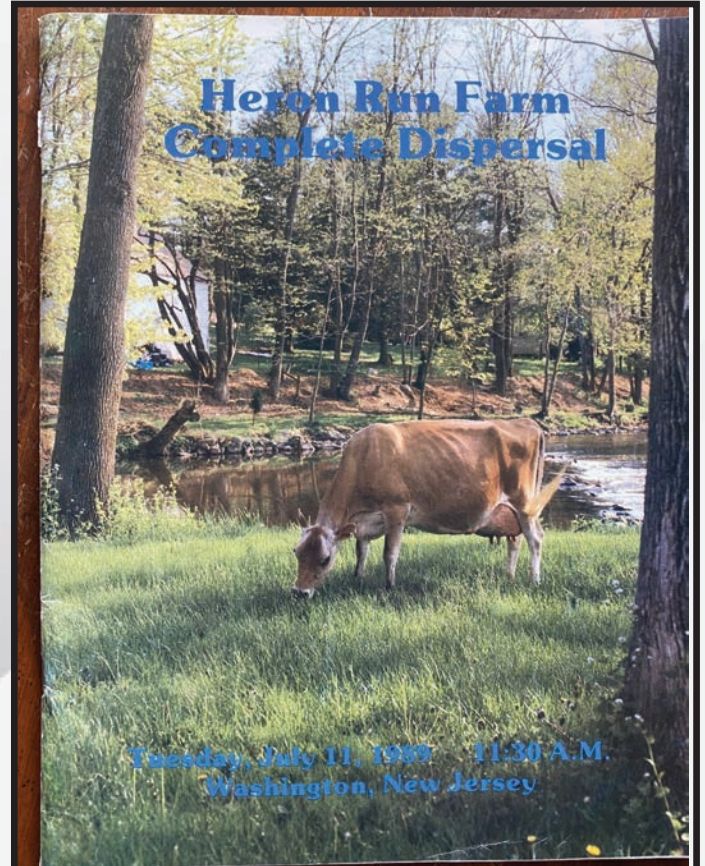
Silent Auction Lot #4

Heron Run Farm Complete Dispersal catalog, 1989

Heron Run Farm was owned by Max Spann and family.

Max had a passion for the Jersey breed and making great cows. He ran his own creamery and milk delivery route for many years. After selling his herd he turned to real estate, but never lost the passion for the Jersey breed.

Donated by Jerry Emerich, N.Y.





Silent Auction Lot #5

Billings Dairy and Polymeadows Farm milk bottles

Two more of New England's finest Jersey herds represented in these bottles. Both Vermont herds had a long history of Registered Jersey cattle.

Donated by David Parkinson, Ariz.



Silent Auction Lot #6

Antique Jersey Cow AJCC Advertising

This framed ad is from the 1920s promotion of the Jersey breed. Created by the AJCC, it helped propel the breed to new highs following the depression era.

Donated by American Jersey Cattle Association



Silent Auction Lot #7

Kiss the Cook spatula

The perfect gift for the cook and Jersey lover in your house!

Donated by Delaine Smith, Tenn.

Silent Auction Lot #8

Set of Jersey Performance Registers, 1943-1972



Track Jersey history with this set of Performance registers issued by the AJCC.

Donated by Tim and Amy King and Family, Ohio



Silent Auction Lot #9

Jersey promotional pieces

A National All-Jersey ashtray; A Jersey trivet and a Jersey keychain are all part of this special offering.

Donated by David Parkinson, Ariz.

Silent Auction Lot #10

Wooden Jersey ornament

A beautiful Jersey ornament displayed on a metal hanger. A great decoration for any room in your house, or a graduation gift for the Jersey enthusiast heading off to their first college dorm room.

Donated by the Delaine Smith, Tenn.



Silent Auction Lot #11

Jersey promotional pins

Support the Jersey breed and All-Jersey milk with these Jersey collectible buttons!

Donated by John and Margie Billman, Ohio



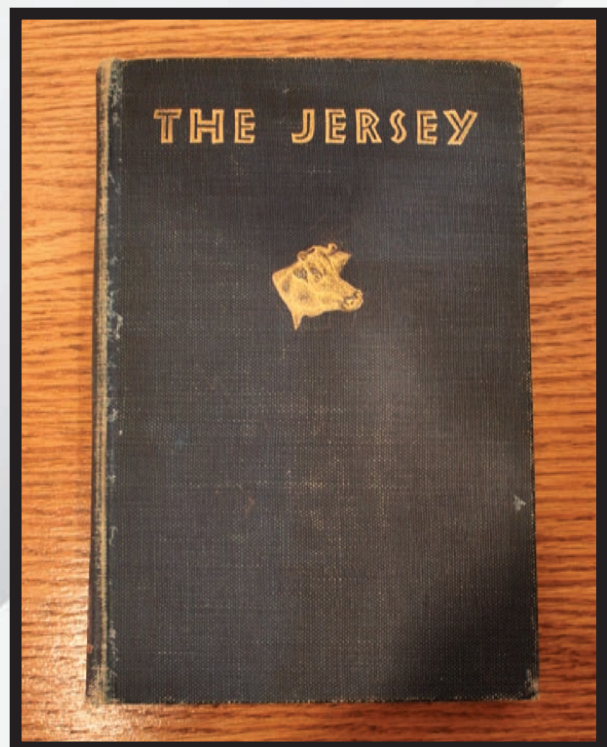
Silent Auction Lot #12

The Jersey

By R.M. Gow

An outline of Jersey history covering two centuries (1734 to 1935). Written by the fifth Executive Secretary of the American Jersey Cattle Club, R.M. Gow.

Donated by Helene Dreisbach, Pa.



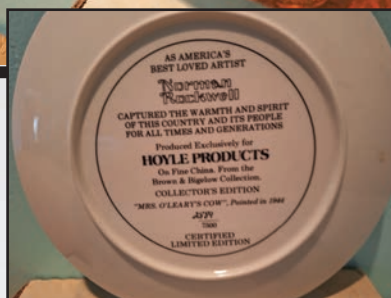
Silent Auction

Lot #13

Mrs. O'Leary's Cow by Norman Rockwell

American's most beloved artist, Norman Rockwell, captured this nostalgic picture of "Mrs. O'Leary and her prize Jersey cow on this beautiful plate.

Donated by David Parkinson, Ariz.



Silent Auction Lot #14

Jersey Cream tin

This vintage tin features a charming design of Jersey Cream Butter Cookies from F.N. McCafferty & Co in Chicago. The colorful graphics and sturdy construction make it a great addition to any collection of advertising memorabilia.

Crafted with attention to detail, this tin is perfect for storing small items or simply displaying on a shelf. With its unique blend of style and practicality, it's sure to become a favorite among collectors and fans of vintage design.

Donated by Anonymous

Silent Auction Lot #15

Canvas Jersey bag

This cute brown cow bag is perfect to carry your souvenirs home in this week. The crowned Jersey is hoping you choose her for your travel plans!

Donated by Anonymous



Silent Auction Lot #16

A girl and her cow

Beautifully framed painting of a young girl and her Jersey cow walking in the picturesque countryside.

Donated by the David Parkinson, Ariz.



New England Jersey Breeders

Items will sell throughout the week to benefit the New England Jersey Breeders. Watch for more details including more information on this:



VERONICA

Beautiful sculpture of Hurlonia Centurion Veronica 20J created by Scott Hussey.

Sale Staff

Greg Lavan	Manager, Jersey Marketing Service.....	614/216-8838
Scott Holcomb	AJCA-NAJ Area Representative.....	614/563-3227
Kristin Paul.....	Director of Field Services/Area Representative	209/402-5679
Ron Mosser	Sale Staff and Senior Appraiser AJCA.....	614/264-0142
Randale Lowe.....	Assistant to the Manager, National All-Jersey Inc.....	614/266-6916
Neal Smith	AJCA-NAJ Executive Secretary	209/988-0601
Kim Billman.....	Director of Communications.....	614/203-6265
Vickie White	Clerk.....	Office: 614/322-4452
Chris Hill	Auctioneer	202/255-7907

Margaret Brady—Jersey Marketing Service Fred Stout Intern

Meganne Chapman—1st Alternate National Jersey Queen



Not able to attend the in-person? No worries!
*Log on to CowBuyer.com and bid from the comfort of
your home!*