

Compass Point Farm Herd Dispersal



Tuesday, June 18, 2024 • 10:00 AM
Gap, PA

Compass Point Farm Herd Dispersal

Tuesday, June 18, 2024 • 10:00 AM

Location: 6148 Old Phila Pike (Rt. 340), Gap, PA 17527 (Lanc. Co.)

Directions: Rt. 340 East of White Horse to Auction on Right

SALES STAFF

ALVIN LAPP
717-768-4689

MATT ZIMMERMAN
717-222-0101

DAVE STOLTZFUS
717-768-7526

JOHN BURKETT
814-381-9070
PEDEGREES

DAVID J. LENTZ
717-329-9202

Auctioneer Note: Come join us if you need TOP wide framed cattle, that are so hard to find these days. This may be one of the best herd dispersals selling this year. You will like what you see here.

RHA 25,234 4.1 1027 3.1 778

June test 85 lbs 175,000 SCC

DHIA herdcodes 23-36-8529

May classification results, 6 EX 29 VG 13 GP

Milking cows on vaccination program with Triangle 10, calves and heifers vaccinated before sale with Inforce 3

REAL-TIME BIDDING ONLINE AT WWW.COWBUYER.COM

AARON RAY TOMPKINS
336-363-4639



AUCTION INFO:

Auction held in tent. Auction Co. and sellers are not responsible for accidents.

Auction day announcements take precedence over all advertising.

Payment terms: cash, approved check or credit card w/ 3% fee.

FOOD STAND ON PREMISES

AUCTIONEERS:

TIM WEAVER, DAVE STOLTZFUS, STEVE SCHULER, TRISTAN SENSENIG

AUCTION FOR:

COMPASS POINT FARM



Phone: 717-354-9524
Lic.# AY2109

JOHN MARK & ESTHER BEILER 484-880-2829

1

COMPASSPOINT UNIX LICORICE

840003204383691 Excellent-92 EX-MS
 Born: September 17, 2018 • Herd No. 256
 3-04 2x 365d 33411 3.7 1222 2.9 966
 2-03 2x 346d 27427 3.6 987 2.8 767
 4-11 2x 263d 32524 3.6 1157 2.9 943 RIP
 Fresh: September 13, 2023
 Milking: 116# 4.0F 3.0P SCC 20



COMPASSPOINT UNIX LICORICE EX-92 EX-MS
 SELLS AS LOT 1

Croteau Lesperron Unix

107567492
 PTA +696M +22F +14P 99R 4/24
 PTA +1.0PL 2.97SCS -0.4DPR 2.1%DCE
 PTA +2.15T +1.99UDC +.11FLC 99R 4/24
 GTPI +2308G

Compasspoint Dundee Lic

840003204383690
 • Sold for Dairy

Bred: May 26, 2024 to Kings-Ransom Dropbox-ET
 (Sexed Semen) 777H011399

Regancrest Dundee

127640114
 PTA -1039M -56F -31P 99R 4/24
 PTA +0.56T +0.66UDC -.16FLC GTPI +1375G

T-Triple-T Atwood Leann

140782495 Excellent-90 EX-MS
 7-09 2x 346d 21020 4.3 900 3.2 664
 2-02 2x 311d 19920 5.0 987 3.2 629

3rd-7th Dams

T-Triple-T Sprite Lace VG-86 VG-MS

3-01 2x 341d 19920 4.8 950 3.1 622
 2-03 2x 302d 19760 4.6 904 3.2 628

Brand-Jam Encore Layne EX-91 3E

10-6 2x 305d 27890 4.2 1163 3.2 892
 Life: 4049d 301540 4.5 13543 3.2 9623

Henschen Lisa Mark 531 VG-87 VG-MS

6-00 3x 365d 37310 3.6 1353 2.6 979
 Life: 1974d 168300 3.6 5982 2.8 4665

Henschen Lady 331-ET GP-80

4-07 2x 354d 28830 4.0 1147 2.9 837

Henschen Louisa Elevation VG-88 GMD DOM

5-05 2x 365d 27090 3.9 1056
 Life: 2827d 169160 3.9 6576 3.0 898

2

COMPASSPOINT CRUSH LOLLIPOP

840003204383696 Very Good-85 VG-MS @ 2-03
 Born: February 12, 2022 • Herd No. 261
 Fresh: April 16, 2024
 Milking: 82# 3.8F 2.3P SCC 27

OCD Mystic Crush-ET

840003201859654 *TC *TE *TP *TR
 PTA +672M +33F +22P 96R 4/24
 PTA +1.0PL 2.94SCS -1.3DPR 2.3%DCE
 PTA +2.96T +2.93UDC +1.02FLC 92R 4/24
 GTPI +2464G

Compasspoint Unix Licorice

840003204383691 Excellent-92 EX-MS
 3-04 2x 365d 33411 3.7 1222 2.9 966
 2-03 2x 346d 27427 3.6 987 2.8 767
 4-11 2x 263d 32524 3.6 1157 2.9 943 RIP

Croteau Lesperron Unix

107567492
 PTA +696M +22F +14P 99R 4/24
 PTA +1.0PL 2.97SCS -0.4DPR 2.1%DCE
 PTA +2.15T +1.99UDC +.11FLC 99R 4/24
 GTPI +2308G

Compasspoint Dundee Lic

840003204383690
 • Sold for Dairy

3rd-8th Dams

T-Triple-T Atwood Leann EX-90 EX-MS

7-09 2x 346d 21020 4.3 900 3.2 664
 2-02 2x 311d 19920 5.0 987 3.2 629

T-Triple-T Sprite Lace VG-86 VG-MS

3-01 2x 341d 19920 4.8 950 3.1 622
 2-03 2x 302d 19760 4.6 904 3.2 628

Brand-Jam Encore Layne EX-91 3E

10-6 2x 305d 27890 4.2 1163 3.2 892
 Life: 4049d 301540 4.5 13543 3.2 9623

Henschen Lisa Mark 531 VG-87 VG-MS

6-00 3x 365d 37310 3.6 1353 2.6 979
 Life: 1974d 168300 3.6 5982 2.8 4665

Henschen Lady 331-ET GP-80

4-07 2x 354d 28830 4.0 1147 2.9 837

Henschen Louisa Elevation VG-88 GMD DOM

5-05 2x 365d 27090 3.9 1056
 Life: 2827d 169160 3.9 6576 3.0 898

3

COMPASSPOINT CRUSH LAUREL

840003273061294

Born: September 13, 2023 • Herd No. 298

Maverick-I Crush

12042760 *TC *TE

PTA -774M -47F -12P 99R 4/24

PTA +2.5PL 2.40SCS +2.0DPR 2.6%DCE

PTA +2.43T +1.54UDC +1.20FLC 99R 4/24

GTPI +2046G

Compasspoint Unix Licorice

3-04 2x 365d 33411 3.7 1222 2.9 966

2-03 2x 346d 27427 3.6 987 2.8 767

4-11 2x 263d 32524 3.6 1157 2.9 943 RIP

Croteau Lesperron Unix

107567492

PTA +696M +22F +14P 99R 4/24

PTA +1.0PL 2.97SCS -0.4DPR 2.1%DCE

PTA +2.15T +1.99UDC +.11FLC 99R 4/24

GTPI +2308G

Compasspoint Dundee Lic

840003204383690

• Sold for Dairy

3rd-8th Dams

T-Triple-T Atwood Leann EX-90 EX-MS

7-09 2x 346d 21020 4.3 900 3.2 664

2-02 2x 311d 19920 5.0 987 3.2 629

T-Triple-T Sprite Lace VG-86 VG-MS

3-01 2x 341d 19920 4.8 950 3.1 622

2-03 2x 302d 19760 4.6 904 3.2 628

Brand-Jam Encore Layne EX-91 3E

10-6 2x 305d 27890 4.2 1163 3.2 892

Life: 4049d 301540 4.5 13543 3.2 9623

Henschen Lisa Mark 531 VG-87 VG-MS

6-00 3x 365d 37310 3.6 1353 2.6 979

Life: 1974d 168300 3.6 5982 2.8 4665

Henschen Lady 331-ET GP-80

4-07 2x 354d 28830 4.0 1147 2.9 837

Henschen Louisa Elevation VG-88 GMD DOM

5-05 2x 365d 27090 3.9 1056

Life: 2827d 169160 3.9 6576 3.0 898

4

COMPASSPOINT JORDY-RED LYLA

840003273061298

Born: January 3, 2024 • Herd No. 302

Cycle Mcgucci Jordy-Red

840003131666411 *CV *TC *TC *TE

PTA -878M -17F -37P 99R 4/24

PTA -2.2PL 3.01SCS -3.8DPR 3.5%DCE

PTA +2.95T +2.22UDC +3.08FLC 99R 4/24

GTPI +1695G

Compasspoint Brewmaster Leo

840003204383676

2-00 2x 306d 22355 4.1 909 2.9 659

Mapel Wood Brewmaster-ET

11161715C Excellent-95-CAN *TR *TP *TC *TY *TV

PTA +612M +85F +22P 99R 4/24

PTA +.67T -.06UDC +.42FLC GTPI +2481G

Compasspoint Unix Licorice

3-04 2x 365d 33411 3.7 1222 2.9 966

2-03 2x 346d 27427 3.6 987 2.8 767

4-11 2x 263d 32524 3.6 1157 2.9 943 RIP

3rd-9th Dams

Compasspoint Dundee Lic NC

T-Triple-T Atwood Leann EX-90 EX-MS

7-09 2x 346d 21020 4.3 900 3.2 664

2-02 2x 311d 19920 5.0 987 3.2 629

T-Triple-T Sprite Lace VG-86 VG-MS

3-01 2x 341d 19920 4.8 950 3.1 622

2-03 2x 302d 19760 4.6 904 3.2 628

Brand-Jam Encore Layne EX-91 3E

10-6 2x 305d 27890 4.2 1163 3.2 892

Life: 4049d 301540 4.5 13543 3.2 9623

Henschen Lisa Mark 531 VG-87 VG-MS

6-00 3x 365d 37310 3.6 1353 2.6 979

Life: 1974d 168300 3.6 5982 2.8 4665

Henschen Lady 331-ET GP-80

4-07 2x 354d 28830 4.0 1147 2.9 837

Henschen Louisa Elevation VG-88 GMD DOM

5-05 2x 365d 27090 3.9 1056

Life: 2827d 169160 3.9 6576 3.0 898



OAKFIELD PRONTO RITZI EX-93 EEEEE 2E
2ND DAM OF LOT 5

3rd-17th Dam

Castleholm Dund Rhapsody-ET EX-90 VEVVE
2-01 2x 365d 28850 3.0 859 2.8 803

Astrahoe Stormatic Radiant EX-91 2E GMD
5-02 3x 365d 49847 4.2 2089 2.9 1437

Life: 1103d 124190 4.0 4924 3.2 3945

Astrahoe LJ Rosa Rebel-ET EX-92 EEEVV 2E
7-05 2x 365d 48580 4.2 2021 3.0 1468

Life: 1186d 110960 3.9 4326 3.2 3529

Pinehurst Royal Rosa-ET EX-91 EEEEE 2E
3-10 3x 365d 41400 3.3 1358 3.0 1223

Life: 1212d 115400 3.5 4073 3.1 3593

Pinehurst Roulade EX-92 EEEEE 2E
3-05 3x 365d 34160 4.3 1474 3.4 1156

Life: 1761d 142070 3.8 5395 3.3 4705

Pinehurst Sweet Cleo EX-90 EEVEV
6-00 3x 365d 40380 4.4 1776 3.2 1305

Life: 2173d 191570 3.9 7392 3.3 6238

Pinehurst Sweet Freedom EX-90 VEVE
5-07 3x 330d 34520 4.3 1500 3.1 1084

Pinehurst Sweet Delight EX-91 3E GMD
8-10 3x 365d 28460 4.2 1194 3.2 917

Life: 2228d 151600 4.0 6116 3.2 4907

Pinehurst Rapture EX-96 4E GMD
8-02 3x 365d 30370 4.2 1290 3.1 948

Life: 2297d 160790 3.9 6337 3.0 2469

Pinehurst Fragrance EX-90 VEEV 2E
4-08 3x 365d 34490 3.6 1234

Life: 2004d 131700 3.5 4659

Hayssen Fond Ariel EX-90 EEEV 2E
8-06 2x 328d 23330 3.2 753

Life: 1936d 105270 3.4 3559

Hayssen D V Audrey EX-90 EEVV 2E
9-03 2x 365d 23670 4.4 1035

Life: 2413d 126251 4.4 5547

Whirlhill Q Rag Apple Ariel EX-92 VEVE
6-02 2x 365d 26755 4.2 1134

Life: 3861d 228465 4.5 9595

Arlite Posch EX-92 EEVE GMD
5-03 2x 365d 21193 3.7 779

Life: 3586d 144739 3.7 5176

Audrey Posch EX-93 EEEE 2E GMD
9-01 3x 365d 27012 3.8 1016

Life: 4292d 227909 3.8 9039"

5

GOLDEN-ROSE DOORMAN RORY

840003206080940 Excellent-90 EX-MS

Born: December 3, 2018 • Herd No. 1219

4-03 2x 362d 35893 3.7 1324 3.0 1080

1-11 2x 365d 26362 3.6 952 3.0 785

3-02 2x 309d 25569 3.7 944 3.2 809

Fresh: April 27, 2024

Milking: 144# 3.3F 2.6P SCC 13

Val-Bisson Doorman

107281711 *TP

PTA -449M +13F +10P 99R 4/24

PTA +0.0PL 2.67SCS -2.5DPR 2.7%DCE

PTA +2.44T +1.54UDC +.64FLC 99R 4/24

GTPI +2129G

Golden-Rose GD Raelynn-ET

74310066 Excellent-94 EX-MS 2E

5-00 2x 365d 37510 3.4 1259 2.8 1053

3-11 2x 294d 25010 3.6 895 2.8 707

Heavenly Golden Dreams

642262 Excellent-93

PTA -1388M -19F -36P 99R 4/24

PTA +1.63T +1.48UDC +.65FLC GTPI +1784G

Oakfield Pronto Ritzi

840003003685349 Excellent-93 EEEEE 2E

4-09 2x 305d 34490 3.3 1155 2.8 969

3-01 2x 305d 31310 3.4 1058 3.1 959

2-02 2x 301d 27520 3.7 1029 3.0 826

6-11 2x 305d 27240 3.4 917 3.0 804

Life: 2076d 177360 3.5 6211 3.1 5462



GOLDEN-ROSE ATWOOD RITZI EX-93 EX-MS 2E GMD
MATERNAL SISTER TO 2ND DAM OF LOT 6

3rd-18th Dams

Oakfield Pronto Ritzi EX-93 EEEEE 2E
 3-01 2x 305d 31310 3.4 1058 3.1 959
 Life: 2076d 177360 3.5 6211 3.1 5462

Castleholm Dund Rhapsody-ET EX-90 EX-MS
 2-01 2x 365d 28850 3.0 859 2.8 803

Astrahoe Stormatic Radiant EX-91 2E GMD
 5-02 3x 365d 49847 4.2 2089 2.9 1437
 Life: 1103d 124190 4.0 4924 3.2 3945

Astrahoe LJ Rosa Rebel-ET EX-92 EEEVV 2E
 7-05 2x 365d 48580 4.2 2021 3.0 1468
 Life: 1186d 110960 3.9 4326 3.2 3529

Pinehurst Royal Rosa-ET EX-91 EEEEE 2E
 3-10 3x 365d 41400 3.3 1358 3.0 1223
 Life: 1212d 115400 3.5 4073 3.1 3593

Pinehurst Roulade EX-92 EEEEE 2E
 3-05 3x 365d 34160 4.3 1474 3.4 1156
 Life: 1761d 142070 3.8 5395 3.3 4705

Pinehurst Sweet Cleo EX-90 EEEVV
 6-00 3x 365d 40380 4.4 1776 3.2 1305
 Life: 2173d 191570 3.9 7392 3.3 6238

Pinehurst Sweet Freedom EX-90 VEVE
 5-07 3x 330d 34520 4.3 1500 3.1 1084

Pinehurst Sweet Delight EX-91 3E GMD
 8-10 3x 365d 28460 4.2 1194 3.2 917
 Life: 2228d 151600 4.0 6116 3.2 4907

Pinehurst Rapture EX-96 4E GMD
 8-02 3x 365d 30370 4.2 1290 3.1 948
 Life: 2297d 160790 3.9 6337 3.0 2469

Pinehurst Fragrance EX-90 VEEV 2E
 4-08 3x 365d 34490 3.6 1234
 Life: 2004d 131700 3.5 4659

Hayssen Fond Ariel EX-90 EEEV 2E
 8-06 2x 328d 23330 3.2 753
 Life: 1936d 105270 3.4 3559

Hayssen D V Audrey EX-90 EEVV 2E
 9-03 2x 365d 23670 4.4 1035
 Life: 2413d 126251 4.4 5547

Whirlhill Q Rag Apple Ariel EX-92 VEVE
 6-02 2x 365d 26755 4.2 1134
 Life: 3861d 228465 4.5 9595

Arlite Posch EX-92 EEVE GMD
 5-03 2x 365d 21193 3.7 779
 Life: 3586d 144739 3.7 5176

Audrey Posch EX-93 EEEE 2E GMD
 9-01 3x 365d 27012 3.8 1016
 Life: 4292d 227909 3.8 9039"

6

COMPASSPOINT HANAN ROULETTE

840003204383698 Very Good-85 VG-MS @ 2-03
 Born: February 22, 2022 • Herd No. 263
 1-11 2x 117d 8772 3.9 346 2.9 255 RIP
 Fresh: April 1, 2024
 Milking: 84# 3.6F 3.0P SCC 13

Bred: May 9, 2024 to Progenesis Anahita 200HO12726

7

COMPASSPOINT HAS IT ALL RAD

840003273061300
 Born: February 6, 2024 • Herd No. 304
 Sire: **Duckett Prct Has It All-ET**
 Dam: **Compasspoint Hanan Roulette**

Siemers Exc Hanans 31753-ET

840003143986722 99%RHA-I *TR *TP *TE *TC *TY *TV *TL
 PTA +232M +93F +45P 98R 4/24
 PTA +2.6PL 2.75SCS -2.4DPR 1.9%DCE
 PTA +3.58T +2.57UDC +2.34FLC 96R 4/24
 GTPI +2921G

Golden-Rose Doorman Rory

840003206080940 Excellent-90 EX-MS
 4-03 2x 362d 35893 3.7 1324 3.0 1080
 1-11 2x 365d 26362 3.6 952 3.0 785
 3-02 2x 309d 25569 3.7 944 3.2 809

Val-Bisson Doorman

107281711 *TP
 PTA -449M +13F +10P 99R 4/24
 PTA +2.44T +1.54UDC +.64FLC GTPI +2129G

Golden-Rose GD Raelynn-ET

74310066 Excellent-94 EX-MS 2E
 5-00 2x 365d 37510 3.4 1259 2.8 1053
 3-11 2x 294d 25010 3.6 895 2.8 707

Maternal sister to Raelynn

Golden-Rose Atwood Ritzi EX-93 EX-MS 2E GMD

Life: 1621d 160730 4.0 6365 3.1 4989

8

COMPASSPOINT ARTISAN ROLO

Registration Pending

Born: March 6, 2023 • Herd No. 289

Bred: May 20, 2024 to Progenesis Anahita
200H012726

Luck-E Artisan-Red-ET

840003141305472 99%RHA-I *TP *TE *TC *TY *TV

PTA +179M +73F +19P 98R 4/24

PTA +.02PL 3.02SCS -.6DPR 2.4%DCE

PTA +1.52T +.74UDC +.60FLC 97R 4/24

GTPI +2404G

Golden-Rose Doorman Rory

840003206080940 Excellent-90 EX-MS

4-03 2x 362d 35893 3.7 1324 3.0 1080

1-11 2x 365d 26362 3.6 952 3.0 785

3-02 2x 309d 25569 3.7 944 3.2 809

Val-Bisson Doorman

107281711 *TP

PTA -449M +13F +10P 99R 4/24

PTA +2.44T +1.54UDC +.64FLC GTPI +2129G

Golden-Rose GD Raelynn-ET

74310066 Excellent-94 EX-MS 2E

5-00 2x 365d 37510 3.4 1259 2.8 1053

3-11 2x 294d 25010 3.6 895 2.8 707

Maternal sister to Raelynn

Golden-Rose Atwood Ritzi EX-93 EX-MS 2E GMD

Life: 1621d 160730 4.0 6365 3.1 4989

3rd-18th Dams

Oakfield Pronto Ritzi EX-93 EEEEE 2E

3-01 2x 305d 31310 3.4 1058 3.1 959

Life: 2076d 177360 3.5 6211 3.1 5462

Castleholm Dund Rhapsody-ET EX-90 EX-MS

2-01 2x 365d 28850 3.0 859 2.8 803

Astrahoe Stormatic Radiant EX-91 2E GMD

5-02 3x 365d 49847 4.2 2089 2.9 1437

Life: 1103d 124190 4.0 4924 3.2 3945

Astrahoe LJ Rosa Rebel-ET EX-92 EEEVV 2E

7-05 2x 365d 48580 4.2 2021 3.0 1468

Life: 1186d 110960 3.9 4326 3.2 3529

Pinehurst Royal Rosa-ET EX-91 EEEEE 2E

3-10 3x 365d 41400 3.3 1358 3.0 1223

Life: 1212d 115400 3.5 4073 3.1 3593

Pinehurst Roulade EX-92 EEEEE 2E

3-05 3x 365d 34160 4.3 1474 3.4 1156

Life: 1761d 142070 3.8 5395 3.3 4705

Pinehurst Sweet Cleo EX-90 EEVEV

6-00 3x 365d 40380 4.4 1776 3.2 1305

Life: 2173d 191570 3.9 7392 3.3 6238

Pinehurst Sweet Freedom EX-90 VEVE

5-07 3x 330d 34520 4.3 1500 3.1 1084

Pinehurst Sweet Delight EX-91 3E GMD

8-10 3x 365d 28460 4.2 1194 3.2 917

Life: 2228d 151600 4.0 6116 3.2 4907

Pinehurst Rapture EX-96 4E GMD

8-02 3x 365d 30370 4.2 1290 3.1 948

Life: 2297d 160790 3.9 6337 3.0 2469

Pinehurst Fragrance EX-90 VEEV 2E

4-08 3x 365d 34490 3.6 1234

Life: 2004d 131700 3.5 4659

Hayssen Fond Ariel EX-90 EEEV 2E

8-06 2x 328d 23330 3.2 753

Life: 1936d 105270 3.4 3559

Hayssen D V Audrey EX-90 EEVV 2E

9-03 2x 365d 23670 4.4 1035

Life: 2413d 126251 4.4 5547

Whirlhill Q Rag Apple Ariel EX-92 VEVE

6-02 2x 365d 26755 4.2 1134

Life: 3861d 228465 4.5 9595

Arlite Posch EX-92 EEVE GMD

5-03 2x 365d 21193 3.7 779

Life: 3586d 144739 3.7 5176

Audrey Posch EX-93 EEEE 2E GMD

9-01 3x 365d 27012 3.8 1016

Life: 4292d 227909 3.8 9039"

9

OCD Thunder Struck-ET

840003204457423

PTA +199M +29F +12P 96R 4/24

PTA -1.2PL 2.96SCS -2.5DPR 3.4%DCE

PTA +3.43T +2.46UDC +.90FLC 93R 4/24

GTPI +2267G

Golden-Rose Doorman Rory

840003206080940 Excellent-90 EX-MS

4-03 2x 362d 35893 3.7 1324 3.0 1080

1-11 2x 365d 26362 3.6 952 3.0 785

3-02 2x 309d 25569 3.7 944 3.2 809

Val-Bisson Doorman

107281711 *TP

PTA -449M +13F +10P 99R 4/24

PTA +2.44T +1.54UDC +.64FLC GTPI +2129G

Golden-Rose GD Raelynn-ET

74310066 Excellent-94 EX-MS 2E

5-00 2x 365d 37510 3.4 1259 2.8 1053

3-11 2x 294d 25010 3.6 895 2.8 707

Maternal sister to Raelynn

Golden-Rose Atwood Ritzi EX-93 EX-MS 2E GMD

Life: 1621d 160730 4.0 6365 3.1 4989



LONG-HAVEN SANCHEZ RHUBARB EX-90 EX-MS
2ND DAM OF LOT 10

3rd-17th Dams

Kingsmill Roy Renee EX-90 EX-MS GMD
3-00 2x 305d 30120 3.8 1138 3.1 925
2-00 2x 309d 23140 4.0 927 3.1 726

Astrahoe PS Storm Rosa-ET EX-90 EX-MS
3-10 2x 365d 45280 4.0 1831 3.1 1422

Astrahoe LJ Rosa Rebel-ET EX-92 EEEVV 2E
7-05 2x 365d 48580 4.2 2021 3.0 1468
Life: 1186d 110960 3.9 4326 3.2 3529

Pinehurst Royal Rosa-ET EX-91 EEEEE 2E
3-10 3x 365d 41400 3.3 1358 3.0 1223
Life: 1212d 115400 3.5 4073 3.1 3593

Pinehurst Roulade EX-92 EEEEE 2E
3-05 3x 365d 34160 4.3 1474 3.4 1156
Life: 1761d 142070 3.8 5395 3.3 4705

Pinehurst Sweet Cleo EX-90 EEEVV
6-00 3x 365d 40380 4.4 1776 3.2 1305
Life: 2173d 191570 3.9 7392 3.3 6238

Pinehurst Sweet Freedom EX-90 VEVE
5-07 3x 330d 34520 4.3 1500 3.1 1084

Pinehurst Sweet Delight EX-91 3E GMD
8-10 3x 365d 28460 4.2 1194 3.2 917
Life: 2228d 151600 4.0 6116 3.2 4907

Pinehurst Rapture EX-96 4E GMD
8-02 3x 365d 30370 4.2 1290 3.1 948
Life: 2297d 160790 3.9 6337 3.0 2469

Pinehurst Fragrance EX-90 VEEV 2E
4-08 3x 365d 34490 3.6 1234
Life: 2004d 131700 3.5 4659

Hayssen Fond Ariel EX-90 EEEV 2E
8-06 2x 328d 23330 3.2 753
Life: 1936d 105270 3.4 3559

Hayssen D V Audrey EX-90 EEEV 2E
9-03 2x 365d 23670 4.4 1035
Life: 2413d 126251 4.4 5547

Whirlhill Q Rag Apple Ariel EX-92 VEVE
6-02 2x 365d 26755 4.2 1134
Life: 3861d 228465 4.5 9595

Arlite Posch EX-92 EEVE GMD
5-03 2x 365d 21193 3.7 779
Life: 3586d 144739 3.7 5176

Audrey Posch EX-93 EEEE 2E GMD
9-01 3x 365d 27012 3.8 1016
Life: 4292d 227909 3.8 9039"

10

COMPASSPOINT TATOO ABBY

840003204383635 Excellent-91 VG-MS
Born: March 17, 2019 • Herd No. 200
4-04 2x 306d 31581 3.6 1133 2.9 902 RIP
3-00 2x 365d 30273 3.5 1065 3.1 929
2-00 2x 320d 22610 3.5 796 2.8 627
Fresh: August 1, 2023
Milking: 76# 4.2F 3.5P SCC 230
Due: September 5, 2024 to OCD Thunder Struck-ET
(Sexed Semen) 550HO15329

11

COMPASSPOINT RENEGADE ALEXA

840003273061291
Born: August 1, 2023 • Herd No. 295
Sire: **S-S-I PR Renegade-ET**
Dam: **Compasspoint Tatoo Abby**

Duckett Crush Tatoo-ET

840003137052923 99%RHA-I *TR *TP *TE *TC *TY
PTA -332M -26F +1P 99R 4/24
PTA +1.4PL 2.70SCS -2.0DPR 1.8%DCE
PTA +2.87T +2.23UDC +.73FLC 99R 4/24
GTPI +2047G

Long-Haven Blake Allie-ET

143762258 Very Good-85 VG-MS @ 3-05

Walnutlawn Blake

11775997 *TC
PTA -485M -12F -13P 98R 4/24
PTA +2.69T +1.63UDC +.67FLC GTPI +1719G

Long-Haven Sanchez Rhubarb

140648542 Excellent-90 EX-MS *TL *TD
1-11 2x 365d 32610 2.9 957 3.0 970
3-02 2x 365d 31500 3.4 1085 3.0 960
4-07 2x 316d 19540 3.8 740 3.2 621
Life: 1424d 103420 3.4 3532 3.1 3193



PINEHURST ROYAL ROSA-ET EX-91 EEEEE 2E
7TH DAM OF LOT 12

3rd 18th Dams

Long-Haven Sanchez Rhubarb EX-90 EX-MS *TL *TD

1-11 2x 365d 32610 2.9 957 3.0 970

Life: 1424d 103420 3.4 3532 3.1 3193

Kingsmill Roy Renee EX-90 EX-MS GMD

3-00 2x 305d 30120 3.8 1138 3.1 925

2-00 2x 309d 23140 4.0 927 3.1 726

Astrahoe PS Storm Rosa-ET EX-90 EX-MS

3-10 2x 365d 45280 4.0 1831 3.1 1422

Astrahoe LJ Rosa Rebel-ET EX-92 EEEVV 2E

7-05 2x 365d 48580 4.2 2021 3.0 1468

Life: 1186d 110960 3.9 4326 3.2 3529

Pinehurst Royal Rosa-ET EX-91 EEEEE 2E

3-10 3x 365d 41400 3.3 1358 3.0 1223

Life: 1212d 115400 3.5 4073 3.1 3593

Pinehurst Roulade EX-92 EEEEE 2E

3-05 3x 365d 34160 4.3 1474 3.4 1156

Life: 1761d 142070 3.8 5395 3.3 4705

Pinehurst Sweet Cleo EX-90 EEVEV

6-00 3x 365d 40380 4.4 1776 3.2 1305

Life: 2173d 191570 3.9 7392 3.3 6238

Pinehurst Sweet Freedom EX-90 VEVE

5-07 3x 330d 34520 4.3 1500 3.1 1084

Pinehurst Sweet Delight EX-91 3E GMD

8-10 3x 365d 28460 4.2 1194 3.2 917

Life: 2228d 151600 4.0 6116 3.2 4907

Pinehurst Rapture EX-96 4E GMD

8-02 3x 365d 30370 4.2 1290 3.1 948

Life: 2297d 160790 3.9 6337 3.0 2469

Pinehurst Fragrance EX-90 VEEV 2E

4-08 3x 365d 34490 3.6 1234

Life: 2004d 131700 3.5 4659

Hayssen Fond Ariel EX-90 EEEV 2E

8-06 2x 328d 23330 3.2 753

Life: 1936d 105270 3.4 3559

Hayssen D V Audrey EX-90 EEVV 2E

9-03 2x 365d 23670 4.4 1035

Life: 2413d 126251 4.4 5547

Whirlhill Q Rag Apple Ariel EX-92 VEVE

6-02 2x 365d 26755 4.2 1134

Life: 3861d 228465 4.5 9595

Arlite Posch EX-92 EEVE GMD

5-03 2x 365d 21193 3.7 779

Life: 3586d 144739 3.7 5176

Audrey Posch EX-93 EEEE 2E GMD

9-01 3x 365d 27012 3.8 1016

Life: 4292d 227909 3.8 9039"

12

COMPASSPOINT HELIX ABIGAIL

840003204383680 Very Good-85

Born: March 26, 2021 • Herd No. 245

2-01 2x 283d 20558 4.2 868 3.2 661

Fresh: April 23, 2024

Milking: 120# 3.5F 2.5P SCC 19

13

COMPASSPOINT SHOWTIME ALLIE

840003273061289

Born: May 15, 2023 • Herd No. 293

Sire: **Jacobs Showtime-RC**

Dam: **Compasspoint Helix Abigail**

Bred: June 1, 2024 to Sandy-Valley P Empower-ET
29HO20939

Duckett Crush Tatoo-ET

840003137052923 99%RHA-I *TR *TP *TE *TC *TY

PTA -332M -26F +1P 99R 4/24

PTA +2.87T +2.23UDC +.73FLC GTPI +2047G

Long-Haven Blake Allie-ET

143762258 Very Good-85 VG-MS @ 3-05

Aot Silver Helix-ET

840003131083927 *TC *TE *TP *TR

PTA +1926M +117F +66P 99R 4/24

PTA -0.2PL 3.03SCS -2.7DPR 2.2%DCE

PTA +1.06T +.83UDC -.29FLC 99R 4/24

GTPI +2724G

Compasspoint Tatoo Abby

840003204383635 Excellent-91 VG-MS

Born: March 17, 2019 • Herd No. 200

4-04 2x 306d 31581 3.6 1133 2.9 902 RIP

3-00 2x 365d 30273 3.5 1065 3.1 929

2-00 2x 320d 22610 3.5 796 2.8 627

14

14A

COMPASSPOINT CRUSH APEX

840003204383707 99%RHA-I
Born: May 7, 2022 • Herd No. 272
Fresh: May 28, 2024

HEIFER CALF

Registration Pending
Born: May 28, 2024 • Herd No. 317
Sire: **Duckett Prct Has It All-ET**
Dam: **Compasspoint Crush Apex**

OCD Mystic Crush-ET

840003201859654 *TC *TE *TP *TR
PTA +672M +33F +22P 96R 4/24
PTA +1.0PL 2.94SCS -1.3DPR 2.3%DCE
PTA +2.96T +2.93UDC +1.02FLC 92R 4/24
GTPI +2464G

Compasspoint Applcrisp Aggy

840003204383657 99%RHA-I VG-85 VG-MS @ 3-02
3-00 2x 305d 19614 3.7 729 3.0 582
2-01 2x 305d 19383 3.8 732 3.0 580

Siemers Oct Apple-Crisp-ET

840003134506808 *RC *TC *TP
PTA +92M +4F -6P 99R 4/24
PTA +1.86T +1.33UDC +.98FLC GTPI +1900G

Long-Haven Blake Allie-ET

143762258 Very Good-85 VG-MS @ 3-05

3rd-18th Dams

Long-Haven Sanchez Rhubarb EX-90 EX-MS

1-11 2x 365d 32610 2.9 957 3.0 970
Life: 1424d 103420 3.4 3532 3.1 3193

Kingsmill Roy Renee EX-90 EX-MS GMD

3-00 2x 305d 30120 3.8 1138 3.1 925
2-00 2x 309d 23140 4.0 927 3.1 726

Astrahoe PS Storm Rosa-ET EX-90 EX-MS

3-10 2x 365d 45280 4.0 1831 3.1 1422

Astrahoe LJ Rosa Rebel-ET EX-92 EEEVV 2E

7-05 2x 365d 48580 4.2 2021 3.0 1468
Life: 1186d 110960 3.9 4326 3.2 3529

Pinehurst Royal Rosa-ET EX-91 EEEEE 2E

3-10 3x 365d 41400 3.3 1358 3.0 1223
Life: 1212d 115400 3.5 4073 3.1 3593

Pinehurst Roulade EX-92 EEEEE 2E

3-05 3x 365d 34160 4.3 1474 3.4 1156
Life: 1761d 142070 3.8 5395 3.3 4705

Pinehurst Sweet Cleo EX-90 EEEVV

6-00 3x 365d 40380 4.4 1776 3.2 1305
Life: 2173d 191570 3.9 7392 3.3 6238

Pinehurst Sweet Freedom EX-90 VEVE

5-07 3x 330d 34520 4.3 1500 3.1 1084

Pinehurst Sweet Delight EX-91 3E GMD

8-10 3x 365d 28460 4.2 1194 3.2 917
Life: 2228d 151600 4.0 6116 3.2 4907

Pinehurst Rapture EX-96 4E GMD

8-02 3x 365d 30370 4.2 1290 3.1 948
Life: 2297d 160790 3.9 6337 3.0 2469

Pinehurst Fragrance EX-90 VEEV 2E

4-08 3x 365d 34490 3.6 1234
Life: 2004d 131700 3.5 4659

Hayssen Fond Ariel EX-90 EEEV 2E

8-06 2x 328d 23330 3.2 753
Life: 1936d 105270 3.4 3559

Hayssen D V Audrey EX-90 EEEV 2E

9-03 2x 365d 23670 4.4 1035
Life: 2413d 126251 4.4 5547

Whirlhill Q Rag Apple Ariel EX-92 VEVE

6-02 2x 365d 26755 4.2 1134
Life: 3861d 228465 4.5 9595

Arlite Posch EX-92 EEEV GMD

5-03 2x 365d 21193 3.7 779
Life: 3586d 144739 3.7 5176

Audrey Posch EX-93 EEEE 2E GMD

9-01 3x 365d 27012 3.8 1016
Life: 4292d 227909 3.8 9039"

3rd Dam

Golden-Rose Atwood Ritzi EX-93 EX-MS 2E GMD

6-03 2x 305d 35670 4.1 1473 3.0 1058
Life: 1700d 167290 4.0 6670 3.1 5212

Oakfield Pronto Ritzi EX-93 EEEEE 2E

3-01 2x 305d 31310 3.4 1058 3.1 959
Life: 2076d 177360 3.5 6211 3.1 5462

Castleholm Dund Rhapsody-ET EX-90 EX-MS

2-01 2x 365d 28850 3.0 859 2.8 803

Astrahoe Stormatic Radiant EX-91 2E GMD

5-02 3x 365d 49847 4.2 2089 2.9 1437
Life: 1103d 124190 4.0 4924 3.2 3945

Astrahoe LJ Rosa Rebel-ET EX-92 EEEVV 2E

7-05 2x 365d 48580 4.2 2021 3.0 1468
Life: 1186d 110960 3.9 4326 3.2 3529

• Extended Pedigree Listed Above...

15

COMPASSPOINT DOC RIPTIDE

840003204383648 99%RHA-I VG-88 VG-MS
Born: December 8, 2019 • Herd No. 213
2-11 2x 365d 32218 3.4 1108 3.1 1010
2-00 2x 266d 20171 3.5 701 3.0 608 RIP
Fresh: March 13, 2024
Milking: 128# 3.0F 2.6P SCC 857

Bred: May 10, 2024 to OCD Thunder Struck-ET
(Sexed Semen) 550H015329

Woodcrest King Doc

3132417775 99%RHA-I EX-90 *TR *TP *TE *TC *TY *TV
PTA +1561M +68F +54P 99R 4/24
PTA +3.3PL 3.12SCS -1.6DPR 2.2%DCE
PTA +3.15T +2.07UDC +1.90FLC 99R 4/24
GTPI +2789G

Compasspoint Dempsey Ritzi

840003140004823 Good Plus-80 @ 2-09
2-00 2x 269d 20360 3.2 649 2.7 551
• Sold for Dairy

Lirr Drew Dempsey

61083609 Excellent-93 *TR *CD *TP *TY
PTA -731M -4F -4P 99R 4/24
PTA +1.65T +1.06UDC +1.00FLC GTPI +1917G

Golden-Rose Riley-ET

74310047 Very Good-87
5-08 2x 305d 31590 3.1 991 2.8 898
4-06 2x 305d 31060 3.3 1018 2.7 848
3-02 2x 305d 26350 3.1 830 2.7 723
1-11 2x 305d 22380 3.3 741 2.8 637
Life: 1776d 158750 3.3 5184 2.9 4543

16

COMPASSPOINT DOC RELATE

840003204383671 99%RHA-I VG-85 VG-MS @ 3-02
 Born: October 28, 2020 • Herd No. 236
 2-07 2x 353d 29843 3.6 1086 3.1 924
 1-08 2x 248d 12947 3.8 489 3.2 410

Due: July 15, 2024 to Duckett Crush Tadoo-ET
 7H013839

Woodcrest King Doc

3132417775 99%RHA-I EX-90 *TR *TP *TE *TC *TY *TV
 PTA +1561M +68F +54P 99R 4/24
 PTA +3.3PL 3.12SCS -1.6DPR 2.2%DCE
 PTA +3.15T +2.07UDC +1.90FLC 99R 4/24
 GTPI +2789G

Compasspoint Dempsey Ritzi

840003140004823 Good Plus-80 @ 2-09
 2-00 2x 269d 20360 3.2 649 2.7 551
 • Sold for Dairy

Lirr Drew Dempsey

61083609 Excellent-93 *TR *CD *TP *TY
 PTA -731M -4F -4P 99R 4/24
 PTA +1.65T +1.06UDC +1.00FLC GTPI +1917G

Golden-Rose Riley-ET

74310047 Very Good-87
 5-08 2x 305d 31590 3.1 991 2.8 898
 4-06 2x 305d 31060 3.3 1018 2.7 848
 3-02 2x 305d 26350 3.1 830 2.7 723
 1-11 2x 305d 22380 3.3 741 2.8 637
 Life: 1776d 158750 3.3 5184 2.9 4543

3rd-19th Dam

Golden-Rose Atwood Ritzi EX-93 EX-MS 2E GMD

6-03 2x 305d 35670 4.1 1473 3.0 1058
 Life: 1700d 167290 4.0 6670 3.1 5212

Oakfield Pronto Ritzi EX-93 EEEEE 2E

3-01 2x 305d 31310 3.4 1058 3.1 959
 Life: 2076d 177360 3.5 6211 3.1 5462

Castleholm Dund Rhapsody-ET EX-90 EX-MS

2-01 2x 365d 28850 3.0 859 2.8 803

Astrahoe Stormatic Radiant EX-91 2E GMD

5-02 3x 365d 49847 4.2 2089 2.9 1437
 Life: 1103d 124190 4.0 4924 3.2 3945

Astrahoe LJ Rosa Rebel-ET EX-92 EEEVV 2E

7-05 2x 365d 48580 4.2 2021 3.0 1468
 Life: 1186d 110960 3.9 4326 3.2 3529

Pinehurst Royal Rosa-ET EX-91 EEEEE 2E

3-10 3x 365d 41400 3.3 1358 3.0 1223
 Life: 1212d 115400 3.5 4073 3.1 3593

Pinehurst Roulade EX-92 EEEEE 2E

3-05 3x 365d 34160 4.3 1474 3.4 1156
 Life: 1761d 142070 3.8 5395 3.3 4705

Pinehurst Sweet Cleo EX-90 EEVEV

6-00 3x 365d 40380 4.4 1776 3.2 1305
 Life: 2173d 191570 3.9 7392 3.3 6238

Pinehurst Sweet Freedom EX-90 VEVE

5-07 3x 330d 34520 4.3 1500 3.1 1084
 Life: 2228d 151600 4.0 6116 3.2 4907

Pinehurst Sweet Delight EX-91 3E GMD

8-10 3x 365d 28460 4.2 1194 3.2 917
 Life: 2228d 151600 4.0 6116 3.2 4907

Pinehurst Rapture EX-96 4E GMD

8-02 3x 365d 30370 4.2 1290 3.1 948
 Life: 2297d 160790 3.9 6337 3.0 2469

Pinehurst Fragrance EX-90 VEEV 2E

4-08 3x 365d 34490 3.6 1234
 Life: 2004d 131700 3.5 4659

Hayssen Fond Ariel EX-90 EEEV 2E

8-06 2x 328d 23330 3.2 753
 Life: 1936d 105270 3.4 3559

Hayssen D V Audrey EX-90 EEVV 2E

9-03 2x 365d 23670 4.4 1035
 Life: 2413d 126251 4.4 5547

Whirlhill Q Rag Apple Ariel EX-92 VEVE

6-02 2x 365d 26755 4.2 1134
 Life: 3861d 228465 4.5 9595

Arlite Posch EX-92 EEVE GMD

5-03 2x 365d 21193 3.7 779
 Life: 3586d 144739 3.7 5176

Audrey Posch EX-93 EEEE 2E GMD

9-01 3x 365d 27012 3.8 1016
 Life: 4292d 227909 3.8 9039"

17

COMPASSPOINT CRUSH RIBBON

840003204383627 99%RHA-I Excellent-91 EX-MS
 Born: November 7, 2018 • Herd No. 192
 4-02 2x 309d 24037 3.9 933 3.0 727
 3-02 2x 299d 20476 3.7 749 3.0 622
 2-02 2x 314d 19748 3.7 729 3.1 604
 5-02 2x 146d 14095 3.6 508 3.0 418 RIP
 Fresh: January 8, 2024
 Milking: 92# 4.2F 3.0P SCC 492
 Bred: May 26, 2024 to Duckett Pfat Has It All-ET
 (Sexed Semen) 507H016295

18

COMPASSPOINT PERFECT RIVER

840003273061299
 Born: January 8, 2024 • Herd No. 303
 Sire: **Siemers Rengd Perfect-ET**
 Dam: **Compasspoint Crush Ribbon**

Mr Chassity Gold Chip-ET

14014553 Excellent-95
 PTA -540M -20F -37P 99R 4/24
 PTA +1.50T +1.07UDC +.98FLC GTPI +1763G

Golden-Rose Riley-ET

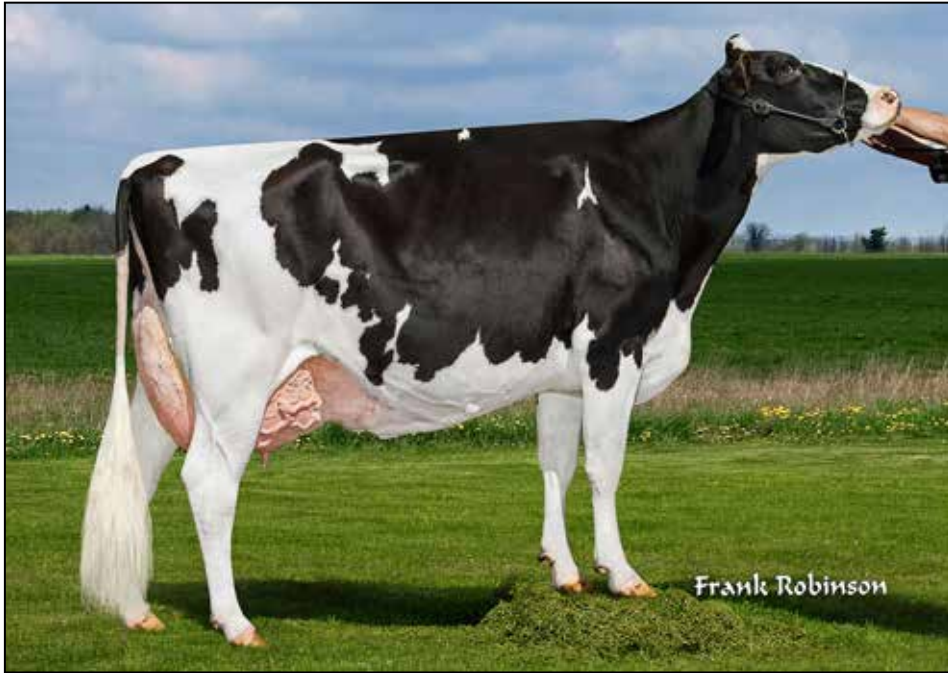
74310047 Very Good-87
 5-08 2x 305d 31590 3.1 991 2.8 898
 4-06 2x 305d 31060 3.3 1018 2.7 848
 3-02 2x 305d 26350 3.1 830 2.7 723
 1-11 2x 305d 22380 3.3 741 2.8 637
 Life: 1776d 158750 3.3 5184 2.9 4543

Maverick-I Crush

12042760 *TC *TE
 PTA -774M -47F -12P 99R 4/24
 PTA +2.5PL 2.40SCS +2.0DPR 2.6%DCE
 PTA +2.43T +1.54UDC +1.20FLC 99R 4/24
 GTPI +2046G

Compasspoint G-Chip Ritzi

840003140004799 Good Plus-81 @ 2-08
 2-02 2x 189d 12940 3.3 421 2.6 333



GOLDEN-ROSE GOLD RUSH-ET EX-94 3E
SAME FAMILY AS LOTS 5-19

3rd-19th Dam

Golden-Rose Atwood Ritzi EX-93 EX-MS 2E GMD

6-03 2x 305d 35670 4.1 1473 3.0 1058

Life: 1700d 167290 4.0 6670 3.1 5212

Oakfield Pronto Ritzi EX-93 EEEEE 2E

3-01 2x 305d 31310 3.4 1058 3.1 959

Life: 2076d 177360 3.5 6211 3.1 5462

Castleholm Dund Rhapsody-ET EX-90 EX-MS

2-01 2x 365d 28850 3.0 859 2.8 803

Astrahoe Stormatic Radiant EX-91 2E GMD

5-02 3x 365d 49847 4.2 2089 2.9 1437

Life: 1103d 124190 4.0 4924 3.2 3945

Astrahoe LJ Rosa Rebel-ET EX-92 EEEVV 2E

7-05 2x 365d 48580 4.2 2021 3.0 1468

Life: 1186d 110960 3.9 4326 3.2 3529

Pinehurst Royal Rosa-ET EX-91 EEEEE 2E

3-10 3x 365d 41400 3.3 1358 3.0 1223

Life: 1212d 115400 3.5 4073 3.1 3593

Pinehurst Roulade EX-92 EEEEE 2E

3-05 3x 365d 34160 4.3 1474 3.4 1156

Life: 1761d 142070 3.8 5395 3.3 4705

Pinehurst Sweet Cleo EX-90 EEVEV

6-00 3x 365d 40380 4.4 1776 3.2 1305

Life: 2173d 191570 3.9 7392 3.3 6238

Pinehurst Sweet Freedom EX-90 VEVE

5-07 3x 330d 34520 4.3 1500 3.1 1084

Pinehurst Sweet Delight EX-91 3E GMD

8-10 3x 365d 28460 4.2 1194 3.2 917

Life: 2228d 151600 4.0 6116 3.2 4907

Pinehurst Rapture EX-96 4E GMD

8-02 3x 365d 30370 4.2 1290 3.1 948

Life: 2297d 160790 3.9 6337 3.0 2469

Pinehurst Fragrance EX-90 VEEV 2E

4-08 3x 365d 34490 3.6 1234

Life: 2004d 131700 3.5 4659

Haysen Fond Ariel EX-90 EEEV 2E

8-06 2x 328d 23330 3.2 753

Life: 1936d 105270 3.4 3559

Haysen D V Audrey EX-90 EEVV 2E

9-03 2x 365d 23670 4.4 1035

Life: 2413d 126251 4.4 5547

Whirlhill Q Rag Apple Ariel EX-92 VEVE

6-02 2x 365d 26755 4.2 1134

Life: 3861d 228465 4.5 9595

Arlite Posch EX-92 EEVE GMD

5-03 2x 365d 21193 3.7 779

Life: 3586d 144739 3.7 5176

Audrey Posch EX-93 EEEE 2E GMD

9-01 3x 365d 27012 3.8 1016

Life: 4292d 227909 3.8 9039"

19

COMPASSPOINT PERFECT RIPPLE

840003273061296 99%RHA-I

Born: December 2, 2023 • Herd No. 300

Siemers Rengd Parfect-ET

840003200124761 99%RHA-I *TR *TP *TM *TE

PTA +1140M +100F +61P 99R 4/24

PTA +4.1PL 2.88SCS -.9DPR 1.9%DCE

PTA +2.47T +2.22UDC +2.00FLC 99R 4/24

GTPI +3044G

Compasspoint Crush Rose

840003204383637 99%RHA-I VG-88 VG-MS

3-07 2x 318d 31030 3.8 1208 3.3 1041

2-06 2x 340d 29721 3.7 1102 3.2 972

Maverick-I Crush

12042760 *TC *TE

PTA -774M -47F -12P 99R 4/24

PTA +2.43T +1.54UDC +1.20FLC GTPI +2046G

Golden-Rose Riley-ET

74310047 Very Good-87

5-08 2x 305d 31590 3.1 991 2.8 898

4-06 2x 305d 31060 3.3 1018 2.7 848

3-02 2x 305d 26350 3.1 830 2.7 723

1-11 2x 305d 22380 3.3 741 2.8 637

Life: 1776d 158750 3.3 5184 2.9 4543

20

COMPASSPOINT CRUSH JELLY

840003204383645 99%RHA-I EX-91 EX-MS
 Born: October 25, 2019 • Herd No. 210
 2-11 2x 357d 29910 3.4 1014 3.2 949
 1-11 2x 286d 19450 3.4 671 3.0 590
 4-00 2x 191d 20249 3.4 691 3.0 616 RIP
 Fresh: November 24, 2023
 Milking: 92# 3.1F 3.2P SCC 13

Due: December 2, 2024 to Siemers Rz Pazzle 34954-ET
 (Sexed Semen) 550H016115



MS CLARA-DAN LEE ANN-ET EX-94 3E GMD
 3RD DAM OF LOT 20

Maverick-I Crush

12042760 *TC *TE
 PTA -774M -47F -12P 99R 4/24
 PTA +2.5PL 2.40SCS +2.0DPR 2.6%DCE
 PTA +2.43T +1.54UDC +1.20FLC 99R 4/24
 GTPI +2046G

Compasspoint Corvette Jilly

840003140004806 Good Plus-83 VG-MS @ 3-07
 2-09 2x 305d 22130 4.1 912 3.1 695

Sonnek GC Corvette-ET

71391400 Excellent-92 *TR *TP *TY *TV *TL
 PTA -86M +1F +2P 99R 4/24
 PTA +1.87T +.83UDC +1.26FLC GTPI +1927G

Ms Glen-Valley Jingle-ET

70358747 Very Good-87 VG-MS
 6-00 2x 305d 27680 4.2 11160 3.2 892
 4-00 2x 305d 25670 4.0 1023 3.0 781
 5-00 2x 305d 24870 4.1 1028 3.2 796
 7-10 2x 292d 24420 4.0 979 3.1 757
 Life: 1400d 112840 4.2 4689 3.2 3596

3rd Dam

Ms Clara-Dan Lee Ann-ET EX-94 3E GMD

6-05 2x 305d 30490 4.0 1206 3.0 926
 Life: 2592d 208310 4.0 8308 3.1 6525

21

CEDAR-CREST LAMBDA ARLENE

840003244321568 99%RHA-I VG-87 VG-MS
 Born: August 18, 2021 • Herd No. 706
 2-02 2x 210d 15577 3.7 569 2.9 454 RIP
 Fresh: November 5, 2023
 Milking: 84# 3.5F 2.8P SCC 13

Due: January 16, 2025 to Duckett Pfrt Has It All-ET
 (Sexed Semen) 507H016295

Farnear Delta-Lambda-ET

840003125993715 *TR *TP *TC *TY *TV *TL
 PTA +1317M +52F +47P 99R 4/24
 PTA +4.9PL 2.78SCS -0.3PR 2.1%DCE
 PTA +2.81T +2.74UDC +1.11FLC 99R 4/24
 GTPI +2818G

Cedar-Crest Doc Arlene

840003203781284 99%RHA-I
 • Sold for Dairy

Woodcrest King Doc

3132417775 99%RHA-I EX-90 *TR *TP *TC *TY *TV *TL
 PTA +1584M +68F +54P 99R 8/23
 PTA +3.24T +2.15UDC +1.99FLC GTPI +2802G

Cedar-Crest Ashock Ambition

840003132674325 Very Good-85
 4-08 2x 305d 26460 3.3 879 3.1 827
 3-01 2x 305d 23760 3.6 864 3.0 724

3rd Dams

Cedar-Crest Iota Alison NC

4th Dam

Cedar-Crest Leader Amber EX-90

6-11 2x 365d 38780 3.4 1314 2.9 1111
 Life: 2394d 217120 3.5 7512 2.9 6225

5th Dam

Cedar-Crest C Lucinda-TW EX-90 2E

5-10 2x 365d 36790 4.0 1461 2.7 1005
 Life: 1871d 15540 4.2 6547 2.9 4526



BRAINWAVE GOLDWYN LAURAMIE-ET EX-92
3RD DAM OF LOT 22

LAURAMIE!

- Nominated All-American 4-Yr-Old 2011
- Res Grand Champ, WI Championship Show 2011
- 1st 4-Year-Old, WI Championship Show 2011
- HHM All-American Jr 3-Year-Old Cow 2010
- Int Champion Midwest Sprg/Nat Show 2010
- 1st Jr 3-Year-Old & BU Midwest Sprg/Nat 2010
- Int Champion NY Sprg/Internat'l Show 2010
- Res All-Canadian Jr 2-Year-Old Cow 2009
- 2nd & BU Jr 2-Year-Old, Royal Winter Fair 2009
- HHM All-American Jr 2-Year-Old Cow 2009

22

MS GOLDEN-ROSE DRMAN LOGAN

840003206080935 99%RHA-I VG-88 VG-MS

Born: October 27, 2018 • Herd No. 1214

4-07 2x 298d 33005 4.4 1468 3.0 997

2-02 2x 365d 28056 3.9 1098 3.2 892

3-05 2x 313d 20849 3.8 794 3.2 669

Due: June 13, 2024 to Cycle McGucci Jordy-Red

23

COMPASSPOINT PERFECT LAURA

840003273061290

Born: June 9, 2023 • Herd No. 294

Sire: **Siemers Rengd Perfect-ET**

Dam: **Ms Golden-Rose Drman Logan**

24

COMPASSPOINT HANANS LEXUS

840003204383700 Good Plus-83 VG-MS @ 2-01

Born: April 6, 2022 • Herd No. 265

Fresh: May 9, 2024

Milking: 72# 4.3F 2.8P SCC 13

Sire: **Siemers Exc Hanans 31753-ET**

Dam: **Ms Golden-Rose Drman Logan**

25

HEIFER

Registration Pending

Born: May 9, 2024 • Herd No. 315

Sire: **MB-Luckylady Eye Candy-ET**

Dam: **Compasspoint Hanans Lexus**

3rd-10th Dams

Brainwave Goldwyn Lauramie-ET EX-92 EEEEE

2-04 2x 365d 34612 4.1 1434 3.2 1117

4-03 2x 361d 27354 3.8 1043 3.0 807

Fleury Formation Lauria-ET EX-95 4*

5-08 2x 365d 37679 3.4 1299 3.1 1175

3-08 2x 365d 30461 3.9 1184 3.2 983

Life: 4 Lact 124203 3.6 4462 3.2 4001

• Res All-Ontario Mature Cow 2006

• Nom All-Canadian 5-Yr-Old Cow 2003

Fleury Aerostar Lausa VG-87 VG-MS *22 STAR

3-05 2x 365d 32284 3.8 1224 3.3 1078

Blake-T Rotate Laura LCI-ET VG-87 *3 STAR

6-03 2x 305d 33054 3.7 1221 3.0 999

Life: 4 Lact 141264 3.5 4936 3.2 4535

Bly-Century Valiant Laurette EX-90 2E

9-02 2x 365d 33430 3.8 1272 3.3 1089

Life: 5 Lact 151851 4.0 6113 3.4 5229

Bly-Century Matt Laurinda VG-88

4-01 2x 365d 22099 4.0 880

Life: 7 Lact 109489 3.8 4182

Bly-Century D Elevation Lilac EX-90

6-00 2x 365d 20639 4.1 851

Bly-Hill Bruce Lady VG-87

9-05 2x 344d 24030 3.9 946

Life: 7 Lact 137461 3.5 4852

Val-Bisson Doorman

107281711 *TP

PTA -449M +13F +10P 99R 4/24

PTA +0.0PL 2.67SCS -2.5DPR 2.7%DCE

PTA +2.44T +1.54UDC +.64FLC 99R 4/24

GTPI +2129G

Ms Golden-Rose Sid Liberty

840003206080965

Pine-Tree Sid-ET

62175895 *TR *TP *TY *TL

PTA -838M -19F -23P 99R 4/24

PTA +1.51T +.97UDC -.80FLC GTPI +1518G

Milksource Wndbrok Lexie-ET

70721228 Excellent-91 EX-MS



ZIEMS THREAT BECKY-RED EX-92 5E EEEEE
6TH DAM OF LOT 26

26

COMPASSPOINT DOORMAN BELLA

840003204383629 99%RHA-I VG-86 VG-MS *RC
 Born: December 11, 2018 • Herd No. 194
 4-04 2x 341d 28801 4.6 1320 3.4 966
 3-03 2x 311d 23081 4.1 939 3.4 783
 2-00 2x 365d 22561 4.6 1028 3.4 755
 • Sells Dry
 Due: July 20, 2024 to Trent-Way Rifle-Red-ET
 94H000923

Val-Bisson Doorman

107281711 *TP
 PTA -449M +13F +10P 99R 4/24
 PTA +0.0PL 2.67SCS -2.5DPR 2.7%DCE
 PTA +2.44T +1.54UDC +.64FLC 99R 4/24
 GTPI +2129G

Compasspoint Rbst Basia-Red

840003132006241 Very Good-88 EX-MS
 5-03 2x 305d 27590 3.9 1084 3.1 850
 3-01 2x 305d 26300 3.9 1027 3.1 816
 4-02 2x 305d 26100 3.9 1009 3.1 806
 2-00 2x 305d 23000 3.7 843 3.0 691
 Life: 1583d 127630 3.9 5026 3.1 3962

Lookout P Redburst-Red-ET

106030980C *TY *TV *TL
 PTA -145M -11F +4P 99R 4/24
 PTA +1.41T +1.27UDC +.89FLC GTPI +2169G

Androscoggin Chr Bayley-Red

141923712 Very Good-88 VG-MS
 3-07 2x 305d 31820 3.6 1141 2.8 887
 4-09 2x 305d 30980 3.8 1174 2.8 869
 2-06 2x 305d 24720 3.5 864 2.9 706
 Life: 1192d 110590 3.7 4041 2.8 3139

27

COMPASSPOINT MCDONALD BIGMAC

840003204383701 99%RHA-I GP-82 *RC *PO
 Born: April 8, 2022 • Herd No. 266
 1-10 2x 99d 7198 4.6 333 3.1 223 RIP
 Fresh: February 24, 2024
 Milking: 80# 4.3F 3.0P SCC 31
 Sire: **Aprilday Mcdonald-P-Red-ET**
 Dam: **Compasspoint Doorman Bella**
 Due: February 5, 2025 to Duckett Crush Tadoo-ET
 (Sexed Semen) 507H013839

3rd-9th Dams

Androscoggin RL Bethany-Red EX-91 EX-MS
 3-03 2x 365d 21190 3.5 751 3.2 681
 2-04 2x 308d 14310 3.7 533 3.0 433
Androscoggin Mardigra Betsy EX-90 2E *RC
 6-01 2x 365d 28100 3.4 968 3.1 870
 Life: 237820 3.5 8242 3.1 7267
Androscoggin Nitt Becky-Red GP-82
 5-07 2x 365d 28540 3.1 897 3.1 893
 Life: 122370 3.2 3953 3.1 3810
Ziems Threat Becky-Red EX-92 5E EEEEE
 13-08 2x 365d 24950 4.4 1109 3.5 867
 Life: 222040 4.3 9619 3.4 6504
Ziems Silver Belle GP-84
 4-11 2x 349d 19350 3.5 686
Ziems Silver Bootie VG-85 DOM
 8-08 2x 334d 26980 3.7 1007
 Life: 171100 3.8 6569
Ziems Lakefield Boots VG-87
 5-08 2x 332d 23740 3.7 870

28

COMPASSPOINT AWE BRI-RED-ET

840003204383678 Very Good-88 VG-MS
Born: February 3, 2021 • Herd No. 243
2-00 2x 365d 20789 3.9 800 3.1 647
Fresh: April 6, 2024
Milking: 130# 4.3F 2.3P SCC 13

Luck-E Awesome-Red

72186769 *CV *TE *TC *TY
PTA -1596M -51F -50P 99R 4/24
PTA -.4PL 3.5SCS -2.2DPR 3.6%DCE
PTA +2.13T +2.76UDC +.80FLC 99R 4/24
GTPI +1479G

Compasspoint Rbst Basia-Red

840003132006241 Very Good-88 EX-MS
5-03 2x 305d 27590 3.9 1084 3.1 850
3-01 2x 305d 26300 3.9 1027 3.1 816
4-02 2x 305d 26100 3.9 1009 3.1 806
2-00 2x 305d 23000 3.7 843 3.0 691
Life: 1583d 127630 3.9 5026 3.1 3962

Lookout P Redburst-Red-ET

106030980C *TY *TV *TL
PTA -145M -11F +4P 99R 4/24
PTA +1.41T +1.27UDC +.89FLC GTPI +2169G

Androscoggin Chr Bayley-Red

141923712 Very Good-88 VG-MS
3-07 2x 305d 31820 3.6 1141 2.8 887
4-09 2x 305d 30980 3.8 1174 2.8 869
2-06 2x 305d 24720 3.5 864 2.9 706
Life: 1192d 110590 3.7 4041 2.8 3139

29

COMPASSPOINT EYE CANDY BELL

Registration Pending
Born: April 6, 2024 • Herd No. 311
Sire: **MB-Luckylady Eye Candy-ET**
Dam: **Compasspoint Awe Bri-Red-ET**

3rd-9th Dams

Androscoggin RL Bethany-Red EX-91 EX-MS

3-03 2x 365d 21190 3.5 751 3.2 681
2-04 2x 308d 14310 3.7 533 3.0 433

Androscoggin Mardigra Betsy EX-90 2E *RC

6-01 2x 365d 28100 3.4 968 3.1 870
Life: 237820 3.5 8242 3.1 7267

Androscoggin Nitt Becky-Red GP-82

5-07 2x 365d 28540 3.1 897 3.1 893
Life: 122370 3.2 3953 3.1 3810

Ziems Threat Becky-Red EX-92 5E EEEEE

13-08 2x 365d 24950 4.4 1109 3.5 867
Life: 222040 4.3 9619 3.4 6504

Ziems Silver Belle GP-84

4-11 2x 349d 19350 3.5 686

Ziems Silver Bootie VG-85 DOM

8-08 2x 334d 26980 3.7 1007

Life: 171100 3.8 6569

Ziems Lakefield Boots VG-87

5-08 2x 332d 23740 3.7 870

30

COMPASSPOINT AWE BRIA-RED

840003204383679 Very Good-86 VG-MS
Born: February 8, 2021 • Herd No. 244
2-00 2x 346d 21864 4.3 937 3.2 691
Fresh: April 23, 2024
Milking: 110# 3.6F 2.4P SCC 13

Luck-E Awesome-Red

72186769 *CV *TE *TC *TY
PTA -1596M -51F -50P 99R 4/24
PTA -.4PL 3.5SCS -2.2DPR 3.6%DCE
PTA +2.13T +2.76UDC +.80FLC 99R 4/24
GTPI +1479G

Compasspoint Rbst Basia-Red

840003132006241 Very Good-88 EX-MS
5-03 2x 305d 27590 3.9 1084 3.1 850
3-01 2x 305d 26300 3.9 1027 3.1 816
4-02 2x 305d 26100 3.9 1009 3.1 806
2-00 2x 305d 23000 3.7 843 3.0 691
Life: 1583d 127630 3.9 5026 3.1 3962

COMPASSPOINT WAR BLAZE-RED

Registration Pending
Born: April 23, 2024 • Herd No. 312
Sire: **Mr Blondin Warrior-Red-ET**
Dam: **Compasspoint Awe Bria-Red**

Lookout P Redburst-Red-ET

106030980C *TY *TV *TL
PTA -145M -11F +4P 99R 4/24
PTA +1.41T +1.27UDC +.89FLC GTPI +2169G

Androscoggin Chr Bayley-Red

141923712 Very Good-88 VG-MS
3-07 2x 305d 31820 3.6 1141 2.8 887
4-09 2x 305d 30980 3.8 1174 2.8 869
2-06 2x 305d 24720 3.5 864 2.9 706
Life: 1192d 110590 3.7 4041 2.8 3139

31

COMPASSPOINT MCD BASIL-RED

840003273061286
Born: March 10, 2023 • Herd No. 290
Sire: **Aprilday Mcdonald-P-Red-ET**
Dam: **Compasspoint Awe Bria-Red**

3rd-9th Dams

Androscoggin RL Bethany-Red EX-91 EX-MS

3-03 2x 365d 21190 3.5 751 3.2 681
2-04 2x 308d 14310 3.7 533 3.0 433

Androscoggin Mardigra Betsy EX-90 2E *RC

6-01 2x 365d 28100 3.4 968 3.1 870
Life: 237820 3.5 8242 3.1 7267

Androscoggin Nitt Becky-Red GP-82

5-07 2x 365d 28540 3.1 897 3.1 893
Life: 122370 3.2 3953 3.1 3810

Ziems Threat Becky-Red EX-92 5E EEEEE

13-08 2x 365d 24950 4.4 1109 3.5 867
Life: 222040 4.3 9619 3.4 6504

Ziems Silver Belle GP-84

4-11 2x 349d 19350 3.5 686

Ziems Silver Bootie VG-85 DOM

8-08 2x 334d 26980 3.7 1007

Life: 171100 3.8 6569

Ziems Lakefield Boots VG-87

5-08 2x 332d 23740 3.7 870

32

Life: 1583d 127630 3.9 5026 3.1 3962

33

COMPASSPOINT ALT BLAIRE-RED

840003204383692 99%RHA-I
Born: September 10, 2021 • Herd No. 257
2-01 2x 221d 15181 3.9 598 3.0 458 RIP
Fresh: October 25, 2023
Milking: 66# 4.0F 2.9P SCC 13

Due: October 18, 2024 to Trent-Way Rifle-Red-ET
94H000923

Farnear Altitude-Red-ET

840003128013348 99%RHA-I *TE *TC *TY *TV *TL
PTA +154M +14F +14P 99R 4/24
PTA +.2PL 2.94SCS -2.9DPR 3.1%DCE
PTA +2.86T +2.54UDC +1.35FLC 99R 4/24
GTPI +2190G

Compasspoint Belle-Red-ET

840003204383630 99%RHA-I VG-88 VVVVV
3-11 2x 365d 30107 3.6 1097 2.9 859
2-08 2x 365d 27298 3.6 977 2.9 777

Cycle Mcgucci Jordy-Red

840003131666411 *CV *TC *TC *TE
PTA -878M -17F -37P 99R 4/24
PTA +2.95T +2.22UDC +3.08FLC GTPI +1695G

Compasspoint Rbst Basia-Red

840003132006241 Very Good-88 EX-MS
5-03 2x 305d 27590 3.9 1084 3.1 850
3-01 2x 305d 26300 3.9 1027 3.1 816
4-02 2x 305d 26100 3.9 1009 3.1 806
2-00 2x 305d 23000 3.7 843 3.0 691
Life: 1583d 127630 3.9 5026 3.1 3962

3rd-10th Dams

Androscoggin Chr Bayley-Red VG-88 VG-MS
3-07 2x 305d 31820 3.6 1141 2.8 887
Life: 1192d 110590 3.7 4041 2.8 3139
Androscoggin RL Bethany-Red EX-91 EX-MS
3-03 2x 365d 21190 3.5 751 3.2 681
2-04 2x 308d 14310 3.7 533 3.0 433
Androscoggin Mardigra Betsy EX-90 2E *RC
6-01 2x 365d 28100 3.4 968 3.1 870
Life: 237820 3.5 8242 3.1 7267
Androscoggin Nitt Becky-Red GP-82
5-07 2x 365d 28540 3.1 897 3.1 893
Life: 122370 3.2 3953 3.1 3810
Ziems Threat Becky-Red EX-92 5E EEEEE
13-08 2x 365d 24950 4.4 1109 3.5 867
Life: 222040 4.3 9619 3.4 6504
Ziems Silver Belle GP-84
4-11 2x 349d 19350 3.5 686
Ziems Silver Bootie VG-85 DOM
8-08 2x 334d 26980 3.7 1007
Life: 171100 3.8 6569
Ziems Lakefield Boots VG-87
5-08 2x 332d 23740 3.7 870

34

COMPASSPOINT BRIGHT-RED-TW

840003204383717
Born: November 26, 2022 • Herd No. 282

Due: January 17, 2025 to Progenesis Anahita
200H012726

Farnear Altitude-Red-ET

840003128013348 99%RHA-I *TE *TC *TY *TV *TL
PTA +154M +14F +14P 99R 4/24
PTA +.2PL 2.94SCS -2.9DPR 3.1%DCE
PTA +2.86T +2.54UDC +1.35FLC 99R 4/24
GTPI +2190G

Compasspoint Belle-Red-ET

840003204383630 99%RHA-I VG-88 VVVVV
3-11 2x 365d 30107 3.6 1097 2.9 859
2-08 2x 365d 27298 3.6 977 2.9 777

Cycle Mcgucci Jordy-Red

840003131666411 *CV *TC *TC *TE
PTA -878M -17F -37P 99R 4/24
PTA +2.95T +2.22UDC +3.08FLC GTPI +1695G

Compasspoint Rbst Basia-Red

840003132006241 Very Good-88 EX-MS
5-03 2x 305d 27590 3.9 1084 3.1 850
3-01 2x 305d 26300 3.9 1027 3.1 816
4-02 2x 305d 26100 3.9 1009 3.1 806
2-00 2x 305d 23000 3.7 843 3.0 691
Life: 1583d 127630 3.9 5026 3.1 3962

3rd-10th Dams

Androscoggin Chr Bayley-Red VG-88 VG-MS
3-07 2x 305d 31820 3.6 1141 2.8 887
Life: 1192d 110590 3.7 4041 2.8 3139
Androscoggin RL Bethany-Red EX-91 EX-MS
3-03 2x 365d 21190 3.5 751 3.2 681
2-04 2x 308d 14310 3.7 533 3.0 433
Androscoggin Mardigra Betsy EX-90 2E *RC
6-01 2x 365d 28100 3.4 968 3.1 870
Life: 237820 3.5 8242 3.1 7267
Androscoggin Nitt Becky-Red GP-82
5-07 2x 365d 28540 3.1 897 3.1 893
Life: 122370 3.2 3953 3.1 3810
Ziems Threat Becky-Red EX-92 5E EEEEE
13-08 2x 365d 24950 4.4 1109 3.5 867
Life: 222040 4.3 9619 3.4 6504
Ziems Silver Belle GP-84
4-11 2x 349d 19350 3.5 686
Ziems Silver Bootie VG-85 DOM
8-08 2x 334d 26980 3.7 1007
Life: 171100 3.8 6569
Ziems Lakefield Boots VG-87
5-08 2x 332d 23740 3.7 870

35

COMPASSPOINT BRIDE-RED-TW

840003204383718

Born: November 26, 2022 • Herd No. 283

Bred: May 29, 2024 to Jacobs Showtime-ET
94HO19826

Farnear Altitude-Red-ET

840003128013348 99%RHA-I *TE *TC *TY *TV *TL

PTA +154M +14F +14P 99R 4/24

PTA +.2PL 2.94SCS -2.9DPR 3.1%DCE

PTA +2.86T +2.54UDC +1.35FLC 99R 4/24

GTPI +2190G

Compasspoint Belle-Red-ET

840003204383630 99%RHA-I VG-88 VVVVV

3-11 2x 365d 30107 3.6 1097 2.9 859

2-08 2x 365d 27298 3.6 977 2.9 777

Cycle Mcgucci Jordy-Red

840003131666411 *CV *TC *TC *TE

PTA -878M -17F -37P 99R 4/24

PTA +2.95T +2.22UDC +3.08FLC GTPI +1695G

Compasspoint Rbst Basia-Red

840003132006241 Very Good-88 EX-MS

5-03 2x 305d 27590 3.9 1084 3.1 850

3-01 2x 305d 26300 3.9 1027 3.1 816

4-02 2x 305d 26100 3.9 1009 3.1 806

2-00 2x 305d 23000 3.7 843 3.0 691

Life: 1583d 127630 3.9 5026 3.1 3962

3rd-10th Dams

Androscoggin Chr Bayley-Red VG-88 VG-MS

3-07 2x 305d 31820 3.6 1141 2.8 887

Life: 1192d 110590 3.7 4041 2.8 3139

Androscoggin RL Bethany-Red EX-91 EX-MS

3-03 2x 365d 21190 3.5 751 3.2 681

2-04 2x 308d 14310 3.7 533 3.0 433

Androscoggin Mardigra Betsy EX-90 2E *RC

6-01 2x 365d 28100 3.4 968 3.1 870

Life: 237820 3.5 8242 3.1 7267

Androscoggin Nitt Becky-Red GP-82

5-07 2x 365d 28540 3.1 897 3.1 893

Life: 122370 3.2 3953 3.1 3810

Ziems Threat Becky-Red EX-92 5E EEEEE

13-08 2x 365d 24950 4.4 1109 3.5 867

Life: 222040 4.3 9619 3.4 6504

Ziems Silver Belle GP-84

4-11 2x 349d 19350 3.5 686

Ziems Silver Bootie VG-85 DOM

8-08 2x 334d 26980 3.7 1007

Life: 171100 3.8 6569

Ziems Lakefield Boots VG-87

5-08 2x 332d 23740 3.7 870

36

COMPASSPOINT LAMBDA BEULAH

840003204383687 Very Good-86 VG-MS

Born: July 15, 2021 • Herd No. 252

2-02 2x 257d 22210 4.0 892 2.9 635 RIP

Fresh: September 19, 2023

Milking: 80# 4.3F 2.9P SCC 71

Due: October 14, 2024 to Jacobs Showtime-ET
94HO19826

Farnear Delta-Lambda-ET

840003125993715 *TR *TP *TC *TY *TV *TL

PTA +1317M +52F +47P 99R 4/24

PTA +4.9PL 2.78SCS -0.3DPR 2.1%DCE

PTA +2.81T +2.74UDC +1.11FLC 99R 4/24

GTPI +2818G

Compasspoint Defiant Basil

840003140004831 *RC

Scientific B Defiant-ET

141123484 Very Good-87 *RC *TP *TC *TY *TV *TL

PTA +84M -49F -13P 99R 4/24

PTA +2.60T +1.68UDC +.91FLC GTPI +1656G

Androscoggin Chr Bayley-Red

141923712 Very Good-88 VG-MS

3-07 2x 305d 31820 3.6 1141 2.8 887

4-09 2x 305d 30980 3.8 1174 2.8 869

2-06 2x 305d 24720 3.5 864 2.9 706

Life: 1192d 110590 3.7 4041 2.8 3139

3rd-9th Dams

Androscoggin RL Bethany-Red EX-91 EX-MS

3-03 2x 365d 21190 3.5 751 3.2 681

2-04 2x 308d 14310 3.7 533 3.0 433

Androscoggin Mardigra Betsy EX-90 2E *RC

6-01 2x 365d 28100 3.4 968 3.1 870

Life: 237820 3.5 8242 3.1 7267

Androscoggin Nitt Becky-Red GP-82

5-07 2x 365d 28540 3.1 897 3.1 893

Life: 122370 3.2 3953 3.1 3810

Ziems Threat Becky-Red EX-92 5E EEEEE

13-08 2x 365d 24950 4.4 1109 3.5 867

Life: 222040 4.3 9619 3.4 6504

Ziems Silver Belle GP-84

4-11 2x 349d 19350 3.5 686

Ziems Silver Bootie VG-85 DOM

8-08 2x 334d 26980 3.7 1007

Life: 171100 3.8 6569

Ziems Lakefield Boots VG-87

5-08 2x 332d 23740 3.7 870



MARFADY WINDBROOK NADINE-ET VG-85
MATERNAL SISTER TO DAM OF LOT 37

37

COMPASSPOINT ATTORNEY NINJA

840003140004792 Very Good-88 VVVV
 Born: June 24, 2016 • Herd No. 138
 4-02 2x 365d 32678 3.7 1209 2.9 944
 6-03 2x 326d 25293 3.5 896 3.0 756
 3-02 2x 332d 25242 3.6 918 2.8 709
 2-02 2x 210d 11485 3.8 436 3.0 340
 7-03 2x 231d 21819 3.6 795 3.0 644 RIP
 Fresh: October 15, 2023
 Milking: 86# 3.6F 2.8P SCC 429

Bred: April 24, 2024 to Maverick Crush
 94H017998

Maternal sister to Nicole

Marfady Windbrook Nadine-ET VG-85

Mr Aubrey GC Attorney-ET

70476912 Very Good-88 *TC *TY *TV *TL
 PTA +178M -42F -32P 99R 4/24
 PTA +.5PL 2.76SCS -3.0DPR 2.3%DCE
 PTA +1.44T +1.27UDC +1.94FLC 98R 4/24
 GTPI +1656G

Marfady Atwood Nicole

73108656 Excellent-90 EX-MS
 6-00 2x 305d 33440 3.6 1201 2.9 975
 4-06 2x 305d 24800 3.7 921 3.0 742
 3-00 2x 305d 24560 3.8 940 3.1 753
 2-00 2x 295d 17120 3.9 671 3.2 545
 Life: 1612d 129300 3.8 4952 3.1 3983

Maple-Downs-I G W Atwood-ET

8956379C Excellent-90 *TR *TP *TY *TV *TL
 PTA -297M +12F -8P 99R 4/24
 PTA +2.92T +1.87UDC +2.04FLC GTPI +1904G

Marfady Dundee 2073

68935134 Excellent-93 EX-MS *TL *TD
 5-00 2x 351d 39920 3.7 1458 3.1 1246
 3-08 2x 305d 30680 3.5 1064 3.1 960
 1-10 2x 305d 24390 3.6 890 3.2 771
 6-01 2x 316d 23600 3.7 868 3.3 774
 Life: 1679d 145850 3.6 5304 3.2 4693

Regancrest Dundee-ET

127640114 Excellent-95 *TV *TL *TY

Marfady Trace Nancy-TW

137461756 Very Good-88 EX-MS
 4-08 2x 335d 29450 3.9 1151 3.1 906
 6-09 2x 305d 28160 4.3 1197 3.1 877
 3-09 2x 278d 24610 3.3 800 3.0 730
 5-09 2x 307d 23830 3.6 852 3.3 776
 2-07 2x 305d 21830 2.7 594 3.2 697
 Life: 1846d 146470 3.7 5432 3.2 4663

38

COMPASSPOINT LUSTER NOLA

840003204383715

Born: September 25, 2022 • Herd No. 280

Due: January 12, 2025 to Angus

Cherry-Lily Zip Luster-P-ET

840003138843085 *PC *PO *TC *TE *TR

PTA +1592M +81F +49P 99R 4/24

PTA +3.5PL 2.79SCS -0.4DPR 2.3%DCE

PTA +2.57T +2.17UDC +1.70FLC 99R 4/24

GTPI +2892G

Compasspoint Attorney Ninja

840003140004792 Very Good-88 VVVVV

4-02 2x 365d 32678 3.7 1209 2.9 944

6-03 2x 326d 25293 3.5 896 3.0 756

3-02 2x 332d 25242 3.6 918 2.8 709

2-02 2x 210d 11485 3.8 436 3.0 340

7-03 2x 231d 21819 3.6 795 3.0 644 RIP

Mr Aubrey GC Attorney-ET

70476912 Very Good-88 *TC *TY *TV *TL

PTA +178M -42F -32P 99R 4/24

PTA +1.44T +1.27UDC +1.94FLC GTPI +1656G

Marfady Atwood Nicole

73108656 Excellent-90 EX-MS

6-00 2x 305d 33440 3.6 1201 2.9 975

4-06 2x 305d 24800 3.7 921 3.0 742

3-00 2x 305d 24560 3.8 940 3.1 753

2-00 2x 295d 17120 3.9 671 3.2 545

Life: 1612d 129300 3.8 4952 3.1 3983

3rd & 4th Dams

Marfady Dundee 2073 EX-93 EX-MS *TL *TD

5-00 2x 351d 39920 3.7 1458 3.1 1246

Life: 1679d 145850 3.6 5304 3.2 4693

Marfady Trace Nancy-TW VG-88 EX-MS

4-08 2x 335d 29450 3.9 1151 3.1 906

Life: 1846d 146470 3.7 5432 3.2 4663

39

COMPASSPOINT UNDENIED NEMO

840003204383641 Very Good-87 EX-MS

Born: August 31, 2019 • Herd No. 206

3-10 2x 332d 32751 4.1 1351 2.9 945 RIP

1-10 2x 365d 24494 4.1 1007 2.9 721

Fresh: July 6, 2023

Milking: 94# 4.4F 3.0P SCC 13

Due: November 13, 2024 to Angus

Our-Favorite Undenied-ET

840003125220760 99%RHA-I VG-87 *TR *TP *TE *TC *TY *TV *TL

PTA -9M +22F -8P 99R 4/24

PTA -1.7PL 2.99SCS -3.6DPR 2.4%DCE

PTA +2.98T +.91UDC +.49FLC 99R 4/24

GTPI +1967G

Compasspoint Attorney Ninja

840003140004792 Very Good-88 VVVVV

4-02 2x 365d 32678 3.7 1209 2.9 944

6-03 2x 326d 25293 3.5 896 3.0 756

3-02 2x 332d 25242 3.6 918 2.8 709

2-02 2x 210d 11485 3.8 436 3.0 340

7-03 2x 231d 21819 3.6 795 3.0 644 RIP

Mr Aubrey GC Attorney-ET

70476912 Very Good-88 *TC *TY *TV *TL

PTA +178M -42F -32P 99R 4/24

PTA +1.44T +1.27UDC +1.94FLC GTPI +1656G

Marfady Atwood Nicole

73108656 Excellent-90 EX-MS

6-00 2x 305d 33440 3.6 1201 2.9 975

4-06 2x 305d 24800 3.7 921 3.0 742

3-00 2x 305d 24560 3.8 940 3.1 753

2-00 2x 295d 17120 3.9 671 3.2 545

Life: 1612d 129300 3.8 4952 3.1 3983

COMPASSPOINT HELIX NLYSS

840003204383688 99%RHA-I VG-85 VG-MS @ 2-05

Born: July 16, 2021 • Herd No. 253

1-11 2x 329d 28642 3.7 1063 2.8 792

• Sells Dry

Due: July 4, 2024 to Duckett Crush Tatoo-ET

7H013839

Sire: Aot Silver Helix-ET

Dam: Compasspoint Undenied Nemo

40

3rd & 4th Dams

Marfady Dundee 2073 EX-93 EX-MS *TL *TD

5-00 2x 351d 39920 3.7 1458 3.1 1246

Life: 1679d 145850 3.6 5304 3.2 4693

Marfady Trace Nancy-TW VG-88 EX-MS

4-08 2x 335d 29450 3.9 1151 3.1 906

Life: 1846d 146470 3.7 5432 3.2 4663



MARFADY DUNDEE 2073 EX-93 EEEEE 2E
2ND DAM OF LOT 37 & 41

41

COMPASSPOINT APPLE NADINE

840003204383663 99%RHA-I GP-84 VG-MS @ 3-06

Born: June 4, 2020 • Herd No. 228

1-11 2x 365d 19220 3.7 713 2.9 558

3-01 2x 292d 25247 3.7 941 2.8 716 RIP

Fresh: August 2, 2023

Milking: 78# 3.7F 3.1P SCC 66

Due: July 15, 2024 to Val-Bisson Doorman-ET
200H06480

Siemers Oct Apple-Crisp-ET

840003134506808 *RC *TC *TP

PTA +92M +4F -6P 99R 4/24

PTA -3.6PL 3.16SCS -2.0DPR 2.3%DCE

PTA +1.86T +1.33UDC +.98FLC 98R 4/24

GTPI +1900G

Marfady Atwood Nicole

73108656 Excellent-90 EX-MS

6-00 2x 305d 33440 3.6 1201 2.9 975

4-06 2x 305d 24800 3.7 921 3.0 742

3-00 2x 305d 24560 3.8 940 3.1 753

2-00 2x 295d 17120 3.9 671 3.2 545

Life: 1612d 129300 3.8 4952 3.1 3983

Maple-Downs-I G W Atwood-ET

8956379C Excellent-90 *TR *TP *TY *TV *TL

PTA -297M +12F -8P 99R 4/24

PTA +2.92T +1.87UDC +2.04FLC GTPI +1904G

Marfady Dundee 2073

68935134 Excellent-93 EX-MS *TL *TD

5-00 2x 351d 39920 3.7 1458 3.1 1246

3-08 2x 305d 30680 3.5 1064 3.1 960

1-10 2x 305d 24390 3.6 890 3.2 771

6-01 2x 316d 23600 3.7 868 3.3 774

Life: 1679d 145850 3.6 5304 3.2 4693

Regancrest Dundee-ET

127640114 Excellent-95 *TV *TL *TY

Marfady Trace Nancy-TW

137461756 Very Good-88 EX-MS

4-08 2x 335d 29450 3.9 1151 3.1 906

6-09 2x 305d 28160 4.3 1197 3.1 877

3-09 2x 278d 24610 3.3 800 3.0 730

5-09 2x 307d 23830 3.6 852 3.3 776

2-07 2x 305d 21830 2.7 594 3.2 697

Life: 1846d 146470 3.7 5432 3.2 4663



DIRIGO SEPT STORM MORGAN-ET EX-93 EX-MS 2E
2ND DAM OF LOT 42

42

RODONWA DURABLE MARGE

143980146 Very Good-88 VG-MS
Born: September 11, 2016 • Herd No. 41
6-02 2x 322d 28451 3.7 1065 2.8 801
4-07 2x 365d 26161 3.4 896 2.9 756
3-07 2x 299d 22275 3.8 843 2.9 639
2-02 2x 365d 18617 3.6 678 2.9 539
7-01 2x 208d 19100 3.9 747 3.0 571 RIP
Milking: 106# 5.5F 2.8P SCC 25

Bred: May 20, 2024 to Maverick Crush
94H017998

3rd Dam

Dirigo Integrity Mahala EX-94 EEEEE 4E
7-08 2x 365d 35000 3.9 1380 3.2 1126
4-04 2x 365d 33090 3.8 1249 3.1 1041

4th Dam

Dirigo-Pondoak Malina-ET EX-93 3E GMD DOM
8-05 2x 365d 40240 3.6 1467 3.2 1296
Life: 2361d 188110 3.9 7310 3.4 6434

5th Dam

Pond-Oak Ned Boy Margot-ET EX-95 3E DOM 1*
7-09 2x 365d 36109 4.1 1493 3.3 1182

6th Dam

Pond-Oak Valiant Missy EX-92 3E GMD DOM
3-10 2x 365d 30840 3.6 1114 3.3 1005
Life: 2062d 135110 3.8 5089 3.3 4484

7th Dam

Pond-Oak Elevation Pumpkin VG-87 GMD DOM
6-08 2x 318d 24170 3.2 769
Life: 2017d 132040 3.4 4425

Ronelee SS Durable

136747211 Excellent-90 *RC *CD *TY *TV *TL
PTA +26M +15F -15P 99R 4/24
PTA -.8PL 2.75SCS -1.7DPR 2.5%DCE
PTA -.48T -.64UDC +.84FLC 99R 4/24
GTPI +1904G

Rodonwa Planet Marci-ET

143019181 Very Good-86 VG-MS
2-03 2x 307d 18210 3.8 699 3.0 551

Ensenada Taboo Planet-ET

60597003 Excellent-92 *TR *TP *TC *TY *TV
PTA +957M +11F +24P 99R 4/24
PTA -.39T +.03UDC -1.38FLC GTPI +2041G

Dirigo Sept Storm Morgan-ET

62650727 Excellent-93 EEEVE 2E
6-07 2x 343d 18540 4.6 856 2.9 532
3-09 2x 365d 22730 3.1 703 3.0 677
2-01 2x 365d 21830 3.5 757 3.0 657
5-02 2x 343d 18540 4.6 856 2.9 532



BUROCO JUROR EDITH EX-94 EEEEE 4E
2ND DAM OF LOT 43 & 44

43

COMPASSPOINT TAT ECHOED-TW

840003204383712 99%RHA-I
Born: July 19, 2022 • Herd No. 277
Fresh: May 28, 2024
Milking: 46# 5.9F 3.6P SCC 1131

44

COMPASSPOINT TAT ECHOES-TW

840003204383711 99%RHA-I
Born: July 19, 2022 • Herd No. 276
Fresh: May 6, 2024

Duckett Crush Tadoo-ET

840003137052923 99%RHA-I *TR *TP *TE *TC *TY
PTA -332M -26F +1P 99R 4/24
PTA +1.4PL 2.70SCS -2.0DPR 1.8%DCE
PTA +2.87T +2.23UDC +.73FLC 99R 4/24
GTPI +2047G

Pyramid Buxton Echo-ET

840003123600943 Excellent-90 EX-MS 2E
6-10 2x 305d 32550 4.4 1436 2.9 941
4-08 2x 305d 29940 4.0 1211 2.9 859
3-01 2x 305d 27860 4.1 1150 3.1 859
5-09 2x 305d 27510 3.8 1045 3.0 821
2-01 2x 303d 19250 4.1 786 3.1 595
Life: 2270d 184600 4.2 7705 3.0 5630

Mue038 Buxton-ET

104875006C Very Good-85-CAN *BY *TC *TV *TL
PTA +391M +2F -16P 99R 4/24
PTA +1.40T +1.54UDC +1.01FLC GTPI +1817G

Buroco Juror Edith

8426013C Excellent-94 EEEEE 4E
2-02 2x 345d 21460 4.3 921 3.4 721
3-03 2x 359d 28410 4.1 1172 3.2 922
4-05 2x 305d 29050 4.1 1184 3.1 914
6-05 2x 365d 37340 4.1 1541 3.2 1201
8-02 2x 365d 36570 4.7 1708 3.3 1205
10-0 2x 365d 37000 4.3 1593 3.0 1098
12-3 2x 365d 30162 4.4 1348 3.0 916
Life: 3323d 273810 4.5 12211 3.1 8511

Edith

- Nom Jr All-American 4-Year-Old 2006
- Nom Jr All-American Sr 3-Year-Old 2005
- HM Jr All-American Winter Yearling 2003
- 2nd Aged Cow Northeast Fall Nat'l 2008
- Sr & Grand Champ Northeast Fall Nat'l Jr 2008
- Res Sr & Res Grand Champ VT Holstein Show 2005
- Res Jr Champ Northeast Fall Nat'l 2002

Ked Juror-ET

2124357 Good Plus-82 *TV *TL

Larisac Stardust Eddie

1063654C Excellent-90-CAN 2E
3-03 2x 318d 23389 3.8 877 3.1 732
6-04 2x 365d 28880 4.3 1248 3.0 862
9-00 2x 321d 23062 4.3 988 3.2 739
Life: 162140 4.1 6709 3.1 5079

45

COMPASSPOINT HANANS ELITE

840003273061292 99%RHA-I

Born: September 2, 2023 • Herd No. 296

Siemers Exc Hanans 31753-ET

840003143986722 99%RHA-I *TR *TP *TE *TC *TY *TV *TL

PTA +232M +93F +45P 98R 4/24

PTA +2.6PL 2.75SCS -2.4DPR 1.9%DCE

PTA +3.58T +2.57UDC +2.34FLC 96R 4/24

GTPI +2921G

Pyramid Buxton Echo-ET

840003123600943 Excellent-90 EX-MS 2E

6-10 2x 305d 32550 4.4 1436 2.9 941

4-08 2x 305d 29940 4.0 1211 2.9 859

3-01 2x 305d 27860 4.1 1150 3.1 859

5-09 2x 305d 27510 3.8 1045 3.0 821

2-01 2x 303d 19250 4.1 786 3.1 595

Life: 2270d 184600 4.2 7705 3.0 5630

Mue038 Buxton-ET

104875006C Very Good-85-CAN *BY *TC *TV *TL

PTA +391M +2F -16P 99R 4/24

PTA +1.40T +1.54UDC +1.01FLC GTPI +1817G

Buroco Juror Edith

8426013C Excellent-94 EEEEE 4E

2-02 2x 345d 21460 4.3 921 3.4 721

3-03 2x 359d 28410 4.1 1172 3.2 922

4-05 2x 305d 29050 4.1 1184 3.1 914

6-05 2x 365d 37340 4.1 1541 3.2 1201

8-02 2x 365d 36570 4.7 1708 3.3 1205

10-0 2x 365d 37000 4.3 1593 3.0 1098

12-3 2x 365d 30162 4.4 1348 3.0 916

Life: 3323d 273810 4.5 12211 3.1 8511

Ked Juror-ET

2124357 Good Plus-82 *TV *TL

Larisac Stardust Eddie

1063654C Excellent-90-CAN 2E

3-03 2x 318d 23389 3.8 877 3.1 732

6-04 2x 365d 28880 4.3 1248 3.0 862

9-00 2x 321d 23062 4.3 988 3.2 739

Life: 162140 4.1 6709 3.1 5079

46

HEIFER

Registration Pending

Born: May 6, 2024 • Herd No. 314

Duckett Prct Has It All-ET

840003235342391 *TR *TP *TC *TY *TV *TL *TD *TE

PTA +1753M +73F +59P 82R 4/24

PTA +3.4PL 3.00SCS -1.1DPR 2.4%DCE

PTA +2.85T +2.24UDC +1.50FLC 81R 4/24

GTPI +2868G

Compasspoint Tat Echoes-TW (Lot 44)

840003204383711 99%RHA-I

Duckett Crush Tatoo-ET

840003137052923 99%RHA-I *TR *TP *TE *TC *TY

PTA -332M -26F +1P 99R 4/24

PTA +2.87T +2.23UDC +.73FLC GTPI +2047G

Pyramid Buxton Echo-ET

840003123600943 Excellent-90 EX-MS 2E

6-10 2x 305d 32550 4.4 1436 2.9 941

4-08 2x 305d 29940 4.0 1211 2.9 859

3-01 2x 305d 27860 4.1 1150 3.1 859

5-09 2x 305d 27510 3.8 1045 3.0 821

2-01 2x 303d 19250 4.1 786 3.1 595

Life: 2270d 184600 4.2 7705 3.0 5630

3rd Dam

Buroco Juror Edith EX-94 EEEEE 4E

2-02 2x 345d 21460 4.3 921 3.4 721

Life: 3323d 273810 4.5 12211 3.1 8511

4th Dam

Larisac Stardust Eddie EX-90-CAN 2E

3-03 2x 318d 23389 3.8 877 3.1 732

Life: 162140 4.1 6709 3.1 5079

47

COMPASSPOINT SELECT NEVA

840003204383677 99%RHA-I VG-85 VG-MS
Born: January 12, 2021 • Herd No. 242
1-11 2x 289d 18357 4.5 823 3.1 561
2-11 2x 170d 14984 4.3 651 3.2 479 RIP
Fresh: December 15, 2023
Milking: 84# 4.5F 3.1P SCC 35

Due: January 24, 2025 to Sandy-Valley P Empower-ET
29H020939

Avant-Garde Unix Select-ET

840003149135073 99%RHA-I *TR *TP *TE *TC
PTA -946M +26F -13P 99R 4/24
PTA -.2PL 2.67SCS -.3DPR 2.1%DCE
PTA +2.37T +1.79UDC +.31FLC 99R 4/24
GTPI +2178G

Compasspoint Franchise Ninja

84000314004820 Very Good-86 VG-MS
3-04 2x 304d 29600 3.8 1137 3.0 878
4-04 2x 297d 28500 3.6 1017 2.8 812
2-05 2x 303d 22490 3.9 875 3.0 667
Life: 1264d 117810 3.8 4434 2.9 3425

OCD Rodgers Franchise-ET

840003014365400 *TR *TP *TY *TV
PTA +856M +38F +31P 99R 4/24
PTA +.37T +1.61UDC -.05FLC GTPI +2517G

Compasspoint Gavor Nifty

73775093 Very Good-85 VG-MS
2-10 2x 305d 15940 3.4 875 2.6 684
1-11 2x 292d 20910 3.7 778 2.7 575

3rd Dan

R-Waterloo Carisma Nile VG-89 VG-MS

5-11 2x 305d 33870 3.7 1270 2.8 953
Life: 1662d 130920 4.3 5579 3.0 3955

48

COMPASSPOINT WARRIOR NINA

840003204383722 99%RHA-I *RC
Born: December 31, 2022 • Herd No. 287

Due: February 2, 2025 to Siemers Rz Pazzle 34954-ET
(Sexed Semen) 550H016115

Mr Blondin Warrior-Red-ET

840003139655530 99%RHA-I *TP *TE *TC *TY *TV *TL
PTA -830M -26F -18P 99R 4/24
PTA -5.0PL 2.94SCS -2.2DPR 3.1%DCE
PTA +2.78T +1.40UDC +1.18FLC 99R 4/24
GTPI +1669G

Compasspoint Franchise Ninja

84000314004820 Very Good-86 VG-MS
3-04 2x 304d 29600 3.8 1137 3.0 878
4-04 2x 297d 28500 3.6 1017 2.8 812
2-05 2x 303d 22490 3.9 875 3.0 667
Life: 1264d 117810 3.8 4434 2.9 3425

OCD Rodgers Franchise-ET

840003014365400 *TR *TP *TY *TV
PTA +856M +38F +31P 99R 4/24
PTA +.37T +1.61UDC -.05FLC GTPI +2517G

Compasspoint Gavor Nifty

73775093 Very Good-85 VG-MS
2-10 2x 305d 15940 3.4 875 2.6 684
1-11 2x 292d 20910 3.7 778 2.7 575

3rd Dan

R-Waterloo Carisma Nile VG-89 VG-MS

5-11 2x 305d 33870 3.7 1270 2.8 953
Life: 1662d 130920 4.3 5579 3.0 3955

49

COMPASSPOINT CRUSH NIKE

840003204383651 Very Good-88 VG-MS
Born: January 23, 2020 • Herd No. 216
2-03 2x 351d 35594 3.9 1380 3.3 1166
3-04 2x 344d 24643 3.7 924 3.3 814
Fresh: June 17, 2023
Milking: 78# 3.5F 4.2P SCC 62

Due: January 26, 2025 to Siemers Rz Pazzle 34954-ET
(Sexed Semen) 550H016115

Maverick-I Crush

12042760 *TC *TE
PTA -774M -47F -12P 99R 4/24
PTA +2.5PL 2.40SCS +2.0DPR 2.6%DCE
PTA +2.43T +1.54UDC +1.20FLC 99R 4/24
GTPI +2046G

Compasspoint Franchise Ninja

84000314004820 Very Good-86 VG-MS
3-04 2x 304d 29600 3.8 1137 3.0 878
4-04 2x 297d 28500 3.6 1017 2.8 812
2-05 2x 303d 22490 3.9 875 3.0 667
Life: 1264d 117810 3.8 4434 2.9 3425

OCD Rodgers Franchise-ET

840003014365400 *TR *TP *TY *TV
PTA +856M +38F +31P 99R 4/24
PTA +.37T +1.61UDC -.05FLC GTPI +2517G

Compasspoint Gavor Nifty

73775093 Very Good-85 VG-MS
2-10 2x 305d 15940 3.4 875 2.6 684
1-11 2x 292d 20910 3.7 778 2.7 575

3rd Dan

R-Waterloo Carisma Nile VG-89 VG-MS
5-11 2x 305d 33870 3.7 1270 2.8 953
Life: 1662d 130920 4.3 5579 3.0 3955

50

COMPASSPOINT CRUSH NOVA

840003273061301 99%RHA-I
Born: February 18, 2024 • Herd No. 305

Maverick-I Crush

12042760 *TC *TE
PTA -774M -47F -12P 99R 4/24
PTA +2.5PL 2.40SCS +2.0DPR 2.6%DCE
PTA +2.43T +1.54UDC +1.20FLC 99R 4/24
GTPI +2046G

Compasspoint Franchise Ninja

84000314004820 Very Good-86 VG-MS
3-04 2x 304d 29600 3.8 1137 3.0 878
4-04 2x 297d 28500 3.6 1017 2.8 812
2-05 2x 303d 22490 3.9 875 3.0 667
Life: 1264d 117810 3.8 4434 2.9 3425

OCD Rodgers Franchise-ET

840003014365400 *TR *TP *TY *TV
PTA +856M +38F +31P 99R 4/24
PTA +.37T +1.61UDC -.05FLC GTPI +2517G

Compasspoint Gavor Nifty

73775093 Very Good-85 VG-MS
2-10 2x 305d 15940 3.4 875 2.6 684
1-11 2x 292d 20910 3.7 778 2.7 575

3rd Dan

R-Waterloo Carisma Nile VG-89 VG-MS
5-11 2x 305d 33870 3.7 1270 2.8 953
Life: 1662d 130920 4.3 5579 3.0 3955

51

COMPASSPOINT DOORMAN NADINE

840003204383638 99%RHA-I VG-88 EX-MS

Born: June 3, 2019 • Herd No. 203

3-01 2x 365d 29137 4.8 1395 3.4 989

2-03 2x 263d 18888 4.3 821 3.1 579

4-06 2x 103d 10548 4.2 441 3.1 328 RIP

Fresh: December 21, 2023

Milking: 100# 4.4F 3.1P SCC 71

Due: February 1, 2025 to Cherry-Lily Zip Luster-P-ET
(Sexed Semen) 507H014160

Val-Bisson Doorman

107281711 *TP

PTA -449M +13F +10P 99R 4/24

PTA +0.0PL 2.67SCS -2.5DPR 2.7%DCE

PTA +2.44T +1.54UDC +.64FLC 99R 4/24

GTPI +2129G

Compasspoint Dempsey Nerd

840003132006243 Very Good-85 VG-MS

2-00 2x 365d 20452 4.2 868 3.2 649

3-05 2x 301d 19157 4.5 868 3.2 608

Lirr Drew Dempsey

61083609 Excellent-93 *TR *CD *TP *TY

PTA -731M -4F -4P 99R 4/24

PTA +1.65T +1.06UDC +1.00FLC GTPI +1917G

R-Waterloo Carisma Nile

66620685 Very Good-89 VG-MS

5-11 2x 305d 33870 3.7 1270 2.8 953

4-09 2x 305d 29410 4.3 1260 2.9 858

3-04 2x 305d 25700 4.3 1106 2.9 750

2-00 2x 305d 17180 4.2 727 3.0 511

Life: 1662d 130920 4.3 5579 3.0 3955

52

COMPASSPOINT BLOOMFIELD NIP

840003204383658 Very Good-85 VG-MS @ 3-09

Born: March 28, 2020 • Herd No. 223

3-01 2x 365d 24499 5.0 1232 3.4 838

2-00 2x 337d 19279 5.2 998 3.5 674

• Sells Dry

Due: August 2, 2024 to Cherry-Lily Zip Luster-P-ET
(Sexed Semen) 507H014160

Siemers Bloomfield-ET

840003130920421 *TR *TP *TY *TV

PTA -519M +83F +1P 99R 4/24

PTA +3.1PL 2.81SCS +1.0DPR 3.2%DCE

PTA +1.53T +1.77UDC +.15FLC 99R 4/24

GTPI +2599G

Compasspoint Atwood Nike

840003140004800 Very Good-87 VG-MS

4-08 2x 305d 27490 4.1 1115 3.0 821

2-06 2x 301d 23400 4.4 1031 2.9 686

3-06 2x 305d 20720 4.4 914 3.3 686

Life: 1538d 113770 4.4 5001 3.1 3548

Maple-Downs-I G W Atwood-ET

8956379C Excellent-90 *TR *TP *TY *TV *TL

PTA -297M +12F -8P 99R 4/24

PTA +2.92T +1.87UDC +2.04FLC GTPI +1904G

R-Waterloo Mammoth Nail

75346363 Good Plus-83

3rd Dan

R-Waterloo Carisma Nile VG-89 VG-MS

5-11 2x 305d 33870 3.7 1270 2.8 953

Life: 1662d 130920 4.3 5579 3.0 3955

53

COMPASSPOINT TROPIC NEVAEH

840003204383705 Good Plus-82 @ 2-01
Born: April 17, 2022 • Herd No. 270
Fresh: March 26, 2024
Milking: 80# 4.5F 3.2P SCC 373

Bred: May 21, 2024 to Duckett Pfct Has It All-ET
(Sexed Semen) 507H016295

Peak Tropic-ET

840003145229820 Very Good-85 *TR *TP *TM *TE
PTA +628M +69F +42P 99R 4/24
PTA -.5PL 2.80SCS -1.7DPR 1.9%DCE
PTA +2.52T +1.92UDC +1.42FLC 99R 4/24
GTPI +2682G

Compasspoint Bloomfield Nip

840003204383658 Very Good-85 VG-MS @ 3-09
3-01 2x 365d 24499 5.0 1232 3.4 838
2-00 2x 337d 19279 5.2 998 3.5 674

Siemers Bloomfield-ET

840003130920421 *TR *TP *TY *TV
PTA -519M +83F +1P 99R 4/24
PTA +1.53T +1.77UDC +.15FLC GTPI +2599G

Compasspoint Atwood Nike

840003140004800 Very Good-87 VG-MS
4-08 2x 305d 27490 4.1 1115 3.0 821
2-06 2x 301d 23400 4.4 1031 2.9 686
3-06 2x 305d 20720 4.4 914 3.3 686
Life: 1538d 113770 4.4 5001 3.1 3548

4th Dan

R-Waterloo Carisma Nile VG-89 VG-MS
5-11 2x 305d 33870 3.7 1270 2.8 953
Life: 1662d 130920 4.3 5579 3.0 3955

Maple-Downs-I G W Atwood-ET

8956379C Excellent-90 *TR *TP *TY *TV *TL
PTA -297M +12F -8P 99R 4/24
PTA +2.92T +1.87UDC +2.04FLC GTPI +1904G

R-Waterloo Mammoth Nail

75346363 Good Plus-83

55

COMPASSPOINT CHIEF NIMMY

840003204383703 99%RHA-I Very Good-85 VG-MS @ 2-01
Born: April 15, 2022 • Herd No. 268
1-10 2x 103d 7033 4.1 285 3.1 215 RIP
Fresh: February 20, 2024
Milking: 84# 3.8F 3.1P SCC 13
Bred: May 6, 2024 to Duckett Pfct Has It All-ET
(Sexed Semen) 507H016295

Stantons Chief-ET

840003129015989 99%RHA-I *TE *TC *TY *TV *TL
PTA +793M +6F +19P 99R 4/24
PTA +.8PL 2.72SCS -.5DPR 3.4%DCE
PTA +2.08T +2.18UDC +.20FLC 99R 4/24
GTPI +2243G

Compasspoint Crush Nia

840003140004837 99%RHA-I GP-81
2-04 2x 305d 20160 3.8 768 3.1 632

Maverick-I Crush

12042760 *TC *TE
PTA -774M -47F -12P 99R 4/24
PTA +2.43T +1.54UDC +1.20FLC GTPI +2046G

Compasspoint Dempsey Ninja

840003132006255 Very Good-86 VG-MS
4-04 2x 305d 27950 3.9 1101 3.1 853
3-04 2x 305d 24260 3.9 955 2.8 686
2-02 2x 230d 14510 4.2 603 3.0 442

COMPASSPOINT HARDY NIGHTOWL

840003273061302
Born: February 20, 2024 • Herd No. 306
Sire: **Siemers Pfct Hardy 35126-ET**
Dan: **Compasspoint Chief Nimmy**

3rd Dam

Compasspoint Hefty Nina GP-82

4th Dan

R-Waterloo Carisma Nile VG-89 VG-MS
5-11 2x 305d 33870 3.7 1270 2.8 953
Life: 1662d 130920 4.3 5579 3.0 3955

57

COMPASSPOINT TROPIC NIGHT

840003204383689 Good Plus-81
Born: July 21, 2021 • Herd No. 254
1-11 2x 317d 20178 4.0 814 3.2 637

Due: July 21, 2024 to Angus

Peak Tropic-ET

840003145229820 Very Good-85 *TR *TP *TM *TE
PTA +628M +69F +42P 99R 4/24
PTA -.5PL 2.80SCS -1.7DPR 1.9%DCE
PTA +2.52T +1.92UDC +1.42FLC 99R 4/24
GTPI +2682G

Compasspoint Unix Nokia

840003204383639
2-01 2x 105d 4920 4.0 196 3.1 152

Croteau Lesperron Unix

107567492
PTA +696M +22F +14P 99R 4/24
PTA +2.15T +1.99UDC +.11FLC GTPI +2308G

Compasspoint Byway Natalie

840003140004807 Good Plus-81
2-04 2x 305d 17880 4.0 709 2.9 516
3-07 2x 215d 17080 4.1 692 2.8 474

3rd Dan

R-Waterloo Carisma Nile VG-89 VG-MS
5-11 2x 305d 33870 3.7 1270 2.8 953
Life: 1662d 130920 4.3 5579 3.0 3955

58

COMPASSPOINT DAY 85

75346361 75%RHA-NA Excellent-90 3E
Born: February 22, 2014 • Herd No. 85
5-09 2x 365d 39616 3.2 1253 2.9 1133
7-03 2x 365d 35049 3.5 1233 2.9 1029
4-07 2x 365d 34992 3.3 1154 3.1 1072
3-02 2x 365d 31637 3.5 1106 3.2 1007
8-08 2x 337d 27618 3.6 991 3.0 839
1-11 2x 365d 27354 3.4 933 3.1 859
Life: 2557d 226370 3.4 7744 3.0 6872
Fresh: December 31, 2023
Milking: 100# 3.3F 2.6P SCC 132

Due: January 7, 2025 to Duckett Crush Tatoo-ET
(Sexed Semen) 507H013839

Minnigan-Hills Day-ET

69774730 *TC *TP
PTA +1109M +18F +27P 99R 4/24
PTA +2.1PL 2.79SCS -0.6DPR 2.9%DCE
PTA +1.01T +0.91UDC -0.04FLC 99R 4/24
GTPI +2312G

Compasspoint Deann 11

74578437 80%RHA-NA Good Plus-83
3-10 2x 305d 24230 4.3 1030 3.2 783

England-Schill Deann 58A-ET

60000299 *TY *TV *TL
PTA -127M -23F -13P 99R 4/24
PTA +.09T -.43UDC +.84FLC GTPI +1884G

59

COMPASSPOINT HANANS FICKLE

840003204383714

Born: August 1, 2022 • Herd No. 279

Due: October 12, 2024 to Duckett Pft Has It All-ET
(Sexed Semen) 507H016295

Siemers Exc Hanans 31753-ET

840003143986722 99%RHA-I *TR *TP *TE *TC *TY *TV *TL

PTA +232M +93F +45P 98R 4/24

PTA +2.6PL 2.75SCS -2.4DPR 1.9%DCE

PTA +3.58T +2.57UDC +2.34FLC 96R 4/24

GTPI +2921G

Compasspoint Solomon Flashy

840003140004829 93%RHA-I VG-86

4-06 2x 357d 33598 4.0 1337 3.1 1040

3-00 2x 305d 30210 3.8 1139 2.9 886

2-00 2x 305d 22680 4.0 907 2.8 646

Life: 1343d 119801 4.0 4752 3.0 3588

Walnutlawn Solomon-ET

11775998C 99%RHA-I *TR *TP *TE *TY *TV *TL

PTA -533M -13F -10P 99R 4/24

PTA +2.70T +1.65UDC +.33FLC GTPI +1918G

Compasspoint Kingboy Flash

840003132006247 87%RHA-I Good Plus-83 VG-MS

4-00 2x 294d 27120 3.4 910 2.8 746

2-11 2x 305d 26680 3.4 912 2.8 743

1-11 2x 296d 20450 3.3 677 2.9 583

3rd Dam

Compasspoint Day 85 EX-90

5-09 2x 365d 39616 3.2 1253 2.9 1133

Life: 2557d 226370 3.4 7744 3.0 6872

4th Dam

Compasspoint Deann 11 GP-83

3-10 2x 305d 24230 4.3 1030 3.2 783

60

COMPASSPOINT EYE CANDY FIRE

840003273061295

Born: September 22, 2023 • Herd No. 299

Mb-Luckylady Eye Candy-ET

840003234629820 *TC *TE *TP

PTA +368M +45F +26P 82R 4/24

PTA +1.5PL 2.86SCS -1.2DPR 2.8%DCE

PTA +3.17T +2.59UDC +1.35FLC 81R 4/24

GTPI +2536G

Compasspoint Solomon Flashy

840003140004829 93%RHA-I VG-86

4-06 2x 357d 33598 4.0 1337 3.1 1040

3-00 2x 305d 30210 3.8 1139 2.9 886

2-00 2x 305d 22680 4.0 907 2.8 646

Life: 1343d 119801 4.0 4752 3.0 3588

Walnutlawn Solomon-ET

11775998C 99%RHA-I *TR *TP *TE *TY *TV *TL

PTA -533M -13F -10P 99R 4/24

PTA +2.70T +1.65UDC +.33FLC GTPI +1918G

Compasspoint Kingboy Flash

840003132006247 87%RHA-I Good Plus-83 VG-MS

4-00 2x 294d 27120 3.4 910 2.8 746

2-11 2x 305d 26680 3.4 912 2.8 743

1-11 2x 296d 20450 3.3 677 2.9 583

3rd Dam

Compasspoint Day 85 EX-90

5-09 2x 365d 39616 3.2 1253 2.9 1133

Life: 2557d 226370 3.4 7744 3.0 6872

4th Dam

Compasspoint Deann 11 GP-83

3-10 2x 305d 24230 4.3 1030 3.2 783

61

COMPASSPOINT GOLD CHIP LIN

840003204383650 98%RHA-NA VG-86 VG-MS
Born: January 11, 2020 • Herd No. 215
3-06 2x 239d 20398 3.9 799 2.9 599 RIP
2-05 2x 303d 21537 3.9 849 3.1 674
Fresh: March 6, 2023
Milking: 70# 5.3F 3.4P SCC 528

Due: August 11, 2024 to Siemers Doc Hancock
250H014579

Mr Chassity Gold Chip-ET

14014553 Excellent-95
PTA -540M -20F -37P 99R 4/24
PTA +.2PL 2.78SCS -1.6DPR 1.5%DCE
PTA +1.50T +1.07UDC +.98FLC 4/24
GTPI +1763G

Compasspoint Bradnick Lila

840003140004793 96%RHA-NA VG-85 VG-MS
3-05 2x 305d 26370 3.2 840 2.9 768
2-02 2x 305d 20710 3.2 655 3.1 637

Regancrest-GV S Bradnick-ET

66625940 Excellent-96 *TR *TP *TY *TV *TL
PTA +534M -42F -2P 99R 4/24
PTA +1.68T +1.78UDC +1.67FLC GTPI +1854G

Compasspoint Super 32

74578442 93%RHA-NA EX-91 VEEVE 2E
8-09 2x 365d 39743 3.9 1573 3.2 1276
6-08 2x 325d 33501 4.0 1333 3.3 1095
4-07 2x 333d 32443 3.8 1233 3.4 1100
7-09 2x 305d 32199 3.9 1240 3.2 1019
3-04 2x 365d 29091 4.0 1192 3.3 989
2-02 2x 365d 26175 4.0 1058 3.3 938
10-4 2x 305d 24180 3.6 864 3.0 719

62

COMPASSPOINT MOGUL LILAC

840003204383667 98%RHA-NA VG-87 VG-MS
Born: September 20, 2020 • Herd No. 232
1-10 2x 330d 18146 4.2 760 3.2 588
2-10 2x 289d 21885 4.5 984 3.3 730 RIP
Fresh: August 18, 2023
Milking: 63# 4.9F 3.7P SCC 1131

Due: September 6, 2024 to Jacobs Showtime-ET
94H019826

Mountfield Ssi Dcy Mogul-ET

840003006972816 EX-93 *TR *TP *TC *TY *TV *TL
PTA +419M +40F +13P 99R 4/24
PTA -.2PL 3.13SCS -3.3DPR 1.6%DCE
PTA +1.27T +2.05UDC +1.05FLC 99R 4/24
GTPI +2260G

Compasspoint Brokaw Lillie

840003140004839 96%RHA-NA VG-86 VG-MS @ 3-07
3-02 2x 297d 22410 4.2 942 3.3 743
2-00 2x 305d 18600 4.8 887 3.4 640

Mr Atwood Brokaw-ET

140602463 VG-86 *TR *TP *TY *TV *TL
PTA -560M -2F -5P 99R 4/24
PTA +2.61T +1.67UDC +.53FLC GTPI +1829G

Compasspoint Super 32

74578442 93%RHA-NA EX-91 VEEVE 2E
8-09 2x 365d 39743 3.9 1573 3.2 1276
6-08 2x 325d 33501 4.0 1333 3.3 1095
4-07 2x 333d 32443 3.8 1233 3.4 1100
7-09 2x 305d 32199 3.9 1240 3.2 1019
3-04 2x 365d 29091 4.0 1192 3.3 989
2-02 2x 365d 26175 4.0 1058 3.3 938
10-4 2x 305d 24180 3.6 864 3.0 719

63

COMPASSPOINT BREWMAST LILAC

840003204383694 98%RHA-NA
Born: November 6, 2021 • Herd No. 259
2-03 2x 112d 7979 5.0 396 2.8 227 RIP
Fresh: February 11, 2024
Milking: 74# 4.4F 2.9P SCC 187

Due: February 10, 2025 to Kings-Ransom Dropbox-ET
(Sexed Semen) 777H011399

Mapel Wood Brewmaster-ET

11161715C Excellent-95-CAN *TR *TP *TC *TY *TV
PTA +612M +85F +22P 99R 4/24
PTA +.6PL 2.89SCS -1.1DPR 2.1%DCE
PTA +.67T -.06UDC +.42FLC 99R 4/24
GTPI +2481G

Compasspoint Brokaw Lillie

840003140004839 96%RHA-NA VG-86 VG-MS @ 3-07
3-02 2x 297d 22410 4.2 942 3.3 743
2-00 2x 305d 18600 4.8 887 3.4 640

Mr Atwood Brokaw-ET

140602463 VG-86 *TR *TP *TY *TV *TL
PTA -560M -2F -5P 99R 4/24
PTA +2.61T +1.67UDC +.53FLC GTPI +1829G

Compasspoint Super 32

74578442 93%RHA-NA EX-91 VEVEE 2E
8-09 2x 365d 39743 3.9 1573 3.2 1276
6-08 2x 325d 33501 4.0 1333 3.3 1095
4-07 2x 333d 32443 3.8 1233 3.4 1100
7-09 2x 305d 32199 3.9 1240 3.2 1019
3-04 2x 365d 29091 4.0 1192 3.3 989
2-02 2x 365d 26175 4.0 1058 3.3 938
10-4 2x 305d 24180 3.6 864 3.0 719

64

COMPASSPOINT LAMBDA LYNN

840003204383686 98%RHA-I GP-81 @ 2-05
Born: July 11, 2021 • Herd No. 251
1-11 2x 286d 19491 4.7 909 3.3 649
Fresh: May 22, 2024
Milking: 82# 4.9F 3.2P SCC 141

Farnear Delta-Lambda-ET

840003125993715 *TR *TP *TC *TY *TV *TL
PTA +1317M +52F +47P 99R 4/24
PTA +4.9PL 2.78SCS -0.3PR 2.1%DCE
PTA +2.81T +2.74UDC +1.11FLC 99R 4/24
GTPI +2818G

Compasspoint Mccutchen Lena

840003204383643 96%RHA-I Good-78

De-Su Bkm Mccutchen 1174-ET

69990138 99%RHA-I EX-93 *TR *TP *TC *TY *TV *TL
PTA +206M +24F +10P 99R 4/24
PTA +2.11T +1.32UDC +.90FLC GTPI +2183G

Compasspoint Super 32

74578442 93%RHA-NA EX-91 VEVEE 2E
8-09 2x 365d 39743 3.9 1573 3.2 1276
6-08 2x 325d 33501 4.0 1333 3.3 1095
4-07 2x 333d 32443 3.8 1233 3.4 1100
7-09 2x 305d 32199 3.9 1240 3.2 1019
3-04 2x 365d 29091 4.0 1192 3.3 989
2-02 2x 365d 26175 4.0 1058 3.3 938
10-4 2x 305d 24180 3.6 864 3.0 719

65

COMPASSPOINT SIDEKICK LEXI

840003204383704

Born: April 15, 2022 • Herd No. 269

Fresh: April 26, 2024

Milking: 48# 4.1F 2.8P SCC 29

Walnutlawn Sidekick

12508113C 99%RHA-I *TR *TE *TY *TV *TL

PTA -1223M +4F -9P 99R 4/24

PTA +.1PL 2.76SCS -.4DPR 2.2%DCE

PTA +3.07T +2.29UDC +1.18FLC 99R 4/24

GTPI +2170G

Compasspoint Super 32

74578442 93%RHA-NA EX-91 VEVEE 2E

8-09 2x 365d 39743 3.9 1573 3.2 1276

6-08 2x 325d 33501 4.0 1333 3.3 1095

4-07 2x 333d 32443 3.8 1233 3.4 1100

7-09 2x 305d 32199 3.9 1240 3.2 1019

3-04 2x 365d 29091 4.0 1192 3.3 989

2-02 2x 365d 26175 4.0 1058 3.3 938

10-4 2x 305d 24180 3.6 864 3.0 719

Charleedale Superstition-ET

62065919 *TR *TP *TC *TY *TV *TL

PTA +780M -31F +14P 99R 4/24

PTA -.03T -.10UDC -.39FLC GTPI +1988G

Compasspoint Toystory 5

74578436 87%RHA-NA

66

COMPASSPOINT ROZROYAL KIP

840003140004832 99%RHA-I VG-88 VG-MS

Born: March 1, 2018 • Herd No. 178

5-00 2x 365d 36707 3.8 1394 2.9 1064

2-11 2x 365d 32713 3.6 1160 2.9 952

4-01 2x 272d 27906 3.3 934 2.9 814

1-11 2x 302d 24133 3.4 820 2.8 669

Life: 1322d 122429 3.6 4349 2.9 3530

Due: June 11, 2024 to Duckett Crush Tatoo-ET

7H013839

Siemers Kingboy Rozroyal-ET

840003125519623 99%RHA-I EX-90 *TR *TP *TY *TV

PTA +2289M +47F +47P 98R 4/24

PTA +.7PL 2.83SCS -1.6DPR 2.4%DCE

PTA +1.01T +1.20UDC -.10FLC 94R 4/24

GTPI +2469G

Ichthus Eraser 580 642

66019275 99%RHA-NA VG-86 EX-MS

7-00 2x 305d 30150 3.7 1124 2.9 868

5-06 2x 305d 29570 3.9 1156 2.9 853

4-03 2x 305d 28020 4.0 1115 2.9 821

1-11 2x 305d 25240 3.7 930 2.8 716

3-01 2x 305d 22870 4.0 918 3.0 692

Life: 2465d 200130 4.0 8023 3.0 6041

Sunny-Valley Shot Eraser-ET

137521195 *TV *TL

PTA -467M -19F -18P 95R 4/24

PTA +.42F +.07UDC +.95FLC GTPI +1728G

Ichthus Stormnorm 395 580

63168973 99%RHA-NA GP-82

4-02 2x 305d 24640 4.6 1130 2.8 692

3-02 2x 301d 21570 3.7 789 2.8 611

2-02 2x 305d 18820 4.3 816 2.9 537

67

COMPASSPOINT CRUSH KITE

840003204383702 99%RHA-I Good Plus-80 @ 2-01
Born: April 13, 2022 • Herd No. 267
Fresh: March 14, 2024
Milking: 74# 3.5F 2.7P SCC 20

68

COMPASSPOINT HANX-P KIMMY

840003273061304
Born: March 14, 2024 • Herd No. 308
Sire: **Siemers Hanan Hanx-P-ET**
Dam: **Compasspoint Crush Kite**

OCD Mystic Crush-ET

840003201859654 *TC *TE *TP *TR
PTA +672M +33F +22P 96R 4/24
PTA +1.0PL 2.94SCS -1.3DPR 2.3%DCE
PTA +2.96T +2.93UDC +1.02FLC 92R 4/24
GTPI +2464G

Compasspoint Rozroyal Kip

840003140004832 99%RHA-I VG-88 VG-MS
5-00 2x 365d 36707 3.8 1394 2.9 1064
2-11 2x 365d 32713 3.6 1160 2.9 952
4-01 2x 272d 27906 3.3 934 2.9 814
1-11 2x 302d 24133 3.4 820 2.8 669
Life: 1322d 122429 3.6 4349 2.9 3530

Siemers Kingboy Rozroyal-ET

840003125519623 99%RHA-I EX-90 *TR *TP *TY *TV
PTA +2289M +47F +47P 98R 4/24
PTA +1.01T +1.20UDC -.10FLC GTPI +2469G

Ichthus Eraser 580 642

66019275 99%RHA-NA VG-86 EX-MS
7-00 2x 305d 30150 3.7 1124 2.9 868
5-06 2x 305d 29570 3.9 1156 2.9 853
4-03 2x 305d 28020 4.0 1115 2.9 821
1-11 2x 305d 25240 3.7 930 2.8 716
3-01 2x 305d 22870 4.0 918 3.0 692
Life: 2465d 200130 4.0 8023 3.0 6041

Sunny-Valley Shot Eraser-ET

137521195 *TV *TL
PTA -467M -19F -18P 95R 4/24
PTA +.42F +.07UDC +.95FLC GTPI +1728G

Ichthus Stormnorm 395 580

63168973 99%RHA-NA GP-82
4-02 2x 305d 24640 4.6 1130 2.8 692
3-02 2x 301d 21570 3.7 789 2.8 611
2-02 2x 305d 18820 4.3 816 2.9 537

69

COMPASSPOINT CRUSH RAVEN

840003140004835 99%RHA-I VG-88 EX-MS
Born: July 16, 2018 • Herd No. 181
4-04 2x 295d 26988 3.7 1008 3.0 818
3-04 2x 310d 26569 3.8 1002 3.1 814
2-01 2x 365d 23943 4.2 994 3.1 746
5-04 2x 189d 14773 4.1 608 3.0 445 RIP
Fresh: November 26, 2023
Milking: 94# 4.5F 3.3P SCC 33
Due: January 27, 2025 to Angus

70

COMPASSPOINT HANCOCK REBA

840003204383720
Born: December 11, 2022 • Herd No. 285
Sire: **Siemers Doc Hancock**
Dam: **Compasspoint Crush Raven**

Due: December 20, 2024 to Siemers Rz Puzzle 34954-ET
(Sexed Semen) 550H016115

Maverick-I Crush

12042760 *TC *TE
PTA -774M -47F -12P 99R 4/24
PTA +2.5PL 2.40SCS +2.0DPR 2.6%DCE
PTA +2.43T +1.54UDC +1.20FLC 99R 4/24
GTPI +2046G

Compasspoint Bankroll Rubic

840003132006254 87%RHA-NA GP-83 VG-MS @ 2-10
3-04 2x 305d 27790 3.7 1027 2.8 789
2-01 2x 305d 19710 3.8 755 3.0 595

Crasdale Bankroll-ET

72436689 *TR *TP *TY *TV *TL
PTA -150M +17F +11P 99R 4/24
PTA +1.66T +1.77UDC +1.30FLC GTPI +2138G

Compass Point Legend 62

23WCT6159 75%RHA-NA

71

COMPASSPOINT BELAIR KIMMY

840003204383673 99%RHA-I VG-85 VG-MS

Born: November 25, 2020 • Herd No. 238

2-01 2x 347d 22775 4.6 1047 3.1 713

3-02 2x 109d 10528 4.5 476 2.8 294 RIP

Fresh: February 14, 2024

Milking: 96# 4.4F 2.8P SCC 18

Bred: May 20, 2024 to Kings-Ransom Dropbox-ET

(Sexed Semen)

777H011399

Eildon-Tweed Ssr Belair-ET

72350071 99%RHA-I VG-86 *TR *TP *TC *TY *TV

PTA +293M +48F +26P 99R 4/24

PTA +1.2PL 3.17SCS -2.1DPR 2.1%DCE

PTA +1.47T +1.50UDC +1.14FLC 97R 4/24

GTPI +2427G

Compasspoint Doorsopen Kim

840003140004819 99%RHA-I VG-85 VG-MS @ 2-03

2-03 2x 305d 22520 3.9 870 3.1 689

Ladys-Manor Doorsopen-ET

840003013129323 99%RHA-I EX-92 *TR *TP *TY *TV

PTA +144M +46F +11P 99R 4/24

PTA +1.44T +1.40UDC +.28FLC GTPI +2340G

Compasspoint Jacey Kite

73775104 99%RHA-I Good Plus-83

4-10 2x 305d 33320 3.5 1182 2.9 962

6-07 2x 298d 33020 3.4 1129 2.8 931

3-06 2x 305d 31650 3.3 1044 2.9 928

1-11 2x 305d 28040 3.4 945 3.0 828

Life: 1837d 176650 3.5 6215 3.0 5349

72

COMPASSPOINT COAL 260

840003204383695 93%RHA-I Very Good-85 VG-MS @ 2-04

Born: January 1, 2022 • Herd No. 260

1-11 2x 160d 11388 4.0 450 3.0 346 RIP

Fresh: December 25, 2023

Milking: 76# 3.9F 3.0P SCC 200

Due: November 25, 2024 to Siemers Rz Pazzle 34954-ET

(Sexed Semen)

550H016115

Scientific Doc Coal-ET

144436873 99%RHA-I *TR *TP *TE *TC *TY

PTA +46M +35F +10P 95R 4/24

PTA +2.3PL 2.77SCS -2.4DPR 2.6%DCE

PTA +2.81T +1.91UDC +1.76FLC 93R 4/24

GTPI +2387G

Compasspoint Tatoo 211

840003204383646 87%RHA-I GP-82 @ 2-04

2-01 2x 126d 7790 3.3 257 3.0 233

Duckett Crush Tatoo-ET

840003137052923 99%RHA-I *TR *TP *TE *TC *TY

PTA -332M -26F +1P 99R 4/24

PTA +2.87T +2.23UDC +.73FLC GTPI +2047G

Compasspoint Wynner 113

840003132006231 74%RHA-NA GP-84 VG-MS @ 3-11

3-04 2x 305d 27640 2.9 795 2.8 782

2-05 2x 301d 19850 3.1 618 2.8 564

73

COMPASSPOINT SELECT PAMELLA

840003204383681 96%RHA-I GP-83 VG-MS @ 2-09 *PO

Born: March 26, 2021 • Herd No. 246

2-01 2x 308d 17419 4.7 827 3.6 626

Fresh: May 13, 2024

Milking: 106# 3.6F 2.7P SCC 13

Avant-Garde Unix Select-ET

840003149135073 99%RHA-I *TR *TP *TE *TC

PTA -946M +26F -13P 99R 4/24

PTA -.2PL 2.67SCS -.3DPR 2.1%DCE

PTA +2.37T +1.79UDC +.31FLC 99R 4/24

GTPI +2178G

Compass Point Day 97

73775092 93%RHA-I

5-00 2x 365d 38019 3.7 1402 3.0 1154

6-06 2x 365d 33950 3.7 1263 3.1 1045

2-11 2x 310d 26681 3.8 1006 3.2 842

3-11 2x 299d 26460 3.6 955 3.1 833

1-11 2x 307d 19973 3.9 773 3.3 650

Life: 1646d 160054 3.7 6001 3.2 5074

Minnigan-Hills Day-ET

69774730 *TC *TP

PTA +1109M +18F +27P 99R 4/24

PTA +1.01T +0.91UDC -0.04FLC GTPI +2312G

Compass Point Cobra 338

23WBK6960 86%RHA-I

74

HEIFER

Registration Pending

Born: May 13, 2024 • Herd No. 316

Cherry-Lily Zip Luster-P-ET

840003138843085 *PC *PO *TC *TE *TR

PTA +1592M +81F +49P 99R 4/24

PTA +3.5PL 2.79SCS -0.4DPR 2.3%DCE

PTA +2.57T +2.17UDC +1.70FLC 99R 4/24

GTPI +2892G

Compasspoint Select Pamella

840003204383681 96%RHA-I GP-83 VG-MS @ 2-09 *PO

2-01 2x 308d 17419 4.7 827 3.6 626

Avant-Garde Unix Select-ET

840003149135073 99%RHA-I *TR *TP *TE *TC

PTA -946M +26F -13P 99R 4/24

PTA -.2PL 2.67SCS -.3DPR 2.1%DCE

PTA +2.37T +1.79UDC +.31FLC 99R 4/24

GTPI +2178G

Compass Point Day 97

73775092 93%RHA-I

5-00 2x 365d 38019 3.7 1402 3.0 1154

6-06 2x 365d 33950 3.7 1263 3.1 1045

2-11 2x 310d 26681 3.8 1006 3.2 842

3-11 2x 299d 26460 3.6 955 3.1 833

1-11 2x 307d 19973 3.9 773 3.3 650

Life: 1646d 160054 3.7 6001 3.2 5074

Minnigan-Hills Day-ET

69774730 *TC *TP

PTA +1109M +18F +27P 99R 4/24

PTA +1.01T +0.91UDC -0.04FLC GTPI +2312G

Compass Point Cobra 338

23WBK6960 86%RHA-I

75

COMPASSPOINT JOURNEY POINT

840003204383697 98%RHA-I GP-80 @ 2-03 *RC
Born: February 17, 2022 • Herd No. 262
Fresh: March 8, 2024
Milking: 64# 3.4F 2.9P SCC 214

Bred: May 21, 2024 to Duckett Crush Tatoo-ET
(Sexed Semen) 507HO13839

Cycle Jails Journey-Red-ET

840003204381634 99%RHA-I *TP *TE *TC *TY
PTA -404M -34F -25P 95R 4/24
PTA -2.0PL 3.00SCS -2.7DPR 3.2%DCE
PTA +2.66T +1.90UDC +.69FLC 93R 4/24
GTPI +1679G

Compasspoint Piranha-P 184

840003140004838 96%RHA-I
4-05 2x 297d 25411 3.6 927 3.1 780
3-05 2x 295d 24823 3.7 922 3.2 789
2-04 2x 353d 23136 4.0 915 3.2 740

Buck-H-Creek Mgl Piranha-P

142478989 *RC *PC *TC *TY *TV
PTA +182M -3F +18P 99R 4/24
PTA +1.59T +2.49UDC +.76FLC GTPI +2182G

Compass Point Day 97

73775092 93%RHA-I VG-86
5-00 2x 365d 38019 3.7 1402 3.0 1154
6-06 2x 365d 33950 3.7 1263 3.1 1045
2-11 2x 310d 26681 3.8 1006 3.2 842
3-11 2x 299d 26460 3.6 955 3.1 833
1-11 2x 307d 19973 3.9 773 3.3 650
Life: 1646d 160054 3.7 6001 3.2 5074

Minnigan-Hills Day-ET

69774730 *TC *TP
PTA +1109M +18F +27P 99R 4/24
PTA +1.01T +0.91UDC -0.04FLC GTPI +2312G

Compass Point Cobra 338

23WBK6960 86%RHA-I

76

COMPASSPOINT TSTRUCK POPPY

840003273061303
Born: March 8, 2024 • Herd No. 307

OCD Thunder Struck-ET

840003204457423
PTA +199M +29F +12P 96R 4/24
PTA -1.2PL 2.96SCS -2.5DPR 3.4%DCE
PTA +3.43T +2.46UDC +.90FLC 93R 4/24
GTPI +2267G

Compasspoint Journey Point

840003204383697 98%RHA-I GP-80 @ 2-03 *RC

Cycle Jails Journey-Red-ET

840003204381634 99%RHA-I *TP *TE *TC *TY
PTA -404M -34F -25P 95R 4/24
PTA +2.66T +1.90UDC +.69FLC GTPI +1679G

Compasspoint Piranha-P 184

840003140004838 96%RHA-I GP-80
4-05 2x 297d 25411 3.6 927 3.1 780
3-05 2x 295d 24823 3.7 922 3.2 789
2-04 2x 353d 23136 4.0 915 3.2 740

3rd Dam

Compass Point Day 97 VG-86

77

COMPASSPOINT KINGROYAL HALO

840003204383672 93%RHA-I GP-83 VG-MS @ 3-01
Born: November 13, 2020 • Herd No. 237
1-11 2x 365d 26755 4.0 1076 3.1 831
Due: June 7, 2024 to Angus

78

COMPASSPOINT LIMITED HIPPO

840003204383716
Born: November 1, 2022 • Herd No. 281
Sire: **Hyden Limited-P**
Dam: **Compasspoint Kingroyal Halo**

Due: January 23, 2025 to Sandy-Valley P Empower-ET
29H020939

Plain-Knoll King Royal-ET

74564764 99%RHA-I VG-86 *TR *TP *TE *TC *TY
PTA +284M +57F +38P 99R 4/24
PTA -1.0PL 3.06SCS -1.9DPR 2.9%DCE
PTA +2.28T +1.76UDC +1.16FLC 99R 4/24
GTPI +2496G

Compasspoint Marcel Hazel

73775095 87%RHA-NA GP-84
4-11 2x 305d 31220 3.6 1139 2.6 826
3-06 2x 305d 29300 3.2 930 2.7 777
1-11 2x 305d 22130 3.6 791 2.7 608
6-00 2x 238d 21890 3.4 736 2.6 575
Life: 1548d 133080 3.5 4641 2.7 3633

Morningview Marcelon Cri-ET

68767099 99%RHA-NA *TP *TC *TY *TV *TL
PTA +716M +27F +12P 99R 4/24
PTA -.37T -.34UDC +.79FLC GTPI +2142G

Compasspoint Justin 273

74578444 75%RHA-NA VG-88 EX-MS
10-1 2x 365d 33464 3.6 1212 2.9 986
7-11 2x 305d 29031 3.6 1052 3.0 865
3-10 2x 305d 27140 3.8 1027 3.0 822
5-06 2x 305d 26997 3.9 1049 3.0 809
9-01 2x 301d 26440 3.8 995 3.1 819
6-09 2x 305d 25280 3.8 962 3.0 761
2-01 2x 305d 23362 3.9 908 3.0 700
Life: 2970d 256171 3.8 9824 3.1 7936

79

COMPASSPOINT CRUSH MILEY

840003204383661 99%RHA-I VG-85 VG-MS @ 3-00
Born: May 7, 2020 • Herd No. 226
1-11 2x 365d 25090 3.9 984 3.4 854
3-02 2x 125d 4373 3.9 171 3.7 161 RIP
Fresh: August 4, 2023
• Sells Dry

Due: July 4, 2024 to Siemers Hanan Hanx-P-ET
7H016387

80

COMPASSPOINT TROPIC MIST

840003204383706
Born: May 4, 2022 • Herd No. 271
Sire: **Peak Tropic-ET**
Dam: **Compasspoint Crush Miley**

Due: July 2, 2024 Siemers Hanan Hanx-P-ET
7H016387

Maverick-I Crush

12042760 *TC *TE
PTA -774M -47F -12P 99R 4/24
PTA +2.5PL 2.40SCS +2.0DPR 2.6%DCE
PTA +2.43T +1.54UDC +1.20FLC 99R 4/24
GTPI +2046G

Compasspoint Lawman Mardi

840003132006250 Very Good-87 VG-MS
4-01 2x 305d 28060 4.2 1170 3.2 898
3-01 2x 305d 27240 4.0 1087 3.2 873
5-02 2x 283d 24420 4.0 973 3.2 790
1-11 2x 305d 25410 4.0 1014 3.3 849
Life: 1311d 111580 4.1 4563 3.3 3667

Co-Op Mogul Lawman-ET

71451889 *TP *TC *TY *TV *TL
PTA +534M +25F +38P 99R 4/24
PTA +1.04T +.48UDC +1.21FLC GTPI +2205G

Compasspoint Tango Minnie

73775083

81

COMPASSPOINT ARTISAN MAVIS

840003204383685 99%RHA-I VG-85 VG-MS

Born: June 20, 2021 • Herd No. 250

2-02 2x 269d 17247 4.3 733 3.0 520 RIP

Fresh: September 7, 2023

Milking: 62# 4.5F 3.2P SCC 606

Due: December 6, 2024 to Angus

Luck-E Artisan-Red-ET

840003141305472 99%RHA-I *TP *TE *TC *TY *TV

PTA +179M +73F +19P 98R 4/24

PTA +.02PL 3.02SCS -.6DPR 2.4%DCE

PTA +1.52T +.74UDC +.60FLC 97R 4/24

GTPI +2404G

Compasspoint Lawman Mardi

840003132006250 Very Good-87 VG-MS

4-01 2x 305d 28060 4.2 1170 3.2 898

3-01 2x 305d 27240 4.0 1087 3.2 873

5-02 2x 283d 24420 4.0 973 3.2 790

1-11 2x 305d 25410 4.0 1014 3.3 849

Life: 1311d 111580 4.1 4563 3.3 3667

Co-Op Mogul Lawman-ET

71451889 *TP *TC *TY *TV *TL

PTA +534M +25F +38P 99R 4/24

PTA +1.04T +.48UDC +1.21FLC GTPI +2205G

Compasspoint Tango Minnie

73775083

82

COMPASSPOINT PERFECT MARCIA

840003273061293

Born: September 7, 2023 • Herd No. 297

Siemers Rengd Perfect-ET

840003200124761 99%RHA-I *TR *TP *TM *TE

PTA +1140M +100F +61P 99R 4/24

PTA +4.1PL 2.88SCS -.9DPR 1.9%DCE

PTA +2.47T +2.22UDC +2.00FLC 99R 4/24

GTPI +3044G

Compasspoint Artisan Mavis

840003204383685 99%RHA-I GP-84 VG-MS

2-02 2x 269d 17247 4.3 733 3.0 520 RIP

Luck-E Artisan-Red-ET

840003141305472 99%RHA-I *TP *TE *TC *TY *TV

PTA +179M +73F +19P 98R 4/24

PTA +.02PL 3.02SCS -.6DPR 2.4%DCE

PTA +1.52T +.74UDC +.60FLC 97R 4/24

GTPI +2404G

Compasspoint Lawman Mardi

840003132006250 Very Good-87 VG-MS

4-01 2x 305d 28060 4.2 1170 3.2 898

3-01 2x 305d 27240 4.0 1087 3.2 873

5-02 2x 283d 24420 4.0 973 3.2 790

1-11 2x 305d 25410 4.0 1014 3.3 849

Life: 1311d 111580 4.1 4563 3.3 3667

Co-Op Mogul Lawman-ET

71451889 *TP *TC *TY *TV *TL

PTA +534M +25F +38P 99R 4/24

PTA +1.04T +.48UDC +1.21FLC GTPI +2205G

Compasspoint Tango Minnie

73775083

83

COMPASSPOINT DOC QUINCY

840003204383659 98%RHA-I VG-86 VG-MS @ 3-09

Born: March 31, 2020 • Herd No. 224

3-04 2x 291d 28330 3.7 1060 3.1 879 RIP

2-03 2x 335d 22281 3.9 872 3.1 694

Fresh: August 16, 2023

Milking: 64# 4.8F 3.6P SCC 528

Due: September 25, 2024 to Maverick Crush
94H017998

Woodcrest King Doc

3132417775 99%RHA-I EX-90 *TR *TP *TE *TC *TY *TV

PTA +1561M +68F +54P 99R 4/24

PTA +3.3PL 3.12SCS -1.6DPR 2.2%DCE

PTA +3.15T +2.07UDC +1.90FLC 99R 4/24

GTPI +2789G

Compasspoint Mogul Queen

840003140004802 96%RHA-NA VG-85 VG-MS

5-01 2x 305d 31410 3.8 1203 3.0 936

3-06 2x 305d 30130 3.6 1094 2.9 888

2-03 2x 305d 21540 4.0 862 2.9 615

Life: 1287d 109660 3.9 4262 3.0 3342

Mountfield Ssi Dcy Mogul-ET

840003006972816 EX-93 *TR *TP *TC *TY *TV *TL

PTA +419M +40F +13P 99R 4/24

PTA +1.27T +2.05UDC +1.05FLC GTPI +2260G

Compasspoint Super 41

75346364 93%RHA-NA GP-83

3-05 2x 305d 24370 3.2 788 3.0 734

2-04 2x 305d 20640 3.4 693 3.1 631

4-05 2x 235d 18400 3.3 611 3.0 544

84

COMPASSPOINT SELECT QUICK

840003204383693 98%RHA-I GP-81 @ 2-06

Born: November 2, 2021 • Herd No. 258

2-00 2x 185d 13357 3.9 520 2.9 384 RIP

Fresh: November 30, 2023

Milking: 80# 3.6F 2.9P SCC 13

Due: November 25, 2024 to Angus

Avant-Garde Unix Select-ET

840003149135073 99%RHA-I *TR *TP *TE *TC

PTA -946M +26F -13P 99R 4/24

PTA -.2PL 2.67SCS -.3DPR 2.1%DCE

PTA +2.37T +1.79UDC +.31FLC 99R 4/24

GTPI +2178G

Compasspoint Mogul Queen

840003140004802 96%RHA-NA VG-85 VG-MS

5-01 2x 305d 31410 3.8 1203 3.0 936

3-06 2x 305d 30130 3.6 1094 2.9 888

2-03 2x 305d 21540 4.0 862 2.9 615

Life: 1287d 109660 3.9 4262 3.0 3342

Mountfield Ssi Dcy Mogul-ET

840003006972816 EX-93 *TR *TP *TC *TY *TV *TL

PTA +419M +40F +13P 99R 4/24

PTA +1.27T +2.05UDC +1.05FLC GTPI +2260G

Compasspoint Super 41

75346364 93%RHA-NA GP-83

3-05 2x 305d 24370 3.2 788 3.0 734

2-04 2x 305d 20640 3.4 693 3.1 631

4-05 2x 235d 18400 3.3 611 3.0 544

85

COMPASSPOINT CRUSH EVA

840003204383699 99%RHA-I GP-80 @ 2-01

Born: April 3, 2022 • Herd No. 264

Fresh: April 2, 2024

Milking: 88# 4.0F 2.6P SCC 44

OCD Mystic Crush-ET

840003201859654 *TC *TE *TP *TR

PTA +672M +33F +22P 96R 4/24

PTA +1.0PL 2.94SCS -1.3DPR 2.3%DCE

PTA +2.96T +2.93UDC +1.02FLC 92R 4/24

GTPI +2464G

Compasspoint Brewmaster Ego

840003204383654 99%RHA-I

Mapel Wood Brewmaster-ET

11161715C Excellent-95-CAN *TR *TP *TC *TY *TV

PTA +612M +85F +22P 99R 4/24

PTA +.67T -.06UDC +.42FLC GTPI +2481G

Compasspoint Kingboy Envy

840003140004822 98%RHA-I G-76

2-03 2x 281d 20960 3.3 686 2.9 610

86

COMPASSPOINT LUSTER TALE-TW

840003204383708

Born: June 14, 2022 • Herd No. 273

Due: June 30, 2024 to Sandy-Valley P Empower-ET

29H020939

Cherry-Lily Zip Luster-P-ET

840003138843085 *PC *PO *TC *TE *TR

PTA +1592M +81F +49P 99R 4/24

PTA +3.5PL 2.79SCS -0.4DPR 2.3%DCE

PTA +2.57T +2.17UDC +1.70FLC 99R 4/24

GTPI +2892G

Compass Point Hefty 73

23WCY6170 Good Plus-82

7-02 2x 365d 42040 3.2 1355 2.8 1177

5-11 2x 365d 38107 3.3 1258 2.8 1079

4-07 2x 365d 35517 3.2 1120 2.8 1015

8-09 2x 343d 33778 3.2 1091 2.8 963

2-11 2x 365d 32629 3.0 1004 3.0 973

1-11 2x 309d 23489 3.8 901 3.0 710

Brandt-View Hefty-ET

138550394

PTA +516M +18F +4P 99R 4/24

PTA +.76T +.30UDC +.23FLC GTPI +1909G

23WCH2862

87

COMPASSPOINT HANANS ZEST

840003204383710 99%RHA-I

Born: July 16, 2022 • Herd No. 275

• Sells Fresh

Siemers Exc Hanans 31753-ET

840003143986722 99%RHA-I *TR *TP *TE *TC *TY *TV *TL

PTA +232M +93F +45P 98R 4/24

PTA +2.6PL 2.75SCS -2.4DPR 1.9%DCE

PTA +3.58T +2.57UDC +2.34FLC 96R 4/24

GTPI +2921G

Compasspoint Brewmastr Zash

840003204383665 98%RHA-I Good-79 @ 2-01

1-10 2x 151d 5898 4.0 228 3.0 170

Mapel Wood Brewmaster-ET

11161715C Excellent-95-CAN *TR *TP *TC *TY *TV

PTA +612M +85F +22P 99R 4/24

PTA +.67T -.06UDC +.42FLC GTPI +2481G

Campasspoint Omega 121

840003132006239 96%RHA-I GP-81

3-11 2x 258d 20911 3.5 740 2.8 582

3-00 2x 283d 20850 3.7 764 2.9 614

2-00 2x 302d 18550 3.6 664 2.9 543

88

COMPASSPOINT HANCOCK SARA

840003273061287 99%RHA-I

Born: April 5, 2023 • Herd No. 291

Due: February 5, 2025 to Progenesis Anahita

200H012726

Siemers Doc Hancock

840003144882821 99%RHA-I *TR *TP *TM *TE *TC

PTA +1146M +49F +39P 99R 4/24

PTA +3.0PL 2.82SCS -2.2DPR 2.1%DCE

PTA +3.62T +3.38UDC +2.51FLC 99R 4/24

GTPI +2737G

Campasspoint Undenied Zee

840003140004840 98%RHA-I VG-87 VG-MS

3-06 2x 280d 21370 3.8 820 3.1 673

2-01 2x 305d 19820 3.9 771 3.2 638

Our-Favorite Undenied-ET

840003125220760 99%RHA-I VG-87 *TR *TP *TE *TC

PTA -9M +22F -8P 99R 4/24

PTA +2.98T +.91UDC +.49FLC GTPI +1967G

Campasspoint Omega 121

840003132006239 96%RHA-I GP-81

3-11 2x 258d 20911 3.5 740 2.8 582

3-00 2x 283d 20850 3.7 764 2.9 614

2-00 2x 302d 18550 3.6 664 2.9 543

89

COMPASSPOINT CHIEF WEST

840003204383713 96%RHA-I

Born: July 28, 2022 • Herd No. 278

Due: December 23, 2024 to Angus

Stantons Chief-ET

840003129015989 99%RHA-I *TE *TC *TY *TV *TL

PTA +793M +6F +19P 99R 4/24

PTA +.8PL 2.72SCS -.5DPR 3.4%DCE

PTA +2.08T +2.18UDC +.20FLC 99R 4/24

GTPI +2243G

Compasspoint Kingroyal Wish

840003204383666 93%RHA-I GP-81 @ 2-08

1-10 2x 333d 23935 3.9 941 3.3 788

Plain-Knoll King Royal-ET

74564764 99%RHA-I VG-86 *TR *TP *TE *TC *TY

PTA +284M +57F +38P 99R 4/24

PTA +2.28T +1.76UDC +1.16FLC GTPI +2496G

Compasspoint Sajak Windy

840003140004817 87%RHA-I GP-83

4-06 2x 305d 24800 3.7 908 3.0 745

3-04 2x 305d 22810 3.7 838 3.2 732

2-05 2x 291d 18850 3.8 708 3.1 580

90

COMPASSPOINT HANCOCK WINNY

840003204383721 93%RHA-I

Born: December 14, 2022 • Herd No. 286

Due: November 15, 2024 to Angus

Siemers Doc Hancock

840003144882821 99%RHA-I *TR *TP *TM *TE *TC

PTA +1146M +49F +39P 99R 4/24

PTA +3.0PL 2.82SCS -2.2DPR 2.1%DCE

PTA +3.62T +3.38UDC +2.51FLC 99R 4/24

GTPI +2737G

Compasspoint Sajak Windy

840003140004817 87%RHA-I GP-83

4-06 2x 343d 26271 3.7 969 3.0 798

5-07 2x 341d 23886 3.8 902 3.0 732

3-04 2x 306d 22860 3.7 840 3.2 734

2-05 2x 291d 18850 3.8 708 3.1 580

Gil-Gar Domain Sajak-ET

56541579 *TR *TP *TY *TV *TL

PTA -146M -5F -8P 99R 4/24

PTA +.25T +.84UDC +.09FLC GTPI +1976G

Compass Point Super 57

23SCY6154 74%RHA-I VG-85

91

WATERLOO FARM
717-598-0563

WATERLOO ARTIST VENUS

840003250307342 99%RHA-I
Born: July 31, 2022 • Herd No. 277

Due: July 22, 2024 to Sandy-Valley Rbc Panther-ET
54H0973

Stone-Front Artist

840003136876946 99%RHA-I *TR *TE *TC *TY *TV *TL
PTA -521M -23F -10P 99R 4/24
PTA -.3PL 2.61SCS -.7DPR 2.9%DCE
PTA +2.57T +1.61UDC +.68FLC 98R 4/24
GTPI +1975G

Waterloo Ludwig Vera

840003214170080 Good Plus-81

Savage-Leigh Ludwig-ET

840003004778725 Very Good-88
PTA -304M +9F -19P 97R 4/24
PTA +.34T -.08UDC -.13FLC GTPI +1741G

Tuscarora-Run Sid Vienna

840003134762618 99%RHA-I GP-81
4-00 2x 302d 24600 4.3 1068 3.2 789
5-01 2x 305d 23110 4.6 1058 3.2 733

3rd Dam

Tuscarora-Run Valerie VG-88 VG-MS
7-08 2x 278d 25960 3.8 976 3.1 801
Life: 1773d 149680 4.0 5930 3.2 4763

4th Dam

Tuscarora-Run Valentine G-75
1-11 3x 339d 26780 4.2 1123 3.1 817

5th Dam

Tuscarora-Run Virginia VG-86 VG-MS
5-02 3x 290d 26640 3.7 978 2.9 762
Life: 1347d 105310 3.9 4065 2.9 3046

6th Dam

Tuscarora-Run Vanilla VG-87 VG-MS
5-06 2x 344d 39680 3.7 1471 2.8 1124
Life: 1959d 192850 3.9 7425 2.8 5489

92

WATERLOO FARM
717-598-0563

WATERLOO REX-PP VIENNA

84000325037352 99%RHA-I *RC *PO
Born: September 15, 2022 • Herd No. 287

Due: August 1, 2024 to Maverick Crush
94H017998

Ja-Bob Rex PP-Red-ET

73130038 Excellent-91 *PP *TC*TV *TL
PTA -952M -47F -14P 99R 4/24
PTA +1.9PL 2.95SCS -.2DPR 3.8%DCE
PTA -.28T +.69UDC +.33FLC 96R 4/24
GTPI +1755G

Waterloo Coronado Vicki

840003206236048 99%RHA-I GP-81 @ 2-09

Mr Triplecrown Coronado-ET

840003133064870 99%RHA-I *TR *TP *TC *TY *TV
PTA +1087M -4F +19P 97R 4/24
PTA +2.09T +1.07UDC +.82FLC GTPI +2133G

Tuscarora-Run Sid Vienna

840003134762618 99%RHA-I GP-81
4-00 2x 302d 24600 4.3 1068 3.2 789
5-01 2x 305d 23110 4.6 1058 3.2 733

3rd Dam

Tuscarora-Run Valerie VG-88 VG-MS
7-08 2x 278d 25960 3.8 976 3.1 801
Life: 1773d 149680 4.0 5930 3.2 4763

4th Dam

Tuscarora-Run Valentine G-75
1-11 3x 339d 26780 4.2 1123 3.1 817

5th Dam

Tuscarora-Run Virginia VG-86 VG-MS
5-02 3x 290d 26640 3.7 978 2.9 762
Life: 1347d 105310 3.9 4065 2.9 3046

6th Dam

Tuscarora-Run Vanilla VG-87 VG-MS
5-06 2x 344d 39680 3.7 1471 2.8 1124
Life: 1959d 192850 3.9 7425 2.8 5489

93

WATERLOO FARM
717-598-0563

WATERLOO REPAIRMAN VIOLA

840003250307343 99%RHA-I
Born: July 31, 2022 • Herd No. 278

Due: July 19, 2024 to Vogue A2P2-PP-ET
724H02004

VVH Repairman

737132388 99%RHA-I *TR *TY *TV *TL
PTA -121M +24F +17P 92R 4/24
PTA +.8PL 2.93SCS -1.0DPR 3.2%DCE
PTA -.99T -1.15UDC +.66FLC 89R 4/24
GTPI +2058G

Tuscarora-Run Lindel Velvet

840003151552735 99%RHA-I VG-85 VG-MS @ 3-08
3-01 2x 279d 26850 3.6 959 3.2 850
4-00 2x 305d 26180 3.8 992 3.2 847
2-02 2x 287d 20370 3.9 795 3.3 666

Hartline Lindell-ET

70673475 Very Good-87 *TR *TE *TY *TV *TL
PTA +183M -4F +16P 98R 4/24
PTA +1.52T +1.23UDC +.55FLC GTPI +2251G

Tuscarora-Run Sid Vienna

840003134762618 99%RHA-I GP-81
4-00 2x 302d 24600 4.3 1068 3.2 789
5-01 2x 305d 23110 4.6 1058 3.2 733

3rd Dam

Tuscarora-Run Valerie VG-88 VG-MS
7-08 2x 278d 25960 3.8 976 3.1 801
Life: 1773d 149680 4.0 5930 3.2 4763

4th Dam

Tuscarora-Run Valentine G-75
1-11 3x 339d 26780 4.2 1123 3.1 817

5th Dam

Tuscarora-Run Virginia VG-86 VG-MS
5-02 3x 290d 26640 3.7 978 2.9 762
Life: 1347d 105310 3.9 4065 2.9 3046

6th Dam

Tuscarora-Run Vanilla VG-87 VG-MS
5-06 2x 344d 39680 3.7 1471 2.8 1124
Life: 1959d 192850 3.9 7425 2.8 5489



HOLSTEIN ASSOCIATION TERMS AND CONDITIONS FOR PUBLIC SALES

EFFECTIVE MARCH 2, 1996 - Amended October 1, 1997, June 28, 2000, June 23, 2002, and March 26, 2010

TERMS: The terms of the sale are cash unless arrangements are made prior to the sale or are printed in the sale catalog. Only when the above conditions are met will the buyer be entitled to the warranties listed below. In no case will animals be released unless settlement is made with the clerk of the sale.

RESPONSIBILITY: The seller, buyer, and manager of this sale are obligated to comply with the provisions of these terms and conditions.

EXPORT SALES: Buyer assumes all responsibility for health tests required by the importing country.

BIDS: The highest bidder is the buyer. Bidding parties or their agents are responsible for all bids placed. Every animal or lot presented for bidding is pledged to absolute sale. In case of dispute, the animal or lot will again be put up for advance bids, and if there is no advance bid, the animal or lot will be sold to the person the auctioneer accepted the last bid from. In case two or more claim the bid, the auctioneer will indicate the party whose bid he recognized. Other claimants will be given an opportunity to increase the bid and bidding will be restricted to the two or more claimants.

BY-BIDDING: Bidding directly or indirectly by the sole owner of any animal or lot is prohibited unless the intention to bid is disclosed specific to each animal in the catalog and announced when the animal enters the ring. Bidding by any member of a partnership, syndicate, or other entity having an ownership interest in an animal or lot is permitted.

TRANSFER OF OWNERSHIP: For all Registered HolsteinsSM, the transfer of ownership to the buyer will be recorded on the records of Holstein Association USA and a certificate of registration showing that transfer of ownership will be provided to the buyer free of charge. For embryos, the transfer of ownership to the buyer will be recorded on the records of Holstein Association USA free of charge to the buyer.

RISK: All animals located at sale site are at the purchaser's risk as soon as struck off, but will be cared for free of charge for a maximum of 24 hours following the end of the sale.

WARRANTIES:

- 1) Each consignor warrants clear title to the animal or lot, and the right to sell same.
- 2) To the best of the seller's knowledge, each animal is sound and healthy in every respect and embryos have been recovered, processed, frozen, transferred and graded in keeping with IETS recommendations unless otherwise noted in the catalog or announced from the auction stand. Every precaution will be taken to represent the physical condition of each lot exactly as is known. Examination of all purchases should be made immediately after the purchase and before the close of the sale, and if found not to be as represented, complaint must be reported to the sale management before the close of the sale. In the event no complaint is filed, it is understood that the buyer assumes full ownership in the case of animals at sale site together with all risks, after which no representations of the seller can be challenged through the sale management. Heifers that never calved are in no way guaranteed as to the condition of their udders following calving.

3) Breeding Warranty

The seller guarantees all animals to be breeders, but not beyond the purchase price, with the following understanding:

- a. Males - Should any bull after reaching the age of fourteen months fail to prove a breeder after being used for two months on cows or heifers known to be breeders, the matter shall be reported in writing to the seller within three months of the sale date. The report must include the animal's examination record, a written statement of treatment, and a statement of the animals' inability to breed,

by a licensed veterinarian. The seller has the option to refund the purchase price or make other settlement that is satisfactory to the buyer. In either case the rights of ownership of the animal return to the seller. The seller makes no guarantees with respect to the ability to freeze semen.

- b. Females - All females are guaranteed to be breeders with the exception of:
 1. Cows over 7 years of age when sold;
 2. Cows and/or heifers carrying a pregnancy that is the result of an embryo transfer.

Report of a non-breeder must occur in writing within 3 months of the date of sale or before the animal reaches 21 months of age and must be submitted to the seller. The report must include the animal's examination record, a written statement of treatment, and a statement of the animals' inability to breed, by a licensed veterinarian. The seller has the option to refund the purchase price or make other settlement that is satisfactory to the buyer. In either case the rights of ownership of the animal return to the seller.

Females bred when sold and pronounced in calf are presumed to be pregnant but pregnancy is not guaranteed unless so announced. The seller makes no warranty that pregnant cows will deliver calves or that they will carry calves full term.

- c. If, after the sale, embryos or oocytes are recovered from a female or an attempt is made to superovulate her, this negates the breeding warranty unless there is a separate written agreement between buyer and seller.

SHIPPING: Assistance will be given in arranging shipping of the animals after the sale. All costs, risks and responsibility will be borne by the purchaser.

PEDIGREE INFORMATION: All production, classification, type and production summaries are current. Only information recorded on Holstein Association USA pedigrees is used. Any production or classification records supplied by the seller or consignor will be properly identified as provided by owner. Records in progress are identified as such.

GENOMIC INFORMATION: If genomic information on the animal or embryo is available, it must be dated and disclosed at or before the time of sale.

EMBRYO TRANSFER: All registered animals that have resulted from embryo transfer are identified with one of the following suffixes in the name: ET, ETS (from split embryo), or ETN (from nuclear transfer). If unregistered, the appropriate technology will be identified. Donor dams are identified.

HEALTH WARRANTY: The seller will provide an official health certificate to the buyer for each animal showing the results of all health tests made in preparation for this sale as required by the state where the cattle reside. Other health tests completed for this sale will be disclosed.

ERRORS: The material in this catalog has been carefully edited. If any errors or omissions are discovered, they will be announced. Such announcements take precedence over that printed in this catalog.

ACCIDENT: The sale management, the consignors, and the owner of the grounds will not be responsible in any case for the condition of the grounds or the behavior of the animals and disclaim any liability in the event of personal accident or property loss.

LIMITATIONS OF WARRANTIES: Warranties contained herein, unless terminated earlier, will cease upon the resale of an animal.

Index

Name	Herd #	Lot #	Name	Herd #	Lot #
CEDAR-CREST LAMBDA ARLENE	706	21	COMPASSPOINT HARDY NIGHTOWL	306	56
COMPASSPOINT ALT BLAIRE-RED	257	33	COMPASSPOINT HAS IT ALL RAD	304	7
COMPASSPOINT APPLE NADINE	278	41	COMPASSPOINT HELIX ABIGAIL	245	12
COMPASSPOINT ARTISAN MAVIS	250	81	COMPASSPOINT HELIX NLYSS	253	40
COMPASSPOINT ARTISAN ROLO	289	8	COMPASSPOINT JORDY-RED LYLA	302	4
COMPASSPOINT ATTORNEY NINJA	138	37	COMPASSPOINT JOURNEY POINT	262	75
COMPASSPOINT AWE BRI-RED-ET	243	28	COMPASSPOINT KINGROYAL HALO	237	77
COMPASSPOINT AWE BRIA-RED	244	30	COMPASSPOINT LAMBDA BEULAH	252	36
COMPASSPOINT BELAIR KIMMY	238	71	COMPASSPOINT LAMBDA LYNN	251	64
COMPASSPOINT BLOOMFIELD NIP	233	52	COMPASSPOINT LIMITED HIPPO	281	78
COMPASSPOINT BRIDE-RED-TW	283	35	COMPASSPOINT LUSTER NOLA	280	38
COMPASSPOINT BRIGHT-RED-TW	282	34	COMPASSPOINT LUSTER TALE-TW	273	86
COMPASSPOINT CHIEF NIMMY	268	55	COMPASSPOINT MCD BASIL-RED	290	31
COMPASSPOINT CHIEF WEST	278	89	COMPASSPOINT MCDONALD BIGMAC	266	27
COMPASSPOINT COAL 260	260	72	COMPASSPOINT MOGUL LILAC	232	62
COMPASSPOINT CRUSH APEX	272	14	COMPASSPOINT PERFECT LAURA	294	23
COMPASSPOINT CRUSH EVA	264	85	COMPASSPOINT PERFECT MARCIA	297	82
COMPASSPOINT CRUSH JELLY	210	20	COMPASSPOINT PERFECT RIPPLE	300	19
COMPASSPOINT CRUSH KITE	267	67	COMPASSPOINT PERFECT RIVER	303	18
COMPASSPOINT CRUSH LAUREL	298	3	COMPASSPOINT RENEGADE ALEXA	295	11
COMPASSPOINT CRUSH LOLLIPOP	261	2	COMPASSPOINT ROZROYAL KIP	178	66
COMPASSPOINT CRUSH MILEY	226	79	COMPASSPOINT SELECT NEVA	242	47
COMPASSPOINT CRUSH NIKE	216	49	COMPASSPOINT SELECT PAMELLA	246	73
COMPASSPOINT CRUSH NOVA	305	50	COMPASSPOINT SELECT QUICK	258	84
COMPASSPOINT CRUSH RAVEN	181	69	COMPASSPOINT SHOWTIME ALLIE	293	13
COMPASSPOINT CRUSH RIBBON	192	17	COMPASSPOINT SIDEKICK LEXI	269	65
COMPASSPOINT DAY 85	85	58	COMPASSPOINT TAT ECHOED-TW	277	43
COMPASSPOINT DOC QUINCY	224	83	COMPASSPOINT TAT ECHOES-TW	276	44
COMPASSPOINT DOC RELATE	236	16	COMPASSPOINT TATTOO ABBY	200	10
COMPASSPOINT DOC RIPTIDE	213	15	COMPASSPOINT TROPIC MIST	271	80
COMPASSPOINT DOORMAN BELLA	194	26	COMPASSPOINT TROPIC NEVAEH	270	53
COMPASSPOINT DOORMAN NADINE	203	51	COMPASSPOINT TROPIC NIGHT	254	57
COMPASSPOINT DURABLE MARGE	41	42	COMPASSPOINT TSTRUCK POPPY	307	76
COMPASSPOINT EYE CANDY BELL	311	29	COMPASSPOINT UNDENIED NEMO	206	39
COMPASSPOINT EYE CANDY FIRE	299	60	COMPASSPOINT UNIX LICORICE	256	1
COMPASSPOINT GOLD CHIP LIN	215	61	COMPASSPOINT WAR BLAZE-RED	312	32
COMPASSPOINT HANAN ROULETTE	263	6	COMPASSPOINT WARRIOR NINA	287	48
COMPASSPOINT HANANS ELITE	296	45	GOLDEN-ROSE DOORMAN RORY	1219	5
COMPASSPOINT HANANS FICKLE	279	59	HEIFER	313	9
COMPASSPOINT HANANS LEXUS	265	24	HEIFER	317	14A
COMPASSPOINT HANANS ZEST	275	87	HEIFER	315	25
COMPASSPOINT HANCOCK REBA	285	70	HEIFER	314	46
COMPASSPOINT HANCOCK SARA	291	88	HEIFER	316	74
COMPASSPOINT HANCOCK WINNY	286	90	MS GOLDEN-ROSE DRMAN LOGAN	1214	22
COMPASSPOINT HANX-P KIMMY	308	68	WATERLOO ARTIST VENUS	277	91
COMPASSPOINT HANX-P NATASHA	309	54	WATERLOO REPAIRMAN VIOLA	278	93
			WATERLOO REX-PP VIENNA	287	92