



*Spring*  
into **OPPORTUNITY**  
*at Pine Tree*

**Saturday, April 13, 2024 • 11:00 AM**  
**Wayne County Fairgrounds • Wooster, Ohio**



You are invited to the

# Spring

into **OPPORTUNITY**

.....at Pine Tree.....

**Saturday, April 13, 2024 :: 11:00 a.m.**

**Pre-sale cattle viewing Friday evening with dinner at 6pm  
Wayne County Fairgrounds, Wooster, Ohio**

*Pine Tree tours can be scheduled to see their new robot facility*

**Featuring 40+ genomic lots, IVF opportunities, and even show/type animals! Nearly all the Jerseys offered in this sale have dams that are VG-85+, many out of Excellent dams. Many Polled Jerseys offered. This is an exciting opportunity for you to add to your genetics straight from the best of the Pine Tree genetic program!**



Vivianne



2473



13947



16492-P



Lexie



Vanity-P

### *Cow families represented ...*

**JX MM Thrasher Manhattan 13947 {5}-ET, E-91%**  
GPTAT +2.2 GJUI +18.4 GJPI +202

**Kilgus Dazzler Lexie, E-94%**  
22,260M with 5.3%F :: GPTAT +1.6 GJUI +16.0

**Elm-J Listowel Carolee 16492-P-ET, VG-86%**  
GPTAT +1.3 GJUI +17.5 GJPI +126  
*Backed by five Excellent dams from the Dutch Hollow "Cherish" line.*

**Oakfield TBone Vivianne-ET, E-96%**  
Lifetime production over 270,000M  
GPTAT +1.3 GJUI +17.3  
*Granddaughter of the great "Veronica," E-97%*

**Ahlem Viabull Vanity 5057-P, E-94%**  
22,000M with 1,074F :: GPTAT +1.6 GJUI +20.9  
**She sells!** *Backed by two Excellent dams.*

**JX Pine-Tree 1917 Thrasher 2473 {5}-ET, E-90%**  
+1,479M +76F +64P GJPI +161  
*Granddaughter of JX Pine-Tree World Cup Dellia {5}-ET, E-93%*

**Join us in April for this live auction and don't miss this outstanding offering!**



**JMS**  
**Jersey Marketing Service**

6486 E. Main Street, Reynoldsburg, OH 43068  
614.861.3636 614.861.8040 fax



*Real time bidding on*  
**CowBuyer.com**



*Check out our website for updates:*  
**www.pinetreedairy.org**

**Matthew Steiner and Family**  
8586 Benner Road, Marshallville, OH 44645  
pinetreedairy@gmail.com Andrew: 330/466-9137

*For more information contact the sale staff:*



# Spring into OPPORTUNITY at Pine-Tree

Saturday, April 13, 2024 • 11:00A.M. EDT

Sale Location & GPS: Wayne County Fairgrounds, 199 Vanover St, Wooster, OH 44691

**Special Note: • 16 Lots selling that are Polled!**

**• 15 Lots selling sired by daughter proven sires!**

**• 14 Lots selling out of EX Dams!**



*View/bid online in Real Time  
at [www.cowbuyer.com](http://www.cowbuyer.com)*

\*Bidders must pre-register & be pre-approved.

\*Contact Aaron Tompkins if you need assistance at 336-363-4639

Sale Order is Catalog Order ~ Contact any member of the sale staff below to handle bids or answer questions!

## Sale Staff

Chris Hill, auctioneer... 202-255-7907

Greg Lavan..... 614-216-8838

Herby Lutz..... 614-570-2444

Heather Moore..... 203-417-6080

Jason Robinson ..... 614-216-5862

Ron Mosser..... 614-264-0142

Neal Smith..... 209-988-0601

Wyatt Schlauch..... 330-275-7822

Andrew Steiner..... 330-466-9137

Hannah Steiner..... 330-466-0424

Nate Steiner..... 330-465-5825

Matt Steiner, Jr..... 330-464-7309

Erica Davis..... 614-371-8533

-cowbuyer representative

Sale Clerk: Kim Billman

**Terms of sale:** Cash or good check sale day. Cattle purchased by an agent or a member of the sale staff on buyers behalf should be settled for by priority mail payment or money wire. Shipping on all embryo purchases is the responsibility of the buyer. For all other terms and conditions refer to the JMS Terms and Conditions page in the back of this catalog.

Sale Host:

Sale Managed By:

### **Pine-Tree Dairy/Matt Steiner Family**

8565 Benner Rd, Marshallville, OH 44645

**Matt 330-466-1896**

**Ethan 330-466-8916**

**Andrew 330-466-9137**

**Hannah 330-466-0424**

**Nate 330-465-5825**

**Matt Jr 330-464-7309**

**Email: [pinetreedairy@gmail.com](mailto:pinetreedairy@gmail.com)**







**JX MM Thrasher Manhattan 13947 (5)-ET EX-91%**

1-07 365 21848 5.0 1081 3.7 811  
 (Dam or 2nd Dam of Lots 1-5)

**LOT 1  
 IVF Session**

*\*Buyer is purchasing rights to control the next IVF session(s). Buyer is guaranteed IVF sessions until a minimum of 8 #1 or #2 IVF embryos are produced. Embryo grades are determined at the time of transfer if fresh embryos or at time of freezing if freezing is requested by buyer. Buyer keeps all resulting embryos from these controlled IVF sessions. Buyer is responsible for all costs of the aspiration and mating sire decisions.*

**JX MM Thrasher Manhattan 13947 (5)-ET  
 3-00 EX-91%**

3222006491 BBR 100 JH1F  
 Born 11/26/20 ID Eartag 13947  
 12/23 PTA +202 GJPI +2.2T +720CMS\$  
 +1462M +.06% +84F +.04% +62P  
 +4.0PL +.2DPR +18.4GJUI 3.04SCS  
 A2/A2  
 1-07 365 21848 5.0 1081 3.7 811  
 2-09 179 17845 4.9 870 3.4 608 RIP  
 (Pictured above)

#27 JPI in the entire Jersey Breed  
 #8 PTAT Jersey on the top 500 JPI list  
 \*Only EX Jersey on the top 500 JPI list  
 combined cows and heifers

**JX Cdf Jls Pilgrim Thrasher (6)-ET**

3006436075 12/23 PTA +212GJPI  
 +.6T +1768M +74F +69P +789CMS\$  
 +4.8PL +2.6DPR +6.8GJUI 2.95SCS  
 Pilgrim X VG-84% Viceroy

**JX MM Amplify Manhattan 7300 (4)**

**4-00 D-77%** 3205867076  
 12/23 PTA +129GJPI +1.3T +534CMS\$  
 +803M +.20% +82F +42P +1.6PL  
 3-08 305 17720 6.7 1196 4.1 723  
 Sire: JX Pine-Tree Amplify (3)-ET

**3rd Dam: (Pictured w/ Lots 4 & 5)  
 JX MM Mackenzie 1511 (3)**

**VG-87%**  
 1-07 296 17500 5.6 978 3.9 680  
 2-07 283 17690 5.6 998 4.0 714  
 3-06 304 21190 5.6 1186 4.0 838  
 4-06 305 16400 6.4 1053 4.1 670  
 5-07 305 15110 6.1 926 3.9 588

**4th Dam:  
 JX MM Vernon 14904 (2)**

**D-79%**  
 3-10 305 18370 5.0 912 3.6 662  
 5-01 305 21700 5.1 1104 3.5 754

**5th Dam:  
 JX MM Tariff 7742 (1)  
 VG-85%**





**JX MM Thrasher Manhattan 13947 (5)-ET EX-91%**

1-07 365 21848 5.0 1081 3.7 811  
(Dam or 2nd Dam of Lots 1-5)

**LOT 2 Embryos**

\*Selling 5 IVF female embryos  
sired by Julius

\*Embryos @ Trans Ova, MD

**Jx Sunbow JLS Corsair Julius (6)-ET**  
3250244886 12/23 PTA +184GJPI  
+1.3T +947M +76F +44P +730CMS\$  
+4.8PL -.2DPR +23.2GJUI 2.89SCS  
Corsair X Skyler

**JX MM Thrasher Manhattan 13947 (5)-ET**  
**3-00 EX-91%** 3222006491  
12/23 PTA +202 GJPI +2.2T +720CMS\$  
+1462M +.06% +84F +.04% +62P +4.0PL  
+.2DPR +18.4GJUI 3.04SCS  
1-07 365 21848 5.0 1081 3.7 811  
2-09 179 17845 4.9 870 3.4 608 RIP  
Sire: JX Cds Jls Pilgrim Thrasher (6)-ET  
(Pictured above)

*#27 JPI in the entire Jersey Breed*  
*#8 PTAT Jersey on the top 500 JPI list*  
*\*Only EX Jersey on the top 500 JPI list*  
*combined cows and heifers*

**2nd Dam:**

**JX MM Amplify Manhattan 7300 (4)**  
**D-77%**  
3-08 305 17720 6.7 1196 4.1 723

**3rd Dam: (Pictured w/ Lots 4 & 5)**  
**JX MM Mackenzie 1511 (3)**  
**VG-87%**

1-07 296 17500 5.6 978 3.9 680  
2-07 283 17690 5.6 998 4.0 714  
3-06 304 21190 5.6 1186 4.0 838  
4-06 305 16400 6.4 1053 4.1 670

**4th Dam:**

**JX MM Vernon 14904 (2)**  
**D-79%**  
3-10 305 18370 5.0 912 3.6 662  
5-01 305 21700 5.1 1104 3.5 754

**5th Dam:**

**JX MM Tariff 7742 (1)**  
**VG-85%**





**JX MM Thrasher Manhattan 13947 (5)-ET EX-91%**

1-07 365 21848 5.0 1081 3.7 811  
(Dam or 2nd Dam of Lots 1-5)



**LOT 3**

**JX Pine-Tree 13947 Dabo 1027 (6)-ET**  
76381027 BBR 100 JH1F  
Born 8/29/23 ID Eartag 13947  
12/23 PTA +184 **GJPI** +1.1T +754CMS  
+1267M +.03% +68F +.04% +55P  
+5.6PL -.3DPR +9.3GJUI 2.94SCS  
A2/A2

**Goff S-S-I Listowel Dabo-P-ET**  
3217272164 12/23 PTA +160GJPI  
+.5T +837M +50F +40P +664CMS  
+5.9PL +.1DPR +8.9GJUI 2.75SCS  
Listowel X EX-94% Disco

**JX MM Thrasher Manhattan 13947 (5)-ET**  
**3-00 EX-91%** 3222006491  
12/23 PTA +202GJPI +2.2T +720CMS  
+1462M +.06% +84F +.04% +62P +4.0PL  
+.2DPR +18.4GJUI 3.04SCS  
1-07 365 21848 5.0 1081 3.7 811  
2-09 179 17845 4.9 870 3.4 608 RIP  
Sire: JX Cds Jls Pilgrim Thrasher (6)-ET  
(Pictured above)

*#27 JPI in the entire Jersey Breed*  
*#8 PTAT Jersey on the top 500 JPI list*  
*\*Only EX Jersey on the top 500 JPI list*  
*combined cows and heifers*

**2nd Dam:**

**JX MM Amplify Manhattan 7300 (4)**  
**D-77%**  
3-08 305 17720 6.7 1196 4.1 723

**3rd Dam: (Pictured w/ Lots 4 & 5)**  
**JX MM Mackenzie 1511 (3)**  
**VG-87%**

1-07 296 17500 5.6 978 3.9 680  
2-07 283 17690 5.6 998 4.0 714  
3-06 304 21190 5.6 1186 4.0 838  
4-06 305 16400 6.4 1053 4.1 670

**4th Dam:**

**JX MM Vernon 14904 (2)**  
**D-79%**  
3-10 305 18370 5.0 912 3.6 662  
5-01 305 21700 5.1 1104 3.5 754

**5th Dam:**

**JX MM Tariff 7742 (1)**  
**VG-85%**





**JX MM Mackenzie 1511 (3) VG-87%**

3-06 304 21190 5.6 1186 4.0 838

(3rd or 4th Dam of Lots 1-5)

**LOT 4**

**JX Pine-Tree 13947 Venetie 2965 (6)-ET**

67652965 BBR 100 JH1F

Born 3/16/23 ID Eartag 2965

12/23 PTA +166 **GJPI** +1.7T +644CMS

+927M +.05% +57F +.05% +44P

+5.0PL +.2DPR +20.3GJUI 2.89SCS

A2/A2

**Bred 3/12/24 to**

**7JE01699 Pine (sexed)**

**TOG Venetie 38518-ET**

3209969460 12/23 PTA +132GJPI

+4.4T +61M +50F +27P +626CMS

+4.4PL +.5DPR +8.9GJUI 2.73SCS

Heavy X VG-86% Hjort

**JX MM Thrasher Manhattan 13947 (5)-ET**

**3-00 EX-91%** 3222006491

12/23 PTA +202GJPI +2.2T +720CMS

+1462M +.06% +84F +.04% +62P +4.0PL

+2DPR +18.4GJUI 3.04SCS

1-07 365 21848 5.0 1081 3.7 811

2-09 179 17845 4.9 870 3.4 608 RIP

Sire: JX Cds Jls Pilgrim Thrasher (6)-ET

**(Pictured w/ Lots 1-3)**

*#27 JPI in the entire Jersey Breed*

*#8 PTAT Jersey on the top 500 JPI list*

*\*Only EX Jersey on the top 500 JPI list  
combined cows and heifers*

**2nd Dam:**

**JX MM Amplify Manhattan 7300 (4)**

**D-77%**

3-08 305 17720 6.7 1196 4.1 723

**3rd Dam: (Pictured above)**

**JX MM Mackenzie 1511 (3)**

**VG-87%**

1-07 296 17500 5.6 978 3.9 680

2-07 283 17690 5.6 998 4.0 714

3-06 304 21190 5.6 1186 4.0 838

4-06 305 16400 6.4 1053 4.1 670

**4th Dam:**

**JX MM Vernon 14904 (2)**

**D-79%**

3-10 305 18370 5.0 912 3.6 662

5-01 305 21700 5.1 1104 3.5 754

**5th Dam:**

**JX MM Tariff 7742 (1)**

**VG-85%**



**JX MM Mackenzie 1511 (3) VG-87%**

3-06 304 21190 5.6 1186 4.0 838

(3rd or 4th Dam of Lots 1-5)

**LOT 5 Embryos**

\*Selling 5 IVF female embryos  
sired by Julius

\*Embryos @ Trans Ova, MD

**Jx Sunbow JLS Corsair Julius (6)-ET**

3250244886 12/23 PTA +184GJPI  
+1.3T +947M +76F +44P +730CMS\$  
+4.8PL -.2DPR +23.2GJUI 2.89SCS  
Corsair X Skyler

**JX Pine-Tree 13947 Boss 1060 (6)-ET**

3222006491 12/23 PTA +189 GJPI  
+1.7T +743CMS\$ +941M +.10% +68F  
+.08% +53P +5.7PL -1.2DPR +16.2GJUI  
A2/A2  
Sire: JX Vierra TheBoss (6)-ET-ET

**2nd Dam:**

**JX MM Thrasher Manhattan 13947 (5)-ET  
EX-91%**

1-07 365 21848 5.0 1081 3.7 811  
2-09 179 17845 4.9 870 3.4 608 RIP  
(Pictured w/ Lots 1-3)

**#27 JPI in the entire Jersey Breed  
#8 PTAT Jersey on the top 500 JPI list  
\*Only EX Jersey on the top 500 JPI  
list combined cows and heifers**

**3rd Dam:**

**JX MM Amplify Manhattan 7300 (4)  
D-77%**

3-08 305 17720 6.7 1196 4.1 723

**4th Dam: (Pictured above)**

**JX MM Mackenzie 1511 (3)  
VG-87%**

1-07 296 17500 5.6 978 3.9 680  
2-07 283 17690 5.6 998 4.0 714  
3-06 304 21190 5.6 1186 4.0 838

**5th Dam:**

**JX MM Vernon 14904 (2)  
D-79%**

3-10 305 18370 5.0 912 3.6 662  
5-01 305 21700 5.1 1104 3.5 754

**6th Dam:**

**JX MM Tariff 7742 (1)  
VG-85%**





**JX Faria Brothers Calvin 306933 (5)**  
**VG-87%**  
(3rd Dam of Lot 6)

## LOT 6

### **FB Jalapeno 822207-ET**

3255808078 BBR 100 JH1F  
Born 7/9/22 ID Eartag 822207  
12/23 PTA +198 **GJPI** +1.7T +893CMS  
+1402M -.01% +66F +.03% +59P  
+7.1PL -2.0DPR +21.0GJUI 2.88SCS  
A2/A2

**Due 10/23/24 to 7JE2054 Chekhov-P**

**#19 CMS heifer in the breed!**

**\*One of the top heifers in the breed  
for CMS & JUI combination**

**\*PTA Milk +1400**

### **Forest Glen Jiggy Jalapeno-ET**

67650510 12/23 PTA +150GJPI +.8T  
+1112M +.02% +59F +.05% +53P  
+701CMS +5.1PL -2.3DPR 2.89SCS  
Jiggy X VG-82% Listowel

### **FB Thrasher 692054-ET**

3224804130 12/23 PTA +189GJPI +1.2T  
+708CMS +1698M +63F +67P +3.7PL  
-Fresh October, 2022  
Sire: JX CDF JLF Pilgrim Thrasher (6)

#### **2nd Dam:**

**JX Faria Brothers Zinc 491630 (6)-ET**

#### **3rd Dam: (Pictured above)**

**JX Faria Brothers Calvin 306933 (5)**  
**VG-87%**

1-07 305 17990 5.7 1030 3.9 710  
2-08 305 19420 5.3 1032 3.9 749  
3-10 305 20730 5.1 1048 3.9 799

#### **4th Dam:**

**JX Faria Brothers Hulk 229849 (4)**  
**VG-85%**

3-08 305 24290 5.3 1277 3.9 942  
4-09 289 25200 5.5 1382 3.9 986  
5-09 305 25250 5.3 1342 3.9 987

#### **5th Dam:**

**JX Faria Brothers Valentino 203272 (3)**  
**VG-86%**

3-06 305 22660 5.0 1137 3.7 844

## LOT 7

### JX AJ Colonel 5586 (5)

67635586 BBR 100 JH1F  
Born 2/7/23 ID Eartag 5586  
12/23 PTA +162 GJPI +2.0T +755CMS\$  
+887M +.10% +65F +.02% +36P  
+5.8PL -.5DPR +20.5GJUI 2.87SCS  
A2/A2

Bred 2/23/24 to 7JE2054 Chekhov-P

### Ahlem Colonel

3213753790 12/23 PTA +152GJPI  
+1.9T +1513M +43F +42P +730CMS\$  
+6.0PL -.7DPR +22.6GJUI 3.00SCS  
Chief X VG-83% Caprice

### JX AJ Westpoint 4533 (4)

3-08 VG-85% 67534533  
12/23 PTA +87GJPI +1.1T +415CMS\$  
+337M +.15% +49F +.06% +26P  
+2.6PL -.6DPR +1.1GJUI 2.89SCS  
2-02 300 18280 5.5 997 3.4 619  
3-02 295 21140 5.3 1127 3.7 786  
Sire: JX Cal-Mart Westport (5)-ET

### 2nd Dam:

#### JX AJ Marlo 3343 (3)

#### VG-86%

1-09 292 16330 4.4 719 3.3 534  
2-09 305 22880 4.5 1034 3.3 745  
3-09 305 25990 3.9 1009 3.1 816

### 3rd Dam:

#### AJ Barnabas 2730

#### D-79%

1-10 285 16870 4.9 835 3.8 643

### 4th Dam:

#### Lyndon 1833

#### VG-84%

4-09 305 23680 3.6 844 3.5 833

### 5th Dam:

#### Berretta 490 753

#### VG-81%

6-03 293 18960 4.8 918 3.4 638

## LOT 8

### AJ Chief 5545

67635545 BBR 100 JH1F  
Born 1/5/23 ID Eartag 5545  
12/23 PTA +178 GJPI +1.9T +832CMS\$  
+1282M +.08% +80F +.04% +56P  
+5.3PL -2.3DPR +17.7GJUI 2.87SCS  
A2/A2

*"The White Jersey", approximately  
30% white coat color*

CM\$ +832

### JX River Valley Chief (6)-ET

75341195 12/23 PTA +144GJPI  
+2.4T +2013M +92F +57P +772CMS\$  
+3.2PL -4.9DPR +16.0GJUI 2.93SCS  
Checkmate X EX-90% Chrome

### AJ Mighty 4627 (6)

3-05 VG-86% 67534627  
12/23 PTA +125GJPI +.7T +481CMS\$  
+866M +.04% +50F +.09% +52P  
+2.0PL -1.7DPR +15.6GJUI 2.88SCS  
1-09 305 23580 4.4 1034 3.5 825  
2-10 305 29300 5.0 1479 3.8 1112  
Sire: Dutch Hollow Mighty-ET

### 2nd Dam:

#### AJ Axis 2751 (5)

#### VG-85%

1-09 284 21250 3.2 680 3.1 659  
2-09 298 25040 3.0 758 3.4 856  
3-08 305 27000 5.0 1361 3.5 932  
4-10 305 27640 4.6 1269 3.9 1079

### 3rd Dam:

#### AJ Premier 1892 (4)

#### VG-83%

1-10 305 22550 4.3 976 3.1 702

### 4th Dam:

#### A Headline 1892 (3)

#### VG-83%

1-09 395 20270 4.4 898 3.4 686  
2-10 305 21990 4.7 1026 3.5 775





**JX Roc-Bot Chief 12620 (4)-P VG-83%**

2-00 340 26080 5.1 1337 3.6 937

(2nd Dam of Lots 9 & 10 and Dam of Lot 11)

**LOT 9**

**JX Pine-Tree 2764 Weld 1168 (5)-P-ET**

76381168 BBR 100 JH1F

Born 11/27/23 ID Eartag 1168

12/23 PTA +202 **GJPI** +1.3T +797CM\$

+481M +.18% +62F +.11% +41P

+7.5PL +.4DPR +19.8GJUI 2.71SCS

A2/A2

*\*She is the #13 JPI Polled female*

**Sire of Lot 9:**

**Dupat Thrasher Weld-ET**

3206581219 12/23 PTA +171GJPI

+8T +1228M +50F +47P +667CM\$

+6.0PL +.6DPR +16.2GJUI 2.79SCS

Thrasher X VG-84% Got Maid

**Sire of Lot 10:**

**JX Cdf Jls Pilgrim Thrasher (6)-ET**

3006436075 12/23 PTA +212GJPI

+6T +1768M +74F +69P +789CM\$

+4.8PL +2.6DPR +6.8GJUI 2.95SCS

Pilgrim X VG-84% Viceroy

**2nd Dam: (Pictured above)**

**JX Roc-Bot Chief 12620 (4)-P**

**VG-83%**

2-00 340 26080 5.1 1337 3.6 937

3-02 191 17074 5.2 895 3.7 639 RIP

**LOT 10**

**JX Pine-Tree 2764 Thra 1191 (5)-ET**

76381191 BBR 100 JH1F

Born 1/10/24 ID Eartag 1191

3/24 PTA +191 **GJPI** +1.0T +715CM\$

+1522M -.06% +61F -.03% +49P

+6.0PL +1.5DPR +12.5GJUI 2.87SCS

A2/A2

**Dam of Lots 9 & 10:**

**JX Pine-Tree 12620 Stoney 2764 (4)-ET**

67652764 12/23 PTA +147GJPI +1.1T

+664CM\$ +617M +67F +31P +5.4PL

-Due 3/17/24

Sire: JX Spring Creek Marlo Stoney (3)

*\*She sells as Lot 11*





**JX Roc-Bot Chief 12620 (4)-P VG-83%**

2-00 340 26080 5.1 1337 3.6 937

(Dam of Lot 11 and 2nd Dam of Lots 9 & 10)

**LOT 11**

**JX Pine-Tree 12620 Stoney 2764 (4)-P-ET**

67652764 BBR 100 JH1F  
Born 3/30/22 ID Eartag 2764  
12/23 PTA +147 GJPI +1.1T +664CMS  
+617M +.17% +67F +.04% +31P  
+5.4PL -1.5DPR +15.8GJUI 2.88SCS  
A2/A2

\*Will sell fresh, Due 3/17/24

**JX Spring Creek Marlo Stoney (3)-ET**

3011730374 12/23 PTA +157GJPI  
+1.4T +.32% +67F +21P +651CMS  
+5.9PL -.5DPR +19.0GJUI 2.91SCS  
Marlo X EX-90% Allstar

**JX Roc-Bot Chief 12620 (4)-P**

**2-05 VG-83%** 3219011952  
12/23 PTA +143GJPI +1.4T +681CMS  
+1538M +71F +57P +3.6PL +14.2GJUI  
2-00 305 23730 5.1 1200 3.5 838  
Sire: JX River Valley Chief (6)-ET  
(Pictured above)

**2nd Dam:**

**JX Roc-Bot Listowel 10567 (3)-P  
D-73%**

2-00 340 26080 5.1 1337 3.6 937  
3-02 191 17074 5.2 895 3.7 639 RIP





**JX Roc-Bot Chief 11861 (4)-P**  
**VG-86%**

1-11 305 20070 4.5 901 4.4 674  
(Dam of Lot 12 & 2nd Dam of Lot 13)

**LOT 12**

**JX Pine-Tree 11861 Stoney 2754 (4)-P-ET**

67652754 BBR 100 JH1F  
Born 3/15/22 ID Eartag 2754  
12/23 PTA +145 GJPI +1.7T +604CMS  
+654M +.14% +62F +.04% +32P  
+5.0PL -1.0DPR +19.1GJUI 2.93SCS  
A2/A2

**Fresh 1/14/24**

-Last test- 86 lbs 4.7%F 3.0%P

SCC 115,000

**Bred 2/20/24 to 7JE01699 Pine (sexed)**

**JX Spring Creek Marlo Stoney (3)-ET**

3011730374 12/23 PTA +157GJPI  
+1.4T +.32% +67F +21P +651CMS  
+5.9PL -.5DPR +19.0GJUI 2.91SCS  
Marlo X EX-90% Allstar

**JX Roc-Bot Chief 11861 (4)-P**

**2-04 VG-86%** 3213787206  
12/23 PTA +143GJPI +1.8T +648CMS  
+1426M +64F +53P +3.7PL +13.2GJUI  
1-11 305 20070 4.5 901 4.4 674  
Sire: JX River Valley Chief (6)-ET

**2nd Dam:**

**JX Roc-Bot Listowel 9221 (3)-P**

**VG-87%**  
1-08 294 21150 3.9 823 3.9 827  
2-08 305 23520 4.8 1134 3.9 916

**3rd Dam:**

**JX Roc-Bot Clearvision 7985 (2)**

**4th Dam:**

**JX Roc-Bot Militia 4544 (1)**

**VG-84%**  
5-09 302 18230 5.7 1045 4.0 725

**LOT 13**

**JX Pine-Tree 2754 Over 1196 (5)-ET**

76381196 BBR 100 JH1F  
Born 1/14/24 ID Eartag 1196  
3/24 PTA +143 GJPI +1.6T +532CMS  
+673M +.10% +54F +.04% +34P  
+4.1PL +.0DPR +17.7GJUI 2.85SCS  
A2/A2

**Rowleys 80 Caliban Overalls-ET**

3230110523 12/23 PTA +145GJPI  
+1.8T +432M +53F +27P +501CMS  
+3.7PL +.9DPR +22.5GJUI 2.81SCS  
Caliban X EX-90% Chrome

**JX Pine-Tree 11861 Stoney 2754 (4)-P-ET**

77652754 12/23 PTA +145GJPI +1.7T  
+604CMS +654M +.14% +62F +.04%  
+32P +5.0PL +19.1GJUI 2.93SCS  
-Fresh 1/1/24  
Sire: JX Spring Creek Marlo Stoney (3)  
\*She sells as Lot 12

**2nd Dam:**

**JX Roc-Bot Chief 11861 (4)-P**

**VG-86%**  
1-11 305 20070 4.5 901 4.4 674

**3rd Dam:**

**JX Roc-Bot Listowel 9221 (3)-P**

**VG-87%**  
1-08 294 21150 3.9 823 3.9 827  
2-08 305 23520 4.8 1134 3.9 916

**4th Dam:**

**JX Roc-Bot Clearvision 7985 (2)**

**5th Dam:**

**JX Roc-Bot Militia 4544 (1)**

**VG-84%**  
5-09 302 18230 5.7 1045 4.0 725



**JX Pine-Tree 1917 Thrasher 2473 (5)-ET EX-90%**

1-08 292 20299 4.8 977 3.7 755

(Dam of Lots 14-16)

**LOT 14**

**JX Pine-Tree 2473 Boss 1144 (6)-ET**  
 76381144 BBR 100 JH1F  
 Born 10/23/23 ID Eartag 1144  
 12/23 PTA +192 GJPI +1.3T +722CMS  
 +755M +.17% +75F +.11% +52P  
 +4.3PL -.4DPR +19.0GJUI 2.77SCS  
 A2/A2

**JX Vierra TheBoss (6)-ET**  
 3218042562 12/23 PTA +178GJPI  
 +1.1T +1138M +72F +51P +804CMS  
 +6.4PL -.21DPR +12.9GJUI 2.76SCS  
 Got Maid X EX-90% Chief

**JX Pine-Tree 1917 Thrasher 2473 (5)-ET**  
**2-11 EX-90%** 67762473  
 12/23 PTA +161GJPI +1.1T +572CMS  
 +1478M +.02% +76F +.04% +64P  
 +1.5PL -.7DPR +12.9GJUI 3.03SCS  
 1-08 292 20299 4.8 977 3.7 755  
 -Fresh 4/23/23, 2nd lactation  
 Sire: JX Cds Jls Pilgrim Thrasher (6)-ET  
**(Pictured above)**

**2nd Dam:**  
**JX Pine-Tree Enzo Dellia 1917 (4)-ET**  
**VG-82%**  
 1-11 305 23670 4.3 1029 3.7 884

**3rd Dam:**  
**JX Pine-Tree World Cup Dellia (5)-ET**  
**EX-93%**  
 3-07 305 20090 5.3 1063 4.1 823

**4th Dam:**  
**Oaklane Chisel Della 2130-ET**  
**VG-85%**  
 3-01 305 21340 5.5 1168 3.9 824

**5th Dam:**  
**Sunset Canyon Dzzler V Maid 2348**  
**VG-87%**  
 2-11 305 24380 6.4 1566 4.0 983

**6th Dam:**  
**Sunset Canyon Valen I Maid 118-ET**  
**VG-85%**  
 1-09 305 16700 5.1 860 3.7 612

**7th Dam:**  
**Sunset Canyon Impuls L Maid 2-ET**  
**VG-87%**  
 1-08 365 20468 5.7 1169 3.8 804

**8th Dam:**  
**Sunset Canyon Lemvig Maid 4-ET**  
**EX-93%**  
 5-02 365 30508 7.0 2150 4.3 1302

**9th Dam:**  
**Tenn Haug E Maid EX-93%**  
 6-00 365 26014 7.0 1820 4.3 1107

**LOT 15**

**JX Pine-Tree 2473 Boss 1153 (6)-ET**  
 76381153 BBR 100 JH1F  
 Born 10/11/23 ID Eartag 1153  
 12/23 PTA +185 GJPI +1.1T +694CMS  
 +1745M -.08% +66F -.01% +62P  
 +4.5PL -1.2DPR +18.3GJUI 2.82SCS  
 A1/A2





**JX Pine-Tree 1917 Thrasher 2473 (5)-ET EX-90% \*pic as 2yr-old**

1-08 292 20299 4.8 977 3.7 755

(Dam of Lots 14-16)

**LOT 16**

**JX Pine-Tree Star 2998 (6)**

67652998 BBR 100 JH1F  
Born 4/23/23 ID Eartag 2998  
12/23 PTA +159 GJPI +1.2T +595CMS  
+942M +.04% +54F +.03% +42P  
+4.9PL +.0DPR +16.0GJUI 2.89SCS  
A2/A2

Bred 3/12/24 to  
7JE01699 Pine (sexed)

#2 JPI daughter of Starlord (tie)

**Primus Craze Starlord-ET**

3141725644 12/23 PTA +139GJPI  
+1.2T +393M +45F +16P +556CMS  
+5.9PL +1.1DPR +12.9GJUI 2.88SCS  
Craze X Showgirl

**JX Pine-Tree 1917 Thrasher 2473 (5)-ET**

2-11 EX-90% 67762473  
12/23 PTA +161GJPI +1.1T +572CMS  
+1478M +.02% +76F +.04% +64P  
+1.5PL -.7DPR +12.9GJUI 3.03SCS  
1-08 292 20299 4.8 977 3.7 755  
-Fresh 4/23/23, 2nd lactation  
Sire: JX Cds Jls Pilgrim Thrasher (6)-ET  
(Pictured above)

**2nd Dam:**

**JX Pine-Tree Enzo Dellia 1917 (4)-ET**  
VG-82%  
1-11 305 23670 4.3 1029 3.7 884

**3rd Dam:**

**JX Pine-Tree World Cup Dellia (5)-ET**  
EX-93%  
3-07 305 20090 5.3 1063 4.1 823

**4th Dam:**

**Oaklane Chisel Della 2130-ET**  
VG-85%  
3-01 305 21340 5.5 1168 3.9 824

**5th Dam:**

**Sunset Canyon Dzzler V Maid 2348**  
VG-87%  
2-11 305 24380 6.4 1566 4.0 983

**6th Dam:**

**Sunset Canyon Valen I Maid 118-ET**  
VG-85%  
1-09 305 16700 5.1 860 3.7 612

**7th Dam:**

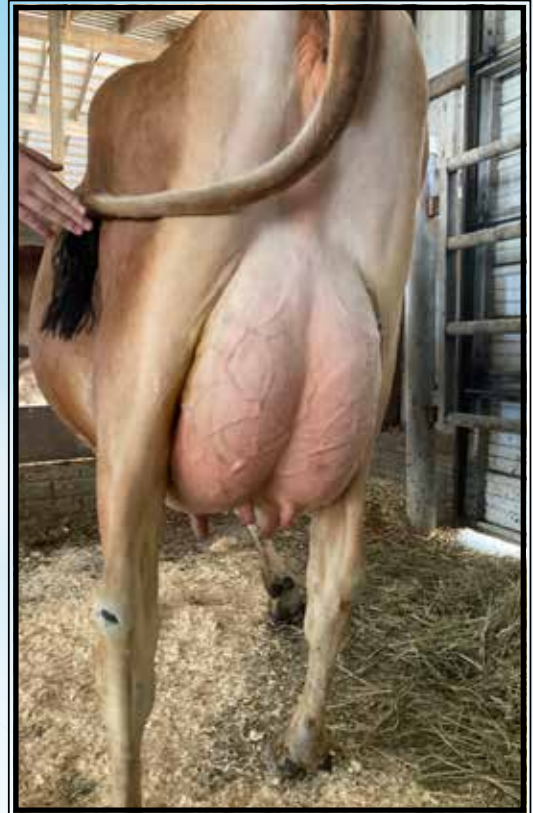
**Sunset Canyon Impuls L Maid 2-ET**  
VG-87%  
1-08 365 20468 5.7 1169 3.8 804

**8th Dam:**

**Sunset Canyon Lemvig Maid 4-ET**  
EX-93%  
5-02 365 30508 7.0 2150 4.3 1302

**9th Dam:**

**Tenn Haug E Maid EX-93%**  
6-00 365 26014 7.0 1820 4.3 1107



**Elm-J Listowel Carolee 16492-P-ET VG-87%**  
(Dam of Lots 17-23)

## LOT 17

**Pine-Tree 16492 Steno 1163-P-ET**  
76381163 BBR 100 JH1F  
Born 11/21/23 ID Eartag 1163  
12/23 PTA +176 GJPI +.6T +692CM\$  
+337M +.24% +68F +.12% +39P  
+4.0PL +1.6DPR +16.0GJUI 2.92SCS  
A2/A2

**IDSK VJ Tudvad Samson Steno**  
DNK304715 12/23 PTA +154GJPI  
-.6T +305M +74F +40P +659CM\$  
+2.1PL +2.9DPR +1.2GJUI 3.04SCS  
Samson X Hazard

**Elm-J Listowel Carolee 16492-P-ET**  
**2-05 VG-87%** 3238827310  
12/23 PTA +126GJPI +1.3T +512CM\$  
+491M +.06% +36F +.06% +30P  
+4.2PL +.0DPR +17.5GJUI 2.87SCS  
1-09 265 17260 5.0 867 3.7 633 RIP  
-Fresh 6/18/23 for 1st lactation  
-Due 6/21/24 for 2nd lactation  
Sire: Hillview Listowel-P  
(Pictured above)

**2nd Dam: (Pictured w/ Lot 18)**  
**DGM Chrome Carolina**  
**EX-91%**

1-11 305 18520 5.1 947 3.7 693  
3-00 305 21400 5.2 1109 3.9 826

**3rd Dam:**  
**JX Dutch Hollow Baltazar Challie (6)**  
**EX-93%**

3-03 305 18520 4.9 910 3.9 721  
4-03 305 19400 5.3 1035 3.9 756

**4th Dam: (Pictured w/ Lot 22)**  
**Dutch Hollow Topeka Charlize**  
**EX-90%**  
6-09 305 27920 5.2 1465 3.7 1038

**5th Dam: (Pictured w/ Lot 20)**  
**Dutch Hollow Valentino Cheryl-ET**  
**EX-90%**  
2-08 305 24660 4.3 1066 3.3 803

**6th Dam:**  
**Dutch Hollow GM Cherish-P**  
**EX-90%**  
4-09 305 28810 4.1 1207 3.6 1023

**7th Dam:**  
**Dutch Hollow Montana Cherry**  
**VG-85%**  
1-08 305 21650 4.3 923 3.2 701





**DGM Chrome Carolina EX-91%**

3-00 305 21400 5.2 1109 3.9 826  
(2nd Dam of Lots 17-23)

**LOT 18**

**Pine-Tree 16492 Thr 1102-P-ET**

76381102 BBR 100 JH1F  
Born 8/17/23 ID Eartag 1102  
12/23 PTA +165 GJPI +1.1T +577CMS  
+1060M -.02% +47F +.03% +45P  
+3.9PL +2.3DPR +13.2GJUI 2.90SCS  
A2/A2

**JX Cdf Jls Pilgrim Thrasher (6)-ET**

3006436075 12/23 PTA +212GJPI  
+.6T +1768M +74F +69P +789CMS  
+4.8PL +2.6DPR +6.8GJUI 2.95SCS  
Pilgrim X VG-84% Viceroy

**Elm-J Listowel Carolee 16492-P-ET**

**2-05 VG-87%** 3238827310  
12/23 PTA +126GJPI +1.3T +512CMS  
+491M +.06% +36F +.06% +30P  
+4.2PL +.0DPR +17.5GJUI 2.87SCS  
1-09 265 17260 5.0 867 3.7 633 RIP  
-Fresh 6/18/23 for 1st lactation  
-Due 6/21/24 for 2nd lactation  
Sire: Hillview Listowel-P  
(Pictured w/ Lot 17)

**LOT 19**

**Pine-Tree 16492 Thr 1092-P-ET**

76381092 BBR 100 JH1F  
Born 8/1/23 ID Eartag 1092  
12/23 PTA +163 GJPI +.8T +590CMS  
+1197M -.04% +48F +.02% +49P  
+4.2PL +1.0DPR +15.3GJUI 2.91SCS  
A2/A2

**2nd Dam: (Pictured above)  
DGM Chrome Carolina**

**EX-91%**  
1-11 305 18520 5.1 947 3.7 693  
3-00 305 21400 5.2 1109 3.9 826

**3rd Dam:**

**JX Dutch Hollow Baltazar Challie (6)  
EX-93%**

3-03 305 18520 4.9 910 3.9 721  
4-03 305 19400 5.3 1035 3.9 756

**4th Dam: (Pictured w/ Lot 22)  
Dutch Hollow Topeka Charlize  
EX-90%**

6-09 305 27920 5.2 1465 3.7 1038

**5th Dam: (Pictured w/ Lot 20)  
Dutch Hollow Valentino Cheryl-ET  
EX-90%**

2-08 305 24660 4.3 1066 3.3 803

**6th Dam:**

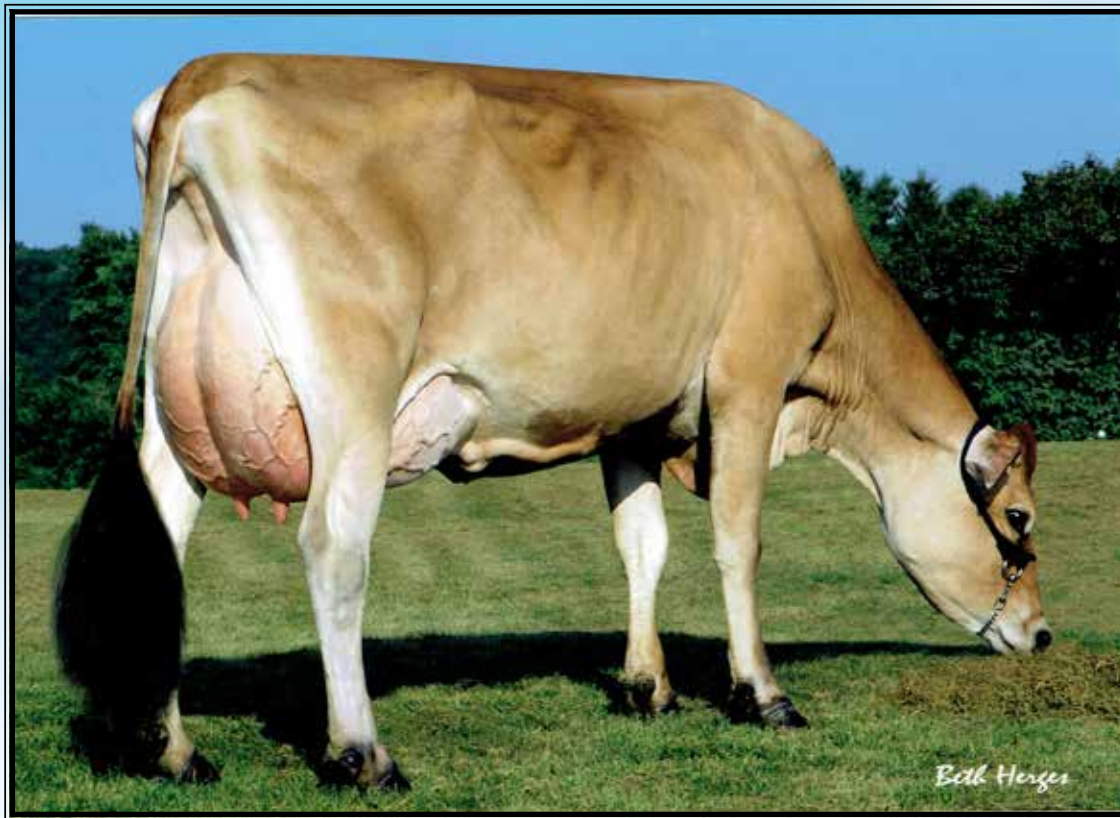
**Dutch Hollow GM Cherish-P  
EX-90%**

4-09 305 28810 4.1 1207 3.6 1023

**7th Dam:**

**Dutch Hollow Montana Cherry  
VG-85%**

1-08 305 21650 4.3 923 3.2 701



**Dutch Hollow Valentino Cheryl-ET EX-90%**

2-08 305 24660 4.3 1066 3.3 803  
(5th Dam of Lots 17-23)

**LOT 20**

**Pine-Tree 16492 Thr 1125-P-ET**

76381125 BBR 100 JH1F  
Born 9/14/23 ID Eartag 1125  
12/23 PTA +162 GJPI +1.0T +625CMS  
+973M +.06% +60F +.03% +43P  
+4.1PL +.8DPR +13.2GJUI 2.91SCS  
A2/A2

**JX Cdf Jls Pilgrim Thrasher (6)-ET**

3006436075 12/23 PTA +212GJPI  
+.6T +1768M +74F +69P +789CMS  
+4.8PL +2.6DPR +6.8GJUI 2.95SCS  
Pilgrim X VG-84% Viceroy

**Elm-J Listowel Carolee 16492-P-ET**

**2-05 VG-87%** 3238827310  
12/23 PTA +126GJPI +1.3T +512CMS  
+491M +.06% +36F +.06% +30P  
+4.2PL +.0DPR +17.5GJUI 2.87SCS  
1-09 265 17260 5.0 867 3.7 633 RIP  
-Fresh 6/18/23 for 1st lactation  
-Due 6/21/24 for 2nd lactation  
Sire: Hillview Listowel-P  
(Pictured w/ Lot 17)

**LOT 21**

**Pine-Tree 16492 Thr 1089-ET**

76381089 BBR 100 JH1F  
Born 7/28/23 ID Eartag 1089  
12/23 PTA +183 GJPI +1.0T +698CMS  
+1213M -.05% +47F +.04% +53P  
+5.7PL +1.9DPR +12.6GJUI 2.85SCS  
A2/A2

**2nd Dam: (Pictured w/ Lot 18)**

**DGM Chrome Carolina**

**EX-91%**

1-11 305 18520 5.1 947 3.7 693  
3-00 305 21400 5.2 1109 3.9 826

**3rd Dam:**

**JX Dutch Hollow Baltazar Challie (6)**

**EX-93%**

3-03 305 18520 4.9 910 3.9 721  
4-03 305 19400 5.3 1035 3.9 756

**4th Dam: (Pictured w/ Lot 22)**

**Dutch Hollow Topeka Charlize**

**EX-90%**

6-09 305 27920 5.2 1465 3.7 1038

**5th Dam: (Pictured above)**

**Dutch Hollow Valentino Cheryl-ET**

**EX-90%**

2-08 305 24660 4.3 1066 3.3 803

**6th Dam:**

**Dutch Hollow GM Cherish-P**

**EX-90%**

4-09 305 28810 4.1 1207 3.6 1023

**7th Dam:**

**Dutch Hollow Montana Cherry**

**VG-85%**

1-08 305 21650 4.3 923 3.2 701





**Dutch Hollow Topeka Charlize EX-90%**

6-09 305 27920 5.2 1465 3.7 1038  
(4th Dam of Lots 17-23)

**LOT 22**

**Pine-Tree 16492 Mon 1077-P-ET**

76381077 BBR 100 JH1F  
Born 7/15/23 ID Eartag 1077  
12/23 PTA +153 GJPI +1.2T +617CMS  
+542M +.14% +57F +.07% +36P  
+4.3PL -.4DPR +17.2GJUI 2.79SCS  
A2/A2

**Four J Monster (6)-P-ET**

3209703049 12/23 PTA +184GJPI  
+.6T +1048M +83F +56P +743CMS  
+3.6PL +.7DPR +5.3GJUI 2.85SCS  
Thrasher X VG-82% Listowel

**Elm-J Listowel Carolee 16492-P-ET**

**2-05 VG-87%** 3238827310  
12/23 PTA +126GJPI +1.3T +512CMS  
+491M +.06% +36F +.06% +30P  
+4.2PL +.0DPR +17.5GJUI 2.87SCS  
1-09 265 17260 5.0 867 3.7 633 RIP  
-Fresh 6/18/23 for 1st lactation  
-Due 6/21/24 for 2nd lactation  
Sire: Hillview Listowel-P  
(Pictured above)

**2nd Dam: (Pictured w/ Lot 18)  
DGM Chrome Carolina  
EX-91%**

1-11 305 18520 5.1 947 3.7 693  
3-00 305 21400 5.2 1109 3.9 826

**3rd Dam:  
JX Dutch Hollow Baltazar Challie (6)  
EX-93%**

3-03 305 18520 4.9 910 3.9 721  
4-03 305 19400 5.3 1035 3.9 756

**4th Dam: (Pictured w/ Lot 22)  
Dutch Hollow Topeka Charlize  
EX-90%**

6-09 305 27920 5.2 1465 3.7 1038

**5th Dam: (Pictured w/ Lot 20)  
Dutch Hollow Valentino Cheryl-ET  
EX-90%**

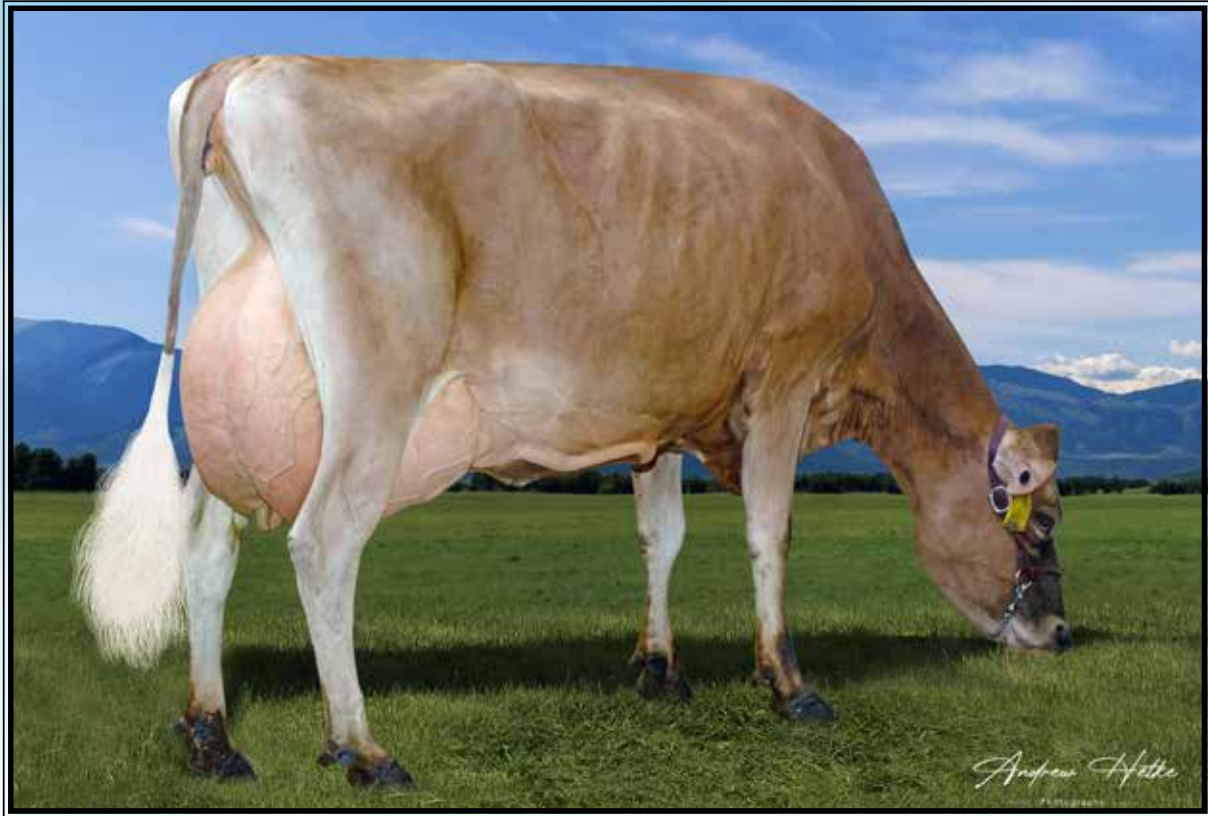
2-08 305 24660 4.3 1066 3.3 803

**6th Dam:  
Dutch Hollow GM Cherish-P  
EX-90%**

4-09 305 28810 4.1 1207 3.6 1023

**7th Dam:  
Dutch Hollow Montana Cherry  
VG-85%**

1-08 305 21650 4.3 923 3.2 701



**DGM Chrome Carolina EX-91%**

3-00 305 21400 5.2 1109 3.9 826

(2nd Dam of Lots 17-23)

**LOT 23**

**Pine-Tree 16492 Pine 1056**

76381056 BBR 100 JH1F

Born 6/18/23 ID Eartag 1056

12/23 PTA +154 GJPI +1.2T +580CMS

+260M +.16% +46F +.10% +32P

+4.5PL +1.5DPR +18.9GJUI 2.96SCS

A2/A2

**JX Ahlem Frisco Pine (6)-ET**

67823956 12/23 PTA +148GJPI

+1.0T +485M +38F +41P +508CMS

+4.0PL +1.6DPR +18.4GJUI 3.11SCS

Frisco X VG-87% Dimension

**Elm-J Listowel Carolee 16492-P-ET**

2-05 VG-87% 3238827310

12/23 PTA +126GJPI +1.3T +512CMS

+491M +.06% +36F +.06% +30P

+4.2PL +.0DPR +17.5GJUI 2.87SCS

1-09 265 17260 5.0 867 3.7 633 RIP

-Fresh 6/18/23 for 1st lactation

-Due 6/21/24 for 2nd lactation

Sire: Hillview Listowel-P

(Pictured w/ Lot 17)

**2nd Dam: (Pictured above)**

**DGM Chrome Carolina**

**EX-91%**

1-11 305 18520 5.1 947 3.7 693

3-00 305 21400 5.2 1109 3.9 826

**3rd Dam:**

**JX Dutch Hollow Baltazar Challie (6)**

**EX-93%**

3-03 305 18520 4.9 910 3.9 721

4-03 305 19400 5.3 1035 3.9 756

**4th Dam: (Pictured w/ Lot 22)**

**Dutch Hollow Topeka Charlize**

**EX-90%**

6-09 305 27920 5.2 1465 3.7 1038

**5th Dam: (Pictured w/ Lot 20)**

**Dutch Hollow Valentino Cheryl-ET**

**EX-90%**

2-08 305 24660 4.3 1066 3.3 803

**6th Dam:**

**Dutch Hollow GM Cherish-P**

**EX-90%**

4-09 305 28810 4.1 1207 3.6 1023

**7th Dam:**

**Dutch Hollow Montana Cherry**

**VG-85%**

1-08 305 21650 4.3 923 3.2 701





**JX Gure Behla Skyler 3946**  
**VG-86%**

1-11 305 16350 6.0 988 4.0 660  
(Dam of Lots 24 & 25)

**LOT 24**

**JX Pine-Tree 3946 Mons 1100 (6)-ET**  
76381100 BBR 100 JH1F  
Born 8/12/23 ID Eartag 1100  
12/23 PTA +184 GJPI +.7T +826CM\$  
+857M +.22% +91F +.08% +50P  
+5.3PL -.3DPR +6.2GJUI 2.90SCS  
A2/A2

**Four J Monster (6)-P-ET**  
3209703049 12/23 PTA +184GJPI  
+.6T +1048M +83F +56P +743CM\$  
+3.6PL +.7DPR +5.3GJUI 2.85SCS  
Thrasher X VG-82% Listowel

**JX Gure Behia Skyler 3946 (5)**  
**2-03 VG-86%** 67883946  
12/23 PTA +146GJPI +.7T +713CM\$  
+591M +.26% +86F +.09% +42P  
+4.4PL -1.3DPR +10.4GJUI 3.04SCS  
1-11 305 16350 6.0 988 4.0 660  
-Due 4/13/24 for 2nd lactation  
Sire: Progenesis Skyler-ET  
(Pictured above)

**2nd Dam:**

**JX Gure Behia Mesquite 1752 (4)**

**3rd Dam:**

**JX CDF Mate 174 (6)**

**VG-88%**

1-10 305 16990 4.8 822 3.7 631  
3-00 305 19620 4.9 963 3.8 744  
4-01 305 25840 4.7 1215 3.8 987  
5-02 305 28530 5.1 1453 3.9 1122

**LOT 25**

**JX Pine-Tree 3946 Mons 1080 (6)-ET**  
76381080 BBR 100 JH1F  
Born 7/18/23 ID Eartag 1080  
12/23 PTA +174 GJPI +.8T +743CM\$  
+843M +.22% +90F +.10% +53P  
+3.6PL -.2DPR +6.6GJUI 2.92SCS  
A2/A2





**Oaklane Chisel Della 2130-ET VG-85%**

3-01 305 21340 5.5 1168 3.9 824  
(4th Dam of Lots 26 & 27)

**LOT 26**

**Pine-Tree 2537 Dabo 2863-P**

67652863 BBR 100 JH1F  
Born 9/13/22 ID Eartag 2863  
12/23 PTA +178 GJPI +.6T +704CMS\$  
+505M +.14% +55F +.12% +44P  
+5.1PL +1.3DPR +12.5GJUI 2.80SCS  
A2/A2

**Due 9/21/24 to  
200JE1334 TheBoss (sexed)**

*\*Embryos Exported*

*\*Purebred, Polled, Pregnant, with DPR*

**Goff S-S-I Listowel Dabo-P-ET**  
3217272164 12/23 PTA +160GJPI  
+.5T +837M +50F +40P +664CMS\$  
+5.9PL +.1DPR +8.9GJUI 2.75SCS  
Listowel X EX-94% Disco

**Pine-Tree 1923 Gislev 2537-ET**  
**2-03 VG-86%** 67762537  
12/23 PTA +111GJPI +.6T +434CMS\$  
+60M +.22% +49F +.16% +36P +1.5PL  
-.6DPR +15.8GJUI 2.92SCS  
1-11 305 18910 5.9 1115 4.2 794  
2-11 173 12966 6.0 784 4.0 513 RIP  
-Due 9/19/24 for 3rd lactation  
Sire: ISDK VJ Raastrup Hihl Gislev

**2nd Dam:**  
**Pine-Tree Viceroy Della 1923 (6)-ET**  
**VG-81%**  
1-11 305 18670 5.6 1042 4.0 744  
3-00 305 19920 5.6 1121 4.0 798  
4-02 305 22170 6.2 1384 4.3 950

**3rd Dam:**  
**JX Pine-Tree World Cup Della (5)-ET**  
**VG-83%**  
2-01 305 20470 4.7 964 3.6 738

**4th Dam: (Pictured above)**  
**Oaklane Chisel Della 2130-ET**  
**VG-85%**  
3-01 305 21340 5.5 1168 3.9 824

**5th Dam:**  
**Sunset Canyon Dzzler V Maid 2348**  
**VG-87%**  
2-11 305 24380 6.4 1566 4.0 983

**6th Dam:**  
**Sunset Canyon Valen I Maid 118-ET**  
**VG-85%**  
1-09 305 16700 5.1 860 3.7 612

**7th Dam:**  
**Sunset Canyon Impuls L Maid 2-ET**  
**VG-87%**  
1-08 365 20468 5.7 1169 3.8 804

**8th Dam: (Pictured w/ Lot 27)**  
**Sunset Canyon Lemvig Maid 4-ET**  
**EX-93%**  
5-02 365 30508 7.0 2150 4.3 1302

**9th Dam:**  
**Tenn Haug E Maid EX-93%**  
6-00 365 26014 7.0 1820 4.3 1107





**Sunset Canyon Lemvig Maid 4-ET EX-93%**

3-01 305 21340 5.5 1168 3.9 824

(7th Dam of Lots 26 & 27)

**LOT 27**

**Pine-Tree 2599 Veneti 2826-ET**

67652826 BBR 100 JH1F  
Born 7/30/22 ID Eartag 2826  
12/23 PTA +167 GJPI +.7T +768CMS  
+404M +.21% +65F +.10% +37P  
+5.5PL +.3DPR +13.0GJUI 2.77SCS  
A2/A2

**Due 6/9/24 to  
200JE1334 TheBoss (sexed)**

*\*2 generations of Viking Jersey Genetics!*

**TDG Venetie 38518-ET**

3209969460 12/23 PTA +132GJPI  
+.4T +61M +50F +27P +626CMS  
+4.4PL +.5DPR +10.9GJUI 2.73SCS  
Heavy X VG-86% Hjort

**Pine-Tree 1923 Gislev 2599-ET**

2-07 VG-85% 67762599  
12/23 PTA +122GJPI +.7T +553CMS  
+268M +.26% +68F +.14% +41P  
+1.7PL -.8DPR +11.2GJUI 2.94SCS  
1-11 281 18560 3.3 605 3.9 716

Sire: ISDK VJ Raastrup Hihl Gislev

**2nd Dam:**

**Pine-Tree Viceroy Della 1923 (6)-ET  
VG-81%**

1-11 305 18670 5.6 1042 4.0 744  
3-00 305 19920 5.6 1121 4.0 798  
4-02 305 22170 6.2 1384 4.3 950

**3rd Dam:**

**JX Pine-Tree World Cup Della (5)-ET  
VG-83%**

2-01 305 20470 4.7 964 3.6 738

**4th Dam: (Pictured w/ Lot 26)  
Oaklane Chisel Della 2130-ET  
VG-85%**

3-01 305 21340 5.5 1168 3.9 824

**5th Dam:**

**Sunset Canyon Dzzler V Maid 2348  
VG-87%**

2-11 305 24380 6.4 1566 4.0 983

**6th Dam:**

**Sunset Canyon Valen I Maid 118-ET  
VG-85%**

1-09 305 16700 5.1 860 3.7 612

**7th Dam:**

**Sunset Canyon Impuls L Maid 2-ET  
VG-87%**

1-08 365 20468 5.7 1169 3.8 804

**8th Dam: (Pictured above)**

**Sunset Canyon Lemvig Maid 4-ET  
EX-93%**

5-02 365 30508 7.0 2150 4.3 1302

**9th Dam:**

**Tenn Haug E Maid EX-93%**

6-00 365 26014 7.0 1820 4.3 1107



**Ahlem Viabull Vanity 5057-P EX-94%**

5-11 362 24087 5.2 1254 3.7 892 RIP

(She sells as Lot 28 and 3rd Dam of Lots 29-33)

**LOT 28**

**Ahlem Viabull Vanity 5057-P**

**3-00 EX-94%**

67705057 BBR 100 JH1F

Born 11/7/16 ID Eartag 5057

12/23 PTA +69 GJPI +1.6T +186CM\$

+4.6PL +1.3DPR +20.9GJUI 2.81SCS

A2/A2

1-09 305 16880 4.6 782 3.7 625

3-04 305 19410 4.4 855 3.7 709

4-11 305 22000 4.9 1074 3.8 825

5-11 362 24087 5.2 1254 3.7 892 RIP

Last test- 86 lbs 4.6%F 3.3%P

SCC 71,000

**Fresh 12/28/23**

**Bred 3/13/24 to 7JE01699 Pine (sexed)**

**\*Embryos Exported**

**(Pictured above)**

**AI sons include:**

**29JE4261 Vacuum-PP**

**566JE110 Valuable-PP**

**Ahlem Viabull-P**

71199749 12/23 PTA +94GJPI

+1.1T +557M +18F +6P +394CM\$

+5.1PL +1.4DPR +14.7GJUI 2.80SCS

Critic-P X EX-92% Headline

**Ahlem Speed Vanity 3175**

**5-04 EX-90%** 67603175

12/23 PTA +20GJPI +1.4T +19CM\$

+2.9PL +.7DPR +23.8GJUI 2.93SCS

1-09 305 16610 4.4 731 3.7 609

2-11 299 20590 4.3 885 3.8 783

3-11 305 21300 4.6 971 3.8 815

5-00 271 19850 4.4 880 3.8 754

5-11 278 17920 4.5 811 3.7 664

Sire: River Valley Salina Speed

**2nd Dam:**

**Ahlem Iatola Vanity 32859**

**EX-93%**

2-09 263 19090 4.8 911 3.7 714

3-08 274 20070 4.4 881 3.7 737

4-07 272 23420 4.5 1046 3.7 859

5-08 244 18410 4.4 807 3.8 704

**3rd Dam:**

**Ahlem Action Vanity 16031**

**VG-85%**

2-11 274 17500 4.9 864 3.6 637

3-10 305 21520 4.6 1000 3.7 790

**4th Dam:**

**Ahlem Hallmark Vanity 2339**

**VG-85%**

2-10 305 25080 4.2 1057 3.6 900

**5th Dam:**

**Ahlem Fair Vanity 9628**

**6th Dam:**

**Ahlem Barber Vanity 6291 (6)**

**VG-88%**

3-09 305 20930 5.6 1176 3.7 780





**Ahlem Viabull Vanity 5057-P EX-94%**

5-11 362 24087 5.2 1254 3.7 892 RIP

(She sells as Lot 28 and 3rd Dam of Lots 29-33)

**LOT 29**

**Pine-Tree 2718 Thra 1132-P-ET**

76381132 BBR 100 JH1F  
Born 9/22/23 ID Eartag 1132  
12/23 PTA +163 GJPI +.6T +705CMS\$  
+925M +.06% +59F +.03% +41P  
+5.5PL +1.1DPR +7.8GJUI 2.83SCS  
A2/A2

**LOT 30**

**Pine-Tree 2718 Thra 1135-P-ET**

76381135 BBR 100 JH1F  
Born 9/29/23 ID Eartag 1135  
12/23 PTA +157 GJPI +.7T +634CMS\$  
+907M +.03% +51F +.06% +46P  
+4.3PL +1.9DPR +9.4GJUI 2.86SCS  
A2/A2

**JX Cdf Jls Pilgrim Thrasher (6)-ET**

3006436075 12/23 PTA +212GJPI  
+.6T +1768M +74F +69P +789CMS\$  
+4.8PL +2.6DPR +6.8GJUI 2.95SCS  
Pilgrim X VG-84% Viceroy

**Pine-Tree 2271 Feder 2718-PP-ET**

1-10 VG-85% 67652718  
12/23 PTA +109GJPI +.6T +443CMS\$  
+.17% +31F +.08% +14P +4.0PL  
+1.4DPR +15.7GJUI 2.77SCS  
1-08 279 15734 5.2 819 3.7 582 RIP  
-Last test- 60 lbs 5.9%F 4.0%P  
-Due 6/24 for 2nd lactation  
Sire: TOG Federer 37562-P-ET

**2nd Dam:**

**Pine-Tree 5057 Dalton 2271-PP-ET VG-88%**

1-10 305 18570 4.7 879 3.7 684  
2-10 305 21320 4.4 938 3.8 809  
-Fresh w/ 3rd lactation

**3rd Dam:**

**Ahlem Viabull Vanity 5057-P EX-94%**

4-11 305 22000 4.9 1074 3.8 825  
5-11 362 24087 5.2 1254 3.7 892 RIP  
Fresh 12/28/23 w/ 5th calf

\*Sells as Lot 28

**AI sons include:**

29JE4261 Vacuum-PP

566JE110 Valuable-PP

**4th Dam:**

**Ahlem Speed Vanity 3175 EX-90%**

2-11 299 20590 4.3 885 3.8 783  
3-11 305 21300 4.6 971 3.8 815

**5th Dam:**

**Ahlem Iatola Vanity 32859 EX-93%**

4-07 272 23420 4.5 1046 3.7 859

**6th Dam:**

**Ahlem Action Vanity 16031 VG-85%**

3-10 305 21520 4.6 1000 3.7 790

**7th Dam:**

**Ahlem Hallmark Vanity 2339 VG-85%**

2-10 305 25080 4.2 1057 3.6 900

**8th Dam: Ahlem Fair Vanity 9628**

**9th Dam:**

**Ahlem Barber Vanity 6291 (6) VG-88%**

3-09 305 20930 5.6 1176 3.7 780



**Ahlem Viabull Vanity 5057-P EX-94%**

5-11 362 24087 5.2 1254 3.7 892 RIP

(She sells as Lot 28 and 3rd Dam of Lots 29-33)

**LOT 31**

**Pine-Tree 2718 Mons 1090-PP-ET**

76381090 BBR 100 JH1F  
Born 8/7/23 ID Eartag 1090  
12/23 PTA +142 GJPI +1.2T +554CMS  
+451M +.08% +40F +.05% +27P  
+4.6PL +1.3DPR +17.9GJUI 2.77SCS  
A2/A2

\*Homozygous Polled

**Four J Monster (6)-P-ET**

3209703049 12/23 PTA +184GJPI  
+.6T +1048M +83F +56P +743CMS  
+3.6PL +.7DPR +5.3GJUI 2.85SCS  
Thrasher X VG-82% Listowel

**Pine-Tree 2271 Feder 2718-PP-ET**

1-10 VG-85% 67652718  
12/23 PTA +109GJPI +.6T +443CMS  
+.17% +31F +.08% +14P +4.0PL  
+1.4DPR +15.7GJUI 2.77SCS  
1-08 279 15734 5.2 819 3.7 582 RIP  
-Last test- 60 lbs 5.9%F 4.0%P  
-Due 6/24 for 2nd lactation  
Sire: TOG Federer 37562-P-ET

**2nd Dam:**

**Pine-Tree 5057 Dalton 2271-PP-ET  
VG-88%**

1-10 305 18570 4.7 879 3.7 684  
2-10 305 21320 4.4 938 3.8 809  
-Fresh w/ 3rd lactation

**3rd Dam:**

**Ahlem Viabull Vanity 5057-P  
EX-94%**

4-11 305 22000 4.9 1074 3.8 825  
5-11 362 24087 5.2 1254 3.7 892 RIP  
Fresh 12/28/23 w/ 5th calf

\*Sells as Lot 28

**AI sons include:**

29JE4261 Vacuum-PP  
566JE110 Valuable-PP

**4th Dam:**

**Ahlem Speed Vanity 3175  
EX-90%**

2-11 299 20590 4.3 885 3.8 783  
3-11 305 21300 4.6 971 3.8 815

**5th Dam:**

**Ahlem Iatola Vanity 32859  
EX-93%**

4-07 272 23420 4.5 1046 3.7 859

**6th Dam:**

**Ahlem Action Vanity 16031  
VG-85%**

3-10 305 21520 4.6 1000 3.7 790

**7th Dam:**

**Ahlem Hallmark Vanity 2339  
VG-85%**

2-10 305 25080 4.2 1057 3.6 900

**8th Dam: Ahlem Fair Vanity 9628**

**9th Dam:**

**Ahlem Barber Vanity 6291 (6)  
VG-88%**

3-09 305 20930 5.6 1176 3.7 780





**Ahlem Viabull Vanity 5057-P EX-94%**

5-11 362 24087 5.2 1254 3.7 892 RIP

(She sells as Lot 28 and 3rd Dam of Lots 29-33)

**LOT 32**

**Pine-Tree 2718 Boss 1023-P-ET**

76381023 BBR 100 JH1F  
Born 6/3/23 ID Eartag 1023  
12/23 PTA +161 GJPI +.9T +641CMS\$  
+718M +.06% +49F +.05% +38P  
+5.6PL +.4DPR +17.7GJUI 2.84SCS  
A1/A2

**Sire of Lot 32:**

**JX Vierra TheBoss (6)-ET**  
3218042562 12/23 PTA +178GJPI  
+1.1T +1138M +72F +51P +804CMS\$  
+6.4PL -.2DPR +12.9GJUI 2.76SCS  
Got Maid X EX-90% Chief

**Sire of Lot 33:**

**Ahlem Dimitri Seisme-PP-ET**  
67652718 12/23 PTA +109GJPI  
+.6T +496M +62F +28P +715CMS\$  
+6.6PL -.5DPR +21.6GJUI 2.77SCS  
Dimitri X VG-82% Skylar

**Dam of Lots 32 & 33:**

**Pine-Tree 2271 Feder 2718-PP-ET**  
**1-10 VG-85%** 67652718  
12/23 PTA +109GJPI +.6T +443CMS\$  
+.17% +31F +.08% +14P +4.0PL  
+1.4DPR +15.7GJUI 2.77SCS  
1-08 279 15734 5.2 819 3.7 582 RIP  
-Last test- 60 lbs 5.9%F 4.0%P  
-Due 6/24 for 2nd lactation  
Sire: TOG Federer 37562-P-ET

**LOT 33**

**Pine-Tree 2718 Seis 1180-PP-ET**

76381180 BBR 100 JH1F  
Born 12/12/23 ID Eartag 1180  
3/24 PTA +132 GJPI +1.3T +528CMS\$  
+420M +.10% +41F +.02% +20P  
+4.9PL +.2DPR +22.5GJUI 2.80SCS  
A2/A2

*\*Homozygous polled!*

**2nd Dam:**

**Pine-Tree 5057 Dalton 2271-PP-ET**  
**VG-88%**  
1-10 305 18570 4.7 879 3.7 684  
2-10 305 21320 4.4 938 3.8 809  
-Fresh w/ 3rd lactation

**3rd Dam:**

**Ahlem Viabull Vanity 5057-P**  
**EX-94%**  
4-11 305 22000 4.9 1074 3.8 825  
5-11 362 24087 5.2 1254 3.7 892 RIP  
Fresh 12/28/23 w/ 5th calf  
\*Sells as Lot 27

**AI sons include:**

**29JE4261 Vacuum-PP**  
**566JE110 Valuable-PP**

**4th Dam:**

**Ahlem Speed Vanity 3175**  
**EX-90%**  
2-11 299 20590 4.3 885 3.8 783  
3-11 305 21300 4.6 971 3.8 815

**5th Dam:**

**Ahlem Iatola Vanity 32859**  
**EX-93%**  
4-07 272 23420 4.5 1046 3.7 859

**6th Dam:**

**Ahlem Action Vanity 16031**  
**VG-85%**  
3-10 305 21520 4.6 1000 3.7 790

**7th Dam:**

**Ahlem Hallmark Vanity 2339**  
**VG-85%**  
2-10 305 25080 4.2 1057 3.6 900

**8th Dam: Ahlem Fair Vanity 9628**

**9th Dam:**

**Ahlem Barber Vanity 6291 (6)**  
**VG-88%**  
3-09 305 20930 5.6 1176 3.7 780



**JX Pine-Tree World Cup Dellia (5)-ET EX-93%**

3-07 305 20090 5.3 1063 4.1 823

(3rd Dam of Lot 34)

**LOT 34**

**JX Pine-Tree 2598 Blizzard 2952 (6)-ET**

67652952 BBR 100 JH1F  
Born 2/20/23 ID Eartag 1090  
12/23 PTA +161 GJPI +1.0T +637CM\$  
+669M +.19% +74F +.11% +49P  
+2.9PL +.1DPR +16.4GJUI 3.03SCS  
A2/A2

**Bred 3/12/23 to**  
**507JE1758 Thrasher (sexed)**

**Different Sire Stack:**  
**Blizzard x Gislev x Achiever**

**Valsigna Pine Blizzard**

3126987947 12/23 PTA +159GJPI  
+1.2T +973M +59F +49P +619CM\$  
+5.0PL -1.0DPR +18.4GJUI 3.02SCS  
Pine X VG-85% Steve

**JX Pine-Tree 2054 Gisley 2598 (5)-ET**

**2-05 VG-85%** 67762598  
12/23 PTA +136GJPI +.4T +513CM\$  
+.30% +53F +.18% +29P +2.3PL  
+2.3DPR +12.2GJUI 2.85SCS  
1-10 340 20429 4.9 1003 4.1 840  
-Fresh for 2nd lactation  
Sire: ISDK VJ Rastrup Hihl Gisley

**2nd Dam:**

**JX Pine-Tree 1556 Achiever 2054 (4)-ET**  
**VG-86%**  
1-08 305 16490 5.8 956 4.2 693

**3rd Dam: (Pictured above)**

**JX Pine-Tree World Cup Dellia (5)-ET**  
**EX-93%**

2-03 305 18510 5.6 1044 4.0 733  
3-07 305 20090 5.3 1063 4.1 823  
4-07 305 19750 5.4 1071 4.2 830  
-Still in herd

*\*Dam of 7JE1792 Navidad*

**4th Dam:**

**Oaklane Chisel Della 2130-ET**  
**VG-85%**  
3-01 305 21340 5.5 1168 3.9 824

**5th Dam:**

**Sunset Canyon Dzzler V Maid 2348**  
**VG-87%**  
2-11 305 24380 6.4 1566 4.0 983

**6th Dam:**

**Sunset Canyon Valen I Maid 118-ET**  
**VG-85%**  
1-09 305 16700 5.1 860 3.7 612

**7th Dam:**

**Sunset Canyon Impuls L Maid 2-ET**  
**VG-87%**  
1-08 365 20468 5.7 1169 3.8 804

**8th Dam:**

**Sunset Canyon Lemvig Maid 4-ET**  
**EX-93%**  
5-02 365 30508 7.0 2150 4.3 1302

**9th Dam:**

**Tenn Haug E Maid EX-93%**  
6-00 365 26014 7.0 1820 4.3 1107





**Kilgus Dazzler Lexie EX-94%**

3-04 305 22260 5.5 1220 3.8 835

(Dam of Lots 35 & 36)

**LOT 35**

**Pine-Tree Lexi Blizzard 1050-ET**

76381050 BBR 100 JH1F  
Born 6/9/23 ID Eartag 1050  
12/23 PTA +142 GJPI +1.4T +570CMS  
+225M +.09% +31F +.05% +19P  
+6.5PL +1.6DPR +17.0GJUI 2.89SCS  
A2/A2 MAS +1.4

**Sire of Lot 35:**

**Valsigna Pine Blizzard**  
3126987947 12/23 PTA +159GJPI  
+1.2T +973M +59F +49P +619CMS  
+5.0PL -1.0DPR +18.4GJUI 3.02SCS  
Pine X VG-85% Steve

**2nd Dam:**

**Super-K Action Lynn  
EX-90%**  
2-02 284 11440 5.1 582 3.7 418  
3-02 305 10750 4.4 478 3.4 369  
5-03 305 19730 4.5 894 3.2 638

**LOT 36**

**Pine-Tree Lexi Kama 1103-ET**

76381103 BBR 100 JH1F  
Born 8/19/23 ID Eartag 1103  
12/23 PTA +126 GJPI +1.5T +468CMS  
+360M +.01% +20F +.00% +13P  
+6.3PL +1.4DPR +18.0GJUI 2.68SCS  
A2/A2 MAS +.09

**Sire of Lot 36:**

**Black Label Thrashing Kamakazi-ET**  
3219480313 12/23 PTA +141GJPI  
+1.6T +1135M +50F +36P +477CMS  
+3.9PL -.4DPR +18.1GJUI 2.79SCS  
ThrasherX EX-95% Valentino

**3rd Dam:**

**Super-K Counciller Linda  
EX-90%**  
3-01 305 15310 5.4 829 3.8 584  
4-02 305 15880 5.2 825 3.7 590

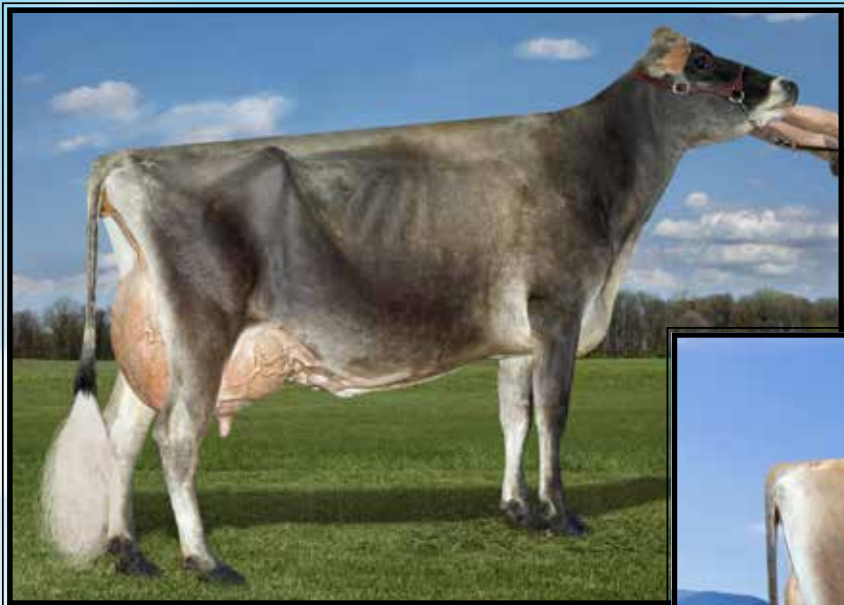
**Dam of Lots 35 & 36:**

**Kilgus Dazzler Lexie  
7-09 EX-94%** 119184696  
12/23 PTA +93GJPI +1.6T +330CMS  
+5.0PL +1.8DPR +16.0GJUI 2.71SCS  
2-02 305 19790 5.4 1069 3.6 708  
3-04 305 22260 5.5 1220 3.8 835  
4-04 296 21130 5.3 1117 3.8 808  
5-03 292 19100 5.4 1031 3.8 717  
6-03 305 22260 5.3 1182 3.7 827  
7-05 305 19780 5.3 1042 4.0 783  
Sire: Sunset Canyon Dazzler-ET  
(Pictured above)

**4th Dam:**

**JJF Barbers Miss Lilly  
EX-90%**  
4-02 305 19610 4.9 962 3.8 750  
5-02 249 19080 4.4 836 3.6 691





**Ahlem Chekelo Blush 47526**  
**EX-95%**

*\*Nom. Jr All-American 5yr-old 2021*  
(2nd Dam of Lot 37)



**Fire-Lake Bionic Blessing-ET**  
**EX-90%**

1-11 305 18910 5.9 1115 4.2 794  
(Dam of Lot 37)

## LOT 37

### Elm-J Blessing Mon 1119-ET

76381119 BBR 100 JH1F  
Born 9/5/23 ID Eartag 1119  
12/23 PTA +151 GJPI +1.4T +511CMS  
+653M +.05% +42F +.06% +38P  
+4.1PL +.6DPR +18.4GJUI 2.82SCS  
A2/A2

### Four-J Monster (6)-P-ET

3209703049 12/23 PTA +184GJPI  
+.6T +1048M +83F +56P +743CMS  
+3.6PL +.7DPR +5.3GJUI 2.85SCS  
Thrasher X VG-82% Listowel

### Fire-Lake FF Bionic Blessing-ET

**3-06 EX-90%** 3217703003  
12/23 PTA +117GJPI +2.0T +417CMS  
+722M -.04% +27F +.00% +26P  
+4.2PL -.4DPR +20.3GJUI 2.82SCS  
1-11 305 18910 5.9 1115 4.2 794  
Sire: River Valley Buttons Bionic-ET  
(Pictured above)

### 2nd Dam: (Pictured above) Ahlem Chekelo Blush 47526 EX-95%

2-09 288 16250 4.7 768 4.1 660  
3-08 305 16410 4.8 790 3.7 612  
4-11 305 19010 5.3 1005 3.8 719  
*\*Nom. Jr All-Am 5yr-old 2021*

### 3rd Dam: Ahlem Mozart Blush 43318 EX-92%

6-03 305 22820 4.9 1107 3.5 808  
7-04 305 22740 4.5 1016 3.6 810

### 4th Dam: Ahlem Valentino Blush 38502 VG-88%

7-10 305 25640 4.8 1237 3.8 978

### 5th Dam: Ahlem Celebrity Blush 34338 VG-85%

2-10 301 18400 4.9 910 3.7 689

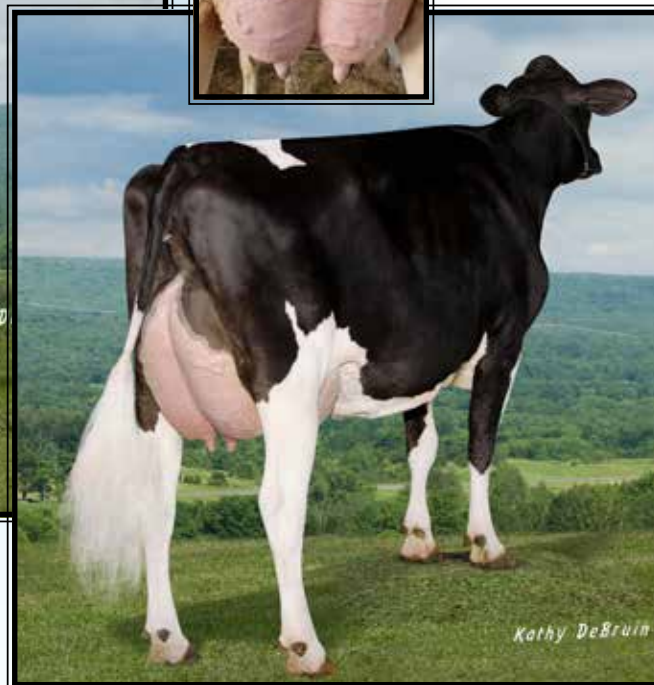
### 6th Dam: Ahlem Hero Blush 15288 VG-88%

3-11 305 22360 5.9 1315 3.5 791





Udder view of  
mat. sister to the  
Dam of Lot 37



**Pine-Tree 2287 Delt 6646-ET VG-88 +E+VE**

6-10 305 34730 4.1 1431 3.3 1157  
(Full sister to the 3rd Dam of Lot 38)

**LOT 38**

**JX Pine-Tree 2006 Joelle 1017 (1)-P**

76381017 BBR 46  
Born 5/24/23 ID Eartag 1017  
12/23 PTA +170 GJPI +.6T +613CMS\$  
+1497M +.02% +78F -.06% +42P  
+2.5PL +1.0DPR +11.2GJUI 2.83SCS  
A2/A2

*"This heifer the result of an F1 x F1  
mating! A2A2, Polled, ready to work"*

**UR JX Pine-Tree Jopollo Joe (1)-PP-ET**

67762493 12/23 PTA +147GJPI  
+.3T +1262M +68F +36P +625CMS\$  
+2.5PL +1.7DPR +5.2GJUI 2.84SCS  
Jopollo X VG-86% Listowel

**JX Pine-Tree 7429 Achiever 2006 (1)**

3-02 EX-90% 75812006  
12/23 PTA +172GJPI +1.3T +602CMS\$  
+1677M +.04% +91F -.02% +56P  
+1.0DPR +15.7GJUI 3.02SCS  
1-08 305 21770 5.5 1197 3.8 832  
2-09 305 25740 5.3 1358 3.8 976  
4-02 290 25990 5.2 1360 3.6 393 RIP  
Sire: JX Pine-Tree Achiever (3)-ET

(Pictured above)

**Maternal sister:**

**Pine-Tree DJ Empire**  
(udder photo above)

**2nd Dam:**

**Pine-Tree 6691 Hang 7429**  
VG-88 +VVVE  
2-00 365 31400 4.4 1378 3.4 1077

**3rd Dam:**

**Pine-Tree 2287 Delt 6691-ET**  
-lost at calving

**Full sister:**

**Pine-Tree 2287 Delt 6646-ET**  
VG-87 +V+VE  
2-10 327 33017 3.9 1281 3.3 1095  
6-10 305 34730 4.1 1431 3.3 1157  
(Pictured above)

**4th Dam:**

**Edg Ety Monarch 2287-ET**  
VG-86 VVVVV DOM  
1-10 287 18590 4.7 881 3.6 660

**5th Dam:**

**Welcome Bookem Ety-ET**  
VG-85 +V+V DOM

**6th Dam: Welcome Million Evaline**

EX-90 VVVVE  
1-11 365 30750 4.5 1392 3.6 1095

**7th Dam: Welcome Sharky Evi-ET\*TV**

VG-86 +E+VV  
2-08 329 36230 3.7 1345 3.3 1211  
3-09 365 43380 3.5 1518 3.3 1209  
Lifetime 160700 3.5 5632 3.3 5224

**8th Dam: Welcome Garter Every-ET**

VG-87 VVVVV GMD  
3-00 365 39870 3.5 1401 3.4 1361  
4-03 365 42400 3.3 1385 3.3 1403  
Lifetime 179770 3.5 6223 3.4 6136

**9th Dam: Welcome Amel Eve-ET**

VG-86 VVVVV GMD-DMD  
1-11 365 35410 3.5 1233 3.4 1196

**10th Dam: Aguila Fatal Ebony**

EX-90 EEEVV GMD  
2-00 365 33170 3.7 1238 3.6 1192





**Oakfield Tbone Vivianne-ET EX-96%**

Lifetime 273510 5.3 14504 4.0 1083  
(2nd Dam of Lot 39)

**LOT 39**

**Kevetta Nuance Valentine**

3-11 EX-92%

3210402499 BBR 100 JH1F  
Born 2/15/20 ID Eartag 412  
12/23 PTA +2GJPI +1.8T +.24%F  
+.08%P +2.1PL +4DPR +20.8GJUI  
1-10 313 16244 5.4 880 3.9 636  
2-11 295 15470 5.2 803 4.1 635  
3-10 64 5380 5.2 280 3.4 185 RIP  
Last test- 92 lbs 5.6%F 3.5%P  
SCC 19,000  
Fresh 1/5/24  
Bred 3/2/24 to  
54JE973 Arethusa Joel Cabot

\*Just appraised EX-92% in February, 2024

**ST-Lu Nuance-ET**

109541955 12/23 PTA +13GJPI  
+1.8T +.12%F +.04%P +2.4PL  
+2.2DPR +15.0GJUI 2.76SCS  
Balin X Samson

**Kevetta Citation A Vintage-ET**

7-02 EX-94% 3130648681  
1-10 280 15760 4.8 753 3.6 568  
2-09 280 17450 5.0 874 3.8 655  
3-08 305 20580 4.7 974 3.8 777  
4-11 305 24700 5.1 1259 3.8 930  
6-04 305 24880 4.9 1231 3.9 969  
Sire: BW Citation A-ET

**Maternal sisters include:**

Kevetta Nuance V-Max  
\*All American Winter Calf 2021

Kevetta Nuance Vancura  
\*Nominated All American Winter Calf  
and Winter Yearling

EX-94 by Applejack  
EX-94 & EX-90 by Victorious  
EX-93, EX-93 & EX-91 by Chrome  
EX-93 & EX-90 by Lemonhead  
EX-91, 90 & 90 by Incentive  
EX-92, 91, 91, 90 by Citation A  
EX-90 by Primero  
EX-90 by Colton

**2nd Dam: (Pictured above)**  
**Oakfield Tbone Vivianne-ET EX-96%**  
2-03 305 18850 4.7 880 3.7 699  
3-06 305 25140 5.3 1326 3.9 981  
4-06 305 21320 5.4 1148 3.9 835  
5-10 304 30110 5.3 1594 3.7 1111  
6-10 305 27460 5.1 1406 4.0 1085  
8-07 305 26110 5.2 1357 3.9 1017  
10-00 305 28060 5.1 1418 3.8 1061  
11-10 305 31720 5.3 1676 3.7 1179  
Lifetime 273510 5.3 14504 4.0 1083  
*\*1st Cheese yield, 3rd Milk, 4th Fat & 2nd Protein in Nat'l Class Leaders 2022*

**3rd Dam:**  
**Arethusa Response Vision-ET VG-88%**  
**Maternal sisters include:**  
**Arethusa Response Vivid-ET EX-96%**  
*\*Grand & Supreme Champ Royal 2014*  
*\*Un. ABA All-Am & All-Can 2014*  
*\*Grand Champion WDE & Royal 2012*

**4th Dam:**  
**Huronia Centurion Veronica 20J EX-97%,5E**  
2-11 365 25815 4.9 1272 4.1 1054  
*\*World Champion of All Breeds*  
*\*Supreme Champion World Dairy Expo 2006*  
*Grand Champion World Dairy Expo 2006*  
*\*Supreme Champion PA All-American 2005*  
*\*Grand Champion PA All-American 2005*  
*\*Grand Champion World Dairy Expo 2005*  
*\*National Grand Champion NAILE 2004*  
*\*All-Canadian Sr 2yr-old 2002*

**5th Dam: Genesis Renaissance Vivianne**  
**VG-87-CAN @ 2-01**  
5-00 303 12018 4.2 514 3.8 461

**6th Dam: Genesis Juno Virginia**  
**SUP EX-92,6E-CAN**  
9-09 305 16870 4.4 691 3.9 638  
Lifetime 149776 4.6 6948 3.9 5826

**7th Dam: Swissbell F Veronica SUP EX**  
Lifetime 133058 4.3 5760 4.0 5293

**8th Dam: Swissbell Ell Virginia EX-90%**  
4-01 305 11964 4.5 539

**9th Dam: Swissbell Virginia SUP EX-90%**  
Lifetime 149770 5.8 8670

**10th Dam: Belmont Jester Virginia SUP EX**





**Tierneys Getaway to London VG-85%**

*\*Jr Champion Louisville 2014  
(3rd Dam of Lot 40)*



**Tierneys Maverick Lusela EX-94%**

*\*Grand Champion Eastern State Jr Show 2018  
(Same family as Lot 40)*



**Tierneys Barbaro Lucine EX-93%**

*\*All-WI 4yr-old 2012  
(Mat. sister to the 5th Dam of Lot 40)*

## LOT 40

### Tierneys Kid Rock Lilybelle

174843027 Tatoo 651

Born 7/2/22

Due 6/4/24 to

507JE1726 Starlord (sexed)

*\*Reserve JR Champion of the  
Wayne County Fair Jr Show 2023*

### Mr Kathies Kid Rock

3128791587 12/23 PTA +1.6T

Gentry X EX-95% Comerica

### Tierneys Dirk Lulubelle

2-09 VG-88% 174312815

1-08 305 8030 5.1 409 3.8 306

Sire: RRF Colton Dirk-ET

### Same family as:

Tierneys Maverick Lusela {6}  
EX-94 % (Pictured above)

*\*Grand Champion Eastern States Jr  
Jersey Show 2018*

*\*Res. Grand Champ Eastern States 2017*

### 2nd Dam:

Tierneys Viral Letoile

EX-90%

2-00 291 10090 4.2 424 3.4 344

3-00 277 9780 4.8 470 3.5 346

3-11 263 10980 4.1 451 3.6 400

### 3rd Dam: (Pictured above)

Tierneys GetawayTo London

VG-85%

5-04 218 5740 5.3 400 230

*\*AJCA All-American Summ Yrlg 2014*

*\*AJCA Junior All-American 2014*

*\*Jr Champion All-American Jersey  
Show 2014 (Louisville)*

### 4th Dam:

Tierneys Kobalt Lulu EX-91%

9-04 293 15660 4.2 658 3.7 573

11-07 305 16450 3.4 558 3.4 553

### 5th Dam:

Tierneys Socrates Lucretia VG-88%

4-10 305 10150 5.7 576 4.2 423

### Maternal sisters include:

Tierneys Barbaro Lucine EX-93%

*\*All-WI 4yr-old 2012*

(Pictured above)

### 6th Dam:

Tierneys Duke Lucy EX-90%

5-06 305 14560 5.2 758 4.1 591

### Next 6 Dams:

VG-82% Counciller

VG-88% Duncan Chief

EX-90% Juno

EX-90% Big Shot

VG-87% Celas Master

EX-92 %





## JMS TERMS FOR CONSIGNMENT SALES

**TERMS:** The terms of the sale are cash, check, or wire transfer for the full purchase price in U.S. funds on sale day. Parties unknown to the seller or sale management must furnish a statement or letter from his/her bank or a certified check. The seller, sponsor, or sale manager reserves the right to require payment by wire transfer, certified check, or in cash. If other arrangements for payment are made with the seller, a written agreement acknowledging such terms and signed by both parties must be filed with the sale clerk prior to release. All payments must be made to the sale clerk. No release will be given prior to a satisfactory settlement, whereupon a signed order from the clerk must be presented to the loading supervisor. Seller retains title until payment has been honored unless other arrangements are made. Buyers are entitled to warranties as listed below only after full compliance with these terms.

**SALE POSITIVE:** The highest bidder shall be the buyer. Every animal is pledged to absolute sale unless withdrawn for cause as determined by the sale manager. In case of dispute the animal shall again be put up for advance bids, and if there be no advance bid, the animal shall be sold to the person from whom the auctioneer accepted the last bid. If two or more claim the bid, the auctioneer shall indicate the party whose bid was recognized. Other claimants will be given an opportunity to increase the bid. Bidding directly or indirectly on an animal in which the bidder or any person for whom the bid is made has an ownership interest is prohibited unless the intention to bid is disclosed specific to each animal in the catalog or announced from the auction stand.

**CERTIFICATES OF REGISTRATION:** Certificates of registration or identification (whichever applies) showing transfer to the buyer on the records of the American Jersey Cattle Association will be furnished by the seller for each animal at no cost within a reasonable period of time. An animal may not be transferred back to the seller for a period of one year except at the discretion of the American Jersey Cattle Association. Registration certificates show registration on the records of the American Jersey Cattle Association, but are not documents of title.

**CATALOG INFORMATION:** The material in the sale catalog has been carefully edited. Any errors, omissions, or information noted after printing of the catalog will be announced from the auction stand. Such announcements will take precedence over printed matter in the catalog. In any event, neither the sponsor nor the sale manager shall be responsible for errors or omissions.

**RISK:** All animals are at the buyer's risk as soon as struck off, but will be cared for at no cost for 24 hours. Buyers must make arrangements for care of their purchases beyond the 24 hour period. Animals are solely at the seller's risk prior to being struck off, including that time while under the care and supervision of the sponsor or sale manager.

### **WARRANTIES:**

- (a) Title. The seller warrants clear title to the animal and other items sold and the right to sell the same.
- (b) Breeding. The seller guarantees his/her animals to be breeders, but not beyond the purchase price, with the following understanding:

**Males:** Should any bull within four months after the sale date or within four months after reaching the age of fourteen months, whichever is later, fail to prove a breeder after being used on a registered Jersey female known to be a breeder, the matter shall be reported in writing to the seller who shall have four months from the date the bull is returned to him/her to prove him to be a breeder, before refunding the full purchase amount or making other satisfactory settlement with the buyer.

**Females:** Any female that has freshened normally within ninety days prior to the date of sale is, by that fact, considered to be a breeder. Should any other female when fresh over ninety days fail to become pregnant within four months of the sale date, or if she is less than sixteen months old when sold fail to become pregnant by the time she reaches the age of twenty months, after having been bred to a registered Jersey bull known to be a breeder and after having been treated by a licensed veterinarian, the matter shall be reported in writing to the seller within 90 days of the applicable limit, and the seller shall then have the privilege for four months after receiving the animal to prove her a breeder before refunding the full purchase price or making other settlement satisfactory to the buyer. Females bred when sold and pronounced in calf are presumed to be pregnant, but pregnancy is not guaranteed unless so announced. The seller makes no warranty that pregnant females will deliver calves or that they will carry them full term. Superovulation or flushing of a female after the sale negates any breeding warranty. Unless notice has been given to the sale manager prior to sale date and is noted in the catalog or announced from the auction stand that a female has been superovulated or flushed prior to sale date, the seller warrants that such is not the case. For animals that have been superovulated or flushed, a complete record of all embryo transfer offspring, pregnancies, and frozen embryos by service sire are to be given to the sale manager.

(c) Embryos. Only Grade 1 embryos collected and processed by an embryo transfer business (ETB) certified by the American Embryo Transfer Association (AETA) will be sold. Sale manager will have a copy of the Certificate of Embryo Recovery and Certificate of Freezing (AETA Forms A and C) before and during any sale.

(d) Choice of Pregnancy. Should an animal chosen from a specified flush fail to meet the breeding warranties, or should an animal of the sex specified by the buyer not result from a specified flush, the buyer and seller will take the following steps:

1. Seller will offer the choice of remaining animals from the specified flush, and/or
2. Seller will offer the choice of another flush already implanted or of a future flush. If the buyer accepts the choice of a future flush, unless otherwise agreed no interest will be charged to the buyer, but payment schedules will remain the same.
3. If neither of the above options are acceptable to the buyer, the seller will make full refund of all payments received.

(e) Limited Warranties. The Seller makes no other warranties, express or implied, including without limitation, merchantability or fitness for a particular purpose. All warranties cease when an animal is resold or transferred by the original purchaser.

**HEALTH CERTIFICATE:** The seller will provide to the buyer an official health certificate for interstate shipment of each animal. No warranty is made as to the condition or health of the animal or the result of any future health test or as to the condition of an animal's udder following calving. Herd and/or area accreditation and certification status and calfhood vaccination status will be printed in the catalog or announced from the auction stand. Health tests and condition for export sales to foreign countries or states with special health requirements are the sole responsibility of the buyer unless otherwise announced from the auction stand or otherwise agreed prior to sale between the seller and the potential buyer.

**SHIPPING:** Assistance will be given in loading and shipping animals after the sale but no risk is assumed by anyone associated with the sale when such assistance is given. All costs, risks and responsibilities are borne by the buyer, and transportation charges on all animals subject to adjustment shall be paid by the buyer, unless other arrangements are made.

**ABSENTEE BIDDERS:** While it is preferable for prospective bidders to attend the sale in person, for the convenience of those not present, members of the sales force will represent you at the sale. Others handling bids for absentee buyers should identify themselves to the sponsor or sale manager before the sale to ensure that the terms of the sale are complied with. Any person handling a bid for an absentee buyer does so as agent only and is not responsible to the buyer for any animal he may purchase in that capacity.

**RESPONSIBILITY:** The seller is solely responsible for all warranties, as to animals or other property offered for sale. The sale manager, auctioneer and sponsor are acting as agents only and are not responsible for the title, condition, quality, fitness, or productiveness of any animals or other items sold. Examination of all purchases should be made immediately after purchase, and any complaint must be reported to the sale manager before the close of the sale. Neither the sale manager, the sponsor, the seller, the auctioneer, nor anyone associated with the sale shall be responsible for accident, injury or property loss to anyone attending the sale. The sale manager, sponsor, and auctioneer shall not be liable for payment of the purchase price of any animal or other item sold. In submitting entries and/or selling animals or other items, the seller agrees to the terms and conditions set forth herein and assumes full responsibility of his or her animals.

**PENALTIES:** Violations of these terms and conditions shall be considered unethical sales practices and shall subject the violator to such penalties as may be imposed by the American Jersey Cattle Association.



**Please Bring This Catalog to the Sale!**

Catalogs by:

***Daniel Brandt***   
PEDIGREES & MARKETING

167 Valley Lane, Annville, PA 17003  
Ph: 717-821-1238 • E-mail: [brandtfive@comcast.net](mailto:brandtfive@comcast.net)