

# Future Opportunity Sale IV



**February 15th, 2024**

**Richmond, MN**

**1:00 PM CST**



# Live Internet Bidding at

[www.cowbuyer.com](http://www.cowbuyer.com)



- View/Bid online in real time. Registration is required. Please register at least one hour prior to sale time at [www.cowbuyer.com](http://www.cowbuyer.com)
- High speed internet is required. Slower speed will not permit you to bid and keep pace in real time.
- Terms: Purchasing online constates a legal contract and promise for payment of purchase. All purchases must be paid within five days of sale date and prior to load out or delivery of cattle purchased.
- Cowbuyer.com is a service provider and is not responsible for the activity or inactivity of any technology, internet connection at the sale site or connection and technology of the bidder.
- No APP required on mobile devices.

Questions please contact Aaron Ray Tompkins 336-363-4639

# Future Opportunity Sale

Thursday, February 15, 2024 @ 1:00 PM CST

View/ bid online in real time at [www.cowbuyer.com](http://www.cowbuyer.com)

\*Bidders must be pre-register & pre-approved. Contact Aaron Ray Tompkins if you need assistance at 336-363-4639

Feel Free to contact any member of the sale staff below to handle your bids or answer your questions!

## Sale Staff

Arnie Gruenes.....320-493-9703

Arnie Junior Gruenes....320-293-1514

Jamie Endvick.....608-566-9096

Terms of sale: We are not a bank & we do not finance cattle! Buyers will be invoiced immediately by email with overnight payments expected by money wires or good check sent by priority mail to Sale Clerk

## Sale Clerk

Kris Gruenes .....320-493-9704... [krisarn@meltel.net](mailto:krisarn@meltel.net)

We welcome participation from buyers who understand the proceeds need to be issued immediately! Buyers of live cattle should make immediate arrangements with sellers for transportation of purchases after payment has been made to sale managers. We encourage buyers to ensure their purchases at least until they arrive at their new homes! Buyers are guaranteed their purchase will be healthy at time of pick up.

## Sale Catalog

Ashley Gruenes.....320-345-0126.....[lilyandmacy@gmail.com](mailto:lilyandmacy@gmail.com)

Twin Spruce Farm is excited to be giving the best opportunity for the future. As we have used these genetics and other cow families to make and grow our future herd early on. Our family would like to thank everyone for the support and hope these genetics will bring you great opportunities for in the future.

Sincerely,

Arnie & Kris Gruenes and Family

This sale will strictly be done on cowbuyer. All bidding will be placed and accepted through cowbuyer. This sale is going to be popcorn bidding. Where every lot in up to 1-minute intervals after the last person bids will close. There will be two lots going the same time. There is No auctioneer and No pedigree reader.



T-Spruce G Miller 19523-ET

# Lot 1

# T-Spruce G Miller 19523-ET

## IVF Session

\*Buyer is purchasing rights to control the next IVF session(s) until a minimum of 8 #1 or #2 IVF embryos are produced. Embryo grades are determined at the time of transfer if fresh embryos or at time of freezing if freezing is requested by buyer. Buyer keeps all resulting embryos from these controlled IVF sessions. Buyer is responsible for all costs of the aspiration and mating sire decisions.

14 Average

#1 TPI

Oocytes

George Miller

DAUGHTER

Arnie Gruenes  
Twin Spruce Farm  
17565 Co Rd 43  
Richmond, MN 56368  
Cows@meltel.net  
320-493-9703

Tested Negative  
for MW

Born 10/05/2022 Reg: 840003260816935

12/2023	CDCB SUMMARY GENOMICCOW				NM\$ +1193
Milk	+1348	79%R	Cheese Merit \$		+1217
Fat	+105	+0.18%	FMS +1034	GMS	+1145
Protein	+72	+0.10%	Gestation Len.	MSP	
CFP	+177		EFI %	gEFI 11.1%	gIB 14.1%
SCS	2.88	%R	Mastitis +3.1	Fert. Index	+1.4
PL	+7.5	%R	Livability +2.3	Heifer Liv.	+1.1
DPR	+0.8	%R	HCR +2.9	CCR	+3.3
RFI	-65				
Feed Saved	+52	43%R		0 Dtrs 0 Herds	% US

Beta: A1A1 Kappa: AB DWP\$: 1244

12/2023	GHA TYPE SUMMARY				TPI +3224
PTAT +2.05	78%R	UDC+1.92	FLC+1.03	BSC +1.06	0 D / 0 H

			-2	-1	0	1	2
Stature	+1.74	Tall					
Strength	+0.19	Strong					
Body Depth	+0.22	Deep					
Dairy Form	+1.40	Open Rib					
Rump Angle	-0.10	High Pins					
Thurl Width	+1.08	Wide					
Rear Legs-Side	-0.31	Posty					
Rear Legs-Rear	+1.01	Straight					
Foot Angle	+1.24	Steep					
Feet & Legs Score	+1.42	High					
F. Udder Attachment	+2.73	Strong					
Rear Udder Height	+2.34	High					
Rear Udder Width	+2.15	Wide					
Udder Cleft	+1.34	Strong					
Udder Depth	+2.41	Shallow					
Front Teat Placement	+1.49	Close					
Rear Teat Placement	+1.82	Close					
Teat Length	-1.21	Short					

Sire: Lars-Acres George Miller-ET

3219742983 12/23 PTA +3035 GTPI +519 M  
0.21% +81 F +0.14% +56 P +1040 NM\$ +7.7 PL  
+2.3 DPR 2.50 SCS +0.90 T +1.55 UDC +0.58 FLC  
Taos x Legacy x Jagger

Dam: T-SPRUCE MONSHINER 15704-ET

Reg: 3220247712 12/23 PTA +3079 GTPI  
+1602 M +110 F +1153 NM\$  
+5.8 PL +0.1 DPR +1.33 T +1.39 UDC  
Sire Stack: Moonshiner x Lionel x Samuri  
2-7 2x 161DIM 14710M 674F 4.5%f 486P 3.3%P

2<sup>nd</sup> Dam

T-Spruce Lionel 13196-ET GP - 83  
LACT 1 294d 28050M 4.1% 1170F 3.3% 933P

3<sup>rd</sup> Dam

T-Spruce Samuri 6347-ET

4<sup>th</sup> Dam

Mercedes Ts 9539-ET  
02-00 3x 354d 30670m 3.7 1149f 3.2 991p



T-Spruce Phoenix 22160-ET

# Lot 2

# T-Spruce Phoenix 22160-ET

Born 11/05/2023 Reg: 840003280396501

12/2023	CDCB SUMMARY GENOMICCOW				NMS +1093
Milk	+1248	79%R	Cheese Merit \$		+1109
Fat	+136	+0.30%	FMS\$ +966	GMS	+1068
Protein	+64	+0.09%	Gestation Len.	MSP	
CFP	+200		EFI %	gEFI 12.0%	gIB 17.6%
SCS	2.91	%R	Mastitis +1.6	Fert. Index	+0.7
PL	+4.7	%R	Livability -1.2	Heifer Liv.	+0.9
DPR	-0.2	%R	HCR +3.0	CCR	+1.9
RFI	-54				
Feed Saved	-53	44%R	0 Dtrs	0 Herds	% US

Beta: A2A2 Kappa: AA DWP\$: 1039

12/2023	GHA TYPE SUMMARY				TPI +3189
PTAT +2.14	78%R	UDC+2.07	FLC+0.98	BSC +1.43	0 D / 0 H
					-2 -1 0 1 2
Stature	+1.61	Tall			
Strength	+1.04	Strong			
Body Depth	+1.09	Deep			
Dairy Form	+1.78	Open Rib			
Rump Angle	-1.52	High Pins			
Thurl Width	+2.01	Wide			
Rear Legs-Side	+0.71	Sickle			
Rear Legs-Rear	+1.46	Straight			
Foot Angle	+0.82	Steep			
Feet & Legs Score	+1.23	High			
F. Udder Attachment	+2.36	Strong			
Rear Udder Height	+2.79	High			
Rear Udder Width	+3.02	Wide			
Udder Cleft	+1.60	Strong			
Udder Depth	+1.51	Shallow			
Front Teat Placement	+1.17	Close			
Rear Teat Placement	+1.82	Close			
Teat Length	+0.13	Long			

## #7 TPI

# PHOENIX DAUGHTER

Tested Negative for MW

Arnie Gruenes  
Twin Spruce Farm  
17565 Co Rd 43  
Richmond, MN 56368  
Cows@meltel.net  
320-493-9703

**Sire: T-Spruce Phoenix 2176-ET**

3234732161 12/23 PTA +3180 GTPI +1669 M  
0.24% +134 F +0.08% +76 P +1036 NM\$ +3.3 PL  
-1.9 DPR 3.04 SCS +2.52 T +2.22 UDC +1.32 FLC  
Perfect x Lionel x Yoder

**Dam: T-SPRUCE MONSHINER 15704-ET**

Reg: 3220247712 12/23 PTA +3079 GTPI  
+1602 M +110 F +1153 NM\$  
+5.8 PL +0.1 DPR +1.33 T +1.39 UDC  
Sire Stack: Moonshiner x Lionel x Samuri  
2-7 2x 161DIM 14710M 674F 4.5%f 486P 3.3%P

**2<sup>nd</sup> Dam**

T-Spruce Lionel 13196-ET GP - 83  
LACT 1 294d 28050M 4.1% 1170F 3.3% 933P

**3<sup>rd</sup> Dam**

T-Spruce Samuri 6347-ET

**4<sup>th</sup> Dam**

Mercedes Ts 9539-ET  
02-00 3x 354d 30670m 3.7 1149f 3.2 991p



T-SPRUCE LTWRTH 20218-ET

# Lot 3

# T-SPRUCE LTWRTH 20218-ET

Born 12/27/2022 Reg: 840003260817630

Arnie Gruenes  
Twin Spruce Farm  
17565 Co Rd 43  
Richmond, MN 56368  
Cows@meltel.net  
320-493-9703

12/2023	CDCB SUMMARY GENOMICCOW				NMS +1194
Milk	+1025	78%R	Cheese Merit \$		+1218
Fat	+120	+0.28%	FMS +1031	GMS	+1162
Protein	+64	+0.11%	Gestation Len.	MSP	
CFP	+184		EFI %	gEFI 11.7%	gIB 17.1%
SCS	2.74	%R	Mastitis +1.5	Fert. Index	+1.2
PL	+6.4	%R	Livability +2.0	Heifer Liv.	+0.7
DPR	+0.5	%R	HCR +2.3	CCR	+2.3
RFI	-177				
Feed Saved	+180	43%R		0 Dtrs 0 Herds	% US

Tested Negative  
for MW

Beta: A2A2 Kappa: AB DWP\$: 1064

12/2023	GHA TYPE SUMMARY				TPI +3171			
PTAT +1.63	77%R	UDC+1.40	FLC+0.57	BSC +0.89	0 D / 0 H			
				-2	-1	0	1	2
Stature	+1.33	Tall						
Strength	+0.29	Strong						
Body Depth	+0.35	Deep						
Dairy Form	+1.55	Open Rib						
Rump Angle	+1.06	Sloped						
Thurl Width	+0.97	Wide						
Rear Legs-Side	+0.64	Sickle						
Rear Legs-Rear	+0.82	Straight						
Foot Angle	+0.80	Steep						
Feet & Legs Score	+0.82	High						
F. Udder Attachment	+1.38	Strong						
Rear Udder Height	+2.18	High						
Rear Udder Width	+2.29	Wide						
Udder Cleft	+1.10	Strong						
Udder Depth	+1.00	Shallow						
Front Teat Placement	+1.41	Close						
Rear Teat Placement	+1.54	Close						
Teat Length	-1.23	Short						

### Sire: Aurora Letchworth-ET

3218470965 12/23 PTA +3086 GTPI +885 M  
0.26% +109 F +0.11% +59 P +1121 NM\$ +6.0 PL  
+1.1 DPR 2.78 SCS +1.39 T +1.27 UDC +0.25 FLC  
Conway x Rapid x Frazzled

### Dam: T-SPRUCE GAMEDAY 16896-ET

Reg: 3235976903 12/23 PTA +3047 GTPI  
+1210 M +102 F +1079 NM\$  
+6.3 PL +1.4 DPR +1.26 T +1.23 UDC  
Sire Stack: Gameday x Renegade x Frazzled

#### 2<sup>nd</sup> Dam

T-Spruce Renegade 13580-ET

#### 3<sup>rd</sup> Dam

T-Spruce Frazzled 6471-ET G-79  
02-03 3x 365d 35800m 4.3 1544f 3.3 1177p

#### 4<sup>th</sup> Dam

Melarry Spring 9500-ET



T-Spruce Phoenix 22091-ET

# Lot 4

# T-Spruce Phoenix 22091-ET

Born 10/27/2023 Reg: 840003280396432

12/2023	CDCB SUMMARY GENOMICCOW				NM\$ +1194
Milk	+1934	78%R	Cheese Merit \$		+1210
Fat	+119	+0.15%	FMS +1093	GMS	+1154
Protein	+78	+0.06%	Gestation Len.	MSP	
CFP	+197		EFI %	gEFI 11.8%	gIB 19.9%
SCS	2.75	%R	Mastitis +2.3	Fert. Index	+1.0
PL	+6.1	%R	Livability -0.7	Heifer Liv.	+0.7
DPR	-0.2	%R	HCR +3.5	CCR	+2.3
RFI	-68				
Feed Saved	+78	43%R		0 Dtrs 0 Herds	% US

Beta: A2A2 Kappa: BB DWPS: 1146

12/2023	GHA TYPE SUMMARY				TPI +3174			
PTAT +1.17	77%R	UDC+1.49	FLC+0.31	BSC +0.27	0 D / 0 H			
				-2	-1	0	1	2
Stature	+0.02	Tall						
Strength	+0.29	Strong						
Body Depth	+0.24	Deep						
Dairy Form	+1.20	Open Rib						
Rump Angle	-0.27	High Pins						
Thurl Width	+1.54	Wide						
Rear Legs-Side	+0.49	Sickle						
Rear Legs-Rear	+0.41	Straight						
Foot Angle	-0.13	Low						
Feet & Legs Score	+0.30	High						
F. Udder Attachment	+1.32	Strong						
Rear Udder Height	+2.37	High						
Rear Udder Width	+2.66	Wide						
Udder Cleft	+0.43	Strong						
Udder Depth	+0.12	Shallow						
Front Teat Placement	-0.18	Wide						
Rear Teat Placement	+0.27	Close						
Teat Length	+0.66	Long						

## #2 Net Merit PHOENIX DAUGHTER

Tested Negative  
for MW

### Sire: T-Spruce Phoenix 2176-ET

3234732161 12/23 PTA +3180 GTPI +1669 M  
0.24% +134 F +0.08% +76 P +1036 NM\$ +3.3 PL  
-1.9 DPR 3.04 SCS +2.52 T +2.22 UDC +1.32 FLC  
Parfect x Lionel x Yoder

### Dam: T-SPRUCE F BITE 18891-ET

Reg: 3251844061 12/23 PTA +3022 GTPI  
+1688 M +93 F +1101 NM\$  
+6.8 PL +0.4 DPR +0.73 T +1.45 UDC  
Sire Stack: Frost Bite x Rhett x Nugent

**2<sup>nd</sup> Dam**  
T-Spruce Rhett 14692-ET  
**3<sup>rd</sup> Dam**  
T-Spruce Nugent 12728-ET  
**4<sup>th</sup> Dam**  
T-Spruce Frazzled 10914-ET

Arnie Gruenes  
Twin Spruce Farm  
17565 Co Rd 43  
Richmond, MN 56368  
Cows@meltel.net  
320-493-9703



T-SPRUCE HIKE 20861-ET

# Lot 5

# T-Spruce Hike 20861-ET

## IVF Session

\*Buyer is purchasing rights to control the next IVF session(s) until a minimum of 8 #1 or #2 IVF embryos are produced. Embryo grades are determined at the time of transfer if fresh embryos or at time of freezing if freezing is requested by buyer. Buyer keeps all resulting embryos from these controlled IVF sessions. Buyer is responsible for all costs of the aspiration and mating sire decisions.

Born 04/08/2023 Reg: 840003265765367

12/2023	CDCB SUMMARY GENOMICCOW				NMS +1283
Milk	+1275	78%R	Cheese Merit \$		+1301
Fat	+134	+0.29%	FMS +1141	GMS	+1236
Protein	+68	+0.10%	Gestation Len.	MSP	
CFP	+202		EFI %	gEFI 12.0%	gIB 15.0%
SCS	2.92	%R	Mastitis +1.0	Fert. Index	-0.5
PL	+5.6	%R	Livability +2.0	Heifer Liv.	+1.0
DPR	-1.4	%R	HCR +2.2	CCR	+0.5
RFI	-121				
Feed Saved	+376	44%R	0 Dtrs	0 Herds	% US

Beta: A2A2 Kappa: BB DWP\$: 1353

12/2023	GHA TYPE SUMMARY				TPI +3270
PTAT +2.46	77%R	UDC+2.86	FLC+1.21	BSC-0.02	0 D / 0 H
Stature	+0.15	Tall			
Strength	-0.67	Frail			
Body Depth	-0.05	Shallow			
Dairy Form	+2.92	Open Rib			
Rump Angle	-0.60	High Pins			
Thurl Width	+0.84	Wide			
Rear Legs-Side	+0.59	Sickle			
Rear Legs-Rear	+0.88	Straight			
Foot Angle	+0.58	Steep			
Feet & Legs Score	+1.28	High			
F. Udder Attachment	+2.65	Strong			
Rear Udder Height	+3.54	High			
Rear Udder Width	+4.09	Wide			
Udder Cleft	+1.98	Strong			
Udder Depth	+1.30	Shallow			
Front Teat Placement	+2.32	Close			
Rear Teat Placement	+2.57	Close			
Teat Length	-1.23	Short			

## 15 Average Oocytes

Arnie Gruenes  
Twin Spruce Farm  
17565 Co Rd 43  
Richmond, MN 56368  
Cows@meltel.net  
320-493-9703

Tested Negative for MW

### Sire: Trifecta Hike-ET

3225319587 12/23 PTA +3095 GTPI +1469 M  
0.20% +116 F +0.06% +63 P +1211 NM\$ +5.3 PL  
-.09 DPR 2.83 SCS +1.22 T +2.03 UDC +0.30 FLC  
Bosa x Tahiti x Bandares

### Dam: T-SPRUCE HIGHJUMP 16722-ET

Reg: 3235976729 12/23 PTA +3079 GTPI  
+1560 M +136 F +1092 NM\$  
+3.2 PL -3.7 DPR +2.18 T +2.40 UDC  
Sire Stack: Highjump x Lionel x Yoder

#### 2<sup>nd</sup> Dam

Mercedes Lionel Lass-ET

#### 3<sup>rd</sup> Dam

Endco Yoder L7933 9839-ET VG-86  
5-5 3x 350DIM 34310m 1560f 4.5%f 1255p 3.6%p

#### 4<sup>th</sup> Dam

T-Spruce Lgold 7933-ET  
02-05 2x 248d 20320m 4.4 904f 3.4 687p





T-Spruce Versachi 21338-ET

# Lot 6

# T-Spruce Versachi 21338-ET

## IVF Session

\*Buyer is purchasing rights to control the next IVF session(s) until a minimum of 8 #1 or #2 IVF embryos are produced. Embryo grades are determined at the time of transfer if fresh embryos or at time of freezing if freezing is requested by buyer. Buyer keeps all resulting embryos from these controlled IVF sessions. Buyer is responsible for all costs of the aspiration and mating sire decisions.

Born 06/24/2023 Reg: 840003272452037

12/2023	CDCB SUMMARY GENOMICCOW				NMS +1317
Milk	+1738	79%R	Cheese Merit \$		+1335
Fat	+141	+0.25%	FMS +1183	GMS	+1212
Protein	+80	+0.09%	Gestation Len.	MSP	
CFP	+221		EFI %	gEFI	12.2% gIB 18.5%
SCS	2.87	%R	Mastitis +2.9	Fert. Index	-1.6
PL	+6.0	%R	Livability +2.8	Heifer Liv.	+1.0
DPR	-2.7	%R	HCR +1.1	CCR	-1.1
RFI	-143				
Feed Saved	+208	44%R	0 Dtrs	0 Herds	% US

Beta: A2A2 Kappa: BB DWP\$: 1474

12/2023	GHA TYPE SUMMARY				TPI +3224		
PTAT +1.51	77%R	UDC+1.61	FLC+0.15	BSC +0.86	0 D / 0 H		
			-2	-1	0	1	2
Stature	+1.37	Tall					
Strength	+0.06	Strong					
Body Depth	+0.46	Deep					
Dairy Form	+2.10	Open Rib					
Rump Angle	+0.14	Sloped					
Thurl Width	+0.95	Wide					
Rear Legs-Side	-0.10	Posty					
Rear Legs-Rear	+0.07	Straight					
Foot Angle	+0.77	Steep					
Feet & Legs Score	+0.51	High					
F. Udder Attachment	+1.94	Strong					
Rear Udder Height	+2.20	High					
Rear Udder Width	+2.38	Wide					
Udder Cleft	+0.79	Strong					
Udder Depth	+1.30	Shallow					
Front Teat Placement	+1.05	Close					
Rear Teat Placement	+1.08	Close					
Teat Length	-0.33	Short					

#1 TPI  
Versachi  
DAUGHTER

#2 Net Merit and  
Cheese Merit  
Versachi  
DAUGHTER

Tested Negative  
for MW

### Sire: Level-Plain Versachi-ET

3208694575 12/23 PTA +2988 GTPI +1529 M  
0.15% +103 F +0.03% +57 P +1144 NM\$ +6.7 PL  
-0.8 DPR 2.94 SCS +0.73 T +1.44 UDC +0.34 FLC  
Supercharge x Acura x Achiever

### Dam: T-SPRUCE HIGHJUMP 16722-ET

Reg: 3235976729 12/23 PTA +3079 GTPI  
+1560 M +136 F +1092 NM\$  
+3.2 PL -3.7 DPR +2.18 T +2.40 UDC  
Sire Stack: Highjump x Lionel x Yoder

**2<sup>nd</sup> Dam**  
Mercedes Lionel Lass-ET  
**3<sup>rd</sup> Dam**  
Endco Yoder L7933 9839-ET VG-86  
5-5 3x 350DIM 34310m 1560f 4.5%f 1255p 3.6%p  
**4<sup>th</sup> Dam**  
T-Spruce Lgold 7933-ET  
02-05 2x 248d 20320m 4.4 904f 3.4 687p

Arnie Gruenes  
Twin Spruce Farm  
17565 Co Rd 43  
Richmond, MN 56368  
Cows@meltel.net  
320-493-9703



T-Spruce Sheepster 21521-ET

# Lot 7 T-SPRUCE SHEEPSTER 21521-ET

## IVF Session

\*Buyer is purchasing rights to control the next IVF session(s) until a minimum of 8 #1 or #2 IVF embryos are produced. Embryo grades are determined at the time of transfer if fresh embryos or at time of freezing if freezing is requested by buyer. Buyer keeps all resulting embryos from these controlled IVF sessions. Buyer is responsible for all costs of the aspiration and mating sire decisions.

Born 07/23/2023 Reg: 840003272452220

12/2023	CDCB SUMMARY GENOMICCOW			NMS +1241
Milk	+1506	79%R	Cheese Merit \$	+1261
Fat	+137	+0.27%	FMS +1097	GMS +1186
Protein	+75	+0.10%	Gestation Len.	MSP
CFP	+212		EFI %	gEFI 11.2%
SCS	2.85	%R	Mastitis +3.2	Fert. Index -0.5
PL	+5.7	%R	Livability +1.6	Heifer Liv. +1.0
DPR	-1.2	%R	HCR +2.4	CCR +1.1
RFI	-90			
Feed Saved	+162	43%R	0 Dtrs	0 Herds % US

Beta: A2A2 Kappa: AA DWP\$: 1383

12/2023	GHA TYPE SUMMARY			TPI +3220
PTAT +1.73	77%R	UDC+1.66	FLC+0.74	BSC +0.80
			0 D / 0 H	
Stature	+1.23	Tall		
Strength	+0.21	Strong		
Body Depth	+0.50	Deep		
Dairy Form	+2.25	Open Rib		
Rump Angle	+0.34	Sloped		
Thurl Width	+0.61	Wide		
Rear Legs-Side	+0.17	Sickle		
Rear Legs-Rear	+0.78	Straight		
Foot Angle	+1.16	Steep		
Feet & Legs Score	+0.98	High		
F. Udder Attachment	+1.96	Strong		
Rear Udder Height	+2.19	High		
Rear Udder Width	+2.73	Wide		
Udder Cleft	+1.05	Strong		
Udder Depth	+1.02	Shallow		
Front Teat Placement	+1.15	Close		
Rear Teat Placement	+1.19	Close		
Teat Length	-0.63	Short		

## Full Sister to lot 9

Arnie Gruenes  
Twin Spruce Farm  
17565 Co Rd 43  
Richmond, MN 56368  
Cows@meltel.net  
320-493-9703

Tested Negative for MW

### Sire: Ocd Trooper Sheepster-ET

3236792832 12/23 PTA +3187 GTPI +1358 M  
0.26% +129 F +0.11% +75 P +1194 NM\$ +6.1 PL  
-0.5 DPR 2.93 SCS +1.41 T +1.14 UDC +0.90 FLC  
Trooper x Acura x Resolve

### Dam: T-SPRUCE HIGHJUMP 16722-ET

Reg: 3235976729 12/23 PTA +3079 GTPI  
+1560 M +136 F +1092 NM\$  
+3.2 PL -3.7 DPR +2.18 T +2.40 UDC  
Sire Stack: Highjump x Lionel x Yoder

#### 2<sup>nd</sup> Dam

Mercedes Lionel Lass-ET

#### 3<sup>rd</sup> Dam

Endco Yoder L7933 9839-ET VG-86  
5-5 3x 350DIM 34310m 1560f 4.5%f 1255p 3.6%p

#### 4<sup>th</sup> Dam

T-Spruce Lgold 7933-ET  
02-05 2x 248d 20320m 4.4 904f 3.4 687p



T-SPRUCE OVERDO 19374-ET

# Lot 8 T-SPRUCE SHEEPSTER 21188-ET

## IVF Session

\*Buyer is purchasing rights to control the next IVF session(s) until a minimum of 8 #1 or #2 IVF embryos are produced. Embryo grades are determined at the time of transfer if fresh embryos or at time of freezing if freezing is requested by buyer. Buyer keeps all resulting embryos from these controlled IVF sessions. Buyer is responsible for all costs of the aspiration and mating sire decisions.

Born 06/01/2023 Reg: 840003265765694

12/2023	CDCB SUMMARY GENOMICCOW				NMS +1200
Milk	+1437	79%R	Cheese Merit \$		+1221
Fat	+115	+0.20%	FMS +1045	GMS	+1179
Protein	+75	+0.10%	Gestation Len.	MSP	
CFP	+190		EFI %	gEFI 11.8% gIB 16.1%	
SCS	2.83	%R	Mastitis +2.8	Fert. Index +2.0	
PL	+6.6	%R	Livability +2.8	Heifer Liv. +1.2	
DPR	+1.4	%R	HCR +2.7	CCR +3.4	
RFI	-30				
Feed Saved	+22	43%R	0 Dtrs	0 Herds	% US

Beta: A1A2 Kappa: AA DWPS: 1378

12/2023	GHA TYPE SUMMARY		TPI +3215
PTAT +1.52	78%R	UDC+1.01 FLC+0.97 BSC +0.86	0 D / 0 H
		-2 -1 0 1 2	
Stature	+1.31	Tall	
Strength	+0.41	Strong	
Body Depth	+0.28	Deep	
Dairy Form	+1.43	Open Rib	
Rump Angle	+0.16	Sloped	
Thurl Width	+0.62	Wide	
Rear Legs-Side	-0.49	Posty	
Rear Legs-Rear	+1.17	Straight	
Foot Angle	+1.05	Steep	
Feet & Legs Score	+1.20	High	
F. Udder Attachment	+1.13	Strong	
Rear Udder Height	+1.64	High	
Rear Udder Width	+1.96	Wide	
Udder Cleft	+0.68	Strong	
Udder Depth	+0.70	Shallow	
Front Teat Placement	+0.51	Close	
Rear Teat Placement	+0.74	Close	
Teat Length	+0.91	Long	

Arnie Gruenes  
Twin Spruce Farm  
17565 Co Rd 43  
Richmond, MN 56368  
Cows@meltel.net  
320-493-9703

Tested Negative  
for MW

### Sire: Ocd Trooper Sheepster-ET

3236792832 12/23 PTA +3187 GTPI +1358 M  
0.26% +129 F +0.11% +75 P +1194 NM\$ +6.1 PL  
-0.5 DPR 2.93 SCS +1.41 T +1.14 UDC +0.90 FLC  
Trooper x Acura x Resolve

### Dam: T-SPRUCE TAOS 16364-ET

Reg: 3235976371 12/23 PTA +3096 GTPI  
+1869 M +110 F +1067 NM\$  
+5.4 PL +0.6 DPR +1.52 T +0.76 UDC  
Sire Stack: Taos x Lionel x Samuri

**2<sup>nd</sup> Dam**  
T-Spruce Lionel 13196-ET GP - 83  
LACT 1 294d 28050M 4.1% 1170F 3.3% 933P

**3<sup>rd</sup> Dam**  
T-Spruce Samuri 6347-ET

**4<sup>th</sup> Dam**  
Mercedes Ts 9539-ET  
02-00 3x 354d 30670m 3.7 1149f 3.2 991p



T-SPRUCE SHEEPSTER 21584-ET

# Lot 9 T-SPRUCE SHEEPSTER 21584-ET

## IVF Session

\*Buyer is purchasing rights to control the next IVF session(s) until a minimum of 8 #1 or #2 IVF embryos are produced. Embryo grades are determined at the time of transfer if fresh embryos or at time of freezing if freezing is requested by buyer. Buyer keeps all resulting embryos from these controlled IVF sessions. Buyer is responsible for all costs of the aspiration and mating sire decisions.

Born 08/03/2023 Reg: 840003272452283

12/2023	CDCB SUMMARY GENOMICCOW				NM\$ +1259
Milk	+1524	79%R	Cheese Merit \$		+1280
Fat	+144	+0.29%	FM\$ +1104	GMS	+1182
Protein	+78	+0.10%	Gestation Len.	MSP	
CFP	+222		EFI %	gEFI 11.4%	gIB 14.0%
SCS	2.87	%R	Mastitis +1.6	Fert. Index	-1.2
PL	+5.2	%R	Livability +1.0	Heifer Liv.	+0.8
DPR	-2.2	%R	HCR +1.2	CCR	-0.7
RFI	-148				
Feed Saved	+163	43%R	0 Dtrs	0 Herds	% US

Beta: A2A2 Kappa: BB DWP\$: 1332

12/2023	GHA TYPE SUMMARY				TPI +3272
PTAT +2.16	77%R	UDC+2.03	FLC+1.32	BSC +0.87	0 D / 0 H
Stature	+1.08	Tall			
Strength	+0.47	Strong			
Body Depth	+0.55	Deep			
Dairy Form	+2.01	Open Rib			
Rump Angle	+0.05	Sloped			
Thurl Width	+1.25	Wide			
Rear Legs-Side	-0.50	Posty			
Rear Legs-Rear	+1.54	Straight			
Foot Angle	+1.54	Steep			
Feet & Legs Score	+1.43	High			
F. Udder Attachment	+2.26	Strong			
Rear Udder Height	+2.73	High			
Rear Udder Width	+3.12	Wide			
Udder Cleft	+0.92	Strong			
Udder Depth	+1.27	Shallow			
Front Teat Placement	+0.54	Close			
Rear Teat Placement	+1.01	Close			
Teat Length	-0.16	Short			

## APRIL 1st session(s) will be available

Arnie Gruenes  
Twin Spruce Farm  
17565 Co Rd 43  
Richmond, MN 56368  
Cows@meltel.net  
320-493-9703

Tested for MW  
Pending Results

### Sire: Ocd Trooper Sheepster-ET

3236792832 12/23 PTA +3187 GTPI +1358 M  
0.26% +129 F +0.11% +75 P +1194 NM\$ +6.1 PL  
-0.5 DPR 2.93 SCS +1.41 T +1.14 UDC +0.90 FLC  
Trooper x Acura x Resolve

### Dam: T-SPRUCE HIGHJUMP 16722-ET

Reg: 3235976729 12/23 PTA +3079 GTPI  
+1560 M +136 F +1092 NM\$  
+3.2 PL -3.7 DPR +2.18 T +2.40 UDC  
Sire Stack: Highjump x Lionel x Yoder

#### 2<sup>nd</sup> Dam

Mercedes Lionel Lass-ET

#### 3<sup>rd</sup> Dam

Endco Yoder L7933 9839-ET VG-86

5-5 3x 350DIM 34310m 1560f 4.5%f 1255p 3.6%p

#### 4<sup>th</sup> Dam

T-Spruce Lgold 7933-ET

02-05 2x 248d 20320m 4.4 904f 3.4 687p



T-SPRUCE OVERDO 19547-ET

# Lot 10 T-SPRUCE OVERDO 19547-ET

## IVF Session

\*Buyer is purchasing rights to control the next IVF session(s) until a minimum of 8 #1 or #2 IVF embryos are produced. Embryo grades are determined at the time of transfer if fresh embryos or at time of freezing if freezing is requested by buyer. Buyer keeps all resulting embryos from these controlled IVF sessions. Buyer is responsible for all costs of the aspiration and mating sire decisions.

Born 10/08/2022 Reg: 840003260816959

12/2023	CDCB SUMMARY GENOMICCOW			NMS +1182
Milk	+1958	79%R	Cheese Merit \$	+1199
Fat	+128	+0.18%	FMS +1078	GMS +1144
Protein	+79	+0.06%	Gestation Len.	MSP
CFP	+207		EFI %	gEFI 12.3% gIB 14.5%
SCS	2.72	%R	Mastitis +2.1	Fert. Index +0.3
PL	+5.1	%R	Livability -0.6	Heifer Liv. +0.9
DPR	-0.4	%R	HCR +0.6	CCR +1.2
RFI	-90			
Feed Saved	-11	44%R	0 Dtrs	0 Herds % US

Beta: A1A2 Kappa: BB DWP\$: 1164

12/2023	GHA TYPE SUMMARY				TPI +3258
PTAT +2.29	78%R	UDC+1.95	FLC+0.63	BSC +1.80	0 D / 0 H

			-2	-1	0	1	2
Stature	+2.08	Tall					
Strength	+1.31	Strong					
Body Depth	+1.47	Deep					
Dairy Form	+2.62	Open Rib					
Rump Angle	+0.44	Sloped					
Thurl Width	+2.09	Wide					
Rear Legs-Side	+0.07	Sickle					
Rear Legs-Rear	+0.61	Straight					
Foot Angle	+1.27	Steep					
Feet & Legs Score	+1.12	High					
F. Udder Attachment	+2.22	Strong					
Rear Udder Height	+2.82	High					
Rear Udder Width	+3.61	Wide					
Udder Cleft	+1.25	Strong					
Udder Depth	+1.18	Shallow					
Front Teat Placement	+1.26	Close					
Rear Teat Placement	+1.38	Close					
Teat Length	+0.42	Long					

18 Average

#1 TPI

Oocytes

OVERDO

DAUGHTER

Arnie Gruenes  
Twin Spruce Farm  
17565 Co Rd 43  
Richmond, MN 56368  
Cows@meltel.net  
320-493-9703

Tested Positive  
for MW

Sire: Ladys-Manor Overdo-ET

3214324420 12/23 PTA +3170 GTPI +890 M  
0.33% +129 F +0.11% +58 P +1139 NM\$ +4.8 PL  
+0.2 DPR 2.65 SCS +1.55 T +2.24 UDC +0.94 FLC  
HIGHJUMP x Granite x Millington

Dam: T-SPRUCE TAOS 16364-ET

Reg: 3235976371 12/23 PTA +3096 GTPI  
+1869 M +110 F +1067 NM\$  
+5.4 PL +0.6 DPR +1.52 T +0.76 UDC  
Sire Stack: Taos x Lionel x Samuri

**2<sup>nd</sup> Dam**  
T-Spruce Lionel 13196-ET GP - 83  
LACT 1 294d 28050M 4.1% 1170F 3.3% 933P  
**3<sup>rd</sup> Dam**  
T-Spruce Samuri 6347-ET  
**4<sup>th</sup> Dam**  
Mercedes Ts 9539-ET  
02-00 3x 354d 30670m 3.7 1149f 3.2 991p



T-Spruce Sheepster 21081-ET

# Lot 11 T-Spruce Sheepster 21081-ET

## IVF Session

\*Buyer is purchasing rights to control the next IVF session(s) until a minimum of 8 #1 or #2 IVF embryos are produced. Embryo grades are determined at the time of transfer if fresh embryos or at time of freezing if freezing is requested by buyer. Buyer keeps all resulting embryos from these controlled IVF sessions. Buyer is responsible for all costs of the aspiration and mating sire decisions.

Born 05/16/2023 Reg: 840003265765587

12/2023	CDCB SUMMARY GENOMICCOW				NMS +1266
Milk	+1646	79%R	Cheese Merit \$		+1284
Fat	+138	+0.25%	FMS +1125	GMS	+1219
Protein	+79	+0.09%	Gestation Len.	MSP	
CFP	+217		EFI %	gEFI 12.2%	gIB 20.6%
SCS	2.91	%R	Mastitis +0.9	Fert. Index	+0.0
PL	+5.5	%R	Livability +0.7	Heifer Liv.	+1.1
DPR	-1.1	%R	HCR +2.3	CCR	+1.7
RFI	-91				
Feed Saved	+174	44%R	0 Dtrs	0 Herds	% US

Beta: A2A2 Kappa: AA DWP\$: 1256

12/2023	GHA TYPE SUMMARY				TPI +3227
PTAT +1.52	78%R	UDC+1.22	FLC+1.02	BSC +0.39	0 D / 0 H
Stature	+0.69	Tall			
Strength	-0.03	Frail			
Body Depth	-0.04	Shallow			
Dairy Form	+1.65	Open Rib			
Rump Angle	+0.34	Sloped			
Thurl Width	+0.58	Wide			
Rear Legs-Side	-0.04	Posty			
Rear Legs-Rear	+1.20	Straight			
Foot Angle	+0.83	Steep			
Feet & Legs Score	+1.08	High			
F. Udder Attachment	+1.42	Strong			
Rear Udder Height	+1.43	High			
Rear Udder Width	+2.00	Wide			
Udder Cleft	+0.92	Strong			
Udder Depth	+0.62	Shallow			
Front Teat Placement	+1.38	Close			
Rear Teat Placement	+1.67	Close			
Teat Length	-0.70	Short			

## 31 Average Oocytes

Tested Negative for MW

**Sire: Ocd Trooper Sheepster-ET**  
 3236792832 12/23 PTA +3187 GTPI +1358 M  
 0.26% +129 F +0.11% +75 P +1194 NM\$ +6.1 PL  
 -0.5 DPR 2.93 SCS +1.41 T +1.14 UDC +0.90 FLC  
 Trooper x Acura x Resolve

**Dam: T-SPRUCE TAOS 15323-ET**  
 Reg: 3219884896 12/23 PTA +3001 GTPI  
 +1807 M +101 F +973 NM\$  
 +3.9 PL -0.3 DPR +1.48 T +1.48 UDC  
 Sire Stack: Taos x Lionel x Yoder  
 2-6 3x 245d 16000m 698f 4.3%f 544p 3.4%p

**2<sup>nd</sup> Dam**  
 Mercedes Lionel Lass-ET  
**3<sup>rd</sup> Dam**  
 Endco Yoder L7933 9839-ET VG-86  
**4<sup>th</sup> Dam**  
 T-Spruce Lgold 7933-ET  
 02-05 2x 248d 20320m 4.4 904f 3.4 687p

Arnie Gruenes  
 Twin Spruce Farm  
 17565 Co Rd 43  
 Richmond, MN 56368  
 Cows@meltel.net  
 320-493-9703



T-Spruce Sheepster 21324-ET

# Lot 12

# T-Spruce Sheepster 21324-ET

## IVF Session

\*Buyer is purchasing rights to control the next IVF session(s) until a minimum of 8 #1 or #2 IVF embryos are produced. Embryo grades are determined at the time of transfer if fresh embryos or at time of freezing if freezing is requested by buyer. Buyer keeps all resulting embryos from these controlled IVF sessions. Buyer is responsible for all costs of the aspiration and mating sire decisions.

Born 06/21/2023 Reg: 840003260816786

12/2023	CDCB SUMMARY GENOMICCOW				NMS +1317
Milk	+2228	79%R	Cheese Merit \$		+1330
Fat	+145	+0.20%	FMS +1223	GM\$	+1226
Protein	+86	+0.06%	Gestation Len.	MSP	
CFP	+231		EFI %	gEFI 11.4%	gIB 16.1%
SCS	2.88	%R	Mastitis +1.8	Fert. Index	-1.4
PL	+5.9	%R	Livability +0.4	Heifer Liv.	+0.7
DPR	-2.5	%R	HCR +0.9	CCR	-0.9
RFI	-5				
Feed Saved	+185	43%R	0 Dtrs	0 Herds	% US

Beta: A2A2 Kappa: AA DWP\$: 1281

12/2023	GHA TYPE SUMMARY				TPI +3233
PTAT +1.32	77%R	UDC+1.57	FLC+0.27	BSC -0.19	0 D / 0 H

			-2	-1	0	1	2
Stature	-0.25	Short					
Strength	-0.37	Frail					
Body Depth	-0.10	Shallow					
Dairy Form	+1.97	Open Rib					
Rump Angle	-0.27	High Pins					
Thurl Width	+0.41	Wide					
Rear Legs-Side	-0.31	Posty					
Rear Legs-Rear	+0.15	Straight					
Foot Angle	+0.30	Steep					
Feet & Legs Score	+0.21	High					
F. Udder Attachment	+1.69	Strong					
Rear Udder Height	+1.95	High					
Rear Udder Width	+2.47	Wide					
Udder Cleft	+0.86	Strong					
Udder Depth	+0.03	Shallow					
Front Teat Placement	+1.69	Close					
Rear Teat Placement	+1.83	Close					
Teat Length	-1.16	Short					

## #4 MILK SHEEPSTER DAUGHTER

Arnie Gruenes  
Twin Spruce Farm  
17565 Co Rd 43  
Richmond, MN 56368  
Cows@meltel.net  
320-493-9703

Tested Negative for MW

### Sire: Ocd TRooper Sheepster-ET

3236792832 12/23 PTA +3187 GTPI +1358 M  
0.26% +129 F +0.11% +75 P +1194 NM\$ +6.1 PL  
-0.5 DPR 2.93 SCS +1.41 T +1.14 UDC +0.90 FLC  
Trooper x Acura x Resolve

### Dam: T-SPRUCE TORRO 16389-ET

Reg: 3235976396 12/23 PTA +2973 GTPI  
+1975 M +129 F +1062 NM\$  
+3.1 PL -3.3 DPR +1.08 T +1.54 UDC  
Sire Stack: Taos x Lionel x Yoder

**2<sup>nd</sup> Dam**  
Mercedes Lionel Lass-ET  
**3<sup>rd</sup> Dam**  
Endco Yoder L7933 9839-ET VG-86  
**4<sup>th</sup> Dam**  
T-Spruce Lgold 7933-ET  
02-05 2x 248d 20320m 4.4 904f 3.4 687p



T-Spruce Ltchworth 20741-ET

# Lot 13

# T-Spruce Ltchworth 20741-ET

## IVF Session

\*Buyer is purchasing rights to control the next IVF session(s) until a minimum of 8 #1 or #2 IVF embryos are produced. Embryo grades are determined at the time of transfer if fresh embryos or at time of freezing if freezing is requested by buyer. Buyer keeps all resulting embryos from these controlled IVF sessions. Buyer is responsible for all costs of the aspiration and mating sire decisions.

Born 03/18/2023 Reg: 840003260818153

**17 Average  
Oocytes**

**#4 TPI**

**LETCHWORTH  
DAUGHTER**

Arnie Gruenes  
Twin Spruce Farm  
17565 Co Rd 43  
Richmond, MN 56368  
Cows@meltel.net  
320-493-9703

Tested Negative  
for MW

12/2023	CDCB SUMMARY GENOMICCOW			NMS +1223
Milk	+944	79%R	Cheese Merit \$	+1249
Fat	+124	+0.30%	FMS +1067	GMS +1202
Protein	+59	+0.10%	Gestation Len.	MSP
CFP	+183		EFI %	gEFI 11.5% gIB 19.9%
SCS	2.58	%R	Mastitis +3.7	Fert. Index +2.0
PL	+6.8	%R	Livability +2.1	Heifer Liv. +1.1
DPR	+1.0	%R	HCR +4.3	CCR +3.7
RFI	-181			
Feed Saved	+149	43%R	0 Dtrs 0 Herds	% US

Beta: A2A2 Kappa: AA DWP\$: 1294

12/2023	GHA TYPE SUMMARY			TPI +3193
PTAT +1.09	78%R	UDC+1.48	FLC+0.28	BSC +0.57 0 D / 0 H
				-2 -1 0 1 2
Stature	+0.93	Tall		
Strength	+0.16	Strong		
Body Depth	-0.15	Shallow		
Dairy Form	+0.56	Open Rib		
Rump Angle	+0.10	Sloped		
Thurl Width	+0.89	Wide		
Rear Legs-Side	+0.54	Sickle		
Rear Legs-Rear	+0.37	Straight		
Foot Angle	+0.71	Steep		
Feet & Legs Score	+0.47	High		
F. Udder Attachment	+1.78	Strong		
Rear Udder Height	+1.92	High		
Rear Udder Width	+1.72	Wide		
Udder Cleft	+0.37	Strong		
Udder Depth	+1.89	Shallow		
Front Teat Placement	+0.63	Close		
Rear Teat Placement	+0.81	Close		
Teat Length	-1.18	Short		

### Sire: Aurora Letchworth-ET

3218470965 12/23 PTA +3086 GTPI +885 M  
0.26% +109 F +0.11% +59 P +1121 NM\$ +6.0 PL  
+1.1 DPR 2.78 SCS +1.39 T +1.27 UDC +0.25 FLC  
Conway x Rapid x Frazzled

### Dam: T-SPRUCE GAMEDAY 16518-ET GP-83

Reg: 3235976525 12/23 PTA +3007 GTPI  
+1299 M +107 F +1077 NM\$  
+5.2 PL -0.3 DPR +1.19 T +1.18 UDC  
Sire Stack: Gameday x Lionel x Samuri  
2-2 3x 174d 15320m 710f 4.6% 515P 3.3%

#### 2<sup>nd</sup> Dam

T-Spruce Lionel 13196-ET GP - 83  
LACT 1 294d 28050M 4.1% 1170F 3.3% 933P

#### 3<sup>rd</sup> Dam

T-Spruce Samuri 6347-ET

#### 4<sup>th</sup> Dam

Mercedes Ts 9539-ET  
02-00 3x 354d 30670m 3.7 1149f 3.2 991p





T-Spruce Sheepster 21239-ET

# Lot 14 T-Spruce Sheepster 21239-ET

## IVF Session

\*Buyer is purchasing rights to control the next IVF session(s) until a minimum of 8 #1 or #2 IVF embryos are produced. Embryo grades are determined at the time of transfer if fresh embryos or at time of freezing if freezing is requested by buyer. Buyer keeps all resulting embryos from these controlled IVF sessions. Buyer is responsible for all costs of the aspiration and mating sire decisions.

Born 06/08/2023 Reg: 840003265765745

12/2023	CDCB SUMMARY GENOMICCOW			NM\$ +1199
Milk	+602	79%R	Cheese Merit \$	+1229
Fat	+134	+0.39%	FMS +983	GMS +1171
Protein	+63	+0.15%	Gestation Len.	MSP
CFP	+197		EFI %	gEFI 11.0% gIB 15.5%
SCS	2.80	%R	Mastitis +4.3	Fert. Index +1.0
PL	+5.6	%R	Livability +2.0	Heifer Liv. +0.8
DPR	+0.1	%R	HCR +3.4	CCR +1.9
RFI	-72			
Feed Saved	+103	43%R	0 Dtrs 0 Herds	% US

Beta: A1A2 Kappa: AB DWP\$: 1188

12/2023	GHA TYPE SUMMARY			TPI +3218
PTAT +1.59	78%R	UDC+1.25	FLC+1.31	BSC +0.44 0 D / 0 H
				-2 -1 0 1 2
Stature	+0.58	Tall		
Strength	+0.18	Strong		
Body Depth	+0.29	Deep		
Dairy Form	+1.26	Open Rib		
Rump Angle	-0.32	High Pins		
Thurl Width	+0.57	Wide		
Rear Legs-Side	+1.23	Sickle		
Rear Legs-Rear	+1.51	Straight		
Foot Angle	+0.70	Steep		
Feet & Legs Score	+1.37	High		
F. Udder Attachment	+1.57	Strong		
Rear Udder Height	+1.78	High		
Rear Udder Width	+1.56	Wide		
Udder Cleft	+0.30	Strong		
Udder Depth	+0.93	Shallow		
Front Teat Placement	+0.55	Close		
Rear Teat Placement	+0.36	Close		
Teat Length	-0.22	Short		

Arnie Gruenes  
Twin Spruce Farm  
17565 Co Rd 43  
Richmond, MN 56368  
Cows@meltel.net  
320-493-9703

Tested Negative  
for MW

### Sire: Ocd TRooper Sheepster-ET

3236792832 12/23 PTA +3187 GTPI +1358 M  
0.26% +129 F +0.11% +75 P +1194 NM\$ +6.1 PL  
-0.5 DPR 2.93 SCS +1.41 T +1.14 UDC +0.90 FLC  
Trooper x Acura x Resolve

### Dam: PINE-TREE 8418 CONWA 728-ET

Reg: 3228682798 12/23 PTA +3042 GTPI  
+1205 M +120 F +1054 NM\$  
+4.2 PL -1.2 DPR +1.76 T +1.34 UDC  
Sire Stack: Conway x Pursuit x Achiever

#### 2<sup>nd</sup> Dam

Pine-Tree 7593 Purs 8418-ET GP-84

#### 3<sup>rd</sup> Dam

Pine-Tree Era Achie 7593-ET GP-82

#### 4<sup>th</sup> Dam

Sandy-Valley Morgan Era-ET

02-02 2x 365d 34790m 4.2 1450f 3.4 1192p



T-Spruce Hike 20886-ET

# Lot 15

# T-Spruce Hike 20886-ET

## IVF Session

\*Buyer is purchasing rights to control the next IVF session(s) until a minimum of 8 #1 or #2 IVF embryos are produced. Embryo grades are determined at the time of transfer if fresh embryos or at time of freezing if freezing is requested by buyer. Buyer keeps all resulting embryos from these controlled IVF sessions. Buyer is responsible for all costs of the aspiration and mating sire decisions.

Born 04/12/2023 Reg: 84000 3265765392

12/2023	CDCB SUMMARY GENOMICCOW				NMS +1326
Milk	+1676	78%R	Cheese Merit \$		+1340
Fat	+130	+0.22%	FMS +1221	GM\$	+1291
Protein	+72	+0.07%	Gestation Len.	MSP	
CFP	+202		EFI %	gEFI 11.8%	gIB 13.7%
SCS	2.90	%R	Mastitis +2.7	Fert. Index	+1.0
PL	+6.3	%R	Livability +1.3	Heifer Liv.	+0.9
DPR	-0.5	%R	HCR +3.6	CCR	+1.2
RFI	-99				
Feed Saved	+384	43%R	0 Dtrs	0 Herds	% US

Beta: A2A2 Kappa: NR DWP\$: 1278

12/2023	GHA TYPE SUMMARY				TPI +3265
PTAT +1.69	77%R	UDC+1.64	FLC+0.91	BSC -0.13	0 D / 0 H
Stature	+0.06	Tall			
Strength	-0.79	Frail			
Body Depth	+0.12	Deep			
Dairy Form	+2.91	Open Rib			
Rump Angle	-0.01	High Pins			
Thurl Width	+0.22	Wide			
Rear Legs-Side	+1.45	Sickle			
Rear Legs-Rear	+0.77	Straight			
Foot Angle	-0.37	Low			
Feet & Legs Score	+1.03	High			
F. Udder Attachment	+1.01	Strong			
Rear Udder Height	+2.68	High			
Rear Udder Width	+2.75	Wide			
Udder Cleft	+0.89	Strong			
Udder Depth	-0.24	Deep			
Front Teat Placement	+1.60	Close			
Rear Teat Placement	+1.76	Close			
Teat Length	-0.10	Short			

## 11 Average Oocytes

Tested Negative for MW

### Sire: Trifecta Hike-ET

3225319587 12/23 PTA +3095 GTPI +1469 M  
 0.20% +116 F +0.06% +63 P +1211 NM\$ +5.3 PL  
 -.09 DPR 2.83 SCS +1.22 T +2.03 UDC +0.30 FLC  
 Bosa x Tahiti x Bandares

### Dam: PINE-TREE 8418 CONWA 728-ET

Reg: 3228682798 12/23 PTA +3042 GTPI  
 +1205 M +120 F +1054 NM\$  
 +4.2 PL -1.2 DPR +1.76 T +1.34 UDC  
 Sire Stack: Conway x Pursuit x Achiever

**2<sup>nd</sup> Dam**  
 Pine-Tree 7593 Purs 8418-ET GP-84  
**3<sup>rd</sup> Dam**  
 Pine-Tree Era Achie 7593-ET GP-82  
**4<sup>th</sup> Dam**  
 Sandy-Valley Morgan Era-ET  
 02-02 2x 365d 34790m 4.2 1450f 3.4 1192p

Arnie Gruenes  
 Twin Spruce Farm  
 17565 Co Rd 43  
 Richmond, MN 56368  
 Cows@meltel.net  
 320-493-9703



3<sup>rd</sup> Dam: Sandy-Valley No Limit-ET



Pine-Tree 727 Easton 12955-ET

# Lot 16 Pine-Tree 727 Easton 12955-ET

Born 10/12/2023 Reg: 840003256167610

Pine-Tree Dairy  
8586 Benner Rd  
Marshallville, OH 44645  
Pinetreedairy@gmail.com  
330-466-9137 - Andrew

01/2024	CDCB SUMMARY GENOMICCOW				NMS +1117
Milk	+1440	79%R	Cheese Merit \$		+1135
Fat	+119	+0.22%	FMS +1002	GMS	+1071
Protein	+66	+0.07%	Gestation Len. -2	MSP	
CFP	+185		EFI %	gEFI 12.9%	gIB 15.9%
SCS	2.73	%R	Mastitis +1.9	Fert. Index	+0.3
PL	+5.0	%R	Livability +1.0	Heifer Liv.	+0.6
DPR	-0.9	%R	HCR +2.2	CCR	+0.8
RFI	-86				
Feed Saved	+134	44%R	0 Dtrs	0 Herds	% US

Beta: A2A2 Kappa: BB

### Sire: Pine-Tree Easton-ET

3147135998 12/23 PTA +3133 GTPI +1797 M  
0.09% +95 F +0.04% +68 P +1155 NM\$ +6.0 PL  
+0.1 DPR 2.71 SCS +1.79 T +2.08 UDC +0.97 FLC  
Outcome x Pursuit x Achiever

01/2024	GHA TYPE SUMMARY				TPI +3128
PTAT +1.81	78%R	UDC+1.69	FLC+0.52	BSC +0.57	0 D / 0 H
Stature	+0.48	Tall			
Strength	+0.33	Strong			
Body Depth	+0.56	Deep			
Dairy Form	+2.11	Open Rib			
Rump Angle	-1.20	High Pins			
Thurl Width	+1.63	Wide			
Rear Legs-Side	+1.09	Sickle			
Rear Legs-Rear	+0.37	Straight			
Foot Angle	+0.28	Steep			
Feet & Legs Score	+0.70	High			
F. Udder Attachment	+1.64	Strong			
Rear Udder Height	+2.05	High			
Rear Udder Width	+2.59	Wide			
Udder Cleft	+1.26	Strong			
Udder Depth	+0.70	Shallow			
Front Teat Placement	+1.36	Close			
Rear Teat Placement	+1.72	Close			
Teat Length	-0.16	Short			

### Dam: PINE-TREE BG 7831 LI 727-ET GP +80

Reg: 3149155150 12/23 PTA +2919 GTPI  
+1221 M +131 F +988 NM\$  
+2.0 PL -2.7 DPR +0.74 T +1.00 UDC  
Sire Stack: Lionel x Prophecy x Delta  
1-10 365 26,609 5.4% 1337 3.9% 955  
Fresh 2nd Lactation milking 129 lbs.

<b>2<sup>nd</sup> Dam</b>
Pine-Tree 5976 Prop 7831-ET GP +80
2-05 365 27,037 5.7% 1516 3.8% 1019
3-07 307 28,130 5.3% 1482 3.8% 1059
<b>3<sup>rd</sup> Dam</b>
Sandy-Valley No Limit-ET VG-86
<b>4<sup>th</sup> Dam</b>
Sandy-Valley Ss Psych-ET



T-SPRUCE POWERSTAR 21270-ET

# Lot 17 T-SPRUCE POWERSTAR 21270-ET

## IVF Session

\*Buyer is purchasing rights to control the next IVF session(s) until a minimum of 8 #1 or #2 IVF embryos are produced. Embryo grades are determined at the time of transfer if fresh embryos or at time of freezing if freezing is requested by buyer. Buyer keeps all resulting embryos from these controlled IVF sessions. Buyer is responsible for all costs of the aspiration and mating sire decisions.

Born 06/12/2023 Reg: 840003265765776

12/2023	CDCB SUMMARY GENOMICCOW				NMS +1152
Milk	+1794	78%R	Cheese Merit \$		+1171
Fat	+112	+0.14%	FMS +1026	GMS	+1084
Protein	+79	+0.08%	Gestation Len.	MSP	
CFP	+191		EFI %	gEFI	12.2% gIB 15.2%
SCS	2.75	%R	Mastitis +1.6	Fert. Index	+0.5
PL	+5.6	%R	Livability +0.3	Heifer Liv.	+1.1
DPR	-1.1	%R	HCR +2.7	CCR	+0.5
RFI	-195				
Feed Saved	+81	44%R	0 Dtrs	0 Herds	% US

Beta: A2A2 Kappa: BB

12/2023	GHA TYPE SUMMARY				TPI +3179		
PTAT +2.08	77%R	UDC+1.61	FLC+0.53	BSC +1.53	0 D / 0 H		
			-2	-1	0	1	2
Stature	+1.81	Tall					
Strength	+1.22	Strong					
Body Depth	+1.32	Deep					
Dairy Form	+1.83	Open Rib					
Rump Angle	-1.20	High Pins					
Thurl Width	+1.23	Wide					
Rear Legs-Side	-0.20	Posty					
Rear Legs-Rear	+0.48	Straight					
Foot Angle	+1.35	Steep					
Feet & Legs Score	+0.95	High					
F. Udder Attachment	+2.25	Strong					
Rear Udder Height	+2.24	High					
Rear Udder Width	+2.58	Wide					
Udder Cleft	+0.79	Strong					
Udder Depth	+1.22	Shallow					
Front Teat Placement	+1.27	Close					
Rear Teat Placement	+1.38	Close					
Teat Length	-0.34	Short					

Arnie Gruenes  
Twin Spruce Farm  
17565 Co Rd 43  
Richmond, MN 56368  
Cows@meltel.net  
320-493-9703

Tested Positive  
for MW

### Sire: Peak Powerstar-ET

3224956499 12/23 PTA +3056 GTPI +1283 M  
0.17% +99 F +0.09% +65 P +1103NM\$ +6.6 PL  
-0.6 DPR 2.64 SCS +1.46 T +1.19 UDC +0.41 FLC  
Altawheelhouse x Big Al x Reason

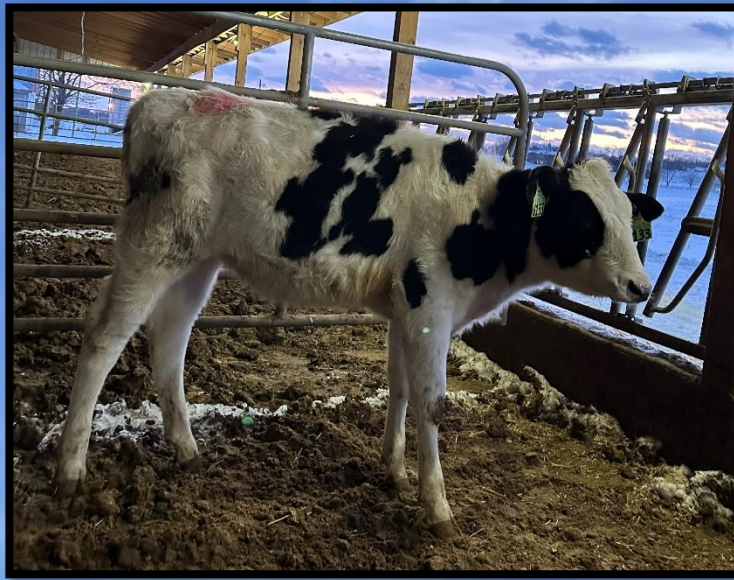
### Dam: T-SPRUCE MONSHINER 15734-ET

Reg: 3220247742 12/23 PTA +2984 GTPI  
+1558 M +99 F +1001 NM\$  
+4.8 PL -0.2 DPR +1.26 T +1.26 UDC  
Sire Stack: Moonshiner x Lionel x Samuri

**2<sup>nd</sup> Dam**  
T-Spruce Lionel 13196-ET GP – 83  
LACT 1 294d 28050M 4.1% 1170F 3.3% 933P

**3<sup>rd</sup> Dam**  
T-Spruce Samuri 6347-ET

**4<sup>th</sup> Dam**  
Mercedes Ts 9539-ET  
02-00 3x 354d 30670m 3.7 1149f 3.2 991p



FIT CORBIN 6133 ANTJE-ET

# Lot 18

# FIT CORBIN 6133 ANTJE-ET

## IVF Session

\*Buyer is purchasing rights to control the next IVF session(s) until a minimum of 8 #1 or #2 IVF embryos are produced. Embryo grades are determined at the time of transfer if fresh embryos or at time of freezing if freezing is requested by buyer. Buyer keeps all resulting embryos from these controlled IVF sessions. Buyer is responsible for all costs of the aspiration and mating sire decisions.

Born 07/10/2023 Reg: 840003269405441

12/2023	CDCB SUMMARY GENOMICCOW			NMS +1242
Milk	+1669	80%R	Cheese Merit \$	+1256
Fat	+108	+0.15%	FMS\$ +1163	GM\$ +1215
Protein	+65	+0.04%	Gestation Len.	MSP
CFP	+173		EFI %	gEFI 11.2% gIB 15.0%
SCS	2.70	%R	Mastitis +3.5	Fert. Index +1.8
PL	+7.6	%R	Livability +3.4	Heifer Liv. +0.9
DPR	+0.9	%R	HCR +4.7	CCR +4.2
RFI	-41			
Feed Saved	+253	44%R	0 Dtrs	0 Herds % US

Beta: A2A2 Kappa: AB DWP\$: 1237

12/2023	GHA TYPE SUMMARY			TPI +3178
PTAT +1.31	78%R	UDC+1.75	FLC+0.27	BSC-0.28 0 D / 0 H

			-2	-1	0	1	2
Stature	+0.03	Tall					
Strength	-0.91	Frail					
Body Depth	-0.80	Shallow					
Dairy Form	+1.63	Open Rib					
Rump Angle	-0.80	High Pins					
Thurl Width	+0.50	Wide					
Rear Legs-Side	+0.16	Sickle					
Rear Legs-Rear	-0.16	Hock In					
Foot Angle	+0.05	Steep					
Feet & Legs Score	+0.39	High					
F. Udder Attachment	+1.77	Strong					
Rear Udder Height	+2.32	High					
Rear Udder Width	+2.46	Wide					
Udder Cleft	+0.24	Strong					
Udder Depth	+1.08	Shallow					
Front Teat Placement	+1.50	Close					
Rear Teat Placement	+1.26	Close					
Teat Length	-1.89	Short					

15 Average  
Oocytes

#4 TPI  
Milky  
DAUGHTER

Tested Negative  
for MW

Worked at  
Trans Ova  
Maryland

**Sire: Pine-Tree Lionel Milky-ET**  
3150687388 12/23 PTA +3047 GTPI +1885 M  
0.19% +129 F +0.06% +76 P +1183 NM\$ +4.4 PL  
-2.6 DPR 2.95 SCS +0.58 T +1.26 UDC +0.06 FLC  
Lionel x Achiever x Damaris

**Dam: PEN-COL 6274 AWKWAFINA-ET**  
Reg: 3227859457 12/23 PTA +2961 GTPI  
+310 M +92 F +1068 NM\$  
+7.6 PL +1.9 DPR +0.82 T +1.32 UDC  
Sire Stack: Gameday x Legacy x Modesty

**2<sup>nd</sup> Dam**  
Pen-Col Legacy Jazz-ET  
**3<sup>rd</sup> Dam**  
Pen-Col Modesty Jewel-ET VG-86  
02-08 2x 305d 19940m 3.9 780f 3.4 671p  
**4<sup>th</sup> Dam**  
Pen-Col Delta Juno-ET VG-87

Fit Genetics  
ftdairygenetics@gm  
ail.com  
859-699-2998



T-Spruce Sheepster 21146-ET

# Lot 19

# T-Spruce Sheepster 21146-ET

Born 05/24/2023 Reg: 840003265765652

Arnie Gruenes  
Twin Spruce Farm  
17565 Co Rd 43  
Richmond, MN 56368  
Cows@meltel.net  
320-493-9703

12/2023	CDCB SUMMARY GENOMICCOW				NMS +1239
Milk	+1077	79%R	Cheese Merit \$		+1260
Fat	+134	+0.32%	FMS +1067	GMS	+1223
Protein	+69	+0.12%	Gestation Len.	MSP	
CFP	+203		EFI %	gEFI 11.4%	gIB 16.2%
SCS	2.98	%R	Mastitis +1.3	Fert. Index	+0.4
PL	+5.3	%R	Livability +1.4	Heifer Liv.	+0.9
DPR	-0.2	%R	HCR +2.2	CCR	+1.9
RFI	-122				
Feed Saved	+279	43%R		0 Dtrs 0 Herds	% US

Beta: A1A2 Kappa: AA DWP\$: 1253

12/2023	GHA TYPE SUMMARY				TPI +3210
PTAT +1.72	78%R	UDC+1.67	FLC+1.16	BSC +0.22	0 D / 0 H

			-2	-1	0	1	2
Stature	+0.58	Tall					
Strength	-0.41	Frail					
Body Depth	-0.09	Shallow					
Dairy Form	+2.00	Open Rib					
Rump Angle	+0.28	Sloped					
Thurl Width	+0.44	Wide					
Rear Legs-Side	+0.55	Sickle					
Rear Legs-Rear	+1.43	Straight					
Foot Angle	+0.62	Steep					
Feet & Legs Score	+1.18	High					
F. Udder Attachment	+1.68	Strong					
Rear Udder Height	+2.56	High					
Rear Udder Width	+2.60	Wide					
Udder Cleft	+0.40	Strong					
Udder Depth	+0.68	Shallow					
Front Teat Placement	+0.56	Close					
Rear Teat Placement	+0.58	Close					
Teat Length	-0.35	Short					

## 19 Average Oocytes

Tested Negative for MW

### Sire: Ocd Trooper Sheepster-ET

3236792832 12/23 PTA +3187 GTPI +1358 M  
0.26% +129 F +0.11% +75 P +1194 NM\$ +6.1 PL  
-0.5 DPR 2.93 SCS +1.41 T +1.14 UDC +0.90 FLC  
Trooper x Acura x Resolve

### Dam: T-SPRUCE CONWAY 16106-ET

Reg: 3220248114 12/23 PTA +3067 GTPI  
+1471 M +126 F +1074 NM\$  
+3.7 PL -2.5 DPR +1.96 T +2.12 UDC  
Sire Stack: Conway x Lionel x Yoder  
2-2 3x 189d 17840m 778f 4.3%f 549p 3.0%p

#### 2<sup>nd</sup> Dam

Mercedes Lionel Lass-ET

#### 3<sup>rd</sup> Dam

Endco Yoder L7933 9839-ET VG-86

5-5 3x 350DIM 34310m 1560f 4.5%f 1255p 3.6%p

#### 4<sup>th</sup> Dam

T-Spruce Lgold 7933-ET

02-05 2x 248d 20320m 4.4 904f 3.4 687p



T-Spruce Phoenix 22120-ET

# Lot 20

# T-Spruce Phoenix 22120-ET

Born 10/31/2023 Reg: 840003280396461

Arnie Gruenes  
Twin Spruce Farm  
17565 Co Rd 43  
Richmond, MN 56368  
Cows@meltel.net  
320-493-9703

12/2023	CDCB SUMMARY GENOMICCOW				NMS +1113
Milk	+1467	78%R	Cheese Merit \$		+1128
Fat	+125	+0.23%	FMS +999	GMS	+1074
Protein	+68	+0.08%	Gestation Len.	MSP	
CFP	+193		EFI %	gEFI 11.5%	gIB 18.7%
SCS	2.93	%R	Mastitis +0.8	Fert. Index	+0.2
PL	+4.6	%R	Livability +0.3	Heifer Liv.	+0.8
DPR	-0.9	%R	HCR +2.4	CCR	+0.9
RFI	-119				
Feed Saved	+70	42%R	0 Dtrs	0 Herds	% US

Tested Negative  
for MW

Beta: A2A2 Kappa: BB DWP\$: 1227

12/2023	GHA TYPE SUMMARY				TPI +3179			
PTAT +2.04	77%R	UDC+2.24	FLC+1.31	BSC +0.80	0 D / 0 H			
				-2	-1	0	1	2
Stature	+0.80	Tall						
Strength	+0.55	Strong						
Body Depth	+0.43	Deep						
Dairy Form	+1.35	Open Rib						
Rump Angle	-0.83	High Pins						
Thurl Width	+2.00	Wide						
Rear Legs-Side	+0.36	Sickle						
Rear Legs-Rear	+1.76	Straight						
Foot Angle	+0.75	Steep						
Feet & Legs Score	+1.32	High						
F. Udder Attachment	+2.28	Strong						
Rear Udder Height	+3.11	High						
Rear Udder Width	+3.24	Wide						
Udder Cleft	+1.34	Strong						
Udder Depth	+1.25	Shallow						
Front Teat Placement	+0.83	Close						
Rear Teat Placement	+1.19	Close						
Teat Length	+0.71	Long						

## Sire: T-Spruce Phoenix 2176-ET

3234732161 12/23 PTA +3180 GTPI +1669 M  
0.24% +134 F +0.08% +76 P +1036 NM\$ +3.3 PL  
-1.9 DPR 3.04 SCS +2.52 T +2.22 UDC +1.32 FLC  
Parfect x Lionel x Yoder

## Dam: T-SPRUCE F BITE 18680-ET

Reg: 3251843850 12/23 PTA +3012 GTPI  
+1431 M +124 F +1192 NM\$  
+4.5 PL -0.9 DPR +0.42 T +0.63 UDC  
Sire Stack: Frost Bite x Conway x Delta-Worth

### 2<sup>nd</sup> Dam

T-Spruce Conway 15680-ET  
3x 352d3209m 1447f 4.5% 1051p 3.25%p

### 3<sup>rd</sup> Dam

T-Spruce Dworth 13452-ET G-77

### 4<sup>th</sup> Dam

T-Spruce Frazzled 11721-ET  
03-02 3x 283d 32230m 4.3 1388f 3.1 1002p

# Lot 21

# WINSTAR ENCLAVE 9737-ET

Born 08/20/2023 Reg: 840003267484835

## #3 TPI

# ENCLAVE DAUGHTER

Winstar Genetics LLC  
2549 Lakeview Rd  
American Falls ID, 83211  
greg@seagullbaydairy.com  
208-339-0904

Tested Negative  
for MW

01/2024	CDCB SUMMARY GENOMICCOW			NMS +1082
Milk	+891	79%R	Cheese Merit \$	+1107
Fat	+120	+0.30%	FMS +928	GMS +1014
Protein	+57	+0.10%	Gestation Len. -2	MSP
CFP	+177		EFI %	gEFI 12.0% glB 16.8%
SCS	2.61	%R	Mastitis +3.6	Fert. Index +1.0
PL	+6.5	%R	Livability +1.4	Heifer Liv. +0.9
DPR	+0.0	%R	HCR +3.0	CCR +1.7
RFI	+11			
Feed Saved	-170	43%R	0 Dtrs 0 Herds	% US

Beta: A1A2 Kappa: AB

01/2024	GHA TYPE SUMMARY			TPI +3180
PTAT +2.16	77%R	UDC+2.26	FLC+0.32	BSC +1.41 0 D / 0 H
				-2 -1 0 1 2
Stature	+1.73	Tall		
Strength	+1.03	Strong		
Body Depth	+0.81	Deep		
Dairy Form	+0.95	Open Rib		
Rump Angle	-1.00	High Pins		
Thurl Width	+1.69	Wide		
Rear Legs-Side	+0.18	Sickle		
Rear Legs-Rear	+0.58	Straight		
Foot Angle	+1.26	Steep		
Feet & Legs Score	+0.65	High		
F. Udder Attachment	+3.00	Strong		
Rear Udder Height	+2.62	High		
Rear Udder Width	+2.60	Wide		
Udder Cleft	+1.16	Strong		
Udder Depth	+2.58	Shallow		
Front Teat Placement	+1.74	Close		
Rear Teat Placement	+1.53	Close		
Teat Length	+0.04	Long		

**Sire: Wilra Ssi Regal Enclave-ET**

3241466104 12/23 PTA +3028 GTPI +1110 M  
0.17% +93 F +0.08% +57 P +1052 NM\$ +7.2 PL  
+0.4 DPR 2.61 SCS +1.18 T +1.71 UDC -0.01 FLC  
Regal x Legacy x Spectre

**Dam: WINSTAR GAMEDAY 8294-ET**

Reg: 3236651394 12/23 PTA +3009 GTPI  
+483 M +101 F +1005 NM\$  
+6.8 PL +1.2 DPR +1.64 T +1.42 UDC  
Sire Stack: Gameday x Magnitude x Achiever  
Due in February

**2<sup>nd</sup> Dam**

Winstar Magnitude 7005-ET  
3-03 159d 14310 5.1 730 3.5 501 RIP  
Pregnant with her 3rd calf milking 98 lbs in our robot barn

**3<sup>rd</sup> Dam**

Winstar Achiever Model-ET VG-85

**4<sup>th</sup> Dam**

Triplecrown Jw Ofest 142-ET VG-87





T-Spruce Sheepster 21129-ET

# Lot 22 T-Spruce Sheepster 21129-ET

## IVF Session

\*Buyer is purchasing rights to control the next IVF session(s) until a minimum of 8 #1 or #2 IVF embryos are produced. Embryo grades are determined at the time of transfer if fresh embryos or at time of freezing if freezing is requested by buyer. Buyer keeps all resulting embryos from these controlled IVF sessions. Buyer is responsible for all costs of the aspiration and mating sire decisions.

Born 05/22/2023 Reg: 840003265765635

12/2023	CDCB SUMMARY GENOMICCOW				NMS +1276
Milk	+839	78%R	Cheese Merit \$		+1304
Fat	+121	+0.31%	FMS +1066	GMS	+1242
Protein	+69	+0.15%	Gestation Len.	MSP	
CFP	+190		EFI %	gEFI 11.6%	gIB 15.8%
SCS	2.85	%R	Mastitis +3.4	Fert. Index	+2.1
PL	+7.6	%R	Livability +4.7	Heifer Liv.	+1.3
DPR	+1.5	%R	HCR +2.8	CCR	+3.2
RFI	-53				
Feed Saved	+122	43%R		0 Dtrs 0 Herds	% US

Beta: A1A2 Kappa: AB DWPS: 1448

12/2023	GHA TYPE SUMMARY				TPI +3218
PTAT +1.11	77%R	UDC+0.88	FLC+0.89	BSC +0.09	0 D / 0 H

			-2	-1	0	1	2
Stature	+0.33	Tall					
Strength	-0.28	Frail					
Body Depth	-0.32	Shallow					
Dairy Form	+0.80	Open Rib					
Rump Angle	+0.40	Sloped					
Thurl Width	+0.39	Wide					
Rear Legs-Side	-0.09	Posty					
Rear Legs-Rear	+0.77	Straight					
Foot Angle	+0.49	Steep					
Feet & Legs Score	+0.96	High					
F. Udder Attachment	+1.28	Strong					
Rear Udder Height	+0.98	High					
Rear Udder Width	+0.99	Wide					
Udder Cleft	+0.07	Strong					
Udder Depth	+1.12	Shallow					
Front Teat Placement	+0.49	Close					
Rear Teat Placement	+0.33	Close					
Teat Length	-1.04	Short					

## 38 Average

## Oocytes

Tested Negative for MW

### Sire: Ocd Trooper Sheepster-ET

3236792832 12/23 PTA +3187 GTPI +1358 M  
 0.26% +129 F +0.11% +75 P +1194 NM\$ +6.1 PL  
 -0.5 DPR 2.93 SCS +1.41 T +1.14 UDC +0.90 FLC  
 Trooper x Acura x Resolve

### Dam: T-SPRUCE CRUSHER 16744-ET

Reg: 3235976751 12/23 PTA +3035 GTPI  
 +932 M +135 F +1112 NM\$  
 +4.5 PL -1.7 DPR +1.10 T +0.52 UDC  
 Sire Stack: Crusher x Lionel x Samuri

**2<sup>nd</sup> Dam**  
 T-Spruce Lionel 13196-ET GP - 83  
 LACT 1 294d 28050M 4.1% 1170F 3.3% 933P

**3<sup>rd</sup> Dam**  
 T-Spruce Samuri 6347-ET

**4<sup>th</sup> Dam**  
 Mercedes Ts 9539-ET  
 02-00 3x 354d 30670m 3.7 1149f 3.2 991p

Arnie Gruenes  
 Twin Spruce Farm  
 17565 Co Rd 43  
 Richmond, MN 56368  
 Cows@meltel.net  
 320-493-9703



T-Spruce Hlysmokes 21151-ET

# Lot 23

# T-Spruce Hlysmokes 21151-ET

## IVF Session

\*Buyer is purchasing rights to control the next IVF session(s) until a minimum of 8 #1 or #2 IVF embryos are produced. Embryo grades are determined at the time of transfer if fresh embryos or at time of freezing if freezing is requested by buyer. Buyer keeps all resulting embryos from these controlled IVF sessions. Buyer is responsible for all costs of the aspiration and mating sire decisions.

Born 05/25/2023 Reg: 840003265765657

12/2023	CDCB SUMMARY GENOMICCOW			NMS +1205
Milk	+1550	79%R	Cheese Merit \$	+1224
Fat	+112	+0.18%	FMS +1059	GMS +1174
Protein	+77	+0.10%	Gestation Len.	MSP
CFP	+189		EFI %	gEFI 12.0% gIB 18.2%
SCS	2.90	%R	Mastitis +1.0	Fert. Index +1.1
PL	+5.9	%R	Livability +0.9	Heifer Liv. +0.9
DPR	+0.1	%R	HCR +3.1	CCR +1.4
RFI	-30			
Feed Saved	+168	43%R	0 Dtrs	0 Herds % US

Beta: A1A2 Kappa: BB DWP\$: 1245

12/2023	GHA TYPE SUMMARY				TPI +3197
PTAT +1.62	77%R	UDC+2.05	FLC+0.55	BSC +0.28	0 D / 0 H

			-2	-1	0	1	2
Stature	+0.39	Tall					
Strength	+0.01	Strong					
Body Depth	+0.35	Deep					
Dairy Form	+2.30	Open Rib					
Rump Angle	+0.05	Sloped					
Thurl Width	+0.26	Wide					
Rear Legs-Side	-0.02	Posty					
Rear Legs-Rear	+0.42	Straight					
Foot Angle	+0.69	Steep					
Feet & Legs Score	+0.63	High					
F. Udder Attachment	+2.12	Strong					
Rear Udder Height	+2.87	High					
Rear Udder Width	+3.20	Wide					
Udder Cleft	+1.09	Strong					
Udder Depth	+0.64	Shallow					
Front Teat Placement	+1.31	Close					
Rear Teat Placement	+1.69	Close					
Teat Length	-1.26	Short					

Arnie Gruenes  
Twin Spruce Farm  
17565 Co Rd 43  
Richmond, MN 56368  
Cows@meltel.net  
320-493-9703

Tested Negative  
for MW

### Sire: Cookiecutter Holysmokes-ET

3212874372 12/23 PTA +3126 GTPI +1588 M  
0.16% +107 F +0.08% +73 P +1032 NM\$ +4.5 PL  
-0.9 DPR 2.73 SCS +2.05 T +2.27 UDC +1.11 FLC  
HIGHJUMP x Renegade x Slam dunk

### Dam: T-SPRUCE TORRO 16389-ET

Reg: 3235976396 12/23 PTA +2973 GTPI  
+1975 M +129 F +1062 NM\$  
+3.1 PL -3.3 DPR +1.08 T +1.54 UDC  
Sire Stack: Taos x Lionel x Yoder

#### 2<sup>nd</sup> Dam

Mercedes Lionel Lass-ET

#### 3<sup>rd</sup> Dam

Endco Yoder L7933 9839-ET VG-86

#### 4<sup>th</sup> Dam

T-Spruce Lgold 7933-ET

02-05 2x 248d 20320m 4.4 904f 3.4 687p



T-Spruce Hike 20871-ET

# Lot 24

# T-Spruce Hike 20871-ET

## IVF Session

\*Buyer is purchasing rights to control the next IVF session(s) until a minimum of 8 #1 or #2 IVF embryos are produced. Embryo grades are determined at the time of transfer if fresh embryos or at time of freezing if freezing is requested by buyer. Buyer keeps all resulting embryos from these controlled IVF sessions. Buyer is responsible for all costs of the aspiration and mating sire decisions.

Born 04/10/2023 Reg: 840003265765377

12/2023	CDCB SUMMARY GENOMICCOW			NMS +1214
Milk	+1234	78%R	Cheese Merit \$	+1235
Fat	+101	+0.18%	FMS +1094	GMS +1184
Protein	+60	+0.07%	Gestation Len.	MSP
CFP	+161		EFI %	gEFI 11.9% gIB 17.3%
SCS	2.81	%R	Mastitis +3.1	Fert. Index +1.7
PL	+7.3	%R	Livability +1.4	Heifer Liv. +0.7
DPR	+0.8	%R	HCR +2.4	CCR +2.5
RFI	-191			
Feed Saved	+332	44%R	0 Dtrs	0 Herds % US

Beta: A1A2 Kappa: BB DWP\$: 1300

12/2023	GHA TYPE SUMMARY				TPI +3190
PTAT +1.88	77%R	UDC+2.37	FLC+0.73	BSC+0.26	0 D / 0 H

			-2	-1	0	1	2
Stature	+0.69	Tall					
Strength	-0.44	Frail					
Body Depth	-0.13	Shallow					
Dairy Form	+1.76	Open Rib					
Rump Angle	+0.32	Sloped					
Thurl Width	+0.41	Wide					
Rear Legs-Side	+0.34	Sickle					
Rear Legs-Rear	+0.36	Straight					
Foot Angle	+0.44	Steep					
Feet & Legs Score	+0.99	High					
F. Udder Attachment	+2.46	Strong					
Rear Udder Height	+2.79	High					
Rear Udder Width	+3.00	Wide					
Udder Cleft	+2.12	Strong					
Udder Depth	+1.77	Shallow					
Front Teat Placement	+2.87	Close					
Rear Teat Placement	+3.28	Close					
Teat Length	-1.66	Short					

Arnie Gruenes  
Twin Spruce Farm  
17565 Co Rd 43  
Richmond, MN 56368  
Cows@meltel.net  
320-493-9703

Tested Negative  
for MW

### Sire: Trifecta Hike-ET

3225319587 12/23 PTA +3095 GTPI +1469 M  
0.20% +116 F +0.06% +63 P +1211 NM\$ +5.3 PL  
-.09 DPR 2.83 SCS +1.22 T +2.03 UDC +0.30 FLC  
Bosa x Tahiti x Bandares

### Dam: T-SPRUCE MONSHINER 15734-ET

Reg: 3220247742 12/23 PTA +2984 GTPI  
+1558 M +99 F +1001 NM\$  
+4.8 PL -0.2 DPR +1.26 T +1.26 UDC  
Sire Stack: Moonshiner x Lionel x Samuri

#### 2<sup>nd</sup> Dam

T-Spruce Lionel 13196-ET GP - 83  
LACT 1 294d 28050M 4.1% 1170F 3.3% 933P

#### 3<sup>rd</sup> Dam

T-Spruce Samuri 6347-ET

#### 4<sup>th</sup> Dam

Mercedes Ts 9539-ET  
02-00 3x 354d 30670m 3.7 1149f 3.2 991p



T-Spruce Perky 21405-ET

# Lot 25

# T-Spruce Perky 21405-ET

## IVF Session

\*Buyer is purchasing rights to control the next IVF session(s) until a minimum of 8 #1 or #2 IVF embryos are produced. Embryo grades are determined at the time of transfer if fresh embryos or at time of freezing if freezing is requested by buyer. Buyer keeps all resulting embryos from these controlled IVF sessions. Buyer is responsible for all costs of the aspiration and mating sire decisions.

Born 07/03/2023 Reg: 840003272452104

12/2023	CDCB SUMMARY GENOMICCOW			NMS +1235
Milk	+1655	78%R	Cheese Merit \$	+1253
Fat	+124	+0.20%	FMS +1111	GMS +1188
Protein	+75	+0.08%	Gestation Len.	MSP
CFP	+199		EFI %	gEFI 12.5% gIB 20.8%
SCS	2.82	%R	Mastitis +1.7	Fert. Index +0.8
PL	+6.7	%R	Livability +3.2	Heifer Liv. +1.3
DPR	+0.3	%R	HCR +1.8	CCR +2.6
RFI	-18			
Feed Saved	+54	44%R	0 Dtrs	0 Herds % US

Beta: A1A2 Kappa: AA DWPS: 1351

12/2023	GHA TYPE SUMMARY			TPI +3183
PTAT +1.05	77%R	UDC+1.37	FLC+0.11	BSC +0.88 0 D / 0 H
				-2 -1 0 1 2
Stature	+1.47	Tall		
Strength	-0.10	Frail		
Body Depth	+0.15	Deep		
Dairy Form	+1.62	Open Rib		
Rump Angle	+1.33	Sloped		
Thurl Width	+1.45	Wide		
Rear Legs-Side	-0.02	Posty		
Rear Legs-Rear	+0.02	Straight		
Foot Angle	+0.46	Steep		
Feet & Legs Score	+0.52	High		
F. Udder Attachment	+1.48	Strong		
Rear Udder Height	+1.96	High		
Rear Udder Width	+2.18	Wide		
Udder Cleft	+1.09	Strong		
Udder Depth	+1.22	Shallow		
Front Teat Placement	+1.07	Close		
Rear Teat Placement	+1.28	Close		
Teat Length	-0.85	Short		

## 31 Average Oocytes

Tested Negative for MW

### Sire: Progenesis Perky

0014226928 12/23 PTA +3170 GTPI +749 M  
 0.34% +127 F +0.11% +55 P +1168 NM\$ +6.5 PL  
 +0.3 DPR 2.57 SCS +1.71 T +1.76 UDC +0.08 FLC  
 Gameday x Altazazzle x Yoda

### Dam: T-SPRUCE UPSIDE 17557-ET

Reg: 3243331811 12/23 PTA +3063 GTPI  
 +1592 M +113 F +1088 NM\$  
 +5.1 PL -0.9 DPR +1.34 T +1.50 UDC  
 Sire Stack: Upside x Lionel x Yoder

**2<sup>nd</sup> Dam**  
 Mercedes Lionel Lass-ET  
**3<sup>rd</sup> Dam**  
 Endco Yoder L7933 9839-ET VG-86  
**4<sup>th</sup> Dam**  
 T-Spruce Lgold 7933-ET  
 02-05 2x 248d 20320m 4.4 904f 3.4 687p

Arnie Gruenes  
 Twin Spruce Farm  
 17565 Co Rd 43  
 Richmond, MN 56368  
 Cows@meltel.net  
 320-493-9703



T-SPRUCE JALAPENO 20470-ET

# Lot 26

# T-Spruce Jalapeno 20470-ET

## IVF Session

\*Buyer is purchasing rights to control the next IVF session(s) until a minimum of 8 #1 or #2 IVF embryos are produced. Embryo grades are determined at the time of transfer if fresh embryos or at time of freezing if freezing is requested by buyer. Buyer keeps all resulting embryos from these controlled IVF sessions. Buyer is responsible for all costs of the aspiration and mating sire decisions.

### #3 TPI

## JALAPENO DAUGHTER

Tested Positive for MW

Arnie Gruenes  
Twin Spruce Farm  
17565 Co Rd 43  
Richmond, MN 56368  
Cows@meltel.net  
320-493-9703

Born 02/01/2023 Reg: 840003260817882

12/2023	CDCB SUMMARY GENOMICCOW				NMS +1204
Milk	+1060	79%R	Cheese Merit \$		+1228
Fat	+128	+0.30%	FMS\$ +1024		GMS\$ +1221
Protein	+69	+0.12%	Gestation Len.		MSP
CFP	+197		EFI %	gEFI 11.3%	gIB 10.9%
SCS	2.83	%R	Mastitis +2.6	Fert. Index	+2.0
PL	+5.2	%R	Livability +0.0	Heifer Liv.	+0.8
DPR	+1.3	%R	HCR +2.2	CCR	+3.0
RFI	-18				
Feed Saved	+186	43%R	0 Dtrs	0 Herds	% US

Beta: A2A2 Kappa: BB DWP\$: 1242

12/2023	GHA TYPE SUMMARY				TPI +3179
PTAT +1.17	77%R	UDC+1.10	FLC+0.26	BSC+0.03	0 D / 0 H

			-2	-1	0	1	2
Stature	+0.09	Tall					
Strength	-0.29	Frail					
Body Depth	+0.18	Deep					
Dairy Form	+2.09	Open Rib					
Rump Angle	+0.79	Sloped					
Thurl Width	+0.28	Wide					
Rear Legs-Side	+0.65	Sickle					
Rear Legs-Rear	+0.16	Straight					
Foot Angle	+0.00	Steep					
Feet & Legs Score	+0.33	High					
F. Udder Attachment	+0.86	Strong					
Rear Udder Height	+1.53	High					
Rear Udder Width	+2.07	Wide					
Udder Cleft	+0.77	Strong					
Udder Depth	-0.21	Deep					
Front Teat Placement	+1.15	Close					
Rear Teat Placement	+1.56	Close					
Teat Length	-0.49	Short					

Sire: Progenesis Jalapeno

0013807753 12/23 PTA +3045 GTPI +1819 M  
0.16% +117 F +0.07% +77 P +1098 NM\$ +3.7 PL  
-0.8 DPR 2.79 SCS +1.18 T +1.18 UDC -0.58 FLC  
HIGHJUMP x Spectre x Josuper

Dam: T-SPRUCE CONWAY 15854-ET GP-82

Reg: 3220247862 12/23 PTA +3016 GTPI  
+676 M +115 F +1018 NM\$  
+4.7 PL +0.1 DPR +1.25 T +0.86 UDC  
Sire Stack: Conway x Lionel x Samuri  
2-5 3x 198d 15420m 669f 4.3% 516p 3.3%p

2<sup>nd</sup> Dam

T-Spruce Lionel 13196-ET GP - 83  
LACT 1 294d 28050M 4.1% 1170F 3.3% 933P

3<sup>rd</sup> Dam

T-Spruce Samuri 6347-ET

4<sup>th</sup> Dam

Mercedes Ts 9539-ET  
02-00 3x 354d 30670m 3.7 1149f 3.2 991p



T-Spruce Tamborine 21661-ET

# Lot 27

# T-Spruce Tamborine 21661-ET

Born 08/15/2023 Reg: 840003272452360

Arnie Gruenes  
Twin Spruce Farm  
17565 Co Rd 43  
Richmond, MN 56368  
Cows@meltel.net  
320-493-9703

12/2023	CDCB SUMMARY GENOMICCOW				NMS +1173
Milk	+1858	79%R	Cheese Merit \$		+1187
Fat	+108	+0.12%	FMS +1078	GMS	+1156
Protein	+75	+0.06%	Gestation Len.	MSP	
CFP	+183		EFI %	gEFI 12.2%	gIB 14.2%
SCS	2.84	%R	Mastitis +0.9	Fert. Index	+0.8
PL	+5.4	%R	Livability +1.4	Heifer Liv.	+0.7
DPR	+0.1	%R	HCR +2.4	CCR	+1.7
RFI	-129				
Feed Saved	+280	44%R	0 Dtrs	0 Herds	% US

Tested Negative for MW

Beta: A2A2 Kappa: BB DWP\$: 1154

12/2023	GHA TYPE SUMMARY				TPI +3143			
PTAT +1.57	78%R	UDC+1.36	FLC+1.36	BSC +0.07	0 D / 0 H			
				-2	-1	0	1	2
Stature	+0.17	Tail						
Strength	-0.23	Frail						
Body Depth	+0.03	Deep						
Dairy Form	+1.97	Open Rib						
Rump Angle	-1.57	High Pins						
Thurl Width	+0.33	Wide						
Rear Legs-Side	-0.36	Posty						
Rear Legs-Rear	+1.32	Straight						
Foot Angle	+1.21	Steep						
Feet & Legs Score	+1.30	High						
F. Udder Attachment	+1.45	Strong						
Rear Udder Height	+2.23	High						
Rear Udder Width	+2.09	Wide						
Udder Cleft	+0.22	Strong						
Udder Depth	+0.29	Shallow						
Front Teat Placement	+0.73	Close						
Rear Teat Placement	+0.64	Close						
Teat Length	-1.28	Short						

## Sire: Ladys-Manor O Tamborine-ET

3238997218 12/23 PTA +3093 GTPI +1863 M  
0.06% +91 F +0.04% +71 P +1084 NM\$ +5.0 PL  
+1.2 DPR 2.94 SCS +1.60 T +1.81 UDC +0.83 FLC  
Outcome x Alphabet x Toronto

## Dam: T-SPRUCE CONWAY 15854-ET

Reg: 3220247862 12/23 PTA +3016 GTPI  
+676 M +115 F +1018 NM\$  
+4.7 PL +0.1 DPR +1.25 T +0.86 UDC  
Sire Stack: Conway x Lionel x Samuri

### 2<sup>nd</sup> Dam

T-Spruce Lionel 13196-ET GP - 83  
LACT 1 294d 28050M 4.1% 1170F 3.3% 933P

### 3<sup>rd</sup> Dam

T-Spruce Samuri 6347-ET

### 4<sup>th</sup> Dam

Mercedes Ts 9539-ET  
02-00 3x 354d 30670m 3.7 1149f 3.2 991p



PLAIN-KNOLL 4353 CELTIC

Lot 28

PLAIN-KNOLL 4353 CELTIC

## IVF Session

\*Buyer is purchasing rights to control the next IVF session(s) until a minimum of 8 #1 or #2 IVF embryos are produced. Embryo grades are determined at the time of transfer if fresh embryos or at time of freezing if freezing is requested by buyer. Buyer keeps all resulting embryos from these controlled IVF sessions. Buyer is responsible for all costs of the aspiration and mating sire decisions.

Born 01/26/2023 Reg: 840003244651123

12/2023	CDCB SUMMARY GENOMICCOW				NMS +1046
Milk	+1218	79%R	Cheese Merit \$		+1067
Fat	+90	+0.15%	FMS +948	GMS	+1017
Protein	+54	+0.06%	Gestation Len.	MSP	
CFP	+144		EFI %	gEFI 11.6%	gIB 11.7%
SCS	2.48	%R	Mastitis +4.4	Fert. Index	+2.8
PL	+7.4	%R	Livability +3.2	Heifer Liv.	+1.1
DPR	+2.3	%R	HCR +2.6	CCR	+3.6
RFI	-29				
Feed Saved	-57	45%R		0 Dtrs	0 Herds % US

Beta: A2/A2 Kappa: AA DWP\$: 1162

12/2023	GHA TYPE SUMMARY				TPI +3094
PTAT +1.55	78%R	UDC+1.37	FLC+0.72	BSC +0.57	0 D / 0 H
Stature	+0.65	Tall			
Strength	+0.58	Strong			
Body Depth	+0.32	Deep			
Dairy Form	+0.26	Open Rib			
Rump Angle	+0.18	Sloped			
Thurl Width	+0.56	Wide			
Rear Legs-Side	+0.47	Sickle			
Rear Legs-Rear	+0.26	Straight			
Foot Angle	+0.77	Steep			
Feet & Legs Score	+0.97	High			
F. Udder Attachment	+2.06	Strong			
Rear Udder Height	+1.33	High			
Rear Udder Width	+1.63	Wide			
Udder Cleft	+0.83	Strong			
Udder Depth	+1.15	Shallow			
Front Teat Placement	+1.15	Close			
Rear Teat Placement	+1.11	Close			
Teat Length	+0.39	Long			

### Sire: Welcome-Tel Taos Hayk-ET

3214541122 12/23 PTA +3089 GTPI +1226 M  
 0.16% +94 F +0.10% +67 P +1025 NM\$ +5.9 PL  
 +1.6 DPR 2.57 SCS +1.40 T +1.32 UDC +0.53 FLC  
 Taos x Tahiti x Superhero

### Dam: PLAIN-KNOLL S-S-I 12328-ET

Reg: 3200059856 12/23 PTA +2908 GTPI  
 +1673 M +80 F +877 NM\$  
 +6.1 PL +0.9 DPR +1.69 T +1.19 UDC  
 Sire Stack: Husky x Lylas x Numero Uno

#### 2<sup>nd</sup> Dam

Plain-Knoll Lylas 1359-ET VG-85

#### 3<sup>rd</sup> Dam

S-S-I Uno Mara 8395-ET VG-86  
 03-04 3x 304d 27750m 4.3 1204f 3.4 952p

#### 4<sup>th</sup> Dam

S-S-I Shamrock Mesa 7388-ET VG-87  
 04-09 3x 322d 37080m 3.5 1286f 3.0 1116p

Fit Genetics  
 fitdairygenetics@gmail.com  
 859-699-2998

Worked at  
 Trans Ova  
 Maryland

Lot Type	LOT#	Date of Birth	Reg #	Reg name	TPI	NM	DWP	Milk	Fat	Pro	CFP	Beta	Kappa
IVF	1	10.5.22	3260816935	T-Spruce G Milller 19523-ET	3,224	1,193	1,244	1,348	105	72	177	A1/A1	BB
sell	2	11.5.23	3280396501	T-Spruce Phoenix 22160-ET	3,189	1,093	1,039	1,248	136	64	200	A2/A2	AA
sell	3	12.27.22	3260817630	T-Spruce Ltwrth 20218-ET	3,171	1,194	1,064	1,025	120	64	184	A2/A2	AB
sell	4	10.27.23	3280396432	T-Spruce Phoenix 22091-ET	3,174	1,194	1,146	1,934	119	78	197	A2/A2	BB
IVF	5	4.8.23	3265765367	T-Spruce Hike 20861-ET	3,270	1,283	1,353	1,275	134	68	202	A2/A2	BB
IVF	6	6.24.23	3272452037	T-Spruce Versachi 21338-ET	3,224	1,317	1,474	1,738	141	80	221	A2/A2	BB
IVF	7	7.23.23	3272452220	T-Spruce Sheepster 21521-ET	3,220	1,241	1,383	1,506	137	75	212	A2/A2	AA
IVF	8	6.1.23	3265765694	T-Spruce Sheepster 21188-ET	3,215	1,200	1,378	1,437	115	75	190	A1/A2	AA
IVF	9	8/3/2023	3272452283	T-SPRUCE SHEEPSTER 21584-ET	3272	1259	1332	1524	144	78	222	A2A2	AB
IVF	10	10.8.22	3260816959	T-Spruce Overdo 19547-ET	3,258	1,182	1,164	1,958	128	79	207	A1/A2	BB
IVF	11	5.16.23	3265765587	T-Spruce Sheepster 21081-ET	3,227	1,266	1,256	1,646	138	79	217	A2/A2	AA
IVF	12	6.21.23	3272452023	T-Spruce Sheepster 21324-ET	3,233	1,317	1,281	2,228	145	86	231	A2/A2	AA
IVF	13	3.18.23	3260818153	T-Spruce Ltchworth 20741-ET	3,193	1,223	1,294	944	124	59	183	A2/A2	AA
IVF	14	6.8.23	3265765745	T-Spruce Sheepster 21239-ET	3,218	1,199	1,188	602	134	63	197	A1/A2	AB
IVF	15	4.12.23	3265765392	T-Spruce Hike 20886-ET	3,265	1,326	1,278	1,676	130	72	202	A2/A2	NR
Sell	16	10/12/2023	3256167610	Pine-Tree 727 Easton 12955-ET	3128	1117	-	1440	119	66	185	A2/A2	BB
IVF	17	06.12.2023	3265765776	T-SPRUCE POWERSTAR 21270-ET	3179	1152	-	1794	112	79	191	A2/A2	BB
IVF	18	7/10/2023	3269405441	FIT CORBIN 6133 ANTJE-ET	3178	1242	1289	1669	108	65	173	A2/A2	AA
sell	19	5.24.23	3265765652	T-Spruce Sheepster 21146-ET	3,210	1,239	1,253	1,077	134	69	203	A1/A2	AA
sell	20	10.31.23	3280396461	T-Spruce Phoenix 22120-ET	3,179	1,113	1,227	1,467	125	68	193	A2/A2	BB
Sell	21	8/20/2023	3267484835	WINSTAR ENCLAVE 9737-ET	3180	1082	-	891	120	57	177	A1A2	AB
IVF	22	5.22.23	3265765635	T-Spruce Sheepster 21129-ET	3,218	1,276	1,448	839	121	69	190	A1/A2	AB
IVF	23	5.25.23	3265765657	T-Spruce Hlysmokes 21151-ET	3,197	1,205	1,245	1,550	112	77	189	A1/A2	BB
IVF	24	4.10.23	3265765377	T-Spruce Hike 20871-ET	3,190	1,214	1,300	1,234	101	60	161	A1/A2	BB
IVF	25	7.3.23	3272452104	T-Spruce Perky 21405-ET	3,183	1,235	1,351	1,655	124	75	199	A1/A2	AA
IVF	26	2.1.23	3260817882	T-Spruce Jalapeno 20470-ET	3,179	1,204	1,242	1,060	128	69	197	A2/A2	BB
sell	27	8.15.23	3272452360	T-Spruce Tamborine 21661-ET	3,143	1,173	1,154	1858	108	75	183	A2/A2	BB
IVF	28	1/26/2023	3244651123	PLAIN-KNOLL 4353 CELTIC	3094	1046	1162	1218	90	54	144	A2/A2	AA



# Sale Index

<b>Fit Genetics</b>	18 & 28
<b>Pine-Tree Dairy</b>	16
<b>Winstar Genetics LLC</b>	21
<b>Twin Spruce Farm</b>	1, 2, 3, 4, 5, 6, 7, 8, 9, 10, 11, 12, 13, 14, 15, 17, 19, 20, 22, 23, 24, 25, 26 & 27



### Twin Spruce (Minnesota) invited to speak in Hungary

Twin Spruce is a 1700 cow dairy in Minnesota and a strong customer of the Nelson Family of Companies. Arnie and Kris Gruenes were invited to Hungary by Holstein Genetika to speak at an annual seminar of all Hungarian dairy farm owners. This seminar, sponsored by the equipment dealer

Axial, focused on the benefits of shredlage. During the week long trip, Arnie & Kris visited many other dairy operations across Hungary and exchanged experiences and ideas.





# HOLSTEIN ASSOCIATION TERMS AND CONDITIONS FOR PUBLIC SALES

EFFECTIVE MARCH 2, 1996 - Amended October 1, 1997, June 28, 2000, June 23, 2002, March 26, 2010 and March 24, 2016

**TERMS:** The terms of the sale are cash unless arrangements are made prior to the sale or are printed in the sale catalog. Only when the above conditions are met will the buyer be entitled to the warranties listed below. In no case will animals be released unless settlement is made with the clerk of the sale.

**RESPONSIBILITY:** The seller, buyer, and manager of this sale are obligated to comply with the provisions of these terms and conditions.

**EXPORT SALES:** Buyer assumes all responsibility for health tests required by the importing country.

**BIDS:** The highest bidder is the buyer. Bidding parties or their agents are responsible for all bids placed. Every animal or lot presented for bidding is pledged to absolute sale. In case of dispute, the animal or lot will again be put up for advance bids, and if there is no advance bid, the animal or lot will be sold to the person the auctioneer accepted the last bid from. In case two or more claim the bid, the auctioneer will indicate the party whose bid he recognized. Other claimants will be given an opportunity to increase the bid and bidding will be restricted to the two or more claimants.

**BY-BIDDING:** Bidding directly or indirectly by the sole owner of any animal or lot is prohibited unless the intention to bid is disclosed specific to each animal in the catalog and announced when the animal enters the ring. Bidding by any member of a partnership, syndicate, or other entity having an ownership interest in an animal or lot is permitted.

**TRANSFER OF OWNERSHIP:** For all Registered Holsteins<sup>SM</sup>, the transfer of ownership to the buyer will be recorded on the records of Holstein Association USA and a certificate of registration showing that transfer of ownership will be provided to the buyer free of charge. For embryos, the transfer of ownership to the buyer will be recorded on the records of Holstein Association USA free of charge to the buyer.

**RISK:** All animals located at sale site are at the purchaser's risk as soon as struck off, but will be cared for free of charge for a maximum of 24 hours following the end of the sale.

## WARRANTIES:

- 1) Each consignor warrants clear title to the animal or lot, and the right to sell same.
- 2) To the best of the seller's knowledge, each animal is sound and healthy in every respect and embryos have been recovered, processed, frozen, transferred and graded in keeping with IETS recommendations unless otherwise noted in the catalog or announced from the auction stand. Every precaution will be taken to represent the physical condition of each lot exactly as is known. Examination of all purchases should be made immediately after the purchase and before the close of the sale, and if found not to be as represented, complaint must be reported to the sale management before the close of the sale. In the event no complaint is filed, it is understood that the buyer assumes full ownership in the case of animals at sale site together with all risks, after which no representations of the seller can be challenged through the sale management. Heifers that never calved are in no way guaranteed as to the condition of their udders following calving. The sex of an embryo or fetus is in no way guaranteed.

### 3) Breeding Warranty

The seller guarantees all animals to be breeders, but not beyond the purchase price, with the following understanding:

- a. Males - Should any bull after reaching the age of fourteen months fail to prove a breeder after being used for two months on cows or heifers known to be breeders, the matter shall be reported in writing to the seller within three months of the sale date. The report must include the animal's examination record, a written statement of treatment, and a statement of the animals' inability to breed,

by a licensed veterinarian. The seller has the option to refund the purchase price or make other settlement that is satisfactory to the buyer. In either case the rights of ownership of the animal return to the seller. The seller makes no guarantees with respect to the ability to freeze semen.

- b. Females - All females are guaranteed to be breeders with the exception of:
  1. Cows over 7 years of age when sold;
  2. Cows and/or heifers carrying a pregnancy that is the result of an embryo transfer.

Report of a non-breeder must occur in writing within 3 months of the date of sale or before the animal reaches 21 months of age and must be submitted to the seller. The report must include the animal's examination record, a written statement of treatment, and a statement of the animals' inability to breed, by a licensed veterinarian. The seller has the option to refund the purchase price or make other settlement that is satisfactory to the buyer. In either case the rights of ownership of the animal return to the seller.

Females bred when sold and pronounced in calf are presumed to be pregnant but pregnancy is not guaranteed unless so announced. The seller makes no warranty that pregnant cows will deliver calves or that they will carry calves full term.

- c. If, after the sale, embryos or oocytes are recovered from a female or an attempt is made to superovulate her, this negates the breeding warranty unless there is a separate written agreement between buyer and seller.

**SHIPPING:** Assistance will be given in arranging shipping of the animals after the sale. All costs, risks and responsibility will be borne by the purchaser.

**PEDIGREE INFORMATION:** All production, classification, type and production summaries are current. Only information recorded on Holstein Association USA pedigrees is used. Any production or classification records supplied by the seller or consignor will be properly identified as provided by owner. Records in progress are identified as such.

**GENOMIC INFORMATION:** If genomic information on the animal or embryo is available, it must be dated and disclosed at or before the time of sale.

**EMBRYO TRANSFER:** All registered animals that have resulted from embryo transfer are identified with one of the following suffixes in the name: ET, ETS (from split embryo), or ETN (from nuclear transfer). If unregistered, the appropriate technology will be identified. Donor dams are identified.

**HEALTH WARRANTY:** The seller will provide an official health certificate to the buyer for each animal showing the results of all health tests made in preparation for this sale as required by the state where the cattle reside. Other health tests completed for this sale will be disclosed.

**ERRORS:** The material in this catalog has been carefully edited. If any errors or omissions are discovered, they will be announced. Such announcements take precedence over that printed in this catalog.

**ACCIDENT:** The sale management, the consignors, and the owner of the grounds will not be responsible in any case for the condition of the grounds or the behavior of the animals and disclaim any liability in the event of personal accident or property loss.

**LIMITATIONS OF WARRANTIES:** Warranties contained herein, unless terminated earlier, will cease upon the resale of an animal.

*Thank You*

