



**KHW Regiment Apple-RED-ET  
EX-96,4E EEEEE DOM**

*\*Grand Champion of the 2011  
Grand International Red & White Show  
(3rd Dam of Lot 1)*



**Ms Apple Arriella-ET\*RC  
EX-92 EEEEE**

3-03 365 35590 4.6 1688 3.3 1199  
(2nd Dam of Lot 1)

**LOT 1 #1992**

**Brandt-View Moov Apricot-ET**

3215092410 99%RHA-NA  
Born 8/20/21 12/23 PTA +2276GTPI  
+3.39T +2.57UDC +2.27FLC

**Fresh 12/13/23**

1/4 test- 74 lbs 4.6%F 3.5%P  
SCC 29,000

**\*Beautiful heifer, sure VG 1st score!**

*\*All Brandt-View Lots raised in  
freestalls and headlocks*

**Brandt-View Farms**

2044 Horseshoe Pike  
Annville, PA 17003  
717-821-1238

**Lindenright Moovin-ET**

12873743C 12/23 PTA +1805GTPI  
+3.25T +2.51UDC +1.94FLC 99%R  
Avalanche X VG-87 Bradnick

**BlackNCherry KD Abigail-ET**

**3-01 VG-85 V+VGV 3151399794**  
2-05 319 26350 4.5 1176 3.7 965  
Sire: Woodcrest King Doc

**2nd Dam: BlackNCherry Bmr Alisha**

**VG-88 EV+VV**  
5-01 243 22360 4.5 1014 3.4 770

**3rd Dam: (Pictured above)**

**Ms Apple Arriella-ET  
EX-92 EEEEE\*RC**  
1-11 365 31031 5.0 1553 3.3 1009  
3-03 365 35590 4.6 1688 3.3 1199

**Sisters include:**

**Miss Apple Snapple-RED EX-96**  
*\*Un. All-American R&W 4yr-old 2017*  
**Ms Candy Apple-RED EX-94**  
*\*Un. All-American 4yr-old 2013*  
**Ms Delicious Apple-RED EX-94**  
*\*Red Impact Cow of the Year 2019*

**4th Dam: (Pictured above)**

**KHW Regiment Apple-RED-ET  
EX-96,4E EEEEE DOM**  
9-01 365 36750 4.3 1582 3.5 1280  
Lifetime 240640 4.7 11394 3.7 9013

*\*Multiple time All-American!*

*-\$1 million Global Glamour Sale Topper*

**5th Dam: Kamps-Hollow Altitude-ET**

**EX-95,2E EEEEE DOM**  
7-00 365 39690 4.7 1849 3.5 1385  
Lifetime 144460 4.4 6295 3.7 5288

**6th Dam: Clover-Mist Alisha-ET**

**EX-93,3E EEEEE DOM**  
8-07 365 36920 4.2 1553 3.4 1258  
Lifetime 226470 4.7 10659 3.6 8149

**7th Dam: Clover-Mist Augy Star-ET**

**EX-94,4E EEEEE DOM**  
7-10 365 43140 5.0 2136 3.3 1421  
Lifetime 206250 4.7 9793 3.5 7187

**8th Dam: D-R-A August**

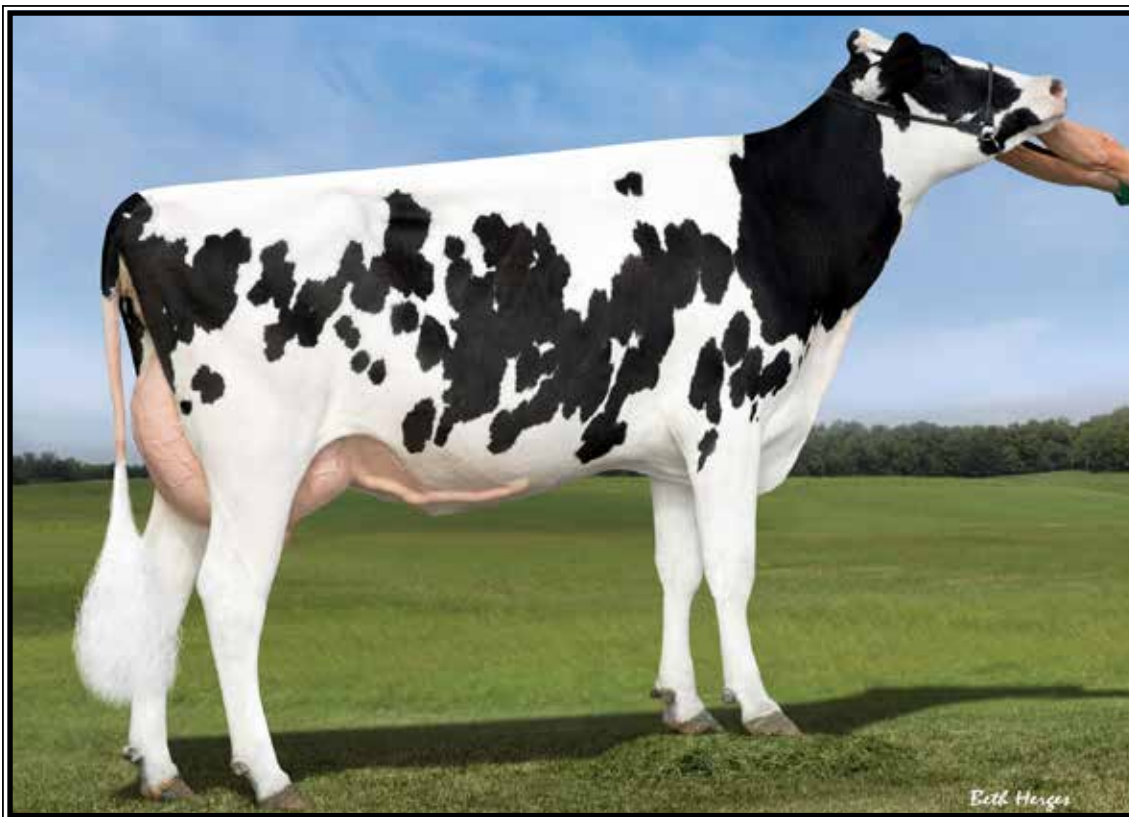
**EX-96,4E EEEEE DOM**  
Lifetime 190200 4.4 8281 3.3 4457  
*\*Nom. All-American Aged Cow 1986*

**9th Dam:**

**D-R-A Ideal Precious Leader EX-90,2E**

**10th Dam:**

**D-R-A Princess Lad Leader EX-90,3E**



**S-S-I Moonry Myesha 9071-ET VG-85 UUU+U DOM**

2-01 365 33260 4.0 1330 3.5 1152

(4th Dam of Lot 2)

**LOT 2**

#7613

**Winstar 7613 Doris Burke-ET**

3224449579 12/23 PTA +2942GTPI

+1400M +.09% +81F +.02% +50P

+909NMS +6.3PL -.5DPR 2.78SCS

+1.67T +2.14UDC +1.17FLC

**Fresh 12/12/23**

1/4 test- 86 lbs 4.7%F 3.3%P

SCC 38,000

\*She is Tested A2/A2

\*Tremendous +2942GTPI & 909NMS  
-high genomics for a milking cow!

\*5 offspring over +3000G up to +3059G

**Brandt-View Farms**

2044 Horseshoe Pike

Annville, PA 17003

717-821-1238

**Siemers Reng Perfect-ET**

3200124761 12/23 PTA +3042GTPI

+1135M +.18% +95F +58P +861NMS

+4.6PL +2.61T +2.12UDC +2.10FLC

Renegade X EX-91 Delta-Lambda

**Winstar Moola 5972-ET**

3206461019

Sire: Melarry Frazzled Moola-ET

**2nd Dam:**

Ms TJR Dynamo 36867-ET

VG-85 ++V+V

2-01 305 22800 4.2 969 3.5 796

**3rd Dam: Triplecrown JW Masey 132-ET**

VG-87 EVEV+

3-02 296 28070 3.3 924 3.7 1025

**4th Dam: (Pictured above)**

S-S-I Moonry Myesha 9071-ET

VG-85 VVV+V DOM

2-01 365 33260 4.0 1330 3.5 1152

**5th Dam:**

S-S-I Bookem Modesto7269-ET

VG-87 VV++V DOM

3-03 305 25995 3.8 982 3.5 909

**AI sons include: Mando & Marshman**

**6th Dam: Roylane Shot Mindy 2079-ET**

VG-86 VVVVV DOM

2-02 365 34589 4.3 1489 3.3 1148

\*Dam of 'Monarch' at Select!

**7th Dam: Seagull-Bay Oman Mirror-ET**

VG-86 +VVVV DOM

3-00 365 36430 4.4 1606 3.6 1304

\*Dam of sires: Robust, Bob & Punch

**8th Dam: Seagull-Bay Manat Mirage-ET**

EX-90 VEVVE GMD-DOM

3-06 365 35900 3.8 1364 3.4 1229

**9th Dam: Lynmead Celsius Minnow-ET**

EX-91,2E EEEVV GMD-DOM

4-10 365 49550 3.7 1857 3.2 1592

Lifetime 255910 3.7 9446 3.3 8481

**10th Dam: CMV Melwood Mindy-ET**

VG-85 VE+V GMD-DOM

4-01 365 36341 3.6 1305 3.4 1239

**11th Dam: Briarpatch-R Misty-ET**

VG-85 +E+V GMD-DOM

2-02 365 24680 4.8 1176 3.1 776

**12th Dam: Rilara Mars Las Ravena**

EX-91 EVEE GMD-DOM

4-03 305 29030 4.6 1329



**Brandt-View Colby Kimber-ET  
UG-87,EX-MS DOM**

2-03 364 42720 3.6 1541 3.2 1375  
(3rd Dam of Lot 3)

**2nd Dam:**  
**Brandt-View Halogn Heinz-ET**  
GP-83 +V+V  
2-00 311 24170 3.6 872 3.2 783  
3-01 295 26970 3.3 892 3.0 806  
4-01 230 25150 3.1 788 3.0 763

**3rd Dam: (Pictured above)**  
**Brandt-View Colby Kimber-ET**  
VG-87 VE+GV EX-MS DOM  
2-03 364 42715 3.6 1541 3.2 1379  
**Kimber's popular AI sons include:**

At ABS: 29HO16179 Calico  
At Genex: 1HO10455 Kristoff

**4th Dam:**  
**Conant-Acres Potter Gail-ET**  
VG-87 VV++V DOM  
2-00 365 46630 3.8 1761 3.1 1436

**5th Dam:**  
**Conant-Acres BWM Ginny-ET**  
VG-88 VVVVE DOM  
2-01 365 28300 3.2 902 3.1 878  
\*Full sister to 7HO7455 Granger

**6th Dam:**  
**Chan-Lee Duster Glenna-ET**  
EX-90 EEVVE GMD-DOM  
3-07 365 35380 3.7 1312 3.4 1209  
Lifetime 120350 3.9 4659 3.4 4104

**7th Dam:**  
**Chan-Lee Aerostar Glare-ET**  
EX-91,3E VEEVE DOM  
5-02 365 29060 4.0 1168 3.3 961  
Lifetime 162500 3.7 6092 3.2 5269

**8th Dam:**  
**Chan-Lee Mark Starglo**  
VG-87 +EVE DOM  
2-03 365 20490 4.0 827 3.1 644

**9th Dam:**  
**Chan-Lee Valiant Starfire-ET**  
VG-86 VVVV  
Lifetime 126550 2.9 3696 2.9 3658

**10th Dam:**  
**Chan-Lee Jet Stream Stardust**  
VG-88 VEVV DOM  
Lifetime 167510 3.5 5868

**LOT 3 #2006**  
**Brandt-View Faneca Muppet**

3215092424 99%RHA-I  
Born 10/2/21 12/23 PTA +2431GTPI

**Fresh 12/16/23**  
1/4 test- 86 lbs 4.7%F 3.3%P  
SCC 38,000

\*She is Tested A2/A2 BB

**Brandt-View Farms**  
Anville, PA

**Badger SSI Lucia Faneca-ET**  
3205251583 12/23 PTA +2772GTPI  
+1031M +.25% +113F +40P +699NMS  
+1.7PL +1.63T +1.14UDC +.19FLC  
Lucia X VG-87 Helix

**Brandt-View Modesty Martina**  
**6-08 EX-91 VEVVE 95-MS** 73629759  
2-09 365 39300 3.5 1363 3.2 1258  
3-11 323 34220 3.0 1038 3.1 1053  
5-00 365 39100 3.6 1426 3.2 1253  
6-02 316 30310 4.0 1212 3.2 981  
-recently fresh again and looks great!  
LTD 146100 3.5 5174 3.2 4655  
Sire: Bacon-Hill Pety Modesty-ET

**LOT 4 #1773**  
**Brandt-View Crimson Dolce**

3-07 GP-82 +V+++  
3141609350 99%RHA-I  
Born 10/30/19 12/23 PTA +2565GTPI  
+.21% +64F +24P +710NMS +4.7PL  
3-01 290 23350 5.0 1164 3.6 842

**Fresh 12/30/23**  
-milking 116 lbs/day

\*She is Tested A2/A2

**Brandt-View Farms**  
Anville, PA

**ABS Crimson-ET**  
3141494296 12/23 PTA +2658GTPI  
+1125M +94F +52P +796NMS +4.5PL  
Spectre X VG-86 Rubicon

**Brandt-View Delta Dandelion**  
**5-11 EX-91 VE+EE** 73629745  
2-01 349 31310 4.0 1241 3.2 991  
3-02 327 29040 4.3 1235 3.4 980  
4-03 320 37830 3.5 1341 3.1 1180  
5-03 338 40230 3.6 1449 3.1 1255  
Lifetime 149940 3.8 5706 3.2 4755  
Sire: Mr Mogul Delta 1427-ET

**2nd Dam:**  
**Brandt-View Bronco Brenda**  
VG-88 VV+EE

2-02 330 31270 3.4 1076 3.0 939  
3-02 365 35270 3.4 1205 3.2 1140  
4-10 365 41140 3.2 1306 3.0 1231  
6-00 336 43740 3.6 1563 3.0 1292  
Lifetime 159570 3.4 5476 3.1 4875

**3rd Dam:**  
**Brandt-View Goldwyn Giszel**  
EX-90 EEVVE  
2-03 365 40220 3.2 1304 3.4 1354  
4-01 347 33260 3.5 1170 3.5 1160

**4th Dam:**  
**Brandt-View Damion Dandy**  
VG-88 VEVVV  
2-00 365 35600 3.2 1141 3.2 1154  
3-05 365 37160 3.0 1126 3.3 1228  
Lifetime 111570 3.1 3513 3.3 3667



**Kevel Shottle May-ET  
EX-94,3E EEEEE DOM**

7-03 365 38410 4.1 1581 3.4 1288  
(6th Dam of Lot 5)

**2nd Dam:**  
Ri-Val-Re Frazzled 2628-ET

**3rd Dam:**  
Peak Many Dmrs 1503-ET GP-80

**4th Dam:**  
Leaderwin Miles Many-ET  
VG-85 VV+V+  
2-03 365 31280 4.2 1319 3.6 1121

**5th Dam:**  
Leaderwin Iota Monday-ET  
EX-90 EEEVE DOM  
2-05 365 27150 4.4 1206 3.6 987

**6th Dam: (Pictured above)**  
Kevel Shottle May-ET  
EX-94,3E EEEEE DOM  
5-02 365 34400 4.1 1423 3.2 1117  
7-03 365 38410 4.1 1581 3.4 1288  
Lifetime 139940 4.2 5935 3.6 5018

**7th Dam:**  
Brandt-View BW Marsh Mia-ET  
EX-90 VEEVE DOM  
4-10 365 30090 4.9 1475 3.4 1025  
Lifetime 159770 4.5 7209 3.5 5516

**\*Maternal sister:**  
Brandt-View Manfred Miss-ET VG-88  
*\*Nom. Global Cow of the Year 2008*

**8th Dam: Da-Net Patron Pansy-ET**  
VG-87,92-MS GMD-DOM  
2-00 365 35110 4.3 1505 3.1 1097

**9th Dam: Da-Net Angie Leadman**  
EX-90,EX-MS GMD-DOM  
6-05 365 46150 3.5 1599 3.0 1388  
8-08 365 45300 4.2 1900 3.0 1362  
Lifetime 284316 3.9 11136 3.3 9758

**10th Dam: Da-Net Bambi Steady**  
VG-87 +V+EE GMD-DOM  
3-10 365 30489 4.4 1333 3.0 910  
Lifetime 127602 4.3 5491 3.1 3895

**LOT 5 #19819**

**Brandt-View Farms**  
Anville, PA

**Sunquest Top Lucy-ET**

3214290394 99%RHA-I  
Born 2/25/21 12/23 PTA +2718GTPI  
+1274M +.15% +94F +49P +790NMS\$  
+3.8PL 2.79SCS +.55T +1.07UDC

**Fresh 12/23/23**

1/4 test- 71 lbs 5.4%F 3.6%P  
SCC 19,000 @ just 13 days fresh  
*\*now milking 88 lbs/day*

**\*She is Tested A1/A2**

**\*Embryos exported as heifer**

**Bomaz Top Dog-ET**

3206093970 12/23 PTA +2830GTPI  
+617M +.27% +111F +46P +842NMS\$  
+3.8PL +.58T +1.12UDC +.09FLC  
Rome X Outsider

**Ri-Val-Re Lariat 4094-ET**

**3-01 GP-83 +VGGV 3208409068**  
1-10 305 30040 3.8 1150 3.5 1042  
Sire: R-Val-Re Lariat-ET

**LOT 6 #2015**

**Brandt-View Farms**  
Anville, PA

**Brandt-View Griff Bailey**

3215092433 99%RHA-I  
Born 11/5/21 12/23 PTA +2483GTPI  
+881M +57F +42P +2.0PL

**Fresh 12/19/23**

1/4 test- 80 lbs 4.3%F 3.3%P  
SCC 81,000 @ just 18 days fresh  
*\*now milking 90 lbs/day*

**\*She is Tested A2/A2**

**Welcome Silver Griff-ET**

3129340690 12/23 PTA +2796GTPI  
+919M +106F +56P +801NMS\$ +2.3PL  
+.60T +.55UDC +.17FLC 99%R  
Silver X VG-86 DOM Supersire

**Brandt-View Proit Puzzle-ET**

**3-06 GP-83 +V+V 73629672**  
2-02 365 32510 3.2 1034 3.1 992  
3-04 365 40160 3.3 1313 3.1 1239  
4-09 319 37280 3.4 1258 3.0 1124  
Lifetime 131820 3.3 4353 3.1 4037  
Sire: S-S-I Partyrock Profit-ET

**2nd Dam: Confort Supersire Bev-TW-ET**  
VG-85 +E+++  
2-05 365 41260 3.8 1585 3.3 1343  
3-08 331 38040 3.6 1368 3.3 1271

**3rd Dam: Ginary Oman Oman Nicole-ET**  
GP-82-CAN  
1-10 365 25331 4.4 1124 3.6 902

**4th Dam: Ginary Goldwyn Tanja**  
EX-90-CAN 91-MS  
3-03 365 34489 5.0 1713 3.5 1197  
5-10 365 35521 5.1 1801 3.5 1248  
Lifetime 141619 4.9 5057 3.6 5057

**5th Dam: Ginary Rudolph Tanja**  
VG-86-CAN 88-MS 17\*  
4-01 365 40141 4.5 1819 3.5 1398  
6-01 365 44085 4.9 1475 3.3 1475  
Lifetime 181397 4.3 7888 3.6 6490

**6th Dam: Ginary Astre Yasmin**  
VG-87-CAN 88-MS  
4-07 365 32315 3.7 1184 3.4 1091

**7th Dam: Valigny Jethro Bonny**  
VG-88-CAN  
5-05 365 26473 3.7 988 3.8 941  
Lifetime 108898 3.9 4231 3.6 3973

**8th Dam: Valigny Marlin Wendy**  
VG-87-CAN 88-MS  
9-07 365 26206 4.0 1043 3.9 1023  
Lifetime 139924 4.3 6003 3.7 5247



**View-Home Silver Rose**  
**VG-87 +U++E**  
 2-04 357 32080 4.5 1445 3.4 1108  
 (2nd Dam of Lot 7)

**LOT 7** #1961  
**Brandt-View Top Dog Rabbit**

**Brandt-View Farms**  
 Annville, PA

3215092379 99%RHA-I  
 Born 4/27/21 12/23 PTA +2734GTPI  
 +573M +.20% +80F +41P +761NMS  
 +4.2PL 2.81SCS +.82T +1.29UDC

**Fresh 12/18/23**

1/4 test- 71 lbs 4.6%F 3.3%P  
 SCC 22,000 @ just 18 days fresh  
 \*now milking 80 lbs/day

\*She is Tested A1/A2  
 \*Embryos exported as heifer

**Bomaz Top Dog-ET**  
 3206093970 12/23 PTA +2830GTPI  
 +617M +.27% +111F +46P +842NMS  
 +3.8PL +.58T +1.12UDC +.09FLC  
 Rome X Outsider

**BGP SLF AltaNitro 18083-ET**  
**2-08 GP-82 ++FG+ 3203692718**  
 \*Sold for \$11,000  
 Sire: G-Deruyter AltaNitro-ET

**2nd Dam: (Pictured above)**  
**View-Home Silver Rose-ET**  
**VG-87 +V++E**  
 2-04 357 32080 4.5 1445 3.4 1108  
**3rd Dam:**  
**View-Home McC Alabama-ET**  
**GP-82 +V+V**  
 2-11 305 26210 4.1 1086 3.3 865  
 \*Full sister to 29HO16955 Monterey

**4th Dam:**  
**Pine-Tree 2149Robst 4846-ET**  
**VG-87 EEV+V DOM**  
 2-04 365 32001 4.7 1520 3.4 1097  
 \*Offspring have sold for up to \$100,000  
 \*Tremendous genomic transmitter!!  
 \*8 sons in active AI including Monterey,  
 Powerball-P, Missouri and Cashflow

**5th Dam: Pine-Tree Zenith Sheen**  
**VG-87 VV+VV DOM**  
 1-11 365 27883 3.9 1092 3.0 855

**6th Dam: Pine-Tree Martha Sheen-ET**  
**VG-86 VV+VV DOM**  
 1-11 365 31210 4.2 1305 3.1 968

**7th Dam: Pine-Tree Missy Martha-ET**  
**VG-86 VVV+V DOM**  
 2-02 365 34730 3.6 1266 3.1 1070

**8th Dam:Wesswood-HC Rudy Missy-ET**  
**EX-92,3E EEEEE GMD-DOM**  
 4-11 365 40880 4.1 1665 3.4 1385  
 Lifetime 119610 4.1 4885 3.4 4031  
 \*Global Cow of the Year 2014

**9th Dam:Wesswood Elton Mimi**  
**EX-90 EEEEE GMD-DOM**  
 3-05 365 35380 3.3 1160 3.0 1054

**10th Dam thru 12th Dam all VG or EX**

**LOT 8** #1722  
**Brandt-View Yolo Ysabel**

**Brandt-View Farms**  
 Annville, PA

**4-03 VG-85 VV+GV**  
 3141609299 99%RHA-I  
 Born 5/30/10 12/23 PTA +2659GTPI  
 +613M +.21% +84F +36P +688NMS  
 +2.1PL +.93T +1.70UDC +.70FLC  
 2-05 338 28090 4.2 1183 3.5 974  
 3-06 306 25600 4.7 1199 3.7 945

**Fresh 12/30/23**

-milking 108 lbs/day

\*She is Tested A2/A2

**BGP Yolo-ET**  
 3145398965 12/23 PTA +2929GTPI  
 +1028M +.23% +105F +42P +882NMS  
 +3.4PL +1.66T +2.38UDC +.87FLC  
 Bandares X VG-86 Meridian

**Lightningridge Mod 417**  
**2-09 VG-85 +VVVV 3138127340**  
 2-07 362 35230 3.8 1356 3.5 1250  
 3-10 365 37770 3.9 1477 3.6 1341  
 Sire: Bacon-Hill Pety Modesty-ET

**2nd Dam:**  
**Dudoc El Bombero Bobo-ET**  
**GP-83, VG-MS**

**4th Dam:**  
**Dudoc Mogul Blessure**  
**VG-85-CAN 86-MS**  
 2-03 365 28938 4.0 1168 3.5 1014

**5th Dam:**  
**Misty Springs Larkin Red Bliss**  
**GP-84-CAN**  
 2-03 365 39930 3.9 1541 3.4 1351

**6th Dam:**  
**Misty Springs Altivo Best**  
**VG-86-CAN 87-MS**  
 2-00 365 25293 4.3 1087 3.9 979

**7th Dam:**  
**Misty Springs Shottle Brenda**  
**VG-85-CAN 87-MS**  
 2-00 365 27928 4.2 1177 3.7 1023

**8th Dam:**  
**West Port Talent Burgette RED**  
**VG-86-CAN 86-MS**  
 5-05 365 29731 4.8 1418 3.6 1078

**9th Dam thru 13th Dams all VG or EX  
 in Canada**



## Misty-Moor Mdsty Mallory-ET UG-86 UUG+U

3-02 321 28050 4.7 1321 3.5 984  
(Dam of Lot 9)

**2nd Dam:**  
Misty-Moor Mdsty Mallory-ET  
VG-88 VV+EE  
2-02 308 26720 4.2 1131 3.3 879  
3-02 321 28050 4.7 1321 3.5 984  
4-02 353 32050 4.5 1446 3.4 1099  
5-04 307 27790 4.7 1304 3.4 945  
-fresh again & proj @ 31,000M  
Lifetime 114610 4.5 5202 3.4 3907

**3rd Dam:**  
Misty-Moor Delta Pailou-ET  
VG-88 EEVVV  
3-05 365 39150 3.5 1381 3.4 1323

**4th Dam:**  
Misty-Moor Ptrn Pilvar-ET  
GP-83 ++G++  
2-03 155 11780 3.7 436 2.9 347 RIP  
\*Sold for \$7000

**5th Dam:**  
All-Riehl Massey Perfume  
VG-86 VV+VV  
3-11 365 39240 3.3 1305 3.0 1170  
5-02 305 39970 3.0 1185 2.9 1144  
Lifetime 120400 3.2 3908 3.0 3648

**6th Dam:**  
All-Riehl Throne Prime-ET  
EX-90 EEVEV GMD-DOM  
3-07 365 34160 3.7 1247 3.1 1043  
Lifetime 115930 3.6 4227 3.1 3651

**7th Dam:**  
Brookburn Rudolph Pansy-ET  
EX-93,3E EEEEE DOM  
5-01 365 36470 3.4 1245 3.0 1102  
\*Nom. Global Cow of the Year

**7th Dam:**  
Brookburn Prissy Laban-TW  
EX-90 VEEVE DOM  
5-08 365 35340 3.5 1231 3.2 1140  
Lifetime 136750 3.5 4749 3.2 4405

**8th Dam:**  
Brookburn Pansy Chief Mark  
VG-87, VG-MS  
4-06 365 32400 3.2 1400 2.8 915

## LOT 9

#1995

Brandt-View Farms

Anville, PA

### Brandt-View Faneca Minnow

3215092413 99%RHA-I  
Born 9/5/21 12/23 PTA +2542GTPI  
+1089M +68F +38P +619NMS\$ +2.4PL

#### Fresh 12/19/23

1/4 test- 63 lbs 4.5%F 3.0%P  
SCC 66,000 @ just 17 days fresh  
\*now milking 74 lbs/day

\*She is Tested A1/A2

### Badger SSI Lucia Faneca-ET

3205251583 12/23 PTA +2772GTPI  
+1031M +.25% +113F +40P +699NMS\$  
+1.7PL +1.63T +1.14UDC +.19FLC  
Lucia X VG-87 Helix

### Brandt-View Sky Sunshine-ET

3141609200  
-sold for dairy as fresh 2yr-old  
Sire: Bomaz Skywalker-ET

## LOT 10

#1968

Brandt-View Farms

Anville, PA

### Brandt-View Ahead Sissy

3215092386 99%RHA-I  
Born 6/1/21 12/23 PTA +2705GTPI  
+379M +61F +33P +697NMS\$ +4.6PL  
+2.6DPR +.60T +1.20UDC +.29FLC

#### Fresh 12/28/23

1/4 test- 66 lbs 5.8%F 4.2%P  
SCC 35,000 @ just 8 days fresh  
\*now milking 78 lbs/day

\*She is Tested A2/A2 BB

### Blumenfeld Renegad Ahead-ET

3206144957 12/23 PTA +2849GTPI  
+.36% +98F +35P +788NMS\$ +4.9PL  
+.93T +.89UDC +2.4FLC 97%R  
Renegade X GP-82 Myles

### Brandt-View First Flower-ET

3-01 F-73 FFGFG 3141609233  
2-07 365 30580 4.4 1358 3.3 1024  
Sire: Melarry Modesty First-ET

**2nd Dam:** Tramilda Jedi Sage-ET  
GP-82-CAN, 85-MS  
2-00 310 20576 4.7 970 3.4 701

**3rd Dam:** Tramilda-N Kingboy Sage-ET  
VG-85 VVV+V  
2-03 305 18180 4.6 828 3.5 644

**4th Dam:** Ladys-Manor MG Suzanne-ET  
VG-88 VV+EE  
4-00 365 30730 4.7 1453 3.5 1081

**5th Dam:** Ladys-Manor Ruby D Shawn-ET  
EX-90 EEVVE GMD-DOM  
4-04 365 37920 4.8 1808 3.4 1280  
-Dam of 7HO10849 'Shamrock'

**6th Dam:** Ladys-Manor Ruby D-ET  
EX-90 EEVVE GMD-DOM  
4-10 365 39790 5.3 2127 3.6 1416  
Lifetime 124840 5.1 6335 3.6 4522

**7th Dam:** Ladys-Manor Ruby Jen  
EX-94,2E EEVEE GMD-DOM  
4-02 365 46920 4.6 2141 3.2 1514  
Lifetime 135960 4.6 6282 3.4 4615

**7th Dam:** VG-87 VG-MS  
**8th Dam:** EX-91 GMD-DOM  
**9th Dam:** EX-93,3E GMD-DOM  
**10th thru 13th Dams ALL VG or EX**