

# CELEBRATION IV SALE



**MS LISTERINES LOOK AT ME-ET EX-94**  
**DAM OF LOT 69**  
*HM All-American Junior 3-Year-Old 2018*

## Lot 69

### Dymentholm Mr App Avalanche-TW

CAN 11957107 \*RC \*CV \*TL \*TY \*TD  
 PTA -23M +7F +1P 98R 4/20  
 PTA -1.8PL 2.90SCS -3.0DPR 9.5%DCE  
 PTA +3.84T +2.92UDC +2.46FLC 98R 4/20  
 GTPI +2172G

### Ms Listerines Look At Me-ET

143332804 Excellent-94 EEEEE @ 5-04  
 4-02 2x 312d 29170 4.1 1197 3.3 972  
 1-10 2x 365d 26130 3.7 976 3.3 863  
 3-03 2x 257d 22510 4.3 979 3.4 776  
 • HM All-American Junior 3-Year-Old 2018  
 • 3rd Junior 3-Year-Old, International Show 2018

Full sister to Look At Me

### Ms Listerines Luckylady-ET VG-86

• Reserve All-Canadian Junior Yearling 2016

### DUCKETT AVALANCHE LILY-ET

840 3144909714 99%RHA \*RC  
 Born: September 1, 2018 Tag: 650  
 PTA +3.44T +2.05UDC +2.50FLC 4/20

Fresh: June 28, 2020

### De-Su Bkm McCutchen 1174-ET

69990138 Excellent-93 GM 8/15 \*TV \*TL \*TY \*TD  
 PTA +326M +28F +13P 99R 4/20  
 PTA +2.22T +1.44UDC +1.22FLC GTPI +2264G

### KHW Regiment Apple C-Red-ETN

CAN 70244494 VG-89-CAN \*CV  
 3-07 2x 365d 36949 4.2 1554 3.6 1332

• Res Grand Champ, Supreme Dairy R&W 2014

### Maple-Downs-I G W Atwood-ET

CAN 8956379 Excellent-90 \*TR \*TV \*TL \*TY \*TD  
 PTA -389M +11F -10P 99R 4/20  
 PTA +2.98T +1.68UDC +2.21FLC GTPI +1914G

### Ms Licorice Listerine-ET

72127299 Excellent-91 EEEVE 2E  
 3-09 2x 305d 33880 3.8 1294 3.2 1099  
 2-01 2x 305d 25690 4.4 1139 3.2 833  
 5-11 2x 266d 24690 4.4 1082 3.5 874

3rd Dam

### Rockymountain Talent Licorice-ET EX-95 8\* \*RC

3-10 2x 323d 34771 4.0 1384 3.4 1173

- All-American 4-Year-Old 2011
- All-Canadian 4-Year-Old 2011
- All-Canadian Senior 3-Year-Old 2010
- Reserve All-American Senior 3-Year-Old 2010

4th Dam

### Idee Rudolph Liberty VG-89 EX-MS-CAN 9\*

5-11 2x 365d 33838 3.4 1164 3.3 1102  
 Life: 5 Lact 151496 3.7 5553 3.2 4903

5th Dam

### Idee Skychief LaToya VG-88-CAN 10\*

5-07 2x 365d 32527 4.2 1362 3.2 1049  
 Life: 4 Lact 141480 4.6 6471 3.5 4983

6th thru 10th Dams

### C Ravenswell Lydia EX-92 EEEE DOM 19\*

5-01 2x 365d 24578 4.6 1125 3.2 779

### Spring Farm Miss Lynn-ET VG-CAN

2-11 2x 329d 22335 4.0 888 3.6 811

### Spring Farm Miss Connie VG-88 2\*

8-00 2x 305d 21420 3.9 840

Life: 5 Lact 108757 3.9 4273

### Spring Farm Miss Citation VG-87 3\*

6-04 2x 365d 27725 3.8 1054

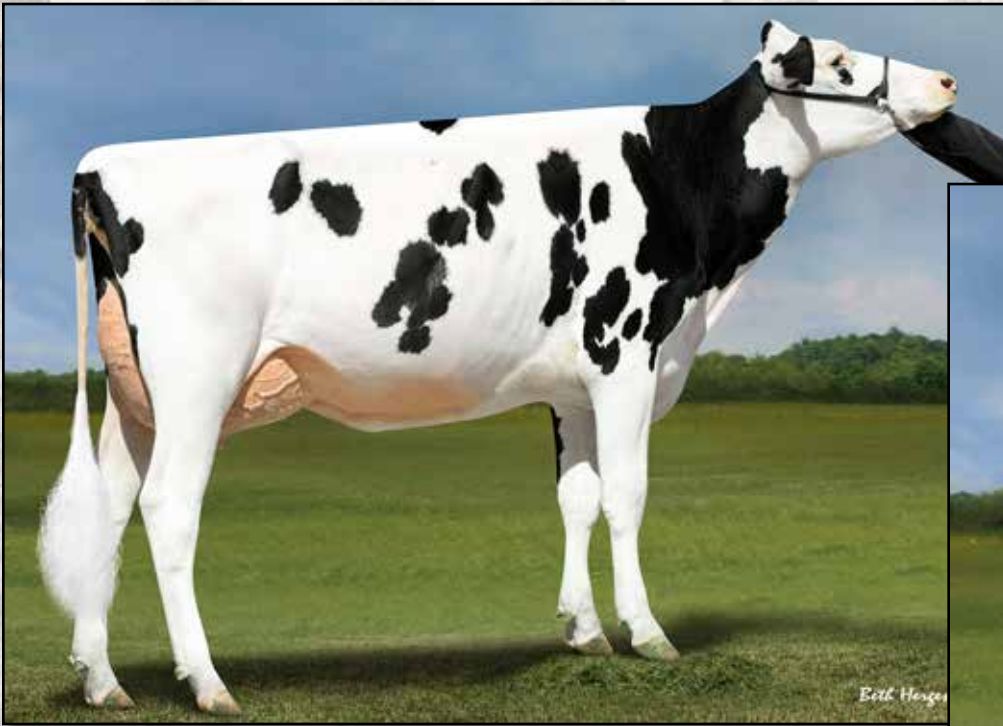
Life: 11 Lacs 215519 3.7 7952

### Spring Farm Miss Pathfinder EX-CAN 8\*

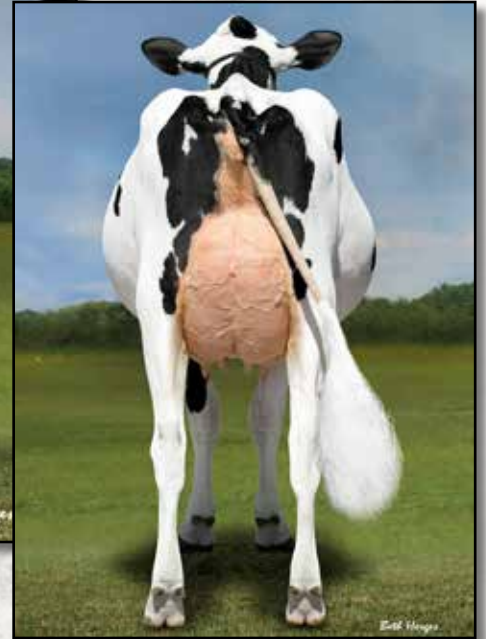
Life: 12 Lact 242021 3.6 8814

Next three dams VG-CAN

# CELEBRATION IV SALE



**VANDEN-BERGE DEAR SHEEN-ET EX-90**  
SELLS AS LOT 70



## Lot 70

### VANDEN-BERGE DEAR SHEEN-ET

840 3132359918 Excellent-90 VEVVE @ 3-08  
Born: November 4, 2016 Tag: 673  
2-01 2x 365d 27660 4.0 1114 3.1 865

Fresh: March 20, 2020  
Milking 95# SCC: 11 on last test

#### Minnigan-Hills Day-ET

69774730 GM 8/15 \*TY \*TV  
PTA +1024M +17F +25P 99R 4/20  
PTA +1.08T +1.12UDC +.07FLC GTPI +2332G

#### Miss OCD Robst Deleicious-ET

840 3006989479 Very Good-87 GMD DOM  
2-05 2x 365d 33780 3.3 1121 3.3 1111

#### Morningview McC Kingboy-ET

72044077 Excellent-92 \*TV \*TL \*TY \*TD  
PTA +1887M +26F +25P 99R 4/20  
PTA +2.10T +1.53UDC +.45FLC GTPI +2395G

#### Gen-R-Vista Mo Sheen-ET

70920441 Very Good-88 VEVV @ 3-07  
3-03 3x 365d 37400 3.7 1376 3.3 1237  
1-11 3x 365d 29990 3.4 1034 3.2 962

#### Mr Day Dearing 1445-ET

72128234 GM 8/18 \*TY \*TV  
PTA +1278M +44F +45P 99R 4/20  
PTA +4.1PL 3.10SCS -1.0DPR 6.5%DCE  
PTA +.54T +.93UDC +.46FLC 98R 4/20  
GTPI +2536G

#### Vanden-Berge Sheen 3965-ET

143182294 Good Plus-82 @ 2-07  
GTPI +2355 +676M +49F +22P +1.60T 4/20  
2-01 3x 365d 25490 4.0 1025 3.5 882

#### 3rd Dam

**Ocean-View Gold Sheen-ET EX-90 EX-MS 2E**  
2-03 2x 365d 32120 3.7 1188 3.2 1041  
Life: 2346d 193800 3.4 6543 3.1 6100

#### 4th Dam

**Ocean-View Outside Sheen-ET EX-91 2E GMD**  
3-08 2x 365d 45000 3.5 1593 2.9 1289  
Life: 2614d 227700 3.6 8310 3.3 6184

#### 5th thru 11th Dams

**Ocean-View Lindy Sheen EX-94 EEEVE GMD DOM**  
4-09 2x 365d 47400 3.0 1437 3.4 1615  
Life: 1172d 110970 3.4 3745 3.5 3881

• 4x Nominated All-American in Milking Form

**Ocean-View Thor Sheen EX-92 GMD DOM**  
4-11 2x 365d 37,360 3.4 1260 3.1 1145

• Res. All-California 5 Year Old 1997

**Ocean-View Rok Sheena VG-85**  
5-05 2x 365d 29780 3.9 1165 2.9 863

**Ocean-View Tradition Sue VG-85**  
Life: 2322d 163070 3.7 5991 2.8 4614

**Ocean-View Tempo Sheena VG-86**  
7-08 2x 312d 23870 4.5 1066 2.7 652

**Ocean-View Elevation Suzzette EX-90 GMD**  
6-08 2x 365d 35850 3.7 1328

Life: 1764d 140540 3.7 5170

**Ocean-View Posch Sue-Tw VG-86**

5-02 2x 365d 22720 3.6 820

• Next three dams Excellent