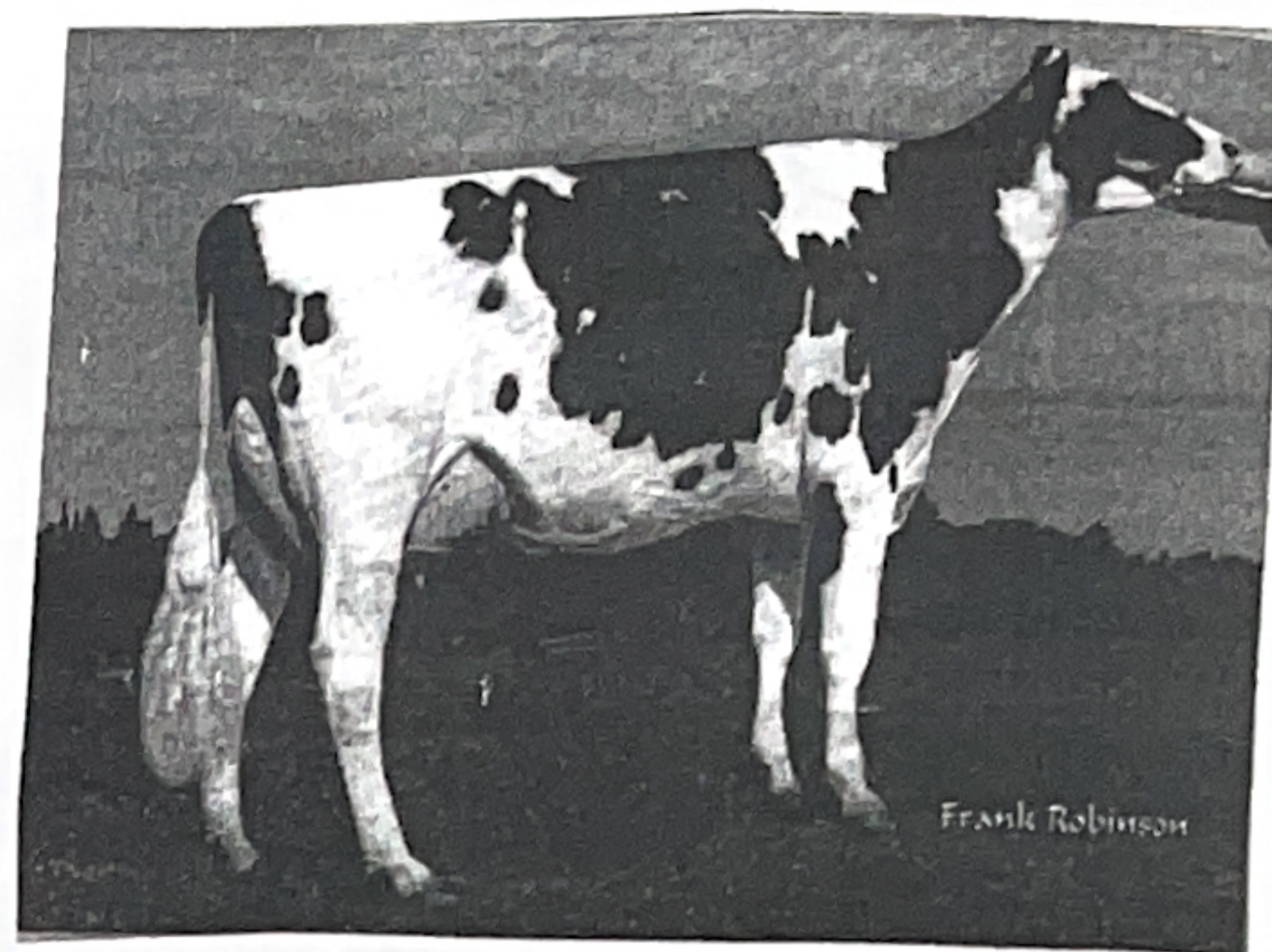


FISHER'S
QUALITY

DAIRY SALES



CHRISTMAS SALE INCLUDING
2ND EDITION OF CREAM OF
CEDAR CREST HOLSTEINS

#1-51

Friday, December 8, 2023

AUCTIONEER; DAVE STOLTZFUS
PEDIGREES; JOHN BURKET

109. BORN 11/19/20 FRESH 10/31/23 109# 3.8 3.0
1-11 313 23,949 3.9 928 2.8 679 SCC 22,000
SIRE;FRAZZLED

110. BORN 9/10/20 FRESH 10/24/23 91# 3.3 3.1 2-00 339
26,611 4.1 1081 3.1 819 SCC 24,000 SIRE;FRAZZLED

111. BORN 11/2/20 FRESH 11/5/23 80# 4.8 3.7 1-10 382
23,155 4.1 951 3.2 744 SCC 88,000 SIRE;SIMPLICITY

112. BORN 8/7/20 FRESH 9/15/23 110# 3.6 3.0 1-11 337
27,258 3.9 1062 3.1 837 SCC 26,000 SIRE;BELAIR

113. BORN 1/3/20 FRESH 11/24/23 SIRE;7H13888
SIRE;KINGDOC

114. FRESH 11/29/23

115. POLLED FRESH 7/23/23 78# PREG. DUE 8/7/24 TO
ANGUS SIRE;RAGER-RED

OLD RECORD- 345 2 981 3.8 2.9 AVG SCC 17,000
SIRE;OUR-FAVORITE BRENNED IT

116. FRESH 9/20/23 76# BRED 11/28/23 TO ANGUS
SIRE;PRIMETIME

117. BORN 9/3/21 FRESH 11/29/23 70# SIRE;GROWL
DAM'S RECORD 4-10 295 31,375 3.4 1057 3.0 942 5-10 301
29,982 3.6 1086 3.1 924

118. BORN 11/9/21 FRESH 11/13/23 80# SOLD DAM FOR DAIRY AS 2YR. OLD SIRE;GREED

119. BORN 10/10/20 FRESH 10/6/23 90#

120. BORN 7/20/21 FRESH 10/28/23 70#

121. 2ND LAC. FRESH 11/16/23 95# SIRE;MAXWELL-P

122. DRY DUE 12/23/23 TO LUSTER-P HIGH BUTTERFAT SIRE;BEEMER

123. BORN 11/2/20 FRESH 11/3/23 102# SCC 0.9 SIRE;KINGDOC

124. BORN 11/2/21 FRESH 11/9/23 68# SIRE;CRUSHTIME

125. 99% REG. BORN 8/25/20 FRESH 11/20/23 100# 2YR. OLD RECORD- 346 25,981 3.8 2.9 AVG. SCC 120,000 SIRE;OUR-FAVORITE UNDENIED-ET

126. FRESH 10/28/23 68# 3.7 3.1 SCC 0

127. BORN 6/22/21 FRESH 10/7/23 85# GOING UP 3.5 3.0 SCC 38,000 a little restless to milk SIRE;MARSH

128. 1ST CALF FRESH 11/22/23 70# MILKS NICE
DUE 7/24/24 TO ANGUS SIRE;DEGREE

129. 1ST CALF FRESH 10/9/23 82# MILKS NICE

130. FRESH 60# 4.0 3.6 SCC 28,000 DUE 4/22/24 TO
ANGUS

131. 1ST CALF FRESH 10/25/23 80# 4.3 3.1 SCC 69,000
SIRE;SAMUR

132. 99% REG. BORN 4/28/21 FRESH 68# 5.1 3.7 SCC 0
DUE 7/20/24 TO ANGUS SIRE;WOODCREST KING DOC

133. 1ST CALF FRESH 11/5/23 90# SIRE;TOTEM DAM'S
SIRE-MOGUL X CLARK 3RD LAC. NADE 338 25,440 4.8
3.4

134. 1ST CALF FRESH 11/23/23 70# SIRE;ZAMBONI
DAM'S SIRE;BREWMASTER X ARMY 3RD LAC -297 25,400
4.2 3.1

135. 100% REG. BORN 6/26/21 FRESH 11/16/23 60# 4.5
3.2 SCC 23,000 SIRE;ERNEST-ANTHONY TEMPEST-ET DAM
IS VG 85 LAST LAC. 5-02 307 22,969 4.1 3.3

136. BORN 9/15/20 FRESH 8/18/23 98# 3.9 3.3 SCC 0.1
DUE 8/1/24 TO PRIMETIME SIRE;MACE