

# Uber-Haven Dispersal



June 27, 2020 | 10:00am | Mercer, PA



# Uber-Haven Dispersal

June 27, 2020 | 10:00am | 384 Grove Rd. Mercer, PA 16137

## SALE STAFF

Beth Hillmar

*Auctioneer* | AU006558 | 724-967-4039

Matt Lawrence

*Pedigrees* | 724-971-3010

Zach Logan

*Cattle Prep* | 330-282-7191

Vanessa Philson

*Herd Manager* | 724-977-3780



**SALE WILL BE BROADCAST LIVE WITH REAL-TIME BIDDING TO  
PRE-APPROVED BUYERS VIA COWBUYER.COM!**

Sale will be broadcast live via Cowbuyer.com, with real-time bidding to pre-approved buyers  
Contact Aaron Ray Tompkins 336-363-4639

**Terms:** Cash or Good Check day of auction. If purchasing through an agent or Cowbuyer, immediate payment required.

**NO CATTLE RELEASED UNTIL PAID FOR IN FULL.**

**OWNERS | MIKE UBER - VANESSA PHILSON**

**PARTNERS | PLUM-LINE LINE HOLSTEINS - JEFF & BRENDA MCKISSICK**



**MS Plum-Line Aspen Libby EX-94 3E**

*Sells as Lot 1*

# 1 MS Plum-Line Aspen Libby

139539356 100%RHA Born: 7/30/2008  
 2-06 2 305 28730 3.8 1091 3.1 900  
 3-08 2 305 27730 3.5 968 3.2 877  
 5-04 2 305 35890 3.9 1394 3.2 1132  
 6-08 2 305 32090 3.6 1151 3.3 1053  
 8-01 2 305 28720 3.8 1092 3.4 971  
 9-05 2 279 32480 3.7 1201 3.1 1015  
 10-06 2 305 36340 3.3 1211 3.1 1142  
 LIFE: 2,713d 261,280lb 3.7% 9,772f 3.3% 8,521p  
*Sells Dry*

**Excellent-94 EEEEE 3E @ 9-09**  
**Aged Cow**

**EK-OSEEANA ASPEN-ET**  
**129854100 100%RHA-NA TV TL**  
**PTAT +.92T -.82UDC -.43FLC GTPI +1238G**  
*Encore x Tri-Day Ashlyn-ET EX-96 2E GMD DOM*  
*Ashlyn record: 4-09 2 365 43,090 4.8 2079 3.3 1422*

**ETTINGER LEADER RACHEL**  
 8329912 10-01 Excellent-94 EEEEE 3E  
 4-02 2 292 24860 2.8 691 2.8 703  
 5-02 2 305 30630 2.8 864 2.7 821

*Daughter of Libby*  
**MS Plum-Line Uber Lolita EX-93**

*Maternal Sister to Libby*  
**MS Plum-Line Sid Legacy VG-87**  
*Jr Champ Northwest B&W Show 2012*





**MS Plum-Line Aspen Libby EX-94 3E**

*Dam of Lots 2 & 3*



**MS Plum-Line Uber Lolita EX-93**

*Maternal Sister to Lots 2 & 3*

**2**

*Plum-Uber Solomon Liv*

840003141692278 99%RHA Born: 1/26/2018

**Sr 2 Yr Old**

**WALNUTLAWN SOLOMON-ET**

11775998 99%RHA TR TP TY TV TL TD

PTAT +2.71T +1.71UDC +.58FLC GTPI +1988G

*Doorman x Misty Springs Lavanguard Sue VG-89 4YR CAN*

*Sue record: 4-03 2 365 30123 4.6 1380 3.0*

**3**

*Plum-Uber Diamond Luna*

840003149950005 99%RHA Born: 2/14/2019

**Winter Yearling**

**MR D APPLE DIAMONDBACK**

840003013721049 99%RHA RC TP TC TY TV EX-93 @ 3-03

PTAT +2.43T +2.01UDC +1.34FLC GTPI +1910

*Doorman x MS Delicious Apple-Red-ET EX-94 2E*

*Maternal Sister to Lots 2 & 3*

**MS Plum-Line Uber Lolita EX-93**

*Maternal Sister to Dam of Lots 2 & 3*

**MS Plum-Line Sid Legacy VG-87**

*Jr Champ Northwest B&W Show 2012*

**MS PLUM-LINE ASPEN LIBBY**

139539356 9-09 Excellent-94 EEEEE 3E

2-06 2 305 28730 3.8 1091 3.1 900

3-08 2 305 27730 3.5 968 3.2 877

5-04 2 305 35890 3.9 1394 3.2 1132

6-08 2 305 32090 3.6 1151 3.3 1053

8-01 2 305 28720 3.8 1092 3.4 971

9-05 2 279 32480 3.7 1201 3.1 1015

10-06 2 305 36340 3.3 1211 3.1 1142

LIFE: 2,713d 261,280lb 3.7% 9,772f 3.3% 8,521p

*2nd Dam:*

**Ettinger Leader Rachel EX-94 3E**

4-02 2 292 24860 2.8 691 2.8 703

5-02 2 305 30630 2.8 864 2.7 821





**MS Plum-Line Aspen Libby EX-94 3E**  
2nd Dam of Lot 4



**MS Plum-Line Uber Lolita EX-93**  
Dam of Lot 4

# 4 Plum-Uber Awesome Lola-ET \* RC

840003149950037 100%RHA Born: 9/4/2019

**Fall Calf**

**LUCK-E AWESOME-RED**

72186769 100%RHA CV TC TY TL TD

PTAT +2.08T +3.25UDC +.88FLC GTPI +1375G

Absolute x Luck-E Advent Asia-ET EX-94 3E

Asia record: 6-02 2 365 40150 4.9 1984 3.1 1261

**MS PLUM-LINE UBER LOLITA**

(Sired by Aftershock)

72769221 4-11 Excellent-93 EEEVE

2-02 2 305 24890 3.9 964 3.2 791

4-06 2 286 23340 4.3 1010 3.2 746

2nd Dam:

**MS Plum-Line Aspen Libby EX-94 3E**

2-06 2 305 28730 3.8 1091 3.1 900

3-08 2 305 27730 3.5 968 3.2 877

5-04 2 305 35890 3.9 1394 3.2 1132

6-08 2 305 32090 3.6 1151 3.3 1053

8-01 2 305 28720 3.8 1092 3.4 971

9-05 2 279 32480 3.7 1201 3.1 1015

10-06 2 305 36340 3.3 1211 3.1 1142

LIFE: 2,713d 261,280lb 3.7% 9,772f 3.3% 8,521p

**Maternal Sister**

**MS Plum-Line Sid Legacy VG-87**

Jr Champ Northwest B&W Show 2012

3rd Dam:

**Ettinger Leader Rachel EX-94 3E**

4-02 2 292 24860 2.8 691 2.8 703

5-02 2 305 30630 2.8 864 2.7 821



**MS Plum-Line Uber Lolita EX-93**  
Dam of Lot 4





© Jenny Thomas  
Lyle Fisher Photography

**MS Plum-Line Aspen Libby EX-94 3E**  
2nd Dam of Lot 5

5

*Plum-Uber Livewire \* RC*

840003149949989 100%RHA Born: 12/02/2018

**Winter Yearling**

**HYLITE BARBWIRE-RED-ET**

9748330 100%RHA TP TC TY TV TL VG-87

PTAT +1.21T -.18UDC +.86FLC GTPI +1430G

Shaquille x Rainyridge Talent Barbara EX-95

Barbara record: 3-04 2 365 34465 3.6 1257 3.1 1068

**MS PLUM-LINE UBER LIZ-ET**

(Sired by Chelios)

840003128162448 3-04 Very Good-85 GVV+E

3-00 2 241 18430 3.9 718 3.2 592

2nd Dam:

**MS Plum-Line Aspen Libby EX-94 3E**

2-06 2 305 28730 3.8 1091 3.1 900

3-08 2 305 27730 3.5 968 3.2 877

5-04 2 305 35890 3.9 1394 3.2 1132

6-08 2 305 32090 3.6 1151 3.3 1053

8-01 2 305 28720 3.8 1092 3.4 971

9-05 2 279 32480 3.7 1201 3.1 1015

10-06 2 305 36340 3.3 1211 3.1 1142

LIFE: 2,713d 261,280lb 3.7% 9,772f 3.3% 8,521p

**Maternal Sister**

**MS Plum-Line Sid Legacy VG-87**

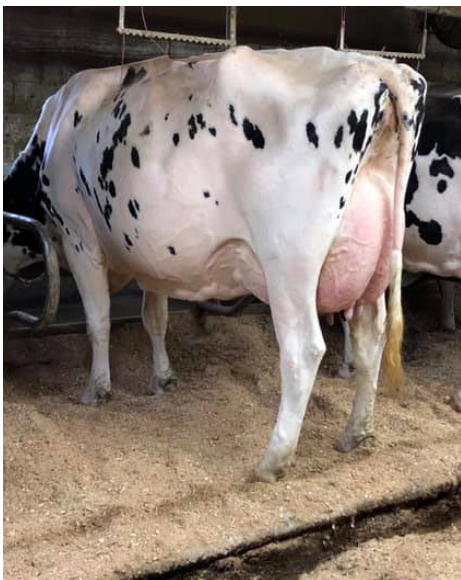
Jr Champ Northwest B&W Show 2012

3rd Dam:

**Ettinger Leader Rachel EX-94 3E**

4-02 2 292 24860 2.8 691 2.8 703

5-02 2 305 30630 2.8 864 2.7 821



**MS Plum-Line Uber Lolita EX-93**  
Maternal Sister to Dam of Lot 5





**Gleann GW Relentless-ET EX-94**

*Sells as Lot 6*

**6**

*Gleann GW Relentless*

11253315 100%RHA Born: 10/2/2011  
 2-05 2 311 18475 4.2 780 3.1 575  
 3-06 2 329 25188 3.9 990 3.4 880  
 4-06 2 365 34041 3.9 1329 3.1 1059  
 6-02 2 305 30803 3.5 1077 2.8 872  
 RIP 8-00 2 245 26805 1022 730  
 Last test: 126lbs 5.4% 2.8%  
 Calved 10/7/2019

**Excellent-94 EEEEE @ 8-03**

**Aged Cow**

*Sr Champion & HM Grand, NE Ohio District Show 2020  
 3rd Aged Cow, Eastern National 2018  
 Grand Champion, NE Ohio District Show 2018  
 Grand Champion, Lawrence Co. Fair 2018*

**BRAEDALE GOLDWYN**  
 10705608 100%RHA CD TY TV TL  
 PTAT +.97T +.53UDC +.83FLC GTPI + 1848  
 James x Braedale Baler Twine-ETS VG-86 2YR CAN

**GLEANN CHAMPION REMAKE-ET**  
 7414010 CAN 03Y VG 87  
 3-04 2 365 28897 3.3 943 2.8 798  
 4-09 2 365 31600 3.1 992 2.7 868  
 7-03 2 365 30441 3.1 937 2.7 815  
 10-00 2 360 30432 3.4 1038 2.7 817

*2nd Dam:*  
**Gleann RM Rustico-ET VG-86 CAN**  
 2-00 2 365 17833 3.7 654 3.0 536  
 4 EX & 5 VG Daughters

*3rd Dam:*  
**Gleann Jed Rainbow VG-88 CAN**  
 5-00 2 331 24969 4.2 1047 3.3 829  
 9-09 2 351 27857 3.8 1060 3.2 895  
 2nd Mature Cow, East NS EX 2005

*4th Dam*  
**Terrdale Secret Russ EX-6YR-CAN 9\***  
 4-06 2 305 27143 4.1 1105 3.4 924  
 6-00 2 305 28598 3.9 1111 3.3 946  
*5th Dam*  
**Terrdale Sunshine VG-85 CAN**  
 9-01 2 286 19901 3.4 686 2.8 564





**Gleann GW Relentless-ET EX-94**

*Dam of Lot 7*

# 7 Uber-Haven HY Resentment

3150633840 100%RHA Born: 10/7/2019

**Fall Calf**

**MR HOTSTUFFS HYPNOTIC-ET**  
 840003012554421 100%RHA-NA RC TP TC TY  
 PTAT+2.19T +1.17UDC +1.66FLC GTPI +1937  
*Windbrook x Starmark AD Hotstiff-Red-ET EX-94 2E*

**GLEANN GW RELENTLESS**  
 11253315 8-03 Excellent-94 EEEEE  
 4-06 2 365 34041 3.9 1329 3.1 1059  
 6-02 2 305 30803 3.5 1077 2.8 872

*2nd Dam:*

**Gleann Champion Remake-ET VG-87 3YR CAN**  
 3-04 2 365 28897 3.3 943 2.8 798  
 4-09 2 365 31600 3.1 992 2.7 868  
 7-03 2 365 30441 3.1 937 2.7 815  
 10-00 2 360 30432 3.4 1038 2.7 817

*3rd Dam:*

**Gleann RM Rustico-ET VG-86 CAN**  
 2-00 2 365 17833 3.7 654 3.0 536  
 4 EX & 5 VG Daughters

*4th Dam:*

**Gleann Jed Rainbow VG-88 CAN**  
 5-00 2 331 24969 4.2 1047 3.3 829  
 9-09 2 351 27857 3.8 1060 3.2 895  
 2nd Mature Cow, East NS EX 2005

*5th Dam*

**Terrdale Secret Russ EX-6YR-CAN 9\***  
 4-06 2 305 27143 4.1 1105 3.4 924  
 6-00 2 305 28598 3.9 1111 3.3 946

*6th Dam*

**Terrdale Sunshine VG-85 CAN**  
 9-01 2 286 19901 3.4 686 2.8 564





**Stony-Pillar Sharmaine-Red EX-94 2E**

*2nd Dam of Lot 8*



**Oakfield Armani Smiley-ET VG-87**

*Maternal Sister to Dam of Lot 8*

**Oakfield A Champagne-Red VG-89-3YR-CAN**

*Maternal Sister to Dam of Lot 8*

## 8 Uber-Haven Defiant Sexyrthing RC

144602317 100%RHA Born: 9/2/2018  
Due 9/10/2020 to  
7HO14477 MR Blondin Warrior-Red-ET

**Fall Yearling**

*2nd Fall Calf, NE Ohio District Show 2019*

**SCIENTIFIC B DEFIANT**  
USA141123484 RC TP TC TY TV TL TD VG-87  
PTAT +2.79 UDC+1.59 FLC+1.06  
*Braxton x Scientific Gold Dior Rae-ET EX-92*

**OAKFIELD LADD SHELBY-RED-ET**  
3134444648  
*Maternal Sisters*  
**Oakfield A Champagne-Red VG-89-3YR-CAN**  
*Grand Champ, World Dairy Expo R&W Show 2018*  
*All-American R&W Jr 2 Yr Old 2017*  
**Oakfield RB Shantay-Red-ET EX-91**  
*HM All-American R&W Milking Yearling 2016*  
**Oakfield Pic Shasta-Red-ET VG-87**  
**Oakfield Def Selena-Red-ET VG-87**  
*Nominated All-American R&W Fall Calf 2016*  
*Jr Champ, Western National Spring Show 2016*  
**Oakfield Armani Smiley-ET VG-87**  
*1st Jr 3, Intermediate & Reserve Grand, OH District Show 2018*  
*Reserve Grand Champion, Lawrence Co. Fair 2018*  
*2nd Jr 2, PA Spring Show 2017*

*Maternal Sister to Dam*

**Oakfield A Champagne-Red VG-89-3YR-CAN**  
*1st Jr 3, Intermediate & Grand Champion, WDE 2018*  
*All-American R&W Jr 3 Yr Old 2018*  
*People's Choice Red & White 2018*  
*1st Jr 2, World Dairy Expo 2017*

*2nd Dam:*

**Stony-Pillar Sharmaine-Red EX-94 2E**  
8-00 3 305 26,860 2.9% 771 2.9% 787  
*1st Aged Cow & Grand Champ, West NY Show 2012*  
*3 EX and 14 VG daughters to date*

*3rd Dam:*

**Stony-Pillar RM Shayla-Red VG-87**  
2-06 3x 305d 17,010 3.7% 631 3.0% 514  
*4th Jr 2, All-American R&W Show 2003*  
*4th Dam*

**Sher-Don Apollo Shara-Red VG-88 EX-MS**  
8-01 3x 305d 27,610 2.9% 202 3.0% 834  
Life: 2368d 181,040lbs 3.3% 5,905f 3.1% 5,612p  
*5th Dam*

**Sher-Don Neutron Sweet-Red VG-85 VG-MS**  
4-07 2x 365d 28,530 3.6% 1,014 3.3% 947  
*6th Dam*

**Sher-Don Threat Sugar-Red VG-88**  
4-08 2x 305d 24,250 3.5% 851 3.0% 722





**Uber-Haven Dfint Chrome-Red EX-92 @ 3-05**

*Dam of Lot 9*

9

*Uber-Haven Cai \*RC*

3150633827 100%RHA Born: 3/2/2018  
 RIP 2-01 2 49 3656 3.1 157 2.6 97  
 Last test: 86lbs 3.1% 2.6%  
 Calved 4/20/2020

**Jr 2 Yr Old**

**BLONDIN LOTUS-ET**  
 107308984 100%RHA-NA RC TC TY TV TL  
 PTAT +1.53T +.55UDC +.21FLC GTPI +1239  
*Goldwyn x Rockymountain Talent Licorice-ET EX-95*  
*Licorice Record: 3-10 2 323 34770 4.0 1384 3.2 1106*

**UBER-HAVEN DFINT CHROME-RED**  
 143819811 3-05 Excellent-92 EEEEE  
 Reserve All-American R&W Jr 3 Yr Old 2019  
 Illinois Cow of the Year 2019  
 2nd Jr 3, International R&W Show 2019  
 Supreme Champion, IL State Fair 2019  
 Grand Champion, IL State Fair Holstein Show 2019  
 1st Jr 3, Sr & Grand Champion, IL Championship Show 2019  
 HM Int Champion, NY Spring Int'l R&W Show 2019  
 1st Jr 3, NY Spring Int'l R&W Show 2019  
 1st Jr 3, Int, & Res Grand Champion, Spring Dairy Expo 2019  
 2nd Jr 2, NY International Spring Show 2018

2nd Dam:  
**Uber-Haven Absl Cambria-Red VG-88 @ 2-07**  
 6th Sr 2, All-American R&W Show 2016  
 Grand Champion, Western PA R&W Show 2016  
 3rd Sr 2, Western PA Championship Show 2016  
 Res Grand Champion Holstein, Canfield Fair 2016  
 Grand Champion Holstein, Lawrence Co Fair 2016  
 3rd Sr 2, NY International Spring R&W Show 2016  
 2nd Winter Calf, NAILE Louisville 2014  
 4th Winter Calf, All-American R&W Show 2014  
 Res Jr Champion, Western PA R&W Show 2014  
 1st Winter Calf, Western PA R&W Show 2014  
 3rd Winter Calf, Spring Dairy Expo 2014

3rd Dam:  
**Uber-Haven Crimson-Red EX-90 @ 3-03**  
 3-00 2 298 27780 3.0 826 2.9 805  
 1st Winter Calf, All-American R&W Show 2011  
 4th Dam:

**Minor-Acre Childpla-Red-ET EX-90 2E**  
 5-04 2 238 28500 3.5 1006 3.0 851  
 6-02 2 305 28720 3.3 962 3.2 926  
 LIFE: 1,795d 156,170 3.7% 5,798 3.2% 4,924  
 Grand Champion, Western PA R&W Show 2014  
 Grand Champion, Western PA R&W Show 2013  
 Grand Champion, Western PA R&W Show 2012  
 5th Dam

**Idywilde Red-MKR Cherry-Red EX-93 4YR**



**Uber-Haven Absl Cambria-Red VG-88 @ 2-07**

*2nd Dam of Lot 9*



**Minor-Acres Childpla-Red-ET EX-90 2E**

*4th Dam of Lot 9*





© Cybil Fisher

**Entourage-LC CP Frolic-Red VG-86 @ 2-07**

*Dam of Lot 10*

# 10 Uber-Haven Miss Flawless RC

840003150633838 99%RHA Born: 6/16/2019

**Summer Yearling**

**MR D APPLE DIAMONDBACK**

840003013721049 99%RHA RC TP TC TY TV EX-93 @ 3-03

PTAT +2.43T +2.01UDC +1.34FLC GTPI +1910

*Doorman x MS Delicious Apple-Red-ET EX-94 2E*

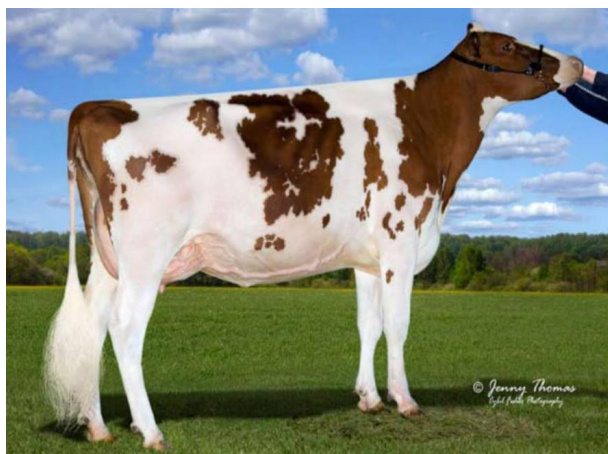
**ENTOURAGE-LC CP FROLIC-RED**

840003143018465 PO 2-07 Very Good-86 +V+VV

*HM All-American Summer Yearling 2018*

*4th Summer Yearling, World Dairy Expo R&W Show 2018*

*2nd Summer Yearling, All-American Dairy Show 2018*



© Jenny Thomas  
Light Photo Photography

*2nd Dam*

**Jo-Lan Contendr Fire-Red-ET VG-87**

*3rd Dam*

**Penn-Gate Advent Forte-ET EX-90 EX-MS**

2-02 2 305 16950 4.3 737 3.5 587

*4th Dam*

**Penn-Gate T Fort-ET EX-92 EX-MS**

3-06 2 365 34000 5.2 1755 3.6 1231

*5th Dam*

**Penn-Gate Skychief Finesse EX-95 3E DOM**

4-09 2 305 27,460 4.9 1,351 3.2 883

9-00 2 365 36,760 3.8 1,386 3.2 1,158

LIFE: 2,245d 161,510lb 4.5% 7,311 3.3% 5,285

*6th Dam*

**Penn-Gate Starbuck Finesse EX-94 2E GMD DOM**

9-00 2 365 36,760 3.8 1,386 3.3 1,227

LIFE: 2,220d 166,730lb 3.7% 6,252 3.5% 5,902

*7th Dam*

**Penn-Gate Elevation Flashie EX-94 5E GMD DOM**

7-01 2 365 32,410 4.3 1,382 3.2 1,025

LIFE: 3,872d 260,540lb 4.4% 11,435 3.3% 7,091

**Jo-Lan Contendr Fire-Red-ET VG-87**

*2nd Dam of Lot 10*





© Jaydyn Jenaya

**Uber-Haven Linjet Casey EX-90**

Sells as Lot 11

11

*Uber-Haven Linjets Casey*

840003126292340 100%RHA Born: 12/26/2014

1-10 2 278 13108 526 387  
 3-03 2 252 19318 688 577  
 4-02 2 275 18629 696 551  
 RIP 5-03 2 59 4553 151 138  
 Last test: 92lbs 3.0% 2.8%

Calved 4/10/2020

Bred 5/27/2020 to

7H08221 Gold-Oaks ST Alexander-ET

**Excellent-90 VEEVE @ 4-06**

**Five Yr Old**

1st Sr 3, Western PA Championship Show 2018

1st Sr 3, NE Ohio District Show 2018

**SUNNYLODGE LINJET**

5578386 100%RHA TV TL EX-CAN

PTAT +.22T -.17UDC +.12FLC GTPI +1293

Lindy x Sunnyslodge Prelude Spottie VG-87-3YR-CAN

Spottie record: 3-04 2 305 26638 4.0 1058 3.3 868

**UBER-HAVEN SANCHEZ CASSADEE**

142279722 3-07 Very Good-85 VVV++

2-00 2 305 22730 3.3 750 3.1 711

3-02 2 237 21620 2.8 612 2.9 619

2nd Dam

**Uber-Haven Stuchal Casino EX-90 @ 3-03**

3-01 2 281 28770 93 2.9 828 2.9 846

3rd Dam

**Highland-H Champ Caberet-ET EX-92 2E**

Int Champion, Western PA Championship Show 2012

1st Sr 3, Western PA Championship Show 2012

Supreme Champion, Lawrence Co Fair 2012

Reserve All-PA Fall Yearling 2010

4th Dam

**Highland-H Durham Cameo-ET VG-85**

3-11 2 305 28440 3.5 987 3.4 977

5th Dam

**Highland-H Skybuck Candy EX-91 2E**

4-05 2 305d 31060 4.0 1241 3.2 1003

6th Dam

**Curtis-Haven Steady Christlyn EX-90 EX-MS**

6-09 2 305 27100 3.9 1044 3.4 932

7th Dam

**Maple-Leaf-M Apollo Cloud VG-86**

LIFE: 2,798d 157,250lb 4.1% 6,495 3.5% 4,982

Next dam: EX-90 EX-MS & over 159,000lb lifetime

Full Sister to 3rd Dam

**Highland-H Champion Candace-ET EX-94**

5-02 2 365d 36690 3.7 1348 3.1 1145

6th Jr 3, World Dairy Expo 2007



© Jimmy Thomas  
 Spotted Photography

**Highland-H Champion Caberet-ET EX-92 2E**

3rd Dam of Lot 11





© Jaydyn Jenaya

**Uber-Haven Linjet Casey EX-90**

*Dam of Lot 12*

**12**

*Uber-Haven King Creedy*

3150633828 100%RHA Born: 4/6/2018  
 RIP 1-11 2 86 5489 230 158  
 Last test: 66lbs 3.7% 2.9%  
 Calved 3/14/2020

**Jr 2 Yr Old**

**PLUM-LINE LAUTHORITY KING**

840003128162428 100%RHA 2-03 VG-88 EVVV  
 PTAT +1.22T# -.09UDC# +.05FLC# TPI +1682  
 Lauthority x Plum-Line Aspen Karamel EX-93  
 Karamel record: 4-01 2 305 28680 4.9 1392 3.2 924

**UBER-HAVEN LINJETS CASEY**

840003126292340 4-06 Excellent-90 VEEVE  
 3-03 2 252 19318 688 577  
 4-02 2 275 18629 696 551

*2nd Dam*

**Uber-Haven Sanchez Cassaddee VG-85**  
 2-00 2 305 22730 3.3 750 3.1 711

*3rd Dam*

**Uber-Haven Stuchal Casino EX-90 @ 3-03**  
 3-01 2 281 28770 93 2.9 828 2.9 846

*4th Dam*

**Highland-H Champ Caberet-ET EX-92 2E**  
*Int Champion, Western PA Championship Show 2012*  
*1st Sr 3, Western PA Championship Show 2012*  
*Supreme Champion, Lawrence Co Fair 2012*  
*Reserve All-PA Fall Yearling 2010*

*5th Dam*

**Highland-H Durham Cameo-ET VG-85**  
 3-11 2 305 28440 3.5 987 3.4 977

*6th Dam*

**Highland-H Skybuck Candy EX-91 2E**  
 4-05 2 305d 31060 4.0 1241 3.2 1003

*7th Dam*

**Curtis-Haven Steady Christlyn EX-90 EX-MS**  
 6-09 2 305 27100 3.9 1044 3.4 932

*8th Dam*

**Maple-Leaf-M Apollo Cloud VG-86**  
 LIFE: 2,798d 157,250lb 4.1% 6,495 3.5% 4,982  
 Next dam: EX-90 EX-MS & over 159,000lb lifetime



**Plum-Line Aspen Karamel EX-93**

*Paternal Granddam of Lot 12*



**Highland-H Champion Caberet-ET EX-92 2E**

*4th Dam of Lot 12*

*Full Sister to 4th Dam*

**Highland-H Champion Candace-ET EX-94**

5-02 2 365d 36690 3.7 1348 3.1 1145

*6th Jr 3, World Dairy Expo 2007*





© Jaydyn Jenaya



© Jaydyn Jenaya



**Uber-Haven Linjet Casey EX-90**  
 Dam of Lot 13

# 13 Uber-Haven Tattoo Confession

840003150633832 99%RHA Born: 3/15/2019

**Spring Yearling**

**DUCKETT CRUSH TATOO-ET**

840003137052923 99%RHA TR TP TC TY TV  
 PTAT +2.77T +2.30UDC +1.17FLC GTPI +2045  
 Crush x Duckett G Chip Tokyo-ET EX-93 @ 3-11  
 Tokyo record: 3-09 2 365 32930 3.9 1277 3.3 1076

**UBER-HAVEN LINJETS CASEY**

840003126292340 4-06 Excellent-90 VEEVE  
 3-03 2 252 19318 688 577  
 4-02 2 275 18629 696 551

*2nd Dam*

**Uber-Haven Sanchez Cassaddee VG-85**  
 2-00 2 305 22730 3.3 750 3.1 711

*3rd Dam*

**Uber-Haven Stuchal Casino EX-90 @ 3-03**  
 3-01 2 281 28770 93 2.9 828 2.9 846

*4th Dam*

**Highland-H Champ Caberet-ET EX-92 2E**  
*Int Champion, Western PA Championship Show 2012*  
*1st Sr 3, Western PA Championship Show 2012*  
*Supreme Champion, Lawrence Co Fair 2012*  
*Reserve All-PA Fall Yearling 2010*

*5th Dam*

**Highland-H Durham Cameo-ET VG-85**  
 3-11 2 305 28440 3.5 987 3.4 977

*6th Dam*

**Highland-H Skybuck Candy EX-91 2E**  
 4-05 2 305d 31060 4.0 1241 3.2 1003

*7th Dam*

**Curtis-Haven Steady Christlyn EX-90 EX-MS**  
 6-09 2 305 27100 3.9 1044 3.4 932

*8th Dam*

**Maple-Leaf-M Apollo Cloud VG-86**  
 LIFE: 2,798d 157,250lb 4.1% 6,495 3.5% 4,982  
 Next dam: EX-90 EX-MS & over 159,000lb lifetime



© Jeremy Thomas

**Highland-H Champion Caberet-ET EX-92 2E**  
 4th Dam of Lot 13

*Full Sister to 4th Dam*  
**Highland-H Champion Candace-ET EX-94**  
 5-02 2 365d 36690 3.7 1348 3.1 1145  
 6th Jr 3, World Dairy Expo 2007





**Highland-H Champion Caberet-ET EX-92 2E**

*Dam of Lot 14*

**14**

# Uber-Haven King Cobra

840003150633826 100%RHA Born: 12/5/2017

RIP 2-01 2 152 10940 412 305

Last test: 84lbs 3.5% 2.8%

Calved 1/8/2020

Bred 5/31/2020 to

7H10039 MD-Valleyvue Gold Chris

**Very Good-85 VVG+V @ 2-01**

**Sr 2 Yr Old**

*Maternal Sister to Cobra*

**Uber-Haven Stuchal Casino EX-90 @ 3-03**

**PLUM-LINE LAUTHORITY KING**

840003128162428 100%RHA 2-03 VG-88 EVVW

PTAT +1.22T# -.09UDC# +.05FLC# TPI +1682

*Authority x Plum-Line Aspen Karamel EX-93*

**Karamel record: 4-01 2 305 28680 4.9 1392 3.2 924**

**HIGHLAND-H CHAMP CABARET-ET**

65530606 8-05 Excellent-92 EEEEE 2E

*Int Champion, Western PA Championship Show 2012*

*1st Sr 3, Western PA Championship Show 2012*

*Supreme Champion, Lawrence Co Fair 2012*

*Reserve All-PA Fall Yearling 2010*

*Full Sister to Dam*

**Highland-H Champion Candace-ET EX-94**

5-02 2 365d 36690 3.7 1348 3.1 1145

*6th Jr 3, World Dairy Expo 2007*

*2nd Dam*

**Highland-H Durham Cameo-ET VG-85**

3-11 2 305 28440 3.5 987 3.4 977

*3rd Dam*

**Highland-H Skybuck Candy EX-91 2E**

4-05 2 305d 31060 4.0 1241 3.2 1003

*4th Dam*

**Curtis-Haven Steady Christlyn EX-90 EX-MS**

6-09 2 305 27100 3.9 1044 3.4 932

*5th Dam*

**Maple-Leaf-M Apollo Cloud VG-86**

LIFE: 2,798d 157,250lb 4.1% 6,495 3.5% 4,982

*Next dam: EX-90 EX-MS & over 159,000lb lifetime*



**Plum-Line Aspen Karamel EX-93**

*Paternal Granddam of Lot 14*



**Highland-H Champion Caberet-ET EX-92 2E**

*4th Dam of Lot 14*





**Highland-H Champion Caberet-ET EX-92 2E**  
*2nd Dam of Lot 15*



# 15 Uber-Haven Crocodile Dundee

840003150633841 100%RHA Born: 1/8/2020

**Winter Calf**

**REGANCREST DUNDEE-ET**  
 USA 127640114 100%RHA TY TV TL EX-95  
 PTAT +.42T +.75UDC -.28FLC GTPI +1326  
*Encore x Snow-N Denises Dellia EX-95 2E GMD DOM*  
*Dellia record: 7-06 2 365 35610 4.0 1431 2.9 1035*

**UBER-HAVEN KING COBRA**  
 840003150633826 2-01 Very Good-85 VVG+V  
 RIP 2-01 2 152 10940 412 305

*2nd Dam*

**Highland-H Champ Caberet-ET EX-92 2E**  
*Int Champion, Western PA Championship Show 2012*  
*1st Sr 3, Western PA Championship Show 2012*  
*Supreme Champion, Lawrence Co Fair 2012*  
*Reserve All-PA Fall Yearling 2010*  
*Full Sister to Caberet*

**Highland-H Champion Candace-ET EX-94**  
 5-02 2 365d 36690 3.7 1348 3.1 1145  
*6th Jr 3, World Dairy Expo 2007*

*3rd Dam*

**Highland-H Durham Cameo-ET VG-85**  
 3-11 2 305 28440 3.5 987 3.4 977

*4th Dam*

**Highland-H Skybuck Candy EX-91 2E**  
 4-05 2 305d 31060 4.0 1241 3.2 1003

*5th Dam*

**Curtis-Haven Steady Christlyn EX-90 EX-MS**  
 6-09 2 305 27100 3.9 1044 3.4 932

*6th Dam*

**Maple-Leaf-M Apollo Cloud VG-86**  
 LIFE: 2,798d 157,250lb 4.1% 6,495 3.5% 4,982  
*Next dam: EX-90 EX-MS & over 159,000lb lifetime*



**Uber-Haven King Cobra VG-85 @ 2-01**  
*Dam of Lot 15*





© Lea McLullough  
Light Purses Photography

## Regancrest Chanel-ET EX-92

2nd Dam of Lot 16

# 16

# Uber-Haven High Cotton

840003150633842 99%RHA Born: 1/28/2020

## Winter Calf

**DE-SU 12794 COTTON-ET**  
840003127334948 99%RHA TC TY TV TL TD  
PTAT +2.04T +1.70UDC +.04FLC GTPI +2369  
Monterey x De-Su Mogul 2162-ET VG-86 @ 2-05 DOM  
Mogul 2162: 3-11 3x 297 34410 4.2 1436 3.0 1027

**CRYSTAL-STAR AVLUCH1188-ET**  
840003150999215 (Sired by Avalanche)



Beth Hedges

## Regancrest Cinderella-ET EX-92 2E GMD DOM

2nd Dam of Lot 16

2nd-9th Dam

**Regancrest Chanel-ET EX-92 EX-MS**

4-11 2 365 30220 4.2 1261 3.2 954

**Regancrest Cinderella EX-92 2E GMD DOM**

5-00 2 365 34220 4.1 1418 3.1 1074

1st Sr. 2, Mideast Fall Nat'l 2006

1st Sr. 3, Midwest Spring Nat'l 2007

**Regancrest-PR Barbie-ET EX-92 94MS GMD DOM**

2-06 365 31690 3.9 1237 3.3 1050

HM All-American Jr 3 Yr Old 2004

**Regancrest Juror Brina-ET EX-92 GMD**

4-04 365 40640 3.6 1478 2.8 1140

Reserve Grand Champion, Iowa State Fair

**Regancrest Aerostar Bert-ET EX-90 GMD DOM**

5-02 365 37790 3.6 1357 3.2 1215

**Regancrest Mark Chairman Bea EX-91 2E GMD DOM**

7-09 365 33830 3.8 1276 3.1 1052

**Regancrest Board Chairman Bea EX-90**

5-09 365 26010 4.1 1059 3.4 884

**Regancrest Apache Standout Bea VG-86 EX-MS**

Life: 131940 3.6 4744





**Windy-Knoll-View Chanel-ET EX-94 3E**

4th Dam of Lot 17

**17**

## Uber-Haven Cuttin Ties

Pending 99%RHA Born: 3/2/2020

**Spring Calf**

**DE-SU BKM MCCUTCHEN 1174-ET**  
 69990138 99%RHA TR TP TC TY TV TL EX-93 GM  
 PTAT +2.22 UDC+1.44 FLC+1.22 GTPI +2264G  
 Bookem x Sully Shottle May-TW EX-91 2E DOM

**UBER-HAVEN IM CRACRA**  
 840003150633829 (Sired by Atwood)

2nd Dam: **OCD Doorman Cranky-ET GP-83 @ 2-11**  
 3rd Dam: **Windy-Knoll-View Chagold-ET VG-87 @ 3-06**  
 2-08 3 365 22610 4.2 955 3.4 772

Maternal Sisters

**Windy-Knoll-View Convey-ET EX-93**  
**Windy-Knoll-View Covergirl EX-93**  
 4th Dam: **Windy-Knoll-View Chanel-ET EX-94 3E**

3-04 2x 365d 35730 4.0 1443 3.2 1136

8-10 2x 365d 38820 3.8 1481 3.0 1147

Life: 2494d 201390 4.0 8130 3.2 6398

3rd Aged Cow, Eastern National 2010

Res Grand Champion, PA Spring Show 2009

3rd 4 Yr Old, Eastern National 2007

Nom All-American Jr 3-Yr-Old 2006

3rd Jr 3, World Dairy Expo 2006

2nd Jr 3, Eastern National 2006

5th Dam: **Windy-Knoll-View Catherine EX-90 EX-MS**

6-10 2x 365d 24790 3.5 873 3.0 756

6th Dam: **Windy-Knoll-View Juror Cass EX-94 3E**

5-09 2x 365d 40620 3.1 1269 3.1 1260

7th Dam: **Windy-Knoll-View Cassandra EX-90**

5-04 2x 365d 29250 3.7 1090 3.1 921

8th Dam: **Windy-Knoll-View Caitlin EX-90**

5-01 2x 365d 37090 2.8 1040 3.1 1146

9th Dam: **Windy-Knoll-View Supreme Chris EX-90**

10th Dam: **Windy-Knoll-View Bova Christie EX-91 2E**

11th Dam: **Windy-Knoll-View Jerry Crystal EX-92 2E**

12th Dam: **Windy-Knoll-View CD Cindy-OC EX-90 2E**

13th Dam: **Strother CM Burke Crusader VG-85 VG-MS**





**Uber-Haven ImaBlack Diamond VG-85**

*Sells as Lot 18*

# 18 Uber-Haven ImaBlack Diamond

144349490 99%RHA Born: 9/03/2017

1-02 2 349 23295 4.0 958 3.2 743

*Sells Dry*

*Due 8/1/2020 to*

*94H13666 Scientific Destry*

**Very Good-85 VV+++ @ 2-04**

**Sr 2 Yr Old**

*1st Milking Yearling, NE Ohio District Show 2019*

**MR D APPLE DIAMONDBACK**

840003013721049 99%RHA RC TP TC TY TV EX-93 @ 3-03

PTAT +2.43T +2.01UDC +1.34FLC GTPI +1910

*Dooman x MS Delicious Apple-Red-ET EX-94 2E*

**UBER-HAVEN ADV KEYSTONE ICE RC**

3126292345 RC 3-03 Excellent-90 EEE+E

3-02 2 365 25200 95 4.8 1214 3.7 931

*2nd Dam:*

**Peachey Tundel Iris EX-92 2E**

6-11 2 305 30440 94 4.4 1328 3.3 997

*3rd Dam:*

**Peachey Lee Isola EX-92 2E**

6-04 2 365 31980 3.7 1174 3.1 991

7-06 2 365 37190 4.0 1487 2.9 1097

LIFE: 2,228d 182,520 4.0% 7,280 3.1% 5,626

*4th Dam:*

**Peachey Linjet Iona VG-86**

6-00 2 365 37960 3.9 1481 2.9 1115

LIFE: 2,121d 170,720 3.9% 6,645 3.1% 5,239

*5th Dam*

**Peachey Slocum Ivy VG-87**

5-06 2 344 28990 3.5 1010 2.8 801

6-07 2 365 34150 3.8 1283 2.7 935





**Paullor Granger Jest EX-94**

*Sells as Lot 19*

**19**

# Paullor Granger Jest

11404109 Born: 3/06/2012  
5-08 2 305 22820 5.0 1148 3.8 878

**Excellent-94 @ 6-00**

**Aged Cow**

*2nd Aged Cow, NY Spring International Show 2018*

*12th Four Yr Old, World Dairy Expo 2016*

*8th Jr 3, World Dairy Expo 2015*

**PAULLOR TOPS GRANGER**

10956294

**C Tops x Paullor Ren Georgia-ET VG-86 @ 2-04**

**PAULLOR CONNECTION JAVA**

10956291 8-11 Excellent-90 5E CAN

4-05 305 14048 6.1 853 4.3 600

*2nd Dam*

**Paullor By Whom Jevette EX-93 3E CAN**

4-05 305 24260 5.0 1219 3.9 937

6-07 305 23572 6.1 1444 3.9 917

7-06 305 25223 5.3 1345 3.9 955

*Grand Champion, Perth-Huron Parish Show 2010*

*Grand Champion, Perth-Huron Parish Show 2009*

*2nd 5 Yr Old, Ontario Spring Discovery 2009*

*2nd 5 Yr Old, Stratford Championship Show 2009*

*Nominated All-Canadian Four Yr Old 2008*

*4th Four Yr Old, RAWF 2008*

*Reserve All-Canadian Jr 3 Yr Old 2007*

*2nd Jr 3 & HM Int Champion, RAWF 2007*

*HM All-Canadian Jr 2 Yr Old 2006*

*3rd Jr 2, RAWF 2006*

*3rd Dam*

**Bovi-Lact Jude Jewel VG-89 5\***

*All-Canadian Sr 3 Yr Old 1997*

*Reserve All-Canadian Sr 2 Yr Old 1996*

*All-Canadian Intermediate Yearling 1995*

**4th Dam: Meadow Lawn Bright Jewel SUP EX-90 3\***

**5th Dam: Kinghurst Zinnias Bright SUP EX-90**

**6th Dam: Kinghurst Supreme Bright SUP EX-90**

**7th Dam: River North Pansy's Bright SUP EX**

**8th Dam: Maids Pansy EX**

*Maternal Sisters to 2nd Dam*

**Rock Ella Giller Jamie-Lee EX-90**

*Nominated All-Canadian Jr 2 Yr Old 2005*

*Reserve All-Canadian Summer Yearling 2004*

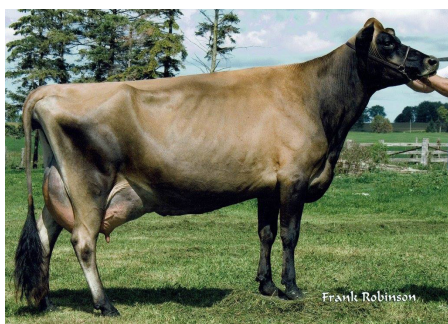
**Paullor By Whom Jelita-ET SUP EX-92 5E**

*Nominated All-Canadian Jr Calf 2004*



**Paullor By Whom Jevette EX-93-3E**

*2nd Dam of Lot 19*



**Paullor Duaiseoir Juliette EX-93-2E**

*Maternal Sister to 2nd Dam of Lot 19*





**Paullor Granger Jest EX-94**

*Dam of Lots 20, 21, & 22*

## 20 Jest's VP Justice-ET

174023432 Born: 3/20/2019

**Spring Yearling**

## 21 Jest's VP Jenea-ET

174023441 Born: 3/23/2019

**Spring Yearling**

## 22 Jest's VP Jackpot-ET

174023450 Born: 6/9/2019

**Summer Yearling**

**RIVER VALLEY VENUS V I P-ET**

840003126479167 JH1F

GPTAT 98%R +1.1 GJUI 18.0 GJPI 83%R -115

Colton x TJ Classic Minister Venus EX-94

Venus: Supreme Champion, World Dairy Expo 2014

**PAULLOR GRANGER JEST**

11404109 6-00 Excellent-94

5-08 2 305 22820 5.0 1148 3.8 878

2nd Aged Cow, NY Spring International Show 2018

12th Four Yr Old, World Dairy Expo 2016

8th Jr 3, World Dairy Expo 2015

2nd Dam

**Paullor Connection Java EX-90-5E CAN**

4-05 305 14048 6.1 853 4.3 600

**Paullor By Whom Jevette EX-93 3E CAN**

4-05 305 24260 5.0 1219 3.9 937

6-07 305 23572 6.1 1444 3.9 917

7-06 305 25223 5.3 1345 3.9 955

Grand Champion, Perth-Huron Parish Show 2010

Grand Champion, Perth-Huron Parish Show 2009

2nd 5 Yr Old, Ontario Spring Discovery 2009

2nd 5 Yr Old, Stratford Championship Show 2009

Nominated All-Canadian Four Yr Old 2008

4th Four Yr Old, RAWF 2008

Reserve All-Canadian Jr 3 Yr Old 2007

2nd Jr 3 & HM Int Champion, RAWF 2007

HM All-Canadian Jr 2 Yr Old 2006

3rd Jr 2, RAWF 2006

3rd Dam

**Bovi-Lact Jude Jewel VG-89 5\***

All-Canadian Sr 3 Yr Old 1997

Reserve All-Canadian Sr 2 Yr Old 1996

All-Canadian Intermediate Yearling 1995

4th Dam: **Meadow Lawn Bright Jewel SUP EX-90 3\***

5th Dam: **Kinghurst Zinnias Bright SUP EX-90**

6th Dam: **Kinghurst Supreme Bright SUP EX-90**

7th Dam: **River North Pansy's Bright SUP EX**

8th Dam: **Maids Pansy EX**

Maternal Sisters to 2nd Dam

**Rock Ella Giller Jamie-Lee EX-90**

Nominated All-Canadian Jr 2 Yr Old 2005

Reserve All-Canadian Summer Yearling 2004

**Paullor By Whom Jelita-ET SUP EX-92 5E**

Nominated All-Canadian Jr Calf 2004





**Elliotts Comerica Snow-ET EX-93**

*Sells as Lot 23*

**23**

*Elliotts Comerica Snow*

118128768 Born: 10/29/2011  
 2-04 2 113 5540 4.7 259 3.4 189  
 3-04 2 243 10980 5.3 577 3.7 401  
 4-04 2 361 15608 6.2 946 3.6 546  
 5-03 2 211 11560 4.6 529 3.5 401  
 6-02 2 255 13920 5.1 703 3.4 476  
 7-04 2 360 15782 5.5 894 3.4 558

*Sells Dry*

*Due 11/5/2020 to*

*94JE4036 Sunset Canyon Andreas*

**Excellent-93 @ 6-04**

**Aged Cow**

*Grand Champion, Lawrence Co. Fair 2018*

*Grand Champion, Crawford Co. Fair 2019*

*Maternal Sisters to Snow*

**Arethusa Impression Sunshine EX-94**

*4th 5 Yr Old, PA All-American 2019*

*2nd Sr 3, Eastern States 2017*

*Reserve All-Canadian Senior 2 Yr Old 2016*

*2nd Sr 2 & Res Int Champion, Eastern States Exposition 2016*

*All-Canadian Winter Yearling 2015*

**Elliotts Comerica Sable EX-93**

*National Jersey Jug Champion 2015*

**Elliotts Voltage Skylar-ET EX-93**

*Res Int Champion, Eastern States Expo 2014*

*Member ABA All-American Senior Best Three 2014*

**Elliotts Voltage Sahara EX-93**

**Elliotts Tequila Seniorita EX-91**

*All-Canadian Senior 2-Year-Old 2014*

*Intermediate Champion, RAWF 2014*

**BRIDON REMAKE COMERICA-ET**

**8422994 JH1F**

**GPTAT 78%R 0.4 GJUI 9.2 GJPI 74%R-127**

**Remake x Jasper Renaissance Evening EX-91-3E-CAN**

**Evening record: 6-11 2 305 22979 6.0 1375 3.8 875**

**MILO VINDICATION SEASON-ET**

115088306 9-06 EX-94%

4-06 2 305 20610 6.2 1269 3.6 735

*All-Canadian Mature Cow 2012*

*ABA All-American Aged Cow 2012*

*1st & BU Aged Cow, World Dairy Expo 2012*

*1st & BU, Sr & Grand Champion, NY Spring Show 2012*

*ABA All-American 4-Year-Old 2010*

*1st Four Yr Old, World Dairy Expo 2010*

*ABA Reserve All-American Sr 3-Year-Old 2009*

*1st Senior 3-Year-Old, WDE 2009*

*3rd Dam*

**Bri-Lin Rens Sofie EX-90%**

4-04 2 305 21506 5.2 1118 3.8 816

*Jersey Canada Cow of the Year 2012*

*4th Dam*

**Bri-Lin Imperial Snow VG-86-CAN 11\***

6-06 2x 305d 19262 5.2 1025 3.9 772

*5th Dam*

**Diarwood Silver Snowball VG-85-CAN**

8-07 2 305 14147 6.3 886 4.6 548

*6th Dam*

**Diarwood Julie Spot VG-86-CAN**

7-00 2 305 13210 4.8 626 3.8 500

*7th Dam*

**Diarwood Shelta's Beauty VG-86-CAN**

6-07 2 305 10434 5.3 558



**Milo Vindication Season EX-94**  
*Dam of Lot 19*



**Arethusa Impression Sunshine EX-94**  
*Maternal Sister to Lot 19*





**Milo Vindication Season EX-94**

2nd Dam of Lots 24 & 25



**Elliotts Comerica Snow EX-93**

Dam of Lots 24 & 25



**Arethusa Impression Sunshine EX-94**

Maternal Sister to Dam of Lots 24 & 25

24

*MVUE VP Stevie*

173783818 Born: 3/16/2019

**Spring Yearling**

**RIVER VALLEY VENUS V I P-ET**

840003126479167 JH1F

GPTAT 98%R +1.1 GJUI 18.0 GJPI 83%R -115

Colton x TJ Classic Minister Venus EX-94

Venus: Supreme Champion, World Dairy Expo 2014

2nd Dam

**Milo Vindication Season EX-94**

4-06 2 305 20610 6.2 1269 3.6 735

All-Canadian Mature Cow 2012

ABA All-American Aged Cow 2012

1st & BU Aged Cow, World Dairy Expo 2012

1st, Sr & Grand Champion, NY Spring Show 2012

ABA All-American 4-Year-Old 2010

1st Four Yr Old, World Dairy Expo 2010

ABA Reserve All-American Sr 3-Year-Old 2009

1st Senior 3-Year-Old, WDE 2009

3rd Dam

**Bri-Lin Rens Sofie EX-90%**

4-04 2 305 21506 5.2 1118 3.8 816

Jersey Canada Cow of the Year 2012

4th Dam

**Bri-Lin Imperial Snow VG-86-CAN 11\***

6-06 2x 305d 19262 5.2 1025 3.9 772

5th Dam

**Diarwood Silver Snowball VG-85-CAN**

8-07 2 305 14147 6.3 886 4.6 548

6th Dam

**Diarwood Julie Spot VG-86-CAN**

7-00 2 305 13210 4.8 626 3.8 500

7th Dam

**Diarwood Shelta's Beauty VG-86-CAN**

6-07 2 305 10434 5.3 558

25

*MVUE C Summer*

173783827 Born: 6/3/2019

**Summer Yearling**

**CHILLI ACTION COLTON-ET**

66738335 JH1F

GPTAT 98%R +1.5 GJUI 14.2 GJPI 96%R -63

Action x Family Hill Connection Chill-ET EX-91

Chilli record: 3-4 365 27,470 6.2 1,721 3.7% 1,038

Maternal Sisters to Dam of Lots 20 & 21

**Arethusa Impression Sunshine EX-94**

4th 5 Yr Old, PA All-American 2019

2nd Sr 3, Eastern States 2017

Reserve All-Canadian Senior 2 Yr Old 2016

2nd Sr 2 & Res Int Champion, Eastern States Expo 2016

All-Canadian Winter Yearling 2015

**Elliotts Comerica Sable EX-93**

National Jersey Jug Champion 2015

**Elliotts Voltage Skylar-ET EX-93**

Res Int Champion, Eastern States Expo 2014

**Elliotts Voltage Sahara EX-93**

**Elliotts Tequila Seniorita EX-91**

All-Canadian Senior 2-Year-Old 2014

Intermediate Champion, RAWF 2014

**ELLIOTTS COMERICA SNOW**

118128768 6-04 EX-93%

4-04 2 361 15608 6.2 946 3.6 546

7-04 2 360 15782 5.5 894 3.4 558

Grand Champion, Lawrence Co. Fair 2018

Grand Champion, Crawford Co. Fair 2019





**MVUE Hot Tamale {6} VG-88 @ 3-05**

*Sells as Lot 26*

# 26 MVUE Hot Tamale {6}

119853256 Born: 9/1/2016

2-01 2 182 7306 371 256

3-00 2 176 7814 412 282

*Sells Dry*

*Due 8/6/2020 to sexed*

*7J1088 Chilli Action Colton-ET*

**Very Good-88 @ 3-05**

**Sr 3 Yr Old**

**ROCK ELLA IMPRESSION-ET**

11227649 JH1F

GPTAT 97%R +0.3 GJUI 3.9 GJPI 94%R -141

*Indiana x Huronia Connection Crystalyn 23L EX-95 2E*

*Crystalyn: Grand Champion, Royal Winter Fair 2006*

**MVUE TESSAS TALLY {5}**

118622525 2-03 Very Good-86

*6th Summer Yearling, All-American Dairy Show 2014*

*Supreme Heifer, Lawrence Co. Fair 2014*

*2nd Dam*

**O Be Joyful 3M Sky Tessa EX-90**

6-07 2 305 17860 5.1 903 4.1 730

*3rd Dam*

**O Be Joyful Piedmont Sky Twila EX-90**

8-09 2 305 14520 4.9 705 3.8 559

# 27 MVUE Gentry Tia

173974164 Born: 9/16/2019

*Gentry x Tamale*

**Fall Calf**

**RAPID BAY INDIANA GENTRY-ET**

105762718

PTAT 90%R +1.2 JUI +7.1 JPI 83%R -172

*Indiana x Vandenburg Amadeo Gorgeous EX-97*

*Gorgeous: 3x Grand, 2x Supreme, Royal Winter Fair*



**MVUE Tallas Tally {5} VG-86 @ 2-03**

*Dam of Lot 26 & 2nd Dam of Lot 27*





© Jaydyn Jenaya

**MVUE TESSAS TEAGAN EX-91**

*Sells as Lot 28 & Dam of Lot 29*

**28**

**MVUE TESSAS TEAGAN**

119140105 Born: 9/30/2014  
 2-06 2 168 8506 322 268  
 3-06 2 257 13795 549 452  
 4-05 2 216 11208 473 359  
 RIP 5-04 2 102 5826 252 188  
 Last test: 76lbs 3.6% 3.1%  
 Fresh 2/27/2020

**Excellent-91 @ 4-09**  
**Five Yr Old**

*HM Grand Champion, Crawford Co Fair 2019*

**ROCK ELLA IMPRESSION-ET**

11227649 JH1F

GPTAT 97%R +0.3 GJUI 3.9 GJPI 94%R -141  
*Indiana x Huronia Connection Crystalyn 23L EX-95 2E*  
*Crystalyn: Grand Champion, Royal Winter Fair 2006*

**O BE JOYFUL 3M SKY TESSA**

115942808 5-09 EX-90  
 6-07 2 305 17860 5.1 903 4.1 730

*2nd Dam*

**O Be Joyful Piedmont Sky Twila EX-90**

8-09 2 305 14520 4.9 705 3.8 559

*Maternal Sister to Lot 28*

**Mvue TESSAS Tally {5} VG-86 @ 2-03**

*Supreme Heifer, Lawrence Co. Fair 2014*

*6th Summer Yearling, All-American Dairy Show 2014*

*2nd Summer Yearling, Spring Dairy Expo 2014*

*2nd Summer Yearling, Ohio State Fair 2014*

**29**

**MVUE VIP TICKET**

173783809 Born: 3/9/2019  
 VIP x Teagan

**Spring Yearling**

**RIVER VALLEY VENUS V I P-ET**

840003126479167 JH1F

GPTAT 98%R +1.1 GJUI 18.0 GJPI 83%R -115  
*Colton x TJ Classic Minister Venus EX-94*

*Venus: Supreme Champion, World Dairy Expo 2014*





**MVUE TESSAS TEAGAN EX-91**  
*Sells as Lot 28 & Dam of Lot 29*

# 30

## Hillacres Tonka Rally

840003141545616 Born: 3/1/2017  
1-11 2 225 9295 479 320  
RIP 3-01 2 42 2055 115 71  
Last test: 46lbs 6.1% 3.1%  
*Fresh 4/27/2020*

**Very Good-87 @ 2-04**

**Jr 3 Yr Old**

*Jr Champion, Lawrence Co Fair 2018*

*4th Spring Calf, All-American Dairy Show 2017*

**TOWER VUE JEMI TONKA-ET**  
117390951

JUI 8.2 JPI 62%R -224

*Giller x Pleasant Nook Sambo Teal EX-94*

*Teal: 8-00 2 305 25000 6.0 1501 3.5 869*

**HILLACRES VELOCITY RANDI**

840003129451624 G-72

2-02 2 289 11840 5.1 601 3.7 440

*2nd Dam*

**Hillacres Rhonda Ricotta EX-90**

6-00 2 305 20290 5.2 1059 3.7 744

*All-American Milking Yearling 2009*

*1st Milking Yearling, NAILE 2009*

*3rd Milking Yearling, World Dairy Expo 2009*

*2nd Milking Yearling, All-American Dairy Show 2009*

*3rd Dam*

**Hillacres Rosario Rhonda VG-85**

*4th Dam*

**Hillacres Rosas Rosario EX-90**

6-04 2 365 21372 4.8 1040 3.8 821

*5th Dam*

**Hillacres Rachels Rosa VG-86**

*6th Dam*

**Hillacres Duncan Rachel EX-92**

9-02 2 305 21070 4.6 961 3.7 790





# HOLSTEIN ASSOCIATION TERMS AND CONDITIONS FOR PUBLIC SALES

EFFECTIVE MARCH 2, 1996 - Amended October 1, 1997, June 28, 2000, June 23, 2002, March 26, 2010 and March 24, 2016

**TERMS:** The terms of the sale are cash unless arrangements are made prior to the sale or are printed in the sale catalog. Only when the above conditions are met will the buyer be entitled to the warranties listed below. In no case will animals be released unless settlement is made with the clerk of the sale.

**RESPONSIBILITY:** The seller, buyer, and manager of this sale are obligated to comply with the provisions of these terms and conditions.

**EXPORT SALES:** Buyer assumes all responsibility for health tests required by the importing country.

**BIDS:** The highest bidder is the buyer. Bidding parties or their agents are responsible for all bids placed. Every animal or lot presented for bidding is pledged to absolute sale. In case of dispute, the animal or lot will again be put up for advance bids, and if there is no advance bid, the animal or lot will be sold to the person the auctioneer accepted the last bid from. In case two or more claim the bid, the auctioneer will indicate the party whose bid he recognized. Other claimants will be given an opportunity to increase the bid and bidding will be restricted to the two or more claimants.

**BY-BIDDING:** Bidding directly or indirectly by the sole owner of any animal or lot is prohibited unless the intention to bid is disclosed specific to each animal in the catalog and announced when the animal enters the ring. Bidding by any member of a partnership, syndicate, or other entity having an ownership interest in an animal or lot is permitted.

**TRANSFER OF OWNERSHIP:** For all Registered Holsteins<sup>SM</sup>, the transfer of ownership to the buyer will be recorded on the records of Holstein Association USA and a certificate of registration showing that transfer of ownership will be provided to the buyer free of charge. For embryos, the transfer of ownership to the buyer will be recorded on the records of Holstein Association USA free of charge to the buyer.

**RISK:** All animals located at sale site are at the purchaser's risk as soon as struck off, but will be cared for free of charge for a maximum of 24 hours following the end of the sale.

## WARRANTIES:

- 1) Each consignor warrants clear title to the animal or lot, and the right to sell same.
- 2) To the best of the seller's knowledge, each animal is sound and healthy in every respect and embryos have been recovered, processed, frozen, transferred and graded in keeping with IETS recommendations unless otherwise noted in the catalog or announced from the auction stand. Every precaution will be taken to represent the physical condition of each lot exactly as is known. Examination of all purchases should be made immediately after the purchase and before the close of the sale, and if found not to be as represented, complaint must be reported to the sale management before the close of the sale. In the event no complaint is filed, it is understood that the buyer assumes full ownership in the case of animals at sale site together with all risks, after which no representations of the seller can be challenged through the sale management. Heifers that never calved are in no way guaranteed as to the condition of their udders following calving. The sex of an embryo or fetus is in no way guaranteed.
- 3) **Breeding Warranty**  
The seller guarantees all animals to be breeders, but not beyond the purchase price, with the following understanding:
  - a. **Males** - Should any bull after reaching the age of fourteen months fail to prove a breeder after being used for two months on cows or heifers known to be breeders, the matter shall be reported in writing to the seller within three months of the sale date. The report must include the animal's examination record, a written statement of treatment, and a statement of the animals' inability to breed,

by a licensed veterinarian. The seller has the option to refund the purchase price or make other settlement that is satisfactory to the buyer. In either case the rights of ownership of the animal return to the seller. The seller makes no guarantees with respect to the ability to freeze semen.

- b. **Females** - All females are guaranteed to be breeders with the exception of:
  1. Cows over 7 years of age when sold;
  2. Cows and/or heifers carrying a pregnancy that is the result of an embryo transfer.

Report of a non-breeder must occur in writing within 3 months of the date of sale or before the animal reaches 21 months of age and must be submitted to the seller. The report must include the animal's examination record, a written statement of treatment, and a statement of the animals' inability to breed, by a licensed veterinarian. The seller has the option to refund the purchase price or make other settlement that is satisfactory to the buyer. In either case the rights of ownership of the animal return to the seller.

Females bred when sold and pronounced in calf are presumed to be pregnant but pregnancy is not guaranteed unless so announced. The seller makes no warranty that pregnant cows will deliver calves or that they will carry calves full term.

- c. If, after the sale, embryos or oocytes are recovered from a female or an attempt is made to superovulate her, this negates the breeding warranty unless there is a separate written agreement between buyer and seller.

**SHIPPING:** Assistance will be given in arranging shipping of the animals after the sale. All costs, risks and responsibility will be borne by the purchaser.

**PEDIGREE INFORMATION:** All production, classification, type and production summaries are current. Only information recorded on Holstein Association USA pedigrees is used. Any production or classification records supplied by the seller or consignor will be properly identified as provided by owner. Records in progress are identified as such.

**GENOMIC INFORMATION:** If genomic information on the animal or embryo is available, it must be dated and disclosed at or before the time of sale.

**EMBRYO TRANSFER:** All registered animals that have resulted from embryo transfer are identified with one of the following suffixes in the name: ET, ETS (from split embryo), or ETN (from nuclear transfer). If unregistered, the appropriate technology will be identified. Donor dams are identified.

**HEALTH WARRANTY:** The seller will provide an official health certificate to the buyer for each animal showing the results of all health tests made in preparation for this sale as required by the state where the cattle reside. Other health tests completed for this sale will be disclosed.

**ERRORS:** The material in this catalog has been carefully edited. If any errors or omissions are discovered, they will be announced. Such announcements take precedence over that printed in this catalog.

**ACCIDENT:** The sale management, the consignors, and the owner of the grounds will not be responsible in any case for the condition of the grounds or the behavior of the animals and disclaim any liability in the event of personal accident or property loss.

**LIMITATIONS OF WARRANTIES:** Warranties contained herein, unless terminated earlier, will cease upon the resale of an animal.



