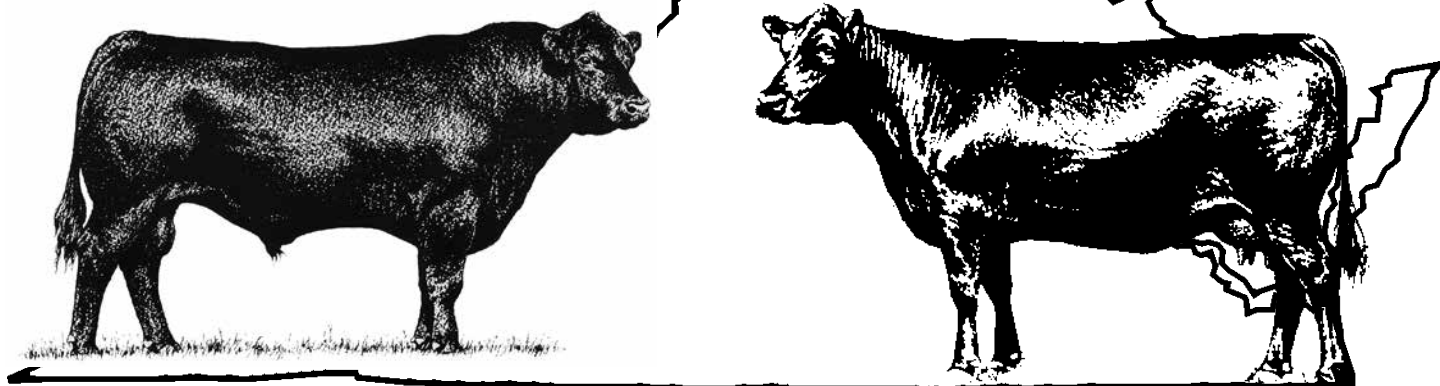


SOUTHWEST VIRGINIA'S FINEST ANGUS SALE



Saturday • December 2nd, 2023 • Noon
SALE SITE

Washington County Fairgrounds • 17046 Fairground Dr. • Abingdon, VA 24212

To All Beef Producers,

We invite you to be with us on Saturday, December 2nd for the 2023 version of the Southwest Virginia Finest Angus Sale. This year we will be selling 50 lots of registered Angus females, which consist of bred cows, bred heifers, open heifers and cow/calf pairs. As with previous sales for 2023, if you do not feel comfortable attending in person due to the impact of COVID-19, we would like to remind you that the sale will also be streamed live on Cowbuyer.com where your bids will be received in real time. If you prefer to bid by phone, please contact either Smith Reasor or myself before sale day and we will provide you with a number you can call to place your bids that day.

The fall group of yearling Angus bulls from the SWVAA Performance Test will sell first, followed by the registered females. Fifty-nine bulls were chosen to sell. They were all fed as a group at G&E Farms in Gretna, VA. They were weighed off test on 11/3/2023 and were evaluated by VDACS state graders. This is a good group of bulls from the SWVAA consignors. All of the bulls qualified under the Virginia Quality Assurance program and are designated with a VQA symbol underneath the EPDs. Negative BVD PI test at delivery on all bulls.

The sale starts at 12 noon with the bulls selling first. You are welcome to come by on Friday, December 1st in the afternoon or on Saturday morning prior to the sale to evaluate the cattle being offered for sale.

I encourage you to study the pedigrees and performance information on these cattle. Many selling are sired by some of the most proven bulls available in the breed. The consignors of these cattle offered in this sale have been in business for a number of years. They are offering some of their best genetics from which you may select. The EPDs and pedigrees along with individual performance, will assist you in making your selections.

We look forward to seeing you on Saturday, December 2nd. Please feel free to contact any of the consignors or the sale coordinator, George T. Johnstone, Jr. at 620-4901, or the sale auctioneer, Smith Reasor at 620-3123.

Southwest Virginia Angus Association hereby reserves the right in its absolute and total discretion to refuse to accept any bid from any person or individual or to issue a bid number for any reason, including but not limited to, a previous instance of non-payment in a Southwest Virginia Angus Association sale.

George T. Johnstone Jr.

1 BGS DUAL THREAT 949

G A R SURE FIRE

G A R DUAL THREAT

G A R DAYBREAK A3010

DEER VALLEY WALL STREET

B G S FLOWER 896

G V F FLOWER 7044

DOB 11/1/22
Tatt 949
Reg. 20745189

CED	11
BW	-.7
WW	77
YW	139
M	32

**VQA
BULL**

	BW	WW	ADG	YW
Weight	78	685	4.98	1375
Ratio	99	106	118	118

Consignor: **B G S ANGUS**



G A R DUAL THREAT

2 WDB GROWTH F 1404 2223

BASIN PAYWEIGHT 1682

DEER VALLEY GROWTH FUND

DEER VALLEY RITA 36113

TC CANDID 161

WDB MISS CANDID 112 1404

W D B 7234 FOCUS 112

DOB 10/20/22
Tatt 2223
Reg. 20678615

CED	14
BW	-.7
WW	76
YW	132
M	29

**VQA
BULL**

	BW	WW	ADG	YW
Weight	82	639	4.98	1267
Ratio	101	100	118	109

Consignor: **BAIRD ANGUS FARM**

3 WDB G FUND 1706 2213

BASIN PAYWEIGHT 1682

DEER VALLEY GROWTH FUND

DEER VALLEY RITA 36113

SYDGEN C C & 7

WDB CC&7 JEAN 754 1706

M D B MISS 004 305 754

DOB 9/10/22
Tatt 2213
Reg. 20627042

CED	5
BW	2.7
WW	86
YW	160
M	40

**VQA
BULL**

	BW	WW	ADG	YW
Weight	81	633	6.36	1249
Ratio	101	106	150	107

Consignor: **BAIRD ANGUS FARM**



DEER VALLEY GROWTH FUND

4 CK MYSTIC HILL GIBSON

WERNER WAR PARTY 1472

MONTANA GIBSON 9111

COLEMAN DONNA 206

BASIN EXCITEMENT

MYSTIC HILL ELBA OF 3188

MYSTIC HILL ELBA 3188

DOB 9/19/22
Tatt 2604
Reg. 20468008

CED	4
BW	2.1
WW	61
YW	109
M	27

**VQA
BULL
OHP**

	BW	WW	ADG	YW
Weight	76	688	4.45	1090
Ratio	100	100	105	94

Consignor: **CK TANGUB FARMS**



K C F BENNETT SOUTHSIDE



JUSTAFEW SOUTHSIDE 215

NICHOLS EXTRA K205

DOB 10/3/22

Tatt 215

Reg. 20668283

K C F BENNETT SOUTHSIDE

K C F MISS 208 S11

PA POWER TOOL 9108

JUSTAFEW PT BONNIE 801

JUSTAFEW PENDLTN BONNIE 001

CED	7
BW	1.8
WW	65
YW	118
M	30

	BW	WW	ADG	YW
Weight	72	680	5.23	1243
Ratio	100	100	124	107

**VQA
BULL**

Consignor: **JUSTAFEW ANGUS**



GRAGG RENOWN 2158G

S A V RENOWN 3439

DOB 9/24/22

Tatt 2158G

GRAGG RENOWN 7138G

Reg. 20685213

GRAGG ELSIEMERE 4117

GRAGG RIGHT TIME 503G

CED	0
BW	3.3
WW	76
YW	131
M	28

GRAGG ELLUNAS ELITE 7141

GRAGG ELLUNAS ELITE 5103

	BW	WW	ADG	YW
Weight	96	672	4.27	1115
Ratio	103	111	101	96

**VQA
BULL**

Consignor: **GRAGG FARMS**



JUSTAFEW BLACK PEARL 203

SYDGEN TRUST 6228

DOB 9/1/22

Tatt 203

Reg. 20668277

SYDGEN BLACK PEARL 2006

SYDGEN ANITA 8611

K C F BENNETT SOUTHSIDE

JUSTAFEW SOUTHERN BONNIE 006

JUSTAFEW 2XVISION BONNIE 714

CED	12
BW	-.5
WW	69
YW	124
M	32

	BW	WW	ADG	YW
Weight	62	720	5.66	1383
Ratio	81	109	134	119

**VQA
BULL**

Consignor: **JUSTAFEW ANGUS**



GRAGG RAINMAKER 2151G

SITZ RAINMAKER 11127

DOB 9/6/22

Tatt 2151G

GRAGG RAINMAKER 4125G

Reg. 20685212

COLEMAN EVERELDA ENTENSE0243

SITZ RAINMAKER 11127

CED	8
BW	1.0
WW	54
YW	98
M	31

GRAGG LADY 5048

WHITESTONE LADY W81

	BW	WW	ADG	YW
Weight	85	643	3.61	1044
Ratio	91	106	85	90

**VQA
BULL
MIP**

Consignor: **GRAGG FARMS**



SYDGEN BLACK PEARL 2006



KAF STELLAR 227

DOB 11/21/22

MOHNEN SUBSTANTIAL 272

Tatt 227

SITZ STELLAR 726D

Reg. 20719884

SITZ PRIDE 200B

GDAR LEUPOLD 298

CED	5
BW	1.1
WW	68
YW	118
M	22

WDB MISS BURGESS112 131 1725

WDB MISS 8177 122 131

	BW	WW	ADG	YW
Weight	78	578	5.02	1305
Ratio	104	100	118	112

VQA BULL

Consignor: **KING ANGUS FARM**



LAWSONS STELLAR K1118

DOB 9/15/22

SITZ STELLAR 726D

Tatt K1118

SITZ STELLAR 715G

Reg. 20626883

SITZ BARBARAMERE JET 171E

COLEMAN VENTURE 403

CED	7
BW	0
WW	56
YW	103
M	36

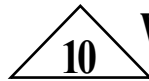
LAWSONS CHLOE E269

LAWSONS CHLOE C747

	BW	WW	ADG	YW
Weight	75	510	4.70	1064
Ratio	96	83	111	92

VQA BULL

Consignor: **LAWSON FAMILY FARMS**



WDB MR ENHANCE 1651 2207

DOB 9/5/22

SYDGEN EXCEED 3223

Tatt 2207

SYDGEN ENHANCE

Reg. 20433122

SYDGEN RITA 2618

QUAKER HILL RAMPAGE 0A36

CED	4
BW	2.7
WW	75
YW	136
M	28

WDB MS BURGESS PAGE1243 1651

WDB MISS 0007 033 1243

	BW	WW	ADG	YW
Weight	82	685	5.36	1541
Ratio	100	100	126	132

VQA BULL

Consignor: **KING ANGUS FARM**



SYDGEN ENHANCE



LAWSONS ICONIC K1142

DOB 9/29/22

MUSGRAVE 316 STUNNER

Tatt K1142

DB ICONIC G95

Reg. 20535117

DB MS DISCOVERY D13

COLEMAN BRAVO 6313

CED	12
BW	-1.0
WW	68
YW	115
M	36

LAWSONS CHLOE G522

LAWSONS CHLOE C815

	BW	WW	ADG	YW
Weight	84	633	4.23	1145
Ratio	100	100	100	98

VQA BULL

Consignor: **LAWSON FAMILY FARMS**



LAWSONS ALTERNATIVE K1112

DOB 9/8/22

BALDRIDGE ALTERNATIVE E125

Tatt K1112

STEVENSON ALTERNATIVE 00081

Reg. 20626901

STEVENSON JOYCE 3825

CONNEALY CAPITALIST 028

CED	16
BW	-.7
WW	64
YW	121
M	24

COLEMAN DONNA 405

COLEMAN DONNA 714

	BW	WW	ADG	YW
Weight	79	522	4.86	1117
Ratio	101	85	115	96

VQA BULL

Consignor: **LAWSON FAMILY FARMS**

14 LAWSONS STUNNER K1110

MUSGRAVE 316 STUNNER

DOB 9/7/22

Tatt K1110

Reg. 20626890

CED	12
BW	-.6
WW	59
YW	103
M	24

VQA BULL

T K STUNNER F655B

T K PRINCESS Z749

TEX PLAYBOOK 5437

BRIDGEVIEW/S&G RITA 1809

BRIDGEVIEW RITA 6110

	BW	WW	ADG	YW
Weight	76	596	4.52	1152
Ratio	99	97	107	99

Consignor: **LAWSON FAMILY FARMS**



MUSGRAVE 316 STUNNER

15 LAWSONS STUNNER K1098

MUSGRAVE 316 STUNNER

DOB 9/5/22

Tatt K1098

Reg. 20626896

CED	9
BW	1.6
WW	92
YW	161
M	32

VQA BULL

T K STUNNER F655B

T K PRINCESS Z749

BASIN PAYWEIGHT 1682

LAWSONS HENRIETTA PRIDE F363

DEER VALLEY HENRIETTA 2212

	BW	WW	ADG	YW
Weight	70	598	4.89	1151
Ratio	91	97	116	99

Consignor: **LAWSON FAMILY FARMS**

17 LAWSONS DEMARINI K1083

S A V RENOWN 3439

DOB 9/2/22

Tatt K1083

Reg. 20626894

CED	1
BW	1.9
WW	72
YW	117
M	22

VQA BULL

LAWSONS DEMARINI E131

COLEMAN DONNA 407

COLEMAN REGIS 356

LAWSONS REGIS D950

LAWSONS LUCY 4007

	BW	WW	ADG	YW
Weight	78	660	4.09	1192
Ratio	100	107	97	103

Consignor: **LAWSON FAMILY FARMS**

16 LAWSONS STELLAR K1093

SITZ STELLAR 726D

DOB 9/4/22

Tatt K1093

Reg. 20626886

CED	5
BW	1.6
WW	63
YW	113
M	32

VQA BULL

SITZ STELLAR 715G

SITZ BARBARAMERE JET 171E

SITZ UPWARD 307R

LAWSONS WITCH Z321

YON WITCH S379

	BW	WW	ADG	YW
Weight	79	603	5.11	1198
Ratio	103	98	121	103

Consignor: **LAWSON FAMILY FARMS**

18 LAWSONS STELLAR K1088

SITZ STELLAR 726D

DOB 9/2/22

Tatt K1088

Reg. 20642859

CED	6
BW	1.5
WW	68
YW	117
M	31

VQA BULL

SITZ STELLAR 715G

SITZ BARBARAMERE JET 171E

COLEMAN ENGAGE 5255

LAWSONS DONNA F362

COLEMAN DONNA 063

	BW	WW	ADG	YW
Weight	79	596	4.21	1166
Ratio	103	97	100	100

Consignor: **LAWSON FAMILY FARMS**



COLEMAN ENGAGE 5255

21 LAWSONS ENGAGE K1082

COLEMAN ENGAGE 5255

DOB 9/1/22

Tatt K1082

Reg. 20626903

LAWSONS ENGAGE G619

LAWSONS CHLOE D907

VERMILION PAYWEIGHT J847

BASIN LUCY S997

BASIN LUCY 3829

CED	9
BW	1.6
WW	58
YW	100
M	24

	BW	WW	ADG	YW
Weight	81	729	3.41	1062
Ratio	105	119	81	91

**VQA
BULL**

Consignor: **LAWSON FAMILY FARMS**

19 LAWSONS STELLAR K1089

SITZ STELLAR 726D

DOB 9/2/22

Tatt K1089

SITZ STELLAR 715G

Reg. 20626877

SITZ BARBARAMERE JET 171E

S A V RENOWN 3439

LAWSONS DONNA F392

COLEMAN DONNA 063

CED	-2
BW	3.6
WW	85
YW	145
M	18

	BW	WW	ADG	YW
Weight	73	558	4.27	1067
Ratio	95	91	101	92

**VQA
BULL**

Consignor: **LAWSON FAMILY FARMS**

22 LAWSONS STELLAR K1084

SITZ STELLAR 726D

DOB 9/1/22

Tatt K1084

Reg. 20626898

SITZ STELLAR 715G

SITZ BARBARAMERE JET 171E

S A V RESOURCE 1441

SIEBRING ABIGALE 805

S A V ABIGALE 214

CED	4
BW	2.0
WW	65
YW	118
M	27

	BW	WW	ADG	YW
Weight	74	596	3.41	1091
Ratio	96	97	81	94

**VQA
BULL**

Consignor: **LAWSON FAMILY FARMS**

20 LAWSONS STELLAR K1090

SITZ STELLAR 726D

DOB 9/2/22

Tatt K1090

SITZ STELLAR 715G

Reg. 20626880

SITZ BARBARAMERE JET 171E

S A V RAINFALL 6846

LAWSONS DONNA F318

LAWSONS DONNA D910

CED	8
BW	3.0
WW	81
YW	138
M	26

	BW	WW	ADG	YW
Weight	77	661	4.20	1183
Ratio	100	108	99	102

**VQA
BULL**

Consignor: **LAWSON FAMILY FARMS**



SITZ STELLAR 726D



G A R ASHLAND

25 MATNEY ASHLAND F2273

G A R ASHLAND

CONNEALY ASHLAND 7442

ENDELLA OF CONANGA 7442

GAR DAYLIGHT H 3076

MATNEY DAYLIGHT 9133

MATNEY CON 1207

	BW	WW	ADG	YW
Weight	65	552	4.04	1127
Ratio	96	98	95	97

DOB 11/5/22
Tatt F2273
Reg. 20631090

CED	4
BW	1.0
WW	72
YW	120
M	33

VQA BULL

Consignor: **MATNEY ANGUS FARM**

23 LAWSONS STELLAR K1086

SITZ STELLAR 726D

DOB 9/1/22

Tatt K1086

SITZ STELLAR 715G

Reg. 20626882

SITZ BARBARAMERE JET 171E

HA COWBOY UP 5405

BRIDGEVIEW HENRIETTA 801

LAWSONS HENRIETTA B563

CED	5
BW	1.5
WW	68
YW	118
M	23

	BW	WW	ADG	YW
Weight	75	572	4.14	1074
Ratio	97	93	98	92

VQA BULL

Consignor: **LAWSON FAMILY FARMS**

26 MATNEY UNIQUE 020-F2267

DEER VALLEY UNIQUE 5635

DOB 11/3/22

Tatt F2267

CONNEALY UNIQUE 020

Reg. 20623686

ELFA OF CONANGA 020

G A R PROPHET

MATNEY PROFIT 1573

MATNEY PRIORITY 1377

	BW	WW	ADG	YW
Weight	65	597	3.91	1123
Ratio	92	106	92	97

CED	10
BW	.8
WW	80
YW	133
M	26

VQA BULL

Consignor: **MATNEY ANGUS FARM / JUSTIN MATNEY**

24 MATNEY CONNEALY UNIQUE-F2278

DEER VALLEY UNIQUE 5635

DOB 11/8/22

Tatt F2278

CONNEALY UNIQUE 020

Reg. 20639222

ELFA OF CONANGA 020

GAR DAYLIGHT H 3076

MATNEY DAYLIGHT 8133

MATNEY SHREK 1421

CED	10
BW	0
WW	78
YW	139
M	30

	BW	WW	ADG	YW
Weight	69	564	4.30	1154
Ratio	100	107	102	99

VQA BULL

Consignor: **MATNEY ANGUS FARM**

27 MATNEY UNIQUE 020-F2256

DEER VALLEY UNIQUE 5635

DOB 10/30/22

Tatt F2256

CONNEALY UNIQUE 020

Reg. 20623678

ELFA OF CONANGA 020

GAR DAYLIGHT H 3076

MATNEY DAYLIGHT 1774

MATNEY 7606 OF HYL338

	BW	WW	ADG	YW
Weight	71	643	3.89	1159
Ratio	100	114	92	100

CED	4
BW	1.2
WW	78
YW	136
M	25

VQA BULL

Consignor: **MATNEY ANGUS FARM**



S S NIAGARA Z29

30 MATNEY NIAGARA 7133-F2236

S S NIAGARA Z29

DOB 10/19/22

Tatt F2236

Reg. 20549706

MATNEY NIAGARA 7133

MATNEY DAYLIGHT 1551

W H S LIMELIGHT 64V

MATNEY LIMELIGHT 1272

MATNEY PRIDE-1008

CED	7
BW	1.2
WW	67
YW	117
M	34

	BW	WW	ADG	YW
Weight	72	580	4.04	1168
Ratio	103	103	95	100

VQA BULL

Consignor: **MATNEY ANGUS FARM**

28 MATNEY GARY F2249

CONNEALY GARY

DOB 10/25/22

Tatt F2249

CONNEALY GARY 756X

Reg. 20623674

JAZZEEN OF CONANGA 4660 756X

CONNEALY BLACKHAWK 6198

MATNEY BLACKHAWK 8142

MATNEY PARTY 1516

CED	10
BW	.2
WW	74
YW	122
M	26

	BW	WW	ADG	YW
Weight	68	528	3.95	1131
Ratio	97	94	93	97

VQA BULL

Consignor: **MATNEY ANGUS FARM**

31 MATNEY TAHOE B767-F2231

TEHAMA UPWARD Y238

DOB 10/17/22

Tatt F2231

Reg. 20541451

TEHAMA TAHOE B767

TEHAMA MARY BLACKBIRD Y684

G A R SUNRISE 2153G

MATNEY SUNRISE 1552

MATNEY BE 1213

CED	0
BW	2.6
WW	74
YW	122
M	28

	BW	WW	ADG	YW
Weight	77	618	3.95	1190
Ratio	108	110	93	102

VQA BULL

Consignor: **MATNEY ANGUS FARM**

29 MATNEY GROWTH FUND-F2237

BASIN PAYWEIGHT 1682

DOB 10/19/22

Tatt F2237

DEER VALLEY GROWTH FUND

Reg. 20543914

DEER VALLEY RITA 36113

PA SAFEGUARD 021

MATNEY SAFEGUARD 1525

MATNEY BE 1211

CED	5
BW	1.6
WW	79
YW	144
M	31

	BW	WW	ADG	YW
Weight	85	809	5.04	1203
Ratio	120	143	119	103

VQA BULL

Consignor: **MATNEY ANGUS FARM / JUSTIN MATNEY**



TEHAMA TAHOE B767

32 TE GARY 756X-F2228

DOB 10/15/22
Tatt F2228
Reg. 20541460

CONNEALY GARY

CONNEALY GARY 756X

JAZZEEN OF CONANGA 4660 756X

WERNER WAR PARTY 2417

MATNEY PARTY 1578

MATNEY 1301-7601

CED	8
BW	.9
WW	61
YW	103
M	28

**VQA
BULL
DDC**

	BW	WW	ADG	YW
Weight	71	565	4.54	1226
Ratio	100	100	107	105

Consignor: **MATNEY ANGUS FARM /
TAYLOR ESTEP**

33 MATNEY UNIQUE 020-F2225

DOB 10/14/22
Tatt F2225
Reg. 20541449

DEER VALLEY UNIQUE 5635

CONNEALY UNIQUE 020

ELFA OF CONANGA 020

PA SAFEGUARD 021

MATNEY SAFEGUARD 1512

MATNEY CON 1212

CED	4
BW	.4
WW	72
YW	123
M	32

**VQA
BULL**

	BW	WW	ADG	YW
Weight	71	654	4.02	1211
Ratio	100	116	95	104

Consignor: **MATNEY ANGUS FARM**



E W A PEYTON 642

34 TE GROWTH FUND-F2220

DOB 10/12/22
Tatt F2220
Reg. 20613071

BASIN PAYWEIGHT 1682

DEER VALLEY GROWTH FUND

DEER VALLEY RITA 36113

G A R SURE FIRE

MATNEY SURE FIRE 1963

MATNEY DAYLIGHT 1640

CED	17
BW	-2.2
WW	74
YW	132
M	42

**VQA
BULL**

	BW	WW	ADG	YW
Weight	70	657	3.43	1140
Ratio	97	110	81	98

Consignor: **MATNEY ANGUS FARM /
TAYLOR ESTEP**

35 MATNEY STAGECOACH 1908-F2219

DOB 10/11/22
Tatt F2219
Reg. 20543913

TEHAMA TAHOE B767

HOFFMAN STAGECOACH 1908

BSG COUNTESS 1705 OF 028

PA SAFEGUARD 021

MATNEY SAFEGUARD 1413

MATNEY BE 1211

CED	6
BW	2.3
WW	85
YW	140
M	29

**VQA
BULL**

	BW	WW	ADG	YW
Weight	78	549	4.50	1208
Ratio	110	97	106	104

Consignor: **MATNEY ANGUS FARM /
JUSTIN MATNEY**

36 MSA ENERGIZER 2K13

DOB 10/9/22
Tatt 2K13
Reg. 20459324

E W A PEYTON 642

ROSEDA POWERBALL23 F091

ROSEDA BLACKCAP B103 D118

BARSTOW BANKROLL B73

VPI LADY BURGESS 8F5

VPI LADY BURGESS 5C29

CED	6
BW	1.6
WW	94
YW	171
M	24

**VQA
BULL**

	BW	WW	ADG	YW
Weight	71	777	5.34	1374
Ratio	104	98	126	118

Consignor: **MOSSY SPRING ANGUS**



MSA UNITED 2K8

DOB 9/4/22

E W A PEYTON 642

Tatt 2K8

E W A TEAMWORK 821

Reg. 20459321

E W A 543 OF 117 WEIGH UP

EXAR UPSHOT 0562B

CED	12
BW	-.2
WW	88
YW	154
M	29

TRIPLE E ROSEMARY

ECHO RIDGE BLACKBIRD 1768

	BW	WW	ADG	YW
Weight	69	839	4.54	1280
Ratio	101	106	107	110

VQA BULL

Consignor: **MOSSY SPRING ANGUS**



M A F 23B9

DOB 9/9/22

CONNEALY ARMORY

Tatt 9

CONNEALY BLACKHAWK 6198

Reg. 20482714

PRECIOUS OF CONANGA 380X

JINDRA ACCLAIM

M A F 21J11

M A F 18W3

CED	3
BW	3.4
WW	92
YW	165
M	35

	BW	WW	ADG	YW
Weight	65	740	4.93	1418
Ratio	106	109	116	122

VQA BULL

Consignor: **MULLINS ANGUS FARM**



M A F 2320

DOB 9/21/22

S WHITLOCK 179

Tatt 20

VPI WHITLOCK 7E35

Reg. 20482724

VPI BLACKBIRD 5C25

PLATTEMERE WEIGH UP K360

CED	11
BW	-.3
WW	69
YW	126
M	32

M A F 18W3

GRACE MEADOWS NEW DESIGNU078

	BW	WW	ADG	YW
Weight	71	612	4.61	1131
Ratio	103	90	109	97

VQA BULL M1P

Consignor: **MULLINS ANGUS FARM**



M A F 23B8

DOB 9/8/22

CONNEALY ARMORY

Tatt 8

CONNEALY BLACKHAWK 6198

Reg. 20482713

PRECIOUS OF CONANGA 380X

JINDRA ACCLAIM

M A F 21J10

M A F 19F95

CED	5
BW	1.1
WW	90
YW	163
M	24

	BW	WW	ADG	YW
Weight	64	766	4.18	1348
Ratio	104	113	99	116

VQA BULL

Consignor: **MULLINS ANGUS FARM**



M A F 23WR16

DOB 9/14/22

WAR CAVALRY B063 Z044

Tatt 16

WILKS REGIMENT 9035

Reg. 20482720

VINTAGE CHLOE 6137

QUAKER HILL RAMPAGE 0A36

CED	9
BW	.9
WW	88
YW	156
M	30

M A F 18R10

M A F 14U4

	BW	WW	ADG	YW
Weight	67	705	5.36	1384
Ratio	97	104	126	119

VQA BULL

Consignor: **MULLINS ANGUS FARM**



WILKS REGIMENT 9035

42

M A F 23B7

CONNEALY ARMORY

CONNEALY BLACKHAWK 6198

PRECIOUS OF CONANGA 380X

CONNEALY COMRADE 1385

M A F 18C6

M A F 16R60

	BW	WW	ADG	YW
Weight	66	687	4.70	1291
Ratio	96	101	111	111

DOB 9/7/22

Tatt 7

Reg. 20482712

CED	11
BW	-.1
WW	78
YW	133
M	25

VQA BULL

Consignor: **MULLINS ANGUS FARM**



CONNEALY BLACKHAWK 6198

43

M A F 23B5

CONNEALY ARMORY

CONNEALY BLACKHAWK 6198

PRECIOUS OF CONANGA 380X

CONNEALY RIGHT ANSWER 746

M A F 17R69

M A F 10P9

	BW	WW	ADG	YW
Weight	65	717	4.89	1333
Ratio	94	105	116	115

DOB 9/6/22

Tatt 5

Reg. 20482710

CED	11
BW	0
WW	73
YW	128
M	35

VQA BULL

Consignor: **MULLINS ANGUS FARM**

45

M A F 23WR1

WAR CAVALRY B063 Z044

WILKS REGIMENT 9035

VINTAGE CHLOE 6137

CONNEALY BLACKHAWK 6198

M A F 20B22

M A F 16L57

	BW	WW	ADG	YW
Weight	64	695	4.75	1283
Ratio	97	102	112	110

DOB 9/4/22

Tatt 1

Reg. 20482706

CED	13
BW	.2
WW	83
YW	153
M	28

VQA BULL

Consignor: **MULLINS ANGUS FARM**

44

M A F 23B2

CONNEALY ARMORY

CONNEALY BLACKHAWK 6198

PRECIOUS OF CONANGA 380X

JINDRA ACCLAIM

M A F 21J5

M A F 19W89

	BW	WW	ADG	YW
Weight	65	725	4.88	1360
Ratio	106	107	115	117

DOB 9/5/22

Tatt 2

Reg. 20482707

CED	9
BW	.3
WW	78
YW	135
M	25

VQA BULL

Consignor: **MULLINS ANGUS FARM**

46

NSC MAN IN BLACK K32

BAR R JET BLACK 5063

LAR MAN IN BLACK

JMB MAXINE TG 2131

G A R SURE FIRE

HHF SURE FIRE LADY 71 78

HHF WHITLOCK LADY 58 71

	BW	WW	ADG	YW
Weight	74	564	4.86	1149
Ratio	100	101	115	99

DOB 10/10/22

Tatt K32

Reg. 20643590

CED	5
BW	1.9
WW	85
YW	146
M	36

VQA BULL

Consignor: **N & S CATTLE COMPANY**

47 NSC FIREBALL K29

G A R SURE FIRE 6404

DOB 9/28/22

Tatt K29

Reg. 20643589

GB FIREBALL 672

GB ANTICIPATION 432

DEER VALLEY ALL IN

E W A 5106 OF 968 ALL IN

EDGEWOOD LADY 968

CED	9
BW	3.1
WW	87
YW	133
M	25

	BW	WW	ADG	YW
Weight	76	588	4.54	1130
Ratio	99	105	107	97

VQA BULL

Consignor: **N & S CATTLE COMPANY**



G A R SURE FIRE

48 NSC MAN IN BLACK K28

BAR R JET BLACK 5063

DOB 9/23/22

Tatt K28

Reg. 20643588

LAR MAN IN BLACK

JMB MAXINE TG 2131

MATNEY SUNRISE 1663

NSC SUNRISE 214

HC BLACKCAP 1713108644B

CED	1
BW	5.5
WW	96
YW	169
M	25

	BW	WW	ADG	YW
Weight	86	573	4.52	1118
Ratio	116	103	107	96

VQA BULL

Consignor: **N & S CATTLE COMPANY**

49 OGLE NORTHSIDE 022

K C F BENNETT SOUTHSIDE

DOB 9/12/22

Tatt 022

Reg. 20614947

BAKERS NORTHSIDE 6007

BAKERS ERICAMERE 3128

SITZ STELLAR 726D

BRITT'S MORRISON H6

LEMMON MORRISON A237

CED	6
BW	.3
WW	74
YW	131
M	32

	BW	WW	ADG	YW
Weight	67	767	4.88	1258
Ratio	100	104	115	108

VQA BULL

Consignor: **OGLE FARM/DAVID OGLE**



DEER VALLEY GROWTH FUND

50 RAINBOW GROWTH FUND 1036

BASIN PAYWEIGHT 1682

DOB 9/2/22

Tatt 1036

Reg. 20450297

DEER VALLEY GROWTH FUND

DEER VALLEY RITA 36113

EXAR UPSHOT 0562B

RAINBOW MISS 297

RAINBOW MISS 239

CED	11
BW	0
WW	69
YW	127
M	28

	BW	WW	ADG	YW
Weight	78	609	3.64	1149
Ratio	93	100	86	99

VQA BULL M1P

Consignor: **RAINBOW ANGUS**

51 RIVERVIEW REGIMENT 84

WAR CAVALRY B063 Z044

DOB 9/2/22

Tatt 84

Reg. 20667724

WILKS REGIMENT 9035

VINTAGE CHLOE 6137

QUAKER HILL RAMPAGE 0A36

CED	10
BW	1.4
WW	82
YW	149
M	27

RIVERVIEW BLACKBIRD 99

QUAKER HILL BLACKBIRD 2Y12

	BW	WW	ADG	YW
Weight	72	669	4.59	1339
Ratio	103	102	108	115

**VQA
BULL**

Consignor: **RIVER VIEW FARM**



WILKS REGIMENT 9035

52 RIVERVIEW REGIMENT 81

WAR CAVALRY B063 Z044

DOB 9/1/22

Tatt 81

Reg. 20667726

WILKS REGIMENT 9035

VINTAGE CHLOE 6137

SITZ UPWARD 307R

CED	11
BW	.7
WW	73
YW	135
M	31

PRIMUS CHLOE 1375

PRIMUS CHLOE 6260

	BW	WW	ADG	YW
Weight	68	645	4.80	1318
Ratio	96	98	113	113

**VQA
BULL**

Consignor: **RIVER VIEW FARM**

54 GHS ASHLAND 264

G A R EARLY BIRD

DOB 9/22/22

Tatt 264

Reg. 20785235

G A R ASHLAND

CHAIR ROCK AMBUSH 1018

CONNEALY THUNDER

CED	8
BW	1.4
WW	75
YW	137
M	33

GHS CLOVA 452

GHS CLOVA S926 I87 R40

	BW	WW	ADG	YW
Weight	80	650	5.05	1298
Ratio	105	119	119	112

**VQA
BULL**

Consignor: **STOVALL LIVESTOCK**

53 GHS TOP CUT 275

SPRING COVE RENO 4021

DOB 9/25/22

Tatt 275

Reg. 20780925

YON TOP CUT G730

YON SARAH D668

GHS UPSHOT 440

CED	5
BW	2.6
WW	69
YW	125
M	33

GHS LADY 6101

D R LADY 9572

	BW	WW	ADG	YW
Weight	85	621	4.91	1212
Ratio	112	114	116	104

**VQA
BULL**

Consignor: **STOVALL LIVESTOCK**

55 GHS TOP CUT 241

SPRING COVE RENO 4021

DOB 9/18/22

Tatt 241

Reg. 20780916

YON TOP CUT G730

YON SARAH D668

S S NIAGARA Z29

CED	9
BW	-1.3
WW	78
YW	131
M	28

GHS CLOVA 874

GHS CLOVA 454

	BW	WW	ADG	YW
Weight	78	623	4.39	1204
Ratio	104	115	104	104

**VQA
BULL**

Consignor: **STOVALL LIVESTOCK**



POSS RAWHIDE

58 WILSON RAWHIDE 1928-K120

POSS MAVERICK
POSS RAWHIDE

POSS BLUEBLOOD 6502
ECO LOMBARDI 1512
WHC LADY PROP 1928
G A R PROPHET A222

	BW	WW	ADG	YW
Weight	89	657	3.79	1234
Ratio	100	100	89	106

DOB 9/27/22
Tatt K120
Reg. 20479337

CED	6
BW	1.9
WW	92
YW	154
M	31

**VQA
BULL**

Consignor: **WINDY HILL CATTLE**

56 GHS TOP CUT 236

DOB 9/17/22

SPRING COVE RENO 4021

Tatt 236

YON TOP CUT G730

Reg. 20780927

YON SARAH D668

RITO 6EM3 OF 4L1 EMBLAZON

CED	7
BW	.7
WW	70
YW	113
M	29

GHS QUEEN B 429

DALTONS QUEEN B 3308 BW MF

	BW	WW	ADG	YW
Weight	76	569	4.14	1133
Ratio	100	105	98	97

**VQA
BULL**

Consignor: **STOVALL LIVESTOCK**

59 WILSON BREAKTHROUGH 65-K611

DOB 9/19/22

G A R PROPHET K263

Tatt 611

BEAL BREAKTHROUGH

Reg. 20457158

H P C A SURE FIRE S6

HOOVER NO DOUBT

WILSON NO BAR MAID H65

CHIMNEY TOP 10X BAR MAID C65

CED	12
BW	.8
WW	86
YW	153
M	36

	BW	WW	ADG	YW
Weight	87	780	4.07	1349
Ratio	112	112	96	116

**VQA
BULL**

Consignor: **WINDY HILL CATTLE**

57 GHS ASHLAND 234

DOB 9/17/22

G A R EARLY BIRD

Tatt 234

G A R ASHLAND

Reg. 20785274

CHAIR ROCK AMBUSH 1018

CONNELLY LEAD ON

CED	5
BW	1.8
WW	60
YW	103
M	36

GHS ERICA 328

BLACK VENTURE

	BW	WW	ADG	YW
Weight	74	639	4.36	1183
Ratio	97	117	103	102

**VQA
BULL**

Consignor: **STOVALL LIVESTOCK**



G A R ASHLAND



JINDRA DOUBLE VISION

62A B G S BLACKCAP 932

CONNEALY REFLECTION

DOB 9/27/21

JINDRA DOUBLE VISION

Tatt 932

HOFF RACHEL 8312 405

Reg. 20778123

B G S DIRECTION 952

B G S BLACKCAP 704

B G S BLACKCAP 3051

CED	5
BW	.9
WW	49
YW	92
M	26

COW

Consignor: **B G S ANGUS**

A nice heifer sired by Jindra Double Vision out of a dam from the Blackcap cow family. She was bred on 5/27/23 to G A R Dual Threat whose EPDs are +12 -1.1 +63 +121 +37 \$B+205 \$C+331. Dual Threat's \$B and \$C are in the Top 2% of the Angus breed. Confirmed safe 6 months.

60 MISS ACE IN THE HOLE 15J

QUAKER HILL RAMPAGE 0A36

DOB 3/14/21

WILLIAMS RAMPAGE 282

Tatt 15j

WILLIAMS RITA 71

Reg. 20786708

PROGRESSOR G 33A PROGRESS 27Y

CED	10
BW	-.1
WW	60
YW	106
M	27

MISS PROGRESSOR 15C

MISS NEW DESIGN 2S10

COW

Consignor: **ACE IN THE HOLE FARM**

Nice EPDs on this bred heifer from Randall William's Ace In The Hole Farm. Her grandsire is the Pathfinder bull, Quaker Hill Rampage 0A36 owned by Quaker Hill Farm in Louisa, VA. She sells pasture exposed to TTT Fireball 26 whose EPDs are: +16 -2.5 +71 +128 +30 \$G+122 (Top 1%) \$B+226 (Top 1%) \$C+334 (Top 2%) from 4/23/23 to 8/16/23. Breeding update sale day.

62B B G S BLACKCAP 923

A A R TEN X 7008 S A

DOB 9/18/21

V A R DISCOVERY 2240

Tatt 923

DEER VALLEY RITA 0308

Reg. 20777122

BALDRIDGE NEBRASKA 901

B G S BLACKCAP 738

B G S BLACKCAP 704

CED	4
BW	1.9
WW	65
YW	124
M	23

COW

Consignor: **B G S ANGUS**

This V A R Discovery 2240 daughter is out of a dam from the Blackcap cow family. She was bred on 6/17/23 to G A R Dual Threat whose EPDs are +12 -1.1 +63 +121 +37 \$B+205 \$C+331. Confirmed safe 5.5 months.

61 BLACK GOLD J52

QUAKER HILL RAMPAGE 0A36

DOB 3/11/21

WILLIAMS RAMPAGE 282

Tatt J52

WILLIAMS RITA 71

Reg. 20786707

BEXTOR G 8U BEX 80R

CED	7
BW	.9
WW	54
YW	97
M	27

BLACK GOLD Y 52

BLACK GOLD T52

COW

Consignor: **ACE IN THE HOLE FARM**

Another nice granddaughter of the Pathfinder bull, Quaker Hill Rampage 0A36 owned by Quaker Hill Farm in Louisa, VA. She sells pasture exposed to TTT Fireball 26 whose EPDs are: +16 -2.5 +71 +128 +30 \$G+122 (Top 1%) \$B+226 (Top 1%) \$C+334 (Top 2%) from 4/23/23 to 8/16/23. Breeding update sale day.



V A R DISCOVERY 2240

63 WDB BURGESS 1505 1821 2003

BARSTOW CASH

DOB 8/24/20

Tatt 2003

Reg. 20066852

CED	14
BW	-3.1
WW	53
YW	102
M	34

BARSTOW BANKROLL B73

BARSTOW MISS DIANNA Z25

JINDRA ACCLAIM

WDB MS BURG ACCL 1505 1821

WDB MISS BISMARCK 110 1505

COW

BAIRD ANGUS FARM

Consignor:

This Barstow Bankroll B73 daughter shows several pathfinders in her pedigree. Her BW in is the Top 1% of the Angus breed and her CED is in the Top 3%. She was pasture exposed from 2/13/23 to 5/15/23 to G V F Maga 1008 whose EPDs are: +19 -3.4 +76 +140 +31 \$B+166. 1008's CED and BW are in the Top 1% of the Angus breed. Breeding update sale day.



BARSTOW BANKROLL B73

64 WDB CC&7 JEAN 754 1706

S A F CONNECTION

DOB 4/1/17

Tatt 1706

Reg. 18849259

CED	8
BW	1.5
WW	57
YW	101
M	38

SYDGEN C C & 7

SYDGEN FOREVER LADY 4087

S A V 8180 TRAVELER 004

M D B MISS 004 305 754

W D B MISS JEAN 813-878-305

COW

BAIRD ANGUS FARM

Consignor:

Nice EPDs on this SydGen C C & 7 daughter. Her Milk EPD is in the Top 3% of the Angus breed. She was bred on 4/19/23 to WDB 1711 1193 1939 whose EPDs are: +3 +1.8 +74 +124 +27 \$B+140. Due to calve 1/29/24.

65 BF ENVISION 914

A A R TEN X 7008 S A

DOB 3/8/19

Tatt 914

Reg. 19536684

44 ENVISION

MAURER'S MS PREDESTINED W10

ELLINGSON IDENTITY 9104

BF IDENTITY 429

BF QUEEN UPWARD 206

CED	15
BW	-2.9
WW	40
YW	75
M	28

COW

M1P

BULLOCK FARM

Consignor:

A superb calving ease daughter of 44 Envision and an Ellingston Identity dam who is also a granddaughter of the great Sitz Upward. A pedigree packed with performers top to bottom. Take this cow home and let her go straight to work. Safe 5 months to BF Confidence 023 whose EPDs are +9 +0 +47 +85 +27.



CONNEALY CONFIDENCE 0100

66 BF CONFIDENCE 880

CONNEALY CONFIDENCE 0100

DOB 2/27/18

Tatt 880

Reg. 19238212

CONNEALY CONFIDENCE PLUS

ELBANNA OF CONANGA 1209

ELLINGSON IDENTITY 9104

BF IDENTITY 527

BF ALL SITZ UP TREND 355

CED	6
BW	1.8
WW	57
YW	111
M	26

COW

BULLOCK FARM

Consignor:

Here is a super nice cow being a daughter of Connealy Confidence Plus out of a Ellingston Identity dam. Great EPDs on this cow to back the powerfully packed pedigree with performance sires top to bottom. This cow should improve anyone's herd. Safe 5 months to BF Confidence 023.

67

BF ENVISION 882

AA R TEN X 7008 S A

DOB 2/11/18

44 ENVISION

Tatt 882

MAURER'S MS PREDESTINED W10

Reg. 19238220

HARB PENDLETON 765 J H

CED	10
BW	0
WW	50
YW	88
M	32

BF PENDLETON 224

B F BLACKBIRD 961

COW

Consignor: **BULLOCK FARM**

Another nice Cow from Bullock farms. An own daughter of the 44 Envision bull out of a HARB Pendleton 765 J H dam who stemmed from the great herd bull Graystone War Alliance. This cow has a solid pedigree and many years of production left. Safe 4 months to BF Confidence 023.



AA R TEN X 7008 S A

68

BF CONFIDENCE PLUS 806

CONNELY CONFIDENCE 0100

DOB 1/30/18

CONNELY CONFIDENCE PLUS

Tatt 806

ELBANNA OF CONANGA 1209

Reg. 19238219

JINDRA DOUBLE VISION

CED	9
BW	-.1
WW	53
YW	99
M	25

BF TOTAL DOUBLE VISION 615

BF TOTAL ALLIANCE 174

BULL

Consignor: **BULLOCK FARM**

Another nice daughter of Connealy Confidence Plus out of a Jindra Double Vision dam. A maternally driven pedigree with plenty of performance to boot. Many years of production left to continue to grow your herd in the right way. Safe 3.5 months to BF Confidence 023 whose EPDs are +9 +0 +47 +85 +27.

69

BF FULL POWER 530

PA POWER TOOL 9108

DOB 2/11/15

PA FULL POWER 1208

Tatt 530

PINE VIEW SQR RITA W091

Reg. 18249090

K C F BENNETT TOTAL

BF TOTAL BLACK 840

B F BLACK

CED	8
BW	-.8
WW	51
YW	89
M	25

COW

M1P

Consignor: **BULLOCK FARM**

Tom and Vanessa Bullock always brings some nice consignments, here's your chance to add some true maternal power to your program and improve fertility as well. This is a Pathfinder daughter of PA Full Power out of a KCF Bennett Total dam. This cow has proven herself time and time again to get this recognition in the breeds herd book. She is safe 5 months to BF Confidence 023.



BASIN EXCITEMENT

70

BF EXCITEMENT 427

BASIN EXPEDITION R156

DOB 1/27/14

BASIN EXCITEMENT

Tatt 427

BASIN LADY S532 AK

Reg. 17918065

BOYD NEW DAY 8005

B F NEW DAYS 011

B F BLACK

CED	8
BW	.9
WW	57
YW	100
M	29

COW

M1P

Consignor: **BULLOCK FARM**

An own daughter of Basin Excitement out of a Boyd New Day dam. Plenty of depth and an easy fleshing cow, with good EPD's. A pedigree packed with maternal genetics to carry your herd through for years to come. Sells safe 4.5 months to BF Confidence 023.

71A CK EISA ERICA FORTRESS

CONNEALY CONSENSUS

DOB 1/19/23

K C F BENNETT FORTRESS

Tatt 3746

THOMAS PATRICIA 9705

Reg. 20569892

GINGER HILL SEMPER FI 321

CED	10
BW	-.3
WW	57
YW	102
M	25

LPH EISA ERICA 746

LEGACY EISA ERICA 413

COW

Consignor: **CK TANGUB FARMS**

Eisa Erica 3746 is a young heifer with exceptional pedigree. She comes from the Legacy of Pine Hills Eisa Erica line. Her mother has always produced healthy and fast-growing calves and her sire is Knoll Crest Farms Bennett Fortress. Fortress is one of the most elite spread bulls in the Angus breed. He is a calving ease bull with added depth of body and extra performance. The pedigree on this one is just top notch. Sells open.

71B CK BEROSA SURPASS

TEX PLAYBOOK 5437

DOB 12/14/22

BJ SURPASS

Tatt 3113

BJ PROPHET 5275

Reg. 20570145

CONNEALY IN SURE 8524

CED	13
BW	-.6
WW	58
YW	98
M	32

LRAF BEROSA 113

LRAF BEROSA 311

COW

Consignor: **CK TANGUB FARMS**

CK Berosa Surpass comes from the elite line of Berosa cows and the legendary bull, BJ Surpass. She sells open and ready to breed. Her sire, BJ Surpass is an exceptional young bull with powerful phenotype, excellent feet, and a quiet disposition. He has exceptional individual performance and ideal structure with excellent conception rates. This young heifer is a can't miss prospect.

71C CK DV FOREVERLADY BLUEPRINT

CONNEALY CONFIDENCE PLUS

DOB 12/14/22

WOODHILL BLUEPRINT

Tatt 2766

WOODHILL EVERGREEN Z291-B233

Reg. 20579393

PLATTEMERE WEIGH UP K360

CED	10
BW	.1
WW	61
YW	113
M	32

DEER VALLEY FOREVERLADY 7667

MGR FOREVER LADY 3050

COW

Consignor: **CK TANGUB FARMS**

Forever Lady 2766 is a big sturdy young heifer. Her dam is from the Deer Valley Farm herd and her paternal granddad is Plattermere Weigh Up K360, one of Deer Valley Farms' popular bulls. She is the direct daughter of Woodhill Blueprint. He has exceptional phenotype with the combination of EPDs and genomic profile indicating the proper balance of traits for maternal performance and end-product merit. He comes from the legendary Evergreen cow family. Sells open.

72A GINGER HILL BLACKBIRD 1828

GINGER HILL TEQUILA 305

DOB 9/10/21

GINGER HILL ROAD HOUSE 780

Tatt 1828

GINGER HILL HELEN 452

Reg. 20275770

COLE CREEK 7 BLACK 335

CED	1
BW	2.8
WW	57
YW	100
M	25

GINGER HILL BLACKBIRD 828

GINGER HILL BLACKBIRD 572

COW

Consignor: **CK TANGUB FARMS**

1828 stems from the Ginger Hill herd and sired by the popular Ginger Hill herd sire, Roadhouse. Her dam is from the Ginger Hill Blackbird line and her sire is Ginger Hill Tequila. She is a strong and sturdy young female that will produce great calves in the years to come. She sells bred to Yon Flagship - - the exciting young bull - - which sold for \$66,000 for 2/3 interest to Knoll Crest Farms. Flagship has a negative birth weight and is in the top 3% of yearling weight. Flagship is truly one of the young elite bulls to come in and will be producing wonderful cows in the years to come. She is due to calve March 16, 2024.

72B MYSTIC HILL ELBA 1018

LD CAPITALIST 316

DOB 8/26/21

MUSGRAVE 316 STUNNER

Tatt 1018

MCATL BLACKBIRD 831-1378

Reg. 20202210

BASIN EXCITEMENT

MYSTIC HILL ELBA OF 3188

CED	7
BW	.2
WW	62
YW	107
M	32

MYSTIC HILL ELBA 3188

COW

OHP

Consignor: **CK TANGUB FARMS**

1018 is a young exciting heifer out of Musgrave Stunner. Her dam is from the Mystic Hill herd and her maternal grandsire is Basin Excitement. She sells bred to Yon Flagship which sold for \$66,000 for 2/3 interest to Knoll Crest Farms. Flagship has a negative birth weight and is in the top 3% of yearling weight. Flagship is truly one of the young elite bulls to come out. She is due to calve March 16, 2024.



MUSGRAVE 316 STUNNER

73 DAWSON FARMS RITA 2035

DEER VALLEY ALL IN
ANGUS HILL 6108 ALL IN 813B
DRMCTR 111 RITA 6108
WAGNERS GAME PLAN 840 903
RS GAME PLAN 1220 1530
RS PREDOMINANT S8 1220

DOB 12/24/20
 Tatt 2035
 Reg. 19922929

CED	7
BW	1.8
WW	72
YW	128
M	23

COW

Consignor: **DAWSON FARMS**

A very nice young cow with a balance of maternal and terminal traits. She descends from DRMCTR Rita 6108 and her dam 1530 produced five calves that completed bull test stations. She has a 9/29/2023 bull calf at her side sired by P/CC radical Growth 760. Breeding update on sale day.

74 DMB RITA 281

PVF INSIGHT 0129
WERNER INSIGHT 7218
WERNER LADY 919
3F EPIC 4631
BOYD RITA 9038
DEER VALLEY RITA 7105

DOB 8/7/21
 Tatt 281
 Reg. 20224234

CED	14
BW	-2.1
WW	71
YW	129
M	37

COW

Consignor: **DMB ANGUS**

A young female that comes with a nice EPD profile to go along with a little extra length of body. She has calving ease numbers on the front end, growth, and a high milk EPD. She sells with a heifer calf at side born 10/14/23 (bw 60#), sired by DMB Hometown 581 whose EPDs are +10 +.3 +85 +143 +21. 581's \$G (+106) is in the Top 1% and his \$B (+214) and \$C (+333) are in the Top 2% of the Angus breed.



DOUBLE HEART ISABEL J3

75 DMB SPECIAL 2100

S WHITLOCK 179
WERNER WHITLOCK 7120
WERNER LADY JAYE 0176
WDB MR 040 005 1318
DCF SPECIAL 85
D C F SPECIAL 14

DOB 10/7/20
 Tatt 2100
 Reg. 19890974

CED	11
BW	.2
WW	62
YW	109
M	37

COW

Consignor: **DMB ANGUS**

A nice, moderate, good uddered three year old. She also comes with calving ease numbers and high milk EPD. She did a good job on her first calf and it looks like these Whitlock granddaughters will be good uddered and good milking females. She sells pasture exposed to DMB Treasure 3109 whose EPDs are +7 +1.0 +76 +141 +25 \$B +166 \$C +297. She should calve by sale time.

76 LUCAS LADY 100X 790

A A R TEN X 7008 S A
G A R 100X
G A R 5050 NEW DESIGN A91
JMB TRACTION 292
LUCAS LADY TRACTION 564S
LUCAS LADY LUCK N FOCUS 819F

DOB 10/3/17
 Tatt 790
 Reg. 19079886

CED	10
BW	-1.3
WW	53
YW	102
M	31

COW

Consignor: **DMB ANGUS**

A mature cow that stems for the Lucas herd. Her pedigree is stacked with Pathfinder's throughout. She also is a low birth weight, high milk EPD female that has done a good job raising calves. She sells pasture exposed to DMB Treasure 3109 (Reg #19638230) and should calve by sale time.

77 DOUBLE HEART ISABEL J3

SYDGEN ENHANCE
S S ENTERPRISE E84
S S MISS HOOVER DAM H27 H613
HOOVER NO DOUBT
POINT P ISABEL 5219
BALDRIDGE ISABEL B758

DOB 9/24/21
 Tatt J3
 Reg. 20143108

CED	5
BW	1.6
WW	75
YW	137
M	23

COW

Consignor: **DOUBLE HEART FARMS**

Double Heart Isabel J3 is deep and wide and scores in the top 1% for docility. Her pedigree goes back to the Point Pleasant Angus owned donor Baldrige Isabel B758 who is the full sister to Baldrige Isabel Y69 in which many proclaim her to be the best cow in the Angus breed. This Young female should serve her new owner for many Years. She sells due to calve 11/18/23 to Beal Breakthrough whose EPDs are: +18 -2.1 +89 +155 +29 \$B +217 (Top 1%) \$C +373 (Top 1%).



BALDRIDGE ALTERNATIVE E125

80A LAWSONS WITCH L1198

BALDRIDGE ALTERNATIVE E125

DOB 1/14/23

STEVENSON ALTERNATIVE 00081

Tatt L1198

STEVENSON JOYCE 3825

Reg. 20767911

ZWT SUMMITT 6507

LAWSONS WITCH G583

CED	9
BW	2.5
WW	69
YW	120
M	24

LAWSONS WITCH Z321

COW

Consignor: LAWSON FAMILY FARMS

Super balanced EPDs on this open female. Her granddam, Lawsons Witch Z321 has a WW Ratio of 106 on 9 calves. She has a bull in this sale and sold a few others in the SWVA Sales. They always get found and sold at the top.

78 G V F PRIDE 8075

SITZ UPWARD 307R

DOB 2/5/18

PLATTEMERE WEIGH UP K360

Tatt 8075

BARBARA OF PLATTEMERE 337

Reg. 19148370

TC CANDID 161

CED	1
BW	2.9
WW	99
YW	167
M	23

G V F PRIDE 5103

G V F PRIDE 2034

COW

Consignor: KING ANGUS FARM

A high growth TC Candid 161 granddaughter that ranks in the top 1% for weaning weight and top 1% for yearling weight. Sells with a heifer calf born 6/25/2023 by G V F Maga 0066. A powerful bull that will put pounds on his calves and records +191 on \$ B plus +303 on \$ C. Pasture exposed from 7/15/2023 through sale date to G V F Caliber the low-birth, high growth son whose calves come small but grow really fast. His dollar values for \$ B is +177 and +302 for \$ C.

80B LAWSONS ELBA L1177

BALDRIDGE ALTERNATIVE E125

DOB 1/4/23

STEVENSON ALTERNATIVE 00081

Tatt L1177

STEVENSON JOYCE 3825

Reg. 20767933

ZWT SUMMITT 6507

LAWSONS ELBA 1912

CED	7
BW	3.3
WW	77
YW	129
M	25

S A V ELBA 110

COW

Consignor: LAWSON FAMILY FARMS

An open heifer from our S A V Elba 110 cow. One of my favorites. Great pedigree with great earning potential. Notice the sire on the dam's side, ZWT Summitt 6507, these make the best daughters.

79 WDB MS BURGESS PAGE1243 1651

MCC DAYBREAK

DOB 10/19/16

QUAKER HILL RAMPAGE 0A36

Tatt 1651

QHF BLACKCAP 6E2 OF4V16 4355

Reg. 18796642

G V F MAINLINE 0007

CED	1
BW	4.4
WW	80
YW	137
M	25

WDB MISS 0007 033 1243

W D B MISS 9126 830 033

COW

Consignor: KING ANGUS FARM

A direct daughter of Quaker Hill Rampage 0A36 that has put three bull calves in test stations. Her \$ B value is +166 and \$ C is +271. Sells with a heifer calf born 7/15/2023 by G V F Maga 0066. A big-growth bull whose calves grow really fast. His \$ values are +191 on \$ B and +303 on \$ C. Pasture exposed from 7/15/2023 through sale date to G V F Caliber. A low birthweight son that was the top-selling bull in the 2021 Grassy Valley sale. His numbers for \$B is + 177 and +302 for \$C.

80C LAWSONS PRISCILLA 1166B

SITZ STELLAR 726D

DOB 11/17/22

SITZ STELLAR 715G

Tatt 1166B

SITZ BARBARAMERE JET 171E

Reg. 20781446

S A V PRIORITY 7283

LAWSONS PRISCILLA 4012

CED	2
BW	2.9
WW	71
YW	122
M	25

S A V PRISCILLA 996

COW

Consignor: LAWSON FAMILY FARMS

Another nice open heifer with a balanced set of EPDs. Bred at S A V in North Dakota. Her pedigree, top and bottom, is stacked with proven sires and dams. Combining the Sitz and S A V cattle will be a great mix. She will earn great potential over time.

81A LAWSONS LUCY K1171

BALDRIDGE ALTERNATIVE E125

DOB 12/16/22

STEVENSON ALTERNATIVE 00081

Tatt K1171

STEVENSON JOYCE 3825

Reg. 20768017

EXAR EQUITY 7435B

CED	3
BW	3.9
WW	70
YW	122
M	22

LAWSONS LUCY H762

BASIN LUCY S997

COW

Consignor: **LAWSON FAMILY FARMS**

Open female with balanced EPDs goes back to our oldest cow on the farm living at eighteen years of age, our ?? Basin Lucy S997. Longevity and maternal is in the Lucy family.



EXAR EQUITY 7435B

81B LAWSONS DONNA K1167

MUSGRAVE 316 STUNNER

DOB 11/23/22

T K STUNNER F655B

Tatt K1167

T K PRINCESS Z749

Reg. 20626899

S A V RAINDANCE 6848

CED	7
BW	2.6
WW	75
YW	128
M	22

LAWSONS DONNA F434

COLEMAN DONNA 063

COW

Consignor: **LAWSON FAMILY FARMS**

Selling a nice open heifer going back to the Coleman Donna 063 cow; she makes great females. She's a full sister to Coleman Rock which will be a sire used a lot for years to come. These females will be very profitable.

82A LAWSONS ELBA K1032

3F EPIC 4631

DOB 3/3/22

EXAR EQUITY 7435B

Tatt K1032

EXAR BLACKCAP 4555

Reg. 20461741

S A V PEDIGREE 4834

LAWSONS ELBA D918

S A V ELBA 178

CED	3
BW	2.7
WW	86
YW	146
M	3

COW

Consignor: **LAWSON FAMILY FARMS**

Super nice bred heifer going back to the million dollar Elba 1094 cow bred out at S A V. She earned a WW Ratio of 108. She sells bred to Lawsons Demarini E131 with a bull calf. Due mid-April 2024.

81C LAWSONS ELBA K1163

BALDRIDGE ALTERNATIVE E125

DOB 11/7/22

STEVENSON ALTERNATIVE 00081

Tatt K1163

STEVENSON JOYCE 3825

Reg. 20768032

EXAR EQUITY 7435B

CED	9
BW	1.5
WW	73
YW	126
M	22

LAWSONS ELBA H763

LAWSONS ELBA D918

COW

Consignor: **LAWSON FAMILY FARMS**

Sells open. Nice female going back to the Elba cow family sired by the Stevenson Alternative 00081 bull. She will make a great investment along with a balanced set of EPDs.

82B LAWSONS HENRIETTA PRIDE K98

LD CAPITALIST 316

DOB 2/6/22

MUSGRAVE 316 EXCLUSIVE

Tatt K988

MUSGRAVE PRIM LASSIE 163-386

Reg. 20461730

COLEMAN VENTURE 403

LAWSONS HENRIETTA PRIDE E103

DEER VALLEY HENRIETTA 2212

CED	1
BW	2.5
WW	75
YW	123
M	39

COW

Consignor: **LAWSON FAMILY FARMS**

Selling a nice stout bred heifer from our Henrietta Pride 2212 which has sold several top bulls here in SWVA sales over the last eight years. She is sired by the Musgrave 316 Exclusive bull. She is carrying a heifer calf due mid-April, sired by Lawsons Demarini E131 whose EPDs are +5 +.6 +72 +128 +20. His daughters are super nice. Great investment here.

83 LAWSONS ELBA H689

HA COWBOY UP 5405

DOB 2/21/20

LAWSONS COWBOY E224

Tatt H689

LAWSONS CHLOE Z341

Reg. 19902721

S A V TEN SPEED 3022

CED	7
BW	1.0
WW	74
YW	123
M	26

LAWSONS ELBA E113

S A V ELBA 110

COW

Consignor: LAWSON FAMILY FARMS

Coming four year old cow from one of my favorites, S A V Elba 110. She is due to calf in February to Lawsons Stunner H774, whose EPDs are +4 +1.7 +77 +135 +36 or TK Stunner F655B whose EPDs are +3 +3.6 +92 +152 +17 depending on calving date.



HA Cowboy Up 5405

84 LAWSONS DONNA D865

CONNEALY FINAL PRODUCT

DOB 2/5/16

SITZ INVESTMENT 660Z

Tatt D865

SITZ ELLUNAS ELITE 656T

Reg. 18558059

B C EMBLAZON 854E 8023

CED	8
BW	1.4
WW	61
YW	120
M	28

ANGUS ALLIANCE DONNA 975

COLEMAN DONNA 386

COW

Consignor: LAWSON FAMILY FARMS

Nice seven year old from our Donna cow family. A lot of maternal in this cow. She sells bred to calf in February to Lawsons Stunner H774, whose EPDs are +4 +1.7 +77 +135 +36 or TK Stunner F655B whose EPDs are +3 +3.6 +92 +152 +17 depending on calving date.

85A LUCAS LADY SUPERCHARGER T158

S A V RECHARGE 3436

DOB 10/16/21

S A V SUPERCHARGER 6813

Tatt 1580

S A V MADAME PRIDE 0075

Reg. 20356657

K C F BENNETT ANTHEM

LUCAS LADY ANTHEM T740M

CED	2
BW	2.8
WW	73
YW	131
M	26

LUCAS LADY SIGNATURE T528M

COW

Consignor: LUCAS FARM

1580 is a bred heifer sired by the powerful SAV Supercharger. The Supercharger cattle are making beautiful females and the dam side of 1580 is stacked with big stout powerful cows. 1580 had a WR of 102 and a YR of 103. She sells bred to the calving ease Point P Goalkeeper 1004 whose EPDs are: +12 +0 +84 +149 +29 \$B+186 \$C+318. Breeding update on sale day.



S A V SUPERCHARGER 6813

85B LUCAS LADY SUPERCHARGER 130S

S A V RECHARGE 3436

DOB 9/23/21

S A V SUPERCHARGER 6813

Tatt 130S

S A V MADAME PRIDE 0075

Reg. 20356655

K C F BENNETT UPWARD W538

LUCAS LADY UPWARD W538 3800

CED	7
BW	0
WW	52
YW	92
M	28

LUCAS LADY KCF 6595 5MA27

COW

OHP

Consignor: LUCAS FARM

Here is a true maternal bred female. 130S is sired by the powerful, easy fleshing bull SAV Supercharger from the Select Sires lineup. Her dam is a pathfinder cow that could be a model for what an "ideal" cow should look like. 130S sells bred to Point P Goalkeeper 1004 whose EPDs are: +12 +0 +84 +149 +29 \$B+186 \$C+318. Do not let this front pasture kind of female slip by you. Breeding update on sale day.



CTS REMEDY 1T01

86 LUCAS LADY GROWTH FUND M9750

DOB 10/12/19
Tatt 9750
Reg. 19762698

BASIN PAYWEIGHT 1682
DEER VALLEY GROWTH FUND
DEER VALLEY RITA 36113
A A R TEN X 7008 S A
LUCAS LADY TEN X 448S
LUCAS LADY PROPHET 2700

CED	6
BW	1.9
WW	83
YW	151
M	20

COW MIP

Consignor: **LUCAS FARM**

Here is a rare opportunity to buy a top-notch Growth Fund female out of the 448S donor. A maternal brother to 9750 was purchased by Semex through the Culpepper BCIA sale in 2020. Between 9750's looks and EPD's she could be a key donor for anyone's operation. Ranking in the top 1% for CW and \$F, top 2% for YW, and top 3% for WW, \$B, and \$C. She is a big boned, stout, sound footed, beautiful uddered 4-year-old cow and sells with a herd sire prospect born 10/26/23 (*BW 78 lbs*) sired by Lucas Supercharger 045S whose EPDs are: -2 +3.4 +67 +115 +23.

87 LUCAS LADY MANNING T936S

DOB 9/4/19
Tatt 936S
Reg. 19689126

EXAR DENVER 2002B
QUAKER HILL MANNING 4EX9
QUAKER HILL BLACKCAP 0A32
BALDRIDGE BRONC
LUCAS LADY BRONC T771S
LUCAS LADY TEN X T461S

CED	9
BW	1.7
WW	76
YW	124
M	28

COW

Consignor: **LUCAS FARM**

This 4 yr old Manning daughter is what I consider an ideal cow. She is moderate in size, good footed with a perfect udder. 936S is a low BW cow with plenty of growth. She also ranks in the top 10% for \$M, top 3% for \$W and top 10% for \$C. 936S has a BR of 2-97 & WR 2-100. Her 2022 bull calf is currently on test at the SWVA BCIA Bull Test. 936S will have a calf at side by sale time by Lucas Southwest.

88 LUCAS LADY REMEDY 892S

DOB 9/26/18
Tatt 892S
Reg. 19445592

CONNEALY THUNDER
CTS REMEDY 1T01
CTS 7V03 BELLEMERE MAID 9T02
CONNEALY IMPRESSION
LUCAS LADY IMPRESSION 259S
LUCAS LADY IN FOCUS 019J

CED	2
BW	1.6
WW	64
YW	119
M	25

COW

Consignor: **LUCAS FARM**

An attractive, big bodied cow sired by the popular Select Sires bull, CTS Remedy. 892S's dam was a cow that the judges liked well in the local show ring and 892S has many of the same attributes as her dam. 892S' dam is also the grandam of Lucas Tonic who sold to Semex through the Culpepper BCIA sale in 2017. 892S sells with a fancy heifer calf sired by Lucas Southwest born 10/26/23 (*BW 67 lbs*).

89 LUCAS LADY REMEDY 87J

DOB 1/17/18
Tatt 87J
Reg. 19127875

CONNEALY THUNDER
CTS REMEDY 1T01
CTS 7V03 BELLEMERE MAID 9T02
K C F BENNETT COMMONWEALTH
LUCAS LADY COMMONWEALTH 509N
LUCAS LADY MANDATE 0550

CED	5
BW	.8
WW	65
YW	126
M	32

COW

Consignor: **LUCAS FARM**

87J is your typical Remedy daughter, big bodied, feminine, nice uddered, and good footed. She has a well put together set of EPD's and should have a calf sired by Lucas Supercharger 045S before sale day. 045S' EPDs are: whose EPDs are: -2 +3.4 +67 +115 +23.



QUAKER HILL MANNING 4EX9

90A JET ASHLAND F1202

G A R ASHLAND
CONNEALY ASHLAND 7442
EDELLE OF CONANGA 7442
G A R SUNRISE 2153G
RR RITA'S SUNRISE DV
RRR RITA Z5

DOB 12/15/21
Tatt F1202
Reg. 20617565

CED	12
BW	-.8
WW	53
YW	90
M	11

COW

Consignor: **MATNEY ANGUS/
JAKE & TAYLOR ESTEP**

A nice daughter of one of our herd sires, Connealy Ashland 7442. Females by this bull have proven to make great producers in our herd. She sells bred to Connealy Stronghold 812F whose EPDs are: +4 +1.7 +80 +142 +38 \$B+166 \$C+282. Breeding update on sale day.



G A R ASHLAND

90B TE COMRADE 1707-1223

CONNEALY COMRADE 1385
MATNEY COMRADE 1707
MATNEY SHREK 1420
G A R SURE FIRE
MATNEY SURE FIRE 1913
MATNEY SHREK 1702

DOB 4/2/21
Tatt 1223
Reg. 20295299

CED	15
BW	-2.7
WW	63
YW	105
M	39

COW

Consignor: **MATNEY ANGUS/
JAKE & TAYLOR ESTEP**

Here's a super nice, bred heifer by Matney Comrade 1707. She is top 2% in both CED and BW in the Angus breed. She sells bred to Connealy Stronghold 812F whose EPDs are: +4 +1.7 +80 +142 +38 \$B+166 \$C+282. Breeding update on sale day.

91 MATNEY NIAGARA 7133-F2154

S S NIAGARA Z29
MATNEY NIAGARA 7133
MATNEY DAYLIGHT 1551
GAR DAYLIGHT H 3076
MATNEY DAYLIGHT 1660
MATNEY B E 8009

DOB 10/31/21
Tatt F2154
Reg. 20368394

CED	12
BW	-1.4
WW	48
YW	91
M	30

COW

Consignor: **MATNEY ANGUS FARM**

A nice bred heifer from Matney Angus Farm. A granddaughter of the Select Sires bull, S S Niagara Z29. Sells bred to Connealy Stronghold 812F whose EPDs are: +4 +1.7 +80 +142 +38 \$B+166 \$C+282. Breeding information updated sale day.



G A R SUNRISE

92 TE MATNEY SUNRISE-F0209

G A R SUNRISE
G A R SUNRISE 2153G
G A R PREDESTINED A057
PA SAFEGUARD 021
MATNEY SAFEGUARD 1526
MATNEY MANDAN-1052

DOB 12/20/20
Tatt F0209
Reg. 20154766

CED	1
BW	1.7
WW	70
YW	122
M	29

COW

Consignor: **MATNEY ANGUS/
JAKE & TAYLOR ESTEP**

A super nice, beautiful phenotype, three-year-old cow out of our long-time herd sire GAR Sunrise 2153G. This female has nicely balanced EPDs that should fit most any program well. She sells bred to Connealy Gary 756X whose EPDs are: +12 -1.0 +78 +130 +27 \$B+167 \$C+273. Breeding update on sale day.

93 **TE SURE FIRE 1830-F2091**

G A R SURE FIRE
MATNEY SURE FIRE 1830
MATNEY WAR PARTY 1414
G A R SUNRISE 2153G
MATNEY SUNRISE 1735
MATNEY SAFEGUARD 1526

DOB 11/15/20
Tatt F2091
Reg. 20154759

CED	15
BW	-1.5
WW	62
YW	107
M	39

COW

Consignor: **MATNEY ANGUS/**

JAKE & TAYLOR ESTEP

A feminine, moderate female sired by Matney Sure Fire 1830 out of a Sunrise daughter. She sells with a nice heifer calf at her side, born 9/21/23 by GAR Hometown Hero whose EPDs are +5 +2.9 +73 +135 +21 \$B+214 \$C+334. Both \$B & \$C are in the Top 1% of the Angus breed.



G A R SURE FIRE

94 **LAWSONS DONNA E78**

A A R TEN X 7008 S A
V A R DISCOVERY 2240
DEER VALLEY RITA 0308
CONNELLY CAPITALIST 028
COLEMAN DONNA 406
COLEMAN DONNA 714

DOB 2/22/17
Tatt E78
Reg. 19267477

CED	12
BW	-.6
WW	62
YW	113
M	20

COW

Consignor: **MATNEY ANGUS/**

JET FARMS

A big, powerful cow sired by Select Sires bull, V A R Discovery 2240. This female has balanced EPDs that should fit most any program well. She sells with twins (heifer & bull) born 9/9/23 sired by GAR Dual Threat whose EPDs are: +12 -1.0 +64 +122 +37 \$B+204 \$C+331. Both \$B & \$C are in the Top2% of the Angus breed.

95 **MATNEY DAYLIGHT 1545**

G A R DAYLIGHT
GAR DAYLIGHT H 3076

DOB 3/28/15
Tatt 1545
Reg. 18194518

V A R LADY JAYE 1139

G A R GRID MAKER

MATNEY DESIGN 8034

G A R 1407 NEW DESIGN X73

CED	2
BW	2.7
WW	62
YW	108
M	20

COW

Consignor: **MATNEY ANGUS FARM**

A proven producer from Matney Angus Farm. A daughter of GAR Daylight H3076 who left many good daughters in the herd. Sells bred to Connealy Gary 756X whose EPDs are: +12 -1.0 +78 +130 +27 \$B+167 \$C+273. Breeding update sale day.

96 **MATNEY PRIORITY 1377**

S A V FINAL ANSWER 0035
S A V PRIORITY 7283

DOB 11/18/13
Tatt 1377
Reg. 17835418

S A V BLACKCAP MAY 5530

G A R CONCRETE

MATNEY CON 1170

MATNEY TRAVELER-0512

CED	9
BW	.4
WW	52
YW	82
M	27

COW

Consignor: **MATNEY ANGUS FARM**

A proven producer sired by the Genex bull, S A V Priority 7283. She descends from the Lady Rita cow family. 7283 has twin calves at side born 10/19/23 (Bull Calf #F2399, Heifer Calf #3200) sired by Connealy Gary 756X whose EPDs are: +12 -1.0 +78 +130 +27 \$B+167 \$C+273.



S A V PRIORITY 7283

97 MSA ROSEMARY 9G11

CONNEALY CONSENSUS 7229 DOB 9/13/19
MILL BAR HICKOK 7242 Tatt 9G11
MILL BAR BEMINDFUL MAID 6304 Reg. 19578850
JMB TRACTION 292
MSA ROSEMARY 7E17
TRIPLE E ROSEMARY

CED	10
BW	1.3
WW	71
YW	118
M	28

COW

MOSSY SPRING ANGUS

Consignor: Here is an exciting opportunity to select a direct daughter by the maternal and performance sire, Mill Bar Hickok 7242, and out of a highly productive female from the Rosemary tribe. 9G11 has earned the MaternalPlus™ designation badge within the Angus Herd Improvement Records Program. Her dam, 7E17, blends the genetic strengths of the Pathfinder sires, Sitz Top Gain and EXAR Upshot. This maternal factory sells safe to the Select Sires \$B and \$C specialist, G A R Home Town, who was the #1 AI sire for registrations in 2022. Expected due date is 4/12/24. Certified and Accredited herd.

98 MSA ROSEMARY 8F8

JINDRA 3RD DIMENSION DOB 9/14/18
JINDRA ACCLAIM Tatt 8F8
JINDRA BLACKBIRD LASSY 1111 Reg. 19243918
EXAR UPSHOT 0562B
TRIPLE E ROSEMARY
ECHO RIDGE BLACKBIRD 1768

CED	6
BW	1.6
WW	68
YW	122
M	31

COW

MOSSY SPRING ANGUS

Consignor: 8F8 is a solid brood cow in the prime of her life that combines the popular Pathfinder sire, Jindra Acclaim, with a highly proven MSA foundation female, Triple E Rosemary, who had a WWR of 7@103. This highly productive female records 13 different traits in the upper 20th percentile of the breed, including a ranking of 1% in \$B and 2% in \$C. She sells safe in calf to the ABS calving-ease super star, Quaker Hill Black Bandolier 1C25, with an expected due date on 3/19/24. Certified and Accredited herd.



CONNEALY BLACKHAWK 6198

99A M A F 23WR17

S WHITLOCK 179 DOB 9/14/22
VPI WHITLOCK 7E35 Tatt 17
VPI BLACKBIRD 5C25 Reg. 20482721
CONNEALY BLACKHAWK 6198
M A F 21B3
M A F 17R69

CED	8
BW	1.2
WW	68
YW	120
M	33

COW

MIP

MULLINS ANGUS FARM

Consignor: Nice EPDs on this open female sired by VPI Whitlock 7E35 out of a dam sired by the Select Sires Pathfinder, Connealy Blackhawk 6198. These Connealy Blackhawk 6198 females will make a great addition to any herd. She had her second dose of Gold 5WFP+ Vibero on 10/1/23. Sells open, ready to breed.

99B M A F 23B10

CONNEALY ARMORY DOB 9/12/22
CONNEALY BLACKHAWK 6198 Tatt 10
PRECIOUS OF CONANGA 380X Reg. 20482715
S S NIAGARA Z29
M A F 19N90
M A F 17W78

CED	8
BW	1.4
WW	73
YW	132
M	28

COW

MULLINS ANGUS FARM

Consignor: Great EPDs on this daughter of the Select Sires Pathfinder bull, Connealy Blackhawk 6198. She has many Pathfinders in her pedigree top and bottom. She had her second dose of Gold 5WFP+ Vibero on 10/1/23. Sells open, ready to breed.

99C M A F 23B12

CONNEALY ARMORY DOB 9/12/22
CONNEALY BLACKHAWK 6198 Tatt 12
PRECIOUS OF CONANGA 380X Reg. 20482717
JINDRA ACCLAIM
M A F 20J15
M A F 17W78

CED	11
BW	-.1
WW	68
YW	120
M	29

COW

MULLINS ANGUS FARM

Consignor: Another daughter of the Select Sires Pathfinder bull, Connealy Blackhawk 6198. She has many Pathfinders in her pedigree. She had her second dose of Gold 5WFP+ Vibero on 10/1/23. Sells open, ready to breed.

100A NSC GROWTH FUND 616 L19

DOB 3/26/23

BASIN PAYWEIGHT 1682

Tatt L19

DEER VALLEY GROWTH FUND

Reg. 20780038

DEER VALLEY RITA 36113

HHF FINAL ANSWER H57 B3

CED	10
BW	2.3
WW	72
YW	120
M	31

ALH 1231 B3 616

MWF OBJECTIVE 3238 793 1231

COW

DDP

Consignor: **N & S CATTLE COMPANY**

A Deer Valley Growth Fund daughter out of a dam sired by a Holly Hill Final Answer bull. Solid EPDs with excellent maternal traits ranking in the top 10% of the breed in \$M. Sells open.

101A OGLE SAZE ICONIC 722

MUSGRAVE 316 STUNNER

DOB 11/3/22

DB ICONIC G95

Tatt 722

DB MS DISCOVERY D13

Reg. 20614952

MILL BRAE IDENTIFIED 4031

CED	3
BW	2.4
WW	81
YW	139
M	25

VPI SAZERAC 6D31

VPI PREDESTINED 8U45

COW

Consignor: **OGLE FARM/DAVID OGLE**

Nice heifer sired by DB Iconic G95, one of the most heavily used bulls in the Angus breed. Her dam is a proven cow that has done a really good job on all her calves. She is Top 10% WW and YW. Sells open, ready to breed.

100B NSC RELEVANT 215 L4

DOB 2/27/23

T C A ACCRUEL 260

Tatt L4

FF RITO RELEVANT 8B63

Reg. 20781948

FF RITA 6R22 OF 3R30 RAMPAGE

MA F 19W98

CED	9
BW	-.1
WW	69
YW	118
M	29

NSC WEIGH UP 101 413

NSC TEN X 101

COW

Consignor: **N & S CATTLE COMPANY**

A Rito Relevant 8B63 daughter out of a dam sired by a MAF Weigh Up bull. Well balanced EPDs with CED, BW, WW, YW, AND M all ranking in the top 35% of the breed. Sells open.

101B OGLE GREATER GOOD 522

G A R ASHLAND

DOB 10/20/22

G A R GREATER GOOD

Tatt 522

G A R SURE FIRE A5008

Reg. 20614950

JINDRA ACCLAIM

CED	5
BW	2.9
WW	78
YW	142
M	25

OGLE SAZERAC ACCLAIM 419

VPI SAZERAC 6D31

COW

Consignor: **OGLE FARM/DAVID OGLE**

Here is an attractive ST Genetics, G A R Greater Good daughter. His sire and dam are the popular G A R Ashland and G A R Sure Fire A5008. Her dam is a standout cow with stature that is eye-catching. She is Top 10% YW and Top 15% WW. Sells open, ready to breed.

100C NSC GROWTH FUND 312 L1

DOB 2/23/23

BASIN PAYWEIGHT 1682

Tatt L18

DEER VALLEY GROWTH FUND

Reg. 20781451

DEER VALLEY RITA 36113

MATNEY SUNRISE 1663

CED	11
BW	.8
WW	76
YW	133
M	28

NSC SUNRISE 312

ALH 6 B3 615

COW

Consignor: **N & S CATTLE COMPANY**

Another Deer Valley Growth Fund daughter out of a dam sired by a Matney Sunrise bull. Great EPDs with an excellent spread ranking in the top 15% of the breed in CED, CEM, WW, and YW. Sells open.

101C OGLE HAZEL 322

BAR R JET BLACK 5063

DOB 9/15/22

LAR MAN IN BLACK

Tatt 322

JMB MAXINE TG 2131

Reg. 20614955

YON FUTURE FURY A233

CED	6
BW	2.9
WW	79
YW	132
M	27

YON HAZEL E358

YON HAZEL A171

COW

Consignor: **OGLE FARM/DAVID OGLE**

A really nice LAR Man in Black daughter. Not many around, hard to get semen. Her dam is a super good cow. She raised twin heifer calves with no creep. I decided to let one go, they look like two peas in a pod. She is Top 25% on \$M & Top 10% WW. Sells open, ready to breed.

102A QDFF LADY CRACKERJACK 301

MUSGRAVE CRACKERJACK DOB 1/5/23
MUSGRAVE CRACKERJACK 300-328 Tatt 301
MUSGRAVE JUANA ERICA 328-773 Reg. 20650018
WERNER FLAT TOP 4136
LUCAS LADY FLAT TOP 932S
LUCAS LADY REMEDY M761S

CED	10
BW	-4
WW	68
YW	120
M	34

COW

Consignor: **Q&D FAMILY FARMS**

A daughter sired by our herd bull Musgrave Crackerjack 300 that has sired some of the best females we have had on the farm. She is out of a dam sired by Werner Flat Top. Good set of balanced EPD's on this young stout heifer. Sells open.

102B QDFF LADY BOMBER 313

KM BROKEN BOW 002 DOB 12/15/22
CASINO BOMBER N33 Tatt 313
CASINO ANNIE K48 Reg. 20650017
SS NIAGARA Z29
OGLE MISS ELBA 1520
SAF ELBA 2354 1610

CED	7
BW	.7
WW	78
YW	136
M	25

COW

MIP

Consignor: **Q&D FAMILY FARMS**

A direct daughter from Casino Bomber N33 out of a dam sired by SS Niagara Z29. The Niagara females have been some of our favorite on the farm and this one is no different. Sells open.

102C QDFF LADY BOMBER 217

KM BROKEN BOW 002 DOB 12/6/22
CASINO BOMBER N33 Tatt 217
CASINO ANNIE K48 Reg. 20650015
JINDRA ACCLAIM
OGLE LADY EVERGREEN 920
MONOMOY EVERGREEN B13

CED	11
BW	-1.2
WW	67
YW	119
M	29

COW

Consignor: **Q&D FAMILY FARMS**

A direct daughter from Casino Bomber N33 out of a dam sired by Jindra Acclaim. A straight big bodied heifer with lots of potential. Sells open.

103 RAINBOW FLOWER 340

S A V BRUISER 9164 DOB 11/12/21
G V F BRUISER 7034 Tatt 340
G V F RUBY 4025 Reg. 20381113
TC TOTAL 410
G V F FLOWER 1047
G V F FLOWER 6050

CED	2
BW	1.4
WW	65
YW	114
M	27

COW

Consignor: **RAINBOW ANGUS**

Nice EPDs on this two year old sired by G V F Bruiser 7034. Her dam is from the Flower cow family. She sells with a heifer calf born 11/10/23 sired by Hoffman Stagecoach 1908 whose EPDs are: +11 +.7 +87 +141 +21.

104 RAINBOW BLACKBIRD 339

V A R DISCOVERY 2240 DOB 11/9/21
B G S DISCOVERY 874 Tatt 339
B G S BLACKCAP 738 Reg. 20383071
S A V NET WORTH 4200
RAINBOW BLACKBIRD 232
RAINBOW BLACKBIRD 207

CED	3
BW	1.9
WW	72
YW	134
M	28

COW

MIP

Consignor: **RAINBOW ANGUS**

This B G S Discovery 874 daughter is out of the Rainbow Blackbird cow family. She was bred 2/3/23 to Baldrige Movin On G780 whose EPDs are +10 -.6 +62 +110 +23 \$B+173 (Top 15%) \$C+297 (Top 10%). Should have a calf by sale day.



CASINO BOMBER N33

105A RIVERVIEW CYBIL 74

PLATTEMERE WEIGH UP K360

DOB 4/20/22

KB-FULL MEASURE C40

Tatt 74

KB-EMMA-TEN X-B02

Reg. 20515355

PVF INSIGHT 0129

CED	8
BW	.9
WW	63
YW	112
M	28

RX CYBILL 416

JG PCC CYBILL 490B

COW

Consignor: **RIVER VIEW FARM**

Cybil 74 is a nice stout heifer sired by Select Sires KB-Full Measure C40. Her maternal granddam stems from the Pembroke herd in Oklahoma. She sells bred to popular Select Sires Wilks Regiment 9035. Regiment ranks in the top 2% of the Angus breed for weaning weight/\$B and the top 1% for yearling weight. Due to calve 5/20/2024.



WILKS REGIMENT 9035

105B RIVERVIEW PRINCESS 86

CONNELY ARMORY

DOB 2/23/22

CONNELY BLACKHAWK 6198

Tatt 86

PRECIOUS OF CONANGA 380X

Reg. 20778147

BOYD NEW DAY 8005

CED	7
BW	1.2
WW	66
YW	115
M	26

RIVER VIEW PRINCESS ISABELLA

H&D 6906 PRINCESS

COW

M1P

Consignor: **RIVER VIEW FARM**

A true daughter of crowd favorite Connealy Blackhawk 6198 who is known for producing nice heifers. Her maternal grandsire is well known Boyd New Day 8005. She is an easy fleshing feminine heifer with lots of potential. Sells bred to Wilks Regiment 9035 an elite growth bull from Select Sires who ranks in the top 2% for weaning weight and the top 1% for yearling weight. Due to calve 4/2/2024.



E W A TEAMWORK 821

106 RIVERVIEW LADY PEYTON 42

QUAKER HILL MANNING 4EX9

DOB 10/3/20

E W A PEYTON 642

Tatt 42

E W A 444 OF 968 PROGRESS

Reg. 20313688

ROCKY PINNACLE 1341

RIVERVIEW PLEASANT PRIDE 7

CED	7
BW	1.8
WW	75
YW	132
M	28

RX PLEASANT PRIDE 843

COW

Consignor: **RIVER VIEW FARM**

An attractive three-year-old with a nice set of EPDs. She ranks in the top 15% in the Angus breed for weaning weight. Her sire is well known E W A Peyton 642. Sells bred to Wilks Regiment 9035 an elite growth bull from Select Sires who ranks in the top 2% of the Angus breed for weaning weight and the top 1% for yearling weight. Due to calve 2/10/2024.

107 RIVERVIEW PRINCESS SOPHIA

MCC DAYBREAK

DOB 1/18/18

QUAKER HILL RAMPAGE 0A36

Tatt 1846

QHF BLACKCAP 6E2 OF4V16 4355

Reg. 19236766

G A R US PREMIUM BEEF

H&D 6906 PRINCESS

CED	4
BW	2.1
WW	58
YW	99
M	21

SW PRINCESS HALEY S221

COW

M1P

Consignor: **RIVER VIEW FARM**

A thick bodied easy keeper in her prime. She is a daughter of legendary Quaker Hill Rampage 0A36. Sells bred to Select Sires growth sire E W A TeamWork 821 who ranks in the top 1% for Angus breed in weaning weight and yearling weight. He also ranks in the top 3% for the Angus breed in rib eye. Due to calve 3/20/2024.

108A RX BARBARA 257H

PVF INSIGHT 0129

DOB 1/9/23

PVF BLACKLIST 7077

Tatt 257H

PVF BLACKBIRD 3070

Reg. 20665322

DAMERON FIRST IMPRESSION

CED	-4
BW	5.2
WW	57
YW	98
M	22

DDA BARBARA 1306

W C C BARBARA M84

COW

Consignor: **RX ANGUS**

RX Barbara 257 was one of our favorites in the spring calf crop. She is an elegant female with good bone and good depth. Her sire, PVF Blacklist 7077, is known for siring functional cattle that excel in the show ring. Her dam, DDA Barbara 1306, is a former Tennessee State Preview Champion. She is also the dam of a Tennessee State Preview Grand Champion. She has produced champions on all levels and this one could be next. Halter broke. BW 74 lbs. Sells open.

109A RX BARBARA 255H

PVF INSIGHT 0129

DOB 1/7/23

PVF BLACKLIST 7077

Tatt 255H

PVF BLACKBIRD 3070

Reg. 20665323

DAMERON FIRST IMPRESSION

CED	-4
BW	5.2
WW	57
YW	98
M	22

DDA BARBARA 1306

W C C BARBARA M84

COW

Consignor: **RX ANGUS**

RX Barbara 255H is a high performing daughter of PVF Blacklist 7077. Her dam, DDA Barbara 1306, is simply the finest female we have owned. She has proven herself to be a producer of good, functional cattle that can get it done in the show ring and in production. BW 88 lbs. Sells open.

108B RX BARBARA 256H

EXG RS FIRST RATE S903 R3

DOB 1/8/23

DAMERON FIRST CLASS

Tatt 256H

DAMERON NORTHERN MISS 3114

Reg. 20666197

DAMERON FIRST IMPRESSION

CED	-5
BW	5.1
WW	57
YW	93
M	21

DDA BARBARA 1306

W C C BARBARA M84

COW

Consignor: **RX ANGUS**

RX Barbara 256H is an own daughter of Dameron First Class, the deceased two-time Denver Champion whose semen has sold at auction for over \$15K/straw. Her dam not only produces show winners, but gets it done in the pasture as well. A full sister to this female topped the 2020 Tennessee Agribition Sale. BW 76 lbs. Sells open.

109B RX NORTHERN MISS 393

KR CADILLAC JACK

DOB 1/4/23

KR CADILLAC RANCH

Tatt 393

KR PRIDE 4031

Reg. 20775727

SILVEIRAS STYLE 9303

DDA NORTHERN MISS 2039

DAMERON NORTHERN MISS 0109

	Sire	Dam
CED	6	3
BW	1.3	3.2
WW	78	56
YW	139	93
M	22	19

COW

Consignor: **RX ANGUS**

RX Northern Miss 393 is an own daughter of KR Cadillac Ranch. Her dam, purchased out of the Double Diamond herd in Illinois, is beautifully uddered, and has done a nice job with this natural calf. Her 393's granddam, Dameron Northern Miss 0109, was Grand Champion at Denver as well as the National Angus Jr. Show. She has been a long time donor in the DDA and Dameron programs. BW. 55 lbs. Sells open.

108C RX BARBARA 250H

SCC TRADITION OF 24

DOB 11/4/22

SCC SCH 24 KARAT 838

Tatt 250H

FCF PROVEN QUEEN 419

Reg. 20665320

DAMERON FIRST IMPRESSION

CED	-5
BW	5.5
WW	53
YW	90
M	27

DDA BARBARA 1306

W C C BARBARA M84

COW

Consignor: **RX ANGUS**

RX Barbara 250H is about as stout as you can make one. She is big ribbed, has tremendous bone, and puts it all together in an extended, feminine package. She is sired by 24 Karat, currently the point leader for sire of the year honors. Her donor dam has produced champions on every level. Whether you're looking for a potential donor, a show heifer, or a front pasture replacement female, this one fits the bill. Halter broke. BW 60 lbs. Sells open.

109C RX PURE PRIDE 323

SITZ TRAVELER 8180

DOB 1/2/23

S A V 8180 TRAVELER 004

Tatt 323

BOYD FOREVER LADY 8003

Reg. 20774189

S A V FIRST CLASS 0207

RX PURE PRIDE 74

RX PURE PRIDE 107

CED	4
BW	2.6
WW	48
YW	85
M	27

COW

Consignor: **RX ANGUS**

RX Pure Pride 323 is an own daughter of the legendary S A V 8180 Traveler 004. Some of the best cows we have produced were paternal sisters to this female. Her dam consistently produces one of our heaviest weaning calves. We believe 323 will make a fine addition to any herd. BW 70 lbs. Sells open.



*Join us for our
Southwest Virginia Angus Double Header*

SATURDAY, APRIL 20TH 2024



**ANGUS IN THE HIGHLANDS
FEMALE SALE**

12 noon • Washington County Fairgrounds • Abingdon, VA



**SWVAA PERFORMANCE TESTED
ANGUS BULL SALE**

BERKSHIRE HATHAWAY

HomeServices



Smith Reasor
Realtor®

Mountain Sky Properties
Serving Southwest Virginia
and the New River Valley
Cell: (276) 620-3123
Office: (276) 228-8882
smithreasorsell@gmail.com
www.swvarealty.com

🏠 A member of the franchise system of BHH Affiliates, LLC



*Your visit
is always
welcome!*

Anderson & Son's

Meat Processing

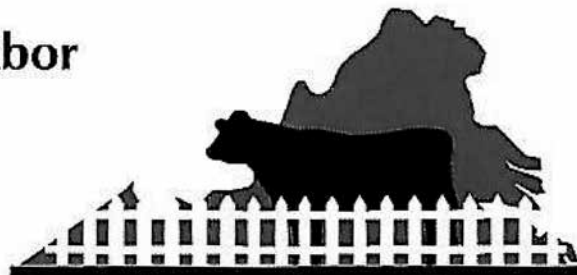
- USDA Inspected
- Beef
- Lamb
- Pork
- Deer (24/7 drop-off available)

We are a family owned and operated processing facility conveniently located 3 miles from downtown Abingdon, VA. We are here to serve the Tri-state area for generations to come.

As we set out on this journey, providing quality in every cut along with customer satisfaction being our number one goal.

276-623-3623
13200 Chip Ridge Road, Abingdon, VA
andersonandsonsm meats.com

Tommy Tabor



VIRGINIA FENCE BUILDERS, INC.

Fence Contractor

540-616-6181 (cell)
540-674-6181 (office)
540-674-1500 (fax)

CATTLE PENS
Home Repair
Barns Built
Paint

6623 Aaron Lane
Dublin, VA 24084
tt43111@hotmail.com

ONLINE BIDDING



Pre-Registration & Pre-Approval Required

**Contact Aaron Ray Tompkins
336.363.4639**

**LIVE INTERNET BIDDING AT
www.cowbuyer.com**

- View/bid online in Real Time
- **Registration is required.** Please register at least one (1) hour prior to sale time at www.cowbuyer.com
- High Speed Internet is required. Slower speed will not permit you to bid and keep pace in real time.
- Terms: Purchasing online constitutes a legal contract and promise for payment of purchases. All purchases must be paid within ten (10) days of sale date and prior to load out or delivery of cattle purchased.
- Cowbuyer LLC is a service provider and is not responsible for the activity or inactivity of any technology, internet connection at the sale site or connection and technology of the bidders.
- No App required on mobile devices.

Questions please contact:

Aaron Ray Tompkins – 336-363-4639

The ultimate farm tool is ready to be yours.



M Series 57.9-141.4 Gross HP Wide range of attachments



Kubota tractors are rated #1 for durability and owner experience in the U.S. as awarded by Progressive Farmer.* Stop in for a demo** and claim this great offer on a range of M Series tractor models including the Kubota M5.

20% DOWN 0% APR UP TO 60 MONTHS

VISIT US TODAY FOR THIS LIMITED-TIME OFFER



Kubota

LAWSON BUILDING SUPPLY,
INC. 111 ENTERPRISE DR
ROSE HILL, VA 24281 276-445-
5411 www.lawsonskubota.com

KubotaUSA.com

*Award based on 2021 Progressive Farmer Reader Insights Tractor Study. **Subject to availability. © Kubota Tractor Corporation, 2023. 0% Down, 0% A.P.R. financing for up to 48 months of new M5, M6 and M6s Series equipment and \$0 Down, 0% A.P.R. financing for up to 48 months on purchases of new M5, M60, M4 from participating dealers' in-stock inventory is available to qualified purchasers through Kubota Credit Corporation, U.S.A.; subject to credit approval. Example: 48 monthly payments of \$20.83 per \$1,000 financed. Offers expire 12/31/23. Terms subject to change. This material is for descriptive purposes only. Kubota disclaims all representations and warranties, express or implied, or any liability from the use of this material. For complete warranty, disclaimer, safety, incentive offer and product information, consult your Dealer or KubotaUSA.com.

Progressive
FARMER
READER INSIGHTS

2023 EXTRA BULL INFORMATION

LOT	FS	M	S	TS	SC	Rib Fat	Rump Fat	RE	IM	\$W	\$B	\$C
1	6.5	3	3	15	37.0	.32	.40	15.2	3.84	73	179	289
2	5.6	3	3	14	34.5	.55	.50	12.5	5.58	80	145	281
3	6.4	3	3	13	40.0	.30	.50	13.0	4.23	83	180	290
4	6.4	3	3	15	38.0	.41	.47	12.6	4.01	59	101	192
5	5.0	3	3	14	37.0	.27	.31	10.1	3.04	60	101	197
6	5.3	3	2	14	38.0	.34	.38	11.8	3.53	56	123	221
7	6.1	3	3	14	35.0	.37	.44	14.9	4.87	59	157	269
8	6.3	3	3	15	39.0	.41	.42	14.7	6.23	67		
9	6.2	3	3	14	33.5	.57	.59	15.8	3.65	57		
10	6.8	3	3	15	36.0	.50	.46	14.9	5.65	62	178	294
11	5.3	4	3	15	38.0	.38	.61	13.7	4.26	77	160	285
12	5.4	3	3	14	35.0	.46	.32	14.1	3.16	67	134	264
13	5.1	3	3	14	37.0	.56	.39	15.6	2.95	64	124	239
14	5.8	3	3	15	39.0	.47	.60	11.5	4.72	62	145	247
15	5.5	3	3	15	40.0	.33	.42	11.5	3.95	84	177	281
16	6.3	3	3	15	38.0	.46	.36	12.8	3.38	61	133	239
17	5.3	4	3	16	40.0	.55	.40	13.9	3.47	70	107	226
18	5.3	3	3	14	35.0	.43	.28	14.7	3.53	77	115	240
19	5.3	4	3	16	34.0	.24	.22	14.2	2.06	64	134	242
20	5.8	4	3	15	38.5	.67	.67	13.0	4.36	75	137	262
21	5.6	3	3	14	36.0	.27	.37	12.1	3.28	54	122	222
22	4.8	4	3	16	36.5	.36	.34	13.1	3.45	64	125	231
23	5.8	4	3	15	34.5	.39	.32	14.0	3.97	62	117	215
24	6.1	3	3	14	37.0	.40	.39	13.6	4.20	76	160	276
25	6.0	3	3	14	32.5	.45	.49	12.3	4.25	77	132	230
26	5.5	3	4	14	31.5	.37	.45	11.8	5.62	78	137	242
27	5.9	3	3	14	36.5	.38	.33	14.6	4.27	73	167	282
28	5.6	3	3	15	40.0	.54	.53	14.4	5.85	76	148	259
29	6.3	3	3	15	36.5	.54	.34	13.8	4.49	73	163	274
30	5.8	3	3	15	38.0	.38	.35	14.4	5.57	68	173	284
31	6.3	3	3	15	38.0	.39	.47	13.8	6.13	71	178	302
32	6.3	3	3	15	37.0	.45	.43	12.7	5.06	63	129	222
33	5.7	3	3	15	38.5	.49	.60	13.5	5.23	76	153	252
34	6.5	3	2	14	36.0	.49	.54	12.4	3.85	87	152	266
35	6.2	3	3	15	39.0	.26	.30	13.2	4.27	81	181	316
36	7.2	3	3	15	38.5	.53	.48	14.4	3.73	77	216	331
37	6.3	4	3	16	38.5	.26	.33	15.3	3.22	85	212	338
38	6.7	3	3	14	32.0	.26	.40	12.6	3.44	73	146	237
39	6.1	3	3	15	40.0	.35	.30	15.4	3.62	77	177	285
40	6.8	3	3	15	38.0	.46	.44	11.7	6.77	80	179	274
41	6.1	3	3	15	40.0	.41	.46	12.2	4.89	75	190	296
42	7.3	3	3	15	36.5	.51	.56	14.0	5.11	71	+137	241
43	7.1	3	3	14	41.5	.54	.44	12.5	3.54	74	111	202
44	6.1	4	3	16	39.0	.28	.33	17.1	3.86	69	174	273
45	6.3	3	3	15	38.0	.32	.35	14.4	3.57	71	182	298
46	5.4	3	3	15	41.0	.33	.31	14.0	3.79	81	156	260
47	6.3	3	3	15	38.5	.30	.40	14.6	6.20	78	217	346
48	5.5	3	3	15	39.0	.23	.30	13.9	3.47	70	175	287
49	5.9	3	3	14	39.0	.40	.38	14.2	3.58	77	151	266
50	4.8	3	3	15	36.5	.23	.32	13.9	4.01	73	134	235
51	6.5	3	3	15	39.0	.29	.27	13.2	3.37	66	134	244
52	5.5	3	3	15	38.0	.33	.18	13.4	4.56	67	167	274
53	6.3	3	3	15	42.0	.53	.45	13.4	5.36	66	153	271
54	7.0	3	3	15	38.5	.47	.58	13.6	5.12	73	161	266
55	4.9	3	3	15	38.5	.49	.49	15.5	4.67	84	154	299
56	4.9	3	3	15	39.0	.46	.43	14.2	5.71	78	146	283
57	6.4	3	3	15	38.0	.38	.50	14.0	4.01	65	125	210
58	5.3	3	3	15	39.0	.53	.53	13.2	7.15	87	201	327
59	7.0	3	3	15	41.0	.20	.22	14.8	4.53	89	203	356