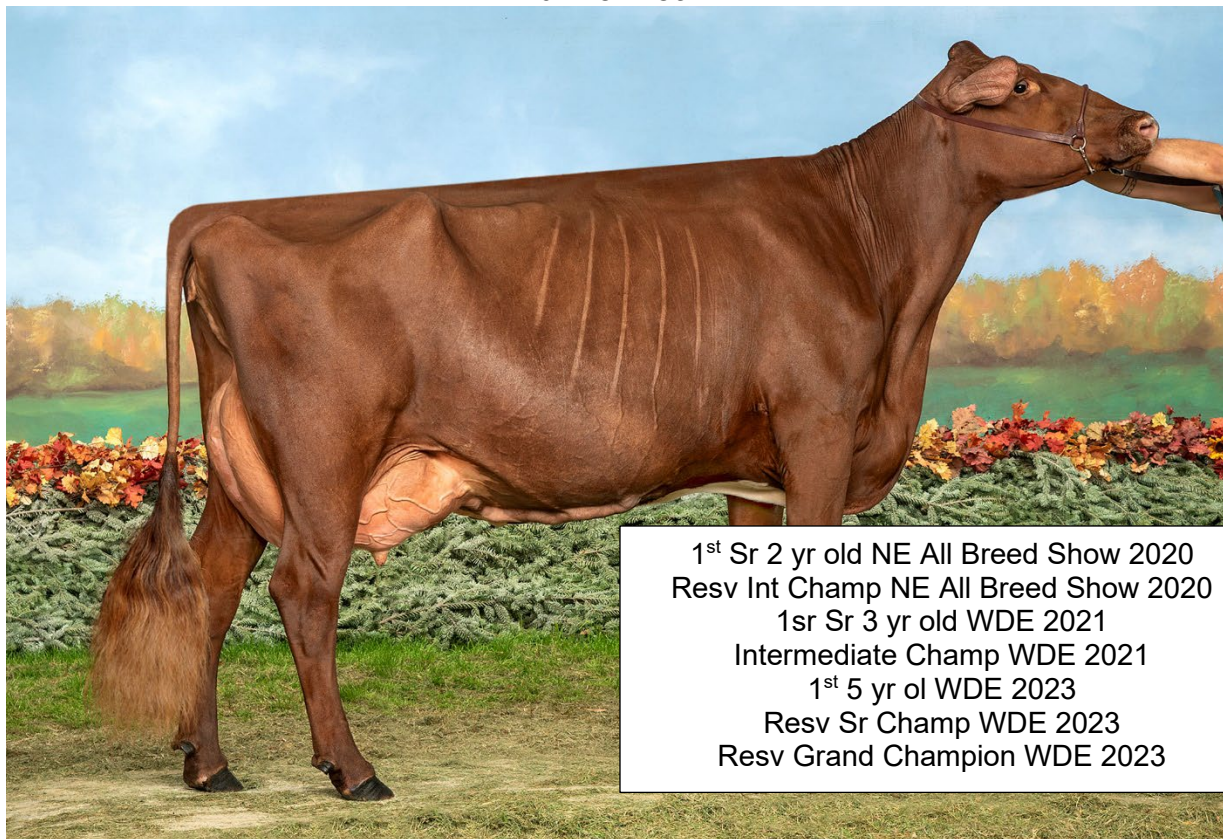


Dam of Lot E1



1st Sr 2 yr old NE All Breed Show 2020
Resv Int Champ NE All Breed Show 2020
1sr Sr 3 yr old WDE 2021
Intermediate Champ WDE 2021
1st 5 yr ol WDE 2023
Resv Sr Champ WDE 2023
Resv Grand Champion WDE 2023

GIN-VAL LOGIC LAURETTA EXP EX92 2E

LOT E1

3 #1 IVF REVERSE SORTED FROZEN EMBRYOS

Cory & Kristen Salzl
Litchfield, MN

DIRECT TRANSFER
Stored in Minnesota

Halpins Muddy Rockstar TW

USA 840003013654947
PTA: -1086M -57F -31P
PTAT: +0.6

Kuszmar Mudslinger

USA 464007 EX90
PA: -971M -50F -30P
PTAT: +0.3

Halpins Ruthanne

USA 68302830 EX94 2E
Res Grand Champion NAILE 2014
1st 5 yr old NAILE 2014

Gin-Val Logic Laurretta EXP

USA 68323167 EX92 2E
2-03 305 19610 4.0 775 3.0 595
3-05 305 23530 5.1 1205 2.8 651
365 25430 5.0 1272 2.8 713

GMC Rebel Logic ET

USA 456757
PTA: -819M +4F -20P
PTAT: +0.2

GE Ginger-Effect Huck Laura

USA 68314619 EX91 3E
3-02 305 20130 3.4 681 2.8 570
345 21550 3.4 741 2.9 621
4-05 242 17020 4.3 732 2.7 456
5-06 291 22550 4.1 932 2.6 587

3rd Dam:

G12 Lake Effect MD Lauren 7215
EX95 3E

3-01 365 22090 4.4 966 3.1 689
5-10 365 27280 4.9 1337 2.9 797
HM AA Jr 3 yr old 2008

Dam of Lot E2



Nom All American Summer Yearling 2014
 1st Summer Yearling Eastern Natl 2014
 2nd Jr 2 Yr old Eastern Natl 2015
 2nd 4 yr old WDE 2017
 3rd Eastern Natl 4 yr old 2017
 Resv All American 4 yr old 2017
 1st 5 yr old Eastern Natl 2018
 All American Aged Cow 2019
 HM All American Production Cow 2021
 Total Performance Eastern Natl 2023

HC-HP FROLIC DIXIE ET EX94 4E

LOT E2

3 #1 IVF REVERSE SORTED FROZEN EMBRYOS

DIRECT TRANSFER

Hard Core Farm
New Enterprise, PA

Stored at TransOva Hagerstown, MD

Innisfail Mega Lottery ET

USA 68314502
PTA: -561M -43F -26P
PTAT: +0.7

HC-HP Frolic Dixie ET

USA 68314556 EX94 4E
3-00 303 15408 3.7 566 3.0 466
4-00 278 15410 3.5 541 2.9 545
5-00 312 16820 3.7 617 3.1 518
6-00 284 16154 3.9 635 3.1 504
7-00 305 20350 3.7 758 3.0 608
333 21640 3.7 803 3.0 647
8-00 345 19101 4.0 768 3.1 598
9-03 305 19226 3.9 743 2.9 549
365 21795 3.9 850 2.9 635

Kuszmar Megadeth

USA 455752 EX93
PTA: -399M -18F -12P
PTAT: +0.7

Innisfail RO Lady 5086 TW

EXP
USA 463548 EX92 2E
2-05 365 24080 3.1 746 3.0 734
5-09 365 24500 3.2 787 3.0 743

Vinra Peerless Frolic

USA 449081
PTA: -289M -1F -1P
PTAT: -0.8

Sunshine Dittos Dottie

USA 452249 EX94 5E
5-11 365 22550 3.9 872 3.1 706
8-05 365 22140 4.1 908 3.1 681
10-02 365 22190 3.9 872 3.0 670
11-11 305 19430 4.4 855 3.0 579
13-06 365 19560 3.7 730 3.0 586
16-00 305 18328 4.1 759 3.0 557

Maternal Sisters to Dam of Lot:

Sunshine Ace Dahlia EX90
Sunshine Frolic Dorothy EX95 3E
Hard Core Rebel Daytona ET
EX92 2E

Sunshine Frosty's Ditto

USA 447066 EX90
4-06 305 15850 3.9 618 3.0 473
365 17780 3.8 684 3.0 540
5-11 307 14690 4.1 603 3.4 498

3rd Dam:

Sunshine Fig's Frosty EX90

Dam of Lot E3



All American Lifetime Merit Cow 2021
All American Aged Cow 2020
Grand Champion WDE 2021
Total Performance Cow WDE 2021 & 2022

MAPLE FUDGE OF 12 OAKS*CV EX96 3E

LOT E3

3 #1 IVF REVERSE SORTED FROZEN EMBRYOS

Colton & Ashley Brandel
Lake Mills, WI

DIRECT TRANSFER
Stored in Wisconsin

B-D-F Marshas Money

USA 68325655 EX90
PA: -542M -14F -16P
PTAT: +0.6

Hard Core S Firefighter EXP ET

USA 68317459
PA: -358M -8F -7P
PTAT: +0.5

B-D-F Madness Marsha

USA 68317489
AA Sr 3 yr old 2018

Maple Fudge of 12 Oaks*CV

USA 68315279 EX96 3E
3-03 289 26840 3.8 1013 3.1 820
7-00 305 31970 4.1 1300 3.0 963
365 36220 4.1 1479 3.1 1105
8-05 305 31940 4.0 1281 3.0 963
365 34950 4.0 1406 3.1 1074
LTD: 198171M 7971F 6073P

Rovin Snowht Lhill Snappy

USA 68304639
PA: -285M -16F -13P
PTAT: -0.7

Maple of 12 Oaks

USA 455297

Granddam of Lot E4



All American 5 yr old 2019
Grand Champion International 2019
Grand Champion International 2017
AA Jr 3 yr old 2017
Res AA Jr 2 yr old 2016

EICHLERS MD BLANCHE ET EX94 3E

LOT E4 3 #1 IVF FROZEN EMBRYOS MADE WITH SEXED SEMEN

Cold Springs Farm
Farmington, NH

DIRECT TRANSFER
Stored at Transova Hagertown MD

Hard Core Lottery Spiderman

USA 68330210 EX94
PA: -407M -26F -18P
PTAT: +0.4

Innisfail Mega Lottery ET

USA 68314502
PTA: -349M -34F -18P
PTAT: +0.7

Hard Core Perfect Sunrise EXP

USA 68312417 EX95 4E
7-05 309 22410 3.5 792 2.9 652
8-05 365 22121 3.5 777 2.9 648

Elite HP Blast

USA 840003128124770 EX91 2E
2-00 289 10921 2.5 278 3.2 348
3-00 305 16248 3.3 542 3.3 540
 320 16713 3.3 558 3.3 558
4-00 271 15176 3.3 495 3.5 526
4-11 305 19628 2.9 571 3.3 645
 357 21728 3.0 652 3.3 717

Innisfail Perfection EXP

USA 683132600
PTA: +238M +9F +6P
PTAT: +0.5

Eichlers MD Blanche ET

USA 840003124891972 EX94 3E
2-03 305 20870 3.8 792 3.0 635
 347 23700 3.8 898 3.1 726
3-05 305 23870 3.9 937 3.2 773
5-02 304 25500 3.6 916 3.0 767

3rd Dam:

**Eichlers RN Blessing
Breakfast EX90**

2-02 333 15230 4.0 604 3.2 481
3-03 305 20420 3.8 774 3.4 685
 365 23420 3.9 902 3.4 793

4th Dam:

**MJ Eichler Dap Bianca
Blessing EX90**

3-03 305 26520 3.6 947 3.1 810

Dam of Lot E5



HM All American Fall Calf 2019
 1st Fall Calf Eastern Natl 2019
 Nom AA Fall yearling 2020
 Jr All American Sr 3 yr old 2022
 Grand Champ Premier Jr Show Harrisburg 2023
 2nd 4 yr old Eastern Natl 2023
 1st 4 yr old Jr Winter Natl 2023

HARD CORE LOTTERY FIREWORKS EX90

LOT E5

3 #1 IVF REVERSE SORTED FROZEN EMBRYOS

Crowshaw, Towe & Graves
Parksville, KY

DIRECT TRANSFER

Stored at TransOva Hagerstown, MD

Kuszmar Megadeth Mykola
EXP

USA 840003131745168 EX92
PTA: -242M -22F -13P
PTAT: +0.4

Hard Core Lottery Fireworks

USA 68324765 EX90
2-06 305 12800 3.8 488 3.2 406
365 14449 3.9 557 3.2 466
3-08 305 13712 3.7 501 3.2 443
312 13883 3.7 507 3.2 450

Kuszmar Megadeth

USA 455752 EX93
PTA: -399M -18F -12P
PTAT: +0.7

GE Kuszmar Dakota Mud

USA 68302062 EX92 2E
6-00 361 29090 3.1 913 3.0 862
7-02 323 26660 3.0 803 2.9 778

Hard Core Othello Snoopy ET

USA 68303119
PTA: -1133M -39F -35P
PTAT: +0.1

Hard Core Snoopy Firebug EXP

USA 68309901 EX94 4E
1-11 365 16160 3.7 595 3.3 539
3-02 305 16300 3.9 632 3.3 532
353 17520 3.9 676 3.3 576
4-05 305 19368 3.7 723 3.2 620
5-11 355 20840 3.6 740 3.2 662
10-00 365 17212 3.9 674 3.3 564
LTD: 109630m 4124f 3629p

3rd Dam:

Springhill Firepower ET
EX92 2E

3-00 315 21790 3.8 819 3.1 686
4-01 328 20380 3.8 784 3.2 651
5-03 295 16000 4.1 651 3.5 556

4th Dam:

Sunshine Now You See
Fireball EX90 2E

7-10 274 19980 3.2 648 2.9 588
Res AA Fall Yearling 2003
Res AA Fall Heifer 2002

5th Dam:

Sunshine Fig's Frosty EX90

5-05 342 22520 3.5 797 3.1 700
6-05 305 19680 3.4 664 3.1 605
352 21090 3.4 717 3.1 651

Dam of Lot E6



1ST Winter Yrl NY Spring show 2017
Jr Champion NY Spring Show Jr Show 2017
2nd Winter Yrl Eastern States 2017
HM Jr All American Winter Yrl 2017
1st Sr 2 yr old Eastern States 2018
3rd Sr 2 yr old Winter Natl 201

COLD SPRINGS RU PERFECT EXP VG87

LOT E6

Courtney Gould
Farmington, NH

4 #1 IVF REVERSE SORTED FROZEN EMBRYOS

DIRECT TRANSFER

Stored at TransOva Hagerstown, MD

Innisfail Mega Lottery ET

USA 68314502
PTA: -561M -43F -26P
PTAT: +0.7

Cold Springs RU Perfect EXP

USA 840003135189027 VG87
4-06 305 14051 3.0 425 3.2 455

Kuszmar Megadeth

USA 455752 EX93
PTA: -399M -18F -12P
PTAT: +0.7

Innisfail RO Lady 5086 TW

EXP
USA 463548 EX92 2E
2-05 365 24080 3.1 746 3.0 734
5-09 365 24500 3.2 787 3.0 743

Innisfail Red Ruben

USA 360010935
PTA: -94M -24F -2P
PTAT: +0.5

Solid-Gold Mega Pebbles ET

USA 68307667 G+81
5-11 365 22550 3.9 872 3.1 706
8-05 365 22140 4.1 908 3.1 681
10-02 365 22190 3.9 872 3.0 670
11-11 305 19430 4.4 855 3.0 579
13-06 365 19560 3.7 730 3.0 586
16-00 305 18328 4.1 759 3.0 557

3rd Dam:

Spungold-R Logic Precious ET
EX92 2E

3-10 356 24180 4.0 971 3.2 785
5-05 305 31210 4.9 1539 3.2 1012
All American Fall Yrl 2009

4th Dam:

Gold Mine Poppys OT Kay

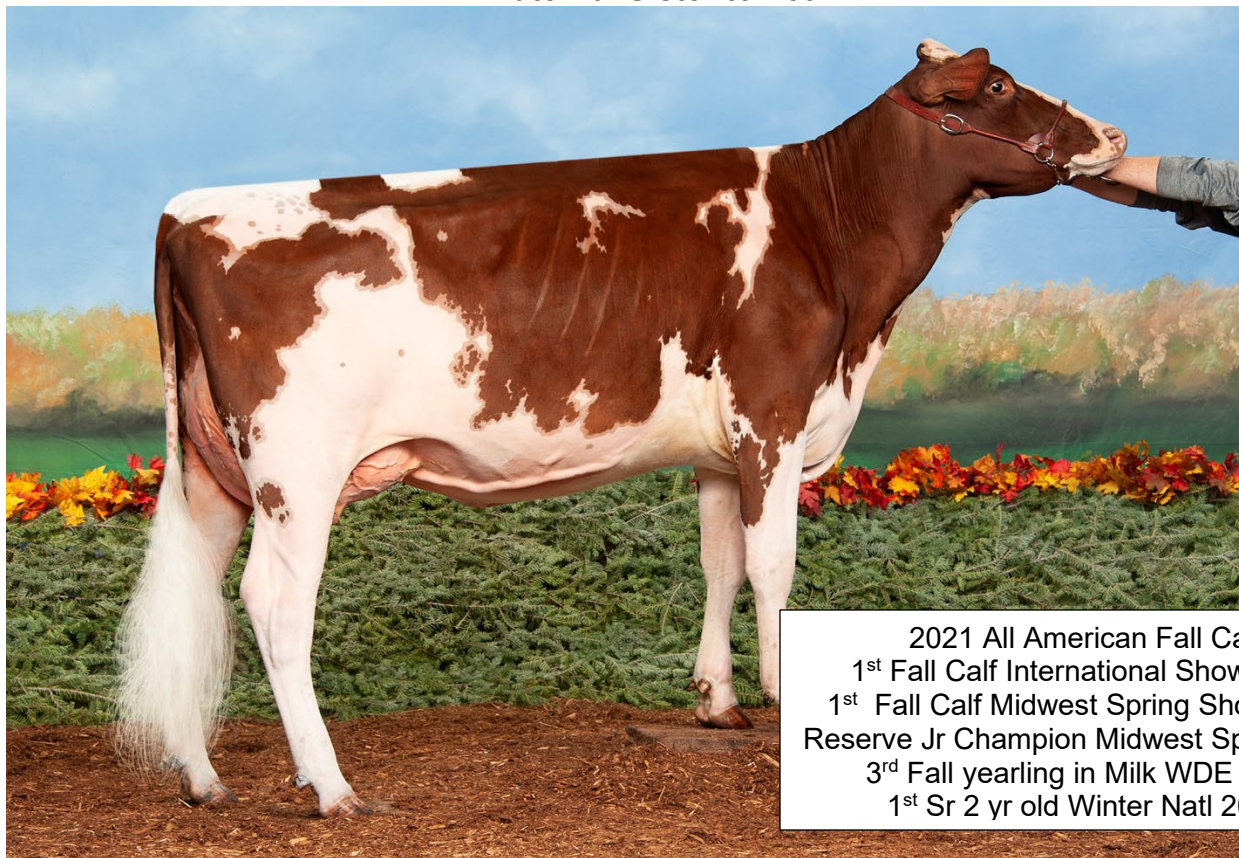
USA 446516 EX-95 2E
4-10 365 46666 3.3 1544 3.1 1427
5-10 365 43840 3.4 1484 3.1 1340
7-11 365 46980 3.4 1587 3.1 1437
AA Aged Cow 2005, 2007
Res AA 4 yr old 2003

5th Dam:

Gold Mine Sweet Poppy 922 EXP

USA 440473 VG87
3-10 303 18990 3.6 696 2.9 554

Maternal Sister to Lot E7



2021 All American Fall Calf
1st Fall Calf International Show 2021
1st Fall Calf Midwest Spring Show 2021
Reserve Jr Champion Midwest Spring 2021
3rd Fall yearling in Milk WDE 2022
1st Sr 2 yr old Winter Natl 2023

MOLEHILL MYKOLA MYRTLE EX90

LOT E7

3 #1 IVF FROZEN EMBRYOS MADE WITH SEXED SEMEN

David Crowshaw
Parkesville, KY

DIRECT TRANSFER
Stored in Kentucky

Pinehurst Rebel 9th

USA 423595
PTA: -760M -33F -25P
PTAT: +0.0

GMC Hard Core Rebel Detroit ET

USA 68329344 EX92
PA: -874M -30F -25P
PTAT: +0.3

Clayside Dairybell Oth

Desiree
USA 465769 EX92 2E
2-04 327 14850 4.0 600 3.1 465
3-04 316 14500 5.1 739 3.3 473

Maternal sister to Embryos:

Molehill Lars Marln Monroe

EXP
3rd Fall Calf WDE 2022

Innisfail Red Ruben

USA 360010935
PTA: -94M -24F -2P
PTAT: +0.5

Blue Spruce RR Mays Macy

USA 68309417 EX91
2-01 305 14640 4.0 582 3.3 476
353 17120 4.0 683 3.3 560
3-02 305 25990 4.4 1138 3.0 791
347 28810 4.4 1268 3.1 884

Blue Spruce Clay Melody

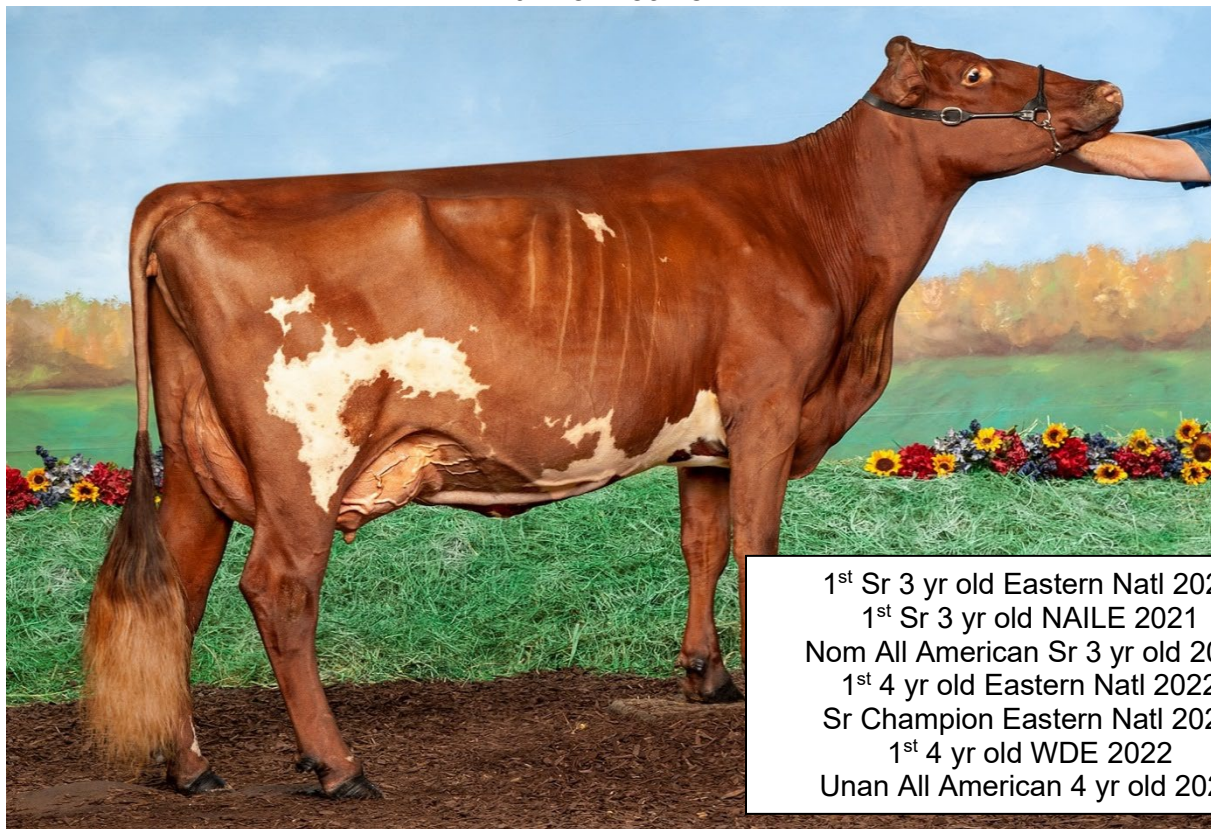
Mya
USA 471000069 EX93 2E
2-03 308 17380 4.2 725 3.4 588
3-03 274 14930 4.4 650 3.3 500
6-00 339 27480 3.9 1083 2.9 799
7-00 293 23690 4.0 955 3.0 720

3rd Dam:

Bluespruce-Kaclay Misty
Melody

USA 455737 VG87
2-08 313 20310 3.6 735 3.3 663
3-08 305 20750 3.6 750 3.1 653
360 22270 3.6 807 3.2 710

Dam of Lot E8



1st Sr 3 yr old Eastern Natl 2021
1st Sr 3 yr old NAILE 2021
Nom All American Sr 3 yr old 2021
1st 4 yr old Eastern Natl 2022
Sr Champion Eastern Natl 2022
1st 4 yr old WDE 2022
Unan All American 4 yr old 2022

HARD CORE C-TIE SUNDANCE ET EX92

LOT E8

3#1 IVF FROZEN EMBRYOS MADE WITH SEXED SEMEN

Hard Core Farm
New Enterprise, PA

DIRECT TRANSFER
Stored at TransOva Hagerstown, MD

Henkeseen Cyride*TC

USA 840003149932697
PTA: -637M +1F -12P
PTAT: +0.1

Lands-Brook Cyclone

USA 68304732
PTA: -1169M +5F -20P
PTAT: +0.1

Innisfail ST Stella 329 EXP*CD

USA 68315974 EX94 4E
5-06 365 31480 3.5 1112 3.1 963
8-02 365 31470 3.5 1213 3.1 1045

Lands-Brook Mega C-Tie EXP ET

USA 471000044 EX91
PTA: -538M -7F -17P
PTAT: +0.5

Hard Core C-Tie Sundance ET

USA 68323116 EX92
2-08 305 16020 4.0 643 3.1 490
331 17150 4.0 689 3.1 529
3-09 305 17977 3.9 708 3.1 551
4-08 305 17555 3.9 679 3.1 551
365 21011 3.9 820 3.2 665

Innisfail BDC Stella 905

USA 445670 EX96 5E
9-08 330 22563 3.8 855 2.9 651
10-10 365 24770 3.7 906 2.9 706
12-04 365 25510 3.8 966 2.9 747
13-10 365 25130 3.6 914 2.9 734
15-01 365 21798 3.9 856 3.0 655
LIFE: 238690M 9385F 7174P
Grand Champ WDE 2006 & 2009

3rd Dam:

Innisfail OT Stella 004 EXP VG86

3-02 305 16040 3.3 523 3.3 532
5-00 352 17260 3.5 603 3.3 561
7-07 334 18230 3.3 602 3.3 603

4th Dam:

Innisfail Stella 125th VG87

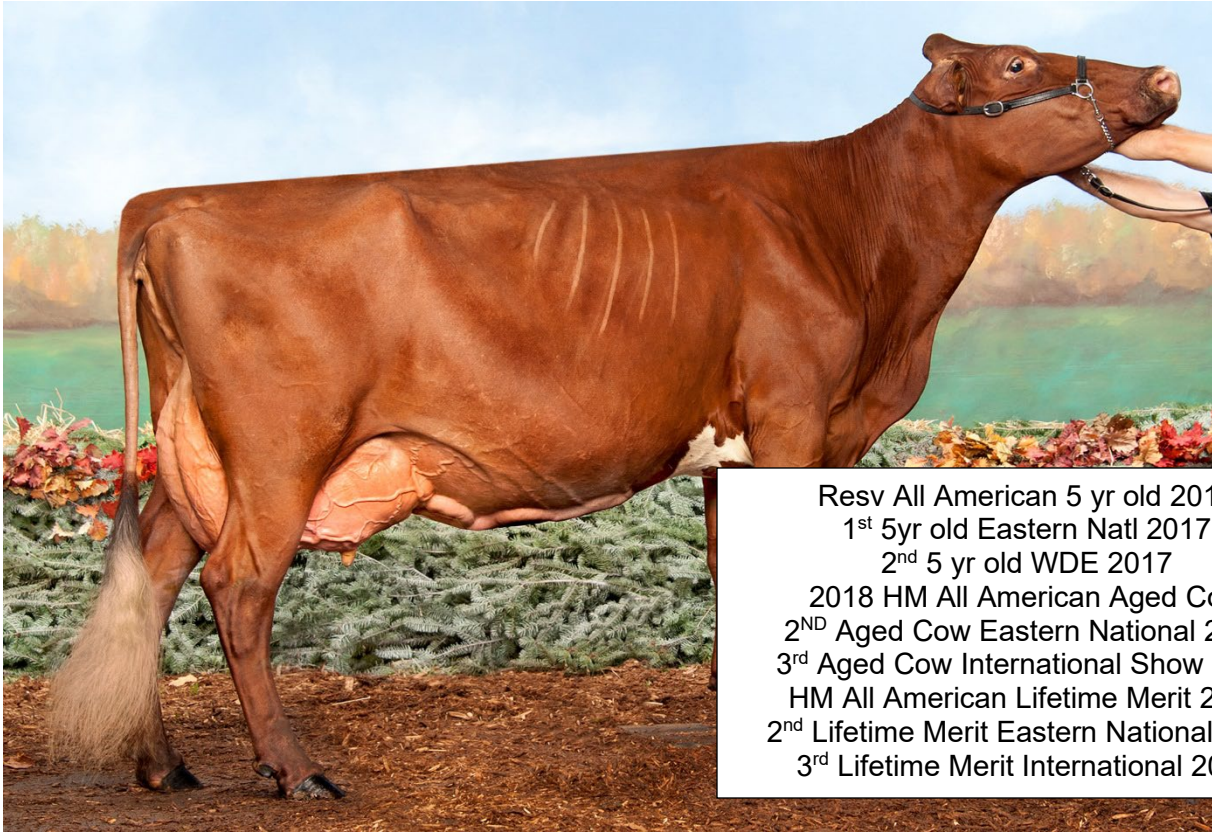
5-01 317 20300 3.6 721 3.3 662
7-02 305 20700 3.6 749 3.2 662

5th Dam:

Innisfail Stella 95th

7-06 305 18060 3.7 671 3.4 615

Dam of Lot E9



Resv All American 5 yr old 2017
 1st 5yr old Eastern Natl 2017
 2nd 5 yr old WDE 2017
 2018 HM All American Aged Cow
 2ND Aged Cow Eastern National 2018
 3rd Aged Cow International Show 2018
 HM All American Lifetime Merit 2019
 2nd Lifetime Merit Eastern National 2019
 3rd Lifetime Merit International 2019

HARD CORE O'RAELY ET EX95 3E

LOT E9

4 #1 IVF REVERSE SORTED FROZEN EMBRYOS

Hard Core Farm
New Enterprise, PA

DIRECT TRANSFER

Stored at TransOva Hagerstown, MD

B-D-F Marshas Money

USA 68325655 EX90
PA: -542M -14F -16P
PTAT: +0.6

Hard Core ORaely ET

USA 68311035 EX95 3E
 3-03 305 16601 4.1 681 3.3 542
 313 16897 4.1 698 3.3 553
 4-02 305 20511 3.6 733 3.0 652
 5-06 305 20240 4.1 820 3.3 659
 6-06 317 18470 3.9 712 3.3 612
 7-06 365 20640 3.9 806 3.3 680
 8-08 307 21660 3.9 850 3.2 687
 9-08 315 20800 4.1 846 3.3 677
 10-09 367 22678 3.8 858 3.3 739

Hard Core S Firefighter EXP ET

USA 68317459
PA: -358M -8F -7P
PTAT: +0.5

B-D-F Madness Marsha

USA 68317489
AA Sr 3 yr old 2018

Kusmar Alfairs Othello

USA 439021
PTA: -991M -57F -29P
PTAT: +0.6

Hard Core Super Riley

USA 447564 EX91
 3-08 313 18160 4.5 823 3.1 556
 4-08 312 18610 4.3 809 3.4 633
 5-08 284 18960 4.4 841 3.4 643
 7-05 308 17880 4.5 798 3.3 594
 HM AA Spr Yrl 2001
 Nom AA 4 Yr old 2004

Full Sister to Dam:

Hard Core O'Royce EX95 3E

5-09 365 25900 4.6 1203 3.5 911
 8-10 341 24470 4.7 1142 3.3 816
 LIFE: 3515d 193930m 9074f
 6814p
 HM AA Jr 3 yr old 2005
 AA 4 yr old 2006
 Res AA 5 yr old 2007
 Res AA Aged Cow 2008

4th Dam:

**Horizon Enhancer Rozlyn
EXP EX90 2E**

4-08 288 18280 2.7 497 3.3 603
 6-11 360 22570 3.6 821 3.2 714
 HM AA Spring Yearling 1994
 HM AA Jr. 2 yr old '95
 Grand Champ CAN Royal Winter
 Fair '95

Granddam of Lot E10



Nom AA Summer Yearling 2012
3rd Jr 2 Yr old East Natl 2013
1st Jr 2 Yr old PA Farm Show 2014
2nd Jr 3 yr old Winter Natl 2014
Resv Grand Champ PA Farm Show 2015
1st 5 yr old East Natl 2016
Nom AA 5 yr old 2016
Resv AA Aged Cow 2017
1st Eastern Natl Aged Cow 2017
2nd WDE Aged Cow 2017

HARD CORE SNOOPY FIREBUG EXP EX94 4E

LOT E10 3 #1 IVF REVERSE SORTED FROZEN EMBRYOS

Hard Core Farm
New Enterprise, PA

DIRECT TRANSFER

Stored at TransOva Hagerstown, MD

Springville Logic Premium ET

USA 68306847
PTA: -1016M -33F -22P
PTAT: +0.6

GMC Rebel Logic ET

USA 456757
PTA: -819M +4F -20P
PTAT: +0.2
Tex-Star Othello Peri
USA 459561 EX95 3E
5-11 291 19000 3.7 710 3.3 632
6-09 363 20760 3.6 755 3.4 706

3rd Dam:

Springhill Firepower ET

USA 360012235 EX92 2E
3-00 315 21790 3.8 819 3.1 686
4-01 328 20380 3.8 784 3.2 651
5-03 295 16000 4.1 651 3.5 556
6-02 283 14020 3.5 496 3.4 474

Oceanbrae Ironman P

CAN 9993327
PTA: -936M +0F -14P
PTAT: -0.2

4th Dam:

Sunshine Now You See

Fireball EX90 2E
7-10 274 19980 3.2 648 2.9 588
Res AA Fall Yearling 2003
Res AA Fall Heifer 2002

Hard Core Ironman Firetime ET

USA 68324980 EX90
2-09 305 15005 4.6 683 3.3 488
318 15431 4.6 705 3.3 503
3-09 305 14360 5.1 729 3.5 508
365 16390 5.0 823 3.6 583

Hard Core Snoopy Firebug EXP

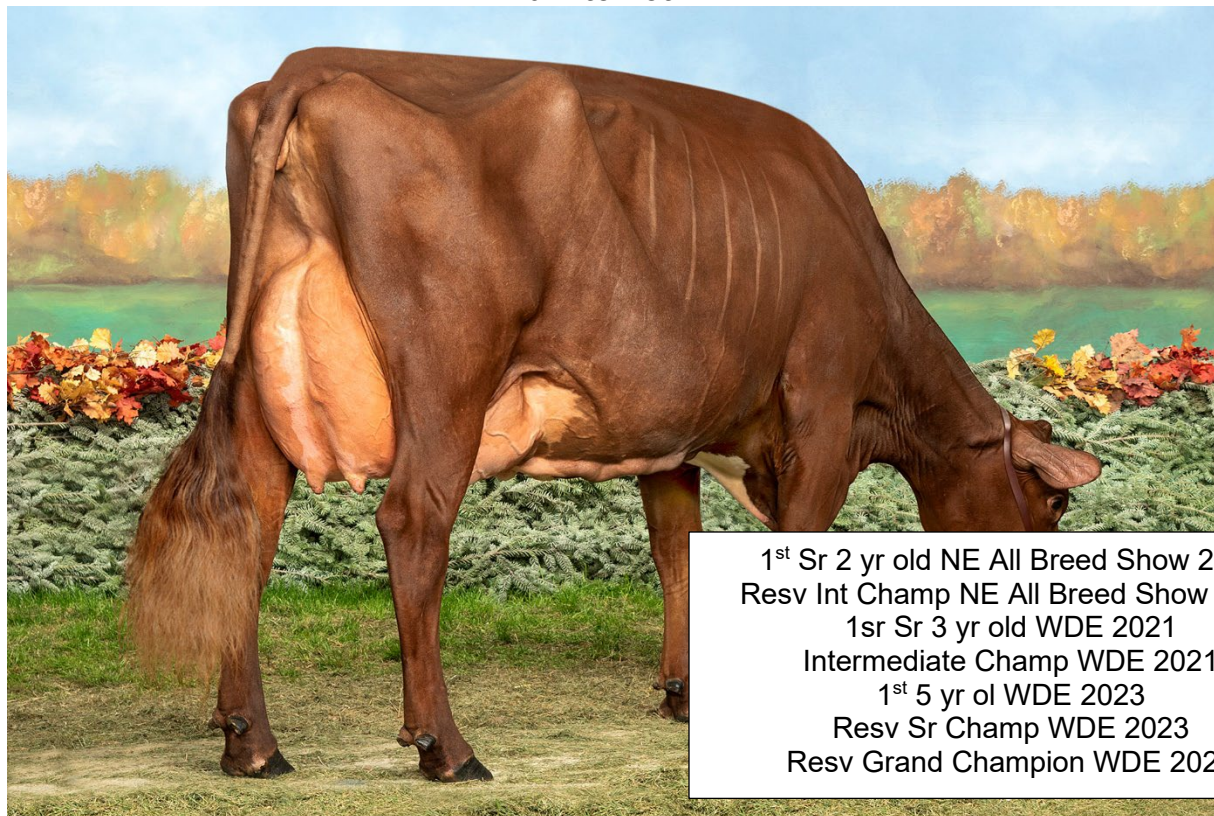
USA 68309901 EX94 4E
3-02 305 16300 3.9 632 3.3 532
353 17520 3.9 676 3.3 576
4-05 305 19368 3.7 723 3.2 620
5-11 305 19530 3.5 692 3.1 615
355 20840 3.6 740 3.2 662
10-00 365 17210 3.9 674 3.3 564
LTD: 109630M 4124F 3629P

5th Dam:

Sunshine Fig's Frosty EX90

5-05 342 22520 3.5 797 3.1 700
6-05 305 19680 3.4 664 3.1 605
352 21090 3.4 717 3.1 651

Dam to Lot E11



1st Sr 2 yr old NE All Breed Show 2020
 Resv Int Champ NE All Breed Show 2020
 1sr Sr 3 yr old WDE 2021
 Intermediate Champ WDE 2021
 1st 5 yr ol WDE 2023
 Resv Sr Champ WDE 2023
 Resv Grand Champion WDE 2023

GIN-VAL LOGIC LAURETTA EXP EX90

LOT E11

3 #1 IVF REVERSE SORTED FROZEN EMBRYOS

Cory & Kristen Salzl
Litchfield, MN

DIRECT TRANSFER
Stored in Minnesota

Gold Mine Ebrose KAO Shale

160
USA 449444
PTA: -790M -17F -20P
PTAT: +0.0

North Stars Presto ET EXP

USA 68307590
PTA: -641M -42F -26P
PTAT: +0.7

North Stars Talent Punkin

USA 3600012413 EX92 2E
2-01 313 21233 3.8 805 3.1 651
3-01 305 23845 3.9 919 3.1 735
4-07 305 21870 3.3 729 2.9 627

GMC Rebel Logic ET

USA 456757
PTA: -819M +4F -20P
PTAT: +0.2

3rd Dam:

G12 Lake Effect MD Lauren 7215
EX95 3E

3-01 365 22090 4.4 966 3.1 689
5-10 365 27280 4.9 1337 2.9 797
HM AA Jr 3 yr old 2008

Gin-Val Logic Lauretta EXP

USA 68323167 EX92 2E
2-03 305 19610 4.0 775 3.0 595
3-05 305 23530 5.1 1205 2.8 651
365 25430 5.0 1272 2.8 713

GE Ginger-Effect Huck Laura

USA 68314619 EX91 3E
3-02 305 20130 3.4 681 2.8 570
345 21550 3.4 741 2.9 621
4-05 242 17020 4.3 732 2.7 456
5-06 291 22550 4.1 932 2.6 587

Grand Dam of Lot E12



All American 5 yr old 2019
Grand Champion International 2019
Grand Champion International 2017
AA Jr 3 yr old 2017
Res AA Jr 2 yr old 2016

EICHLERS MD BLANCHE ET EX94 3E

LOT E12

4 #1 IVF FROZEN EMBRYOS MADE WITH SEXED SEMEN

Cold Springs Farm
Farmington, NH

DIRECT TRANSFER
Stored at TransOva Hagerstown, MD

Henkeseen Cyride*TC

USA 840003149932697
PTA: -637M +1F -12P
PTAT: +0.1

Lands-Brook Cyclone

USA 68304732
PTA: -1169M +5F -20P
PTAT: +0.1

Innisfail ST Stella 329 EXP*CD

USA 68315974 EX94 4E
5-06 365 31480 3.5 1112 3.1 963
8-02 365 31470 3.5 1213 3.1 1045

Innisfail Perfection EXP

USA 683132600
PTA: +238M +9F +6P
PTAT: +0.5

Elite HP Blast

USA 840003128124770 EX91 2E
2-00 289 10921 2.5 278 3.2 348
3-00 305 16248 3.3 542 3.3 540
320 16713 3.3 558 3.3 558
4-00 271 15176 3.3 495 3.5 526
4-11 305 19628 2.9 571 3.3 645
357 21728 3.0 652 3.3 717

Eichlers MD Blanche ET

USA 840003124891972 EX94 3E
2-03 305 20870 3.8 792 3.0 635
347 23700 3.8 898 3.1 726
3-05 305 23870 3.9 937 3.2 773
5-02 304 25500 3.6 916 3.0 767
All American 5 yr old 2019

3rd Dam:

**Eichlers RN Blessing Breakfast
EX90**

2-02 333 15230 4.0 604 3.2 481
3-03 305 20420 3.8 774 3.4 685
365 23420 3.9 902 3.4 793

4th Dam:

**MJ Eichler Dap Bianca Blessing
EX90**

3-03 305 26520 3.6 947 3.1 810

Dam to Lot E13



Jr All American Jr 3 yr old 2022
 Nom All American Jr 3 yr old 2022
 1st Jr 3 yr old WDE Jr Show 2022
 Resv Int Champion WDE Jr Show 2022
 Grand Champion WI State Fair 2023
 Grand Champion Midwest Regional 2023

BRAND-NEW Z FALLIN IN LOVE ET EX90

LOT E13

3 #1 IVF REVERSE SORTED FROZEN EMBRYOS

Colton & Ashley Brandel
Lake Mills, WI

DIRECT TRANSFER

Stored in Wisconsin

Halpins Muddy Rockstar TW

USA 840003013654947
PTA: -1086M -57F -31P
PTAT: +0.6

Kuszmar Mudslinger

USA 464007 EX90
PA: -971M -50F -30P
PTAT: +0.3

Halpins Ruthanne

USA 68302830 EX94 2E
Res Grand Champion NAILE 2014
1st 5 yr old NAILE 2014

Purple Idalee RR Zeus EXP ET

USA 69827487
PTA: -80M -17F -8P
PTAT: +0.6

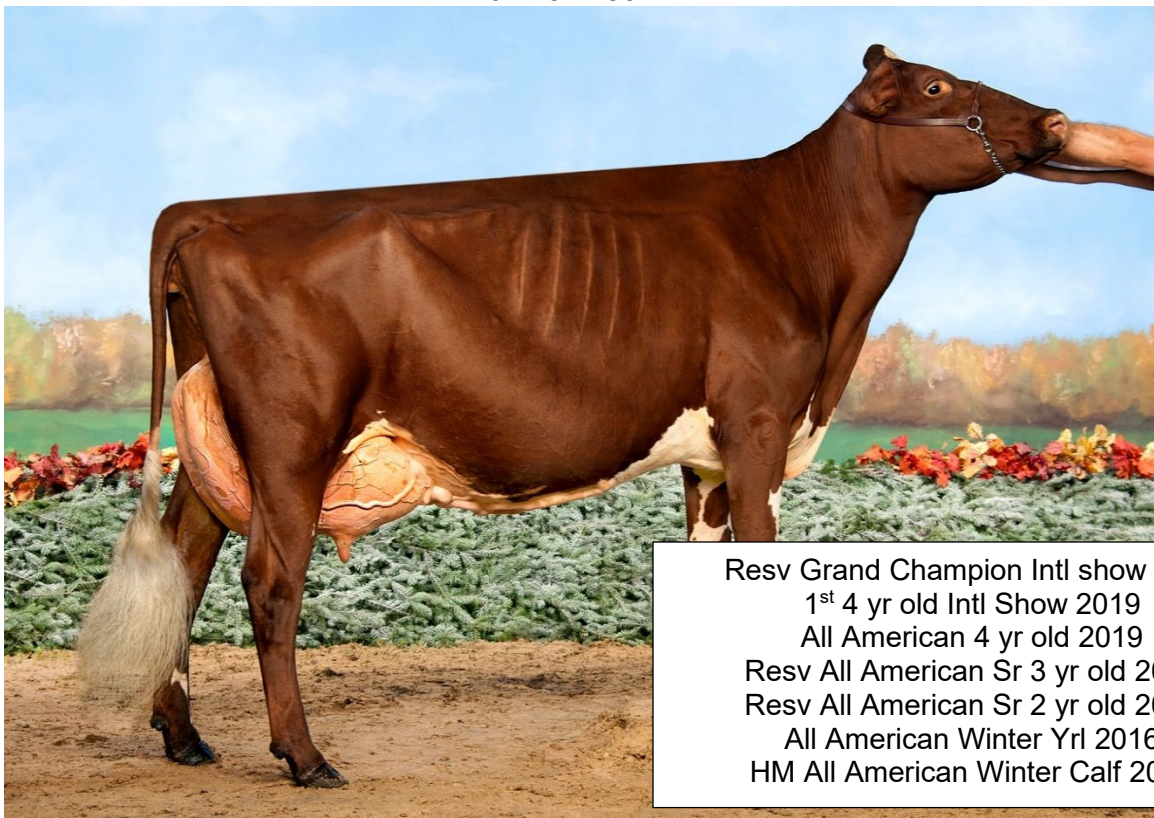
Brand-New Z Fallin In Love ET

USA 68325381 EX90
2-00 294 14710 4.0 583 3.3 482
2-11 294 19104 3.7 715 3.2 602
3-11 195 15664 3.7 588 3.2 493 RIP
305 21251 3.7 792 3.2 679 Proj

Maple Fudge of 12 Oaks*CV

USA 68315279 EX96 3E
3-03 289 26840 3.8 1013 3.1 820
7-00 305 31970 4.1 1300 3.0 963
365 36220 4.1 1479 3.1 1105
8-05 305 31940 4.0 1281 3.0 963
365 34950 4.0 1406 3.1 1074
LTD: 198171M 7971F 6073P

Dam of Lot E14



Resv Grand Champion Intl show 2019
1st 4 yr old Intl Show 2019
All American 4 yr old 2019
Resv All American Sr 3 yr old 2018
Resv All American Sr 2 yr old 2017
All American Winter Yrl 2016
HM All American Winter Calf 2015

TRILOW ZEUS LALA ET EX94 3E

LOT E14 5 #1 IVF FROZEN EMBRYOS MADE WITH SEXED SEMEN

Michelle Upchurch
Hebron, IL

DIRECT TRANSFER

Stored in Illinois

Henkeseen Cyride*TC

USA 840003149932697
PTA: -637M +1F -12P
PTAT: +0.1

Lands-Brook Cyclone

USA 68304732
PTA: -1169M +5F -20P
PTAT: +0.1

Innisfail ST Stella 329 EXP*CD

USA 68315974 EX94 4E
5-06 365 31480 3.5 1112 3.1 963
8-02 365 31470 3.5 1213 3.1 1045

Purple Idalee RR Zeus EXP ET

USA 69827487
PTA: -98M -18F -8P
PTAT: +0.6

Trilow Zeus Lala ET

USA 840003126415961 EX94 3E
2-06 278 19454 4.9 948 3.6 690
3-05 305 20315 4.5 911 3.4 690
4-04 305 27082 4.1 1106 3.3 880
5-05 297 31208 5.2 1633 3.0 944
6-04 308 18600 4.0 737 3.2 601

Mi-San Acres Lola

USA 448919 EX92 3E
5-10 305 22630 4.1 925 3.2 721
9-07 305 22870 3.9 890 3.0 686
365 26300 3.9 1026 3.0 794
All American Sr 3 yr old 2004
All American 5 yr old 2006

3rd Dam:

Mi-San Acres Lucy

3-06 348 14770 4.5 660 3.3 491
HM All American Spring Calf 1998

Maternal Sister to Lot E15



2nd Jr 2 yr old NE All Breed Spring Show 2020
 3rd 4 yr old NE All Breed Spring Show 2022

COLD SPRINGS BLAINE PASTA VG88

LOT E15

Courtney Gould
Farmington, NH

4 #1 IVF REVERSE SORTED FROZEN EMBRYOS

DIRECT TRANSFER

Stored at TransOva Hagerstown, MD

B-D-F Marshas Money

USA 68325655 EX90
PA: -542M -14F -16P
PTAT: +0.6

Cold Springs RU Perfect EXP

USA 840003135189027 VG87
4-06 305 14051 3.0 425 3.2 455

Hard Core S Firefighter EXP ET

USA 68317459
PA: -358M -8F -7P
PTAT: +0.5

B-D-F Madness Marsha

USA 68317489
AA Sr 3 yr old 2018

Innisfail Red Ruben

USA 360010935
PTA: -94M -24F -2P
PTAT: +0.5

Solid-Gold Mega Pebbles ET

USA 68307667 G+81
5-11 365 22550 3.9 872 3.1 706
8-05 365 22140 4.1 908 3.1 681
10-02 365 22190 3.9 872 3.0 670
11-11 305 19430 4.4 855 3.0 579
13-06 365 19560 3.7 730 3.0 586
16-00 305 18328 4.1 759 3.0 557

3rd Dam:

Spungold-R Logic Precious ET
EX92 2E

3-10 356 24180 4.0 971 3.2 785
5-05 305 31210 4.9 1539 3.2 1012
All American Fall Yrl 2009

4th Dam:

Gold Mine Poppys OT Kay

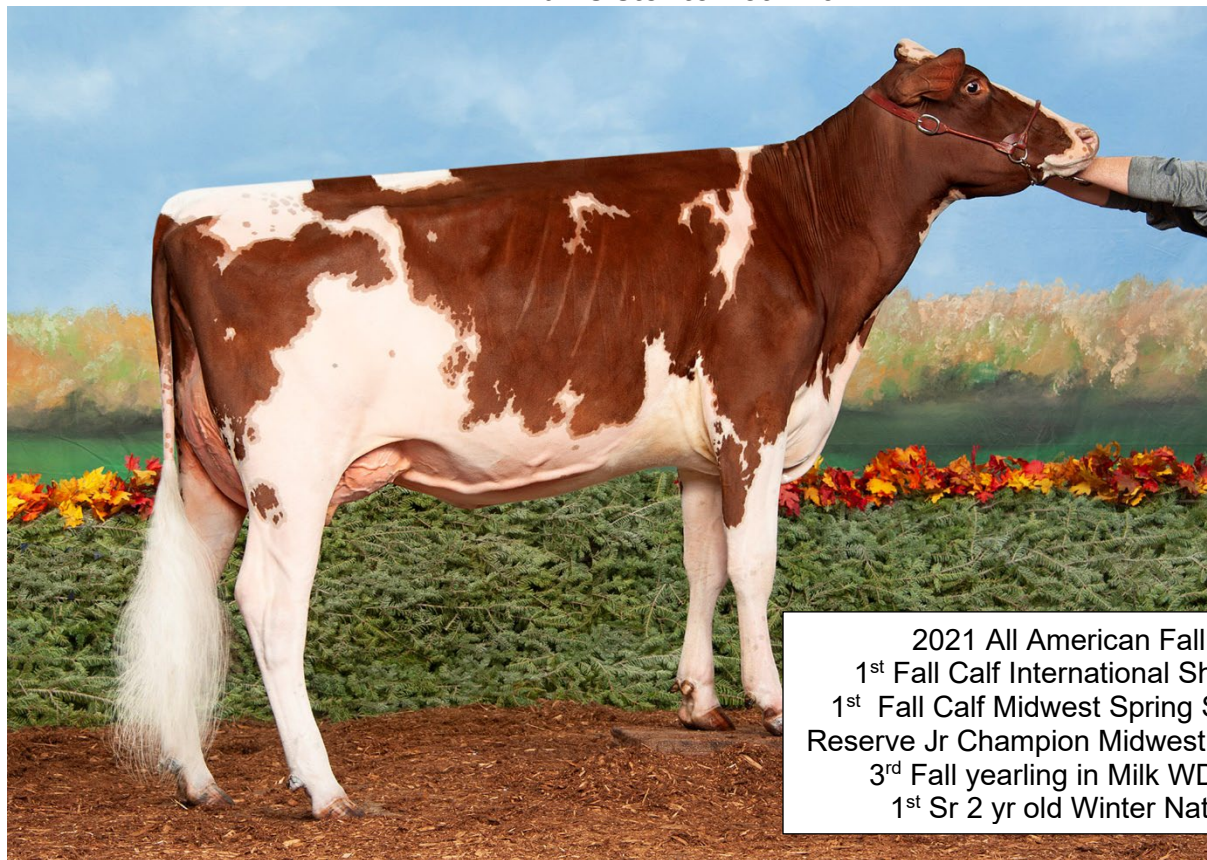
USA 446516 EX-95 2E
4-10 365 46666 3.3 1544 3.1 1427
5-10 365 43840 3.4 1484 3.1 1340
7-11 365 46980 3.4 1587 3.1 1437
AA Aged Cow 2005, 2007
Res AA 4 yr old 2003

5th Dam:

Gold Mine Sweet Poppy 922
EXP

USA 440473 VG87
3-10 303 18990 3.6 696 2.9 554

Full sister to Lot E16



2021 All American Fall Calf
1st Fall Calf International Show 2021
1st Fall Calf Midwest Spring Show 2021
Reserve Jr Champion Midwest Spring 2021
3rd Fall yearling in Milk WDE 2022
1st Sr 2 yr old Winter Natl 2023

MOLEHILL MYKOLA MYRTLE EX90

LOT E16

3 #1 IVF REVERSE SORTED FROZEN EMBRYOS

David Crowshaw
Parkesville, KY

DIRECT TRANSFER
Stored in Kentucky

Kuszmar Megadeth Mykola
EXP

USA 840003131745168 EX92
PTA: -242M -22F -13P
PTAT: +0.4

Blue Spruce RR Mays Macy

USA 68309417 EX91
2-01 305 14640 4.0 582 3.3 476
353 17120 4.0 683 3.3 560
3-02 305 25990 4.4 1138 3.0 791
347 28810 4.4 1268 3.1 884

Kuszmar Megadeth

USA 455752 EX93
PTA: -399M -18F -12P
PTAT: +0.7

GE Kuszmar Dakota Mud

USA 68302062 EX92 2E
6-00 361 29090 3.1 913 3.0 862
7-02 323 26660 3.0 803 2.9 778
8-03 333 23470 3.5 824 2.9 689

Innisfail Red Ruben

USA 360010935
PTA: -94M -24F -2P
PTAT: +0.5

Blue Spruce Clay Melody Mya

USA 471000069 EX93 2E
2-03 308 17380 4.2 725 3.4 588
3-03 274 14930 4.4 650 3.3 500
6-00 339 27480 3.9 1083 2.9 799
7-00 293 23690 4.0 955 3.0 720

Maternal sister to Embryos:

Molehill Lars Marln Monroe
EXP

3rd Fall Calf WDE 2022

3rd Dam:

Blue Spruce-Kaclay Misty
Melody

USA 455737 VG87
2-08 313 20310 3.6 735 3.3 663
3-08 305 20750 3.6 750 3.1 653
360 22270 3.6 807 3.2 710

Dam of Lot E17



HM All American Fall Calf 2019
 1st Fall Calf Eastern Natl 2019
 Nom AA Fall yearling 2020
 Jr All American Sr 3 yr old 2022
 Grand Champ Premier Jr Show Harrisburg 2023
 2nd 4 yr old Eastern Natl 2023
 1st 4 yr old Jr Winter Natl 2023

HARD CORE LOTTERY FIREWORKS EX90

LOT E17 3 #1 IVF REVERSE SORTED FROZEN EMBRYOS

Crowshaw, Towe & Graves
Parksville, KY

DIRECT TRANSFER

Stored at TransOva Hagerstown, MD

Springville Logic Premium ET

USA 68306847
PTA: -1016M -33F -22P
PTAT: +0.6

Hard Core Lottery Fireworks

USA 68324765 EX90
2-06 305 12800 3.8 488 3.2 406
365 14449 3.9 557 3.2 466
3-08 305 13712 3.7 501 3.2 443
312 13883 3.7 507 3.2 450

GMC Rebel Logic ET

USA 456757
PTA: -819M +4F -20P
PTAT: +0.2

Tex-Star Othello Peri

USA 459561 EX95 3E
5-11 291 19000 3.7 710 3.3 632
6-09 363 20760 3.6 755 3.4 706

Hard Core Othello Snoopy ET

USA 68303119
PTA: -1255M -45F -39P
PTAT: +0.1

Hard Core Snoopy Firebug EXP

USA 68309901 EX94 4E
1-11 365 16160 3.7 595 3.3 539
3-02 353 17520 3.9 676 3.3 576
4-05 305 19368 3.7 723 3.2 620
5-11 355 20840 3.6 740 3.2 662
10-00 365 17212 3.9 674 3.3 564
LTD: 109630m 4124f 3629p

3rd Dam:

Springhill Firepower ET
EX92 2E

3-00 315 21790 3.8 819 3.1 686
4-01 328 20380 3.8 784 3.2 651
5-03 295 16000 4.1 651 3.5 556

4th Dam:

Sunshine Now You See
Fireball EX90 2E

7-10 274 19980 3.2 648 2.9 588
Res AA Fall Yearling 2003
Res AA Fall Heifer 2002

5th Dam:

Sunshine Fig's Frosty EX90

5-05 342 22520 3.5 797 3.1 700
6-05 305 19680 3.4 664 3.1 605
352 21090 3.4 717 3.1 651

Grand Dam of Lot E18



All American 5 yr old 2019
Grand Champion International 2019
Grand Champion International 2017
AA Jr 3 yr old 2017
Res AA Jr 2 yr old 2016

EICHLERS MD BLANCHE ET EX94 3E

LOT E18

4 #1 IVF REVERSE SORTED FROZEN EMBRYOS

Cold Springs Farm
Farmington, NH

DIRECT TRANSFER
Stored at Transova Hagerstown MD

B-D-F Marshas Money

USA 68325655 EX90
PA: -542M -14F -16P
PTAT: +0.6

Hard Core S Firefighter EXP ET

USA 68317459
PA: -358M -8F -7P
PTAT: +0.5

B-D-F Madness Marsha

USA 68317489
AA Sr 3 yr old 2018

Elite HP Blast

USA 840003128124770 EX91 2E
2-00 289 10921 2.5 278 3.2 348
3-00 305 16248 3.3 542 3.3 540
320 16713 3.3 558 3.3 558
4-00 271 15176 3.3 495 3.5 526
4-11 305 19628 2.9 571 3.3 645
357 21728 3.0 652 3.3 717

Innisfail Perfection EXP

USA 683132600
PTA: +238M +9F +6P
PTAT: +0.5

Eichlers MD Blanche ET

USA 840003124891972 EX94 3E
2-03 305 20870 3.8 792 3.0 635
347 23700 3.8 898 3.1 726
3-05 305 23870 3.9 937 3.2 773
5-02 304 25500 3.6 916 3.0 767
All American 5 yr old 2019

3rd Dam:

Eichlers RN Blessing

Breakfast EX90

2-02 333 15230 4.0 604 3.2 481
3-03 305 20420 3.8 774 3.4 685
365 23420 3.9 902 3.4 793

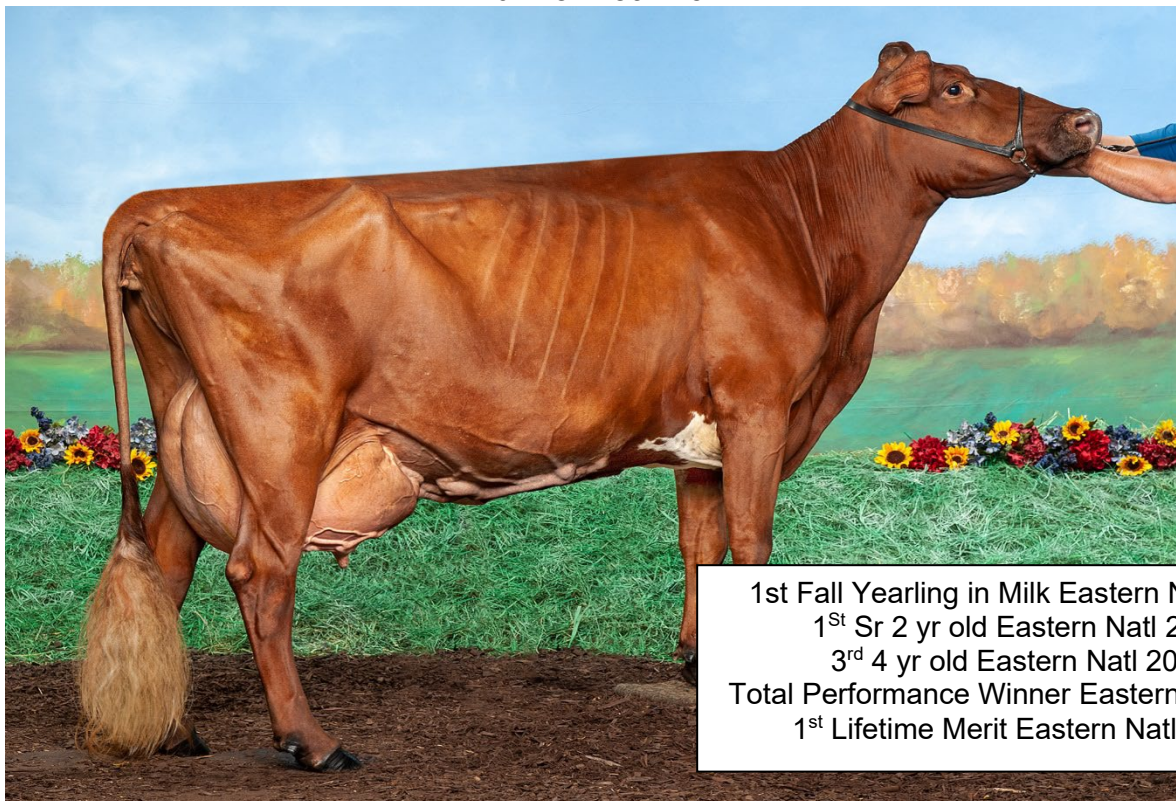
4th Dam:

MJ Eichler Dap Bianca

Blessing EX90

3-03 305 26520 3.6 947 3.1 810

Dam of Lot E19



HARD CORE PERFECT SUNRISE EXP EX94 4E

LOT E19

3 #1 IVF REVERSE SORTED FROZEN EMBRYOS

Hard Core Farm
New Enterprise, PA

DIRECT TRANSFER

Stored at TransOva Hagerstown, MD

Kuszmar Megadeth

USA 455752 EX93
PTA: -399M -18F -12P
PTAT: +0.7

Innisfail Mega Lottery ET

USA 68314502
PTA: -561M -43F -26P
PTAT: +0.7

Innisfail RO Lady 5086 TW

EXP
USA 463548 EX92 2E
2-05 365 24080 3.1 746 3.0 734
5-09 365 24500 3.2 787 3.0 743

3rd Dam:

Innisfail OT Stella 004 EXP

USA 424178 VG86
7-07 334 18230 3.3 602 3.3 603

Hard Core Perfect Sunrise EXP

USA 68318757 EX94 4E
3-08 305 14581 3.3 487 2.9 425
339 15053 3.3 503 2.9 441
4-11 309 16769 3.6 603 3.0 506
5-11 305 17167 3.5 603 3.0 512
365 19315 3.5 677 3.0 582
7-05 309 22411 3.5 792 2.9 652
8-05 305 20469 3.6 726 2.9 594
365 22121 3.5 777 2.9 648

Innisfail Perfect Storm*CD

USA 360012228
PTA: -26M +0F +0P
PTAT: +0.2

4th Dam:

Innisfail Stella 125th VG87

5-01 317 20300 3.6 721 3.3 662
7-02 305 20700 3.6 749 3.2 662

Innisfail BDC Stella 905

USA 445670 EX96 5E
10-10 365 24770 3.7 906 2.9 706
12-04 365 25510 3.8 966 2.9 747
13-10 365 25130 3.6 914 2.9 734
LTD: 234813M 9242F 7050P
Grand Champ WDE 2006 & 2009

5th Dam:

Innisfail Stella 95th

7-06 305 18060 3.7 671 3.4 615