



50th GREAT SOUTHWEST “MORE FOR YOUR MONEY” ANGUS SALE

Saturday • October 14, 2023 • Noon

SALE SITE

*Appalachian Regional Exposition (APEX) Center
200 Apex Drive, Wytheville, VA*

To All Beef Producers,

It is my privilege to welcome you to the 50th Great Southwest “More For Your Money” Fall Sale. It is one of the longest continuous purebred consignment sales on the East Coast. The Southwest Virginia Angus Association is sponsoring this sale as they have done for many years. The SWVAA works to support the entire beef industry in the *Great Southwest*. The SWVAA adheres to the genetic evaluation policy of the American Angus Association. As with our previous sales, if you do not feel comfortable attending in person due to the impact of COVID-19, we would like to remind you that the sale will also be streamed live on Cowbuyer.com where your bids will be received in real time. If you prefer to bid by phone, please contact either Smith Reasor or myself before sale day and we will provide you with a number you can call to place your bids that day.

We have seventeen consignors participating from all over Southwest Virginia, West Virginia, North Carolina and East Tennessee. We are selling cow-calf pairs and some of the calves will be ready to split from their dams. There is a nice group of fall-calving cows with baby calves as well as open and bred heifers in this sale.

Don't hesitate to give me, George T. “Buddy” Johnstone Jr., a call (620-4901) or Smith Reasor, Auctioneer (620-3123). We have a nice selection of cattle from which to choose. They will be available for your inspection after 12:00 on Friday, October 13, 2023.

Southwest Virginia Angus Association hereby reserves the right in its absolute and total discretion to refuse to accept any bid from any person or individual or to issue a bid number for any reason, including but not limited to, a previous instance of non-payment in a Southwest Virginia Angus Association sale.

George T. Johnstone Jr.
Sale Coordinator

1 MISS RAMPAGE 3H

QUAKER HILL RAMPAGE 0A36

DOB 3/8/20

Tatt 3H

Reg. 20317191

CED	12
BW	-1.0
WW	57
YW	102
M	27

WILLIAMS RAMPAGE 282

WILLIAMS RITA 71

PROGRESSOR G 33A PROGRESS 27Y

MISS PROGRESSOR 3D

MISS NEW DESIGN 2U10

COW

Consignor: **ACE IN THE HOLE**

A granddaughter of the ABS bull, Quaker Hill Rampage 0A36 out of a productive dam. Just a three year old with good EPDs. Top 10% of the breed for CED and BW. She was pasture exposed to Aces Magnitude 17H from 1/28/23 until 5/27/23 and from 6/1/23 until 8/16/23 to TTT Fireball 26 whose EPDs are +17 -2.3 +72 +133 +27 with a \$C+344 (top 1% of the breed). Breeding update sale day.



QUAKER HILL RAMPAGE 0A36

2 COOL BREEZE SHORITA

CONNELY CONSENSUS 7229

DOB 3/10/18

Tatt 20F

Reg. 19883705

	Sire	Dam
CED	17	7
BW	-3.4	.1
WW	46	46
YW	90	78
M	29	26

CONNELY COMRADE 1385

HAPPY GEE OF CONANGA 919

PROGRESSOR G 33A PROGRESS 27Y

COOL BREEZE SHORITA 16C

COOL BREEZE SHORITA 1606

COW

Consignor: **ACE IN THE HOLE**

An own daughter of the Select Sires bull, Connealy Comrade 1385 out of a cow from the Shorita cow family. She was pasture exposed to TTT Fireball 26 from 6/1/23 until 8/16/23 and exposed to Aces Magnitude 17H from 1/28/23 until 5/27/23. Breeding update sale day. Both cows raised nice calves that are being retained in the herd.

3 DMB BLACKBIRD 920

M A F TANKER 23

DOB 2/26/20

Tatt 920

Reg. 19725304

DMB TANKER 318

DMB MANDY 216

S A V TEN VOLT 3039

DMB BLACKBIRD 1125

DMB BLACKBIRD 624

CED	-6
BW	4.2
WW	73
YW	130
M	30

COW

Consignor: **DMB ANGUS**

A nice three year old cow with a bull calf at side born 7/16/23 (Reg #20703402) sired by DMB Treasure 3109. She stems from the Blackbird cow family that has been extremely good for us through the years, and loaded with performance sires throughout the pedigree. She sells pasture exposed from 8/1/23 until sale day to DMB Iconic 712, whose EPDs are: +4 +1.2 +93 +163 +30 \$B+195 (top 5%) \$C+325 (top 3%).



MGR TREASURE

4 DMB PRIMROSE 998

SILVEIRAS CONVERSION 8064

DOB 9/28/18

Tatt 998

Reg. 19330092

BYERGO BLACK MAGIC 3348

BYERGO ELIA CUPCAKE 5900

SYDGEN MANDATE 6079

DMB MISS PRIMROSE 494

DMB MISS PRIMROSE 1100

CED	-5
BW	6.1
WW	79
YW	150
M	25

COW

Consignor: **DMB ANGUS**

A Byergo Black Magic daughter from the Primrose cow family. She may have a little more birth weight, but that usually comes with a little more growth and she does pass that along to her calves with an average weaning ration of 107. Also she is pretty good on Claw and Angle if you are needing some help in that area. She sells pasture exposed to DMB Hometown 581 whose EPDs are +10 +.3 +86 +145 +21 \$G+103 (Top 2%) \$B+215 (Top 2%) \$C+334 (Top 2%), she was pregnancy check on 7/7/23 and was called 4 month bred.



GRAYSTONE BLACKBIRD 485

CONNEALY ONWARD

DOB 3/21/15

SITZ UPWARD 307R

Tatt 485

SITZ HENRIETTA PRIDE 81M

Reg. 19994203

BOYD NEW DAY 8005

CED	5
BW	2.5
WW	53
YW	99
M	29

GRAYSTONE BLACKBIRD 684

GRAYSTONE BLACKBIRD 6799

COW

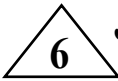


SITZ UPWARD 307R

GRAYSTONE FARM

Consignor:

A proven performer sired by the Genex Masterpiece Sire, Sitz Upward 307R whose dam was one of our most productive Blackbirds. She sells with a heifer calf born 3/25/23 sired by Graystone Renown 507 whose EPDs are: +1 +2.5 +60 +109 +21. Pasture exposed from 6/15/23 until sale date to Graystone Renown 507.



JUSTAFEW MAGNETIC BONNIE 005

K C F BENNETT SOUTHSIDE

DOB 8/28/20

MEAD MAGNITUDE

Tatt 005

MEAD PRIMROSE N198

Reg. 20054561

HARB PENDLETON 765 J H

CED	15
BW	-2.0
WW	57
YW	104
M	33

JUSTAFEW PENDLTN BONNIE 001

JUSTAFEW BONNIE KAYE 111

COW



JUSTAFEW SOUTHERN MISS 905

NICHOLS EXTRA K205

DOB 9/6/19

K C F BENNETT SOUTHSIDE

Tatt 905

K C F MISS 208 S11

Reg. 19750193

HA PROGRAM 5652

JUSTAFEW PROGRAM MISS 411

JUSTAFEW TARGETED MISS 901

CED	4
BW	2.5
WW	69
YW	128
M	29

COW

JUSTAFEW ANGUS

Consignor:

A nice young cow from our foundation Bonnie cow family. Sells with a 9/4/23 bull calf (BW 66 lbs), sired by Sydgen Black Pearl 2006 of the ABS stud. Sells open.

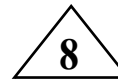
JUSTAFEW ANGUS

Consignor:

A proven young cow that weans an extra heavy calf. Sells with bull calf born 9/3/23 (BW 68 lbs), sired by Sydgen Black Pearl 2006 of the ABS stud. Sire's EPDs are +9 +1.0 +59 +110 +33 \$B+184 (top 10%) \$C+307 (top 10%). Sells open.



K C F BENNETT SOUTHSIDE



KHA WALL STREET MARLO 0123

BASIN PAYWEIGHT 1682

DOB 9/15/22

DEER VALLEY WALL STREET

Tatt 0123

DEER VALLEY RITA 36113

Reg. 20651746

V D A R HERO 5666

NMA MISS MARLO G102

NMA MISS FUSION D102

CED	10
BW	.4
WW	62
YW	112
M	26

COW

DDP

KIBBLE HILL ANGUS

Consignor:

A nice Deer Valley Wall Street daughter. Wall Street females are recognized for their highly maternal and excellent brood cow type. Sells open and ready to breed.



COLEMAN ENGAGE 5255



LAWSONS ELBA H738

COLEMAN CHARLO 0256

DOB 3/25/20

COLEMAN ENGAGE 5255

Tatt H738

COLEMAN EVERELDA ENTENSE1169

Reg. 19902717

S A V SENSATION 5615

LAWSONS ELBA F 315

S A V ELBA 918

CED	8
BW	.6
WW	61
YW	114
M	32

COW

LAWSON FARM

Consignor:

Selling a nice three year old nursing her second calf going back to the million dollar producer at Schaff Angus Valley Ranch, S A V Elba 1094. She sells pasture exposed from 3/23/23 to 5/27/23 to Lawsons Stunner H774 whose EPDs are: +5 +1.5 +78 +138 +37 SB+161, then pasture exposed to TK Stunner F655B from 5/27/23 to 9/1/23.



JUSTAFEW BLK PEARL BONNIE113

SYDGEN TRUST 6228

DOB 10/16/21

SYDGEN BLACK PEARL 2006

Tatt 113

SYDGEN ANITA 8611

Reg. 20360304

EXAR UPSHOT 0562B

JUSTAFEW UPSHOT BONNIE 508

JUSTAFEW STRATGIC BONNIE 808

CED	5
BW	2.1
WW	64
YW	116
M	31

COW

KIBBLE HILL ANGUS

Consignor:

A nice two year old cow that goes back to Ann Rambo's Bonnie cow family. Sells with a 9/1/23 heifer calf sired by Mead Magnitude whose EPDs are +14 -.4 +83 +155 +40. Heifer calf's EPDs are: +10 +.8 +74 +136 +35.



LAWSONS ALTERNATIVE L1264

BALDRIDGE ALTERNATIVE E125

DOB 3/5/23

STEVENSON ALTERNATIVE 00081

Tatt L1264

STEVENSON JOYCE 3825

Reg. 20739523

COLEMAN ENGAGE 5255

LAWSONS ELBA H738

LAWSONS ELBA F 315

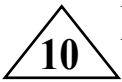
CED	8
BW	1.7
WW	70
YW	124
M	27

BULL

LAWSON FARM

Consignor:

A nice young bull sired by the Lawson herd sire, Stevenson Alternative 00081 whose calves look very good at Lawson Farm.



LAWSONS CHLOE J926B

MUSGRAVE 316 STUNNER

DOB 9/6/21

T K STUNNER F655B

Tatt J926B

T K PRINCESS Z749

Reg. 20402901

COLEMAN VENTURE 403

LAWSONS CHLOE E269

LAWSONS CHLOE C747

CED	10
BW	2.2
WW	81
YW	136
M	31

COW

LAWSON FARM

Consignor:

Super nice, deep soggy Chloe female going back to our still in production Basin Chloe 7T26 @ sixteen years of age. This is a don't miss female. Lots of power. She sells bred to calf to Sitz Stellar 715G. Due mid-October to mid-November.



MUSGRAVE 316 STUNNER

12 BRIDGEVIEW CHLOE 233

SYDGEN ENHANCE

DOB 3/17/20

MOGCK ENTICE

Tatt 233

MOGCK ERICA 2255

Reg. 19942654

K C F BENNETT FORTRESS

CED	7
BW	1.8
WW	78
YW	125
M	29

BRIDGEVIEW CHLOE 7006

LAWSONS CHLOE C680

COW

Consignor: LAWSON FARM

Selling a three year old raising her second calf stemming back to our famous foundation Chloe 7T26 who is still rproducing at coming seventeen years of age. The Chloes are very maternal females with a lot of performance - not many cow families carry both as the Chloes do. As you will see, the bull calf she is nursing is a brute for just an April calf. He will make a great herd sire. She sells pasture exposed from 3/23/23 to 5/27/23 to Lawsons Stunner H774, then pasture exposed to TK Stunner F655B from 5/27/23 to 9/1/23.



K C F BENNETT FORTRESS

12A LAWSONS STUNNER L1283

MUSGRAVE 316 STUNNER

DOB 4/6/23

T K STUNNER F655B

Tatt L1283

T K PRINCESS Z749

Reg. 20739526

MOGCK ENTICE

CED	6
BW	2.6
WW	88
YW	142
M	23

BRIDGEVIEW CHLOE 233

BRIDGEVIEW CHLOE 7006

BULL

Consignor: LAWSON FARM

A herd sired prospect sired by the T K Stunner F655B bull whose calves are top performers. His +88 WW is in the Top 3% and +142 Top 10% of the breed. A chance to buy a bull from the Chloe family.

13 LAWSONS HENRIETTA PRIDE H697

S A V RENOWN 3439

DOB 2/29/20

ZWT SUMMITT 6507

Tatt H697

COLEMAN DONNA 714

Reg. 19902538

HA COWBOY UP 5405

BRIDGEVIEW HENRIETTA 801

LAWSONS HENRIETTA B563

CED	5
BW	1.3
WW	67
YW	115
M	21

COW

Consignor: LAWSON FARM

Nice three year old ZWT Summitt 6507 daughter nursing her second calf. This female goes back to Deer Valley Henrietta 2212 donor who is still in production and has five natural calves with a 103 WW ratio. H697 sells bred pasture exposed from 3/23/23 to 5/27/23 to Lawsons Stunner H774 whose EPDs are +5 +1.5 +78 +138 +37 \$B+161, then pasture exposed to TK Stunner F655B from 5/27/23 to 9/1/23.



S A V RENOWN 3439

13A LAWSONS ALTERNATIVE L1249

BALDRIDGE ALTERNATIVE E125

DOB 2/18/23

STEVENSON ALTERNATIVE 00081

Tatt L1249

STEVENSON JOYCE 3825

Reg. 20739524

ZWT SUMMITT 6507

LAWSONS HENRIETTA PRIDE H697

BRIDGEVIEW HENRIETTA 801

CED	7
BW	2.0
WW	73
YW	124
M	22

BULL

Consignor: LAWSON FARM

A top notch herd sire prospect sired by the Stevenson Alternative 00081 bull out of a dam from the great Henrietta Pride cow family.

14 **LAWSONS LADY H690**

COLEMAN CHARLO 0256
COLEMAN BRAVO 6313
COLEMAN DONNA 714
S A V SENSATION 5615
LAWSONS LADY F321
LAWSONS LADY D874

DOB 2/22/20
Tatt H690
Reg. 19902534

CED	6
BW	1.4
WW	64
YW	111
M	25

COW

Consignor: LAWSON FARM

Selling a nice three year old nursing her second calf. This female goes back to one of my favorite cows, Sinclair Lady 00E1 3410. Her dam, Lawsons Lady F321 has earned her way to Pathfinder status on just her first three calves with a WW Ratio of 108 on three calves. H690's individual WW Ratio was 109. She sells pasture exposed from 3/23/23 to 5/27/23 to Lawsons Stunner H774 then pasture exposed to TK Stunner F655B whose EPDs are: +4 +3.3 +97 +159 +17 \$B+191 from 5/27/23 to 9/1/23.



COLEMAN CHARLO 0256

14A **LAWSONS ALTERNATIVE L1270**

BALDRIDGE ALTERNATIVE E125
STEVENSON ALTERNATIVE 00081
STEVENSON JOYCE 3825
COLEMAN BRAVO 6313
LAWSONS LADY H690
LAWSONS LADY F321

DOB 3/11/23
Tatt L1270
Reg. 20739525

CED	7
BW	2.1
WW	71
YW	122
M	24

BULL

Consignor: LAWSON FARM

Another good bull calf sired by Stevenson Alternative 00081 out of a dam from the Lady cow family.

15 **LAWSONS WITCH G586**

S A V RENOWN 3439
ZWT SUMMITT 6507
COLEMAN DONNA 714
SITZ UPWARD 307R
LAWSONS WITCH Z321
YON WITCH S379

DOB 8/30/19
Tatt G586
Reg. 19782806

CED	13
BW	-.5
WW	57
YW	96
M	30

COW

Consignor: LAWSON FARM

Selling a nice pair of full sisters. We flushed Lawsons Witch Z321 only one time to ZWT Summit 6507. She has had nine natural calves with a 364 day calving interval with WW Ratio of 106 on nine calves. Four bulls have sold on bull testings at the top tier. Great earning potential on both of these only four year olds. She sells with a bull calf born 9/2/23 sired by Lawsons Stunner H774. Bull calf's EPDs are: +9 +.5 +68 +117 +34.



ZWT SUMMITT 6507

16 **LAWSONS WITCH G587**

S A V RENOWN 3439
ZWT SUMMITT 6507
COLEMAN DONNA 714
SITZ UPWARD 307R
LAWSONS WITCH Z321
YON WITCH S379

DOB 8/30/19
Tatt G587
Reg. 19782807

CED	6
BW	2.1
WW	73
YW	121
M	19

COW

Consignor: LAWSON FARM

Selling a nice pair of full sisters. We flushed Lawsons Witch Z321 only one time to ZWT Summit 6507. She has had nine natural calves with a 364 day calving interval with WW Ratio of 106 on nine calves. Four bulls have sold on bull testings at the top tier. Great earning potential on both of these only four year olds. She sells with a bull calf born 9/2/23 sired by Lawsons Stunner H774. Bull calf's EPDs are: +6 +1.8 +76 +130 +28.



DEER VALLEY GROWTH FUND

19

LUCAS LADY BAREBACK M228S

BALDRIDGE BRONC

DOB 9/22/22

LUCAS BAREBACK 778S

Tatt 228S

LUCAS LADY PROPHET 5910

Reg. 20644739

DEER VALLEY GROWTH FUND

LUCAS LADY GROWTH FUND M9750

LUCAS LADY TEN X 448S

CED	3
BW	3.0
WW	73
YW	130
M	27

COW

MIP

LUCAS ANGUS FARM

Consignor: 228S is a phenotypically attractive female sired by our powerful herdsire Lucas Bareback 778S. She is a larger framed heifer and stands on a good set of feet. Her dam is a picture perfect, beautiful uddered young Growth Fund cow. 228S ranks in the top 20% for WW and YW. Sells open.

17 LUCAS LADY BAREBACK 2620

BALDRIDGE BRONC

DOB 10/25/22

LUCAS BAREBACK 778S

Tatt 2620

LUCAS LADY PROPHET 5910

Reg. 20644740

R B TOUR OF DUTY 177

CED	7
BW	1.5
WW	63
YW	103
M	31

LUCAS LADY TOUR OF DUTY 655S

LUCAS LADY BISMARCK 114J

COW

MIP

LUCAS ANGUS FARM

Consignor: Here is a stout made heifer sired by Lucas Bareback 778S. 2620 has three generations of powerful females in the maternal side of her pedigree. Her maternal grandam is still going strong at twelve years of age. Longevity and broodiness is bred into this one. Sells open.

20

LUCAS LADY DRAG IRON T217S

HOOVER NO DOUBT

DOB 9/12/22

BALDRIDGE DRAG IRON

Tatt 217S

BALDRIDGE ISABEL C024

Reg. 20644729

H P C A INTENSITY

LUCAS LADY INTENSITY T67J

LUCAS LADY IN FOCUS T846O

CED	6
BW	2.0
WW	67
YW	119
M	28

COW

LUCAS ANGUS FARM

Consignor: This heifer is sired by Baldrige Drag Iron out of the Sire Buyer lineup. The Drag Iron cattle are very impressive. We chose Drag Iron to introduce some Hoover No Doubt genetics into our herd and it has worked out really well. 217S has a solid set of EPD's and ranks top 15% for \$M and top 25% for \$C. These are a nice set of open heifers.

18 LUCAS LADY CRACKERJACK T2490

MUSGRAVE 316 STUNNER

DOB 10/2/22

MUSGRAVE CRACKERJACK

Tatt 2490

MUSGRAVE RITO JET A649

Reg. 20671557

G A R SURE FIRE

CED	9
BW	.7
WW	71
YW	127
M	29

LUCAS LADY SURE FIRE T856S

LUCAS LADY RAMPAGE T685S

COW

LUCAS ANGUS FARM

Consignor: A really attractive heifer sired by the ST Genetics bull Musgrave Crackerjack. This low BW heifer has a solid set of EPD's and her pedigree is stacked with AI sires. 2490 weaned off with a weaning ratio of 102. A very nice heifer here she sells open.



MUSGRAVE CRACKERJACK



MSA BLACKBIRD 7E4



MSA BLACKBIRD 7E4

MCC DAYBREAK

DOB 2/28/17

QUAKER HILL RAMPAGE 0A36

Tatt 7E4

QHF BLACKCAP 6E2 OF4V16 4355

Reg. 18773685

CONNALLY RIGHT ANSWER 746

MSA BLACKBIRD 1Y12

MSA BLACKBIRD 9W12

CED	9
BW	1.3
WW	74
YW	123
M	22

COW

MOSSY SPRINGS ANGUS

Consignor: Here is a powerfully designed Rampage daughter that is a big ribbed, good footed female with a beautiful udder and quiet disposition. 7E4 has a 369-day lifetime calving interval on 6 calves and has a balanced set of genetic traits along with an opportunistic pedigree. Her 2021 G A R Home Town son (*20003093) is currently a walking herd sire at VA Tech while the Revelation heifer calf at side will sell separately. This maternal factory sells safe to the Select Sires \$B and \$C specialist, G A R Home Town, and will be due on 3/15/24. Certified and Accredited herd.



LUCAS LADY EXCLUSIVE 127S

LD CAPITALIST 316

DOB 9/21/21

MUSGRAVE 316 EXCLUSIVE

Tatt 127S

MUSGRAVE PRIM LASSIE 163-386

Reg. 20356660

G A R PROGRESS

LUCAS LADY PROGRESS 49J

LUCAS LADY PROPHET 221F

CED	10
BW	.5
WW	65
YW	116
M	32

COW

LUCAS ANGUS FARM

Consignor: Do not let this opportunity go by to purchase a female sired by the great, now deceased, Musgrave 316 Exclusive. 127S is just a two year old and will make a great addition to any herd with her heifer calf sired by the calving ease, high growth ST Genetics bull Hoffman High Road (born 9/22/23).



MSA BLACKBIRD 3L3

QUAKER HILL RAMPAGE 0A36

DOB 2/16/23

V A R REVELATION 6299

Tatt 3L3

SANDPOINT BLACKBIRD 8809

Reg. 20615615

QUAKER HILL RAMPAGE 0A36

MSA BLACKBIRD 7E4

MSA BLACKBIRD 1Y12

CED	2
BW	4.2
WW	86
YW	149
M	18

COW

MOSSY SPRINGS ANGUS

Consignor: This attractive weaned heifer calf, sired by V A R Revelation 6299, has an abundance of pre-weaning growth and exceptional carcass values. Her HD50K genomic profile reveals 9 different traits with a top 10% ranking. She tipped the scales with an actual weaning weight of 541 lbs. at 185 days and has a completed health record at weaning. This stylish heifer calf is certainly show-ring material, is calf-hood vaccinated, and hails from a Certified and Accredited herd.



MSA SHAWNEE 9G15

K C F BENNETT FORTRESS

DOB 10/26/19

VPI FORTRESS 6D28

Tatt 9G15

VPI RITA 317 7T39 ET

Reg. 19578854

K C F BENNETT FORTRESS

MSA SHAWNEE 7E1

MSA SHAWNEE 4B10

CED	8
BW	1.3
WW	86
YW	154
M	24

COW

MOSSY SPRINGS ANGUS

Consignor: Here is a phenotypically flawless female that has the kind of numerical values which you just don't find every day. She has breed-leading growth EPDs and is loaded with maternal power. Her dam, 7E1, sold last year to Taylor Mundy, Mount Airy, NC in the SW VA Double Header Sale. She sells with a V A R Revelation 6299 bull calf at side (tattoo 3L9, BW 62 lbs.), born 9/3/23. 9G15 is open and comes from a Certified and Accredited herd.



MSA SHAWNEE 9G15

24

MAF 22B23

CONNEALY ARMORY

CONNEALY BLACKHAWK 6198

PRECIOUS OF CONANGA 380X

QUAKER HILL RAMPAGE 0A36

MAF 16R54

MAF 12I5

DOB 9/1/21

Tatt 23

Reg. 20163414

CED	6
BW	2.0
WW	79
YW	134
M	23



CONNEALY BLACKHAWK 6198

COW

MULLINS ANGUS FARM

Consignor: Just a two year old out of, Connealy Blackhawk 6198. Her dam was sired by the Pathfinder bull, Quaker Hill Rampage 0A36. Pasture exposed from 1/1/23 to 3/1/23 to VPI Whitlock 7E35 whose EPDs are: +6 +1.5 +59 +108 +34. She was then pasture exposed from 3/2/23 to 6/30/23 to MAF 22B25. Vet checked safe six months.



JINDRA ACCLAIM

26

MAF 20J15

JINDRA 3RD DIMENSION

JINDRA ACCLAIM

JINDRA BLACKBIRD LASSY 1111

PLATTEMERE WEIGH UP K360

MAF 17W78

MAF 13T24

DOB 9/1/19

Tatt 15

Reg. 19525147

CED	7
BW	.9
WW	75
YW	145
M	33

COW

MULLINS ANGUS FARM

Consignor: Outstanding EPDs on this female sired by Jindra Acclaim. Her YW+145 Ratio and \$B+186 are in the top 3% of the Angus breed. She was pasture exposed from 1/1/23 to 3/1/23 to VPI Whitlock 7E35, then pasture exposed from 3/2/23 to 6/30/23 to MAF 22B25 whose EPDs are: +11 +1.7 +80 +136 +23. Vet checked safe five-six months.



PLATTEMERE WEIGH UP K360

25

MAF 21J5

JINDRA 3RD DIMENSION

JINDRA ACCLAIM

JINDRA BLACKBIRD LASSY 1111

PLATTEMERE WEIGH UP K360

MAF 19W89

MAF 16R54

DOB 9/1/20

Tatt 5

Reg. 19851579

CED	6
BW	1.7
WW	80
YW	142
M	26

COW

MULLINS ANGUS FARM

Consignor: Outstanding EPDs on this three year old sired by the Pathfinder bull, Jindra Acclaim. Her WW+80 and YW+142 Ratios are in the top 4% of the Angus breed while her \$B+192 is in the top 2%. She was pasture exposed from 1/1/23 to 3/1/23 to VPI Whitlock 7E35, then pasture exposed to MAF 22B25 whose EPDs are: +11 +1.7 +80 +136 +23 from 3/2/23 to 6/30/23. Vet checked safe five-six months.

27

MAF 19F95

CONNEALY CONSENSUS

DOB 9/22/18

K C F BENNETT FORTRESS

Tatt 95

THOMAS PATRICIA 9705

Reg. 19252932

PLATTEMERE WEIGH UP K360

CED	0
BW	3.3
WW	66
YW	111
M	23

MAF 16W45

MAF 7Y6

COW

MULLINS ANGUS FARM

Consignor: This six year old female is sired by the Pathfinder bull, K C F Bennett Fortress. Her dam is sired by Plattemere Weigh Up K360. She was pasture exposed from 1/1/23 to 3/1/23 to VPI Whitlock 7E35, then pasture exposed from 3/2/23 to 6/30/23 to MAF 22B25. Vet checked safe four-five months.



CONNEALY CONSENSUS

28

MAF 18W3

SITZ UPWARD 307R

DOB 9/1/17

PLATTEMERE WEIGH UP K360

Tatt 3

BARBARA OF PLATTEMERE 337

Reg. 18922591

S S OBJECTIVE T510 0T26

CED	12
BW	1.1
WW	87
YW	146
M	26

GRACE MEADOWS NEW DESIGNU078

G A R RETAIL PRODUCT 3416

COW

MULLINS ANGUS FARM

Consignor: Great EPDs on this female sired by the Pathfinder bull, Plattemere Weigh Up K360. Her WW+87 is in the top 2% and her YW+146 is in the top 3% of the Angus breed. She was pasture exposed from 1/1/23 to 3/1/23 to VPI Whitlock 7E35, then pasture exposed from 3/2/23 to 6/30/23 to MAF 22B25. Vet checked safe four-five months.

29

LWHF HENRIETTA PRIDE 305G

BASIN PAYWEIGHT 1682

DOB 9/7/19

TEX PLAYBOOK 5437

Tatt 305G

RITA 1C43 OF 9M26 COMPLETE

Reg. 19756333

V A R RESERVE 1111

PF 1111 HENRIETTA PRIDE 4510

SITZ HENRIETTA PRIDE 643T

CED	8
BW	.9
WW	56
YW	102
M	27

COW

NESTER ANGUS

Consignor: This 4-year-old Henrietta Pride cow is just entering her prime. A really maternal, moderately framed cow whose maternal granddam is the legendary Sitz Henrietta Pride 643T with 290 genomic progeny. She's an easy keeper with a Mature Weight in the bottom 25% of the breed while still boasting a top 45% Milk EPD. Sells bred to SS identified 7551, whose \$B+213 & \$C+377 are both in the top 1% of the breed, on 4/21 and pasture exposed to KAF Caliber 218 from 4/28/23 through 6/3/23. Confirmed safe.



SYDGEN C C & 7

30

NMA MS BERTIE J104 6 9070

MUSGRAVE 316 STUNNER

DOB 10/20/22

NMA STUNNER 9070

Tatt J104

M C BLACKCAP 4034

Reg. 20467865

SYDGEN C C & 7

SKY KING VERA 6

SARRATTS LUCY 9625

CED	9
BW	0
WW	61
YW	103
M	27

COW

NEW MORNING ANGUS

Consignor: Selling a nice group of open heifers sired by NMA Stunner 9070 whose EPDs are +1 +2.8 +77 +122 +32. This heifer's dam was sired by the Pathfinder bull, SydGen C C & 7 who has been very popular over the years. She shows several other Pathfinders in her pedigree. Sells open.

31 NMA RITA J103 OF G88 9070

MUSGRAVE 316 STUNNER
NMA STUNNER 9070
M C BLACKCAP 4034
V D A R HERO 5666
NMA RITA G88 OF B96 5666
NMA RITA B96 OF 4U20 823

DOB 10/18/22
 Tatt J103
 Reg. 20467862

CED	0
BW	3.1
WW	79
YW	126
M	27

COW MIP

NEW MORNING ANGUS

Consignor: Another nice heifer out of NMA Stunner 9070. Her WW +79 is in the Top 10% of the Angus breed. Her dam is from the Rita cow family. Sells open.



MUSGRAVE 316 STUNNER

32 NMA MISS ANNIE J91 D400 9070

MUSGRAVE 316 STUNNER
NMA STUNNER 9070
M C BLACKCAP 4034
DIAMOND ROUNDUP 896B
NMF DIAMOND ANNIE D400
DIAMOND ANNIE 078B

DOB 9/12/22
 Tatt J91
 Reg. 20467859

CED	2
BW	2.5
WW	62
YW	108
M	29

COW

NEW MORNING ANGUS

Consignor: This Musgrave 316 Stunner granddaughter is out of a dam from the Diamond cow family. Balanced EPDs on this open heifer.

33 NMA MORNING QUEEN J92

MUSGRAVE 316 STUNNER
NMA STUNNER 9070
M C BLACKCAP 4034
BASIN PAYWEIGHT 107S
NMA QUEEN VERA F92 OF 6 107S
SKY KING VERA 6

DOB 9/12/22
 Tatt J92
 Reg. 20467860

CED	5
BW	1.5
WW	76
YW	124
M	31

COW

NEW MORNING ANGUS

Consignor: Another daughter of NMA Stunner 9070. Her dam was sired by the Pathfinder bull, Basin Payweight 107S. She shows several Pathfinders in her pedigree. Sells open.



V D A R HERO 7072

34 NMA BLACK GARNET I95

V D A R HERO 7072
V D A R HERO 5666
V D A R LUCY 4361
G A R PROPHET
NMA BLACK GARNET 8017 6128
GOODE PREDESTINED 8017

DOB 9/25/21
 Tatt I95
 Reg. 20234553

CED	5
BW	2.9
WW	75
YW	125
M	31

COW

NEW MORNING ANGUS

Consignor: Just a two year old sired by V D A R Hero 5666 out of a dam that was sired by the Pathfinder bull, G A R Prophet. Her WW +75 is in the Top 15% of the Angus breed. She was pasture exposed from 12/1/22 until 3/1/23 to NMA Stunner I810 (# 20223125) and NMA Rainmaker 9084 (#19802624). Breeding update sale day.

35 NMA BLACK GARNET H88 OF B41

K C F BENNETT ABSOLUTE
RB CONFIRMED 02-4524
R B LADY STANDARD 305-02
G A R PROPHET
NMA BLACK GARNET 8017 6128
GOODE PREDESTINED 8017

DOB 8/24/20
 Tatt H88
 Reg. 19805501

CED	6
BW	1.2
WW	74
YW	120
M	28

COW

NEW MORNING ANGUS

Consignor: Great EPDs on this K C F Bennett Absolute granddaughter whose dam was sired by G A R Prophet. Her WW +74, \$B+164 and \$C+282 are in the Top 10% and her YW is in the Top 20% of the Angus breed. She was bred 2/12/23 to NMA Stunner 9070 whose EPDs are: +1 +2.8 +77 +122 +32. She was pasture exposed from 12/1/22 until 3/1/23 to NMA Rainmaker 9084 (#19802624) and NMA Stunner I810 (#20223125). Breeding update sale day.



S S NIAGARA Z29

37 NMA RITA H70 OF 6008 F83

BASIN PAYWEIGHT 107S
NMA PAYWEIGHT F83
NMA BLACK GARNET 8017 6128
DEER VALLEY ALL IN
WOODSIDE RITA 6008 OF 1885
G A R OBJECTIVE 1885

DOB 7/2/20
 Tatt H70
 Reg. 19770251

CED	1
BW	4.2
WW	82
YW	140
M	30

COW

NEW MORNING ANGUS

Consignor: Another Basin Payweight 107S granddaughter with a great set of EPDs. H70's WW+82 (Top 3%), YW+140 (Top 4%) and \$G+65 \$B+163 and \$C+271 are all in the Top 15% of the Angus breed. Sells pasture exposed from 2/5/23 to 8/29/23 to Musgrave High Road 220-2038 (#20346555) and NMA Stunner 9070 (#19802670). Breeding update sale day.

38 OGLE MS PATRIARCH 622

S S NIAGARA Z29
TEHAMA PATRIARCH F028
TEHAMA ELITE BLACKBIRD D826
K C F BENNETT FORTRESS
SFA BARBARA FF37
SFA BARBARA BD29

DOB 10/23/22
 Tatt 622
 Reg. 20614951

CED	12
BW	-1.0
WW	70
YW	129
M	26

COW

OGLE FARM/DAVID OGLE

Consignor: Olge MS Patriarch 622 sired by bullet proof maternal sire, Tehama Patriarch F028. Her dam is a stand out K C F Bennett Fortress daughter. This heifer looks like her dam; thick made, deep sided, large spring of rib. Should have a bright future. Sells open.

36 NMA ENCHANTRESS H85

BASIN PAYWEIGHT 107S
NMA PAYWEIGHT F83
NMA BLACK GARNET 8017 6128
G A R DAYBREAK 6882
NMA ENCHANTRESS E96
NMA ENCHANTRESS A34

DOB 8/20/20
 Tatt H85
 Reg. 19797025

CED	0
BW	3.6
WW	82
YW	148
M	30

COW

NEW MORNING ANGUS

Consignor: Outstanding EPDs on this three year old Basin Payweight 107S granddaughter. Her YW+148 is in the Top 2% while her WW+82 (Top 3%), and \$B+180 (Top 4%) of the Angus breed. Her \$F+108, \$G+73 and \$C+286 are all in the Top 10%. She was pasture exposed from 2/5/23 until 8/29/23 to Musgrave High Road 220-2038 (#20346555) and NMA Stunner 9070 (#19802670). Breeding update sale day.



BASIN PAYWEIGHT 107S



E W A PEYTON 642

41 **OGLE ERICA PEYTON 819**

QUAKER HILL MANNING 4EX9

DOB 4/30/19

E W A PEYTON 642

Tatt 819

E W A 444 OF 968 PROGRESS

Reg. 19473484

MGR TREASURE

POWELL ERICA 7035

WILLIAMS PROP ERICA UP 255-2

CED	12
BW	.6
WW	82
YW	142
M	26

COW

Consignor: **OGLE FARM/DAVID OGLE**

A nice daughter of E W A Peyton 642 with MGR Treasure on her dam's side. Has great, balanced EPDs. Sells safe in calf to Williams Transcender 12-315 who is in the top 1% in nine EPD and \$Value indexes (\$C+380). Pasture exposed from 4/2/23 until 6/12/23. Sells with a nice bull calf at side.

39 **OGLE MS EXPONENTIAL 422**

CASINO BOMBER N33

DOB 10/13/22

K C F BENNETT EXPONENTIAL

Tatt 422

K C F MISS SOUTHSIDE B226

Reg. 20614949

JINDRA ACCLAIM

OGLE MISS ERICA 620

POWELL ERICA 7048

CED	10
BW	.8
WW	78
YW	137
M	29

COW

Consignor: **OGLE FARM/DAVID OGLE**

An own daughter of K C F Bennett Exponential who topped the Spring 2019 KCF Bull Sale to ST Genetics. Heifer had a weaning ratio of 104. Sells open.

41A **OGLE PEY WILDCAT 922**

GAR DISCOVERY 6737H

DOB 1/12/23

E & B WILDCAT 9402

Tatt 922

E&B LADY PLUS 643

E W A PEYTON 642

OGLE ERICA PEYTON 819

POWELL ERICA 7035

Reg. 20614954

CED	15
BW	-.2
WW	82
YW	147
M	26

BULL

Consignor: **OGLE FARM/DAVID OGLE**

Nice calving ease herd bull prospect sired by the popular Genex AI sire, E & B Wildcat 9402.

40 **OGLE LADY 821**

JINDRA ACCLAIM

DOB 11/1/21

OGLE EVERGREEN ACCLAIM 129

Tatt 821

MONOMOY EVERGREEN B13

Reg. 20298220

MGR TREASURE

POWELL LADY 7033

RB LADY RIVER 116-4226

CED	8
BW	1.3
WW	72
YW	132
M	30

COW

Consignor: **OGLE FARM/DAVID OGLE**

Ogle Lady 821 is a bred heifer with a bright future. Safe in calf to sale-topping AI bull, GB Fireball 672. Checked safe. Due 10/30/23.



JINDRA ACCLAIM



G A R A S H L A N D



G H S S A R I T A 1 2 3

G A R A S H L A N D

DOB 9/9/21

SC ABUNDANCE 42F

Tatt 123

CHAIR ROCK PROPHET 3054

Reg. 20737527

K C F B E N N E T T F O R T R E S S

787 SARITA 787

G H S S A R I T A 3 1 4 9

CED	5
BW	1.4
WW	73
YW	119
M	28

C O W

MIP

Consignor: **STOVALL LIVESTOCK**

A heifer who is sired by SC Abundance 42F who is a son of the Genex sire G A R A S hland. Her dam is sired by the Knollcrest bull K C F Bennett Fortress. She comes from a cow family known for their longevity that was developed by the Gentry's of North Carolina. She is bred to GHS Full Tank 110, whose EPDs are: +12 +.6 +67 +125 +35 for a March calf.



R X S A N D Y 2 5 8 H

D A M E R O N F I R S T C L A S S

DOB 3/4/23

COLBURN PRIMO 5153

Tatt 258H

SILVEIRAS SARAS DREAM 1339

Reg. 20679096

COLBURN PRIMO 5153

CED	6
BW	2.4
WW	57
YW	89
M	16

SELDOM REST SANDY 9110

SILVEIRAS S SIS SANDY 2354

C O W

Consignor: **R X A N G U S**

258H is special. She is a linebred Primo, and an own granddaughter of the 2354 cow that has made the Sandy family famous in show circles. A full sister to this heifer sold for 6500 in our last online sale, and has been a many time champion in North Carolina. This heifer is super stout, big bodied, and has an extra tic of bone. She is well extended in her front one-third, and has awesome hair. This heifer was shown one time, and was a class winner at the Appalachian Fair. She has a great disposition, and should pair well with any showman.



R X B A R B A R A 2 5 4 H

G A M B L E S H O T R O D

DOB 1/6/23

SILVEIRAS STYLE 9303

Tatt 254H

SILVEIRAS ELBA 2520

Reg. 20679108

D A M E R O N F I R S T C L A S S

CED	-2
BW	4.8
WW	55
YW	93
M	15

R X B A R B A R A 2 2 5 H

D D A B A R B A R A 1 3 0 6

C O W

Consignor: **R X A N G U S**

254H is a beautiful daughter of Silveiras Style. Her dam was a many times champion, and was a class winner at the North American. This heifer is as good fronted as you can make one. She is sow bellied and has really good hair. We showed this heifer one time, and she was calf champion in a tough division at Greene County Fair. This heifer has a great attitude, and would be a good fit for any age showman.



G H S C L O V A 0 4 8

H O O V E R D A M

DOB 9/13/20

S S N I A G A R A Z 2 9

Tatt 048

J E T S S X 1 4 4

Reg. 20737709

N I C H O L S E X T R A K 2 0 5

CED	5
BW	.6
WW	63
YW	125
M	31

G H S C L O V A 1 2 9 S

J A N A S T C I 6 1 6 N O B L E 0 3 6

C O W

Consignor: **STOVALL LIVESTOCK**

This S S Niagara Z29 daughter is from another branch of the Clova family in our herd. They are functional hard working cows that raise big calves and breed back every year. She is bred for a January calf to MF Complement N Stan 1756, who has left good daughters of his own in our herd.



D A M E R O N F I R S T C L A S S



WERNER WAR PARTY 2417



GHSCLOVA 04

CONNEALY JUDGMENT

DOB 8/13/20

KG JUSTIFIED 3023

Tatt 04

KG MISS MAGIC 1443

Reg. 20737719

SYDGEN BLACK PEARL 2006

GHS CLOVA 837

GHS CLOVA S33

CED	9
BW	.7
WW	60
YW	114
M	33

COW

Consignor: **STOVALL LIVESTOCK**

This KG Justified 3023 daughter is out of a first calf heifer and stacks Black Pearl, War Party, and In Focus on farther back. Her cow family is one of our most prolific. She sells exposed to GHS Full Tank 110, whose epds are BW +.6, WW +67, YW +125, Milk +35, and Doc +33. Examined safe for a March Calf.



GHS QUEEN B 037

CTS REMEDY 1T01

DOB 9/12/20

ELLINGSON HOMEGROWN 6035

Tatt 037

EA BLANCHE 4137

Reg. 20738256

RITO 6EM3 OF 4L1 EMBLAZON

CED	7
BW	1.8
WW	56
YW	99
M	29

GHS QUEEN B 429

DALTONS QUEEN B 3308 BW MF

COW

Consignor: **STOVALL LIVESTOCK**

An Ellingson Homegrown 6035 daughter out of a Rito 6EM3 of 4L1 Emblazon daughter who is still making the right kind of calves in our herd today. She is examined to MF Complement N Stan 1756, BW -.6, ww +36, yw +78, Milk +35, Doc +20 for a January calf



GHS CLOVA 919

PLATTEMERE WEIGH UP K360

DOB 9/8/19

DEER VALLEY UNIQUE 5635

Tatt 919

SITZ HENRIETTA PRIDE 643T

Reg. 20455947

WERNER WAR PARTY 2417

GHS CLOVA S33

GHS MISS NOBLE W141 S23 109

CED	12
BW	-.3
WW	78
YW	142
M	36

COW

Consignor: **STOVALL LIVESTOCK**

This Deer Valley Unique 5635 daughter is out of a pathfinder Cow from the Clova cow family. The reason I have so many Clova cows to sell is they make good cows that work. She is bred to GHS Full Tank 110 for a March calf.



GHS CLOVA 026

BASIN PAYWEIGHT 1682

DOB 9/9/20

DEER VALLEY WALL STREET

Tatt 026

DEER VALLEY RITA 36113

Reg. 20738801

DEER VALLEY ALL IN

CED	15
BW	-1.9
WW	61
YW	110
M	31

GHS CLOVA 558

GHS MISS NOBLE W141 S23 109

COW

Consignor: **STOVALL LIVESTOCK**

A Deer Valley Wall Street daughter, who is a flushmate to Growth Fund. Again more of the Clova cow family. This girl's grandsire is Deer Valley All In. Her dam makes good calves and breeds up every year like she is supposed to. She is bred to GHS Full Tank 110 for a March Calf.



DEER VALLEY ALL IN

50

GHS CLOVA 622

MCC DAYBREAK
QUAKER HILL RAMPAGE 0A36
QHF BLACKCAP 6E2 OF4V16 4355
W H S LIMELIGHT 64V
GHS CLOVA 374
GHS MISS NOBLE R40 C804 036

DOB 9/4/16
Tatt 622
Reg. 18849316

CED	10
BW	1.1
WW	82
YW	136
M	21

COW

Consignor: **STOVALL LIVESTOCK**

This big stout Clova cow is a bit different than the others. Her dam is a W H S Limelight 64V cow and she is sired by Quaker Hill Rampage 0A36, so she is bred to work in Virginia. She is easy to handle and one of the first in the field to show up for a treat. She is Bred to GHS Full Tank for a late spring calf.

52

TAYLOR RITA 018

MGR TREASURE
WILLIAMS TREASURE 603-411
WILLIAMS RAM ERICA 402-886
MGR TREASURE
WILLIAMS T RITA 201-
WILLIAMS UP-RITA 800-360

DOB 4/24/20
Tatt 018
Reg. 19737156

CED	10
BW	1.1
WW	79
YW	145
M	23

COW

Consignor: **TAYLOR ANGUS**

A young three year old female double bred to the MGR Treasure bull. She is a member of the Rita cow family. She sells with a 7/31/23 bull calf sired by the promising new herd sire at Taylor Angus, Williams Promogen IV, a son of G A R Home Town. Bull calf's EPDs are: +9 +1.3 +87 +154 +32 \$C+343. She was rebred on 9/7/23 to Williams Promogen IV.

51

TAYLOR BLACKCAP 224

MGR TREASURE
WILLIAMS TREASURE 603-411
WILLIAMS RAM ERICA 402-886
K C F BENNETT ANTHEM
LUCAS LADY ANTHEM T739F
LUCAS LADY UPWARD W538 T425F

DOB 6/28/22
Tatt 224
Reg. 20431627

CED	10
BW	.5
WW	72
YW	128
M	18

COW

Consignor: **TAYLOR ANGUS**

An open heifer from Taylor Angus Farm. A granddaughter of MGR Treasure out of a Lucas Lady dam from the Lucas Angus herd in Blacksburg, VA. Nice EPDs on this young female.



MGR TREASURE



EXAR UPSHOT 0562B

53

DMB RITA 2128

EXAR UPSHOT 0562B
ROCK RIDGE UPSHOT B99
ROCK RIDGE BLOSSOM 2060
WHITESTONE INTUITION C106
DMB RITA 496
DMB RITA 592

DOB 12/16/18
Tatt 2128
Reg. 19330099

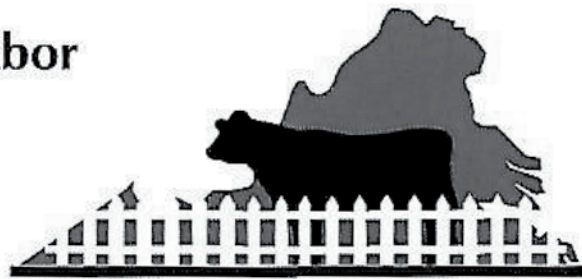
CED	3
BW	2.3
WW	69
YW	121
M	24

COW

Consignor: **TYLER LIVESTOCK**

A nice uddered cow in the prime of her life. The Rock Ridge Upshot daughters have made really nice cows, pair that with the Rita cow family and you have nice, functional, and productive females. She sells with a heifer calf at side, born 5/25/23, sired by Werner Insight 7218. She sells pasture exposed back to DMB Iconic 712, whose EPDs are: +4 +1.2 +93 +163 +30 \$B+195 (top 5%) \$C+325 (top 3%) from 8/1/23 until sale day.

Tommy Tabor



**VIRGINIA FENCE
BUILDERS, INC.**

Fence Contractor

540-616-6181 (cell)
540-674-6181 (office)
540-674-1500 (fax)

CATTLE PENS

Home Repair
Barns Built
Paint

6623 Aaron Lane
Dublin, VA 24084
tt43111@hotmail.com

ONLINE BIDDING



Pre-Registration & Pre-Approval Required

**Contact Aaron Ray Tompkins
336.363.4639**

**LIVE INTERNET BIDDING AT
www.cowbuyer.com**

- View/bid online in Real Time
- **Registration is required.** Please register at least one (1) hour prior to sale time at www.cowbuyer.com
- High Speed Internet is required. Slower speed will not permit you to bid and keep pace in real time.
- Terms: Purchasing online constitutes a legal contract and promise for payment of purchases. All purchases must be paid within ten (10) days of sale date and prior to load out or delivery of cattle purchased.
- Cowbuyer LLC is a service provider and is not responsible for the activity or inactivity of any technology, internet connection at the sale site or connection and technology of the bidders.
- No App required on mobile devices.

Questions please contact:

Aaron Ray Tompkins – 336-363-4639

BERKSHIRE HATHAWAY

HomeServices



Smith Reasor
Realtor®

Mountain Sky Properties
Serving Southwest Virginia
and the New River Valley
Cell: (276) 620-3123
Office: (276) 228-8882
smithreasorsell@gmail.com
www.swvarealty.com

Ⓜ A member of the franchise system of BHH Affiliates, LLC



*Your visit
is always
welcome!*

Anderson & Son's

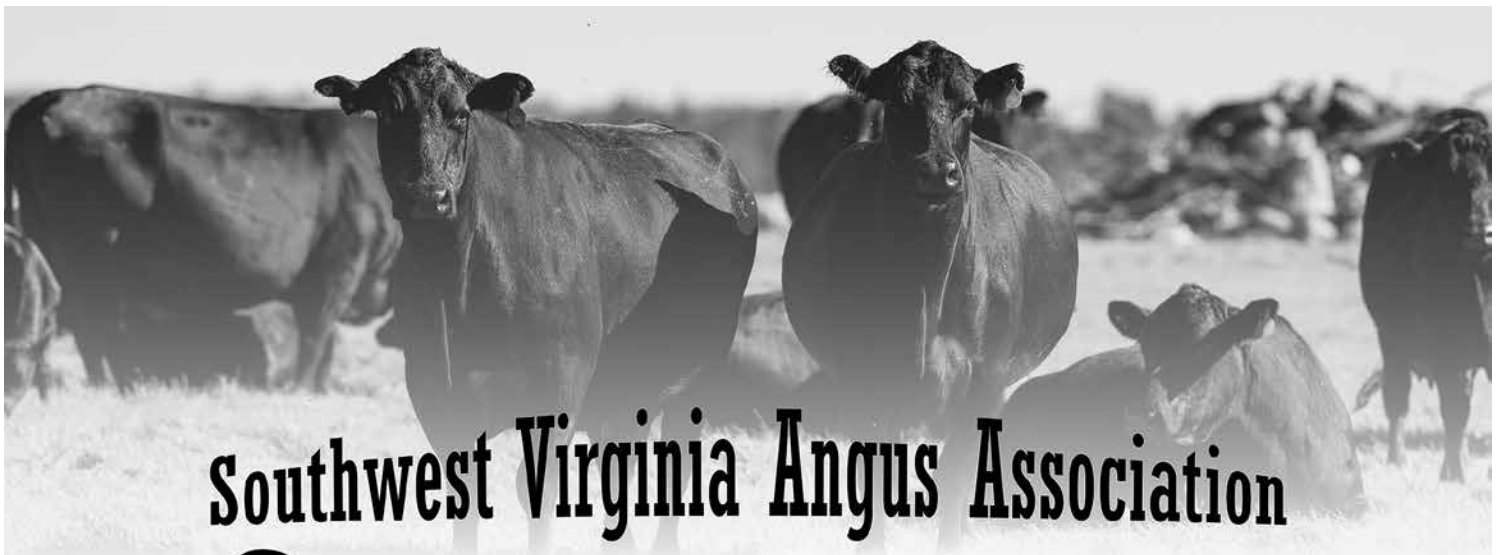
Meat Processing

- USDA Inspected
- Beef
- Lamb
- Pork
- Deer (24/7 drop-off available)

We are a family owned and operated processing facility conveniently located 3 miles from downtown Abingdon, VA. We are here to serve the Tri-state area for generations to come.

As we set out on this journey, providing quality in every cut along with customer satisfaction being our number one goal.

276-623-3623
13200 Chip Ridge Road, Abingdon, VA
andersonandsonsmcats.com



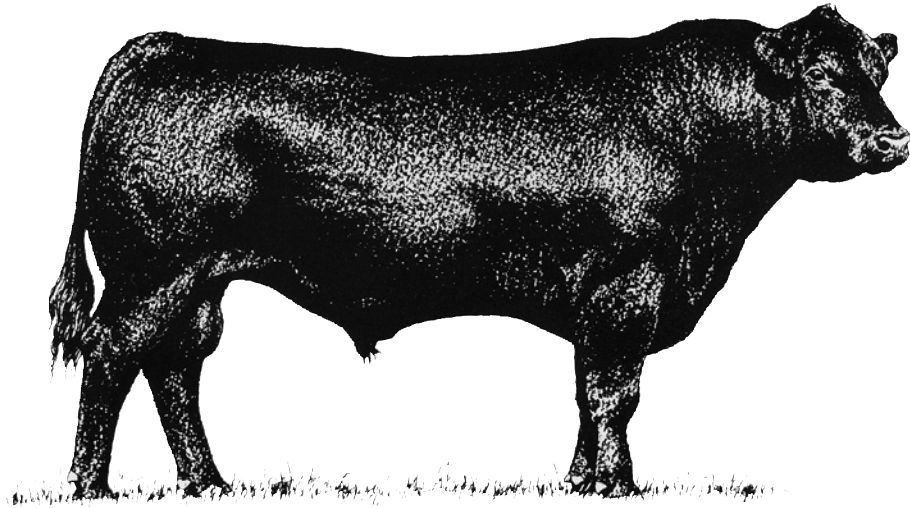
Southwest Virginia Angus Association



**Annual Sales in
April, October, & December**

Visit our Website:
www.swvaangus.org

SOUTHWEST VIRGINIA'S FINEST ANGUS SALE



SATURDAY, DECEMBER 2, 2023

12 noon • Washington County Fairgrounds

Abingdon, VA

Selling Performance Tested Bulls & Registered Females

